



13-25-529
Version: 01
September 15, 2016
Correction: March 10, 2017

Manual updated 3/1/22 page 13

**L-SERIES
FRAME 3
BASE-MOUNTED COMPRESSOR**

GD PILOT TS CONTROLS

MODELS

**L30-45B – 40, 50 & 60HP
LRS30-45B – 30, 37, & 45kW**

50/60 HZ

PARTS LIST

MAINTAIN COMPRESSOR RELIABILITY AND PERFORMANCE WITH GENUINE GARDNER DENVER® COMPRESSOR PARTS AND SUPPORT SERVICES

Gardner Denver® Compressor genuine parts, manufactured to design tolerances, are developed for optimum dependability – specifically for Gardner Denver compressor systems. Design and material innovations are the result of years of experience with hundreds of different compressor applications. Reliability in materials and quality assurance is incorporated in our genuine replacement parts.

Your authorized Gardner Denver Compressor distributor offers all the backup you'll need. A worldwide network of authorized distributors provides the finest product support in the air compressor industry.

Your authorized distributor can support your Gardner Denver air compressor with these services:

1. Trained parts specialists to assist you in selecting the correct replacement parts.
2. Factory warranted new and remanufactured rotary screw airends. Most popular model remanufactured airends are maintained in stock at the factory, for purchase on an exchange basis with liberal core credit available for the replacement unit.
3. A full line of factory tested AEON™ compressor lubricants specifically formulated for use in Gardner Denver compressors.
4. Repair and maintenance kits designed with the necessary parts to simplify servicing your compressor.

Authorized distributor service technicians are factory trained and skilled in compressor maintenance and repair. They are ready to respond and assist you by providing fast, expert maintenance and repair services.

To Contact Gardner Denver or locate your local distributor:

visit: www.contactgd.com/compressors

or

call: (800)682-9868

INSTRUCTIONS FOR ORDERING REPAIR PARTS

When ordering parts, specify Compressor **MODEL**, Method of Cooling, **POWER** and **SERIAL NUMBER** (see nameplate on unit). The Airend Serial Number is also stamped on top of the discharge bearing carrier castings.

All orders for Parts should be placed with the nearest authorized distributor.

Where NOT specified, quantity of parts required per compressor or unit is one (1); where more than one is required per unit, quantity is indicated in parenthesis. **SPECIFY EXACTLY THE NUMBER OF PARTS REQUIRED.**

DO NOT ORDER BY SETS OR GROUPS.

To determine the Right-Hand and Left-Hand side of a compressor, stand at the motor end and look toward the compressor. Right-Hand and Left- Hand are indicated in parenthesis following the part name, i.e. (RH) and (LH), when appropriate.

TOTAL PRODUCT SUPPORT – GARDNER DENVER'S CONTINUING COMMITMENT TO YOUR AIR COMPRESSOR PERFORMANCE

Commitment to total product support continues long after the purchase of your quality Gardner Denver rotary screw compressor.

Gardner Denver original parts incorporate years of experience and improvements in design, materials and quality assurance. Maintaining your compressor investment with Gardner Denver parts will insure protection for the air compressor unit and long, dependable service life.

Your authorized Gardner Denver compressor distributor maintains a complete stock of all common maintenance parts, factory approved AEON lubricants, and Gardner Denver factory warranted exchange airends. In addition, authorized distributor technicians are factory trained, and can provide complete diagnostic, compressor maintenance and repair services.

This manual is designed to assist you in maintaining high performance and receiving many years of dependable service you expect from your Gardner Denver compressor.

REMANUFACTURED AIRENDS

Whenever an airend requires replacement or repair, Gardner Denver offers an industry unique, factory remanufactured airend exchange program. From its modern factory, Gardner Denver is committed to supplying you with the highest quality, factory remanufactured airends that are guaranteed to save you time, and money.

Immediately Available

Repair downtime costs you money, which is why the most popular models are in inventory at all times.

Skilled Craftsmen

Our Remanufacturing assembly technicians average over 20 years experience with air compression products.

Precision Remanufacturing

All potentially usable parts are thoroughly cleaned, inspected and analyzed. Only those parts that can be brought back to original factory specifications are remanufactured. Every remanufactured airend receives a new overhaul kit: bearings, gears, seals, sleeves and gaskets.

Extensive Testing

Gardner Denver performs testing that repair houses just don't do. Magnaflux and ultrasonic inspection spot cracked or stressed castings, monochromatic light analysis exposes oil leaks, and coordinate measurement machine inspects to +/- .0001", insuring that all remanufactured airends meet factory performance specifications.

Warranty

Gardner Denver backs up every remanufactured airend with a new warranty...27 months from purchase, 24 months from service.

Gardner Denver remanufactured airends deliver *quality without question...year in and year out.*

Call Gardner Denver for information on the airend exchange program and the name of your authorized distributor.

Phone Number: (800) 682-9868 or
Fax: (217) 224-7814

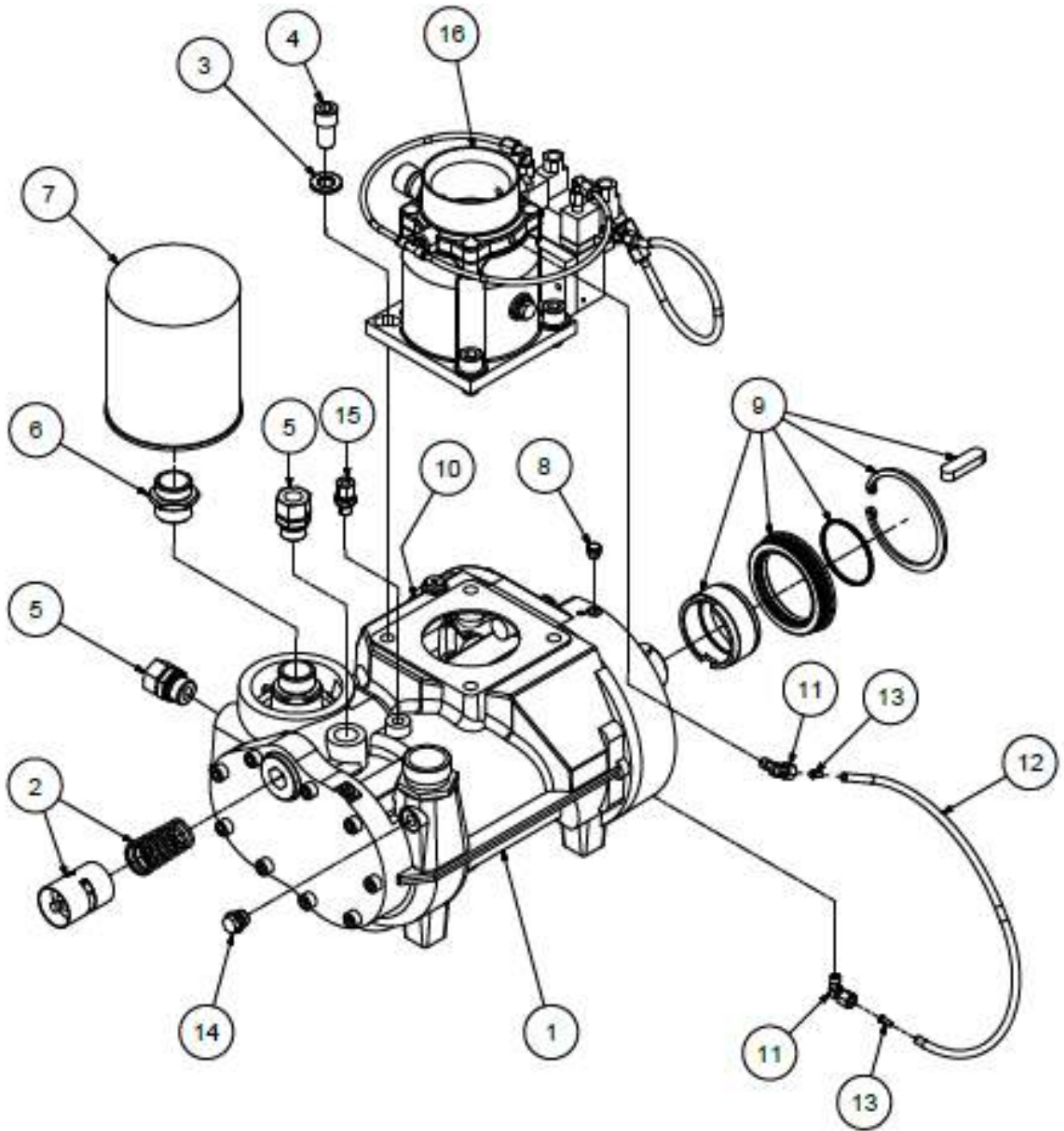
TABLE OF CONTENTS

MAINTAIN COMPRESSOR RELIABILITY AND PERFORMANCE WITH GENUINE GARDNER DENVER	
COMPRESSOR PARTS AND SUPPORT SERVICES.....	1
INSTRUCTIONS FOR ORDERING REPAIR PARTS	1
TOTAL PRODUCT SUPPORT – GARDNER DENVER’S CONTINUING COMMITMENT TO YOUR AIR	
COMPRESSOR PERFORMANCE	2
REMANUFACTURED AIRENDS	2
BARE COMPRESSOR – EK140NK & EK140NG	4 thru 7
AIREND SELECTION AND REPAIR KITS	8
INLET VALVE GROUP	9
INTAKE CONTROLLER.....	10
AIR INLET GROUP.....	11
RESERVOIR GROUP.....	12 & 13
COOLING GROUP – 40HP	14 & 15
COOLING GROUP – 50-60HP	16 & 17
MOTOR GROUP – DIRECT DRIVE	18 & 19
MOTOR GROUP – GEAR DRIVE	20 & 21
ENCLOSURE GROUP.....	23 thru 24
DISCHARGE MANIFOLD GROUP.....	25
CONTROL BOX, FIXED SPEED	26 & 27
CONTROL GROUP – VARIABLE SPEED	28 & 29
DECALS	30 & 31
CONTROLLER ASSEMBLY – FIXED SPEED – 40 HP – 380 VOLT/60HZ – 400VOLT/50HZ	32 & 35
CONTROLLER ASSEMBLY – FIXED SPEED – 40 HP - 230 VOLT/60HZ	35 & 37
CONTROLLER ASSEMBLY – FIXED SPEED – 40 HP –460 VOLT/60HZ LT	37 & 39
CONTROLLER ASSEMBLY – FIXED SPEED –40 HP - 575 VOLT/60HZ	39 & 41
CONTROLLER ASSEMBLY – FIXED SPEED – 50 HP – 380 VOLT/60HZ – 400VOLT/50HZ	41 & 43
CONTROLLER ASSEMBLY – FIXED SPEED – 50 HP –230 VOLT/60HZ.....	43 & 45
CONTROLLER ASSEMBLY – FIXED SPEED – 50 HP – 460 VOLT/60HZ.....	45 & 47
CONTROLLER ASSEMBLY – FIXED SPEED – WYE DELTA STARTER 50 HP – 575 VOLT.....	47 & 49
CONTROLLER ASSEMBLY – FIXED SPEED – 60 HP – 380 VOLT/60HZ.....	49 & 51
CONTROLLER ASSEMBLY – FIXED SPEED – 60 HP – 230 VOLT/60HZ.....	51 & 53
CONTROLLER ASSEMBLY – FIXED SPEED – 60 HP – 460 VOLT/50HZ.....	53 & 55
CONTROLLER ASSEMBLY – FIXED SPEED – 60HP - 575 VOLT/60HZ	55 & 57
CONTROLLER ASSEMBLY – FIXED SPEED – 40 HP – 200 VOLT/60HZ.....	57 & 59
CONTROLLER ASSEMBLY – FIXED SPEED 50 HP – 200 VOLT/60HZ.....	59 & 61
CONTROLLER ASSEMBLY – FIXED SPEED – 60 HP – 200 VOLT/60HZ.....	61 & 63
CONTROLLER ASSEMBLY – VARIABLE SPEED – 40HP – 380V/60HZ – 400V/50HZ - 460 V/60HZ	63 & 67
CONTROLLER ASSEMBLY – VARIABLE SPEED – 40 HP – 230 VOLT/60HZ.....	65 & 69
CONTROLLER ASSEMBLY – VARIABLE SPEED 40/50 HP – 575 VOLT/60HZ.....	67 & 71
CONTROLLER ASSEMBLY – VARIABLE SPEED – 50 HP – 380V/60HZ – 400V/50HZ – 460V/50HZ	69 & 73
CONTROLLER ASSEMBLY – VARIABLE SPEED – 60 HP – 380V/60HZ – 400V/50HZ – 460V/50HZ	71 & 75
CONTROLLER ASSEMBLY – VARIABLE SPEED 60 HP – 575 V/60HZ.....	73 & 77
MOTOR TABLE	78
REPAIR KITS.....	76 thru 80

For Operating and Service Instructions, see:

SERVICE MANUAL	13-25-615
GD PILOT	ZS1133367

BARE COMPRESSOR – EK140NK – DIRECT DRIVE



315KDX810 - A
(Ref. Drawing)

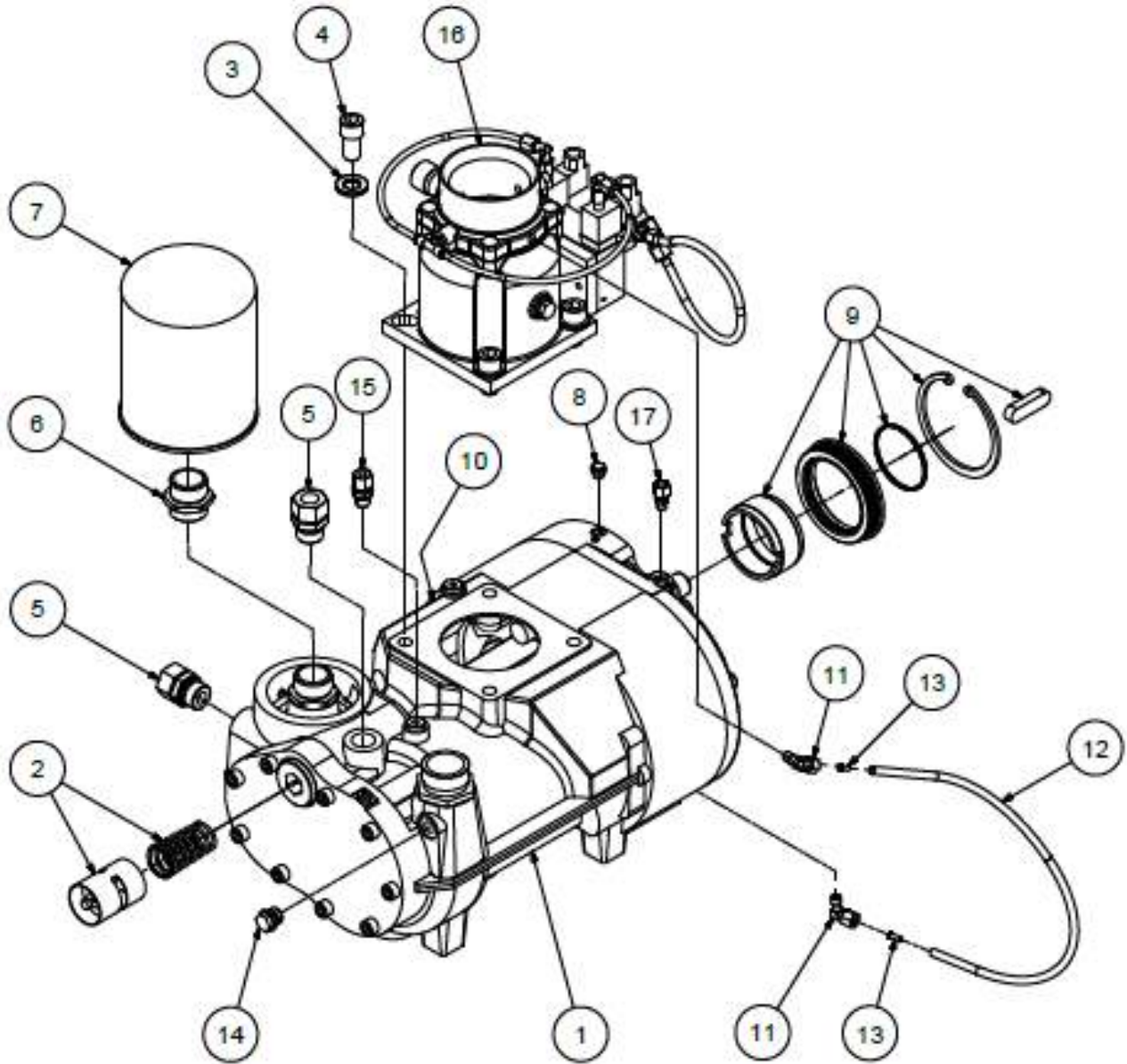
Order by Part Number and Description. Reference Numbers are for your convenience only.

BARE COMPRESSOR – EK140NK – DIRECT DRIVE

**B/M: 301VDX4004
300VDX4004
301KDX4001**

Ref. No.	Name of Part	Qty.	Part No.
1	AIR END (See Page 8)		
2	CONTROL SET (71°C)	1	100010137
3	DISK	4	A93130140
4	SCREW	4	A93041140
5	STRAIGHT SCREW JOINT	2	A93581600
6	DOUBLE NIPPLE	1	ZS1066468
7	OIL FILTER	1	ZS1063359
8	SILENCER	1	A13012774
9	AIR END SHAFT SEAL KIT	1	A11830474
10	NAME PLATE	1	ZS1068756
11	THREAD.ELBOW JOINT	2	A93581640
12	TUBE (In Meters)	0.70	A91801030
13	INSERT SOCKET	2	A93614110
14	LOCKING SCREW	1	A93060550
15	THREAD SCREW. JOINT.....	1	A93581060
16	INLET VALVE (See Page 9)	1	300KDX4030

BARE COMPRESSOR – EK140NG – GEAR DRIVE



316KDX810-A
(Ref. Drawing)

Order by Part Number and Description. Reference Numbers are for your convenience only.

BARE COMPRESSOR – EK140NG – GEAR DRIVE

B/M: 300 – 301KDX4004

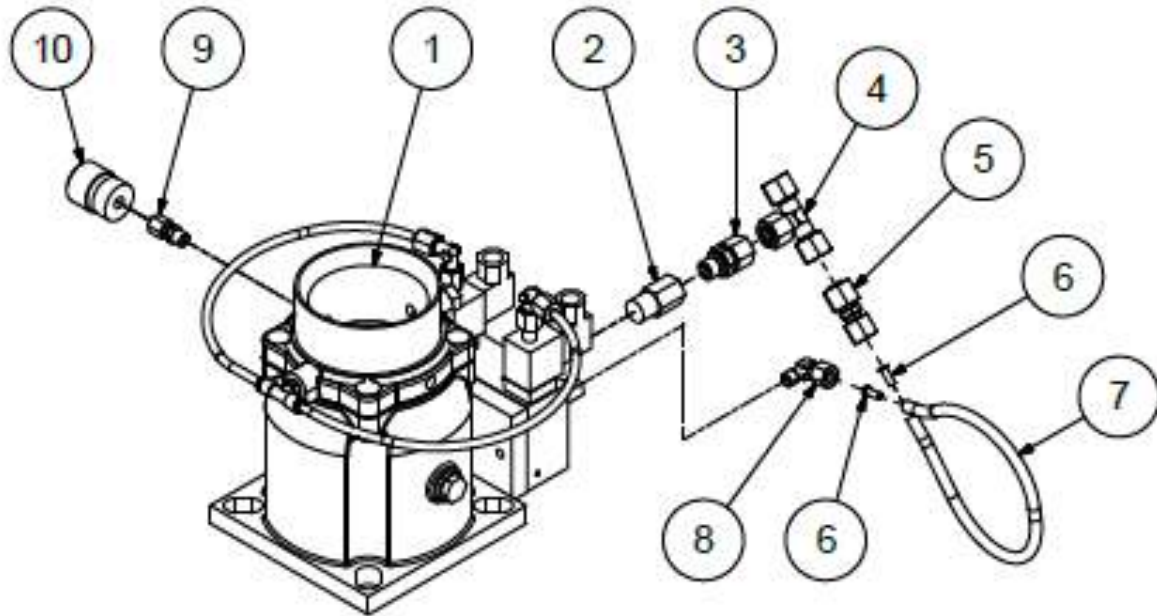
Ref. No.	Name of Part	Qty.	Part No.
1	AIR END (See Page 8)		
2	CONTROL SET (55°C)	1	100010134
3	DISK B	4	A93130140
4	SCREW	4	A93041140
5	STRAIGHT SCREW JOINT	2	A93581600
6	DOUBLE NIPPLE	1	ZS1066468
7	OIL FILTER	1	ZS1063359
8	SILENCER	1	A13012774
9	AIR END SHAFT SEAL KIT	1	A11830674
10	NAME PLATE	1	ZS1068756
11	THREAD.ELBOW JOINT	2	A93581640
12	TUBE (In Meters)	0.70	A91801030
13	INSERT SOCKET	2	A93614110
14	LOCKING SCREW	1	A93060550
15	THREADED SCREW JOINT	1	A93581060
16	INLET VALVE (See Page 9)	1	300KDX4030
17	THREADED SCREW JOINT	1	A93581040

AIREND SELECTION AND REPAIR KITS

60HZ		110 PSI	130 PSI	145 PSI	190 PSI
40 HP	BARE	A11934774	A11934874	X	A11934174
	ASSEMBLY	310KDX4011	312KDX4011		319KDX4011
50 HP	BARE	A11930174	A11934574	X	A11930174
	ASSEMBLY	311KDX4011	315KDX4011		312KDX4011
60 HP	BARE	A11934774	A11934474	X	A11934674
	ASSEMBLY	317KDX4011	316KDX4011		313KDX4011
50HZ		110 PSI	130 PSI	145 PSI	190 PSI
40 HP	BARE	A11930174	X	A11934674	A11934874
	ASSEMBLY	311KDX4011		313KDX4011	312KDX4011
50 HP	BARE	A11934274	X	A11934474	A11934574
	ASSEMBLY	314KDX4011		316KDX4011	315KDX4011
60 HP	BARE	A11934174	X	A11934274	A11934774
	ASSEMBLY	318KDX4011		314KDX4011	316KDX4011

Order by Part Number and Description. Reference Numbers are for your convenience only.

INLET VALVE GROUP



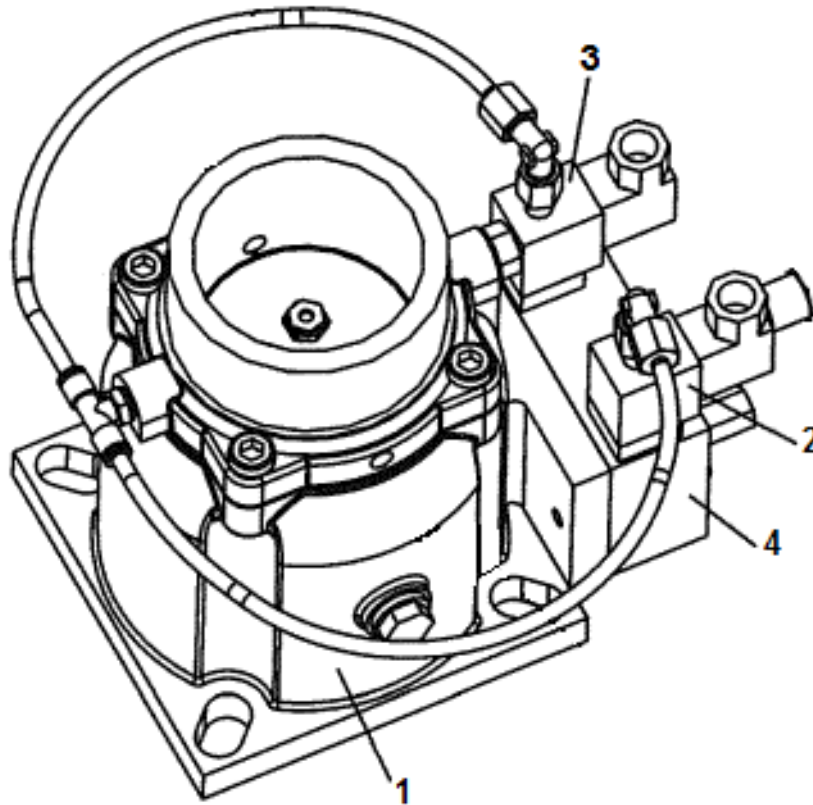
326KDX810-A
(Ref. Drawing)

B/M: 300KDX4030

Ref. No.	Name of Part	Qty.	Part No.
1	INTAKE VALVE (See Page 10)	1	ZS1061095
2	REDUCER.....	1	A93599010
3	THREADED SCREW JOINT	1	A93581070
4	TEE.....	1	A93599030
5	CONNECTOR.	1	A93596180
6	INSERT SOCKET	2	A93614110
7	TUBE (In Meters)	0.32	A91801030
8	THREAD.ELBOW JOINT	1	A93581640
9	THREADED SCREW JOINT.....	1	A93581020
10	LOW-PRESSURE INDICATOR	1	A13093774

Order by Part Number and Description. Reference Numbers are for your convenience only.

INTAKE CONTROLLER

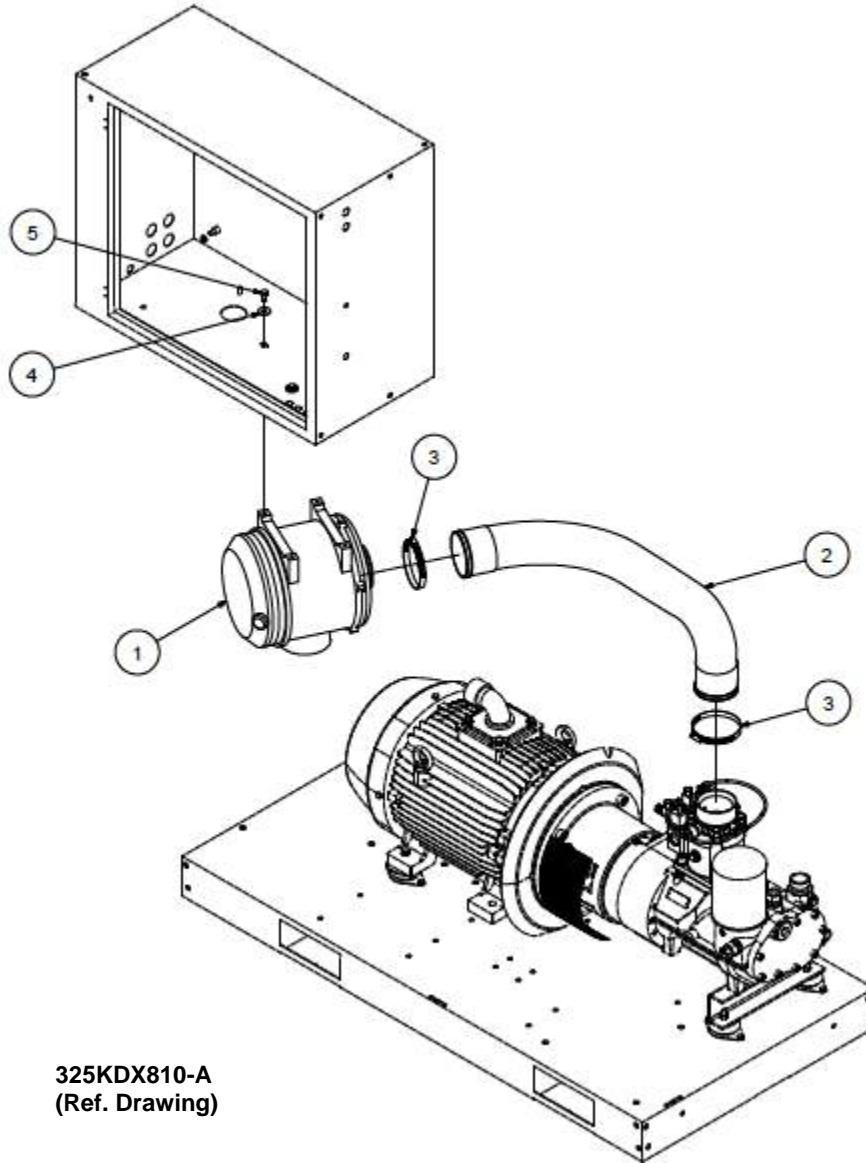


B/M: ZS1061095

Ref. No.	Name of Part	Qty.	Part No.
1	SPARE PART KIT INTAKE CONTROLLER	1	100010409
2	SOLENOID VALVE	1	ZS1061134
3	SOLENOID VALVE	1	ZS1057786
4	CONTROLLER BLOCK.....	1	ZS1067833

Order by Part Number and Description. Reference Numbers are for your convenience only.

AIR INLET GROUP

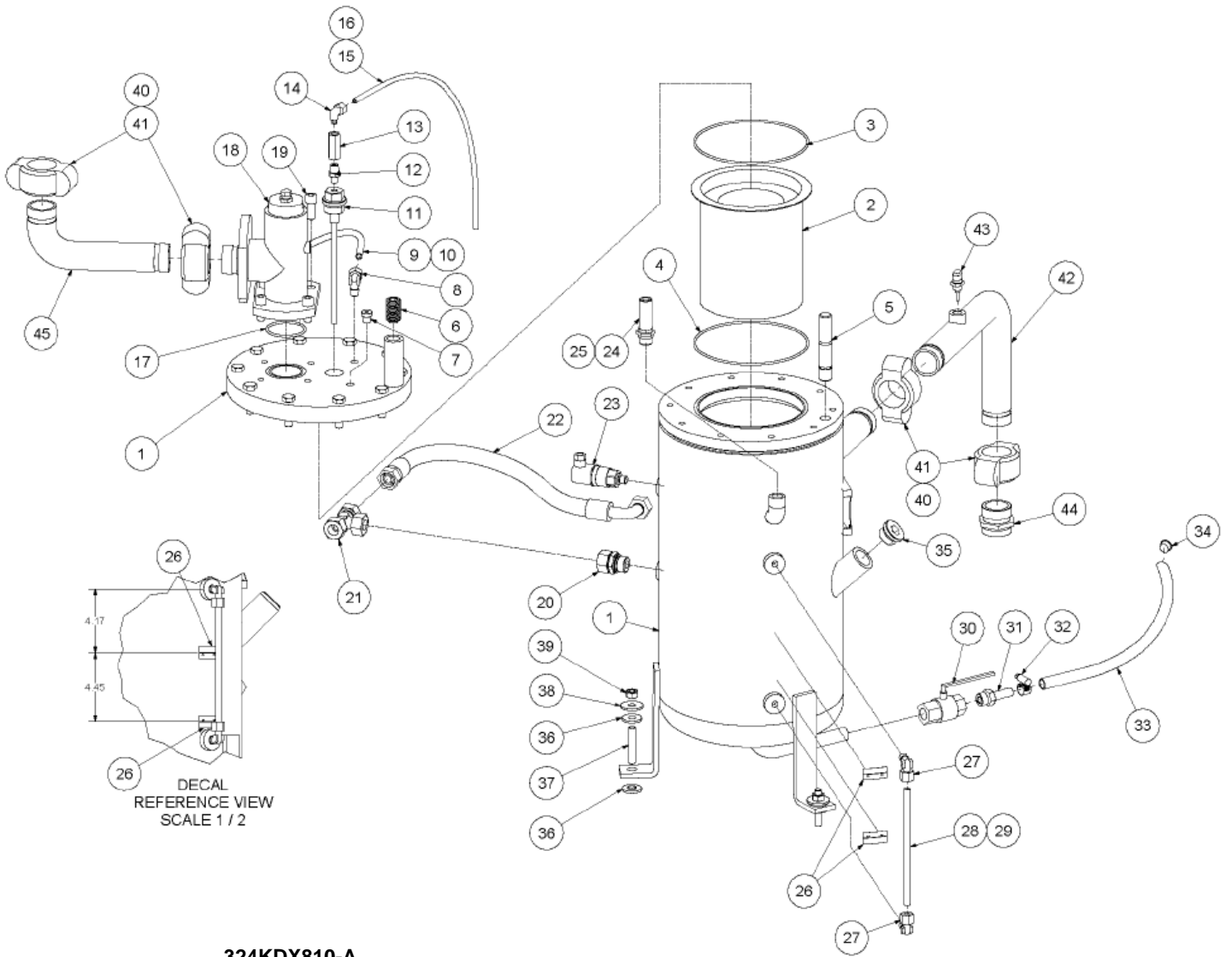


325KDX810-A
(Ref. Drawing)

B/M: 300KDX4013

Ref. No.	Name of Part	Qty.	Part No.
* 1	AIR FILTER	1	ZS1063353
2	INTAKE HOSE	1	100008786
3	HOSE CLIP	2	A93616880
4	DISK	4	A93139190
5	HEX HEAD SCREW	4	A93015070
* REPLACEMENT ELEMENT, ZS1063356.			

RESERVOIR GROUP



324KDX810-A
(Ref. Drawing)

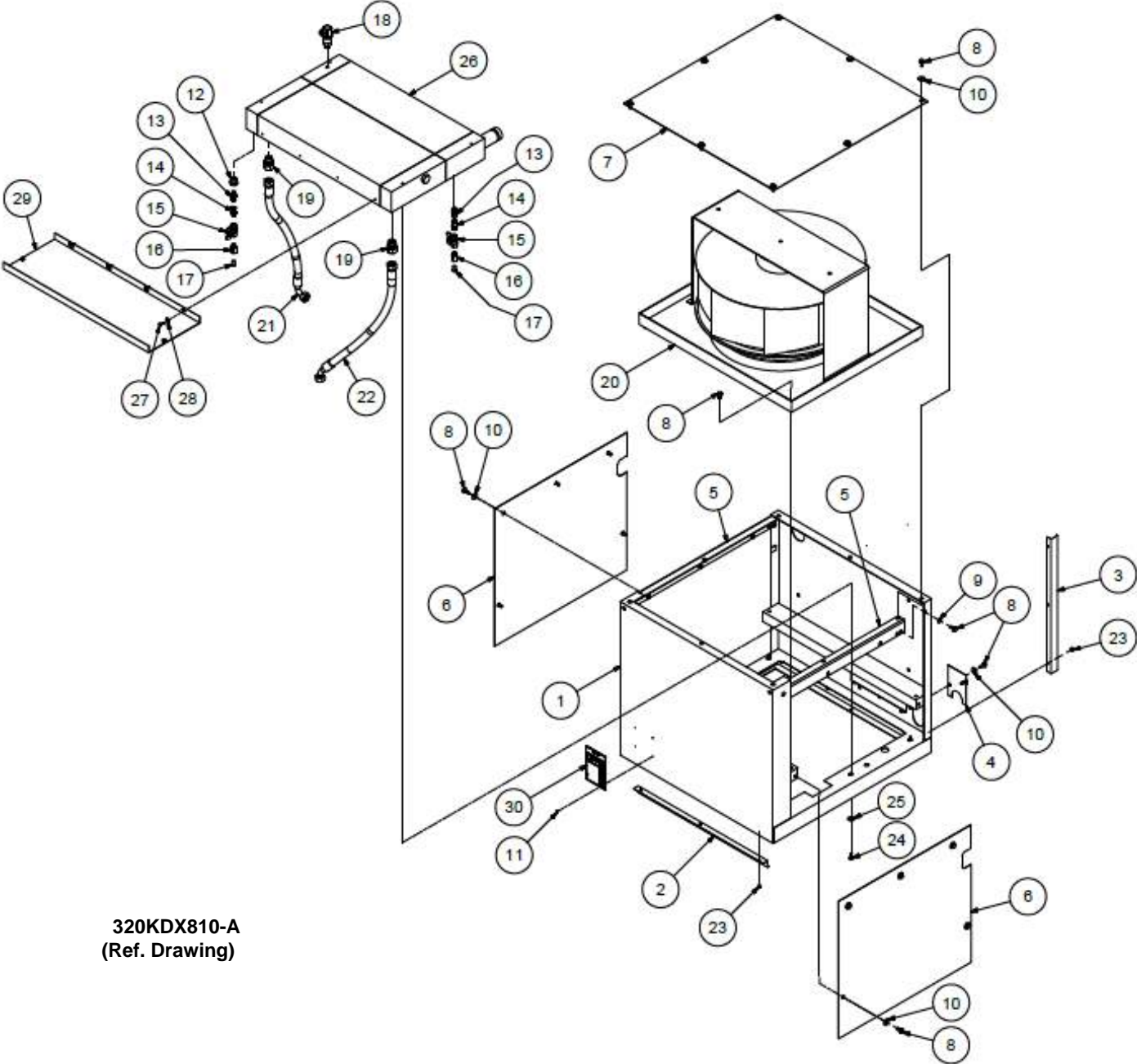
Order by Part Number and Description. Reference Numbers are for your convenience only.

RESERVOIR GROUP

B/M: 300KDX4018
306KDX4013

Ref. No.	Name of Part	Qty.	Part No.
1	AIR/OIL SEPARATOR RESERVOIR	1	300EBD623
2	AIR/OIL SEPARATOR ELEMENT	1	ZS1063828
3	RD-RING	1	A93191670
4	PIPE SEAL	1	A93191660
5	STUD BOLT.....	1	A93022050
6	THREADED PIN	1	A93053300
7	LOCKING SCREW	1	A93060460
8	THREAD.ELBOW JOINT.....	1	A93581670
9	TUBE (In Meters).....	0.77	A91801050
10	INSERT SOCKET	2	A93614120
11	OIL SUCTION.....	1	100011216
12	DOUBLE FITTING	1	A93271970
13	NONRETURN VALVE.....	1	ZS1135780
14	THREAD.ELBOW JOINT.....	1	A93581660
15	TUBE (In Meters).....	0.84	A91801030
16	INSERT SOCKET	2	A93614110
17	PIPE SEAL	1	A93196380
18	MIN.PRESSURE VALVE	1	100012308
19	SCREW	4	A93040850
20	STRAIGHT SCREW JOINT	1	A93581600
21	CONNECTOR.....	1	A93599060
22	HOSE.....	1	ZS1084920
23	PRESSURE SENSOR	1	ZS1050642
24	SAFETY VALVE	1	100010193
25	SEALING RING	1	A93189570
26	LABEL.....	2	A05021878
27	THREAD.ELBOW JOINT.....	2	A93581670
28	PLASTIC-TUBE (In Meters).....	0.23	A91801060
29	INSERT SOCKET	2	A93614140
30	BALL VALVE.....	1	A10352174
31	THREADED NOZZLE	1	A93613080
32	HOSE CLIP.....	1	A93610360
33	PVC-TRANSPORT HOSE (In Meters).....	0.50	A93615710
34	TAPER PLUG	1	A92193580
35	SCREW PLUG.....	1	100014624
36	BUFFER	1	100002438
37	STUD BOLT.....	6	A93024070
38	DISK	3	A93139170
39	HEXAGON NUT.....	3	A93129870
40	LUBRICANT.....	1	A92132170
41	COUPLING	4	100008958
42	PRESSURE PIPE	1	100007993
43	TEMPERATURE PROBE	1	100013684
44	ADAPTER.....	1	A11932874
45	PRESSURE PIPE	1	100007684

COOLING GROUP - 40HP



320KDX810-A
(Ref. Drawing)

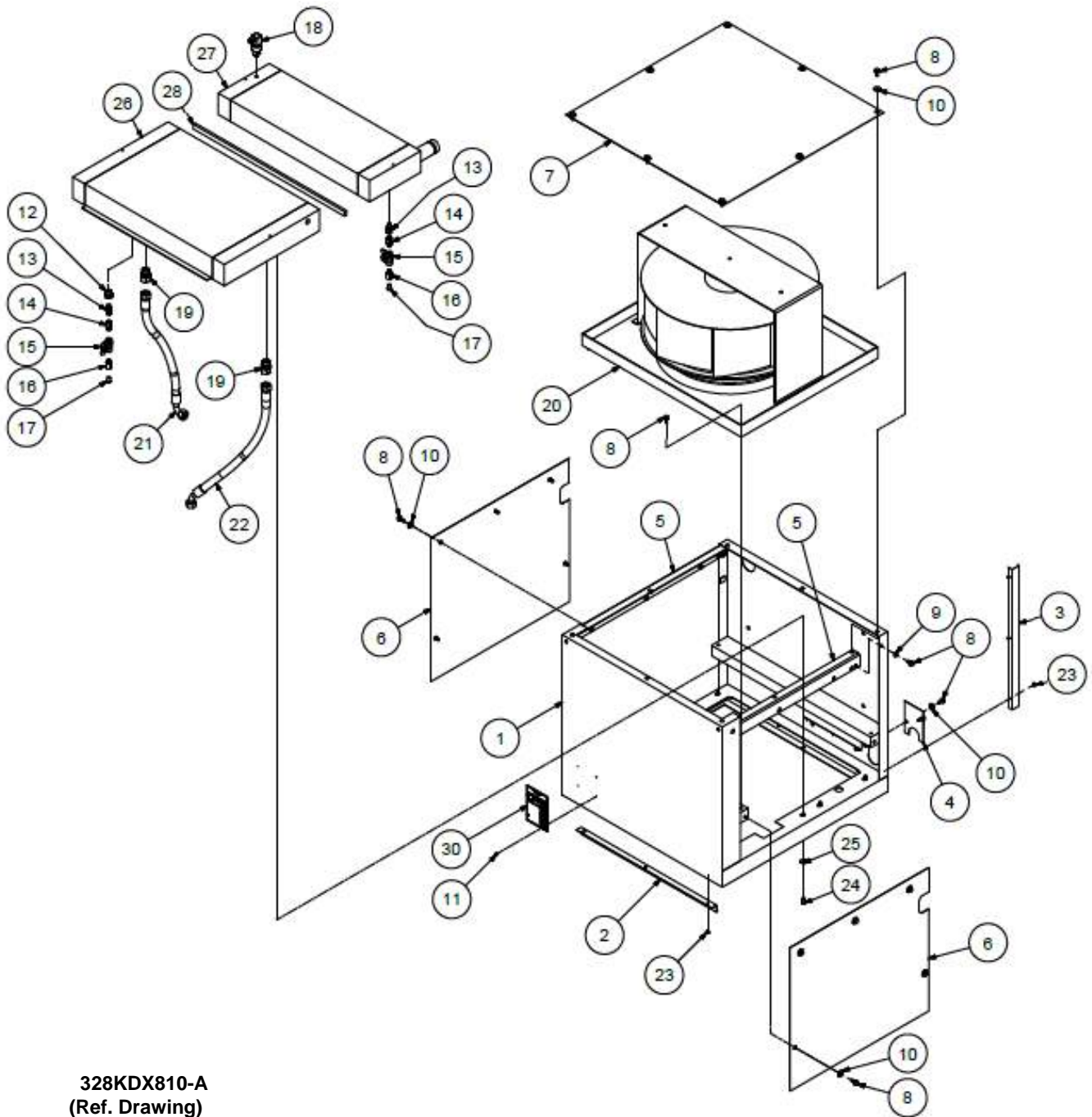
Order by Part Number and Description. Reference Numbers are for your convenience only.

COOLING GROUP – 40HP

B/M: 300-301KDX4003
 300-302KDX4058
 305KDX4017

Ref. No.	Name of Part	Qty.	Part No.
1	COOLER SUPPORT	1	ZS1065963
2	BRACKET	1	ZS1065965
3	BRACKET	1	ZS1065966
4	COVER	1	ZS1065967
5	SUPPORT	2	ZS1065968
6	FAN COVER	2	ZS1065969
7	FAN SCREEN	1	100007948
8	SCREW	22	A93010515
9	DISK B	2	A93130090
10	DISK A.....	20	A93139210
11	BLIND RIVET	4	A93179020
12	REDUCE SOCKET	1	A93594910
13	THREADED SCREW JOINT.....	2	A93581060
14	SCREW JOINT.....	2	A04092974
15	VALVE.....	2	100003882
16	ADAPTOR	2	100003603
17	LOCK-SCREW	2	A93290340
18	PRESSURE SENSOR	1	ZS1050642
19	STRAIGHT SCREW JOINT	2	A93581600
20	RADIAL FAN		
	40HP - 200V, 230V, 380V & 460V	1	100008753
	40HP – 400V	1	ZS1135535
	40HP – 575V	1	100008754
21	HOSE	1	ZS1084919
22	HOSE	1	ZS1084918
23	BLIND RIVET	6	A93179285
24	HEX.HEAD SCREW.....	6	A93014800
25	DISK A.....	6	A93139210
26	COMBICOOLER	1	100007671
27	HEX.HEAD SCREW.....	4	A93014570
28	DISK A/B	4	A93139270
29	HOLDER - COMBI COOLER	1	100011789
30	IDENTIFICATION PLATE	1	100016812

COOLING GROUP – 50-60HP



328KDX810-A
(Ref. Drawing)

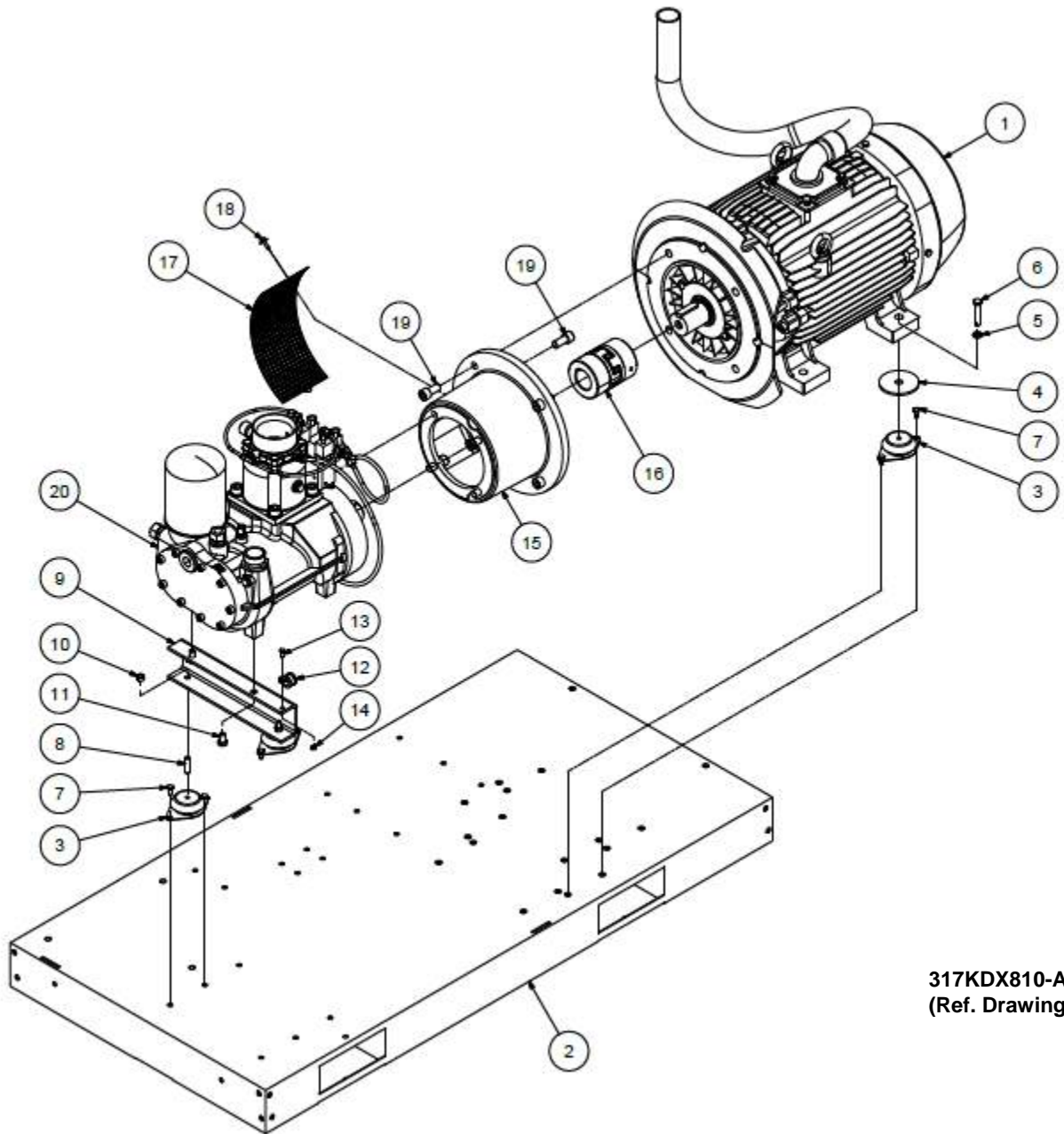
Order by Part Number and Description. Reference Numbers are for your convenience only.

COOLING GROUP – 50-60HP

**B/M: 300KDX4003 & 302KDX4003
300-305KDX4058
305KDX4017**

Ref. No.	Name of Part	Qty.	Part No.
1	COOLER SUPPORT	1	ZS1065963
2	BRACKET	1	ZS1065965
3	BRACKET	1	ZS1065966
4	COVER.....	1	ZS1065967
5	SUPPORT	2	ZS1065968
6	FAN COVER	2	ZS1065969
7	FAN SCREEN	1	100007948
8	SCREW	22	A93010515
9	DISK B	2	A93130090
10	DISK A.....	20	A93139210
11	BLIND RIVET	4	A93179020
12	REDUCE SOCKET	1	A93594910
13	THREADED SCREW JOINT.....	2	A93581060
14	SCREW JOINT.....	2	A04092974
15	VALVE.....	2	100003882
16	ADAPTOR.....	2	100003603
17	LOCK-SCREW	2	A93290340
18	PRESSURE SENSOR	1	ZS1050642
19	STRAIGHT SCREW JOINT	2	A93581600
20	RADIAL FAN		
	50 HP – 200V, 230V, 380V & 460V.....	1	100008753
	50HP – 400V.....	1	ZS1135535
	50HP – 575V.....	1	100008754
	60HP - 200V, 230V, 380V & 460V.....	1	100008716
	60HP – 400V.....	1	ZS1135537
	60HP – 575V.....	1	100008717
21	HOSE	1	ZS1084919
22	HOSE	1	ZS1084918
23	BLIND RIVET	6	A93179285
24	SCREW	8	A93014800
25	DISK A.....	8	A93139210
26	OIL COOLER	1	100007672
27	AIR COOLER	1	100007673
28	FOAM STRIP COOLER	1	100006415
30	IDENTIFICATION PLATE	1	100016812

MOTOR GROUP – DIRECT DRIVE



317KDX810-A
(Ref. Drawing)

Order by Part Number and Description. Reference Numbers are for your convenience only.

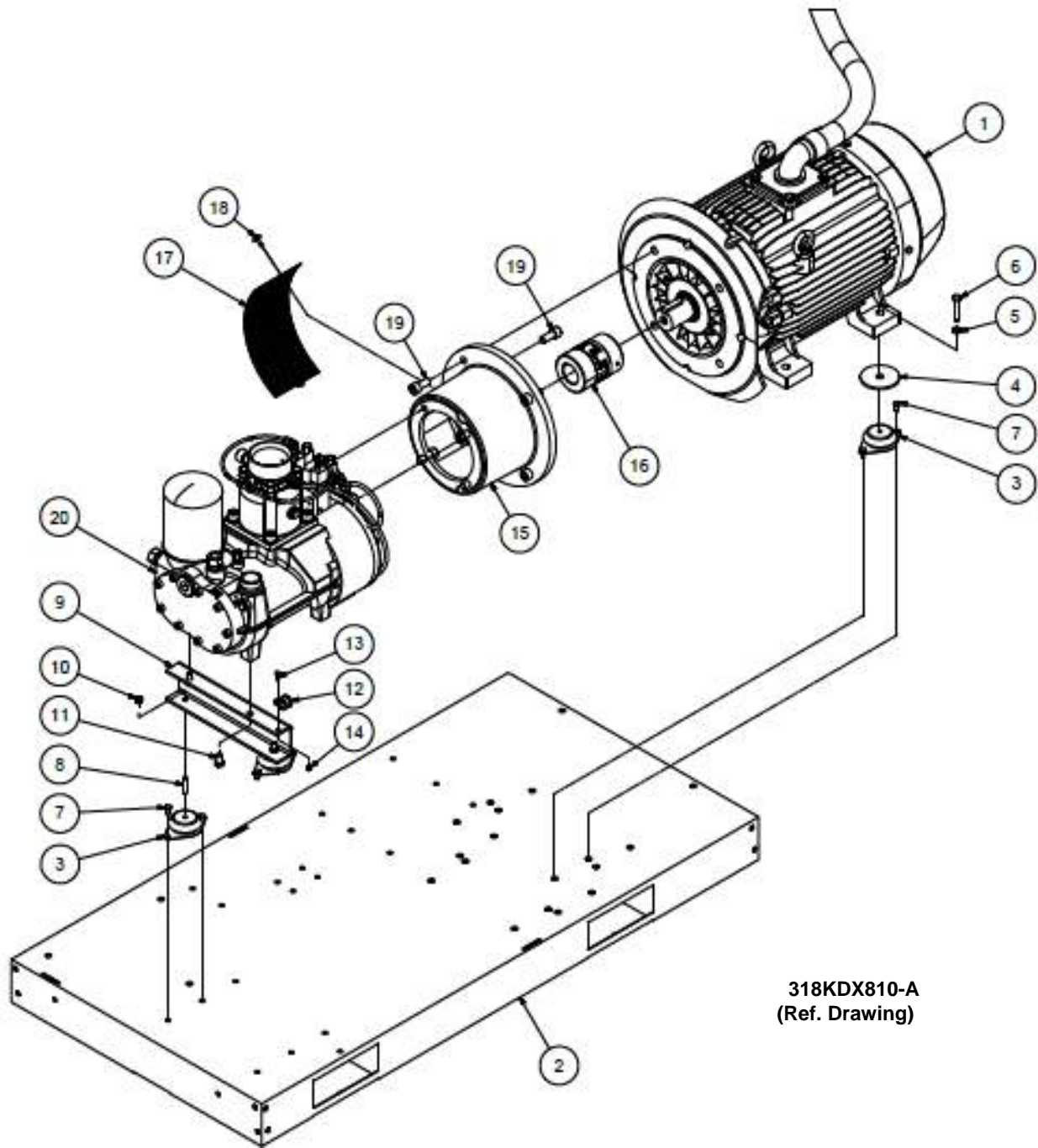
MOTOR GROUP – DIRECT DRIVE

B/M: 302KDX4004 & 300KDX4005

Ref. No.	Name of Part	Qty.	Part No.
1	MOTOR.(See Motor Table Page 78).....		
2	BASE FRAME	1	100017021
3	ANTI VIBRATION MOUNT	4	100016236
4	DISK	2	100007423
5	DISK	2	A93139190
6	SCREW	2	A93010740
7	SCREW	8	A93014800
8	STUD BOLT	2	A93024060
9	HOLDER AIR END	1	100007994
10	NUT	2	A93120100
11	SCREW	2	A93015350
12	PIPE CLAMP	1	A03607177
13	SCREW	1	A93014580
14	NUT	1	A93120080
15	CONNECTING HOUSING.....	1	A11933074
* 16	COUPLING	1	100008854
17	COVER PLATE COUPLING.....	1	A11923574
18	SCREW	2	98500/5073
19	SCREW	8	A93041150
20	AIREND KIT (See Page 8)		

* COUPLING REPLACEMENT SPIDER, 100008875.

MOTOR GROUP – GEAR DRIVE



318KDX810-A
(Ref. Drawing)

Order by Part Number and Description. Reference Numbers are for your convenience only.

MOTOR GROUP – GEAR DRIVE

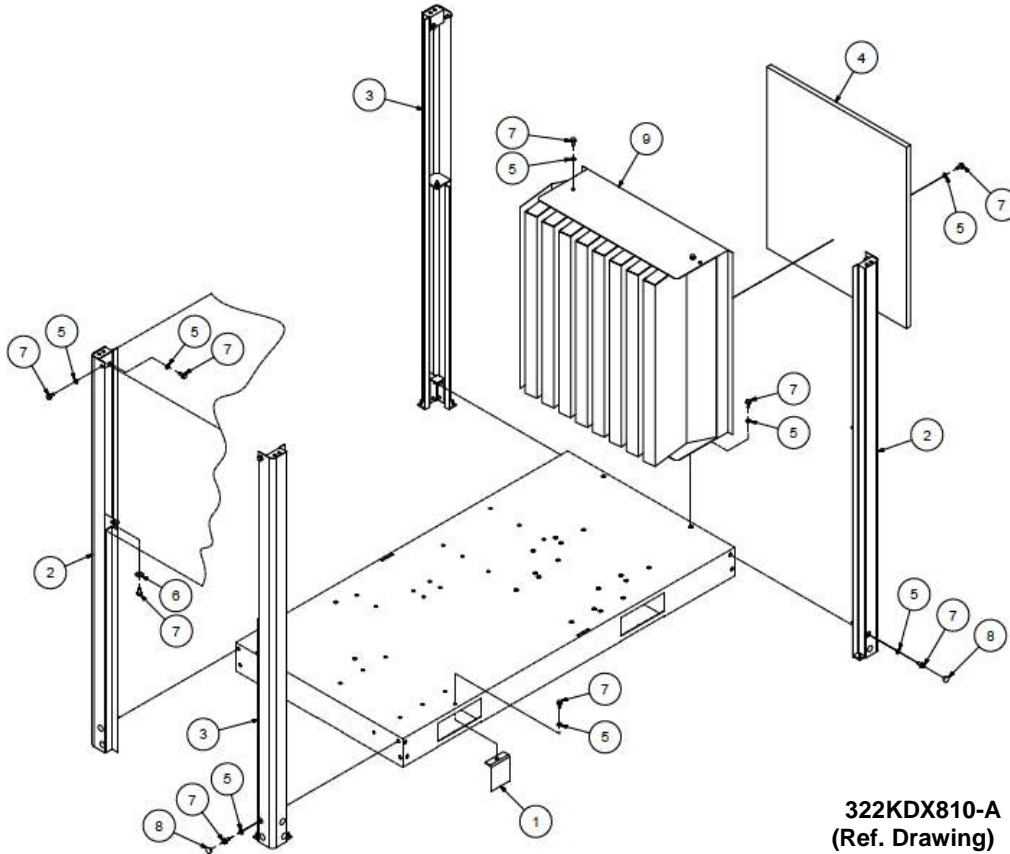
B/M: 302KDX4004 & 300KDX4005

Ref. No.	Name of Part	Qty.	Part No.
1	MOTOR (See Motor Table Page 78).....		
2	BASE FRAME	1	100017021
3	ANTI VIBRATION MOUNT	4	100016236
4	DISK.....	2	100007423
5	DISK.....	2	A93139190
6	SCREW	2	A93010740
7	SCREW	8	A93014800
8	STUD BOLT	2	A93024060
9	HOLDER AIR END	1	100007994
10	NUT	2	A93120100
11	SCREW	2	A93015350
12	PIPE CLAMP	1	A03607177
13	SCREW	1	A93014580
14	NUT	1	A93120080
15	CONNECTING HOUSING	1	A11933074
* 16	COUPLING	1	100008854
17	COVER PLATE COUPLING	1	A11923574
18	SCREW SEMS HELIX FLUTED	2	98500/5073
19	CYLINDER SCREW	8	A93041150
20	AIREND KIT (See Page 8)		

* COUPLING REPLACEMENT SPIDER, 100008875.

Order by Part Number and Description. Reference Numbers are for your convenience only.

ENCLOSURE GROUP

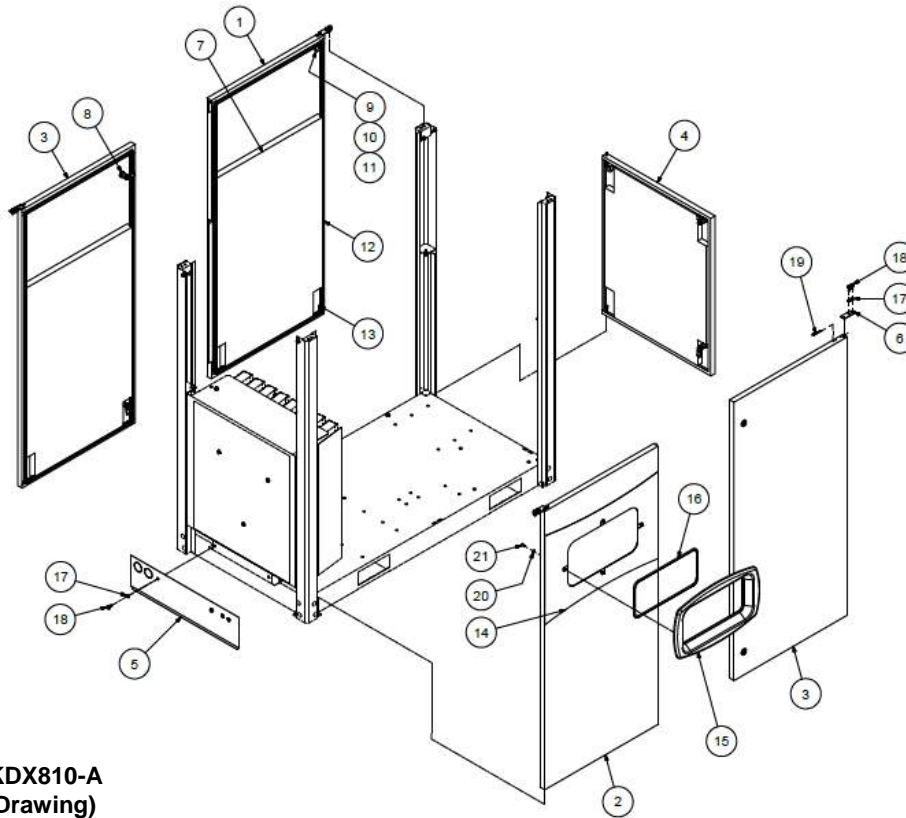


**B/M: 300VDX4017,
302KDX4017,
303KDX4017, 309KDX4013**

Ref. No.	Name of Part	Qty.	Part No.
1	BRACKET.....	1	100017022
2	SUPPORT	2	ZS1062073 300KDX313
3	SUPPORT	2	ZS1062074 301KDX313
4	FILTER ELEMENT	1	100008651
5	DISK	32	A93130090
6	DISK	4	A93139210
7	SCREW	36	A93019820
8	COVER CAP	16	A11020974
9	SOUND ABSORBER		
	FIXED SPEED	1	ZS1065936
	VARIABLE SPEED	1	ZS1089271

Order by Part Number and Description. Reference Numbers are for your convenience only.

ENCLOSURE GROUP



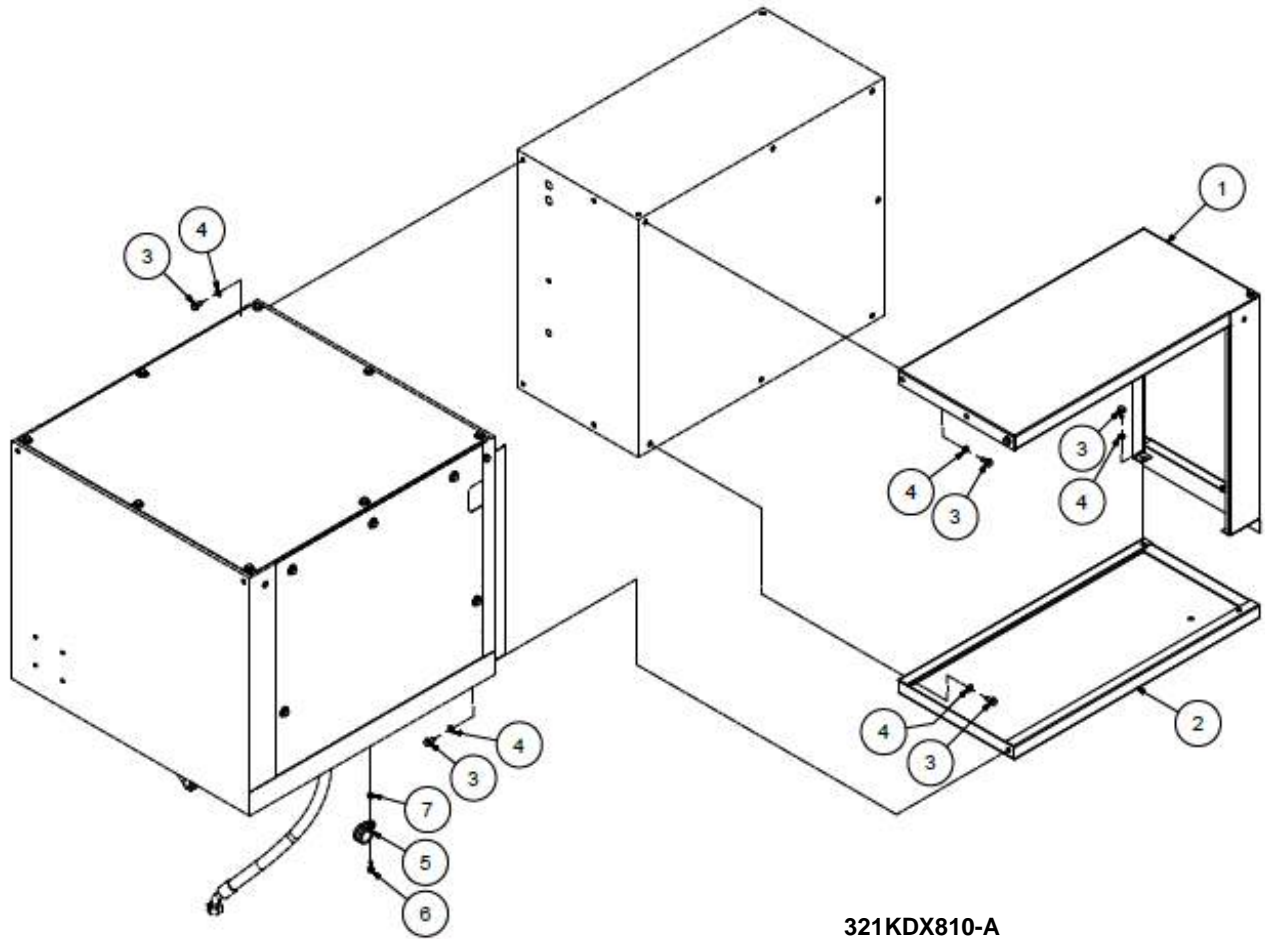
323KDX810-A
(Ref. Drawing)

B/M: 301KDX4013
304KDX4017

Ref. No.	Name of Part	Qty.	Part No.
1	DOOR (BACKSIDE LEFT).....	1	100017001
2	DOOR (FRONTSIDE LEFT WITH CUTOUT)	1	ZS1089269
3	DOOR (FRONTSIDE/BACKSIDE RIGHT).....	2	100017002
4	DOOR (SIDE).....	1	ZS1065931
5	COVER PLATE.....	1	100017004
6	HINGED JOINT	4	100005680
7	SET SOUND ABSORPTION	1	100008010
8	FASTENER	6	100005589
9	PIN - TOP HINGE.....	5	100013281
10	LOCK WASHER	5	A93144090
11	SPRING - TOP HINGE	5	98518-57
12	SEALING PROFILE (In Meters).....	21.92	A93343540
13	SCREW	4	A93040481
14	BACKGROUND FOIL DISPLAY	1	ZS1089321
15	DISPLAYFRAME	1	ZS1061837
16	SEALING STRIP (In Meters)	1.61	100013129
17	DISK.....	10	A93130090
18	SCREW	10	A93019820
19	CLIP CONNECTOR.....	4	ZS1047289
20	DISK.....	4	A93131020
21	SCREW	4	A93014580
22	DOUBLE BIT KEY (Not Shown).....	1	A05906674
23	TRIANGULAR KEY (Not Shown).....	1	A05906574

Order by Part Number and Description. Reference Numbers are for your convenience only.

ENCLOSURE GROUP



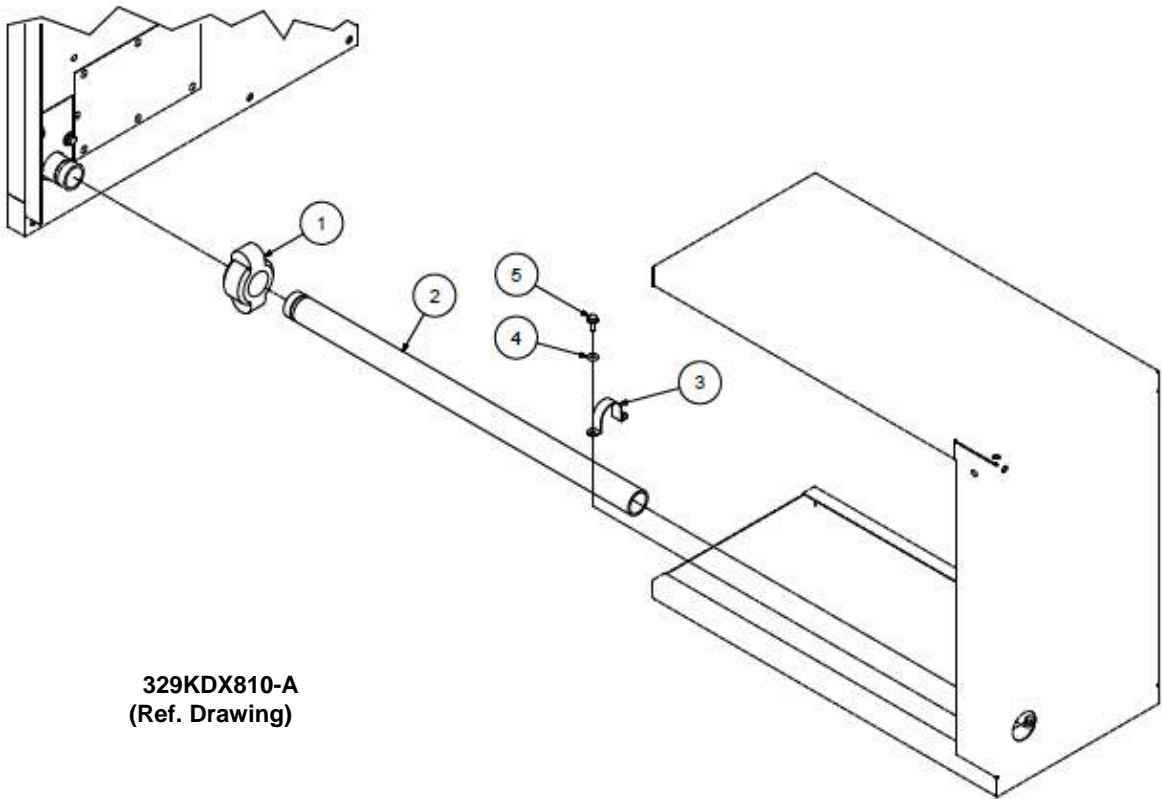
321KDX810-A
(Ref. Drawing)

B/M: 300KDX4017
310KDX4013

Ref. No.	Name of Part	Qty.	Part No.
1	PANEL-CORNER,BEHIND CONTROL BOX	1	300KDX216
2	PANEL-BOTTOM,BEHIND CONTROL BOX	1	301KDX216
3	SCREW	16	A93019820
4	DISK	16	A93130090
5	PIPE CLAMP	1	A93649540
6	SCREW	1	A93014800
7	NUT	1	A93120090

Order by Part Number and Description. Reference Numbers are for your convenience only.

DISCHARGE MANIFOLD GROUP

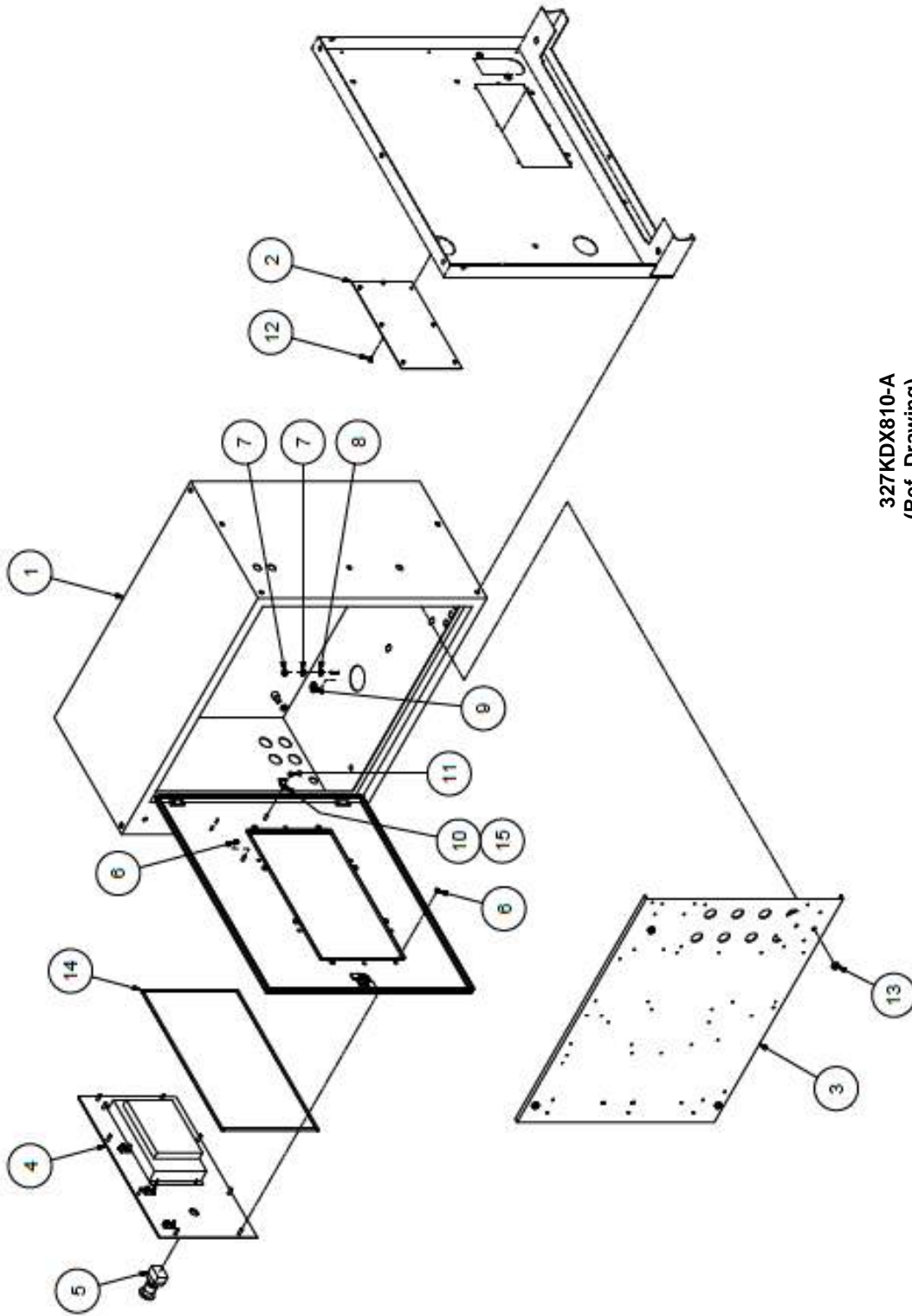


329KDX810-A
(Ref. Drawing)

B/M: 300KDX4022

Ref. No.	Name of Part	Qty.	Part No.
1	COUPLING, PIPE GROOVED	1	VP1102548
2	PRESSURE PIPE.....	1	100010934
3	PIPE CLAMP	1	A93610020
4	DISK	2	A93130090
5	SCREW	2	A93010515

CONTROL BOX, FIXED SPEED



327KDX810-A
(Ref. Drawing)

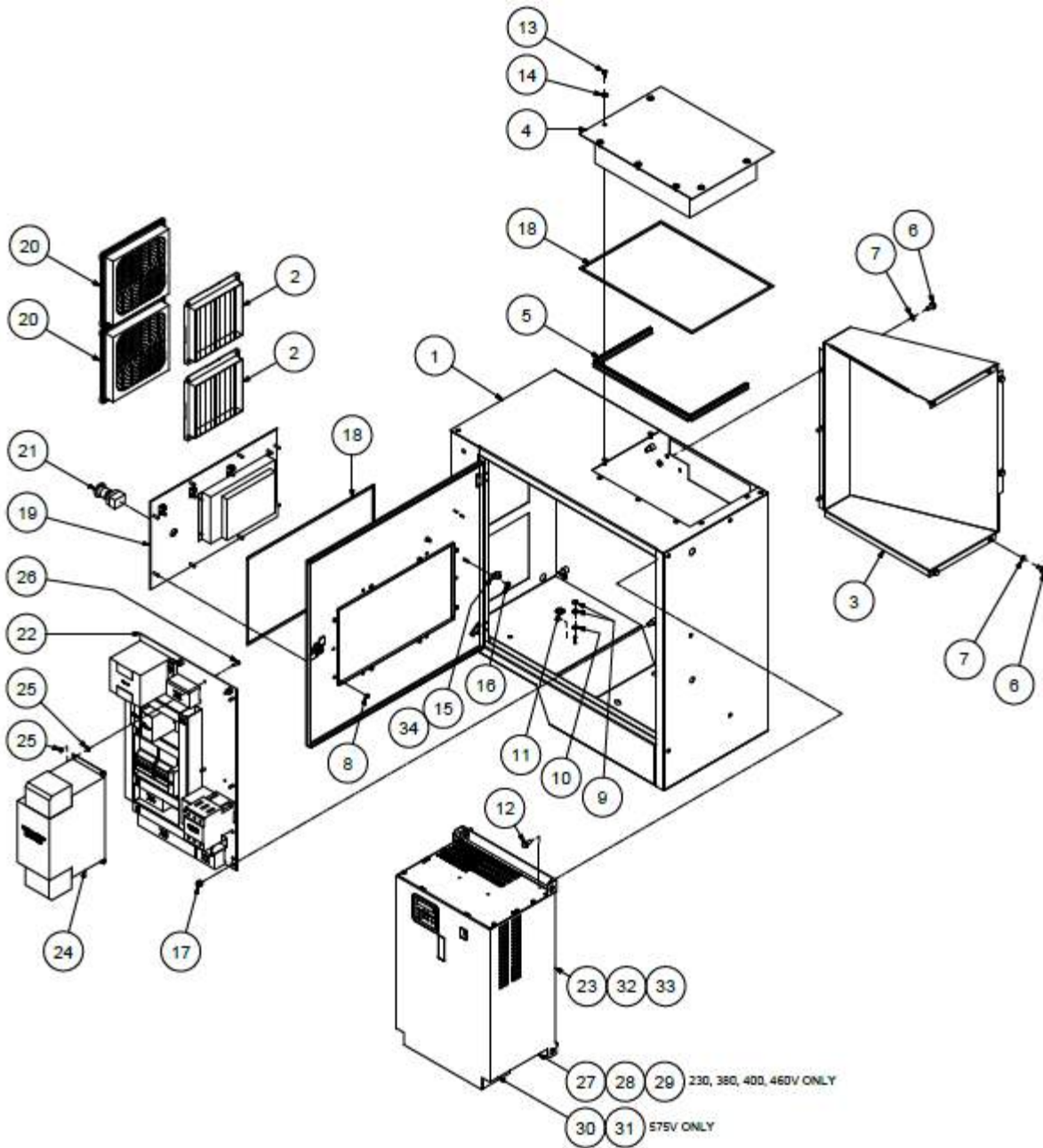
Order by Part Number and Description. Reference Numbers are for your convenience only.

CONTROL BOX, FIXED SPEED

B/M: 303KDX4013 & 306KDX4017

Ref. No.	Name of Part	Qty.	Part No.
1	CONTROL BOX ASSEMBLY	1	301KDX179
2	COVER PLATE COOLER	1	ZS1065972
3	CONTROL PANEL, (See Pages 32-63).....		
4	ELECTRONIC GD PILOT.....	1	ZS1061619
5	EMERGENCY-STOP-SWITCH.....	1	100002893
6	NUT	8	A93120080
7	NUT	2	A93120090
8	TOOTHED DISK.....	1	A93143340
9	GROUND SYMBOL.....	1	A93292090
10	MOUNT FOR CABLE TIE	1	ZS1052905
11	NUT	1	A93121340
12	BLIND RIVET	7	A93179285
13	NUT W/INSERT.....	4	A93121360
14	FOAM-RUBBER TAPE.....	3	A93343490

CONTROL GROUP – VARIABLE SPEED



319KDX810
(Ref. Drawing)

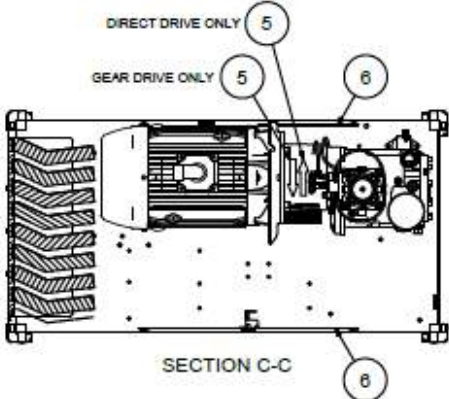
Order by Part Number and Description. Reference Numbers are for your convenience only.

CONTROL GROUP – VARIABLE SPEED

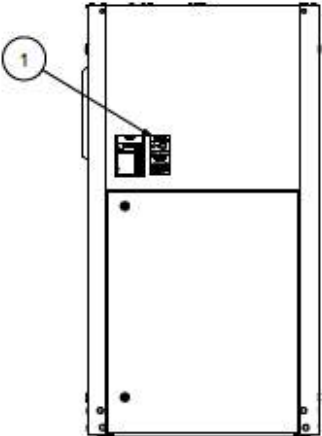
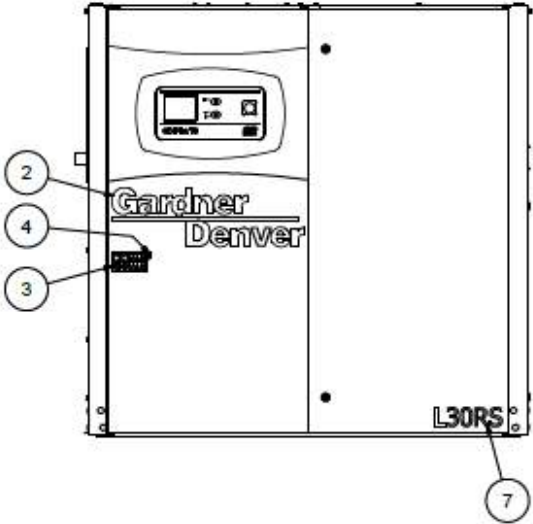
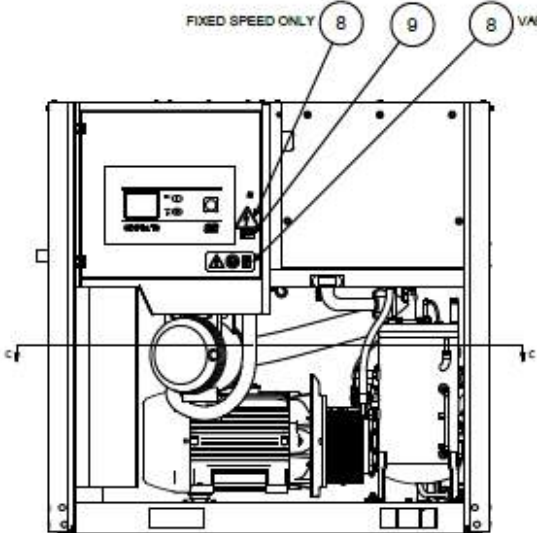
**B/M: 301VDX4013
301VDX4017 – 303VDX4017**

Ref. No.	Name of Part	Qty.	Part No.
1	CONTROL BOX	1	301VDX179
2	BAFFLE.....	1	ZS1134321
3	AIR DUCT-BACK	1	301VDX856
4	AIR DUCT		
	230V, 380V, 400V, 460V	1	ZS1089318
	575V	1	300VDX856
5	SEALING PROFILE (In Meters)	0.84	A93343790
6	SCREW	7	A93019820
7	DISK.....	7	A93130090
8	NUT.....	10	A93120080
9	NUT.....	4	A93120090
10	TOOTHED DISK	2	A93143340
11	SYMBOL	2	A93292090
12	SCREW.....	4	75LM307
13	SCREW.....	7	A93014580
14	DISK.....	7	A93139270
15	MOUNT FOR CABLE TIE	8	ZS1052905
16	NUT.....	8	A93121340
17	NUT.....	4	A93121360
18	FOAM-RUBBER TAPE (In Meters)	3.04	A93343490
19	ELECTRONIC GD PILOT TS - VS SERIES.....	1	ZS1085953
20	FILTER.....	2	ZS1051739
21	EMERGENCY-STOP-SWITCH HW1B-V4F02R	1	100002893
22	CONTROL PANEL (See Pages 64 – 77)		
23	VARIABLE SPEED DRIVE (See Pages 64 – 77).....		
24	FILTER (See Pages 64 – 77).....		
25	NUT (230V, 380V, 400V & 460V ONLY)	8	A93120080
26	SCREW (230V, 380V, 400V & 460V ONLY).....	4	665HMCA06016Z
27	SPLITTER CABLE (230V, 380V, 400V & 460V ONLY).....	1	24CA5899
28	PLUG KIT (230V, 380V, 400V & 460V ONLY).....	1	24CA5933
29	RESISTOR (230V, 380V, 400V & 460V ONLY).....	1	24CA5900
30	COMM CARD CARRIER (575V ONLY)	1	TEN000128
31	MODBUS ADAPTER (575V ONLY)	1	90500154
32	WIRE BLACK		
	(230 V & 575V – 60 HP)	12 FT	2009422
	(50/60HP – 575V).....	18 FT	2009708
	(60HP – 380V, 400V, 460V & 575 V – 50HP)	12 FT	2009321
	(40/50HP – 380V, 400V & 460V, 575V – 40HP).....	12 FT	2009708
	(40HP – 575V).....	18 FT	2009408
33	WIRE GREEN GROUND		
	(230V & 575V – 60HP)	4 FT	97J65
	(All Other Voltages)	6 FT	97J39

DECALS



330KDX810-A
(Ref. Drawing)



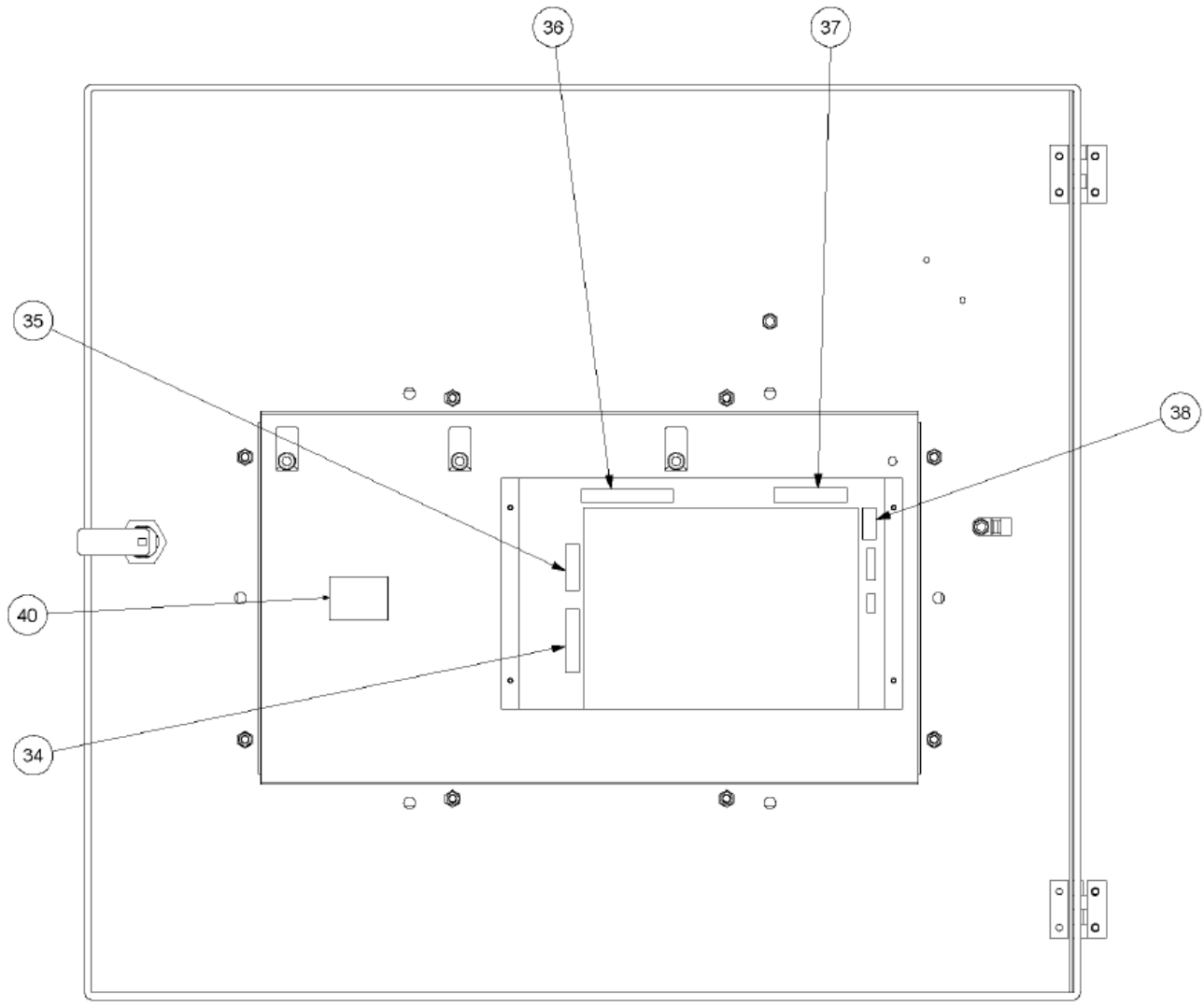
Order by Part Number and Description. Reference Numbers are for your convenience only.

DECALS

BOM: 300-313KDX4011 &
 300-302VDX4011
 316KDX4011 &
 330-331KDX4011

Ref. No.	Name of Part	Qty.	Part No.
1	DECAL LUBRICANT.....		
	9000SP LUBRICANT.....	1	243EAQ077
	BIO LUBRICANT.....	1	315EAQ077
	9000TH LUBRICANT.....	1	325EAQ077
	9000FG-68 LUBRICANT.....	1	338EAQ077
	4000 LUBRICANT.....	1	228EAQ077
	9000FG FOOD GRADE LUBRICANT.....	1	339EAQ077
2	DECAL "GD GARDNER DENVER" LARGE.....	1	ZS1126735
3	SIGN "SAFETY".....	1	A93638650
4	LABELSAFETY VALVE.....	1	100009159
5	ARROW SIGN.....	1	A04561374
6	FORK-LIFT SIGN.....	2	A93638210
7	MODEL CODE.....		
	L30.....	1	A93633540
	L37.....	1	A93633560
	L45.....	1	A93633580
	L30RS.....	1	A93633550
	L37RS.....	1	A93633570
	L45RS.....	1	A93633590
8	WARNING SIGN.....		
	FIXED SPEED.....	1	A93637260
	VARIABLE SPEED.....		A93630015
9	VOLTAGE SIGN.....		
	200 V.....	1	A93639890
	230 V.....	1	A93636090
	380 V.....	1	A93636010
	400 V.....	1	A93638200
	460 V.....	1	A93636040
	575 V.....	1	A93636070
10	SIGN "CENTER OF GRAVITY".....	4	A93638210
11	SIGN "FORK LIFTER – LOAD SUPPORT".....	1	A93631500

CONTROLLER ASSEMBLY – FIXED SPEED



331KDX810-A
(Ref. Drawing)

Order by Part Number and Description. Reference Numbers are for your convenience only.

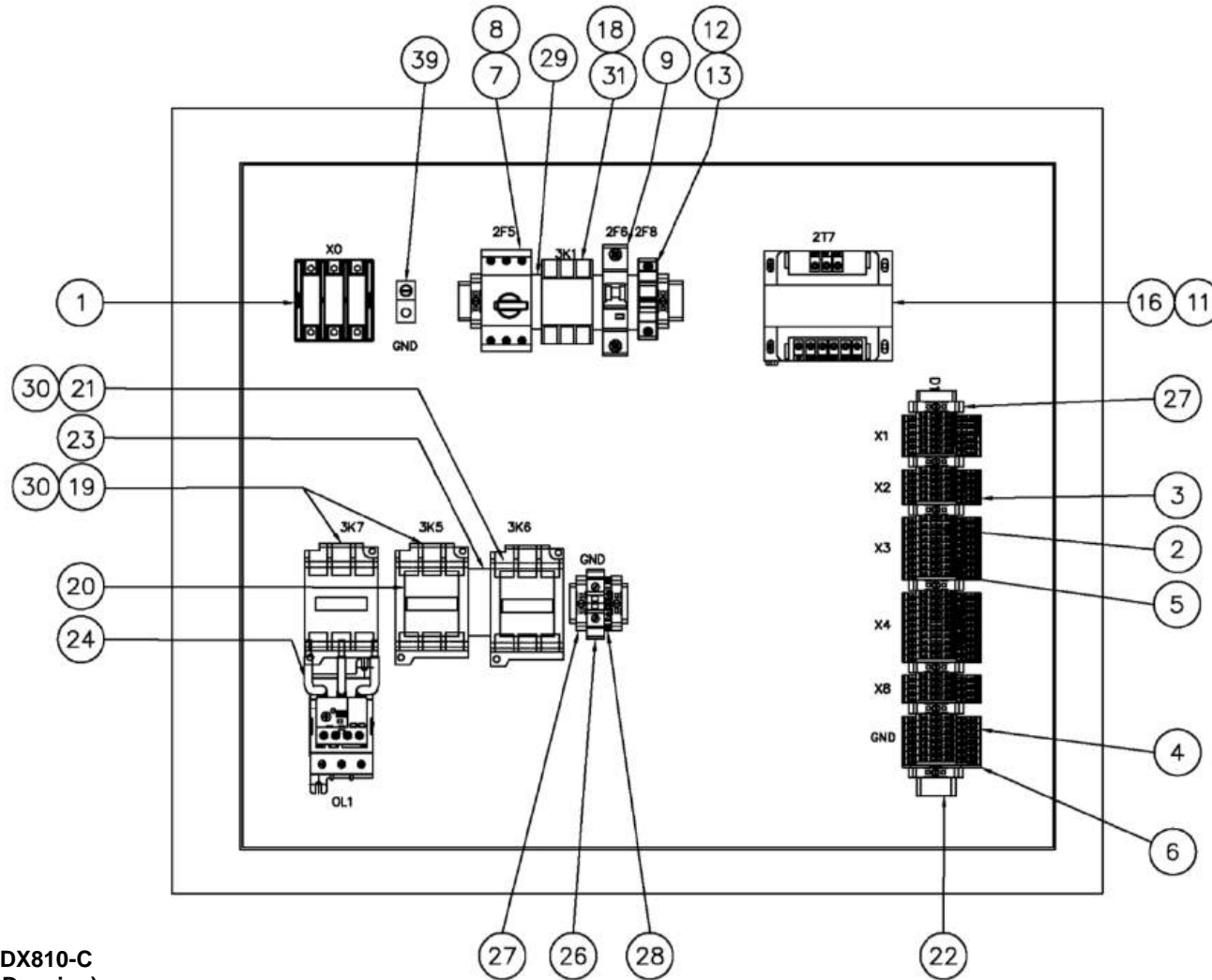
CONTROLLER ASSEMBLY – FIXED SPEED

		QTY.	BOM:	*
34	CONNECTOR.....	1		24CA7857
35	CONNECTOR.....	1		TEN000528
36	CONNECTOR.....	1		TEN000530
37	CONNECTOR.....	1		TEN000529
38	CONNECTOR.....	1		TEN000527
40	CONTACT BLOCK	1		24CA7534

* Drawing 331KDX810 and BOM References the Following Part Numbers:

300KDX466	308KDX466
301KDX466	309KDX466
302KDX466	310KDX466
303KDX466	311KDX466
304KDX466	312KDX466
305KDX466	313KDX466
306KDX466	314KDX466
307KDX466	

CONTROLLER ASSEMBLY – FIXED SPEED
40 HP – 380 VOLT/60HZ – 400VOLT/50HZ



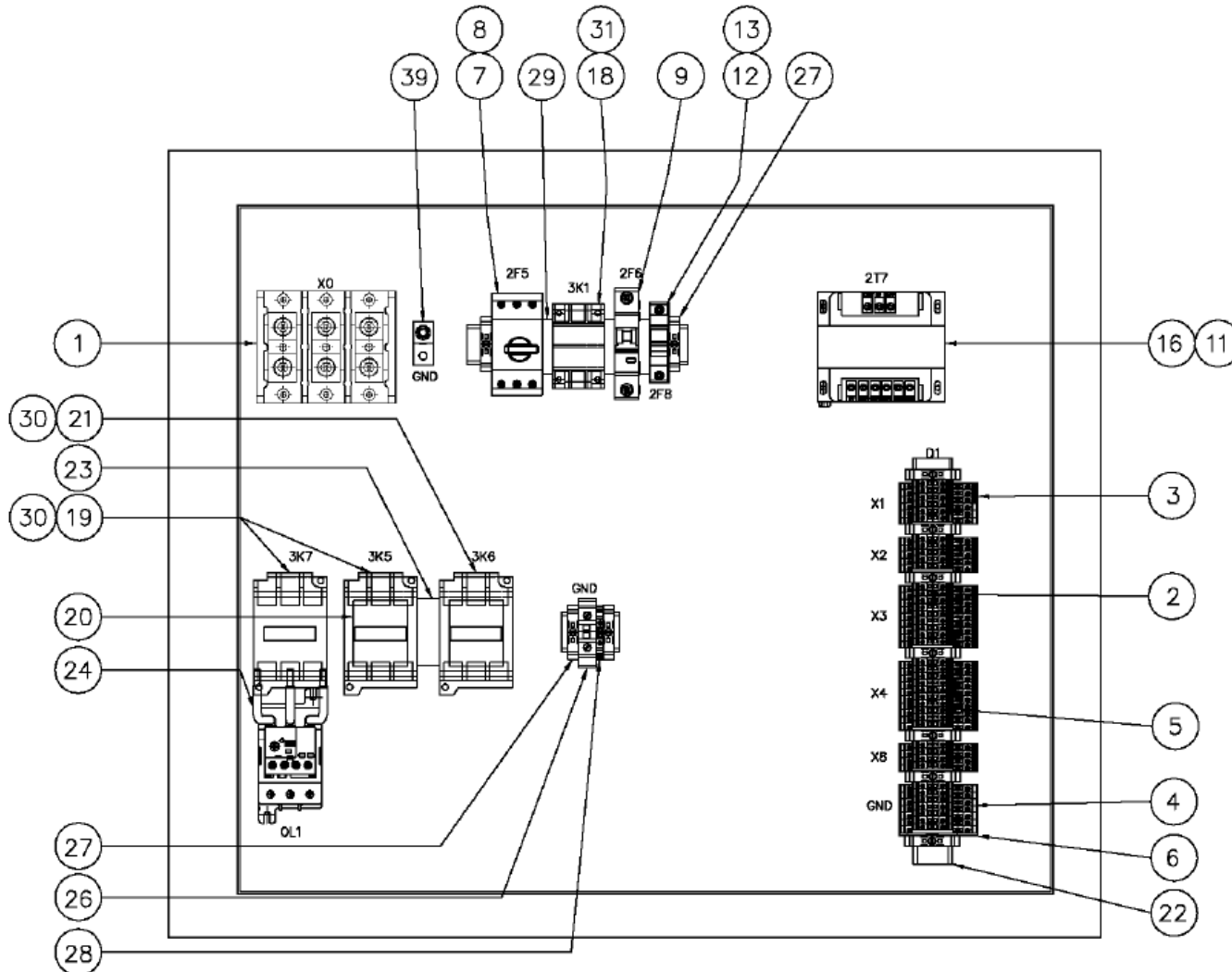
300KDX810-C
(Ref. Drawing)

Order by Part Number and Description. Reference Numbers are for your convenience only.

**CONTROLLER ASSEMBLY – FIXED SPEED
40 HP – 380 VOLT/60HZ – 400VOLT/50HZ**

		QTY.	
	CONTROL BOX.....		300KDX466
1	POWER DISTRIBUTION BLOCK.....	1	TEN001153
2	PLUG-IN BRIDGE FOR XBUT4.....	1	24CA7522
3	TERMINAL BLOCK.....	33	24CA5984
4	GROUND BLK.....	8	24CA7523
5	PLUG-IN BRIDGE FOR XBUT4.....	4	TEN000361
6	TERMINAL BLOCK.....	1	24CA5985
7	MANUAL MOTOR PROTECTOR.....	1	TEN000366
8	AUX CONTACT.....	1	TEN000430
9	CIRCUIT BREAKER.....	1	TEN001471
11	FUSE.....	2	24CA2783
12	FUSE.....	1	TEN000558
13	FUSE.....	1	24CA2783
16	TRANSFORMER.....	1	24CA7883
18	CONTACTOR.....	1	TEN000350
19	CONTACTOR.....	2	TEN000354
20	AUX CONTACT.....	2	24CA7509
21	CONTACTOR.....	1	TEN000354
22	DIN RAIL.....	1	24CA5991
23	MECHANICAL INTERLOCK.....	1	24CA7505
24	OVERLOAD RELAY.....	1	TEN000773
26	GROUND BLOCK.....	1	24CA7524
27	TERMINAL BLOCK.....	14	24CA5987
28	GROUND BLOCK.....	1	24CA5986
29	SPACER FOR DIN RAIL COMPONENTS.....	3	24CA7526
30	COIL – CONTACTOR.....	3	TEN000431
31	COIL - CONTACTOR.....	1	TEN000432
39	LUG.....	1	24CA7880

**CONTROLLER ASSEMBLY – FIXED SPEED
40 HP – 230 VOLT/60HZ**

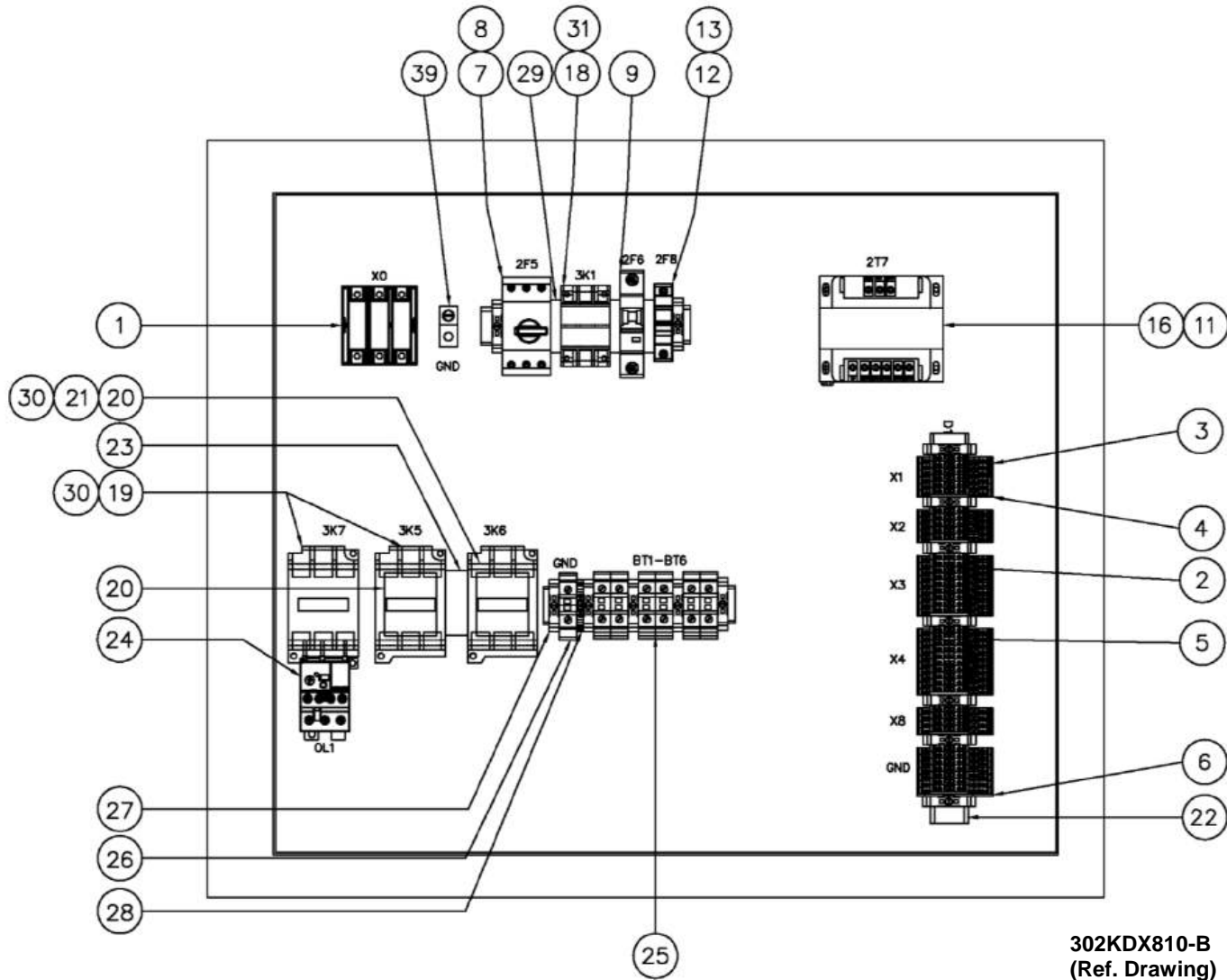


Order by Part Number and Description. Reference Numbers are for your convenience only.

**CONTROLLER ASSEMBLY – FIXED SPEED
40 HP – 230 VOLT/60HZ**

		QTY.
	CONTROL BOX.....	301KDX466
1	POWER DISTRIBUTION BLOCK	1 TEN001118
2	PLUG-IN BRIDGE FOR XBUT4, 3-POSITION.....	6 24CA7522
3	TERMINAL BLOCK,BI-LEVEL,DIN MOUNT 600V.....	33 24CA5984
4	GROUND BLK, DBL LVL,D MNT, 26-10 AWG G/Y	8 24CA7523
5	PLUG-IN BRIDGE FOR XBUT4, 2-POSITION.....	4 TEN000361
6	TERMINAL BLOCK,END PLATE	1 24CA5985
7	MANUAL MOTOR PROTECTOR.....	1 TEN000367
8	AUX CONTACT	1 TEN000430
9	CIRCUIT BREAKER	1 TEN001471
11	FUSE	2 24CA2785
12	FUSE	1 TEN000558
13	FUSE	1 24CA2783
14	CONTACT BLOCK	1 24CA7534
16	TRANSFORMER	1 24CA7883
18	CONTACTOR	1 TEN000350
19	CONTACTOR	2 TEN000355
20	AUX CONTACT	2 24CA7509
21	CONTACTOR	1 TEN000355
22	DIN RAIL.....	1 24CA5991
23	MECHANICAL INTERLOCK FOR FREEDOM CONTACT	1 24CA7505
24	OVERLOAD RELAY	1 TEN000773
26	GROUND BLOCK.....	1 24CA6071
27	TERMINAL BLOCK	14 24CA5987
28	GROUND BLOCK.....	1 24CA5986
29	SPACER FOR DIN RAIL COMPONENTS	3 24CA7526
30	COIL – CONTACTOR.....	3 TEN000431
31	COIL – CONTACTOR.....	1 TEN000432
39	LUG.....	1 24CA7880

**CONTROLLER ASSEMBLY – FIXED SPEED
40 HP –460 VOLT/60HZ**



**302KDX810-B
(Ref. Drawing)**

Order by Part Number and Description. Reference Numbers are for your convenience only.

CONTROLLER ASSEMBLY – FIXED SPEED

40 HP –460 VOLT/60HZ

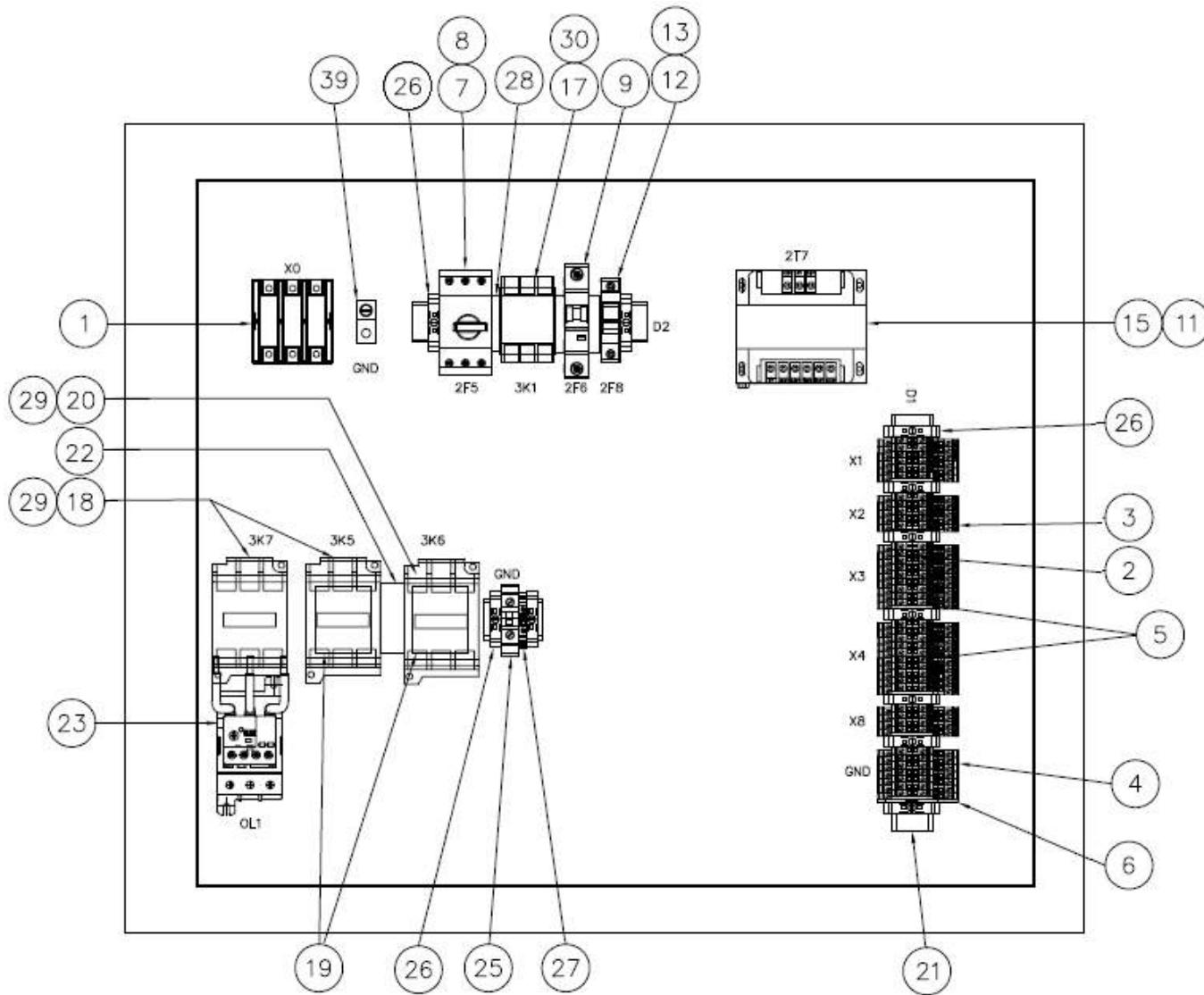
		QTY.	
	CONTROL BOX		302KDX466
1	POWER DISTRIBUTION BLOCK	1	TEN001153
2	PLUG-IN BRIDGE FOR XBUT4.....	7	24CA7522
3	TERMINAL BLOCK	33	24CA5984
4	GROUND BLK, DBL LVL	8	24CA7523
5	PLUG-IN BRIDGE FOR XBUT4.....	4	TEN000361
6	TERMINAL BLOCK,END PLATE	1	24CA5985
7	MANUAL MOTOR PROTECTOR	1	TEN000366
8	AUX CONTACT.....	1	TEN000430
9	CIRCUIT BREAKER	1	TEN001471
11	FUSE	2	24CA2782
12	FUSE	1	TEN000558
13	FUSE	1	24CA2783
16	TRANSFORMER	1	24CA7883
18	CONTACTOR.....	1	TEN000350
19	CONTACTOR.....	2	TEN000352
20	AUX CONTACT.....	2	24CA7509
21	CONTACTOR.....	1	TEN000352
22	DIN RAIL	1	24CA5991
23	MECHANICAL INTERLOCK FOR FREEDOM CONTACT....	1	24CA7505
24	OVERLOAD RELAY	1	24CA7516
25	TERMINAL BLOCK.....	6	24CA7517
26	GROUND BLK.....	1	24CA7524
27	TERMINAL BLOCK,END STOP	14	24CA5987
28	GROUND BLOCK	1	24CA5986
29	SPACER FOR DIN RAIL COMPONENTS.....	3	24CA7526
30	COIL – CONTACTOR	1	TEN000431
31	COIL – CONTACTOR	1	TEN000432
39	LUG	1	24CA7880

Order by Part Number and Description. Reference Numbers are for your convenience only.

**CONTROLLER ASSEMBLY – FIXED SPEED
40 HP –575 VOLT/60HZ**

		QTY.	
	CONTROL BOX		303KDX466
1	POWER DISTRIBUTION BLOCK	1	TEN001153
2	PLUG-IN BRIDGE FOR XBUT4.....	7	24CA7522
3	TERMINAL BLOCK	33	24CA5984
4	GROUND BLOCK	8	24CA7523
5	PLUG-IN BRIDGE	4	TEN000361
6	TERMINAL BLOCK	1	24CA5985
9	CIRCUIT BREAKER.....	1	TEN000365
10	AUX CONTACT	1	TEN000430
11	CIRCUIT BREAKER.....	1	TEN001471
13	FUSE	1	24CA2781
14	FUSE	1	TEN000558
15	FUSE	1	24CA2783
18	TRANSFORMER.....	1	24CA7883
21	CONTACTOR.....	1	TEN000350
22	CONTACTOR.....	1	TEN000351
23	AUX CONTACT	2	24CA7509
24	CONTACTOR.....	1	TEN000351
25	DIN RAIL	1	24CA5991
26	MECHANICAL INTERLOCK FOR FREEDOM CONTACT	1	24CA7505
27	OVERLOAD RELAY.....	1	24CA7516
28	GROUND BLOCK	1	24CA7524
29	TERMINAL BLOCK,END STOP.....	11	24CA5987
30	GROUND BLOCK,	1	24CA5986
31	SPACER FOR DIN RAIL COMPONENTS.....	3	24CA7526
32	CONTACTOR.....	3	TEN000433
33	CONTACTOR.....	3	TEN000432
39	CONTACTOR.....	1	24CA7880

**CONTROLLER ASSEMBLY – FIXED SPEED
50 HP – 380 VOLT/60HZ – 400VOLT/50HZ**



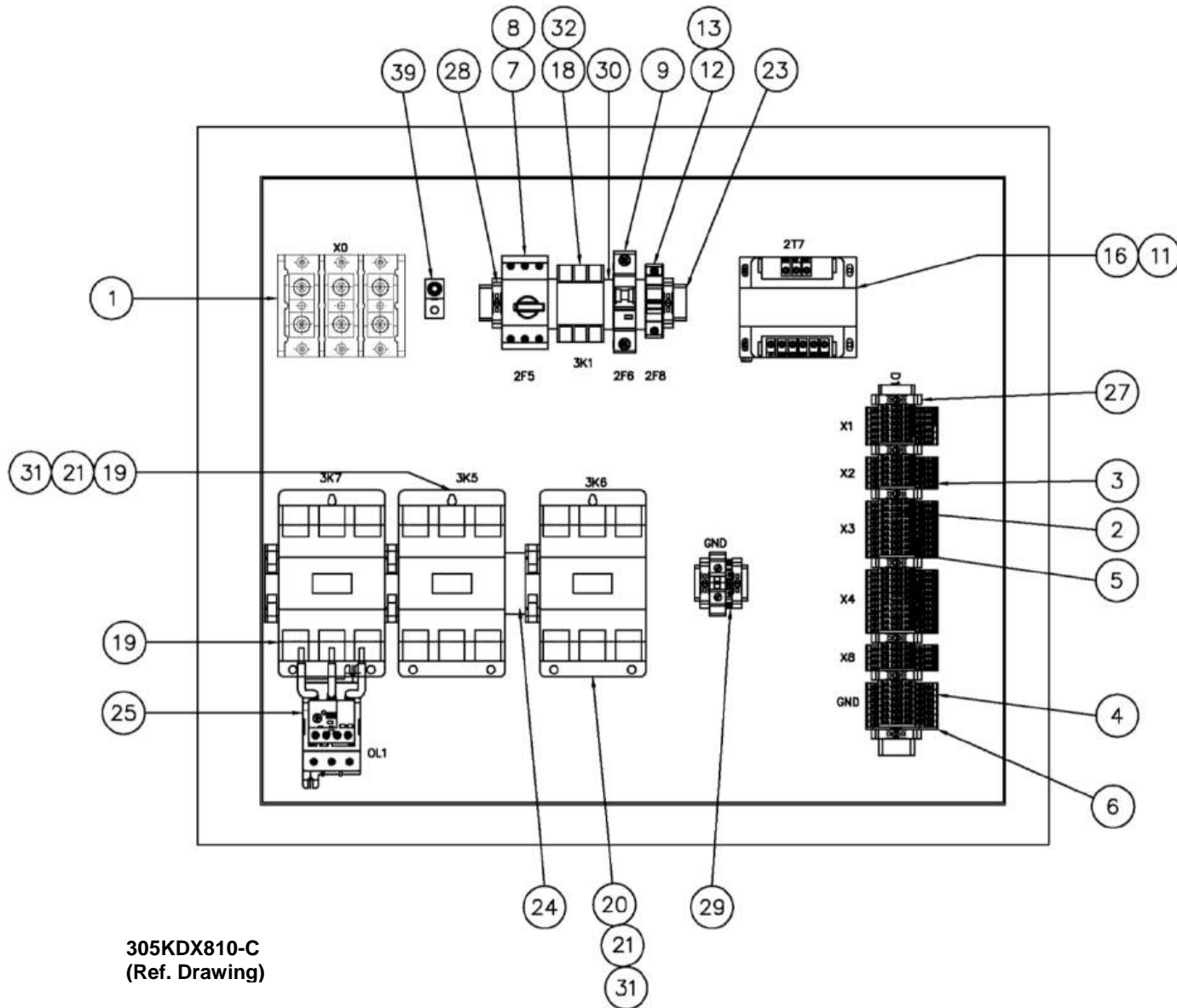
304KDX810-C
(Ref. Drawing)

Order by Part Number and Description. Reference Numbers are for your convenience only.

**CONTROLLER ASSEMBLY – FIXED SPEED
50 HP – 380 VOLT/60HZ – 400VOLT/50HZ**

		QTY.	
	CONTROL BOX		304KDX466
1	POWER DISTRIBUTION BLOCK	1	TEN001153
2	PLUG-IN BRIDGE FOR XBUT4	7	24CA7522
3	TERMINAL BLOCK	33	24CA5984
4	GROUND BLOCK	8	24CA7523
5	PLUG-IN BRIDGE FOR XBUT4	4	TEN000361
6	TERMINAL BLOCK	1	24CA5985
7	MANUAL MOTOR PROTECTOR	1	TEN000366
8	AUX CONTACT	1	TEN000430
9	CIRCUIT BREAKER	1	TEN001471
11	FUSE	2	24CA2783
12	FUSE	1	TEN000558
13	FUSE	1	24CA2783
15	TRANSFORMER	1	24CA7883
17	CONTACTOR, 3 POLE	1	TEN000350
18	CONTACTOR, 3 POLE	2	TEN000354
19	AUX CONTACT	2	24CA7509
20	CONTACTOR, 3 POLE	1	TEN000354
21	DIN RAIL	1	24CA5991
22	MECHANICAL INTERLOCK FOR FREEDOM CONTACT	1	24CA7505
23	OVERLOAD RELAY	1	TEN000773
25	GROUND BLOCK	1	24CA6071
26	TERMINAL BLOCK	14	24CA5987
27	GROUND BLOCK	1	24CA5986
28	SPACER FOR DIN RAIL COMPONENTS	3	24CA7526
29	COIL-CONTACTOR	3	TEN000431
30	COIL-CONTACTOR	1	TEN000432
39	LUG	1	24CA7880

**CONTROLLER ASSEMBLY – FIXED SPEED
50 HP –230 VOLT/60HZ**



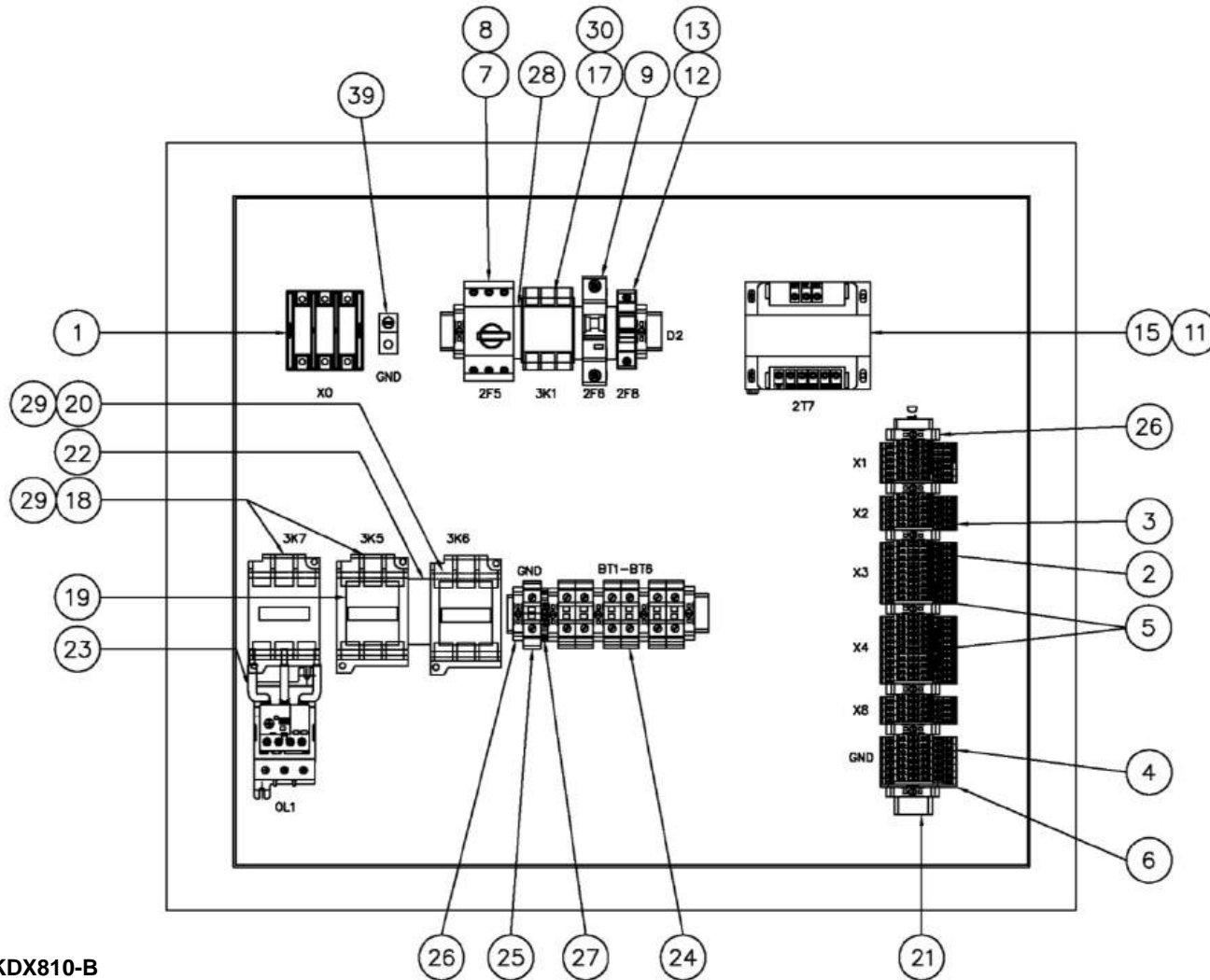
**305KDX810-C
(Ref. Drawing)**

Order by Part Number and Description. Reference Numbers are for your convenience only.

**CONTROLLER ASSEMBLY – FIXED SPEED
50 HP –230 VOLT/60HZ**

		QTY.
	CONTROL BOX	305KDX466
1	POWER DISTRIBUTION BLOCK.....	1 TEN001118
2	PLUG-IN BRIDGE FOR XBUT4	6 24CA7522
3	TERMINAL BLOCK.....	33 24CA5984
4	GROUND BLOCK	8 24CA7523
5	PLUG-IN BRIDGE FOR XBUT4	4 TEN000361
6	TERMINAL BLOCK.....	1 24CA5985
7	MANUAL MOTOR PROTECTOR	1 TEN000367
8	AUX CONTACT	1 TEN000430
9	CIRCUIT BREAKER	1 TEN001471
11	FUSE	2 T24CA2785
12	FUSE	1 TEN000558
13	FUSE	1 24CA2783
16	TRANSFORMER	1 24CA7883
18	CONTACTOR	1 TEN000350
19	CONTACTOR	2 TEN000357
20	CONTACTOR	1 TEN000357
21	AUX CONTACT	2 24CA4332
23	DIN RAIL	1 24CA5991
24	MECHANICAL INTERLOCK FREEDOM CONTACT	1 24CA7506
25	OVERLOAD RELAY	1 TEN000773
27	GROUND BLOCK.....	1 24CA6071
28	TERMINAL BLOCK.....	14 24CA5987
29	GROUND BLOCK.....	1 24CA5986
30	SPACER FOR DIN RAIL COMPONENTS.....	30 24CA7526
31	COIL – CONTACTOR	1 TEN000434
32	COIL – CONTACTOR	1 TEN000432
39	LUG.....	1 24CA7880

**CONTROLLER ASSEMBLY – FIXED SPEED
50 HP – 460 VOLT/60HZ**



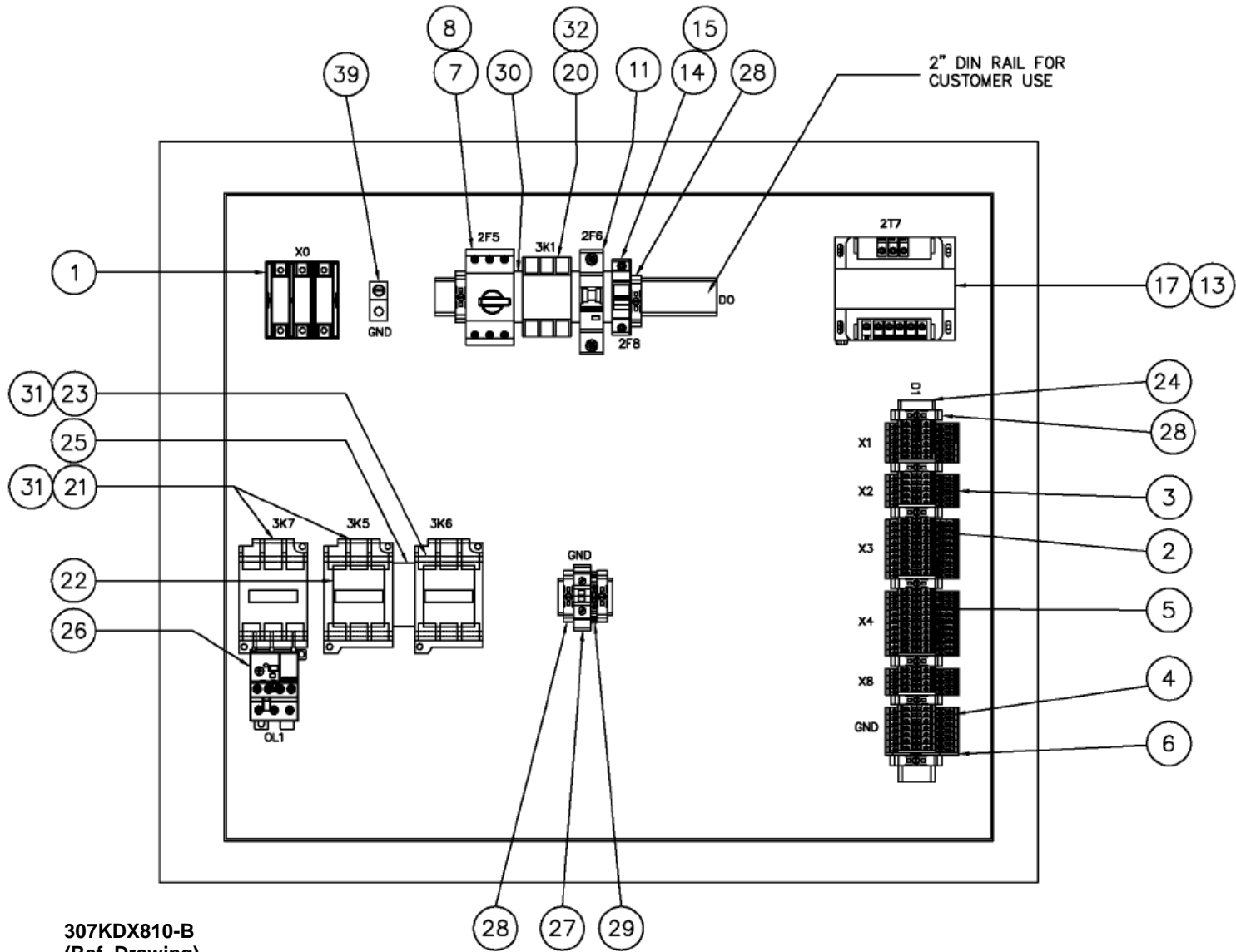
**306KDX810-B
(Ref. Drawing)**

Order by Part Number and Description. Reference Numbers are for your convenience only.

**CONTROLLER ASSEMBLY – FIXED SPEED
50 HP – 460 VOLT/60HZ**

		QTY.	
	CONTROL BOX.....		306KDX466
1	POWER DISTRIBUTION BLOCK.....	1	TEN001153
2	PLUG-IN BRIDGE FOR XBUT4.....	7	24CA7522
3	TERMINAL BLOCK.....	33	24CA5984
4	GROUND BLOCK.....	8	24CA7523
5	PLUG-IN BRIDGE FOR XBUT4.....	4	TEN000361
6	TERMINAL BLOCK.....	1	24CA5985
7	MANUAL MOTOR PROTECTOR.....	1	TEN000366
8	AUX CONTACT.....	1	TEN000430
9	CIRCUIT BREAKER.....	1	TEN001471
11	FUSE.....	2	24CA2782
12	FUSE.....	1	TEN000558
13	FUSE.....	1	24CA2783
15	TRANSFORMER.....	1	24CA7883
17	CONTACTOR.....	1	TEN000350
18	CONTACTOR.....	2	TEN000354
19	AUX CONTACT.....	2	24CA7509
20	CONTACTOR.....	1	TEN000354
21	DIN RAIL.....	1	24CA5991
22	MECHANICAL INTERLOCK FOR FREEDOM CONTACT...	1	24CA7505
23	OVERLOAD RELAY.....	1	TEN000773
24	TERMINAL BLOCK.....	6	24CA7517
25	GROUND BLOCK.....	1	24CA6071
26	TERMINAL BLOCK.....	14	24CA5987
27	GROUND BLOCK.....	1	24CA5986
28	SPACER FOR DIN RAIL COMPONENTS.....	3	24CA7526
29	COIL-CONTACTOR.....	3	TEN000431
30	COIL-CONTACTOR.....	1	TEN000432
39	LUG.....	1	24CA7880

**CONTROLLER ASSEMBLY – FIXED SPEED
50 HP – 575 VOLT**



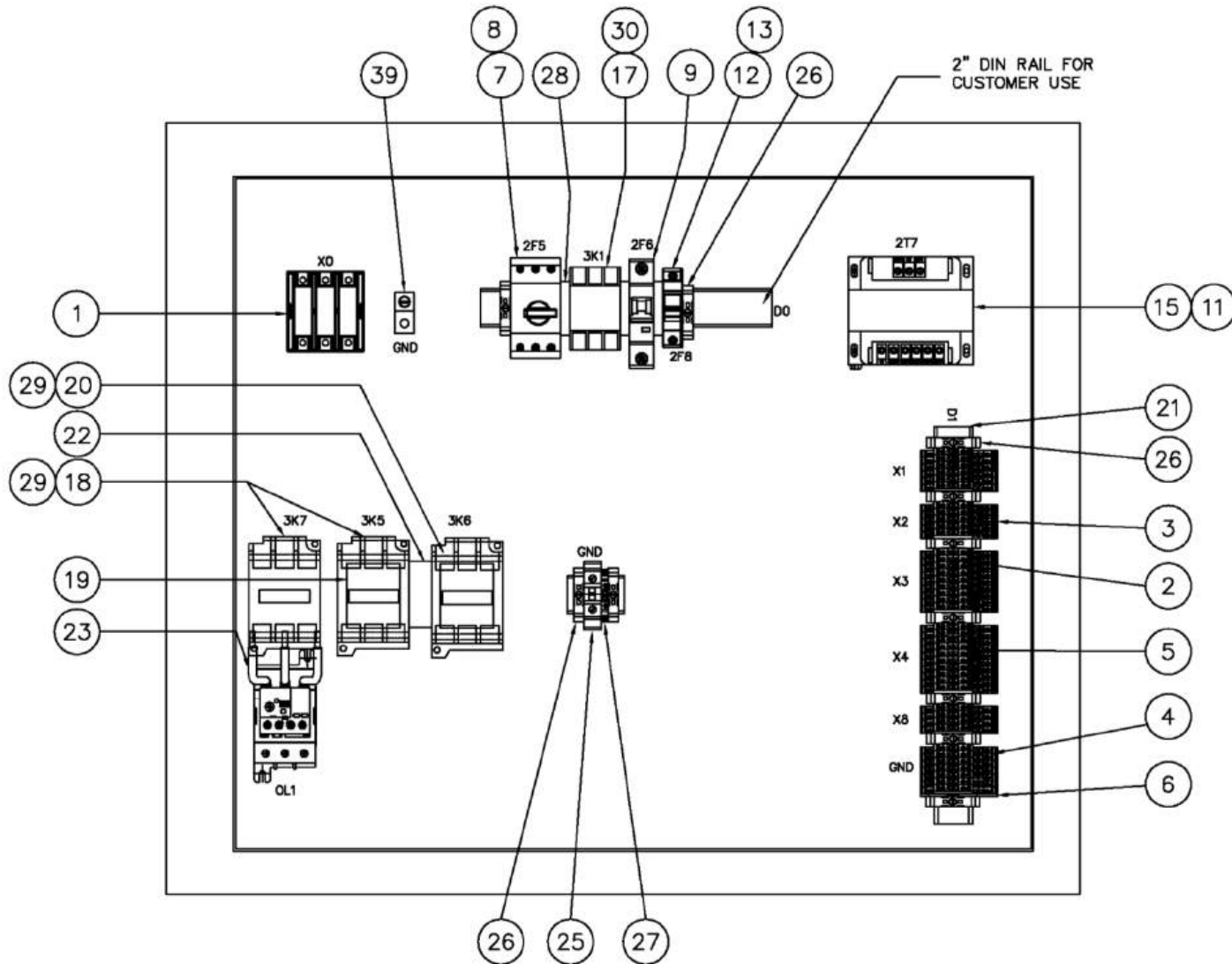
**307KDX810-B
(Ref. Drawing)**

Order by Part Number and Description. Reference Numbers are for your convenience only.

**CONTROLLER ASSEMBLY – FIXED SPEED
50 HP – 575 VOLT**

		QTY.	
	CONTROL BOX.....		307KDX466
1	POWER DISTRIBUTION BLOCK	1	TEN001153
2	PLUG-IN BRIDGE FOR XBUT4	7	24CA7522
3	TERMINAL BLOCK	33	24CA5984
4	GROUND BLOCK.....	8	24CA7523
5	PLUG-IN BRIDGE FOR XBUT4	4	TEN000361
6	TERMINAL BLOCK	1	24CA5985
7	MANUAL MOTOR PROTECTOR.....	1	TEN000365
8	AUX CONTACT	1	TEN000430
11	CIRCUIT BREAKER	1	TEN001471
13	FUSE	2	24CA2781
14	FUSE	1	TEN000558
15	FUSE	1	24CA2783
17	TRANSFORMER	1	24CA7883
20	CONTACTOR	1	TEN000350
21	CONTACTOR	2	TEN000352
22	AUX CONTACT	2	24CA7509
23	CONTACTOR	1	TEN000352
24	DIN RAIL.....	1	24CA5991
25	MECHANICAL INTERLOCK FOR FREEDOM CONTACT	1	24CA7505
26	OVERLOAD RELAY	1	24CA7516
27	GROUND BLOCK.....	1	24CA7524
28	TERMINAL BLOCK,	11	24CA5987
29	GROUND BLOCK.....	1	24CA5986
30	SPACER FOR DIN RAIL COMPONENTS	3	24CA7526
31	COIL-CONTACTOR	3	TEN000431
32	COIL-CONTACTOR	1	TEN000432
39	LUG.....	1	24CA7880

**CONTROLLER ASSEMBLY – FIXED SPEED
60 HP – 380 VOLT/60HZ**



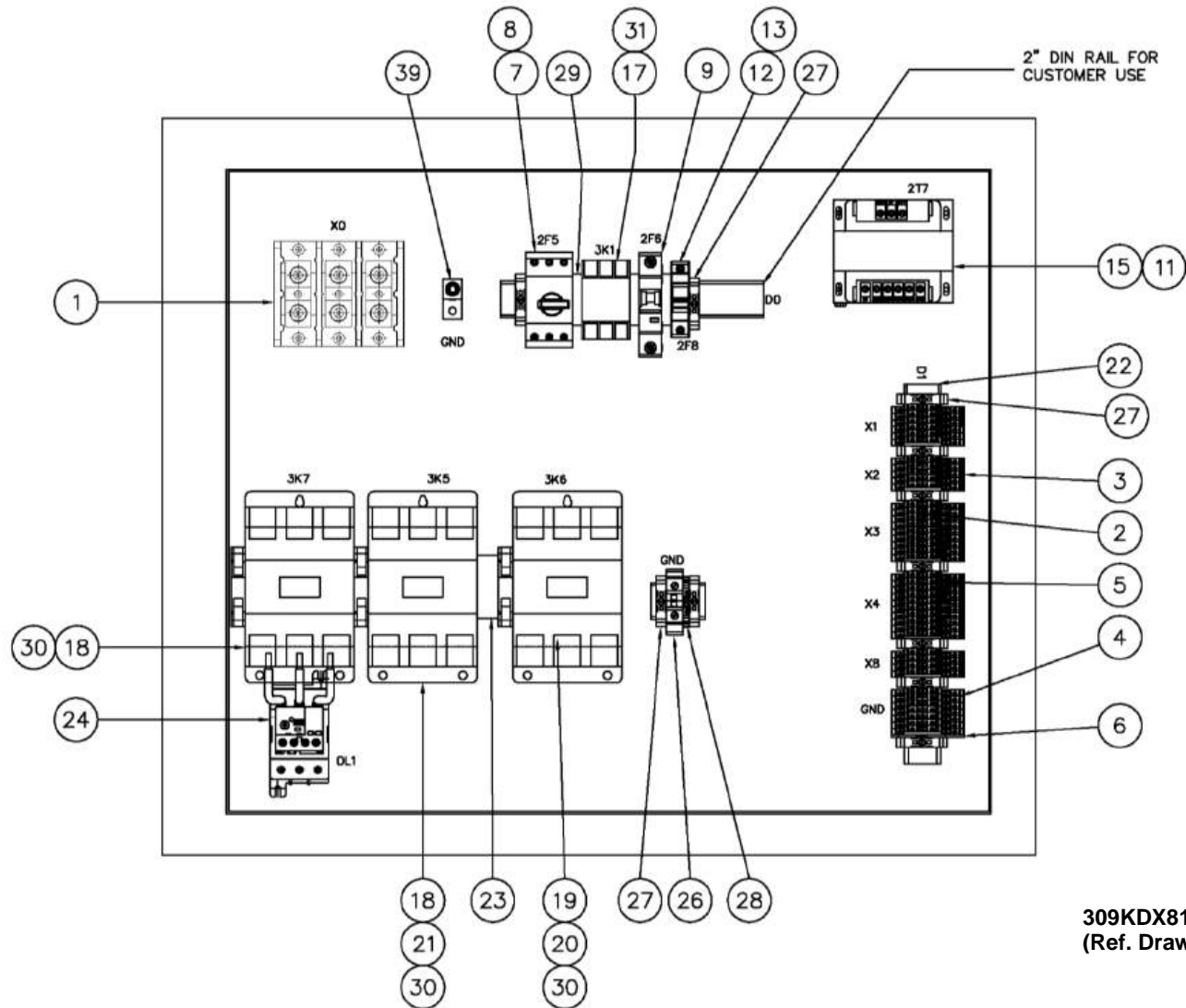
**308KDX810-C
(Ref. Drawing)**

Order by Part Number and Description. Reference Numbers are for your convenience only

**CONTROLLER ASSEMBLY – FIXED SPEED
60 HP – 380 VOLT/60HZ**

		QTY.	
	CONTROL BOX.....		308KDX466
1	POWER DISTRIBUTION BLOCK	1	TEN001153
2	PLUG-IN BRIDGE FOR XBUT4	7	24CA7522
3	TERMINAL BLOCK	33	24CA5984
4	GROUND BLOCK.....	8	24CA7523
5	PLUG-IN BRIDGE FOR XBUT4	4	TEN000361
6	TERMINAL BLOCK	1	24CA5985
7	MANUAL MOTOR PROTECTOR.....	1	TEN000367
8	AUX CONTACT	1	TEN000430
9	CIRCUIT BREAKER	1	TEN001471
11	FUSE	2	24CA2783
12	FUSE	1	TEN000558
13	FUSE	1	24CA2783
15	TRANSFORMER	1	24CA7883
17	CONTACTOR	1	TEN000350
18	CONTACTOR	2	TEN000355
19	AUX CONTACT	2	24CA7509
20	CONTACTOR	1	TEN000355
21	DIN RAIL	1	24CA5991
22	MECHANICAL INTERLOCK FOR FREEDOM CONTACT	1	24CA7505
23	OVERLOAD RELAY	1	TEN000773
25	GROUND BLOCK.....	1	24CA6071
26	TERMINAL BLOCK	14	24CA5987
27	GROUND BLOCK.....	1	24CA5986
28	SPACER FOR DIN RAIL COMPONENTS	3	24CA7526
29	COIL-CONTACTOR	3	TEN000431
30	COIL-CONTACTOR	1	TEN000432
39	LUG.....	1	24CA7880

**CONTROLLER ASSEMBLY – FIXED SPEED
60 HP – 230 VOLT/60HZ**



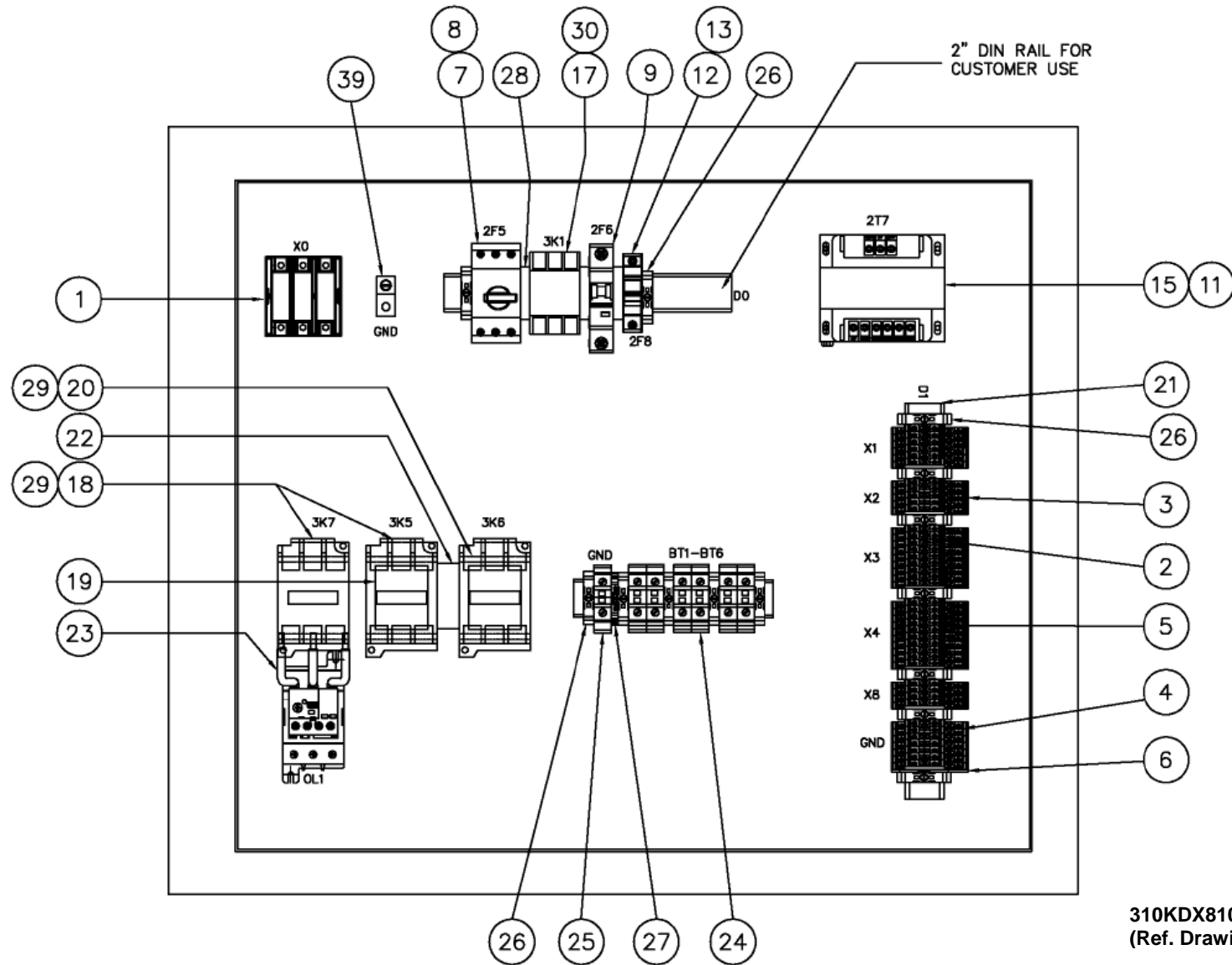
**309KDX810-C
(Ref. Drawing)**

Order by Part Number and Description. Reference Numbers are for your convenience only

**CONTROLLER ASSEMBLY – FIXED SPEED
60 HP – 230 VOLT/60HZ**

		QTY.	
	CONTROL BOX.....		309KDX466
1	POWER DISTRIBUTION BLOCK	1	TEN001118
2	PLUG-IN BRIDGE FOR XBUT4	6	24CA7522
3	TERMINAL BLOCK,BI-LEVEL.....	33	24CA5984
4	GROUND BLOCK.....	8	24CA7523
5	PLUG-IN BRIDGE FOR XBUT4	4	TEN000361
6	TERMINAL BLOCK	1	24CA5985
7	MANUAL MOTOR PROTECTOR.....	1	TEN000368
8	AUX CONTACT	1	TEN000430
9	CIRCUIT BREAKER	1	TEN001471
11	FUSE	2	24CA2785
12	FUSE	1	TEN000558
13	FUSE	1	24CA2783
15	TRANSFORMER	1	24CA7883
17	CONTACTOR	1	TEN000350
18	CONTACTOR	2	TEN000358
19	CONTACTOR	1	TEN000358
20	AUX CONTACT	1	24CA4332
21	CONTACT.....	1	24CA4332
22	DIN RAIL.....	1	24CA5991
23	MECHANICAL INTERLOCK FREEDOM CONTACT	1	24CA7506
24	OVERLOAD RELAY	1	TEN000557
26	GROUND BLOCK.....	1	24CA6071
27	TERMINAL BLOCK	14	24CA5987
28	GROUND BLOCK.....	1	24CA5986
29	SPACER FOR DIN RAIL COMPONENTS	3	24CA7526
30	COIL-CONTACTOR	3	TEN000434
31	COIL-CONTACTOR	1	TEN000432
39	LUG.....	1	24CA7880

**CONTROLLER ASSEMBLY – FIXED SPEED
60 HP – 460 VOLT/60HZ**

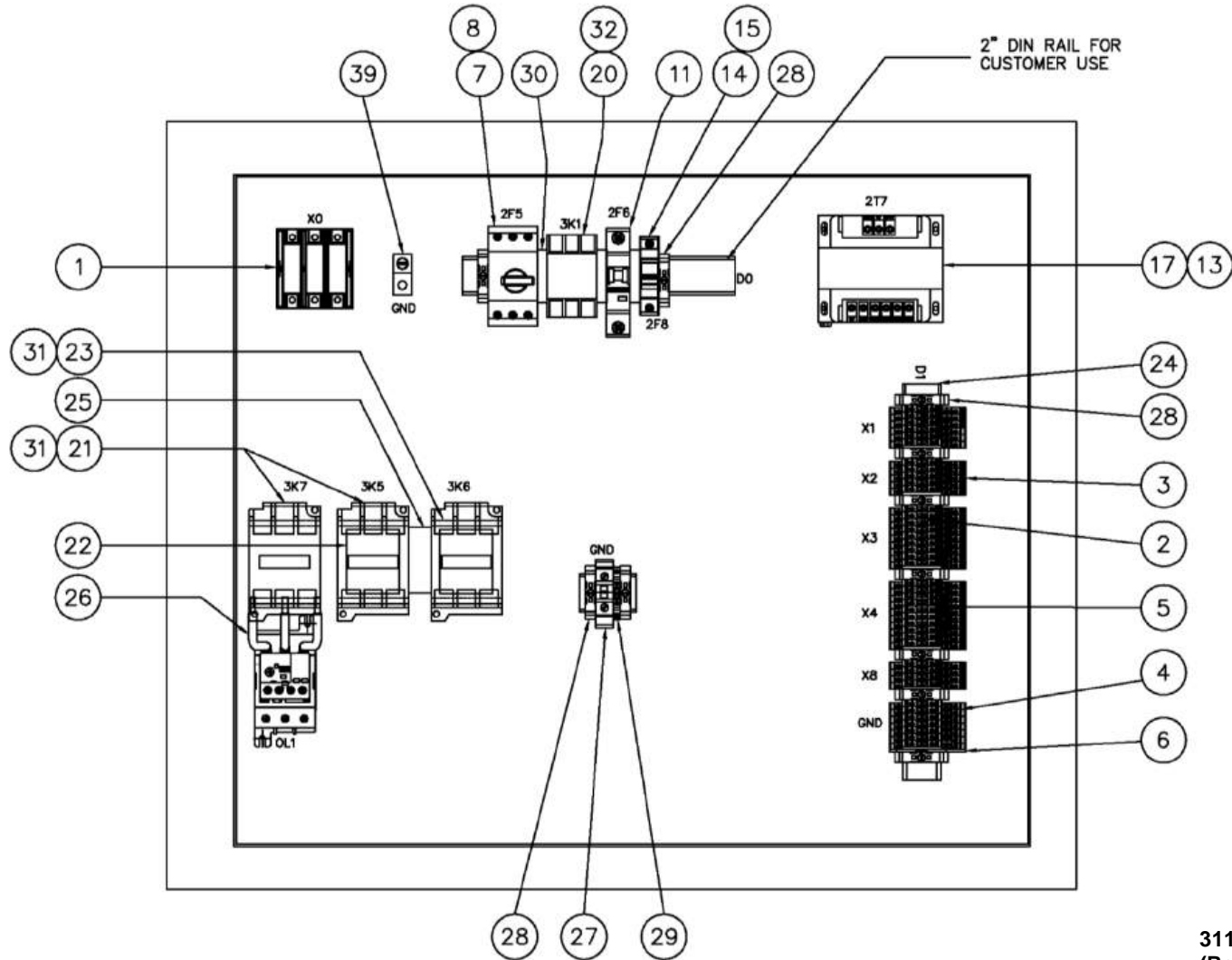


**310KDX810-B
(Ref. Drawing)**

Order by Part Number and Description. Reference Numbers are for your convenience only
CONTROLLER ASSEMBLY – FIXED SPEED
60 HP – 460 VOLT/60HZ

		QTY.	
	CONTROL BOX.....		310KDX466
1	POWER DISTRIBUTION BLOCK	1	TEN001153
2	PLUG-IN BRIDGE FOR XBUT4	7	24CA7522
3	TERMINAL BLOCK	33	24CA5984
4	GROUND BLOCK.....	8	24CA7523
5	PLUG-IN BRIDGE FOR XBUT4	4	TEN000361
6	TERMINAL BLOCK	1	24CA5985
7	MANUAL MOTOR PROTECTOR.....	1	TEN000367
8	AUX CONTACT	1	TEN000430
9	CIRCUIT BREAKER	1	TEN001471
11	FUSE	2	24CA2782
12	FUSE	1	TEN000558
13	FUSE	1	24CA2783
15	TRANSFORMER	1	24CA7883
17	CONTACTOR	1	TEN000350
18	CONTACTOR	2	TEN000354
19	AUX CONTACT	2	24CA7509
20	CONTACTOR	1	TEN000354
21	DIN RAIL.....	1	24CA5991
22	MECHANICAL INTERLOCK FOR FREEDOM CONTACT ...	1	24CA7505
23	OVERLOAD RELAY	1	TEN000773
24	TERMINAL BLOCK	6	24CA7517
25	GROUND BLOCK,DIN MNT.....	1	24CA6071
26	TERMINAL	14	24CA5987
27	GROUND BLOCK.....	1	24CA5986
28	SPACER FOR DIN RAIL COMPONENTS	3	24CA7526
29	COIL-CONTACTOR	3	TEN000431
30	COIL-CONTACTOR	1	TEN000432
39	LUG.....	1	24CA7880

**CONTROLLER ASSEMBLY – FIXED SPEED –
60HP - 575 VOLT/60HZ**



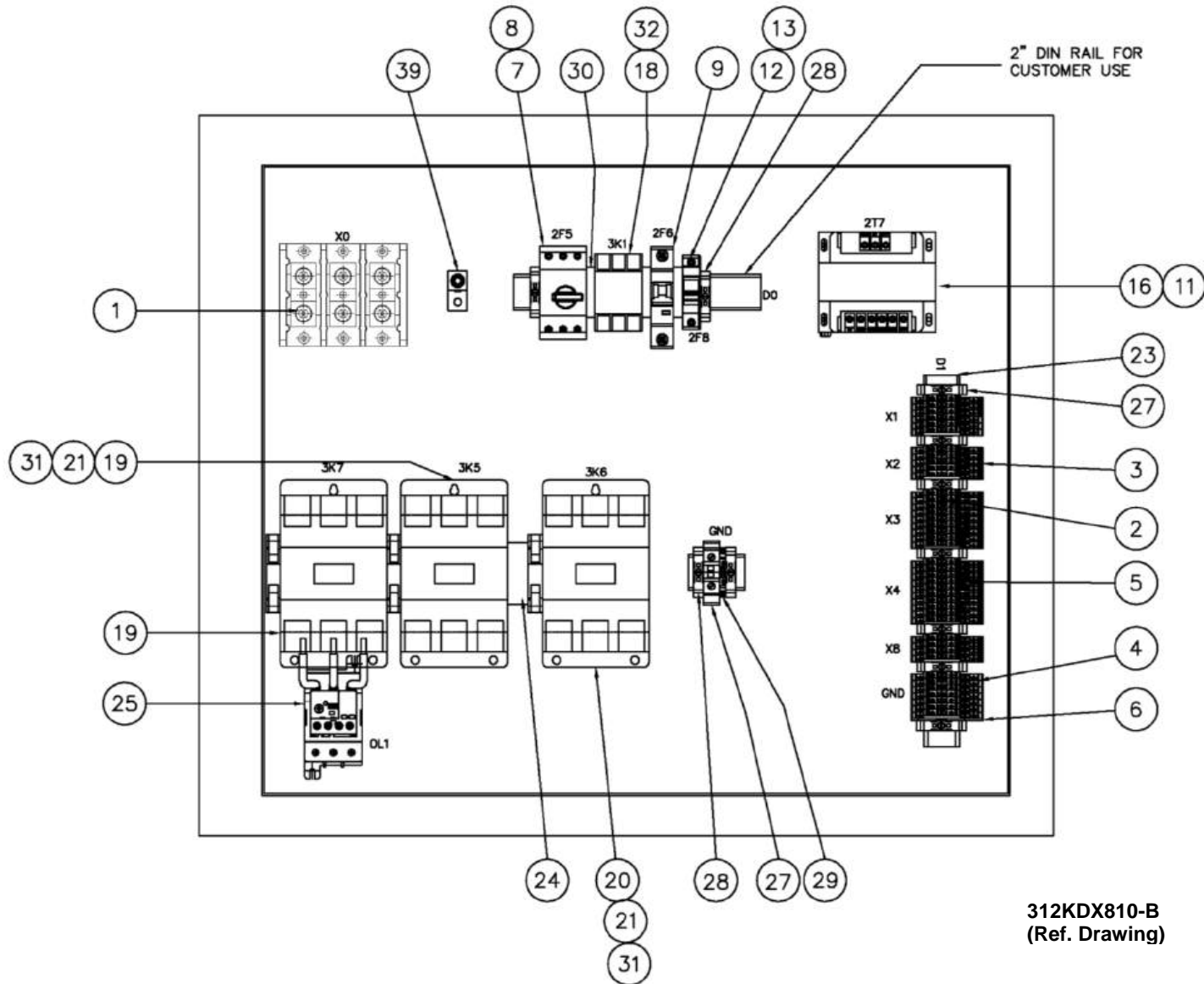
**311KDX810-B
(Ref. Drawing)**

Order by Part Number and Description. Reference Numbers are for your convenience only

**CONTROLLER ASSEMBLY – FIXED SPEED –
60HP - 575 VOLT/60HZ**

		QTY.	
	CONTROL BOX		311KDX466
1	POWER DISTRIBUTION BLOCK.....	1	TEN001153
2	PLUG-IN BRIDGE FOR XBUT4	7	24CA7522
3	TERMINAL BLOCK.....	33	24CA5984
4	GROUND BLOCK.....	8	24CA7523
5	PLUG-IN BRIDGE FOR XBUT4	4	TEN000361
6	TERMINAL BLOCK.....	1	24CA5985
7	MANUAL MOTOR PROTECTOR	1	TEN000367
8	AUX CONTACT	1	TEN000430
11	CIRCUIT BREAKER	1	TEN001471
13	FUSE.....	2	24CA2781
14	FUSE.....	1	TEN000558
15	FUSE	1	24CA2783
17	TRANSFORMER	1	24CA7883
20	CONTACTOR	1	TEN000350
21	CONTACTOR	2	TEN000353
22	AUX CONTACT	2	24CA7509
23	CONTACTOR	1	TEN000353
24	DIN RAIL	1	24CA5991
25	MECHANICAL INTERLOCK FOR FREEDOM CONTACT.....	1	24CA7505
26	OVERLOAD RELAY	1	TEN000773
27	GROUND BLOCK.....	1	24CA7524
28	TERMINAL BLOCK.....	11	24CA5987
29	GROUND BLOCK.....	1	24CA5986
30	SPACER FOR DIN RAIL COMPONENTS.....	3	24CA7526
31	COIL-CONTACTOR.....	3	TEN000431
32	COIL-CONTACTOR.....	1	TEN000432
39	LUG.....	1	24CA7880

**CONTROLLER ASSEMBLY – FIXED SPEED
40 HP – 200 VOLT/60HZ**



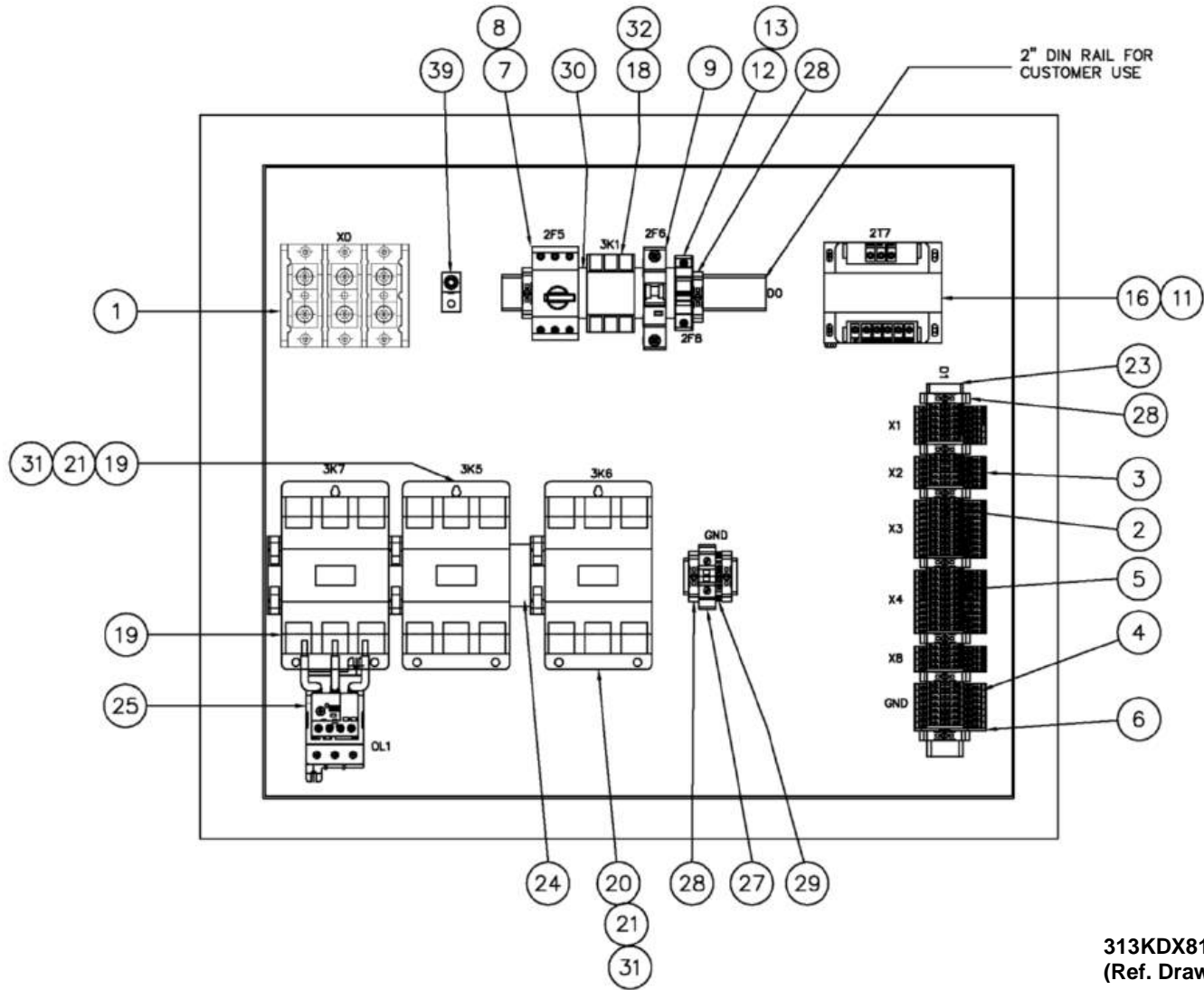
**312KDX810-B
(Ref. Drawing)**

Order by Part Number and Description. Reference Numbers are for your convenience only

**CONTROLLER ASSEMBLY – FIXED SPEED
40 HP – 200 VOLT/60HZ**

		QTY.	
	CONTROL BOX.....		312KDX466
1	POWER DISTRIBUTION BLOCK	1	TEN001118
2	PLUG-IN BRIDGE FOR XBUT4.....	6	24CA7522
3	TERMINAL BLOCK	33	24CA5984
4	GROUND BLOCK.....	8	24CA7523
5	PLUG-IN BRIDGE FOR XBUT4.....	4	TEN000361
6	TERMINAL BLOCK	1	24CA5985
7	MANUAL MOTOR PROTECTOR.....	1	TEN000367
8	AUX CONTACT	1	TEN000460
9	CIRCUIT BREAKER	1	TEN001471
11	FUSE	2	TEN000555
12	FUSE	1	TEN000558
13	FUSE	1	24CA2783
16	TRANSFORMER.....	1	24CA7883
18	CONTACTOR	1	TEN000350
19	CONTACTOR	2	TEN000356
20	CONTACTOR	1	TEN000356
21	AUX CONTACT	2	24CA4332
23	DIN RAIL.....	1	24CA5991
24	MECHANICAL INTERLOCK FREEDOM CONTACT	1	24CA7506
25	OVERLOAD RELAY	1	TEN000773
27	GROUND BLOCK.....	1	24CA6071
28	TERMINAL BLOCK	11	24CA5987
29	GROUND BLOCK.....	1	24CA5986
30	SPACER FOR DIN RAIL COMPONENTS	3	24CA7526
31	COIL-CONTACTOR	3	TEN000434
32	COIL-CONTACTOR	1	TEN000432
39	LUG	1	24CA7880

**CONTROLLER ASSEMBLY – FIXED SPEED
50 HP – 200 VOLT/60HZ**



**313KDX810-B
(Ref. Drawing)**

Order by Part Number and Description. Reference Numbers are for your convenience only

**CONTROLLER ASSEMBLY – FIXED SPEED
50 HP – 200 VOLT/60HZ**

		QTY.	
	CONTROL BOX.....		313KDX466
1	POWER DISTRIBUTION BLOCK	1	TEN001118
2	PLUG-IN BRIDGE FOR XBUT4.....	6	24CA7522
3	TERMINAL BLOCK	33	24CA5984
4	GROUND BLOCK.....	8	24CA7523
5	PLUG-IN BRIDGE FOR XBUT4.....	4	TEN000361
6	TERMINAL BLOCK	1	24CA5985
7	MANUAL MOTOR PROTECTOR.....	1	TEN000367
8	AUX CONTACT	1	TEN000430
9	CIRCUIT BREAKER.....	1	TEN001471
11	FUSE	2	TEN000555
12	FUSE	1	TEN000558
13	FUSE	1	24CA2783
16	TRANSFORMER.....	1	24CA7883
18	CONTACTOR.....	1	TEN000350
19	CONTACTOR.....	2	TEN000357
20	CONTACTOR.....	1	TEN000357
21	AUX CONTACT	2	24CA4332
23	DIN RAIL.....	1	24CA5991
24	MECHANICAL INTERLOCK FREEDOM	1	24CA7506
25	OVERLOAD RELAY	1	TEN000557
27	GROUND BLOCK.....	1	24CA6071
28	GROUND BLOCK.....	11	24CA5986
29	SPACER FOR DIN RAIL COMPONENTS	1	24CA7526
30	SPACER FOR DIN RAIL COMPONENTS	3	24CA7526
31	COIL-CONTACTOR		TEN000434
32	COIL-CONTACTOR		TEN000432
39	LUG		24CA7880

Order by Part Number and Description. Reference Numbers are for your convenience only

**CONTROLLER ASSEMBLY – FIXED SPEED
60 HP – 200 VOLT/60HZ**

		QTY.	
	CONTROL BOX.....	1	314KDX466
1	POWER DISTRIBUTION BLOCK	6	TEN001118
2	PLUG-IN BRIDGE FOR XBUT4	33	24CA7522
3	TERMINAL BLOCK	8	24CA5984
4	GROUND BLOCK.....	4	24CA7523
5	PLUG-IN BRIDGE FOR XBUT4	1	TEN000361
6	TERMINAL BLOCK	1	24CA5985
7	MANUAL MOTOR PROTECTOR.....	1	TEN000368
8	AUX CONTACT	1	TEN000430
9	CIRCUIT BREAKER	1	TEN001471
11	FUSE	2	TEN000555
12	FUSE	1	TEN000558
13	FUSE	1	24CA2783
15	TRANSFORMER	1	24CA7883
17	CONTACTOR	1	TEN000350
18	CONTACTOR	2	TEN000358
19	CONTACTOR	1	TEN000358
20	CONTACTOR.....	1	24CA4332
21	CONTACTOR	1	24CA4332
22	DIN RAIL.....	1	24CA5991
23	MECHANICAL INTERLOCK FREEDOM CONTACT	1	24CA7506
24	OVERLOAD RELAY	1	TEN000557
26	GROUND BLOCK,DIN MNT	1	24CA6071
27	TERMINAL BLOCK	11	24CA5987
28	GROUND BLOCK.....	1	24CA5986
29	SPACER FOR DIN RAIL COMPONENTS	3	24CA7526
30	COIL-CONTACTOR	3	TEN000434
31	COIL-CONTACTOR	1	TEN000432
39	LUG.....	1	24CA7880

Order by Part Number and Description. Reference Numbers are for your convenience only.

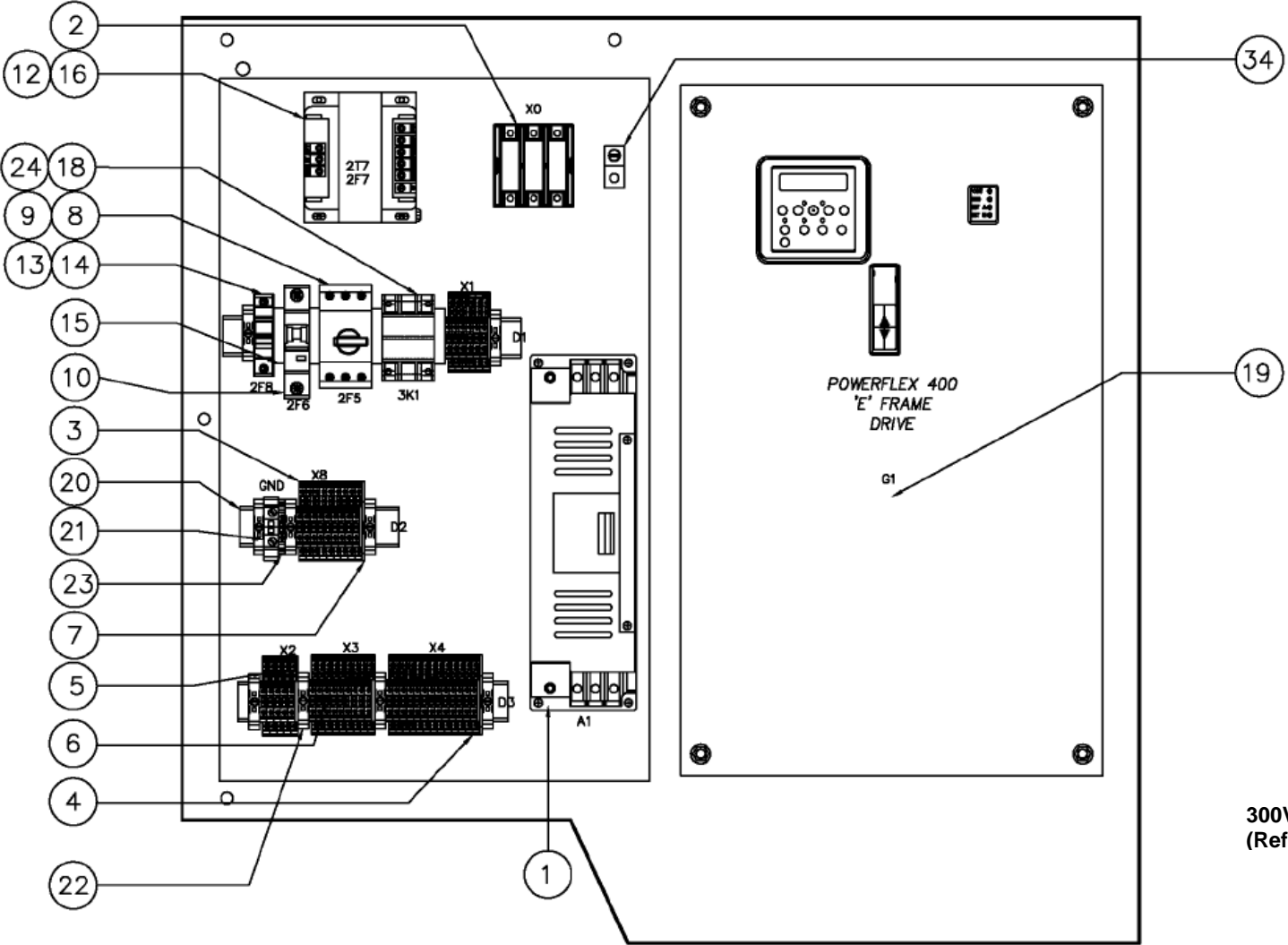
CONTROLLER ASSEMBLY – VARIABLE SPEED

		QTY.	BOM:	*
25	CONNECTOR.....	1	24CA7534	
27	CONNECTOR.....	1	24CA7857	
28	CONNECTOR.....	1	TEN000528	
29	CONNECTOR.....	1	TEN000530	
30	CONNECTOR.....	1	TEN000529	
31	CONNECTOR.....	1	TEN000527	
32	CONNECTOR.....	1	TEN000531	
33	CONNECTOR.....	1	TEN000532	
35	CONTACT BLOCK	1	24CA7111	

* Drawing 331KDX810 and BOM References the Following Part Numbers:

300VDX1189
301VDX1189
302VDX1189
303VDX1189
304VDX1189
305VDX1189
306VDX1189

**CONTROLLER ASSEMBLY – VARIABLE SPEED
40HP – 380VOLT/60HZ – 400VOLT/50HZ - 460 VOLT/60HZ**



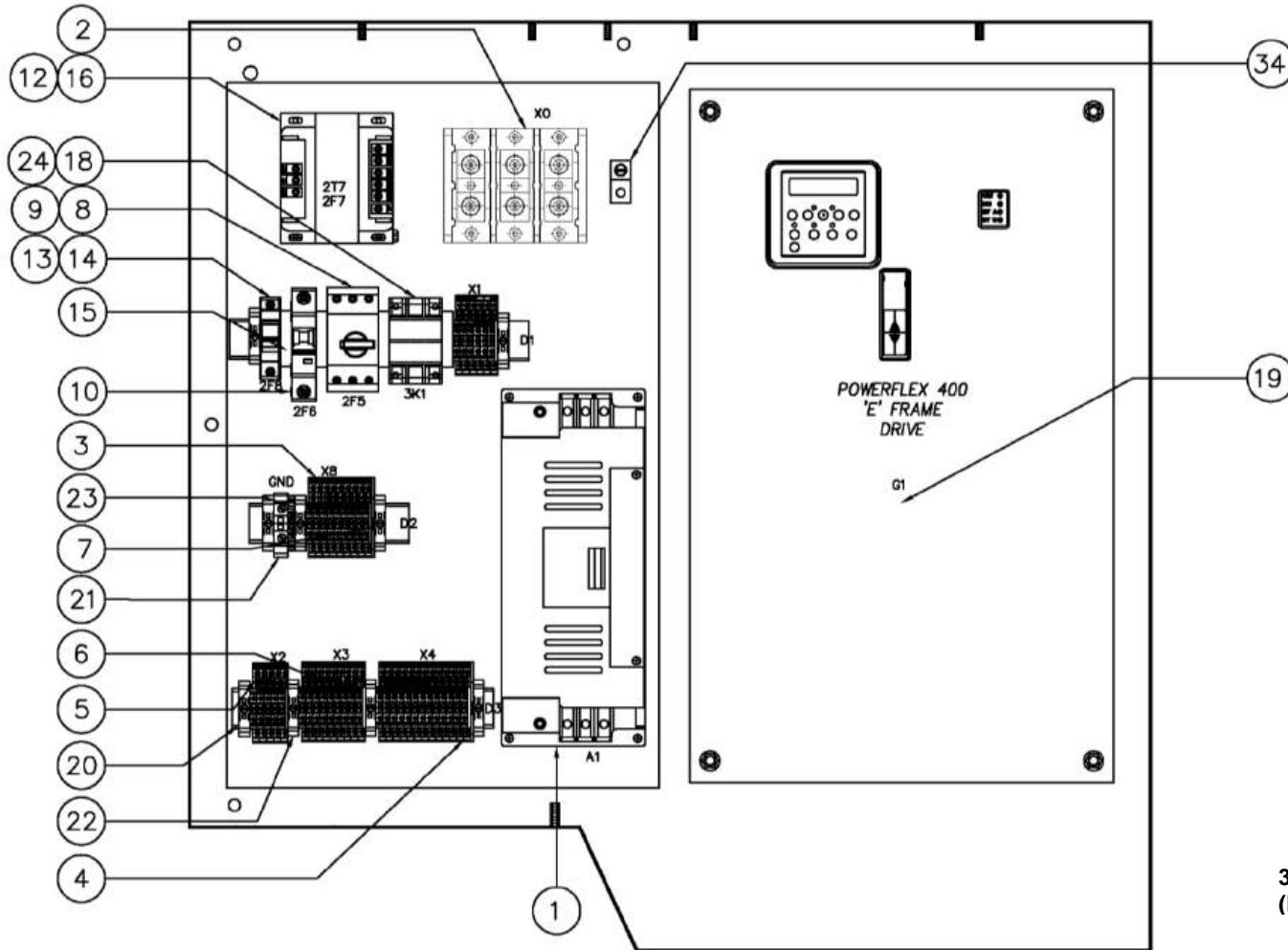
**300VDX810-B
(Ref. Drawing)**

Order by Part Number and Description. Reference Numbers are for your convenience only

**CONTROLLER ASSEMBLY – VARIABLE SPEED
40HP – 380VOLT/60HZ – 400VOLT/50HZ - 460 VOLT/60HZ
QTY.**

	CONTROL BOX.....		300VDX1189
1	EMC FILTER	1	89864669
2	POWER DISTRIBUTION BLOCK	1	TEN001153
3	TERMINAL BLOCK	32	24CA5984
4	GROUND BLOCK.....	8	24CA7523
5	PLUG-IN BRIDGE FOR XBUT4	3	24CA7522
6	PLUG-IN BRIDGE FOR XBUT4	13	TEN000361
7	TERMINAL BLOCK	2	24CA5985
8	MANUAL MOTOR PROTECTOR.....	1	TEN000366
9	AUX CONTACTOR.....	1	TEN000430
10	CIRCUIT BREAKER	1	TEN001471
12	FUSE	2	24CA2782
13	FUSE	1	TEN000558
14	FUSE	1	24CA2783
15	SPACER FOR DIN RAIL COMPONENTS	4	24CA7526
16	TRANSFORMER	1	24CA7883
18	CONTACTOR.....	1	TEN000350
19	VARIABLE SPEED DRIVE (400V – 50HZ & 460V – 60HZ)	1	89864409
	VARIABLE SPEED DRIVE (380V – 60HZ)	1	89864389
20	DIN RAIL.....	1	24CA5991
21	GROUND BLOCK.....	1	24CA7524
22	TERMINAL BLOCK	9	24CA5987
23	GROUND BLOCK.....	1	24CA5986
24	COIL-CONTACTOR	1	TEN000432
25	CONTACT BLOCK	1	24CA7534
34	LUG.....	1	24CA7880

CONTROLLER ASSEMBLY – VARIABLE SPEED
40 HP – 230 VOLT/60HZ

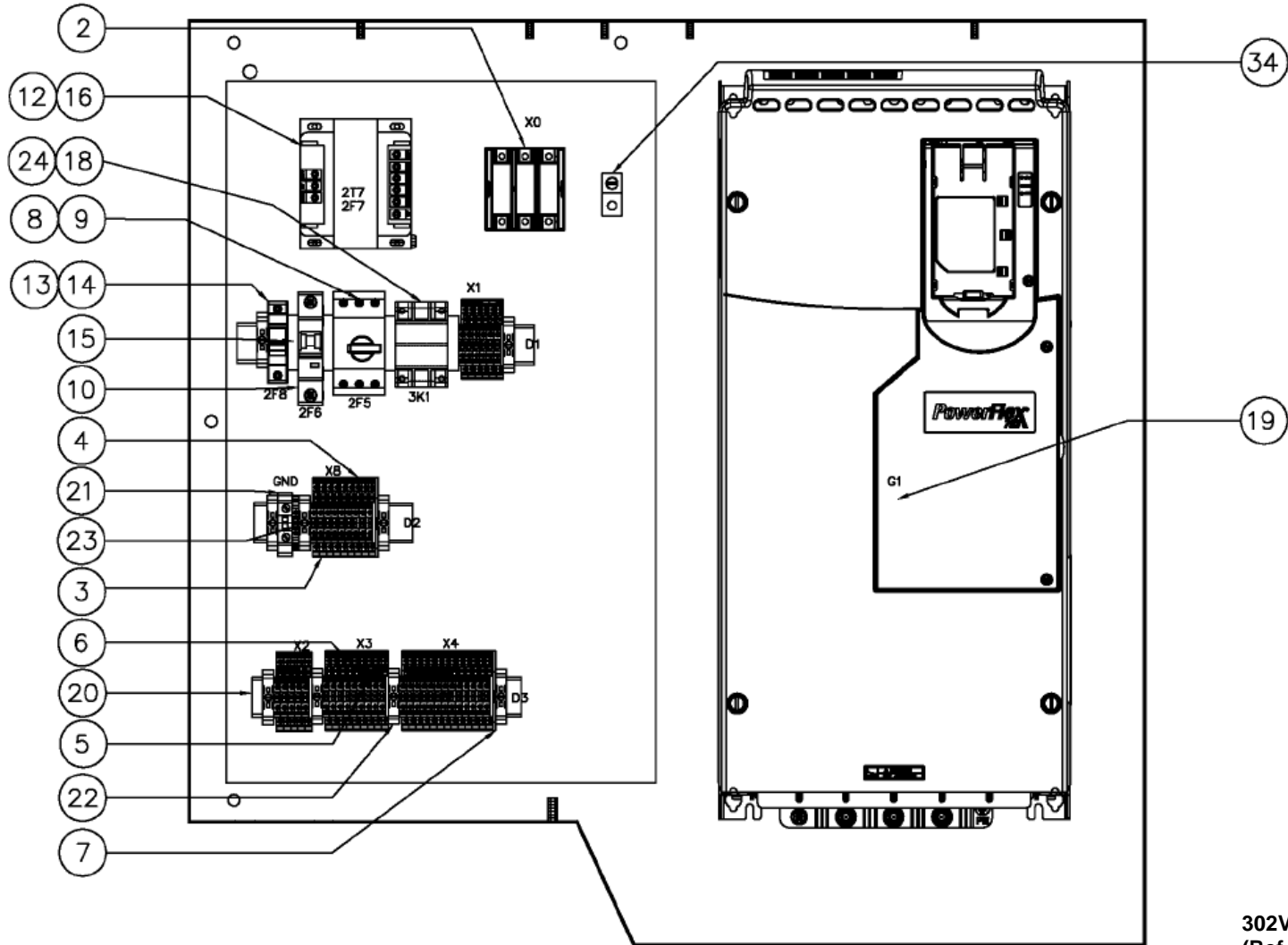


Order by Part Number and Description. Reference Numbers are for your convenience only

**CONTROLLER ASSEMBLY – VARIABLE SPEED
40 HP – 230 VOLT/60HZ**

		QTY.	
	CONTROL BOX.....		301VDX1189
1	EMC FILTER	1	90500049
2	POWER DISTRIBUTION BLOCK	1	TEN001118
3	TERMINAL BLOCK	34	24CA5984
4	GROUND BLOCK.....	8	24CA7523
5	PLUG-IN BRIDGE FOR XBUT4	2	24CA7522
6	PLUG-IN BRIDGE FOR XBUT4	13	TEN000361
7	TERMINAL BLOCK	2	24CA5985
8	MANUAL MOTOR PROTECTOR.....	1	TEN000367
9	AUX CONTACTOR.....	1	TEN000430
10	CIRCUIT BREAKER	1	TEN001471
12	FUSE	2	24CA2785
13	FUSE	1	TEN000558
14	FUSE	1	24CA2783
15	SPACER FOR DIN RAIL COMPONENTS	4	24CA7526
16	TRANSFORMER	1	24CA7883
18	CONTACTOR.....	1	TEN000350
19	VARIABLE SPEED DRIVE	1	VP1026951
20	DIN RAIL.....	1	24CA5991
21	GROUND BLOCK.....	1	24CA7524
22	TERMINAL BLOCK	9	24CA5987
23	GROUND BLOCK.....	1	24CA5986
24	COIL-CONTACTOR	1	TEN000432
34	LUG.....	1	24CA7880

CONTROLLER ASSEMBLY – VARIABLE SPEED
 40, 50, 60 HP – 575 VOLT/60HZ

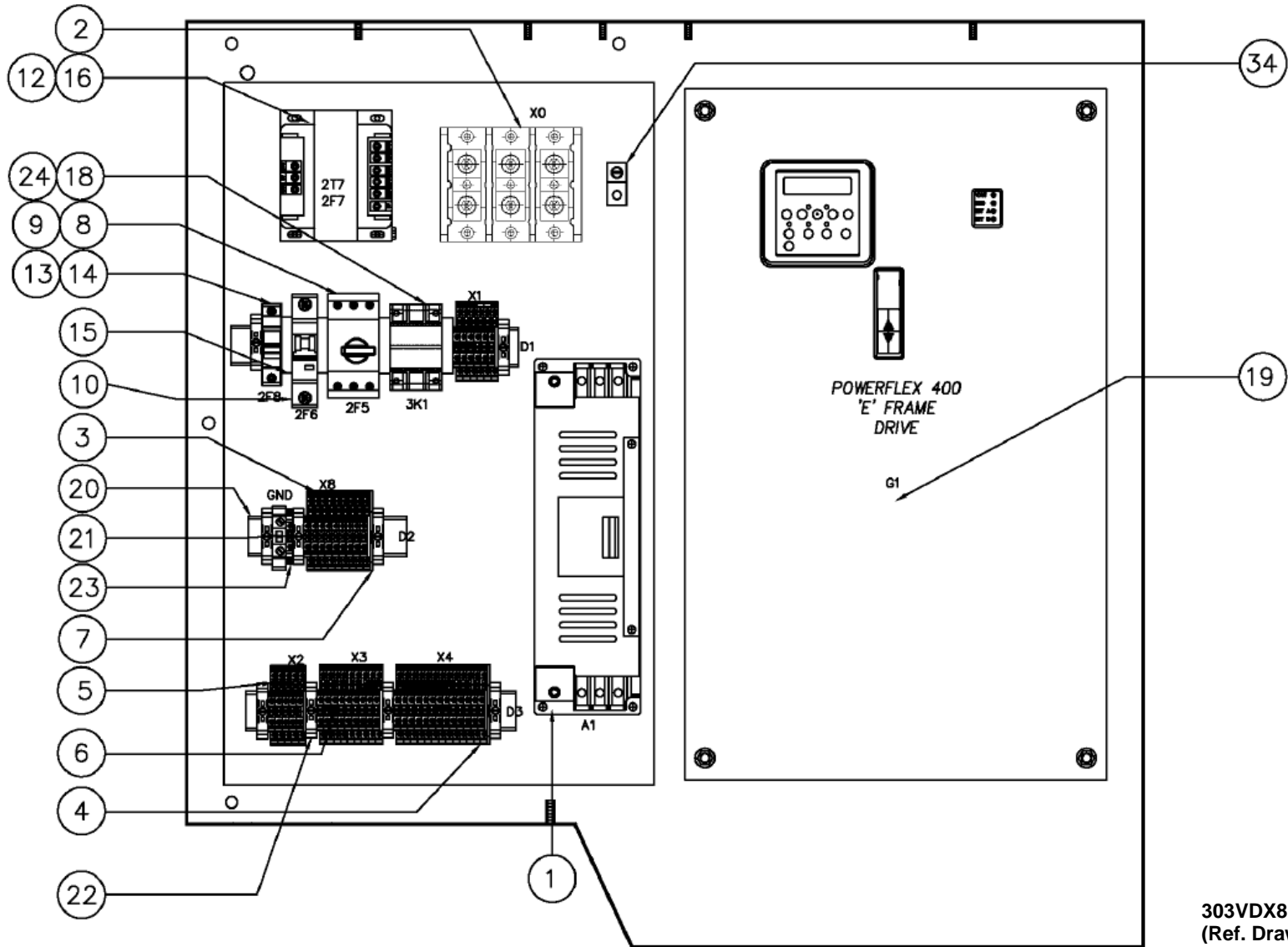


Order by Part Number and Description. Reference Numbers are for your convenience only

**CONTROLLER ASSEMBLY – VARIABLE SPEED
40, 50, 60 HP – 575 VOLT/60HZ**

		QTY.	40 HP	50 & 60HP
	CONTROL BOX.....		302VDX1189	305VDX1189
2	POWER DISTRIBUTION BLOCK	1	TEN001153	TEN001153
3	TERMINAL BLOCK	34	24CA5984	24CA5984
4	GROUND BLOCK.....	8	24CA7523	24CA7523
5	PLUG-IN BRIDGE FOR XBUT4	3	24CA7522	24CA7522
6	PLUG-IN BRIDGE FOR XBUT4	13	TEN000361	TEN000361
7	TERMINAL BLOCK	2	24CA5985	24CA5985
8	MANUAL MOTOR PROTECTOR.....	1	TEN000365	TEN000365
9	AUX CONTACTOR.....	1	TEN000430	TEN000430
10	CIRCUIT BREAKER	1	TEN001471	TEN001471
12	FUSE	2	24CA2781	24CA2781
13	FUSE HOLDER	1	TEN000558	TEN000558
14	FUSE	1	24CA2783	24CA2783
15	SPACER FOR DIN RAIL COMPONENTS	4	24CA7526	24CA7526
16	TRANSFORMER	1	24CA7883	24CA7883
18	CONTACTOR	1	TEN000350	TEN000350
19	VARIABLE SPEED DRIVE	1	VP1145154	VP1145156
20	DIN RAIL.....	1	24CA5991	24CA5991
21	GROUND BLOCK.....	1	24CA7524	24CA7524
22	TERMINAL BLOCK	9	24CA5987	24CA5987
23	GROUND BLOCK.....	1	24CA5986	24CA5986
24	COIL-CONTACTOR	1	TEN000432	TEN000432
34	LUG.....	1	24CA7880	24CA7880

CONTROLLER ASSEMBLY – VARIABLE SPEED
50 HP – 380VOLT/60HZ – 400VOLT/50HZ – 460VOLT/50HZ

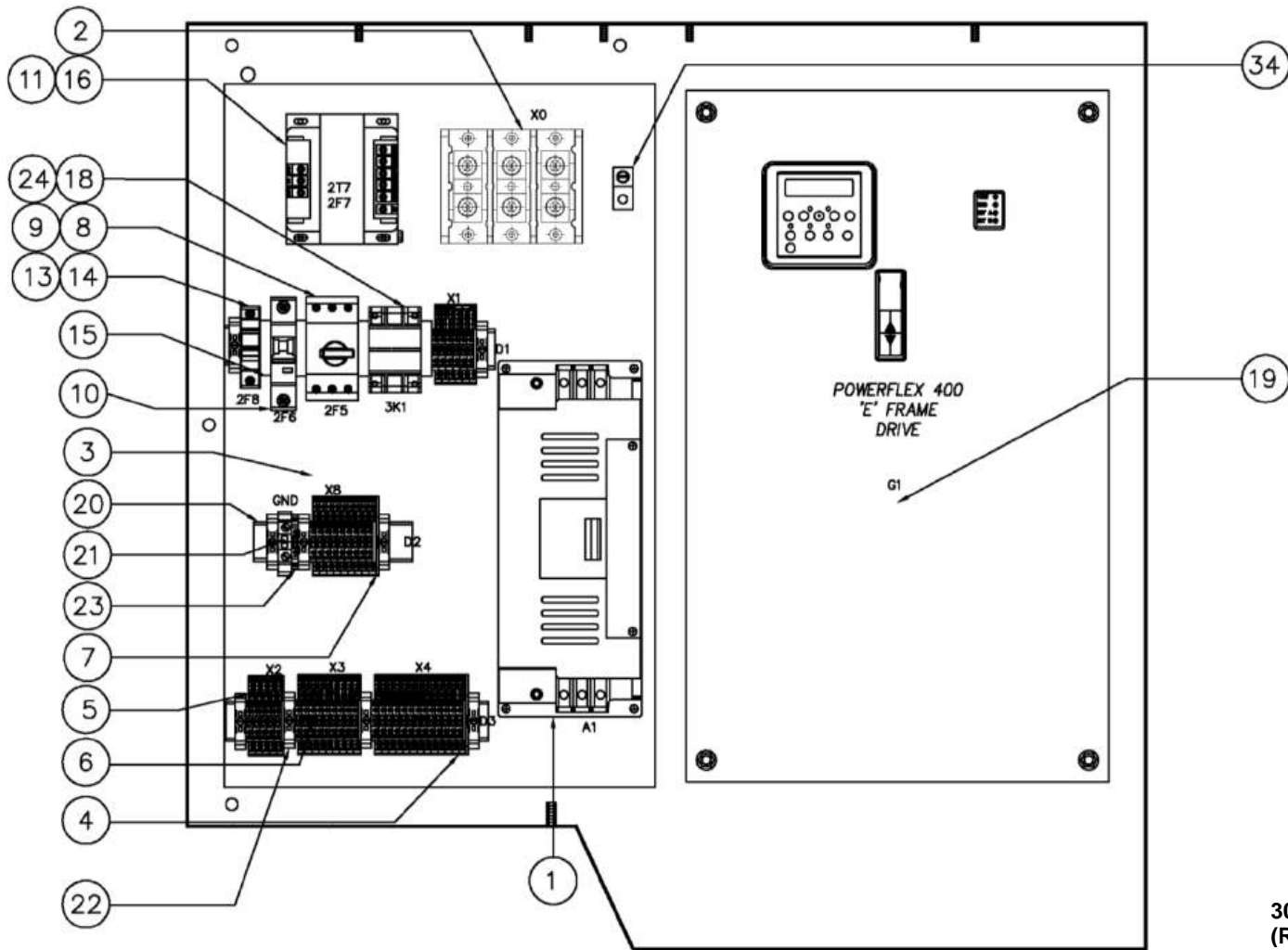


Order by Part Number and Description. Reference Numbers are for your convenience only

**CONTROLLER ASSEMBLY – VARIABLE SPEED
50 HP – 380VOLT/60HZ – 400VOLT/50HZ – 460VOLT/50HZ**

		QTY.	
	CONTROL BOX.....		303VDX1189
1	EMC FILTER	1	89864669
	EMC FILTER	1	90500048
2	POWER DISTRIBUTION BLOCK	1	TEN001118
3	TERMINAL BLOCK	32	24CA5984
4	GROUND BLOCK.....	8	24CA7523
5	PLUG-IN BRIDGE FOR XBUT4	3	24CA7522
6	PLUG-IN BRIDGE FOR XBUT4	13	TEN000361
7	TERMINAL BLOCK	2	24CA5985
8	MANUAL MOTOR PROTECTOR.....	1	TEN000366
9	AUX CONTACT	1	TEN000430
10	CIRCUIT BREAKER	1	TEN001471
12	FUSE	2	24CA2782
13	FUSE	1	TEN000558
14	FUSE	1	24CA2783
15	SPACER FOR DIN RAIL COMPONENTS	4	24CA7526
16	TRANSFORMER	1	24CA7883
18	CONTACTOR	1	TEN000350
19	VARIABLE SPEED DRIVE (400V – 50HZ, 460V – 60HZ).....	1	89864389
	VARIABLE SPEED DRIVE (380V – 60HZ)	1	90500030
20	DIN RAIL.....	1	24CA5991
21	GROUND BLOCK.....	1	24CA7524
22	TERMINAL BLOCK	9	24CA5987
23	GROUND BLOCK.....	1	24CA5986
24	COIL-CONTACTOR	1	TEN000432
34	LUG.....	1	24CA7880

**CONTROLLER ASSEMBLY – VARIABLE SPEED
60 HP – 380VOLT/60HZ – 400VOLT/50HZ – 460VOLT/50HZ**

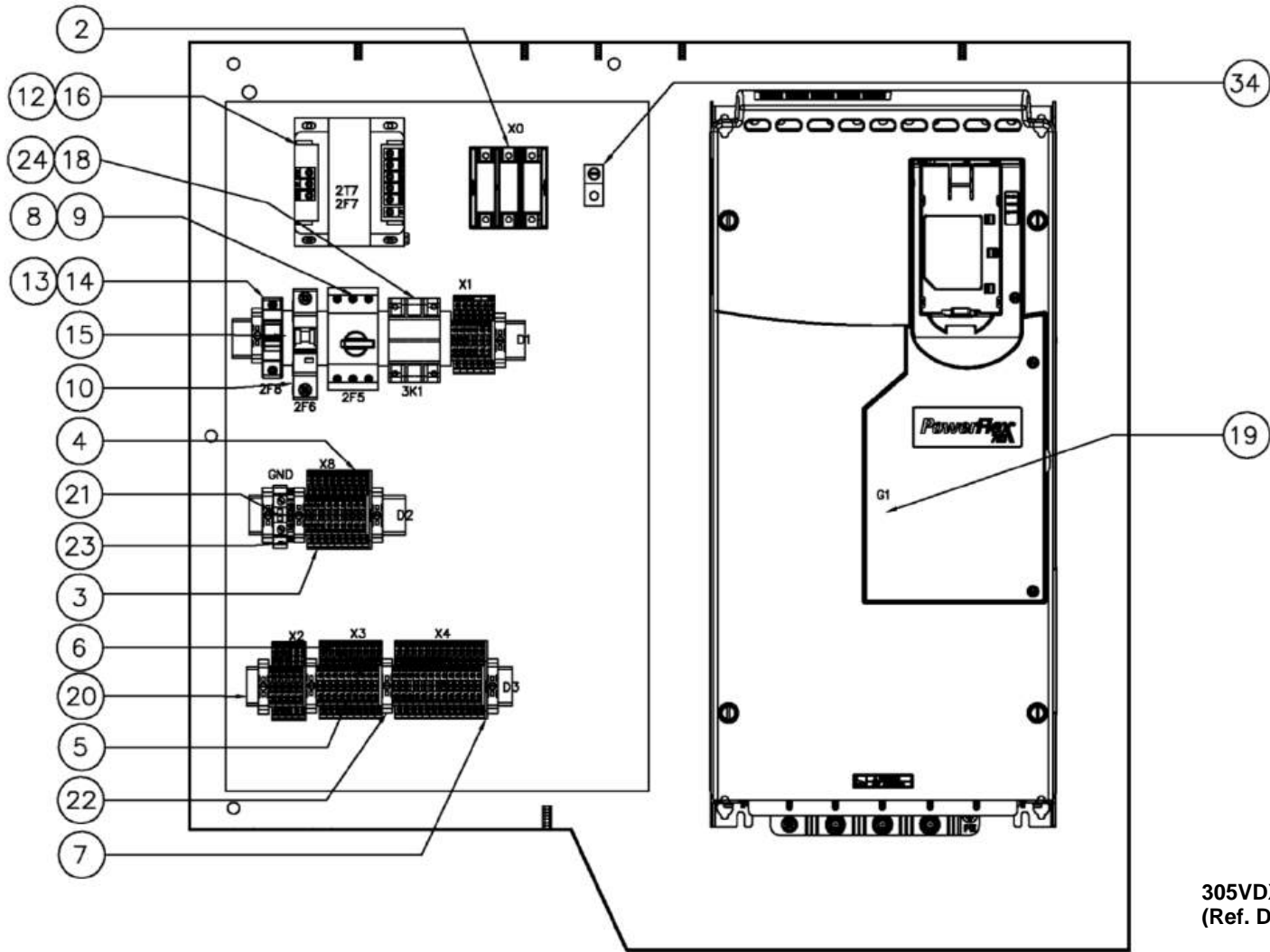


Order by Part Number and Description. Reference Numbers are for your convenience only

**CONTROLLER ASSEMBLY – VARIABLE SPEED
60 HP – 380VOLT/60HZ – 400VOLT/50HZ – 460VOLT/50HZ**

		QTY.
	CONTROL BOX.....	304VDX1189
1	EMC FILTER	1 90500048
	EMC FILTER	1 90500049
2	POWER DISTRIBUTION BLOCK	1 TEN001118
3	TERMINAL BLOCK	34 24CA5984
4	GROUND BLOCK.....	8 24CA7523
5	PLUG-IN BRIDGE FOR XBUT4	3 24CA7522
6	PLUG-IN BRIDGE FOR XBUT4	13 TEN000361
7	TERMINAL BLOCK	2 24CA5985
8	MANUAL MOTOR PROTECTOR.....	1 TEN000367
9	AUX CONTACT	1 TEN000430
10	CIRCUIT BREAKER	1 TEN001471
11	FUSE	2 24CA2782
13	FUSE	1 TEN000558
14	FUSE	1 24CA2783
15	SPACER FOR DIN RAIL COMPONENTS	4 24CA7526
16	TRANSFORMER	1 24CA7883
18	CONTACTOR.....	1 TEN000350
20	VARIABLE SPEED DRIVE (400V – 50HZ, 460V – 60HZ).....	1 90500030
	VARIABLE SPEED DRIVE (380V – 60HZ)	1 90500031
20	DIN RAIL.....	1 24CA5991
21	GROUND BLOCK.....	1 24CA7524
22	TERMINAL BLOCK	9 24CA5987
23	GROUND BLOCK.....	1 24CA5986
24	COIL-CONTACTOR	1 TEN000432
34	LUG.....	1 24CA7880

CONTROLLER ASSEMBLY – VARIABLE SPEED
60 HP – 575 VOLT/60HZ



305VDX810-B
(Ref. Drawing)

Order by Part Number and Description. Reference Numbers are for your convenience only

**CONTROLLER ASSEMBLY – VARIABLE SPEED
60 HP – 575 VOLT/60HZ**

		QTY.	
	CONTROL BOX.....		306VDX1189
2	POWER DISTRIBUTION BLOCK	1	TEN001153
3	TERMINAL BLOCK	34	24CA5984
4	GROUND BLOCK.....	8	24CA7523
5	PLUG-IN BRIDGE FOR XBUT4	3	24CA7522
6	PLUG-IN BRIDGE FOR XBUT4	13	TEN000361
7	TERMINAL BLOCK	2	24CA5985
8	MANUAL MOTOR PROTECTOR.....	1	TEN000367
9	AUX CONTACT	1	TEN000430
10	CIRCUIT BREAKER	1	TEN001471
12	FUSE	2	24CA2781
13	FUSE	1	TEN000558
14	FUSE	1	24CA2783
15	SPACER FOR DIN RAIL COMPONENTS	4	24CA7526
16	TRANSFORMER	1	24CA7883
18	CONTACTOR	1	TEN000350
19	VARIABLE SPEED DRIVE	1	VP1145156
20	DIN RAIL.....	1	24CA5991
21	GROUND BLOCK.....	1	24CA7524
22	TERMINAL BLOCK	9	24CA5987
23	GROUND BLOCK.....	1	24CA5986
24	COIL-CONTACTOR	1	TEN000432
34	LUG.....	1	24CA7880

REPAIR KITS

Your Gardner Denver rotary screw compressor is designed and manufactured for many years of reliable operation. All components are engineered to exacting specifications, which will function together as a system to provide maximum efficiency. To insure the continuing integrity of compressor operation, use only original quality genuine Gardner Denver replacement parts and accessories.

Name of Part	Qty.	Part No.
WARRANTY KIT (L30 & 45B)		300KDA6032
OIL FILTER ELEMENT	2	ZS1063359
AIR FILTER ELEMENT	2	ZS1063356
AIR/OIL SEPARATOR ELEMENT	1	ZS1063828
FILTER ELEMENT	2	100008651
BOTTLE, AEON OIL SAMPLE KIT	2	VP1074048
RD-RING SEAL	1	A93191670
PIPE SEAL	1	A93191660
WARRANTY KIT (LRS30-45B)		300VDA6032
OIL FILTER ELEMENT	2	ZS1063359
AIR FILTER ELEMENT	2	ZS1063356
AIR/OIL SEPARATOR ELEMENT	1	ZS1063828
FILTER ELEMENT	2	100008651
FILTER PAD	1	ZS1051760
BOTTLE, AEON OIL SAMPLE KIT	2	VP1074048
RD-RING SEAL	1	A93191670
PIPE SEAL	1	A93191660
SEAL KIT (NK-DIRECT DRIVE)		A11830474
INTERNAL RING.....	1	A11932574
SHAFT SEAL.....	1	A93220110
PIPE SEAL	1	A93199100
SNAP RING.....	1	A93147480
ADJUST. SPRING.....	1	A93160920
SILENCER.....	1	A13012774
SEAL KIT (NG-GEAR DRIVE)		A11830674
INTERNAL RING.....	1	A11932474
SHAFT SEAL.....	1	A93220110
PIPE SEAL	1	A93199100
SNAP RING.....	1	A93147480
ADJUST. SPRING.....	1	A93160920
SILENCER.....	1	A13012774

REPAIR KITS (CONTINUED)

Name of Part	Qty.	Part No.
LUBRICANT (AEON 9000SP) – STANDARD		
5-GALLON PAIL.....	1	28H109
55-GALLON DRUM	1	28H103
LUBRICANT (AEON 9000TH)		
5-GALLON PAIL.....	1	28H286
55-GALLON DRUM	1	28H270
LUBRICANT (AEON 9000FG)		
5-GALLON PAIL.....	1	28H39
55-GALLON DRUM	1	28H100
LUBRICANT (AEON 6000FG-68)		
5-GALLON PAIL.....	1	28H314
55-GALLON DRUM	1	28H315
LUBRICANT (AEON BIO)		
5-GALLON PAIL.....	1	28H102
55-GALLON DRUM	1	28H103

Gardner Denver®

For additional information, contact your local representative or visit:
www.contactgd.com/compressors

©2016 Gardner Denver, Inc. Printed in U.S.A.

