

Registration code

**Atlas Copco**

Collection: ASL 22  
Tab: 31  
Sequence: 0500

1990-10

Parts list for stationary compressors  
Onderdelenlijst voor stationaire compressoren  
Reservdelsförteckning för stationära kompressorer  
Teilliste für stationäre Kompressoren  
Liste de pièces pour compresseurs stationnaires  
Lista de las partes para compresores estacionarios  
Listino parti di ricambio per compressori stazionari

## ZT3 A, -B, -M Pack

From following serial number onwards :  
Geldig vanaf volgend serienummer :  
Fr.o.m. tillverkningsnummer :  
Gültig ab Seriennummer :  
Valable à partir du numéro de série suivant :  
A partir del siguiente número de serie :  
Dai seguenti numeri di serie in avanti:

ARP-850 353

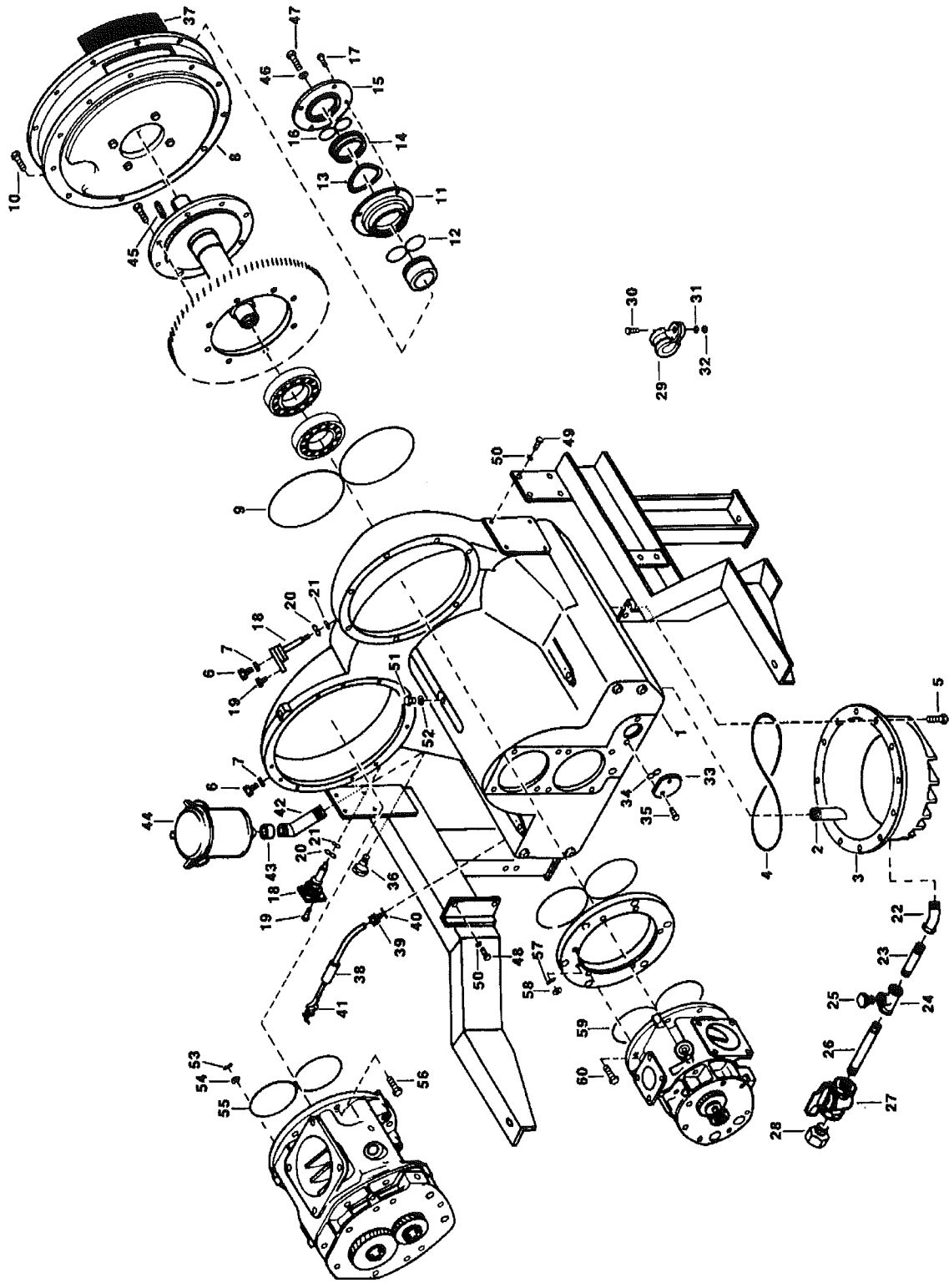
Page	<b>Contents</b>
Biz.	<b>Inhoud</b>
Sida	<b>Innehåll</b>
Selte	<b>Inhaltsverzeichnis</b>
Pag.	<b>Table des matières</b>
Pág.	<b>Indice</b>
Pag.	<b>Indice</b>

5	Gear casing Tandwielhuis Växelhus Getriebegehäuse Carter d'engrenages Cárter de engranajes Scatola Ingranaggi	19	Inter- and aftercooler connections Tussen- en nakoeleraansluitingen Mellan- och efterkylaranslutningar Zwischen- und Nachkühleranschlüsse Connexions des refroidisseurs intermédiaire et final Conexiones de los refrigeradores intermedio y posterior Conessioni del refrigeratore intermedio e del refrigeratore finale
7	Compressor elements and drive gear Kompressorelementen en aandrijving Kompressorelement och drivning Kompressorelemente und Antrieb Éléments compresseurs et entraînement Elementos compresores y accionamiento Elementi compressori e ingranaggi di azionamento	20	Drain connections Aftapaansluitingen Avtappningsanslutningar Ablafsanschlüsse Connexions de vidange Conexiones de drenaje Conessioni di scarico
9	Drive arrangement E Aandrijfuitvoering E Arrangemang E Antriebsanordnung E Entraînement, disp. E Accionamiento, disp. E Azionamento, disposizione E	21	Float valve Vlotterklep Flottörventil Schwimmerventil Soupape à flotteur Válvula de flotador Valvola galleggiante
11	Drive arrangement 1 Aandrijfuitvoering 1 Arrangemang 1 Antriebsanordnung 1 Entraînement, disp. 1 Accionamiento, disp. 1 Azionamento, disposizione 1	23	Discharge silencer and blow-off connections Uitlaatgeluiddemper, aansluitingen van koeler voor afblaasluicht Utlöpsljuddämpare och avblåsningsanslutningar Luftaustrittsschalldämpfer, Anschlüsse für Abblaseluft Silencieux de refoulement, connexions d'air de décharge Silenciador de impulsión, conexiones del refrigerador del aire de descarga Silenziatore dello scarico e connessioni dello scarico nell'atmosfera
13	Oil system Oliesysteem Oljesystem Ölkreislauf Système d'huile Sistema de aceite Sistema dell'olio	24	Throttle valve Smookklep Spjällventil Drosselventil Etrangleur Válvula de estrangulación Valvola strozzatrice
14	Oil pump and drive Oljepomp en aandrijving Oljepump och drivning Ölpumpe und Antrieb Pompe à huile et entraînement Bomba de aceite y accionamiento Pompa dell'olio e azionamento	25	Unloader Onlader Avlastningsenhet Entlaster Déchargeur Descargador Gruppo di messa a vuoto
15	Coolers Koelers Kylare Kühler Refrroidisseurs Refrigeradores Refrigeratori	27	Control cubicle Instrumentenkast Kontrollskåp Instrumentenkasten Armoire d'instruments Armario de instrumentos Armadio del controllo
17	Fan and cooling duct plates Ventilator en koelgeleiplaten Fläkt och kylkanalplåtar Lüfter und Kühlluftführungsplatten Ventilateur et conduits de refroidissement Ventilador y paneles de conducción de refrigeración Ventilatore e intubatura		

Page	<b>Contents</b>
Blz.	<b>Inhoud</b>
Sida	<b>Innehåll</b>
Selte	<b>Inhaltsverzeichnis</b>
Pag.	<b>Table des matières</b>
Pág.	<b>Indice</b>
Pag.	<b>Indice</b>

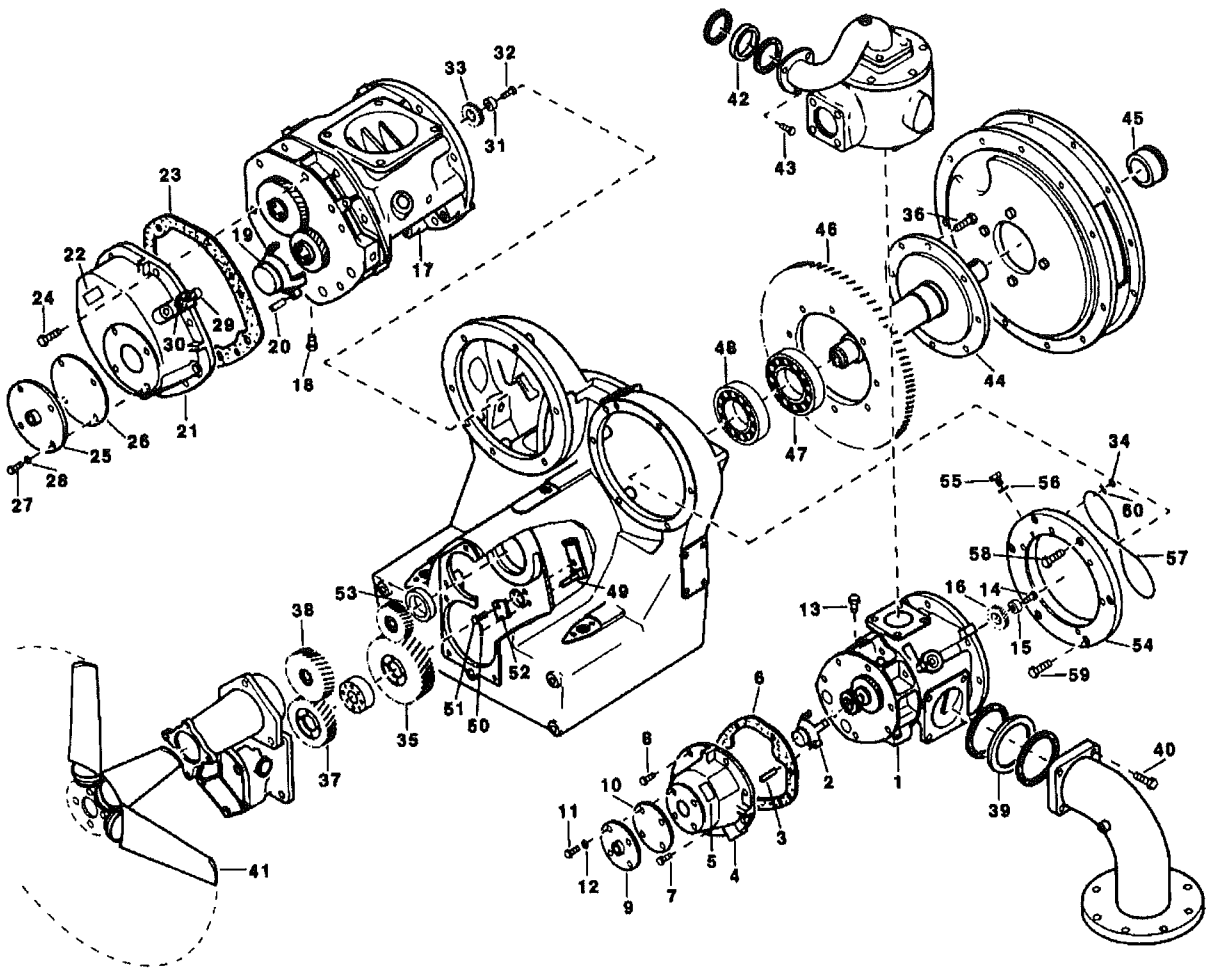
---

29	Regulating connections Regelaansluitingen Regleringsanslutningar Regelanschlüsse Connexions de régulation Conexiones de regulación Conessioni della regolazione	42	Pipe fittings Pijpfittingen Rörförskruvningar Rohrformstücke Accessoires pour tuyaux Accesorios para tubería Raccordi del tubo
31	Cubicle Kast Skåp Kasten Armoire Armario Armadio elettrico	43	Contents "Service kits" and reference to pages Inhoud "Service kits" en verwijzing naar bladzijden Innehåll "Service kits" och hänvisning till sidor Inhaltsverzeichnis "Service kits" und Verweis zu den Seiten Table des matières "Service kits" et référence aux pages Indice "Service kits" y referencia a páginas Indice "Kit per la manutenzione", vedi pagine
33	Cubicle with regulator (without starter) Kast met regelaar (zonder starter) Skåp med regulator (utan startutrustning) Kasten mit Regler (ohne Anlasser) Armoire avec régulateur (sans démarreur) Armario con regulador (sin arrancador) Armadio elettrico con regolatore (senza apparecchiatura di avviamento)		
35	Cubicle with regulator and starter Kast met regelaar en starter Skåp med regulator och startutrustning Kasten mit Regler und Anlasser Armoire avec régulateur et démarreur Armario con regulador y arrancador Armadio elettrico con regolatore e apparecchiatura di avviamento		
39	Bodywork Karosserie Karosseri Karosserie Capotage Carrocería Cappottatura		
41	Specific parts and parts approved by classification societies Specifieke onderdelen en door klassifikatiebureaus goedgekeurde onderdelen Specifika delar och av klassningssällskap godkända delar Spezifische Teile und Teile genehmigt durch die Abnahme-Gesellschaften Pièces spécifiques et pièces approuvées par les Sociétés de Classification Piezas específicas y piezas aprobadas por sociedades de clasificación Parti speciali e parti approvate dalle Società di classificazione		



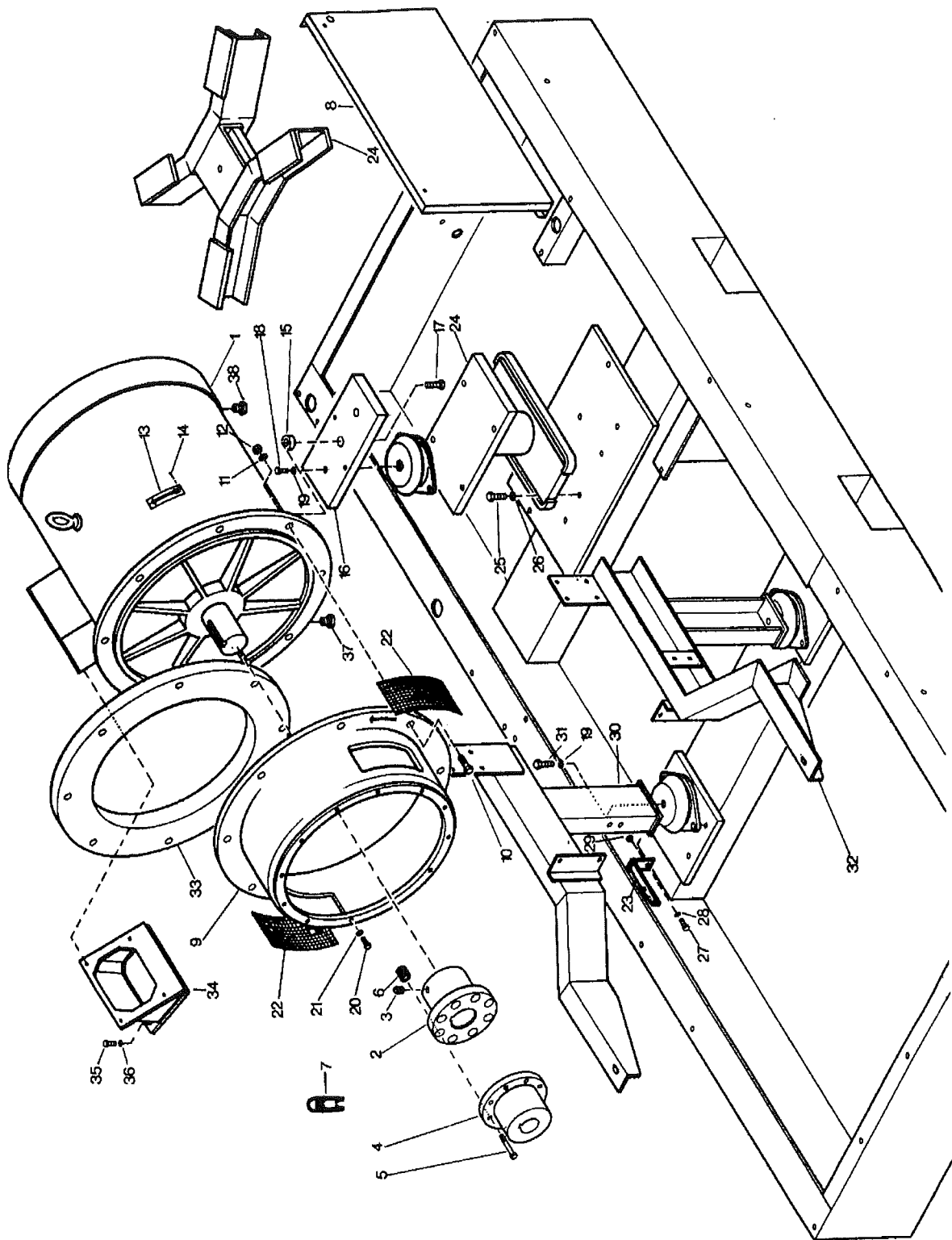
Gear casing  
Tandwielhuis  
Växelhus  
Getriebegehäuse  
Carter d'engrenages  
Cárter de engranajes  
Scatola ingranaggi

Ref.	A	B	C	D	Designation	Ref.	A	B	C	D	Designation	
1	2254	0580	00	.....	1	42	2253	5944	00	.....	1	Pipe
2	2250	4102	00	.....	1	43	0607	2156	00	.....	1	Socket
3	2250	6063	00	.....	1	44	1619	6236	00	.....	1	Breather
4	0663	6179	00	1.....	1	x	1619	6285	00	•.....	1	Housing
5	0147	1362	03	.....	12	x	1619	6284	00	•.....	1	Steel wool
6	0686	4208	00	.....	2	x	1619	6283	00	•.....	1	Disc
7	0661	1049	00	1.....	2	x	1619	6314	00	•.....	2	Plate
8	1202	6246	00	.....	1	x	1619	6313	00	•.....	1	Seal
9	0663	2103	25	1.....	1	x	1619	6282	01	•.....	1	Cover
10	0147	1362	15	.....	11	45	0337	8229	00	.....	1	Key
11	2252	0847	00	.....	1	46	2250	5622	00	.....	1	Washer
12	0663	6147	00	1,2.....	1	47	0144	3454	00	.....	1	Bolt
13	2250	8181	00	2.....	1	48	0147	1400	03	.....	4	Bolt
14	2250	8183	00	2.....	1	49	0147	1401	03	.....	8	Bolt
15	2252	0848	00	.....	1	50	0333	3237	00	1.....	12	Lock washer
16	0663	6142	00	1,2.....	1	51	0686	4204	00	.....	1	Plug
17	0147	1250	03	.....	4	52	0653	1124	00	.....	1	Gasket
18	2250	6055	00	.....	2	53	0663	7119	00	1,4.....	1	O-ring
19	0211	1362	00	.....	2	54	2250	8581	00	.....	1	Ring
20	0663	2133	00	1.....	2	55	0663	2103	22	4.....	1	O-ring
21	0663	2125	00	1.....	2	56	.....	.....	.....	.....	.....	Bolt
22	0562	0507	00	.....	1	.....	0147	1402	03	.....	5	- M12x35
23	0551	3384	04	.....	1	.....	0147	1405	03	.....	1	- M12x50
24	0564	0137	00	.....	1	57	0663	7119	00	1,3.....	1	O-ring
25	0686	3304	00	.....	1	58	2250	8581	00	.....	1	Ring
26	0551	3377	04	.....	1	59	0663	2103	19	3.....	1	O-ring
27	1619	6153	06	.....	1	60	0147	1362	03	.....	6	Bolt
28	0686	3306	00	.....	1	.....	.....	.....	.....	.....	.....	.....
29	1613	0801	03	.....	1	1	Kit	2910	0207	00	.....	.....
30	0147	1246	03	.....	1	2	Kit	2910	7001	00	.....	.....
31	0301	2321	00	.....	1	3	Kit	2910	4006	00	.....	.....
32	0266	2108	00	.....	1	4	Kit	2910	4007	00	.....	.....
33	1202	5827	00	.....	1	1)	SPM vibration monitoring / SPM trillingskontrolle /	.....	.....	.....	.....	.....
34	0663	3135	00	1.....	1	.....	SPM vibrationskontroll / SPM Vibrationsüberwachung /	.....	.....	.....	.....	.....
35	0147	1362	03	.....	2	.....	Contrôle de vibrations SPM / Supervisión de vibraciones SPM /	.....	.....	.....	.....	.....
36	1619	6032	00	1).....	1	.....	Monitoraggio delle vibrazioni, in corse al minuto	.....	.....	.....	.....	.....
37	2253	4920	00	.....	2	2251	6002	60	10/2251	6004	60	08
38	2253	6012	00	.....	1	18_104_0_0_0	.....	.....	.....	.....	.....	.....
39	0581	0062	00	.....	1	.....	.....	.....	.....	.....	.....	.....
40	0653	1100	00	1.....	1	.....	.....	.....	.....	.....	.....	.....
41	1619	5892	00	.....	1	.....	.....	.....	.....	.....	.....	.....



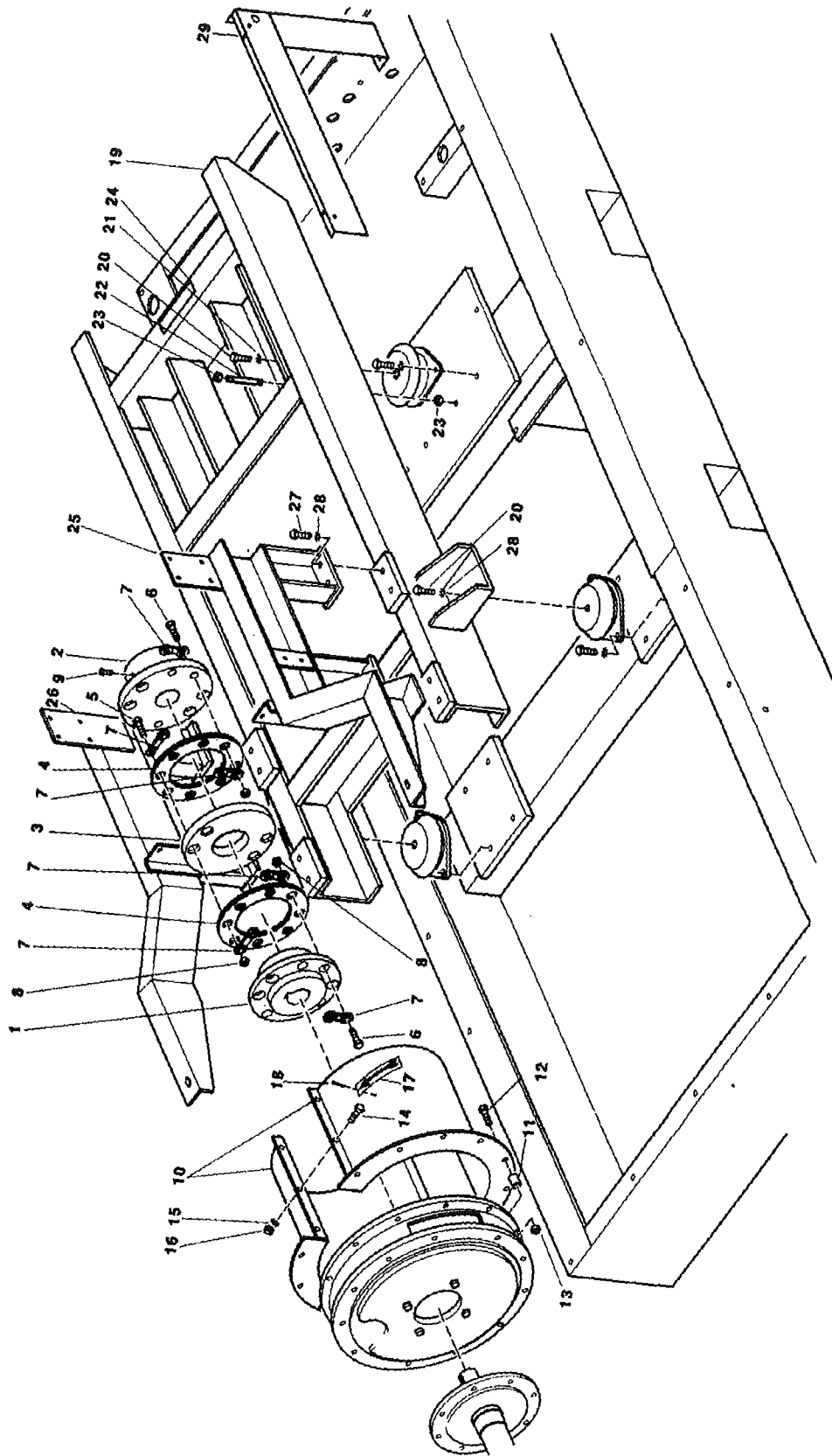
Compressor elements and drive gear  
 Kompressorelementen en aandrijving  
 Kompressorelement och drivning  
 Kompressorelemente und Antrieb  
 Eléments compresseurs et entraînement  
 Elementos compresores y accionamiento  
 Elementi compressor e ingranaggi di azionamento

Ref.	A	B	C	D	Designation	Ref.	A	B	C	D	Designation
-				1	Element, HP	40				4	Bolt
	2102 0660 84		5)		- "		0144 3367 00		1),3)		- "
	2102 0660 80				- "		0144 3368 00		2)		- "
1	***	•		1	Element, HP	41				1	Fan
2	2102 0686 00	•		1	Piston		2253 6592 00		1),3)		- "
3	0108 1322 00	•		1	Elastic pin		2253 5201 00		2)		- "
4	2250 7525 00	•		1	Cover	x	2900 0537 00	•		9	Blade
5	2250 5881 00	•		1	Data plate	x	2900 0205 00	•		9	Pin
6	1202 6953 00	•	1	1	Gasket	x	2253 6501 00	•		1	Fan hub
7	0211 5285 00	•		6	Cap screw	42				1	Spacer
8	0211 5300 00	•		1	Cap screw		2102 0813 02		1)		- "
9	1202 5756 00	•		1	Cover		2102 0813 01		2)		- "
10	2253 7852 00	•	1	1	Diaphragm		2102 0813 03		3)		- "
11	0144 3288 00	•		4	Bolt	43				3	Bolt
12	0301 2344 00	•		4	Washer		0147 1365 03		1)		- "
13	1619 6032 00	•	4)	3	Nipple		0147 1364 03		2)		- "
14	2250 8330 00	•		1	Cap screw		0147 1365 00		3)		- "
15	2252 0754 00	•		1	Washer	44	2102 0700 00			1	Drive shaft
16				1	Gearwheel	45	2252 0849 00			1	Bush
	2254 8177 01		1)		- "	46				1	Gearwheel
	2254 8177 02		2)		- "		2254 8175 01		1)		- "
	2254 8177 03		3)		- "		2254 8175 02		2)		- "
				1	Element, LP		2254 8175 03		3)		- "
	2102 0625 86		5)		- "	47	0502 3113 00			1	Bearing
	2102 0625 80				- "	48	0502 4221 01			1	Bearing
17	***	•		1	Element, LP	49	2252 0586 80			1	Clamp
18	1619 6032 00	•	4)	3	Nipple	50	0111 1279 00			1	Split pin
19	2102 0655 00	•		1	Piston	51	0144 3288 00			1	Bolt
20	0108 1322 00	•		1	Elastic pin	52	2252 0588 00			1	Lock washer
21	2102 0657 00	•		1	Cover	53	2252 0744 00			1	Spacer
22	2250 5881 00	•		1	Data plate	54				1	Eccentric ring
23	1202 6955 00	•		1	Gasket		2254 0961 05		1)		- "
24	0211 5287 00	•	2	1	Cap screw		2254 0961 10		2)		- "
25	1202 5710 00	•		1	Cover		2254 0961 11		3)		- "
26	2253 7856 00	•	2	1	Diaphragm	55	0686 4201 00			1	Plug
27	0144 3288 00	•		4	Bolt	56	0653 1046 00			1	Gasket
28	0301 2344 00	•		4	Washer	57	0663 2103 20		3	1	O-ring
29	0686 3716 03	•		2	Plug	58	0211 1360 00			2	Cap screw
30	0653 1062 00	•		2	Gasket	59	0211 1362 00			4	Cap screw
31	2252 6681 00	•		1	Washer	60	0663 7119 00		3	1	O-ring
32	0211 5293 00	•		3	Cap screw						
33				1	Gearwheel	1	Kit 2910 4006 00				
	2254 8176 01		1)		- "	2	Kit 2910 4007 00				
	2254 8176 02		2)		- "	3	Kit 2910 7001 00				
	2254 8176 03		3)		- "						
34	2250 8581 00			1	Ring		1) ZT3 A				
35	2102 0795 00			1	Gearwheel		2) ZT3 B				
36	0144 3287 00			8	Bolt		3) ZT3 M				
37				1	Gearwheel		4) SPM vibration monitoring / SPM trillingskontrolle /				
	2250 4170 00		3)		- "		SPM vibrationskontroll / SPM Vibrationsüberwachung /				
	2250 4169 00		1)2)		- "		Contrôle de vibrations SPM / Supervisión de vibraciones SPM /				
38				1	Gearwheel		Monitoraggio delle vibrazioni, in corse al minuto				
	2253 5654 00		3)		- "		5) Epoxy				
	2250 7742 00		1)2)		- "						
39				1	Spacer						
	2253 5676 02		1)		- "		2102 0640 80 09/2102 0673 80 06/2251 0801 61 01/				
	2253 5676 03		2)		- "		2251 6047 80 01/2251 6047 91 01/2251 6047 92 01				
	2253 5676 01		3)		- "		18_105_0_0_0				



Drive arrangement E  
 Aandrijfuitvoering E  
 Arrangement E  
 Antriebsanordnung E  
 Entraînement, disp. E  
 Accionamiento, disp. E  
 Azionamento, disipolazione E

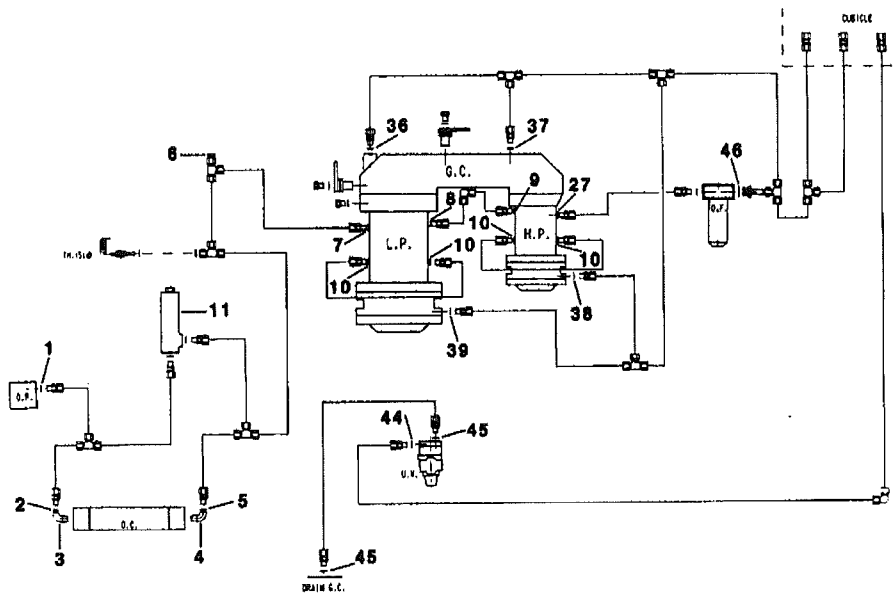
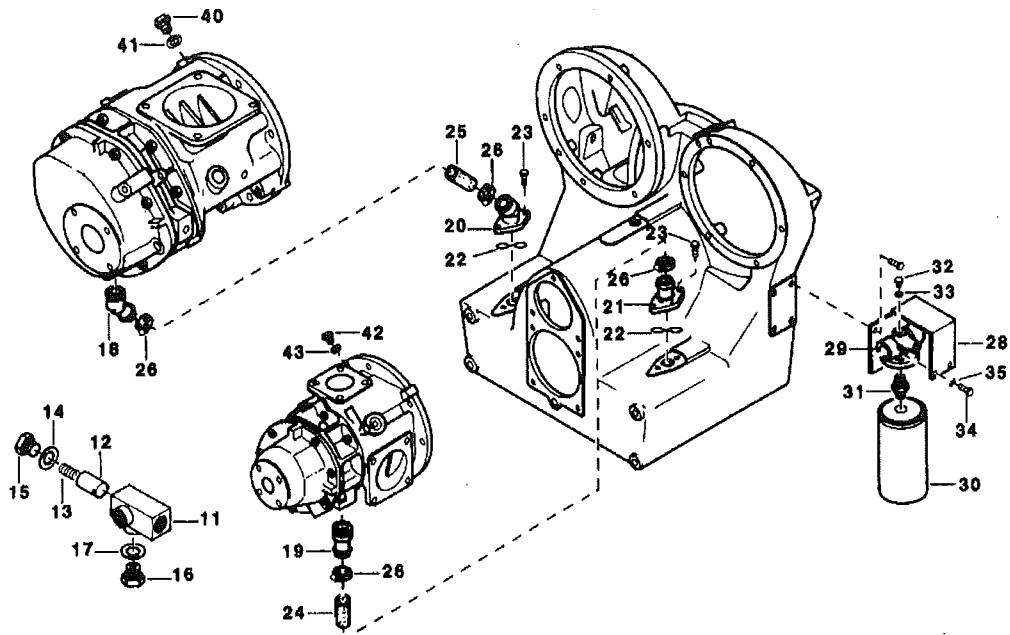
Ref.	A	B	C	D	Designation	Ref.	A	B	C	D	Designation
1				1	Motor	0147 1632 00			4)	1	- "
	1080 2583 01		1)		- ZT3A, 220V/50Hz	0147 1636 00			4)	1	- "
	1080 2583 02		1)		- ZT3A, 380-415V/ 50Hz	0147 1638 00				1	- "
	1080 2583 04		1)		- ZT3A, 500V/50Hz	18 0147 1479 03				2	Bolt
	1080 2584 10		2)		- ZT3A, 440-460V/ 60Hz	19 0333 3244 00				4	Lock washer
	1080 2582 01		3)		- ZT3B, 220V/50Hz	20 0147 1362 03				12	Bolt
	1080 2582 02		3)		- ZT3B, 380-415V/ 50Hz	21 0333 3232 00				12	Lock washer
	1080 2582 04		3)		- ZT3B, 500V/50Hz	22 2253 4923 00				2	Protection
	1080 2583 08		1)		- ZT3B, 220V/60Hz	23 2253 5645 00				1	Support
	1080 2583 10		1)		- ZT3B, 440-460V/ 60Hz	24				1	Support
	1080 2584 01		2)		- ZT3M, 220V/50Hz	2250 8633 01			4)		- "
	1080 2584 02		2)		- ZT3M, 380-415V/ 50Hz	2255 2305 00					- "
	1080 2584 04		2)		- ZT3M, 500V/50Hz	25 0147 1402 03				4	Bolt
2	1619 6332 00		4)	1	Coupling half	26 0302 1274 02				4	Washer
	1202 7434 02				- "	27 0147 1325 03				2	Bolt
3	0196 1471 00	•		1	Set screw	28 0333 3227 00				2	Lock washer
4	2254 0353 00			1	Coupling half	29 0266 2110 00				2	Nut
5	2900 0573 00	•		8	Pin	30 2253 5592 00				1	Support
6	2900 0574 00	•		8	Sleeve	31 0147 1475 03				2	Bolt
7	1619 2795 00			AR	Seal	32 2253 5599 00				1	Support
8	2252 1234 00			1	Panel	33 2250 8701 00			4)	1	- Red. ring
9	1202 6248 00			1	Housing	34 2254 8089 00				1	Connection
10	0147 1557 00		4)	8	Bolt	35 0147 1325 03				4	Bolt
	0147 1555 00				- "	36 0333 3227 00				4	Lock washer
11	0301 2194 00			8	Washer	37 1619 6032 00			6)	1	Nipple
12	0266 1116 00			8	Nut	38 1619 6032 01			6)	1	Nipple
13	1619 1980 00			1	Instruction plate	1) Siemens 1LA6 313-2AC					
14	0244 4123 00			2	Drive screw	2) Siemens 1LA6 316-2AC					
15	2250 5673 12		5)	1	Spacer	3) Siemens 1LA6 310-2AC					
	2252 0841 05		4)		- "	4) USA					
	2250 5673 15				- "	5) ZT3B 50 Hz					
16	2255 0555 00		4)	1	Support	6) SPM vibration monitoring / SPM trillingskontrolle / SPM vibrationskontroll / SPM Vibrationsüberwachung / Contrôle de vibrations SPM / Supervisión de vibraciones SPM / Monitoraggio delle vibrazioni, in corso al minuto SPM					
	2250 5674 01				- "	2251 6032 90 02/2251 6036 60 05/2251 6048 90 01/ 2251 6048 91 01/2251 6048 92 01					
17					Bolt	35_036_3_0_0					



Drive arrangement 1  
 Aandrijfuitvoering 1  
 Arrangement 1  
 Antriebsanordnung 1  
 Entraînement, disp. 1  
 Accionamiento, disp. 1  
 Azionamento, disposizione 1

Ref.	A	B	C	D	Designation	Ref.	A	B	C	D	Designation
1	1020 6019 00			1	Coupling half	21	0333 3244 00			12	Lock washer
2	1020 6020 75			1	Coupling half	22	0246 1296 04		2)	2	Stud
-	1020 6025 90			1	Coupling element	23	0266 2112 00		2)	4	Nut
3	1020 6025 00	•		1	Ring	24	2252 2819 00			1	Label
4	1020 6021 00	•		2	Lamin. ring	25	2253 7373 00			1	Support
5	1020 6023 00	•		4	Bolt	26	2253 7375 00			1	Support
6	1020 6024 00	•		8	Bolt	27	0147 1476 00			8	Bolt
7	1020 6022 00	•		12	Link	28	0333 3244 00			8	Lock washer
8	1020 6026 00	•		12	Lock nut	29	2252 1386 00			1	Panel
9	0196 3441 00	•		1	Set screw						
10				2	Guard	1) USA					
	2255 0675 00		1)		- "	2) To be used for transport only					
	2253 7671 00				- "	Enkel te gebruiken voor het transport					
11	0324 1463 00			12	Spacer	Skall endast användas för transport					
12	0147 1364 03			12	Bolt	Nur für Transport verwenden					
13	0266 2111 00			12	Nut	A utiliser seulement pour le transport					
14	0147 1322 03			6	Bolt	Utilizar únicamente para el transporte					
15	0333 3227 00			6	Lock washer	Da usare solo per il trasporto					
16	0266 2110 00			6	Nut						
17	1619 1980 00			1	Instruction plate						
18	0244 4123 00			2	Drive screw						
19	2253 7408 00			1	Frame						
20	0147 1475 03			4	Bolt						

1020 6025 90 01/2251 6032 91 01/2251 6048 93 01  
 35\_035\_2\_0\_0



Oil system  
 Oliesysteem  
 Oljesystem  
 Ölkreislauf  
 Système d'huile  
 Sistema de aceite  
 Sistema dell'olio

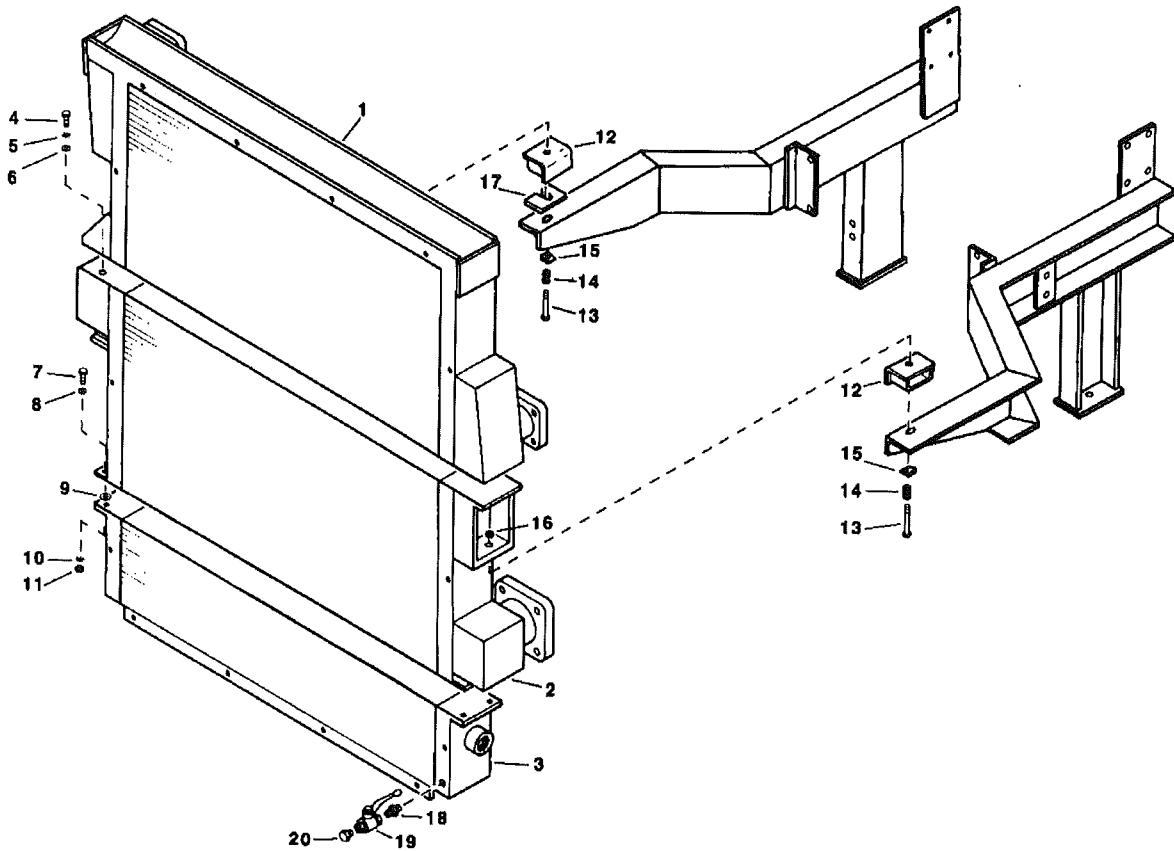
1)

Ref.	A	B	C	D	Designation	Ref.	A	B	C	D	Designation		
1	0661	1049	00	1,3	1	Gasket	34	0147	1323	03	2	Bolt	
2	0661	1049	00	2	1	Gasket	35	0333	3227	00	2	Lock washer	
3	0560	0200	02		1	Elbow	36	0661	1033	00	3	Gasket	
4	0560	0200	02		1	Elbow	37	0661	1033	00	3	Gasket	
5	0661	1049	00	2	1	Gasket	38	0653	1062	00	4	Gasket	
6	0584	1818	00		1	Plug	39	0653	1062	00	5	Gasket	
7	0661	1056	00	5	1	Gasket	40	0686	4203	00		1	Plug
8	0661	1056	00	5	1	Gasket	41	0653	1100	00		1	Gasket
9	0661	1049	00	4	1	Gasket	42	0686	3716	03		1	Plug
10	0653	1062	00	4,5	4	Gasket	43	0653	1062	00		1	Gasket
11	2250	6343	00		1	Housing	44	0653	1062	00	6,7	1	Gasket
12	2255	0831	00		1	Valve	45	0653	1062	00	6,7	2	Gasket
13	2250	4490	00		1	Spring	46	2255	2082	00		1	Nipple
14	0661	1049	00		1	Gasket							
15	2255	0833	01		1	Plug	1	Kit 2910	0179	00			
16	0686	4208	00		1	Plug	2	Kit 2910	5054	00			
17	0661	1049	00		1	Gasket	3	Kit 2910	7001	00			
18	2254	0130	00		1	Connection	4	Kit 2910	4006	00			
19	2254	0129	00		1	Connection	5	Kit 2910	4007	00			
20	2254	0128	00		1	Connection	6	Kit 2910	3038	00			
21	2254	0131	00		1	Connection	7	Kit 2910	3058	00			
22	0663	3130	00	3	2	O-ring	1)	See "Pipe fittings" / Zie "Pijffittingen"					
23	0147	1325	03		4	Bolt		Se "Rörförskruvningar" / Siehe "Rohrformstücke"					
24	2254	9948	01		1	Hose		Voir "Accessoires pour tuyaux"					
25	2254	9948	02		1	Hose		Véase "Accesorios para tubería"					
26	1202	8064	00		4	Hose clip		Vedere "Raccordi del tubo"					
27	0661	1049	00	4	1	Gasket							
28	2253	8019	00		1	Support							
29	1612	2668	00		1	Housing							
30	1612	3980	00		1	Oil filter							
31	1619	3770	00		1	Nipple							
32	0686	4201	00		1	Plug							
33	0653	1046	00		1	Gasket							

2251 2306 60 07/2251 6009 61 01/2251 6010 60 07/  
 2251 6011 60 03  
 16\_120\_0\_0\_0



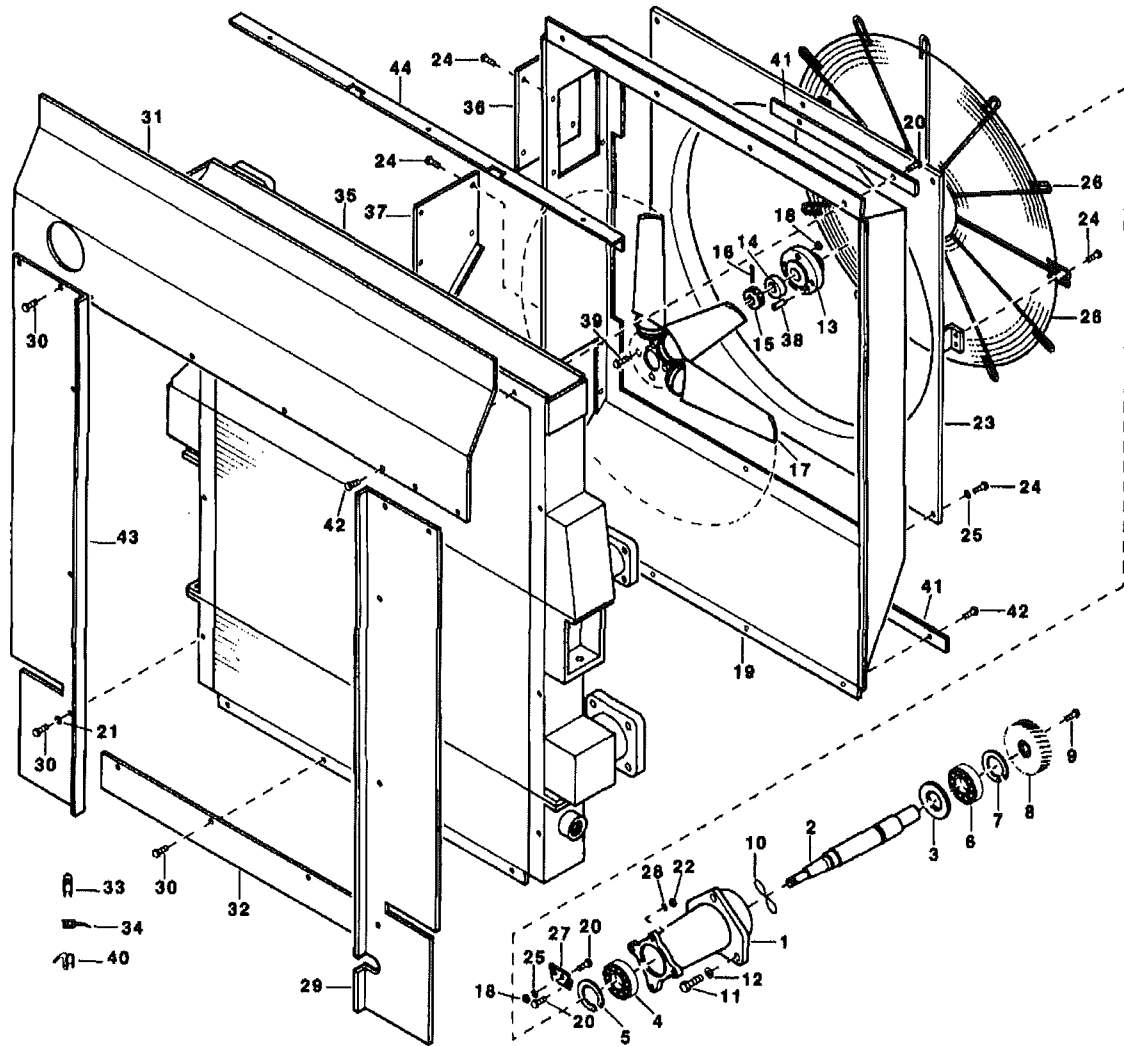
**Coolers**  
**Koelers**  
**Kylare**  
**Kühler**  
**Refrigidisseurs**  
**Refrigeradores**  
**Refrigeratori**



Ref.	A	B	C	D	Designation
-	1202 8450 80			1	Combi-cooler
1	1202 8450 00	•		1	Aftercooler
2	1202 8903 00	•		1	Intercooler
3	1202 8904 00	•		1	Oil cooler
4	0147 1325 03	•		4	Bolt
5	0333 2225 00	•		4	Lock washer
6	0301 2335 00	•		4	Washer
7	0147 1327 03	•		4	Bolt
8	0301 2335 00	•		4	Washer
9	1202 8905 00	•		4	Rubber washer
10	0333 2225 00	•		4	Lock washer
11	0266 2108 00	•		4	Nut
12	1202 7700 00			2	Support
13	0147 1411 03			2	Bolt

Ref.	A	B	C	D	Designation
14	1613 5442 00			2	Spring
15	0306 3107 00			2	Channel washer
16	0291 1112 00			2	Lock nut
17				AR	Shim
	1613 1296 01				- 3 mm
	1613 1296 02				- 5 mm
	1613 1296 03				- 10 mm
18	0603 4105 00			1	Nipple
19	1619 6153 05			1	Valve
20	0686 3305 00			1	Plug

1202 8450 80 02/2251 6008 60 10  
 13\_047\_0\_0\_0

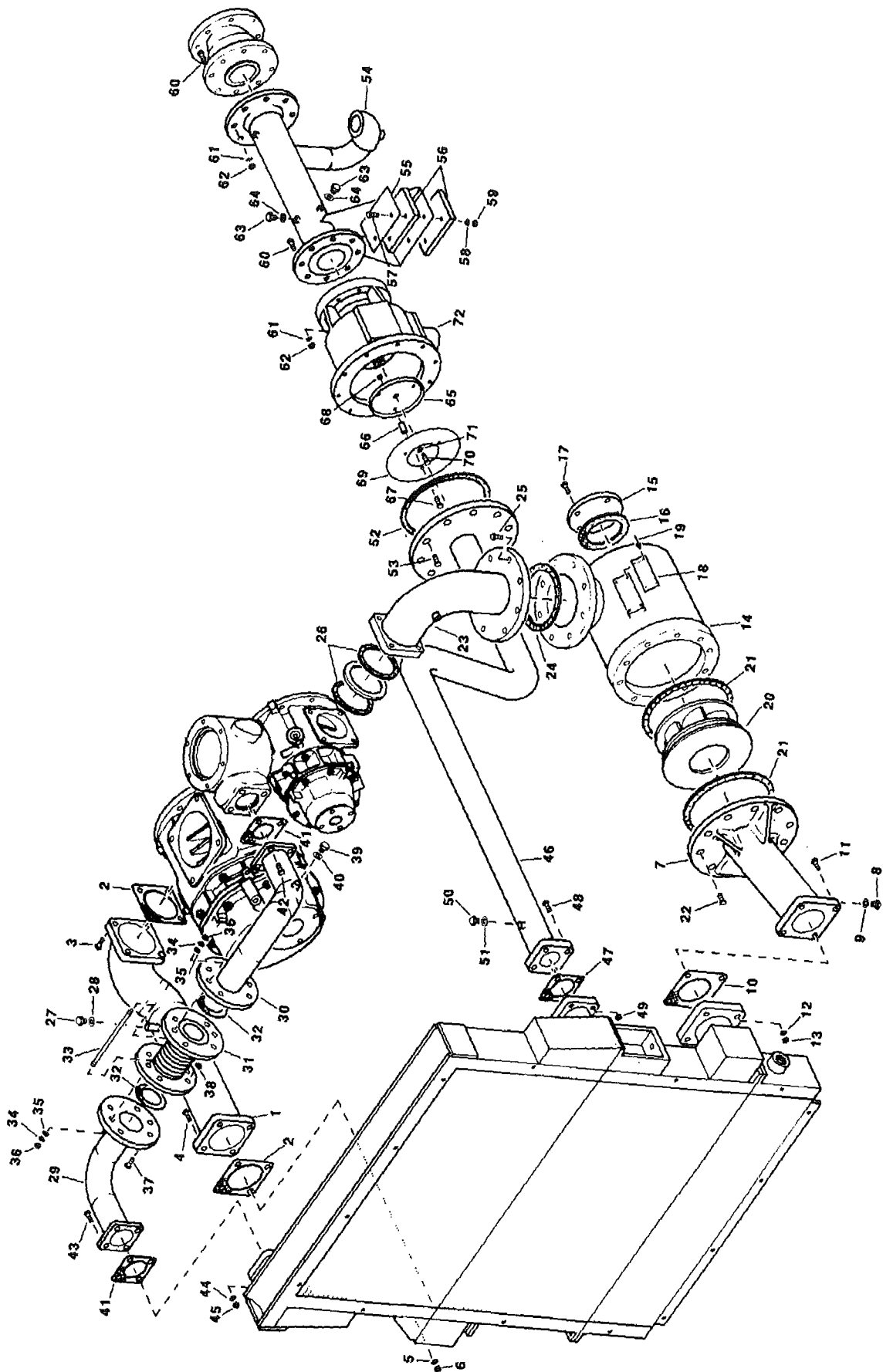


Fan and cooling duct plates  
 Ventilator en koelgeleiplaten  
 Fläkt och kylkanalplåtar  
 Lüfter und Kühlluftführungsplatten  
 Ventilateur et conduits de refroidissement  
 Ventilador y paneles de conducción de refrigeración  
 Ventilatore e intubatura

Ref.	A	B	C	D	Designation	Ref.	A	B	C	D	Designation
1	2253 5679 00		.....	1	Housing	30	0147 1322 03		.....	6	Bolt
2	2253 5678 00		.....	1	Fan shaft	31	2253 5634 00		.....	1	Plate
3	2253 4525 00		.....	1	Diaphragm	32	2253 5636 00		.....	1	Plate
4	0502 2235 00		.....	1	Bearing	33	1619 2795 00		.....	AR	Seal
5	0335 2157 00		.....	1	Circlip	34	1619 2473 00		.....	AR	Seal
6	0502 3107 00		.....	1	Bearing	35	---		.....	1	Combl-cooler
7	0335 2160 00		.....	1	Circlip	36	2253 9850 00		.....	1	Cover
8	---		1) .....	1	Gearwheel	37	2253 9851 00		.....	1	Cover
9	0211 1323 00		.....	5	Cap screw	38	0108 1292 00		.....	1	Elastic pin
10	0663 6145 00		.....	1	O-ring	39	0147 1327 03		.....	4	Bolt
11	0147 1402 03		.....	3	Bolt	40	1619 2665 00		.....	AR	Seal
12	0301 2358 00		.....	3	Washer	41	2254 1520 00		.....	16	Strip
13	2253 4783 00		.....	1	Adaptor	42	0147 1326 03		.....	12	Bolt
14	2252 8614 00		.....	1	Ring	43	2254 1527 00		.....	1	Plate
15	0281 1364 00		.....	1	Castled nut	44	2253 7161 00		.....	1	Profile
16	0111 1309 00		.....	1	Split pin						
17	---		1) .....	1	Fan						
18	0291 1110 00		.....	20	Nut						
19	2253 9843 00		.....	1	Fan cowl						
20	0147 1323 03		.....	6	Bolt						
21	0301 2335 00		.....	6	Washer						
22	0266 2110 00		.....	2	Nut						
23	2254 1517 00		.....	1	Cover						
24	1619 2766 00		.....	23	Bolt						
25	1616 3286 00		.....	11	Washer						
26	2254 1519 00		.....	2	Fan guard						
27	2253 5638 00		.....	2	Bracket						
28	0333 3227 00		.....	2	Lock washer						
29	2253 5635 00		.....	1	Plate						

1) See "Compressor elements and drive gear"  
 Zie "Kompressorelementen en aandrijving"  
 Se "Kompressorelement och drivning"  
 Siehe "Kompressorelemente und Antrieb"  
 Voir "Eléments compresseurs et entraînement"  
 Véase "Elementos compresores y accionamiento"  
 Vedere "Elementi compressori e ingranaggi di azionamento"

2251 6006 61 01/2251 6007 61 02  
 11\_042\_3\_0\_0

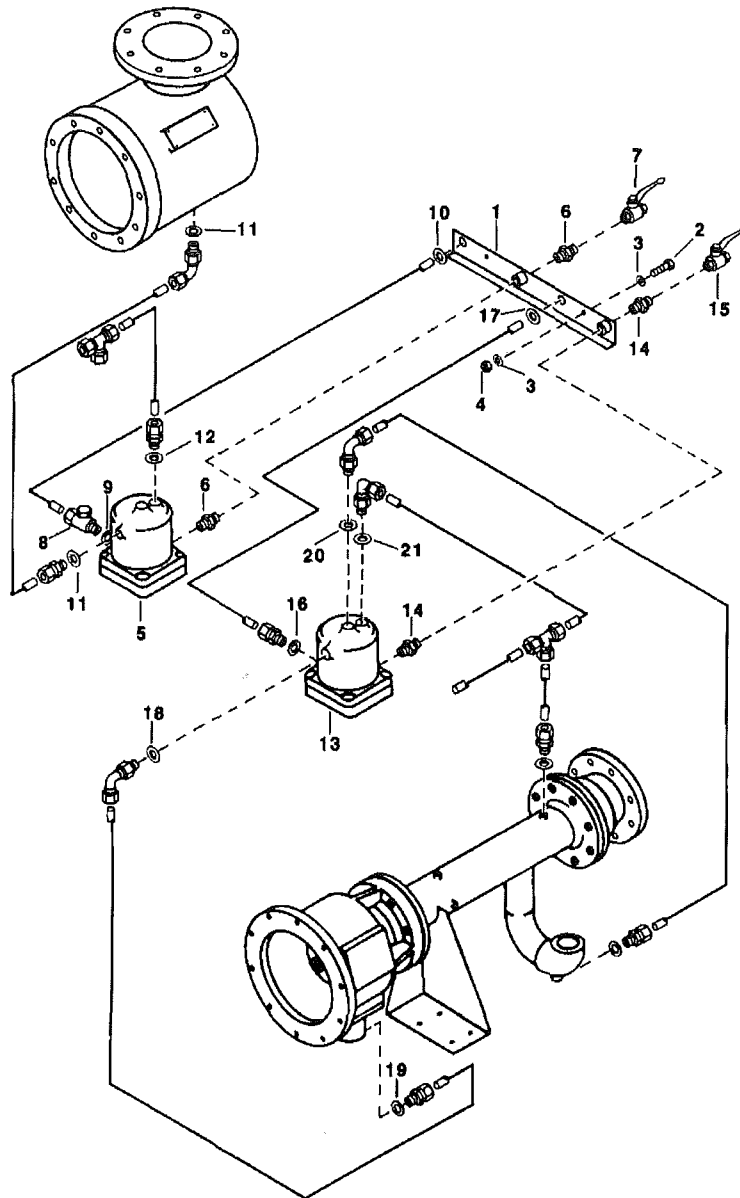


Inter- and aftercooler connections  
Tussen- en nakoeleraansluitingen  
Mellan- och efterkylaranslutningar  
Zwischen- und Nachkühleranschlüsse  
Connexions des refroidisseurs intermédiaire et final  
Conexiones de los refrigeradores intermedio y posterior  
Conessioni del refrigeratore intermedio e del refrigeratore finale

Ref.	A	B	C	D	Designation	Ref.	A	B	C	D	Designation
1	2253 5655 00			1	Pipe	45	0266 2112 00			4	Nut
2	1202 5580 06		1,2	2	Gasket	46	1202 9304 00			1	Pipe
3	0144 3366 00			4	Bolt	47	1202 5580 05		1		Gasket
4	0147 1406 03			4	Bolt	48	0147 1404 03			4	Bolt
5	0301 2358 00			4	Washer	49	0266 2112 00			4	Nut
6	0266 2112 00			4	Nut	50	0686 3716 03			1	Plug
7	1202 9173 00			1	Pipe	51	0653 1062 00			1	Gasket
8	0686 3716 03			1	Plug	52	0650 1001 13		6		Gasket
9	0653 1062 00			1	Gasket	53	0147 1478 03			10	Bolt
10	1202 5580 06		1,3	1	Gasket	54	2255 1658 00			1	Pipe
11	0147 1406 03			4	Bolt	55	2252 2648 00			1	Plate
12	0301 2358 00			4	Washer	56	2252 2647 00			2	Vibr. absorber
13	0266 2112 00			4	Nut	57	0147 1332 03			2	Bolt
-	1202 9230 80			1	Moisture trap	58	0301 2335 00			2	Washer
14	1202 9230 10	•		1	Moisture trap	59	0291 1110 00			2	Lock nut
15	1202 9300 00	•		1	Flange	60	0147 1482 03			16	Bolt
16	1202 9301 00	•	3	1	Gasket	61	0333 3244 00			16	Lock washer
17	0147 1957 89	•	As, Sa	4	Bolt	62	0266 2114 00			16	Nut
18	1202 9706 00	•		1	Data plate	63	0686 3716 03			2	Plug
19	0244 4184 00	•		4	Screw	64	0653 1062 00			2	Gasket
20	2253 5109 00			1	Cyclone	65	1202 4982 00			1	Shield
21	0650 1001 13		3	2	Gasket	66	1202 4971 02			3	Spacer
22	0147 1479 03			10	Bolt	67	0147 1329 02			3	Bolt
23	1202 9174 00			1	Pipe	68	0291 1185 09			3	Lock nut
24	0650 1000 90		3	1	Gasket	69	1202 4983 00			1	Shield
25	0147 1479 03			8	Bolt	70	0147 1400 02			1	Bolt
26	0650 0100 25		3,4	2	Gasket	71	0333 3174 02			1	Lock washer
27	0686 4204 00			1	Plug	72	---		1)	1	Moisture trap
28	0653 1124 00			1	Gasket						
29	1202 8898 00			1	Pipe	1	Kit 2910 5054 00				
30	1202 8897 00			1	Pipe	2	Kit 2910 4007 00				
31	1202 8907 00			1	Compensator	3	Kit 2910 5055 00				
32	0650 1001 19			2	Gasket	4	Kit 2910 4006 00				
33	0248 9979 75			2	Threaded rod	5	Kit 2910 0213 00				
34	0304 1060 00			4	Spher. washer	6	Kit 2910 5056 00				
35	0304 1010 00			4	Spher. washer						
36	0266 2114 00			4	Nut	1)	See "Specific parts" / Zie "Specifieke onderdelen"				
37	0147 1479 03			8	Bolt		Se "Specifika delar" / Siehe "Spezifische Teile"				
38	0266 2114 00			8	Nut		Voir "Pièces spécifiques" / Véase "Piezas específicas"				
39	0686 3716 03			1	Plug		Vedere "Parti speciali"				
40	0653 1062 00			1	Gasket						
41	1202 5580 05		1,5	2	Gasket						
42	0147 1401 03			4	Bolt						
43	0147 1404 03			4	Bolt						
44	0301 2358 00			4	Washer						

2251 6014 61 01/2251 6015 61 02  
08\_060\_0\_0\_0

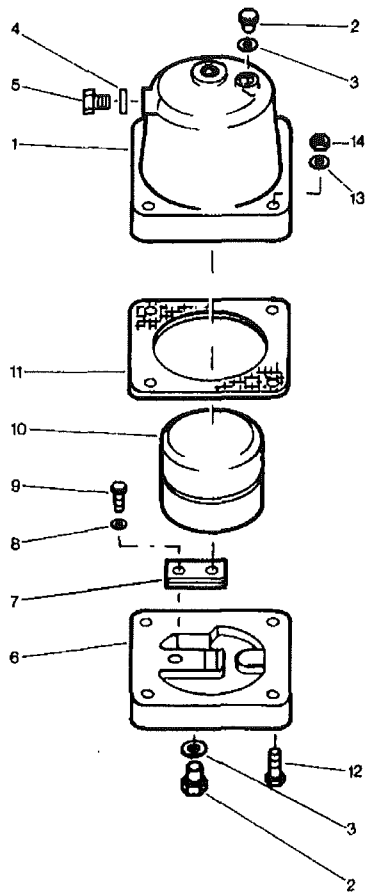
1)  
**Drain connections**  
**Aftapaansluitingen**  
**Avtappingsanslutningar**  
**Ablaßanschlüsse**  
**Connexions de vidange**  
**Conexiones de drenaje**  
**Conessioni di scarico**



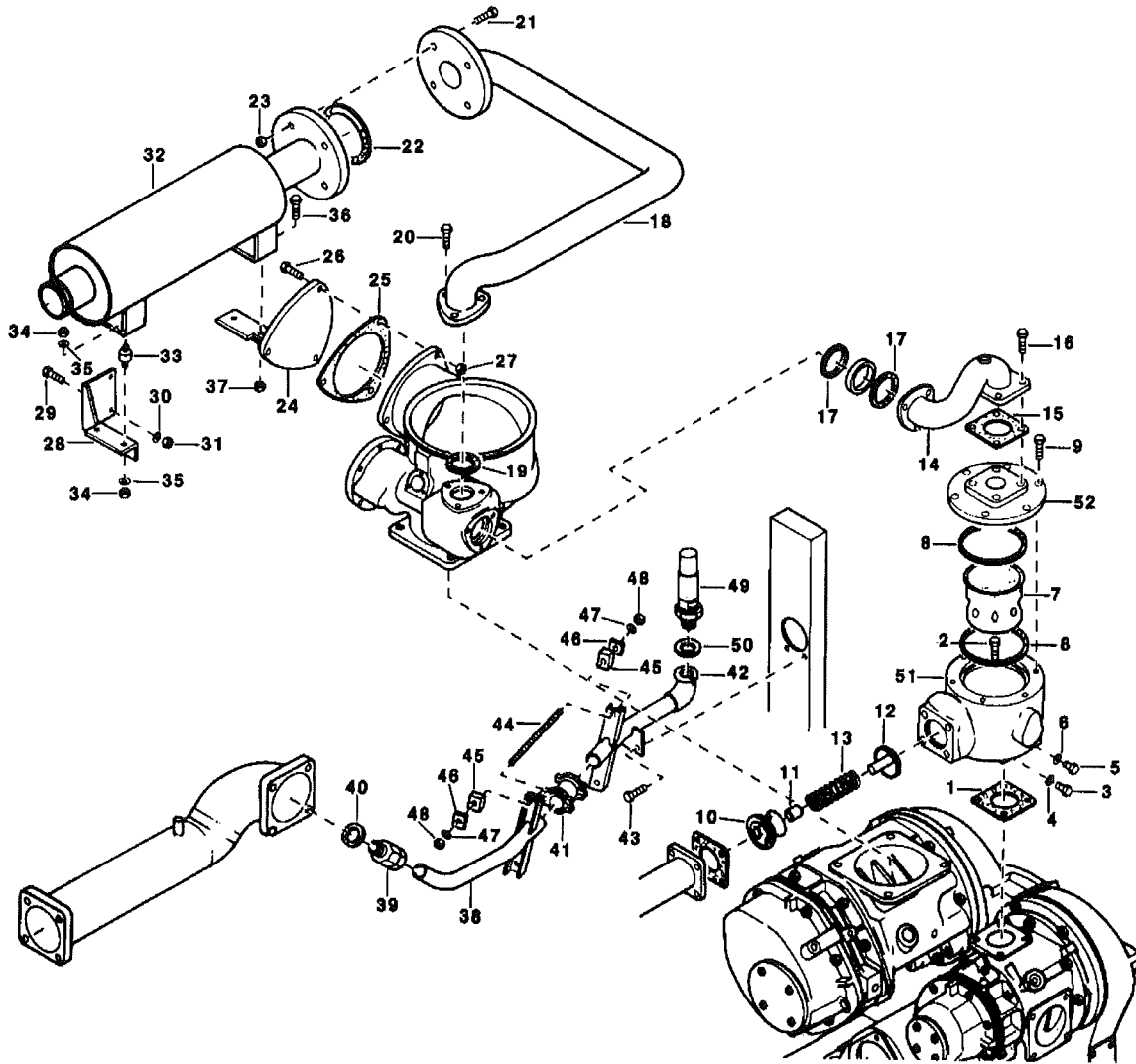
Ref.	A	B	C	D	Designation	Ref.	A	B	C	D	Designation
1	1202 7138 00			1	Bracket	19	0661 1033 00	3		1	Gasket
2	0147 1323 03			2	Bolt	20	0661 1033 00	1		1	Gasket
3	0301 2335 00			4	Washer	21	0653 1062 00	1		1	Gasket
4	0266 2110 00			2	Nut						
5	---			1	Float valve	1	Kit 2910 0206 00				
6	0603 4104 00			2	Nipple	2	Kit 2910 5055 00				
7	1619 6153 04			1	Ball valve	3	Kit 2910 5056 00				
8	1619 7462 00			1	Non-return valve	1)	See "Pipe fittings" / Zie "Pijpfittingen"				
9	0661 1033 00	1		1	Gasket		Se "Rörförskruvningar" / Siehe "Rohrformstücke"				
10	0698 0151 00			1	Bushing		Voir "Accessoires pour tuyaux"				
11	0661 1033 00		1,2	2	Gasket		Véase "Accesorios para tubería"				
12	0653 1062 00		1	1	Gasket		Vedere "Raccordi del tubo"				
13	---			1	Float valve						
14	0603 4104 00			2	Nipple						
15	1619 6153 04			1	Ball valve						
16	0661 1033 00		1	1	Gasket						
17	0698 0151 00			1	Bushing						
18	0661 1033 00		1	1	Gasket						

2251 6017 60 05/2251 6018 60 06  
10\_132\_0\_0\_0

Float valve  
 Flotterklep  
 Flottörventil  
 Schwimmerventil  
 Soupape à flotteur  
 Válvula de flotador  
 Valvola galleggiante



Ref.	A	B	C	D	Designation	Ref.	A	B	C	D	Designation
-				1	Drain valve, aut.	10	1202 3825 00	•		1	Float
	1202 3741 80		1)		- "	11	0650 0100 52	•	1		Gasket
	1202 3741 85		2)		- "	12	0147 1369 03	•		4	Bolt
1	1202 3741 00	•		1	Housing	13	0301 2344 00	•		4	Washer
2		•			Plug	14	0266 2111 00	•		4	Nut
	0686 3716 01		1)	2	- "	1	<b>Kit 2910 0206 00</b>				
	0686 3716 01		2)	1	- "	1)	Aftercooler / Nakoeler / Efterkylare / Nachkühler				
3		•			Gasket		Refrroidisseur final / Refrigerador posterior				
	0661 1020 00		1-1)	2	- "		Refrigeratore finale				
	0661 1020 00		1-2)	1	- "	2)	Intercooler / Tussenkoeler / Mellankylare / Zwischenkühler				
4	0661 1033 00	•	1	1	Gasket		Refrroidisseur intermédiaire / Refrigerador intermedio				
5	0686 3716 02	•		1	Plug		Refrigeratore intermedio				
6		•		1	Cover		1202 3741 80 06/1202 3741 85 03				
	1202 3742 00		1)		- "		9_078_0_3_0				
	1202 4819 00		2)		- "						
7	1202 3739 00	•	1	1	Membrane						
8	1202 3740 00	•		1	Washer						
9	0160 1244 01	•		1	Screw						



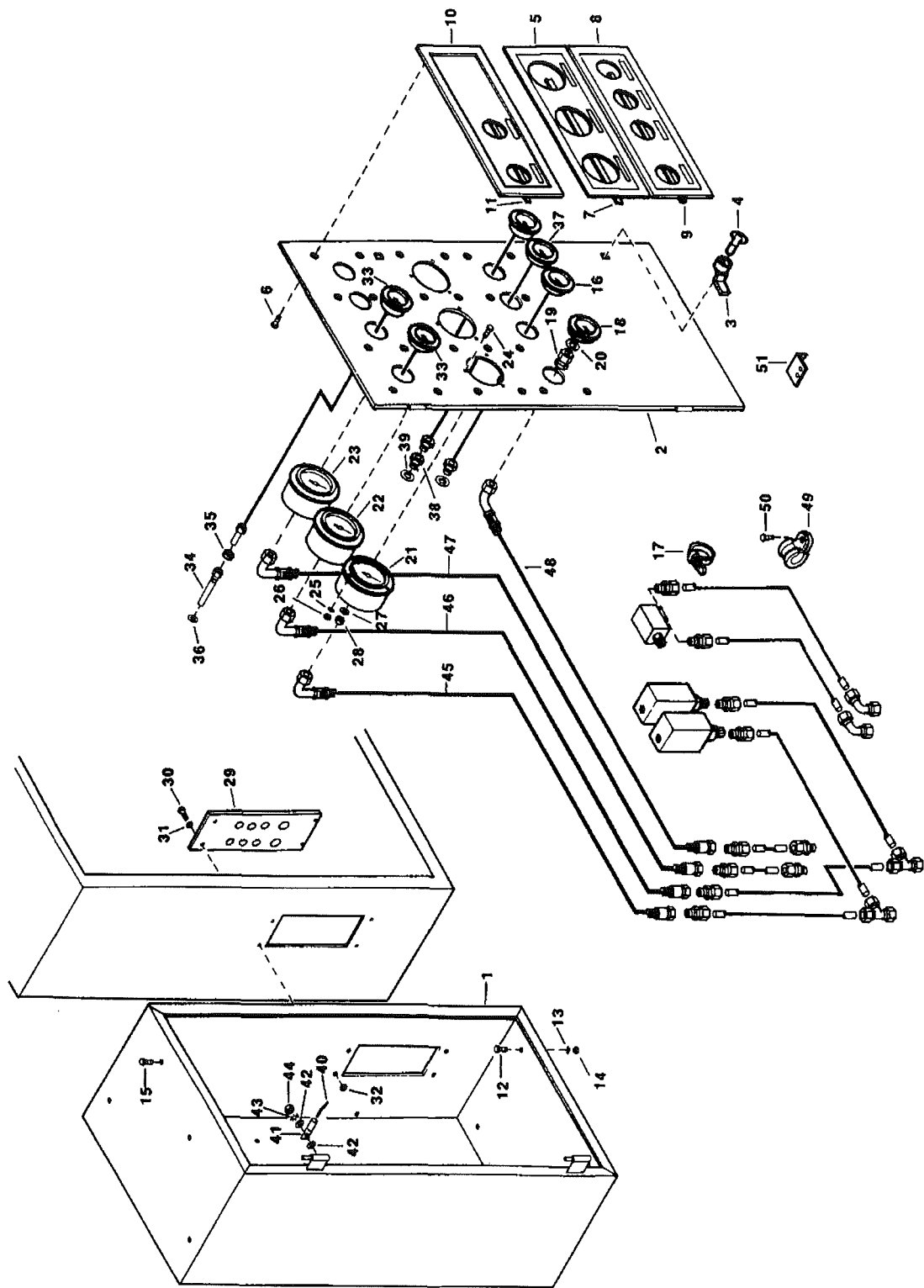
Discharge silencer and blow-off connections  
 Uitlaatgeluiddemper, aansluitingen van koeler voor afblaaslucht  
 Utloppsliuddämpare och avblåsningsanslutningar  
 Luftaustrittsschalldämpfer, Anschlüsse für Abblaseluft  
 Silencieux de refoulement, connexions d'air de décharge  
 Silenciador de impulsión, conexiones del refrigerador del aire de descarga  
 Silenziatore dello scarico e connessioni dello scarico nell'atmosfera

Ref.	A	B	C	D	Designation	Ref.	A	B	C	D	Designation
1	1202 5580 05		1,2	1	Gasket	34	0266 2108 00			4	Nut
2	0144 3366 00			4	Bolt	35	0301 2321 00			4	Washer
3	0686 3716 03			1	Plug	36	0147 1323 03			2	Bolt
4	0653 1062 00		1	1	Gasket	37	0266 2110 00			2	Nut
5	0686 4204 00			1	Plug	38	2253 5683 00			1	Pipe
6	0653 1124 00			1	Gasket	39	0580 0226 00			1	Coupling
7	2255 2203 00			1	Insert	40	0653 1254 00			1	Gasket
8	0650 1000 80		1	2	Gasket	41	1619 3922 01			1	Connection
9	0147 1401 03			6	Bolt	42	2253 5680 00			1	Pipe
-	2001 0218 80			1	Housing	43	1619 2766 00			2	Bolt
10	***			1	Guide	44	0248 9979 02			2	Stud
11	2001 0255 00	•		1	Bush	45	2252 3093 00			4	Vibration absorber
12	2001 0217 00			1	Valve	46	2252 3094 00			4	Washer
13	2250 5579 00			1	Spring	47	0301 2335 00			4	Washer
14	2102 0800 00			1	Breather	48	0291 1110 00			4	Lock nut
15	1202 5580 05		1	1	Gasket	49	1091 0338 81			1	Relief valve
16	0147 1400 03			4	Bolt	50	2252 0419 01			1	Washer
17	0650 1001 12		1,3	2	Gasket	51	---		1)	1	Silencer
18	2253 7057 00			1	Pipe	52	---		1)	1	Cover
19	0650 1001 12		3	1	Gasket						
20	0211 1363 00			3	Cap screw	1	Kit 2910 0213 00				
21	0147 1480 03			4	Bolt	2	Kit 2910 4006 00				
22	0650 1000 93		3	1	Gasket	3	Kit 2910 3058 00				
23	0266 2114 00			4	Nut	1)	See "Specific parts" / Zie "Specifieke onderdelen"				
24	2253 5685 00			1	Support		Se "Specifica delar" / Siehe "Spezifische Teile"				
25	1202 5590 00		3	1	Gasket		Voir "Pièces spécifiques" / Véase "Piezas específicas"				
26	0147 1364 03			3	Bolt		Vedere "Parti speciali"				
27	0266 2111 00			3	Nut						
28	1202 9309 00			1	Support						
29	0147 1322 03			2	Bolt						
30	0301 2335 00			2	Washer						
31	0266 2110 00			2	Nut						
32	2252 2710 00			1	Silencer						
33	1020 5170 00			2	Rubber buffer						

2251 6016 60 03/2251 6022 61 01/2251 6023 60 10  
 39\_219\_0\_0\_0

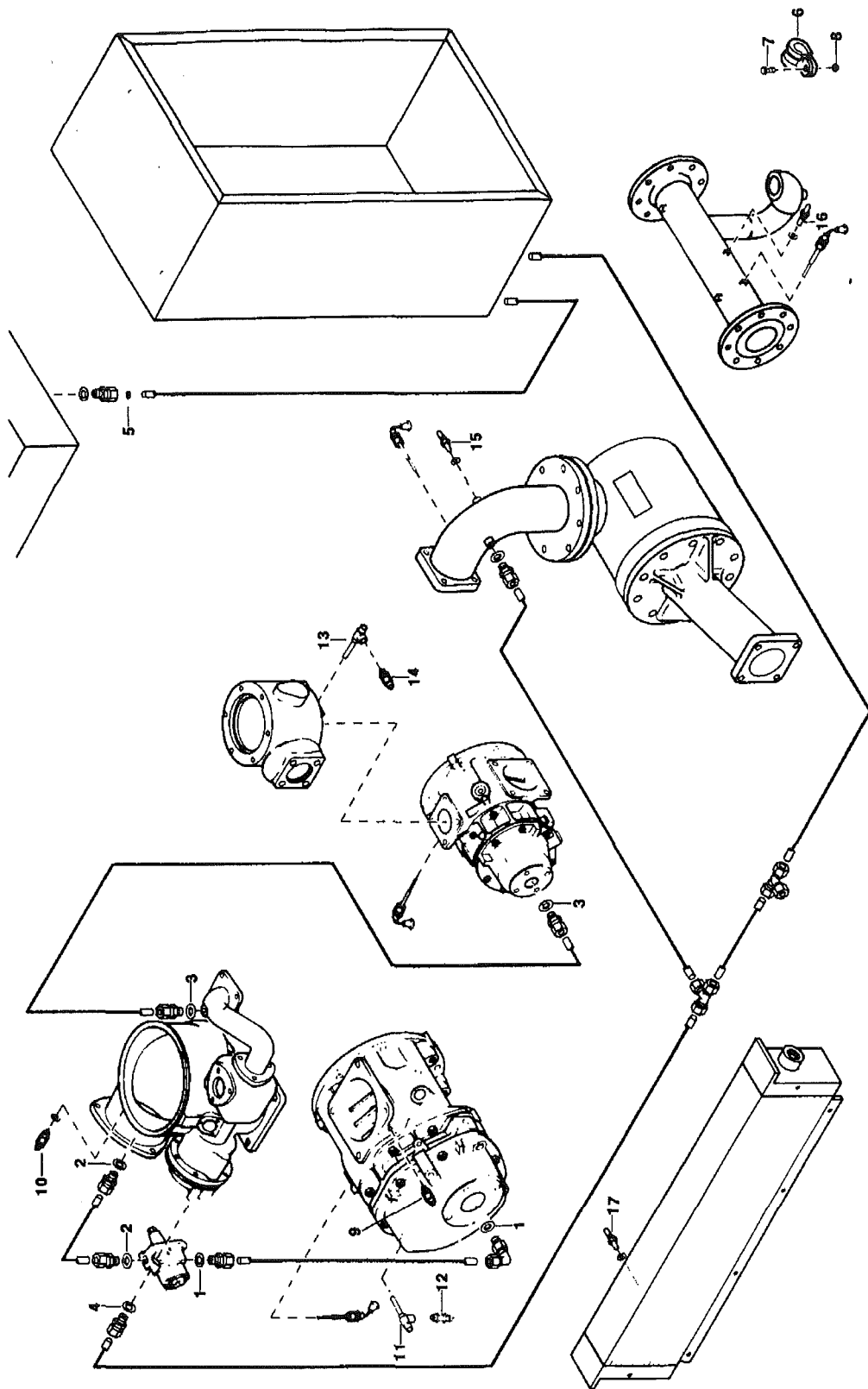






Control cubicle 1)  
 Instrumentenkast  
 Kontrollskåp  
 Instrumentenkasten  
 Armoire d'instruments  
 Armario de instrumentos  
 Armadio del controllo

Ref.	A	B	C	D	Designation	Ref.	A	B	C	D	Designation				
-	2253	3872	85	.....	1	Control cubicle	32	0266	2110	00	.....	4	Nut		
1	2253	3872	00	•	.....	1	Cubicle	33	1089	0502	01	.....	2	Temp. switch	
2	2254	8733	00	•	.....	1	Door	34	2255	0223	00	.....	2	Sleeve	
3	1619	5525	00	•	.....	2	Lock	35	2255	0564	00	.....	2	Sleeve	
4	1089	9068	01	•	.....	1	Key	36	0653	1100	00	.....	2	Gasket	
5	2253	3950	00	•	.....	1	Cover	37	1089	0502	05	.....	1	Temp. switch	
6	0160	6058	00	•	.....	AR	Screw	38	2255	0790	00	.....	1	Nipple	
7	2253	4173	00	•	.....	1	Name strip	39	0653	1124	00	.....	1	Gasket	
8	2253	3954	00	•	.....	1	Cover	40	0017	2070	60	.....	AR	Earth wire	
9	2253	9395	00	•	.....	1	Name strip	41	1088	0010	10	.....	2	Cable lug	
10	2254	8736	00	•	.....	1	Cover	42	0301	2335	00	.....	4	Washer	
11	2254	8732	00	•	.....	1	Name strip	43	0333	3227	00	.....	2	Lock washer	
12	0147	1322	03	.....	.....	12	Bolt	44	0266	2110	00	.....	2	Nut	
13	0333	3227	00	.....	.....	12	Lock washer	45	0574	8236	28	.....	1	Flexible	
14	0266	2110	00	.....	.....	12	Nut	46	0574	8236	32	.....	1	Flexible	
15	1619	2987	00	.....	.....	6	Plug	47	0574	8236	35	.....	1	Flexible	
16	1619	2841	00	.....	.....	1	Thermometer	48	0574	8236	28	.....	1	Flexible	
17	1088	1301	02	.....	.....	10	Cable ty	49	.....	.....	.....	.....	.....	.....	Clamp
18	1202	7542	00	.....	.....	1	Vacuum gauge	.....	1613	0801	05	.....	.....	13	- 1 x 8
x	1619	5819	00	.....	.....	1	Disc	.....	1613	0801	00	.....	.....	9	- 1 x 11
19	0581	0216	03	.....	.....	1	Coupling	.....	1613	0801	07	.....	.....	4	- 1 x 15
20	0653	0905	05	.....	.....	1	Gasket	50	0147	1246	03	.....	.....	26	Bolt
21	1619	2843	01	.....	.....	1	Press. gauge	51	2255	2473	00	.....	.....	1	Bracket
22	1619	2843	02	.....	.....	1	Press. gauge	1) See "Pipe fittings" / Zie "Pijpfittingen"				Se "Rörförskruvningar" / Siehe "Rohrformstücke"			
23	1619	2843	03	.....	.....	1	Press. gauge	Voir "Accessoires pour tuyaux"				Véase "Accesorios para tubería" / Vedere "Raccordi del tubo"			
24	0160	6040	00	.....	.....	9	Screw	2251 6132 61 03/2251 6133 61 03/2253 3872 85 03				29_326_0_0_0			
25	0333	3214	00	.....	.....	9	Lock washer								
26	0266	2106	00	.....	.....	9	Nut								
27	0584	0022	00	.....	.....	3	Seal ring								
28	0584	2022	00	.....	.....	3	Nut								
29	2252	1058	03	.....	.....	1	Flange								
30	0147	1323	03	.....	.....	4	Bolt								
31	0301	2335	00	.....	.....	4	Washer								

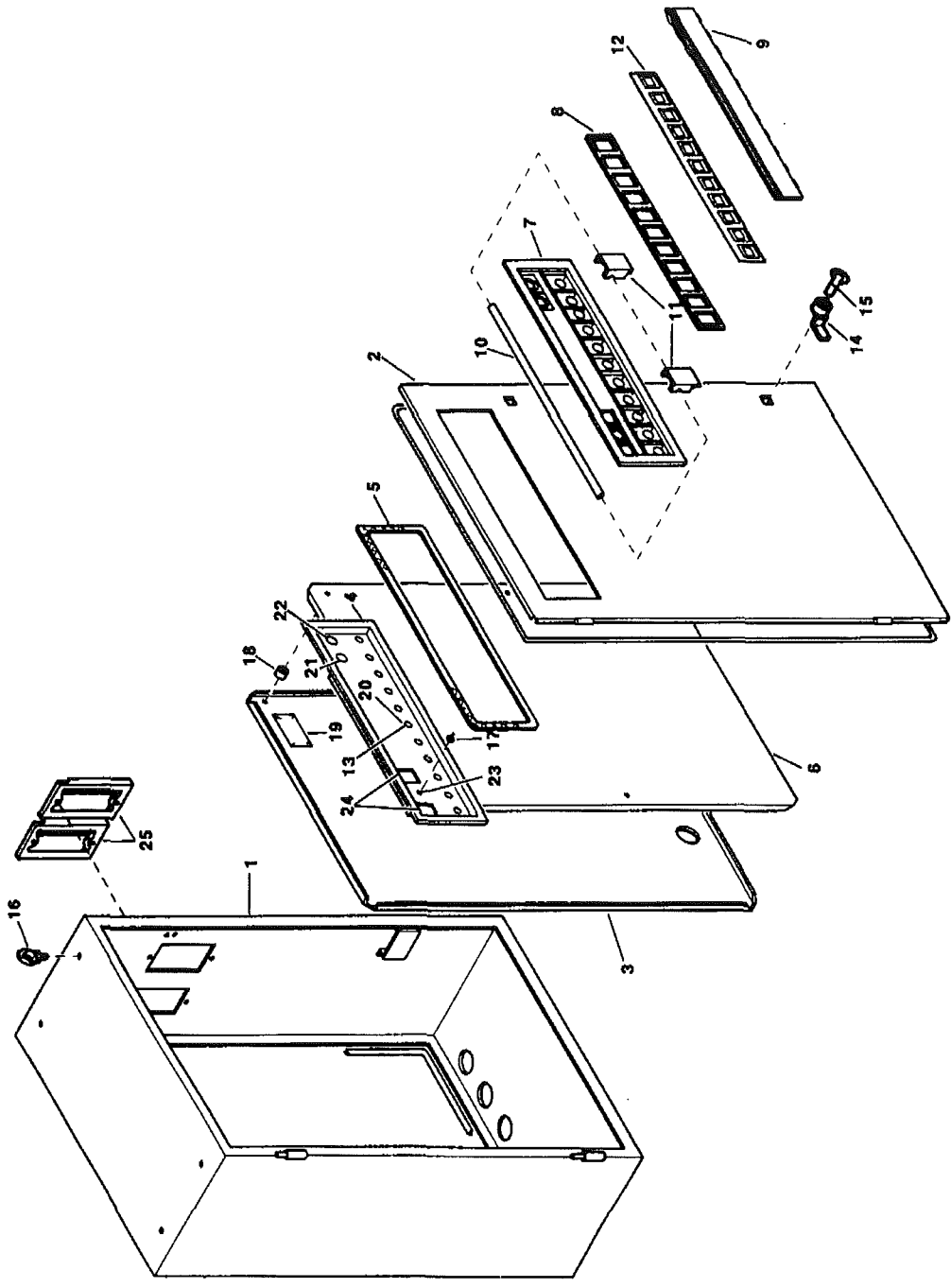


Regulating connections  
 Regelaansluitingen  
 Regleringsanslutningar  
 Regelanschlüsse  
 Connexions de régulation  
 Conexiones de regulación  
 Conessioni della regolazione

1)

Ref.	A	B	C	D	Designation
1	0653 1062 00		1,2	2	Gasket
2	0653 1062 00		2,3	2	Gasket
3	0653 1062 00		2,4	2	Gasket
4	0653 1062 00		2,3	1	Gasket
5	1619 5819 00			1	Sintered disc
6					Clamp
	1613 0801 00			6	- 1 x 11
	1613 0801 05			7	- 1 x 8
	1613 0801 07			1	- 1 x 15
7	0147 1246 03			7	Bolt
8	0266 2108 00			7	Nut
9	1619 6404 01			1	Sleeve
10	1619 6408 01			1	Plug
11	2254 1730 00			1	Housing
12	1619 6408 03			1	Plug
13	2254 1730 00			1	Housing
14	1619 6408 03			1	Plug

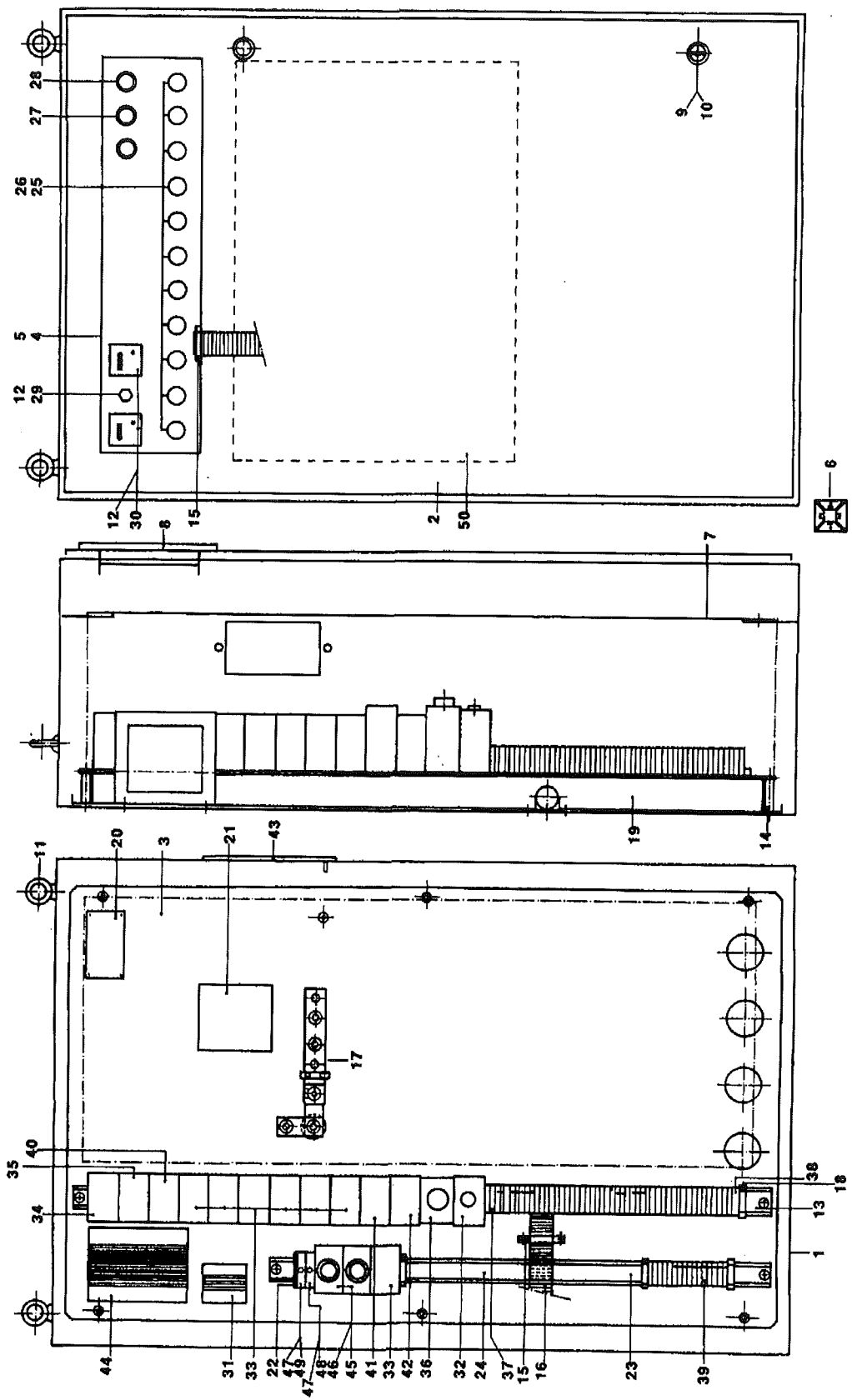
Ref.	A	B	C	D	Designation
15	1619 6404 01			1	Sleeve
16	1619 6404 00			1	Sleeve
17	1619 6404 00			1	Sleeve
1	Kit 2910 4007 00				
2	Kit 2910 3058 00				
3	Kit 2910 3038 00				
4	Kit 2910 4006 00				
1)	See "Pipe fittings" / Zie "Pijpfittingen" Se "Rörförskruvningar" / Siehe "Rohrformstücke" Voir "Accessoires pour tuyaux" Véase "Accesorios para tubería" / Vedere "Raccordi del tubo"				
2251 6024 60 08/2251 6144 65 02					
29_322_0_0_0					



**Cubicle**  
**Kast**  
**Skáp**  
**Kasten**  
**Armoire**  
**Armario**  
**Armadio elettrico**

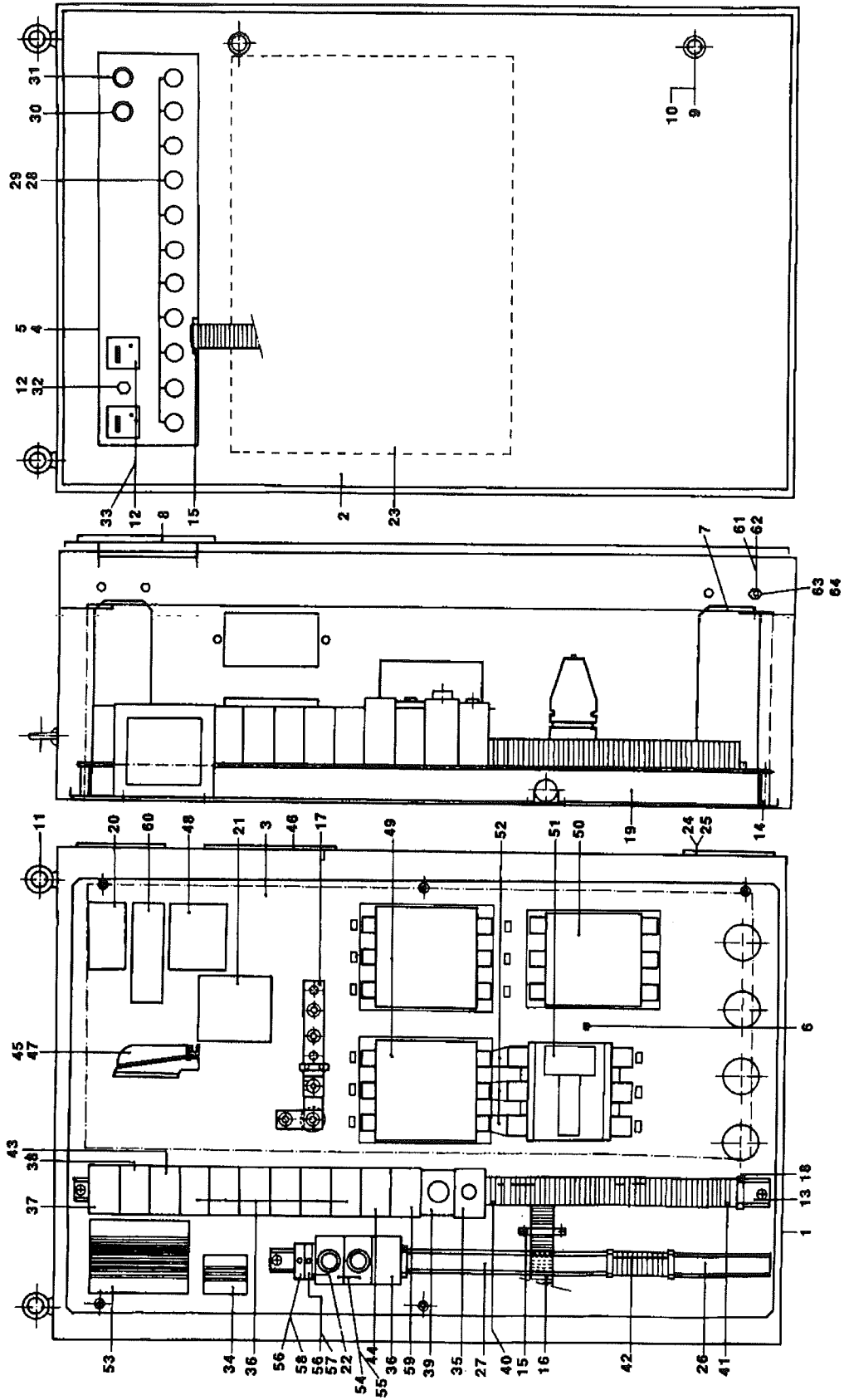
Ref.	A	B	C	D	Designation	Ref.	A	B	C	D	Designation
-	1900 0460 54		1).....	1	Cubicle	13	1089 9108 03	•	.....	11	Bulb
	1900 0340 59		2).....		- "	14	1619 5518 00	•	.....	2	Lock
1	2253 3603 00	•	.....	1	Cubicle	15	1089 9154 02	•	.....	2	Key
2	2253 3604 00	•	.....	1	Door	16	0371 1101 00	•	.....	2	Eye bolt
3	2253 4015 04	•	.....	1	Mounting panel	17	1619 2371 00	•	.....	1	Shroud
4	2253 3599 00	•	.....	1	Instrument panel	18	0324 1148 00	•	.....	4	Spacer
5	2253 3602 00	•	.....	1	Gasket	19	0690 3401 41	•	.....	1	Data plate
6	2253 6708 00	•	.....	1	Panel	20	1089 9076 01	•	.....	11	Lampholder
-	1900 0002 06		1).....	1	Cover panel	21	1089 0362 04	•	.....	1	Push button
	1900 0002 50		2).....		- "	22	1089 0362 05	•	.....	1	Push button
7	2253 3940 00	••	.....	1	Cover panel	23	1089 9165 01	•	.....	1	Toggle switch
8	2253 3942 00	••	.....	1	Gasket	24	1089 9142 14	•	.....	2	Hourmeter
9	2253 3943 00	••	.....	1	Cover panel	25	1088 0409 01	•	.....	2	Flange
10	2253 3944 00	••	.....	1	Rod						
11	1613 3499 00	••	.....	1	- Lens, white	1) USA					
	1613 3500 00	••	1).....	1	- Lens, green	2) Canada					
	1613 3500 00	••	2).....	2	- Lens, green						
	1613 3501 00	••	.....	6	- Lens, red						
	1613 3502 00	••	1).....	3	- Lens, yellow						
	1613 3502 00	••	2).....	2	- Lens, yellow						
12	2253 6593 11	••	.....	1	Name strip						
	2253 6593 58		1).....		- "						
			2).....		- "						

1900 0002 06 03/1900 0002 50 04/1900 0340 59 10/  
 1900 0460 54 10  
 29\_323\_0\_0\_0



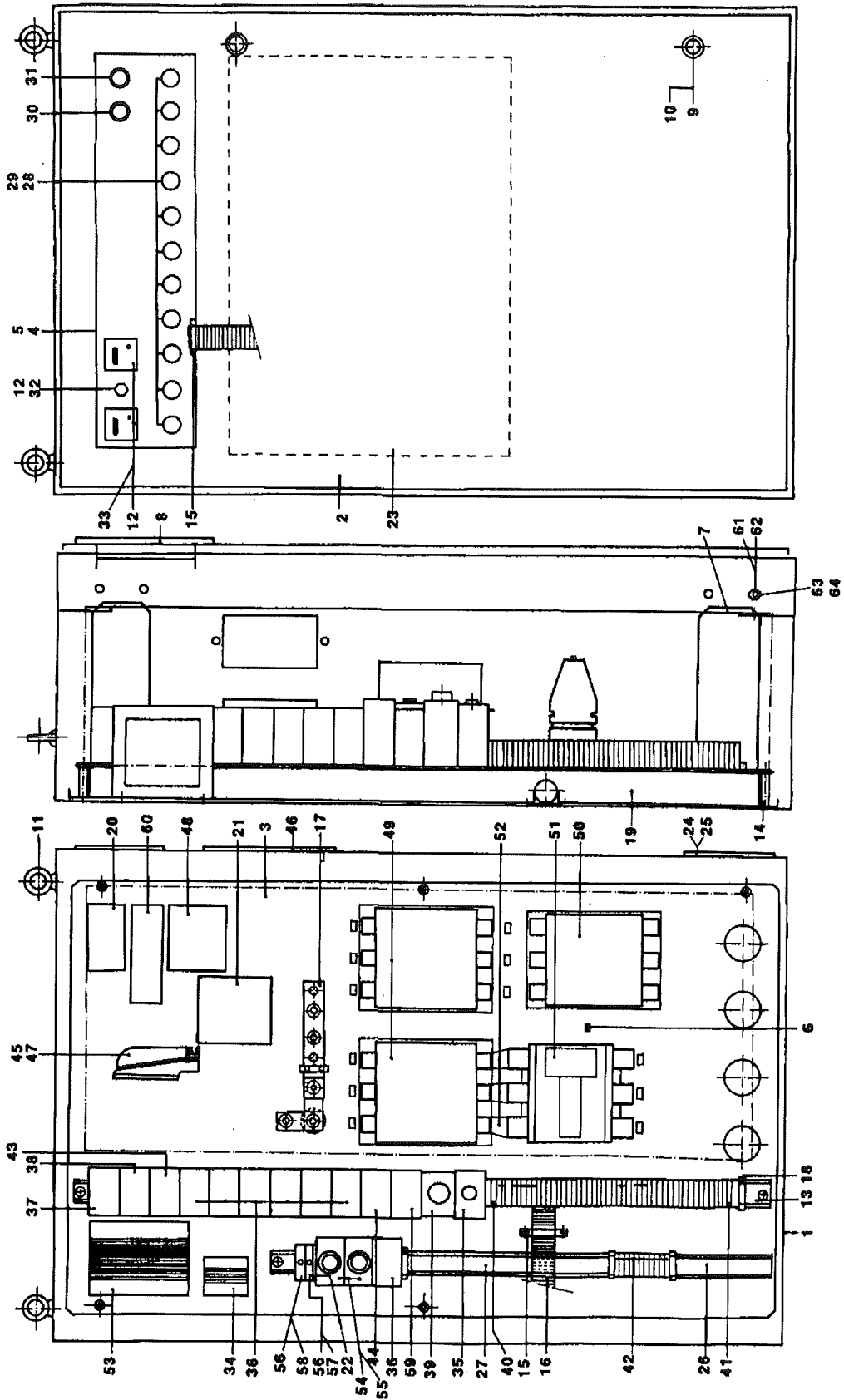
**Cubicle with regulator (without starter)**  
**Kast met regelaar (zonder starter)**  
**Skáp med regulator (utan startutrustning)**  
**Kasten mit Regler (ohne Anlasser)**  
**Armoire avec régulateur (sans démarreur)**  
**Armario con regulador (sin arrancador)**  
**Armadio elettrico con regolatore (senza apparecchiatura di avviamento)**

Ref.	A	B	C	D	Designation	Ref.	A	B	C	D	Designation
-	1900 0460 05		1)	1	Cubicle	31	1089 9135 01	•		1	Transformer
	1900 0460 06		2)		- "	32	1089 9277 05	•		1	Relay
1	2253 3603 00	•		1	Cubicle	33		•		7	Relay
2	2253 3604 00	•		1	Door		1089 9146 03		1)		- "
3	2253 4015 01	•		1	Mounting panel		1089 9146 13		2)		- "
4	2253 3599 00	•		1	Instrument panel	34		•		1	Relay
5	2253 3602 00	•		1	Gasket		1089 9146 08		1)		- "
6	1088 1305 02	•		2	Locking plate		1089 9146 18		2)		- "
7	2254 1531 00	•		1	Screen	35		•		1	Relay
8	1900 0002 50	•		1	Cover panel		1089 9146 10		1)		- "
x	2253 3940 00	••		1	Cover panel		1089 9146 20		2)		- "
x	2253 3942 00	••		1	Gasket	36	1089 9277 02	•		1	Time relay
x	2253 3943 00	••		1	Cover panel	37	1089 0506 02	•		16	Terminal
x	2253 3944 00	••		1	Rod	38	1089 0506 01	•		2	Terminal
x	1613 3499 00	••		1	Lens, white	39	1089 0506 10	•		11	Terminal
x	1613 3500 00	••		2	Lens, green	40		•		1	Relay
x	1613 3501 00	••		6	Lens, red		1089 9146 06		1)		- "
x	1613 3502 00	••		2	Lens, yellow		1089 9146 16		2)		- "
x	2253 6593 58	••		1	Name strip	41		•		1	Relay
9	1619 5518 00	•		2	Lock		1089 9146 52		1)		- "
10	1089 9154 02	•		2	Key		1089 9146 53		2)		- "
11	0371 1101 00	•		2	Lifting eye	42		•		1	Relay
12	1088 0003 24	•		6	Cable lug		1089 9146 02		1)		- "
13	0090 1400 02	•		AR	Rail		1089 9146 12		2)		- "
14	0324 1132 00	•		4	Spacer	43	1088 0409 01	•		1	Flange
15	1613 0801 06	•		2	Clamp	44	1089 9136 14	•		1	Transformer
16	0070 7250 08	•		AR	Tube	45	1089 9083 13	•		2	Fuse holder
17	1900 0003 02	•	2)	1	- Earth rail	46	1619 3332 00	•		2	Fuse
18	1089 0506 30	•		4	End bracket	47	1089 9049 03	•		2	Fuse holder
19	1088 0851 13	•		AR	Raceway	48	1089 9037 03	•		1	Fuse link
20	0690 3401 41	•		1	Data plate	49	1089 9037 07	•		1	Fuse link
21	1615 2314 00	•		1	Label	50	9828 0255 02	•		1	Label
22	1089 0332 02	•		1	End section						
23	0090 1400 02	•		AR	Rail	1)	220 V / 50 Hz				
24	1088 0851 13	•		AR	Raceway	2)	220 V / 60 Hz				
25	1089 9076 01	•		11	Lampholder						
26	1091 0211 00	•		11	Bulb		1900 0002 50 04/1900 0460 05 01/1900 0460 06 01				
27	1089 0362 04	•		1	Push button		29_324_0_0_0				
28	1089 0362 05	•		1	Push button						
29	1089 9051 01	•		1	Switch						
30		•		2	Hour meter						
	1089 9142 11		1)		- "						
	1089 9142 12		2)		- "						



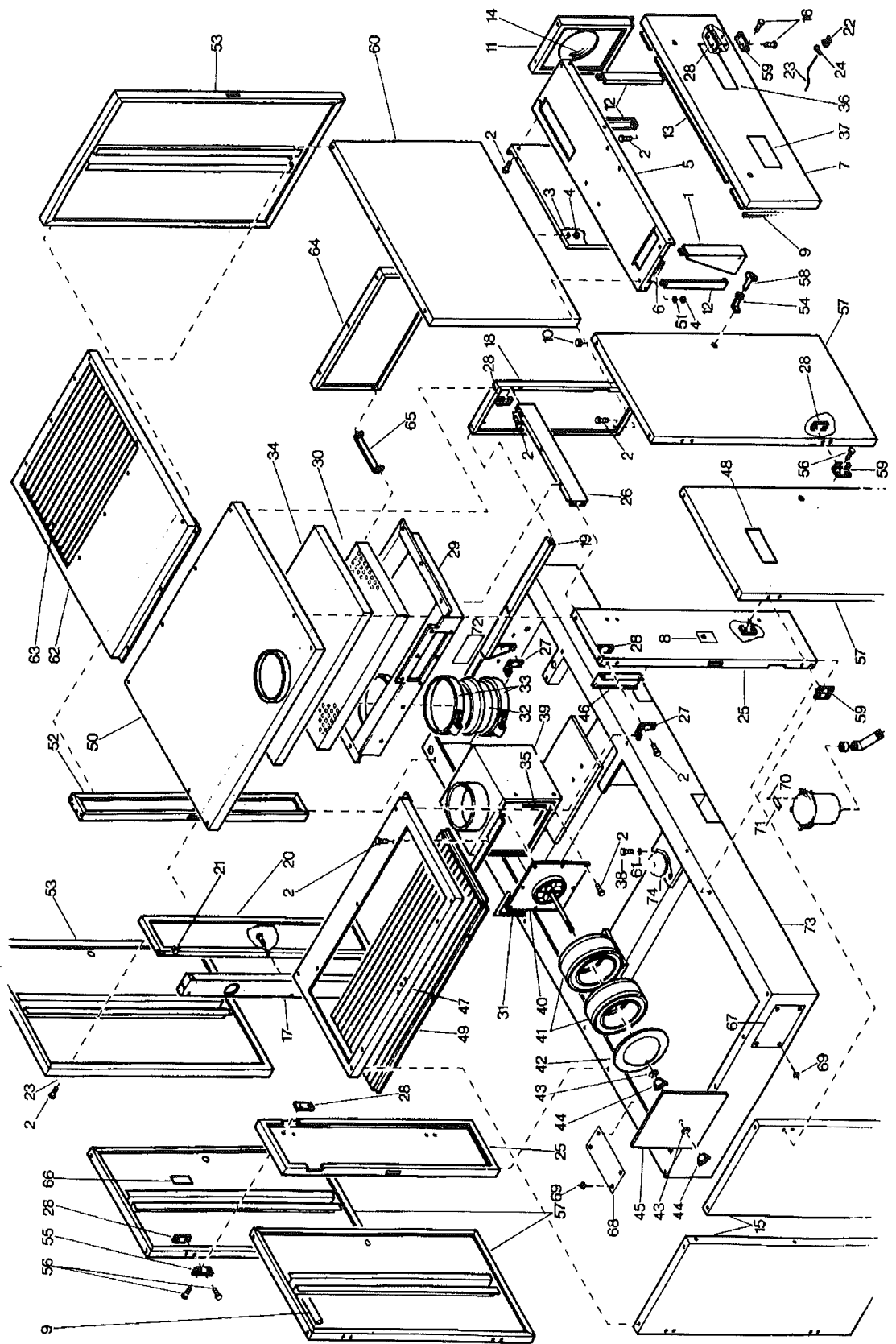
**Cubicle with regulator and starter**  
**Kast met regelaar en starter**  
**Skåp med regulator och startutrustning**  
**Kasten mit Regler und Anlasser**  
**Armoire avec régulateur et démarreur**  
**Armario con regulador y arrancador**  
**Armadio elettrico con regolatore e apparecchiatura di avviamento**

Ref.	A	B	C	D	Designation	Ref.	A	B	C	D	Designation
				1	Cubicle	29	1091 0211 00	•		11	Bulb
	1900 0442 05		1)		- "	30	1089 0362 04	•		1	Push button
	1900 0442 07		2)		- "	31	1089 0362 05	•		1	Push button
	1900 0442 09		3)		- "	32	1089 9051 01	•		1	Switch
	1900 0442 10		4)		- "	33		•		2	Hour meter
	1900 0442 12		5)		- "		1089 9142 12		6),9),10)		- "
	1900 0442 27		6)		- "		1089 9142 11				- "
	1900 0443 04		7)		- "	34	1089 9135 01	•		1	Transformer
	1900 0443 07		8)		- "	35	1089 9277 05	•		1	Relay
	1900 0443 22		9)		- "	36		•		7	Relay
	1900 0443 23		10)		- "		1089 9146 13		6),9),10)		- "
1		•		1	Cubicle		1089 9146 03				- "
	2253 3603 01		5),6)		- "	37		•		1	Relay
	2253 3603 00				- "		1089 9146 18		6),9),10)		- "
2	2253 3604 00	•		1	Door		1089 9146 08				- "
3	2253 4015 01	•		1	Mounting panel	38		•		1	Relay
4	2253 3599 00	•		1	Instrument panel		1089 9146 20		6),9),10)		- "
5	2253 3602 00	•		1	Gasket		1089 9146 10				- "
6	1088 1305 02	•		2	Locking plate	39	1089 9277 02	•		1	Time relay
7	2254 1531 00	•		1	Screen	40	1089 0506 02	•		16	Terminal
8		•		1	Cover	41	1089 0506 01	•		2	Terminal
	1900 0002 50		3),6)		- "	42	1089 0506 10	•		11	Terminal
	1900 0002 72				- "	43		•		1	Relay
x	2253 3940 00	••		1	Cover panel		1089 9146 16		6),9),10)		- "
x	2253 3942 00	••		1	Gasket		1089 9146 06				- "
x	2253 3943 00	••		1	Cover panel	44		•		1	Relay
x	2253 3944 00	••		1	Rod		1089 9146 53		6),9),10)		- "
x	1613 3499 00	••		1	Lens, white		1089 9146 52				- "
x	1613 3500 00	••		2	Lens, green	45		•			Cable box
x	1613 3501 00	••		6	Lens, red		1089 0342 02		1),7)	1	- "
x	1613 3502 00	••		2	Lens, yellow		1089 0342 02			2	- "
x		••		1	Name strip	46	1088 0409 01	•	1),7)	1	- Flange
	2253 6593 58		3),6)		- "	47		•			Gasket
	2253 6593 78				- "		1088 0495 02		1),7)	1	- "
9	1619 5518 00	•		2	Lock		1088 0495 02			2	- "
10	1089 9154 02	•		2	Key	48		•			Label
11	0371 1101 00	•		2	Lifting eye		1615 4435 00		6),9),10)	4	- "
12	1088 0003 24	•		6	Cable lug		1615 4435 00			1	- "
13	0090 1400 02	•		AR	Rail	49		•		2	Contacteur
14	0324 1132 00	•		4	Spacer		1089 9221 09		1),7)		- "
15	1613 0801 06	•		2	Clamp		1089 9221 10		2),3),8)		- "
16	0070 7250 08	•		AR	Tube		1089 9221 11		4)		- "
17		•		1	Earth rail		1089 9221 12		5)		- "
	1900 0003 01		1),7)		- "		1089 9221 23		9),10)		- "
	1900 0003 02				- "		1089 9221 25		6)		- "
18	1089 0506 30	•		4	End bracket	50		•		1	Contacteur
19	1088 0851 13	•		AR	Raceway		1089 9221 08		1),7)		- "
20	0690 3401 41	•		1	Data plate		1089 9221 09		2),3),4),8)		- "
21	1615 2314 00	•		1	Label		1089 9221 11		5)		- "
22	1089 0332 02	•		1	End section		1089 9221 22		9),10)		- "
23		•		1	Label		1089 9221 24		6)		- "
	9828 0255 03		1),7)		- "	51		•		1	Overload relay
	9828 0255 04				- "		1089 9205 03		7)		- "
24	1088 0411 06	•	5),6)	2	- Flange		1089 9205 04		1)		- "
25	1088 0499 07	•	5),6)	2	- Gasket		1089 9205 06		2),8),9)		- "
26	0090 1400 02	•		AR	Rail		1089 9205 07		10)		- "
27	1088 0851 13	•		AR	Raceway		1089 9205 08		3)		- "
28	1089 9076 01	•		11	Lampholder		1089 9174 02		5),6)		- "



**Cubicle with regulator and starter**  
**Kast met regelaar en starter**  
**Skåp med regulator och startutrustning**  
**Kasten mit Regler und Anlasser**  
**Armoire avec régulateur et démarreur**  
**Armario con regulador y arrancador**  
**Armadio elettrico con regolatore e apparecchiatura di avviamento**

Ref.	A	B	C	D	Designation	Ref.	A	B	C	D	Designation
	1089 9174 04	•	4).....		- "	1)	ZT3 B-380-415 V / 50 Hz				
52		•		..... 1	- Link	2)	ZT3 A-380-415 V / 50 Hz				
	1089 9215 03	•	4),5),6).....		- "	3)	ZT3 M-380-415 V / 50 Hz				
	1089 9215 07	•	3),10).....		- "	4)	ZT3 B-220 V / 50 Hz				
53	1089 9136 14	•	.....	..... 1	Transformer	5)	ZT3 A-220 V / 50 Hz, ZT3 M-220 V / 50 Hz				
54	1089 9083 13	•	.....	..... 2	Fuse holder	6)	ZT3 B-220 V / 60 Hz				
55	1619 3332 00	•	.....	..... 2	Fuse	7)	ZT3 A-500 V / 50 Hz, ZT3 B-500 V / 50 Hz				
56	1089 9049 03	•	.....	..... 2	Fuse holder	8)	ZT3 M-500 V / 50 Hz				
57	1089 9037 03	•	.....	..... 1	Fuse link	9)	ZT3 B-440-460 V 60 Hz				
58	1089 9037 07	•	.....	..... 1	Fuse link	10)	ZT3 A-440-460 V 60 Hz				
59	1089 9271 06	•	.....	..... 1	Time relay						
60	1614 3559 00	•	.....	..... 1	Label						
61	0147 1326 03	•	5),6).....	..... 8	- Bolt						1900 0002 50 04/1900 0002 72 02/1900 0442 05 01/ 1900 0442 07 01/1900 0442 09 01/1900 0442 10 02/ 1900 0442 12 01/1900 0442 27 01/1900 0443 04 01/ 1900 0443 07 01/1900 0443 22 01/1900 0443 23 01 29_325_0_0_0
62	0301 2335 00	•	5),6).....	..... 8	- Washer						
63	0333 3227 00	•	5),6).....	..... 8	- Lock washer						
64	0266 2110 00	•	5),6).....	..... 8	- Nut						



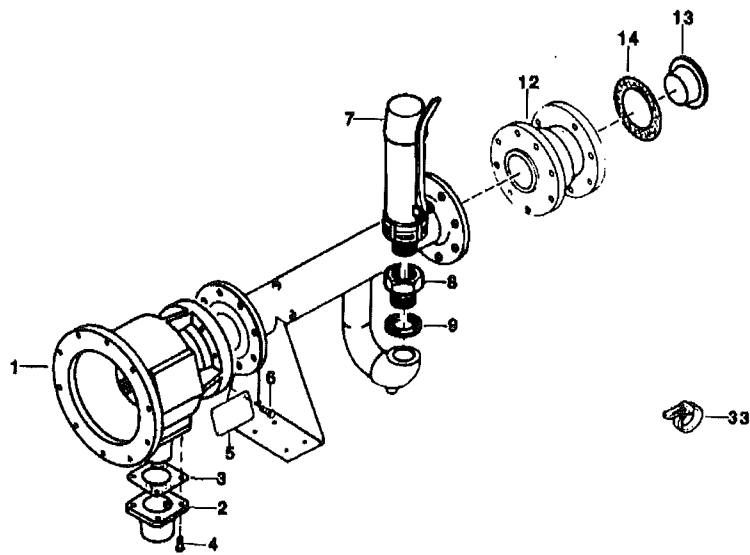
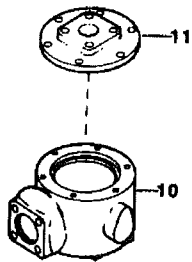
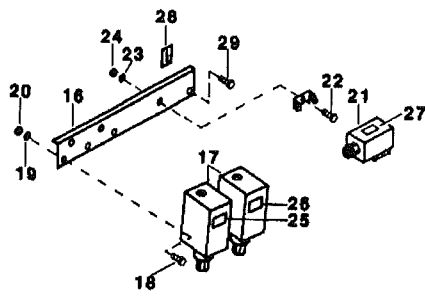
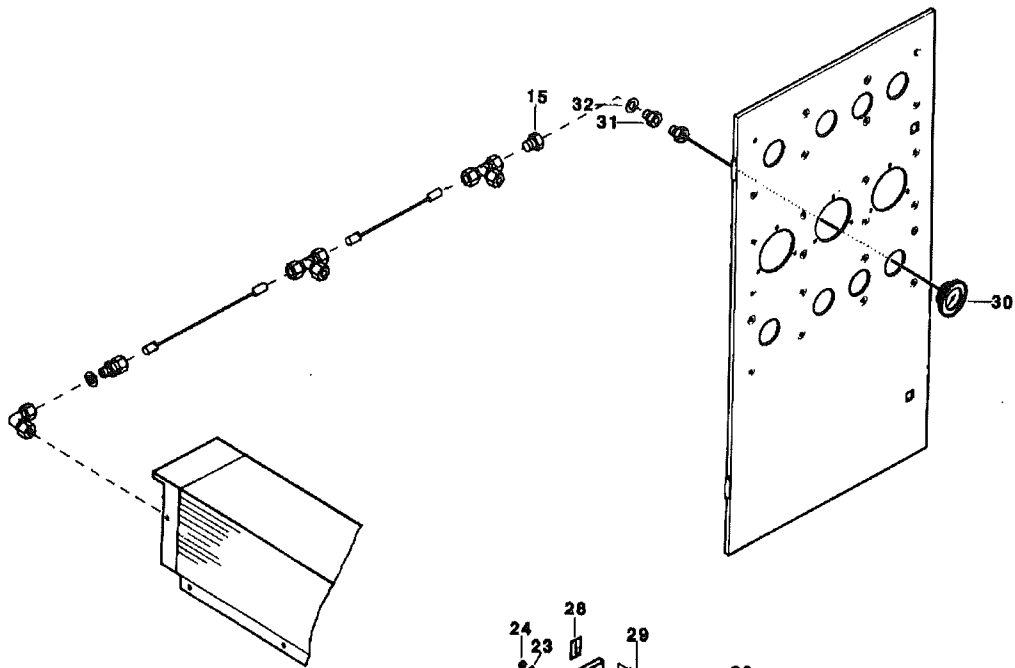
**Bodywork**  
**Karosserie**  
**Karosseri**  
**Karosserie**  
**Capotage**  
**Carroceria**  
**Cappottatura**

Ref.	A	B	C	D	Designation
1	2254 2913 00			1	Foot
2				AR	Bolt
	0147 1322 03				- M8x16
	0147 1323 03				- M8x20
	1619 2766 00				- M8x20
	1619 2766 02				- M8x70
3	0333 3227 00			AR	Lock washer
4	0266 2110 00			AR	Nut
5	2254 2915 00			1	Bottom plate
6	1619 2473 00			AR	Seal
7	2254 2920 00	1)		1	Door
8	1614 3269 00			1	Decal
9	1619 2665 00			AR	Seal
10	1619 5225 00			18	Plug
11	2254 2917 00	1)		1	Panel, rear
12	2254 2911 00			3	Foot
13	2254 3277 00			1	Plate
14	1619 2795 00			AR	Seal
15	2253 5605 00	1)		2	Panel
16	0162 4323 00			8	Screw
17	2253 5627 00	1)		1	Panel
18	2253 5631 00	1)		1	Panel
19	2253 5624 00			1	Support
20	2254 7895 00	1)		1	Gable
21	1616 2987 00			16	Plug
22	2254 8695 00			1	Bracket
23	1613 1250 03			1	Cable
24	1619 1695 00			2	Nipple
25	2253 5625 00	1)		2	Panel
26	2253 7056 00			1	Support
27	2252 0893 00			3	Support
28	1615 2242 00			29	Bracket
29	1202 9513 00	1)		1	Inlet silencer
30	1202 9514 00			1	Cage
31	1619 5188 00			AR	Seal
32	2252 1199 00			1	Hump hose
33	1030 1005 03			2	Clamp
34	1202 9515 00	1)		1	Roof
35	1619 3843 00			AR	Seal
36	2253 4770 00			1	Label
37	2253 5989 00			1	Label
38	0147 1398 03			8	Boilt
39	2252 1213 00			1	Housing
40	2252 1217 00			1	Support
41	1030 1070 00			2	Filter

Ref.	A	B	C	D	Designation
42	1404 1259 00			1	Cover
43	0301 2344 00			2	Washer
44	0296 1111 02			2	Wing nut
45	2252 1223 00			1	Cover
46	2253 5633 00			1	Bracket
47	2253 5610 00	1)		1	Roof, front
48	0690 1132 01			2	Label
49	2253 5620 00			1	Grating
50	2253 6008 00	1)		1	Roof, centre
51	0301 2335 00			14	Washer
52	2252 1192 00	1)		1	Gable
53	2253 5606 00	1)		2	Door
54	2252 7237 00			8	Lock
55	1615 2243 01			8	Hinge
56	0162 4322 00			48	Screw
57	2253 5608 00	1)		4	Door
58	1089 9068 01			1	Key
59	1615 2243 00			6	Hinge
60	2252 1235 00	1)		1	Panel
61	0333 3237 00			8	Lock washer
62	2253 5614 00	1)		1	Roof, rear
63	2253 5616 00			1	Grating
64	2253 7228 00	1)		1	Baffle
65	2253 7229 00			1	Bracket
66	2252 8147 00			1	Label
67	1614 4691 00			1	Data plate
68	1091 1204 00			1	Patent plate
69	0129 3104 00			8	Rivet
70	2252 1429 00			1	Instruction plate
71	0129 3104 00			2	Rivet
72	2253 4953 00			1	Decal
73	2253 5588 00			1	Frame
74	1020 5072 00			4	Rubber buffer

1) To be lined with foam plastic / Te bekleden met schuimrubber/  
 Skall kläs med skumplast / Auskleiden mit Schaumgummi/  
 A garnir avec du caoutchouc mousse / Revestir de goma espuma/  
 Da rivestira con plastica espansa  
 1619 2114 03 (AR)

2251 6026 60 04/2251 6027 60 03/2251 6028 60 05/  
 2251 6029 60 02/2251 6030 61 01/2251 6031 60 02  
 41\_089\_3\_0\_0



**Specific parts and parts approved by classification societies**  
**Specifieke onderdelen en door klassifikatiebureaus goedgekeurde onderdelen**  
**Specifika delar och av klassningsällskap godkända delar**  
**Spezifische Teile und Teile genehmigt durch die Abnahme-Gesellschaften**  
**Pièces spécifiques et pièces approuvées par les Sociétés de Classification**  
**Piezas específicas y piezas aprobadas por sociedades de clasificación**  
**Parti speciali e parti approvate dalle Società di classificazione**

Ref.	A	B	C	D	Designation	Ref.	A	B	C	D	Designation
-	1202 4884 80		.....	1	Moisture trap	16	1202 7276 00	•	.....	1	Support
	1202 4884 82		L.....		- "	17	1091 0394 01	•	.....	2	Press. switch
			As.....		- "	18	0160 6060 00	•	.....	4	Screw
1	1202 4884 00	•	.....	1	Moisture trap	19	0301 2318 00	•	.....	4	Washer
2	1202 4990 00	•	.....	1	Cover	20	0266 2107 00	•	.....	4	Nut
3	1202 9621 06	•	1.....	1	Gasket	21		•	.....	1	Solenoid valve
4	0147 1363 03	•	.....	4	Bolt		1089 0384 14		1),2)		- "
5		•	.....	1	Data plate		1089 0384 11		.....		- "
	1202 8057 00		(L).....		- "	22	0160 6060 00	•	.....	1	Screw
	1202 7721 00		(As).....		- "	23	0301 2318 00	•	.....	1	Washer
6	0244 4184 00	•	.....	4	Screw	24	0266 2107 00	•	.....	1	Nut
7			.....	1	Safety valve	25	2252 2120 01	•	.....	1	Label
	0830 1005 47		1),2).....		- 135 psig	26	2252 2120 03	•	.....	1	Label
	0830 1006 25		.....		- 9,3 bar(e)	27	2252 2120 05	•	.....	1	Label
8			.....	1	Bushing	28	1088 1001 04	•	.....	1	Warning mark
	2254 2922 00		1),2).....		- "	29	1619 2766 00		.....	4	Bolt
	0605 8535 04		.....		- "	30	1089 0502 03		1).....	1	- Temp. switch
9	0653 1227 00		.....	1	Gasket		1619 2841 00		.....	1	- Thermometer
10			.....	1	Silencer	31	1202 9405 00		1).....	1	- Bushing
	2254 7098 00		As.....		- "	32	0661 1033 00		1).....	1	- Gasket
	2254 4414 00		.....		- "	33	1088 1301 02		.....	10	Cable strip
11			.....	1	Cover						
	2254 7101 00		As.....		- "	1	Kit 2910 5056 00				
	2254 5486 00		.....		- "	1)	USA				
12			.....	1	Compensator	2)	Canada				
	1619 7554 00		1).....		- "						
	1619 3120 00		.....		- "						
13	1202 6389 01		.....	1	Plug		1202 4884 80 05/1202 4884 82 04/2251 6049 90 03/				
14	0650 1001 14		.....	1	Gasket		2251 6049 91 03/2251 6049 92 01/2253 3862 86 05/				
15			.....	1	Adapter		2253 3862 87 05				
	1079 5831 50		1).....		- "		12_011_0_0_0				
	1079 5831 49		.....		- "						
			.....	1	Control panel						
	2253 3862 87		1),2).....		- "						
	2253 3862 86		.....		- "						

Pipe fittings  
 Pijpfittingen  
 Rörförskruvningar  
 Rohrformstücke  
 Accessoires pour tuyaux  
 Accesorios para tubería  
 Raccordi del tubo

PIPE

Outer diameter	Part number
08	0072 5551 08
12	0075 5551 19
16	0075 5551 39
22	0075 5551 72
28	0075 5551 94

NUT

For pipe diameter	Thread	Part number
08	M13x1	0584 3005 00
12	M18x1	0584 3000 10
16	M23x1.5	0584 3013 00
22	M29x1.5	0584 3018 00
28	M36x1.5	0584 3022 00
36	M44x1.5	0584 3026 00
42	M51x1.5	0584 3030 00

SOLDERING CONE

For pipe diameter	Diameter O-ring groove	Part number
08	08	1079 5831 08
08	12	1079 5831 35
08	16	1079 5831 15
12	12	1079 5831 09
12	16	1079 5831 14
16	16	1079 5831 10
16	22	1079 5831 13
22	22	1079 5831 01
22	28	1079 5831 47
28	28	1079 5831 02
28	36	1079 5831 40
28	42	1079 5831 06

O-RING

For groove diameter	Inner diameter	Part number
08	6	0663 2101 84
12	10	0663 2101 85
16	13	0663 2101 87
22	19.1	0663 7126 00
28	25.1	0663 7128 00
36	32.1	0663 7131 00
42	37.1	0663 7133 00

STUD - PIPE COUPLING

Pipe side For pipe diameter	Thread	Connection side Thread	Part number
08	M13x1	1/4"	0582 0000 10
08	M13x1	NPT1/4" 1)	1079 5831 28
12	M18x1	1/4"	1079 5831 20
12	M18x1	NPT1/4" 1)	1079 5831 29
16	M23x1.5	1/2"	0582 0000 11
22	M29x1.5	3/4"	0582 0000 14
28	M36x1.5	1"	0582 0000 15
36	M44x1.5	1 1/4"	0582 0000 19
42	M51x1.5	1 1/4"	1079 5831 30

1) Taper thread (NPT)

STUD - NUT COUPLING

Pipe side For pipe diameter	Thread	Connection side Thread	Part number
08	M13x1	1/4"	1079 5831 16
16	M23x1.5	1/2"	1079 5831 17

PIPE - PIPE COUPLING

Diameter pipe 1	Diameter pipe 2	Part number
08	06	1079 5831 36
08	08	0582 0000 17

COPPER GASKET

For thread	Inner diameter	Outer diameter	Part number
1/4"	13	20	0653 1062 00
1/2"	21	26	0653 1124 00

STEEL GASKET

For thread	Inner diameter	Outer diameter	Part number
1/4"	13.7	20.6	0661 1020 00
1/2"	21.5	28.6	0661 1033 00
3/4"	27	35	0661 1038 00
1"	33.8	42.5	0661 1049 00
1 1/4"	42.9	52.4	0661 1056 00

ELBOW

For pipe diameter	Thread	Part number
08	M13x1	0582 2000 14
12	M18x1	0582 2000 18
16	M23x1.5	0582 2000 13
36	M44x1.5	0582 2000 15

TEE

For pipe diameter	Thread	Part number
08	M13x1	0582 4000 11
12	M18x1	0582 4000 16
16	M23x1.5	0582 4000 13
22	M29x1.5	0582 4000 15
28	M36x1.5	0582 4000 18
36	M44x1.5	0582 4000 17

53\_000\_0\_0\_0

Contents "Service kits" and reference to pages  
 Inhoud "Service kits" en verwijzing naar bladzijden  
 Innehåll "Service kits" och hänvisning till sidor  
 Inhaltsverzeichnis "Service kits" und Verweis zu den Seiten  
 Table des matières "Service kits" et référence aux pages  
 Índice "Service kits" y referencia a páginas  
 Indice "Kit per la manutenzione", vedi pagine

A	C	D	pages	A	C	D	pages	A	C	D	pages
Kit 2910 0179 00		1	13,14	Kit 2910 3058 00		1	13,23,24,29	Kit 2910 7001 00		1	5,7,13,14
Oil pump				Throttle valve mounting				Gear casing			
0333 3232 00	1)	5		0650 1000 93		1		0653 1100 00		1	
0653 1189 00		1		0650 1001 12		3		0661 1033 00		2	
0661 1049 00		1		0653 1062 00		6		0661 1049 00		3	
0663 3831 00		1		1202 5590 00		1		0663 2103 20		1	
0663 7853 00		1		1202 9621 03		1		0663 2103 25		1	
1202 7725 00	1)	1						0663 2125 00		2	
1619 7589 00		1		Kit 2910 4006 00		1	5,7,13,19,23,29	0663 2133 00		2	
				Compressor element				0663 3130 00		2	
Kit 2910 0206 00		2	20,21	0650 0100 25		2		0663 3135 00		1	
Float valve				0653 1062 00		4		0663 3831 00		1	
0650 0100 52	1)	1		0661 1049 00		2		0663 6142 00		1	
0653 1062 00		1		0663 2103 19		1		0663 6147 00		1	
0661 1020 00		2		0663 7119 00		1		0663 6179 00		1	
0661 1033 00		4		1202 5580 05		1		0663 7119 00		3	
1202 3739 00	1)	1		1202 6953 00	1)	1		0663 7853 00		1	
				2253 7852 00	1)	1					
Kit 2910 0207 00		1	5	Kit 2910 4007 00		1	5,7,13,19,24,29				
Drive shaft				Compressor element							
0663 6142 00		1		0653 1062 00		4					
0663 6147 00		1		0661 1056 00		2					
2250 8181 00		1		0663 2103 22		1					
2250 8183 00		1		0663 7119 00		1					
				1202 5580 06		1					
Kit 2910 0213 00		1	19,23	1202 6955 00	1)	1					
Discharge silencer				1202 9621 03		1					
0650 1000 80		2		2253 7856 00	1)	1					
0650 1001 12		2									
0653 1062 00		1		Kit 2910 5054 00		1	13,19				
1202 5580 05		3		Cooler							
				0661 1049 00		2					
Kit 2910 3038 00		1	13,25,29	1202 5580 05		2					
Unloader				1202 5580 06		2					
0653 1062 00		4									
0661 1033 00	1)	1		Kit 2910 5055 00		1	19,20				
0663 3135 00	1)	1		Moisture trap - Intercooler							
0663 3830 00	1)	3		0650 0100 25		2					
1619 6903 00	1)	1		0650 1000 90		1					
2250 4191 00	1)	3		0650 1001 13	1)	2					
				0661 1033 00		1					
Kit 2910 3050 00	1)	1	24	1202 5580 06		1					
Throttle valve overhaul				1202 9301 00		1					
0301 2178 01		1									
0653 1062 00		2		Kit 2910 5056 00		1	19,20,41				
1619 7087 00		2		Moisture trap - aftercooler							
1619 7142 00		2		0650 1001 13	1)	1					
2102 0806 00		1		0661 1033 00		1					
2254 7041 00		1		1202 9621 06		1					
2254 7046 00		1									
2255 0022 00		1									
2255 0038 00		1									

1) Parts needed to overhaul the respective sub-assembly; all other parts of the kit to be used for mounting the sub-assembly into the unit / Komponenten nodig voor de revisie van het respectievelijke onderdeel; alle andere componenten van de kit gebruiken om het onderdeel in de groep te monteren / Delar som behövs till ifrågavarande komponentens översyn; alla andra delar i "service kit" skall användas till montering av komponenten i aggregatet / Komponentens nötig um die respektive Baueinheit zu überholen; alle anderen Komponenten vom "Service Kit" sind zu verwenden um die Baueinheit in die Gruppe einzubauen / Pièces nécessaires pour la révision du composant respectif; utiliser toutes les autres pièces du kit pour la pose du composant dans le groupe / Piezas necesarias para la revisión del subconjunto respectivo; utilizar todas las otras piezas del "kit" para montar el subconjunto en el grupo / Parti necessarie per revisionare il rispettivo sotto-gruppo; tutte le altre parti del kit devono essere usate per montare il sotto-gruppo sull'unità

)

)

)

)