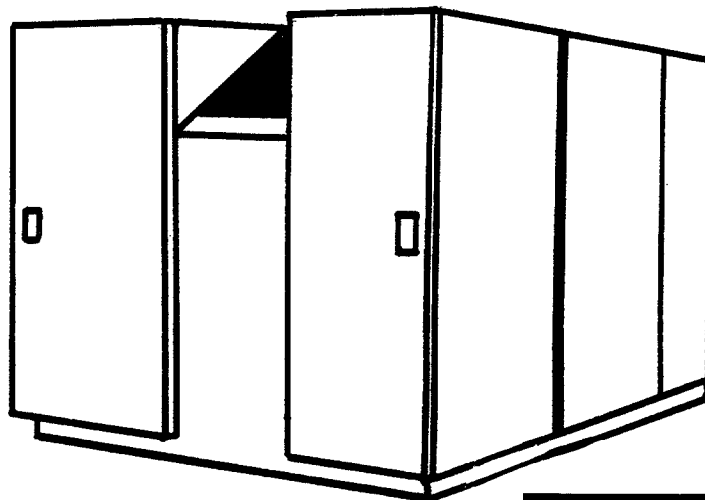


# QUINCY

QSI Helical Screw Air Compressor

**MODEL 490A**

**PARTS LIST**



RECORD OF CHANGE 1

**DANGER**

AIR FROM THIS COMPRESSOR  
MUST NOT BE USED FOR FOOD  
PROCESSING OR BREATHING  
WITHOUT ADEQUATE FILTERING.

**Colt Industries**



**Quincy Compressor  
Division**

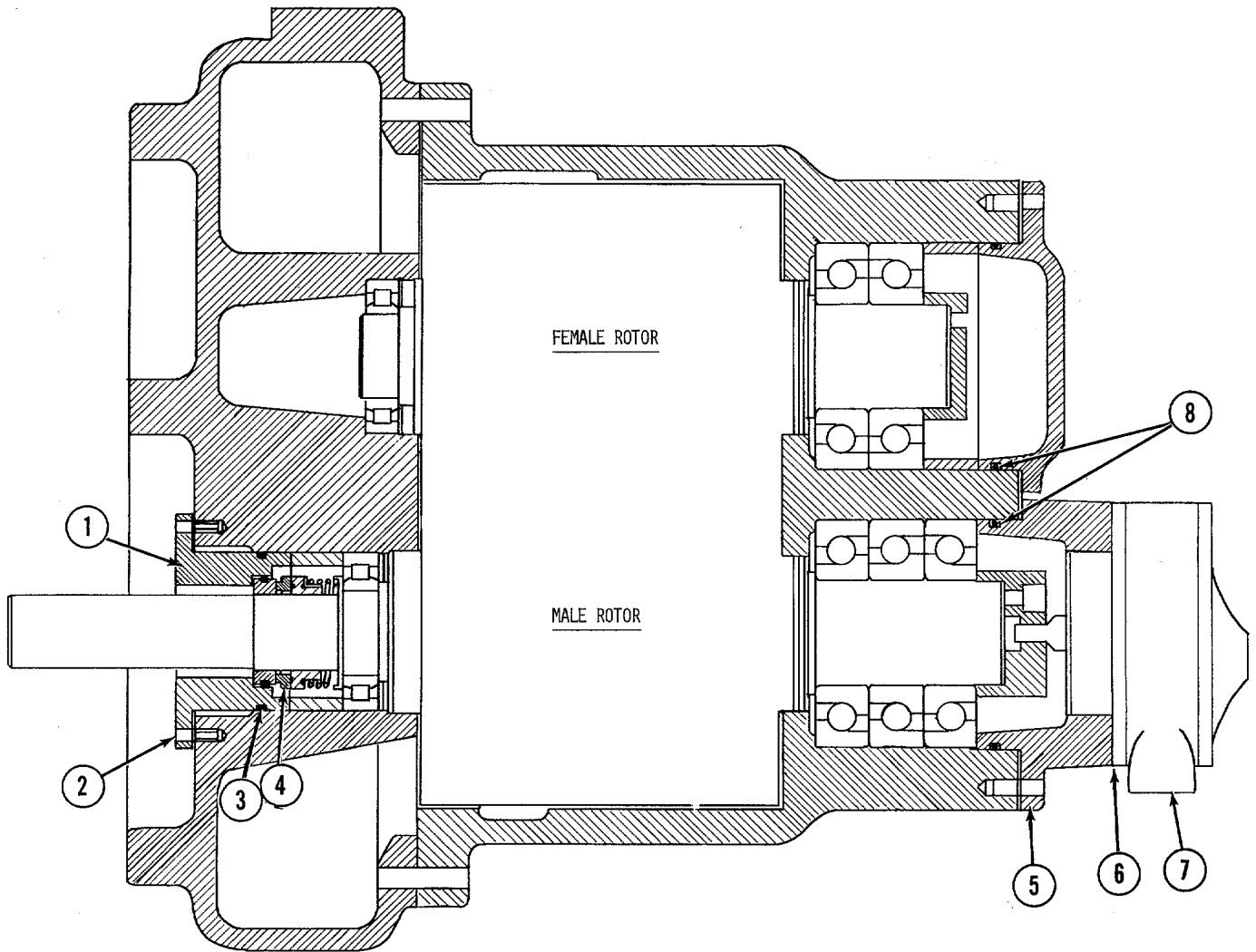
217 Maine Street  
Quincy, Illinois 62301

A division of the Colt Industries  
Operating Corp

## TABLE OF CONTENTS

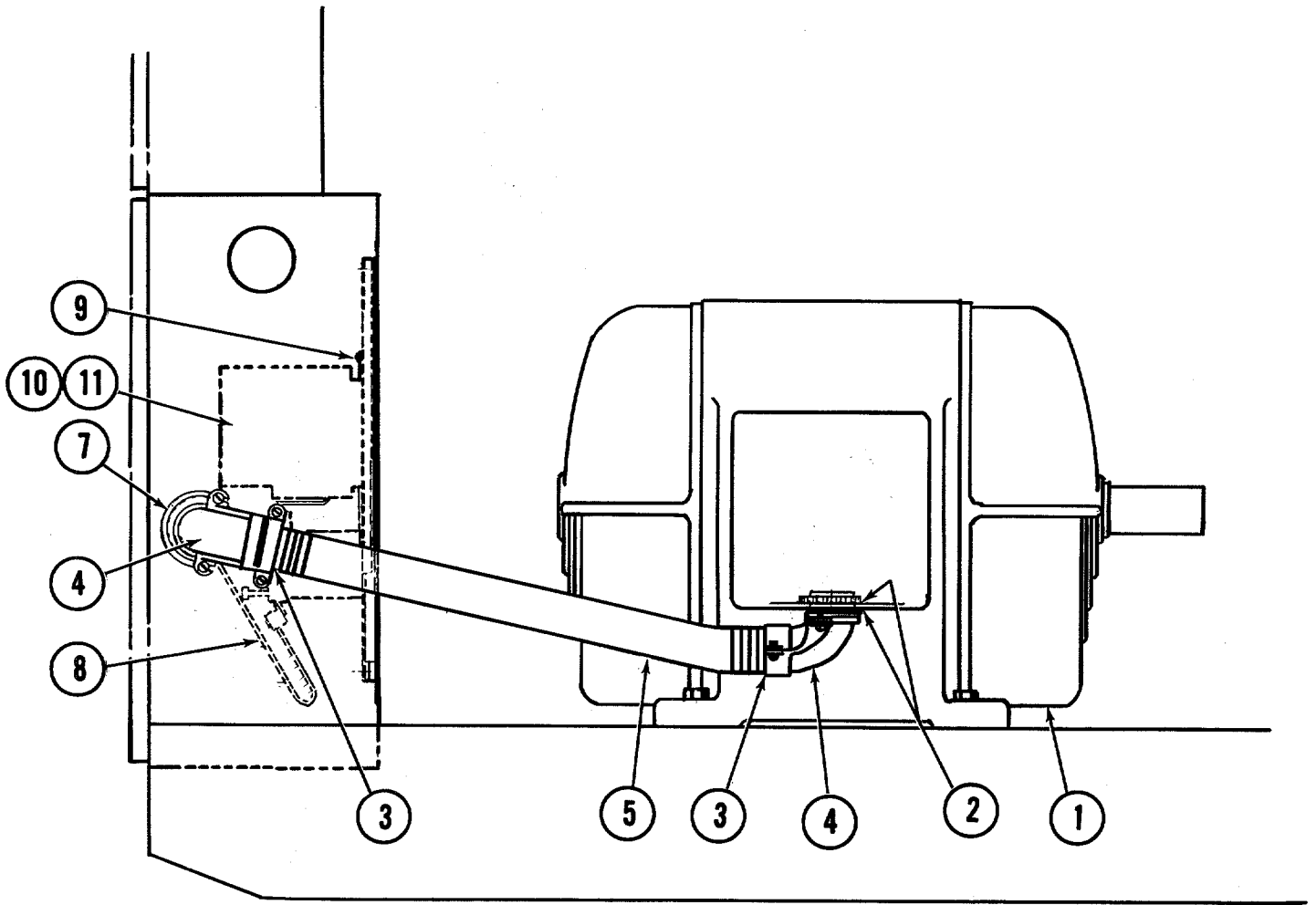
BASIC COMPRESSOR GROUP .....	1
MOTOR & STARTER GROUP .....	2
COUPLING GROUP .....	3
RECEIVER GROUP .....	4
INLET VALVE ASSEMBLY GROUP .....	5-6
AIR INTAKE FILTER GROUP .....	7-8
RAIN HOOD .....	7-8
AIR PIPING GROUP .....	9-10
AIR PIPING GROUP WITH AFTERCOOLER .....	11-12
FAN MOTOR & STARTER GROUP .....	13
OIL COOLER GROUP .....	14
OIL PIPING GROUP .....	15-16
CONTROL PIPING GROUP .....	17-18
CONTROL CENTER GROUP .....	19
INSTRUMENT PANEL GROUP .....	20
CONTROL TRANSFORMER & CONTROL CIRCUIT FUSES .....	21
LIFTING BAIL GROUP .....	22
FINAL ASSEMBLY HARDWARE GROUP .....	23-24
CABINET GROUP .....	25-26
RECOMMENDED SPARE PARTS .....	27
NUMERICAL PARTS INDEX .....	27-28

# BASIC COMPRESSOR GROUP



INDEX NUMBER	PART NUMBER	DESCRIPTION	QUANTITY REQUIRED
1	22567	ADAPTER - SEAL	1
2	1991	SCREW - 1/4"-20 X 3/4" HEX HEAD CAP	4
3	22749-249	RING - "O"	1
4	22592	SEAL	1
5	9118	SCREW - 3/8"-16 X 1-1/4" COUNTER-BOR	5
6	20071	GASKET - OIL PUMP	1
7	20225	PUMP - OIL	1
8	22749-259	RING - "O"	2

# MOTOR & STARTER GROUP

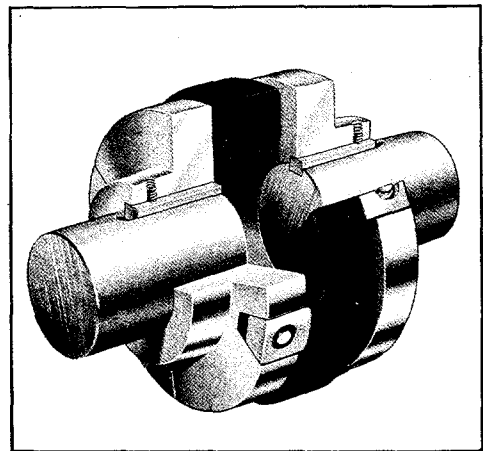
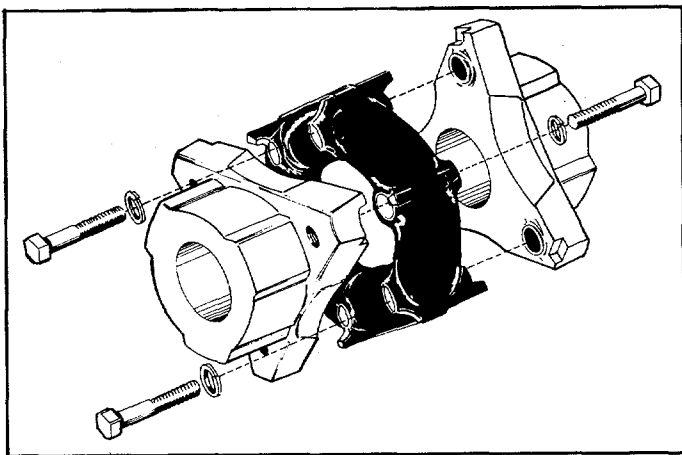


INDEX NUMBER	PART NUMBER			DESCRIPTION	QUANTITY REQUIRED
	230V	460V	575V		
1	21257	21257	120692	MOTOR -	1
2	120652	120657	8921	WASHER - REDUCING	2
3	9840	23491	9416	SLEEVE - INSULATING	2
4	9839	23489	9956	CONNECTOR - 90° CONDUIT	2
5	9848-30	23490-30	9417-30	CONDUIT - FLEXIBLE	1
7	-----	23493	40597	WASHER - REDUCING	2
8	9411-36	9349-36	9348-36	CONDUCTOR	3
9	7599-14	7599-14	7599-14	SCREW - 1/4"-20 X 1/2" PAN HEAD	3
10	23487-230	22467-480	22467-575	STARTER	1
11	9370	*23504	*23503	OVERLOAD UNIT - THERMAL	3
	-----	*8469	*8468	OVERLOAD UNIT - THERMAL	3

\*ASTERISK INDICATES: 23504 THERMAL OVERLOAD UNIT IS USED WITH ALLIS CHALMERS, MARATHON & CENTURY MOTORS. (460V)  
 23503 THERMAL OVERLOAD UNIT IS USED WITH GENERAL ELECTRIC, LOUIS ALLIS & MARATHON MOTORS. (575V)  
 8469 THERMAL OVERLOAD UNIT IS USED WITH GENERAL ELECTRIC & LOUIS ALLIS MOTORS. (460V)  
 8468 THERMAL OVERLOAD UNIT IS USED WITH ALLIS CHALMERS & CENTURY MOTORS. (575V)

# COUPLING GROUP

①

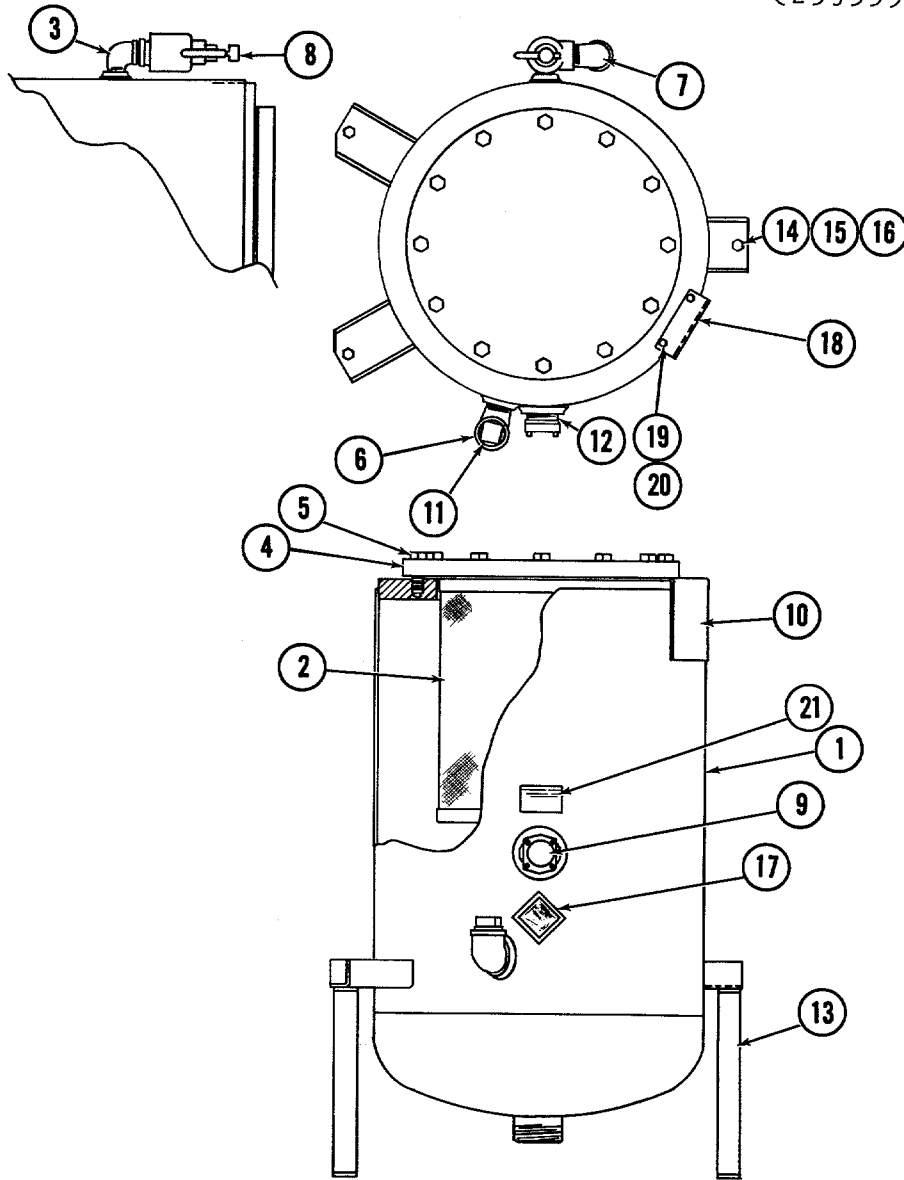


TYPE 1.

TYPE 2.

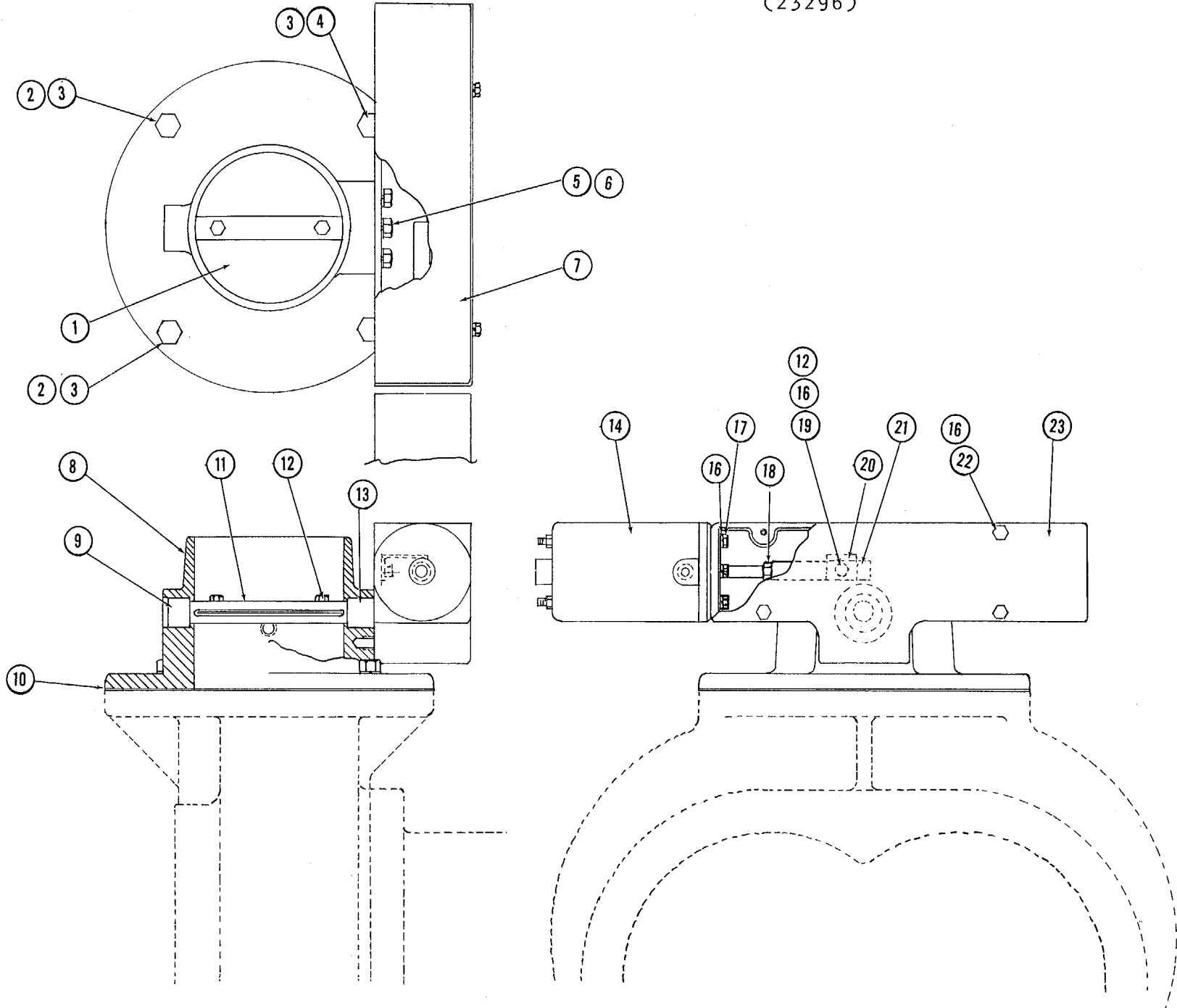
INDEX NUMBER	PART NUMBER	DESCRIPTION	QUANTITY REQUIRED
1	23738-3	COUPLING ASSEMBLY (SEE TYPE 1.) NOTE: TYPE 1. COUPLING ASSEMBLY, PART NO. 23738-3 INCLUDES THE FOLLOWING COMPONENTS. 23753, HUB - MOTOR 23754, HUB - COMPRESSOR 22729, DONUT - RUBBER 22733, KIT - FASTENING	1  1 1 1 1
1	120203-2	COUPLING ASSEMBLY (SEE TYPE 2.) NOTE: TYPE 2. COUPLING ASSEMBLY, PART NO. 120203-2 INCLUDES THE FOLLOWING COMPONENTS. 120217, HUB - MOTOR 120218, HUB - COMPRESSOR 22189, ELEMENT - FLEXIBLE (PART NO. 22189 INCLUDES FASTENING KIT #22182.) 22182, KIT - FASTENING	1  1 1 1
NOT SHOWN	21194	GUARD - COUPLING	1
NOT SHOWN	21184	KEY - SHAFT	1

RECEIVER GROUP  
(23953)



INDEX NUMBER	PART NUMBER	DESCRIPTION	QUANTITY REQUIRED
1	23540	RECEIVER - AIR	1
2	22705-3	SEPARATOR - OIL	1
3	3004	ELBOW - 1" NPT X 90° STREET	1
4	23538	PLATE - RECEIVER TOP	1
5	23843	SCREW - 3/4"-10 X 2-3/4" HEX HEAD CAP	12
6	4512	ELBOW - 1-1/2" NPT X 90° STREET	1
7	5760	ELBOW - 1-1/4" NPT X 90° STREET	1
8	23268-2	VALVE - SAFETY	1
9	23680	GAUGE - OIL LEVEL	1
10	22177	TAG - OIL FILL	1
11	23269	PLUG - 1-1/2" NPT PIPE	1
12	22335	ADAPTER - GAUGE	1
13	120444	BRACKET - RECEIVER MOUNTING	3
14	1707	SCREW - 1/2"-13 X 1-1/4" HEX HEAD CAP	3
15	3186	WASHER - 1/2" HELICAL SPRING LOCK	3
16	2714	NUT - 1/2"-13 HEX	3
17	21082	DECAL - SAFETY	1
18	23747	BRACKET - DIFFERENTIAL SWITCH MOUNTING	1
19	2138	SCREW - 1/4"-20 X 1/2" HEX HEAD CAP	2
20	2787	WASHER - 1/4" HELICAL SPRING LOCK	2
21	22482	DECAL - OIL SPECIFICATION	1

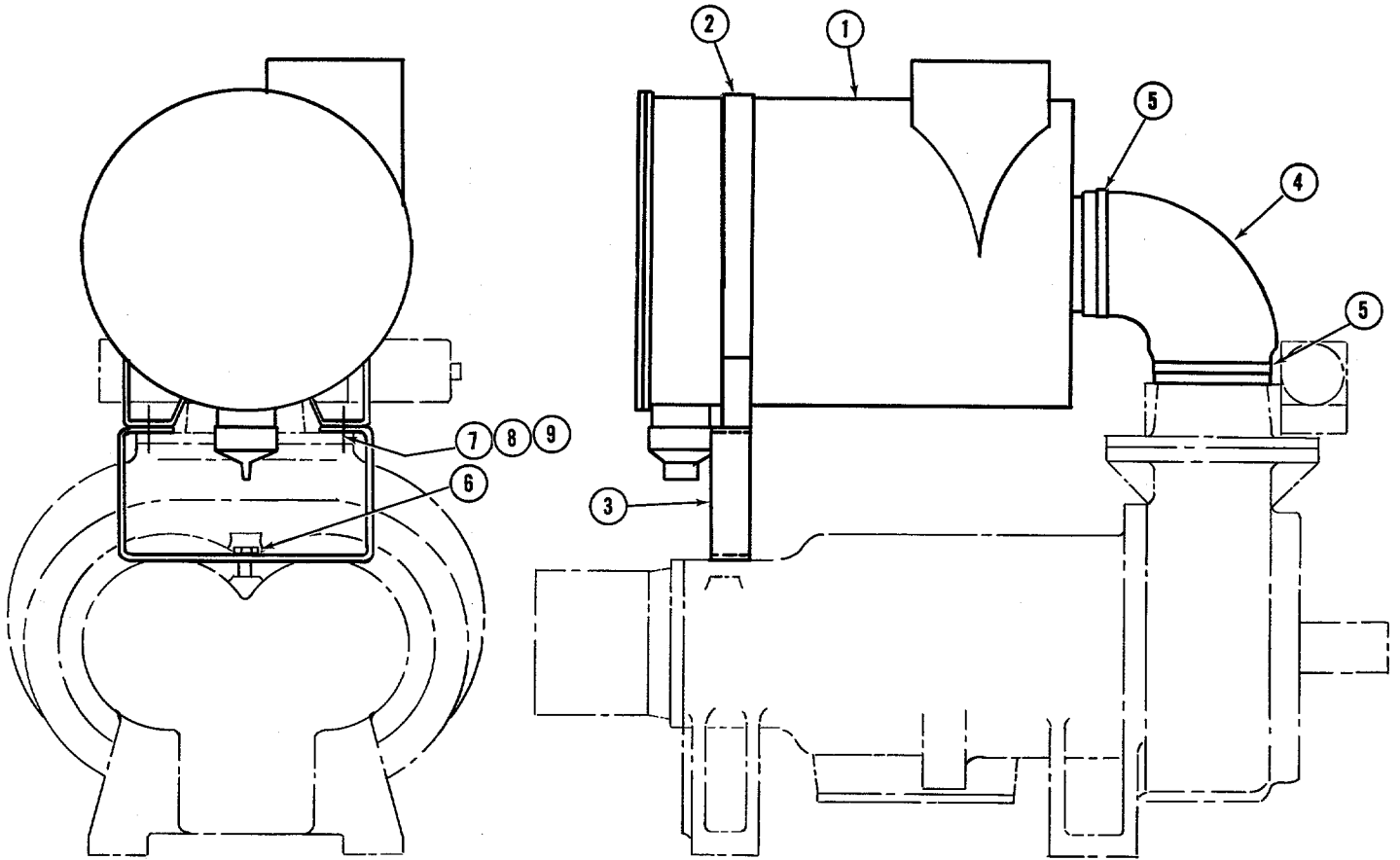
# INLET VALVE ASSEMBLY GROUP (23296)



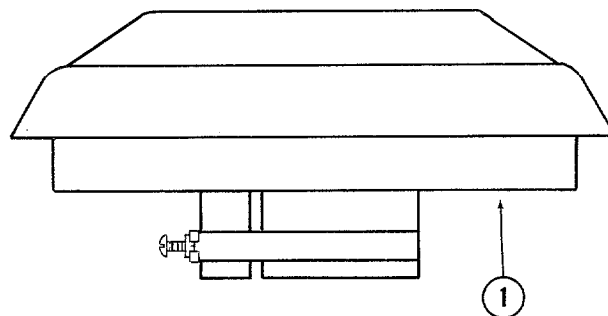
## INLET VALVE ASSEMBLY GROUP - CONTINUED

INDEX NUMBER	PART NUMBER	DESCRIPTION	QUANTITY REQUIRED
1	20346	PLATE - VALVE	1
2	2056	SCREW - 1/2"-13 X 1" HEX HEAD CAP	2
3	3186	WASHER - 1/2" HELICAL SPRING LOCK	4
4	1707	SCREW - 1/2"-13 X 1-1/4" HEX HEAD CAP	2
5	20712	SCREW - 3/8"-16 X 5/8" HEX HEAD CAP	3
6	2732	WASHER - 3/8" HELICAL SPRING LOCK	3
7	20655	BRACKET	1
8	20025	BODY - BUTTERFLY VALVE	1
9	22271	BEARING - CLOSED END	1
10	20349	GASKET	1
11	22270	SHAFT ASSEMBLY - (INCLUDES GEAR)	1
12	3951	SCREW - 1/4"-20 X 5/8" HEX HEAD CAP	3
13	22272	BEARING - NEEDLE	1
14	23302	MOTOR - AIR	1
16	2787	WASHER - 1/4" HELICAL SPRING LOCK	8
17	1991	SCREW - 1/4"-20 X 3/4" HEX HEAD CAP	3
18	20623	NUT - 3/8"-24 HEX	1
19	2256	NUT - 1/4"-20 HEX	1
20	21424	BRACKET - RACK	1
21	20656	RACK - GEAR	1
22	2138	SCREW - 1/4"-20 X 1/2" HEX HEAD CAP	4
23	20658	COVER - PLATE MOUNTING BRACKET	1
NOT SHOWN	22033	SPRING - AIR MOTOR	1
NOT SHOWN	21807	KIT - AIR MOTOR DIAPHRAGM REPAIR	1

AIR INTAKE FILTER GROUP  
(23992)



RAIN HOOD



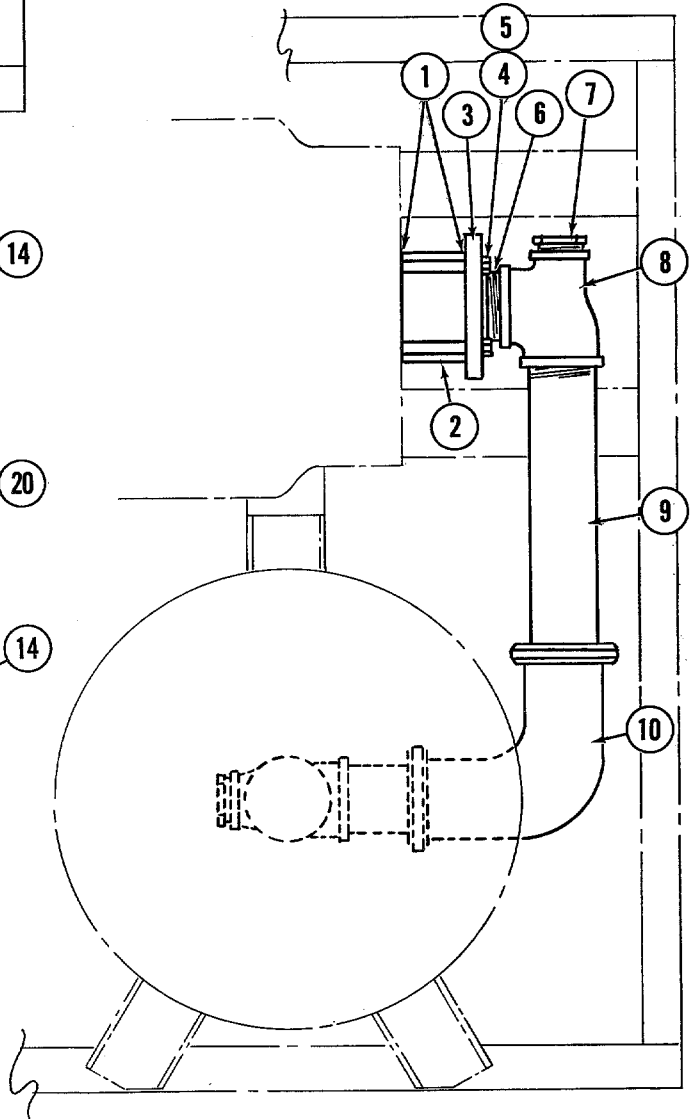
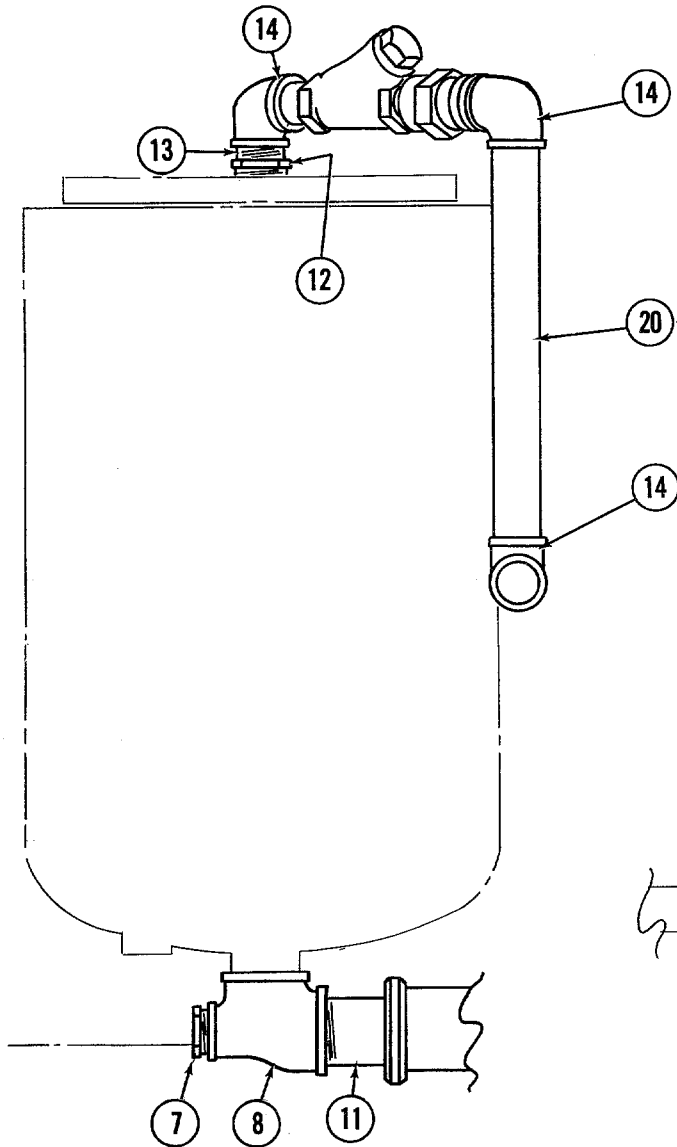
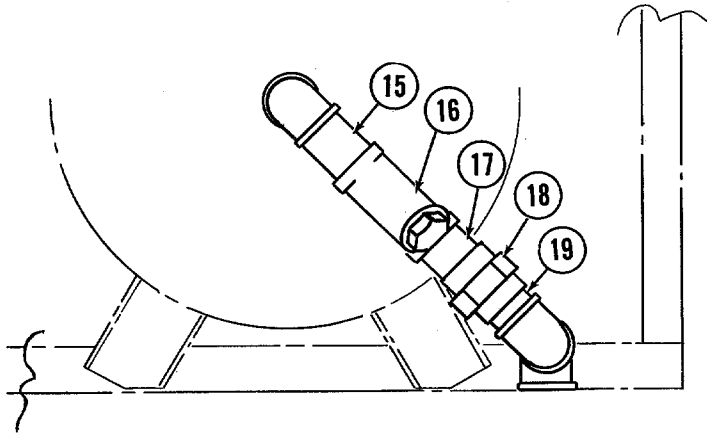
AIR FILTER INTAKE GROUP - CONTINUED

INDEX NUMBER	PART NUMBER	DESCRIPTION	QUANTITY REQUIRED
1	22864-3	FILTER - AIR	1
2	120002	BAND - MOUNTING	1
3	120271	BRACKET - MOUNTING	1
4	120272	ELBOW - 6" X 5-1/2" REDUCING	1
5	20424	CLAMP - 6" HOSE	2
6	3780	SCREW - 5/8"-11 X 1-3/4" HEX HEAD CAP	1
7	9118	SCREW - 3/8"-16 X 1-1/4" HEX HEAD CAP	2
8	2732	WASHER - 3/8" HELICAL SPRING LOCK	2
9	2747	NUT - 3/8"-16 HEX	2
NOT SHOWN	23458-3	ELEMENT - AIR INTAKE FILTER	1

RAIN HOOD - CONTINUED

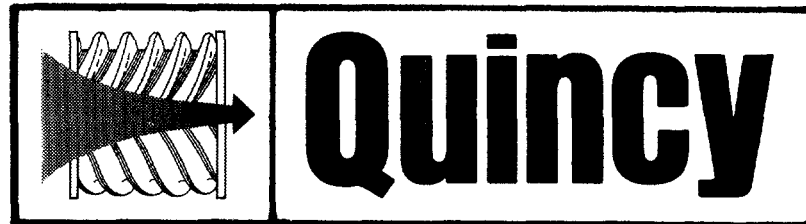
INDEX NUMBER	PART NUMBER	DESCRIPTION	QUANTITY REQUIRED
1	20952	HOOD - RAIN	1

AIR PIPING GROUP  
(23957)

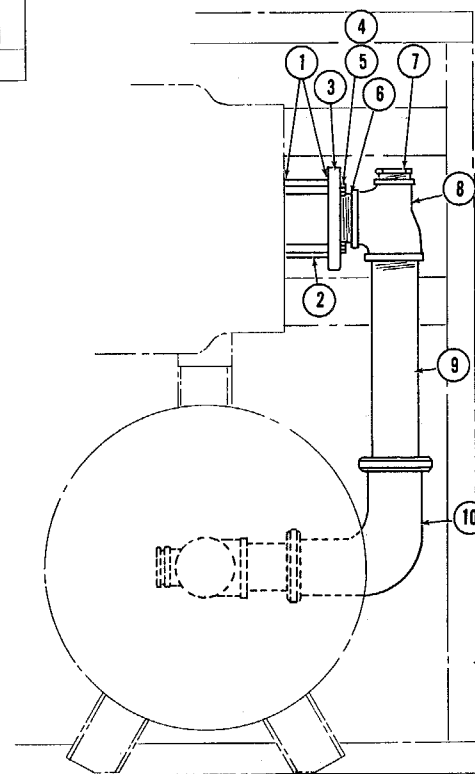
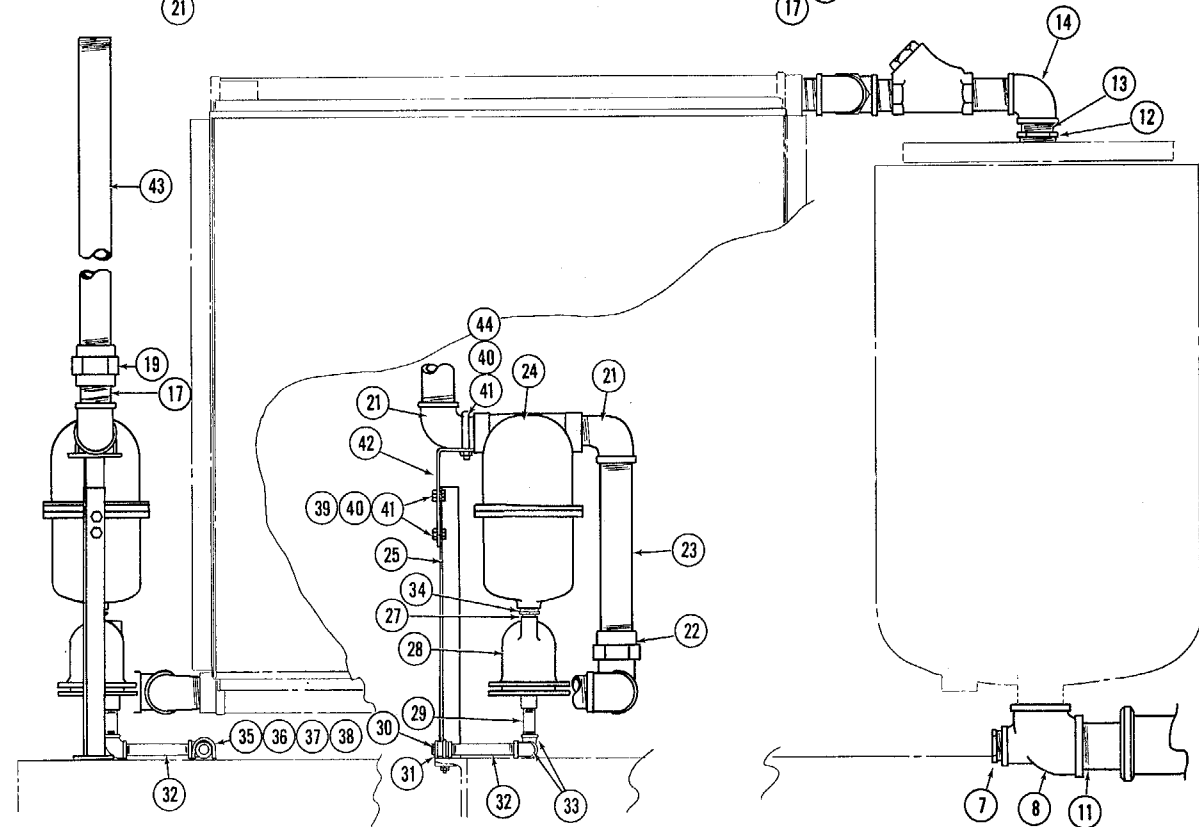
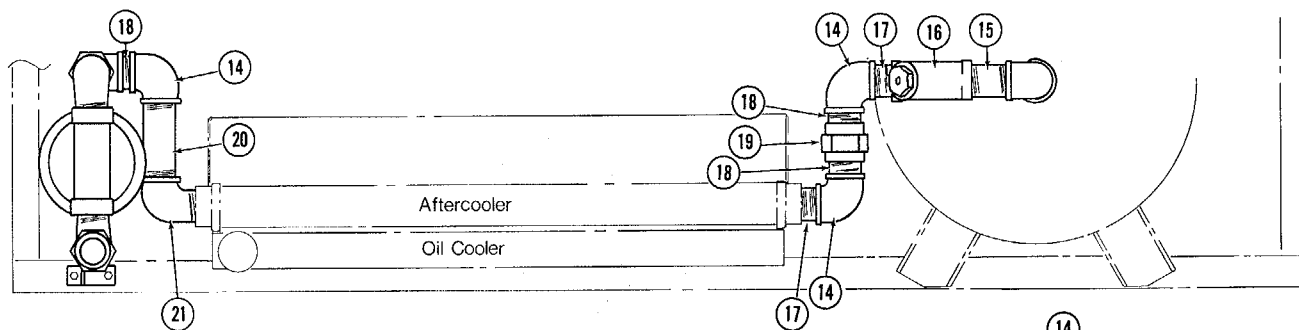


AIR PIPING GROUP - CONTINUED

INDEX NUMBER	PART NUMBER	DESCRIPTION	QUANTITY REQUIRED
1	23975	GASKET - CHECK VALVE	2
2	22713	VALVE - 3" CHECK	1
3	23969	FLANGE - 3"	1
4	22777	SCREW - 5/8"-11 X 5-1/2" HEX HEAD CAP	4
5	2732	WASHER - 5/8" HELICAL SPRING LOCK	4
6	21476	NIPPLE - 3" NPT X 2-1/2" PIPE	1
7	3349	BUSHING - 2" NPT X 1/2" NPT REDUCING	2
8	120837	TEE - 3" X 2" X 3" NPT REDUCING	2
9	120838	NIPPLE - 3" NPT X 18" PIPE (THREADED ONE END)	1
10	23971	ELBOW - 3" COUPLING	1
11	22070	NIPPLE - 3" NPT X 5-7/8" PIPE (THREADED ONE END)	1
12	4571	BUSHING - 2-1/2" NPT X 2" NPT REDUCING	1
13	120445	PIPE - RESTRICTOR	1
14	4463	ELBOW - 2" NPT PIPE	3
15	9235	NIPPLE - 2" NPT X 4" PIPE	1
16	21585	VALVE - 2" CHECK	1
17	9194	NIPPLE - 2" NPT X 3" PIPE	1
18	4398	UNION - 2" NPT PIPE	1
19	3047	NIPPLE - 2" NPT CLOSE PIPE	1
20	23734	NIPPLE - 2" NPT X 21-1/2" PIPE	1



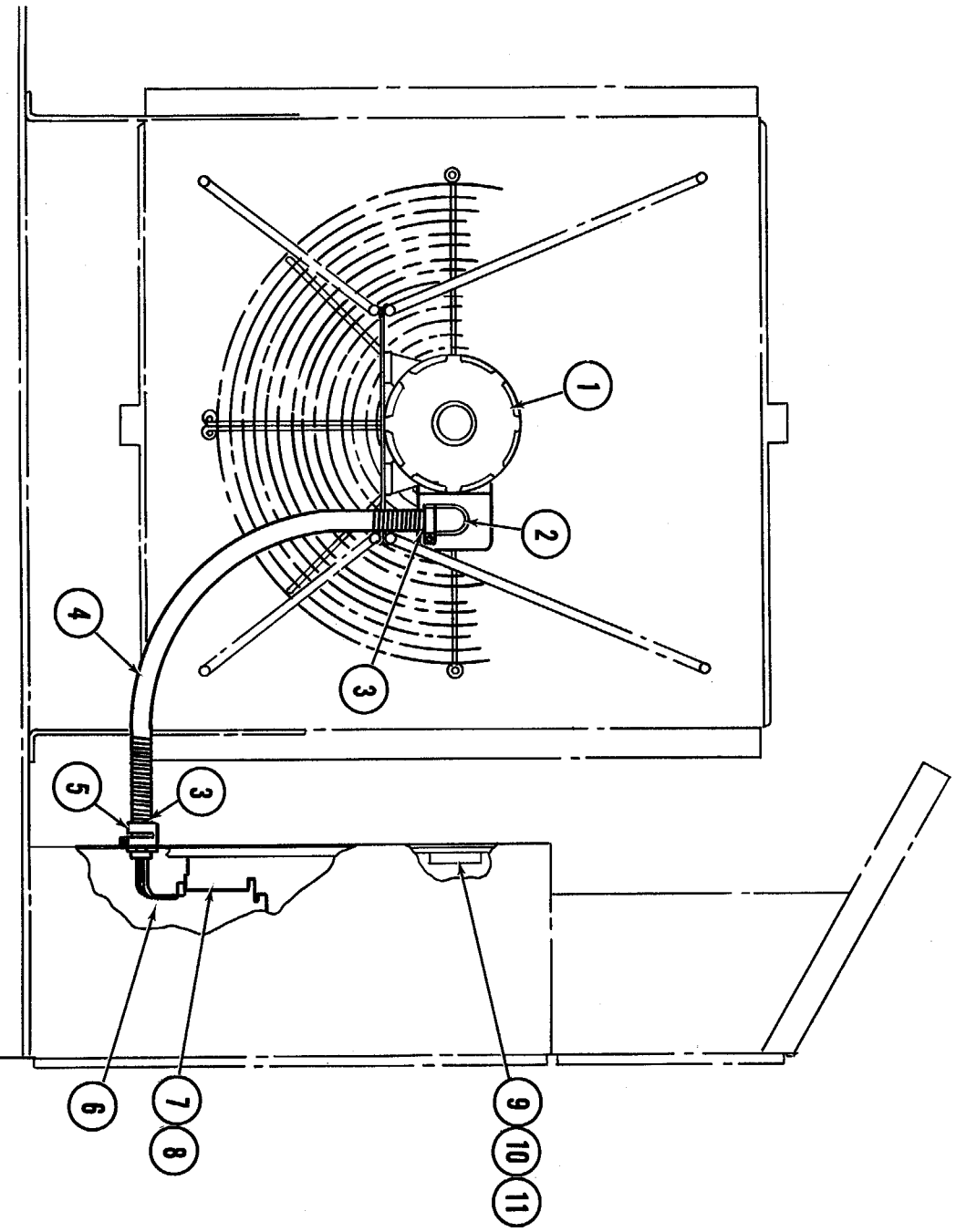
# AIR PIPING GROUP WITH AFTERCOOLER (OPTIONAL) (120663)



AIR PIPING GROUP WITH AFTERCOOLER (OPTIONAL) - CONTINUED

INDEX NUMBER	PART NUMBER	DESCRIPTION	QUANTITY REQUIRED
1	23975	GASKET - CHECK VALVE	2
2	22713	VALVE - DISCHARGE CHECK	1
3	23969	FLANGE - 3"	1
4	22777	SCREW - 5/8"-11 X 5-1/2" HEX HEAD CAP	4
5	2732	WASHER - 5/8" HELICAL SPRING LOCK	4
6	21476	NIPPLE - 3" NPT X 2-1/2" PIPE	1
7	3349	BUSHING - 2" NPT X 1/2" NPT REDUCING	2
8	120837	TEE - 3" X 2" X 3" NPT REDUCING	2
9	120838	NIPPLE - 3" NPT X 18" PIPE (THREADED ONE END)	1
10	23971	ELBOW - 3" X 90° COUPLING	1
11	22070	NIPPLE - 3" NPT X 5-7/8" PIPE (THREADED ONE END)	1
12	4571	BUSHING - 2-1/2" NPT X 2" NPT REDUCING	1
13	120445	PIPE - RESTRICTOR	1
14	4463	ELBOW - 2" NPT X 90° PIPE	3
15	9235	NIPPLE - 2" NPT X 4" PIPE	1
16	21585	VALVE - 2" CHECK	1
17	20697	NIPPLE - 2" NPT X 2-1/2" PIPE	3
18	3047	NIPPLE - 2" NPT CLOSE PIPE	3
19	4398	UNION - 2" NPT PIPE	2
20	9643	NIPPLE - 2" NPT X 4-1/2" PIPE	1
21	4462	ELBOW - 2" NPT X 90° STREET	3
22	23900	UNION - 2" NPT X 90° ELBOW	1
23	9892	NIPPLE - 2" X 14" PIPE	1
24	9099	SEPARATOR - MOISTURE	1
25	121272	BRACKET	1
26	20586	NIPPLE - 2" NPT X 7" PIPE	1
27	2739	NIPPLE - 1/2" NPT CLOSE PIPE	1
28	7899	TRAP - MOISTURE	1
29	21919	NIPPLE - 1/2" NPT X 3" PIPE	1
30	2721	PLUG - 1/2" NPT PIPE	1
31	23976	COUPLING - 1/2" PIPE	1
32	121273	NIPPLE - 1/2" NPT X 5-3/4" PIPE	2
33	21922	ELBOW - 1/2" NPT PIPE	2
34	2754	BUSHING - 1" NPT X 1/2" NPT PIPE	1
35	120320	BOLT - 1/4"-20 "U"	1
36	20612	WASHER - 1/4" BEVEL	2
37	2787	WASHER - 1/4" HELICAL SPRING LOCK	2
38	2256	NUT - 1/4"-20 HEX	2
39	1920	SCREW - 5/16" X 1" HEX HEAD CAP	1
40	2716	WASHER - 5/16" HELICAL SPRING LOCK	4
41	7612	NUT - 5/16" HEX	4
42	121271	BRACKET - SUPPORT	1
43	121274	NIPPLE - 2" NPT X 29" PIPE	1
44	120806	BOLT - "U"	1

# FAN MOTOR & STARTER GROUP

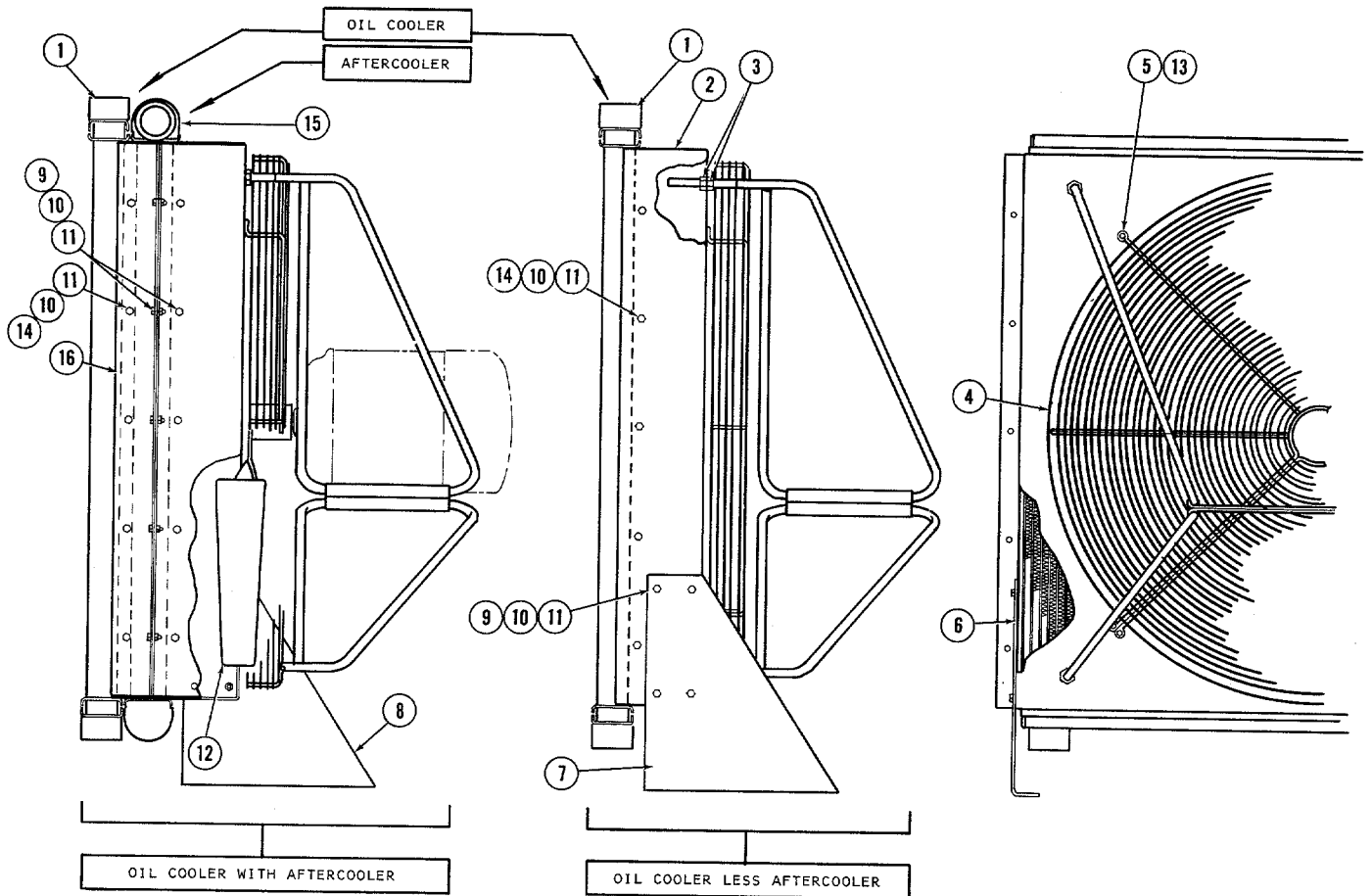


INDEX NUMBER	PART NUMBER				DESCRIPTION	QUANTITY REQUIRED
	200V	230V	460V	575V		
1	*8118	*120782	*120782	*120775	MOTOR - FAN	1
2	23483	23483	23483	23483	ELBOW - 1/2" X 90° CONDUIT	1
3	8049	8049	8049	8049	SLEEVE - 1/2" INSULATING	2
4	22100-36	22100-36	22100-36	22100-36	CONDUIT - 1/2" FLEXIBLE	1
5	22115	22115	22115	22115	CONNECTOR - CONDUIT	1
6	7903-48	7903-48	7903-48	7903-48	CONDUCTOR	3
7	8701-200	8701-230	8700-480	8700-575	STARTER	1
8	6417	6417	6417	6417	SCREW - #10-24 X 3/8"	3
9	-----	120740	120640	120640	FUSE - 20 AMP	1
10	-----	120746	120511	120511	HOLDER - FUSE	3
11	-----	4566	21689	21689	SCREW - ROUND HEAD	2

\*ASTERISK INDICATES: WHEN THE COOLER IS MOUNTED OUTSIDE THE UNIT,

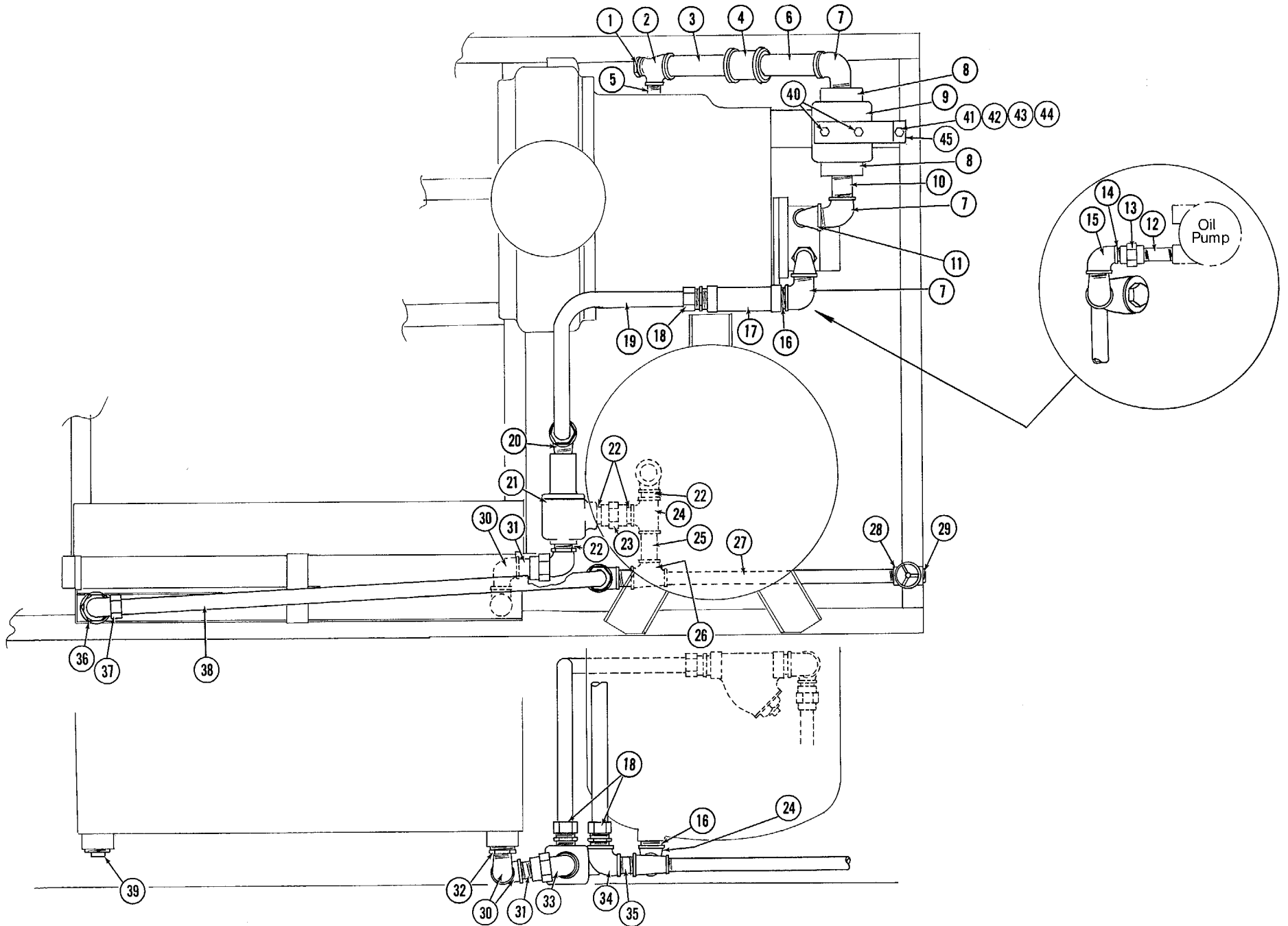
- FAN MOTOR 120725 REPLACES FAN MOTOR 8118.
- FAN MOTOR 120058 REPLACES FAN MOTOR 120782.
- FAN MOTOR 120775 REPLACES FAN MOTOR 120724.

# OIL COOLER GROUP



INDEX NUMBER	PART NUMBER	DESCRIPTION	QUANTITY REQUIRED
1	120031	CORE - OIL COOLER	1
2	120642	SHROUD - FAN	1
3	3980	NUT - 5/8"-11 HEX	2
4	120643	GUARD - FAN	8
5	2510	SCREW - 1/4"-20 X 1" HEX HEAD CAP	2
6	120647	SPACER - OIL COOLER (LESS AFTERCOOLER ONLY)	6
7	120644	BRACKET - LEFT SHROUD MOUNTING	2
8	120645	BRACKET - RIGHT SHROUD MOUNTING	1
9	1990	SCREW - 3/8"-16 X 3/4" HEX HEAD CAP (8 REQ. LESS AFTERCOOLER)	1
10	2732	WASHER - 3/8" HELICAL SPRING LOCK (18 REQ. LESS AFTERCOOLER)	28
11	2747	NUT - 3/8"-16 HEX (18 REQUIRED LESS AFTERCOOLER)	38
12	120036	FAN	38
13	22456	NUT - 1/4"-20	1
14	2190	SCREW - 3/8"-16 X 1-1/2" HEX HEAD CAP	6
15	120032	CORE - AFTERCOOLER	10
16	120646	BRACKET - AFTERCOOLER MOUNTING	1
			2

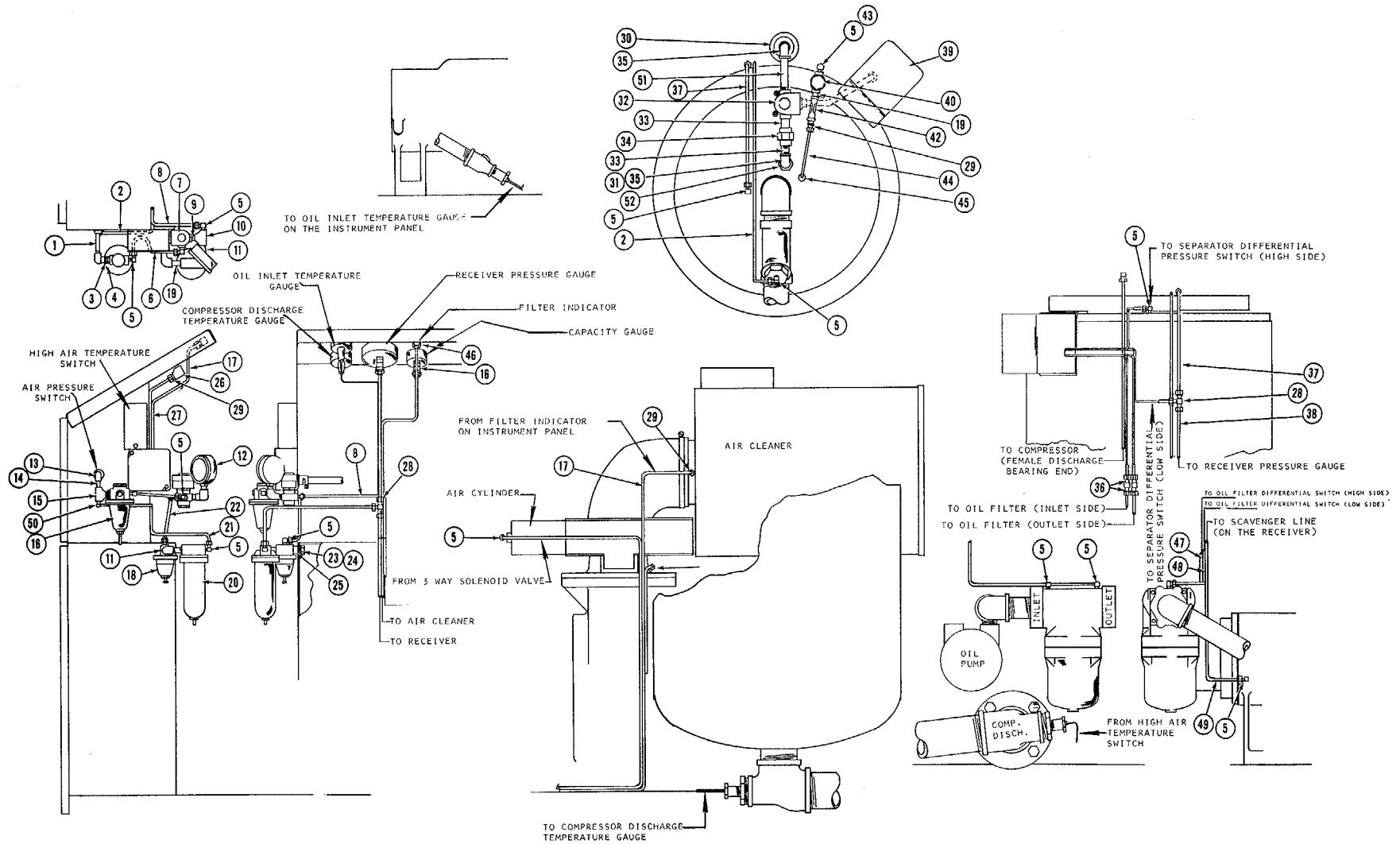
# OIL PIPING GROUP (120807)



## OIL PIPING GROUP - CONTINUED

INDEX NUMBER	PART NUMBER	DESCRIPTION	QUANTITY REQUIRED
1	2754	BUSHING - 1" NPT X 1/2" NPT REDUCING	1
2	23518	TEE - 1-1/2" X 1" X 1" NPT REDUCING	1
3	21161	NIPPLE - 1-1/2" NPT X 7-3/4" PIPE (THREADED ONE END)	1
4	23365	COUPLING - 1-1/2"	1
5	4723	NIPPLE - 1" NPT X 3" PIPE	1
6	21159	NIPPLE - 1-1/2" NPT X 10-1/4" PIPE (THREADED ONE END)	1
7	4512	ELBOW - 1-1/2" NPT X 90° STREET	3
8	22716-2	ADAPTER - OIL FILTER	2
9	22714	FILTER - OIL (SEE RECOMMENDED SPARE PARTS FOR FILTER ELEMENT)	1
10	21167	NIPPLE - 1-1/2" NPT X 3-1/4" PIPE	1
11	23241	ELBOW - 1-1/2" NPT X 1" NPT STREET	1
12	6197	NIPPLE - 1" NPT X 4" PIPE	1
13	3450	UNION - 1" PIPE	1
14	2767	NIPPLE - 1" NPT CLOSE PIPE	1
15	23721	ELBOW - 1-1/2" X 1" REDUCING	1
16	3599	NIPPLE - 1-1/2" NPT CLOSE PIPE	2
17	22793-2	STRAINER - LINE	1
18	23240	CONNECTOR - 1/2" MALE	3
19	120821	TUBE - 1-1/2" OD STEEL	1
20	120822	ELBOW - 1-1/2" NPT X 1-1/4" NPT STREET	1
21	20203	VALVE - THERMAL	1
22	2761	NIPPLE - 1-1/4" NPT CLOSE	4
23	4748	UNION - 1-1/4" PIPE	1
24	9443	TEE - 1-1/4" NPT PIPE	1
25	21289	NIPPLE - 1-1/4" NPT X 3-3/4" PIPE	1
26	120823	TEE - 1-1/4" X 1" X 1-1/4" NPT REDUCING	1
27	120464	NIPPLE - 1" X 22-1/2" PIPE	1
28	6155	VALVE - 1"	1
29	9414	PLUG - 1" NPT PIPE	1
30	5760	ELBOW - 1-1/4" NPT X 90° STREET	2
31	6498	NIPPLE - 1-1/4" NPT X 2" PIPE	1
32	6639	BUSHING - 2" NPT X 1-1/4" NPT REDUCING	1
33	4328	UNION - 1-1/4" X 90° ELBOW	1
34	6181	ELBOW - 1-1/2" NPT X 1-1/4" NPT REDUCING	1
35	21169	NIPPLE - 1-1/4" NPT X 2-1/2" PIPE	1
36	6064	BUSHING - 2" NPT X 1-1/2" NPT REDUCING	1
37	23717	ELBOW - 1/2" MALE	1
38	120824	TUBE - 1-1/2" OD STEEL	1
39	4719	PLUG - 2" NPT SQUARE HEAD PIPE	1
40	2056	SCREW - 1/2"-23 X 1" HEX HEAD CAP	2
41	2190	SCREW - 3/8"-16 X 1-1/2" HEX HEAD CAP	2
42	20105	WASHER - 3/8" BEVEL	2
43	2732	WASHER - 3/8" HELICAL SPRING LOCK	2
44	2747	NUT - 3/8"-16 HEX	2
45	120714	BRACKET - OIL FILTER	1

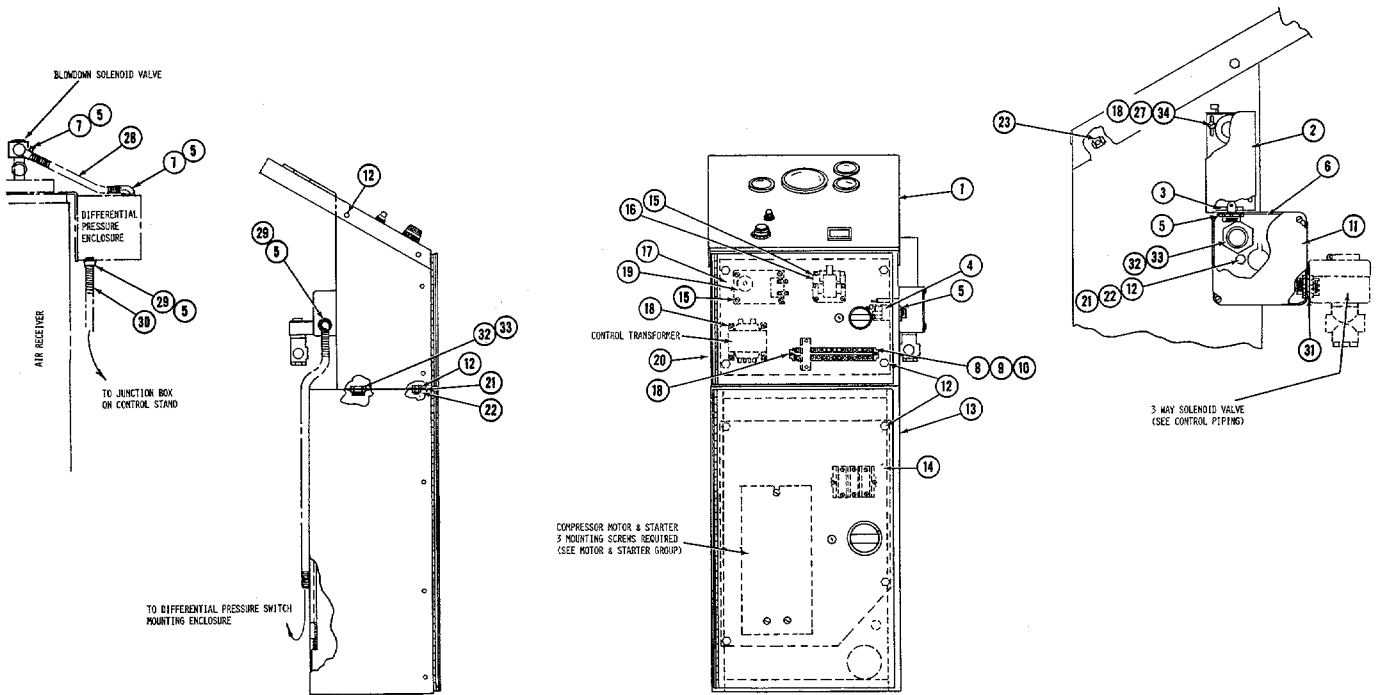
# CONTROL PIPING GROUP (120716)



CONTROL PIPING GROUP - CONTINUED

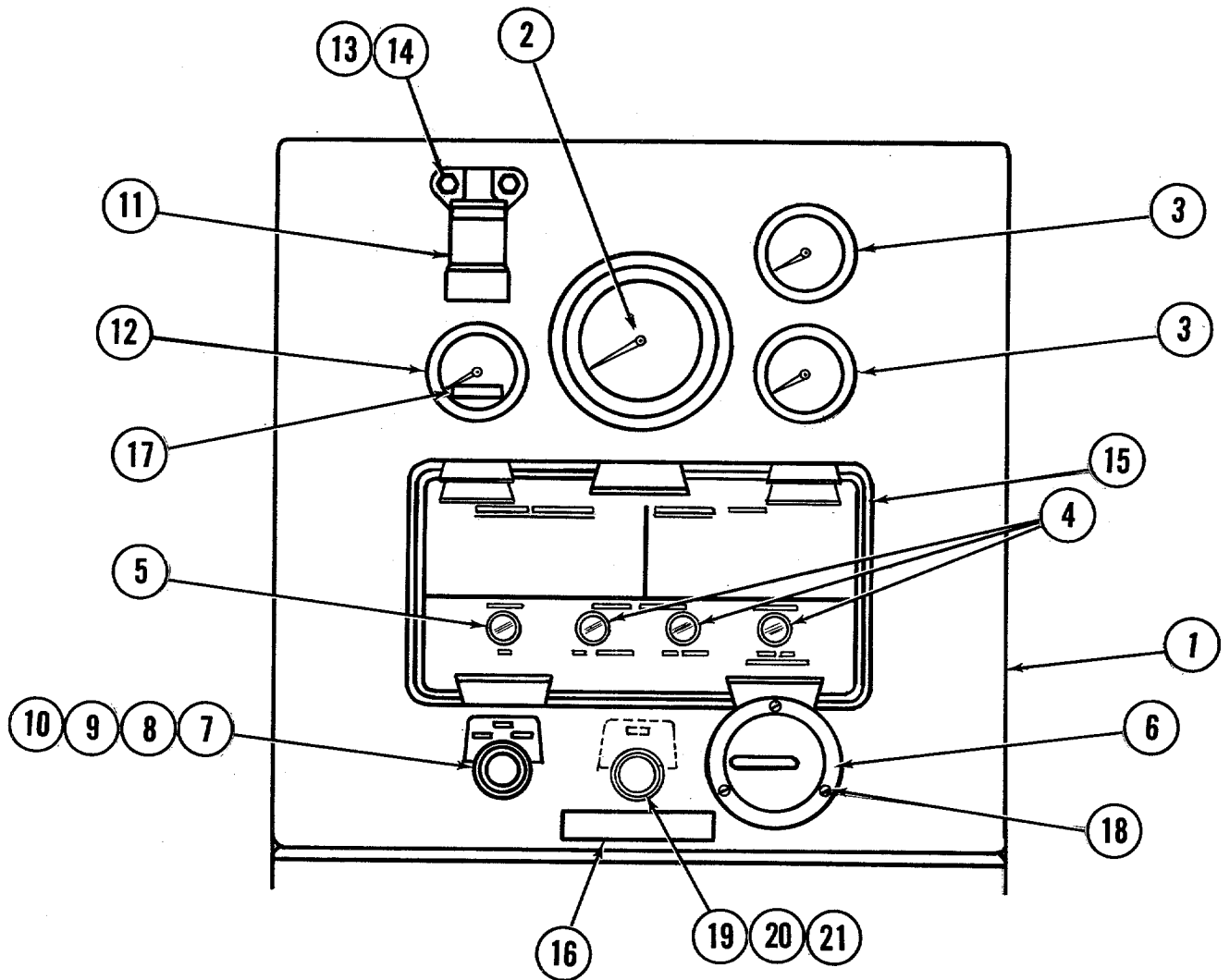
INDEX NUMBER	PART NUMBER	DESCRIPTION	QUANTITY REQUIRED
1	4712	NIPPLE - 1/8" NPT X 2-1/2" PIPE	1
2	8945-184	TUBE - 1/4" OD COPPER	1
3	3016	NIPPLE - 1/8" NPT CLOSE	1
4	4516	BUSHING - 1/4" X 1/8" REDUCER	1
5	2708	ELBOW - 1/4" MALE	14
6	8945-7	TUBE - 1/4" OD COPPER	1
7	22325	VALVE - 3 WAY SOLENOID	1
8	8945-120	TUBE - 1/4" OD COPPER	1
9	23546	NIPPLE - 1/4" NPT X 3/4" PIPE	1
10	4574	TEE - 1/4" NPT PIPE	1
11	2962	ELBOW - 1/4" NPT X 90° STREET	2
12	9232	GAUGE - PRESSURE	1
13	8225	ELBOW - 1/8" NPT X 90° PIPE	1
14	4790	NIPPLE - 1/8" NPT X 1" PIPE	1
15	4805	TEE - 1/8" NPT PIPE	1
16	23543	REGULATOR - PRESSURE	1
17	8945-136	TUBE - 1/4" OD COPPER	1
18	21969-1	REGULATOR - DIFFERENTIAL PRESSURE	1
19	2946	NIPPLE - 1/4" NPT X 1-1/2" PIPE	1
20	8770	FILTER - LINE	1
21	8945-20	TUBE - 1/4" OD COPPER	1
22	8945-6	TUBE - 1/4" OD COPPER	1
23	2510	SCREW - 1/4"-20 X 1" HEX HEAD CAP	1
24	2787	WASHER - 1/4" HELICAL SPRING LOCK	1
25	120411	SPACER - PRESSURE REGULATOR	1
26	22483	ELBOW - 1/4" FEMALE	1
27	8945-12	TUBE - 1/4" OD COPPER	1
28	4836	TEE - 1/4" NPT	2
29	2704	CONNECTOR - 1/4" MALE	2
30	21615	MUFFLER - 3/8" BLOWDOWN	1
31	2766	NIPPLE - 3/8" NPT X 2" PIPE	1
32	21316	VALVE - SOLENOID BLOWDOWN	1
33	23862	NIPPLE - 3/8" NPT X 1-1/2" PIPE	2
34	7638	UNION - 3/8" NPT PIPE	1
35	4461	ELBOW - 3/8" NPT X 90° PIPE	2
36	9424	UNION - 1/4"	5
37	8945-15	TUBE - 1/4" OD COPPER	1
38	8945-174	TUBE - 1/4" OD COPPER	1
39	23748	SWITCH - DIFFERENTIAL PRESSURE (TANDEM MOUNT)	1
40	5529	FILTER - LINE	1
42	22420	GLASS - SIGHT	1
43	5784	ORIFICE	1
44	22718-4	TUBE - SEPARATOR DRAIN	1
45	23312	CONNECTOR - TUBE	1
46	20605	ELBOW - 1/4" X 1/8" FEMALE	2
47	8945-42	TUBE - 1/4" OD COPPER	1
48	8945-48	TUBE - 1/4" OD COPPER	1
49	8945-66	TUBE - 1/4" OD COPPER	1
50	1642	ELBOW - 1/4" X 1/8" MALE	1
51	3671	NIPPLE - 3/8" NPT X 3-1/2" PIPE	1
52	4728	BUSHING - 3/4" NPT X 3/8" NPT REDUCER	1

# CONTROL CENTER GROUP



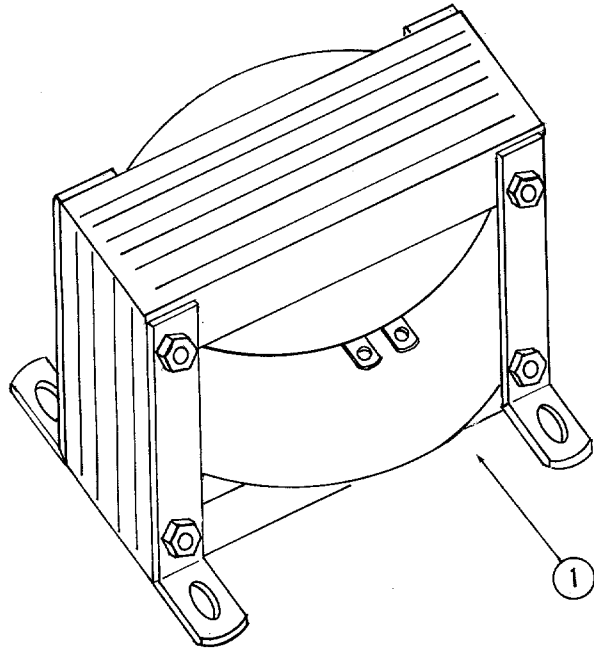
INDEX NUMBER	PART NUMBER			DESCRIPTION	QUANTITY REQUIRED
	CONTINUOUS RUN	AUTOMATIC DUAL	UNIT CONTROL		
	(22754-1)	(22754-2)	(22754-3)		
1	22768	23420	22768-1	PANEL - INSTRUMENT	1
2	9252	9252	9252	SWITCH - TEMPERATURE	1
3	23919	23919	23919	CONNECTOR - 1/2" CHASE	1
4	22454-1	22454-1	-----	SWITCH - PRESSURE	1
5	8052	8052	8052	LOCKNUT - 1/2" CONDUIT	6
6	21746	21746	21746	BOX - JUNCTION	1
7	23483	23483	23483	CONNECTOR - 90° CONDUIT ELL	2
8	90163	90163	90163	SECTION - CONTACT	14
9	90165	90165	90165	END PIECE	2
10	90164	90164	90164	BLOCK - FUSE	1
11	120502	120502	120502	COVER - JUNCTION BOX	1
12	5193	5193	5193	SCREW - 1/4"-20 X 1/2" HEX HEAD CAP	17
13	22724	22724	22724	ENCLOSURE ASSEMBLY - STARTER	1
14	22726	22726	22726	PANEL - STARTER MOUNTING	1
15	21689	21689	21689	SCREW - #8-32 X 3/8" ROUND	4
16	9530	9530	9530	CONTROL RELAY	1
17	22725	22725	22725	PANEL - CONTROL MOUNTING	1
18	2784	2784	2784	SCREW - #10-24 X 1/2" ROUND HEAD	7
19	-----	22118	-----	TIMER - RELAY	1
20	22719	22719	22719	ASSEMBLY - CONTROL, STAND	1
21	2787	2787	2787	WASHER - 1/4" HELICAL SPRING LOCK	5
22	2256	2256	2256	NUT - 1/4"-20 HEX	5
23	22456	22456	22456	NUT - 1/4"-20 SPEEDGRIP	4
NOT SHOWN	WP1540	WP1537	WP1545	DIAGRAM - WIRING	1
NOT SHOWN	23452-2	23452-1	23452-3	WIRING - WATERCOOLED	1
NOT SHOWN	23452-5	23452-4	23452-6	WIRING - AIRCOOLED	1
27	7610	7610	7610	WASHER - #10 HELICAL SPRING LOCK	1
28	22100-6	22100-6	22100-6	CONDUIT - 1/2" FLEXIBLE	1
29	22115	22115	22115	CONNECTOR - 1/2" CONDUIT	2
30	22100-156	22100-156	22100-156	CONDUIT - 1/2" FLEXIBLE	1
31	22455	22455	22455	CONNECTOR - 1/2" (BACK TO BACK)	1
32	40591	40591	40591	CONNECTOR - 3/4" CHASE	2
33	8877	8877	8877	LOCKNUT - 3/4" CONDUIT	2
34	7609	7609	7609	NUT - #10-24 HEX	1
35	120656	120656	120656	BLANK - SNAP-IN	

# INSTRUMENT PANEL GROUP



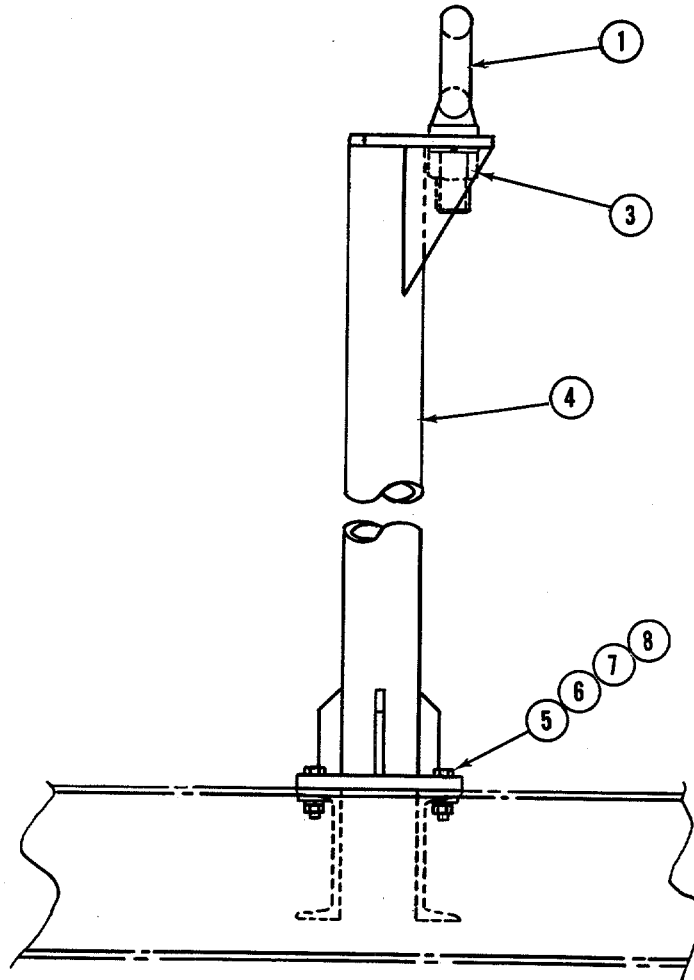
INDEX NUMBER	PART NUMBER			DESCRIPTION	QUANTITY REQUIRED
	CONTINUOUS RUN	AUTOMATIC DUAL	UNIT CONTROL		
	(22768)	(23420)	(22768-1)		
1	22720	23434	22720	PANEL - INSTRUMENT	1
2	21313	21313	21313	GAUGE - PRESSURE	1
3	21314	21314	21314	GAUGE - TEMPERATURE	2
4	21556	21556	21556	LIGHT - RED PILOT	3
5	21555	21555	21555	LIGHT - AMBER PILOT	1
6	23921	23921	23921	METER - HOUR	1
7	22443	22265	22443	SWTICH - OPERATOR SELECTOR	1
8	22198	22198	22198	CONTACT - 2 POLE	1
9	22201	-----	22201	CONTACT - 1 POLE	3
10	22445	22266	22445	PLATE - LEGEND	3
11	21312	21312	21312	INDICATOR - FILTER	1
12	22397	22397	22397	GAUGE - CAPACITY	1
13	2510	2510	2510	SCREW - 1/4"-20 X 1" HEX HEAD CAP	2
14	2256	2256	2256	NUT - 1/4"-20 HEX	2
15	23103	23103	23103	PLATE - LEGEND	1
16	120260	120260	120260	PLATE - SERIAL	1
17	120581	120581	120581	PLATE - PATENT	1
18	120326	120326	120326	SCREW - #6-32 X 5/16" MACHINE	3
19	-----	22197	-----	BUTTON - PUSH TO TEST OPERATOR	1
20	-----	23321	-----	PLATE - LEGEND TEST	1
21	-----	22201	-----	CONTACT - 1 POLE	1

# CONTROL TRANSFORMER & CONTROL CIRCUIT FUSES



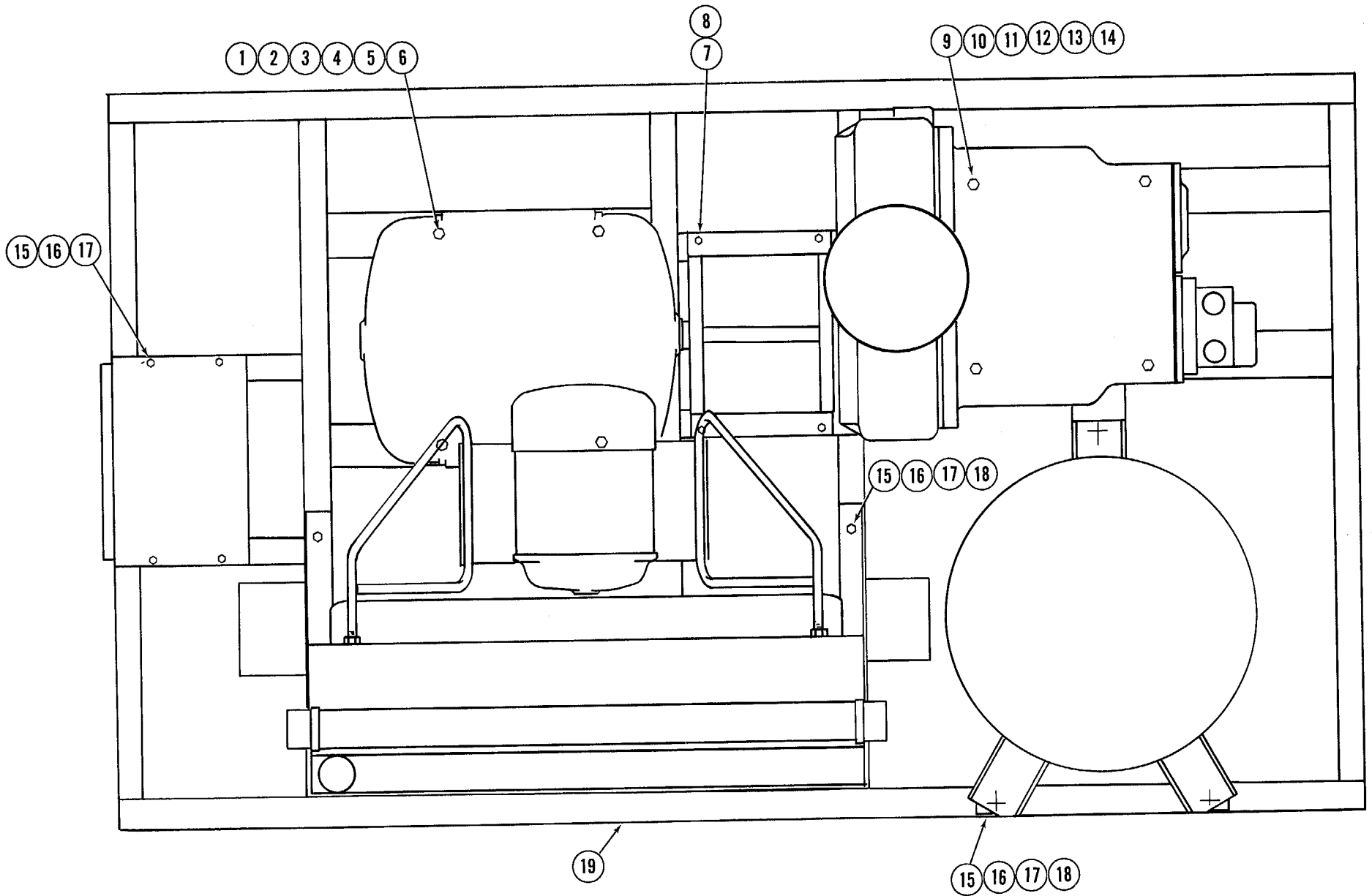
INDEX NUMBER	PART NUMBER	DESCRIPTION	QUANTITY REQUIRED
1	22428-200	TRANSFORMER - 100VA CONTROL	1
	22428-230	TRANSFORMER - 100VA CONTROL	
	22428-480	TRANSFORMER - 100VA CONTROL	
	22428-575	TRANSFORMER - 100VA CONTROL	
NOT SHOWN	22453	FUSE - 1 AMP 250V CONTROL CIRCUIT	1

# LIFTING BAIL GROUP (120583)



INDEX NUMBER	PART NUMBER	DESCRIPTION	QUANTITY REQUIRED
1	22903	BOLT - EYE	1
3	120084	NUT - 1-1/2" - 6 HEX	1
4	120582	BAIL - LIFTING	1
5	22606	SCREW - 1/2"-13 X 2" HEX HEAD CAP	4
6	20099	WASHER - 1/2" BEVEL	4
7	3186	WASHER - 1/2" HELICAL SPRING LOCK	4
8	2714	NUT - 1/2"-13 HEX	4

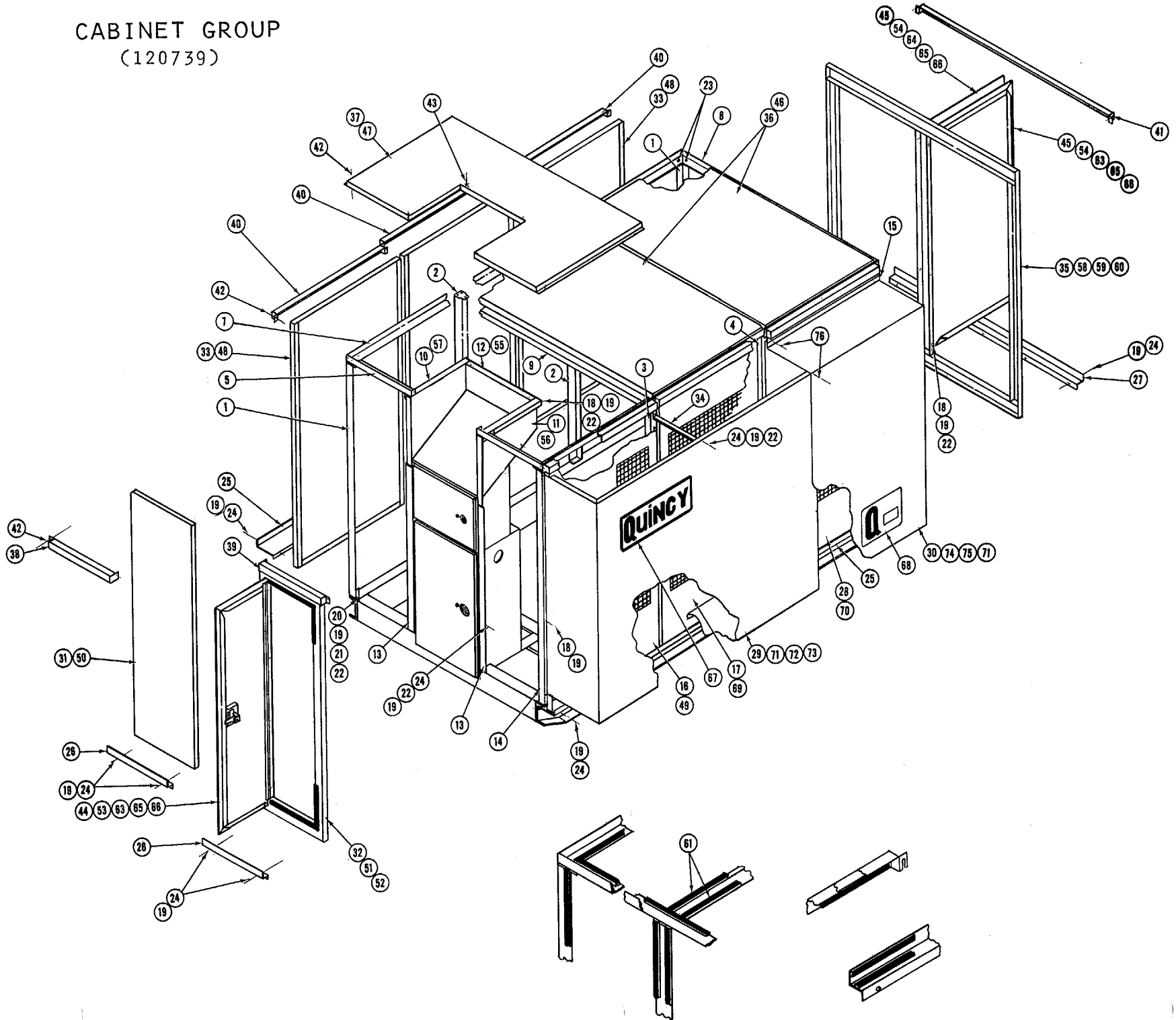
# FINAL ASSEMBLY HARDWARE GROUP (120738)



FINAL ASSEMBLY HARDWARE GROUP - CONTINUED

INDEX NUMBER	PART NUMBER	DESCRIPTION	QUANTITY REQUIRED
1	120650	SCREW - 3/4"-10 X 3-1/2" HEX HEAD CAP	4
2	4209	WASHER - 3/4" BEVEL	4
3	7607	WASHER - 3/4" HELICAL SPRING LOCK	4
4	7545	NUT - 3/4"-10 HEX	4
5	21961	SHIM - .015" THICK MOTOR	8
6	21962	SHIM - .005" THICK MOTOR	8
7	2510	SCREW - 1/4"-20 X 1" HEX HEAD CAP	4
8	2787	WASHER - 1/4" HELICAL SPRING LOCK	4
9	4240	SCREW - 5/8"-11 X 3" HEX HEAD CAP	4
10	20611	WASHER - 5/8" BEVEL	4
11	3457	WASHER - 5/8" HELICAL SPRING LOCK	4
12	3980	NUT - 5/8"-11 HEX	4
13	21963	SHIM - .015" THICK COMPRESSOR	8
14	21964	SHIM - .005" THICK COMPRESSOR	8
15	2763	SCREW - 1/2"-13 X 1-3/4" HEX HEAD CAP	7
16	20099	WASHER - 1/2" BEVEL	7
17	3186	WASHER - 1/2" HELICAL SPRING LOCK	7
18	2714	NUT - 1/2"-13 HEX	7
19	23931	BASE	1

# CABINET GROUP (120739)



## CABINET GROUP - CONTINUED

INDEX NUMBER	PART NUMBER	DESCRIPTION	QUANTITY REQUIRED
1	23614	POST - CORNER	2
2	23615	POST - SIDE	2
3	120436	POST - SIDE	1
4	120813	POST - SIDE	1
5	23618	BRACE - LEFT HAND FRONT	1
6	23619	BRACE - RIGHT HAND FRONT	1
7	23620	BRACE - TOP SIDE	2
8	23621	BRACE - TOP REAR	1
9	23622	BRACE - TOP CENTER	2
10	23623	PANEL - CONTROL STAND SIDE	1
11	23624	PANEL - CONTROL STAND SIDE	1
12	23625	PANEL - CONTROL STAND BACK	1
13	23626	BRACKET - PANEL SUPPORT	2
14	120814	POST - CORNER	1
15	120815	POST - CORNER	1
16	120816	PANEL - SIDE OUTLET	1
17	120817	PANEL - SIDE OUTLET	1
18	2138	SCREW - 1/4"-20 X 1/2" HEX HEAD CAP	29
19	2139	WASHER - 1/4" HELICAL SPRING LOCK	76
20	21402	SCREW - 1/4"-20 X 1-1/4" HEX HEAD CAP	16
21	20612	WASHER - 1/4" BEVEL	16
22	2765	NUT - 1/4"-20 HEX	43
23	21772	SCREW - 1/4"-20 X 1" FLAT HEAD	20
24	1991	SCREW - 1/4"-20 X 3/4" HEX HEAD CAP	29
25	23629	SUPPORT - SIDE PANEL	2
26	23630	SUPPORT - FRONT PANEL	2
27	23631	SUPPORT - REAR PANEL	1
28	120818	PANEL - INLET SIDE	1
29	120819	SHROUD - SILENCER	1
30	120820	SHROUD - SILENCER	1
31	23632	PANEL - LEFT FRONT	1
32	23633	PANEL - FRONT DOOR	1
33	23634	PANEL - SIDE	3
34	120809	BRACE - SHROUD TO POST	1
35	23636	PANEL - REAR DOOR	1
36	23637	PANEL - TOP	2
37	23638	PANEL - TOP	1
38	23639	CAP - LEFT FRONT PANEL	1
39	23640	CAP - RIGHT FRONT PANEL	1
40	23641	CAP - SIDE PANEL	6
41	23642	CAP - REAR PANEL	1
42	120376	SCREW - #10-32 X 1/2"	26
43	23646	SCREW - #10-32 X 1-1/2"	4
44	23643	DOOR - FRONT	1
45	23644	DOOR - REAR	2
46	23645-1	PANEL - INSULATION (USED WITH PANEL 23637)	2
47	23645-2	PANEL - INSULATION (USED WITH PANEL 23638)	1
48	23645-3	PANEL - INSULATION (USED WITH PANEL 23634)	3
49	23645-18	PANEL - INSULATION (USED WITH PANEL 120816)	1
50	23645-5	PANEL - INSULATION (USED WITH PANEL 23632)	1
51	23645-6	PANEL - INSULATION (USED WITH PANEL 23633)	2
52	23645-7	PANEL - INSULATION (USED WITH PANEL 23633)	2
53	23645-8	PANEL - INSULATION (USED WITH PANEL 23643)	1
54	23645-9	PANEL - INSULATION (USED WITH PANEL 23644)	2
55	23645-10	PANEL - INSULATION (USED WITH PANEL 23625)	1
56	23645-11	PANEL - INSULATION (USED WITH PANEL 23624)	1
57	23645-12	PANEL - INSULATION (USED WITH PANEL 23623)	1
58	23645-13	PANEL - INSULATION (USED WITH PANEL 23636)	1
59	23645-14	PANEL - INSULATION (USED WITH PANEL 23636)	2
60	23645-15	PANEL - INSULATION (USED WITH PANEL 23636)	1
61	22571	SEAL - RUBBER STRIPPING (250 FT.)	1
62	22663	ADHESIVE - INSULATION (1-1/2" GAL.)	1
63	21730	LATCH - RIGHT HAND DOOR	2
64	21731	LATCH - LEFT HAND DOOR	1
65	20436	RIVET	12
66	20437	CAP - UMBRELLA	12
67	21351	DECAL - QUINCY	2
68	120658	DECAL - Q-490	2
69	23645-19	PANEL - INSULATION (USED WITH PANEL 120817)	1
70	23645-20	PANEL - INSULATION (USED WITH PANEL 120818)	2
71	23645-22	PANEL - INSULATION (USED WITH PANEL 120819 & 120820)	2
72	23645-23	PANEL - INSULATION (USED WITH PANEL 120819)	1
73	23645-24	PANEL - INSULATION (USED WITH PANEL 120819)	1
74	23645-25	PANEL - INSULATION (USED WITH PANEL 120820)	1
75	23645-26	PANEL - INSULATION (USED WITH PANEL 120820)	1
76	23148	SCREW - SELF TAPPING	10

## RECOMMENDED SPARE PARTS

PART NUMBER	DESCRIPTION	QUANTITY
RECOMMENDED SPARE PARTS FOR ONE YEAR OPERATION.		
22705-3	SEPARATOR - OIL	2
23458-3	ELEMENT - AIR INTAKE FILTER	2
22722-1	ELEMENT - OIL FILTER	4
22722-2	SEAL - OIL FILTER HOUSING	4
22722	KIT - OIL FILTER ELEMENT (NOTE: THIS KIT CONSISTS OF 22722-1 ELEMENT AND 22722-2 SEAL)	1
21807	KIT - AIR MOTOR DIAPHRAGM REPAIR	1

## NUMERICAL PARTS INDEX

PART NUMBER	APPEARS ON		PART NUMBER	APPEARS ON		PART NUMBER	APPEARS ON		PART NUMBER	APPEARS ON		
	PAGE NO.	INDEX NO.		PAGE NO.	INDEX NO.		PAGE NO.	INDEX NO.		PAGE NO.	INDEX NO.	
1642	18	50	2765	26	22	4574	18	10	8945-12	18	27	
1707	4	14	2766	18	31	4712	18	1	8945-15	18	37	
	6	4	2767	16	14	4719	16	39	8945-20	18	21	
1920	12	39	2784	19	18	4723	16	5	8945-42	18	47	
1990	14	9	2787	4	20	4728	18	52	8945-48	18	48	
1991	1	2		6	16	4748	16	23	8945-66	18	49	
	6	17		12	37	4790	18	14	8945-120	18	8	
	26	24		18	24	4805	18	15	8945-136	18	17	
2056	6	2		19	21	4836	18	28	8945-174	18	38	
	16	40		24	8	5193	19	12	8945-184	18	2	
	4	19		18	19	5529	18	40	9099	12	24	
2138	6	22		2962	18	11	5760	4	7	9118	1	5
	26	18		3004	4	3		16	30		8	7
	26	19		3016	18	3	5784	18	43	9194	10	17
2139	14	14	3047	10	19	6064	16	36	9232	18	12	
2190	16	41		12	18	6155	16	28	9235	10	15	
	6	19	3186	4	15	6181	16	34		12	15	
	12	38		6	3	6197	16	12	9252	19	2	
	19	22		22	7	6417	13	8	9348-36	2	8	
20	14	24		17	6498	16	31	9349-36	2	8		
2510	14	5	3349	10	7	6639	16	32	9370	2	11	
	18	23		12	7	7545	24	4	9411-36	2	8	
	20	13		16	13	7599-14	2	9	9414	16	29	
	24	7		24	11	7607	24	3	9416	2	3	
2704	18	29	3599	16	16	7609	19	34	9417-30	2	5	
2708	18	5	3671	18	51	7610	19	27	9424	18	36	
2714	4	16	3780	8	6	7612	12	41	9443	16	24	
	22	8	3951	6	12	7638	18	34	9530	19	16	
	24	18	3980	14	3	7899	12	28	9643	12	20	
2716	12	40		24	12	7903-48	13	6	9839	2	4	
2721	12	30	4209	24	2	8052	19	5	9840	2	3	
2732	6	6	4240	24	9	8049	13	3	9848-30	2	5	
	8	8	4328	16	33	8118	13	1	9892	12	23	
	10	5	4398	10	18	8225	18	13	9956	2	4	
	12	5		12	19	8468	2	11	20025	6	8	
	14	10		18	35	8469	2	11	20071	1	6	
	16	43		12	21	8700-480	13	7	20099	22	6	
	2739	12	27	4463	10	14	8700-575	13	7		24	16
	2747	8	9		12	14	8701-200	13	7	20105	16	42
14		11	4512	4	6	8701-230	13	7	20203	16	21	
16		44		16	7	8770	18	20	20225	1	7	
2754	12	34	4516	18	4	8877	19	33	20346	6	1	
	16	1	4566	13	11	8921	2	2	20349	6	10	
2761	16	22	4571	10	12	8945-6	18	22	20424	8	5	
2763	24	15		12	12	8945-7	18	6	20436	26	65	

# NUMERICAL PARTS INDEX - CONTINUED

PART NUMBER	APPEARS ON		PART NUMBER	APPEARS ON		PART NUMBER	APPEARS ON		PART NUMBER	APPEARS ON	
	PAGE NO.	INDEX NO.		PAGE NO.	INDEX NO.		PAGE NO.	INDEX NO.		PAGE NO.	INDEX NO.
20437	26	66	22397	20	12	23618	26	5	90165	18	9
20586	12	26	22420	18	42	23619	26	6	120002	8	2
20605	18	46	22428-200	21	1	23620	26	7	120031	14	1
20611	24	10	22428-230	21	1	23621	26	8	120032	14	15
20612	12	36	22428-480	21	1	23622	26	9	120036	14	12
	26	21	22428-575	21	1	23623	26	10	120058	13	*
20623	6	18	22443	20	7	23624	26	11	120084	22	3
20655	6	7	22445	20	10	23625	26	12	120203-3	3	1
20656	6	21	22453	21	*	23626	26	13	120217	3	1
20658	6	23	22454-1	19	4	23629	26	25	120218	3	1
20697	12	17	22455	19	31	23630	26	26	120260	20	16
20712	6	5	22456	14	13	23631	26	27	120271	8	3
20952	8	1		19	23	23632	26	31	120272	8	4
21082	4	17	22467-480	2	10	23633	26	32	120320	12	35
21159	16	6	22467-575	2	10	23634	26	33	120326	20	18
21161	16	3	22482	4	21	23636	26	35	120376	26	42
21167	16	10	22483	18	26	23637	26	36	120411	18	25
21169	16	35	22567	1	1	23638	26	37	120436	26	3
21184	3	*	22571	26	61	23639	26	38	120444	4	13
21194	3	*	22592	1	4	23640	26	39	120445	10	13
21257	2	1	22606	22	5	23641	26	40		12	13
21289	16	25	22663	26	62	23642	26	41	120464	16	27
21312	20	11	22705-3	4	2	23643	26	44	120502	19	11
21313	20	2	22713	10	2	23644	26	45	120511	13	10
21314	20	3		12	2	23645-1	26	46	120581	20	17
21316	18	32	22714	16	9	23645-2	26	47	120582	22	4
21351	26	67	22716-2	16	8	23645-3	26	48	120640	13	9
21402	26	20	22718-4	18	44	23645-5	26	50	120642	14	2
21424	6	20	22719	19	20	23645-6	26	51	120643	14	4
21476	10	6	22720	20	1	23645-7	26	52	120644	14	7
	12	6	22724	19	13	23645-8	26	53	120645	14	8
21555	20	5	22725	19	17	23645-9	26	54	120646	14	16
21556	20	4	22726	19	14	23645-10	26	55	120647	14	6
21585	10	16	22729	3	1	23645-11	26	56	120650	24	1
	12	16	22733	3	1	23645-12	26	57	120652	2	2
21615	18	30	22749-249	1	3	23645-13	26	58	120656	19	35
21689	13	11	22749-259	1	8	23645-14	26	59	120657	2	2
	19	15	22768	19	1	23645-15	26	60	120658	26	68
21730	26	63	22768-1	19	1	23645-18	26	49	120692	2	1
21731	26	64	22777	10	4	23645-19	26	69	120714	16	45
21746	19	6		12	4	23645-20	26	70	120725	13	*
21772	26	23	22793-2	16	17	23645-22	26	71	120740	13	9
21807	6	*	22864-3	8	1	23645-23	26	72	120746	13	10
21919	12	29	22903	22	1	23645-24	26	73	120775	13	1
21922	12	33	23103	20	15	23645-25	26	74	120782	13	1
21961	24	5	23148	26	76	23645-26	26	75	120806	12	44
21962	24	6	23240	16	18	23646	26	43	120809	26	34
21963	24	13	23241	16	11	23680	4	9	120813	26	4
21964	24	14	23268-2	4	8	23717	16	37	120814	26	14
21969-1	18	18	23269	4	11	23721	16	15	120815	26	15
22033	6	*	23302	6	14	23734	10	20	120816	26	16
22070	10	11	23312	18	45	23738-3	3	1	120817	26	17
	12	11	23321	20	20	23747	4	18	120818	26	28
22100-6	19	28	23365	16	4	23748	18	39	120819	26	29
22100-36	13	4	23420	19	1	23753	3	1	120820	26	30
22100-156	19	30	23434	20	1	23754	3	1	120821	16	19
22115	13	5	23458-3	8	*	23862	18	33	120822	16	20
	19	29	23483	13	2	23843	4	5	120823	16	26
22118	19	19		19	7	23900	12	22	120824	16	38
22177	4	10	23487-230	2	10	23919	19	3	120837	10	8
22182	3	1	23489	2	4	23921	20	6		12	8
22189	3	1	23490-30	2	5	23931	24	19	120838	10	9
22197	20	19	23491	2	3	23969	10	3		12	9
22198	20	8	23493	2	7		12	3	121271	12	42
22201	20	9	23503	2	11	23971	10	10	121272	12	25
	20	21	23504	2	11		12	10	121273	12	32
22265	20	7	23518	16	2	23975	10	1	121274	12	43
22266	20	10	23538	4	4		12	1			
22270	6	11	23540	4	1	23976	12	31			
22271	6	9	23543	18	16	40591	19	32			
22272	6	13	23546	18	9	40597	2	7			
22325	18	7	23614	26	1	90163	19	8			
22335	4	12	23615	26	2	90164	18	10			

\*ASTERISK INDICATES THAT THE PART NUMBER IS NOT ILLUSTRATED ON THE PAGE INDICATED.

# NATIONWIDE SALES/SERVICE

Quincy service is always near. There are more than 135 Authorized Quincy Compressor Service Depots located throughout the United States and Canada. They stock genuine Quincy replacement parts and accessories for a wide range of Quincy compressor models. Service specialists are factory trained and experienced in the compressor field. Quincy service will help keep you in business. Call for Authorized Quincy Compressor Service.



**Colt Industries**



**Quincy Compressor  
Division**

217 Maine Street  
Quincy, Illinois 62301

A division of the Colt Industries  
Operating Corp

FORM QSI-490A  
01-20-75

PRINTED IN USA