



an EnPro Industries company

QSF-75/100

Rotary Screw Air Compressor



Parts Manual

available to
this manual
ent.

018-1A

Edition

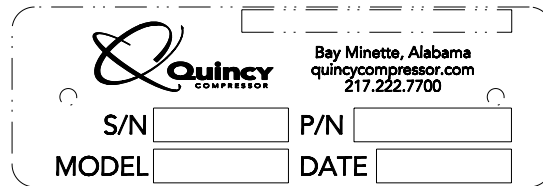
Updated: September 2007

Alphabetical Index

Airend	4-5
Air Filter	12-13
Air Piping (air-cooled)	26
Air Piping (water-cooled)	27
Base/Coupling	6-7
Cabinet (air-cooled)	36-37
Cabinet (water-cooled)	38-39
Control Piping (75 hp)	18-19
Control Piping (100 hp)	20-21
Control Schematic	42
Cooler	24-25
Decals	40-41
Discharge Piping	8
Electrical Control & Starting	14-17
Electrical Control Diagram	43
Fluid Piping	28-31
Fluid Specifications.....	2
Inlet Valve (75 hp)	9
Inlet Valve (100 hp, full voltage)	10
Inlet Valve (100 hp, wye-delta)	11
Ordering Replacement Parts	1
Recommended Spare Parts	3
Reservoir	22-23
Serial Number Identification.....	1
Shaft Seal Kit - 143084	4
Water Piping	32-35

Serial Number Identification

The serial number tag is located on the top flange of the unit frame just left of the control panel and in the upper right corner of the electrical control panel.



Ordering Replacement Parts

Prompt service can be rendered on replacement part orders if the following information is given:

1. The serial number must be given when ordering replacement parts. Part numbers should be verified per the bill of materials associated with the serial number to ensure that correct replacement parts are ordered.
2. State the exact part number needed. Do not order by index numbers, as index numbers are repeated throughout this manual and if used for ordering parts will necessitate time consuming correspondence.
3. State the exact quantity needed.
4. State the preferred type of transportation.

All replacement parts are to be ordered through an authorized distributor. Insist on Genuine Quincy Parts only! Failure to do so may void your warranty.

Fluid Specifications

Quincy Compressor® recommends that all Quincy Rotary Screw Products be filled with one of the following QuinSyn® Brand synthetic fluids:

★QuinSyn Plus™★

★QuinSyn XP®★

★QuinSyn PG™★

★QuinSyn F® (food grade)★

Synthetic fluids other than QuinSyn brand(s) may not be compatible with components used in Quincy Compressor products. If it is deemed necessary to convert a Quincy compressor or vacuum pump to a synthetic other than QuinSyn brand, please contact an authorized Quincy Compressor distributor. To locate your nearest distributor, contact Sales & Marketing in Quincy, Illinois:

Phone 217-222-7700, FAX 217-222-4138 or visit our website:

<http://www.quincycompressor.com>.

The following information will be required by the distributor when changing compressor fluid:

MODEL (CIRCLE CONFIGURATION):	HORSEPOWER		COOLING		PSI		
	QSF	75 100	A/C	W/C	100	125	150
SERIAL NO. _____ FLUID ORIGINALLY USED: _____							
FLUID NOW USED (IF CHANGED): _____ NEW FLUID TO BE USED: _____							

Additional information regarding fluid specifications can be found in the Instruction Manual shipped with your unit.

- **Fluid Analysis Kit**

Quincy Compressor offers free fluid analysis to provide early detection of excessive parts wear, fluid breakdown, or a contaminated fluid system. Order the Fluid Analysis Kit (part no. 128515) from your local authorized Quincy Compressor distributor.

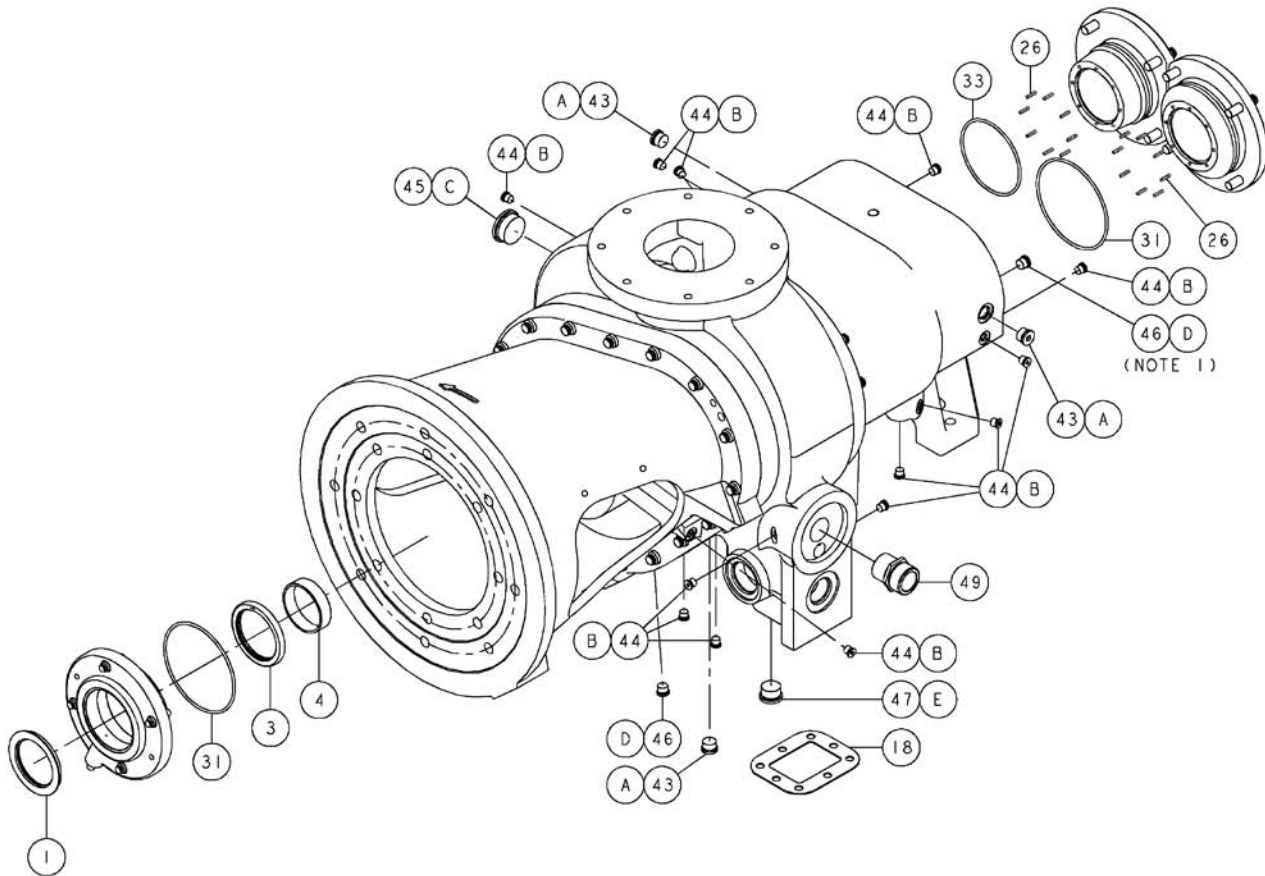
- **Fluid Requirements**

- Air-cooled - 10.50 gallons
- Water-cooled - 10.50 gallons

Recommended Spare Parts

QTY.	PART NUMBER	DESCRIPTION
1	143084	SHAFT SEAL KIT
1	23458-4	AIR FILTER ELEMENT
1	122880-232	TEMPERATURE SWITCH (230°F)
1	143754	TEMPERATURE PROBE-HIGH VIBRATION
1	129732-051	LINE FILTER KIT (INCLUDES BOWL SEAL, FILTER ELEMENT, GASKET)
1	146175-100	DIFFERENTIAL PILOT VALVE KIT (INCLUDES DIAPHRAGM ASSEMBLY & SEAT)
1	124487-003	AIR/FLUID SEPARATOR (75 HP)
1	124487-018	AIR/FLUID SEPARATOR (100 HP)
1	128691-052	MINIMUM PRESSURE CHECK VALVE KIT
1	142243	FLUID FILTER ELEMENT
3	144046-005	QUINSYN PLUS FLUID (5 GALLON CONTAINER)
3	143808-005	QUINSYN PG FLUID (5 GALLON CONTAINER)
3	142784-005	QUINSYN XP FLUID (5 GALLON CONTAINER)
3	110756-005	QUINSYN F FLUID (5 GALLON CONTAINER)
1	128515-3	FLUID ANALYSIS KIT (CONTAINS 3 INDIVIDUAL SAMPLE KITS)

<div style="display: flex; justify-content: space-between; align-items: center;">  <div style="text-align: center;">WARNING</div>  </div> <p>GUARDS MUST BE FASTENED IN PLACE BEFORE STARTING THE MACHINE AND NEVER REMOVED BEFORE DISCONNECTING AND LOCKING OUT THE MAIN POWER SUPPLY.</p>	<div style="display: flex; justify-content: space-between; align-items: center;">  <div style="text-align: center;">DANGER</div>  </div> <p>AIR IN THE PIPING FROM THIS EQUIPMENT WILL CAUSE SEVERE INJURY OR DEATH IF USED FOR BREATHING AIR OR FOOD PROCESSING (IF NON-FOOD GRADE FLUID IS USED). AIR USED FOR THESE PROCESSES MUST MEET OSHA 29CFR1910.134 OR FDA 21CFR178.3570 STANDARDS.</p>
--	---

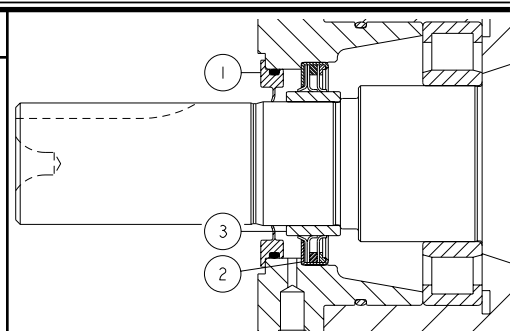


NOTES - UNLESS OTHERWISE SPECIFIED:
 1) ITEM 46 IS LOCATED ON THE BACK OF THE INLET HOUSING BENEATH THE ROTOR HOUSING.
 2) ONLY REPLACEABLE EXTERNAL ITEMS ARE SHOWN, INTERNAL AIREND COMPONENTS ARE NOT SHOWN.
 3) NOT ALL REPLACEABLE ITEMS ARE SHOWN.

Shaft Seal Kit - 143084

ITEM No.	QTY.	PART NUMBER	DESCRIPTION
1	1	129619	COMPRESSOR FLUID SLINGER
2	1	142587	SHAFT SEAL
3	1	129620	WEAR RING SEAL

REFERENCE INSTRUCTION MANUAL TO INSTALL COMPRESSOR SHAFT SEAL. TOOL KIT 140284 FOR 204 MM SHAFT SEAL AND WEAR RING INSTALLATION CAN BE PURCHASED FROM QUINCY COMPRESSOR.



Airend - 144256-***/144257-154/144258-***

ITEM No.	QTY.	PART NUMBER	DESCRIPTION
1	1	129619	COMPRESSOR FLUID SLINGER
2	1	143931	SEAL ADAPTER
3	1	142587	SHAFT SEAL
4	1	129620	WEAR RING SEAL
5	1		INLET CASING
6	1	22749-281	VITON O-RING-15.00 I.D.
7	4	124145-005	DOWEL PIN
8	1	22749-385	VITON O-RING-16.00 I.D.
9	1	143930	MOTOR ADAPTER
10	1		ROTOR BEARING
11	1		BEARING
12	1		ROTOR BEARING
13	1		ROTOR HOUSING
14	1		MALE ROTOR-204 MM
15	1		FEMALE ROTOR-204 MM
16	25	90386-N17	COUNTERBORE SCREW-1/2-13 UNC X 2.00, GRADE 8 (@ 75 FT-LBS)
17	1	123478-N16	CAP SCREW-1/2-13 UNC X 1.75, GRADE 5 (@ 55 FT-LBS)
18	1	22530	FLUID GALLERY PLATE GASKET
19	1	22528	FLUID GALLERY COVER PLATE
20	8	90386-L12	COUNTERBORE SCREW-3/8-16 UNC X 1.00, GRADE 8 (@ 35 FT-LBS)
21	1		ROTOR BEARING
22	2	129964-002	BEARING RETAINER RING
23	1		ROTOR BEARING
24	2		ROTOR BEARING
25	1		ROTOR BEARING
26	16	144066	COMPRESSION SPRING
27	1	140895	ROTOR SHIM-TEMPERED STEEL/BRASS
28	2	143922	BEARING RETAINER
29	10	90386-L14	COUNTERBORE SCREW-3/8-16 UNC X 1.25, GRADE 8 (@ 45 FT-LBS, BACK OFF TO 25 FT-LBS)
30	1	129997	ROTOR SHIM-TEMPERED STEEL/BRASS
31	2	22749-252	VITON O-RING-5.25 I.D.
32	1	143950	DISCHARGE END CAP
33	1	22749-245	VITON O-RING-4.38 I.D.
34	1	143949	DISCHARGE END CAP
35	8	90386-N15	COUNTERBORE SCREW-1/2-13 UNC X 1.50, GRADE 8 (@ 75 FT-LBS)
36	1		ROTOR BEARING-DISCHARGE END
37	1	142318	INPUT SHAFT
38	1		ROTOR BEARING-DISCHARGE END
39	1	142194	SPRAY NOZZLE CAP
40	1	110705-D04	ROLL PIN-STEEL, 1/8 X 0.38
41	1	143165-J10	PATCH SCREW-12 PT, 0.25 UNC X 0.75
42	2	23207	PLUG ORIFICE-0.12 NPT
43	3	128883-075	PIPE PLUG-3/4-16 (O-RING)
44	14	128883-044	PIPE PLUG-7/16-20 (O-RING)
45	1	128883-162	PIPE PLUG-1-5/8-12 (O-RING)
46	2	128883-056	PIPE PLUG-9/16-18 (O-RING)
47	1	128883-106	PIPE PLUG-1-1/16-12 (O-RING)
48	1	124393-004	MALE CONNECTOR-0.25 TUBE X 0.125 NPT
49	1	140537	FLUID FILTER STUD
50	1		GEARS-MATCHED SET
51	2	121160	PIPE PLUG-0.125 NPT (75 HP ONLY)

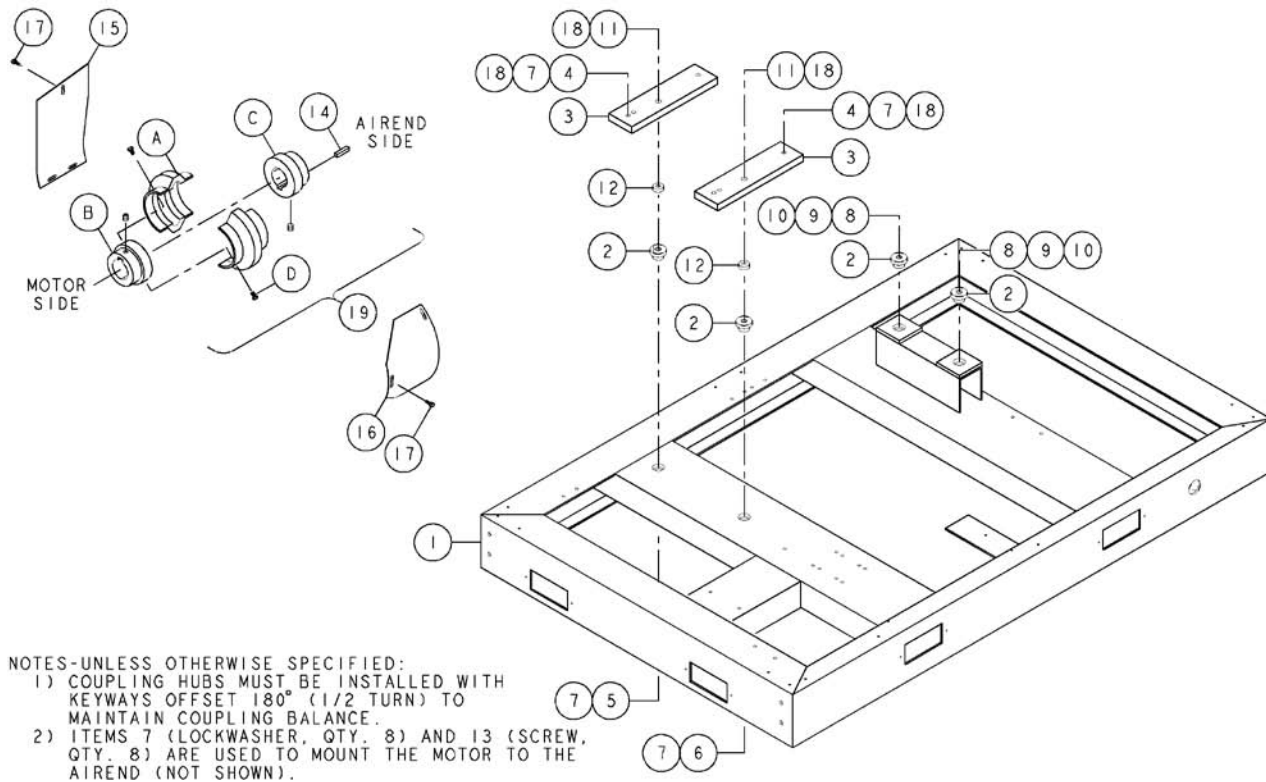
COMPONENT MAINTENANCE PARTS

A	3	140406-908	VITON O-RING-0.64 I.D.
B	14	140406-904	VITON O-RING-0.35 I.D.
C	1	140406-920	VITON O-RING-1.48 I.D.
D	2	140406-906	VITON O-RING-0.47 I.D.
E	1	140406-912	VITON O-RING-0.92 I.D.

* ITEMS NOT SOLD SEPARATELY, MUST BE ORDERED AS A COMPLETE AIREND.

@ INDICATES TORQUE VALUE IN FOOT POUNDS (LUBRICATED THREADS).

Base/Coupling (75 hp) - 142924-001



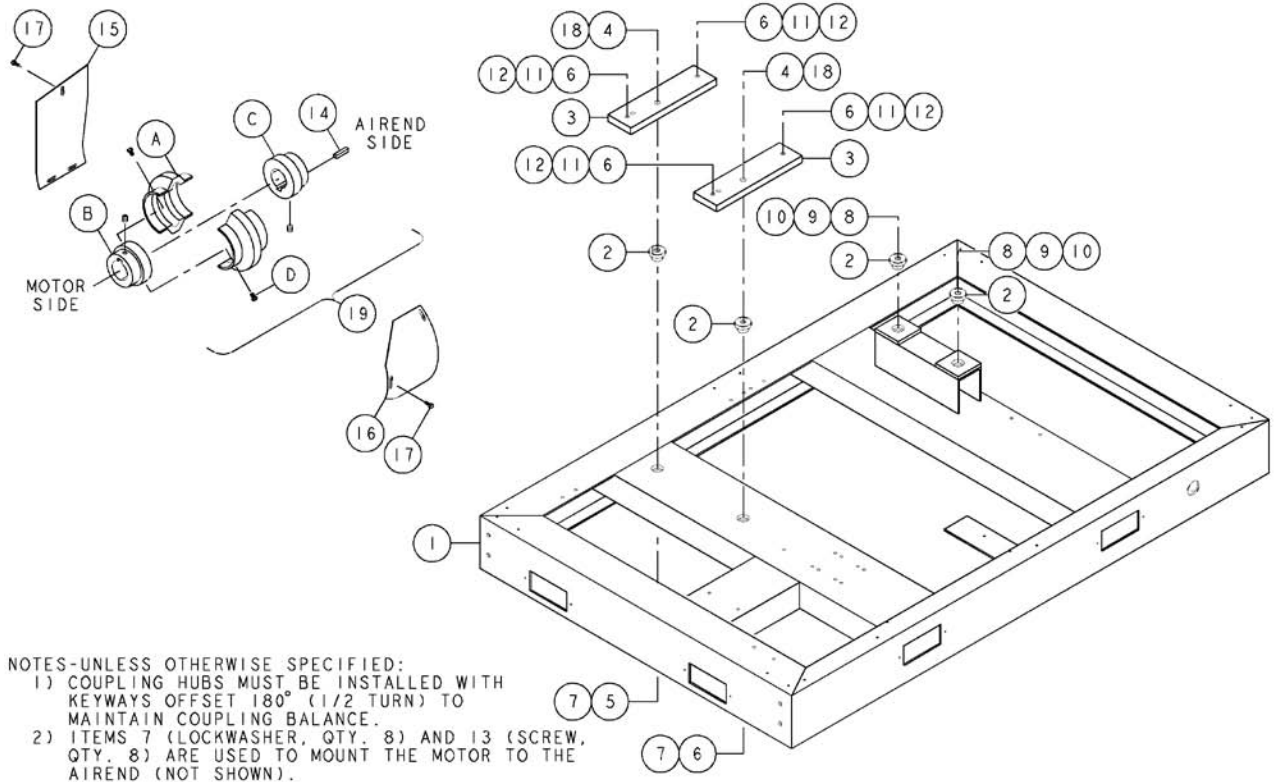
ITEM NO.	QTY.	PART NUMBER	DESCRIPTION
1	1	142279	BASE
2	4	142201-03	MOTOR MOUNT
3	2	142546	MOTOR SUPPORT BRACKET
4	4	123478-Q17	CAP SCREW-5/8-11 UNC X 2.00, GRADE 5 (@ 110 FT-LBS)
5	1	122680-20	FLAT WASHER-0.66
6	1	110428W075	FLAT WASHER-0.75
7	14	123115-10C	LOCKWASHER, 0.63
8	2	123478-N25	CAP SCREW-1/2-13 UNC X 4.00, GRADE 5 (@ 75 FT-LBS)
9	2	122680-18	FLAT WASHER-0.53
10	2	124370-N02	LOCKNUT-1/2-13 UNC
11	2	123478-Q25	CAP SCREW-5/8-11 UNC X 4.00, GRADE 5 (@110 FT-LBS)
12	2	129059-10	MOTOR SPACER
13	8	123478-Q16	CAP SCREW-5/8-11 UNC X 1.75, GRADE 5 (@ 110 FT-LBS)
14	1	160075-004	SHAFT KEY
15	1	142589	COUPLING GUARD
16	1	129673	COUPLING GUARD
17	6	110511-K10	HEX HEAD SCREW-ZINC, 5/16-18 UNC X 0.75
18	6	110428W062	FLAT WASHER-0.63
19	1	128387-145	DRIVE COUPLING

COMPONENT MAINTENANCE PARTS

A	1	128387-406	DRIVE COUPLING ELEMENT (1 PAIR OF HALVES SOLD AS A MATCHED SET ONLY)
B	1	128387-213	COUPLING HUB-MOTOR SIDE (INCLUDES SET SCREW)
C	1	128387-320	COUPLING HUB-AIREND SIDE (INCLUDES SET SCREW)
D	1	128387-502	DRIVE COUPLING BOLT KIT (@ 30 FT-LBS, DRY THREADS)

@ INDICATES TORQUE VALUE IN FOOT POUNDS (LUBRICATED THREADS).

Base/Coupling (100 hp) - 142924-002



- NOTES-UNLESS OTHERWISE SPECIFIED:
 1) COUPLING HUBS MUST BE INSTALLED WITH KEYWAYS OFFSET 180° (1/2 TURN) TO MAINTAIN COUPLING BALANCE.
 2) ITEMS 7 (LOCKWASHER, QTY. 8) AND 13 (SCREW, QTY. 8) ARE USED TO MOUNT THE MOTOR TO THE AIREND (NOT SHOWN).

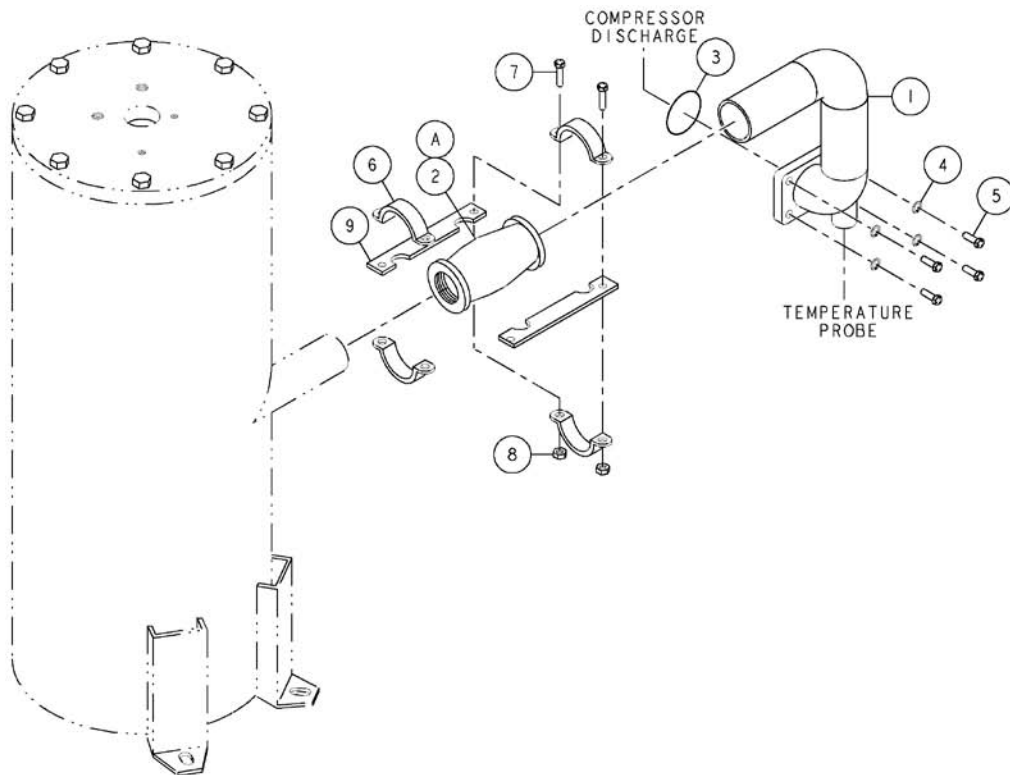
ITEM No.	QTY.	PART NUMBER	DESCRIPTION
1	1	142279	BASE
2	4	142201-04	MOTOR MOUNT
3	2	142547	MOTOR SUPPORT BRACKET
4	2	123478-Q20	CAP SCREW-5/8-11 UNC X 2.75, GRADE 5 (@ 110 FT-LBS)
5	1	122680-20	FLAT WASHER-0.66
6	5	110428W075	FLAT WASHER-0.75
7	10	123115-10C	LOCKWASHER, 0.63
8	2	123478-N25	CAP SCREW-1/2-13 UNC X 4.00, GRADE 5 (@ 75 FT-LBS)
9	2	122680-18	FLAT WASHER-0.53
10	2	124370-N02	LOCKNUT-1/2-13 UNC
11	4	123478-R19	CAP SCREW-3/4-10 UNC X 2.50, GRADE 5 (@ 200 FT-LBS)
12	4	123115-12C	LOCKWASHER, 0.75
13	8	123478-Q16	CAP SCREW-5/8-11 UNC X 1.75, GRADE 5 (@ 110 FT-LBS)
14	1	160075-004	SHAFT KEY
15	1	142589	COUPLING GUARD
16	1	129673	COUPLING GUARD
17	6	110511-K10	HEX HEAD SCREW-ZINC, 5/16-18 UNC X 0.75
18	2	110428W062	FLAT WASHER-0.63
19	1	128387-143	DRIVE COUPLING

COMPONENT MAINTENANCE PARTS

A	1	128387-406	DRIVE COUPLING ELEMENT (1 PAIR OF HALVES SOLD AS A MATCHED SET ONLY)
B	1	128387-207	COUPLING HUB-MOTOR SIDE (INCLUDES SET SCREW)
C	1	128387-320	COUPLING HUB-AIREND SIDE (INCLUDES SET SCREW)
D	1	128387-502	DRIVE COUPLING BOLT KIT (@ 30 FT-LBS, DRY THREADS)

@ INDICATES TORQUE VALUE IN FOOT POUNDS (LUBRICATED THREADS).

Discharge Piping - 142926-001

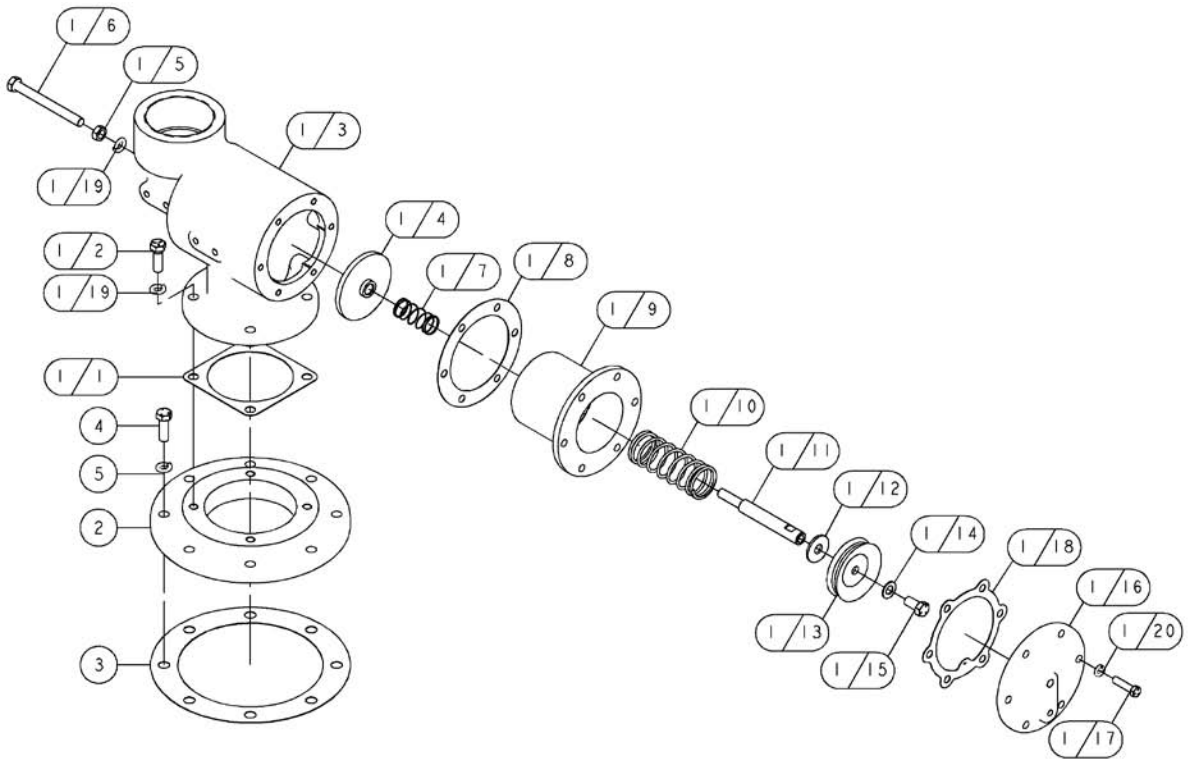


ITEM No.	QTY.	PART NUMBER	DESCRIPTION
1	1	142321	DISCHARGE MANIFOLD
2	1	140509S250	FLEXIBLE COUPLING
3	1	22749-333	VITON O-RING-2.50I.D.
4	4	123115-08C	LOCKWASHER, 0.50
5	4	123478-N15	CAP SCREW-1/2-13 UNC X 1.50, GRADE 5 (@ 55 FT-LBS)
6	2	124450G002	PIPE CLAMP-GALVANIZED, 2.50
7	4	123478-N17	CAP SCREW-1/2-13 UNC X 2.00, GRADE 5 (@ 55 FT-LBS)
8	4	124370-N02	LOCKNUT-1/2-13 UNC
9	2	124451-002	TENSION BAR

COMPONENT MAINTENANCE PARTS

A	2	140509G250	COUPLING GASKET
---	---	------------	-----------------

@INDICATES TORQUE VALUE IN FOOT POUNDS (LUBRICATED THREADS).

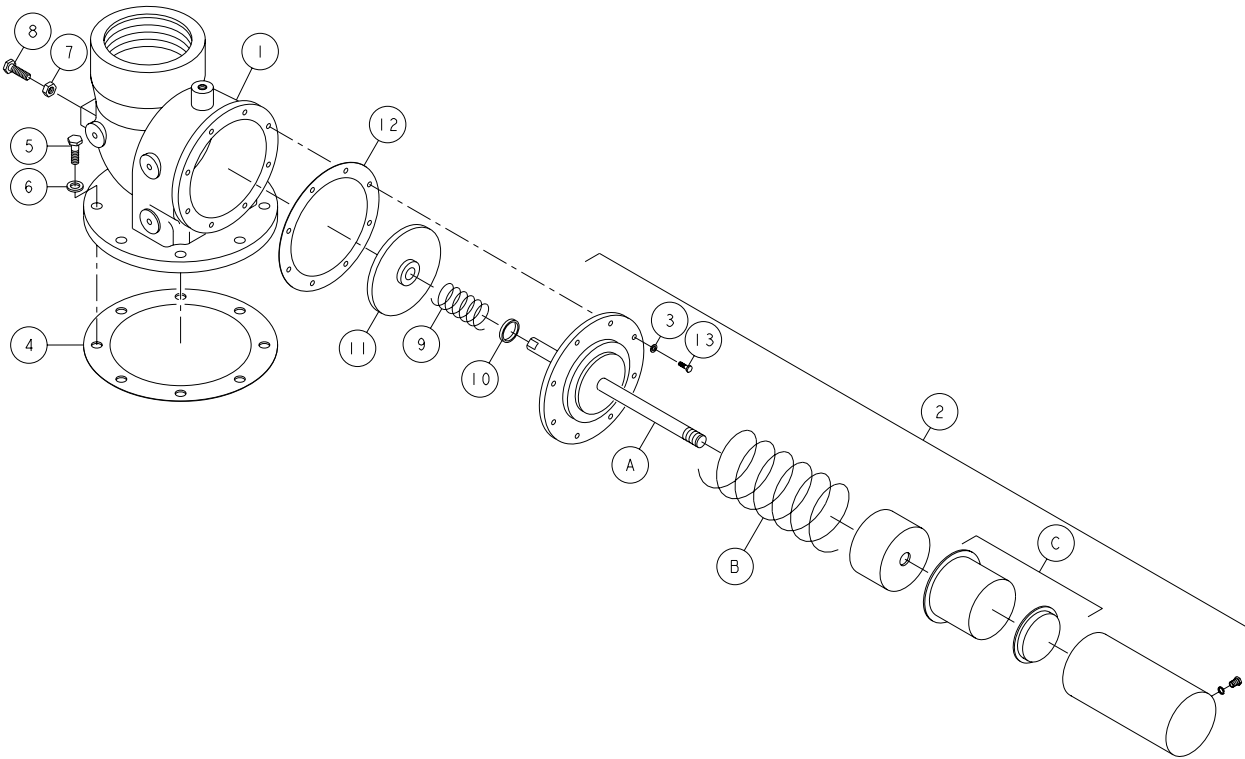


NOTE-UNLESS OTHERWISE SPECIFIED:
 1) APPLY LOCTITE 609 TO ITEM 1/15 AT ASSEMBLY WITH ITEM 1/11.

ITEM No.	QTY.	PART NUMBER	DESCRIPTION
1/1	1	141608	INLET VALVE GASKET
1/2	4	142578-N15	CAP SCREW-ZINC, 1/2-13 UNC X 1.50, GRADE 5 (@ 23 FT-LBS)
1/3	1	126646	INLET VALVE HOUSING
1/4	1	122995	INLET VALVE PLATE ASSEMBLY (INCLUDES BUSHING-P/N 23681)
1/5	1	124368-N02	JAM NUT-1/2-13 UNC
1/6	1	128720-001	HEX HEAD SCREW-1/2-13 UNC X 5.00, GRADE 5 (@ 55 FT-LBS)
1/7	1	123092	SPRING
1/8	1	123549-003	GASKET-6.50 O.D. X 4.56 I.D.
1/9	1	126644	INLET VALVE CYLINDER (INCLUDES BUSHING-P/N 22880)
1/10	1	126649	INLET VALVE SPRING
1/11	1	126648	INLET VALVE SHAFT
1/12	1	126647	FLAT WASHER-0.56
1/13	1	126460-350	PISTON CUP
1/14	1	1478-1	FLAT WASHER-0.52
1/15	1	123478-N12	CAP SCREW-1/2-13 UNC X 1.00, GRADE 5 (@ 55 FT-LBS)
1/16	1	126645	INLET VALVE COVER PLATE
1/17	6	123478-L15	CAP SCREW-3/8-16 UNC X 1.50, GRADE 5 (@ 23 FT-LBS)
1/18	1	141258	INLET VALVE GASKET
1/19	5	123115-08C	LOCKWASHER, 0.50
1/20	6	123115-06C	LOCKWASHER, 0.38
2	1	128307	INLET VALVE ADAPTER PLATE
3	1	123549-002	GASKET-11.00 O.D. X 8.00 I.D.
4	8	123478-N15	CAP SCREW-1/2-13 UNC X 1.50, GRADE 5 (@ 55 FT-LBS)
5	8	123115-08C	LOCKWASHER, 0.50

@ INDICATES TORQUE VALUE IN FOOT POUNDS (LUBRICATED THREADS).

Inlet Valve (100 hp, full voltage) - 125323-005



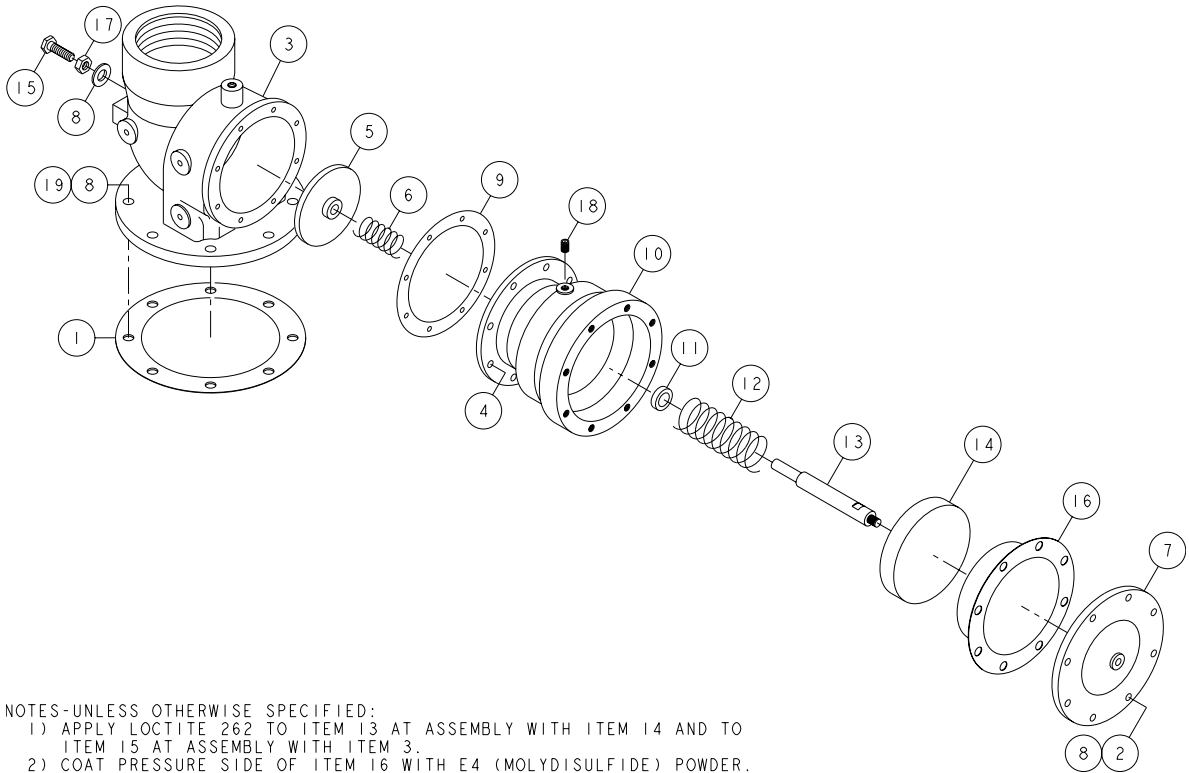
ITEM No.	QTY.	PART NUMBER	DESCRIPTION
1	1	143057-005	INLET VALVE HOUSING
2	1	141075	AIR CYLINDER ASSEMBLY
3	8	123115-06C	LOCKWASHER, 0.38
4	1	123549-002	GASKET-11.00 O.D. X 8.00 I.D.
5	8	123478-N15	CAP SCREW-1/2-13 UNC X 1.50, GRADE 5 (@ 55 FT-LBS)
6	8	123115-08C	LOCKWASHER, 0.50
7	1	124368-N02	JAM NUT-1/2-13 UNC
8	1	128720-001	HEX HEAD SCREW-1/2-13 UNC X 5.00, GRADE 5 (@ 55 FT-LBS)
9	1	122379	SPRING
10	1	123157-018	BUNA-N O-RING-0.75 I.D.
11	1	122372-2	INLET VALVE PLATE
12	1	122377	GASKET
13	8	123478-L12	CAP SCREW-3/8-16 UNC X 1.00, GRADE 5 (@ 23 FT-LBS)

COMPONENT MAINTENANCE PARTS

A	1	122375-050	HEAD ASSEMBLY KIT
B	1	124970	SPRING
C	1	123467	SPRING RETURN DIAPHRAGM KIT

@ INDICATES TORQUE VALUE IN FOOT POUNDS (LUBRICATED THREADS).

Inlet Valve (100 hp, wye-delta) - 143073-1

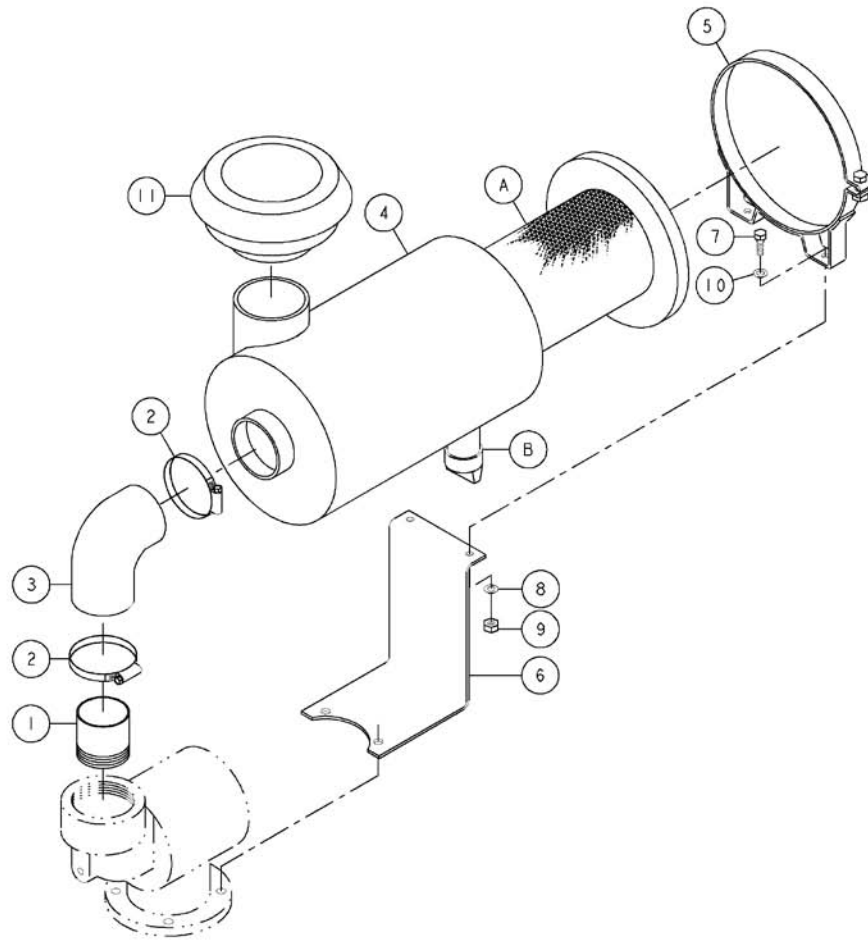


NOTES-UNLESS OTHERWISE SPECIFIED:
 1) APPLY LOCTITE 262 TO ITEM 13 AT ASSEMBLY WITH ITEM 14 AND TO ITEM 15 AT ASSEMBLY WITH ITEM 3.
 2) COAT PRESSURE SIDE OF ITEM 16 WITH E4 (MOLYDISULFIDE) POWDER.

ITEM NO.	QTY.	PART NUMBER	DESCRIPTION
1	1	123549-002	GASKET-11.00 O.D. X 8.00 I.D.
2	9	123478-N15	CAP SCREW-1/2-13 UNC X 1.50, GRADE 5 (@ 55 FT-LBS)
3	1	143057-005	INLET VALVE HOUSING
4	8	123478-L12	CAP SCREW-3/8-16 UNC X 1.00, GRADE 5 (@ 23 FT-LBS)
5	1	122372-3	INLET VALVE PLATE ASSEMBLY (INCLUDES BUSHING-P/N 129139)
6	1	128713	COMPRESSION SPRING
7	1	128716	INLET VALVE COVER PLATE
8	17	123115-08Z	LOCKWASHER-ZINC, 0.50
9	1	122377	GASKET
10	1	128715	INLET VALVE CYLINDER ASSEMBLY (INCLUDES BUSHING-P/N 128719)
11	1	128708	INLET VALVE SHAFT SEAL
12	1	128714-1	COMPRESSION SPRING
13	1	128712-1	INLET VALVE SHAFT
14	1	128717	INLET VALVE PISTON
15	1	128720-001	HEX HEAD SCREW-1/2-13 UNC X 5.00, GRADE 5 (@ 55 FT-LBS)
16	1	128711	INLET VALVE DIAPHRAGM
17	1	124368-N02	JAM NUT-1/2-13 UNC
18	1	2719	PIPE PLUG-HEX SOCKET, 0.25 NPT
19	7	123478-N16	CAP SCREW-1/2-13 UNC X 1.75, GRADE 5 (@ 55 FT-LBS)

@ INDICATES TORQUE VALUE IN FOOT POUNDS (LUBRICATED THREADS).

Air Filter (75 hp) - 143260-003/-005



NOTES-UNLESS OTHERWISE SPECIFIED:
 1) UNITS WITH CABINET DO NOT REQUIRE ITEM 11.

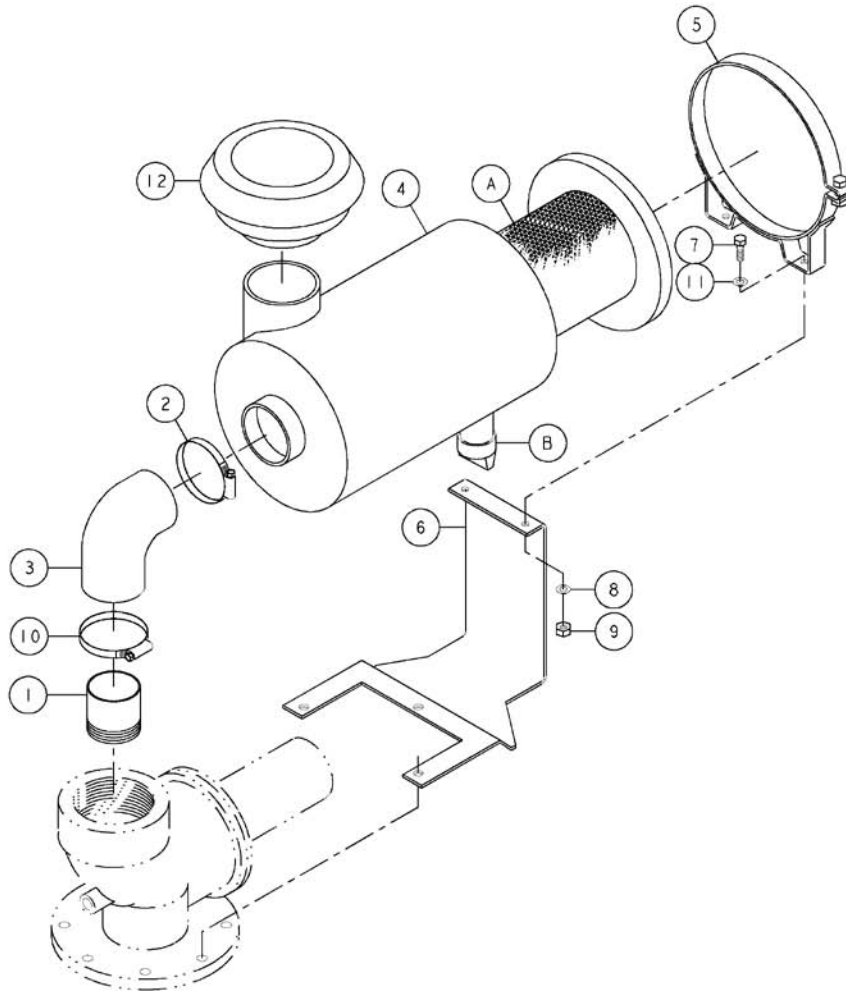
ITEM No.	QTY.	PART NUMBER	DESCRIPTION
1	1	126039-017	PIPE NIPPLE-3.50 NPT X 3.00, TOE
2	2	110423-072	HOSE CLAMP
3	1	20418	RUBBER ELBOW
4	1	22864-4	AIR FILTER
5	1	120045	AIR FILTER MOUNTING BAND
6	1	126859	AIR FILTER BRACKET
7	2	123478-L12	CAP SCREW-3/8-16 UNC X 1.00, GRADE 5 (@ 23 FT-LBS)
8	2	123115-06C	LOCKWASHER, 0.38
9	2	124364-L02	HEX NUT-3/8-16 UNC
10	2	110428W038	FLAT WASHER-0.38
11	1	20187	AIR FILTER HOOD (UNITS LESS CABINET ONLY)

COMPONENT MAINTENANCE PARTS

A	1	23458-4	AIR FILTER ELEMENT
B	1	121291	DUST EVACUATOR VALVE

@ INDICATES TORQUE VALUE IN FOOT POUNDS (LUBRICATED THREADS).

Air Filter (100 hp) - 143260-004/-006



NOTES-UNLESS OTHERWISE SPECIFIED:
 1) UNITS WITH CABINET DO NOT REQUIRE ITEM 12.

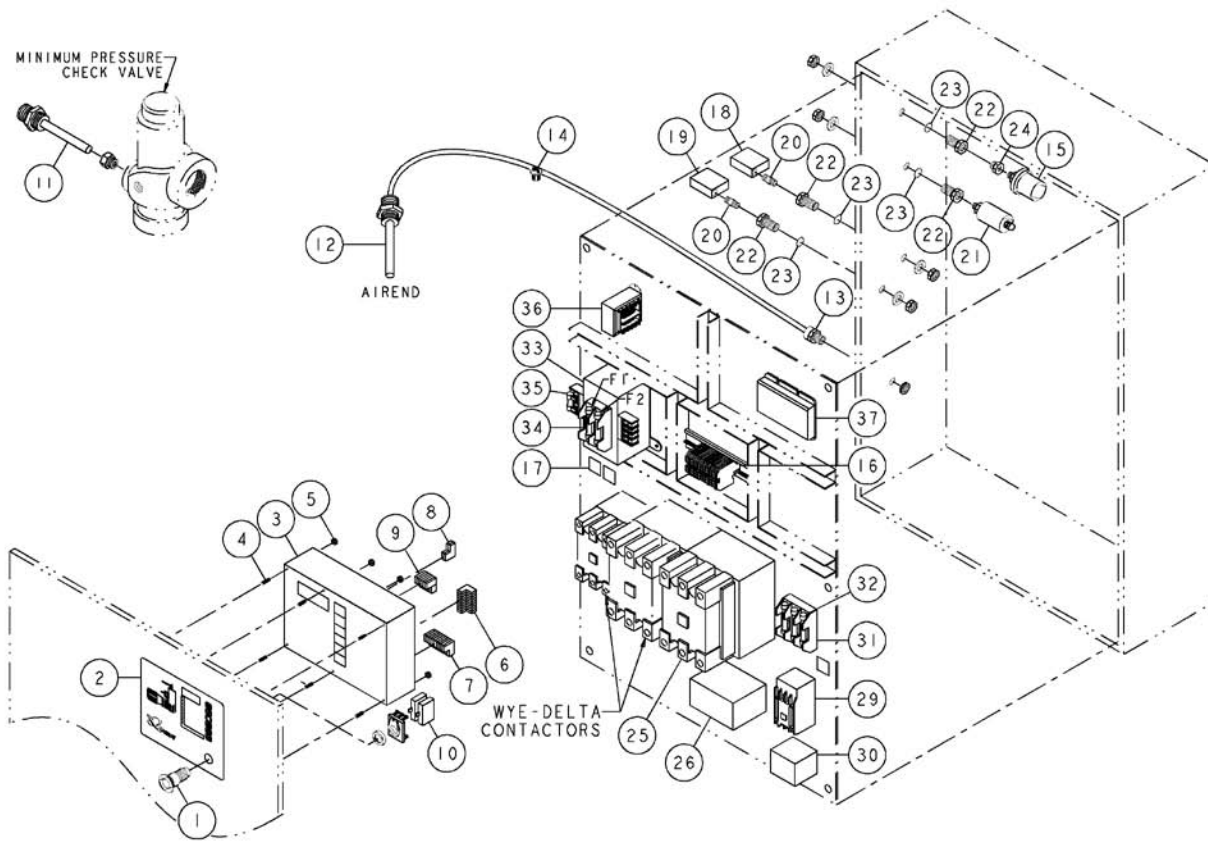
ITEM No.	QTY.	PART NUMBER	DESCRIPTION
1	1	128791-017	PIPE NIPPLE-5.00 NPT X 3.00, TOE
2	1	110423-072	HOSE CLAMP
3	1	122934	RUBBER ELBOW-5.50 X 4.00 X 90°
4	1	22864-4	AIR FILTER
5	1	120045	AIR FILTER MOUNTING BAND
6	1	142987	AIR FILTER BRACKET
7	2	123478-L12	CAP SCREW-3/8-16 UNC X 1.00, GRADE 5 (@ 23 FT-LBS)
8	2	123115-06C	LOCKWASHER, 0.38
9	2	124364-L02	HEX NUT-3/8-16 UNC
10	1	110423-096	HOSE CLAMP
11	2	110428W038	FLAT WASHER-0.38
12	1	20187	AIR FILTER HOOD (UNITS LESS CABINET ONLY)

COMPONENT MAINTENANCE PARTS

A	1	23458-4	AIR FILTER ELEMENT
B	1	121291	DUST EVACUATOR VALVE

@ INDICATES TORQUE VALUE IN FOOT POUNDS (LUBRICATED THREADS).

Electrical Control & Starting



NOTES-UNLESS OTHERWISE SPECIFIED:

- 1) ITEM 27 (CURRENT TRANSFORMER) NOT SHOWN. USED WITH 143780-01 & -02 OVERLOADS ONLY.
- 2) ITEM 28 (MECHANICAL INTERLOCK) NOT SHOWN. USED ON WYE-DELTA ONLY.
- 3) ITEM 37 (PHASE MONITOR) IS OPTIONAL.
- 3) ITEM A (ENCLOSURE LATCH) IS NOT SHOWN.

Electrical Control & Starting

ITEM NO.	QTY.	PART NUMBER	DESCRIPTION
1	1	129863-01	STOP BUTTON
2	1	142081	CONTROLLER DECAL-QSF ELECTRONIC CONTROL
3	1	142131	ELECTRONIC CONTROLLER
4	6	160048-F09	SET SCREW-# 8 UNF X 0.63
5	6	124365-F02	HEX NUT-# 8 UNF
6	1	142659-03	HEADER PLUG-9 PIN
7	1	142659-04	HEADER PLUG-10 PIN
8	1	142659-01	HEADER PLUG-2 PIN
9	1	142659-02	HEADER PLUG-6 PIN
10	1	129864-02	CONTACT BLOCK (NORMALLY CLOSED)
11	1	122880-232	TEMPERATURE SWITCH (230°F)
12	1	143754	TEMPERATURE PROBE-HIGH VIBRATION
13	1	142096-04	STRAIN RELIEF CONNECTOR
14	4	142388	SELF LOCK CABLE TIE
15	1	129597-001	VACUUM SWITCH
16	1	142334-05	TERMINAL BLOCK ASSEMBLY
17	1	143470	ELECTRICAL DECALS SHEET
18	1	129596-001	DIFFERENTIAL PRESSURE SWITCH (10#)
19	1	129596-002	DIFFERENTIAL PRESSURE SWITCH (19#)
20	2	142125-2	EXTRA STRONG BRASS NIPPLE-0.25 NPT X 1.25
21	1	142133	ELECTRONIC CONTROL TRANSDUCER
22	4	129203-003	BULKHEAD COUPLING
23	4	123157-117	BUNA-N O-RING-0.81 I.D.
24	1	143046-008	PIPE BUSHING-0.25 NPT X 0.12 NPT
25	*	(PAGE 16)	DRIVE MOTOR CONTACTOR
26	1	(PAGE 16)	DRIVE MOTOR OVERLOAD RELAY
27	3	143781-300**	CURRENT TRANSFORMER
	3	143781-600***	CURRENT TRANSFORMER
28	1	144573-01	MECHANICAL INTERLOCK (Y-D, 380 THRU 575 VOLT)
	1	144573-03	MECHANICAL INTERLOCK (Y-D, 200/230 VOLT)
29	1	(PAGE 17)	FAN MOTOR CONTACTOR
30	1	(PAGE 17)	FAN MOTOR OVERLOAD RELAY
31	1	126263-004	FAN MOTOR FUSEBLOCK
32	3	(PAGE 17)	FAN MOTOR FUSES
33	1	(PAGE 17)	TRANSFORMER
34	2	(PAGE 17)	TRANSFORMER FUSE (PRIMARY)
35	1	128622-400	TRANSFORMER FUSE (SECONDARY)
36	1	143674	24 VOLT TRANSFORMER

OPTIONAL:

37	1	129200-001	PHASE MONITOR (200-240 VOLT)
	1	129200-003	PHASE MONITOR (360-430 VOLT)
	1	129200-002	PHASE MONITOR (400-480 VOLT)
	1	128422-003	PHASE MONITOR (525-625 VOLT)
	1	126263-004	PHASE MONITOR FUSEBLOCK
	3	128858-010	PHASE MONITOR FUSE

COMPONENT MAINTENANCE PARTS

A	1	141784-001	ELECTRICAL ENCLOSURE LATCH (NEMA 1)
	1	141784-002	ELECTRICAL ENCLOSURE LATCH (NEMA 4 & 12)

* SEE TABULATION ON PAGE INDICATED FOR QUANTITIES.

** USED ONLY WITH 143780-01 DRIVE MOTOR CONTACTOR.

*** USED ONLY WITH 143780-02 DRIVE MOTOR CONTACTOR.

Electrical Control & Starting

ITEM 25 DRIVE MOTOR CONTACTOR

FULL VOLTAGE

VOLTAGE	QTY.	75 HP	100 HP
200	1	144570-15	N/A
230	1	144570-14	144570-16
380	1	144570-12	144570-13
415	1	144570-11	144570-12
460	1	144570-11	144570-12
575	1	144570-09	144570-11

WYE-DELTA

VOLTAGE	QTY.	75 HP	QTY.	100 HP
200	2	144570-12		N/A
	1	144570-11		
230	2	144570-12	2	144570-13
	1	144570-11	1	144570-11
380	2	144570-09	2	144570-10
	1	144570-08	1	144570-08
415	3	144570-08	2	144570-09
			1	144570-08
460	3	144570-08	2	144570-10
			1	144570-08
575	3	144570-08	2	144570-09
			1	144570-08

ITEM 26 DRIVE MOTOR OVERLOAD RELAY

FULL VOLTAGE

VOLTAGE	QTY.	75 HP	100 HP
200	1	143780-01	N/A
230	1	143780-01	143780-01
380	1	143780-08	143780-01
415	1	143780-08	143780-01
460	1	143780-07	143780-01
575	1	143780-06	143780-08

WYE-DELTA

VOLTAGE	QTY.	75 HP	100 HP
200	1	143780-08	N/A
230	1	143780-07	143780-01
380	1	143780-06	143780-06
415	1	143780-05	143780-06
460	1	143780-05	143780-06
575	1	143780-04	143780-05

Electrical Control & Starting

ITEM 29		FAN MOTOR CONTACTOR	
VOLTAGE	QTY.	75 HP	100 HP
200	1	144570-02	N/A
230	1	144570-02	144570-02
380	1	144570-02	144570-01
415	1	144570-01	144570-01
460	1	144570-01	144570-01
575	1	144570-01	144570-01

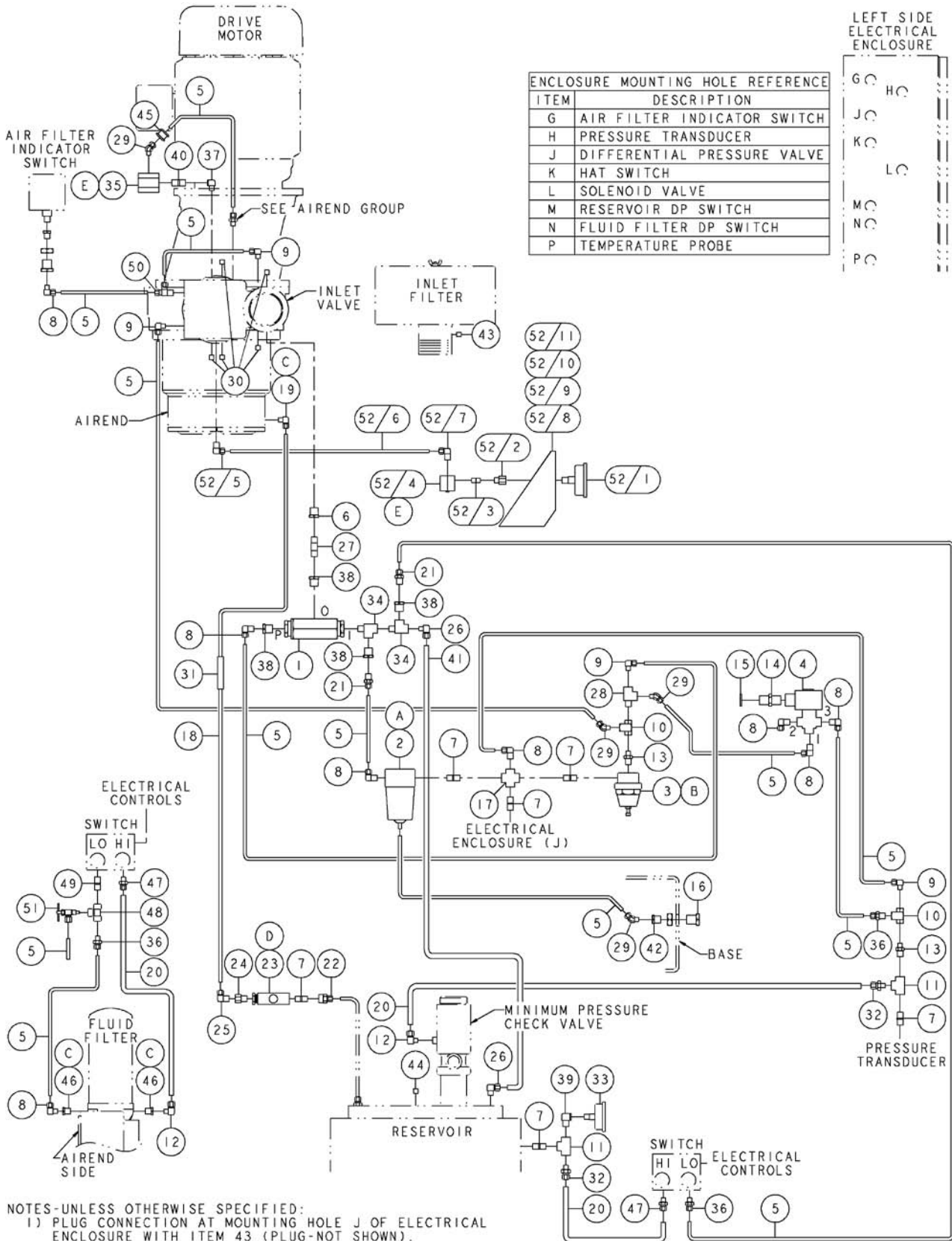
ITEM 30		FAN MOTOR OVERLOAD RELAY	
VOLTAGE	QTY.	75 HP	100 HP
200	1	143780-14	N/A
230	1	143780-13	143780-13
380	1	143780-13	143780-13
415	1	143780-13	143780-13
460	1	143780-13	143780-13
575	1	143780-13	143780-13

ITEM 32		FAN MOTOR FUSES	
VOLTAGE	QTY.		
200	3	128857-035	
230	3	128857-025	
380	3	128857-021 (LESS CABINET)	
	3	128857-025 (WITH CABINET)	
415	3	128857-021 (LESS CABINET)	
	3	128857-025 (WITH CABINET)	
460	3	128857-020	
575	3	128857-009	

ITEM 33		TRANSFORMER	
VOLTAGE	QTY.		
200	1	128413-351	
230	1	128413-353	
380	1	128413-356	
415	1	128413-354	
460	1	128413-353	
575	1	128413-355	

ITEM 34		TRANSFORMER FUSES (PRIMARY)	
VOLTAGE	QTY.		
200	2	128857-006	
230	2	128857-005	
380	2	128857-004	
415	2	128857-004	
460	2	128857-030	
575	2	128857-011	

Control Piping (75 hp) - 143383-064/-065/-066/-067

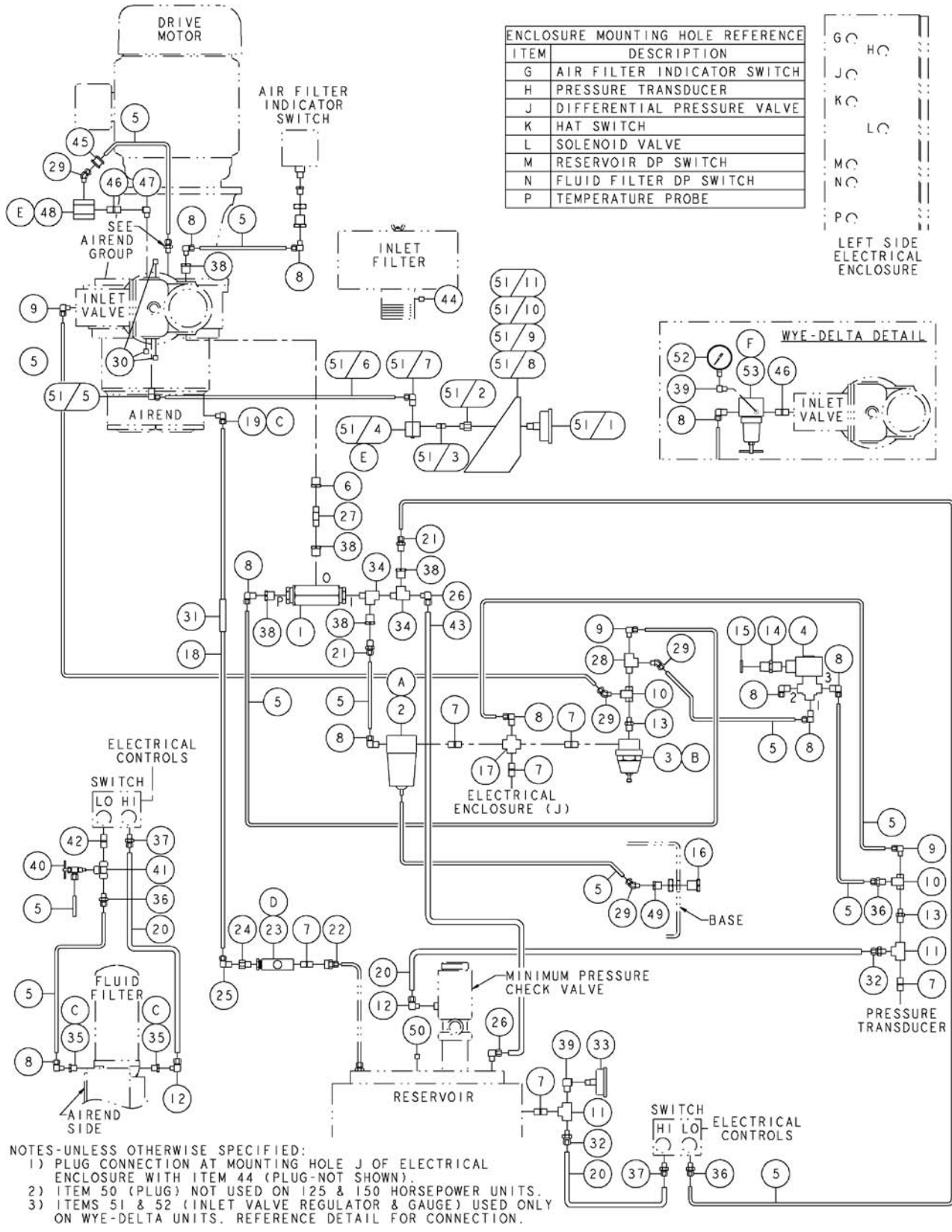


Control Piping (75 hp) - 143383-064/-065/-066/-067

ITEM NO.	QTY.	PART NUMBER	DESCRIPTION
1	1	128826-1	BLOWDOWN VALVE
2	1	129732	AUTOMATIC LINE FILTER
3	1	146175-2	DIFFERENTIAL PILOT VALVE
4	1	120496-5	SOLENOID VALVE-3-WAY (100/125#)
	1	120496-4	SOLENOID VALVE-3-WAY (150#)
5	33.0 FT	124435-003	NYLON TUBING-0.25 O.D.
6	1	121033-2	PIPE BUSHING-BRASS, 0.38 NPT X 0.25 NPT
7	7	142125-1	EXTRA STRONG BRASS NIPPLE-0.25 NPT X CLOSE
8	8	124349-005	90° MALE ELBOW-0.25 TUBE X 0.25 NPT
9	4	124349-004	90° MALE ELBOW-0.25 TUBE X 0.125 NPT
10	2	90084	SHUTTLE VALVE-0.125 NPT
11	2	121034-2	PIPE TEE-BRASS, 0.25 NPT
12	2	124349-010	90° MALE ELBOW-0.38 TUBE X 0.25 NPT
13	2	111098-002	PIPE NIPPLE-BRASS, 0.125 NPT X 0.25 NPT X CLOSE
14	1	144545-02	STRAIN RELIEF CONNECTOR-0.50
15	1	8052	CONDUIT LOCKNUT-0.50
16	1	129203-003	BULKHEAD COUPLING
17	1	6150	PIPE CROSS-BRASS, 0.25 NPT
18	7.0 FT	140333	STAINLESS STEEL TUBE-0.25 O.D.
19	1	128886-003	ELBOW-0.25 TUBE X 7/16-20 (O-RING)
20	7.0 FT	124435-004	NYLON TUBING-0.38 O.D.
21	2	124393-005	MALE CONNECTOR-0.25 TUBE X 0.25 NPT
22	1	126354-005	FEMALE CONNECTOR-0.25 TUBE X 0.25 NPT
23	1	140508	SIGHTGLASS (O-RING)
24	1	125025	LINE FILTER ORIFICE (0.040)
25	1	110419-005	90° MALE ELBOW-0.25 TUBE X 0.25 NPT
26	2	124349-015	90° MALE ELBOW-0.50 TUBE X 0.50 NPT
27	1	142125-5	EXTRA STRONG BRASS NIPPLE-0.25 NPT X 2.38
28	1	7361-001	PIPE TEE-BRASS, 0.12 NPT
29	4	128967-001	45° MALE ELBOW-0.25 TUBE X 0.12 NPT
30	5	121160	PIPE PLUG-0.125 NPT
31	0.25 FT	140326-04	FUEL TUBING
32	2	124393-012	MALE CONNECTOR-0.38 TUBE X 0.25 NPT
33	1	126345	PRESSURE GAUGE-LIQUID FILLED (0-200#)
34	2	7361-004	PIPE TEE-BRASS, 0.50 NPT
35	1	122056	CHECK VALVE
36	3	124393-004	MALE CONNECTOR-0.25 TUBE X 0.125 NPT
37	1	122212	PIPE ELBOW-BRASS, 0.125 NPT X 0.25 NPT
38	4	121033-5	PIPE BUSHING-BRASS, 0.50 NPT X 0.25 NPT
39	1	122636	PIPE ELBOW-BRASS, 0.25 NPT
40	1	142125-3	EXTRA STRONG BRASS NIPPLE-0.25 NPT X 1.50
41	5.0 FT	124435-005	NYLON TUBING-0.50 O.D.
42	1	121033-1	PIPE BUSHING-BRASS, 0.25 NPT X 0.125 NPT
43	2	2719	PIPE PLUG-HEX SOCKET, 0.25 NPT
44	1	2057	PIPE PLUG-0.50 NPT
45	1	140317	RUBBER GROMMET
46	2	140106-024	ADAPTER-7/16-20 X 0.25 NPTF (O-RING)
47	2	124393-010	MALE CONNECTOR-0.38 TUBE X 0.12 NPT
48	1	121034-1	PIPE TEE-BRASS, 0.125 NPT
49	1	142125-13	EXTRA STRONG BRASS NIPPLE-0.12 NPT X CLOSE
50	1	124348-002	MALE RUN TEE-0.25 TUBE X 0.125 NPT
51	1	142947	NEEDLE ANGLE VALVE
52	1		PERCENT CAPACITY GAUGE GROUP
52/1	1	128663	PERCENT CAPACITY GAUGE
52/2	1	125260-001	PIPE REDUCER-BRASS, 0.25 NPT X 0.12 NPT
52/3	1	142125-13	EXTRA STRONG BRASS NIPPLE-0.12 NPT X CLOSE
52/4	1	122056	CHECK VALVE
52/5	1	124349-004	90° MALE ELBOW-0.25 TUBE X 0.125 NPT
52/6	5.0 FT	124435-003	NYLON TUBING-0.25 O.D.
52/7	1	124349-005	90° MALE ELBOW-0.25 TUBE X 0.25 NPT
52/8*	1	143011	GAUGE PANEL
52/9*	4	124370-K02	LOCKNUT-5/16-18 UNC
52/10*	4	110428W025	FLAT WASHER-0.25
52/11*	4	110511-K10	HEX HEAD SCREW-ZINC, 5/16-18 UNC X 0.75
<u>COMPONENT MAINTENANCE PARTS</u>			
A	1	129732-051	LINE FILTER KIT (INCLUDES BOWL SEAL, FILTER ELEMENT, GASKET)
B	1	146175-100	DIFFERENTIAL PILOT VALVE KIT (INCLUDES DIAPHRAGM ASSEMBLY & SEAT)
C	3	140406-904	VITON O-RING-0.35 I.D.
D	2	22749-010	VITON O-RING-0.25 I.D.
E	4	123157-008	BUNA-N O-RING-0.18 I.D.

* THESE ITEMS USED ONLY ON UNITS LESS CABINET.

Control Piping (100 hp) - 143383-042 thru -049

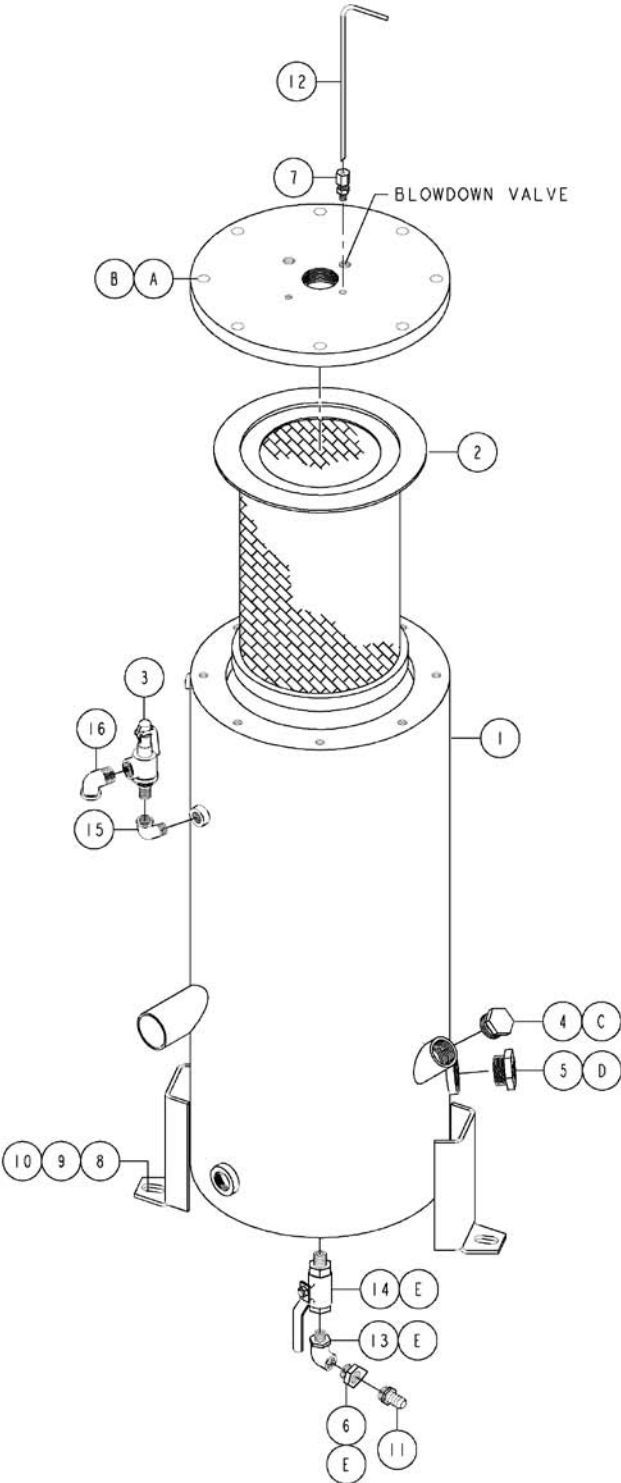


Control Piping (100 hp) - 143383-042 thru -049

ITEM NO.	QTY.	PART NUMBER	DESCRIPTION
1	1	128826-1	BLOWDOWN VALVE
2	1	129732	AUTOMATIC LINE FILTER
3	1	146175-2	DIFFERENTIAL PILOT VALVE
4	1	120496-5	SOLENOID VALVE-3-WAY (100/125#)
	1	120496-4	SOLENOID VALVE-3-WAY (150#)
5	33.0 FT	124435-003	NYLON TUBING-0.25 O.D.
6	1	121033-2	PIPE BUSHING-BRASS, 0.38 NPT X 0.25 NPT
7	6	142125-1	EXTRA STRONG BRASS NIPPLE-0.25 NPT X CLOSE
8	9	124349-005	90° MALE ELBOW-0.25 TUBE X 0.25 NPT
9	3	124349-004	90° MALE ELBOW-0.25 TUBE X 0.125 NPT
10	2	90084	SHUTTLE VALVE-0.125 NPT
11	2	121034-2	PIPE TEE-BRASS, 0.25 NPT
12	2	124349-010	90° MALE ELBOW-0.38 TUBE X 0.25 NPT
13	2	111098-002	PIPE NIPPLE-BRASS, 0.125 NPT X 0.25 NPT X CLOSE
14	1	144545-02	STRAIN RELIEF CONNECTOR-0.50
15	1	8052	CONDUIT LOCKNUT-0.50
16	1	129203-003	BULKHEAD COUPLING
17	1	6150	PIPE CROSS-BRASS, 0.25 NPT
18	7.0 FT	140333	STAINLESS STEEL TUBE-0.25 O.D.
19	1	128886-003	ELBOW-0.25 TUBE X 7/16-20 (O-RING)
20	7.0 FT	124435-004	NYLON TUBING-0.38 O.D.
21	2	124393-005	MALE CONNECTOR-0.25 TUBE X 0.25 NPT
22	1	126354-005	FEMALE CONNECTOR-0.25 TUBE X 0.25 NPT
23	1	140508	SIGHTGLASS (O-RING)
24	1	125025	LINE FILTER ORIFICE (0.040)
25	1	110419-005	90° MALE ELBOW-0.25 TUBE X 0.25 NPT
26	2	124349-015	90° MALE ELBOW-0.50 TUBE X 0.50 NPT
27	1	142125-5	EXTRA STRONG BRASS NIPPLE-0.25 NPT X 2.38
28	1	7361-001	PIPE TEE-BRASS, 0.12 NPT
29	4	128967-001	45° MALE ELBOW-0.25 TUBE X 0.12 NPT
30	3	121160	PIPE PLUG-0.125 NPT
31	0.25 FT	140326-04	FUEL TUBING
32	2	124393-012	MALE CONNECTOR-0.38 TUBE X 0.25 NPT
33	1	126345	PRESSURE GAUGE-LIQUID FILLED (0-200#)
34	2	7361-004	PIPE TEE-BRASS, 0.50 NPT
35	2	140106-024	ADAPTER-7/16-20 X 0.25 NPTF (O-RING)
36	3	124393-004	MALE CONNECTOR-0.25 TUBE X 0.125 NPT
37	2	124393-010	MALE CONNECTOR-0.38 TUBE X 0.12 NPT
38	5	121033-5	PIPE BUSHING-BRASS, 0.50 NPT X 0.25 NPT
39	1	122636	PIPE ELBOW-BRASS, 0.25 NPT
40	1	142947	NEEDLE ANGLE VALVE
41	1	121034-1	PIPE TEE-BRASS, 0.125 NPT
42	1	142125-13	EXTRA STRONG BRASS NIPPLE-0.12 NPT X CLOSE
43	5.0 FT	124435-005	NYLON TUBING-0.50 O.D.
44	2	2719	PIPE PLUG-HEX SOCKET, 0.25 NPT
45	1	140317	RUBBER GROMMET
46	1	142125-3	EXTRA STRONG BRASS NIPPLE-0.25 NPT X 1.50
47	1	122212	PIPE ELBOW-BRASS, 0.125 NPT X 0.25 NPT
48	1	122056	CHECK VALVE
49	1	121033-1	PIPE BUSHING-BRASS, 0.25 NPT X 0.125 NPT
50	1	2057	PIPE PLUG-0.50 NPT
51	1		PERCENT CAPACITY GAUGE GROUP
	51/1	128663	PERCENT CAPACITY GAUGE
	51/2	125260-001	PIPE REDUCER-BRASS, 0.25 NPT X 0.12 NPT
	51/3	142125-13	EXTRA STRONG BRASS NIPPLE-0.12 NPT X CLOSE
	51/4	122056	CHECK VALVE
	51/5	124349-004	90° MALE ELBOW-0.25 TUBE X 0.125 NPT
	51/6	124435-003	NYLON TUBING-0.25 O.D.
	51/7	124349-005	90° MALE ELBOW-0.25 TUBE X 0.25 NPT
	51/8*	143011	GAUGE PANEL
	51/9*	124370-K02	LOCKNUT-5/16-18 UNC
	51/10*	110428W025	FLAT WASHER-0.25
	51/11*	110511-K10	HEX HEAD SCREW-ZINC, 5/16-18 UNC X 0.75
52	1	140718	PRESSURE GAUGE
53	1	23543-002	PRESSURE REGULATOR
<u>COMPONENT MAINTENANCE PARTS</u>			
A	1	129732-051	LINE FILTER KIT (INCLUDES BOWL SEAL, FILTER ELEMENT, GASKET)
B	1	146175-100	DIFFERENTIAL PILOT VALVE KIT (INCLUDES DIAPHRAGM ASSEMBLY & SEAT)
C	3	140406-904	VITON O-RING-0.35 I.D.
D	2	22749-010	VITON O-RING-0.25 I.D.
E	4	123157-008	BUNA-N O-RING-0.18 I.D.
F	1	23543-050	PRESSURE REGULATOR KIT

* THESE ITEMS USED ONLY ON UNITS LESS CABINET.

Reservoir - 142927-001/-002



Reservoir - 142927-001/-002

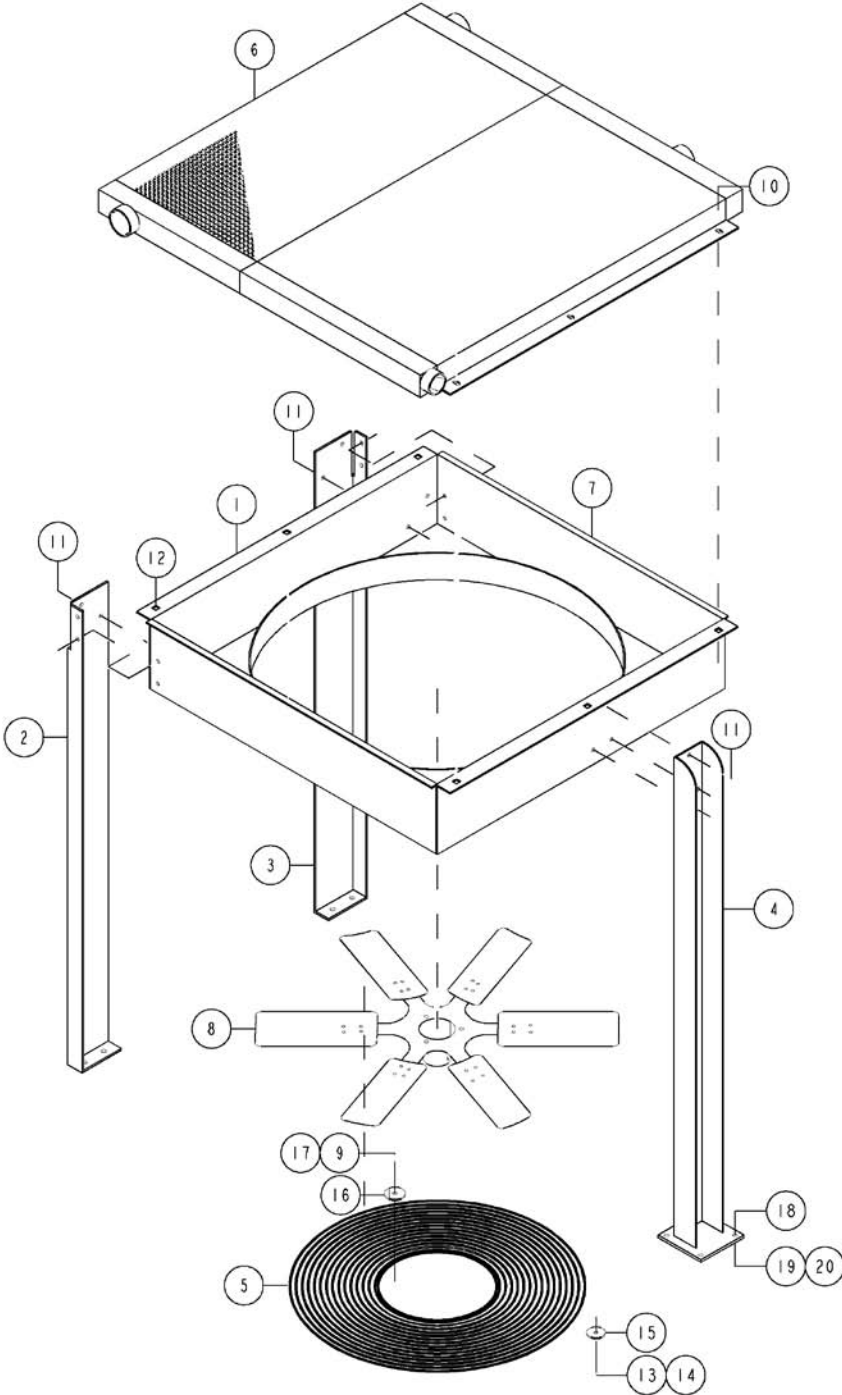
ITEM NO.	QTY.	PART NUMBER	DESCRIPTION
1	1	143320-175	AIR/FLUID RESERVOIR
2	1	124487-003	AIR/FLUID SEPARATOR (75 HP)
	1	124487-018	AIR/FLUID SEPARATOR (100 HP)
3	1	141966-6	PRESSURE RELIEF VALVE (175#)
4	1	129844-162	FILLER CAP (O-RING)
5	1	129843-188	SIGHTGLASS (O-RING)
6	1	140106-003	ADAPTER-3/4-16 X 0.38 NPTF (O-RING)
7	1	142299	STRAIGHT FITTING-0.25 TUBE X 0.25 NPT
8	3	124370-N02	LOCKNUT-1/2-13 UNC
9	9	110428W050	FLAT WASHER-0.50
10	3	123478-N15	CAP SCREW-1/2-13 UNC X 1.50, GRADE 5 (@ 55 FT-LBS)
11	1	128968-010	BARBED HOSE FITTING-0.50 HOSE X 0.38 NPT
12	1	140323-9	SEPARATOR DRAIN TUBE
13	1	143355-003	ELBOW-0.50 TUBE X 3/4-16 (O-RING)
14	1	129730-050	QUARTER TURN VALVE (O-RING)
15	1	3092	PIPE ELBOW-0.75 NPT
16	1	3004	PIPE ELBOW-1.00 NPT

COMPONENT MAINTENANCE PARTS

A	8	123478-Q18	CAP SCREW-5/8-11 UNC X 2.25, GRADE 5 (@ 110 FT-LBS)
B	8	123115-10C	LOCKWASHER, 0.63
C	1	140406-920	VITON O-RING-1.48 I.D.
D	1	140406-924	VITON O-RING-1.72 I.D.
E	3	140406-908	VITON O-RING-0.64 I.D.

@ INDICATES TORQUE VALUE IN FOOT POUNDS (LUBRICATED THREADS).

Cooler - 142990-001/-002/-003/-004/-005

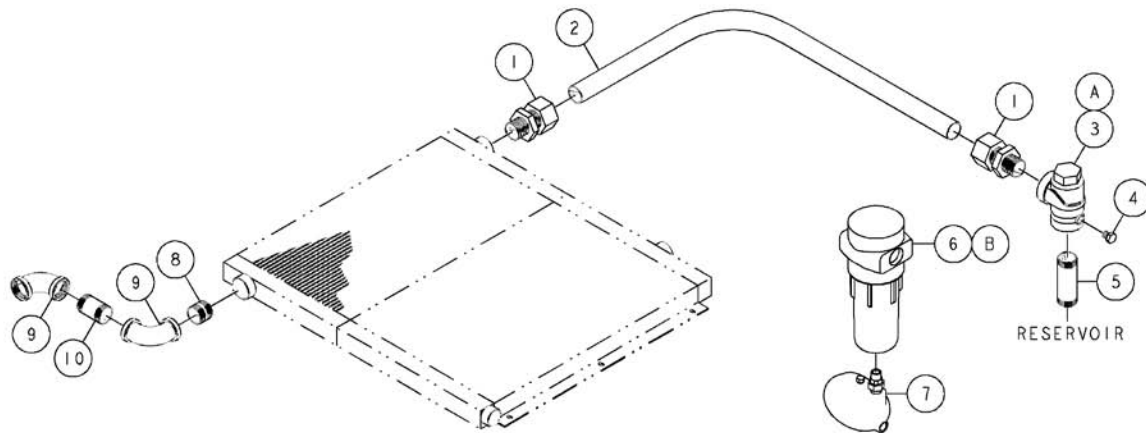


Cooler - 142990-001/-002/-003/-004/-005

ITEM NO.	QTY.	PART NUMBER	DESCRIPTION
1	1	142218	COOLER SHROUD-VENTURI (QSF-75)
	1	142689	COOLER SHROUD-VENTURI (QSF-100)
2	1	142348	SUPPORT BRACKET-RIGHT SIDE
3	1	142349	SUPPORT BRACKET-LEFT SIDE
4	1	142560-02	SUPPORT BRACKET
5	1	142683	FAN GUARD
6	1	142219	COMBINATION COOLER (200#) (QSF-75)
	1	142681-001	COMBINATION COOLER (200#) (QSF-100)
7	6.0 FT	141528	RUBBER SEAL
8	1	126511-055	FAN-5 BLADE, 30.0 O.D. (75 HP, 60 Hz)
	1	126511-060	FAN-5 BLADE, 30.0 O.D. (75 HP, 50 Hz)
	1	126511-049	FAN-5 BLADE, 30.0 O.D. (100 HP, ALL 60 Hz & 50 Hz, L/CABINET)
	1	126511-062	FAN-9 BLADE, 30.0 O.D. (100 HP, 50 Hz, W/CABINET)
9	4	123478-N15	CAP SCREW-1/2-13 UNC X 1.50, GRADE 5 (@ 55 FT-LBS)
10	6	141631-L10	CAP SCREW-3/8-16 UNC X 0.75, GRADE 5 (@ 23 FT-LBS)
11	11	141631-K10	CAP SCREW-5/16-18 UNC X 0.75, GRADE 5 (@ 23 FT-LBS)
12	6	112272-L02	SELF-LOCKING HEX NUT-ZINC, 3/8-16 UNC
13	8	110511-K12	HEX HEAD SCREW-ZINC, 5/16-18 UNC X 1.00
14	8	112272-K02	SELF-LOCKING HEX NUT-ZINC, 5/16-18 UNC
15	8	110428W031	FLAT WASHER-0.31
16	4	110428W050	FLAT WASHER-0.50
17	4	123115-08C	LOCKWASHER, 0.50
18	8	123478-L14	CAP SCREW-3/8-16 UNC X 1.25, GRADE 5 (@ 23 FT-LBS)
19	8	123115-06C	LOCKWASHER, 0.38
20	8	124364-L02	HEX NUT-3/8-16 UNC

@ INDICATES TORQUE VALUE IN FOOT POUNDS (LUBRICATED THREADS).

Air Piping (air-cooled) - 142994-001/-005



NOTES-UNLESS OTHERWISE SPECIFIED:
 1) ITEMS 6 AND 7 ARE SHIPPED LOOSE.
 2) ITEMS 8 THRU 10 ARE USED ONLY ON UNITS W/CABINET.

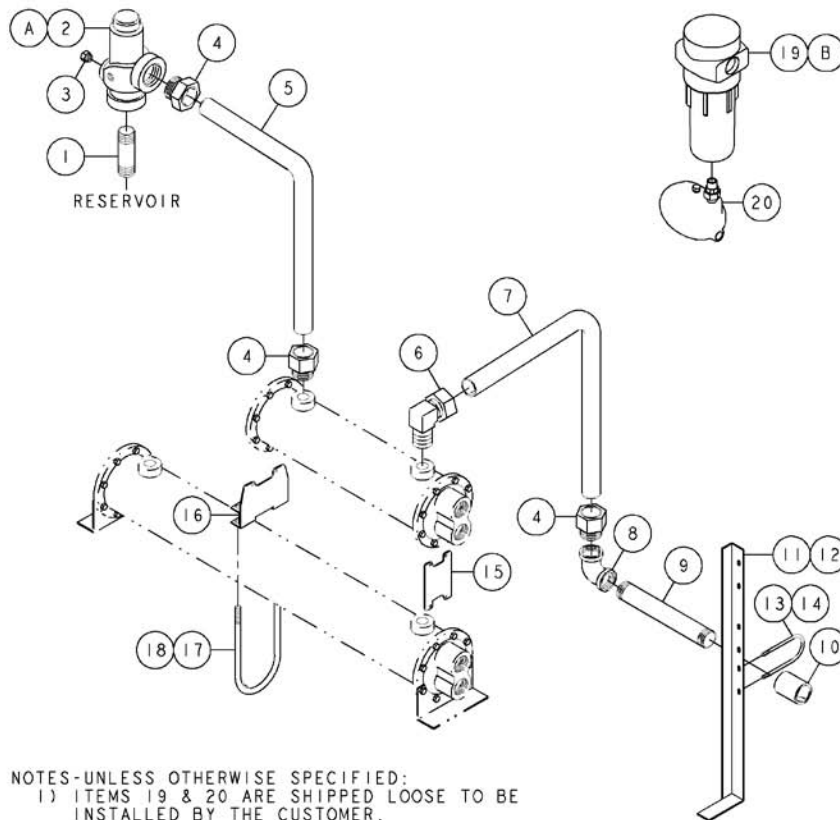
ITEM No.	QTY.	PART NUMBER	DESCRIPTION
1	2	23991	MALE CONNECTOR-2.00 TUBE X 2.00 NPT
2	1	121918-024	FORMED STEEL TUBE-2.00 O.D.
3	1	128691-002	MINIMUM PRESSURE CHECK VALVE
4	1	142939	PIPE BUSHING-BRASS, 0.50 NPT X 0.75 NPT
5	1	125940-038	PIPE NIPPLE-2.00 NPT X 5.50
6	1	145999-200	MOISTURE SEPARATOR
7	1	146395	CONDENSATE DRAIN
8*	1	126023-001	PIPE NIPPLE-GALVANIZED, 2.00 NPT X CLOSE
9*	2	22629	PIPE ELBOW-GALVANIZED, 2.00 NPT
10*	1	126023-024	PIPE NIPPLE-GALVANIZED, 2.00 NPT X 3.75

COMPONENT MAINTENANCE PARTS

A	1	128691-052	MINIMUM PRESSURE CHECK VALVE KIT
B	1	145999-052	VITON O-RING

* THESE ITEMS USED ONLY ON UNITS WITH CABINET.

Air Piping (water-cooled) - 142994-003/-004

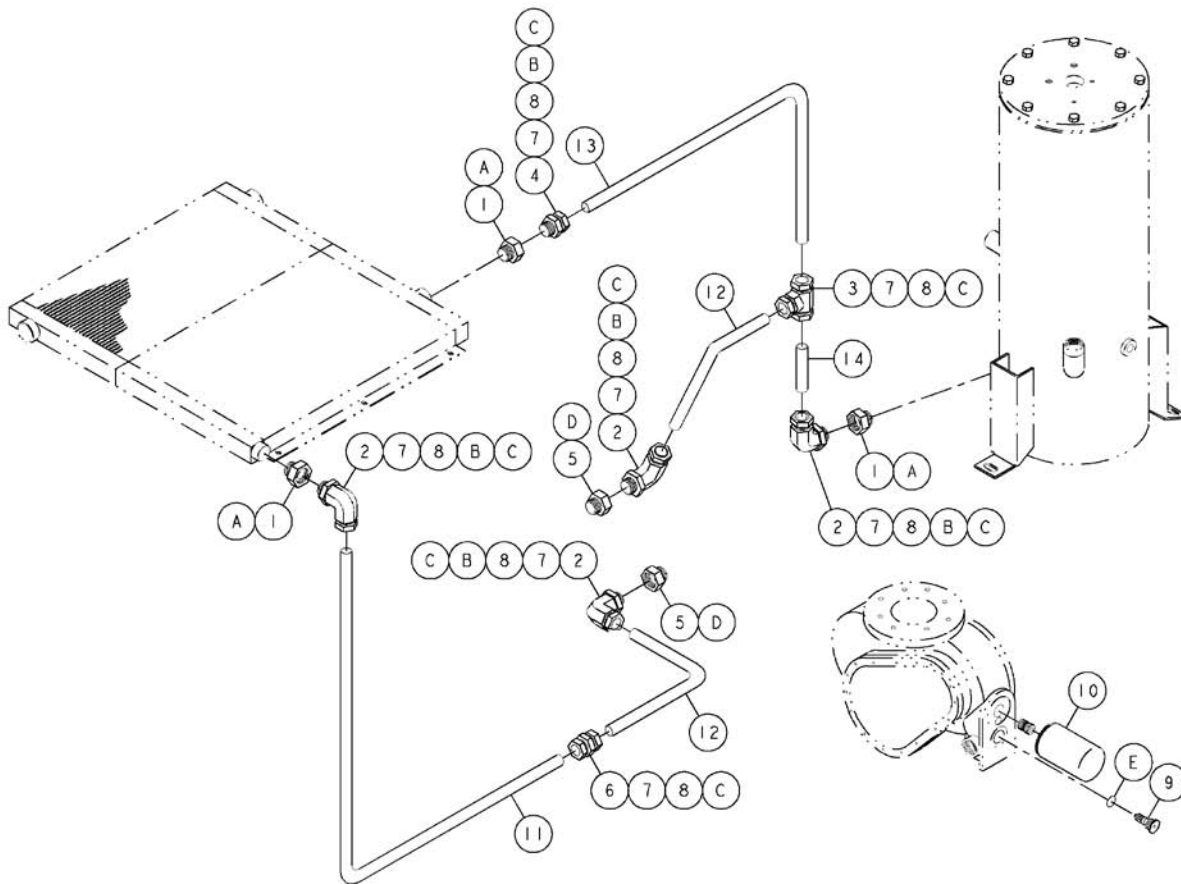


ITEM No.	QTY.	PART NUMBER	DESCRIPTION
1	1	125938-038	PIPE NIPPLE-1.25 NPT X 5.50
2	1	128691-002	MINIMUM PRESSURE CHECK VALVE
3	1	142939	PIPE BUSHING-BRASS, 0.50 NPT X 0.75 NPT
4	3	23991	MALE CONNECTOR-2.00 TUBE X 2.00 NPT
5	1	120906	FORMED STEEL TUBE-2.00 O.D.
6	1	110419-024	90° MALE ELBOW-2.00 TUBE X 2.00 NPT
7	1	121918-071	FORMED STEEL TUBE-2.00 O.D.
8	1	4463	PIPE ELBOW-2.00 NPT
9	1	125940-058	PIPE NIPPLE-2.00 NPT X 8.00
10	1	6366	PIPE COUPLING-2.00 NPT
11	1	143554-1	COOLER BRACKET
12	2	110511-K10	HEX HEAD SCREW-ZINC, 5/16-18 UNC X 0.75
13	1	6306	U-BOLT, 1/4-18 UNC
14	2	124370-J02	LOCKNUT-1/4-20 UNC
15	1	142744	COOLER SUPPORT BRACKET (QSF-75)
	1	142745	COOLER SUPPORT BRACKET (QSF-100)
16	1	142150-1	COOLER SUPPORT BRACKET (QSF-75)
	1	142746	COOLER SUPPORT BRACKET (QSF-100)
17	1	23731	U-BOLT, 1/2-13 UNC
18	2	124370-N02	LOCKNUT-1/2-13 UNC
19	1	145999-200	MOISTURE SEPARATOR
20	1	146395	CONDENSATE DRAIN

COMPONENT MAINTENANCE PARTS

A	1	145999-052	VITON O-RING
B	1	128691-052	MINIMUM PRESSURE CHECK VALVE KIT

Fluid Piping (75 hp, air-cooled) - 142995-001

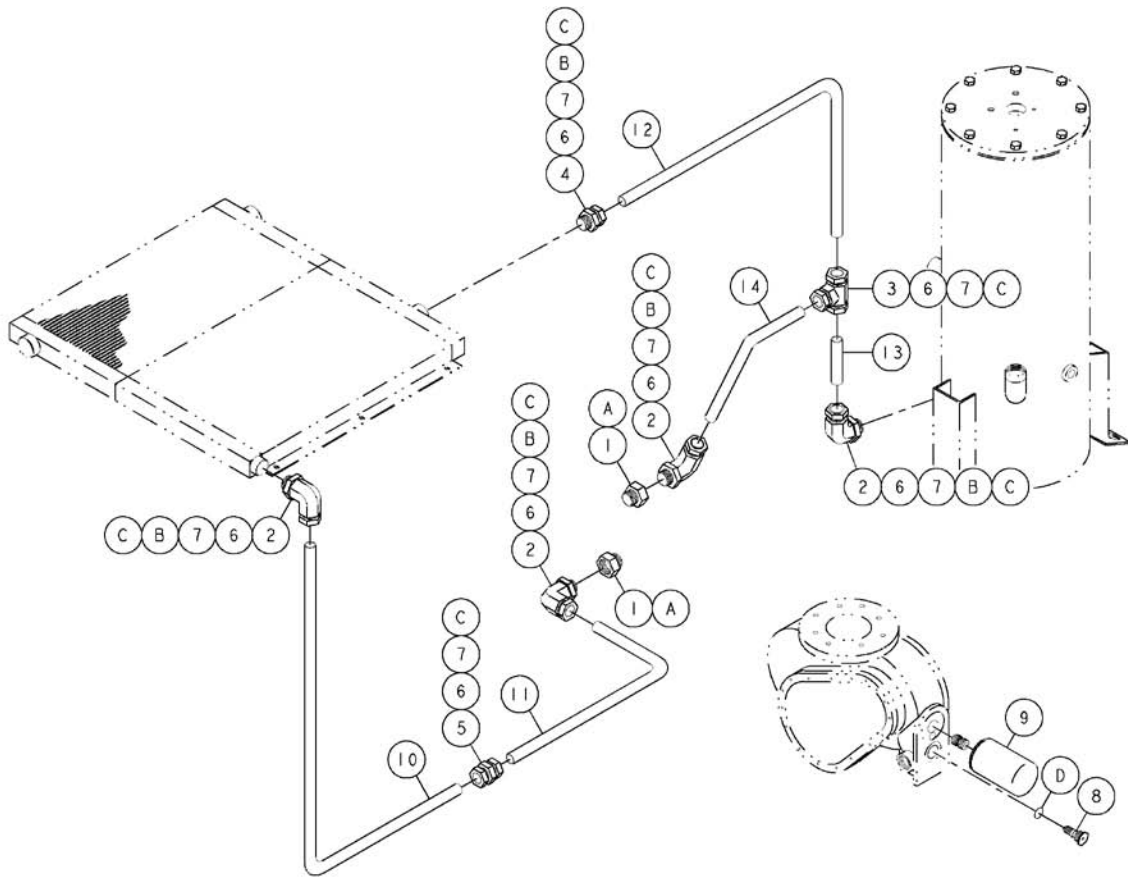


ITEM No.	QTY.	PART NUMBER	DESCRIPTION
1	3	129208-021	ADAPTER-1-5/16-12 X 1-5/8-12 (O-RING)
2	4	140676-018	ELBOW-1.00 TUBE X 1-5/16-12 (O-RING)
3	1	140674-006	UNION TEE-1.00 TUBE (O-RING)
4	1	140682-020	CONNECTOR-1.00 TUBE X 1-5/16-12 (O-RING)
5	2	129208-024	ADAPTER-1-5/16-12 X 1-7/8-12 (O-RING)
6	1	141110-010	UNION-1.00 TUBE (O-RING)
7	10	140679-007	NUT-1.00 O.D. TUBE
8	10	140680-006	SLEEVE-1.00 TUBE
9	1	140536-1	THERMAL CARTRIDGE VALVE
10	1	142243	FLUID FILTER ELEMENT
11	1	142999-6	FORMED STEEL TUBE-1.00 O.D.
12	2	121918-130	FORMED STEEL TUBE-1.00 O.D.
13	1	121918-129	FORMED STEEL TUBE-1.00 O.D.
14	1	127567-006	STEEL TUBE-1.00 O.D.

COMPONENT MAINTENANCE PARTS

A	3	140406-920	VITON O-RING-1.48 I.D.
B	5	140406-916	VITON O-RING-1.17 I.D.
C	10	140675-006	VITON O-RING/FACE SEAL-0.93 I.D.
D	2	140406-924	VITON O-RING-1.72 I.D.
E	1	22749-123	VITON O-RING-1.18 I.D.

Fluid Piping (100 hp, air-cooled) - 142995-002

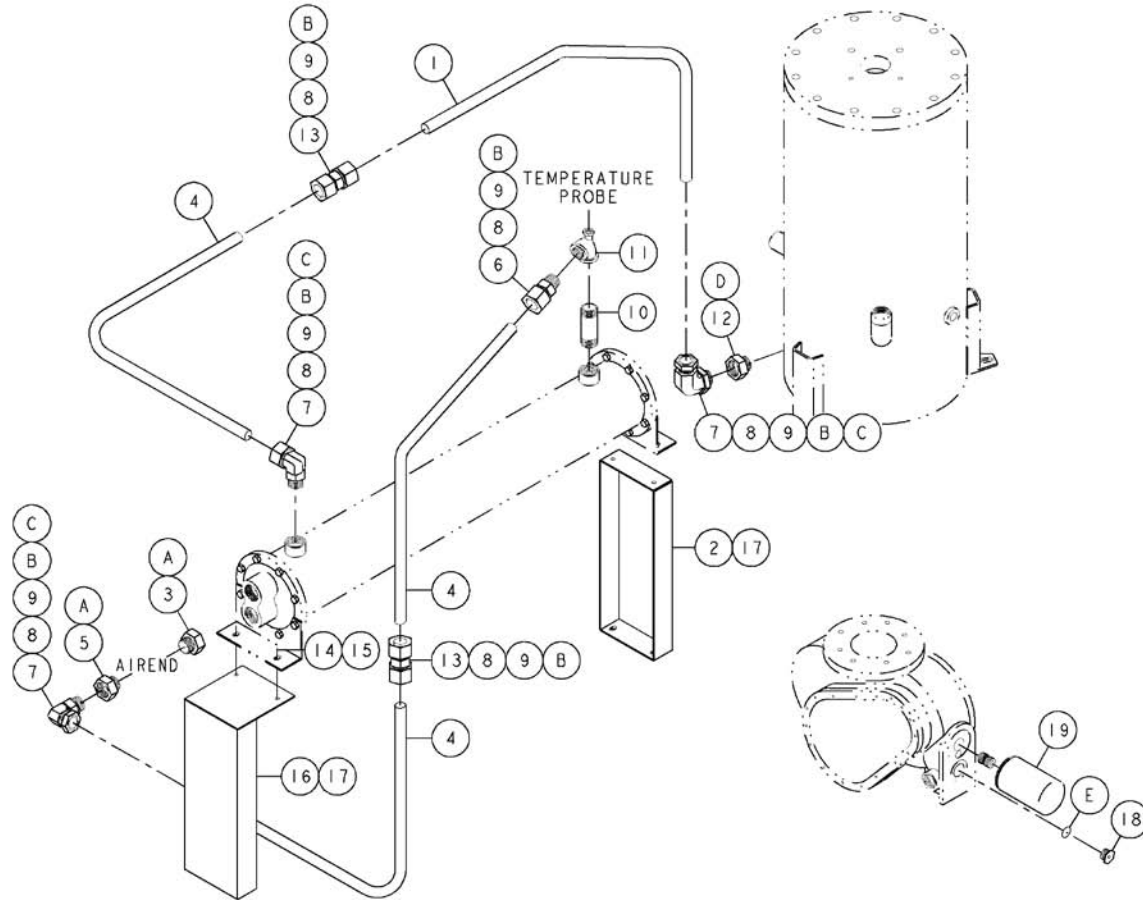


ITEM No.	QTY.	PART NUMBER	DESCRIPTION
1	2	129208-025	ADAPTER-1-5/8-12 X 1-7/8-12 (O-RING)
2	4	140676-021	ELBOW-1.25 TUBE X 1-5/8-12 (O-RING)
3	1	140674-007	UNION TEE-1.25 TUBE (O-RING)
4	1	140682-024	CONNECTOR-1.25 TUBE X 1-5/8-12 (O-RING)
5	1	141110-012	UNION-1.25 TUBE (O-RING)
6	10	140679-008	NUT-1.25 O.D. TUBE
7	10	140680-007	SLEEVE-1.25 TUBE
8	1	140536-1	THERMAL CARTRIDGE VALVE
9	1	142243	FLUID FILTER ELEMENT
10	1	142999-1	FORMED STEEL TUBE-1.25 O.D.
11	1	121918-013	FORMED STEEL TUBE-1.25 O.D.
12	1	121918-030	FORMED STEEL TUBE-1.25 O.D.
13	1	127567-010	STEEL TUBE-1.25 O.D.
14	1	121918-116	FORMED STEEL TUBE-1.25 O.D.

COMPONENT MAINTENANCE PARTS

A	2	140406-924	VITON O-RING-1.72 I.D.
B	5	140406-920	VITON O-RING-1.48 I.D.
C	10	140675-007	VITON O-RING/FACE SEAL-1.18 I.D.
D	1	22749-123	VITON O-RING-1.18 I.D.

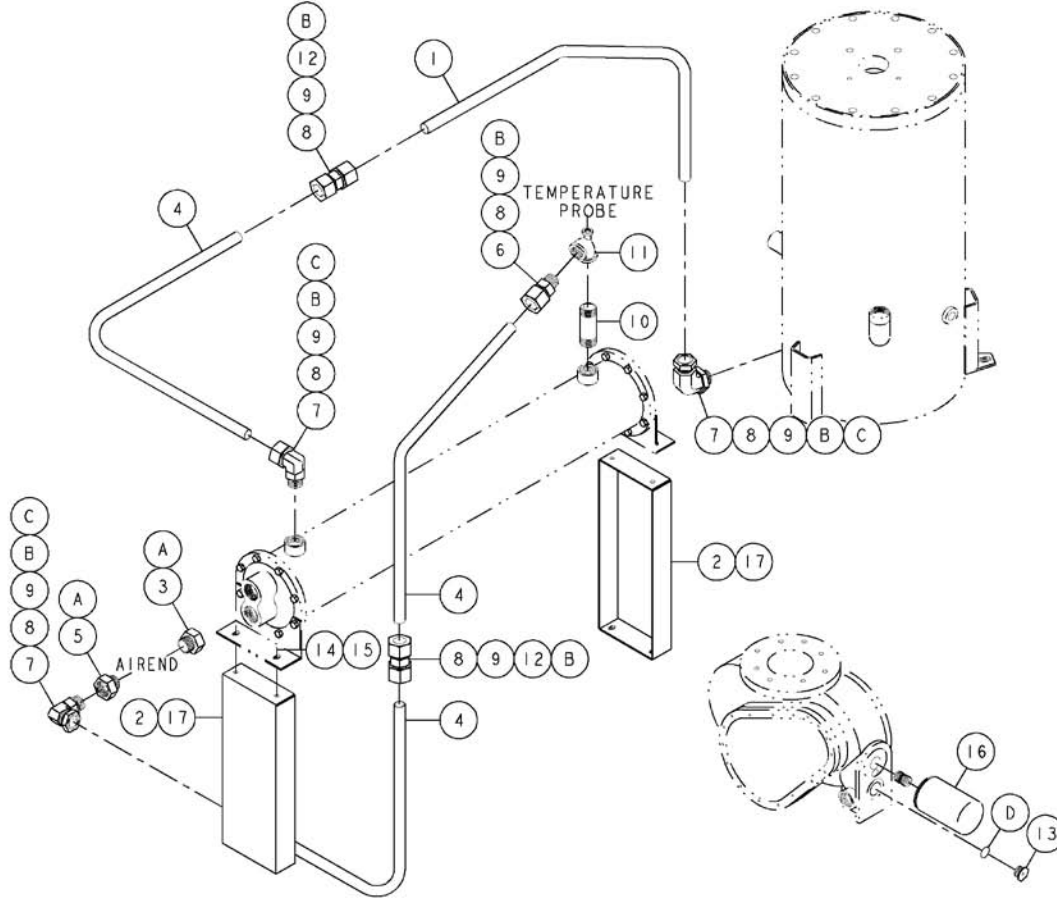
Fluid Piping (75 hp, water-cooled) - 142995-003



ITEM No.	QTY.	PART NUMBER	DESCRIPTION
1	1	143498-3	STEEL TUBE-1.00 O.D.
2	1	142150-2	COOLER SUPPORT BRACKET
3	1	129770-188	PIPE PLUG-1-7/8-12 (O-RING)
4	3	121918-129	FORMED STEEL TUBE-1.00 O.D.
5	1	129208-024	ADAPTER-1-5/16-12 X 1-7/8-12 (O-RING)
6	1	140681-015	CONNECTOR-1.00 NPTF X 1.00 TUBE (O-RING)
7	3	140676-018	ELBOW-1.00 TUBE X 1-5/16-12 (O-RING)
8	8	140679-007	NUT-1.00 O.D. TUBE
9	8	140680-006	SLEEVE-1.00 TUBE
10	1	125938-026	PIPE NIPPLE-1.25 NPT X 4.00
11	1	124420-037	PIPE TEE-1.25 NPT X 0.50 NPT X 1.00 NPT
12	1	129208-021	ADAPTER-1-5/16-12 X 1-5/8-12 (O-RING)
13	2	141110-010	UNION-1.00 TUBE (O-RING)
14	4	141631-K10	CAP SCREW-5/16-18 UNC X 0.75, GRADE 5 (@ 23 FT-LBS)
15	4	112272-K02	SELF-LOCKING HEX NUT-ZINC, 5/16-18 UNC
16	1	142150-4	COOLER SUPPORT BRACKET
17	4	110511-K10	HEX HEAD SCREW-ZINC, 5/16-18 UNC X 0.75
18	1	143566	THERMAL VALVE PLUG
19	1	142243	FLUID FILTER ELEMENT
<u>COMPONENT MAINTENANCE PARTS</u>			
A	2	140406-924	VITON O-RING-1.72 I.D.
B	8	140675-006	VITON O-RING/FACE SEAL-0.93 I.D.
C	3	140406-916	VITON O-RING-1.17 I.D.
D	1	140406-920	VITON O-RING-1.48 I.D.
E	1	22749-123	VITON O-RING-1.18 I.D.

@ INDICATES TORQUE VALUE IN FOOT POUNDS (LUBRICATED THREADS).

Fluid Piping (100 hp, water-cooled) - 142995-004



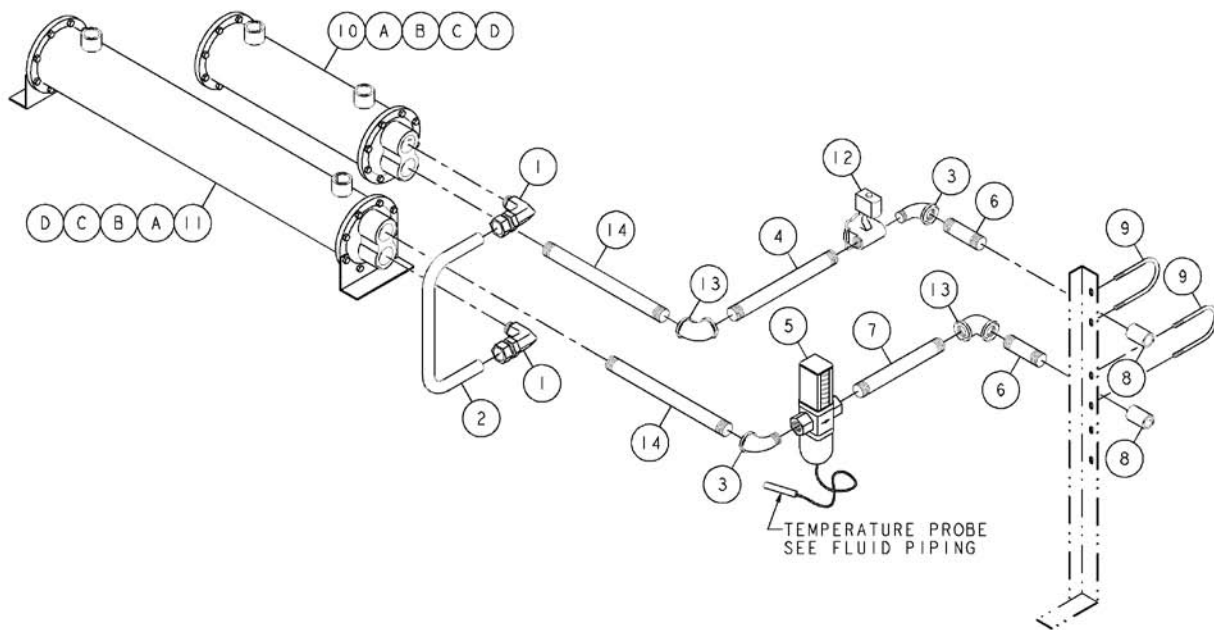
ITEM NO.	QTY.	PART NUMBER	DESCRIPTION
1	1	143546-1	FORMED STEEL TUBE-1.25 O.D.
2	2	142150-2	COOLER SUPPORT BRACKET
3	1	129770-188	PIPE PLUG-1-7/8-12 (O-RING)
4	3	121918-110	FORMED STEEL TUBE-1.25 O.D.
5	1	129208-025	ADAPTER-1-5/8-12 X 1-7/8-12 (O-RING)
6	1	140681-017	CONNECTOR-1.25 NPTF X 1.25 TUBE (O-RING)
7	3	140676-021	ELBOW-1.25 TUBE X 1-5/8-12 (O-RING)
8	8	140679-008	NUT-1.25 O.D. TUBE
9	8	140680-007	SLEEVE-1.25 TUBE
10	1	125938-026	PIPE NIPPLE-1.25 NPT X 4.00
11	1	21741	PIPE TEE-1.25 NPT X 0.50 NPT X 1.25 NPT
12	2	141110-012	UNION-1.25 TUBE (O-RING)
13	1	143566	THERMAL VALVE PLUG
14	4	141631-K10	CAP SCREW-5/16-18 UNC X 0.75, GRADE 5 (@ 23 FT-LBS)
15	4	112272-K02	SELF-LOCKING HEX NUT-ZINC, 5/16-18 UNC
16	1	142243	FLUID FILTER ELEMENT
17	4	110511-K10	HEX HEAD SCREW-ZINC, 5/16-18 UNC X 0.75

COMPONENT MAINTENANCE PARTS

A	2	140406-924	VITON O-RING-1.72 I.D.
B	8	140675-007	VITON O-RING/FACE SEAL-1.18 I.D.
C	3	140406-920	VITON O-RING-1.48 I.D.
D	1	22749-123	VITON O-RING-1.18 I.D.

@ INDICATES TORQUE VALUE IN FOOT POUNDS (LUBRICATED THREADS).

Water Piping (75 hp, fresh water) - 142998-001

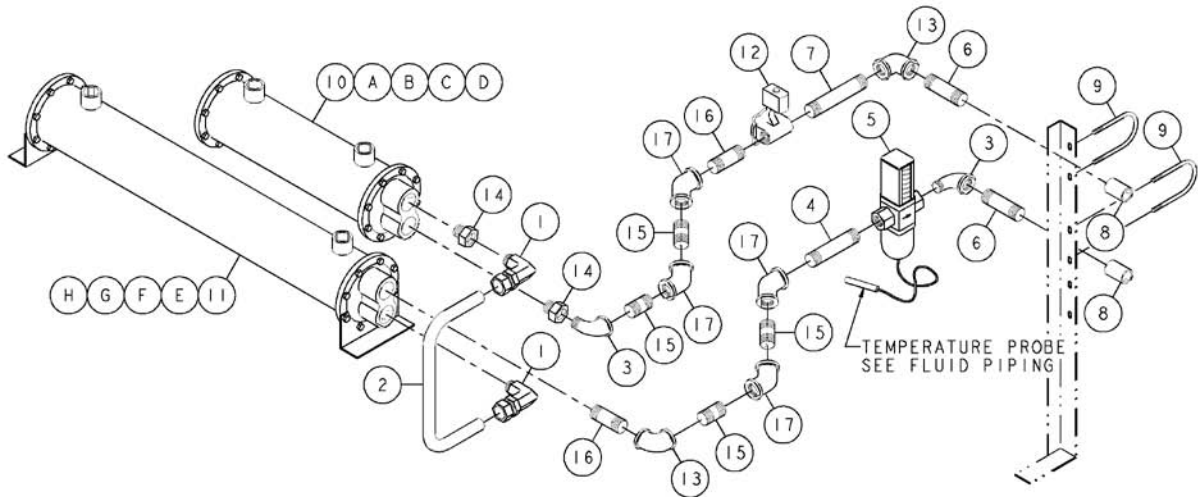


ITEM No.	QTY.	PART NUMBER	DESCRIPTION
1	2	110419-020	90° MALE ELBOW-1.00 TUBE X 1.00 NPT
2	1	142549-001	FORMED STEEL TUBE-1.00 O.D.
3	2	21730	PIPE ELBOW-GALVANIZED, 1.00 NPT
4	1	126020-076	PIPE NIPPLE-GALVANIZED, 1.00 NPT X 10.75
5	1	23219-1	WATER TEMPERATURE REGULATOR VALVE
6	2	126020-018	PIPE NIPPLE-GALVANIZED, 1.00 NPT X 3.00
7	1	126020-064	PIPE NIPPLE-GALVANIZED, 1.00 NPT X 8.75
8	2	21740	PIPE COUPLING-GALVANIZED, 1.00 NPT
9	2	120317	U-BOLT, 5/16-18 UNC
10	1	22709-18	HEAT EXCHANGER-AFTERCOOLER
11	1	22708-36	HEAT EXCHANGER-FLUID COOLER
12	1	22431	SOLENOID VALVE-2-WAY
13	2	21731	PIPE ELBOW-GALVANIZED, 1.00 NPT
14	2	126020-102	PIPE NIPPLE-GALVANIZED, 1.00 NPT X 13.50

COMPONENT MAINTENANCE PARTS

A	2	22708-725	COOLER BONNET-IN/OUT END
B	2	22708-727	COOLER GASKET-IN/OUT END
C	2	22708-726	COOLER BONNET-RETURN END
D	2	22708-728	COOLER GASKET-RETURN END

Water Piping (100 hp, fresh water) - 142998-002

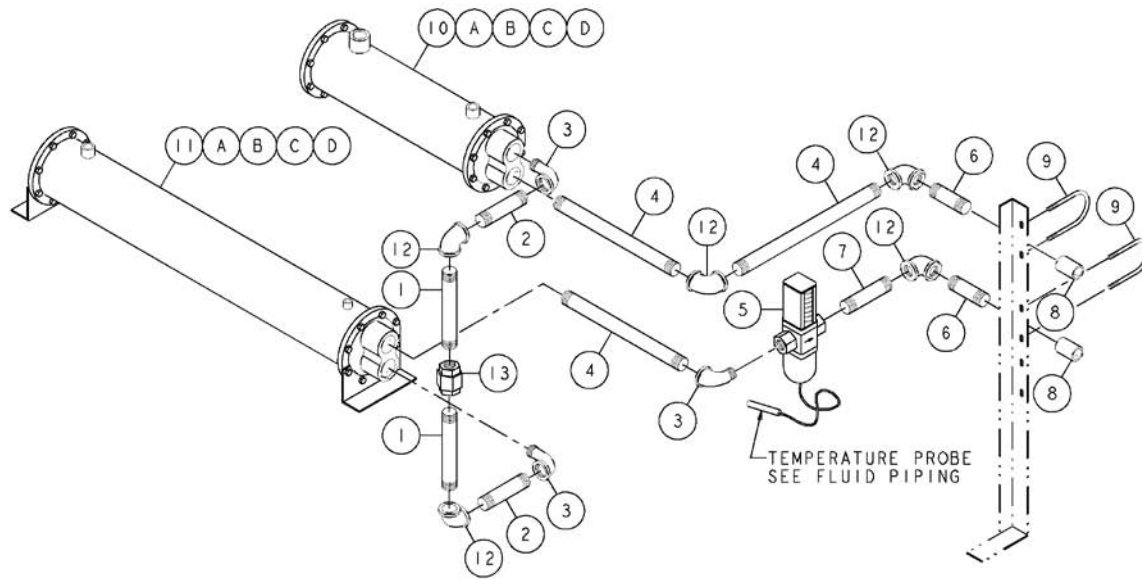


ITEM NO.	QTY.	PART NUMBER	DESCRIPTION
1	2	110419-020	90° MALE ELBOW-1.00 TUBE X 1.00 NPT
2	1	142549-001	FORMED STEEL TUBE-1.00 O.D.
3	2	21730	PIPE ELBOW-GALVANIZED, 1.00 NPT
4	1	126020-028	PIPE NIPPLE-GALVANIZED, 1.00 NPT X 4.25
5	1	23219-1	WATER TEMPERATURE REGULATOR VALVE
6	2	126020-018	PIPE NIPPLE-GALVANIZED, 1.00 NPT X 3.00
7	1	126020-032	PIPE NIPPLE-GALVANIZED, 1.00 NPT X 4.75
8	2	21740	PIPE COUPLING-GALVANIZED, 1.00 NPT
9	2	120317	U-BOLT, 5/16-18 UNC
10	1	22709-19	HEAT EXCHANGER-AFTERCOOLER
11	1	22708-30	HEAT EXCHANGER-FLUID COOLER
12	1	22431	SOLENOID VALVE-2-WAY
13	2	21731	PIPE ELBOW-GALVANIZED, 1.00 NPT
14	2	125868-016	PIPE BUSHING-1.25 NPT X 1.00 NPT
15	4	126020-001	PIPE NIPPLE-GALVANIZED, 1.00 NPT X CLOSE
16	2	126020-010	PIPE NIPPLE-GALVANIZED, 1.00 NPT X 2.00
17	4	122171	PIPE ELBOW-GALVANIZED, 1.00 NPT X 45°

COMPONENT MAINTENANCE PARTS

A	1	22708-825	COOLER BONNET-IN/OUT END
B	1	22708-827	COOLER GASKET-IN/OUT END
C	1	22708-826	COOLER BONNET-RETURN END
D	1	22708-828	COOLER GASKET-RETURN END
E	1	22708-725	COOLER BONNET-IN/OUT END
F	1	22708-727	COOLER GASKET-IN/OUT END
G	1	22708-726	COOLER BONNET-RETURN END
H	1	22708-728	COOLER GASKET-RETURN END

Water Piping (75 hp, sea water) - 142998-003

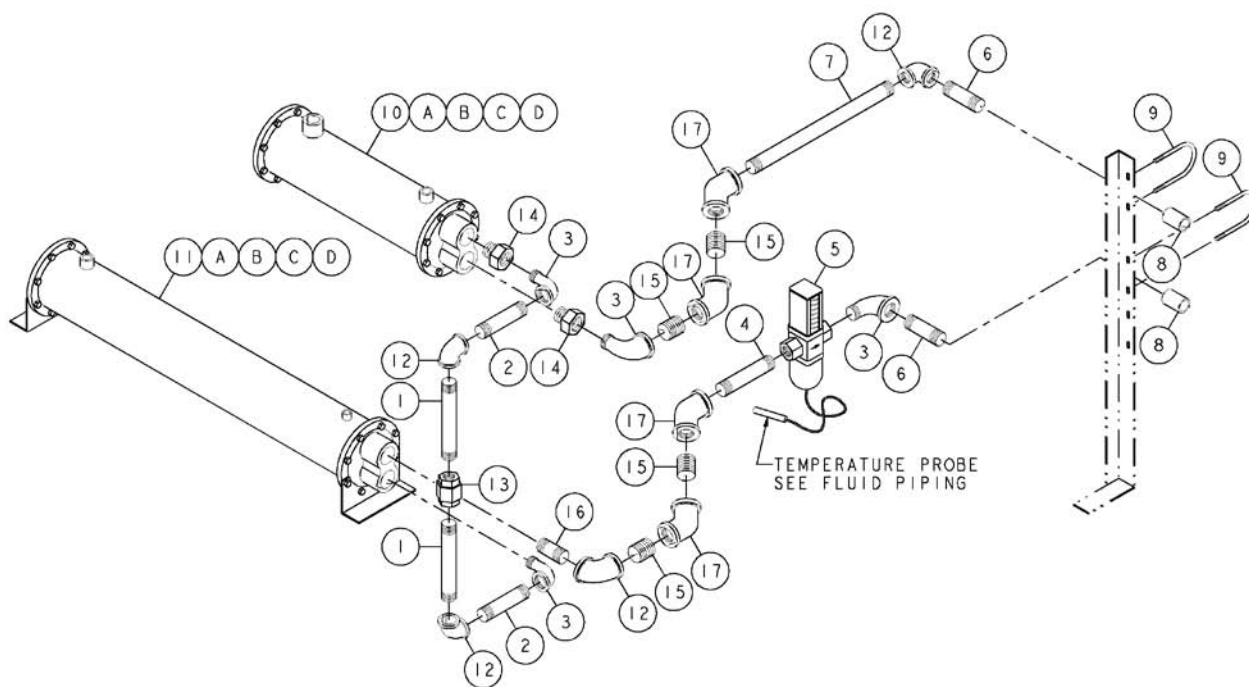


ITEM No.	QTY.	PART NUMBER	DESCRIPTION
1	2	126020-034	PIPE NIPPLE-GALVANIZED, 1.00 NPT X 5.00
2	2	126020-026	PIPE NIPPLE-GALVANIZED, 1.00 NPT X 4.00
3	3	21730	PIPE ELBOW-GALVANIZED, 1.00 NPT
4	3	126020-102	PIPE NIPPLE-GALVANIZED, 1.00 NPT X 13.50
5	1	23219-1	WATER TEMPERATURE REGULATOR VALVE
6	2	126020-018	PIPE NIPPLE-GALVANIZED, 1.00 NPT X 3.00
7	1	126020-064	PIPE NIPPLE-GALVANIZED, 1.00 NPT X 8.75
8	2	21740	PIPE COUPLING-GALVANIZED, 1.00 NPT
9	2	120317	U-BOLT, 5/16-18 UNC
10	1	124061-009	HEAT EXCHANGER-AFTERCOOLER (SEA WATER)
11	1	124060-015	HEAT EXCHANGER-FLUID COOLER (SEA WATER)
12	5	21731	PIPE ELBOW-GALVANIZED, 1.00 NPT
13	1	127289-019	PIPE UNION-1.00 NPT

COMPONENT MAINTENANCE PARTS

A	2	124061-225	COOLER BONNET-IN/OUT END
B	2	22708-727	COOLER GASKET-IN/OUT END
C	2	124061-226	COOLER BONNET-RETURN END
D	2	22708-728	COOLER GASKET-RETURN END

Water Piping (100 hp, sea water) - 142998-004

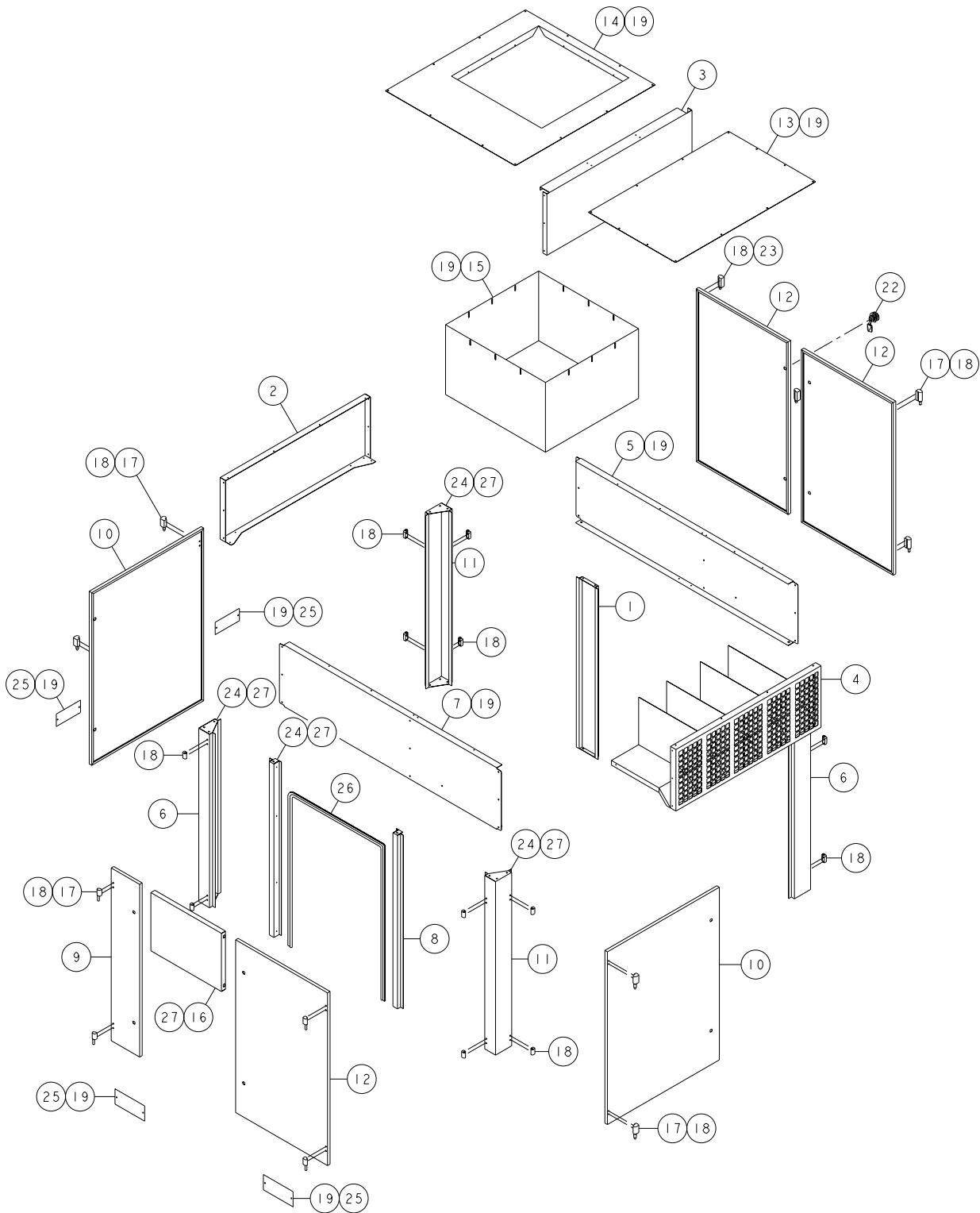


ITEM NO.	QTY.	PART NUMBER	DESCRIPTION
1	2	126020-034	PIPE NIPPLE-GALVANIZED, 1.00 NPT X 5.00
2	2	126020-026	PIPE NIPPLE-GALVANIZED, 1.00 NPT X 4.00
3	4	21730	PIPE ELBOW-GALVANIZED, 1.00 NPT
4	1	126020-028	PIPE NIPPLE-GALVANIZED, 1.00 NPT X 4.25
5	1	23219-1	WATER TEMPERATURE REGULATOR VALVE
6	2	126020-018	PIPE NIPPLE-GALVANIZED, 1.00 NPT X 3.00
7	1	126020-067	PIPE NIPPLE-GALVANIZED, 1.00 NPT X 9.12
8	2	21740	PIPE COUPLING-GALVANIZED, 1.00 NPT
9	2	120317	U-BOLT, 5/16-18 UNC
10	1	124061-014	HEAT EXCHANGER-AFTERCOOLER (SEA WATER)
11	1	124060-016	HEAT EXCHANGER-FLUID COOLER (SEA WATER)
12	4	21731	PIPE ELBOW-GALVANIZED, 1.00 NPT
13	1	127289-019	PIPE UNION-1.00 NPT
14	2	125868-016	PIPE BUSHING-1.25 NPT X 1.00 NPT
15	4	126020-001	PIPE NIPPLE-GALVANIZED, 1.00 NPT X CLOSE
16	1	126020-010	PIPE NIPPLE-GALVANIZED, 1.00 NPT X 2.00
17	4	122171	PIPE ELBOW-GALVANIZED, 1.00 NPT X 45°

COMPONENT MAINTENANCE PARTS

A	1	124060-125	COOLER BONNET-IN/OUT END
B	1	22708-827	COOLER GASKET-IN/OUT END
C	1	124060-126	COOLER BONNET-RETURN END
D	1	22708-828	COOLER GASKET-RETURN END

Cabinet (air-cooled) - 143454-002/143456-002



NOTES-UNLESS OTHERWISE SPECIFIED:

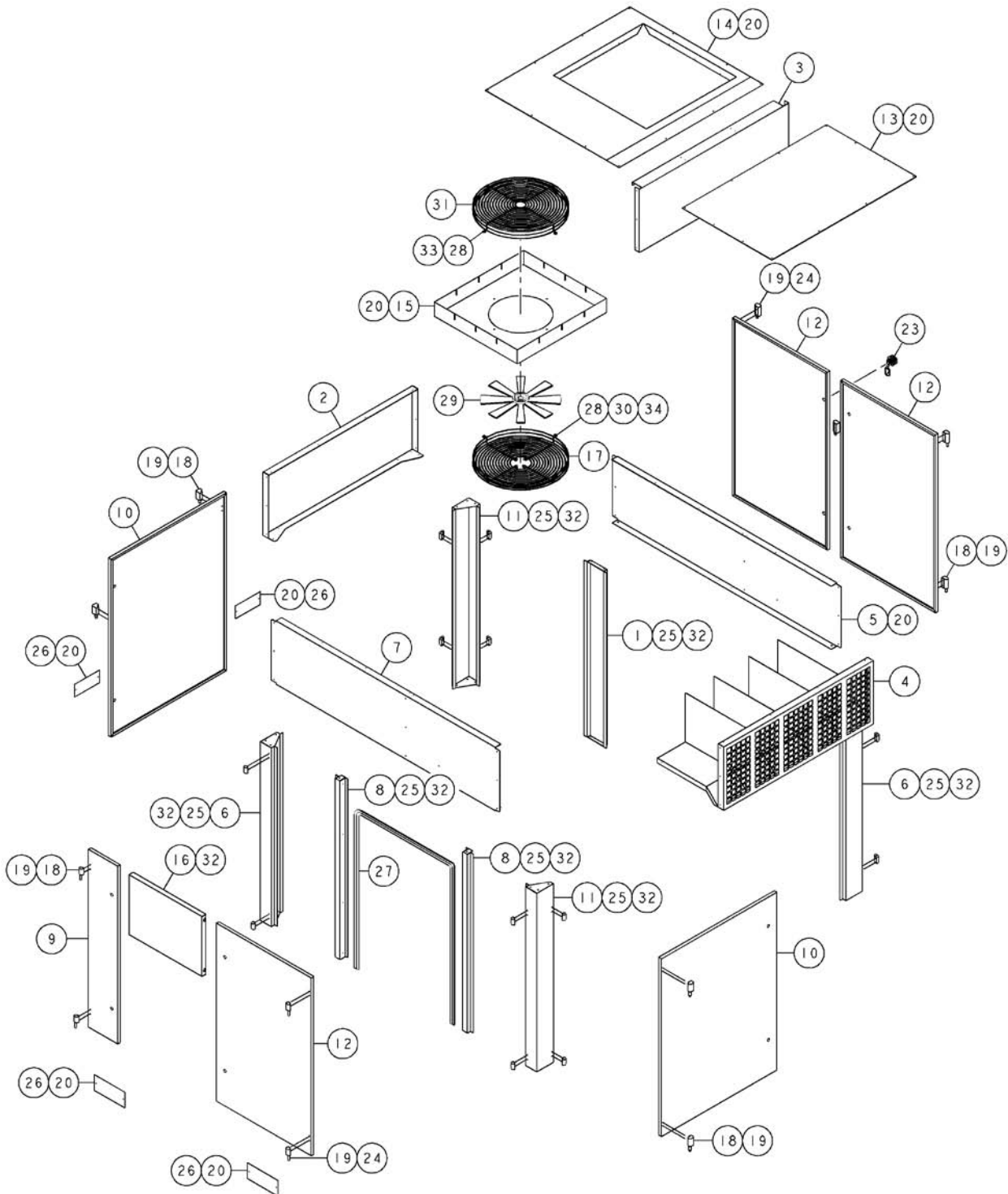
- 1) ITEM 20 (NOT SHOWN) IS TRIM AROUND SERVICE AIR LINE IN CABINET CORNER POST.
- 2) ITEM 21 (NOT SHOWN) IS SEAL AROUND DOORS.

Cabinet (air-cooled) - 143454-002/143456-002

ITEM NO.	QTY.	PART NUMBER	DESCRIPTION
1	1	142763-10	DOOR POST PANEL
2	1	142763-11	END PANEL
3	1	142763-12	CENTER DIVIDER PANEL
4	1	142763-83	INLET PANEL
5	1	142763-14	SIDE PANEL
6	2	142763-25	CORNER POST PANEL
7	1	142763-26	SIDE PANEL
8	2	142763-21	DOOR POST PANEL
9	1	142763-22	DOOR PANEL
10	2	142763-23	DOOR PANEL
11	2	142763-24	CORNER POST PANEL
12	3	142763-15	DOOR PANEL
13	1	142763-16	TOP PANEL
14	1	142763-17	TOP PANEL-AIR OUT (75 HP)
	1	142763-18	TOP PANEL-AIR OUT (100 HP)
15	1	142763-19	COOLER PANEL (75 HP)
	1	142763-20	COOLER PANEL (100 HP)
16	1	142763-28	GAUGE PANEL
17	8	141526-1	CABINET HINGE
18	48	142578-J07	CAP SCREW-ZINC, 1/4-20 UNC X 0.50, GRADE 5 (@ 6 FT-LBS)
19	52	141575-J07	PAN HEAD SCREW-1/4-20 UNC X 0.50
20	0.7 FT	20579	VIBRATION DAMPENER
21	100.0 FT	141528	RUBBER SEAL
22	12	128954-2	QUARTER TURN DOOR LATCH
23	4	141526-2	CABINET HINGE
24	16	110511-K10	HEX HEAD SCREW-ZINC, 5/16-18 UNC X 0.75
25	4	141991-1	BASE COVER PANEL
26	8.3 FT	141527-1	PANEL TRIM
27	28	110511-J07	HEX HEAD SCREW-ZINC, 1/4-20 UNC X 0.50

@ INDICATES TORQUE VALUE IN FOOT POUNDS (LUBRICATED THREADS).

Cabinet (water-cooled) - 144678-098



NOTES-UNLESS OTHERWISE SPECIFIED:
 1) ITEM 21 (TRIM AROUND SERVICE AIR LINE) IS NOT SHOWN.
 2) ITEM 22 (DOOR SEAL) IS NOT SHOWN.
 3) ITEMS 1 THROUGH 13 ARE IN KIT NUMBER 145004.
 4) ITEM 14 AND 15 ARE IN KIT NUMBER 143332-3.

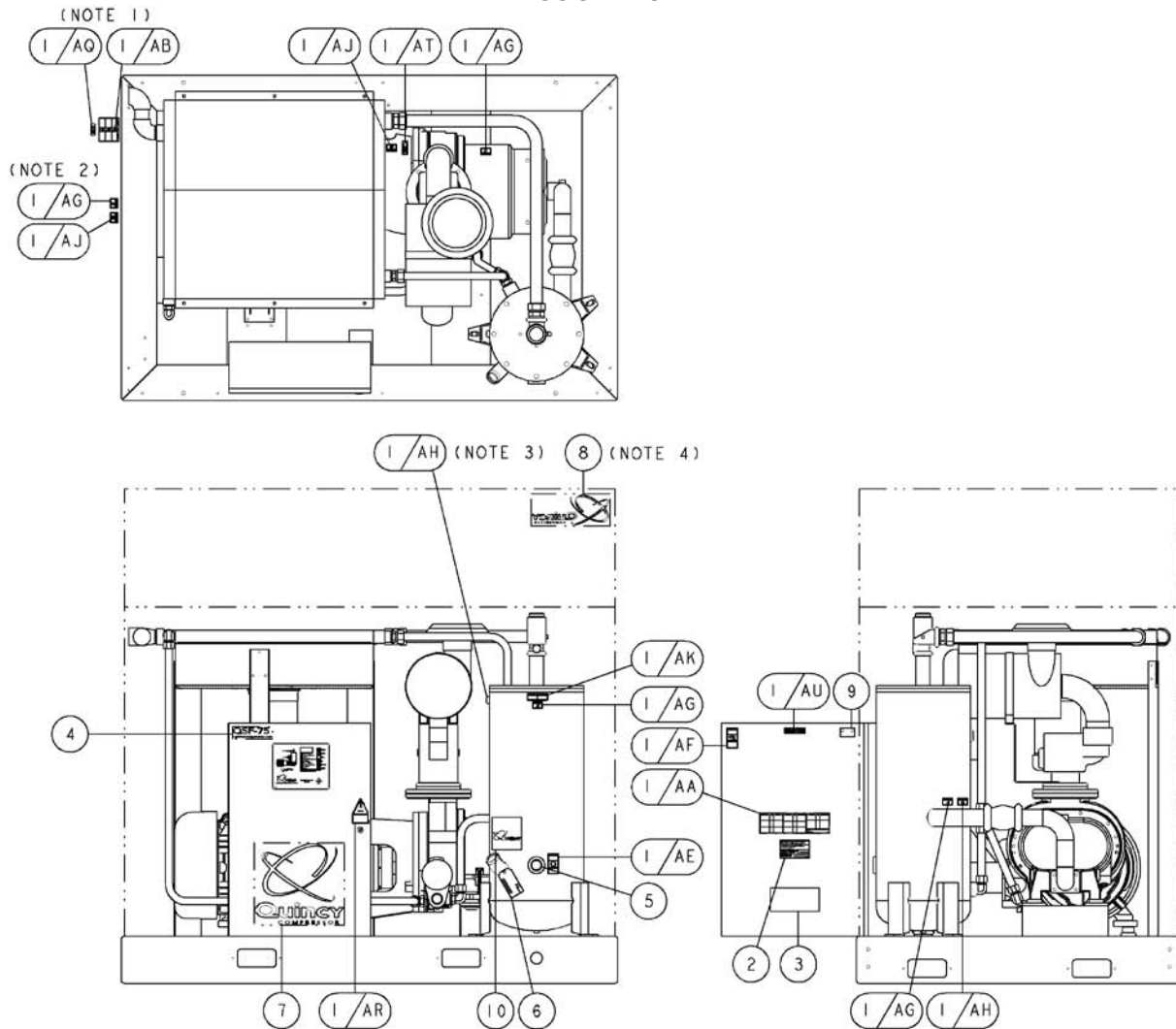
Cabinet (water-cooled) - 144678-098

ITEM NO.	QTY.	PART NUMBER	DESCRIPTION
1	1	142763-10	DOOR POST PANEL
2	1	142763-11	END PANEL
3	1	142763-12	CENTER DIVIDER PANEL
4	1	142763-83	INLET PANEL
5	1	142763-14	SIDE PANEL
6	2	142763-25	CORNER POST PANEL
7	1	142763-26	SIDE PANEL
8	2	142763-21	DOOR POST PANEL
9	1	142763-22	DOOR PANEL
10	2	142763-23	DOOR PANEL
11	2	142763-24	CORNER POST PANEL
12	3	142763-15	DOOR PANEL
13	1	142763-16	TOP PANEL
14	1	142763-17	TOP PANEL-AIR OUT
15	1	142763-29	FAN PANEL
16	1	142763-28	GAUGE PANEL
17	1	141223	FAN GUARD
18	8	141526-1	CABINET HINGE
19	48	142578-J07	CAP SCREW-ZINC, 1/4-20 UNC X 0.50, GRADE 5 (@ 6 FT-LBS)
20	52	141575-J07	PAN HEAD SCREW-1/4-20 UNC X 0.50
21	0.6 FT	20579	VIBRATION DAMPENER
22	100.0 FT	141528	RUBBER SEAL
23	12	128954-2	QUARTER TURN DOOR LATCH
24	4	141526-2	CABINET HINGE
25	16	110511-K10	HEX HEAD SCREW-ZINC, 5/16-18 UNC X 0.75
26	4	141991-1	BASE COVER PANEL
27	8.3 FT	141527-1	PANEL TRIM
28	8	110428W031	FLAT WASHER-0.31
29	1	126511-034	FAN-8 BLADE, 16.0 O.D.
30	4	112272-K02	SELF-LOCKING HEX NUT-ZINC, 5/16-18 UNC
31	1	143061	FAN GUARD
32	26	110511-J07	HEX HEAD SCREW-ZINC, 1/4-20 UNC X 0.50
33	4	110511-K14	HEX HEAD SCREW-ZINC, 5/16-18 UNC X 1.25
34	4	141631-L10	CAP SCREW-3/8-16 UNC X 0.75, GRADE 5 (@ 23 FT-LBS)
35	4	123115-05C	LOCKWASHER, 0.31

@ INDICATES TORQUE VALUE IN FOOT POUNDS (LUBRICATED THREADS).

Decals - 142996A001/A004

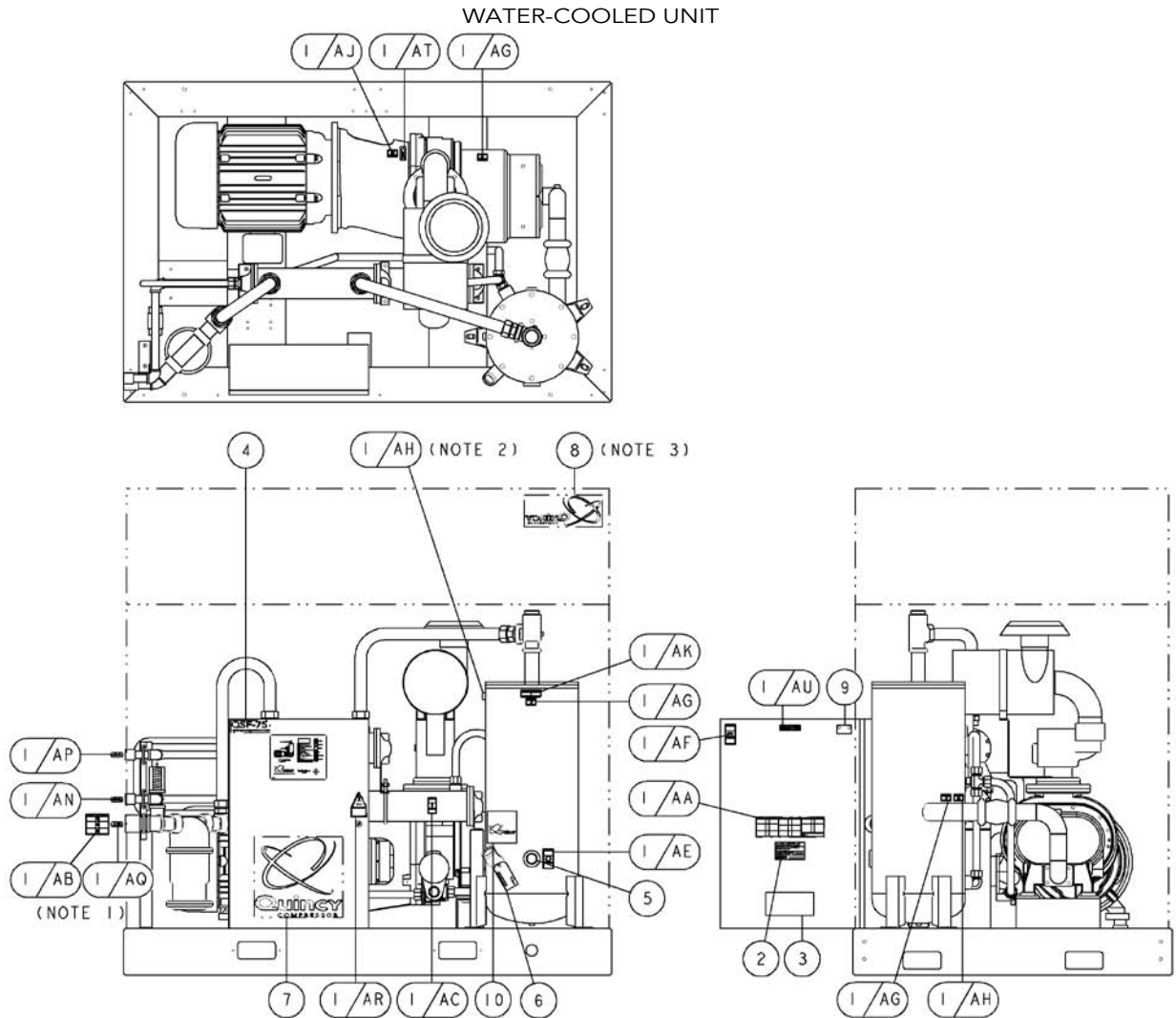
AIR-COOLED UNIT



NOTES-UNLESS OTHERWISE SPECIFIED:

- 1) UNITS WITH CABINET:
ITEMS 1/AB & 1/AQ ARE TO BE PLACED ON THE CABINET PANEL NEAR THE AIR OUTLET.
- UNITS WITHOUT CABINET:
ITEMS 1/AB & 1/AQ ARE TO BE PLACED ON THE COOLER SHROUD NEAR THE AIR OUTLET.
- 2) ITEMS 1/AG & 1/AJ ARE TO BE PLACED ON THE COOLER SHROUD ON THIS END.
- 3) ITEM 1/AH TO BE PLACED NEAR PRESSURE RELIEF VALVE.
- 4) UNITS WITH CABINET:
ITEM 8 IS TO BE PLACED IN THE UPPER LEFT CORNER OF THE CABINET PANEL ON THE BACK SIDE OF THE UNIT.
- UNITS WITHOUT CABINET:
ITEM 8 IS TO BE PLACED ON THE COOLER SHROUD ON THE BACK SIDE OF THE UNIT.

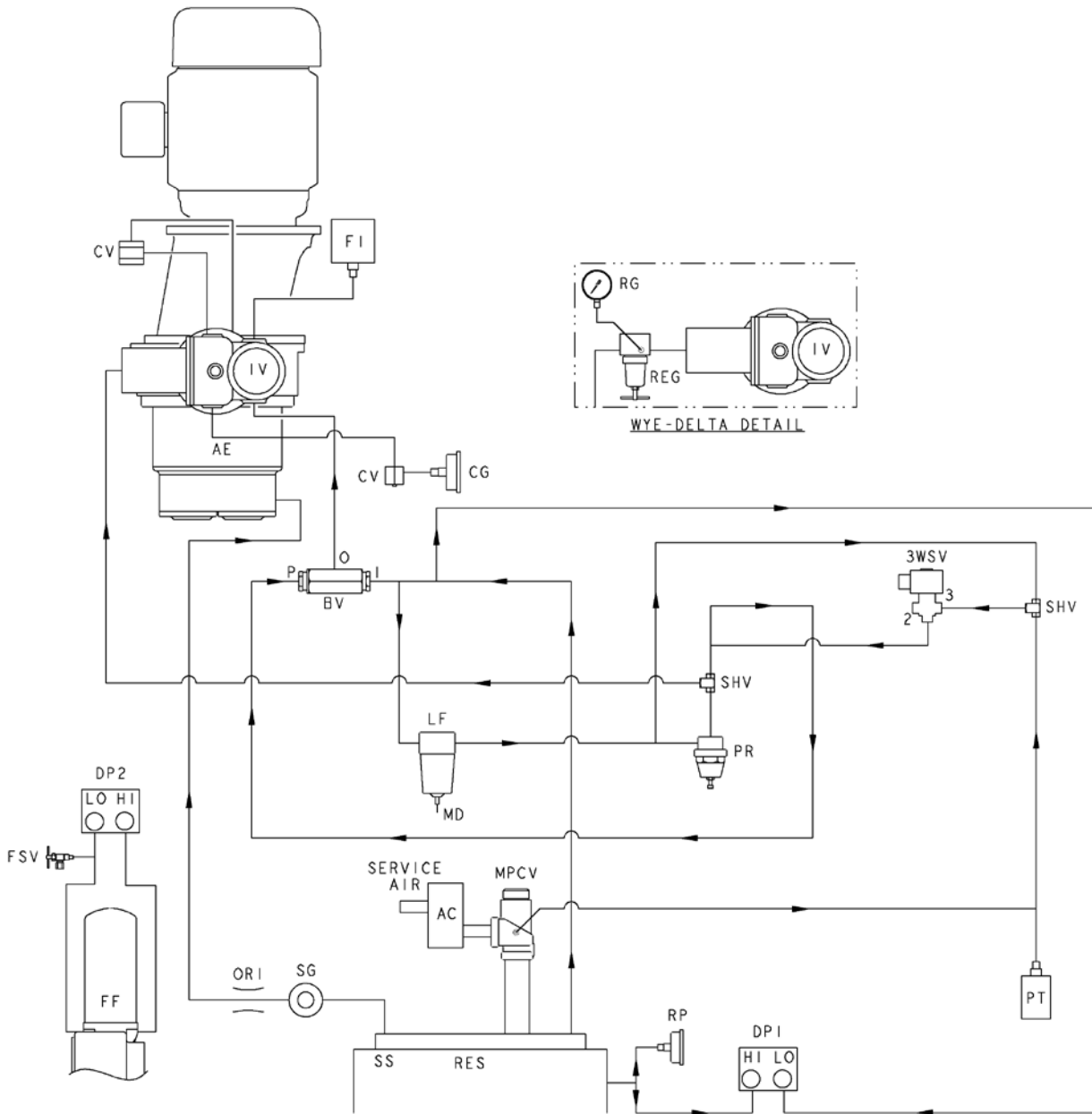
ITEM No.	QTY.	PART NUMBER	DESCRIPTION
1	1	146001	SAFETY DECAL SHEET
2	1	128198	GENUINE QUINCY COMPONENTS LABEL
3	1	110690-001	PLASTIC ENVELOPE
4	1	146012-075	DECAL-QSF-75
	1	146012-100	DECAL-QSF-100
5	1	142325	FLUID LEVEL DECAL
6	1	22177	TAG-FLUID TYPE SHIPPED WITH UNIT



- NOTES-UNLESS OTHERWISE SPECIFIED:
- 1) UNITS WITH CABINET:
 ITEMS 1/AB & 1/AO ARE TO BE PLACED ON THE CABINET PANEL NEAR THE AIR OUTLET.
 ITEMS 1/AN & 1/AP ARE TO BE PLACED ON THE CABINET PANEL NEAR THE WATER INLET & OUTLET.
 - UNITS WITHOUT CABINET:
 ITEMS 1/AB & 1/AO ARE TO BE PLACED ON OR NEAR THE AIR OUTLET.
 ITEMS 1/AN & 1/AP ARE TO BE PLACED ON OR NEAR THE WATER INLET & OUTLET.
 - 2) ITEM 1/AH TO BE PLACED NEAR PRESSURE RELIEF VALVE.
 - 3) UNITS WITH CABINET:
 ITEM 8 IS TO BE PLACED IN THE UPPER LEFT CORNER OF THE CABINET PANEL ON THE BACK SIDE OF THE UNIT.
 - UNITS WITHOUT CABINET:
 ITEM 8 IS TO BE PLACED ON THE RESERVOIR TO BE VISIBLE FROM THE BACK SIDE OF THE UNIT.

ITEM No.	QTY.	PART NUMBER	DESCRIPTION
7	1	146021-2	DECAL-Q/QUINCY, WHITE (15 INCH)
8	1	146002-3	DECAL-QUINCY LOGO, WHITE (13 INCH)
9	1	113058	CONTROL PANEL DECAL-UL LISTED
10	1	143861	DECAL-THIS MACHINE PROTECTED WITH QUINSYN PG™
	1	140519-3	DECAL-THIS MACHINE PROTECTED WITH QUINSYN XP®
	1	144048	DECAL-THIS MACHINE PROTECTED WITH QUINSYN PLUS
	1	128426	DECAL-THIS MACHINE PROTECTED WITH QUINSYN-F®

Control Schematic

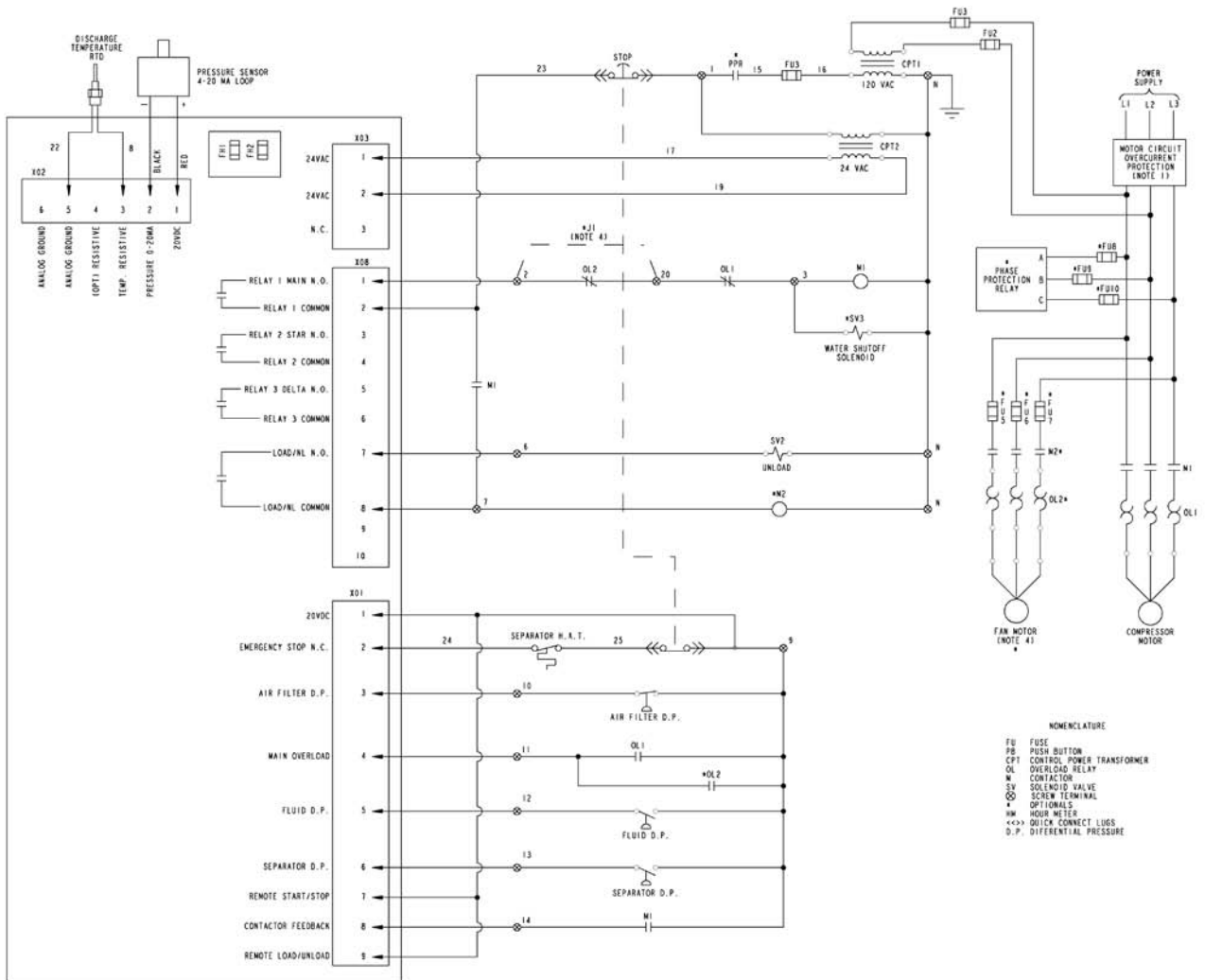


AC: AFTERCOOLER
 AE: AIREND
 BV: BLOWDOWN VALVE
 CG: CAPACITY GAUGE
 CV: CAPACITY VALVE
 DP1: DIFFERENTIAL PRESSURE SWITCH (SEPARATOR)
 DP2: DIFFERENTIAL PRESSURE SWITCH (FLUID FILTER)
 FF: FLUID FILTER
 FI: AIR FILTER INDICATOR SWITCH
 FSV: FLUID SAMPLE VALVE
 IV: INLET VALVE
 LF: LINE FILTER
 MD: MOISTURE DRAIN

MPCV: MINIMUM PRESSURE CHECK VALVE
 OR: SCAVENGE ORIFICE (0.040)
 PR: PRESSURE REGULATOR
 PT: PRESSURE TRANSDUCER
 REG: INLET VALVE REGULATOR
 RES: RESERVOIR
 RG: REGULATOR PRESSURE GAUGE
 RP: RESERVOIR PRESSURE GAUGE
 SG: SCAVENGE SIGHTGLASS
 SHV: SHUTTLE VALVE
 SS: SEPARATOR SCAVENGE
 3WSV: 3-WAY SOLENOID VALVE

Electrical Control Diagram

WP2001A



NOTES-UNLESS OTHERWISE SPECIFIED:
 1) AT INSTALLATION THE CUSTOMER IS TO PROVIDE DISCONNECT AND BRANCH CIRCUIT OVERCURRENT PROTECTION IN ACCORDANCE WITH THE NATIONAL ELECTRICAL CODE AND/OR ANY LOCAL CODES HAVING PRECEDENCE.
 2) UNLESS OTHERWISE SPECIFIED ALL WIRES ARE RED EXCEPT "M" WIRES ARE WHITE AND "G" WIRE IS GREEN.
 3) ALL PUSH BUTTONS, SELECTOR SWITCHES, HOURMETER, AND INDICATOR LIGHTS ARE LOCATED IN THE CONTROL PANEL.
 4) FAN MOTOR USED ON ALL AIR-COOLED UNITS AND ON WATER-COOLED UNITS WITH CABINET. JUMPER TO BE PLACED BETWEEN TERMINALS 2 AND 20 ON WATER-COOLED UNITS.

Standard Terms and Conditions

Quincy Compressor and Ortman Fluid Power Divisions

LEGAL EFFECT: Except as expressly otherwise agreed to in writing by an authorized representative of Seller, the following terms and conditions shall apply to and form a part of this order and any additional and/or different terms of Buyer's purchase order or other form of acceptance are rejected in advance and shall not become a part of this order.

The rights of Buyer hereunder shall be neither assignable nor transferable except with the written consent of Seller.

This order may not be canceled or altered except with the written consent of Seller and upon terms which will indemnify Seller against all loss occasioned thereby. All additional costs incurred by Seller due to changes in design or specifications, modification of this order or revision of product must be paid for by Buyer.

In addition to the rights and remedies conferred upon Seller by this order, Seller shall have all rights and remedies conferred at law and in equity and shall not be required to proceed with the performance of this order if Buyer is in default in the performance of such order or of any other contract or order with seller.

TERMS OF PAYMENT: Unless otherwise specified in the order acknowledgment, the terms of payment shall be net cash within thirty (30) days after shipment. These terms shall apply to partial as well as complete shipments. If any proceeding be initiated by or against Buyer under any bankruptcy or insolvency law, or in the judgment of Seller the financial condition of Buyer, at the time the equipment is ready for shipment, does not justify the terms of payment specified, Seller reserves the right to require full payment in cash prior to making shipment. If such payment is not received within fifteen (15) days after notification of readiness for shipment, Seller may cancel the order as to any unshipped item and require payment of its reasonable cancellation charges.

If Buyer delays shipment, payments based on date of shipment shall become due as of the date when ready for shipment. If Buyer delays completion of manufacture, Seller may elect to require payment according to percentage of completion. Equipment held for Buyer shall be at Buyer's risk and storage charges may be applied at the discretion of Seller.

Accounts past due shall bear interest at the highest rate lawful to contract for but if there is no limit set by law, such interest shall be eighteen percent (18%). Buyer shall pay all cost and expenses, including reasonable attorney's fees, incurred in collecting the same, and no claim, except claims within Seller's warranty of material or workmanship, as stated below, will be recognized unless delivered in writing to Seller within thirty (30) days after date of shipment.

TAXES: All prices exclude present and future sales, use, occupation, license, excise, and other taxes in respect of manufacture, sales or delivery, all of which shall be paid by Buyer unless included in the purchase price at the proper rate or a proper exemption certificate is furnished.

ACCEPTANCE: All offers to purchase, quotations and contracts of sales are subject to final acceptance by an authorized representative at Seller's plant.

DELIVERY: Except as otherwise specified in this quotation, delivery will be F. O. B. point of shipment. In the absence of exact shipping instruction, Seller will use its discretion regarding best means of insured shipment. No liability will be accepted by Seller for so doing. All transportation charges are at Buyer's expense. Time of delivery is an estimate only and is based upon the receipt of all information and necessary approvals. The shipping schedule shall not be construed to limit seller in making commitments for materials or in fabricating articles under this order in accordance with Seller's normal and reasonable production schedules.

Seller shall in no event be liable for delays caused by fires, acts of God, strikes, labor difficulties, acts of governmental or military authorities, delays in transportation or procuring materials, or causes of any kind beyond Seller's control. No provision for liquidated damages for any cause shall apply under this order. Buyer shall accept delivery within thirty (30) days after receipt of notification of readiness for shipment. Claims for shortages will be deemed to have been waived if not made in writing within ten (10) days after the receipt of the material in respect of which any such shortage is claimed. Seller is not responsible for loss or damage in transit after having received "In Good Order" receipt from the carrier. All claims for loss or damage in transit should be made to the carrier.

Standard Terms and Conditions

Quincy Compressor and Ortman Fluid Power Divisions

TITLE & LIEN RIGHTS: The equipment shall remain personal property, regardless of how affixed to any realty or structure. Until the price (including any notes given therefore) of the equipment has been fully paid in cash, Seller shall, in the event of Buyer's default, have the right to repossess such equipment.

PATENT INFRINGEMENT: If properly notified and given an opportunity to do so with friendly assistance, Seller will defend Buyer and the ultimate user of the equipment from any actual or alleged infringement of any published United States patent by the equipment or any part thereof furnished pursuant hereto (other than parts of special design, construction, or manufacture specified by and originating with Buyer), and will pay all damages and costs awarded by competent court in any suit thus defended or of which it may have had notice and opportunity to defend as aforesaid.

STANDARD WARRANTY: Seller warrants that products of its own manufacture will be free from defects in workmanship and materials under normal use and service for the period specified in the product instruction manual. Warranty for service parts will be ninety (90) days from date of factory shipment. Electric Motors, gasoline and diesel engines, electrical apparatus and all other accessories, components and parts not manufactured by Seller are warranted only to the extent of the original manufacturer's warranty.

Notice of the alleged defect must be given to the Seller, in writing with all identifying details including serial number, type of equipment and date of purchase within thirty (30) days of the discovery of the same during the warranty period.

Seller's sole obligation on this warranty shall be, at its option, to repair or replace or refund the purchase price of any product or part thereof which proves to be defective. If requested by Seller, such product or part thereof must be promptly returned to seller, freight prepaid, for inspection.

Seller warrants repaired or replaced parts of its own manufacture against defects in materials and workmanship under normal use and service for ninety (90) days or for the remainder of the warranty on the product being repaired.

This warranty shall not apply and Seller shall not be responsible or liable for:

- (a) Consequential, collateral or special losses or damages;
- (b) Equipment conditions caused by fair wear and tear, abnormal conditions of use, accident, neglect or misuse of equipment, improper storage or damage resulting during shipping;
- (c) Deviation from operating instructions, specifications or other special terms of sale;
- (d) Labor charges, loss or damage resulting from improper operation, maintenance or repairs made by person(s) other than Seller or Seller's authorized service station.

In no event shall Seller be liable for any claims whether arising from breach of contract or warranty or claims of negligence or negligent manufacture in excess of the purchase price.

THIS WARRANTY IS THE SOLE WARRANTY OF SELLERS AND ANY OTHER WARRANTIES, WHETHER EXPRESS OR IMPLIED IN LAW OR IMPLIED IN FACT, INCLUDING ANY WARRANTIES OF MERCHANTABILITY AND FITNESS FOR PARTICULAR USE ARE HEREBY SPECIFICALLY EXCLUDED.

LIABILITY LIMITATIONS: Under no circumstances shall the Seller have any liability for liquidated damages or for collateral, consequential or special damages or for loss of profits, or for actual losses or for loss of production or progress of construction, whether resulting from delays in delivery or performance, breach of warranty, negligent manufacture or otherwise.

ENVIRONMENTAL AND OSHA REQUIREMENTS: At the time of shipment of the equipment from the factory, Quincy Compressor / Ortman Fluid Power will comply with the various Federal, State and local laws and regulations concerning occupational health and safety and pollution. However, in the installation and operation of the equipment and other matters over which the seller has no control, the Seller assumes no responsibility for compliance with those laws and regulations, whether by the way of indemnity, warranty or otherwise.



an EnPro Industries company

Quincy Compressor Products: 217.222.7700
E-mail: info@quincycompressor.com
Website: quincycompressor.com



© 2006 Quincy Compressor, an EnPro Industries company
All Rights Reserved. Litho in U.S.A.