

# Quincy

**MODEL QSB  
50/60/75 H.P.  
AIRCOOLED  
HELICAL SCREW  
COMPRESSOR UNIT**

## **PARTS MANUAL**

**50053-101**



**MARCH 1986**

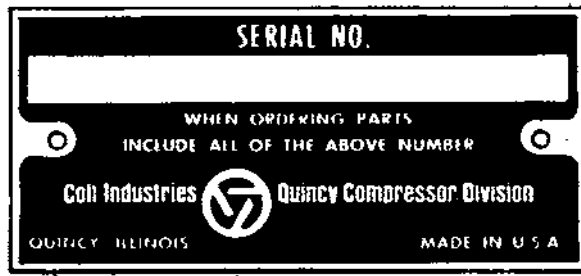


## ALPHABETICAL INDEX

AIR FILTER GROUP .....	30 & 31
AIR/OIL RESERVOIR GROUPS .....	12 & 13
AIR PIPING GROUPS (LESS AFTERCOOLER) .....	26 & 27
AIR PIPING GROUPS (WITH AFTERCOOLER) .....	28 & 29
BASIC COMPRESSOR GROUPS .....	4 & 5
CABINET GROUPS (50 OR 60 H.P., LESS AFTERCOOLER) .....	48 & 49
CABINET GROUPS (50 OR 60 H.P., WITH AFTERCOOLER) .....	46 & 47
CABINET GROUP (75 H.P., LESS AFTERCOOLER) .....	52 & 53
CABINET GROUP (75 H.P., WITH AFTERCOOLER) .....	50 & 51
CONTROL PIPING GROUP .....	36 & 37
CONTROL PIPING SCHEMATIC .....	54
DISCHARGE PIPING GROUP .....	14 & 15
DRIVE GROUPS .....	32 THRU 35
ELECTRICAL CONTROL GROUP (CONTINUOUS RUN) .....	38 & 39
ELECTRICAL CONTROL GROUP (AUTO DUAL) .....	40 & 41
FAN MOTOR/STARTER GROUPS .....	42 & 43
INLET VALVE GROUP .....	10 & 11
LUBRICATION SPECIFICATIONS .....	3
MOTOR/STARTER GROUPS .....	6 THRU 9
OIL COOLER GROUP (50 OR 60 H.P., LESS AFTERCOOLER) .....	16 & 17
OIL COOLER GROUP (50 OR 60 H.P., WITH AFTERCOOLER) .....	18 & 19
OIL COOLER GROUP (75 H.P., LESS AFTERCOOLER) .....	20 & 21
OIL COOLER GROUP (75 H.P., WITH AFTERCOOLER) .....	22 & 23
OIL PIPING GROUP .....	24 & 25
RECOMMENDED SPARE PARTS .....	57
SERIAL NUMBER IDENTIFICATION .....	2
TRANSFORMER GROUPS .....	44 & 45
WIRING SCHEMATIC WP 1708AC (CONTINUOUS RUN) .....	55
WIRING SCHEMATIC WP 1711 (AUTO DUAL) .....	56

## SERIAL NUMBER IDENTIFICATION

THE SERIAL NUMBER TAG IS LOCATED ON THE TOP FLANGE OF THE UNIT FRAME JUST LEFT OF THE CONTROL PANEL.



## ORDERING REPLACEMENT PARTS

PROMPT SERVICE CAN BE RENDERED ON REPLACEMENT PART ORDERS IF THE FOLLOWING INFORMATION IS GIVEN:

1. THE SERIAL NUMBER MUST BE GIVEN WHEN ORDERING REPLACEMENT PARTS.
2. STATE THE EXACT PART NUMBER NEEDED. DO NOT ORDER BY INDEX NUMBERS, AS INDEX NUMBERS ARE REPEATED THROUGHOUT THIS MANUAL, AND IF USED FOR ORDERING PARTS WILL NECESSITATE TIME CONSUMING CORRESPONDENCE.
3. STATE THE EXACT QUANTITY NEEDED.
4. STATE THE PREFERRED TYPE OF TRANSPORTATION.

ALL REPLACEMENT PARTS ARE TO BE ORDERED THROUGH AN AUTHORIZED DISTRIBUTOR.

### NOTICE:

DO NOT OPERATE THIS COMPRESSOR WITHOUT ALL GUARDS AND ACCOUSTICAL PANELS IN PLACE.



AIR FROM THIS COMPRESSOR  
MUST NOT BE USED FOR  
FOOD PROCESSING OR BREATHING.  
DEATH OR INJURY MAY RESULT.



## HELICAL SCREW LUBRICATION OILS

WE RECOMMEND THAT ALL QSB COMPRESSORS BE FILLED WITH OIL THAT MEETS ONE OF THE FOLLOWING SPECIFICATIONS:

### MOTOR OILS

API SERVICE CD - SAE 20W VISCOSITY  
MIL-L-2104D - SAE 20W VISCOSITY  
MIL-L-46152B - SAE 20W VISCOSITY

ADDITIONAL INFORMATION MAY BE FOUND IN THE QSB INSTRUCTION MANUAL.

IF A COMPRESSOR IS GOING TO BE SUBJECTED TO SUB-FREEZING TEMPERATURES, CONTACT AN AUTHORIZED QUINCY COMPRESSOR DISTRIBUTOR.

SHOULD REQUIREMENTS NECESSITATE A SYNTHETIC OIL, IT WILL BE NECESSARY THAT THE ORDER SO STATE, SO THAT THE COMPRESSOR MAY BE FILLED WITH SYNTHETIC OIL FOR THE PARTICULAR APPLICATION. IF THE ORDER DOES NOT SPECIFY TYPE OIL, THE COMPRESSOR WILL BE SHIPPED WITH MOTOR OIL AS SPECIFIED ABOVE.

SYNTHETIC LUBRICANTS MAY NOT BE COMPATIBLE WITH COMPONENTS USED IN ANY QUINCY HELICAL SCREW COMPRESSOR SHIPPED FROM QUINCY, ORIGINALLY USING PETROLEUM OIL. IF IT IS DEEMED NECESSARY TO CONVERT ANY SUCH UNIT TO SYNTHETIC LUBRICATION, PLEASE CONTACT AN AUTHORIZED QUINCY COMPRESSOR DISTRIBUTOR.

THE FOLLOWING INFORMATION WILL BE REQUIRED BY THE DISTRIBUTOR:

MODEL \_\_\_\_\_

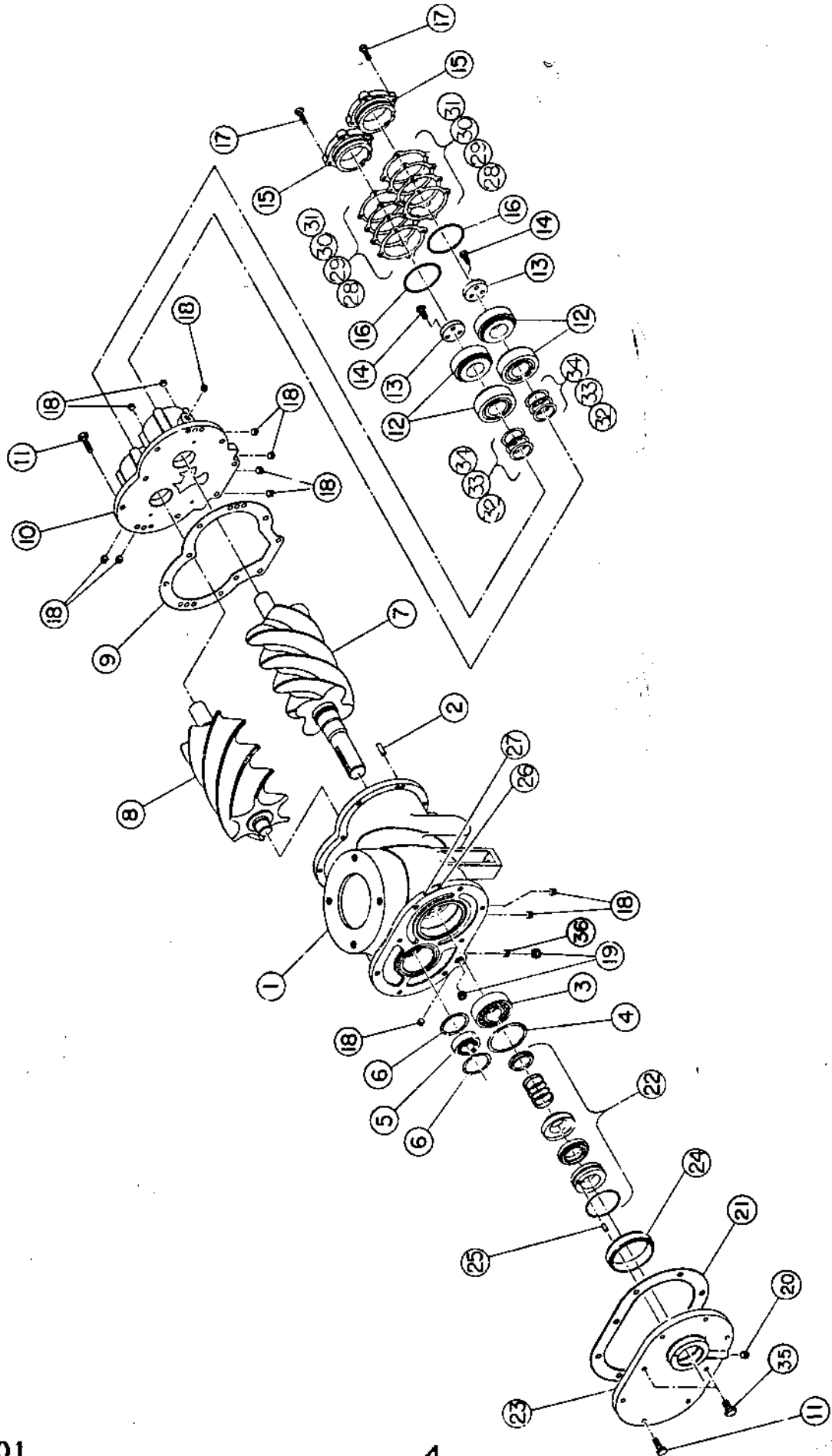
SERIAL NO. \_\_\_\_\_

OIL ORIGINALLY USED \_\_\_\_\_

OIL NOW USED (IF CHANGED) \_\_\_\_\_

OIL TO BE USED \_\_\_\_\_

# BASIC COMPRESSOR GROUPS

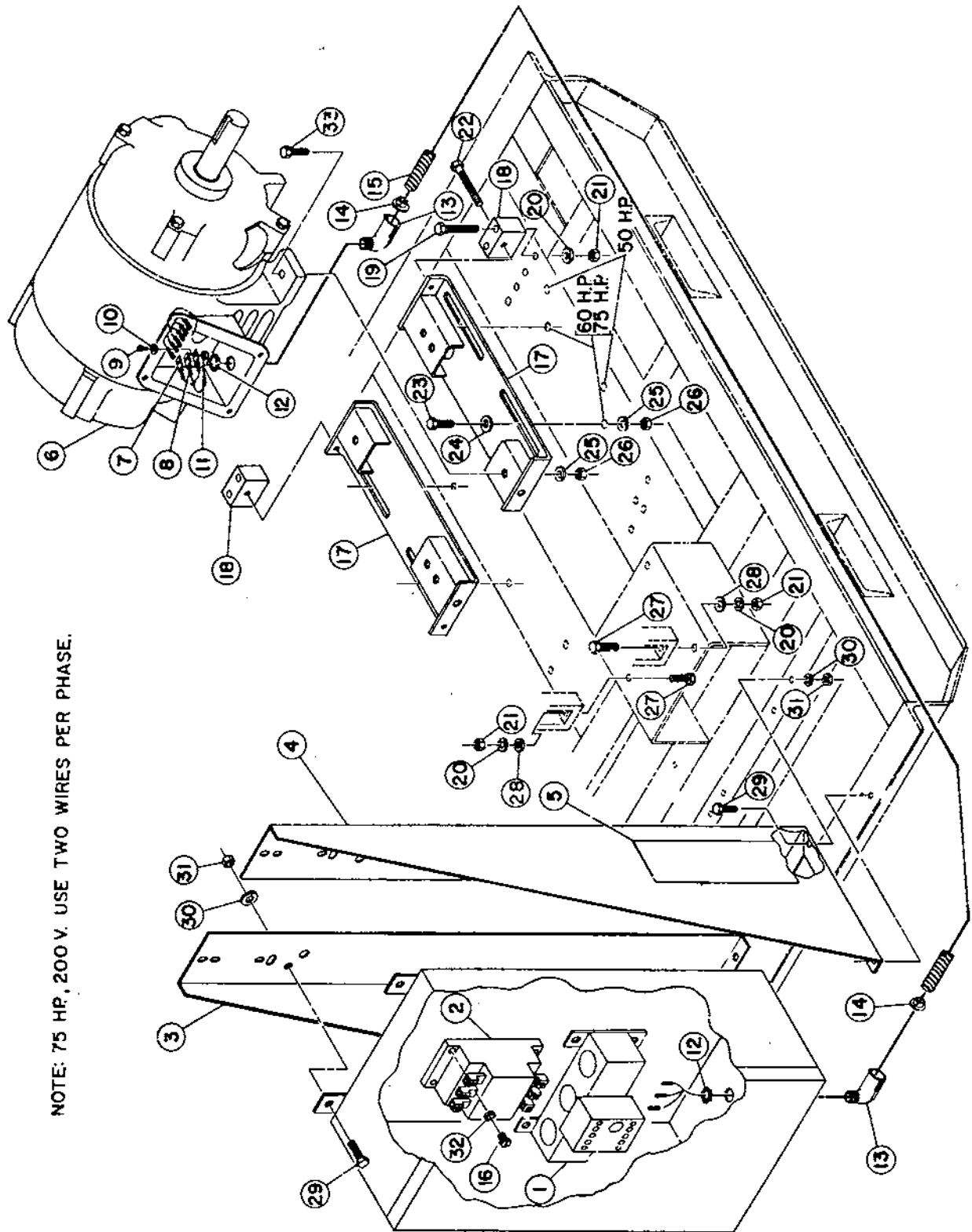


## BASIC COMPRESSOR GROUPS

INDEX NUMBER	QTY	PART NUMBER	QTY	PART NUMBER	DESCRIPTION
		125583-001			BASIC COMPRESSOR GROUP (50/60 H.P.)
				125583-002	BASIC COMPRESSOR GROUP (75 H.P.)
1	1	125563-001	1	125563-001	HOUSING - ROTOR
2	2	124145-004	2	124145-004	PIN - DOWEL
3	1	124232-002	1	124232-002	BEARING - MALE ROTOR, SUCTION END
4	1	125581	1	125581	RING - RETAINER, BEARING
5	1	124232-003	1	124232-003	BEARING - FEMALE ROTOR
6	2	125688	2	125688	RING - RETAINER, BEARING
7	1	125557	1	125557	ROTOR - MALE
8	1	125558	1	125558	ROTOR - FEMALE
9	1	125577-001	1	125577-001	GASKET - DISCHARGE PLATE
10	1	125566	1	125566	PLATE - DISCHARGE
11	15	123478-L14	15	123478-L14	SCREW - HEX., 3/8-16 UNC X 1.25, GRADE 5 (●30 FT-LBS)
12	4	125580-001	4	125580-001	BEARING - DISCHARGE END
13	2	125572	2	125572	RETAINER - BEARING, DISCHARGE END
14	6	123478-K12	6	123478-K12	SCREW - HEX., 5/16-18UNC X 1.00, GRADE 5 (●17 FT-LBS)
15	2	125567	2	125567	CAP - DISCHARGE END
16	2	22749-151	2	22749-151	O-RING - .09 X 3.00 I.D.
17	8	123478-J12	8	123478-J12	SCREW - HEX., 1/4-20 UNC X 1.00, GRADE 5 (●6FT-LBS)
18	12	121160	12	121160	PLUG - PIPE, 1/8 NPT
19	2	2719	2	2719	PLUG - PIPE, 1/4 NPT
20	1	124332-001	1	124332-001	PLUG - PIPE, 1/16 NPT
21	1	125689	1	125689	GASKET - PLATE, SUCTION END
22	1	22758-1	1	22758-1	SEAL - OIL
23	1	125564	1	125564	PLATE - SUCTION END
24	1	125571	1	125571	RING - PILOT
25	1	6268	1	6268	PIN - STOP
26	1	120189	1	120189	PLATE - IDENTIFICATION
27	2	4029	2	4029	PIN - NAMEPLATE
28	4	125576-001	4	125576-001	SHIM - BEARING, .001
29	2	125576-005	2	125576-005	SHIM - BEARING, .005
30	2	125576-010	2	125576-010	SHIM - BEARING, .010
31	2	125576-030	2	125576-030	SHIM - BEARING, .030
32	4	125575-001	4	125575-001	SHIM - BEARING, .001
33	2	125575-005	2	125575-005	SHIM - BEARING, .005
34	2	125575-010	2	125575-010	SHIM - BEARING, .010
35	2	123478-L12	2	123478-L12	SCREW - HEX., 3/8-16 UNC X 1.00, GRADE (●30FT-LBS)
36	1	126621-001		NOT USED	ORIFICE - PLUG, 1/8 NPT

● INDICATES TORQUE VALUE IN FOOT POUNDS (DRY THREADS)

# MOTOR/STARTER GROUPS

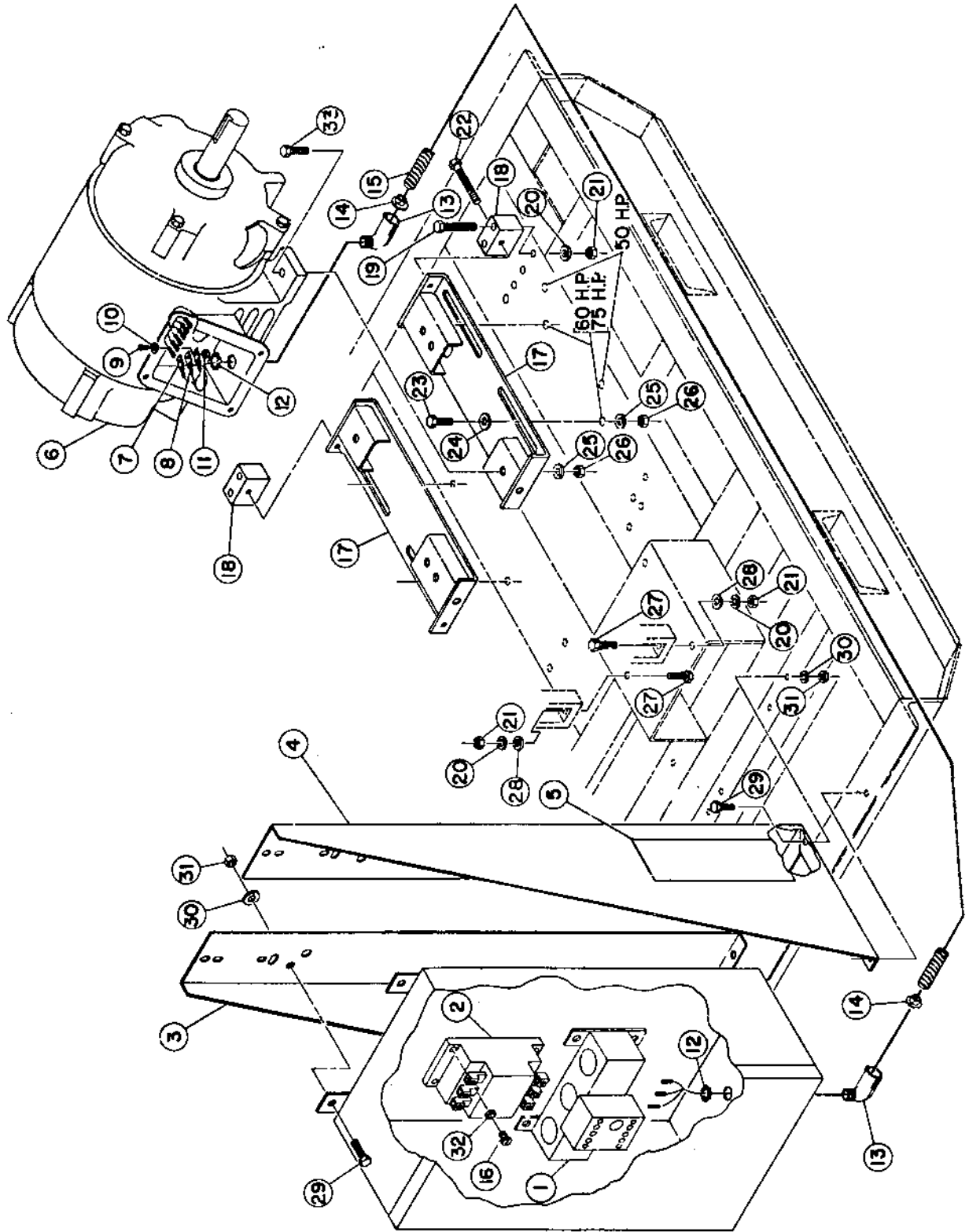


NOTE: 75 HP, 200 V. USE TWO WIRES PER PHASE.

## MOTOR/STARTER GROUPS

INDEX NUMBER	QTY	PART NUMBER	QTY	PART NUMBER	QTY	PART NUMBER	DESCRIPTION
<b>200 VOLT UNITS</b>							
		126454-Q31		126454-R31		126454-S31	MOTOR/STARTER GROUP (50 H.P.) MOTOR/STARTER GROUP (60 H.P.) MOTOR/STARTER GROUP (75 H.P.)
1	1	1673C-EQ	1	1673C-ER	1	1673C-ES	OVERLOAD - THERMAL
2	1	1673A-EQEO	1	1673A-EREO	1	1673A-ESEO	CONTACTOR - ELECTRICAL
3	1	126448	1	126448	1	126448	SUPPORT - ELECTRICAL ENCLOSURE
4	1	126447	1	126447	1	126447	SUPPORT - ELECTRICAL ENCLOSURE
5	1	126114-50	1	126114-60	1	126114-75	DECAL - "50+" DECAL - "60+" DECAL - "75+"
6	1	9748	1	121284	1	23965	MOTOR
7	3	40996	3	40669	3	9391	CONNECTOR
8	25FT	9974	25FT	120567	45FT	124219	WIRE - ELECTRICAL, BLACK
9	6	40753	6	40753	6	40753	SCREW - HEX., 1/4-20 UNC X .62, BRASS
10	9	122324	9	122324	9	122324	FLATWASHER - 1/4, BRASS
11	6	124366-J02	6	124366-J02	6	123478-J02	NUT - HEX., 1/4-20 UNC, BRASS
12	2	9419	2	9419	2	9842	LOCKNUT - CONDUIT
13	2	9491	2	9491	2	9839	ELBOW - FLEXIBLE CONDUIT
14	2	9390	2	9390	2	9840	SLEEVE - INSULATING
15	5FT	9332	5FT	9332	5FT	9848	CONDUIT - FLEXIBLE
16	8	123200-J12	8	123200-J12	8	123200-J12	SCREW - PAN HEAD, 1/4-20 UNC X 1.00, GRADE 5
17	2	125860	2	125860	2	125860	BASE - MOTOR
18	2	126434	2	126434	2	126434	BLOCK - TENSION
19	4	123478-N21	4	123478-N21	4	123478-N21	SCREW - HEX., 1/2-13 UNC X 3.00, GRADE 5
20	7	123115-08C	7	123115-08C	7	123115-08C	LOCKWASHER - 1/2
21	7	124364-N02	7	124364-N02	7	124364-N02	NUT - HEX., 1/2-13 UNC
22	2	9183	2	9183	2	9183	SCREW - HEX., 1/2-13 UNC X 5.50, GRADE 5
23	4	123478-Q16	4	123478-Q16	4	123478-Q16	SCREW - HEX., 5/8-11 UNC X 1.75, GRADE 5
24	4	110428W062	4	110428W062	4	110428W062	FLATWASHER - 5/8
25	8	123115-10C	8	123115-10C	8	123115-10C	LOCKWASHER - 5/8
26	8	124364-Q02	8	124364-Q02	8	124364-Q02	NUT - HEX., 5/8-11 UNC
27	3	123478-N16	3	123478-N16	3	123478-N16	SCREW - HEX., 1/2-13 UNC X 1.75, GRADE 5
28	3	110428W050	3	110428W050	3	110428W050	FLATWASHER - 1/2
29	10	123478-L14	10	123478-L14	10	123478-L14	SCREW - HEX., 3/8-16 UNC X 1.25, GRADE 5
30	10	123115-06C	10	123115-06C	10	123115-06C	LOCKWASHER - 3/8
31	10	124364-L02	10	124364-L02	10	124364-L02	NUT - HEX., 3/8-16 UNC
32	8	123115-Q4C	8	123115-Q4C	8	123115-Q4C	LOCKWASHER - 1/4
33	4	123478-Q18	4	123478-Q18	4	123478-Q18	SCREW - HEX., 5/8-11 UNC X 2.25, GRADE 5
<b>230 VOLT UNITS</b>							
		126454-Q32		126454-R32		126454-S32	MOTOR/STARTER GROUP (50 H.P.) MOTOR/STARTER GROUP (60 H.P.) MOTOR/STARTER GROUP (75 H.P.)
1	1	1673C-6Q	1	1673C-6R	1	1673C-6S	OVERLOAD - THERMAL
2	1	1673A-6Q60	1	1673A-6R60	1	1673A-6S60	CONTACTOR - ELECTRICAL
3	1	126448	1	126448	1	126448	SUPPORT - ELECTRICAL ENCLOSURE
4	1	126447	1	126447	1	126447	SUPPORT - ELECTRICAL ENCLOSURE
5	1	126114-50	1	126114-60	1	126114-75	DECAL - "50+" DECAL - "60+" DECAL - "75+"
6	1	9198	1	9489	1	9199	MOTOR
7	3	9391	3	40996	3	122759	CONNECTOR
8	25FT	9349	25FT	9974	25FT	9847	WIRE - ELECTRICAL, BLACK
9	6	40753	6	40753	6	40753	SCREW - HEX., 1/4-20 UNC X .62, BRASS
10	9	122324	9	122324	9	122324	FLATWASHER - 1/4, BRASS
11	6	124366-J02	6	124366-J02	6	124366-J02	NUT - HEX., 1/4-20 UNC, BRASS
12	2	22038	2	9419	2	9842	LOCKNUT - CONDUIT
13	2	23489	2	9491	2	9839	ELBOW - FLEXIBLE CONDUIT
14	2	23491	2	9390	2	9840	SLEEVE - CONDUIT
15	5FT	23490	5FT	9332	5FT	9848	CONDUIT - FLEXIBLE
16	8	123200-J12	8	123200-J12	8	123200-J12	SCREW - PAN HEAD, 1/4-20 UNC X 1.00, GRADE 5
17	2	125860	2	125860	2	125860	BASE - MOTOR
18	2	126434	2	126434	2	126434	BLOCK - TENSION
19	4	123478-N21	4	123478-N21	4	123478-N21	SCREW - HEX., 1/2-13 UNC X 3.00, GRADE 5
20	7	123115-08C	7	123115-08C	7	123115-08C	LOCKWASHER - 1/2
21	7	124364-N02	7	124364-N02	7	124364-N02	NUT - HEX., 1/2-13 UNC
22	2	9183	2	9183	2	9183	SCREW - HEX., 1/2-13 UNC X 5.50, GRADE 5
23	4	123478-Q16	4	123478-Q16	4	123478-Q16	SCREW - HEX., 5/8-11 UNC X 1.75, GRADE 5
24	4	110428W062	4	110428W062	4	110428W062	FLATWASHER - 5/8
25	8	123115-10C	8	123115-10C	8	123115-10C	LOCKWASHER - 5/8
26	8	124364-Q02	8	124364-Q02	8	124364-Q02	NUT - HEX., 5/8-11 UNC
27	3	123478-N16	3	123478-N16	3	123478-N16	SCREW - HEX., 1/2-13 UNC X 1.75, GRADE 5
28	3	110428W050	3	110428W050	3	110428W050	FLATWASHER - 1/2
29	10	123478-L14	10	123478-L14	10	123478-L14	SCREW - HEX., 3/8-16 UNC X 1.25, GRADE 5
30	10	123115-06C	10	123115-06C	10	123478-06C	LOCKWASHER - 3/8
31	10	124364-L02	10	124364-L02	10	124364-L02	NUT - HEX., 3/8-16 UNC
32	8	123115-Q4C	8	123115-Q4C	8	123115-Q4C	LOCKWASHER - 1/4
33	4	123478-Q18	4	123478-Q18	4	123478-Q18	SCREW - HEX., 5/8-11 UNC X 2.25, GRADE 5

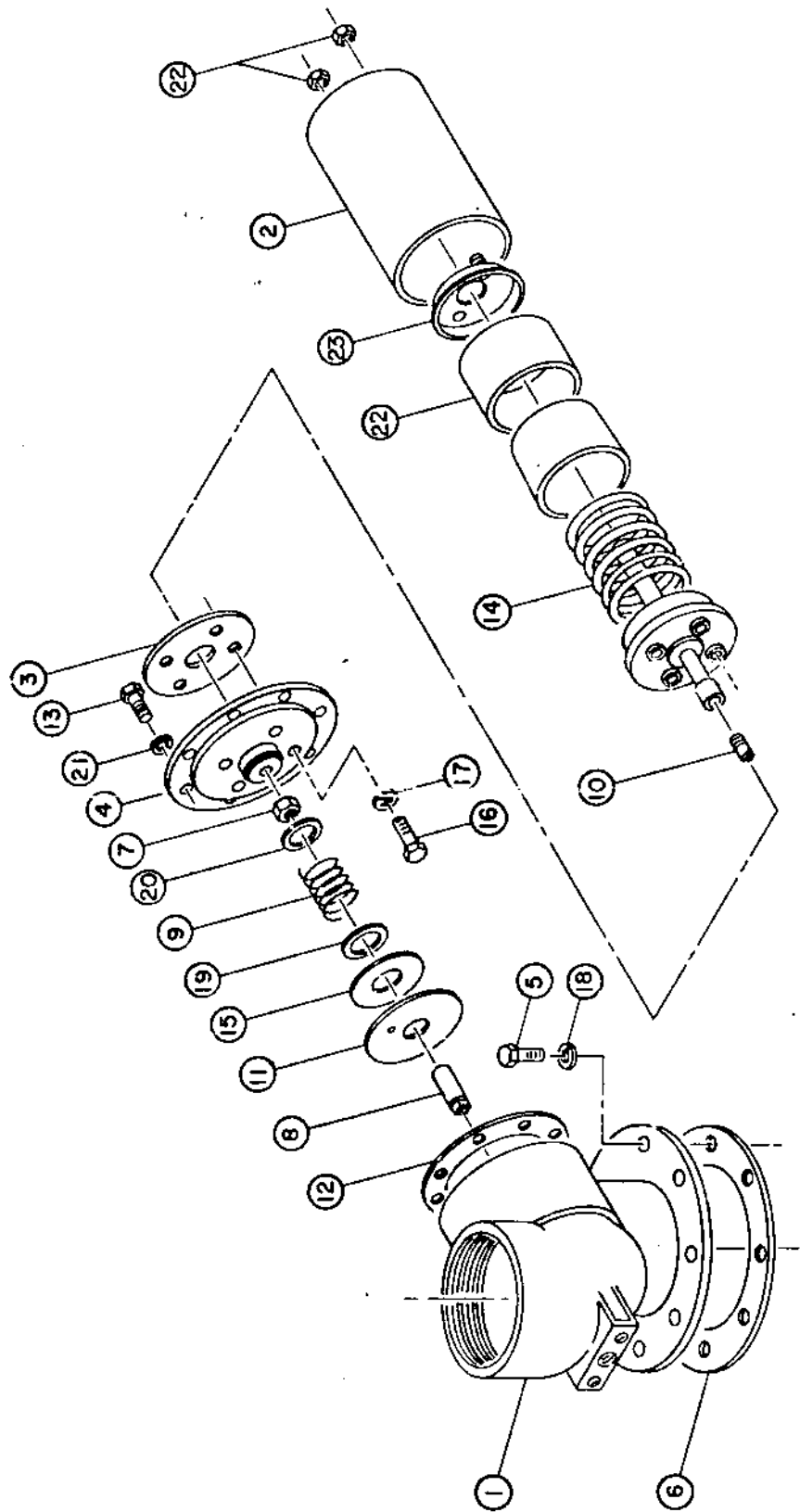
# MOTOR/STARTER GROUPS



## MOTOR/STARTER GROUPS

INDEX NUMBER	QTY	PART NUMBER	QTY	PART NUMBER	QTY	PART NUMBER	DESCRIPTION
<b>460 VOLT UNITS</b>							
		126454-Q34		126454-R34		126454-S34	MOTOR/STARTER GROUP (50 H.P.) MOTOR/STARTER GROUP (60 H.P.) MOTOR/STARTER GROUP (75 H.P.)
1	1	1673C-KQ	1	1673C-KR	1	1673C-KS	OVERLOAD - THERMAL
2	1	1673A-KOKO	1	1673A-KRKO	1	1673A-KSKO	CONTACTOR - ELECTRICAL
3	1	126448	1	126448	1	126448	SUPPORT - ELECTRICAL ENCLOSURE
4	1	126447	1	126447	1	126447	SUPPORT - ELECTRICAL ENCLOSURE
5	1	126114-50	1	126114-60	1	126114-75	DECAL - "50+" DECAL - "60+" DECAL - "75+"
6	1	9198	1	9489	1	9199	MOTOR
7	3	9375	3	9970	3	8053-018	CONNECTOR
8	25FT	9335	25FT	9955	25FT	9348	WIRE - ELECTRICAL, BLACK
9	6	40753	6	40753	6	40753	SCREW - HEX., 1/4-20 UNC X .62, BRASS
10	9	122324	9	122324	9	122324	FLATWASHER - 1/4
11	6	124366-J02	6	124366-J02	6	124366-J02	NUT - HEX., 1/4-20 UNC, BRASS
12	2	40605	2	9843	2	9843	LOCKNUT - CONDUIT
13	2	5187	2	9956	2	9956	ELBOW - FLEXIBLE CONDUIT
14	2	23325	2	9416	2	9416	SLEEVE - INSULATING
15	5FT	23323	5FT	9417	5FT	9417	CONDUIT - FLEXIBLE
16	8	123200-J12	8	123200-J12	8	123200-J12	SCREW - PAN HEAD, 1/4-20 UNC X 1.00, GRADE 5
17	2	125860	2	125860	2	125860	BASE - MOTOR
18	2	126434	6	126434	2	126434	BLOCK - TENSION
19	4	123478-N21	4	123478-N21	4	123478-N21	SCREW - HEX., 1/2-13 UNC X 3.00, GRADE 5
20	7	123115-08C	7	123115-08C	7	123115-08C	LOCKWASHER - 1/2
21	7	124364-N02	7	124364-N02	7	124364-N02	NUT - HEX., 1/2-13 UNC
22	2	9183	2	9183	2	9183	SCREW - HEX., 1/2-13 UNC X 5.50, GRADE 5
23	4	123478-Q16	4	123478-Q16	4	123478-Q16	SCREW - HEX., 5/8-11 UNC X 1.75, GRADE 5
24	4	110428W062	4	110428W062	4	110428W062	FLATWASHER - 5/8
25	8	123115-10C	8	123115-10C	8	123115-10C	LOCKWASHER - 5/8
26	8	124364-002	8	124364-002	8	124364-002	NUT - HEX., 5/8-11 UNC
27	3	123478-N16	3	123478-N16	3	123478-N16	SCREW - HEX., 1/2-13 UNC X 1.75, GRADE 5
28	3	110428W050	3	110428W050	3	110428W050	FLATWASHER - 1/2
29	10	123478-L14	10	123478-L14	10	123478-L14	SCREW - HEX., 3/8-16 UNC X 1.25, GRADE 5
30	10	123115-06C	10	123115-06C	10	123115-06C	LOCKWASHER - 3/8
31	10	124364-L02	10	124364-L02	10	124364-L02	NUT - HEX., 3/8-16 UNC
32	8	123115-04C	8	123115-04C	8	123115-04C	LOCKWASHER - 1/4
33	4	123478-Q18	4	123478-Q18	4	123478-Q18	SCREW - HEX., 5/8-11 UNC X 2.25, GRADE 5
<b>575 VOLT UNITS</b>							
		126454-Q35		126454-R35		126454-S35	MOTOR/STARTER GROUP (50 H.P.) MOTOR/STARTER GROUP (60 H.P.) MOTOR/STARTER GROUP (75 H.P.)
1	1	1673C-MQ	1	1673C-MR	1	1673C-MS	OVERLOAD - THERMAL
2	1	1673A-MQMO	1	1673A-MRMO	1	1673A-MSMO	CONTACTOR - ELECTRICAL
3	1	126448	1	126448	1	126448	SUPPORT - ELECTRICAL ENCLOSURE
4	1	126447	1	126447	1	126447	SUPPORT - ELECTRICAL ENCLOSURE
5	1	126114-50	1	126114-60	1	126114-75	DECAL - "50+" DECAL - "60+" DECAL - "75+"
6	1	121285	1	121283	1	121281	MOTOR
7	3	9376	3	9375	3	9970	CONNECTOR
8	25FT	9334	25FT	9335	25FT	9955	WIRE - ELECTRICAL, BLACK
9	6	40753	6	40753	6	40753	SCREW - HEX., 1/4-20 UNC X .62, BRASS
10	9	122324	9	122324	9	122324	FLATWASHER - 1/4
11	6	124366-J02	6	124366-J02	6	124366-J02	NUT - HEX., 1/4-20 UNC
12	2	40605	2	40605	2	9843	LOCKNUT - CONDUIT
13	2	5187	2	5187	2	9956	ELBOW - FLEXIBLE CONDUIT
14	2	23325	2	23325	2	9416	SLEEVE - CONDUIT
15	5FT	23323	5FT	23323	5FT	9417	CONDUIT - FLEXIBLE
16	8	123200-J12	8	123200-J12	8	123200-J12	SCREW - PAN HEAD, 1/4-20 UNC X 1.00, GRADE 5
17	2	125860	2	125860	2	125860	BASE - MOTOR
18	2	126434	2	126434	2	126434	BLOCK - TENSION
19	4	123478-N21	4	123478-N21	4	123478-N21	SCREW - HEX., 1/2-13 UNC X 3.00, GRADE 5
20	7	123115-08C	7	123115-08C	7	123115-08C	LOCKWASHER - 1/2
21	7	124364-N02	7	124364-N02	7	124364-N02	NUT - HEX., 1/2-13 UNC
22	2	9183	2	9183	2	9183	SCREW - HEX., 1/2-13 UNC X 5.50, GRADE 5
23	4	123478-Q16	4	123478-Q16	4	123478-Q16	SCREW - HEX., 5/8-11 UNC X 1.75, GRADE 5
24	4	110428W062	4	110428W062	4	110428W062	FLATWASHER - 5/8
25	8	123115-10C	8	123115-10C	8	123115-10C	LOCKWASHER - 5/8
26	8	124364-002	8	124364-002	8	124364-002	NUT - HEX., 5/8-11 UNC
27	3	123478-N16	3	123478-N16	3	123478-N16	SCREW - HEX., 1/2-13 UNC X 1.75, GRADE 5
28	3	110428W050	3	110428W050	3	110428W050	FLATWASHER - 1/2
29	10	123478-L14	10	123478-L14	10	123478-L14	SCREW - HEX., 3/8-16 UNC X 1.25, GRADE 5
30	10	123115-06C	10	123115-06C	10	123115-06C	LOCKWASHER - 3/8
31	10	124364-L02	10	124364-L02	10	124364-L02	NUT - HEX., 3/8-16 UNC
32	8	123115-04C	8	123115-04C	8	123115-04C	LOCKWASHER - 1/4
33	4	123478-Q18	4	123478-Q18	4	123478-Q18	SCREW - HEX., 5/8-11 UNC X 2.25, GRADE 5

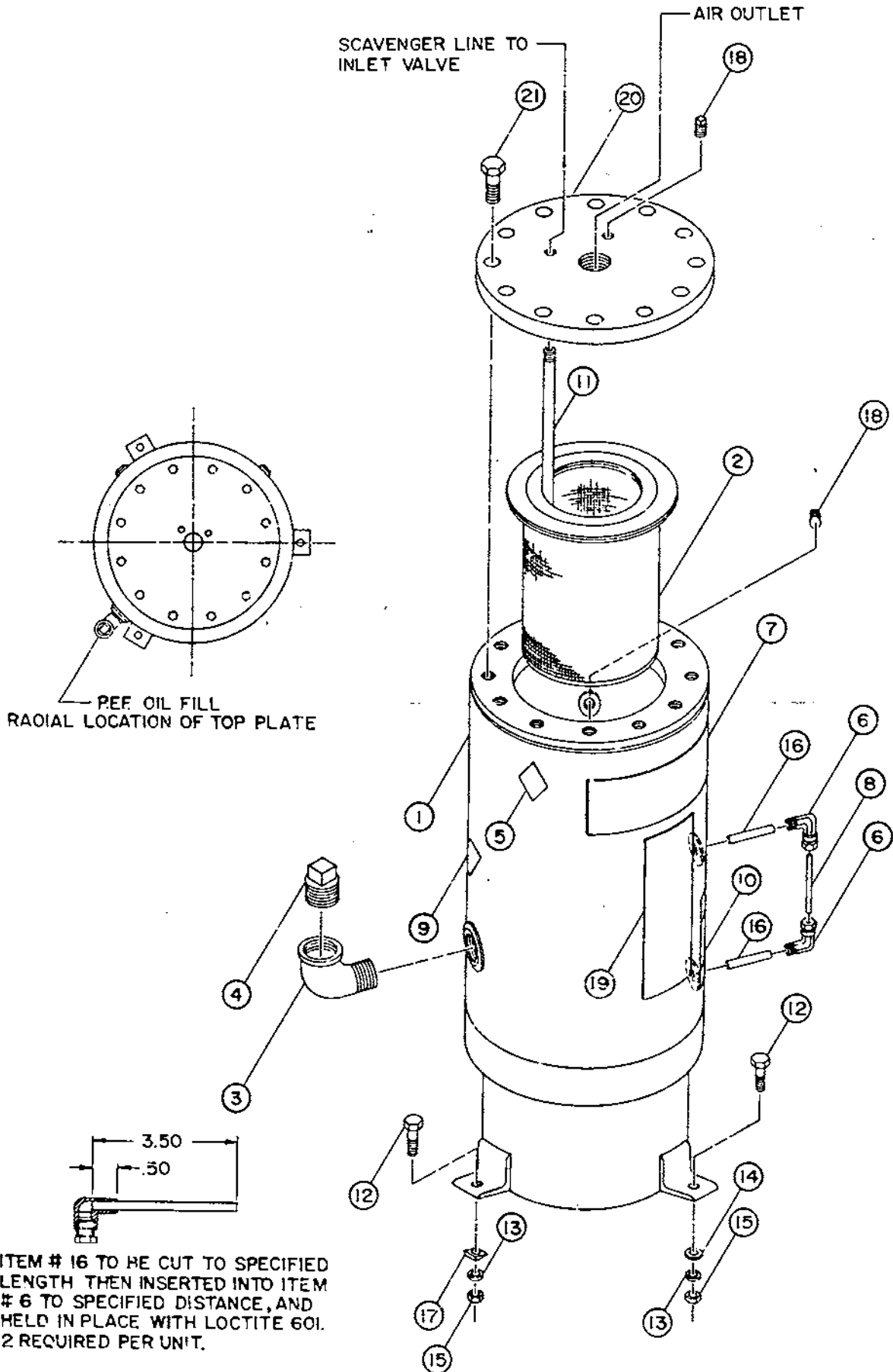
# INLET VALVE GROUP 125905-001



## INLET VALVE GROUP 125905-001

INDEX NUMBER	QTY	PART NUMBER	DESCRIPTION
1	1	122990-003	HOUSING - INLET VALVE
2	1	20647	MOTOR - AIR
3	1	123532	GASKET - AIR MOTOR
4	1	122992	PLATE - VALVE
5	4	123478-N15	SCREW - HEX., 1/2-13 UNC X 1.50, GRADE 5
6	1	123068	GASKET - INLET VALVE
7	1	123307	NUT - INLET VALVE
8	1	122993	SHAFT - INLET VALVE
9	1	123092	SPRING - INLET VALVE
10	1	122935	SCREW - SET, 5/16-24UNF X1.00
11	1	122995-001	PLATE - INLET VALVE
12	1	123091	GASKET - INLET VALVE
13	6	123478-K12	SCREW - HEX., 5/16 UNC X 1.00, GRADE 5
14	1	125952	SPRING - INLET VALVE
15	1	125912	DISC - INLET VALVE
16	4	123478-J11	SCREW - HEX., 1/4-20 UNC X .88, GRADE 5
17	4	123115-04C	LOCKWASHER - 1/4
18	4	123115-08C	LOCKWASHER - 1/2
19	1	2134	GASKET - INLET VALVE
20	1	22749-111	"O"RING - .09 WIDE X .44 I.D.
21	6	123115-05C	LOCKWASHER - 5/16
			<u>REPLACEMENT PARTS</u>
22	1	21807	REPAIR KIT - AIR MOTOR INCLUDES: (1) DIAPHRAGM - AIR MOTOR (2) NUT - SPECIAL
23	1	124743	CAP - DIAPHRAGM RETAINER

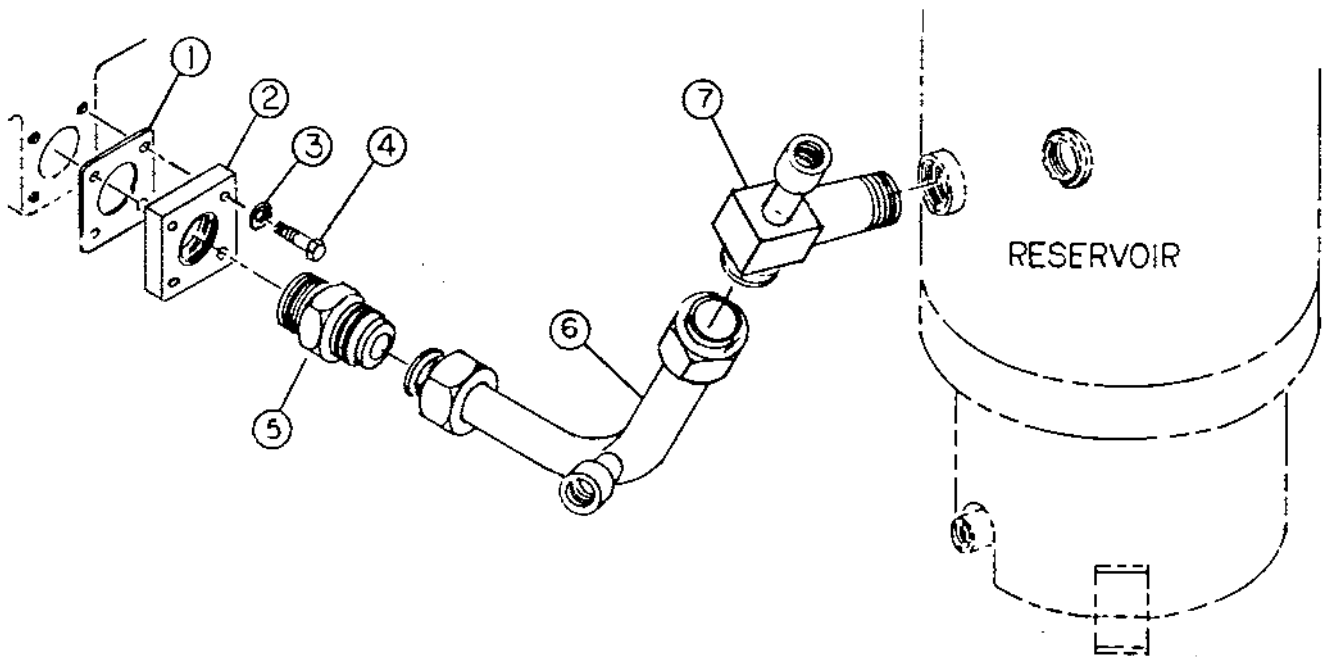
# AIR/OIL RESERVOIR GROUPS



**AIR/OIL RESERVOIR GROUPS**  
**125901-502 (FOR 50 H.P. MODEL)**  
**125901-602 (FOR 60 H.P. MODEL)**  
**125901-752 (FOR 75 H.P. MODEL)**

INDEX NUMBER	QTY	PART NUMBER	DESCRIPTION
1	1	125837-200	RESERVOIR - AIR/OIL
2	1	124487-009	SEPARATOR - AIR /OIL
3	1	5760	ELBOW - PIPE, 1-1/4 NPT
4	1	4730	PLUG - PIPE, 1-1/4 NPT
5	1	124839	DECAL - "WARNING"
6	2	124349-010	FITTING - ELBOW, NYLON TUBING
7	1	126115	DECAL - "QUINCY"
8	1 FT	124435-004	TUBE - NYLON, 3/8
9	1	21082	DECAL - "CAUTION"
10	1	125128	DECAL - DIL LEVEL
11	1	125021-006	PIPE - SCAVENGER
12	3	123478-N15	SCREW - HEX., 1/2-13 UNC X 1.50, GRADE 5
13	3	123115-08C	LOCKWASHER - 1/2
14	2	110428W050	FLATWASHER - 1/2
15	3	124364-N02	NUT - HEX., 1/2-13 UNC
16	1 FT	110515-031	TUBE - COPPER, 5/16
17	1	20099	WASHER - BEVEL, 1/2
18	2	2574	PLUG - PIPE, 1/4 NPT
19	1	126114-50	DECAL - "50+" (FOR 50 H.P. MODEL)
OR	1	126114-60	DECAL - "60+" (FOR 60 H.P. MODEL)
OR	1	126114-75	DECAL - "75+" (FOR 75 H.P. MODEL)
<u>REPLACEMENT PARTS</u>			
20	1	125837-001	PLATE - TOP
21	12	123478-N17	SCREW - HEX., 1/2-13 UNC X 2.00, GRADE 5

# DISCHARGE PIPING GROUP 126685

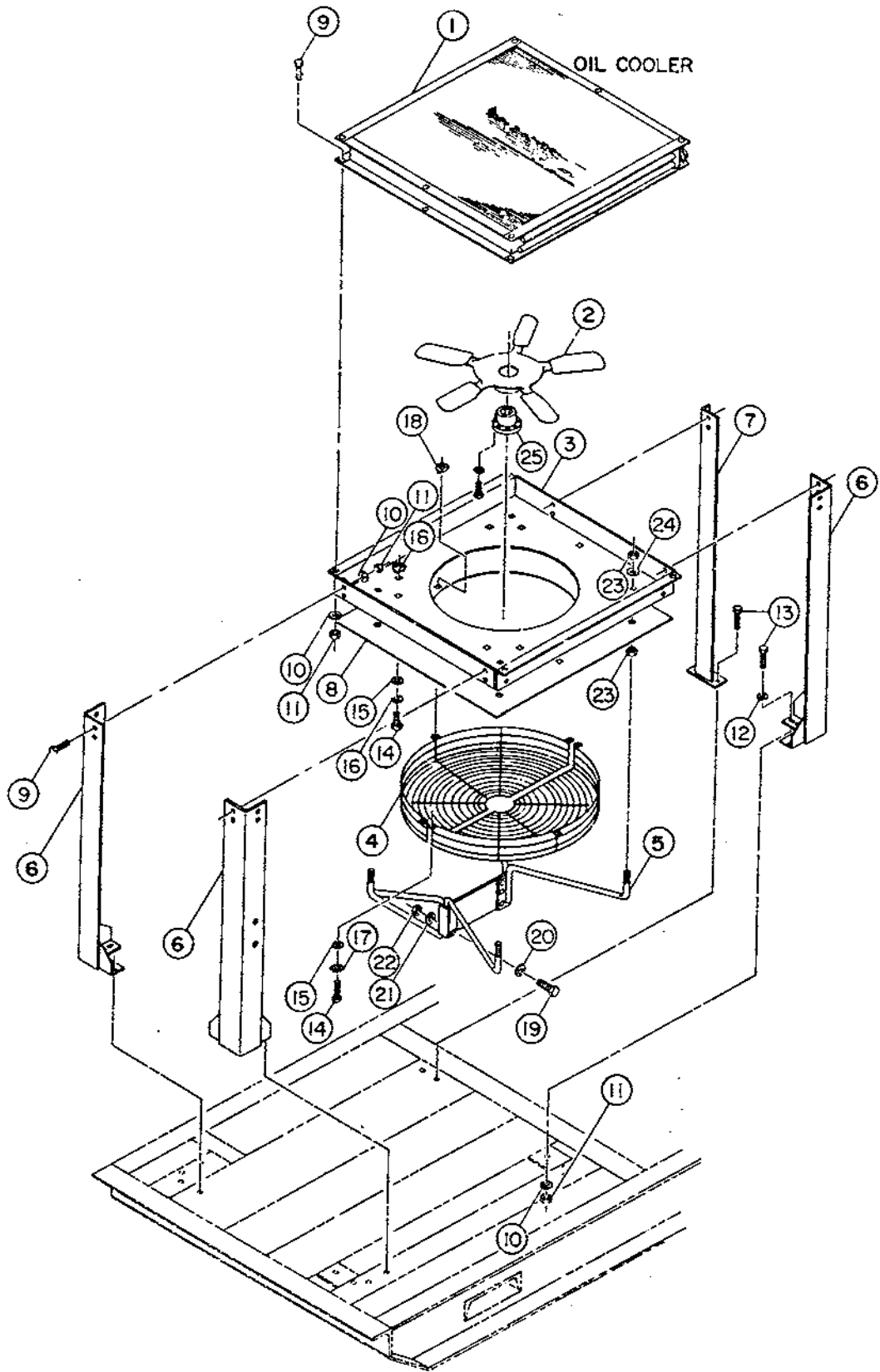


## DISCHARGE PIPING GROUP 126685

INDEX NUMBER	QTY	PART NUMBER	DESCRIPTION
1	1	125579	GASKET - ADAPTER
2	1	125574	FLANGE - DISCHARGE
3	4	123115-04C	LOCKWASHER - 1/4
4	4	90386-J14	SCREW - COUNTERBORE, 1/4-20 UNC X 1.25, GRADE 8(@12FT-LBS.)
5	1	123166-29	FITTING - TUBE, MALE CONNECTOR, 1-1/2 TUBE X 1-1/2 NPT
6	1	126526	TUBE - FORMED
7	1	126527	FITTING - ELBOW

@ INDICATES TORQUE VALUE IN FOOT POUNDS (DRY THREADS)

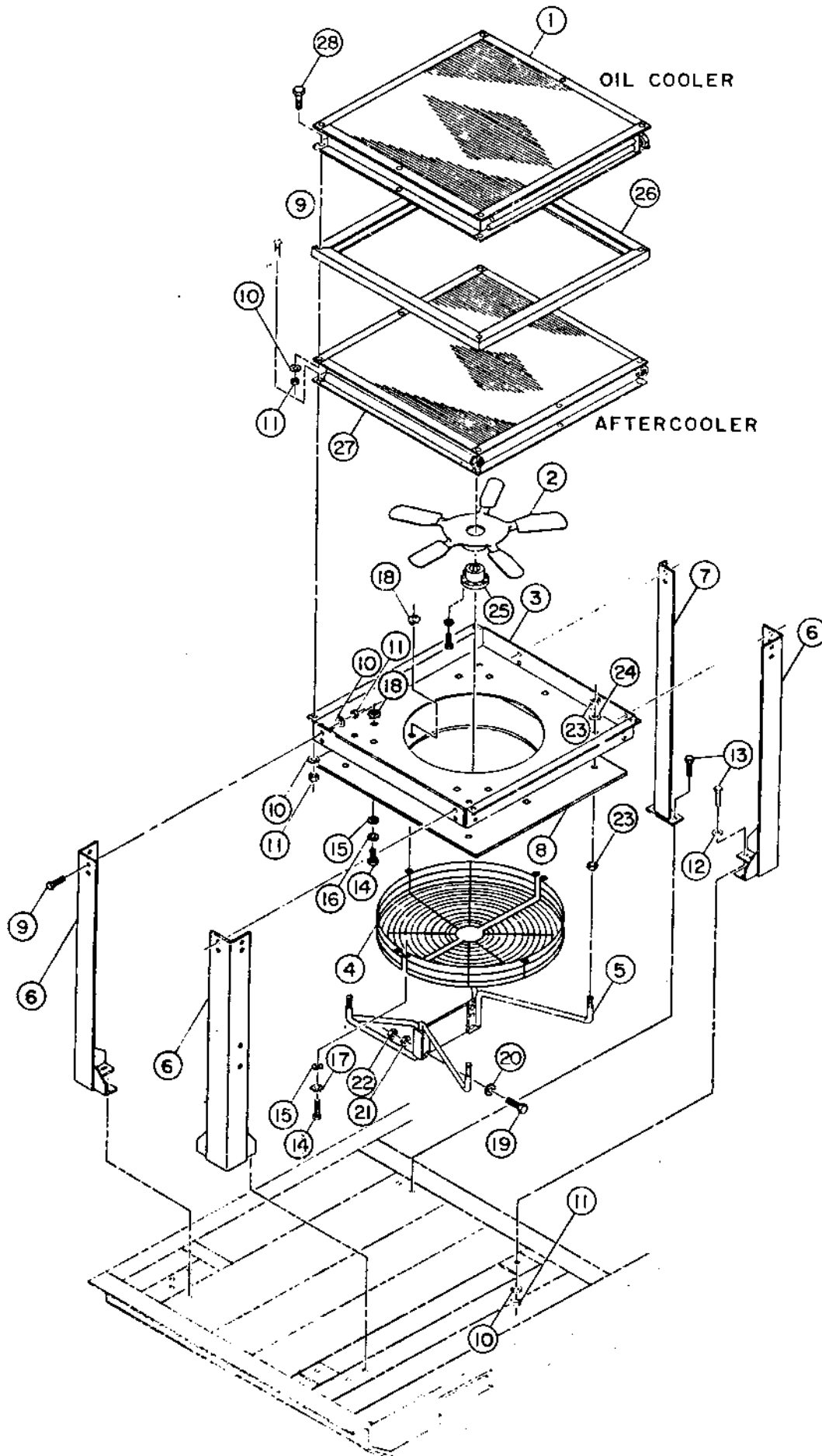
# OIL COOLER GROUP 126442-001



**OIL COOLER GROUP 126442-001  
(FOR 50 OR 60 H.P. MODELS LESS AFTERCOOLER)**

INDEX NUMBER	QTY	PART NUMBER	DESCRIPTION
1	1	126168	COOLER - OIL
2	1	126435	FAN
3	1	126326	SHROUD - FAN
4	2	126330	GUARD - FAN
5	1	23433	MOUNT - FAN MOTOR
6	3	125840	SUPPORT - COOLER
7	1	126007	SUPPORT - COOLER
8	1	126328	SHROUD - FAN
9	18	123478-L12	SCREW - HEX., 3/8-16 UNC X 1.00, GRADE 5
10	32	123115-06C	LOCKWASHER - 3/8
11	32	124364-L02	NUT - HEX., 3/8-16 UNC
12	12	110428W038	FLATWASHER - 3/8
13	14	123478-L15	SCREW - HEX., 3/8-16 UNC X 1.50, GRADE 5
14	16	123478-J12	SCREW - HEX., 1/4-20 UNC X 1.00, GRADE 5
15	16	110428W025	FLATWASHER - 1/4
16	10	123115-04C	LOCKWASHER - 1/4
17	6	2139	STARWASHER - 1/4
18	16	22456	SPEEDNUT - 1/4-20 UNC
19	4	123478-K14	SCREW - HEX., 5/16-18 UNC X 1.25, GRADE 5
20	4	110428W031	FLATWASHER - 5/16
21	4	123115-05C	LOCKWASHER - 5/16
22	4	124364-K02	NUT - HEX., 5/16-18 UNC
23	8	124364-N02	NUT - HEX., 1/2-13 UNC
24	4	123115-08C	LOCKWASHER - 1/2
25	1	40660	BUSHING - FAN

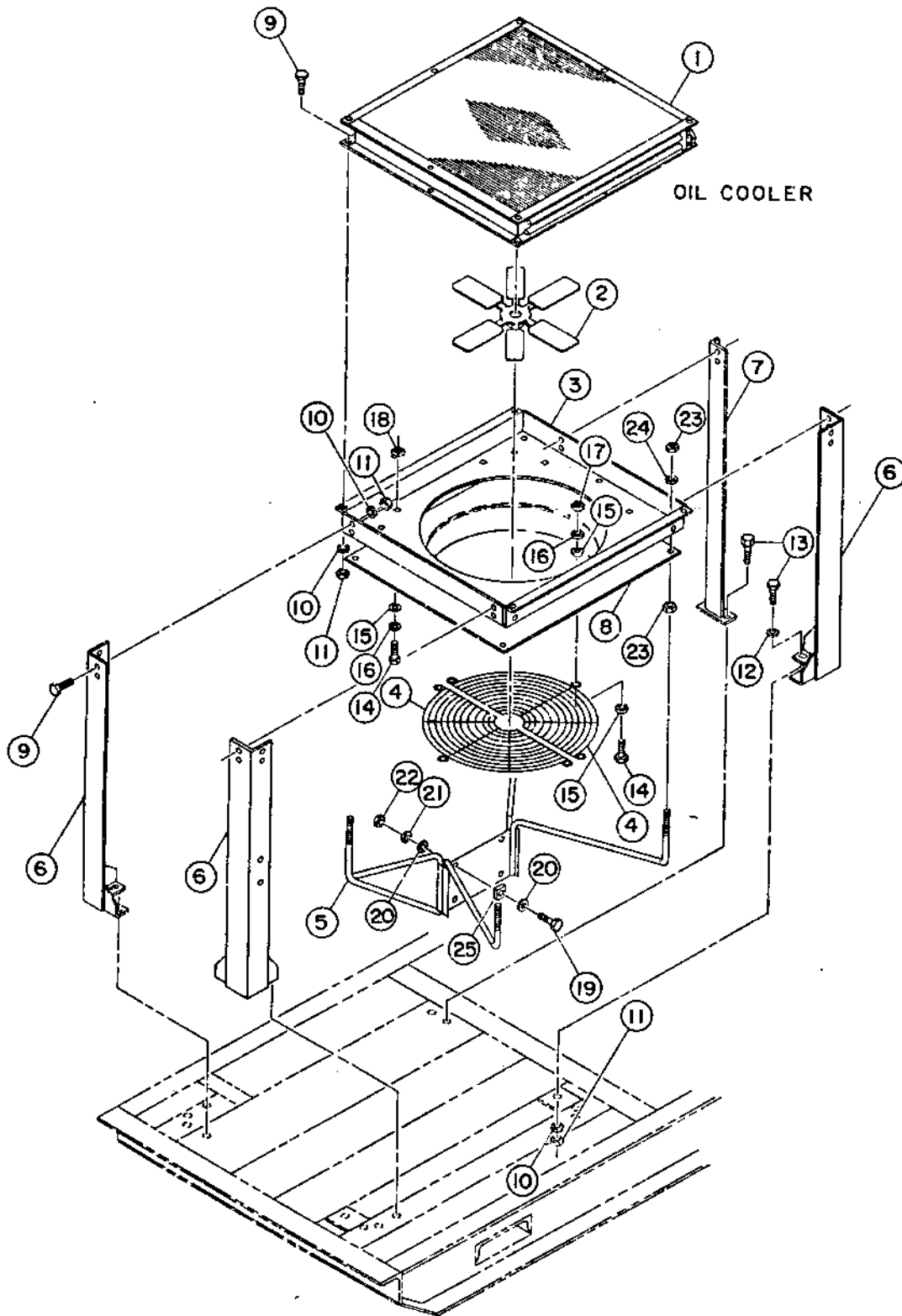
# OIL COOLER GROUP 126443-001



**OIL COOLER GROUP 126443-001  
(FOR 50 OR 60 H.P. MODELS WITH AFTERCOOLER)**

INDEX NUMBER	QTY	PART NUMBER	DESCRIPTION
1	1	126168	COOLER - OIL
2	1	126435	FAN
3	1	126326	SHROUD - FAN
4	2	126330	GUARD - FAN
5	1	23433	MOUNT - FAN MOTOR
6	3	125840	SUPPORT - COOLER
7	1	126007	SUPPORT - COOLER
8	1	126328	SHROUD - FAN
9	18	123478-L12	SCREW - HEX., 3/8-16 UNC X 1.00, GRADE 5
10	36	123115-06C	LOCKWASHER - 3/8
11	36	124364-L02	NUT - HEX., 3/8-16 UNC
12	12	110428W038	FLATWASHER - 3/8
13	14	123478-L15	SCREW - HEX., 3/8-16 UNC X 1.50, GRADE 5
14	16	123478-J12	SCREW - HEX., 1/4-20 UNC X 1.00, GRADE 5
15	16	110428W025	FLATWASHER - 1/4
16	10	123115-04C	LOCKWASHER - 1/4
17	6	2139	STARWASHER - 1/4
18	16	22456	SPEEDNUT - 1/4-20 UNC
19	4	123478-K14	SCREW - HEX., 5/16-18 UNC X 1.25, GRADE 5
20	4	110428W031	FLATWASHER - 5/16
21	4	123115-05C	LOCKWASHER - 5/16
22	4	124364-K02	NUT - HEX., 5/16-18 UNC
23	8	124364-N02	NUT - HEX., 1/2-13 UNC
24	4	123115-08C	LOCKWASHER - 1/2
25	1	40660	BUSHING - FAN
26	1	126327	SPACER - COOLER
27	1	126169	AFTERCOOLER
28	4	123478-L19	SCREW - HEX., 3/8-16 UNC X 2.50, GRADE 5

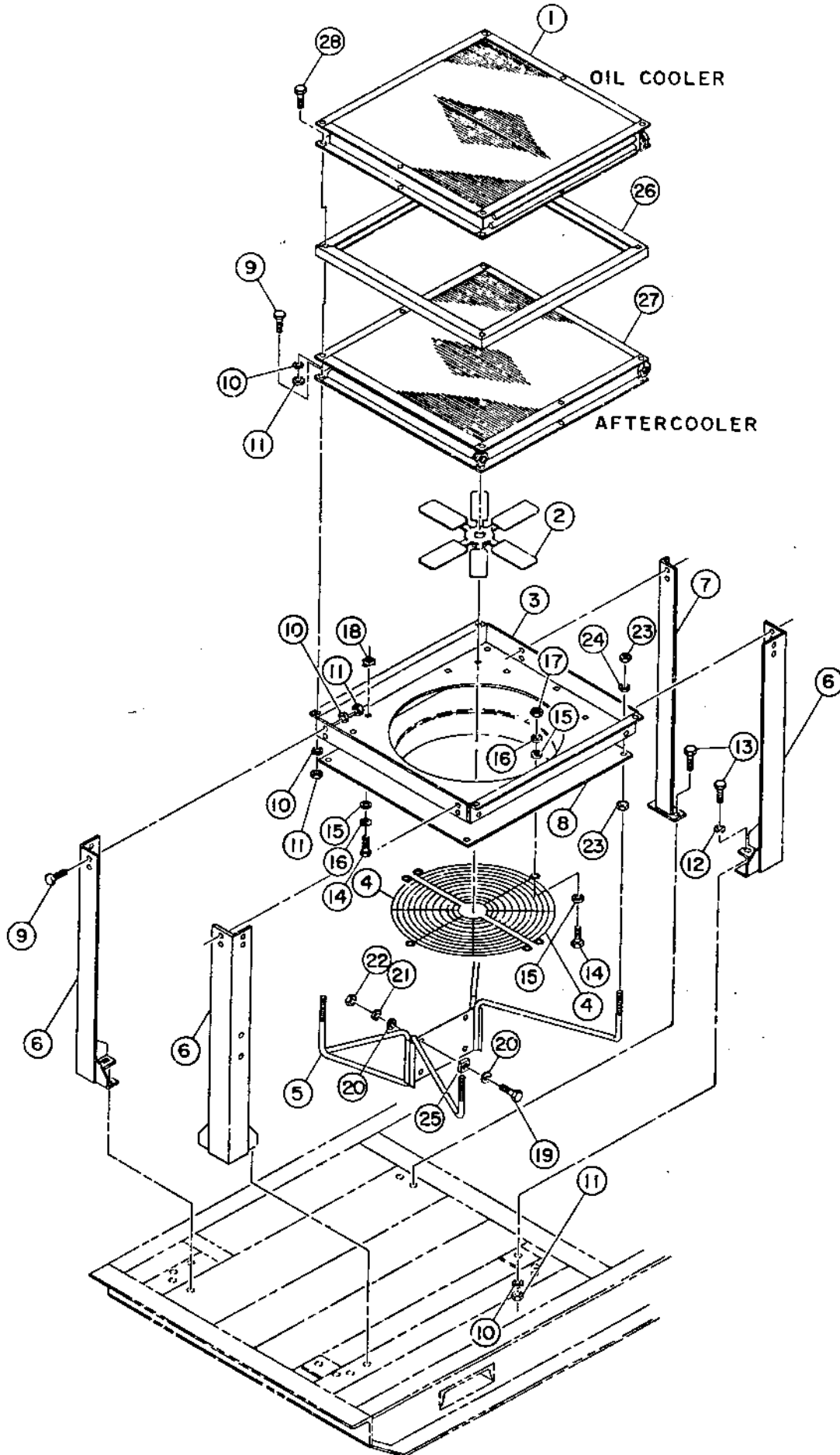
# OIL COOLER GROUP 126440-001



**OIL COOLER GROUP 126440-001  
(FOR 75 H.P. MODELS LESS AFTERCOOLER)**

INDEX NUMBER	QTY	PART NUMBER	DESCRIPTION
1	1	126168	COOLER - OIL
2	1	126113	FAN
3	1	126326	SHROUD - FAN
4	2	126325	GUARD - FAN
5	1	120258	MOUNT - FAN MOTOR
6	3	125840	SUPPORT - COOLER
7	1	126007	SUPPORT - COOLER
8	1	126329	SHROUD - FAN
9	18	123478-L12	SCREW - HEX., 3/8-16 UNC X 1.00, GRADE 5
10	32	123115-06C	LOCKWASHER - 3/8
11	32	124364-L02	NUT - HEX., 3/8-16 UNC
12	12	110428W038	FLATWASHER - 3/8
13	14	123478-L15	SCREW - HEX., 3/8-16 UNC X 1.50, GRADE 5
14	16	123478-J12	SCREW - HEX., 1/4-20 UNC X 1.00, GRADE 5
15	22	110428W025	FLATWASHER - 1/4
16	16	123115-04C	LOCKWASHER - 1/4
17	6	124363-J02	NUT - HEX., 1/4-20 UNC
18	10	22456	SPEEDNUT - 1/4-20 UNC
19	4	123478-K17	SCREW - HEX., 5/16-18 UNC X 2.00, GRADE 5
20	8	110428W031	FLATWASHER - 5/16
21	4	123115-05C	LOCKWASHER - 5/16
22	4	124364-K02	NUT - HEX., 5/16-18 UNC
23	8	124364-N02	NUT - HEX., 1/2-13 UNC
24	4	123115-08C	LOCKWASHER - 1/2
25	4	126446	BLOCK - RISER

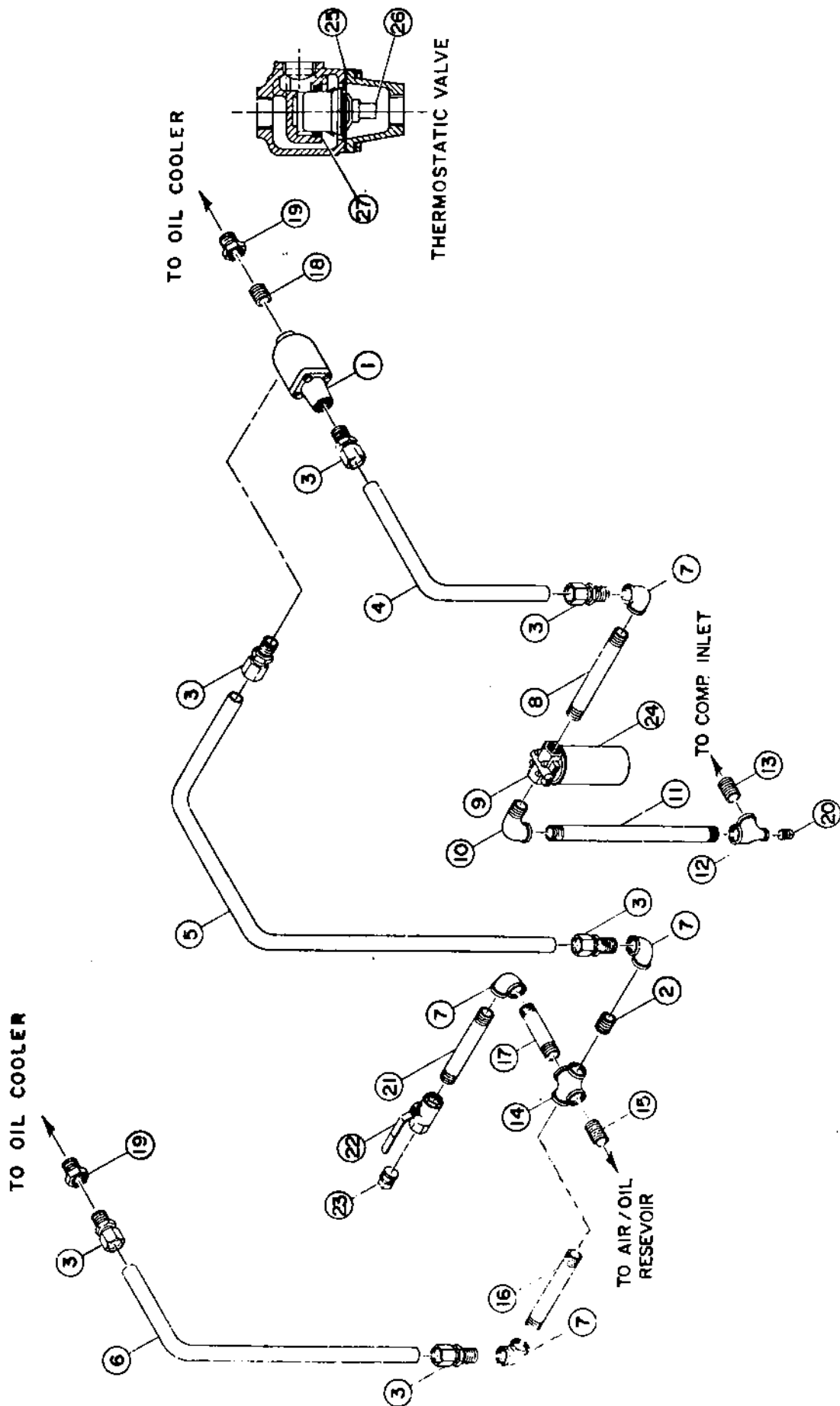
# OIL COOLER GROUP 126441-001



**OIL COOLER GROUP 126441-001  
(FOR 75 H.P. MODELS WITH AFTERCOOLER)**

INDEX NUMBER	QTY	PART NUMBER	DESCRIPTION
1	1	126168	COOLER - OIL
2	1	126113	FAN
3	1	126326	SHROUD - FAN
4	2	126325	GUARD - FAN
5	1	120258	MOUNT - FAN MOTOR
6	3	125840	SUPPORT - COOLER
7	1	126007	SUPPORT - COOLER
8	1	126329	SHROUD - FAN
9	18	123478-L12	SCREW - HEX., 3/8-16 UNC X 1.00, GRADE 5
10	36	123115-06C	LOCKWASHER - 3/8
11	36	124364-L02	NUT - HEX., 3/8-16 UNC
12	12	110428W038	FLATWASHER - 3/8
13	14	123478-L15	SCREW - HEX., 3/8-16 UNC X 1.50, GRADE 5
14	16	123478-J12	SCREW - HEX., 1/4-20 UNC X 1.00, GRADE 5
15	22	110428W025	FLATWASHER - 1/4
16	16	123115-04C	LOCKWASHER - 1/4
17	6	124364-J02	NUT - HEX., 1/4-20 UNC
18	10	22456	SPEEDNUT - 1/4-20 UNC
19	4	123478-K17	SCREW - HEX., 5/16-18 UNC X 2.00, GRADE 5
20	8	110428W031	FLATWASHER - 5/16
21	4	123115-05C	LOCKWASHER - 5/16
22	4	124364-K02	NUT - HEX., 5/16-18 UNC
23	8	124364-N02	NUT - HEX., 1/2-13 UNC
24	4	123115-08C	LOCKWASHER - 1/2
25	4	126446	BLOCK - RISER
26	1	126327	SPACER - COOLER
27	1	126169	AFTERCOOLER
28	4	123478-L19	SCREW - HEX., 3/8-16 UNC X 2.50, GRADE 5

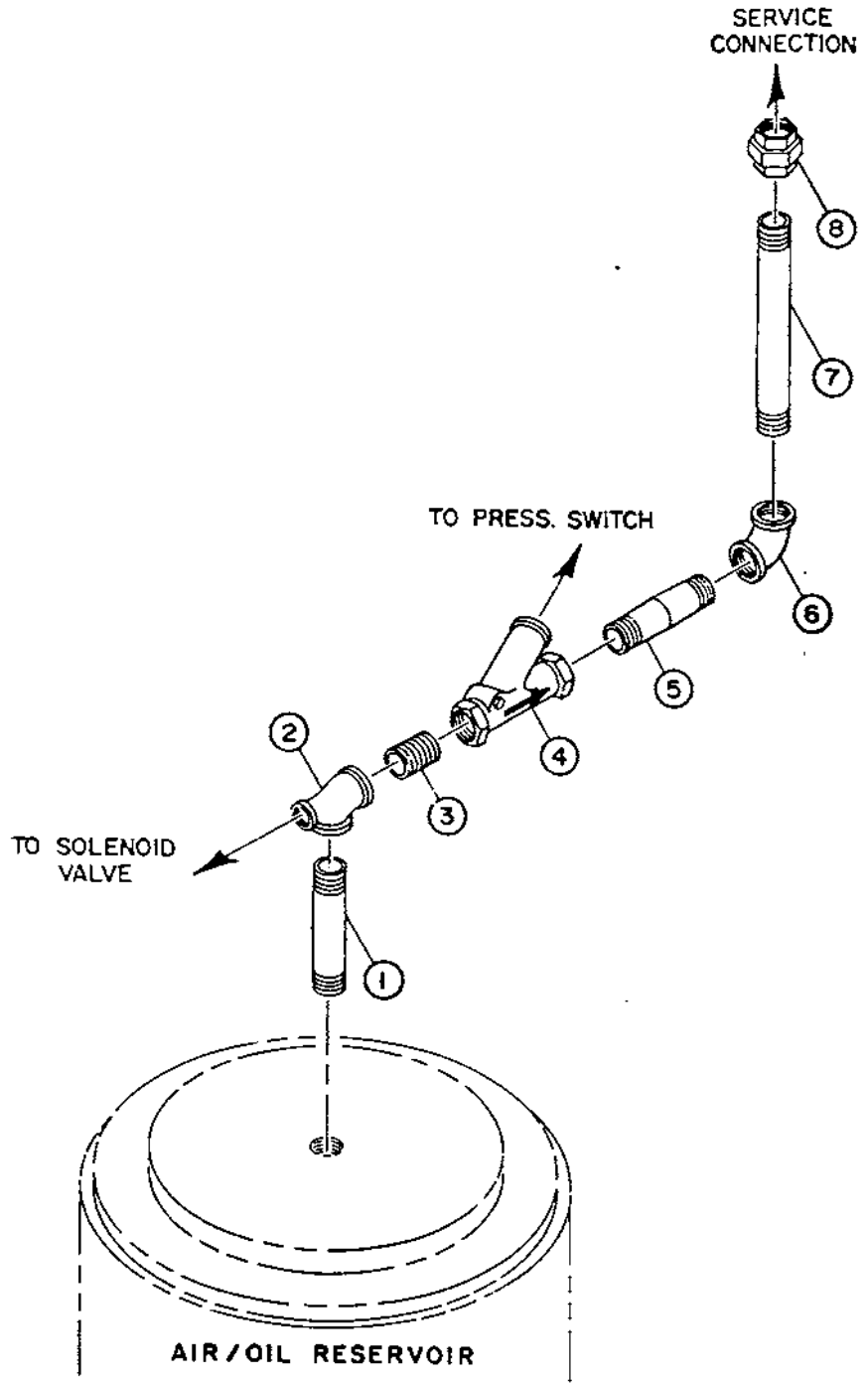
# OIL PIPING GROUP 126375-001



## OIL PIPING GROUP 126375-001

INDEX NUMBER	QTY	PART NUMBER	DESCRIPTION
1	1	124973-001	VALVE - THERMOSTATIC
2	1	125937-010	NIPPLE - PIPE, 1 NPT X 2.00
3	6	23358	FITTING - STRAIGHT, 1 TUBE X 1 NPT
4	1	121918-033	TUBE - FORMED, 1 O.D.
5	1	125038-006	TUBE - FORMED, 1 O.D.
6	1	121918-032	TUBE - FORMED, 1 O.D.
7	4	4464	ELBOW - PIPE, 1 NPT
8	1	125937-044	NIPPLE - PIPE, 1 NPT X 6.25
9	1	124331	FILTER - OIL
10	1	3004	ELBOW - PIPE, 1 NPT
11	1	125937-102	NIPPLE - PIPE, 1 NPT X 13.50
12	1	120268	TEE - PIPE, 1 NPT X 1/2 NPT X 3/4 NPT
13	1	126059	PIPE ORIFICE - 3/4 NPT X 2.00
14	1	123736	CROSS - PIPE, 1 NPT
15	1	125937-001	NIPPLE - PIPE, 1 NPT X CLOSE
16	1	125937-022	NIPPLE - PIPE, 1 NPT X 3.50
17	1	125937-013	NIPPLE - PIPE, 1 NPT X 2.38
18	1	125937-020	NIPPLE - PIPE, 1 NPT X 3.25
19	2	3451	BUSHING - PIPE, 1-1/2 NPT X 1 NPT
20	1	2057	PLUG - PIPE, 1/2 NPT
21	1	125937-026	NIPPLE - PIPE, 1 NPT X 4.00
22	1	110425-100	VALVE - BALL, 1 NPT
23	1	124876-001	PLUG - PIPE, 1 NPT
			<u>REPLACEMENT PARTS</u>
24	1	124331-050	ELEMENT - OIL FILTER
25	1	124973-051	GASKET - THERMOSTATIC VALVE
26	1	124973-053	ELEMENT - THERMOSTATIC VALVE
27	1	124973-052	SEAL - THERMOSTATIC VALVE

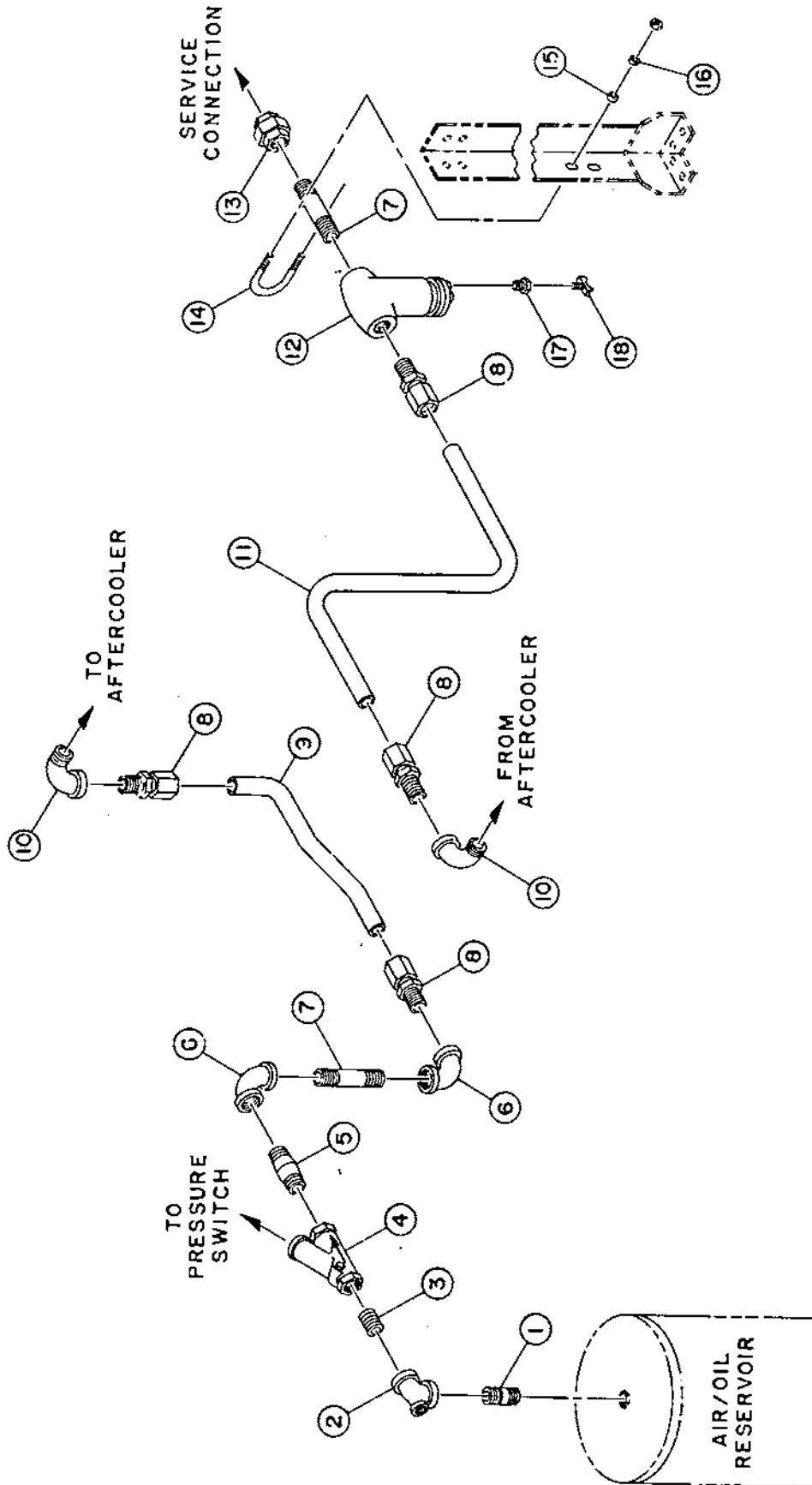
# AIR PIPING GROUPS



## AIR PIPING GROUPS

INDEX NUMBER	QTY	PART NUMBER	QTY	PART NUMBER	DESCRIPTION
<b><u>FOR MODELS LESS CABINET/LESS AFTERCOOLER</u></b>					
		126156-001			AIR PIPING GROUP (50 OR 60 H.P. MODELS)
				126156-002	AIR PIPING GROUP (75 H.P. MODELS)
1	1	125940-020	1	125940-020	NIPPLE - PIPE, 2 NPT X 3.25
2	1	20393	1	20393	TEE - PIPE, 2 NPT X 3/4 NPT X 2 NPT
3	1	125940-001	1	125940-001	NIPPLE - PIPE, 2 NPT X CLOSE
4	1	125039-002	1	125039-002	VALVE - CHECK
5	1	122211-2	1	122211-3	ORIFICE - SONIC
6	1	4463	1	4463	ELBOW - PIPE, 2 NPT
7	1	125940-014	1	125940-014	NIPPLE - PIPE, 2 NPT X 2.50
8	1	4398	1	4398	UNION - PIPE, 2 NPT
<b><u>FOR MODELS WITH CABINET/LESS AFTERCOOLER</u></b>					
		126156-003			AIR PIPING GROUP (50 OR 60 H.P. MODELS)
				126156-004	AIR PIPING GROUP (75 H.P. MODELS)
1	1	125940-020	1	125940-020	NIPPLE - PIPE, 2 NPT X 3.25
2	1	20393	1	20393	TEE - PIPE, 2 NPT X 3/4 NPT X 2 NPT
3	1	125940-001	1	125940-001	NIPPLE - PIPE, 2 NPT X CLOSE
4	1	125039-002	1	125039-002	VALVE - CHECK
5	1	122211-2	1	122211-3	ORIFICE - SONIC
6	1	4463	1	4463	ELBOW - PIPE, 2 NPT
7	1	125940-054	1	125940-054	NIPPLE - PIPE, 2 NPT X 7.50
8	1	4398	1	4398	UNION - PIPE, 2 NPT

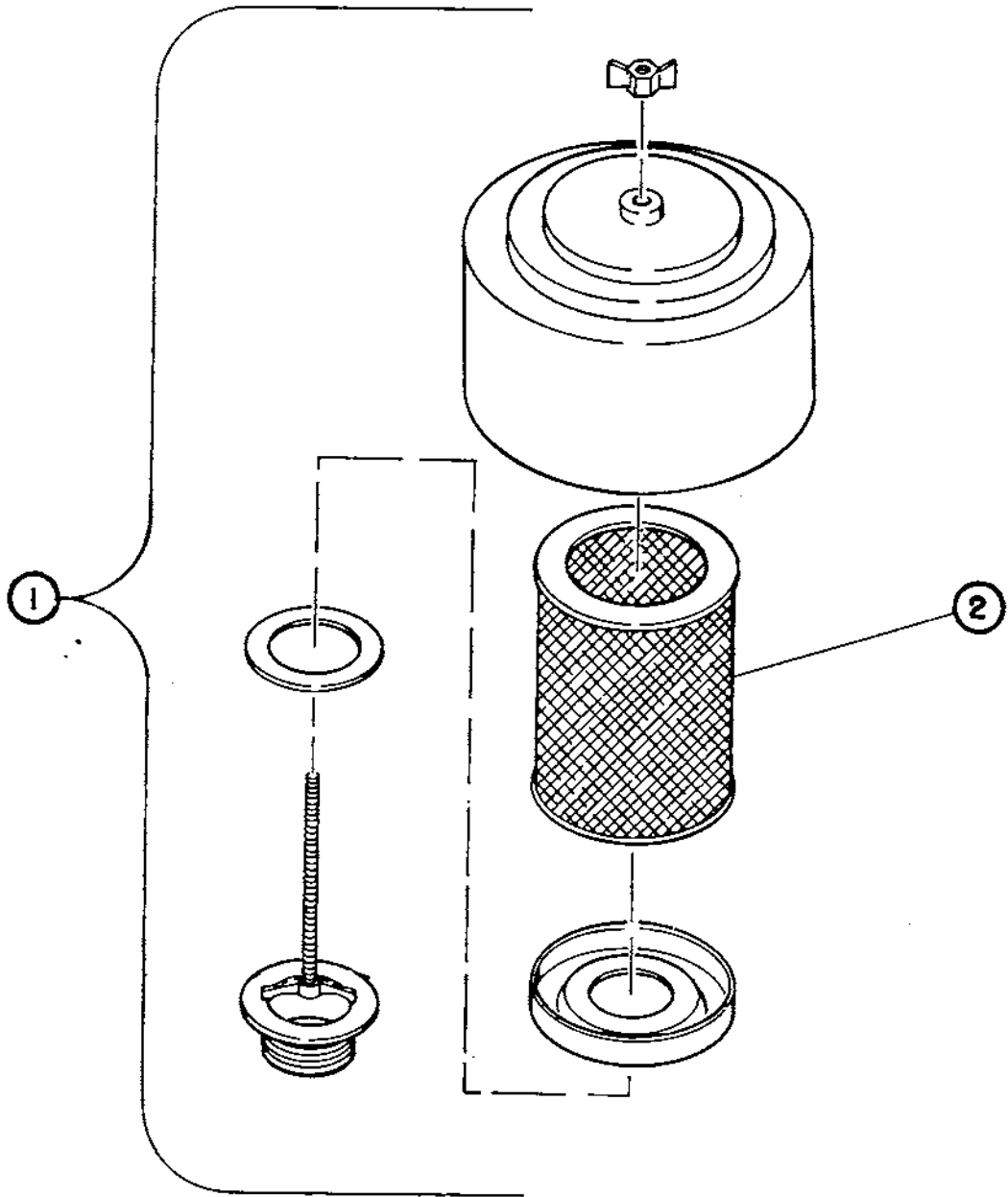
# AIR PIPING GROUPS (WITH AFTERCOOLER)



**AIR PIPING GROUPS (WITH AFTERCOOLER)  
126394-001 (FOR 50 OR 60 H.P. MODELS)  
126394-002 (FOR 75 H.P. MODELS)**

INDEX NUMBER	QTY	PART NUMBER	DESCRIPTION
1	1	125940-020	NIPPLE - PIPE, 2 NPT X 3.25
2	1	20393	TEE - PIPE, 2NPT X 3/4 NPT X 2 NPT
3	1	125940-001	NIPPLE - PIPE, 2 NPT X CLOSE
4	1	125039-002	VALVE - CHECK
5	1	122211-2	ORIFICE - SONIC (FOR 50 &/OR 60 H.P. UNITS)
OR	1	122211-3	ORIFICE - SONIC (FOR 75 H.P. UNITS)
6	2	4718	ELBOW - PIPE, 1-1/2 NPT
7	2	125940-042	NIPPLE - PIPE, 2 NPT X 6.00
8	4	23991	FITTING - STRAIGHT, 2 TUBE X 2 NPT
9	1	126407	TUBE - FORMED, 2 O.D.
10	2	4462	ELBOW - PIPE, 2 NPT
11	1	126406	TUBE - FORMED, 2 O.D.
12	1	124827-200	SEPARATOR - MOISTURE
13	1	4398	UNION - PIPE, 2 NPT
14	1	122761	"U" BOLT
15	2	110428W038	FLATWASHER - 3/8
16	2	123115-06C	LOCKWASHER - 3/8
17	1	4717	BUSHING - PIPE, 3/4 NPT X 1/4 NPT
18	1	2713	DRAINCOCK

# AIR FILTER GROUP 110377H300



## AIR FILTER GROUP 110377H300

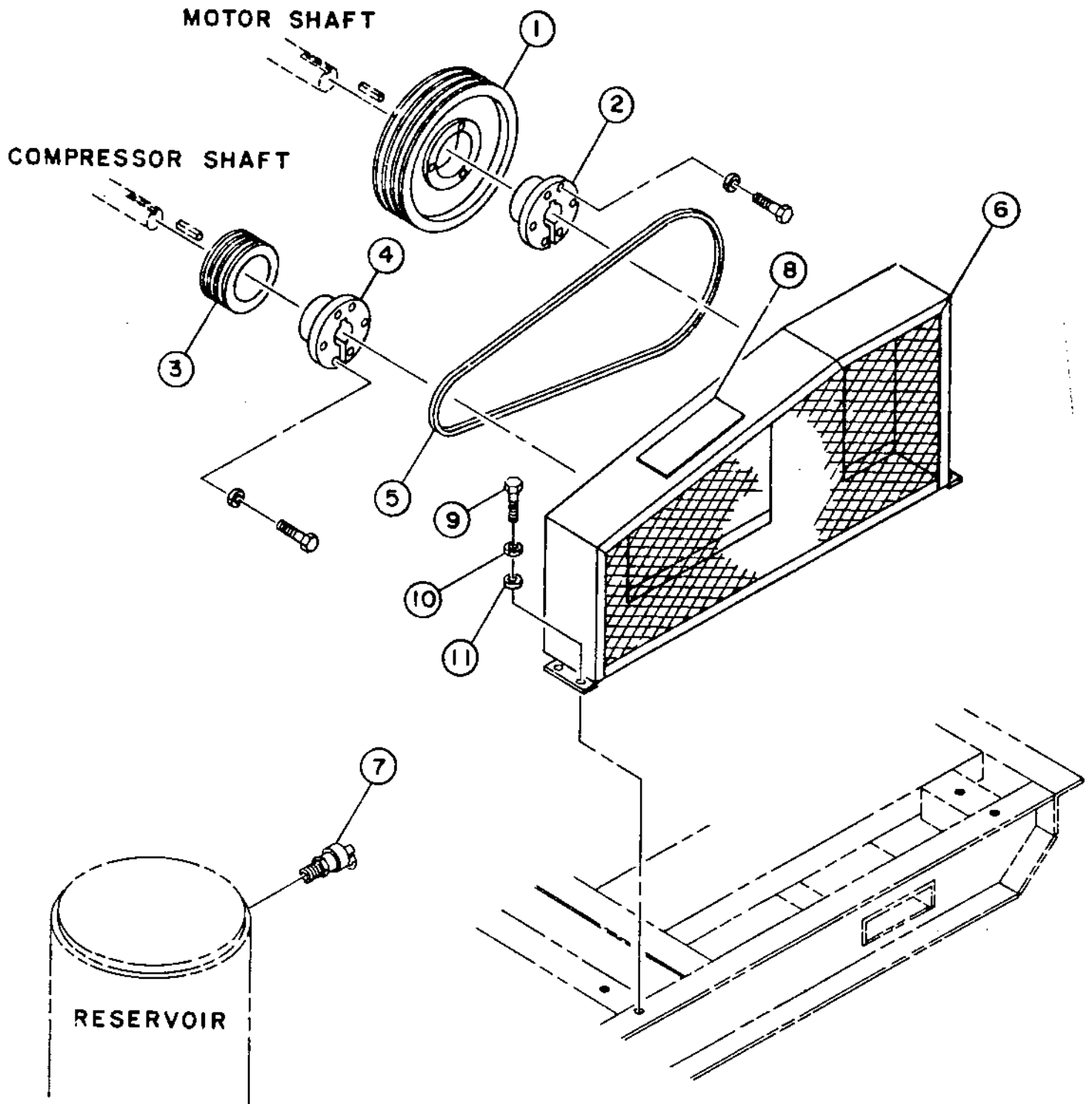
---

INDEX NUMBER	QTY	PART NUMBER	DESCRIPTION
1	1	110377H300	FILTER - AIR
2	1	110377E300	ELEMENT - AIR FILTER

---

REPLACEMENT PARTS

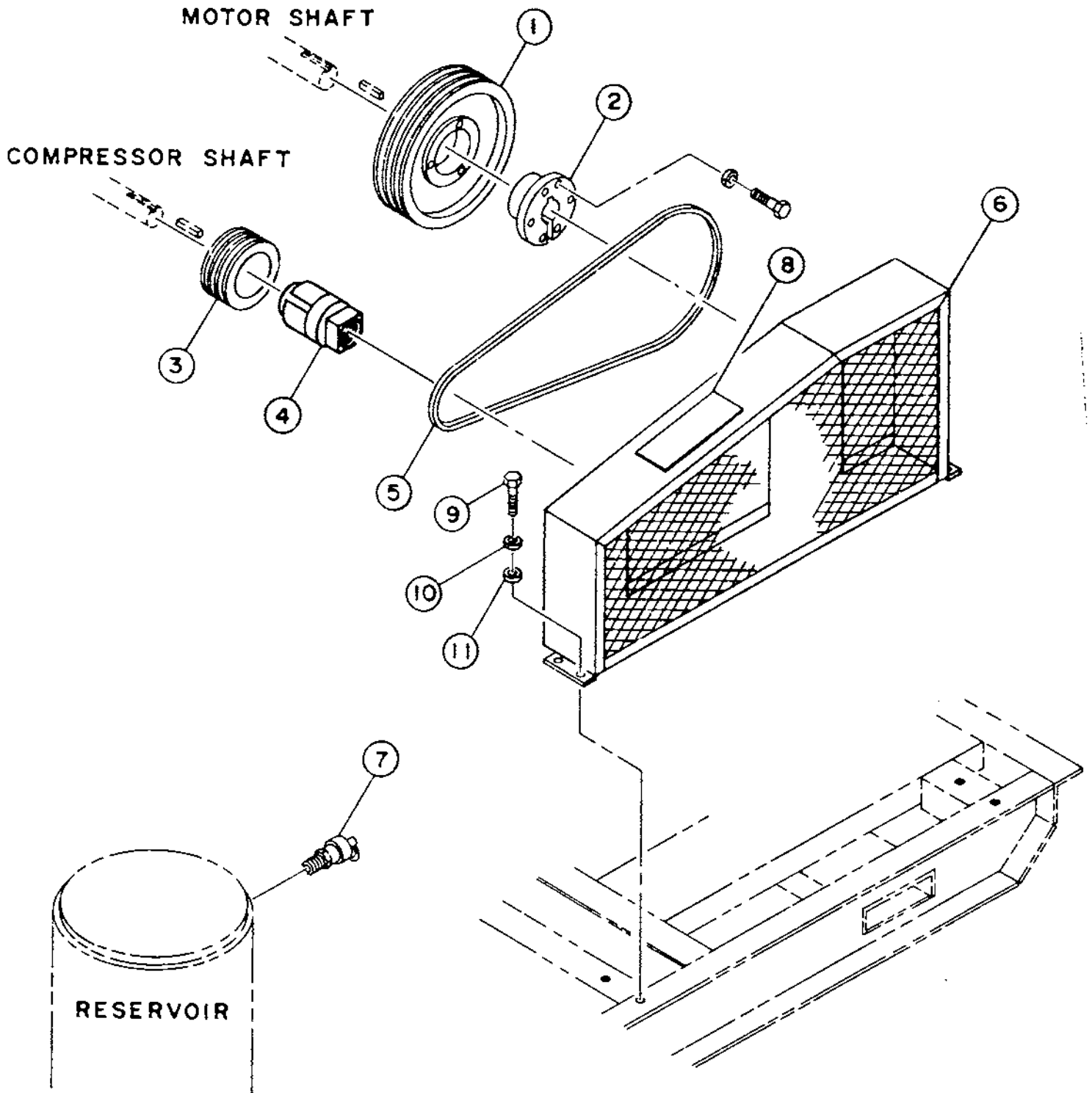
# DRIVE GROUPS



## DRIVE GROUPS

INDEX NUMBER	QTY	PART NUMBER	QTY	PART NUMBER	QTY	PART NUMBER	DESCRIPTION
<b>100 P.S.I.θ. MODELS</b>							
		126398-501		126398-601			DRIVE GROUP (50 H.P.) DRIVE GROUP (60 H.P.) DRIVE GROUP (75 H.P.)
1	1	125886	1	125889		SEE PAGE 35	PULLEY - 5V SECTION, 3 GROOVE, 13.2 O.D.
2	1	9212	1	9798			PULLEY - 5V SECTION, 4 GROOVE, 14.0 O.D.
3	1	125879					BUSHING - PULLEY
4	1	124714	1	125881			SHEAVE - 5V SECTION, 3 GROOVE, 5.5 O.D.
5	3	1102865075	4	1102865075			SHEAVE - 5V SECTION, 4 GROOVE, 4.9 O.D.
6	1	126436	1	126436			BUSHING - SHEAVE, 1.69 BORE
7	1	125873-137	1	125873-137			BELT - 5V SECTION X 75.00 OUTSIDE LENGTH
8	1	125324-002	1	125324-002			GUARD - BELT
9	4	123478-J10	4	123478-J10			VALVE - SAFETY
10	4	123115-04C	4	123115-04C			DECAL - "QUINCY"
11	4	110428W025	4	110428W025			SCREW - HEX., 1/4-20 UNC X .75, GRADE 5
							LOCKWASHER - 1/4
							FLATWASHER - 1/4
<b>125 P.S.I.θ. MODELS</b>							
		126398-502		126398-602			DRIVE GROUP (50 H.P.) DRIVE GROUP (60 H.P.) DRIVE GROUP (75 H.P.)
1	1	125884	1	125890		126398-752	PULLEY - 5V SECTION, 3 GROOVE, 11.0 O.D.
2	1	9952	1	9798	1	126187	PULLEY - 5V SECTION, 4 GROOVE, 13.0 O.D.
3	1	125879			1	9798	PULLEY - 3V SECTION, 8 GROOVE, 14.0 O.D.
			1	125882			BUSHING - PULLEY
4	1	124714	1	125878	1	126185	SHEAVE - 5V SECTION, 3 GROOVE, 5.5 O.D.
5	3	1102865075	4	1102865075	1	121175	SHEAVE - 5V SECTION, 4 GROOVE, 5.2 O.D.
6	1	126436	1	126436	8	1102863080	SHEAVE - 3V SECTION, 8 GROOVE, 4.3 O.D.
7	1	125873-165	1	125873-165	1	126436	BUSHING - SHEAVE, 1.69 BORE
8	1	125324-002	1	125324-002	1	125873-165	BELT - 5V SECTION X 75.00 OUTSIDE LENGTH
9	4	123478-J10	4	123478-J10	4	123478-J10	BELT - 3V SECTION X 80.00 OUTSIDE LENGTH
10	4	123115-04C	4	123115-04C	4	123115-04C	GUARD - BELT
11	4	110428W025	4	110428W025	4	110428W025	VALVE - SAFETY
							DECAL - "QUINCY"
							SCREW - HEX., 1/4-20 UNC X .75, GRADE 5
							LOCKWASHER - 1/4
							FLATWASHER - 1/4
<b>150 P.S.I.θ. MODELS</b>							
		126398-503		126398-603			DRIVE GROUP (50 H.P.) DRIVE GROUP (60 H.P.) DRIVE GROUP (75 H.P.)
1	1	125885	1	125887		126398-753	PULLEY - 5V SECTION, 3 GROOVE, 12.0 O.D.
2	1	9212	1	9798	1	126187	PULLEY - 5V SECTION, 4 GROOVE, 12.0 O.D.
3	1	125880			1	9798	PULLEY - 3V SECTION, 8 GROOVE, 14.0 O.D.
			1	125883			BUSHING - PULLEY
4	1	121175	1	125878	1	126186	SHEAVE - 5V SECTION, 3 GROOVE, 6.3 O.D.
5	3	1102865075	4	1102865075	1	121175	SHEAVE - 5V SECTION, 4 GROOVE, 5.5 O.D.
6	1	126436	1	126436	8	1102863080	SHEAVE - 3V SECTION, 8 GROOVE, 4.75 O.D.
7	1	125873-175	1	125873-175	1	126436	BUSHING - SHEAVE, 1.69 BORE
8	1	125324-002	1	125324-002	1	125873-175	BELT - 5V SECTION X 75.00 OUTSIDE LENGTH
9	4	123478-J10	4	123478-J10	4	123478-J10	BELT - 3V SECTION X 80.00 OUTSIDE LENGTH
10	4	123115-04C	4	123115-04C	4	123115-04C	GUARD - BELT
11	4	110428W025	4	110428W025	4	110428W025	VALVE - SAFETY
							DECAL - "QUINCY"
							SCREW - HEX., 1/4-20 UNC X .75, GRADE 5
							LOCKWASHER - 1/4
							FLATWASHER - 1/4

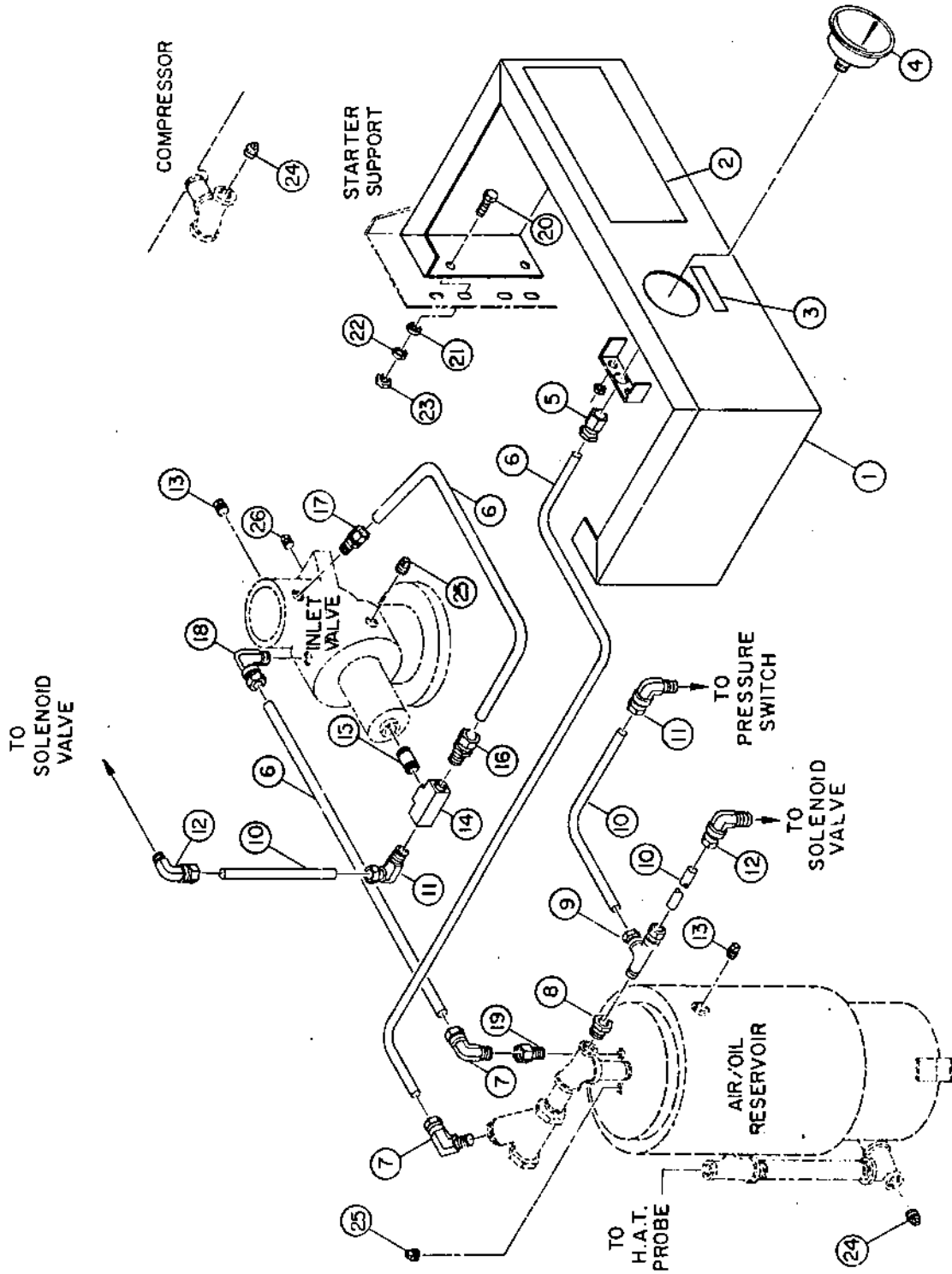
DRIVE GROUP 126408-751



DRIVE GROUP 126408-751  
(75 H.P./100 P.S.I.G.)

INDEX NUMBER	QTY	PART NUMBER	DESCRIPTION
1	1	126187	PULLEY - 3V SECTION, 8 GROOVE, 14.00 O.D.
2	1	9798	BUSHING - PULLEY
3	1	126184	SHEAVE - 3V SECTION, 8 GROOVE, 3.88 O.D.
4	1	126445-001	BUSHING - SHEAVE, 2.62 BORE
5	8	1102863080	BELT - 3V SECTION X 80.00 OUTSIDE LENGTH
6	1	126436	GUARD - BELT
7	1	125873-137	VALVE - SAFETY
8	1	125324-002	DECAL - "QUINCY"
9	4	123478-J10	SCREW - HEX., 1/4-20 UNC X .75, GRADE 5
10	4	123115-04C	LOCKWASHER - 1/4
11	4	110428W025	FLATWASHER - 1/4

# CONTROL PIPING GROUP 126444-001



**CONTROL PIPING GROUP 126444-001**

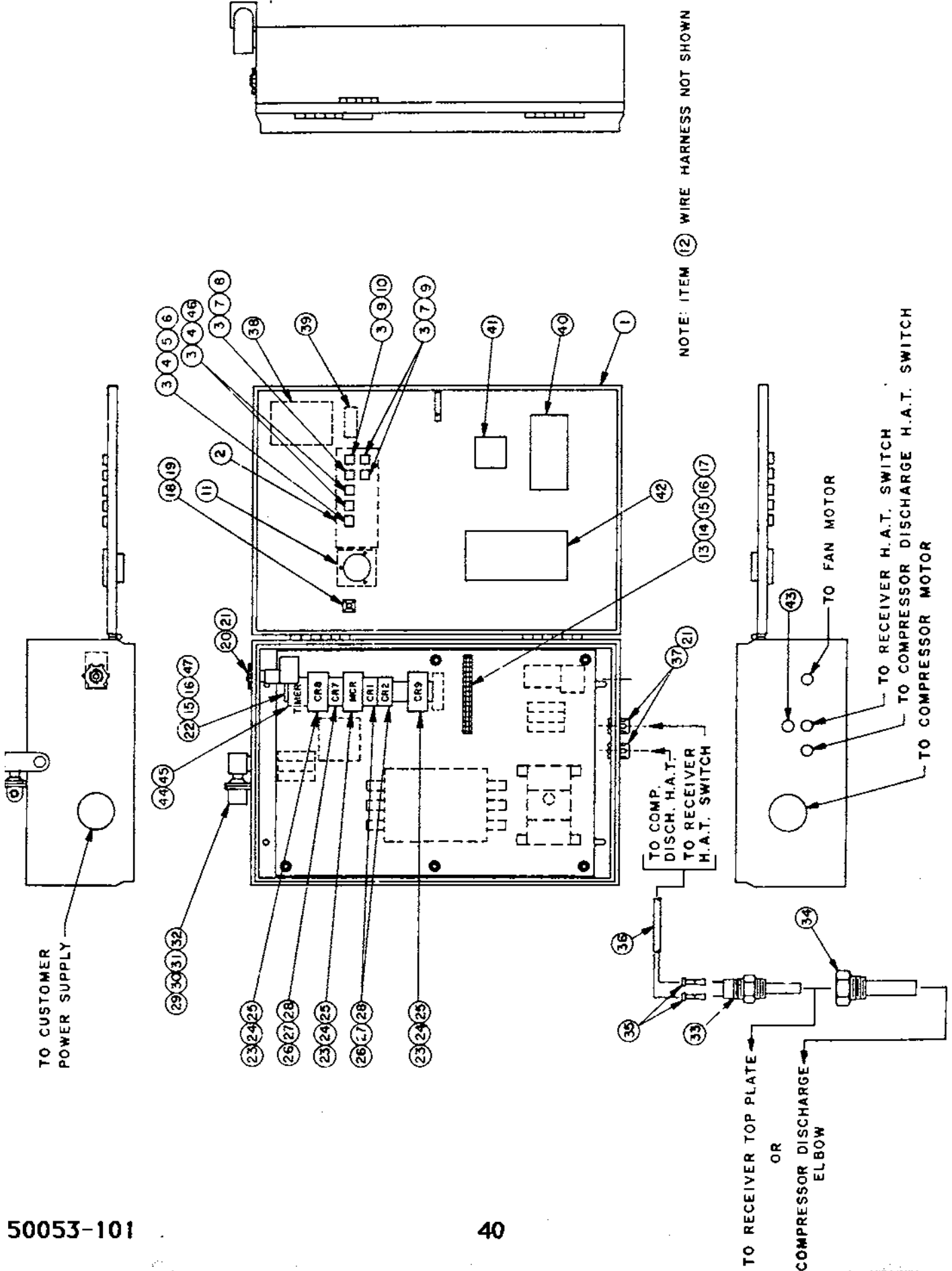
<b>INDEX NUMBER</b>	<b>QTY</b>	<b>PART NUMBER</b>	<b>DESCRIPTION</b>
1	1	125910	PANEL - GAUGE
2	1	125324-002	DECAL - "QUINCY"
3	1	125604	DECAL - "AIR PRESSURE"
4	1	120980	GAUGE - PRESSURE
5	1	124347-004	FITTING - FEMALE CONNECTOR, NYLON TUBE
6	25FT	124435-003	TUBE - NYLON, 1/4
7	2	124349-005	FITTING - ELBOW, NYLON TUBE
8	1	4728	BUSHING - PIPE, 3/4 NPT X 3/8 NPT
9	1	124348-008	FITTING - TEE, NYLON TUBE
10	12FT	124435-004	TUBE - NYLON, 3/8
11	2	124349-010	FITTING - ELBOW, NYLON TUBE
12	2	124349-011	FITTING - ELBOW, NYLON TUBE
13	2	2140	PLUG - PIPE, 1/8 NPT
14	1	121034-2	TEE - BRASS, 1/4 NPT
15	1	125953-002	ORIFICE - 1/4 NPT
16	1	124393-005	FITTING - MALE CONNECTOR, NYLON TUBE
17	1	124393-004	FITTING - MALE CONNECTOR, NYLON TUBE
18	1	124349-004	FITTING - ELBOW, NYLON TUBE
19	1	125025	FILTER - LINE
20	4	123478-J09	SCREW - HEX., 1/4-20 UNC X .62, GRADE 5
21	4	110428W025	FLATWASHER - 1/4
22	4	123115-04C	LOCKWASHER - 1/4
23	4	124364-J02	NUT - HEX., 1/4 UNC
24	2	2057	PLUG - PIPE, 1/2 NPT
25	2	2574	PLUG - PIPE, 1/4 NPT
26	1	1301	PLUG - PIPE, 3/8 NPT



**ELECTRICAL CONTROL GROUP 126684-001  
(CONTINUOUS RUN)**

INDEX NUMBER	QTY	PART NUMBER	DESCRIPTION
1	1	126603-F01	ENCLOSURE - ELECTRICAL
2	1	126378-001	DECAL - SWITCH INFO
3	5	126451	LAMP - BULB
4	1	126452-11G	LENS - GREEN
5	1	126453-M11	HOUSING - SWITCH
6	1	126456-001	GUARD - SWITCH
7	3	126452-11R	LENS - RED
8	1	126453-A11	HOUSING - SWITCH
9	3	126453-N01	HOUSING - SWITCH
10	1	126452-11Y	LENS - YELLOW
11	1	126682-024	METER - HOUR
12	1	126619	HARNESS - WIRE
13	1	123153-015	STRIP - TERMINAL
14	1	125786-004	DECAL - TERMINAL STRIP INFO
15	7	123200-E09	SCREW - PAN HEAD, #6-32 UNC X .62
16	7	123108-06C	LOCKWASHER - #6
17	4	23190-15	TERMINAL - FORK
18	12	23371	TIE - CABLE, SELFLOCK, BASE MOUNT
19	24	23326	TIE - CABLE, SELFLOCK
20	1	22454-3	SWITCH - PRESSURE
21	4	8052	LOCKNUT - CONDUIT
22	1	126487-D01	TRACK - MOUNTING
23	2	123191-A24	RELAY - ELECTRICAL
24	2	122868-D11	SOCKET - RELAY
25	2	126636-001	CLIP - RETAINER
26	2	126400-A24	RELAY - MINI
27	2	122868-D14	SOCKET - RELAY
28	2	126636-002	CLIP - RETAINER
29	1	7773-36Y	VALVE - SOLENOID
30	1	22455	CONNECTOR
31	2FT	122846	WIRE - ELECTRICAL, BLACK, #18
32	2	8854	CONNECTOR - SPLICE
33	2	122880-223	SWITCH - TEMPERATURE
34	1	90484-001	THERMOWELL
35	4	21563-04	TERMINAL - FEMALE, ELECTRICAL
36	12	125869-002	CABLE - ELECTRICAL
37	2	123507-01	FITTING - ELECTRICAL
38	1	40744-001	DECAL - "DANGER HIGH VOLTAGE"
39	1	40744	DECAL - "DANGER AIR FROM THIS COMPRESSOR"
40	1	124780-002	DECAL - ""COMPRESSOR CONTROL PANEL PART NO..."
41	1	40773B	DECAL - "UNDERWRITERS LABORATORIES"
42	1	110690-001	ENVELOPE - PLASTIC
43	1	40825	BLANK - CONDUIT

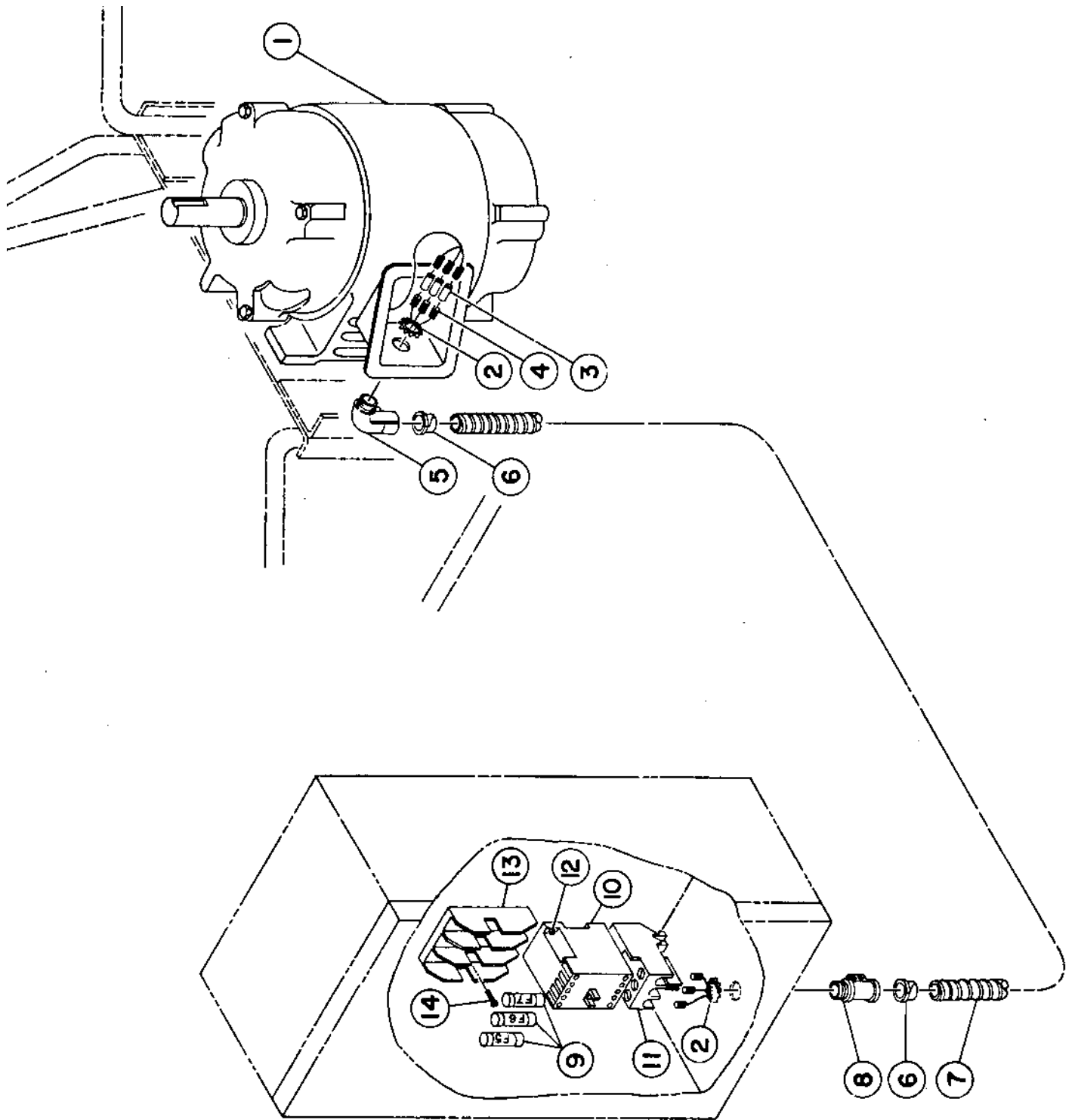
# ELECTRICAL CONTROL GROUP 126684-003 (AUTO DUAL)



**ELECTRICAL CONTROL GROUP 126684-003  
(AUTO DUAL)**

INDEX NUMBER	QTY	PART NUMBER	DESCRIPTION
1	1	126603-F01	ENCLOSURE - ELECTRICAL
2	1	126378-004	DECAL - SWITCH INFO
3	7	126451	LAMP - BULB
4	3	126452-11G	LENS - GREEN
5	1	126453-M11	HOUSING - SWITCH
6	1	126456-001	GUARD - SWITCH
7	3	126452-11R	LENS - RED
8	1	126453-A11	HOUSING - SWITCH
9	3	126453-N01	HOUSING - SWITCH
10	1	126452-11Y	LENS - YELLDW
11	1	126682-024	METER - HOUR
12	1	126620	HARNESS - WIRING, AUTO DUAL
13	1	123153-015	STRIP - TERMINAL
14	1	125786-004	DECAL - TERMINAL STRIP INFO
15	7	123200-E09	SCREW - PAN HEAD, #6-32 UNC X .62
16	7	123108-06C	LOCKWASHER - #6
17	4	23190-15	TERMINAL - FORK
18	12	23371	TIE - CABLE, SELFLOCK, BASE MOUNT
19	24	23326	TIE - CABLE, SELFLOCK
20	1	22454-3	SWITCH - PRESSURE
21	4	8052	LOCKNUT - CONDUIT
22	1	126487-D01	TRACK - MOUNTING
23	3	123191-A24	RELAY - ELECTRICAL
24	3	122868-D11	SOCKET - RELAY
25	3	126636-001	CLIP - RETAINER
26	3	126400-A24	RELAY - MINI
27	3	122868-D14	SOCKET - RELAY
28	3	126636-002	CLIP - RETAINER
29	1	7773-36Y	VALVE - SOLENOID
30	1	22455	CONNECTOR
31	2FT	122846	WIRE - ELECTRICAL, BLACK, #18
32	2	8854	CONNECTOR - SPLICE
33	2	122880-223	SWITCH - TEMPERATURE
34	1	90484-001	THERMOWELL
35	4	21563-04	TERMINAL - FEMALE, ELECTRICAL
36	12	125869-002	CABLE - ELECTRICAL
37	2	123507-01	FITTING - ELECTRICAL
38	1	40744-001	DECAL - "DANGER HIGH VOLTAGE"
39	1	40744	DECAL - "DANGER AIR FROM THIS COMPRESSOR"
40	1	124780-002	DECAL - ""COMPRESSOR CONTROL PANEL PART NO..."
41	1	40773B	DECAL - "UNDERWRITERS LABORATORIES"
42	1	110690-001	ENVELOPE - PLASTIC
43	1	40825	BLANK - CONDUIT
44	1	126252-600	TIMER - 10 MIN., DELAY-ON-BREAK
45	1	122868-D08	SOCKET - TIMER
46	2	126453-M21	HOUSING - SWITCH
47	1	126488-D01	SPACER - MOUNTING TRACK

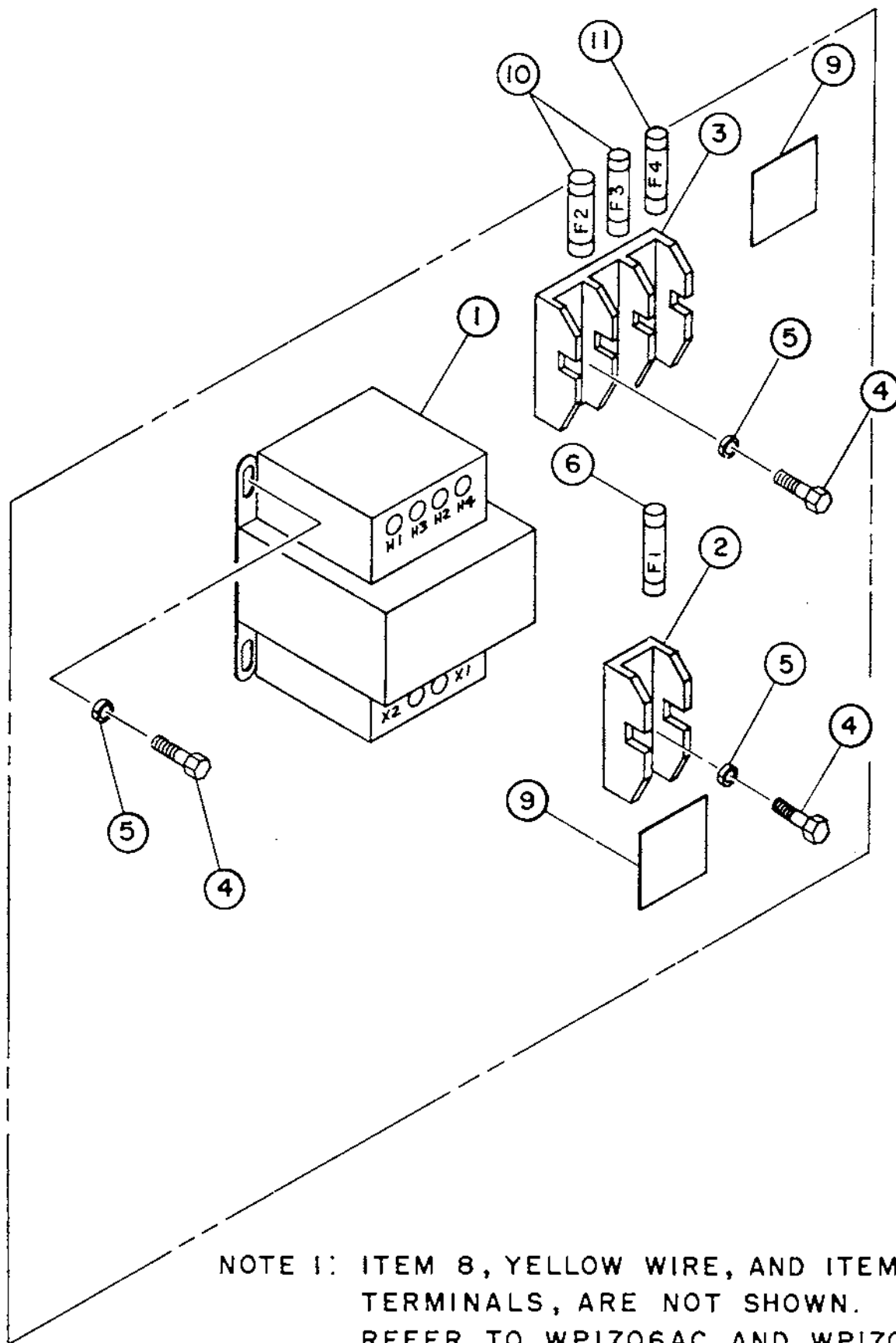
# FAN/MOTOR STARTER GROUPS



## FAN MOTOR/STARTER GROUPS

INDEX NUMBER	QTY	PART NUMBER	QTY	PART NUMBER	DESCRIPTION
<b>200 VOLT MODELS</b>					
		126476-G31			FAN MOTOR/STARTER GROUP (50 OR 60 H.P.)
1	1	8097	1	126476-I31	FAN MOTOR/STARTER GROUP (75 H.P.)
2	2	8052	2	124517-092	MOTOR
3	3	7592	3	8052	LOCKNUT - CONDUIT, 1/2
4	27FT	7908	27FT	7592	JOINT - WIRE
5	1	23483	1	7903	WIRE - ELECTRICAL, BLACK
6	2	8049	2	23483	ELBOW - FLEXIBLE, 1/2
7	8FT	22100	8FT	8049	SLEEVE - CONDUIT, 1/2
8	1	22115	1	22100	CONDUIT - ELECTRICAL, FLEXIBLE, 1/2
9	3	120639	3	22115	FITTING - FLEXIBLE CONDUIT, STRAIGHT, 1/2
10	1	1673A-E6A0	1	8059	FUSE - 12 AMP, TIME DELAY TYPE
11	1	1673B-E6	1	1673A-GIA0	FUSE - 30 AMP, DUAL ELEMENT TYPE
12	2	123200-F07	2	1673B-GI	CONTACTOR - ELECTRICAL
13	1	126263-003	1	123200-F07	OVERLOAD - THERMAL
14	2	123200-E07	2	126263-003	SCREW - PAN HEAD, #8-32 UNC X .50
				123200-E07	FUSEBLOCK - ELECTRICAL
					SCREW - PAN HEAD, #6-32 UNC X .50
<b>230 VOLT MODELS</b>					
		126476-G32			FAN MOTOR/STARTER GROUP (50 OR 60 H.P.)
1	1	4010	1	126476-I32	FAN MOTOR/STARTER GROUP (75 H.P.)
2	2	8052	2	4012	MOTOR
3	3	7592	3	8052	LOCKNUT - CONDUIT, 1/2
4	27FT	7908	27FT	7592	JOINT - WIRE
5	1	23483	1	7905	WIRE - ELECTRICAL, BLACK,
6	2	8049	2	23483	ELBOW - FLEXIBLE, 1/2
7	8FT	22100	8FT	8049	SLEEVE - CONDUIT, 1/2
8	1	22115	1	22100	CONDUIT - ELECTRICAL, FLEXIBLE, 1/2
9	3	8818	3	22115	FITTING - FLEXIBLE CONDUIT, STRAIGHT, 1/2
10	1	1673A-G6A0	1	8859	FUSE - 10 AMP, TIME DELAY TYPE
11	1	1673B-G6	1	1673A-GIA0	FUSE - 30 AMP, DUAL ELEMENT TYPE
12	2	123200-F07	2	1673B-GI	CONTACTOR - ELECTRICAL
13	1	126263-003	1	123200-F07	OVERLOAD - THERMAL
14	2	123200-E07	2	126263-003	SCREW - PAN HEAD, #8-32 UNC X .50
				123200-E07	FUSEBLOCK - ELECTRICAL
					SCREW - PAN HEAD, #6-32 UNC X .50
<b>460 VOLT MODELS</b>					
		126476-G34			FAN MOTOR/STARTER GROUP (50 OR 60 H.P.)
1	1	4010	1	126476-I34	FAN MOTOR/STARTER GROUP (75 H.P.)
2	2	8052	2	4012	MOTOR
3	3	7592	3	8052	LOCKNUT - CONDUIT, 1/2
4	27FT	7908	27FT	7592	JOINT - WIRE
5	1	23483	1	7908	WIRE - ELECTRICAL, BLACK, #14
6	2	8049	2	23483	ELBOW - FLEXIBLE, 1/2
7	8FT	22100	8FT	8049	SLEEVE - CONDUIT, 1/2
8	1	22115	1	22100	CONDUIT - ELECTRICAL, FLEXIBLE, 1/2
9	3	120512	3	22115	FITTING - FLEXIBLE CONDUIT, STRAIGHT, 1/2
10	1	1673A-K6A0	1	120253	FUSE - 10 AMP, FAST ACTING TYPE
11	1	1673B-K6	1	1673A-KIA0	FUSE - 15 AMP, TIME DELAY TYPE
12	2	123200-F07	2	1673B-KI	CONTACTOR - ELECTRICAL
13	1	126263-003	1	123200-F07	OVERLOAD - THERMAL
14	2	123200-E07	2	126263-003	SCREW - PAN HEAD, #8-32 UNC X .50
				123200-E07	FUSEBLOCK - ELECTRICAL
					SCREW - PAN HEAD, #6-32 UNC X .50
<b>575 VOLT MODELS</b>					
		126476-G35			FAN MOTOR/STARTER GROUP (50 OR 60 H.P.)
1	1	120774	1	126476-I35	FAN MOTOR/STARTER GROUP (75 H.P.)
2	2	8052	2	124517-043	MOTOR
3	3	7592	3	8052	LOCKNUT - CONDUIT, 1/2
4	27FT	7908	27FT	7592	JOINT - WIRE
5	1	23483	1	7908	WIRE - ELECTRICAL, BLACK, #14
6	2	8049	2	23483	ELBOW - FLEXIBLE, 1/2
7	8FT	22100	8FT	8049	SLEEVE - CONDUIT, 1/2
8	1	22115	1	22100	CONDUIT - ELECTRICAL, FLEXIBLE, 1/2
9	3	120681	3	22115	FITTING - FLEXIBLE CONDUIT, STRAIGHT, 1/2
10	1	1673A-M6A0	1	120640	FUSE - 8 AMP, FAST ACTING TYPE
11	1	1673B-M6	1	1673A-MIA0	FUSE - 20 AMP, FAST ACTING TYPE
12	2	123200-F07	2	1673B-MI	CONTACTOR - ELECTRICAL
13	1	126263-003	1	123200-F07	OVERLOAD - THERMAL
14	2	123200-E07	2	126263-003	SCREW - PAN HEAD, #8-32 UNC X .50
				123200-E07	FUSEBLOCK - ELECTRICAL
					SCREW - PAN HEAD, #6-32 UNC X .50

# TRANSFORMER GROUPS

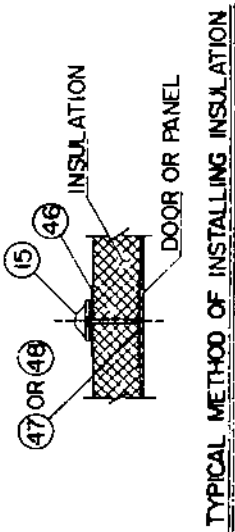


NOTE 1: ITEM 8, YELLOW WIRE, AND ITEM 7, TERMINALS, ARE NOT SHOWN. REFER TO WP1706AC AND WP1706WC FOR WIRING.

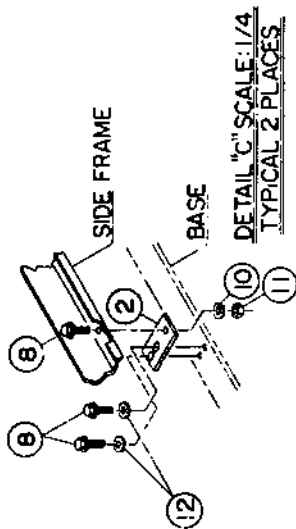
## TRANSFORMER GROUPS

INDEX NUMBER	QTY	PART NUMBER	DESCRIPTION
<b>200 VOLT MODELS</b>			
		126478-101	TRANSFORMER GROUP (50, 60, OR 75 H.P. UNITS)
1	1	125834-005	TRANSFORMER
2	1	126263-001	FUSEBLOCK - ELECTRICAL
3	1	126263-003	FUSEBLOCK - ELECTRICAL
4	7	123200-E07	SCREW - PAN HEAD, #6-32 UNC X .50
5	7	123108-06C	LOCKWASHER - #6
6	1	22293	FUSE - 5 AMP, TIME DELAY TYPE
7	8	23190-03	TERMINAL - FORK
8	6FT	7919	WIRE - ELECTRICAL, YELLOW, #16
9	2	40639	DECAL - "CAUTION...FUSES USED IN THIS CIRCUIT..."
10	2	9532-212	FUSE - 1-1/4 AMP, SLOW BLOWING TYPE
11	1	23985	FUSE - 6 AMP, FAST ACTING TYPE
<b>230 VOLT MODELS</b>			
		126478-102	TRANSFORMER GROUP (50, 60, OR 75 H.P. UNITS)
1	1	125834-003	TRANSFORMER
2	1	126263-001	FUSEBLOCK - ELECTRICAL
3	1	126263-003	FUSEBLOCK - ELECTRICAL
4	7	123200-E07	SCREW - PAN HEAD, #6-32 UNC X.50
5	7	123108-06C	LOCKWASHER - #6
6	1	22293	FUSE - 5 AMP, TIME DELAY TYPE
7	8	23190-03	TERMINAL - FORK
8	6FT	7919	WIRE - ELECTRICAL, YELLOW, #16
9	2	40639	DECAL - "CAUTION...FUSES USED IN THIS CIRCUIT..."
10	2	22453	FUSE - 1 AMP, TIME DELAY TYPE
11	1	23985	FUSE - 6 AMP, FAST ACTING TYPE
<b>460 VOLT MODELS</b>			
		126478-104	TRANSFORMER GROUP (50, 60, OR 75 H.P. UNITS)
1	1	125834-003	TRANSFORMER
2	1	126263-001	FUSEBLOCK - ELECTRICAL
3	1	126263-003	FUSEBLOCK - ELECTRICAL
4	7	123200-E07	SCREW - PAN HEAD, #6-32 UNC X.50
5	7	123108-06C	LOCKWASHER - #6
6	1	22293	FUSE - 5 AMP, TIME DELAY TYPE
7	8	23190-03	TERMINAL - FORK
8	6FT	7919	WIRE - ELECTRICAL, YELLOW, #16
9	2	40639	DECAL - "CAUTION...FUSES USED IN THIS CIRCUIT..."
10	2	9532-507	FUSE - 1/2 AMP, TIME DELAY TYPE
11	1	23985	FUSE - 6 AMP, FAST ACTING TYPE
<b>575 VOLT MODELS</b>			
		126478-105	TRANSFORMER GROUP (50, 60, OR 75 H.P. UNITS)
1	1	125834-006	TRANSFORMER
2	1	126263-001	FUSEBLOCK - ELECTRICAL
3	1	126263-003	FUSEBLOCK - ELECTRICAL
4	7	123200-E07	SCREW - PAN HEAD, #6-32 UNC X.50
5	7	123108-06C	LOCKWASHER - #6
6	1	22293	FUSE - 5 AMP, TIME DELAY TYPE
7	8	23190-03	TERMINAL - FORK
8	6FT	7919	WIRE - ELECTRICAL, YELLOW, #16
9	2	40639	DECAL - "CAUTION...FUSES USED IN THIS CIRCUIT..."
10	2	9532-605	FUSE - 3/10 AMP, FAST ACTING TYPE
11	1	23985	FUSE - 6 AMP, FAST ACTING TYPE

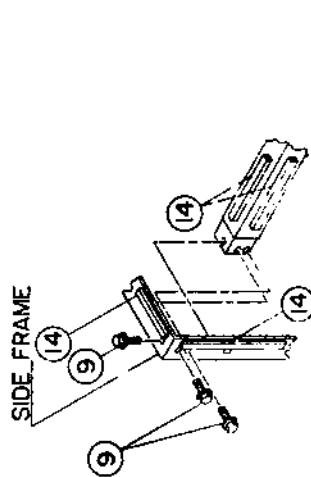
# CABINET GROUPS



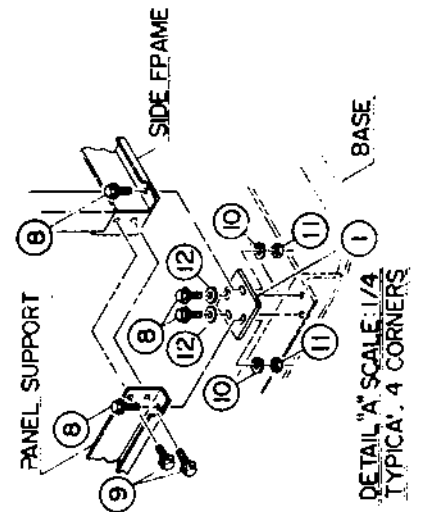
TYPICAL METHOD OF INSTALLING INSULATION



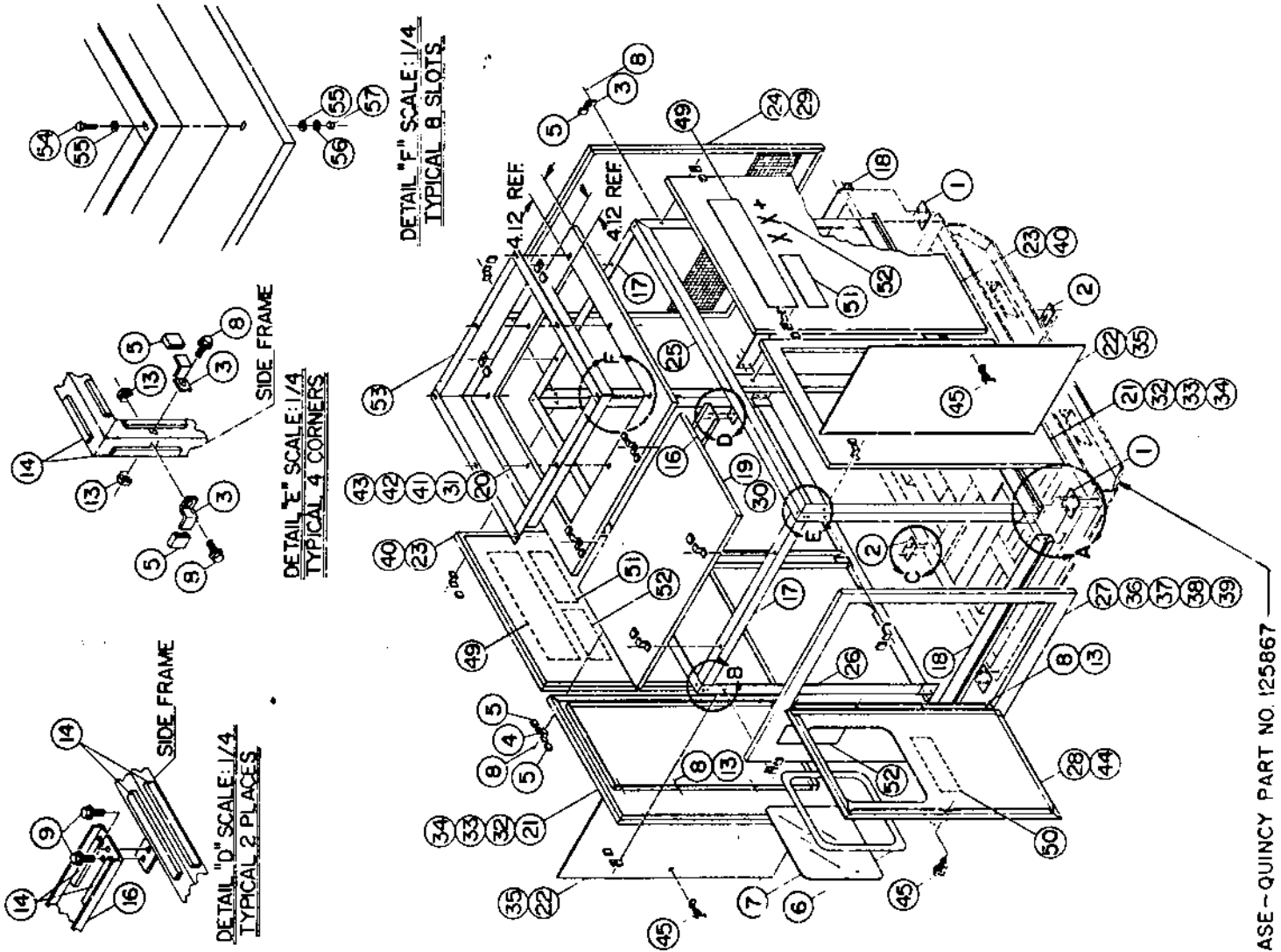
DETAIL "C" SCALE: 1/4  
TYPICAL 2 PLACES



DETAIL "B" SCALE: 1/4  
TYPICAL 4 CORNERS



DETAIL "A" SCALE: 1/4  
TYPICAL 4 CORNERS

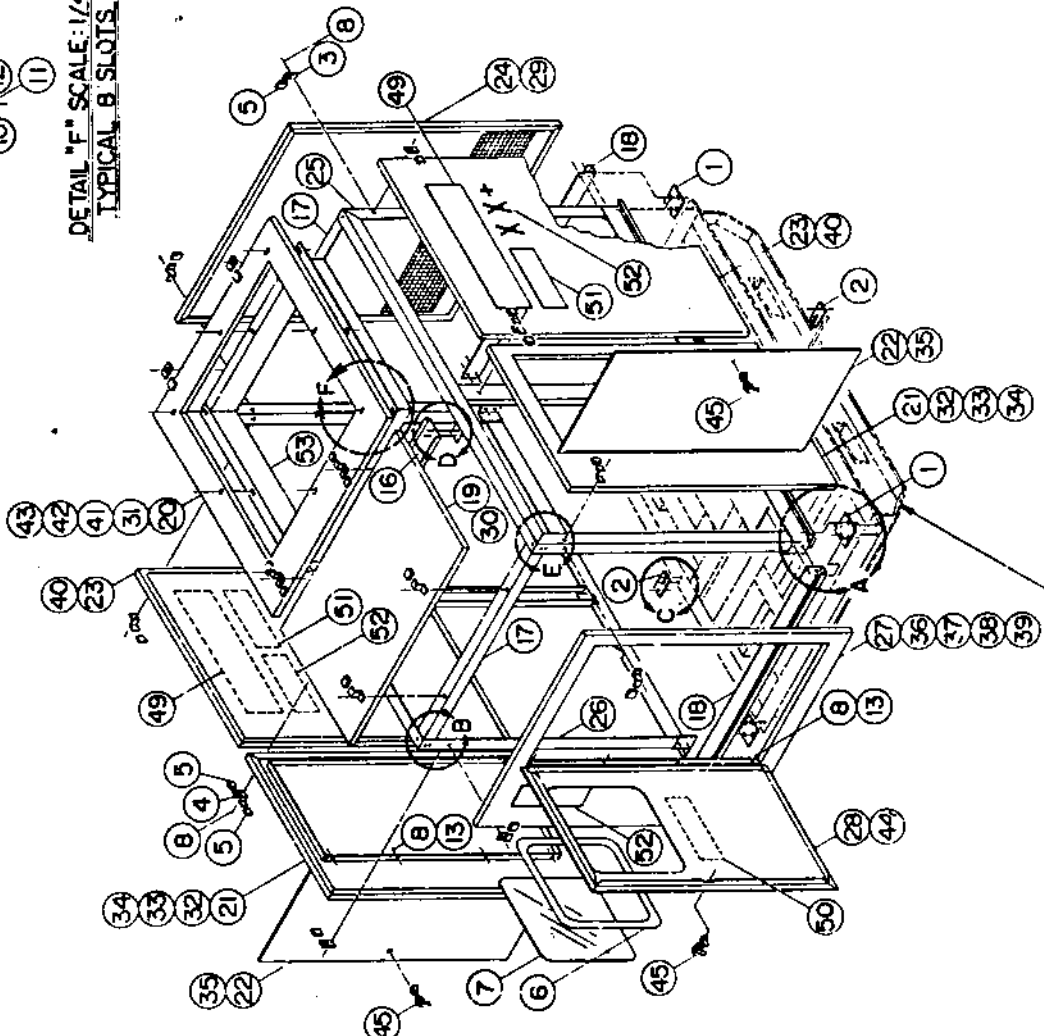
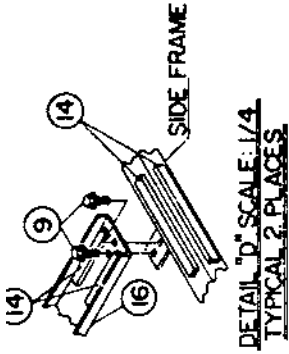
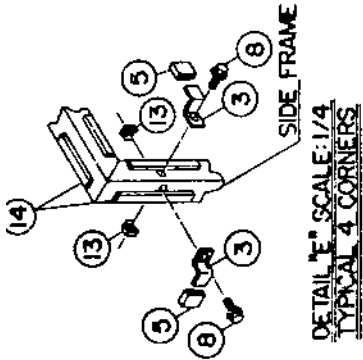
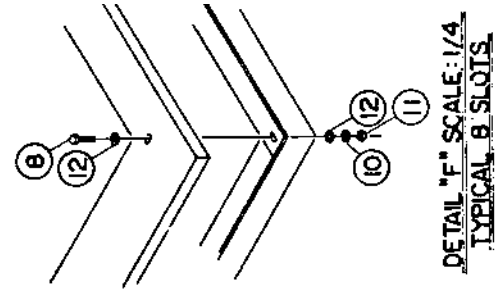


BASE - QUINCY PART NO. 125867

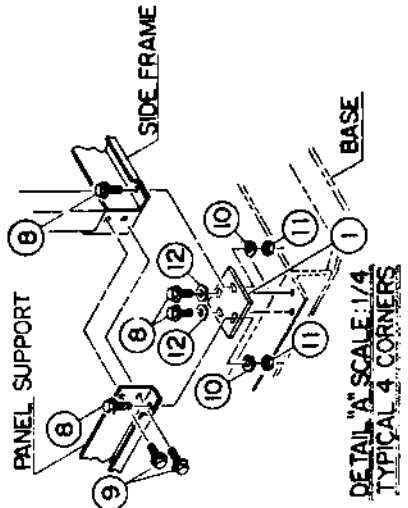
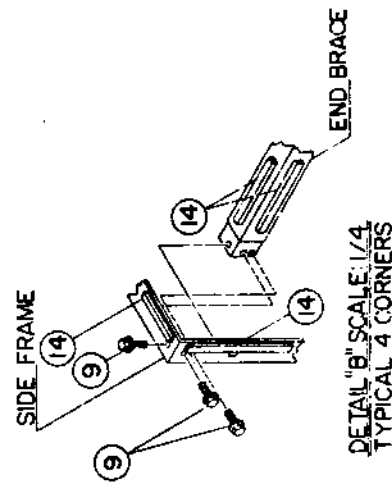
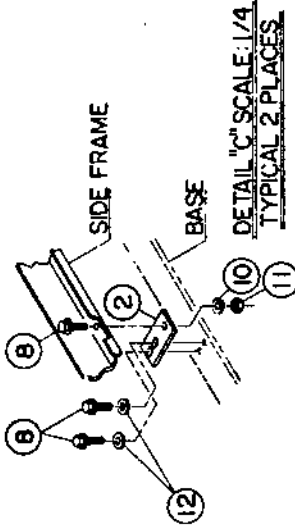
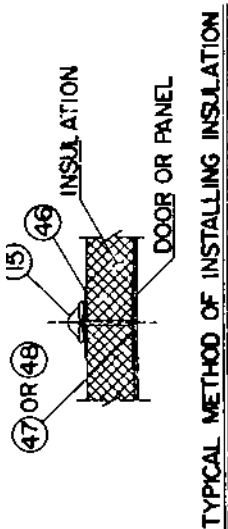
**CABINET GROUPS**  
**125957-502 (FOR 50 H.P. MODELS WITH AFTERCOOLER)**  
**125957-602 (FOR 60 H.P. MODELS WITH AFTERCOOLER)**

INDEX NUMBER	QTY	PART NUMBER	DESCRIPTION
1	4	120961	PLATE - EXTENSION MOUNT
2	2	120962	PLATE - SIDE EXTENSION MOUNT
3	12	120972	CLIP - END, PANEL
4	4	120973	CLIP - TWIN, PANEL
5	20	122259	CAP
6	6FT	120223	MOULDING - WINDOW
7	1	125418	WINDOW - DOOR
8	50	123777-J10	SCREW - HEX., 1/4-20 UNC X .75, GRADE 5
9	24	110511-J07	SCREW - HEX., 1/4-20 UNC X .50
10	10	123115-04C	LOCKWASHER - 1/4
11	10	124364-J02	NUT - HEX., 1/4 UNC
12	12	110428N025	FLATWASHER - 1/4
13	28	22456	SPEEDNUT - 1/4
14	91FT	22571	TAPE - SEALANT
15	65	123798	NUT - HANGER
16	1	125845	BRACE - CABINET, TOP
17	2	125846	BRACE - CABINET, END
18	2	125847	SUPPORT - PANEL
19	1	125841	PANEL - CABINET, TOP
20	1	125842	PANEL - CABINET, TOP
21	2	125848-001	PANEL - CABINET, SIDE
22	2	125850-001	PANEL - DOOR
23	2	125852-001	PANEL - CABINET, SIDE
24	1	125853-001	PANEL - CABINET, END
25	1	125843-001	FRAME - CABINET, SIDE
26	1	125844-001	FRAME - CABINET, SIDE
27	1	125849-001	PANEL - DOOR FRAME
28	1	125851-001	PANEL - DOOR
29	1	120358-86	INSULATION
30	1	120358-90	INSULATION
31	1	120358-91	INSULATION
32	2	120358-92	INSULATION
33	2	120358-93	INSULATION
34	4	120358-94	INSULATION
35	2	120358-95	INSULATION
36	1	120358-96	INSULATION
37	1	120358-97	INSULATION
38	1	120358-98	INSULATION
39	1	120358-99	INSULATION
40	2	120358-100	INSULATION
41	1	120358-101	INSULATION
42	1	120358-102	INSULATION
43	1	120358-103	INSULATION
44	1	120358-104	INSULATION
45	3	120975	LATCH - DOOR
46	65	123844	WASHER - SELF LOCK
47	50	123797-001	HANGER - INSULATION
48	15	123797-002	HANGER - INSULATION
49	2	125324-001	DECAL - "QUINCY"
50	1	125324-002	DECAL - "QUINCY"
51	2	126115	DECAL - "QSB"
52	3	126114-50	DECAL - "50+" (FOR 50 H.P. UNITS)
OR	3	126114-60	DECAL - "60+" (FOR 60 H.P. UNITS)

# CABINET GROUPS



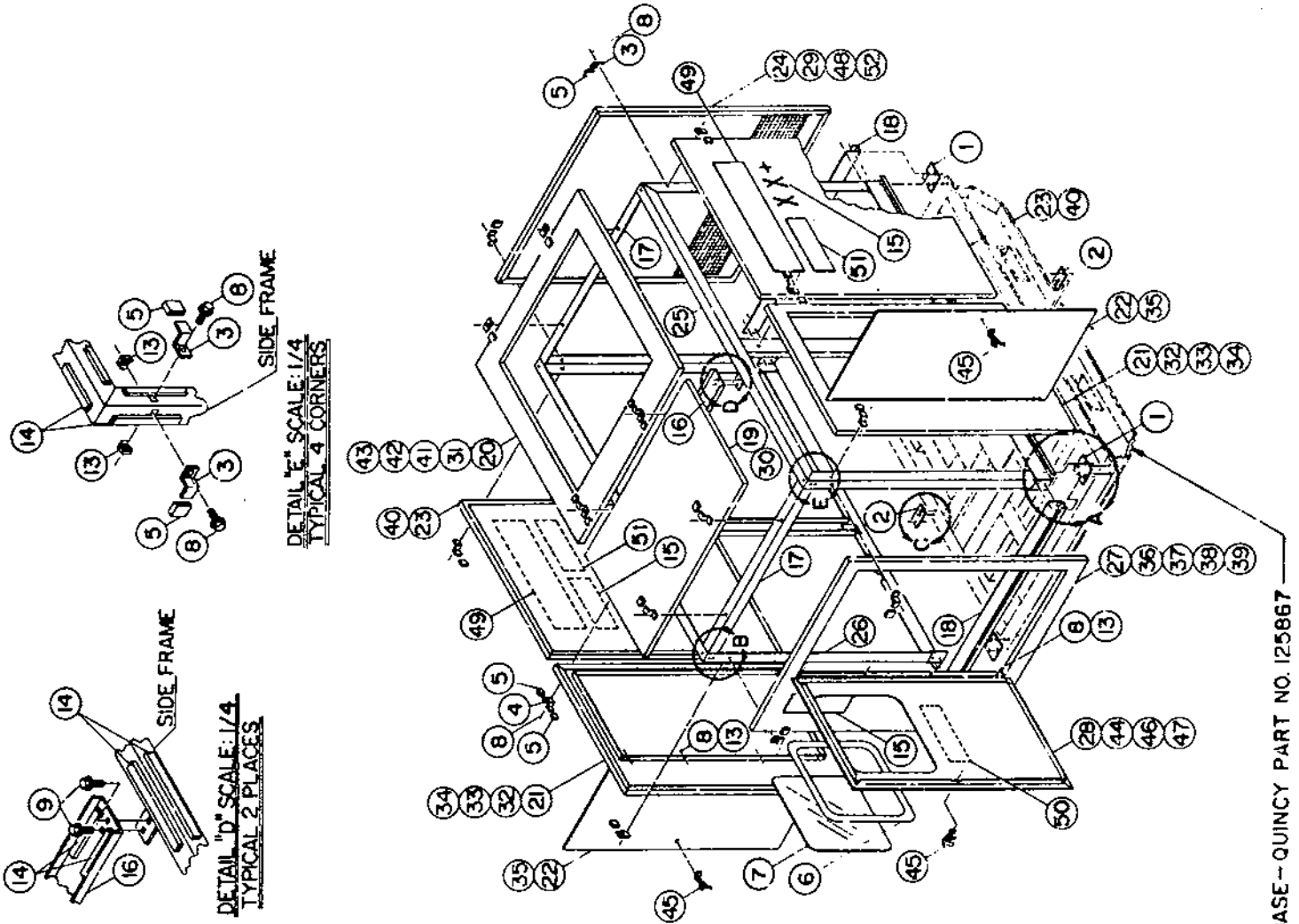
BASE--QUINCY PART NO. 125867



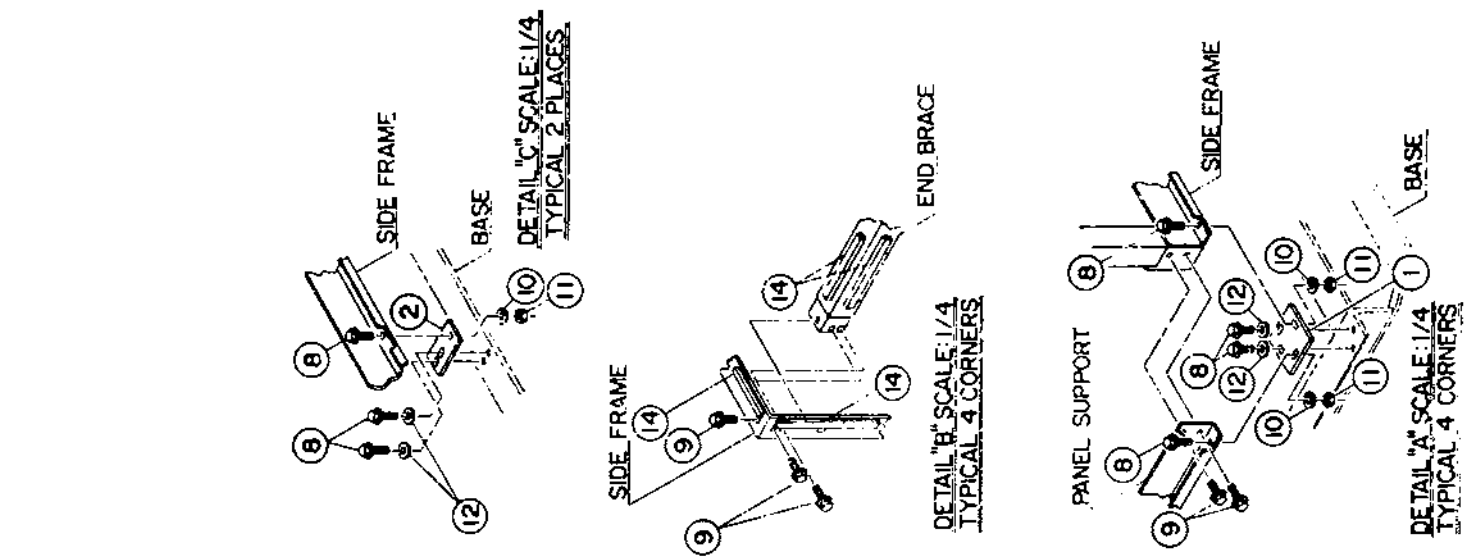
**CABINET GROUPS**  
**125610-502 (FOR 50 H.P. MODELS LESS AFTERCOOLER)**  
**125610-602 (FOR 60 H.P. MODELS LESS AFTERCOOLER)**

INDEX NUMBER	QTY	PART NUMBER	DESCRIPTION
1	4	120961	PLATE - EXTENSION MOUNT
2	2	120962	PLATE - SIDE EXTENSION MOUNT
3	12	120972	CLIP - END, PANEL
4	4	120973	CLIP - TWIN, PANEL
5	20	122259	CAP
6	6FT	120223	MOULDING - WINDOW
7	1	125418	WINDOW - DOOR
8	58	123777-J10	SCREW - HEX., 1/4-20 UNC X .75, GRADE 5
9	24	110511-J07	SCREW - HEX., 1/4-20 UNC X .50
10	18	123115-04C	LOCKWASHER - 1/4
11	18	124364-J02	NUT - HEX., 1/4 UNC
12	28	110428N025	FLATWASHER - 1/4
13	28	22456	SPEEDNUT - 1/4
14	91FT	22571	TAPE - SEALANT
15	65	123798	NUT - HANGER
16	1	125845	BRACE - CABINET, TOP
17	2	125846	BRACE - CABINET, END
18	2	125847	SUPPORT - PANEL
19	1	125841	PANEL - CABINET, TOP
20	1	125842	PANEL - CABINET, TOP
21	2	125848-001	PANEL - CABINET, SIDE
22	2	125850-001	PANEL - DOOR
23	2	125852-001	PANEL - CABINET, SIDE
24	1	125853-001	PANEL - CABINET, END
25	1	125843-001	FRAME - CABINET, SIDE
26	1	125844-001	FRAME - CABINET, SIDE
27	1	125849-001	PANEL - DOOR FRAME
28	1	125851-001	PANEL - DOOR
29	1	120358-86	INSULATION
30	1	120358-90	INSULATION
31	1	120358-91	INSULATION
32	2	120358-92	INSULATION
33	2	120358-93	INSULATION
34	4	120358-94	INSULATION
35	2	120358-95	INSULATION
36	1	120358-96	INSULATION
37	1	120358-97	INSULATION
38	1	120358-98	INSULATION
39	1	120358-99	INSULATION
40	2	120358-100	INSULATION
41	1	120358-101	INSULATION
42	1	120358-102	INSULATION
43	1	120358-103	INSULATION
44	1	120358-104	INSULATION
45	3	120975	LATCH - DOOR
46	65	123844	WASHER - SELF LOCK
47	50	123797-001	HANGER - INSULATION
48	15	123797-002	HANGER - INSULATION
49	2	125324-001	DECAL - "QUINCY"
50	1	125324-002	DECAL - "QUINCY"
51	2	126115	DECAL - "QSB"
52	3	126114-50	DECAL - "50+" (FOR 50 H.P. UNITS)
OR	3	126114-60	DECAL - "60+" (FOR 60 H.P. UNITS)
53	1	126401	ADAPTER - PANEL

# CABINET GROUPS



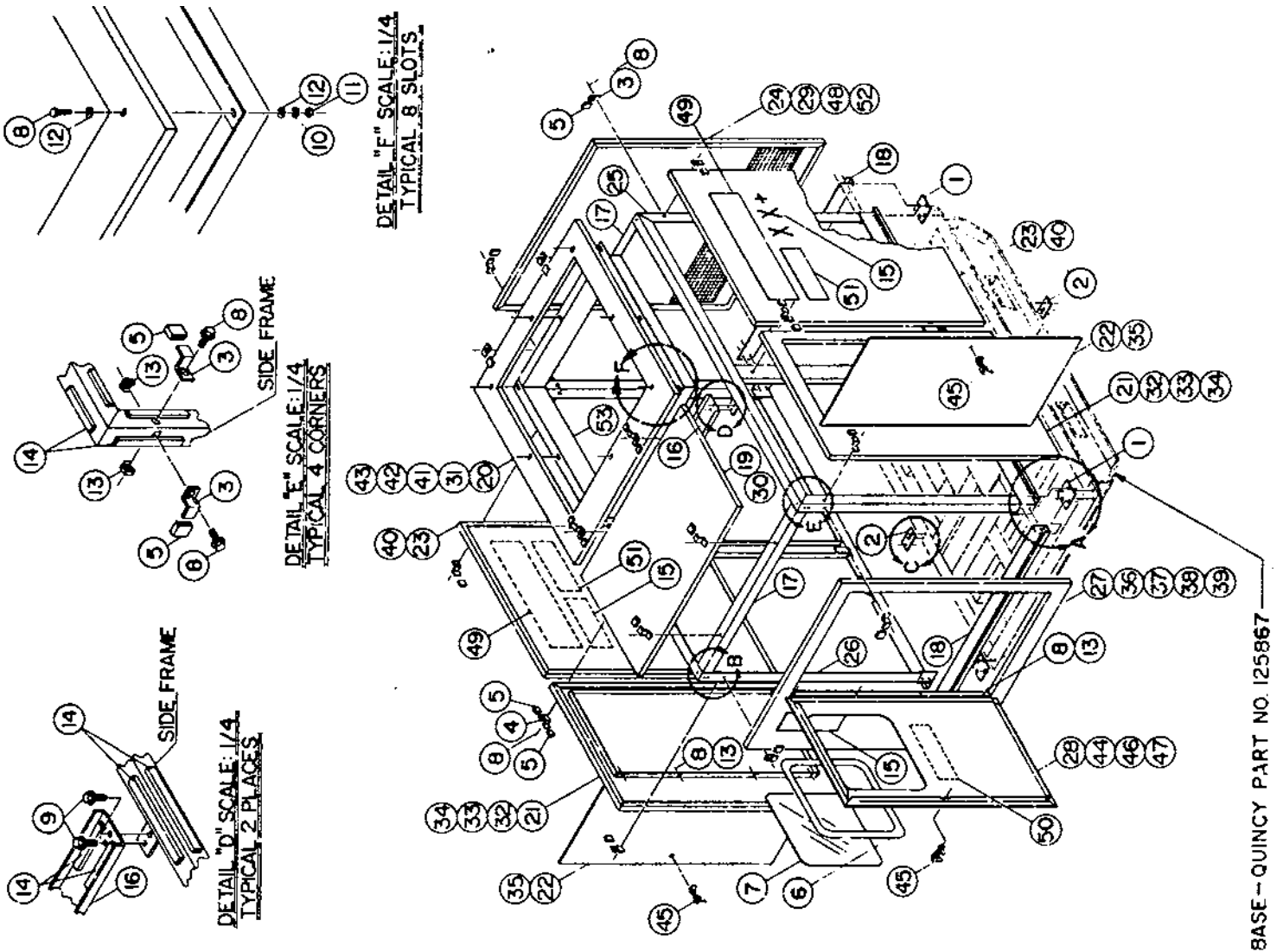
BASE - QUINCY PART NO. 125867



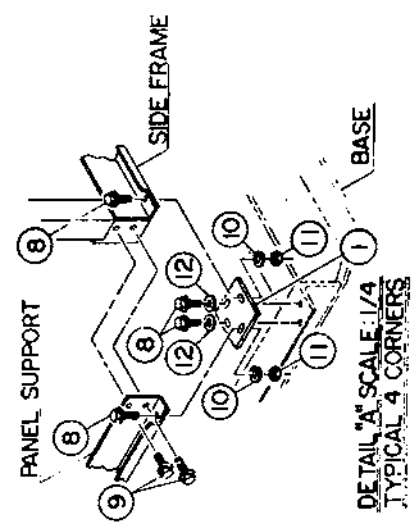
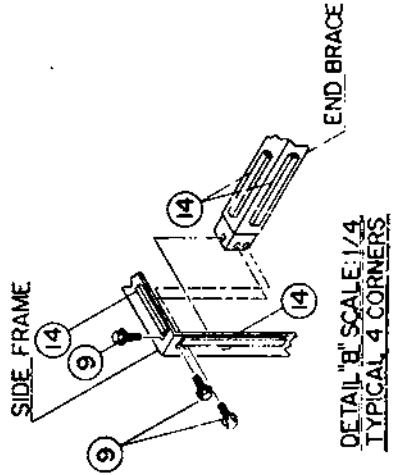
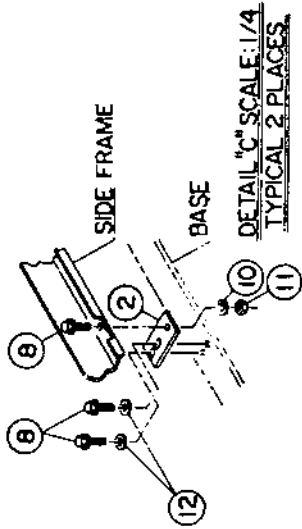
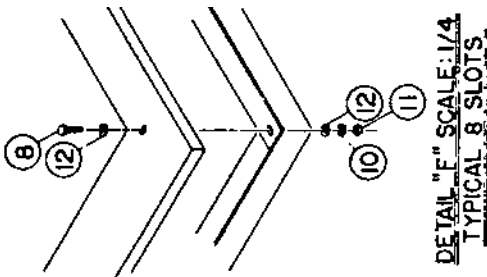
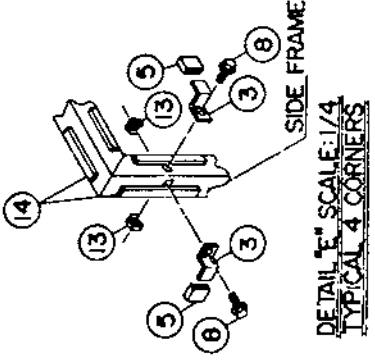
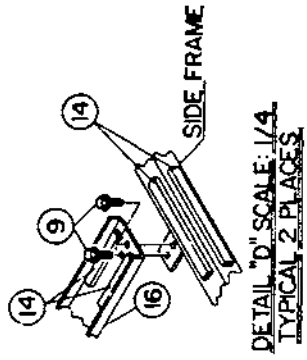
**CABINET GROUP**  
**125957-752 (FOR 75 H.P. MODELS WITH AFTERCOOLER)**

INDEX NUMBER	QTY	PART NUMBER	DESCRIPTION
1	4	120961	PLATE - EXTENSION MOUNT
2	2	120962	PLATE - SIDE EXTENSION MOUNT
3	12	120972	CLIP - END, PANEL
4	4	120973	CLIP - TWIN, PANEL
5	20	122259	CAP
6	6FT	120223	MOULDING - WINDOW
7	1	125418	WINDOW - DOOR
8	50	123777-J10	SCREW - HEX., 1/4-20 UNC X .75, GRADE 5
9	24	110511-J07	SCREW - HEX., 1/4-20 UNC X .50
10	10	123115-04C	LOCKWASHER - 1/4
11	10	124364-J02	NUT - HEX., 1/4 UNC
12	12	110428N025	FLATWASHER - 1/4
13	28	22456	SPEEDNUT - 1/4
14	91FT	22571	TAPE - SEALANT
15	3	126114-75	DECAL - "75"
16	1	125845	BRACE - CABINET, TOP
17	2	125846	BRACE - CABINET, END
18	2	125847	SUPPORT - PANEL
19	1	125841	PANEL - CABINET, TOP
20	1	125842	PANEL - CABINET, TOP
21	2	125848-001	PANEL - CABINET, SIDE
22	2	125850-001	PANEL - DOOR
23	2	125852-001	PANEL - CABINET, SIDE
24	1	125853-001	PANEL - CABINET, END
25	1	125843-001	FRAME - CABINET, SIDE
26	1	125844-001	FRAME - CABINET, SIDE
27	1	125849-001	PANEL - DOOR FRAME
28	1	125851-001	PANEL - DOOR
29	2	124117-76C	INSULATION
30	1	124117-63C	INSULATION
31	1	124117-77C	INSULATION
32	2	124117-64C	INSULATION
33	2	124117-58C	INSULATION
34	4	124117-59C	INSULATION
35	2	124117-60C	INSULATION
36	1	124117-61C	INSULATION
37	1	124117-65C	INSULATION
38	1	124117-66C	INSULATION
39	1	124117-67C	INSULATION
40	2	124117-68C	INSULATION
41	1	124117-78C	INSULATION
42	1	124117-79C	INSULATION
43	1	124117-80C	INSULATION
44	1	124117-69C	INSULATION
45	3	120975	LATCH - DOOR
46	1	124117-70C	INSULATION
47	1	124117-71C	INSULATION
48	1	124117-74C	INSULATION
49	2	125324-001	DECAL - "QUINCY"
50	1	125324-002	DECAL - "QUINCY"
51	2	126115	DECAL - "QSB"
52	1	124117-75C	INSULATION

# CABINET GROUP



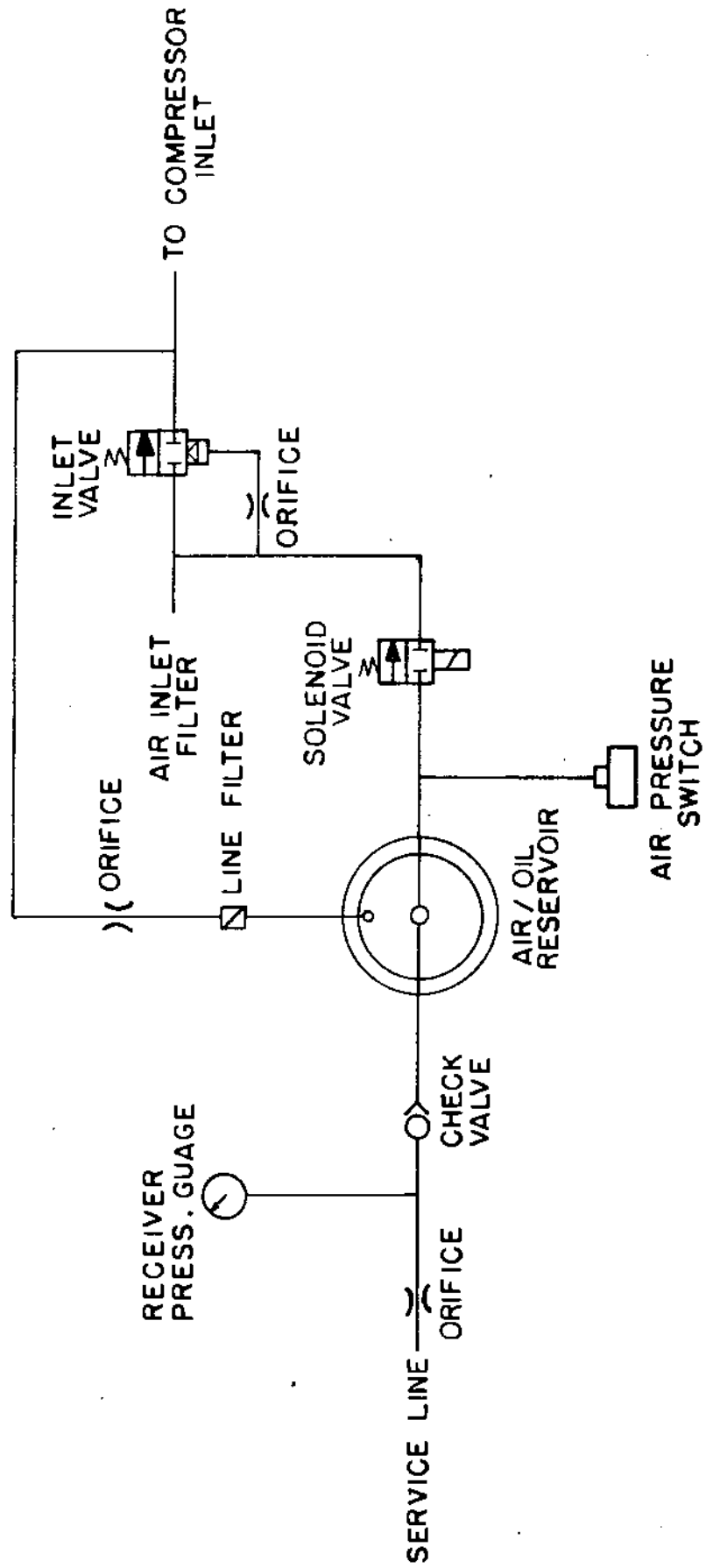
BASE—QUINCY PART NO. 125867



**CABINET GROUP**  
**126610-752 (FOR 75 H.P. MODELS LESS AFTERCOOLER)**

INDEX NUMBER	QTY	PART NUMBER	DESCRIPTION
1	4	120961	PLATE - EXTENSION MOUNT
2	2	120962	PLATE - SIDE EXTENSION MOUNT
3	12	120972	CLIP - END, PANEL
4	4	120973	CLIP - TWIN, PANEL
5	20	122259	CAP
6	6FT	120223	MOULDING - WINDOW
7	1	125416	WINDOW - DOOR
8	58	123777-J10	SCREW - HEX., 1/4-20 UNC X .75, GRADE 5
9	24	110511-J07	SCREW - HEX., 1/4-20 UNC X .50
10	18	123115-04C	LOCKWASHER - 1/4
11	18	124364-J02	NUT - HEX., 1/4 UNC
12	28	110428N025	FLATWASHER - 1/4
13	28	22456	SPEEDNUT - 1/4
14	91FT	22571	TAPE - SEALANT
15	3	126114-75	DECAL - "75+"
16	1	125845	BRACE - CABINET, TOP
17	2	125846	BRACE - CABINET, END
18	2	125847	SUPPORT - PANEL
19	1	125841	PANEL - CABINET, TOP
20	1	125842	PANEL - CABINET, TOP
21	2	125848-001	PANEL - CABINET, SIDE
22	2	125850-001	PANEL - DOOR
23	2	125852-001	PANEL - CABINET, SIDE
24	1	125853-001	PANEL - CABINET, END
25	1	125843-001	FRAME - CABINET, SIDE
26	1	125844-001	FRAME - CABINET, SIDE
27	1	125849-001	PANEL - DOOR FRAME
28	1	125851-001	PANEL - DOOR
29	2	124117-76C	INSULATION
30	1	124117-63C	INSULATION
31	1	124117-77C	INSULATION
32	2	124117-64C	INSULATION
33	2	124117-58C	INSULATION
34	4	124117-59C	INSULATION
35	2	124117-60C	INSULATION
36	1	124117-61C	INSULATION
37	1	124117-65C	INSULATION
38	1	124117-66C	INSULATION
39	1	124117-67C	INSULATION
40	2	124117-68C	INSULATION
41	1	124117-78C	INSULATION
42	1	124117-79C	INSULATION
43	1	124117-80C	INSULATION
44	1	124117-69C	INSULATION
45	3	120975	LATCH - DOOR
46	1	124117-70C	INSULATION
47	1	124117-71C	INSULATION
48	1	124117-74C	INSULATION
49	2	125324-001	DECAL - "QUINCY"
50	1	125324-002	DECAL - "QUINCY"
51	2	126115	DECAL - "GSB"
52	1	124117-75C	INSULATION
53	1	126401	ADAPTER - PANEL

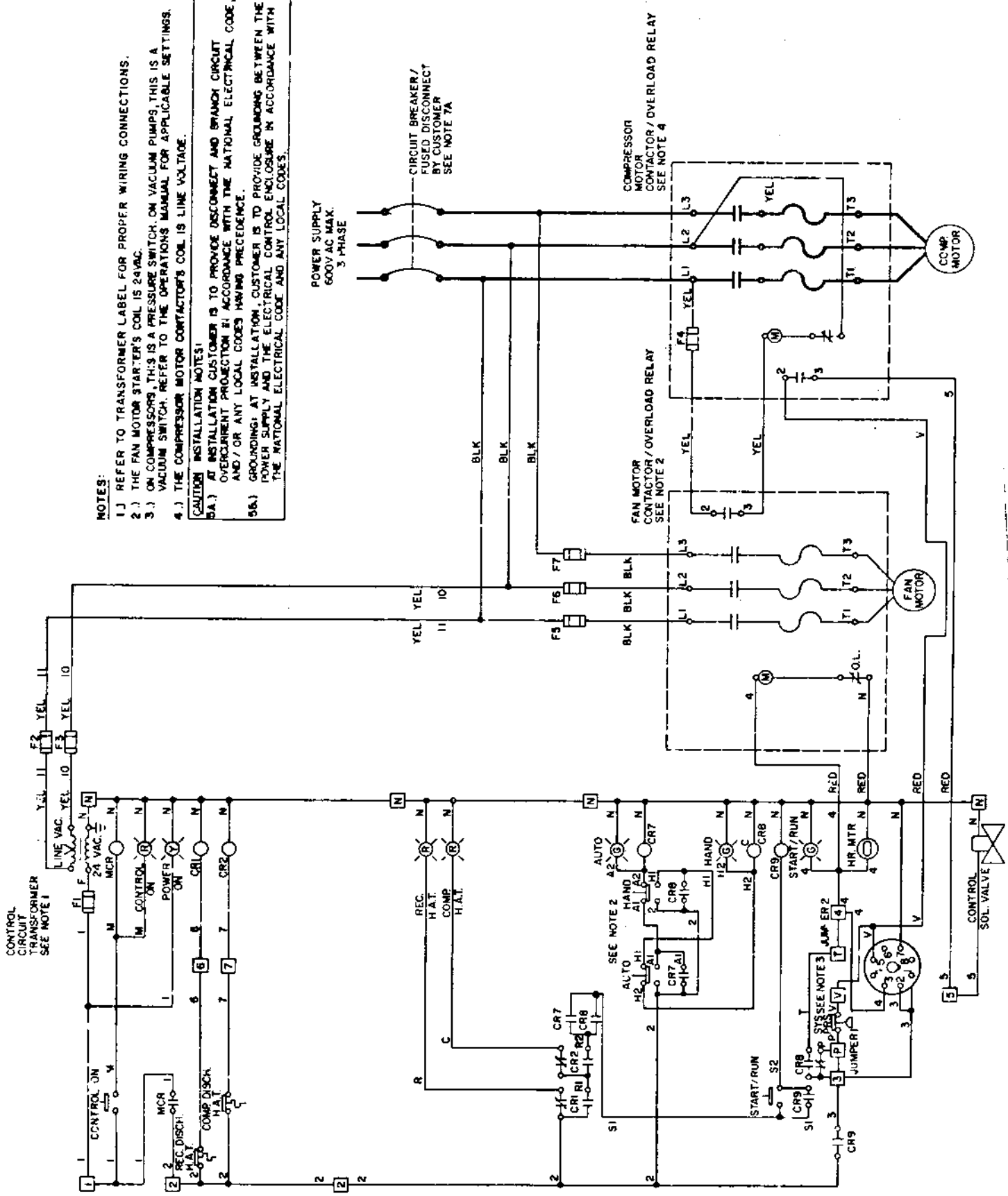
# CONTROL PIPING SCHEMATIC





# WIRING SCHEMATIC WP1711 (AUTO DUAL)

- NOTES:**
- 1.) REFER TO TRANSFORMER LABEL FOR PROPER WIRING CONNECTIONS.
  - 2.) THE FAN MOTOR STARTER'S COIL IS 24VAC.
  - 3.) ON COMPRESSORS, THIS IS A PRESSURE SWITCH. ON VACUUM PUMPS, THIS IS A VACUUM SWITCH. REFER TO THE OPERATIONS MANUAL FOR APPLICABLE SETTINGS.
  - 4.) THE COMPRESSOR MOTOR CONTACTOR'S COIL IS LINE VOLTAGE.
- CAUTION: INSTALLATION NOTES!**
- 5A.) AT INSTALLATION CUSTOMER IS TO PROVIDE DISCONNECT AND BRANCH CIRCUIT OVERCURRENT PROTECTION IN ACCORDANCE WITH THE NATIONAL ELECTRICAL CODE, AND/OR ANY LOCAL CODES HAVING PRECEDENCE.
  - 5B.) GROUNDING: AT INSTALLATION, CUSTOMER IS TO PROVIDE GROUNDING BETWEEN THE POWER SUPPLY AND THE ELECTRICAL CONTROL ENCLOSURE IN ACCORDANCE WITH THE NATIONAL ELECTRICAL CODE AND ANY LOCAL CODES.



## RECOMMENDED SPARE PARTS

<u>QTY</u>	<u>PART NUMBER</u>	<u>DESCRIPTION</u>
1	110377E300	ELEMENT - AIR FILTER
1	124331-050	ELEMENT - OIL FILTER
1	124487-009	SEPARATOR - AIR/OIL
1	122880-223	SWITCH - HI-TEMPERATURE SHUTDOWN
<u>FUSES</u>		
200 VOLT MODELS		
1	22293	FUSE - 5 AMP, TIME DELAY TYPE
1	9532-212	FUSE - 1-1/4 AMP, SLOW BLOWING TYPE
1	120639	FUSE - 12 AMP, TIME DELAY TYPE
1	23985	FUSE - 6 AMP, FAST ACTING TYPE
1	8859	FUSE - 12 AMP, TIME DELAY TYPE
230 VOLT MODELS		
1	22293	FUSE - 5 AMP, TIME DELAY TYPE
1	22453	FUSE - 1 AMP, TIME DELAY TYPE
1	8818	FUSE - 10 AMP, TIME DELAY TYPE
1	8859	FUSE - 30 AMP, DUAL ELEMENT TYPE
1	23985	FUSE - 6 AMP, FAST ACTING TYPE
460 VOLT MODELS		
1	22293	FUSE - 5 AMP, TIME DELAY TYPE
1	9532-507	FUSE - 1/2 AMP, TIME DELAY TYPE
1	120512	FUSE - 10 AMP, FAST ACTING TYPE
1	120253	FUSE - 15 AMP, TIME DELAY TYPE
1	23985	FUSE - 6 AMP, FAST ACTING TYPE
575 VOLT MODELS		
1	22293	FUSE - 5 AMP, TIME DELAY TYPE
1	9532-605	FUSE - 3/10 AMP, FAST ACTING TYPE
1	120681	FUSE - 8 AMP, FAST ACTING TYPE
1	120640	FUSE - 20 AMP, FAST ACTING TYPE
1	23985	FUSE - 6 AMP, FAST ACTING TYPE

# **NATIONWIDE SALES/SERVICE**

**Quincy Service is always near. There are Authorized Quincy Distributors located throughout the United States and Canada. They stock genuine Quincy replacement parts and accessories for a wide range of Quincy products. Service specialists are factory trained and experienced. Quincy service will help keep you in business. Call for Authorized Quincy Service.**

**Quincy**  
Compressor Division

---

**Colt Industries**

