

Illustrated Parts Manual

L75SR

Air Compressor

L75SR

Air Compressor Parts List

WARRANTY

Conditions of CompAir warranty are stated in our standard conditions of sale. Details of warranty for a particular product may be obtained from the supplying Distributor

CAUTION

Use only CompAir Genuine Parts when carrying out routine maintenance or repair.

The use of replacement parts or lubricating oils not supplied or approved by CompAir can lead to expensive failures which will not be covered by warranty.

To ensure continued trouble-free operation of the unit it is important that periodic servicing is carried out in accordance with the information given in the 'Maintenance' section of the User Manual.

Consult your CompAir Distributor for advice if any doubt exists.

Contents

Section	Page
Notes	5
General Arrangement	6
Enclosure	7
Power Converter Assembly	8
Air-end/Motor	9
Air Pipework	10
Oil Pipework	11
Reclaimer	12
Regulation System	13
Air/Oil Cooler & Fan	14
Electrical Wiring	15
Waste Heat Recovery Option	16
Common Fastenings	17

**Always use
CompAir
Genuine Parts**

Notes

1. Indication of sub-assemblies.

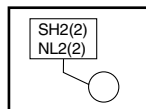
Where a part or assembly includes other parts or assemblies, the component parts follow immediately in the list with their descriptions indented. For example:

1	C27150-216	Duct, Inlet
2	C27150-211	Support
3	C27150-212	Support, Angle
4	C26150-200	Baffle, Inlet Duct
5	C26150-282	Baffle, Long
6	C26150-212	Insulation, Sounc
7	C26050-122	Pin, Location

An order for the part number of item 1 would also include items 2, 3, 4, 5 & 6; an order for items 2 or 3 would not include any other item; an order for item 4 would also include items 5 & 6; an order for item 5 would also include item 6. Item 7 would not be included with any of the preceding items.

2. Common Fastenings

Some normal screws, nuts, washers etc. are not illustrated. Their location is indicated by a reference number on the illustration which includes a letter code, with the quantity required given in brackets, e.g.:



The codes are listed in the section 'Common Fastenings', specifying type, size and CompAir part number.

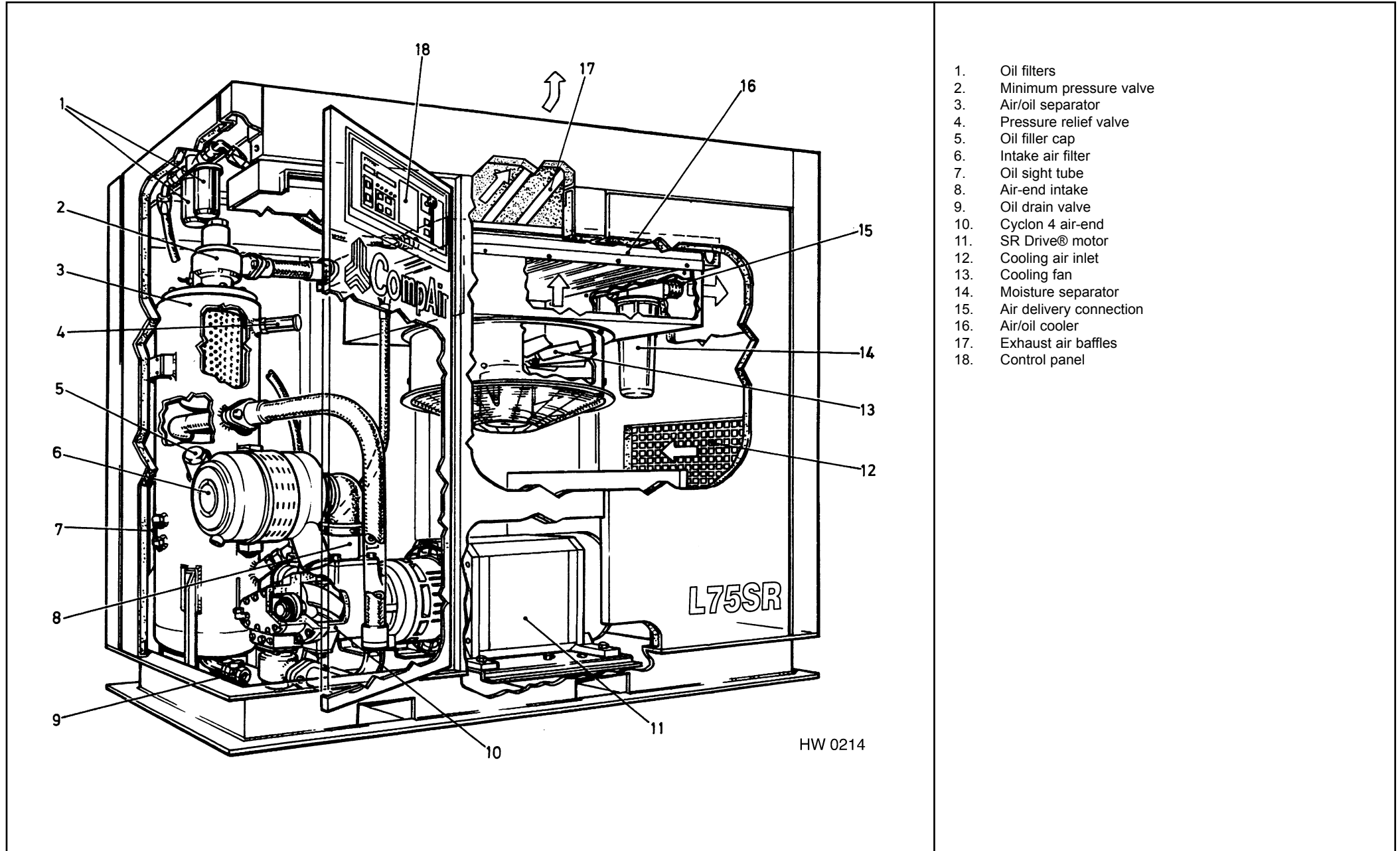
3. Non-specific Quantities

Items such as sealing strip, nylon tube etc., are supplied to Distributors in standard length packs. Users should specify part number and length required when ordering from Distributors.

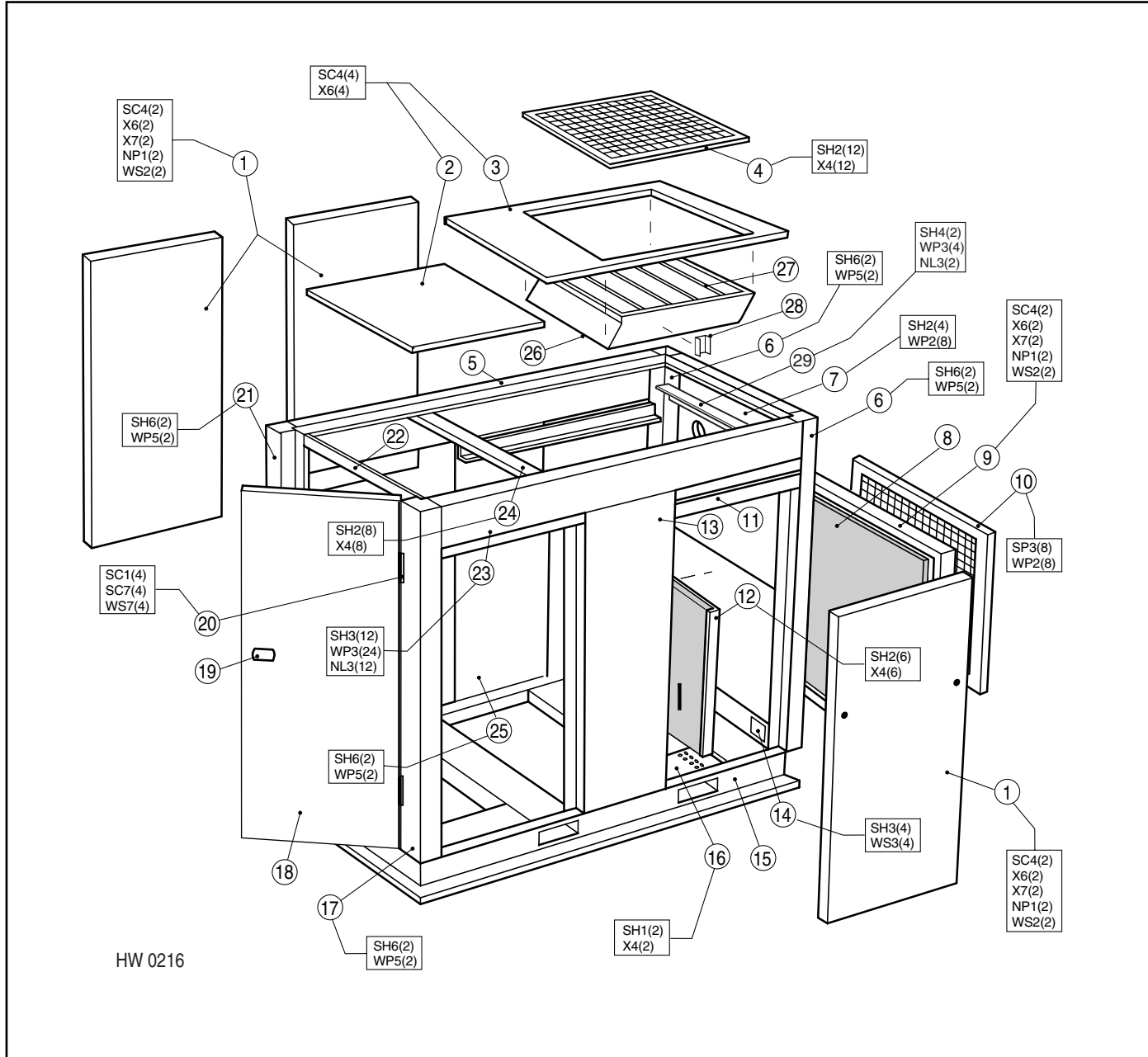
4. Service Kits for L75SR

Minor Kit: CK2004-2 Major Kit: CK8004-5 Separator Kit: CK6004-197

GENERAL ARRANGEMENT



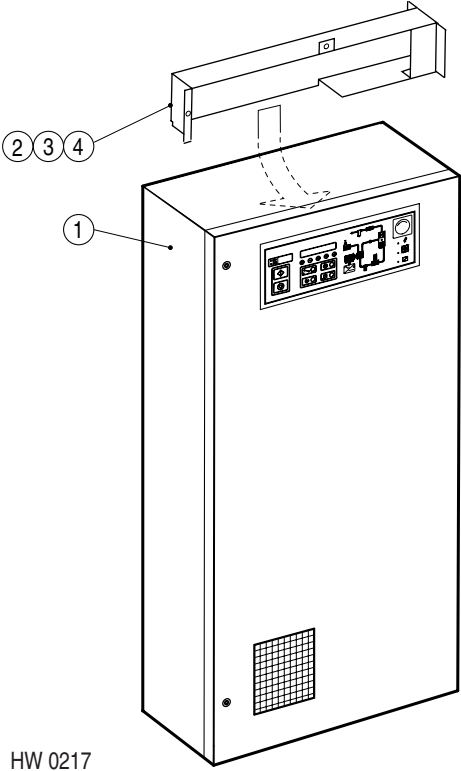
ENCLOSURE



Ref.	Part No.	Qty.	Description
1	UC27399-77	3	Panel, Side
-	UC27399-129	3	Insulation, Sound
2	C27399-80	1	Panel, Roof (Compressor End)
-	C27399-132	1	Insulation, Sound
3	C27399-78	1	Panel, Roof (Exhaust End)
-	C27399-131	1	Insulation, Sound
4	C27399-79	1	Grille, Exhaust
5	C27399-44	1	Rail, Rear Side
-	UC27399-123	1	Insulation, Sound
6	C27399-192	2	Column
-	UC27399-121	2	Insulation, Sound
7	C27399-55	1	Panel, Delivery
-	C27399-124	1	Insulation, Sound
8	UC27399-188	1	Element, Enclosure Filter
9	UC27399-187	1	Panel, Inlet
-	C27399-128	1	Insulation, Sound
10	UC27399-189	1	Grille, Inlet
11	Refers to Support, Cooler (see Air/Oil Cooler)		
12	C27399-66	1	Baffle, Inlet
-	C27399-136	1	Insulation, Sound
-	C27399-202	1	Insulation, Sound
13	C27399-46	1	Panel, Centre Front
-	C27399-122	1	Insulation, Sound
14	C27399-30	1	Plate, Gland
15	C27399-2	1	Baseframe
16	C27399-84	1	Tray, Cable
17	C27399-16	1	Column, Starter
-	UC27399-121	1	Insulation, Sound
18	UC27399-67	1	Door, Service
19	98382-10	1	Latch
20	98313-7	2	Hinge
-	UC27399-127	1	Insulation, Sound
21	C27399-210	1	Column
-	UC27399-121	1	Insulation, Sound
22	C27399-38	1	Rail, Service End
23	UC27399-42	1	Rail, Front Side
-	UC27399-123	1	Insulation, Sound
24	C27399-40	1	Support, Centre Roof
25	C27399-47	1	Panel, Centre Rear
-	C27399-122	1	Insulation, Sound
26	C27399-335	1	Duct, Exhaust
27	C27399-334	1	Insulation, Sound
28	C27399-319	1	Bracket, Exhaust Duct
29	C27399-345	1	End Rail

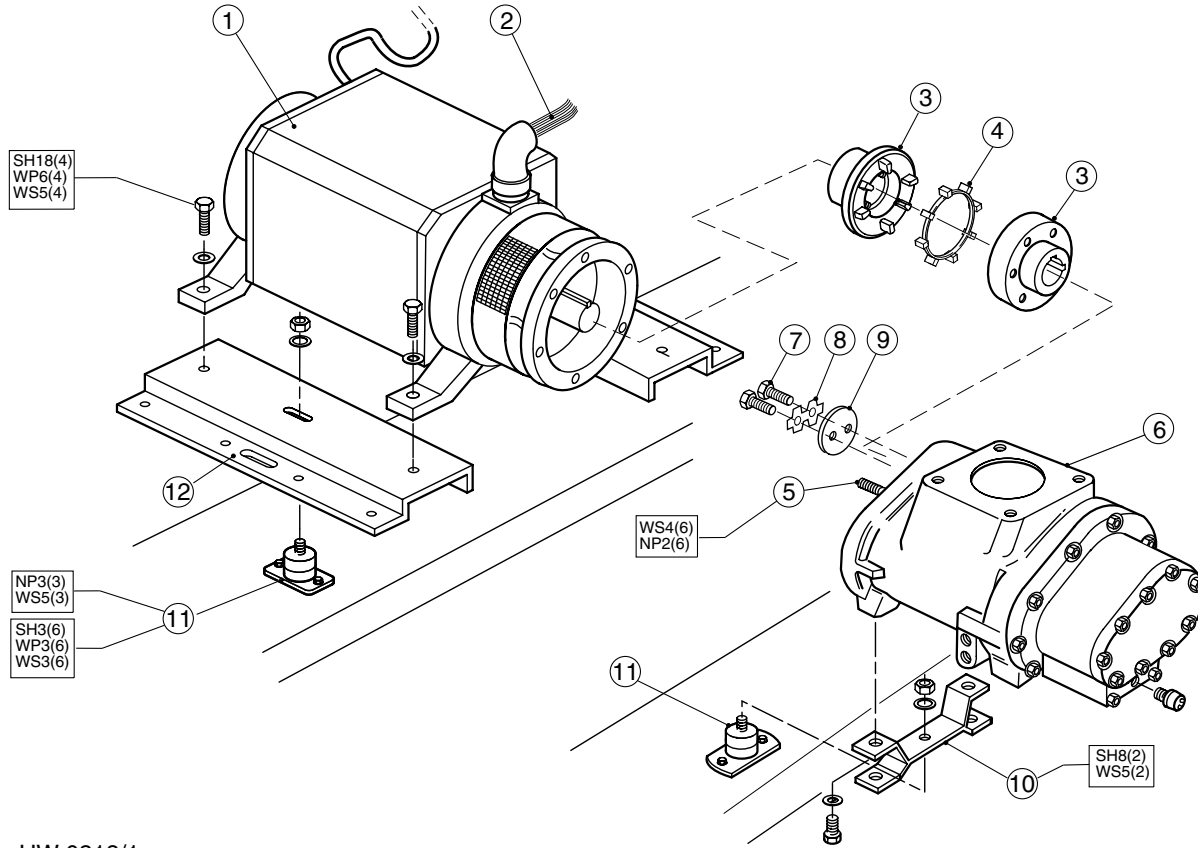
HW 0216

POWER CONVERTER ASSEMBLY



Ref.	Part No.	Qty.	Description
1	98155-15	1	Assy, Power Converter – 50 Hz
1	98155-16	1	Assy, Power Converter – 60 Hz
For details of Power Converter components used in this machine, please consult the listings and diagrams supplied in the converter box enclosure.			
2	C27399-221	1	Duct, Heatsink
3	A93014570	3	Screw, Hex. Head M6x12
4	A3753/36	11	Washer, Conical M6

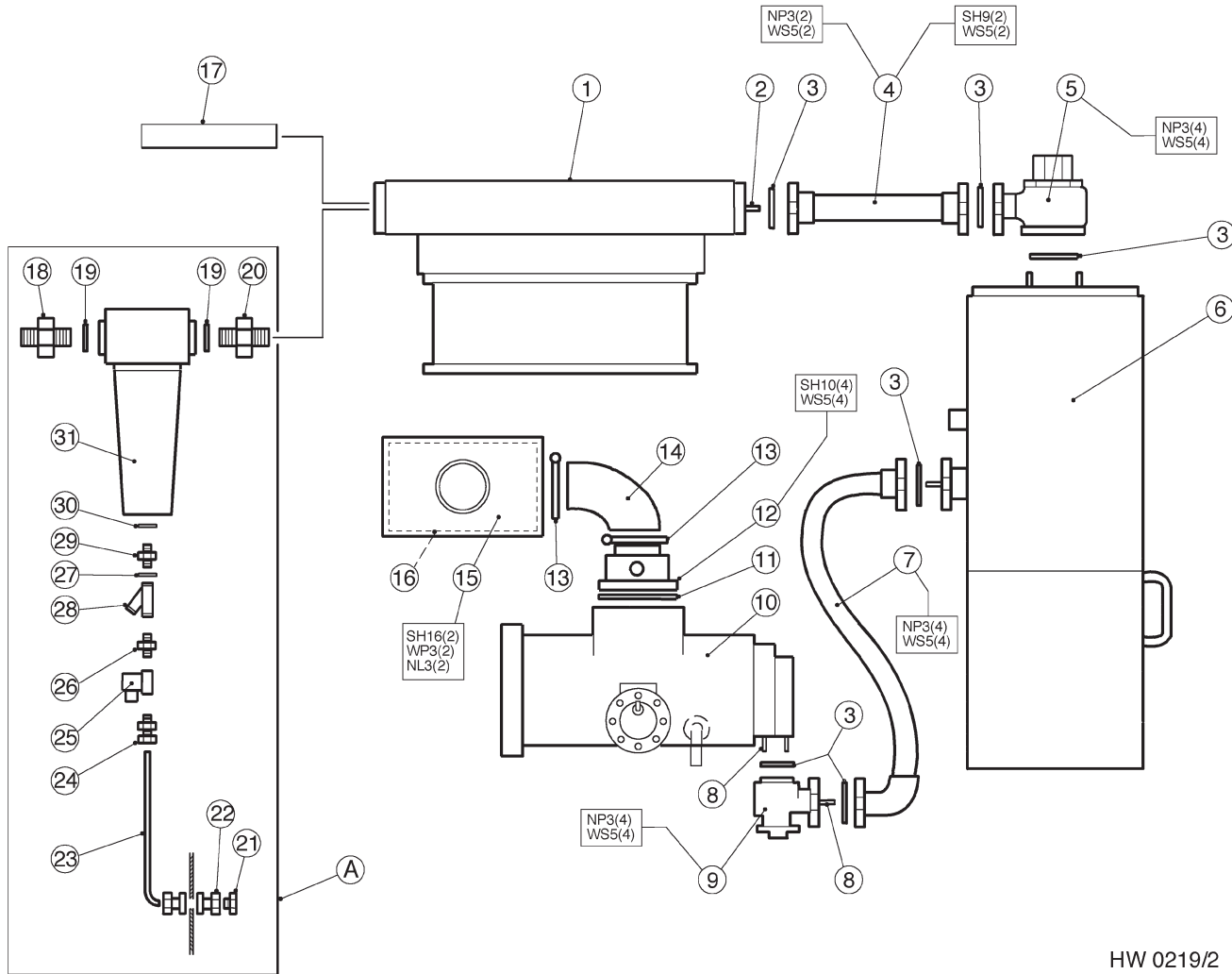
AIR-END/MOTOR



HW 0218/1

Ref.	Part No.	Qty.	Description
1	UC20608-194	1	Motor – 75kW, 380/415V
2	–	1	L Harness, Motor
3	100007119	1	Coupling, Drive
4	100007122	1	L Replacement Element
5	A93024050	6	Stud M10x35
6	UC20465-110	1	Air-end, Cyclon 4
7	A93015090	2	Screw, Hex. Head M10x25
8	UC20464-13	1	Plate, Locking
9	UC20464-12	1	Plate
10	C27399-8	1	Foot, Compressor Mounting
11	98418-2	3	Mounting, Anti-vibration
12	C27399-9	2	Foot, Motor Mounting

AIR PIPEWORK

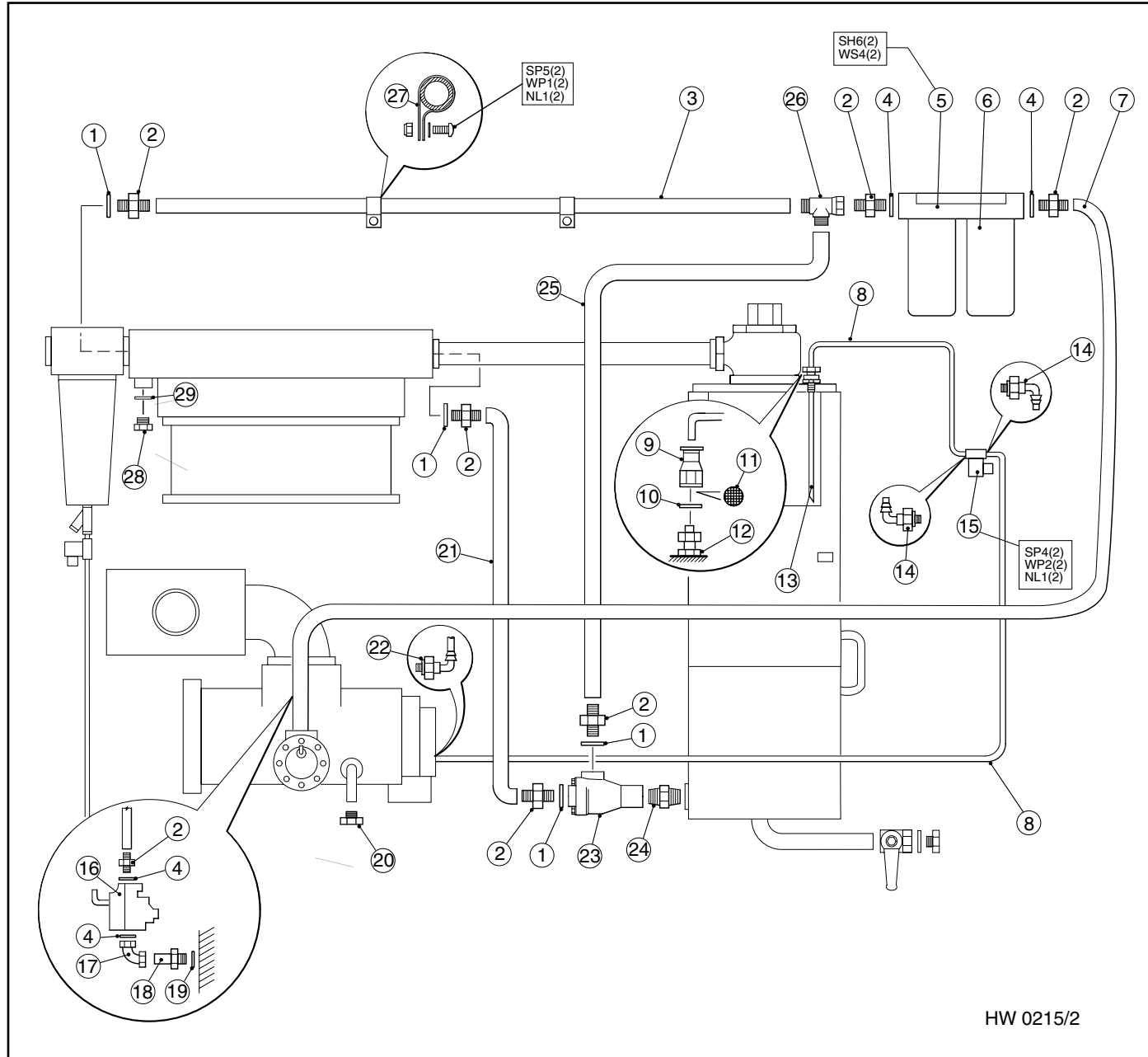


Ref.	Part No.	Qty.	Description
1	Refers to Air/Oil Cooler		
2	A93024070	2	Stud – M12x35
3	95602-85	6	'O' Ring
4	UC27399-85	1	Pipe, Reclaimer Discharge
5	UC20600-440	1	Valve, Minimum Pressure
6	(see Reclaimer)	1	Reclaimer
7	UC27399-12	1	Pipe, Flexible – Air
8	A93024020	6	Stud – M12x30
9	UC20600-390	1	Valve, Non-return
10	Refers to Air End		
11	UC21260-29	1	Joint
12	UC27399-3	1	Connector
13	A93616880	2	Clip
14	98262-224	1	Adaptor, Elbow
15	A11323274	1	Filter, Air Intake
16	A11323374	1	L Element, Air Filter
17	A93271690	1	Pipe, 2 1/2in. x 250
A	100007103	1	Moisture Separator Kit
18 ★	C11605-3	1	Nipple
	C11605-11	1	Union, Coned – N. America
19 ★	A93189280	2	Washer, Copper
20 ★	C11605-3	1	Nipple
21 ★	98442-111	1	Plug
22 ★	95440-405	1	Coupling, Bulkhead
23 ★	98617-19	–	Pipe, Nylon Ø10
24 ★	95450-693	1	Coupling, Stud
25 ★	98652-37	1	Valve, Solenoid Drain
26 ★	A93253320	1	Nipple
27 ★	95635-4	1	Washer, Copper
28 ★	98224-327	1	Strainer
29 ★	UC27331-127	1	Union, Special Coned
30 ★	95635-8	1	Washer, Copper
31 ★	98508-4	1	Separator, Moisture

★ Optional Fittings

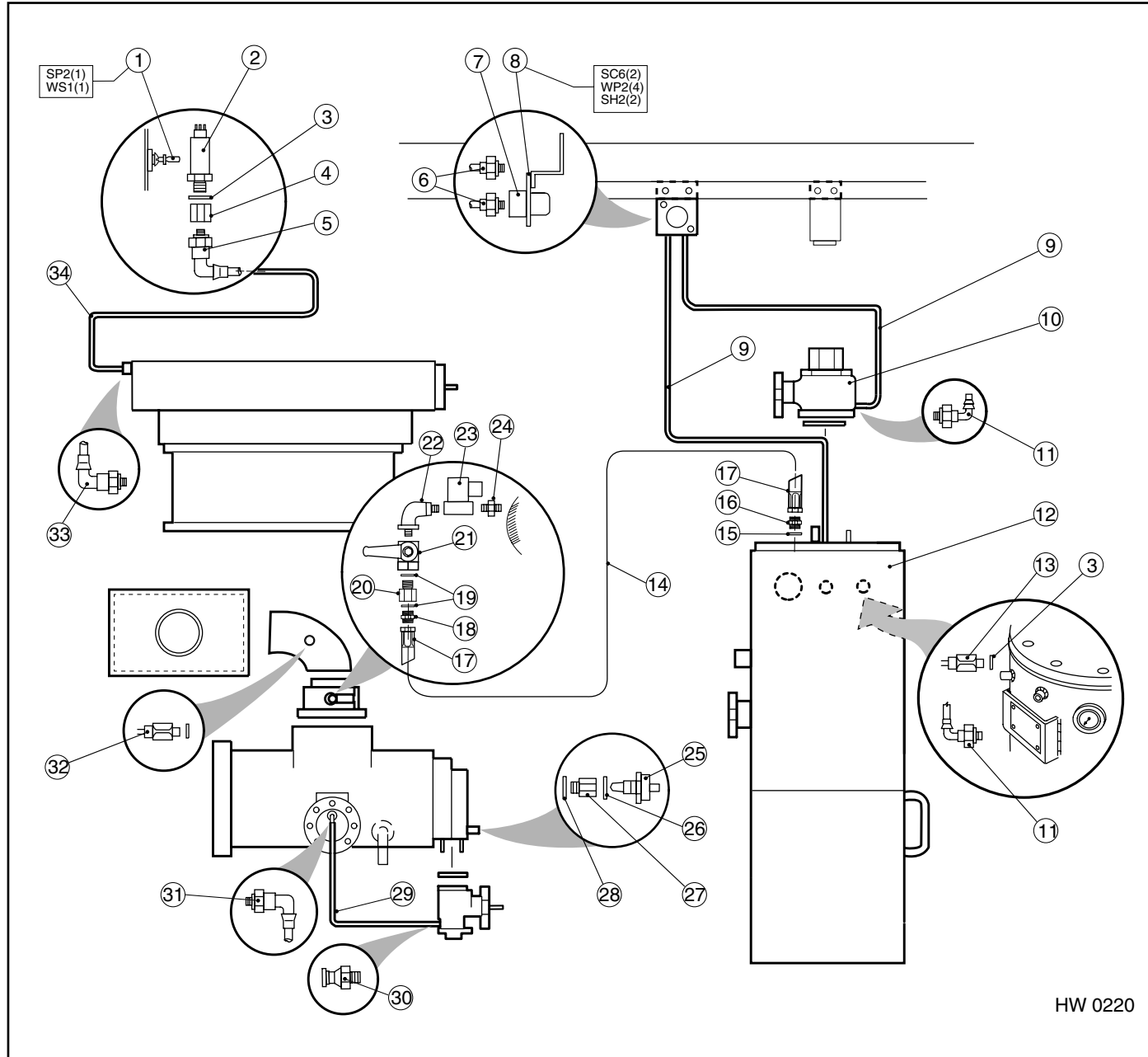
HW 0219/2

OIL PIPEWORK



Ref.	Part No.	Qty.	Description
1	95635-8	4	Washer, Copper
2	UC11605-25	7	Nipple
3	C27399-331	1	Pipe, Flexible, Oil
4	95630-6	2	Washer, Sealing
5	100005303	1	Filter, Oil complete
6	98262-220	2	Element, Oil Filter
	100005301	1	Manifold, Oil Filter
7	UC27399-92	1	Pipe, Flexible Oil
8	98617-22	-	Pipe, Clear Nylon Ø8
9	95450-588	1	Coupling
10	95630-2	1	Washer, Sealing
11	98262-178	1	Strainer, Scavenge
12	A93604720	1	Coupling, Stud
13	100006128	1	Pipe, Scavenge
14	A13309474	2	Coupling, Elbow
15	98652-56	1	Valve, Solenoid
16	98650-363	1	Valve, Oil Stop
17	98156-73	1	Elbow, Swivel
18	C27399-14	1	Standpipe, Stud
19	95635-4	1	Washer, Copper
20	A93060470	1	Oil Filler Cap
21	C27399-330	1	Pipe, Flexible, Oil
22	95450-691	1	Coupling, Elbow
23	98650-390	1	Valve, Thermostatic Control
24	A93253060	1	Nipple
25	C27399-343	1	Pipe, Flexible, Oil
26	95420-5672	1	Tee
27	98150-68	2	Clip, Pipe
28	A93060490	1	Cap
29	95635-62	1	Washer, Copper

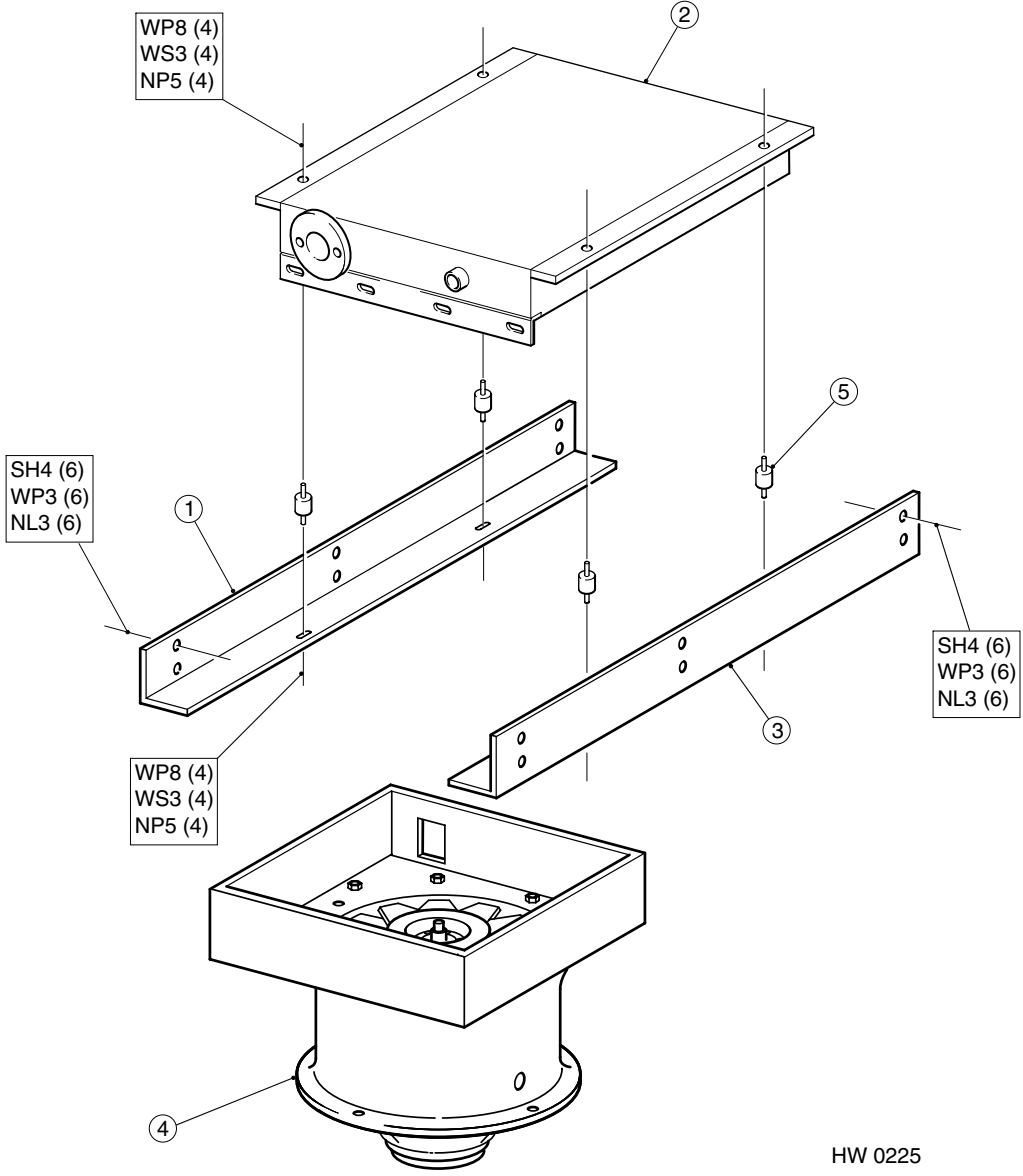
REGULATION SYSTEM



Ref.	Part No.	Qty.	Description
1	98150-383	1	Clip, Spring
2	98612-130	1	Transducer, Pressure
3	95635-2	2	Washer, Copper
4	95450-943	1	Coupling
5	95450-691	1	Coupling, Elbow
	100006962	1	Kit, Differential Pressure Indicator
★ 6	95450-552	1	Coupling, Stud
★ 7	98288-122	1	Indicator, Differential Pressure
★ 8	UC27399-206	1	Bracket
★ 9	98617-7	-	Pipe, Nylon Ø4
10	UC20600-440	-	Valve, Minimum Pressure
★ 11	95450-685	2	Coupling, Elbow
12	(see Reclaimer)	1	Reclaimer
13	98612-115	1	Switch, Over Pressure
14	C27399-247	1	Assy., Blowdown Pipe
15	95631-3	1	Washer, Sealing
16	UC11605-27	1	Union, Hex. Coned
17	C27399-246	1	Hose, Flexible
18	UC11605-39	1	Union, Hex. Coned
19	95631-4	2	Washer, Sealing
20	C26075-373	1	Adaptor, Orifice - G1/2
21	98650-133	1	Valve, Ball
22	A93240190	1	Coupling, Elbow
23	98652-54	1	Valve, Venting
24	A93253040	1	Nipple
25	98612-126	1	Sensor, Delivery Temperature
26	95635-3	1	Washer, Copper
27	A93594970	1	Bush
28	95635-4	1	Washer, Copper
29	98617-9	-	Pipe, Nylon Ø8
30	100002705	1	Coupling, Stud
31	95450-692	1	Coupling, Elbow
★ 32	98612-29	1	Switch, Air Filter
33	95450-691	1	Coupling, Elbow
34	98617-22	-	Pipe, Nylon Ø8
			★ Optional Fittings

HW 0220

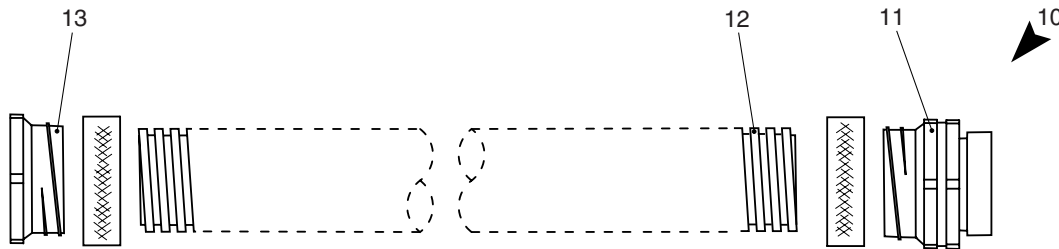
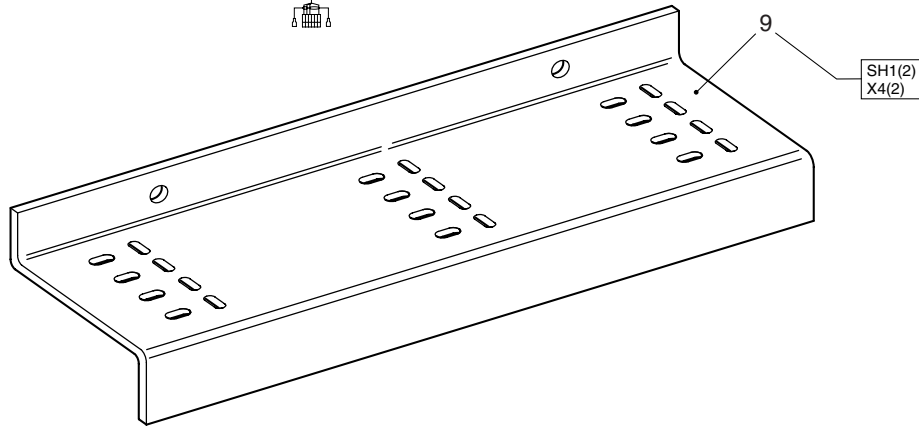
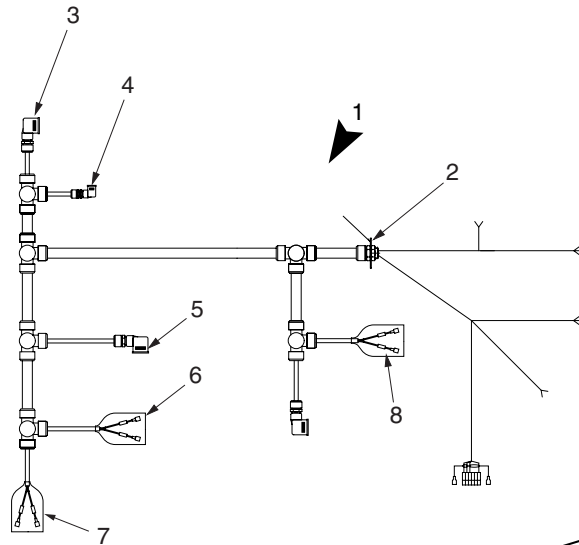
AIR/OIL COOLER & FAN



HW 0225

Ref.	Part No.	Qty.	Description
1	C27399-51	1	Support, Cooler Front
2	98154-337	1	Cooler, Air/Oil
3	C27399-53	1	Support, Cooler Rear
4	C20078-181	1	Fan Assembly 50Hz
	C20078-182	1	Fan Assembly 60Hz
5	98418-61	4	Mount, Anti Vibration

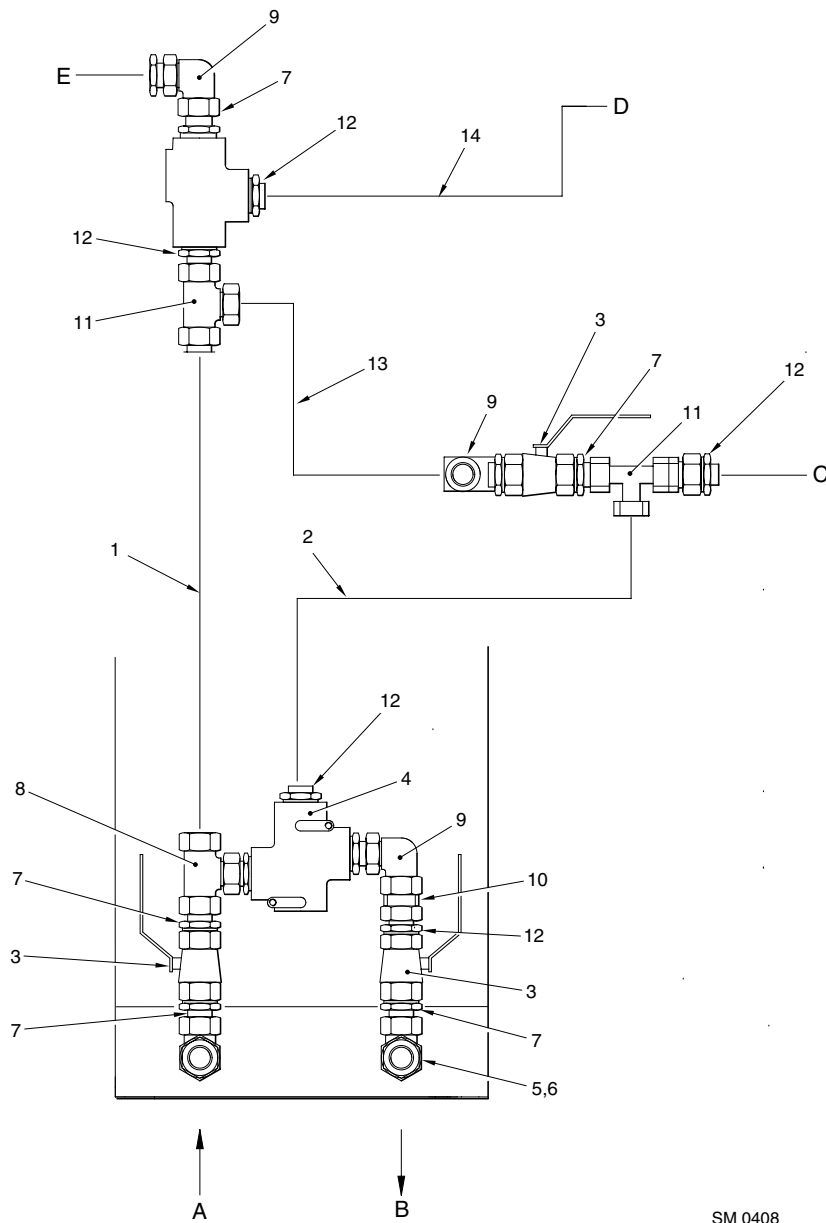
ELECTRICAL WIRING



HW 0226/1

Ref.	Part No.	Qty.	Description
1	C27399-213	1	Harness, Instrument
2	C27399-139	1	Plate, Gland (Starter Box)
3	-	1	Drain Solenoid Valve
4	-	1	Pressure Transducer
5	-	1	Scavenge Solenoid
6	-	1	Excess Pressure Switch
7	-	1	Oil Temperature sensor
8	-	1	Air Filter DP Switch
9	C27399-84	1	Tray, Cable
10	C20608-188	1	Assy., Motor Conduit
11	98152-88	1	Fitting, Straight (Motor)
12	98152-87	680mm	Conduit, Flexible Ø50
13	98152-89	1	Fitting, Straight

WASTE HEAT RECOVERY OPTION



SM 0408

Ref.	Part No.	Qty.	Description
1	A11017174	1	Hose Line
2	A11016174	1	Hose Line
3	A10352274	3	Ball Valve
4	A10594074	1	Oil Temp. Regulator (55 deg.C)
5	A93580980	2	Sealing Bunch
6	A93585120	2	Ang. Bulkh. Scr. Joint
7	A93598120	5	Evge-Conn.
8	A93602380	1	EVT-Screw Conn.
9	A93601680	3	EVW-Screw Conn.
10	A91101530	0.047m	Galvan. Tube
11	A93597420	2	EVL-Conn.
12	A93581120	5	Thr. Scr. Joint
13	A11179474	1	Hose Line
14	C27331-171	1	Flexible Hose - Oil Cooler (Outp.) to Tee

- A Refers to Oil In
- B Refers to Oil Out
- C Refers to Reclaimer
- D Refers to Oil Filter
- E Refers to Cooler

Not Illustrated
 A11029474 1 Cable Protection

COMMON FASTENINGS

Ref.	Part No.	Description	Ref.	Part No.	Description	Ref.	Part No.	Description
SC1	95018-132	Capscrew – M5x8	WP7	A93130140	Washer, Plain – M16			
SC2	95018-172	Capscrew – M6x40	WP8	95148-14	Washer, Plain – M8			
SC3	95018-175	Capscrew – M6x55	WS1	A93140060	Washer, Spring – M4			
SC4	95018-176	Capscrew – M6x60	WS2	A93140080	Washer, Spring – M6			
SC5	95018-164	Capscrew – M6x8	WS3	A93140090	Washer, Spring – M8			
SC6	A93040280	Capscrew – M6x12	WS4	A93140100	Washer, Spring – M10			
SC7	A93040150	Capscrew – M5x10	WS5	A93140110	Washer, Spring – M12			
SH1	A93014570	Screw, Hexagon Head – M6x12	WS6	A93140130	Washer, Spring – M16			
SH2	A93014580	Screw, Hexagon Head – M6x16	WS7	A93140070	Washer, Spring – M5			
SH3	A93014800	Screw, Hexagon Head – M8x16	WSP1	95186-22	Washer, Shakeproof – ext. – M10			
SH4	A93014820	Screw, Hexagon Head – M8x20	WSP2	95187-16	Washer, Shakeproof – int. – M5			
SH5	95001-258	Screw, Hexagon Head – M8x35						
SH6	A93015050	Screw, Hexagon Head – M10x16	X1	A93129720	Nut, Captive – M6			
SH7	A93015090	Screw, Hexagon Head – M10x25	X2	A93129940	Nut, Cage – M6			
SH8	A93015390	Screw, Hexagon Head – M12x30	X3	A93129940	Nut, Cage – M6			
SH9	A93015410	Screw, Hexagon Head – M12x40	X4	UA10308-10	Washer, Conical – M6			
SH10	A93015940	Screw, Hexagon Head – M16x30	X5	A6742-6	Screw, Self-tapping			
SH11	A93011370	Screw, Hexagon Head – M16x45	X6	UC26075-91	Collar, Capscrew Retaining			
SH12	95013-281	Screw, Hexagon Head – M10x16	X7	UC26050-122	Peg, Locating			
SH13	A93014600	Screw, Hexagon Head – M6x20						
SH14	A93014840	Screw, Hexagon Head – M8x25						
SH15	95001-319	Screw, Hexagon Head – M12x55						
SH16	A93014860	Screw, Hexagon Head – M8x30						
SH17	95001-348	Screw, Hexagon Head – M16x55						
SH18	A93015420	Screw, Hexagon Head – M12x45						
SP1	95044-246	Screw, Pan Hd. – M4x10						
SP2	95044-248	Screw, Pan Hd. – M4x12						
SP3	95044-396	Screw, Pan Hd. – M6x25						
SP4	95044-392	Screw, Pan Hd. – M6x16						
NL1	95141-4	Nut, Self-locking – M4						
NL2	A93121340	Nut, Self-locking – M6						
NL3	A93121350	Nut, Self-locking – M8						
NL4	A93121360	Nut, Self-locking – M10						
NL5	A93121370	Nut, Self-locking – M12						
NP1	A93120080	Nut, Plain – M6						
NP2	A93120100	Nut, Plain – M10						
NP3	A93120110	Nut, Plain – M12						
NP4	A93120130	Nut, Plain – M16						
NP5	A93120090	Nut, Plain – M8						
WP1	A93130060	Washer, Plain – M4						
WP2	A93130080	Washer, Plain – M6						
WP3	A93130090	Washer, Plain – M8						
WP5	A93130100	Washer, Plain – M10						
WP6	A93130110	Washer, Plain – M12						