

# Atlas Copco Stationary Air Compressors

GA180 VSD, GA180 W VSD  
GA180 VSD-FF, GA180 W VSD-FF

## Parts list

- Copyright 2003, Atlas Copco Airpower n.v., Antwerp, Belgium.  
Any unauthorized use or copying of the contents or any part thereof is prohibited. This applies in particular to trademarks, model denominations, part numbers and drawings.
- **Use only authorized parts.** Any damage or malfunction caused by the use of unauthorized parts is not covered by Warranty or Product Liability.

No. 2930 1294 00

[www.atlascopco.com](http://www.atlascopco.com)

Registration code: APC GA $\geq$ 180 VSD / 39 / 999

2003-11

**Atlas Copco**

Contents  
Inhoud  
Innehåll  
Inhaltsverzeichnis  
Table des matières  
Indice

Indice  
Inneholdsfortegnelse  
Indice  
Indholdsfortegnelse  
Sisällöluettelo

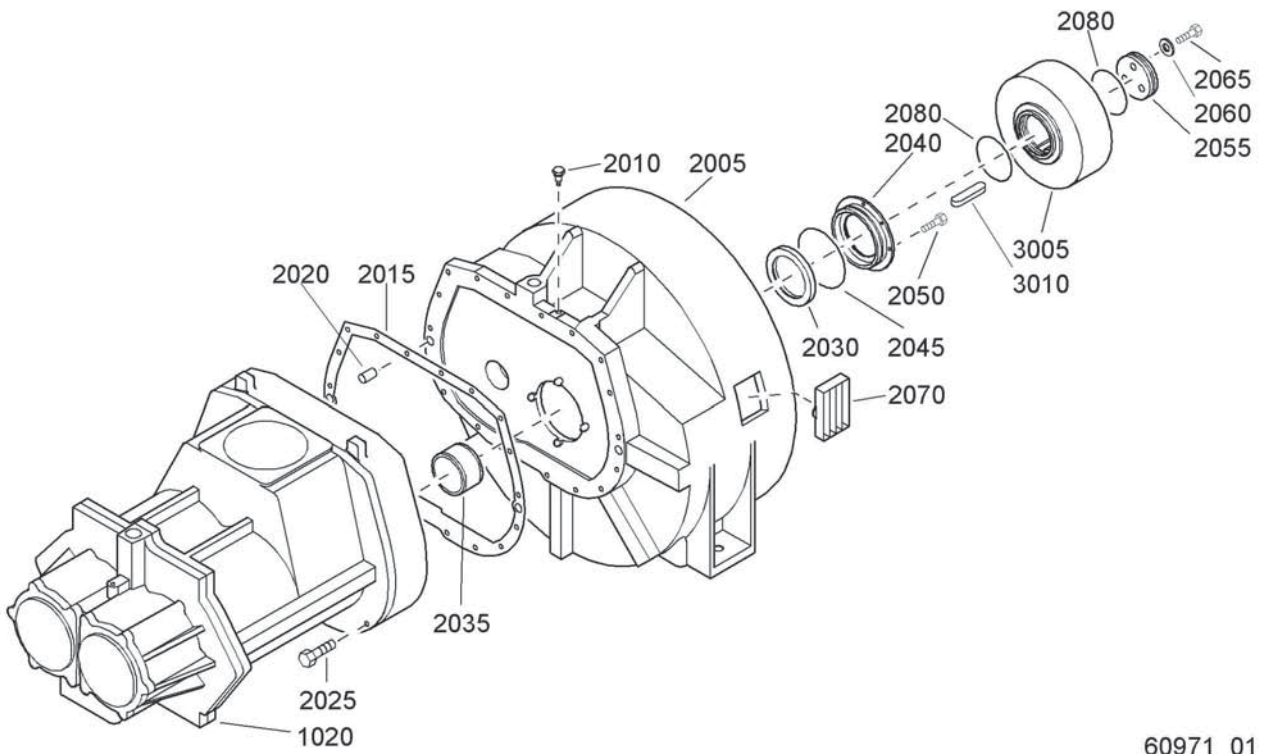
Drive arrangement Aandrijfuitvoering Drivarrangemang Antriebsanordnung Dispositif d'entraînement Disposición de accionamiento Disposizione di azionamento Arrangement Disposição de accionamento Drivarrangement Rakenne .....	1	Air outlet Luchtuitlaat Luftutlopp Luftauslaß Sortie d'air Salida de aire Mandata dell'aria Luftafgang Saída de ar Luftutløp Paineilmaputki	
Air inlet Luchtinlaat Luftintag Lufteinlaß Admission d'air Entrada de aire Presa d'aria Luftindsug Admissão de ar Luftinnløp Tuloilma		- Pack .....	8
- GA .....	2	- Full-feature .....	9
- GA W .....	3	Drain system Aftapsysteem Avtappingssystem Ablaßsystem Système de vidange Sistema de drenaje Sistema di scarico Drænsystem Sistema de drenagem de condensados Avtappingssystem Lauhteenpoistojärjestelmä	
- Standard option - Heavy duty filter .....	4	- Basic- and DD-filter drain .....	10
Air receiver Luchtketel Luftbehållare Luftbehälter Réservoir d'air Depósito de aire Serbatoio dell'aria Luftbeholder Reservatório de ar Luftbeholder Ilmasäiliö .....	5	- Electronic Drain System .....	11
Air and oil system Lucht- en oliesysteem Luft- och oljesystem Luft- und Ölsystem Système d'air et d'huile Sistema de aire y aceite Sistema di aria e olio Luft- og oliesystem Circuitos de ar e óleo Luft- og oljesystem Ilma- ja öljyjärjestelmä		- Oil Separator Condensate Drain .....	12
- GA .....	6	Cooler(s) Koeler(s) Kylare Kühler Refroidisseur(s) Refrigerador(es) Refrigeratore(i) Kølere Refrigerador(es) Kjøler(e) Jäähdyttimet	
- GA W .....	7	- GA .....	13
		- GA W .....	14
		Frame and coupling Frame en koppeling Ram och koppling Rahmen und Kupplung Châssis et accouplement Bastidor y acoplamiento Telaio e giunto Ramme og kobling Base e acoplamento Ramme og kopling Runko ja kytkin .....	15

Contents  
Inhoud  
Innehåll  
Inhaltsverzeichnis  
Table des matières  
Indice

Indice  
Innholdsfortegnelse  
Indice  
Indholdsfortegnelse  
Sisällysluettelo

Fan and cooling duct plates Ventilator en koelluchtgeleideplaten Fläkt och kylkanalplåtar Ventilator und Kühlluftleitbleche Ventilateur et conduits de refroidissement Ventilador y paneles de conducción de refrigeración Ventilatore e intubatura Ventilator og kjøledeplader Ventilador e paineis das condutas de refrigeração Vifte og kjølekanalplater Puhallin ja jäähdytyskanavalevyt - GA ..... 16	Schaltschrank Armoire(s) Armario(s) Armadio(s) elettrico Elskab Quadro Skap Kotelo ..... 24
Regulating system Regelsysteem Reglersystem Regelsystem Système de régulation Sistema de regulación Sistema di regolazione Reguleringsystem Sistema de regulação Reguleringsystem Säätöjärjestelmä ..... 17	Cubicle Kast Skåp Schaltschrank Armoire Armario Armadio elettrico Elskab Quadro Skap Kotelo - VSD assembly ..... 25
Bodywork Carrosserie Karosseri Karosserie Capotage Carrocería Cappottatura Karosseri Carroceria Kabinett Kotelo - GA ..... 18 - GA W ..... 19	Control panel Bedieningsbord Manöverpanel Schalttafel Panneau de commande Panel de control Pannello di controllo Kontrolpanel Painel de controlo Kontrollpanel Käyttöpaneeli - GA ..... 26 - GA W ..... 27 - Standard options ..... 28
Air dryer Luchtdroger Lufttorkare Lufttrockner Sécheur d'air Secador de aire Essiccatore d'aria Lufttørrer Secador de ar Lufttørker Kuivain - GA 1) ..... 20 - GA 2) ..... 21 - GA W 1) ..... 22 - GA W 2) ..... 23	Service kits Service kits Service kits Service Kits Service kits Service kits Kit per la manutenzione Service kits Conjuntos de reparação Servicesett Huoltotarvikesarjat ..... 29
Cubicle(s) Kast(en) Skåp	1) Up to serial No.: / Tot serienummer: / T.o.m. tillverkningsnummer: Bis Seriennummer: / Jusqu'au numéro de série: / Hasta el número de serie: / Fino al numeri di serie: / Gælder til følgende serienumre: Até o número de série: / Til følgende serienummer: / Seuraavaan valmistusnumeroon asti, No.: AIF-068 101 2) From following serial No. onwards: / Geldig vanaf volgend serie- nummer: / Fr.o.m. tillverkningsnummer: / Gültig ab Seriennummer: Valable à partir du numéro de série suivant: / A partir del siguiente número de serie: / Dai seguenti numeri di serie in avanti: Gælder fra følgende serienumre: / A partir do número de série: / Fra og med følgende serienummer: / Alkaen valmistusnumerosta AIF-068 102

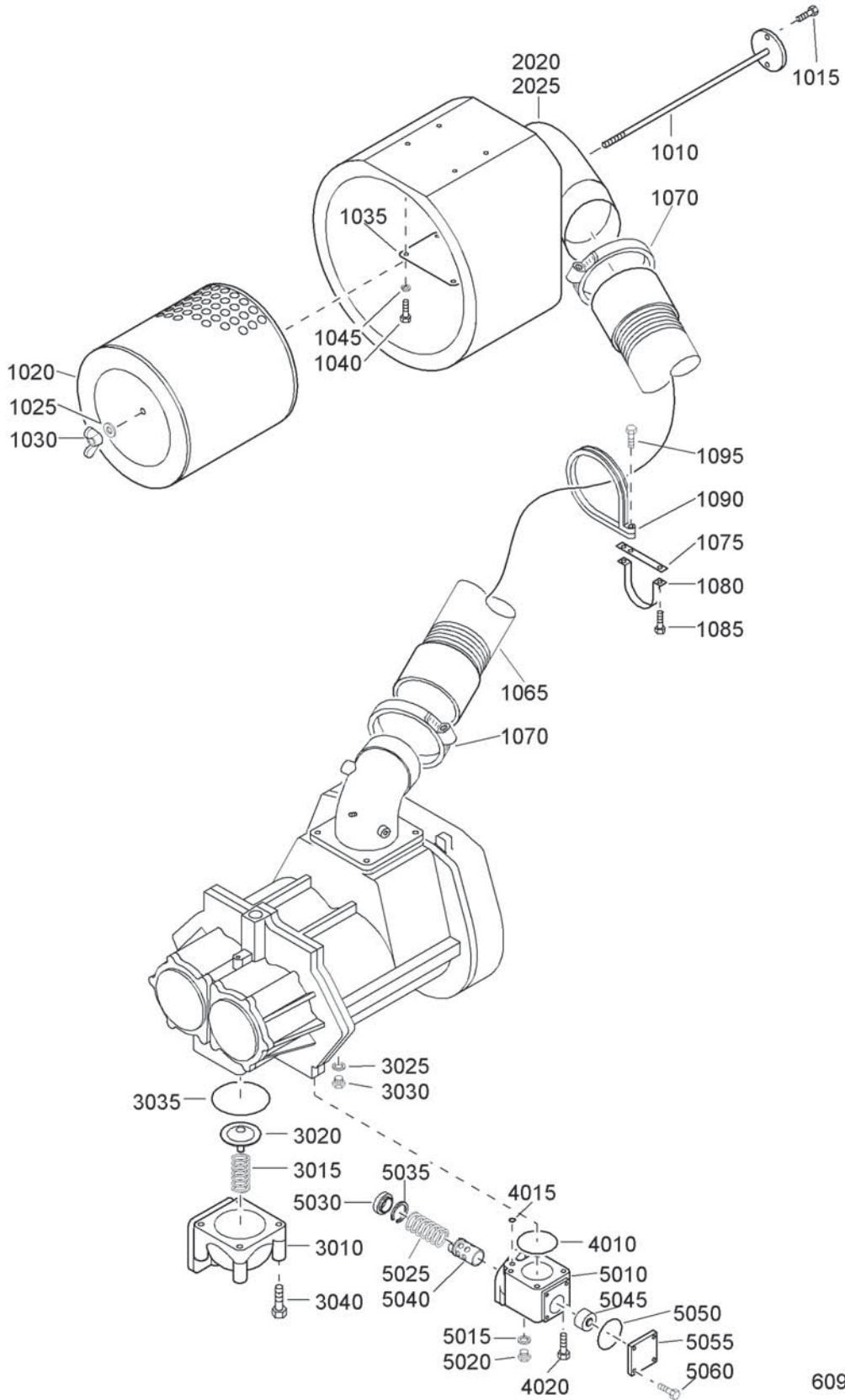
1



60971\_01



# 2

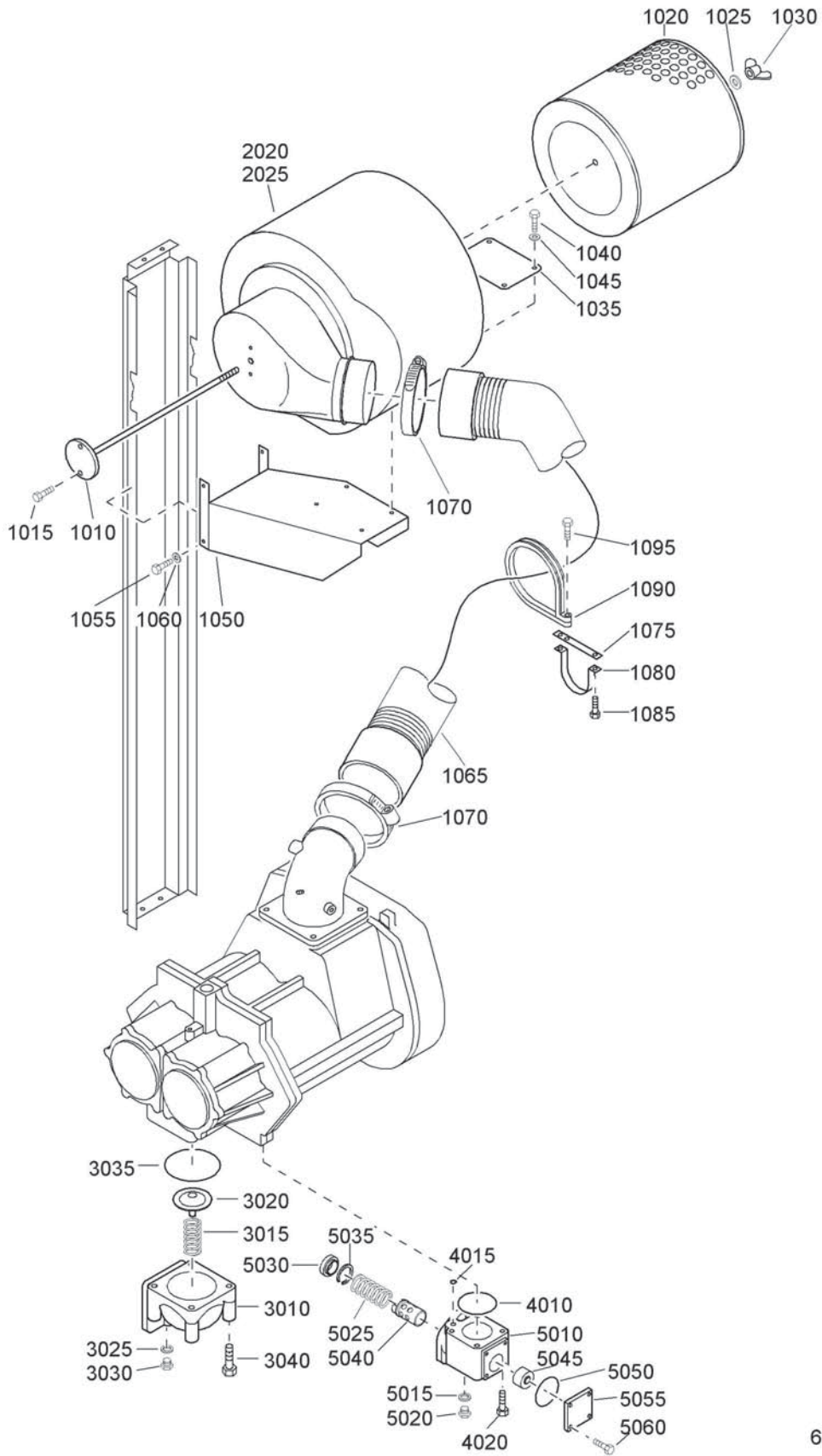


60938\_02

## Air inlet - GA

Ref.	Part number	Qty	Name	Remarks	Ref.	Part number	Qty	Name	Remarks
1010	1614 8004 01	1	Rod		3020	2254 5324 00	1	Check valve	
1015	0147 1322 03	2	Bolt		3025	0661 1000 25	2	Seal washer	
1020	1030 0979 00	1	Air filter		3030	0686 3716 01	2	Plug	
1025	0301 2358 00	1	Washer		3035	0663 2106 20	1	O-ring	
1030	0296 1112 02	1	Wing nut		3040	0147 1417 03	4	Bolt	
1035	1614 9088 00	1	Plate		4010	0663 2106 15	1	O-ring	
1040	0147 1325 03	4	Bolt		4015	0663 2108 12	1	O-ring	
1045	0301 2335 00	4	Washer		4020	0147 1379 03	4	Bolt	
1065	1614 9091 00	1	Hose assy			<b>1614 9920 80</b>	<b>1</b>	<b>Oil stop valve</b>	
1070	0347 6121 00	2	Hose clip		5010	1614 9920 00 •	1	Valve housing	
1075	1614 9873 00	1	Support		5015	0653 1062 00 •	1	Flat gasket	
1080	1614 9299 00	1	Support		5020	1619 5205 00 •	1	Nipple	
1085	1619 2766 00	2	Bolt		5025	2254 9868 00 •	1	Compr.spring	
1090	0346 1000 27	1	Pipe clamp		5030	2252 6269 00 •	1	Spring guide	
1095	1619 2766 00	1	Bolt		5035	0335 2145 00 •	1	Int.circlip	
	<b>1614 9202 80</b>	<b>1</b>	<b>Air filter assy</b>		5040	1614 9921 00 •	1	Valve	
2020	1614 9202 00 •	1	Filter housing		5045	2255 2813 00 •	1	Piston	
2025	1614 9132 00 •	1	Silencing foam		5050	0663 2106 12 •	1	O-ring	
3010	1614 6425 00	1	Housing		5055	1614 9120 00 •	1	Cover	
3015	2254 8075 00	1	Compr.spring		5060	0147 1325 03 •	4	Bolt	

# 3

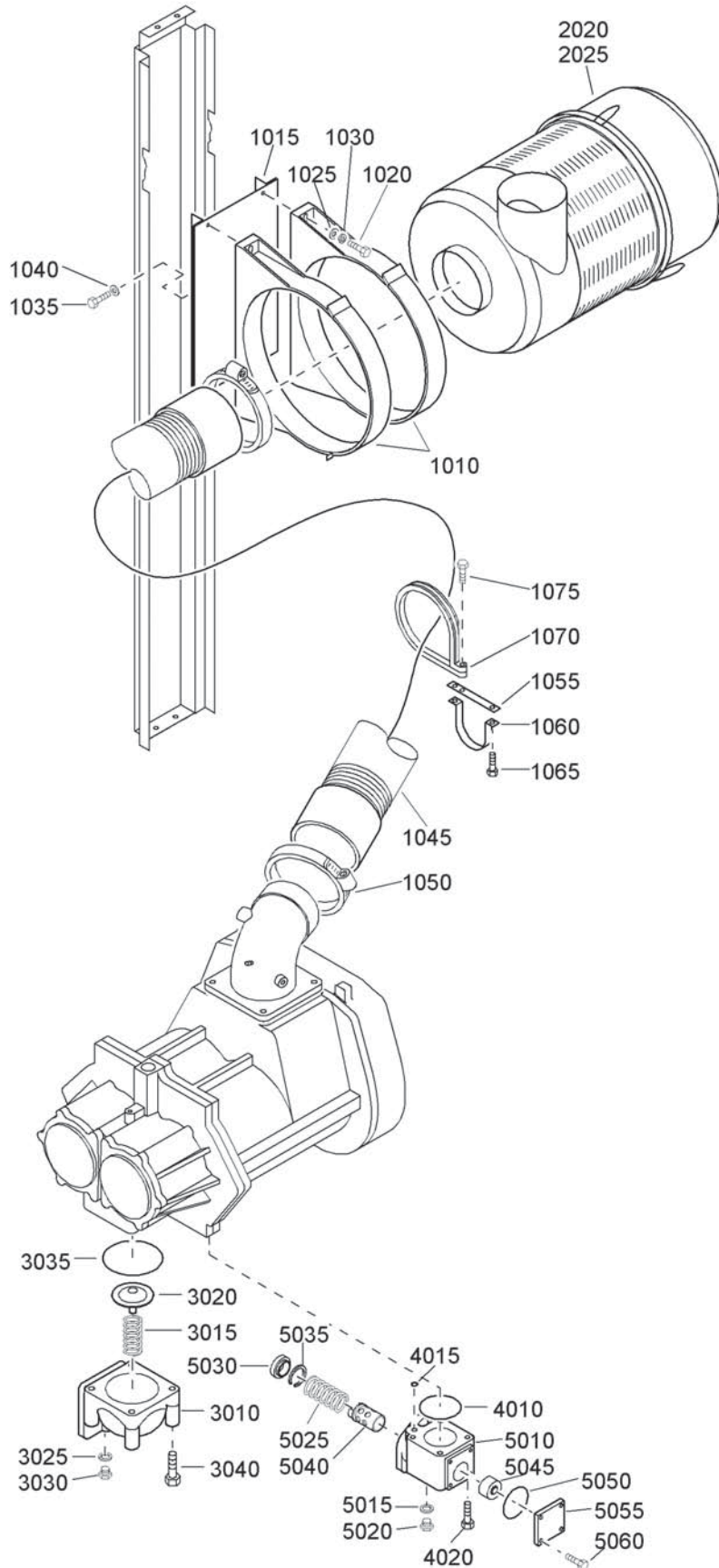


60984\_02

## Air inlet - GA W

Ref.	Part number	Qty	Name	Remarks	Ref.	Part number	Qty	Name	Remarks
1010	1614 8004 01	1	Rod		3020	2254 5324 00	1	Check valve	
1015	0147 1322 03	2	Bolt		3025	0661 1000 25	2	Seal washer	
1020	1030 0979 00	1	Air filter		3030	0686 3716 01	2	Plug	
1025	0301 2358 00	1	Washer		3035	0663 2106 20	1	O-ring	
1030	0296 1112 02	1	Wing nut		3040	0147 1417 03	4	Bolt	
1035	1614 9088 00	1	Plate		4010	0663 2106 15	1	O-ring	
1040	0147 1325 03	4	Bolt		4015	0663 2108 12	1	O-ring	
1045	0301 2335 00	4	Washer		4020	0147 1379 03	4	Bolt	
1065	1614 9091 00	1	Hose assy			<b>1614 9920 80</b>	<b>1</b>	<b>Oil stop valve</b>	
1070	0347 6121 00	2	Hose clip		5010	1614 9920 00 •	1	Valve housing	
1075	1614 9873 00	1	Support		5015	0653 1062 00 •	1	Flat gasket	
1080	1614 9299 00	1	Support		5020	1619 5205 00 •	1	Nipple	
1085	1619 2766 00	2	Bolt		5025	2254 9868 00 •	1	Compr.spring	
1090	0346 1000 27	1	Pipe clamp		5030	2252 6269 00 •	1	Spring guide	
1095	1619 2766 00	1	Bolt		5035	0335 2145 00 •	1	Int.circlip	
	<b>1614 9202 80</b>	<b>1</b>	<b>Air filter assy</b>		5040	1614 9921 00 •	1	Valve	
2020	1614 9202 00 •	1	Filter housing		5045	2255 2813 00 •	1	Piston	
2025	1614 9132 00 •	1	Silencing foam		5050	0663 2106 12 •	1	O-ring	
3010	1614 6425 00	1	Housing		5055	1614 9120 00 •	1	Cover	
3015	2254 8075 00	1	Compr.spring		5060	0147 1325 03 •	4	Bolt	

4

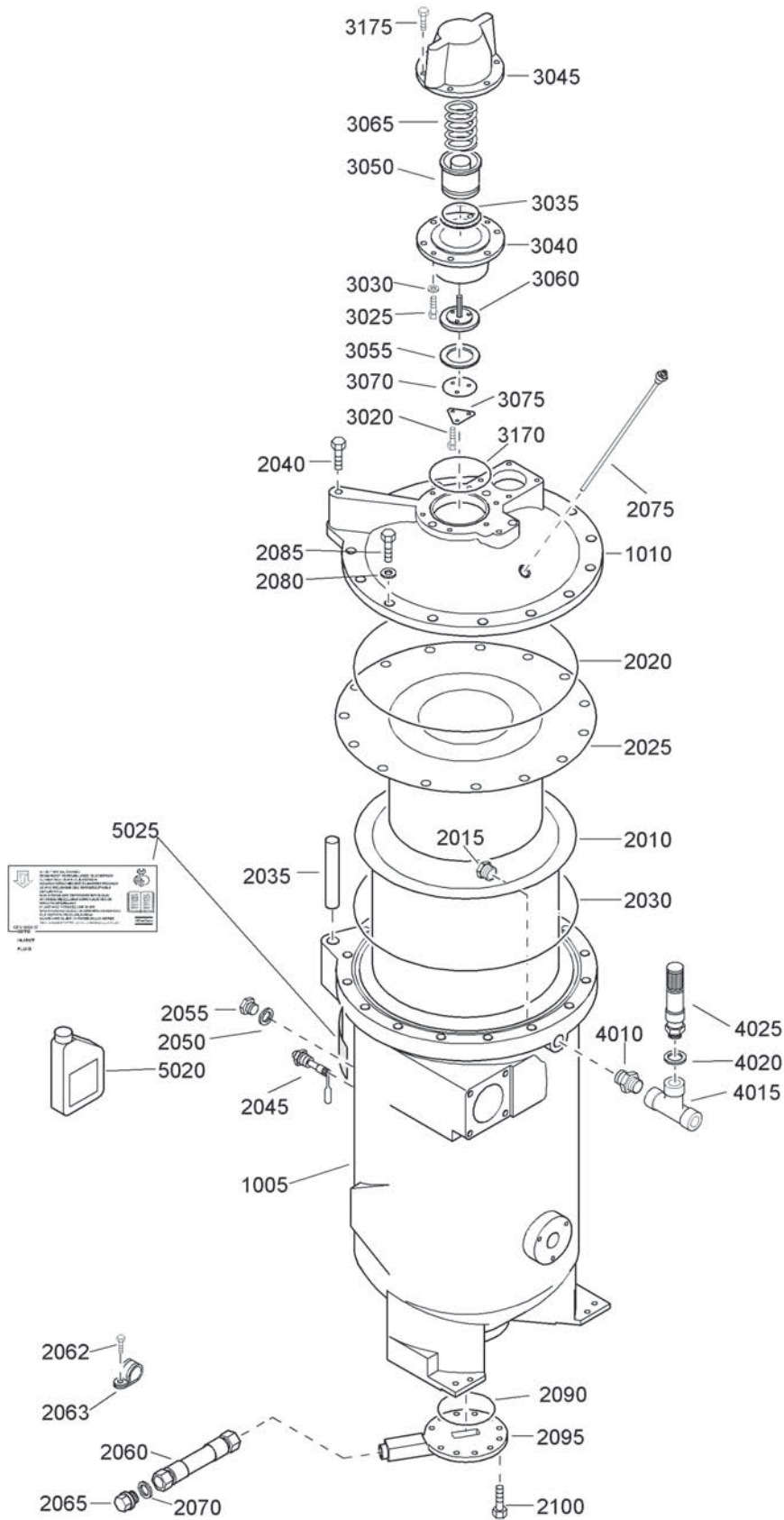


60985\_02

**Air inlet - Standard option - Heavy duty filter**

Ref.	Part number	Qty	Name	Remarks	Ref.	Part number	Qty	Name	Remarks
1010	1614 9368 00	2	Clamp		3025	0661 1000 25	2	Seal washer	
1015	1614 9858 00	1	Support		3030	0686 3716 01	2	Plug	
1020	0147 1327 03	4	Bolt		3035	0663 2106 20	1	O-ring	
1025	0301 2335 00	4	Washer		3040	0147 1417 03	4	Bolt	
1030	0333 3227 00	4	Lock washer		4010	0663 2106 15	1	O-ring	
1035	0147 1323 03	4	Bolt		4015	0663 2108 12	1	O-ring	
1040	0301 2335 00	4	Washer		4020	0147 1379 03	4	Bolt	
1045	1614 9376 00	1	Hose assembly			<b>1614 9920 80</b>	<b>1</b>	<b>Oil stop valve</b>	
1050	0347 6121 00	2	Hose clip		5010	1614 9920 00	• 1	Valve housing	
1055	1614 9873 00	1	Support		5015	0653 1062 00	• 1	Flat gasket	
1060	1614 9299 00	1	Support		5020	1619 5205 00	• 1	Nipple	
1065	1619 2766 00	2	Bolt		5025	2254 9868 00	• 1	Compr.spring	
1070	0346 1000 27	1	Pipe clamp		5030	2252 6269 00	• 1	Spring guide	
1075	1619 2766 00	1	Bolt		5035	0335 2145 00	• 1	Int.circlip	
	<b>1614 9367 00</b>	<b>1</b>	<b>Air filter</b>		5040	1614 9921 00	• 1	Valve	
2010	•	• 1	Filter housing		5045	2255 2813 00	• 1	Piston	
2015	2914 5017 00	• 1	Filter element		5050	0663 2106 12	• 1	O-ring	
3010	1614 6425 00	1	Housing		5055	1614 9120 00	• 1	Cover	
3015	2254 8075 00	1	Compr.spring		5060	0147 1325 03	• 4	Bolt	
3020	2254 5324 00	1	Check valve						

# 5

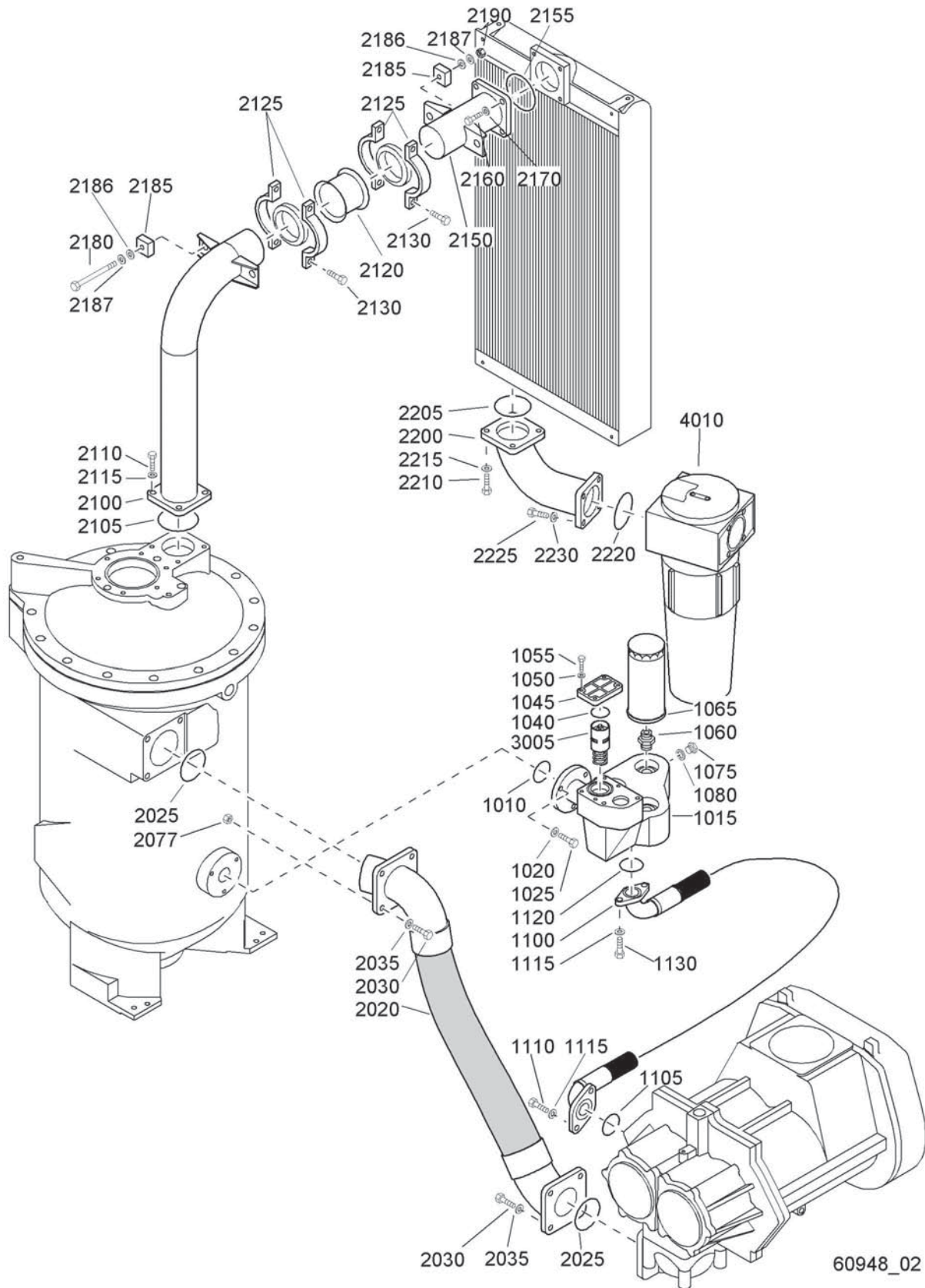


60939\_03

## Air receiver

Ref.	Part number	Qty	Name	Remarks	Ref.	Part number	Qty	Name	Remarks
		1	<b>Air receiver</b>		2050	0661 1000 31	•• 1	Seal washer	
	<b>1614 9101 28</b>		China		2055	2250 2528 00	•• 1	Plug screw	
	<b>1614 9101 80</b>		CE		2060	1614 9540 00	•• 1	Hose assembly	
	<b>1614 9101 82</b>		As		2062	0346 1000 15	•• 1	Pipe clamp	
	<b>1614 9101 85</b>		D		2063	1619 2766 00	•• 1	Bolt	
	<b>1614 9484 80</b>		CE-Italy		2065	1614 9146 00	•• 1	Plug	
		• 1	<b>Vessel ass'y</b>		2070	0653 1124 00	•• 1	Flat gasket	
	<b>1614 9483 80</b>		CE-Italy		2075	1614 9141 00	•• 1	Scavenge line	
	<b>1614 9100 80</b>		CE		2080	0301 2394 00	•• 16	Washer	
	<b>1614 9100 28</b>		China		2085	0147 1962 38	•• 16	Bolt	
	<b>1614 9100 82</b>		As		2090	0663 2106 20	•• 1	O-ring	
	<b>1614 9100 85</b>		D		2095	1614 9003 00	•• 1	Cover	
1005		•• 1	Vessel		2100	0147 1962 29	•• 11	Bolt	
	1614 9483 08		CE-Italy			<b>1614 6476 80</b>	<b>1</b>	<b>Min.press.valve</b>	
	1614 9100 05		CE		3020	0147 1322 03	• 3	Bolt	
	1614 9100 02		China		3025	0147 1958 97	• 2	Bolt	
	1614 9100 08		As		3030	0301 2335 00	• 2	Washer	
	1614 9100 18		D		3035	0665 0700 89	• 1	Back-up ring	
1010		•• 1	Valve housing		3040	1614 6477 00	• 1	Sleeve	
	1614 9101 18		CE-Italy		3045	1614 6478 00	• 1	Cover	
	1614 9101 05		CE		3050	1614 6479 00	• 1	Piston	
	1614 9101 02		China		3055	1614 6957 00	• 1	Washer	
	1614 9101 08		As		3060	1614 7294 00	• 1	Valve	
	1614 9101 08		D		3065	2253 1860 00	• 1	Spring	
		• 1	<b>Vessel ass'y parts</b>		3070	2254 9214 00	• 1	Washer	
	<b>1614 9485 80</b>		CE-Italy		3075	2254 9215 00	• 1	Lockplate	
	<b>1614 9054 81</b>		Others		3170	0663 2106 58	• 1	O-ring	
2010		•• 1	Shield		3175	0147 1365 03	• 6	Bolt	
	1614 9477 00		CE-Italy		4010	0603 4107 03	1	Hexagon nipple	
	1614 9428 00		Others		4015	0564 0000 81	1	Tee	
2015	1614 9094 00	•• 1	Bushing		4020	0653 1189 00	1	Flat gasket	
2020	0663 2109 45	•• 1	O-ring		4025	0830 1008 18	1	Safety valve	
2025	1614 9056 00	•• 1	Oil sep.element		5020	1613 6532 01	1	Oil can	
2030	0663 2109 45	•• 1	O-ring		5025		1	Label	
2035		•• 1	Pivot pin			1079 9909 57		Lubricant "ROTO INJECT FLUID	
	1614 6432 00		CE-Italy			1079 9909 58		Lubricant "HD ROTO FLUID	
	1614 9089 00		Others						
2040	0147 1479 03	•• 1	Bolt						
2045	1614 9184 00	•• 1	Level gauge						

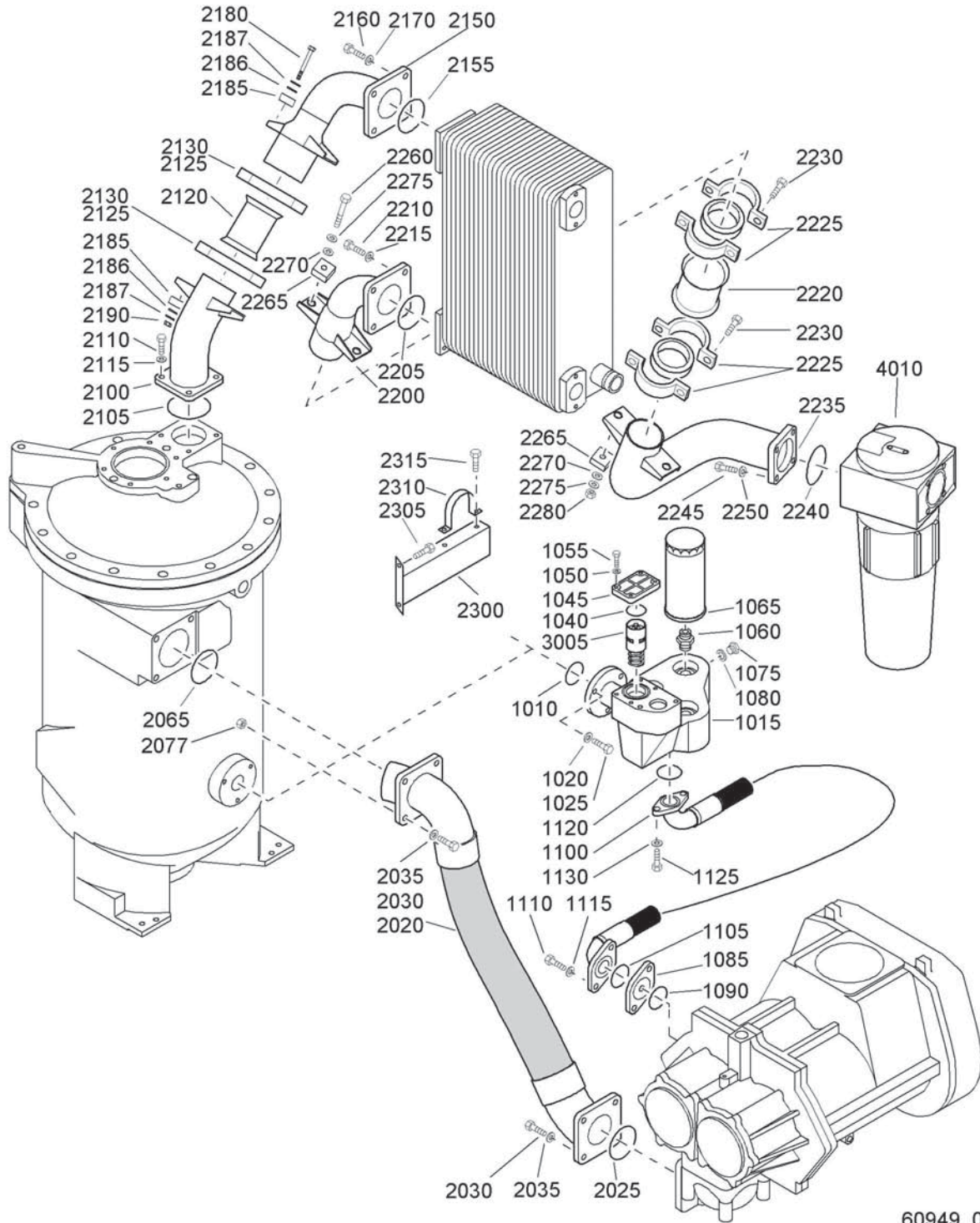
# 6



## Air and oil system - GA

Ref.	Part number	Qty	Name	Remarks	Ref.	Part number	Qty	Name	Remarks
1010	0663 2107 77	1	O-ring		2110	0147 1364 03	4	Bolt	
1015	1614 9006 00	1	Oil filter housing		2115	0301 2344 00	4	Washer	
1020	0301 2344 00	3	Washer		2120	1614 9066 00	1	Pipe	
1025	0147 1363 03	3	Bolt		2125	1614 9063 00	2	Joint set	
1040	0663 2107 77	1	O-ring		2130	0147 1369 03	4	Bolt	
1045	1614 9007 00	1	Cover		2150	1614 9217 00	1	Pipe	
1050	0301 2335 00	4	Washer		2155	0663 2106 17	1	O-ring	
1055	0147 1325 03	4	Bolt		2160	0147 1364 03	4	Bolt	
1060	1619 3770 00	3	Nipple		2170	0301 2344 00	4	Washer	
1065	1613 6105 00	3	Oil filter		2180	0147 1501 03	2	Bolt	
1075	0686 3716 01	1	Plug		2185	1614 9490 00	4	Absorber	
1080	0661 1000 25	1	Seal washer		2186	0300 0276 03	4	Washer	
1100	1614 9795 00	1	Hose assembly		2187	0301 2344 00	4	Washer	
1105	0663 2106 11	1	O-ring		2190	0291 1114 00	2	Locknut	
1110	0147 1401 03	2	Bolt		2200	1614 9448 00	1	Pipe	
1115	0301 2358 00	2	Washer		2205	0663 2106 15	1	O-ring	
1120	0663 2109 68	1	O-ring		2210	0147 1364 03	4	Bolt	
1125	0147 1362 03	2	Bolt		2215	0301 2344 00	4	Washer	
1130	0301 2344 00	2	Washer		2220	0663 2109 69	1	O-ring	
2020	1614 9915 00	1	Hose assembly		2225	0211 1401 03	4	Cap screw	
2025	0663 2106 18	2	O-ring		2230	0301 2358 00	4	Washer	
2030	0147 1403 03	8	Bolt		3005	1202 5869 03	1	Thermost.valve	
2035	0301 2358 00	8	Washer		4010		1	Waterseparator	
2077		4	Nut			1614 9374 00		Electronic Condensate	
	0266 2112 00		Italy					Drain	
2100	1614 9488 00	1	Pipe			1613 6728 00		Others	
2105	0663 2106 17	1	O-ring						

# 7

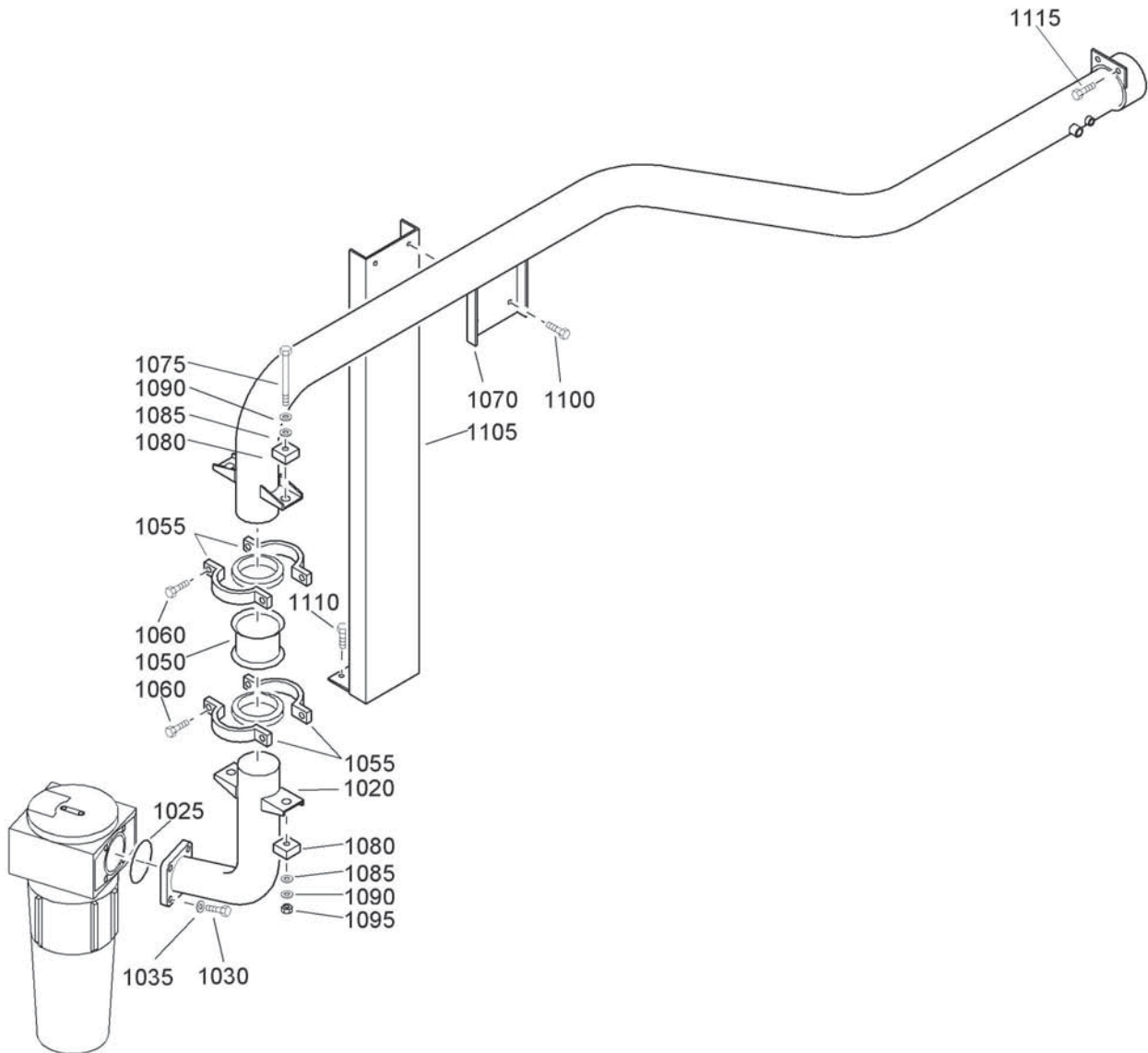


60949\_02

## Air and oil system - GA W

Ref.	Part number	Qty	Name	Remarks	Ref.	Part number	Qty	Name	Remarks
1010	0663 2107 77	1	O-ring		2150	1614 9290 00	1	Pipe	
1015	1614 9006 00	1	Oil filter housing		2155	0663 2106 17	1	O-ring	
1020	0301 2344 00	3	Washer		2160	0147 1363 03	4	Bolt	
1025	0147 1363 03	3	Bolt		2170	0301 2344 00	4	Washer	
1040	0663 2106 11	1	O-ring		2180	0147 1501 03	2	Bolt	
1045	1614 9007 00	1	Cover		2185	1614 9490 00	4	Absorber	
1050	0301 2335 00	4	Washer		2186	0300 0276 03	4	Washer	
1055	0147 1325 03	4	Bolt		2187	0301 2344 00	4	Washer	
1060	1619 3770 00	3	Nipple		2190	0291 1114 00	2	Locknut	
1065	1613 6105 00	3	Oil filter		2200	1614 9631 00	1	Pipe	
1075	0686 3716 01	1	Plug		2205	0663 2106 17	1	O-ring	
1080	0661 1000 25	1	Seal washer		2210	0147 1363 03	4	Bolt	
1085	1614 6497 01	1	Flange		2215	0301 2344 00	4	Washer	
1090	0663 2106 11	1	O-ring		2220	1614 9066 00	1	Pipe	
1100	1614 9795 00	1	Hose assembly		2225	1614 9063 00	2	Joint set	
1105	0663 2106 11	1	O-ring		2230	0147 1369 03	4	Bolt	
1110	0147 1403 03	2	Bolt		2235	1614 9632 00	1	Pipe	
1115	0301 2358 00	2	Washer		2240	0663 2109 69	1	O-ring	
1120	0663 2109 68	1	O-ring		2245	0147 1401 03	4	Bolt	
1125	0147 1362 03	2	Bolt		2250	0301 2358 00	4	Washer	
1130	0301 2344 00	2	Washer		2260	0147 1501 03	2	Bolt	
2020	1614 9915 00	1	Hose assembly		2265	1614 9490 00	4	Absorber	
2025	0663 2106 18	2	O-ring		2270	0300 0276 03	4	Washer	
2030	0147 1403 03	8	Bolt		2275	0301 2344 00	4	Washer	
2035	0301 2358 00	8	Washer		2280	0291 1114 00	2	Locknut	
2077		4	Nut		2300	1614 9583 00	1	Support	
	0266 2112 00		Italy		2305	1619 2766 00	2	Bolt	
2100	1614 9289 00	1	Pipe		2310	1614 9299 00	1	Support	
2105	0663 2106 17	1	O-ring		2315	1619 2766 00	2	Bolt	
2110	0147 1363 03	4	Bolt		3005	1202 5869 03	1	Thermost.valve	
2115	0301 2344 00	4	Washer		4010		1	Waterseparator	
2120	1614 9066 00	1	Pipe			1614 9374 00		Electronic Condensate	
2125	1614 9063 00	2	Joint set					Drain	
2130	0147 1369 03	4	Bolt			1613 6728 00		Others	

# 8



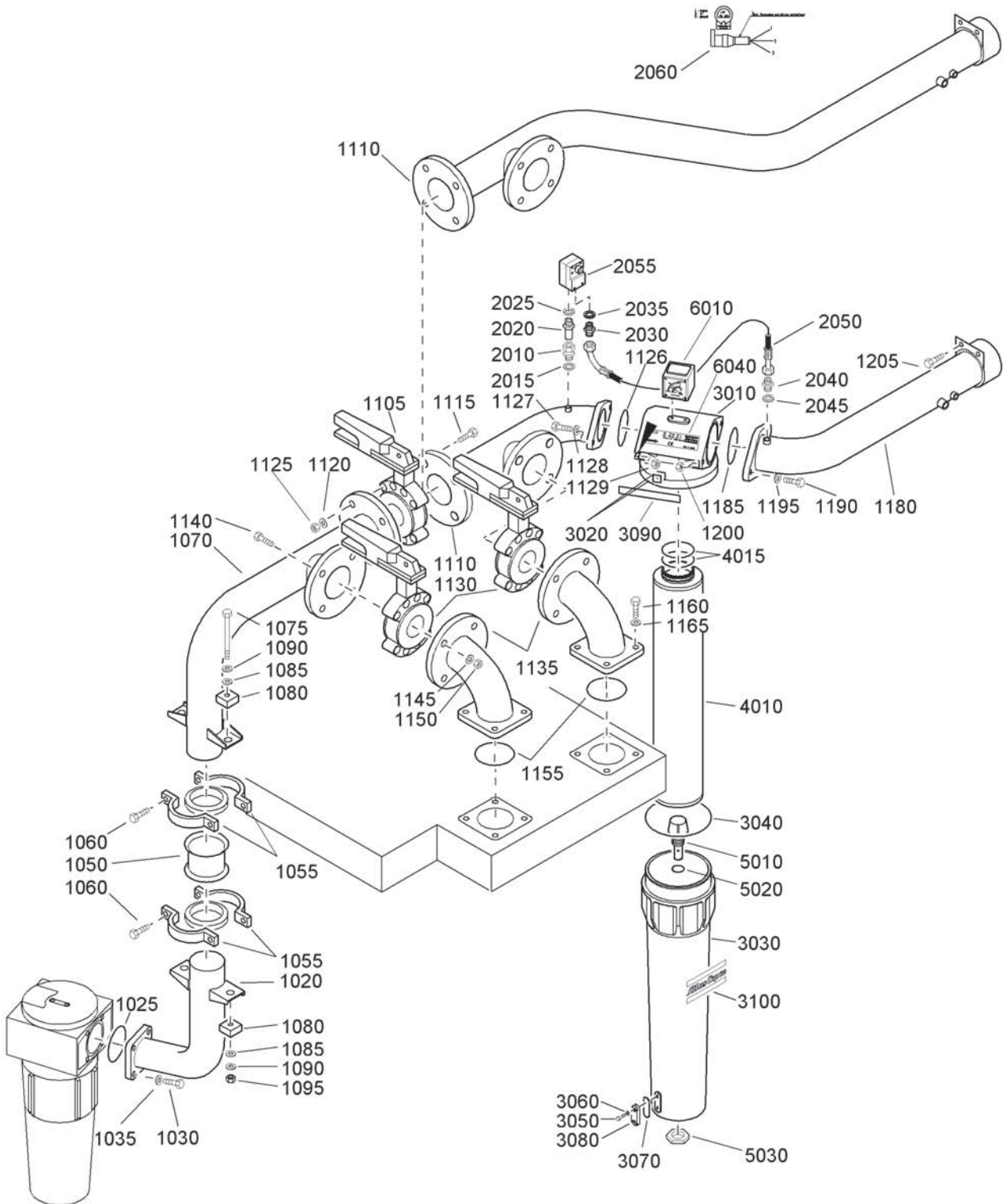
60957\_02

**Air outlet - Pack**

8

Ref.	Part number	Qty	Name	Remarks	Ref.	Part number	Qty	Name	Remarks
1020	1614 9450 00	1	Pipe		1075	0147 1501 03	2	Bolt	
1025	0663 2109 69	1	O-ring		1080	1614 9490 00	4	Absorber	
1030	0147 1401 03	4	Bolt		1085	0300 0276 03	4	Washer	
1035	0301 2358 00	4	Washer		1090	0301 2344 00	4	Washer	
1050	1614 9066 00	1	Pipe		1095	0291 1114 00	2	Locknut	
<b>1055</b>	<b>1614 9063 00</b>	<b>2</b>	<b>Joint set</b>		1100	1619 2766 00	2	Bolt	
	1614 9064 00 •	1	Joint		1105	1614 9713 00	1	Support	
1060	0147 1369 03	4	Bolt		1110	1619 5337 01	3	Bolt	
1070		1	Pipe		1115	1619 2766 00	2	Bolt	
	1614 9856 00		BSP						
	1614 9857 00		NPT						

# 9



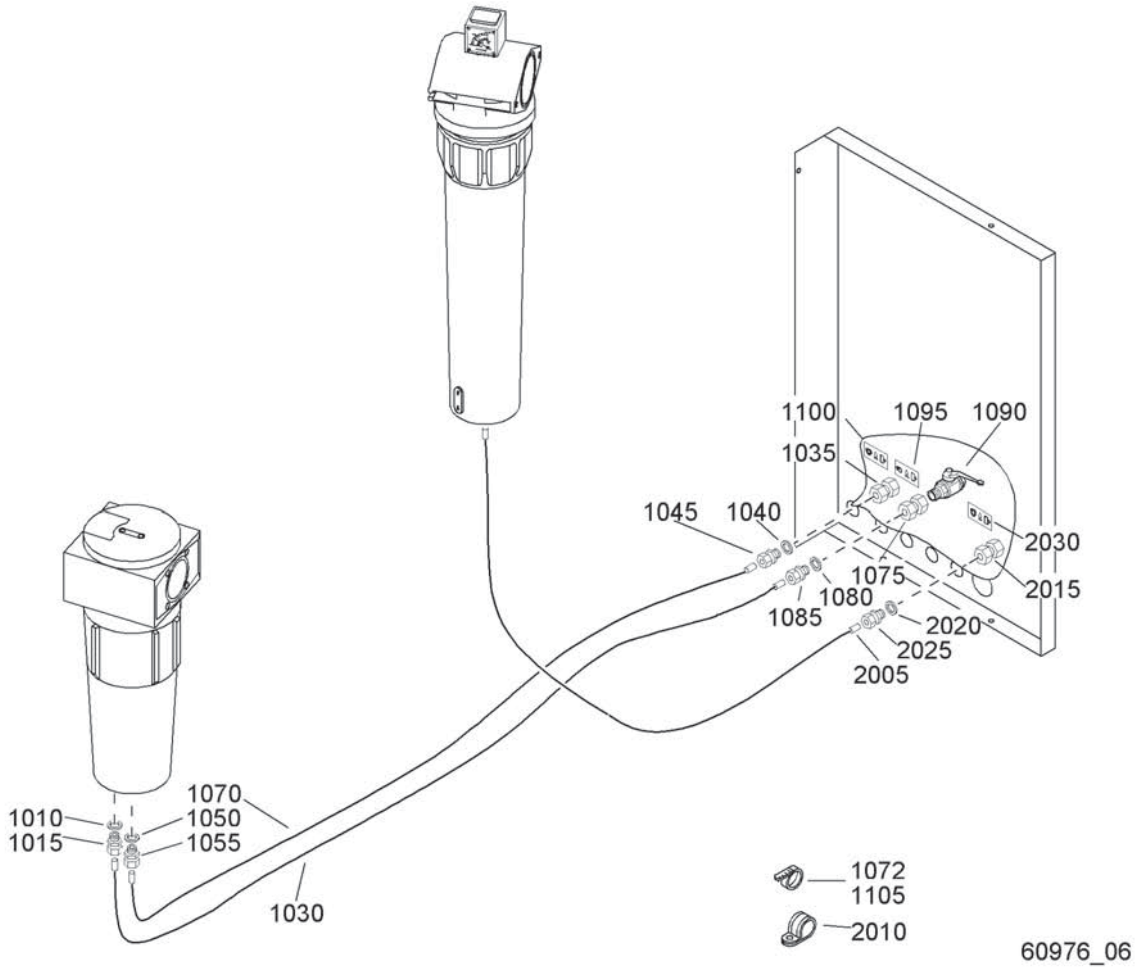
60958\_02

## Air outlet - Full-feature

Ref.	Part number	Qty	Name	Remarks	Ref.	Part number	Qty	Name	Remarks
1020	1614 9450 00	1	Pipe		1195		2	Lock washer	
1025	0663 2109 69	1	O-ring			0333 3232 00		DD-Filter	
1030	0147 1401 03	4	Bolt		1200		2	Square nut	
1035	0301 2358 00	4	Washer			0282 0000 06		DD-Filter	
1050	1614 9066 00	1	Pipe		1205	1619 2766 00	2	Bolt	
<b>1055</b>	<b>1614 9063 00</b>	<b>2</b>	<b>Joint set</b>		2010	0581 0025 01	1	Pipe coupling	
	1614 9064 00	• 1	Joint		2015	0653 1046 00	1	Flat gasket	
1060	0147 1369 03	4	Bolt		2020	1615 3624 00	1	Nozzle	
1070	1614 9445 00	1	Pipe		2025	0653 1046 00	1	Flat gasket	
1075	0147 1501 03	2	Bolt		2030	1079 5840 01	1	Nipple	
1080	1614 9490 00	4	Absorber		2035	0653 1046 00	1	Flat gasket	
1085	0300 0276 03	4	Washer		2040	1619 5205 00	1	Nipple	
1090	0301 2344 00	4	Washer		2045	0653 1062 00	1	Flat gasket	
1095	0291 1114 00	2	Locknut		2050	0574 8231 16	1	Hose assembly	
1105	1614 9879 00	1	Valve		2055	1089 0575 20	1	DP transducer	
1110		1	Pipe		2060	1614 8519 00	1	Cable	
	1614 9823 00		BSP			<b>8102 2604 06</b>	<b>1</b>	<b>Filter DD520</b>	1)
	1614 9824 00		DD-Filter				• <b>1</b>	<b>Head/bowl assy</b>	
	1614 9852 00		NPT		3010	1617 7008 00	•• 1	Head	
1115	0147 1489 03	4	Bolt		3020	1617 7038 03	•• 2	Dual lock strip	
1120	0301 2378 00	4	Washer		3030	1617 7017 00	•• 1	Bowl	
1125	0266 2114 00	4	Nut		3040	0663 2109 63	•• 1	O-ring	
1126		1	O-ring		3050	0160 0996 06	•• 2	Screw	
	0663 2106 16		DD-Filter		3060	0661 1010 00	•• 2	Tredo washer	
1127		2	Bolt		3070	0663 9095 00	•• 1	O-ring	
	0147 1365 03		DD-Filter		3080	1617 7044 00	•• 1	Sight glass	
1128		2	Lock washer		3090	1617 7035 00	•• 2	Side plate	
	0333 3232 00		DD-Filter		3100	0690 1112 01	•• 2	Atlas copco logo	
1129		2	Square nut			<b>1617 7043 07</b>	• <b>1</b>	<b>Filter element</b>	
	0282 0000 06		DD-Filter		4010		•• 1	Element	
1130	1614 9212 00	2	Valve		4015	0663 2109 67	•• 2	O-ring	
1135	1614 9444 00	2	Pipe			<b>1603 7002 20</b>	• <b>1</b>	<b>Automatic drain</b>	
1140	0147 1489 03	8	Bolt		5010	1617 7047 00	•• 1	Autom.drain valve	
1145	0301 2378 00	8	Washer		5020	0663 9244 00	•• 1	O-ring	
1150	0266 2114 00	8	Nut		5030	1617 7046 00	•• 1	Nut	
1155	0663 2106 18	2	O-ring		6010	1617 7045 00	• 1	Diff.press.gauge	
1160	0147 1403 03	8	Bolt		6040	1617 7055 07	• 1	Label	
1165	0301 2358 00	8	Washer						
1180		1	Pipe		1)	See / Zie / Se / Siehe / Voir / Véase / Vedere / Se / Ver / Se / Katso			
	1614 9854 00		DD-Filter - BSP			<b>Service kits</b>			
	1614 9855 00		DD-Filter - NPT			<b>2906 7003 00</b>		<b>Spare element kit</b>	
1185		1	O-ring						
	0663 2106 16		DD-Filter						
1190		2	Bolt						
	0147 1365 03		DD-Filter						

# 10

## Drain system - Basic- and DD-filter drain

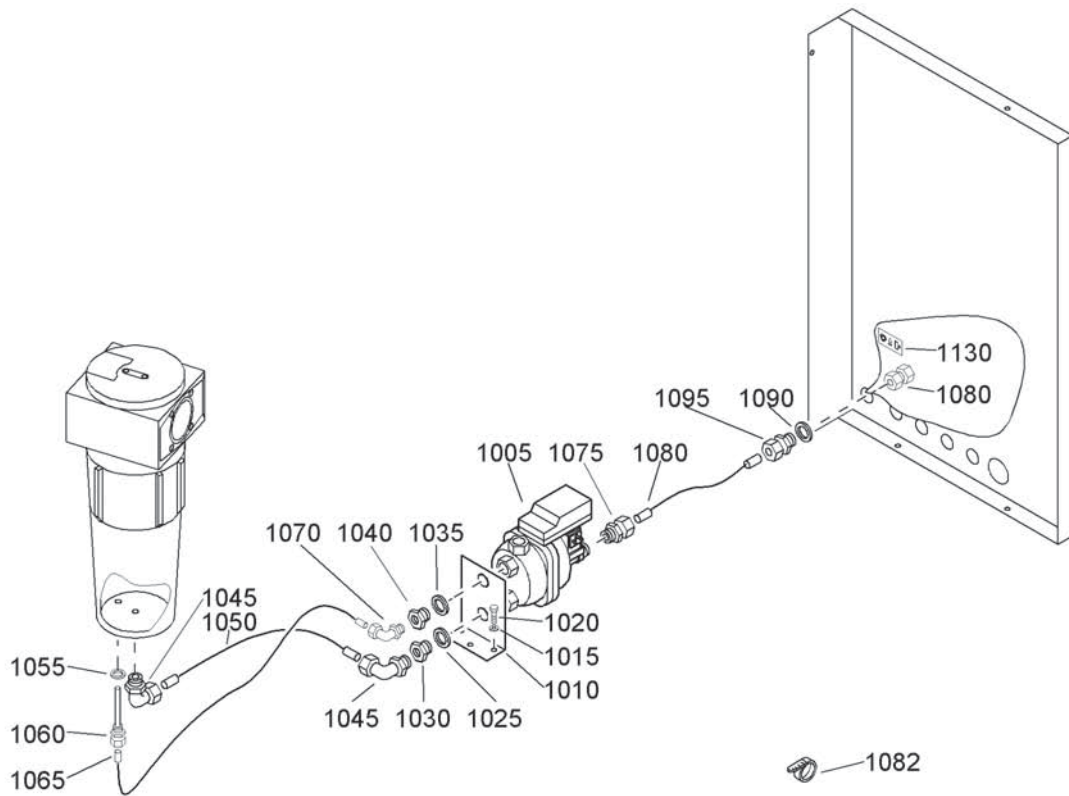


60976\_06

60976\_06

Ref.	Part number	Qty	Name	Remarks	Ref.	Part number	Qty	Name	Remarks
1010	0661 1000 25	1	Seal washer		1085	0581 0000 53	1	Pipe coupling	
1015	0581 0000 45	1	Pipe coupling		1090	0852 0010 33	1	Ball valve	
1030	0070 6002 06	AR	Plastic tube		1095	1079 9910 95	1	Label	
1035	0581 0000 86	1	Pipe coupling		1100	1079 9910 96	1	Label	
1040	0653 1124 00	1	Flat gasket		1105	0348 0101 12	10	Cable tie	
1045	0581 0000 53	1	Pipe coupling		2005	0070 6002 06	AR	Plastic tube	
1050	0653 1062 00	1	Flat gasket		2010	0347 6102 00	1	Hose clip	
1055	0581 0000 45	1	Pipe coupling		2015	0581 0000 86	1	Pipe coupling	
1070	0070 6002 06	AR	Plastic tube		2020	0661 1000 27	1	Seal washer	
1072	0348 0102 06	1	Cable tie		2025	0581 0000 53	1	Pipe coupling	
1075	0581 0000 86	1	Pipe coupling		2030	1079 9910 96	1	Label	
1080	0653 1124 00	1	Flat gasket						

Drain system - Electronic drain system



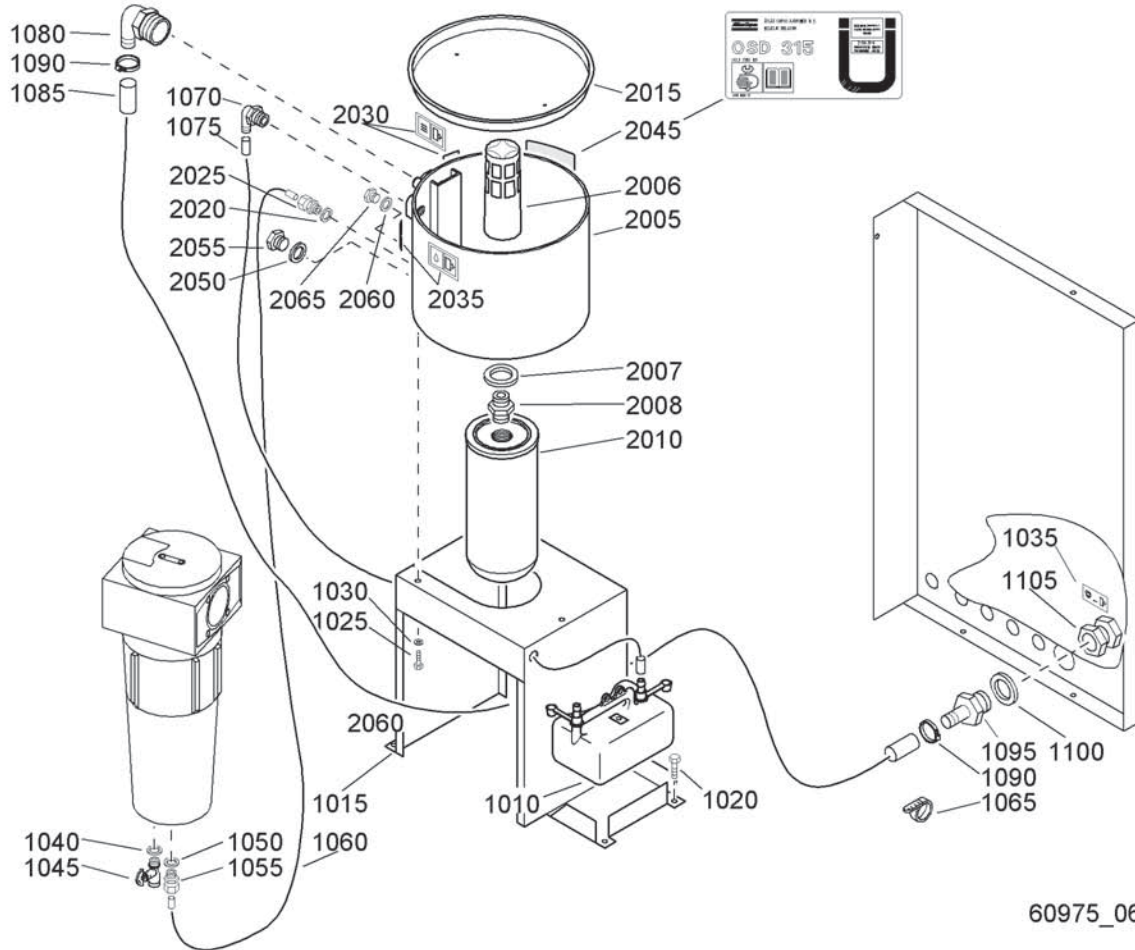
60974\_06

60974\_06

Ref.	Part number	Qty	Name	Remarks	Ref.	Part number	Qty	Name	Remarks
1005	8102 0425 80	1	Drain valve		1060	1613 8084 00	1	Pipe coupling	
1010	1617 1768 00	1	Support		1065	0070 6002 05	AR	Plastic tube	
1015	0301 2335 00	3	Washer		1070	0581 1200 23	1	Elbow	
1020	0147 1323 03	3	Bolt		1075	0581 0001 04	1	Pipe coupling	
1025	0661 1000 29	1	Seal washer		1080	0070 6002 13	AR	Plastic tube	
1030	0605 8700 84	1	Bushing		1082	0348 0101 17	3	Cable strip	
1035	0661 1000 29	1	Seal washer		1085	0581 0000 86	1	Pipe coupling	
1040	0605 8820 05	1	Bushing		1090	0661 1000 27	1	Seal washer	
1045	0581 1200 38	2	Pipe coupling		1095	0581 0000 71	1	Pipe coupling	
1050	0070 6002 13	AR	Plastic tube		1130	1079 9910 96	1	Label	
1055	0661 1000 25	1	Seal washer						

# 12

## Drain system - Oil Separator Condensate drain



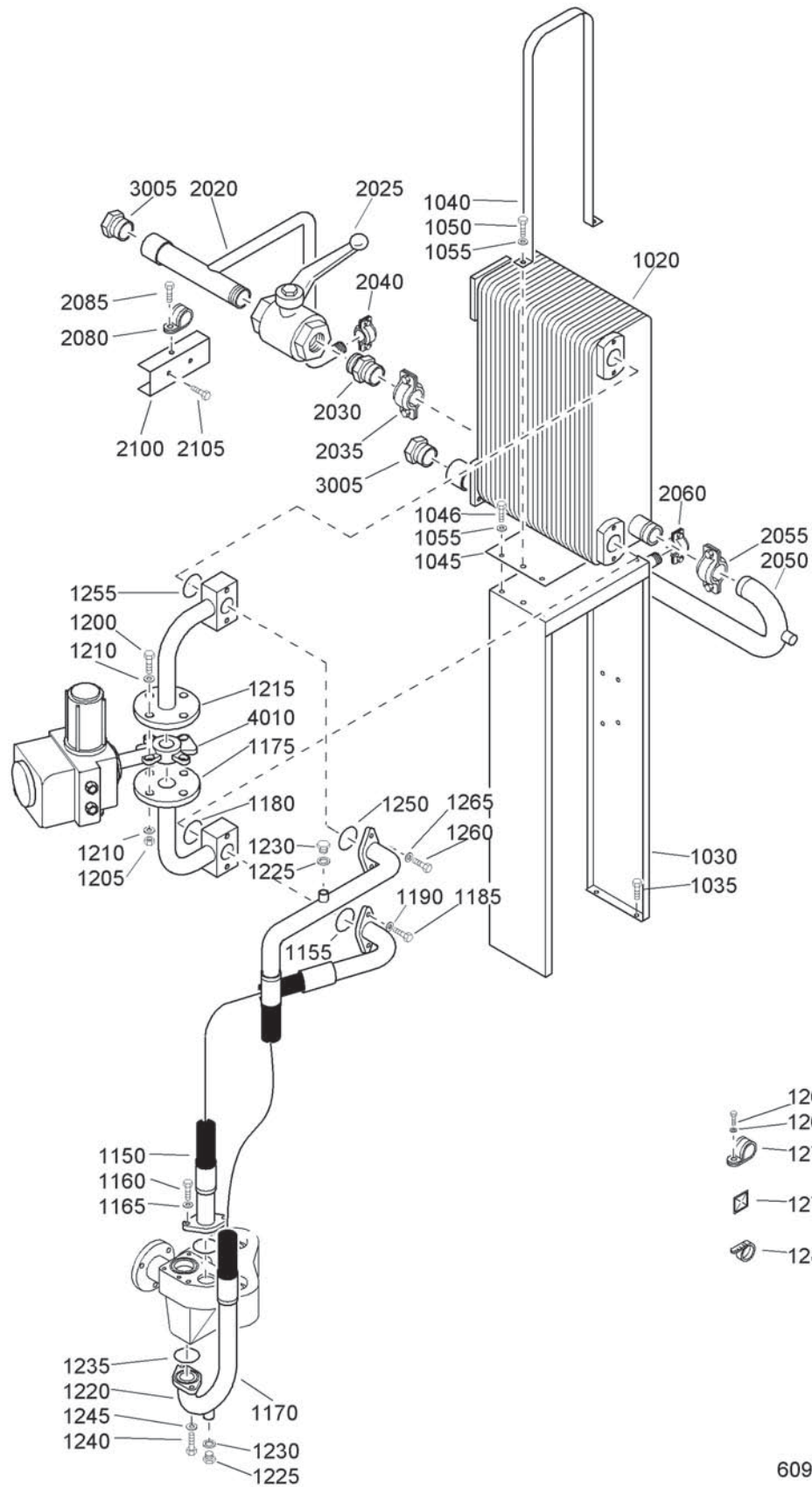
60975\_06

60975\_06

Ref.	Part number	Qty	Name	Remarks	Ref.	Part number	Qty	Name	Remarks
1010	1613 7300 00	1	Oil can		1100	0661 1000 31	1	Seal washer	
	1079 9912 38	1	Information label		1105	0581 0001 08	1	Coupling	
1015	1614 9708 00	1	Support		2005	1614 9351 00	1	Housing	
1020	1619 2766 00	4	Bolt		2006	1613 7299 00	1	Strainer	
1025	0147 1322 03	3	Bolt		2007	0661 1054 00	1	Tredo washer	
1030	0301 2335 00	3	Washer		2008	1613 7297 00	1	Nipple	
1035	1079 9910 97	1	Label		2010	1614 9352 00	1	Oil filter	
1040	0661 1000 25	1	Seal washer		2015	1614 9707 00	1	Cover	
1045	0852 0010 29	1	Ball valve		2020	0661 1000 25	1	Seal washer	
1050	0661 1000 25	1	Seal washer		2025	1614 9363 00	1	Pipe coupling	
1055	0581 0000 35	1	Pipe coupling		2030	1079 9913 69	1	Inform.label	
1060	0070 6002 03	AR	Flexible		2035	1079 9912 28	1	Information lab	
1065	1621 1091 00	3	Clamp		2040	1079 9912 07	1	Information lab	
1070	1613 7335 00	1	Hose nipple		2045	1079 9920 17	1	Information lab	
1075	0070 6002 14	AR	Flexible		2050	0686 3716 45	1	Hexagon plug	
1080	1614 9706 00	1	Hose nipple		2055	0661 1000 27	1	Seal washer	
1085	0070 6002 28	AR	Plastic tube		2060	0686 3716 44	1	Hexagon plug	
1090	0347 6110 00	2	Hose clip		2065	0661 1000 25	1	Seal washer	
1095	1614 9876 00	1	Hose nipple						



# 14

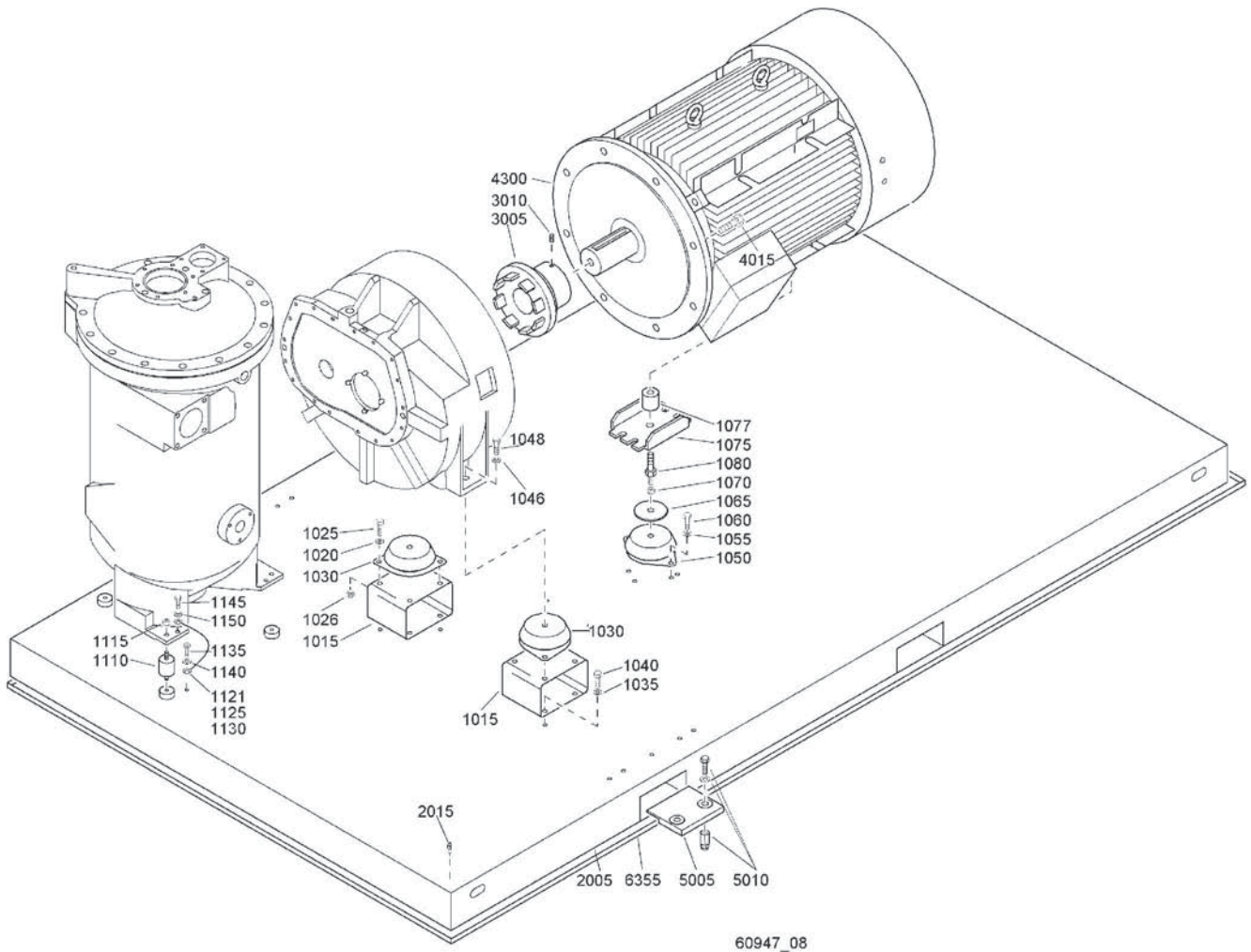


60945\_02

## Coolers - GA W

Ref.	Part number	Qty	Name	Remarks	Ref.	Part number	Qty	Name	Remarks
1020	1614 9584 00	1	Cooler		1260	0147 1374 03	2	Bolt	
1030	1614 9578 00	1	Support		1265	0301 2344 00	2	Washer	
1035	1619 2766 00	4	Bolt		1270	0346 1000 15	2	Pipe clamp	
1040	1614 9567 00	1	Support		1275	1088 1305 02	5	Push mount	
1045	1614 9585 00	1	Plate		1280	1088 1301 03	7	Cable strip	
1046	0147 1323 03	4	Bolt		2020		1	Pipe	
1050	0147 1325 03	2	Bolt			1614 9272 00		Without air dryer	
1055	0301 2335 00	6	Washer			1614 9273 00		With air dryer	
1150	1614 9386 00	1	Hose assembly		2025	1619 6153 08	1	Ball valve	
1155	0663 2109 68	1	O-ring		2030	1614 9274 00	1	Pipe	
1160	0147 1362 03	2	Bolt		2035	0634 1000 27	1	Pipe coupling	
1165	0301 2344 00	2	Washer		2040		1	Union	
1170	0663 2109 68	1	O-ring			0586 1000 30		With air dryer	
1175	1614 9830 00	1	Pipe		2050		1	Pipe	
1180	0663 2109 68	1	O-ring			1614 9388 00		Without air dryer	
1185	0147 1374 03	2	Bolt			1614 9389 00		With air dryer	
1190	0301 2344 00	2	Washer		2055	0634 1000 27	1	Pipe coupling	
1200	0147 1487 03	4	Bolt		2060		1	Union	
1205	0266 2114 00	4	Nut			0586 1000 30		With air dryer	
1210	0301 2378 00	8	Washer		2080	1619 2861 01	2	Clamp	
1215	1614 9831 00	1	Pipe		2085	1619 5337 01	2	Bolt	
1220	1614 9385 00	1	Hose assembly		2100	1614 9579 00	1	Support	
1225	0661 1000 25	2	Seal washer		2105	1619 2766 00	2	Bolt	
1230	0686 3716 01	2	Plug		3005		2	Bushing	
1235	0663 2109 68	1	O-ring			0605 8350 26		NPT	
1240	0147 1363 03	2	Bolt		4010		1	Valve	
1245	0301 2344 00	2	Washer			1089 0652 01		230V/50Hz-CE/IEC	
1250	0663 2109 68	1	O-ring			1089 0652 02		110V/60Hz-CSA/UL	
1255	0663 2109 68	1	O-ring						

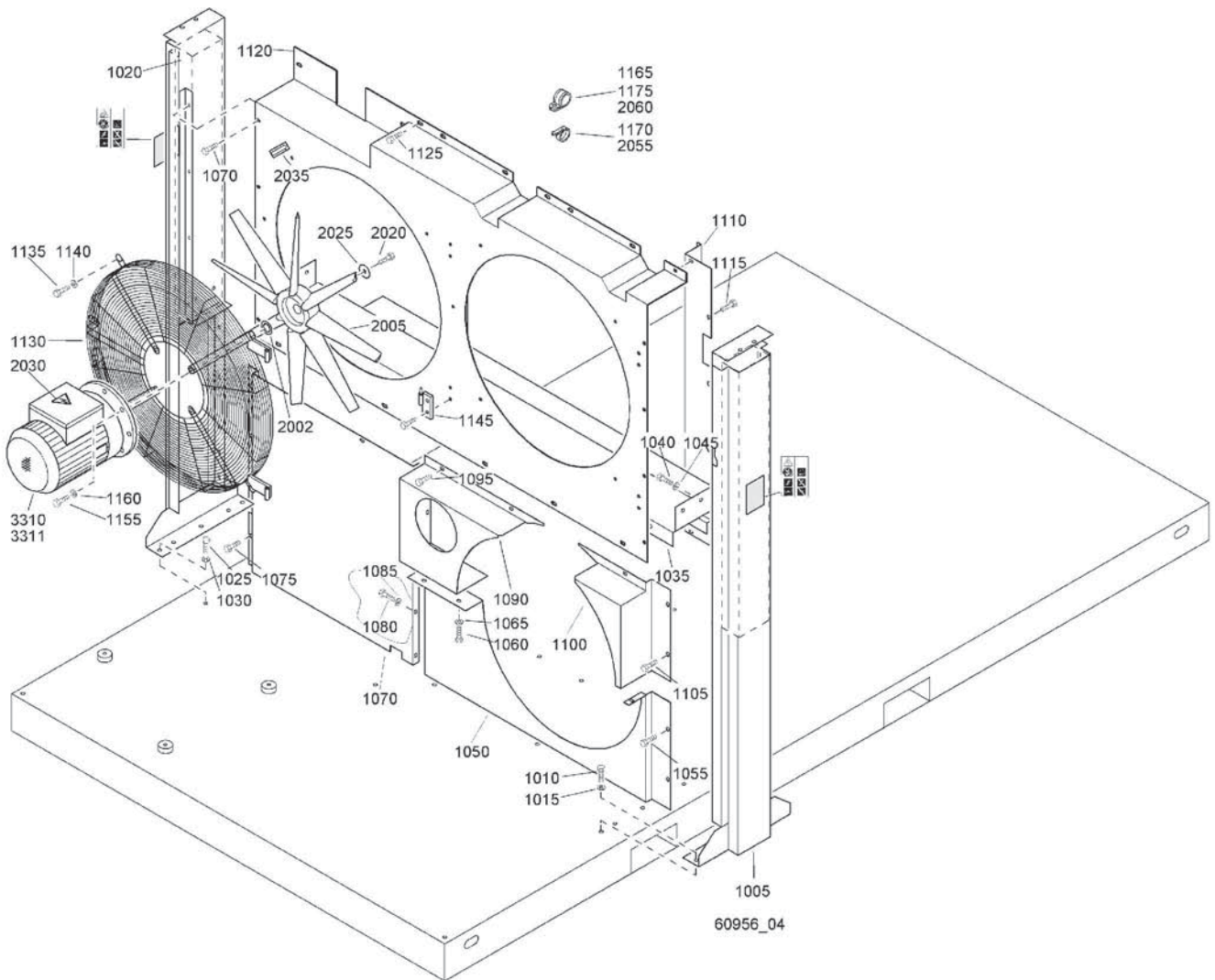
# 15



## Frame and coupling

Ref.	Part number	Qty	Name	Remarks	Ref.	Part number	Qty	Name	Remarks
1015	1614 9099 00	2	Support		1125	0694 5138 00	1	Cable lug	
1020	0301 2358 00	12	Washer		1130	1088 0010 25	1	Cable lug	
1025	0147 1401 03	4	Bolt		1135	0147 1322 03	1	Bolt	
1026	0266 2112 00	4	Nut		1140	0333 3227 00	1	Lock washer	
1030	1020 5072 00	2	Rubber buffer		1145	0147 1358 03	1	Bolt	
1035	0301 2358 00	4	Washer		1150	0333 3232 00	1	Lock washer	
1045	0147 1400 03	4	Bolt			<b>1614 9834 80</b>	<b>1</b>	<b>Frame</b>	
1046	0333 3244 00	2	Lock washer		2005		• 1	Frame	
1048	0147 1479 03	2	Bolt		2015	1614 9851 00	• 7	Pin	
1050	1020 5072 00	1	Rubber buffer		3005	1614 9820 00	1	Coupling half	
1055	0301 2358 00	2	Washer		3010	0196 1360 00	1	Set screw	
1060	0147 1400 03	2	Bolt		3015	0147 1552 03	8	Bolt	
1065	1614 6600 00	1	Disc		4300	1080 2590 92	1	Motor	
1070	0261 2114 00	1	Nut					<b>Standard options</b>	
1075	1614 8743 00	1	Support				<b>1</b>	<b>Anchor pads</b>	
1077	1614 9849 00	1	Spacer		5005	1621 5004 00	• 4	Plate	
1080	1614 9850 00	1	Stud		5010	0226 9929 06	• 8	Wedge bolt	
1110	1614 9412 00	3	Buffer				<b>1</b>	<b>Oil containing frame</b>	
1115	0291 1111 00	3	Locknut		6355	161 9833 00		Frame	
1121	0017 2071 00	AR	Cable						

# 16

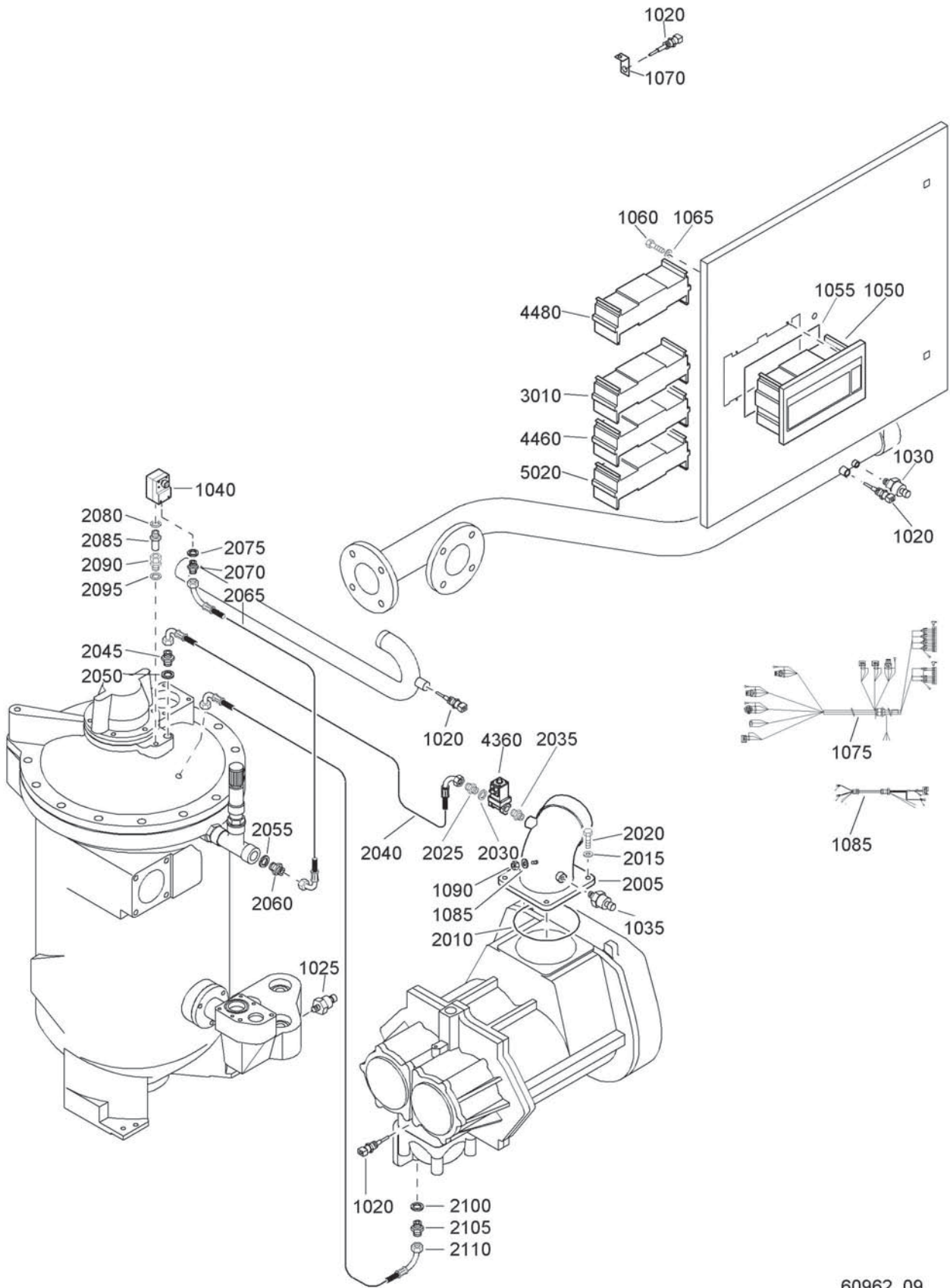


## Fan and cooling duct plates - GA

Ref.	Part number	Qty	Name	Remarks	Ref.	Part number	Qty	Name	Remarks
<b>1005</b>	<b>1614 9440 80</b>	<b>1</b>	<b>Beam assy</b>	1)	1115	1619 2766 00	6	Bolt	
	1079 9901 09 •	1	Label		1120	1614 9489 00	1	Fan cowl	
1010	0147 1362 03	5	Bolt		1125	1619 2766 00	15	Bolt	
1015	0301 2344 00	5	Washer		1130	1614 9403 00	2	Fan guard	
<b>1020</b>	<b>1614 9441 80</b>	<b>1</b>	<b>Beam assy</b>	1)	1135	0147 1363 03	10	Bolt	
	1079 9901 09 •	1	Label		1140	0333 3232 00	10	Lock washer	
1025	0147 1362 03	5	Bolt		1145	1614 9405 00	4	Hinge	
1030	0301 2344 00	5	Washer		1150	1619 5337 01	8	Bolt	
1035	1614 9183 00	1	Support		1155	0147 1401 03	8	Bolt	
1040	0147 1360 03	4	Bolt		1160	0301 2358 00	8	Washer	
1045	0301 2344 00	4	Washer		1165	0346 1000 15	3	Pipe clamp	
<b>1050</b>	<b>1614 9825 80</b>	<b>1</b>	<b>Baffle</b>		1170	1088 1301 04	5	Cable strip	
	1619 6449 00 •	AR	Seal		1175	0346 1000 15	1	Pipe clamp	
1055	1619 2766 00	2	Bolt		2002	1614 6453 00	2	Washer	
1060	0147 1323 03	3	Bolt		2005	1614 9287 00	2	Fan	
1065	0301 2335 00	3	Washer		2020	0147 1363 03	2	Bolt	
<b>1070</b>	<b>1614 9826 80</b>	<b>1</b>	<b>Baffle</b>		2025	1614 6456 00	2	Washer	
	1619 6449 00 •	AR	Seal		2030	1088 1001 01	2	Warning mark	
1075	1619 2766 00	6	Bolt		2035	1503 0786 00	2	Rotation arrow	
1080	0147 1323 03	5	Bolt		2055	1088 1301 01	12	Cable strip	
1085	0301 2335 00	5	Washer		2060	0348 0101 12	4	Cable tie	
<b>1090</b>	<b>1614 9827 80</b>	<b>1</b>	<b>Baffle</b>		3310	1080 4069 01	1	Fan motor	
	1619 6449 00 •	AR	Seal		3311	1080 4069 01	1	Fan motor	
	1202 6584 00 •	AR	Seal						
1095	1619 2766 00	2	Bolt						
<b>1100</b>	<b>1614 9828 80</b>	<b>1</b>	<b>Baffle</b>						
	1619 6449 00 •	AR	Seal						
1105	1619 2766 00	3	Bolt						
<b>1110</b>	<b>1614 9216 80</b>	<b>1</b>	<b>Plate</b>						
	1619 2795 00 •	AR	Rubber strip						

1) Lined with / Bekleed met / Beklädd med / Ausgekleidet mit / Garnir de / Rivestido de / Allineato con / Foret med / Revestido com / Kledd med / Vuorattu :  
Foam: 1079 0003 33 (AR) 50 x 2000 x 1500

# 17

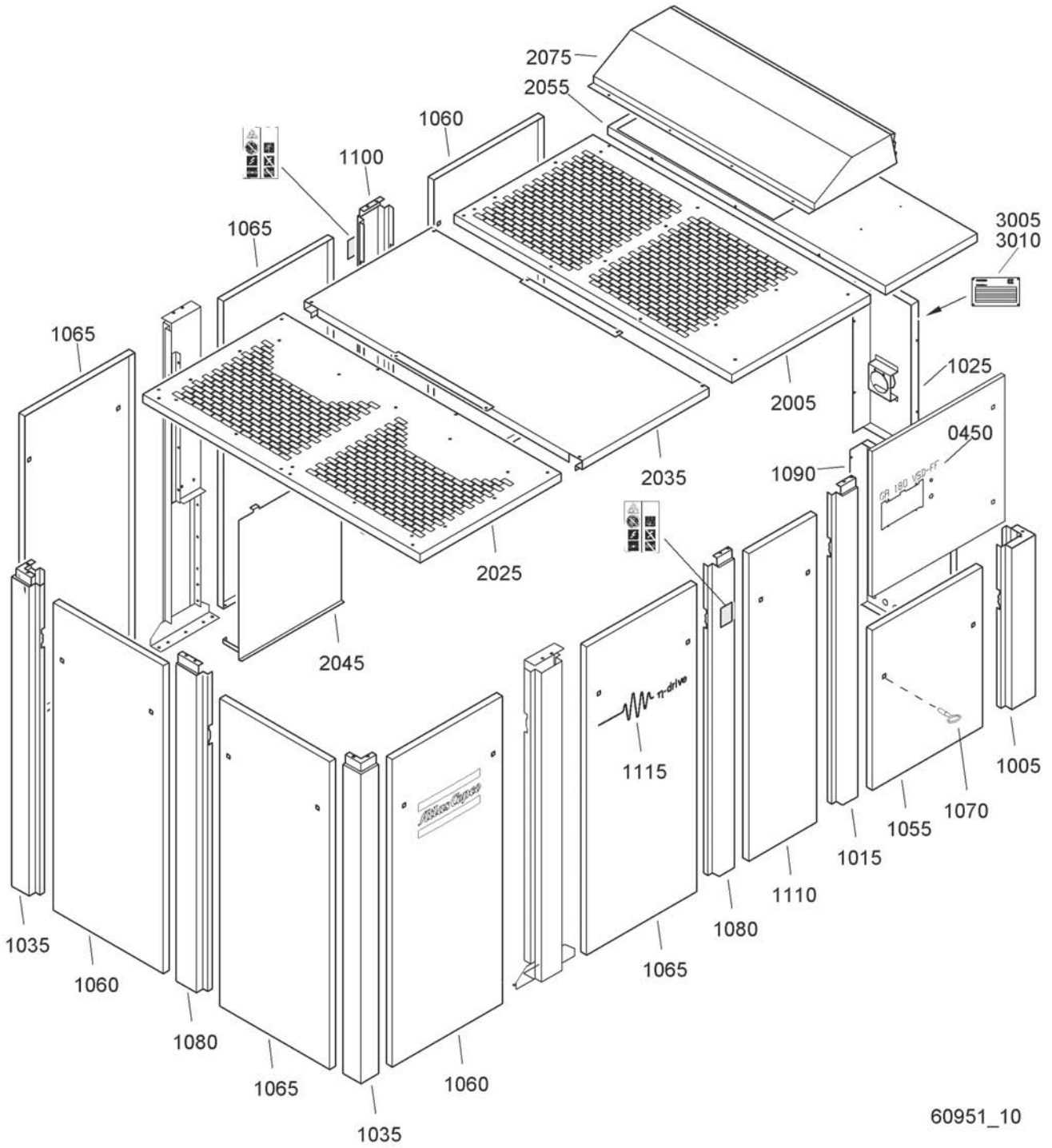


60962\_09

## Regulating system

Ref.	Part number	Qty	Name	Remarks	Ref.	Part number	Qty	Name	Remarks
1020	1089 0574 07	3	Temp. sensor		2040	0574 9842 07	1	Hose assembly	
1025	1089 0575 28	1	Press. transducer		2045	1079 5840 29	1	Hexagon nipple	
1030	1089 0575 28	1	Press. transducer		2050	0661 1000 29	1	Seal washer	
1035	1089 0575 33	1	Press. transducer		2055	0653 1189 00	1	Flat gasket	
1040	1089 0575 20	1	DP transducer		2060	1614 9144 00	1	Hexagon nipple	
1050	1900 0701 24	1	Regulator		2065	0575 0361 18	1	Hose assembly	
1055	1503 2467 00	AR	Seal cord		2070	1079 5840 01	1	Nipple	
1060	0160 6059 00	4	Screw		2075	0653 1046 00	1	Flat gasket	
1065	0301 2318 00	4	Washer		2080	0653 1046 00	1	Flat gasket	
1070	1614 9406 00	1	Bracket		2085	1615 3624 00	1	Nozzle	
1075	1614 9809 00	1	Wire harness		2090	0580 0013 32	1	Coupling	
1080	1614 9810 00	1	Wire harness		2095	0653 1062 00	1	Flat gasket	
1085	0301 2335 00	1	Washer		2100	0653 1124 00	1	Flat gasket	
1090	0266 2110 00	1	Nut		2105	0686 3716 02	1	Plug	
2005	1614 9853 00	1	Pipe		2110	0575 0791 46	1	Hose assembly	
2010	0663 2109 71	1	O-ring		3010	1900 0701 45	1	Sioe	
2015	0301 2344 00	4	Washer		4360	1089 0580 01	1	Solenoid valve	
2020	0147 1363 03	4	Bolt		4460	1900 0701 63	1	COM1 module	
2025	0603 4103 03	1	Nipple		4480	1900 0701 82	1	COM2 module	
2030	0661 1000 26	1	Seal washer		5020	1900 0701 91	1	Profibus	
2035	0571 0035 45	1	Hexagon nipple						

# 18

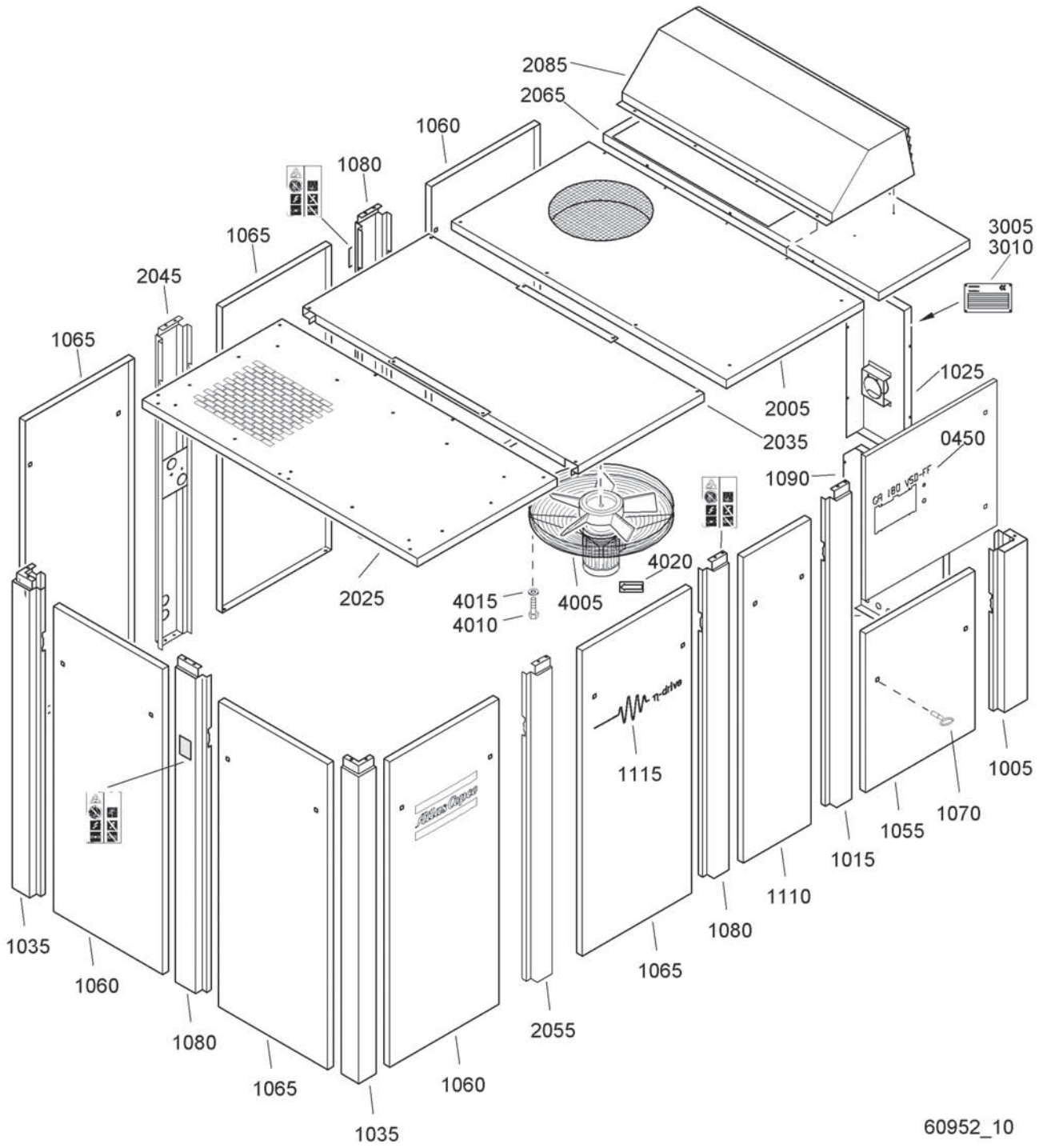


60951\_10

## Bodywork - GA

Ref.	Part number	Qty	Name	Remarks	Ref.	Part number	Qty	Name	Remarks
0450			Label		2025	1614 9436 80	1	Roof assembly	1)
	1614 9425 29		GA180 VSD		2035	1614 9437 80	1	Roof assembly	1)
	1614 9425 31		GA180 VSD-FF		2045	1614 9415 80	1	Baffle	1)
1005	1614 9431 80	1	Stay	1)	2055	1614 9804 80	1	Roof	1)
1015	1614 9432 80	1	Stay	1)	2075	1614 9839 80	1	Exhaust duct	1)
	1079 9901 09	• 1	Label		3005		1	Data plate	
1025	1614 9800 80	1	Panel	1)		1614 8057 01		CE	
	1079 9901 09	• 1	Label			1614 8057 05		Others	
1035	1614 9014 80	2	Stay	1)	3010	0129 3104 00	4	Blind rivet	
1055	1614 9018 80	1	Door				AR	Bolt	
	1619 5188 00	• AR	Seal					M8 x 20	
1060	1614 9017 80	3	Door	1)2)	0147 1323 03			M8 x 60	
	0690 1140 01	• 1	House mark		0147 1332 03			M8 x 20 paint stripping	
	1619 5188 00	• AR	Seal		1619 2766 00		AR	Washer	
1065	1614 9017 81	4	Door		0301 2335 00			8.4 x 16 x 1.6	
	1619 5188 00	• AR	Seal						
1070		1	Key	2)					
1080	1614 9013 80	2	Stay	1)	1)	Lined with / Bekleed met / Beklädd med / Ausgekleidet mit / Garnir de / Rivestido de / Allineato con / Foret med / Revestido com / Kledd med / Vuorattu :			
	1079 9901 09	• 1	Label			Foam: 1079 0003 33 (AR) 50 x 2000 x 1500			
1090	1614 9802 80	1	Panel	1)	2)	See / Zie / Se / Siehe / Voir / Véase / Vedere / Se / Ver / Se / Katso			
1100	1614 9865 80	1	Stay	1)		Service kits			
	1079 9901 09	• 1	Label		2906 0300 00	Hinge replacement kit			
1110	1614 9161 80	1	Panel assembly	1)2)					
	1619 5188 00	AR	Seal						
1115	1079 9920 61	1	Label						
2005	1614 9798 80	1	Roof	1)					

# 19

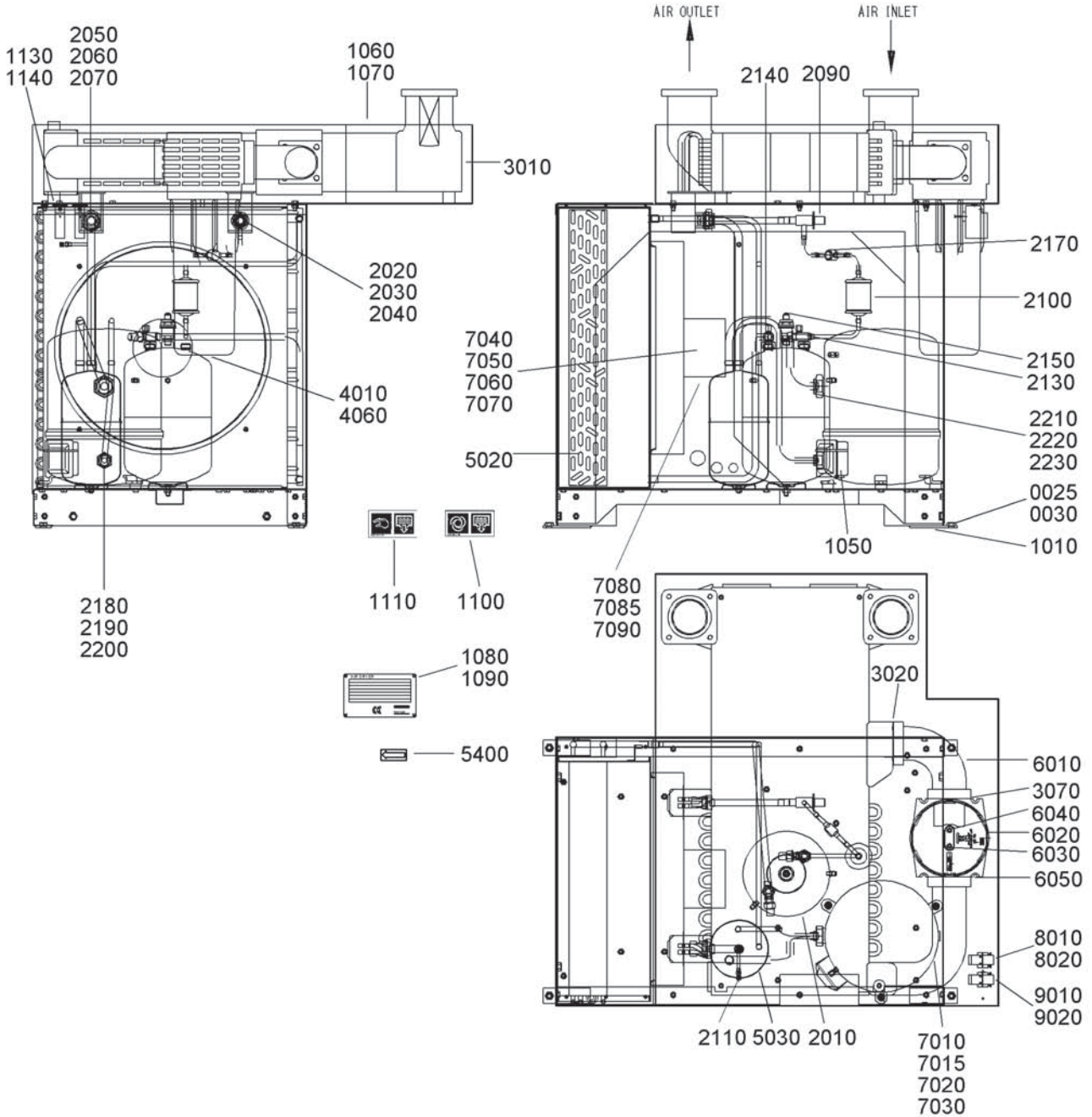


60952\_10

## Bodywork - GA W

Ref.	Part number	Qty	Name	Remarks	Ref.	Part number	Qty	Name	Remarks
0450			Label		<b>2065</b>	<b>1614 9804 80</b>	<b>1</b>	<b>Roof</b>	1)
	1614 9425 30		GA180 W VSD		<b>2085</b>	<b>1621 6527 80</b>	<b>1</b>	<b>Exhaust duct</b>	1)
	1614 9425 32		GA180 W VSD-FF		3005		1	Data plate	
<b>1005</b>	<b>1614 9431 80</b>	<b>1</b>	<b>Stay</b>	1)		1614 8057 01		CE	
<b>1015</b>	<b>1614 9432 80</b>	<b>1</b>	<b>Stay</b>	1)		1614 8057 05		Others	
	1079 9901 09 •	1	Label		3010	0129 3104 00	4	Blind rivet	
<b>1025</b>	<b>1614 9800 80</b>	<b>1</b>	<b>Panel</b>	1)	4005		1	Fan assembly	
	1079 9901 09 •	1	Label			1614 9608 01		230-400V/50Hz	
<b>1035</b>	<b>1614 9014 80</b>	<b>2</b>	<b>Stay</b>	1)		1614 9608 02		440-460V/60Hz	
<b>1055</b>	<b>1614 9018 80</b>	<b>1</b>	<b>Door</b>			1614 9608 03		220-380V/60Hz	
	1619 5188 00 •	AR	Seal			1614 9608 04		500V/50Hz	
<b>1060</b>	<b>1614 9017 80</b>	<b>3</b>	<b>Door</b>	1)2)	4010	0147 1250 03	3	Bolt	
	0690 1140 01 •	1	House mark		4015	0301 2321 00	3	Washer	
	1619 5188 00 •	AR	Seal		4020	1503 0786 00	1	Rotation arrow	
<b>1065</b>	<b>1614 9017 81</b>	<b>4</b>	<b>Door</b>		4025	1088 1001 01	1	Warning mark	
	1619 5188 00 •	AR	Seal				AR	Bolt	
1070		1	Key	2)		0147 1323 03		M8 x 20	
<b>1080</b>	<b>1614 9013 80</b>	<b>2</b>	<b>Stay</b>	1)		0147 1332 03		M8 x 60	
	1079 9901 09 •	1	Label			1619 2766 00		M8 x 20 paint stripping	
<b>1090</b>	<b>1614 9802 80</b>	<b>1</b>	<b>Panel</b>	1)			AR	Washer	
<b>1100</b>	<b>1614 9865 80</b>	<b>1</b>	<b>Stay</b>	1)		0301 2335 00		8.4 x 16 x 1.6	
	1079 9901 09 •	1	Label						
<b>1110</b>	<b>1614 9161 80</b>	<b>1</b>	<b>Panel assembly</b>	1)2)					
	1619 5188 00	AR	Seal		1)	Lined with / Bekleed met / Beklädd med / Ausgekleidet mit / Garnir de / Rivestido de / Allineato con / Foret med / Revestido com / Kledd med / Vuorattu : Foam: 1079 0003 33 (AR) 50 x 2000 x 1500			
1115	1079 9920 61	1	Label		2)	See / Zie / Se / Siehe / Voir / Véase / Vedere / Se / Ver / Se / Katso			
<b>2005</b>	<b>1614 9866 80</b>	<b>1</b>	<b>Roof ass'y</b>	1)		<b>Service kits</b>			
<b>2025</b>	<b>1614 9662 80</b>	<b>1</b>	<b>Roof assembly</b>	1)		<b>2906 0300 00</b>		<b>Hinge replacement kit</b>	
<b>2035</b>	<b>1614 9437 80</b>	<b>1</b>	<b>Roof assembly</b>	1)					
<b>2045</b>	<b>1614 9766 80</b>	<b>1</b>	<b>Stay ass'y</b>	1)					
	1079 9913 69 •	1	Inform.label	Water IN					
	1079 9913 79 •	1	Inform.label	Water OUT					
<b>2055</b>	<b>1614 9013 80</b>	<b>1</b>	<b>Stay</b>	1)					
	1079 9901 09 •	1	Label						

# 20



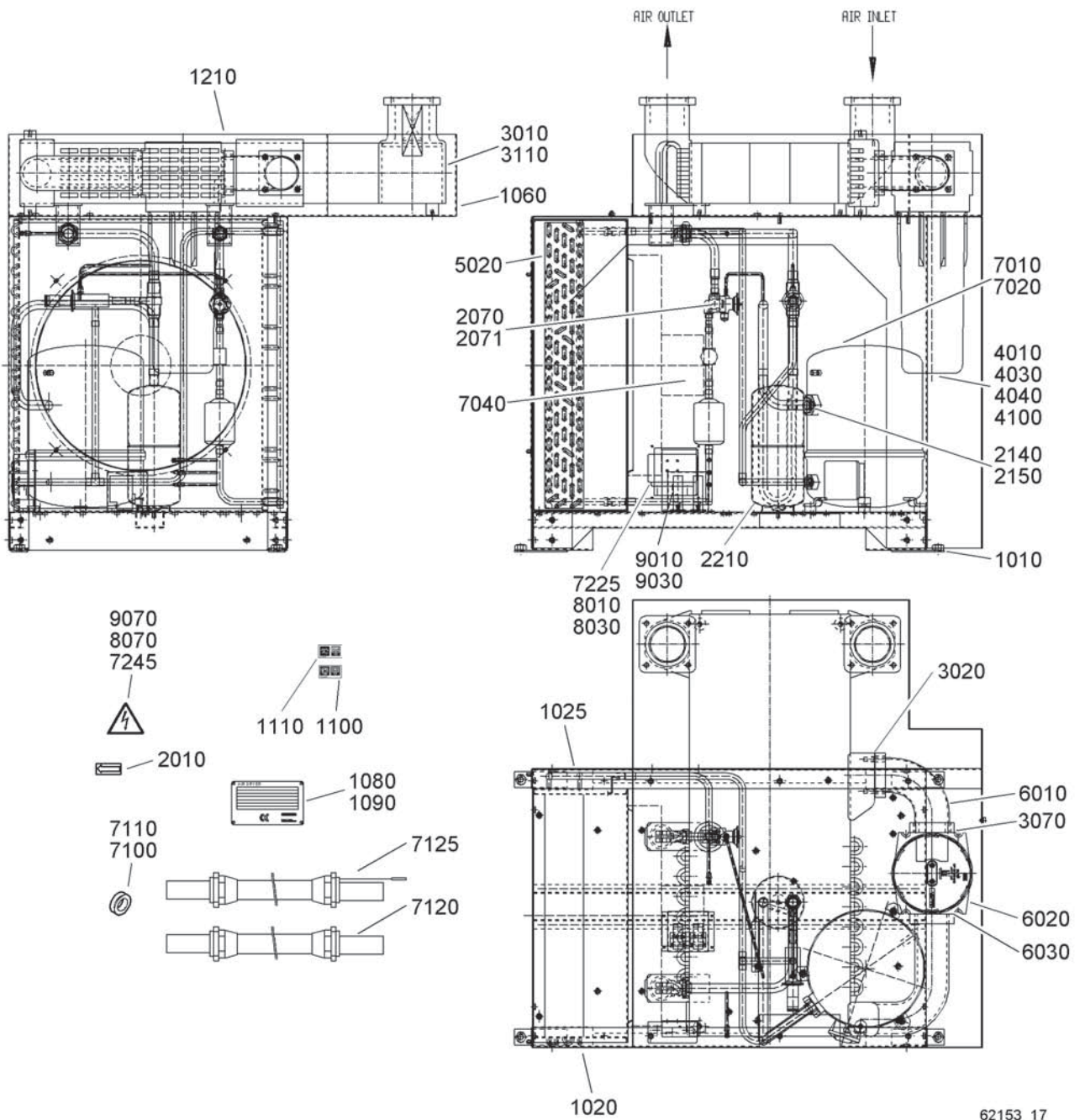
60946\_17

## Air dryer - GA 1)

Ref.	Part number	Qty	Name	Remarks	Ref.	Part number	Qty	Name	Remarks
0025	0147 1405 03	4	Bolt		5400	1503 0786 00	• 1	Rotation arrow	
0030	0301 2358 00	4	Washer		6010	1617 1247 00	• 1	Connector	
		1	<b>Air dryer</b>		6020	1613 6728 00	• 1	Waterseparator	
	<b>1617 2162 81</b>		400V/50Hz		6030	0663 2107 46	• 2	O-ring	
	<b>1617 2162 82</b>		500V/50Hz		6040	0147 1403 03	• 4	Hexagon bolt	
	<b>1617 2162 87</b>		380V/60Hz		6050	0301 2358 00	• 4	Washer	
	<b>1617 2162 86</b>		440-460V/60Hz		7010		• 1	Refrig.compressor	
	<b>1617 2162 88</b>		575V/60Hz			1619 7674 19		380-415V/50Hz, 440-460V/60Hz	
1010	1617 2126 00	• 1	Frame			1619 7674 22		500V/50Hz, 575V/60Hz	
1020	1617 2124 00	• 1	Support front			1619 7674 21		380V/60Hz	
1025	1617 2125 00	• 1	Support rear		7015	1619 5337 03	• 3	Scr.bolt m8x40	
1030	1619 2766 00	• 12	Scr.bolt		7020	1619 7689 01	• 1	Carter heating	
1050	1617 2313 00	• 1	Box IP54		7030	1617 0128 00	• AR	Heat conducting	
<b>1060</b>	<b>1603 2123 80</b>	• 1	<b>Box assy</b>		7040		• 1	Fan assembly	
	1617 2123 00	•• 1	Box			1617 1183 81		380-415V/50Hz	
	1617 2096 00	•• 1	Insulation top			1617 1183 82		500V/50Hz	
	1617 2097 00	•• 1	Insulation bottom			1614 9608 03		380V/60Hz	
1070	1619 2766 00	• 6	Scr.bolt			1614 9608 04		440-460V/60Hz	
1080	1617 0745 00	• 1	Data plate			1614 9608 05		575V/60Hz	
1090	0129 3103 00	• 4	Blind rivet		7050	0147 1247 03	• 4	Hexagon bolt	
1100	1079 9915 89	• 1	Label		7060	0300 0274 68	• 4	Washer	
1110	1079 9915 98	• 1	Label		7070	0333 3220 00	• 4	Lock washer	
1130	0129 3270 20	• 4	Rivet		7080		• 1	Cable (compressor)	
1140	1617 2314 00	• 1	Plate			1617 2172 03		50Hz	
2010	1617 2056 00	• 1	Liquid receiver			1617 2172 01		60Hz	
2020	1617 0477 00	• 1	Sleeve		7085		• 1	Cable (fanmotor)	
2030	1617 0476 00	• 1	Nut			1617 2172 04		50Hz	
2040	1617 0320 00	• 1	Ring			1617 2172 02		60Hz	
2050	1617 0386 00	• 1	Sleeve		7090	1617 2173 00	• 1	Wiring (regulating)	
2060	1617 0314 00	• 1	Nut		7100	0698 0154 00	• 1	Grommet	
2070	1617 0315 00	• 1	Ring		7110	0698 0154 00	• 1	Grommet	
2090	1619 6768 17	• 1	Expansion valve		8010	1089 9214 32	• 1	Press.switch	
2100	1617 1495 01	• 1	Filter dryer		8020	1079 2263 01	• 2	Screw	
2110	1619 5563 02	• 1	Schräderventiel		9010	1089 9214 33	• 1	Press.switch	
2130	1617 0123 00	• 1	Stop valve		9020	1079 2263 01	• 2	Screw	
2140	1617 2098 00	• 1	Valve						
2150	1617 2248 00	• 1	Safety valve						
2170	1619 5567 02	• 1	Sight-glass						
2180	1617 0314 00	• 1	Nut						
2190	1617 0474 00	• 1	Sleeve						
2200	1617 0315 00	• 1	Ring						
2210	1617 0476 00	• 1	Nut						
2220	1617 0477 00	• 1	Sleeve						
2230	1617 0320 00	• 1	Ring						
3010	1617 2044 00	• 1	Heat exchanger						
3020	0650 0100 09	• 1	Gasket						
3070	0663 2107 46	• 1	O-ring						
4010	0653 1062 00	• 2	Flat gasket						
4060	0581 0000 35	• 2	Straight coupling						
5020	1617 2051 00	• 1	Condensor						
5030	1617 2158 00	• 1	Liquid seperator						

1) Up to serial No. :  
 Tot serienummer:  
 T.o.m. tillverkningsnummer:  
 Bis Seriennummer:  
 Jusqu'au numéro de série:  
 Hasta el número de serie:  
 Fino al numeri di serie:  
 Gælder til følgende serienumre:  
 Até o número de série:  
 Til følgende serienummer:  
 Seuraavaan valmistusnumeroon asti, No.:  
 AIF-068 101

# 21



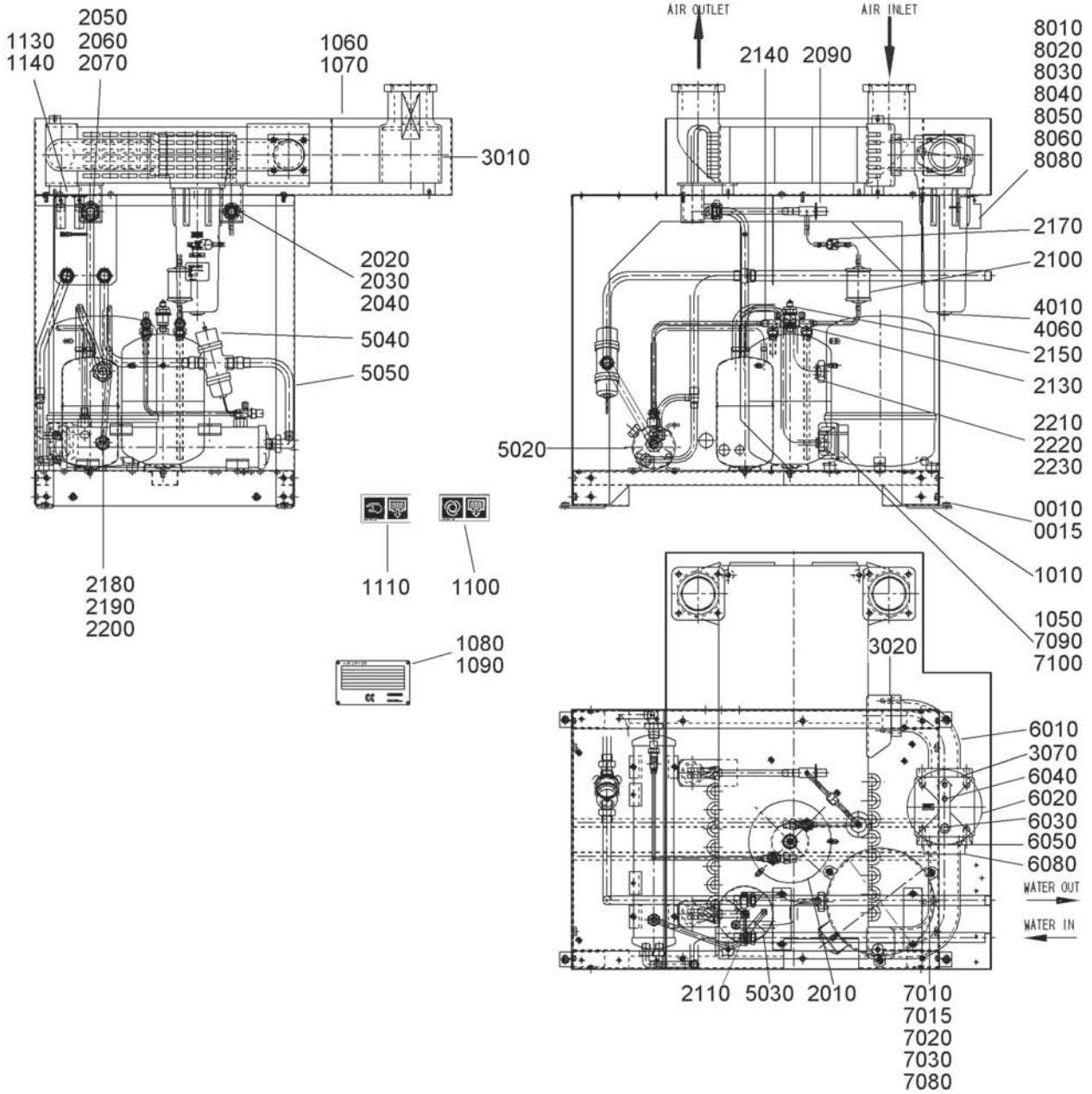
## Air dryer - GA 1)

Ref.	Part number	Qty	Name	Remarks	Ref.	Part number	Qty	Name	Remarks
	<b>1617 2535 81</b>	<b>1</b>	<b>Air dryer</b>		7020	1619 7689 01	• 1	Carter heating	
	<b>1617 2535 82</b>		400V/50Hz		<b>7040</b>		• 1	<b>Fan ass'y</b>	
	<b>1617 2535 87</b>		500V/50Hz			<b>1617 1183 82</b>		500V/50Hz	
	<b>1617 2535 86</b>		380V/60Hz	C,U		<b>1617 1183 81</b>		Others	
1010	1617 2126 00	• 1	440-460V/60Hz	C,U			•• 1	Fan motor	
1020	1617 2124 00	• 1	Frame			1617 2383 00		500V/50Hz	
1025	1617 2537 00	• 1	Support front			1617 2382 00		Others	
<b>1060</b>	<b>1603 2123 80</b>	• 1	Support rear	2)		1617 0526 00	•• 1	Fan	
	1617 2123 00	•• 1	<b>Box ass'y</b>			1617 0364 00	•• 1	Grating	
	1617 2096 00	•• 1	Box			1617 0136 00	•• 1	Adapter	
	1617 2097 00	•• 1	Insulation top		7100	0698 0154 00	• 1	Grommet	
1080	1617 2971 00	• 1	Insulation bottom		7110	0698 0154 00	• 1	Grommet	
1090	0129 3103 00	• 4	Data plate		7120	1617 3207 80	• 1	Wiring	
1100	1079 9915 89	• 1	Blind rivet		7125	1617 3208 80	• 1	Wiring	
1110	1079 9915 98	• 1	Label		7225		• 2	Capillar connection	
1210	1617 2630 00	• 1	Label			1617 2618 00		400V/50Hz, 500V/50Hz	
2010	1503 0786 00	• 1	Cover		7245	1088 1001 01	• 2	Warning mark	
2070	1617 2231 01	• 1	Rotation arrow			<b>1603 1007 34</b>	• 1	<b>Fan switch set</b>	
2071	1617 2232 01	• 1	T.e.valve/bulb		8010	1617 2721 00	•• 1	Support	
2140	1617 0476 00	• 1	T.e.valve/orifice		8030	1089 9139 07	•• 1	Pressure switch	
2150	1617 0488 00	• 1	Nut		8070	1088 1001 01	•• 1	Warning mark	
2210	1617 2529 00	• 1	Sleeve		9010	1617 2721 00	• 1	Support	
3010	1617 2044 00	• 1	Liquid separator		9030		• 1	Pressure switch	
3020	0650 0100 09	• 1	Liquid separator			1089 9214 10		400V/50Hz, 500V/50Hz	
3070	0663 2107 46	• 1	Heat exchanger			1089 9139 52		380V/60Hz, 440-460V/60Hz	
3110	1617 2897 00	• 4	Gasket		9070	1088 1001 01	• 1	Warning mark	
4010	0653 1062 00	• 2	O-ring 87 x 5						
4030	0581 0000 35	• 2	Insulation part						
4040	0070 6002 05	• AR	Gasket 13 x 20						
4100	0070 6002 13	• AR	Pipe coupling						
5020	1617 2051 00	• 1	Plastic tube						
6010	1617 1247 00	• 1	Plastic tube						
<b>6020</b>	<b>1613 9463 80</b>	• 1	Condensor						
	0663 2109 56	•• 1	Connector						
	0663 2108 01	•• 1	<b>Wsd750 (16bar)</b>						
	0663 2133 00	•• 1	O-ring						
	0663 2111 27	•• 1	O-ring 39,2x3						
6030	0663 2107 46	• 2	O-ring 31.5x3						
7010		• 1	O-ring 87 x 5						
	1619 7674 19		Refrig.compressor						
	1619 7674 21		400V/50Hz,						
	1619 7674 19		440-460V/60Hz						
	<b>1603 1025 19</b>	• 1	380V/60Hz						
	1617 2655 00	•• 1	500V/50Hz						
	1089 9304 52	•• 1	<b>Ass'y kit for 500V/50Hz</b>						
	1617 2891 00	•• 1	Support (500V/50Hz)						
			Trafo kit(500V/50Hz)						
			Service diagram						
			(500V/50Hz)						

1) From following serial No. onwards:  
Geldig vanaf volgend serienummer:  
Fr.o.m. tillverkningsnummer:  
Gültig ab Seriennummer:  
Valable à partir du numéro de série suivant:  
A partir del siguiente número de serie:  
Dai seguenti numeri di serie in avanti:  
Gælder fra følgende serienummer:  
A partir do número de série:  
Fra og med følgende serienummer:  
Alkaen valmistusnumerosta  
AIF-068 102

2) Lined with / Bekleed met / Beklädd med / Ausgekleidet mit / Garnir de / Rivestido de / Allineato con / Foret med / Revestido com / Kledd med / Vuorattu :  
Foam: 0395 6001 69 (AR) 50 x 2040 x 1650

# 22



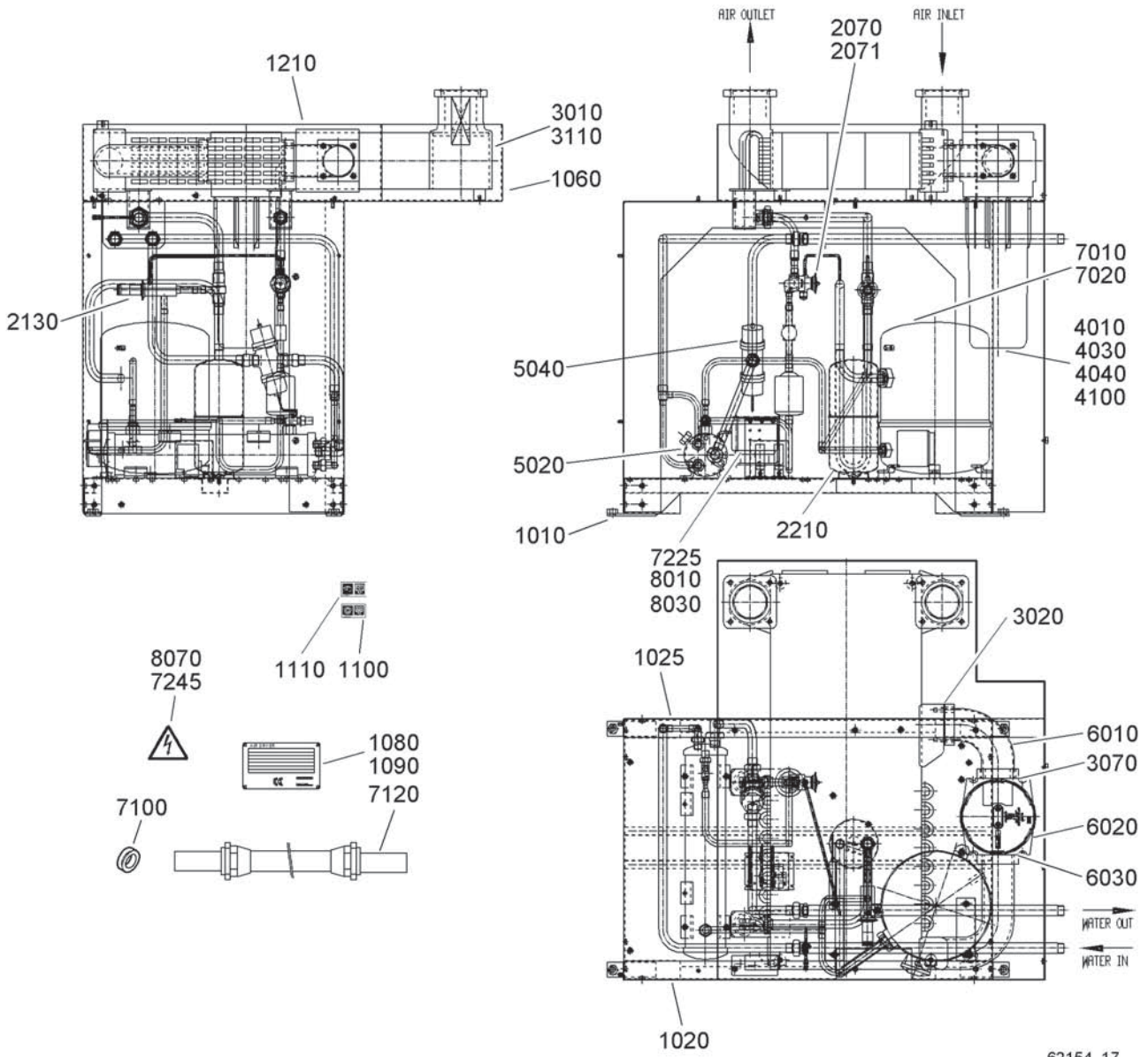
60959\_17

## Air dryer - GA W 1)

Ref.	Part number	Qty	Name	Remarks	Ref.	Part number	Qty	Name	Remarks
0010	0147 1405 03	4	Bolt		4060	0581 0000 35	• 2	Straight coupling	
0015	0301 2358 00	4	Washer		5020	1617 2395 01	• 1	Tube condensor	
		<b>1</b>	<b>Air dryer</b>		5030	1617 2158 00	• 1	Liquid seperato	
	<b>1617 2163 81</b>		415V/50Hz		5040	1617 2002 03	• 1	Regulating valv	
	<b>1617 2163 82</b>		500V/50Hz		5050	1617 2067 80	• 1	Pipe	
	<b>1617 2163 86</b>		460V/60Hz		6010	1617 1247 00	• 1	Connector	
	<b>1617 2163 87</b>		380V/60Hz		6020	1613 6728 00	• 1	Waterseparator	
	<b>1617 2163 88</b>		575V/60Hz		6030	0663 2107 46	• 2	O-ring	
1010	1617 2126 00	• 1	Frame		6040	0147 1403 03	• 4	Hexagon bolt	
1020	1617 2124 00	• 1	Support front		6050	0301 2358 00	• 4	Washer	
1025	1617 2125 00	• 1	Support rear		7010		• 1	Refrig.compress	
1030	1619 2766 00	• 12	Scr.bolt			1619 7674 19		380-415V/50Hz,	
1050	1617 2313 00	• 1	Box IP54					440-460V/60Hz	
<b>1060</b>	<b>1603 2123 80</b>	• <b>1</b>	<b>Box assy</b>			1619 7674 21		380V/60Hz	
	1617 2123 00	•• 1	Box			1619 7674 22		500V/50Hz,	
	1617 2096 00	•• 1	Insulation top					575V/60Hz	
	1617 2097 00	•• 1	Insulation bottom		7015	1619 5337 03	• 3	Scr.bolt m8x40	
1070	1619 2766 00	• 6	Scr.bolt		7020	1619 7689 01	• 1	Carter heating	
1080	1617 0745 00	• 1	Data plate		7030	1617 0128 00	• AR	Heat conducting	
1090	0129 3103 00	• 4	Blind rivet		7080		• 1	Cable (compressor)	
1100	1079 9915 89	• 1	Label			1617 2172 03		500V/50Hz,	
1110	1079 9915 98	• 1	Label					575V/60Hz	
1130	0129 3270 20	• 4	Rivet			1617 2172 01		Others	
1140	1617 2314 00	• 1	Plate		7090		• 1	Wiring (regulating)	
2010	1617 2056 00	• 1	Liquid receiver			1617 2312 00		380-415V/50Hz,	
2020	1617 0477 00	• 1	Sleeve					440-460V/60Hz	
2030	1617 0476 00	• 1	Nut			1617 2173 00		Others	
2040	1617 0320 00	• 1	Ring		7100	0698 0154 00	• 2	Grommet	
2050	1617 0386 00	• 1	Sleeve		8010	1089 9214 08	• 1	Pressure switch	
2060	1617 0314 00	• 1	Nut		8020	1617 0354 00	• 1	Plate	
2070	1617 0315 00	• 1	Ring		8030	0333 3214 00	• 4	Lock washer	
2090	1619 6768 17	• 1	Expansion valve		8040	1617 0092 01	• 1	Nut	
2100	1617 1495 01	• 1	Filter dryer		8050	1617 0092 03	• 1	Ring	
2110	1619 5563 02	• 1	Schräderventiel		8060	0129 3115 00	• 3	Blind rivet	
2130	1617 0123 00	• 1	Stop valve		8080	1617 1720 00	• 2	Capillar conn.	
2140	1617 2098 00	• 1	Valve						
2150	1617 2248 00	• 1	Safety valve						
2170	1619 5567 02	• 1	Sight-glass						
2180	1617 0314 00	• 1	Nut						
2190	1617 0474 00	• 1	Sleeve						
2200	1617 0315 00	• 1	Ring						
2210	1617 0476 00	• 1	Nut						
2220	1617 0477 00	• 1	Sleeve						
2230	1617 0320 00	• 1	Ring						
3010	1617 2044 00	• 1	Heat exchanger						
3020	0650 0100 09	• 1	Gasket						
3070	0663 2107 46	• 1	O-ring						
4010	0653 1062 00	• 2	Flat gasket						

1) Up to serial No. :  
 Tot serienummer:  
 T.o.m. tillverkningsnummer:  
 Bis Seriennummer:  
 Jusqu'au numéro de série:  
 Hasta el número de serie:  
 Fino al numeri di serie:  
 Gælder til følgende serienumre:  
 Até o número de série:  
 Til følgende serienummer:  
 Seuraavaan valmistusnumeroon asti, No.:  
 AIF-068 101

# 23



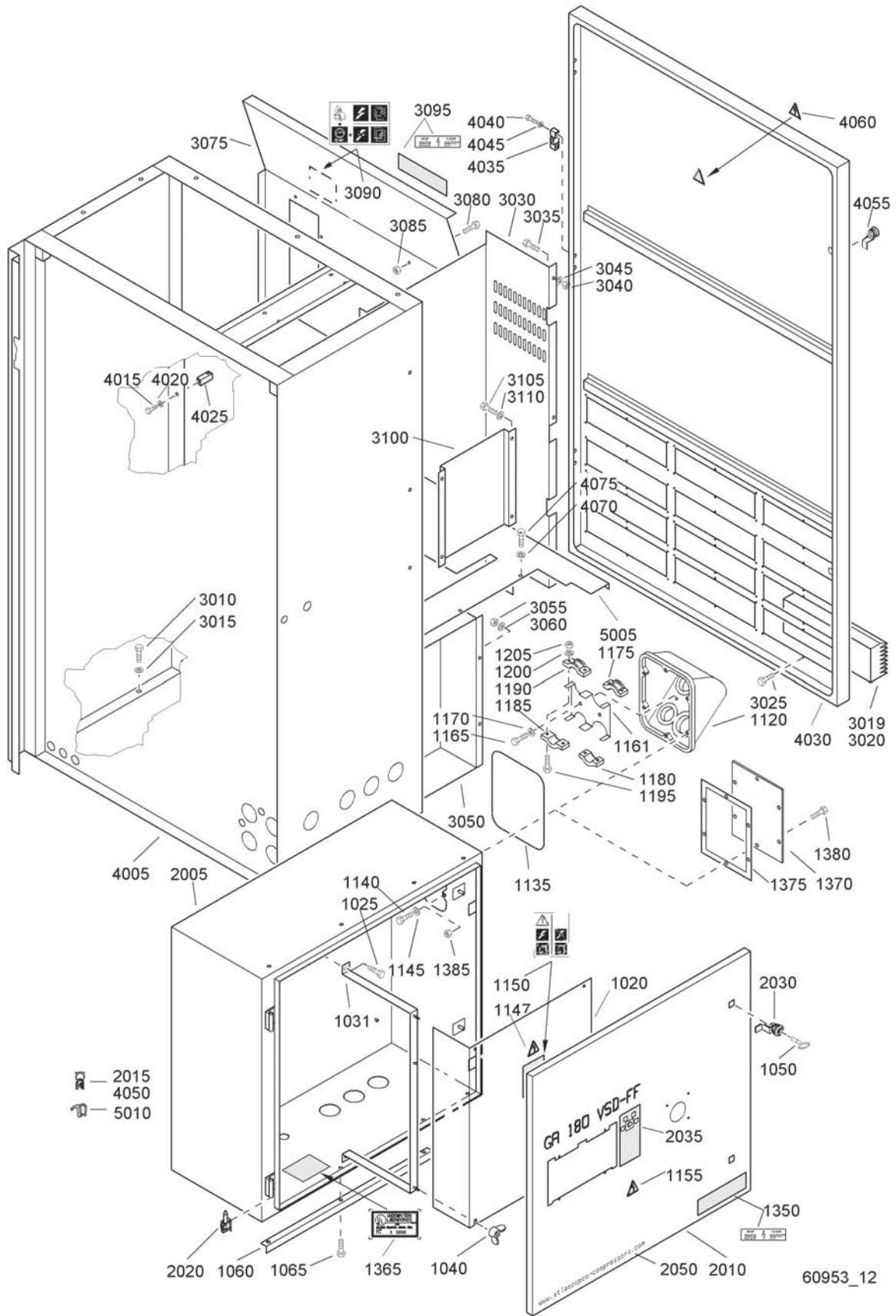
62154\_17

## Air dryer - GA W 1)

Ref.	Part number	Qty	Name	Remarks	Ref.	Part number	Qty	Name	Remarks
		1	<b>Air dryer</b>						
	<b>1617 2536 81</b>		415V/50Hz		6030	0663 2107 46 •	2	O-ring 87 x 5	
	<b>1617 2536 82</b>		500V/50Hz		7010	•	1	Refrig.compressor	
	<b>1617 2536 87</b>		380V/60Hz			1619 7674 19		415V/50Hz	
	<b>1617 2536 86</b>		460V/60Hz					440-460V/60Hz	
1010	1617 2126 00 •	1	Frame			1619 7674 21		380V/60Hz	
1020	1617 2124 00 •	1	Support front			1619 7674 19		500V/50Hz	
1025	1617 2537 00 •	1	Support rear			<b>1603 1025 19 •</b>	<b>1</b>	<b>Ass'y kit for 500V/50Hz</b>	
<b>1060</b>	<b>1603 2123 80 •</b>	<b>1</b>	<b>Box ass'y</b>			1617 2655 00 ••	1	Support	
	1617 2123 00 ••	1	Box			1089 9304 52 ••	1	Trafo kit	
	1617 2096 00 ••	1	Insulation top			1617 2891 00 ••	1	Service diagram	
	1617 2097 00 ••	1	Insulation bottom		7020	1619 7689 01 •	1	Carter heating	
1080	1617 2971 00 •	1	Data plate		7100	0698 0154 00 •	1	Grommet	
1090	0129 3103 00 •	4	Blind rivet		7120	1617 3209 80 •	1	Wiring	
1100	1079 9915 89 •	1	Label		7225	•	2	Capillar connection	
1110	1079 9915 98 •	1	Label			1617 2618 00		415V/50Hz, 500V/50Hz	
1210	1617 2630 00 •	1	Cover		7245	1088 1001 01 •	1	Warning mark	
2070	1617 2231 01 •	1	T.e.valve/bulb		8010	1617 2721 00 •	1	Support	
2071	1617 2232 01 •	1	T.e.valve/orifice		8030	•	1	Pressure switch	
2130	1617 2528 02 •	1	Capacitor			1089 9214 10		415V/50Hz,	
2210	1617 2529 00 •	1	Liquid separator					500V/50Hz,	
3010	1617 2044 00 •	1	Heat exchanger			1089 9139 52		380V/60Hz,	
3020	0650 0100 09 •	1	Gasket					440-460V/60Hz	
3070	0663 2107 46 •	1	O-ring 87 x 5		8070	1088 1001 01 •	1	Warning mark	
3110	1617 2897 00 •	4	Insulation part						
4010	0653 1062 00 •	2	Gasket 13 x 20						
4030	0581 0000 35 •	2	Pipe coupling t						
4040	0070 6002 05 •	AR	Plastic tube						
4100	0070 6002 13 •	AR	Plastic tube						
5020	1617 2395 01 •	1	Tube condensor						
5040	1617 2617 01 •	1	Regulating valve						
6010	1617 1247 00 •	1	Connector						
<b>6020</b>	<b>1613 9463 80 •</b>	<b>1</b>	<b>Wsd750 (16bar)</b>						
	0663 2109 56 ••	1	O-ring						
	0663 2108 01 ••	1	O-ring						
	0663 2133 00 ••	1	O-ring 39,2x3						
	0663 2111 27 ••	1	O-ring 31.5x3						

1) From following serial No. onwards:  
 Geldig vanaf volgend serienummer:  
 Fr.o.m. tillverkningsnummer:  
 Gültig ab Seriennummer:  
 Valable à partir du numéro de série suivant:  
 A partir del siguiente número de serie:  
 Dai seguenti numeri di serie in avanti:  
 Gælder fra følgende serienumre:  
 A partir do número de série:  
 Fra og med følgende serienummer:  
 Alkaen valmistusnumerosta  
 AIF-068 102

# 24



## Cubicle(s)

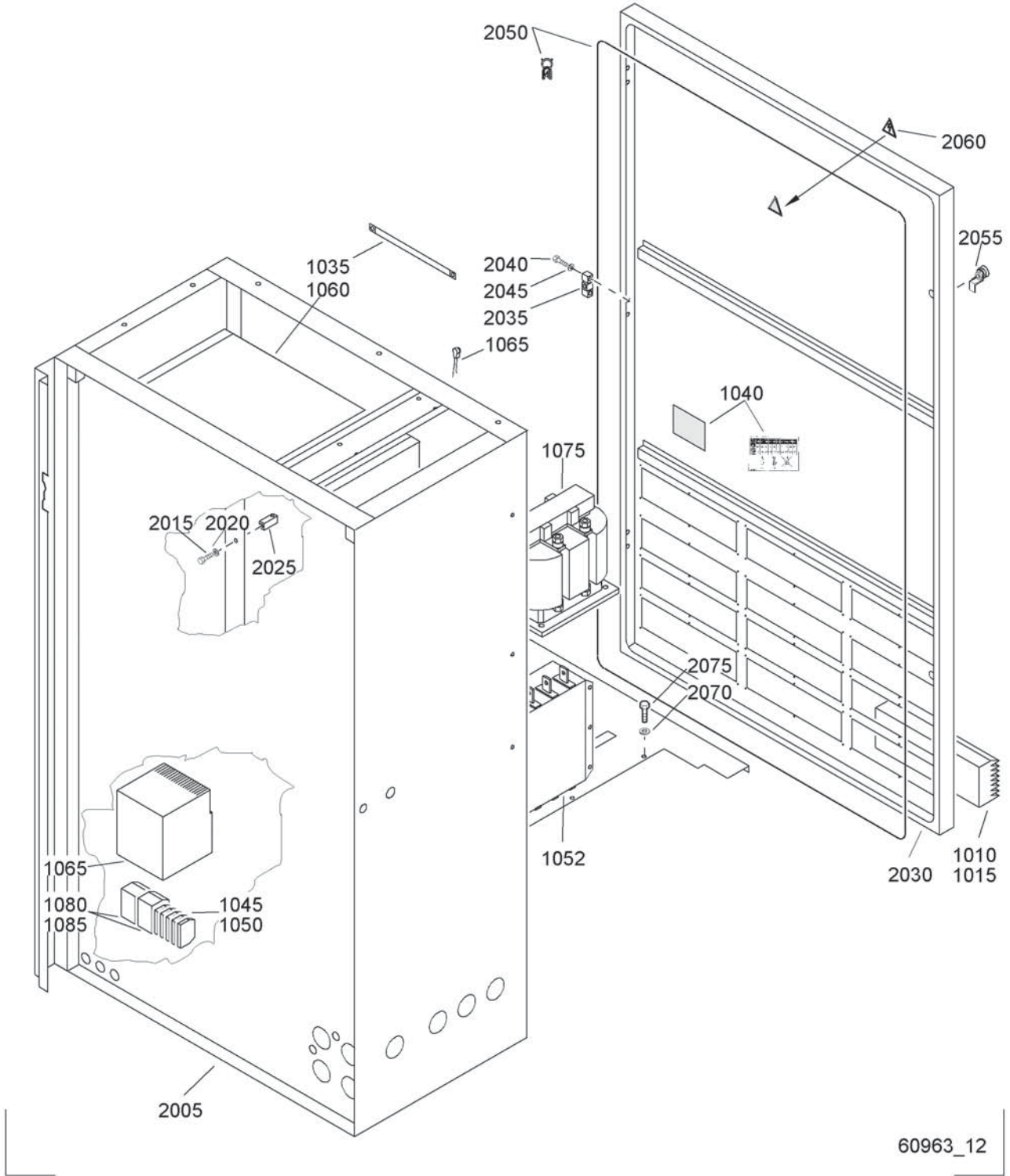
Ref.	Part number	Qty	Name	Remarks	Ref.	Part number	Qty	Name	Remarks	
1020	1614 9109 00	1	Screen	50Hz	3040	0266 2110 00	3	Nut		
1025	1619 2766 00	2	Bolt	50Hz	3045	0301 2335 00	3	Washer		
1031	1614 9108 00	1	Bracket	50Hz	3050	1614 9845 00	1	Box		
1040	0296 1108 02	4	Wing nut	50Hz	3055	0266 2110 00	4	Nut		
1050		1	Key	1)	3060	0301 2335 00	4	Washer		
1060	1614 9380 00	1	Bracket		3075	1614 9883 00	1	Screen		
1065	1619 2766 00	3	Bolt		3080	0147 1205 03	6	Bolt		
1120	1614 6571 00	1	Cable box		3085	0266 2107 00	6	Nut		
1135	1614 6567 00	1	Seal		3090	1079 9901 61	1	Label		
1140	0147 1322 03	6	Bolt		3095		1	Label		
1145	0301 2335 00	6	Washer			1613 3431 00		GA W		
1147	1088 1001 04	1	Warning mark		3100	1621 6559 00	1	Support		
1150	1079 9901 67	1	Label		3105	0147 1323 03	4	Bolt		
1155	1088 1001 01	1	Warning mark		3110	0301 2335 00	4	Washer		
1161	1614 6566 00	1	Plate			<b>1614 9812 80</b>	<b>1</b>	<b>Drive cubicle</b>	2)	
1165	0147 1322 03	2	Bolt		4005	1614 9812 00	•	1	Cubicle	
1170	0301 2335 00	2	Washer		4015	0211 1359 03	•	3	Cap screw	
1175	1614 6562 00	2	Clamp		4020	0333 3232 00	•	3	Lock washer	
1180	1614 6563 00	2	Clamp		4025	1621 6570 00	•	3	Hinge	
1185	1614 6565 00	2	Clamp		4030	1614 9846 00	•	1	Door	
1190	1614 6564 00	2	Clamp		4035	1621 6569 00	•	3	Hinge	
1195	0147 1250 03	8	Bolt		4040	0147 1357 03	•	3	Bolt	
1200	0301 2321 00	8	Washer		4045	0333 3232 00	•	3	Lock washer	
1205	0266 2108 00	8	Nut		4050	1202 6584 00	•	AR	Seal	
1350	1613 3431 00	1	Label	60Hz	4055		•	2	Lock	1)
1365	1613 5330 00	1	Listing mark	60Hz	4060	1088 1001 04	•	1	Warning mark	
1370	1614 7146 00	1	Flange	60Hz	4070	0301 2358 00	•	4	Washer	
1375	1614 7145 00	1	Gasket	60Hz	4075	0211 1957 80	•	4	Cap screw	
1380	0147 1325 03	6	Bolt	60Hz			<b>1</b>	<b>Plate</b>		
1385	0266 2110 00	6	Nut	60Hz		<b>1614 9842 80</b>		GA		
	<b>1614 9796 80</b>	<b>1</b>	<b>Cubicle</b>			<b>1614 9843 80</b>		GA W		
2005	1614 9796 00	•	1	Cubicle	5005		•	1	Plate	
2010	1614 9797 00	•	1	Door		1614 9842 00		GA		
2015	1202 6584 00	•	AR	Seal		1614 9843 00		GA W		
2020	1614 9106 03	•	2	Pin	5010	1619 2665 00	•	AR	Seal	
2030	1619 7704 00	•	2	Lock						
2035	1621 6572 00	•	1	Decal						
2050	1079 9920 56	•	1	Label						
3010	0147 1400 03	4	Bolt							
3015	0301 2358 00	4	Washer							
3019	1088 0501 02	12	Air inlet							
3020	1088 0501 12	12	Metal wire nett							
3025	0147 1170 03	48	Bolt							
3030	1614 9844 00	1	Cover							
3035	1619 2766 00	3	Bolt							

1) See / Zie / Se / Siehe / Voir / Véase / Vedere / Se / Ver / Se / Katso

**Service kits**  
**2906 0300 00 Hinge replacement kit**

2) Lined with / Bekleed met / Beklädd med / Ausgekleidet mit / Garnir de / Rivestido de / Allineato con / Foret med / Revestido com / Kledd med / Vuorattu :  
Foam: 1079 0001 91 (AR) 40 x 2000 x 1500 Self-adhesive

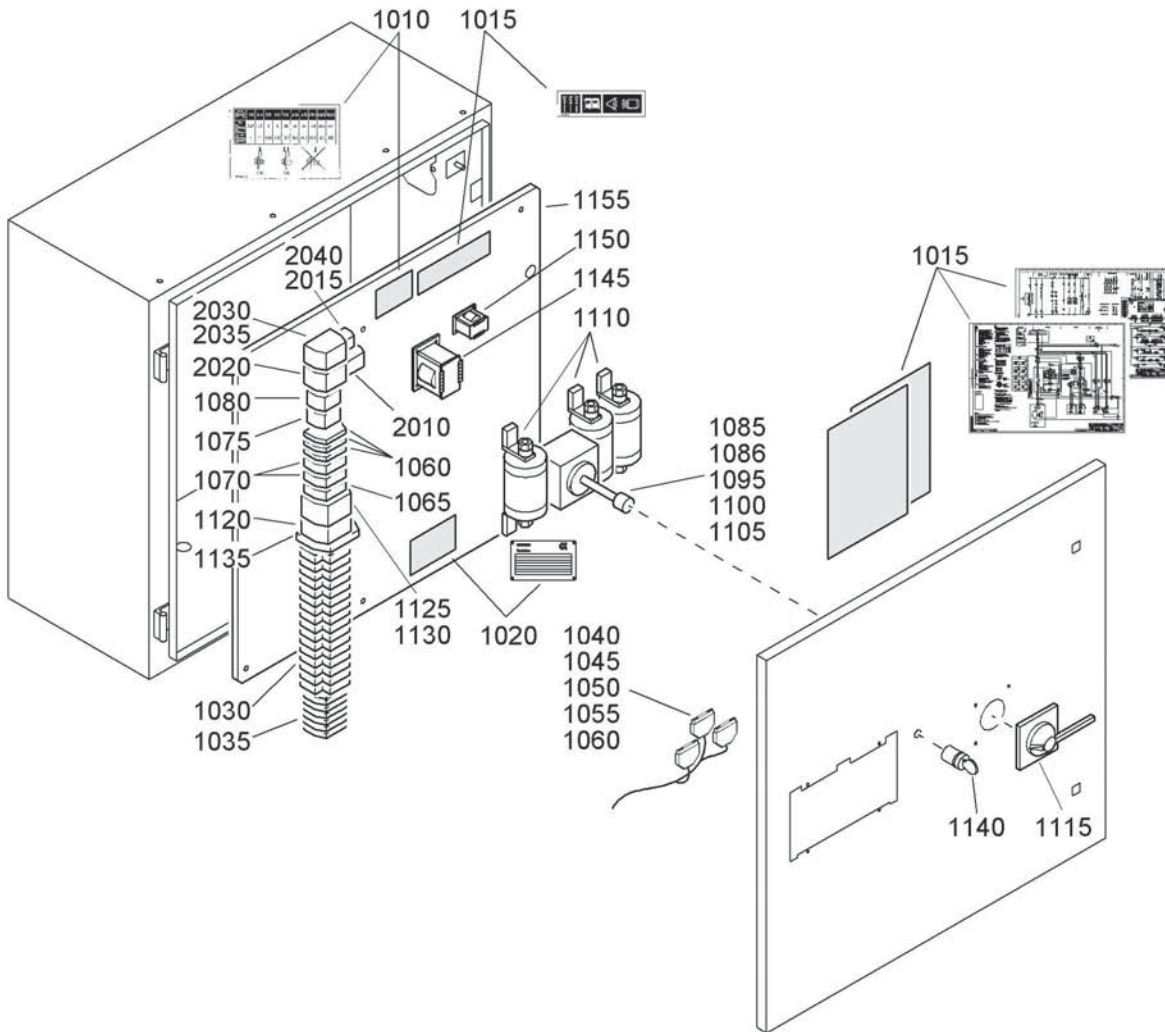
# 25



## Cubicle - VSD assembly

Ref.	Part number	Qty	Name	Remarks	Ref.	Part number	Qty	Name	Remarks
		<b>1</b>	<b>VSD assembly</b>		1085		• 2	Contact block 1NO+INC for 3RV	
	<b>1900 3107 01</b>		GA - 400V/50Hz			1089 9416 07		GA	
	<b>1900 3107 11</b>		GA W - 400V/50Hz			<b>1614 9812 80</b>	<b>1</b>	<b>Drive cubicle</b>	2)
	<b>1900 3107 02</b>		GA - 500V/50Hz		2005	1614 9812 00	• 1	Cubicle	
	<b>1900 3107 12</b>		GA W - 500V/50Hz		2015	0211 1359 03	• 3	Cap screw	
	<b>1900 3107 03</b>		GA - 380V/60Hz		2020	0333 3232 00	• 3	Lock washer	
	<b>1900 3107 13</b>		GA W - 380V/60Hz		2025	1621 6570 00	• 3	Hinge	
	<b>1900 3109 01</b>		GA - 440-460V/60Hz - CSA/UL		2030	1614 9846 00	• 1	Door	
	<b>1900 3109 11</b>		GA W - 440-460V/60Hz - CSA/UL		2035	1621 6569 00	• 3	Hinge	
1010	1088 0501 02	• 12	Air inlet		2040	0147 1357 03	• 6	Bolt	
1015	1088 0501 12	• 12	Metal wire netting		2045	0333 3232 00	• 6	Lock washer	
1035	1089 9345 02	• 2	HF-screen 300mm		2050	1202 6584 00	• AR	Seal	
1040	1079 9906 09	• 1	Label "Retightening screws"		2055		• 2	Lock	1)
1045	1089 0506 27	• 2	Terminal 4-PE-2P		2060	1088 1001 04	• 1	Warning mark	
1050	0000 1111 11	• 3	Terminal 4mm <sup>2</sup> double M4/6.D2		2070	0301 2358 00	• 4	Washer	
1052		• 1	Master drive / EMC-filter		2075	0211 1957 80	• 4	Cap screw	
	0068 1200 22		CSA/UL		1)	See / Zie / Se / Siehe / Voir / Véase / Vedere / Se / Ver / Se / Katso			
	1089 9339 25		IEC			<b>Service kits 2906 0300 00 Hinge replacement kit</b>			
1060	1089 9338 50	• 1	Simovert masterdrives		2)	Lined with / Bekleed met / Beklädd med / Ausgekleidet mit / Garnir de / Rivestido de / Allineato con / Foret med / Revestido com / Kledd med / Vuorattu :			
1065		• 1	Filtered micromaster 7.5kW			Foam: 1079 0001 91 (AR) 40 x 2000 x 1500 Self-adhesive			
	0068 8013 92		GA						
1070	1089 9453 01	• 1	Temp. sensor R <sup>335</sup> °C						
1075	1089 9342 04	• 1	Enetzdrossel line reactor						
1080		• 2	Circuit breaker						
	1089 9416 28		GA						

# 26

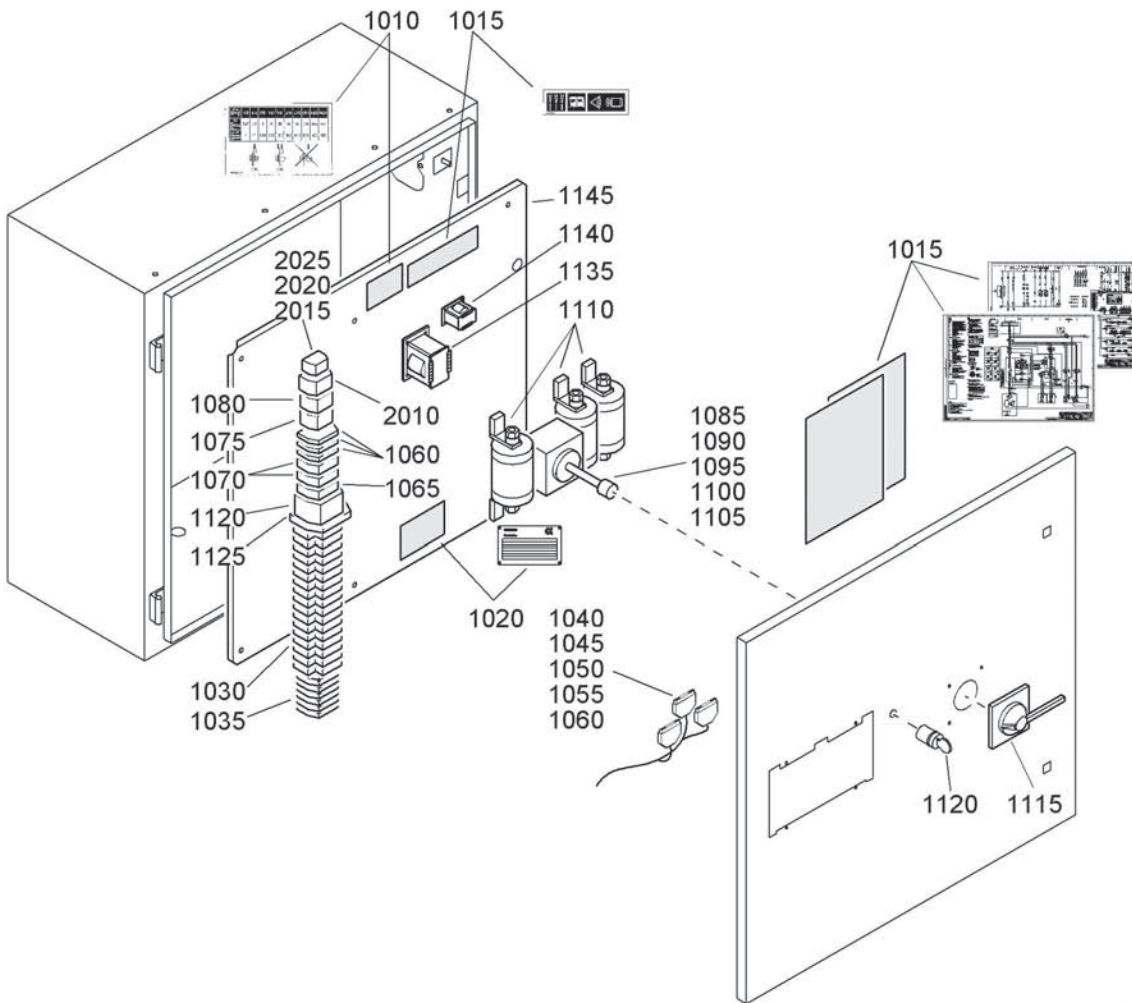


60965\_12

## Control panel - GA

Ref.	Part number	Qty	Name	Remarks	Ref.	Part number	Qty	Name	Remarks
			<b>Control panel</b>		1115		• 1	Handle	
	<b>1900 3106 01</b>		400V/50Hz			0068 8011 33		IEC	
	<b>1900 3106 02</b>		500V/50Hz			0068 8010 26		CSA/UL	
	<b>1900 3106 03</b>		380V/60Hz		1120		• 1	Circuit breaker	
	<b>1900 3108 01</b>		440-460V/60Hz CSA/UL			1089 9416 21		IEC	
1010	1079 9906 09	• 1	Label "Retightening screws"			1089 9416 22		CSA/UL	
1015	9823 1821 21	• 1	Label "Service diagram"		1125		• 1	Circuit breaker	
1020		• 1	Data plate			1089 9416 70		IEC	
	1613 6639 00		IEC			1089 9416 71		CSA/UL	
	1613 3046 00		CSA/UL		1130	1089 9416 07	• 1	Contact block 1NO+1NC for 3RV	
1025	1089 0506 27	• 10	Terminal 4-PE-2p		1135	1089 0609 05	• 1	Switch	
1030	0000 1111 11	• 30	Terminal 4mm <sup>2</sup> Double M4/6.D2		1140	1089 9082 24	• 1	Key switch	
1035	1089 0506 60	• 6	Terminal 6-1p		1145	1089 9436 05	• 1	Transformer	
1040	1088 0024 04	• 1	Connector 4 poles		1150	1089 9436 11	• 1	Transformer	
1045	1088 0024 10	• 1	Connector 10 poles		1155	1614 9793 00	• 1	Mounting plate	
1050	1088 0024 18	• 1	Connector 18 poles					<b>Feature option - with dryer</b>	
1055	1088 0000 06	• 1	Connector 6 poles			<b>1900 3002 05</b>		400V/50Hz	
1060	1088 0024 02	• 3	Connector 2 poles			<b>1900 3002 16</b>		500V/50Hz	
1065		• 1	Circuit breaker			<b>1900 3002 42</b>		380V/60Hz IEC	
	1089 9203 21		IEC			<b>1900 3002 55</b>		440-460V/60Hz CSA/UL	
	1089 9203 35		CSA/UL		2010		• 1	Contact	
1070		• 2	Circuit breaker			1089 9415 22		400V/50Hz	
	1089 9203 04		IEC			1089 9415 21		500V/50Hz	
	1089 9203 36		CSA/UL			1089 9415 23		380V/60Hz IEC	
1075		• 1	Relay			1089 9415 26		440-460V/60Hz CSA/UL	
	0068 8007 98		IEC		2015		• 1	Contact	
	0068 8012 24		CSA/UL			1089 9415 11		IEC	
1080		• 1	Relay			1089 9415 14		CSA/UL	
	0068 8007 96	• 1	IEC		2020		• 1	Circuit breaker	
	1089 9438 01	• 1	CSA/UL			1089 9416 70		400V/50Hz	
1085		• 1	Contact block			1089 9416 71		500V/50Hz	
	1089 9337 30		IEC			1089 9416 73		380V/60Hz IEC	
	0068 2000 45		CSA/UL			1089 9416 72		440-460V/60Hz CSA/UL	
1086		• 1	Main switch / Disconnecter		2025	0068 8010 21	• 1	Connecting element	
	0068 1019 66		IEC		2030	1089 9416 07	• 2	Contact block 1NO+1NC for 3RV	
	0068 2000 44		CSA/UL		2035		• 1	Circuit breaker	
1095		• 1	Door locking device			1089 9416 21		400V/50Hz	
	1089 9337 21		IEC			1089 9416 20		500V/50Hz	
1100		• 1	Extension rod 600mm			1089 9416 21		380V/60Hz IEC	
	0068 1110 35		IEC			1089 9416 22		440-460V/60Hz CSA/UL	
1105		• 1	Terminal cover		2040	1089 9416 06	• 1	Connection element	
	0068 1230 92		IEC						
1110		• 3	Fuse						
	1089 9363 25		IEC						
	0068 2060 52		CSA/UL						

# 27



60966\_12

## Control panel - GA W

Ref.	Part number	Qty	Name	Remarks	Ref.	Part number	Qty	Name	Remarks
			<b>Control panel</b>		1100		• 1	Extension rod 600mm	
	<b>1900 3106 13</b>		400V/50Hz			0068 1110 35		IEC	
	<b>1900 3106 11</b>		500V/50Hz		1105		• 1	Terminal cover	
	<b>1900 3106 12</b>		380V/60Hz			0068 1230 92		IEC	
	<b>1900 3108 11</b>		440-460V/60Hz CSA/UL		1110		• 3	Fuse	
1010	1079 9906 09	• 1	Label "Retightening screws"			1089 9363 25		IEC	
1015	9823 1821 22	• 1	Label "Service diagram"			0068 2060 52		CSA/UL	
1020		• 1	Data plate		1115		• 1	Handle	
	1613 6639 00		IEC			0068 8011 33		IEC	
	1613 3046 00		CSA/UL			0068 8010 26		CSA/UL	
1025	1089 0506 27	• 10	Terminal 4-PE-2p		1120		• 1	Circuit breaker	
1030	0000 1111 11	• 30	Terminal 4mm <sup>2</sup> Double			1089 9416 22		50Hz	
			M4/6.D2			1089 9416 21		60Hz	
1035	1089 0506 60	• 6	Terminal 6-1p		1125	1089 0609 05	• 1	Switch	
1040	1088 0024 04	• 1	Connector 4 poles		1130	1089 9082 24	• 1	Key switch	
1045	1088 0024 10	• 1	Connector 10 poles		1135	1089 9436 05	• 1	Transformer	
1050	1088 0024 18	• 1	Connector 18 poles		1140	1089 9436 11	• 1	Transformer	
1055	1088 0000 06	• 1	Connector 6 poles		1145	1614 9793 00	• 1	Mouting plate	
1060	1088 0024 02	• 3	Connector 2 poles				1	<b>Feature option - with</b>	
1065		• 1	Circuit breaker					<b>dryer</b>	
	1089 9203 21		IEC			<b>1900 3002 34</b>		400V/50Hz	
	1089 9203 35		CSA/UL			<b>1900 3002 36</b>		500V/50Hz	
1070		• 2	Circuit breaker			<b>1900 3002 48</b>		380V/60Hz IEC	
	1089 9203 04		IEC			<b>1900 3002 86</b>		440-460V/60Hz CSA/UL	
	1089 9203 36		CSA/UL		2010		• 1	Contact	
1075		• 1	Relay			1089 9415 22		400V/50Hz	
	0068 8007 98		IEC			1089 9415 21		500V/50Hz	
	0068 8012 24		CSA/UL			1089 9415 23		380V/60Hz IEC	
1080		• 1	Relay		2015		• 1	Circuit breaker	
	0068 8007 96		IEC			1089 9416 71		400V/50Hz	
	1089 9438 01		CSA/UL			1089 9416 70		500V/50Hz	
1085		• 1	Contact block 1nc + 1no			1089 9416 73		380V/60Hz IEC	
	1089 9337 30		IEC		2020	1089 9416 07	• 1	Contact block 1no+1nc	
	0068 2000 45		CSA/UL					for 3rv	
1090		• 1	Main switch / Disconnecter		2025	0068 8010 21	• 1	Connecting element	
	0068 1019 66		IEC					3rv - 3rt s0	
	0068 2000 44		CSA/UL						
1095		• 1	Door locking device						
	1089 9337 21		IEC						

## 28

## Control panel - Standard options

Ref.	Part number	Qty	Name	Remarks	Ref.	Part number	Qty	Name	Remarks
	<b>1900 3002 02</b>		<b>Electronic Condensate Drain - IEC</b>			1089 9203 31 •	1	Circuit breaker 0.5A	
	1089 9203 23 •	1	Circuit breaker 0.5A			<b>1900 3002 09</b>		<b>COM1 Module IEC</b>	
	<b>1900 3002 52</b>		<b>Electronic Condensate Drain - CSA/UL</b>			1088 0024 02 •	1	Connector 2 poles	
	1089 9203 31 •	1	Circuit breaker 0.5A			<b>1900 3002 59</b>		<b>COM1 Module CSA/UL</b>	
	<b>1900 3002 03</b>		<b>Dryer with Electronic Condensate Drain - IEC</b>			1088 0024 02 •	1	Connector 2 poles	
	1089 9203 23 •	1	Circuit breaker 0.5A			<b>1900 3002 11</b>		<b>DD-filter</b>	
	<b>1900 3002 53</b>		<b>Dryer with Electronic Condensate Drain - CSA/UL</b>			<b>1900 3002 17</b>		<b>Modbus IEC</b>	
						1088 0024 02 •	1	Connector 2 poles	
						<b>1900 3002 68</b>		<b>Modbus CSA/UL</b>	
						<b>1900 3002 18</b>		<b>Profibus IEC</b>	
						1088 0024 02 •	1	Connector 2 poles	
						<b>1900 3002 69</b>		<b>Profibus CSA/UL</b>	

## Service kits

Ref.	Part number	Qty	Name	Remarks	Ref.	Part number	Qty	Name	Remarks
	<b>2906 0092 00</b>	<b>1</b>	<b>Air/oil filter kit</b>			<b>2906 0300 00</b>	<b>1</b>	<b>Hinge replacement kit</b>	
	0653 1046 00	• 1	Flat gasket			0162 4322 00	• 16	Screw	
	0653 1100 00	• 1	Flat gasket			1089 9068 01	• 1	Key	
	0653 1124 00	• 1	Flat gasket			1089 9154 02	• 1	Key	
	0661 1000 25	• 2	Seal washer			1202 7125 00	• 1	Lock	
	0661 1000 27	• 3	Seal washer			1614 8166 00	• 1	Hinge	
	0661 1000 31	• 1	Seal washer			1614 8167 00	• 1	Hinge	
	1030 0979 99	• 1	Air filter element			1614 8212 00	• 1	Hinge	
	1613 6105 90	• 3	Oil filter element			1614 8213 00	• 1	Hinge	
						1614 8214 00	• 2	Hinge	
						1614 8215 00	• 2	Hinge	
	<b>2906 0093 00</b>	<b>1</b>	<b>Check valve kit</b>			1615 2242 00	• 8	Bracket	
	0661 1000 25	• 1	Seal washer			1619 7704 00	• 1	Lock	
	0663 2106 18	• 1	O-ring			2255 2059 00	• 2	Lock	
	0663 2106 20	• 1	O-ring			2255 2478 00	• 1	Lock	
	2254 5324 00	• 1	Check valve kit						
	2254 8075 00	• 1	Spring						
	<b>2906 0094 00</b>	<b>1</b>	<b>Oil stop valve kit</b>			<b>2906 0565 00</b>	<b>1</b>	<b>Oil separator kit</b>	
	0661 1000 25	• 1	Seal washer			0663 2106 17	• 1	O-ring	
	0663 2106 11	• 2	O-ring			0663 2109 45	• 2	O-ring	
	0663 2106 12	• 1	O-ring			1614 9056 99	• 2	O-ring	
	0663 2106 15	• 1	O-ring			2906 0572 00	• 1	Flexmaster joint kit	
	0663 2108 12	• 1	O-ring						
	2254 9868 00	• 1	Spring			<b>2906 0566 00</b>	<b>1</b>	<b>Cooler kit for GA180 VSD</b>	
						0663 2106 15	• 1	O-ring	
						0663 2106 17	• 1	O-ring	
						0663 2109 68	• 4	O-ring	
	<b>2906 0095 00</b>	<b>1</b>	<b>Min. Pressure valve kit</b>			<b>2906 0567 00</b>	<b>1</b>	<b>Cooler kit for GA180 W VSD</b>	
	0663 2106 58	• 1	O-ring			0634 1000 49	• 2	Pipe coupling element	
	0665 0700 89	• 1	Sealring			0663 2106 17	• 2	O-ring	
	1614 6957 00	• 1	Washer			0663 2109 68	• 4	O-ring	
	2254 9215 00	• 1	Lockplate						
	<b>2906 0170 00</b>	<b>1</b>	<b>Oil filter kit</b>			<b>2906 0572 00</b>	<b>1</b>	<b>Flexmaster joint</b>	
	0653 1046 00	• 1	Flat gasket			0291 1114 00	• 2	Locknut	
	0653 1100 00	• 1	Flat gasket			0300 0276 03	• 4	Washer	
	0653 1124 00	• 1	Flat gasket			1614 9064 00	• 2	Rubber joint	
	0661 1000 25	• 2	Seal washer			1614 9490 00	• 4	Absorber	
	0661 1000 27	• 3	Seal washer						
	0661 1000 31	• 1	Seal washer			<b>2906 0573 00</b>	<b>1</b>	<b>Maintenance kit 4000h - yearly</b>	
	1613 6105 90	• 3	Oil filter element			0661 1000 25	• 1	Seal washer	
	<b>2906 0186 00</b>	<b>1</b>	<b>Compressor element overhaul kit</b>			0663 2106 18	• 1	O-ring	
	0211 1407 00	• 6	Cap screw			0663 2106 20	• 1	O-ring	
	0508 2115 01	• 2	Roller bearing			2254 8075 00	• 1	Spring	
	0653 1124 00	• 2	Flat gasket			2906 0092 00	• 1	Air/oil filter kit	
	0663 7154 00	• 2	O-ring			2906 0094 00	• 1	Oil stop valve kit	
	1079 5081 05	• 2	Bearing			2906 0095 00	• 1	Min press valve kit	
	1616 5380 00	• 2	Wave spring			2901 0301 00	• 1	Drain valve kit	
	1616 5603 70	• 2	Spacer						
	1616 6446 00	• 1	Gasket			<b>2906 0578 00</b>	<b>1</b>	<b>Seal washer kit</b>	
	0663 7131 00	• 1	O-ring oil nozzle			0653 0500 08	• 3	Flat Cu Gasket	
						0653 1046 00	• 3	Flat Cu Gasket	
	<b>2906 0219 00</b>	<b>1</b>	<b>Exchange element installation kit</b>			0653 1062 00	• 12	Flat Cu Gasket	
	0211 1409 00	• 3	Cap screw			0653 1100 00	• 3	Flat Cu Gasket	
	0337 6074 00	• 1	Key			0653 1124 00	• 3	Flat Cu Gasket	
	0663 2104 63	• 1	O-ring			0653 1165 00	• 3	Flat Cu Gasket	
	0663 2106 15	• 1	O-ring			0653 1189 00	• 3	Flat Cu Gasket	
	0663 2106 20	• 1	O-ring			0653 1227 00	• 3	Flat Cu Gasket	
	0663 2108 12	• 1	O-ring			0653 9078 00	• 3	Flat Cu Gasket	
	0663 2109 71	• 1	O-ring			0661 1000 25	• 9	Seal ring	
	0663 2109 71	• 1	O-ring			0661 1000 27	• 12	Seal ring	
	1202 7003 00	• 1	Gasket			0661 1000 29	• 6	Seal ring	
						0661 1000 31	• 3	Seal ring	
						0661 1000 36	• 3	Seal ring	
						0661 1000 30	• 3	Seal ring	
						0661 1000 32	• 3	Seal ring	

## 29

## Service kits

Ref.	Part number	Qty	Name	Remarks
	<b>2906 0604 00</b>	<b>1</b>	<b>Air/oil filter kit (heavy duty version)</b>	
	0653 1046 00 •	1	Flat gasket	
	0653 1100 00 •	1	Flat gasket	
	0653 1124 00 •	1	Flat gasket	
	0661 1000 25 •	2	Seal washer	
	0661 1000 27 •	3	Seal washer	
	0661 1000 31 •	1	Seal washer	
	2914 5017 00 •	1	Air filter element	
	1613 6105 90 •	3	Oil filter element	
	<b>2906 0605 00</b>	<b>1</b>	<b>Exchange element installation kit</b>	
	1614 8942 00 •	1	Bushing	
	1614 9822 00 •	1	Sealring	
	0663 2108 23 •	1	O-ring	
	0663 2107 17 •	2	O-ring	
	0661 1000 25 •	3	Seal washer	
	0211 1409 00 •	3	Cap screw	
	<b>2906 0606 00</b>	<b>1</b>	<b>Maintenance kit - 8000h every two years</b>	
	0663 2107 77 •	1	O-ring oil filter housing	
	1202 5869 03 •	1	Thermostatic valve	
	2901 0301 00 •	1	Drain valve kit	
	2906 0092 00 •	1	Air/oil filter kit	
	2906 0093 00 •	1	Check valve kit	
	2906 0094 00 •	1	Oil stop valve kit	
	2906 0095 00 •	1	Min press valve kit	
	2906 0565 00 •	1	Oil separator kit	
	2906 0572 00 •	2	Flexmaster joint kit	
	<b>2906 7003 00</b>	<b>1</b>	<b>Spare element kit</b>	
	0663 2109 63 •	1	O-ring	
	1617 7043 07 •	1	Filter element	
	0663 9244 00 •	1	O-ring	

# **Atlas Copco** Stationary Air Compressors

GA180 VSD, GA180 W VSD

GA180 VSD-FF, GA180 W VSD-FF

Parts list

What sets Atlas Copco apart as a company is our conviction that we can only excel in what we do if we provide the best possible know-how and technology to really help our customers produce, grow and succeed.

There is a unique way of achieving that - we simply call it the Atlas Copco way. It builds on **interaction**, on long-term relationships and involvement in the customers' process, needs and objectives. It means having the flexibility to adapt to the diverse demands of the people we cater for.

It's the **commitment** to our customers' business that drives our effort towards increasing their productivity through better solutions. It starts with fully supporting existing products and continuously doing things better, but it goes much further, creating advances in technology through **innovation**. Not for the sake of technology, but for the sake of our customer's bottom line and peace-of-mind.

That is how Atlas Copco will strive to remain the first choice, to succeed in attracting new business and to maintain our position as the industry leader.



\* 2 9 3 0 1 2 9 4 0 0 \*