
GARDNER DENVER®

13-10-613
2nd Edition
August, 1995

ELECTRA-SAVER®
STATIONARY BASE-MOUNTED
COMPRESSORS
WITH “AUTO SENTRY ES”
CONTROLLER

MODELS
EAYQ_E & EAYS_E

OPERATING AND
SERVICE MANUAL

Gardner

Denver

MAINTAIN COMPRESSOR RELIABILITY AND PERFORMANCE WITH GENUINE GARDNER DENVER COMPRESSOR PARTS AND SUPPORT SERVICES

Gardner Denver Compressor genuine parts, engineered to original tolerances, are designed for optimum dependability — specifically for Gardner Denver compressor systems. Design and material innovations are the result of years of experience with hundreds of different compressor applications. Reliability in materials and quality assurance are incorporated in our genuine replacement parts.

Your authorized Gardner Denver Compressor distributor offers all the backup you'll need. A worldwide network of authorized distributors provides the finest product support in the air compressor industry. Your local authorized distributor maintains a large inventory of genuine parts and he is backed up for emergency parts by direct access to the Gardner Denver Machinery Inc. Master Distribution Center (MDC) in Memphis, Tennessee.

Your authorized distributor can support your Gardner

Denver air compressor with these services:

1. Trained parts specialists to assist you in selecting the correct replacement parts.
2. Factory warranted new and remanufactured rotary screw air ends. Most popular model remanufactured air ends are maintained in stock at MDC for purchase on an exchange basis with liberal core credit available for the replacement unit.
3. A full line of factory tested AEON™ compressor lubricants specifically formulated for use in Gardner Denver compressors.
4. Repair and maintenance kits designed with the necessary parts to simplify servicing your compressor.

Authorized distributor service technicians are factory-trained and skilled in compressor maintenance and repair. They are ready to respond and assist you by providing fast, expert maintenance and repair services.

For the location of your local authorized Gardner Denver Air Compressor distributor refer to the yellow pages of your phone directory or contact:

Distribution Center:
Gardner Denver Machinery Inc.
Master Distribution Center
5585 East Shelby Drive
Memphis, TN 38141
Phone: (901) 542-6100
(800) 245-4946
Fax: (901) 542-6159

Factory:
Gardner Denver Machinery Inc.
1800 Gardner Expressway
Quincy, IL 62301
Phone: (217) 222-5400
Fax: (217) 223-5897

REMANUFACTURED AIR ENDS

Whenever an air end requires replacement or repair, Gardner Denver offers an industry unique, factory remanufactured air end exchange program. From its modern Remanufacturing Center in Indianapolis, IN, Gardner Denver is committed to supplying you with the highest quality, factory remanufactured air ends that are guaranteed to save you time, aggravation and money.

Immediately Available

Repair downtime costs you money, which is why there are over 200 remanufactured units in inventory at all times, ready for immediate delivery.

Skilled Craftsmen

Our Remanufacturing assembly technicians average over 20 years experience with air compression products.

Precision Remanufacturing

All potentially usable parts are thoroughly cleaned, inspected and analyzed. Only those parts that can be brought back to original factory specifications are remanufactured. Every remanufactured air end receives

a new overhaul kit: bearings, gears, seals, sleeves and gaskets.

Extensive Testing

Gardner Denver performs testing that repair houses just don't do. Magnaflux and ultrasonic inspection spot cracked or stressed castings, monochromatic light analysis exposes oil leaks, and coordinate measurement machine inspects to +/- .0001", insuring that all remanufactured air ends meet factory performance specifications.

Warranty

Gardner Denver backs up every remanufactured air end with a new warranty . . . 18 months from purchase, 12 months from service.

Gardner Denver remanufactured air ends deliver *quality without question . . . year in and year out.*

Call Gardner Denver for information on the air end exchange program and the name of your authorized distributor.

Phone Number: 800-245-4946 or
FAX: 901-542-6159

FOREWORD

Gardner Denver Rotary Screw compressors are the result of advanced engineering and skilled manufacturing. To be assured of receiving maximum service from this machine the owner must exercise care in its operation and maintenance. This book is written to give the operator and maintenance department essential information for day-to-day operation, maintenance and adjustment. Careful adherence to these instructions will result in economical operation and minimum downtime.

DANGER

Danger is used to indicate the presence of a hazard which will cause severe personal injury, death, or substantial property damage if the warning is ignored.

WARNING

Warning is used to indicate the presence of a hazard which can cause severe personal injury, death, or substantial property damage if the warning is ignored.

CAUTION

Caution is used to indicate the presence of a hazard which will or can cause minor personal injury or property damage if the warning is ignored.

NOTICE

Notice is used to notify people of installation, operation or maintenance information which is important but not hazard-related.

This book covers the following models:

HP	PSIG	Air Cooled	Water Cooled	Parts List
350	100, 125, 150	EAYQSE	EAYSSE	13-10-510
400	100, 125, 150	EAYQTE	EAYSTE	13-10-510
500	100, 125, 150	EAYQVE	EAYSVE	13-10-510

TABLE OF CONTENTS

Remanufactured Air Ends	i
Foreword	ii
Index	iv
List of Illustrations	ix
Section 1, General Information	1
Section 2, Installation	8
Section 3, Starting & Operating Procedures	16
Section 4, Controls & Instrumentation	18
Section 5, Lubrication, Oil Cooler, Oil Filter & Separator	37
Section 6, Air Filter	48
Section 7, Coupling	50
Section 8, Maintenance Schedule	51
Section 9, Trouble Shooting	52
Section 10, Trouble Shooting Controls	55
Warranty	Last Page

INSTRUCTIONS FOR ORDERING REPAIR PARTS

When ordering parts, specify Compressor MODEL, Method of Cooling, HORSEPOWER and SERIAL NUMBER (see nameplate on unit). The Serial Number is also stamped on top of the cylinder flange to the right of the inlet housing.

All orders for Parts should be placed with the nearest authorized distributor.

Where NOT specified, quantity of parts required per compressor or unit is one (1); where more than one is

required per unit, quantity is indicated in parenthesis. SPECIFY EXACTLY THE NUMBER OF PARTS REQUIRED.

DO NOT ORDER BY SETS OR GROUPS.

To determine the Right Hand and Left Hand side of a compressor, stand at the motor end and look toward the compressor. Right Hand and Left Hand are indicated in parenthesis following the part name, i.e. (RH) & (LH), when appropriate.

INDEX

<p>Actuator, Turn Valve 30</p> <p>Addition of Oil Between Changes 39</p> <p>Advisories</p> <p style="padding-left: 20px;">Clearing 20</p> <p style="padding-left: 20px;">Service and Maintenance 20</p> <p>Aftercooler 11</p> <p>AIR FILTER, SECTION 6 48</p> <p>Air Filter Element Life 48, 49</p> <p>Air Filter Vacuum Switch 31</p> <p>Air Filter, Dust Cap 49</p> <p>Air Filter, Heavy-Duty 48</p> <p>Air Filter, Heavy-Duty – 350 & 400 HP Units .. 49</p> <p>Air Flow in the Compressor System 1</p> <p>Air Receiver, Auxiliary 11</p> <p>Air-Cooled Oil Cooler Module 9</p> <p>Alarm Relay 27</p> <p>Auto Sentry–ES Control Display 19</p> <p>Auto Sentry–ES Controller</p> <p style="padding-left: 20px;">Alarm Relay 27</p> <p style="padding-left: 20px;">Automatic Sequence Change 26</p> <p style="padding-left: 20px;">Connection to External Controls 26</p> <p style="padding-left: 20px;">Establishing Initial Sequence 24</p> <p style="padding-left: 20px;">How Auto Sentry–ES Controls Pressure while Sequencing 25</p> <p style="padding-left: 20px;">Installation 24</p> <p style="padding-left: 20px;">Operation 24</p> <p style="padding-left: 20px;">Other Features 26</p> <p style="padding-left: 20px;">Programming and Setup 21</p> <p style="padding-left: 20px;">Programming Steps 21</p> <p style="padding-left: 20px;">Remote On / Off 26</p> <p style="padding-left: 20px;">Serial Communications 27</p> <p>Auto Sentry–ES Operation 18</p> <p style="padding-left: 20px;">Automatic Mode 19</p> <p style="padding-left: 20px;">Constant Run Mode 18</p> <p style="padding-left: 20px;">Low Demand Mode 18</p> <p style="padding-left: 20px;">Sequence Mode 19</p> <p>Automatic Mode Operation 19</p> <p>Blowdown Valve 28</p>	<p>Change Procedure, Lubricant 38</p> <p>Check, Daily 17</p> <p>Cleaning and Draining Oil System 40</p> <p>Clearing Advisories 20</p> <p>Cold Ambient Operation 39</p> <p>Cold Weather Operation 12</p> <p>Cold Weather Operation, Installation for 12</p> <p>Compression Principle 1</p> <p>Compressor 1</p> <p>Compressor Capacity Control – Turn Valve Units Only 32</p> <p>Compressor Oil Cooler 42</p> <p>Compressor Oil Filter 41</p> <p>Compressor Oil Separator 45</p> <p>Compressor Oil System 37</p> <p>Compressor Oil System Check 47</p> <p>Constant Run Mode Operation 18</p> <p>Control Devices, Other 27</p> <p>Control Transformer 31</p> <p>CONTROLS & INSTRUMENTS, SECTION 4 . 18</p> <p>Controls & Instruments, General Description .. 18</p> <p>Cooler, Compressor Oil 42</p> <p>Cooling, Sealing and Lubrication 1</p> <p>COUPLING, SECTION 7 50</p> <p>Coupling 50</p> <p style="padding-left: 20px;">Alignment 50</p> <p>Daily Check 17</p> <p>Decals 6, 7</p> <p>Discharge Service Line 13</p> <p>Discharge Thermistor 31</p> <p>Drain, Oil Reservoir 9</p> <p>Draining and Cleaning Oil System 40</p> <p>Dust Cap 49</p> <p>Electric Motor Grease Recommendations 15</p> <p>Electric Motor Regreasing Interval 15</p> <p>Electrical Wiring 14</p> <p style="padding-left: 20px;">Standard Units 14</p> <p>Element Life, Air Filter 48, 49</p>
--	---

INDEX

<p>Emergency Stop Push–Button 31</p> <p>Emergency Stop Shutdown 21</p> <p>Enclosure 9</p> <p>External Device Shutdown 21</p> <p>Fan Starter 31</p> <p>Filling Oil Reservoir 41</p> <p>Filter, Compressor Oil 41</p> <p>Filter Element 48, 49</p> <p>Filter, Heavy Duty Air 48</p> <p>Foreword ii</p> <p>Foundation 9</p> <p>Gauge, Oil Level 28, 39</p> <p>GENERAL INFORMATION, SECTION 1 1</p> <p>Grease Recommendations, Electric Motor 15</p> <p>Grounding 15</p> <p>High Pressure Shutdown 21</p> <p>High Temperature Operation 38</p> <p>High Temperature Shutdown 20</p> <p>Inlet Line 12</p> <p>Inlet Screen and Tube 49</p> <p>Inlet Valve 29</p> <p>INSTALLATION, SECTION 2 8</p> <p>Installation, General 8</p> <p>Installation for Cold Weather Operation 12</p> <p>Lifting Unit 8</p> <p>Line, Discharge Service 13</p> <p>Line, Inlet 12</p> <p>Location 8</p> <p>Low Demand Mode Operation 18</p> <p>Low Oil Pressure Shutdown 21</p> <p>Lubricant, Recommended 37</p> <p>Lubricant Change Procedure 38</p> <p>Lubrication, Cooling and Sealing 1</p> <p>LUBRICATION, OIL COOLER, OIL FILTER & SEPARATOR, SECTION 5 37</p>	<p>Lubrication, Motor 15</p> <p>Main Starter 31</p> <p>MAINTENANCE SCHEDULE, SECTION 8 ... 51</p> <p>Minimum Discharge Pressure Valve 28</p> <p>Moisture in the Oil System 39</p> <p>Moisture Separator/Trap 12</p> <p>Motor Grease Recommendations 15</p> <p>Motor Lubrication 15</p> <p>Motor Protective Devices 20</p> <p>Motor Regreasing Interval 15</p> <p>Oil Change Interval 40</p> <p>Oil Cooler, Compressor 42</p> <p>Oil Filter, Compressor 41</p> <p>Oil Level Gauge 28, 39</p> <p>Oil Reservoir 45</p> <p style="padding-left: 20px;">Filling 41</p> <p>Oil Reservoir Drain 9</p> <p>Oil Separator</p> <p style="padding-left: 20px;">Compressor 45</p> <p style="padding-left: 20px;">Inspection 46</p> <p style="padding-left: 20px;">Oil Carryover 45</p> <p style="padding-left: 20px;">Removal for Inspection or Replacement ... 46</p> <p>Oil Specifications 37</p> <p>Oil System</p> <p style="padding-left: 20px;">Compressor 37</p> <p style="padding-left: 20px;">Draining and Cleaning 40</p> <p>Oil System Check 47</p> <p style="padding-left: 20px;">Air and Oil Discharge Temperature 47</p> <p style="padding-left: 20px;">Oil Cooler Oil Pressure Differential 47</p> <p style="padding-left: 20px;">Oil Cooler Temperature Differential 47</p> <p style="padding-left: 20px;">Oil Cooler Water Pressure Differential 47</p> <p style="padding-left: 20px;">Oil Inlet Pressure 47</p> <p>Operation</p> <p style="padding-left: 20px;">Automatic Mode 19</p> <p style="padding-left: 20px;">Cold Ambient 39</p> <p style="padding-left: 20px;">Constant Run Mode 18</p> <p style="padding-left: 20px;">High Temperature 38</p> <p style="padding-left: 20px;">Low Demand Mode 18</p>
---	---

INDEX

Sequence Mode	19	Service Check List	51
Optional Switches	32	Air Filter	51
Power Failure	21	Every 1000 Hours Operation	51
Pressure Differential Gauging	46	Every 125 Hours Operation	51
Pressure Regulator	29	Every 6000 Hours Operation	51
Prestart-Up Instructions	16	Every 8 Hours Operation	51
Air Filter	16	Every Year	51
Coupling	16	Motor Lubrication	51
Electrical	16	Oil Separator	51
Enclosure	17	Shutdowns	
Grounding	16	Emergency Stop	21
Operating Mode	17	External Device	21
Piping	16	High Pressure	21
Rotation	16	High Temperature	20
System Pressure	17	Low Oil Pressure	21
Programming and Setup, Auto Sentry-ES		Motor Protective Devices	20
Controller	21	Other	21
Protective Shutdowns	20	Power Failure	21
Purge Valve	30	Separator Differential Pressure	21
Recommended Lubricant	37	Shuttle Valve	30
Regreasing Interval, Electric Motor	15	Solenoid Valves IVC and IVO	29
Regulator, Pressure	29	Solenoid Valves TVC and TVO	30
Relief Valve	27	Specifications, Oil	37
Remote On / Off	26	Starter	
Repair Parts, Ordering Instructions	iii	Fan	31
Reservoir, Oil	45	Main	31
Reservoir Pressure Transducer	31	STARTING & OPERATING PROCEDURES,	
Safety Precautions	4, 5	SECTION 3	16
Sealing, Lubrication and Cleaning	1	Starting the Unit	17
Separator, Compressor Oil	45	Unit Cold	17
Separator Differential Pressure Shutdown	21	Unit Hot	17
Separator/Trap, Moisture	12	Stopping the Unit	17
Sequence Mode Operation	19	Strip, Terminal	31
Sequencing Compressors with Auto		Switch	
Sentry-ES	24	Air Filter Vacuum	31
Serial Communications	27	Vibration	31
Service Advisories	20	Switches, Optional	32
		System Pressure Transducer	30
		System Thermistor	31

INDEX

Table of Contents	iii	Valve	
Terminal Strip	31	Blowdown	28
Thermistor		Inlet	29
Discharge	31	Minimum Discharge Pressure	28
System	31	Purge	30
Transducer		Relief	27
Reservoir Pressure	31	Shuttle	30
System Pressure	30	Solenoid IVC and IVO	29
Transformer, Control	31	Solenoid TVC and TVO	30
TROUBLE SHOOTING, SECTION 9	52	Turn	30
TROUBLE SHOOTING CONTROLS, SECTION 10	55	Ventilation	9
Tube, Inlet	49	Vibration Switch	31
Turn Valve	1, 30	Warranty	Last Page
Turn Valve Actuator – EAQ Units Only	30	Wiring, Electrical	14

LIST OF ILLUSTRATIONS

Figure #	Description	Page
Figure 1–1	Compression Cycle	1
Figure 1–2	View of Water Cooled Unit with Aftercooler (less enclosure) – Motor Side	2
Figure 1–3	View of Water Cooled Unit with Aftercooler (less enclosure) – Motor End	2
Figure 1–4	View of Water Cooled Unit with Aftercooler (less enclosure) – Reservoir End	3
Figure 1–5	View of Water Cooled Unit with Aftercooler (less enclosure) – Reservoir Side	3
Figure 2–1	Typical Compressor Room	8
Figure 2–2	Air Flow Chart	8
Figure 2–3	Piping Schematic	9
Figure 2–4	Piping Diagram for Aftercooler and Heat Exchanger	10
Figure 2–5	Cold Weather Installation	11
Figure 2–6	Inlet Line Lengths	12
Figure 2–7	Heat Exchanger (Oil Cooler) Approximate Water Flow	13
Figure 2–8	Aftercooler Approximate Water Flow	13
Figure 4–1	Auto Sentry–ES Display	19
Figure 4–2	Schematic Tubing Diagram	27
Figure 4–3	Blowdown Valve	28
Figure 4–4	Minimum Discharge Pressure Valve	28
Figure 4–5	Inlet Valve	29
Figure 4–6	Shuttle Valve	30
Figure 4–7	Turn Valve Control	30
Figure 4–8	Turn Valve Actuator	31
Figure 4–9	Control Schematic – Compressor at Full Load	33
Figure 4–10	Control Schematic – Compressor Fully Unloaded – Constant Speed Mode	34
Figure 4–11	Control Schematic – Compressor Fully Unload – Low Demand Mode	35
Figure 4–12	Wiring Diagram – 212EAP546	36
Figure 5–1	Flow Diagram – Air / Oil Systems	37
Figure 5–2	Oil Systems Capacities (Approximate) U. S. Gallons	39
Figure 5–3	Oil Change Interval	40
Figure 5–4	Compressor Oil Filter	42
Figure 5–5	Oil Flow Diagram – Remote Overhead Mounted Oil Cooler	42
Figure 5–6	Thermostatic Mixing Valve Element	43
Figure 5–7	Water Control Valve	44
Figure 5–8	Dew Point Temperature vs. Ambient Temperature, (100% Relative Humidity)	44
Figure 5–9	Single Element Oil Separator	45
Figure 5–10	Ambient Temperatures	47
Figure 6–1	Heavy Duty Air Filter	48
Figure 7–1	Installation of Coupling Style “A”	50
Figure 7–2	Installation of Coupling Style “B”	50

SECTION 1 GENERAL INFORMATION

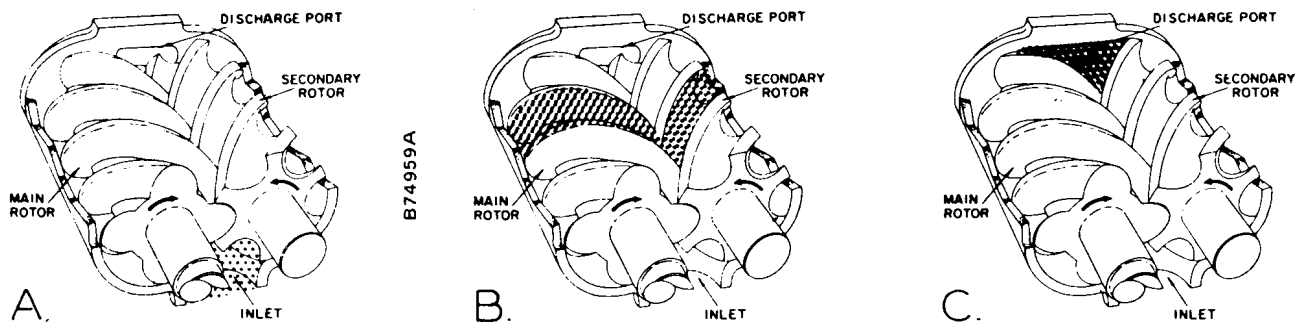


FIGURE 1-1 – COMPRESSION CYCLE

COMPRESSOR – The Gardner Denver Electra-Saver compressor is a single stage, positive displacement rotary machine using meshing helical rotors to effect compression. The input drive shaft and helical drive gear are supported in the gear case by high capacity tapered roller bearings. The drive gear meshes with a driven gear mounted on the main rotor shaft to drive the rotors. Both rotors are supported between large capacity anti-friction bearings located outside the compression chamber. Single width cylindrical roller bearings are used at the inlet end of the rotors. Early models used two (2) heavy-duty, single-row, angular contact ball bearings at the discharge end to locate each rotor axially and carry all thrust loads; later models use tapered roller bearings in this location.

COMPRESSION PRINCIPLE (FIGURE 1-1) – Compression is accomplished by the main and secondary rotors synchronously meshing in a one-piece cylinder. The main rotor has four (4) helical lobes 90° apart. The secondary rotor has five (5) matching helical grooves 72° apart to allow meshing with main rotor lobes.

The air inlet port is located on top of the compressor near the center. The discharge port is near the bottom at the opposite end of the compressor cylinder. *Figure 1-1 is an inverted view to show inlet and discharge ports.* The compression cycle begins as rotors unmesh at the inlet port and air is drawn into the cavity between the main rotor lobes and secondary rotor grooves (A). When the rotors pass the inlet port cutoff, air is trapped in the interlobe cavity and flows axially with the meshing rotors (B). As meshing continues, more of the main rotor lobe enters the secondary rotor groove, normal volume is reduced and pressure increases.

Oil is injected into the cylinder to remove the heat of compression and seal internal clearances. Volume reduction and pressure increase continues until the air/oil

mixture trapped in the interlobe cavity by the rotors passes the discharge port and is released to the oil reservoir (C). Each rotor cavity follows the same “fill-compress-discharge” cycle in rapid succession to produce a discharge air flow that is continuous, smooth and shock free.

AIR FLOW (FIGURE 5-1, page 37) – Air enters the air filter and passes through the inlet unloader valve to the compressor. After compression, the air/oil mixture passes into the oil reservoir where most of the entrained oil is removed by velocity change and impingement and drops back into the reservoir. The air and remaining oil then passes through the oil separator; the separated oil is returned to the system through tubing connecting the separator and compressor. The air passes through the reservoir discharge manifold, discharge check valve, minimum pressure valve and the customer furnished unit shutoff globe valve to the plant air lines.

LUBRICATION, COOLING AND SEALING – Oil is forced by air pressure from the oil reservoir through the oil cooler, thermostatic mixing valve, and oil filter and discharges into the compressor main oil gallery. A portion of the oil is directed through internal passages to the bearings, gears and shaft oil seal. The balance of the oil is injected directly into the compression chamber to remove heat of compression, seal internal clearances and lubricate the rotors.

TURN VALVE – The turn valve is a rotary helical valve located on the discharge side of the cylinder toward the inlet end. The valve opens and closes ports in the cylinder which communicates with the inlet passage. This varies the compressor rotor volume to match the demand for air, thus reducing the part-load power requirement.

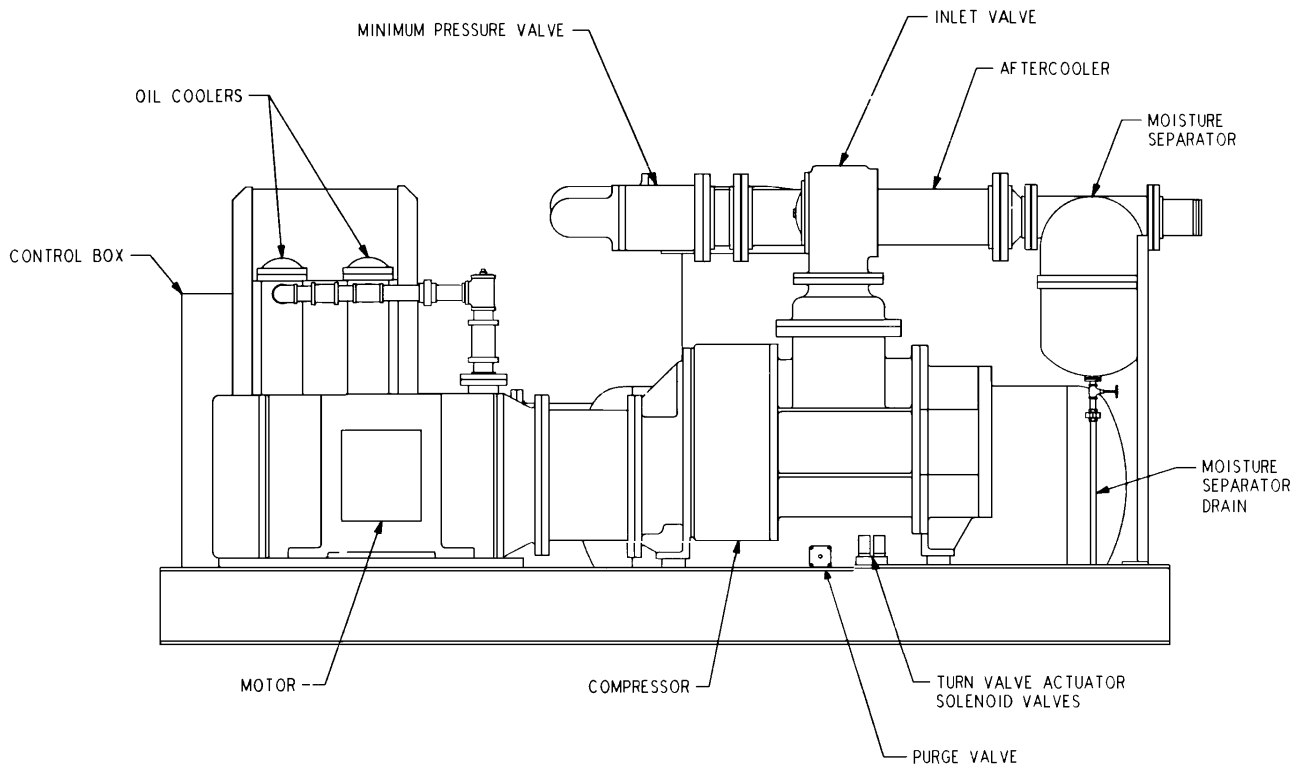


FIGURE 1-2 – VIEW OF WATER COOLED UNIT WITH AFTERCOOLER (LESS ENCLOSURE) COMPRESSOR – MOTOR SIDE

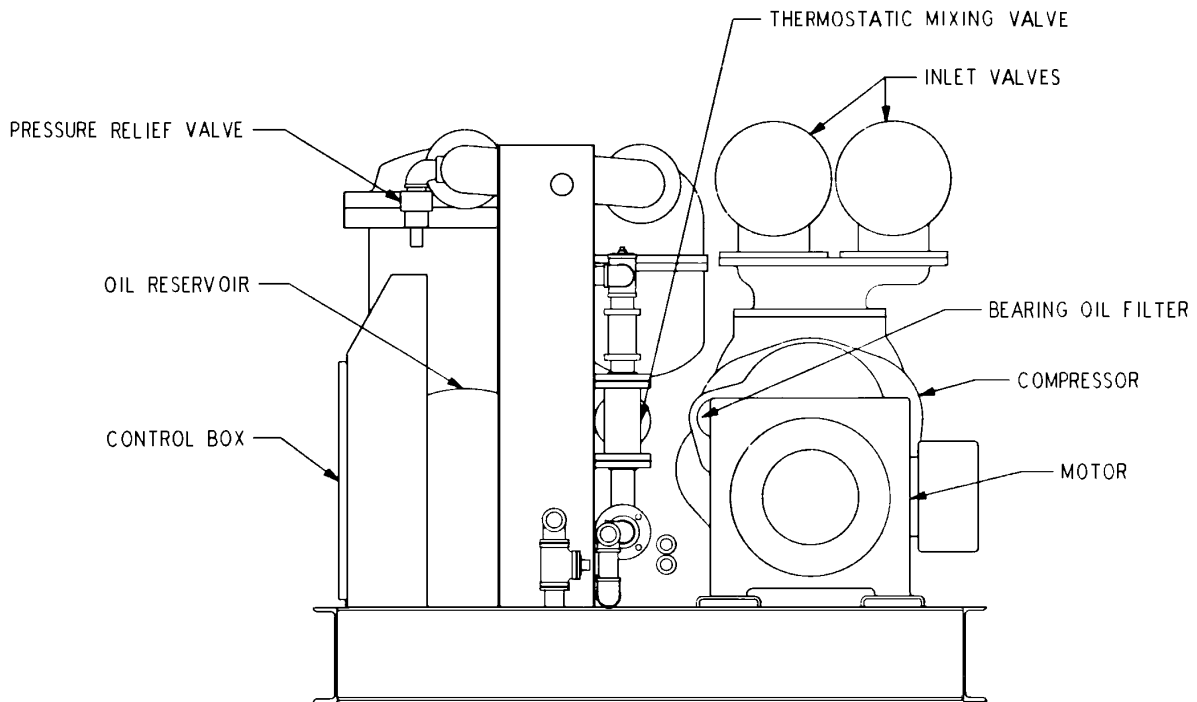


FIGURE 1-3 – VIEW OF WATER COOLED UNIT WITH AFTERCOOLER (LESS ENCLOSURE) – MOTOR END

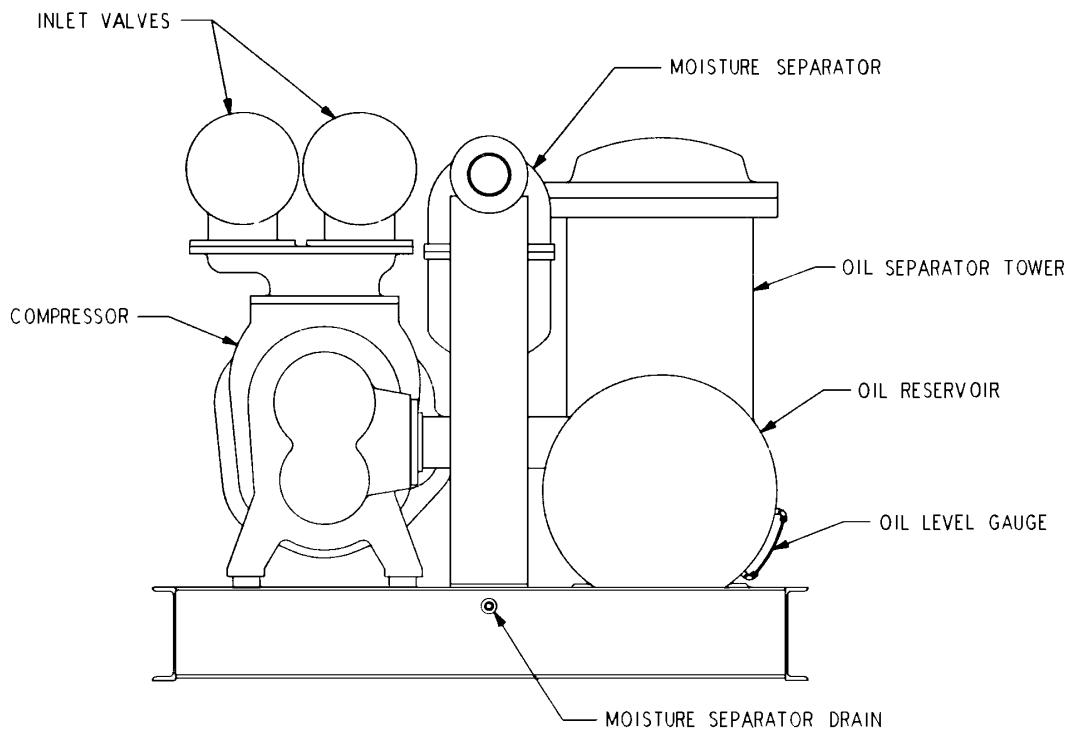


FIGURE 1-4 – VIEW OF WATER COOLED UNIT WITH AFTERCOOLER (LESS ENCLOSURE) COMPRESSOR – RESERVOIR END

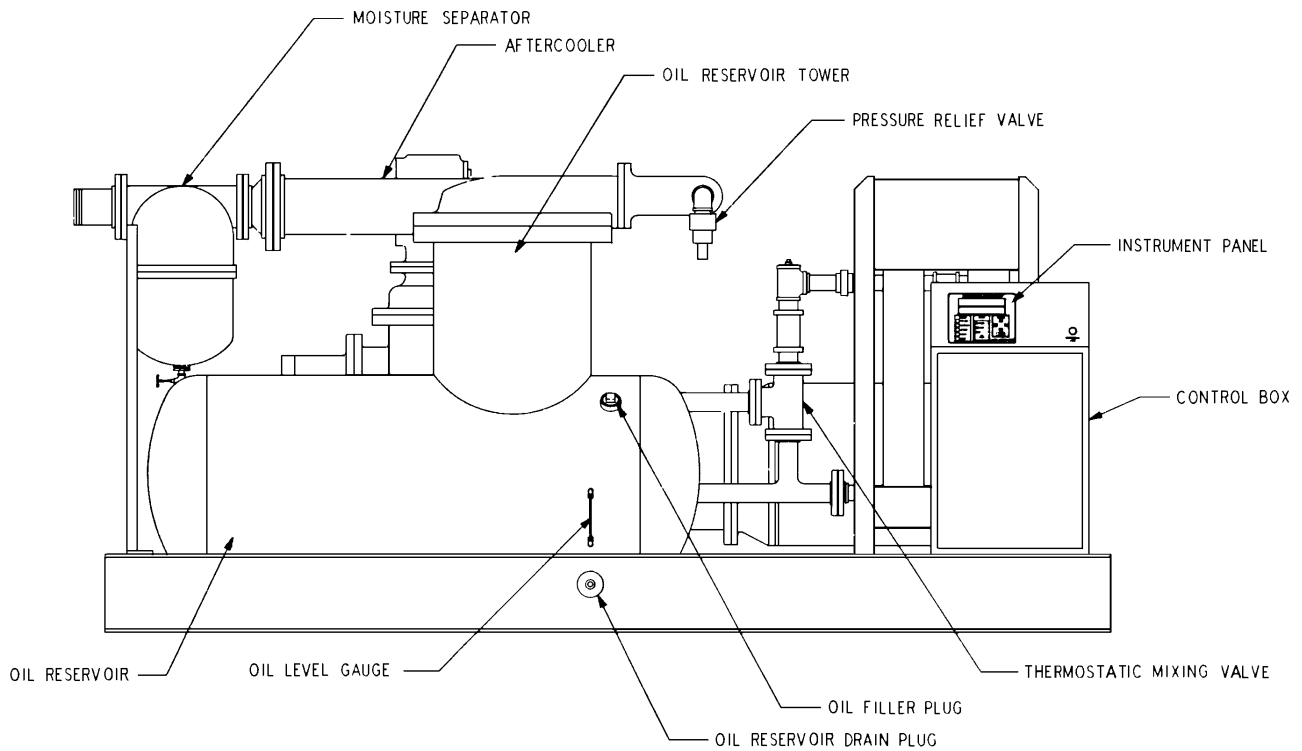


FIGURE 1-5 – VIEW OF WATER COOLED UNIT WITH AFTERCOOLER (LESS ENCLOSURE) RESERVOIR SIDE

SAFETY PRECAUTIONS

Safety is everybody's business and is based on your use of good common sense. All situations or circumstances cannot always be predicted and covered by established rules. Therefore, use your past experience, watch out for safety hazards and be cautious.

Some general safety precautions are given below:



Failure to observe these notices could result in injury to or death of personnel.

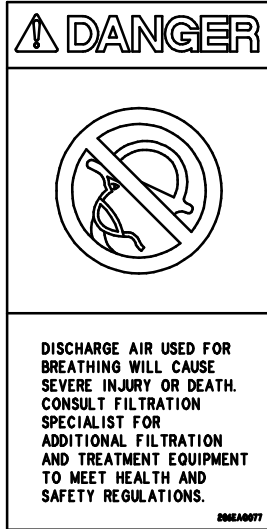
- **Keep fingers and clothing away from revolving fan, drive coupling, etc.**
- **Do not use the air discharge from this unit for breathing – not suitable for human consumption.**
- **Do not loosen or remove the oil filler plug, drain plugs, covers, the thermostatic mixing valve or break any connections, etc., in the compressor air or oil system until the unit is shut down and the air pressure has been relieved.**
- **Electrical shock can and may be fatal.**
- **Compressor unit must be grounded in accordance with the National Electrical Code. A ground jumper equal to the size of the equipment ground conductor must be used to connect the compressor motor base to the unit base.**
- **Fan motors must remain grounded to the main base through the starter mounting panel in accordance with the National Electrical Code.**
- **Open main disconnect switch, tag and lockout before working on the control.**
- **Disconnect the compressor unit from its power source, tag and lockout before working on the unit – this machine is automatically controlled and may start at any time.**

 **WARNING**

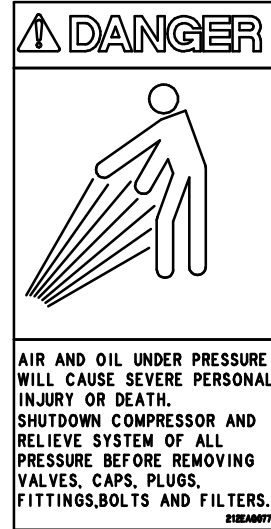
Failure to observe these notices could result in damage to equipment.

- **Stop the unit** if any repairs or adjustments on or around the compressor are required.
- **Disconnect the compressor** unit from its power source, tag and lockout before working on the unit – this machine is automatically controlled and may start at any time.
- **An Excess Flow Valve** should be on all compressed air supply hoses exceeding 1/2 inch inside diameter. (OSHA Regulation, Section 1926.302)
- **Do not exceed the rated maximum pressure values** shown on the nameplate.
- **Do not operate unit** if safety devices are not operating properly. Check periodically. Never bypass safety devices.

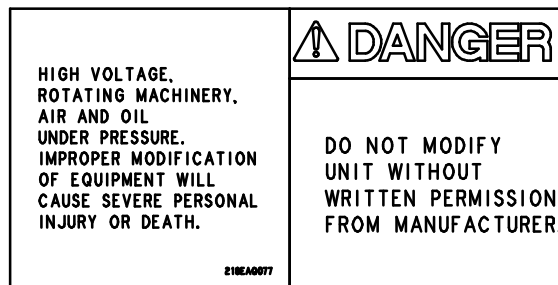
DECALS



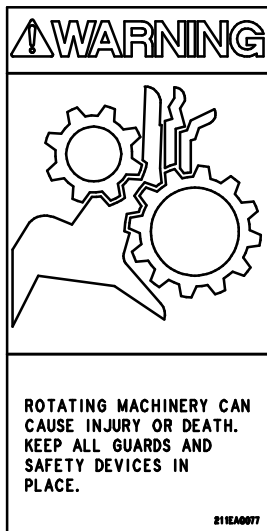
206EAQ077



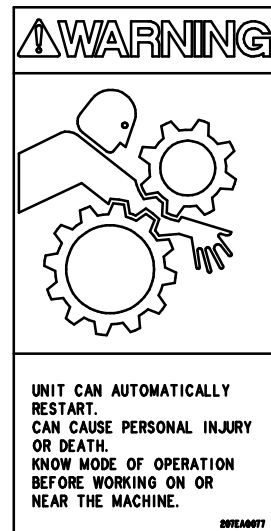
212EAQ077



218EAQ077

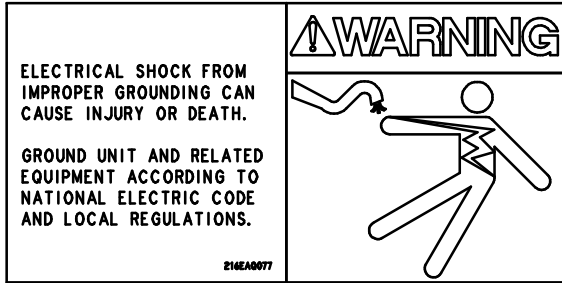


211EAQ077

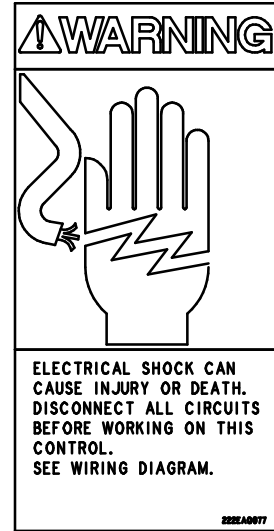


207EAQ077

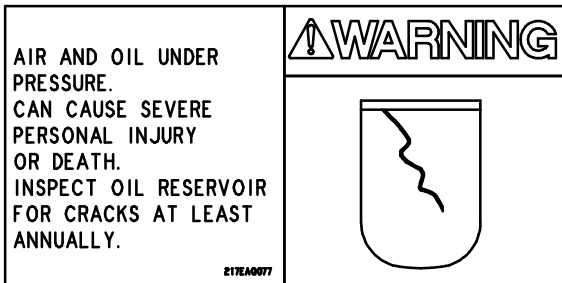
DECALS



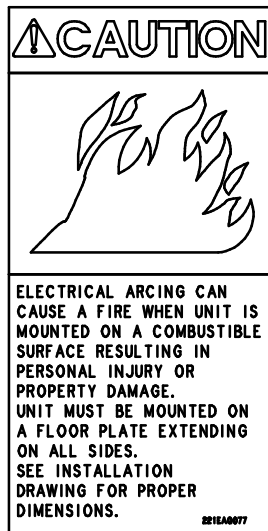
216EAQ077



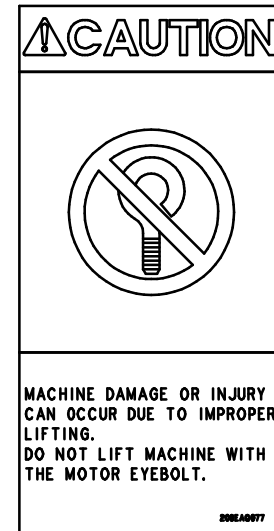
222EAQ077



217EAQ077



221EAQ077



208EAQ077

SECTION 2 INSTALLATION

GENERAL – On receipt of the unit, check for any damage that may have been incurred during transit. Report any damage or missing parts as soon as possible.

CAUTION

Do not electric weld on the compressor or base; bearings can be damaged by passage of current.

LIFTING UNIT:

CAUTION

Lift compressor unit by base only. Do not use other places such as motor, compressor or discharge manifold piping as lifting points.

DANGER

The eyebolts or lugs provided on the motor are for lifting the motor only and should not be used to lift any additional weight. All eyebolts must be securely tightened. When lifting the motor the lifting angle must not exceed 15 degrees. Failure to observe this warning may result in damage to equipment or personal injury.

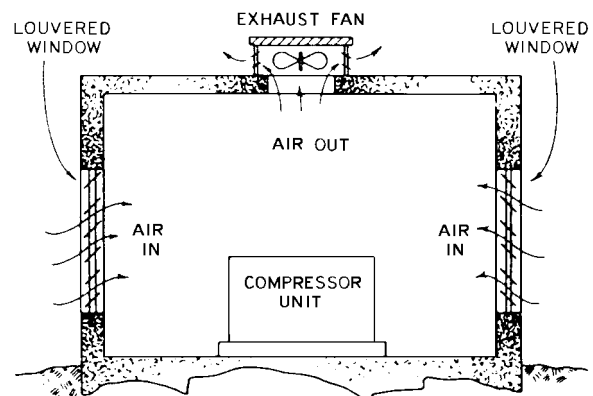
DANGER

Compressor, air/oil reservoir, separation chamber and all piping and tubing may be at high temperature during and after operation.

LOCATION – The compressor should be installed in a clean, well-lighted, well-ventilated area with ample space all around for maintenance. Select a location that provides a cool, clean, dry source of air. In some

cases it may be necessary to install the air filter at some distance from the compressor to obtain proper air supply.

The compressor unit require electric motor cooling air as well as air to the compressor inlet. Proper ventilation **MUST** be provided (FIGURE 2–2); hot air must be exhausted from the compressor operating area. A typical inlet–outlet air flow arrangement is shown in FIGURE 2–1.



A75119

FIGURE 2-1 – TYPICAL COMPRESSOR ROOM

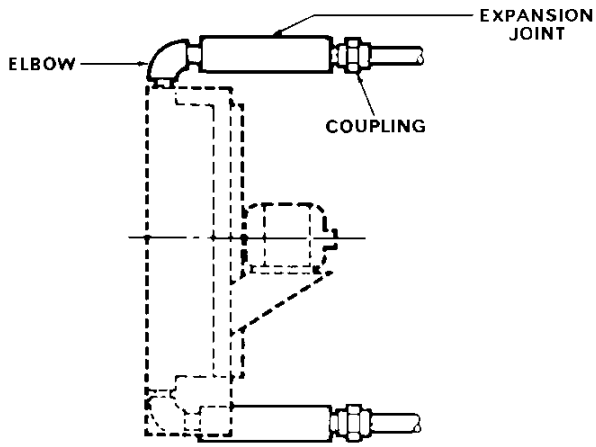
If the air-cooled oil cooler module is to be installed at a location remote from the compressor unit, be sure that adequate ventilation is provided, FIGURE 2–2. Hot air must be exhausted from the oil cooler area.

Do not block the air flow to and from the unit. Allow 3–1/2 feet to the nearest obstruction on the control box side of the unit and 3 feet on all other sides.

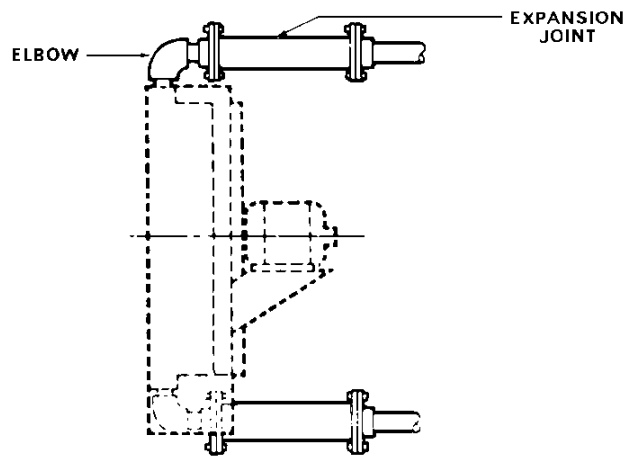
Size	Open Compressor Unit	Aftercooler and Oil Cooler Module	Open Unit With Aftercooler & Oil Cooler Module Discharge in Same Room
350 HP	12,600	43,000	55,600
400 HP	14,400	43,000	57,400
500 HP	18,000	43,000	61,000

* 80° F Inlet Air

FIGURE 2-2 – AIR FLOW CHART



PIPING SCHEMATIC OF COOLER WITH SCREWED CONNECTIONS.



PIPING SCHEMATIC OF COOLER WITH FLANGED CONNECTIONS.

FIGURE 2-3 – PIPING SCHEMATIC

VENTILATION – The unit, whether air- or water-cooled, requires sufficient air flow, FIGURE 2-2, for electric motor cooling. Air is drawn into the back and front of the motor and is discharged out the sides. Do not block air flow to and from the unit.

FOUNDATION – The Electra-Saver® compressor requires no special foundation but should be mounted on a smooth, solid surface of sufficient strength to support the weight of the unit. Whenever possible install the unit near level. Temporary installation may be made at a maximum 10° angle lengthwise or 30° sidewise.

Mounting bolts are not normally required. However, installation conditions such as piping rigidity, angle of tilt, or danger of shifting from outside vibrations or moving vehicles may require the use of mounting bolts to the foundation.

OIL RESERVOIR DRAIN – (FIGURE 1-5, page 3) The oil reservoir drain valve is located near the center of the oil reservoir just below the separator tower. The drain valve is approximately 5 inches from the floor level. If this height is not sufficient to conveniently drain the oil, some other methods of providing oil drain are:

1. Elevate the compressor unit on a suitable structure to obtain the desired drain height.
2. Construct an oil sump or trough below the floor level and pump or bail the drained oil.
3. Pump oil from the reservoir filler opening or drain to a container.

ACOUSTIC ENCLOSURE – The Electra-Saver unit is furnished with an acoustic enclosure over the compressor only, as standard equipment. The enclosure reduces the normal operating sound of the unit to 90 DBA or below in free field conditions.

AIR-COOLED OIL COOLER MODULE – The air-cooled oil cooler is a separate module and may be mounted remote to the compressor unit.

Ventilation – The oil cooler requires adequate cooling air flow. Proper ventilation **MUST** be provided, with hot air exhausted away from the cooler; take care that hot air is not recirculated from the exhaust to the inlet side of the cooler. Cooling air flow direction is from the motor side through the grille side of the oil cooler. Do not obstruct the air flow to or from the cooler. Allow two (2) feet clearance on all sides of the cooler module. See FIGURE 2-2, page 8, for cooling air flow requirements.

Low Oil Pressure Protection – The standard factory-installed low oil pressure shutdown switch in the control box will prevent start-up or shut the unit down if oil pressure is not established or maintained due to malfunction in the oil cooler system.

Oil Cooler – Location and General Piping – The oil cooler module can be mounted in any of several remote locations; close coupled but not joined to the compressor unit; horizontal remote, located on the same level as the compressor unit, but some distance away; or overhead remote, located above level of the compressor unit, as on a roof.

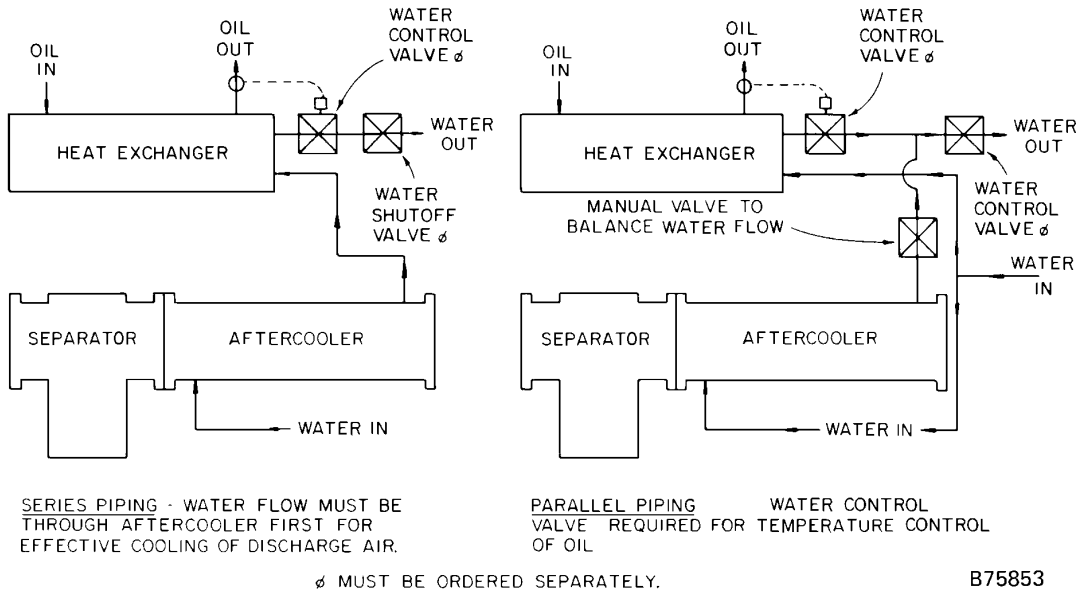


FIGURE 2-4 – PIPING DIAGRAM FOR AFTERCOOLER AND HEAT EXCHANGER

WARNING

The machine cannot be run blown down with remote overhead oil cooler. These units require special wiring diagram – check with factory. Running the machine blown down with an overhead cooler could result in damage to compressor.

All piping and wiring between the compressor unit and the remote oil cooler is to be supplied by the user. **THE DESIGN OF THE REMOTE OIL COOLER MODULE SYSTEM MUST BE APPROVED BY THE FACTORY BEFORE INSTALLATION.** The design information to be submitted for approval includes:

1. Location of oil cooler module – inside or outdoors.
2. Range of operating ambient temperatures at the oil cooler location.
3. Elevation of the oil cooler above the compressor unit.
4. Pipe type and size(s) to be used to connect the oil cooler and the compressor unit. Minimum pipe size is 2-1/2" NPT.
5. Horizontal and vertical lengths of the pipe run. If more than one pipe size is used, list length of each size and total length.
6. Number and size of elbows, tees, unions, reduc-

ers, and valves to be used in the pipe run.

7. A dimensional sketch of the proposed piping system showing location of the compressor unit, oil cooler, pipe, and fittings illustrating design information included in numbers 3 through 6 above.

All remote piping should be of adequate size to insure a minimum pressure loss. Number 4 above lists the minimum pipe size to be used. Long runs of pipe and the use of valves and fittings require larger than the minimum pipe sizes in the system to keep the pressure loss low. All pipe and fittings used in a remote oil cooler system should be galvanized or treated internally to prevent rust, and all valves are to be of a nonferrous construction to prevent corrosion and fouling.

The remote cooler should be placed so that the fan air flow through the cooler (air flow is from the motor side through core) and the prevailing winds are in the same direction. A baffle should be provided on the exhaust side of the cooler for protection against occasional wind shifts.

When the oil cooler is mounted above the compressor unit, a check valve is to be mounted on the compressor unit in the line to the oil cooler; see FIGURE 5-4, page 42. A pneumatic pilot-operated normally-closed valve is to be mounted at the oil filter inlet on the compressor unit line from the oil cooler. The check valve permits oil flow to the oil cooler during operation, but prevents return oil flow from the cooler when the unit is shut down. The pilot valve is held open by air pressure from the unit oil reservoir during operation and closes under spring load when the unit is shut down to prevent return oil flow from the oil cooler.

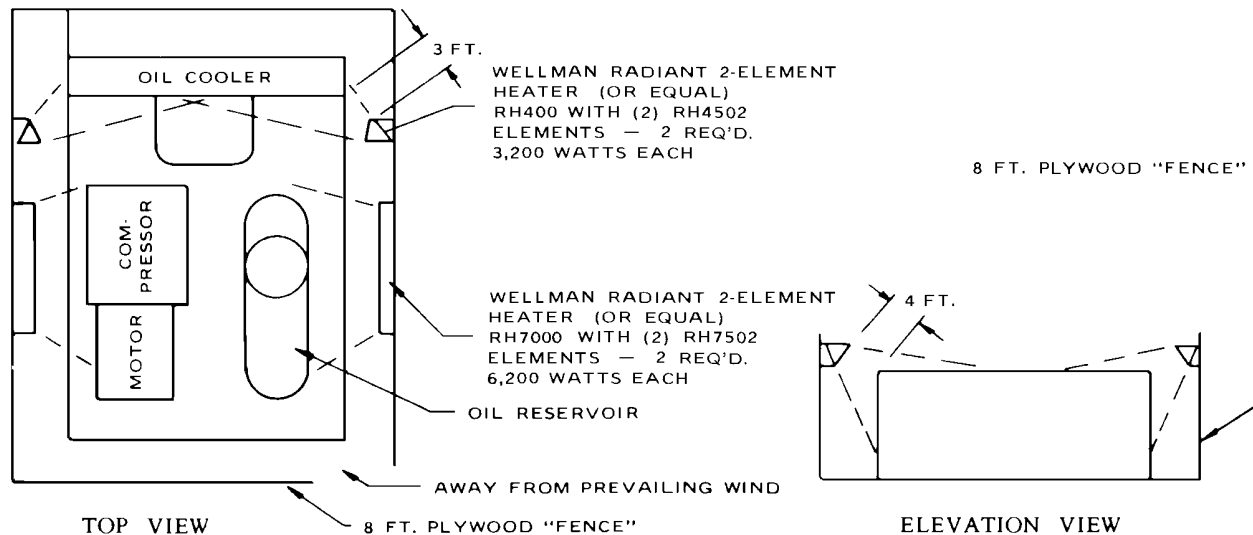


FIGURE 2-5 – COLD WEATHER INSTALLATION

An oil filler stand pipe and plug must be located in the piping on the oil cooler module for ease of filling of a remote oil cooler, see FIGURE 5-4, page 42.

Oil Cooler – Installation – Inspect unit upon arrival. In case of damage, report immediately to transportation company. Before installation, check rating plate on motor to verify that power input and motor specification requirements match available electric power at point of installation.

1. Set the unit level on a firm, solid foundation. The larger oil cooler models have lifting holes to facilitate unit hoisting.
2. Allow for linear expansion and contraction of piping in the direction away from the oil cooler. Use flexible connectors or suitable expansion joints on all oil cooler inlet and outlet piping. See FIGURE 2-3, page 9, for typical schematics.
3. Select properly tensioned and aligned piping support clamps or hangers and position them to relieve any piping stress at the oil cooler inlet and outlet ports. Do not support from flexible connectors.
4. Service – For continuous efficiency, oil cooler cores must be periodically cleaned with either vacuum or compressed air. If wet cleaning is required, shield motor and spray on a mild soap solution and flush with clear water.

AUXILIARY AIR RECEIVER – The unit requires an auxiliary air receiver unless the piping system is large and provides sufficient storage capacity to prevent rapid cycling. When used, an air receiver should be of adequate size, provided with a relief valve of proper setting, a pressure gauge, and a means of draining condensate.

AFTERCOOLER (FIGURE 1-2 and FIGURE 1-5, pages 2 and 3) – An aftercooler will provide control of moisture entering the shop air lines while reducing the normal low discharge temperature of about 180° F at 100 PSIG discharge pressure to near inlet air temperature, or cooling water temperature.

Air-Cooled Machines – When an aftercooler is furnished on an air-cooled machine, the aftercooler is installed on the oil cooler module between the fan and the oil cooler. The moisture separator is furnished by Gardner Denver but must be mounted by the customer between the aftercooler and the auxiliary air receiver with a condensate drain provided at the bottom. All air piping from the compressor discharge to aftercooler to auxiliary air receiver is to be furnished and mounted by customer. **The design of the aftercooler piping must be approved by the factory before installation.** Design information to be submitted for approval includes:

1. Location of aftercooler module – inside or outdoors.
2. Range of operating ambient temperatures at the aftercooler location.
3. Pipe type and size(s) to be used to connect the aftercooler, separator, and compressor unit – minimum pipe size is 5" NPT.
4. Lengths of the pipe run. If more than one pipe size is used, list length of each size and total length.
5. Number and size of elbows, tees, unions, reducers, and valves to be used in the pipe run.
6. A dimensional sketch of the proposed piping system showing location of the compressor unit, aftercooler, separator and auxiliary air receiver, pipe and fittings illustrating design information included in numbers 3 through 5 above.

Water-Cooled Machines (FIGURE 2-4, page 10) – On water-cooled machines with aftercooler, the moisture separator and condensate drain are shipped loose and must be installed by customer. Customer must furnish and install all water piping required.

INSTALLATION FOR COLD WEATHER OPERATION – It is recommended that the unit be installed inside a shelter that will be heated to temperatures above freezing (32°F, 0°C). This will eliminate many of the problems associated with operating units in cold climates where freezing rain, drifting snow, freezing condensate and bitter cold temperatures are encountered.

Refer to Engineering Data Sheet 13-9-411 for the advantages of using the heat recovered from rotary compressors. This heat recovery could easily pay for an adequate shelter for the unit.

When an outside installation must be made, the precautions required will depend on the severity of the environment. The following are general guidelines for outside installations:

Cold Weather (Down To +10°F)

1. Be sure all drains, traps, and control lines, including pressure transducer lines are heated to avoid freezing of condensate. Heat tape with thermostat control is generally satisfactory for this purpose and can be obtained at various local plumbing or hardware outlets at nominal cost.
2. If an air-cooled aftercooler is to be used, provisions to bypass the aftercooler must be made. Since cold air contains very little moisture, successful operation can be achieved without the aftercooler. Successful operation down to +15° F can be accomplished by reversing fan flow, but cooler bypass should still be provided should it be required.
3. Provide at least some simple shelter such as a plywood windbreak to protect against drifting snow.
4. Use only Gardner Denver® AEON™ 9000 SP lubricant.
5. Monitor the unit carefully during start-up and operation to be sure it is functioning normally.

6. Specify NEMA 4 enclosure for electrical devices.

Extreme Cold Weather Operation (Down To -40°F, -40°C) – In addition to the above, the following should be provided:

1. A temperature switch to control the fan should be provided for better starting and quicker warm-up. This switch can be provided from the factory and will delay fan start-up until discharge temperature reaches approximately 150–160° F.
2. It will probably be necessary to provide shutters or to block off part of the cooler in some manner since the cooler is greatly oversized for operation in these low temperatures. Shutters are not a factory option.
3. Auto operation should not be used in extreme environments.
4. Coolers should be located as close to the unit as possible. Long lines to and from the cooler only further complicate the circulation of oil flow on cold starts. Heat tape and insulation may be required on oil lines.
5. Some means of providing heat to the oil reservoir and cooler during shutdown should be provided. There are various methods to accomplish this, but since openings are not provided for sump heaters, the use of radiant heaters is recommended. The heaters should be sized to provide at least a +10°F environment for coolers, motor and sump. FIGURE 2-5, page 11, shows how these might be located in a typical installation and sizes required.

Remember unsheltered (outside) installations should be avoided where possible. Installation next to a heated building where enough heat can be used to keep the compressor room above freezing will save many complications in the operation and installation of the unit.

MOISTURE SEPARATOR/TRAP – Since the unit is equipped with a built-in aftercooler, a combination moisture separator and trap is furnished with the unit. A means of draining condensate will need to be provided for.

INLET LINE – Where an inlet line is used between the air filter and the compressor, it must be thoroughly

Length of Inlet Line	Diameter of Pipe Size
0 to 10 Feet	Same as Compressor Inlet Opening
10 to 17 Feet	One Size Larger Than Inlet Opening
17 to 38 Feet	Two Sizes Larger Than Inlet Opening

FIGURE 2-6 – INLET LINE LENGTHS

HEAT EXCHANGER							
Size	Rated Pressure PSIG	Water Temperature to Heat Exchanger Gallons/minute				Maximum Water Flow GPM	Approximate Water Pressure Drop @ Maximum Flow (PSI)
		60° F.	70° F.	80° F.	90° F.		
350 HP	ALL	33	42	56	83	120	21.0
400 HP	ALL	38	48	64	95	120	21.0
500 HP	ALL	48	60	80	119	130	17.0

The maximum water flow shown is allowable through the heat exchanger.

FIGURE 2-7 – HEAT EXCHANGER (OIL COOLER) APPROXIMATE WATER FLOW

AFTERCOOLER							
Size	Rated Pressure PSIG	Water Temperature to Aftercooler Gallons/minute				Maximum Water Flow GPM	Approximate Water Pressure Drop @ Maximum Flow (PSI)
		60° F.	70° F.	80° F.	90° F.		
350 HP	ALL	8.4	10.5	14.0	21.6	100.0	10.0
400 HP	ALL	9.4	11.7	15.6	23.5	100.0	10.0
500 HP	ALL	11.3	14.1	18.8	29.0	100.0	10.0

Water flow rates (gpm) are based on 100° F water temperature out of cooler. Maximum water flow shown is the maximum allowable flow through aftercooler.

FIGURE 2-8 – AFTERCOOLER APPROXIMATE WATER FLOW


cleaned on the inside to prevent dirt or scale from entering the compressor. **If welded construction is used, the line must be shot blasted and cleaned to remove welding scale.** In either case, the inlet line must be coated internally by galvanizing or painting with a moisture and oil-proof sealing lacquer. The inlet line should be the full size of the inlet opening on the compressor. If an extra-long line is necessary, the pipe size should be increased according to Inlet Line Length Chart, FIGURE 2-6, page 12.

Accessibility for inlet air filter servicing must be considered when relocating the filters from the unit to a remote location.

DISCHARGE SERVICE LINE – The discharge service line connection on water-cooled units with aftercooler is made at the moisture separator. On air-cooled units and water-cooled without aftercooler, the connection is made at the pipe nipple located behind the instrument panel. When manifolding two or more Electra-Saver units on the same line, each unit is isolated by the check valve in the unit discharge line.

If an Electra-Saver unit is manifolded to another compressor, be sure the other compressor has a check valve in the line between the machine and the manifold.

If an Electra-Saver and a reciprocating compressor are manifolded together, an air receiver must be located between the two units.

 DANGER
<p>Discharge air used for breathing will cause severe injury or death.</p> <p>Consult filtration specialists for additional filtration and treatment equipment to meet health and safety standards.</p>

WATER PIPING (Water-Cooled Heat Exchanger Models Only) – On machines equipped with water-cooled heat exchangers, the water inlet and outlet con-

nections are located in the unit base flange on the left side of the unit.

 **WARNING**

It is mandatory that any water cooled unit be installed in a shelter heated to temperatures above freezing (32° F., 0° C).

The water source should be capable of supplying up to the maximum flow shown in FIGURE 2–6, page 12, and FIGURE 2–7, page 13, at a minimum pressure of 40 PSIG; maximum allowable water pressure is 150 PSIG. The water flow rates shown in FIGURE 2–6, page 12, are approximate and a guide to sizing piping, cooling tower and other water system equipment.

The heat exchanger system is designed to operate with water inlet temperatures from 60° to 90° F and a water outlet temperature not to exceed 110° F. If water cooler than 60° F is used, high water outlet temperatures (over 110° F) will be experienced along with shortened heat exchanger life caused by tube fouling and corrosion. If water warmer than 90° F is used, higher compressor oil inlet temperatures and high water usage will result.

Most water systems will require control of impurities: filtration, softening or other treatment. See “Compressor Oil Cooler – Water–Cooled Heat Exchanger” for more information on the water system.

Aftercooler – Heat Exchanger Water Piping (FIGURE 2–4, page 10, and FIGURE 2–6, page 12, and FIGURE 2–7, page 13) – If an aftercooler is used and piped in series with the heat exchanger, install the water flow control valve and magnetic water shutoff valve, if used, downstream of the exchanger. Pipe the aftercooler water outlet to the heat exchanger water inlet on the compressor unit.

If the aftercooler is piped in parallel with the heat exchanger, provide a manual valve between aftercooler outlet and heat exchanger outlet after the water control valve to adjust aftercooler water flow for discharge temperature required and most economical water use; separate water inlet lines are piped to the aftercooler and heat exchanger.

If the standard factory built-in aftercooler is used, the maximum allowable water flow through the aftercooler is 100 gallons per minute on all 350 – 500 HP units and the maximum water inlet pressure is 150 PSIG. If another aftercooler is used, consult the manufacturer for operating limits.

 **CAUTION**

When an aftercooler is piped in series with the oil cooler, the maximum allowable flow rate through the oil/aftercooler system is the maximum allowed by the aftercooler. If the oil cooler requires more water flow than the maximum allowed by the aftercooler, a parallel water piping system must be used.

The water control valve **MUST** be used to maintain discharge temperatures approximately 10° F. over the dew point for expected ambient (FIGURE 5–7, page 44). See Section 5 for adjustment instructions and maximum allowable oil temperature.

ELECTRICAL WIRING – The Electra–Saver® unit is furnished with the compressor motor enclosure as specified by the user. If unit has an air–cooled oil cooler, this fan motor is a totally enclosed “air–over” or “fan–cooled type” and is complete with starter and enclosure as specified by the user. Allow 42” deep and 30” wide clear space to the nearest obstruction in accordance with Article 110–16(a), National Electric Code.


It is necessary to connect the compressor unit (and oil cooler, if used) to a main starter of the correct size, power characteristics, and enclosure for the application. See Section 4 for typical wiring diagrams; however, use only the wiring diagrams supplied with the unit for final connections.

Starter – The main starter is to be mounted at a location selected by the user at the time of installation. The first three feet of line from the motor conduit box to the starter must be of flexible conduit to maintain effective vibration isolation. Electrical connections to other parts of the unit (instrument panel, fan motor, etc.) from the starter do not require flexible conduit since the compressor and motor are already isolated from these parts. See Article 110–16(a) National Electric Code for working clearance.

 **WARNING**

Electrical shock can cause injury or death. Open main disconnect switch, tag and lockout before working on starter/control box.

GROUNDING – Equipment must be grounded in accordance with Section 250–95 of the National Electrical Code.

 WARNING
Failure to properly ground the compressor package could result in controller malfunction.


MOTOR LUBRICATION – Long time satisfactory operation of an electric motor depends in large measure on proper lubrication of the bearings. The following charts show recommended grease qualities and regreasing intervals for motors supplied with ball bearings. For additional information refer to the motor manufacturer’s instructions. The following procedure should be used in regreasing:

1. Stop the unit.
2. Disconnect, tag and lockout the unit from the power supply.

3. Remove the relief plug and free hole of hardened grease.
4. Wipe lubrication fitting clean and add grease with a hand–operated grease gun.

The amount and type of grease added is very important. Only enough grease should be added to replace the grease used by the bearing. Too much grease can be as harmful as insufficient grease. The grease cavity should be filled 1/3 to 1/2 full.

5. Leave the relief plug temporarily off. Reconnect the unit and run for about 20 minutes to expel the excess grease.
6. Stop the unit. Replace the relief plug.
7. Restart the unit.

 WARNING
Rotating machinery can cause injury or death. Open main disconnect, tag and lockout power supply to the starter before working on the electric motor.

ELECTRIC MOTOR GREASE RECOMMENDATIONS (–30° to 50° C)

MANUFACTURER	TRADE NAME
CHEVRON	SRI #2
SHELL	DOLIUM R
EXXON	UNIREX #2
EXXON	POLYREX

ELECTRIC MOTOR REGREASING INTERVAL

Type of Service	Typical Examples	Rating	Relubrication Interval
Standard	One– or Two–Shift Operation	Above 150 HP	12 Months
Severe	Continuous Operation	Above 150 HP	6 Months
Very Severe	Dirty Locations, High Ambient Temperature	Above 150 HP	2 Months

SECTION 3 STARTING & OPERATING PROCEDURES

PRESTART-UP INSTRUCTIONS – A new unit as received from the factory has been tested and then prepared for shipping only. Do not attempt to operate the unit until checked and serviced as follows:

1. **Compressor Oil** – Check the oil level in the reservoir. Add oil only if the oil level gauge reads in the red “ADD OIL” range. Do not mix different type oils. The unit is shipped filled with Gardner Denver AEON™ 4000 SP Lubricating Coolant which is suitable for the first 6000 hours under normal operating conditions.

REPLACE OIL FILTER EVERY 1000 HOURS.

Initial fill, or filling after a complete draining of the system, may show the oil level in the yellow “EXCESS OIL” range. After start-up, the oil will fall into the green operating range as system components are filled. If necessary, add oil to bring the level to the top of the green range as read when the unit is operating at full load and normal pressure. See FIGURE 5-2, page 39.

NOTICE

Regular maintenance and replacement at required intervals of the oil filter, air filter and air-oil separator is necessary to achieve maximum service and extended drain intervals of AEON™ 9000 SP synthetic lubricant. Use only genuine Gardner Denver filters designed and specified for this compressor.

DANGER

Always stop the unit and release air pressure before removing the oil filler plug. Failure to release pressure may result in personal injury or death.

During unloaded operation and after shutdown, the system will partially drain back into the oil res-

ervoir and the oil level may read higher than when operating on load. DO NOT DRAIN OIL TO CORRECT; on the next loaded cycle or start, oil will again fill the system and the gauge will indicate the operating level.

2. **Air Filter** – Inspect the air filter to be sure it is clean and tightly assembled. Refer to Section 6, “Air Filter,” page 48, for complete servicing instructions. Be sure the inlet line, if used, is tight and clean.
3. **Coupling** – Check all bolts and cap screws for tightness. See Section 7, page 50.
4. **Piping** – Refer to Section 2, “Installation,” page 10, and make sure piping meets all recommendations.
5. **Electrical** – Check the wiring diagrams furnished with the unit to be sure it is properly wired. See Section 4, “Controls and Instruments,” for general wiring diagrams and Section 2, page 8 for installation instructions.
6. **Grounding** – Equipment must be properly grounded according to Section 250-95 of the National Electrical Code.

WARNING

Failure to properly ground the compressor package could result in controller malfunction.

7. **Rotation** – Check for correct motor rotation using “JOG MODE.” Compressor drive shaft rotation must be clockwise standing facing the compressor coupling.

WARNING

Operation with incorrect motor rotation can damage equipment and cause oil eruption from the compressor inlet. When checking motor rotation, induce minimum rotation (less than one revolution if possible). Never allow motor to reach full speed.

8. **System Pressure** – Set the controls to the desired load pressure. DO NOT EXCEED THE MAXIMUM OPERATING PRESSURE ON THE COMPRESSOR NAMEPLATE. See Section 4, “Controls and Instrumentation” for procedure.

 **WARNING**

Operation at excessive discharge air pressure can cause personal injury or damage to equipment. Do not adjust the full discharge air pressure above the maximum stamped on the unit nameplate.

9. **Operating Mode** – Refer to Section 4 for detailed information on the control system.
10. **Enclosure** – Check for damaged panels or doors.

Check all screws and latches for tightness. Be sure doors are closed and latched.

STARTING THE UNIT – OBSERVE UNIT COLD OR HOT STARTING PROCEDURES.

Unit Cold – If the unit is a water-cooled heat exchanger model, open any manual water inlet valves wide open. Start the unit by pushing either the “CONSTANT RUN” button or one of the “AUTO” buttons. Since the unit is equipped with a minimum (65 psig) pressure discharge valve, no special procedure to maintain unit reservoir pressure is required.

Unit Hot – No warm-up period is required. If the unit is a water-cooled heat exchanger model, open any manual water inlet valves wide open. Start the unit by pushing either the “CONSTANT RUN” button or one of the “AUTO” buttons.

DAILY CHECK – Refer to Section 8, “Maintenance Schedule,” page 51.

STOPPING THE UNIT – Press “STOP-RESET” button. The oil reservoir will automatically blow down as the motor stops. If the unit is a water-cooled heat exchanger type, close any manual water inlet valves.

SECTION 4 CONTROLS & INSTRUMENTATION

GENERAL DESCRIPTION – The Gardner Denver rotary screw compressor is prewired with all controls for the voltage and horsepower at the time of ordering. It is necessary only to connect the motor to the customer supplied starter, the compressor unit to the correct power supply, to the shop air line, and to the appropriate shop water line, if the compressor is water-cooled. A standard compressor unit consists of the compressor, oil reservoir, oil cooling system and filters, motor type as specified, NEMA 12 starter / control box, and control components as described below.

This compressor unit features the “AUTO SENTRY–ES” controller, which integrates all the control functions under microprocessor control. Its functions include safety and shutdown, compressor regulation, operator control, and advisory / maintenance indicators. The keypad and display provide the operator with a logical and easily operated control of the compressor and indication of its condition.

AUTO SENTRY®–ES OPERATION

Operation of the “Auto Sentry–ES” is dependent on selection of an operating mode (described below) from the controller keypad. Before starting, press the [STOP/RESET] key to place the controller into its READY state (as indicated on the display). Compressor operation may then be started by pressing an operating mode key. Once operating, the mode may be changed at any time by pressing a key, and the selected mode will be displayed in the lower right corner of the message window. Press the [STOP/RESET] key at any time to stop the compressor under normal conditions.

An optional control may be wired into the “Auto Sentry–ES” controller to interrupt and restart the unit based on controls by others. When stopped by these controls, the display indicates “REMOTE STOP”.

WARNING

Automatic restarting or electrical shock can cause injury or death. Open, tag and lockout main disconnect and any other circuits before servicing the unit.

In any mode, the compressor will start only if reservoir pressure is below 5 psig. The display will indicate if the

control is waiting for a reservoir blowdown, along with the remaining pressure. The controls also delay initial loading of the compressor until a startup delay has been completed.

Constant Run Mode Operation – Use this mode in applications where there are no long periods of unloaded operation, or for minimum response time to sudden demands. The compressor unit will start and run continuously, using its modulation controls to match delivery to demand.

As demand falls below the compressor capacity, the pressure will rise to the setpoint of the control. When the pressure reaches the setpoint, the “Auto Sentry–ES” controller operates the solenoid valves IVO and IVC to pass pressure to the inlet valve piston, and the inlet valve will close enough to match it to the air system demand.

As demand increases, the controller will modulate the inlet valve by relieving pressure with the solenoid valves IVO and IVC as required to match delivery to demand. Once the compressor has been first loaded, it will maintain pressure within a few psi of the setpoint pressure. This is true for any demand within its rated capacity.

On units equipped with turn valve control, further increase in demand will cause the inlet valve to be held fully open. Turn valve solenoid valves TVC and TVO control compressor delivery. The controller automatically controls the two methods of modulation to provide the most efficient means of delivery to match the demand of the system under all conditions.

Low Demand Mode Operation – The low demand mode reduces power consumption by relieving pressure in the reservoir during unloaded operation. Use this mode where there is moderate air storage and there are unloaded periods during the day, but frequent motor starting and stopping is undesirable. During periods of moderate to high demands, this mode is identical to the constant–run mode described above.

During low demand periods, the controller will open the blowdown valve and fully close the inlet valve to minimize the motor load. A timer is reset when this occurs. While in this state, the plant air system supplies control air pressure (as well as any plant loads). When the system air pressure drops to the reset pressure due to increased demand, the blowdown valve recloses and the controls resume their normal modulation sequence.

Subsequent blowdown periods are not allowed until the timer has completed its cycle. This cycle eliminates frequent blowdowns during moderate loads, and the

energy required to re pressurize the reservoir. It also eliminates the problems of oil foaming and carryover that can occur if the oil reservoir of an oil-flooded compressor is blown down too often. The timer is adjustable from 5 to 20 minutes.

Automatic Mode Operation – This mode provides automatic start and timed stop, and is best used in applications with long unloaded periods and adequate storage to allow stopping the compressor for periods. Operation during periods of moderate to heavy demands is identical to the low demand mode described above.

The automatic time delay is adjustable from 5 to 20 minutes. If the controller operates unloaded for this period with no demand, the compressor drive motor is halted to eliminate its power consumption. The controls will remain in this state until demand is again indicated by a drop in pressure.

Sequence Mode Operation – This mode provides for communication between controllers, operating only as many as are required for economical operation. Use this on applications with large storage capacity and diverse loads. The lead unit will operate identically to the

automatic mode; operation will be automatically staged for each lag unit (up to 8 total). For more information, refer to the sequencing instructions later in this chapter.

Communication between controllers is achieved by interconnection of a communication cable to circuit board connectors. A “unit number” must be assigned to each unit in this mode, but the display will indicate the unit’s actual operating ranking.

AUTO-SENTRY®-ES CONTROL DISPLAY

The display above the keypad is used to provide operating information to the user.

During normal operation, the display will show the system pressure, compressor discharge temperature, total running hours, and operation mode. If one of the operating modes has been selected, the green “RUN” indicator will be lit.

Alternate displays are available by pressing keypad cursor keys, and will be identified on the display. These include system pressure, reservoir pressure, separator differential pressure, total hours, compressor discharge temperature, and reservoir temperature. In Low Demand, Automatic, and Sequence modes, alternate displays also include the appropriate remaining

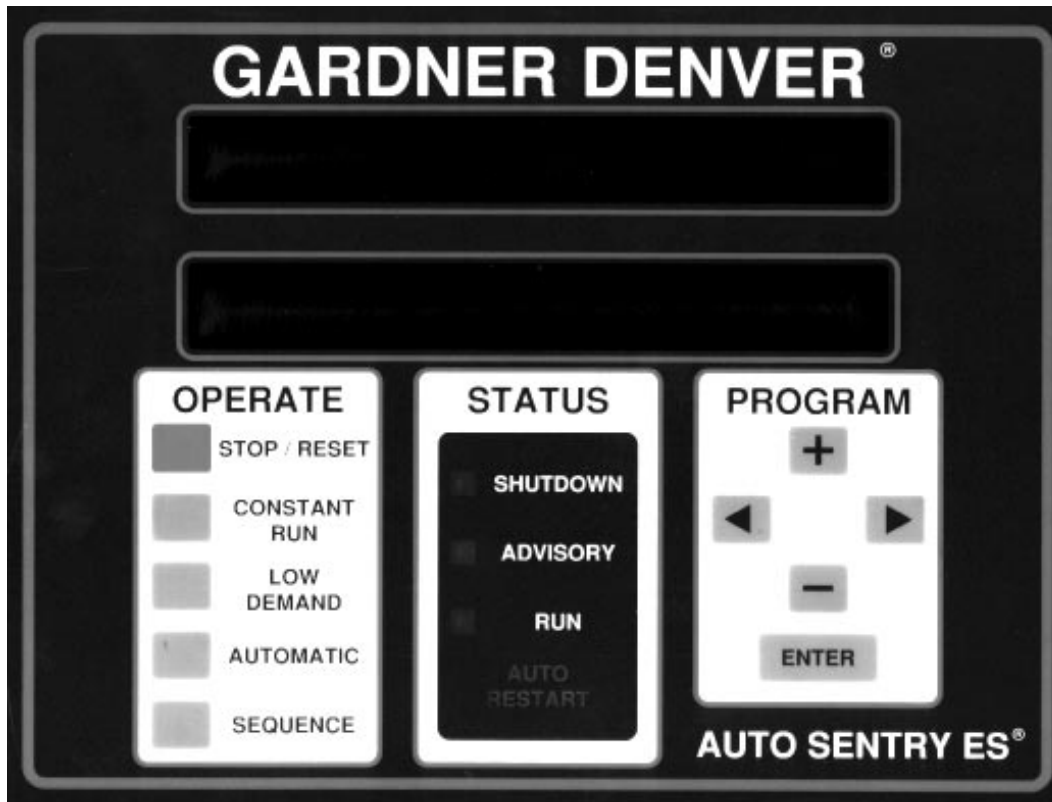


FIGURE 4-1 – AUTO SENTRY® -ES DISPLAY

times of the time delays. If no keys are pressed for 5 seconds, the display will revert to its normal mode.

The display is also used as a service reminder for normal maintenance items. When these conditions are sensed, the yellow "ADVISORY" light will come on, and the message will alternate with the normal lower line message. These messages are intended to advise of conditions that require service or may lead to a shutdown.

If a shutdown has occurred, the display will indicate "SHUTDOWN" and the cause and the red shutdown indicator will be lit. The compressor may not be operated until the conditions are corrected and the controller is reset.

SERVICE ADVISORIES

The AUTO SENTRY-ES controller continually monitors operation of the compressor unit, and will indicate when service is required. These conditions will not stop the operation of the compressor unit, but need attention and service.

Service and Maintenance – These include the change separator, change air filter, and change oil filter messages, which are based on measured pressures or recommended service intervals. The controller automatically calculates oil change intervals based on actual operating conditions. This allows maximum utilization of AEON 9000SP oil. The advisory messages also indicate low or high temperature operation, if the unit has operated near its tolerable limits.

Refer to the service instructions in this manual for service details in response to these advisory messages.

Clearing Advisories – Temperature advisories may be cleared while the unit is running by simply pressing the [ENTER] key. To reset the service advisories — CHANGE SEPARATOR, CHANGE AIR FILTER, CHANGE OIL, CHANGE OIL FILTER — perform the following steps:

1. Press the [STOP/RESET] key to stop operation of the compressor.
2. Relieve all air pressure.
3. Disconnect, tag, and lock out power supply.
4. Perform necessary maintenance, and record it on maintenance log.
5. Following service, put the enable switch in the down, "+" position.
6. Restore power to the unit. The display will read: "SHUTDOWN-POWER FAILURE" (or "READY" if auto-restart is enabled).
7. Press the [STOP/RESET] key. The display will indicate "READY" in the lower right hand corner.

8. Press [ENTER]. The display will read: "ENTER TO SETUP – AUTO TO SERVICE"
9. Press [AUTO]. The display will read: "OIL FILTER – HOURS TILL CHANGE"
10. Press [ENTER]. The display will read: "HOURS TILL NEXT OIL CHANGE"
11. Press [ENTER]. If an advisory is present, it will be displayed at this time.
12. Press [ENTER] to clear the advisory. When all are cleared, the display will read: "ENTER TO SETUP – RESET TO EXIT"
13. Press [STOP/RESET] to return to the READY state.

To prevent unauthorized programming, disconnect, tag, and lockout power supply and return the ENABLE switch to the up, SET position. Restore power, press [STOP/RESET] to place the controller into the READY state, and select an operating mode to start compressor operation.

PROTECTIVE SHUTDOWNS

The "AUTO SENTRY-ES" will shut down the unit following any fault detected in the following devices. Following a shutdown, a message will be displayed, with the top line indicating "SHUTDOWN" and the lower line indicating the cause. The shutdown light will be steadily lit if the cause still exists, or will flash if the cause has been cleared. To resume operation, the cause of the shutdown must be corrected and the controller reset by pressing the [STOP/RESET] key.

Refer to the service instructions in this manual for additional details on what service is required in response to these shutdown messages.

Motor Protective Devices – Overload heaters are furnished for the starter in the voltage range specified. There are three (3) overloads in the starter of proper size for the starter and its enclosure. Note that motor nameplate current must be multiplied by 0.577 for wye-delta starters. The display will indicate which overload relay has tripped. The overload relay is reset by pressing the button on the relay itself, then the controller may be reset. Measure motor current (amps) and voltage in the affected motor wiring to locate the cause for high current. Overload relays provided in standard units are sensitive to both overload and phase imbalance for improved motor protection.

Proper starter coil and contact action are also monitored and errors in operation will cause a shutdown with the cause displayed as a start error.

High Temperature – The compressor is protected from high discharge temperature by two independent thermistor probes. One probe is located in the compressor discharge to sense compressor discharge temperature. The second probe is located at the sepa-

rator discharge and senses the temperature of the air at the oil separator. The “AUTO SENTRY–ES” will shut the compressor down if temperature exceeds 225° F (or lower per user adjustment) or if rapid temperature rise is detected. The location of the high temperature fault will be displayed.

Thermistor probes are also checked for open or shorted circuits, or extreme low temperature, and the display will indicate the location of the defective probe.



CAUTION

Machine damage will occur if compressor is repeatedly restarted after high temperature stops operation. Find and correct the malfunction before resuming operation.

Separator Differential Pressure – The “AUTO SENTRY–ES” continually monitors the pressure drop across the oil separator. The unit shuts down at a differential pressure of approximately 15 psid. This becomes active only after the compressor has been running and pressures have had time to stabilize.

High Pressure – The “AUTO SENTRY–ES” will first attempt to unload and blow down the unit if excessive pressures are detected in the reservoir or the plant system. If unsuccessful, a shutdown will occur.

Shut down will also occur if a defective transducer is detected. The display will indicate the location of the high sensed pressure or transducer (xducer) error. Check that all adjustments have been properly made, and all connections are secure.

Low Oil Pressure – The “AUTO SENTRY–ES” will shutdown the unit if inadequate oil reservoir pressure is detected after starting and loading. If this occurs, check the wiring and piping to the solenoid valves.

Emergency Stop – Pressing the emergency stop button will shut down the unit and the controller. To restart, pull the button out to its normal position and reset the controller. Use this for emergency purposes only — use the keypad [STOP/RESET] key for normal controlled stopping.

Power Failure – Following power interruptions, the controller will remain in a shutdown state (unless programmed for auto restart).

High Vibration (optional) – This optional feature will shut down the unit if abnormally high vibration is detected.

Other Shutdowns – The controller runs continuous

diagnostic checks of its own operation and the sensors to which it is connected. Refer to the service section for a complete listing of shutdowns and remedial actions.

PROGRAMMING AND SETUP INSTRUCTIONS FOR THE AUTO SENTRY®–ES CONTROLLER

All compressor control adjustments are made through the controller keypad. This provides a single location for all adjustments, coordinates all related controls, and eliminates the need for additional gauges and meters. The controller stores all adjustments digitally. These are permanent unless changed by further programming.

General – Programming and setup is accomplished with the PROGRAM keys. In all steps, the [ENTER] key will cause the controller to accept the displayed value into memory and advance to the next programming function. The plus [+] and minus [–] keys will increase and decrease displayed numeric values, or step through menu selections. During numeric adjustments, the right [<] and left [>] arrow keys, move the cursor (flashing digit) to the position desired. The number at the cursor will be the number that is changed by the [+] and [–] keys. At any point in the programming and setup routine, press the [STOP–RESET] key to exit and return to the READY state without altering the adjustment.

In all steps of the programming routine, the top line of the display will give a description of the parameter to be programmed, while the bottom line shows the variable that is capable of being altered by programming.

The following is a step by step guide to programming the “AUTO SENTRY–ES” controller.

NOTICE

Between each step it is necessary to press the “ENTER” key to restore the new value and advance to the next step.

Programming Steps:

1. Stop the compressor before making any adjustments. If the unit is running, press the [STOP/RESET] key to place the control in the “READY” state. Adjustments can also be performed while in the “SHUTDOWN” state.
2. Press the [ENTER] key to begin programming. If the enable switch on the circuit board is in the set (up) position, the control proceeds to step 7 below. If the switch is in the “+” (down) position, the controller will display “ENTER TO SETUP – AUTO TO

SERVICE". Press [ENTER] to go directly to step 7 below. Press [AUTO] to perform the following steps.

3. The display shows "OIL FILTER" and the hours remaining until the next advisory are displayed on the bottom line. Press [ENTER] to go to step 4 without any change.

Press [AUTO] only if the oil filter change has been performed early. This will reset this timer back to the oil filter interval (see step 19).

4. The display shows "OIL CHANGE" and the hours remaining until the next advisory are displayed on the bottom line. Press [ENTER] to go to step 5 without any change.

Press [AUTO] only if the oil change has been performed early. This will reset this timer back to the oil change interval (see step 20).

5. If any service advisories are in effect (yellow ADVISORY indicator is on), they will be displayed. Press [ENTER] to clear the advisory.

6. The display will indicate "ENTER TO SETUP – RESET TO EXIT". This indicates that all the maintenance adjustments have been completed. Press [STOP/RESET] to go back to the READY state, or press [ENTER] to go on to step 7.

7. The top line shows "DISPLAY UNITS". The bottom line indicates "ENGLISH" (PSIG, Fahrenheit) or "METRIC" (Bars, Celsius) units of measurement. Select the desired display units and press [ENTER] to proceed.

8. The top line displays "NUM OF SEQ UNITS". The bottom line indicates a number in the range of one through eight. This will be factory set at "1". Set this to a number corresponding to the number of compressors that are currently installed on this air system that also have AUTO SENTRY–ES controllers. It should be noted that all AUTO SENTRY–ES compressors on the system must have the same number programmed here to operate correctly in SEQUENCE mode.

NOTICE

Setting the value in step 8 to one indicates that no sequencing is to take place. Consequently, steps 9, 10, and 11, which relate to sequencing, are skipped by the "AUTO SENTRY®–ES"; Programming commences at step 12.

9. The top line displays "UNIT NUMBER". The bottom line will again indicate a number of one through eight and be factory set at "1". Each "AUTO SENTRY–ES" in a sequenced system must have a unique number here. The sequence mode will not function if two or more compressors have the same UNIT NUMBER. Use low numbers for the most efficient machine–to–machine communications. Example: Use 1, 2, and 3 for a three compressor installation.
10. The top line displays "TRANSFER INTERVAL". The bottom line indicates a number of hours from 1 to 5000. It is factory set at 24. This is the number of hours that this machine will stay in the role of "master" or "lead" compressor. Normally it is desirable to set this to the same value on all sequenced units to equalize running hours.
11. The top line displays "LAG START DELAY". The bottom line indicates a number from 15 to 600 seconds. It is factory set at 30. This is the length of time this machine will wait before starting when the pressure drops below the reset point. Set this to the same value for all sequenced units. Its setting will depend on the amount of air storage volume in the system. Too small a number will result in more compressors being started than is necessary to satisfy demand. See "SEQUENCING COMPRESSORS WITH THE AUTO SENTRY–ES" for more details on optimizing a sequenced installation.
12. The top line displays "BLOWDOWN TIME". The bottom line indicates a time between 5 and 20 minutes. It is factory set at 10 minutes. This is the minimum time interval between blowdowns. A longer blowdown time minimizes wasteful dumping of compressed air when loading is likely to occur in a short time. Longer periods also have been shown to prevent oil foaming.
13. The top line displays "AUTO TIME". The bottom line indicates a time between 5 and 20 minutes. It too, is factory set at 10 minutes. Its function is to prevent frequent motor starting, and to allow the motor a 'cool–down' period before stopping.
14. The top line displays "START TIMER". The bottom line indicates a time between 3 and 10 seconds. This is the time that the controller spends in the unloaded 'start' mode. On units with factory–furnished wye–delta starters, this is the time that the starter is in its 'start' mode. Set this for the time when the motor reaches its maximum speed. On all other starter types, this should be set for the time that the motor takes to reach full speed. If the setup switch is in the up position, the controller returns to the READY state after this adjustment.

NOTICE

Unit setup adjustments are normally required only at the time of unit installation. To prevent accidental access, these will not be available if the “SET” switch is in the up position. The “SET” switch is located beneath the power transformer mounting plate on the left edge of the main circuit board.

15. If the switch is in the down position, “HI SYS PRES LIM” is displayed on the top line. The bottom line indicates a value that is factory set 20 – 25 PSI above name plate. This is the pressure that will cause a forced blowdown if approached due to a malfunction such as a stuck inlet valve or broken control line. The controller will shut down if this pressure is exceeded.

The upper limits for the following two adjustments are based on the setting of the high system pressure limit. If necessary, the controller automatically reduces them following this step, and the display will briefly indicate “ADJUSTING PSET AND PRES”
16. The top line displays “SET PRESSURE”. The bottom line indicates a pressure value. Set at the nameplate rating of the compressor for normal operation. Under NO circumstances, is this adjustment to be set more than the compressor nameplate pressure.
17. The top line displays, “RESET PRESSURE”. The bottom line indicates a pressure value. This setting determines the point at which machine startup occurs in AUTO and SEQUENCE modes and when the compressor will load up from the blown down condition. Note that RESET PRESSURE cannot be set within 5 PSI of the SET PRESSURE. It is necessary that all machines to be sequenced have the same SET and RESET PRESSURE setpoints.
18. The top line displays “REMOTE STOP”. The bottom line indicates either “TIMED” or “IMMEDIATE”. Select the desired response to the remote input and press [ENTER] to proceed.
19. The top line displays “FILTER CHNG INTERVAL”. The bottom line indicates a time interval of 500 to 1000 hours. After the machine has run for the programmed setting, an advisory will be displayed, requesting an oil filter change. Adjust as desired and press [ENTER] to go on.
20. The top line displays “OIL CHANGE INTERVAL”. The bottom line indicates a time interval of 1000 to 8000 hours. After the machine has run for the programmed setting, an advisory will be displayed, requesting an oil change. Adjust as desired and press [ENTER] to proceed. 8000 hours is the proper change interval for AEON 9000SP synthetic oil. See section 5 for proper setting for AEON lubricants.
21. The top line displays “HI TEMP LIMIT”. The bottom line indicates 225 degrees F. This is the maximum (and proper) setting for compressor operation. It may be temporarily lowered to verify the function of the temperature shutdown system.
22. The top line displays “FAN TYPE”. The bottom line indicates either “AIR COOLED” or “WATER COOLED”. Select air cooled to place the fan under thermostatic control. This is the preferred setting for air cooled units. Select water cooled to run the (enclosure vent) fan whenever the main motor runs. This is the mandatory setting for water cooled compressors or compressors with remote elevated coolers. Select the type according to the type of compressor model.
23. The top line displays “AUTO RESTART”. The bottom line indicates either “OFF” or “ON”. Set this feature to ON when it is necessary to have the compressor automatically restart after a power interruption. This feature shall only be enabled when the owner determines that it is safe to do so. It is recommended that compressor access be limited to only trained service personnel when this feature is used.
24. This step happens only if the AUTO RESTART function was set to ON in step 23. The top line displays “RESTART TIME”. The bottom line indicates a time between 5 and 60 seconds. It is factory set at 10 seconds. This is the amount of delay introduced before restarting after power has been restored to ensure a stable supply and staggered starting. Adjust to any value per user preference.
25. The top line displays “AIR END TYPE”. The bottom line indicates either “TURN VALVE” or “NON TURN VALVE”. Set as appropriate for the compressor.
26. In the top line, “SYSTEM VOLUME” is displayed. The bottom line may be selected as “SMALL”, “MEDIUM”, or “LARGE”. This tunes the response of the modulation control loops to optimize loop stability. It is factory set to MEDIUM. Set as follows:
SMALL if estimated volume is less than .25 gallon per CFM.
MEDIUM if estimated volume is between .25 and 1.0 gallon per CFM.

LARGE if estimated volume is greater than 1.0 gallon per CFM.

NOTICE

This setting is not critical. When set to its most appropriate value, the controller will maintain discharge at the closest possible value. If not set correctly, pressure will vary from the desired setpoint to a somewhat greater degree but the compressor and its components will not be adversely affected.

27. The top line displays "REMOVE SYS PRESS". The bottom line displays the current pressure being sensed at the package discharge. At this point steps must be taken to ensure that system pressure is really zero psig. Remove the line to the system pressure transducer. Pressing [ENTER] will now cause the "AUTO SENTRY-ES" to calibrate the transducer output to zero PSIG. Obviously, pressure measurement errors will occur if 'zeroing' is done with pressure at the transducer. If large errors are detected, the controller will demand that the transducer be checked.
28. The top line shows "REMOVE RES PRESS". The bottom line displays the current pressure being sensed in the reservoir. The reservoir pressure transducer may now be 'zeroed' by following the steps outlined in 27 above.
29. The display now reads "PRESS CNST RUN TO JOG MOTOR." Press the [CONSTANT RUN] key to briefly energize the starters, and rotate the compressor 1/4 to 1-1/2 revolutions to allow a rotation check. This is limited to three tests.
30. This completes the programming and setup procedures for the "AUTO SENTRY-ES" controller. Press the [STOP/RESET] key to return the compressor to the READY state.

SEQUENCING COMPRESSORS WITH THE AUTO SENTRY®-ES

Sequencing compressors with the AUTO SENTRY-ES controller is as simple as plugging in a telephone to a wall jack. The only item required to make the system functional is a standard telephone cable similar to cables that connect nearly every telephone to its wall jack. One less cable than the number of compressors to be sequenced is required. For example, four compressors require three cables. A kit, 200EAP752, is

available that contains all material needed to sequence up to five compressors. This kit contains 500 feet of cable, eight modular connectors, and a crimping tool to install the connectors. Note that this cable is designed specifically for this type of communication, and is a higher grade than most standard phone cables.

In spite of the fact that it is a standard feature and its inherent installation simplicity, the sequencing function of a multi-compressor "AUTO SENTRY-ES" system is the most fully featured, functionally complete available today.

Installation

A proper sequencing installation requires two or more Gardner Denver rotary air compressors complete with "AUTO SENTRY-ES" controllers, piped into a common air system, interconnected as described above. For best performance, pipe the units directly to the receiver, without any intervening check valves, dryers, or other restrictions. Size the receiver to prevent excessive drops or rapid rises in pressures during the operation as described below. All standard practices common to sound air compressor installations such as proper sizing of discharge piping, proper electrical supply and conductor sizing, and grounding are to be observed. The serial communications interface meets RS-485 standard. This is the most widely used interface in harsh, industrial environments today. However, communications cables should be routed through metallic conduit to provide them with both mechanical protection and electromagnetic shielding.

Each control circuit board has two modular jacks that accept RJ-12 telephone plugs. One jack is vacant; the other has a short pigtail plugged into it. To interconnect two compressors, plug the cable into the vacant jack on each controller. For installations of more than two units, disconnect the pigtail plug on all controllers except the two at each end of the line. The order of interconnection has no effect on the system operation. The following conditions are necessary and sufficient for proper operation:

1. Every compressor must have a cable connecting it to another compressor. One less cable than the number of units sequenced must be used.
2. Each board that has only one cable connected to it must have its pigtail plugged into the unused jack. All installations will have two such units.

Operation

1. ESTABLISHING THE INITIAL SEQUENCE

Operation of compressors in sequence requires only a press of the 'sequence' key on each compressor in the system. Since the sequencing algorithm includes provisions for automatic replacement of a failed master or 'lead' compressor, it is important for the operator to be aware of the hierarchy of events when starting the system.

The first compressor placed into sequence mode will become the master. However, since any compressor first placed into sequence has no way of knowing whether a master exists, it will first assume the highest rotation number available. For example if the number of units to be sequenced is programmed at four, any compressor will start out in position four when placed in sequence mode. It will then listen on the communications line for a call from the master.

If no call is received, it will assume position three and again wait for a call from the master. After another lack of a master call, it assumes position two. Subsequently, it assumes position one, which makes it the master. As soon as a master is established, it immediately attempts to call all other units and assigns them successive rotation positions. The system is now active.

Before a master is established, the system is not deprived of air. This is due to one of the outstanding features of the "AUTO SENTRY-ES" sequencing system: pressure control is always executed locally at each compressor. The effective setpoint for compressor control is the programmed setpoint minus $3 \times (\text{rotation number} - 1)$. So while a compressor is counting down towards establishing a master, it is also capable of delivering air at a pressure determined by the above formula.

To ensure that two or more machines do not simultaneously decrement their rotation numbers and simultaneously become masters, place the desired master in sequence mode first and wait until the first decrement in rotation number is seen (about 7 seconds). Then place subsequent compressors in sequence mode. To dictate the complete initial sequence manually, wait until the previous machine decrements one position and then place the next desired compressor in sequence mode. To let the master determine the initial sequence, simply wait until the master has decremented its rotation number once, and then place all remaining compressors in sequence mode. Remember that once a master is established, no further self-decrementing is done by the individual compressors. Instead, they will wait until the master assigns them a rotation number.

Rotation numbers are displayed in the bottom display line, with the mode indication. For example, the mode indication for the current master is SEQ1; for the first lag compressor, SEQ2; second lag, SEQ3.

2. HOW THE "AUTO SENTRY®-ES" CONTROLS PRESSURE WHILE SEQUENCING

Each compressor operates exactly the same as if it were in AUTO mode with one exception: it has a dynamic setpoint. The initial setpoint is determined by the equation shown above. A compressor starts when the system pressure drops below its programmed reset point, after waiting for ['LAG START INTERVAL' times (rotation number - 1)] seconds. This prevents all lag

compressors from starting at once. Note that a compressor's ['LAG START INTERVAL' times (rotation number - 1)] timer is not reset to zero until that compressor is started or until another unit in the system stops. This means that the time for the next lag compressor to come on may be somewhat less than 'LAG START INTERVAL'.

EXAMPLE:

In a three compressor sequence system, SET PRESSURE = 100 PSI; RESET PRESSURE = 90 PSI; LAG START INTERVAL = 15 seconds. The lead compressor is running alone, maintaining 100 PSI by modulation when an air tool comes on line and causes the air demand to exceed the capacity of the lead compressor. When the pressure drops to 90 PSI, the #2 unit times out its 15 second timer and starts. It takes 5 additional seconds for the pressure to rise above 90 PSI. The #3 unit whose timer was initially set at 30 seconds ($15 \times [3 - 1]$), has counted down 20 seconds (the total time that system pressure was below 90 PSI). If air demand increases again, the pressure will have to fall below 90 PSI for only 10 seconds more to start unit #3.

As was previously stated, a lag compressor's modulation setpoint (PSET for short) is [SET PRESSURE - $3(\text{rotation number} - 1)$]. Thus in the above example, the first lag compressor (rotation #2) has a PSET of 97 PSI; the second lag, 94 PSI, and so on. But look what happens in an eight compressor installation: The eighth compressor will have an initial setpoint of [$100 - 3(8 - 1)$], or 79 PSI. Does this mean that an eight compressor installation must operate 21 PSI below the desired operating point when all compressors are running? NO! This is where the "AUTO SENTRY-ES" dynamic setpoint control takes over. This is how it works: Whenever the system pressure is below the programmed RESET PRESSURE, the PSET of each lag compressor is incremented 1 PSI every thirty seconds. Thus, after a short interval (about five minutes in this example), the PSET of the last sequenced compressor will climb until either it equals the RESET PRESSURE, or a decrease in demand causes the actual system pressure to rise above the RESET PRESSURE. The "AUTO SENTRY-ES", with its dynamic setpoint control, will maintain system pressure between the limits of RESET PRESSURE and SET PRESSURE. Remember, RESET and SET PRESSURE values are programmed by the operator so the operating range is completely programmable and predictable.

Dynamic setpoint control will also work in reverse of the operation described above. Obviously, incrementing setpoints will cause overlap of the compressors' modulation ranges. While this enables us to maintain a higher pressure than competitor's sequencers, overlap is undesirable as demand decreases, because a system could end up with several compressors running partially loaded instead of running the minimum number of fully loaded compressors. To overcome this, as pressure

rises through the range between RESET and SET, the lag compressors' PSET's are now decremented. This reverses the effect described above during periods of high demand. The "AUTO SENTRY-ES" keeps track of all functions so there is never any mix-up of setpoints and the proper rotation sequence is always maintained.

The Automatic Sequence Change

After the master (lead) compressor has served for the duration programmed (TRANSFER INTERVAL), it relinquishes control and assigns itself the highest available rotation number. The lag compressors detect the loss of the master and decrement their rotation numbers. Number 2 becomes number 1, the new master; number 3 becomes number 2, etc.

Whenever the master detects a missing rotation number, such as when a compressor is turned off that was previously in the rotation, it will automatically 'close the gap' by decrementing the rotation numbers of all compressors whose rotation numbers were greater than the missing number. Likewise, if for whatever reason, the master compressor fails to carry out its role, all lag compressors begin decrementing their rotation number until a new master is established. Regardless of the scenario, the result will always be that the compressors that remain in rotation will always end up with the lowest possible rotation numbers.

Other Features

Any air system will exhibit pressure differences from one point to the next. Even a well-designed multi-compressor installation will show 'minor' pressure variations between one compressor's discharge point and another compressor's discharge. These points will also vary from the central system (normally the air storage receiver). The "AUTO SENTRY-ES" sequencing system is designed to tolerate minor variations. These pressure differences wreak havoc with conventional sequencers. Central sequencers sense a lower pressure than is seen at each compressor. With such systems, there is always a chance that the sequencer could cause a compressor to over pressure due to this pressure drop. The alternative has been to set the central sequencer to a lower pressure to prevent this or allow local override of the sequencer by the local pressure control, neither of which is desirable in the scheme of maintaining plant pressure efficiently with sequencing. The "AUTO SENTRY-ES" sequencing system will automatically adjust the system to prevent over pressures in any individuals.

The "AUTO SENTRY-ES" sequencing system lets each compressor control itself independently about a setpoint (PSET) derived to cause staggered operation, or sequencing. The aforementioned pressure drops can also cause derogatory effects (mainly skewed, or

out of sequence operation) to the sequencing algorithm used by the "AUTO SENTRY-ES".

Since these pressure variations are not constant (they will vary due to demand changes, compressor load percentage changes, and number of compressors running), any scheme to compensate for the pressure variations must be dynamic. The exclusive dynamic setpoint control feature accomplishes this error correction scheme rather easily.

Here's how it works: The master continually receives system pressure values from every machine in the sequence rotation. The values are averaged and this average is distributed to all lag compressors. All compressors, lead and lag, then compare their local pressure reading to the average and adjust their PSET by the amount of error. The effect is that all compressors are controlling to a single pressure reading, a reading that is not one that is picked up somewhere removed from the compressor, but an average of actual discharge pressures.

The pressure displayed on the top line by all sequenced compressors is this average.

CONNECTION TO EXTERNAL CONTROLS

The "AUTO SENTRY-ES" controller offers interconnection points for external controls and indicators. This allows simple connection to remote controls and indicators, or integration into any plantwide controls system.

Remote On / Off – Remote on-off control of the system requires only a simple two-wire control, with an isolated contact suitable for 120 volts, 1 amp. This may be a switch, a timer contact, a relay contact, or a PLC output. To connect, simply run the two wires to the control enclosure, remove the jumper between terminal 6 and terminal 9 on the terminal strip, and connect the two wires to terminal 6 and terminal 9.

The air compressor will operate normally in its selected mode whenever this contact is closed (turned on). Note that the keypad is always the master control; the operating mode must be selected at the keypad, and the remote is not capable of starting a unit after the STOP/RESET key has been pressed to place the controller in the READY state. When the contact is opened (turned off), operation depends on how the controller has been programmed and what it is doing prior to opening the contact.

If the compressor was already stopped in automatic or sequence modes, it will remain stopped and will not restart until the contact is closed. The display will flash the message "REMOTE STOP" to indicate that it is waiting for the remote signal.

If the compressor was running in any mode when the contact was opened, and the remote response is programmed for "IMMEDIATE", the compressor will im-

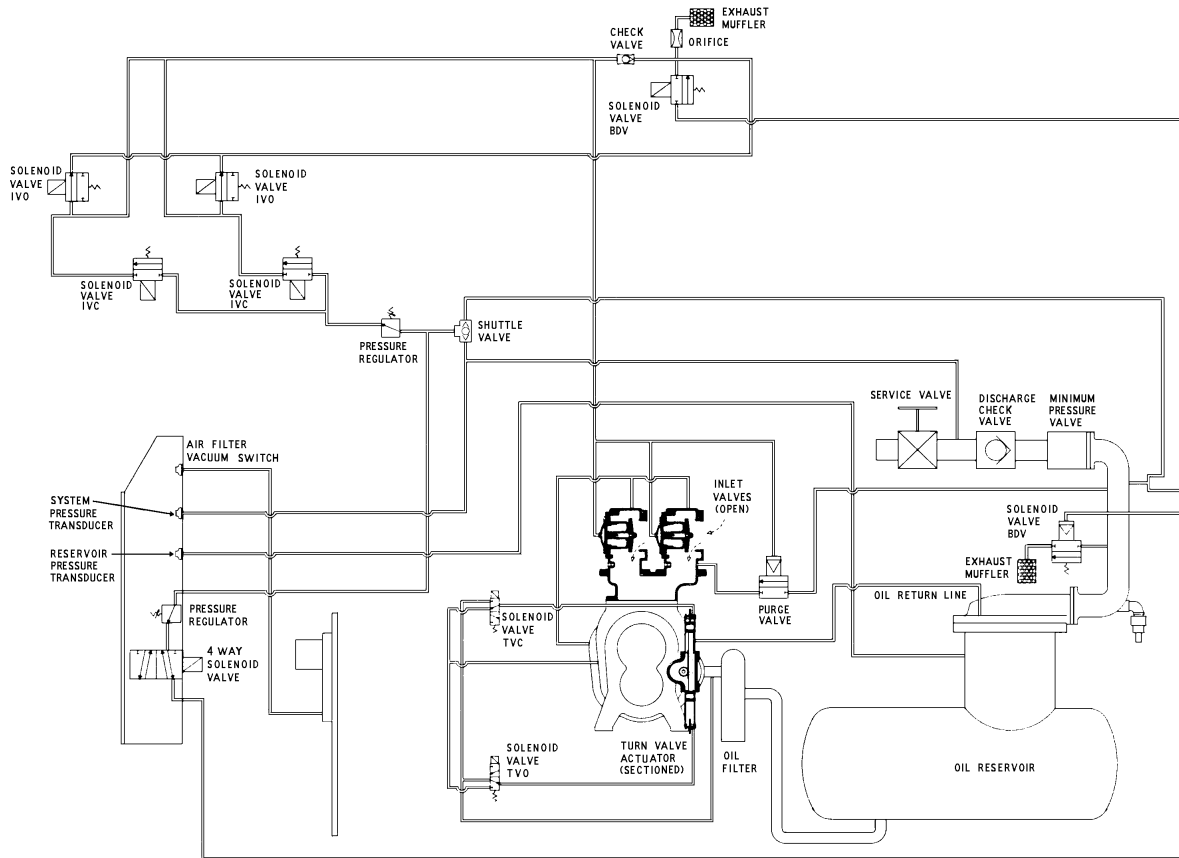


FIGURE 4-2 – SCHEMATIC TUBING DIAGRAM

mediately unload, blowdown and stop the motors. The unit is then in the “REMOTE STOP” mode as indicated above.

If the compressor was running in any mode when the contact was opened, and the remote response is programmed for “TIMED UNLOAD”, the compressor will immediately unload and blowdown. It will then continue to run unloaded for whatever period has been programmed for “AUTO TIME” (or will complete the remaining auto time if already blown down). After completion, the motors will stop, and the unit will be in the “REMOTE STOP” mode as indicated above. This is the preferred setting for automatic remote controls that may cycle in less than 1/2 hour, as the motor is always cooled evenly and rapid start cycles are prevented.

Alarm Relay – The “AUTO SENTRY-ES” controller provides an alarm relay that may be connected to a remote mounted indicator light, horn, or into a PLC input of a plantwide control system. The contact is commercial rated 2 amps at 120 volts. The relay turns on whenever there is a shutdown condition requiring service at the compressor, and remains off during normal operation, stopping, or power off conditions. The external connections from the controller are from an isolated form C (single-pole, double-throw) contact. This al-

lows control of either a “compressor okay” or a “compressor shutdown” remote indicator.

To use this relay, connect the supply wire for the remote circuit to terminal 21 (relay common) on the terminal strip. Connect a wire to the indicator from either terminal 19 (normally open) or from terminal 20 (normally closed). Connect the other side of the indicator to its neutral.

Serial Communications – If units are NOT connected in sequence, the serial port is available for communications of compressor data to external monitoring systems. Data available include all pressures and temperatures, and a report of internal service data. This is accessible with a PC or PLC with an RS-485 communications port. For protocol information, request drawing 200EAP1255.

OTHER CONTROL DEVICES

Besides the electronic controller noted above, the following components are also used to control operation of the compressor unit.:

Relief Valve – A pressure relief valve(s) is (are) installed in the final discharge line and set to approximately 120–125% of the unit’s full load operating pres-

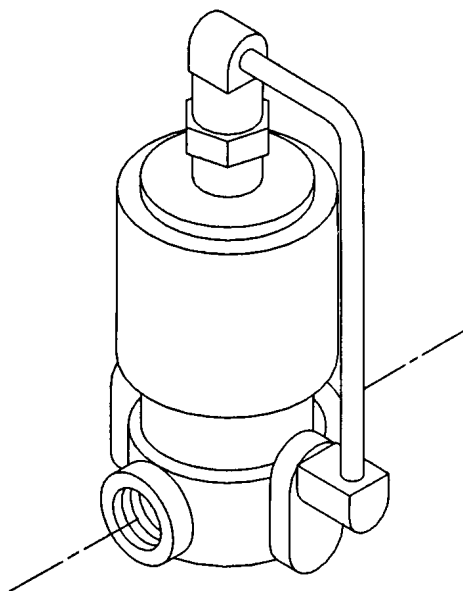
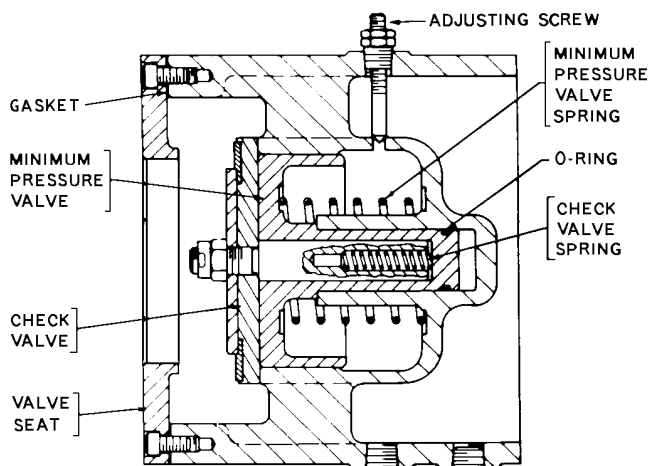


FIGURE 4-3 – BLOWDOWN VALVE



B76087

FIGURE 4-4 – MINIMUM DISCHARGE PRESSURE / CHECK VALVE

sure for protection against over pressure. Periodic checks should be made to ensure its (their) operation.

The relief valve should be tested for proper operation at least once every year. To test the relief valve, raise the system operating pressure to 75% of the relief valve set pressure and manually open the valve with the hand lever. Hold the valve open for a few seconds and allow it to snap shut.

⚠ WARNING

When the relief valve opens, a stream of high velocity air is released, resulting in a high noise level and possible discharge of accumulated dirt or other debris. Always wear eye and ear protection and stand clear of the discharge port when testing the relief valve to prevent injury.

⚠ CAUTION

Never paint, lubricate or alter a relief valve. Do not plug vent or restrict discharge.

⚠ WARNING

Operation of unit with improper relief valve setting can result in severe personal injury or machine damage. Insure properly set valves are installed and maintained.

Blowdown Valve (FIGURE 4-3) – This valve normally is used for control functions, but also serves to relieve reservoir pressure following a shutdown. The blowdown valve is a two-way solenoid valve which is piped into the oil reservoir outlet ahead of the minimum pressure valve. When the solenoid is de-energized, the valve opens and the coolant system is blown down. When the solenoid is energized, the valve closes to allow the coolant system to pressurize. A control air check valve is provided to ensure that the inlet valve is closed during blowdown.

Oil Level Gauge (FIGURE 1-5, Section 1, page 3) – This gauge is located on the oil reservoir and indicates the oil level. See section 5 for information on how to correctly read the gauge and proper lubrication.

Minimum Discharge Pressure/Check Valve (FIGURE 4-4) – An internal spring-loaded minimum pressure valve is used in the final discharge line to provide a positive pressure on the coolant system of the

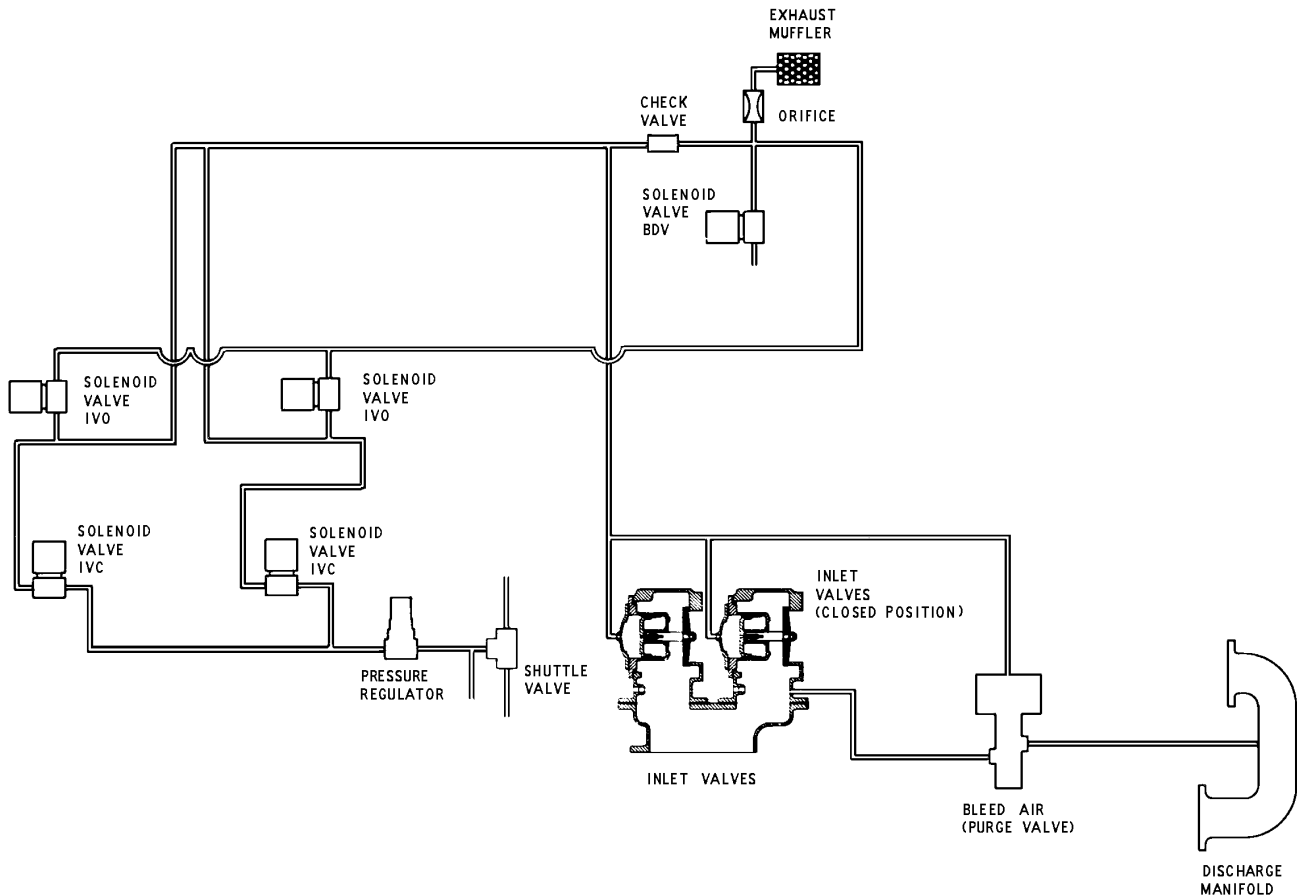


FIGURE 4-5 – INLET VALVE

compressor even if the air service valve is fully open to atmospheric pressure. This valve also functions as a check valve to prevent back flow of air from the shop air line when the unit stops, unloads, or is shut down.

The valve incorporates a spring-loaded piston which maintains approximately 65 psig in the oil reservoir. When the air pressure on the upstream (reservoir) side of the valve rises above 65 psig, the spring is overridden and the valve opens to full porting.

The valve does not require maintenance or adjustment. If the valve fails to function, check the valve stem O-ring for sealing, valve orifices for restriction, or valve and valve seat for burrs and dirt.

The valve is adjustable within a small range. It is adjusted by a screw on the side of the valve. By turning the screw, the minimum pressure to open the valve increases. Conversely, backing it out decreases the minimum pressure required to open the valve.

To service the valve, unscrew the valve cap from the body. The internal parts will come out after the cap has been removed. Repair kits are available from your local authorized Gardner Denver Machinery distributor.

Inlet Valve (FIGURE 1-4, page 3, and FIGURE 4-5) – The Inlet valve restricts the inlet to control delivery and closes to unload the compressor. At shutdown, the inlet valve closes to prevent the back flow of air.

The inlet valve position is controlled by air pressure in its piston cylinder, which is controlled by the “Auto Sentry-ES” through solenoid valves IVC and IVO. As Pressure to the piston is increased, the valve closes to restrict air flow and compressor delivery.

Solenoid Valves IVC and IVO – These valves control position of the inlet valve in response to signals from the “Auto Sentry®-ES”. With both valves de-energized, the normally open IVC valve allows control pressure to the inlet piston to close the valve. If IVC only is energized, the inlet valve is held in its current position. If both valves are energized, control pressure is relieved from the inlet piston to allow the valve to open.

Pressure Regulator – The pressure regulator is used to supply a constant and low control pressure to prevent damage to the inlet valve from “slamming.” The regulator should be set for 25–30 psig.

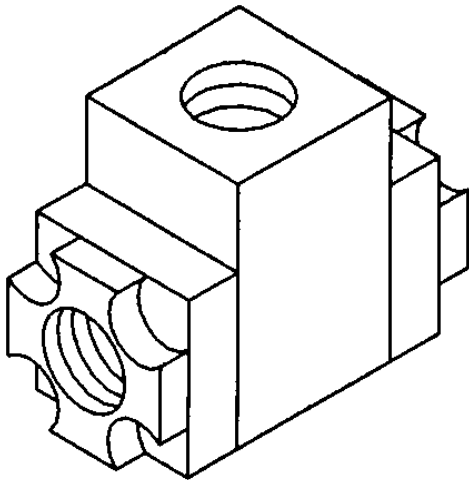


FIGURE 4-6 – SHUTTLE VALVE

Shuttle Valve (FIGURE 4-6) – Also known as a double check valve, the shuttle valve is a device which will take two (2) supply signals and allow the one with the highest pressure to pass through. The shuttle valve is used to provide control air pressure from either the reservoir or plant air system, as required during different operating conditions.

Purge Air Valve – The purge valve is a normally closed two-way air actuated valve that admits purge air from the final discharge manifold to the compressor to counteract the oil knock that occurs in oil-flooded rotary screw compressors when they are completely unloaded with pressure in the oil reservoir. This valve is controlled by the same control pressure which controls the inlet valve.

Turn Valve (Electra-Saver only) (FIGURE 4-7)– The turn valve is a helical valve which, when rotated, opens and closes a series of ports cast into the compressor cylinder. When these ports are open, they direct some of the air which would otherwise be compressed back to the inlet, reducing both capacity and power consumption.

Turn Valve Actuator (Electra-Saver only) (FIGURE 4-8) – The turn valve actuator is a rotary rack and pinion device which positions the turn valve according to system demand. Filtered oil from the compressor sump is directed to the outboard end of the two actuating cylinders to move the rack and rotate the valve. Located on the ends of the cylinders are adjusting screws which limit the travel of the actuator. The adjusting screw on the top adjusts the open position of the turn valve; the bottom adjusting screw adjusts the full closed (full load) position of the valve. The full load position of the actuator may be checked by removing

the adjusting screw at the unloaded end of the actuator (top of the compressor) and using a rod to push the pistons to the full load position. The rod must be clean and free of burrs and scale. Take care not to scrape the cylinder walls when moving the pistons.

Solenoid Valves TVC and TVO (Electra-Saver only) – These valves control the position of the turn valve in response to signals from the “AUTO SENTRY-ES” controller. With both valves de-energized, equal pressure is applied to both ends of the actuator to hold it in its present position. If TVC only is energized, the right side of the turn valve actuator is exhausted to the compressor inlet cavity, causing the turn valve to move towards the full load position. If TVO only is energized, the left end of the turn valve actuator is exhausted to the compressor inlet cavity, causing the turn valve to move towards the unload position. See “AUTO SENTRY-ES OPERATION” in this section for a description of how the turn valve position is controlled during normal operation.

System Pressure Transducer – This transducer is connected after the minimum pressure valve. It converts the pressure in the plant air system into an electrical signal for use by the “Auto Sentry-ES” controller for modulation and control.

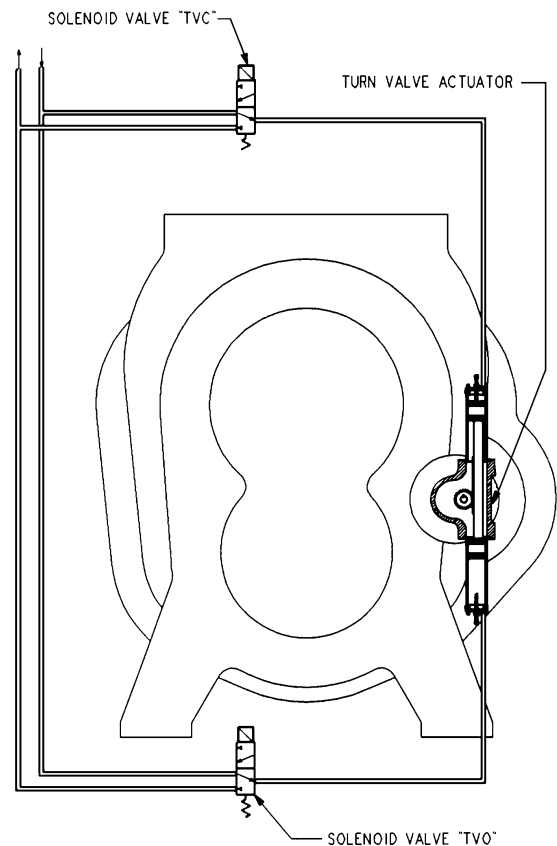


FIGURE 4-7 – TURN VALVE CONTROL

Reservoir Pressure Transducer – This transducer is connected to the coolant system. Its signal is used to prevent loaded starts, monitor reservoir pressure, and monitor the condition of the air/oil separator.

Air Filter Vacuum Switch – This switch is used to monitor air filter condition and alert the user if the filter requires service or replacement.

Discharge Thermistor – This sensor is located directly in the compressor discharge. Its signal is used to monitor compressor temperature and shut down the compressor if a coolant problem is detected.

Reservoir Thermistor – This sensor is located near the separator and is used to monitor temperature and shut down the compressor if high temperatures are detected.

Emergency Stop Push-Button – This is a maintained push-button, and removes power from the controller outputs regardless of controller status. It is located on the upper section of the panel, next to the keypad. This should be used for emergency purposes only – use the keypad “STOP/RESET” for normal controlled stopping.

installed optional shutdown switches. The switch is simply wired in place of the jumper between terminals 7 and 9 of the terminal strip. If the contact is opened, the compressor will be shut down, and will display “SHUTDOWN – HIGH VIBRATION”.

The vibration shutdown switch is to be mounted on the compressor coupling cover, and detects an increase in vibration that could be an indication of impending damage to the unit. The switch actuates when the selected level of vibration is exceeded.

The switch must be adjusted when the unit is first installed. Refer to the switch manufacturer’s instruction manual for complete details.

Control Transformer – This control device changes the incoming power voltage to 110–120 volts for use by all unit control devices. The transformers employed are usually connectable for several input voltages, refer to the transformer label for connection prior to energizing. Two primary and one secondary fuse are provided. Refer to adjacent labeling for replacement information.

Terminal Strip – This provides connections for all 110–120 volt devices not contained within the enclosure.

Fan Starter – The starter is used to provide control and overload protection for the cooling fan or the ventilation fan of water-cooled units with enclosure. Overload heaters should be selected and adjusted based on the motor nameplate amps and the instructions located inside the cover of the electrical enclosure. Three fuses are provided. Refer to adjacent labeling for replacement information.

Main Starter – This starter is used to provide control and overload protection for the main drive motor. Full voltage starters employ a single contactor, overload heaters should be selected and adjusted based on the motor nameplate amps and the instructions located in-

⚠ WARNING

Automatic restarting or electrical shock can cause injury or death. Open, tag and lockout main disconnect and any other circuits before servicing the unit.

Vibration Switch – The “Auto Sentry-ES” controller has one additional input available for dealer or user

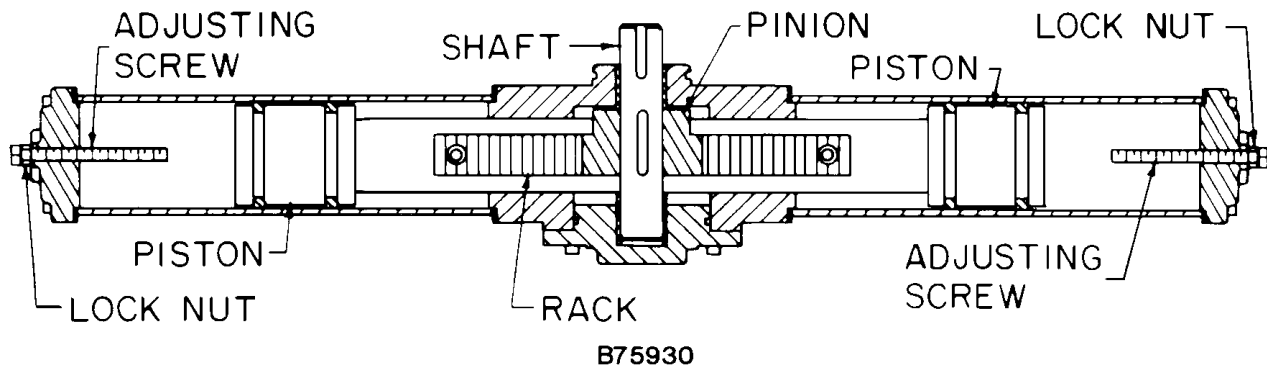


FIGURE 4-8 – TURN VALVE ACTUATOR

side the cover of the enclosure. Wye–delta starters employ three contactors which are controlled sequentially to provide low current starting. For wye–delta starters, the motor nameplate amps must be first multiplied by 0.577 before using the heater table.

Optional Switches – The “Auto Sentry–ES” controller has one additional input available for dealer or user installed optional shutdown switches. If the contact is opened, the compressor will be shut down, and will display “HIGH VIBRATION.”

COMPRESSOR CAPACITY CONTROL – TURN VALVE UNITS ONLY

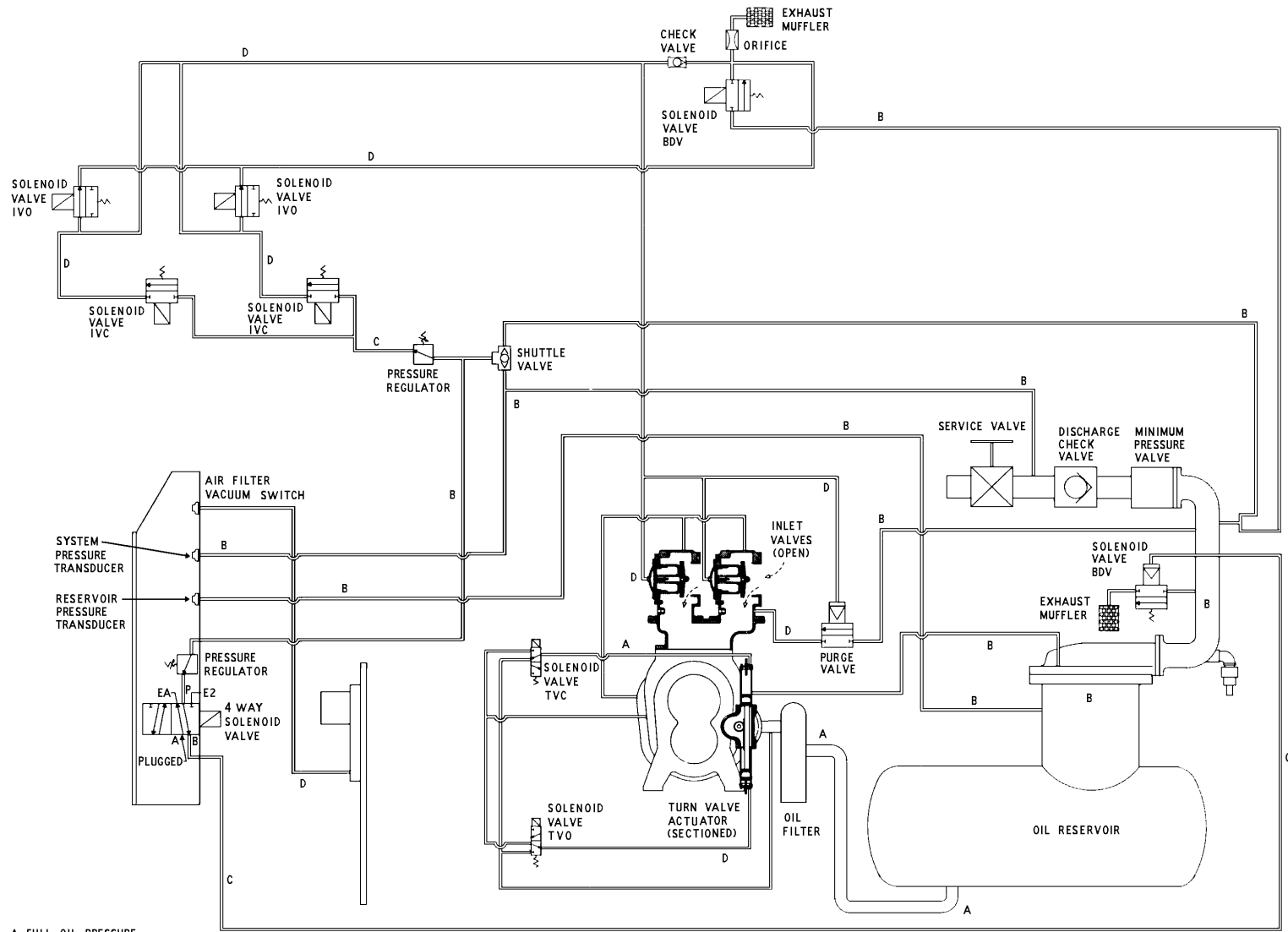
The capacity of the compressor is controlled by the action of the Turn Valve and the Compressor Inlet Valve.

The turn valve controls compressor delivery to match demands of 40% to 100% of the compressor’s maxi-

imum capacity. The inlet valve throttles to control compressor delivery to match demands of 0% to 40% of the compressors maximum capacity.

Example with normal setting of 100 PSIG:

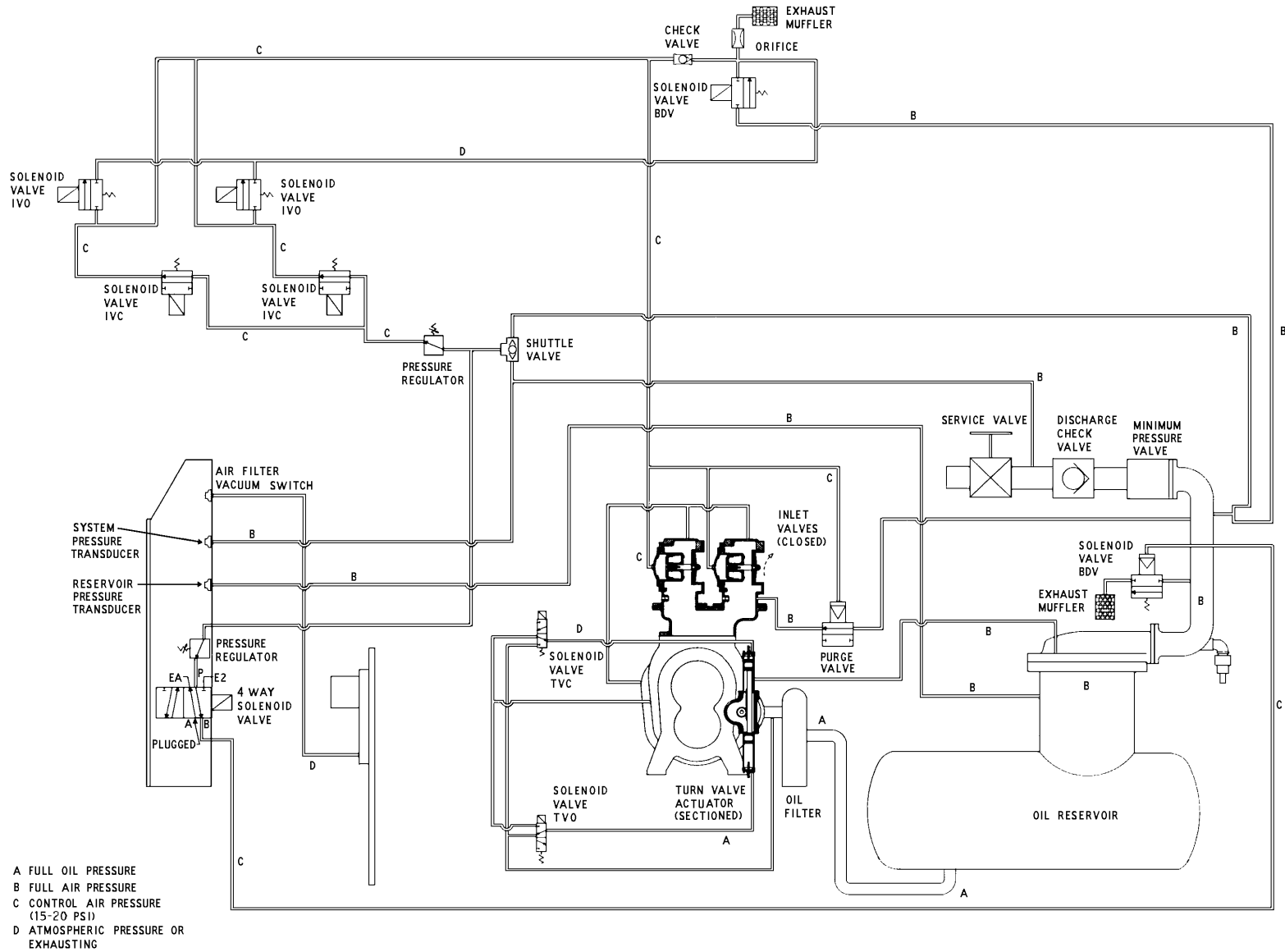
Compressor Delivery	Inlet Valve	Turn Valve	Discharge Manifold Pressure
Full Capacity	Open	Closed	100
70% Capacity	Open	50% Open	100
40% Capacity	Open	Full Open	100
30% Capacity	Closing	Full Open	103
20% Capacity	Closing	Full Open	103
0% Capacity	Closed	Full Open	103



- A FULL OIL PRESSURE
- B FULL AIR PRESSURE
- C CONTROL AIR PRESSURE (15-20 PSI)
- D ATMOSPHERIC PRESSURE OR EXHAUSTING

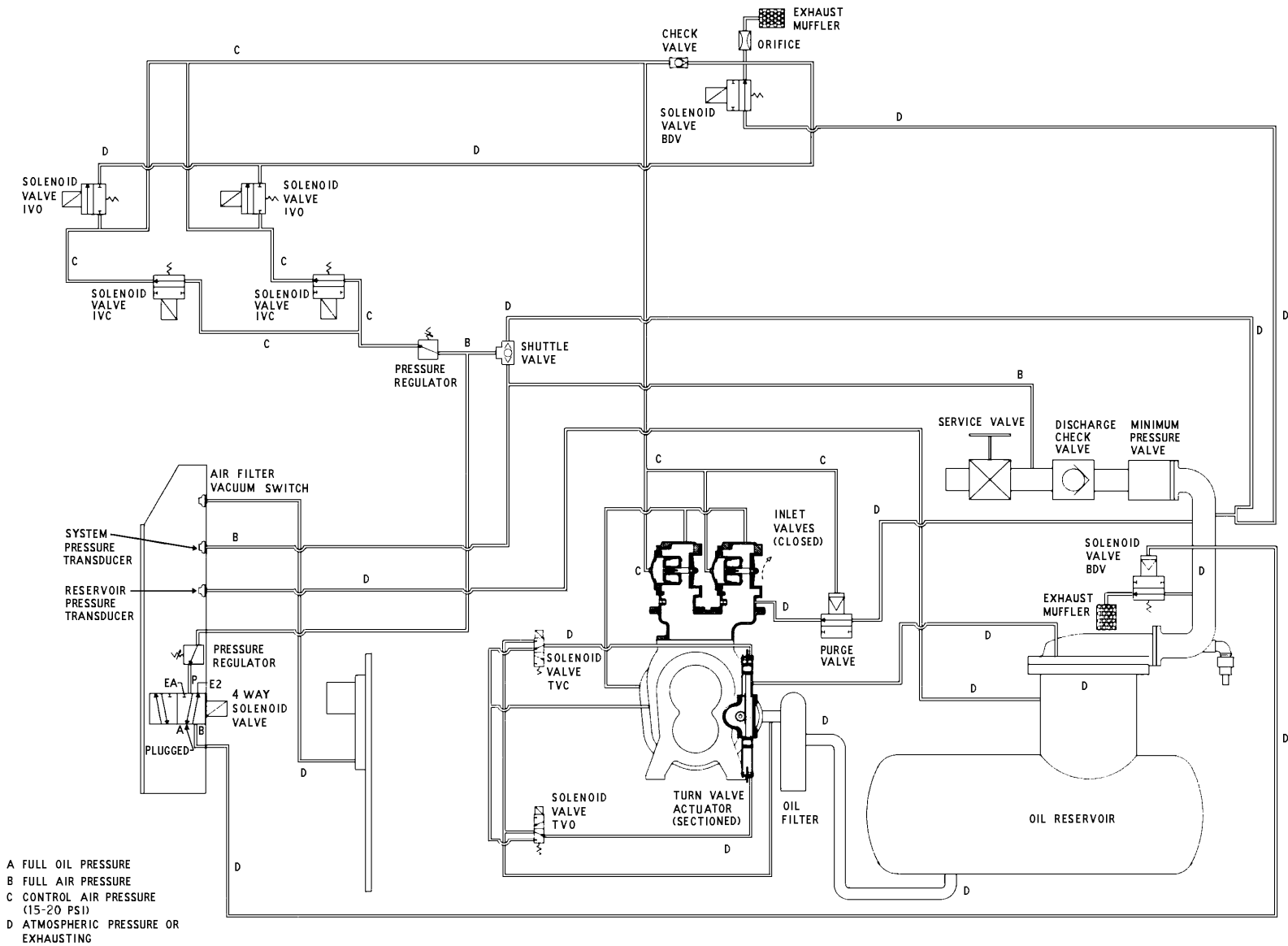
204EAY797
(Ref. Drawing)

FIGURE 4-9 – CONTROL SCHEMATIC – COMPRESSOR AT FULL LOAD



205EAY797
 (Ref. Drawing)

FIGURE 4-10 - CONTROL SCHEMATIC - COMPRESSOR FULLY UNLOADED - CONSTANT SPEED MODE



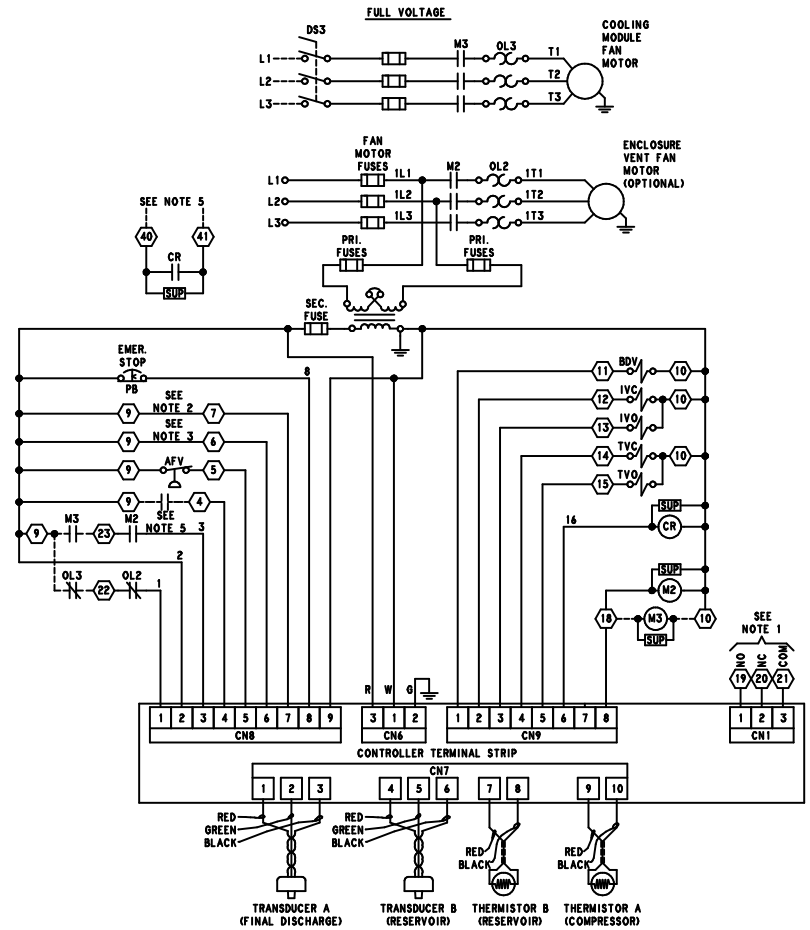
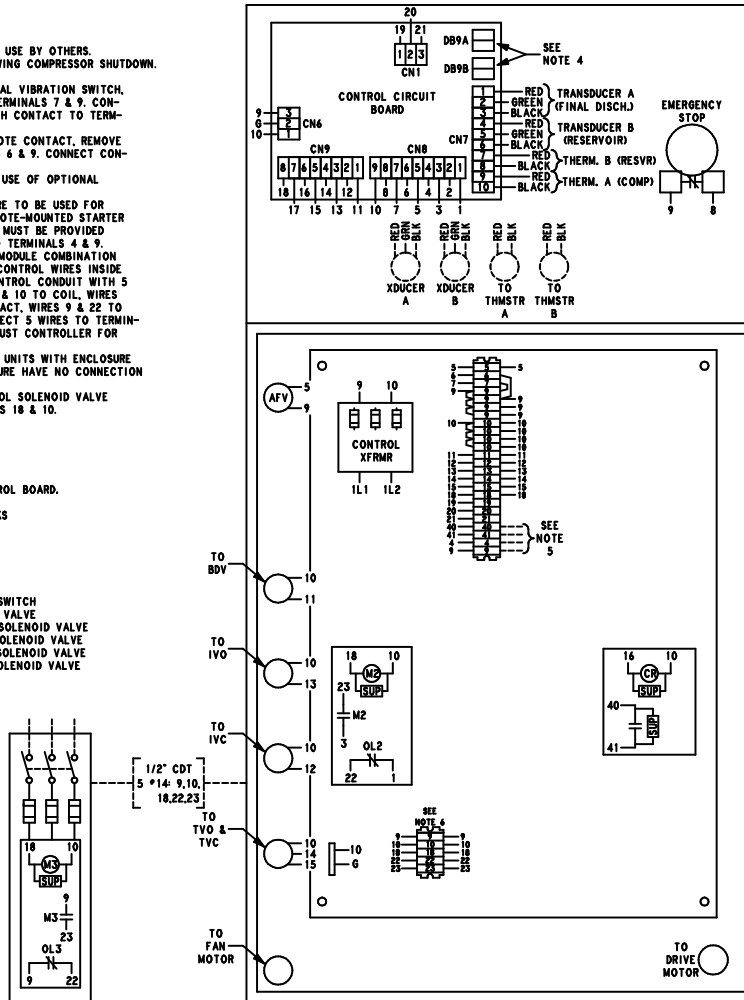
206EAY797
 (Ref. Drawing)

FIGURE 4-11 - CONTROL SCHEMATIC - COMPRESSOR FULLY UNLOADED - LOW DEMAND MODE

- NOTE 1: FORM C CONTACT FOR USE BY OTHERS. CONTACT OPERATES FOLLOWING COMPRESSOR SHUTDOWN. RATING: 120VAC, 2 AMP.
- NOTE 2: FOR USE WITH OPTIONAL VIBRATION SWITCH, REMOVE JUMPER BETWEEN TERMINALS 7 & 9. CONNECT N.C. VIBRATION SWITCH CONTACT TO TERMINALS 7 & 9.
- NOTE 3: FOR CONTROL BY REMOTE CONTACT, REMOVE JUMPER BETWEEN TERMINALS 6 & 9. CONNECT CONTACT TO TERMINALS 6 & 9.
- NOTE 4: DB9A & DB9B ARE FOR USE OF OPTIONAL COMMUNICATIONS CABLE.
- NOTE 5: TERMINALS 40 & 41 ARE TO BE USED FOR TWO-WIRE CONTROL OF REMOTE-MOUNTED STARTER. A N.O. AUXILIARY CONTACT MUST BE PROVIDED ON THIS STARTER WIRED TO TERMINALS 4 & 9.
- NOTE 6: MOUNT THE COOLING MODULE COMBINATION STARTER AND REMOVE ALL CONTROL WIRES INSIDE THE STARTER. INSTALL CONTROL CONDUIT WITH 5 WIRES. CONNECT WIRES 18 & 10 TO COIL WIRES 9 & 23 TO AUXILIARY CONTACT, WIRES 9 & 22 TO OVERLOAD CONTACT. CONNECT 5 WIRES TO TERMINALS IN CONTROL BOX. ADJUST CONTROLLER FOR "WATERCOOLED" FAN MODE.
- NOTE 7: VENT FAN IS USED ON UNITS WITH ENCLOSURE ONLY. UNITS LESS ENCLOSURE HAVE NO CONNECTION TO IT1, IT2 & IT3.
- NOTE 8: WHEN A WATER CONTROL SOLENOID VALVE IS USED, WIRE TO TERMINALS 18 & 10.

- = CONNECTION TO CONTROL BOARD.
- = PANEL TERMINAL BLOCKS

- LEGEND:
- AFV - AIR FILTER VACUUM SWITCH
 - BDV - BLOWDOWN SOLENOID VALVE
 - IVC - INLET VALVE CLOSE SOLENOID VALVE
 - IVO - INLET VALVE OPEN SOLENOID VALVE
 - TVC - TURN VALVE CLOSE SOLENOID VALVE
 - TVO - TURN VALVE OPEN SOLENOID VALVE
 - SUP - SUPPRESSOR



212EAP546
(Ref. Drawing)

FIGURE 4-12 - WIRING DIAGRAM

SECTION 5 LUBRICATION OIL COOLER, OIL FILTER & SEPARATOR

- A – Compressor
- B – Oil Reservoir
- C – Oil Separator
- D – Oil Cooler
- E – Thermal Mixing Valve
- F – Oil Filter
- G – Separator to Cylinder Oil Return Line
- H. – Pressure Relief Valve
- J – Discharge Check Valve
- K – Minimum Discharge Pressure Valve
- L – Purge Valve
- M – Pneumatic Blowdown Valve
- N – Orifice
- P – Blowdown Muffler
- R – Shuttle Valve
- S – Pressure Regulator
- T – Solenoid Valve “IVC”
- U – Solenoid Valve “IVO”
- W – Check Valve
- X – Air Filter Vacuum Switch
- Y – System Pressure Transducer
- Z – Discharge Pressure Transducer
- AA – Fan & Motor
- BB – Water Flow Control Valve
- CC – Magnetic Water Shutoff Valve
- DD – Oil Line Check Valve (Remote Overhead Oil Cooler Only)
- EE – Oil Stop Valve (Remote Overhead Oil Cooler Only)

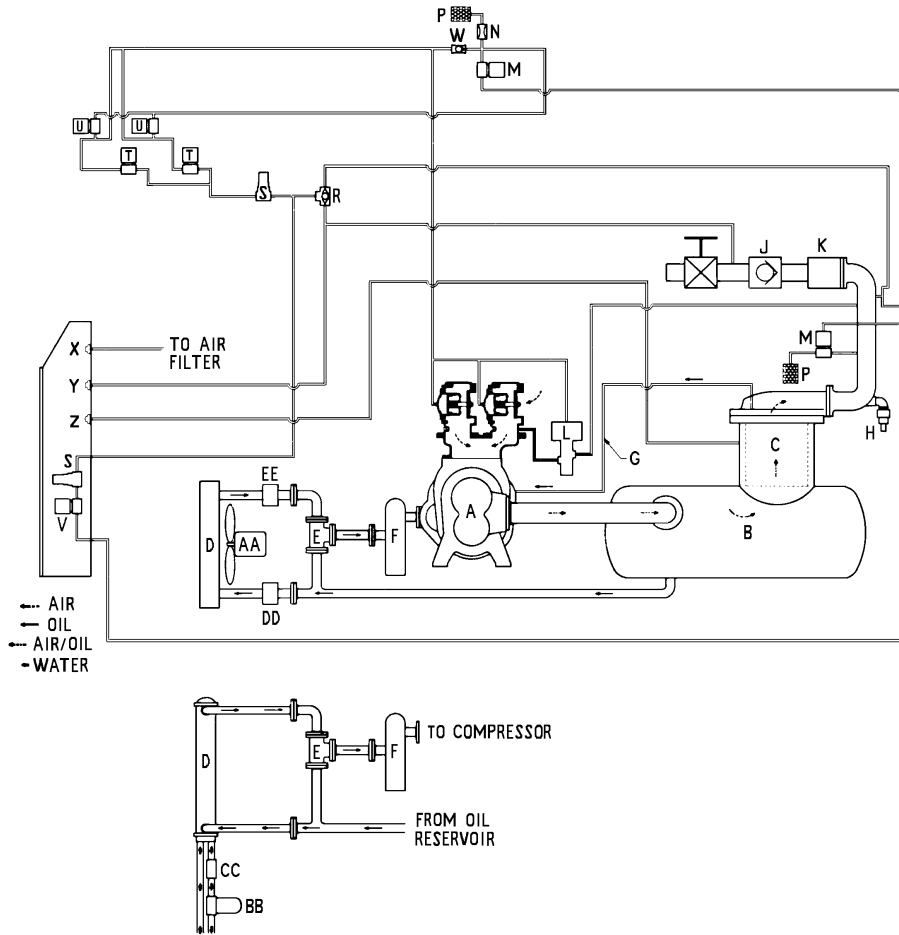


FIGURE 5-1 – FLOW DIAGRAM – AIR/OIL SYSTEMS

COMPRESSOR OIL SYSTEM (FIGURE 5-1) cools the compressor, lubricates moving parts and seals internal clearances in the compression chamber.

The oil inlet line is connected at the bottom of the oil reservoir. Air pressure in the oil reservoir forces oil through the oil cooler, thermostatic mixing valve, oil filter and into the compressor main oil gallery.

The oil passes through internal passages for lubrication, cooling and sealing. The air-oil mixture is then discharged to the oil reservoir where a large part of the entrained oil drops out of the air stream; the air then passes through the final oil separator where most of the remaining oil is removed. The separated oil is returned to the compressor and the air passes to the final discharge line.

RECOMMENDED LUBRICANT – Gardner Denver compressors are factory filled with AEON lubricants. These lubricants are formulated to the highest quality standards and are factory authorized, tested and approved for use in rotary screw compressors. AEON lubricants are available through your authorized Gardner Denver compressor distributor.

OIL SPECIFICATIONS – The recommended compressor lubricant is Gardner Denver AEON™ 4000 Lubricating Coolant which can be used for year-round operation except as noted in the “High Temperature Operation” paragraph below, or low temperature, see “Installation for Cold Weather”, Section 2, page 12. AEON™ 4000 Lubricating Coolant is a superior petroleum base lubricant formulated and containing additives for use in Gardner Denver compressors.

 **CAUTION**

Use of improper lubricants will cause damage to equipment. Do not mix different types of lubricants or use inferior lubricants.

HIGH TEMPERATURE OPERATION – If the discharge temperature is sustained between 200–210° F for a period of more than four (4) hours due to continuing high ambient air temperature, use Gardner Denver® AEON 9000 SP Lubricating Coolant which is a superior synthetic lubricant. Short periods of up to four (4) hours of sustained discharge temperatures up to 210° F do not require a change from the recommended year-round lubricant AEON™ 4000.

 **DANGER**

Compressor, air/oil reservoir, separation chamber and all piping and tubing may be at high temperature during and after operation.

LUBRICANT CHANGE PROCEDURE – Upgrading to a longer life lubricant is essentially a very worthwhile practice. Following are the primary steps to be completed when upgrading or changing the type of lubricant.

1. Thoroughly drain system:
 - Drain oil from air end and cooler while hot.
 - Break low point connections and drain oil from pipe runs.
 - Dump oil from the filter and reinstall used filter.
2. Fill the system with a 50 percent charge of the new lubricant:
 - Start the machine and stay there to observe.
 - Allow the machine to run about five minutes at temperature, or until temperature stabilizes, then shut down.
3. Thoroughly drain the machine.
4. Change to a new filter and separator.
5. Fill the system with a full charge of the new lubricant.

6. Replace the drain plug before restoring power.
7. Machine should then be run normally, however, total run time after the initial changeout should be 50 percent of normal anticipated service life of the new lubricant.
 - Drain all lubricant from the system, change the filter and separator, and replace with a full charge of the new lubricant.
8. Subsequent lubricant changeouts should be at normal intervals. (See (FIGURE 5–3, page 40.)

 **CAUTION**

Improper equipment maintenance with use of synthetic lubricants will damage equipment. Oil filter and oil separator change intervals remain the same as for AEON™ 4000 — See Maintenance Schedule, page 51.

 **WARNING**

High temperature operation can cause damage to equipment or personal injury. Do not repeatedly restart after high temperature stops operation. Find and correct the malfunction before resuming operation.

 **WARNING**

All materials used in Gardner Denver® compressor units are compatible with AEON™ 9000 SP Lubricating Coolant. Use caution when selecting downstream components such as air line lubricating bowls, gaskets and valve trim.

AEON™ 9000 SP Synthetic Lubricant is not compatible with low nitrile Buna N or acrylic paints. AEON™ 9000 SP is compatible with most air system downstream components.


Material Safety Data Sheets (MSDS) are available for all AEON lubricants from your authorized Gardner Denver distributor or by calling 217-222-5400.


COLD AMBIENT OPERATION – See “Installation for Cold Weather Operation,” page 12.

ADDITION OF OIL BETWEEN CHANGES must be made when the oil level is in the red range on the gauge as read while the unit is on. To add oil, follow these steps:

1. Be sure the unit is completely off and that no air pressure is in the oil reservoir.
2. Disconnect, tag and lockout the power supply to the starter.
3. Wipe away all dirt around the oil filler plug.
4. Remove the oil filler plug and add oil as required to return the oil level to the center of the green range on the gauge.
5. Replace the oil filter plug **BEFORE** restoring power to the unit.

DO NOT OVERFILL. The quantity required to raise the oil level from the red range center of the green range is shown in FIGURE 5-2. Repeated addition of oil between oil changes may indicate excessive oil carry-over and should be investigated.

 DANGER
Air/oil under pressure will cause severe personal injury or death. Shut down compressor, relieve system of all pressure, disconnect, tag and lockout power supply to the starter before removing valves, caps, plugs, fittings, bolts, and filters.

 DANGER
Compressor, air/oil reservoir, separation chamber and all piping and tubing may be at high temperature during and after operation.

Size	Approximate System Capacity (Initial Fill)	Oil Reservoir Capacity** (Refill)	Qty. – Top of ADD to Centerline of RUN
350 HP	Air Cld* – 61 Water Cld – 59	55 55	11 11
400 HP	Air Cld* – 61 Water Cld – 59	55 55	11 11
500 HP	Air Cld* – 61 Water Cld – 59	55 55	11 11

* System capacity shown is for the initial fill of the compressor unit oil cooler module ONLY – remotely mounted oil coolers will require additional oil to fill the piping between the compressor unit and the cooler.

** The oil reservoir refill quantity shown is measured at the centerline of the oil level gauge RUN range or approximately 3.5 inches below the centerline of the oil reservoir.

FIGURE 5-2 – OIL SYSTEM CAPACITIES (APPROXIMATE) – U. S. GALLONS

 CAUTION
Excessive oil carry-over can damage equipment. Never fill oil reservoir above the “FULL” marker.

OIL LEVEL GAUGE (FIGURE 1-5, page 3) indicates the amount of oil in the oil reservoir. When the unit is stopped, the oil level will be higher in the RUN range than when operating on load. When the unit is operating, the oil level should be near the center of the RUN range. In normal operation, the oil level will fluctuate slightly as the compressor loads and unloads. Add oil only when the oil level gauge indicated in the ADD OIL range when the compressor is loaded. Drain oil only when the oil level gauge indicates EXCESS OIL when the compressor is loaded.

MOISTURE IN THE OIL SYSTEM – In normal humidity and with normal operating temperatures and pressures, the thermal mixing valve controls the oil temperature and prevents moisture contamination of the oil. Unusual cooling of the oil reservoir, short loaded cycle in high humidity or malfunctions of the thermal valve may result in moisture in the oil system which is detrimental to compressor lubrication and could cause oil carryover. If moisture is observed in the oil reservoir,


drain the moisture and correct the condition causing the accumulation. See “Compressor Oil System Check,” page 47 and “Thermal Control (Thermostatic Mixing) Valve,” page 43.


OIL CHANGE INTERVAL – Recommended oil change intervals are based on oil temperature (see FIGURE 5–3).

When operating conditions are severe (very dusty, high humidity, etc.), it will be necessary to change the oil more frequently. Operating conditions and the appearance of the drained oil must be surveyed and the oil change intervals planned accordingly by the user. A good lubricant analysis program is helpful in planning the change interval.

 CAUTION
Change the oil filter every 1000 hours.

DRAINING AND CLEANING OIL SYSTEM

 DANGER
Air/oil under pressure will cause severe personal injury or death. Shut down compressor, relieve system of all pressure, disconnect, tag and lockout power supply to the starter before removing valves, caps, plugs, fittings, bolts, and filters.

 DANGER
Compressor, air/oil reservoir, separation chamber and all piping and tubing may be at high temperature during and after operation.

Always drain the complete system. Draining when the oil is hot will help to prevent varnish deposits and carry away impurities.

To drain the system, use one of the following methods:

1. If the unit is not elevated high enough to use the oil reservoir drain line to drain oil, a small hand, electric or air operated pump should be used to drain reservoir through the oil filler opening or from the drain valve.
2. If the unit is elevated so that the oil reservoir drain can be used, empty the oil reservoir through the drain valve to a suitable container or sump.
3. If the drained oil and/or the oil filter element are contaminated with dirt, flush the entire system: reservoir, oil cooler, mixing valve and lines.
4. Inspect the oil separator elements for dirt accumulation; replace if necessary. If a varnish deposit exists, contact the factory for recommendations for removal of the deposit and prevention of varnish.

Discharge Temperature	AEON 4000 Change Interval	AEON 9000 SP Change Interval
Up to 180°F (82°C)	6000 hrs.	8000 hrs.
180° to 190°F (82° to 88°C)	4500 hrs.	6000 hrs.
190° to 200°F (88° to 93°C)	3000 hrs.	4000 hrs.
200°F+ (93°C)	1500 hrs.	2000 hrs.

FIGURE 5–3 – OIL CHANGE INTERVAL

FILLING OIL RESERVOIR

DANGER

Air/oil under pressure will cause severe personal injury or death. Shut down compressor, relieve system of all pressure, disconnect, tag and lockout power supply to the starter before removing valves, caps, plugs, fittings, bolts, and filters.

DANGER

Compressor, air/oil reservoir, separation chamber and all piping and tubing may be at high temperature during and after operation.

1. Be sure the unit is completely off and that no air pressure is in the oil reservoir.
2. Disconnect, tag and lockout the power supply to the starter.
3. Wipe away all dirt around the oil filler plug.
4. Remove the oil filler plug and add oil as required to return the oil level to the center of the green range on the gauge.
5. Install the oil filler plug and operate the unit for about a minute allowing oil to fill all areas of the system. Check for leaks.
6. Shut down unit, allowing the oil to settle, and be certain all pressure is relieved.
7. Add oil, if necessary, to bring level to the center of the green range on the gauge.

On unloaded operation and after shutdown some oil will drain back into the oil reservoir and the oil level gauge may read in EXCESS OIL range. DO NOT DRAIN OIL TO CORRECT. On the next start, oil will again fill the system and the gauge will indicate the operating level.

COMPRESSOR OIL FILTER (FIGURE 5-4, page 42) – This replaceable element oil filter is a vital part in maintaining a trouble-free compressor, since it removes dirt and abrasives from the circulated oil. The oil filter relief valve is located in the oil filter head. The relief valve opens in the event the element becomes dirty enough to block the flow of oil.

CAUTION

Element must be replaced every 1000 hours or sooner, or when top of the indicator on the filter is in the red CHANGE FILTER half of the window. Unit must be running and warmed up for indicator to read accurately. Check with light to be certain of indicator position – some lubricants will obscure the indicator.

Use only the replacement element shown on the filter tag or refer to the parts list for the part number. Use the following procedure to replace the filter element. Do not disturb the piping.

DANGER

Compressor, air/oil reservoir, separation chamber and all piping and tubing may be at high temperature during and after operation.

DANGER

Air/oil under pressure will cause severe personal injury or death. Shut down compressor, relieve system of all pressure, disconnect, tag and lockout power supply to the starter before removing valves, caps, plugs, fittings, bolts, and filters.

Compressor Main Oil Filter Instructions (Refer to FIGURE 5-4, page 42)

1. Stop the unit and be sure no air pressure is in the oil reservoir. Disconnect, tag and lockout power supply to the starter.
2. To remove head assembly, rotate tee handle (9) counterclockwise until head assembly (1) is free of housing (3).
3. Holding baffle (12) down, push down on indicator assembly (5) to insure that it moves up and down freely within the baffle. Remove baffle (12) and

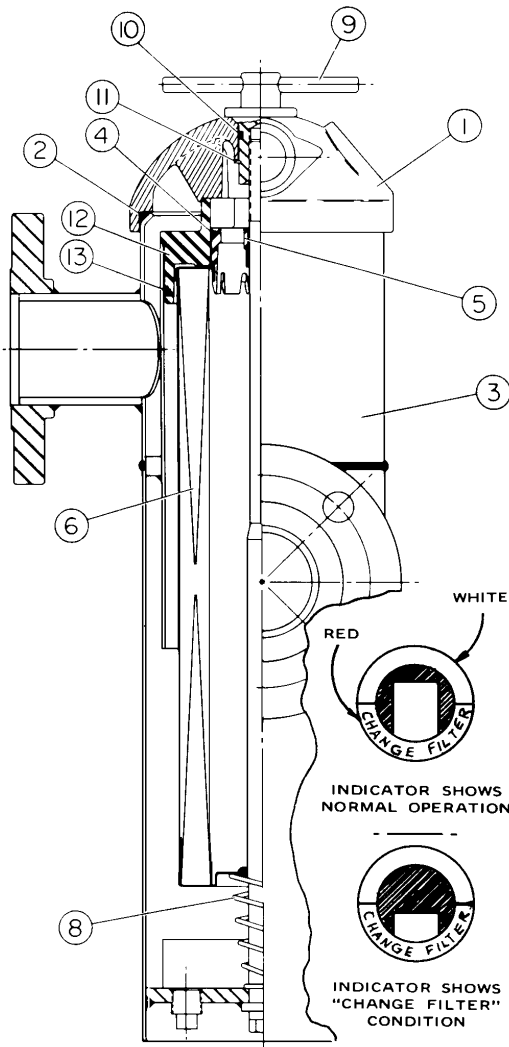


FIGURE 5-4 – COMPRESSOR OIL FILTER

check its inside bore for burrs or deep scratches and carefully smooth out if required. Check seal (13) for cuts and excess wear.

4. Remove element (6) from housing assembly (3). Remove indicator assembly (5) from element (6) by inserting screwdriver between indicator assembly and element cap and carefully prying downward. Inspect indicator O-ring (4) for cuts or excessive wear and discard element (6).
5. Remove O-ring from head assembly (1) and inspect for cuts or excessive wear. Wipe O-ring area of head (1) with clean cloth and after covering O-ring (2) with oil, reinstall in head assembly.
6. Reinstall indicator assembly (5) into new element (6). Place element into canister (3), making sure that large diameter of spring (8) contacts the new element, and install baffle (12).
7. Place head assembly (1) onto housing assembly

(3) and rotate tee handle (9) clockwise until hand tight; do not exceed 20 foot-pound torque if tools are used.

8. Reconnect starter to power source.
9. If leakage appears around tee handle (9) remove snap ring (11) and remove tee handle (9) from head assembly (1). Remove O-ring (10) and inspect for nicks or cuts and replace if necessary. Wipe tee handle (9) and O-ring groove. Then oil and replace O-ring (10), insert tee handle (9) into head assembly (1) and replace snap ring (11).

BEARING OIL FILTER – An oil filter of the spin-on type is used. This filter is a vital part in maintaining a trouble-free compressor, since it removes dirt and abrasives from the circulated oil before it reaches the bearings. The filter is the disposable type and is equipped with a relief valve that opens in the event the element becomes dirty enough to block the flow of oil. **The filter must be replaced each time the main oil filter element is replaced.** When changing this filter between oil changes, add one (1) quart of lubricant to the system to replace that retained in the old filter. Use only the replacement filter shown in the parts list, as others may not have sufficient burst pressure strength.

To replace filter, stop the unit and be sure no air pressure is in the oil reservoir. Disconnect, tag and lockout power supply to the starter. Spin off the old filter and discard, then spin on the new filter by hand, tightening firmly enough to prevent leaks.

COMPRESSOR OIL COOLER – RADIATOR TYPE (FIGURE 5-5) – The air-cooled oil cooler module is remote mounted. The oil cooler requires pipe and electri-

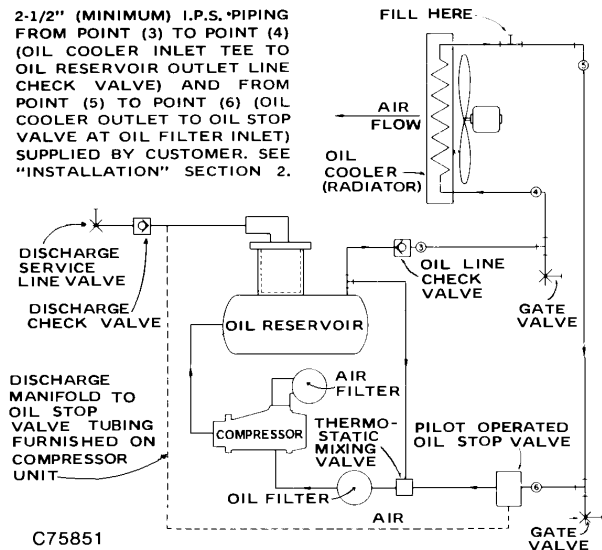


FIGURE 5-5 – OIL FLOW DIAGRAM – REMOTE OVERHEAD MOUNTED OIL COOLER

cal connection to the main compressor unit. Connecting piping and wiring are furnished by the user. See "Installation", Section 2, page 8.

Do not obstruct the air flow to and from the oil cooler. Allow two (2) feet clearance on all sides of the oil cooler. See FIGURE 2-2, Section 2, page 8, for cooling air flow requirements. Keep both faces of the oil cooler core clean for efficient cooling of the compressor oil. Oil cooler malfunctions may be traced by checking oil pressure drop through the cooler; check by installing pressure gauges at fittings in the inlet and outlet oil piping near the end of the cooler. At normal operating air service pressures (65 to 150 psig), with the unit warm, a pressure drop of 2 to 25 psig can be expected between the inlet and outlet side of the cooler. The controller will show the reservoir temperature which is the air temperature in the reservoir and the approximate oil temperature into the thermal mixing valve.

An oil filler stand pipe and plug must be located in the piping on the oil cooler module for ease of filling the oil cooler when it is mounted at a distance from the compressor unit. When filling a remotely mounted oil cooler, be sure all lines to and from the compressor unit are also filled to prevent excessive drawdown of the oil supply in the oil reservoir. A vent line should be installed between the oil cooler and compressor oil reservoir as an aid in filling and to prevent siphoning.

HEAT EXCHANGER (OIL) PIPING – All remote elevated cooler applications must be sent through Engineering for approval and for recommending the pipe size. A special control group will be mounted on the package at the factory. This group controls the oil stop valve as well as not allowing the machine to run unloaded. Kit number EAU68133 includes the oil stop valve, check valve and flanges and must be installed on all remote elevated coolers per FIGURE 5-5, page 42, and the following instructions.

NOTICE

Remote mounted elevated coolers have a maximum pipe length of 30 feet (each way) and a maximum height of 20 feet with a minimum of fittings. Engineering will review all remote elevated cooler applications and recommend pipe size on an individual basis. Customer Service should include the engineering recommendation in the special order sent to Engineering.

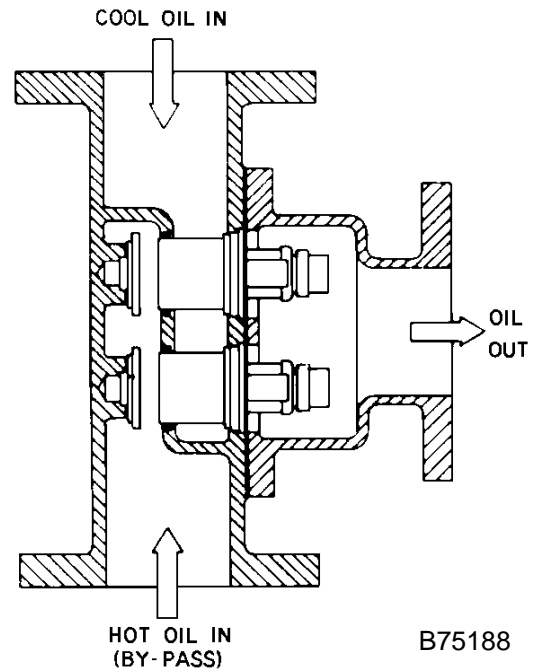


FIGURE 5-6 – THERMOSTATIC MIXING VALVE ELEMENT

1. Mount the check valve (90J113).
2. Mount the drain valves in the lowest section of the pipe on each side of the cooler connections.
3. Mount the oil stop valve (90AR243) in the line after the thermal mixing valve as shown.

Modifications to the control lines will be made at the factory to control the oil stop valve. Air to the oil stop valve must come from the dry side of the reservoir cover, then through the 3-way pneumatic valve. Control air to the valve must come from the line between the tee and the orifice in the blowdown muffler line. When the machine blows down, it will activate the pneumatic valve which will shut off the air and vent the line between the pneumatic control valve and the oil stop valve to the atmosphere. This will shut the oil stop valve and prevent excessive oil from running into the reservoir. Failure to install these parts could result in high oil carryover and cause the machine to shutdown on high discharge temperature.

THERMAL CONTROL (THERMOSTATIC MIXING) VALVE (FIGURE 5-6) on current units is installed in the system as shown in FIGURE 5-1, page 37. This valve is used to control temperature of the oil in both air-cooled radiator and water-cooled heat exchanger type oil cooler systems. The element is so designed that a portion of the oil can flow through the oil cooler at all times. On start-up with unit cold, element is open to bypass, allowing oil to pass directly from the reservoir to compressor during warm-up. As oil warms, element gradually closes to the bypass allowing more of

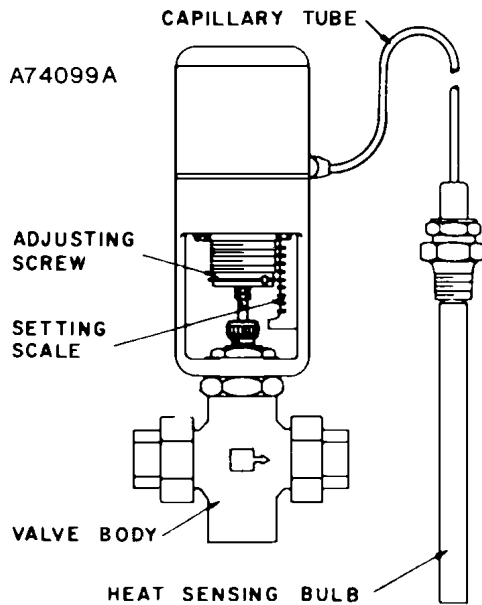


FIGURE 5-7 – WATER CONTROL VALVE

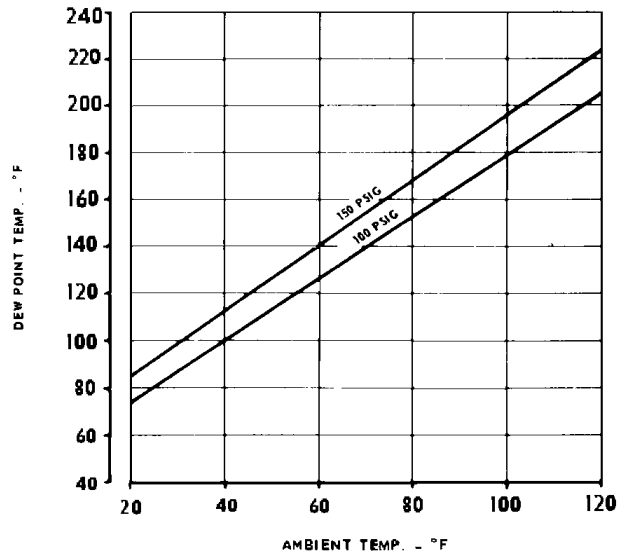


FIGURE 5-8 – DEW POINT TEMPERATURE VS. AMBIENT TEMPERATURE (100% RELATIVE HUMIDITY)

the oil from the cooler to mix with oil from the bypass. After the unit is warmed up, the mixing valve maintains oil injection temperature into the compressor at a minimum of 150° F (66° C). This system provides proper compressor warm-up and helps prevent moisture contamination of oil.

To check element, heat in oil – it should be fully extended at 150° F (66° C). If unit shuts down due to high air discharge temperature, the cause may be that the element is stuck open to the bypass, in which case lines 1 and 2 (FIGURE 5-1, page 37) will be hot to touch and lines 3 and 4 much cooler. When flushing the oil system, remove mixing valve and clean all parts thoroughly.

COMPRESSOR OIL COOLER – WATER-COOLED HEAT EXCHANGER (FIGURE 1-2, page 2) – The heat exchanger oil cooler is a multiple pass type, with water in the tubes and oil in the shell. The oil temperature is controlled by the thermal (thermostatic mixing) valve. The optional water control valve may be used to conserve water.

⚠ WARNING

It is mandatory that any water cooled unit be installed in a shelter heated to temperatures above freezing (32° F., 0° C).

Oil cooler malfunction may be traced by checking pressure at oil inlet and outlet. At normal operating air service pressure (65 to 150 psig) with the unit warm, a pressure drop of 3 to 15 psi can be expected between the oil inlet and the oil outlet.

Water pressure drop from water inlet to outlet will vary with the inlet pressure and amount of water flowing. A normal pressure drop may range from 5 to 10 psi. Any change in the pressure drop from that normally held may indicate tube leakage or fouling and should be investigated.

In many instances, the cooling water supply for the heat exchanger will contain impurities in solution and/or suspension. These substances can cause scale formation, corrosion and plugging of any water-cooled heat exchanger equipment. Disregarding the possibility that one or more of these conditions exist may result in increased maintenance and operation expense, reduced equipment life and emergency shutdown. It is strongly recommended that a reputable, local water treatment concern be engaged to establish the corrosion, scale forming and fouling tendency of the cooling water and take steps necessary to remedy the situation if a problem does exist. The need for water treatment may involve only filtration (screening) to remove debris, sand and/or salt in the cooling water supply. However, chemical treatment methods may be necessary in certain instances to inhibit corrosion and/or remove dissolved solids, to alter the water's tendency to form scale deposits, or prevent the growth of microorganisms. The normal maintenance program for the unit should also include periodic cleaning of the tubes (wa-

ter side) of the heat exchanger to remove deposits which enhance fouling and corrosion.

Hex head zinc anodes are used in the return bonnet (opposite end to the water pipe connections) of heat exchangers to provide internal water system corrosion protection. These anodes should be inspected periodically and replaced when the zinc has been reduced to about 1/2 inch in length.

WATER FLOW CONTROL VALVE FOR HEAT EXCHANGER (Optional Equipment) (FIGURE 5-7, page 44) – The water flow control valve is adjustable to compensate for varying water inlet temperatures and pressures (thermal control valve prevents settings below approximate 180° F.) Use the discharge air temperature gauge on the instrument panel in setting flow control valve for minimum water usage to maintain discharge temperature at a minimum of 10° F above dew point at the maximum anticipated ambient; refer to FIGURE 5-8, page 44, for the dew point temperature at the operating pressure and ambient temperatures.

To decrease water flow (increase compressor discharge air temperature) turn the adjusting screw from left to right, increasing spring tension. **To increase water flow** (decrease compressor discharge air temperature) turn the adjusting screw in the opposite direction. The groove at the lower edge of the adjusting screw is an index line for use with the index scale 0 to 8 in obtaining a desired setting.

These valves must be handled with care and proper tools and techniques must be used when working on the valve.

Care must be used when handling the capillary tube; a kink or break in the tubing or connections will make the valve inoperative. Never attempt to change capillary length. Excess capillary tube should be carefully coiled and placed so that damage will not occur in normal maintenance or traffic past the unit.

If a leak develops through the packing, tighten the packing gland nut firmly with a wrench to reseal the packing around the valve stem, then back off the nut until loose, and finally retighten the nut finger tight. Tightening the packing nut too tight may cause erratic operation. An occasional drop of oil on the valve stem at the packing nut will prolong packing life.

If valve malfunctions, check for bent or binding, paint or corrosion on valve stem, foreign material in valve, erosion, or thermal system (capillary) failure. If foreign material or scale is likely, the use of a strainer in the inlet water line is recommended.

WATER SHUTOFF VALVE – WATER-COOLED HEAT EXCHANGER (Optional Equipment) (FIGURE 5-1, page 37) – A magnetic solenoid-oper-

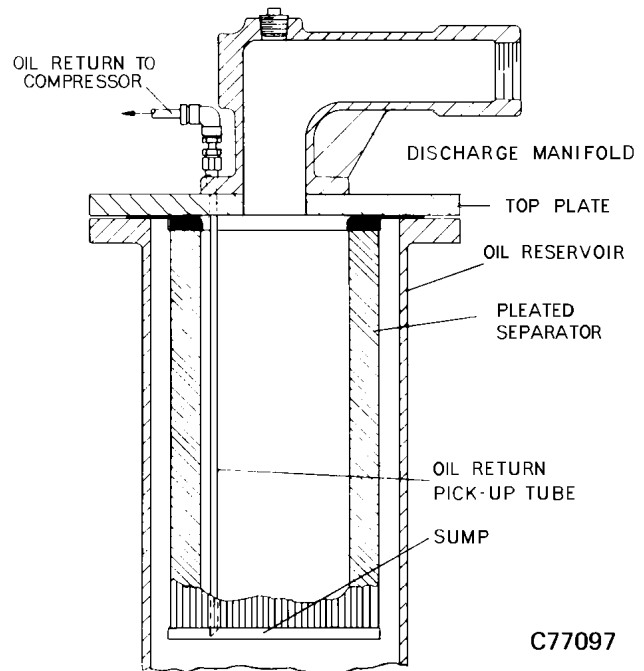


FIGURE 5-9 – SINGLE ELEMENT OIL SEPARATOR

ated water shutoff valve rated at 150 psig water pressure should be mounted in the water outlet line after the oil cooler. The valve should be wired into the compressor control circuit in such a manner that the valve opens to allow water to flow any time the ON-OFF push button is ON and the compressor is running. When the compressor stops under automatic control, or is shut off manually, the valve should close, stopping water flow through the system.

OIL RESERVOIR – The oil reservoir-separator combines multiple functions into one vessel. The lower half is the oil reservoir, providing oil storage capacity for the system and the top portion, a primary oil separation means. The reservoir also provides limited air storage for control and gauge actuation.

COMPRESSOR OIL SEPARATOR located in a separate housing, consists of a renewable cartridge-type separator element and provides the final removal of oil from the air stream. Oil from inside the separator elements is returned through tubing to the compressor cylinder. (FIGURE 5-9).


Oil carryover through the service lines may be caused by a faulty oil separator, faulty minimum pressure valve, over-filling of the oil reservoir, oil that foams, oil return line malfunction or water condensate in the oil. If oil carryover occurs, inspect the separator only after it is determined that the oil level is not too high, the oil

is not foaming excessively, the oil return line from the separator housing to the compressor cylinder is not clogged or pinched off, the check valve in the oil return line is functioning properly, and there is not water or an oil/water emulsion in the oil.

Oil carryover malfunctions of the oil separator are usually due to using elements too long, heavy dirt or varnish deposits caused by inadequate air filter service, use of improper oil or using oil too long for existing conditions. A ruptured or collapsed separator element is usually due to heavy dirt or varnish buildup in the filtering material. Excessive tilt angle of the unit will also hamper separation and cause oil carryover.

Oil separator element life cannot be predicted; it will vary greatly depending on the conditions of operation, the quality of the oil used and the maintenance of the oil and air filters. The condition of the separator can be determined by pressure differential gauging or by inspection.


Pressure Differential Gauging – The “CHANGE SEPARATOR” advisory will flash when the pressure differential across the oil separator reaches approximately 8 PSI. Replace the oil separator element at this time. If ignored, the unit will shut down and the advisory will illuminate steadily when the pressure differential reaches 15 PSI.


 CAUTION
Using an oil separator element at excessive pressure differential can cause damage to equipment. Replace the separator when the “Change Separator” advisory appears.

NOTICE
A sudden drop of zero pressure differential or sudden heavy oil carryover may indicate a ruptured element.

Inspection – After removal of separator element, shine a light inside the element to reveal areas of heavy dirt or varnish deposits or breaks (ruptures) in the element media.

Removal Of Oil Separator For Inspection Or Replacement:

 DANGER
Air/oil under pressure will cause severe personal injury or death. Shut down compressor, relieve system of all pressure, disconnect, tag and lockout power supply to the starter before removing valves, caps, plugs, fittings, bolts, and filters.

 DANGER
Compressor, air/oil reservoir, separation chamber and all piping and tubing may be at high temperature during and after operation.

1. Be certain unit is completely off and that no air pressure is in the oil reservoir.
2. Disconnect, tag and lockout power supply to the starter.
3. Disconnect oil return to compressor tubing at tube elbow near the discharge manifold flange on the top plate.
4. Loosen the nut on fitting at manifold flange and completely withdraw the tubing through the fitting.
5. Disconnect all other tubing from discharge manifold.
6. Disconnect discharge manifold pipe union.
7. Remove screws holding the top plate to the oil reservoir. Lift the top plate from the oil reservoir.
8. Lift the separator from the separator housing.
9. Inspect and/or replace the separator as necessary. Before installing (or reinstalling) any separator be sure gaskets bonded to the separator flanges are not damaged. Remove the gasket material adhering to the top plate or reservoir flange from the old separator.
10. Lower the separator into the oil reservoir.
11. Seat the top plate to the oil reservoir flange; install and tighten all cap screws.
12. Reconnect the discharge manifold pipe union and all tubing.

13. Install original oil return by slipping tube through the fitting at the discharge manifold flange until ferrule bottoms in the fitting. If a new fitting and return tube are used, slip the tube through the fitting until it touches the bottom of the separator, then raise the tube about 1/4 inch off the bottom and tighten the fitting nut securely. Connect the other end of the tube to the compressor oil return tube elbow. Do not bend tube or raise tube further than 1/4"–1/2" from the bottom of the separator.
14. Reconnect compressor oil return tube to tube elbow.

COMPRESSOR OIL SYSTEM CHECK – The compressor should be at operating temperature at the time of the checks. On–half hour of loaded operation is usually sufficient to reach level–out operating temperatures. The data shown below is for an oil–system in good condition.

If the unit will operate at discharge temperatures over 200° F for more than 4 consecutive hours, refer to the "High Temperature Operation" paragraph and select a lubricant for this service. Regardless of level of sustained discharge temperature, the high discharge air temperature switch must never be set higher than 225° F shutdown temperature.

Air and Oil Discharge Temperature – Check with a thermometer in the tapped opening on top of the compressor discharge pipe to the oil reservoir.

For **Air Cooled Oil Systems**, FIGURE 5–10 shows the normal upper limit of discharge temperatures for varying ambient temperatures beginning at the system design point of 80° F. At ambient temperatures below 80° F, the mixing valve will hold the discharge temperature at the 80° F ambient temperature point. Above 80° F, the oil cooler is fully used and the discharge temperature varies degree for degree with the ambient temperature.

For **Water Cooled Oil Systems**, the water flows at various temperatures outlined in Section 2 will hold the discharge temperature below the 80° F ambient tempera-

ture level of FIGURE 5–10. Small variations in specific water flows or temperatures will not be noted in the discharge temperature since the water control valve will tend to hold a constant oil temperature. A significant change in the discharge temperature is cause to check for a change in water flow or temperature.

Oil Inlet Pressure – Check at the fitting in the line near the compressor oil inlet. With air receiver pressure at 100 psi, oil inlet pressure should be 75–85 psig.

Oil Cooler Oil Pressure Differential (Air–Cooled Radiator) – 2 to 25 psi (65 to 150 PSIG Receiver Pressure) – Check at the fitting in the inlet and outlet lines of the oil cooler.

Oil Cooler Oil Pressure Differential (Water–Cooled Heat Exchanger) – 2 to 25 PSI (65 to 150 PSIG Receiver Pressure) – Check at the heat exchanger oil inlet and outlet fittings.

Oil Cooler Temperature Differential (Air–Cooled Radiator) – The oil temperature differential depends on the temperature of the air at the oil cooler fan and cleanliness of core faces. As ambient temperatures and core restrictions increase, the oil cooler outlet temperature will increase. The inlet oil temperature may be checked at the fittings in the oil inlet line on the oil cooler module. The outlet oil temperature may be checked at the fitting in the oil outlet line.

Oil Cooler Temperature Differential (Water–Cooled Heat Exchanger) – The oil temperature differential depends on the inlet water temperature and the water flow rate permitted by the water flow control valve setting. The oil inlet temperature is approximately the same as the air discharge temperature – see the gauge on the instrument panel. The oil outlet temperature may be checked at the compressor oil inlet line fitting.

Oil Cooler Water Pressure Differential (Water–Cooled Heat Exchanger) – The water pressure differential through the heat exchanger will depend on the supply pressure, flow rate, cooler tube cleanliness and outlet pressure. The inlet and outlet water pressure may be checked at the pipe fittings supplied by the customer.

Ambient Temperature (°F.)		80	90	100
350 HP	Discharge Temperature ° F	171	181	191
400 HP		175	185	195
500 HP		184	194	204*

* For temperatures above 200 F see "High Temperature Operation".

FIGURE 5–10 – AMBIENT TEMPERATURES

SECTION 6 AIR FILTERS

AIR FILTER – The air filter furnished as standard equipment is a panel type washable filter. The air filter must receive proper maintenance if maximum service is to be obtained from the unit. Establishing adequate and timely filter service is MOST IMPORTANT. With wide variation of dust conditions encountered, only experience can determine the proper time element for servicing filters. Although a paper filter element is normally considered expendable, proper and careful cleaning can extend its original life several times.

Filter Element – Service the air filter element when the “CHANGE AIR FILTER” LED is illuminated. Clean every 50 to 150 operating hours depending on dust conditions.

To service:

Remove louvered filter cover and filter element by removing the six (6) cover to enclosure screws.

Two methods of cleaning are recommended. Use of compressed air is effective when the major contaminant is dust. Washing is effective on carbon, soot, and oil laden elements.

DO NOT ATTEMPT TO CLEAN ELEMENTS BY BEATING OR RAPPING.

When air is used, direct a jet of air (100 PSI maximum) against the clean air side of the element in the opposite direction of normal air flow. Move the air jet up and down the pleat, slowly moving across the face of the element. The nozzle must be kept at least one inch away from the element. Take care that the paper is not ruptured by the nozzle or air jet.

When cleaning by washing, use a good non-sudsing detergent and water. Soak the element in a solution of two (2) ounces of detergent per gallon of water (140°F maximum) for at least 15 minutes. Swish the element around in the solution (2 minutes) to help remove dirt. Warm solution gives best results. Rinse the element with a stream of water (40 PSI maximum) opposite to normal air flow until rinse water is clear. **DRY THE ELEMENT THOROUGHLY BEFORE USING. DO NOT USE LIGHT BULBS FOR DRYING.** Warm air (160° F or less) must be circulated as high surface temperatures can burn or scorch the filter paper.

After cleaning, thoroughly inspect the element for dirt on the clean air side, holes or damage, by looking through the element toward a bright light. Do not reuse damaged elements.

Filter Element Life – The element should be replaced after six (6) cleanings or if:

1. Visual inspection indicates a rupture, crack or pin hole in the pleated media. Inspection should be done by placing a bright light inside the element.
2. Pressure drop through a filter with a freshly cleaned element is below three (3) inches of water with the compressor running at full load – this would indicate a rupture or crack.

NOTICE

Use only genuine Gardner Denver air filter elements on Gardner Denver compressor units. Genuine parts are available through your authorized Gardner Denver distributor.

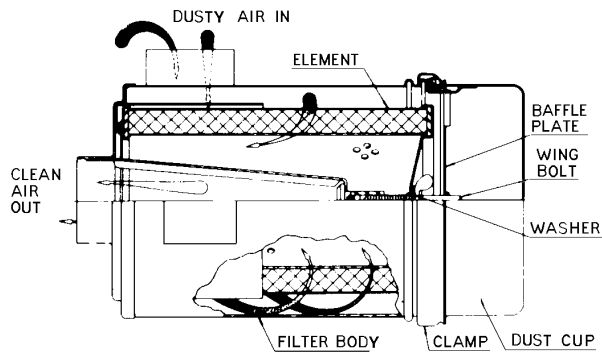
WARNING

Do not oil this element. Do not wash in inflammable cleaning fluids. Do not use solvents other than water. Improper cleaning may damage the element.

NOTICE

Never operate the unit without the element. Never use elements that are damaged, ruptured or wet. Never use gaskets that won't seal. Keep spare elements and gaskets on hand to reduce downtime. Store elements in a protected area free from damage, dirt and moisture. Handle all parts with care.

HEAVY-DUTY AIR FILTER – 350 & 400 HP UNITS (FIGURE 6-1, page 49) – When heavy-duty air filters are specified for the 350 & 400 HP units, they will be a



C74831

FIGURE 6-1 – HEAVY DUTY AIR FILTER

two-stage dry type. When the unit has been so equipped, service the filters as follows:

Dust Cup – Service every 4 to 120 hours depending on dust conditions. To service, loosen the retaining band clamp and remove the dust cup. Do not wash the dust cup – wipe clean with a clean dry cloth. Do not bend the edge of the cup by striking on a hard surface. When installing the dust cup, make sure the clamp is securely tightened to prevent leakage.

Filter Element – Service the air filter element when the “CHANGE AIR FILTER” LED is illuminated. Clean every 50 to 150 operating hours depending on dust conditions.

To service:

1. Loosen the retaining band clamp and remove the dust cup from the body of the filter.
2. Visually inspect the element in place. If cleaning is not necessary, reinstall the dust cup on the filter. If the element requires cleaning, unscrew the wing bolt and withdraw the element from the body.
3. Wash the element by soaking about 15 minutes in warm water with a mild detergent. Rinse the element thoroughly with clean water; a hose may be used if the water pressure does not exceed 40 psig.
4. Inspect the element for ruptures or cracks in the pleated media; replace the element if any are found. Inspect the gasket on the bottom (outlet end) of the element; replace the entire element if the gasket is damaged.
5. Allow the element to air dry COMPLETELY. Do not expose the element to heat over 150° F. Install the element in the filter body and fasten securely with the wing bolt. Reinstall the dust cup and retaining band clamp. Make sure the clamp is tightened securely to prevent leakage.

Filter Element Life – The element should be replaced after six (6) cleanings or if:

1. Visual inspection indicates a rupture, crack or pin hole in the pleated media. Inspection should be done by placing a bright light inside the element.
2. Pressure drop through a filter with a freshly cleaned element is below three (3) inches of water with the compressor running at full load – this would indicate a rupture or crack.

Inlet Tube – Inspect the inlet screen and tube for dirt accumulation each time the filter is serviced. Clean the tube when required by ramming a clean dry cloth through the tube. Wipe the inside of the filter body to remove any dirt falling from the inlet tube before reinstalling the element.

Causes of short element life include: severe dust conditions, infrequent servicing, improper cleaning, or contamination by oil or chemical fumes.

NOTICE

Use only genuine Gardner Denver air filter elements on Gardner Denver compressor units. Genuine parts are available through your authorized Gardner Denver distributor.

⚠ WARNING

Do not oil this element. Do not wash in inflammable cleaning fluids. Do not use solvents other than water. Improper cleaning may damage the element.

NOTICE

Never operate the unit without the element. Never use elements that are damaged, ruptured or wet. Never use gaskets that won't seal. Keep spare elements and gaskets on hand to reduce downtime. Store elements in a protected area free from damage, dirt and moisture. Handle all parts with care.

SECTION 7 COUPLING

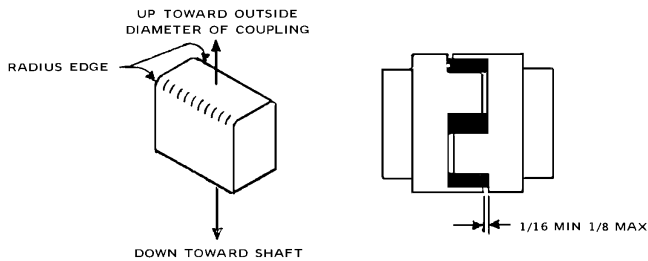


FIGURE 7-1 – INSTALLATION OF COUPLING – STYLE “A”

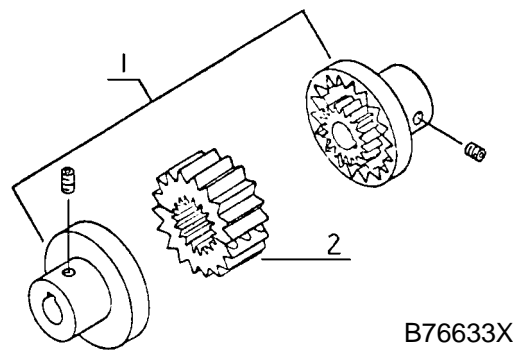


FIGURE 7-2 – INSTALLATION OF COUPLING – STYLE “B”

COUPLING – The motor and compressor are direct connected by a flexible coupling. Style “A” coupling has several individual cushions, (FIGURE 7-1). Style “B” has a two piece split sleeve, (FIGURE 7-2).

cushions and secure with cap screws. Reinstall the cover plate.

FOR STYLE “B” COUPLING:

DANGER

Rotating machinery can cause personal injury or death. Turn the unit completely off, open the main disconnect, tag and lockout before servicing the coupling.

DANGER

Rotating machinery can cause personal injury or death. Do not operate unit with either the coupling guard or the collar removed. All bolts and screws must be properly tightened.

If maintenance on mating parts is requires, reassemble coupling as follows:

1. Slide coupling halves over shaft extensions. Be sure the collar is installed on the shaft behind one coupling body.
2. Assemble the motor to the compressor.

FOR STYLE “A” COUPLING:

- a. Working through the cover plate opening, center coupling halves over the gap between the shafts, maintaining the gap as shown in FIGURE 7-1 between the ends of the jaws on one coupling body and the flange on the opposite coupling body. Tighten set screws in each coupling body.
- b. Insert individual cushions as shown in FIGURE 7-1 and slide the collar over the

- a. Working through coverplate, center coupling halves over the gap in the shafts. Secure short hub half of the coupling to the shaft by tightening the set screws over the shaft key and 90° to the key.
- b. Assemble halves of split sleeve into the teeth of the short hub half of the coupling.
- c. Slide the long hub over the split sleeve teeth until the sleeve is bottomed in both hubs; back long hub off 1/16 inch.
- d. Secure the long hub in position by tightening the socket head cap screw through the split section of the hub; tighten the set screw over the shaft key.

Alignment – The coupling is permanently aligned by the flanges on the compressor and motor.

SECTION 8 MAINTENANCE SCHEDULE

SERVICE CHECK LIST –

Air Filter – Operating conditions determine frequency of service. If the “CHANGE AIR FILTER” message is displayed, air filter requires servicing or changing. See “Air Filter,” Section 6, page 48.

Oil Separator – Operating conditions determine frequency of service. If the “CHANGE SEPARATOR” message is displayed, the oil separator element requires changing. See “Compressor Oil Separator” in Section 5, page 45, for further details.

Motor Lubrication – Refer to Section 2, page 15, and Maintenance Schedule Chart below.

Every 8 Hours Operation

1. Check the reservoir oil level – add oil if required. See Section 5, page 39. If oil consumption is high, refer to “Excessive Oil consumption, page 53. DO NOT MIX LUBRICANTS.
2. Observe if the unit loads and unloads properly.
3. Check discharge pressure and temperature.
4. Drain the moisture trap in the control system.
5. Check Panel LED’s for advisories.

Every 125 Hours Operation

1. Check for dirt accumulation on oil/aftercooler core faces and the cooling fan. If cleaning is required, clean the exterior fin surfaces of the cores by blowing compressed air carrying a nonflammable safety solvent in a direction opposite that of the cooling fan air flow. This cleaning operation will keep the exterior cooling surfaces clean and ensure effective heat dissipation.

Every 1000 Hours Operation

1. Change the oil filter element.

Every 6000 Hours Operation

1. Change the compressor lubricant. UNDER ADVERSE CONDITIONS, CHANGE MORE FREQUENTLY (refer to “Oil Change Interval”, page 40). Flush system if required.

Every Year

1. Check the relief valve for proper operation. See Section 4, page 27.

MAINTENANCE SCHEDULE (See detail notes above)

Maintenance Action	As Indicated By Auto-Sentry-ES	Every 8 Hours	Every 125 Hours	Every 1000 Hours	Every 6000* Hours	Every Year
Change Air Filter	•					
Change Oil Separator	•					
Check Reservoir Oil Level		•				
Check For Proper Load/Unload		•				
Check Discharge Pressure/Temp		•				
Check Dirt Accumulation on Cooler			•			
Change Oil Filter Element	•			•		
Change Compressor Lubricant (AEON 4000)	•				•	
Check Relief Valve						•

* See Oil Change Interval Chart, FIGURE 5–3, Page 40, for specific lubricant life.

SECTION 9 TROUBLE SHOOTING

SYMPTOM	POSSIBLE CAUSE	REMEDY
Compressor fails to start.	<ol style="list-style-type: none"> 1. Wrong lead connections. 2. Blown fuses in control box. 3. Motor starter overload heaters tripped. 4. Pressure in reservoir. 5. Read error message on control panel. 6. Remote Contact is open (terminals 6 & 9). 	<ol style="list-style-type: none"> 1. Change leads. 2. Replace fuse. 3. Reset and investigate cause of overload. 4. Inspect blowdown valve and muffler. 5. Take appropriate action. See Section 4. 6. Replace switch or jumper.
Compressor starts but stops after a short time.	<ol style="list-style-type: none"> 1. High discharge temperature. 2. High discharge temperature switch malfunction. 3. Blown fuse in starter/control box. 4. Motor starter overload heaters trip. 	<ol style="list-style-type: none"> 1. See "High Discharge Air Temperature," this section, page 53. 2. Replace switch. 3. Replace fuse (investigate if fuses continue to blow). 4. Reset and investigate cause of overload.
Compressor does not unload (or load).	<ol style="list-style-type: none"> 1. Improperly adjusted control. 2. Air leak in control lines. 3. Restricted control line. 4. Blowdown valve malfunction. 	<ol style="list-style-type: none"> 1. Refer to Section 4 and adjust control. 2. Determine source of leak and correct. 3. Clean control lines. 4. Repair, clean or replace valve.
Compressor cycles from load to unload excessively.	<ol style="list-style-type: none"> 1. Insufficient receiver capacity. 2. Restriction in control tubing. 	<ol style="list-style-type: none"> 1. Increase receiver size. 2. Inspect and clean control tubing.

SYMPTOM	POSSIBLE CAUSE	REMEDY
Compressor is low on delivery and pressure.	<ol style="list-style-type: none"> 1. Restricted air filter. 2. Sticking inlet valve. 3. Unload pressure adjusted too low. 4. Minimum pressure valve stuck closed. 5. Turn valve adjustment or malfunction. 	<ol style="list-style-type: none"> 1. Clean or replace filter. 2. Inspect and clean inlet valve. 3. Adjust the unload pressure. See Section 4, page 30. 4. Disassemble and clean valve. 5. Adjust turn valve per Section 4, page 30.
High discharge air temperature.	<ol style="list-style-type: none"> 1. Thermostatic mixing valve stuck open. 2. Dirty or clogged cooler face. 3. Insufficient cooling air flow. 4. Clogged oil filter or cooler (interior). 5. Low compressor oil. 	<ol style="list-style-type: none"> 1. Repair or replace valve. 2. Clean cooler. 3. Provide unrestricted supply of cooling air. 4. Replace filter or clean cooler. 5. Add oil to proper level.
Excessive Oil Consumption	<ol style="list-style-type: none"> 1. Oil carryover through lines. 2. Oil leaks at all fittings and gaskets. 	<ol style="list-style-type: none"> 1. See "Oil Carryover", below. 2. Tighten or replace fittings or gasket.
Oil Carry-Over	<ol style="list-style-type: none"> 1. Overfilling the reservoir. 	<ol style="list-style-type: none"> 1. Drain excess oil from system.

 **DANGER**

Air/oil under pressure will cause severe personal injury or death. Shut down compressor, relieve system of all pressure, disconnect, tag and lockout power supply to the starter before removing valves, caps, plugs, fittings, bolts, and filters.

 **DANGER**

Compressor, air/oil reservoir, separation chamber and all piping and tubing may be at high temperature during and after operation.

SYMPTOM	POSSIBLE CAUSE	REMEDY
Oil Carry-Over (Continued)	<ol style="list-style-type: none"> 2. Clogged, broken or loose oil return lines 3. Ruptured oil separator element. 4. Loose assembly. 5. Foam caused by use of incorrect oil. 6. Inoperative minimum pressure valve, causing low operating pressure. 7. Operation at elevated discharge temperatures. 8. Scavenge line check valve failure. 9. Water condensate in oil. 	<ol style="list-style-type: none"> 2. Tighten or replace faulty lines. 3. Replace element. 4. Tighten all fittings and gaskets. 5. Use Gardner Denver® AEON™ 9000 SP Lubricating Coolant. 6. Clean out or replace valve. 7. Reduce temperature. See High Discharge Air Temperature, page 53, this section. 8. Replace check valve. 9. Check oil reservoir temperature and if low, change thermal mixing valve element to higher temperature.

NOTICE

Gardner Denver factory remanufactured replacement compressor air end units are available from your authorized distributor, on an exchange basis, for all rotary screw compressor units.

SECTION 10

TROUBLE SHOOTING CONTROLS

AUTO SENTRY ES CONTROLLER

DISPLAY MODES

The normal display indicates the package service pressure, the air end discharge, the total running hours, and one of the following operating modes. The green light will be on for any operating mode, whether the compressor is running or not.

READY	The compressor has been stopped by pressing the [STOP/RESET] key.
CON	The compressor is operating in the Constant Run mode.
LDM	The compressor is operating in the Low Demand mode.
AUTO	The compressor is operating in the Automatic mode.
SEQ n	The compressor is operating in the sequence mode.

The following alternate displays may be called by pressing a cursor [<] or [>] key

SYS PRES	The pressure at the service connection
RES PRES	The pressure in the oil reservoir
DIF PRES	The pressure drop across the air/oil separator
TOT HRS	The total hour of compressor running
DIS TMP	The temperature at the air end discharge
RES TMP	The temperature in the reservoir / separator
BD TMR	The time remaining before a blowdown will be allowed (Low Demand, Auto, Sequence Modes)
AUTO TMR	The time remaining of unloaded motor operation (Auto, Sequence Modes)

ADVISORY TROUBLESHOOTING GUIDE

All advisories are indicated on the keypad by a yellow indicator in the Status area, and one of the following messages alternating with the normal lower line display. Perform service or maintenance as indicated, then clear the advisory as instructed in Section 4.

Message	Action Needed
CHNG AIR FILTER	Excessive vacuum has been detected after the air filter, indicating it has become full. Change the air filter to ensure maximum air delivery.
CHNG SEPARATOR	The differential pressure across the air/oil separator has risen to over 8 psid. Change the separator to ensure maximum performance.
CHNG OIL FILTER	The unit has been operated for the programmed number of hours since the last filter replacement. Change the filter to ensure an adequate flow of lubricant.
CHANGE OIL	The unit has been operated for the programmed number of hours since the last oil change. If high operating temperatures are encountered, the "AUTO SENTRY-ES" controller will automatically adjust the time interval for the change oil advisory. Change the oil to ensure lubricant quality.

ADVISORY TROUBLESHOOTING GUIDE (Continued)

Message	Action Needed
HIGH TEMP OPER	The temperature was greater than 210° F (99° C) at the air end discharge or the separator. Ensure that the compressor receives adequate cooling air or water, and that the coolers are not plugged.
LOW AMB TEMP	The temperature was less than 40° F (4° C) at the air end discharge or the separator. Ensure that the compressor is located in a room kept above freezing.

SHUTDOWN TROUBLESHOOTING GUIDE

All shutdowns are indicated on the keypad by the word "SHUTDOWN" on the top line of the display, and one of the following messages on the lower line of the display. The red indicator in the Status area will be steadily lit while the conditions exist, and will flash after the condition has been corrected. Perform service as indicated. Press the [STOP/RESET] key to clear the shutdown.

Message	Action Needed
CHANGE SEPARATOR	The differential pressure across the air / oil separator has risen to over 15 psid. Change the separator to ensure maximum compressor performance.
CHECK CN7	All inputs at connector 7 of the controller are off. The most common cause for this is that the connector plug has been pulled out. Plug the connector back in firmly.
CHECK CN8	120 volts has been removed from ALL inputs to connector 8 of the controller. The most common cause for this is that the connector plug has been pulled out. Plug the connector back in firmly.
EMERGENCY STOP	The Emergency Stop button has been pressed. Pull it back out to its normal position. If the button has not been pressed, check that the contact block is firmly mounted in the right or left (not center) position of the operator. Check for loose connections which would remove 120 volts from connector 8–8 of the controller.
FAN OVERLOAD	The motor overload relay for the fan motor, located within the electrical control box, has tripped. This indicates high motor shaft load, low voltage, or excessive imbalance in the incoming power (such as a blown fuse). Disconnect and lock out power, open the box, and press the reset button – it will click when reset. Measure motor amps, and take corrective actions to get all currents within the motor nameplate rating. If overload relay has not tripped, check for the cause that 120 volts was removed from connector 8–1 of the controller.
FAN START ERROR (while stopped)	The controller has attempted to turn off the fan, but is still receiving a return signal from the starter's auxiliary contact. Check that the starter operates freely and that the contact block is properly installed on the starter.
FAN START ERROR (while running)	The controller has attempted to start the fan, but did not receive a return signal from the starter's auxiliary contact. If the starter does not pick up when attempting to start, check that connector 9 of the controller is plugged in firmly, and check the starter coil. If the starter does pick up, but this message appears, check that the auxiliary contact block is properly installed on the starter and wired to connector 8, terminal 3.

SHUTDOWN TROUBLESHOOTING GUIDE (Continued)

Message	Action Needed
HIGH DISCH TEMP	This indicates that the controller has detected temperature in excess of the programmed high temperature limit, or a high temperature rate of rise, at the air end discharge. The most common cause for this is inadequate package cooling. Ensure proper air flow for air cooled units, or adequate water for water cooled units. Monitor temperature carefully during restarts after servicing.
HIGH RESVR PRESS	Pressure in excess of the programmed high pressure limit has been detected. This shutdown will occur if a loss of pneumatic controls occurs. Check the inlet valve, all control piping, solenoid valves, and all other control devices to find the cause for the inlet valve not closing. Other possible causes are loose connections to the transducer, electrical noise and transients, or improper setting of the high pressure limit.
HIGH RESRVR TEMP	This indicates that the controller has detected temperature in excess of the programmed high temperature limit, or a high temperature rate of rise, at the air/oil separator. The most common cause for this is inadequate package ventilation. Monitor the temperature carefully during restarts after servicing.
HIGH SYSTEM PRESS	Pressure in excess of the programmed high pressure limit has been detected. The most likely cause is other, higher pressure compressors on the same air system; separate these from this compressor unit. Other possible causes are loose connections to the transducer, electrical noise and transients, or improper setting of the high pressure limit.
HIGH VIBRATION	120 volts has been removed from terminal 7 of the terminal strip. This is normally shipped jumpered directly to terminal 9, but the jumper may be removed to add a field installed shutdown switch. Reset the external switch.
LOW OIL PRESS	The controller has attempted to start and load the compressor, but pressure is not building up in the oil reservoir. This may indicate either a failure of the motor to turn the compressor, or a failure of the inlet valve to open. If the latter, check also the wiring and piping to solenoid valves IVO and IVC; these are both turned on to load up the compressor.
MAIN OVERLOAD	The motor overload relay for the main compressor drive motor, located within the electrical control box, has tripped. This indicates high motor shaft load, low voltage, or excessive imbalance in the incoming power (such as a blown fuse). Disconnect and lock out power, open the box, and press the reset button – it will click when reset. Measure motor amps, and take corrective actions to get all currents within the motor nameplate rating. If overload relay has not tripped, check for the cause that 120 volts was removed from connector 8–2 of the controller.
MAIN START ERROR (while stopped)	The controller has attempted to turn off the compressor, but is still receiving a return signal from the starter's auxiliary contact. Check that the starter operates freely and that the contact block is properly installed on the starter.
MAIN START ERROR (while running)	The controller has attempted to start the compressor, but did not receive a return signal from the starter's auxiliary contact. If the starter does not pick up when attempting to start, check that connector 9 of the controller is plugged in firmly, and check the starter coil. If the starter does pick up, but the message appears, check that the auxiliary contact block is properly installed on the starter and wired to connector 8, terminal 4.

SHUTDOWN TROUBLESHOOTING GUIDE (Continued)

Message	Action Needed
OPEN THERM	The controller has detected an open connection to thermistor: (A) air end discharge, or (B) separator. This normally indicates a loose or broken connection at the controller connector 7; check and correct the connection. This could also be indicating a broken wire or thermistor probe. This may also occur from excessively low temperature.
OPEN XDUCER	Signal voltage has fallen too low at transducer: (A) Final discharge, or (B) Reservoir. This error is frequently the result of the transducers being improperly zeroed. Disconnect the air lines to the transducers and follow the procedure indicated in the adjustment instructions. This may also indicate a loose connection of the red wire to the transducer or a defective transducer. Check connections, or replace transducer if necessary.
POWER FAILURE	The power to the compressor unit has been turned off and back on. Press [STOP/RESET] and select an operating mode.
SHORTED THERM	The controller has detected a shorted connection to thermistor: (A) air end discharge or (B) separator. This normally indicates a faulty connection (e.g. wire strands touching) at the controller connector 7; check and correct the connection. This could also be indicating a damaged wire or thermistor probe.
SHORTED XDUCER	Signal voltage has exceeded approximately 4.6 volts at transducer: (A) Final discharge or (B) Reservoir. This may indicate a loose connection of the black wire to the transducer or a defective transducer. Check connections, or replace transducer if necessary.

CONTROLS TROUBLESHOOTING GUIDE

The following are recommended service actions. Observe all instructions noted elsewhere in this manual. All electrical service is to be performed only by a qualified electrician.

Symptom	Recommended Action
No display, compressor stopped.	Check incoming power to the compressor unit. Ensure that the disconnect is on and that fuses have not blown (or circuit breaker tripped). If power is being properly supplied to the control box, check the fuses located at the fan starter, the control transformer fuses, and the fuse located on the ES controller chassis near connector CN-6.
Compressor will not start.	To operate, the controller must be placed into an operating mode (e.g. "AUTO"); press the [STOP/RESET] to put the control in the READY state, then select a mode with the operating mode keys. In AUTOMATIC and SEQUENCE modes, compressors will not start until the pressure drops below the reset pressures.
Display indicates "NOT BLOWN DOWN"	The controller prevents attempts to start the main motor if the reservoir pressure is over 5 psig (.35 Bar). Pressure continues to be relieved from the reservoir while this message is on, and the compressor will start automatically after the pressure has dropped. If this message remains with NO pressure in the reservoir, follow the transducer zeroing procedure found in the controls adjustment section.

CONTROLS TROUBLESHOOTING GUIDE

Symptom	Recommended Action
Display indicates "REMOTE STOP"	The controller is provided with an input for user-furnished remote controls. This display indicates that 120 volt is removed from terminal 6 of the terminal strip. Check all connections of the factory installed jumper, or the customer-provided controls, if applicable.
Display indicates "SHUTDOWN"	If the display indicates "SHUTDOWN", refer to the shutdown troubleshooting section for assistance. In addition to the messages shown, there are several internal and system diagnostics performed by the controller. Consult the factory for additional assistance.
Compressor runs, but does not load	In the CONSTANT RUN and LOW DEMAND modes, the compressor will not load until the pressure drops below reset pressure. Refer to the operating instructions for further information. If pressure is below the reset pressure, check that the inlet valve operates freely. Check that the IVO and IVC valves are wired and operating properly.
Compressor runs, unloads at low pressure	If the inlet valve closes at low pressure, check the wiring to the blowdown valve and the piping and check valves in its discharge line.
Compressor does not modulate	The ES controller operates the inlet valve to maintain pressure near the set pressure, matching delivery to demand. If the pressure continues to rise above set pressure, check that the inlet valve operates freely, and that control air is supplied to the IVC valve. If modulation does not close the valve, it will be closed during a blowdown as pressure approaches the high pressure limit.
Compressor cycles rapidly between load and unload	The external air receiver should be sized appropriately to prevent rapid cycles. The rapid response time in CONSTANT RUN mode will operate with small receivers, but any plant air system will operate more efficiently with adequately sized storage. Refer to the operating instructions for further information.
Display is illegible	Extra segments or "ghosting" of characters indicates damage probably from excessive high voltage. Replace the controller, and install protection to prevent further damage to electrical equipment.
Erratic pressures in SEQUENCE only	The sequencing system transmits low-level signal between units to communicate pressures. Units must be properly grounded to a good ground system, the communications cable should use only appropriate quality cable, and the cable should be run in its own conduit.
Compressor cycles rapidly in SEQUENCE mode only	In the sequence mode, the operating system requires all compressors be piped directly to receiver, such that all transducers sense the same pressure. Check valves or restrictions between compressors and the storage will cause system instability. Run units in AUTOMATIC mode until the system is corrected.
LOW OIL PRESSURE in SEQUENCE mode only	If this shutdown occurs in the sequence mode only, it indicates instability due to rapid changes in pressure of the system. Remove restrictions between the compressor and receiver, increase receiver size if necessary to slow down the pressure swings.
Pressure display error	Accuracy of the pressure display and controls requires that the controller and transducers be calibrated together. This MUST be done with no pressure at the transducer, or errors will occur. This is easiest to check with all pressure removed. All pressure displays should indicate 0 psi (0.0 Bar) +/- 1 PSI. If the display indicates greater pressures, recalibrate the system as instructed in the configuration adjustments. Note: reservoir pressure may drop below zero psig when the compressor is stopped, but will return slowly to zero as the vacuum is relieved.

GENERAL PROVISIONS AND LIMITATIONS

Gardner Denver Machinery Inc. (the "Company") warrants to each original retail purchaser ("Purchaser") of its new products from the Company or its authorized distributor that such products are, at the time of delivery to the Purchaser, made with good material and workmanship. No warranty is made with respect to:

1. Any product which has been repaired or altered in such a way, in the Company's judgment, as to affect the product adversely.
2. Any product which has, in the Company's judgment been subject to negligence, accident, improper storage, or improper installation or application.
3. Any product which has not been operated or maintained in accordance with the recommendations of the Company.
4. Components or accessories manufactured, warranted and serviced by others.
5. Any reconditioned or prior owned product.

Claims for items described in (4) above should be submitted directly to the manufacturer.

WARRANTY PERIOD

The Company's obligation under this warranty is limited to repairing or, at its option, replacing, during normal business hours at an authorized service facility of the Company, any part which in its judgment proved not to be as warranted within the applicable Warranty Period as follows.

COMPRESSOR AIR ENDS

Compressor air ends, consisting of all parts within and including the compressor cylinder and gear housing, are warranted for 24 months from date of initial use or 27 months from date of shipment to the first purchaser, whichever occurs first.

Any disassembly or partial disassembly of the air end, or failure to return the "unopened" air end per Company instructions, will be cause for denial of warranty.

OTHER COMPONENTS

All other components are warranted for 12 months from date of initial use or 15 months from date of shipment to first purchaser, whichever occurs first.

LABOR TRANSPORTATION AND INSPECTION

The Company will provide labor, by Company representative or authorized service personnel, for repair or

replacement of any product or part thereof which in the Company's judgment is proved not to be as warranted. Labor shall be limited to the amount specified in the Company's labor rate schedule.

Labor costs in excess of the Company rate schedule amounts or labor provided by unauthorized service personnel is not provided for by this warranty.

All costs of transportation of product, labor or parts claimed not to be as warranted and, of repaired or replacement parts to or from such service facilities shall be borne by the Purchaser. The Company may require the return of any part claimed not to be as warranted to one of its facilities as designated by Company, transportation prepaid by Purchaser, to establish a claim under this warranty.

Replacement parts provided under the terms of the warranty are warranted for the remainder of the Warranty Period of the product upon which installed to the same extent as if such parts were original components.

DISCLAIMER

THE FOREGOING WARRANTY IS EXCLUSIVE AND IT IS EXPRESSLY AGREED THAT, EXCEPT AS TO TITLE, THE COMPANY MAKES NO OTHER WARRANTIES, EXPRESSED, IMPLIED OR STATUTORY, INCLUDING ANY IMPLIED WARRANTY OF MERCHANTABILITY.

THE REMEDY PROVIDED UNDER THIS WARRANTY SHALL BE THE SOLE, EXCLUSIVE AND ONLY REMEDY AVAILABLE TO PURCHASER AND IN NO CASE SHALL THE COMPANY BE SUBJECT TO ANY OTHER OBLIGATIONS OR LIABILITIES. UNDER NO CIRCUMSTANCES SHALL THE COMPANY BE LIABLE FOR SPECIAL, INDIRECT, INCIDENTAL OR CONSEQUENTIAL DAMAGES, EXPENSES, LOSSES OR DELAYS HOWSOEVER CAUSED.

No statement, representation, agreement, or understanding, oral or written, made by any agent, distributor, representative, or employee of the Company which is not contained in this Warranty will be binding upon the Company unless made in writing and executed by an officer of the Company.

This warranty shall not be effective as to any claim which is not presented within 30 days after the date upon which the product is claimed not to have been as warranted. Any action for breach of this warranty must be commenced within one year after the date upon which the cause of action occurred.

Any adjustment made pursuant to this warranty shall not be construed as an admission by the Company that any product was not as warranted.

Gardner
Denver

For additional information contact your local representative or Gardner Denver Machinery Inc., Customer Service Department, 1800 Gardner Expressway, Quincy, Illinois 62301
Telephone: (800) 682-9868 FAX: (217) 224-7814



Sales and Service in all major cities.

For parts information, contact Gardner Denver, Master Distribution Center, Memphis, TN
Telephone: (800) 245-4946 FAX: (901) 542-6159

Specifications subject to change without notice.
Copyright 1996 Gardner Denver Machinery Inc.

Litho in U.S.A.