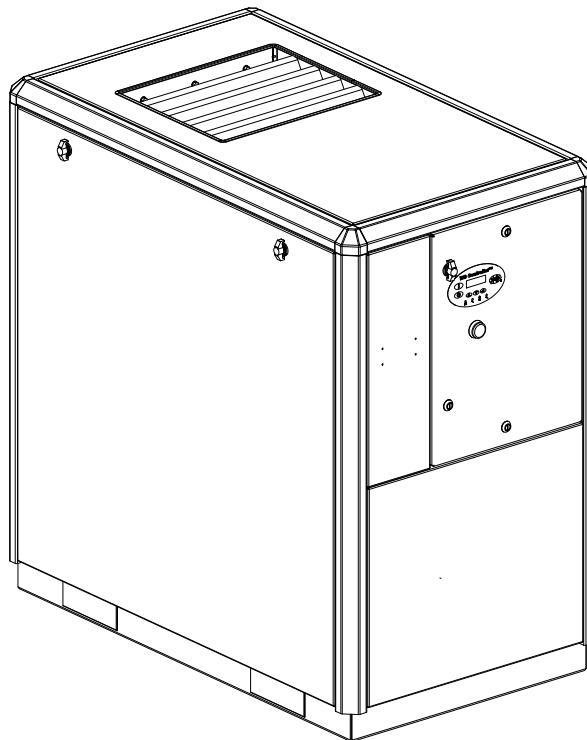




PARTS LIST MANUAL

**INDUSTRIAL AIR COMPRESSOR
1800, 2200, 1800v, 2200v
18, 22kW/25 & 30HP**



**PART NUMBER:
02250176-181 R01**

**KEEP FOR
FUTURE
REFERENCE**

WARRANTY NOTICE

**Failure to follow the instructions
and procedures in this manual or,
misuse of this equipment will
VOID its warranty!**

©SULLAIR CORPORATION

The information in this manual is current
as of its publication date, and applies to
compressor **serial number:**

200805050000

and all subsequent serial numbers.



AIR CARE SEMINAR TRAINING

Sullair Air Care Seminars are courses that provide hands-on instruction for the proper operation, maintenance, and servicing of Sullair products. Individual seminars on Industrial compressors and compressor electrical systems are offered at regular intervals throughout the year at Sullair's corporate headquarters training facility located at Michigan City, Indiana.

Instruction includes training on the function and installation of Sullair service parts, troubleshooting common faults and malfunctions, and actual equipment operation. These seminars are recommended for maintenance, contractor maintenance, and service personnel.

For detailed course outlines, schedule, and cost information contact:

SULLAIR CUSTOMER CARE TRAINING DEPARTMENT

1-888-SULLAIR or
219-879-5451 (ext. 5623)
www.sullair.com

- Or Write -

Sullair Corporation
3700 E. Michigan Blvd.
Michigan City, IN 46360
Attn: Service Training Department.

TABLE OF CONTENTS

| PAGE | SECTION | DESCRIPTION | PAGE | SECTION | DESCRIPTION |
|-------------|----------------|---|-------------|----------------|--|
| 5 | 1.1 | PROCEDURE FOR ORDERING PARTS | 34 | 1.16 | CONTROL SYSTEM AND ELECTRICAL PARTS, MFV |
| 6 | 1.2 | RECOMMENDED SERVICE PARTS LIST | 38 | 1.17 | CONTROL SYSTEM AND ELECTRICAL PARTS, VSD |
| 8 | 1.3 | COMPRESSOR, FRAME AND DRIVE | 40 | 1.18 | CONTROL SYSTEM AND ELECTRIC PARTS, 230/460 WYE-DELTA |
| 10 | 1.4 | AIR INLET SYSTEM | 42 | 1.19 | CONTROL SYSTEM AND ELECTRIC PARTS, YD CE |
| 12 | 1.5 | AIR PIPING, AIR-COOLED | 44 | 1.20 | CONTROL SYSTEM AND ELECTRIC PARTS, VSD CE |
| 14 | 1.6 | AIR PIPING WITH INTEGRAL DRYER | 46 | 1.21 | CONTROL STARTER—MFV |
| 16 | 1.7 | FLUID PIPING, AIR-COOLED | 48 | 1.22 | CONTROL STARTER—WYE-DELTA |
| 18 | 1.8 | COOLING AND LUBRICATION SYSTEM, AIR-COOLED CENTRIFUGAL FAN, 50/60HZ/30HP, 50HZ/25HP | 50 | 1.23 | CONTROL STARTER—VSD N12 |
| 20 | 1.9 | COOLING AND LUBRICATION SYSTEM, AIR-COOLED AXIAL FAN, 60HZ/25HP | 52 | 1.24 | CONTROL STARTER—VSD CE N12 |
| 22 | 1.10 | DISCHARGE, SEPARATOR/SUMP TANK AND PIPING SYSTEM | 54 | 1.25 | CONTROL STARTER—YD CE N4 |
| 24 | 1.11 | MOISTURE DRAIN—STANDARD | 56 | 1.26 | ENCLOSURE, AIR-COOLED |
| 26 | 1.12 | MOISTURE DRAIN—SCD | 58 | 1.27 | ENCLOSURE, AIR-COOLED INTEGRAL DRYER |
| 28 | 1.13 | MOISTURE DRAIN, AIR-COOLED WITH INTEGRAL DRYER | 60 | 1.28 | DECAL LOCATION SECTION, AIR-COOLED |
| 30 | 1.14 | PNEUMATIC CONTROL SYSTEM—NYLON | 62 | 1.29 | DECAL LOCATION SECTION, AIR-COOLED, INTEGRAL DRYER |
| 32 | 1.15 | PNEUMATIC CONTROL SYSTEM—STAINLESS STEEL | 64 | 1.30 | DECAL GROUP |

1.1 PROCEDURE FOR ORDERING PARTS

| | |
|--|---|
| <p>SULLAIR CORPORATION</p> <p>3700 East Michigan Boulevard Michigan City, Indiana 46360 U.S.A www.sullair.com Telephone: 1-800-SULLAIR (U.S.A. only) Fax: 219-874-1273</p> <p>CUSTOMER CARE for PARTS and SERVICE</p> <p>1-888-SULLAIR (785-5247) 219-874-1835</p> | <p>SULLAIR ASIA, LTD.</p> <p>Sullair Road, No. 1 Chiwan, Shekuo Shenzhen, Guangdong PRV. PRC POST CODE 518068 Telephone: 755-6851686 Fax: 755-6853473 www.sullair-asia.com</p> |
| <p>SULLAIR EUROPE, S.A.</p> <p>Zone Des Granges BP 82 42602 Montbrison, France Telephone: 33-477968470 Fax: 33-477968499 www.sullaireurope.com</p> | <p>CHAMPION COMPRESSORS, LTD.</p> <p>Princess Highway Hallam, Victoria 3803 Australia Telephone: 61-3-9796-4000 Fax: 61-3-9703-8053 www.championcompressors.com.au</p> |

The genuine Sullair service parts listed meet or exceed the demands of this compressor. Use of replacement parts other than those approved by Sullair Corporation may lead to hazardous conditions over which Sullair Corporation has no control. Such conditions include, but are not limited to, bodily injury and compressor failure.

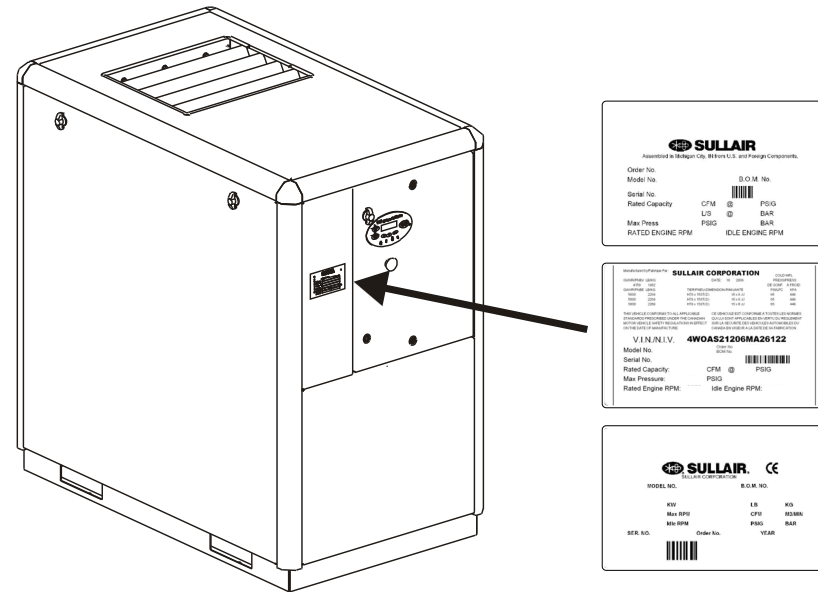


Figure 1-1: Serial Plate / Serial Number Location

Parts should be ordered from the nearest Sullair Representative or the Representative from whom the compressor was purchased. If for any reason parts cannot be obtained in this manner, contact the factory directly at the address, phone numbers or fax numbers below.

When ordering parts always indicate the Serial Number of the compressor. This can be obtained from the Bill of Lading for the compressor or from the Serial Number Plate located on the compressor. See *Figure 1-1: Serial Plate / Serial Number Location*.

RECOMMENDED SERVICE PARTS LIST

1.2 RECOMMENDED SERVICE PARTS LIST

| KEY NO. | ORDER PART NO. | QTY | DESCRIPTION | NOTE |
|---------|----------------|-----|--|------|
| 1 | 02250155-709 | 1 | element, compressor fluid filter 02250155-708 | |
| 2 | 02250125-372 | 1 | element, heavy duty air filter 02250125-369 | |
| 3 | 02250160-776 | 1 | element, replacement for separator 02250160-774 | |
| 4 | 02250110-988 | 1 | kit, repair for minimum pressure/check valve 02250097-609 | |
| 5 | 02250046-397 | 1 | kit, cap for minimum pressure/check valve | |
| 6 | 02250048-362 | 1 | kit, O-ring for minimum pressure/check valve | |
| 7 | 02250051-338 | 1 | kit, piston for minimum pressure/check valve | |
| 8 | 02250144-327 | 1 | kit, repair for thermal valve 195deg 02250092-081 | |
| 9 | 02250148-827 | 1 | repair for thermal valve 210 deg 02250148-796 | |
| 10 | 250019-453 | 1 | kit, repair for pressure regulator 250017-280 | |
| 11 | 02250157-500 | 1 | kit, repair for control solenoid valve 02250155-714 | |
| 12 | 02250157-502 | 1 | kit, coil replacement for control solenoid valve coil 02250155-714 | |
| 13 | 02250157-501 | 1 | kit, repair for condensate drain solenoid valve coil 02250155-715 | |
| 14 | 02250157-502 | 1 | kit, coil replacement for condensate drain solenoid valve coil | |
| 15 | 02250164-606 | 1 | kit, repair inlet valve (integrated with compressor unit) | |

Continued on next page.

**PLEASE NOTE: WHEN ORDERING PARTS,
INDICATE SERIAL NUMBER OF COMPRESSOR**

1.2 RECOMMENDED SERVICE PARTS LIST

| KEY NO. | ORDER PART NO. | QTY | DESCRIPTION | NOTE |
|---------|----------------|-----|---|------|
| 16 | 02250164-607 | 1 | kit, rebuild inlet valve | |
| 17 | 241772 | 1 | kit, repair for v-type strainer 241771 | |
| 18 | 02250155-594 | 1 | kit, repair for shaft seal | |
| 19 | 001932-005 | 1 | kit, repair for shaft seal installation | |
| 20 | 02250117-782 | 2 | filter, scavenge line 02250117-782 | |
| 21 | 02250144-735 | 1 | kit, seal replacement for separator/trap 02250144-635 | |
| 22 | 250019-662 | | lubricant, Sullube (Std.) (5 gal/19 liter) | (I) |
| 23 | 250022-669 | | lubricant, Sullube (Std.) (5 gal/19 liter) | (I) |
| 24 | 02250051-053 | | lubricant, 24 KT (5 gal/19 liter) | (I) |
| 25 | 250029-008 | | lubricant, Food Grade (5 gal/19 liter) | (I) |

(I) For proper amount of fluid fill, please consult *Lubrication Guide* in *Section 3: Specifications* in User Manual

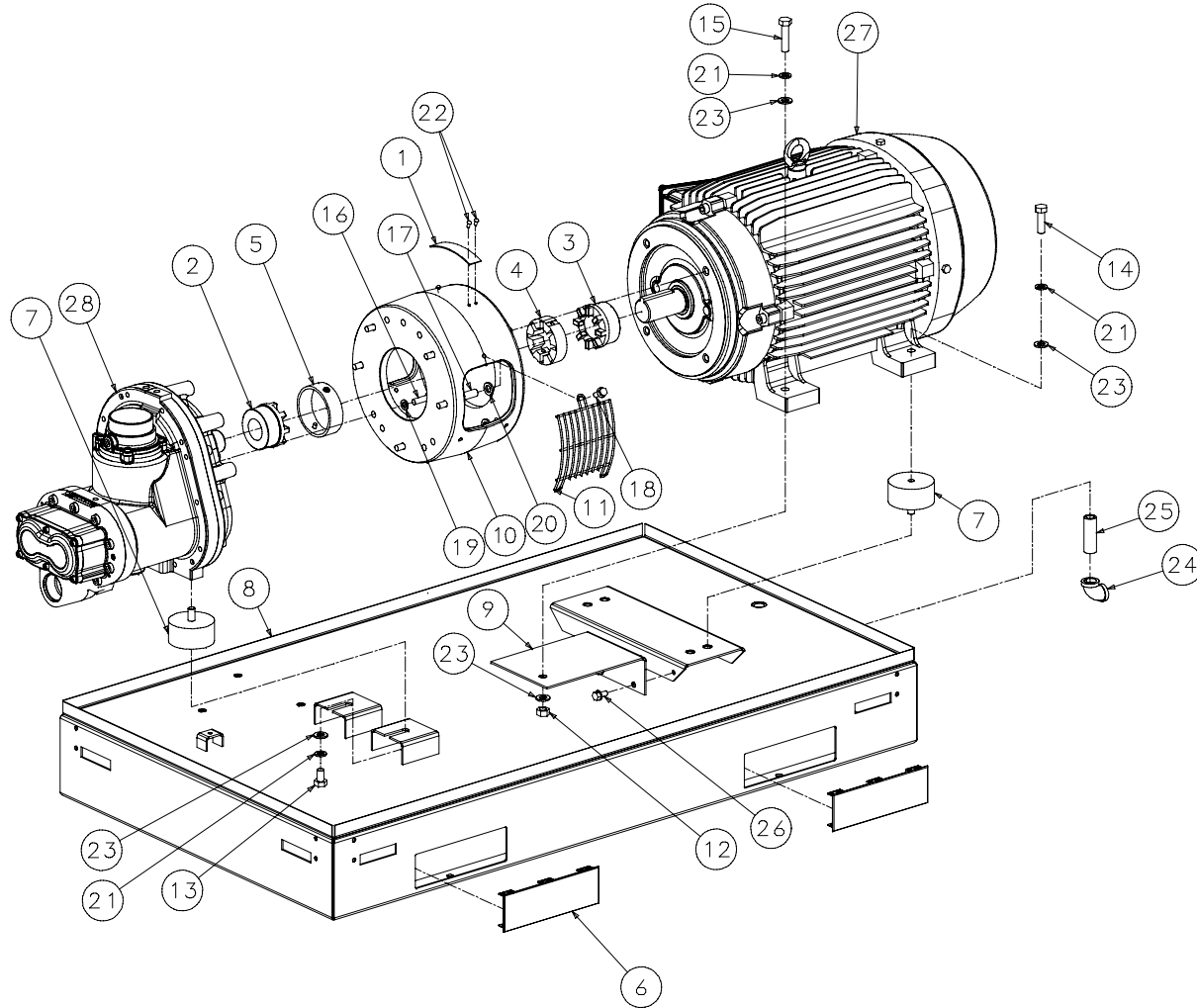


CAUTION

Mixing of other lubricants within the compressor unit will void all warranties.

PLEASE NOTE: WHEN ORDERING PARTS,
INDICATE SERIAL NUMBER OF COMPRESSOR

1.3 COMPRESSOR, FRAME AND DRIVE



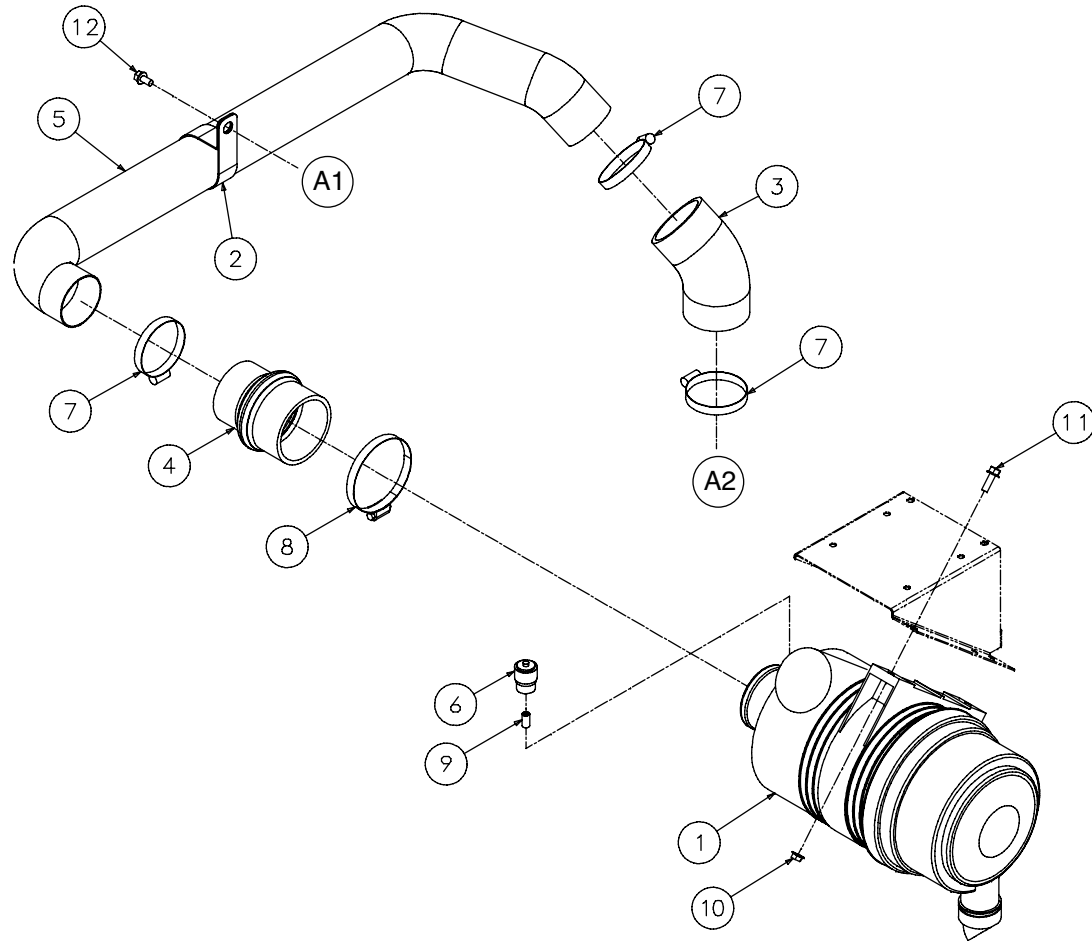
02250156-477R03

1.3 COMPRESSOR, FRAME AND DRIVE

| KEY NO. | PART NO. | QTY | DESCRIPTION | NOTE |
|---|--------------|-----|-------------------------------------|------|
| 1 | 02250057-737 | 1 | plate,rotation arrow | |
| 2 | 02250152-619 | 1 | hub, coupling 1.50 bore 10r | |
| 3 | 02250152-620 | 1 | hub, coupling 1.625 bore 10r | |
| 4 | 02250152-669 | 1 | element,cplg 10r | |
| 5 | 02250152-677 | 1 | cover,forkpocket 37kw | |
| 6 | 02250154-405 | 4 | cover,forkpocket 37kw | |
| 7 | 02250155-285 | 4 | isolator, vibration motor 37kw | |
| 8 | 02250156-138 | 1 | frame, base 1800/2200 | |
| 9 | 02250163-961 | 1 | support,shipping mtr/unit 2200 | |
| 10 | 250038-448 | 1 | adapter,unit to motor | |
| 11 | 250040-319 | 2 | grille,cplg guard compr/mtr | |
| 12 | 825912-175 | 1 | nut,hex metric m12 x 1.75 | |
| 13 | 828012-020 | 2 | capscrew,hex 8.8 m12 x 20mm | |
| 14 | 828012-040 | 2 | capscrew,hex 8.8 m12 x 40mm | |
| 15 | 828012-050 | 1 | capscrew,hex gr5 3/8-16 x 1 1/4 | |
| 16 | 829106-125 | 7 | capscrew,hex gr5 3/8-16 x 1 1/4 | |
| 17 | 829108-125 | 4 | capscrew,hex gr5 1/2-13 x 1 1/4 | |
| 18 | 829705-075 | 6 | screw, hex ser washer 5/16-18 x 3/4 | |
| 19 | 837806-094 | 7 | washer, spr lock reg pltd 3/8 | |
| 20 | 837808-125 | 4 | washer, spr lock reg pltd 1/2 | |
| 21 | 838812-250 | 5 | washer, spr lock-metric pltd m12 | |
| 22 | 839608-060 | 3 | screw, drive rd hd #8 x 3/8 | |
| 23 | 865412-240 | 6 | washer, metric-iso7089- 12 | |
| PLEASE NOTE: WHEN ORDERING PARTS, INDICATE SERIAL NUMBER OF COMPRESSOR | | | | |

| KEY NO. | PART NO. | QTY | DESCRIPTION | NOTE |
|---|------------|-----|--------------------------------|-------------|
| 24 | 866215-020 | 1 | elbow, pipe 90 deg plt 1/2" | |
| 25 | 866408-025 | 1 | nipple,pipe-xs plt 1/2 x 2 1/2 | |
| 26 | 883008-016 | 2 | screw, tf-hex m8 x 16 blk zinc | |
| 27 | | 1 | MOTOR | (I) |
| 28 | | 1 | COMPRESSOR | (I) (II) |
| <p>(I) This part may vary per machine design. Consult factory with machine serial number to determine the proper part number</p> <p>(II) Sullair offers an exchange program whereby a remanufactured compressor unit can be obtained from Sullair distributors or the factory at a lower cost than it would cost for the owner to repair the unit. For information regarding the unit exchange program, contact your nearest Sullair representative or the Sullair Corporation. The shaft seal is not considered part of the compressor unit in regard to the two year warranty, but the normal Sullair parts warranty does apply. For shaft seal repairs, order repair kit no. 02250155-594, and installation kit no. 001932-005</p> | | | | |
| PLEASE NOTE: WHEN ORDERING PARTS, INDICATE SERIAL NUMBER OF COMPRESSOR | | | | |

1.4 AIR INLET SYSTEM

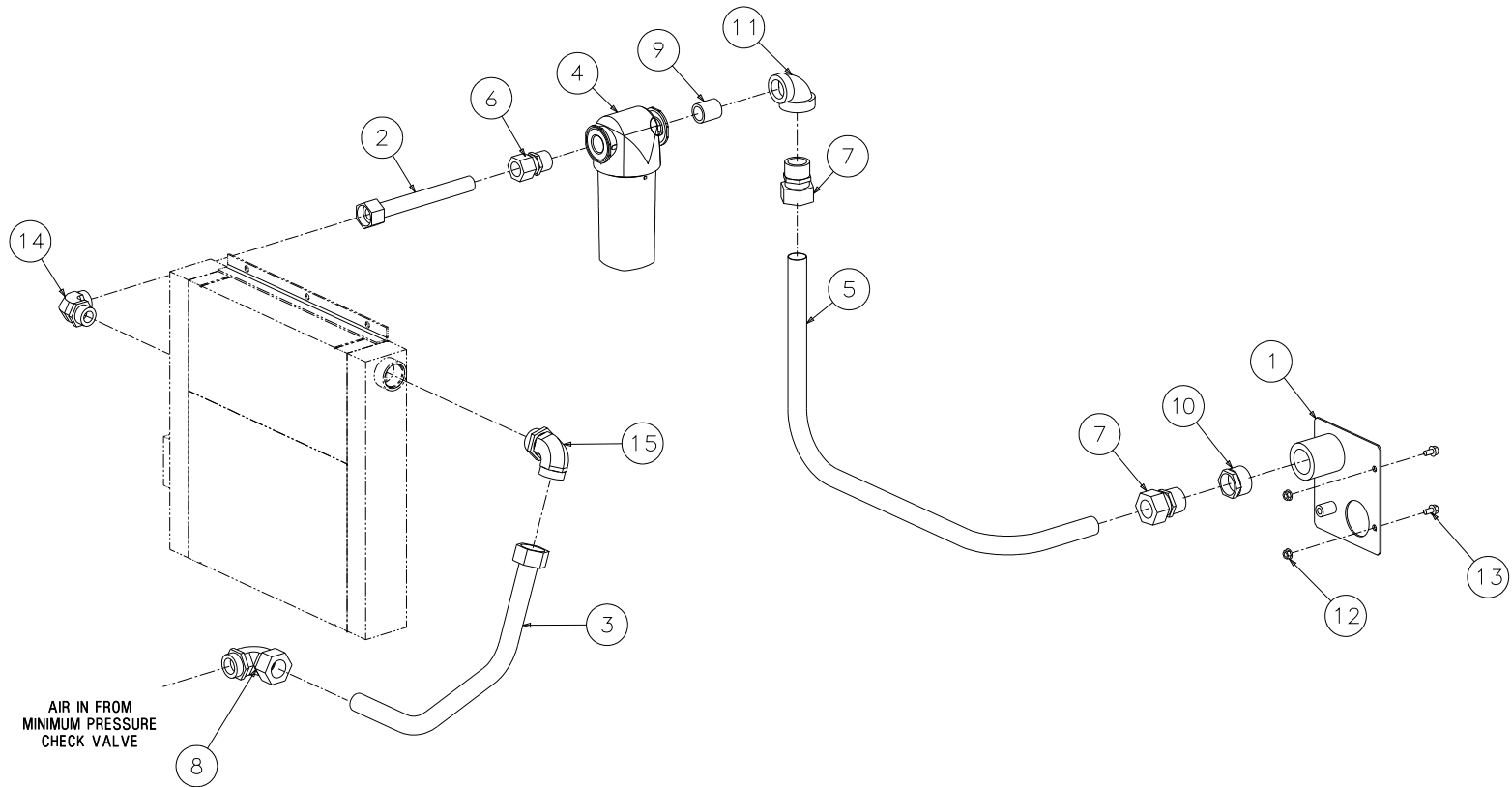


02250156-635R04

1.4 AIR INLET SYSTEM

| KEY NO. | PART NO. | QTY | DESCRIPTION | NOTE |
|---|--|-----|--------------------------------|------|
| 1 | 02250125-369 | 1 | filter, air 8"(plastic)w/mtg | (I) |
| 2 | 02250162-347 | 1 | clamp,hose o.d. 3.00 | |
| 3 | 02250163-998 | 1 | elbow,rub 45deg 3.00" | |
| 4 | 02250163-999 | 1 | hose, hump red str 3.50 x 3.00 | |
| 5 | 02250164-008 | 1 | tube,airinl p10 | |
| 6 | 250003-869 | 1 | indicator, restriction 20" h20 | (II) |
| 7 | 250018-550 | 3 | clamp, hose 2-13/16 to 3-3/4" | |
| 8 | 250031-415 | 1 | clamp, hose 2-13/16 to 3-3/4" | |
| 9 | 866402-000 | 1 | clamp, hose 4.25/3.31 | (II) |
| 10 | 882508-125 | 2 | nipple,pipe-xs plt 1/8 x cl | |
| 11 | 882608-025 | 2 | screw, hex serr washer m8 x 25 | |
| 12 | 883008-016 | 1 | screw, hex serr washer m8 x 25 | |
| A1 | To support bracket on air duct | | | |
| A2 | To air inlet on compressor unit | | | |
| (I) | For maintenance on air filter No. 02250125-369, order replacement element 02250125-372, evacuator valve 02250125-376 | | | |
| (II) | Not used with vacuum switch option | | | |
| PLEASE NOTE: WHEN ORDERING PARTS, INDICATE SERIAL NUMBER OF COMPRESSOR | | | | |

1.5 AIR PIPING, AIR-COOLED

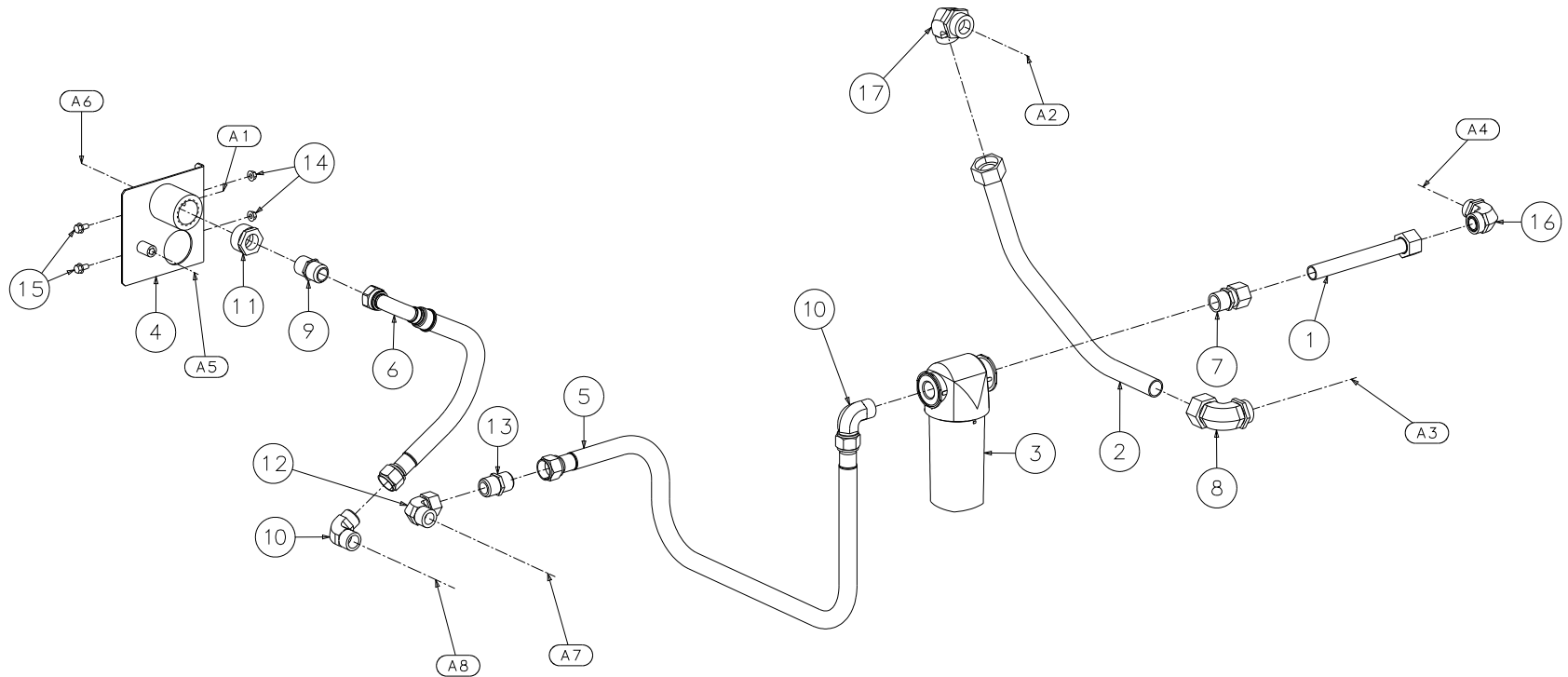


02250156-633R05

1.5 AIR PIPING, AIR-COOLED

| KEY NO. | PART NO. | QTY | DESCRIPTION | NOTE |
|---|--------------|-----|------------------------------------|------|
| 1 | 02250152-215 | 1 | support,outlet conn 1-1/2npt | |
| 2 | 02250159-493 | 1 | tube,orfs 1" aftrclr to moist sep | |
| 3 | 02250166-561 | 1 | tube,orfs 1-1/4" mpv/aftrclr | |
| 4 | 02250167-115 | 1 | separator, water scws-235n 1" l/ad | |
| 5 | 02250167-608 | 1 | tube,1-1/4" discharge p10 | |
| 6 | 810216-100 | 1 | connector, tube-m 1 x 1 | |
| 7 | 810220-125 | 2 | connector, tube-m 1 1/4 x 1 1/4 | |
| 8 | 811620-162 | 1 | elbow, tube str thrd 1 1/4 x 1 5/8 | |
| 9 | 866416-000 | 1 | nipple,pipe-xs plt 1 x cl | |
| 10 | 867106-050 | 1 | bushing,red pltd 1 1/2 x 1 1/4 | |
| 11 | 869205-040 | 1 | elbow, red 1 1/4 x 1 150# plt | |
| 12 | 882508-125 | 2 | nut,serr flng m8 x 1.25 | |
| 13 | 882608-016 | 2 | screw, hex serr washer m8 x 16 | |
| 14 | 883633-016 | 1 | elbow,met st thd/orfs m33 x 1 | |
| 15 | 883642-020 | 1 | elbow,met st thd/orfs m42 x 1 1/4 | |
| PLEASE NOTE: WHEN ORDERING PARTS, INDICATE SERIAL NUMBER OF COMPRESSOR | | | | |

1.6 AIR PIPING WITH INTEGRAL DRYER



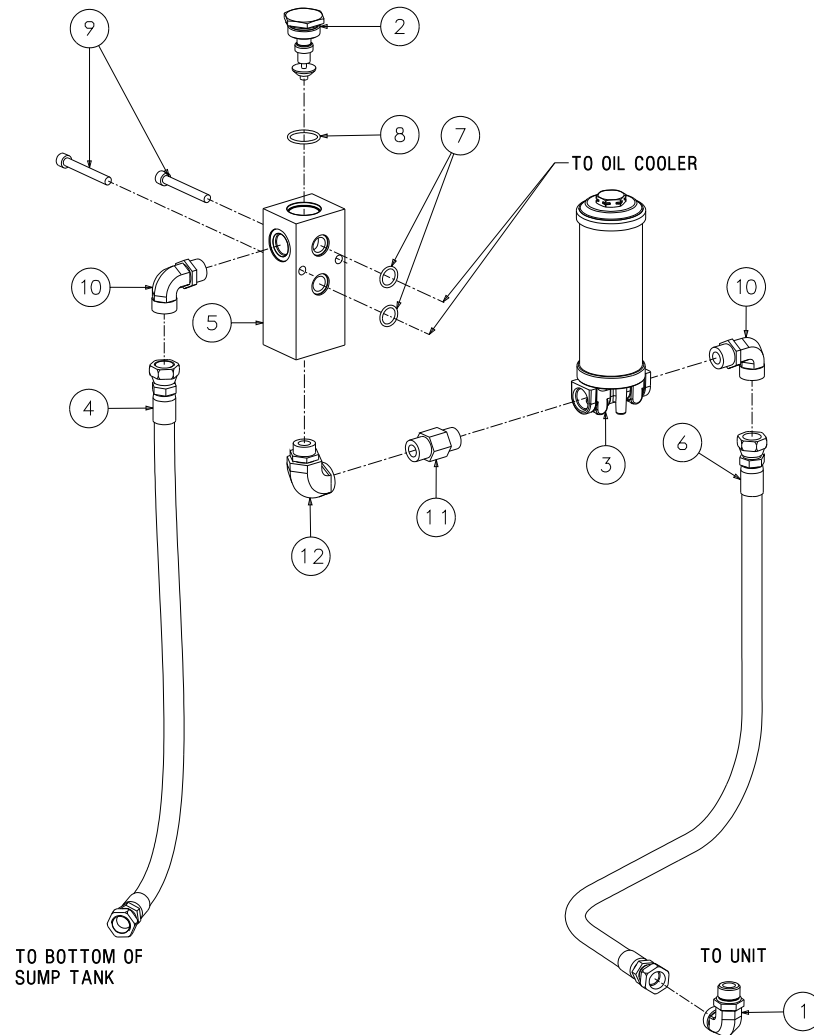
02250168-701

1.6 AIR PIPING WITH INTEGRAL DRYER

| KEY NO. | PART NO. | QTY | DESCRIPTION | NOTE |
|---|--------------|-----|---------------------------------------|------|
| 1 | 02250159-493 | 1 | tube,orfs 1" afrclr to moist sep | |
| 2 | 02250166-561 | 1 | tube,orfs 1-1/4" mpv/afrclr | |
| 3 | 02250167-115 | 1 | separator, water scws-235n 1" l/ad | |
| 4 | 02250168-568 | 1 | support,outlet conn 1"nptf 2200 dryer | |
| 5 | 02250168-852 | 1 | hose, air moistsep to evap | |
| 6 | 02250173-002 | 1 | hose, air evap to airout brkt | |
| 7 | 810216-100 | 1 | connector, tube-m 1 x 1 | |
| 8 | 811620-162 | 1 | elbow, tube str thrd 1 1/4 x 1 5/8 | |
| 9 | 860116-100 | 1 | connector,37 fl/mpt pltd 1 x 1 | |
| 10 | 860216-100 | 2 | elbow, 37fl 90m 1 x 1 | |
| 11 | 868906-040 | 1 | bushing,red hex pltd 1 1/2 x 1 | |
| 12 | 875816-016 | 1 | elbow, 37 sw 90m 1 x 1 | |
| 13 | 878416-131 | 1 | union,37fl bhd 1" | |
| 14 | 882508-125 | 2 | nut,serr flng m8 x 1.25 | |
| 15 | 883008-016 | 2 | screw, tf-hex m8 x 16 blk zinc | |
| 16 | 883633-016 | 1 | elbow,met st thd/orfs m33 x 1 | |
| 17 | 883642-020 | 1 | elbow,met st thd/orfs m42 x 1 1/4 | |
| A1: PACKAGE DISCHARGE PRESSURE P2 | | | | |
| A2: TO AFTERCOOLER | | | | |
| A3: FROM MINIMUM PRESSURE VALVE | | | | |
| A4: FROM AFTERCOOLER | | | | |
| A5: FROM MOISTURE DRAIN | | | | |
| PLEASE NOTE: WHEN ORDERING PARTS, INDICATE SERIAL NUMBER OF COMPRESSOR | | | | |

| KEY NO. | PART NO. | QTY | DESCRIPTION | NOTE |
|---|----------|-----|-------------|------|
| A6: CUSTOMER AIR OUT CONNECTION | | | | |
| A7: COMPRESSOR AIR IN TO EVAPORATOR | | | | |
| A8: COMPRESSOR AIR OUT FROM EVAPORATOR | | | | |
| PLEASE NOTE: WHEN ORDERING PARTS, INDICATE SERIAL NUMBER OF COMPRESSOR | | | | |

1.7 FLUID PIPING, AIR-COOLED

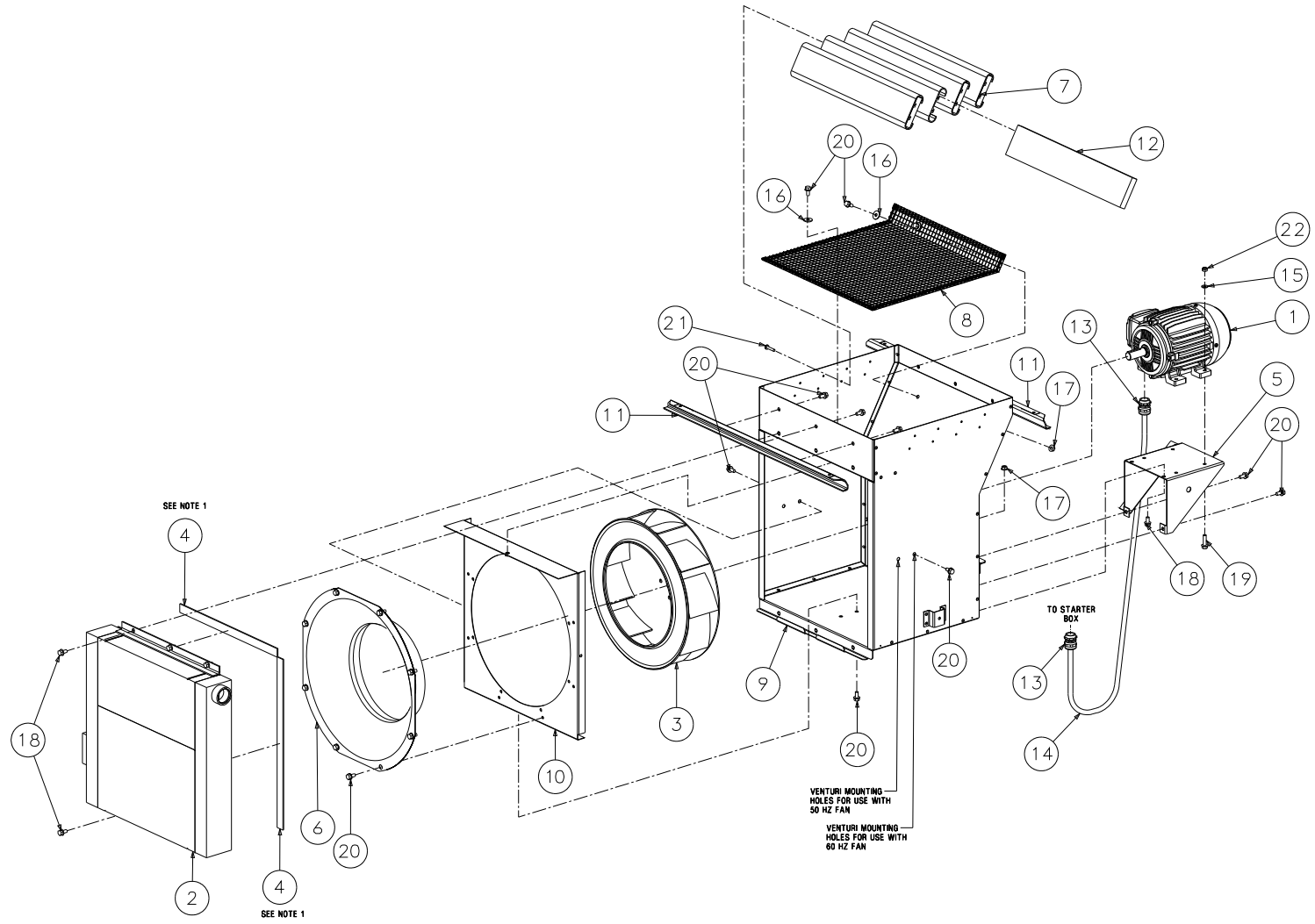


02250156-634-R04

1.7 FLUID PIPING, AIR-COOLED

| KEY NO. | PART NO. | QTY | DESCRIPTION | NOTE |
|---|--------------|-----|--|------|
| 1 | 02250099-766 | 1 | elbow,90 sae x orfs .75" | |
| 2 | 02250148-796 | 1 | valve,thermal 210f 1 1/2-18 | |
| 3 | 02250155-708 | 1 | filter,coreless m27 6"l | |
| 4 | 02250156-909 | 1 | hose, medium pressure orfs f-swvl 3/4" x 33" | |
| 5 | 02250157-222 | 1 | housing, thrm vlv 2200 | |
| 6 | 02250161-751 | 1 | hose, medium pressure orfs f-swvl 3/4" x 37" | |
| 7 | 826502-211 | 2 | o-ring, viton 13/16 x 1/8" | |
| 8 | 826502-219 | 1 | o-ring, viton 1 5/16 x 1/8" | |
| 9 | 829310-080 | 2 | screw, socket iso 4762 m10 x 80mm | |
| 10 | 883627-012 | 2 | elbow,met st thd/orfs m27 x 3/4 | |
| 11 | 883727-012 | 1 | union,str thd iso 6149 m27 x 2 | |
| 12 | 884227-012 | 1 | elbow,met st thd mxl m27 | |
| PLEASE NOTE: WHEN ORDERING PARTS, INDICATE SERIAL NUMBER OF COMPRESSOR | | | | |

1.8 COOLING AND LUBRICATION SYSTEM, AIR-COOLED CENTRIFUGAL FAN, 50/60HZ/30HP, 50HZ/25HP



02250156-995-R05

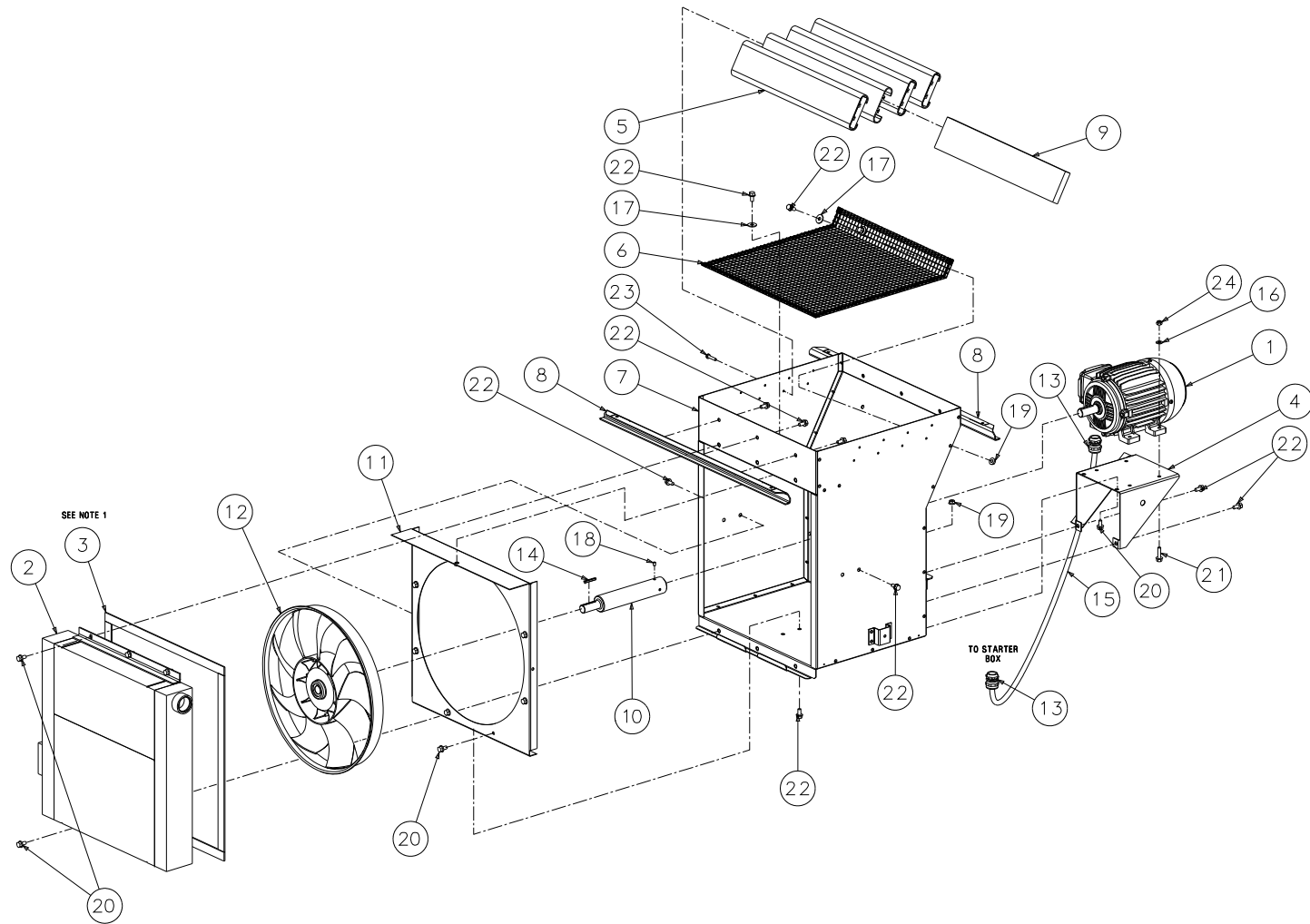
02250156-995-R05

1.8 COOLING AND LUBRICATION SYSTEM, AIR-COOLED CENTRIFUGAL FAN, 50/60HZ/30HP, 50HZ/25HP

| KEY NO. | PART NO. | QTY | DESCRIPTION | NOTE |
|---|--------------|-----|-------------------------------------|------|
| 1 | various | 1 | fan motor | |
| 2 | 02250156-137 | 1 | clr,air/oil p10 std | |
| | 02250164-164 | 1 | clr,air/oil p10 crn/ce | |
| 3 | various | 1 | fan, cooling | |
| 4 | 02250058-345 | 7 | strip,weather 1" x 1/8" foam (ft) | |
| 5 | 02250154-721 | 1 | support, motor fan 1800/2200 | |
| 6 | 02250156-639 | 1 | venturi,es8 16" | |
| 7 | 02250160-429 | 4 | louver,extruded 18kw 500.0 lng | |
| 8 | 02250160-452 | 1 | guard, fan discharge p8 p10 | |
| 9 | 02250160-536 | 1 | duct,centrifugal fan p8 p10 | |
| 10 | 02250160-543 | 1 | panel, venturi p8/p10 | |
| 11 | 02250160-566 | 2 | support,airoc p8 p10 | |
| 12 | 02250162-492 | 4 | insulation,foam acous louver p8 p10 | |
| 13 | 250018-497 | 2 | grip,cord for so 12/4 st 3/4" | |
| 14 | 850604-012 | 8 | wire, neoprene #12-4 so (ft) | |
| 15 | 865408-170 | 4 | washer, metric-iso7089- 8 | |
| 16 | 865708-240 | 3 | washer, iso 7093-8-140hv | |
| 17 | 882508-125 | 4 | nut,serr flng m8 x 1.25 | |
| 18 | 882608-016 | 8 | screw, hex serr washer m8 x 16 | |
| 19 | 882608-030 | 4 | screw, hex serr washer m8 x 30 | |
| 20 | 883008-016 | 22 | screw, tf-hex m8 x 16 blk zinc | |
| 21 | 883306-030 | 16 | screw, plastic pilot m6 x 30 | |
| 22 | 884708-125 | 4 | nut,hex locking m8 | |
| PLEASE NOTE: WHEN ORDERING PARTS, INDICATE SERIAL NUMBER OF COMPRESSOR | | | | |

| KEY NO. | PART NO. | QTY | DESCRIPTION | NOTE |
|---|----------|-----|-------------|------|
| NOTES: | | | | |
| 1. PLACE WEATHER STRIPPING ON COOLER MOUNTING FACE TO ELIMINATE AIR LEAKAGE. | | | | |
| PLEASE NOTE: WHEN ORDERING PARTS, INDICATE SERIAL NUMBER OF COMPRESSOR | | | | |

1.9 COOLING AND LUBRICATION SYSTEM, AIR-COOLED AXIAL FAN, 60HZ/25HP



02250173-351-R02

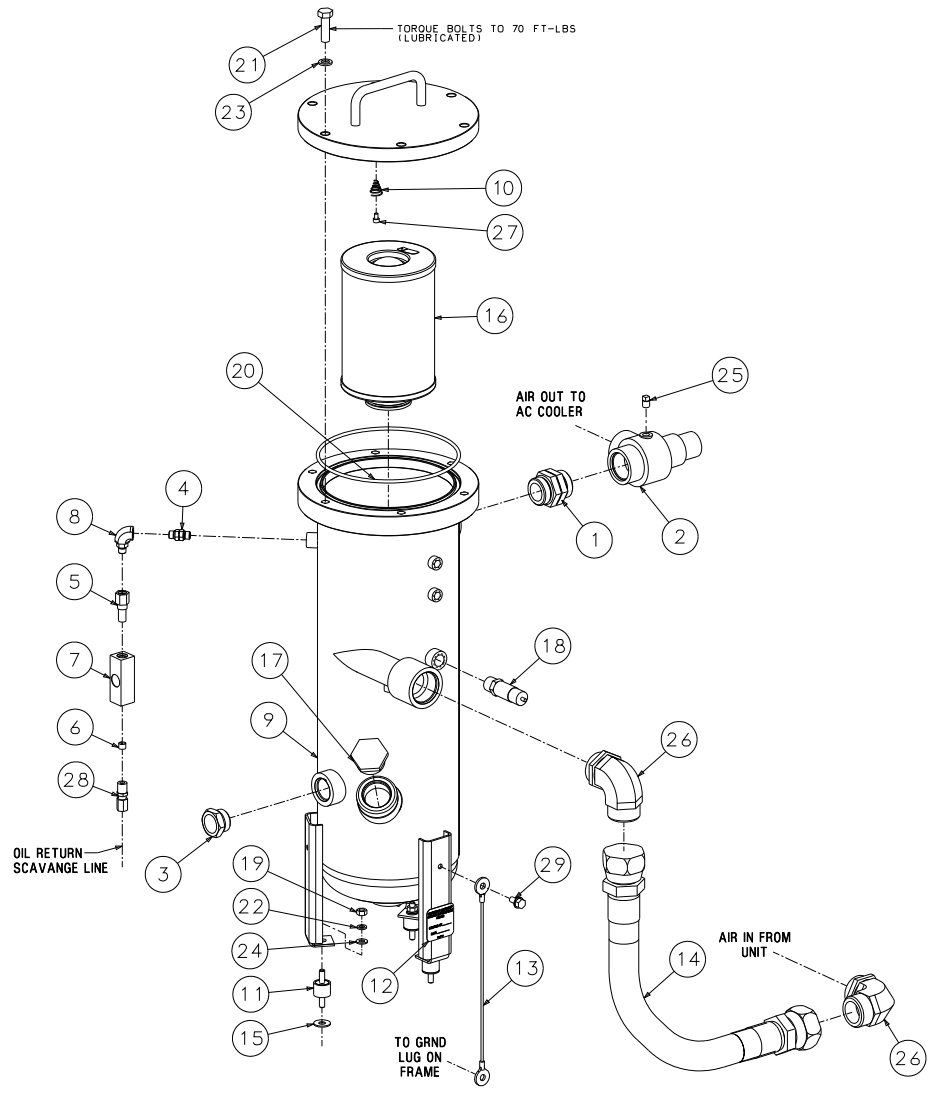
1.9 COOLING AND LUBRICATION SYSTEM, AIR-COOLED AXIAL FAN, 60HZ/25HP

| KEY NO. | PART NO. | QTY | DESCRIPTION | NOTE |
|---|--------------|-----|-------------------------------------|------|
| 1 | - | 1 | motor, fan 1hp 4p tee | |
| 2 | 02250156-137 | 1 | cooler,air/oil p10 std | |
| 3 | 02250058-345 | 7 | strip,weather 1" x 1/8" foam (ft) | |
| 4 | 02250154-721 | 1 | support, motor fan 1800/2200 | |
| 5 | 02250160-429 | 4 | louver,extruded 18kw 500.0 lng | |
| 6 | 02250160-452 | 1 | guard, fan discharge p8 p10 | |
| 7 | 02250160-536 | 1 | duct,centrifugal fan p8 p10 | |
| 8 | 02250160-566 | 2 | support,airoc p8 p10 | |
| 9 | 02250162-492 | 4 | insulation,foam acous louver p8 p10 | |
| 10 | 02250167-452 | 1 | drive,output shaft fan | |
| 11 | 02250171-617 | 1 | panel, venturi p8/p10 | |
| 12 | 02250173-084 | 1 | fan, 18" nylon 9-blade axial | |
| 13 | 250018-497 | 2 | grip, cord for so 12/4 st 3/4" | |
| 14 | 821103-150 | 1 | key, square cl1 3/16" x 1 1/2 | |
| 15 | 850604-012 | 8 | wire, neoprene #12-4 so (ft) | |
| 16 | 865408-170 | 4 | washer, metric-iso7089- 8 | |
| 17 | 865708-240 | 3 | washer, iso 7093-8-140hv | |
| 18 | 874904-038 | 2 | screw, set cup 1/4 x 3/8 plt | |
| 19 | 882508-125 | 4 | nut,serr flng m8 x 1.25 | |
| 20 | 882608-016 | 16 | screw, hex serr washer m8 x 16 | |
| 21 | 882608-030 | 4 | screw, hex serr washer m8 x 30 | |
| 22 | 883008-016 | 14 | screw, tf-hex m8 x 16 blk zinc | |
| 23 | 883306-030 | 16 | screw, plastic pilot m6 x 30 | |
| PLEASE NOTE: WHEN ORDERING PARTS, INDICATE SERIAL NUMBER OF COMPRESSOR | | | | |

| KEY NO. | PART NO. | QTY | DESCRIPTION | NOTE |
|---|------------|-----|--------------------|------|
| 24 | 884708-125 | 4 | nut,hex locking m8 | |
| PLEASE NOTE: WHEN ORDERING PARTS, INDICATE SERIAL NUMBER OF COMPRESSOR | | | | |

DISCHARGE, SEPARATOR/SUMP TANK AND PIPING SYSTEM

1.10 DISCHARGE, SEPARATOR/SUMP TANK AND PIPING SYSTEM



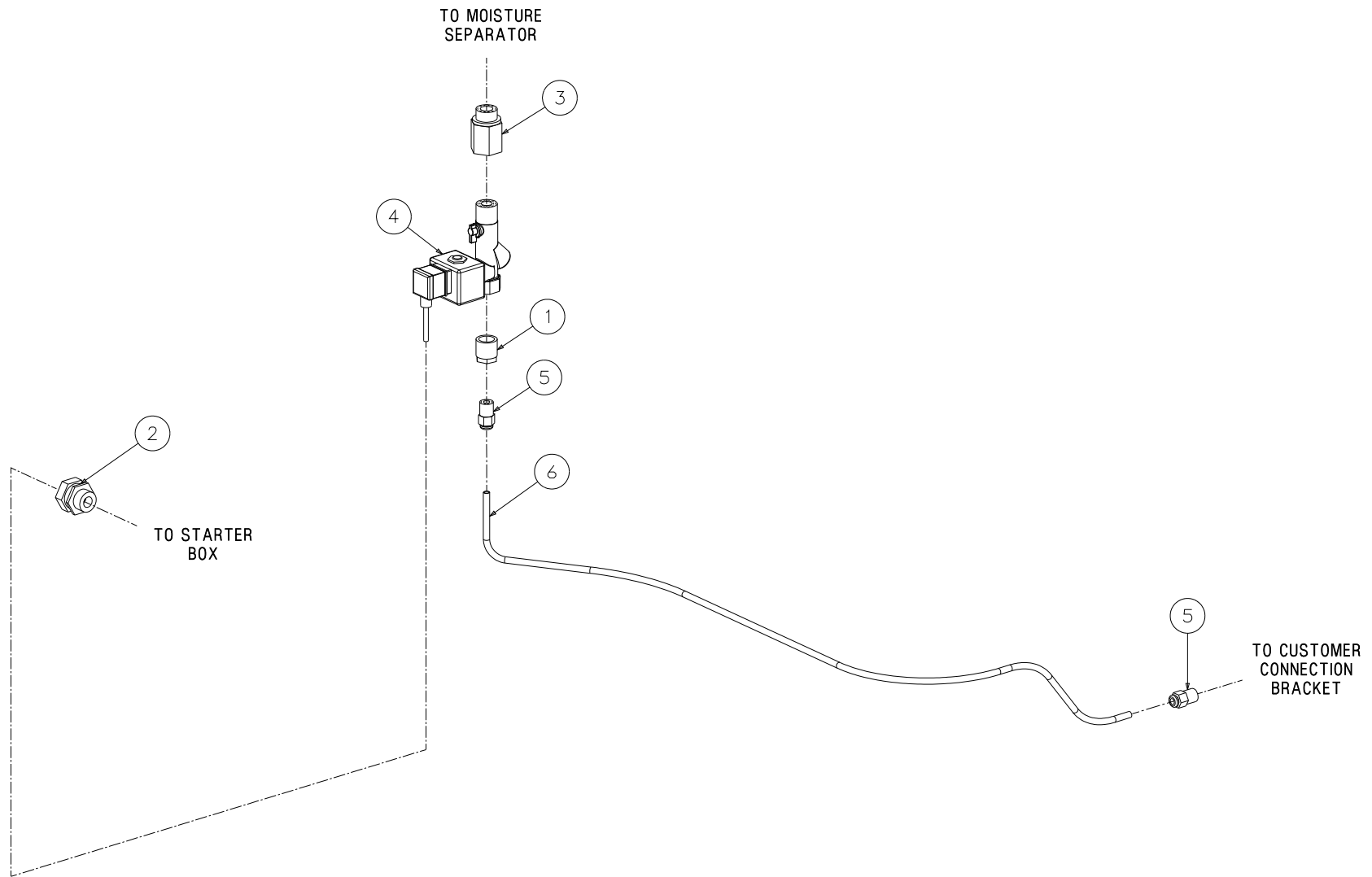
02250156-632-R03

1.10 DISCHARGE, SEPARATOR/SUMP TANK AND PIPING SYSTEM

| KEY NO. | PART NO. | QTY | DESCRIPTION | NOTE |
|---|--------------|-----|---|------|
| 1 | 02250055-015 | 1 | adapter, sae 1 5/8-12 x 1 5/8-12 | |
| 2 | 02250097-609 | 1 | valve, min pressure check 1 5/8"sae - | |
| 3 | 02250097-610 | 1 | plug,sight glass 1 5/16" sae 00 | |
| 4 | 02250101-783 | 1 | adapter, sae 7/16 x 7/16-20 | |
| 5 | 02250117-782 | 1 | filter, assembly screen filter | |
| 6 | 02250125-774 | 1 | orifice,plug brass 1/8"npt x 1/32" | |
| 7 | 02250126-129 | 1 | sightglass, orf block sae | |
| 8 | 02250152-798 | 1 | elbow,saе 1/4" (7/16-20) m x f | |
| 9 | 02250155-599 | 1 | tank, separator 1800/2200 | |
| 10 | 02250155-720 | 1 | spring,conical oil sep ground ws | |
| 11 | 02250156-379 | 3 | isolator, vibration ws 30/37/45 rec tnk | |
| 12 | 02250156-944 | 1 | decal,continuity check ws37 | |
| 13 | 02250157-450 | 1 | wire,10 gage ground bond 12" m8 | |
| 14 | 02250157-596 | 1 | hose,l.p. f-swvl jic 1.5 x 21"l | |
| 15 | 02250159-433 | 3 | gasket,frame/isolator 2200 viton | |
| 16 | 02250160-773 | 1 | element, sep round 5.5d x 9.0lmg | |
| 17 | 040029 | 1 | plug,o-ring boss sae 1 1/4 | |
| 18 | 250006-938 | 1 | valve,pressure relief 200 psig | |
| 19 | 825908-125 | 3 | nut,hex metric m8 x 1.25 | |
| 20 | 826502-369 | 1 | o-ring, viton 8 x 3/16" | |
| 21 | 828012-040 | 6 | capscrew,hex 8.8 m12 x 40mm | |
| 22 | 838808-200 | 3 | washer, spr lock-metric pltd m8 | |
| 23 | 838812-250 | 6 | washer, spr lock-metric pltd m12 | |
| PLEASE NOTE: WHEN ORDERING PARTS, INDICATE SERIAL NUMBER OF COMPRESSOR | | | | |

| KEY NO. | PART NO. | QTY | DESCRIPTION | NOTE |
|---|------------|-----|---------------------------------------|------|
| 24 | 865408-170 | 3 | washer, metric-iso7089- 8 | |
| 25 | 866900-005 | 1 | plug, pipe 1/8" 3000# stl plt | |
| 26 | 870624-024 | 2 | connector,90d str x jic 1 7/8 x 1 7/8 | |
| 27 | 874505-008 | 1 | screw, socket iso m5 x 8mm pc 12.9 | |
| 28 | 876804-025 | 1 | connector, tube-m 1/4 x 1/4 ss | |
| 29 | 883008-016 | 1 | screw, tf-hex m8 x 16 blk zinc | |
| PLEASE NOTE: WHEN ORDERING PARTS, INDICATE SERIAL NUMBER OF COMPRESSOR | | | | |

1.11 MOISTURE DRAIN—STANDARD



02250171-765-R00

1.11 MOISTURE DRAIN—STANDARD

| KEY NO. | PART NO. | QTY | DESCRIPTION | NOTE |
|---|--------------|-----|-----------------------------------|------|
| 1 | 02250046-110 | 1 | bushing, red brs 1/2 x 1/4 | |
| 2 | 02250071-380 | 1 | grip, cord n4 .187-.250 x 1/2" | |
| 3 | 02250167-603 | 1 | adapter, 1/2m bspp-1/2f npt brass | |
| 4 | 02250170-783 | 1 | valve, drain combo 24 vdc | |
| 5 | 250025-859 | 2 | connector, male 1/4 tube x 1/4 | |
| 6 | 842215-004 | 3 | hose, nylon 1/4" | |
| SERVICE KITS FOR 02250170-783 | | | | |
| 02250171-243 COIL, JCL 24 VDC 16W 50/60HZ | | | | |
| 02250171-245 KIT, DRAIN VALVE SERVICE | | | | |
| 02250171-483 CABLE, PWR REPL DRN VLV | | | | |
| PLEASE NOTE: WHEN ORDERING PARTS, INDICATE SERIAL NUMBER OF COMPRESSOR | | | | |

1.12 MOISTURE DRAIN—SCD

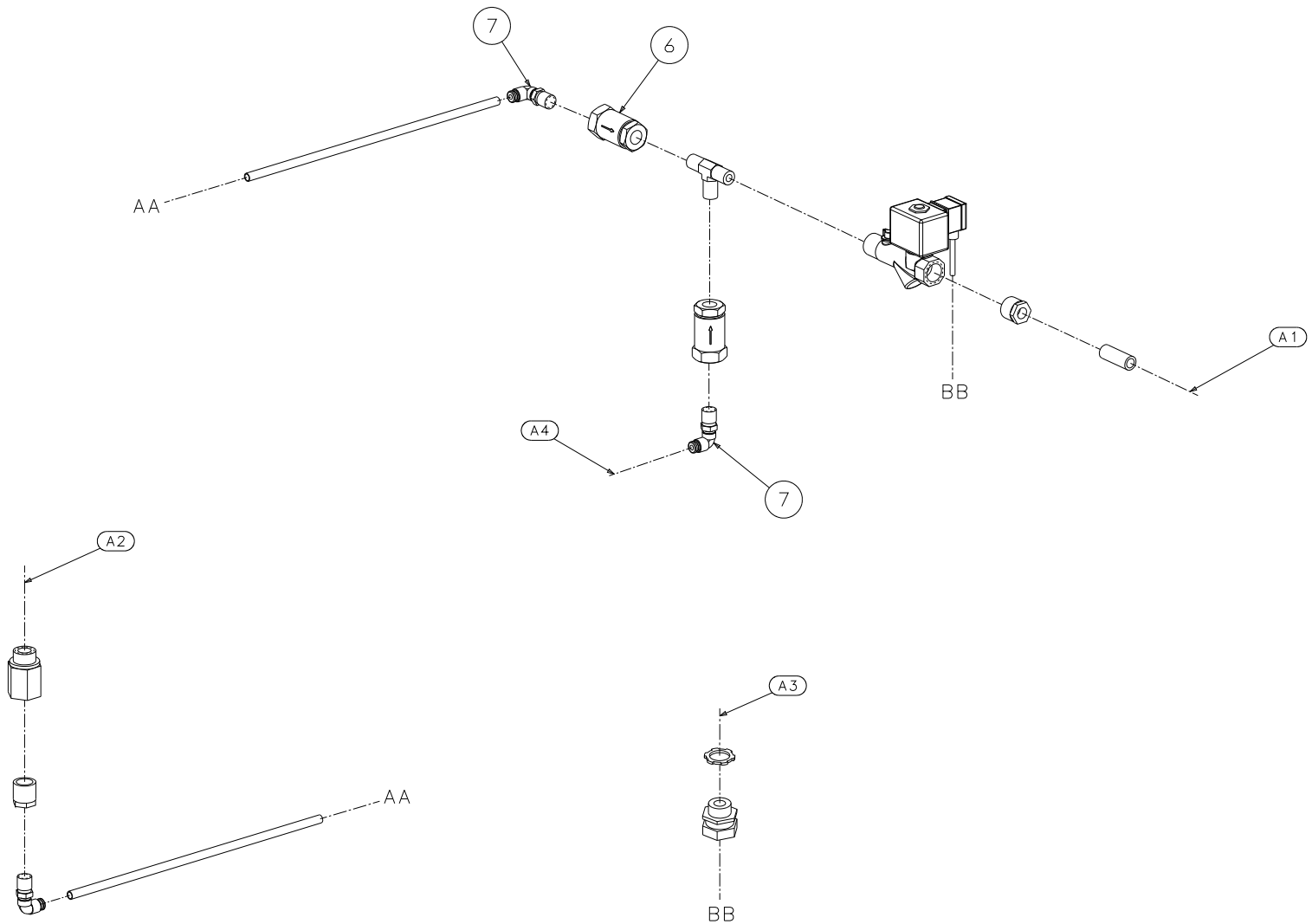
TO STARTER
BC

1.12 MOISTURE DRAIN—SCD

| KEY NO. | PART NO. | QTY | DESCRIPTION | NOTE |
|---|--|-----|--|------|
| 1 | 02250071-381 | 1 | grip, cord n4 .250-.375 x 1/2" | |
| 2 | 02250093-815 | 1 | connector, hose barb 5/16" hose x 1/8" npt | |
| 3 | 02250111-686 | 1 | drain,scd200 136cfm | |
| 4 | 02250144-841 | 1 | valve,ball/srn 1/2m x 1/2m | |
| 5 | 02250167-603 | 1 | adapter,1/2m bspp-1/2f npt brass | |
| 6 | 047235 | 2 | clamp, hose 3/8" - | |
| 7 | 842315-031 | 2 | hose,fuel line 5/16 (ft) | |
| A1 | Prior to installation of SCD drain option, remove separator bowl from moisture separator and remove the brass adaptor installed in the bottom of the bow | | | |
| A2 | To starter box | | | |
| A3 | To customer connection bracket | | | |
| A4 | SCD drain not available with integral dryer | | | |
| PLEASE NOTE: WHEN ORDERING PARTS, INDICATE SERIAL NUMBER OF COMPRESSOR | | | | |

MOISTURE DRAIN, AIR-COOLED WITH INTEGRAL DRYER

1.13 MOISTURE DRAIN, AIR-COOLED WITH INTEGRAL DRYER

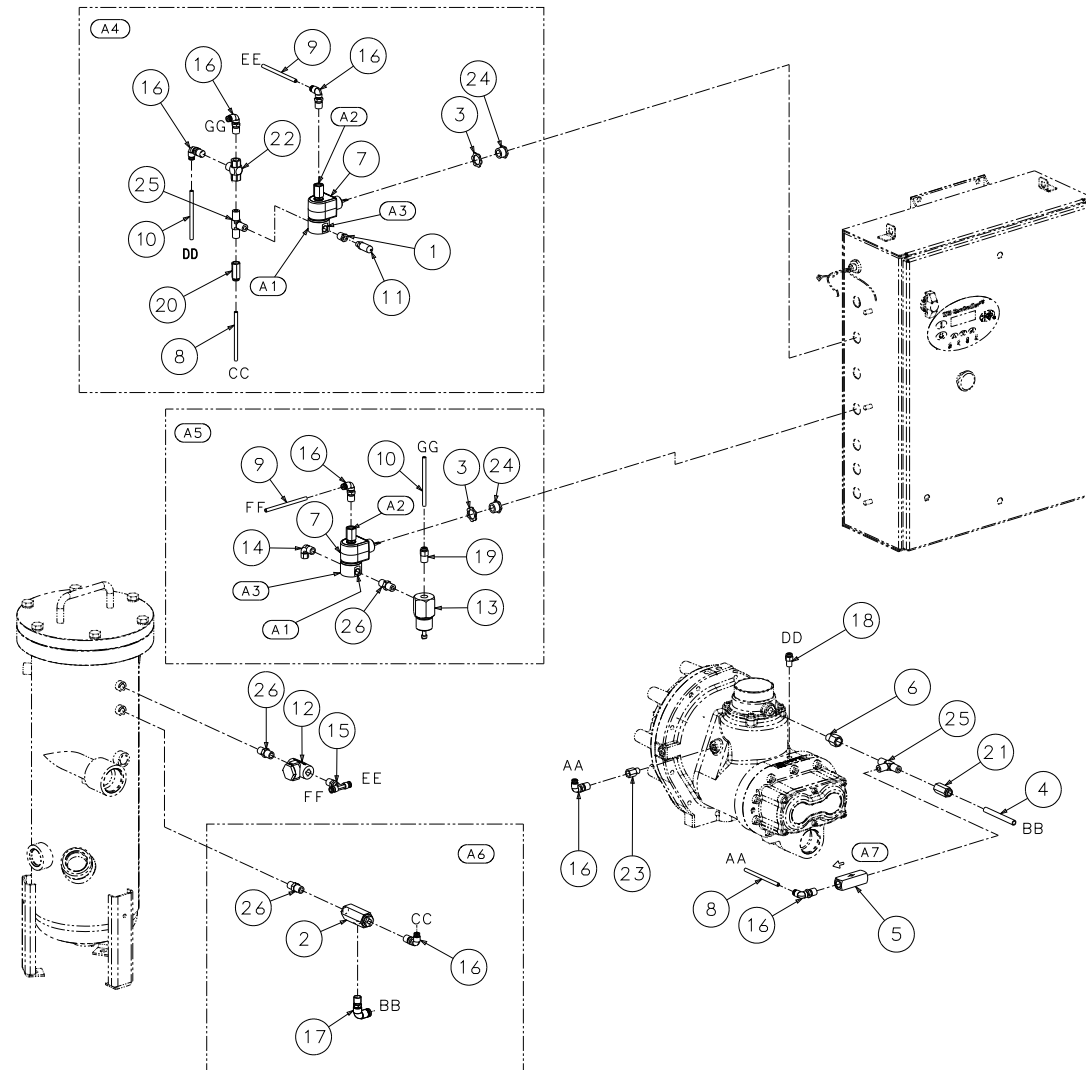


02250170-758 R01

1.13 MOISTURE DRAIN, AIR-COOLED WITH INTEGRAL DRYER

| KEY NO. | PART NO. | QTY | DESCRIPTION | NOTE |
|---|---|-----|---|------|
| 1 | 02250046-110 | 1 | bushing,red-brs-1/2"x1/4" | |
| 2 | 02250071-362 | 1 | locknut, n4 conduit sealing | |
| 3 | 02250071-380 | 1 | grip, cord n4 .187-.250 x 1/2" | |
| 4 | 02250167-603 | 1 | adapter,1/2m bspp-1/2f npt plated steel | |
| 5 | 02250170-783 | 1 | valve, drain combo 24 vdc | |
| 6 | 049905 | 1 | valve, check 1/4" | |
| 7 | 250025-850 | 3 | elbow, 90deg m swvl 1/4t x 1/4 npt | |
| 8 | 842215-004 | 5 | hose,nylon 1/4(ft) | |
| 9 | 866304-015 | 1 | nipple,pipe pltd 1/4 x 1 1/2 | |
| 10 | 868902-010 | 1 | bushing,red hex pltd 1/2 x 1/4 | |
| 11 | 868902-010 | 1 | tee,male pipe brass 1/4 | |
| | | | | |
| | | | | |
| A1 | TO AIROUT BRACKET | | | |
| A2 | FROM WATER SEPERATOR | | | |
| A3 | TO BOTTOM OF STARTER BOX | | | |
| A4 | FROM REFRIGERANT EVAPORATOR CONDENSATE HOSE | | | |
| PLEASE NOTE: WHEN ORDERING PARTS, INDICATE SERIAL NUMBER OF COMPRESSOR | | | | |

1.14 PNEUMATIC CONTROL SYSTEM—NYLON



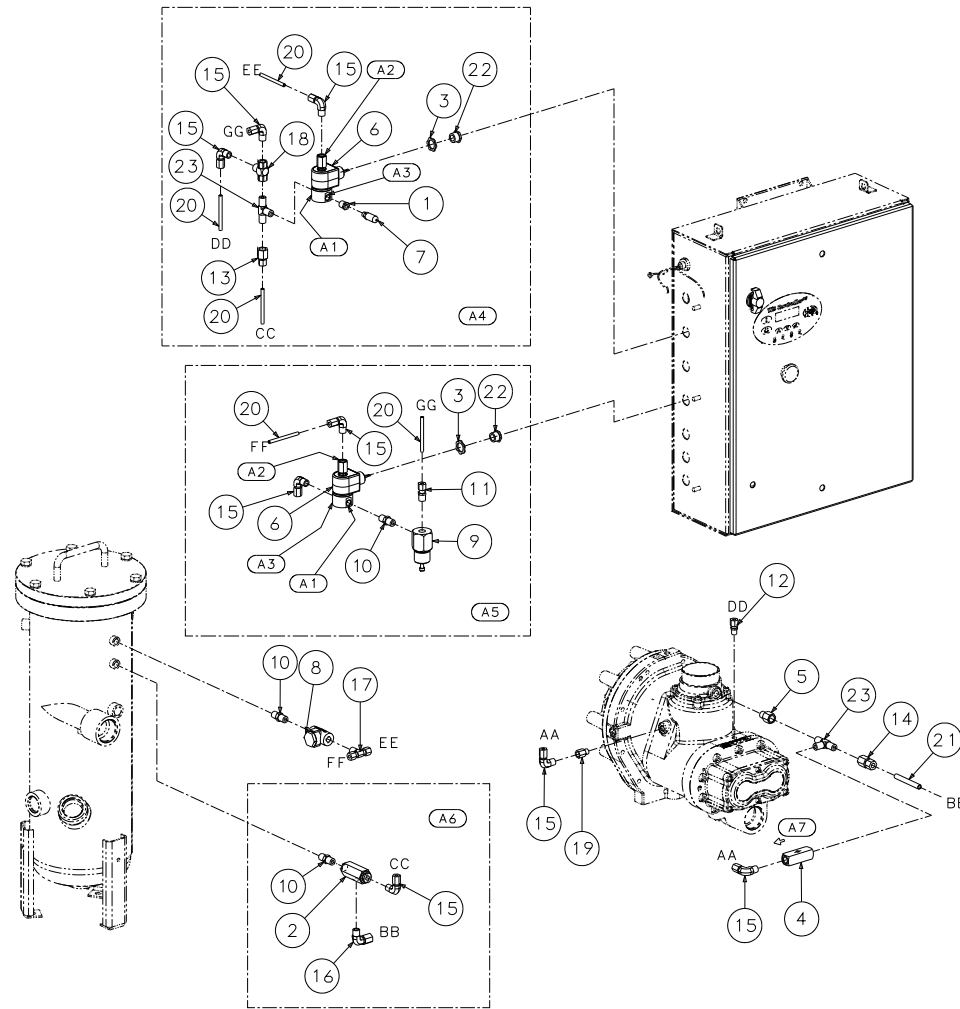
02250157-077-R07

1.14 PNEUMATIC CONTROL SYSTEM—NYLON

| KEY NO. | PART NO. | QTY | DESCRIPTION | NOTE |
|---|--------------|-----|--|-------|
| 1 | 02250049-634 | 1 | valve, blowdown 1/4 npt hi prs | |
| 2 | 02250071-362 | 2 | locknut, n4 conduit sealing | |
| 3 | 02250099-630 | 3 | tube, nylon .375"od x .050w black (ft) | |
| 4 | 02250115-272 | 1 | valve, check 1/4" poppet style | |
| 5 | 02250118-586 | 1 | orifice,.078 .25 fnpt x .25 mnpt | |
| 6 | 02250155-714 | 2 | valve, solenoid 3wno 1/4 250# 24vdc | (I) |
| 7 | 02250155-961 | 3 | tbg, nylon 1/4"-od red | |
| 8 | 02250155-962 | 3 | tbg, nylon 1/4"-od blue | |
| 9 | 02250155-963 | 3 | tbg, nylon 1/4"-od yellow | |
| 10 | 241771 | 1 | strainer, v-type 300psix1/4 | (II) |
| 11 | 250017-280 | 1 | valve, pressure regulator | (III) |
| 12 | 250018-430 | 2 | elbow, 90 1/4t pls x 1/4 npt m | |
| 13 | 250025-835 | 1 | tee, male branch swiv 1/4 tube x 1/4 npt | |
| 14 | 250025-850 | 7 | elbow, 90deg m swvl 1/4t x 1/4 npt | |
| 15 | 250025-852 | 1 | elbow, 90deg m swvl 3/8 t x1/4 | |
| 16 | 250025-858 | 1 | connector, male 1/4tube x 1/8 | |
| 17 | 250025-859 | 1 | connector, male1/4tube x 1/4 | |
| 18 | 250025-923 | 1 | connector, fem tube 1/4 x 1/4 nptf | |
| 19 | 250025-926 | 1 | connector, fem tube 3/8 x 1/4 nptf | |
| 20 | 250025-926 | 1 | valve, shuttle 1/4" npt (dbl chk) | |
| 21 | 811502-025 | 1 | adapter, fem pipe 1/4" x 7/16"-20 | |
| 22 | 847815-050 | 2 | adapter, fem pipe 1/4" x 7/16"-20 | |
| 23 | 869825-025 | 2 | tee, male pipe brass 1/4 | |
| PLEASE NOTE: WHEN ORDERING PARTS, INDICATE SERIAL NUMBER OF COMPRESSOR | | | | |

| KEY NO. | PART NO. | QTY | DESCRIPTION | NOTE |
|--|--------------------------|-----|---------------------------------|------|
| 24 | 881304-025 | 3 | nipple, pipe-hx brass 1/4 x 1/4 | |
| A1 | Port 2 | | | |
| A2 | Port 3 | | | |
| A3 | Load control subassembly | | | |
| A4 | Sequencing subassembly | | | |
| A5 | Blowdown subassembly | | | |
| A6 | Flow | | | |
| (I) For maintenance on solenoid valve no. 02250155-714, order repair kit no. 02250157-500 and replacement coil no. 02250157-502 (II) For maintenance on strainer no. 241771, order repair kit no. 241772 (III) For maintenance on pressure regulator no. 250017-280, order repair kit no. 250019-453 | | | | |
| PLEASE NOTE: WHEN ORDERING PARTS, INDICATE SERIAL NUMBER OF COMPRESSOR | | | | |

1.15 PNEUMATIC CONTROL SYSTEM—STAINLESS STEEL



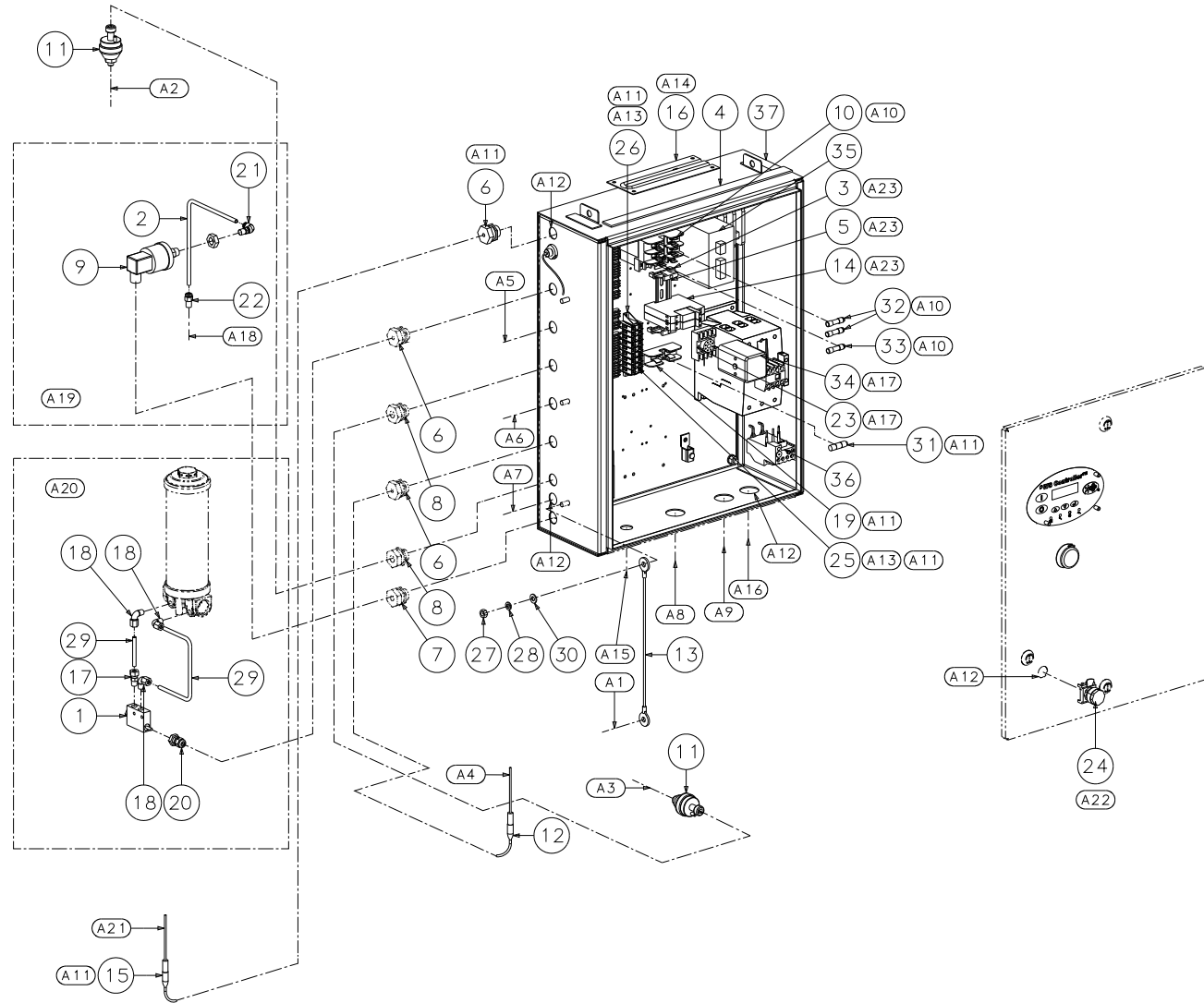
02250158-319-R06

1.15 PNEUMATIC CONTROL SYSTEM—STAINLESS STEEL

| KEY NO. | PART NO. | QTY | DESCRIPTION | NOTE |
|---|--------------|-----|-------------------------------------|------|
| 1 | 02250046-101 | 1 | bushing, red brs 1/4 x 1/8 | |
| 2 | 02250049-634 | 1 | valve, blowdown 1/4 npt hi prs | |
| 3 | 02250071-362 | 2 | locknut, n4 conduit sealing | |
| 4 | 02250115-272 | 1 | valve,check 1/4" poppet style | |
| 5 | 02250118-586 | 1 | orifice,.078 .25 fnpt x .25 mnpt | |
| 6 | 02250155-714 | 2 | valve, solenoid 3wno 1/4 250# 24vdc | |
| 7 | 02250173-972 | 1 | filter,pneumatic 1/8"npt 5micr | |
| 8 | 241771 | 1 | strainer, v-type 300psix1/4 | |
| 9 | 250017-280 | 1 | valve, pressure regulator | |
| 10 | 250018-760 | 3 | nipple,hx tbe 316s 1/4" | |
| 11 | 250139-016 | 1 | connector, tube-m 1/4 swgk 316s | |
| 12 | 250139-024 | 1 | connector, tube-m 1/4 x 1/8 316s | |
| 13 | 250139-044 | 1 | connector, tube-f 1/4 swgk 316s | |
| 14 | 250139-053 | 1 | connector, tube-f 3/8 x 1/4 316s | |
| 15 | 250211-005 | 8 | elbow,tube-m 1/4" swgk 316ss | |
| 16 | 250211-017 | 1 | elbow, tube-m3/8t x1/4p swg ss | |
| 17 | 250591-002 | 1 | tee,tube-m branch 1/4 swg ss | |
| 18 | 408893 | 1 | valve, shuttle 1/4" npt (dbl chk) | |
| 19 | 811502-025 | 1 | adapter, fem pipe 1/4 x 7/16-20 | |
| 20 | 841215-004 | 6 | tubing, stnls stl 1/4 20ga ft | |
| 21 | 841215-006 | 3 | tubing, stnls stl 3/8 20ga ft | |
| 22 | 847815-050 | 2 | nipple,chase cond 1/2 | |
| 23 | 869825-025 | 2 | tee,male pipe brass 1/4 | |
| PLEASE NOTE: WHEN ORDERING PARTS, INDICATE SERIAL NUMBER OF COMPRESSOR | | | | |

| KEY NO. | PART NO. | QTY | DESCRIPTION | NOTE |
|---|----------|-----|--|------|
| | | | A1- PORT 2 | |
| | | | A2- PORT 3 | |
| | | | A3- PORT 1 | |
| | | | A4- SUBASSEMBLY, LOAD CONTROL | |
| | | | A5- SUBASSEMBLY, SEQUENCING | |
| | | | A6- SUBASSEMBLY, BLOWDOWN | |
| | | | A7- FLOW DIRECTION | |
| | | | SERVICE KITS FOR 241771 | |
| | | | 241772 KIT, REP STRAINER-V-TYPE | |
| | | | SERVICE KITS FOR 250017-280 | |
| | | | 250019-453 KIT, REPAIR PRESS REG VALVE | |
| | | | SERVICE KITS FOR 02250155-714 | |
| | | | 02250157-500 KIT,SOL VLV 3WNO 24VDC | |
| PLEASE NOTE: WHEN ORDERING PARTS, INDICATE SERIAL NUMBER OF COMPRESSOR | | | | |

1.16 CONTROL SYSTEM AND ELECTRICAL PARTS, MFV



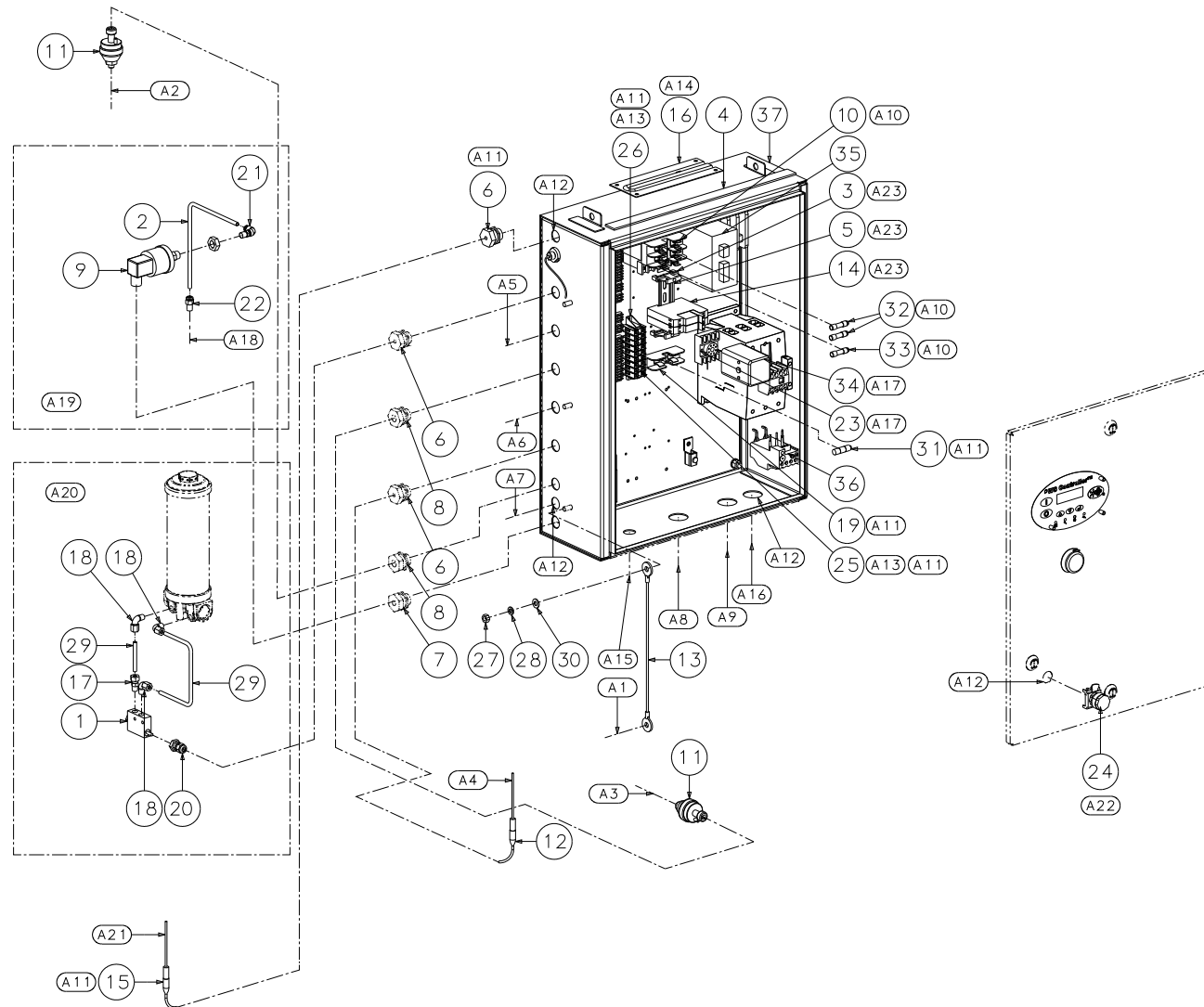
02250156-917-R04

1.16 CONTROL SYSTEM AND ELECTRICAL PARTS, MFV (CONTINUED)

| KEY NO. | PART NO. | QTY | DESCRIPTION | NOTE |
|---|--------------|-----|--|------|
| 1 | 02250050-154 | 1 | switch, defferential pressure 20psid 12ft or | |
| 2 | 02250054-861 | 1 | tube,nyl .25 od x 040w blk(ft) | |
| 3 | 02250057-245 | 2 | block, term end stop ch | |
| 4 | 02250058-345 | 1 | strip,weather 1" x 1/8" foam (ft) | |
| 5 | 02250060-705 | 1 | rail,din 35mm (meters) | |
| 6 | 02250071-379 | 3 | grip, cord n4 .125-.187 x 1/2" | |
| 7 | 02250071-380 | 1 | grip, cord n4 .187-.250 x 1/2" | |
| 8 | 02250071-381 | 2 | grip, cord n4 .250-.375 x 1/2" | |
| 9 | 02250078-249 | 1 | switch, vacuum 22"wc n4 6ft cable 5a | |
| 10 | 02250083-182 | 1 | transformer, control 50va univ w/pri fh | |
| 11 | 02250155-174 | 2 | transducer, pressure 0-250# ratiometric | |
| 12 | 02250155-175 | 1 | probe,rtd 100 ohm plat 3.5"x 6ft | |
| 13 | 02250157-450 | 1 | wire,10 gage ground bond 12" m8 | |
| 14 | 02250158-377 | 2 | relay,sptd din 10a 24vdc coil | |
| 15 | 02250175-087 | 1 | probe,thermister 3000 ohm ntc 12'l | |
| 16 | 249008 | 1 | heater, enclosure 50w | |
| 17 | 250018-427 | 1 | connector,1/4" tube x 1/8" npt | |
| 18 | 250018-429 | 3 | elbow, 90 1/4"tube x 1/8"npt | |
| 19 | 250019-771 | 1 | holder,fuse 1p 30a 600v | |
| 20 | 250023-496 | 1 | connector, cord grip 0.09-0.26 | |
| 21 | 250025-849 | 1 | elbow,90deg m swvl 1/4t x 1/8npt | |
| 22 | 250025-858 | 1 | connector, male 1/4tube x 1/8 | |
| 23 | 250034-430 | 1 | socket, 8pin 480v | |
| PLEASE NOTE: WHEN ORDERING PARTS, INDICATE SERIAL NUMBER OF COMPRESSOR | | | | |

| KEY NO. | PART NO. | QTY | DESCRIPTION | NOTE |
|---|--------------|---------------|---------------------------------|------|
| 24 | 250034-627 | 1 | button, push non-illum blk n4x | |
| 25 | 250041-102 | 3 | block,terminal kt3 | |
| 26 | 250041-103 | 1 | block,term adapter kad | |
| 27 | 825908-125 | 6 | nut,hex metric m8 x 1.25 | |
| 28 | 838808-200 | 6 | washer, spr lock-metric pltd m8 | |
| 29 | 841215-004 | 1 | tubing, st stl 1/4" 20ga | |
| 30 | 865408-170 | 6 | washer, metric-iso7089- 8 | |
| 31 | FUSE,DRYER | 1 | various | |
| 32 | FUSE,PRI | 2 | various | |
| 33 | FUSE,SEC | 1 | various | |
| 34 | PHASE MNTR | 1 | various | |
| 35 | POWER SUPPLY | 1 | various | |
| 36 | RELAY,OVLD | 1 | various | |
| 37 | STARTER | RE LA Y | 1 various | |
| <i>Continued on page 37</i> | | | | |
| PLEASE NOTE: WHEN ORDERING PARTS, INDICATE SERIAL NUMBER OF COMPRESSOR | | | | |

1.16 CONTROL SYSTEM AND ELECTRICAL PARTS, MFV (CONTINUED)



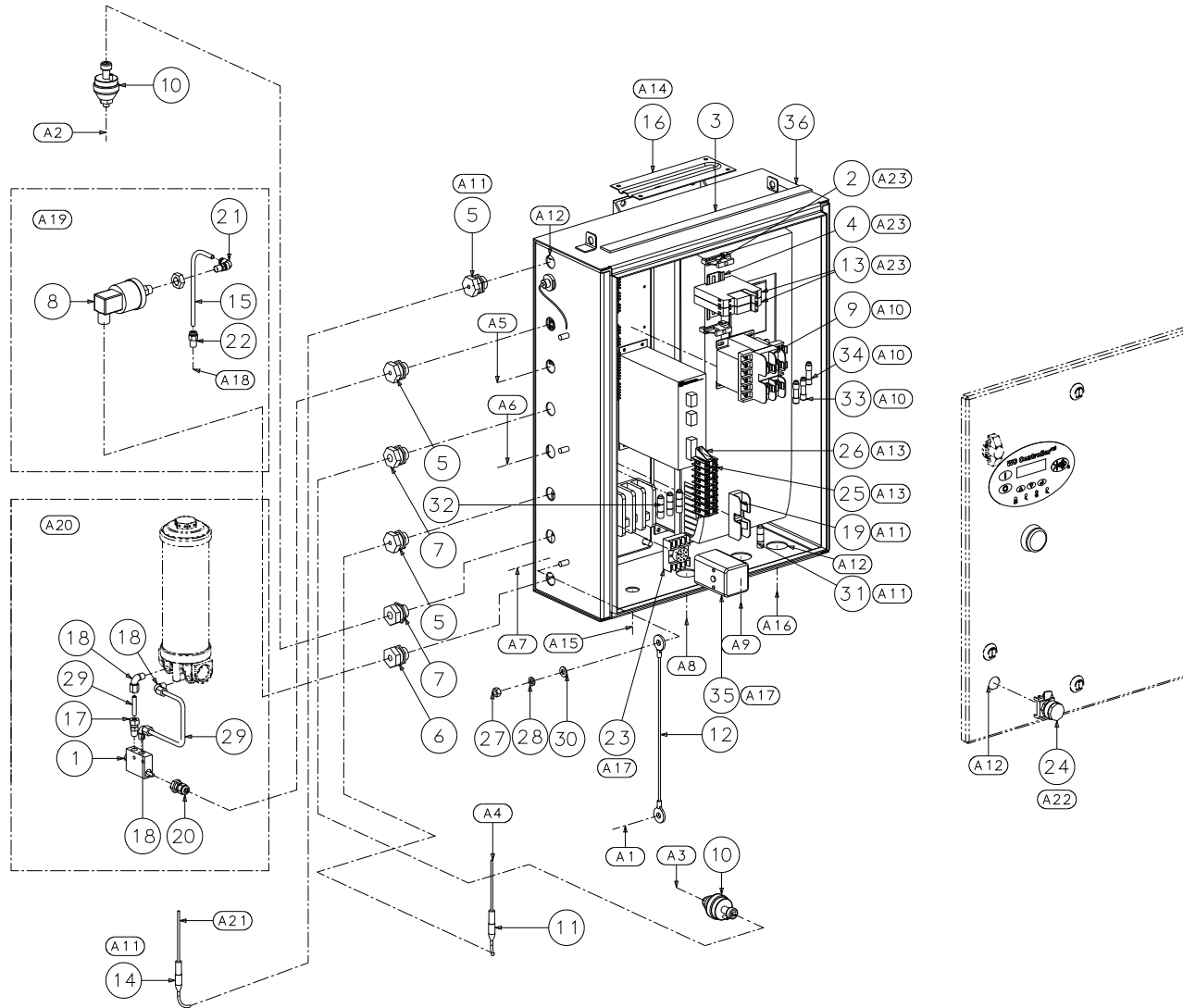
02250156-917-R04

1.16 CONTROL SYSTEM AND ELECTRICAL PARTS, MFV

| KEY NO. | PART NO. | QTY | DESCRIPTION | NOTE |
|---|----------|-----|---|------|
| | | | A1: TO FRAME | |
| | | | A2: P2-PACKAGE DISCHARGE PRESSURE | |
| | | | A3: P1-TO SUMP TANK WET SUMP PRESSURE | |
| | | | A4: T1-TO SUMP TANK WET DISCHARGE TEMPERATURE | |
| | | | A5: SOLENOID 1 | |
| | | | A6: SOLENOID 4 | |
| | | | A7: SOLENOID 5-ELECTRIC DRAIN | |
| | | | A8: FAN MOTOR CONNECTION | |
| | | | A9: MOTOR WIRING | |
| | | | A10: SCD DRAIN OPTION | |
| | | | A11: DRYER OPTION | |
| | | | A12: HOLE TO BE DRILLED IN BOX AS NEEDED | |
| | | | A13: HEATER OPTIONS | |
| | | | A14: ENCLOSURE HEATER MOUNTED INSIDE TOP OF STARTER BOX | |
| | | | A15: DRYER CTL POWER - 24VDC | |
| | | | A16: DRYER COMPRESSOR MOTOR POWER | |
| | | | A17: PHASE MONITOR OPTION | |
| | | | A18: TO AIR FILTER | |
| | | | A19: INLET PRESSURE SWITCH OPTION MOUNT TO FAN MOTOR SUP- PORT | |
| | | | A20: DIFFERENTIAL PRESSURE SWITCH OPTION | |
| PLEASE NOTE: WHEN ORDERING PARTS, INDICATE SERIAL NUMBER OF COMPRESSOR | | | | |

| KEY NO. | PART NO. | QTY | DESCRIPTION | NOTE |
|---|----------|-----|--|------|
| | | | A21: T3-TO INTEGRAL DRYER EVAPORATOR DRYER DEWPOINT TEM- PERATURE | |
| | | | A22: CSA OPTION | |
| | | | A23: OTHER OPTIONS | |
| | | | Q1: SEE ASSY DRAWINGS: | |
| | | | 02250169-624 DWG,START P8/10 MFV TAB | |
| PLEASE NOTE: WHEN ORDERING PARTS, INDICATE SERIAL NUMBER OF COMPRESSOR | | | | |

1.17 CONTROL SYSTEM AND ELECTRICAL PARTS, VSD



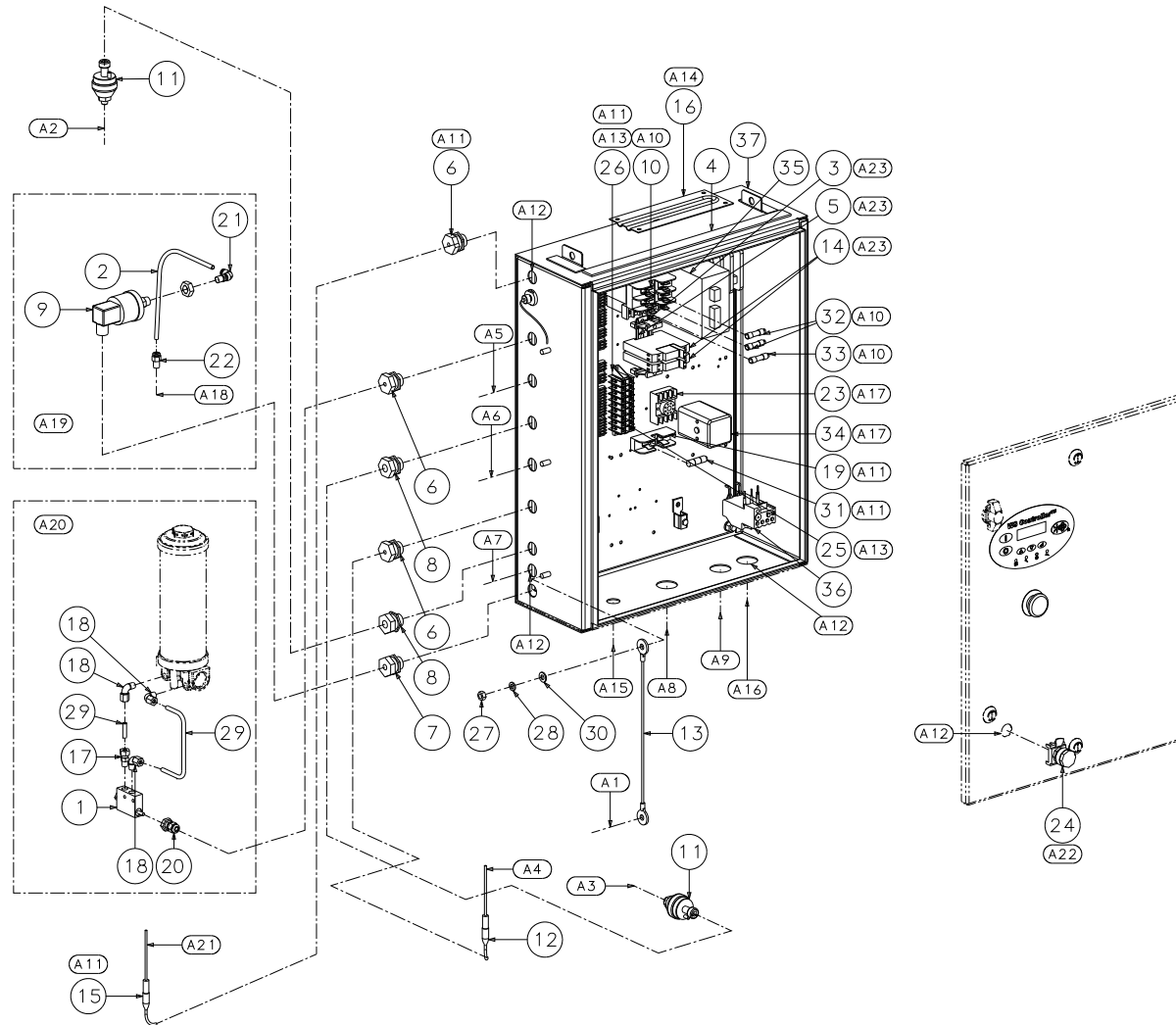
02250165-276-R03

1.17 CONTROL SYSTEM AND ELECTRICAL PARTS, VSD

| KEY NO. | PART NO. | QTY | DESCRIPTION | NOTE |
|---|--------------|-----|--|------|
| 1 | 02250050-154 | 1 | switch, differential pressure 20psid 12ft or | |
| 2 | 02250057-245 | 2 | block, term end stop ch | |
| 3 | 02250058-345 | 1 | strip,weather 1" x 1/8" foam (ft) | |
| 4 | 02250060-705 | 1 | rail,din 35mm (meters) | |
| 5 | 02250071-379 | 3 | grip, cord n4 .125-.187 x 1/2" | |
| 6 | 02250071-380 | 1 | grip, cord n4 .187-.250 x 1/2" | |
| 7 | 02250071-381 | 2 | grip, cord n4 .250-.375 x 1/2" | |
| 8 | 02250078-249 | 1 | switch, vacuum 22"wc n4 6ft cable 5a | |
| 9 | 02250083-182 | 1 | transformer, control 50va univ w/pri fh | |
| 10 | 02250155-174 | 2 | transducer, pressure 0-250# ratiometric | |
| 11 | 02250155-175 | 1 | probe,rtd 100 ohm plat 3.5"x 6ft | |
| 12 | 02250157-450 | 1 | wire,10 gage ground bond 12" m8 | |
| 13 | 02250158-377 | 2 | relay,sptd din 10a 24vdc coil | |
| 14 | 02250175-087 | 1 | probe,thermister 3000 ohm ntc 12'l | |
| 15 | 0225054-861 | 1 | tube,nyl .25 od xx 040w blk(ft) | |
| 16 | 249008 | 1 | heater, enclosure 50w | |
| 17 | 250018-427 | 1 | connector,1/4" tube x 1/8" npt - | |
| 18 | 250018-429 | 3 | elbow, 90 1/4"tube x 1/8"npt - | |
| 19 | 250019-771 | 1 | holder,fuse 1p 30a 600v | |
| 20 | 250023-496 | 1 | connector, cord grip 0.09-0.26 | |
| 21 | 250025-849 | 1 | elbow,90deg m swvl 1/4t x 1/8npt | |
| 22 | 250025-858 | 1 | connector, male 1/4tube x 1/8 | |
| 23 | 250034-430 | 1 | socket, 8pin 480v | |
| 24 | 250034-627 | 1 | button, push non-illum blk n4x | |
| 25 | 250041-102 | 3 | block,terminal kt3 | |
| 26 | 250041-103 | 1 | block,term adapter kad | |
| 27 | 825908-125 | 6 | nut,hex metric m8 x 1.25 | |
| 28 | 838808-200 | 6 | washer, spr lock-metric pltd m8 | |
| 29 | 841215-004 | 1 | tubing, st stl 1/4" 20ga | |
| 30 | 865408-170 | 6 | washer, metric-iso7089- 8 | |
| 31 | FUSE,DRYER | 1 | various | |
| PLEASE NOTE: WHEN ORDERING PARTS, INDICATE SERIAL NUMBER OF COMPRESSOR | | | | |

| KEY NO. | PART NO. | QTY | DESCRIPTION | NOTE |
|---|--------------|-----|-------------|------|
| 32 | FUSE,FAN | 3 | various | |
| 33 | FUSE,PRI | 2 | various | |
| 34 | FUSE,SEC | 1 | various | |
| 35 | PHASE MNTR | 1 | various | |
| 36 | STARTER ASSY | 1 | various | |
| A1: TO FRAME | | | | |
| A2: P2-PACKAGE DISCHARGE PRESSURE | | | | |
| A3: P1-TO SUMP TANK WET SUMP PRESSURE | | | | |
| A4: T1-TO SUMP TANK WET DISCHAGE TEMPERATURE | | | | |
| A5: SOLENOID 1 | | | | |
| A6: SOLENOID 4 | | | | |
| A7: SOLENOID 5-ELECTRIC DRAIN | | | | |
| A8: FAN MOTOR CONNECTION | | | | |
| A9: MOTOR WIRING | | | | |
| A10: SCD DRAIN OPTION | | | | |
| A11: DRYER OPTION | | | | |
| A12: HOLE TO BE DRILLED IN BOX AS NEEDED | | | | |
| A13: HEATER OPTIONS | | | | |
| A14: ENCLOSURE HEATER MOUNTED INSIDE TOP OF STARTER BOX | | | | |
| A15: DRYER CTL POWER - 24VDC | | | | |
| A16: DRYER COMPRESSOR MOTOR POWER | | | | |
| A17: PHASE MONITOR OPTION | | | | |
| A18: TO AIR FILTER | | | | |
| A19: INLET PRESSURE SWITCH OPTION MOUNT TO FAN MOTOR SUPPORT | | | | |
| A20: DIFFERENTIAL PRESSURE SWITCH OPTION | | | | |
| A21: T3-TO INTEGRAL DRYER EVAPORATOR DRYER DEWPOINT TEMPERATURE | | | | |
| A22: CSA OPTION | | | | |
| A23: OTHER OPTIONS | | | | |
| Q1: SEE ASSY DRAWINGS: | | | | |
| 02250169-671 DWG,START P8/10 VSD TAB | | | | |
| PLEASE NOTE: WHEN ORDERING PARTS, INDICATE SERIAL NUMBER OF COMPRESSOR | | | | |

1.18 CONTROL SYSTEM AND ELECTRIC PARTS, 230/460 WYE-DELTA



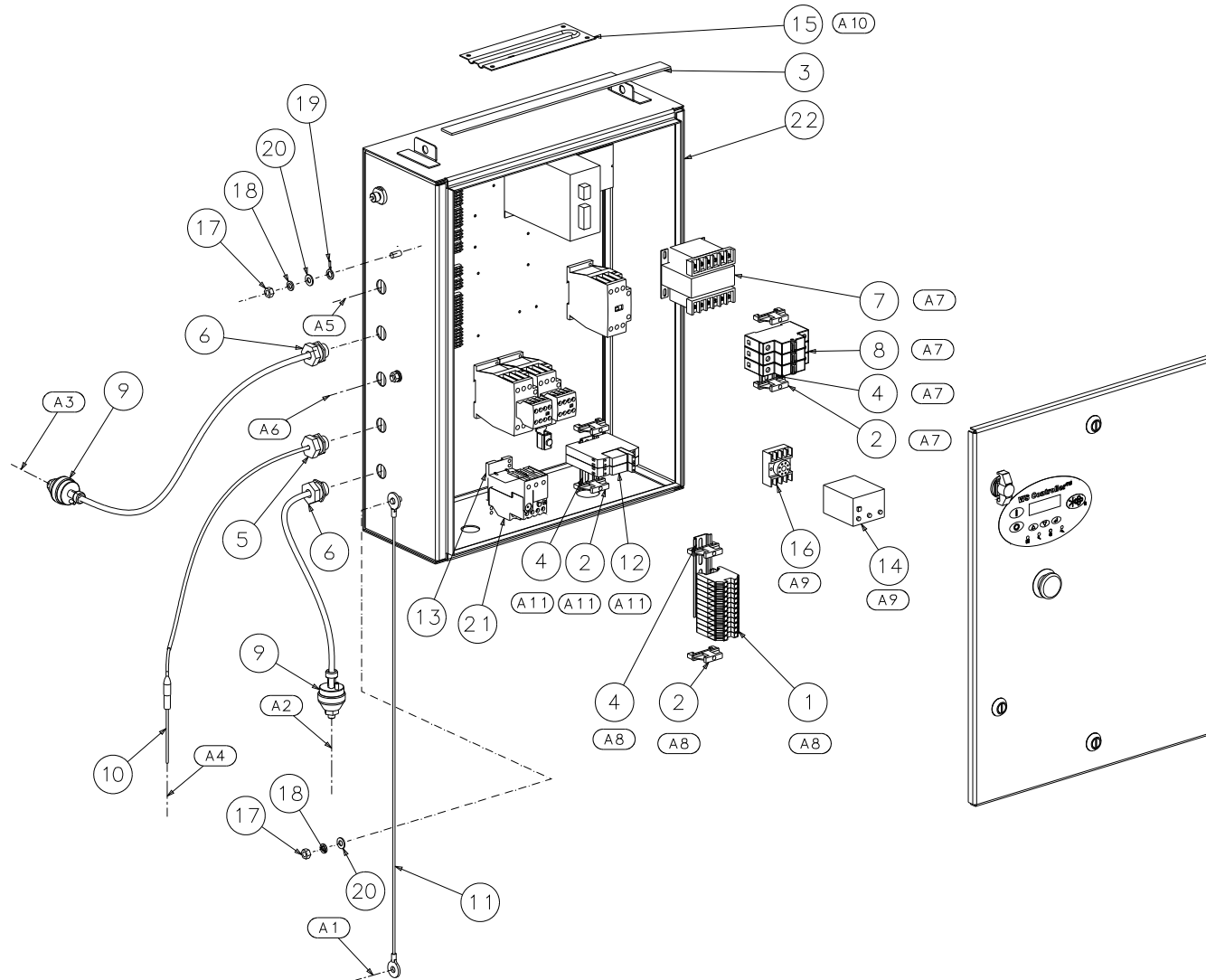
02250165-275-R03

1.18 CONTROL SYSTEM AND ELECTRIC PARTS, 230/460 WYE-DELTA

| KEY NO. | PART NO. | QTY | DESCRIPTION | NOTE |
|---|--------------|-----|--|------|
| 1 | 02250050-154 | 1 | switch, differential pressure 20psid 12ft or | |
| 2 | 02250054-861 | 1 | tube,nyl .25 od xx 040w blk(ft) | |
| 3 | 02250057-245 | 2 | block, term end stop ch | |
| 4 | 02250058-345 | 1 | strip,weather 1" x 1/8" foam (ft) | |
| 5 | 02250060-705 | 1 | rail,din 35mm (meters) | |
| 6 | 02250071-379 | 3 | grip, cord n4 .125-.187 x 1/2" | |
| 7 | 02250071-380 | 1 | grip, cord n4 .187-.250 x 1/2" | |
| 8 | 02250071-381 | 2 | grip, cord n4 .250-.375 x 1/2" | |
| 9 | 02250078-249 | 1 | switch, vacuum 22"wc n4 6ft cable 5a | |
| 10 | 02250083-182 | 1 | transformer, control 50va univ w/pri fh | |
| 11 | 02250155-174 | 2 | transducer, pressure 0-250# ratiometric | |
| 12 | 02250155-175 | 1 | probe,rtd 100 ohm plat 3.5"x 6ft | |
| 13 | 02250157-450 | 1 | wire,10 gage ground bond 12" m8 | |
| 14 | 02250158-377 | 2 | relay,sptd din 10a 24vdc coil | |
| 15 | 02250175-087 | 1 | probe,thermister 3000 ohm ntc 12'l | |
| 16 | 249008 | 1 | heater, enclosure 50w | |
| 17 | 250018-427 | 1 | connector,1/4" tube x 1/8" npt - | |
| 18 | 250018-429 | 3 | elbow, 90 1/4"tube x 1/8"npt - | |
| 19 | 250019-771 | 1 | holder,fuse 1p 30a 600v | |
| 20 | 250023-496 | 1 | connector, cord grip 0.09-0.26 | |
| 21 | 250025-849 | 1 | elbow,90deg m swvl 1/4t x 1/8npt | |
| 22 | 250025-858 | 1 | connector, male 1/4tube x 1/8 | |
| 23 | 250034-430 | 1 | socket, 8pin 480v | |
| 24 | 250034-627 | 1 | button, push non-illum blk n4x | |
| 25 | 250041-102 | 3 | block,terminal kt3 | |
| 26 | 250041-103 | 1 | block,term adapter kad | |
| 27 | 825908-125 | 6 | nut,hex metric m8 x 1.25 | |
| 28 | 838808-200 | 6 | washer, spr lock-metric pltd m8 | |
| 29 | 841215-004 | 1 | tubing, st stl 1/4" 20ga | |
| 30 | 865408-170 | 6 | washer, metric-iso7089- 8 | |
| 31 | FUSE,DRYER | 1 | various | |
| PLEASE NOTE: WHEN ORDERING PARTS, INDICATE SERIAL NUMBER OF COMPRESSOR | | | | |

| KEY NO. | PART NO. | QTY | DESCRIPTION | NOTE |
|---|--------------|-----|-------------|------|
| 32 | FUSE,PRI | 2 | various | |
| 33 | FUSE,SEC | 1 | various | |
| 34 | PHASE MNTR | 1 | various | |
| 35 | POWER SUPPLY | 1 | various | |
| 36 | RELAY,OVLd | 1 | various | |
| 37 | STARTER ASSY | 1 | various | |
| A1: TO FRAME | | | | |
| A2: P2-PACKAGE DISCHARGE PRESSURE | | | | |
| A3: P1-TO SUMP TANK WET SUMP PRESSURE | | | | |
| A4: T1-TO SUMP TANK WET DISCHAGE TEMPERATURE | | | | |
| A5: SOLENOID 1 | | | | |
| A6: SOLENOID 4 | | | | |
| A7: SOLENOID 5-ELECTRIC DRAIN | | | | |
| A8: FAN MOTOR CONNECTION | | | | |
| A9: MOTOR WIRING | | | | |
| A10: SCD DRAIN OPTION | | | | |
| A11: DRYER OPTION | | | | |
| A12: HOLE TO BE DRILLED IN BOX AS NEEDED | | | | |
| A13: HEATER OPTIONS | | | | |
| A14: ENCLOSURE HEATER MOUNTED INSIDE TOP OF STARTER BOX | | | | |
| A15: DRYER CTL POWER - 24VDC | | | | |
| A16: DRYER COMPRESSOR MOTOR POWER | | | | |
| A17: PHASE MONITOR OPTION | | | | |
| A18: TO AIR FILTER | | | | |
| A19: INLET PRESSURE SWITCH OPTION MOUNT TO FAN MOTOR SUPPORT | | | | |
| A20: DIFFERENTIAL PRESSURE SWITCH OPTION | | | | |
| A21: T3-TO INTEGRAL DRYER EVAPORATOR DRYER DEWPOINT TEMPERATURE | | | | |
| A22: CSA OPTION | | | | |
| A23: OTHER OPTIONS | | | | |
| Q1: SEE ASSY DRAWINGS: 02250169-665 DWG,START P8/10 YD N4 TAB | | | | |
| PLEASE NOTE: WHEN ORDERING PARTS, INDICATE SERIAL NUMBER OF COMPRESSOR | | | | |

1.19 CONTROL SYSTEM AND ELECTRIC PARTS, YD CE



02250179-957-R00

1.19 CONTROL SYSTEM AND ELECTRIC PARTS, YD CE

| KEY NO. | PART NO. | QTY | DESCRIPTION | NOTE |
|---|----------------|-----|---|------|
| 1 | 02250057-241 | 12 | block, term 45a 600v euro ch | |
| 2 | 02250057-245 | 6 | block, term end stop ch | |
| 3 | 02250058-345 | 1 | strip,weather 1" x 1/8" foam | |
| 4 | 02250060-705 | 3 | rail,din 35mm (meters) | |
| 5 | 02250071-379 | 1 | grip, cord n4 .125-.187 x 1/2" | |
| 6 | 02250071-381 | 2 | grip, cord n4 .250-.375 x 1/2" | |
| 7 | 02250083-181 | 1 | transformer, control 50va univ w/o pri fh | |
| 8 | 02250131-188 | 3 | breaker, circ-h high inrush | |
| 9 | 02250155-174 | 2 | transducer, pressure 0-250# ratiometric | |
| 10 | 02250155-175 | 1 | probe, rtd 100 ohm plat 3.5"x 6ft | |
| 11 | 02250157-449 | 1 | wire, ground bond 30" 10 ga | |
| 12 | 02250158-377 | 2 | relay, sptd din 10a 24vdc coil | |
| 13 | 02250167-814 | 1 | relay,ovrld base for xt frame c | |
| 14 | 02250179-970 | 1 | relay, phase monitor ce | |
| 15 | 249008 | 1 | heater, enclosure 50w | |
| 16 | 250034-430 | 1 | socket, 8pin 480v | |
| 17 | 825908-125 | 6 | nut, hex metric m8 x 1.25 | |
| 18 | 838808-200 | 6 | washer, spr lock-metric pltd m8 | |
| 19 | 849306-008 | 1 | terminal, ring tng 3/8 x 8ga | |
| 20 | 865408-170 | 6 | washer, metric-iso7089- 8 | |
| 21 | RELAY OVERLOAD | 1 | various | |
| 22 | STARTER | 2 | various | |
| PLEASE NOTE: WHEN ORDERING PARTS, INDICATE SERIAL NUMBER OF COMPRESSOR | | | | |

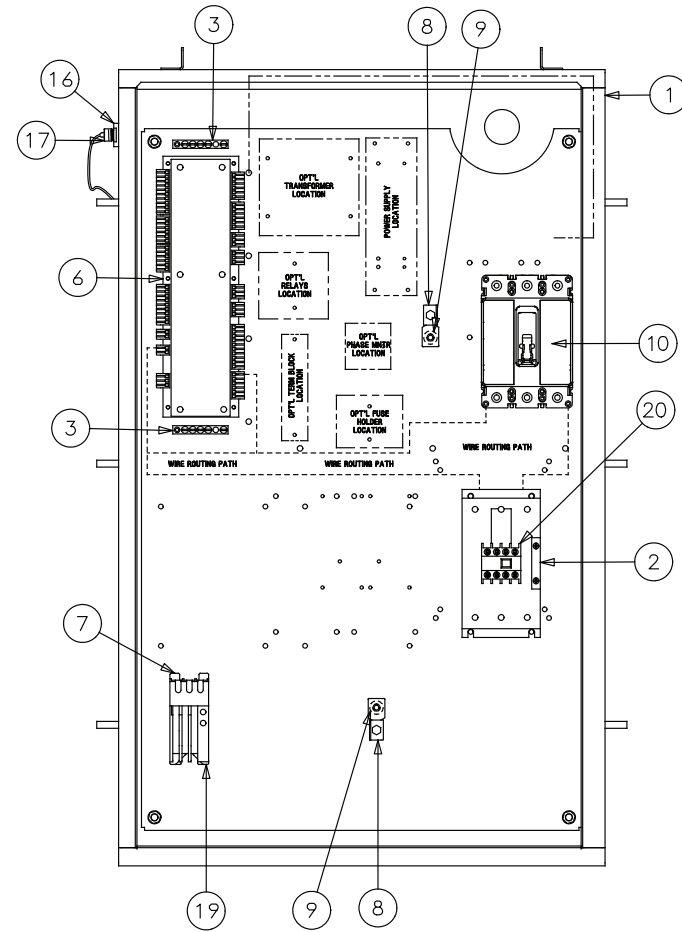
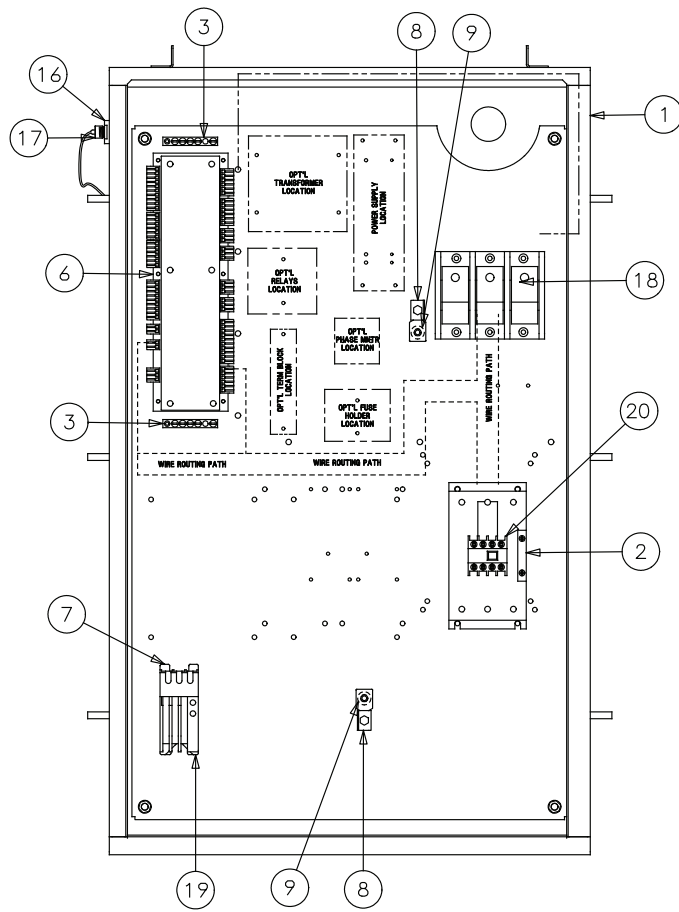
| KEY NO. | PART NO. | QTY | DESCRIPTION | NOTE |
|---|----------|-----|-------------|------|
| | | | | |
| A1: TO FRAME | | | | |
| A2: P2-PACKAGE DISCHARGE PRESSURE | | | | |
| A3: P1-TO SUMP TANK WET SUMP PRESSURE | | | | |
| A4: T1-TO SUMP TANK WET DISCHARGE TEMPERATURE | | | | |
| A5: SOLENOID 1 | | | | |
| A6: SOLENOID 4 | | | | |
| A7: SCD DRAIN OPTION | | | | |
| A8: HEATER OPTIONS | | | | |
| A9: PHASE MONITOR OPTION | | | | |
| A10: STARTER BOX HEATER MOUNTED INSIDE TOP OF STARTER BOX | | | | |
| A11: OTHER OPTIONS | | | | |
| | | | | |
| SERVICE KITS FOR 02250178-681 02250178-681 DWG, START P10 CE YD N4 TAB | | | | |
| PLEASE NOTE: WHEN ORDERING PARTS, INDICATE SERIAL NUMBER OF COMPRESSOR | | | | |

1.20 CONTROL SYSTEM AND ELECTRIC PARTS, VSD CE

| KEY NO. | PART NO. | QTY | DESCRIPTION | NOTE |
|---|--------------|-----|---|------|
| 1 | 02250057-241 | 12 | block, term 45a 600v euro ch | |
| 2 | 02250057-245 | 6 | block, term end stop ch | |
| 3 | 02250058-345 | 1 | strip,weather 1" x 1/8" foam | |
| 4 | 02250060-705 | 3 | rail,din 35mm (meters) | |
| 5 | 02250071-379 | 1 | grip, cord n4 .125-.187 x 1/2" | |
| 6 | 02250071-381 | 2 | grip, cord n4 .250-.375 x 1/2" | |
| 7 | 02250083-181 | 1 | transformer, control 50va univ w/o pri fh | |
| 8 | 02250131-188 | 3 | breaker, circ-h high inrush | |
| 9 | 02250154-607 | 1 | block, contact aux 1no ch-it a-e | |
| 10 | 02250155-174 | 2 | transducer, pressure 0-250# ratiometric | |
| 11 | 02250155-175 | 1 | probe,rtd 100 ohm plat 3.5"x 6ft | |
| 12 | 02250157-449 | 1 | wire, ground bond 30" 10 ga | |
| 13 | 02250158-377 | 2 | relay,sptd din 10a 24vdc coil | |
| 14 | 02250162-392 | 1 | starter,1.9a fv ch-it | |
| 15 | 02250179-970 | 1 | relay,phase monitor ce | |
| 16 | 249008 | 1 | heater, enclosure 50w | |
| 17 | 250034-430 | 1 | socket, 8pin 480v | |
| 18 | 825908-125 | 6 | nut,hex metric m8 x 1.25 | |
| 19 | 838808-200 | 6 | washer, spr lock-metric pltd m8 | |
| 20 | 849306-008 | 1 | terminal, ring tng 3/8 x 8ga | |
| 21 | 865408-170 | 6 | washer, metric-iso7089- 8 | |
| 22 | STARTER | 1 | various | |
| PLEASE NOTE: WHEN ORDERING PARTS, INDICATE SERIAL NUMBER OF COMPRESSOR | | | | |

| KEY NO. | PART NO. | QTY | DESCRIPTION | NOTE |
|---|----------|-----|-------------|------|
| A1: TO FRAME | | | | |
| A2: P2-PACKAGE DISCHARGE PRESSURE | | | | |
| A3: P1-TO SUMP TANK WET SUMP PRESSURE | | | | |
| A4: T1-TO SUMP TANK WET DISCHARGE TEMPERATURE | | | | |
| A5: SOLENOID 1 | | | | |
| A6: SOLENOID 4 | | | | |
| A7: SCD DRAIN OPTION | | | | |
| A8: HEATER OPTIONS | | | | |
| A9: PHASE MONITOR OPTION | | | | |
| A10: STARTER BOX HEATER MOUNTED INSIDE TOP OF STARTER BOX | | | | |
| A11: OTHER OPTIONS | | | | |
| SERVICE KITS FOR 02250178-751 02250178-751 START,ASY P10 CE VSD N12 | | | | |
| PLEASE NOTE: WHEN ORDERING PARTS, INDICATE SERIAL NUMBER OF COMPRESSOR | | | | |

1.21 CONTROL STARTER—MFV



02250169-587R04

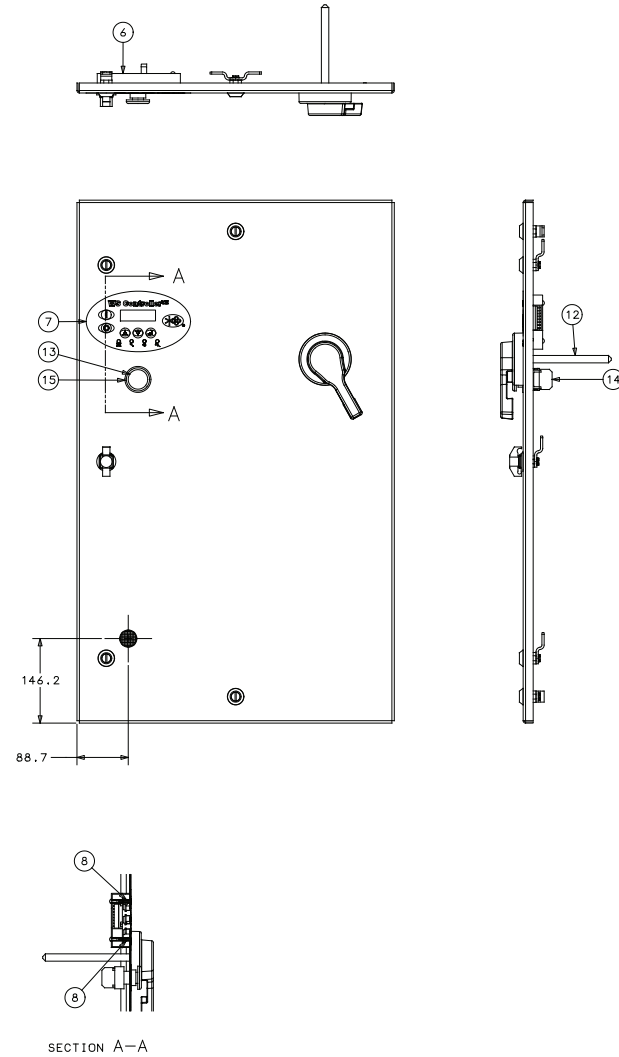
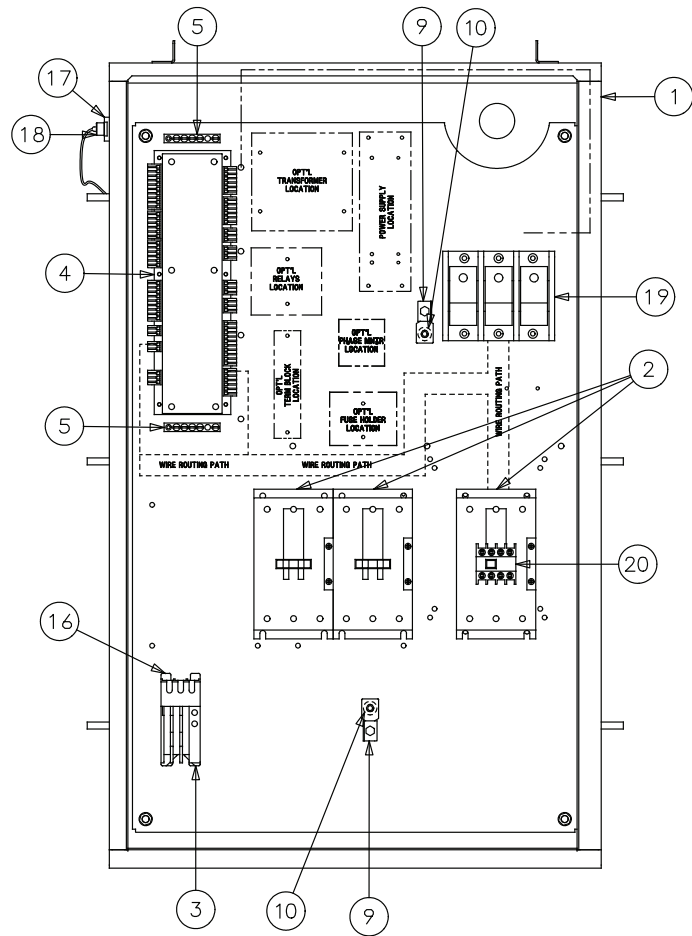
1.21 CONTROL STARTER—MFV

| TORQUE VALUES (IN/LBS) | | | |
|------------------------|--------------------------------|-------|-----------|
| SULLAIR P/N | DESCRIPTION | LUG | TERMINALS |
| 02250167-818 | CNTOR,65A 3P 24VDC 1NO XT | 29.2 | 10.6 |
| 02250170-761 | CNTOR,80A 3P 24VDC 1NO XT | 123.9 | 10.6 |
| 02250167-819 | CNTOR,95A 3P 24VDC 1NO XT | 123.9 | 10.6 |
| 02250170-760 | CNTOR,115A 3P 24VDC 1NO XT | 123.9 | 10.6 |
| 02250167-820 | CNTOR,150A 3P 24VDC 1NO XT | 123.9 | 10.6 |
| 02250167-821 | CNTOR,225A 3P 24VDC 2NO-2NC XT | 213 | 10.6 |
| 02250167-822 | CNTOR,400A 3P 24VDC 2NO-2NC XT | 213 | 10.6 |

| | | | | | | | | | | |
|-----|---|---|---|---|---|---|---|--------------|------|-----------------------------------|
| 1 | 1 | - | - | - | 1 | 1 | 1 | 02250167-849 | 20 | BLK,AUX CONT 1NO 1NC FRONT |
| 1 | 1 | 1 | - | 1 | 1 | 1 | 1 | 250021-692 | 19 | RELAY,OVERLOAD 32A |
| - | - | - | 1 | - | - | - | - | 02250145-195 | 18 | BLOCK, POWER DISTRIBUTION 175 AMP |
| 1 | 1 | - | - | 1 | 1 | 1 | 1 | 02250145-194 | 18 | BLOCK, POWER DISTRIBUTION 310 AMP |
| 1 | 1 | 1 | 1 | 1 | 1 | 1 | 1 | 02250159-549 | 17 | CAP,S4 PROGRAM PORT NEMA 6P |
| 1 | 1 | 1 | 1 | 1 | 1 | 1 | 1 | 02250159-547 | 16 | RCPT,S4 PROGRAM PORT NEMA 6P |
| 1 | 1 | 1 | 1 | 1 | 1 | 1 | 1 | 02250081-473 | 15 | NPL,YELLOW RING 45MM E-STOP |
| 1 | 1 | 1 | 1 | 1 | 1 | 1 | 1 | 250027-125 | 14 | BLOCK, CONTACT 1 N.C |
| 1 | 1 | 1 | 1 | 1 | 1 | 1 | 1 | 02250085-504 | 13 | SW,PB OPER RED40MM PUSH-TWIST |
| 1 | 1 | 1 | 1 | 1 | 1 | 1 | 1 | 02250154-359 | 12 | DECAL,MICROPROCESSOR OVERLAY |
| - | - | 1 | - | - | - | - | - | 250014-127 | 11 | KIT, CIR BRKR DISCONNECT N4 |
| - | - | 1 | - | - | - | - | - | 250014-827 | 10 | CB, 100A HMCP |
| 2 | 2 | 2 | 1 | 2 | 2 | 2 | 2 | - | 9 | WASHER,LOCK EXTERNAL TOOTH 5/16" |
| 2 | 2 | 2 | 1 | 2 | 2 | 2 | 2 | - | 8 | LUG, GROUND |
| 1 | 1 | 1 | - | 1 | 1 | 1 | 1 | 250021-694 | 7 | ADAPTER,O.L.R. BASE MNT |
| 1 | 1 | 1 | 1 | 1 | 1 | 1 | 1 | 02250154-052 | 6 | CTL,I/O MOD WS 24VDC |
| 4 | 4 | 4 | 4 | 4 | 4 | 4 | 4 | 02250161-759 | 5 | SPCR,.25DIA X .41 LONG - ALUM |
| 1 | 1 | 1 | 1 | 1 | 1 | 1 | 1 | 02250154-051 | 4 | CTL,DISPLAY WS |
| 2 | 2 | 2 | 2 | 2 | 2 | 2 | 2 | 02250101-721 | 3 | BAR, GROUND 5 POST |
| - | - | - | - | 1 | - | - | - | 02250167-822 | 2 | CNTOR,400A 3P 24VDC XT |
| - | - | - | - | - | 1 | - | - | 02250167-821 | 2 | CNTOR,225A 3P 24VDC XT |
| - | - | - | - | - | - | 1 | - | 02250167-820 | 2 | CNTOR,150A 3P 24VDC XT |
| - | 1 | - | - | - | - | - | - | 02250170-760 | 2 | CNTOR,115A 3P 24VDC XT |
| - | - | 1 | - | - | - | - | 1 | 02250167-819 | 2 | CNTOR,95A 3P 24VDC XT |
| 1 | - | - | - | - | - | - | - | 02250170-761 | 2 | CNTOR,80A 3P 24VDC XT |
| - | - | - | - | - | - | - | 1 | 02250167-818 | 2 | CNTOR,65A 3P 24VDC XT |
| 1 | 1 | 1 | 1 | 1 | 1 | 1 | 1 | 02250169-621 | 1 | SPEC, ENCL P12/16 22" X 36" X 10" |
| QTY | | | | | | | | SULLAIR P/N | ITEM | DESCRIPTION |

CONTROL STARTER—WYE-DELTA

1.22 CONTROL STARTER—WYE-DELTA



02250169-659R05

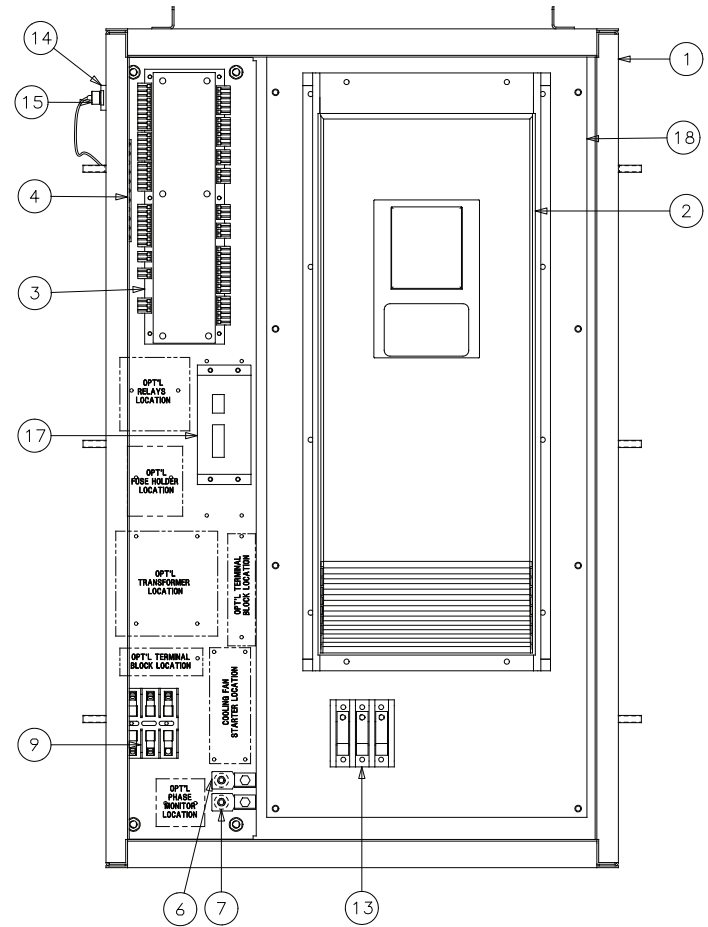
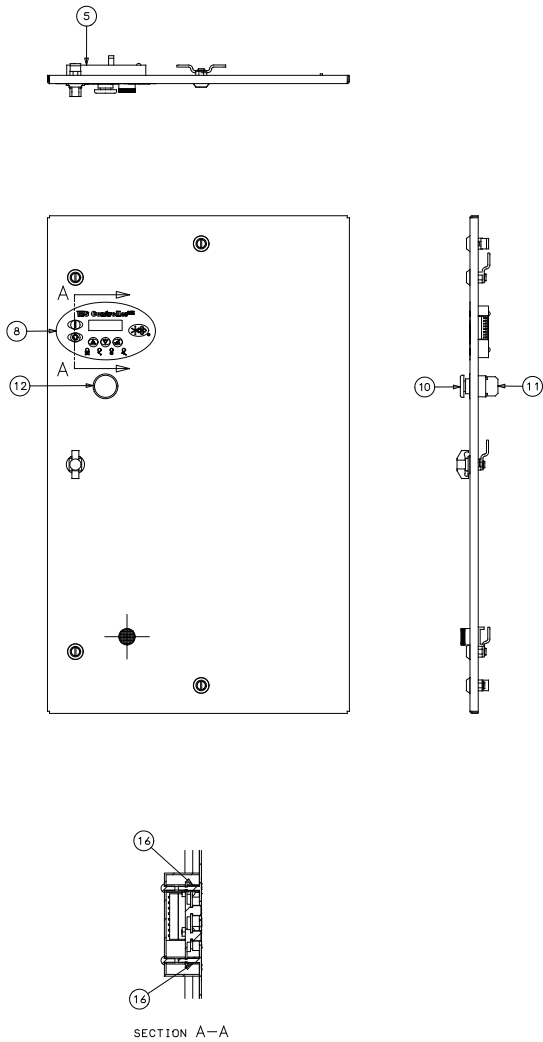
1.22 CONTROL STARTER—WYE-DELTA

| TORQUE VALUES (IN/LBS) | | | | |
|------------------------|-----------------------------|-------|-----------|--|
| SULLAIR P/N | DESCRIPTION | LUG | TERMINALS | |
| 02250 167-817 | CNTOR, 32A 3P 24VAC 1NO XT | 26.6 | 10.6 | |
| 02250 167-818 | CNTOR, 65A 3P 24VAC 1NO XT | 29.2 | 10.6 | |
| 02250 167-819 | CNTOR, 95A 3P 24VAC 1NO XT | 123.9 | 10.6 | |
| 02250 167-820 | CNTOR, 150A 3P 24VAC 1NO XT | 123.9 | 10.6 | |
| 02250 167-821 | CNTOR, 225A 3P 24VAC 1NO XT | 213 | 10.6 | |

| | | | | | | | | |
|---|-----|---|-------------|---|------|---------------|-------------|-----------------------------------|
| 3 | - | 3 | 3 | 3 | - | 02250 167-849 | 20 | BLK,AUX CONT 1NO 1NC FRONT |
| - | - | - | - | - | 3 | 02250 167-843 | 20 | BLK,AUX CONT 1NO 1NC FRONT |
| - | 1 | 1 | 1 | - | - | 02250 145-194 | 19 | BLOCK,POWER DISTRIBUTION 310 AMP |
| - | - | - | - | 1 | 1 | 02250 145-195 | 19 | BLOCK,POWER DISTRIBUTION 175 AMP |
| 1 | 1 | 1 | 1 | 1 | 1 | 02250 159-549 | 18 | CAP,S4 PROGRAM PORT NEMA 6P |
| 1 | 1 | 1 | 1 | 1 | 1 | 02250 159-547 | 17 | RCPT,S4 PROGRAM PORT NEMA 6P |
| 1 | 1 | 1 | 1 | 1 | 1 | 2500 21-694 | 16 | ADAPTER,O.L.R. BASE MNT |
| 1 | 1 | 1 | 1 | 1 | 1 | 02250 81-473 | 15 | NPL,YELLOW RING 45MM E-STOP |
| 1 | 1 | 1 | 1 | 1 | 1 | 2500 27-125 | 14 | BLOCK, CONTACT 1 N.C |
| 1 | 1 | 1 | 1 | 1 | 1 | 02250 85-504 | 13 | SW,PB OPER RED40MM PUSH-TWIST |
| 1 | - | - | - | - | - | 2500 14-127 | 12 | KIT, CIR BKR DISCONNECT N4 |
| 1 | - | - | - | - | - | 2500 14-827 | 11 | CB, 100A HMCP |
| 2 | 2 | 2 | 2 | 2 | 2 | - | 10 | WASHER,LOCK EXTERNAL TOOTH 5/16" |
| 2 | 2 | 2 | 2 | 2 | 2 | - | 9 | LUG, GROUND |
| 4 | 4 | 4 | 4 | 4 | 4 | 02250 161-759 | 8 | SPACER,6.35 DIA X 10.4 LONG ALUM |
| 1 | 1 | 1 | 1 | 1 | 1 | 02250 154-359 | 7 | DECAL,MICROPROCESSOR OVERLAY |
| 1 | 1 | 1 | 1 | 1 | 1 | 02250 154-051 | 6 | CTL,DISPLAY WS |
| 2 | 2 | 2 | 2 | 2 | 2 | 02250 101-721 | 5 | BAR, GROUND 5 POST |
| 1 | 1 | 1 | 1 | 1 | 1 | 02250 154-052 | 4 | CTL,I/O MOD WS 24VDC |
| 1 | 1 | 1 | 1 | 1 | 1 | 2500 21-692 | 3 | RELAY,OVERLOAD 32A |
| - | 3 | - | - | - | - | 02250 167-821 | 2 | CNTOR,225A 3P 24VDC XT |
| - | - | 3 | - | - | - | 02250 167-820 | 2 | CNTOR,150A 3P 24VDC XT |
| - | - | - | 3 | - | - | 02250 167-819 | 2 | CNTOR,95A 3P 24VDC XT |
| 3 | - | - | - | 3 | - | 02250 167-818 | 2 | CNTOR,65A 3P 24VDC XT |
| - | - | - | - | - | 3 | 02250 167-817 | 2 | CNTOR,32A 3P 24VDC XT |
| 1 | 1 | 1 | 1 | 1 | 1 | 02250 169-621 | 1 | SPEC, ENCL P12/16 22" X 36" X 10" |
| | QTY | | SULLAIR P/N | | ITEM | | DESCRIPTION | |

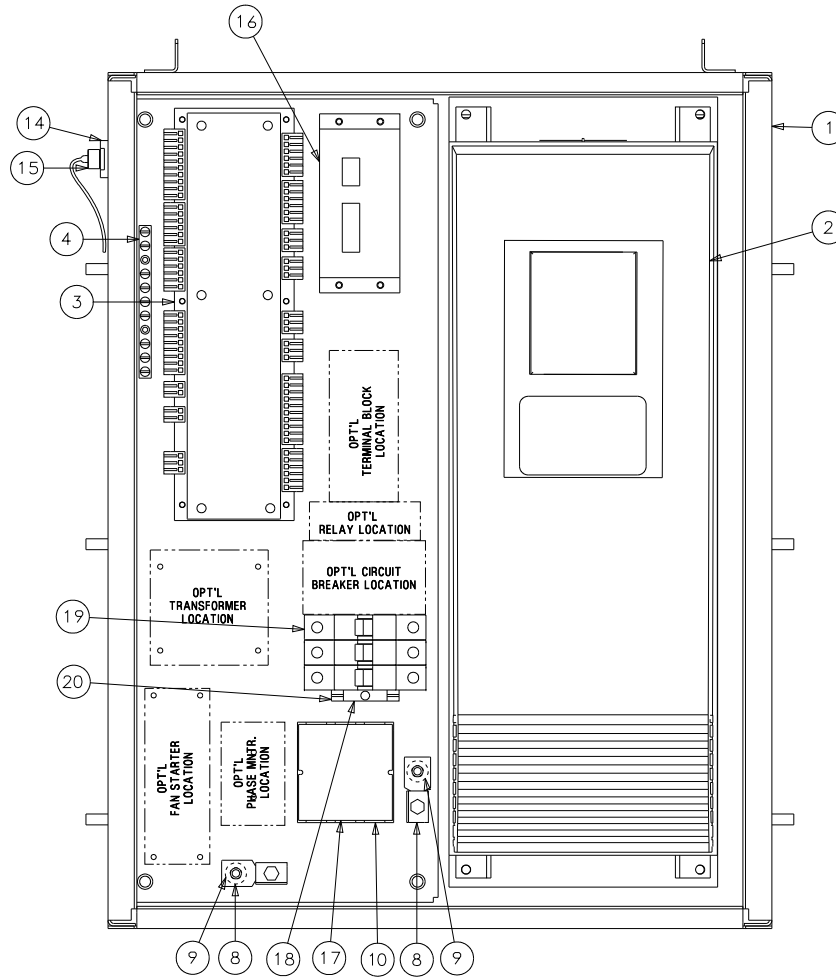
CONTROL STARTER—VSD N12

1.23 CONTROL STARTER—VSD N12



02250169-392R02

1.24 CONTROL STARTER—VSD CE N12



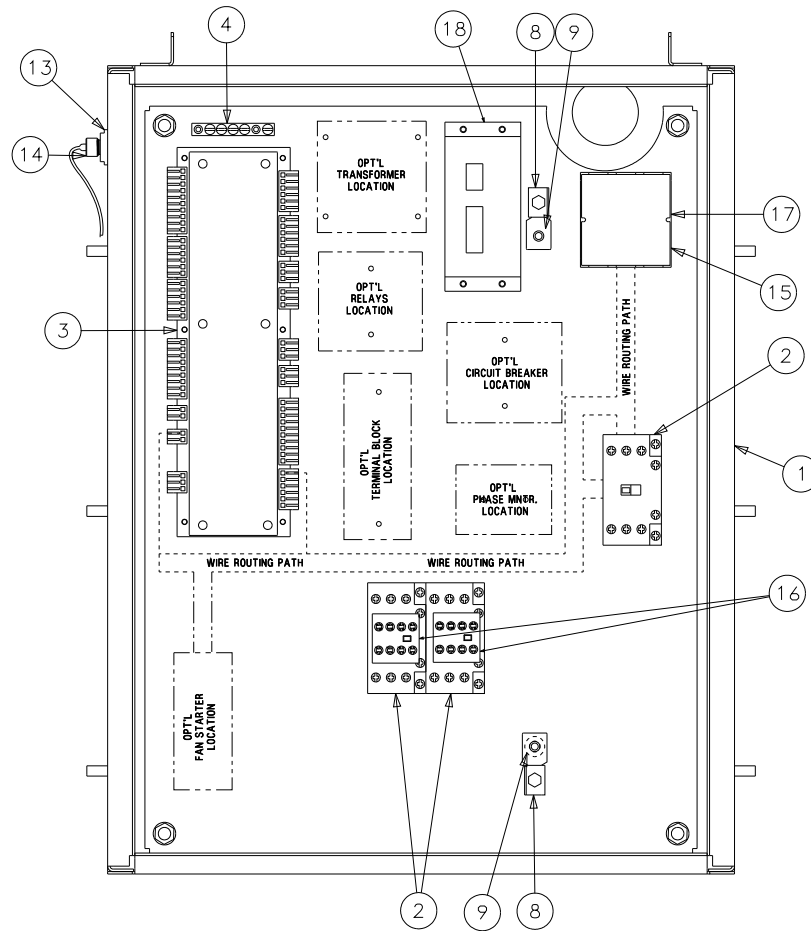
02250178-751-R00

1.24 CONTROL STARTER—VSD CE N12

| TORQUE VALUES (IN/LBS) | | |
|------------------------|------------------------------------|-----|
| SULLAIR P/N | DESCRIPTION | LUG |
| 02250 157-714 | DRIVE, VFD C-H 380/460V 38A NEMA12 | 35 |
| 02250 157-716 | DRIVE, VFD C-H 380/460V 61A NEMA12 | 35 |

| | | |
|---------------|------|-------------------------------------|
| 02250057-245 | 20 | BLK, TERM END STOP C383CH |
| 02250 131-188 | 19 | CB, 15A 1P HI INRUSH WMS1D15 |
| 02250060-705 | 18 | R, DIN 35MM (METERS) |
| 02250 178-679 | 17 | COVER, POWER BLOCK |
| 02250 122-036 | 16 | SPLY, PWR 360-480VAC/24VDC CH-IT |
| 02250 159-549 | 15 | CAP, S4 PROGRAM PORT NEMA 6P |
| 02250 159-547 | 14 | RCPT, S4 PROGRAM PORT NEMA 6P |
| 02250081-473 | 13 | NPL, YELLOW RING 45MM E-STOP |
| 250027-125 | 12 | BLOCK, CONTACT 1 N.C. |
| 02250085-504 | 11 | SW, PB OPER RED40MM PUSH-TWIST |
| 02250 145-195 | 10 | BLOCK, POWER DISTRIBUTION 175 AMP |
| 838405-034 | 9 | WASHER, LOCK EXTERNAL TOOTH 5/16" |
| - | 8 | LUG, GROUND |
| 02250 161-759 | 7 | SPACER, 6.35 DIA X 10.4 LONG ALUM |
| 02250 154-359 | 6 | DECAL, MICROPROCESSOR OVERLAY |
| 02250 154-051 | 5 | CTL, DISPLAY WS |
| 02250 170-668 | 4 | BAR, GROUND 9 POST |
| 02250 154-052 | 3 | CTL, I/O MOD WS 24VDC |
| 02250 157-714 | 2 | DRIVE, VSD CH 380/460V 38A N12 |
| 02250 157-716 | 2 | DRIVE, VSD CH 380/460 61A N12 |
| 02250 178-946 | 1 | SPEC, ENCL CE P8/10 19" X 24.5" X 7 |
| SULLAIR P/N | ITEM | DESCRIPTION |

1.25 CONTROL STARTER—YD CE N4



02250178-681-R00

1.25 CONTROL STARTER—YD CE N4

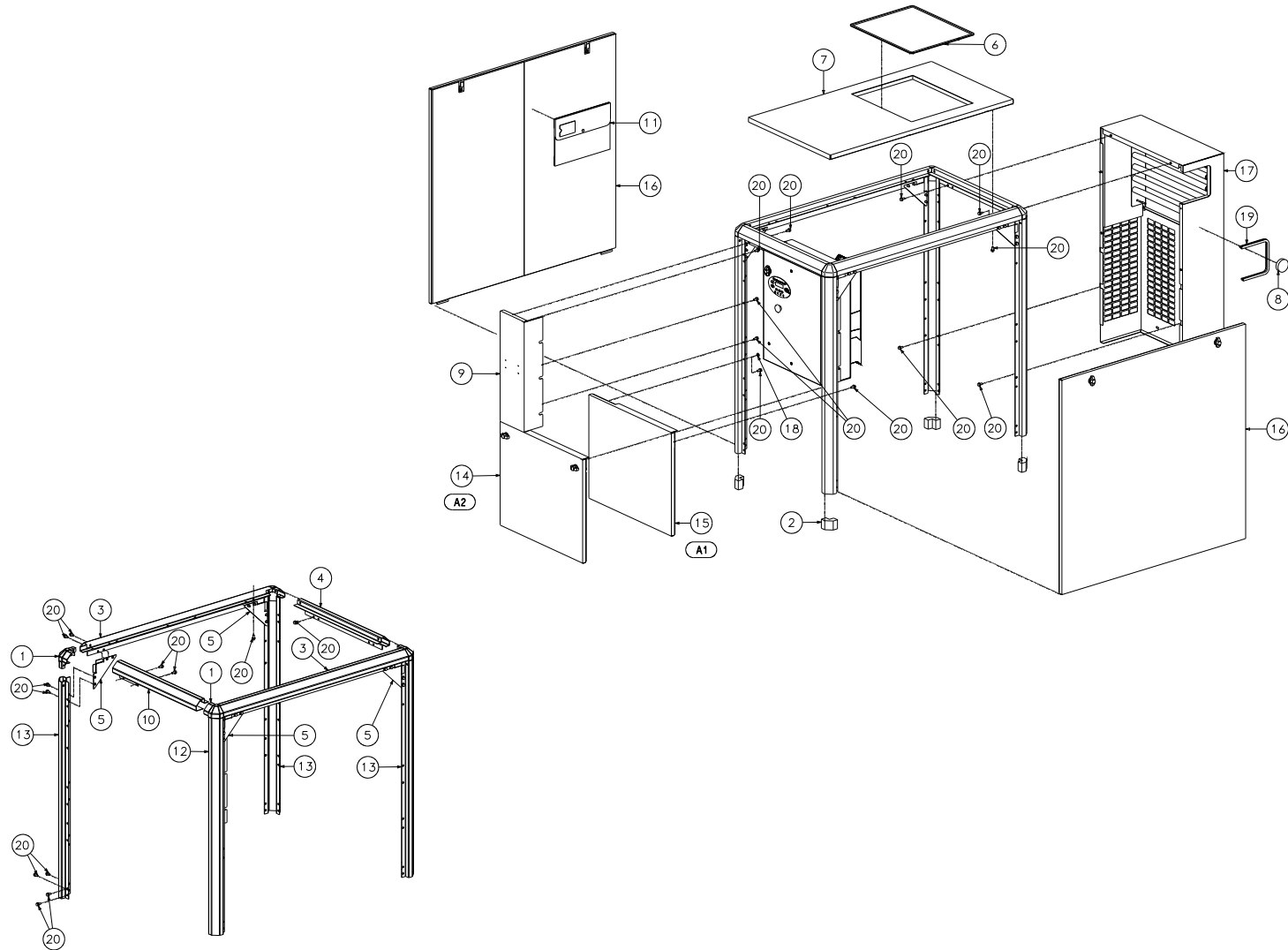
| TORQUE VALUES (IN/LBS) | | | |
|------------------------|----------------------------|------|-----------|
| SULLAIR P/N | DESCRIPTION | LUG | TERMINALS |
| 02250 167-818 | CNTOR, 65A 3P 24VAC 1NO XT | 29.2 | 10.6 |
| 02250 167-817 | CNTOR, 32A 3P 24VAC 1NO XT | 26.6 | 10.6 |

| | | |
|---------------|------|-----------------------------------|
| 02250 122-036 | 18 | SPLY, PWR 360-48AC/24DC CH-IT |
| 02250 178-679 | 17 | CVR, POWER BLOCK CE |
| 02250 167-843 | 16 | BLK, AUX CONT 1NO 1NC FRONT |
| 02250 145-195 | 15 | BLK, POWER DISTRIBUTION 175A |
| 02250 159-549 | 14 | CAP, S4 PROGRAM PORT NEMA 6P |
| 02250 159-547 | 13 | RCPT, S4 PROGRAM PORT NEMA 6P |
| 02250081-473 | 12 | NPL, YELLOW RING 45MM E-STOP |
| 250027-125 | 11 | BLOCK, CONTACT 1 N.C. |
| 02250085-504 | 10 | SW, PB OPER RED40MM PUSH-TWIST |
| 838405-034 | 9 | WASHER, LOCK EXTERNAL TOOTH 5/16" |
| 849215-025 | 8 | LUG, GROUND |
| 02250 161-759 | 7 | SPACER, 6.35DIA X 10.4 LONG ALUM |
| 02250 154-359 | 6 | DECAL, MICROPROCESSOR OVERLAY |
| 02250 154-051 | 5 | CTL, DISPLAY WS |
| 02250 101-721 | 4 | BAR, GROUND 5 POST |
| 02250 154-052 | 3 | CTL, I/O MOD WS 24VDC |
| 02250 167-817 | 2 | CNTOR, 32A 3P 24VDC 1NO XT |
| 02250 178-949 | 1 | SPEC, ENCL CE YD P8/10 19X24.5X7 |
| SULLAIR P/N | ITEM | DESCRIPTION |

1.26 ENCLOSURE, AIR-COOLED

| KEY NO. | PART NO. | QTY | DESCRIPTION | NOTE |
|---|--------------|-----|------------------------------------|------|
| 1 | 02250150-893 | 4 | cap, molded canopy corner | |
| 2 | 02250152-323 | 4 | insulation, foam 2" corner piece | |
| 3 | 02250152-334 | 2 | rail, roof lh and rh | |
| 4 | 02250152-335 | 1 | rail, roof end p8 p10 | |
| 5 | 02250152-336 | 4 | gusset, corner p8 p10 | |
| 6 | 02250154-659 | 7 | trim, edge clip-on 185-260duq | |
| 7 | 02250154-667 | 1 | panel, roof various | |
| 8 | 02250155-284 | 1 | plug, hole 2 1/2" nylon black | |
| 9 | 02250155-824 | 1 | panel, starter end p8 p10 | |
| 10 | 02250155-825 | 1 | rail, roof starter end p8 p10 | |
| 11 | 02250158-039 | 1 | pocket, drawing holder 3700 | |
| 12 | 02250160-372 | 1 | rail, vertical starter side p8 p10 | |
| 13 | 02250160-373 | 3 | rail, vertical p8 p10 | |
| 14 | 02250160-374 | 1 | panel, starter end bottom p8 | |
| 15 | 02250160-375 | 1 | panel, starter end bottom p10 | |
| 16 | 02250160-377 | 1 | panel, louver rear p8 p10 | |
| 17 | 02250160-378 | 2 | panel, canopy door liftoff p8 p10 | |
| 18 | 250019-520 | 2 | plug, plastic for 3/8" hole | |
| 19 | 250034-157 | 2 | trim, canopy edge 7.5/10hp | |
| 20 | 883008-016 | 47 | screw, tf-hex m8 x 16 blk zinc | |
| PLEASE NOTE: WHEN ORDERING PARTS, INDICATE SERIAL NUMBER OF COMPRESSOR | | | | |

1.27 ENCLOSURE, AIR-COOLED INTEGRAL DRYER



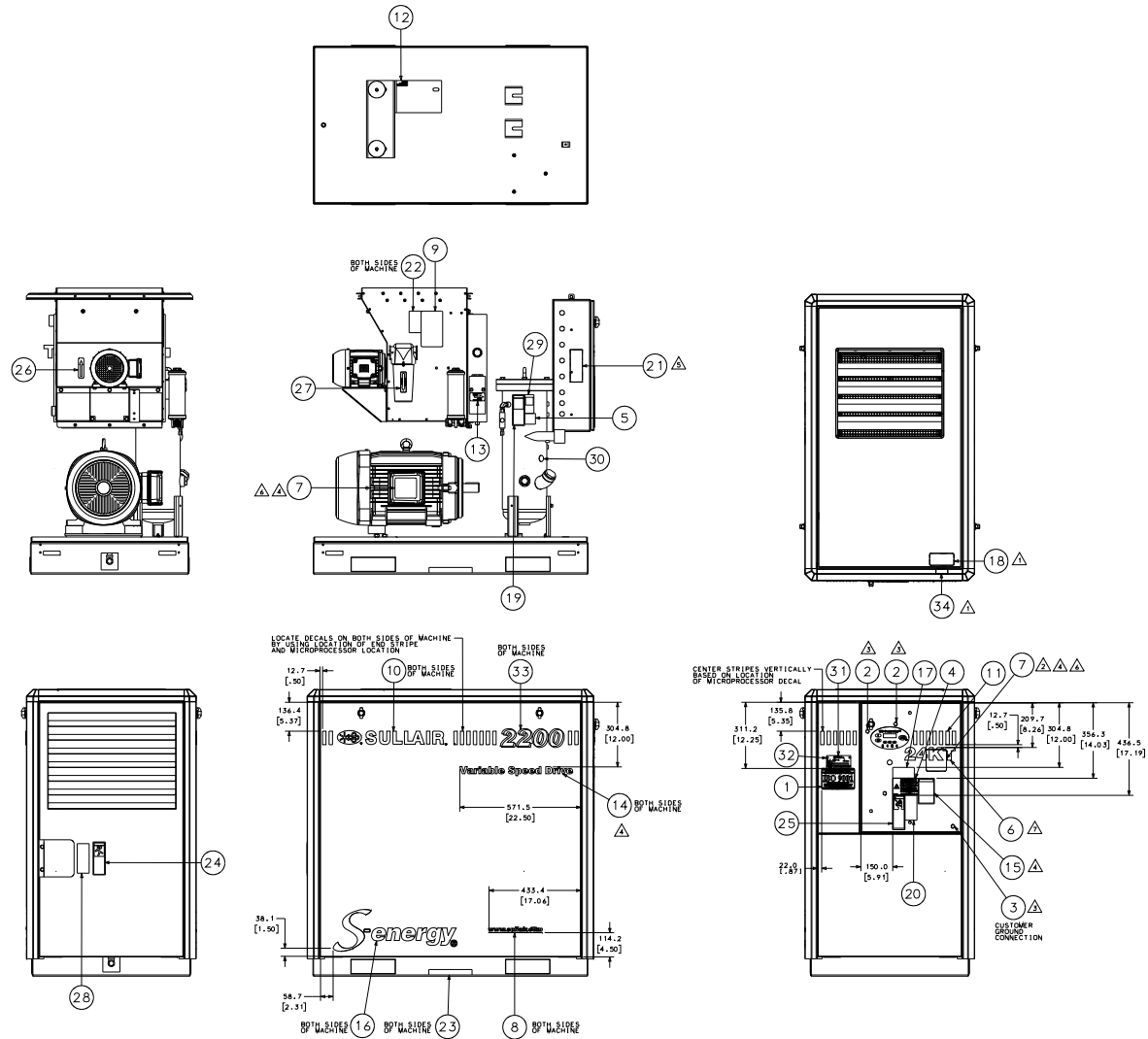
02250168-700-R00

1.27 ENCLOSURE, AIR-COOLED INTEGRAL DRYER

| KEY NO. | PART NO. | QTY | DESCRIPTION | NOTE |
|---|--------------|-----|--|------|
| 1 | 02250150-893 | 4 | cap,molded canopy corner | |
| 2 | 02250152-323 | 4 | insulation,foam 2" corner piece | |
| 3 | 02250152-334 | 2 | rail, roof lh and rh | |
| 4 | 02250152-335 | 1 | rail, roof end p8 p10 | |
| 5 | 02250152-336 | 4 | gusset,corner p8 p10 | |
| 6 | 02250154-659 | 7 | trim,clip-on grip 185-260duq | |
| 7 | 02250154-667 | 1 | panel, roof encl es8 | |
| 8 | 02250155-284 | 1 | plug, hole 2 1/2" nylon black | |
| 9 | 02250155-824 | 1 | panel,starter end p8 p10 | |
| 10 | 02250155-825 | 1 | rail,roof starter end p8 p10 | |
| 11 | 02250158-039 | 1 | pocket,drawing holder 3700 | |
| 12 | 02250160-372 | 1 | rail,vertical starter side p8 p10 | |
| 13 | 02250160-373 | 3 | rail, vertical p8 p10 | |
| 14 | 02250160-374 | 1 | panel,starter end bottom p8 | |
| 15 | 02250160-375 | 1 | panel,starter end bottom p10 | |
| 16 | 02250160-378 | 2 | door, enclosure lift off p8 p10 | |
| 17 | 02250168-656 | 1 | panel, canopy assy intake end 2200 w/ dryer | |
| 18 | 250019-520 | 2 | plug,plastic for 3/8" hole | |
| 19 | 250034-157 | 2 | trim,canopy edge 7.5/10hp | |
| 20 | 883008-016 | 47 | screw, tf-hex m8 x 16 blk zinc | |
| A1 - USED ON 1800/2200 | | | | |
| A2 - USED ON 1100E/1500E/1800E | | | | |
| PLEASE NOTE: WHEN ORDERING PARTS, INDICATE SERIAL NUMBER OF COMPRESSOR | | | | |

DECAL LOCATION SECTION, AIR-COOLED

1.28 DECAL LOCATION SECTION, AIR-COOLED



02250157-700-R05



1.28 DECAL LOCATION SECTION, AIR-COOLED

| KEY NO. | PART NO. | QTY | DESCRIPTION | NOTE |
|---|--------------|-----|---|------|
| 1 | 02250057-624 | 1 | decal,iso 9001 blk 3.44x5.75 | |
| 2 | 02250075-045 | 2 | decal,protective earth ground | |
| 3 | 02250075-540 | 1 | decal,pe designation | |
| 4 | 02250077-472 | 1 | decal,electrocution hazard international/global | |
| 5 | 02250110-891 | 1 | decal,en-warning mixing fluids | |
| 6 | 02250145-206 | 1 | decal,24kt metallic gold | |
| 7 | 02250146-385 | 2 | decal,parallel wye motor conn. | |
| 8 | 02250155-495 | 2 | decal,black www.sullair.com | |
| 9 | 02250157-702 | 1 | decal,maint kit eng | |
| 10 | 02250157-703 | 2 | decal, sullair side graphics | |
| 11 | 02250157-732 | 1 | decal, sullair side graphic | |
| 12 | 02250158-358 | 1 | decal,remove before start-up | |
| 13 | 02250161-967 | 1 | decal,ump fluid drain p8/p10 | |
| 14 | 02250162-215 | 2 | decal,vsd black p8/p10/p12 | |
| 15 | 02250164-823 | 1 | decal, warning n12 elec encl protc | |
| 16 | 02250168-920 | 2 | decal,s-energy black | |
| 17 | 041065 | 1 | decal,warning auto start | |
| 18 | 042218 | 1 | decal,danger hi voltage | |
| 19 | 049685 | 1 | sign,warning-comp oil fil cap | |
| 20 | 049850 | 1 | decal,danger electrocution | |
| 21 | 049852 | 1 | decal,warning elect. shock-ground fault | |
| 22 | 049855 | 2 | sign,warning-sever-fan-indus | |
| PLEASE NOTE: WHEN ORDERING PARTS, INDICATE SERIAL NUMBER OF COMPRESSOR | | | | |

| KEY NO. | PART NO. | QTY | DESCRIPTION | NOTE |
|---|------------|-----|----------------------------------|------|
| 23 | 241814 | 2 | decal,fork lifting | |
| 24 | 250003-144 | 1 | decal,warn "food grade" lube | |
| 25 | 250017-903 | 1 | decal,warning-autostart | |
| 26 | 250021-564 | 1 | decal,rotation 3.5" lg | |
| 27 | 250022-810 | 1 | decal,water drain 3 3/4 x 1" | |
| 28 | 250027-935 | 1 | decal,danger inhaling comp air | |
| 29 | 407408 | 1 | sign,warning-hot surfaces | |
| 30 | FLUID | 1 | al decal,fluid-various | |
| 31 | NAMEPLATE | 1 | nameplate, sullair serial number | |
| 32 | RIVET | 4 | rivet,pop-various | |
| 33 | SERIES | 2 | al decal,various black w/stripe | |
| 34 | VOLTAGE | 1 | al decal,volts-various | |
| 1-ATTACH TO THE BOTTOM ON INSIDE OF STARTER BOX | | | | |
| 2-ATTACH TO INSIDE OF STARTER DOOR | | | | |
| 3-ATTACH TO SUB-PANEL INSIDE STARTER BOX | | | | |
| 4-USED ON VSD MACHINES ONLY | | | | |
| 5-ATTACH TO INSIDE OF STARTER BOX ON RIGHT HAND SIDE | | | | |
| 6-NOT USED ON 575V VSD MACHINES | | | | |
| 7-USE ON 24KT MACHINES ONLY | | | | |
| PLEASE NOTE: WHEN ORDERING PARTS, INDICATE SERIAL NUMBER OF COMPRESSOR | | | | |

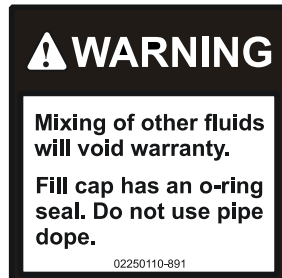
1.29 DECAL LOCATION SECTION, AIR-COOLED, INTEGRAL DRYER

| KEY NO. | PART NO. | QTY | DESCRIPTION | NOTE |
|---|---------------|-----|---|------|
| 1 | *02250075-045 | 1 | decal,protective earth ground | |
| 2 | *02250075-540 | 1 | decal,pe designation | |
| 3 | *041065 | 1 | decal,warning auto start | |
| 4 | *042218 | 1 | decal,danger hi voltage | |
| 5 | *049685 | 1 | sign,warning-comp oil fill cap | |
| 6 | *049850 | 1 | decal,danger electrocution | |
| 7 | *049852 | 1 | decal,warning elect. shock-ground fault | |
| 8 | *049855 | 2 | sign,warning-sever-fan-indus | |
| 9 | *241814 | 2 | decal,fork lifting | |
| 10 | *250003-144 | 1 | decal,warn "food grade" lube | |
| 11 | *250017-903 | 1 | decal,warning-autostart | |
| 12 | *250021-564 | 1 | decal,rotation 3.5" lg | |
| 13 | *250022-810 | 1 | decal,water drain 3 3/4 x 1" | |
| 14 | *250027-935 | 1 | decal,danger inhaling comp air | |
| 15 | 02250057-624 | 1 | decal,iso 9001 blk 3.44x5.75 | |
| 16 | 02250075-045 | 1 | decal,protective earth ground | |
| 17 | 02250077-472 | 1 | decal,electrocution hazard international/global | |
| 18 | 02250110-891 | 1 | decal,en-warning mixing fluids | |
| 19 | 02250145-206 | 1 | decal,24kt metallic gold | |
| 20 | 02250146-385 | 2 | decal,parallel wye motor conn. | |
| 21 | 02250154-359 | 1 | decal,microprocessor overlay | |
| 22 | 02250155-495 | 2 | decal,black www.sullair.com | |
| 23 | 02250157-702 | 1 | decal,maint kit eng | |
| 24 | 02250157-703 | 2 | decal, sullair side graphics | |
| PLEASE NOTE: WHEN ORDERING PARTS, INDICATE SERIAL NUMBER OF COMPRESSOR | | | | |

| KEY NO. | PART NO. | QTY | DESCRIPTION | NOTE |
|---|--------------|-----|------------------------------------|------|
| 25 | 02250157-732 | 1 | decal, sullair side graphic | |
| 26 | 02250158-358 | 1 | decal,remove before start-up | |
| 27 | 02250161-967 | 1 | decal, sump fluid drain p8/p10 | |
| 28 | 02250162-215 | 2 | decal,vsd black p8/p10/p12 | |
| 29 | 02250164-823 | 1 | decal, warning n12 elec encl protc | |
| 30 | 02250168-920 | 2 | decal,s-energy black | |
| 31 | 02250170-899 | 1 | decal,integral dryer | |
| 32 | 407408 | 1 | sign,warning-hot surfaces | |
| 33 | FLUID | 1 | al various | |
| 34 | NAMEPLATE | 1 | various | |
| 35 | RIVET | 4 | various | |
| 36 | SERIES | 2 | al various | |
| 37 | VOLTAGE | 1 | al various | |
| A1: BOTH SIDES OF MACHINES | | | | |
| A2: VSD MACHINES ONLY | | | | |
| A3: NOT USED ON 575V VSD MACHINES | | | | |
| A4: ATTACH TO INSIDE OF STARTER BOX ON RIGHT-HAND SIDE | | | | |
| A5: ATTACH TO INSIDE OF STARTER BOX ON BOTTOM PANEL | | | | |
| A6: ATTACH TO SUB-PANEL INSIDE OF STARTER BOX | | | | |
| A7: 24KT MACHINES ONLY | | | | |
| A8: ATTACH TO INSIDE OF STARTER BOX DOOR | | | | |
| Q1: A "*" PRECEEDING THE PART NUMBER INDICATES DECALS CONTAINED IN KIT 02250069-604 | | | | |
| PLEASE NOTE: WHEN ORDERING PARTS, INDICATE SERIAL NUMBER OF COMPRESSOR | | | | |

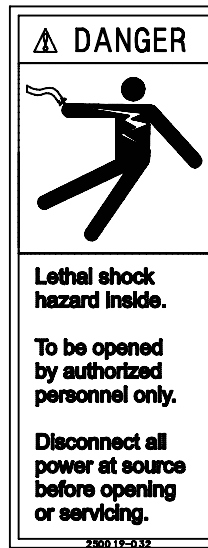
1.30 DECAL GROUP

5



02250110-891

6



250019_032R01

16



042218

26



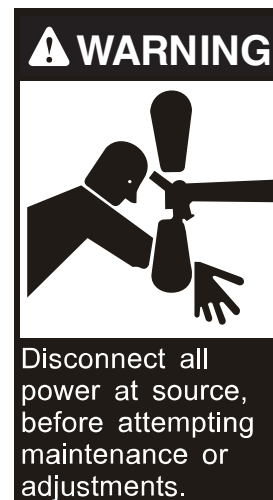
250027-932

18



049850

20



049855

1.30 DECAL GROUP

| KEY NO. | PART NO. | QTY | DESCRIPTION | NOTE |
|---|--------------|-----|---------------------------------|------|
| 26 | 250027-935 | 1 | decal, danger inhaling comp air | |
| 18 | 049850 | 1 | decal, danger electrocution | |
| 6 | 02250146-385 | 2 | decal, parallel wye motor conn. | |
| 16 | 042218 | 1 | decal, danger hi voltage | |
| 5 | 02250110-891 | 1 | decal, en-warning mixing fluids | |
| 20 | 049855 | 2 | sign, warning-sever-fan-indus | |
| PLEASE NOTE: WHEN ORDERING PARTS, INDICATE SERIAL NUMBER OF COMPRESSOR | | | | |

1.30 DECAL GROUP (CONTINUED)

15

CAUTION: This machine is equipped with Automatic Stop / Start Control System. **DO NOT ATTEMPT** to make any adjustment without disconnecting both main line and control circuit electrical power.

41065

17

WARNING



Do not remove caps, plugs, or other components when compressor is running or pressurized. Stop compressor and relieve all internal pressure before doing so.

049685

19

WARNING

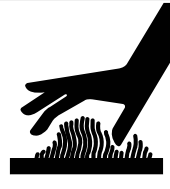


Use equipment grounding connector in accordance with the National Electric Code, and all Federal, State, and Local Codes, to help avoid possible ground fault shock hazard.

049852

27

WARNING




Hot surfaces.

To avoid burns, keep hands and all parts of the body away.

407408

22

WARNING



Do not permit air from this equipment to contact food stuff except in full compliance with FDA Standard 21CFR178.3570 and all other applicable federal, state and local, codes, standards and regulations.

02250003_114

23

WARNING



This Unit is Equipped With An Auto Start Sequence That Will Start The Unit In The Event Of A Power Failure Automatically After The Sump Pressure Drops To 10 PSIG And The Power IS Restored.

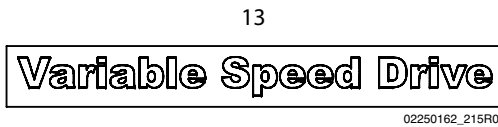
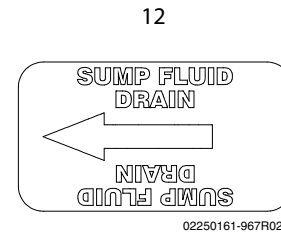
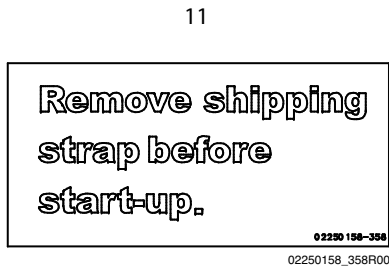
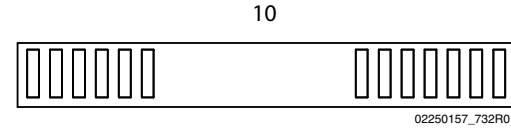
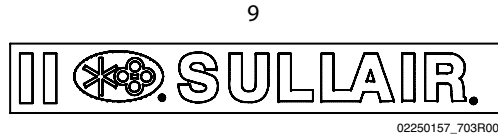
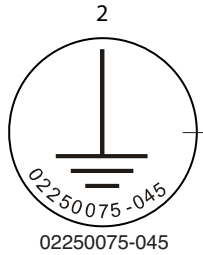
When Performing Maintenance Follow Your Company's Prescribed Safety Practices for Electrical Equipment.

250017-903

1.30 DECAL GROUP (CONTINUED)

| KEY NO. | PART NO. | QTY | DESCRIPTION | NOTE |
|---|------------|-----|--|------|
| 17 | 049685 | 1 | sign, warning-comp oil fill cap | |
| 23 | 250017-903 | 1 | decal, warning-autostart | |
| 19 | 049852 | 1 | decal, warning elec shock-ground fault | |
| 22 | 250003-144 | 1 | decal, warning elec shock-ground fault | |
| 27 | 407408 | 1 | sign, warning-hot surfaces | |
| 15 | 041065 | 1 | decal, warning auto start | |
| PLEASE NOTE: WHEN ORDERING PARTS, INDICATE SERIAL NUMBER OF COMPRESSOR | | | | |

1.30 DECAL GROUP (CONTINUED)



1.30 DECAL GROUP (CONTINUED)

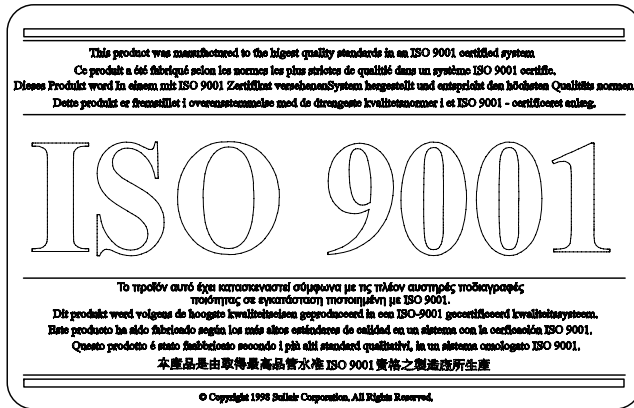
| KEY NO. | PART NO. | QTY | DESCRIPTION | NOTE |
|---|--------------|-----|--|------|
| 2 | 02250075-045 | 2 | decal, protective earth ground | |
| 3 | 02250075-540 | 1 | decal, pe designation | |
| 7 | 02250155-495 | 2 | decal, black www.sullair.com | |
| 9 | 02250157-703 | 2 | decal, sullair side graphics | |
| 10 | 02250157-732 | 1 | decal, sullair side graphic | |
| 11 | 02250158-358 | 2 | decal, remove before start-up | |
| 12 | 02250161-967 | 1 | decal, separator/sump tank fluid drain p8/p10 | |
| 13 | 02250162-215 | 2 | decal, vsd black p8/p10/p12 | |
| PLEASE NOTE: WHEN ORDERING PARTS, INDICATE SERIAL NUMBER OF COMPRESSOR | | | | |

1.30 DECAL GROUP (CONTINUED)

| KEY NO. | PART NO. | QTY | DESCRIPTION | NOTE |
|--|--------------|-----|--|------|
| 4 | 02250077-472 | 1 | decal, electrocution hazard international/global | |
| 8 | 02250157-702 | 1 | decal, maint kit eng | |
| 14 | 02250164-823 | 1 | decal, warning n12 elec encl protection | |
| 21 | 241814 | 2 | decal, fork lifting | |
| 24 | 250021-564 | 1 | decal, rotation 3.5" lg | |
| 25 | 250022-810 | 1 | decal, water drain 3 3/4 x 1" | |
| 28 | 02250069-389 | 1 | fluids, fluid decal | (I) |
| | 02250069-394 | 1 | fluids, fluid decal | (I) |
| | 02250069-395 | 1 | fluids, fluid decal | (I) |
| (I) This decal will vary with individual machine. Consult Sullair Corporation with serial number | | | | |
| PLEASE NOTE: WHEN ORDERING PARTS, INDICATE SERIAL NUMBER OF COMPRESSOR | | | | |

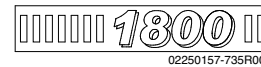
1.30 DECAL GROUP (CONTINUED)

1



02250057-624

31



31



32



32



32



32



32



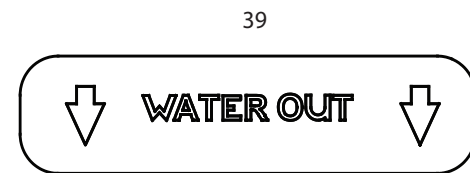
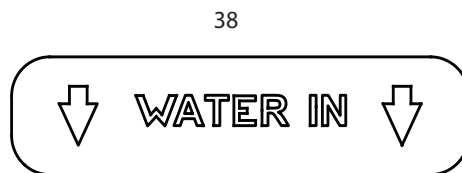
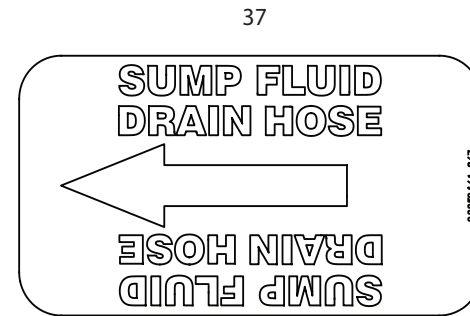
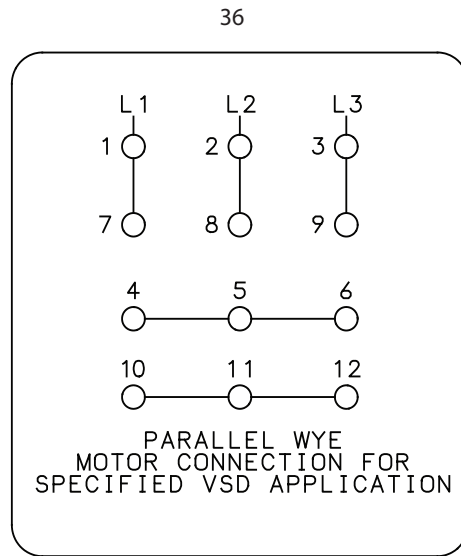
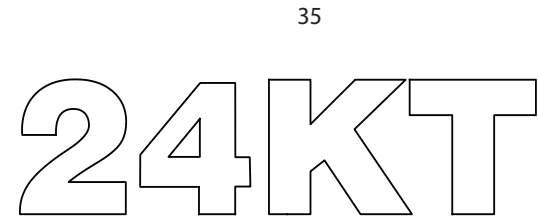
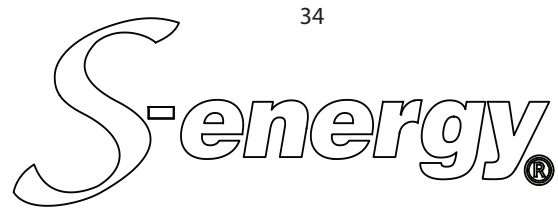
33



1.30 DECAL GROUP (CONTINUED)

| KEY NO. | PART NO. | QTY | DESCRIPTION | NOTE |
|--|--------------|-----|---------------------------------|------|
| 1 | 02250057-624 | 1 | decal, ISO 9001 blk 3.44 x 5.75 | |
| 31 | 02250157-735 | 1 | series decal | (I) |
| | 02250157-731 | 1 | series decal | (I) |
| 32 | 02250069-397 | 1 | voltage decal | (I) |
| | 02250069-399 | 1 | voltage decal | (I) |
| | 02250069-400 | 1 | voltage decal | (I) |
| | 02250069-403 | 1 | voltage decal | (I) |
| | 02250069-406 | 1 | voltage decal | (I) |
| 33 | 02250170-889 | 1 | decal, integral dryer | |
| (I) This decal will vary with individual machine. Consult Sullair Corporation with serial number | | | | |
| PLEASE NOTE: WHEN ORDERING PARTS, INDICATE SERIAL NUMBER OF COMPRESSOR | | | | |

1.30 DECAL GROUP (CONTINUED)



1.30 DECAL GROUP (CONTINUED)

| KEY NO. | PART NO. | QTY | DESCRIPTION | NOTE |
|---|--------------|-----|---------------------------------|------|
| 34 | 02250168-920 | 1 | decal, s-energy black | |
| 35 | 02250145-206 | 1 | decal, 24 kt gold metallic | |
| 36 | 02250146-385 | 1 | decal, parallel wye motor conn. | |
| 37 | 02250161-967 | 1 | decal, sump fluid drain | |
| 38 | 250019-107 | 1 | decal, water in | |
| 39 | 250019-108 | 1 | decal, water out | |
| PLEASE NOTE: WHEN ORDERING PARTS, INDICATE SERIAL NUMBER OF COMPRESSOR | | | | |

BLANK PAGE

NOTES



WORLDWIDE SALES AND SERVICE

SULLAIR ASIA, LTD.

Sullair Road, No. 1
Chiwan, Shekuo
Shenzen, Gunagdong PRV.
PRC POST CODE 518068
Telephone: 755-6851686
Fax: 755-6853473
www.sullair-asia.com

SULLAIR CORPORATION

3700 East Michigan Boulevard
Michigan City, Indiana, 46360 U.S.A.
www.sullair.com
Telephone: 1-800-SULLAIR (U.S.A. only)
Fax: 219-874-1273

CUSTOMER CARE for PARTS and Service

1-888-SULLAIR (7855247)
219-874-1835

SULLAIR EUROPE, S.A.

Zone Des Granges BP 82
42602 Montbrison, France
Telephone: 33-477968470
Fax: 33-477968499
www.sullaieurope.com

Champion Compressors, LTD.

Princess Highway
Hallam, Victoria 3803
Australia
Telephone: 61-3-9703-8000
Fax: 61-3-9703-8053
www.championcompressors.com.au

Printed in the U.S.A.

Specifications subject to
change without prior notice.
E07EP