

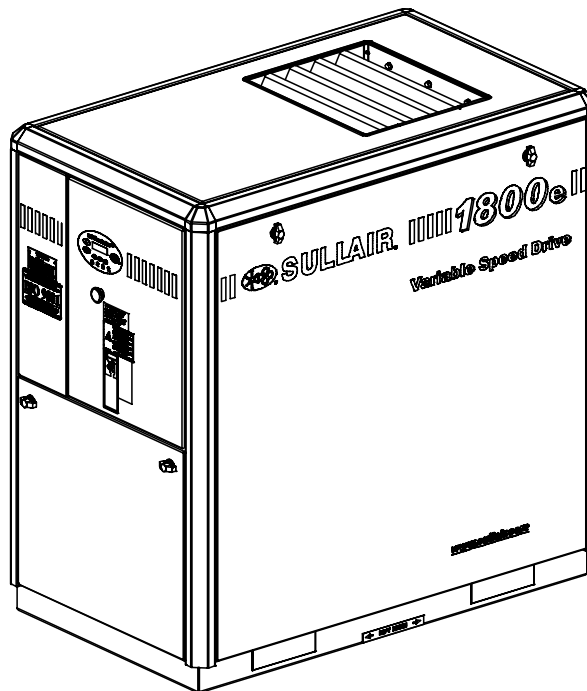


# PARTS LIST MANUAL

INDUSTRIAL AIR COMPRESSOR  
1100E, 1500E, 1800E,  
1100EV, 1500EV, 1800EV  
11, 15 & 18KW/15, 20 & 25HP

---

---



## WARRANTY NOTICE

Failure to follow the instructions  
and procedures in this manual or,  
misuse of this equipment will  
VOID its warranty!

PART NUMBER:  
**02250176-312 R02**

KEEP FOR  
FUTURE  
REFERENCE

©SULLAIR CORPORATION

The information in this manual is current  
as of its publication date, and applies to  
compressor serial number:

**201003010000**

and all subsequent serial numbers.



## **AIR CARE SEMINAR TRAINING**

Sullair Air Care Seminars are courses that provide hands-on instruction for the proper operation, maintenance, and servicing of Sullair products. Individual seminars on Industrial compressors and compressor electrical systems are offered at regular intervals throughout the year at Sullair's corporate headquarters training facility located at Michigan City, Indiana.

Instruction includes training on the function and installation of Sullair service parts, troubleshooting common faults and malfunctions, and actual equipment operation. These seminars are recommended for maintenance, contractor maintenance, and service personnel.

For detailed course outlines, schedule, and cost information contact:

### **SULLAIR CUSTOMER CARE TRAINING DEPARTMENT**

1-888-SULLAIR or  
219-879-5451 (ext. 5623)  
[www.sullair.com](http://www.sullair.com)

- Or Write -

**Sullair Corporation**  
3700 E. Michigan Blvd.  
Michigan City, IN 46360  
Attn: Service Training Department.

## TABLE OF CONTENTS

<b>PAGE</b>	<b>SECTION</b>	<b>DESCRIPTION</b>	<b>PAGE</b>	<b>SECTION</b>	<b>DESCRIPTION</b>
5	1.1	PROCEDURE FOR ORDERING PARTS	30	1.14	PNEUMATIC CONTROL SYSTEM— NYLON
6	1.2	RECOMMENDED SERVICE PARTS LIST	32	1.15	PNEUMATIC CONTROL SYSTEM— STAINLESS STEEL
8	1.3	COMPRESSOR, FRAME AND DRIVE	34	1.16	CONTROL SYSTEM AND ELECTRIC PARTS
10	1.4	AIR INLET SYSTEM	38	1.17	CONTROL SYSTEM AND ELECTRIC PARTS—WYE DELTA
12	1.5	DISCHARGE AIR PIPING	42	1.18	CONTROL SYSTEM AND ELECTRIC PARTS—VSD
14	1.6	AIR PIPING 1100E/1500E WITH INTEGRAL DRYER	46	1.19	CONTROL STARTER—MFV
16	1.7	AIR PIPING 1800E WITH INTEGRAL DRYER	48	1.20	CONTROL STARTER—WYE-DELTA
18	1.8	FLUID PIPING	50	1.21	CONTROL STARTER—VSD N12
20	1.9	COOLING AND LUBRICATION SYSTEM, AIR-COOLED CENTRIFUGAL FAN, 50/ 60HZ, 1800E, 50HZ 1100E/1500E	52	1.22	ENCLOSURE—STANDARD
22	1.10	COOLING AND LUBRICATION SYSTEM, AIR-COOLED AXIAL FAN 60HZ 1100E/ 1500E	54	1.23	ENCLOSURE—WITH INTEGRAL DRYER
24	1.11	COMPRESSOR HOUSING/SEPARATOR/ SUMP AND PARTS	56	1.24	DECAL LOCATION—STANDARD
26	1.12	MOISTURE DRAIN STANDARD	58	1.25	DECAL LOCATION—WITH INTEGRAL DRYER
28	1.13	MOISTURE DRAIN WITH INTEGRAL DRYER	60	1.26	DECAL GROUP



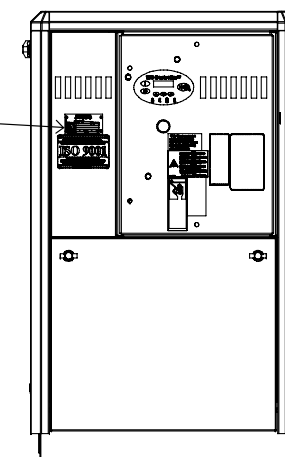
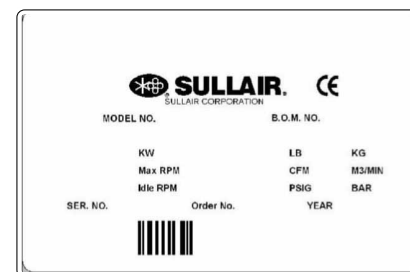
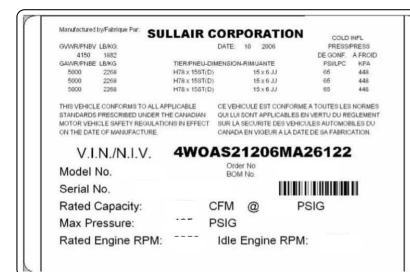
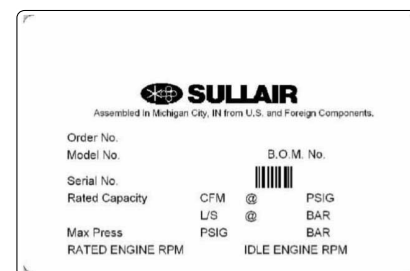
## 1.1 PROCEDURE FOR ORDERING PARTS

<p><b>SULLAIR CORPORATION</b></p> <p>3700 East Michigan Boulevard Michigan City, Indiana 46360 U.S.A www.sullair.com Telephone: 1-800-SULLAIR (U.S.A. only) Fax: 219-874-1273</p> <p><b>CUSTOMER CARE for PARTS and SERVICE</b></p> <p>1-888-SULLAIR (785-5247) 219-874-1835</p>	<p><b>SULLAIR ASIA, LTD.</b></p> <p>Sullair Road, No. 1 Chiwan, Shekuo Shenzhen, Guangdong PRV. PRC POST CODE 518068 Telephone: 755-6851686 Fax: 755-6853473 www.sullair-asia.com</p>
<p><b>SULLAIR EUROPE, S.A.</b></p> <p>Zone Des Granges BP 82 42602 Montbrison, France Telephone: 33-477968470 Fax: 33-477968499 www.sullaireurope.com</p>	<p><b>CHAMPION COMPRESSORS, LTD.</b></p> <p>Princess Highway Hallam, Victoria 3803 Australia Telephone: 61-3-9796-4000 Fax: 61-3-9703-8053 www.championcompressors.com.au</p>

Parts should be ordered from the nearest Sullair Representative or the Representative from whom the compressor was purchased. If for any reason parts cannot be obtained in this manner, contact the factory directly at the address, phone numbers or fax numbers below.

When ordering parts always indicate the Serial Number of the compressor. This can be obtained from the Bill of Lading for the compressor or from the Serial Number Plate located on the compressor. See *Figure 1-1: Serial Plate / Serial Number Location*.

The genuine Sullair service parts listed meet or exceed the demands of this compressor. Use of replacement parts other than those approved by Sullair Corporation may lead to hazardous conditions over which Sullair Corporation has no control. Such conditions include, but are not limited to, bodily injury and compressor failure.



**Figure 1-1: Serial Plate / Serial Number Location**

## RECOMMENDED SERVICE PARTS LIST

### 1.2 RECOMMENDED SERVICE PARTS LIST

KEY NO.	ORDER PART NO.	QTY	DESCRIPTION	NOTE
<b>ELEMENTS</b>				
1	02250156-601	1	element, compressor fluid filter 02250156-599	
2	02250125-370	1	element, heavy duty air filter 02250125-365	
3	02250106-791	1	element, replacement for separator 02250106-789	
<b>KITS</b>				
4	02250050-612	1	kit, repair for minimum pressure / check valve	
5	02250144-327	1	kit, repair for thermal valve 02250092-081	
6	250019-453	1	kit, repair for pressure regulator 250017-280	
7	02250049-634	1	kit, repair for blowdown valve 02250049-634	
8	02250157-500	1	kit, repair for control solenoid valve 02250155-714	
9	02250157-502	1	kit, coil replacement for control solenoid valve 02250155-714	
10	02250157-501	1	kit, repair for condensate drain solenoid valve 02250155-715	
11	02250157-502	1	kit, coil replacement for condensate drain solenoid valve 02250155-715	
12	02250050-614	1	kit, repair inlet valve	
13	241772	1	kit, repair for v-type strainer 241771	
14	02250061-961	1	kit, repair for shaft seal	
15	001932-005	1	kit, repair for shaft seal installation	
				<i>Continued on next page</i>

**PLEASE NOTE: WHEN ORDERING PARTS,  
INDICATE SERIAL NUMBER OF COMPRESSOR**

KEY NO.	ORDER PART NO.	QTY	DESCRIPTION	NOTE
16	02250167-507	1	kit, wear sleeve replacement tool	
17	02250144-736	1	kit, seal replacement for separator trap 02250144-636	
<b>LUBRICATION</b>				
18	250019-662		fluid, SRF 1/4000 (5 gal/19 liter)	(l)
19	250022-669		lubricant, Sullube (Std.) (5 gal/19 liter)	(l)
20	02250051-053		lubricant, 24 KT (5 gal/19 liter)	(l)
21	250029-008		lubricant, Food Grade (5 gal/19 liter)	(l)

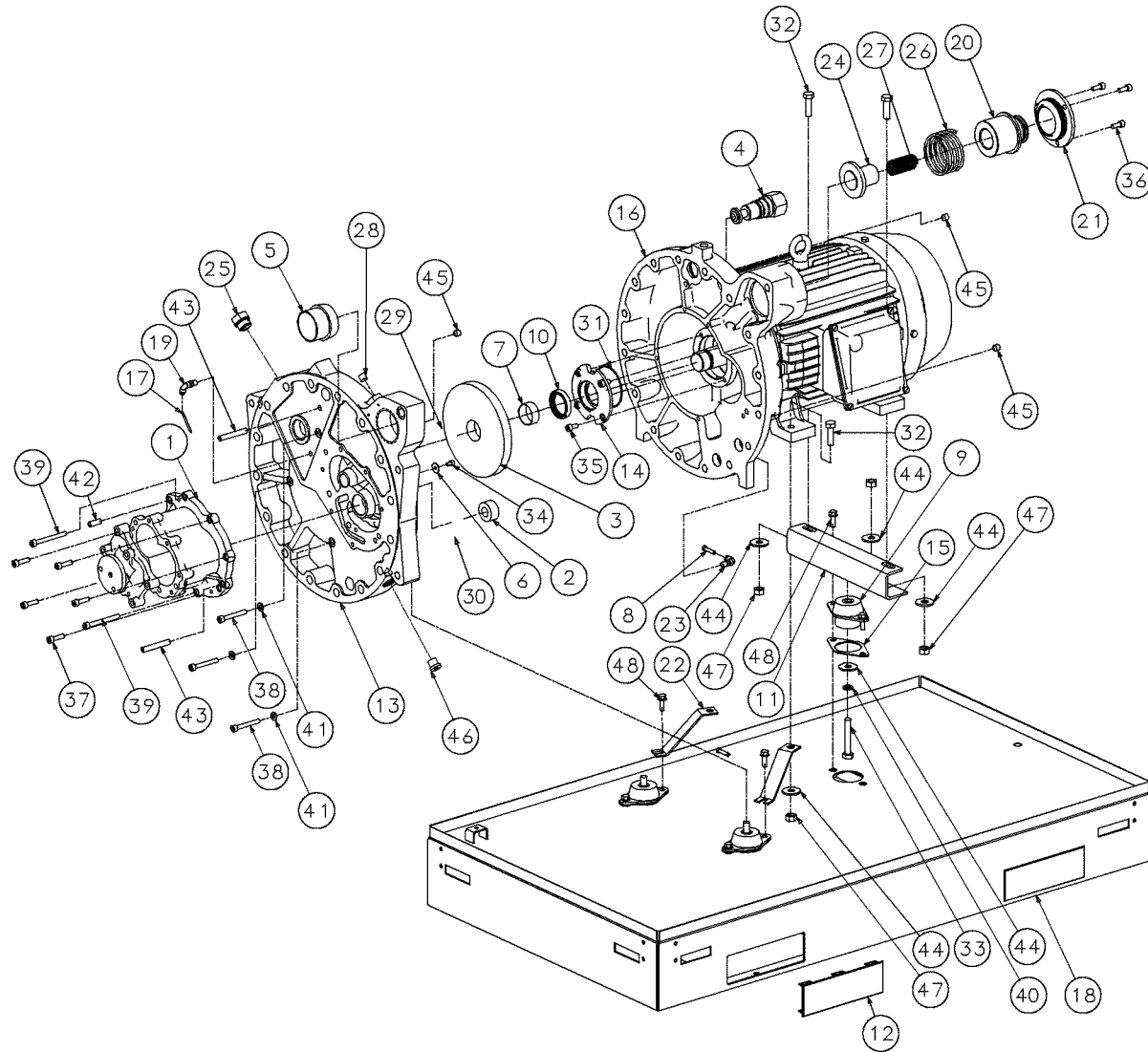
(l) For proper amount of fluid fill, please consult *Lubrication Guide* in *Section 3: Specifications* in User Manual


**CAUTION**

Mixing of other lubricants within the compressor unit will void all warranties.

PLEASE NOTE: WHEN ORDERING PARTS,  
INDICATE SERIAL NUMBER OF COMPRESSOR

1.3 COMPRESSOR, FRAME AND DRIVE



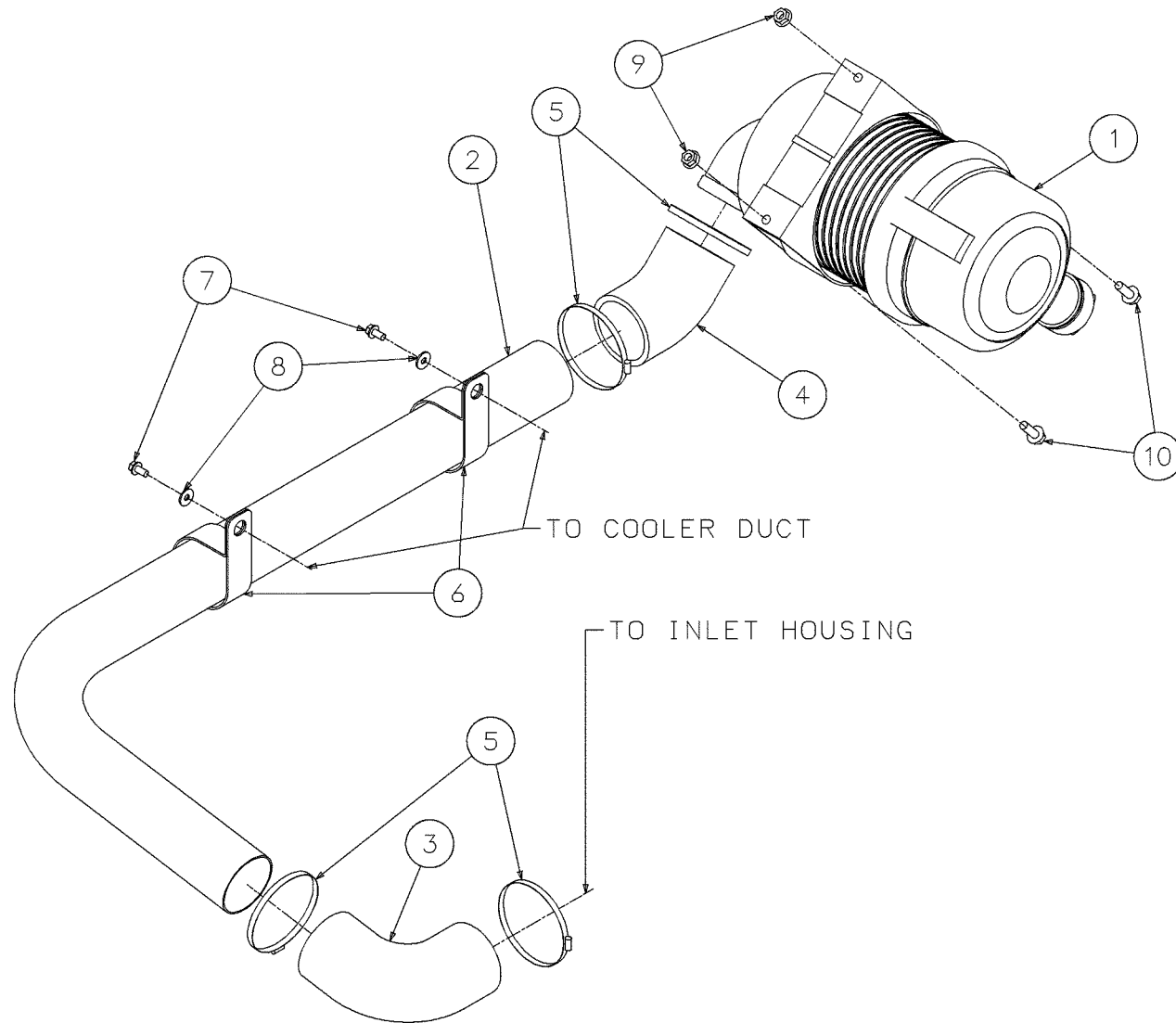
02250157-804-R05

## 1.3 COMPRESSOR, FRAME AND DRIVE

KEY NO.	PART NO.	QTY	DESCRIPTION
1	-	2	8 SERIES UNIT
2	--	1	GEAR, DRIVEN
3	---	1	GEAR, DRIVE
4	02250046-338	1	VLV, MIN PRESS GROUP E08E
5	02250047-425	1	NIP, E8E AIR INTAKE MACH
6	02250048-229	1	WASHER, FLAT (CAR BODY) ZINC PLATED
7	02250048-317	1	SLEEVE, WEAR-SEAL
8	02250052-477	1	PLUG,PUSH-CONN 1/4"
9	02250085-255	3	ISOLATOR, VIB 450# AXIAL
10	02250133-494	1	SEAL,ASSY DBL LIP TFE CW BLUE
11	02250152-324	1	SUPPORT, MOTOR P8
12	02250154-405	4	CVR,FORKPOCKET 3700
13	02250154-428	1	HOUSING, INLET P8
14	02250154-493	1	COVER SHAFT SEAL ES8
15	02250157-598	3	GASKET, ISOL TO FRAME P8
16	02250157-658	1	MTR 11/18KW 256TZ FRAME
17	02250157-679	1	TUBE, SEPARATOR OIL RETURN
18	02250160-379	1	FRAME,LIFT OFF P8
19	02250162-006	1	ELB, 90DEG M SWVL 1/8 T X 1/8
20	02250162-446	1	PISTON INLET VALVE P8
21	02250162-447	1	CVR,INL VLV P8 W/#235 O-RING
22	02250164-026	2	SUPT,SHIPPING MTR/UNIT 1100E/1800E
23	250025-849	1	ELBOW,90DEG M SWVL 1/4T X 1/8NPT
24	250035-584	1	STEM, INLET VALVE (8E)
25	250039-359	1	PLUG, E6E OIL FILL HX HD1 1/16
<b>PLEASE NOTE: WHEN ORDERING PARTS, INDICATE SERIAL NUMBER OF COMPRESSOR</b>			

KEY NO.	PART NO.	QTY	DESCRIPTION	
26	250042-087	1	SPRING, INLET PISTON	
27	250042-088	1	SPRING, INLET CHECK	
28	499046-001	1	PLUG,HEX SOC 1/8 NPT	
29	499082-704	1	BRG,CYC RL PL 20R022	
30	499082-706	1	BRG,CYL RL PL25R022	
31	826502-152	1	O-RING, VITON 3 1/4 X 3/32"	
32	828012-040	4	CAPSCR, HEX 8.8 M12 X 40MM	
33	828012-075	3	CAPSCR, HEX 8.8 M12 X 75MM	
34	829306-010	1	SCRW, SOC ISO 4762 M6 X 10MM	
35	829308-016	4	SCRW, SOC ISO 4762 M8 X 16MM	
36	829308-020	3	SCRW, SOC ISO 4762 M8 X 20MM	
37	829308-030	5	SCRW, SOC ISO 4762 M8 X 30MM	
38	829308-060	3	SCRW, SOC ISO 4762 M8 X 60MM	
39	829308-080	2	SCRW, SOC ISO 4762 M8 X 80MM	
40	838812-250	3	WASHER, SPR LOCK-METRIC PLTD M12	
41	865408-170	3	WASHER, METRIC-ISO7089- 8	
42	865510-028	1	PIN, DOWEL ISO 8735 10X28-A-ST	
43	865510-070	2	PIN, DOWEL ISO 8735 10X70-A-ST	
44	865712-370		WASHER, ISO 7093-12-140HV	8
45	865812-012		SCREW, SET SOC ISO 4029 M12 X 12MM	3
46	882018-015		PLUG,METRIC THD ORNG HOLHX M18	1
47	882112-175		NUT, HEX METRIC M12 X 1.75	5
48	882608-025		SCREW, HEX SERR WASHER M8 X 25	6
<b>PLEASE NOTE: WHEN ORDERING PARTS, INDICATE SERIAL NUMBER OF COMPRESSOR</b>				

1.4 AIR INLET SYSTEM



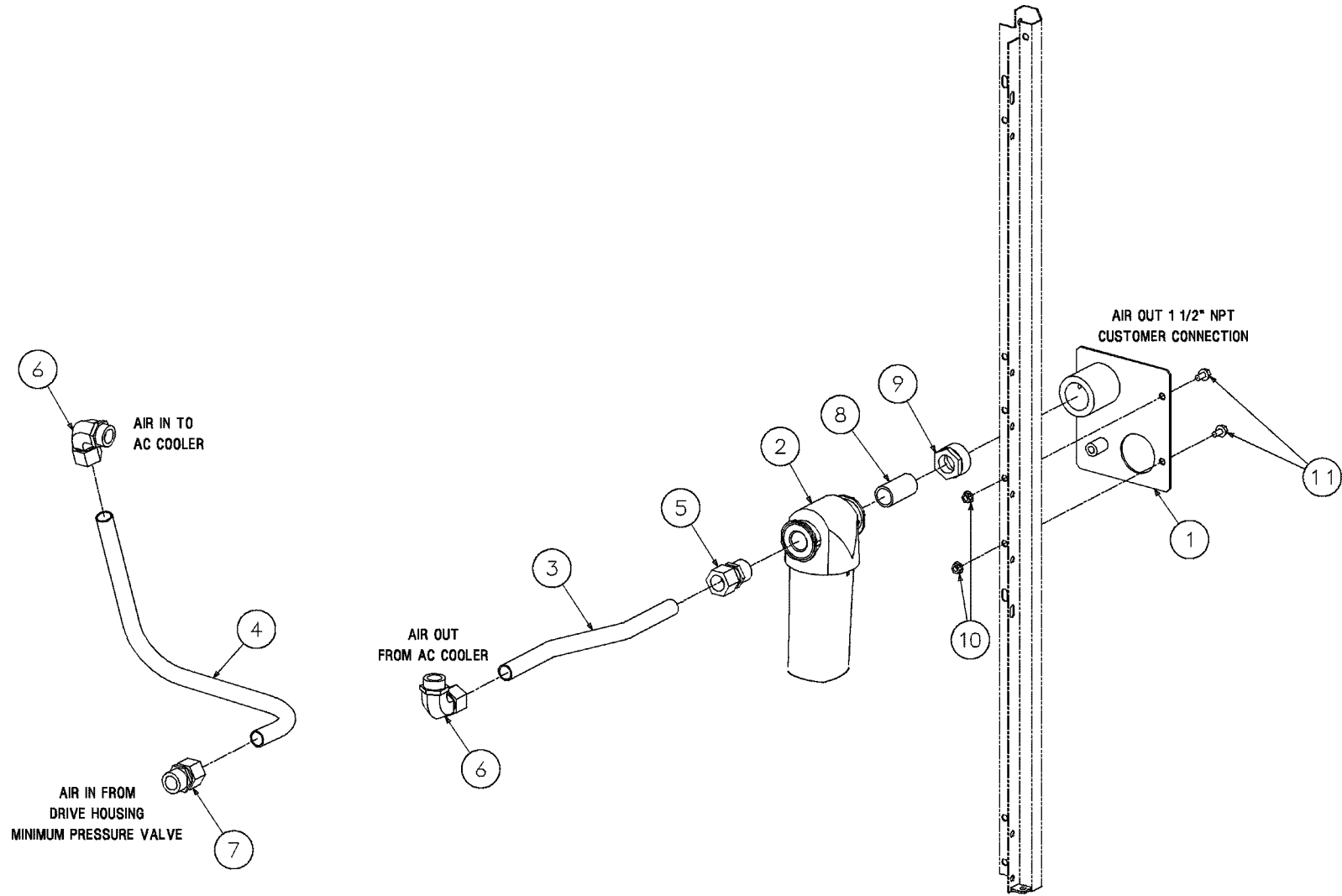
02250157-200-R02

## 1.4 AIR INLET SYSTEM

KEY NO.	PART NO.	QTY	DESCRIPTION	NOTE
1	02250125-365	1	filter, air 6"(plastic) w/mtg &	
2	02250163-976	1	tube,airinlet, p8	
3	02250163-977	1	elbow, rubber 90	
4	02250163-978	1	elbow, rubber 45	
5	040343	4	clamp, hose 3"	
6	408300-010	2	clamp, hose 2 3/8" i.d. -	
7	834504-050	2	screw, self-drill 1/4 x 1/2	
8	865706-180	2	washer, iso 7093-6-140hv	
9	882508-125	2	nut,serr flng m8 x 1.25	
10	882608-025	2	screw, hex serr washer m8 x 25	
<b>PLEASE NOTE: WHEN ORDERING PARTS, INDICATE SERIAL NUMBER OF COMPRESSOR</b>				

# DISCHARGE AIR PIPING

## 1.5 DISCHARGE AIR PIPING

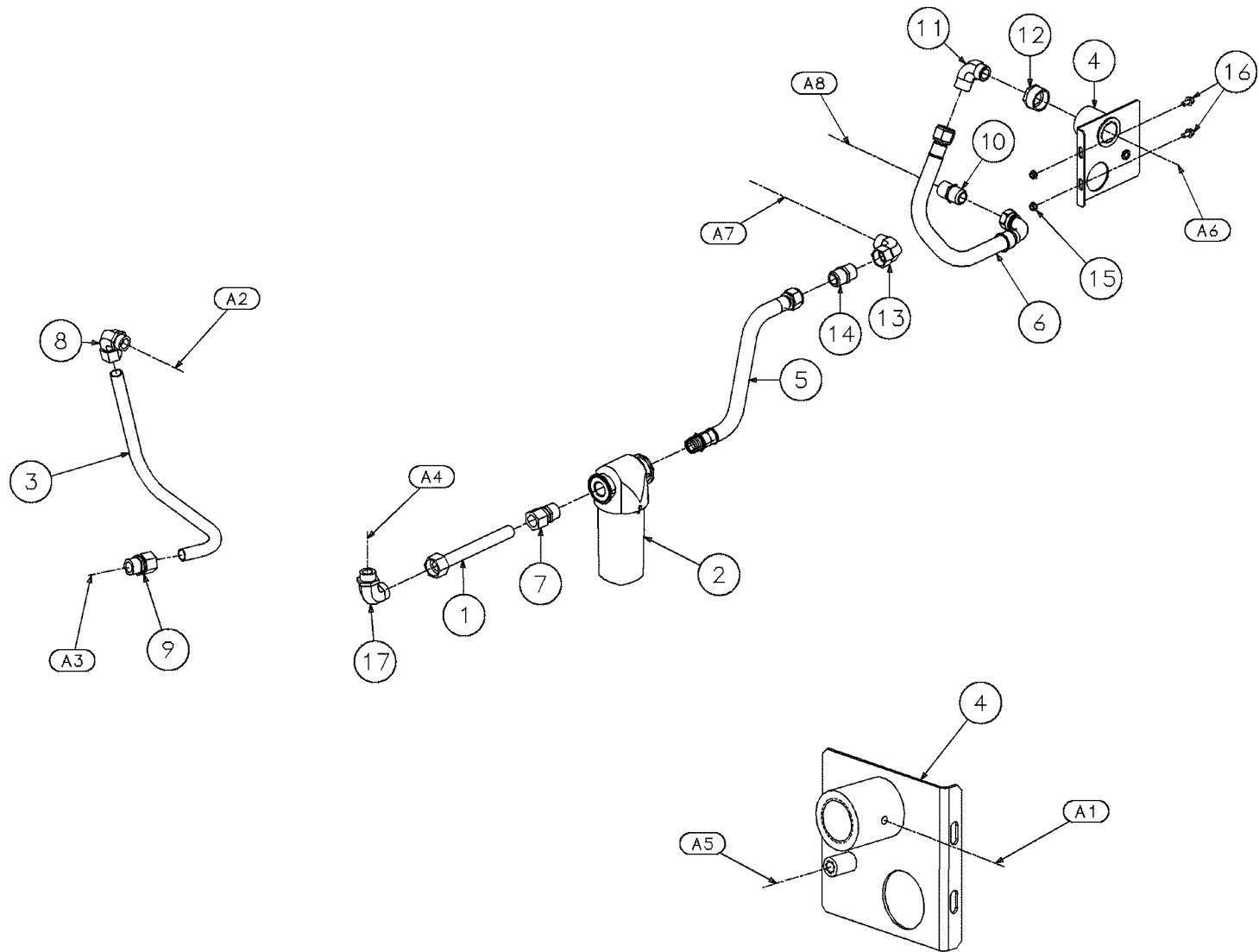


02250171-966-R00

## 1.5 DISCHARGE AIR PIPING

KEY NO.	PART NO.	QTY	DESCRIPTION	NOTE
1	02250152-215	1	support,outlet conn 1-1/2npt	
2	02250167-115	1	separator, water scws-235n 1" l/ad	
3	02250168-253	1	tube,1" cooler to moist sep p8	
4	02250168-254	1	tube,1" mpv to cooler p8	
5	810216-100	1	connector, tube-m 1 x 1	
6	811616-131	2	elbow, tube str thrd 1 x 1 5/16	
7	811816-131	1	connector, tube str thd 1 x 1 5/16	
8	866316-025	1	nipple,pipe pltd 1 x 2 1/2	
9	868906-040	1	bushing,red hex pltd 1 1/2 x 1	
10	882508-125	2	nut,serr flng m8 x 1.25	
11	882608-016	2	screw, hex serr washer m8 x 16	
<b>PLEASE NOTE: WHEN ORDERING PARTS, INDICATE SERIAL NUMBER OF COMPRESSOR</b>				

1.6 AIR PIPING 1100E/1500E WITH INTEGRAL DRYER



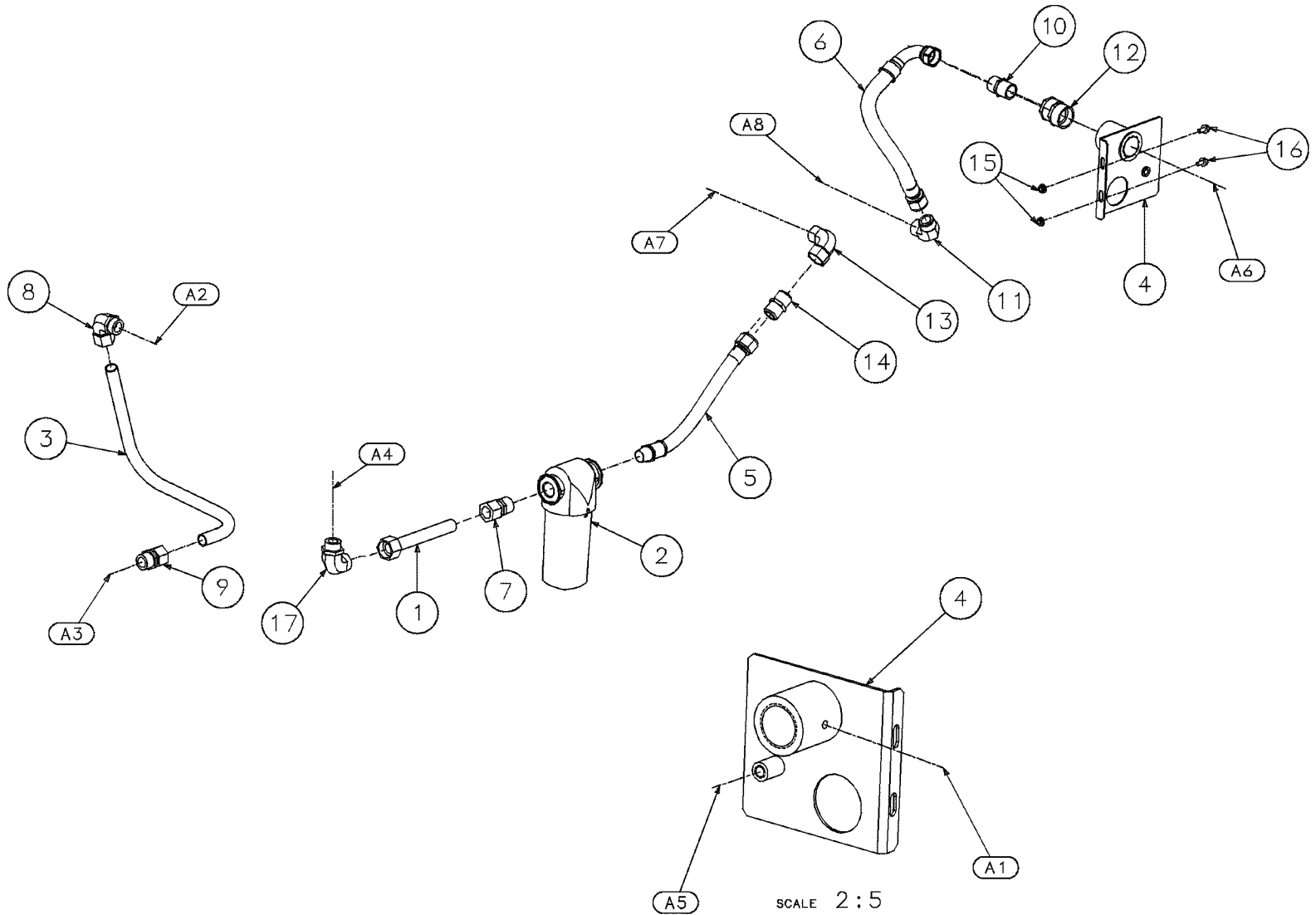
02250172-373-R01

## 1.6 AIR PIPING 1100E/1500E WITH INTEGRAL DRYER

KEY NO.	PART NO.	QTY	DESCRIPTION	NOTE
1	02250159-493	1	tube,orfs 1" aftrclr to moist sep	
2	02250167-115	1	separator, water scws-235n 1" l/ad	
3	02250168-254	1	tube,1" mpv to cooler p8	
4	02250168-568	1	support,outlet conn 1"nptf 2200 dryer	
5	02250172-392	1	hose, air moisture sep to evap	
6	02250173-002	1	hose, air evap to airout brkt	
7	810216-100	1	connector, tube-m 1 x 1	
8	811616-131	1	elbow, tube str thrd 1 x 1 5/16	
9	811816-131	1	connector, tube str thd 1 x 1 5/16	
10	860116-100	1	connector,37 fl/mpt pltd 1 x 1	
11	860216-100	1	elbow, 37fl 90m 1 x 1	
12	868906-040	1	bushing,red hex pltd 1 1/2 x 1	
13	875816-016	1	elbow, 37 sw 90m 1 x 1	
14	878416-131	1	union,37fl bhd 1"	
15	882508-125	2	nut,serr flng m8 x 1.25	
16	882608-016	2	screw, hex serr washer m8 x 16	
17	888716-131	1	elbow, st thd/orfs 1 5/16 x 1	
A1: PACKAGE DISCHARGE PRESSURE P2				
A2: TO AFTERCOOLER				
A3: FROM SUMP				
A4: FROM AFTERCOOLER				
A5: FROM MOISTURE DRAIN				
A6: CUSTOMER AIR OUT CONNECTION				
<b>PLEASE NOTE: WHEN ORDERING PARTS, INDICATE SERIAL NUMBER OF COMPRESSOR</b>				

KEY NO.	PART NO.	QTY	DESCRIPTION	NOTE
A7: COMPRESSOR AIR IN TO EVAPORATOR				
A8: COMPRESSOR AIR OUT FROM EVAPORATOR				
<b>PLEASE NOTE: WHEN ORDERING PARTS, INDICATE SERIAL NUMBER OF COMPRESSOR</b>				

1.7 AIR PIPING 1800E WITH INTEGRAL DRYER



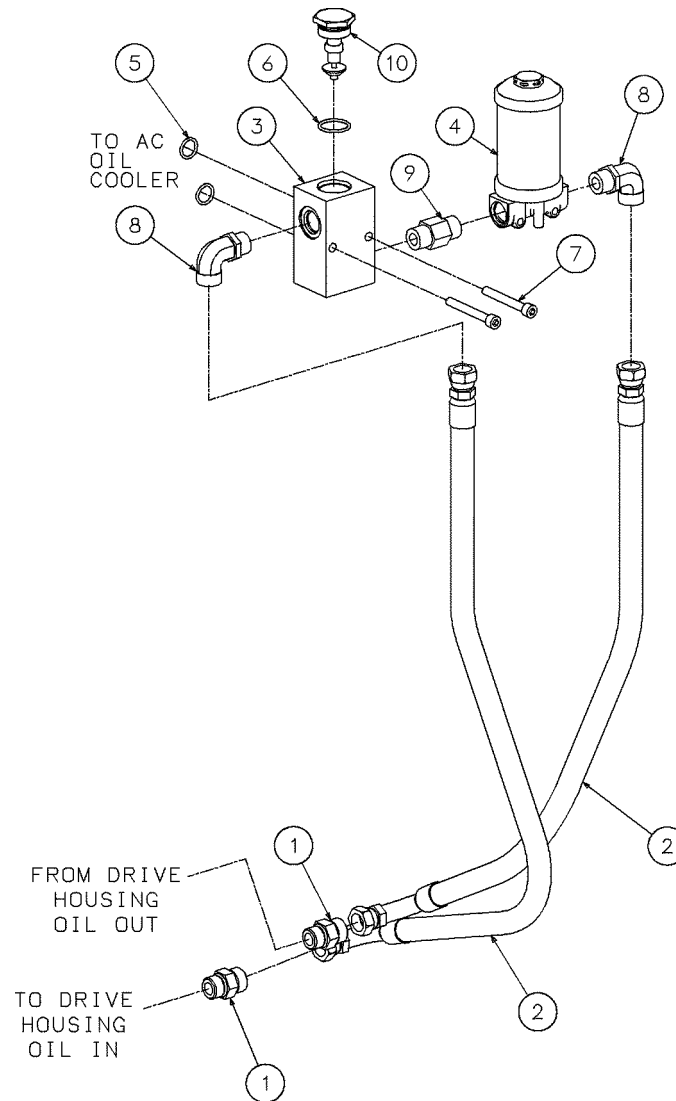
02250173-407-R02

## 1.7 AIR PIPING 1800E WITH INTEGRAL DRYER

KEY NO.	PART NO.	QTY	DESCRIPTION
1	02250159-493	1	tube
2	02250167-115	1	separator
3	02250168-254	1	tube
4	02250168-568	1	support
5	02250172-392	1	hose
6	02250173-002	1	hose
7	810216-100	1	connector
8	811616-131	1	elbow
9	811816-131	1	connector
10	860116-100	1	connector
11	860216-100	1	elbow
12	868906-040	2	bushing
13	875816-016	1	elbow
14	878416-131	1	union
15	882508-125	2	nut
16	882608-016	2	screw
17	888716-131	1	elbow
<b>PLEASE NOTE: WHEN ORDERING PARTS, INDICATE SERIAL NUMBER OF COMPRESSOR</b>			

KEY NO.	PART NO.	QTY	DESCRIPTION
A1: PACKAGE DISCHARGE PRESSURE P2			
A2: TO AFTERCOOLER			
A3: FROM SUMP/SEPARATOR			
A4: FROM AFTERCOOLER			
A5: FROM MOISTURE DRAIN			
A6: CUSTOMER AIR OUT CONNECTION			
A7: COMPRESSOR AIR IN TO EVAPORATOR			
A8: COMPRESSOR AIR OUT FROM EVAPORATOR			
<b>PLEASE NOTE: WHEN ORDERING PARTS, INDICATE SERIAL NUMBER OF COMPRESSOR</b>			

1.8 FLUID PIPING

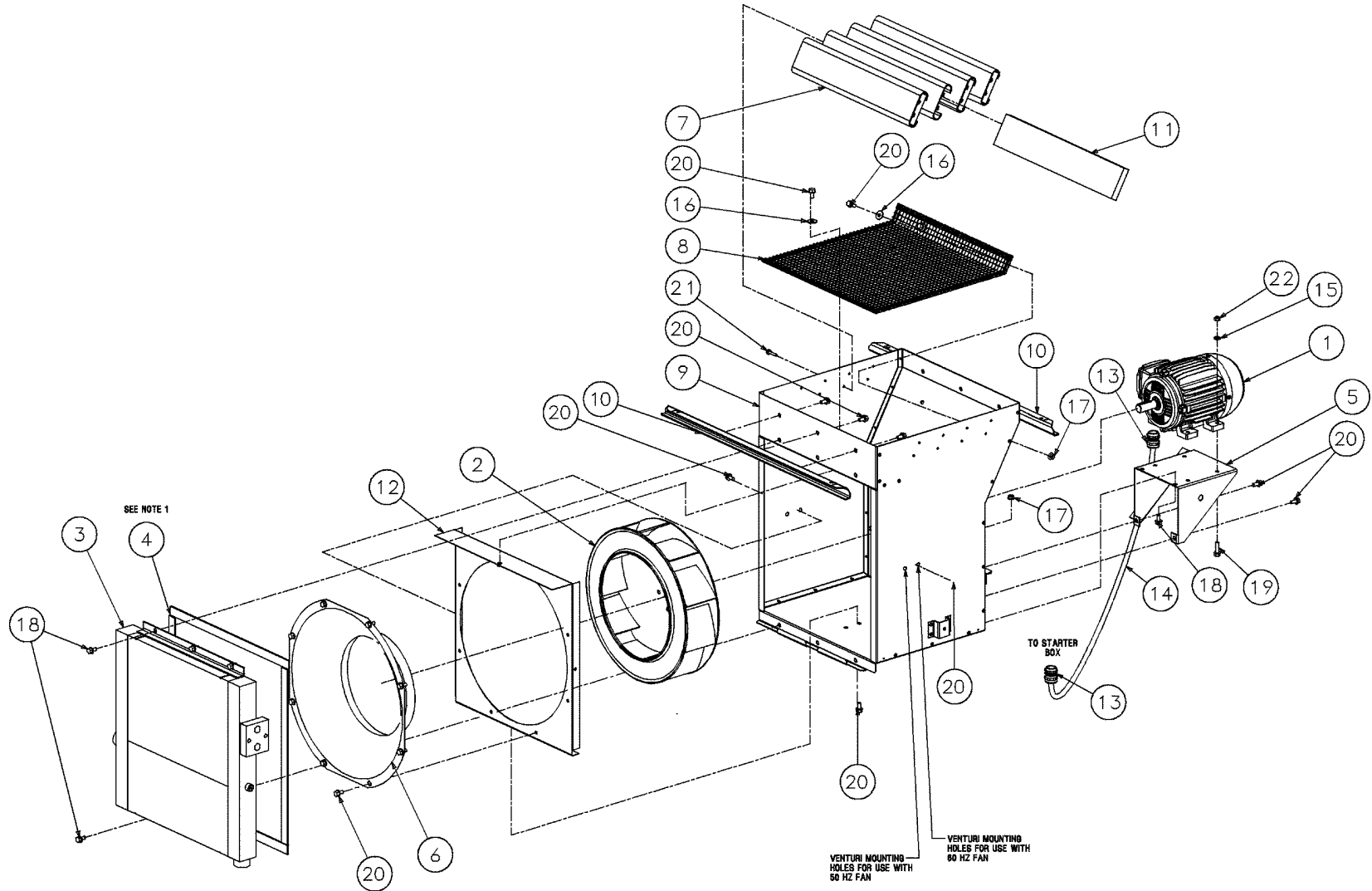


02250154-767-R03

## 1.8 FLUID PIPING

KEY NO.	PART NO.	QTY	DESCRIPTION	NOTE
1	02250099-765	2	connector, sae x orfs 0.75"	
2	02250143-476	2	hose, medium pressure orfs f-swvl 1" x 48"	
3	02250154-788	1	housing, thermal valve es8	
4	02250156-599	1	filter, coreless m27 3"l	
5	826502-211	2	o-ring, viton 13/16 x 1/8"	
6	826502-219	1	o-ring, viton 1 5/16 x 1/8"	
7	829310-080	2	screw, socket iso 4762 m10 x 80mm	
8	883627-012	2	elbow, met st thd/orfs m27 x 3/4	
9	883727-012	1	union, str thd iso 6149 m27 x 2	
10	02250092-081	1	valve, thermal 195f 1 1/2-18	
<b>PLEASE NOTE: WHEN ORDERING PARTS, INDICATE SERIAL NUMBER OF COMPRESSOR</b>				

1.9 COOLING AND LUBRICATION SYSTEM, AIR-COOLED CENTRIFUGAL FAN, 50/60HZ, 1800E, 50HZ 1100E/1500E

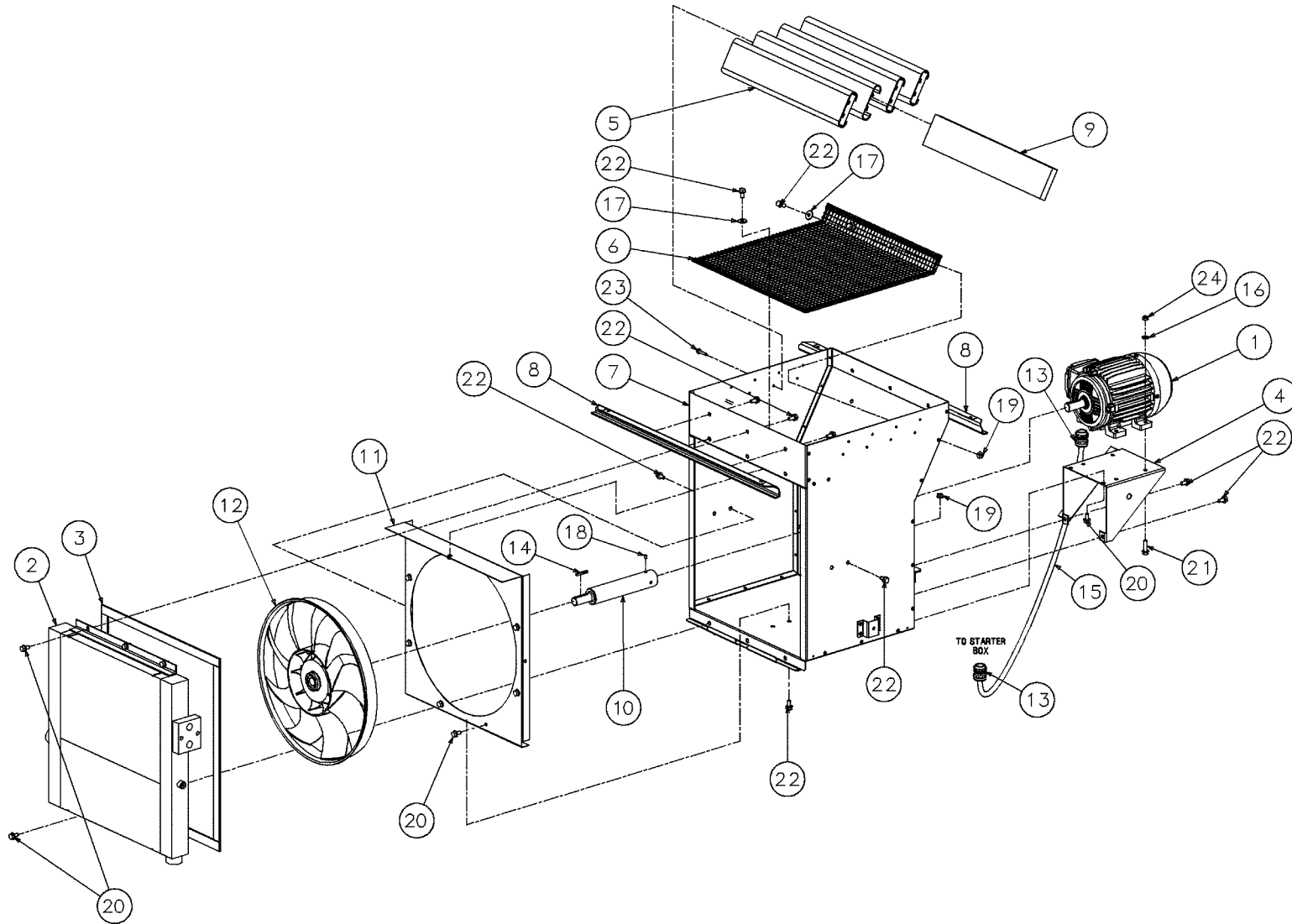


02250173-350 R03

## 1.9 COOLING AND LUBRICATION SYSTEM

KEY NO.	PART NO.	QTY	DESCRIPTION
1	-	1	MTR,FAN
2	--	1	FAN,CLG
3	---	1	CLR,AIR/OIL
4	02250058-345	7	STRIP, WEATHER 1" X 1/8" FOAM (FT)
5	02250154-721	1	SUPPORT, MOTOR FAN 1800/2200
6	02250156-639	1	VENTURI, ES8 16"
7	02250160-429	4	LOUVER,EXTRUDED 18KW 500.0 LNG
8	02250160-452	1	GD,FAN DISCHARGE P8 P10
9	02250160-536	1	DUCT,CENTRIFUGAL FAN P8 P10
10	02250160-566	2	SUPT,AIROC ES8
11	02250162-492	4	INSUL,FOAM ACOUS LOUVER P8 P10
12	02250171-617	1	PANEL, VENTURI P8/P10
13	250018-497	2	GRIP, CORD FOR SO 12/4 ST 3/4"
14	850604-012	8	WIRE, NEOPRENE #12-4 SO (FT)
15	865408-170	4	WASHER, METRIC-ISO7089- 8
16	865708-240	3	WASHER, ISO 7093-8-140HV
17	882508-125	4	NUT, SERR FLNG M8 X 1.25
18	882608-016	8	SCREW, HEX SERR WASHER M8 X 16
19	882608-030	4	SCREW, HEX SERR WASHER M8 X 30
20	883008-016	22	SCREW, TF-HEX M8 X 16 BLK ZINC
21	883306-030	16	SCREW, PLASTIC PILOT M6 X 30
22	884708-125	4	NUT, HEX LOCKING M8
<b>PLEASE NOTE: WHEN ORDERING PARTS, INDICATE SERIAL NUMBER OF COMPRESSOR</b>			

1.10 COOLING AND LUBRICATION SYSTEM, AIR-COOLED AXIAL FAN 60HZ 1100E/1500E



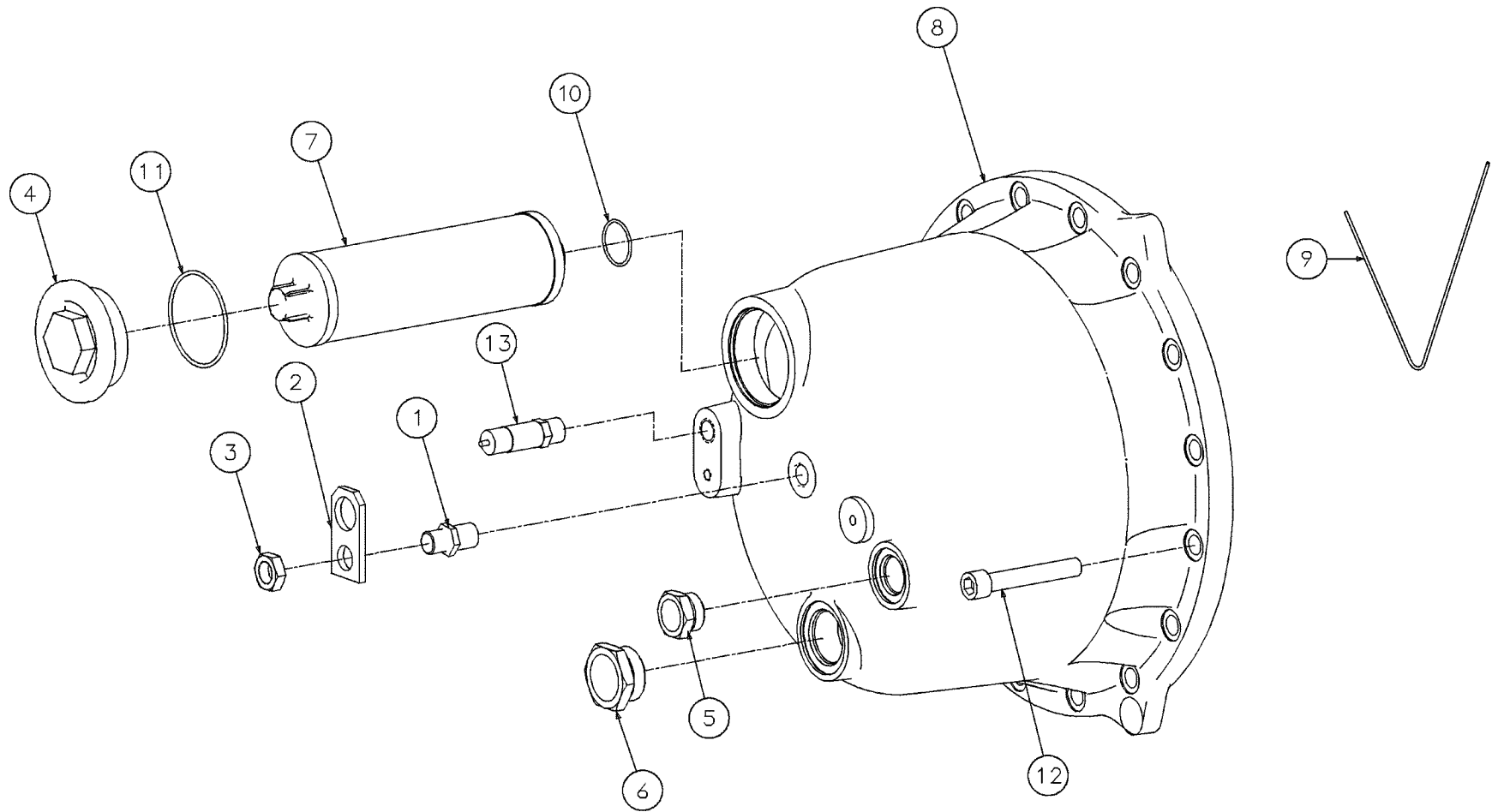
02250173-349-R02

### 1.10 COOLING AND LUBRICATION SYSTEM, AIR-COOLED AXIAL FAN 60HZ 1100E/1500E

KEY NO.	PART NO.	QTY	DESCRIPTION	NOTE
1	-	1	motor, fan 1hp 4p tee	
2	02250168-280	1	clr, air/oil p8 15-25hp std	
3	02250058-345	7	strip,weather 1" x 1/8" foam (ft)	
4	02250154-721	1	support, motor fan 1800/2200	
5	02250160-429	4	louver,extruded 18kw 500.0 lng	
6	02250160-452	1	guard, fan discharge p8 p10	
7	02250160-536	1	duct,centrifugal fan p8 p10	
8	02250160-566	2	support,airoc p8 p10	
9	02250162-492	4	insulation,foam acous louver p8 p10	
10	02250167-452	1	drive,output shaft fan	
11	02250171-617	1	panel, venturi p8/p10	
12	02250173-084	1	fan, 18" nylon 9-blade axial	
13	250018-497	2	grip, cord for so 12/4 st 3/4"	
14	821103-150	1	key, square cl1 3/16" x 1 1/2	
15	850604-012	8	wire, neoprene #12-4 so (ft)	
16	865408-170	4	washer, metric-iso7089- 8	
17	865708-240	3	washer, iso 7093-8-140hv	
18	874904-038	2	screw, set cup 1/4 x 3/8 plt	
19	882508-125	4	nut,serr flng m8 x 1.25	
20	882608-016	16	screw, hex serr washer m8 x 16	
21	882608-030	4	screw, hex serr washer m8 x 30	
22	883008-016	14	screw, tf-hex m8 x 16 blk zinc	
23	883306-030	16	screw, plastic pilot m6 x 30	
<b>PLEASE NOTE: WHEN ORDERING PARTS, INDICATE SERIAL NUMBER OF COMPRESSOR</b>				

KEY NO.	PART NO.	QTY	DESCRIPTION	NOTE
24	884708-125	4	nut,hex locking m8	
<b>PLEASE NOTE: WHEN ORDERING PARTS, INDICATE SERIAL NUMBER OF COMPRESSOR</b>				

1.11 COMPRESSOR HOUSING/SEPARATOR/SUMP AND PARTS



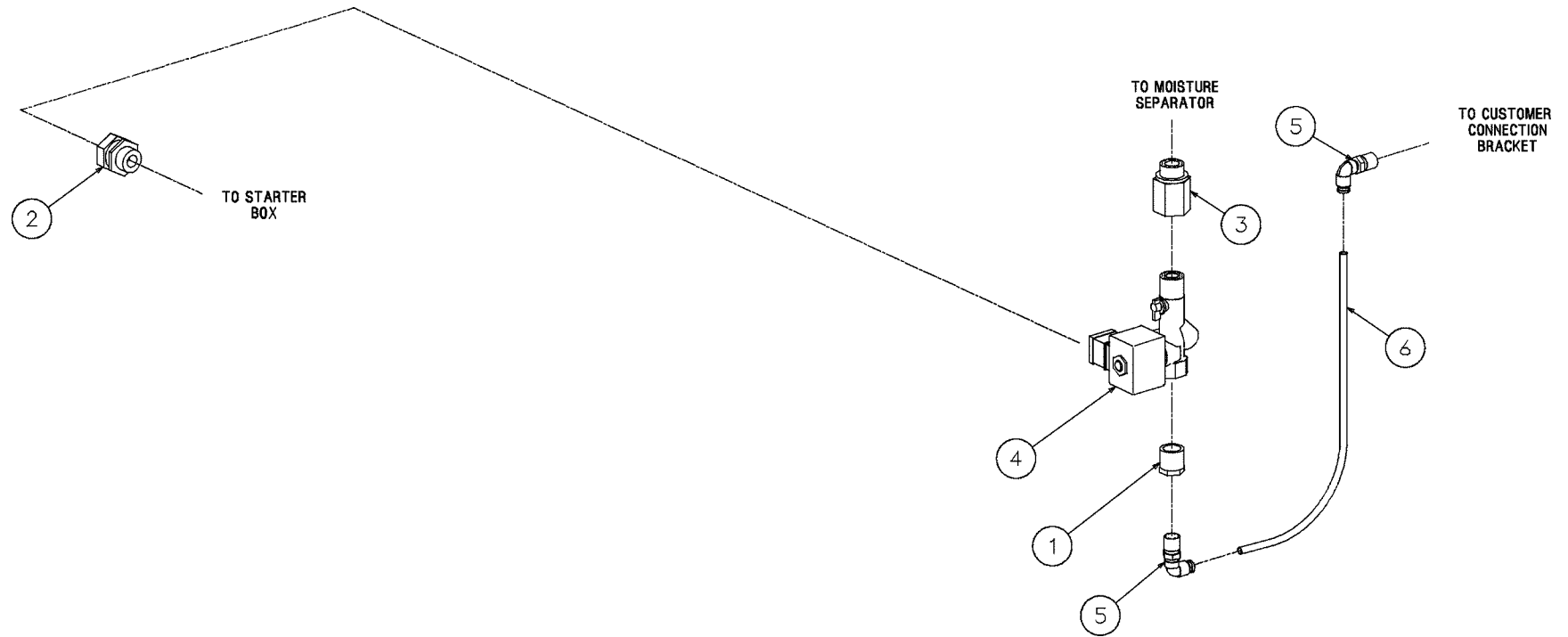
02250157-805-R01

## 1.11 COMPRESSOR HOUSING/SEPARATOR/SUMP AND PARTS

KEY NO.	PART NO.	QTY	DESCRIPTION	NOTE
1	02250054-857	1	plug, 1/2-14 npt to m20 thread	
2	02250054-858	1	bail, lifting e8e	
3	02250055-630	1	nut, hex jam m20	
4	02250057-182	1	cap separator element es-8	
5	02250097-610	1	plug, sight glass 1 5/16" sae	
6	02250097-611	1	plug, sight glass 1-7/8" sae	
7	02250106-789	1	separator, element e8e	
8	02250169-360	1	housing, bell p8 mach	
9	02250169-361	1	o-ring, viton cord .103 dia ft	
10	826502-127	1	o-ring, viton 1 7/16 x 3/32"	
11	826502-235	1	o-ring, viton 3 1/8 x 1/8"	
12	829316-100	16	screw, socket iso 4762 m16 x 100mm	
13	250006-938	1	valve, relief 1/2" 200#	
<b>PLEASE NOTE: WHEN ORDERING PARTS, INDICATE SERIAL NUMBER OF COMPRESSOR</b>				

# MOISTURE DRAIN STANDARD

## 1.12 MOISTURE DRAIN STANDARD

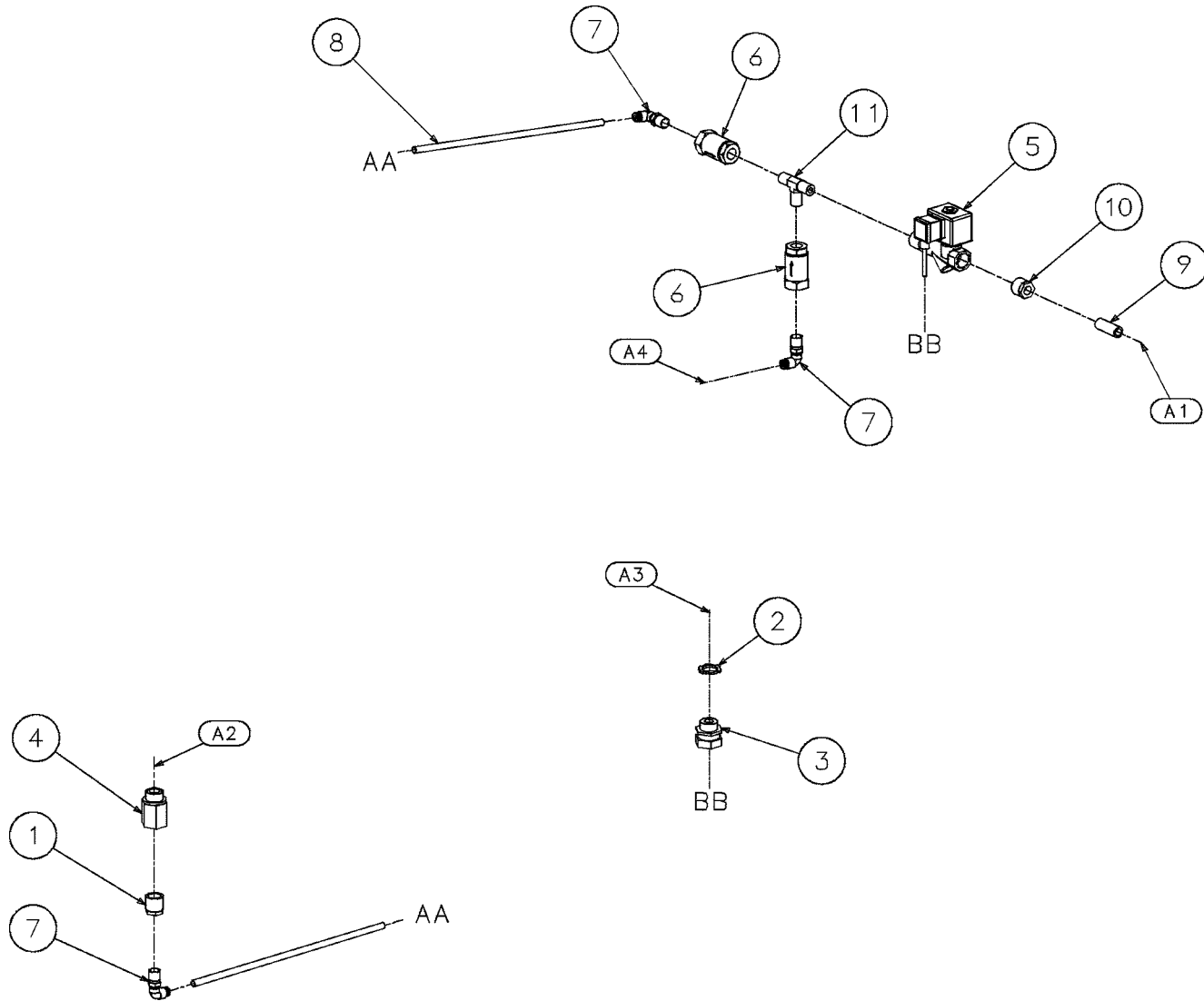


02250171-764-R00

## 1.12 MOISTURE DRAIN STANDARD

KEY NO.	PART NO.	QTY	DESCRIPTION	NOTE
1	02250046-110	1	bushing,red-brs-1/2"x1/4"	
2	02250071-380	1	grip, cord n4 .187-.250 x 1/2"	
3	02250167-603	1	adapter,1/2m bspp-1/2f npt brass	
4	02250170-783	1	valve, drain combo 24 vdc	
5	250025-850	2	elbow, 90deg m swvl 1/4t x 1/4 npt	
6	842215-004	1	hose,nylon 1/4"	
<b>PLEASE NOTE: WHEN ORDERING PARTS, INDICATE SERIAL NUMBER OF COMPRESSOR</b>				

1.13 MOISTURE DRAIN WITH INTEGRAL DRYER

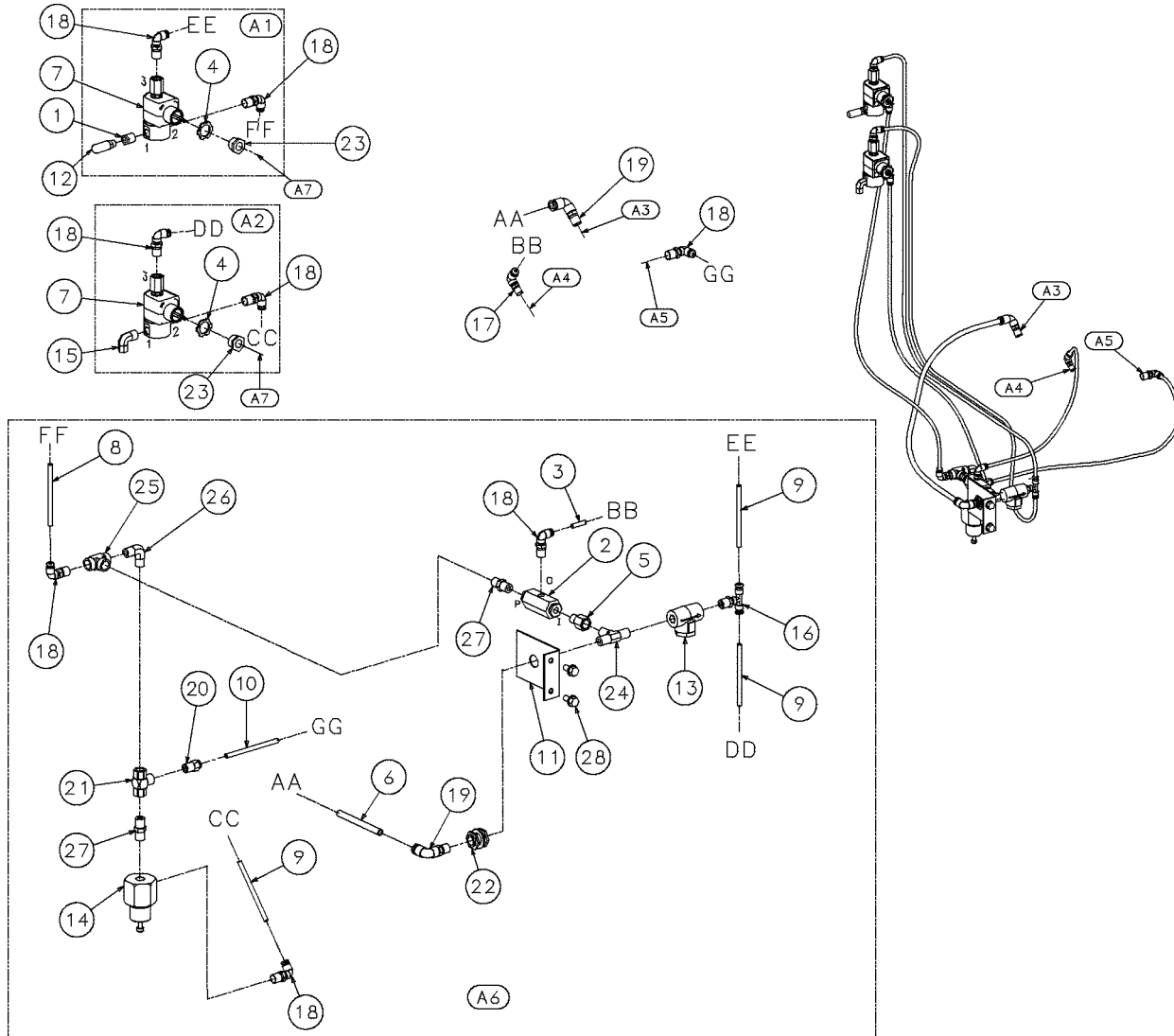


02250172-391-R01

### 1.13 MOISTURE DRAIN WITH INTEGRAL DRYER

KEY NO.	PART NO.	QTY	DESCRIPTION	NOTE
1	02250046-110	1	bushing,red-brs-1/2"x1/4"	
2	02250071-362	1	locknut, n4 conduit sealing	
3	02250071-380	1	grip, cord n4 .187-.250 x 1/2"	
4	02250167-603	1	adapter,1/2m bssp-1/2f npt plated steel	
5	02250170-783	1	valve, drain combo 24 vdc	
6	049905	2	valve, check 1/4"	
7	250025-850	3	elbow, 90deg m swvl 1/4t x 1/4 npt	
8	842215-004	5	hose,nylon 1/4(ft)	
9	866304-015	1	nipple,pipe pltd 1/4 x 1 1/2	
10	868902-010	1	bushing,red hex pltd 1/2 x 1/4	
11	869825-025	1	tee,male pipe brass 1/4	
A1: TO AIR OUT BRACKET				
A2: FROM WATER SEPARATOR				
A3: TO BOTTOM OF STARTER BOX				
A4: FROM REFRIGERANT EVAPORATOR CONDENSATE HOSE				
<b>PLEASE NOTE: WHEN ORDERING PARTS, INDICATE SERIAL NUMBER OF COMPRESSOR</b>				

1.14 PNEUMATIC CONTROL SYSTEM—NYLON



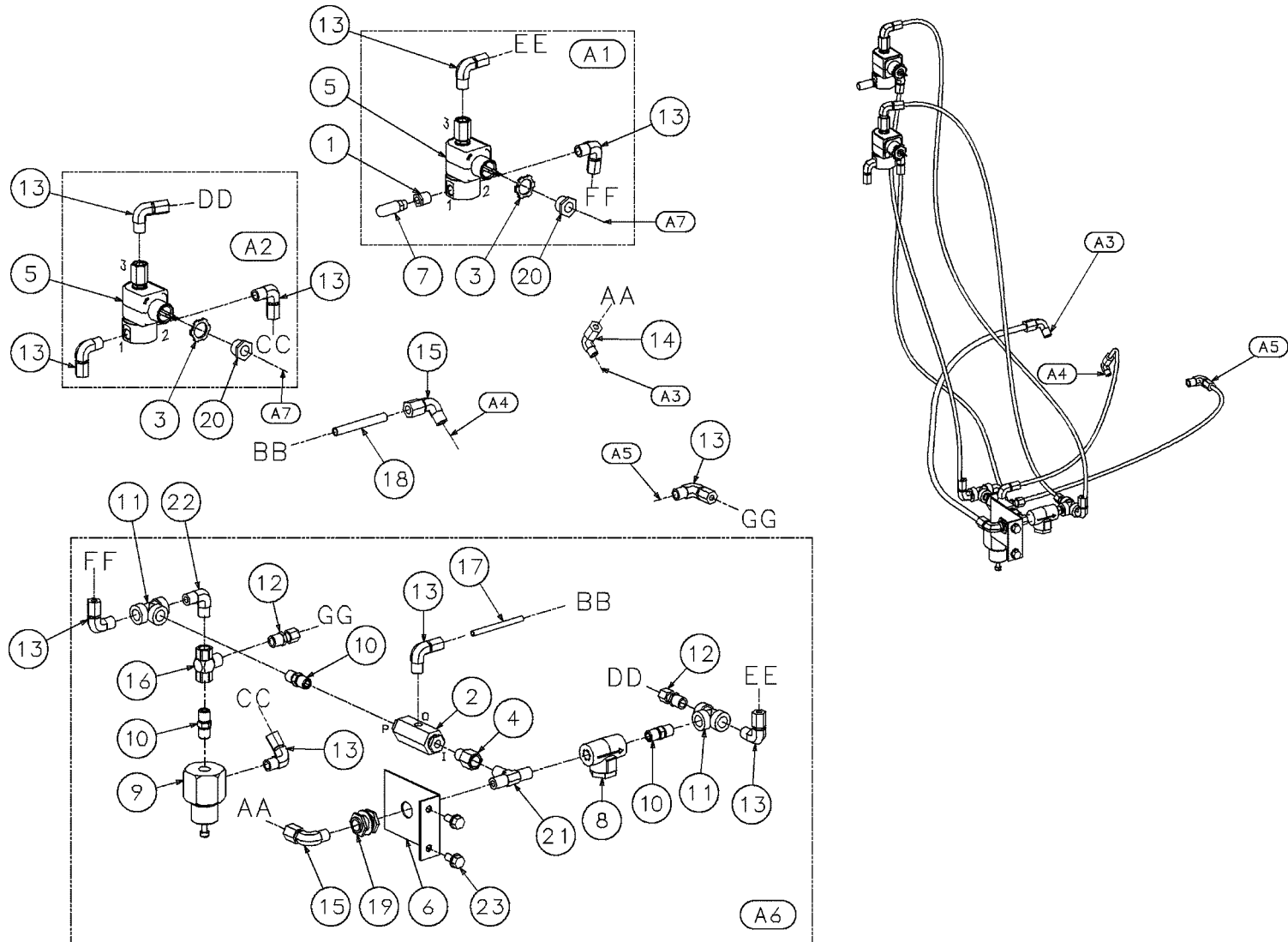
02250154-867-R04

## 1.14 PNEUMATIC CONTROL SYSTEM—NYLON

KEY NO.	PART NO.	QTY	DESCRIPTION	NOTE
1	02250046-101	1	bushing, red brs 1/4 x 1/8	
2	02250049-634	1	valve, blowdown 1/4 npt hi prs	
3	02250054-861	2	tube,nyl .25 od x 040w blk(ft)	
4	02250071-362	2	locknut, n4 conduit sealing	
5	02250118-589	1	orifice,.125 .25 fnpt x .25 mnpt	
6	02250139-953	1	tbg, nylon 3/8"od blue	
7	02250155-714	2	valve, solenoid 3wno 1/4 250# 24vdc	
8	02250155-961	1	tbg,nylon 1/4"-od red	
9	02250155-962	4	tbg,nylon 1/4"-od blue	
10	02250155-963	2	tbg,nylon 1/4"-od yellow	
11	02250157-206	1	support,ctlbg es8	
12	02250173-972	1	filter,pneumatic 1/8"npt 5micr	
13	241771	1	strainer, v-type 300psix1/4	
14	250017-280	1	valve, pressure regulator	
15	250018-430	1	elbow, 90 1/4t pls x 1/4 npt m	
16	250025-835	1	tee, male branch swiv 1/4 tube x 1/4 npt	
17	250025-849	1	elbow,90deg m swvl 1/4t x 1/8npt	
18	250025-850	8	elbow, 90deg m swvl 1/4t x 1/4 npt	
19	250025-852	2	elbow, 90deg m swvl 3/8 t x1/4	
20	250025-859	1	connector, male1/4tube x 1/4	
21	408893	1	valve, shuttle 1/4" npt (dbl chk)	
22	841500-004	1	bulkhead, pipe 1/4" npt	
23	847815-050	2	nipple,chase cond 1/2	
<b>PLEASE NOTE: WHEN ORDERING PARTS, INDICATE SERIAL NUMBER OF COMPRESSOR</b>				

KEY NO.	PART NO.	QTY	DESCRIPTION	NOTE
24	869825-025	1	tee,male pipe brass 1/4	
25	878225-025	1	tee,female pipe brass 1/4"	
26	881004-025	1	elbow, pipe-90m 1/4 x 1/4 brass	
27	881304-025	2	nipple,pipe-hx brass 1/4 x 1/4	
28	883008-016	2	screw, tf-hex m8 x 16 blk zinc	
A1: SOLENOID 1 SUB-ASSEMBLY				
A2: SEQ SOLENOID 4 SUB-ASSEMBLY				
A3: FROM INLET HOUSING				
A4: TO INLET HOUSING AT INLET HOUSING/INLET				
A5: TO DRIVE HOUSING AT INLET VALVE COVER				
A6: CONTROL GROUP SUB-ASSEMBLY				
A7: TO STARTER BOX				
SERVICE KITS FOR 02250155-714				
02250157-500 KIT,SOL VLV 3WNO 24VDC				
SERVICE KITS FOR 250017-280				
250019-453 KIT, REPAIR PRESS REG VALVE				
SERVICE KITS FOR 241771				
241772 KIT, REP STRAINER-V-TYPE				
<b>PLEASE NOTE: WHEN ORDERING PARTS, INDICATE SERIAL NUMBER OF COMPRESSOR</b>				

1.15 PNEUMATIC CONTROL SYSTEM—STAINLESS STEEL



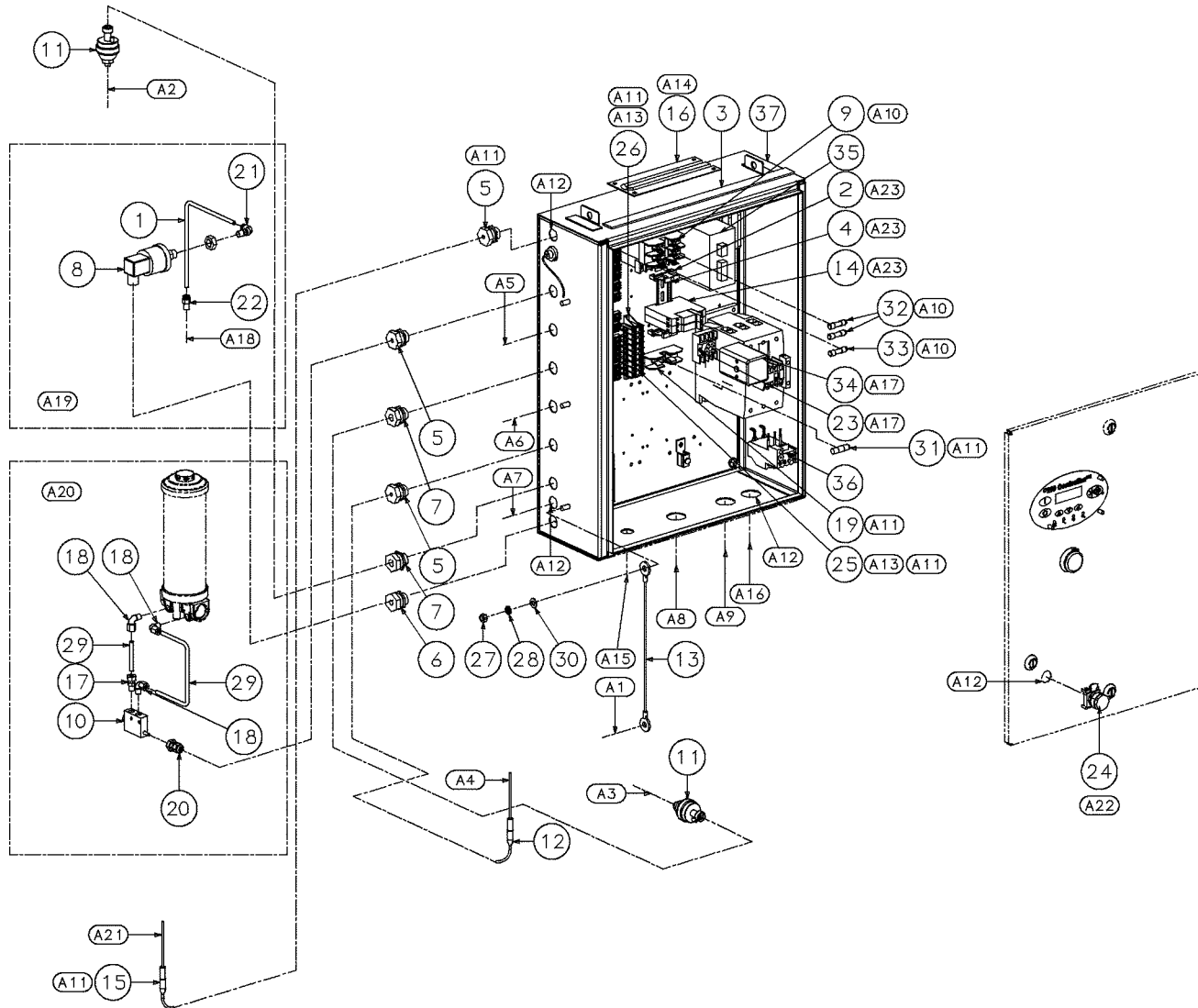
02250164-578-r03

## 1.15 PNEUMATIC CONTROL SYSTEM—STAINLESS STEEL

KEY NO.	PART NO.	QTY	DESCRIPTION	NOTE
1	02250046-101	1	bushing, red brs 1/4 x 1/8	
2	02250049-634	1	valve, blowdown 1/4 npt hi prs	
3	02250071-362	2	locknut, n4 conduit sealing	
4	02250118-589	1	orifice,.125 .25 fnpt x .25 mnpt	
5	02250155-714	2	valve, solenoid 3wno 1/4 250# 24vdc	
6	02250157-206	1	support,ctltbg es8	
7	02250173-972	1	filter,pneumatic 1/8"npt 5micr	
8	241771	1	strainer, v-type 300psix1/4	
9	250017-280	1	valve, pressure regulator	
10	250018-760	3	nipple,hx tbe 316s cajon 1/4"	
11	250019-366	2	tee, pipe 150# 316s 1/4	
12	250139-016	2	connector, tube-m 1/4 swgk 316s	
13	250211-005	10	elbow,tube-m 1/4" swgk 316ss	
14	250211-013	1	elbow, tube-m1/4t x1/8p swg ss	
15	250211-017	2	elbow, tube-m3/8t x1/4p swg ss	
16	408893	1	valve, shuttle 1/4" npt (dbl chk)	
17	841215-004	18	tubing, stnls stl 1/4 20ga ft	
18	841215-006	2	tubing, stnls stl 3/8 20ga ftV	
19	841500-004	1	bulkhead, pipe 1/4" npt	
20	847815-050	2	nipple,chase cond 1/2	
21	869925-025	1	tee,male pipe stainless 1/4	
22	872204-025	1	elbow, pipe-90m 1/4 x 1/4 ss	
23	883008-016	2	screw, tf-hex m8 x 16 blk zinc	
<b>PLEASE NOTE: WHEN ORDERING PARTS, INDICATE SERIAL NUMBER OF COMPRESSOR</b>				

KEY NO.	PART NO.	QTY	DESCRIPTION	NOTE
A1: SOLENOID 1 SUB-ASSEMBLY				
A2: SEQ SOLENOID 4 SUB-ASSEMBLY				
A3: FROM INLET HOUSING				
A4: TO INLET HOUSING				
A5: TO DRIVE HOUSING AT INLET VALVE COVER				
A6: CONTROL GROUP SUB-ASSEMBLY				
A7: TO STARTER BOX				
SERVICE KITS FOR 02250155-714				
02250157-500 KIT,SOL VLV 3WNO 24VDC				
SERVICE KITS FOR 250017-280				
250019-453 KIT, REPAIR PRESS REG VALVE				
SERVICE KITS FOR 241771				
241772 KIT, REP STRAINER-V-TYPE				
<b>PLEASE NOTE: WHEN ORDERING PARTS, INDICATE SERIAL NUMBER OF COMPRESSOR</b>				

1.16 CONTROL SYSTEM AND ELECTRIC PARTS



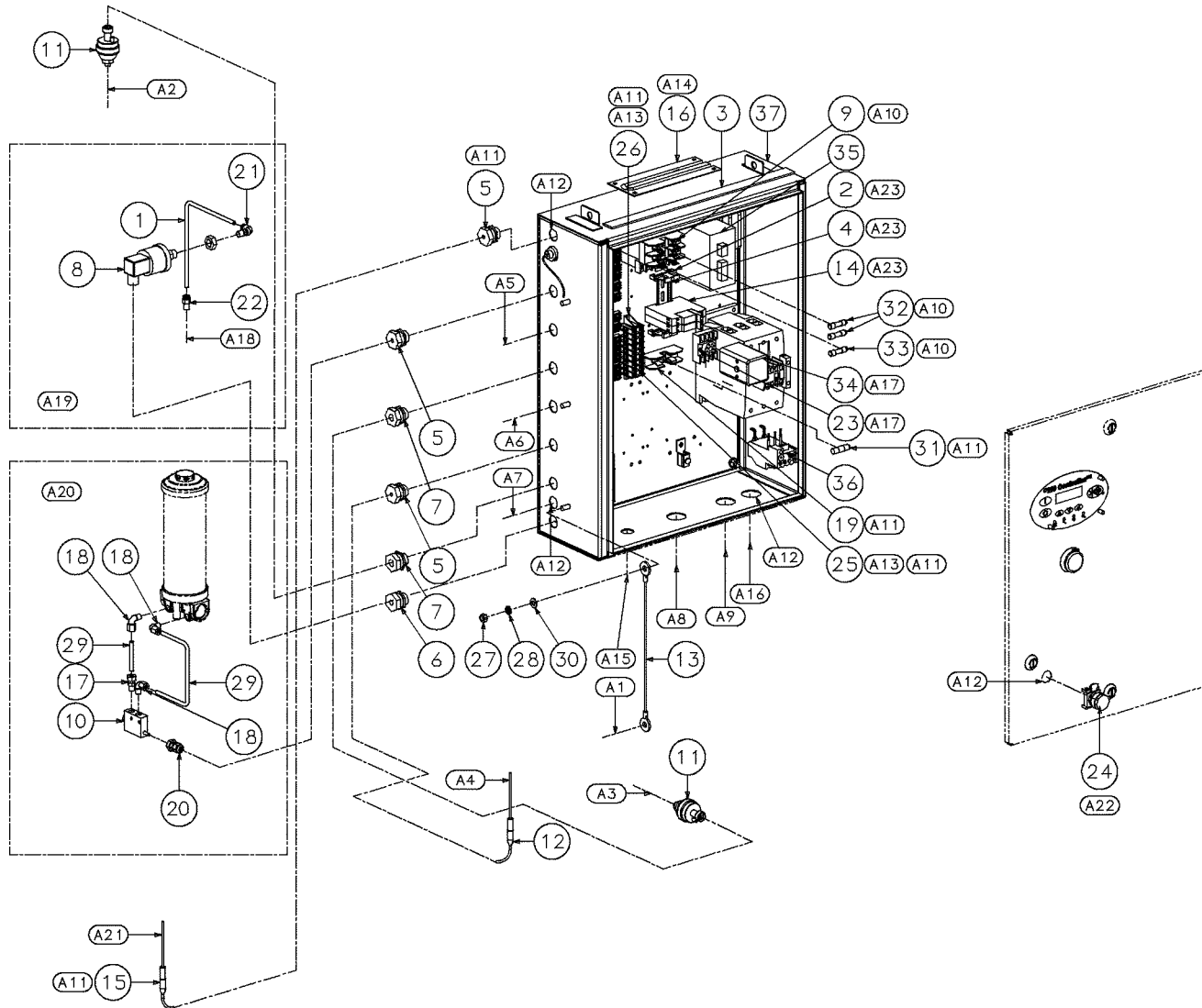
02250156-917-R05

## 1.16 CONTROL SYSTEM AND ELECTRIC PARTS

KEY NO.	PART NO.	QTY	DESCRIPTION
1	02250054-861	1	TUBE,NYL .25 OD X 040W BLK(FT)
2	02250057-245	2	BLK,TERM END STOP CH
3	02250058-345	1	STRIP, WEATHER 1" X 1/8" FOAM (FT)
4	02250060-705	1	R,DIN 35MM (METERS)
5	02250071-379	3	GRIP,CD N4 .125-.187 X 1/2"
6	02250071-380	1	GRIP,CD N4 .187-.250 X 1/2"
7	02250071-381	2	GRIP,CD N4 .250-.375 X 1/2"
8	02250078-249	1	SW,VAC 22"WC N4 6FT CABLE 5A
9	02250083-182	1	XFMR,PT 50VA UNIV W/PRI FH
10	02250100-363	1	SW,DIFF PRESS 20PSID 12FT
11	02250155-174	2	XDCR, PRESS 0-250# RATIOMETRIC
12	02250155-175	1	P,RTD 100 OHM PLAT 3.5"X 6FT
13	02250157-450	1	W, 10 GAGE GROUND BOND 12" M8
14	02250158-377	2	RLY, SPTD DIN 10A 24VDC COIL
15	02250175-087	1	P,THERMISTER 3000 OHM NTC 12'L
16	249008	1	HEATER, ENCLOSURE 50W
17	250018-427	1	CONN, 1/4" TUBE X 1/8" NPT
18	250018-429	3	ELBOW, 90 1/4"TUBE X 1/8"NPT
19	250019-771	1	HOLDER,FUSE 1P 30A 600V
20	250023-496	1	CONN, CORD GRIP 0.09-0.26
21	250025-849	1	ELBOW,90DEG M SWVL 1/4T X 1/8NPT
22	250025-858	1	CONNECTOR, MALE 1/4TUBE X 1/8
23	250034-430	1	SOCKET, 8PIN 480V
<b>PLEASE NOTE: WHEN ORDERING PARTS, INDICATE SERIAL NUMBER OF COMPRESSOR</b>			

KEY NO.	PART NO.	QTY	DESCRIPTION
24	250034-627	1	BUTTON, PUSH NON-ILLUM BLK N4X
25	250041-102	3	BLOCK,TERMINAL KT3
26	250041-103	1	BLOCK,TERM ADAPTER KAD
27	825908-125	6	NUT, HEX METRIC M8 X 1.25
28	838808-200	6	WASHER, SPR LOCK-METRIC PLTD M8
29	841215-004	1	TUBING, ST STL 1/4" 20GA
30	865408-170	6	WASHER, METRIC-ISO7089- 8
31	FUSE,DRYER	1	VARIOUS
32	FUSE,PRI	2	VARIOUS
33	FUSE,SEC	1	VARIOUS
34	PHASE MNTR	1	VARIOUS
35	POWER SUPPLY	1	VARIOUS
36	RELAY,OVLD	1	VARIOUS
37	STARTER ASSY	1	VARIOUS
			<i>Continued on page 37</i>
<b>PLEASE NOTE: WHEN ORDERING PARTS, INDICATE SERIAL NUMBER OF COMPRESSOR</b>			

1.16 CONTROL SYSTEM AND ELECTRIC PARTS (CONTINUED)



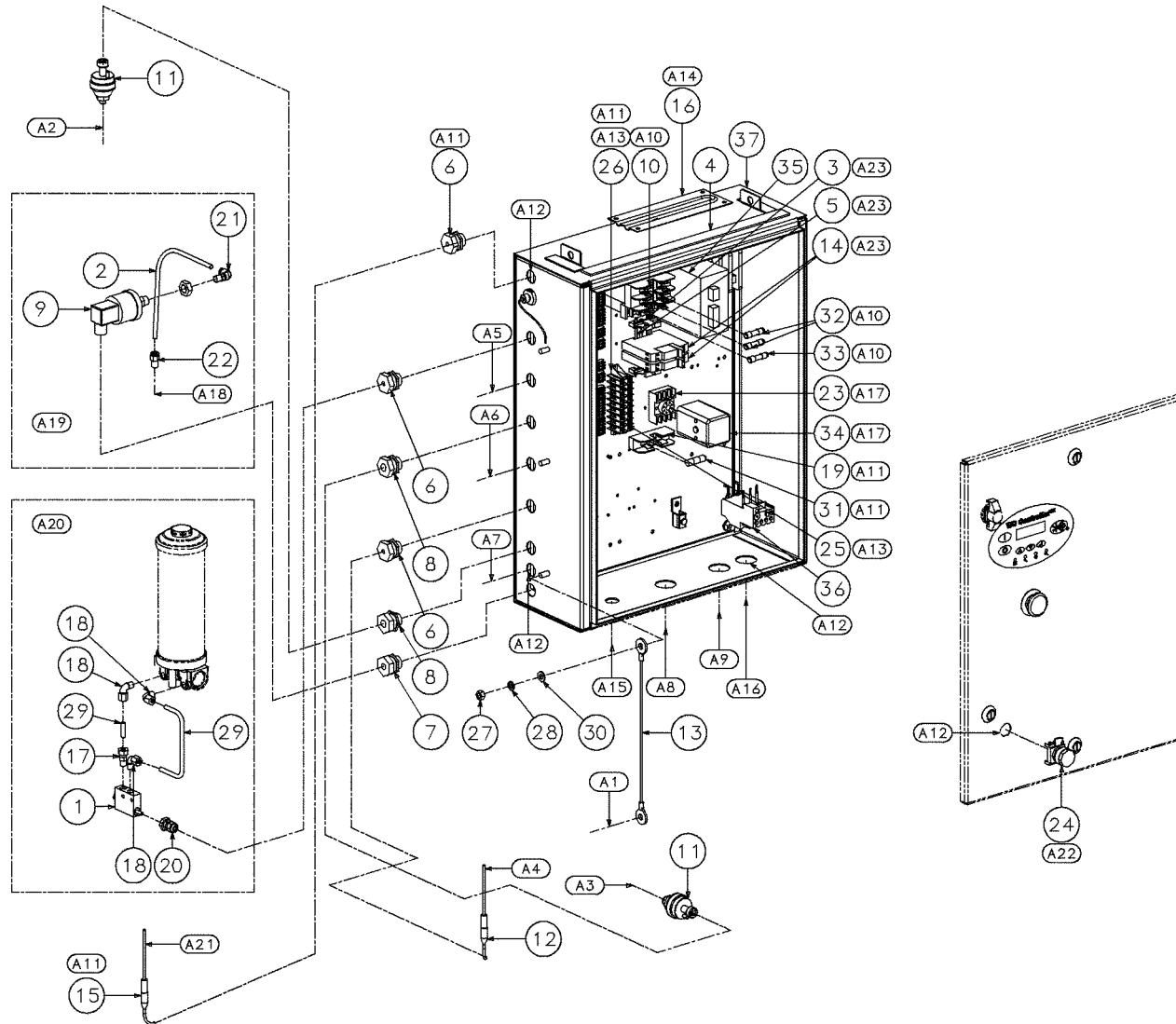
02250156-917-R05

## 1.16 CONTROL SYSTEM AND ELECTRIC PARTS (CONTINUED)

KEY NO.	PART NO.	QTY	DESCRIPTION	NOTE
A1:			TO FRAME	
A2:			P2-PACKAGE DISCHARGE PRESSURE	
A3:			P1-TO SUMP TANK WET SUMP PRESSURE	
A4:			T1-TO SUMP TANK WET DISCHARGE TEMPERATURE	
A5:			SOLENOID 1	
A6:			SOLENOID 4	
A7:			SOLENOID 5-ELECTRIC DRAIN	
A8:			FAN MOTOR CONNECTION	
A9:			MOTOR WIRING	
A10:			SCD DRAIN OPTION	
A11:			DRYER OPTION	
A12:			HOLE TO BE DRILLED IN BOX AS NEEDED	
A13:			HEATER OPTIONS	
A14:			ENCLOSURE HEATER MOUNTED INSIDE TOP OF STARTER BOX	
A15:			DRYER CTL POWER - 24VDC	
A16:			DRYER COMPRESSOR MOTOR POWER	
A17:			PHASE MONITOR OPTION	
A18:			TO AIR FILTER	
A19:			INLET PRESSURE SWITCH OPTION MOUNT TO FAN MOTOR SUPPORT	
A20:			DIFFERENTIAL PRESSURE SWITCH OPTION	
<b>PLEASE NOTE: WHEN ORDERING PARTS, INDICATE SERIAL NUMBER OF COMPRESSOR</b>				

KEY NO.	PART NO.	QTY	DESCRIPTION	NOTE
A21:			T3-TO INTEGRAL DRYER EVAPORATOR DRYER DEW POINT TEMPERATURE	
A22:			CSA OPTION	
A23:			OTHER OPTIONS	
<b>PLEASE NOTE: WHEN ORDERING PARTS, INDICATE SERIAL NUMBER OF COMPRESSOR</b>				
Q1:			SEE ASSY DRAWINGS: 02250169-624 DWG, START P8/10 MFV TAB	

1.17 CONTROL SYSTEM AND ELECTRIC PARTS—WYE DELTA



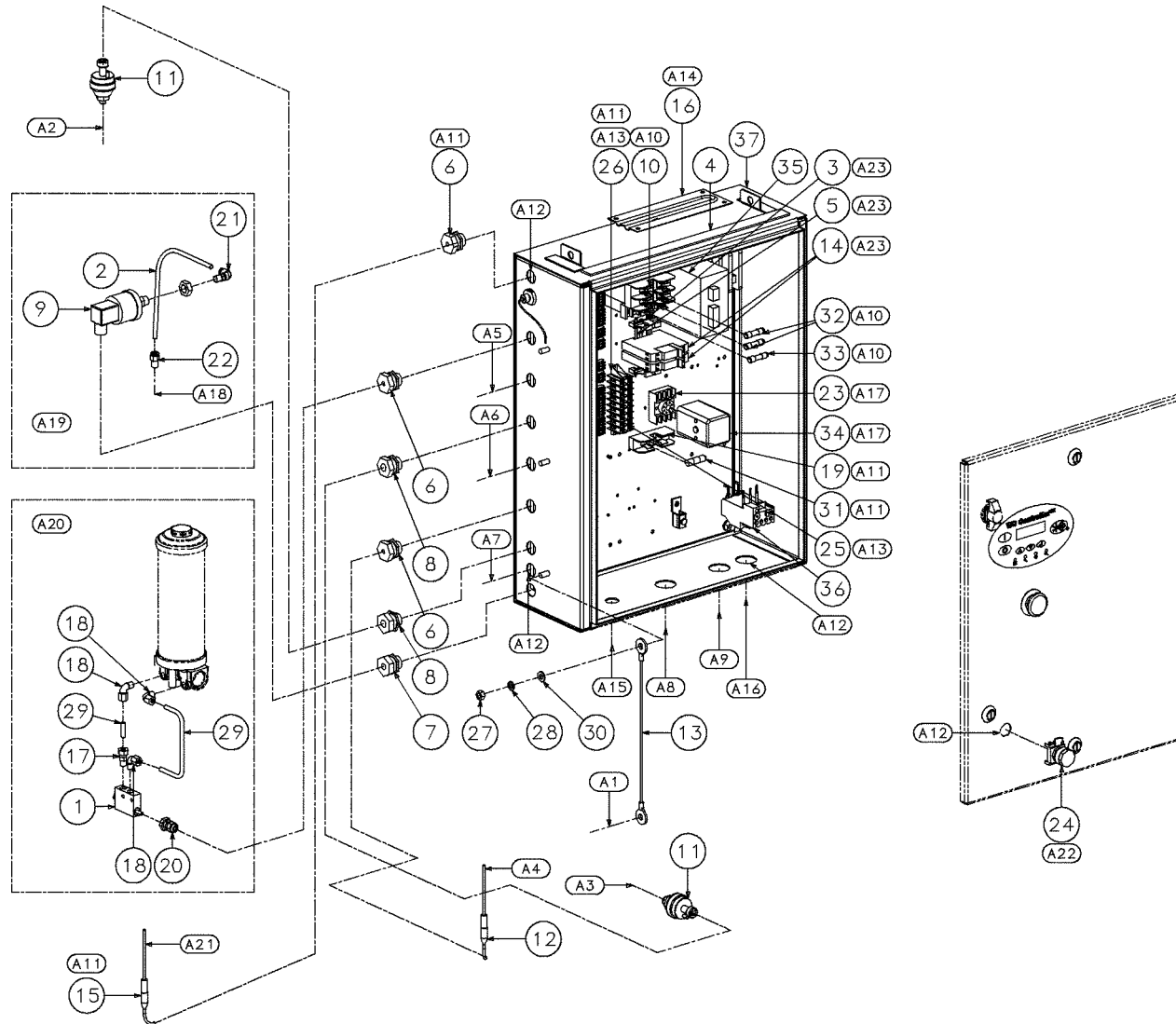
02250165-275-R03

## 1.17 CONTROL SYSTEM AND ELECTRIC PARTS—WYE DELTA

KEY NO.	PART NO.	QTY	DESCRIPTION	NOTE
1	02250050-154	1	switch, defferential pressure 20psid 12ft or	
2	02250054-861	1	tube,nyl .25 od xx 040w blk(ft)	
3	02250057-245	2	block, term end stop ch	
4	02250058-345	1	strip,weather 1" x 1/8" foam (ft)	
5	02250060-705	1	rail,din 35mm (meters)	
6	02250071-379	3	grip, cord n4 .125-.187 x 1/2"	
7	02250071-380	1	grip, cord n4 .187-.250 x 1/2"	
8	02250071-381	2	grip, cord n4 .250-.375 x 1/2"	
9	02250078-249	1	switch, vacuum 22"wc n4 6ft cable 5a	
10	02250083-182	1	transformer, control 50va univ w/pri fh	
11	02250155-174	2	transducer, pressure 0-250# ratiometric	
12	02250155-175	1	probe,rtd 100 ohm plat 3.5"x 6ft	
13	02250157-450	1	wire,10 gage ground bond 12" m8	
14	02250158-377	2	relay,sptd din 10a 24vdc coil	
15	02250175-087	1	probe,thermister 3000 ohm ntc 12'l	
16	249008	1	heater, enclosure 50w	
17	250018-427	1	connector,1/4" tube x 1/8" npt	-
18	250018-429	3	elbow, 90 1/4"tube x 1/8"npt	-
19	250019-771	1	holder,fuse 1p 30a 600v	
20	250023-496	1	connector, cord grip 0.09-0.26	
21	250025-849	1	elbow,90deg m swvl 1/4t x 1/8npt	
22	250025-858	1	connector, male 1/4tube x 1/8	
23	250034-430	1	socket, 8pin 480v	
<b>PLEASE NOTE: WHEN ORDERING PARTS, INDICATE SERIAL NUMBER OF COMPRESSOR</b>				

KEY NO.	PART NO.	QTY	DESCRIPTION	NOTE
24	250034-627	1	button, push non-illum blk n4x	
25	250041-102	3	block,terminal kt3	
26	250041-103	1	block,term adapter kad	
27	825908-125	6	nut,hex metric m8 x 1.25	
28	838808-200	6	washer, spr lock-metric pltd m8	
29	841215-004	1	tubing, st stl 1/4" 20ga	
30	865408-170	6	washer, metric-iso7089- 8	
31	FUSE,DRYER	1	various	
32	FUSE,PRI	2	various	
33	FUSE,SEC	1	various	
34	PHASE MNTR	1	various	
35	POWER SUPPLY	1	various	
36	RELAY,OVLD	1	various	
37	STARTER ASSY	1	various	
<i>Continued on page 41</i>				
<b>PLEASE NOTE: WHEN ORDERING PARTS, INDICATE SERIAL NUMBER OF COMPRESSOR</b>				

1.17 CONTROL SYSTEM AND ELECTRIC PARTS—WYE DELTA (CONTINUED)



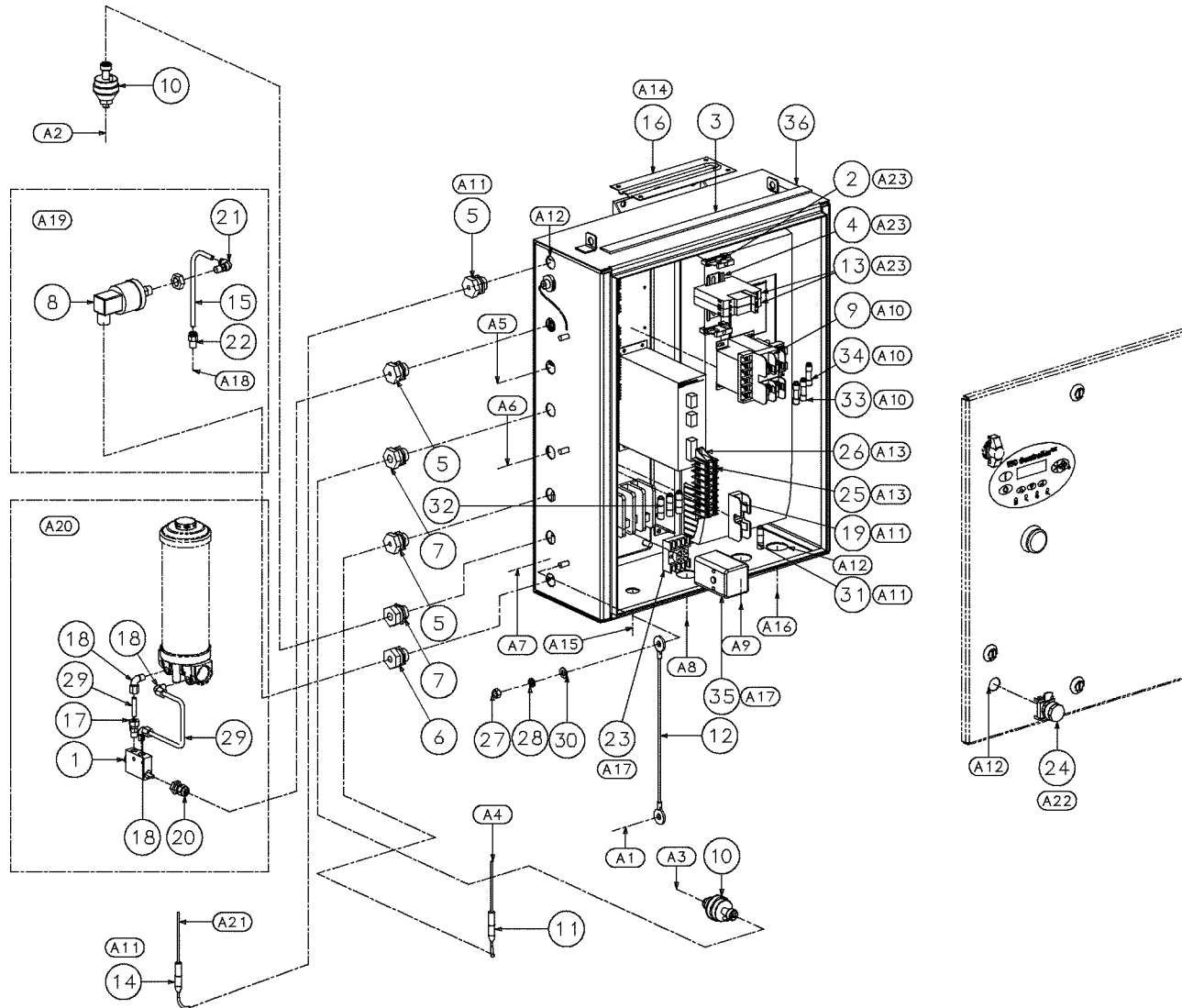
02250165-275-R03

## 1.17 CONTROL SYSTEM AND ELECTRIC PARTS—WYE DELTA (CONTINUED)

KEY NO.	PART NO.	QTY	DESCRIPTION	NOTE
A1:			TO FRAME	
A2:			P2-PACKAGE DISCHARGE PRESSURE	
A3:			P1-TO SUMP WET SUMP PRESSURE	
A4:			T1-TO SUMP WET DISCHARGE TEMPERATURE	
A5:			SOLENOID 1	
A6:			SOLENOID 4	
A7:			SOLENOID 5-ELECTRIC DRAIN	
A8:			FAN MOTOR CONNECTION	
A9:			MOTOR WIRING	
A10:			SCD DRAIN OPTION	
A11:			DRYER OPTION	
A12:			HOLE TO BE DRILLED IN BOX AS NEEDED	
A13:			HEATER OPTIONS	
A14:			ENCLOSURE HEATER MOUNTED INSIDE TOP OF STARTER BOX	
A15:			DRYER CTL POWER - 24VDC	
A16:			DRYER COMPRESSOR MOTOR POWER	
A17:			PHASE MONITOR OPTION	
A18:			TO AIR FILTER	
A19:			INLET PRESSURE SWITCH OPTION MOUNT TO FAN MOTOR SUPPORT	
A20:			DIFFERENTIAL PRESSURE SWITCH OPTION	
A21:			T3-TO INTEGRAL DRYER EVAPORATOR DRYER DEWPOINT TEMPERATURE	
<b>PLEASE NOTE: WHEN ORDERING PARTS, INDICATE SERIAL NUMBER OF COMPRESSOR</b>				

KEY NO.	PART NO.	QTY	DESCRIPTION	NOTE
A22:			CSA OPTION	
A23:			OTHER OPTIONS	
Q1:			SEE ASSY DRAWINGS:	
			02250169-665 DWG,START P8/10 YD N4 TAB	
<b>PLEASE NOTE: WHEN ORDERING PARTS, INDICATE SERIAL NUMBER OF COMPRESSOR</b>				

1.18 CONTROL SYSTEM AND ELECTRIC PARTS—VSD



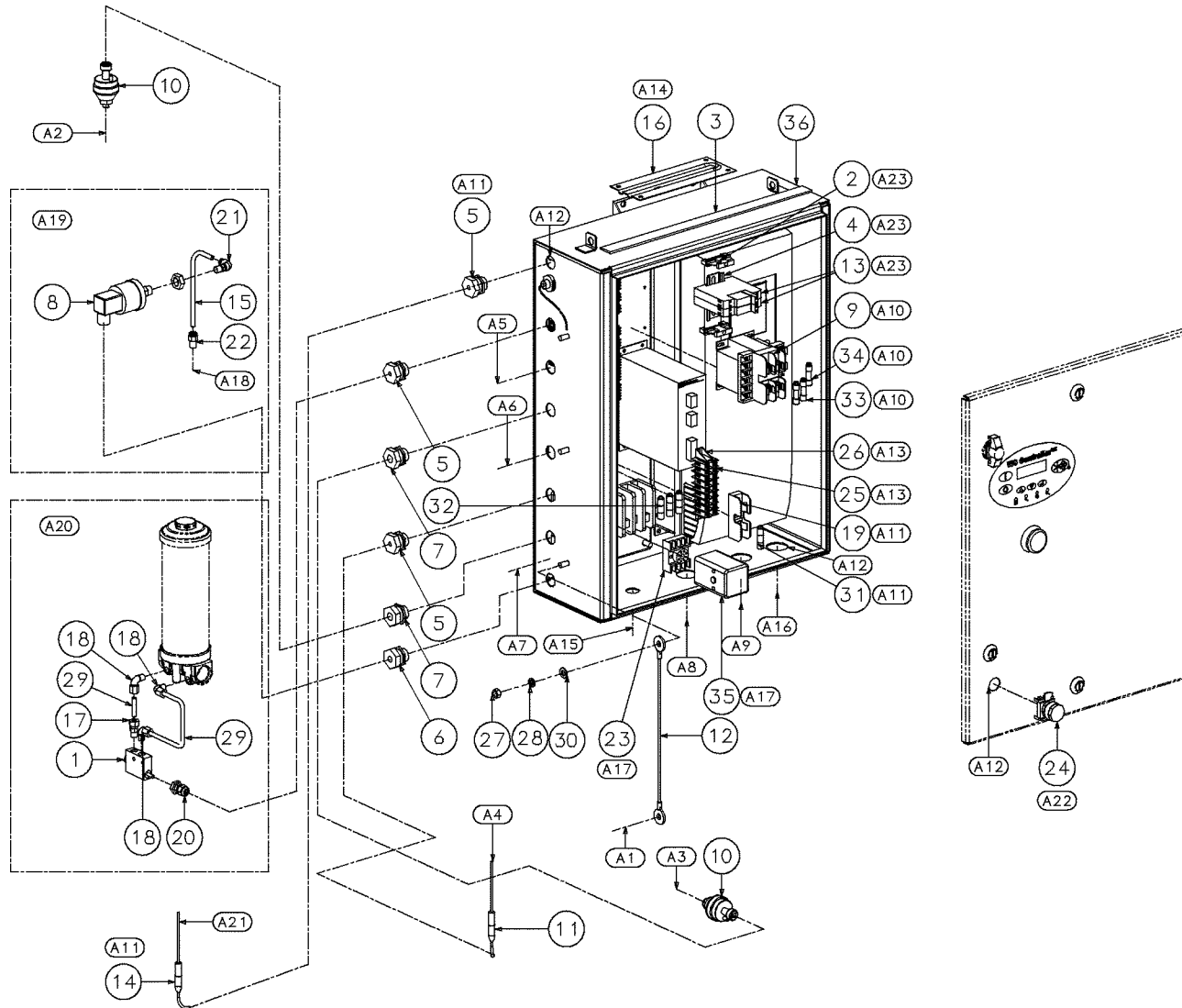
02250165-276-R03

## 1.18 CONTROL SYSTEM AND ELECTRIC PARTS—VSD

KEY NO.	PART NO.	QTY	DESCRIPTION	NOTE
1	02250050-154	1	switch, defferential pressure 20psid 12ft or	
2	02250057-245	2	block, term end stop ch	
3	02250058-345	1	strip,weather 1" x 1/8" foam (ft)	
4	02250060-705	1	rail,din 35mm (meters)	
5	02250071-379	3	grip, cord n4 .125-.187 x 1/2"	
6	02250071-380	1	grip, cord n4 .187-.250 x 1/2"	
7	02250071-381	2	grip, cord n4 .250-.375 x 1/2"	
8	02250078-249	1	switch, vacuum 22"wc n4 6ft cable 5a	
9	02250083-182	1	transformer, control 50va univ w/pri fh	
10	02250155-174	2	transducer, pressure 0-250# ratiometric	
11	02250155-175	1	probe, rtd 100 ohm plat 3.5"x 6ft	
12	02250157-450	1	wire, 10 gage ground bond 12" m8	
13	02250158-377	2	relay, sptd din 10a 24vdc coil	
14	02250175-087	1	probe, thermister 3000 ohm ntc 12'l	
15	0225054-861	1	tube, nyl .25 od xx 040w blk(ft)	
16	249008	1	heater, enclosure 50w	
17	250018-427	1	connector, 1/4" tube x 1/8" npt	-
18	250018-429	3	elbow, 90 1/4" tube x 1/8" npt	-
19	250019-771	1	holder, fuse 1p 30a 600v	
20	250023-496	1	connector, cord grip 0.09-0.26	
21	250025-849	1	elbow, 90deg m swvl 1/4t x 1/8npt	
22	250025-858	1	connector, male 1/4tube x 1/8	
23	250034-430	1	socket, 8pin 480v	
<b>PLEASE NOTE: WHEN ORDERING PARTS, INDICATE SERIAL NUMBER OF COMPRESSOR</b>				

KEY NO.	PART NO.	QTY	DESCRIPTION	NOTE
24	250034-627	1	button, push non-illum blk n4x	
25	250041-102	3	block, terminal kt3	
26	250041-103	1	block, term adapter kad	
27	825908-125	6	nut, hex metric m8 x 1.25	
28	838808-200	6	washer, spr lock-metric pltd m8	
29	841215-004	1	tubing, st stl 1/4" 20ga	
30	865408-170	6	washer, metric-iso7089- 8	
31	FUSE, DRYER	1	various	
32	FUSE, FAN	3	various	
33	FUSE, PRI	2	various	
34	FUSE, SEC	1	various	
35	PHASE MNTR	1	various	
36	STARTER ASSY	1	various	
<i>Continued on page 45</i>				
<b>PLEASE NOTE: WHEN ORDERING PARTS, INDICATE SERIAL NUMBER OF COMPRESSOR</b>				

1.18 CONTROL SYSTEM AND ELECTRIC PARTS—VSD (CONTINUED)



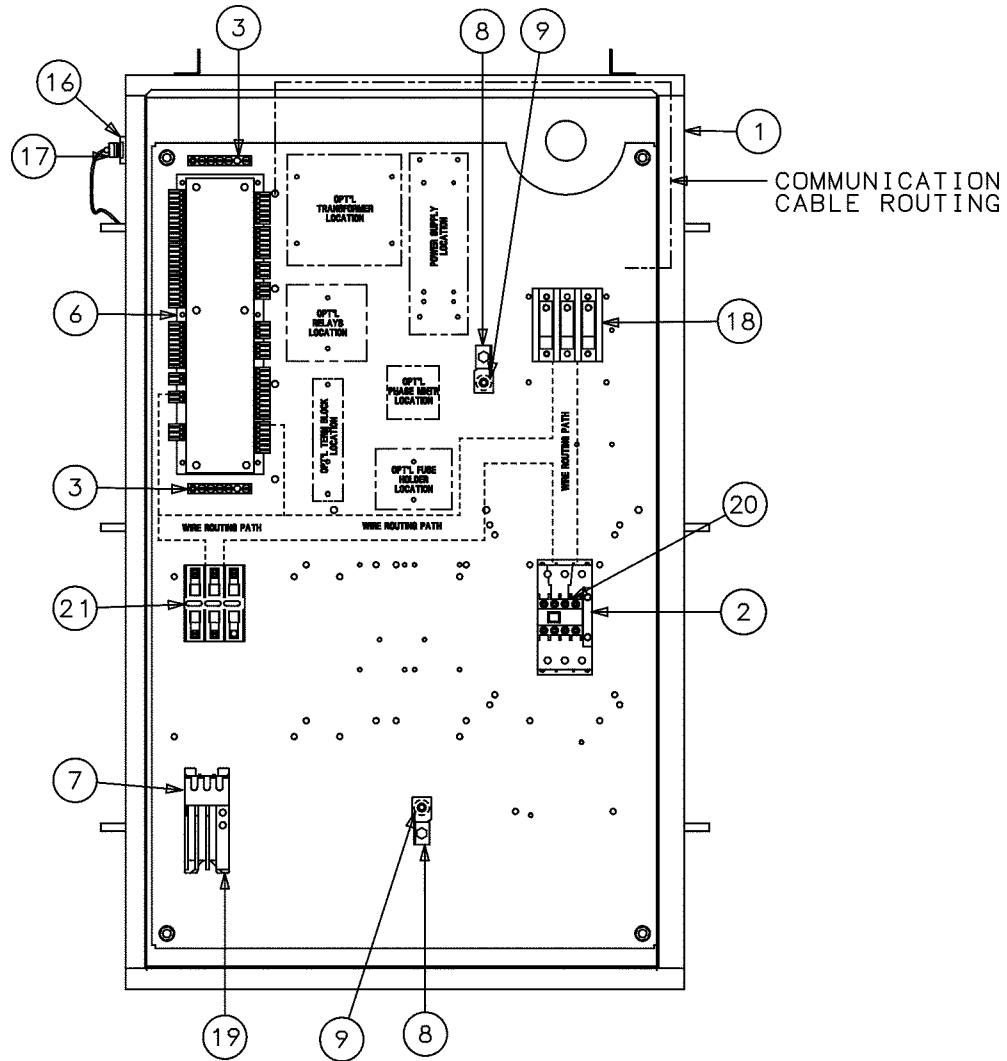
02250165-276-R03

## 1.18 CONTROL SYSTEM AND ELECTRIC PARTS—VSD (CONTINUED)

KEY NO.	PART NO.	QTY	DESCRIPTION	NOTE
A1:			TO FRAME	
A2:			P2-PACKAGE DISCHARGE PRESSURE	
A3:			P1-TO SUMP WET SUMP PRESSURE	
A4:			T1-TO SUMP WET DISCHARGE TEMPERATURE	
A5:			SOLENOID 1	
A6:			SOLENOID 4	
A7:			SOLENOID 5-ELECTRIC DRAIN	
A8:			FAN MOTOR CONNECTION	
A9:			MOTOR WIRING	
A10:			SCD DRAIN OPTION	
A11:			DRYER OPTION	
A12:			HOLE TO BE DRILLED IN BOX AS NEEDED	
A13:			HEATER OPTIONS	
A14:			ENCLOSURE HEATER MOUNTED INSIDE TOP OF STARTER BOX	
A15:			DRYER CTL POWER - 24VDC	
A16:			DRYER COMPRESSOR MOTOR POWER	
A17:			PHASE MONITOR OPTION	
A18:			TO AIR FILTER	
A19:			INLET PRESSURE SWITCH OPTION MOUNT TO FAN MOTOR SUPPORT	
A20:			DIFFERENTIAL PRESSURE SWITCH OPTION	
A21:			T3-TO INTEGRAL DRYER EVAPORATOR DRYER DEWPOINT TEMPERATURE	
<b>PLEASE NOTE: WHEN ORDERING PARTS, INDICATE SERIAL NUMBER OF COMPRESSOR</b>				

KEY NO.	PART NO.	QTY	DESCRIPTION	NOTE
A22:			CSA OPTION	
A23:			OTHER OPTIONS	
Q1:			SEE ASSY DRAWINGS: 02250169-671 DWG,START P8/10 VSD TAB	
<b>PLEASE NOTE: WHEN ORDERING PARTS, INDICATE SERIAL NUMBER OF COMPRESSOR</b>				

1.19 CONTROL STARTER—MFV



02250169-587 R06

## 1.19 CONTROL STARTER—MFV

KEY NO.	PART NO.	QTY	DESCRIPTION
1	02250169-621		SPEC, ENCL P12/16 22" X 36" X 10"
2	02250167-818		CNTOR,65A 3P 24VDC XT
2	02250170-761		CNTOR,80A 3P 24VDC XT
2	02250167-819		CNTOR,95A 3P 24VDC XT
2	02250170-760		CNTOR,115A 3P 24VDC XT
2	02250167-820		CNTOR,150A 3P 24VDC XT
2	02250167-821		CNTOR,225A 3P 24VDC XT
2	02250167-822		CNTOR,400A 3P 24VDC XT
3	02250101-721		BAR, GROUND 5 POST
4	02250154-051		CTL,DISPLAY WS
5	02250161-759		SPCR,.25DIA X .41 LONG - ALUM
6	02250154-052		CTL,I/O MOD WS 24VDC
7	250021-694		ADAPTER,O.L.R. BASE MNT
8	-		LUG, GROUND
9	-		WASHER,LOCK EXTERNAL TOOTH 5/16"
10	250014-827		CB, 100A HMCP
11	250014-127		KIT, CIR BRKR DISCONNECT N4
12	02250154-359		DECAL,MICROPROCESSOR OVERLAY
13	02250085-504		SW,PB OPER RED40MM PUSH-TWIST
14	250027-125		BLOCK, CONTACT 1 N.C
15	02250081-473		NPL,YELLOW RING 45MM E-STOP
16	02250159-547		RCPT,S4 PROGRAM PORT NEMA 6P
17	02250159-549		CAP,S4 PROGRAM PORT NEMA 6P
<b>PLEASE NOTE: WHEN ORDERING PARTS, INDICATE SERIAL NUMBER OF COMPRESSOR</b>			

KEY NO.	PART NO.	QTY	DESCRIPTION
18	02250145-194		BLOCK, POWER DISTRIBUTION 310 AMP
18	02250145-195		BLOCK, POWER DISTRIBUTION 175 AMP
19	250021-692		RELAY,OVERLOAD 32A
20	02250167-849		BLK,AUX CONT 1NO 1NC FRONT
21	250019-773		HOLDER,FUSE KTK-R 3 POLE
<b>NOTES:</b>			
-SEPARATE DC CONTROL WIRING FROM AC CONTROL WIRING			
-ALL DC CONTROL WIRES TO BE DARK BLUE IF NOT IN A CABLE.			
-GROUND WIRES ARE GREEN WITH YELLOW TRACER.			
-ALL COMPONENTS TO BE UL AND CSA APPROVED.			
-MANUFACTURER: CUTLER-HAMMER			
-SULLAIR P/N 02250159-549 AND 02250159-547 SHOULD NOT BE INSTALLED AND WIRED BUT SHOULD BE SECURELY SHIPPED LOOSE INSIDE STARTER BOX.			
-DO NOT ROUTE WIRING THROUGH OPTIONAL COMPONENT LOCATIONS.			
-ROUTE COMMUNICATION CABLE FROM I/O MODULE TO DISPLAY MODULE OFF OF THE SUB-PANEL.			
<b>PLEASE NOTE: WHEN ORDERING PARTS, INDICATE SERIAL NUMBER OF COMPRESSOR</b>			



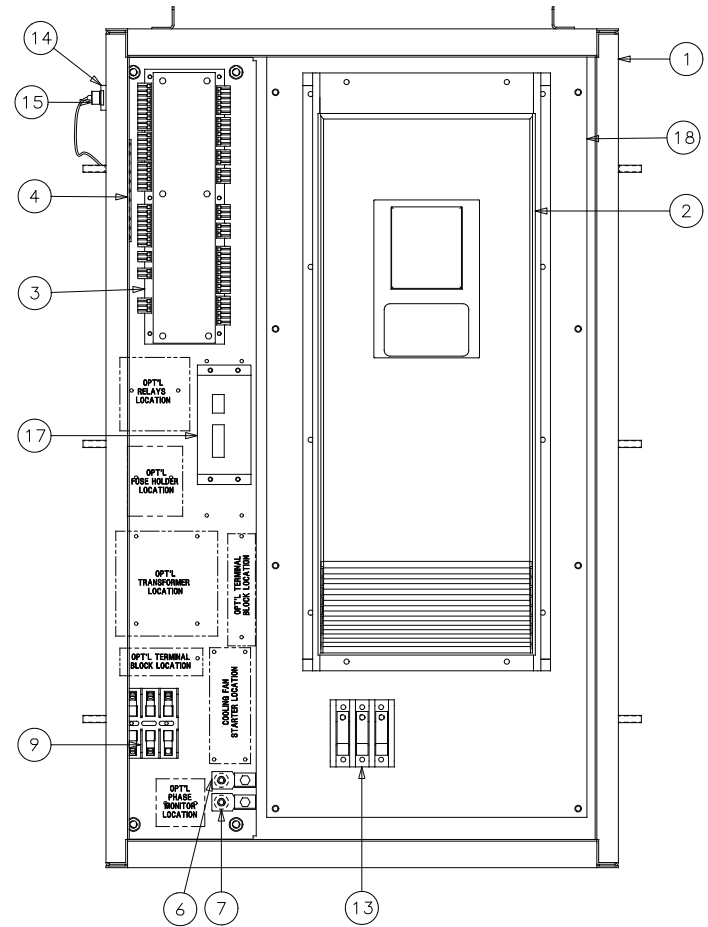
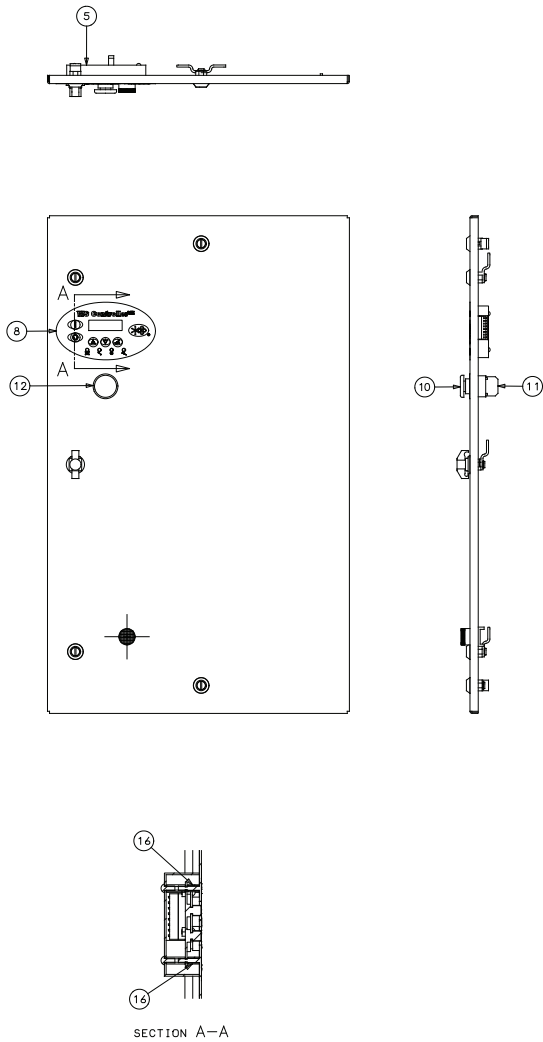
## 1.20 CONTROL STARTER—WYE-DELTA

KEY NO.	PART NO.	QTY	DESCRIPTION
1	02250169-621		SPEC, ENCL P12/16 22" X 36" X 10"
2	02250167-817		CNTOR,32A 3P 24VDC XT
2	02250167-818		CNTOR,65A 3P 24VDC XT
2	02250167-819		CNTOR,95A 3P 24VDC XT
2	02250167-820		CNTOR,150A 3P 24VDC XT
2	02250167-821		CNTOR,225A 3P 24VDC XT
3	250021-692		RELAY,OVERLOAD 32A
4	02250154-052		CTL,I/O MOD WS 24VDC
5	02250101-721		BAR, GROUND 5 POST
6	02250154-051		CTL,DISPLAY WS
7	02250154-359		DECAL,MICROPROCESSOR OVERLAY
8	02250161-759		SPACER,6.35 DIA X 10.4 LONG ALUM
9	-		LUG, GROUND
10	-		WASHER,LOCK EXTERNAL TOOTH 5/16"
11	250014-827		CB, 100A HMCP
12	250014-127		KIT, CIR BKR DISCONNECT N4
13	02250085-504		SW,PB OPER RED40MM PUSH-TWIST
14	250027-125		BLOCK, CONTACT 1 N.C
15	02250081-473		NPL,YELLOW RING 45MM E-STOP
16	250021-694		ADAPTER,O.L.R. BASE MNT
17	02250159-547		RCPT,S4 PROGRAM PORT NEMA 6P
18	02250159-549		CAP,S4 PROGRAM PORT NEMA 6P
19	02250145-195		BLOCK,POWER DISTRIBUTION 175 AMP
<b>PLEASE NOTE: WHEN ORDERING PARTS, INDICATE SERIAL NUMBER OF COMPRESSOR</b>			

KEY NO.	PART NO.	QTY	DESCRIPTION
19	02250145-194		BLOCK,POWER DISTRIBUTION 310 AMP
20	02250167-843		BLK,AUX CONT 1NO 1NC FRONT
20	02250167-849		BLK,AUX CONT 1NO 1NC FRONT
21	250019-773		HOLDER,FUSE KTK-R 3 POLE
<b>NOTES:</b>			
-SEPARATE DC CONTROL WIRING FROM AC CONTROL WIRING			
-ALL DC CONTROL WIRES TO BE DARK BLUE IF NOT IN A CABLE.			
-GROUND WIRES ARE GREEN WITH YELLOW TRACER.			
-ALL COMPONENTS TO BE UL AND CSA APPROVED.			
-MANUFACTURER: CUTLER-HAMMER			
-SULLAIR P/N 02250159-549 AND 02250159-547 SHOULD NOT BE INSTALLED AND WIRED BUT SHOULD BE SECURELY SHIPPED LOOSE INSIDE STARTER BOX.			
-DO NOT ROUTE WIRING THROUGH OPTIONAL COMPONENT LOCATIONS.			
-ROUTE COMMUNICATION CABLE FROM I/O MODULE TO DISPLAY MODULE OFF OF THE SUB-PANEL.			
<b>PLEASE NOTE: WHEN ORDERING PARTS, INDICATE SERIAL NUMBER OF COMPRESSOR</b>			

# CONTROL STARTER—VSD N12

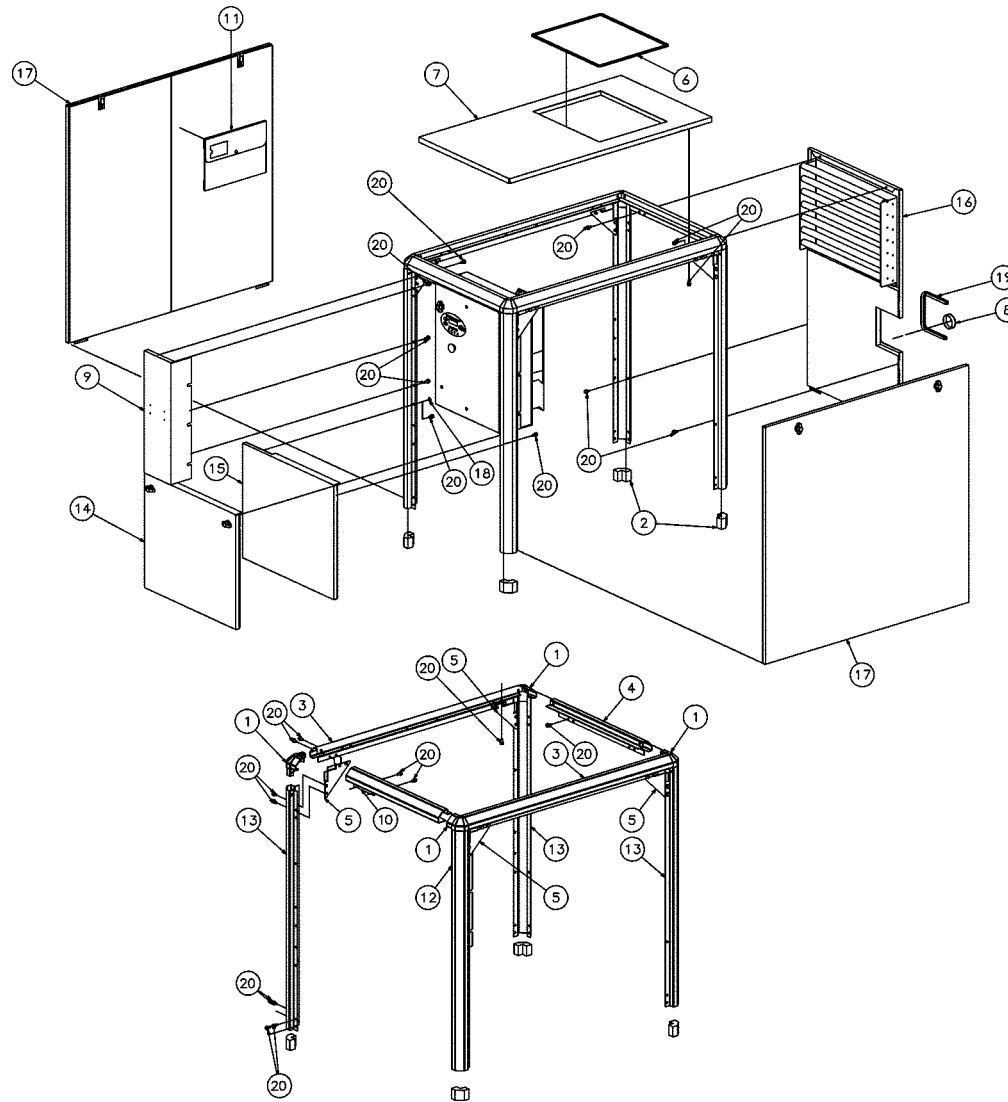
## 1.21 CONTROL STARTER—VSD N12



02250169-392-R02



1.22 ENCLOSURE—STANDARD

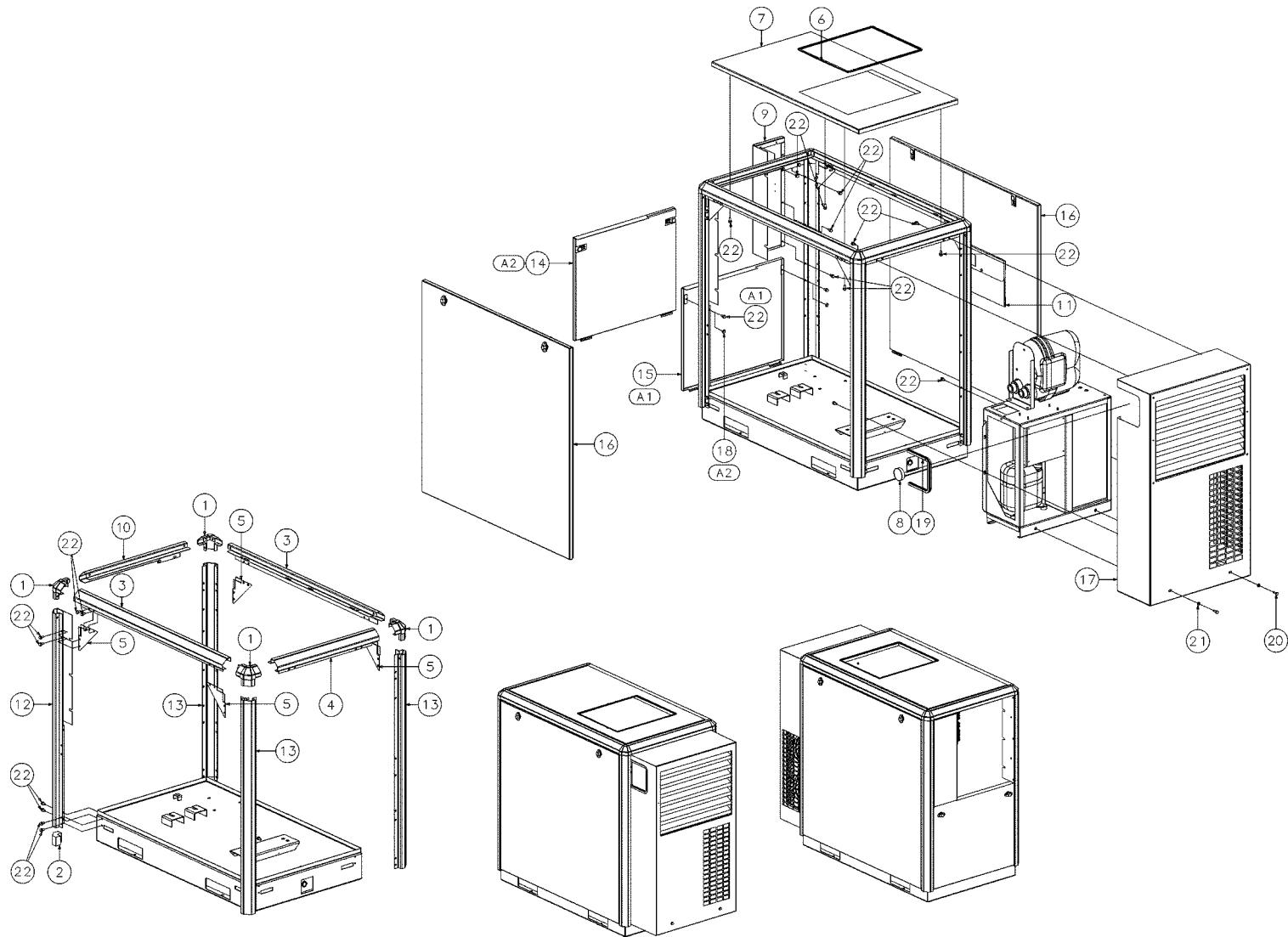


02250155-649-R05

## 1.22 ENCLOSURE—STANDARD

KEY NO.	PART NO.	QTY	DESCRIPTION	NOTE
1	02250150-893	4	cap,molded canopy corner	
2	02250152-323	4	insulation,foam 2" corner piece 50h	
3	02250152-334	2	rail, roof lh and rh	
4	02250152-335	1	rail, roof end p8 p10	
5	02250152-336	4	gusset,corner p8 p10	
6	02250154-659	7	trim, edge clip-on 185-260duq	
7	02250154-667	1	panel,roof various	
8	02250155-284	1	plug, hole 2 1/2" nylon black	
9	02250155-824	1	panel,starter end p8 p10	
10	02250155-825	1	rail,roof starter end p8 p10	
11	02250158-039	1	pocket,drawing holder 3700	
12	02250160-372	1	rail,vertical starter side p8 p10	
13	02250160-373	3	rail, vertical p8 p10	
14	02250160-374	1	panel,starter end bottom p8	
15	02250160-375	1	panel,starter end bottom p10	
16	02250160-377	1	panel, louver rear p8 p10	
17	02250160-378	2	panel, canopy door liftoff p8 p10	
18	250019-520	2	plug,plastic for 3/8" hole	
19	250034-157	2	trim,canopy edge 7.5/10hp	
20	883008-016	47	screw, tf-hex m8 x 16 blk zinc	
<b>PLEASE NOTE: WHEN ORDERING PARTS, INDICATE SERIAL NUMBER OF COMPRESSOR</b>				

1.23 ENCLOSURE—WITH INTEGRAL DRYER



02250168-700-R01

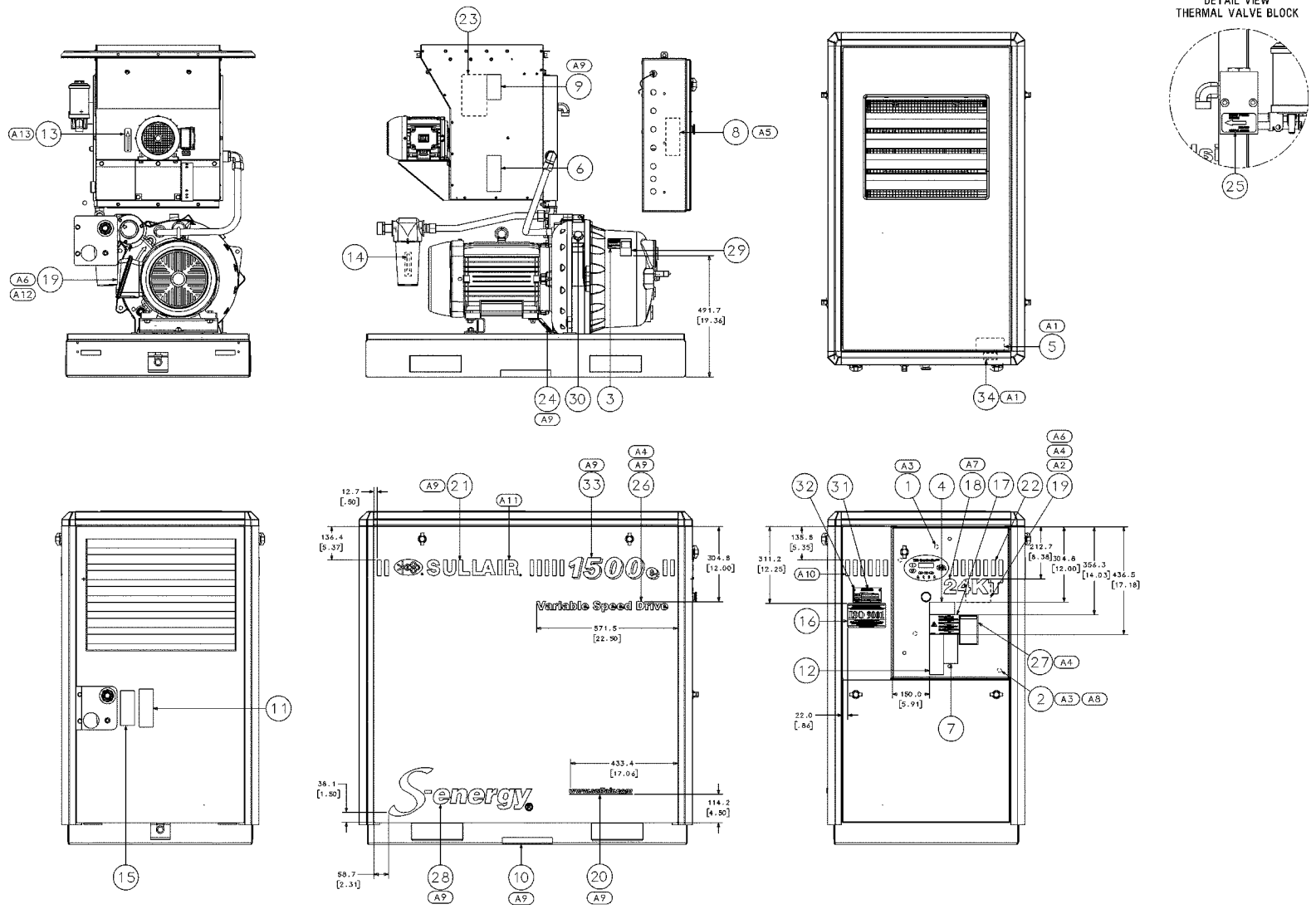
## 1.23 ENCLOSURE—WITH INTEGRAL DRYER

KEY NO.	PART NO.	QTY	DESCRIPTION
1	02250150-893	4	CAP,MOLDED CANOPY CORNER
2	02250152-323	4	INSUL,FOAM 2" CORNER PIECE
3	02250152-334	2	RAIL, ROOF LH AND RH
4	02250152-335	1	RAIL, ROOF END P8 P10
5	02250152-336	4	GUSSET, CORNER P8 P10
6	02250154-659	7	TRIM,CLIP-ON GRIP 185-260DUQ
7	02250154-667	1	PANEL, ROOF ENCL ES8
8	02250155-284	1	PLUG, HOLE 2 1/2" NYLON BLACK
9	02250155-824	1	PNL,STARTER END P8 P10
10	02250155-825	1	R,ROOF STARTER END P8 P10
11	02250158-039	1	PKT,DRAWING HOLDER 3700
12	02250160-372	1	R,VERTICAL STARTER SIDE P8 P10
13	02250160-373	3	RAIL, VERTICAL P8 P10
14	02250160-374	1	PNL,STARTER END BOTTOM P8
15	02250160-375	1	PNL,STARTER END BOTTOM P10
16	02250160-378	2	DOOR,ENCL LIFT OFF P8 P10
17	02250168-656	1	PNL,CAN ASSY INTAKE END 2200 W/ DRYER
18	250019-520	2	PLUG,PLASTIC FOR 3/8" HOLE
19	250034-157	2	TRIM,CANOPY EDGE 7.5/10HP
20	828008-025	2	CAPSCR, HEX 8.8 M8 X 25MM
21	865408-170	2	WASHER, METRIC-ISO7089- 8
22	883008-016	47	SCREW, TF-HEX M8 X 16 BLK ZINC
<b>PLEASE NOTE: WHEN ORDERING PARTS, INDICATE SERIAL NUMBER OF COMPRESSOR</b>			

KEY NO.	PART NO.	QTY	DESCRIPTION
A1 - USED ON 1800/2200			
A2 - USED ON 1100E/1500E/1800E			
<b>PLEASE NOTE: WHEN ORDERING PARTS, INDICATE SERIAL NUMBER OF COMPRESSOR</b>			

# DECAL LOCATION—STANDARD

## 1.24 DECAL LOCATION—STANDARD



02250157-768-R06



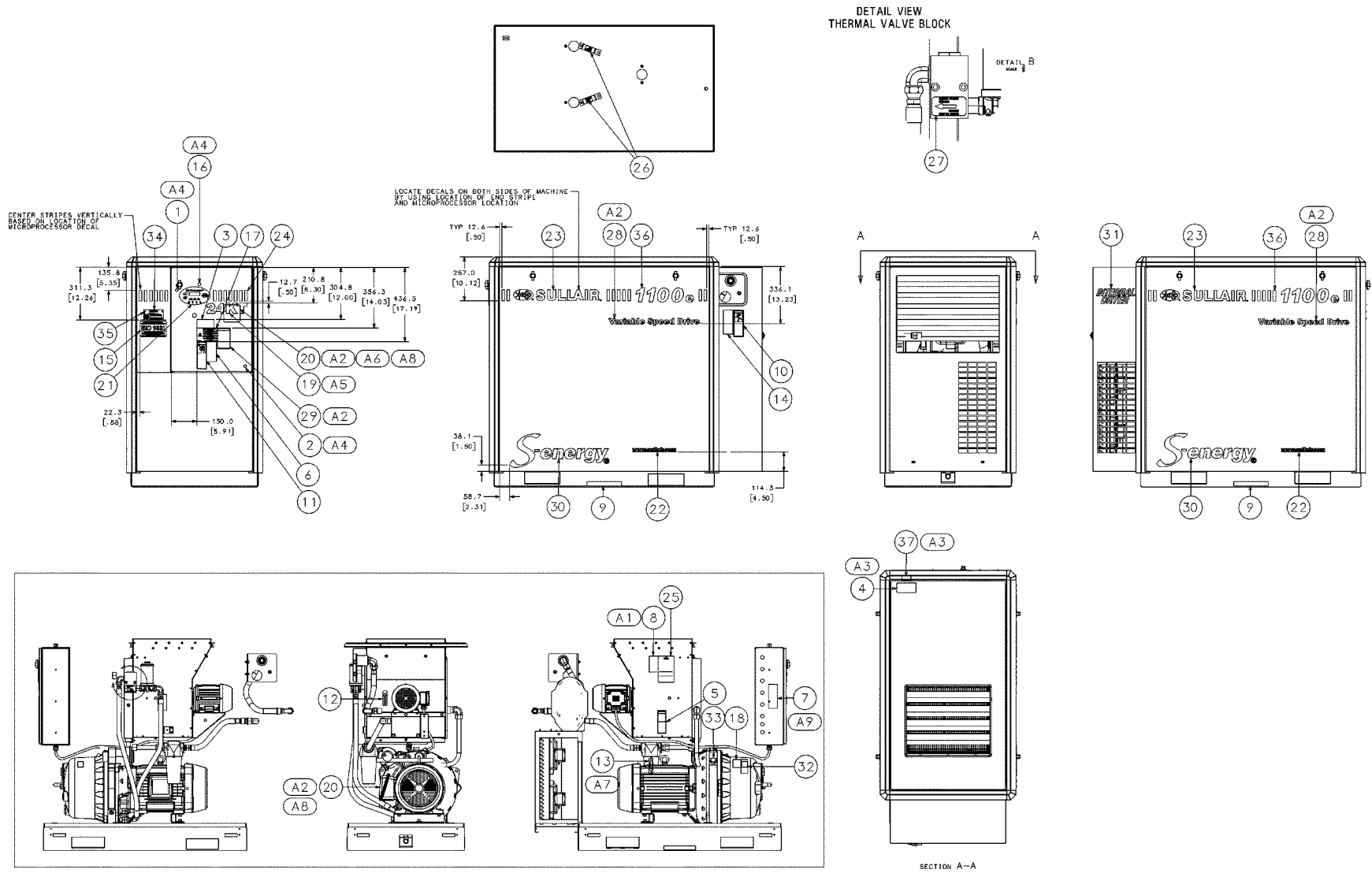
## 1.24 DECAL LOCATION—STANDARD

KEY NO.	PART NO.	QTY	DESCRIPTION
1	*02250075-045	1	decal
2	*02250075-540	1	decal
3	*0225010-891	1	decal
4	*041065	1	decal
5	*042218	1	decal
6	*049685	1	sign
7	*049850	1	sign
8	*049852	1	sign
9	*049855	2	sign
10	*241814	2	decal
11	*250003-144	1	sign
12	*250017-903	1	decal
13	*250021-564	1	decal
14	*250022-810	1	decal
15	*250027-935	1	decal
16	02250057-624	1	decal
17	02250077-472	1	decal
18	02250145-206	1	decal
19	02250146-385	2	decal
20	02250155-495	2	decal
21	02250157-703	2	decal
22	02250157-732	1	decal
23	02250157-749	1	decal
24	02250158-358	2	decal
25	02250161-967	1	decal
26	02250162-215	2	decal
27	02250164-823	1	decal
<b>PLEASE NOTE: WHEN ORDERING PARTS, INDICATE SERIAL NUMBER OF COMPRESSOR</b>			

KEY NO.	PART NO.	QTY	DESCRIPTION
28	02250168-920	2	decal
29	407408	1	sign
30	FLUID	1	various fluids
31	NAMEPLATE	1	various materials
32	RIVET	4	various materials
33	SERIES	2	various
34	VOLTAGE	1	various
A1: ATTACH TO THE BOTTOM ON INSIDE OF STARTER BOX			
A2: ATTACH TO INSIDE OF STARTER DOOR			
A3: ATTACH TO SUBPANEL INSIDE OF STARTER BOX			
A4: USED ON VSD MACHINES			
A5: APPLY TO INSIDE OF STARTER BOX ON RIGHT-HAND SIDE			
A6: NOT USED ON 575V VSD MACHINES			
A7: USED ON 24KT MACHINES			
A8: CUSTOMER GROUND CONNECTION			
A9: DECAL INSTALLED ON BOTH SIDES OF MACHINE			
A10: CENTER STRIPES VERTICALLY BASED ON LOCATION OF MICROPROCESSOR DECAL			
A11: LOCATE DECALS ON BOTH SIDES OF MACHINE BY USING LOCATION OF END STRIPE AND MICROPROCESSOR LOCATION			
A12: INSTALL ON FACE OF MOTOR CONDUIT BOX			
A13: REVERSE ARROW DIRECTION WHEN USED WITH 15/20HP 60HZ MACHINES.			
Q1: A "*" PRECEEDING THE PART NUMBER INDICATES DECALS CONTAINED IN KIT 02250069-604			
<b>PLEASE NOTE: WHEN ORDERING PARTS, INDICATE SERIAL NUMBER OF COMPRESSOR</b>			

# DECAL LOCATION—WITH INTEGRAL DRYER

## 1.25 DECAL LOCATION—WITH INTEGRAL DRYER



02250172-375-R00

## 1.25 DECAL LOCATION—WITH INTEGRAL DRYER

KEY NO.	PART NO.	QTY	DESCRIPTION	NOTE
1	*02250075-045	1	decal,protective earth ground	
2	*02250075-540	1	decal,pe designation	
3	*041065	1	decal,warning auto start	
4	*042218	1	decal,danger hi voltage	
5	*049685	1	sign,warning-comp oil fil cap	
6	*049850	1	decal,danger electrocution	
7	*049852	1	decal,warning elect. shock-ground fault	
8	*049855	2	sign,warning-sever-fan-indus	
9	*241814	2	decal,fork lifting	
10	*250003-144	1	decal,warn "food grade" lube	
11	*250017-903	1	decal,warning-autostart	
12	*250021-564	1	decal,rotation 3.5" lg	
13	*250022-810	1	decal,water drain 3 3/4 x 1"	
14	*250027-935	1	decal,danger inhaling comp air	
15	02250057-624	1	decal,iso 9001 blk 3.44x5.75	
16	02250075-045	1	decal,protective earth ground	
17	02250077-472	1	decal,electrocution hazard international/global	
18	02250110-891	1	decal,en-warning mixing fluids	
19	02250145-206	1	decal,24kt metallic gold	
20	02250146-385	2	decal,parallel wye motor conn.	
21	02250154-359	1	decal,microprocessor overlay	
22	02250155-495	2	decal,black www.sullair.com	
23	02250157-703	2	decal, sullair side graphics	
24	02250157-732	1	decal, sullair side graphic	
25	02250157-749	1	decal,maint kit eng	
26	02250158-358	2	decal,remove before start-up	
<b>PLEASE NOTE: WHEN ORDERING PARTS, INDICATE SERIAL NUMBER OF COMPRESSOR</b>				

KEY NO.	PART NO.	QTY	DESCRIPTION	NOTE
27	02250161-967	1	decal, sump fluid drain p8/p10	
28	02250162-215	2	decal,vsd black p8/p10/p12	
29	02250164-823	1	decal, warning n12 elec encl protc	
30	02250168-920	2	decal,s-energy black	
31	02250170-899	1	decal,integral dryer	
32	407408	1	sign,warning-hot surfaces	
33	FLUID DECAL	1	various	
34	NAMEPLATE	1	various	
35	RIVET	4	various	
36	SERIES DECAL	2	various	
37	VOLTAGE DECAL	1	various	
A1: BOTH SIDES OF MACHINES				
A2: VSD MACHINES ONLY				
A3: ATTACH TO INSIDE OF STARTER BOX ON BOTTOM PANEL				
A4: ATTACH TO SUB-PANEL INSIDE OF STARTER BOX				
A5: 24KT MACHINES ONLY				
A6: ATTACH TO INSIDE OF STARTER BOX DOOR				
A7: ATTACH TO MOISTURE SEPARATOR ON SIDE OPPOSITE MAIN MOTOR				
A8: NOT USED ON 575V VSD MACHINES				
A9: ATTACHE TO INSIDE OF STARTER BOX ON RIGHT-HAND SIDE				
Q1: A "*" PRECEEDING THE PART NUMBER INDICATES DECALS CONTAINED IN KIT 02250069-604				
<b>PLEASE NOTE: WHEN ORDERING PARTS, INDICATE SERIAL NUMBER OF COMPRESSOR</b>				

1.26 DECAL GROUP

26



250027-932

18



049850

6



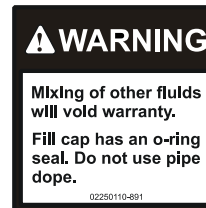
250019\_032R01

16



042218

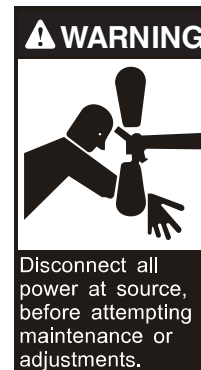
5



02280110-891

02250110-891

20



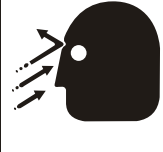
049855

## 1.26 DECAL GROUP (CONTINUED)

KEY NO.	PART NO.	QTY	DESCRIPTION	NOTE
26	250027-935	1	decal, danger inhaling comp air	
18	49850	1	decal, danger electrocution	
6	02250146-385	2	decal, parallel wye motor conn.	
16	42218	1	decal, danger hi voltage	
5	02250110-891	1	decal, en-warning mixing fluids	
20	49855	2	sign, warning-sever-fan-indus	
<b>PLEASE NOTE: WHEN ORDERING PARTS, INDICATE SERIAL NUMBER OF COMPRESSOR</b>				

1.26 DECAL GROUP (CONTINUED)

17




**WARNING**

Do not remove caps, plugs, or other components when compressor is running or pressurized. Stop compressor and relieve all internal pressure before doing so.

049685

23



**WARNING**

This Unit is Equipped With An Auto Start Sequence That Will Start The Unit In The Event Of A Power Failure Automatically After The Sump Pressure Drops To 10 PSIG And The Power IS Restored.

When Performing Maintenance Follow Your Company's Prescribed Safety Practices for Electrical Equipment.

250017-903

19



**WARNING**

Use equipment grounding connector in accordance with the National Electric Code, and all Federal, State, and Local Codes, to help avoid possible ground fault shock hazard.

049852

22



**WARNING**

Do not permit air from this equipment to contact food stuff except in full compliance with FDA Standard 21CFR178.357Q and all other applicable federal, state and local codes, standards and regulations.

02250003\_114

27



**WARNING**

Hot surfaces.

To avoid burns, keep hands and all parts of the body away.

427408

15

**CAUTION:** This machine is equipped with Automatic Stop / Start Control System.

**DO NOT ATTEMPT** to make any adjustment without disconnecting both main line and control circuit electrical power.

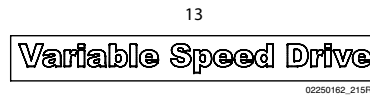
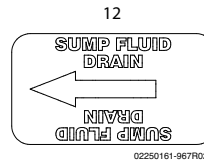
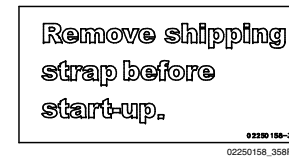
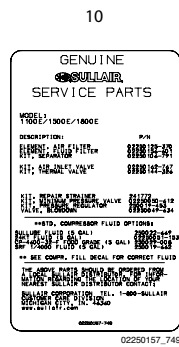
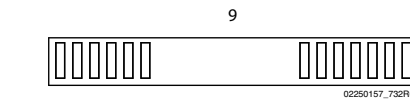
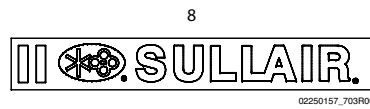
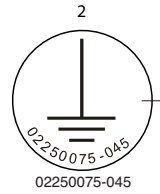
41065

41065

## 1.26 DECAL GROUP (CONTINUED)

KEY NO.	PART NO.	QTY	DESCRIPTION	NOTE
17	49685	1	sign, warning—comp oil fill cap	
23	250017-903	1	decal, warning—autostart	
19	49852	1	decal, warning elec shock—ground fault	
22	250003-144	1	decal, warning elec shock—ground fault	
27	407408	1	sign, warning—hot surfaces	
15	41065	1	decal, warning auto start	
<b>PLEASE NOTE: WHEN ORDERING PARTS, INDICATE SERIAL NUMBER OF COMPRESSOR</b>				

1.26 DECAL GROUP (CONTINUED)

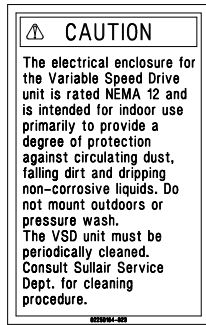


## 1.26 DECAL GROUP (CONTINUED)

KEY NO.	PART NO.	QTY	DESCRIPTION	NOTE
2	02250075-045	2	decal, protective earth ground	
3	02250075-540	1	decal, pe designation	
7	02250155-495	2	decal, black www.sullair.com	
9	02250157-703	2	decal, sullair side graphics	
10	02250157-732	1	decal, sullair side graphic	
11	02250158-358	2	decal, remove before start-up	
12	02250161-967	1	decal, separator/sump fluid drain p8/p10	
13	02250162-215	2	decal, vsd black p8/p10/p12	
<b>PLEASE NOTE: WHEN ORDERING PARTS, INDICATE SERIAL NUMBER OF COMPRESSOR</b>				

1.26 DECAL GROUP (CONTINUED)

14



02250164\_823r00

21



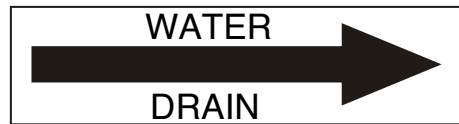
241814

24



250021-564

25



250022-810

28



02250069-389

28



02250069-394

28



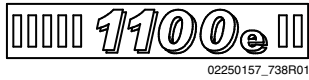
02250069-395

## 1.26 DECAL GROUP (CONTINUED)

KEY NO.	PART NO.	QTY	DESCRIPTION	NOTE
14	02250164-823	1	decal, warning n12 elec encl protection	
21	241814	2	decal, fork lifting	
24	250021-564	1	decal, rotation 3.5" lg	
25	250022-810	1	decal, water drain 3 3/4 x 1"	
28	02250069-389	1	fluids, fluid decal	(I)
	02250069-394	1	fluids, fluid decal	(I)
	02250069-395	1	fluids, fluid decal	(I)
(I) This decal will vary with individual machine. Consult Sullair Corporation with serial number				
<b>PLEASE NOTE: WHEN ORDERING PARTS, INDICATE SERIAL NUMBER OF COMPRESSOR</b>				

1.26 DECAL GROUP (CONTINUED)

31



31



31



32



32



32



32



32



33



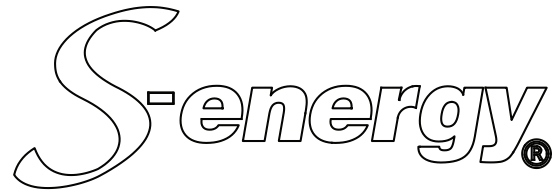
02250170-899

## 1.26 DECAL GROUP (CONTINUED)

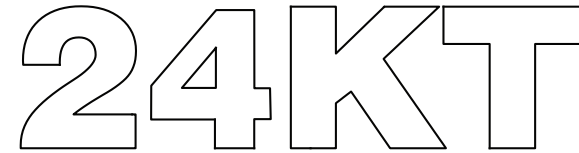
KEY NO.	PART NO.	QTY	DESCRIPTION	NOTE
31	02250157-738	1	decal, 1100e black w/stripe	(I)
	02250157-737	1	decal, 1500e black w/stripe	(I)
	02250157-736	1	decal, 1800e black w/stripe	(I)
32	02250069-397	1	voltage decal	(I)
	02250069-399	1	voltage decal	(I)
	02250069-400	1	voltage decal	(I)
	02250069-403	1	voltage decal	(I)
	02250069-406	1	voltage decal	(I)
33	02250170-889	1	decal, integral dryer	
(I) This decal will vary with individual machine. Consult Sullair Corporation with serial number				
<b>PLEASE NOTE: WHEN ORDERING PARTS, INDICATE SERIAL NUMBER OF COMPRESSOR</b>				

1.26 DECAL GROUP (CONTINUED)

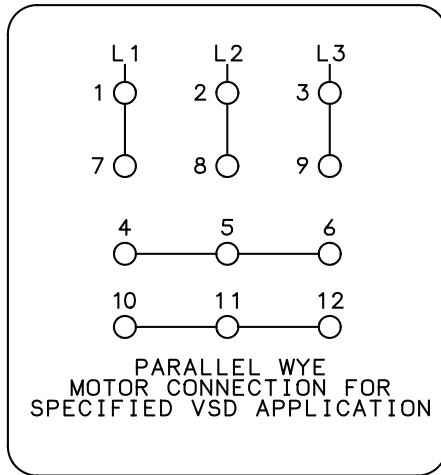
34



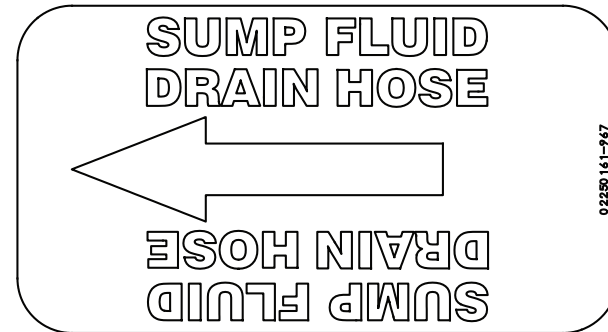
35



36



37



38



39



**1.26 DECAL GROUP**

KEY NO.	PART NO.	QTY	DESCRIPTION	NOTE
34	02250168-920	1	decal, s-energy black	
35	02250145-206	1	decal, 24kt gold matallic	
36	02250146-385	1	decal, parallel wye motor conn.	
37	02250161-967	1	decal, sump fluid drain	
38	250019-107	1	decal, water in	
39	250019-108	1	decal, water out	
<b>PLEASE NOTE: WHEN ORDERING PARTS, INDICATE SERIAL NUMBER OF COMPRESSOR</b>				

**NOTES**

---

---

## NOTES

---

---



## WORLDWIDE SALES AND SERVICE

---

---

### **SULLAIR ASIA, LTD.**

Sullair Road, No. 1  
Chiwan, Shekuo  
Shenzen, Gunagdong PRV.  
PRC POST CODE 518068  
Telephone: 755-6851686  
Fax: 755-6853473  
[www.sullair-asia.com](http://www.sullair-asia.com)

### **SULLAIR CORPORATION**

3700 East Michigan Boulevard  
Michigan City, Indiana, 46360 U.S.A.  
[www.sullair.com](http://www.sullair.com)  
Telephone: 1-800-SULLAIR (U.S.A. only)  
Fax: 219-874-1273

### **CUSTOMER CARE for PARTS and Service**

1-888-SULLAIR (7855247)  
219-874-1835

### **SULLAIR EUROPE, S.A.**

Zone Des Granges BP 82  
42602 Montbrison, France  
Telephone: 33-477968470  
Fax: 33-477968499  
[www.sullaireurope.com](http://www.sullaireurope.com)

### **Champion Compressors, LTD.**

324-332 Frankston Dandenong Road  
Dandenong VIC  
Australia 3175  
Ph: +61397039000  
Fx: +61397039053  
[www.championcompressors.com.au](http://www.championcompressors.com.au)

---

**Printed in the U.S.A.**

Specifications subject to  
change without prior notice.  
E10EP