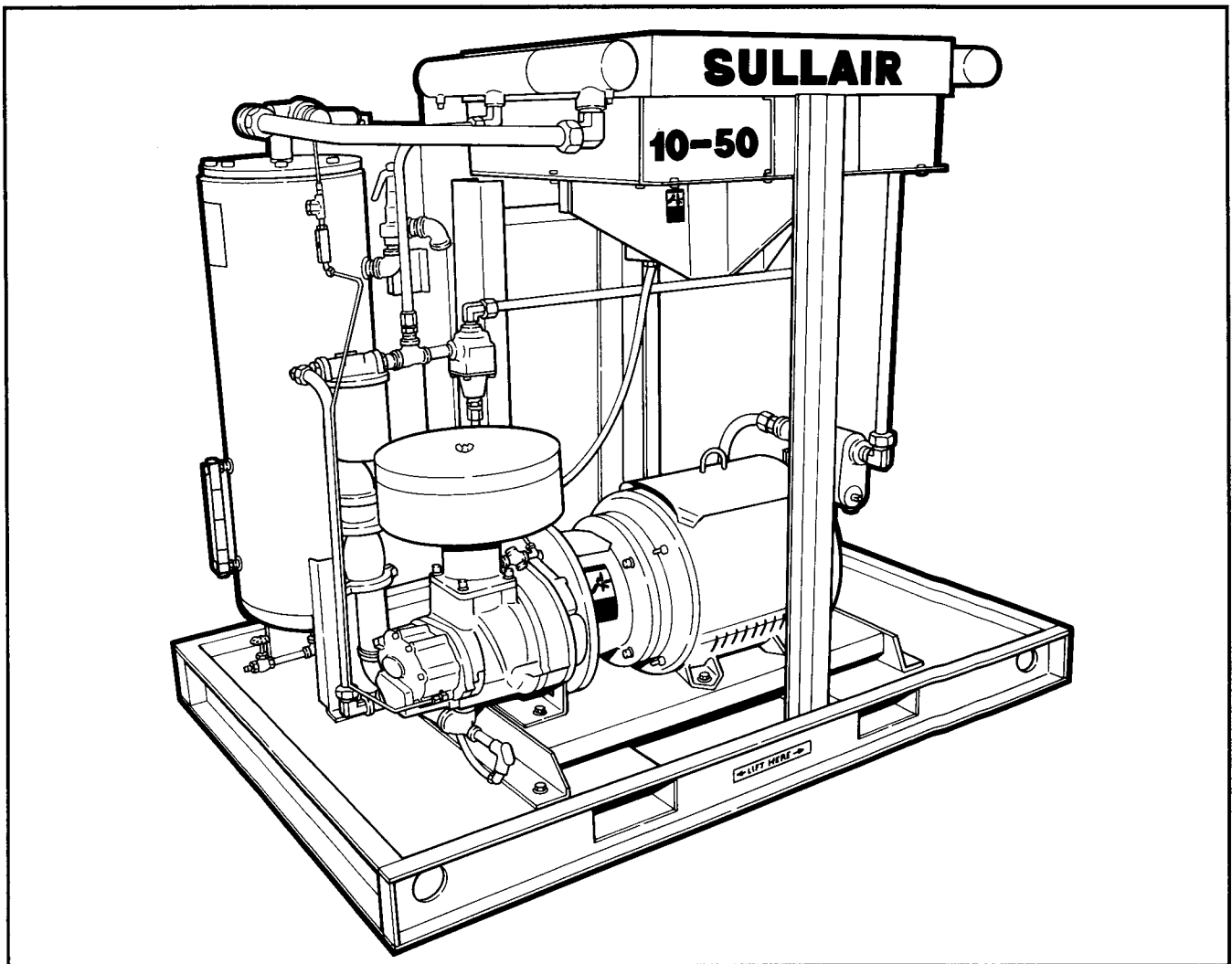


# PARTS MANUAL

# SULLAIR<sup>®</sup> COMPRESSOR

Series 10B 50HP Standard  
Industrial Rotary Screw Air Compressor



## **AIR CARE SEMINAR TRAINING**

Sullair Air Care Seminars are 3-day courses that provide hands-on instruction in the proper operation, maintenance and service of Sullair equipment. Individual seminars on Industrial compressors and compressor electrical systems are presented at regular intervals throughout the year at a dedicated training facility at Sullair's corporate headquarters in Michigan City, Indiana.

Instruction includes discussion of the function and installation of Sullair service parts, troubleshooting of the most common problems, and actual equipment operation. The seminars are recommended for maintenance and service personnel.

For detailed course outlines, schedule and cost information contact:

Sullair Corporate Training Department  
1-800-348-2722 or 219-874-1800

- Or Write -

Sullair Corporation  
3700 E. Michigan Blvd.  
Michigan City, IN 46360  
Attn: Service Training Department

## TABLE OF CONTENTS

### Section 1

## ILLUSTRATIONS AND PARTS LIST

<b>1</b>	<b>1.1 PROCEDURE FOR ORDERING PARTS</b>
<b>1</b>	<b>1.2 RECOMMENDED SPARE PARTS LIST</b>
<b>2</b>	<b>1.3 MOTOR, COMPRESSOR, FRAME AND PARTS</b>
<b>4</b>	<b>1.4 AIR INLET SYSTEM</b>
<b>6</b>	<b>1.5 FLUID COOLING AND LUBRICATION SYSTEM (AIR-COOLED)</b>
<b>10</b>	<b>1.6 FLUID COOLING AND LUBRICATION SYSTEM (WATER-COOLED)</b>
<b>14</b>	<b>1.7 FLUID COOLER ASSEMBLY</b>
<b>16</b>	<b>1.8 COMPRESSOR DISCHARGE SYSTEM (AIR-COOLED)</b>
<b>20</b>	<b>1.9 COMPRESSOR DISCHARGE SYSTEM (WATER-COOLED)</b>
<b>22</b>	<b>1.10 PNEUMATIC CONTROLS</b>
<b>26</b>	<b>1.11 INSTRUMENT PANELS AND PARTS</b>
<b>28</b>	<b>1.12 ELECTRICAL PANEL AND PARTS</b>
<b>30</b>	<b>1.13 ENCLOSURE</b>
<b>32</b>	<b>1.14 DECAL GROUP</b>



# Section 1 ILLUSTRATIONS AND PARTS LIST

## 1.1 PROCEDURE FOR ORDERING PARTS

Parts should be ordered from the nearest Sullair® Representative or the Representative from whom the compressor was purchased. If for any reason parts cannot be obtained in this manner, contact the factory directly at the address below.

When ordering parts always indicate the **Serial Number** of the compressor. This can be obtained from the Bill of Lading for the compressor or from the Serial Number Plate located on the compressor.

## SULLAIR® CORPORATION

Subsidiary of Sundstrand Corporation  
3700 East Michigan Boulevard  
Michigan City, Indiana 46360

Telephone: (219) 879-5451  
Telex: 4946922

## SULLAIR® CORPORATION

Parts Distribution Division  
1625 E. Second Street  
Michigan City, Indiana 46360

Telephone: (219) 879-5451 or  
1-800-348-2722 (U.S. except Indiana)  
1-800-225-6226 (Indiana)  
1-800-525-5506 (Canada)  
Telex: 4320147  
FAX: 1-219-874-1835

CORRECTION NOTICE  
EFFECTIVE 2/18/91  
Solenoid Valve Part Number 250038-674  
Supercedes  
Solenoid Valve Part Number 250017-993

## 1.2 RECOMMENDED SPARE PARTS LIST

<i>Description</i>	<i>Assembly Part Number*</i>	<i>Kit Number</i>	<i>Quantity</i>
element, compressor fluid filter	250025-521	250025-525	1
element, air filter	250030-092	040899	1
element, separator	250015-284	408167-005	1
repair kit, minimum pressure/check valve	241581	250020-344	1
repair kit, thermal valve	250025-620	250025-621	1
repair kit, pressure regulator	250017-280	250019-453	1
repair kit, pilot valve	250017-993	250018-970	1
replacement kit, pilot valve coil	250017-993	250018-971	1
repair kit, Flexmaster gasket	040648	040649	1
repair kit, v-type strainer	241771	241772	1
repair kit, shaft seal (10 Series)		001836-007	1
valve, poppet inlet (3")	250030-612	250031-438	1

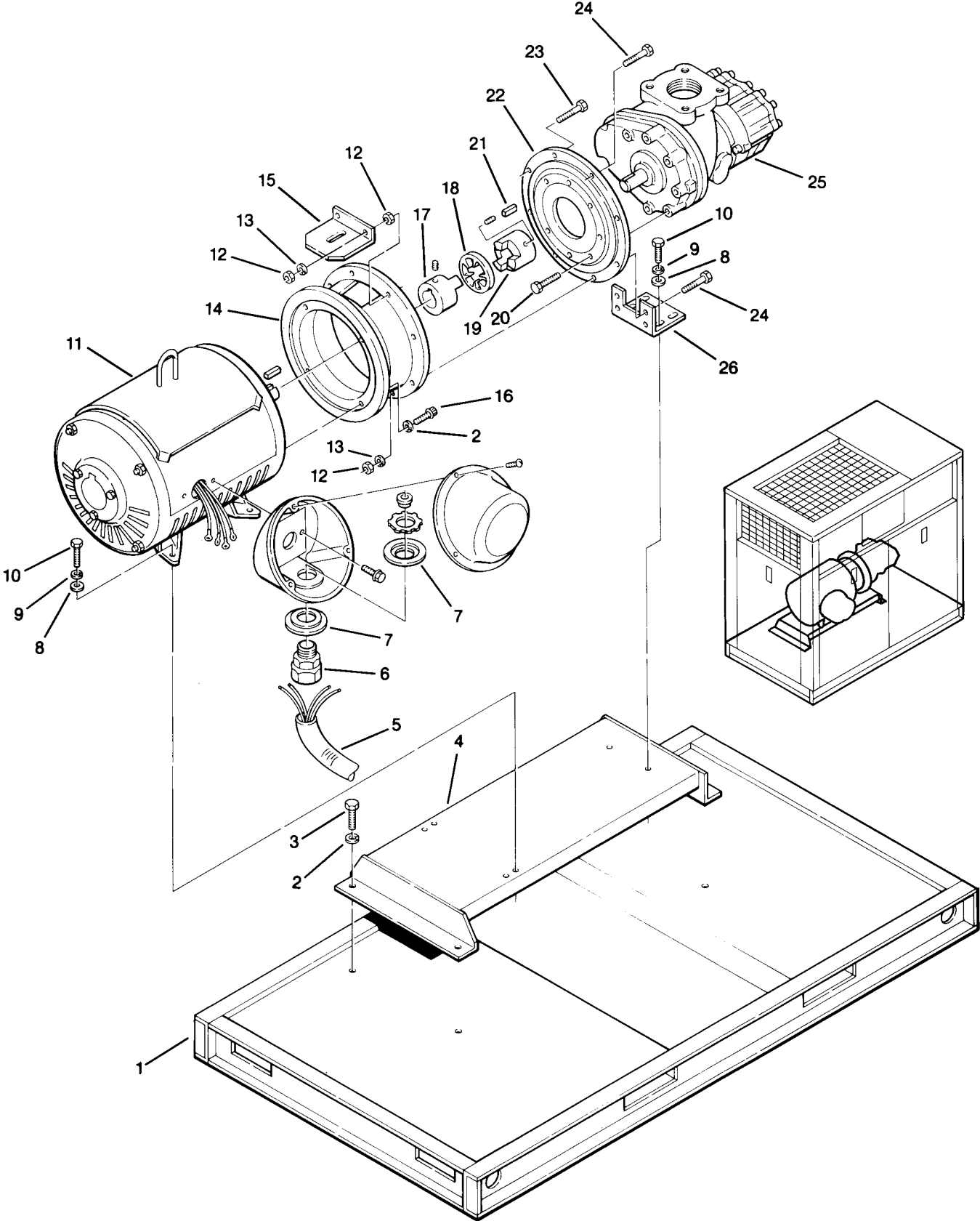
\* Sullair complete assembly part number needs indicated repair kit number.

WHEN ORDERING PARTS, INDICATE SERIAL NUMBER OF COMPRESSOR

Section 7

# ILLUSTRATIONS AND PARTS LIST

## 1.3 MOTOR, COMPRESSOR, FRAME AND PARTS



# Section 1 ILLUSTRATIONS AND PARTS LIST

---

## 1.3 MOTOR, COMPRESSOR, FRAME AND PARTS

<i>key number</i>	<i>description</i>	<i>part number</i>	<i>quantity</i>
1	frame, assembly	250015-817	1
2	washer, springlock $\frac{5}{8}$ "	837510-156	8
3	capscrew, hex $\frac{5}{8}$ "-11 x $1\frac{1}{4}$ " gr5	828610-125	4
4	base, sub	250030-614	1
5	wire, type g-gc 4ga (ft.)	250014-306	4
6	grip, cord #34	250014-557	2
7	washer, conduit reducing 3" x $1\frac{1}{2}$ "	847012-060	2
8	washer, regular $\frac{1}{2}$ "	837208-112	4
9	washer, springlock $\frac{1}{2}$ "	837508-125	10
10	capscrew, hex $\frac{1}{2}$ "-13 x $1\frac{1}{2}$ " gr5	828608-150	4
11	motor, 50HP	250023-933	1
12	nut, hex $\frac{3}{8}$ "-16	824206-337	9
13	washer, springlock $\frac{3}{8}$ "	837506-094	14
14	adapter, motor compressor	231977	1
15	plate, adaptor cover	225980	1
16	capscrew, ferry $\frac{5}{8}$ "-11 x $1\frac{1}{2}$ "	828410-150	4
17	hub, coupling $1\frac{1}{8}$ " x $\frac{1}{2}$ "	250004-640	1
18	element, coupling	250004-638	1
19	hub, coupling $1\frac{1}{2}$ " x $\frac{3}{8}$ "	250004-639	1
20	capscrew, hex $\frac{3}{8}$ "-16 x $1\frac{1}{4}$ " gr5	828606-125	7
21	key, square $\frac{3}{8}$ " x $1\frac{1}{2}$ "	821206-150	1
22	adapter, SAE5	250009-542	1
23	capscrew, hex $\frac{3}{8}$ "-16 x $1\frac{3}{4}$ " gr5	828606-175	3
24	capscrew, hex $\frac{3}{8}$ "-16 x 2" gr5	828606-200	4
25	compressor unit*	-	1
26	bracket, compressor mounting	250004-580	1

\* There is an exchange program whereby a remanufactured compressor unit can be obtained from Sullair distributors or the factory at less cost than the owner could repair the unit. For information regarding the unit exchange program, contact your nearest Sullair representative or the Sullair Corporation.

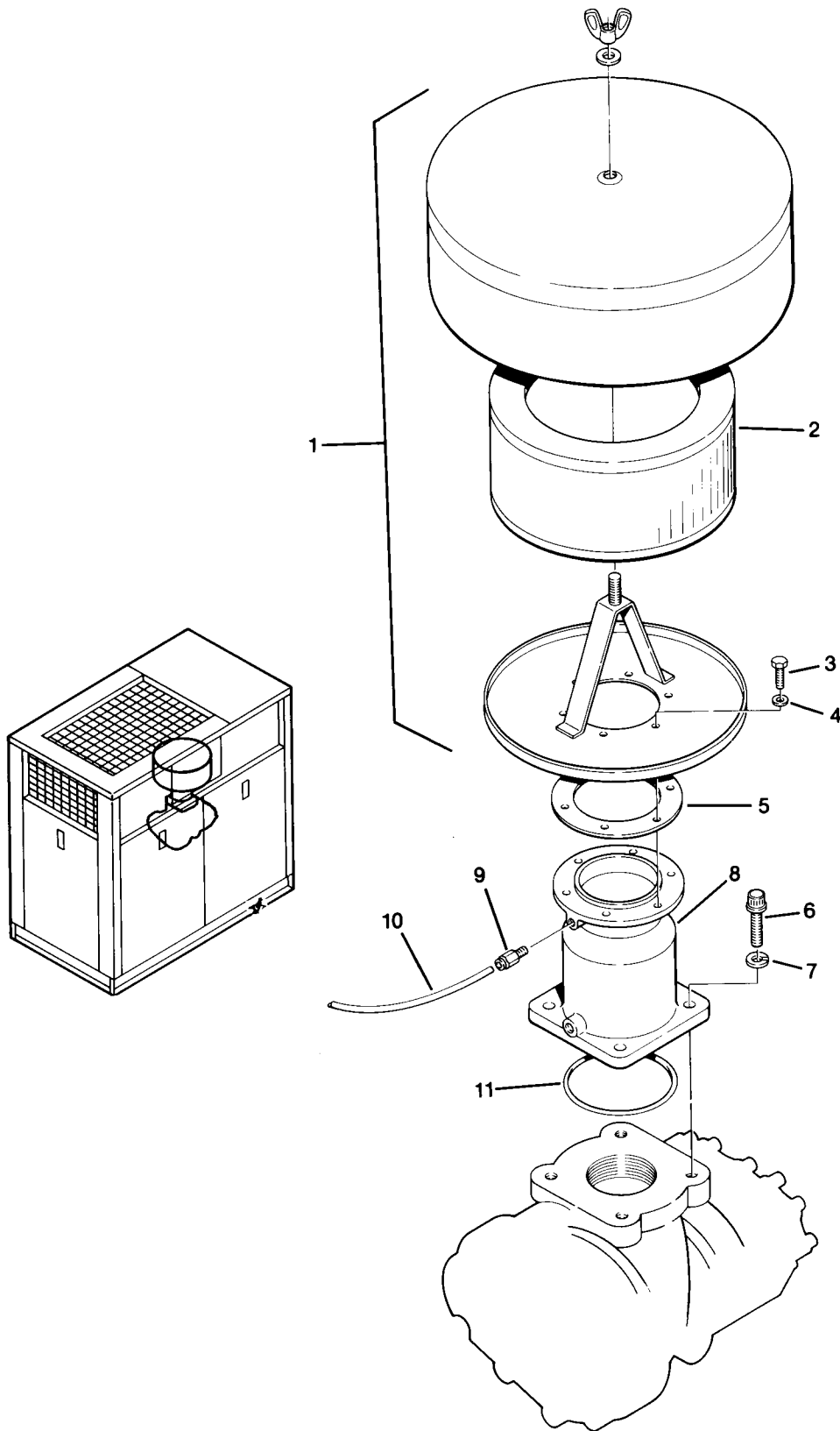
The shaft seal is not considered part of the compressor unit in regard to the 2 year warranty. The normal Sullair parts warranty applies.

---

**WHEN ORDERING PARTS, INDICATE SERIAL NUMBER OF COMPRESSOR**

Section 7  
**ILLUSTRATIONS AND PARTS LIST**

**1.4 AIR INLET SYSTEM**



# Section 1 ILLUSTRATIONS AND PARTS LIST

---

## 1.4 AIR INLET SYSTEM

<i>key number</i>	<i>description</i>	<i>part number</i>	<i>quantity</i>
1	filter, air assembly	250030-092	1
2	filter, air	040899	1
3	capscrew, hex ¼"-20 x 1" gr5	828604-100	6
4	washer, springlock ¼"	837504-062	6
5	gasket, inlet filter	250030-613	1
6	capscrew, ferry ⅝"-11 x 1½"	828410-150	4
7	washer, springlock ⅝"	837510-156	4
8	valve, 3" poppet inlet*	250030-612	1
9	connector, tube straight	250024-684	1
10	tube, plastic ¼" (ft.)	842215-004	6
11	o-ring, 4" x ⅛"	826502-242	1

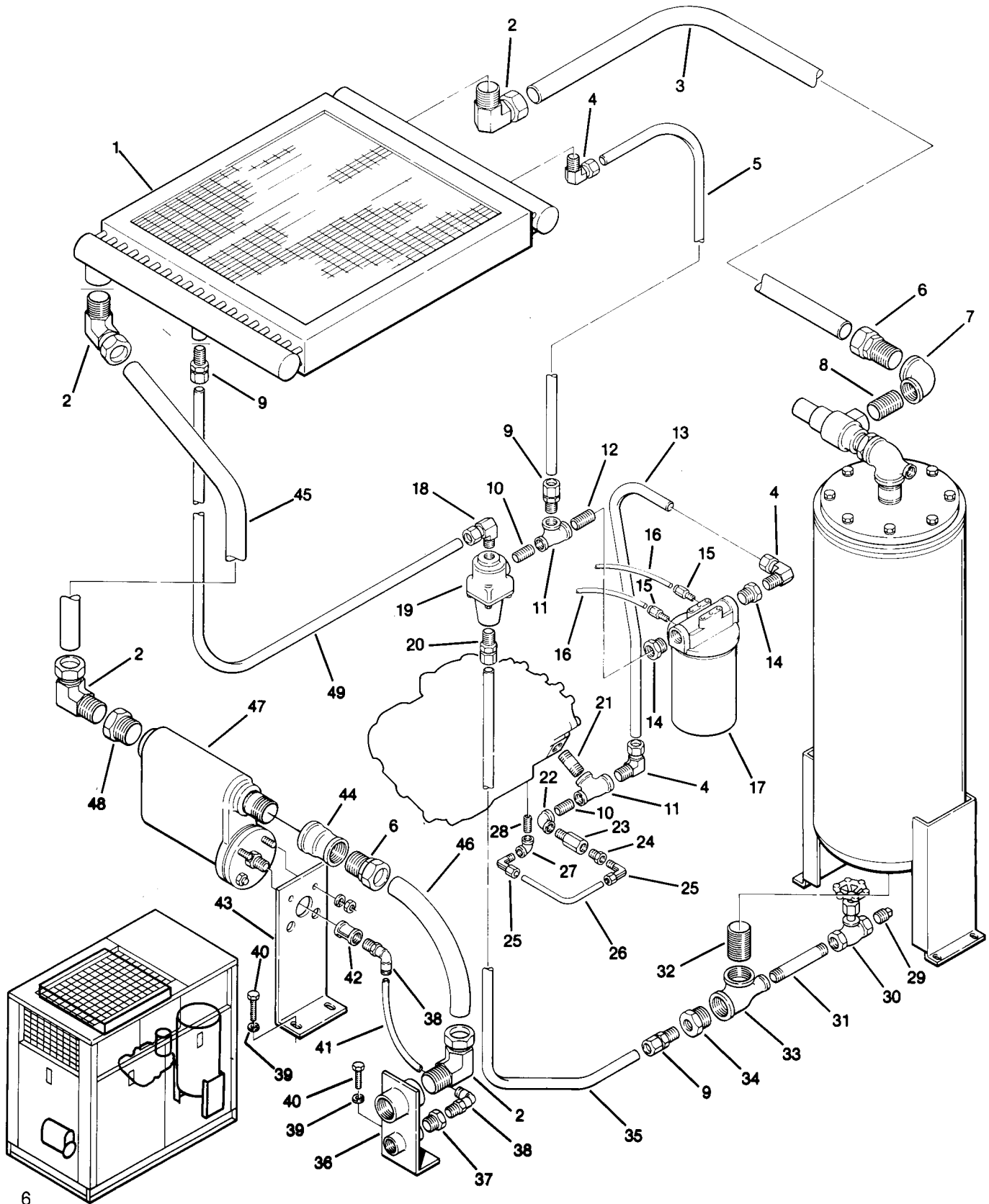
\* For maintenance on poppet inlet valve no. 250030-612, order repair kit no. 250031-438.

---

WHEN ORDERING PARTS, INDICATE SERIAL NUMBER OF COMPRESSOR

# Section 1 ILLUSTRATIONS AND PARTS LIST

## 1.5 FLUID COOLING AND LUBRICATION SYSTEM (AIR-COOLED)



# Section 1 ILLUSTRATIONS AND PARTS LIST

## 1.5 FLUID COOLING AND LUBRICATION SYSTEM (AIR-COOLED)

<i>key number</i>	<i>description</i>	<i>part number</i>	<i>quantity</i>
1	cooler, fluid	250015-525	1
2	elbow, tube-m 1½" x 1½"	810524-150	4
3	tube, 1½"	250018-250	1
4	elbow, tube-m 1" x 1"	810516-100	3
5	tube, 1"	250018-249	1
6	connector, tube 1½" x 1½"	810224-150	2
7	elbow, reducing 1½" x 1¼"	801606-050	1
8	nipple, pipe 1¼" x close	822220-000	1
9	connector, tube 1" x 1"	810216-100	3
10	nipple, pipe ¾" x close	822212-000	12
11	tee, reducing 1" x ¾" x 1"	802204-034	2
12	nipple, pipe 1" x close	822216-000	1
13	tube, 1"	250031-231	1
14	bushing, reducing 1¼" x 1"	802105-040	2
15	connector, tube	250024-685	2
16	tubing, nylon ¼" (ft.)	842215-004	Consult Factory
17	filter, fluid assembly*	250025-521	1
18	elbow, tube 90-m 1" x ¾"	810516-075	1
19	valve, thermal**	250025-620	1
20	connector, tube-m 1" x ¾"	810216-075	1
21	nipple, pipe ¾" x 2"	822112-020	1
22	elbow, reducing ¾" x ½"	801603-020	1
23	orifice, ½" x ½"	234125-109	1
24	bushing, reducing ½" x ¼"	807602-010	1
25	elbow, tube 90-m ¾" x ¼"	810506-025	2
26	tubing, steel ⅜" (ft.)	841115-006	Consult Factory
27	elbow, pipe 90°¼"	801515-010	1
28	nipple, close ¼"	822204-000	1
29	plug, pipe ½"	807800-020	1
30	valve, globe ½"	041007	1
31	nipple, pipe ½" x 4"	822108-040	1
32	nipple, pipe 1½" x close	822224-000	1

(continued)

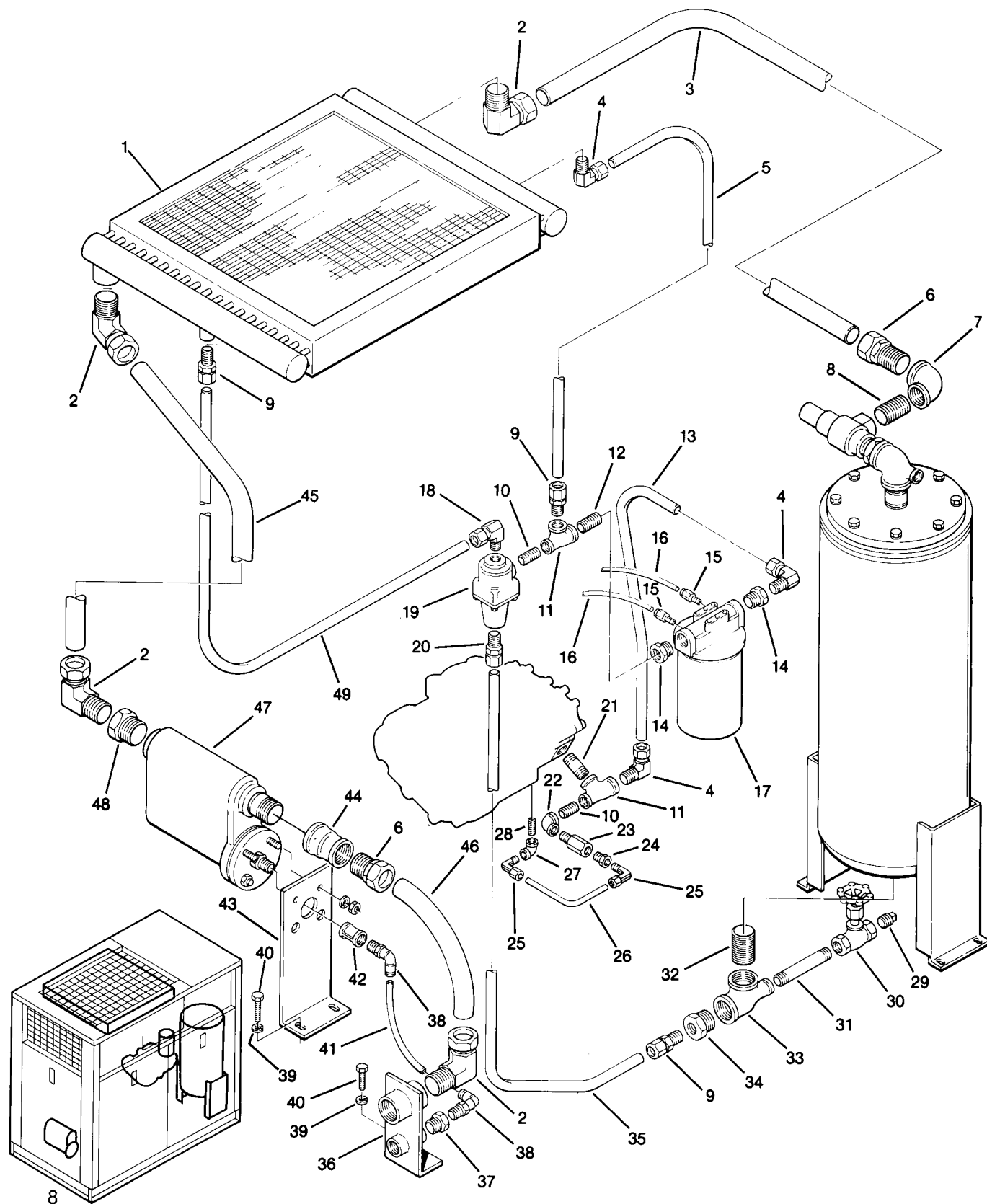
\* For maintenance on fluid filter no. 250025-521, order repair kit no. 250025-525.

\*\* For maintenance on thermal valve no. 250025-620, order repair kit no. 250025-621.

WHEN ORDERING PARTS, INDICATE SERIAL NUMBER OF COMPRESSOR

# Section 1 ILLUSTRATIONS AND PARTS LIST

## 1.5 FLUID COOLING AND LUBRICATION SYSTEM (AIR-COOLED)



## Section 1 ILLUSTRATIONS AND PARTS LIST

---

### 1.5 FLUID COOLING AND LUBRICATION SYSTEM (AIR-COOLED) (continued)

<i>key number</i>	<i>description</i>	<i>part number</i>	<i>quantity</i>
33	tee, reducing 1½" x ½" x 1½"	802206-026	1
34	bushing, reducing hex 1½" x 1"	802106-040	1
35	tube, 1"	250031-230	1
36	bracket, air connection and condensation drain	250017-233	1
37	bushing, reducing ¾" x ½"	802103-020	1
38	elbow, connector ½" x ⅜"	250024-711	2
39	washer, springlock ½"	837508-125	3
40	capscrew, hex ½"-13 x 1½" gr5	828608-150	3
41	tubing, thermoplastic ⅜" (ft.)	250024-746	1
42	coupling, pipe ½"	801215-020	1
43	bracket, separator trap	250018-378	1
44	coupling, reducing 2" x 1½"	801016-012	1
45	tube, 1½"	250018-251	1
46	tube, 1½"	250018-252	1
47	separator/trap 2"***	040847	1
48	bushing, reducing hex 2" x 1½"	802108-060	1
49	tube, 1"	250031-229	1

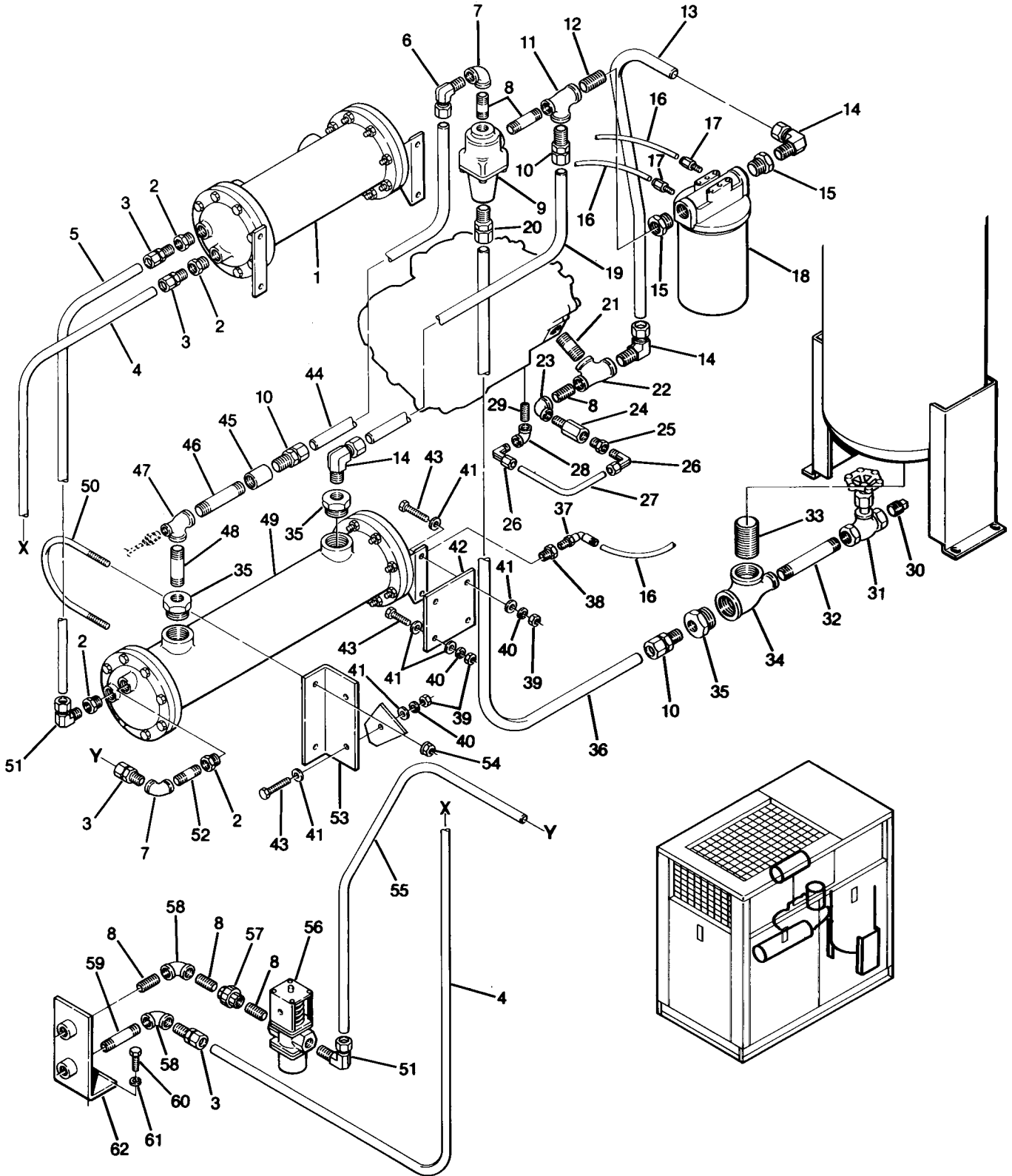
\*\*\* For maintenance on separator trap no. 040847, order repair kit no. 044374.

---

**WHEN ORDERING PARTS, INDICATE SERIAL NUMBER OF COMPRESSOR**

# Section 1 ILLUSTRATIONS AND PARTS LIST

## 1.6 FLUID COOLING AND LUBRICATION SYSTEM (WATER-COOLED)



## Section 1

# ILLUSTRATIONS AND PARTS LIST

---

### 1.6 FLUID COOLING AND LUBRICATION SYSTEM (WATER-COOLED)

<i>key number</i>	<i>description</i>	<i>part number</i>	<i>quantity</i>
1	heat exchanger	250017-527	1
2	bushing, reducing hex 1" x 3/4"	802104-030	4
3	connector, tube-m 3/4" x 3/4"	810212-075	4
4	tube, water in to aftercooler 3/4"	250033-204	1
5	tube, aftercooler to oil cooler 3/4"	250033-205	1
6	elbow, tube 90° m 1" x 3/4"	810516-075	1
7	elbow, pipe 90° 3/4"	801515-030	2
8	nipple, pipe 3/4" x close	822212-000	6
9	valve, thermal	250025-620	1
10	connector, tube-m 1" x 1"	810216-100	3
11	tee, reducing 1" x 3/4" x 1"	802204-034	1
12	nipple, pipe 1 x close	822216-000	1
13	tube, filter/injection 1" od	250031-231	1
14	elbow, tube 90° 1" x 1"	810516-100	2
15	bushing, reducing hex 1 1/4" x 1"	802105-040	2
16	tubing, nylon 1/4" (ft.)	842215-004	Consult Factory
17	connector, tube start 1/4" mnpt x 1/4" t	250024-685	1
18	filter, fluid	250025-521	1
19	tube, tv bypass to oil cooler 1"	250033-208	1
20	connector, tube-m 1" x 3/4"	810216-075	1
21	nipple, pipe 3/4" x 2"	822112-020	1
22	tee, reducing 1" x 3/4" x 3/4"	802204-033	1
23	elbow, reducing 3/4" x 1/2"	801603-020	1
24	orifice, 1/2" x 1/2"	234125-109	1
25	bushing, reducing 1/2" x 1/4"	807602-010	1
26	elbow, tube 90° m 3/8" x 1/4"	810506-025	2
27	tubing, steel 1/4" (ft.)	841115-006	1
28	elbow, pipe 90° 1/4"	801515-010	1
29	nipple, pipe 1/4" x close	822204-000	1
30	plug, pipe 1/2"	807800-020	1
31	valve, globe 1/2"	041007	1
32	nipple, pipe 1/2" x 4"	822108-040	3
33	nipple, pipe 1 1/2" x close	822224-000	1
34	tee, reducing 1 1/2" x 1/2" x 1 1/2"	802206-026	1
35	bushing, reducing hex 1 1/2" x 1"	802106-040	1

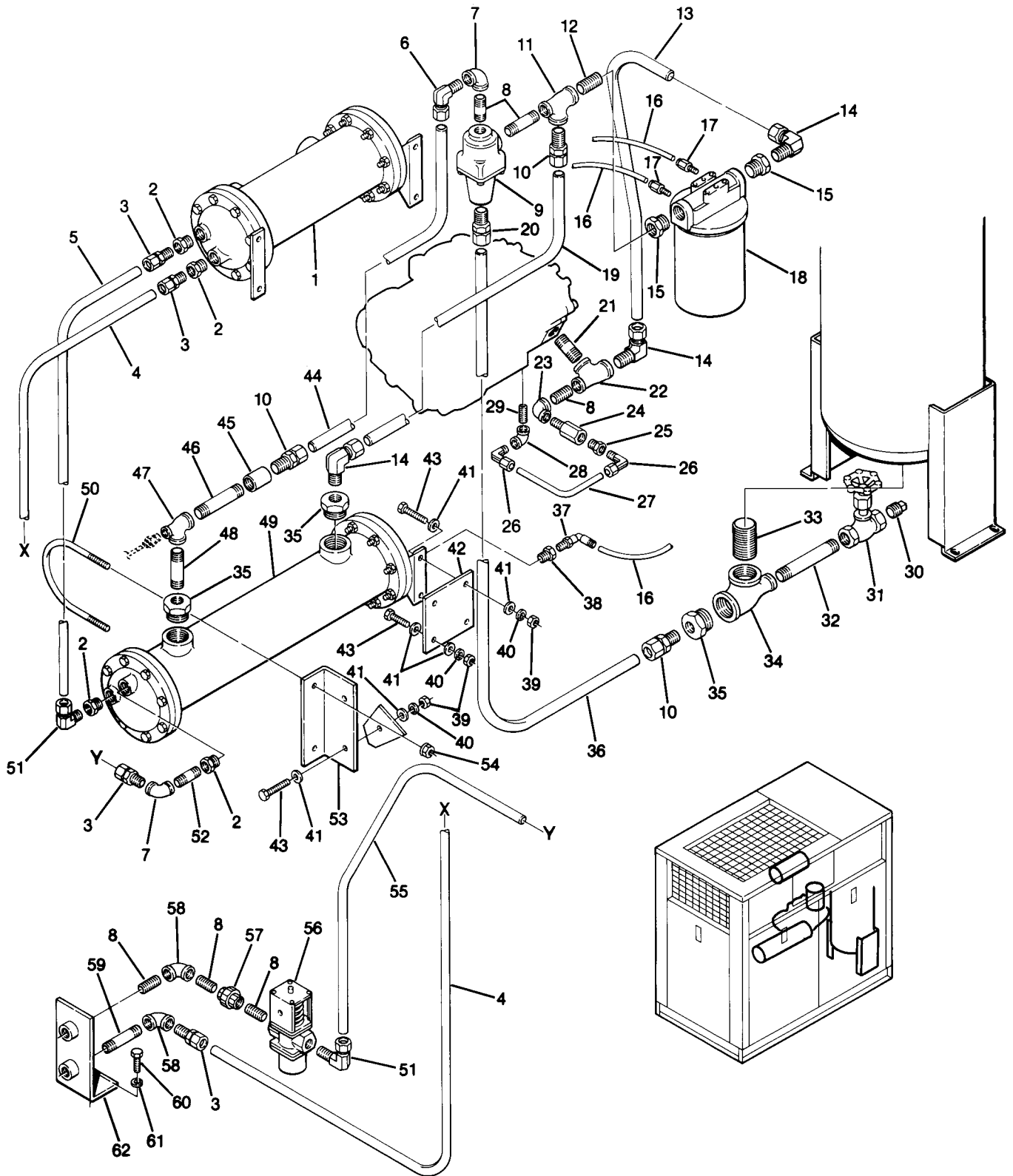
(continued)

---

WHEN ORDERING PARTS, INDICATE SERIAL NUMBER OF COMPRESSOR

# Section 1 ILLUSTRATIONS AND PARTS LIST

## 1.6 FLUID COOLING AND LUBRICATION SYSTEM (WATER-COOLED)



## Section 1 ILLUSTRATIONS AND PARTS LIST

---

### 1.6 FLUID COOLING AND LUBRICATION SYSTEM (WATER-COOLED) (continued)

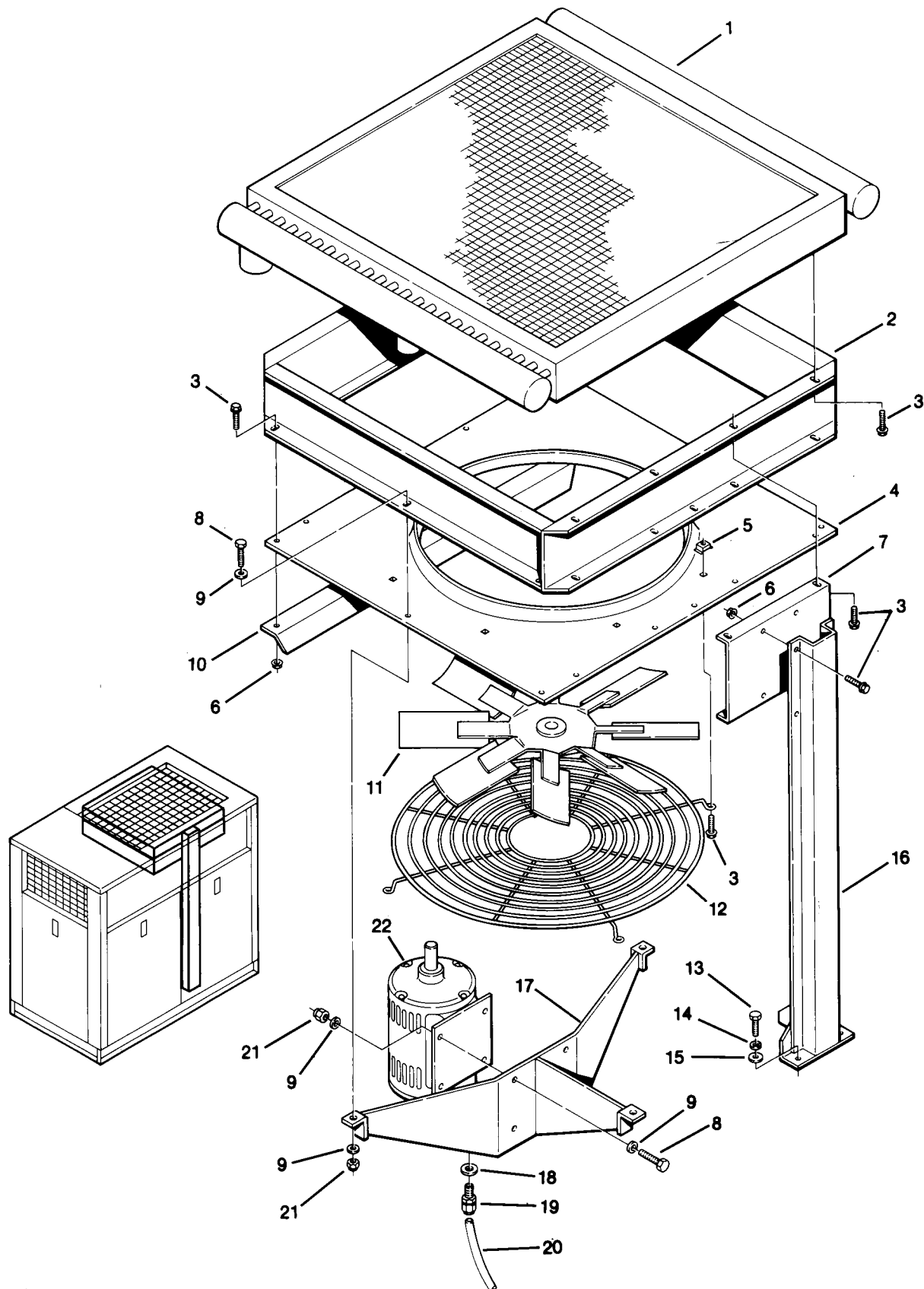
<i>key number</i>	<i>description</i>	<i>part number</i>	<i>quantity</i>
36	tube, sump/tr 1"od	250031-230	1
37	elbow, 90°m swivel ¼"t x ¼"	250025-850	1
38	bushing, reducing ⅜" x ¼"	807601-010	1
39	nut, hex ⅝"-16	825006-337	6
40	washer, springlock ⅜"	837506-094	6
41	washer, regular ⅜"	837206-071	12
42	plate, oil cooler support	250033-188	1
43	capscrew, hex gr5 ⅜"-16 x 1"	828606-100	6
44	tube, tv bypass to oil cooler 1"	250033-208	1
45	coupling, pipe 1"	801215-040	1
46	nipple, pipe 1" x 6"	822116-060	1
47	tee, reducing 1" x ½" x 1"	802204-024	1
48	nipple, pipe 1" x 3"	822116-030	1
49	heat exchanger,	408373	1
50	u-bolt, ½" x 4"	829008-400	1
51	elbow, tube 90° ¾" x ¾"	810512-075	2
52	nipple, pipe ¾" x 2½"	822112-025	1
53	bracket, cooler 6"	250019-027	1
54	nut, hex ½"-13	825008-448	2
55	tube, oil cooler to water regulator valve	250033-206	1
56	valve, water regulating ¾"	047398	1
57	union, pipe ¾"	802515-030	1
58	elbow, pipe 90° ¾"	801515-030	2
59	nipple, pipe ¾" x 8	822112-085	1
60	capscrew, hex gr5 ½"-13 x 1½"	828608-150	1
61	washer, springlock ½"	837508-125	1
62	bracket, water connection ¾"	250017-234	1

---

WHEN ORDERING PARTS, INDICATE SERIAL NUMBER OF COMPRESSOR

# Section 1 ILLUSTRATIONS AND PARTS LIST

## 1.7 FLUID COOLER ASSEMBLY



## Section 1 ILLUSTRATIONS AND PARTS LIST

---

### 1.7 FLUID COOLER ASSEMBLY

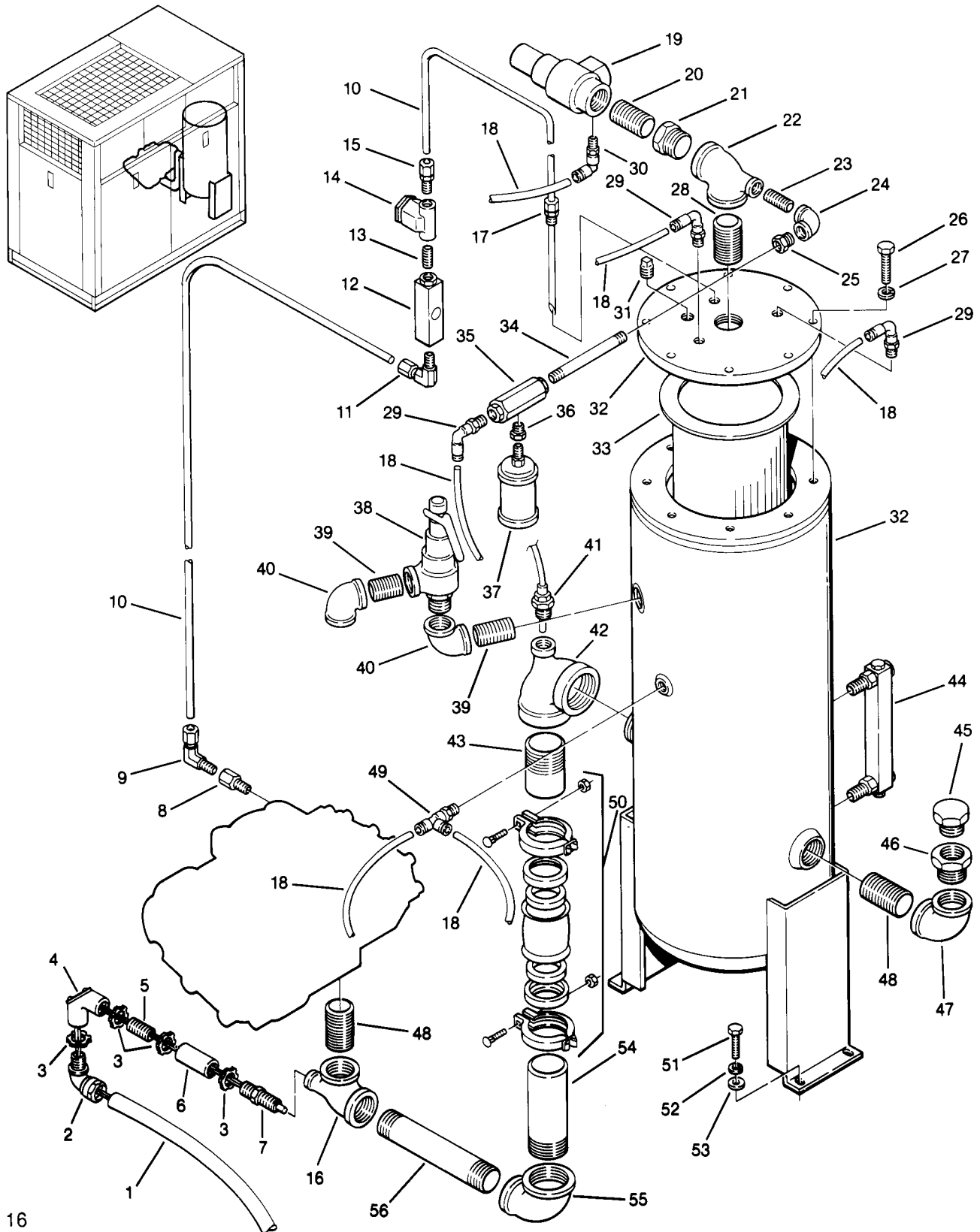
<i>key number</i>	<i>description</i>	<i>part number</i>	<i>quantity</i>
1	cooler, fluid/after	250015-525	1
2	adapter, Venturi	250017-271	1
3	screw, hex serrated washer $\frac{5}{16}$ " x $\frac{3}{4}$ "	829705-075	22
4	panel, Venturi	250017-494	1
5	nut, retainer $\frac{5}{16}$ "-18	861405-092	4
6	nut, hex flanged $\frac{5}{16}$ "-18	825305-283	14
7	bracket, cooler support	250018-114	1
8	capscrew, hex $\frac{5}{16}$ "-18 x 1" gr5	828605-100	6
9	washer, regulating $\frac{5}{16}$ "	838205-071	6
10	angle, cooler support	250018-121	1
11	fan, 22" diameter	241390	1
12	guard, fan 24" diameter	241501	1
13	capscrew, hex $\frac{3}{8}$ "-16 x $1\frac{1}{4}$ " gr5	828606-125	5
14	washer, springlock $\frac{3}{8}$ "	837506-094	5
15	washer, regular $\frac{3}{8}$ "	838206-071	5
16	support, cooler	250017-630	1
17	support, fan motor	250017-499	1
18	washer, conduit reducer 1 x $\frac{1}{2}$ "	847004-020	2
19	grip, cord straight $\frac{1}{2}$ "	250018-495	1
20	wire, neoprene #12-4 (ft.)	850604-012	6
21	nut, hex locking $\frac{5}{16}$ "-18	825505-166	6
22	motor, 2HP	050557	1

---

WHEN ORDERING PARTS, INDICATE SERIAL NUMBER OF COMPRESSOR

# Section 1 ILLUSTRATIONS AND PARTS LIST

## 1.8 COMPRESSOR DISCHARGE SYSTEM (AIR-COOLED)



# Section 1 ILLUSTRATIONS AND PARTS LIST

## 1.8 COMPRESSOR DISCHARGE SYSTEM (continued)

<i>key number</i>	<i>description</i>	<i>part number</i>	<i>quantity</i>
1	conduit, flex ½" (ft.)	846315-050	Consult Factory
2	elbow, 90 liq-tite	846600-050	1
3	locknut, conduit ½"	847200-050	4
4	elbow, corner pull 90° ½"	846915-050	1
5	conduit, rigid (ft.)	845800-008	Consult Factory
6	coupling, conduit ½"	250007-179	1
7	switch, temperature 240°F nc	040588	1
8	orifice, ⅛"m x ⅛"f x .062	224427	1
9	elbow, tube-m ¼" x ⅛"	810504-012	1
10	tubing, steel ¼" (ft.)	841015-004	Consult Factory
11	elbow, tube-m ¼" x ¼"	810504-025	1
12	glass, sight	046559	1
13	nipple, galvanized ¼" x close	823204-000	4
14	strainer, v-type*	241771	1
15	connector, tube-m ¼" x ⅛"	810204-012	1
16	tee, reducing 1½" x ½" x 1½"	802206-026	1
17	connector, flex ¼"t x ¼"p	020169	1
18	tubing, nylon ¼" (ft.)	842215-004	Consult Factory
19	valve, minimum pressure/check**	241581	1
20	nipple, pipe 1¼" x close	822220-000	3
21	bushing, reducing hex 1½" x 1¼"	802106-050	1
22	tee, reducing 1½" x ½" x 1½"	802206-026	2
23	nipple, pipe ½" x close	822208-000	1
24	elbow, pipe 90° ½"	801515-020	2
25	bushing, reducing hex ½" x ¼"	802102-010	1
26	capscrew, hex head gr5 ⅝" x 2"	828610-200	8
27	washer, springlock ⅝"	837510-156	8
28	nipple, pipe 1½" x 3"	822124-030	1
29	elbow, tube-m ¼" x ¼"	250025-850	2
30	elbow, tube-m ¼" x ⅛"	250025-849	1
31	plug, pipe ½"	807800-020	1

(continued)

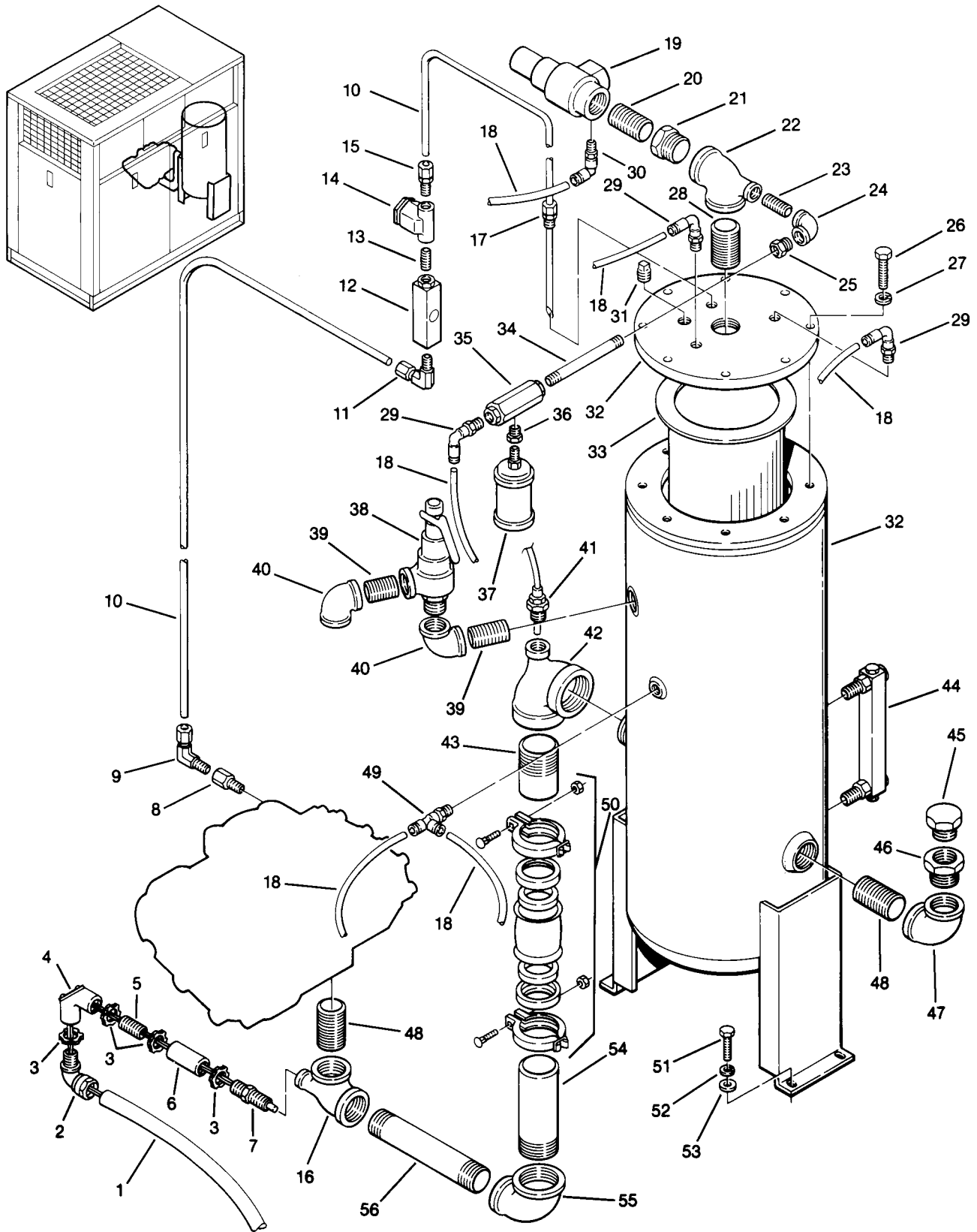
\* For maintenance on v-type strainer no. 241771, order repair kit no. 241772.

\*\* For maintenance on minimum pressure/check valve no. 241581, order repair kit no. 250020-344.

**WHEN ORDERING PARTS, INDICATE SERIAL NUMBER OF COMPRESSOR**

# Section 1 ILLUSTRATIONS AND PARTS LIST

## 1.8 COMPRESSOR DISCHARGE SYSTEM (AIR-COOLED)



## Section 1 ILLUSTRATIONS AND PARTS LIST

---

### 1.8 COMPRESSOR DISCHARGE SYSTEM (AIR-COOLED) (continued)

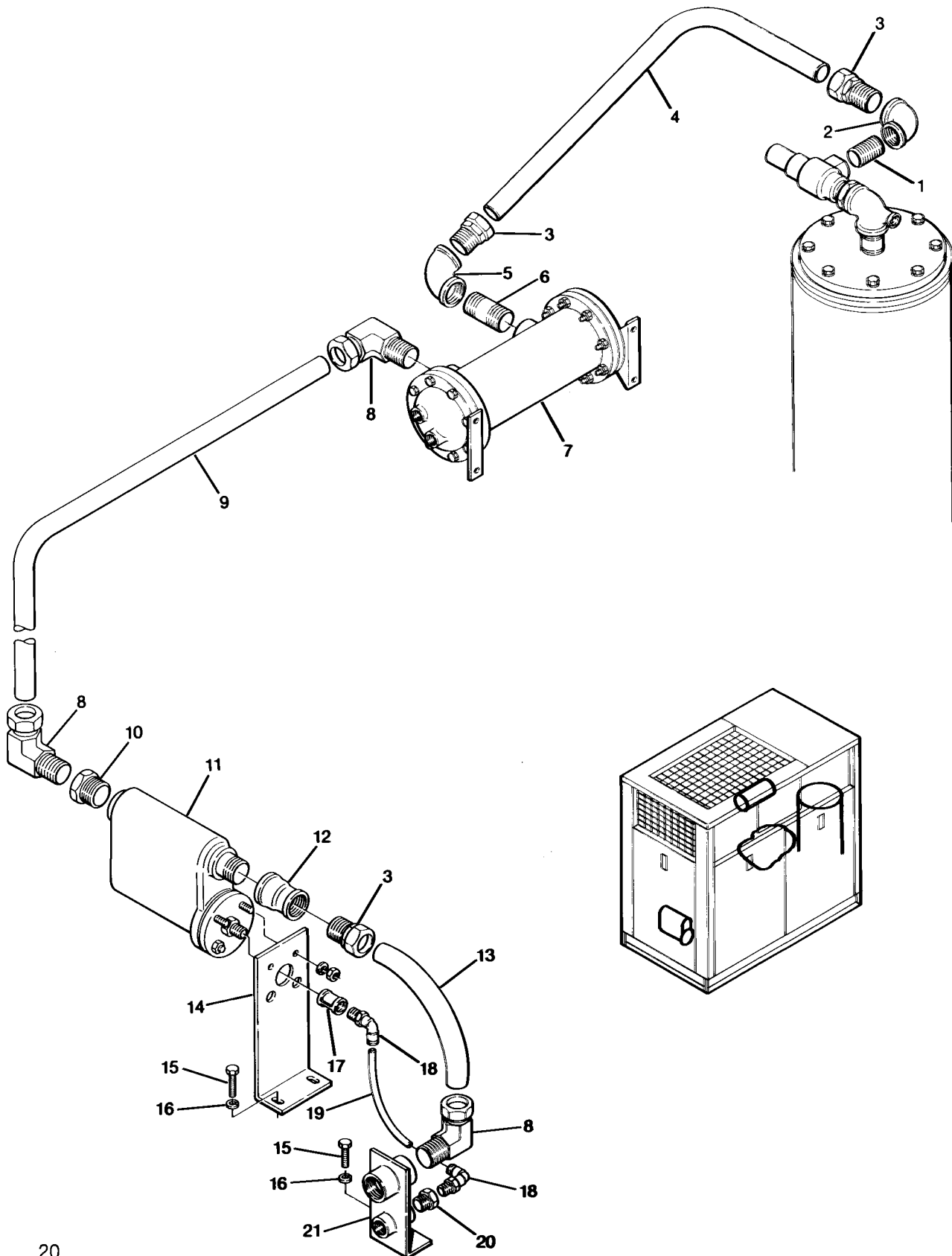
<i>key number</i>	<i>description</i>	<i>part number</i>	<i>quantity</i>
32	tank, separator	250015-284	1
33	element, separator	408167-005	1
34	nipple, pipe ¼" x 5"	822104-050	1
35	valve, blowdown ¼"	250025-655	1
36	bushing, reducing ¼" x ⅛"	807600-005	1
37	silencer, compressed air ⅛"	043196	1
38	valve, relief 175 PSI	248344	1
39	nipple, pipe 1" x close	822216-000	2
40	elbow, pipe 90° 1"	801515-040	2
41	gauge, temperature	042582	1
42	tee, reducing 2½" x ½" x 2½"	802210-020	1
43	nipple, half 2½" x 4"	822840-040	1
44	gauge, fluid level	046558	1
45	plug, o-ring 1¼"	040029	1
46	adapter, filler	020044	1
47	elbow, pipe 90° 1½"	801515-060	1
48	nipple, pipe 1½" x close	822224-000	2
49	tee, running ¼" tube	250031-333	1
50	coupling, Flexmaster 2½"	040648	1
51	capscrew, hex ½"-13 x 1½" gr5	828608-150	11
52	washer, springlock ½"	837508-125	11
53	washer, regulating ½"	837208-112	4
54	nipple, half 2½" x 9"	822840-090	1
55	elbow, reducing 2½" x 1½"	801610-060	1
56	nipple, pipe 1½" x 9½"	822124-095	1

---

**WHEN ORDERING PARTS, INDICATE SERIAL NUMBER OF COMPRESSOR**

# Section 1 ILLUSTRATIONS AND PARTS LIST

## 1.9 COMPRESSOR DISCHARGE SYSTEM (WATER-COOLED)



# Section 1 ILLUSTRATIONS AND PARTS LIST

---

## 1.9 COMPRESSOR DISCHARGE SYSTEM (WATER-COOLED) (continued)

<i>key number</i>	<i>description</i>	<i>part number</i>	<i>quantity</i>
1	nipple, pipe 1¼" x close	822220-000	1
2	elbow, reducing 1½" x 1¼"	801606-050	1
3	connector, tube-m 1½" x 1½"	810224-150	3
4	tube, minimum press check valve/ aftercooler 1½"	250018-400	1
5	elbow, pipe 90° 1½"	801515-060	1
6	nipple, pipe 1½" x 3"	822124-030	1
7	heat exchanger	250017-527	1
8	elbow, tube 90° m 1½" x 1½"	810524-150	3
9	tube, aftercooler/separator 1½"	250018-401	1
10	bushing, reducing 2" x 1½"	802108-060	1
11	separator/trap 2"*	040847	1
12	coupling, reducing 2" x 1½"	801016-012	1
13	tube, 1½"	250018-252	1
14	bracket, separator trap	250018-378	1
15	capscrew, hex gr5 ½"-13 x 1½"	828608-150	3
16	washer, springlock ½"	837508-125	3
17	coupling, pipe ½"	801215-020	1
18	elbow, connector ½" x ⅜"	250024-711	2
19	tubing, thermoplastic ⅜" (ft.)	250024-746	1
20	bushing, reducing ¾" x ½"	802103-020	1
21	bracket, air connection and condensation drain	250017-233	1

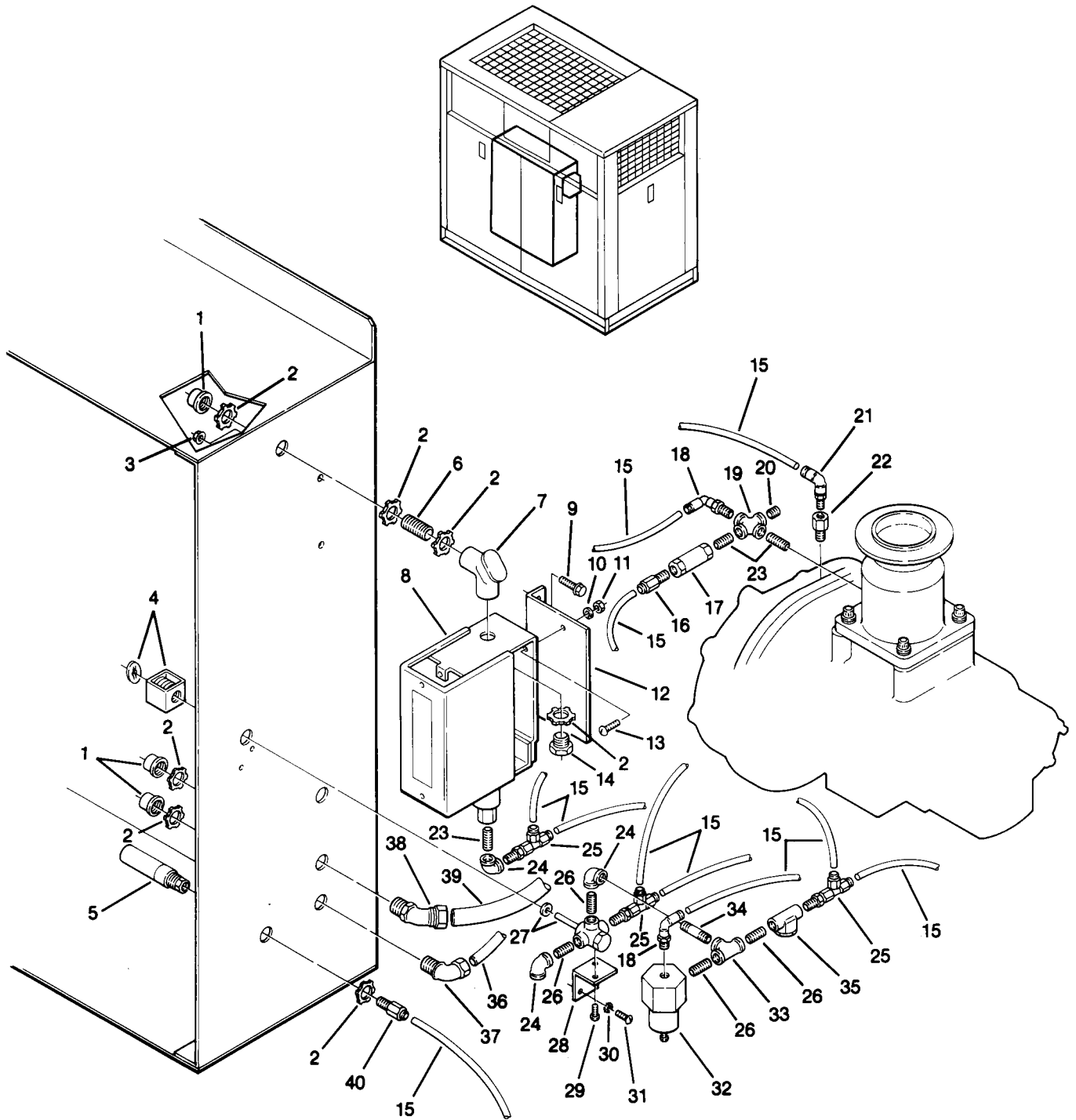
\* For maintenance on separator/trap no. 040847, order repair kit no. 044374.

---

WHEN ORDERING PARTS, INDICATE SERIAL NUMBER OF COMPRESSOR

# Section 1 ILLUSTRATIONS AND PARTS LIST

## 1.10 PNEUMATIC CONTROLS



# Section 1 ILLUSTRATIONS AND PARTS LIST

## 1.10 PNEUMATIC CONTROLS

<i>key number</i>	<i>description</i>	<i>part number</i>	<i>quantity</i>
1	bushing, conduit 1/2"	848815-050	3
2	locknut, conduit 1/2"	847200-050	7
3	nut, hex flanged 5/16"-18	825305-283	2
4	valve, solenoid	250030-567	1
5	switch, pressure nc 135 PSI	250017-991	1
6	nipple, conduit 1/2" x 1 1/2"	250007-169	1
7	elbow, corner pull 90° 1/2"	846915-050	1
8	switch, pressure 0-150#	040694	1
9	screw, serrated washer 5/16"-18 x 3/4"	829705-075	2
10	washer, springlock #10	837802-047	2
11	nut, hex #10-32	825801-130	2
12	bracket, pressure switch	250018-146	1
13	screw, machine rod head #10-32 x 1/2"	831702-050	2
14	nipple, chase conduit 1/2"	847815-050	1
15	hose, nylon 1/4" (ft.)	842215-004	Consult Factory
16	connector, tube 1/4" x 1/4"	250024-685	1
17	valve, check 1/4"	049905	1
18	elbow, tube 1/4" x 1/4"	250025-850	2
19	cross, pipe 1/4"	806315-010	1
20	orifice, pipe plug 1/4"	232874	1
21	elbow, tube 1/4" x 1/8"	250025-849	1
22	orifice	026367	1
23	nipple, pipe 1/4" x close	823204-000	5
24	elbow, pipe 90° 1/4"	803515-010	1
25	tee, tube 1/4"	250031-333	2
26	nipple, pipe 1/4" x close	823104-000	4
27	valve, solenoid 1/4" 3-way	250017-993	1
28	bracket, solenoid valve support	250030-037	1
29	screw, tc-f pan #8-32 x 3/8"	835601-038	2
30	washer, lock external #10	838402-025	4
31	screw, tc-f pane #10-24 x 1/2"	835602-050	2
32	valve, pressure regulator*	250017-280	1
33	tee, pipe 1/4"	804415-010	1
34	nipple, pipe 1/4" x 1 1/2"	823104-015	1

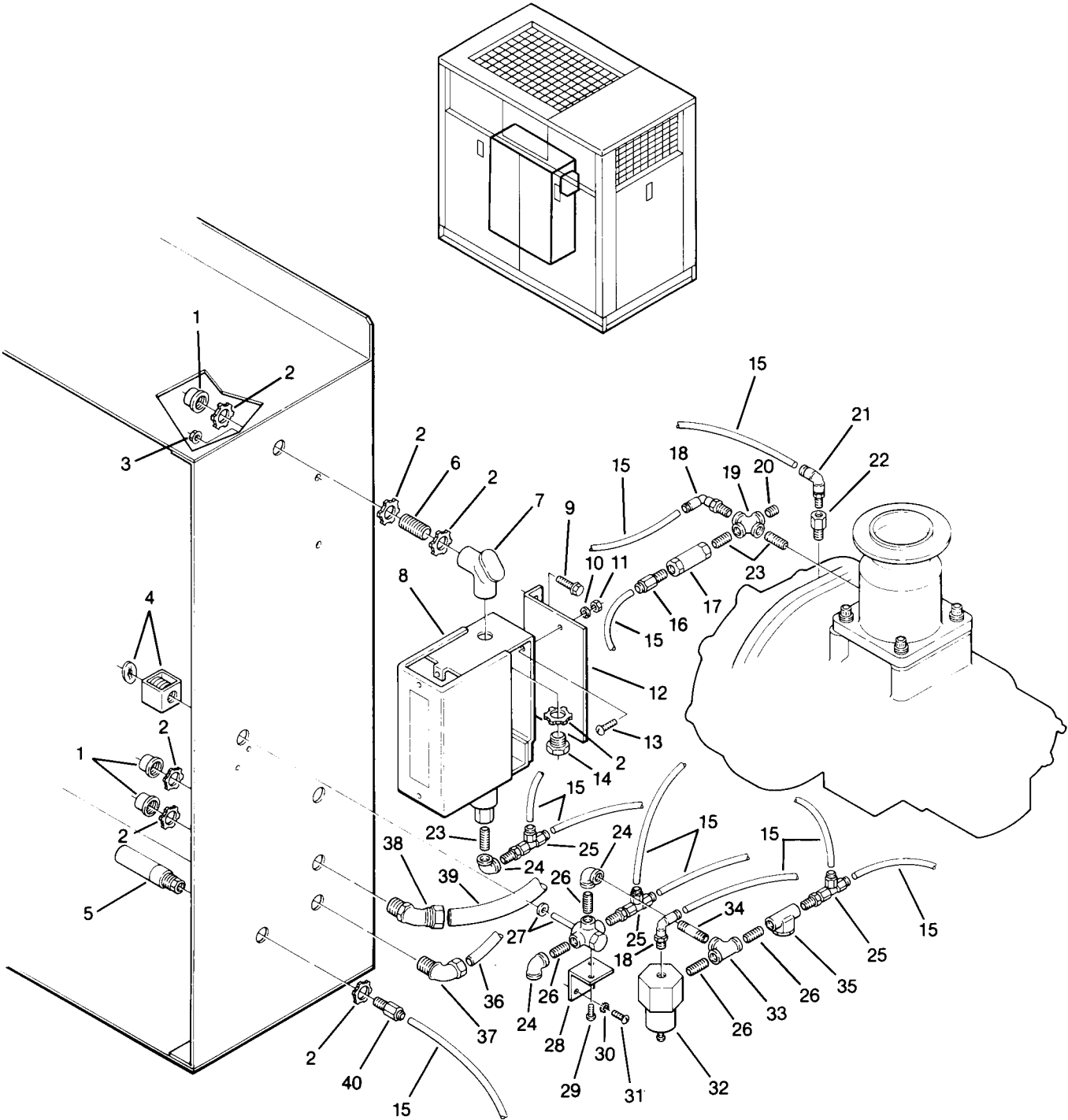
(continued)

\* For maintenance on pressure regulator valve no. 250017-280, order repair kit no. 250019-453.

WHEN ORDERING PARTS, INDICATE SERIAL NUMBER OF COMPRESSOR

# ILLUSTRATIONS AND PARTS LIST

## 1.10 PNEUMATIC CONTROLS



## Section 1 ILLUSTRATIONS AND PARTS LIST

---

### 1.10 PNEUMATIC CONTROLS (continued)

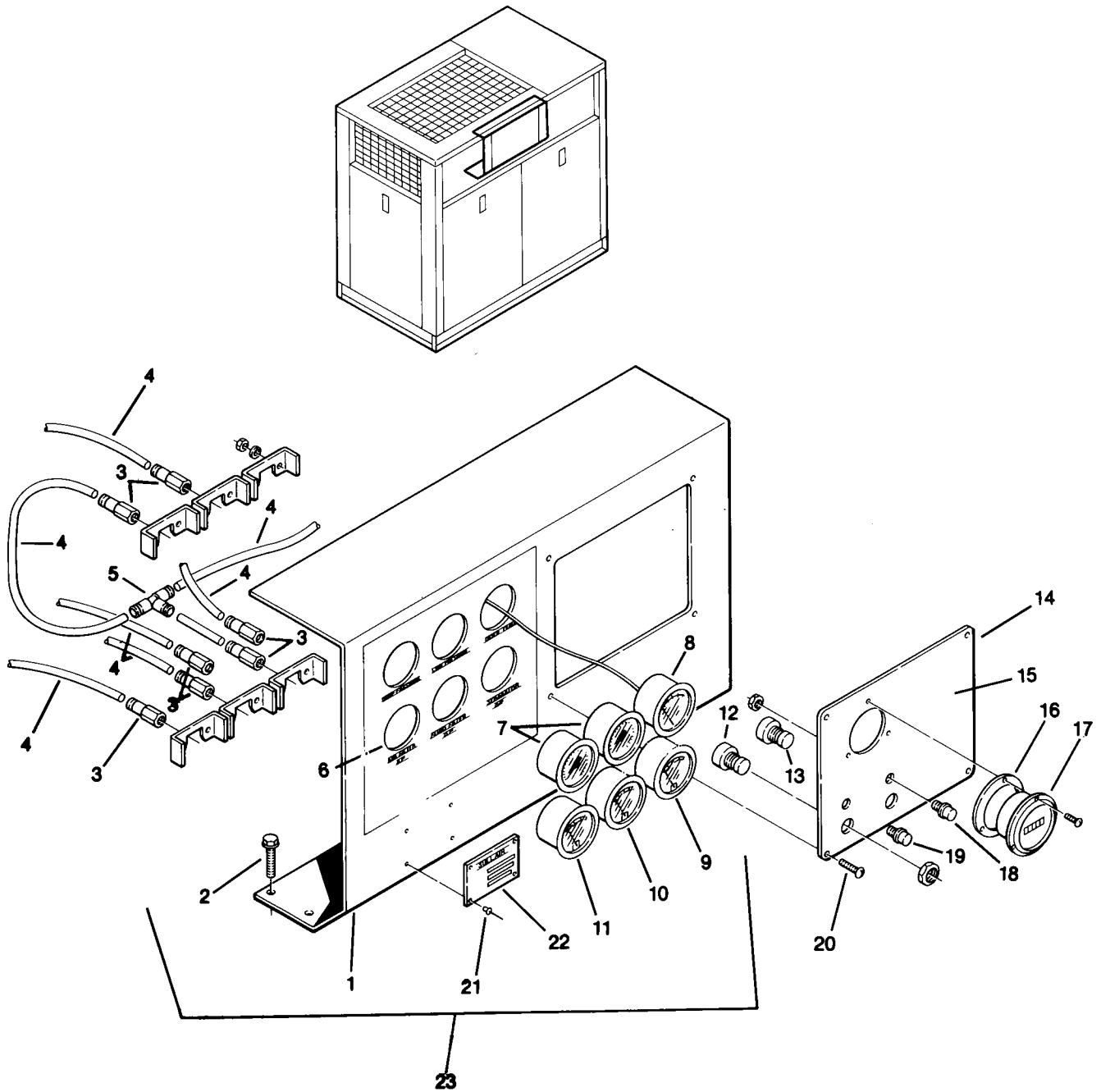
<i>key number</i>	<i>description</i>	<i>part number</i>	<i>quantity</i>
35	strainer, v-type ¼"	241771	1
36	wire neoprene #12-4 (ft.)	850604-012	6
37	grip, cord elbow 90° ¾"	250018-498	1
38	elbow, 45° liquid tite ½"	846500-050	1
39	conduit, csa flex ½" (ft.)	846315-050	4
40	connector, tube ¼" x ⅛"	250024-684	1

---

WHEN ORDERING PARTS, INDICATE SERIAL NUMBER OF COMPRESSOR

# Section 1 ILLUSTRATIONS AND PARTS LIST

## 1.11 INSTRUMENT PANEL AND PARTS



## Section 1

# ILLUSTRATIONS AND PARTS LIST

---

### 1.11 INSTRUMENT PANEL AND PARTS

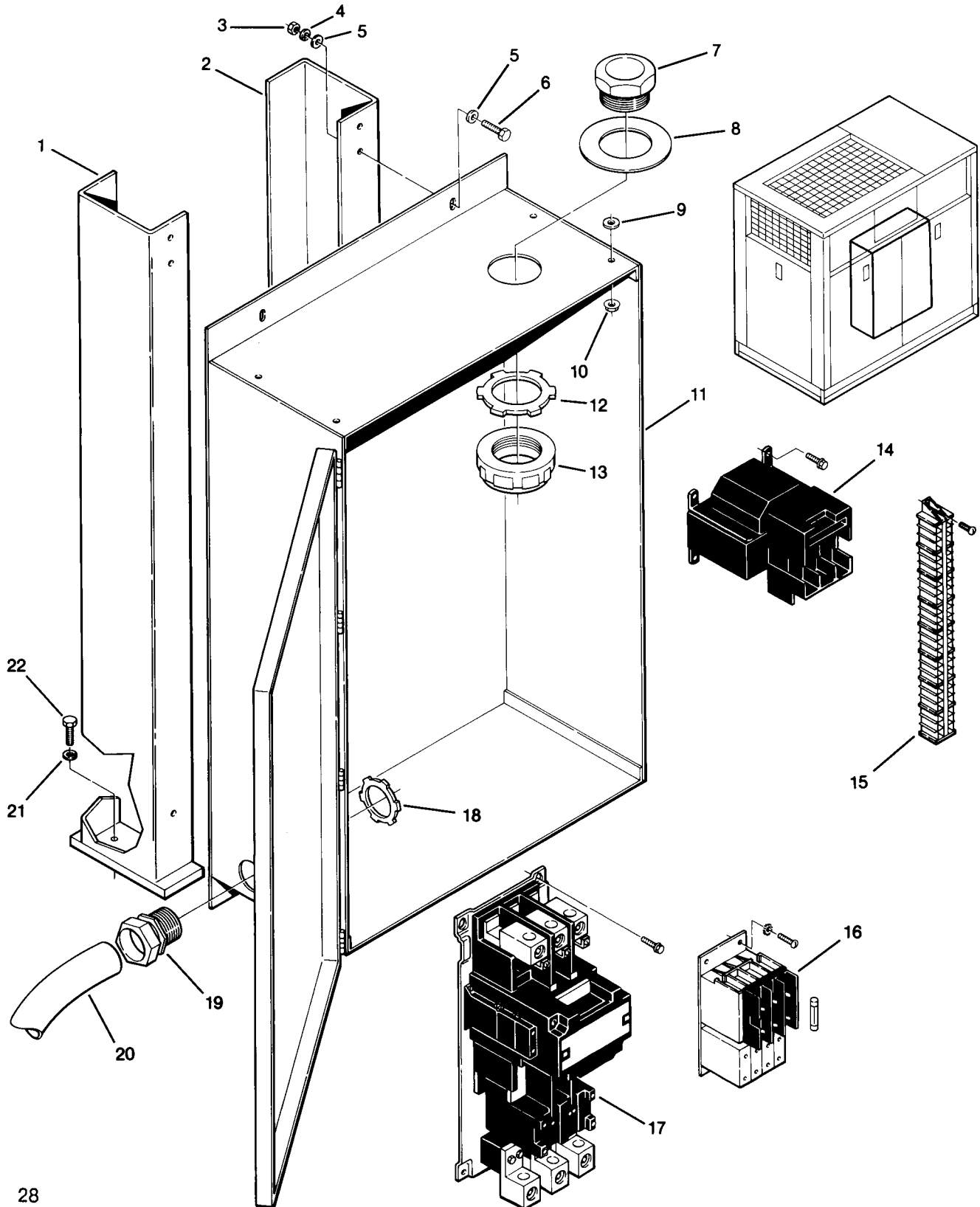
<i>key number</i>	<i>description</i>	<i>part number</i>	<i>quantity</i>
1	panel, instrument	250019-481	1
2	screw, serrated washer $\frac{5}{16}$ "-18 x $\frac{3}{4}$ "	829705-075	4
3	connector, tube-f	250025-922	7
4	hose, nylon $\frac{1}{4}$ " (ft.)	842215-004	Consult Factory
5	tee, union $\frac{1}{4}$ "	250024-738	1
6	decal, instrument panel	250015-500	1
7	gauge, pressure	250005-185	2
8	gauge, temperature	042582	1
9	gauge, differential pressure	250003-798	1
10	gauge, differential pressure	250003-799	1
11	gauge, vacuum	250003-797	1
12	switch, stop	250016-351	1
13	switch, start	250016-350	1
14	panel, electrical	250015-471	1
15	decal, label	250015-483	1
16	gasket, hourmeter	410353	1
17	hourmeter	250015-715	1
18	holder, lamp	043383	2
	• lens, red	043384	1
	• bulb	043386	2
	• gasket, lamp holder	241808	2
	• gasket, lens	241809	2
19	holder, lamp	043383	1
	• lens, green	043385	1
	• bulb	043386	1
	• gasket, lamp holder	241808	2
	• gasket, lens	241809	2
20	screw, tc-f pan #8-32 x $\frac{1}{2}$ "	835601-050	4
21	rivet, pop $\frac{1}{8}$ " x $\frac{1}{2}$ "	843102-050	4
22	nameplate, Sullair	040052	1
23	panel, instrument assembly	250031-339	1

---

WHEN ORDERING PARTS, INDICATE SERIAL NUMBER OF COMPRESSOR

# Section 1 ILLUSTRATIONS AND PARTS LIST

## 1.12 ELECTRICAL PANEL AND PARTS



## Section 1 ILLUSTRATIONS AND PARTS LIST

---

### 1.12 ELECTRICAL PANEL AND PARTS

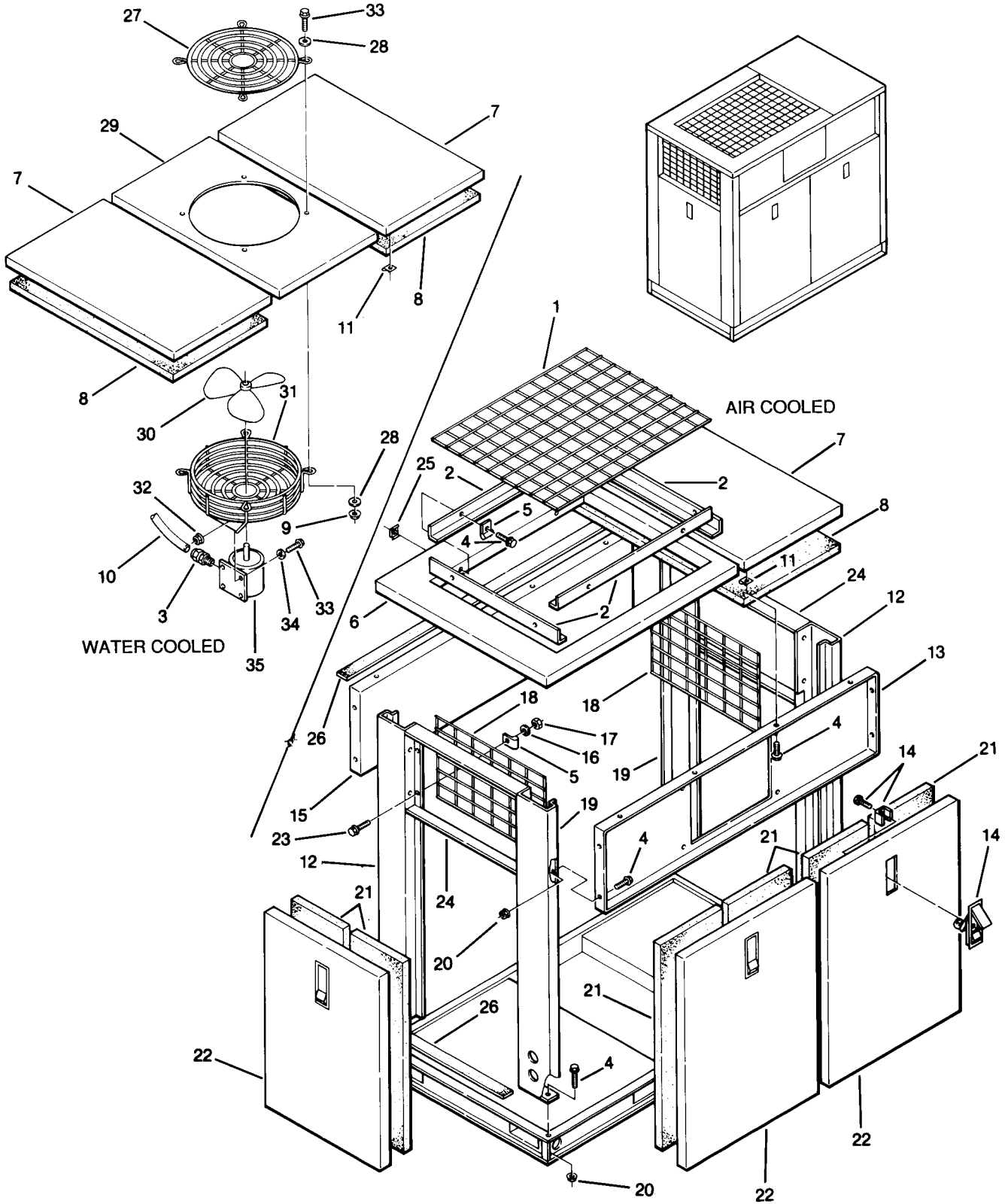
<i>key number</i>	<i>description</i>	<i>part number</i>	<i>quantity</i>
1	support, starter – left hand	250017-978	1
2	support, starter – right hand	250017-977	1
3	nut, hex $\frac{3}{8}$ "-16	824206-337	4
4	washer, springlock $\frac{3}{8}$ "	837506-094	4
5	washer, regular $\frac{3}{8}$ "	838206-071	8
6	capscrew, hex $\frac{3}{8}$ "-16 x $1\frac{1}{4}$ " gr5	828606-125	4
7	nipple, chase conduit $1\frac{1}{4}$ "	847815-125	1
8	gasket, instrument panel	250019-557	1
9	gasket, washer $\frac{5}{16}$ " x $\frac{3}{4}$ "	250029-176	4
10	nut, hex flanged $\frac{5}{16}$ "-18	825305-283	10
11	starter, 460V	250015-667	1
12	locknut, conduit $1\frac{1}{4}$ "	847200-125	1
13	bushing, conduit plastic $1\frac{1}{4}$ "	848815-125	1
14	transformer, 350VA	249536	1
15	block, terminal and track	041493	1
16	holder, fuse	250019-773	1
17	starter, MFV size 3	052362	1
18	locknut, conduit 1	847200-150	1
19	grip, cord #4	250014-557	2
20	wire, type G-GC 4ga (ft.)	250014-306	4
21	washer, springlock $\frac{1}{2}$ "	837508-125	11
22	capscrew, hex $\frac{1}{2}$ "-13 x $1\frac{1}{2}$ " gr5	828608-150	11

---

WHEN ORDERING PARTS, INDICATE SERIAL NUMBER OF COMPRESSOR

# Section 1 ILLUSTRATIONS AND PARTS LIST

## 1.13 ENCLOSURE



# Section 1 ILLUSTRATIONS AND PARTS LIST

---

## 1.13 ENCLOSURE

<i>key number</i>	<i>description</i>	<i>part number</i>	<i>quantity</i>
1	grill, cooler	250018-295	1
2	angle, seal	250018-291	2
3	grip, cord ½"	250021-321	1
4	screw, hex serrated washer 5/16"-18 x 3/4"	829705-075	36
5	clamp, speed tube ¼"	043357	8
6	frame, roof	250018-268	1
7	panel, roof	250018-309	1
8	panel, fiberglass roof	250020-012	1
9	nut, hex flange 5/16"	825305-283	4
10	wire, neoprene #16-4 (ft.)	850604-016	6
11	nut ,retainer 5/16"-18	861505-140	8
12	panel, corner - right hand	250018-609	2
13	panel, front side	250017-311	1
14	latch, adjustable trigger lock	049764	6
15	panel, back side	250017-312	1
16	washer, springlock ¼"	837504-062	4
17	nut, hex ¼"	824204-226	4
18	grille, enclosure end	250018-667	2
19	panel, corner - left hand	250018-610	2
20	nut, hex flanged 5/16"	825305-283	36
21	panel, fiberglass door	250020-015	12
22	panel, access side	250017-310	6
23	capscrew, hex ¼"-20	828104-100	16
24	panel, end	250018-646	2
25	nut, retainer 5/16"-18	861405-092	8
26	felt, weatherstrip (ft.)	043502	112
27	guard, fan 20"	241137	1
28	washer, plain 5/16"	838205-071	8
29	panel, access roof	250017-308	1
30	fan, vent 18"	410358	1
31	guard, exhaust fan	410179	1

---

WHEN ORDERING PARTS, INDICATE SERIAL NUMBER OF COMPRESSOR

# Section 1 ILLUSTRATIONS AND PARTS LIST

## 1.14 DECAL GROUP

**1** **GENUINE SULLAIR SERVICE PARTS**  
 MODEL 10B 25 & 30HP  
 DESCRIPTION P/N  
 \* ELEMENT AIR FILTER STD 042445  
 ELEMENT FLUID FILTER (FG) 250025-525  
 ELEMENT SEPARATOR 408167-009  
 KIT FLUID RETURN LINE 241772  
 KIT AIR INLET VALVE 250015-351  
 KIT THERMAL VALVE 250025-621  
 \*\* STD COMPRESSOR FLUID OPTIONS  
 SRF 1,4000 FLUID (5 GAL.) 250019-662  
 SULLUBE 32 FLUID (5 GAL.) 250022-669  
 24KT FLUID (5 GAL.) 046850-001  
 \*\* SEE COMPR FILL DECAL FOR CORRECT FLUID  
 \* HEAVY DUTY FILTER OPTION  
 ELEMENT AIR FILTER 043334  
 THE ABOVE PARTS MAY ALSO BE ORDERED AS AN ANNUAL MAINTENANCE KIT  
 10B W/STD AIR FILTER 250027-928  
 10B W/H D AIR FILTER 250027-929  
 THE ABOVE PARTS SHOULD BE ORDERED FROM A LOCAL SULLAIR DISTRIBUTOR FOR INFORMATION REGARDING THE LOCATION OF YOUR NEAREST SULLAIR DISTRIBUTOR CONTACT  
 SULLAIR CORPORATION TEL (219) 874-1800  
 PARTS DIVISION 800 348-2722  
 1825 E SECOND ST MICHIGAN CITY, IN 46360  
 250030-997

**2** **WARNING**  
 Do not touch the pressure of compressed air or other objects to avoid injury.

**3** **WARNING**  
 Do not touch the pressure of compressed air or other objects to avoid injury.

**4** **DANGER**  
 Lethal shock hazard inside. Disconnect all power at source before opening or servicing.

**5** **NOIITLATION ROTATION**  
**ROTATION**

**6** THIS UNIT WIRED FOR 480 VOLT 4081

**7** **GROUND** 44432

**8** **SULLAIR COMPRESSOR FLUID SULLUBE-32**  
 P/N-250008-396  
 MIXING OF OTHER FLUIDS WILL VOID WARRANTY  
 FILL CAP HAS AN O-RING SEAL DO NOT USE PIPE DOPE.  
 250022-281

**9** **SULLAIR COMPRESSOR FLUID SRF 1/4000**  
 -P/N-250019-661-  
 MIXING OF OTHER FLUIDS WILL VOID WARRANTY  
 FILL CAP HAS AN O-RING SEAL DO NOT USE PIPE DOPE.  
 250027-928

**10** **GENUINE SULLAIR SERVICE PARTS**  
 MODEL 10B-40HP  
 DESCRIPTION P/N  
 \* ELEMENT AIR FILTER STD 042445  
 ELEMENT FLUID FILTER (FG) 250025-525  
 ELEMENT SEPARATOR 408167-010  
 KIT FLUID RETURN LINE 241772  
 KIT SULLICON CONTROL 250020-353  
 SPRING SULLICON CONTROL 250006-526  
 \*\* STD COMPRESSOR FLUID OPTIONS  
 SRF 1,4000 FLUID (5 GAL.) 250019-662  
 SULLUBE 32 FLUID (5 GAL.) 250022-669  
 24KT FLUID (5 GAL.) 046850-001  
 \*\* SEE COMPR FILL DECAL FOR CORRECT FLUID  
 \* HEAVY DUTY FILTER OPTION  
 ELEMENT AIR FILTER 040596  
 THE ABOVE PARTS MAY ALSO BE ORDERED AS AN ANNUAL MAINTENANCE KIT  
 10B W/STD AIR FILTER 250027-927  
 10B W/H D AIR FILTER 250027-931  
 THE ABOVE PARTS SHOULD BE ORDERED FROM A LOCAL SULLAIR DISTRIBUTOR FOR INFORMATION REGARDING THE LOCATION OF YOUR NEAREST SULLAIR DISTRIBUTOR CONTACT  
 SULLAIR CORPORATION TEL (219) 874-1800  
 PARTS DIVISION 800 348-2722  
 1825 E SECOND ST MICHIGAN CITY IN 46360  
 250029-021

**11** **WARNING**  
 Do not remove caps or plugs of these components when compressor is under air pressure.  
 Shut compressor and relieve air pressure before doing so.  
 491-85

**12** **DANGER**  
 Death or serious injury can occur from inhaling compressed air without using proper safety equipment.  
 See OSHA standards on safety equipment.  
 250027-935

**13** **WARNING**  
 DO NOT PERMIT AIR FROM THIS EQUIPMENT TO CONTACT FOODSTUFF, EXCEPT IN FULL COMPLIANCE WITH FDA STANDARD 21CFR 178.3570 AND ALL OTHER APPLICABLE FEDERAL STATE AND LOCAL CODES, STANDARDS AND REGULATIONS

**14** **WARNING**  
 Use equipment grounding connector in accordance with the National Electrical Code, and all Federal, State, and Local Codes, to help avoid possible ground fault shock hazard.

**15** **DANGER HIGH VOLTAGE**  
 42218

**16** **WATER IN OUT**  
 40873

**17** **WATER IN**  
 250028-207

**18** **WATER OUT**  
 250028-208

**19** **NOIITLATION ROTATION**  
 248014

**20** **WATER DRAIN**

**21** **SULLAIR CORPORATION TWO Airanteed YEARS SCREW COMPRESSORS**  
 43067

Section 1

**ILLUSTRATIONS AND PARTS LIST**

---

**1.14 DECAL GROUP**

<i>key number</i>	<i>description</i>	<i>part number</i>	<i>quantity</i>
1	decal, 50HP maintenance kit	250030-997	1
2	sign, warning sever fan	049855	2
3	sign, warning server fan port	049965	1
4	sign, danger electrocution	049850	1
5	decal, rotation	250021-286	1
6	decal, 460 volt	040631	1
7	decal, grounding lug	045433	1
8	decal, compressor fluid Sullube-32	250023-361	1
9	decal, SRF 1/4000 fluid	250022-839	1
10	decal, 50HP maintenance kit	250029-021	1
11	sign, warning compressor oil fill cap	049685	1
12	sign, danger air breathing	250027-935	1
13	sign, warning "food grade" lube	250003-144	1
14	sign, warning ground fault	049852	1
15	decal, danger high voltage	042218	1
16	decal, water inlet/outlet	049873	1
17	decal, water in	250019-107	1
18	decal, water out	250019-108	1
19	decal, rotation	250021-564	1
20	decal, water drain	250022-310	1
21	decal, airanteed 2 year (white)	043067	1
22	decal, fork lifting	241814	1

---

**WHEN ORDERING PARTS, INDICATE SERIAL NUMBER OF COMPRESSOR**

# NOTES

# NOTES

# NOTES

# STATEMENT OF WARRANTY

Sullair Corporation ("Sullair") warrants that, under normal use and service, if properly stored, handled, installed, operated, and maintained, its 24 KT air end shall, for a period of ten (10) years if continuously charged with 24 KT Coolant, (1) beginning at machine start-up if the registration card is returned within ten (10) days after start-up and the start-up occurs within twelve (12) months after shipment by Sullair from the factory, or (2) if not, beginning thirty (30) days after shipment by Sullair from the factory, be free of defects in materials and workmanship, under normal use and service, and free of loss of capacity due to wear. Should any such defect become apparent within such time, and written notice of each and every such defect is promptly provided to Sullair, and Sullair reasonably determines that any such product is defective in material or workmanship, Sullair will, at its option, replace or repair such product. Sullair's obligation with respect to such product shall be limited to repair or replacement, F.O.B. Sullair's place of business, without any further expense to Sullair, and except as expressly provided herein, Sullair shall not in any event be liable for any other labor, transportation, installation, adjustment or other expenses which may arise in connection with such product. Any misuse or abuse of the product(s) voids this limited warranty.

The Sullair warranty does not extend to products not assembled by Sullair. As to such Products assembled by others, Purchaser shall be entitled to proceed only upon the terms of that particular manufacturer's warranty. Warranty does not apply to defects in materials provided by Purchaser or design stipulated by Purchaser.

Used products, and products not assembled by Sullair, are sold AS IS with no representation or warranty, and ALL WARRANTIES OF QUALITY, WRITTEN, ORAL OR IMPLIED, other than may be expressly agreed to by Sullair in writing, INCLUDING WITHOUT LIMITATION, WARRANTIES OF MERCHANTABILITY OR FITNESS, ARE HEREBY DISCLAIMED.

IN NO EVENT SHALL SULLAIR BE LIABLE FOR SPECIAL, INDIRECT, INCIDENTAL OR CONSEQUENTIAL DAMAGES however arising whether in warranty, strict liability, contract, tort, negligence or otherwise, including but not limited to loss of profits or revenue, loss of total or partial use of the Products, facilities or services, downtime costs, or claims of Purchaser for such or other damages whether on account of Products furnished hereunder or delays in delivery thereof of services performed upon or with respect to such Products. Sullair's liability on any claim whether in warranty, strict liability, contract, tort, negligence or otherwise for any loss or damage arising out of, connected with, or resulting from this contract or the performance or breach thereof, or from the design, manufacture, sale, delivery, resale, repair, replacement, installation, technical direction of installation, inspection, servicing, operation or use of any Product covered by or furnished under this contract shall in no case exceed the purchase price allowable to the Product or part thereof which give rise to the claim. Notice of claims against Sullair hereunder for any reason, including breach of warranty, must be made to Sullair in writing within forty-eight (48) hours of discovery to afford Sullair an opportunity to make a prompt investigation of surrounding facts and mitigate any damage which might ensue, should it be determined to be Sullair's responsibility. Failure to give such notice to Sullair shall constitute a waiver by Purchaser of any right later to assert such a claim.

Any cause of action against Sullair arising out of or relating to the contract or the performance hereof shall expire unless brought within one year of the time of accrual thereof.

THE FOREGOING LIMITED WARRANTY IS EXCLUSIVE AND IN LIEU OF ALL OTHER WARRANTIES, EXPRESSED OR IMPLIED, INCLUDING BUT NOT LIMITED TO ANY WARRANTY OF MERCHANTABILITY OR FITNESS FOR A PARTICULAR PURPOSE.

**SULLAIR CORPORATION**  
A Subsidiary of Sundstrand Corporation  
Michigan City, Indiana 46360

# WORLDWIDE SALES AND SERVICE

---

## SULLAIR CORPORATION

A SUBSIDIARY OF SUNDSTRAND CORPORATION

3700 E. Michigan Blvd. Michigan City, Indiana 46360-9990  
Telephone (219) 879-5451 Telex 4946922



Printed in U.S.A. Effective 11/89

Specifications Subject To  
Change Without Prior Notice

Part No. 253036