

**QUINCY QSI SERIES  
INDUSTRIAL AIR COMPRESSORS**

**PARTS  
LIST**

**MODEL  
QSI-350**

**AIR COOLED**

**SERIAL NO.** \_\_\_\_\_

**SECOND EDITION**

# TABLE OF CONTENTS

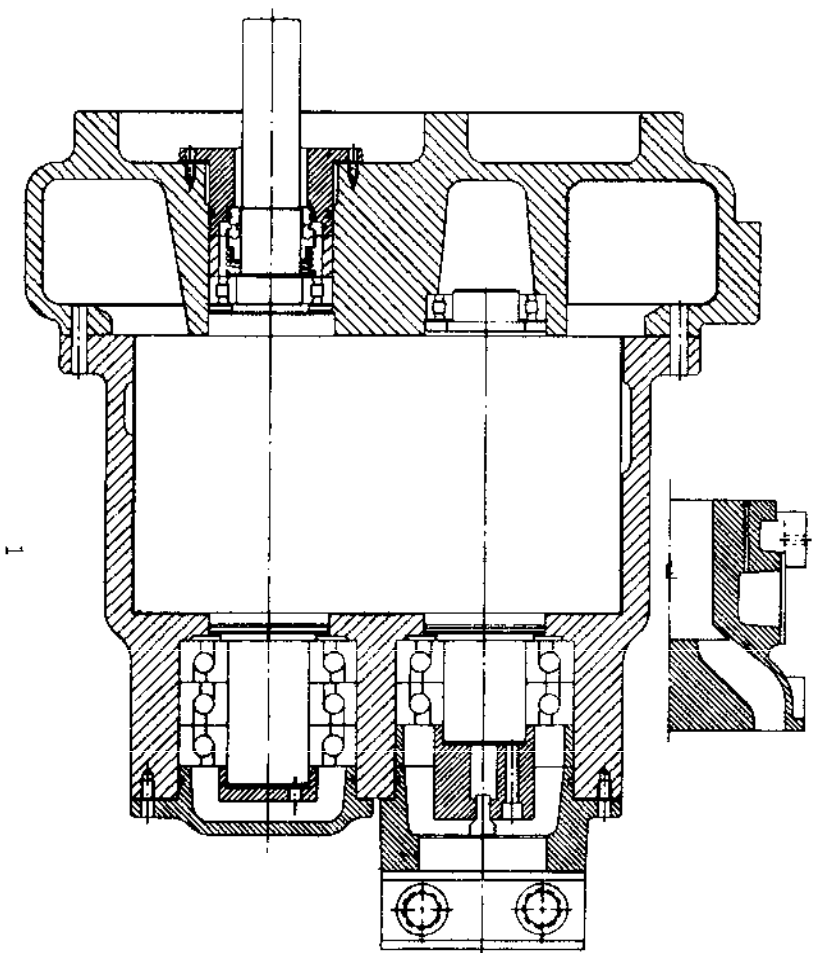
BASIC COMPRESSOR GROUP . . . . .	1 & 2
MOTOR & COMPRESSOR GROUP . . . . .	3 & 4
MOTOR & STARTER GROUP. . . . .	5 & 6
RECEIVER GROUP . . . . .	7 & 8
AIR CLEANER GROUP. . . . .	9 & 10
INLET VALVE GROUP. . . . .	.11 & 12
AIR PIPING GROUP . . . . .	.13 & 14
(WITH AFTERCOOLER - WITH CANOPY)	
(WITH AFTERCOOLER - LESS CANOPY)	
FAN MOTOR & STARTER GROUP. . . . .	.15 & 16
AIR PIPING GROUP . . . . .	.17 & 18
OIL PIPING GROUP . . . . .	.19 & 20
CONTROL PIPING GROUP . . . . .	.21,22,23 & 24
DISCHARGE PIPING GROUP . . . . .	.25 & 26
GAUGE PANEL GROUP. . . . .	.27 & 28
CONTROL TRANSFORMER & LIFTING BAIL GROUP . . . . .	.29 & 30
ELECTRIC CONTROL GROUP . . . . .	.31 & 32
FINAL ASSEMBLY GROUP . . . . .	.33 & 34
CANOPY GROUP . . . . .	.35 & 36
COOLER GROUP . . . . .	.37 & 38

## RECOMMENDED SPARE PARTS

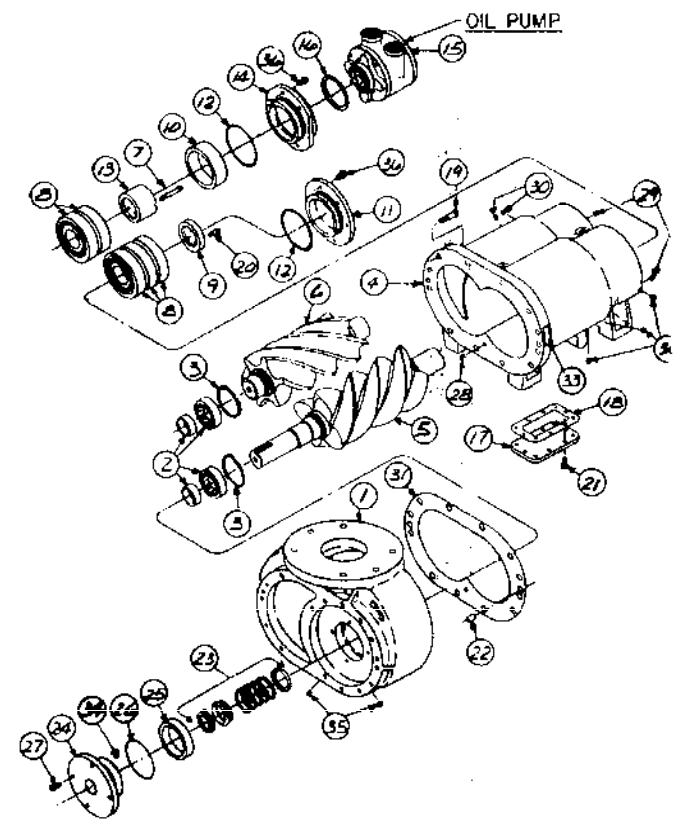
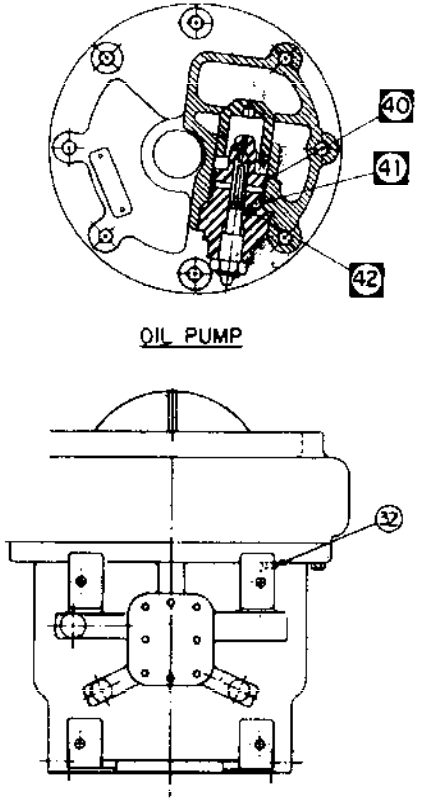
Qty.	Part Number	Description
2	22705-2	PRIMARY AIR/OIL SEPERATOR
2	122117-2	SECONDARY AIR/OIL SEPERATOR
2	23458-4	AIR INTAKE FILTER
4	22722	OIL FILTER KITS
2	22293	CONTROL CIRCUIT FUSE (5 AMP TIME-DELAY)
1	122862-600	TIMER
1	123389-01	MODULE
2	121857-01	PROBE
1	122812-E01	LINE FILTER ELEMENT

# **BASIC COMPRESSOR GROUP QSI-350 AIR & WATER**

**22583**



ILLUSTRATES BEARING INSTALLATION



Index Number	Qty.	Part Number	Description
1	1	22425-1	CASING - INLET
2	2	20039	BEARING
3	2	20010	RING
4	1	22427-1	HOUSING - ROTOR
5	1	22400-1	ROTOR-FINISH-M
6	1	22401-1	ROTOR-FINISH-F
7	3	90386-L18	SCREW - 3/8 X 2.25
8	5	22574	BEARING
9	1	22523	RETAINER
10	-	22572	SPACER
11	1	22514	CAP
12	2	22749-249	O-RING
13	1	22522	RETAINER
14	1	22516	ADAPTER
15	1	22596	PUMP
16	1	22531	GASKET
17	1	23544	PLATE
18	1	23548	GASKET
19	9	123478-N17	SCREW - 1/2 X 2.00
20	3	90386-L12	SCREW - 3/8 X 1.00
21	10	123478-L10	SCREW - 3/8 X .75
22	2	120004	PIN
23	1	22578-1	SEAL
24	1	22529	ADAPTER
25	1	22562	SPACER
26	1	22749-236	O-RING
27	4	123478-J10	SCREW - 1/4 X .75
28	1	23207	PLUG
29	2	121160	PLUG
30	5	2140	PLUG
31	1	22750-1	GASKET
32	1	123478-N16	SCREW - 1/2 X 1.75
33	1	120189	PLATE
34	1	6268	STOP PIN
35	2	2574	PLUG
36	10	90386-L14	SCREW - 3/8 X 1.25
**40	1	122419-4	O-RING OIL PUMP
**41	1	122419-5	O-RING OIL PUMP
**42	1	122419-3	O-RING OIL PUMP

RECOMMENDED TORQUE SPECIFICATIONS

ITEM	DRY	WET
19	75 FT#	55 FT#
20	45 FT#	35 FT#
21	30 FT#	23 FT#
27	96 IN#	75 IN#
32	75 FT#	55 FT#
36	45 FT#	35 FT#

**Quincy**  
Compressor Division

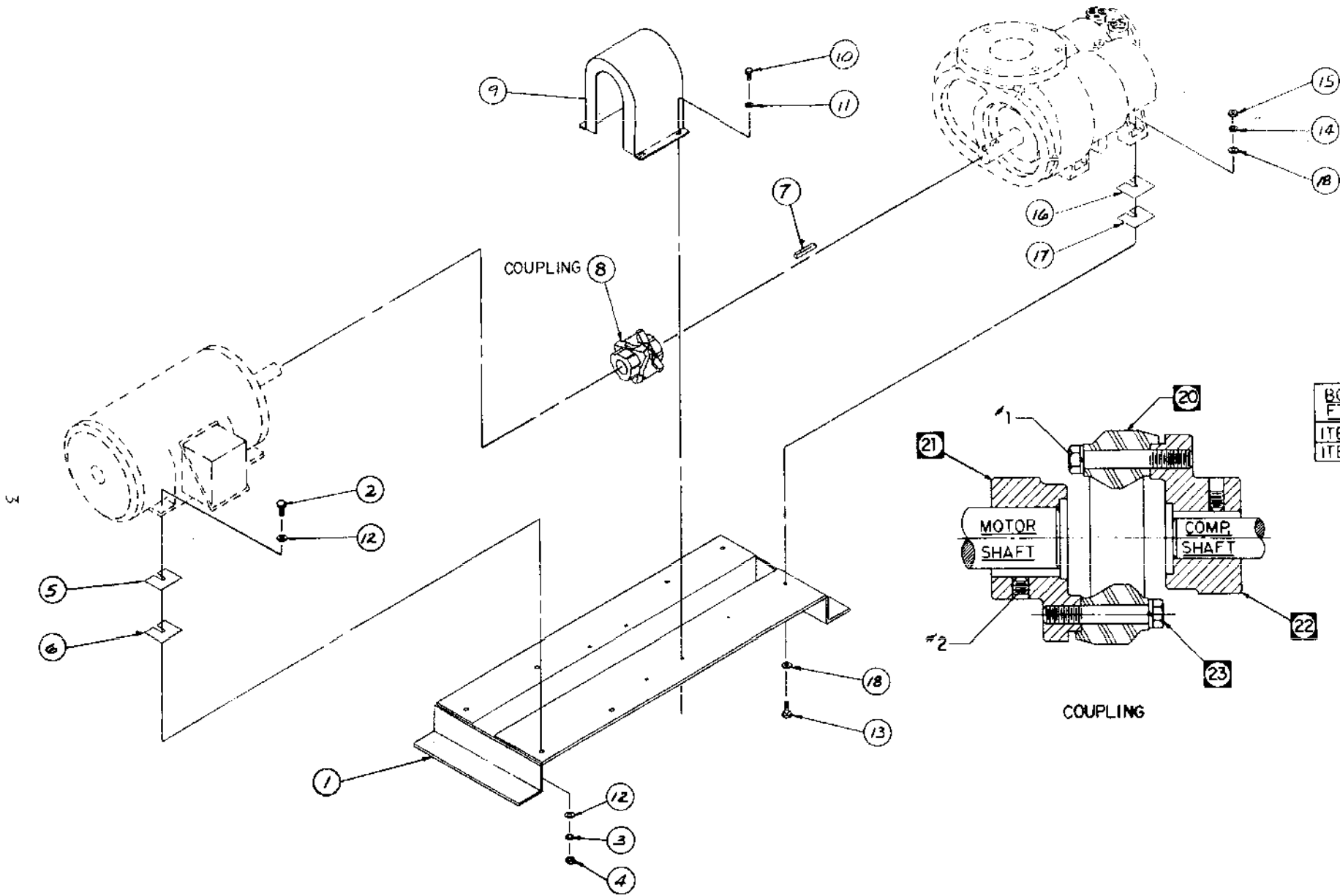
---

**Colt Industries**



# **MOTOR & COMPRESSOR GROUP QSI-350 AIR & WATER**

**23469**



Index Number	Qty.	Part Number	Description
1	1	23514	BASE
2	4	123478-Q18	SCREW - 5/8 X 2.25
3	4	123115-10C	WASHER - LOCK HELICAL
4	4	124364-Q02	NUT - 5/8-11-2B
5 *AN		21961	SHIM .015
6 *AN		21962	SHIM .005
7	1	20109	KEY
8	1	23249-2	COUPLING
9	1	23736	GUARD
10	4	123478-J12	SCREW - 1/4 X 1.00
11	4	123115-04C	WASHER - LOCK HELICAL
12	8	3592	WASHER, PLAIN 5/8
13	4	123478-N18	SCREW - 1/2 X 2.25
14	4	123115-08C	WASHER - LOCK HELICAL
15	4	124364-N02	NUT - 1/2-13-2B
16 *AN		122354	SHIM .010
17 *AN		122355	SHIM .020
18	8	2769	WASHER, PLAIN 1/2
20*	1	22730	DONUT
21*	1	23739	MOTOR HUB
22*	1	23740	COMPRESSOR HUB
23*	1	22734	BOLT KIT

\* AN - AS NECESSARY

**Quincy**  
Compressor Division

---

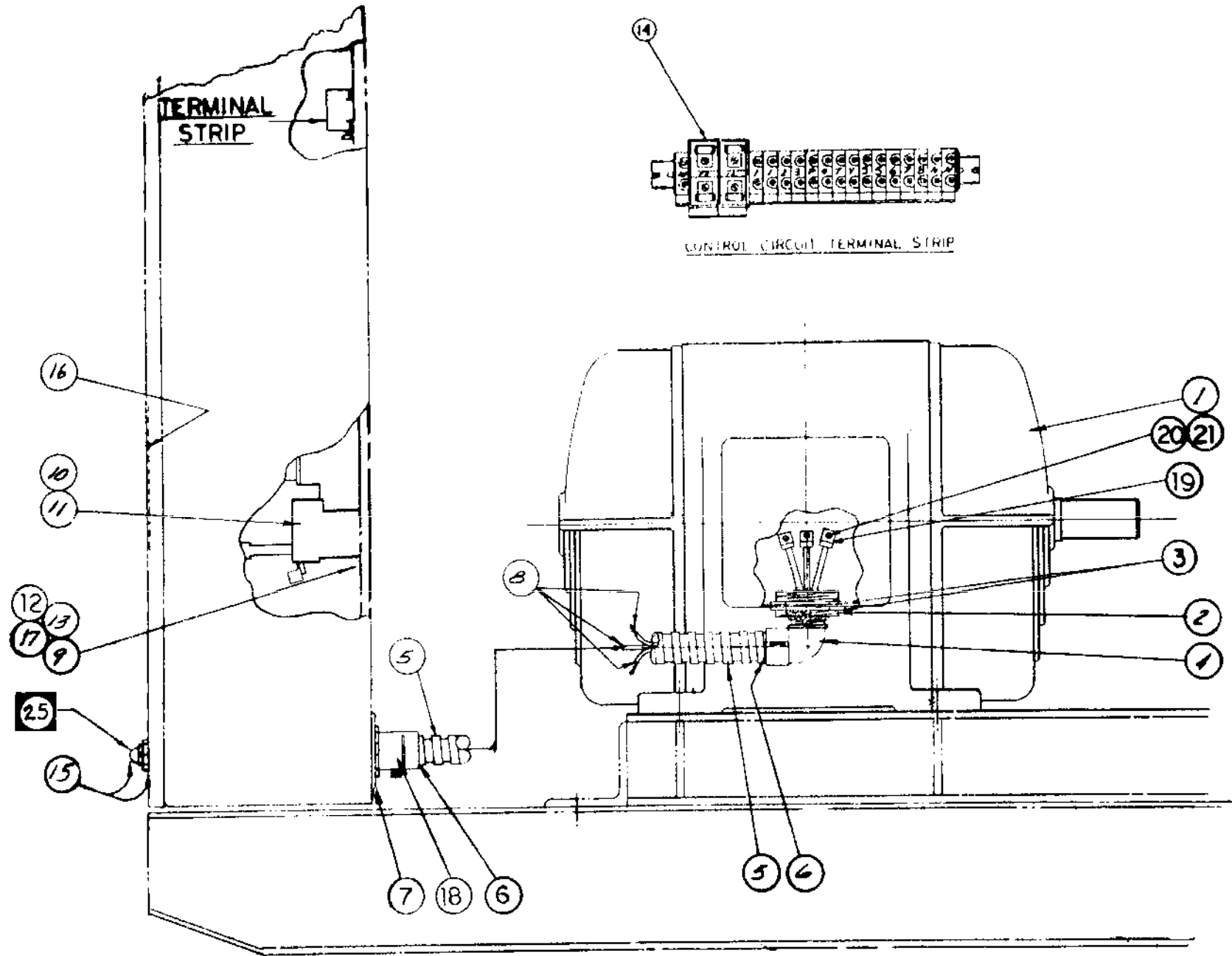
**Colt Industries**



# **MOTOR & STARTER GROUP**

## **QSI-350 AIR**

**23602**



Index Number	Qty.	Part Number	Description
1	1	23965	MOTOR 75-200V
2	1	120651	BUSHING
3	2	90332	LOCKNUT
4	1	9839	CONNECTOR
5	2	9848	CONDUIT-FT
6	2	9849	SLEEVE
8	9	124220	WIRE
9	3	123478-N10	SCREW - 1/2 X .75
10	1	23487-200	STARTER
11	3	22131	RELAY
12	3	123115-08C	WASHER, LOCK HELICAL
13	3	124364-N02	NUT - 1/2-13-28
14	1	120673	FUSE - 3 AMP TIME DELAY 500 VOLT
15	1	123155-170	LAMP ASSEMBLY
16	2	110005	DECAL
18	1	9837	CONNECTOR
19	12	8053	FITTING
20	3	123201-N10	CAPSCREW
21	3	124366-N02	NUT - 1/2-13-28
#25	1	123155-001	BULB - LAMP ASSEMBLY#FOR PROPER OVERLOAD HEATERS CONSULT CIRCULAR LETTER NO.37
1	1	23473	MOTOR 75- 230V
2	1	120651	BUSHING
3	2	90332	LOCKNUT
4	1	9839	CONNECTOR
5	2	9848	CONDUIT-FT
6	2	9849	SLEEVE
8	9	9847	WIRE
9	3	123478-N10	SCREW - 1/2 X .75
10	1	23487-230	STARTER
11	3	22131	RELAY
12	3	123115-08C	WASHER, LOCK HELICAL
13	3	124364-N02	NUT - 1/2-13-28
14	1	120673	FUSE - 3 AMP TIME DELAY 500 VOLT
15	1	123155-120	LAMP ASSEMBLY
16	1	110005	DECAL
18	1	9837	CONNECTOR
19	12	8053	FITTING
20	2	40753	CAPSCREW
21	3	124366-J02	NUT - 1/4-20-28
#25	1	123155-001	BULB - LAMP ASSEMBLY#FOR PROPER OVERLOAD HEATERS CONSULT CIRCULAR LETTER NO.37
1	1	23470	MOTOR 75-460V
2	1	90333	REDUCER
3	2	90332	LOCKNUT
4	1	23489	CONNECTOR
5	2	23490	CONDUIT - FT
6	2	23491	SLEEVE
7	2	40685	WASHER
8	9	124219	WIRE
9	2	123478-J10	SCREW - 1/4 X .75
10	1	22467-480	STARTER
11	3	8288	RELAY
14	1	120673	FUSE - 3 AMP TIME DELAY 500 VOLT
15	1	123155-120	LAMP ASSEMBLY
16	1	110004	DECAL
17	1	123478-K10	SCREW - 5/16 X .75
18	1	23492	CONNECTOR
19	12	8053	FITTING
20	3	40753	CAPSCREW
21	3	124366-L02	NUT - 1/4-20-28
#25	1	123155	BULB - LAMP ASSEMBLY#FOR PROPER OVERLOAD HEATERS CONSULT CIRCULAR LETTER NO.37
1	1	23466	MOTOR 75-575V
2	1	40596	BUSHING
3	2	90332	LOCKNUT
4	1	9956	ELBOW
5	2	9417	CONDUIT-FT
6	2	9416	SLEEVE
7	2	40597	WASHER
8	9	9348	WIRE-FT
9	2	123478-J10	SCREW - 1/4 X .75
10	1	22467-575	STARTER
11	3	8288	RELAY
14	1	120677	FUSE - 2 AMP FAST ACTING 600 VOLT
15	1	123155-120	LAMP ASSEMBLY
16	1	110004	DECAL
17	1	123478-K10	SCREW - 5/16 X .75
18	1	9418	CONNECTOR
19	12	8053	FITTING
20	3	40753	CAPSCREW
21	3	124366-J02	NUT - 1/4-20-28
#25	1	123155-001	BULB - LAMP ASSEMBLY#FOR PROPER OVERLOAD HEATERS CONSULT CIRCULAR LETTER NO.37

# SERVICE PARTS ONLY

**Quincy**  
Compressor Division

---

**Colt Industries**



**RECEIVER GROUP  
QSI-350 AIR & WATER**

**23474-2**



Index Number	Qty.	Part Number	Description
1	1	23471-1	RECEIVER-W/T-P
2	1	22705-2	SEPARATOR
3	1	122117-2	SEPARATOR
6	1	3004	ELBOW
7	1	4512	ST. ELL
8	1	3092	ELBOW
9	1	23268-1	VALVE
10	1	23680-1	GAUGE
11	1	22177	OIL TAG NOT SHOWN
12	1	23269	PLUG
13	1	22335	ADAPTER
14	3	23935	BRACKET
15	1	21082	DECAL NOT SHOWN
16	1	4719	PLUG
17	1	2574	PLUG
18	1	1303	PLUG
19	3	123478-N14	SCREW - 1/2 x 1.25
20	3	123115-08C	WASHER, LOCK HELICAL
21	3	124364-N02	NUT - 1/2-13-2B
**23	1	23472	TOP PLATE
**24	10	123478-R18	CAPSCREW HEX HEAD 3/4 x 2.25" LONG
**25	1	120289	SEAL, FILL GAUGE
**26	1	121965	FACE, FILL GAUGE DIAL

**Quincy**  
Compressor Division

---

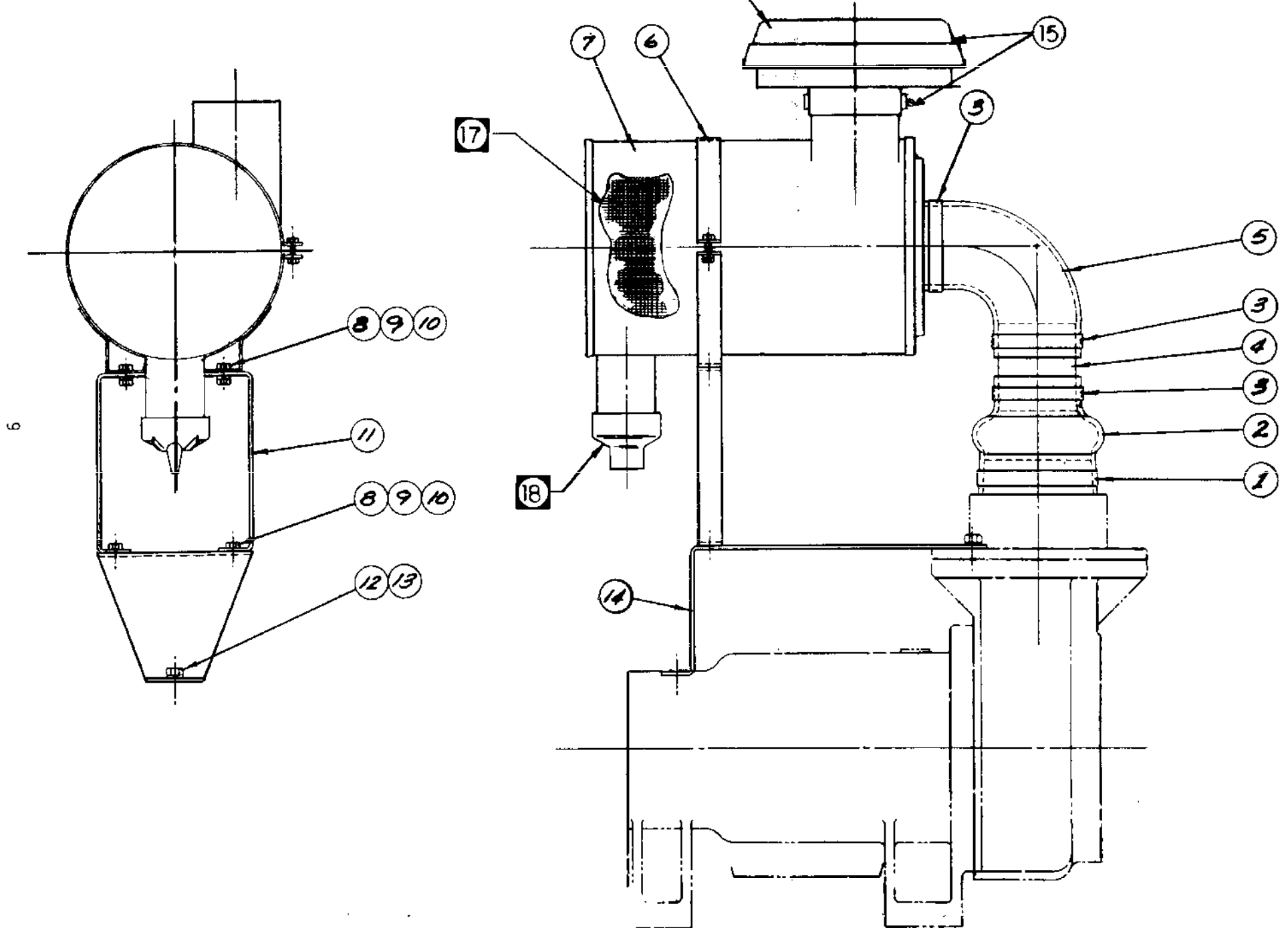
**Colt Industries**



# **AIR CLEANER GROUP QSI-350 AIR & WATER**

**120044**

RAIN HOODS OPTIONAL ON CANOPY UNITS, STANDARD  
ON LESS CANOPY UNITS.



Index Number	Qty.	Part Number	Description
1	1	2316	CLAMP, HOSE
2	1	20417	COUPLING
3	3	20198	CLAMP, AIR INTAKE
4	1	120047	TUBE
5	1	20418	ADAPTOR
6	1	120045	BAND
7	1	22864-4	FILTER
8	4	123478-L12	SCREW - 3/8" X 1.00
9	4	123115-060	WASHER - LOCK
10	4	124364-L02	NUT - 3/8" - 16 - 20
11	1	120030	BRACKET - AIR CLEANER
12	1	123478-012	SCREW - 5/8" X 1.00
13	1	123115-100	WASHER - LOCK
14	1	120046	BRACKET
15	1	20187	RAINHOOD AND CLAMP
17	1	23458-4	ELEMENT
18	1	121291	DUST COVER

**Quincy**  
Compressor Division

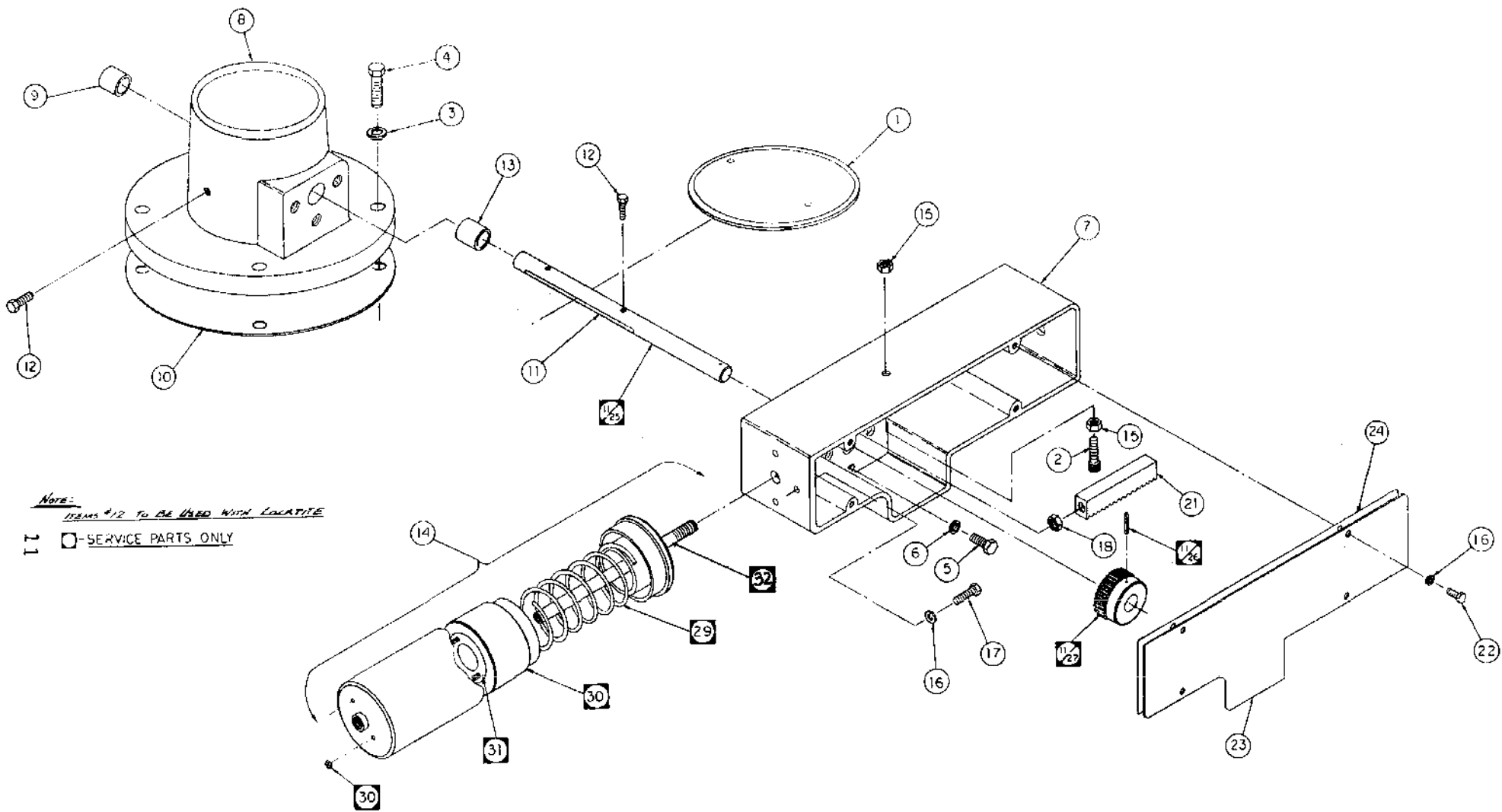
---

**Colt Industries**



# **INLET VALVE GROUP QSI-350 AIR & WATER**

**23296**



NOTE:  
 15MM #12 TO BE USED WITH LOCKTITE

11  -SERVICE PARTS ONLY

Index Number	Qty.	Part Number	Description
1	1	20346	VALVE - PLATE
2	2	123478-N12	SCREW - 1/2" X 1.00
3	4	123115-08C	WASHER - HELICAL LOCK
4	2	123478-N14	SCREW - 1/2" X 1.25
5	3	20712	CAPSCREW
6	3	123115-06C	WASHER - HELICAL LOCK
7	1	20655	HOUSING
8	1	20025	VALVE - BODY
9	1	22271	BEARING
10	1	20349	GASKET
11	1	22270	SHAFT ASSY.
12	3	123478-J09	SCREW - 1/4" X .62
13	1	22272	BEARING
14	1	23302	AIR CLYINDER COMPLETE
15	-	-----	-----
16	8	123115-04C	WASHER - LOCK
17	3	123478-J10	SCREW - 1/4 X .75
18	1	124369-L02	NUT - 3/8-24-2B
19	1	124368-J02	NUT - 1/4-20-2B
20	1	21424	BRACKET
21	1	20656	RACK
22	4	123478-J07	SCREW - 1/4 X .50
23	1	20658	PLATE
24	1	124297	GASKET
25**	1	22269	SHAFT
26**	1	123407	ROLL PIN
27**	1	20660	GEAR
29**	1	22033	SPRING-AIR MOTOR
30**	1	21807	KIT-AIR MOTOR DIAPHRAGM REPAIR
31**	1	124743	CAP-DIAPHRAGM RETAINER ASSEMBLY
32**	1	20647	SHAFT-AIR MOTOR

**Quincy**  
Compressor Division

---

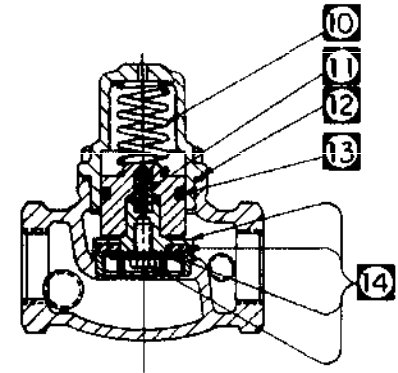
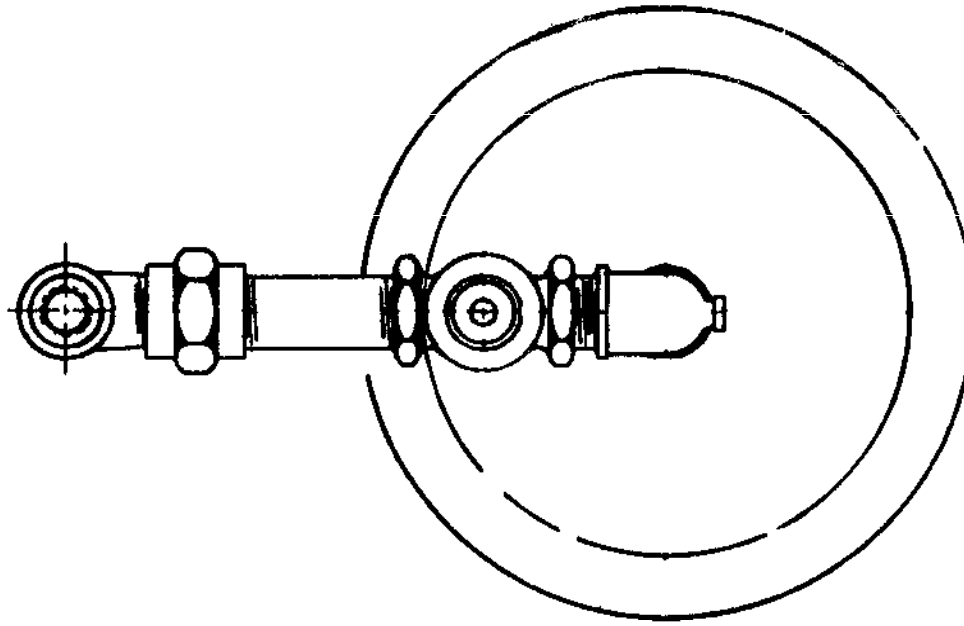
**Colt Industries**



**AIR PIPING GROUP  
QSI-350 AIR & WATER**

**LESS AFTERCOOLER WITH CANOPY  
124042-001**

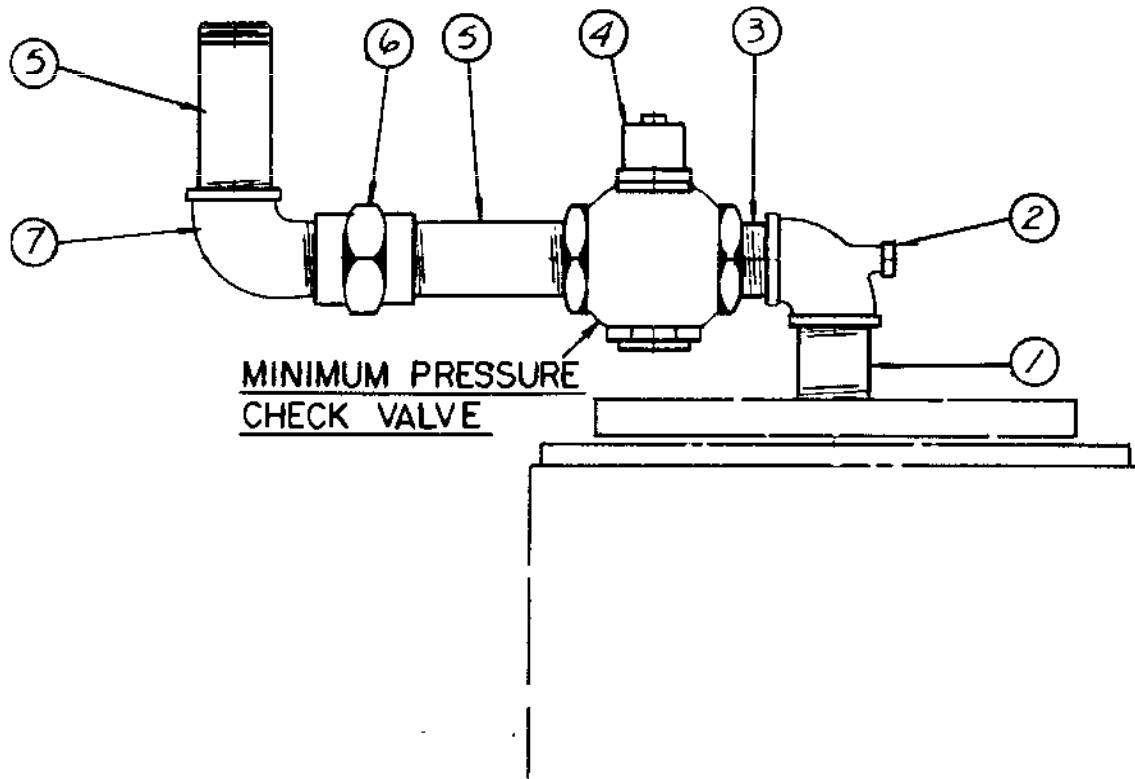
**LESS AFTERCOOLER LESS CANOPY  
124042-002**



MINIMUM PRESSURE  
CONTROL VALVE

AIR PIPING - AIR & WATER COOLED

LESS AFTERCOOLER WITH CANOPY - SEE B/M # 124042-001  
 LESS AFTERCOOLER LESS CANOPY - SEE B/M # 124042-002



MINIMUM PRESSURE  
CHECK VALVE

Index Number	Qty.	Part Number	Description
1	1	23907	NIPPLE
2	1	21929	TEE
3	1	3047	NIPPLE
4	1	122501-3	VALVE
5	2	23901	NIPPLE
6	1	4398	UNION
7	1	4462	ELBOW
			B/M #124042-001
1	1	23907	NIPPLE
2	1	21929	TEE
3	1	3047	NIPPLE
4	1	122501-3	VALVE
			B/M #124042-002
#10	1	124734	PRESSURE SPRING
#11	1	124735	SPRING
#12	1	124736	O-RING BUNA-N
#13	1	124737	O-RING VITON
#14	1	124742	SEAT ASSEMBLY
			MINIMUM COMPRESSOR CONTROL VALVE- REPAIR KIT

**Quincy**

Compressor Division

---

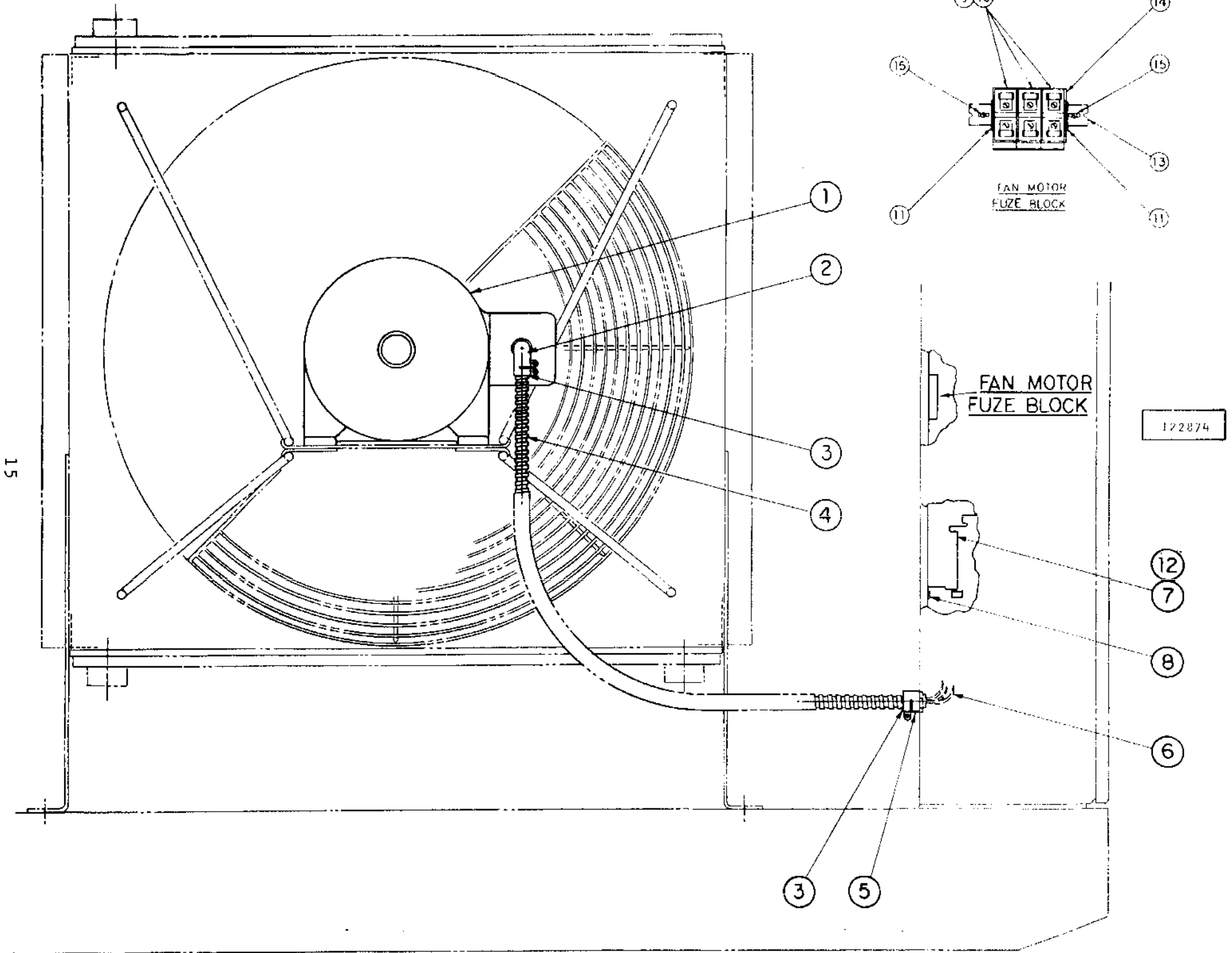
**Colt Industries**



# **FAN & MOTOR STARTER GROUP**

## **QSI-350 AIR**

**122874**



Index Number	Qty.	Part Number	Description
1	1	8117	MOTOR- 3HP. 208 VOLTS 1,200 R.P.M.
2	1	23483	CONNECTOR
3	2	8049	FITTING
4	3	22100	CONDUIT
5	1	22115	CONNECTOR
6	12	7908	WIRE
7	1	8700-120	STARTER
8	3	123200-G05	SCREW
9	3	120683	FUSE - 600 VOLT (FAST BLOW) 30 AMP.
10	3	122752-01	BLOCK
11	2	122756-01	STOPS
12	3	4051	RELAY (THERMAL)
13	1	122757-01	TRACK
14	1	122755-01	BARRIER
15	2	123200-F05	SCREW
			B/M# 122874-301 208 VOLT
1	1	120783	MOTOR- 3HP. 230 VOLTS 1,200 R.P.M.
2	1	23483	CONNECTOR
3	2	8049	FITTING
4	3	22100	CONDUIT
5	1	22115	CONNECTOR
6	12	7908	WIRE
7	1	8700-120	STARTER
8	3	123200-G05	SCREW
9	3	120682	FUSE - 25 AMP 600 VOLT (FAST BLOW)
10	3	122752-01	BLOCK
11	2	122756-01	STOPS
12	3	4051	RELAY
13	1	122757-01	TRACK
14	1	122755-01	BARRIER
15	1	123200-F05	SCREW
			B/M# 122874-302 230 VOLT
1	1	120783	MOTOR - 3HP. 460 VOLTS 1,200 R.P.M.
2	1	23483	CONNECTOR
3	2	8049	FITTING
4	3	22100	CONDUIT
5	1	22115	CONNECTOR
6	12	7908	WIRE
7	1	8700-120	STARTER
8	3	123200-G05	SCREW
9	3	120510	FUSE - 15 AMP 600 VOLT (FAST BLOW)
10	3	122752-01	BLOCK
11	2	122756-01	STOPS
12	3	4051	RELAY
13	1	122757-01	TRACK
14	1	122755-01	BARRIER
15	2	123200-F05	SCREW
			B/M# 122874-304 460 VOLT
1	1	120784	MOTOR - 3HP. 575 VOLT 1,200 RPM.
2	1	23483	CONNECTOR
3	2	8049	FITTING
4	3	22100	CONDUIT
5	1	22115	CONNECTOR
6	12	7908	WIRE
7	1	8700-120	STARTER
8	3	123200-G05	SCREW
9	3	120512	FUSE - 10 AMP. 600 VOLT (FAST BLOW)
10	3	122752-01	BLOCK
11	2	122756-01	STOPS
12	3	4051	RELAY
13	1	122757-01	TRACK
14	1	122755-01	BARRIER
15	2	123200-F05	SCREW
			B/M# 122874-305 575 VOLT

**Quincy**  
Compressor Division

---

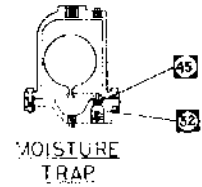
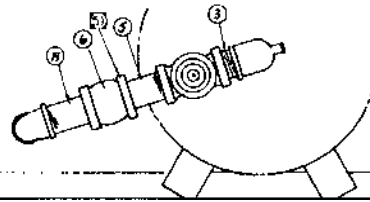
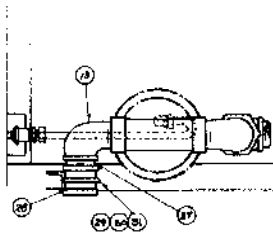
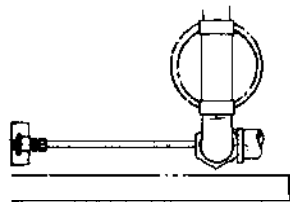
**Colt Industries**



**AIR PIPING GROUP  
QSI-350 AIR**

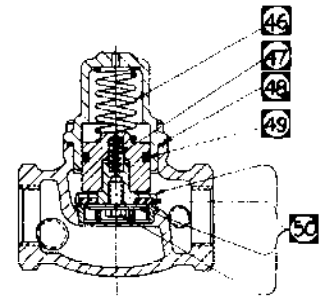
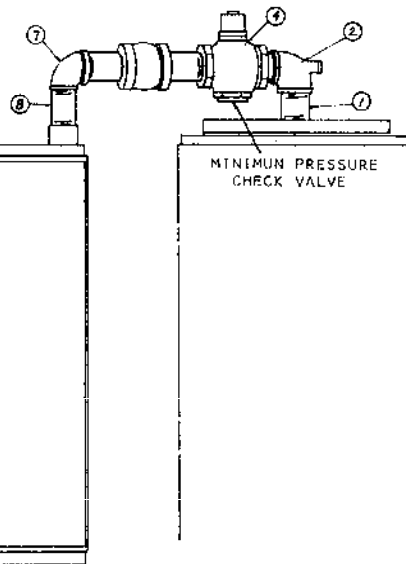
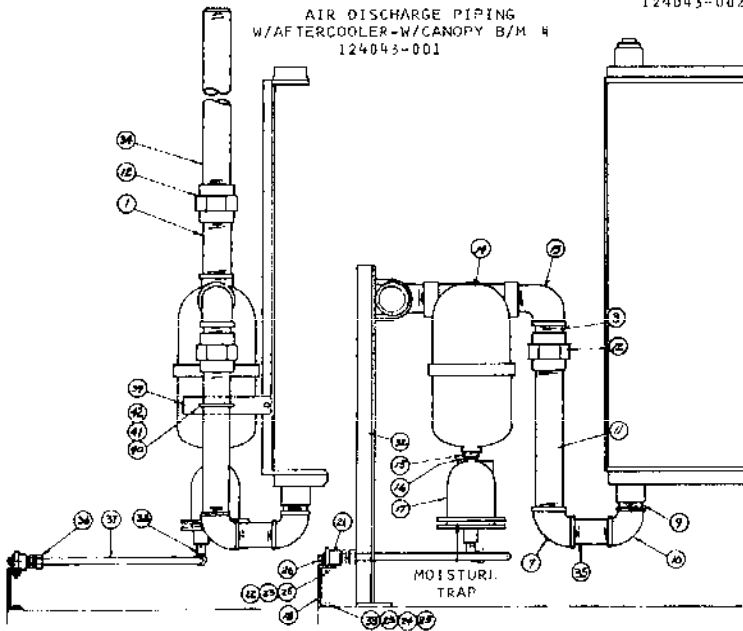
**WITH AFTERCoolER WITH CANOPY  
124043-001**

**WITH AFTERCoolER LESS CANOPY  
124043-002**



AIR DISCHARGE PIPING  
W/AFTERCOOLER-L/CANOPY B/M #  
124043-002

AIR DISCHARGE PIPING  
W/AFTERCOOLER-W/CANOPY B/M #  
124043-001



MINIMUM PRESSURE  
CONTROL VALVE

Index Number	Qty.	Part Number	Description
1	2	23917	NIPPLE
2	1	21929	TEE
3	2	3047	NIPPLE
4	1	122501-3	VALVE
5	1	120182	NIPPLE
6	1	23288	COUPLING
7	2	122173	ELBOW
8	1	124481	NIPPLE
9	1	23685	NIPPLE
10	1	4463	ELBOW
11	1	21928	NIPPLE
12	2	4398	UNION
13	2	4462	ELBOW
14	1	9099	SEPERATOR - MOISTURE
15	1	2754	BUSHING
15	1	2739	NIPPLE
17	1	7899	TRAP - MOISTURE
18	1	124092	BRACKET - SUPPORT
19	1	21942	NIPPLE
21	1	23976	COUPLING
22	1	120320	BOLT
23	4	123115-04C	WASHER - LOCK
24	2	20612	WASHER
25	4	124364-J02	NUT
26	1	2721	PIPE PLUG
33	2	123478-J14	SCREW
34	1	22067	NIPPLE
35	1	23223	NIPPLE
36	1	9178	CONNECTOR
37	2	8948	TUBE - FT.
38	1	121240	ELBOW
39	1	124459	BRACKET
40	1	120806	BOLT - U
41	2	123115-05C	WASHER - LOCK
42	2	124364-M02	NUT
*45	1	124738	GASKET COVER SEAL
*46	1	124734	PRESSURE SPRING
*47	1	124735	SPRING
*48	1	124736	O-RING-BUNA-N
*49	1	124737	O-RING-VITON
*50	1	124742	SEAT ASSEMBLY
*51	2	121823	AEROQUIP COUPLING SEALS - 2.00 INCHES
1	2	23907	NIPPLE
2	1	21929	TEE
3	2	3047	NIPPLE
4	1	122501-3	VALVE
5	1	120182	NIPPLE
6	1	23288	COUPLING
7	2	122173	ELBOW
8	1	124481	NIPPLE
9	1	23885	NIPPLE
10	1	4463	ELBOW
11	1	21928	NIPPLE
12	1	4398	UNION
13	2	4462	ELBOW
14	1	9099	SEPARTOR
15	1	2754	BUSHING
16	1	2739	NIPPLE
17	1	7899	TRAP
18	1	124092	BRACKET - SUPPORT
19	1	21942	NIPPLE
21	1	23976	COUPLING
22	1	120320	BOLT
23	4	122502-04C	WASHER
24	2	20612	WASHER
25	4	124364-J02	NUT
26	1	2721	PIPE - PLUG
27	1	9194	NIPPLE
28	1	6366	COUPLING
29	1	23732	BOLT
30	2	123115-06C	WASHER
31	2	124363-L02	NUT
32	1	122177	BRACKET
33	2	123478-J14	SCREW
35	1	23223	NIPPLE
36	1	9178	CONNECTOR
37	2	8948	TUBE - FT.
38	1	121240	ELBOW
*45	1	124738	GASKET COVER SEAL
*46	1	124734	PRESSURE SPRING
*47	1	124735	SPRING
*48	1	124736	O-RING - BUNA-N
*49	1	124737	O-RING - VITON
*50	1	124742	SEAT ASSEMBLY
*51	2	121823	AEROQUIP COUPLING SEALS - 2.00 INCHES

BILL # 124043-001

BILL # 124043-002

\*SERVICE PARTS ONLY

**Quincy**  
Compressor Division

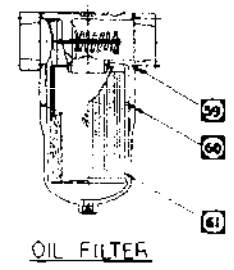
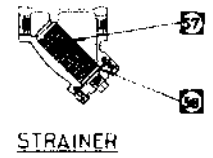
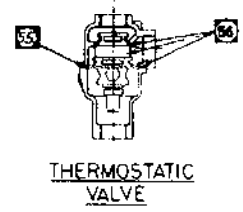
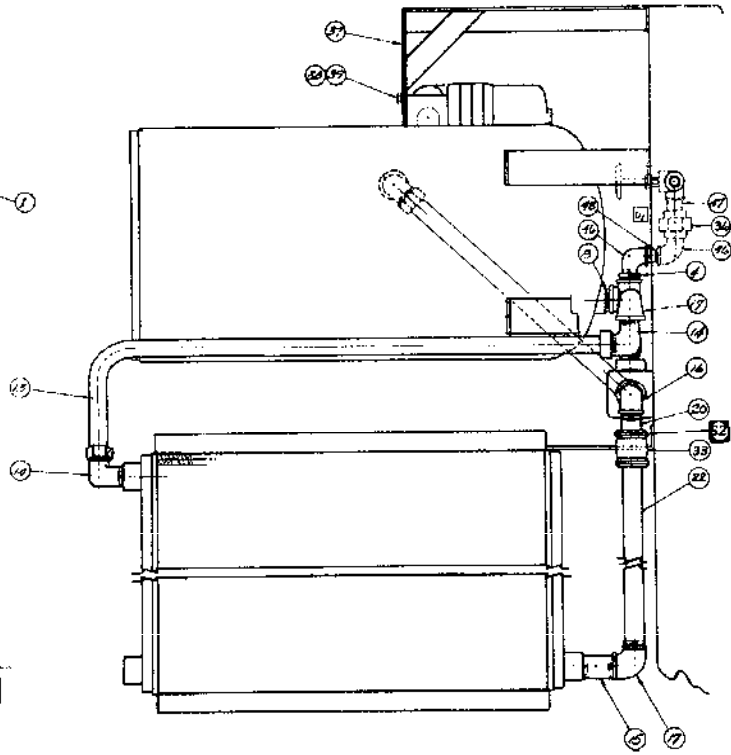
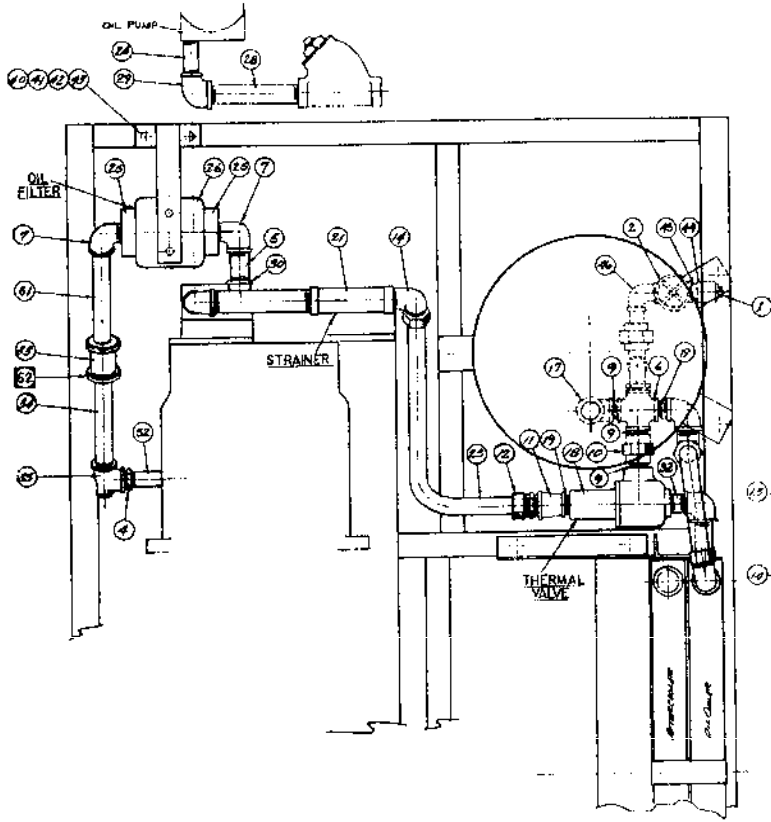
---

**Colt Industries**



**OIL PIPING GROUP  
QSI-350 AIR**

**23523**



Index Number	Qty.	Part Number	Description
1	1	6414	PLUG
2	1	6155	VALVE
4	2	3673	BUSHING
5	1	21289	NIPPLE
6	1	21886	BUSHING
7	2	5760	ELBOW
8	1	3599	NIPPLE
9	3	20351	NIPPLE
10	1	4748	UNION
11	1	23242	COUPLING
12	1	23240	CONNECTOR
13	1	23725	TUBE
14	3	23717	ELBOW
15	1	5872	NIPPLE
16	1	4715	ELBOW
17	3	5181	ELBOW
18	1	20203	VALVE
19	2	6498	NIPPLE
20	1	21166	NIPPLE
21	1	22793-2	STRAINER
22	1	124458	NIPPLE
23	1	120443	TUBE
24	1	6179	NIPPLE
25	2	22716-3	ADAPTER
26	1	22714	FILTER
28	1	21219	NIPPLE
29	1	23721	ELBOW
30	1	20674	ELBOW
32	1	22350	NIPPLE
33	2	124831-007	COUPLING
34	1	21464	NIPPLE
35	1	21741	TEE
36	1	3450	UNION
37	1	120314	BRACKET
38	2	123478-N12	SCREW
39	2	123115-08C	LOCKWASHER
40	2	123478-L15	SCREW
41	2	20105	WASHER
42	2	123115-06C	LOCKWASHER
43	2	124364-L02	NUT
44	1	21149	COUPLING
45	1	2767	NIPPLE
46	3	3004	ELBOW
47	1	123744	NIPPLE
48	1	3449	NIPPLE
51	1	21287	NIPPLE
52	2	4229	NIPPLE
**55	1	122273	O'RING THERMAL VALVE
**56	1	21338	KIT-THERMAL VALVE REPAIR
**57	1	124744-002	STRAINER SCREEN
**58	1	129745-002	STRAINER CUP RETAINER
**59	2	121929	SEAL OIL FILTER ADAPTER
**60	1	22722-2	SEAL OIL FILTER HOUSING
**61	1	22722	ELEMENT OIL FILTER
**62	4	121825	KIT-AEROQUIP COUPLING SEALS

\* SERVICE PARTS ONLY

**Quincy**

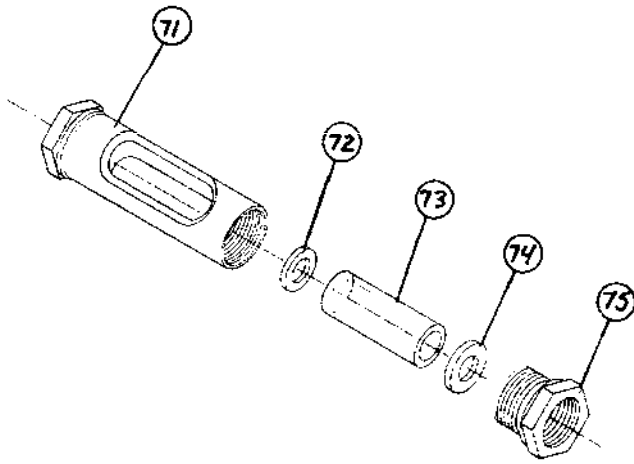
Compressor Division

---

**Colt Industries**

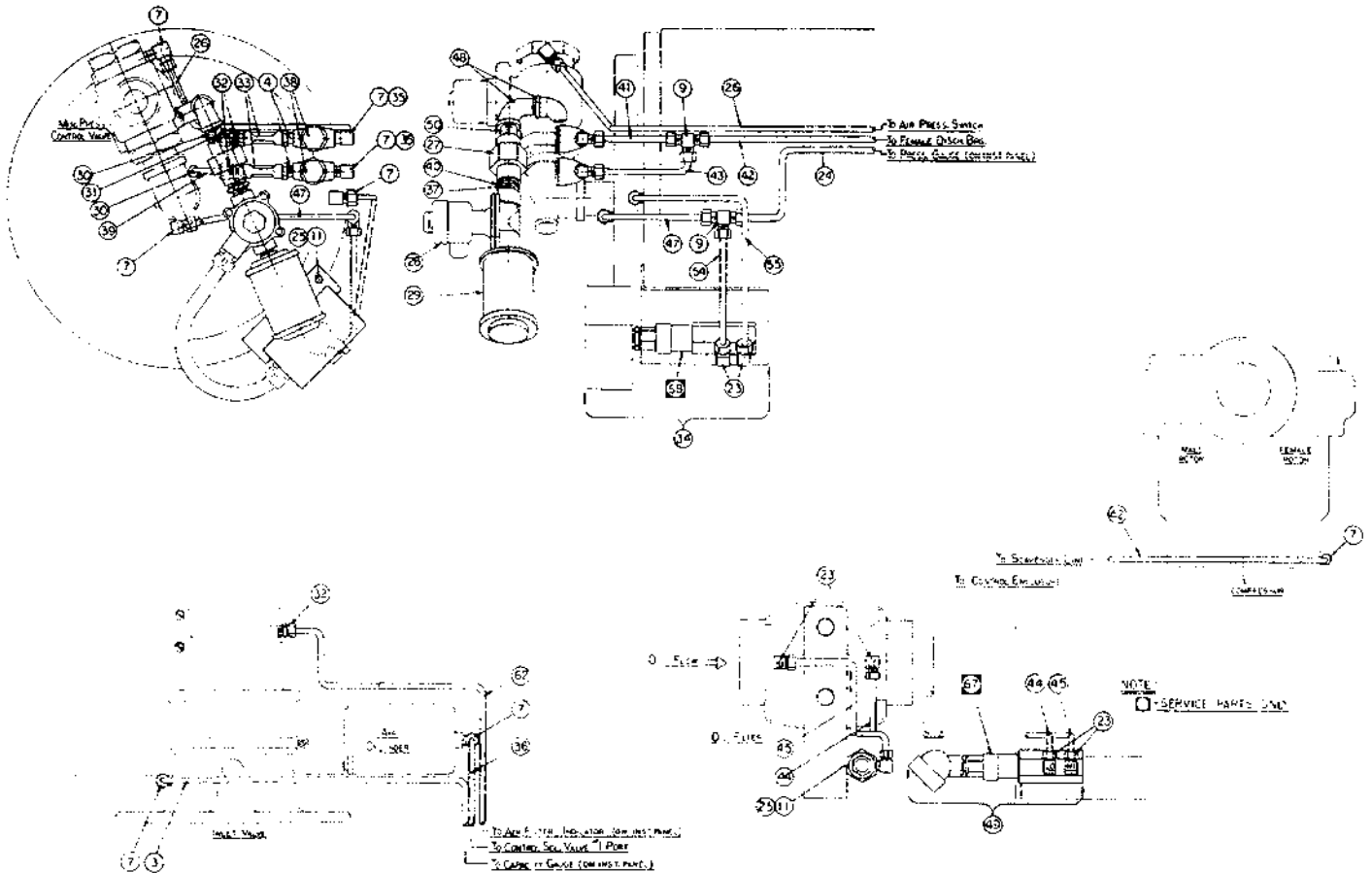


# CONTROL PIPING GROUP QSI-350 AIR & WATER



**124037-201**  
**124037-204**

NEMA  
1  
NEMA  
4 & 12



Index Number	Qty.	Part Number	Description
1	1	9353	CONNECTOR
2	-	-----	TUBING - 1/4"
3	-	-----	TUBING - 1/4"
4	4	121032-3	NIPPLE
5	-	-----	-----
6	1	122636	ELBOW
7	10	2708	ELBOW
8	1	121034-2	TEE
9	3	4836	CONNECTOR
10	1	123478-J15	SCREW
11	4	123115-04C	WASHER
12	1	121921-003	SPACER
13	1	21969-1	PILOT
14	1	121032-4	NIPPLE
15	-	-----	TUBING - 1/4"
16	-	-----	TUBING - 1/4"
17	1	9232	GAUGE
18	1	3324	FITTING
19	1	23543	REGULATOR
20	1	122812-001	FILTER
21	1	22325-1W	SOLENOID NEMA 4 & 12
22	1	22455	CONNECTOR
23	6	1642	CONNECTOR
24	-	-----	-----
25	4	123478-J07	SCREW
26	2	20302	CONNECTOR
27	1	6139	UNION
28	1	21316-0W	SOLENOID NEMA 4 & 12
29	1	21615	MUFFLER
30	2	23312	FITTING
31	1	22718-1	TUBING
32	3	2704	CONNECTOR
33	2	22420	SIGHT GLASS
34	1	123603-010	DIFF. PRESSURE SWITCH ASSY.
35	2	5784	FITTING - ORIFICE .040
36	-	-----	TUBING - 1/4"---
37	1	2176	NIPPLE
38	2	5529	STRAINER
39	1	22718-7	TUBE
40	1	4173	BUSHING
41	-	-----	TUBING - 1/4"
42	-	-----	" "
43	-	-----	" "
44	-	-----	" "
45	-	-----	" "
46	-	-----	" "
47	-	-----	" "
48	2	3021	ELBDW
49	1	123603-015	DIFF. PRESSURE INDICATOR
50	1	2739	NIPPLE
51	1	123506-02	RING
52	1	123157-108	O-RING
53	-	-----	TUBING - 1/4"
54	-	-----	" "
55	-	-----	" "
56	2	20302	CONNECTOR
57	1	20201	ADAPTER
58	1	2140	PLUG
59	1	121033-1	BUSHING
60	1	21413	WASHER
61	1	1643	CONNECTOR
62	-	-----	-----
63	1	121032-14	NIPPLE
64	1	121032-15	NIPPLE
65	1	22483	ELBOW
:: 71	1	22420-001	BODY
:: 72	1	22420-004	GASKET
:: 73	1	22420-003	GLASS
:: 74	1	22420-005	GASKET
:: 75	1	22420-002	NUT

B/M - 124037-204

NEMA - 4 & 12

:: SERVICE PARTS ONLY



Index Number	Qty.	Part Number	Description
1	1	9353	CONNECTOR
2	-	-----	TUBING - 1/4"-----
3	-	-----	TUBING - 1/4"-----
4	4	121032-3	NIPPLE
5	-	-----	-----
6	1	122636	ELBOW
7	10	2708	ELBOW
8	1	121034-2	TEE
9	3	4836	CONNECTOR
10	1	123478-J15	SCREW
11	5	123115-04C	WASHER
12	1	121921-003	SPACER
13	1	21969-1	PILOT
14	1	121032	NIPPLE
15	-	-----	TUBING - 1/4"-----
16	-	-----	TUBING - 1/4"-----
17	1	9232	GAUGE
18	1	3324	FITTING
19	1	23543	REGULATOR
20	1	122812-001	FILTER
21	1	22325	VALVE SOLENOID
22	1	22455	CONNECTOR
23	6	1642	CONNECTOR
24	-	-----	TUBING - 1/4"-----
25	4	123478-J07	SCREW
26	-	-----	TUBING - 1/4"-----
27	1	6139	UNION
28	1	21316	VALVE SOLENOID
29	1	21615	MUFFLER
30	2	23312	FITTING
31	1	22718-1	TUBING
32	3	2704	CONNECTOR
33	2	22420	SIGHT GLASS
34	-	-----	-----
35	2	5784	FITTING - ORIFICE .040
36	-	-----	TUBING - 1/4"
37	1	2176	NIPPLE
38	2	5529	STRAINER
39	1	22718-7	TUBE
40	1	4173	BUSHING
41	-	-----	TUBING - 1/4"
42	-	-----	" "
43	-	-----	" "
44	-	-----	" "
45	-	-----	" "
46	-	-----	" "
47	-	-----	" "
48	2	3021	ELBOW
49	1	123603-015	DIFF. PRESSURE SWITCH ASSY.
50	1	2739	NIPPLE
51	-	-----	TUBING - 1/4"
52	-	-----	" "
53	-	-----	" "
54	-	-----	" "
55	-	-----	" "
56	2	20302	CONNECTOR
57	1	20201	ADAPTER
58	1	2140	PLUG
59	1	121033-1	BUSHING
60	-	-----	-----
61	1	1643	CONNECTOR
62	-	-----	TUBING - 1/4"
63	1	121032-14	NIPPLE
64	1	121032-15	NIPPLE
65	1	22483	ELBOW
66	1	23779-015	INDICATOR - OIL FILTER
67	1	23779-010	INDICATOR SEPARATOR
68	1	20775	REPAIR KIT - DIFFERENTIAL PILOT VALVE
69	1	122812-E01	FILTER - ELEMENT

B/M - 124037-201

NEMA - 1

**Quincy**

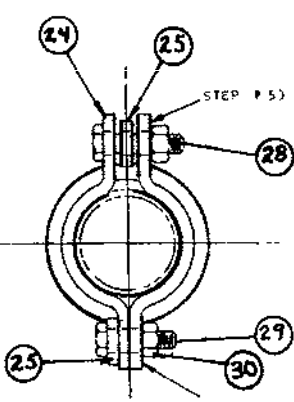
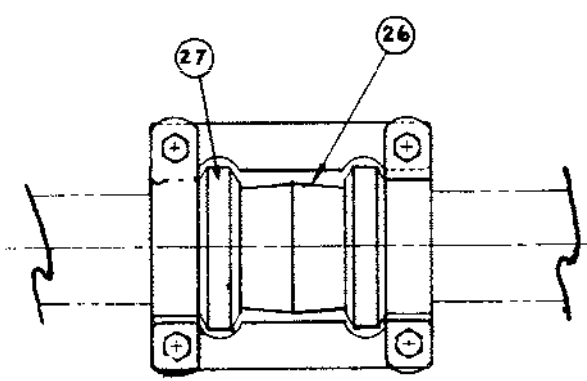
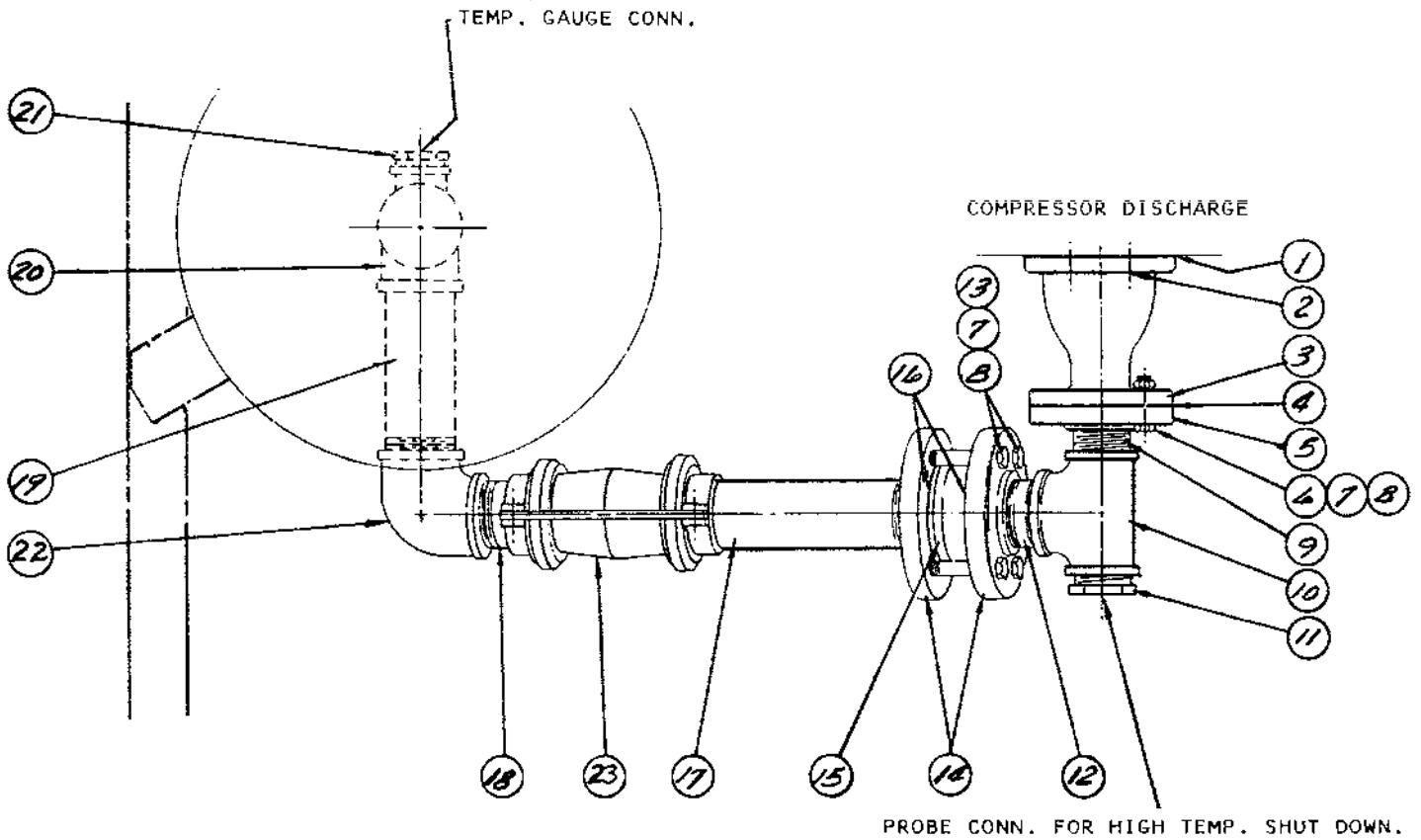
Compressor Division

**Colt Industries**



# **DISCHARGE PIPING GROUP QSI-350 AIR & WATER**

**122291**

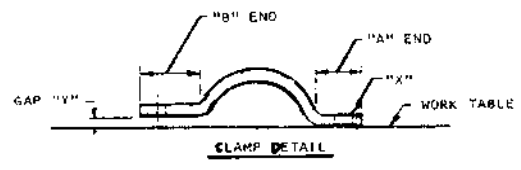


STEP # 5) ASSEMBLE "B" END AS SHOWN & WRENCH TIGHTEN.

STEP # 4) ASSEMBLY "A" END AS SHOWN & WRENCH TIGHTEN.

124831

- ASSEMBLY STEPS
- STEP # 1) CLAMP ENDS MUST BE PAIRED TOGETHER ("A" WITH "A" & "B" WITH "B").
  - STEP # 2) SEE CLAMP DETAIL. PRESS DOWN WITH FINGER AT "X". OTHER END SHOULD LIFT OFF TABLE (GAP "Y"). IF NOT, PRESS OPPOSITE END. "B" END HAS GAP "Y".
  - STEP # 3) AS DOUBLE CHECK ON CLAMPS OF 1 1/2" PIPE SIZE & LARGER, "B" END IS SLIGHTLY LONGER THAN "A" END.



Index Number	Qty.	Part Number	Description
1	1	22532	GASKET
2	10	90386-K12	SCREW
3	1	22699	ADAPTER
* 4	1	22712	GASKET
5	1	22770	FLANGE
6	4	123478-Q17	SCREW
7	8	123115-10C	LOCKWASHER
8	8	124364-Q02	NUT - HEX HEAD
9	1	3047	NIPPLE
10	1	23711	TEE
11	1	3349	BUSHING
12	1	5027	NIPPLE
13	4	123478-Q27	SCREW
14	2	23702	FLANGE
* 15	1	121423	VALVE
* 16	2	23703	GASKET
17	1	122669	NIPPLE
18	1	23813	NIPPLE
19	1	122645	NIPPLE
20	1	120324	TEE
21	1	3797	BUSHING
22	1	5339	ELBOW
23	1	124831-Q02	GRINNELL COUPLING
24	2	124450-002	CLAMP
25	2	124451-002	BAR - TENSION
26	1	23278	COUPLING
* 27	2	121822	SEALS
28	2	123478-N15	CAPSCREW - 1/2" X 1 1/2"
29	2	123478-N17	CAPSCREW - 1/2" X 2"
30	4	2714	NUT - 1/2" X 13

\* SERVICE PARTS

**Quincy**  
Compressor Division

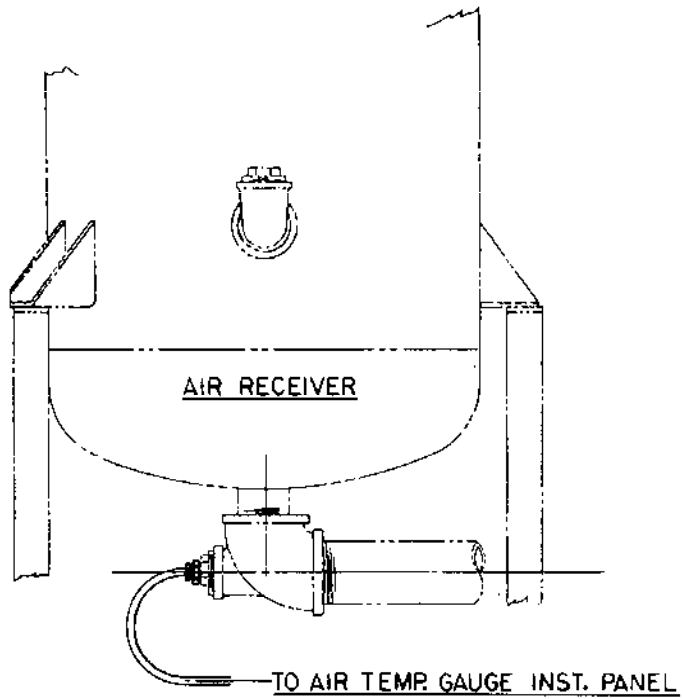
---

**Colt Industries**

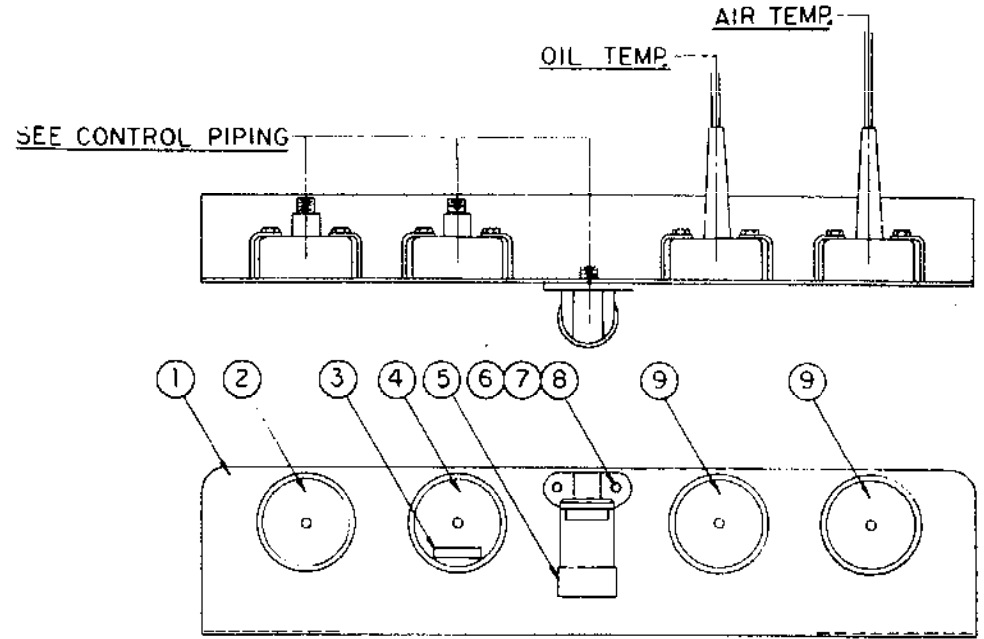


# **GAUGE PANEL GROUP QSI-350 AIR & WATER**

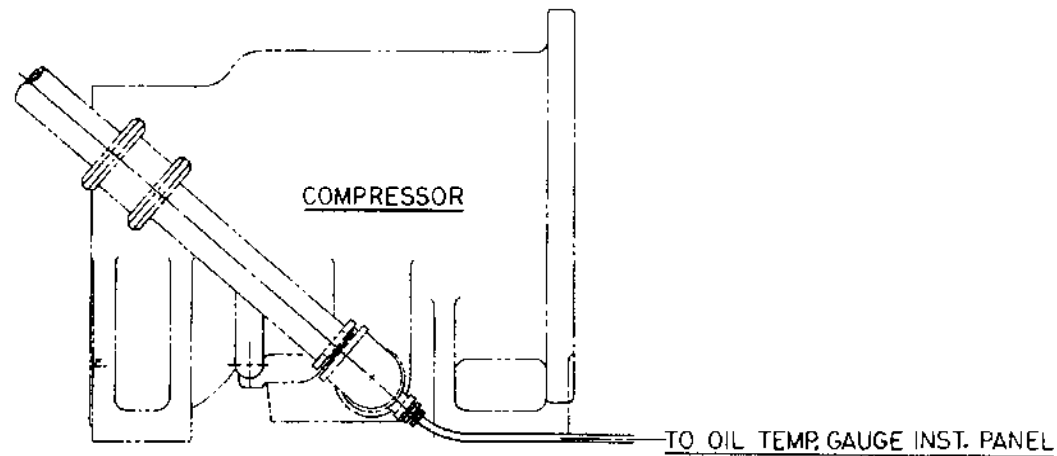
**121893-001**



AIR TEMPERATURE  
 TYPICAL QSI-235; QSI-350; QSI-490



OIL TEMPERATURE  
 TYPICAL ALL QSI MODELS



Index Number	Qty.	Part Number	Description
1	1	121894-001	PANEL GAUGE
2	1	120980	GAUGE
3	1	120581	PLATE
4	1	22397	GAUGE
5	1	21312	INDICATOR
6	2	123478-J09	SCREW
7	2	123115-04C	WASHER
8	2	124364-J02	NUT
9	2	21314	THERMETER

# Quincy

Compressor Division

---

**Colt Industries**



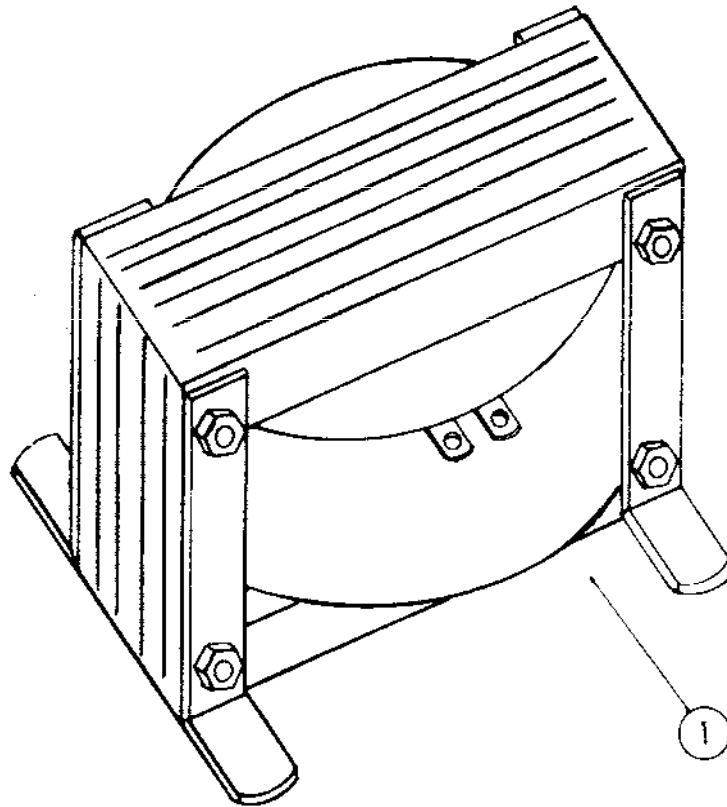
**CONTROL TRANSFORMER GROUP  
QSI-350 AIR & WATER**

**22294**

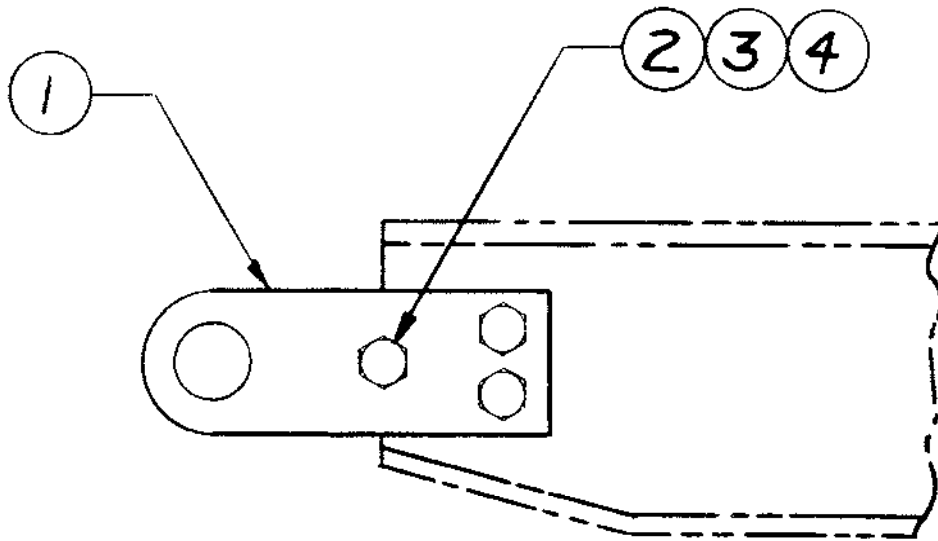
**LIFTING BAIL GROUP  
QSI-350 AIR & WATER**

**123099**

Index Number	Qty.	Part Number	Description
1	1	22294 22294-208 22294-575	TRANSFORMER - 240/480 VOLTS TRANSFORMER - 200/208 VOLTS TRANSFORMER - 575/600 VOLTS



Index Number	Qty.	Part Number	Description
1	4	123097	PLATE
2	16	123478-017	SCREW - 5/8" X 2.00
3	16	123115-10C	WASHER - LOCK
4	16	124364-Q02	NUT - 5/8"



**Quincy**  
Compressor Division

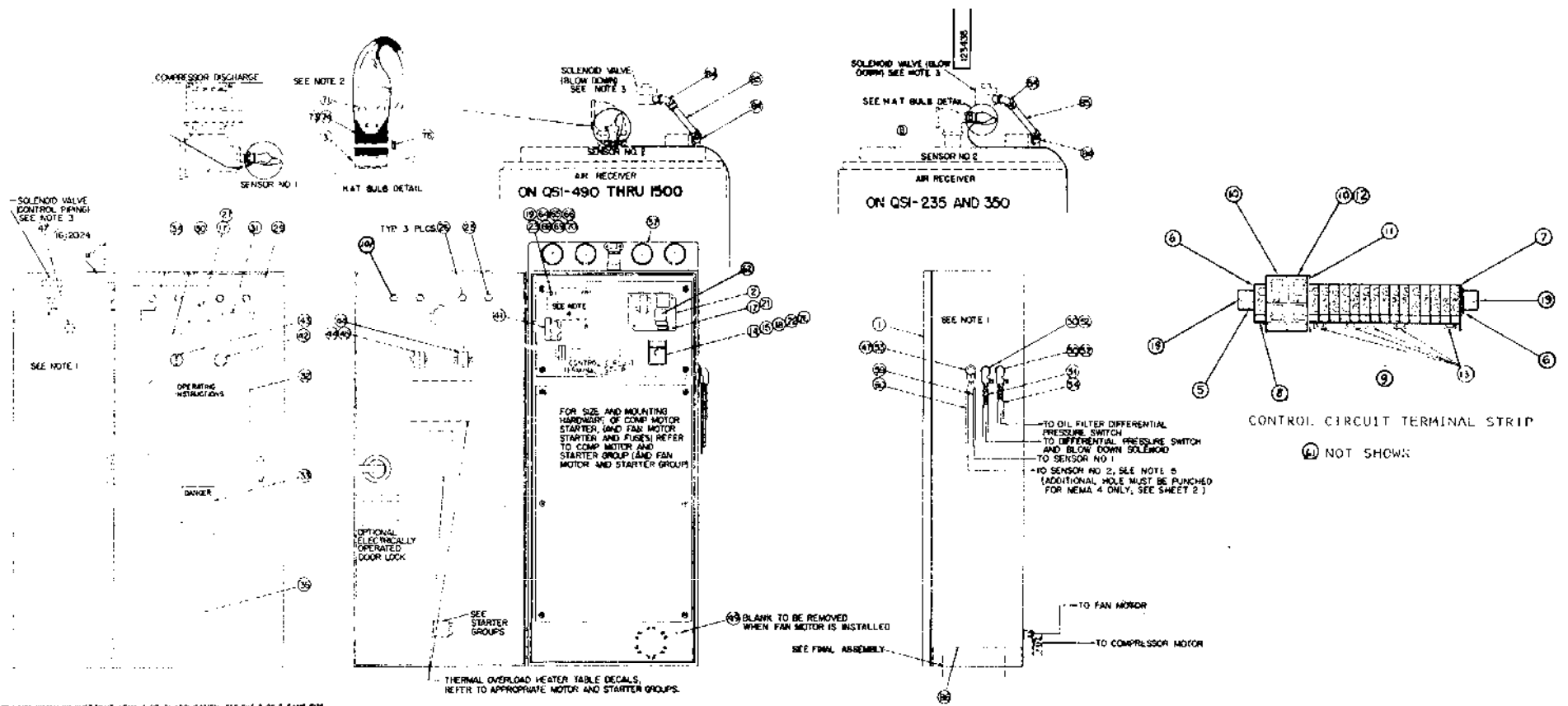
---

**Colt Industries**



# **ELECTRICAL CONTROL GROUP QSI-350 AIR & WATER**

**123435-01**



NOTE 1 FOR MOTOR OR BUST TRAIT, NEMA 4 OR 21 APPLICATION, SEE SHY 2 OF 2 SAME DTE.  
 NOTE 2 THE TERMINALS AND THROUGH PORTION OF THE PROBES ARE TO BE COVERED BY HEAT SHIELD TUBING. SENSOR CABLES ARE TO BE TIED BACK ONTO THE PROBES WITH WIRE TIES.  
 NOTE 3 DIFFERENTIAL PRESSURE SWITCHES FOR FILTERS AND SEPARATOR, AND BOTH SOLENOID VALVES ARE SHOWN ON THE CONTROL PIPING GROUP.  
 NOTE 4 THE CONTROL CIRCUIT TRANSFORMER IS SPECIFIED ON THE INDUSTRIAL COMPRESSOR ASSEMBLY BILL OF MATERIALS.

Index Number	Qty.	Part Number	Description
1	1	122822-01	PANEL ENCLOSURE
2	1	123389-01	SWITCH
3	2	121857-01	PROBE
4	-	-----	-----
5	1	122757-01	TRACK
6	2	122756-01	STOPS
7	1	122753-01	TERMINAL
8	1	122751-01	TERMINAL
9	15	122750-01	BLOCK
10	2	122752-01	BLOCK
11	1	122755-01	BARRIER
12	1	22293	FUSE 5 AMP SLOW BLOW
13	5	120513-01	JUMPER
14	1	122862-600	TIMER
15	1	122868-08	SOCKET
16	2	124364-J02	NUT- 1/4 -20-2B
17	7	123200-007	SCREW
18	2	123200-E09	SCREW- 6 X .62
19	6	123200-F07	SCREW
20	2	123200-J09	SCREW, MACH
21	4	123108-04C	WASHER
22	2	123108-06C	WASHER
23	3	123108-08C	WASHER
24	2	123115-04C	WASHER, LOK HELC
25	1	21556-01	LAMP ASSY. NEON
26	3	21555-01	LAMP ASSY. NEON
27	1	23921	METER HR.
28	-	-----	-----
29	1	123443-001	DECAL - PLATE
30	1	123457-01	DECAL - PLATE
31	1	120260	PLATE - PLATE
32	1	123458	DECAL - PLATE
33	1	407744-001	DECAL - PLATE
34	1	40744	DECAL - PLATE
35	1	123135	DECAL - PLATE
36	-	-----	-----
37	-	-----	-----
38	-	-----	-----
39	-	-----	-----
40	-	-----	-----
41	1	22454-1	SWITCH-PRESSURE
42	1	22197	OPERATOR
43	1	22265	OPERATOR
44	3	22198	BLOCK
45	2	22201	BLOCK
46	-	-----	-----
47	3	8052	LOCKNUT
48	-	-----	-----
49	1	40825-014	BLANK
50	3	23483	CONNECTOR
51	24	22100	CONDUIT - FITTING
52	5	8049	FITTING
53	1	123509-04	CONDUIT FITTING
54	-	-----	-----
55	-	-----	-----
56	-	-----	-----
57	1	121893-001	GAUGE PANEL
58	-	-----	-----
59	1	122827-02	HARNESS
60	1	122827-01	HARNESS
61	1	123134-01	HARNESS
62	1	122865-01	HARNESS
63	-	-----	-----
64	3	7919	WIRE - FITTING
65	1	122848	WIRE - FITTING
66	1	122851	WIRE - FITTING
67	-	-----	-----
68	3	23190-03	TERMINAL - FORK
69	1	23190-17	TERMINAL - FORK
70	1	23190-16	TERMINAL
71	4	21563-04	TERMINAL
72	-	-----	-----
73	2	123442-3	TUBING
74	2	123440-2	TUBING
75	-	-----	-----
76	21	23326	TIES
77	-	-----	-----
78	-	-----	-----
84	2	7941	CONNECTOR
85	1	9804	CONDUIT-FT
86	2	122811	BRACKET
101	-	9531	BULB

**Quincy**  
Compressor Division

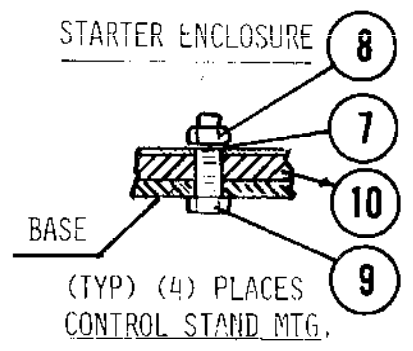
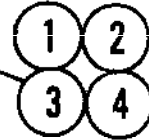
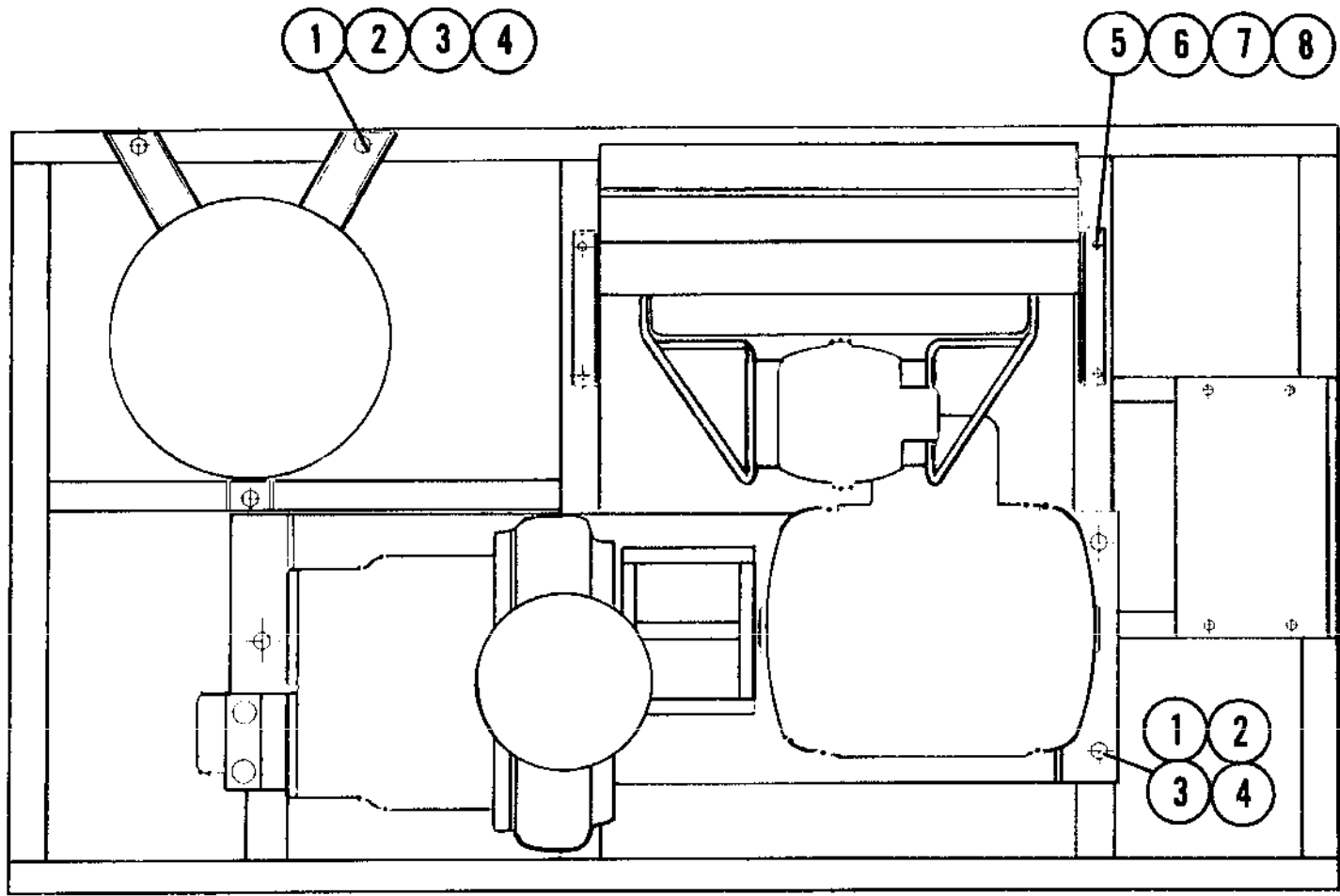
---

**Colt Industries**



**FINAL ASSEMBLY GROUP  
QSI-350 AIR**

**120742**



Index Number	Qty.	Part Number	Description
1	6	123478-N15	SCREW
2	6	20059	WASHER
3	6	123115-080	WASHER
4	4	124364-H02	NUT
5	4	123478-L12	SCREW
6	4	20103	WASHER
7	8	123115-060	WASHER
8	8	124364-L02	NUT
9	4	123478-L14	SCREW
10	2	124529	
11	2	23511	BASE

**Quincy**  
Compressor Division

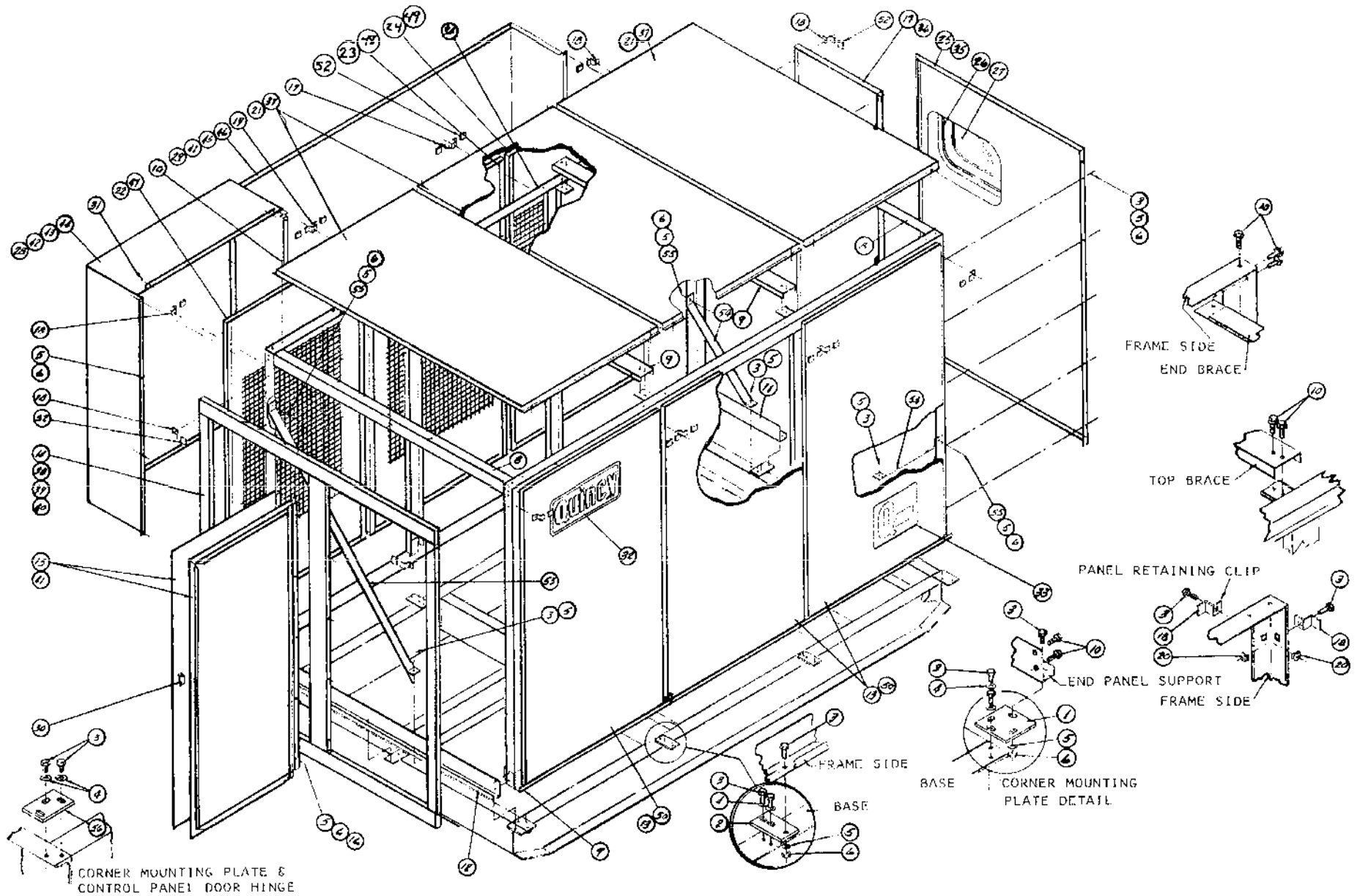
---

**Colt Industries**



**CANOPY GROUP  
QSI-350 AIR**

**121970**



Index Number	Qty.	Part Number	Description
1	5	120961	PLATE
2	5	120962	PLATE
3	36	123478-J10	SCREW
4	20	2203	WASHER
5	31	2139	WASHER
6	29	124364	NUT
7	1	121952	FRAME
8	2	121959	BRACE
9	2	121957	BRACE
10	40	121139	SCREW
11	1	121955	PANEL
12	1	121956	PANEL
13	3	23634	PANEL
14	1	23636	PANEL
15	2	23644	DOOR
17	1	121954	PANEL ASSY.
18	7	120972	CLIP END
19	4	120973	CLIP TWIN
20	36	22456	NUT
21	3	23637	PANEL
22	1	120427	PANEL
23	1	120429	PANEL
24	1	120428	PANEL
25	1	121953	DOOR ASSY.
26	5	120223	MOULDING FOOT
27	1	121035	WINDOW
28	1	120430	SHROUD
29	1	120431	SHROUD
30	3	120975	LATCH
31	6	23148	SCREW
32	2	21351	PLATE
33	2	120412	DECAL
34	1	121952-1	FRAME
35	207	23467	INSULATION (SQUARE FEET)
36	1	22663	ADHESIVE (GAL.)
52	15	122259	CAP
53	1	123118	BRACE
54	2	123119	BRACE

**Quincy**  
Compressor Division

---

**Colt Industries**

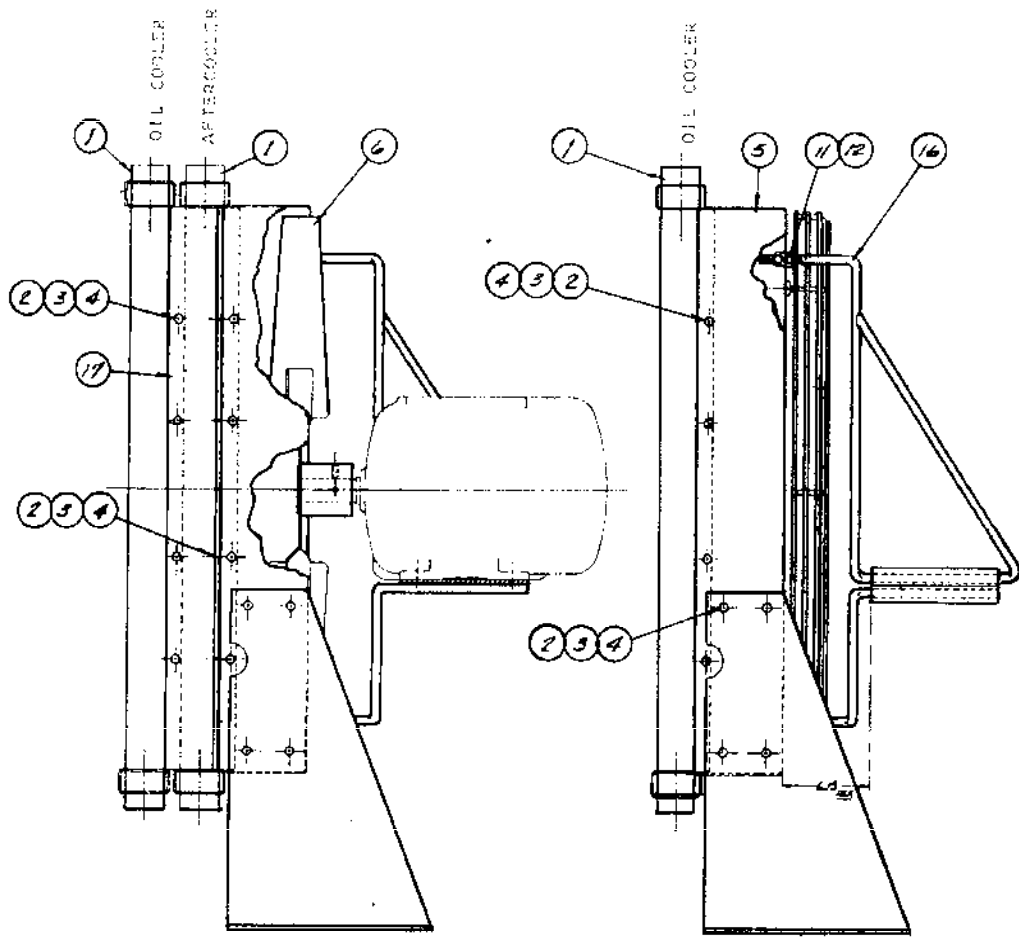


**COOLER GROUP  
QSI-350 AIR**

**WITH AFTERCOOLER  
23593-2**

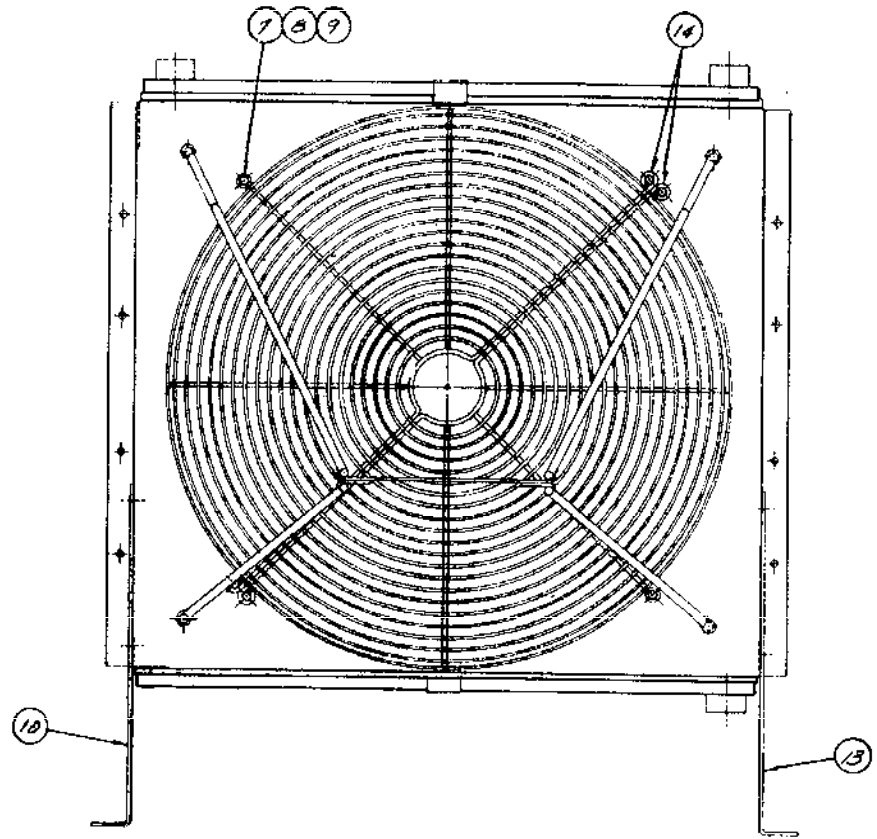
**LESS AFTERCOOLER  
23593-1**

37



WITH AFTERCOOLER  
SEE B/M 23593-2

LESS AFTERCOOLER  
SEE B/M 23593-1



Index Number	Qty.	Part Number	Description
1	1	23608	CORE
2	16	123478-L12	SCREW
3	20	123115-06C	WASHER
4	20	124364-L02	NUT
5	1	120247	SHROUD
6	1	120035	FAN
7	6	123478-J12	SCREW
8	6	123115-04C	WASHER
9	6	22456	NUT
10	1	120248	BRACKET
11	8	124364-N02	NUT
12	~	123115-08C	
13	1	120249	BRACKET
14	2	120250	GUARD
15	4	123478-L15	SCREW
16	1	120258	BRACKET
1	2	23605	CORE
2	32	123478-L12	SCREW
3	36	123115-06C	WASHER
4	36	124364-L02	NUT
5	1	120247	SHROUD
6	1	120035	FAN
7	6	123478-J12	SCREW
8	6	123115-04C	WASHER
9	6	22456	NUT
10	1	120248	BRACKET
11	8	124364-N02	NUT
12	4	123115-08C	WASHER
13	1	120249	BRACKET
14	2	120250	GUARD
15	4	123478-L15	SCREW
16	1	120258	BRACKET
17	2	120252	BRACKET

**Quincy**  
Compressor Division

---

**Colt Industries**

