



# QMB 10-30 HP

Rotary Screw Air Compressor



Parts Manual

This manual contains important safety information and should be made available to all personnel who operate and/or maintain this product. Carefully read this manual before attempting to operate or perform maintenance on this equipment.

Manual No. 65008-1A

February 2006 Edition

Update: July 2008



# Alphabetical Index

---

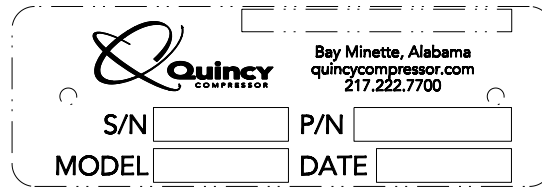
Airend .....	4-5
Air Filter .....	8
Belt Drive .....	10-13
Cabinet (low sound) .....	33
Cabinet (standard) .....	32
Control Piping (electronic control) .....	24-25
Control Piping (load/no load) .....	20-21
Control Piping (modulation) .....	22-23
Control Schematics .....	36-38
Cooler .....	28-31
Decals .....	34-35
Electrical Control & Starting .....	14-19
Electrical Control Diagrams .....	39-48
Fluid Specifications.....	2
Inlet Valve .....	7
Motor Mounting .....	6
Ordering Replacement Parts.....	1
Receiver (optional) .....	9
Recommended Spare Parts.....	3
Reservoir .....	26-27
Serial Number Identification.....	1
Shaft Seal Kit .....	4



## Serial Number Identification

---

The serial number tag is located on the top flange of the unit frame just left of the control panel and in the upper right corner of the electrical control panel.



The image shows a rectangular serial number tag with rounded corners and a dashed border. On the left side, there is a Quincy Compressor logo consisting of a stylized 'Q' and the word 'Quincy' above 'COMPRESSOR'. To the right of the logo, the text reads 'Bay Minette, Alabama', 'quincycompressor.com', and '217.222.7700'. Below this information, there are four input fields arranged in a 2x2 grid. The top-left field is labeled 'S/N', the top-right is 'P/N', the bottom-left is 'MODEL', and the bottom-right is 'DATE'.

## Ordering Replacement Parts

---

Prompt service can be rendered on replacement part orders if the following information is given:

1. The serial number must be given when ordering replacement parts. Part numbers should be verified per the bill of materials associated with the serial number to ensure that correct replacement parts are ordered.
2. State the exact part number needed. Do not order by index numbers, as index numbers are repeated throughout this manual and if used for ordering parts will necessitate time consuming correspondence.
3. State the exact quantity needed.
4. State the preferred type of transportation.

All replacement parts are to be ordered through an authorized distributor. Insist on Genuine Quincy Parts only! Failure to do so may void your warranty.

# Fluid Specifications

---

Quincy Compressor® recommends that all Quincy Rotary Screw Products be filled with one of the following QuinSyn® Brand synthetic fluids:

★QuinSyn Plus™★

★QuinSyn XP®★

★QuinSyn PG™★

★QuinSyn F® (food grade)★

Synthetic fluids other than QuinSyn brand(s) may not be compatible with components used in Quincy Compressor products. If it is deemed necessary to convert a Quincy compressor or vacuum pump to a synthetic other than QuinSyn brand, please contact an authorized Quincy Compressor distributor. To locate your nearest distributor, contact Sales & Marketing in Quincy, Illinois:

Phone 217-222-7700, FAX 217-222-4138 or visit our website:

<http://www.quincycompressor.com>.

The following information will be required by the distributor when changing compressor fluid:

MODEL (CIRCLE CONFIGURATION):	HORSEPOWER					COOLING A/C	PSI			
	QMB	10	15	20	25		30	100	125	150
_____										

SERIAL NO. \_\_\_\_\_ FLUID ORIGINALLY USED: \_\_\_\_\_

FLUID NOW USED (IF CHANGED): \_\_\_\_\_ NEW FLUID TO BE USED: \_\_\_\_\_

Additional information regarding fluid specifications can be found in the Instruction Manual shipped with your unit.

- **Fluid Analysis Kit**

Quincy Compressor offers free fluid analysis to provide early detection of excessive parts wear, fluid breakdown, or a contaminated fluid system. Order the Fluid Analysis Kit (part no. 128515) from your local authorized Quincy Compressor distributor.

- **Fluid Requirements**

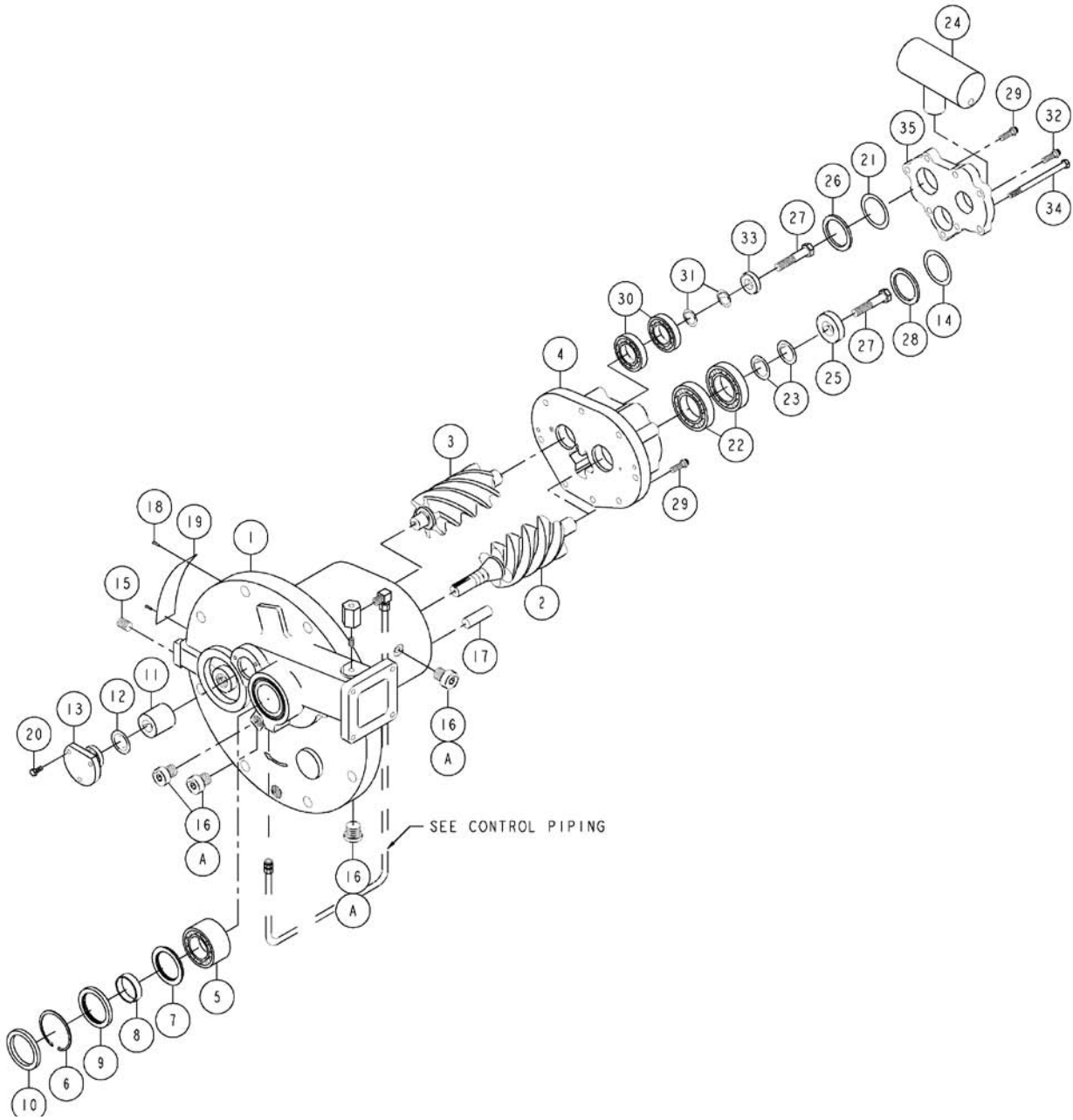
10 & 15 HP	-	2.50 gallons
20 & 25 HP	-	2.75 gallons
30 HP	-	3.00 gallons

## Recommended Spare Parts

QTY.	PART NUMBER	DESCRIPTION
1	129216	SHAFT SEAL KIT
1	128849E362	AIR FILTER ELEMENT
1	122880S222	TEMPERATURE SWITCH (225°F)
1	143754	TEMPERATURE PROBE-HIGH VIBRATION
1	129732-051	LINE FILTER KIT (INCLUDES BOWL SEAL, FILTER ELEMENT, GASKET)
1	146175-100	DIFFERENTIAL PILOT VALVE KIT (INCLUDES DIAPHRAGM ASSEMBLY & SEAT)
1	129881-001	AIR/FLUID SEPARATOR
1	128813-050	MINIMUM PRESSURE CHECK VALVE KIT
1	124827-052	MOISTURE SEPARATOR KIT (INCLUDES GASKET)
1	128598	FLUID FILTER ELEMENT
1	144046-005	FLUID-QUINSYN PLUS (5 GALLON CONTAINER)
1	143808-005	FLUID-QUINSYN PG (5 GALLON CONTAINER)
1	142784-005	FLUID-QUINSYN XP (5 GALLON CONTAINER)
1	110756-005	FLUID-QUINSYN F (5 GALLON CONTAINER)
1	128515-3	FLUID ANALYSIS KIT (CONTAINS 3 INDIVIDUAL SAMPLE KITS)

<div style="display: flex; justify-content: space-between; align-items: center;">  <div style="text-align: center;"> <h3 style="margin: 0;">WARNING</h3> </div>  </div> <p style="margin-top: 10px;">GUARDS MUST BE FASTENED IN PLACE BEFORE STARTING THE MACHINE AND NEVER REMOVED BEFORE DISCONNECTING AND LOCKING OUT THE MAIN POWER SUPPLY.</p>	<div style="display: flex; justify-content: space-between; align-items: center;">  <div style="text-align: center;"> <h3 style="margin: 0;">DANGER</h3> </div>  </div> <p style="margin-top: 10px;">AIR IN THE PIPING FROM THIS EQUIPMENT WILL CAUSE SEVERE INJURY OR DEATH IF USED FOR BREATHING AIR OR FOOD PROCESSING (IF NON-FOOD GRADE FLUID IS USED). AIR USED FOR THESE PROCESSES MUST MEET OSHA 29CFR1910.134 OR FDA 21CFR178.3570 STANDARDS.</p>
---------------------------------------------------------------------------------------------------------------------------------------------------------------------------------------------------------------------------------------------------------------------------------------------------------------------------------------------------------------------------------------------------------------------------------------------------------------------------------------------------------------------------	------------------------------------------------------------------------------------------------------------------------------------------------------------------------------------------------------------------------------------------------------------------------------------------------------------------------------------------------------------------------------------------------------------------------------------------------------------------------------------------------------------------------------------------------------------------------------------------------------------------------------------

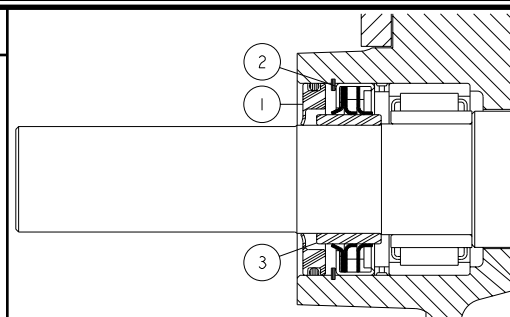
THIS PAGE UPDATED 04/18/08 TO CORRECT/UPDATE AIR/FLUID SEPARATOR PART NUMBER.



Shaft Seal Kit - 129216

ITEM No.	QTY.	PART NUMBER	DESCRIPTION
1	1	128867	SLINGER
2	1	128866	SHAFT SEAL
3	1	128993	WEAR RING SEAL

REFERENCE INSTRUCTION MANUAL TO INSTALL COMPRESSOR SHAFT SEAL. TOOL KIT 129414 FOR 85 MM SHAFT SEAL AND WEAR RING INSTALLATION CAN BE PURCHASED FROM QUINCY COMPRESSOR.



ITEM NO.	QTY.	PART NUMBER	DESCRIPTION
1	*		ROTOR HOUSING
2	*		MALE ROTOR-85 MM
3	1		FEMALE ROTOR-71 MM
4	1	141244	DISCHARGE END PLATE
5	*		BEARING
6	1	128875	INTERNAL RETAINING RING
7	1	1939-020	COMPRESSOR FLUID RING
8	1	128993	WEAR RING SEAL
9	1	128866	SHAFT SEAL
10	1	128867	COMPRESSOR FLUID SLINGER
11	*		BEARING
12	1	22749-212	VITON O-RING-0.88 I.D.
13	1	128815	SUCTION END CAP
14	**	142750	ROTOR SHIM-TEMPERED STEEL
15	1	121160	PIPE PLUG-0.125 NPT
16	4	128883-031	PIPE PLUG-5/16-24 (O-RING)
17	2	124145-004	DOWEL PIN
18	2	4029	DATA PLATE PIN
19	1	142832	PATENT PLATE
20	3	8088	HEX HEAD SCREW-#10-24 UNC X 0.63, GRADE 5 (@ 32 FT-LBS)
21	**	128904	ROTOR SHIM-TEMPERED STEEL
22	*		ROTOR BEARING-DISCHARGE END
23	**	128926	ROTOR SHIM-TEMPERED STEEL
24	1	128999-1	DISCHARGE SILENCER
25	1	128870-007	BEARING RETAINER
26	1	142749-001	PISTON RING
27	2	128928	HEX HEAD SCREW-1/2-20 UNF X 1.25, GRADE 8 (@ 120 FT-LBS)
28	1	142749-002	PISTON RING
29	13	90386-J12	COUNTERBORE SCREW-1/4-20 UNC X 1.00, GRADE 8 (@ 9 FT-LBS)
30	*		ROTOR BEARING-DISCHARGE END
31	**	128927	ROTOR SHIM-TEMPERED STEEL
32	1	123478-J09	CAP SCREW-1/4-20 UNC X 0.63, GRADE 5 (@ 6 FT-LBS)
33	1	128870-006	BEARING RETAINER
34	3	90386-J18	COUNTERBORE SCREW-1/4-20 UNC X 2.25, GRADE 8 (@ 9 FT-LBS)
35	1	142697	DISCHARGE END CAP

COMPONENT MAINTENANCE PARTS

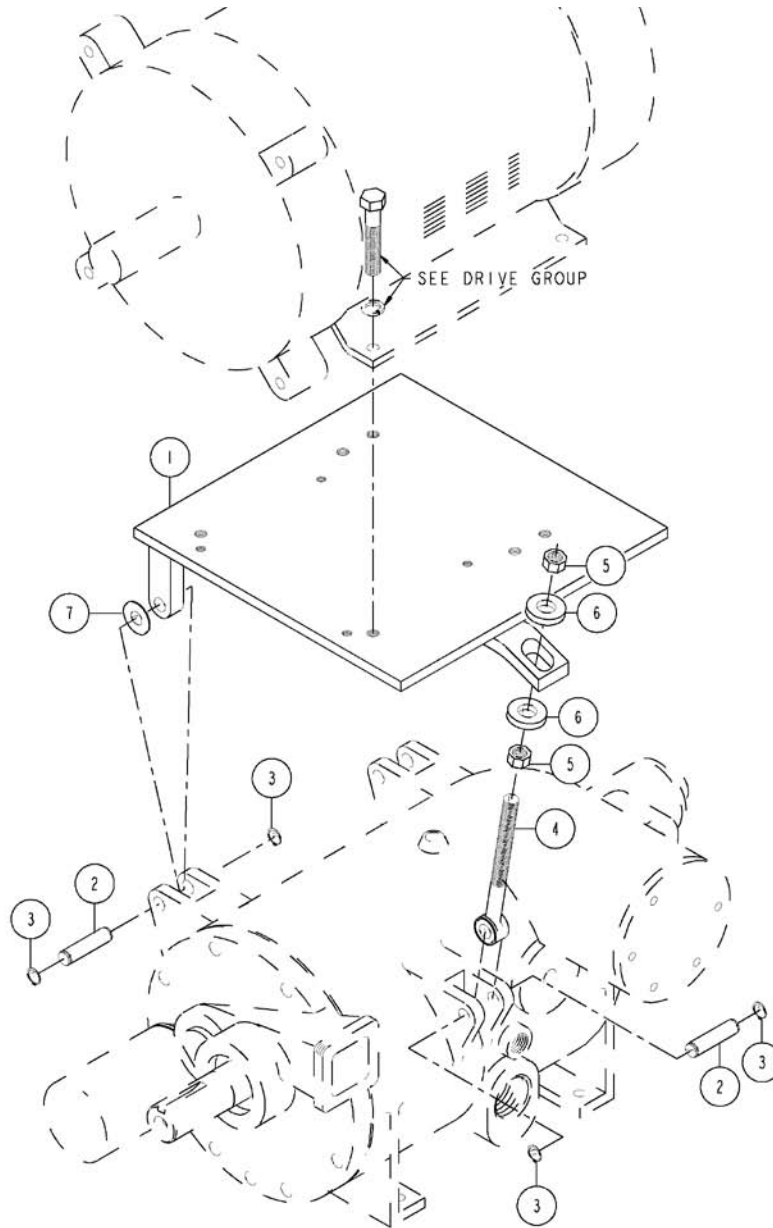
A	4	140406-902	VITON O-RING-0.24 I.D.
---	---	------------	------------------------

\* ITEMS NOT SOLD SEPARATELY, MUST BE ORDERED AS A COMPLETE AIREND.

\*\* QUANTITY AS REQUIRED.

@ INDICATES TORQUE VALUE IN FOOT POUNDS (LUBRICATED THREADS).

# Motor Mounting - 144902-001

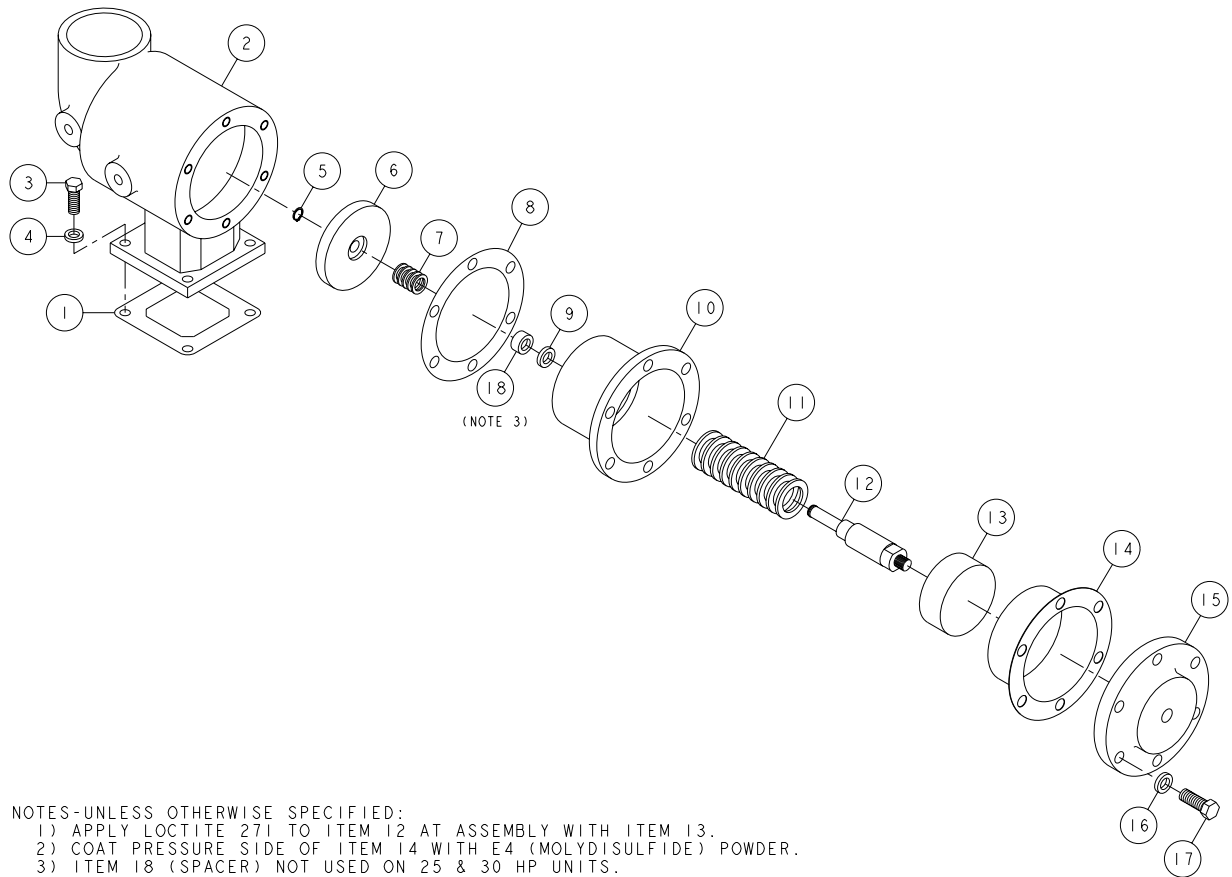


NOTES-UNLESS OTHERWISE SPECIFIED:  
 1) ITEM 7 USED IN THIS LOCATION ONLY (QUANTITY AS REQUIRED).

ITEM No.	QTY.	PART NUMBER	DESCRIPTION
1	1	141570-1	MOTOR BASE
2	3	128830-2	PIVOT PIN
3	6	124098-022	RETAINING RING
4	1	128204-003	SWING BOLT-5/8-11 X 7.00
5	2	124364-Q02	HEX NUT-5/8-11 UNC
6	2	142837-5	SPHERICAL WASHER
7	*	144520	MOTOR BASE SHIM

\* QUANTITY AS REQUIRED.

# Inlet Valve - 128900-001/-003



NOTES-UNLESS OTHERWISE SPECIFIED:

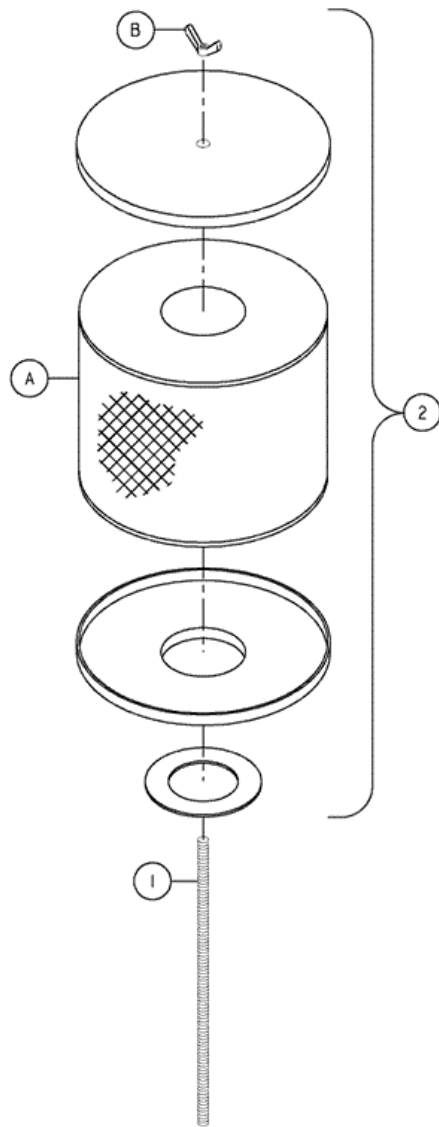
- 1) APPLY LOCTITE 271 TO ITEM 12 AT ASSEMBLY WITH ITEM 13.
- 2) COAT PRESSURE SIDE OF ITEM 14 WITH E4 (MOLYDISULFIDE) POWDER.
- 3) ITEM 18 (SPACER) NOT USED ON 25 & 30 HP UNITS.

ITEM No.	QTY.	PART NUMBER	DESCRIPTION
1	1	128861	INLET VALVE GASKET
2	1	128805	INLET VALVE HOUSING
3	4	123478-J12	CAP SCREW-1/4-20 UNC X 1.00, GRADE 5 (@ 6 FT-LBS)
4	4	123115-04C	LOCKWASHER, 0.25
5	1	124098-013	RETAINING RING
6	1	128853	INLET VALVE PLATE
7	1	128963	COMPRESSION SPRING
8	1	123549-006	GASKET-4.31 O.D. X 3.06 I.D.
9	1	128560	INLET VALVE SHAFT SEAL
10	1	128806	INLET VALVE CYLINDER
11	1	128994	COMPRESSION SPRING
12	1	128852	INLET VALVE SHAFT
13	1	128854	INLET VALVE PISTON
14	1	128810	INLET VALVE DIAPHRAGM
15	1	128807	INLET VALVE CYLINDER CAP
16	6	123115-05C	LOCKWASHER, 0.31
17	6	123478-K15	CAP SCREW-5/16-18 UNC X 1.50, GRADE 5 (@ 13 FT-LBS)
18	1	128995	INLET VALVE SHAFT SPACER (NOT USED ON 25 & 30 HP)

@ INDICATES TORQUE VALUE IN FOOT POUNDS (LUBRICATED THREADS).

# Air Filter - 141505-001

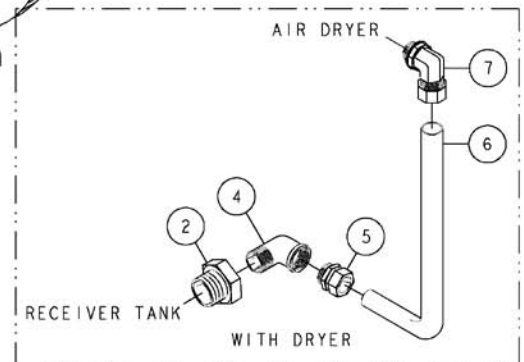
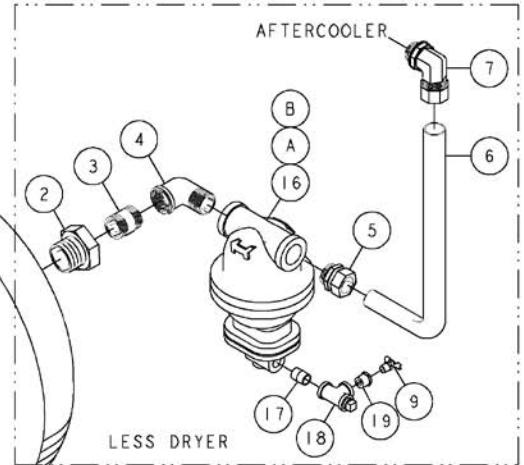
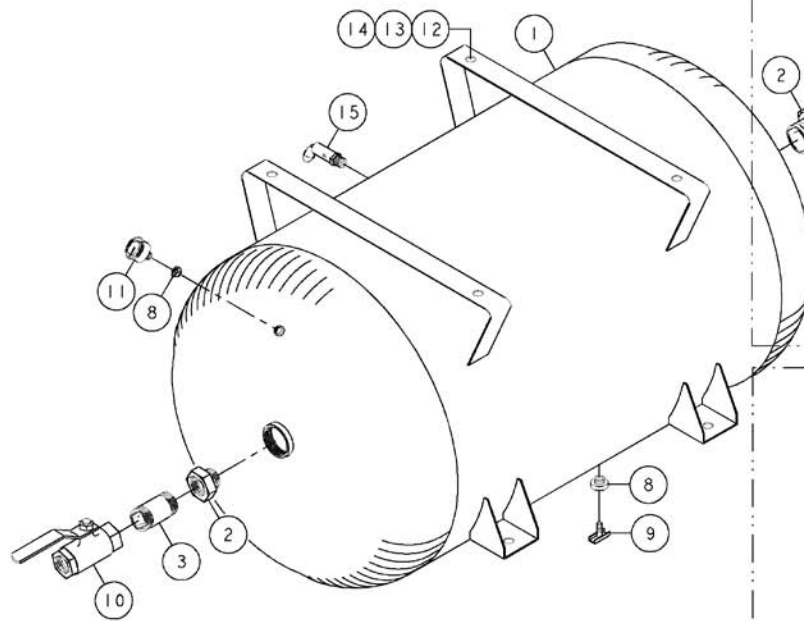
---



ITEM No.	QTY.	PART NUMBER	DESCRIPTION
1	1	127635-004	AIR FILTER STUD
2	1	128849F362	AIR FILTER ASSEMBLY
<u>COMPONENT MAINTENANCE PARTS</u>			
A	1	128849E362	AIR FILTER ELEMENT
B	1	128882	WING NUT-1/4-20 UNC

# Receiver (optional) - 141508-001 thru -008

THIS PAGE UPDATED 11/14/06 TO ADD MOISTURE SEPARATOR & DRAIN.



NOTES-UNLESS OTHERWISE SPECIFIED:  
1) ITEMS 16 THRU 19 ARE NOT USED ON UNITS WITH DRYER.

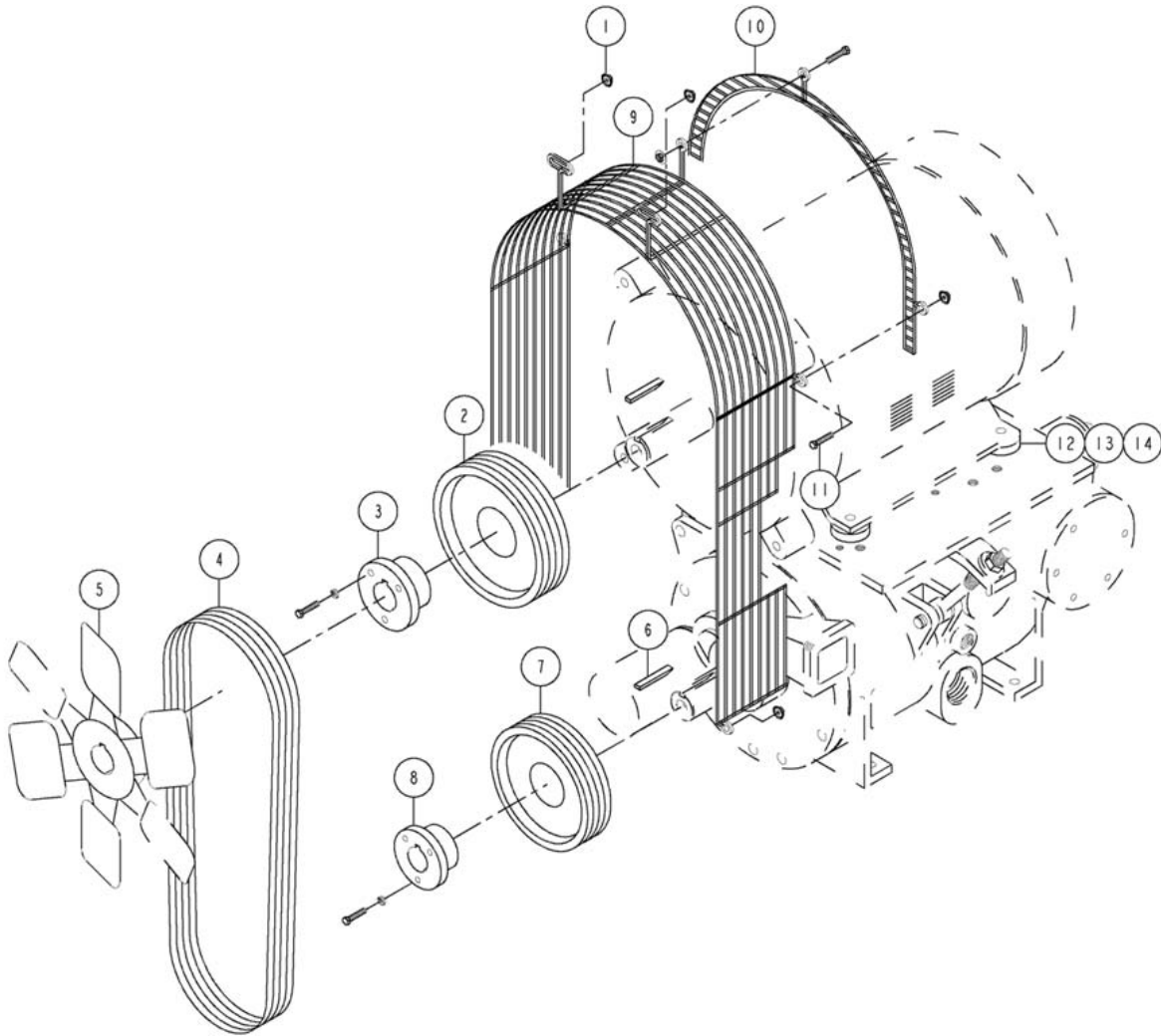
ITEM No.	QTY.	PART NUMBER	DESCRIPTION
1	1	128848-200	120 GALLON RECEIVER
	1	128899-200	200 GALLON RECEIVER
2	2	20882	PIPE BUSHING-2.00 NPT X 1.00 NPT (10/15 HP)
	2	6639-F	PIPE BUSHING-2.00 NPT X 1.25 NPT (20/25/30 HP)
3*	2	125937-014	PIPE NIPPLE-1.00 NPT X 2.50
4	1	3004	PIPE ELBOW-1.00 NPT (10/15 HP)
	1	5760	PIPE ELBOW-1.25 NPT (20/25/30 HP)
5	1	23358	MALE CONNECTOR-1.00 TUBE X 1.00 NPT (10/15 HP)
	1	23225	MALE CONNECTOR-1.25 TUBE X 1.25 NPT (20/25/30 HP)
6	1	121918-125	FORMED STEEL TUBE-1.00 O.D. (10/15 HP)
	1	121918-121	FORMED STEEL TUBE-1.25 O.D. (20/25/30 HP)
7	1	110419-020	90° MALE ELBOW-1.00 TUBE X 1.00 NPT (10/15 HP)
	1	110419-022	90° MALE ELBOW-1.25 TUBE X 1.25 NPT (20/25/30 HP)
8	2	2951	PIPE BUSHING-0.50 NPT X 0.25 NPT
9	2	2713	DRAINCOCK-0.25 NPT
10	1	110425-100	QUARTER TURN VALVE (10/15 HP)
	1	110425-125	QUARTER TURN VALVE (20/25/30 HP)
11	1	110514-300	PRESSURE GAUGE
12	4	123478-N15	CAP SCREW-1/2-13 UNC X 1.50, GRADE 5 (@ 55 FT-LBS)
13	4	123115-08C	LOCKWASHER, 0.50
14	4	124364-N02	HEX NUT-1/2-13 UNC
15	1	143556-200	PRESSURE RELIEF VALVE
16**	1	124827-100	MOISTURE SEPARATOR (10/15 HP)
	1	124827-125	MOISTURE SEPARATOR (20/25/30 HP)
17**	1	125935-001	PIPE NIPPLE-0.50 NPT X CLOSE
18**	1	2399	PIPE TEE-0.50 NPT
19**	1	121033-5	PIPE BUSHING-BRASS, 0.50 NPT X 0.25 NPT

### COMPONENT MAINTENANCE PARTS

A	1	124827-052	MOISTURE SEPARATOR KIT (INCLUDES ITEM B)
B	1	124827-051	MOISTURE SEPARATOR GASKET

\* QUANTITY OF ONE (1) ON UNITS W/DRYER.  
\*\* NOT USED ON UNITS W/DRYER.

# Belt Drive - 142213-\*\*



ITEM No.	QTY.	PART NUMBER	DESCRIPTION
1	7	112272-J02	SELF-LOCKING HEX NUT-ZINC, 1/4-20 UNC
2	1	(PAGE 11)	MOTOR SHEAVE
3	1	(PAGE 11)	MOTOR SHEAVE BUSHING
4	1	(PAGE 11)	DRIVE BELTS-MATCHED SET
5	1	(PAGE 12)	FAN
6	1	160075-008	SHAFT KEY
7	1	(PAGE 12)	COMPRESSOR SHEAVE
8	1	(PAGE 12)	COMPRESSOR SHEAVE BUSHING
9	1	142202	BELT GUARD
10	1	142202-1	BELT GUARD-REAR (10 HP/15 HP, ODP)
	1	142202-2	BELT GUARD-REAR (15 HP, TEFC/20 HP/25 HP, ODP)
	1	142202-3	BELT GUARD-REAR (25 HP, TEFC/30 HP)
11	3	122151	HEX HEAD SCREW-1/4-20 UNC X 0.63, GRADE 5 (@ 6 FT-LBS)
12	4	(PAGE 13)	CAP SCREW (FOR MOUNTING MOTOR)
13	4	123115-06C	LOCKWASHER, 0.38 (10 HP/15 HP, ODP)
	4	123115-08C	LOCKWASHER, 0.50 (15 HP, TEFC/20 HP/25 HP/30 HP)
14	4	(PAGE 13)	MOTOR SPACER (NOT USED IN ALL APPLICATIONS, SEE TABULATION)

@ INDICATES TORQUE VALUE IN FOOT POUNDS (LUBRICATED THREADS).

ITEM 2		MOTOR SHEAVE			
		60 Hz			
HP	QTY.	100#	125#	150#	175#
10	1	129901-020	128077-064	N/A	N/A
15	1	128077-055	128077-035	128077-059	128077-061
20	1	127457	128077-004	128077-003	128077-010
25 (ODP)	1	129901-011	129901-018	129901-016	127457
25 (TEFC)	1	129901-013	129901-018	125440-001	127457
30	1	141537-007	141537-009	141537-009	121179
		50 Hz			
HP	QTY.	100#	125#	150#	175#
10	1	126055	128077-004	N/A	N/A
15	1	128077-003	129901-008	128077-055	N/A
20	1	125440-001	125440-001	121582	N/A
25 (ODP)	1	129901-018	129901-018	129901-021	N/A
25 (TEFC)	1	129901-018	129901-013	129901-021	N/A
30	1	141537-005	141537-005	141537-007	N/A

ITEM 3		MOTOR SHEAVE BUSHING			
		60 Hz			
HP	QTY.	100#	125#	150#	175#
10	1	127456	125442	N/A	N/A
15 (ODP)	1	125442	125442	127456	127456
15 (TEFC)	1	125150	125150	128319	128319
20	1	122474	122474	125150	125150
25	1	122474	122474	122474	122474
30	1	122474	122474	122474	122474
		50 Hz			
HP	QTY.	100#	125#	150#	175#
10	1	110571-005	110571-005	N/A	N/A
15 (ODP)	1	125442	125442	125442	N/A
15 (TEFC)	1	125150	125150	125150	N/A
20	1	122474	122474	122474	N/A
25	1	122474	122474	122474	N/A
30	1	122474	122474	122474	N/A

ITEM 4		BELTS (MATCHED SET)			
		60 Hz			
HP	QTY.	100#	125#	150#	175#
10	1	128085-437	128085-340	N/A	N/A
15 (ODP)	1	128085-340	128085-340	128085-340	128085-340
15 (TEFC)	1	128085-342	128085-342	128085-342	128085-342
20	1	128085-347	128085-345	128085-342	128085-342
25 (ODP)	1	128085-450	128085-447	128085-442	128085-347
25 (TEFC)	1	128085-447	128085-450	128085-353	128085-350
30	1	128085-547	128085-545	128085-545	128085-542
		50 Hz			
HP	QTY.	100#	125#	150#	175#
10	1	128085-342	128085-342	N/A	N/A
15 (ODP)	1	128085-340	128085-437	128085-340	N/A
15 (TEFC)	1	128085-342	128085-437	128085-342	N/A
20	1	128085-350	128085-353	128085-440	N/A
25 (ODP)	1	128085-447	128085-447	128085-442	N/A
25 (TEFC)	1	128085-447	128085-447	128085-445	N/A
30	1	128085-550	128085-550	128085-547	N/A

# Belt Drive - 142213-\*\*

ITEM 5		FAN			
HP	QTY.	60 Hz			
		100#	125#	150#	175#
10	1	128887-011	128887-011	N/A	N/A
15 (ODP)	1	128887-011	128887-011	128887-011	128887-011
15 (TEFC)	1	128887-010	128887-010	128887-010	128887-010
20	1	128887-002	128887-002	128887-002	128887-002
25	1	128887-003	128887-003	128887-003	128887-003
30	1	128887-003	128887-003	128887-003	128887-003
HP	QTY.	50 Hz			
		100#	125#	150#	175#
10	1	128887-005	128887-005	N/A	N/A
15 (ODP)	1	128887-011	128887-011	128887-011	N/A
15 (TEFC)	1	128887-004	128887-004	128887-010	N/A
20	1	128887-003	128887-003	128887-003	N/A
25	1	128887-003	128887-003	128887-003	N/A
30	1	128887-013	128887-013	128887-013	N/A

ITEM 7		COMPRESSOR SHEAVE			
HP	QTY.	60 Hz			
		100#	125#	150#	175#
10	1	129901-002	128077-056	N/A	N/A
15	1	128077-056	128077-002	125444	128077-059
20	1	128077-007	128077-007	128077-012	128077-006
25 (ODP)	1	129901-012	129901-015	129901-010	128077-008
25 (TEFC)	1	129901-014	129901-015	128077-005	128077-008
30	1	141537-012	141537-010	141537-011	141537-006
HP	QTY.	50 Hz			
		100#	125#	150#	175#
10	1	128077-029	128077-001	N/A	N/A
15	1	128077-063	129901-002	128077-002	N/A
20	1	128077-012	128077-008	129901-002	N/A
25 (ODP)	1	129901-002	129901-014	129901-002	N/A
25 (TEFC)	1	129901-002	129901-010	129901-002	N/A
30	1	141537-006	141537-008	141537-008	N/A

ITEM 8		COMPRESSOR SHEAVE BUSHING			
HP	QTY.	60 Hz			
		100#	125#	150#	175#
10	1	127454	127454	N/A	N/A
15	1	127454	128962	128962	127454
20	1	128962	128962	128962	128962
25 (ODP)	1	128962	128962	127454	128962
25 (TEFC)	1	127454	128962	128962	128962
30	1	127454	129933	127454	127454
HP	QTY.	50 Hz			
		100#	125#	150#	175#
10	1	127454	128962	N/A	N/A
15	1	127454	127454	128962	N/A
20	1	128962	128962	127454	N/A
25	1	127454	127454	127454	N/A
30	1	127454	127454	127454	N/A

**ITEM 12****CAP SCREW (FOR MOUNTING MOTOR)**

HP	QTY.	60 Hz			
		100#	125#	150#	175#
10	4	123478-L12	123478-L12	123478-L12	N/A
15 (ODP)	4	123478-L12	123478-L12	123478-L12	123478-L12
15 (TEFC)	4	123478-N16	123478-N17	123478-N16	123478-N16
20	4	123478-N17	123478-N14	123478-N14	123478-N14
25 (ODP)	4	123478-N17	123478-N17	123478-N17	123478-N17
25 (TEFC)	4	123478-N16	123478-N17	123478-N16	123478-N17
30	4	123478-N16	123478-N17	123478-N16	123478-N16

HP	QTY.	50 Hz			
		100#	125#	150#	175#
10	4	123478-L12	123478-L12	123478-L12	N/A
15 (ODP)	4	123478-L12	123478-L16	123478-L12	N/A
15 (TEFC)	4	123478-N16	123478-N16	123478-N16	N/A
20	4	123478-N14	123478-N14	123478-N14	N/A
25 (ODP)	4	123478-N17	123478-N17	123478-N17	N/A
25 (TEFC)	4	123478-N16	123478-N16	123478-N16	N/A
30	4	123478-N17	123478-N16	123478-N16	N/A

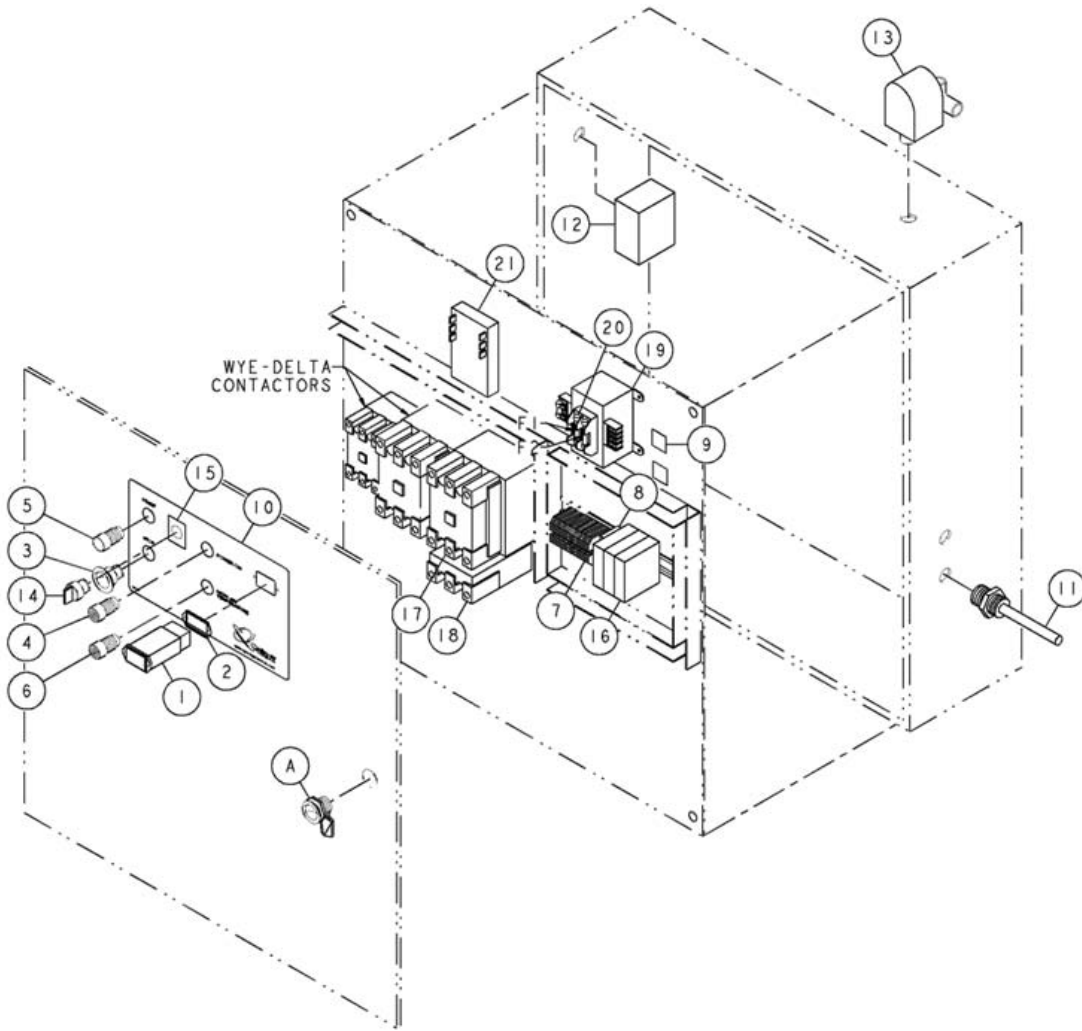
**ITEM 14****MOTOR SPACER**

HP	QTY.	60 Hz			
		100#	125#	150#	175#
10	4	N/A	N/A	N/A	N/A
15 (ODP)	4	N/A	N/A	N/A	N/A
15 (TEFC)	4	N/A	129059-8	N/A	N/A
20	4	129059-8	N/A	N/A	N/A
25 (ODP)	4	129059-8	N/A	129059-8	129059-8
25 (TEFC)	4	N/A	N/A	N/A	129059-1
30	4	N/A	129059-8	N/A	N/A

HP	QTY.	50 Hz			
		100#	125#	150#	175#
10	4	N/A	N/A	N/A	N/A
15 (ODP)	4	N/A	129059-1	N/A	N/A
15 (TEFC)	4	N/A	N/A	N/A	N/A
20	4	N/A	N/A	N/A	N/A
25 (ODP)	4	129059-2	129059-2	129059-2	N/A
25 (TEFC)	4	N/A	N/A	N/A	N/A
30	4	129059-8	N/A	N/A	N/A

# Electrical Control & Starting (standard control)

PIX5094



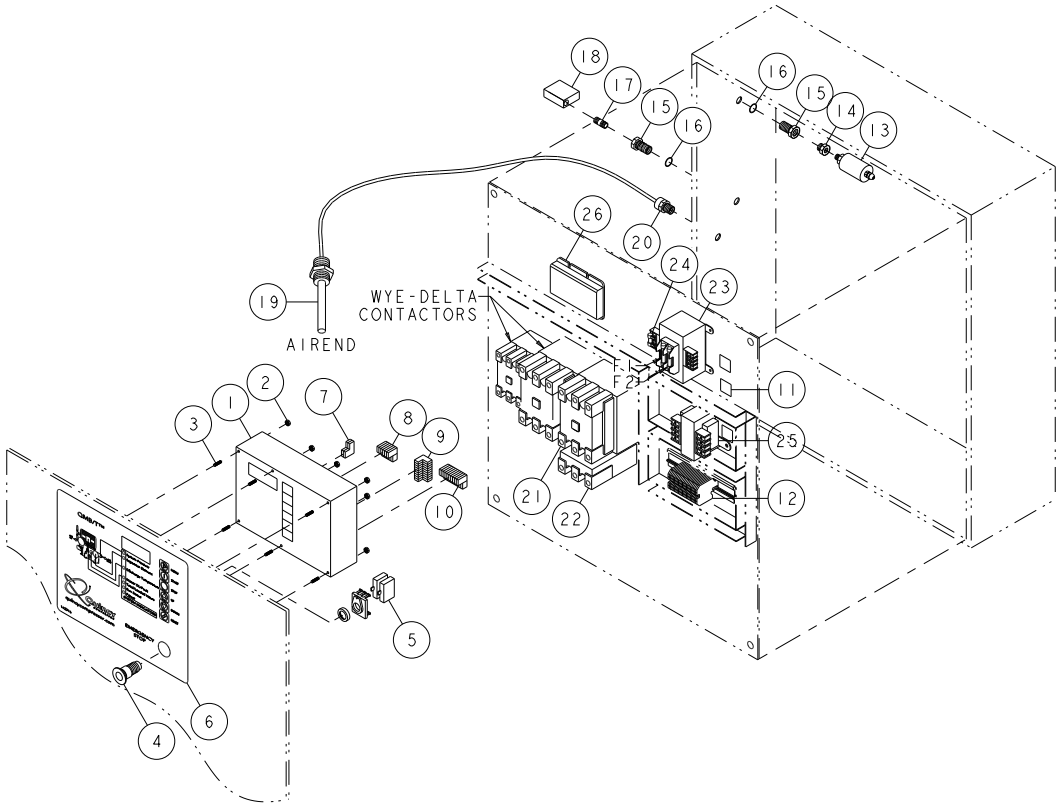
NOTES-UNLESS OTHERWISE SPECIFIED:  
1) QUANTITY OF ITEM 16 (TIMER) VARIES DEPENDING ON OPTIONS SELECTED.  
2) ITEM 21 (PHASE MONITOR) IS OPTIONAL.

## Electrical Control & Starting (standard control)

ITEM NO.	QTY.	PART NUMBER	DESCRIPTION
1	1	110871-120	HOURMETER (60 Hz)
	1	110871-125	HOURMETER (50 Hz)
2	1	126972	HOURMETER GASKET
3	1	129082-2	STOP BUTTON-TURN RELEASE
INCLUDES:	1	129089	CONTACT BLOCK (NORMALLY CLOSED)
4	1	129087	AMBER INDICATOR LIGHT
INCLUDES:	1	143144-01	AMBER LAMP
	2	129092	INDICATOR LIGHT BASE
5	1	129081	START BUTTON
INCLUDES:	1	129090	CONTACT BLOCKS (2 NORMALLY OPEN)
6	1	129088	RED INDICATOR LIGHT
INCLUDES:	1	143144-02	RED LAMP
7	1	142334-11	TERMINAL BLOCK ASSEMBLY
8	1	146561-1	SOCKET RELAY
9	1	143470	ELECTRICAL DECALS SHEET
10	1	129077	CONTROL PANEL DECAL
11	1	122880S222	TEMPERATURE SWITCH (225°F)
12*	1	22454-1	PRESSURE SWITCH (100-125#)
	1	8698-011	PRESSURE SWITCH (150-175#)
13	1	120496-5	SOLENOID VALVE-3-WAY (100-125#)
	1	120496-4	SOLENOID VALVE-3-WAY (150-175#)
14	1	129083	SELECTOR SWITCH (NOT USED ON CONTINUOUS RUN)
INCLUDES:	1	129089	CONTACT BLOCK (NORMALLY CLOSED) (AUTO DUAL)
	1	129091	CONTACT BLOCKS (1 NORMALLY OPEN/1 NORMALLY CLOSED) (AUTO DEMAND)
15	1	129103-2	LEGEND PLATE-AUTO DUAL
	1	129103-4	LEGEND PLATE-REMOTE/LOCAL
	1	129103-6	LEGEND PLATE-LEAD/LAG
16	1	144739	PROGRAMMABLE TIMER (NOT USED ON CONTINUOUS RUN)
17	1	(PAGE 18)	DRIVE MOTOR CONTACTOR
18	1	(PAGE 18)	DRIVE MOTOR OVERLOAD RELAY
	1	144573-01	MECHANICAL INTERLOCK (WYE-DELTA ONLY, NOT SHOWN)
19	1	(PAGE 19)	TRANSFORMER
20	2	(PAGE 19)	TRANSFORMER FUSE (PRIMARY)
	1	128622-100	TRANSFORMER FUSE (10 HP, SECONDARY)
	1	128622-160	TRANSFORMER FUSE (15-30 HP, SECONDARY)
OPTIONAL:			
21	1	129200-001	PHASE MONITOR (200/230 VOLT)
	1	129200-003	PHASE MONITOR (380/415 VOLT)
	1	129200-002	PHASE MONITOR (460 VOLT)
	1	128422-003	PHASE MONITOR (575 VOLT)
AUTO RESTART OPTION:			
(8)	1	146561-1	SOCKET RELAY
(16)	2	144739	PROGRAMMABLE TIMER
NET\$YNC OPTION (NOT SHOWN):			
	1	143265	NET\$YNC BOARD-I/O
	1	125706-005	FLANGE MOUNTED RELAY
	1	123153-014	TERMINAL STRIP
	1	125786-017	TERMINAL STRIP DECAL
	1	129865	SELECTOR SWITCH
	1	140533	SWITCH BRACKET
	1	129864-01	CONTACT BLOCK (NORMALLY OPEN)
	1	143183	DECAL-LOCAL/REMOTE SWITCH
<u>COMPONENT MAINTENANCE PARTS</u>			
A	1	141784-001	ELECTRICAL ENCLOSURE LATCH (NEMA 1)
		141784-002	ELECTRICAL ENCLOSURE LATCH (NEMA 4 & 12)

# Electrical Control & Starting (electronic control)

PIX5066



NOTES-UNLESS OTHERWISE SPECIFIED:  
 1) ITEM A (ENCLOSURE LATCH) IS NOT SHOWN.

## Electrical Control & Starting (electronic control)

ITEM NO.	QTY.	PART NUMBER	DESCRIPTION
1	1	142131	ELECTRONIC CONTROLLER
2	6	124365-F02	HEX NUT-# 8 UNF
3	6	160048-F09	SET SCREW-# 8 UNF X 0.63
4	1	146102-006	EMERGENCY STOP BUTTON
5	2	146103-002	CONTACT BLOCK (NORMALLY CLOSED)
6	1	142316	CONTROLLER DECAL-QMB/T ELECTRONIC CONTROL
7	1	142659-01	HEADER PLUG-2 PIN
8	1	142659-02	HEADER PLUG-6 PIN
9	1	142659-03	HEADER PLUG-9 PIN
10	1	142659-04	HEADER PLUG-10 PIN
11	1	143470	ELECTRICAL DECALS SHEET
12	1	142334-05	TERMINAL BLOCK ASSEMBLY
13	1	142133	ELECTRONIC CONTROL TRANSDUCER
14	1	143046-008	PIPE BUSHING-0.25 NPT X 0.12 NPT
15	2	129203-003	BULKHEAD COUPLING-BRASS, 0.25 NPT
16	2	123157-117	BUNA-N O-RING-0.81 I.D.
17	1	142125-2	EXTRA STRONG BRASS NIPPLE-0.25 NPT X 1.25
18	1	129596-001	DIFFERENTIAL PRESSURE SWITCH (10#)
19	1	143754	TEMPERATURE PROBE-HIGH VIBRATION
20	1	142096-04	STRAIN RELIEF CONNECTOR
21	1	(PAGE 18)	DRIVE MOTOR CONTACTOR
22	1	(PAGE 18)	DRIVE MOTOR OVERLOAD RELAY
	1	144573-01	MECHANICAL INTERLOCK (WYE-DELTA ONLY, NOT SHOWN)
23	1	(PAGE 19)	TRANSFORMER
24	2	(PAGE 19)	TRANSFORMER FUSE (PRIMARY)
	1	128622-160	TRANSFORMER FUSE (SECONDARY)
25	1	143674	24 VOLT TRANSFORMER
OPTIONAL:			
26	1	129200-001	PHASE MONITOR (200/230 VOLT)
	1	129200-003	PHASE MONITOR (380/415 VOLT)
	1	129200-002	PHASE MONITOR (460 VOLT)
	1	128422-003	PHASE MONITOR (575 VOLT)
NET\$YNC OPTION (NOT SHOWN):			
	1	143273	NET\$YNC BOARD-ELECTRONIC CONTROL
	1	129865	SELECTOR SWITCH
	1	140533	SWITCH BRACKET
	2	129864-01	CONTACT BLOCK (NORMALLY OPEN)
	1	143183	DECAL-LOCAL/REMOTE SWITCH
<u>COMPONENT MAINTENANCE PARTS</u>			
A	1	141784-001	ELECTRICAL ENCLOSURE LATCH (NEMA 1)
		141784-002	ELECTRICAL ENCLOSURE LATCH (NEMA 4 & 12)

UPDATED ITEMS 4 & 5 TO CURRENT PRODUCTION (07/30/08).

# Electrical Control & Starting

ITEM 17		DRIVE MOTOR CONTACTOR				
		FULL VOLTAGE				
VOLTAGE	QTY.	10 HP	15 HP	20 HP	25 HP	30 HP
200	1	144570-06	144570-08	144570-08	144570-09	144570-10
230	1	144570-05	144570-06	144570-08	144570-09	144570-09
380	1	144570-04	144570-05	144570-06	144570-07	144570-07
415	1	144570-03	144570-04	144570-05	144570-06	144570-07
460	1	144570-03	144570-04	144570-05	144570-06	144570-06
575	1	144570-04	144570-03	144570-04	144570-05	144570-06
		WYE-DELTA				
VOLTAGE	QTY.	10 HP	15 HP	20 HP	25 HP	30 HP
200	*	144570-04 (2)	144570-05 (3)	144570-06 (2)	144570-07 (2)	144570-05 (3)
		144570-02 (1)		144570-05 (1)	144570-05 (1)	
230	*	144570-04 (2)	144570-05 (3)	144570-06 (2)	144570-07 (2)	144570-05 (3)
		144570-02 (1)		144570-05 (1)	144570-05 (1)	
380	*	144570-02 (2)	144570-03 (2)	144570-04 (2)	144570-04 (2)	144570-08 (3)
		144570-01 (1)	144570-01 (1)	144570-02 (1)	144570-03 (1)	
415	*	144570-01 (3)	144570-03 (2)	144570-03 (2)	144570-04 (2)	144570-08 (3)
			144570-01 (1)	144570-01 (1)	144570-02 (1)	
460	*	144570-02 (2)	144570-03 (2)	144570-04 (2)	144570-04 (2)	144570-05 (3)
		144570-01 (1)	144570-01 (1)	144570-02 (1)	144570-03 (1)	
575	*	144570-01 (3)	144570-02 (2)	144570-03 (2)	144570-04 (2)	144570-04 (2)
			144570-01 (1)	144570-01 (1)	144570-02 (1)	144570-02 (1)

\* QUANTITY IS IN PARENTHESIS ( ) FOLLOWING PART NUMBER.

ITEM 18		DRIVE MOTOR OVERLOAD RELAY				
		FULL VOLTAGE				
VOLTAGE	QTY.	10 HP	15 HP	20 HP	25 HP	30 HP
200	1	143780-04	143780-05	143780-06	143780-06	143780-07
230	1	143780-04	143780-05	143780-05	143780-06	143780-06
380	1	143780-03	143780-03	143780-04	143780-04	143780-05
415	1	143780-03	143780-03	143780-04	143780-04	143780-05
460	1	143780-14	143780-03	143780-04	143780-04	143780-05
575	1	143780-14	143780-03	143780-03	143780-04	143780-04
		WYE-DELTA				
VOLTAGE	QTY.	10 HP	15 HP	20 HP	25 HP	30 HP
200	1	143780-03	143780-03	143780-04	143780-05	143780-03
230	1	143780-03	143780-03	143780-04	143780-04	143780-03
380	1	143780-13	143780-14	143780-14	143780-03	143780-05
415	1	143780-13	143780-14	143780-14	143780-03	143780-05
460	1	143780-13	143780-14	143780-14	143780-03	143780-03
575	1	143780-13	143780-13	143780-14	143780-14	143780-14

# Electrical Control & Starting

---

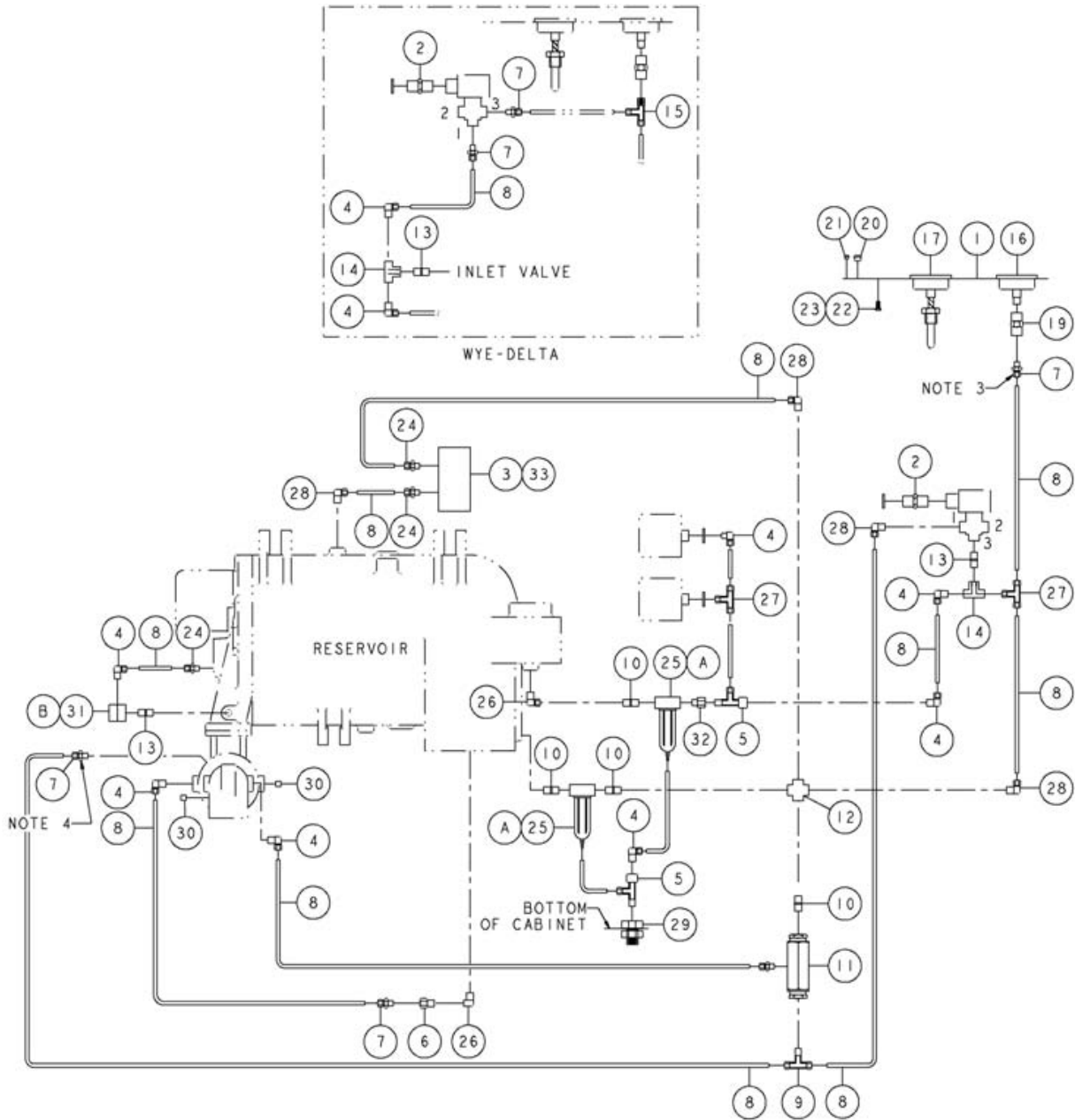
ITEM 19		TRANSFORMER		
VOLTAGE	QTY.	STANDARD CONTROL		ELECTRONIC CONTROL
		10 HP	15-30 HP	10-30 HP
200	1	128413-101	128413-151	128413-151
230	1	128413-103	128413-153	128413-153
380	1	128413-106	128413-156	128413-156
415	1	128413-104	128413-154	128413-154
460	1	128413-103	128413-153	128413-153
575	1	128413-105	128413-155	128413-155

---

ITEM 20		TRANSFORMER FUSES (PRIMARY)		
VOLTAGE	QTY.	STANDARD CONTROL		ELECTRONIC CONTROL
		10 HP	15-30 HP	10-30 HP
200	2	128857-003	128857-030	128857-030
230	2	128857-003	128857-011	128857-011
380	2	128857-002	128857-003	128857-003
415	2	128857-002	128857-002	128857-002
460	2	128857-002	128857-002	128857-002
575	2	128857-001	128857-002	128857-002

---

# Control Piping (load/no load) - 142813-001/-003



NOTE-UNLESS OTHERWISE SPECIFIED:

- 1) ITEM 27 (TEE) AT PRESSURE SWITCH USED ONLY ON UNITS WITH LEAD/LAG OPTION.
- 2) ITEM 13 CONNECTS TO NPT PORT ON CYLINDER CAP OF INLET VALVE.
- 3) WYE DELTA UNITS: REPLACE ITEM 7 AT THIS LOCATION WITH ITEM 15 (SEE DETAIL).
- 4) WYE DELTA UNITS: REPLACE ITEM 7 AT THIS LOCATION WITH ITEMS 13 & 14 (SEE DETAIL).

## Control Piping (load/no load) - 142813-001/-003

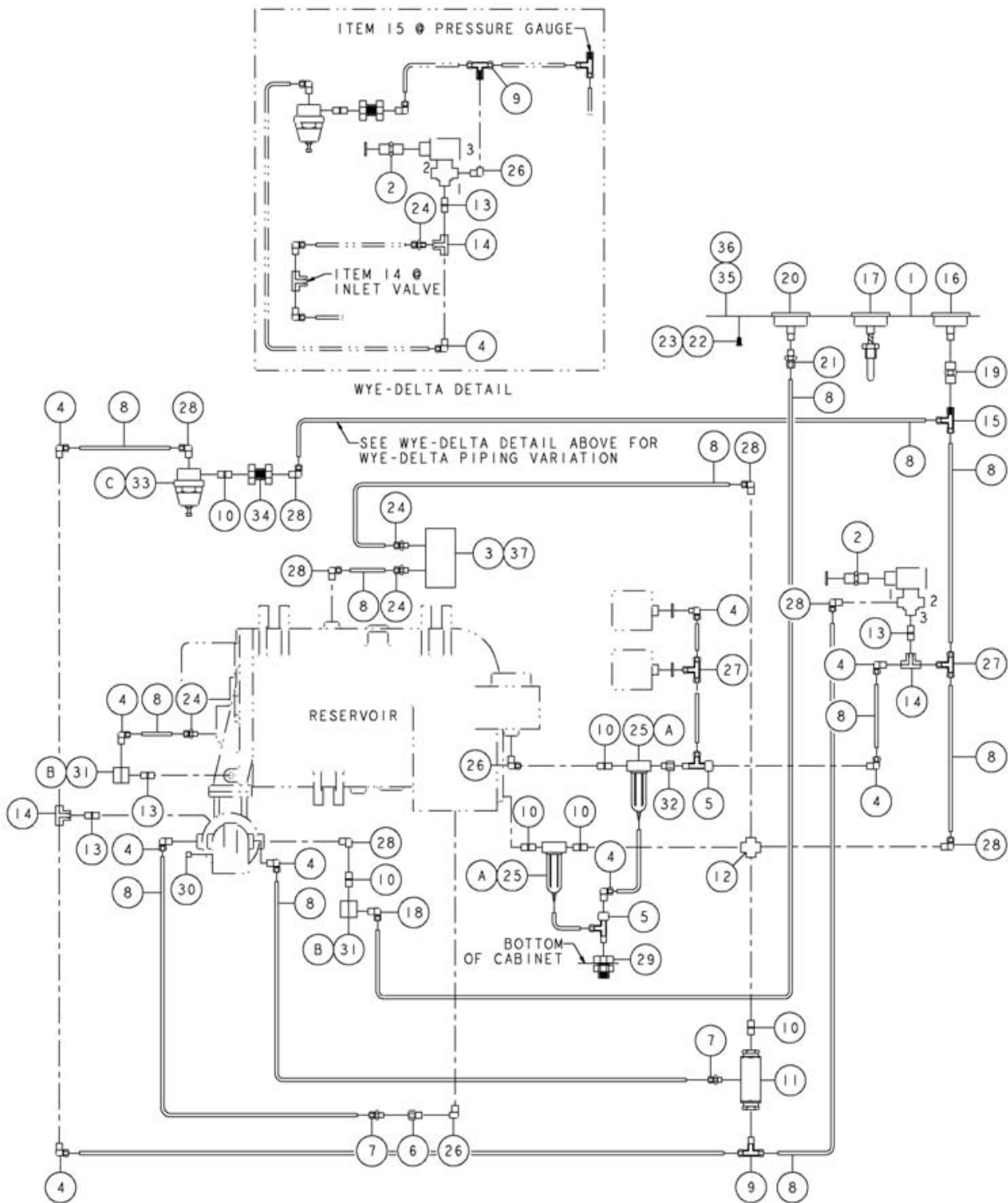
ITEM No.	QTY.	PART NUMBER	DESCRIPTION
1	1	140529	GAUGE PANEL DECAL
2*	1	144545-02	STRAIN RELIEF CONNECTOR-0.50
3	1	23779-15	DIFFERENTIAL PRESSURE INDICATOR
4*	7	124349-004	90° MALE ELBOW-0.25 TUBE X 0.125 NPT
5	2	20201	TEE-0.25 TUBE X 0.12 NPT X 0.12 NPT
6	1	125025-004	LINE FILTER ORIFICE (0.096)
7	2	124393-005	MALE CONNECTOR-0.25 TUBE X 0.25 NPT
8	49.0 FT	124435-003	NYLON TUBING-0.25 O.D.
9	1	124351-004	MALE BRANCH TEE-0.25 TUBE X 0.25 NPT
10	5	142125-1	EXTRA STRONG BRASS NIPPLE-0.25 NPT X CLOSE
11	1	128826	BLOWDOWN VALVE
12	1	6150	PIPE CROSS-BRASS, 0.25 NPT
13*	1	111098-002	PIPE NIPPLE-BRASS, 0.125 NPT X 0.25 NPT X CLOSE
14*	1	90084	SHUTTLE VALVE-0.125 NPT
15*	1	124348-003	MALE RUN TEE-0.25 TUBE X 0.25 NPT
16	1	128662	PRESSURE GAUGE (0-300#)
17	1	128664	TEMPERATURE GAUGE
18	1	122212	PIPE ELBOW-BRASS, 0.125 NPT X 0.25 NPT
19	1	125259-002	BRASS COUPLING-0.25 X 0.25
20	1	125284-010	NYLON PLUG
21	2	125284-005	NYLON PLUG
22	1	123478-J07	CAP SCREW-1/4-20 UNC X 0.50, GRADE 5 (@ 6 FT-LBS)
23	1	123115-04C	LOCKWASHER, 0.25
24	4	124393-004	MALE CONNECTOR-0.25 TUBE X 0.125 NPT
25	2	129732	AUTOMATIC LINE FILTER
26	1	122636	PIPE ELBOW-BRASS, 0.25 NPT
27	1	1665	MALE BRANCH TEE-0.25 TUBE X 0.12 NPT
28	4	124349-005	90° MALE ELBOW-0.25 TUBE X 0.25 NPT
29	1	129203-001	BULKHEAD COUPLING
30	2	2140	PIPE PLUG-0.125 NPT
31	1	122056	CHECK VALVE
32	1	121033-1	PIPE BUSHING-BRASS, 0.25 NPT X 0.125 NPT
33	2	140764-L10	PAN HEAD CAP SCREW-10 UNF X 0.75

### COMPONENT MAINTENANCE PARTS

A	2	129732-051	LINE FILTER KIT (INCLUDES BOWL SEAL, FILTER ELEMENT, GASKET)
B	2	123157-008	BUNA-N O-RING-0.18 I.D.

\* QUANTITY OF THESE ITEMS VARIES DEPENDING ON FULL VOLTAGE OR WYE-DELTA STARTING.  
REFERENCE DRAWING.

# Control Piping (modulation) - 142813-002/-004



## Control Piping (modulation) - 142813-002/-004

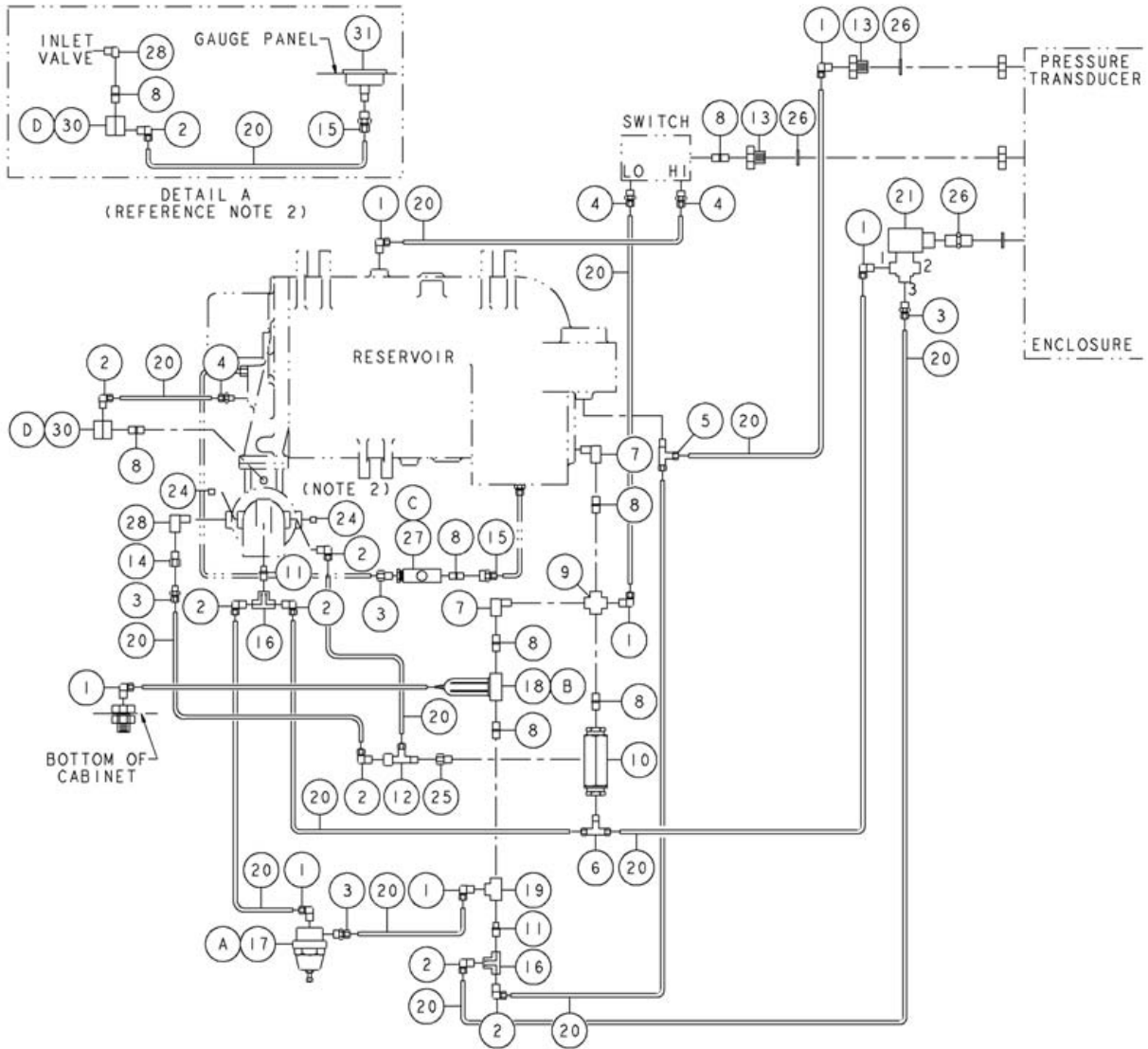
ITEM NO.	QTY.	PART NUMBER	DESCRIPTION
1	1	140530	GAUGE PANEL DECAL
2*	1	144545-02	STRAIN RELIEF CONNECTOR-0.50
3	1	23779-15	DIFFERENTIAL PRESSURE INDICATOR
4*	9	124349-004	90° MALE ELBOW-0.25 TUBE X 0.125 NPT
5	2	20201	TEE-0.25 TUBE X 0.12 NPT X 0.12 NPT
6	1	125025-006	LINE FILTER ORIFICE (0.032)
7	2	124393-005	MALE CONNECTOR-0.25 TUBE X 0.25 NPT
8	53.0 FT	124435-003	NYLON TUBING-0.25 O.D.
9*	1	124351-004	MALE BRANCH TEE-0.25 TUBE X 0.25 NPT
10	6	142125-1	EXTRA STRONG BRASS NIPPLE-0.25 NPT X CLOSE
11	1	128826	BLOWDOWN VALVE
12	1	6150	PIPE CROSS-BRASS, 0.25 NPT
13*	3	111098-002	PIPE NIPPLE-BRASS, 0.125 NPT X 0.25 NPT X CLOSE
14*	2	90084	SHUTTLE VALVE-0.125 NPT
15	1	124348-003	MALE RUN TEE-0.25 TUBE X 0.25 NPT
16	1	128662	PRESSURE GAUGE (0-300#)
17	1	128664	TEMPERATURE GAUGE
18	1	122212	PIPE ELBOW-BRASS, 0.125 NPT X 0.25 NPT
19	1	125259-002	BRASS COUPLING-0.25 X 0.25
20	1	128663	PERCENT CAPACITY GAUGE
21	1	124347-004	FEMALE CONNECTOR-0.25 TUBE X 0.25 NPT
22	1	123478-J07	CAP SCREW-1/4-20 UNC X 0.50, GRADE 5 (@ 6 FT-LBS)
23	1	123115-04C	LOCKWASHER, 0.25
24*	3	124393-004	MALE CONNECTOR-0.25 TUBE X 0.125 NPT
25	2	129732	AUTOMATIC LINE FILTER
26*	2	122636	PIPE ELBOW-BRASS, 0.25 NPT
27	1	1665	MALE BRANCH TEE-0.25 TUBE X 0.12 NPT
28	7	124349-005	90° MALE ELBOW-0.25 TUBE X 0.25 NPT
29	1	129203-001	BULKHEAD COUPLING
30	1	2140	PIPE PLUG-0.125 NPT
31	2	122056	CHECK VALVE
32	1	121033-1	PIPE BUSHING-BRASS, 0.25 NPT X 0.125 NPT
33	1	146175-1	DIFFERENTIAL PILOT VALVE
34	1	129203-003	BULKHEAD COUPLING
35	1	128481-008	NYLON TUBE BUSHING-0.50 X 0.25
36	1	125284-005	NYLON PLUG
37	2	140764-L10	PAN HEAD CAP SCREW-10 UNF X 0.75

### COMPONENT MAINTENANCE PARTS

A	2	129732-051	LINE FILTER KIT (INCLUDES BOWL SEAL, FILTER ELEMENT, GASKET)
B	4	123157-008	BUNA-N O-RING-0.18 I.D.
C	1	146175-100	DIFFERENTIAL PILOT VALVE KIT (INCLUDES DIAPHRAGM ASSEMBLY & SEAT)

\* QUANTITY OF THESE ITEMS VARIES DEPENDING ON FULL VOLTAGE OR WYE-DELTA STARTING.  
REFERENCE DRAWING.

# Control Piping (electronic control) - 142329-002



NOTES-UNLESS OTHERWISE SPECIFIED:  
 1) ITEM 29 (DECAL) NOT SHOWN.  
 2) UNITS WITH GAUGE: REPLACE ITEM 24 AT THIS LOCATION WITH ITEMS SHOWN IN DETAIL A.

## Control Piping (electronic control) - 142329-002

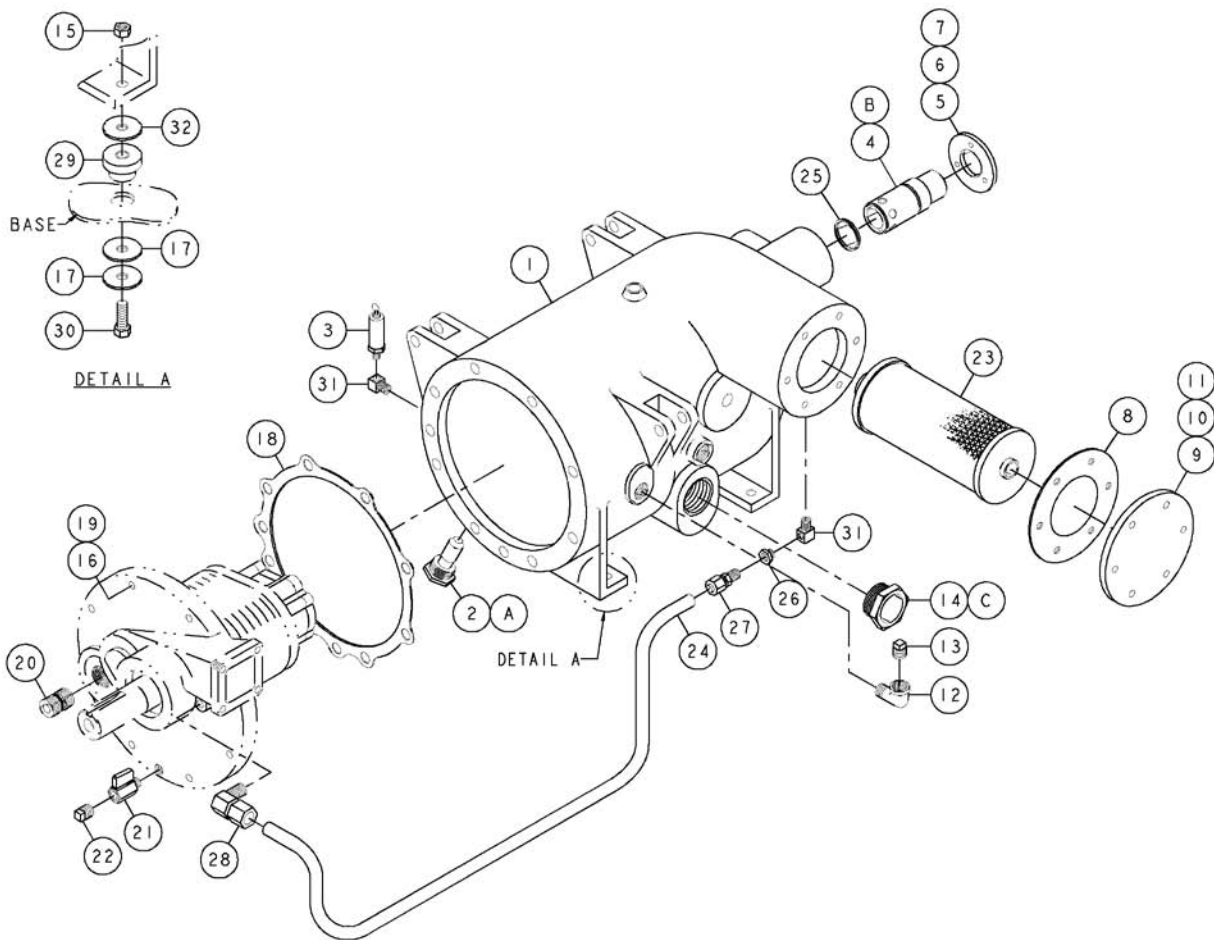
ITEM NO.	QTY.	PART NUMBER	DESCRIPTION
1	7	124349-005	90° MALE ELBOW-0.25 TUBE X 0.25 NPT
2	8	124349-004	90° MALE ELBOW-0.25 TUBE X 0.125 NPT
3	4	124393-005	MALE CONNECTOR-0.25 TUBE X 0.25 NPT
4	3	124393-004	MALE CONNECTOR-0.25 TUBE X 0.125 NPT
5	1	124348-003	MALE RUN TEE-0.25 TUBE X 0.25 NPT
6	1	124351-004	MALE BRANCH TEE-0.25 TUBE X 0.25 NPT
7	2	122636	PIPE ELBOW-BRASS, 0.25 NPT
8	8	142125-1	EXTRA STRONG BRASS NIPPLE-0.25 NPT X CLOSE
9	1	6150	PIPE CROSS-BRASS, 0.25 NPT
10	1	128826	BLOWDOWN VALVE
11	2	111098-002	PIPE NIPPLE-BRASS, 0.125 NPT X 0.25 NPT X CLOSE
12	1	20201	TEE-0.25 TUBE X 0.12 NPT X 0.12 NPT
13	2	129203-003	BULKHEAD COUPLING
14	1	125025-004	LINE FILTER ORIFICE (0.096)
15	2	124347-004	FEMALE CONNECTOR-0.25 TUBE X 0.25 NPT
16	2	90084	SHUTTLE VALVE-0.125 NPT
17	1	146175-1	DIFFERENTIAL PILOT VALVE
18	1	129732	AUTOMATIC LINE FILTER
19	1	121034-2	PIPE TEE-BRASS, 0.25 NPT
20	41.0 FT	140620-003	BLACK NYLON TUBING-0.25 O.D.
21	1	120496-4	SOLENOID VALVE-3-WAY
22	1	129203-001	BULKHEAD COUPLING
23	1	144545-02	STRAIN RELIEF CONNECTOR-0.50
24	2	2140	PIPE PLUG-0.125 NPT
25	1	125260-001	PIPE REDUCER-BRASS, 0.25 NPT X 0.12 NPT
26	2	123157-117	BUNA-N O-RING-0.81 I.D.
27	1	140508	SIGHTGLASS (O-RING)
28	2	122212	PIPE ELBOW-BRASS, 0.125 NPT X 0.25 NPT
29	1	140530-1	GAUGE PANEL DECAL
30	2	122056	CHECK VALVE
31	1	128663	PERCENT CAPACITY GAUGE

### COMPONENT MAINTENANCE PARTS

A	1	146175-100	DIFFERENTIAL PILOT VALVE KIT (INCLUDES DIAPHRAGM ASSEMBLY & SEAT)
B	1	129732-051	LINE FILTER KIT (INCLUDES BOWL SEAL, FILTER ELEMENT, GASKET)
C	2	22749-010	VITON O-RING-0.25 I.D.
D	4	123157-008	BUNA-N O-RING-0.18 I.D.

\* QUANTITY OF THESE ITEMS VARIES DEPENDING ON FULL VOLTAGE OR WYE-DELTA STARTING.  
REFERENCE DRAWING.

# Reservoir - 142203-001



NOTES-UNLESS OTHERWISE SPECIFIED:  
1) APPLY LOCTITE 271 TO ITEM 20.  
2) APPLY LOCTITE 222 TO BRASS FITTINGS.

## Reservoir - 142203-001

ITEM NO.	QTY.	PART NUMBER	DESCRIPTION
1	1	141050-1	AIR/FLUID RESERVOIR
2	1	140147-2	THERMAL VALVE-CARTRIDGE
3	1	143555-200	PRESSURE RELIEF VALVE
4	1	128813	MINIMUM PRESSURE CHECK VALVE
5	1	128916	MINIMUM PRESSURE CHECK VALVE RETAINER
6	3	123115-04C	LOCKWASHER, 0.25
7	3	123478-J10	CAP SCREW-1/4-20 UNC X 0.75, GRADE 5 (@ 6 FT-LBS)
8	1	129907	RESERVOIR TOP PLATE GASKET
9	1	128823	SEPARATOR COVER PLATE
10	6	123115-06C	LOCKWASHER, 0.38
11	6	123478-L14	CAP SCREW-3/8-16 UNC X 1.25, GRADE 5 (@ 23 FT-LBS)
12	1	3092	PIPE ELBOW-0.75 NPT
13	1	2058	PIPE PLUG-0.75 NPT
14	1	129843-188	SIGHTGLASS (O-RING)
15	4	124370-N02	LOCKNUT-1/2-13 UNC
16	8	123115-08C	LOCKWASHER, 0.50
17	8	129303R050	FENDER WASHER
18	1	141243	RESERVOIR GASKET
19	8	123478-N17	CAP SCREW-1/2-13 UNC X 2.00, GRADE 5 (@ 55 FT-LBS)
20	1	128599	FLUID FILTER STUD
21	1	129251-025	PLUG VALVE
22	3	2574	PIPE PLUG-0.25 NPT
23	1	129881-001	AIR/FLUID SEPARATOR
24	2.0 FT	124435-003	NYLON TUBING-0.25 O.D.
25	1	22749-030	VITON O-RING-1.62 I.D.
26	1	125025-006	LINE FILTER ORIFICE (0.032)
27	1	124393-005	MALE CONNECTOR-0.25 TUBE X 0.25 NPT
28	1	124349-005	90° MALE ELBOW-0.25 TUBE X 0.25 NPT
29	4	142201-02	MOTOR MOUNT
30	4	123478-N19	CAP SCREW-1/2-13 UNC X 2.50, GRADE 5 (@ 55 FT-LBS)
31	2	122636	PIPE ELBOW-BRASS, 0.25 NPT
32	4	143803-1	WASHER

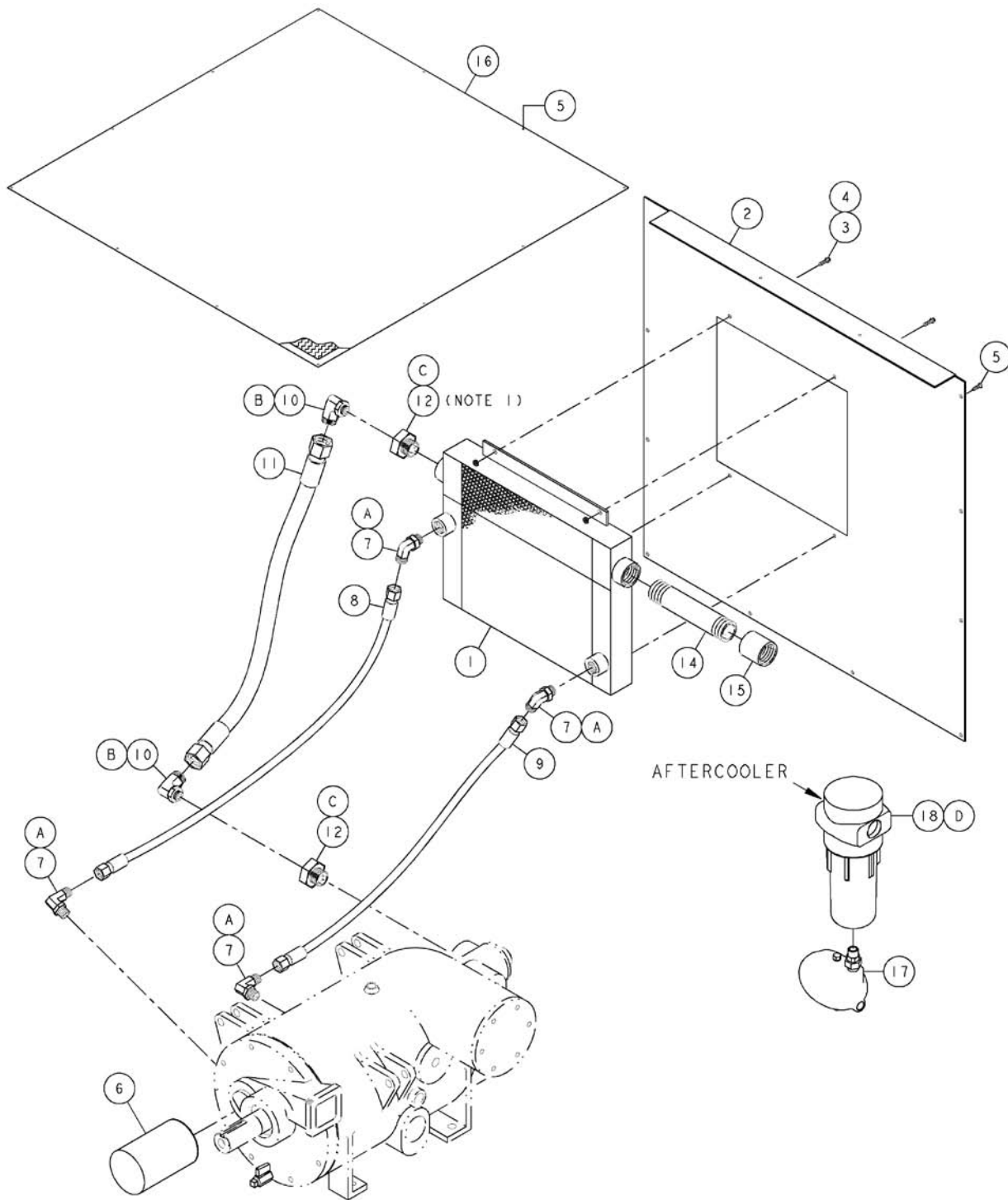
### COMPONENT MAINTENANCE PARTS

A	1	22749-123	VITON O-RING-1.18 I.D.
B	1	128813-050	MINIMUM PRESSURE CHECK VALVE KIT
C	1	140406-924	VITON O-RING-1.72 I.D.

@ INDICATES TORQUE VALUE IN FOOT POUNDS (LUBRICATED THREADS).

THIS PAGE UPDATED 04/18/08 TO CORRECT/UPDATE SEPARATOR PART NUMBER (ITEM 23).

# Cooler (less dryer) - 142204-001 thru -003



- NOTES-UNLESS OTHERWISE SPECIFIED:  
 1) ITEM 12 (ADAPTER) NOT REQUIRED AT COOLER ON 10 AND 15 HP UNITS.  
 2) ITEM 13 (FLUID DRAIN ASSEMBLY) IS NOT SHOWN AND SHIPPED LOOSE.  
 3) ITEMS 17 & 18 (MOISTURE SEPARATOR & DRAIN) ARE SHIPPED LOOSE AND NOT USED ON UNITS WITH RECEIVER.

THIS PAGE UPDATED 11/14/06 TO SHOW CORRECT MOISTURE SEPARATOR & DRAIN.

## Cooler (less dryer) - 142204-001 thru -003

ITEM No.	QTY.	PART NUMBER	DESCRIPTION
1	1	141261-1	COMBINATION COOLER (10/15 HP)
	1	141261-2	COMBINATION COOLER (20/25 HP)
	1	141261-3	COMBINATION COOLER (30 HP)
2	1	142197-03	COOLER PANEL (10/15 HP)
	1	142197-04	COOLER PANEL (20/25 HP)
	1	142197-05	COOLER PANEL (30 HP)
3*	4	141575-J10	PAN HEAD SCREW-1/4-20 UNC X 0.75
4*	4	112272-J02	SELF-LOCKING HEX NUT-ZINC, 1/4-20 UNC
5	33	141575-J07	PAN HEAD SCREW-1/4-20 UNC X 0.50
6	1	128598	FLUID FILTER ELEMENT
7	4	129010-009	ELBOW-0.50 TUBE X 3/4-16 (O-RING)
8	1	141951-032	HOSE ASSEMBLY-0.50 X 33.00 LONG
9	1	141951-033	HOSE ASSEMBLY-0.50 X 40.00 LONG
10	2	129010-015	ELBOW-0.75 TUBE X 1-1/16-12 (O-RING) (10/15 HP)
	2	129010-019	ELBOW-1.00 TUBE X 1-5/16-12 (O-RING) (20/25/30 HP)
11	1	141951-034	HOSE ASSEMBLY-0.75 X 17.50 LONG (10/15 HP)
	1	141951-011	HOSE ASSEMBLY-1.00 X 18.00 LONG (20/25/30 HP)
12	1	129208-020	ADAPTER-1-1/16-12 X 1-5/8-12 (O-RING) (10/15 HP)
	2	129208-021	ADAPTER-1-5/16-12 X 1-5/8-12 (O-RING) (20/25/30 HP)
13	1	143280-001	FLUID DRAIN ASSEMBLY (NOT SHOWN)
INCLUDES: 2.0 FT		129164-500	CLEAR VINYL TUBING-0.50 I.D.
	1	128176-015	HOSE CLAMP
	1	128968-009	BARBED HOSE FITTING-0.50 HOSE X 0.25 NPT
14	1	125937-058	PIPE NIPPLE-1.00 NPT X 8.00 (10/15 HP)
	1	125938-026	PIPE NIPPLE-1.25 NPT X 4.00 (20/25/30 HP)
15	1	21149	PIPE COUPLING-1.00 NPT (10/15 HP)
	1	120290	PIPE COUPLING-1.25 NPT (20/25/30 HP)
16	1	141563-06	TOP PANEL
17	1	146395	CONDENSATE DRAIN
18	1	145999-100	MOISTURE SEPARATOR (10/15 HP)
	1	145999-125	MOISTURE SEPARATOR (20/25/30 HP)

### COMPONENT MAINTENANCE PARTS

A	4	140406-908	VITON O-RING-0.64 I.D.
B	2	140406-912	VITON O-RING-0.92 I.D. (10/15 HP)
	2	140406-916	VITON O-RING-1.17 I.D. (20/25/30 HP)
C**	1	140406-920	VITON O-RING-1.48 I.D.
D	1	145999-050	VITON O-RING (10/15 HP)
	1	145999-051	VITON O-RING (20/25/30 HP)

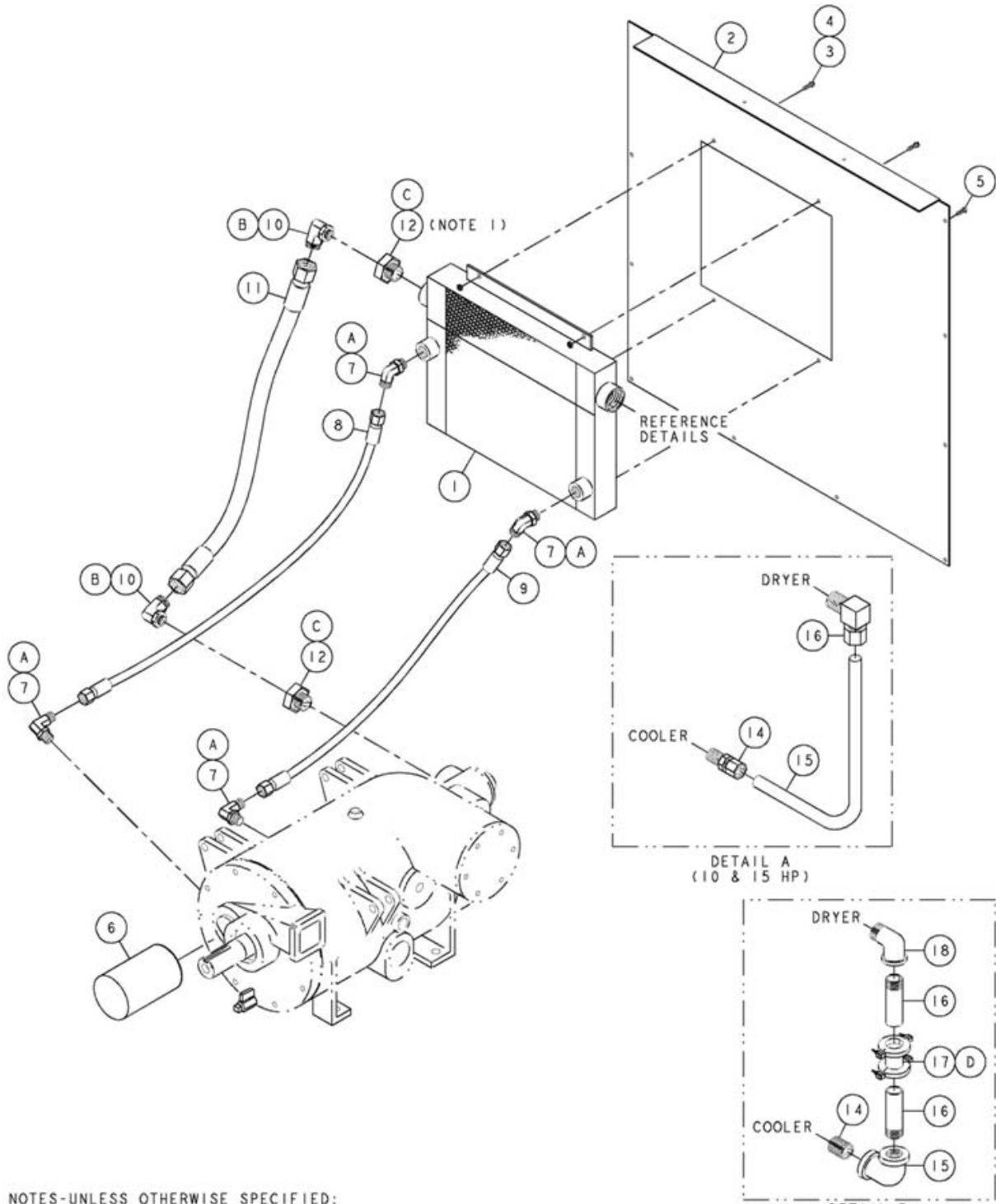
\* QUANTITY OF 6 ON 20 THRU 30 HP UNITS.

\*\* QUANTITY OF 2 ON 20 THRU 30 HP UNITS.

@ INDICATES TORQUE VALUE IN FOOT POUNDS (LUBRICATED THREADS).

THIS PAGE UPDATED 11/14/06 TO SHOW CORRECT MOISTURE SEPARATOR & DRAIN.

Cooler (with dryer) - 142204-004 thru -006



NOTES-UNLESS OTHERWISE SPECIFIED:  
 1) ITEM 12 (ADAPTER) NOT REQUIRED AT COOLER ON 10 AND 15 HP UNITS.  
 2) ITEM 13 (FLUID DRAIN ASSEMBLY) IS NOT SHOWN AND SHIPPED LOOSE.

## Cooler (with dryer) - 142204-004 thru -006

ITEM NO.	QTY.	PART NUMBER	DESCRIPTION
1	1	141261-1	COMBINATION COOLER <b>(10/15 HP)</b>
	1	141261-2	COMBINATION COOLER <b>(20/25 HP)</b>
	1	141261-3	COMBINATION COOLER <b>(30 HP)</b>
2	1	142197-03	COOLER PANEL <b>(10/15 HP)</b>
	1	142197-04	COOLER PANEL <b>(20/25 HP)</b>
	1	142197-05	COOLER PANEL <b>(30 HP)</b>
3*	4	141575-J10	PAN HEAD SCREW-1/4-20 UNC X 0.75
4*	4	112272-J02	SELF-LOCKING HEX NUT-ZINC, 1/4-20 UNC
5	10	141575-J07	PAN HEAD SCREW-1/4-20 UNC X 0.50
6	1	128598	FLUID FILTER ELEMENT
7	4	129010-009	ELBOW-0.50 TUBE X 3/4-16 (O-RING)
8	1	141951-032	HOSE ASSEMBLY-0.50 X 33.00 LONG
9	1	141951-033	HOSE ASSEMBLY-0.50 X 40.00 LONG
10	2	129010-015	ELBOW-0.75 TUBE X 1-1/16-12 (O-RING) <b>(10/15 HP)</b>
	2	129010-019	ELBOW-1.00 TUBE X 1-5/16-12 (O-RING) <b>(20/25/30 HP)</b>
11	1	141951-034	HOSE ASSEMBLY-0.75 X 17.50 LONG <b>(10/15 HP)</b>
	1	141951-011	HOSE ASSEMBLY-1.00 X 18.00 LONG <b>(20/25/30 HP)</b>
12	1	129208-020	ADAPTER-1-1/16-12 X 1-5/8-12 (O-RING) <b>(10/15 HP)</b>
	2	129208-021	ADAPTER-1-5/16-12 X 1-5/8-12 (O-RING) <b>(20/25/30 HP)</b>
13	1	143280-001	FLUID DRAIN ASSEMBLY (NOT SHOWN)
INCLUDES: 2.0 FT		129164-500	CLEAR VINYL TUBING-0.50 I.D.
	1	128176-015	HOSE CLAMP
	1	128968-009	BARBED HOSE FITTING-0.50 HOSE X 0.25 NPT
14	1	23358	MALE CONNECTOR-1.00 TUBE X 1.00 NPT <b>(10/15 HP)</b>
	1	125938-030	PIPE NIPPLE-1.25 NPT X 4.50 <b>(20/25/30 HP)</b>
15	1	121918-077	FORMED STEEL TUBE-1.00 O.D. <b>(10/15 HP)</b>
	1	4715	PIPE ELBOW-1.25 NPT <b>(20/25/30 HP)</b>
16	1	110419-020	90° MALE ELBOW-1.00 TUBE X 1.00 NPT <b>(10/15 HP)</b>
	2	126034-029	PIPE NIPPLE-1.25 NPT X 4.50, TOE <b>(20/25/30 HP)</b>
17	1	120790	FLEXIBLE STRAIGHT COUPLING <b>(20/25/30 HP ONLY)</b>
18	1	5760	PIPE ELBOW-1.25 NPT <b>(20/25/30 HP ONLY)</b>

### COMPONENT MAINTENANCE PARTS

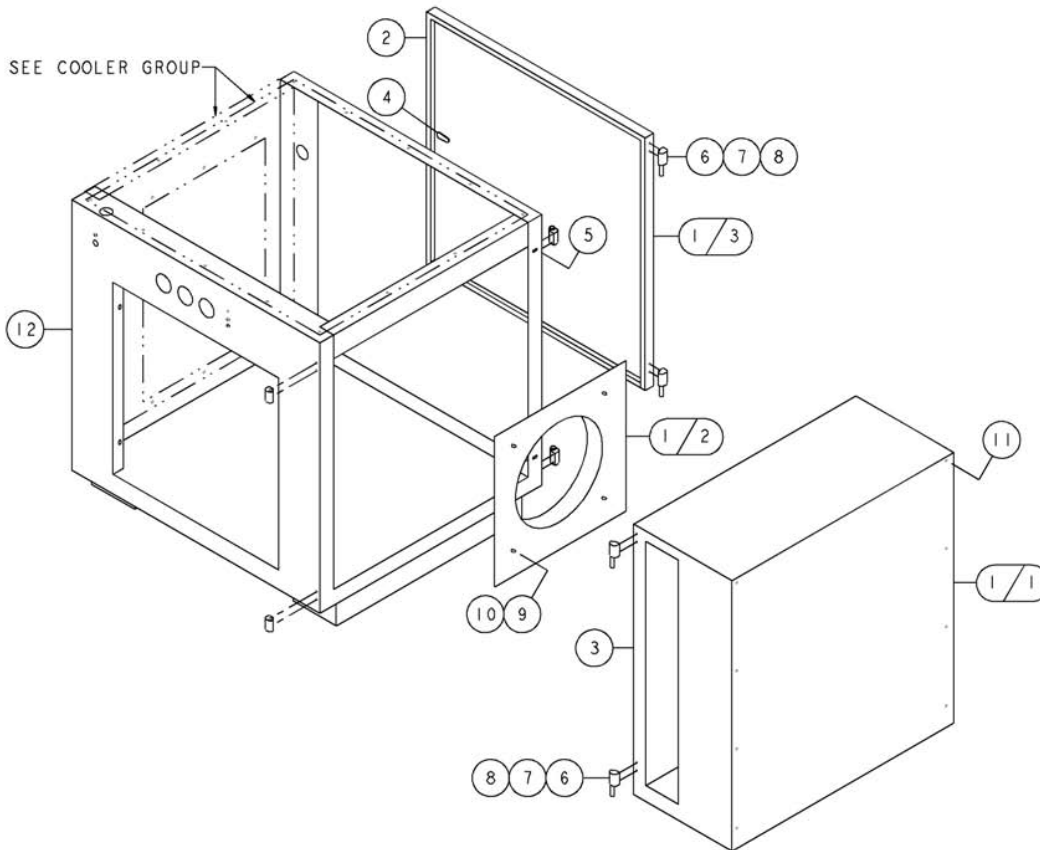
A	4	140406-908	VITON O-RING-0.64 I.D.
B	2	140406-912	VITON O-RING-0.92 I.D. <b>(10/15 HP)</b>
	2	140406-916	VITON O-RING-1.17 I.D. <b>(20/25/30 HP)</b>
C**	1	140406-920	VITON O-RING-1.48 I.D.
D	2	121825	COUPLING SEAL

\* QUANTITY OF 6 ON 20 THRU 30 HP UNITS.

\*\* QUANTITY OF 2 ON 20 THRU 30 HP UNITS.

@ INDICATES TORQUE VALUE IN FOOT POUNDS (LUBRICATED THREADS).

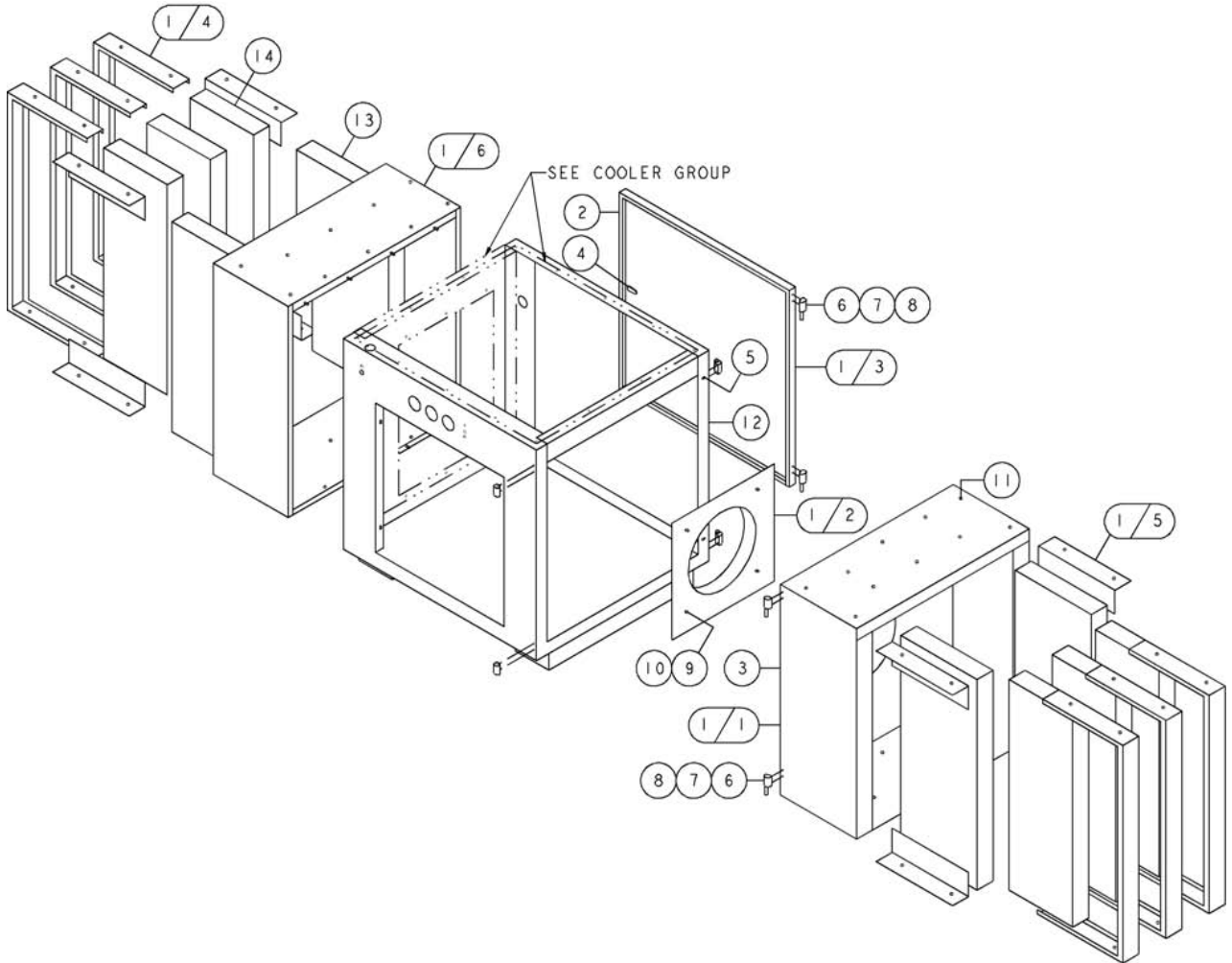
# Cabinet (standard) - 142205-001



ITEM No.	QTY.	PART NUMBER	DESCRIPTION
1	1	142394	CABINET KIT-CORE, QMB
1/1	1	141567-2	INLET DUCT
1/2	1	141609	VENTURI FAN
1/3	1	141563-07	BLANK PANEL
2	10.0 FT	141527	PANEL TRIM
3	12.0 FT	141528	RUBBER SEAL
4	1	128954-1	QUARTER TURN DOOR LATCH
5	2	112272-J02	SELF-LOCKING HEX NUT-ZINC, 1/4-20 UNC
6	4	141526-1	CABINET HINGE
7	8	123478-J07	CAP SCREW-1/4-20 UNC X 0.50, GRADE 5 (@ 6 FT-LBS)
8	8	141588-J07	PAN HEAD SCREW-1/4-20 UNC X 0.50
9	4	122151	HEX HEAD SCREW-1/4-20 UNC X 0.63, GRADE 5 (@ 6 FT-LBS)
10	4	123918-004	SPEED NUT-1/4-20 UNC
11	12	141575-J07	PAN HEAD SCREW-1/4-20 UNC X 0.50
12	1	142333-02	BASE PANEL

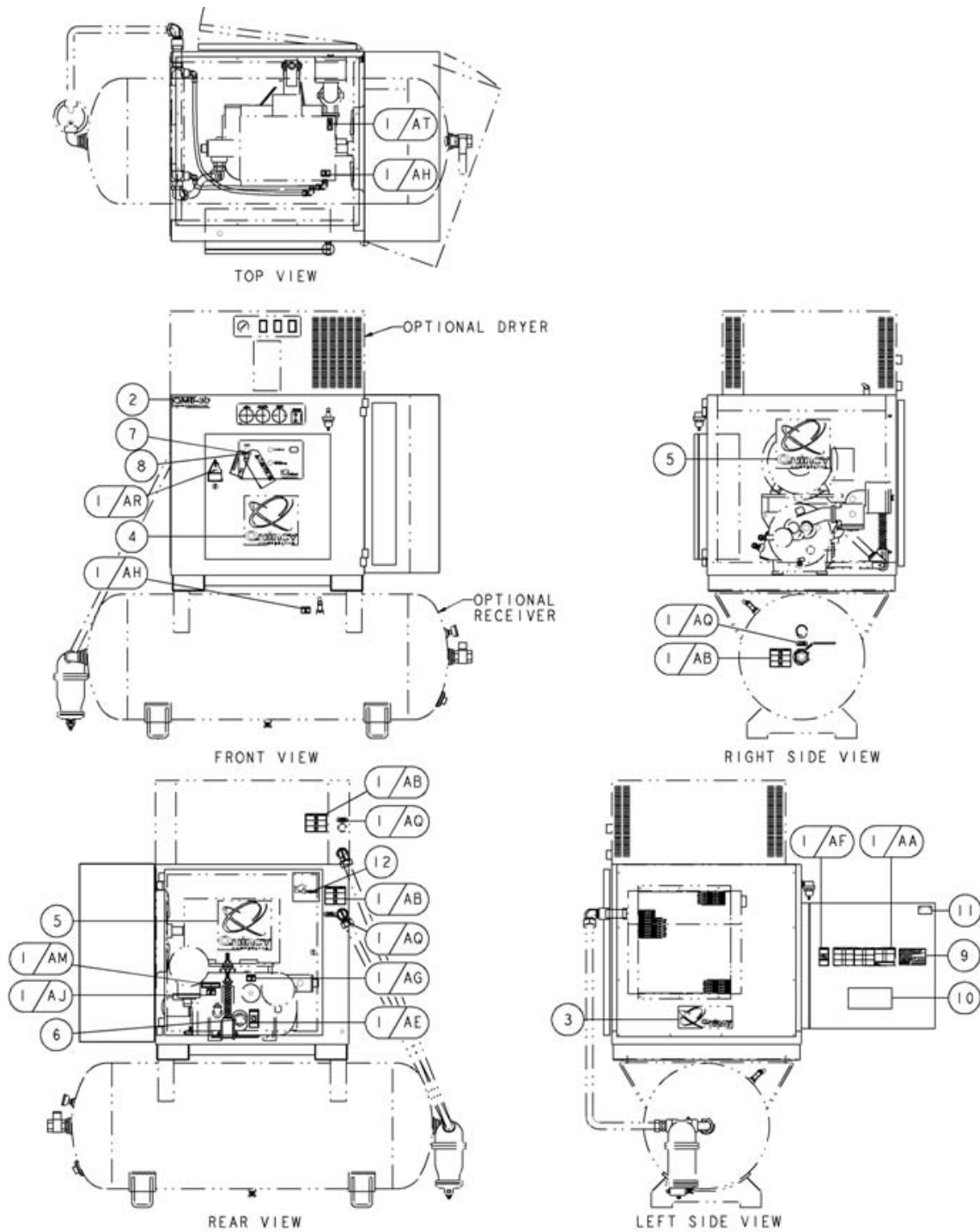
@ INDICATES TORQUE VALUE IN FOOT POUNDS (LUBRICATED THREADS).

# Cabinet (low sound) - 141509-002



ITEM No.	QTY.	PART NUMBER	DESCRIPTION
1	1	142393	CABINET KIT-LOW SOUND, QMB/T
1/1	1	141605-1	INLET DUCT
1/2	1	141609	VENTURI FAN
1/3	1	141563-07	BLANK PANEL
1/4	6	141605-2	INSULATION HOLDER PANEL
1/5	8	141605-3	INSULATION HOLDER PANEL
1/6	1	141606-1	DISCHARGE DUCT
2	10.0 FT	141527	PANEL TRIM
3	21.0 FT	141528	RUBBER SEAL
4	1	128954-1	QUARTER TURN DOOR LATCH
5	8	112272-J02	SELF-LOCKING HEX NUT-ZINC, 1/4-20 UNC
6	4	141526-1	CABINET HINGE
7	8	123478-J07	CAP SCREW-1/4-20 UNC X 0.50, GRADE 5 (@ 6 FT-LBS)
8	23	141588-J07	PAN HEAD SCREW-1/4-20 UNC X 0.50
9	4	122151	HEX HEAD SCREW-1/4-20 UNC X 0.63, GRADE 5 (@ 6 FT-LBS)
10	19	123918-004	SPEED NUT-1/4-20 UNC
11	40	141794-G07	PAN HEAD SCREW-#10-24 UNC X 0.50
12	1	142333-02	BASE PANEL
13	4	128703-003	ACOUSTICAL PANEL
14	6	128703-004	ACOUSTICAL PANEL

@ INDICATES TORQUE VALUE IN FOOT POUNDS (LUBRICATED THREADS).

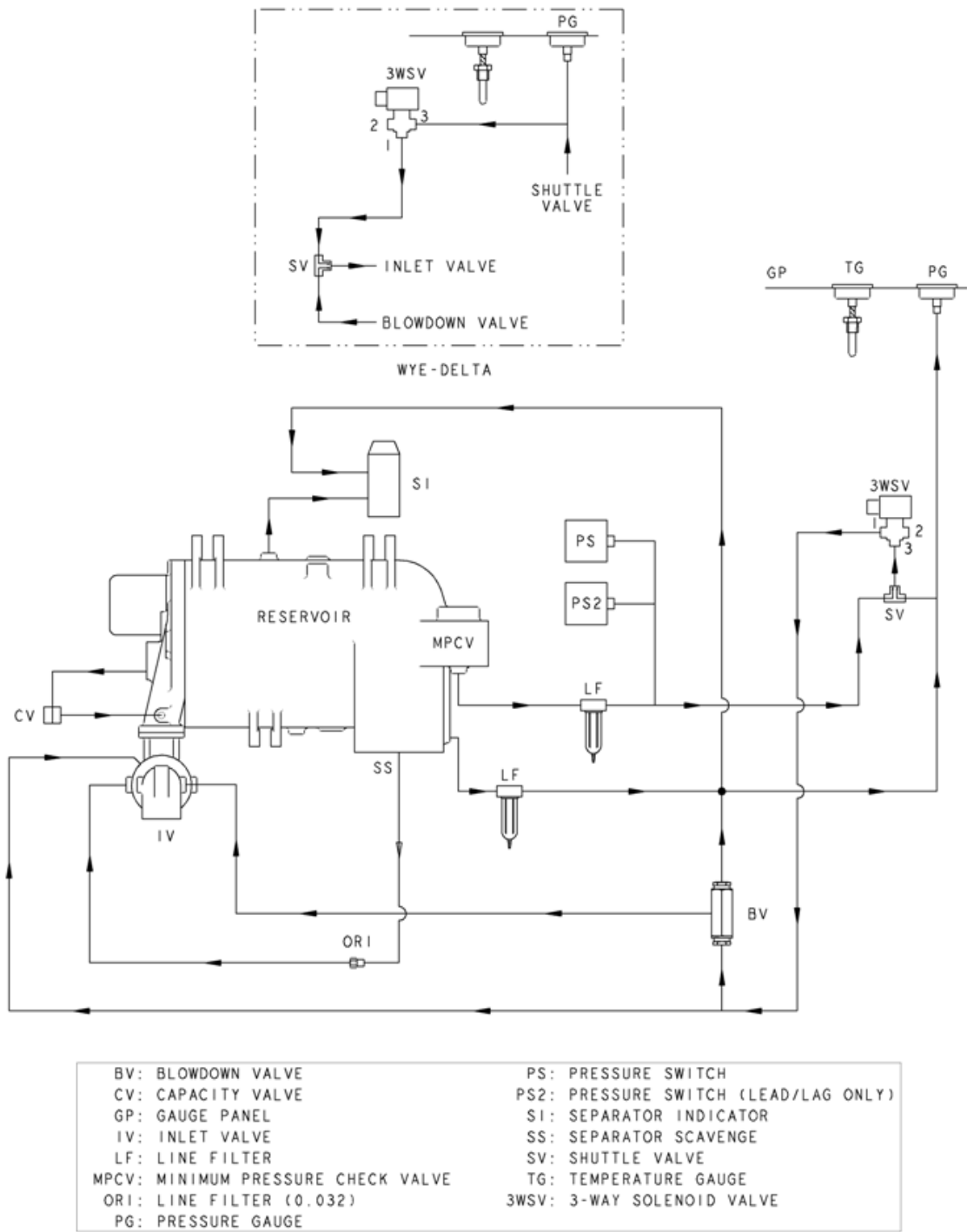


NOTES-UNLESS OTHERWISE SPECIFIED:  
 1) THESE ITEMS (1/AB & 1/AQ) LOCATED HERE ON STANDARD UNITS.  
 2) THESE ITEMS (1/AB & 1/AQ) LOCATED HERE ON UNITS WITH OPTIONAL RECEIVER.  
 3) THESE ITEMS (1/AB & 1/AQ) LOCATED HERE ON UNITS WITH OPTIONAL DRYER.

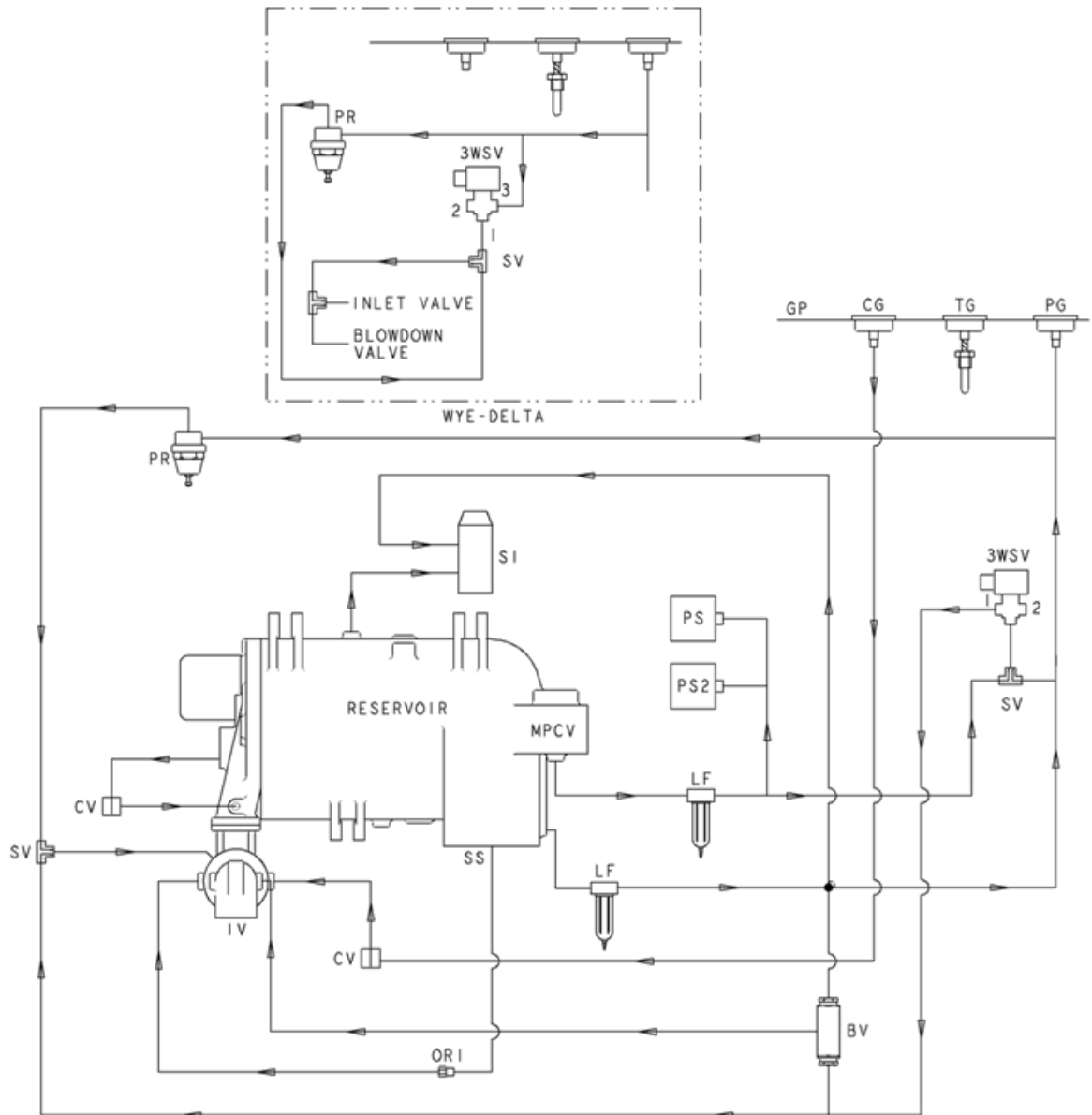
## Decals - 141802-10/-15/-20/-25/-30

ITEM NO.	QTY.	PART NUMBER	DESCRIPTION
1	1	146001	SAFETY DECAL SHEET
2	1	146008-10	DECAL-QMB-10
	1	146008-15	DECAL-QMB-15
	1	146008-20	DECAL-QMB-20
	1	146008-25	DECAL-QMB-25
	1	146008-30	DECAL-QMB-30
3	1	146002-2	DECAL-QUINCY LOGO (WHITE) (10 INCH)
4	1	146021-1	DECAL-Q/QUINCY, WHITE (10 INCH)
5	1	146021-1B	DECAL-Q/QUINCY, BLUE & BLACK (10 INCH)
6	1	142082-1	FLUID LEVEL DECAL
7	1	141250	CAUTION TAG-JOG MOTOR
8	1	22177	TAG-FLUID TYPE SHIPPED WITH UNIT
9	1	128198	GENUINE QUINCY COMPONENTS LABEL
10	1	110690-001	PLASTIC ENVELOPE
11	1	113058	CONTROL PANEL DECAL-UL LISTED
12	1	143861	DECAL-THIS MACHINE PROTECTED WITH QUINSYN PG™
	1	144048	DECAL-THIS MACHINE PROTECTED WITH QUINSYN PLUS
	1	140519-3	DECAL-THIS MACHINE PROTECTED WITH QUINSYN XP®
	1	128426	DECAL-THIS MACHINE PROTECTED WITH QUINSYN-F®

# Control Schematic (load/no load)

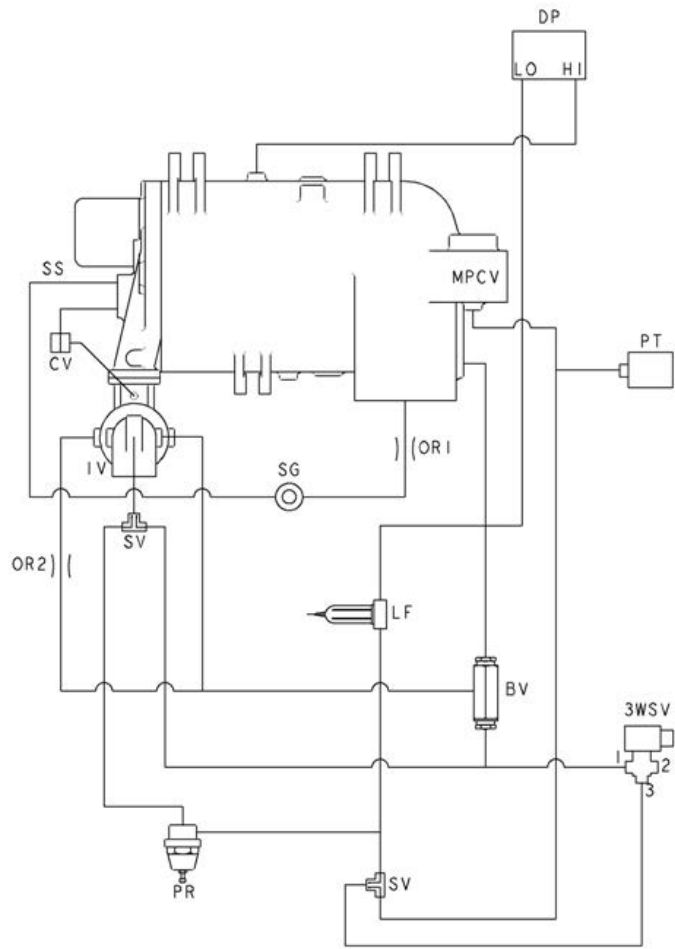


# Control Schematic (modulation)



BV: BLOWDOWN VALVE	PR: PRESSURE REGULATOR
CV: CAPACITY VALVE	PS: PRESSURE SWITCH
CG: CAPACITY GAUGE	PS2: PRESSURE SWITCH (LEAD/LAG ONLY)
GP: GAUGE PANEL	SI: SEPARATOR INDICATOR
IV: INLET VALVE	SS: SEPARATOR SCAVENGE
LF: LINE FILTER	SV: SHUTTLE VALVE
MPCV: MINIMUM PRESSURE CHECK VALVE	TG: TEMPERATURE GAUGE
ORI: LINE FILTER (0.032)	3WSV: 3-WAY SOLENOID VALVE
PG: PRESSURE GAUGE	

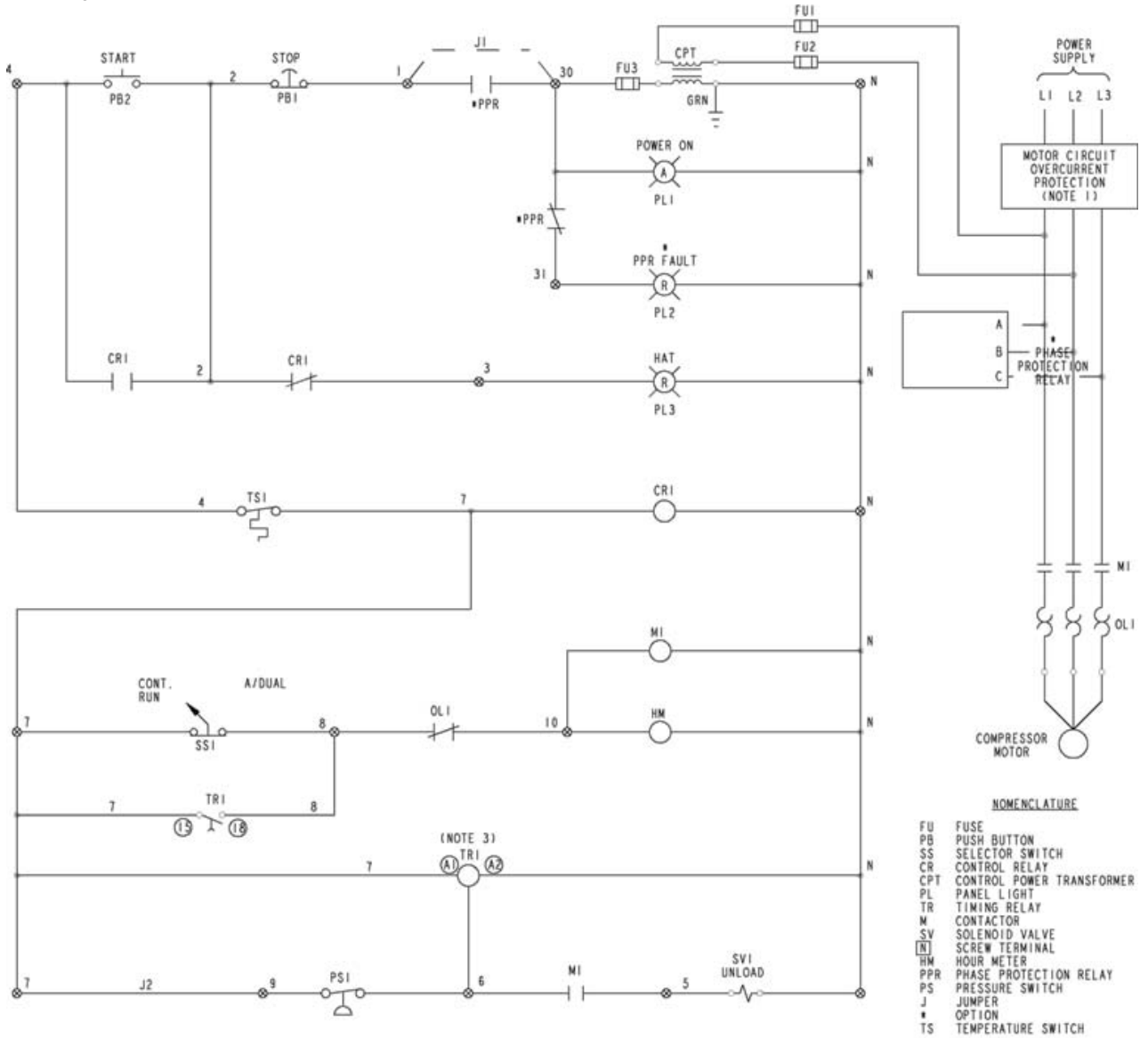
# Control Schematic (electronic control)



- |                                    |                                  |
|------------------------------------|----------------------------------|
| BV: BLOWDOWN VALVE                 | OR1: ORIFICE-LINE FILTER (0.032) |
| CV: CAPACITY VALVE                 | OR2: ORIFICE-LINE FILTER (0.096) |
| DP: DIFFERENTIAL PRESSURE SWITCH   | PR: PRESSURE REGULATOR           |
| GP: GAUGE PANEL                    | PT: PRESSURE TRANSDUCER          |
| IV: INLET VALVE                    | SS: SEPARATOR SCAVENGE           |
| LF: LINE FILTER                    | SV: SHUTTLE VALVE                |
| MPCV: MINIMUM PRESSURE CHECK VALVE | 3WSV: 3-WAY SOLENOID VALVE       |

# Electrical Control Diagram (full voltage, auto dual)

WP1990A



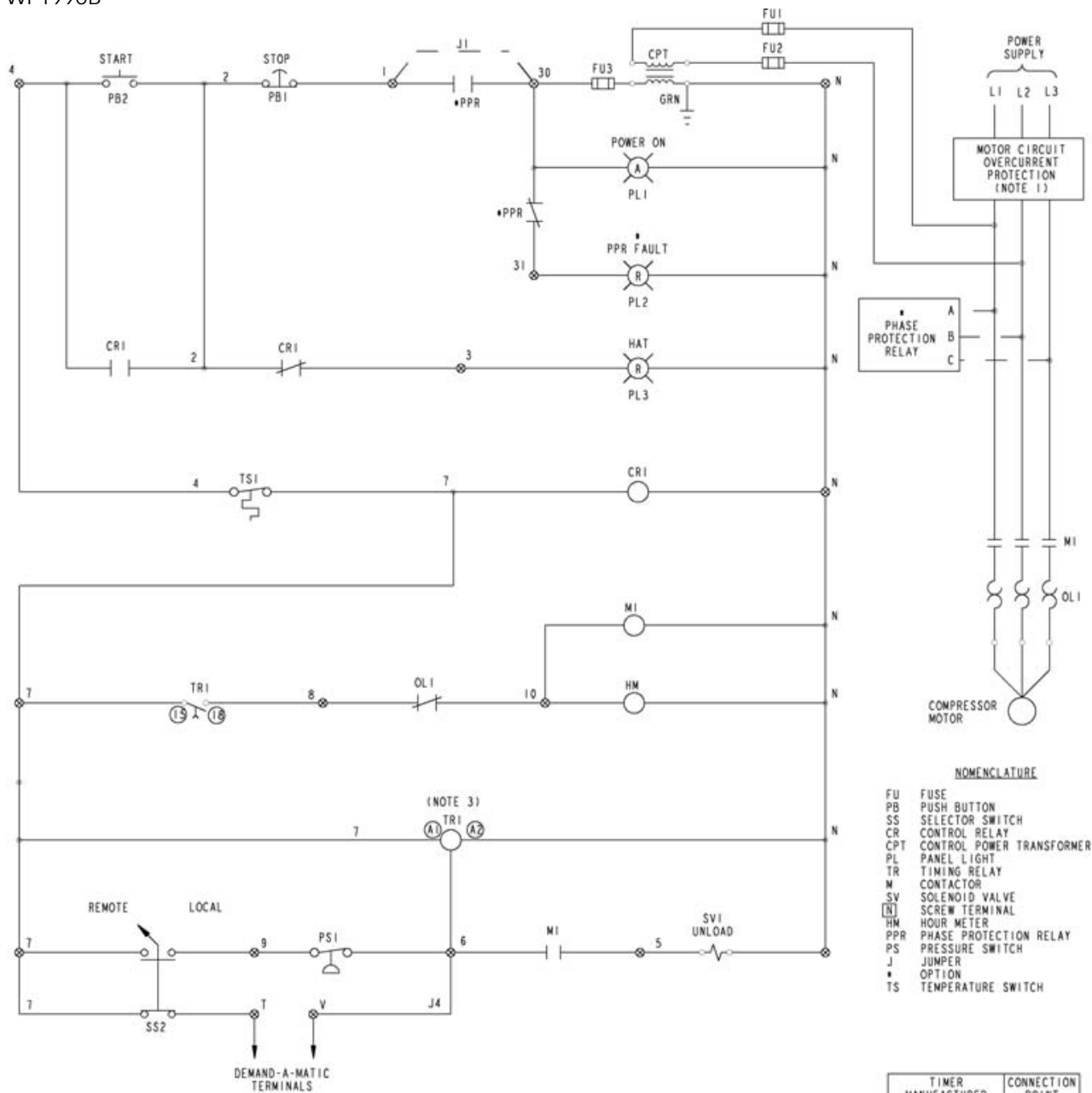
- NOMENCLATURE**
- FU FUSE
  - PB PUSH BUTTON
  - SS SELECTOR SWITCH
  - CR CONTROL RELAY
  - CPT CONTROL POWER TRANSFORMER
  - PL PANEL LIGHT
  - TR TIMING RELAY
  - M CONTACTOR
  - SV SOLENOID VALVE
  - [X] SCREW TERMINAL
  - HM HOUR METER
  - PPR PHASE PROTECTION RELAY
  - PS PRESSURE SWITCH
  - J JUMPER
  - \* OPTION
  - TS TEMPERATURE SWITCH

- NOTES-UNLESS OTHERWISE SPECIFIED:**
- 1) AT INSTALLATION THE CUSTOMER IS TO PROVIDE DISCONNECT AND BRANCH CIRCUIT OVERCURRENT PROTECTION IN ACCORDANCE WITH THE NATIONAL ELECTRICAL CODE AND/OR ANY LOCAL CODES HAVING PRECEDENCE.
  - 2) ALL WIRES ARE RED EXCEPT \*N\* WIRES ARE WHITE AND \*G\* WIRE IS GREEN.
  - 3) TR1 TO BE SET TO OFF-DELAY AND HAVE A TIME SETTING OF 10-15 MINUTES.

TIMER MANUFACTURER	CONNECTION POINT
ABB	Y1
OMRON	B1
CARLO GRAVAZZI	Y1

# Electrical Control Diagram (full voltage, auto demand)

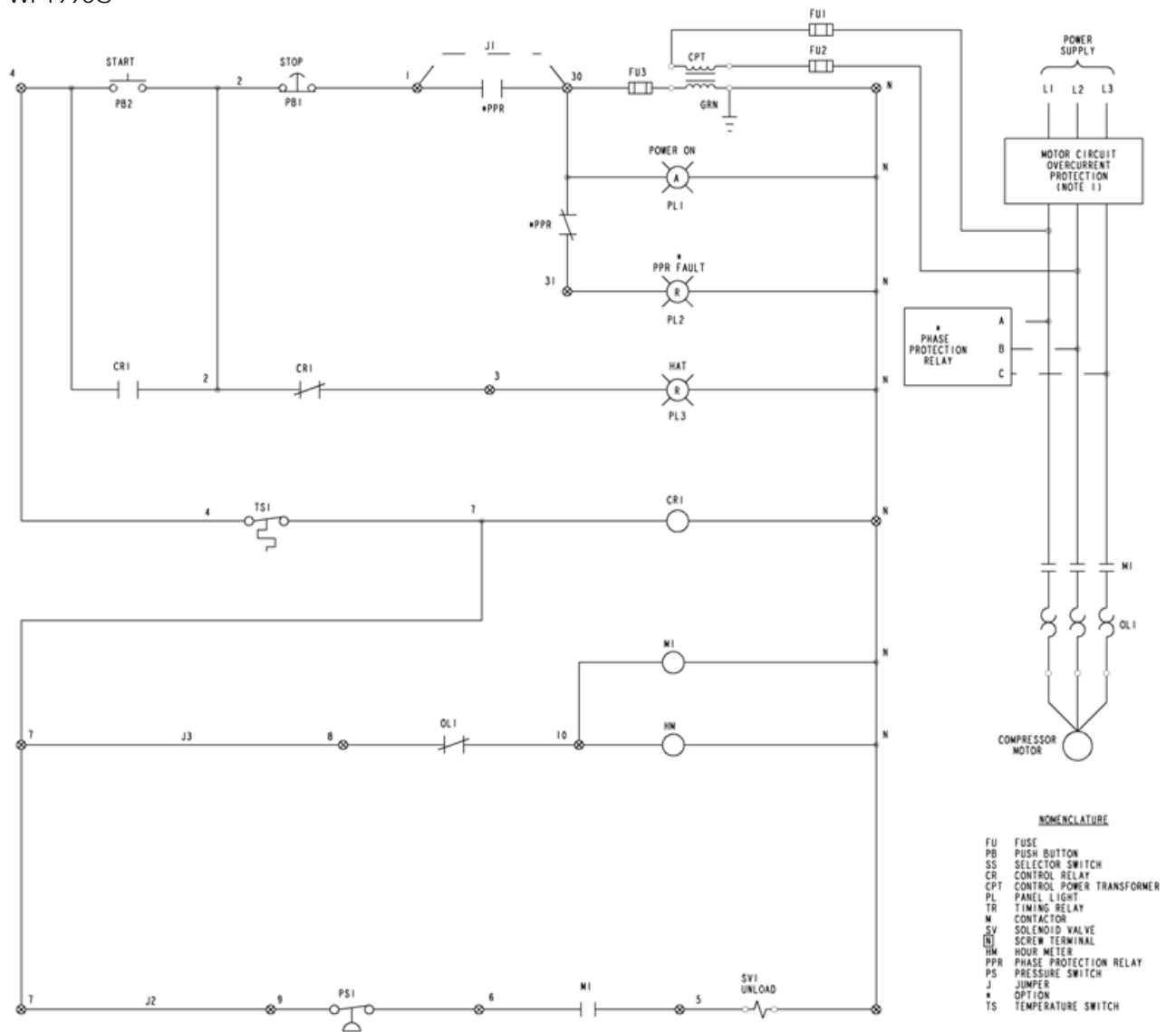
WP1990B



- NOTES-UNLESS OTHERWISE SPECIFIED:
- 1) AT INSTALLATION THE CUSTOMER IS TO PROVIDE DISCONNECT AND BRANCH CIRCUIT OVERCURRENT PROTECTION IN ACCORDANCE WITH THE NATIONAL ELECTRICAL CODE AND/OR ANY LOCAL CODES HAVING PRECEDENCE.
  - 2) ALL WIRES ARE RED EXCEPT "N" WIRES ARE WHITE AND "G" WIRE IS GREEN.
  - 3) TR1 TO BE SET TO OFF-DELAY AND HAVE A TIME SETTING OF 10-15 MINUTES.

# Electrical Control Diagram (full voltage, continuous run)

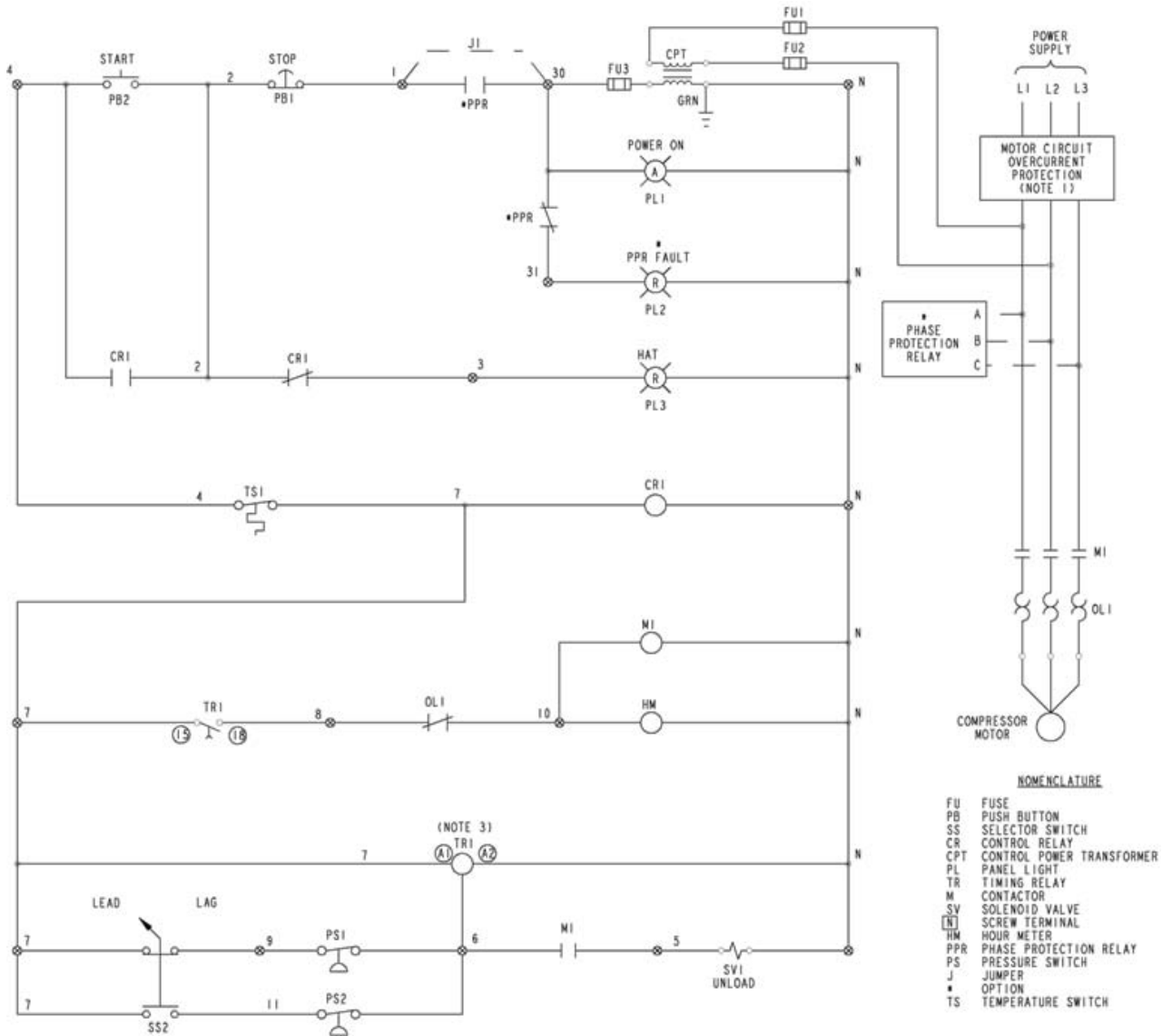
WP1990C



NOTES-UNLESS OTHERWISE SPECIFIED:  
 1) AT INSTALLATION THE CUSTOMER IS TO PROVIDE DISCONNECT AND BRANCH CIRCUIT OVERCURRENT PROTECTION IN ACCORDANCE WITH THE NATIONAL ELECTRICAL CODE AND/OR ANY LOCAL CODES HAVING PRECEDENCE.  
 2) ALL WIRES ARE RED EXCEPT "N" WIRES ARE WHITE AND "G" WIRE IS GREEN.

# Electrical Control Diagram (full voltage, lead/lag)

WP1990D



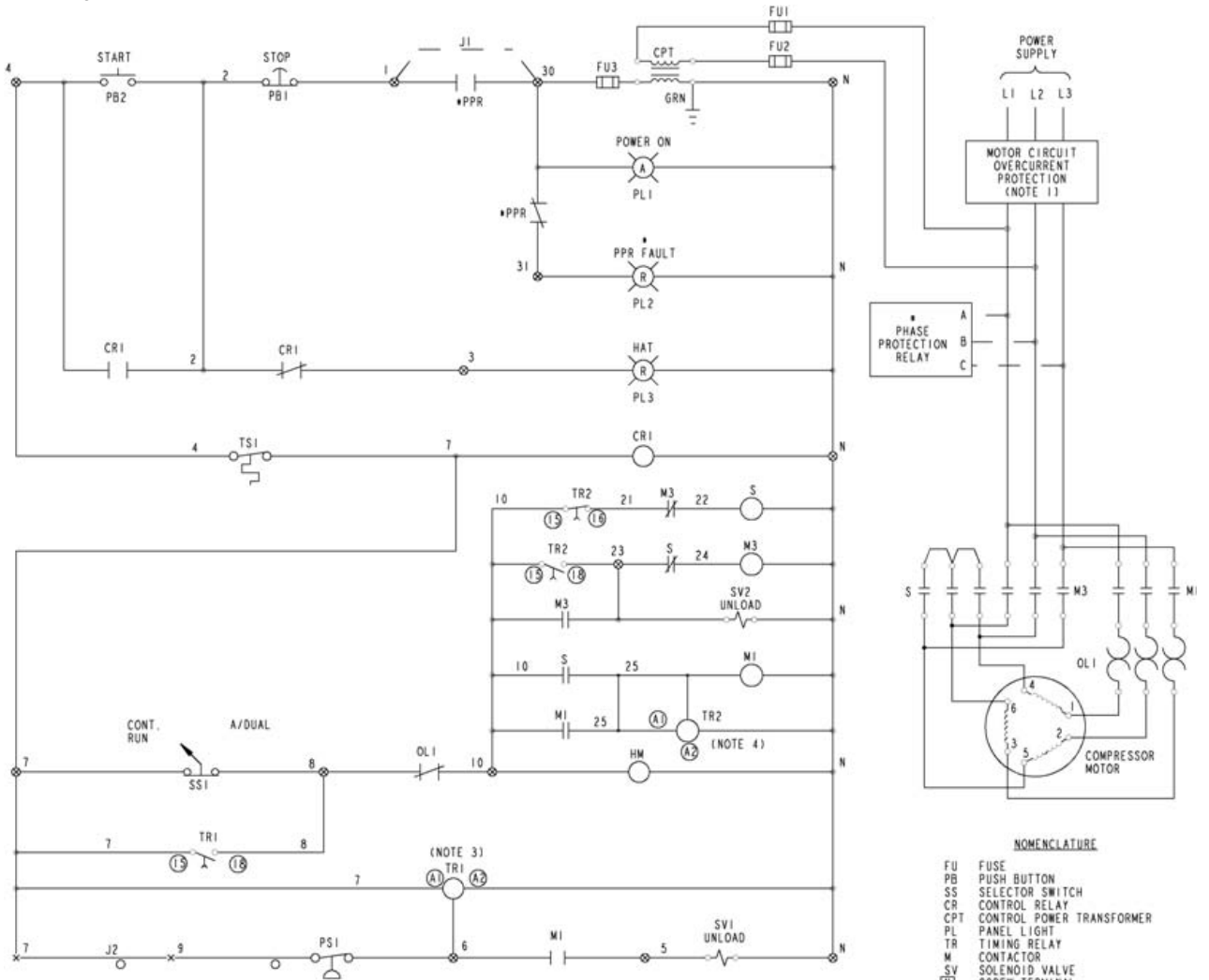
- NOMENCLATURE**
- FU FUSE
  - PB PUSH BUTTON
  - SS SELECTOR SWITCH
  - CR CONTROL RELAY
  - CPT CONTROL POWER TRANSFORMER
  - PL PANEL LIGHT
  - TR TIMING RELAY
  - M CONTACTOR
  - SV SOLENOID VALVE
  - [N] SCREW TERMINAL
  - HM HOUR METER
  - PPR PHASE PROTECTION RELAY
  - PS PRESSURE SWITCH
  - J JUMPER
  - OPTION
  - TS TEMPERATURE SWITCH

TIMER MANUFACTURER	CONNECTION POINT
ABB	Y1
OMRON	B1
CARLO GRAVAZZI	Y1

- NOTES-UNLESS OTHERWISE SPECIFIED:**
- 1) AT INSTALLATION THE CUSTOMER IS TO PROVIDE DISCONNECT AND BRANCH CIRCUIT OVERCURRENT PROTECTION IN ACCORDANCE WITH THE NATIONAL ELECTRICAL CODE AND/OR ANY LOCAL CODES HAVING PRECEDENCE.
  - 2) ALL WIRES ARE RED EXCEPT "N" WIRES ARE WHITE AND "G" WIRE IS GREEN.
  - 3) TR1 TO BE SET TO OFF-DELAY AND HAVE A TIME SETTING OF 10-15 MINUTES.
  - 4) PS1 IS SET FOR THE MAXIMUM UNLOAD PRESSURE OF THE UNIT. PS2 IS SET FOR 5 PSIG LESS THAN PS1.

# Electrical Control Diagram (wye-delta, auto dual)

WP1990A1



NOTES-UNLESS OTHERWISE SPECIFIED:  
 1) AT INSTALLATION THE CUSTOMER IS TO PROVIDE DISCONNECT AND BRANCH CIRCUIT OVERCURRENT PROTECTION IN ACCORDANCE WITH THE NATIONAL ELECTRICAL CODE AND/OR ANY LOCAL CODES HAVING PRECEDENCE.  
 2) ALL WIRES ARE RED EXCEPT "N" WIRES ARE WHITE AND "G" WIRE IS GREEN.  
 3) TR1 TO BE SET TO OFF-DELAY AND HAVE A TIME SETTING OF 10-15 MINUTES.  
 4) TR2 TO BE SET TO ON-DELAY AND HAVE A TIME SETTING OF 6 SECONDS.

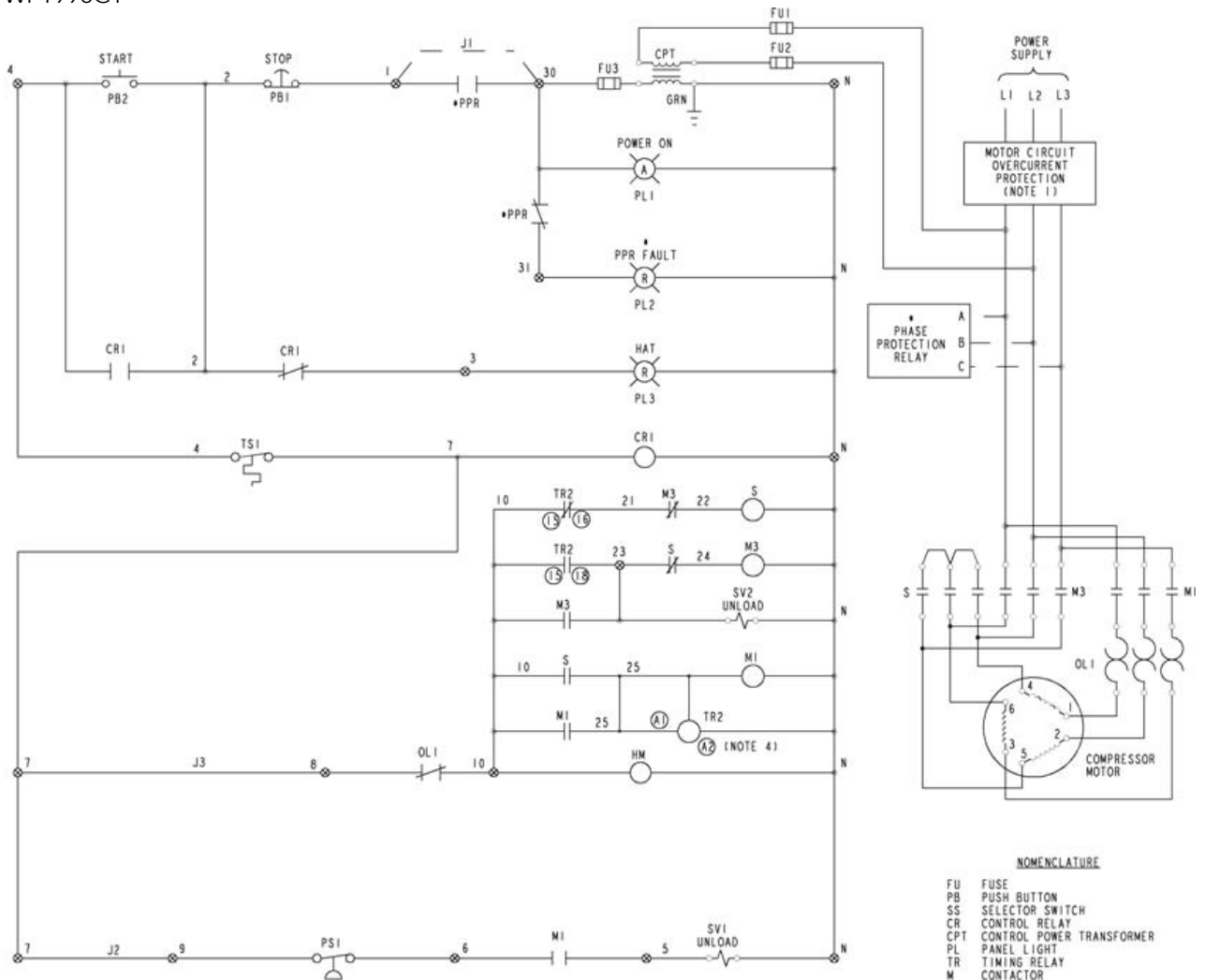
TIMER MANUFACTURER	CONNECTION POINT
ABB	Y1
OMRON	B1
CARLO GRAVAZZI	Y1

- NOMENCLATURE**
- FU FUSE
  - PB PUSH BUTTON
  - SS SELECTOR SWITCH
  - CR CONTROL RELAY
  - CPT CONTROL POWER TRANSFORMER
  - PL PANEL LIGHT
  - TR TIMING RELAY
  - M CONTACTOR
  - SV SOLENOID VALVE
  - [ ] SCREW TERMINAL
  - HM HOUR METER
  - PPR PHASE PROTECTION RELAY
  - PS PRESSURE SWITCH
  - J JUMPER
  - OPTION
  - TS TEMPERATURE SWITCH



# Electrical Control Diagram (wye-delta, continuous run)

WP1990C1



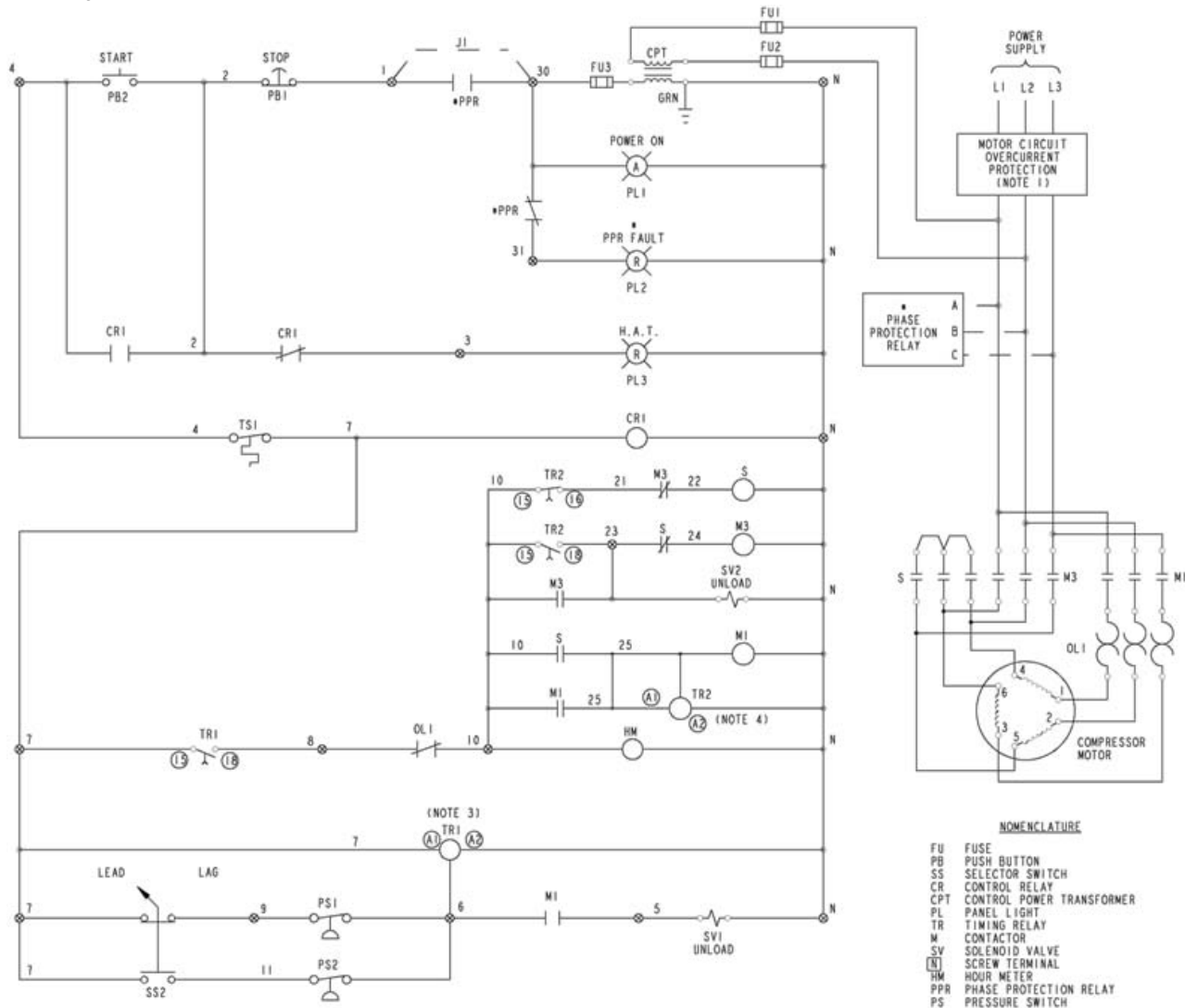
- NOTES-UNLESS OTHERWISE SPECIFIED:
- 1) AT INSTALLATION THE CUSTOMER IS TO PROVIDE DISCONNECT AND BRANCH CIRCUIT OVERCURRENT PROTECTION IN ACCORDANCE WITH THE NATIONAL ELECTRICAL CODE AND/OR ANY LOCAL CODES HAVING PRECEDENCE.
  - 2) ALL WIRES ARE RED EXCEPT "N" WIRES ARE WHITE AND "G" WIRE IS GREEN.
  - 3) TR2 TO BE SET TO ON-DELAY AND HAVE A TIME SETTING OF 6 SECONDS.

TIMER MANUFACTURER	CONNECTION POINT
ABB	Y1
OMRON	B1
CARLO GRAVAZZI	Y1

- NOMENCLATURE**
- FU FUSE
  - PB PUSH BUTTON
  - SS SELECTOR SWITCH
  - CR CONTROL RELAY
  - CPT CONTROL POWER TRANSFORMER
  - PL PANEL LIGHT
  - TR TIMING RELAY
  - M CONTACTOR
  - SV SOLENOID VALVE
  - [N] SCREW TERMINAL
  - TM HOUR METER
  - PPR PHASE PROTECTION RELAY
  - PS PRESSURE SWITCH
  - OPTION
  - TS TEMPERATURE SWITCH

# Electrical Control Diagram (wye-delta, lead/lag)

WP1990D1



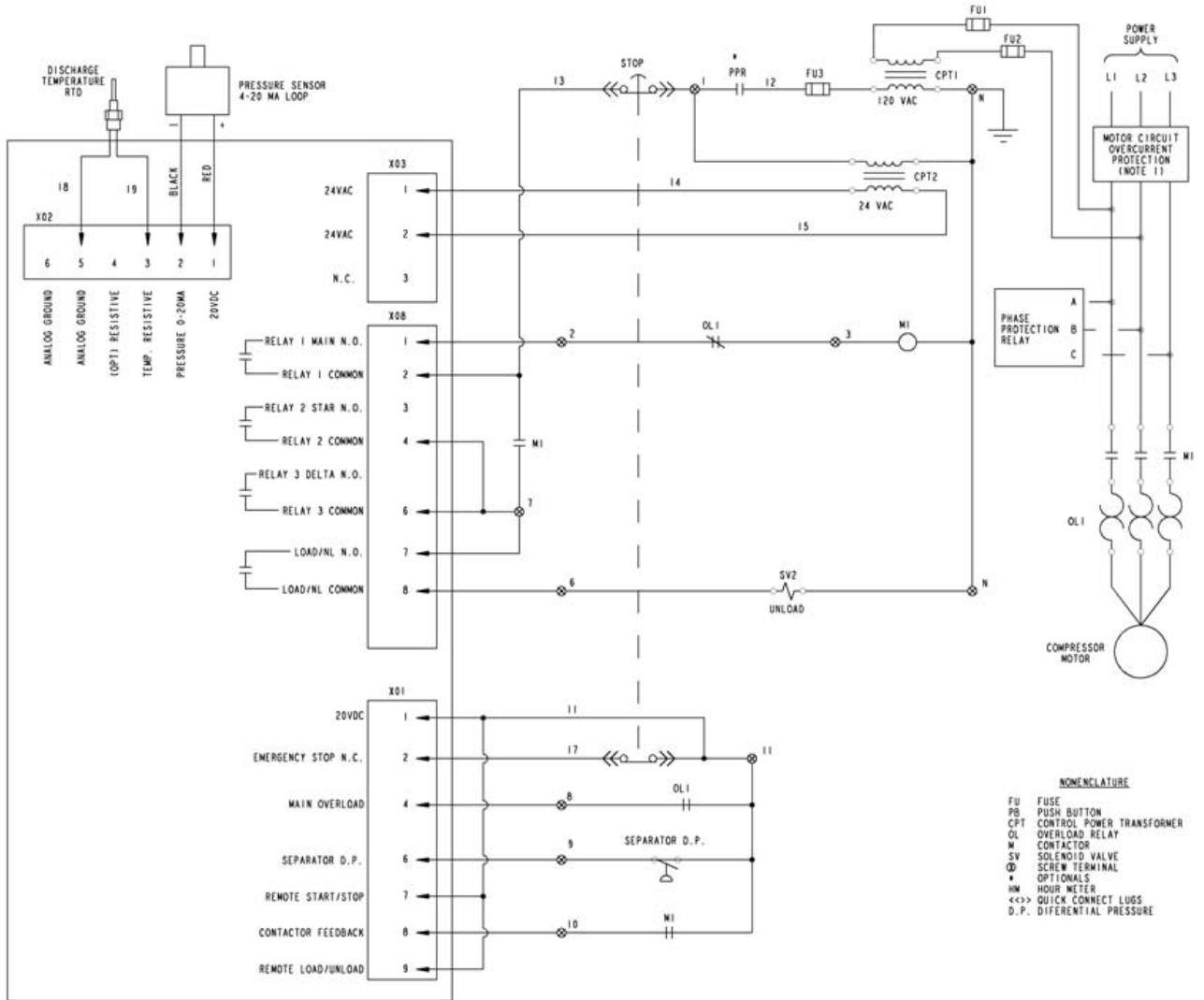
- NOTES-UNLESS OTHERWISE SPECIFIED:
- 1) AT INSTALLATION THE CUSTOMER IS TO PROVIDE DISCONNECT AND BRANCH CIRCUIT OVERCURRENT PROTECTION IN ACCORDANCE WITH THE NATIONAL ELECTRICAL CODE AND/OR ANY LOCAL CODES HAVING PRECEDENCE.
  - 2) ALL WIRES ARE RED EXCEPT "N" WIRES ARE WHITE AND "G" WIRE IS GREEN.
  - 3) TR1 TO BE SET TO OFF-DELAY AND HAVE A TIME SETTING OF 10-15 MINUTES.
  - 4) TR2 TO BE SET TO ON-DELAY AND HAVE A TIME SETTING OF 6 SECONDS.
  - 5) PS1 IS SET FOR THE MAXIMUM UNLOAD PRESSURE OF THE UNIT. PS2 IS SET FOR 5 PSIG LESS THAN PS1.

- NOMENCLATURE**
- FU FUSE
  - PB PUSH BUTTON
  - SS SELECTOR SWITCH
  - CR CONTROL RELAY
  - CPT CONTROL POWER TRANSFORMER
  - PL PANEL LIGHT
  - TR TIMING RELAY
  - M CONTACTOR
  - N NEUTRAL
  - SV SOLENOID VALVE
  - S SCREW TERMINAL
  - HM HOUR METER
  - PPR PHASE PROTECTION RELAY
  - PS PRESSURE SWITCH
  - J JUMPER
  - OPTION
  - TS TEMPERATURE SWITCH

TIMER MANUFACTURER	CONNECTION POINT
ABB	Y1
OMRON	B1
CARLO GRAVAZZI	Y1

# Electrical Control Diagram (electronic control, full voltage)

WP1914B

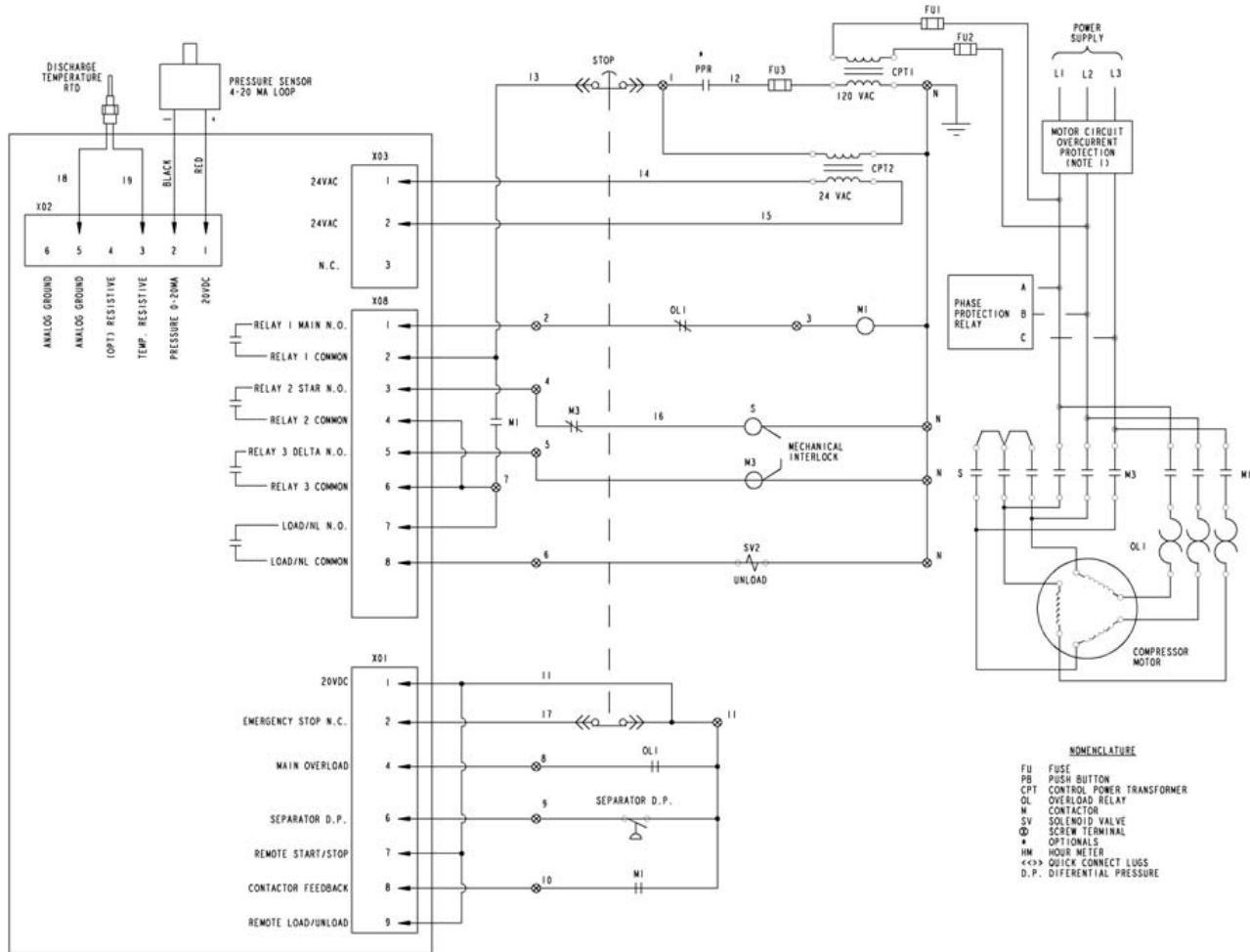


- NOTES-UNLESS OTHERWISE SPECIFIED:  
 1) AT INSTALLATION THE CUSTOMER IS TO PROVIDE DISCONNECT AND BRANCH CIRCUIT OVERCURRENT PROTECTION IN ACCORDANCE WITH THE NATIONAL ELECTRICAL CODE AND/OR ANY LOCAL CODES HAVING PRECEDENCE.  
 2) ALL WIRES ARE RED EXCEPT "N" WIRES ARE WHITE AND "G" WIRE IS GREEN.  
 3) ALL PUSH BUTTONS, SELECTOR SWITCHES, HOURMETER, AND INDICATOR LIGHTS ARE LOCATED IN THE CONTROL PANEL.  
 4) REMOVE ANY JUMPERS ON OVERLOADS THAT ARE FACTORY INSTALLED.

- NONENCLATURE**  
 FU FUSE  
 PB PUSH BUTTON  
 CPT CONTROL POWER TRANSFORMER  
 OL OVERLOAD RELAY  
 M CONTACTOR  
 SV SOLENOID VALVE  
 Ⓞ SCREW TERMINAL  
 \* OPTIONALS  
 HN HOUR METER  
 <<> QUICK CONNECT LUGS  
 D.P. DIFFERENTIAL PRESSURE

# Electrical Control Diagram (electronic control, wye-delta)

WP1914A



NOTES-UNLESS OTHERWISE SPECIFIED:  
 1) AT INSTALLATION THE CUSTOMER IS TO PROVIDE DISCONNECT AND BRANCH CIRCUIT OVERCURRENT PROTECTION IN ACCORDANCE WITH THE NATIONAL ELECTRICAL CODE AND/OR ANY LOCAL CODES HAVING PRECEDENCE.  
 2) ALL WIRES ARE RED EXCEPT "N" WIRES ARE WHITE AND "S" WIRE IS GREEN.  
 3) ALL PUSH BUTTONS, SELECTOR SWITCHES, HOURMETER, AND INDICATOR LIGHTS ARE LOCATED IN THE CONTROL PANEL.  
 4) REMOVE ANY JUMPERS ON OVERLOADS THAT ARE FACTORY INSTALLED.

**NOMENCLATURE**  
 FU FUSE  
 PB PUSH BUTTON  
 CPT CONTROL POWER TRANSFORMER  
 OL OVERLOAD RELAY  
 M CONTACTOR  
 SV SOLENOID VALVE  
 QD SCREW TERMINAL  
 \* OPTIONAL  
 HM HOUR METER  
 <>> QUICK CONNECT LUGS  
 D.P. DIFFERENTIAL PRESSURE

# Standard Terms and Conditions

---

## Quincy Compressor and Ortman Fluid Power Divisions

**LEGAL EFFECT:** Except as expressly otherwise agreed to in writing by an authorized representative of Seller, the following terms and conditions shall apply to and form a part of this order and any additional and/or different terms of Buyer's purchase order or other form of acceptance are rejected in advance and shall not become a part of this order.

The rights of Buyer hereunder shall be neither assignable nor transferable except with the written consent of Seller.

This order may not be canceled or altered except with the written consent of Seller and upon terms which will indemnify Seller against all loss occasioned thereby. All additional costs incurred by Seller due to changes in design or specifications, modification of this order or revision of product must be paid for by Buyer.

In addition to the rights and remedies conferred upon Seller by this order, Seller shall have all rights and remedies conferred at law and in equity and shall not be required to proceed with the performance of this order if Buyer is in default in the performance of such order or of any other contract or order with seller.

**TERMS OF PAYMENT:** Unless otherwise specified in the order acknowledgment, the terms of payment shall be net cash within thirty (30) days after shipment. These terms shall apply to partial as well as complete shipments. If any proceeding be initiated by or against Buyer under any bankruptcy or insolvency law, or in the judgment of Seller the financial condition of Buyer, at the time the equipment is ready for shipment, does not justify the terms of payment specified, Seller reserves the right to require full payment in cash prior to making shipment. If such payment is not received within fifteen (15) days after notification of readiness for shipment, Seller may cancel the order as to any unshipped item and require payment of its reasonable cancellation charges.

If Buyer delays shipment, payments based on date of shipment shall become due as of the date when ready for shipment. If Buyer delays completion of manufacture, Seller may elect to require payment according to percentage of completion. Equipment held for Buyer shall be at Buyer's risk and storage charges may be applied at the discretion of Seller.

Accounts past due shall bear interest at the highest rate lawful to contract for but if there is no limit set by law, such interest shall be eighteen percent (18%). Buyer shall pay all cost and expenses, including reasonable attorney's fees, incurred in collecting the same, and no claim, except claims within Seller's warranty of material or workmanship, as stated below, will be recognized unless delivered in writing to Seller within thirty (30) days after date of shipment.

**TAXES:** All prices exclude present and future sales, use, occupation, license, excise, and other taxes in respect of manufacture, sales or delivery, all of which shall be paid by Buyer unless included in the purchase price at the proper rate or a proper exemption certificate is furnished.

**ACCEPTANCE:** All offers to purchase, quotations and contracts of sales are subject to final acceptance by an authorized representative at Seller's plant.

**DELIVERY:** Except as otherwise specified in this quotation, delivery will be F. O. B. point of shipment. In the absence of exact shipping instruction, Seller will use its discretion regarding best means of insured shipment. No liability will be accepted by Seller for so doing. All transportation charges are at Buyer's expense. Time of delivery is an estimate only and is based upon the receipt of all information and necessary approvals. The shipping schedule shall not be construed to limit seller in making commitments for materials or in fabricating articles under this order in accordance with Seller's normal and reasonable production schedules.

Seller shall in no event be liable for delays caused by fires, acts of God, strikes, labor difficulties, acts of governmental or military authorities, delays in transportation or procuring materials, or causes of any kind beyond Seller's control. No provision for liquidated damages for any cause shall apply under this order. Buyer shall accept delivery within thirty (30) days after receipt of notification of readiness for shipment. Claims for shortages will be deemed to have been waived if not made in writing within ten (10) days after the receipt of the material in respect of which any such shortage is claimed. Seller is not responsible for loss or damage in transit after having received "In Good Order" receipt from the carrier. All claims for loss or damage in transit should be made to the carrier.

# Standard Terms and Conditions

---

## Quincy Compressor and Ortman Fluid Power Divisions

**TITLE & LIEN RIGHTS:** The equipment shall remain personal property, regardless of how affixed to any realty or structure. Until the price (including any notes given therefore) of the equipment has been fully paid in cash, Seller shall, in the event of Buyer's default, have the right to repossess such equipment.

**PATENT INFRINGEMENT:** If properly notified and given an opportunity to do so with friendly assistance, Seller will defend Buyer and the ultimate user of the equipment from any actual or alleged infringement of any published United States patent by the equipment or any part thereof furnished pursuant hereto (other than parts of special design, construction, or manufacture specified by and originating with Buyer), and will pay all damages and costs awarded by competent court in any suit thus defended or of which it may have had notice and opportunity to defend as aforesaid.

**STANDARD WARRANTY:** Seller warrants that products of its own manufacture will be free from defects in workmanship and materials under normal use and service for the period specified in the product instruction manual. Warranty for service parts will be ninety (90) days from date of factory shipment. Electric Motors, gasoline and diesel engines, electrical apparatus and all other accessories, components and parts not manufactured by Seller are warranted only to the extent of the original manufacturer's warranty.

Notice of the alleged defect must be given to the Seller, in writing with all identifying details including serial number, type of equipment and date of purchase within thirty (30) days of the discovery of the same during the warranty period.

Seller's sole obligation on this warranty shall be, at its option, to repair or replace or refund the purchase price of any product or part thereof which proves to be defective. If requested by Seller, such product or part thereof must be promptly returned to seller, freight prepaid, for inspection.

Seller warrants repaired or replaced parts of its own manufacture against defects in materials and workmanship under normal use and service for ninety (90) days or for the remainder of the warranty on the product being repaired.

This warranty shall not apply and Seller shall not be responsible or liable for:

- (a) Consequential, collateral or special losses or damages;
- (b) Equipment conditions caused by fair wear and tear, abnormal conditions of use, accident, neglect or misuse of equipment, improper storage or damage resulting during shipping;
- (c) Deviation from operating instructions, specifications or other special terms of sale;
- (d) Labor charges, loss or damage resulting from improper operation, maintenance or repairs made by person(s) other than Seller or Seller's authorized service station.

In no event shall Seller be liable for any claims whether arising from breach of contract or warranty or claims of negligence or negligent manufacture in excess of the purchase price.

**THIS WARRANTY IS THE SOLE WARRANTY OF SELLERS AND ANY OTHER WARRANTIES, WHETHER EXPRESS OR IMPLIED IN LAW OR IMPLIED IN FACT, INCLUDING ANY WARRANTIES OF MERCHANTABILITY AND FITNESS FOR PARTICULAR USE ARE HEREBY SPECIFICALLY EXCLUDED.**

**LIABILITY LIMITATIONS:** Under no circumstances shall the Seller have any liability for liquidated damages or for collateral, consequential or special damages or for loss of profits, or for actual losses or for loss of production or progress of construction, whether resulting from delays in delivery or performance, breach of warranty, negligent manufacture or otherwise.

**ENVIRONMENTAL AND OSHA REQUIREMENTS:** At the time of shipment of the equipment from the factory, Quincy Compressor / Ortman Fluid Power will comply with the various Federal, State and local laws and regulations concerning occupational health and safety and pollution. However, in the installation and operation of the equipment and other matters over which the seller has no control, the Seller assumes no responsibility for compliance with those laws and regulations, whether by the way of indemnity, warranty or otherwise.









Quincy Compressor Products: 217.222.7700  
E-mail: [info@quincycompressor.com](mailto:info@quincycompressor.com)  
Website: [quincycompressor.com](http://quincycompressor.com)



© 2008 Quincy Compressor  
All Rights Reserved. Litho in U.S.A.