

INSTRUCTION MANUAL

HPET Series

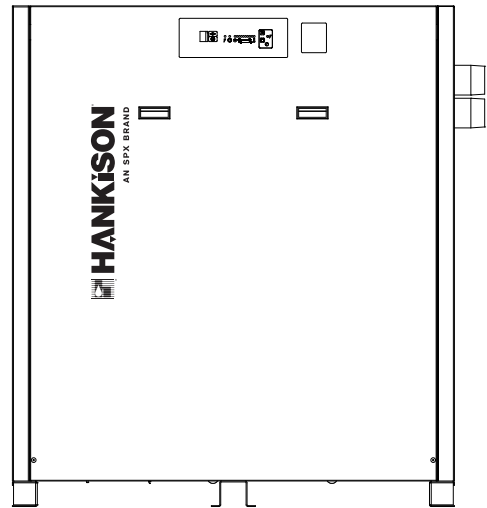
Models: HPET-4, HPET-6, HPET-7.5,
HPET-10

CONTENTS

GENERAL SAFETY INFORMATION.....	2
RECEIVING, MOVING, AND UNPACKING.....	2
1.0 INSTALLATION	3
2.0 OPERATION	5
3.0 MAINTENANCE.....	6
SIZING.....	7
ENGINEERING DATA	8
P&I DIAGRAM.....	9
WIRING DIAGRAMS.....	10-12
DIMENSIONS / WEIGHTS	13
TROUBLESHOOTING GUIDE.....	14
PARTS LIST	15
WARRANTY	16



AN SPX BRAND



HIGH PRESSURE

REFRIGERATED

TYPE

COMPRESSED

AIR DRYERS

GENERAL SAFETY INFORMATION

1. PRESSURIZED DEVICES:

This equipment is a pressure containing device.

- Do not exceed maximum operating pressure as shown on equipment serial number tag.
- Make sure equipment is depressurized before working on or disassembling it for service.



2. ELECTRICAL:

This equipment requires electricity to operate.

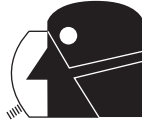
- Install equipment in compliance with all applicable electrical codes.
- Standard equipment is supplied with electrical enclosures not intended for installation in hazardous environments.
- Disconnect power supply to equipment when performing any electrical service work.



3. BREATHING AIR:

- Air treated by this equipment may not be suitable for breathing without further purification.

Refer to applicable standards and specifications for the requirements for breathing quality air.



RECEIVING, MOVING, AND UNPACKING

A. RECEIVING

This shipment has been thoroughly checked, packed and inspected before leaving our plant. It was received in good condition by the carrier and was so acknowledged.

Check for Visible Loss or Damage. If this shipment shows evidence of loss or damage at time of delivery to you, insist that a notation of this loss or damage be made on the delivery receipt by the carrier's agent.

B. UNPACKING

Check for Concealed Loss or Damage. When a shipment has been delivered to you in apparent good order, but concealed damage is found upon unpacking, notify the carrier immediately and insist on his agent inspecting the shipment. Concealed damage claims are not our responsibility as our terms are F.O.B. point of shipment.

C. MOVING

In moving or transporting dryer, do not tip dryer onto its side.

D. STORAGE/SHUT DOWN

CAUTION Dryer should not be stored outside (either packed or unpacked) or exposed to the weather. Damage to electrical and control components may result.

IMPORTANT: WATER-COOLED UNITS - If the unit is shut down in below freezing temperatures, the water-cooled condenser may freeze and cause permanent damage. Condenser must be drained when the unit is shut down.

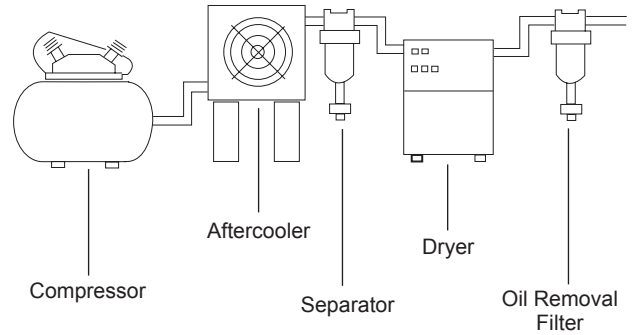
IMPORTANT: Do not store dryer in temperatures above 130°F (54.4°C).

IMPORTANT: READ PRIOR TO STARTING THIS EQUIPMENT

1.0 INSTALLATION

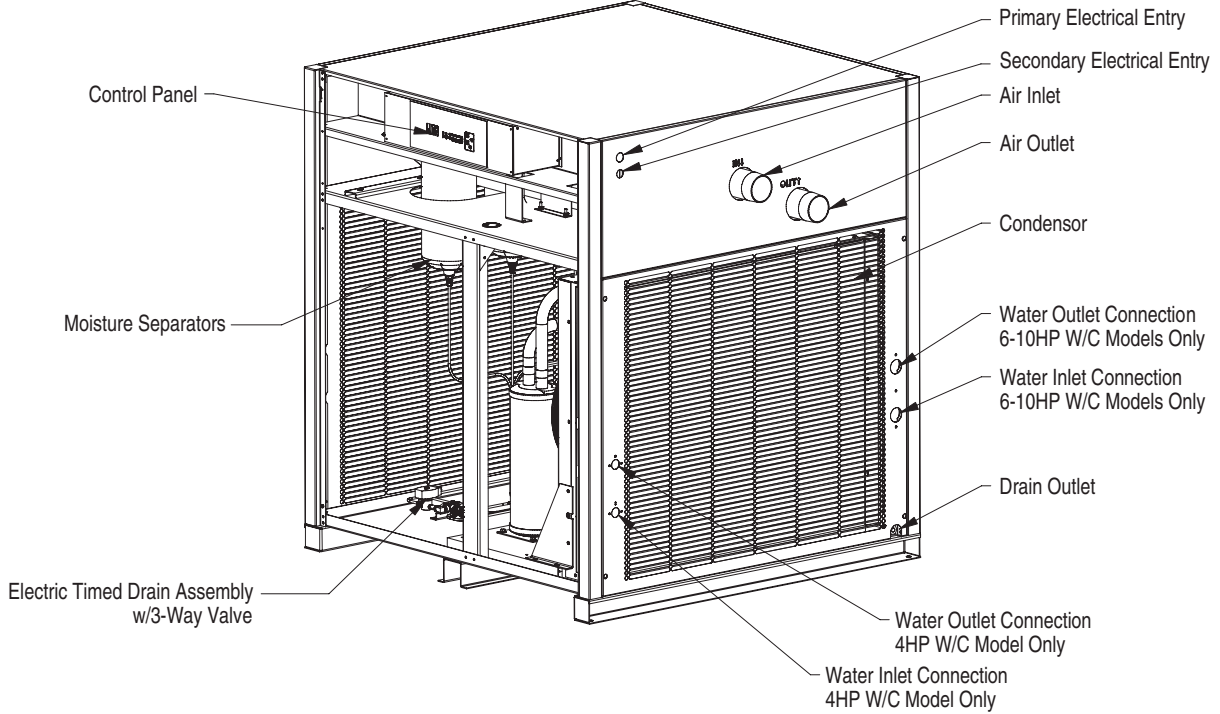
1.1 Location

- A. For typical placement in a compressed air system, see drawing.
- B. Air compressor intake – Locate air compressor so that contaminants potentially harmful to the dryer (e.g. ammonia) are not drawn into the air system.
- C. Free Air Flow - Allow a minimum of 36 inches (914 mm) clearance for free air flow.
Service - To facilitate maintenance leave 36 inches (914 mm) of clearance in front of dryer.
- D. Standard units are designed to operate in ambients:
Air-cooled: 40 to 110°F (4 to 43°C).
Water-cooled: 40 to 130°F (4 to 54°C).



CAUTION There shall be no external forces or vibrations transmitted to the dryer inlet/outlet connections from the piping. External piping must be properly supported. The installation of a flexible connection or vibration dampener, within the air/gas stream, prior to the dryer is recommended to further reduce the possibility of damage from vibration or pulsations. Failure to do so may void the warranty.

NOTE: Outdoor installation – Standard units are designed for indoor installation. Contact manufacturer if installing outdoors.



Models 4, 6, 7.5, and 10

1.2 Mounting

Mount the dryer on a level solid surface. Holes are provided in the dryer base to permanently mount the dryer to the floor.

1.3 Piping Connections

- A. Air Inlet - Connect compressed air line from air source to air inlet. (Reference markings on dryer or see callout drawing on page 13 for air inlet/outlet connection locations.)

NOTE: Use back-up wrench when making piping connections.

CAUTION There shall be no external forces or vibrations transmitted to the dryer inlet/outlet connections from the piping. External piping must be properly supported. The installation of a flexible connection or vibration dampener, within the air/gas stream, prior to the dryer is recommended to further reduce the possibility of damage from vibration or pulsations. Failure to do so may void the warranty.

WARNING Refer to Serial Number Tag for maximum working pressure. Do not exceed dryer's Maximum Working Pressure.

NOTE: Install dryer in air system at highest pressure possible (e.g. before pressure reducing valves).

NOTE: Install dryer at coolest compressed air temperature possible. Maximum inlet compressed air temperature: 120°F (49°C). If inlet air exceeds this temperature, precool the air with an aftercooler.

- B. Air Outlet – Connect air outlet to downstream air lines.

NOTE: Use back-up wrench when making piping connections.

CAUTION There shall be no external forces or vibrations transmitted to the dryer inlet/outlet connections from the piping. External piping must be properly supported. The installation of a flexible connection or vibration dampener, within the air/gas stream, prior to the dryer is recommended to further reduce the possibility of damage from vibration or pulsations. Failure to do so may void the warranty.

- C. Bypass piping – If servicing the dryer without interrupting the air supply is desired, piping should include inlet and outlet valves and an air bypass valve.
- D. Water cooled models – cooling water inlet and outlet
1. Connect cooling water supply to cooling water inlet.
 2. Connect cooling water return line to cooling water outlet connection.

NOTE: Strainer and water regulating valve are supplied on water cooled models.

1.4 Electrical Connections

IMPORTANT: Use copper supply wires only.

- A. Dryer is designed to operate on the voltage, phase, and frequency listed on the serial number tag.
- B. Electrical entry on larger dryers is through a hole in the cabinet. It is located on the right side panel when facing the front of the unit. Connect power source to terminal strip in electrical enclosure as shown on the wiring diagram included with the dryer.



NOTE: Refrigeration condensing unit is designed to run continuously and should NOT be wired to cycle on/off with the air compressor.

1.5 Moisture Separator

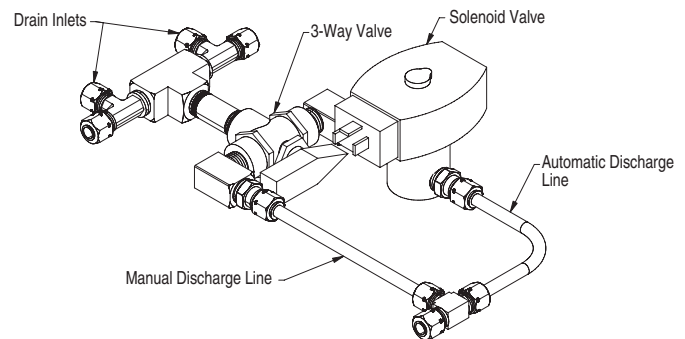
- A. Separator has an external drain which automatically discharges collected condensate.



NOTE: It may be desirable to pipe the condensate from the Automatic Drain outlet to a suitable drain.

- B. For manual draining, convenient dryer depressurization, and drain valve maintenance, a three-way valve assembly is installed between the drain port on the moisture separator and the drain valve. On all models, the three-way valve is mounted to the base pan. Review the following for proper drain function:

- Automatic Draining - Valve handle should be positioned parallel to the valve body (as shown), with the arrow on the handle pointing toward the drain valve. In this position, condensate will flow from the bowl to the drain valve.
- Drain Isolation (Shutdown) - Valve handle shall be turned perpendicular to the valve body (rotate 90°). In this position, condensate flow is shutoff.



- Manual Draining - Drain valve handle shall be rotated slightly past the drain isolation position to allow throttling through the valve for manual discharge and depressurization.

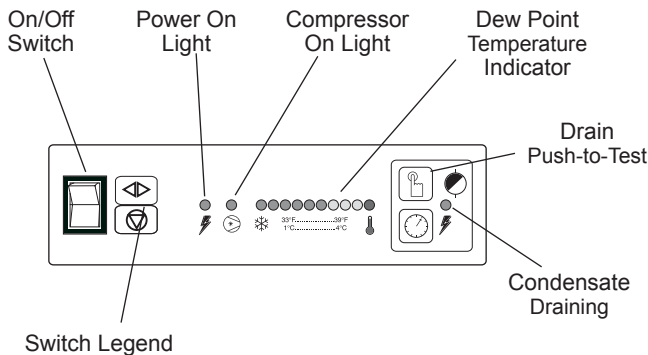
NOTE: Discharge is at system pressure. Drain line should be anchored.

NOTE: Condensate may contain oil. Comply with applicable laws concerning proper disposal.

2.0 OPERATION

2.1 Minimum/Maximum Operating Conditions

- Maximum inlet air pressure: 725 psig (50 barg)
- Minimum inlet air pressure: 15 psig (1.0 barg)
- Maximum inlet air temperature: 120°F (49°C)
- Maximum ambient temperature:
Air-cooled models: 110°F (43°C)
Water-cooled models: 130°F (54°C)
- Minimum ambient temperature: 40°F (4°C)



2.2 Start-up

IMPORTANT: Energize dryer disconnect switch (provided by others, see NEC) 24 hours before refrigeration compressor is started! Never use the disconnect switch to shut-down the dryer for an extended period of time (except for repair). Failure to follow these instructions may result in a non-warrantable compressor failure.

NOTE: It is recommended that dryer be started 15 minutes before compressed air flow begins.

NOTE: If there is no power to the control board for a period of two weeks or more, it may return to the default mode.

- Confirm On/Off Switch is in the "Off" position.
- Check for proper electrical voltage.
- Energize dryer disconnect switch (see IMPORTANT note above)
- For water-cooled models: after 24 hours, begin cooling water flow.
- Toggle ON/OFF switch to the ON position to energize dryer. Green power-on light will illuminate.
- Slowly pressurize unit air side by opening inlet isolation valve. Check for leaks.
- After 15 minutes, open outlet isolation valve slowly.
- Close air by-pass valve.

2.3 Timer Drain

NOTE: The Timer Drain LED level has been pre-programmed at the factory for your specific dryer model. Programming is based upon a minimum of 400 psig saturated inlet air pressure and maximum energy efficiency. The drain open time is fixed at one second and a small amount of air will be exhausted with each cycle. Generally, no adjustment to the timer is required.

CAUTION If water is present downstream of the dryer, always verify that any condensate drains installed upstream of the dryer are draining properly before attempting to readjust the LED setting.

- For minimum inlet air pressures that fall between column values, the setting for the lower pressure is recommended. (i.e. select the 300 psi column values for 324 psi inlet pressure listed in Table 1.)
- Where the dryer is consistently operating at less than maximum capacity, it may be possible to increase the LED set point to minimize air loss. Discretionary adjustments to the dryer should only be made on a hot, humid day when the maximum expected air load is flowing through the dryer. Failure to do so may prevent the condensate from draining completely when operating under peak load conditions.

Table 1 Timed drain illuminated LED Settings

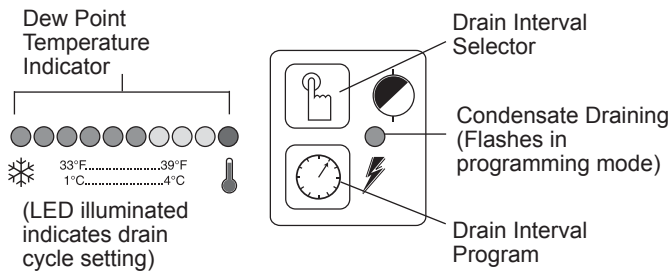
Dryer Model		Inlet Pressure				
		300	400*	500	600	725
4	4	1	1	2	2	2
	6	1	1	1	1	2
	7.5	1	1	1	1	2
	10	1	1	1	1	1

* Recommended and pre-programmed factory settings for each model dryer. Assumes inlet conditions with 120°F ambient and 10°F air-cooled aftercooler approach temperature.

Table 2 Timed drain illuminated LED Settings

LED Illuminated	Minutes between Drain Cycles
1 st	1
2 nd	3
3 rd	5
4 th	10
5 th	20
6 th	30
7 th	40
8 th	50
9 th	60

2.4 Timer Drain Programming Mode



1. Press the “Drain Interval Program” button. The “Condensate Draining” LED will start to flash, and the illuminated LED on the “Dew Point Temperature Indicator” will identify the factory setting for “Minutes Between Drain Cycles.” (See Table 1)
2. Press and release the “Drain Interval Selector” button to sequence the “Minutes Between Drain Cycle LED’s” from left to right until reaching your selection. The “Red” LED is not used (Reference Table 2 for “Drain Cycle Intervals”)
3. To initiate the new setting, press the “Drain Interval Program” button (this will store the new setting and exit the program).
4. Exiting the Program will cause the Timer Drain to discharge and begin a new cycle.

NOTE: Failure to perform step 3 within 25 seconds of completing step 2 will cause the unit to revert back to the previous setting.

NOTE: In the event of a brief or extended period of power loss, the unit will retain the existing program setting and will begin a new cycle once power is reapplied. Had drain been ready to drain before the loss of power, the drain bowl’s capacity would prevent downstream flooding. Condensate will drain completely within a couple of cycles. (Manually pressing the “Push-to-Test” button would drain bowl immediately)

2.5 Operating Check Points

Check the following on a periodic basis:

- A. Green power on light is illuminated.
- B. Dew point indicator is in green area.
- C. Condensate is discharging from drain.

3.0 MAINTENANCE

3.1 Condenser Coil

- A. Air-cooled - clean off accumulated dust and dirt monthly or as necessary in dirty environments.
- B. Water-cooled - clean strainer monthly, more often if required. Shut off water, remove small plug to relieve pressure, then remove large plug to remove strainer. Clean strainer and replace.

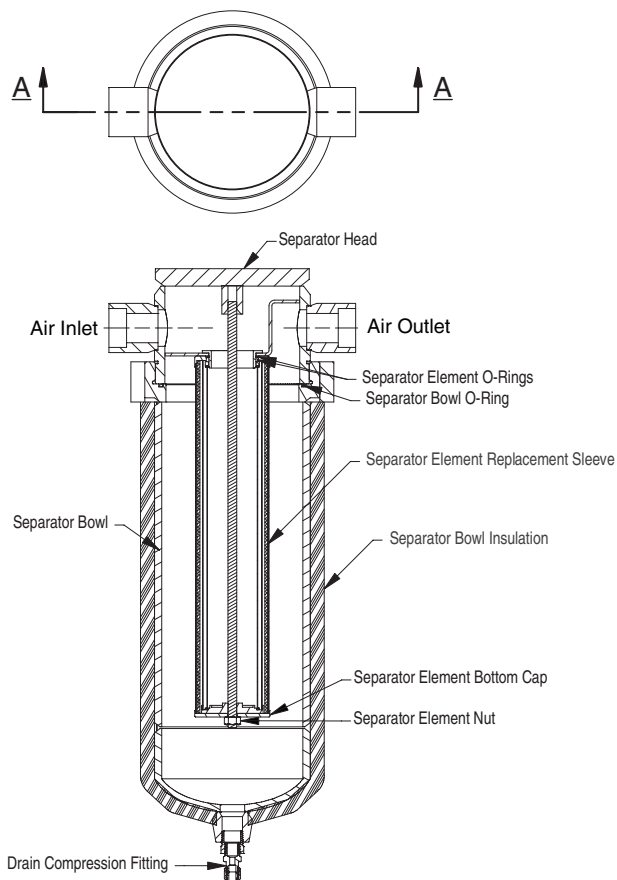
3.2 Moisture Separator/Oil Removal Filter

NOTE: Prepackaged maintenance kits are available that include all necessary filter and timed drain valve components. Maintain maximum performance and efficiency with Genuine Parts. See page 15 for ordering information.

When to replace the Separator/Filters

Replace filter element annually, or when pressure drop across dryer is excessive.

When removing liquids at rated flow conditions, an increase in pressure drop will occur as the separator/filter elements become loaded with solid particles.



Procedure for Separator / Filter Element Replacement

⚠WARNING THIS FILTER IS A PRESSURE CONTAINING DEVICE. DEPRESSURIZE BEFORE SERVICING.

1. Isolate dryer (close inlet and outlet valves if installed) or shut off air supply.
2. Remove front panel and depressurize filter by slowly opening manual drain by-pass valve.
3. Disconnect drain line from bottom of separator.
4. Disassemble filter housing.
 - a. For all models - remove the filter bowl, unscrewing it from the filter head by hand or strap wrench.
5. Clean filter bowl.
6. Remove and replace complete element.
 - a. Unscrew the old filter element and discard. Also, discard the small O-ring that seals the filter to the filter assembly head.
7. Install new filter element and bowl with new O-rings properly seated to head or bowl (dependent upon dryer size).
8. Connect drain line and replace panel.
9. Repressurize dryer and resume operation.

3.3 Check separator daily to be sure automatic drain is discharging.

3.4 Blow down separator weekly by pushing test button on control panel.

3.5 Rebuild drain mechanism annually.

To facilitate service, maintenance kits are available.

SIZING

Determining dryer capacity at actual operating conditions

To determine the maximum inlet flow capacity of a dryer at various operating conditions, multiply the rated capacity from Table 1 by the multipliers shown in Table 2.

Example: How many scfm can an air-cooled model 4 handle when compressed air to be dried is at 350 psig and 90°F; ambient air temperature is 80°F?

Answer: $1250 \times 1.19 \times 1.12 = 1666$ scfm.

Table 1. Rated Capacity

Rated capacity (scfm) @ 725 psig inlet pressure, 100°F inlet temperature, and 100°F ambient temperature and 60 Hertz operation.

MODEL	RATED FLOW	
	(scfm)	m ³ /hr
4	1250	2125
6	1750	2975
7.5	2000	3400
10	3000	5100

Table 2. Capacity Adjustment Factors for Air Inlet Temperature and Pressure

INLET PRESSURES		INLET TEMPERATURES				
(psig)	(barg)	80°F 27°C	90°F 32°C	100°F 38°C	110°F 43°C	120°F 49°C
300 to 725	21 to 50	1.49	1.19	1.00	0.83	0.72

Table 3. Capacity Adjustment Factors for Ambient Air Temperature

AMBIENT TEMPERATURE °F (°C)	CAPACITY ADJUSTMENT FACTOR
80°F (27°C)	1.12
90°F (32°C)	1.06
100°F (38°C)	1.00
110°F (43°C)	0.94
Water-cooled (85°F, 29.4°C cooling water)	1.15

Table 4. Capacity Adjustment Factors for Electrical Frequency

50 Hertz	60 Hertz
0.83	1.00

ENGINEERING DATA

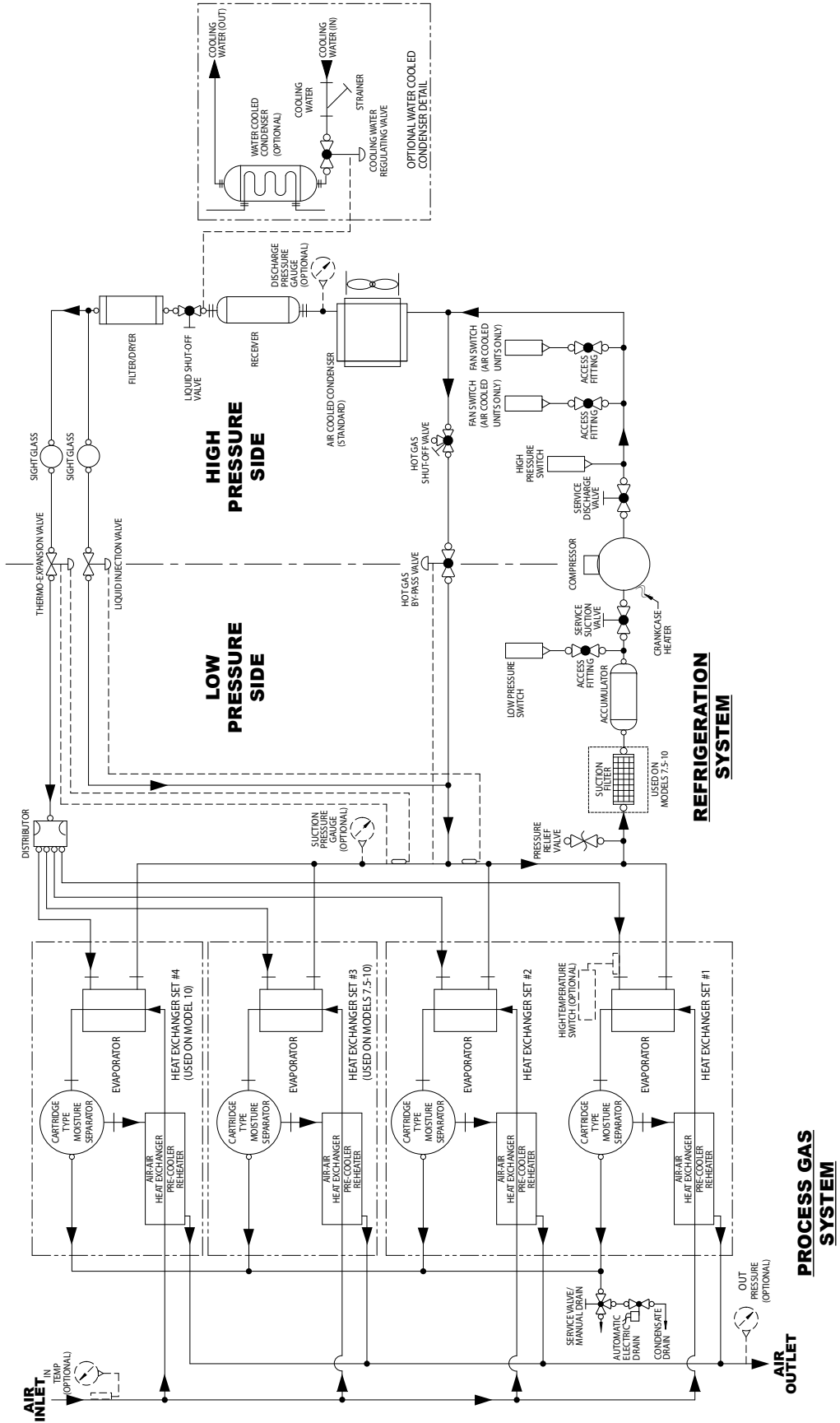
Models		4	6	7.5	10
Air System Data					
Maximum / Minimum Inlet Air Pressure (compressed air at inlet to dryer)		725 psig (50 barg) / 15 psig (1.0 barg)			
Maximum / Minimum Inlet Air Temperature (compressed air at inlet to dryer)		120°F (49°C) / 40°F (4°C)			
Maximum / Minimum Ambient Temperature		Air-cooled: 110°F (43°C) / 40°F (4°C), Water-cooled: 130°F (54°C) / 40°F (4°C)			
Outlet Air Temperature (nominal at rated conditions)		85°F (29°C)			
Refrigeration System Data					
Refrigeration Capacity @ Rated Flow (BTU/hr)*	60 Hz	42,140	57,310	69,370	92,550
	50 Hz	41,400	58,000	70,900	93,300
Refrigerant Type		R-404a			
Refrigerant Charge		See Data Tag on Dryer			
Suction Pressure Setting		78 psig (5.4 barg)			
Compressor Control Ranges (out-in) (air-cooled models)	High	450 - 350 psig (31.0 - 24.1 barg)			
	Low	84 - 67 psig (5.8 - 4.6 barg)			
Compressor Control Ranges (out-in) (water-cooled models)	High	320 - 280 psig (22.1 - 19.3 barg)			
	Low	84 - 67 psig (5.8 - 4.6 barg)			
Air-Cooled Condensers					
Air Flow Across Condenser (cfm)	60 Hz	3,400	4,230	5,300	4,900
	50 Hz	2,830	3,530	4,420	4,080
Condenser Fan Switch Setting (in-out)	Fan 1	300 - 230 psig (21 - 16 barg)			
	Fan 2	N/A	325 - 255 psig (22 - 18 barg)		
Water-Cooled Condensers					
Water Regulating Valve Setting		135 psig (9.3 barg)			
Required Available Water Pressure Differential		40 psig (2.8 barg) - minimum			
Flow Required with 85°F Cooling Water (gallons per minute)	60 Hz	12	14	21	27
	50 Hz	10	12	18	23
Electrical Data					
Nominal Voltage		230/3/60**			
Min. - Max. Voltage		207 - 253			
Input Power @ Rated Flow (watts) *		5,010	7,710	9,710	14,400
Minimum Circuit Ampacity		25.4	28.0	48.0	63.0
Maximum Overcurrent Protector (amps)		40	45	75	100
Compressor Rated Load Amps		8.2	9.3	15.7	21.1
Compressor Locked Rotor Amps		49.5	70.0	99.0	127.0
Compressor Winding Resistance (ohms)		3.64	2.27	1.41	1.02
Nominal Voltage		460/3/60			
Min. - Max. Voltage		414 - 506			
Input Power @ Rated Flow (watts) *		5,010	7,710	9,710	14,400
Minimum Circuit Ampacity		12.7	14.0	24.0	31.5
Maximum Overcurrent Protector (amps)		20	20	35	50
Compressor Rated Load Amps		8.2	9.3	15.7	21.1
Compressor Locked Rotor Amps		49.5	70.0	99.0	127.0
Compressor Winding Resistance (ohms)		3.64	2.27	1.41	1.02
Nominal Voltage		575/3/60**			
Min. - Max. Voltage		518 - 633			
Input Power @ Rated Flow (watts) *		5,010	7,710	9,710	14,400
Minimum Circuit Ampacity		10.2	11.2	19.2	25.2
Maximum Overcurrent Protector (amps)		15	15	30	40
Compressor Rated Load Amps		8.2	9.3	15.7	21.1
Compressor Locked Rotor Amps		49.5	70.0	99.0	127.0
Compressor Winding Resistance (ohms)		3.64	2.27	1.41	1.02
Nominal Voltage		380-420/3/50			
Min. - Max. Voltage		342 - 462			
Input Power @ Rated Flow (watts) *		3,590	5,380	7,120	10,400
Minimum Circuit Ampacity		12.7	14.0	24.0	31.5
Maximum Overcurrent Protector (amps)		20	20	35	50
Compressor Rated Load Amps		8.2	9.3	15.7	21.1
Compressor Locked Rotor Amps		49.5	70.0	99.0	127.0
Compressor Winding Resistance (ohms)		3.64	2.27	1.41	1.02

* For 60 Hz, 35°F Evaporator, 100°F Ambient; for 50Hz, 35°F Evaporator, 77°F Ambient

** 230/3/60 and 575/3/60 units use equipment transformers on incoming power. Compressor and fan voltage is 460/3/60.

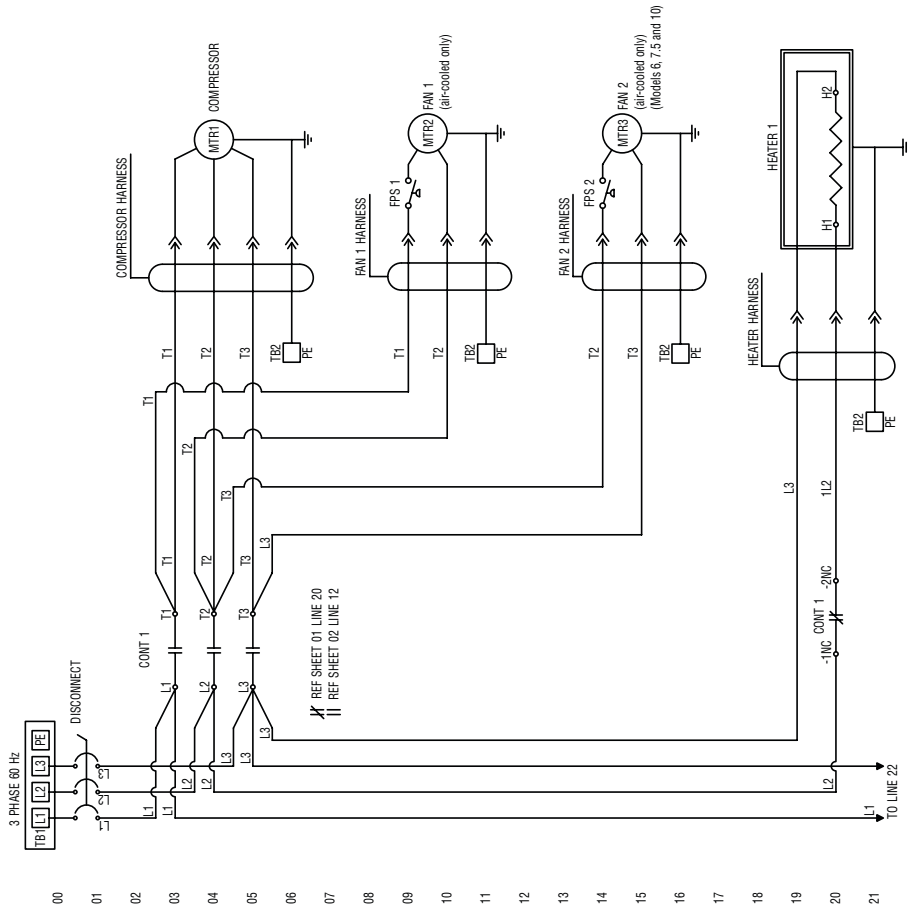
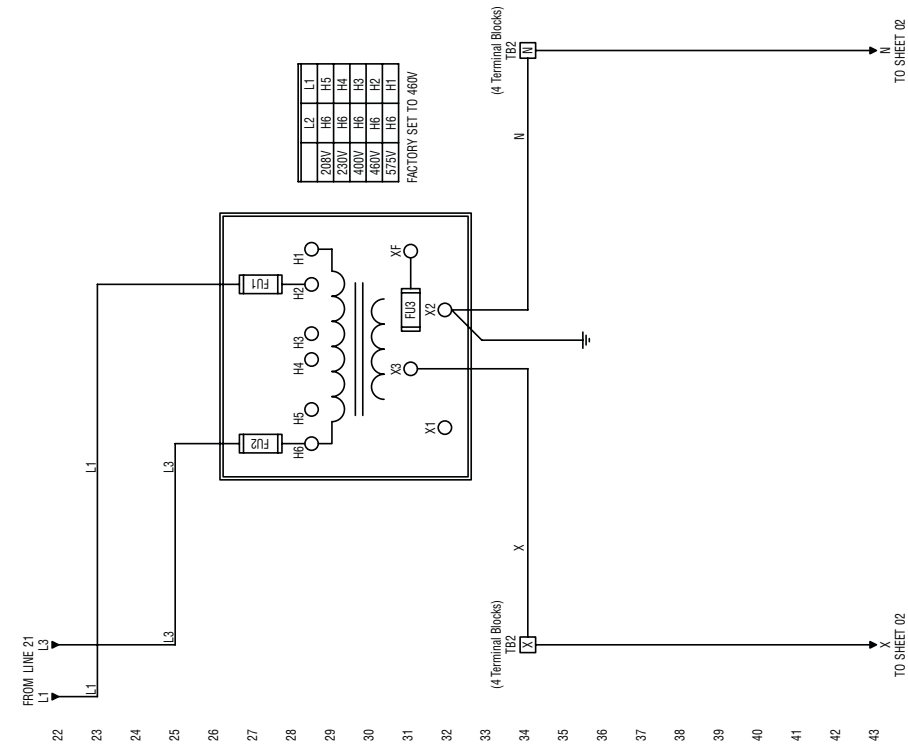
P&I DIAGRAM

Models 4, 6, 7.5 and 10



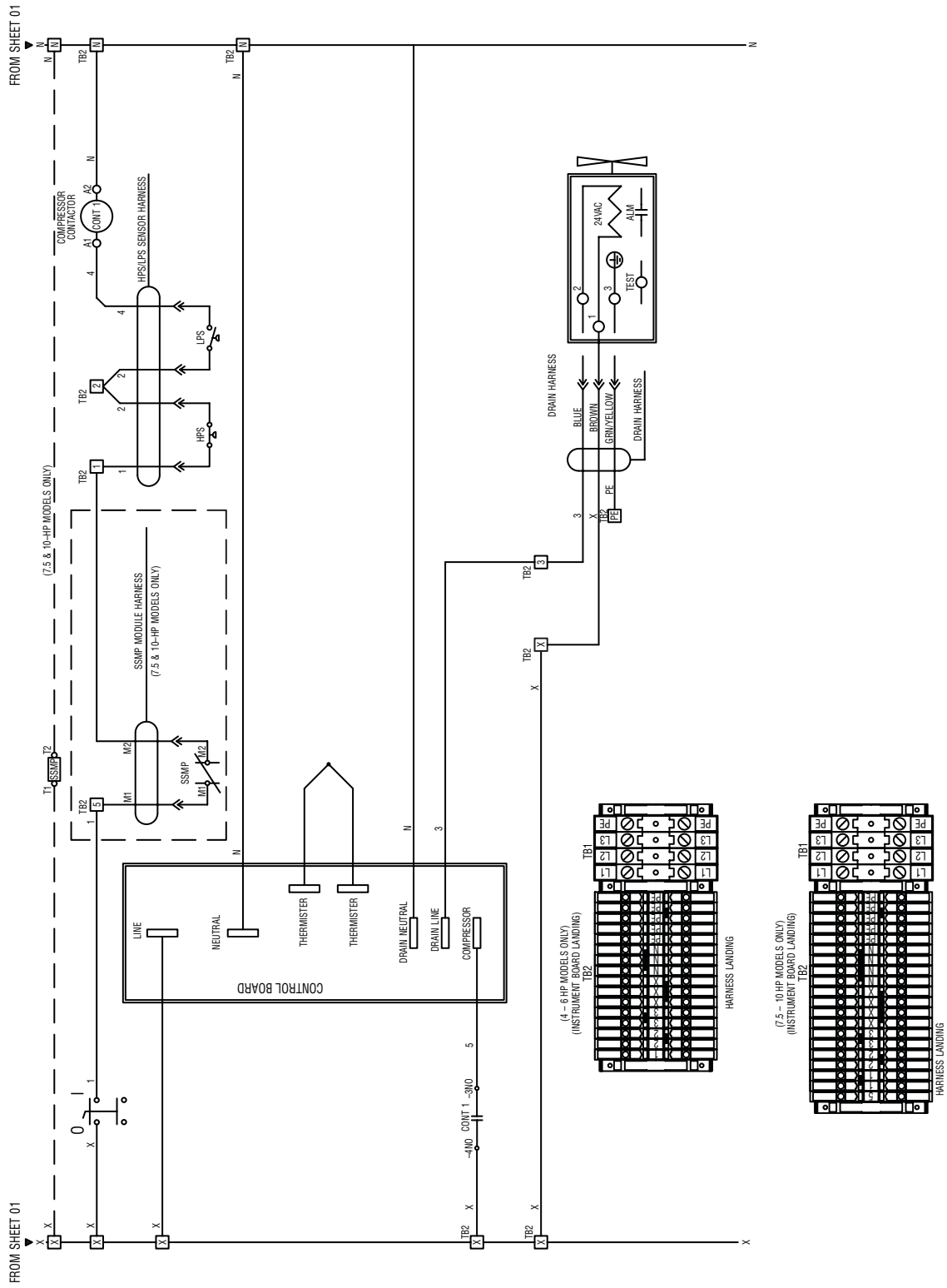
WIRING DIAGRAM

Models 4, 6, 7.5 and 10 (230-400-460V/3/50-60 Hz)
 (Page 1 of 2)



WIRING DIAGRAM

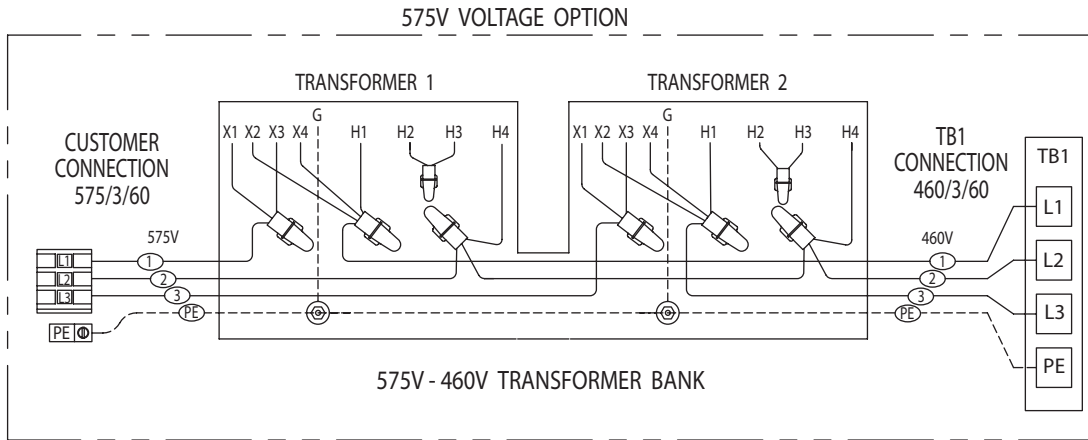
Models 4, 6, 7.5 and 10 (230-400-460V/3/50-60 Hz)
 (Page 2 of 2)



00
 01
 02
 03
 04
 05
 06
 07
 08
 09
 10
 11
 12
 13
 14
 15
 16
 17
 18
 19
 20
 21

WIRING DIAGRAM

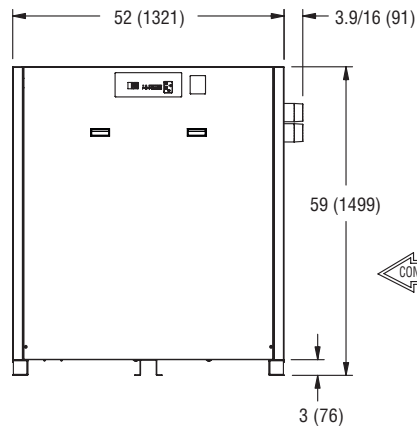
Models 4, 6, 7.5 and 10 (575-460/3/60 Transformer Pack)



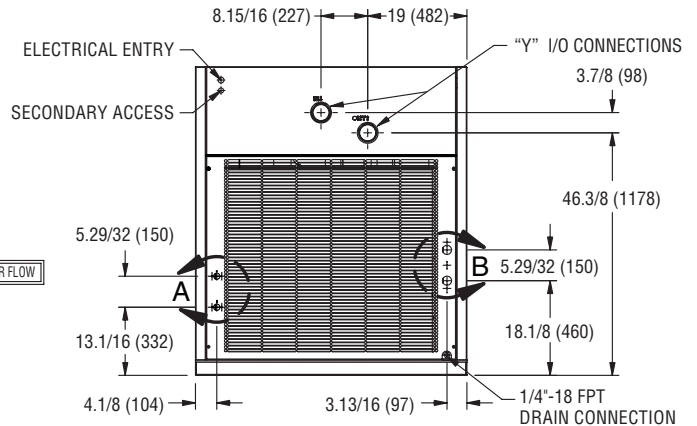
DIMENSIONS / WEIGHTS

MODEL	4	6	7.5	10
DIM "X" – COOLING WATER I/O CONNECTIONS	3/4-14 NPT (FEMALE)	1-14 NPT (FEMALE)	1.1/4-11.5 NPT (FEMALE)	
DIM "Y" – AIR I/O CONNECTIONS	3"-8 NPT (MALE) / Rc 3"-11 BSPT (MALE)			
WEIGHT, lbs (kg)	889 (404)	939 (427)	1204 (547)	1329 (604)

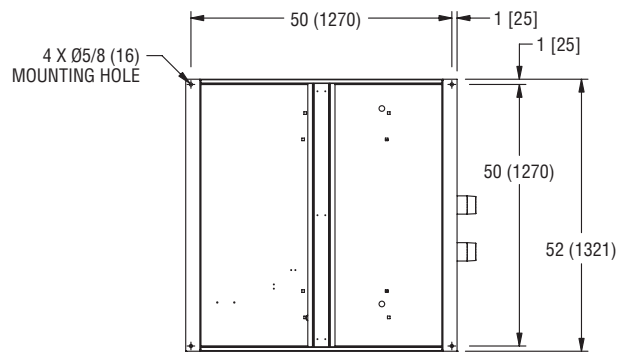
NOTE: Dimensions and Weights are for reference only. Request certified drawings for construction purposes.



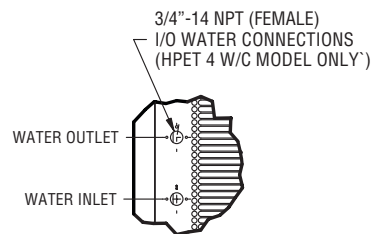
FRONT VIEW



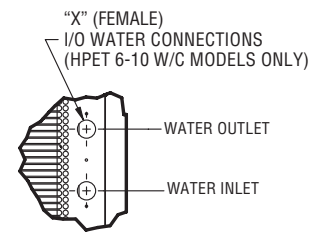
RIGHT SIDE VIEW



BOTTOM VIEW



DETAIL A



DETAIL B

TROUBLESHOOTING GUIDE

SYMPTOM	POSSIBLE CAUSE(S)	CORRECTIVE ACTION
A) Water downstream of dryer	<ol style="list-style-type: none"> 1. Residual free moisture remaining in downstream pipelines. 2. Air bypass system is open. 3. Inlet and Outlet connections are reversed. 4. Temperatures surrounding air lines downstream of dryer have dropped below dryers dew point rating. 5. Excessive free moisture (bulk liquid) at dryer inlet. 6. Condensate not being automatically drained Drain mechanism is clogged or inoperative. Drain line is restricted or frozen. Electric drains-timer not set to allow for sufficient condensate removal. 7. Dryer overloaded resulting in elevated dew point. 8. Refrigeration system not functioning properly resulting in elevated dew point. 9. Separator element not properly installed. 	<p>Blow out system with dry air.</p> <p>Check valve positions. Check for correct connection. Insulate or heat trace air lines exposed to low ambients or dry air to lower dew point.</p> <p>Install separator ahead of dryer.</p> <p>Replace drain mechanism if inoperative. Open drain line. Electric drains-reset time so that all liquid is discharged. Check inlet air temperature and pressure, flow rate (compressor capacity) and ambient air or water temperature. See D below.</p> <p>Check element installation.</p>
B) High pressure drop across dryer	<ol style="list-style-type: none"> 1. Excessive air flow 2. Freezing of moisture in evaporator because of refrigeration system improperly functioning. 3. Inlet air strainer clogged. 4. Separator filter element clogged 	<p>Check flow rate. See D below.</p> <p>Clean inlet air strainer. Replace filter element.</p>
C) High Temperature Alarm	<ol style="list-style-type: none"> 1. Dryer overloaded resulting in high air outlet temperature. 2. Refrigeration system not functioning properly resulting in high air outlet temperature. 3. Unit functioning normally but temperature sensor is malfunctioning or not securely mounted. 	<p>See A7.</p> <p>See D below.</p> <p>Contact qualified refrigeration repairman or manufacturer's service department. Check power to unit.</p>
D) Refrigeration system not functioning properly <ol style="list-style-type: none"> 1. Power on light off 2. Compressor on light off 3. Refrigeration compressor cycles on and off 	<ol style="list-style-type: none"> a. Power failure b. Line disconnect switch open c. Blown fuses, open breaker d. Faulty wiring, loose terminals <ol style="list-style-type: none"> a. ON/OFF switch is "OFF" b. Line disconnect switch open c. Blown fuses, open breaker d. Faulty wiring, loose terminals <ol style="list-style-type: none"> a. High or low ambient conditions b. Air-cooled - Dirty, clogged condenser fins, obstructed flow across condenser, faulty fan motor or fan control switch. 	<p>Check for power to unit Close disconnect switch Check for continuity Have electrician check electrical connections.</p> <p>Turn switch "ON" Close disconnect switch Check for continuity Have electrician check electrical connections</p> <p>Check min./max. temperature ranges Clean condenser and check for free air flow, if problem persists contact qualified refrigeration repairman or manufacturer's service department.</p>

PARTS LIST

PARTS DESCRIPTION	4	6	7.5	10
Compressor	4006286	3210944	3210945	3221271
Fan Motor	3233147	4010923	4010925	4010925
Fan Blade	3219400	3094035	3210272	3210272
Crankcase Heater	4010508	4010508	3223269	3223269
Low Refrigerant Pressure Switch	3230768	3230768	3230768	3230768
High Refrigerant Pressure Switch (AC)	3230770	3230770	3230770	3230770
High Refrigerant Pressure Switch (WC)	3230771	3230771	3230771	3230771
Fan Cutout Switch 1	3230765	3230765	3230765	3230765
Fan Cutout Switch 2	3230766	3230766	3230766	3230766
Hot Gas By-Pass Valve	3232527	3232527	3232548	3232548
Thermal Expansion Valve	3232550	3232550	3232550	3250728
De-Superheating Valve	3232542	3232542	3232542	3232531
Liquid Line Filter Dryer	4006402	4006402	4006402	4006402
Suction Filter	—	—	4006414	4006414
Cooling Water Regulating Valve	4006391	4006391	4006391	4006392
Cooling Water Strainer	4009635	4009635	4009635	4009636
Cooling Water Strainer Screen	3230673	3230673	3230673	3230662
Temperature Sensor	3210926	3210926	3210926	3210926
Contactors	5002928	5002928	5002928	5002928
Auxiliary Contactor	5002929	5002929	5002929	5002929
Control Transformer	3159128	3159128	3159128	3159128
Fuse Primary	3223953	3223953	3223953	3223953
Fuse Secondary	4010495	4010495	4010495	4010495
Solid State Motor Protector	—	—	5004378	5004378
Electric Drain Valve	4009870	4009870	4009870	4009870
Display Board	3227172	3227172	3227172	3227172
Display Board Fuse	5002932	5002932	5002932	5002932
On-Off Switch	3230777	3230777	3230777	3230777

(AC) - Air Cooled Model
(WC) - Water Cooled Model

MAINTENANCE KITS

MODEL	4	6	7.5	10
Includes Elements, Drain Rebuild Kit, Bowl O-Rings, and Water Valve Strainer Screen	HPETMK10	HPETMK10	HPETMK11	HPETMK12

WARRANTY

The manufacturer warrants the product manufactured by it, when properly installed, operated, applied, and maintained in accordance with procedures and recommendations outlined in manufacturer's instruction manuals, to be free from defects in material or workmanship for a period as specified below, provided such defect is discovered and brought to the manufacturer's attention within the aforesaid warranty period.

The manufacturer will repair or replace any product or part determined to be defective by the manufacturer within the warranty period, provided such defect occurred in normal service and not as a result of misuse, abuse, neglect or accident. Normal maintenance items requiring routine replacement are not warranted. The warranty covers parts and labor for the warranty period unless otherwise specified. Repair or replacement shall be made at the factory or the installation site, at the sole option of the manufacturer. Any service performed on the product by anyone other than the manufacturer must first be authorized by the manufacturer.

Unauthorized service voids the warranty and any resulting charge or subsequent claim will not be paid. Products repaired or replaced under warranty shall be warranted for the unexpired portion of the warranty applying to the original product.

The foregoing is the exclusive remedy of any buyer of the manufacturer's product. The maximum damages liability of the manufacturer is the original purchase price of the product or part.

THE FOREGOING WARRANTY IS EXCLUSIVE AND IN LIEU OF ALL OTHER WARRANTIES, WHETHER WRITTEN, ORAL, OR STATUTORY, AND IS EXPRESSLY IN LIEU OF THE IMPLIED WARRANTY OF MERCHANTABILITY AND THE IMPLIED WARRANTY OF FITNESS FOR A PARTICULAR PURPOSE. THE MANUFACTURER SHALL NOT BE LIABLE FOR LOSS OR DAMAGE BY REASON OF STRICT LIABILITY IN TORT OR ITS NEGLIGENCE IN WHATEVER MANNER INCLUDING DESIGN, MANUFACTURE OR INSPECTION OF THE EQUIPMENT OR ITS FAILURE TO DISCOVER, REPORT, REPAIR, OR MODIFY LATENT DEFECTS INHERENT THEREIN.

THE MANUFACTURER, HIS REPRESENTATIVE OR DISTRIBUTOR SHALL NOT BE LIABLE FOR LOSS OF USE OF THE PRODUCT OR OTHER INCIDENTAL OR CONSEQUENTIAL COSTS, EXPENSES, OR DAMAGES INCURRED BY THE BUYER, WHETHER ARISING FROM BREACH OF WARRANTY, NEGLIGENCE OR STRICT LIABILITY IN TORT.

The manufacturer does not warrant any product, part, material, component, or accessory manufactured by others and sold or supplied in connection with the sale of manufacturer's products.

Warranty Period

Parts and labor for two (2) years from the date of shipment from the factory; heat exchangers are covered (parts only) for an additional three (3) years (total of five [5]). On units that manufacturer requests be returned to the factory, a one time removal/reinstallation labor allowance as noted in the Service Warranty Policies and Procedures Handbook will apply. Freight to the factory from the installation site and to the installation site from the factory will be paid by the manufacturer; means of transportation to be specified by manufacturer.

AUTHORIZATION FROM THE SERVICE DEPARTMENT IS NECESSARY BEFORE MATERIAL IS RETURNED TO THE FACTORY OR IN-WARRANTY REPAIRS ARE MADE.

SERVICE DEPARTMENT: (724) 746-1100



SPX FLOW TECHNOLOGY
1000 PHILADELPHIA STREET
CANONSBURG, PA 15317-1700 U.S.A.
TEL | 724 | 745 | 1555 FAX | 724 | 745 | 6040
Email: hankison.service@dehydration.spx.com
www.hankisonintl.com
www.spxft.com



SPX