

Quincy Model QSVI™ 50 HP

Parts Manual · Air-cooled "E" Version
Water-cooled "E" Version

This manual contains important safety information and should be made available to all personnel who operate and/or maintain this product. Carefully read this manual before attempting to operate or perform maintenance on this compressor.



Quincy Compressor®

True Blue ReliabilitySM

Manual No. 50239-EA

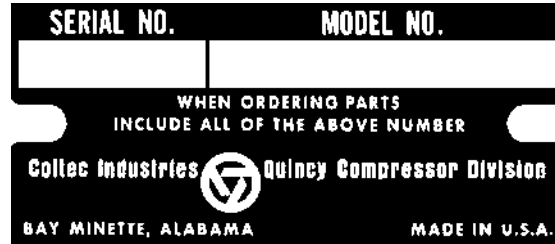
May 1996 Edition

ALPHABETICAL INDEX

Basic Airend Group	4-5
Cabinet Groups:	
Aircooled	34-35
Watercooled	36-37
Control Piping Groups	12-13
Control Schematics	38
Cooler Groups	20-21
Coupling Group:	42
Decal Groups:	
Aircooled	28-29
Watercooled less Cabinet	30-31
Watercooled with Cabinet	32-33
Discharge Piping Group	11
Electrical Control Diagrams:	
Auto Dual	39
Auto Demand	40
Lead/Lag	41
Fluid Piping Groups:	
Aircooled	22-23
Watercooled	24-25
Helical Screw Fluid Specifications	3
Inlet Piping Group	16-17
Inlet Valve Group	14-15
Recommended Spare Parts	43
Separator/Reservoir Groups	18-19
Serial Number Identification	2
Shaft Seal Kit	27
Starting Groups	6-10
Water Piping Groups	26

SERIAL NUMBER IDENTIFICATION

The serial number tag is located on the top flange of the unit frame just left of the control panel and in the upper right corner of the electrical control panel.



ORDERING REPLACEMENT PARTS

Prompt service can be rendered on replacement part orders if the following information is given.

1. The serial number must be given when ordering replacement parts.
2. State the exact part number needed. **Do not order by index numbers**, as index numbers are repeated throughout this manual and if used for ordering parts will necessitate time consuming correspondence.
3. State the exact quantity needed.
4. State the preferred type of transportation.

All replacement parts are to be ordered through an authorized distributor. Insist on Genuine Quincy Parts only! Failure to do so may void your warranty.

WARNING !

Guards must be fastened in place before starting the machine and never removed before disconnecting and locking out the main power supply.

DANGER !

Air from this vacuum compressor will cause severe injury or death if used for breathing or food processing. Air used for these processes must meet OSHA 29 CFR 1910 or FDA 21 CFR 178.3570 Regulations.

ROTARY SCREW FLUIDS

- **Recommendations**

We recommend that all Quincy Rotary Screw Vacuum Pumps be filled with fluids that meet one of the following specifications:

Synthetic Fluids
QUINSYN
QUINSYN-F (Food Grade)

Synthetic fluids other than QUINSYN may not be compatible with components used in a Quincy helical screw vacuum pump. If it is deemed necessary to convert any unit to a synthetic other than QUINSYN, please contact an authorized Quincy Compressor distributor. The following information will be required by the distributor:

MODEL _____

SERIAL NO. _____

FLUID ORIGINALLY USED _____

FLUID NOW USED (IF CHANGED) _____

FLUID TO BE USED _____

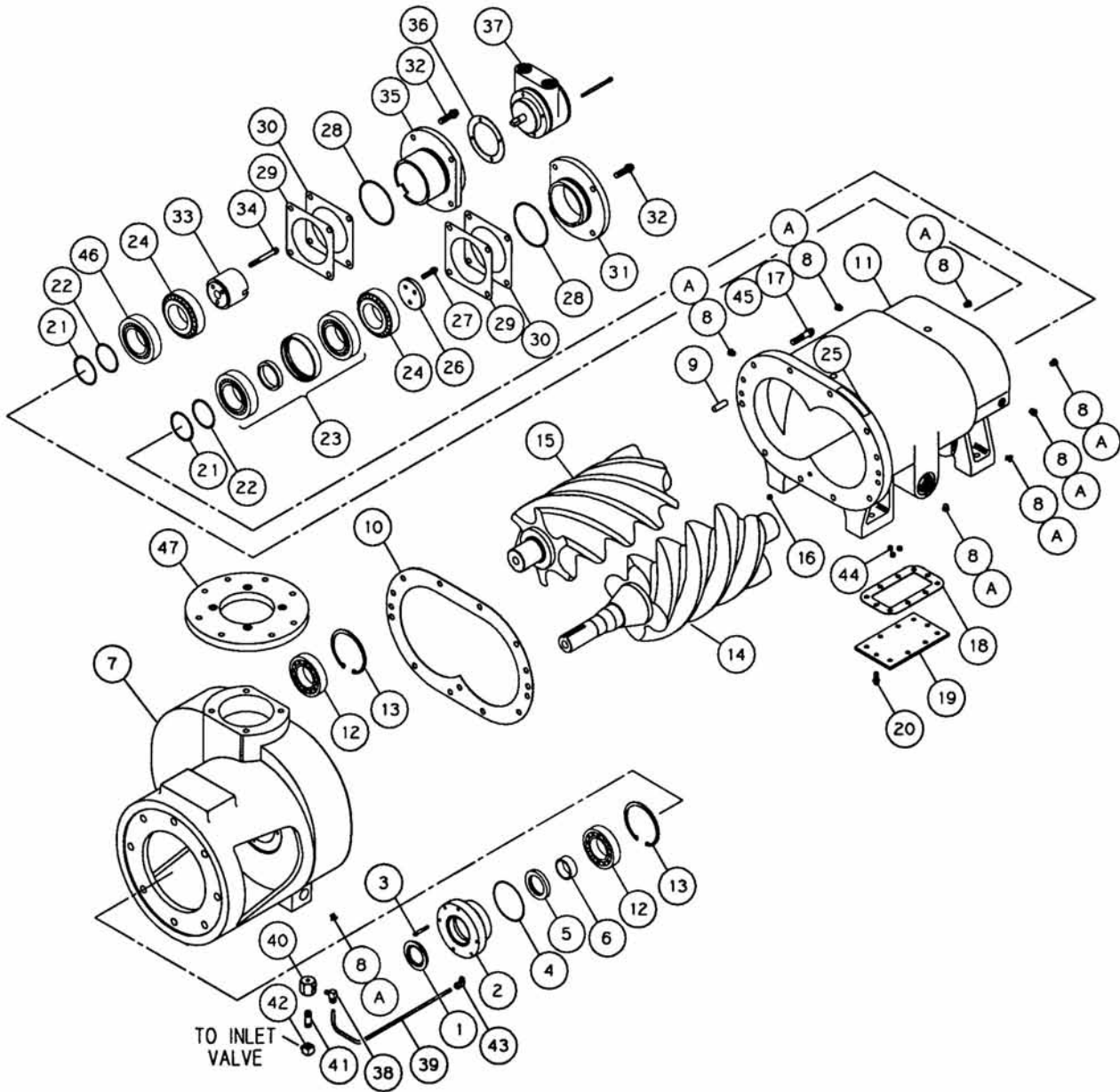
- **Additional Information**

Additional information can be found in the QSVI Vacuum Pump Instruction Manual.

- **Fluid Analysis Kit**

Quincy Compressor now offers a Fluid Analysis Kit to provide early detection of excessive parts wear, fluid breakdown, or a contaminated fluid system. Order the Fluid Analysis Kit (part no. 128515) from your local authorized Quincy Compressor distributor.

BASIC AIREND GROUP
141405-001



BASIC AIREND GROUP
141405-001

ITEM NUMBER	QTY.	PART NUMBER	DESCRIPTION
1	1	129613	SEAL-DYNA LIP
2	1	129466	ADAPTER-SEAL
3	4	90386-J15	SCREW-COUNTERBORE, 1/4-20 UNC X 1.50, GRADE 8 (@ 9 FT.-LBS.)
4	1	22749-154	O-RING, VITON
5	1	129612	SEAL-SHAFT
6	1	129610	SEAL-WEAR RING
7	*	129646	CASING-INLET
8	12	128883-044	PLUG-PIPE, 7/16 SAE O-RING
9	2	124145-005	PIN-DOWEL
10	1	141920	GASKET-INLET HOUSING
11	*	129658-1	HOUSING-ROTOR
12	*		BEARING-ROTOR, SUCTION END
13	2	128203-393	RING-RETAINER
14	*		ROTOR-MALE
15	*		ROTOR-FEMALE
16	1	23207	ORIFICE-PLUG, 1/8 NPT
17	9	90386-N17	SCREW-COUNTERBORE, 1/2-13 UNC X 2.00, GRADE 8 (@ 80 FT.-LBS.)
18	1	23548	GASKET-PLATE, FLUID GALLERY
19	1	23544	GASKET-PLATE, FLUID GALLERY
20	10	90386-L10	SCREW-COUNTERBORE, 3/8-16 UNC X 0.75, GRADE 8 (@ 35 FT.-LBS.)
21		129467-005	SHIM-BEARING, 0.005
22		129467-010	SHIM-BEARING, 0.010
23	*		BEARING-ROTOR, DISCHARGE END
24	*		BEARING-ROTOR, DISCHARGE END
25	1	120189	PLATE-PATENT
26	1	126701	RETAINER-BEARING
27	3	90386-L14	SCREW-COUNTERBORE, 3/8-16 UNC X 1.25, GRADE 8 (@ 35 FT.-LBS.)
28	2	22749-243	O-RING, VITON
29		129468-050	SHIM-BEARING, 0.050
30		129468-005	SHIM-BEARING, 0.005
31	1	129665	CAP-DISCHARGE
32	8	90386-N15	SCREW-COUNTERBORE, 1/2-13 UNC X 1.50, GRADE 8 (@ 80 FT.-LBS.)
33	1	129479	RETAINER-BEARING
34	3	90386-L21	SCREW-COUNTERBORE, 3/8-16 UNC X 3.00, GRADE 8 (@ 35 FT.-LBS.)
35	1	140295	ADAPTER-FLUID PUMP
36	1	127056	GASKET-FLUID PUMP
37	1	125452-014	PUMP-FLUID
38	1	124349-004	FITTING-TUBE, 90 MALE ELBOW 1/4 TUBE X 1/8 NPT
39	3.00 FT	124435-003	TUBING-NYLON, 1/4 O.D.
40	1	122056	VALVE-CAPACITY GAUGE
41	1	121032-4	NIPPLE-PIPE, 1/4 NPT X 1.50, BRASS
42	1	122212	ELBOW-PIPE, 1/8 NPT X 1/4, BRASS
43	1	128967-001	FITTING-TUBE, 45 MALE ELBOW 1/4 TUBE X 1/8 NPT
44	3	126621-002	PLUG-PIPE, 1/8 NPT
45	1	123478-N16	SCREW-HEX., 1/2-13 UNC X 1.75, GRADE 5 (@ 55 FT.-LBS.)
46	*		BEARING-ROTOR, DISCHARGE END
47	1	128307-1	PLATE-ADAPTER, INLET VALVE

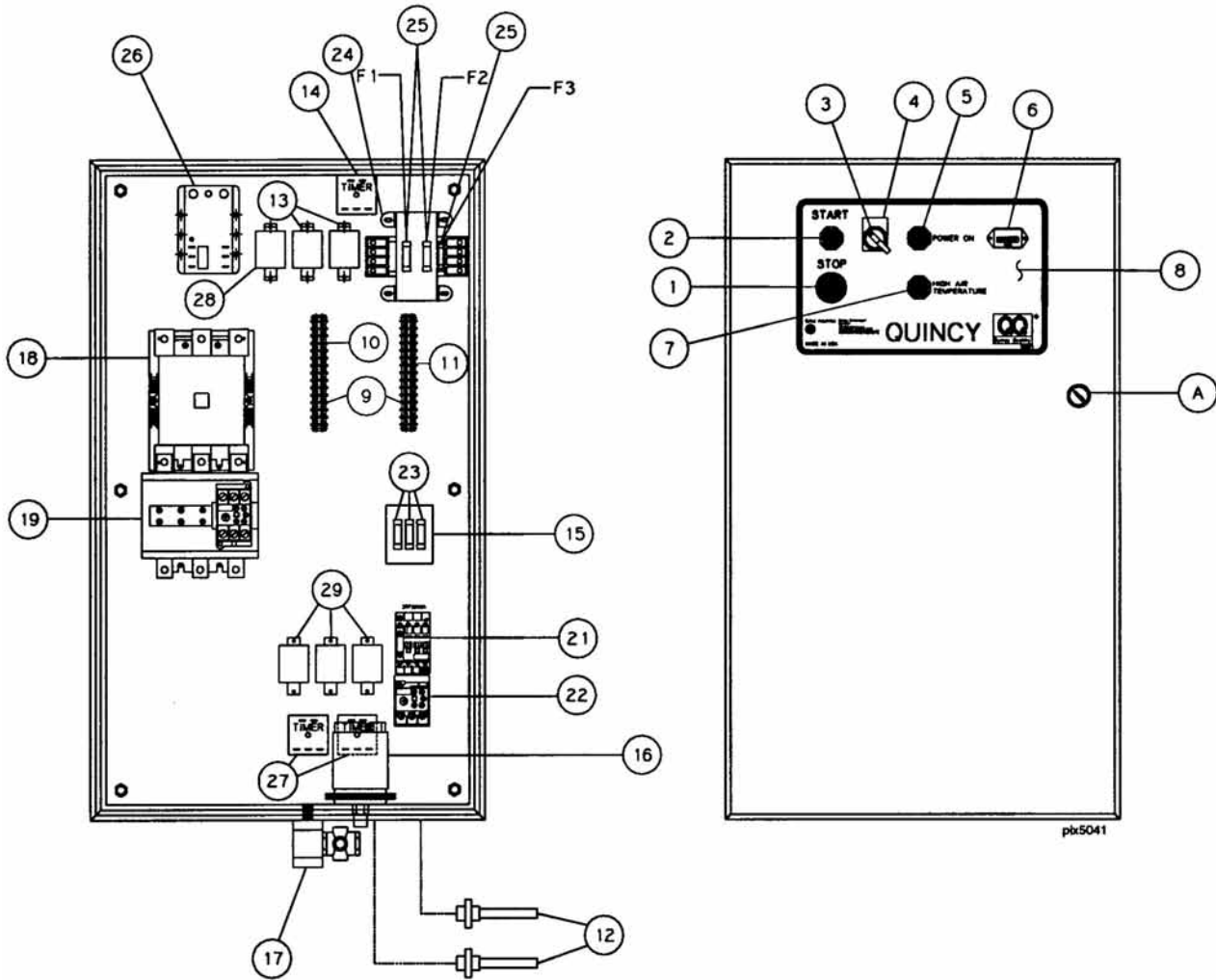
MAINTENANCE PARTS

A	12	140406-904	O-RING, VITON
---	----	------------	---------------

@ indicates torque value in foot pounds. (*lubricated threads*)

* NOT AVAILABLE

STARTING GROUP (across the line)



- NOTES-UNLESS OTHERWISE SPECIFIED:
- 1) ITEMS 21-23 ARE FOR AIR-COOLED UNITS ONLY.
 - 2) ITEMS 28 & 29 ARE OPTIONAL.
 - 3) ITEM 20 IS NOT SHOWN.

STARTING GROUP *(across the line)*

ITEM NUMBER	QTY.	PART NUMBER	DESCRIPTION	
1	1		SWITCH-STOP	
<i>Consisting of:</i>	(1)	129089	BLOCK-CONTACT, N. CLOSED	
	(1)	129082	BUTTON	
2	1		SWITCH-START	
<i>Consisting of:</i>	(1)	129090	BLOCK-CONTACT, N. OPEN	
	(1)	129081	BUTTON	
3	1		SWITCH-MODE	
<i>Consisting of:</i>	(1)	129091	BLOCK-CONTACT	
	(1)	129083	KNOB-OPERATOR	
4	1	129103-2	PLATE-LEGEND (AUTO-DUAL ONLY)	
	1	129103-3	PLATE-LEGEND (AUTO-DEMAND ONLY)	
5	1		LIGHT-POWER ON	
<i>Consisting of:</i>	(1)	129807	LENS CAP	
	(1)	129092	BASE-LAMP	
	(1)	129495	LAMP-INCANDESCENT	
6	1	110871-001	HOURMETER	
7	1		LIGHT-HIGH AIR TEMPERATURE	
<i>Consisting of:</i>	(1)	129088	LENS CAP	
	(1)	129092	BASE-LAMP	
	(1)	129495	LAMP-INCANDESCENT	
8	1	129077	DECAL-PANEL	
9	2	123153-014	TERMINAL STRIP	
10	1	125786-019	DECAL-TERMINAL STRIP	
11	1	125786-020	DECAL-TERMINAL STRIP	
12	2	122880-252	TEMPERATURE SWITCH	
13	2	125706-005	RELAY	
14	1	122862-900	TIMER, 15 MINUTES	
15	1	126263-003	FUSE BLOCK	
16	1	4627-001	SWITCH-ELECTRICAL, VACUUM	
17	1	21316	VALVE-SOLENOID, 2-WAY	
18	*		DRIVE MOTOR CONTACTOR	(PAGE 8)
19	*		MOTOR OVERLOAD RELAY	(PAGE 8)
20	*		DRIVE MOTOR HEATER ELEMENT	(PAGE 8)
21	1	141590-01	FAN MOTOR CONTACTOR	
22	*		FAN MOTOR OVERLOAD RELAY	(PAGE 9)
23	*		FAN MOTOR FUSES	(PAGE 9)
24	*		TRANSFORMER	(PAGE 9)
25	*		TRANSFORMER FUSES	(PAGE 10)
<u>OPTIONAL PARTS</u>				
26	*		PHASE MONITOR	(PAGE 10)
27	2	125705-010	TIMER-AUTO RESTART	
28	1	125706-005	RELAY-AUDIBLE ALARM	
29	3	125706-005	RELAY-AUTO RESTART	
<u>MAINTENANCE PARTS</u>				
A	1	141784-001	LATCH-ENCLOSURE, NEMA 1	
		141784-002	LATCH-ENCLOSURE, NEMA 4	

* Quantities and part numbers listed in tabulations on the following pages.

STARTING GROUP *(across the line)*

ITEM 18 **DRIVE MOTOR CONTACTOR**

	<i>QTY</i>	<i>STD EFF</i>	<i>HI/PREM EFF</i>
200V	1	141590-13	141590-13
230V	1	141590-12	141590-12
380V	1	141590-09	141590-09
415V	1	141590-09	141590-09
460V	1	141590-09	141590-09
575V	1	141590-08	141590-08

ITEM 19 **DRIVE MOTOR OVERLOAD**

	<i>QTY</i>	<i>STD EFF</i>	<i>HI/PREM EFF</i>
200V	1	141591-082	141592-006
230V	1	141591-075	141592-005
380V	1	141591-064	141592-004
415V	1	141591-063	141592-004
460V	1	141591-062	141592-004
575V	1	141591-060	141592-004

**NOTE: STANDARD EFFICIENCY OVERLOADS ARE CLASS 10.
HIGH AND PREMIUM EFFICIENCY OVERLOADS ARE CLASS 20.**

ITEM 20 **DRIVE MOTOR HEATER ELEMENT (CLASS 20)**

	<i>QTY</i>	<i>STD EFF</i>	<i>HI/PREM EFF</i>
200V	3	N/A	141607-081
230V	3	N/A	141607-076
380V	3	N/A	141607-070
415V	3	N/A	141607-069
460V	3	N/A	141607-068
575V	3	N/A	141607-066

STARTING GROUP *(across the line)*

ITEM 22 **FAN MOTOR OVERLOAD**

	<i>QTY</i>	<i>STD EFF</i>	<i>HI/PREM EFF</i>
200V	1	141591-007	N/A
230V	1	141591-007	N/A
380V	1	141591-004	N/A
415V	1	141591-004	N/A
460V	1	141591-004	N/A
575V	1	141591-003	N/A

**NOTE: STANDARD EFFICIENCY OVERLOADS ARE CLASS 10.
HIGH AND PREMIUM EFFICIENCY OVERLOADS ARE CLASS 20.**

ITEM 23 **FAN MOTOR FUSES**

	<i>QTY</i>	<i>STD EFF</i>	<i>HI/PREM EFF</i>
200V	3	120654	N/A
230V	3	120654	N/A
380V	3	120670	N/A
415V	3	120669	N/A
460V	3	120677	N/A
575V	3	120676	N/A

ITEM 24 **TRANSFORMER**

	<i>QTY</i>	<i>STD EFF</i>	<i>HI/PREM EFF</i>
200V	1	128413-351	128413-351
230V	1	128413-353	128413-353
380V	1	128413-356	128413-356
415V	1	128413-354	128413-354
460V	1	128413-353	128413-353
575V	1	128413-355	128413-355

STARTING GROUP (*across the line*)

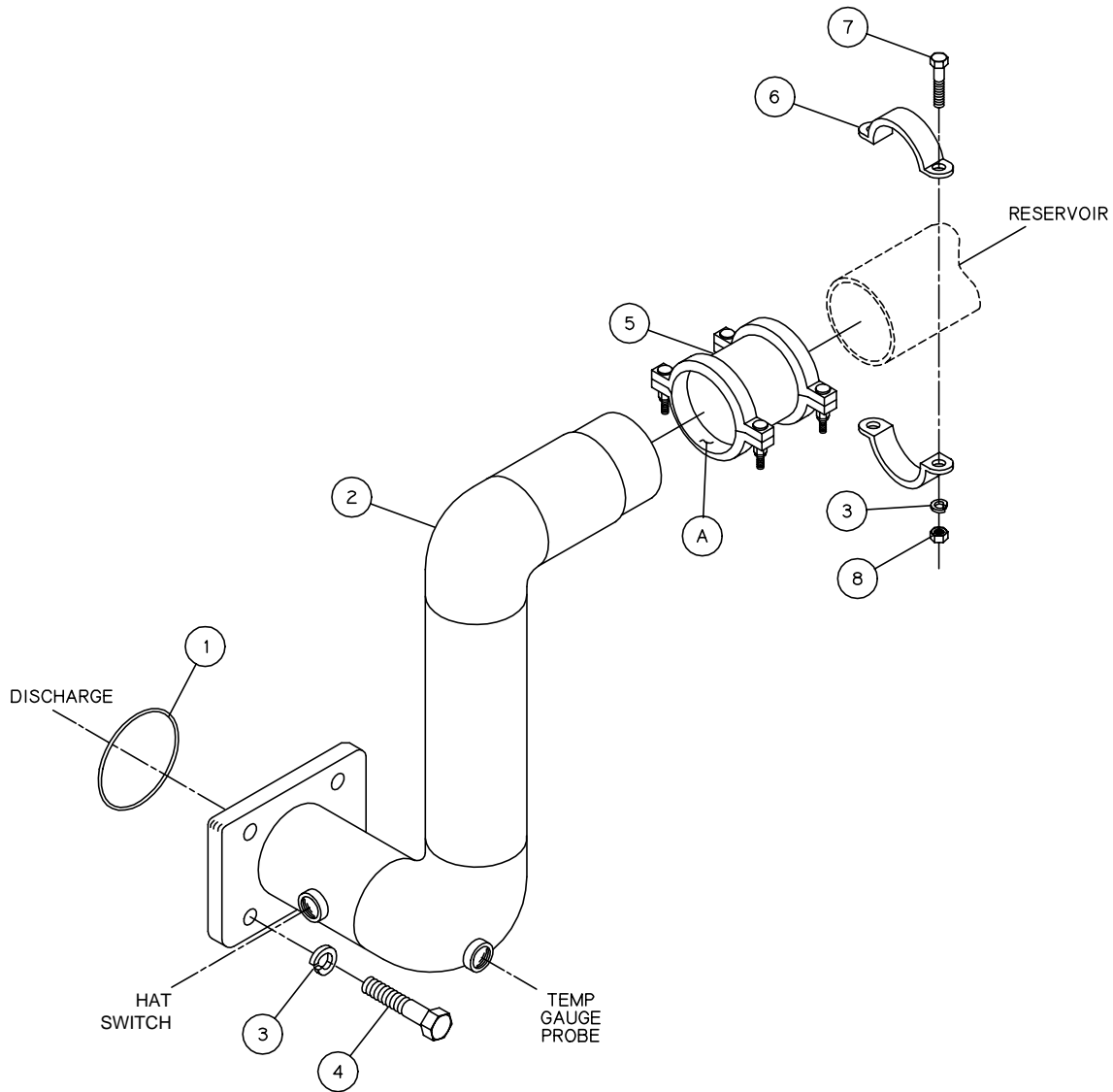
ITEM 25**TRANSFORMER FUSES**

	<i>QTY</i>	<i>PRIMARY</i>	<i>QTY</i>	<i>SECONDARY</i>
200V	2	128857-006	1	128622-400
230V	2	128857-006	1	128622-400
380V	2	128857-015	1	128622-400
415V	2	128857-004	1	128622-400
460V	2	128857-014	1	128622-400
575V	2	128857-013	1	128622-400

ITEM 26**PHASE MONITOR**

	<i>QTY</i>	<i>STD EFF</i>	<i>HI/PREM EFF</i>
200V	1	129200-001	129200-001
230V	1	129200-001	129200-001
380V	1	129200-003	129200-003
415V	1	129200-003	129200-003
460V	1	129200-002	129200-002
575V	1	129200-003	129200-003

**DISCHARGE PIPING GROUP
141267-001**



ITEM NUMBER	QTY.	PART NUMBER	DESCRIPTION
1	1	22749-333	O-RING, VITON
2	1	141390	ADAPTER-DISCHARGE
3	6	123115-08C	LOCKWASHER, 1/2
4	4	123478-N16	SCREW-HEX., 1/2-13 UNC X 1.75, GRADE 5 (@ 55 FT.-LBS.)
5	1	140509S250	COUPLING-FLEXIBLE
6	1	124450-002	CLAMP-PIPE, 2.50
7	2	123478-N15	SCREW-HEX., 1/2-13 UNC X 1.50, GRADE 5 (@ 55 FT.-LBS.)
8	2	124364-N02	NUT-HEX., 1/2-13 UNC

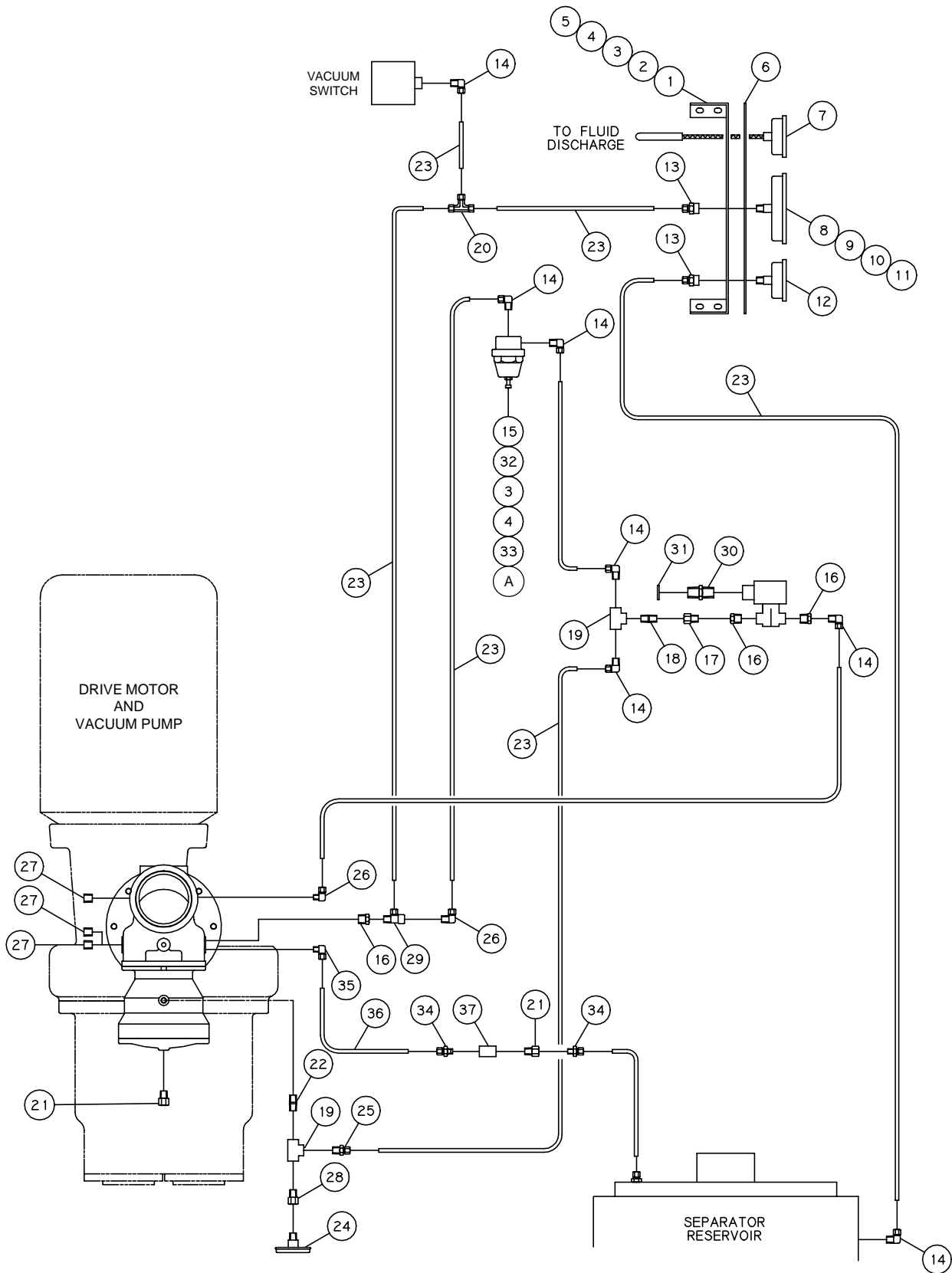
MAINTENANCE PARTS

A	2	140509G250	SEAL-COUPLING
---	---	------------	---------------

@ indicates torque value in foot pounds. (*lubricated threads*)

CONTROL PIPING GROUP (across the line)

141624-001



CONTROL PIPING GROUP (across the line)
141624-001

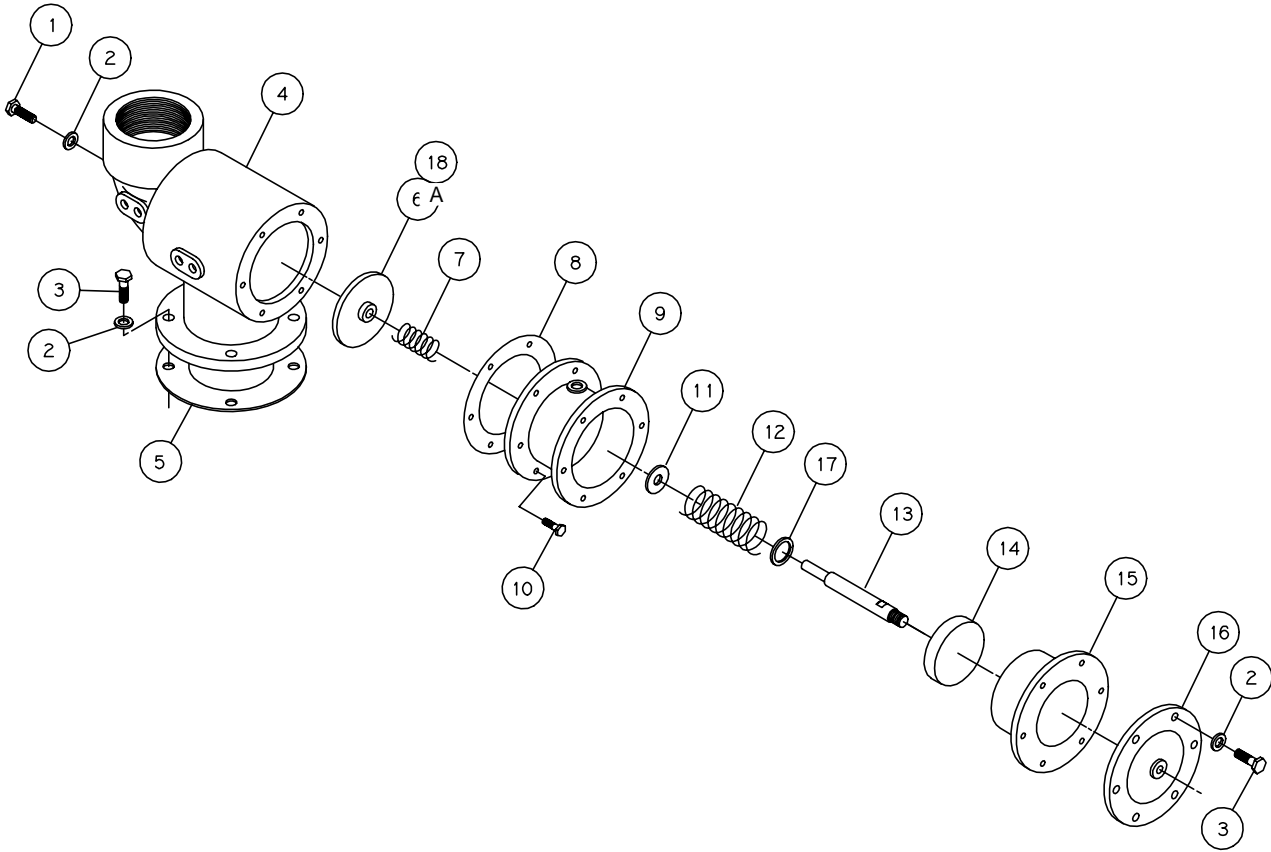
ITEM NUMBER	QTY.	PART NUMBER	DESCRIPTION
1	1	129733	PANEL-GAUGE
2	4	123478-J09	SCREW-HEX., 1/4-20 UNC X .62, GRADE 5 (@ 6 FT.-LBS.)
3	5	110428W025	FLATWASHER, 1/4
4	5	123115-04C	LOCKWASHER, 1/4
5	4	124364-J02	HEX. NUT, 1/4-20 UNC
6	1	129734	DECAL-GAUGE PANEL
7	1	128664	GAUGE-THERMAL
8	1	125600	GAUGE-VACUUM
9	3	123200-G07	SCREW-PAN HEAD, #10-24 UNC X .50
10	3	123107-10C	LOCKWASHER, #10
11	3	124364-G02	NUT-HEX., #10-24 UNC
12	1	120980-003	GAUGE-PRESSURE, AIR
13	2	124347-004	FITTING-TUBE, FEMALE CONNECTOR 1/4 TUBE X 1/4 NPT
14	7	124349-005	FITTING-TUBE, 90 MALE ELBOW 1/4 TUBE X 1/4 NPT
15	1	125368	REGULATOR-PRESSURE
16	3	121033-2	BUSHING-PIPE, 3/8 NPT X 1/4 NPT, BRASS
17	1	125025-006	ORIFICE-LINE FILTER (0.032)
18	1	121032-14	NIPPLE-PIPE, 1/4 NPT X 1.25, BRASS
19	2	121034-2	TEE-PIPE, 1/4 NPT, BRASS
20	1	124974-003	FITTING-TUBE, UNION TEE 1/4 TUBE
21	2	125025-002	ORIFICE-LINE FILTER (0.078)
22	1	121032-3	NIPPLE-PIPE, 1/4 NPT X CLOSE, BRASS
23	36.0 FT	124435-003	TUBING-NYLON, 1/4 O.D.
24	1	160122	BREATHER-1/4 NPT
25	1	124393-005	FITTING-TUBE, MALE CONNECTOR 1/4 TUBE X 1/4 NPT
26	2	124349-004	FITTING-TUBE, 90 MALE ELBOW 1/4 TUBE X 1/8 NPT
27	3	121160	PLUG-PIPE, 1/8 NPT
28	1	125025-005	ORIFICE-LINE FILTER (0.024)
29	1	20201	FITTING-TEE, 1/4 TUBE X 1/8 NPT X 1/8 NPT
30	1	22455	CONNECTOR-ELECTRICAL, 1/2
31	1	8052	LOCKNUT-CONDUIT, 1/2
32	1	123478-J12	SCREW-HEX., 1/4-20 UNC X 1.00, GRADE 5 (@ 6 FT.-LBS.)
33	1	121921-002	SPACER-PIPE, 1/4 NPT X 0.50
34	2	124393-010	FITTING-TUBE, MALE CONNECTOR 3/8 TUBE X 1/8 NPT
35	1	124349-009	FITTING-ELBOW, 3/8 TUBE X 1/8 NPT
36	8.0 FT	129169	TUBE-STEEL, 3/8 O.D.
37	1	125259-002	FITTING-COUPPING, 1/4 X 1/4, BRASS

MAINTENANCE PARTS

A	1	125368-050	KIT-DIFFERENTIAL PILOT VALVE (<i>includes diaphragm, diaphragm gaskets, seat gasket, seat disk, & seat ring</i>)
---	---	------------	--

@ indicates torque value in foot pounds. (*lubricated threads*)

INLET VALVE GROUP
141269-001



NOTES-UNLESS OTHERWISE SPECIFIED:
1) APPLY LOCTITE 262 TO ITEM 13 AT ASSEMBLY
WITH ITEM 14 AND TO 15 AT ASSEMBLY
WITH ITEM 3.

INLET VALVE GROUP
141269-001

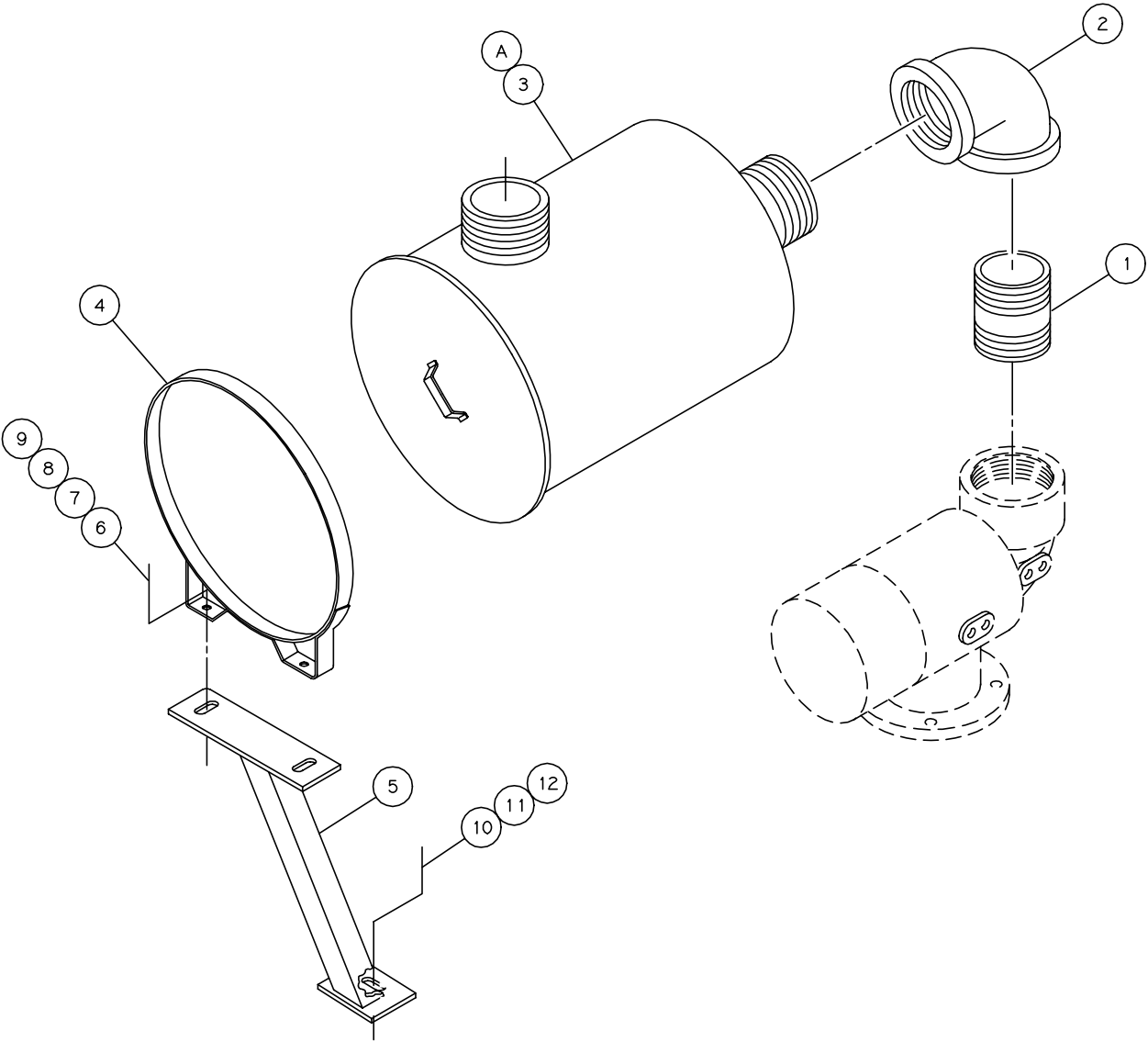
ITEM NUMBER	QTY.	PART NUMBER	DESCRIPTION
1	1	123478-N10	SCREW-HEX., 1/2-13 UNC X 0.75, GRADE 5 (@ 55 FT.-LBS.)
2	7	123115-08C	LOCKWASHER, 1/2
3	16	123478-N15	SCREW-HEX., 1/2-13 UNC X 1.50, GRADE 5 (@ 55 FT.-LBS.)
4	1	122370-005	HOUSING-INLET VALVE
5	1	123549-002	GASKET-INLET VALVE
6	1	122372-4	ASSEMBLY-PLATE, INLET VALVE
7	1	128713	SPRING
8	1	122377	GASKET
9	1	128715	ASSEMBLY-CYLINDER, INLET VALVE
10	1	123478-L12	SCREW-HEX., 3/8-16 UNC X 1.00, GRADE 5 (@ 23 FT.-LBS.)
11	1	128708	SEAL-SHAFT, INLET VALVE
12	1	128714	SPRING-INLET VALVE
13	1	128712	SHAFT-INLET VALVE
14	1	128717	PISTON-INLET VALVE
15	1	128711	DIAPHRAGM-INLET VALVE
16	1	128716	PLATE-COVER
17	1	140675-003	O-RING-FACE SEAL, VITON

MAINTENANCE PARTS

A	1	22749-249	O-RING, VITON
---	---	-----------	---------------

@ indicates torque value in foot pounds. (*lubricated threads*)

INLET PIPING GROUP
141622-001



INLET PIPING GROUP
141622-001

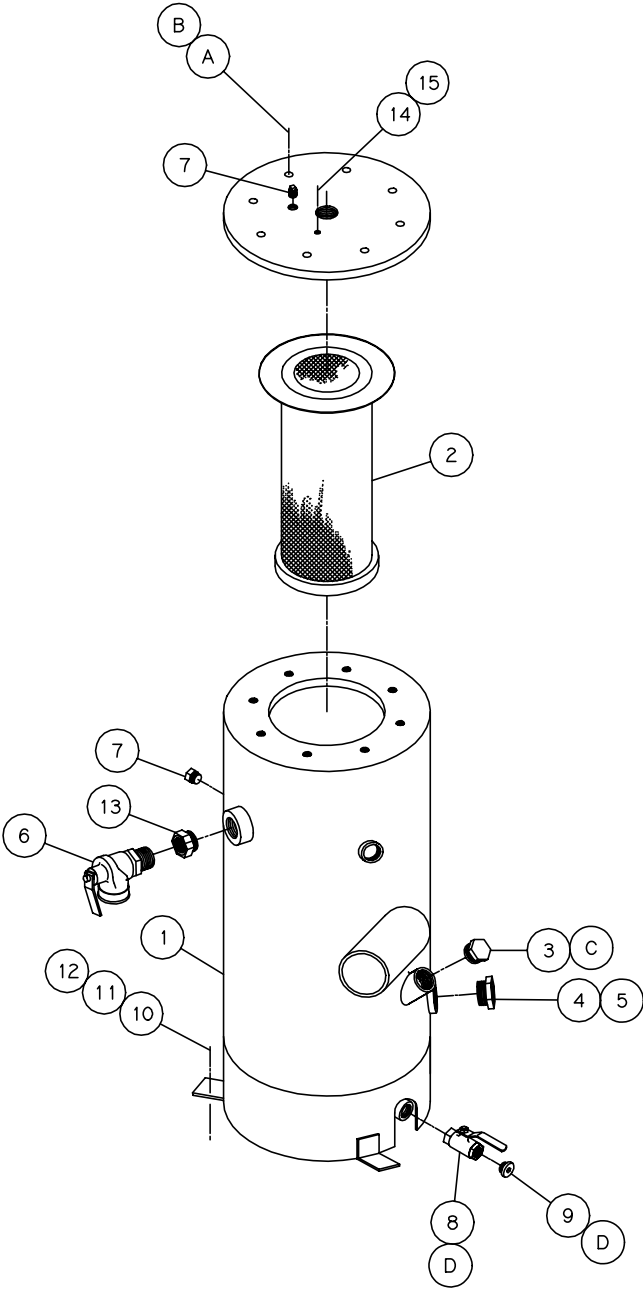
ITEM NUMBER	QTY.	PART NUMBER	DESCRIPTION
1	1	141630	NIPPLE-5.00 NPT X 5.1/2 NPT, TBE
2	1	140810	ELBOW-PIPE, 5.00 NPT
3	1	127357F013	FILTER-AIR INLET
4	1	120002	BAND-AIR FILTER MOUNTING
5	1	141629	SUPPORT-AIR INLET FILTER
6	2	123478-M14	SCREW-HEX., 7/16-14 UNC X 1.25, GRADE 5 (@ 35 FT.-LBS.)
7	2	110428W044	FLATWASHER, 7/16
8	2	123115-07C	LOCKWASHER, 7/16
9	2	124364-M02	NUT-HEX., 7/16-14 UNC
10	1	123478-Q14	SCREW-HEX., 5/8-11 UNC X 1.25 GRADE 5 (@110 FT.-LBS.)
11	1	110428W062	FLATWASHER, 5/8
12	1	123115-10C	LOCKWASHER, 5/8

MAINTENANCE PARTS

A	1	127357E005	ELEMENT-INLET FILTER
---	---	------------	----------------------

@ indicates torque value in foot pounds. (*lubricated threads*)

SEPARATOR/RESERVOIR GROUP
141263-002

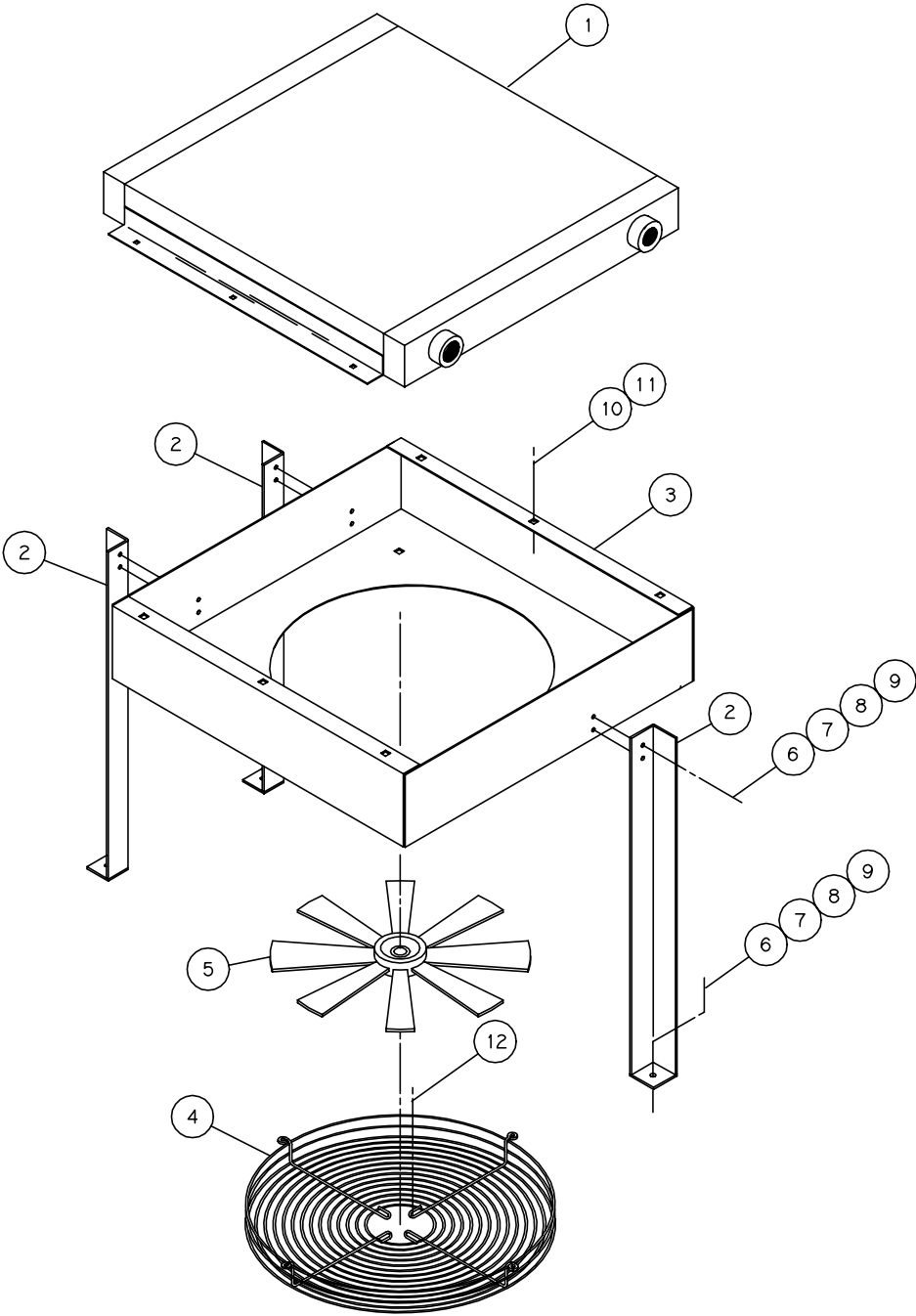


SEPARATOR/RESERVOIR GROUP
141263-002

ITEM NUMBER	QTY.	PART NUMBER	DESCRIPTION
1	1	141388	RESERVOIR-SEPARATOR
2	1	124487-014	SEPARATOR
3	1	129844-162	CAP-FILLER, SAE O-RING
4	1	129843-188	SIGHT GLASS
5	1	140406-924	O-RING, VITON
6	1	141966-53	SAFETY VALVE
7	2	2574	PLUG-PIPE, 1/4 NPT
8	1	129730-050	VALVE-QUARTER TURN, SAE O-RING
9	1	128883-075	PLUG-PIPE, 3/4 SAE O-RING
10	3	123478-N14	SCREW-HEX., 1/2-13 UNC X 1.25, GRADE 5 (@ 55 FT.-LBS.)
11	6	110428W050	FLATWASHER, 1/2
12	3	124370-N02	LOCKNUT, 1/2-13 UNC (@ 85 IN.-LBS.)
13		<i>Not Used</i>	
14	1	126353-006	FITTING-TUBE, MALE CONNECTOR 1/4 TUBE X 1/4 NPT
15	1	140323-7	TUBE-STEEL, 1/4 O.D.
<u>MAINTENANCE PARTS</u>			
A	12	123478-N14	SCREW-HEX., 1/2-13 UNC X 1.25, GRADE 5 (@ 55 FT.-LBS.)
B	12	123115-08C	LOCKWASHER-1/2
C	1	140406-924	O-RING, VITON
D	2	140406-908	O-RING, VITON

@ indicates torque value in foot pounds. (*lubricated threads*)

COOLER GROUP

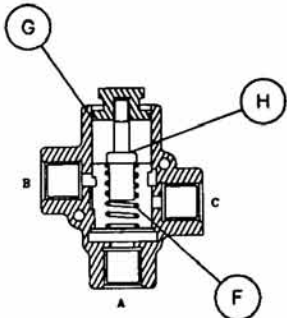


COOLER GROUP

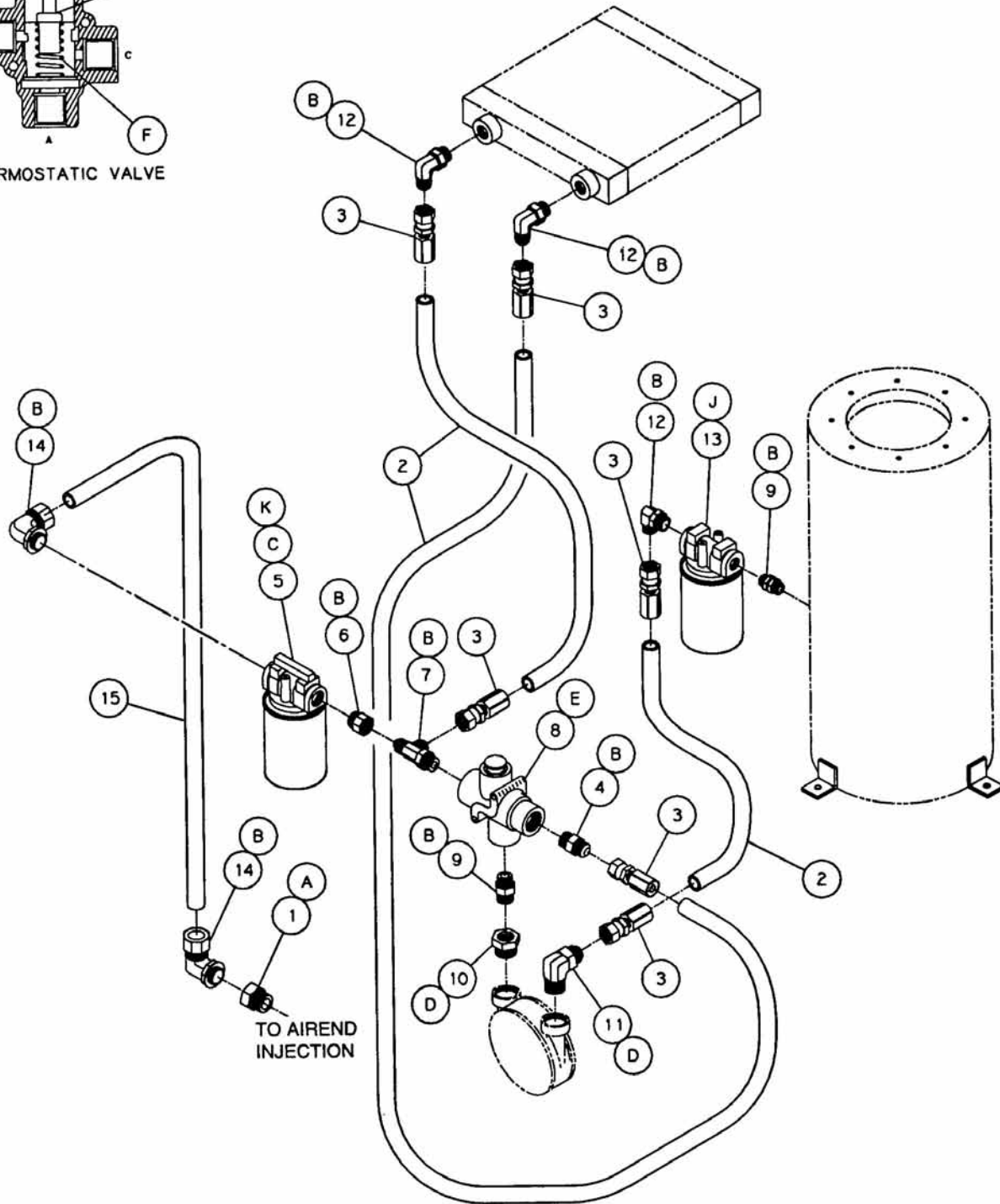
ITEM NUMBER	QTY.	PART NUMBER	DESCRIPTION
		141486-001 L/CABINET	141486-002 W/CABINET
1	1	141396	← COOLER-COMBINATION AIR/FLUID
2	3	141393	141394 SUPPORT-COOLER
3	1	141397	← SHROUD-FAN
4	1	141223	← GUARD-FAN
5	1	126511-034	← FAN
6	9	123478-K14	← SCREW-HEX., 5/16-18 UNC X 1.25, GRADE 5 (@ 13 FT.-LBS.)
7	9	123115-05C	← LOCKWASHER, 5/16
8	9	110428W031	← FLATWASHER, 5/16
9	9	124364-K02	← NUT-HEX., 5/16-18 UNC
10	10	123478-K12	← SCREW-HEX., 5/16-18 UNC X 1.00, GRADE 5 (@ 13 FT.-LBS.)
11	10	8452	← NUT-SPEED, 5/16-18 UNC
12	4	141631-L10	← SCREW-CAP., 3/8-16 UNC X 0.75, GRADE 5 (@ 23 FT.-LBS.)

@ indicates torque value in foot pounds. (***lubricated threads***)

FLUID PIPING GROUP (aircooled)
141196-001



THERMOSTATIC VALVE



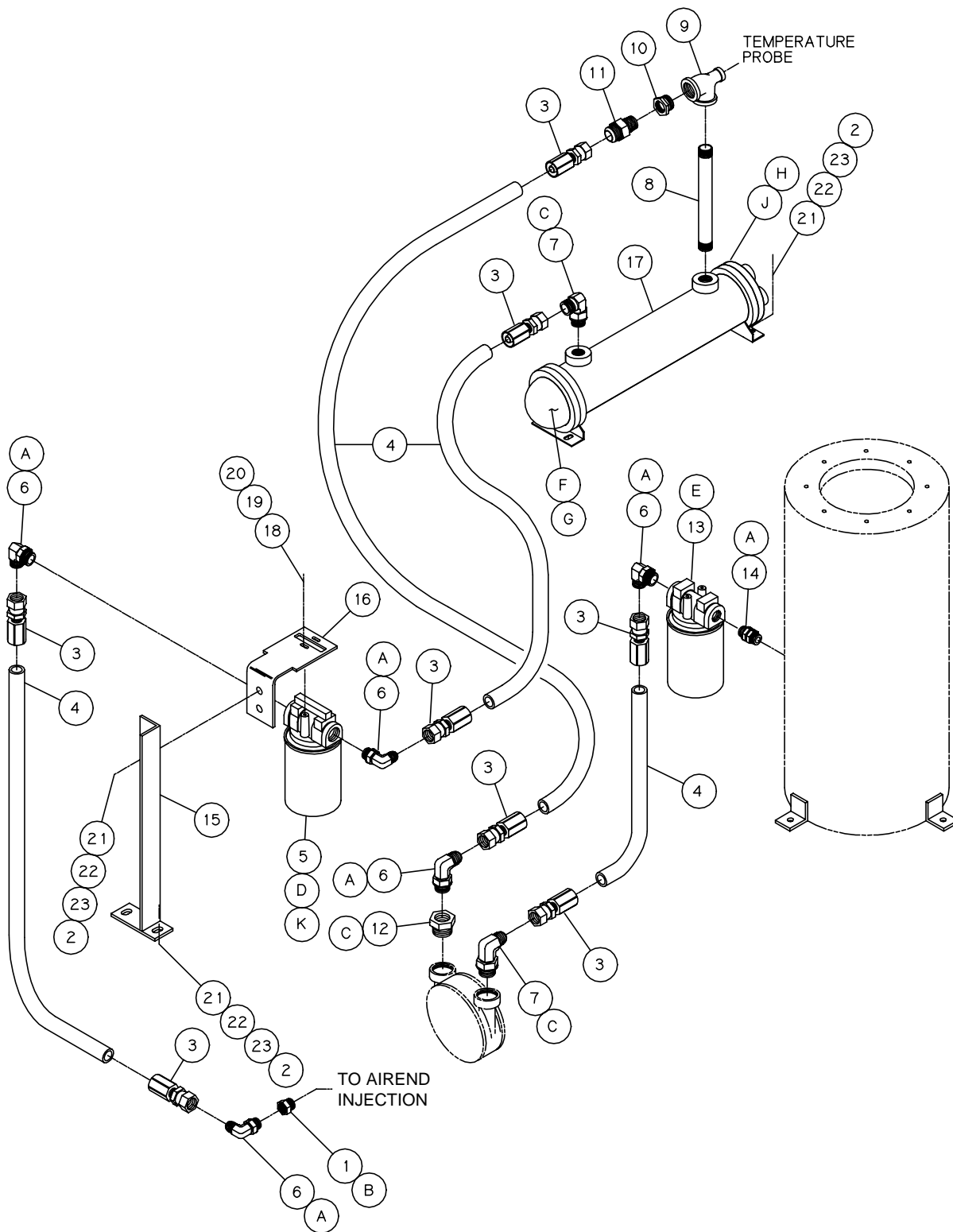
FLUID PIPING GROUP (aircooled)
141196-001

ITEM NUMBER	QTY.	PART NUMBER	DESCRIPTION
1	1	129208-020	FITTING-ADAPTOR, 1-1/16 X 1-5/8 SAE O-RING
2	15.0 FT	123160-05	HOSE-FLUID, 1.08 O.D.
3	6	123163-05	FITTING-HOSE, FEMALE 1-1/16 HOSE X 3/4-14 NPT
4	1	129048-015	FITTING-HOSE, 1-1/16 TUBE X 1-1/16-12 NPT SAE O-RING
5	1	129576	HEAD-FILTER, FLUID
6	1	140931-006	FITTING-HOSE, 1-1/16 HOSE X 1-1/16-12 SAE O-RING
7	1	140197-014	FITTING-TEE, 1-1/16 HOSE X 3/4-16 SAE O-RING
8	1	128786-180	VALVE-THERMOSTATIC
9	2	128884-106	FITTING-UNION, 1-1/16 SAE O-RING
10	1	129208-017	FITTING-ADAPTOR, 1-5/16 X 1-1/16 SAE O-RING
11	1	129010-016	FITTING-ELBOW, 1-1/16 NPT X 1-5/16 SAE
12	3	129010-015	FITTING-ELBOW, 1-1/16 NPT X 1-1/16 SAE
13	1	141100-001	HEAD-STRAINER, FLUID
14	2	128886-008	FITTING-ELBOW, 3/4 TUBE X 1-1/16 SAE O-RING
15	1	121918-099	TUBE-FORMED, .75 O.D.

MAINTENANCE PARTS

A	1	140406-920	O-RING, VITON
B	10	140406-912	O-RING, VITON
C	1	128381-050	ELEMENT-FLUID FILTER
D	2	140406-916	O-RING, VITON
E	1	128786-058	REPAIR KIT-THERMOSTATIC VALVE <i>(includes items F, G, and H)</i>
F	1	125732-051	SPRING-THERMOSTATIC VALVE
G	1	128786-052	O-RING, VITON
H	1	128786-059	ELEMENT
J	1	141100-050	ELEMENT-STRAINER
K	1	129575-052	INDICATOR-FLUID FILTER

FLUID PIPING GROUP (watercooled)
141248-001



FLUID PIPING GROUP (watercooled)
141248-001

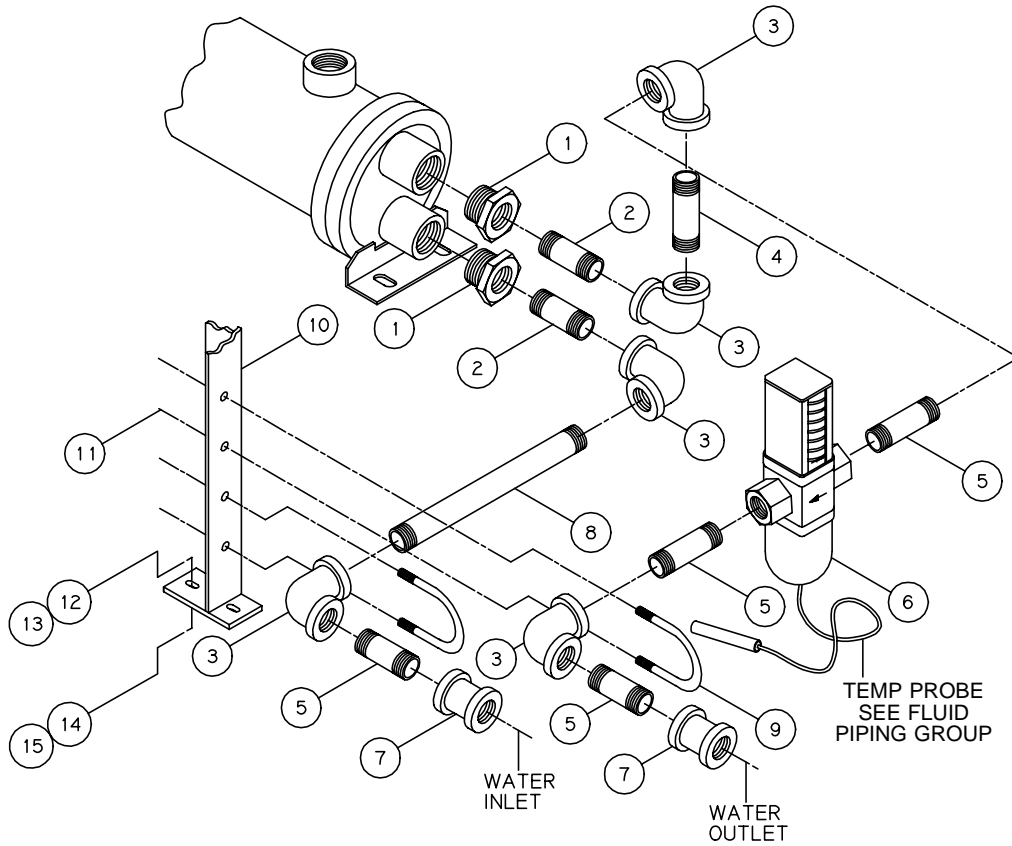
ITEM NUMBER	QTY.	PART NUMBER	DESCRIPTION
1	1	129208-020	FITTING-ADAPTOR, 1-1/16 X 1-5/8 SAE O-RING
2	8	124364-L02	NUT-HEX., 3/8-16 UNC
3	8	123163-05	FITTING-HOSE, FEMALE 1-1/16 HOSE X 3/4-14 NPT
4	15.0 FT	123160-05	HOSE-FLUID, 1.08 O.D.
5	1	129578-2	ASSEMBLY-FLUID FILTER
6	5	129010-015	FITTING-ELBOW, 1-1/16 NPT X 1-1/16 SAE
7	2	129010-016	FITTING-ELBOW, 1-1/16 NPT X 1-5/16 SAE
8	1	125938-072	NIPPLE-PIPE, 1-1/4 NPT X 9.75
9	1	21741	TEE-PIPE, 1-1/4 NPT X 1/2 NPT X 1-1/4 NPT
10	1	3673	BUSHING-PIPE, 1-1/4 NPT X 1.00 NPT
11	1	123166-23	FITTING-TUBE, MALE CONNECTOR 3/4 TUBE X 1.00 NPT
12	1	129208-017	FITTING-ADAPTOR, 1-5/16 X 1-1/16 SAE O-RING
13	1	141100	ASSEMBLY-FLUID STRAINER
14	1	128884-106	FITTING-UNION, 1-1/16 SAE O-RING
15	1	141491	BRACKET-SUPPORT
16	1	125377	BRACKET-FLUID FILTER
17	1	22708-17	HEAT EXCHANGER-FLUID COOLER
18	2	123478-J10	SCREW-HEX., 1/4-20 UNC X .74, GRADE 5 (@ 6 FT.-LBS.)
19	2	123115-04C	LOCKWASHER, 1/4
20	2	110428N025	FLATWASHER, 1/4
21	8	123478-L14	SCREW-HEX., 3/8-16 UNC X 1.25, GRADE 5 (@ 23 FT.-LBS.)
22	8	123115-06C	LOCKWASHER, 3/8
23	8	110428W038	FLATWASHER, 3/8

MAINTENANCE PARTS

A	6	140406-912	O-RING, VITON
B	1	140406-920	O-RING, VITON
C	3	140406-916	O-RING, VITON
D	1	128381-050	ELEMENT-FLUID FILTER
E	1	141100-050	ELEMENT-STRAINER
F	1	22708-727	GASKET-COOLER, IN/OUT END
G	1	22708-725	BONNET-COOLER, IN/OUT END
H	1	22708-728	GASKET-COOLER, RETURN END
J	1	22708-726	BONNET-COOLER, RETURN END
K	1	129575-052	INDICATOR-FLUID FILTER

WATER PIPING GROUP

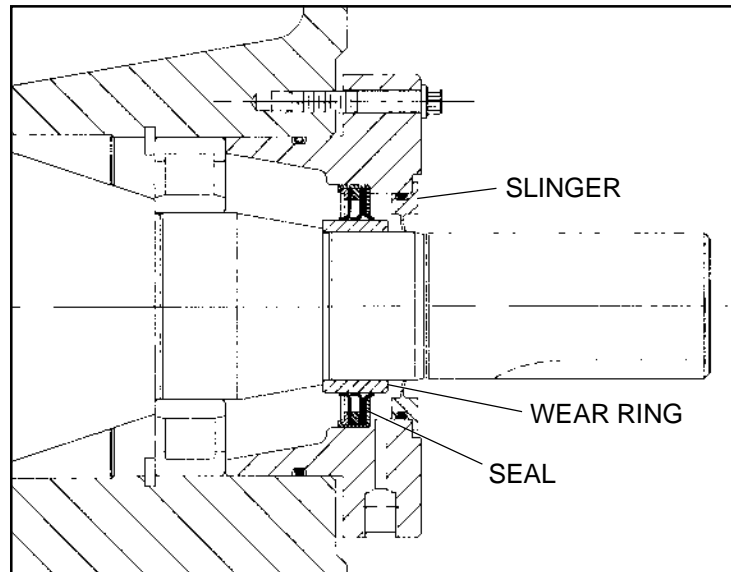
141463-001



ITEM NUMBER	QTY.	PART NUMBER	DESCRIPTION
1	2	125868-012	BUSHING-PIPE, 1.00 NPT X 1/2 NPT
2	2	126018-010	NIPPLE-PIPE, 1/2 NPT X 2.00
3	5	21923	ELBOW-PIPE, 1/2 NPT
4	1	126018-026	NIPPLE-PIPE, 1/2 NPT X 4.00
5	4	126018-016	NIPPLE-PIPE, 1/2 NPT X 2.75
6	1	7651	VALVE-WATER REGULATING
7	2	23976	COUPLING-PIPE, 1/2 NPT
8	1	126018-054	NIPPLE-PIPE, 1/2 NPT X 7.50
9	2	120320	U BOLT-1/4-20 UNC
10	1	141407	BRACKET-SUPPORT
11	4	123115-05C	LOCKWASHER, 5/16
12	2	123478-K14	SCREW-HEX., 5/16-18 UNC X 1.25, GRADE 5 (@ 13 FT.-LBS.)
13	2	110428W031	FLATWASHER, 5/16
14	2	123114-05C	LOCKWASHER, 5/16
15	2	124364-K02	NUT-HEX., 5/16-18 UNC

@ indicates torque value in foot pounds. (*lubricated threads*)

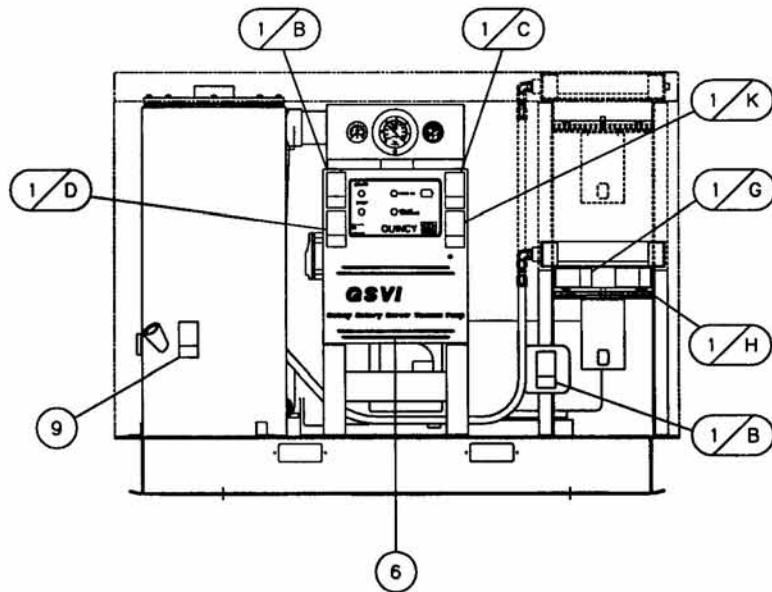
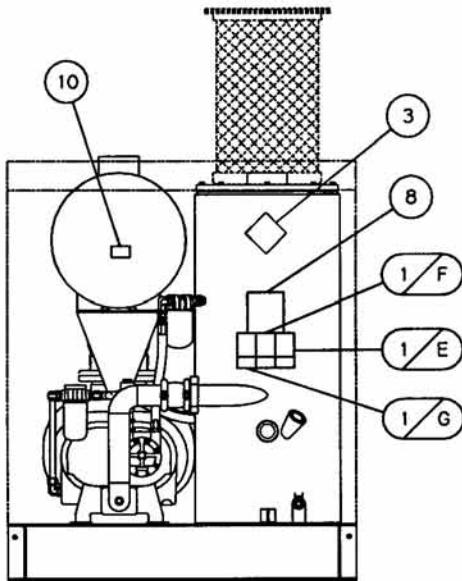
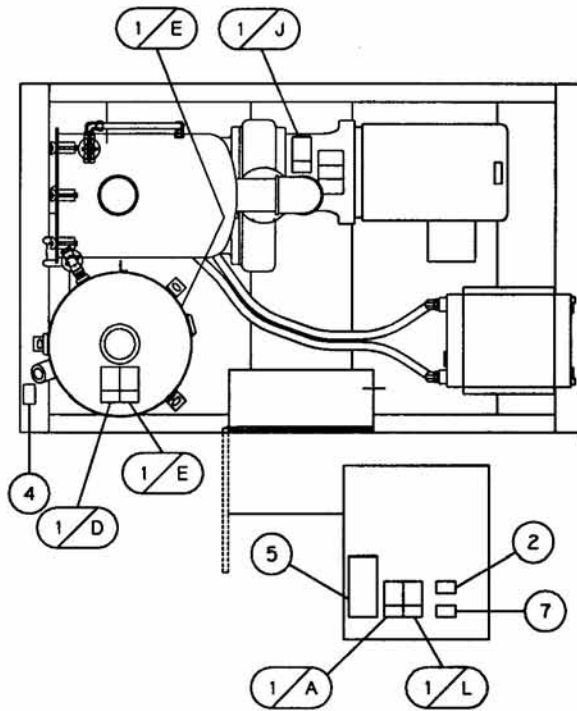
SHAFT SEAL KIT



ITEM NUMBER	QTY.	PART NUMBER	DESCRIPTION
1	1	140209	KIT-SHAFT SEAL (<i>includes items 2, 3, & 4</i>)
2	1		SLINGER
3	1		SEAL-SHAFT
4	1		RING-WEAR

NOTICE! Reference *QSVI Instruction Manual* to install compressor shaft seal. Tool Kit 140284 for *QSVI* shaft seal and wear ring installation can be purchased from Quincy Compressor.

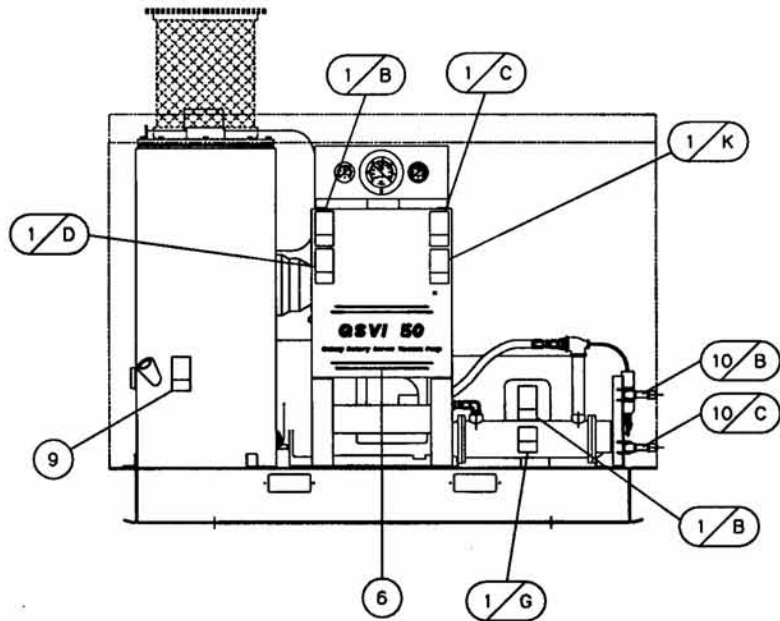
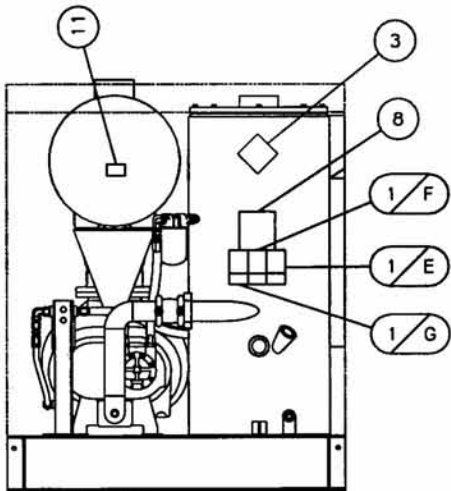
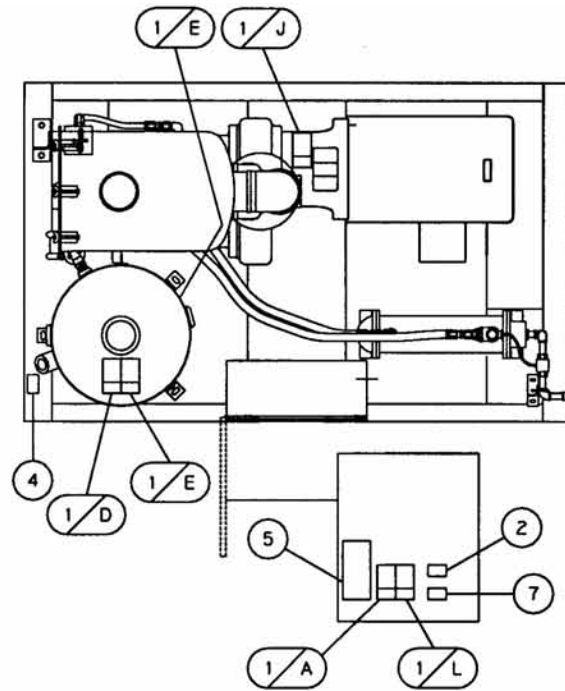
DECAL GROUP (aircooled)
141413-001 (less cabinet)



DECAL GROUP (aircooled)
141413-001 (less cabinet)

ITEM NUMBER	QTY.	PART NUMBER	DESCRIPTION
1A - 1M	1	128004	SHEET-SAFETY DECALS <i>(not all decals on sheet are used)</i>
2	1	128198	LABEL-GENUINE QUINCY COMPONENTS
3	1	124839	DECAL-WARNING, DO NOT REMOVE STAPLES...
4	1	128065	DECAL-DANGER...HOT FLUID UNDER PRESSURE...
5	1	110690-001	ENVELOPE-PLASTIC
6	1	141290-050	DECAL-QSVI 50
7	1	110835	DECAL-COMPRESSOR CONTROL PANEL PART NO
8	1	128425	DECAL-THIS MACHINE IS PROTECTED WITH QUINSYN...
9	1	140322	DECAL-CAUTION...FLUID FILL...
10	1	129869	DECAL-CAUTION, INLET FILTER REQUIRED

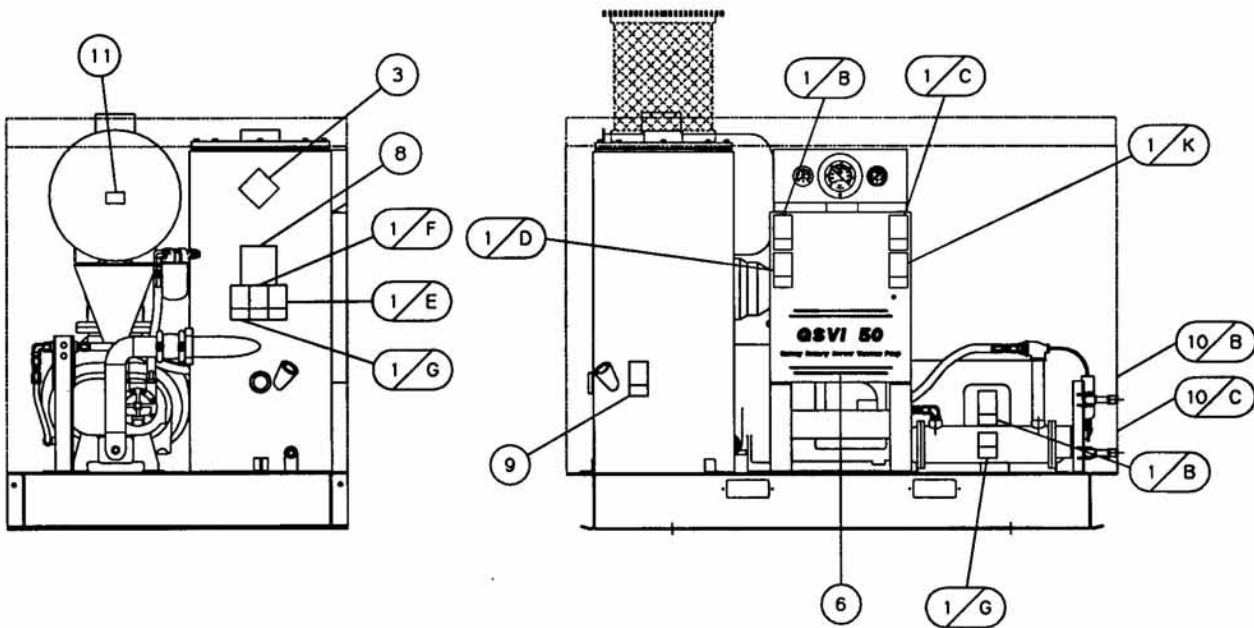
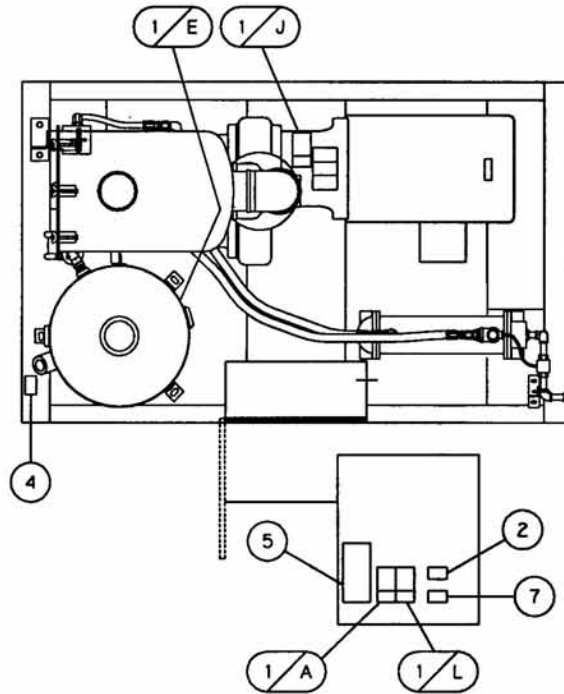
DECAL GROUP (watercooled)
141415-001 (less cabinet)



DECAL GROUP (watercooled)
141415-001 (less cabinet)

ITEM NUMBER	QTY.	PART NUMBER	DESCRIPTION
1A - 1M	1	128004	SHEET-SAFETY DECALS <i>(not all decals on sheet are used)</i>
2	1	128198	LABEL-GENUINE QUINCY COMPONENTS
3	1	124839	DECAL-WARNING, DO NOT REMOVE STAPLES...
4	1	128065	DECAL-DANGER...HOT FLUID UNDER PRESSURE...
5	1	110690-001	ENVELOPE-PLASTIC
6	1	141290-050	DECAL-QSVI 50
7	1	110835	DECAL-COMPRESSOR CONTROL PANEL PART NO
8	1	128425	DECAL-THIS MACHINE IS PROTECTED WITH QUINSYN...
9	1	140322	DECAL-CAUTION...FLUID FILL...
10	1	128280	DECAL-OUTLET IDENTIFICATION
11	1	129869	DECAL-CAUTION, INLET FILTER REQUIRED

DECAL GROUP (watercooled)
141635-001 (with cabinet)



DECAL GROUP (watercooled)
141635-001 (with cabinet)

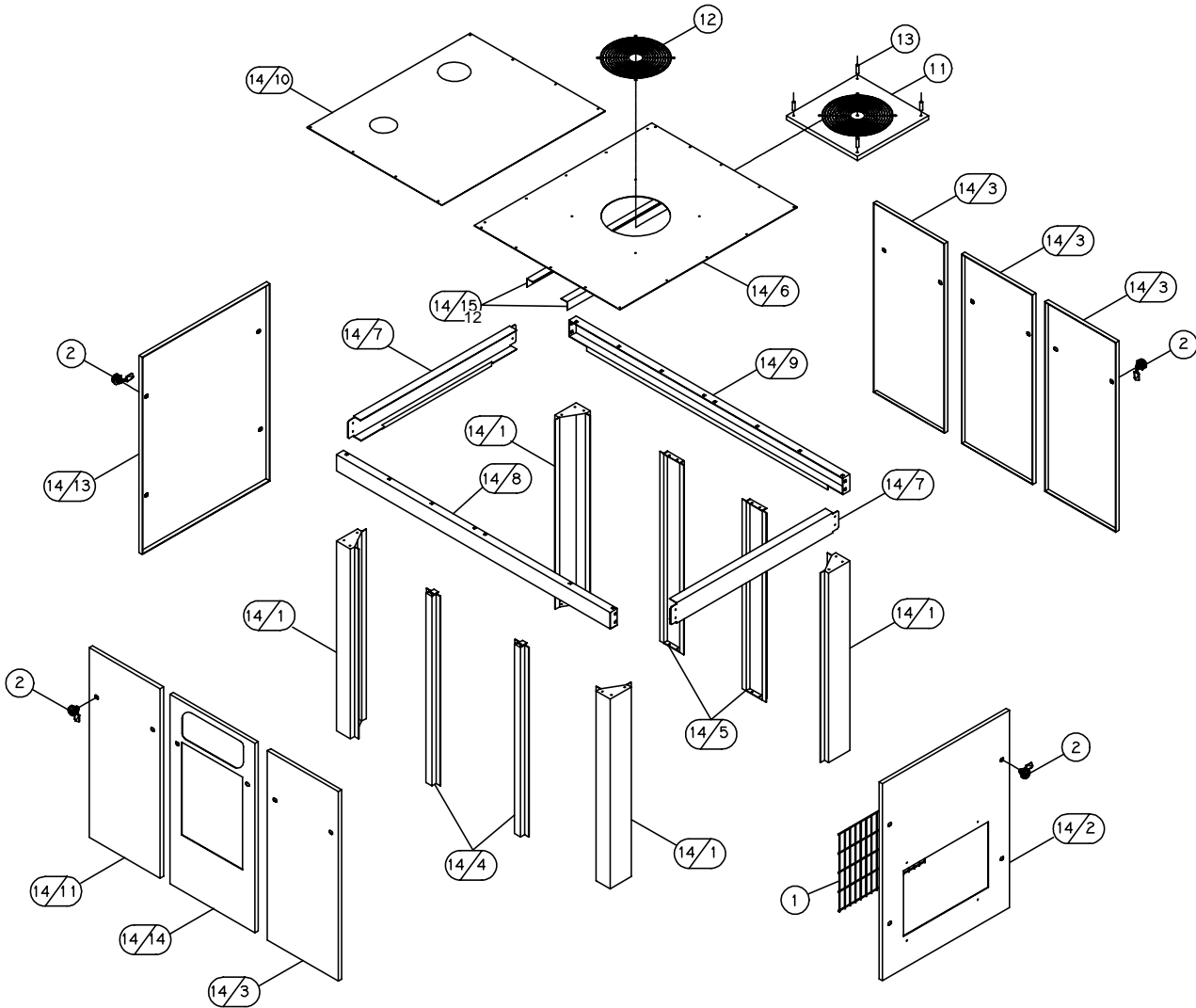
ITEM NUMBER	QTY.	PART NUMBER	DESCRIPTION
1A - 1M	1	128004	SHEET-SAFETY DECALS <i>(not all decals on sheet are used)</i>
2	1	128198	LABEL-GENUINE QUINCY COMPONENTS
3	1	124839	DECAL-WARNING, DO NOT REMOVE STAPLES...
4	1	128065	DECAL-DANGER...HOT FLUID UNDER PRESSURE...
5	1	110690-001	ENVELOPE-PLASTIC
6	1	141290-050	DECAL-QSVI 50
7	1	110835	DECAL-COMPRESSOR CONTROL PANEL PART NO
8	1	128425	DECAL-THIS MACHINE IS PROTECTED WITH QUINSYN...
9	1	140322	DECAL-CAUTION...FLUID FILL...
10	1	128280	DECAL-OUTLET IDENTIFICATION
11	1	129869	DECAL-CAUTION, INLET FILTER REQUIRED

CABINET GROUP (aircooled)
141348-002

ITEM NUMBER	QTY.	PART NUMBER	DESCRIPTION
1	2	129714	SCREEN-CABINET
2	18	127623	LATCH-DOOR, QUARTER TURN
3	32	8452	NUT-SPEED, 5/16-18 UNC
4	10	127984-K12	SCREW-HEX, SOCKET HEAD, 5/16-18 UNC X 1.00
5	62	124364-K02	NUT-HEX., 5/16-18 UNC
6	94	110428W025	FLATWASHER, 1/4
7	62	123115-05C	LOCKWASHER, 5/16
8	40	123478-K12	SCREW-HEX., 5/16-18 UNC X 1.00, GRADE 5 (@ 13 FT.-LBS.)
9	93.8 SF	122544-02	INSULATION-FOAM (NOT SHOWN)
10	40	140061	HEX. SCREW, 5/16-18 UNC X 0.75, GRADE 5 (@ 13 FT.-LBS.)
11	1	141384	KIT-QSVI AIRCOOLED CABINET
11/1	4	129557-10	PANEL-CORNER POST
11/2	1	129557-11	PANEL-AIR INTAKE
11/3	4	129557-12	PANEL,DOOR
11/4	2	141309	PANEL-FRONT DOOR POST
11/5	2	129557-14	PANEL-REAR DOOR POST
11/6	1	141310	PANEL-DOOR
11/7	2	129557-16	PANEL-ROOF SUPPORT
11/8	1	129557-17	PANEL-FRONT ROOF SUPPORT
11/9	1	129557-18	PANEL-REAR ROOF SUPPORT
11/10	1	141627	PANEL-ROOF
11/11	1	129557-20	PANEL-AIR RECEIVER DOOR
11/12	1	141399	PANEL-ROOF
11/13	1	141359	PANEL-AIR INTAKE

@ indicates torque value in foot pounds. (*lubricated threads*)

CABINET GROUP (watercooled)
141380-002



NOTE:
1) ITEMS 3 THRU 10 ARE NOT SHOWN.

CABINET GROUP (watercooled)
141380-002

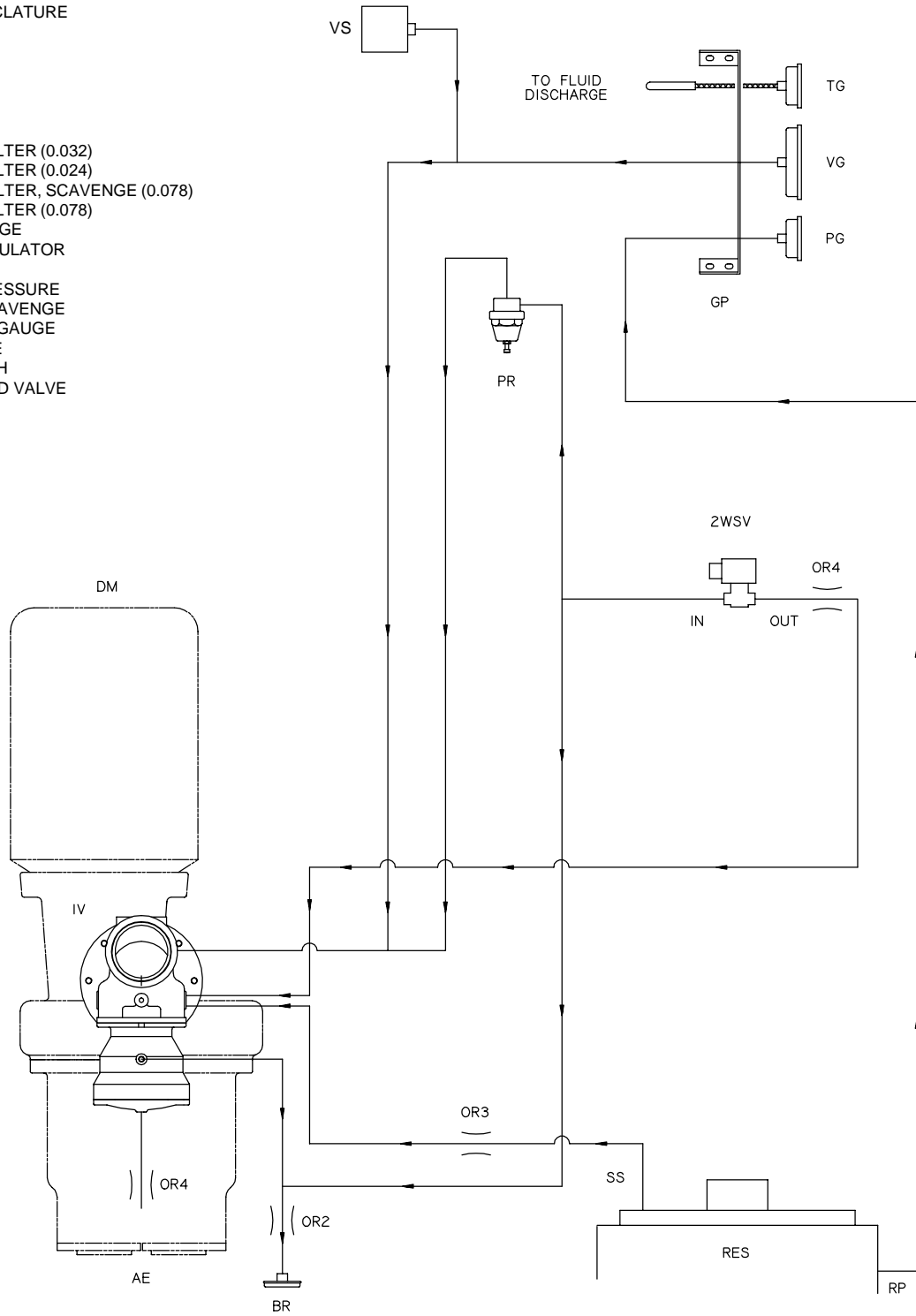
ITEM NUMBER	QTY.	PART NUMBER	DESCRIPTION
1	1	129714	SCREEN-CABINET
2	18	127623	LATCH-DOOR, QUARTER TURN
3	32	8452	NUT-SPEED, 5/16-18 UNC
4	10	127984-K12	SCREW-HEX, SOCKET HEAD, 5/16-18 UNC X 1.00
5	62	124364-K02	NUT-HEX., 5/16-18 UNC
6	94	110428W025	FLATWASHER, 1/4
7	62	123115-05C	LOCKWASHER, 5/16
8	40	123478-K12	SCREW-HEX., 5/16-18 UNC X 1.00, GRADE 5 (@ 13 FT.-LBS.)
9	93.8 SF	122544-02	INSULATION-FOAM (NOT SHOWN)
10	40	140061	HEX. SCREW, 5/16-18 UNC X 0.75, GRADE 5 (@ 13 FT.-LBS.)
11	1	127402-016	FAN-VENT
12	1	128828	GUARD-FAN
13	4	140010	SPACER-FAN
14	1	141628	KIT-QSVI WATERCOOLED CABINET
14/1	4	129557-10	PANEL,CORNER POST
14/2	1	129557-11	PANEL-AIR INTAKE
14/3	4	129557-12	PANEL,DOOR
14/4	2	141309	PANEL-FRONT DOOR POST
14/5	2	129557-14	PANEL-REAR DOOR POST
14/6	1	141409	PANEL-ROOF
14/7	2	129557-16	PANEL-ROOF SUPPORT
14/8	1	129557-17	PANEL-FRONT ROOF SUPPORT
14/9	1	129557-18	PANEL-REAR ROOF SUPPORT
14/10	1	141627	PANEL-ROOF
14/11	1	129557-20	PANEL-AIR RECEIVER DOOR
14/12	2	129557-34	PANEL-SUPPORT
14/13	1	129557-13	PANEL-FRONT DOOR POST
14/14	1	141310	PANEL-DOOR

@ indicates torque value in foot pounds. (*lubricated threads*)

CONTROL PIPING SCHEMATIC (across the line)

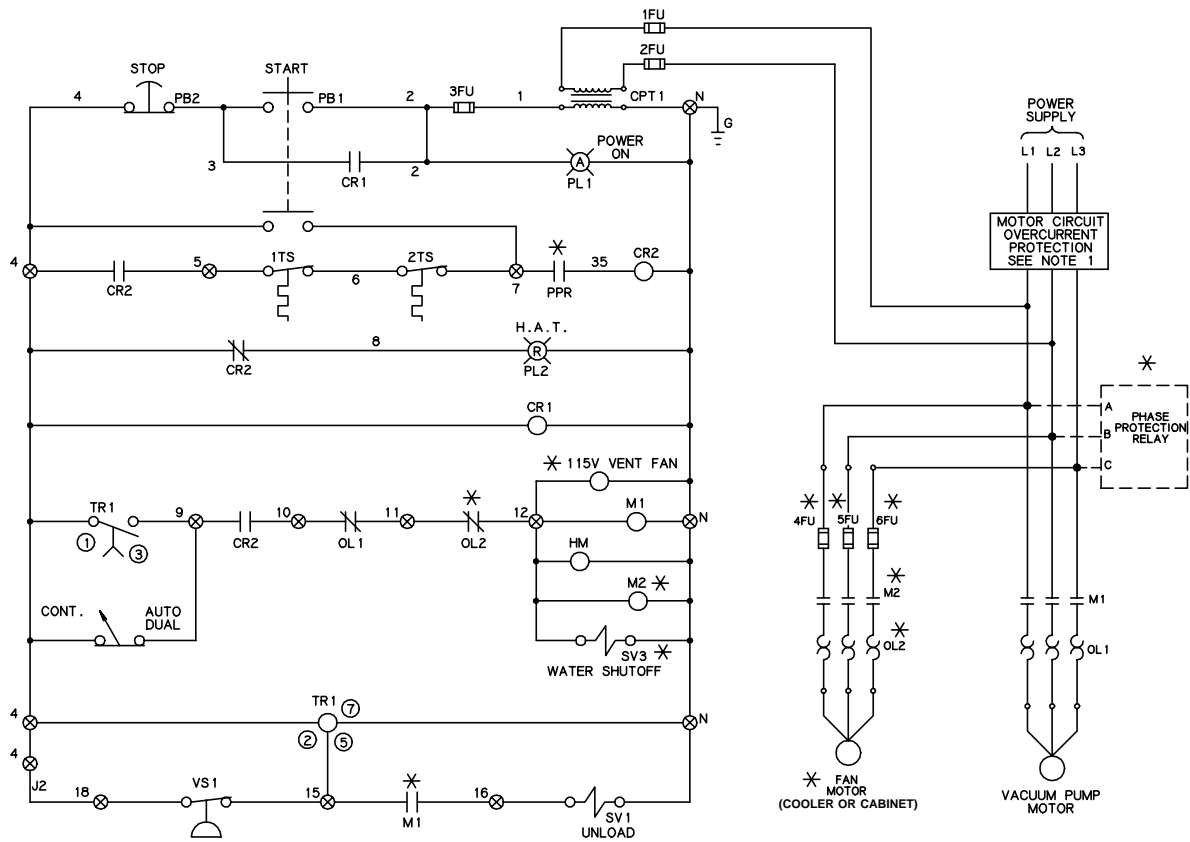
NOMENCLATURE

- AE: AIREND
- BR: BREATHER
- DM: DRIVE MOTOR
- GP: GAUGE PANEL
- IV: INLET VALVE
- OR1: ORIFICE-LINE FILTER (0.032)
- OR2: ORIFICE-LINE FILTER (0.024)
- OR3: ORIFICE-LINE FILTER, SCAVENGE (0.078)
- OR4: ORIFICE-LINE FILTER (0.078)
- PG: PRESSURE GAUGE
- PR: PRESSURE REGULATOR
- RES: RESERVOIR
- RP: RESERVOIR PRESSURE
- SS: SEPARATOR SCAVENGE
- TG: TEMPERATURE GAUGE
- VG: VACUUM GAUGE
- VS: VACUUM SWITCH
- 2WSV: 2-WAY SOLENOID VALVE



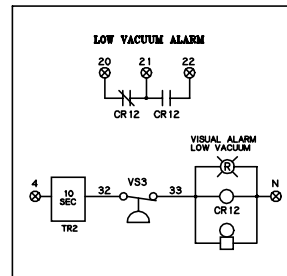
ELECTRICAL CONTROL DIAGRAM (auto dual)

WP1836A



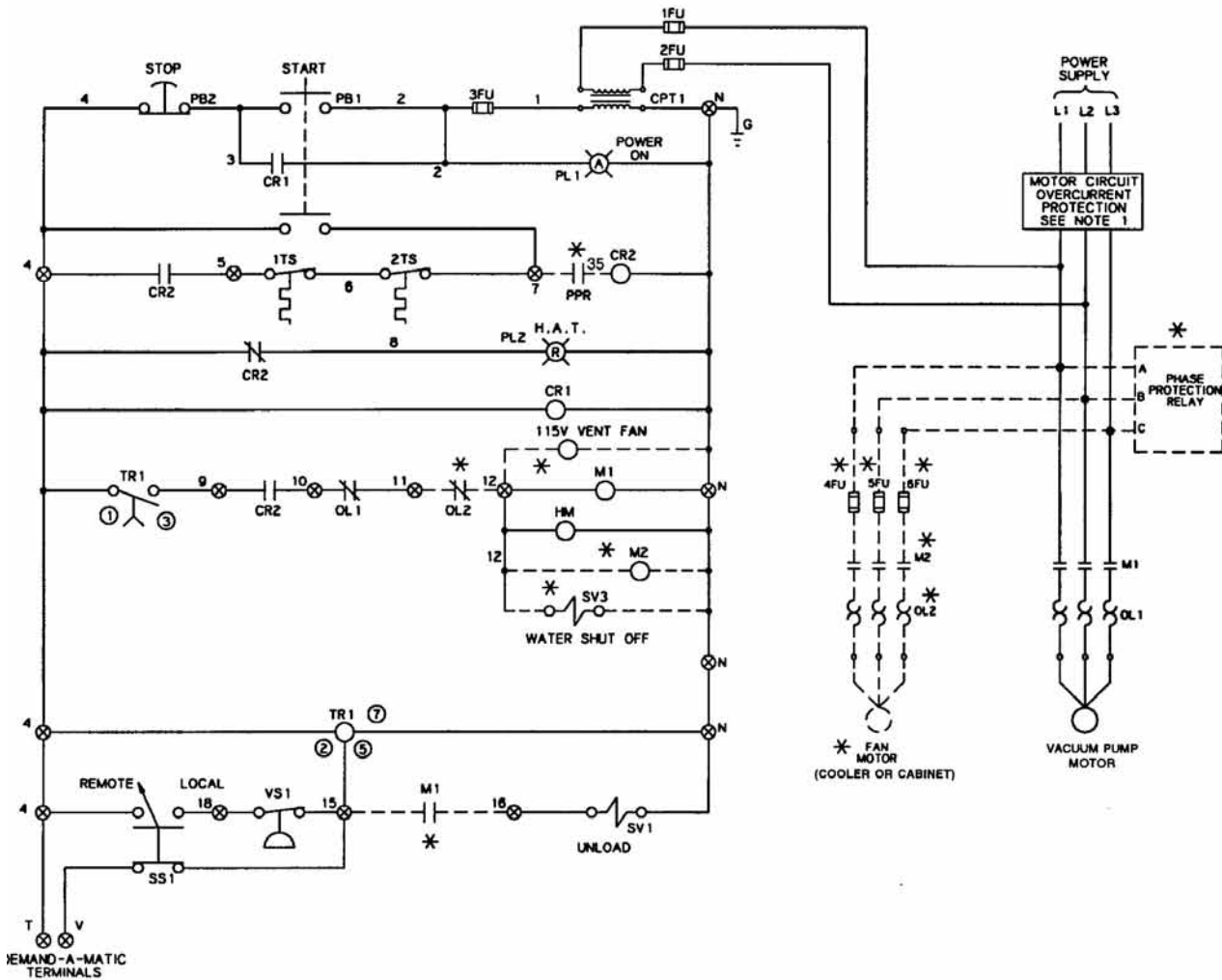
- NOTES**
- 1) AT INSTALLATION THE CUSTOMER IS TO PROVIDE DISCONNECT AND BRANCH CIRCUIT OVERCURRENT PROTECTION IN ACCORDANCE WITH THE NATIONAL ELECTRICAL CODE AND/OR ANY LOCAL CODES HAVING PRECEDENCE.
 - 2) UNLESS OTHERWISE SPECIFIED ALL WIRES ARE RED EXCEPT "N" WIRES ARE WHITE AND "G" WIRE IS GREEN.

NOMENCLATURE	
FU	FUSE
PB	PUSH BUTTON
SS	SELECTOR SWITCH
CR	CONTROL RELAY
CPT	CONTROL POWER TRANS
TS	TEMP. SWITCH
HAT	HIGH AIR TEMP.
PL	PANEL LIGHT
TR	TIMING RELAY
OL	OVERLOAD RELAY
M	CONTACTOR
SV	SOLENOID VALVE
VS	VACUUM SWITCH
⊗	SCREW TERMINAL
⊙	OCTAL SOCKET NUMBER
*	OPTIONALS
HM	HOUR METER
J	JUMPERS

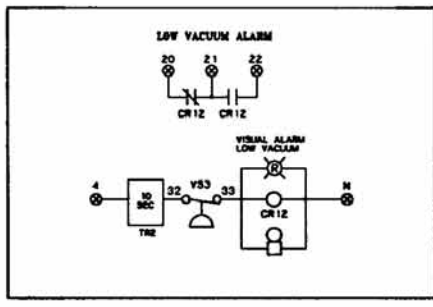


ELECTRICAL CONTROL DIAGRAM (auto-demand)

WP1836C



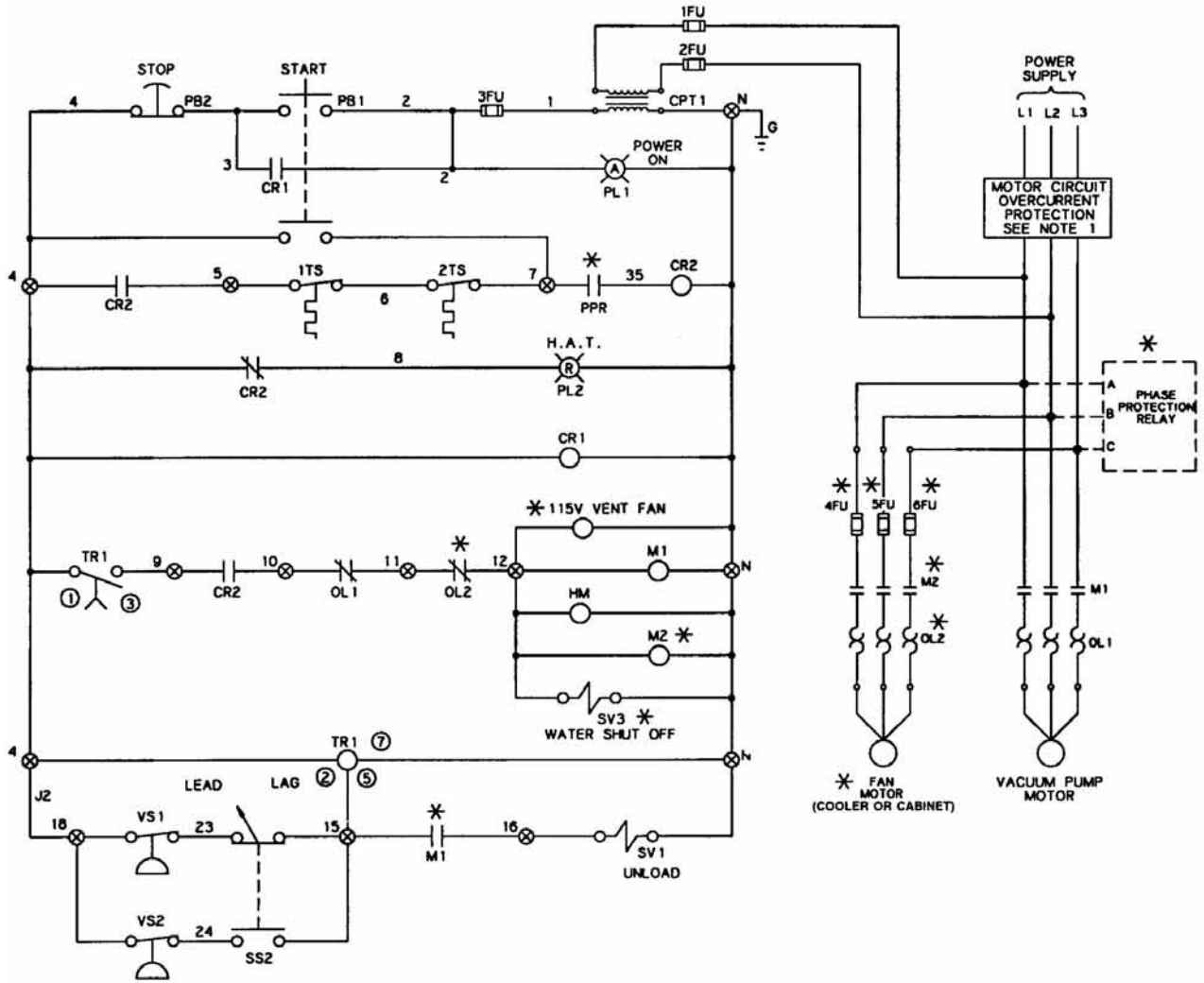
NOMENCLATURE	
FU	FUSE
PB	PUSH BUTTON
SS	SELECTOR SWITCH
CR	CONTROL RELAY
CPT	CONTROL POWER TRANS
TS	TEMP. SWITCH
HAT	HIGH AIR TEMP.
PL	PANEL LIGHT
TR	TIMING RELAY
OL	OVERLOAD RELAY
M	CONTACTOR
SV	SOLENOID VALVE
VS	VACUUM SWITCH
○	SCREW TERMINAL
□	OCTAL SOCKET NUMBER
—	OPTIONALS
HM	HOUR METER
J	JUMPERS



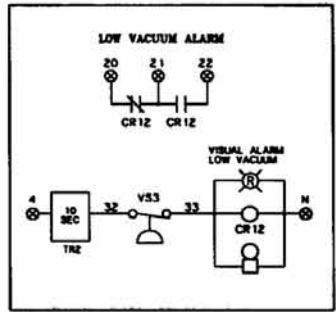
- NOTES
- 1) AT INSTALLATION THE CUSTOMER IS TO PROVIDE DISCONNECT AND BRANCH CIRCUIT OVERCURRENT PROTECTION IN ACCORDANCE WITH THE NATIONAL ELECTRICAL CODE AND/OR ANY LOCAL CODES HAVING PRECEDENCE.
 - 2) UNLESS OTHERWISE SPECIFIED ALL WIRES ARE RED EXCEPT "N" WIRES ARE WHITE AND "G" WIRE IS GREEN.

ELECTRICAL CONTROL DIAGRAM (lead-lag)

WP1836D

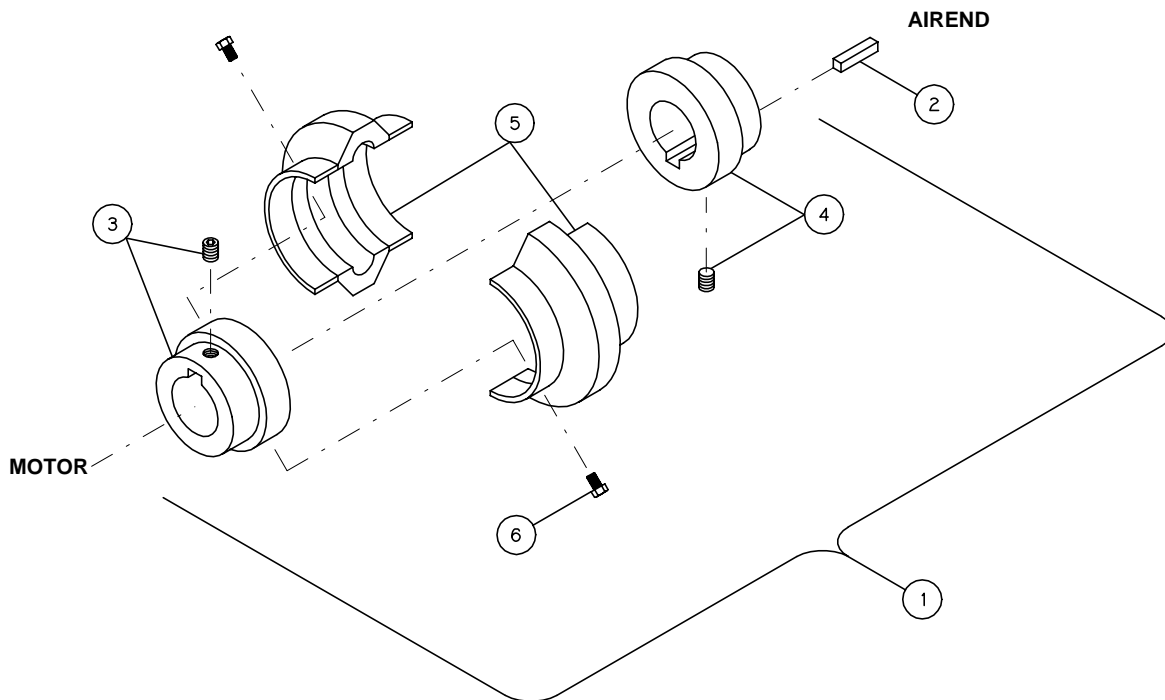


NOMENCLATURE	
FU	FUSE
PB	PUSH BUTTON
SS	SELECTOR SWITCH
CR	CONTROL RELAY
CPT	CONTROL POWER TRANS
TS	TEMP. SWITCH
HAT	HIGH AIR TEMP.
PL	PANEL LIGHT
TR	TIMING RELAY
OL	OVERLOAD RELAY
M	CONTACTOR
SV	SOLENOID VALVE
VS	VACUUM SWITCH
⊗	SCREW TERMINAL
⊙	OCTAL SOCKET NUMBER
*	OPTIONALS
HM	HOUR METER
J	JUMPERS



- NOTES:**
- 1) AT INSTALLATION THE CUSTOMER IS TO PROVIDE DISCONNECT AND BRANCH CIRCUIT OVERCURRENT PROTECTION IN ACCORDANCE WITH THE NATIONAL ELECTRICAL CODE AND/OR ANY LOCAL CODES HAVING PRECEDENCE.
 - 2) UNLESS OTHERWISE SPECIFIED ALL WIRES ARE RED EXCEPT "N" WIRES ARE TO BE WHITE AND "G" WIRE IS GREEN.
 - 3) VS2 IS TO BE SET 0.5 IN. HgV LOWER THAN VS1.

COUPLING GROUP



NOTES - UNLESS OTHERWISE SPECIFIED:
 1) COUPLING HUBS MUST BE INSTALLED WITH KEYWAYS OFFSET
 180° (1/2 TURN) TO MAINTAIN COUPLING BALANCE.

ITEM NUMBER	QTY.	PART NUMBER	DESCRIPTION
1	1	128387-106	COUPLING-DRIVE
2	1	20109	KEY-SQUARE
MAINTENANCE PARTS			
3	1	128387-205	HUB-COUPLING, MOTOR SIDE <i>(includes set screw)</i>
4	1	128387-302	HUB-COUPLING, COMPRESSOR SIDE <i>(includes set screw)</i>
5	1	128387-405	ELEMENT-DRIVE COUPLING <i>(1 pr. of halves sold as a matched set only)</i>
6	1	128387-502	BOLT KIT-DRIVE COUPLING (@ 30FT.-LBS)

@ indicates torque value in foot pounds. (***lubricated threads***)

RECOMMENDED SPARE PARTS

QTY.	PART NUMBER	DESCRIPTION
1	22862-900	TIMER-15 MINUTE, DELAY ON BREAK
2	125706-005	RELAY
2	122880-252	TEMPERATURE SWITCH
*1	124487-014	SEPARATOR
*2	<i>127357E005</i>	<i>ELEMENT-INLET FILTER</i>
*2	128381-050	ELEMENT-FLUID FILTER
*2	<i>141100-050</i>	<i>ELEMENT-STRAINER</i>
<i>1</i>	<i>128786-058</i>	<i>KIT-THERMOSTATIC VALVE</i>
	127462-005	QUINSYN FLUID, STANDARD (5 GAL. CONTAINER)
	127462-055	QUINSYN FLUID, STANDARD (55 GAL. CONTAINER)
	<i>110756-005</i>	<i>QUINSYN-F, FLUID, FOOD GRADE (5 GAL. CONTAINER)</i>
	<i>110756-055</i>	<i>QUINSYN-F, FLUID, FOOD GRADE (55 GAL. CONTAINER)</i>

NOTE: THE ITEMS MARKED (*) ARE INCLUDED IN THE MAINTENANCE KITS BELOW. NEW OR CHANGED ITEMS ABOVE ARE IN BOLD ITALICS.

MAINTENANCE KITS

QUINSYN (standard)

1	127667-S82	MAINTENANCE KIT <i>includes:</i>
1	124487-014	SEPARATOR
5	127462-005	QUINSYN FLUID (5 GAL. CONTAINER)
1	127357E005	ELEMENT-INLET FILTER
3	141100-050	ELEMENT-STAINER
3	128381-050	ELEMENT-FLUID FILTER

QUINSYN-F (food grade)

1	127667FS82	MAINTENANCE KIT <i>includes:</i>
1	124487-014	SEPARATOR
5	110756-005	QUINSYN-F, FLUID (5 GAL. CONTAINER)
1	127357E005	ELEMENT-INLET FILTER
3	141100-050	ELEMENT-STRAINER
3	128381-050	ELEMENT-FLUID FILTER

FLUID ANALYSIS KIT 128515

Provides Early Detection of Excessive Parts Wear, Fluid Breakdown, or a Contaminated Fluid System.

Quincy Service is always near.
There are authorized Quincy
Distributors located worldwide
that stock genuine Quincy parts
& accessories for a wide range of
Quincy products.

Quincy Service specialists are
factory trained and will help keep
you in business. Call for
Authorized Quincy Service.



Quincy Compressor[®]



True Blue ReliabilitySM

Reciprocating / Systems: 217.222.7700
Rotary / Vacuum / Systems: 334.937.5900
Nearest Distributor: 888.424.7729
E-mail: trueblue@quincycompressor.com
Discover: www.quincycompressor.com