

---

---

**GARDNER DENVER®**

13-9-597  
Version: 03  
April 24, 2007

**ELECTRA-SAVER II  
BASE-MOUNTED & TANK MOUNTED  
COMPRESSOR**

**AUTO SENTRY® CONTROLS**

**MODELS**

**EBE99P**

**20, 25 & 30 HP  
(15, 19 & 22 KW)**

**50 HZ**

**PARTS LIST**



**MAINTAIN COMPRESSOR RELIABILITY AND PERFORMANCE WITH  
GENUINE GARDNER DENVER® COMPRESSOR PARTS AND SUPPORT SERVICES**

Gardner Denver® Compressor genuine parts, manufactured to design tolerances, are developed for optimum dependability – specifically for Gardner Denver compressor systems. Design and material innovations are the result of years of experience with hundreds of different compressor applications. Reliability in materials and quality assurance is incorporated in our genuine replacement parts.

Your authorized Gardner Denver Compressor distributor offers all the backup you'll need. A worldwide network of authorized distributors provides the finest product support in the air compressor industry.

Your authorized distributor can support your Gardner Denver air compressor with these services:

1. Trained parts specialists to assist you in selecting the correct replacement parts.
2. Factory warranted new and remanufactured rotary screw airends. Most popular model remanufactured airends are maintained in stock at the Remanufacturing Center in Indianapolis, IN., for purchase on an exchange basis with liberal core credit available for the replacement unit.
3. A full line of factory tested AEON™ compressor lubricants specifically formulated for use in Gardner Denver compressors.
4. Repair and maintenance kits designed with the necessary parts to simplify servicing your compressor.

Authorized distributor service technicians are factory trained and skilled in compressor maintenance and repair. They are ready to respond and assist you by providing fast, expert maintenance and repair services.

**For the location of your local authorized Gardner Denver Air Compressor distributor, refer to the yellow pages of your phone directory, check the Gardner Denver Web Site at [www.gardnerdenver.com](http://www.gardnerdenver.com) or contact:**

**Factory:**

Gardner Denver  
1800 Gardner Expressway  
Quincy, IL 62305

Phone: (217) 222-5400

Fax: (217) 224-7814

**INSTRUCTIONS FOR ORDERING REPAIR PARTS**

When ordering parts, specify Compressor MODEL, Method of Cooling, HORSEPOWER and SERIAL NUMBER (see nameplate on unit). The Airend Serial Number is also stamped on top of the discharge bearing carrier casting.

All orders for Parts should be placed with the nearest authorized distributor.

Where NOT specified, quantity of parts required per compressor or unit is one (1); where more than one is required per unit, quantity is indicated in parenthesis. SPECIFY EXACTLY THE NUMBER OF PARTS REQUIRED.

DO NOT ORDER BY SETS OR GROUPS.

To determine the Right-Hand and Left-Hand side of a compressor, stand at the motor end and look toward the compressor. Right-Hand and Left- Hand are indicated in parenthesis following the part name, i.e. (RH) and (LH), when appropriate.

## **TOTAL PRODUCT SUPPORT – GARDNER DENVER’S CONTINUING COMMITMENT TO YOUR AIR COMPRESSOR PERFORMANCE**

Commitment to total product support continues long after the purchase of your quality Gardner Denver rotary screw compressor.

Gardner Denver original parts incorporate years of experience and improvements in design, materials and quality assurance. Maintaining your compressor investment with Gardner Denver parts will insure protection for the air compressor unit and long, dependable service life.

Your authorized Gardner Denver compressor distributor maintains a complete stock of all common maintenance parts, factory approved AEON lubricants, and Gardner Denver factory warranted exchange airends. In addition, authorized distributor technicians are factory trained, and can provide complete diagnostic, compressor maintenance and repair services.

This manual is designed to assist you in maintaining high performance and receiving many years of dependable service you expect from your Gardner Denver compressor.

### **REMANUFACTURED AIRENDS**

Whenever an airend requires replacement or repair, Gardner Denver offers an industry unique, factory remanufactured airend exchange program. From its modern Remanufacturing Center in Indianapolis, IN., Gardner Denver is committed to supplying you with the highest quality, factory remanufactured airends that are guaranteed to save you time and money.

#### **Immediately Available**

Repair downtime costs you money, which is why the most popular models are in inventory at all times.

#### **Skilled Craftsmen**

Our Remanufacturing assembly technicians average over 20 years experience with air compression products.

#### **Precision Remanufacturing**

All potentially usable parts are thoroughly cleaned, inspected and analyzed. Only those parts that can be brought back to original factory specifications are remanufactured. Every remanufactured airend receives a new overhaul kit: bearings, gears, seals, sleeves and gaskets.

#### **Extensive Testing**

Gardner Denver performs testing that repair houses just don't do. Magnaflux and ultrasonic inspection spot cracked or stressed castings, monochromatic light analysis exposes oil leaks, and coordinate measurement machine inspects to +/- .0001", insuring that all remanufactured airends meet factory performance specifications.

#### **Warranty**

Gardner Denver backs up every remanufactured airend with a warranty...27 months from purchase.

Gardner Denver remanufactured airends deliver *quality without question...year in and year out.*

Call Gardner Denver for information on the airend exchange program and the name of your authorized distributor.

Phone Number: 217-222-5400 or

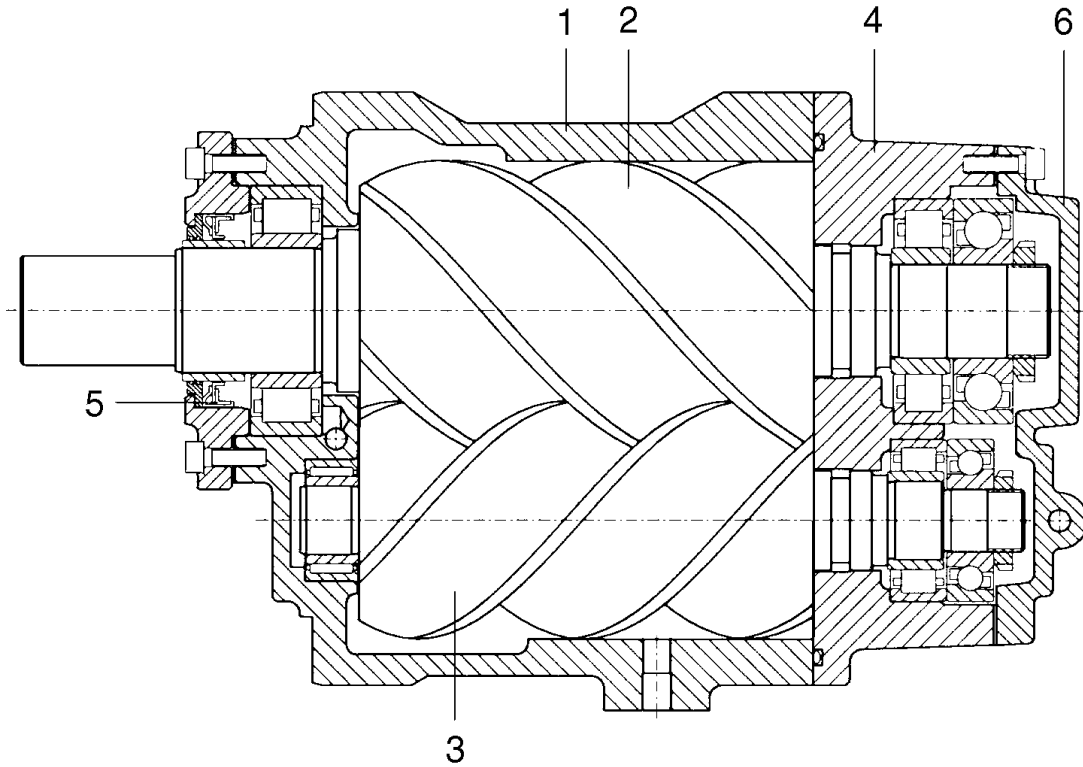
Fax: 217-224-7814

## TABLE OF CONTENTS

Maintain Compressor Reliability And Performance With Genuine Gardner Denver Compressor Parts And Support Services .....	1
Instructions For Ordering Repair Parts .....	1
Total Product Support – Gardner Denver’s Continuing Commitment To Your Air Compressor Performance.....	2
Remanufactured Airends .....	2
Bare Compressor .....	4
Inlet Valve.....	5
Severe Duty Air Filter And Mounting (Standard).....	6
Base And Oil Cooler Mounting.....	7
Oil Reservoir .....	8
Oil Filter – 26C27 .....	9
Oil Line Fittings .....	10, 11
Air Receiver Group.....	12
Discharge Piping – Base Mounted Units (With Separator).....	13
Discharge Piping – Tank Mounted Units (With Separator).....	14
Discharge Piping – Tank Mounted Units (Without Separator).....	15
Thermal Valve .....	16
Subtractive Pilot Valve .....	17
Control Group.....	18, 19
Drive Groups – 20, 25 & 30 HP (15, 19 & 22 Kw) .....	20
Drive Groups – 20 HP (15 Kw) .....	21
Drive Groups – 25 HP (19 Kw) .....	22
Drive Groups – 30 HP (22 Kw) .....	22
Decal & Fuse Group.....	23
Controller Assembly – Wye Delta Starter – 20, 25 & 30 HP (15, 19, & 22 Kw).....	24, 25
Controller Assembly – Less Main Motor Starter .....	26, 27
Controller Assembly .....	28
Controller Assembly - Board .....	29
Enclosure – Hardware & Decals .....	30
Enclosure – Basic Parts .....	31
Quiet Enclosure – ODP Motor Only .....	32
Enclosure – Panels .....	33
Main Motor Group .....	34
Identification And Instruction Group.....	35
Main Motor (Standard ODP & TEFC) .....	36
Overload Relay Heater Conversion Listing.....	37
Repair Kits.....	38, 39

**For Operating and Service Manual, see**

<b>SERVICE MANUAL</b>	<b>13-9-650</b>
<b>CONTROL MANUAL</b>	<b>13-8-623</b>



**BARE COMPRESSOR**

Ref. No.	Name of Part
----------	--------------

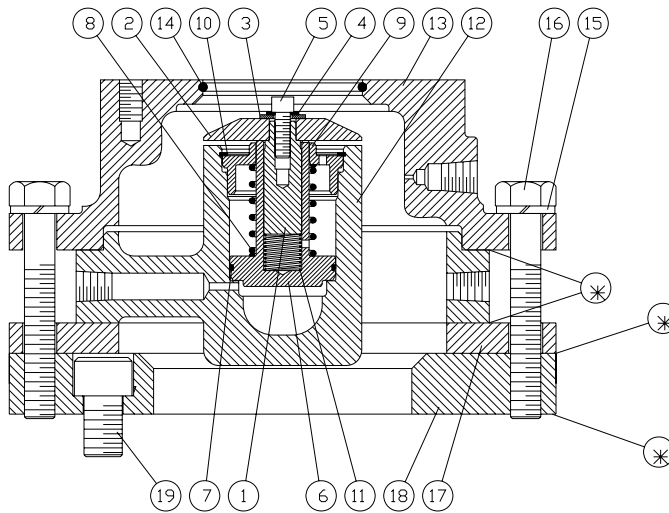
- |   |                           |
|---|---------------------------|
| 1 | CYLINDER                  |
| 2 | MAIN ROTOR                |
| 3 | SECONDARY ROTOR           |
| 4 | DISCHARGE BEARING HOUSING |
| 5 | DRIVE SHAFT SEAL          |
| 6 | DISCHARGE END PLATE       |

For Replacement Airend, order Part Number 300EBE1095.

For Periodic Overhaul Kit, order Part Number 307EFD6013. See page 39.

For Seal Repair Kit, order Part Number 300EFD6029. See page 39.

Order by Part Number and Description. Reference Numbers are for your convenience only.



313EBE810-A  
(Ref. Drawing)

\*GASKET ELIMINATOR REQUIRED

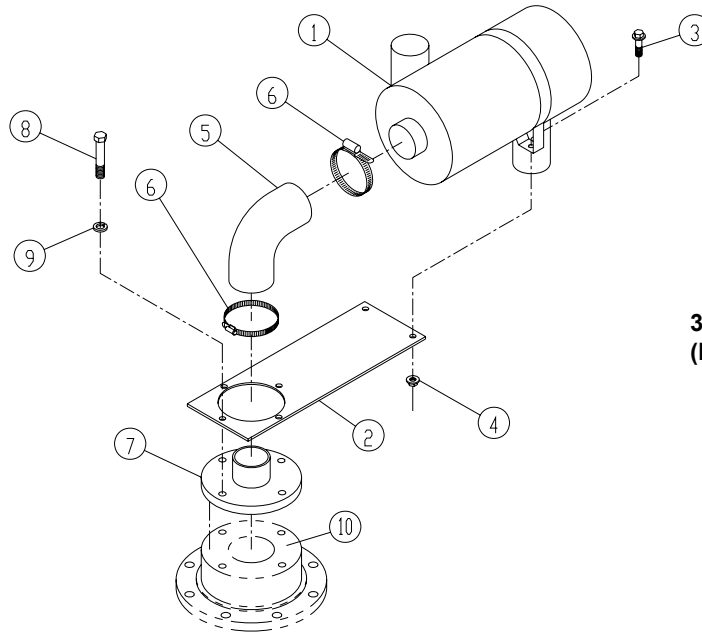
**INLET VALVE**

**B/M: 300EBE4030**

Ref. No.	Name of Part	Qty.	Part No.
1	GUIDE-VALVE.....	1	201SSE483
2	VALVE-INLET.....	1	202SSE044
3	WASHER-PLAIN.....	1	95A1
4	LOCKWASHER.....	1	95H56
5	SCREW.....	1	655EC03N
6	PISTON-INLET VALVE.....	1	202SSE043
+ 7	O-RING.....	1	25BC440
+ 8	SPRING.....	1	78H22
9	RETAINER.....	1	200SSE205
+ 10	RING-RETAINING.....	1	74D87
+ 11	SPRING.....	1	78W59
12	HOUSING-INLET.....	1	205SSE041
13	SEAT.....	1	204SSE256
+ 14	O-RING.....	1	25AM15
15	LOCKWASHER.....	8	95B5
16	SCREW.....	8	655EE140
17	PLATE-RETAINER.....	1	300EBE168
18	ADAPTOR.....	1	300EBE170
19	SCREW (METRIC).....	4	665SMCA160250
+ 19	GASKET ELIMINATOR.....	1	25BC222

+ Parts included in Periodic Maintenance Kit Part Number 302EBE6013. Refer to page 38.

Order by Part Number and Description. Reference Numbers are for your convenience only.



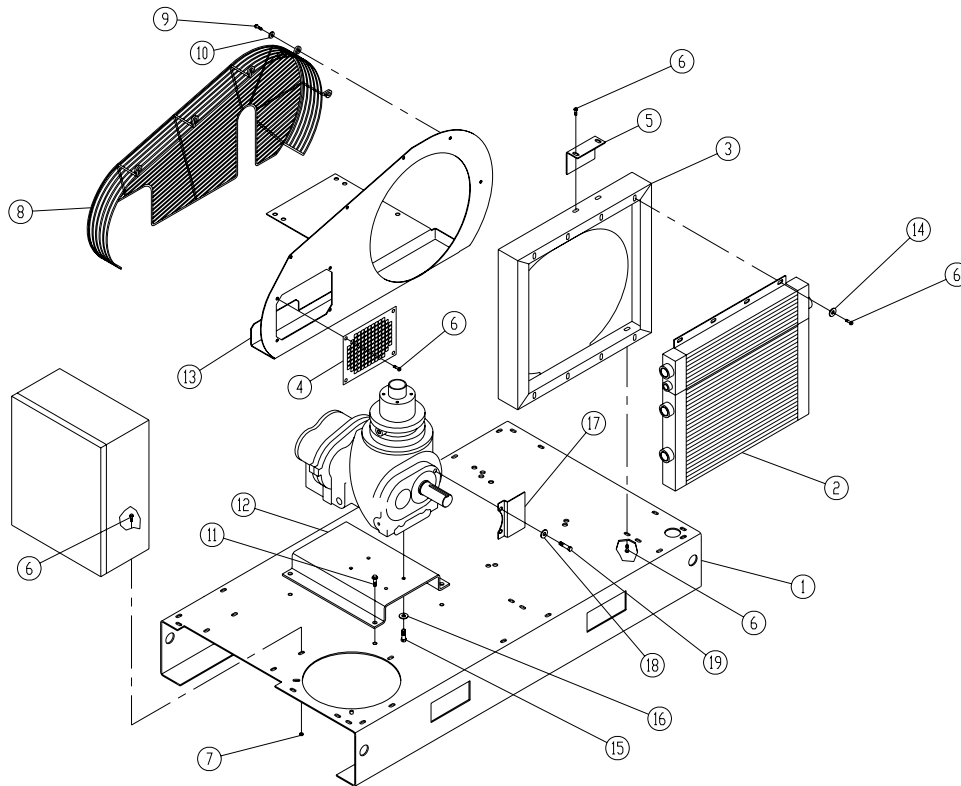
315EBE810-A  
(Ref. Drawing)

**SEVERE DUTY AIR FILTER AND MOUNTING (STANDARD)**

B/M: 300EBE4054

Ref. No.	Name of Part	Qty.	Part No.
1	FILTER-AIR .....	1	5L350
2	BRACKET-FILTER .....	1	300EBE389
3	SCREW .....	2	75LM97
4	NUT .....	2	50AW4
5	HOSE.....	1	29Z468
6	CLAMP .....	2	2009395
7	ADAPTOR-FILTER.....	1	201EBE070
8	SCREW .....	4	655ED080
9	LOCKWASHER .....	4	95B3
10	GASKET-ELIMINATOR.....	1	25BC222
	ELEMENT (REPAIR) (AIR FILTER).....	1	2118314

Order by Part Number and Description. Reference Numbers are for your convenience only.



**312EBE810-B**  
(Ref. Drawing)

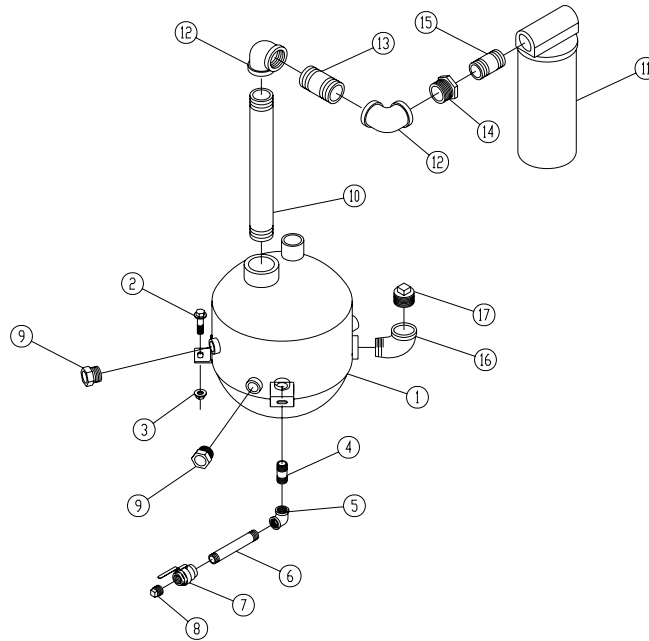
**BASE AND OIL COOLER MOUNTING**

**B/M: 300EBE4003**  
**200EBE4013**

**B/M: 300EBE4003**  
**201EBE4013**

Ref. No.	Name of Part	Qty.	20 HP Part No.	25/30 HP Part No.
1	BASE .....	1	203EBE285	203EBE285
2	COOLER-OIL .....	1	202EBE201	202EBE201
3	BAFFLE .....	1	200EBE840	200EBE840
4	PLATE-INSPECTION .....	1	200EBE052	200EBE052
5	BRACKET .....	1	200EBE142	200EBE142
6	SCREW .....	22	75LM51	75LM51
7	NUT .....	4	50AW5	50AW5
8	GUARD-FAN .....	1	300EBE393	300EBE393
9	SCREW .....	5	75LM150	75LM150
10	RETAINER .....	5	2014731	2014731
11	SCREW .....	4	75LM135	75LM135
12	SUPPORT .....	1	300EBE165	300EBE165
13	ORIFICE .....	1	206EBE814	207EBE814
14	WASHER-PLAIN .....	8	95A3	95A3
15	SCREW (METRIC) .....	4	665HMCA100200	665HMCA100200
16	WASHER-PLAIN .....	4	95A3	95A3
17	GUARD-DRIVE .....	1	300EBE477	300EBE477
18	LOCKWASHER .....	2	95B7	95B7
19	SCREW (METRIC) .....	2	655SMCA160250	655SMCA160250

Order by Part Number and Description. Reference Numbers are for your convenience only.



258EBE810-A  
(Ref. Drawing)

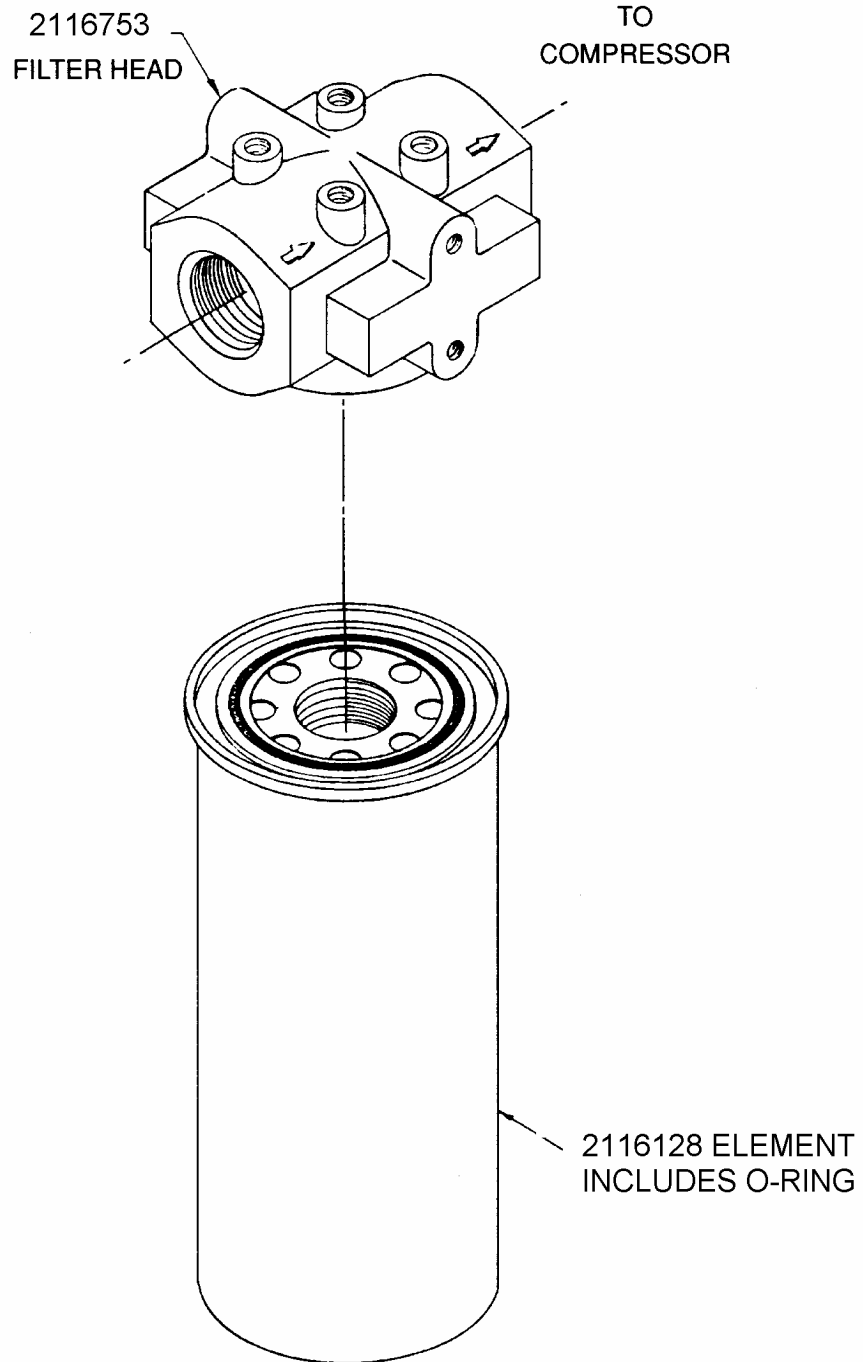
**OIL RESERVOIR**

**B/M: 200EBE4018**

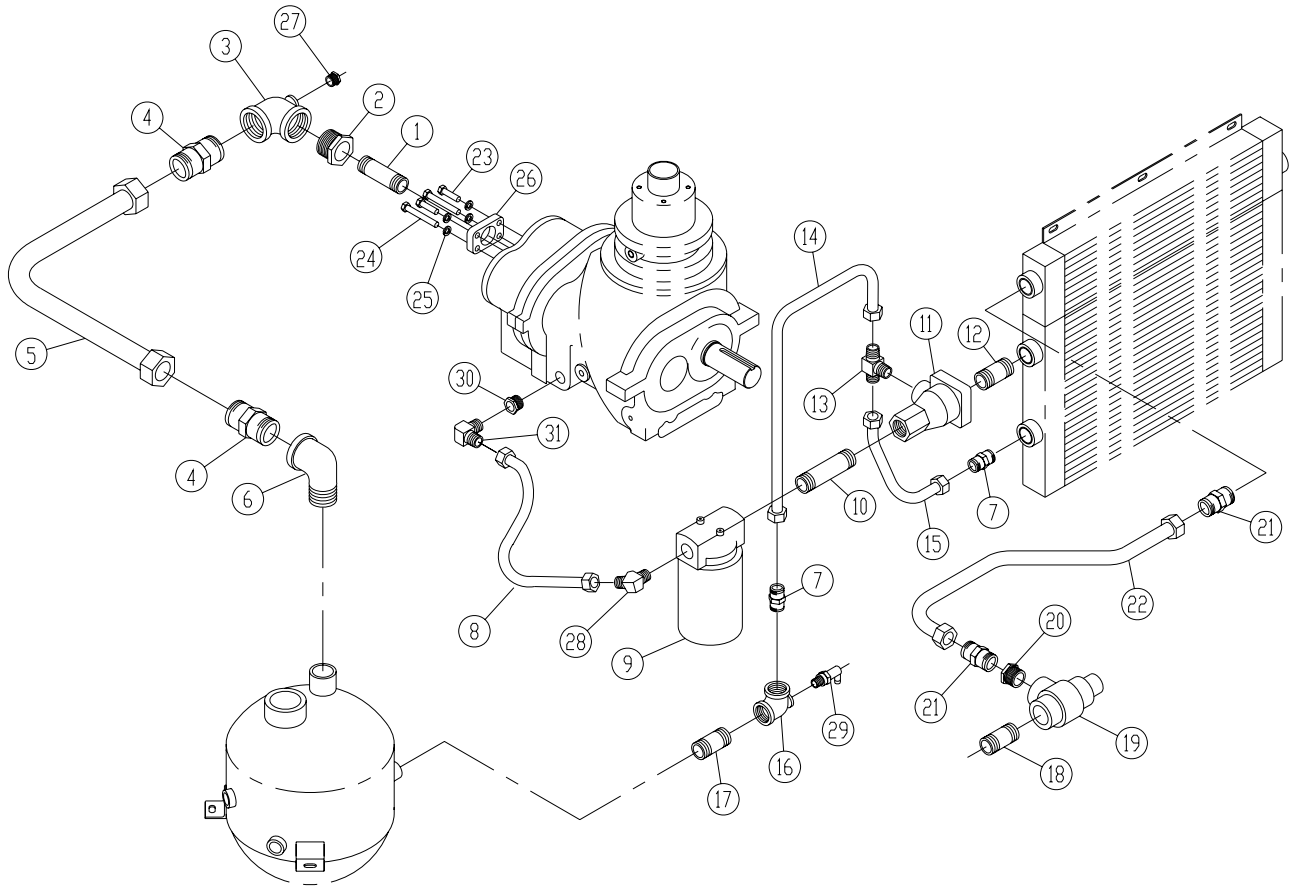
Ref. No.	Name of Part	Qty.	Part No.
1	RESERVOIR-OIL .....	1	203EBE037
2	SCREW .....	3	75LM51
3	NUT .....	3	50AW5
4	NIPPLE .....	1	63F1G
5	ELBOW.....	1	64C4G
6	NIPPLE.....	1	63F6G
7	VALVE-BALL .....	1	90AR360
8	PLUG.....	1	64AA7
9	GAUGE.....	2	00914483 0012
10	NIPPLE .....	1	63K34G
* 11	SEPARATOR-OIL .....	1	55B57
12	ELBOW.....	2	64C8G
13	NIPPLE .....	1	63K18G
14	BUSHING-PIPE.....	1	64E98
15	NIPPLE .....	1	63J15G
16	ELBOW.....	1	64D7G
17	PLUG.....	1	64A26

\* For replacement Element and O-ring, order Part No. 2116717.  
For replacement Head, order Part No. 2116716.

OIL FILTER - 26C27



# OIL LINE FITTINGS



**316EBE810-D**  
**(Ref. Drawing)**

Order by Part Number and Description. Reference Numbers are for your convenience only.

OIL LINE FITTINGS

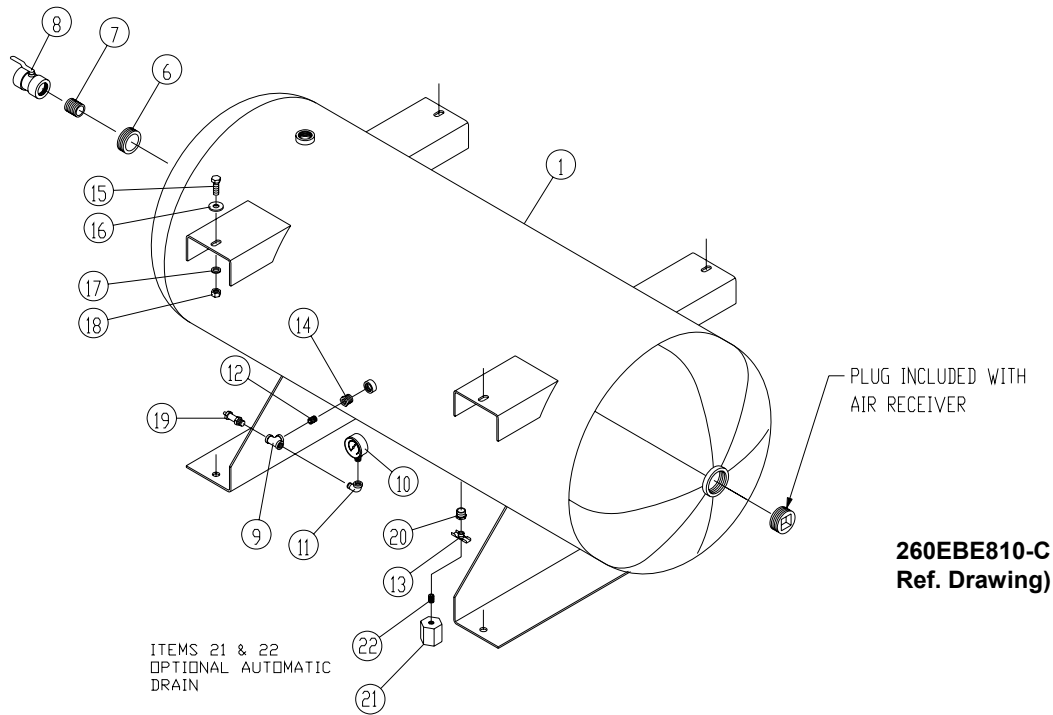
B/M: 301EBE4019; 301 & 302EBE4030

Ref. No.	Name of Part	Qty.	Part No.
1	NIPPLE .....	1	63K25G
2	BUSHING-PIPE .....	1	64EB304
3	ELBOW .....	1	64P106G
4	CONNECTOR-TUBE .....	2	86H142
5	TUBE WITH FITTINGS .....	1	304EBE863
6	ELBOW .....	1	64U6G
7	CONNECTOR-TUBE .....	2	86H137
8	HOSE .....	1	306EFB127
** 9	FILTER-OIL .....	1	26C27
10	NIPPLE .....	1	63G2G
* 11	VALVE-THERMAL		
	170° - Std. ....	1	90AR1093
	180° - Optional .....	1	90AR1100
12	NIPPLE .....	1	63G33G
13	TEE .....	1	86N286
14	TUBE WITH FITTINGS .....	1	200EBE863
15	TUBE WITH FITTINGS .....	1	202EBE863
16	TEE .....	1	64P14G
17	NIPPLE .....	1	63G1G
18	NIPPLE .....	1	63J15G
19	VALVE-MINIMUM PRESSURE .....	1	200EDE527
20	BUSHING-PIPE .....	1	64E97
21	CONNECTOR-TUBE .....	2	86H138
22	TUBE WITH FITTINGS .....	1	206EBE863
23	SCREW (METRIC) .....	2	665HMCA120400
24	SCREW (METRIC) .....	2	665HMCA120900
25	LOCKWASHER .....	4	95B5
26	FLANGE .....	1	300EBE073
27	BUSHING-PIPE .....	1	64E43
28	ADAPTOR .....	1	29Z226
29	VALVE-OIL SAMPLING .....	1	86N345
30	BUSHING-ADAPTOR .....	1	86H156
31	ADAPTOR .....	1	29Z241

\* See page 16 for repair part numbers.

\*\* See page 9 for repair part numbers.

Order by Part Number and Description. Reference Numbers are for your convenience only.

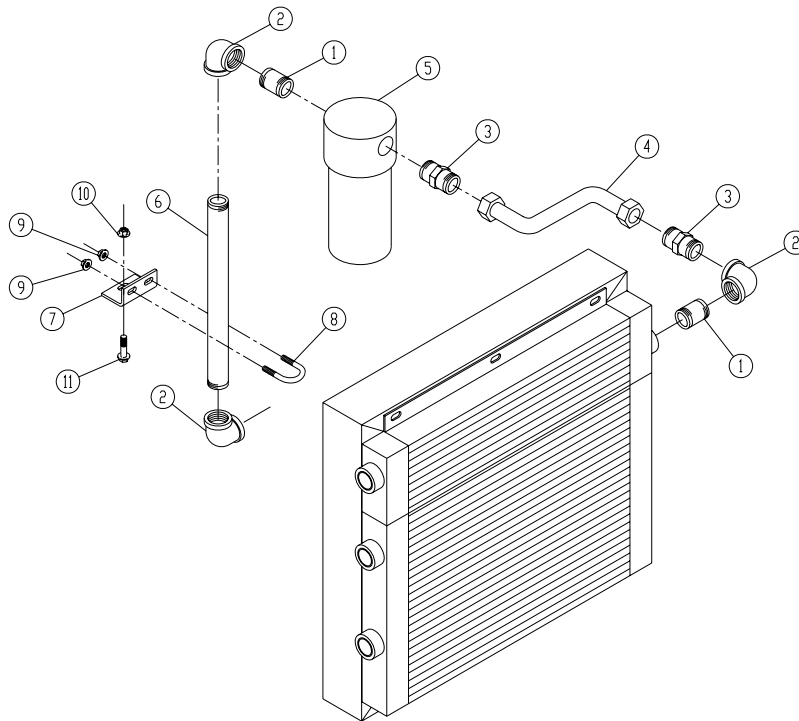


**AIR RECEIVER GROUP**

**B/M: 202EBE4023**  
**203EBE4023, 204EBE4023**  
**207EBE4023**

Ref. No.	Name of Part	Qty.	Part No.
1	RECEIVER-AIR 120 GALLON .....	1	200EJB645
	200 GALLON .....	1	201EJB645
6	BUSHING-PIPE .....	1	64E11
7	NIPPLE .....	1	63H1G
8	VALVE-BALL .....	1	90AR362
9	TEE .....	1	64G3G
10	GAUGE-AIR PRESSURE.....	1	27A114
11	ELBOW.....	1	64D2G
12	NIPPLE .....	1	63D1G
13	COCK (Not required with Automatic Drain).....	1	90C12
14	BUSHING-PIPE .....	1	64E2G
15	SCREW .....	4	655EE060
16	WASHER.....	8	95A5
17	LOCKWASHER .....	4	95B5
18	NUT .....	4	50B5
19	VALVE-PRESSURE RELIEF .....	1	90AR657
20	BUSHING-PIPE.....	1	64E2G
21	AUTOMATIC DRAIN VALVE (Optional).....	1	90AR319
22	PIPE-NIPPLE (Optional).....	1	63F21G

Order by Part Number and Description. Reference Numbers are for your convenience only.



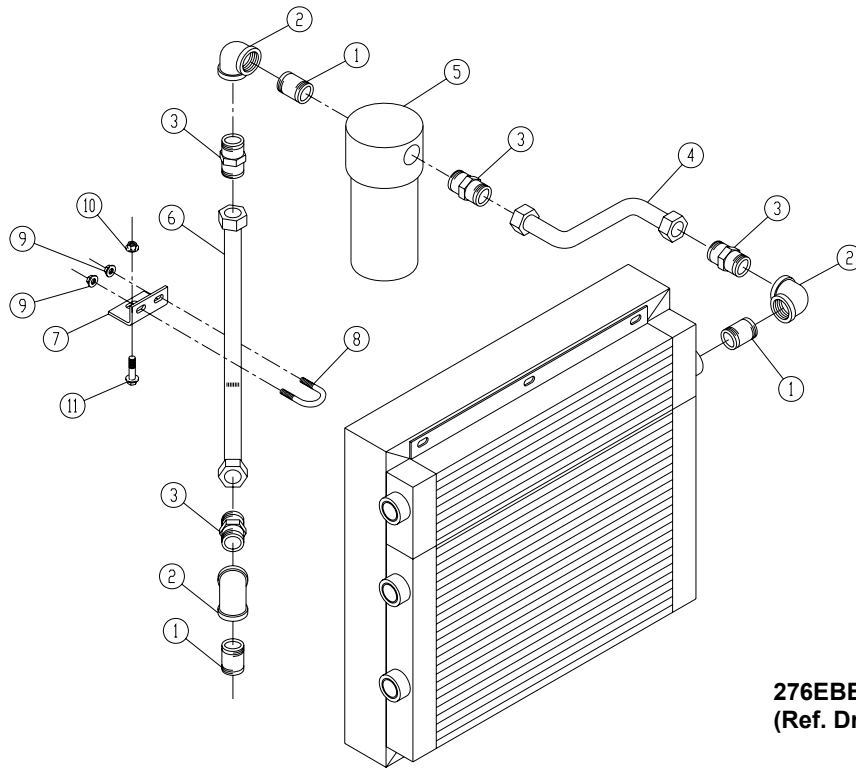
277EBE810  
(Ref. Drawing)

**DISCHARGE PIPING – BASE MOUNTED UNITS  
(WITH SEPARATOR)**

**B/M: 211EBE4019**

<b>Ref. No.</b>	<b>Name of Part</b>	<b>Qty.</b>	<b>Part No.</b>
1	NIPPLE.....	2	63H1G
2	ELBOW .....	3	64C6G
3	CONNECTOR-TUBE .....	2	86H138
4	TUBE WITH FITTINGS .....	1	203EBE863
5	TRAP.....	1	83C78
6	NIPPLE.....	1	63N16X134G
7	BRACKET .....	1	204EJB142
8	U-BOLT .....	1	143738
9	NUT.....	2	50AW4
10	NUT.....	1	50AW5
11	SCREW.....	1	75LM51

Order by Part Number and Description. Reference Numbers are for your convenience only.



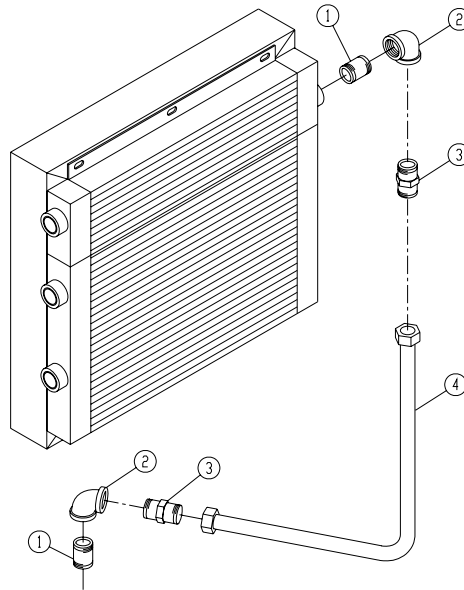
276EBE810  
(Ref. Drawing)

**DISCHARGE PIPING – TANK MOUNTED UNITS  
(WITH SEPARATOR)**

**B/M: 210EBE4019**

Ref. No.	Name of Part	Qty.	Part No.
1	NIPPLE .....	3	63H1G
2	ELBOW .....	3	64C6G
3	CONNECTOR-TUBE .....	4	86H138
4	TUBE WITH FITTINGS .....	1	203EBE863
5	TRAP .....	1	83C78
6	TUBE WITH FITTINGS .....	1	204EBE863
7	BRACKET .....	1	202EJB142
8	U-BOLT .....	1	15U59
9	NUT .....	2	50AW3
10	NUT .....	1	50AW5
11	SCREW .....	1	75LM51

Order by Part Number and Description. Reference Numbers are for your convenience only.



278EBE810  
(Ref. Drawing)

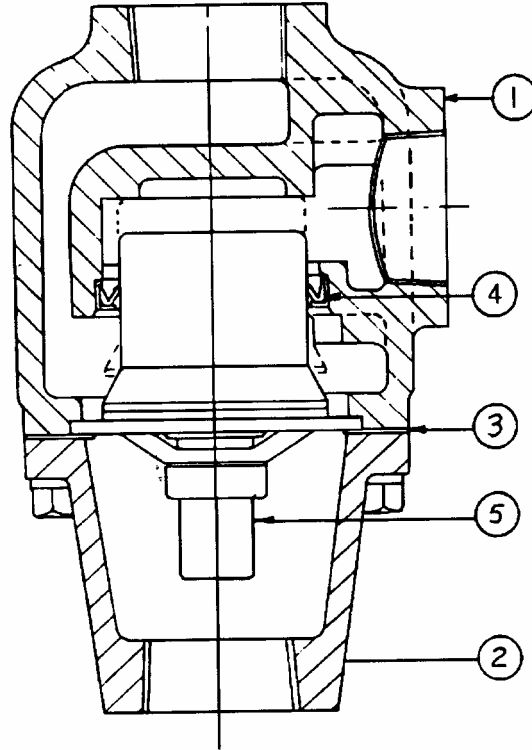
**DISCHARGE PIPING – TANK MOUNTED UNITS  
(WITHOUT SEPARATOR – TRAP)**

B/M: 212EBE4019

Ref. No.	Name of Part	Qty.	Part No.
1	NIPPLE .....	2	63H1G
2	ELBOW .....	2	64C6G
3	CONNECTOR-TUBE .....	2	86H138
4	TUBE WITH FITTINGS .....	1	205EBE863

Order by Part Number and Description. Reference Numbers are for your convenience only.

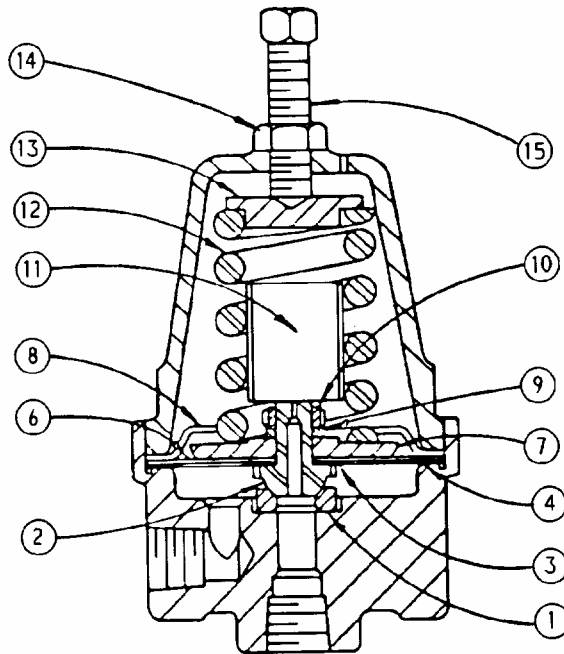
**THERMAL VALVE  
(Thermostatic Mixing)**



**90AR1093 ASSEMBLY VALVE – THERMAL (ALUMINUM HOUSING)**

Ref. No.	Name of Part	Qty.	Part No.
1	VALVE BODY (3/4") .....	1	2117072
2	VALVE COVER (3/4").....	1	2117073
	VALVE KIT (Includes Items 3, 4 & 5)		
	150° THERMOSTAT (Optional) .....	1	2115542
	160° THERMOSTAT (Optional) .....	1	2115543
	170° THERMOSTAT (Standard).....	1	2117074
	180° THERMOSTAT (Optional) .....	1	2117075
3	O-RING (Included in Valve Kit) .....	1	
4	LIP SEAL (Included in Valve Kit).....	1	
5	ELEMENT (Included in Valve Kit) .....	1	

Order by Part Number and Description. Reference Numbers are for your convenience only.

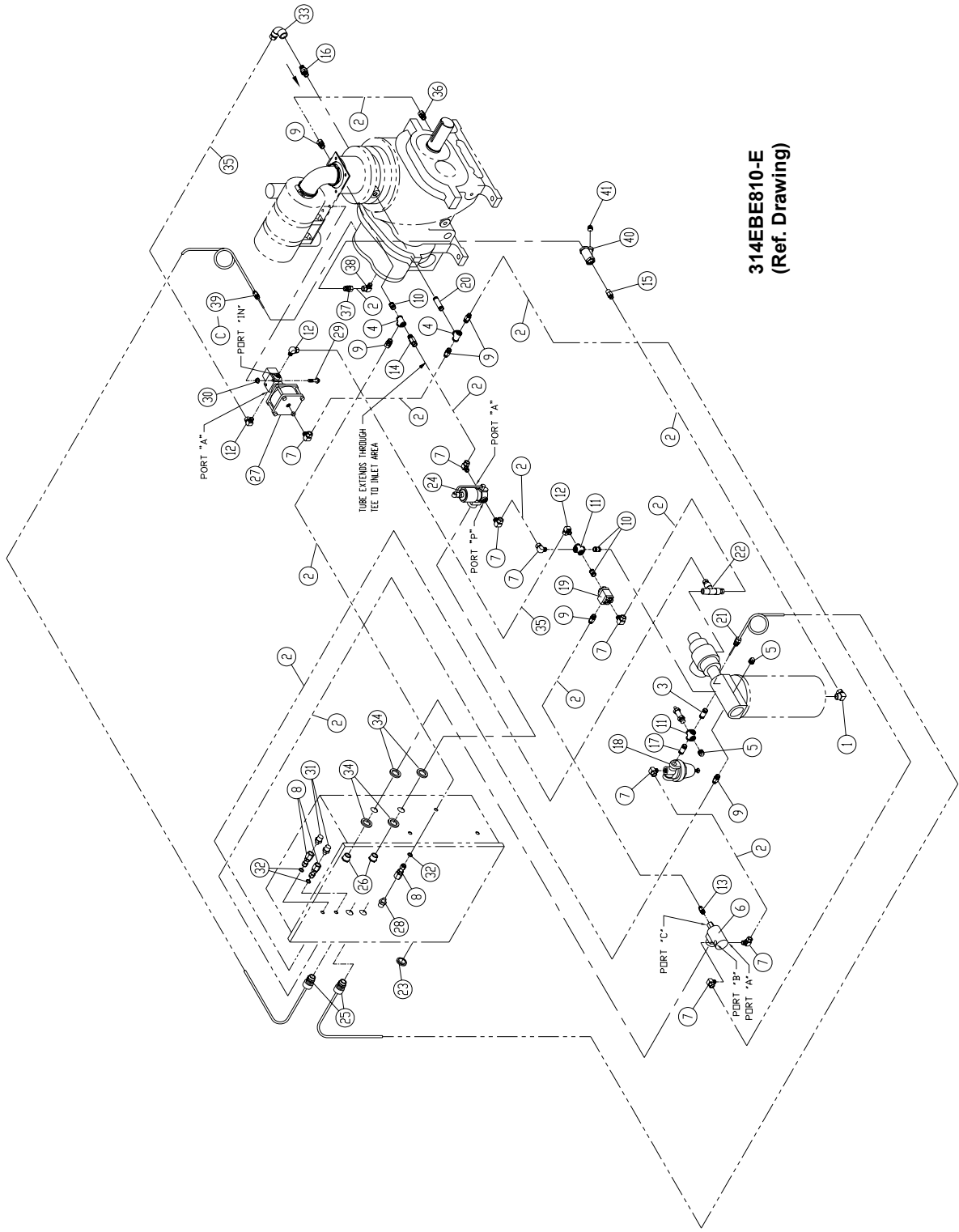


**SUBTRACTIVE PILOT VALVE**

Ref. No.	Name of Part	Qty.	Part No.
	VALVE-SUBTRACTIVE PILOT (Includes Items 1 thru 15)		2009398
1	RING-SEAT .....	1	2008021
2	DISC-SEAT.....	1	2010080
3	GASKET .....	1	2008019
4	GASKET .....	1	2008017
6	DIAPHRAGM SET (Set of 5).....	1	2008018
7	PLATE-PRESSURE .....	1	2008015
8	STOP-DIAPHRAGM.....	1	2008016
9	LOCKWASHER.....	1	95B1
10	NUT .....	1	2008888
11	DAMPER .....	1	2008711
12	SPRING.....	1	2008014
13	BUTTON-SPRING.....	1	2008891
14	LOCKNUT.....	1	50Y2
15	SCREW .....	1	2008952

NOTE: It is necessary to replace some parts in groups to insure satisfactory repair. When replacing diaphragm, also replace both diaphragm and seat gaskets. When replacing seat disc or seat ring, replace the mating seat ring or disc and the seat disc gasket.

**CONTROL GROUP**



**314EBE810-E  
(Ref. Drawing)**

Order by Part Number and Description. Reference Numbers are for your convenience only.

CONTROL GROUP

B/M: 301EBE4002

Ref. No.	Name of Part	Qty.	Part No.	Ref. No.	Name of Part	Qty.	Part No.
1	ELBOW-TUBE.....	1	86E59	+	21 PROBE-ELECTRICAL.....	1	21D264
2	TUBE (IN FEET).....	25	85K3		22 TEE-TUBE .....	1	2009284
3	NIPPLE.....	1	63D3G		23 SEAL-PLUG.....	1	24A415
4	TEE .....	2	64G3G	+ *	24 VALVE-SOLENOID.....	1	91B70
5	PLUG.....	2	64AC2		25 FITTING-ELECTRICAL.....	2	24CA2865
6	VALVE SOLENOID .....	1	91B223		26 NIPPLE.....	2	24CA4641
7	ELBOW .....	8	86E60	++ **	27 CONTROL VALVE .....	1	90AR1082
8	CONNECTOR-TUBE .....	3	86N287	+	28 SWITCH.....	1	88H195
9	CONNECTOR-TUBE .....	6	86E4		29 SCREW.....	2	75LM48
10	NIPPLE.....	3	63D1G		30 NUT.....	2	50AW3
11	CROSS.....	2	64K1G	+	31 TRANSDUCER-PRESSURE.....	2	88H359
12	ELBOW .....	3	86E64		32 O-RING.....	3	165011
13	CONNECTOR-TUBE .....	1	86E4		33 CONNECTOR-TUBE.....	1	86E82
14	CONNECTOR .....	1	86N272		34 O-RING.....	4	24A383
15	CONNECTOR-TUBE .....	1	86E4		35 TUBE (IN FEET) .....	5	85K5
++ 16	VALVE-CHECK.....	2	90AR261		36 CONNECTOR-TUBE.....	1	86H159
17	NIPPLE.....	1	63D3G		37 ORIFICE.....	1	86N339
*** ++18	VALVE-SUB/PILOT .....	1	2009398		38 ELBOW-TUBE .....	1	86H160
++ 19	VALVE-CONTROL.....	1	90AR1034	+	39 THERMISTOR PROBE.....	1	21D264
20	NIPPLE.....	1	63D6G		40 STRAINER.....	1	82E52
					41 PLUG .....	1	64AC2

\* For Repair Kit, (Includes Springs, Seals, Piston Assembly, Plunger Assembly, Nut and O-Ring), order Part Number 2116077 or for Coil, order Part Number 2116078.

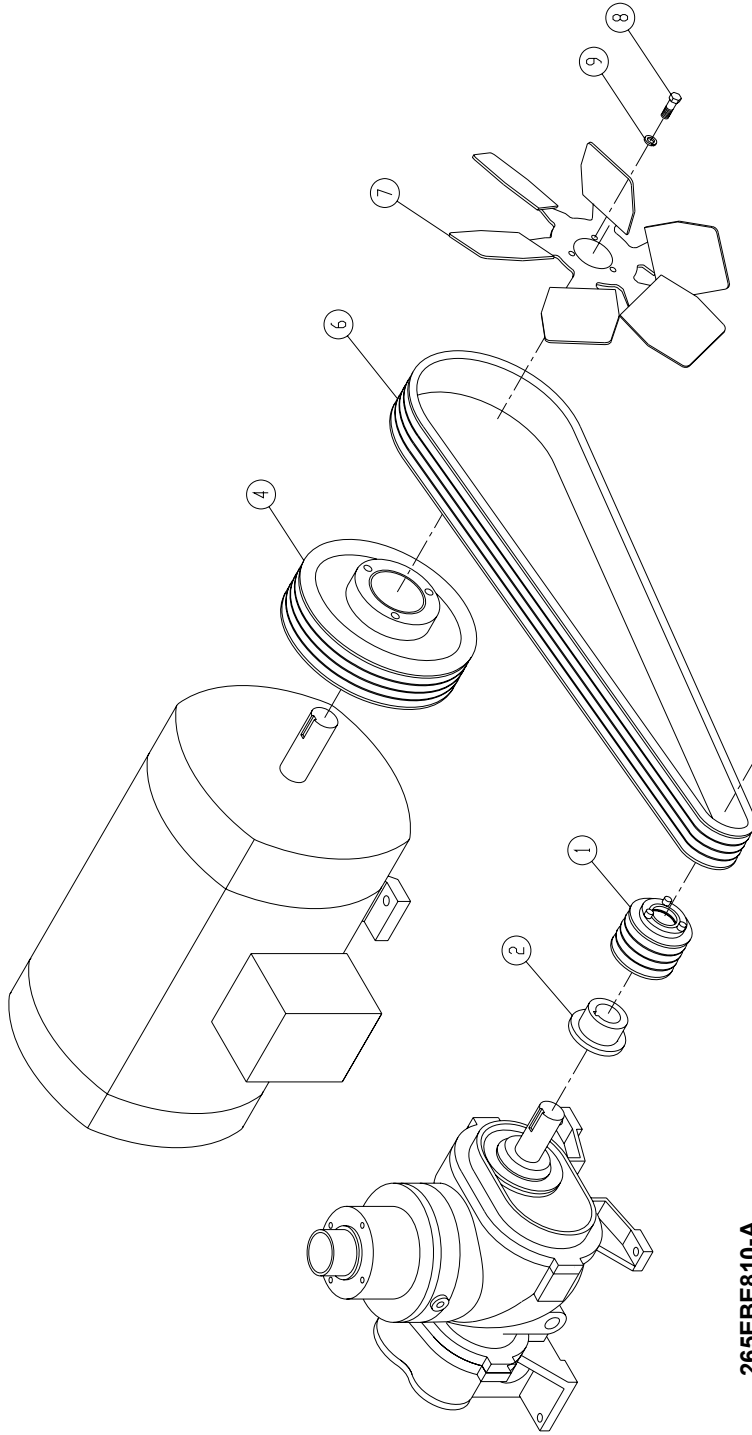
\*\* For repair of U-Cup (Piston Seal), order Part Number 2117904; For O-Ring (Top Plate), order Part Number 2117905.

\*\*\* For Repair parts, see page 17.

+ Parts included in Electrical Control Kit Part Number 306EBE6013. Refer to page 38.

++ Parts included in Pneumatic Control Kit Part Number 300EBE6013. Refer to page 38.

**DRIVE GROUPS – 20, 25 & 30 HP (15, 19 & 22 KW)**



**265EBE810-A**  
(Ref. Drawing)

Order by Part Number and Description. Reference Numbers are for your convenience only.

DRIVE GROUPS – 20 HP (15 KW)

Ref. No.	Name of Part	Qty.	100 PSIG 321EBE4004 Part No.	125 PSIG 322EBE4004 Part No.	150 PSIG 323EBE4004 Part No.	175 PSIG 324EBE4004 Part No.
1	SHEAVE .....	1	73N43V41	73N43V50	73N43V53	300EBE099
2	BUSHING-HUB .....	1	22K35D	22K35D	22K35D	22K35F
4	SHEAVE .....	1	205EBE099	205EBE099	205EBE099	205EBE099
6	BELT-SET 4 PC. ....	1	13AG6004	13AG6004	13AG6004	13AG6004
7	FAN .....	1	203EBE701	203EBE701	203EBE701	203EBE701
8	SCREW .....	3	655ED030	655ED030	655ED030	655ED030
9	LOCKWASHER .....	3	95B3	95B3	95B3	95B3
* 10	VALVE-PRESSURE/RELIEF .....	1	90AR662	90AR663	90AR657	90AR657

\* Not shown on drawing.

Order by Part Number and Description. Reference Numbers are for your convenience only.

**DRIVE GROUPS – 25 HP (19 KW)**

Ref. No.	Name of Part	Qty.	100 PSIG 325EBE4004 Part No.	125 PSIG 326EBE4004 Part No.	150 PSIG 327EBE4004 Part No.	175 PSIG 328EBE4004 Part No.
1	SHEAVE .....	1	73N43V50	73N43V56	301EBE099	302EBE099
2	BUSHING-HUB .....	1	22K35D	22K35D	22K35F	22K35F
4	SHEAVE .....	1	203EJB099	203EBE099	203EBE099	203EBE099
6	SET-BELT 4 PC .....	1	13AG6704	13AG6704	13AG6704	13AG6704
7	FAN .....	1	202EBE701	202EBE701	202EBE701	202EBE701
8	SCREW .....	3	655ED030	655ED030	655ED030	655ED030
9	LOCKWASHER .....	3	95B3	95B3	95B3	95B3
+ 10	VALVE-PRESSURE/RELIEF .....	1	*	90AR663	90AR657	90AR657

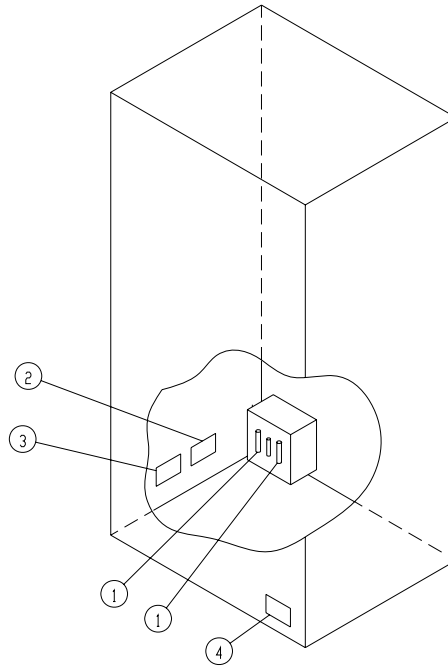
**DRIVE GROUPS – 30 HP (22 KW)**

Ref. No.	Name of Part	Qty.	100 PSIG 329EBE4004 Part No.	125 PSIG 330EBE4004 Part No.	150 PSIG 331EBE4004 Part No.	175 PSIG 332EBE4004 Part No.
1	SHEAVE .....	1	73N43V50	73N43V56	301EBE099	302EBE099
2	BUSHING-HUB .....	1	22K35D	22K35D	22K35F	22K35F
4	SHEAVE .....	1	202EJB099	202EJB099	202EJB099	202EJB099
6	BELT-SET 4 PC .....	1	13AG6704	13AG7104	13AG7104	13AG7104
7	FAN .....	1	202EBE701	202EBE701	202EBE701	202EBE701
8	SCREW .....	3	655ED030	655ED030	655ED030	655ED030
9	LOCKWASHER .....	3	95B3	95B3	95B3	95B3
+ 10	VALVE-PRESSURE/RELIEF .....	1	*	90AR663	90AR657	90AR657

+ Not shown on drawing.

\* (2) 90AR662 Relief Valves required.

Order by Part Number and Description. Reference Numbers are for your convenience only.

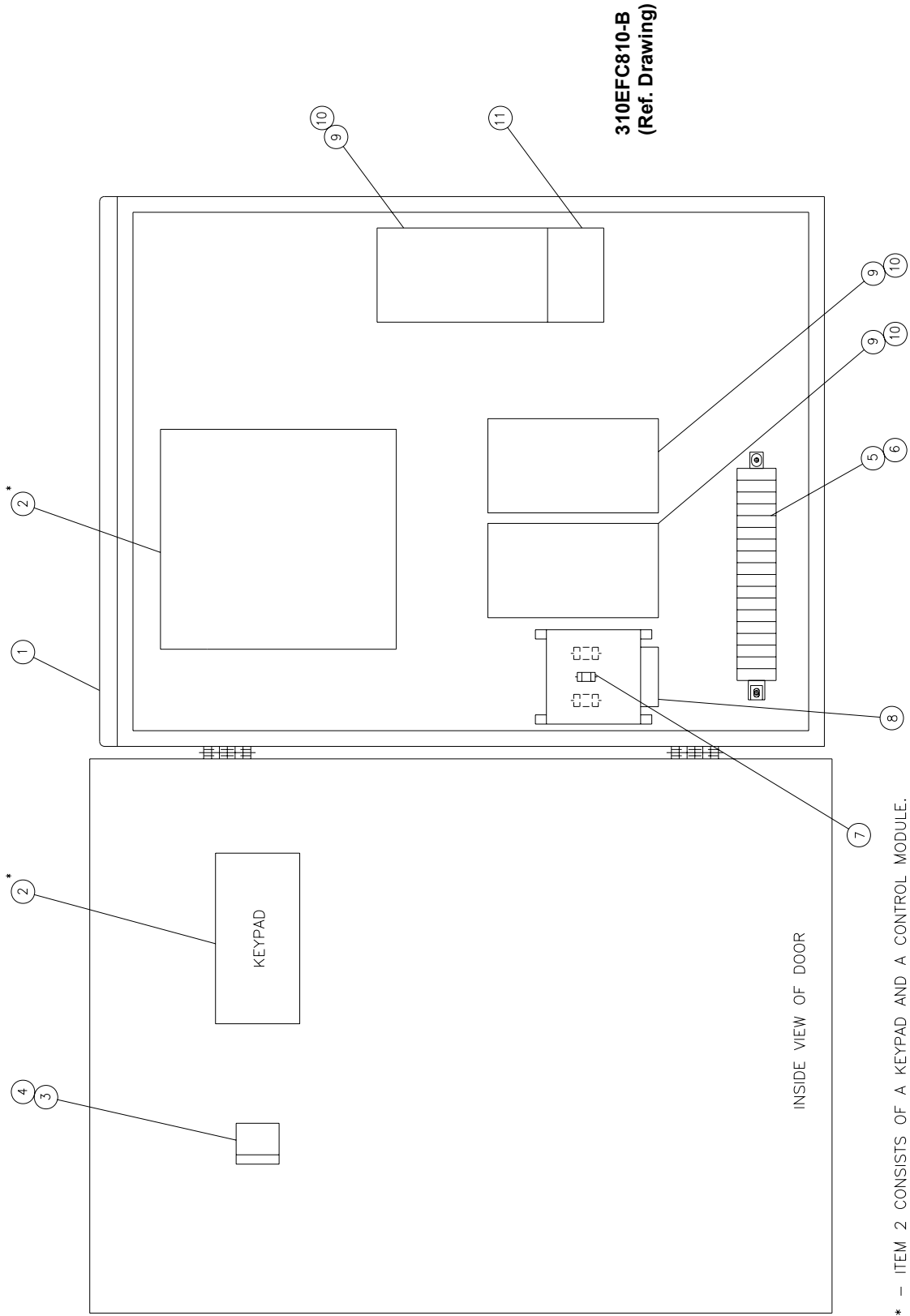


**315EFC810-A**  
(Ref. Drawing)

**DECAL & FUSE GROUP**

Ref. No.	Name of Part	Qty.	B/M: 328EFC4007	B/M: 329EFC4007	B/M: 330EFC4007
			380V	400V	415V
1	FUSE .....	2	24CA3723	24CA3723	24CA3723
2	DECAL.....	1	295AUX077	295AUX077	295AUX077
3	DECAL.....	1	304AUX077	304AUX077	304AUX077
4	MARKER-VOLTAGE ..	1	69F55	69F56	69F59

**CONTROLLER ASSEMBLY – WYE DELTA STARTER – 20, 25 & 30 HP (15, 19, & 22 KW)**



\* – ITEM 2 CONSISTS OF A KEYPAD AND A CONTROL MODULE.

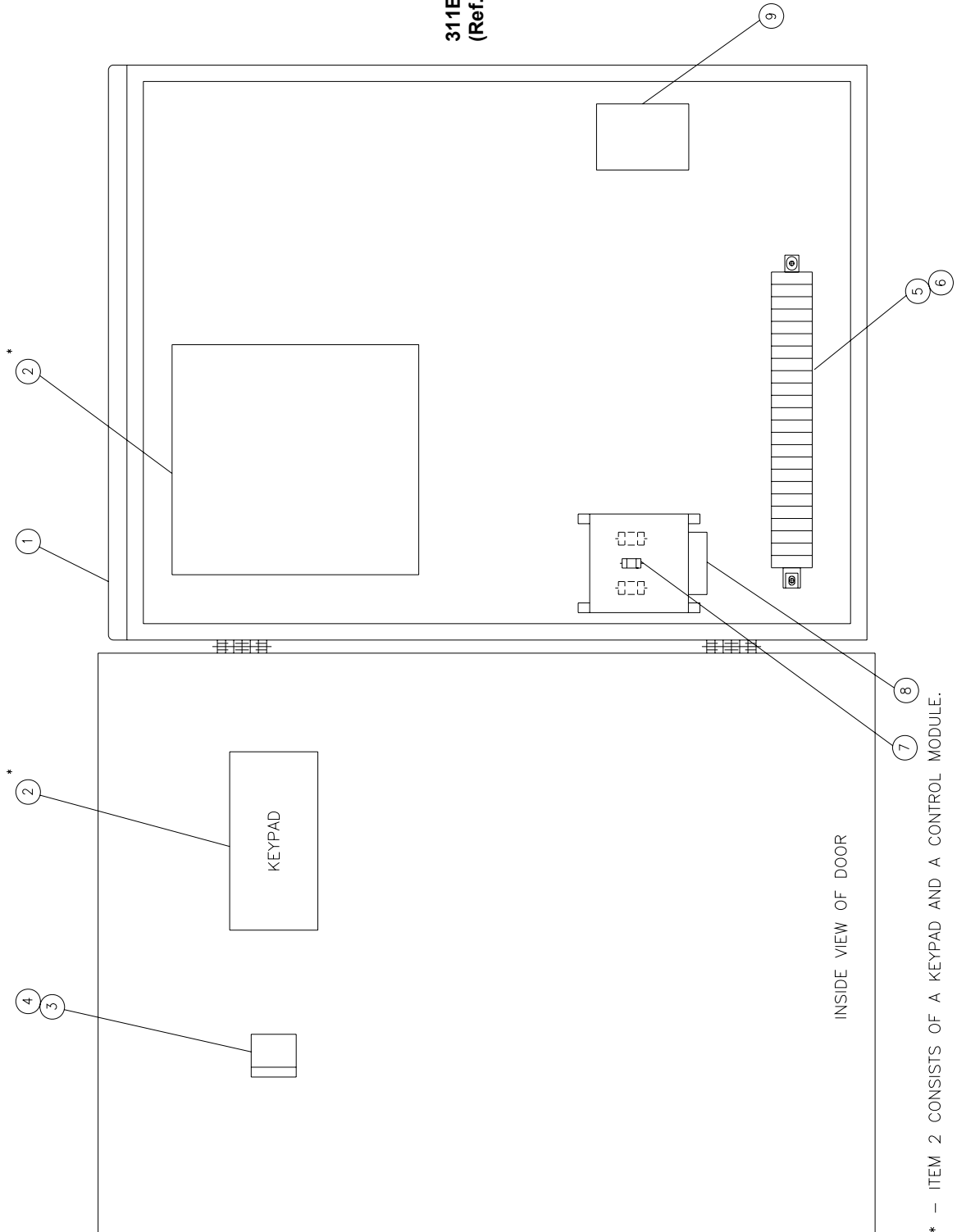
Order by Part Number and Description. Reference Numbers are for your convenience only.

**CONTROLLER ASSEMBLY – WYE DELTA STARTER – 20, 25 & 30 HP (15, 19 & 22 KW)**

	QTY.	380/400/415V
NEMA 12 CONTROL BOX (RS2000) .....		362EFC466
NEMA 4 CONTROL BOX (RS2000) .....		363EFC466
1 CONTROL/STARTER BOX (NEMA 12) .....	1	302EFC179
CONTROL/STARTER BOX (NEMA 4) .....	1	303EFC179
2 CONTROLLER ASSEMBLY (RS2000) .....	1	300EBC2006
3 OPERATOR .....	1	24CA2907
4 CONTACT BLOCK .....	1	24CA2908
5 BLOCK-TERMINAL CONTACT .....	6	24CA2551
6 BLOCK-TERMINAL END .....	1	24CA2552
7 FUSE .....	1	24CA3725
8 TRANSFORMER .....	1	2118396
9 CONTACTOR .....	3	24CA2609
10 COIL .....	3	2116923
11 RELAY .....	1	24CA4086

**CONTROLLER ASSEMBLY – LESS MAIN MOTOR STARTER**

**311EFC810-B  
(Ref. Drawing)**



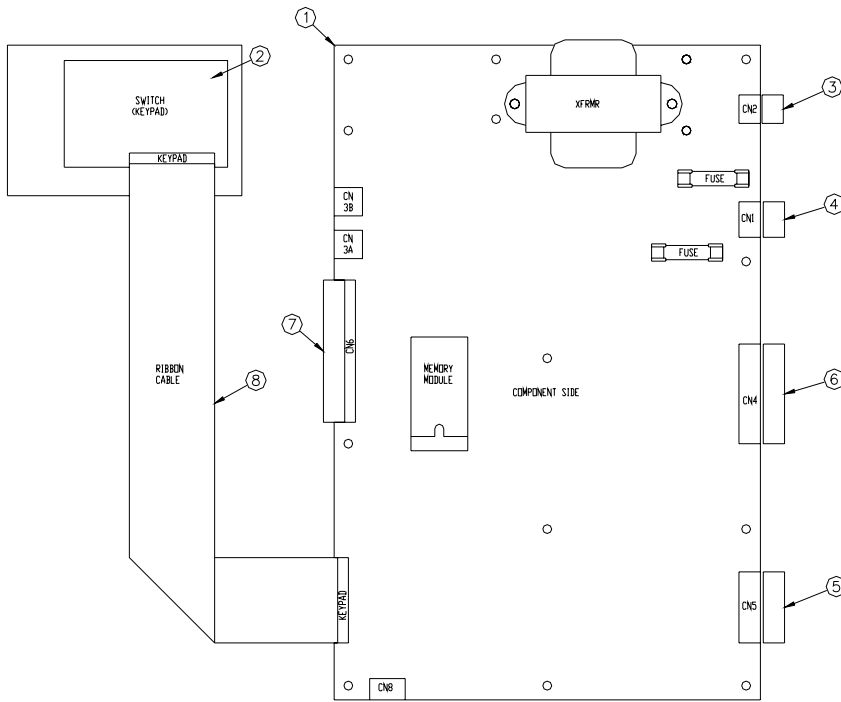
\* – ITEM 2 CONSISTS OF A KEYPAD AND A CONTROL MODULE.

Order by Part Number and Description. Reference Numbers are for your convenience only.

**CONTROLLER ASSEMBLY – LESS MAIN MOTOR STARTER**

	QTY.	380/400/415V
NEMA 12 CONTROL BOX (RS2000) .....		364EFC466
NEMA 4 CONTROL BOX (RS2000) .....		365EFC466
1 CONTROL/STARTER BOX (NEMA 12) .....	1	302EFC179
CONTROL/STARTER BOX (NEMA 4) .....	1	303EFC179
2 CONTROLLER ASSEMBLY (RS2000) .....	1	300EBC2006
3 OPERATOR .....	1	24CA2907
4 CONTACT BLOCK .....	1	24CA2908
5 BLOCK-TERMINAL CONTACT .....	8	24CA2551
6 BLOCK-TERMINAL END .....	1	24CA2552
7 FUSE .....	1	24CA3725
8 TRANSFORMER .....	1	2118396
9 RELAY .....	1	24CA4711

Order by Part Number and Description. Reference Numbers are for your convenience only.



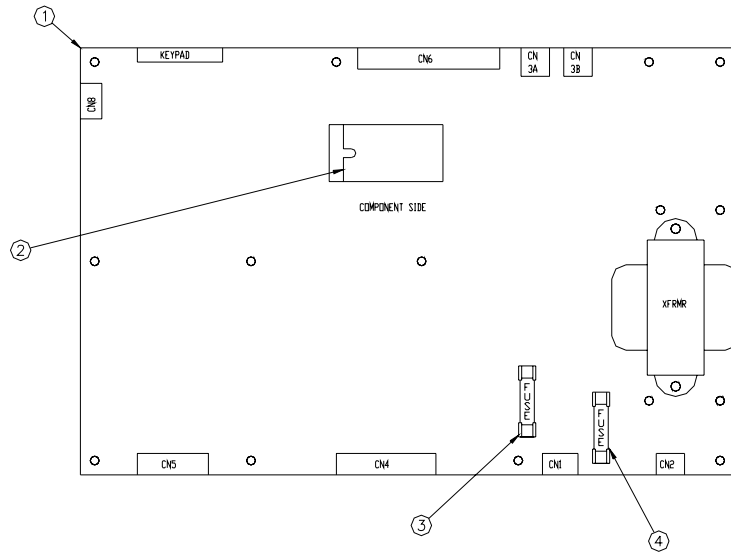
300EBC810-B  
(Ref. Drawing)

**CONTROLLER ASSEMBLY**

**RS2000  
B/M: 300EBC2006**

Ref. No.	Name of Part	Qty.	Part No.
1	CONTROLLER ASSEMBLY – BOARD.....	1	300EBC560
2	SWITCH (KEYPAD).....	1	300EVE375
3	PLUG-CONNECTOR.....	1	24CA4240
4	PLUG-CONNECTOR.....	1	24CA3401
5	PLUG-TERMINAL.....	1	24CA4823
6	PLUG-TERMINAL.....	1	24CA4999
7	PLUG-CONNECTOR.....	1	24CA3306
8	CABLE .....	1	24CA5178

Order by Part Number and Description. Reference Numbers are for your convenience only.



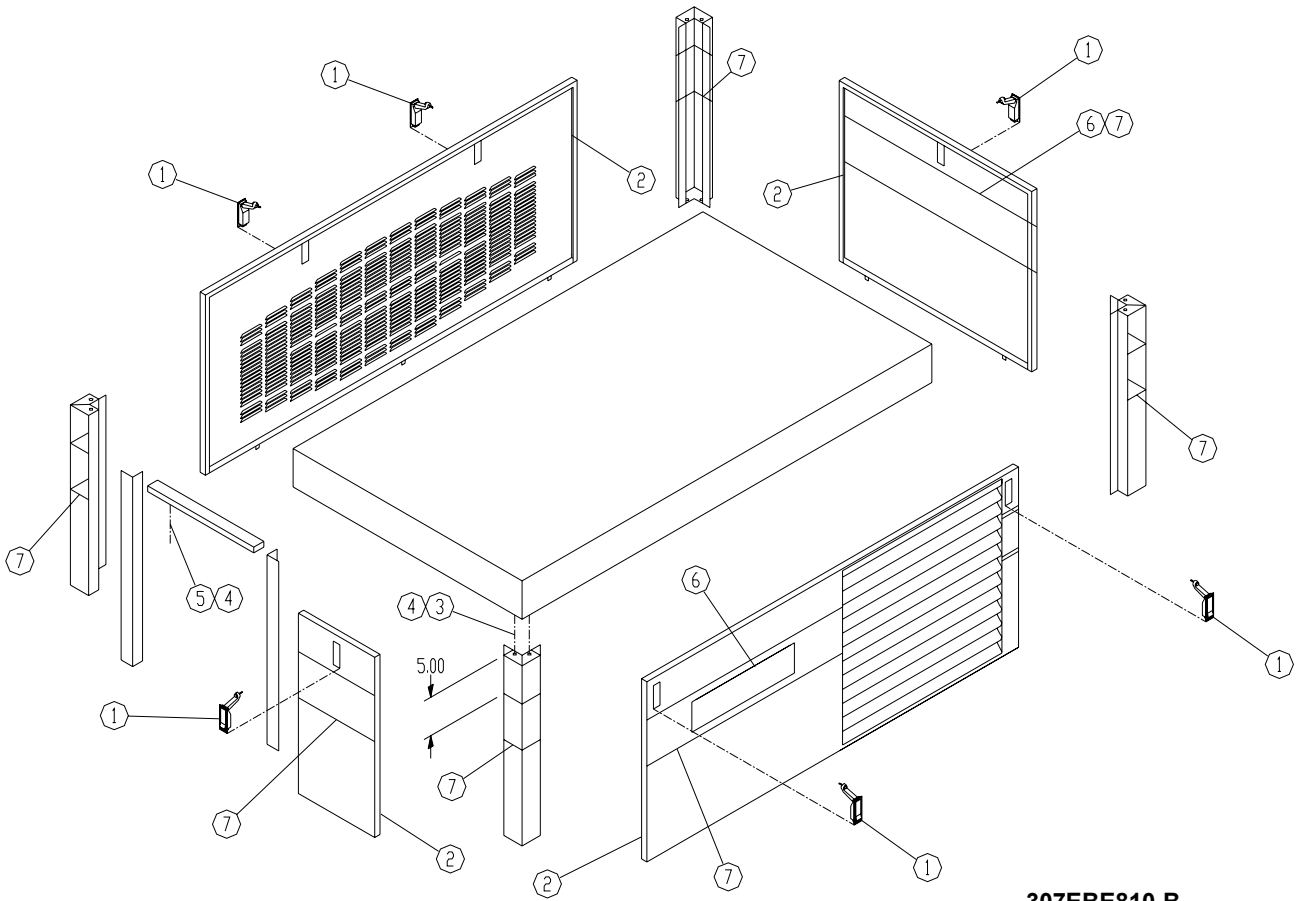
301EBC810-C  
(Ref. Drawing)

**CONTROLLER ASSEMBLY - BOARD**

Ref. No.	Name of Part	Qty.	RS2000 B/M: 300EBC560 Part No.
1	CONTROLLER.....	1	*
2	MEMORY MODULE.....	1	300EBC566
3	FUSE.....	1	24CA2932
4	FUSE.....	1	24CA2932

\* Part number not available for Repair

Order by Part Number and Description. Reference Numbers are for your convenience only.



307EBE810-B  
(Ref. Drawing)

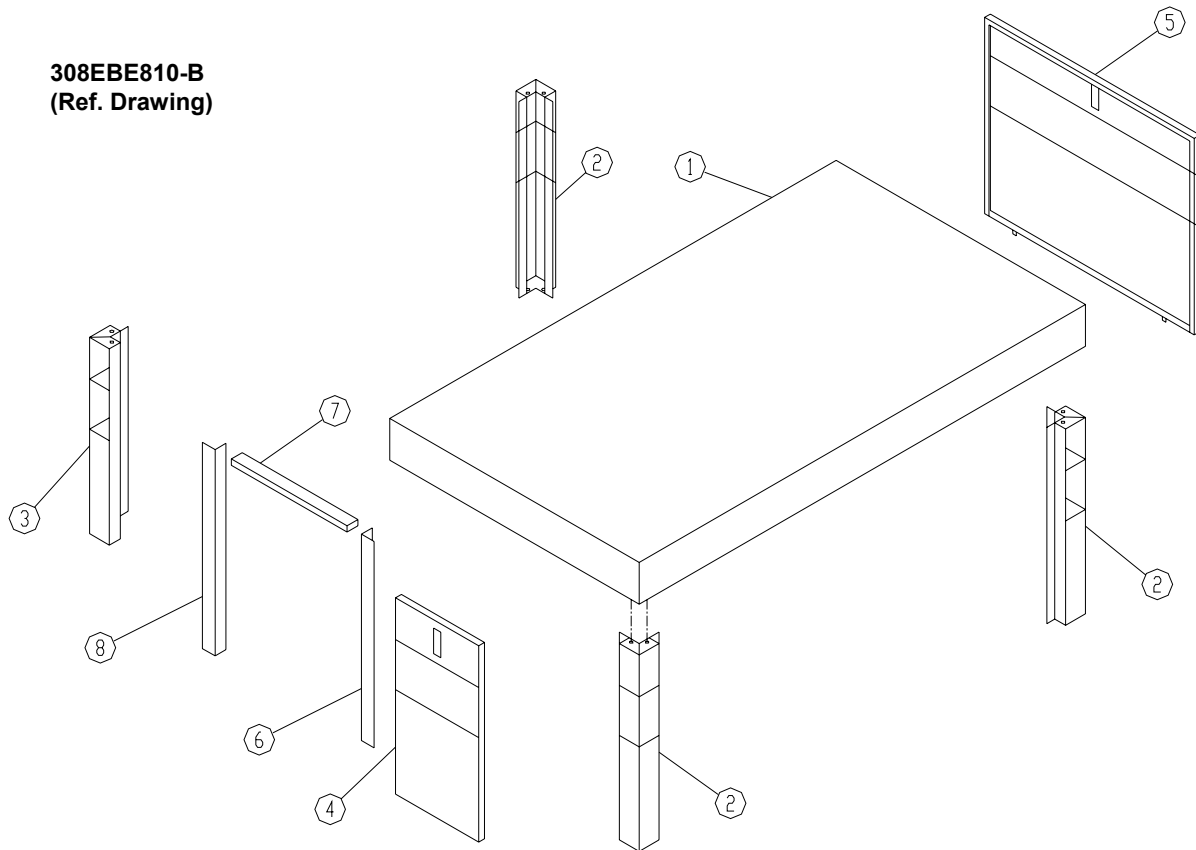
**ENCLOSURE – HARDWARE & DECALS**

**B/M: 303EBE4017**

Ref. No.	Name of Part	Qty.	Part No.
1	LATCH.....	6	31D68
2	SEAL (IN FEET).....	28	32E12
3	SCREW.....	20	75LM150
4	NUT.....	22	50AW5
5	SCREW.....	2	75LM78
6	DECAL.....	2	CC1022500
7	DECAL.....	2	CC1022499
8	KEY.....	2	VP1014243

Order by Part Number and Description. Reference Numbers are for your convenience only.

308EBE810-B  
(Ref. Drawing)

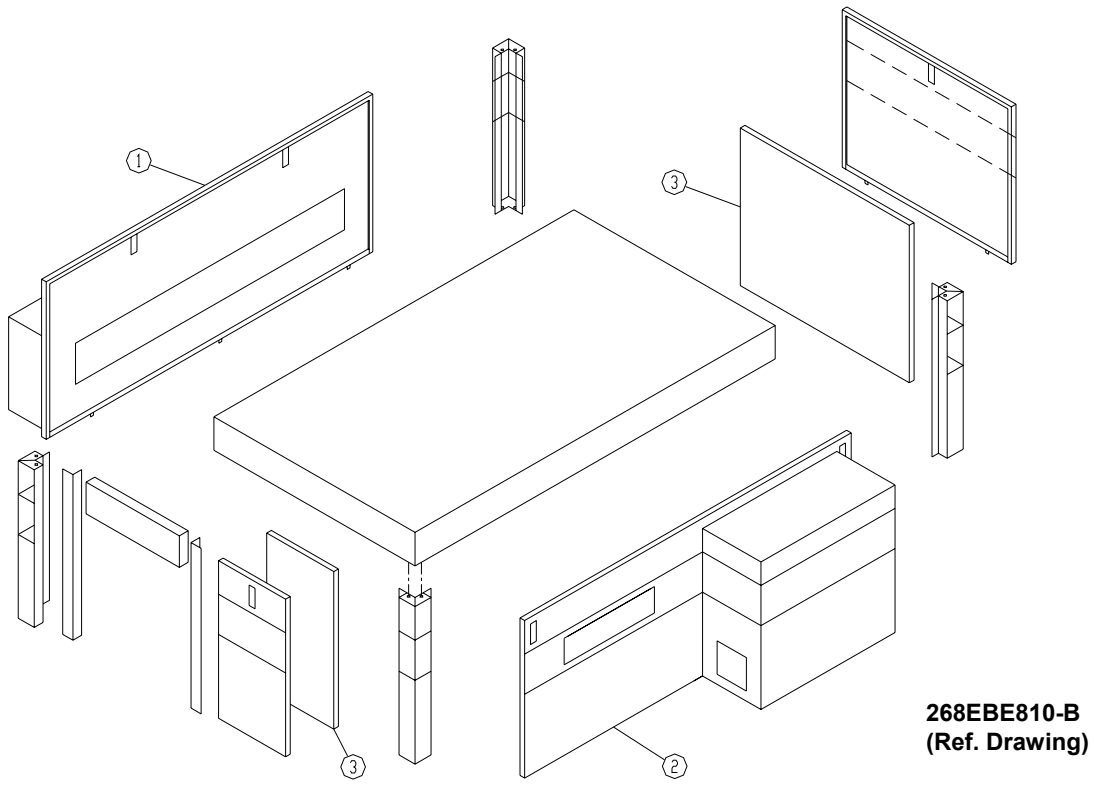


**ENCLOSURE – BASIC PARTS**

**B/M: 301EBE4017**

<b>Ref. No.</b>	<b>Name of Part</b>	<b>Qty.</b>	<b>Part No.</b>
1	HOOD.....	1	200EBE053
2	POST.....	3	206EBE313
3	POST.....	1	207EBE313
4	PANEL.....	1	205EBE216
5	PANEL.....	1	CC1016658
6	PANEL.....	1	CC1016656
7	BRACKET (FORMED) TOP OF CONTROL BOX .....	1	300EBE142
8	BRACKET LH SIDE OF CONTROL BOX.....	1	302EBE142

Order by Part Number and Description. Reference Numbers are for your convenience only.

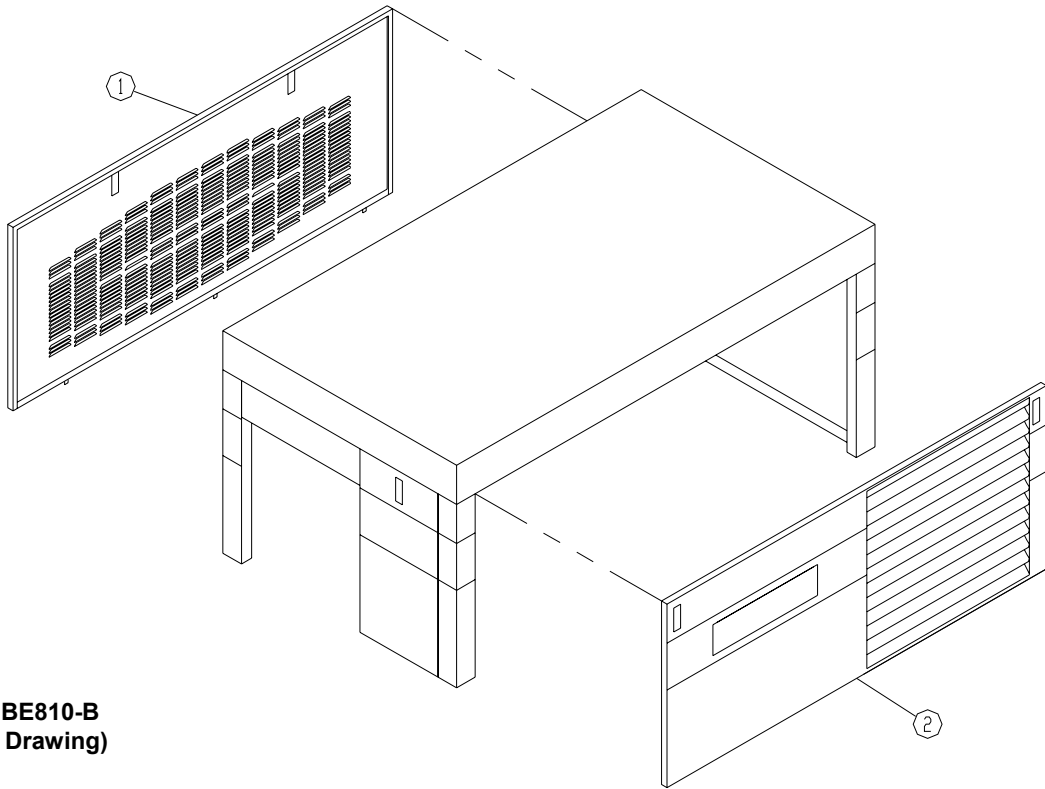


**QUIET ENCLOSURE – ODP MOTOR ONLY**

**B/M: 211EBE4017**

<b>Ref. No.</b>	<b>Name of Part</b>	<b>Qty.</b>	<b>Part No.</b>
1	PANEL.....	1	CC1016661
2	PANEL.....	1	CC1016662
3	INSULATION.....	1	200EJB470

Order by Part Number and Description. Reference Numbers are for your convenience only.



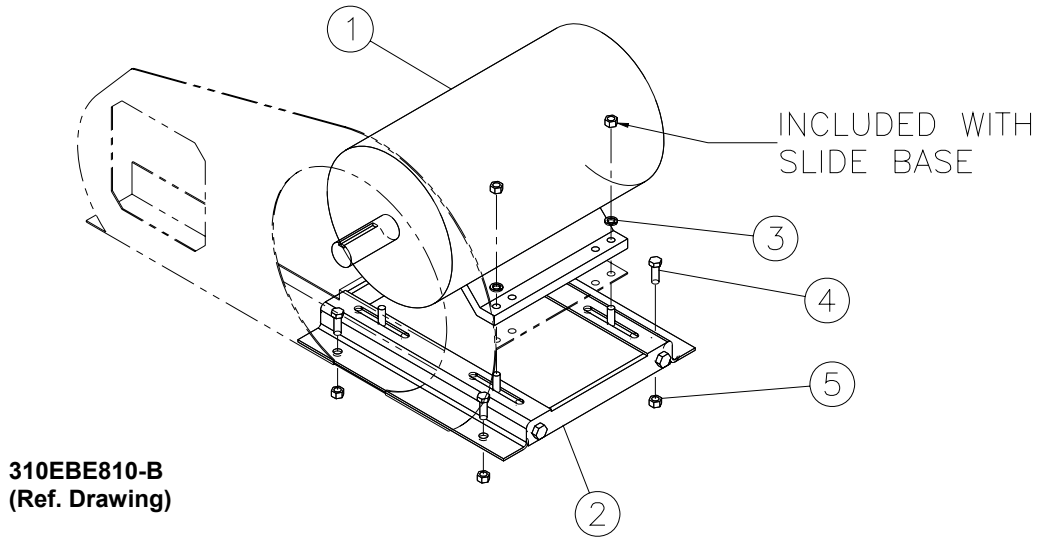
269EBE810-B  
(Ref. Drawing)

**ENCLOSURE – PANELS**

**B/M: 209EBE4017 ODP Motors    B/M: 210EBE4017 TEFC Motors**

Ref. No.	Name of Part	Qty.	Part No.	Part No.
1	PANEL.....	1	CC1016657	CC1016659
2	PANEL.....	1	CC1016660	CC1016660

Order by Part Number and Description. Reference Numbers are for your convenience only.



**MAIN MOTOR GROUP**

Ref. No.	Name of Part	Qty.	Part No.
1	MOTOR.....	1	*
2	BASE.....	1	*
3	LOCKWASHER.....	4	95B5
4	SCREW.....	4	75LM135
5	NUT.....	4	50AW35

\* Selective -- See page 36

**IDENTIFICATION AND INSTRUCTION GROUP**

**B/M: 300EBE4011**

<b>Ref. No.</b>	<b>Name of Part</b>	<b>Qty.</b>	<b>Part No.</b>
1	DECAL, WARNING .....	1	222EAQ077
2	DECAL, WARNING – ELECTRICAL SHOCK.....	1	216EAQ077
3	DECAL, P/L & OPER. MAN.....	1	204EDE077
4	DECAL, CAUTION – USE FLOOR PLATE .....	1	221EAQ077
6	DECAL, 21” ELECTRA SAVER II.....	2	CC1029345
9	DECAL, ROTATION ARROW .....	1	204EBE077
10	DECAL, WARNING .....	1	227EAQ077
11	DECAL - DANGER – AIR/OIL UNDER PRESSURE .....	2	212EAQ077
12	DECAL - QUALITY WITHOUT QUESTION .....	1	251EAQ077
13	DECAL, WARNING – INSPECT RESERVOIR .....	1	217EAQ077
14	DECAL, DANGER – DO NOT MODIFY .....	1	218EAQ077
15	DECAL, WARNING – ROTATING MACHINERY .....	1	211EAQ077
16	DECAL, CAUTION – DO NOT LIFT .....	1	208EAQ077
17	DECAL – WARNING .....	4	207EAQ077
18	DECAL – DANGER – DO NOT BREATHE DISCHARGE. AIR....	2	206EAQ077
19	DECAL, OIL LEVEL.....	1	200EJB077
20	DECAL.....	1	302EFC077
21	DECAL, DRAIN MOISTURE DAILY .....	1	205ESO077
22	DECAL, OIL FILTER ELEMENT 2116128/26C27.....	1	205EBE077
23	DECAL, NOTICE – USE GD PARTS .....	1	214EAQ077
25	DECAL - MADE IN USA .....	1	69F64

**MAIN MOTOR (STANDARD ODP & TEFC)  
(WYE DELTA)**

<b>Name of Part</b>	<b>20 HP (15 KW) Part No.</b>	<b>25 HP (19 KW) Part No.</b>	<b>30 HP (22 KW) Part No.</b>
---------------------	-----------------------------------	-----------------------------------	-----------------------------------

**OPEN DRIP PROOF**

MOTOR, 380/400/415V	24CA4342	24CA4343	24CA4344
---------------------	----------	----------	----------

**TOTALLY ENCLOSED FAN COOLED**

MOTOR, 380/400/415V	24CA4354	24CA4355	24CA4356
---------------------	----------	----------	----------

**MOTOR BASES**

<b>HP</b>	<b>Motor Frame</b>	<b>Part No.</b>
20	256	24AZ22
25	284	24AZ23
30	286	24AZ24

OVERLOAD RELAY HEATER CONVERSION LISTING

Refer to Motor Nameplate "Amperage" and Decal in Control Panel for Selection of Overload Relay Heater Packs

<b>CUTLER-HAMMER PART NUMBER</b>	<b>GARDNER DENVER PART NUMBER</b>
H2002B	24CA4101
H2003B	24CA4102
H2004B	24CA4103
H2005B	24CA4104
H2006B	24CA4105
H2007B	24CA4106
H2008B	24CA4107
H2009B	24CA4108
H2010B	24CA4109
H2011B	24CA4110
H2012B	24CA4111
H2013B	24CA4112
H2014B	24CA4113
H2015B	24CA4114
H2016B	24CA4115
H2017B	24CA4116
H2018	24CA2924
H2019	24CA2925
H2020	24CA2926
H2021	24CA2927
H2022	24CA2893
H2023	24CA2894
H2024	24CA2928

## REPAIR KITS

Your Gardner Denver rotary screw compressor is designed and manufactured for many years of reliable operation. All components are engineered to exacting specifications, which will function together as a system to provide maximum efficiency. To insure the continuing integrity of compressor operation, use only original quality genuine Gardner Denver replacement parts and accessories.

Name of Part	Qty.	Part No.
ROUTINE MAINTENANCE KIT .....		304EBE6013
ELEMENT, AIR FILTER.....	2	2118314
ELEMENT, OIL FILTER.....	3	2116128
PERIODIC MAINTENANCE KIT (Inlet Valve).....		302EBE6013
O-RING .....	1	25BC440
SPRING .....	1	78H22
SPRING .....	1	78W59
O-RING .....	1	25AM15
RING-RETAINING .....	1	74D87
GASKET (ELIMINATOR).....	1	25BC222
OIL SEPARATOR ELEMENT .....	1	2116717
FIELD ENCLOSURE KIT (ODP Motor)(Field Conversion Kit) (Std).....	1	300EBE6005
FIELD ENCLOSURE KIT (TEFC Motor)(Field Conversion Kit) (Std).....	1	301EBE6005
QUIET ENCLOSURE KIT (ODP Motor) (Field Conversion Kit) (Quiet).....	1	302EBE6005
ELECTRICAL CONTROL KIT .....		306EBE6013
THERMISTOR PROBE.....	2	21D264
VALVE-SOLENOID.....	1	91B70
VALVE-SOLDNOID .....	1	91B223
SWITCH-VACUUM .....	1	88H195
TRANSDUCER .....	2	88H359
PNEUMATIC CONTROL KIT .....		300EBE6013
VALVE-SUBTRACTIVE PILOT.....	1	2009398
VALVE-CONTROL.....	1	90AR1034
VALVE-CHECK.....	3	90AR261
CONTROL VALVE.....	1	90AR1082

**REPAIR KITS (CONTINUED)**

Name of Part	Qty.	Part No.
LUBRICANT (AEON 4000)		
5-GALLON PAIL .....	1	28H57
55-GALLON DRUM .....	1	28H36
TOUCH-UP PAINT (White)		
5-GALLON .....	1	28H76
1-GALLON .....	1	28H84
1-QUART CAN.....	1	28H83
DRIVE SHAFT SEAL KIT.....		300EFD6029
SHAFT SEAL KIT .....	1	EFC30834028
GASKET.....	1	EFC30805908
DRIVE SHAFT SEAL TOOL KIT.....		305EBE6013
SHAFT SEAL TOOL (Drift) .....	1	EFC03416008
SHAFT SEAL TOOL (Pressing Tool).....	1	EFC03424838
SHAFT SEAL TOOL .....	1	EFC03424708
WEAR SLEEVE PULLER .....	1	EFC89587189
PERIODIC OVERHAUL KIT .....		307EFD6013
SHAFT SEAL KIT .....	1	EFC30834028
OVERHAUL KIT.....	1	EFC50308830
O-RING .....	1	EFC89558369

# **Gardner** --- **Denver**

Specifications subject to change without notice.  
Copyright © 2006 Gardner Denver, Inc.

Litho in U.S.A.

For additional information contact your local representative or



Gardner Denver Compressor  
1800 Gardner Expressway, Quincy, Illinois 62305

Customer Service Department Telephone:  
(800) 682-9868  
FAX: (217) 224-7814

Visit our Web Site: [www.gardnerdenver.com](http://www.gardnerdenver.com)