
GARDNER DENVER®

13-9-578
Version: 02
June 5, 2003

**ELECTRA-SAVER II
BASE-MOUNTED
COMPRESSOR**

AUTO SENTRY[®] -- ES+ CONTROLS

MODELS

EBM99J – 60 & 75 HP

EBP99H – 100 HP

60 HZ DOMESTIC ONLY

PARTS LIST

Gardner

Denver

MAINTAIN COMPRESSOR RELIABILITY AND PERFORMANCE WITH GENUINE GARDNER DENVER® COMPRESSOR PARTS AND SUPPORT SERVICES

Gardner Denver® Compressor genuine parts, manufactured to design tolerances, are developed for optimum dependability – specifically for Gardner Denver compressor systems. Design and material innovations are the result of years of experience with hundreds of different compressor applications. Reliability in materials and quality assurance is incorporated in our genuine replacement parts.

Your authorized Gardner Denver Compressor distributor offers all the backup you'll need. A worldwide network of authorized distributors provides the finest product support in the air compressor industry. Your local authorized distributor maintains a large inventory of genuine parts and he is backed up for emergency parts by direct access to the Master Distribution Center (MDC) in Memphis, Tennessee.

Your authorized distributor can support your Gardner Denver air compressor with these services:

1. Trained parts specialists to assist you in selecting the correct replacement parts.
2. Factory warranted new and remanufactured rotary screw airends. Most popular model remanufactured airends are maintained in stock at the Remanufacturing Center in Indianapolis, IN., for purchase on an exchange basis with liberal core credit available for the replacement unit.
3. A full line of factory tested AEON™ compressor lubricants specifically formulated for use in Gardner Denver compressors.
4. Repair and maintenance kits designed with the necessary parts to simplify servicing your compressor.

Authorized distributor service technicians are factory trained and skilled in compressor maintenance and repair. They are ready to respond and assist you by providing fast, expert maintenance and repair services.

For the location of your local authorized Gardner Denver Air Compressor distributor, refer to the yellow pages of your phone directory or contact:

Distribution Center:

Gardner Denver
Master Distribution Center
5585 East Shelby Drive
Memphis, TN 38141

Phone: (901) 542-6100
(800) 245-4946

Fax: (901) 542-6159

Factory:

Gardner Denver
1800 Gardner Expressway
Quincy, IL 62301

Phone: (217) 222-5400

Fax: (217) 224-7814

INSTRUCTIONS FOR ORDERING REPAIR PARTS

When ordering parts, specify Compressor MODEL, Method of Cooling, HORSEPOWER and SERIAL NUMBER (see nameplate on unit). The Serial Number is also stamped on top of the discharge bearing carrier casting.

All orders for Parts should be placed with the nearest authorized distributor.

Where NOT specified, quantity of parts required per compressor or unit is one (1); where more than one is required per unit, quantity is indicated in parenthesis. **SPECIFY EXACTLY THE NUMBER OF PARTS REQUIRED.**

DO NOT ORDER BY SETS OR GROUPS.

To determine the Right-Hand and Left-Hand side of a compressor, stand at the motor end and look toward the compressor. Right-Hand and Left- Hand are indicated in parenthesis following the part name, i.e. (RH) and (LH), when appropriate.

TOTAL PRODUCT SUPPORT – GARDNER DENVER'S CONTINUING COMMITMENT TO YOUR AIR COMPRESSOR PERFORMANCE

Commitment to total product support continues long after the purchase of your quality Gardner Denver rotary screw compressor.

Gardner Denver original parts incorporate years of experience and improvements in design, materials and quality assurance. Maintaining your compressor investment with Gardner Denver parts will insure protection for the air compressor unit and long, dependable service life.

Your authorized Gardner Denver compressor distributor maintains a complete stock of all common maintenance parts, factory approved AEON lubricants, and Gardner Denver factory warranted exchange airends. In addition, authorized distributor technicians are factory trained, and can provide complete diagnostic, compressor maintenance and repair services.

This manual is designed to assist you in maintaining high performance and receiving many years of dependable service you expect from your Gardner Denver compressor.

REMANUFACTURED AIRENDS

Whenever an airend requires replacement or repair, Gardner Denver offers an industry unique, factory remanufactured airend exchange program. From its modern Remanufacturing Center in Indianapolis, IN., Gardner Denver is committed to supplying you with the highest quality, factory remanufactured airends that are guaranteed to save you time, aggravation and money.

Immediately Available

Repair downtime costs you money, which is why there are over 200 remanufactured units in inventory at all times, ready for immediate delivery.

Skilled Craftsmen

Our Remanufacturing assembly technicians average over 20 years experience with air compression products.

Precision Remanufacturing

All potentially usable parts are thoroughly cleaned, inspected and analyzed. Only those parts that can be brought back to original factory specifications are remanufactured. Every remanufactured airend receives a new overhaul kit: bearings, gears, seals, sleeves and gaskets.

Extensive Testing

Gardner Denver performs testing that repair houses just don't do. Magnaflux and ultrasonic inspection spot cracked or stressed castings, monochromatic light analysis exposes oil leaks, and coordinate measurement machine inspects to +/- .0001", insuring that all remanufactured airends meet factory performance specifications.

Warranty

Gardner Denver backs up every remanufactured airend with a new warranty...18 months from purchase, 12 months from service.

Gardner Denver remanufactured airends deliver *quality without question...year in and year out.*

Call Gardner Denver for information on the airend exchange program and the name of your authorized distributor.

Phone Number: 800-245-4946 or
Fax: 901-542-6159

TABLE OF CONTENTS

Maintain Compressor Reliability And Performance With Genuine
 Gardner Denver Compressor Parts And Support Servicesi
 Instructions For Ordering Repair Partsi
 Total Product Support – Gardner Denver's Continuing Commitment
 To Your Air Compressor Performance ii
 Remanufactured Airends ii
 Airend Selection And Repair Kits 1
 Bare Compressor – (SSH) EBM..... 2, 3
 Bare Compressor – (SSM) EBM & EBP 4, 5
 Bare Compressor – (SSP) EBP 6, 7
 Oil Seal Detail – (SSH & SSM)..... 8
 Oil Seal Detail – (SSP) EBP 9
 Inlet Valve (All Models)..... 10
 Air Filter 11
 Oil Reservoir..... 12
 Oil Reservoir Group 13
 Oil Separator Housing 14
 Compressor To Air/Oil Reservoir Discharge Piping..... 15
 Oil Piping Group 16
 Oil Filter 17
 Oil Piping Line - SSH..... 18
 Oil Piping Line – SSM & SSP 19
 Oil Scavenge Line..... 20
 Compressor Base Group (SSH, SSP) 21
 Thermal Valve 22
 Air Discharge Piping..... 23
 Air Cooled Discharge Piping..... 24, 25
 Water Cooled Heat Exchanger (With Aftercooler)..... 26, 27
 Water Cooled Heat Exchanger (Without Aftercooler) 28, 29
 Control Tubing Schematic 30, 31
 Minimum Pressure Valve..... 32
 Enclosure (Common Parts - Air/Water Cooled) 33
 Enclosure – Hardware..... 34
 Enclosure – Air Cooled Units 35
 Enclosure – Water Cooled Units 36
 Enclosure – Common Parts..... 37
 Enclosure – Water Cooled (Quiet)..... 38
 Enclosure – Air Cooled (Quiet Baffle)..... 39
 Enclosure – Air Cooled (Quiet Baffle – Hardware) 40
 Enclosure – Vent Fan Assembly (Water Cooled Units Only)..... 41
 Controller Assembly – Full Voltage Starters 42, 43
 Controller Assembly – Wye Delta Starters 44 - 47
 Controller Assembly – Less Main Motor Starter..... 48, 49
 Controller Assembly..... 50
 Miscellaneous Electrical Parts 51
 Main Motor Group..... 52
 Overload Relay Heater Conversion Listing..... 53
 Motor Group (Main Drive Motors)..... 54
 Identification And Instruction Group..... 55
 Repair Kits 56 - 58

For Operating and Service Instructions, see:

SERVICE MANUAL: 13-9-655
CONTROLLER MANUAL: 13-9-653

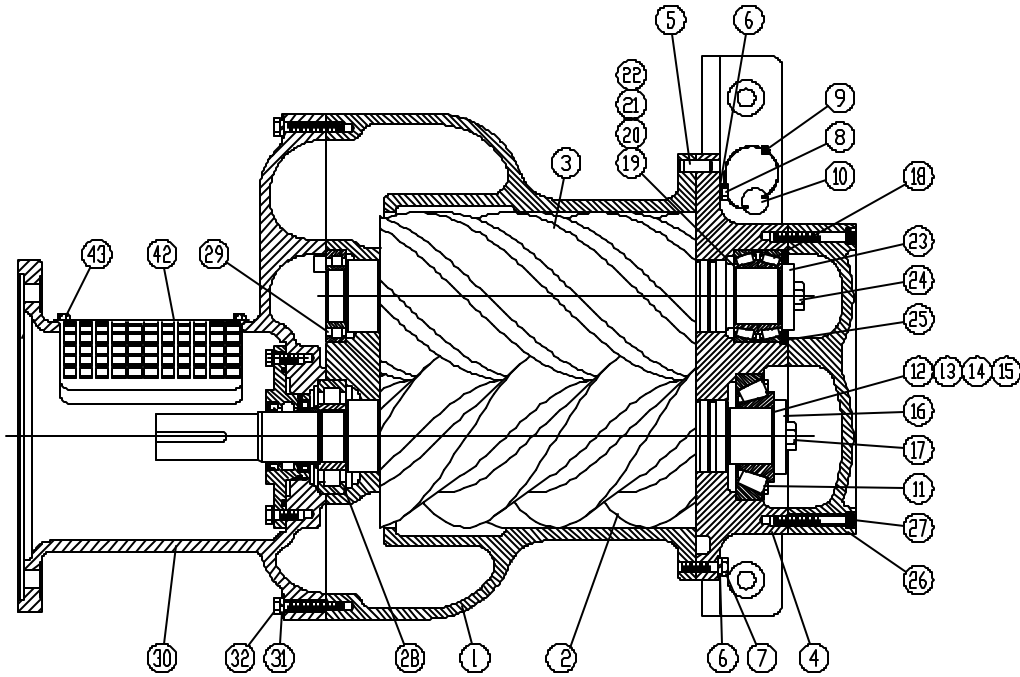
AIREND SELECTION AND REPAIR KITS

Model	HP	PSI	Airend w/Inlet Valve	Reman Airend w/Inlet Valve	Bearing Kit *	Gasket Kit	Inlet Valve Kit	Drive Shaft Seal Kit	Drive Shaft Wear Sleeve Removal & Installation Kit
EBM	60	100	SSMNBE03	SSMNBE03X	320SSM6013	321SSM6013	302SSM6013	302SSH6013	200SSH4017
		125	SSHCBL01	SSHCBL01X	326SSH6013	327SSH6013	302SSM6013	302SSH6013	200SSH4017
		150	SSHCBL02	SSHCBL02X	326SSH6013	327SSH6013	302SSM6013	302SSH6013	200SSH4017
		175	SSHCBL02	SSHCBL02X	326SSH6013	327SSH6013	302SSM6013	302SSH6013	200SSH4017
		200	SSHCBL03	SSHCBL03X	326SSH6013	327SSH6013	302SSM6013	302SSH6013	200SSH4017
EBM	75	100	SSMNBE01	SSMNBE01X	320SSM6013	321SSM6013	302SSM6013	302SSH6013	200SSH4017
		125	SSMNBE02	SSMNBE02X	320SSM6013	321SSM6013	302SSM6013	302SSH6013	200SSH4017
		150	SSMNBE03	SSMNBE03X	320SSM6013	321SSM6013	302SSM6013	302SSH6013	200SSH4017
		175	SSMNBE04	SSMNBE04X	320SSM6013	321SSM6013	302SSM6013	302SSH6013	200SSH4017
		200	SSHCBL01	SSHCBL01X	326SSH6013	327SSH6013	302SSM6013	302SSH6013	200SSH4017
EBP	100	100	SSPNBE01	SSPNBE01X	323SSP6013	324SSP6013	302SSM6013	300SSP6013	200SSP4017
		125	SSPNBE02	SSPNBE02X	323SSP6013	324SSP6013	302SSM6013	300SSP6013	200SSP4017
		150	SSMNBE01	SSMNBE01X	320SSM6013	321SSM6013	302SSM6013	302SSH6017	200SSH4017
		175	SSMNBE01	SSMNBE01X	320SSM6013	321SSM6013	302SSM6013	302SSH6013	200SSH4017
		200	SSMNBE02	SSMNBE02X	320SSM6013	321SSM6013	302SSM6013	302SSH6013	200SSH4017

* When ordering Bearing Kits, also order Gasket Kit and Drive Shaft Seal Kit.

For listing of Repair Parts included in Kit numbers above, see Repair Kit Section, pages 56 – 70.

BARE COMPRESSOR – (SSH) EBM
60 HP – 125, 150, 175 & 200 PSI
75 HP – 200 PSI



207SSH810-C
(Ref. Drawing)

Order by Part Number and Description. Reference Numbers are for your convenience only.

BARE COMPRESSOR – (SSH) EBM
60 HP – 125, 150, 175 & 200 PSI
75 HP – 200 PSI

B/M: 200SSH4049

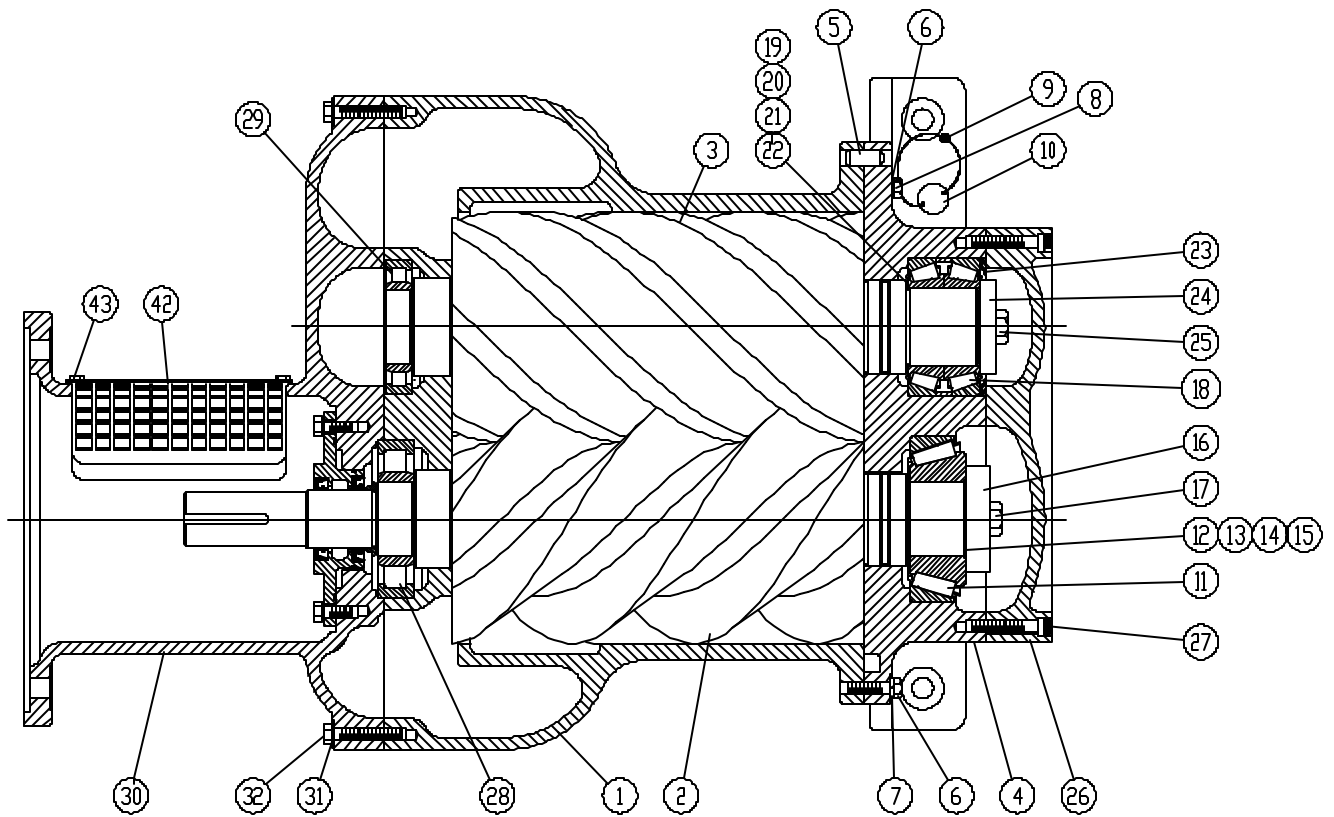
Ref. No.	Name of Part	Qty.	Part No.
1	CYLINDER.....	1	***
2	ROTOR	1	***
3	ROTOR	1	***
4	HOUSING-BEARING.....	1	***
5	PIN-DOWEL	2	***
6	LOCKWASHER.....	14	***
7	SCREW.....	10	***
8	SCREW.....	2	***
9	SEAL.....	1	***
10	TAG-INSTRUCTION.....	1	***
* 11	ROLLER BEARING	1	12BA91
** 12	SHIM	2	77H54015
** 13	SHIM	3	77H54005
** 14	SHIM	3	77H54003
** 15	SHIM	3	77H54002
16	PLATE-BEARING RETAINER.....	1	***
17	SCREW.....	1	***
* 18	ROLLER BEARING	1	12BA196
** 19	SHIM	2	77H53015
** 20	SHIM	3	77H53005
** 21	SHIM	3	77H53003
** 22	SHIM	3	77H53002
23	PLATE-BEARING RETAINER.....	1	***
24	SCREW.....	1	***
* 25	SPRING.....	1	78W96
26	PLATE-BEARING COVER.....	1	***
27	SCREW.....	18	***
* 28	ROLLER BEARING	1	12BA130
* 29	ROLLER BEARING	1	12BA136
30	ADAPTOR	1	***
31	LOCKWASHER.....	16	***
32	SCREW.....	16	***
42	GUARD COUPLING.....	1	***
43	SCREW.....	4	***
44	PLUG (not shown).....	4	***
45	PLUG (not shown).....	1	***
46	PLUG (not shown).....	1	***
47	PLUG (not shown).....	1	***
** 48	GASKET-ELIMINATOR (not shown).....	1	25BC222
49	SCREW (not shown).....	2	***
50	PLUG (not shown).....	2	***

* Parts included in Bearing Kit Part Number 326SSH6013. Refer to Page 57.

** Parts included in Gasket Kit Part Number 327SSH6013. Refer to Page 57.

*** Shown for reference only.

BARE COMPRESSOR – (SSM) EBM & EBP
EBM – 60 HP – 100 PSI
EBM – 75 HP – 100, 125, 150 & 175 PSI
EBP – 100 HP – 150, 175 & 200 PSI



209SSM810-B
(Ref. Drawing)

Order by Part Number and Description. Reference Numbers are for your convenience only.

BARE COMPRESSOR – (SSM) EBM & EBP
EBM – 60 HP – 100 PSI
EBM – 75 HP – 100, 125, 150 & 175 PSI
EBP – 100 HP – 150, 175 & 200 PSI

B/M: 200SSM4049

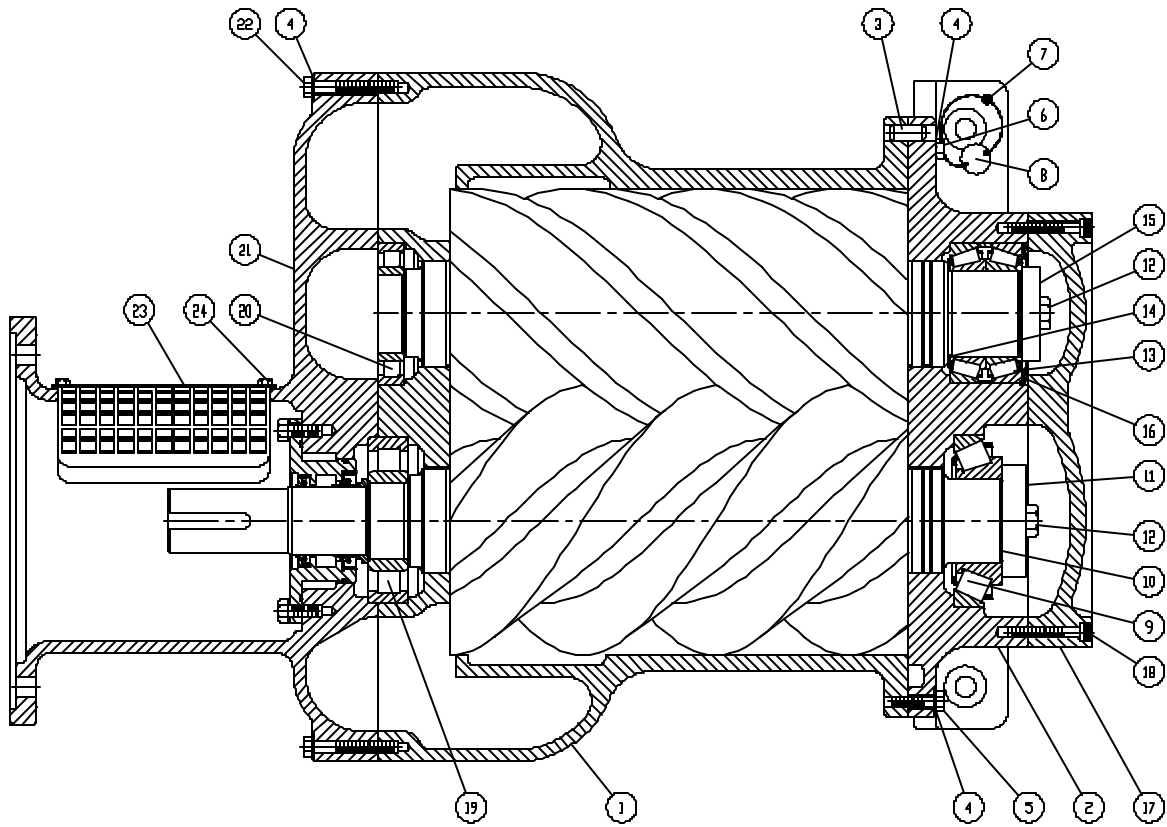
Ref. No.	Name of Part	Qty.	Part No.
1	CYLINDER.....	1	***
2	ROTOR	1	***
3	ROTOR	1	***
4	HOUSING-BEARING.....	1	***
5	PIN-DOWEL	2	***
6	SCREW.....	14	***
7	LOCKWASHER.....	16	***
8	SCREW.....	2	***
9	SEAL.....	1	***
10	TAG-INSTRUCTION.....	1	***
* 11	ROLLER BEARING	1	12BA92
** 12	SHIM	2	77H56015
** 13	SHIM	3	77H56005
** 14	SHIM	3	77H56003
** 15	SHIM	3	77H56002
16	PLATE-BEARING RETAINER.....	1	***
17	SCREW.....	1	***
* 18	ROLLER BEARING	1	12BA197
** 19	SHIM	2	77H57015
** 20	SHIM	3	77H57005
** 21	SHIM	3	77H57003
** 22	SHIM	3	77H57002
* 23	SPRING.....	1	78W97
24	PLATE-BEARING RETAINER.....	1	***
25	SCREW.....	1	***
26	PLATE-BEARING COVER.....	1	***
27	SCREW.....	18	***
* 28	ROLLER BEARING	1	12W34
* 29	ROLLER BEARING	1	12BA93
30	ADAPTOR	1	***
31	LOCKWASHER.....	16	***
32	SCREW.....	16	***
42	GUARD COUPLING.....	1	***
43	SCREW.....	4	***
44	PLUG (not shown).....	6	***
45	PLUG (not shown).....	1	***
46	PLUG (not shown).....	1	***
47	PLUG (not shown).....	1	***
** 48	GASKET-ELIMINATOR (not shown).....	1	25BC222

* Parts included in Bearing Kit Part Number 320SSM6013. Refer to Page 57.

** Parts included in Gasket Kit Part Number 321SSM6013. Refer to Page 57.

*** Shown for reference only.

BARE COMPRESSOR – (SSP) EBP
100 HP – 100 & 125 PSI



216SSP810-B
(Ref. Drawing)

Order by Part Number and Description. Reference Numbers are for your convenience only.

**BARE COMPRESSOR – (SSP) EBP
100 HP – 100 & 125 PSI**

**B/M: 208SSP4000
209SSP4000**

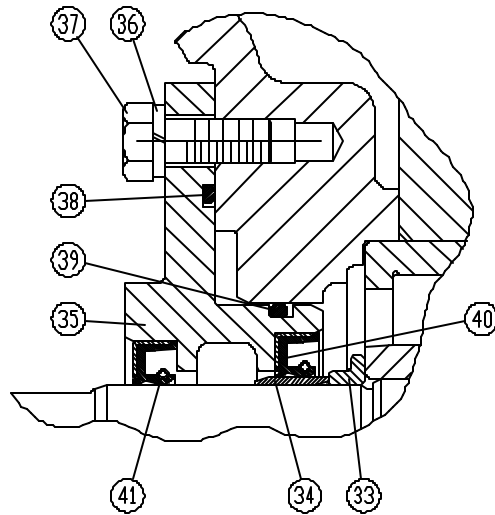
Ref. No.	Name of Part	Qty.	Part No.
1	CYLINDER.....	1	***
2	HOUSING-BEARING.....	1	***
3	PIN-DOWEL.....	2	***
4	LOCKWASHER.....	36	***
5	SCREW.....	14	***
6	SCREW.....	2	***
7	SEAL.....	1	***
8	TAG-INSTRUCTION.....	1	***
* 9	BEARING-ROLLER.....	1	12BA105
** 10	SHIM SET.....	1	77H63
11	PLATE-BEARING RETAINER.....	1	***
12	SCREW.....	2	***
* 13	BEARING-ROLLER.....	1	12BA198
** 14	SHIM SET.....	1	77H62
15	PLATE-BEARING RETAINER.....	1	***
* 16	SPRING.....	1	78W98
17	PLATE-BEARING COVER.....	1	***
18	SCREW.....	18	***
* 19	BEARING-ROLLER.....	1	12BA104
* 20	BEARING-ROLLER.....	1	12BA103
21	ADAPTOR.....	1	***
22	SCREW.....	19	***
23	GUARD COUPLING.....	1	***
24	SCREW.....	4	***
35	PLUG (not shown).....	1	***
36	PLUG (not shown).....	1	***
** 37	GASKET-ELIMINATOR (not shown).....	1	25BC222
38	PLUG (not shown).....	2	***
39	SCREW (not shown).....	1	***
41	PLUG (not shown).....	1	***

* Parts included in Bearing Kit Part Number 323SSP6013. Refer to page 57.

** Parts included in Gasket Kit Part Number 324SSP6013. Refer to page 57.

*** Shown for reference only.

Order by Part Number and Description. Reference Numbers are for your convenience only.



207SSH810-C
(Ref. Drawing)

209SSM810-B
(Ref. Drawing)

OIL SEAL DETAIL – (SSH & SSM)
EBM – 60 HP – 100 PSI
EBM – 75 HP – 100, 125, 150 & 175 PSI
EBP – 100 HP – 150, 175 & 200 PSI

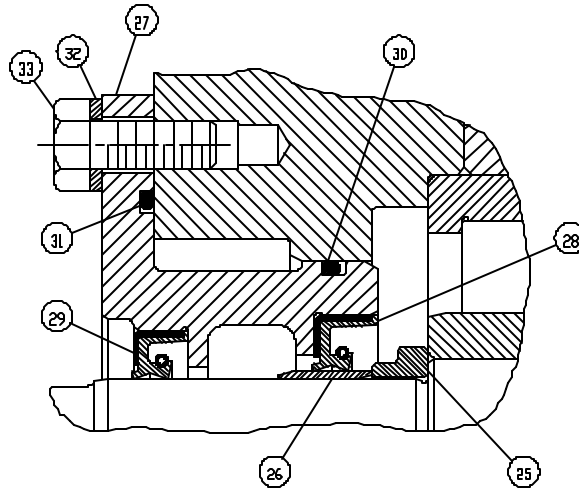
B/M: 200SSH4049
200SSM4049

Ref. No.	Name of Part	Qty.	Part No.
33	SPACER-SHAFT.....	1	200SSH600
* 34	SLEEVE-WEAR.....	1	80M12
35	HOUSING-SEAL.....	1	202SSH362
36	LOCKWASHER.....	8	95B3
37	SCREW.....	8	655ED050
* 38	O-RING	1	8502140
* 39	O-RING	1	25BC165
* 40	SEAL-OIL	1	60DD679
* 41	SEAL-OIL	1	60DD690
*	CHECK VALVE (not shown).....	1	90AR923

* Parts included in Drive Shaft Seal Kit Part Number 302SSH6013. Refer to page 57.

Note: For Wear Sleeve Installation/Removal Kit, see Part Number 200SSH4017. Refer to page 57.

Order by Part Number and Description. Reference Numbers are for your convenience only.



216SSP810-B
(Ref. Drawing)

**OIL SEAL DETAIL – (SSP) EBP
100 HP – 100 & 125 PSI**

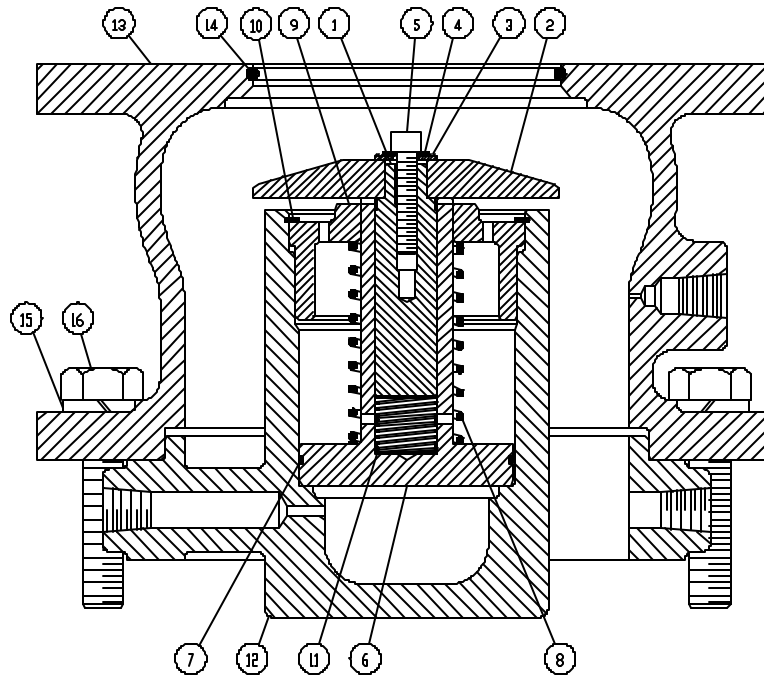
B/M: 208SSP4000

Ref. No.	Name of Part	Qty.	Part No.
25	SPACER-SHAFT.....	1	200SSP600
* 26	SLEEVE-WEAR.....	1	80M40
27	HOUSING-SEAL.....	1	204SSP362
* 28	SEAL-OIL.....	1	60DD693
* 29	SEAL-OIL.....	1	60DD692
* 30	O-RING.....	1	25BC380
* 31	O-RING.....	1	8502140
32	LOCKWASHER.....	8	95B3
33	SCREW.....	8	655ED050

* Parts included in Drive Shaft Seal Kit Part Number 300SSP6013. Refer to page 58.

Note: For Wear Sleeve Installation/Removal Kit, see Part Number 200SSP4017. Refer to page 58.

Order by Part Number and Description. Reference Numbers are for your convenience only.



208SSM810-C
(Ref. Drawing)

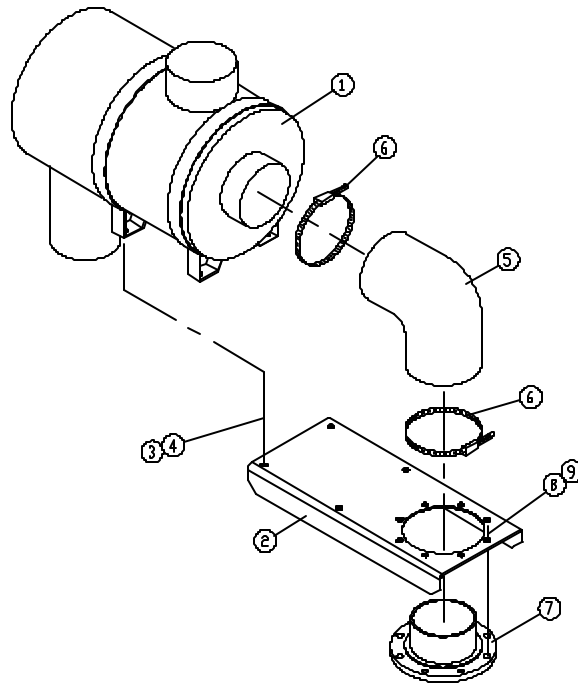
INLET VALVE (All Models)

B/M: 200SSM4030

Ref. No.	Name of Part	Qty.	Part No.
1	GUIDE-VALVE	1	200SSM483
2	VALVE-INLET.....	1	200SSM044
3	WASHER.....	1	95A1
4	LOCKWASHER.....	1	95H56
5	SCREW	1	655EC05N
6	PISTON-INLET VALVE	1	201SSM043
* 7	O-RING.....	1	25BC447
* 8	SPRING	1	78G19
9	RETAINER.....	1	200SSM205
* 10	RING-RETAINING	1	74D88
* 11	SPRING	1	78W63
12	HOUSING-INLET.....	1	205SSM041
13	SEAT	1	203SSM256
* 14	O-RING.....	1	25AM29
15	LOCKWASHER.....	8	95B5
16	SCREW	8	655EE100

* Parts included in Periodic Maintenance Part Number 302SSM6013. Refer to page 56.

Order by Part Number and Description. Reference Numbers are for your convenience only.



289ECM810
(Ref. Drawing)

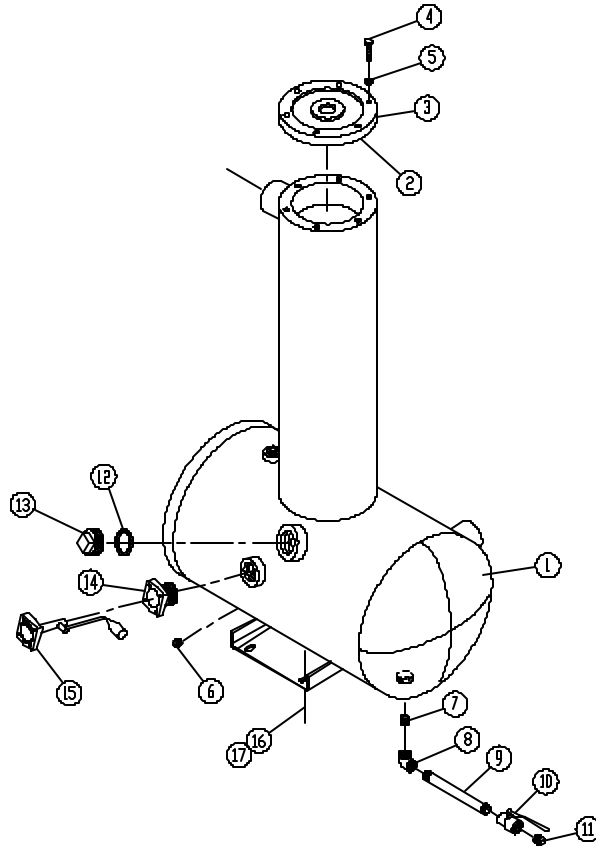
AIR FILTER

B/M: 285ECM4017

Ref. No.	Name of Part	Qty.	Part No.
1	FILTER-AIR.....	1	5L263
2	BRACKET-FILTER.....	1	202ECM389
3	SCREW.....	4	75LM51
4	NUT.....	4	50AW5
5	HOSE.....	1	2009503
6	CLAMP.....	2	2009644
7	ADAPTOR-FILTER.....	1	200EBM070
8	SCREW.....	8	655EE060
9	LOCKWASHER.....	8	95B5
10	GASKET-ELIMINATOR (not shown).....	1	25BC222
*	ELEMENT, AIR FILTER.....	1	2116713

* Repair Element for Air Filter.

Order by Part Number and Description. Reference Numbers are for your convenience only.



301EBP810-A
(Ref. Drawing)

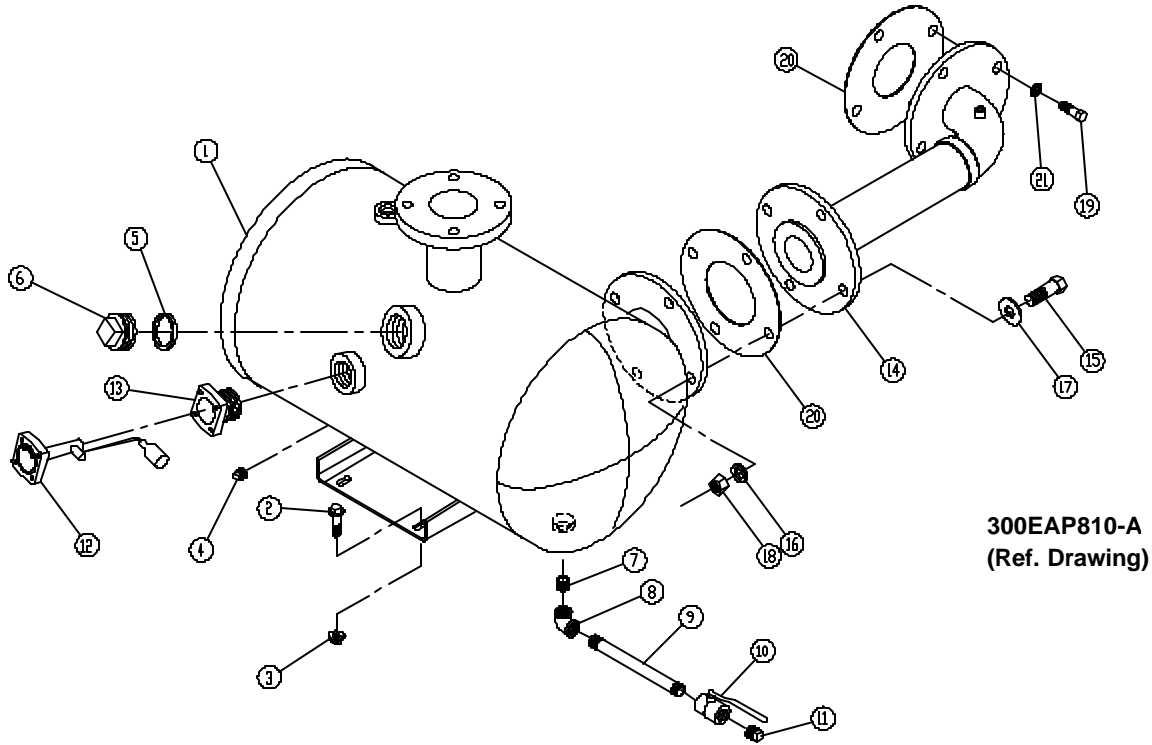
**OIL RESERVOIR
175 & 200 PSI**

B/M: 302EBP4013

Ref. No.	Name of Part	Qty.	Part No.
1	OIL RESERVOIR	1	301EBP037
2	GASKET-ELIMINATOR	1	25BC222
3	COVER.....	1	301EBP225
4	SCREW.....	6	655EE070
5	LOCKWASHER.....	6	95B5
6	PLUG.....	1	64AA5
7	NIPPLE.....	1	63F1G
8	ELBOW.....	1	64C4G
9	NIPPLE.....	1	63F41G
10	VALVE-BALL	1	90AR360
* 11	PLUG.....	1	64AA7
12	O-RING.....	1	54C214
13	COVER-FILLER.....	1	200SPF156
14	ADAPTOR-GAUGE	1	200EDE058
15	GAUGE-FLOAT	1	300EBM303
16	SCREW.....	4	75LM135
17	NUT.....	4	50AW35

For Repair: Float Gauge Gasket – order Part Number 54C204.

Order by Part Number and Description. Reference Numbers are for your convenience only.



**OIL RESERVOIR GROUP
100, 125 & 150 PSI**

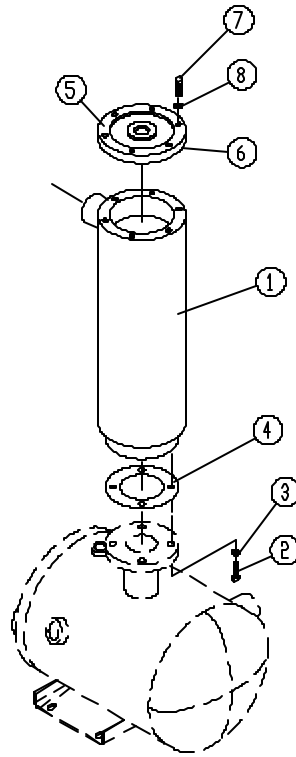
B/M: 300EAP4018

Ref. No.	Name of Part	Qty.	Part No.
1	RESERVOIR-OIL	1	300EAP037
2	SCREW	4	75LM135
3	NUT.....	4	50AW35
4	PLUG.....	1	64AA5
5	O-RING.....	1	54C214
6	COVER-FILLER.....	1	200SPF156
7	NIPPLE.....	1	63F2G
8	ELBOW.....	1	64C4G
9	NIPPLE.....	1	63F13G
10	VALVE-BALL	1	90AR360
* 11	PLUG.....	1	64AA7
12	GAUGE-FLOAT	1	300EBM303
13	ADAPTOR-GAUGE	1	200EDE058
14	MANIFOLD	1	300EAP286
15	SCREW.....	4	655EF120
16	LOCKWASHER.....	4	95B7
17	WASHER.....	4	95A7
18	NUT.....	4	50B7
19	SCREW.....	4	655EF070
20	GASKET	2	25C2722N
21	LOCKWASHER.....	4	95B7

For Repair: Float Gauge Gasket – order Part Number 54C204.

Order by Part Number and Description. Reference Numbers are for your convenience only.

274ECM810-B
(Ref. Drawing)

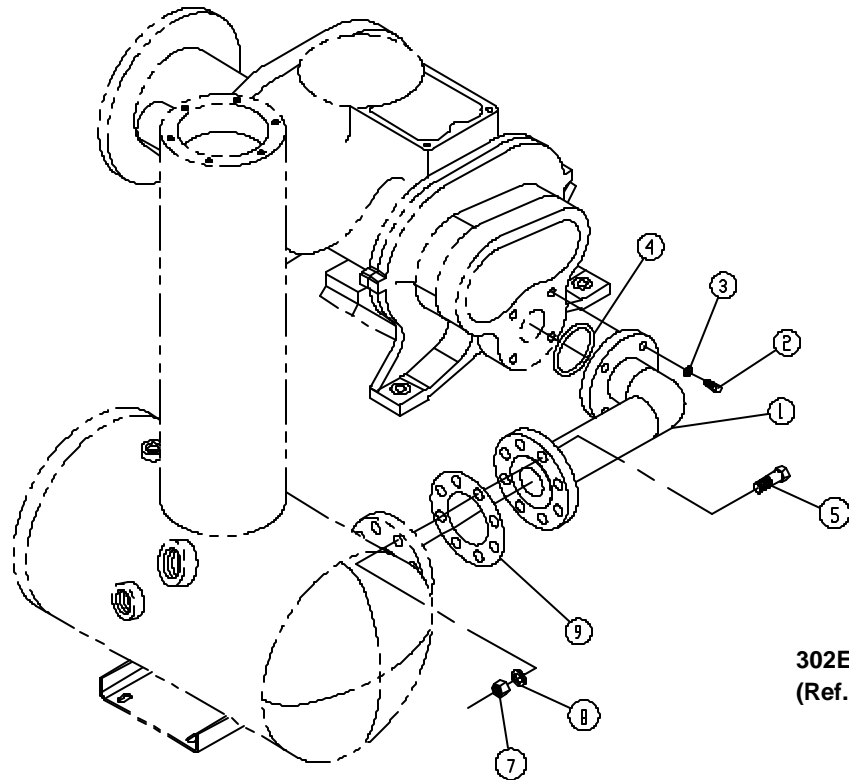


OIL SEPARATOR HOUSING
100, 125 & 150 PSI

B/M: ECM81515

Ref. No.	Name of Part	Qty.	Part No.
1	HOUSING.....	1	200ECM405
2	SCREW.....	4	655EF080
3	LOCKWASHER.....	4	95B7
4	GASKET.....	1	25C802
5	COVER.....	1	203ECM225
6	GASKET-ELIMINATOR.....	1	25BC222
7	SCREW.....	6	655EE070
8	LOCKWASHER.....	6	95B5

Order by Part Number and Description. Reference Numbers are for your convenience only.



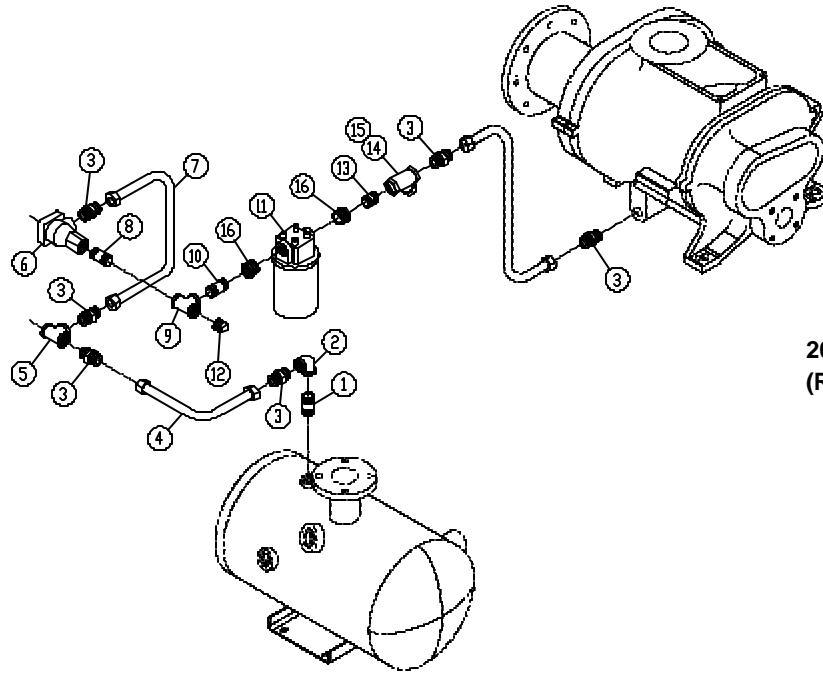
302EBP810-B
(Ref. Drawing)

**COMPRESSOR TO AIR/OIL RESERVOIR DISCHARGE PIPING
175 & 200 PSI**

B/M: 301EBP4013

Ref. No.	Name of Part	Qty.	Part No.
1	MANIFOLD.....	1	300EBP286
2	SCREW.....	4	655EF070
3	LOCKWASHER.....	4	95B7
4	O-RING	1	25BC686
5	SCREW.....	8	655EG140
7	NUT.....	8	50B8
8	LOCKWASHER.....	8	95B8
9	GASKET.....	1	25C513N

Order by Part Number and Description. Reference Numbers are for your convenience only.



207EBM810-B
(Ref. Drawing)

OIL PIPING GROUP

B/M: 300 & 301EBP4054
301EBP4019
302 & 303EBM4013

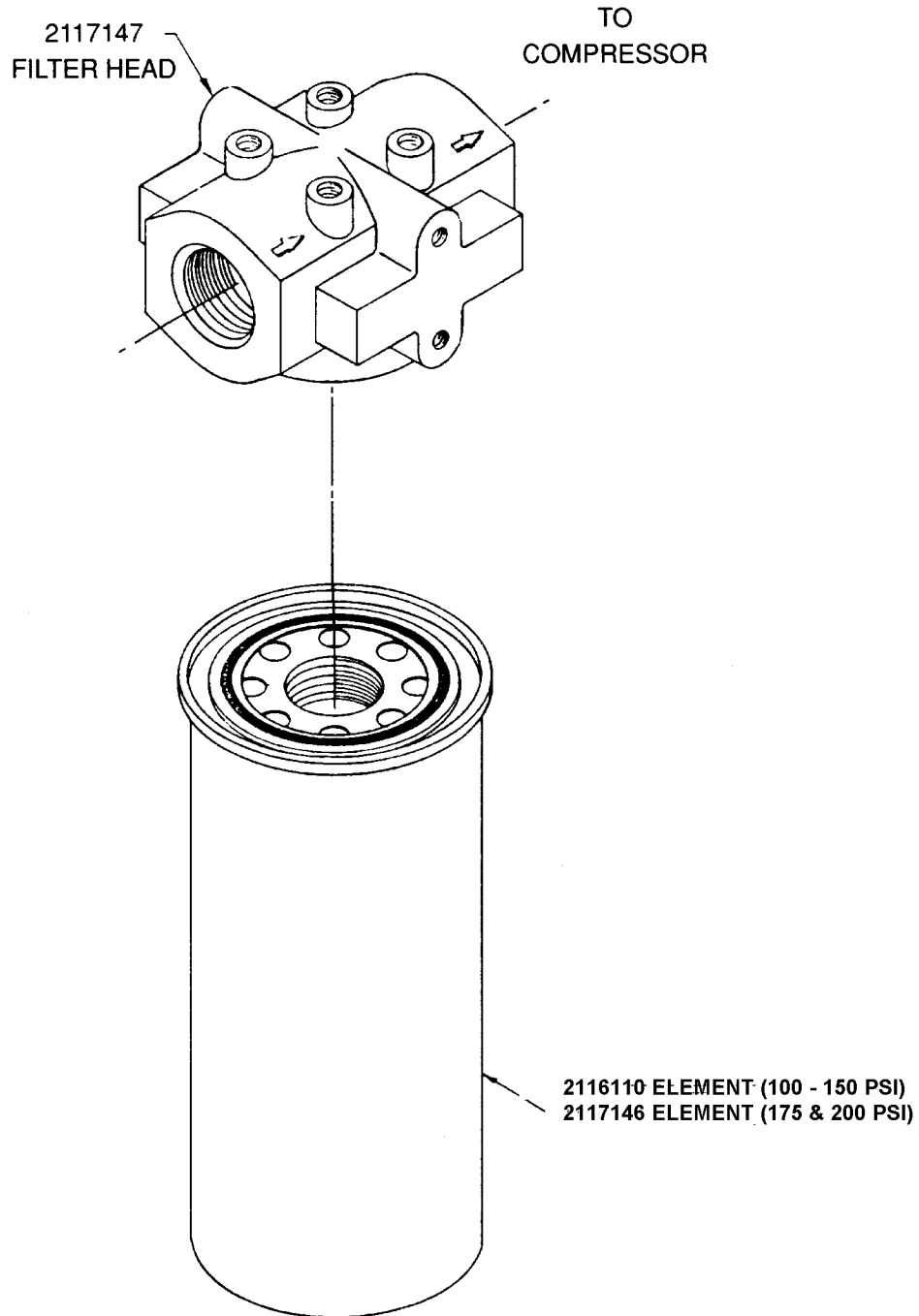
Ref. No.	Name of Part	Qty.	Part No.
1	NIPPLE.....	1	63H2G
2	ELBOW.....	1	64C6G
3	CONNECTOR-TUBE.....	6	86H138
4	TUBE WITH FITTINGS		
	100 - 150 PSIG.....	1	202EBM863
	175 - 200 PSIG.....	1	301EBP863
5	TEE.....	1	64G8G
6	VALVE-THERMAL		
	160° (STD).....	1	90AR167
	180° (OPT).....	1	90AC91
7	TUBE WITH FITTINGS.....	1	201EBM863
8	NIPPLE.....	1	63H1G
9	TEE.....	1	64G8G
10	NIPPLE.....	1	63H1G
11	FILTER-OIL		
*	100 - 150 PSI.....	1	301EBM369
*	175 & 200 PSI.....	1	302EBM369
12	PLUG.....	1	64AA1
13	NIPPLE.....	1	63H26G
**	14 STRAINER.....	1	82E48
	15 PLUG.....	1	64AA3
	16 BUSHING-PIPE.....	2	64E97

* For Repair: Filter Element for 100 - 150 PSI, order Part Number 2116110.
Filter Element for 175 & 200 PSI, order Part Number 2117146.

** For Repair: Screen – order Part Number 2117306
Bushing – order Part Number 2117309.

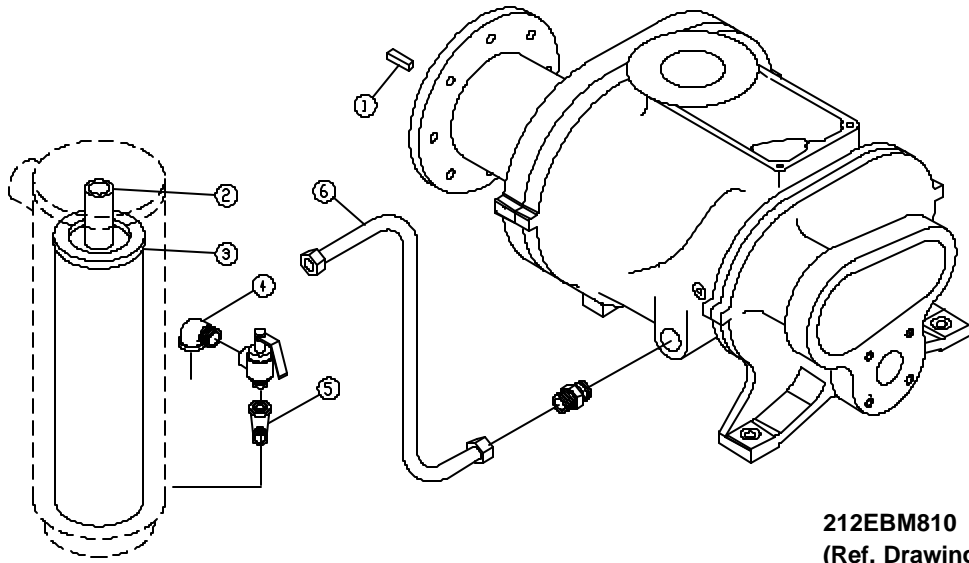
OIL FILTER

**301EBM369 (100 & 150 PSI)
302EBM369 (175 & 200 PSI)**



WITH 212ECM077 DECAL AFFIXED TO ELEMENT

Order by Part Number and Description. Reference Numbers are for your convenience only.



OIL PIPING LINE - SSH

B/M: 201EDH4013
60 HP - 125 & 150 PSI

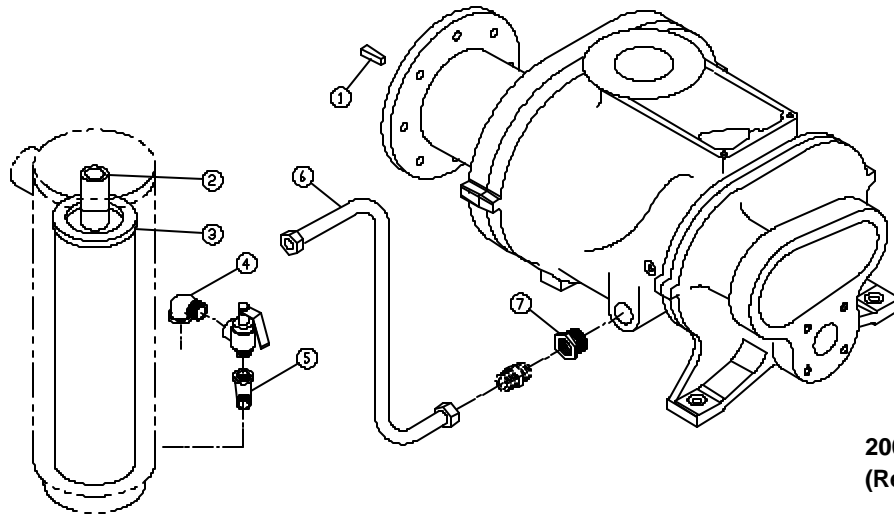
B/M: 300EBM4013
60 HP - 175 & 200 PSI
75 HP - 200 PSI

Ref. No.	Name of Part	Qty.	Part No.	Part No.
1	KEY-SQUARE	1	8500109	8500109
2	SPACER.....	1	200ECM392	300EBM392
* 3	SEPARATOR-AIR/OIL.....	1	200ECM035	200ECM035
4	ELBOW	1	64D10G	64D10G
5	ELBOW	1	64D6G	64D6G
6	TUBE WITH FITTINGS.....	1	300EDH863	300EDH863

* For Separator Kit, see Part Number 208EAP6013. Refer to page 56.

Relief Valves: 125 PSI UNITS 90AR382
150 PSI UNITS 90AR146
175 PSI UNITS 90AR171
200 PSI UNITS 90AR197

Order by Part Number and Description. Reference Numbers are for your convenience only.



OIL PIPING LINE – SSM & SSP

B/M: 200EBM4013 (SSM)
 60 HP – 100 PSI
 75 HP – 100, 125 & 150 PSI

B/M: 300EBP4013 (SSM)
 75 HP – 175 PSI

Ref. No.	Name of Part	Qty.	Part No.	Part No.
1	KEY-SQUARE	1	8500109	8500109
2	SPACER.....	1	200ECM392	300EBM392
*3	SEPARATOR-AIR/OIL	1	200ECM035	200ECM035
4	ELBOW.....	1	64D10G	64D10G
5	ELBOW.....	1	64D6G	64D6G
6	TUBE WITH FITTINGS.....	1	300EBM863	300EBM863
7	BUSHING-PIPE	1	64EB303	64EB303

B/M: 200EBP4013 (SSP)
 100 HP – 100, 125 & 150 PSI

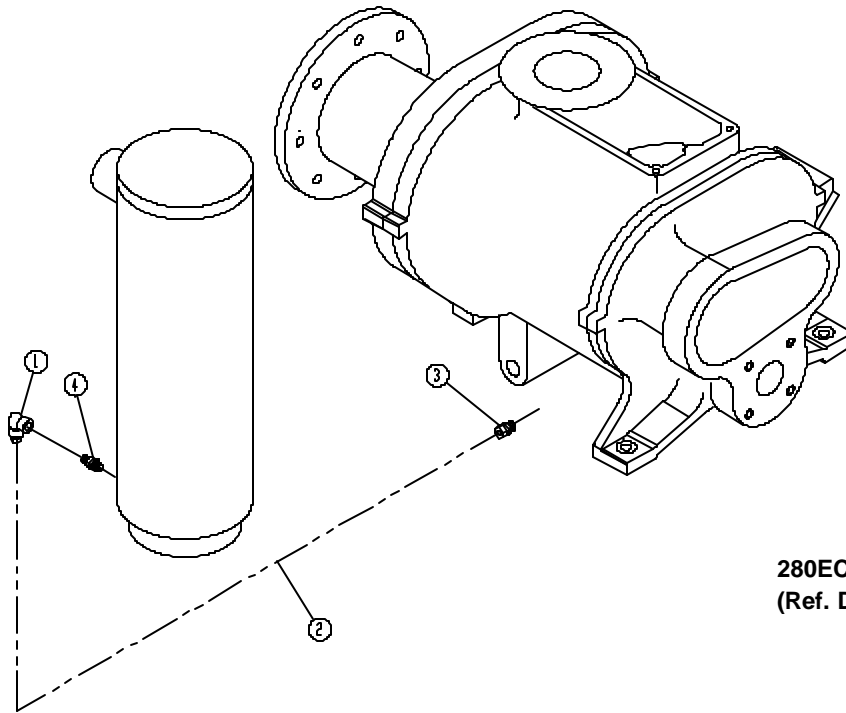
B/M: 300EBP4013 (SSM)
 100 HP – 150, 175 & 200
 PSI

Ref. No.	Name of Part	Qty.	Part No.	Part No.
1	KEY-SQUARE	1	35L37	8500109
2	SPACER.....	1	200ECM392	300EBM392
*3	SEPARATOR-AIR/OIL	1	200ECM035	200ECM035
4	ELBOW.....	1	64D10G	64D10G
5	ELBOW.....	1	64D6G	64D6G
6	TUBE WITH FITTINGS.....	1	300EBP863	300EBM863
7	BUSHING-PIPE	1	64EB303	64EB303

* For Separator Kit, see Part Number 208EAP6013. Refer to page 56.

Relief Valves: 100 PSI UNITS 90AR381
 125 PSI UNITS 90AR382
 150 PSI UNITS 90AR146
 175 PSI UNITS 90AR171
 200 PSI UNITS 90AR197

Order by Part Number and Description. Reference Numbers are for your convenience only.



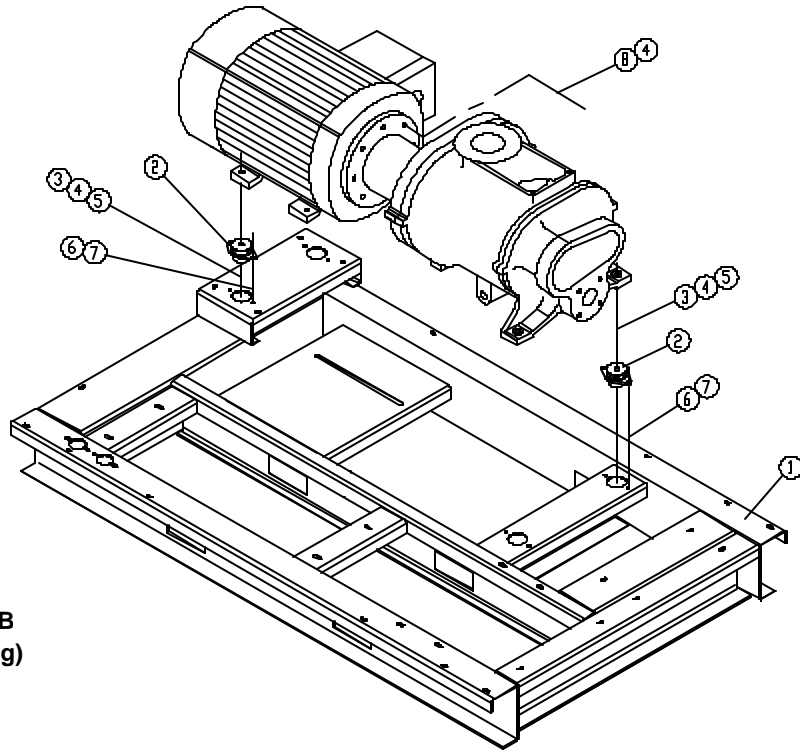
280ECM810-E
(Ref. Drawing)

OIL SCAVENGE LINE

B/M: ECM81547

Ref. No.	Name of Part	Qty.	Part No.
1	ELBOW-TUBE	1	86E193
2	TUBE (IN FEET)	5	85K3
3	CONNECTOR-TUBE.....	1	86E4
4	VALVE-CHECK.....	1	90AR261

Order by Part Number and Description. Reference Numbers are for your convenience only.



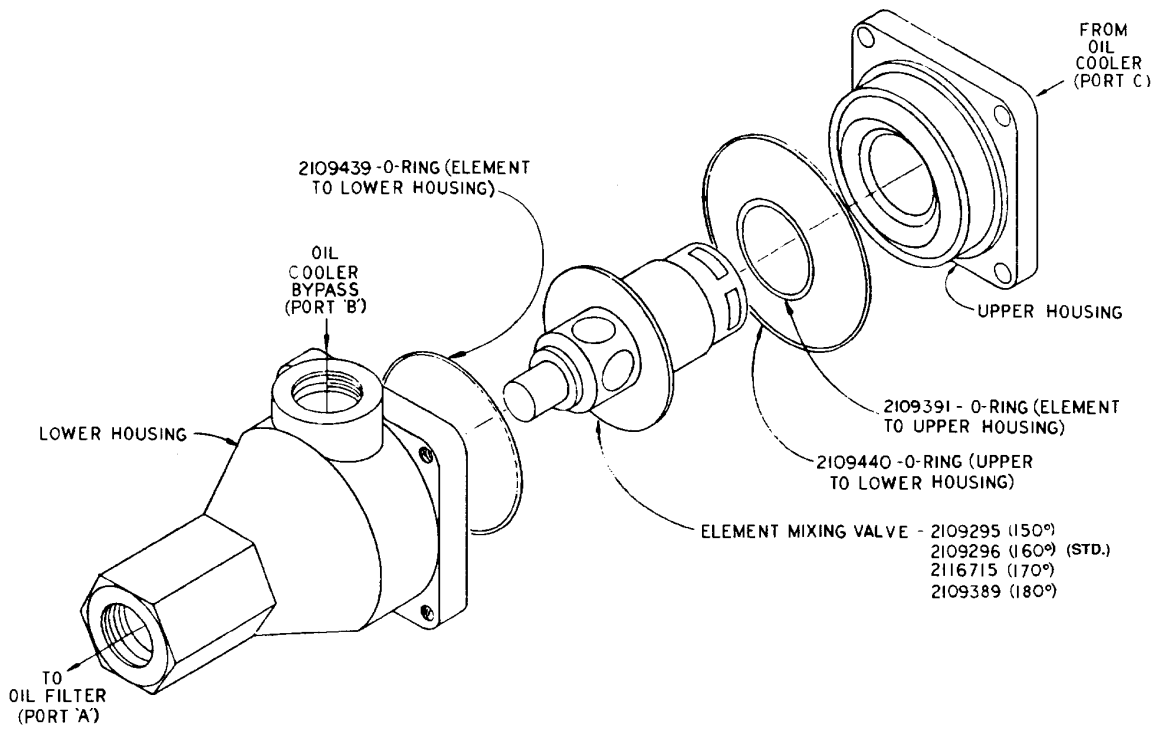
202EDF810-B
(Ref. Drawing)

**COMPRESSOR BASE GROUP (SSH, SSP)
EAP (100 & 125 PSI)
EAM (150 PSI)**

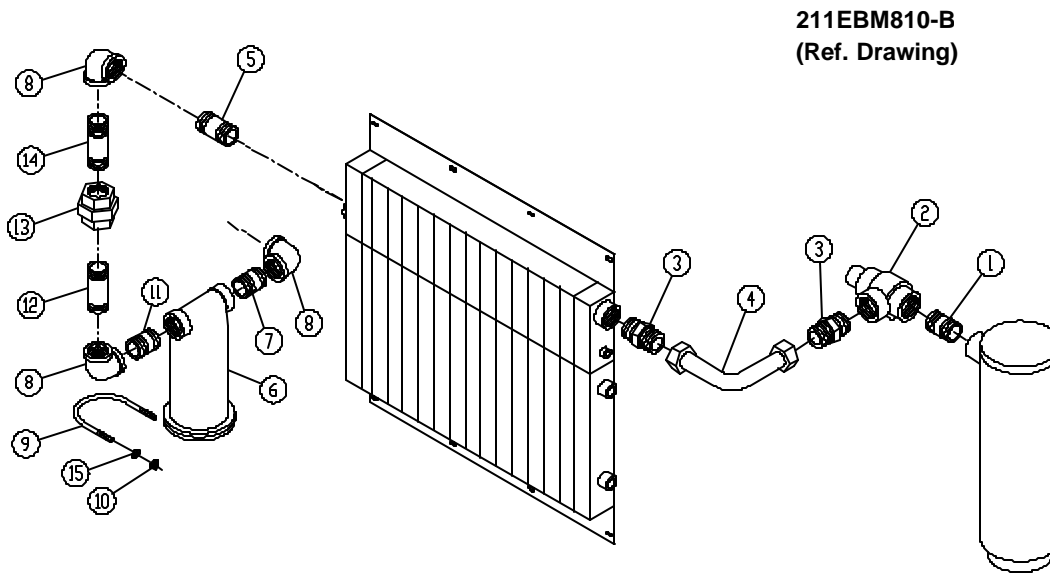
B/M: 300EAP4017

Ref. No.	Name of Part	Qty.	Part No.
1	BASE (MAIN).....	1	300EAP285
2	ISOLATOR-VIBRATION.....	4	49C47
3	SCREW.....	4	655EF200
4	LOCKWASHER.....	12	95B7
5	NUT.....	4	50B7
6	SCREW.....	8	75LM51
7	NUT.....	8	50AW5
8	SCREW.....	8	655EF070

THERMAL VALVE (THERMOSTATIC MIXING)



Order by Part Number and Description. Reference Numbers are for your convenience only.



AIR DISCHARGE PIPING

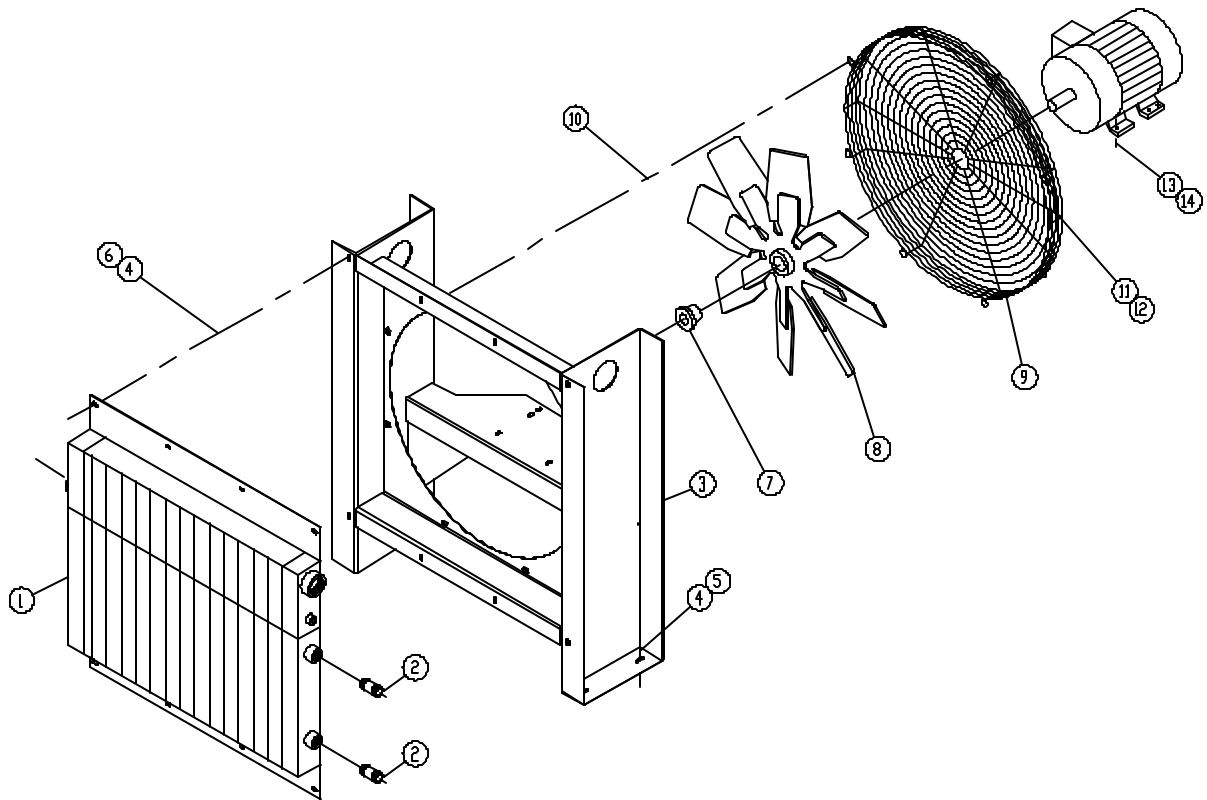
**B/M: 212EBM4003
308EBP4003**

Ref. No.	Name of Part	Qty.	Part No.
1	NIPPLE	1	63L1G
2	VALVE-MINIMUM PRESSURE		
	100 - 150 PSI	1	200EBM527
	175 & 200 PSI	1	300EBM526
3	CONNECTOR-TUBE.....	2	86H142
4	TUBE WITH FITTINGS.....	1	204EBM863
5	NIPPLE	1	63L15G
* 6	MOISTURE SEPARATOR & TRAP	1	83C84
7	NIPPLE	1	63L9G
8	ELBOW	3	64C9G
9	U-BOLT.....	1	15U64
10	NUT.....	2	50AW5
11	NIPPLE	1	63L9G
12	NIPPLE	1	63L20G
13	UNION	1	64Z2
14	NIPPLE	1	63L22G
15	WASHER.....	2	95A3

* Repair Parts Kit for Moisture Separator & Trap: 2117587 – Valve & Seat Assembly; 2117588 – Cover Gasket; 2117589 – Float & Spindle.

Order by Part Number and Description. Reference Numbers are for your convenience only.

AIR COOLED DISCHARGE PIPING



208EBM810
(Ref. Drawing)

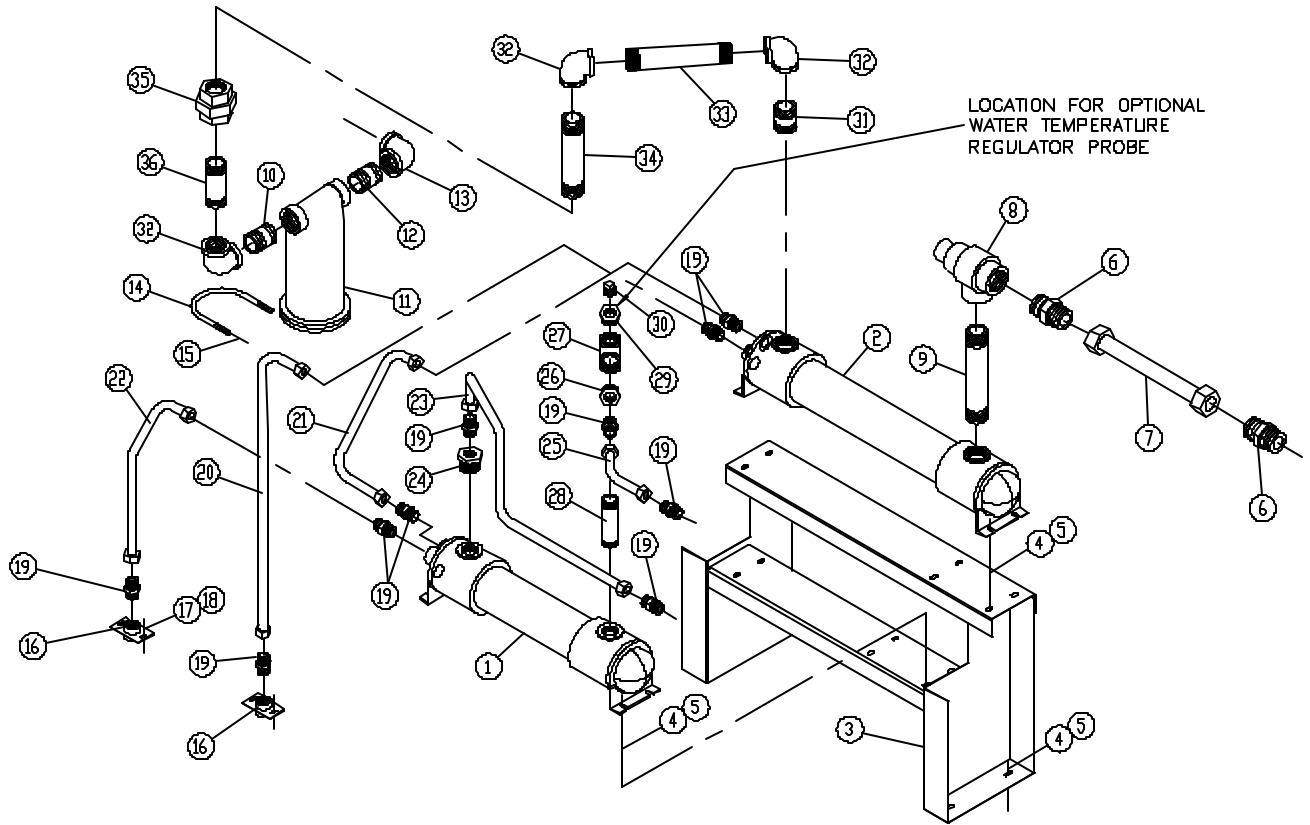
Order by Part Number and Description. Reference Numbers are for your convenience only.

AIR COOLED DISCHARGE PIPING

Ref. No.	Name of Part	Qty.	B/M: 207EBM4003 213EBM4003	B/M: 200EBP4003 215EAP4003
			60 – 75 HP 100 - 150 PSI Part No.	100 HP 100 - 150 PSI Part No.
1	COOLER-OIL/AIR	1	200EBM201	200EBP201
	COOLER-OIL/AIR SEACOAST (Optional)	1	201EBM201	201EBP201
2	NIPPLE	2	63H4G	63H4G
3	SUPPORT.....	1	200EBM165	200EBM165
4	SCREW.....	12	75LM51	75LM51
5	NUT	4	50AW5	50AW5
6	WASHER-PLAIN.....	8	95A3	95A3
7	BUSHING-HUB	1	22G2	22G2
8	FAN	1	201ECM701	201ECM701
9	GUARD-FAN	1	200EBM393	200EBM393
10	SCREW.....	8	75LM51	75LM51
11	SCREW.....	4	75LM50	75LM50
12	NUT	4	50AW4	50AW4
13	SCREW.....	4	75LM78	75KLM78
14	NUT	4	50AW5	50AW5

Ref. No.	Name of Part	Qty.	B/M: 325EBM4003 326EBM4003	B/M: 307EBP4003 309EBP4003
			60 – 75 HP 175 & 200 PSI Part No.	100 HP 175 & 200 PSI Part No.
1	COOLER-OIL/AIR	1	304EBM201	300EBP201
	COOLER-OIL/AIR SEACOAST (Optional)	1	305EBM201	301EBP201
2	NIPPLE	2	63H4G	63H4G
3	SUPPORT.....	1	200EBM165	200EBM165
4	SCREW.....	12	75LM51	75LM51
5	NUT	4	50AW5	50AW5
6	WASHER-PLAIN.....	8	95A3	95A3
7	BUSHING-HUB	1	22G2	22G2
8	FAN	1	201ECM701	201ECM701
9	GUARD-FAN	1	200EBM393	200EBM393
10	SCREW.....	8	75LM51	75LM51
11	SCREW.....	4	75LM50	75LM50
12	NUT	4	50AW4	50AW4
13	SCREW.....	4	75K48	75K48
14	NUT	4	50AW5	50AW5

**WATER COOLED HEAT EXCHANGER
(WITH AFTERCOOLER)**



**209EBM810-B
(Ref. Drawing)**

Order by Part Number and Description. Reference Numbers are for your convenience only.

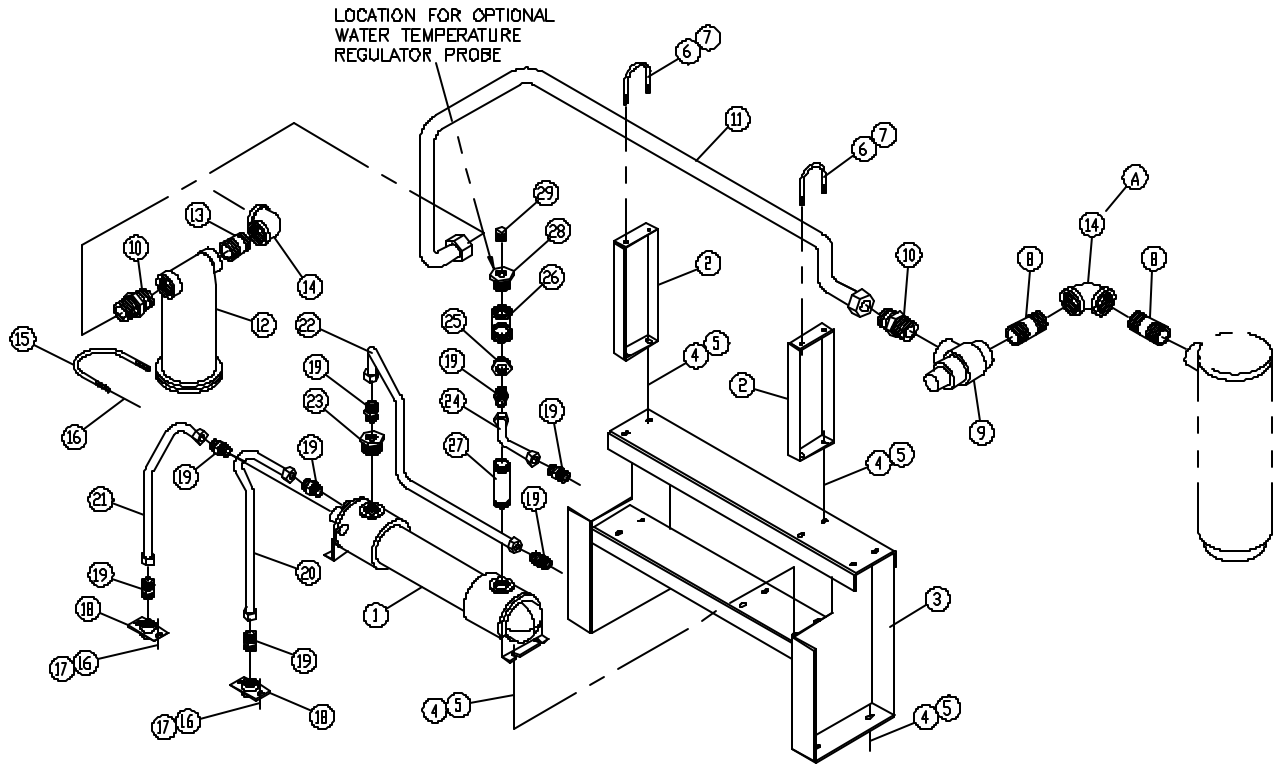
**WATER COOLED HEAT EXCHANGER
(WITH AFTERCOOLER)**

Ref. No.	Name of Part	Qty.	B/M: 208EBM4003, 209EBM4003	B/M: 201EBP4003, 202EBP4003
			327EBM4003, 328EBM4003	310EBP4003, 311EBP4003
			60 HP Part No.	75 & 100 HP Part No.
1	EXCHANGER-HEAT (Oil/Water) – Standard	1	202ESJ349	204ESM349
	BONNET-IN & OUT (For Repair).....	1	2109060	2109060
	BONNET-RETURN (For Repair).....	1	2109061	2109061
	GASKET-IN & OUT (For Repair).....	1	2109058	2109058
	GASKET-RETURN (For Repair).....	1	2109059	2109059
	EXCHANGER-HEAT (Oil/Water) – Salt Water	1	203ESJ349	203ESM349
	BONNET-IN & OUT (For Repair).....	1	2109075	2117756
	BONNET-RETURN (For Repair).....	1	2109074	2109074
	GASKET-IN & OUT (For Repair).....	1	2109058	2109058
	GASKET-RETURN (For Repair).....	1	2109059	2109059
2	AFTERCOOLER - Standard.....	1	200ESL292	201ESM292
	BONNET-IN & OUT (For Repair).....	1	2109060	2109060
	BONNET-RETURN (For Repair).....	1	2109061	2109061
	GASKET-IN & OUT (For Repair).....	1	2109058	2109058
	GASKET-RETURN (For Repair).....	1	2109059	2109059
	AFTERCOOLER – Salt Water	1	201ESL292	202ESM292
	BONNET-IN & OUT (For Repair).....	1	2117756	2117756
	BONNET-RETURN (For Repair).....	1	2109074	2109074
	GASKET-IN & OUT (For Repair).....	1	2109058	2109058
	GASKET-RETURN (For Repair).....	1	2109059	2109059
3	SUPPORT	1	213ECM165	213ECM165
4	SCREW	12	75LM51	75LM51
5	NUT	12	50AW5	50AW5
6	CONNECTOR-TUBE.....	2	86H142	86H142
7	TUBE WITH FITTINGS.....	1	206EBM863	202EBP863
8	VALVE-MINIMUM PRESSURE			
	100 - 150 PSI.....	1	200EBM527	200EBM527
	175 & 200 PS	1	300EBM527	300EBM527
9	NIPPLE.....	1	63L28G	63L28G
10	NIPPLE.....	1	63L9G	63L9G
* 11	MOISTURE SEPARATOR & TRAF.....	1	83C84	83C84
12	NIPPLE.....	1	63L9G	63L9G
13	ELBOW.....	1	64C9G	64C9G
14	U-BOLT.....	1	15U64	15U64
15	NUT	2	50AW5	50AW5
16	MANIFOLD-WATER	2	200ECM072	200ECM072
17	SCREW	4	75LM51	75LM51
18	NUT	4	50AW5	50AW5
19	CONNECTOR-TUBE.....	10	86H138	86H138
20	TUBE WITH FITTINGS.....	1	209EBM863	209EBM863
21	TUBE WITH FITTINGS.....	1	208EBM863	208EBM863
22	TUBE WITH FITTINGS.....	1	210EBM863	210EBM863
23	TUBE WITH FITTINGS.....	1	207EBM863	207EBM863
24	BUSHING-PIPE	1	64E13	64E13
25	TUBE WITH FITTINGS.....	1	205EBM863	201EBP863
26	BUSHING-PIPE	1	64E13	64E13
27	TEE.....	1	64G11G	64G11G
28	NIPPLE.....	1	63K6G	63K6G
29	BUSHING-PIPE	1	64E13	64E13
** 30	PLUG.....	1	64AA1	64AA1
31	NIPPLE.....	1	63L9G	63L15G
32	ELBOW.....	3	64C9G	64C9G
33	NIPPLE.....	1	63L34G	63L34G
34	NIPPLE.....	1	63L27G	63L27G
35	UNION.....	1	64Z2	64Z2
36	NIPPLE.....	1	63L20G	63L16G
	TEMPERATURE REGULATOR (Optional) Not showr.	1	90AR326	90AR326
	SOLENOID VALVE (Optional) Not showr.....	1	91B167	91B167

* Repair Parts Kit for Moisture Separator & Trap: 2117587 – Valve & Seat Assembly; 2117588 – Cover Gasket; 2117589 – Float & Spindle.

** Note: Remove this plug when Optional Water Temperature Regulator is used. This is where the temperature pick-up goes.

WATER COOLED HEAT EXCHANGER (WITHOUT AFTERCOOLER)



210EBM810-B
(Ref. Drawing)

Order by Part Number and Description. Reference Numbers are for your convenience only.

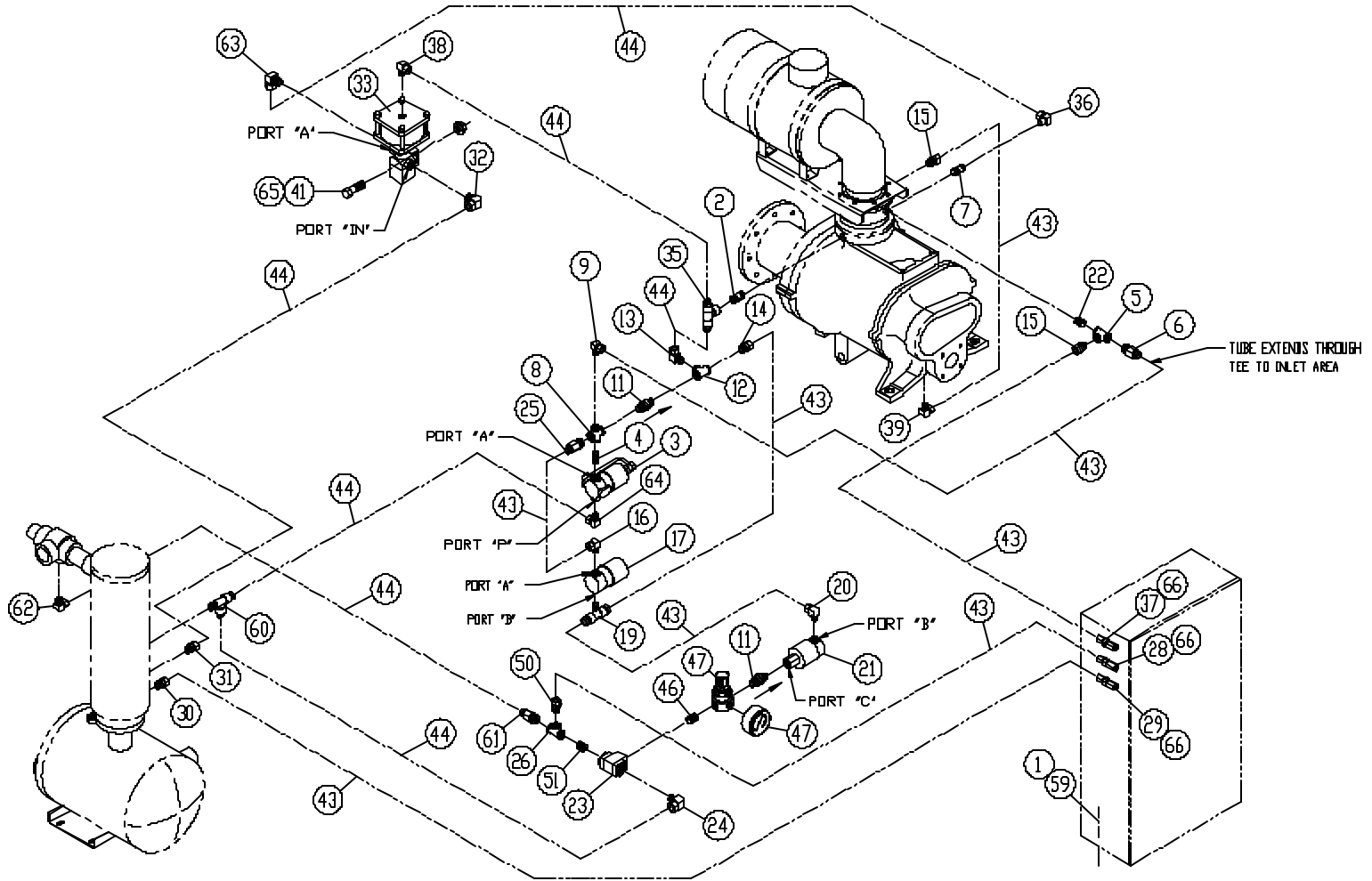
**WATER COOLED HEAT EXCHANGER
(WITHOUT AFTERCOOLER)**

Ref. No.	Name of Part	Qty.	B/M: 210EBM4003, 211EBM4003 329EBM4003, 330EBM4003	B/M: 203EBP4003, 204EBP4003 312EBP4003, 313EBP4003
			60 HP Part No.	75 & 100 HP Part No.
1	EXCHANGER-HEAT (Oil/Water) – Standard	1	202ESJ349	204ESM349
	BONNET-IN & OUT (For Repair).....	1	2109060	2109060
	BONNET-RETURN (For Repair)	1	2109061	2109061
	GASKET-IN & OUT (For Repair).....	1	2109058	2109058
	GASKET-RETURN (For Repair)	1	2109059	2109059
	EXCHANGER-HEAT (Oil/Water) – Salt Water	1	203ESJ349	203ESM349
	BONNET-IN & OUT (For Repair).....	1	2109075	2117756
	BONNET-RETURN (For Repair).....	1	2109074	2109074
	GASKET-IN & OUT (For Repair).....	1	2109058	2109058
	GASKET-RETURN (For Repair).....	1	2109059	2109059
2	BRACKET-PIPE.....	2	201ECM108	201ECM108
3	SUPPORT.....	1	213ECM165	213ECM165
4	SCREW	12	75LM51	75LM51
5	NUT	12	50AW5	50AW5
6	U-BOLT.....	2	15U18	15U18
7	NUT	4	50AW5	50AW5
8	NIPPLE.....	2	63L9G	63L9G
9	VALVE-MINIMUM PRESSURE			
	100 - 150 PSI.....	1	200EBM527	200EBM527
	175 & 200 PSI.....	1	30EBM527	300EBM527
10	CONNECTOR-TUBE.....	2	86H142	86H142
11	TUBE WITH FITTINGS.....	1	213EBM863	213EBM863
* 12	MOISTURE SEPARATOR & TRAF.....	1	83C84	83C84
13	NIPPLE.....	1	63L1G	63L1G
14	ELBOW.....	2	64C9G	64C9G
15	U-BOLT.....	1	15U64	15U64
16	NUT	6	50AW5	50AW5
17	SCREW	4	75LM51	75LM51
18	MANIFOLD-WATER	2	200ECM072	200ECM072
19	CONNECTOR-TUBE.....	8	86H138	86H138
20	TUBE WITH FITTINGS.....	1	211EBM863	211EBM863
21	TUBE WITH FITTINGS.....	1	210EBM863	210EBM863
22	TUBE WITH FITTINGS.....	1	207EBM863	207EBM863
23	BUSHING-PIPE.....	1	64E13	64E13
24	TUBE WITH FITTINGS.....	1	205EBM863	201EBP863
25	BUSHING-PIPE.....	1	64E13	64E13
26	TEE.....	1	64G11G	64G11G
27	NIPPLE.....	1	63K6G	63K6G
28	BUSHING-PIPE.....	1	64E13	64E13
** 29	PLUG.....	1	64AA1	64AA1
	TEMPERATURE REGULATOR (Optional) (not shown)....	1	90AR326	90AR326
	SOLENOID VALVE (NEMA 1) (Optional) (not shown)	1	90AC118	90AC118
	SOLENOID VALVE (NEMA 4) (Optional) (not shown)	1	90AC103	90AC103

* Repair Parts Kit for Moisture Separator & Trap: 2117587 – Valve & Seat Assembly; 2117588 – Cover Gasket; 2117589 – Float & Spindle.

** Note: Remove this plug when Optional Water Temperature Regulator is used. This is where the temperature pick-up goes.

CONTROL TUBING SCHEMATIC



287ECM810-S
(Ref. Drawing)

Order by Part Number and Description. Reference Numbers are for your convenience only.

CONTROL TUBING SCHEMATIC

B/M: 301EBP4002, 300EBP4035

Ref. No.	Name of Part	Qty.	Part No.	Ref. No.	Name of Part	Qty.	Part No.
1	SCREW	4	75LM51	29	CONNECTOR-TUBE		
2	NIPPLE	1	63D5G		100 - 150 PSI	1	86N287
* +	3 VALVE-SOLENOID	1	91B70		175 & 200 PSI	1	86N316
4	NIPPLE	1	63D1G	30	CONNECTOR-TUBE	1	86E4
5	TEE	1	64G3G	31	CONNECTOR-TUBE	1	86E9
6	CONNECTOR	1	86N272	32	ELBOW	1	86E64
7	NIPPLE	1	63D5G	** ++	33 CONTROL VALVE	1	90AR1082
8	CROSS	1	64K1G	35	TEE	1	86E147
9	ELBOW-TUBE	1	86E60	36	ELBOW-TUBE	1	86E82
++	11 VALVE-CHECK	2	90AR261	37	CONNECTOR-TUBE	1	86N287
12	TEE	1	64G3G	38	ELBOW	1	86E64
13	ELBOW	1	86E64	39	ELBOW-TUBE	1	86E60
14	ORIFICE	1	86N289	41	NUT	2	50AW3
15	CONNECTOR-TUBE	2	86E4	43	TUBE (IN FEET)	28	85K3
16	ELBOW-TUBE	1	86E60	44	TUBE (IN FEET)	24	85K5
+	17 VALVE-SOLENOID	1	91B81	46	NIPPLE	1	63D1G
19	TEE	1	86E119	++ Δ	47 REGULATOR-PRESS W/GAUGE	1	88H139
20	ELBOW-TUBE	1	86E60	50	CONNECTOR-TUBE	1	86E4
+	21 VALVE-SOLENOID	1	91B80	51	NIPPLE	1	63D1G
22	NIPPLE	1	63D1G	59	NUT	4	50AW5
++	23 VALVE-CONTROL	1	90AR1034	60	TEE	1	86E136
24	ELBOW	1	86E64	61	CONNECTOR-TUBE	1	86E9
25	CONNECTOR-TUBE	1	86E4	62	ELBOW	1	86E64
26	TEE	1	64G3G	63	ELBOW	1	86E64
28	CONNECTOR-TUBE			64	ELBOW	1	86E64
	100 - 150 PSI	1	86N287	65	SCREW	2	75LM48
	175 & 200 PSI	1	86N316	66	O-RING	3	165011
				67	TIE CABLE (not shown)	30	24CA127

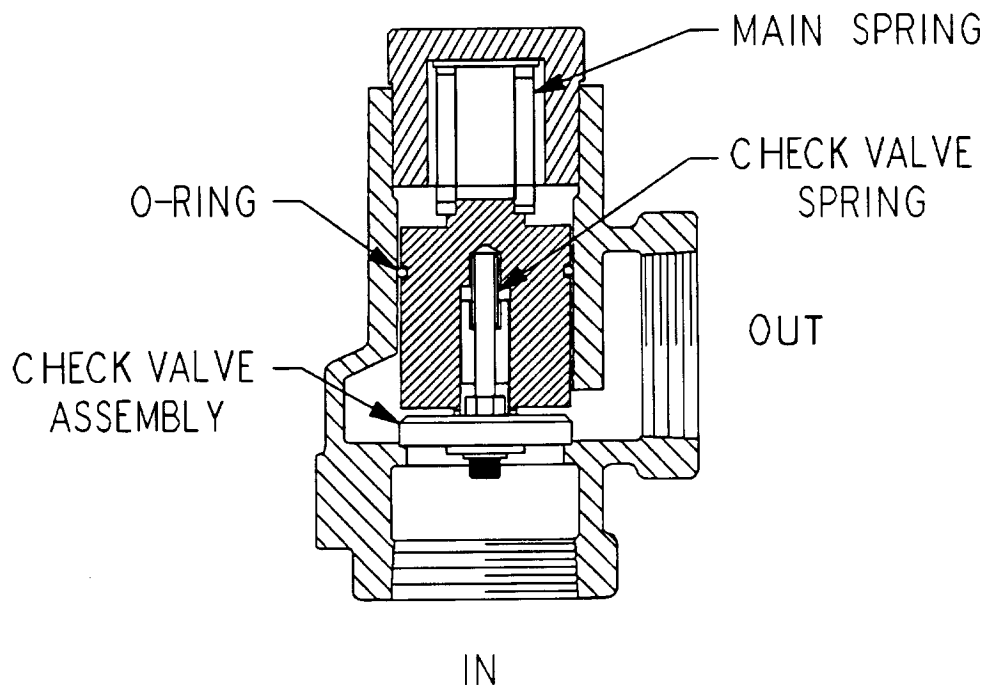
* For Repair Kit (includes Springs, Seals, Piston Assembly, Plunger Assembly, Nut & O-Ring, order Part Number 2116077 or for Coil, order Part Number 2116078.

+ Parts included in Electrical Control Kit, Part Number 206EAP6013 & 301EBP6013. Refer to Page 56.

** For Repair of U-Cup (Piston Seal), order Part Number 2117904; For O-Ring (Top Plate), order Part Number 2117905.

++ Parts included in Pneumatic Control Kit, Part Number 302EAQ6013. Refer to Page 56.

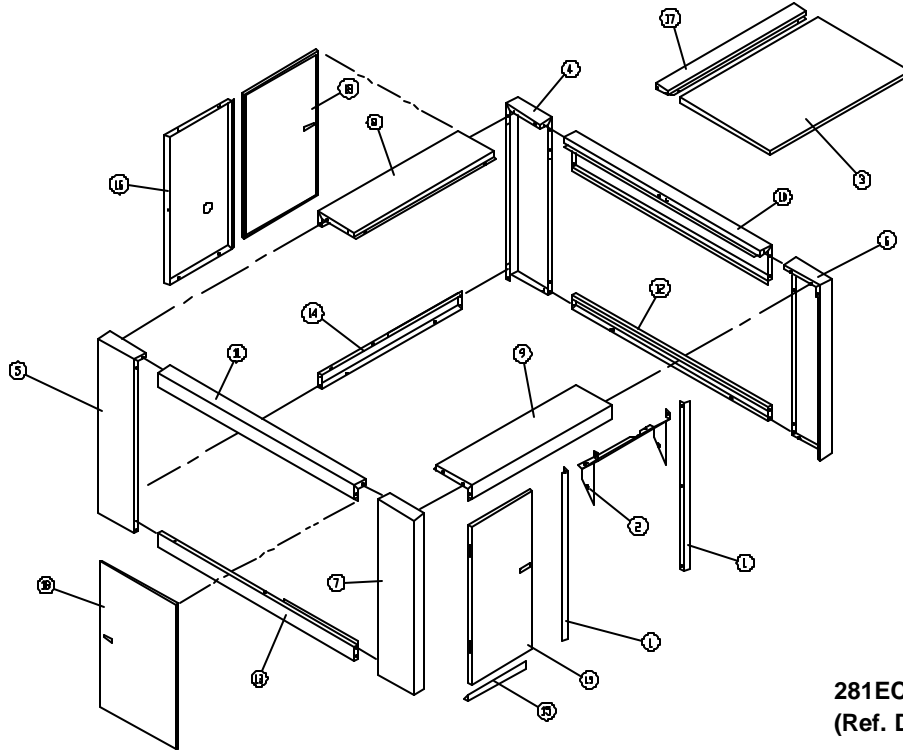
Δ For Replacement Gauge, order Part Number 2116732.



MINIMUM PRESSURE VALVE

Name of Part	Qty.	Part No.
MINIMUM PRESSURE VALVE ASSEMBLY		
100, 125 & 150 PSI.....	1	200EBM527
175 & 200 PSI.....	1	300EBM527
REPAIR KIT – Includes the following:.....	1	2116854
O-RING.....	1	
SPRING- CHECK VALVE.....	1	
CHECK VALVE ASSEMBLY.....	1	
SPRING, MAIN.....	1	

Order by Part Number and Description. Reference Numbers are for your convenience only.



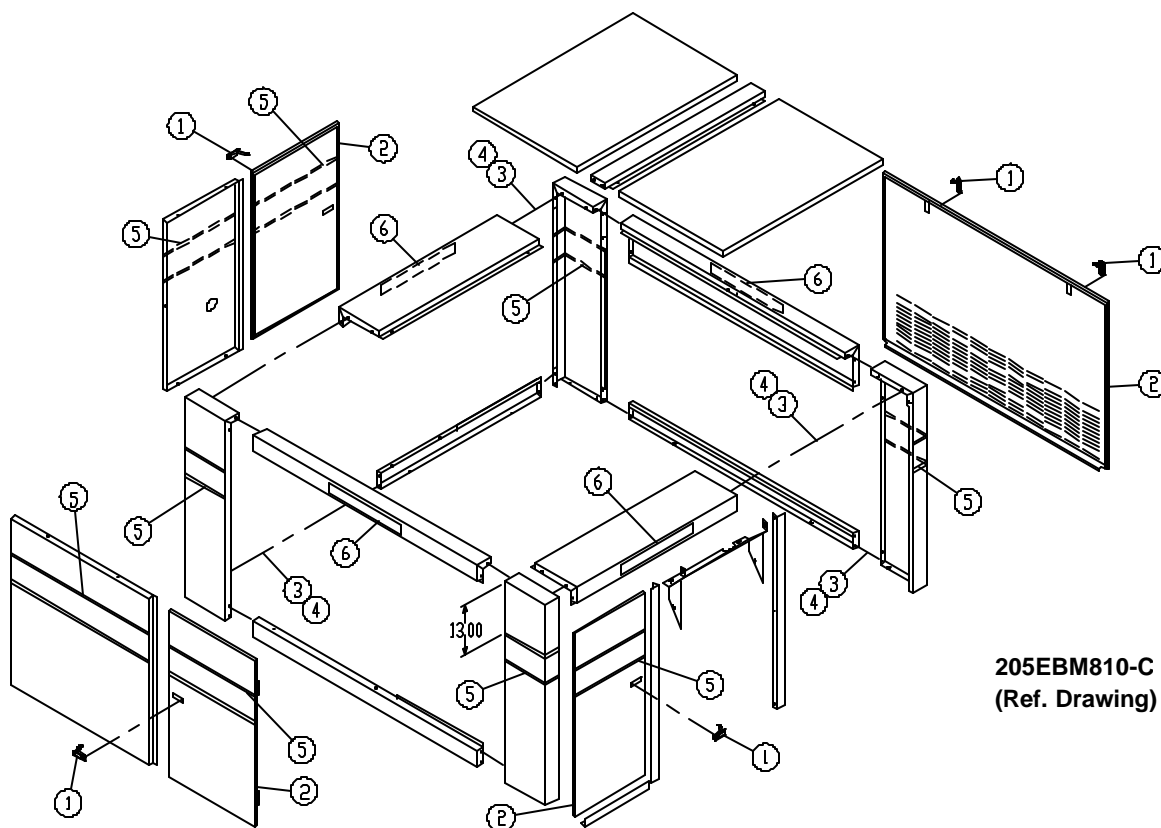
281ECM810-A
(Ref. Drawing)

**ENCLOSURE
(COMMON PARTS – AIR/WATER COOLED)**

B/M: 200ECM4023

Ref. No.	Name of Part	Qty.	Part No.
1	BRACKET	2	215ECM142
2	BRACKET	1	216ECM142
3	PANEL	1	217ECM216
4	POST	1	208ECM313
5	POST	1	209ECM313
6	POST	1	213ECM313
7	POST	1	214ECM313
8	FRAME	1	215ECM314
9	FRAME	1	216ECM314
10	FRAME	1	217ECM314
11	FRAME	1	218ECM314
12	FRAME	1	219ECM314
13	FRAME	1	220ECM314
14	FRAME	1	221ECM314
15	FRAME	1	222ECM314
16	BRACE	1	206ECM326
17	BRACE	1	205ECM326
18	DOOR-CANOPY	2	210ECM334
19	DOOR-CANOPY	1	211ECM334

Order by Part Number and Description. Reference Numbers are for your convenience only.

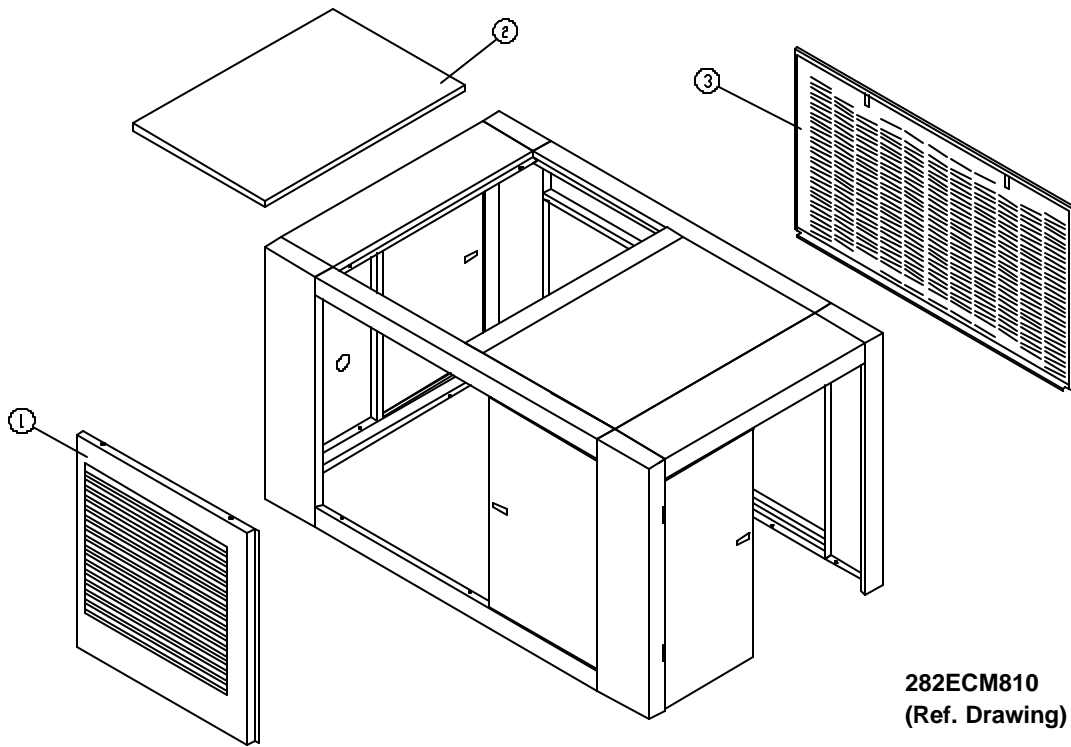


ENCLOSURE – HARDWARE

B/M: 281ECM4017

Ref. No.	Name of Part	Qty.	Part No.
1	LATCH.....	5	31D51
2	SEAL.....	51	32E12
3	SCREW.....	86	75LM51
4	NUT.....	78	50AW5
5	DECAL.....	6	203ESO077
6	DECAL.....	4	213ECM077

Order by Part Number and Description. Reference Numbers are for your convenience only.



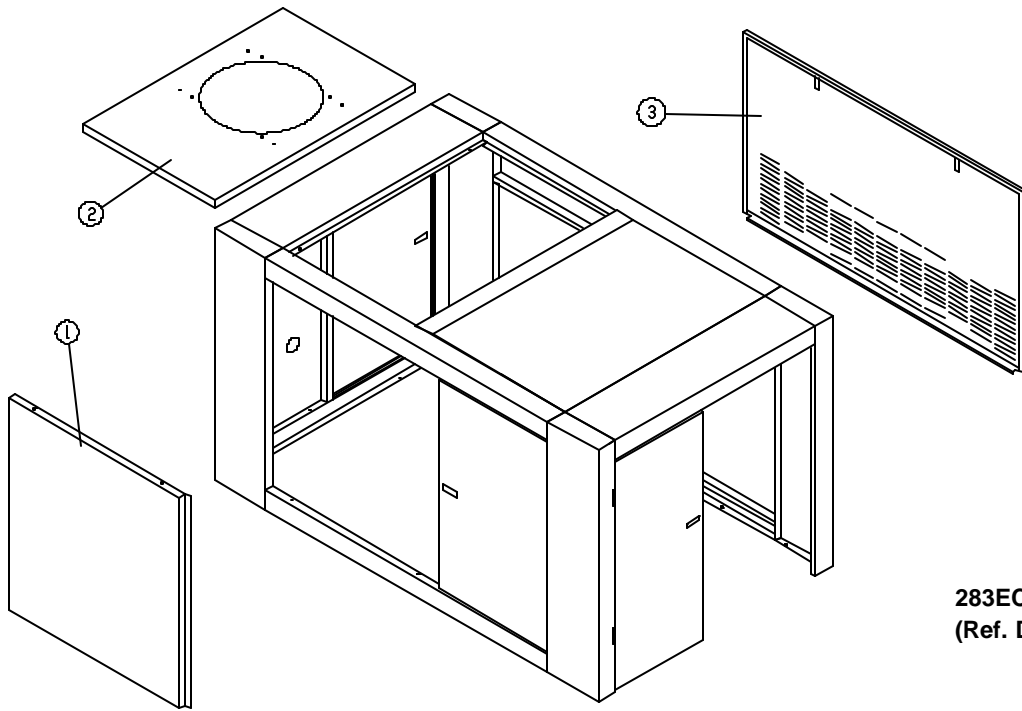
282ECM810
(Ref. Drawing)

ENCLOSURE – AIR COOLED UNITS

B/M: ECM81545

Ref. No.	Name of Part	Qty.	Part No.
1	PANEL.....	1	220ECM216
2	PANEL.....	1	217ECM216
3	PANEL.....	1	215ECM216

Order by Part Number and Description. Reference Numbers are for your convenience only.



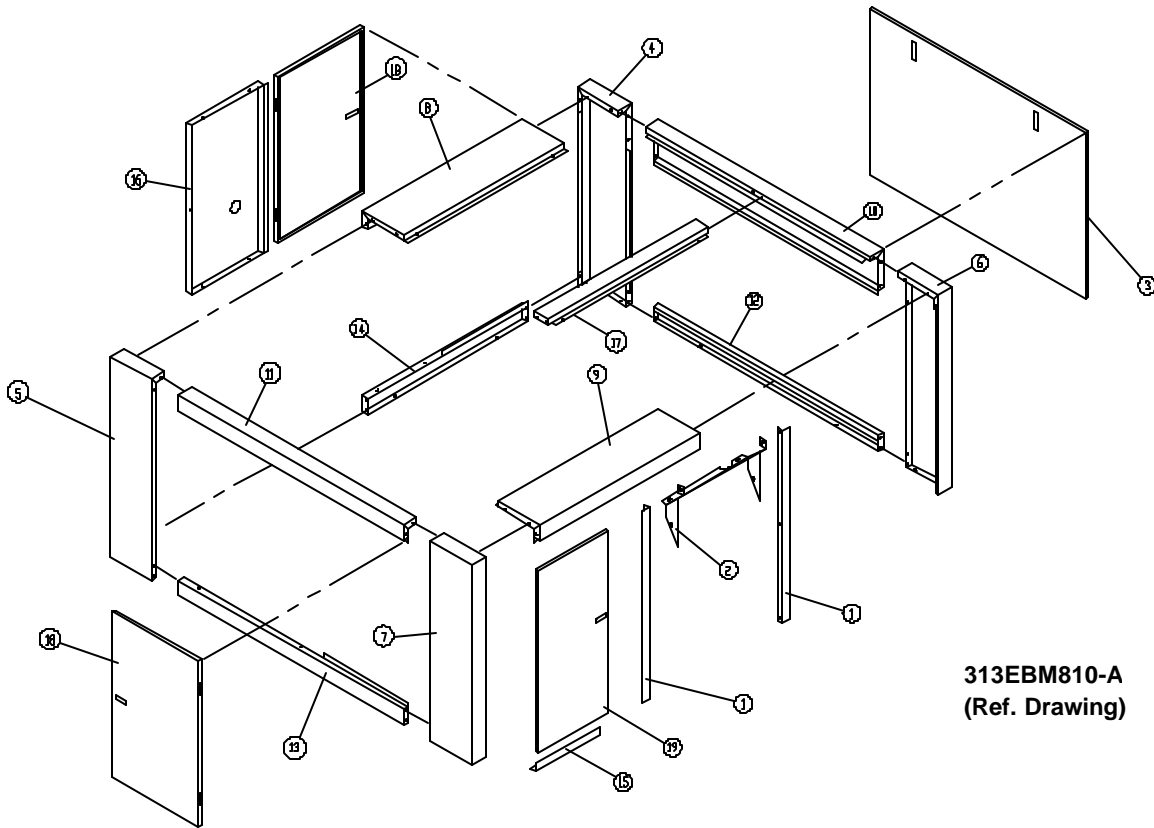
283ECM810
(Ref. Drawing)

ENCLOSURE – WATER COOLED UNITS

B/M: 201ECM4023

Ref. No.	Name of Part	Qty.	Part No.
1	PANEL.....	1	222ECM216
2	PANEL.....	1	216ECM216
3	PANEL.....	1	218ECM216

Order by Part Number and Description. Reference Numbers are for your convenience only.



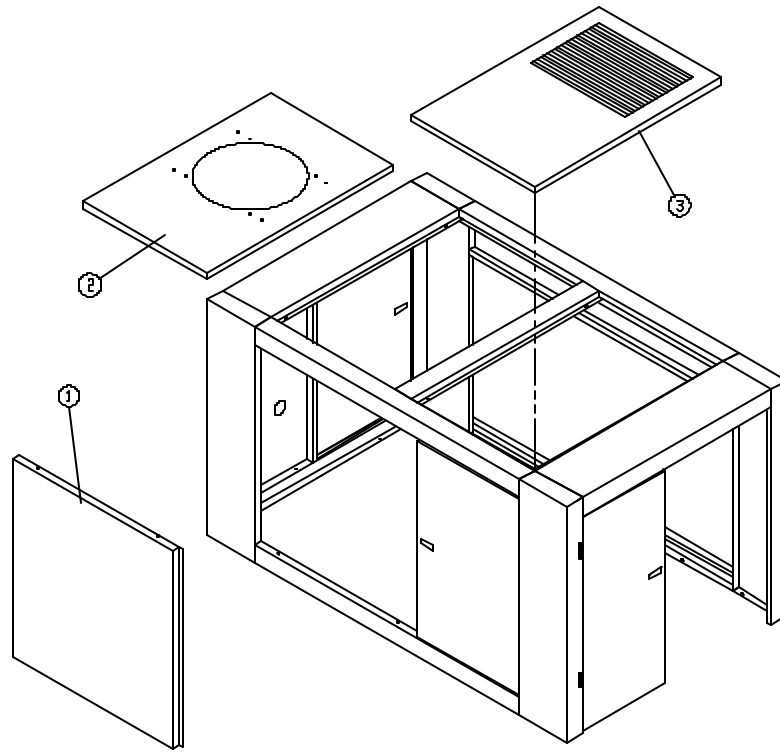
313EBM810-A
(Ref. Drawing)

ENCLOSURE – COMMON PARTS

B/M: 300EBM4023

Ref. No.	Name of Part	Qty.	Part No.
1	BRACKET	2	215ECM142
2	BRACKET	1	216ECM142
3	PANEL	1	302EBM216
4	POST	1	300EBM313
5	POST	1	301EBM313
6	POST	1	302EBM313
7	POST	1	303EBM313
8	FRAME	1	302EBM314
9	FRAME	1	303EBM314
10	FRAME	1	304EBM314
11	FRAME	1	218ECM314
12	FRAME	1	219ECM314
13	FRAME	1	220ECM314
14	FRAME	1	221ECM314
15	FRAME	1	222ECM314
16	BRACE	1	302EBM326
17	BRACE	1	205ECM326
18	DOOR-CANOPY	2	300EBM334
19	DOOR-CANOPY	1	301EBM334

Order by Part Number and Description. Reference Numbers are for your convenience only.



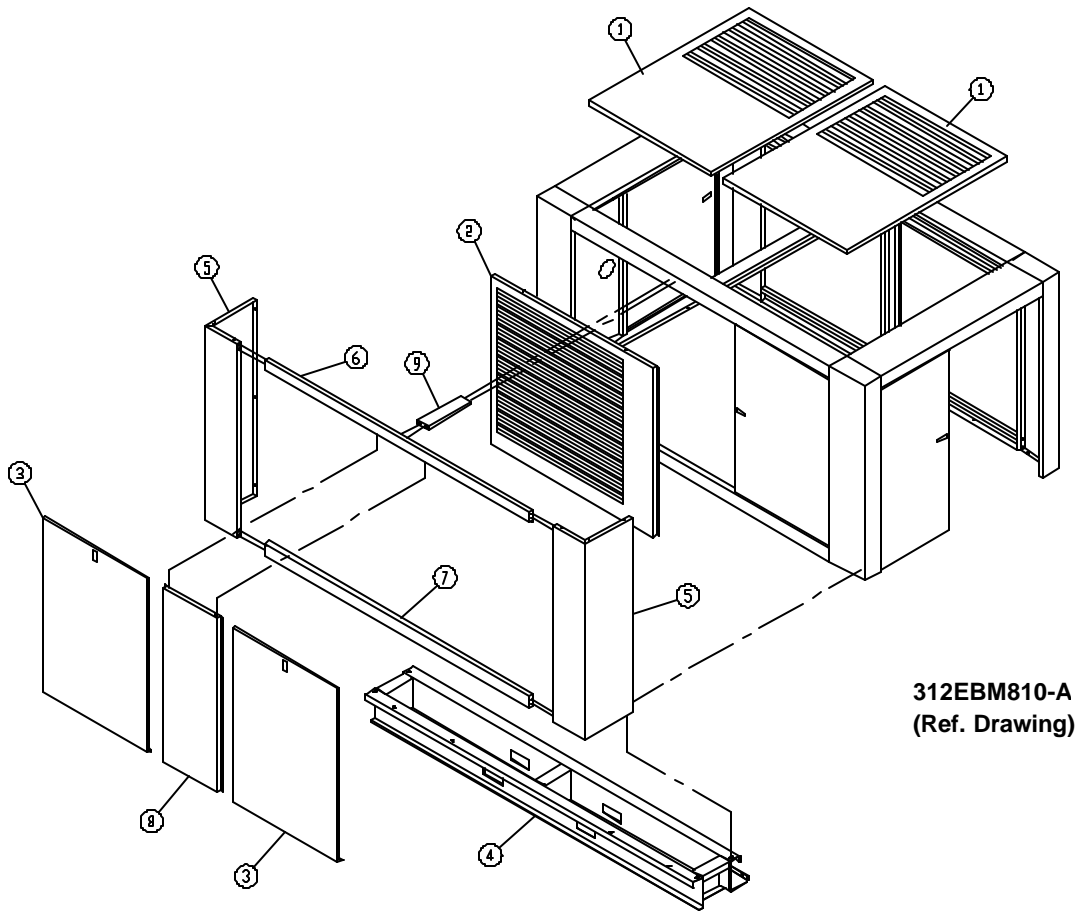
314EBM810-A
(Ref. Drawing)

ENCLOSURE – WATER COOLED (QUIET)

B/M: 302EBM4023

Ref. No.	Name of Part	Qty.	Part No.
1	PANEL.....	1	303EBM216
2	PANEL.....	1	304EBM216
3	PANEL.....	1	301EBM216

Order by Part Number and Description. Reference Numbers are for your convenience only.



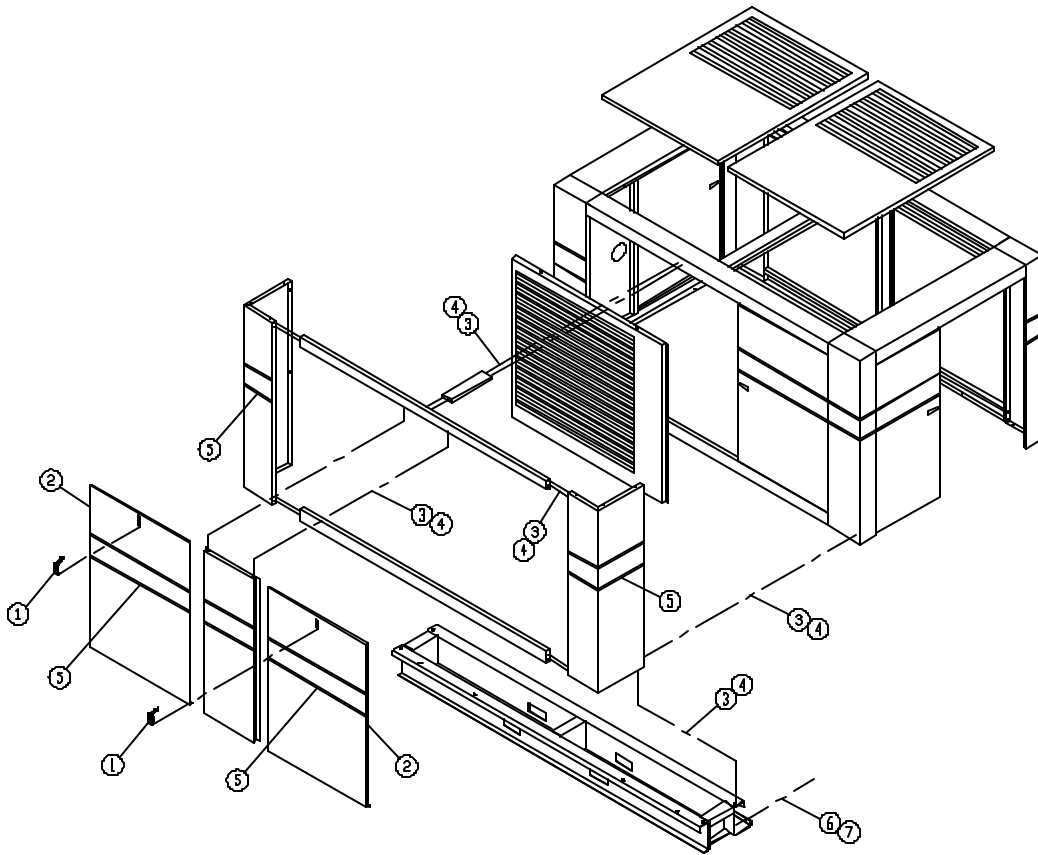
312EBM810-A
(Ref. Drawing)

ENCLOSURE – AIR COOLED (QUIET BAFFLE)

B/M: 301EBM4023

Ref. No.	Name of Part	Qty.	Part No.
1	PANEL.....	2	301EBM216
2	PANEL.....	1	220ECM216
3	PANEL.....	2	300EBM216
4	BASE.....	1	301EBM285
5	POST.....	2	304EBM313
6	FRAME.....	1	301EBM314
7	FRAME.....	1	300EBM314
8	BRACE.....	1	300EBM326
9	BRACE.....	1	301EBM326

Order by Part Number and Description. Reference Numbers are for your convenience only.



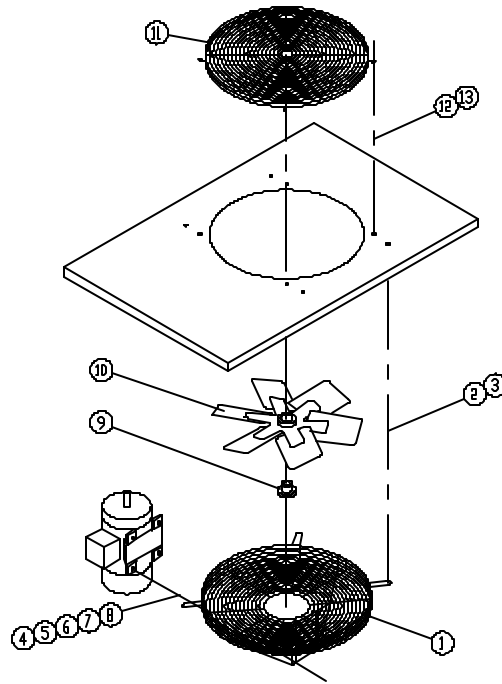
304EBU810-B
(Ref. Drawing)

ENCLOSURE – AIR COOLED (QUIET BAFFLE – HARDWARE)

B/M: 303EBU4023

Ref. No.	Name of Part	Qty.	Part No.
1	LATCH.....	2	31D51
2	SEAL	25	32E12
3	SCREW.....	30	75LM51
4	NUT	30	50AW5
5	DECAL.....	4	203ESO077
6	SCREW.....	4	75LM135
7	NUT.....	4	50AW35

Order by Part Number and Description. Reference Numbers are for your convenience only.



262EAU810
(Ref. Drawing)

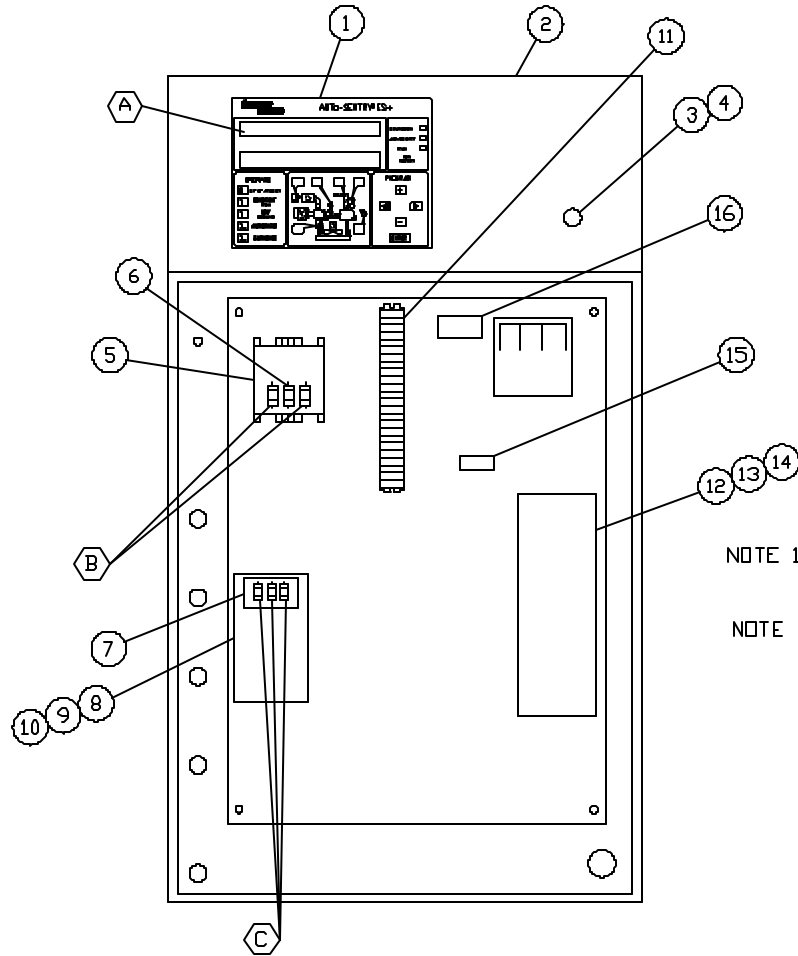
ENCLOSURE – VENT FAN ASSEMBLY (WATER COOLED UNITS ONLY)

B/M: 305EBM4017

Ref. No.	Name of Part	Qty.	Part No.
1	GUARD-FAN	1	202ECM393
2	SCREW.....	4	75K48
3	WASHER	4	95A5
4	SCREW.....	4	75A35
5	RETAINER	4	2014731
6	WASHER	4	95A2
7	LOCKWASHER.....	4	95B2
8	NUT	4	50B2
9	BUSHING-SHEAVE	1	22G27
10	FAN	1	202ECM701
11	GUARD-FAN	1	200ECM393
12	SCREW.....	4	75LM51
13	NUT.....	4	50AW5

NOTE: For Fan Motor Part Numbers, see page 54

**CONTROLLER ASSEMBLY – FULL VOLTAGE STARTERS
60, 75 & 100 HP**



NOTE 1 - ITEMS 15 & 16 ARE USED ONLY ON PANELS WITH ES + AND CURRENT MONITORING.

NOTE 2 - ITEMS 13 & 14 ARE INCLUDED IN 12

**300EAP797-A
(Ref. Drawing)**

Order by Part Number and Description. Reference Numbers are for your convenience only.

**CONTROLLER ASSEMBLY – FULL VOLTAGE STARTERS
60, 75 & 100 HP**

	Qty.	60 – 75 HP 200V	60 – 100 HP 230V	60 – 100 HP 460V	60 – 100 HP 575V
ASSEMBLED PANEL – ES+ : NEMA 12, Without Current Monitor	1	320EAP466	317EAP466	316EAP466	326EAP466
ASSEMBLED PANEL – ES+ : NEMA 4, Without Current Monitor	1	321EAP466	319EAP466	318EAP466	327EAP466
ASSEMBLED PANEL – ES+ : NEMA 12, With Current Monitor	1	352EAP466	349EAP466	348EAP466	358EAP466
ASSEMBLED PANEL – ES+ : NEMA 4, With Current Monitor	1	353EAP466	351EAP466	350EAP466	359EAP466
A FUSE, CONTROL BOARD (1A, AGC)	1	24CA2932	24CA2932	24CA2932	24CA2932
B FUSE, TRANSFORMER PRIMARY (-A, FNQ-R).....	2	24CA2786 (6A)	24CA2786 (6A)	24CA2783 (3A)	24CA3722 (2.25A)
C FUSE, FAN MOTOR, AIR COOLED (-A, LP-CC).....	3	24CA4097 (25A)	24CA3952 (20A)	24CA4095 (10A)	24CA4094 (8A)
C FUSE, FAN MOTOR, WATER COOLED (-A, LP-CC).....	3	24CA4093 (7A)	24CA4093 (7A)	24CA4091 (4A)	24CA4090 (3A)
* 1 ASSEMBLY CONTROL	1	302EAU2006	302EAU2006	302EAU2006	302EAU2006
2 BOX-CONTROL	1	200EAP179	200EAP179	200EAP179	200EAP179
3 OPERATOR, EMERGENCY STOP	1	24CA2907	24CA2907	24CA2907	24CA2907
4 CONTACT BLOCK.....	1	24CA2908	24CA2908	24CA2908	24CA2908
5 TRANSFORMER, CONTROL	1	2118237	2118238	2118238	2118239
6 FUSE, TRANSFORMER SECONDARY.....	1	24CA3728	24CA3728	24CA3728	24CA3728
7 FUSE HOLDER.....	1	24CA4098	24CA4098	24CA4098	24CA4098
8 STARTER, FAN MOTOR.....	1	24CA4408	24CA4408	24CA4408	24CA4408
9 COIL-STARTER	1	2115950	2115950	2115950	2115950
10 OVERLOAD RELAY	1	24CA4086	24CA4086	24CA4086	24CA4086
11 TERMINAL BLOCK.....	6	24CA2633	24CA2633	24CA2633	24CA2633
12 STARTER, MAIN MOTOR.....	1	24CA3490	24CA3490	24CA3881	24CA3881
13 COIL	1	2115952	2115952	2115952	2115952
14 OVERLOAD RELAY	1	24CA4086	24CA4086	24CA4086	24CA4086
15 CURRENT TRANSFORMER	1	24CA4242	24CA4242	24CA4242	24CA4242
16 CURRENT TRANSDUCER.....	1	24CA4241	24CA4241	24CA4241	24CA4241

Note: Items 15 & 16 are used with ES+ with Current Monitoring Units Only.

* Refer to page 50, for Controller Part Numbers.

Order by Part Number and Description. Reference Numbers are for your convenience only.

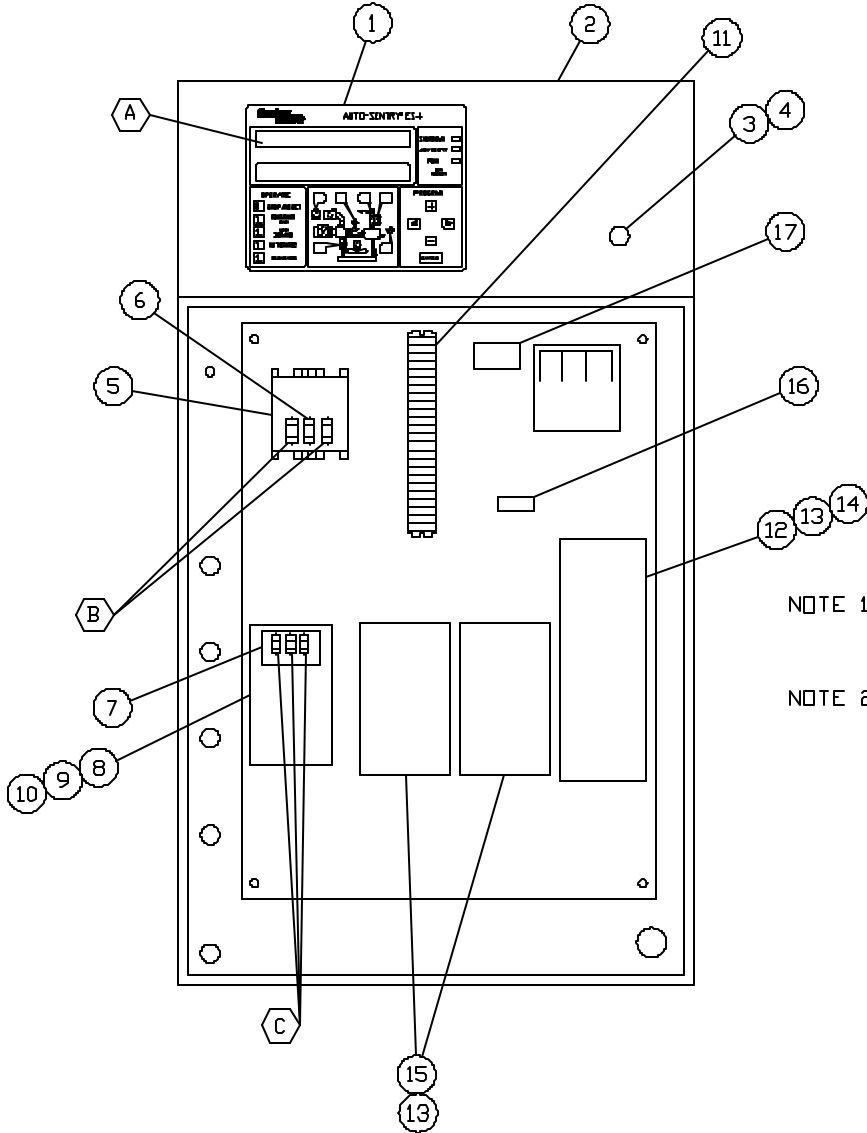
**CONTROLLER ASSEMBLY – WYE DELTA STARTERS
60, 75 & 100 HP**

	Qty.	60 HP 200V	60 – 75 HP 230V	60 – 75 HP 460V	100 HP 460V
ASSEMBLED PANEL – ES+ : NEMA 12, Without Current Monitor	1	300EAP466	297EAP466	296EAP466	297EAP466
ASSEMBLED PANEL – ES+ : NEMA 4, Without Current Monitor	1	301EAP466	299EAP466	298EAP466	299EAP466
ASSEMBLED PANEL – ES+ : NEMA 12, With Current Monitor	1	332EAP466	329EAP466	328EAP466	329EAP466
ASSEMBLED PANEL – ES+ : NEMA 4, With Current Monitor	1	333EAP466	331EAP466	330EAP466	331EAP466
A FUSE, CONTROL BOARD (1A, AGC)	1	24CA2932	24CA2932	24CA2932	24CA2932
B FUSE, TRANSFORMER PRIMARY (-A, FNQ-R).....	2	24CA2786 (6A)	24CA2786 (6A)	24CA2783 (3A)	24CA2783 (3A)
C FUSE, FAN MOTOR, AIR COOLED (-A, LP-CC).....	3	24CA4097 (25A)	24CA3952 (20A)	24CA4095 (10A)	24CA4095 (10A)
C FUSE, FAN MOTOR, WATER COOLED (-A, LP-CC).....	3	24CA4093 (7A)	24CA4093 (7A)	24CA4091 (4A)	24CA4091 (4A)
* 1 ASSEMBLY CONTROL	1	302EAU2006	302EAU2006	302EAU2006	302EAU2006
2 BOX-CONTROL	1	200EAP179	200EAP179	200EAP179	200EAP179
3 OPERATOR, EMERGENCY STOP	1	24CA2907	24CA2907	24CA2907	24CA2907
4 CONTACT BLOCK.....	1	24CA2908	24CA2908	24CA2908	24CA2908
5 TRANSFORMER, CONTROL	1	2118237	2118238	2118238	2118238
6 FUSE, TRANSFORMER SECONDARY.....	1	24CA3728	24CA3728	24CA3728	24CA3728
7 FUSE HOLDER.....	1	24CA4098	24CA4098	24CA4098	24CA4098
8 STARTER, FAN MOTOR.....	1	24CA4408	24CA4408	24CA4408	24CA4408
9 COIL-STARTER	1	2115950	2115950	2115950	2115950
10 OVERLOAD RELAY	1	24CA4086	24CA4086	24CA4086	24CA4086
11 TERMINAL BLOCK.....	6	24CA2633	24CA2633	24CA2633	24CA2633
12 STARTER, MAIN MOTOR.....	1	24CA3255	24CA3255	24CA4142	24CA3255
13 COIL	3	2116555	2116555	2116124	2116555
14 OVERLOAD RELAY	1	24CA4086	24CA4086	24CA4087	24CA4086
15 CONTACTOR	2	24CA3259	24CA3259	24CA3258	24CA3259
16 CURRENT TRANSFORMER.....	1	24CA4242	24CA4242	24CA4242	24CA4242
17 CURRENT TRANSDUCER.....	1	24CA4241	24CA4241	24CA4241	24CA4241

Note: Items 16 & 17 are used with ES+ with Current Monitoring Units Only.

* Refer to page 50, for Controller Part Numbers.

**CONTROLLER ASSEMBLY – WYE DELTA STARTERS
60, 75 & 100 HP**



NOTE 1 - ITEMS 16 & 17 ARE USED ONLY ON PANELS WITH ES + AND CURRENT MONITORING.

NOTE 2 - ITEMS 13 & 14 ARE INCLUDED IN 12
ITEM 13 IS INCLUDED IN 15.

**301EAP797-A
(Ref. Drawing)**

Order by Part Number and Description. Reference Numbers are for your convenience only.

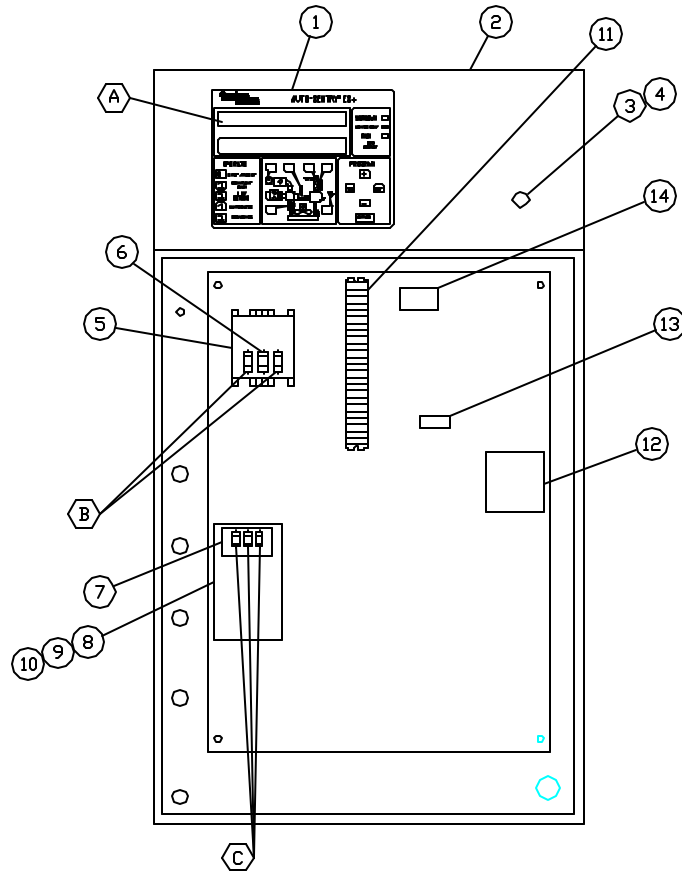
**CONTROLLER ASSEMBLY – WYE DELTA STARTERS
60, 75 & 100 HP**

		Qty.	575V Part No.
	ASSEMBLED PANEL – ES+ : NEMA 12, Without Current Monitor	1	304EAP466
	ASSEMBLED PANEL – ES+ : NEMA 4, Without Current Monitor	1	306EAP466
	ASSEMBLED PANEL – ES+ : NEMA 12, With Current Monitor	1	336EAP466
	ASSEMBLED PANEL – ES+ : NEMA 4, With Current Monitor	1	338EAP466
A	FUSE, CONTROL BOARD (1A, AGC)	1	24CA2932
B	FUSE, TRANSFORMER PRIMARY (-A, FNQ-R).....	2	24CA2786 (6A)
C	FUSE, FAN MOTOR, AIR COOLED (-A, LP-CC).....	3	24CA4097 (25A)
C	FUSE, FAN MOTOR, WATER COOLED (-A, LP-CC).....	3	24CA4093 (7A)
* 1	ASSEMBLY CONTROL	1	302EAU2006
2	BOX-CONTROL	1	200EAP179
3	OPERATOR, EMERGENCY STOP	1	24CA2907
4	CONTACT BLOCK.....	1	24CA2908
5	TRANSFORMER, CONTROL	1	2118239
6	FUSE, TRANSFORMER SECONDARY.....	1	24CA3728
7	FUSE HOLDER.....	1	24CA4098
8	STARTER, FAN MOTOR	1	24CA4408
9	COIL-STARTER	1	2115950
10	OVERLOAD RELAY	1	24CA4086
11	TERMINAL BLOCK.....	6	24CA2633
12	STARTER, MAIN MOTOR.....	1	24CA4142
13	COIL	3	2116124
14	OVERLOAD RELAY	1	24CA4087
15	CONTACTOR	2	24CA3258
16	CURRENT TRANSFORMER.....	1	24CA4242
17	CURRENT TRANSDUCER.....	1	24CA4241

* Refer to page 50, for Controller Part Numbers

Note: Items 16 & 17 are used with ES+ with Current Monitoring Units Only.

**CONTROLLER ASSEMBLY – LESS MAIN MOTOR STARTER
(60, 75 & 100 HP)**



NOTE 1 - ITEMS 13 & 14 ARE USED ONLY ON PANELS WITH ES + AND CURRENT MONITORING.

**302EAP797-A
(Ref. Drawing)**

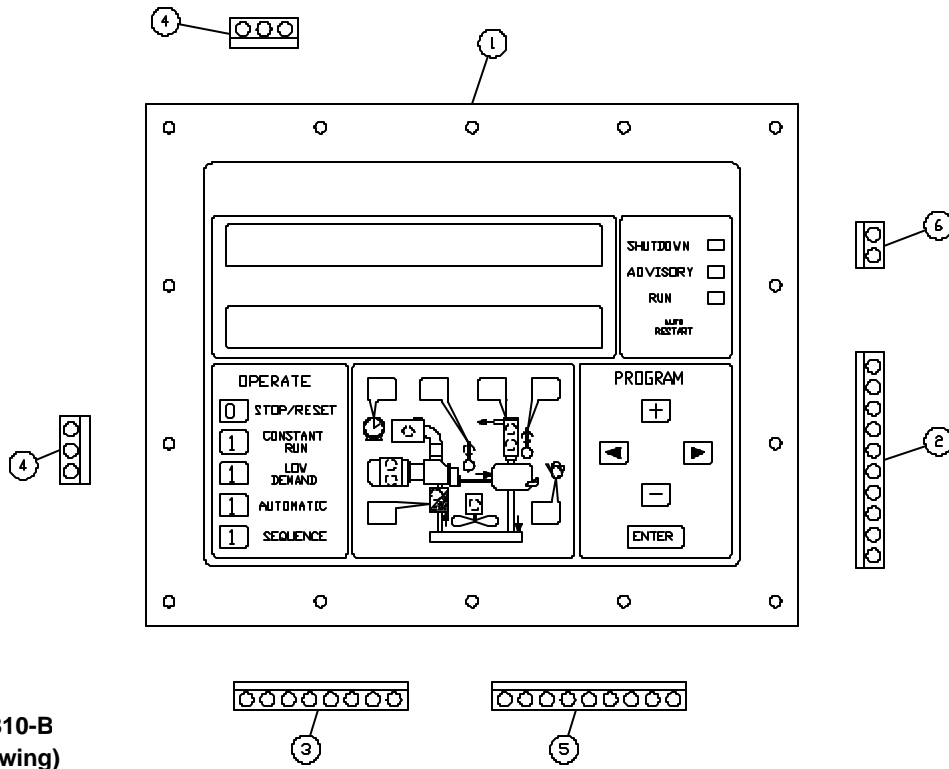
**CONTROLLER ASSEMBLY – LESS MAIN MOTOR STARTER
(60, 75 & 100 HP)**

	Qty.	200V	230V	460V	575V
ASSEMBLED PANEL – ES+ : NEMA 12, Without Current Monitor	1	309EAP466	308EAP466	308EAP466	311EAP466
ASSEMBLED PANEL – ES+ : NEMA 4, Without Current Monitor	1	313EAP466	312EAP466	312EAP466	315EAP466
ASSEMBLED PANEL – ES+ : NEMA 12, With Current Monitor	1	341EAP466	340EAP466	340EAP466	343EAP466
ASSEMBLED PANEL – ES+ : NEMA 4, With Current Monitor	1	345EAP466	344EAP466	344EAP466	347EAP466
A FUSE, CONTROL BOARD (1A, AGC)	1	24CA2932	24CA2932	24CA2932	24CA2932
B FUSE, TRANSFORMER PRIMARY (-A, FNQ-R).....	2	24CA2786 (6A)	24CA2786 (6A)	24CA2783 (3A)	24CA3722 (2.25A)
C FUSE, FAN MOTOR, AIR COOLED (-A, LP-CC).....	3	24CA4097 (25A)	24CA3952 (20A)	24CA4095 (10A)	24CA4094 (8A)
C FUSE, FAN MOTOR, WATER COOLED (-A, LP-CC).....	3	24CA4093 (7A)	24CA4093 (7A)	24CA4091 (4A)	24CA4090 (3A)
* 1 ASSEMBLY CONTROL	1	302EAU2006	302EAU2006	302EAU2006	302EAU2006
2 BOX-CONTROL	1	200EAP179	200EAP179	200EAP179	200EAP179
3 OPERATOR, EMERGENCY STOP	1	24CA2907	24CA2907	24CA2907	24CA2907
4 CONTACT BLOCK.....	1	24CA2908	24CA2908	24CA2908	24CA2908
5 TRANSFORMER, CONTROL	1	2118237	2118238	2118238	2118239
6 FUSE, TRANSFORMER SECONDARY.....	1	24CA3728	24CA3728	24CA3728	24CA3728
7 FUSE HOLDER.....	1	24CA4098	24CA4098	24CA4098	24CA4098
8 STARTER, FAN MOTOR.....	1	24CA4408	24CA4408	24CA4408	24CA4408
9 COIL-STARTER	1	2115950	2115950	2115950	2115950
10 OVERLOAD RELAY	1	24CA4086	24CA4086	24CA4086	24CA4086
11 TERMINAL BLOCK.....	7	24CA2633	24CA2633	24CA2633	24CA2633
12 CONTROL RELAY	1	24CA3896	24CA3896	24CA3896	24CA3896
13 CURRENT TRANSFORMER	1	24CA4242	24CA4242	24CA4242	24CA4242
14 CURRENT TRANSDUCER.....	1	24CA4241	24CA4241	24CA4241	24CA4241

Note: Items 13 & 14 are used with ES+ with Current Monitoring Units Only.

* Refer to page 50, for Controller Part Numbers.

Order by Part Number and Description. Reference Numbers are for your convenience only.

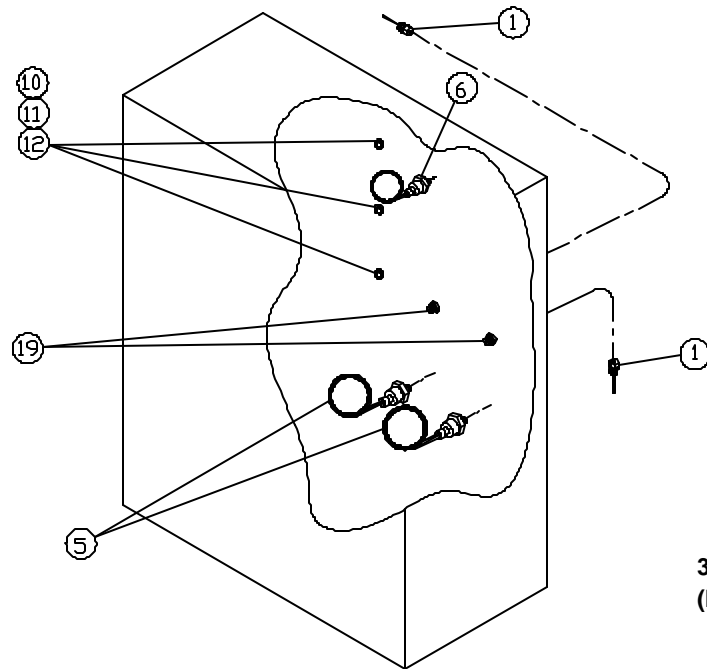


CONTROLLER ASSEMBLY

B/M: 302EAU2006

Ref. No.	Name of Part	Qty.	Part No.
1	CONTROLLER, AUTO SENTRY ES+	1	302EAU1173
2	PLUG-C0NNECTOR 10 PIN TERMINAL.....	1	24CA3306
3	PLUG-C0NNECTOR 8 PIN TERMINAL.....	1	24CA3400
4	PLUG-C0NNECTOR 3 PIN TERMINAL.....	2	24CA3401
5	PLUG-C0NNECTOR 9 PIN TERMINAL.....	1	24CA3402
6	PLUG-C0NNECTOR 2 PIN TERMINAL.....	1	24CA4240

Order by Part Number and Description. Reference Numbers are for your convenience only.

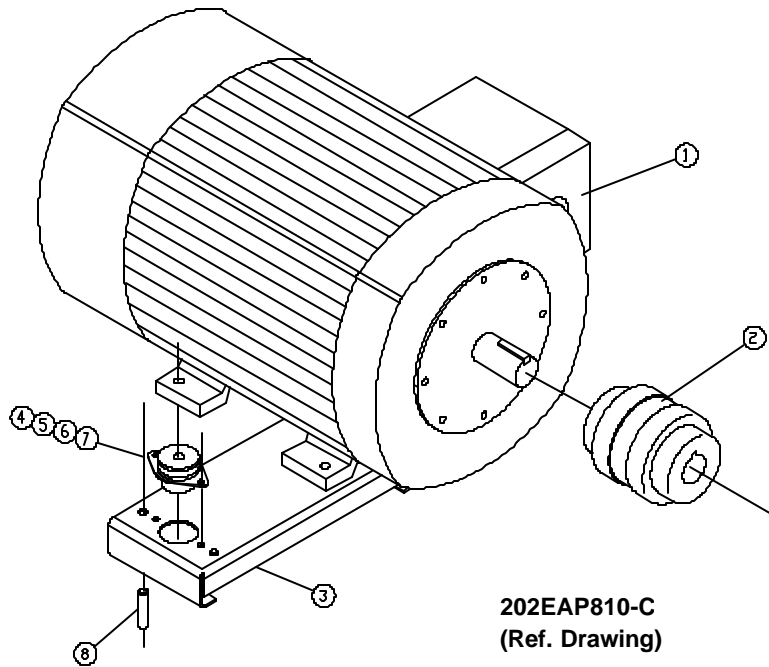


MISCELLANEOUS ELECTRICAL PARTS

Ref. No.	Name of Part	Qty.	B/M: 200ECP4007	B/M: 300EBP4007
			100-150 PSI Part No.	175 & 200 PSI Part No.
* 1	PROBE-ELECTRICAL.....	2	21D264	21D264
* 5	TRANSDUCER-PRESSURE	2	88H359	88H360
* 6	SWITCH-VACUUM	1	88H195	88H195
10	NIPPLE	3	24CA4641	24CA4641
11	O-RING	3	24A383	24A383
12	LOCKNUT.....	3	24A77	24A77
19	FITTING-ELECTRICAL.....	2	24CA2865	24CA2865

* Parts included in Electrical Control Kit, Part Number 206EAP6013. Refer to page 56.

Order by Part Number and Description. Reference Numbers are for your convenience only.



MAIN MOTOR GROUP

Ref. No.	Name of Part	Qty.	ODP Motor Part No.	TEFC Motor Part No.
1	MOTOR.....	1	*	*
2	COUPLING-FLEXIBLE (SSH and SSM Airends).....	1	** 51L167	** 51L167
	COUPLING-FLEXIBLE (SSP Airends).....	1	*** 51L223	*** 51L223
3	SUPPORT-MOTOR – EBM – (100 – 200 PSI).....	1	201EDF620	201EDF620
	SUPPORT-MOTOR – EBP – (150 - 200 PSI).....	1	201EDF620	200EDH620
	SUPPORT-MOTOR – EBP – (100 - 125 PSI).....	1	204ECM620	202EAP620
4	SCREW.....	4	655EF160	655EF160
5	WASHER	4	95A7	95A7
6	LOCKWASHER.....	4	95B7	95B7
7	NUT.....	4	50B7	50B7
8	NIPPLE (Use with 202EDF620).....	4	63AM12X36G	63AM12X36G
	NIPPLE (Use with 201EDF620 & 202EAP620).....	4	63AM12X26G	63AM12X26G

* Selective – See page 54.

** For repair, order Drive Coupling Spider Part Number 2117297.

*** For repair, order Drive Coupling Spider Part Number 2118273.

OVERLOAD RELAY HEATER CONVERSION LISTING

Refer to Motor Nameplate “Amperage” and Decal in Control Panel for Selection of Overload Relay Heater Packs

CUTLER-HAMMER PART NUMBER	GARDNER DENVER PART NUMBER
H2002B	24CA4101
H2003B	24CA4102
H2004B	24CA4103
H2005B	24CA4104
H2006B	24CA4105
H2007B	24CA4106
H2008B	24CA4107
H2009B	24CA4108
H2010B	24CA4109
H2011B	24CA4110
H2012B	24CA4111
H2013B	24CA4112
H2014B	24CA4113
H2015B	24CA4114
H2016B	24CA4115
H2017B	24CA4116
H2018	24CA2924
H2019	24CA2925
H2020	24CA2926
H2021	24CA2927
H2022	24CA2893
H2023	24CA2894
H2024	24CA2928

**MOTOR GROUP (MAIN DRIVE MOTORS)
WYE DELTA & FULL VOLTAGE -- 60 HZ**

Name of Part	60 HP Part No.	75 HP Part No.	100 HP Part No.
---------------------	---------------------------	---------------------------	----------------------------

OPEN DRIP PROOF – 60 HZ – STANDARD EFFICIENCY

MOTOR, 200V	24CA2952	24CA2956	24CA2960
MOTOR, 230V	24CA3013	24CA3014	24CA3015
MOTOR, 460V	24CA3013	24CA3014	24CA3015
MOTOR, 575V	24CA2955	24CA2959	24CA2963

OPEN DRIP PROOF -- 60 HZ – HIGH EFFICIENCY

MOTOR, 200V	24CA2968	24CA2972	24CA2976
MOTOR, 230V	24CA3017	24CA30018	24CA3019
MOTOR, 460V	24CA3017	24CA3018	24CA3019
MOTOR, 575V	24CA2971	24CA2975	24CA2979

TOTALLY ENCLOSED FAN COOLED (TEFC) – 60 HZ

MOTOR, 200V	24CA2984	24CA2988	24CA2992
MOTOR, 230V	24CA3021	24CA3022	24CA3023
MOTOR, 460V	24CA3021	24CA3022	24CA3023
MOTOR, 575V	24CA2987	24CA2991	24CA2995

TOTALLY ENCLOSED FAN COOLED (TEFC) – 60 HZ – HIGH EFFICIENCY

MOTOR, 200V	24CA2996	24CA3000	24CA3004
MOTOR, 230V	24CA3024	24CA3025	24CA3026
MOTOR, 460V	24CA3024	24CA3025	24CA3026
MOTOR, 575V	24CA2999	24CA3003	24CA3007

**MOTOR GROUP
AIR COOLED FAN MOTOR (COOLING MODULE)
(TEFC, 3 HP, 1.33 S.F., 1200 RPM, 60 HZ)**

VOLTAGE	PART NO.
MOTOR, 200V	24CA4259
MOTOR, 230V	24CA4260
MOTOR, 460V	24CA4260
MOTOR, 575V	24CA4261

**WATER COOLED FAN MOTOR (ENCLOSURE VENT FAN)
(TEFC, 1.0 S.F., 1200 RPM, 60 HZ)**

VOLTAGE	PART NO.
MOTOR, 200V	24CA4177
MOTOR, 230V	24CA2464
MOTOR, 460V	24CA2464
MOTOR, 575V	24CA4178

IDENTIFICATION AND INSTRUCTION GROUP

Name of Part	Qty.	B/M: 300EBM4011 Part No.
DECAL, OPERATION & MAINTENANCE	1	217ECM077
DECAL-WARNING.....	1	227EAQ077
DECAL, PARTS LIST & SERVICE MANUAL.....	1	204EDE077
DECAL-WARNING (ELECTRICAL SHOCK & FIRE).....	1	314EAQ077
DECAL-DANGER (AIR/OIL UNDER PRESSURE).....	1	212EAQ077
DECAL, WARNING (INSPECT OIL RESERVOIR).....	1	217EAQ077
DECAL-NOTICE (USE GENUINE GD PARTS).....	1	214EAQ077
DECAL.....	1	212ECM077
DECAL-CAUTION (DO NOT LIFT).....	2	208EAQ077
DECAL-WARNING (ROTATING MACHINERY).....	1	211EAQ077
DECAL-DANGER (DO NOT BREATHE DISCHARGE AIR).....	1	206EAQ077
DECAL, GD LOGO - VERTICAL 18-1/2 HIGH.....	1	69F18
DECAL, HEAT EXCHANGE "IN"	1	200ESP077
DECAL, HEAT EXCHANGE "OUT"	1	201ESP077
DECAL, ELECTRA-SAVER II.....	1	201ECP077
DECAL, ELECTRA-SAVER II.....	1	200ECP077
DECAL-MADE IN USA	1	69F64
DECAL-WARNING.....	1	240EAQ077
DECAL-QUALITY WITHOUT QUESTION.....	1	251EAQ077
TAG-INSTRUCTION - ES+ SPEEDY REFERENCE	1	300EAQ304
TAG-INSTRUCTION - ES+ SPEEDY REFERENCE	1	301EAQ304
POCKET.....	1	200EAQ1304

REPAIR KITS

Your Gardner Denver rotary screw compressor is designed and manufactured for many years of reliable operation. All components are engineered to exacting specifications, which will function together as a system to provide maximum efficiency. To insure the continuing integrity of compressor operation, use only original quality genuine Gardner Denver replacement parts and accessories.

Name of Part	Qty.	Part No.
ROUTINE MAINTENANCE KIT (Heavy Duty Air Filter).....		202ECM6013
ELEMENT, AIR FILTER.....	2	2116713
ELEMENT, OIL FILTER.....	3	2116110
SEPARATOR KIT		208EAP6013
OIL SEPARATOR.....	1	200ECM035
GASKET.....	1	25C1788N
LUBRICANT.....	1	2116755
PNEUMATIC CONTROLS & GAUGES		302EAQ6013
CHECK VALVE.....	3	90AR261
CONTROL VALVE.....	1	90AR1034
CONTROL VALVE.....	1	90AR1082
PRESSURE REGULATOR.....	1	88H139
PRESSURE GAUGE.....	1	2116732
ELECTRICAL CONTROL KIT - 100-150 PSIG.....		206EAP6013
SOLENOID VALVE.....	1	91B70
SOLENOID VALVE.....	1	91B80
SOLENOID VALVE.....	1	91B81
THERMISTOR PROBE.....	2	21D264
TRANSDUCER.....	2	88H359
VACUUM SWITCH.....	1	88H195
ELECTRICAL CONTROL KIT - 175 & 200 PSIG		301EBP6013
SOLENOID VALVE.....	1	91B70
SOLENOID VALVE.....	1	91B80
SOLENOID VALVE.....	1	91B81
THERMISTOR PROBE.....	2	21D264
TRANSDUCER.....	2	88H360
VACUUM SWITCH.....	1	88H195
LUBRICANT (AEON 9000 SP)		
5 GALLON PAIL	1	28H109
55 GALLON DRUM.....	1	28H110
TOUCH-UP PAINT (WHITE)		
5 GALLON PAIL	1	28H76
1 GALLON CAN.....	1	28H84
1 QUART CAN.....	1	28H83
WATER TEMPERATURE REGULATOR (Optional)	1	90AR326
MAGNETIC WATER SHUTOFF VALVE – NEMA 4 (Optional).....	1	ECH75596
AIR COOLED FIELD INSTALLED ENCLOSURE KIT.....	1	282ECM4017
WATER COOLED FIELD INSTALLED ENCLOSURE KIT.....	1	283ECM4017
AIREND REPAIR KITS (Refer to page 1 for selection)		
PERIODIC MAINTENANCE KIT.....		302SSM6013
O-RING.....	1	25BC447
SPRING	1	78G19
SPRING	1	78W63
O-RING.....	1	25AM29
RING-RETAINING.....	1	74D88
GASKET (ELIMINATOR)	1	25BC222

REPAIR KITS (CONTINUED)

Name of Part	Qty.	Part No.
ROLLER BEARING.....	1	320SSM6013 12BA92
ROLLER BEARING.....	1	12BA197
ROLLER BEARING.....	1	12W34
ROLLER BEARING.....	1	12BA93
SPRING.....	1	78W97
SHIM SET.....	1	321SSM6013 77H56
SHIM SET.....	1	77H57
GASKET ELIMINATOR.....	1	25BC222
ROLLER BEARING.....	1	326SSH6013 12BA91
ROLLER BEARING.....	1	12BA196
ROLLER BEARING.....	1	12BA130
ROLLER BEARING.....	1	12BA136
SPRING-WAVE.....	1	78W96
SHIM SET.....	1	327SSH6013 77H54
SHIM SET.....	1	77H53
GASKET ELIMINATOR.....	1	25BC222
WEAR SLEEVE.....	1	302SSH6013 80M12
OIL SEAL.....	1	60DD679
OIL SEAL.....	1	60DD690
O-RING.....	1	8502140
O-RING.....	1	25BC165
GASKET ELIMINATOR.....	1	25BC222
VALVE-CHECK.....	1	90AR923
WEAR SLEEVE PULLER.....	1	200SSH4017
WEAR SLEEVE PULLER.....	1	200SSH219
PLATE PULLER.....	1	200SSH340
SCREW.....	1	655EE030
SCREW.....	1	75LM192
SCREW.....	1	655ED120
SCREW.....	2	75D176
GUIDE.....	1	200SSH450
TOOL.....	1	200SSH074
ROLLER BEARING.....	1	323SSP6013 12BA105
ROLLER BEARING.....	1	12BA198
ROLLER BEARING.....	1	12BA104
ROLLER BEARING.....	1	12BA103
SPRING.....	1	78W98
SHIM SET.....	1	324SSP6013 77H63
SHIM SET.....	1	77H62
GASKET ELIMINATOR.....	1	25BC222

REPAIR KITS (CONTINUED)

Name of Part	Qty.	Part No.
O-RING.....	1	300SSP6013 8502140
O-RING.....	1	25BC380
OIL SEAL.....	1	60DD692
OIL SEAL.....	1	60DD693
WEAR SLEEVE.....	1	80M40
GASKET ELIMINATOR.....	1	25BC222
VALVE CHECK.....	1	90AR923
		325SSP6013
ROLLER BEARING.....	2	12BA51
KEY.....	1	35C114
SPRING.....	1	78W50
PACKING RING.....	4	60AM46
GASKET.....	4	25BC138N
SEAL FASTENER.....	2	60DD801
BUMPER.....	2	32E15
RETAINER PLATE.....	2	300SSU168
RETAINING RING.....	2	74D49
SEAL FASTENER.....	2	60DD65
		200SSP4017
PULLER.....	1	200SSP219
PLATE-PULLER.....	1	200SSP340
SCREW.....	1	75LM192
SCREW.....	1	655ED120
SCREW.....	2	75D177
GUIDE.....	1	200SSP450
TOOL.....	1	200SSP074

Gardner --- **Denver**

Specifications subject to change without notice.

Copyright © 1999 Gardner Denver, Inc.

Litho in U.S.A.

<http://www.gardnerdenver.com> mktg@gardnerdenver.com

For additional information contact your local representative or



Gardner Denver Compressor and Pump Division,
1800 Gardner Expressway, Quincy, Illinois 62301
Customer Service Department Telephone:
(800) 682-9868 FAX: (217) 224-7814

Sales and Service in all major cities.

For parts information, contact Gardner Denver,
Master Distribution Center, Memphis, TN

Telephone: (800) 245-4946 FAX: (901) 542-6159