
GARDNER DENVER®

13-9-573
Version: 04
December 21, 2001

eXact RPM®
VARIABLE SPEED
COMPRESSOR

MODEL -- EGC

PARTS LIST

Gardner

Denver

**MAINTAIN COMPRESSOR RELIABILITY AND PERFORMANCE WITH
GENUINE GARDNER DENVER® COMPRESSOR
PARTS AND SUPPORT SERVICES**

Gardner Denver® Compressor genuine parts, manufactured to design tolerances, are developed for optimum dependability – specifically for Gardner Denver compressor systems. Design and material innovations are the result of years of experience with hundreds of different compressor applications. Reliability in materials and quality assurance is incorporated in our genuine replacement parts.

Your authorized Gardner Denver Compressor distributor offers all the backup you'll need. A worldwide network of authorized distributors provides the finest product support in the air compressor industry. Your local authorized distributor maintains a large inventory of genuine parts and he is backed up for emergency parts by direct access to the Master Distribution Center (MDC) in Memphis, Tennessee.

Your authorized distributor can support your Gardner Denver air compressor with these services:

1. Trained parts specialists to assist you in selecting the correct replacement parts.
2. Factory warranted new and remanufactured rotary screw airends. Most popular model remanufactured airends are maintained in stock at the Remanufacturing Center in Indianapolis, IN., for purchase on an exchange basis with liberal core credit available for the replacement unit.
3. A full line of factory tested AEON™ compressor lubricants specifically formulated for use in Gardner Denver compressors.
4. Repair and maintenance kits designed with the necessary parts to simplify servicing your compressor.

Authorized distributor service technicians are factory trained and skilled in compressor maintenance and repair. They are ready to respond and assist you by providing fast, expert maintenance and repair services.

For the location of your local authorized Gardner Denver Air Compressor distributor, refer to the yellow pages of your phone directory or contact:

Distribution Center:

Gardner Denver
Master Distribution Center
5585 East Shelby Drive
Memphis, TN 38141

Phone: (901) 542-6100
(800) 245-4946

Fax: (901) 542-6159

Factory:

Gardner Denver
1800 Gardner Expressway
Quincy, IL 62301

Phone: (217) 222-5400

Fax: (217) 224-7814

INSTRUCTIONS FOR ORDERING REPAIR PARTS

When ordering parts, specify Compressor MODEL, Method of Cooling, HORSEPOWER and SERIAL NUMBER (see nameplate on unit). The Serial Number is also stamped on top of the discharge bearing carrier casting.

All orders for Parts should be placed with the nearest authorized distributor.

Where NOT specified, quantity of parts required per compressor or unit is one (1); where more than one is required per unit, quantity is indicated in parenthesis. SPECIFY EXACTLY THE NUMBER OF PARTS REQUIRED.

DO NOT ORDER BY SETS OR GROUPS.

To determine the Right-Hand and Left-Hand side of a compressor, stand at the motor end and look toward the compressor. Right-Hand and Left- Hand are indicated in parenthesis following the part name, i.e. (RH) and (LH), when appropriate.

**TOTAL PRODUCT SUPPORT – GARDNER DENVER’S
CONTINUING COMMITMENT
TO YOUR AIR COMPRESSOR PERFORMANCE**

Commitment to total product support continues long after the purchase of your quality Gardner Denver rotary screw compressor.

Gardner Denver original parts incorporate years of experience and improvements in design, materials and quality assurance. Maintaining your compressor investment with Gardner Denver parts will insure protection for the air compressor unit and long, dependable service life.

Your authorized Gardner Denver compressor distributor maintains a complete stock of all common maintenance parts, factory approved AEON lubricants, and Gardner Denver factory warranted exchange airends. In addition, authorized distributor technicians are factory trained, and can provide complete diagnostic, compressor maintenance and repair services.

This manual is designed to assist you in maintaining high performance and receiving many years of dependable service you expect from your Gardner Denver compressor.

REMANUFACTURED AIRENDS

Whenever an airend requires replacement or repair, Gardner Denver offers an industry unique, factory remanufactured airend exchange program. From its modern Remanufacturing Center in Indianapolis, IN., Gardner Denver is committed to supplying you with the highest quality, factory remanufactured airends that are guaranteed to save you time, aggravation and money.

Immediately Available

Repair downtime costs you money, which is why there are over 200 remanufactured units in inventory at all times, ready for immediate delivery.

Skilled Craftsmen

Our Remanufacturing assembly technicians average over 20 years experience with air compression products.

Precision Remanufacturing

All potentially usable parts are thoroughly cleaned, inspected and analyzed. Only those parts that can be brought back to original factory specifications are remanufactured. Every remanufactured airend receives a new overhaul kit: bearings, gears, seals, sleeves and gaskets.

Extensive Testing

Gardner Denver performs testing that repair houses just don't do. Magnaflux and ultrasonic inspection spot cracked or stressed castings, monochromatic light analysis exposes oil leaks, and coordinate measurement machine inspects to +/- .0001", insuring that all remanufactured airends meet factory performance specifications.

Warranty

Gardner Denver backs up every remanufactured airend with a new warranty...18 months from purchase, 12 months from service.

Gardner Denver remanufactured airends deliver *quality without question...year in and year out.*

Call Gardner Denver for information on the airend exchange program and the name of your authorized distributor.

Phone Number: 800-245-4946 or
Fax: 901-542-6159

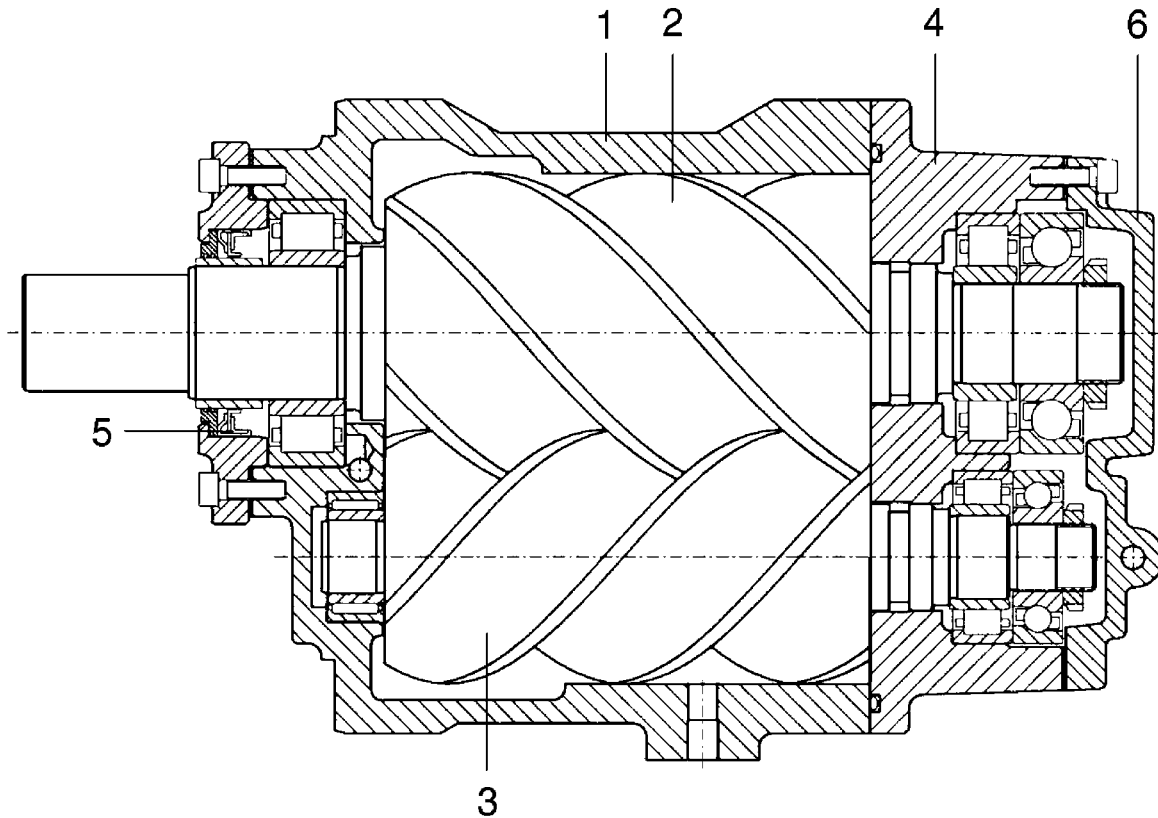
TABLE OF CONTENTS

Maintain Compressor Reliability And Performance With Genuine Gardner Denver Compressor Parts And Support Services.....	i
Instructions For Ordering Repair Parts.....	i
Total Product Support – Gardner Denver’s Continuing Commitment To Your Air Compressor Performance	ii
Remanufactured Airends.....	ii
Bare Compressor	1
Airend Group	2, 3
Inlet Valve Repair Parts.....	4, 5
Minimum Pressure/Check Valve	6, 7
Airend And Inlet Filter Assembly	8, 9
Drive Group – Drive Components	10, 11
Drive Group – Common Parts	12, 13
Cooling Group	14, 15
Control System Assembly And Mounting.....	16, 17
Enclosure Group.....	18, 19
Water Separator Assembly.....	20
Quiet Enclosure Kit.....	21
Quiet Enclosure Sheet Metal Parts	22
Wiring Diagram.....	23 thru 30
Starter Control Box.....	31
Identification And Instruction Group	32
Repair Kits	33

For Operating and Service Manual, see:

SERVICE MANUAL 13-9-651

BARE COMPRESSOR



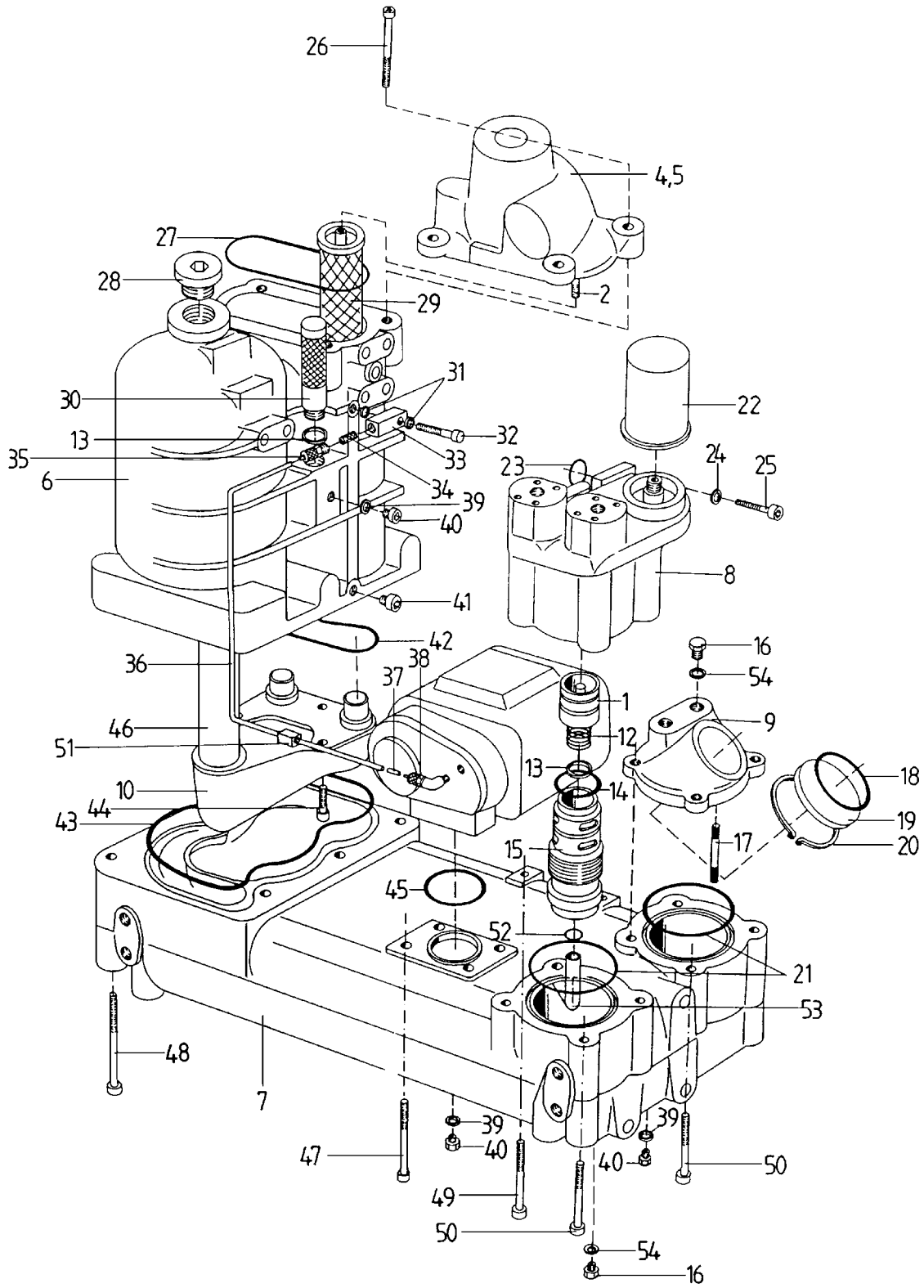
Ref. No.	Name of Part
-----------------	---------------------

- | | |
|---|---------------------------|
| 1 | CYLINDER |
| 2 | MAIN ROTOR |
| 3 | SECONDARY ROTOR |
| 4 | DISCHARGE BEARING HOUSING |
| 5 | DRIVE SHAFT SEAL |
| 6 | DISCHARGE END PLATE |

For replacement Airend, order Part Number 306EFD6013. Refer to page 34.

For Periodic Overhaul Kit, order Part Number 307EFD6013. Refer to page 34.

AIREND GROUP



Order by Part Number and Description. Reference Numbers are for your convenience only.

AIREND GROUP

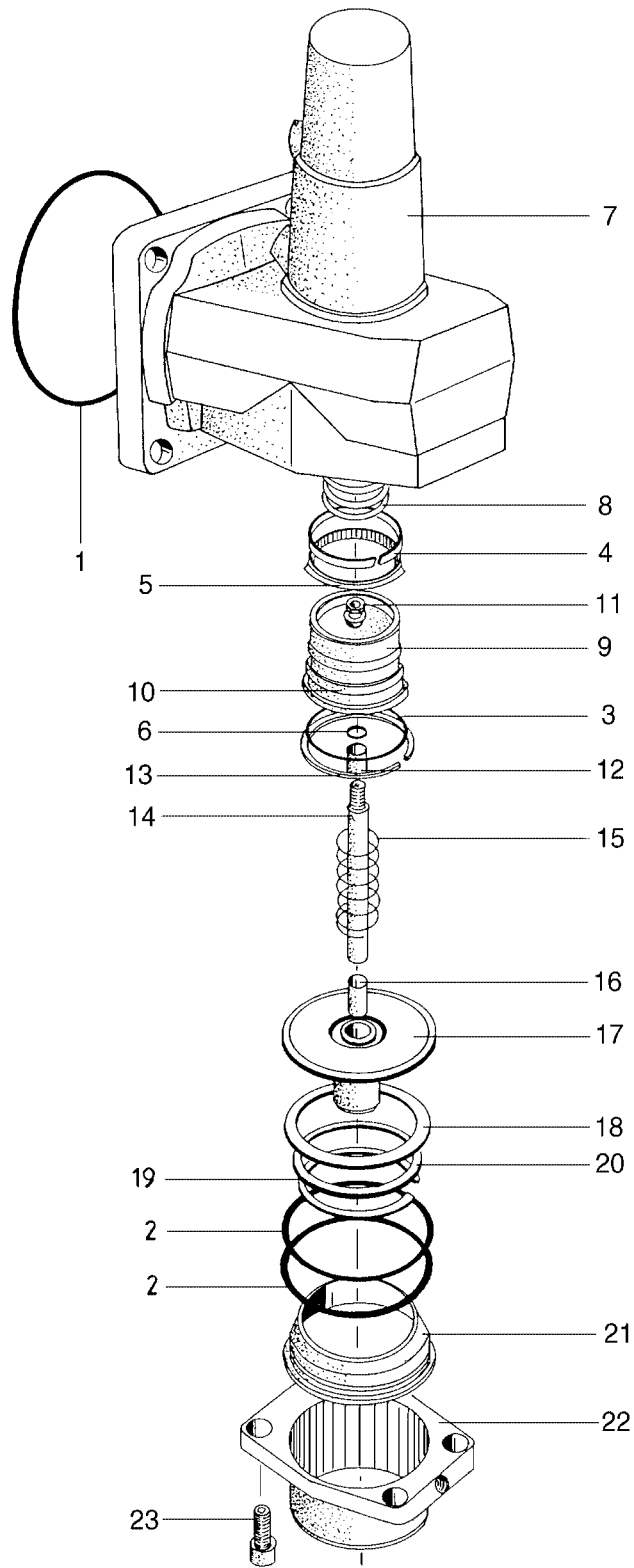
B/M: EFC03979732

Ref. No.	Name of Part	Qty.	Part No.
1	THERMOSTAT ELEMENT.....	1	EFC89560169
2	STUD, AIR/OIL SEPARATOR.....	2	EFC30899728
4	MINIMUM PRESSURE/CHECK VALVE ASSEMBLY.....	1	EFC37609908
5	MINIMUM PRESSURE/CHECK VALVE HOUSING.....	1	EFC03979868
6	SEPARATOR HOUSING.....	1	EFC03979171
7	OIL SUMP/BASE.....	1	EFC03979041
8	FILTERSTAT HOUSING.....	1	EFC03979601
9	OIL SITE GAGE HOUSING.....	1	EFC03812268
10	AIR SEPARATION CHAMBER.....	1	EFC03812398
12	SPRING (Mixing Valve).....	1	EFC89565369
13	GASKET (Mixing Valve).....	2	EFC28335250
14	O-RING (Mixing Valve).....	1	EFC89560299
15	HOUSING – MIXING VALVE.....	1	EFC37607328
16	PLUG.....	3	EFC03381178
17	OIL SITE GLASS MEASURING ROD.....	1	EFC30899608
18	O-RING (Oil Site Glass).....	1	EFC89573939
19	OIL SITE GLASS.....	1	EFC30899578
20	RETAINING RING (Oil site Glass).....	1	EFC42227570
21	O-RING.....	2	EFC86906369
22	OIL FILTER.....	1	2117915
23	O-RING.....	1	EFC89565109
24	LOCK WASHER.....	2	EFC80015909
25	SCREW.....	2	EFC44580140
26	SCREW.....	4	EFC89563199
27	O-RING.....	1	EFC89562879
28	PLUG.....	1	EFC85328079
* 29	OIL SEPARATOR.....	2	2117907
30	PRESSURE RELIEF VALVE.....	1	EFC89728559
31	GASKET.....	2	EFC80314109
32	SCREW.....	1	EFC89569309
33	CONNECTOR, OIL SCAVENGE LINE.....	1	EFC30909408
** 34	SCREEN, OIL SCAVENGE LINE.....	1	EFC85588619
35	CONNECTOR.....	1	EFC03398578
36	PLASTIC TUBE.....	1	EFC85200299
37	ORIFICE.....	1	EFC30895408
38	ELBOW.....	1	EFC85267219
39	GASKET.....	3	EFC80098799
40	PLUG.....	3	EFC81606709
41	PLUG.....	1	EFC80704779
42	O-RING.....	1	EFC89562749
43	O-RING.....	1	EFC89562909
44	SCREW.....	3	EFC44578470
45	O-RING.....	1	EFC89558369
46	AIR SEPARATION SHOTGUN.....	1	EFC03493258
47	SCREW.....	1	EFC89542539
48	SCREW.....	6	EFC87465429
49	SCREW.....	2	EFC89558519
50	SCREW.....	8	EFC89558649
** 51	CHECK VALVE (Scavenge Line).....	1	EFC87340549
52	O-RING.....	1	EFC89534789
53	OIL TUBE.....	1	EFC37624508
54	GASKET.....	3	EFC80034799

* For Repair, order Oil Separator Kit Part Number 301EFD6013. Refer to page 33

** Included in Pneumatic Controls & Gauges Kit Part Number 301EGC6013. Refer to page 34.

INLET VALVE REPAIR PARTS

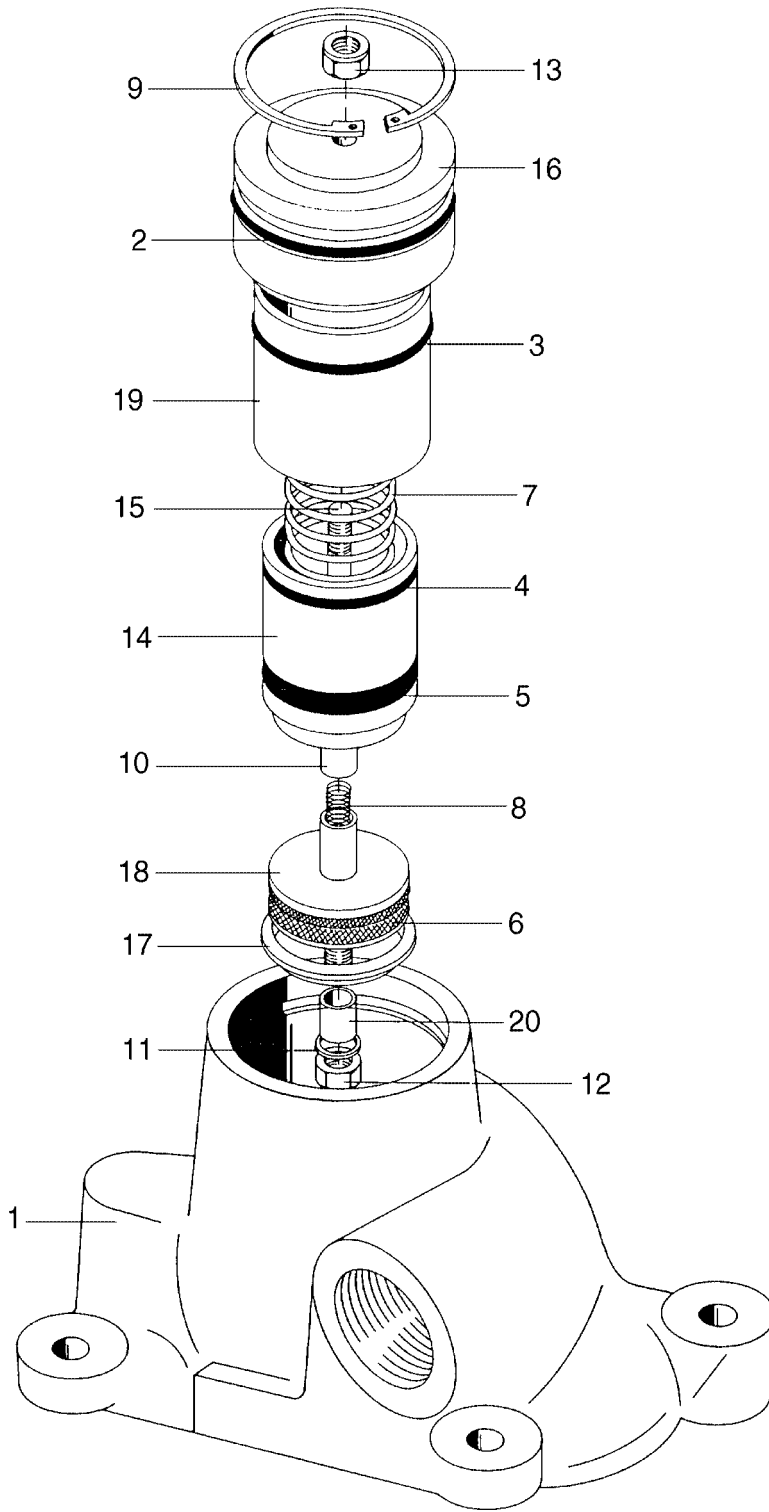


Order by Part Number and Description. Reference Numbers are for your convenience only.

INLET VALVE REPAIR PARTS

Ref. No.	Name of Part	Qty.	Part No.
	INLET VALVE ASSEMBLY.....		EFC22330248
	INLET VALVE SEAL KIT (Items 1-6, 18, 19).....		EFC30816408
	INLET VALVE REPAIR KIT (Items 1-6, 10, 12, 15, 16, 18, 19) ...		EFC89555469
1	O-RING	1	
2	O-RING	2	
3	O-RING	1	
4	RING	1	
5	PISTON GASKET	1	
6	O-RING	1	
7	FRAME	1	
8	SPRING	1	
9	PISTON.....	1	
10	COVER	1	
11	NUT.....	1	
12	BEARING BUSHING	1	
13	LOCK RING	1	
14	PISTON ROD.....	1	
15	SPRING	1	
16	BEARING BUSHING	1	
17	PLATE.....	1	
18	GASKET	1	
19	STOP RING	1	
20	RING	1	
21	BUSHING.....	1	
22	FLANGE.....	1	
23	SCREW.....	4	

MINIMUM PRESSURE/CHECK VALVE

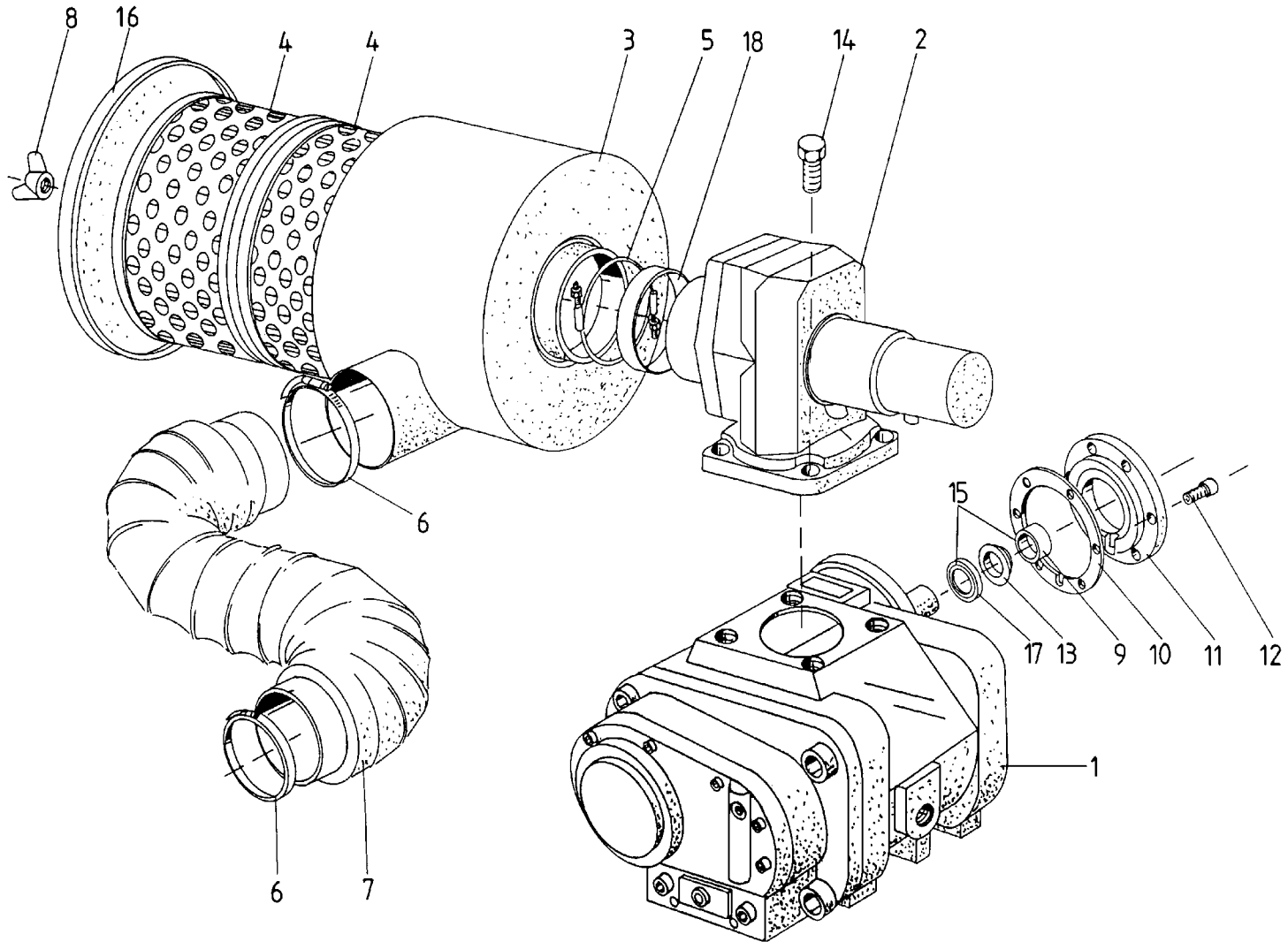


Order by Part Number and Description. Reference Numbers are for your convenience only.

MINIMUM PRESSURE/CHECK VALVE

Ref. No,	Name of Part	Qty.	Part No.
1	MINIMUM PRESSURE/CHECK VALVE HOUSING	1	EFC03979868
	MINIMUM PRESSURE/CHECK VALVE ASM KIT (Items 2-20)		EFC37609908
	MINIMUM PRESSURE/CHECK VALVE SEAL KIT (Items 2, 4, 5, 6, 8)		EFC89573249
	MINIMUM PRESSURE/CHECK VALVE REPAIR KIT (Items 2, 4-14)...		EFC89573379
2	O-RING	1	
3	O-RING	1	
4	PISTON SEAL.....	1	
5	PACKING RING	1	
6	GASKET.....	1	
7	SPRING.....	1	
8	SPRING.....	1	
9	RETAINING RING.....	1	
10	BUSHING (BEARING)	1	
11	GASKET.....	1	
12	NUT	1	
13	NUT	1	
14	PISTON.....	1	
15	SCREW	1	
16	COVER.....	1	
17	RING, THRUST.....	1	
18	PLATE	1	
19	SLEEVE	1	
20	BUSHING.....	1	

AIREND AND INLET FILTER ASSEMBLY



Order by Part Number and Description. Reference Numbers are for your convenience only.

AIREND AND INLET FILTER ASSEMBLY

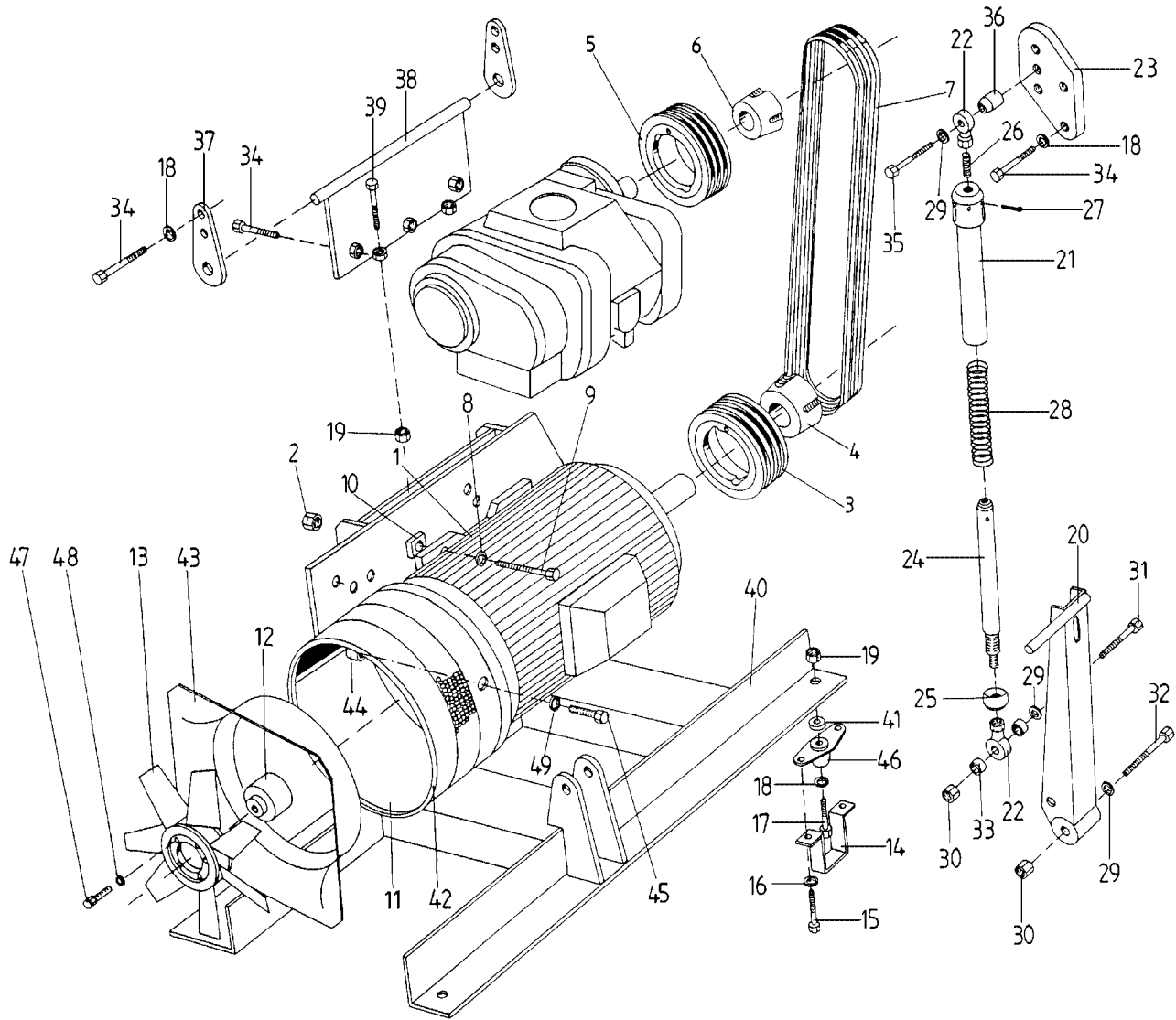
B/M: 300EGC4017

Ref. No.	Name of Part	Qty.	Part No.
1	AIREND, LESS INLET VALVE.....	1	EFC04019024
2	INTAKE VALVE ASSEMBLY	1	EFC22330248
3	AIR FILTER HOUSING	1	EFC22329998
4	AIR FILTER ELEMENT	2	2117909
5	CLAMP	1	EFC30952228
6	HOSE CLAMP	2	EFC28068490
7	HOSE (TUBE)	1	EFC87905539
8	WING NUT	1	EFC80220059
9	BEARING INNER RACE	1	EFC87089639
* 10	GASKET, AIREND SEAL HOUSING	1	EFC30805908
11	HOUSING, AIREND SEAL	1	EFC03786718
12	SCREW	6	EFC44611040
13	SPACER (Shaft Seal).....	1	EFC30806218
14	SCREW	4	EFC44585470
* 15	SHAFT SEAL KIT	1	EFC30834028
16	COVER.....	1	EFC22330098
17	SHAFT SEAL.....	1	EFC85850159
18	GASKET (INLET VALVE TO AIR FILTER).....	1	EFC30861088

* Parts included in Drive Shaft Seal Kit Part Number 300EFD6029. Refer to page 33.

Drive Shaft Tool Kit Part Number is 305EFD6013. See page 33 for individual part numbers.

DRIVE GROUP – DRIVE COMPONENTS



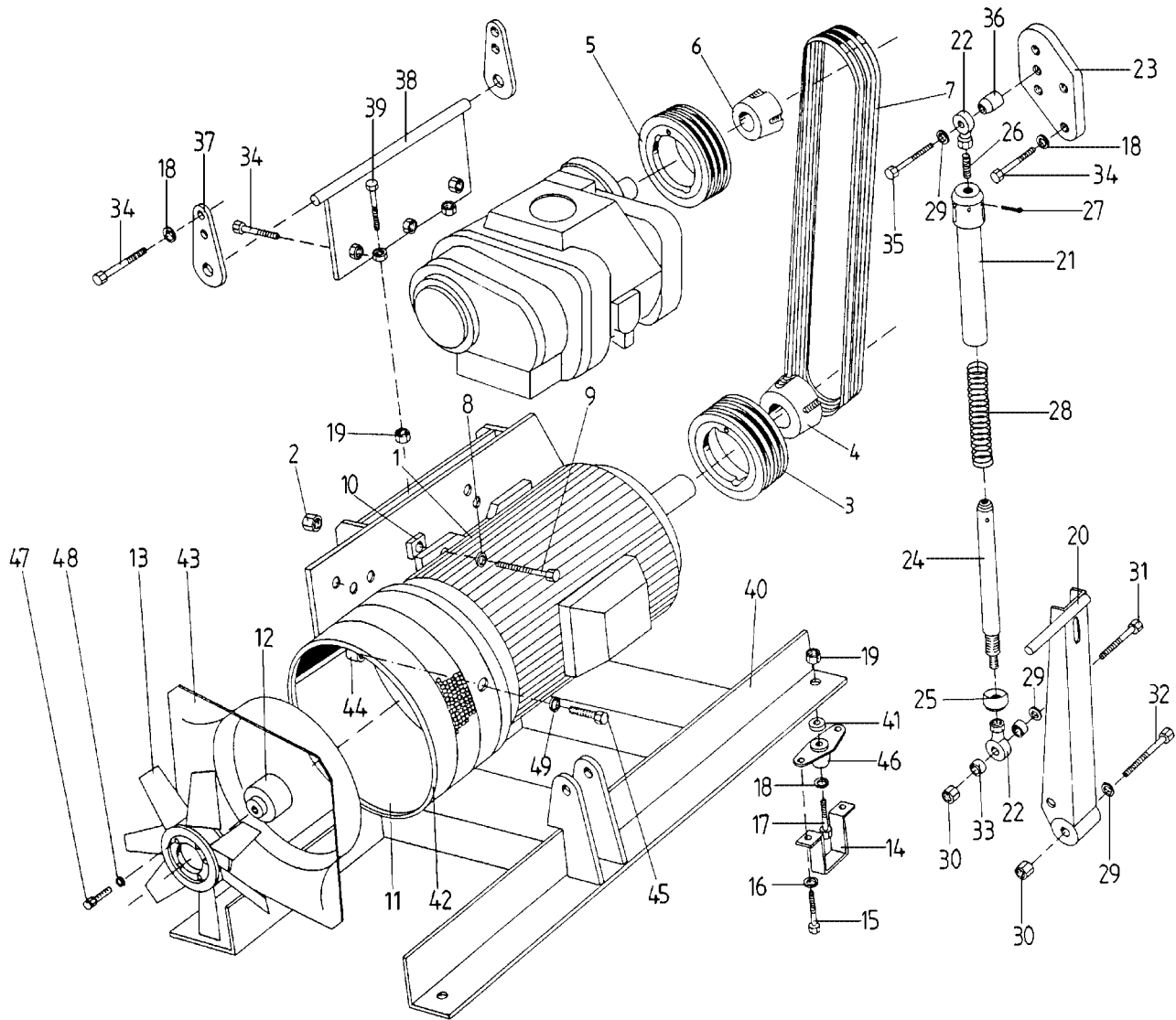
Order by Part Number and Description. Reference Numbers are for your convenience only.

DRIVE GROUP – DRIVE COMPONENTS

Ref. No.	Name of Part	Qty.	B/M: 300EGC4004	B/M: 301EGC4004	B/M: 302EGC4004
			Part No. 100 & 125 PSIG	Part No. 150 PSIG	Part No. 175 PSIG
1	MOTOR	1	EFC89619409	EFC89619409	EFC89619409
2	NUT	4	EFC80227709	EFC80227709	EFC80227709
3	SHEAVE (MOTOR)	1	73R3SPB250	73R3SPB250	73R3SPB250
4	BUSHING (MOTOR)	1	22K55J	22K55J	22K55J
5	SHEAVE (AIREND)	1	73R3SPB132	73R3SPB150	73R3SPB160
6	BUSHING (AIREND)	1	22K35F	22K35G	22K35G
7	BELT	3	13AM1600	13AM1600	13AM1600
8	WASHER	4	EFC80092329	EFC80092329	EFC80092329
9	SCREW	4	EFC85838329	EFC85838329	EFC85838329
10	FITTING PIECE	4	EFC03494138	EFC03494138	EFC03494138
11	FAN GUARD	1	EFC37610008	EFC37610008	EFC37610008
12	FAN HUB	1	EFC37607862	EFC37607862	EFC37607862
13	FAN	1	EFC89546039	EFC89546039	EFC89546039
44	SCREW	4	EFC30935208	EFC30935208	EFC30935208
45	SCREW	4	EFC80242159	EFC80242159	EFC80242159
49	WASHER	4	EFC89514729	EFC89514729	EFC89514729
50	GROUP-COMPRESSOR	1	300EFD4001	300EFD4001	300EFD4001

For Reference Numbers 14 thru 43, 46, 47 & 48, see Drive Group – Common Parts, page 13.

DRIVE GROUP – COMMON PARTS



Order by Part Number and Description. Reference Numbers are for your convenience only.

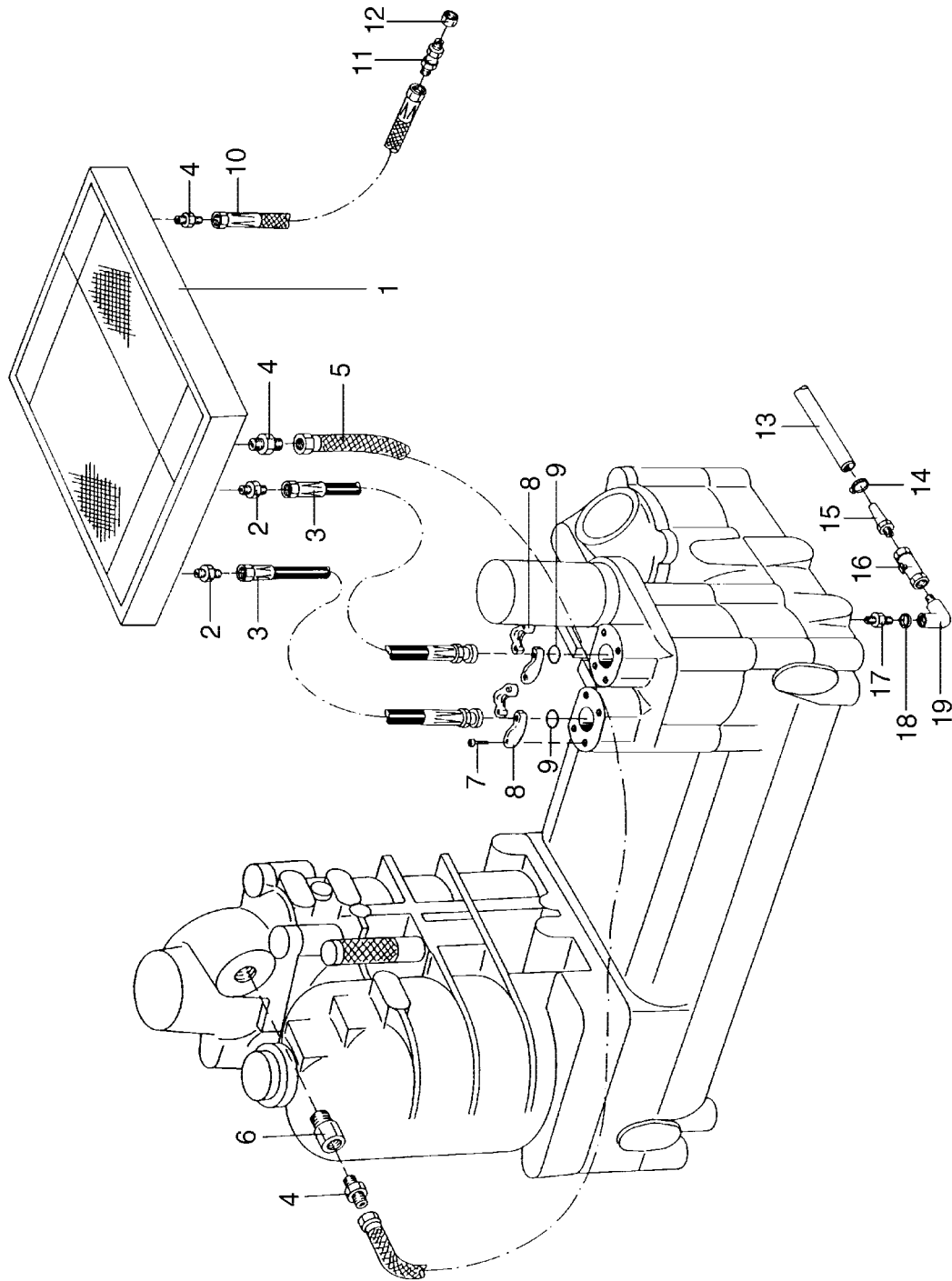
DRIVE GROUP – COMMON PARTS

B/M: 300EFD4001

Ref. No.	Name of Part	Qty.	Part No.
14	SUPPORT (VIBRATION ISOLATOR).....	4	EFC03267298
15	SCREW	8	EFC80880359
16	WASHER.....	8	EFC42116800
17	SCREW	4	EFC80053609
18	WASHER.....	10	EFC42118950
19	NUT	6	EFC80043559
20	BELT TENSION LEVER	1	EFC37606298
21	HOUSING, BELT TENSION, UPPER.....	1	EFC37605978
22	CLEVIS PIN.....	2	EFC89563349
23	BRACKET.....	1	EFC30903738
24	HOUSING, BELT TENSION, LOWER.....	1	EFC37606038
25	ADJUSTING NUT.....	1	EFC03493668
26	SETSCREW	1	EFC89563509
27	SPRING PIN.....	1	EFC89563479
28	SPRING.....	1	EFC89571769
29	WASHER.....	3	EFC42119960
30	NUT	2	EFC80177589
31	SCREW	1	EFC44266520
32	SCREW	1	EFC44265100
33	BUSHING	2	EFC30904338
34	SCREW	9	EFC80053179
35	SCREW	1	EFC80043839
36	BUSHING	1	EFC03493798
37	BRACKET.....	2	EFC03494008
38	FRAME	1	EFC37605848
39	SCREW	2	EFC89523879
40	MOTOR SUPPORT.....	1	EFC37605718
41	WASHER.....	4	EFC03246228
42	SEALBAND	1	EFC30898718
43	FAN ORIFICE.....	1	EFC37603398
46	VIBRATION DAMPNER	4	EFC81745159
47	SCREW	5	EFC80242159
48	WASHER.....	5	EFC42116520

For Reference Numbers 44, 45, 49 & 50, see Drive Group – Drive Components, page 11.

COOLING GROUP

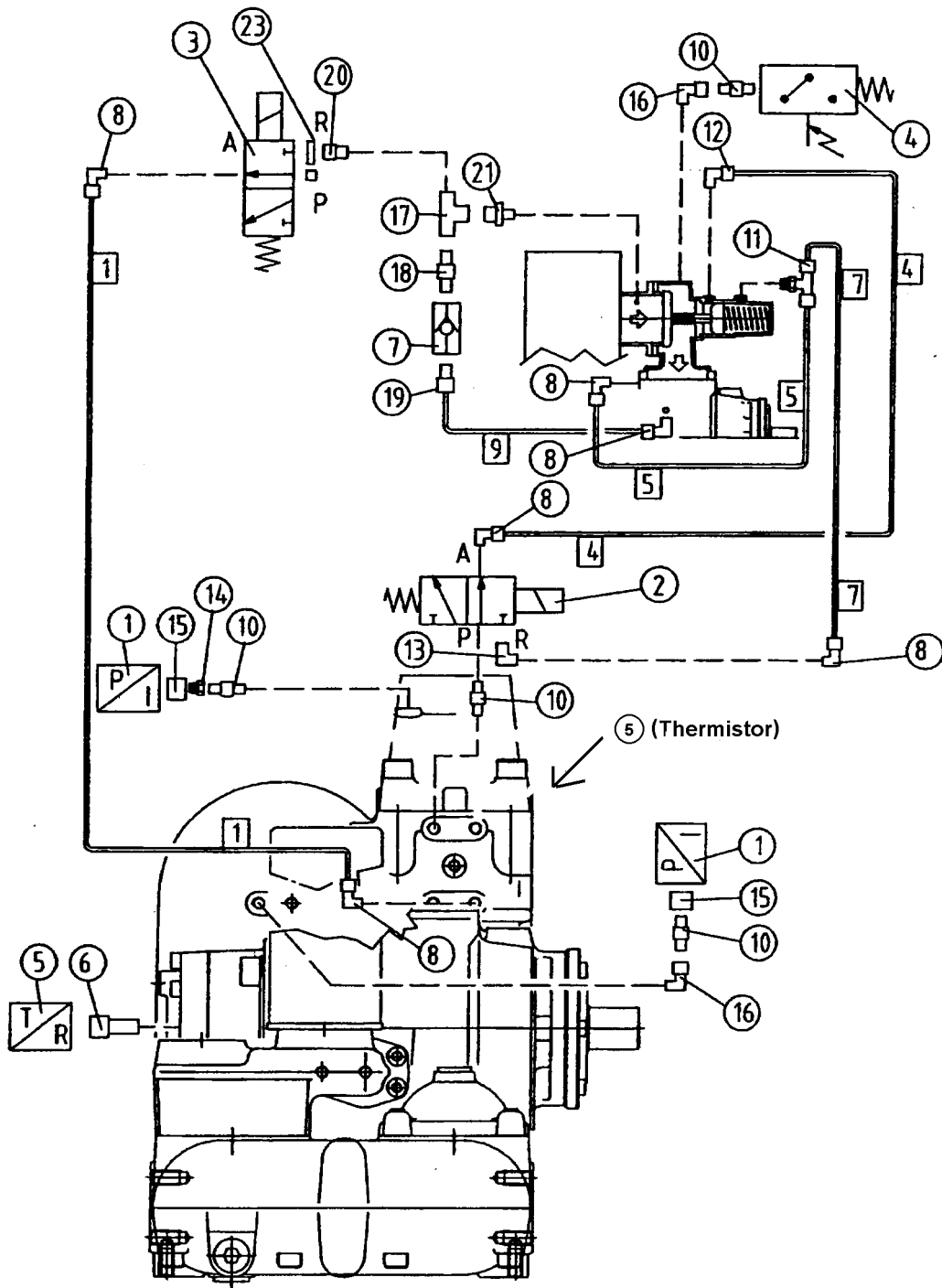


Order by Part Number and Description. Reference Numbers are for your convenience only.

COOLING GROUP

Ref. No.	Name of Part	Qty.	Part No.
1	COOLER, AIR COOLED	1	EFC89559529
2	HOSE FITTING	2	EFC80033119
3	HOSE ASSEMBLY (Oil In and Oil Out).....	2	EFC89563759
4	DOUBLE NIPPLE	3	EFC80032809
5	HOSE ASSEMBLY (Air From Minimum Pressure Valve To Aftercooler).....	1	EFC89571899
6	BUSHING	1	EFC81288429
7	SCREW	8	EFC44572670
8	MOUNTING FLANGE	4	EFC89516059
9	O-RING.....	2	EFC89507729
10	HOSE ASSEMBLY (Air From Aftercooler To Final Discharge).....	1	EFC82261029
11	BULKHEAD FITTING (Final Air Discharge)	1	EFC81318989
12	LOCK NUT	1	EFC81319179
13	HOSE	1	EFC87904409
14	HOSE CLAMP	1	EFC28067350
15	HOSE FITTING	1	EFC87904659
16	VALVE	1	EFC85529129
17	HOSE FITTING	1	EFC80033099
18	GASKET	1	EFC80034799
19	ELBOW	1	EFC81318729

CONTROL SYSTEM ASSEMBLY AND MOUNTING



Order by Part Number and Description. Reference Numbers are for your convenience only.

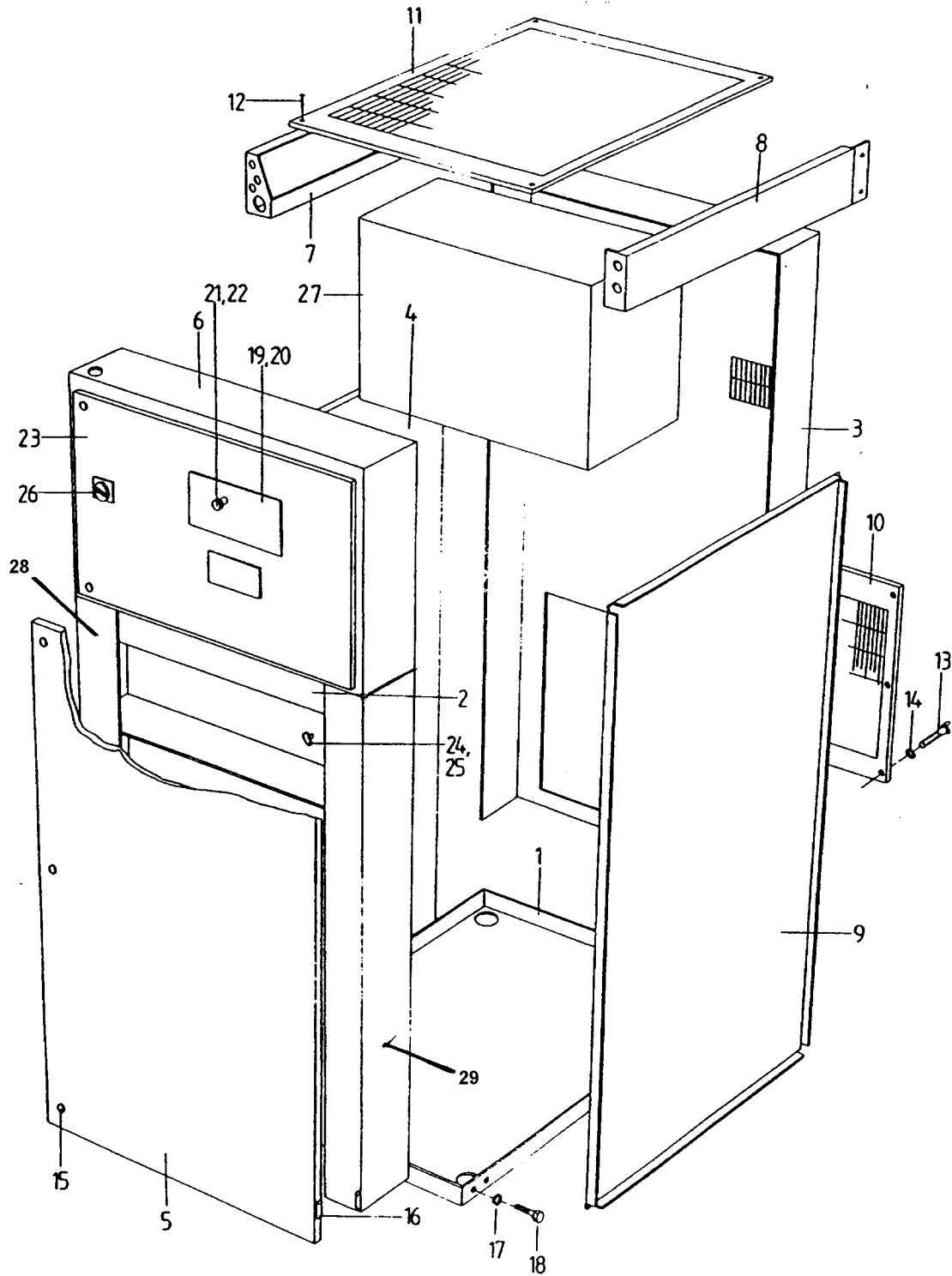
CONTROL SYSTEM ASSEMBLY AND MOUNTING

B/M: 300EGC4002

Ref. No.	Name of Part	Qty.	Part No.
* 1	PRESSURE TRANSDUCER	2	EFC89529549
* 2	SOLENOID VALVE (Inlet Valve).....	1	EFC87997479
* 3	SOLENOID VALVE (Blowdown & Purge Valve).....	1	EFC89698009
* 4	PRESSURE DIFFERENTIAL SWITCH	1	EFC85196699
* 5	THERMISTOR.....	2	EFC89529679
6	BUSHING	1	EFC30957278
7	CHECK VALVE	1	EFC89623199
8	ELBOW	6	EFC81744279
10	DOUBLE NIPPLE.....	4	EFC81288279
11	TUBE TEE.....	1	EFC81780409
12	ELBOW	1	EFC85267219
13	ELBOW	1	EFC62336080
14	BUSHING	1	EFC89573119
15	REDUCING TUBE FITTING	2	EFC80236859
16	ELBOW	2	EFC85883989
17	TUBE TEE.....	1	EFC62357200
18	HOSE FITTING	1	EFC62540220
19	CONNECTOR.....	1	EFC81859669
20	BUSHING	1	EFC81344929
21	BUSHING	1	EFC62244100
23	GASKET.....	2	EFC81356309

* Parts included in Electrical Control Group Part Number 300EGC6013. Refer to page 34.

ENCLOSURE GROUP



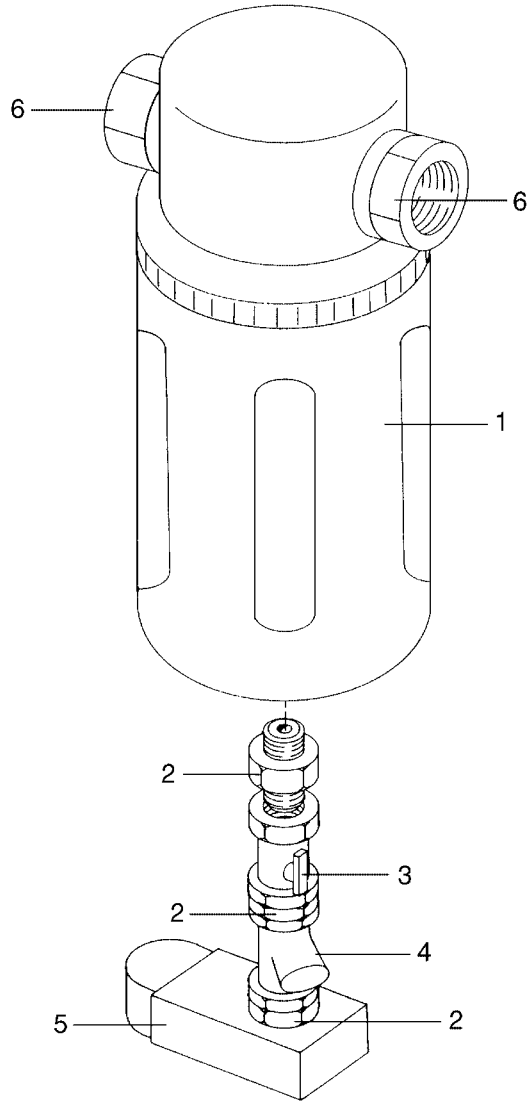
Order by Part Number and Description. Reference Numbers are for your convenience only.

ENCLOSURE GROUP

B/M: 300EGC4023

Ref. No.	Name of Part	Qty.	Part No.
1	BASE ENCLOSURE	1	EFC22399318
2	PANEL, UNDER CONTROL BOX	1	EFC22399608
3	PANEL, BACK.....	1	EFC03810248
4	DOOR	1	EFC03811668
5	DOOR	1	EFC03810118
6	POST, AROUND CONTROL BOX	1	EFC03979328
7	FRAME, UPPER LEFT	1	EFC22399448
8	FRAME, UPPER RIGHT	1	EFC37604278
9	PANEL, RIGHT	1	EFC37604688
10	PANEL, AIR DISCHARGE GRILL, BOTTOM.....	1	EFC22399858
11	PANEL, AIR INLET GRILL, TOP	1	EFC22399578
12	SCREW	4	EFC89571639
13	SCREW	8	EFC80242159
14	WASHER	8	EFC42116520
15	LATCH	6	EFC89515999
16	HINGE	8	EFC85205779
17	WASHER	22	EFC42116520
18	SCREW	22	EFC80242159
19	ELECTRONIC CONTROLLER (AIR PILOT)	1	EFC89552289
20	ELECTRONIC CONTROL PANEL	1	EFC37608338
21	PUSH BUTTON, EMERGENCY STOP	1	EFC89528259
22	EMERGENCY STOP (BASE)	1	EFC89528389
23	DOOR, CONTROL BOX	1	EFC37609348
24	TURN SWITCH.....	1	EFC89501649
25	FRAME.....	1	EFC85152779
26	TURN SWITCH.....	1	EFC86526539
27	FREQUENCY CONVERTER.....	1	EFC89607869
28	SUPPORT BAR, LEFT	1	EFC37659401
29	SUPPORT BAR, RIGHT	1	EFC37659531

Order by Part Number and Description. Reference Numbers are for your convenience only.



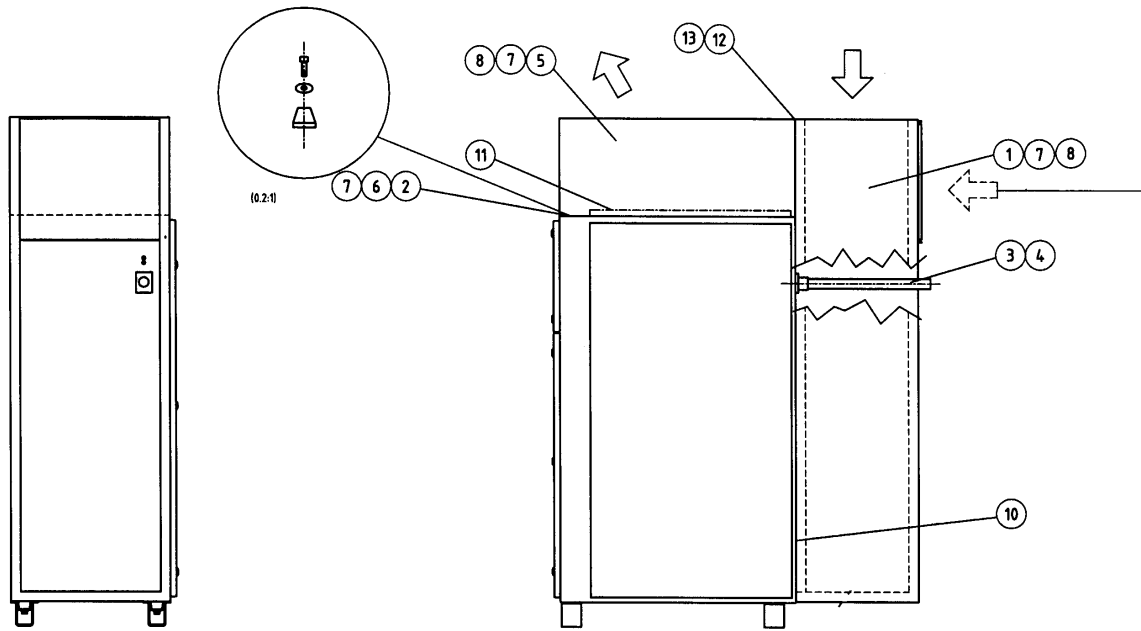
WATER SEPARATOR ASSEMBLY

B/M: 301EGC4017

Ref. No.	Name of Part	Qty.	Part No.
1	MOISTURE SEPARATOR	1	EFC81708999
2	HOSE FITTING	3	EFC62540220
3	VALVE, MOISTURE DRAIN	1	EFC81344809
4	STRAINER	1	EFC81862479
* 5	SOLENOID VALVE (CONDENSATE TRAP).....	1	EFC81620429

* Part included in Electrical Control Group Part Number 300EGC6013. Refer to page 34.

Order by Part Number and Description. Reference Numbers are for your convenience only.

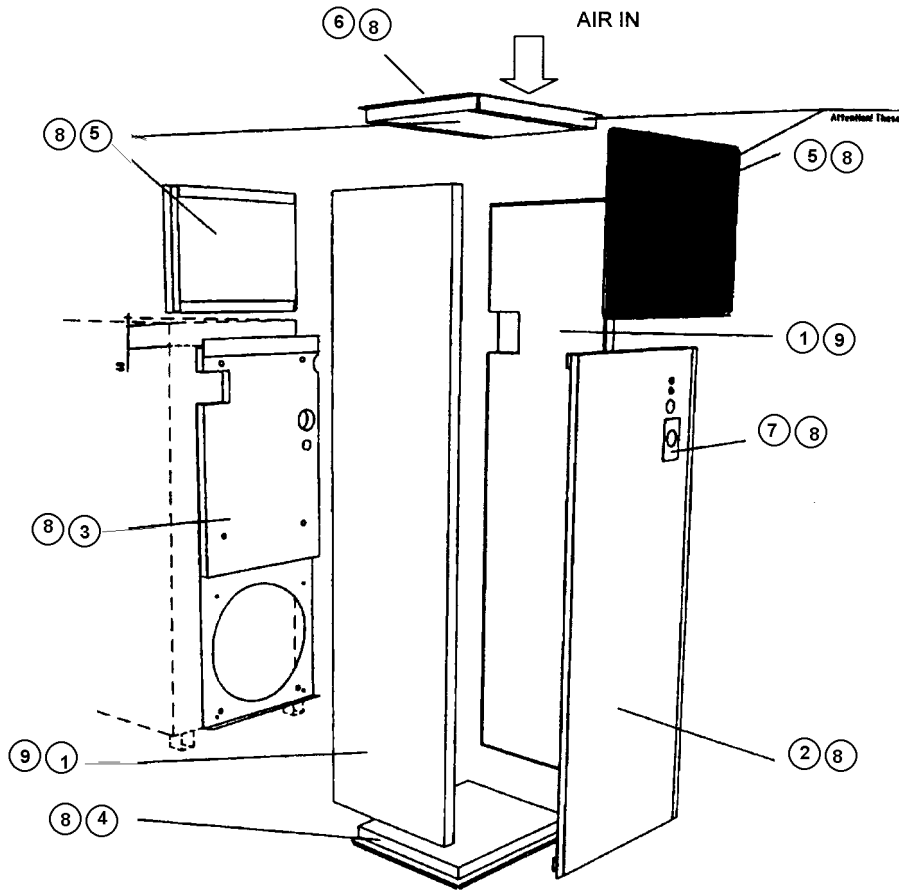


QUIET ENCLOSURE KIT

B/M: EFC50401940

Ref. No.	Name of Part	Qty.	Part No.
1	ENCLOSURE SHEET METAL PARTS (SIDE).....	1	EFC03813708
2	SCREW.....	2	EFC44572670
3	TUBE.....	1	EFC30905758
4	SILENCER	1	EFC62310910
5	ENCLOSURE SHEET METAL PARTS (TOP).....	1	EFC03813838
6	WASHER	2	EFC03285918
7	GASKET.....	4	EFC89572649
8	GASKET.....	4	EFC81384529
12	LATCH	2	EFC89594189
13	SCREW.....	10	EFC80123079

Order by Part Number and Description. Reference Numbers are for your convenience only.

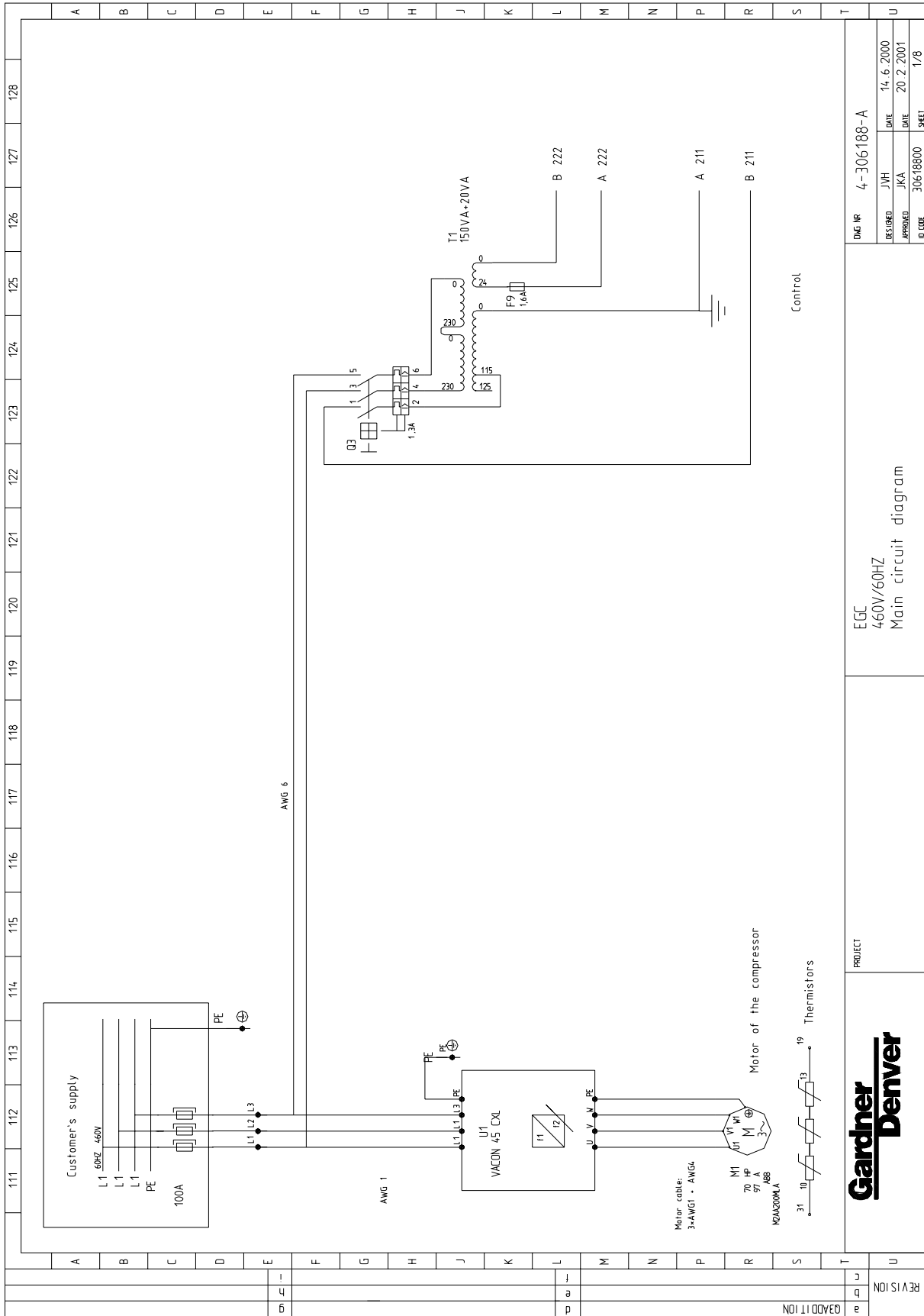


QUIET ENCLOSURE SHEET METAL PARTS

B/M: EFC03813708

Ref. No.	Name of Part	Qty.	Part No.
1	PANEL (SIDE).....	2	EFC37608188
2	PANEL (FRONT)	1	EFC37608058
3	PANEL (SIDE).....	1	EFC03813968
4	BASE.....	1	EFC30906078
5	PLATE.....	2	EFC37607998
6	GRILLE	1	EFC37608208
7	PLATE-COVER.....	1	EFC30906108
8	SCREW.....	36	EFC80123079
9	PLUG (RUBBER).....	6	EFC89515609

WIRING DIAGRAM



DATE	14.6.2000
APPROVED	JKA
DATE	20.2.2001
ID. CODE	30618800
SHEET	1/8

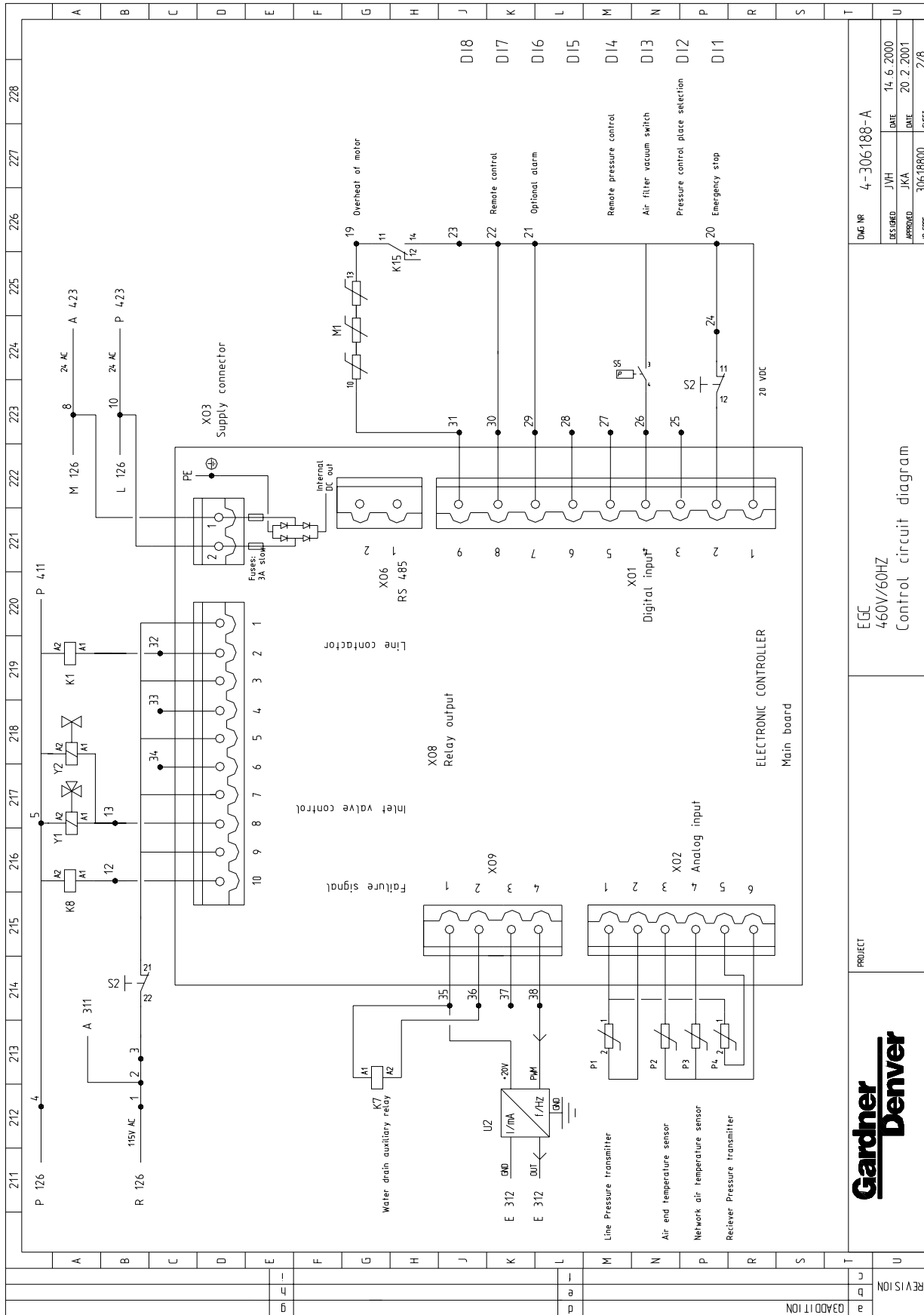
EGC
460V/60HZ
Main circuit diagram

PROJECT



REVISION	
a	03A001110N

WIRING DIAGRAM



PROJECT

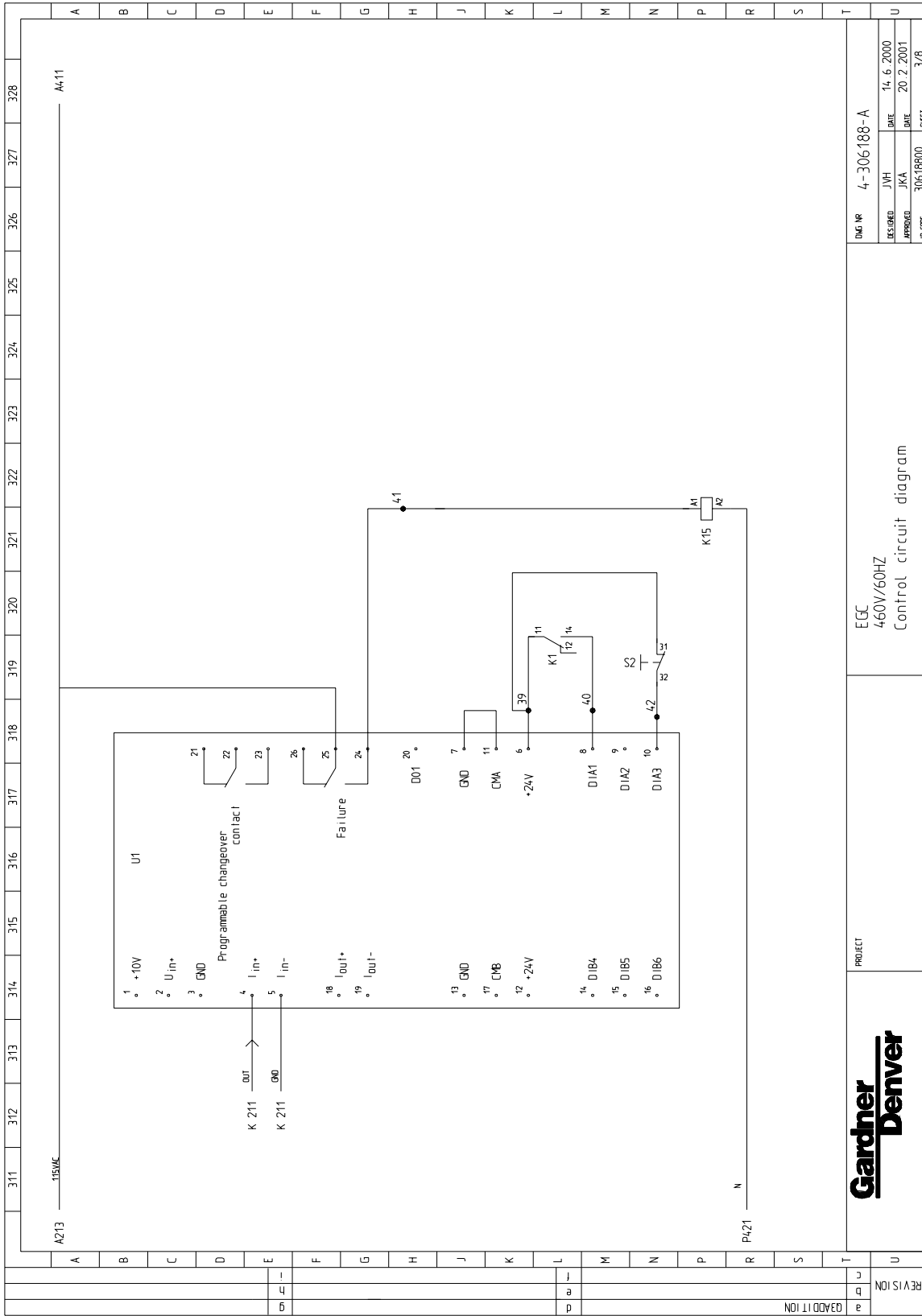
EGC
460V/60HZ
Control circuit diagram

DIAG NR 4-306188-A

DESIGNED	JVH	DATE	14.6.2000
APPROVED	JKA	DATE	20.2.2001
LIB CODE	30618800	SHEET	2/8

REVISION

WIRING DIAGRAM



PROJECT

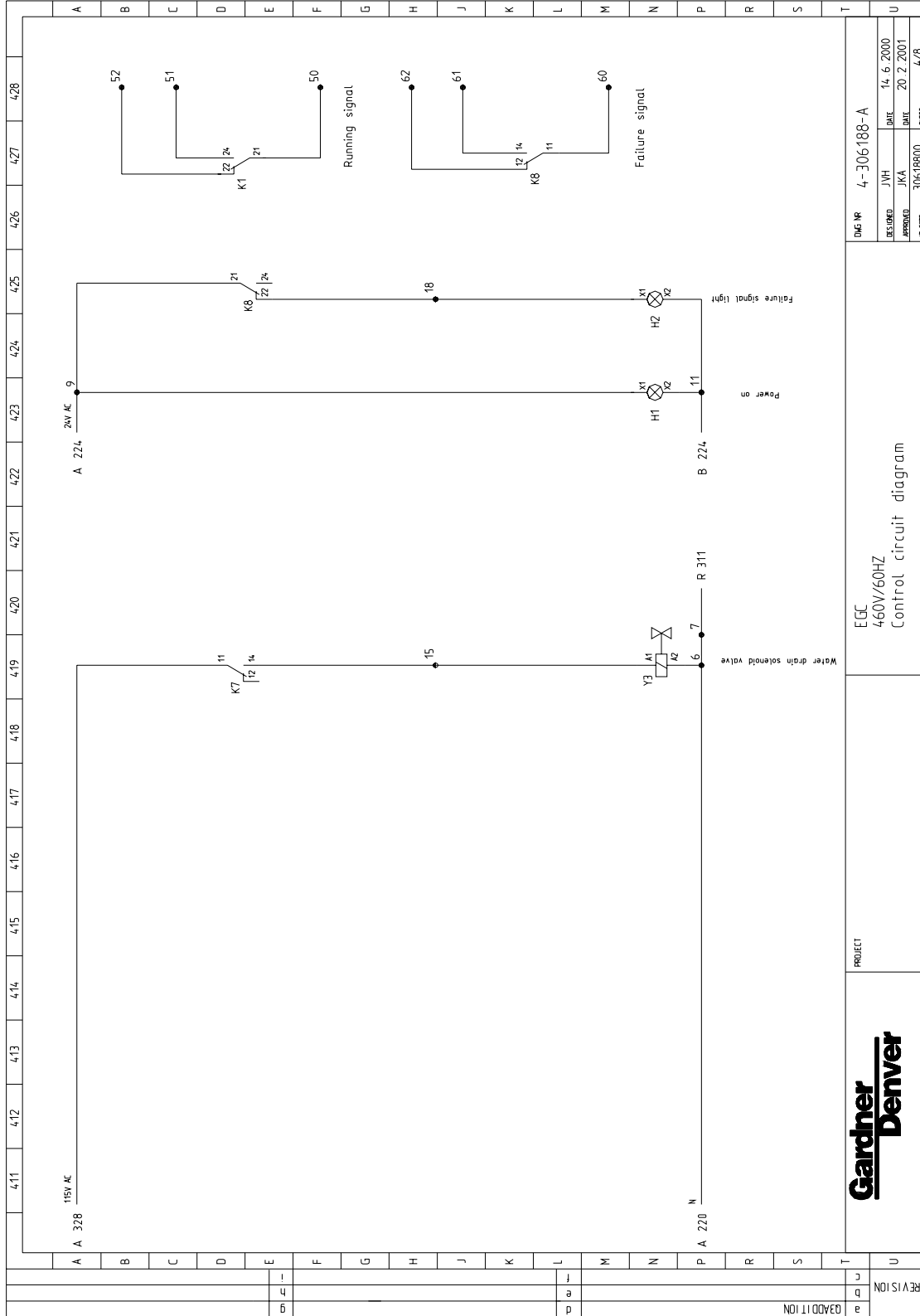
EGC
460V/60HZ
Control circuit diagram

IMG NR 4-306188-A

DESIGNED	JWH	DATE
APPROVED	JKA	20.2.2001
ILLUSTR.	30618800	SPECI 3/8

REVISION

WIRING DIAGRAM



DWG. NO.	4-306188-A		
DESIGNED	J.V.H.	DATE	14.6.2000
APPROVED	J.K.A.	DATE	20.2.2001
NO. OF SHEETS	30618800	SHEET	4/8

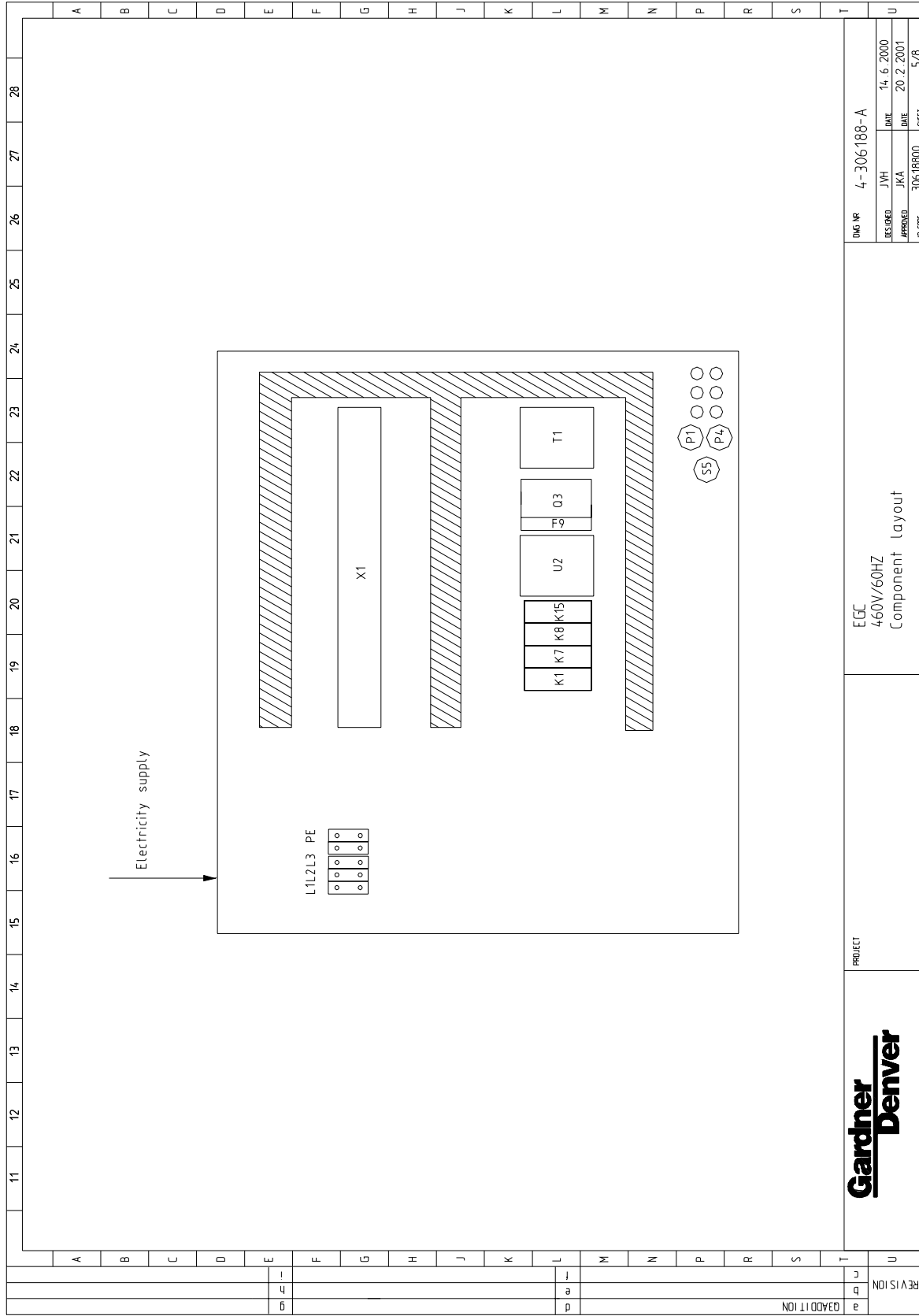
EGC
460V/60HZ
Control circuit diagram

PROJECT



REVISION	a	ADDITION
REVISION	b	
REVISION	c	
REVISION	d	
REVISION	e	
REVISION	f	

WIRING DIAGRAM



PROJECT

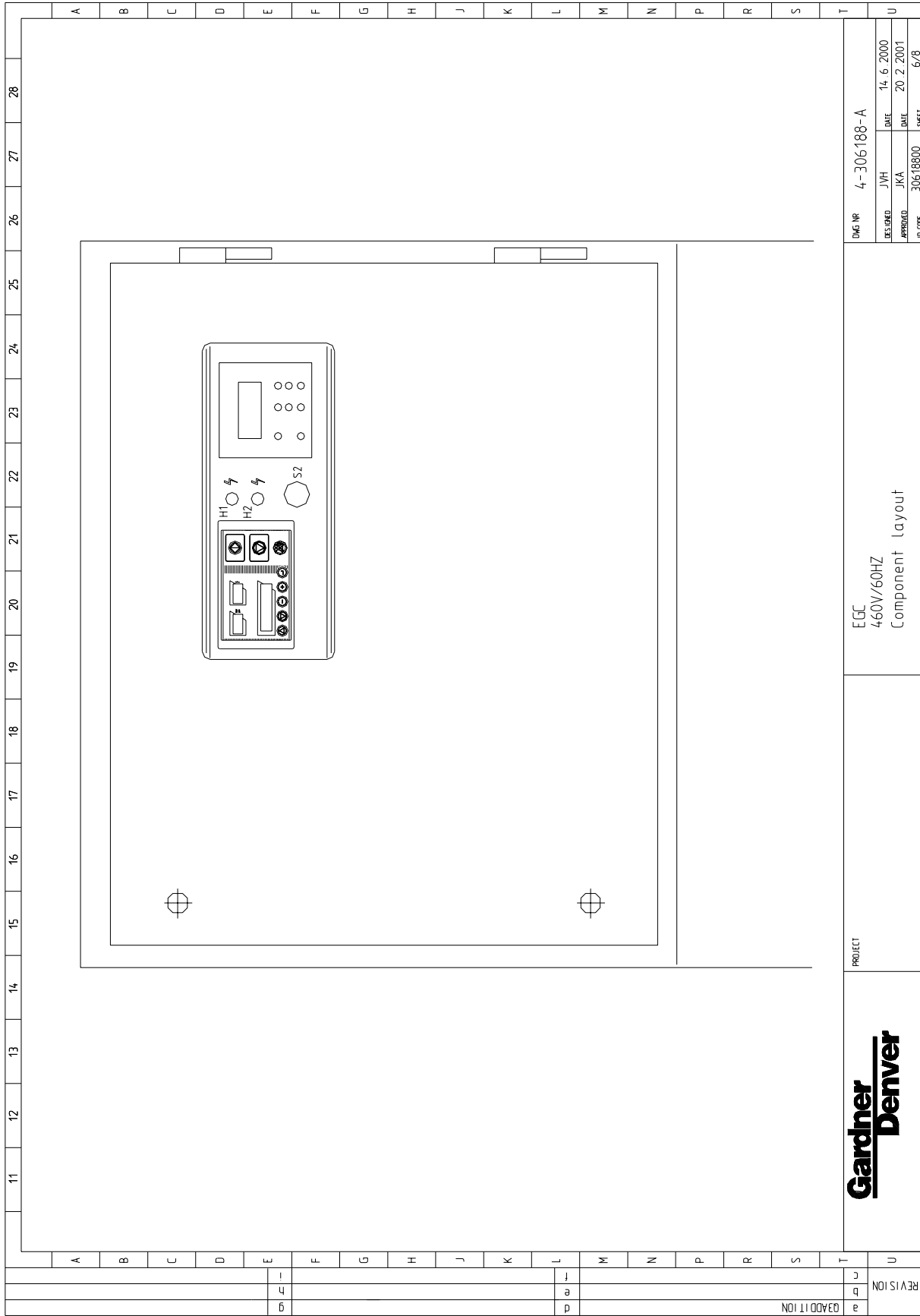
ECC
460V/60HZ
Component layout

DWG NR 4-306188-A

DESIGNED	JWH	DATE	14. 6. 2000
APPROVED	JKA	DATE	20. 2. 2001
ID. CODE	30618800	SHEET	5/8

a	ADDITION
b	
c	REVISION
d	
e	

WIRING DIAGRAM



PROJECT

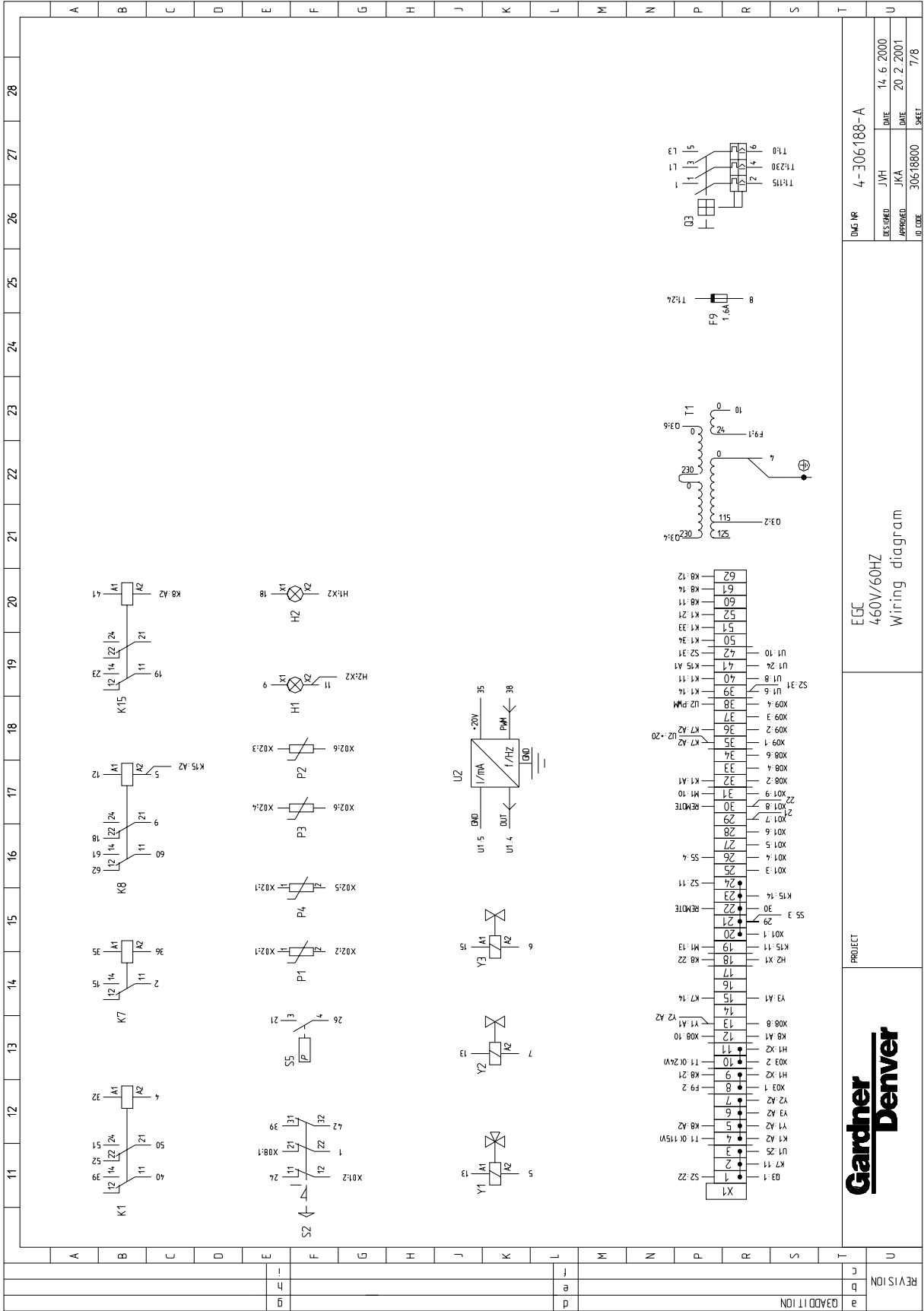
EGC
460V/60HZ
Component layout

DWG NR 4-306188-A

DESIGNED	JWH	DATE	14 6 2000
APPROVED	JKA	DATE	20 2 2001
ID. CODE	30618800	SHEET	6/8

REVISION	a	03 ADDITION
	b	
	c	

WIRING DIAGRAM



DESIGNED	JVH	DATE	14. 6. 2000
APPROVED	JKA	DATE	20. 2. 2001
DL CODE	30618800	SHEET	7/8

EGC
460V/60HZ
Wiring diagram

PROJECT	Gardner Denver
DWG NR	4-306188-A

STARTER CONTROL BOX

B/M: 301EGC466

Ref. No.	Name of Part	Qty.	Part No.
L1	TERMINAL	1	EFC89764659
L2	TERMINAL	1	EFC89764659
L3	TERMINAL	1	EFC89764659
PE	TERMINAL	2	EFC81046229
F9	FUSE	1	EFC89760749
F9	FUSE HOLDER.....	1	EFC89724809
Q3	CIRCUIT BREAKER	1	EFC85878339
K7	RELAY (TERMINAL BLOCK).....	1	EFC89532359
K1	RELAY (TERMINAL BLOCK).....	1	EFC89730079
K8	RELAY (TERMINAL BLOCK).....	1	EFC89730079
K15	RELAY (TERMINAL BLOCK).....	1	EFC89730079
S5	VACUUM SWITCH	1	EFC85196699
H1	LIGHT (SIGNAL LAMP)	1	EFC89761889
H1	LIGHT (SIGNAL LAMP)	1	EFC89761199
H2	LIGHT (SIGNAL LAMP)	1	EFC89762079
H2	LIGHT (SIGNAL LAMP)	1	EFC89761349
Y1	SOLENOID VALVE	1	EFC87997479
Y2	SOLENOID VALVE	1	EFC89698009
Y3	SOLENOID VALVE	1	EFC87997629
P1	PRESSURE TRANSDUCER	1	EFC89529549
P4	PRESSURE TRANSDUCER	1	EFC89529549
P2	THERMISTOR	1	EFC89529679
P4	THERMISTOR	1	EFC89529679
X1	TERMINAL BLOCKS	51	EFC81623739
S2	EMERGENCY STOP (button).....	1	EFC89760909
S2	EMERGENCY STOP (base).....	1	EFC89762509
S2	EMERGENCY STOP (add contact)	1	EFC89762899
S2	EMERGENCY STOP (label)	1	EFC89763089
X03	TERMINAL (PCB SWITCH).....	1	EFC89527529
U2	TERMINAL (PCB SWITCH).....	1	EFC89527529
U2	TERMINAL (PCB SWITCH).....	1	EFC86661639
X09	TERMINAL (PCB SWITCH).....	1	EFC89527659
X02	TERMINAL (PCB SWITCH).....	1	EFC89527789
X01	TERMINAL (PCB SWITCH).....	1	EFC89527809
X08	TERMINAL(PCB SWITCH).....	1	EFC89527939
M1	MOTOR.....	1	EFC89619409
T1	TRANSFORMER	1	EFC89618109
	CONTROLLER (DIGIPILOT ELECTRONIC).....	1	EFC89525229
U1	FREQUENCY CONVERTER (500 volt).....	1	EFC89742709
U2	PWM/ma CONVERTER.....	1	EFC89575829

For Drawings, refer to pages 23 thru 30.

Order by Part Number and Description. Reference Numbers are for your convenience only.

IDENTIFICATION AND INSTRUCTION GROUP

B/M: 300EGC4011

Ref. No.	Name of Part	Qty.	Part No.
1	DECAL-WARNING (ELECTRICAL SHOCK & FIRE).....	1	314EAQ077
2	DECAL-WARNING	1	227EAQ077
3	DECAL.....	1	302EFC077
4	DECAL, eXact RPM	1	300EGC077
7	DECAL-WARNING (ROTATING MACHINERY)	1	211EAQ077
8	DECAL-WARNING (UNIT CAN AUTO START)	2	207EAQ077
9	DECAL DANGER DO NOT MODIFY	2	218EAQ077
10	DECAL (OIL FILTER ELEMENT-GARDNER DENVER)	1	300EFC077
11	DECAL-WARNING (ROTATING MACHINERY)	1	211EAQ077
12	DECAL-NOTICE (USE GENUINE GD PARTS).....	1	214EAQ077
13	DECAL-DANGER (AIR/OIL UNDER PRESSURE).....	1	212EAQ077
14	DECAL-DANGER (DO NOT BREATHE DISCHARGE AIR).....	1	206EAQ077
15	DECAL (GD 7" TALL).....	1	322EAQ077

REPAIR KITS

Your Gardner Denver rotary screw compressor is designed and manufactured for many years of reliable operation. All components are engineered to exacting specifications, which will function together as a system to provide maximum efficiency. To insure the continuing integrity of compressor operation, use only original quality genuine Gardner Denver replacement parts and accessories.

Name of Part	Qty.	Part No.
ROUTINE MAINTENANCE KIT (Heavy Duty Air Filter)		300EFD6013
ELEMENT, AIR FILTER	4	2117909
ELEMENT, OIL FILTER	3	2117915
PERIODIC MAINTENANCE KIT (Inlet Valve)		302EFD6013
INLET VALVE REPAIR KIT (Items 1-6, 10, 12, 15, 16, 18, 19)	1	EFC89555469
GASKET (Inlet Valve to Air Filter)	1	EFC30861088
PERIODIC MAINTENANCE KIT (Minimum Pressure/Check Valve)		303EFD6013
MINIMUM PRESSURE/CHECK VALVE REPAIR KIT (Items 2, 4-14)		EFC89573379
O-RING.....	1	EFC89562879
OIL SEPARATOR KIT		301EFD6013
OIL SEPARATOR	2	2117907
O-RING.....	1	EFC89562879
THERMAL MIXING VALVE ELEMENT REPAIR KIT.....		304EFD6013
THERMOSTAT ELEMENT 160° F (Standard).....	1	EFC89560169
THERMOSTAT ELEMENT 180° F (Optional)	1	EFC89626099
SPRING.....	1	EFC89565369
GASKET	1	EFC28335250
O-RING.....	1	EFC89560299
O-RING.....	1	EFC89565109
O-RING.....	1	EFC86906369
O-RING.....	1	EFC89534789
O-RING.....	2	EFC89507729
DRIVE SHAFT SEAL KIT		300EFD6029
SHAFT SEAL REPAIR KIT	1	EFC30834028
GASKET AIREND SEAL HOUSING	1	EFC30805908
DRIVE SHAFT SEAL TOOL KIT		305EFD6013
INTAKE VALVE TOOL	1	EFC37601938
SHAFT SEAL TOOL (Drift)	1	EFC03416008
SHAFT SEAL TOOL (Pressing Tool)	1	EFC03424838
SHAFT SEAL TOOL.....	1	EFC03424708
WEAR SLEEVE PULLER.....	1	EFC89587189
INTAKE VALVE TOOL.....	1	EFC37687478

REPAIR KITS (Continued)

Name of Part	Qty.	Part No.
BARE AIREND REPAIR KIT		306EFD6013
AIREND	1	EFC04019024
O-RING.....	1	EFC89558369
PERIODIC OVERHAUL KIT, AIREND		307EFD6013
SHAFT SEAL KIT.....	1	EFC30834028
OVERHAUL KIT (Includes Bearings & Gaskets)	1	EFC50308330
O-RING.....	1	EFC89558369
PNEUMATIC CONTROLS AND GAUGES		301EGC6013
CHECK VALVE	1	EFC87340549
CHECK VALVE	1	EFC89623199
SCREEN, OIL SCAVENGE LINE.....	1	EFC85588619
ELECTRICAL CONTROL GROUP.....		300EGC6013
PRESSURE TRANSDUCER.....	2	EFC89529549
SOLENOID VALVE	1	EFC87997479
SOLENOID VALVE	1	EFC89698009
DIFFERENTIAL PRESSURE SWITCH.....	1	EFC85196699
THERMISTOR.....	2	EFC89529679
SOLENOID VALVE	1	EFC87997629
LUBRICANT (AEON 2000)		
5 GALLON PAIL	1	28G36
55 GALLON DRUM	1	28G37
LUBRICANT (AEON 4000)		
5 GALLON PAIL	1	28H57
55 GALLON DRUM	1	28H36
LUBRICANT (AEON 9000SP)		
5 GALLON PAIL	1	28H109
55 GALLON DRUM	1	28H110
TOUCH-UP PAINT		
5 GALLON PAIL	1	28H76
1 GALLON CAN	1	28H84
1 QUART CAN	1	28H83
BELT.....	3	13AM1600

REPAIR KITS (Continued)

Name of Part	Qty.	Part No.
HOSES		
HOSE ASSEMBLY (Air from Aftercooler to Final Discharge)	1	EFC82261029
HOSE ASSEMBLY (Oil In and Oil Out).....	2	EFC89563759
HOSE ASSEMBLY (Air from Minimum Pressure Valve to Aftercooler)	1	EFC89571899
O-RING.....	2	EFC89507729
TRANSFORMER		
200 VOLT TO 460 VOLT.....	1	300EGC542
230 VOLT TO 460 VOLT.....	1	301EGC542
575 VOLT TO 460 VOLT.....	1	302EGC542

Gardner --- **Denver**

Specifications subject to change without notice.

Copyright © 1999 Gardner Denver, Inc.

Litho in U.S.A.

<http://www.gardnerdenver.com>

mktg@gardnerdenver.com

For additional information contact your local representative or



Gardner Denver Compressor and Pump Division,
1800 Gardner Expressway, Quincy, Illinois 62301
Customer Service Department Telephone:
(800) 682-9868 FAX: (217) 224-7814

Sales and Service in all major cities.

For parts information, contact Gardner Denver,
Master Distribution Center, Memphis, TN

Telephone: (800) 245-4946 FAX: (901) 542-6159