
GARDNER DENVER®

13-9-572
Version: 05
November 14, 2003

**ELECTRA-SAVER II
STATIONARY
BASE-MOUNTED & TANK MOUNTED
COMPRESSOR**

MODELS – EBE99M

15, 20, 25 & 30 HP

PARTS LIST

Gardner

Denver

**MAINTAIN COMPRESSOR RELIABILITY AND PERFORMANCE WITH
GENUINE GARDNER DENVER® COMPRESSOR
PARTS AND SUPPORT SERVICES**

Gardner Denver® Compressor genuine parts, manufactured to design tolerances, are developed for optimum dependability – specifically for Gardner Denver compressor systems. Design and material innovations are the result of years of experience with hundreds of different compressor applications. Reliability in materials and quality assurance is incorporated in our genuine replacement parts.

Your authorized Gardner Denver Compressor distributor offers all the backup you'll need. A worldwide network of authorized distributors provides the finest product support in the air compressor industry. Your local authorized distributor maintains a large inventory of genuine parts and he is backed up for emergency parts by direct access to the Master Distribution Center (MDC) in Memphis, Tennessee.

Your authorized distributor can support your Gardner Denver air compressor with these services:

1. Trained parts specialists to assist you in selecting the correct replacement parts.
2. Factory warranted new and remanufactured rotary screw airends. Most popular model remanufactured airends are maintained in stock at the Remanufacturing Center in Indianapolis, IN., for purchase on an exchange basis with liberal core credit available for the replacement unit.
3. A full line of factory tested AEON™ compressor lubricants specifically formulated for use in Gardner Denver compressors.
4. Repair and maintenance kits designed with the necessary parts to simplify servicing your compressor.

Authorized distributor service technicians are factory trained and skilled in compressor maintenance and repair. They are ready to respond and assist you by providing fast, expert maintenance and repair services.

For the location of your local authorized Gardner Denver Air Compressor distributor, refer to the yellow pages of your phone directory or contact:

Distribution Center:

Gardner Denver
Master Distribution Center
5585 East Shelby Drive
Memphis, TN 38141

Phone: (901) 542-6100
(800) 245-4946

Fax: (901) 542-6159

Factory:

Gardner Denver
1800 Gardner Expressway
Quincy, IL 62301

Phone: (217) 222-5400

Fax: (217) 224-7814

INSTRUCTIONS FOR ORDERING REPAIR PARTS

When ordering parts, specify Compressor MODEL, Method of Cooling, HORSEPOWER and SERIAL NUMBER (see nameplate on unit). The Serial Number is also stamped on top of the discharge bearing carrier casting.

All orders for Parts should be placed with the nearest authorized distributor.

Where NOT specified, quantity of parts required per compressor or unit is one (1); where more than one is required per unit, quantity is indicated in parenthesis. SPECIFY EXACTLY THE NUMBER OF PARTS REQUIRED.

DO NOT ORDER BY SETS OR GROUPS.

To determine the Right-Hand and Left-Hand side of a compressor, stand at the motor end and look toward the compressor. Right-Hand and Left-Hand are indicated in parenthesis following the part name, i.e. (RH) and (LH), when appropriate.

**TOTAL PRODUCT SUPPORT – GARDNER DENVER’S
CONTINUING COMMITMENT
TO YOUR AIR COMPRESSOR PERFORMANCE**

Commitment to total product support continues long after the purchase of your quality Gardner Denver rotary screw compressor.

Gardner Denver original parts incorporate years of experience and improvements in design, materials and quality assurance. Maintaining your compressor investment with Gardner Denver parts will insure protection for the air compressor unit and long, dependable service life.

Your authorized Gardner Denver compressor distributor maintains a complete stock of all common maintenance parts, factory approved AEON lubricants, and Gardner Denver factory warranted exchange airends. In addition, authorized distributor technicians are factory trained, and can provide complete diagnostic, compressor maintenance and repair services.

This manual is designed to assist you in maintaining high performance and receiving many years of dependable service you expect from your Gardner Denver compressor.

REMANUFACTURED AIRENDS

Whenever an airend requires replacement or repair, Gardner Denver offers an industry unique, factory remanufactured airend exchange program. From its modern Remanufacturing Center in Indianapolis, IN., Gardner Denver is committed to supplying you with the highest quality, factory remanufactured airends that are guaranteed to save you time, aggravation and money.

Immediately Available

Repair downtime costs you money, which is why there are over 200 remanufactured units in inventory at all times, ready for immediate delivery.

Skilled Craftsmen

Our Remanufacturing assembly technicians average over 20 years experience with air compression products.

Precision Remanufacturing

All potentially usable parts are thoroughly cleaned, inspected and analyzed. Only those parts that can be brought back to original factory specifications are remanufactured. Every remanufactured airend receives a new overhaul kit: bearings, gears, seals, sleeves and gaskets.

Extensive Testing

Gardner Denver performs testing that repair houses just don't do. Magnaflux and ultrasonic inspection spot cracked or stressed castings, monochromatic light analysis exposes oil leaks, and coordinate measurement machine inspects to +/- .0001", insuring that all remanufactured airends meet factory performance specifications.

Warranty

Gardner Denver backs up every remanufactured airend with a new warranty...18 months from purchase, 12 months from service.

Gardner Denver remanufactured airends deliver *quality without question...year in and year out.*

Call Gardner Denver for information on the airend exchange program and the name of your authorized distributor.

Phone Number: 800-245-4946 or
Fax: 901-542-6159

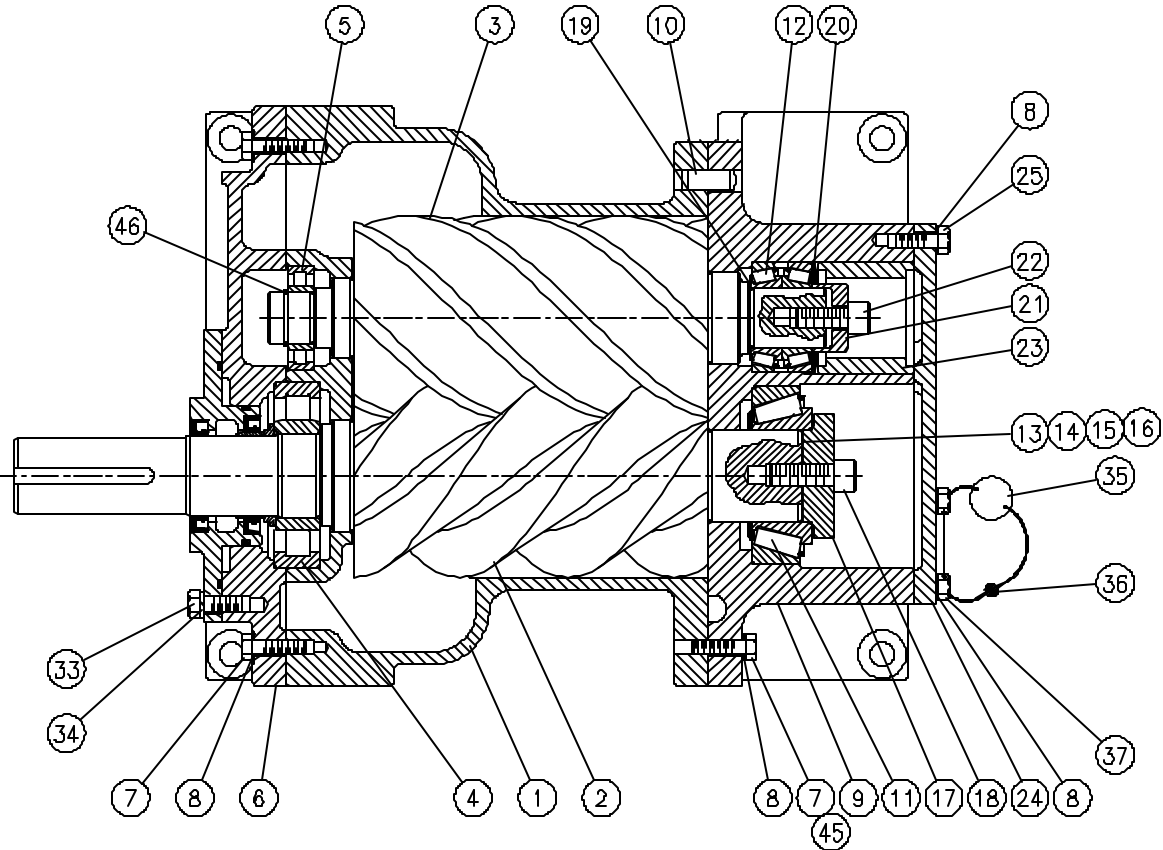
TABLE OF CONTENTS

Maintain Compressor Reliability And Performance With Genuine Gardner Denver Compressor Parts And Support Services	i
Instructions For Ordering Repair Parts	i
Total Product Support – Gardner Denver’s Continuing Commitment To Your Air Compressor Performance	ii
Remanufactured Airends	ii
Bare Compressor.....	1, 2
Oil Seal Detail.....	3
Inlet Valve	4
Severe Duty Air Filter And Mounting (Standard).....	5
Base And Oil Cooler Mounting	6
Oil Reservoir.....	7
Oil Filter – 26C27.....	8
Oil Line Fittings.....	9
Oil Line Tubes	10
Air Receiver Group.....	11
Discharge Piping – Base Mounted Units (With Separator).....	12
Discharge Piping – Tank Mounted Units (With Separator).....	13
Discharge Piping – Tank Mounted Units (Without Separator)	14
Control Group.....	15, 16
Drive Groups – 15, 20, 25 & 30 HP	17
Drive Groups – 15 HP	18
Drive Groups – 20 HP	18
Drive Groups – 25 HP	19
Drive Groups – 30 HP	19
Thermal Valve	20
Subtractive Pilot Valve.....	21
Decal & Fuse Group.....	22
Controller Assembly – Full Voltage Starter – 15, 20, 25 & 30 HP	23
Controller Assembly – Full Voltage Starter – 15 & 20 HP	24
Controller Assembly – Full Voltage Starter – 25 HP	25
Controller Assembly – Full Voltage Starter – 30 HP	26
Controller Assembly – Wye Delta Starter – 15, 20, 25 & 30 HP	27
Controller Assembly – Wye Delta Starter – 15 HP	28
Controller Assembly – Wye Delta Starter – 20 HP	29
Controller Assembly – Wye Delta Starter – 25 & 30 HP	30
Controller Assembly – Less Main Motor Starter.....	31, 32
Controller Assembly.....	33
Controller Assembly - Board.....	34
Enclosure – Hardware & Decals.....	35
Enclosure – Basic Parts	36
Quiet Enclosure – ODP Motor Only.....	37
Enclosure – Panels	38
Overload Relay Heater Conversion Listing.....	39
Identification And Instruction Group.....	40
Main Motor - Full Voltage.....	41
Main Motor - Wye Delta.....	42
Repair Kits	43

For Operating and Service Instructions, see	
SERVICE MANUAL	13-9-650
CONTROL MANUAL	13-8-623

	REMANUFACTURED AIREND EXCHANGE (Furnished With Inlet Valve)	NEW AIREND EXCHANGE (Furnished With Inlet Valve)
15 HP	SSEBBMX	SSEBBM
20 HP	SSEBBMX	SSEBBM
25 HP	SSEBBMX	SSEBBM
30 HP	SSEBBMX	SSEBBM

BARE COMPRESSOR



210SSE810-C
(Ref. Drawing)

Order by Part Number and Description. Reference Numbers are for your convenience only.
 Refer to Repair Kit section for ordering field replacement components.

BARE COMPRESSOR

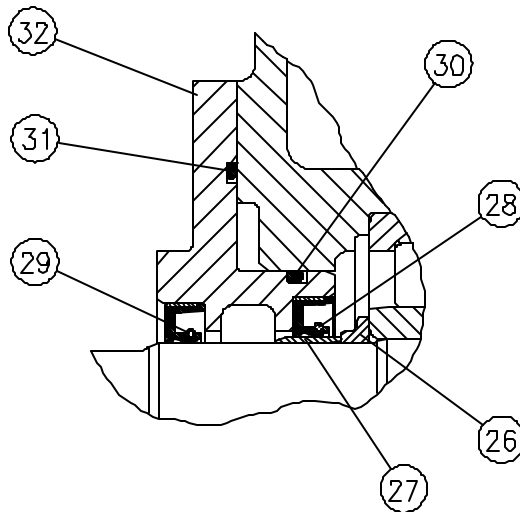
B/M: 200SSE4049

Ref. No.	Name of Part	Qty.	Part No.	Ref. No.	Name of Part	Qty.	Part No.
1	CYLINDER.....	1	**	* 20	SPRING	1	78W95
2	ROTOR.....	1	**	21	PLATE-BEARING RETAINER.....	1	**
3	ROTOR.....	1	**	22	SCREW.....	1	**
* 4	BEARING-ROLLER.....	1	12BA130	23	SPACER.....	1	**
* 5	BEARING-ROLLER.....	1	12BA129	24	PLATE-BEARING COVER.....	1	**
6	PLATE-BEARING COVER.....	1	**	25	SCREW.....	9	**
7	SCREW	24	**	33	SCREW.....	8	**
8	LOCKWASHER.....	43	**	34	LOCKWASHER.....	8	**
9	HOUSING-BEARING	1	**	35	TAG-INSTRUCTION	1	**
10	PIN	2	**	36	SEAL	1	**
* 11	BEARING-ROLLER.....	1	12BA127	37	SCREW.....	2	**
* 12	BEARING-ROLLER.....	1	12BA195	38	GASKET-ELIMINATOR (not shown)....	1	25BC222
* 13	SHIM.....	3	77H54002	39	PLUG (not shown).....	5	**
* 14	SHIM.....	3	77H54003	40	PLUG (not shown).....	1	**
* 15	SHIM.....	3	77H54005	41	PLUG (not shown).....	4	**
* 16	SHIM.....	2	77H54015	42	PLUG (not shown).....	1	**
17	PLATE-BEARING RETAINER..	1	**	43	SCREW (not shown).....	6	**
18	SCREW	1	**	45	SCREW.....	2	**
* 19	SHIM.....	2	77C58015	46	RING-RETAINING.....	1	**
*	SHIM.....	3	77C58005				
*	SHIM.....	3	77C58003				
*	SHIM.....	3	77C58002				

* Parts included in Periodic Overhaul Kit 202SSE6013. Refer to page 43.

** Shown for reference only.

Order by Part Number and Description. Reference Numbers are for your convenience only.



210SSE810-C
(Ref. Drawing)

OIL SEAL DETAIL

B/M: 200SSE4049

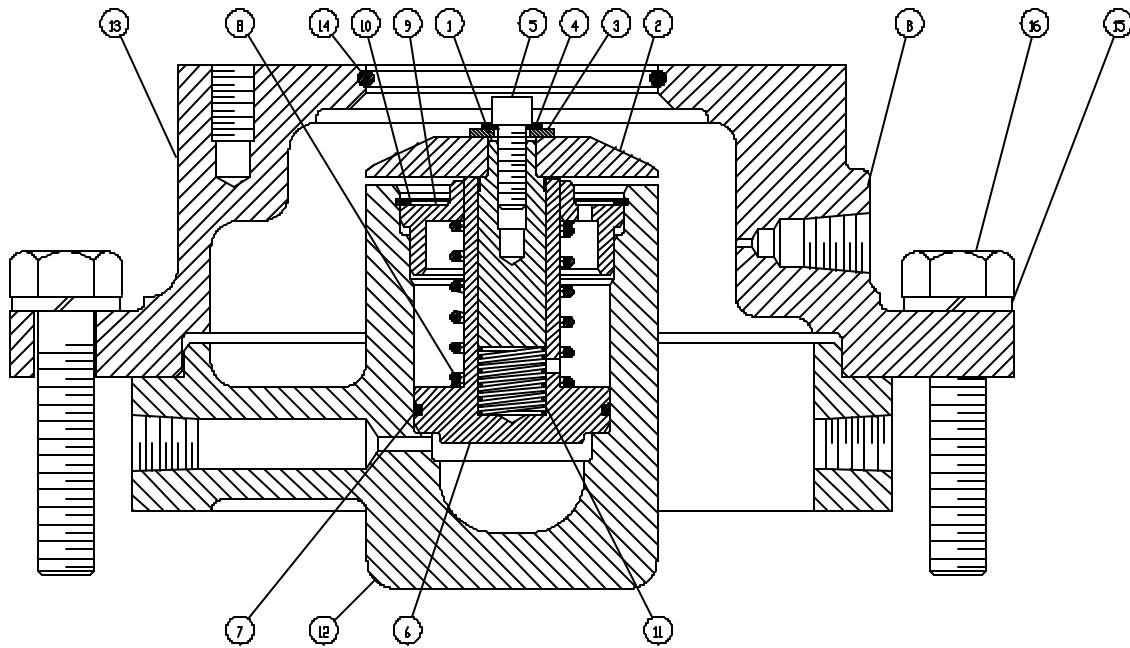
Ref. No.	Name of Part	Qty.	Part No.
26	SPACER-SHAFT.....	1	200SSH600
* 27	SLEEVE-WEAR.....	1	80M12
* 28	SEAL-OIL.....	1	60DD679
* 29	SEAL-OIL.....	1	60DD690
* 30	O-RING.....	1	25BC165
* 31	O-RING.....	1	8502140
32	HOUSING-SEAL.....	1	206SSE362
**	CHECK VALVE	1	90AR923
**	GASKET ELIMINATOR	1	25BC222

* Parts included in Oil Seal Kit No. 302SSH6013. Refer to page 43.

** Not shown

Wear Sleeve Installation and Removal Kit No. SSE81282. Refer to page 44. (Includes Wear Sleeve Puller and Installation Tool.

Order by Part Number and Description. Reference Numbers are for your convenience only.



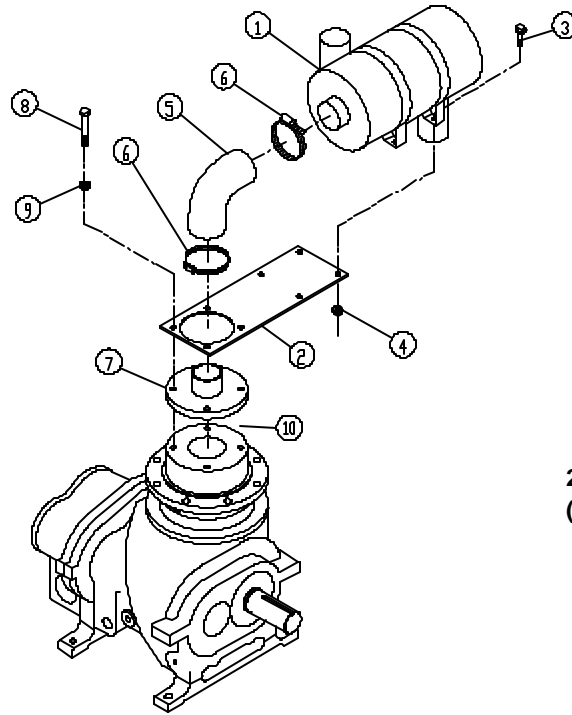
209SSE810-B
(Ref. Drawing)

INLET VALVE

Ref. No.	Name of Part	Qty.	B/M: 200SSE4030 Part No.
1	GUIDE-VLV	1	201SSE483
2	VALVE-INLET.....	1	202SSE044
3	WASHER.....	1	95A1
4	LOCKWASHER.....	1	95H56
5	SCREW	1	655EC03N
6	PISTON-INLET VALVE	1	202SSE043
* 7	O-RING.....	1	25BC440
* 8	SPRING	1	78H22
9	RETAINER.....	1	200SSE205
* 10	RING-RETAINING	1	74D87
* 11	SPRING	1	78W59
12	HOUSING-INLET.....	1	205SSE041
13	SEAT.....	1	204SSE256
* 14	O-RING.....	1	25AM15
15	LOCKWASHER.....	8	95B5
16	SCREW	8	655EE100

* Parts included in Periodic Maintenance Kit Part No. 302EBE6013. Refer to page 43.

Order by Part Number and Description. Reference Numbers are for your convenience only.



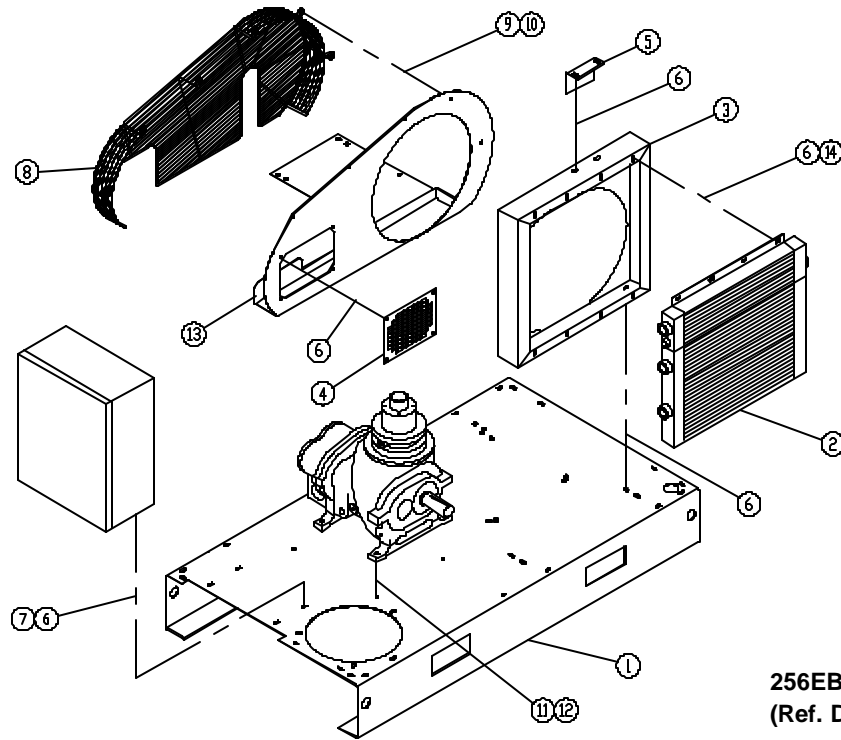
274EBE810-B
(Ref. Drawing)

SEVERE DUTY AIR FILTER AND MOUNTING (STANDARD)

Ref. No.	Name of Part	Qty.	B/M: 201EBE4054 Part No.
1	FILTER-AIR.....	1	5L220
2	BRACKET-FILTER.....	1	203EBE389
3	SCREW	4	75LM50
4	NUT.....	4	50AW4
5	HOSE	1	29Z97
6	CLAMP	2	29B32
7	ADAPTOR-FILTER.....	1	201EBE070
8	SCREW	4	655ED080
9	LOCKWASHER.....	4	95B3
10	GASKET-ELIMINATOR.....	1	25BC222
*	ELEMENT (REPAIR).....	1	2116150

* Not shown on Severe Duty Illustration.

Order by Part Number and Description. Reference Numbers are for your convenience only.

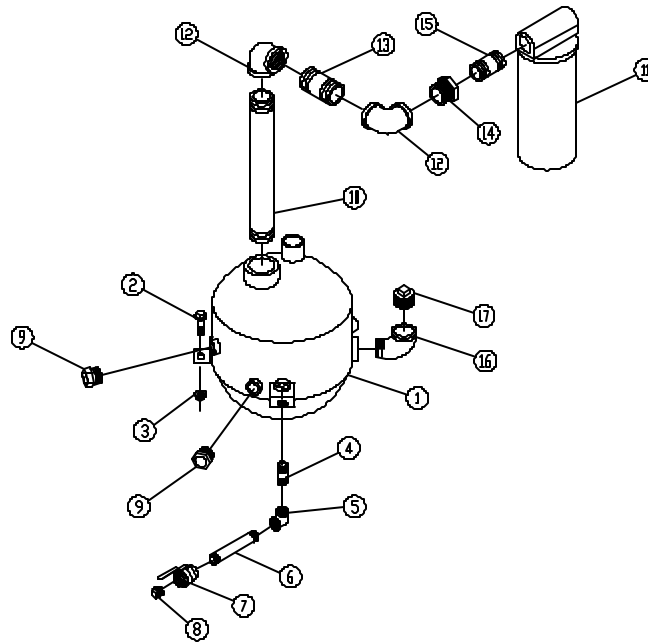


256EBE810-C
(Ref. Drawing)

BASE AND OIL COOLER MOUNTING

Ref. No.	Name of Part	Qty.	B/M: 200EBE4003	B/M: 200EBE4003
			200EBE4013	201EBE4013
			15/20 HP Part No.	25/30 HP Part No.
1	BASE.....	1	203EBE285	203EBE285
2	COOLER-OIL	1	202EBE201	202EBE201
3	BAFFLE	1	200EBE840	200EBE840
4	PLATE-INSPECTION.....	1	200EBE052	200EBE052
5	BRACKET.....	1	200EBE142	200EBE142
6	SCREW	22	75LM51	75LM51
7	NUT.....	4	50AW5	50AW5
8	GUARD-FAN.....	1	203EBE393	203EBE393
9	SCREW	5	75LM150	75LM150
10	RETAINER.....	5	2014731	2014731
11	SCREW	4	655EE080	655EE080
12	LOCKWASHER.....	4	95B5	95B5
13	ORIFICE	1	206EBE814	207EBE814
14	WASHER.....	8	95A3	95A3

Order by Part Number and Description. Reference Numbers are for your convenience only.



258EBE810-A
(Ref. Drawing)

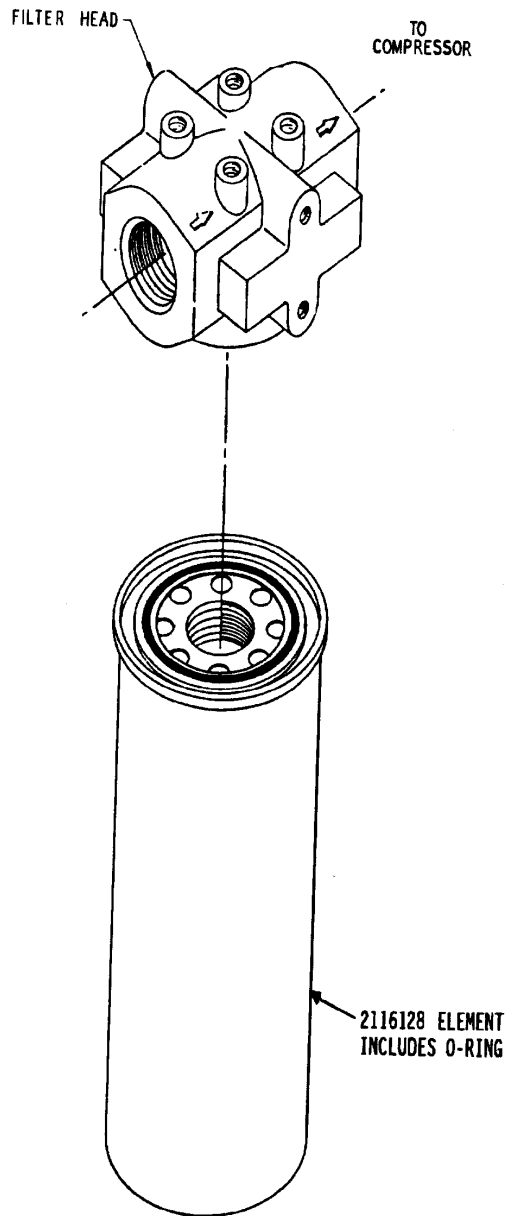
OIL RESERVOIR

B/M: 200EBE4018

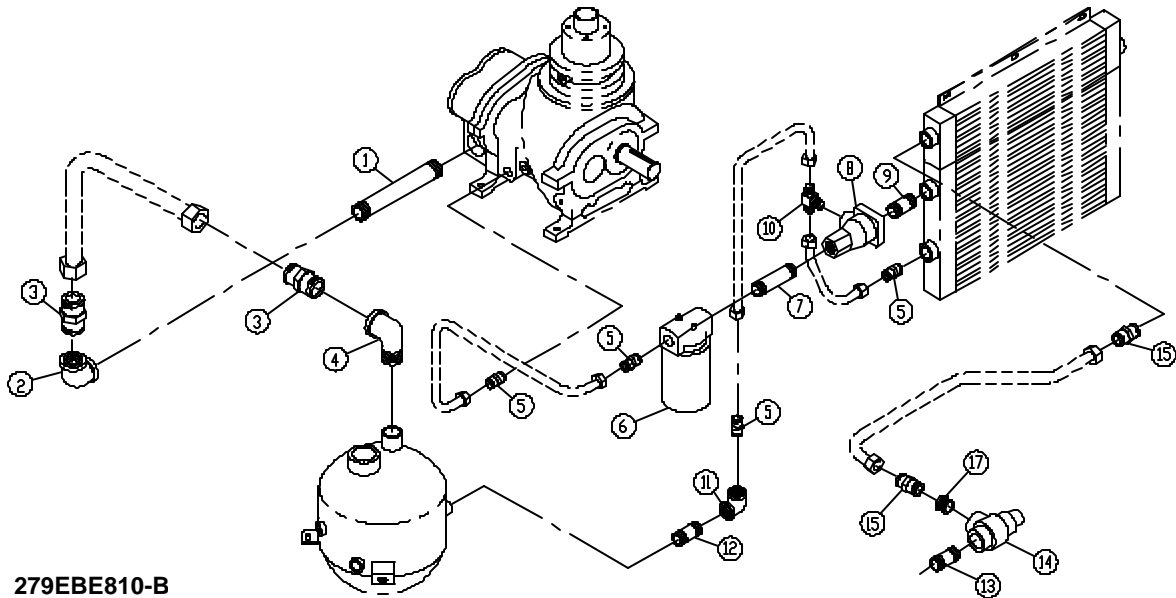
Ref. No.	Name of Part	Qty.	Part No.
1	RESERVOIR-OIL.....	1	203EBE037
2	SCREW	3	75LM51
3	NUT.....	3	50AW5
4	NIPPLE	1	63F1G
5	ELBOW.....	1	64C4G
6	NIPPLE	1	63F6G
7	VALVE-BALL.....	1	90AR360
8	PLUG.....	1	64AA7
9	GAUGE.....	2	00914483 0012
10	NIPPLE	1	63K34G
* 11	SEPARATOR-OIL.....	1	55B57
12	ELBOW.....	2	64C8G
13	NIPPLE	1	63K18G
14	BUSHING-PIPE.....	1	64E98
15	NIPPLE	1	63J15G
16	ELBOW.....	1	64D7G
17	PLUG.....	1	64A26

* For replacement Element and O-ring, order Part No. 2116717.
For replacement Head, order Part No. 2116716.

OIL FILTER – 26C27



Order by Part Number and Description. Reference Numbers are for your convenience only.



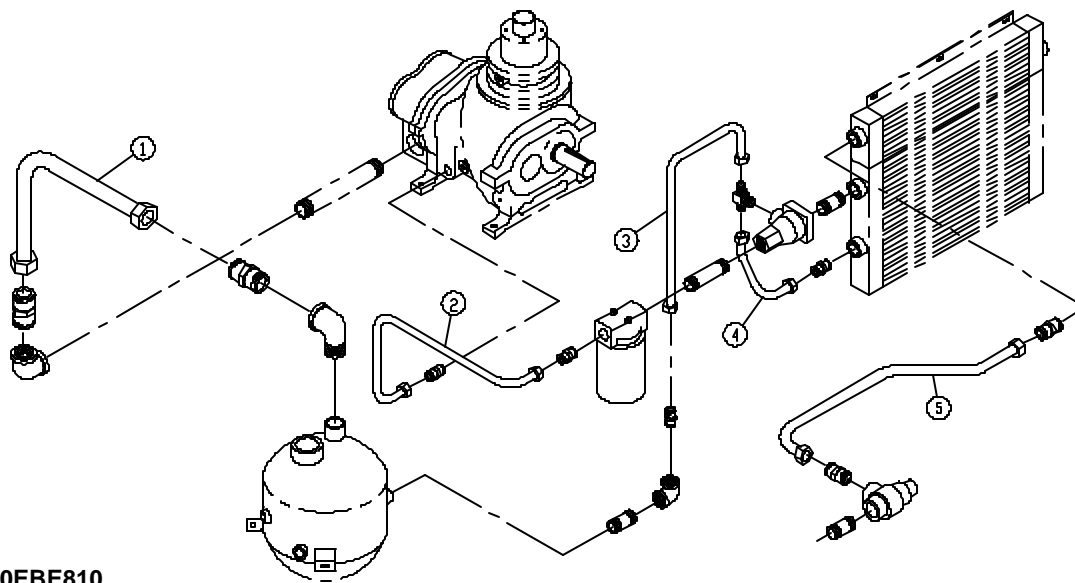
279EBE810-B
(Ref. Drawing)

OIL LINE FITTINGS

B/M: 213EBE4019

Ref. No.	Name of Part	Qty.	Part No.
1	NIPPLE	1	63L5G
2	ELBOW	1	64C9G
3	CONNECTOR-TUBE	2	86H142
4	ELBOW	1	64U6G
5	CONNECTOR-TUBE	4	86H137
6	FILTER-OIL.....	1	26C27
7	NIPPLE	1	63G28G
8	VALVE THERMO	1	90AR1093
9	NIPPLE	1	63G33G
10	TEE	1	86N286
11	ELBOW.....	1	64C5G
12	NIPPLE	1	63G1G
13	NIPPLE	1	63J15G
14	VALVE-MINIMUM PRESSURE.....	1	200EDE527
15	CONNECTOR-TUBE	2	86H138
17	BUSHING-PIPE.....	1	64E97

Order by Part Number and Description. Reference Numbers are for your convenience only.



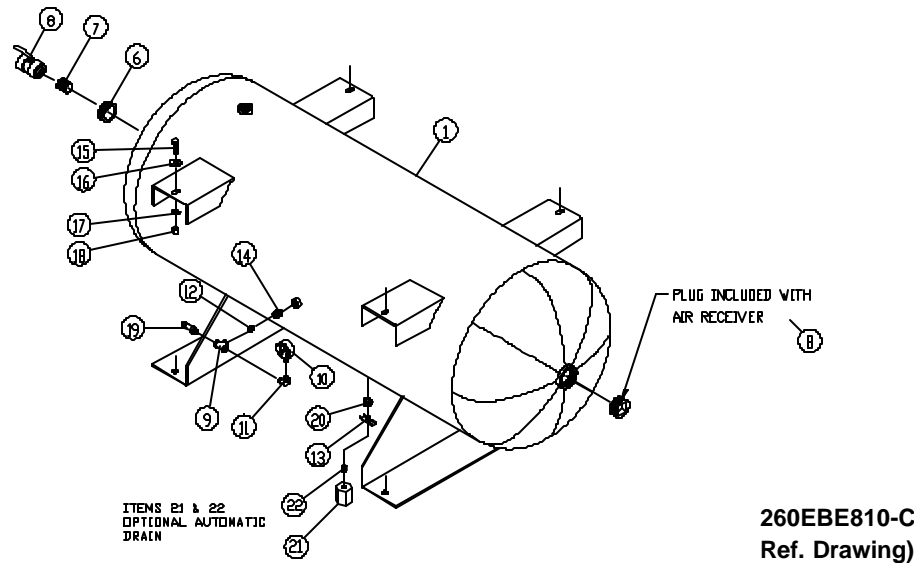
280EBE810
(Ref. Drawing)

OIL LINE TUBES

B/M: 214EBE4019

Ref. No.	Name of Part	Qty.	Part No.
1	TUBE WITH FITTINGS	1	207EBE863
2	TUBE WITH FITTINGS	1	201EBE863
3	TUBE WITH FITTINGS	1	200EBE863
4	TUBE WITH FITTINGS	1	202EBE863
5	TUBE WITH FITTINGS	1	206EBE863

Order by Part Number and Description. Reference Numbers are for your convenience only.

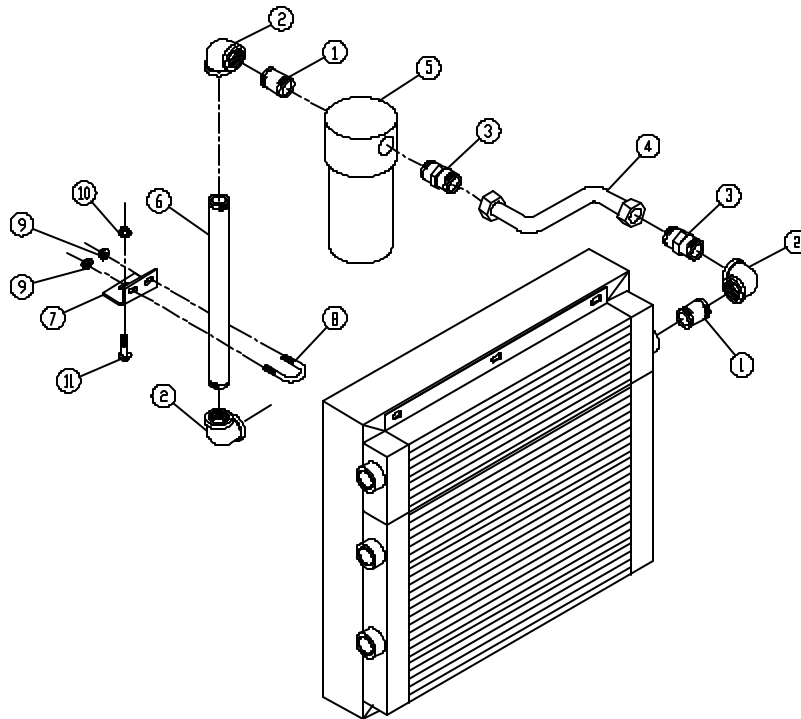


AIR RECEIVER GROUP

B/M: 202EBE4023

Ref. No.	Name of Part	Qty.	Part No.
1	RECEIVER-AIR		
	120 GALLON.....	1	200EJB645
	200 GALLON.....	1	201EJB645
6	BUSHING-PIPE.....	1	64E11
7	NIPPLE.....	1	63H1G
8	VALVE-BALL.....	1	90AR362
9	TEE.....	1	64G3G
10	GAUGE-AIR PRESSURE.....	1	27A114
11	ELBOW.....	1	64D2G
12	NIPPLE.....	1	63D1G
13	COCK (Not required with Automatic Drain).....	1	90C12
14	BUSHING-PIPE.....	1	64E2G
15	SCREW.....	4	655EE060
16	WASHER.....	8	95A5
17	LOCKWASHER.....	4	95B5
18	NUT.....	4	50B5
19	VALVE-PRESSURE RELIEF.....	1	90AR657
20	BUSHING-PIPE.....	1	64E2G
21	AUTOMATIC DRAIN VALVE (Optional).....	1	90AR319
22	PIPE-NIPPLE (Optional).....	1	63F21G

Order by Part Number and Description. Reference Numbers are for your convenience only.



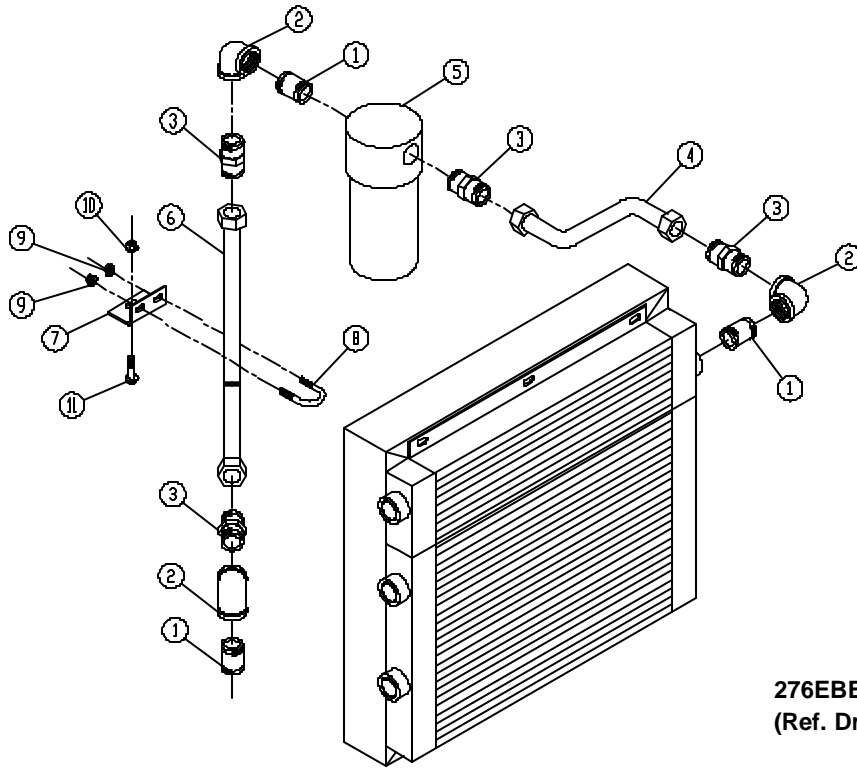
277EBE810
(Ref. Drawing)

**DISCHARGE PIPING – BASE MOUNTED UNITS
(WITH SEPARATOR)**

B/M: 211EBE4019

Ref. No.	Name of Part	Qty.	Part No.
1	NIPPLE	2	63H1G
2	ELBOW	3	64C6G
3	CONNECTOR-TUBE	2	86H138
4	TUBE WITH FITTINGS	1	203EBE863
5	TRAP	1	83C78
6	NIPPLE	1	63N16X134G
7	BRACKET	1	204EJB142
8	U-BOLT	1	143738
9	NUT	2	50AW4
10	NUT	1	50AW5
11	SCREW	1	75LM51

Order by Part Number and Description. Reference Numbers are for your convenience only.



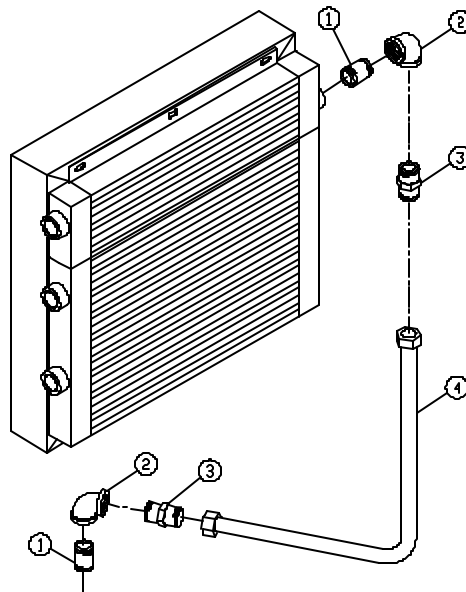
276EBE810
(Ref. Drawing)

**DISCHARGE PIPING – TANK MOUNTED UNITS
(WITH SEPARATOR)**

B/M: 210EBE4019

Ref. No.	Name of Part	Qty.	Part No.
1	NIPPLE	3	63H1G
2	ELBOW	3	64C6G
3	CONNECTOR-TUBE.....	4	86H138
4	TUBE WITH FITTINGS.....	1	203EBE863
5	TRAP	1	83C78
6	TUBE WITH FITTINGS.....	1	204EBE863
7	BRACKET.....	1	202EJB142
8	U-BOLT.....	1	15U59
9	NUT.....	2	50AW3
10	NUT.....	1	50AW5
11	SCREW.....	1	75LM51

Order by Part Number and Description. Reference Numbers are for your convenience only.



278EBE810
(Ref. Drawing)

**DISCHARGE PIPING – TANK MOUNTED UNITS
(WITHOUT SEPARATOR – TRAP)**

B/M: 212EBE4019

Ref. No.	Name of Part	Qty.	Part No.
1	NIPPLE	2	63H1G
2	ELBOW	2	64C6G
3	CONNECTOR-TUBE.....	2	86H138
4	TUBE WITH FITTINGS.....	1	205EBE863

Order by Part Number and Description. Reference Numbers are for your convenience only.

CONTROL GROUP

B/M: 300EBE4002

Ref. No.	Name of Part	Qty.	Part No.	Ref. No.	Name of Part	Qty.	Part No.
1	ELBOW-TUBE	1	86E59	++ 19	VALVE-CONTROL	1	90AR1034
2	TUBE (IN FEET)	35	85K3	20	NIPPLE	1	63D6G
3	NIPPLE	1	63D3G	+ 21	PROBE-ELECTRICAL	2	21D264
4	TEE.....	2	64G3G	22	TEE-TUBE	1	2009284
5	PLUG	2	64AA5	23	SEAL-PLUG.....	1	24A415
+ 6	VALVE SOLENOID	1	91B223	+ * 24	VALVE-SOLENOID.....	1	91B70
7	ELBOW	9	86E60	25	FITTING-ELECTRICAL.....	2	24CA2865
8	CONNECTOR-TUBE.....	3	86N287	26	NIPPLE.....	2	24CA4641
9	CONNECTOR.....	6	86E4	**++ 27	CONTROL VALVE	1	90AR1082
10	NIPPLE	3	63D1G	+ 28	SWITCH	1	88H195
11	CROSS.....	2	64K1G	29	SCREW	2	75LM48
12	ELBOW	3	86E64	30	NUT.....	2	50AW3
13	ORIFICE.....	1	86E4	+ 31	TRANSDUCER-PRESSURE	2	88H242
14	CONNECTOR.....	1	86N272	32	O-RING.....	3	165011
15	CONNECTOR-TUBE.....	1	86E28	33	CONNECTOR-TUBE	1	86E82
++ 16	VALVE-CHECK.....	2	90AR261	34	O-RING.....	4	24A383
17	NIPPLE	1	63D3G	35	TUBE (IN FEET)	5	85K5
∇++ 18	VALVE-SUB/PILOT.....	1	2009398				

* For Repair Kit (includes Springs, Seals, Piston Assembly, Plunger Assembly, Nut & O-Ring, order Part Number 2116077 or for Coil, order Part Number 2116078.

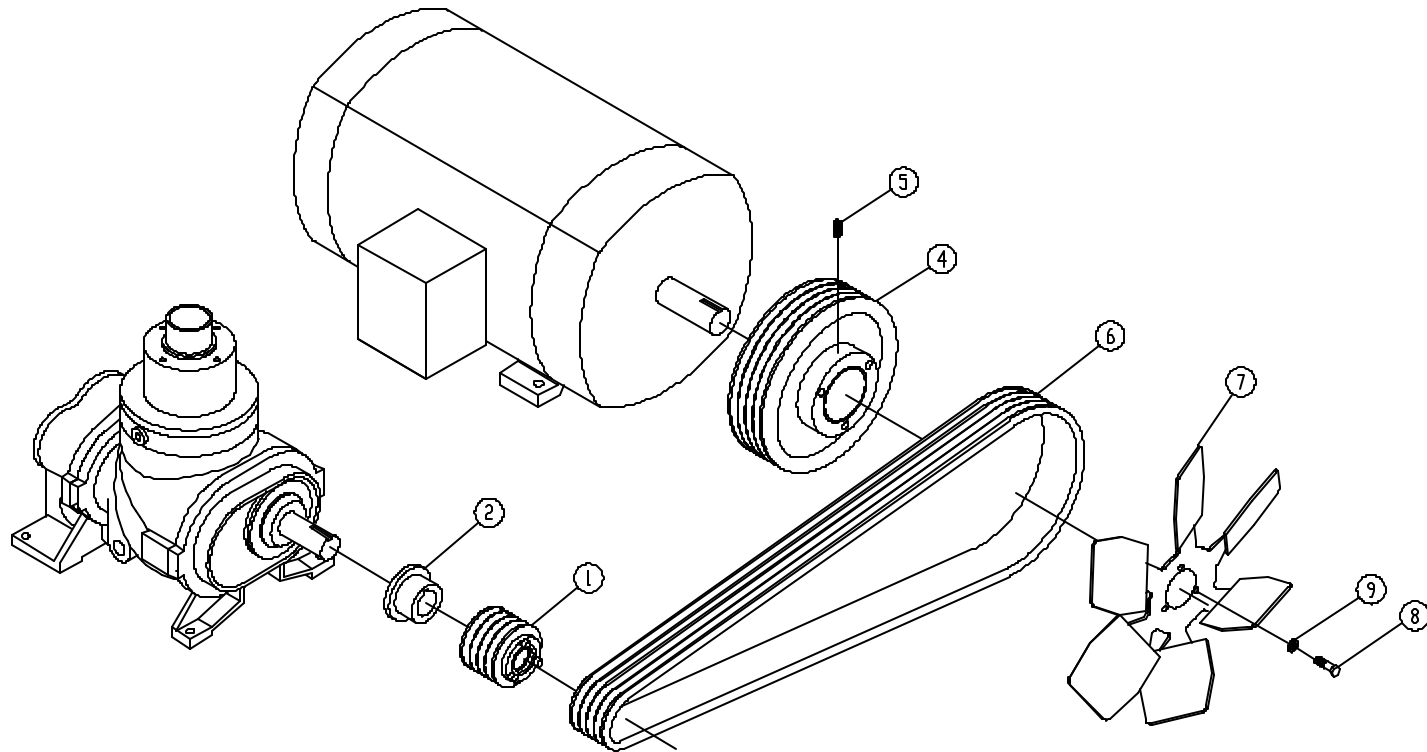
+ Parts included in Electrical Control Kit, Part Number 303EBE6013. Refer to Page 44.

** For Repair of U-Cup (Piston Seal), order Part Number 2117904; For O-Ring (Top Plate), order Part Number 2117905.

++ Parts included in Pneumatic Control Kit, Part Number 300EBE6013. Refer to Page 44.

∇ For Repair parts, see page 21.

DRIVE GROUPS – 15, 20, 25 & 30 HP



265EBE810
(Ref. Drawing)

Order by Part Number and Description. Reference Numbers are for your convenience only.

DRIVE GROUPS – 15 HP

Ref. No.	Name of Part	Qty.	100 PSIG 200EBE4004 Part No.	125 PSIG 201EBE4004 Part No.	150 PSIG (N/A)	175 PSIG (N/A)
1	SHEAVE.....	1	73M43V65	73M43V80		
2	BUSHING-SHEAVE.....	1	22F28SK	22F28SK		
4	SHEAVE.....	1	208EBE099	208EBE099		
5	SCREW.....	2	76F65	76F65		
6	BELT	1	13AG6004	13AG6004		
7	FAN.....	1	203EBE701	203EBE701		
8	SCREW.....	3	655ED030	655ED030		
9	LOCKWASHER.....	3	95B3	95B3		
10+	VALVE-PRESSURE RELIEF.....	1	90AR662	90AR663		

DRIVE GROUPS – 20 HP

Ref. No.	Name of Part	Qty.	100 PSIG 202EBE4004 Part No.	125 PSIG 203EBE4004 Part No.	150 PSIG 204EBE4004 Part No.	175 PSIG (N/A)
1	SHEAVE.....	1	73M43V56	73M43V80	73M43V65	
2	BUSHING-SHEAVE.....	1	22F28SDS	22F28SK	22F28SK	
4	SHEAVE.....	1	201EBE099	205EBE099	202EBE099	
5	SCREW.....	2	76F65	76F65	76F65	
6	BELT	1	13AG6004	13AG6304	13AG6004	
7	FAN.....	1	203EBE701	203EBE701	203EBE701	
8	SCREW.....	3	655ED030	655ED030	655ED030	
9	LOCKWASHER.....	3	95B3	95B3	95B3	
10+	VALVE-PRESSURE RELIEF.....	1	90AR662	90AR663	90AR657	

+ Not shown on drawing, see page 17.

Order by Part Number and Description. Reference Numbers are for your convenience only.

DRIVE GROUPS – 25 HP

Ref. No.	Name of Part	Qty.	100 PSIG 205EBE4004 Part No.	125 PSIG 206EBE4004 Part No.	150 PSIG 207EBE4004 Part No.	175PSIG 208EBE4004 Part No.
1	SHEAVE.....	1	73M43V65	73M43V80	73M43V80	73M43V80
2	BUSHING-SHEAVE.....	1	22F28SK	22F28SK	22F28SK	22F28SK
4	SHEAVE.....	1	203EBE099	204EBE099	207EBE099	206EBE099
5	SCREW.....	2	76F65	76F65	76F65	76F65
6	BELT.....	1	13AG6704	13AG6704	13AG6704	13AG6704
7	FAN.....	1	202EBE701	202EBE701	202EBE701	202EBE701
8	SCREW.....	3	655ED030	655ED030	655ED030	655ED030
9	LOCKWASHER.....	3	95B3	95B3	95B3	95B3
10+	VALVE-PRESSURE RELIEF.....	1	*	90AR663	90AR657	90AR657

DRIVE GROUPS – 30 HP

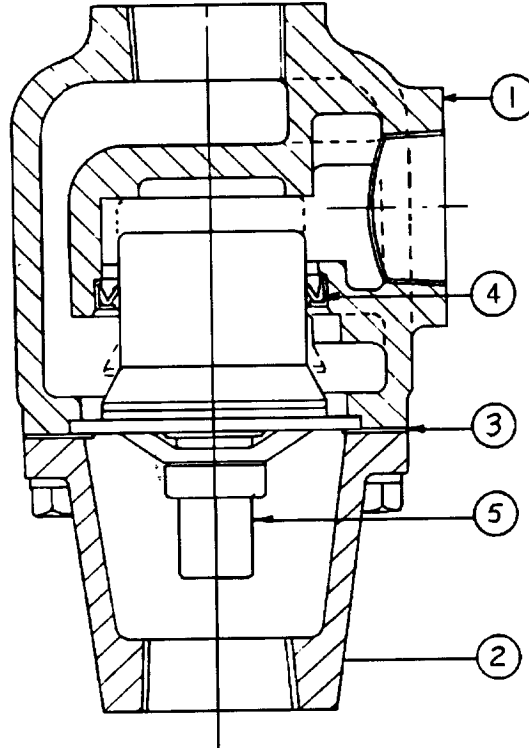
Ref. No.	Name of Part	Qty.	100 PSIG 209EBE4004 Part No.	125 PSIG 210EBE4004 Part No.	150 PSIG 211EBE4004 Part No.	175 PSIG 212EBE4004 Part No.
1	SHEAVE.....	1	73M43V56	73M43V65	73M43V65	73M43V65
2	BUSHING-SHEAVE.....	1	22F28SDS	22F28SK	22F28SK	22F28SK
4	SHEAVE.....	1	203EBE099	203EBE099	207EBE099	206EBE099
5	SCREW.....	2	76F65	76F65	76F65	76F65
6	BELT.....	1	13AG6304	13AG6704	13AG6304	13AG6304
7	FAN.....	1	202EBE701	202EBE701	202EBE701	202EBE701
8	SCREW.....	3	655ED030	655ED030	655ED030	655ED030
9	LOCKWASHER.....	3	95B3	95B3	95B3	95B3
10+	VALVE-PRESSURE RELIEF.....	1	*	90AR663	90AR657	90AR657

+ Not shown on drawing, see page 17.

* (2) 90AR662 Relief Valves required.

Order by Part Number and Description. Reference Numbers are for your convenience only.

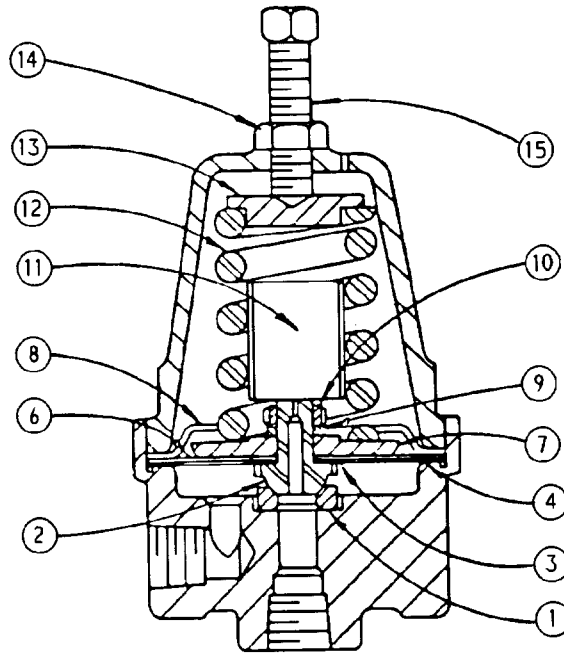
**THERMAL VALVE
(Thermostatic Mixing)**



90AR1093 ASSEMBLY VALVE – THERMAL (ALUMINUM HOUSING)

Ref. No.	Name of Part	Qty.	Part No.
1	VALVE BODY (3/4").....	1	2117072
2	VALVE COVER (3/4").....	1	2117073
	VALVE KIT (Includes Items 3, 4 & 5)		
	150° THERMOSTAT (Optional)	1	2115542
	160° THERMOSTAT (Optional)	1	2115543
	170° THERMOSTAT (Standard).....	1	2117074
	180° THERMOSTAT (Optional)	1	2117075
3	O-RING (Included in Valve Kit).....	1	
4	LIP SEAL (Included in Valve Kit).....	1	
5	ELEMENT (Included in Valve Kit).....	1	

Order by Part Number and Description. Reference Numbers are for your convenience only.

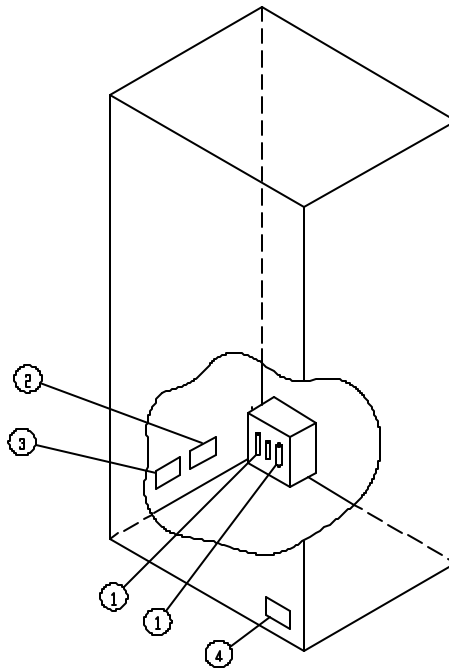


SUBTRACTIVE PILOT VALVE

Ref. No.	Name of Part	Qty.	Part No.
	VALVE-SUBTRACTIVE PILOT (Includes Items 1 thru 15)		2009398
1	RING-SEAT.....	1	2008021
2	DISC-SEAT.....	1	2010080
3	GASKET.....	1	2008019
4	GASKET.....	1	2008017
6	DIAPHRAGM SET (Set of 5).....	1	2008018
7	PLATE-PRESSURE.....	1	2008015
8	STOP-DIAPHRAGM.....	1	2008016
9	LOCKWASHER.....	1	95B1
10	NUT.....	1	2008888
11	DAMPER.....	1	2008711
12	SPRING.....	1	2008014
13	BUTTON-SPRING.....	1	2008891
14	LOCKNUT.....	1	50Y2
15	SCREW.....	1	2008952

NOTE: It is necessary to replace some parts in groups to insure satisfactory repair. When replacing diaphragm, also replace both diaphragm and seat gaskets. When replacing seat disc or seat ring, replace the mating seat ring or disc and the seat disc gasket.

Order by Part Number and Description. Reference Numbers are for your convenience only.

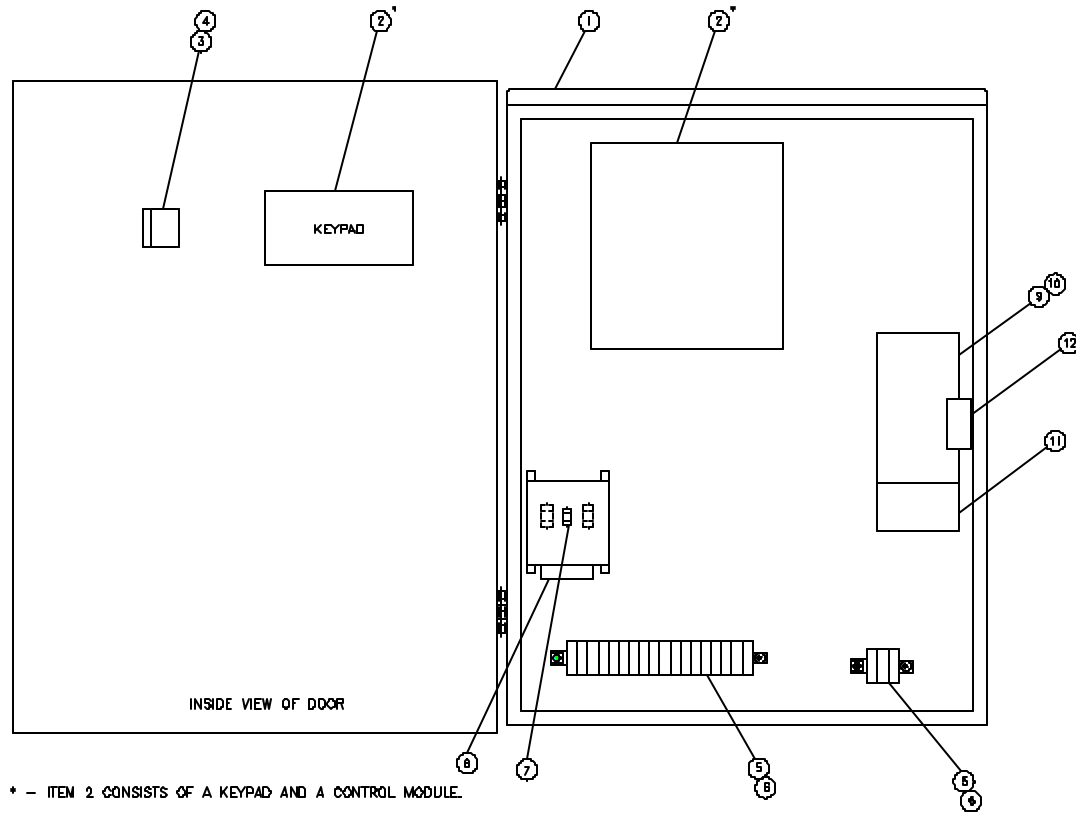


315EFC810-A
(Ref. Drawing)

DECAL & FUSE GROUP

Ref. No.	Name of Part	Qty.	B/M: 318EFC4007	B/M: 319EFC4007	B/M: 320EFC4007	321EFC4007
			200V	230V	460V	575V
1	FUSE.....	2	24CA2786	24CA2785	24CA2782	24CA2781
2	DECAL.....	1	265AUX077	264AUX077	261AUX077	260AUX077
3	DECAL.....	1	297AUX077	297AUX077	297AUX077	297AUX077
4	MARKER-VOLTAGE ..	1	69F50	69F51	69F52	69F60

CONTROLLER ASSEMBLY – FULL VOLTAGE STARTER – 15, 20, 25 & 30 HP



309EFC810-A
(Ref. Drawing)

Order by Part Number and Description. Reference Numbers are for your convenience only.

CONTROLLER ASSEMBLY – FULL VOLTAGE STARTER – 15 & 20 HP

	QTY.	200V	230V	460V	575V
NEMA 12 CONTROL BOX (RS2000).....		303EFC466	309EFC466	307EFC466	313EFC466
NEMA 4 CONTROL BOX (RS2000).....		304EFC466	310EFC466	308EFC466	314EFC466
NEMA 12 CONTROL BOX (AIRPILOT+).....		331EFC466	337EFC466	335EFC466	341EFC466
NEMA 4 CONTROL BOX (AIRPILOT+).....		332EFC466	338EFC466	336EFC466	342EFC466
1 CONTROL/STARTER BOX (NEMA 12).....	1	300EFC179	300EFC179	300EFC179	300EFC179
CONTROL/STARTER BOX (NEMA 4).....	1	301EFC179	301EFC179	301EFC179	301EFC179
2 CONTROLLER ASSEMBLY (RS2000).....	(See Pages 33 & 34)				
CONTROLLER ASSEMBLY (AIRPILOT+).....	(See Pages 33 & 34)				
3 OPERATOR.....	1	24CA2907	24CA2907	24CA2907	24CA2907
4 CONTACT BLOCK.....	1	24CA2908	24CA2908	24CA2908	24CA2908
5 BLOCK-TERMINAL CONTACT.....	7	24CA2551	24CA2551	24CA2551	24CA2551
6 BLOCK-TERMINAL END.....	2	24CA2552	24CA2552	24CA2552	24CA2552
7 FUSE.....	1	24CA3725	24CA3725	24CA3725	24CA3725
8 TRANSFORMER.....	1	24CA5182	24CA5181	24CA5181	24CA5183
9 CONTACTOR.....	1	24CA3258	24CA3258	24CA2609	24CA2609
10 COIL.....	1	2116124	2116124	2116923	2116923
11 RELAY.....	1	24CA4087	24CA4087	24CA4086	24CA4086
12 CONTACT AUXILIARY.....	1	24CA2503	24CA2503	24CA2503	24CA2503

Order by Part Number and Description. Reference Numbers are for your convenience only.

CONTROLLER ASSEMBLY – FULL VOLTAGE STARTER – 25 HP

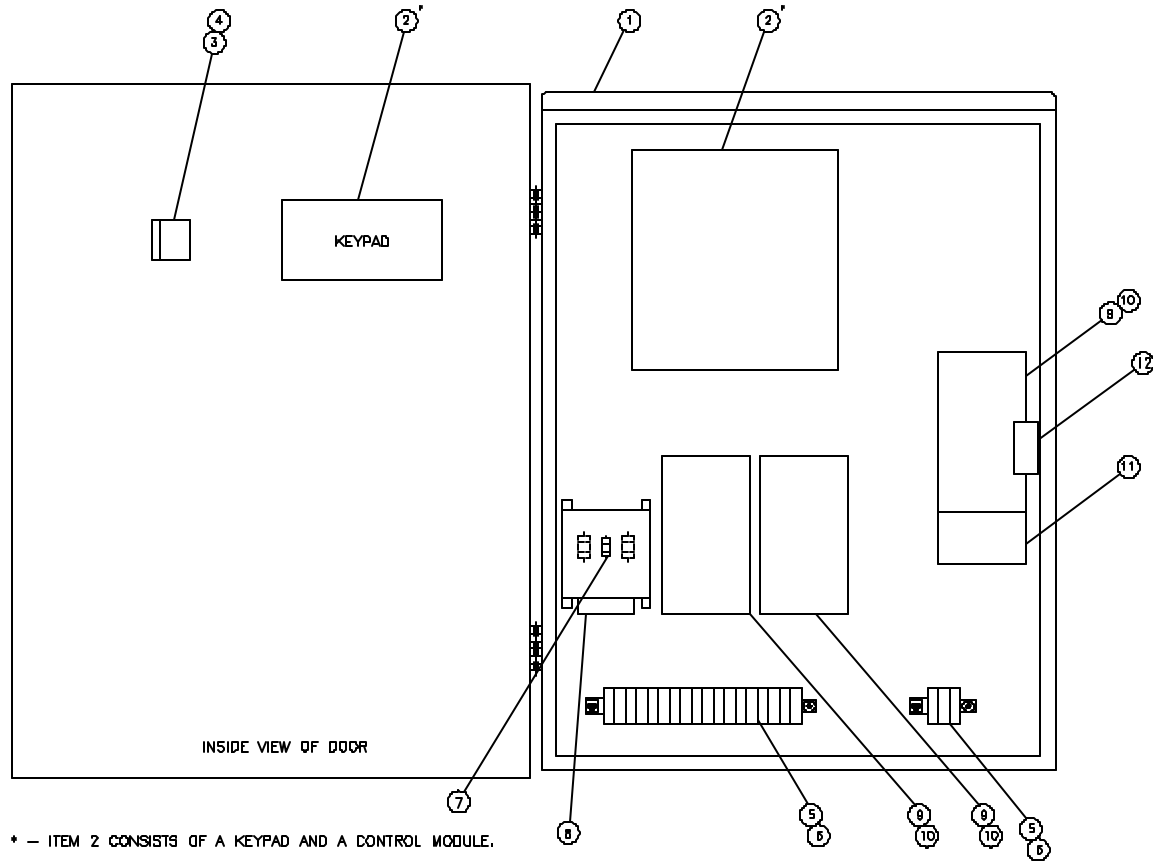
	QTY.	200V	230V	460V	575V
NEMA 12 CONTROL BOX (RS2000).....		305EFC466	309EFC466	309EFC466	313EFC466
NEMA 4 CONTROL BOX (RS2000).....		306EFC466	310EFC466	310EFC466	314EFC466
NEMA 12 CONTROL BOX (AIRPILOT+).....		333EFC466	337EFC466	337EFC466	341EFC466
NEMA 4 CONTROL BOX (AIRPILOT+).....		334EFC466	338EFC466	338EFC466	342EFC466
1 CONTROL/STARTER BOX (NEMA 12).....	1	300EFC179	300EFC179	300EFC179	300EFC179
CONTROL/STARTER BOX (NEMA 4).....	1	301EFC179	301EFC179	301EFC179	301EFC179
2 CONTROLLER ASSEMBLY (RS2000).....	(See Pages 33 & 34)				
CONTROLLER ASSEMBLY (AIRPILOT+).....	(See Pages 33 & 34)				
3 OPERATOR.....	1	24CA2907	24CA2907	24CA2907	24CA2907
4 CONTACT BLOCK.....	1	24CA2908	24CA2908	24CA2908	24CA2908
5 BLOCK-TERMINAL CONTACT.....	7	24CA2551	24CA2551	24CA2551	24CA2551
6 BLOCK-TERMINAL END.....	2	24CA2552	24CA2552	24CA2552	24CA2552
7 FUSE.....	1	24CA3725	24CA3725	24CA3725	24CA3725
8 TRANSFORMER.....	1	24CA5182	24CA5181	24CA5181	24CA5183
9 CONTACTOR.....	1	24CA3259	24CA3258	24CA3258	24CA2609
10 COIL.....	1	21165555	2116124	2116124	2116923
11 RELAY.....	1	24CA2905	24CA4087	24CA4087	24CA4086
12 CONTACT AUXILIARY.....	1	24CA3716	24CA2503	24CA2503	24CA2503

Order by Part Number and Description. Reference Numbers are for your convenience only.

CONTROLLER ASSEMBLY – FULL VOLTAGE STARTER – 30 HP

	QTY.	200V	230V	460V	575V
NEMA 12 CONTROL BOX (RS2000).....		305EFC466	311EFC466	309EFC466	315EFC466
NEMA 4 CONTROL BOX (RS2000).....		306EFC466	312EFC466	310EFC466	316EFC466
NEMA 12 CONTROL BOX (AIRPILOT+).....		333EFC466	339EFC466	337EFC466	343EFC466
NEMA 4 CONTROL BOX (AIRPILOT+).....		334EFC466	340EFC466	338EFC466	344EFC466
1 CONTROL/STARTER BOX (NEMA 12).....	1	300EFC179	300EFC179	300EFC179	300EFC179
CONTROL/STARTER BOX (NEMA 4).....	1	301EFC179	301EFC179	301EFC179	301EFC179
2 CONTROLLER ASSEMBLY (RS2000).....	(See Pages 33 & 34)				
CONTROLLER ASSEMBLY (AIRPILOT+).....	(See Pages 33 & 34)				
3 OPERATOR.....	1	24CA2907	24CA2907	24CA2907	24CA2907
4 CONTACT BLOCK.....	1	24CA2908	24CA2908	24CA2908	24CA2908
5 BLOCK-TERMINAL CONTACT.....	7	24CA2551	24CA2551	24CA2551	24CA2551
6 BLOCK-TERMINAL END.....	2	24CA2552	24CA2552	24CA2552	24CA2552
7 FUSE.....	1	24CA3725	24CA3725	24CA3725	24CA3725
8 TRANSFORMER.....	1	24CA5182	24CA5181	24CA5181	24CA5183
9 CONTACTOR.....	1	24CA3259	24CA3259	24CA3258	24CA3258
10 COIL.....	1	2116555	2116555	2116124	2116124
11 RELAY.....	1	24CA2905	24CA2905	24CA4087	24CA4087
12 CONTACT AUXILIARY.....	1	24CA3716	24CA3716	24CA2503	24CA2503

CONTROLLER ASSEMBLY – WYE DELTA STARTER – 15, 20, 25 & 30 HP



Order by Part Number and Description. Reference Numbers are for your convenience only.

CONTROLLER ASSEMBLY – WYE DELTA STARTER – 15 HP

	QTY.	200V	230V	460V	575V
NEMA 12 CONTROL BOX (RS2000).....		317EFC466	319EFC466	319EFC466	323EFC466
NEMA 4 CONTROL BOX (RS2000).....		318EFC466	320EFC466	320EFC466	324EFC466
NEMA 12 CONTROL BOX (AIRPILOT+).....		345EFC466	347EFC466	347EFC466	351EFC466
NEMA 4 CONTROL BOX (AIRPILOT+).....		346EFC466	348EFC466	348EFC466	352EFC466
1 CONTROL/STARTER BOX (NEMA 12).....	1	300EFC179	300EFC179	300EFC179	300EFC179
CONTROL/STARTER BOX (NEMA 4).....	1	301EFC179	301EFC179	301EFC179	301EFC179
2 CONTROLLER ASSEMBLY (RS2000).....	(See Pages 33 & 34)				
CONTROLLER ASSEMBLY (AIRPILOT+).....	(See Pages 33 & 34)				
3 OPERATOR.....	1	24CA2907	24CA2907	24CA2907	24CA2907
4 CONTACT BLOCK.....	1	24CA2908	24CA2908	24CA2908	24CA2908
5 BLOCK-TERMINAL CONTACT.....	7	24CA2551	24CA2551	24CA2551	24CA2551
6 BLOCK-TERMINAL END.....	2	24CA2552	24CA2552	24CA2552	24CA2552
7 FUSE.....	1	24CA3725	24CA3725	24CA3725	24CA3725
8 TRANSFORMER.....	1	24CA5182	24CA5181	24CA5181	24CA5183
9 CONTACTOR.....	3	24CA3258	24CA2609	24CA2609	24CA2609
10 COIL.....	3	2116124	2116923	2116923	2116923
11 RELAY.....	1	24CA4087	24CA4086	24CA4086	24CA4086
12 CONTACT AUXILIARY.....	1	24CA2503	24CA2503	24CA2503	24CA2503

Order by Part Number and Description. Reference Numbers are for your convenience only.

CONTROLLER ASSEMBLY – WYE DELTA STARTER – 20 HP

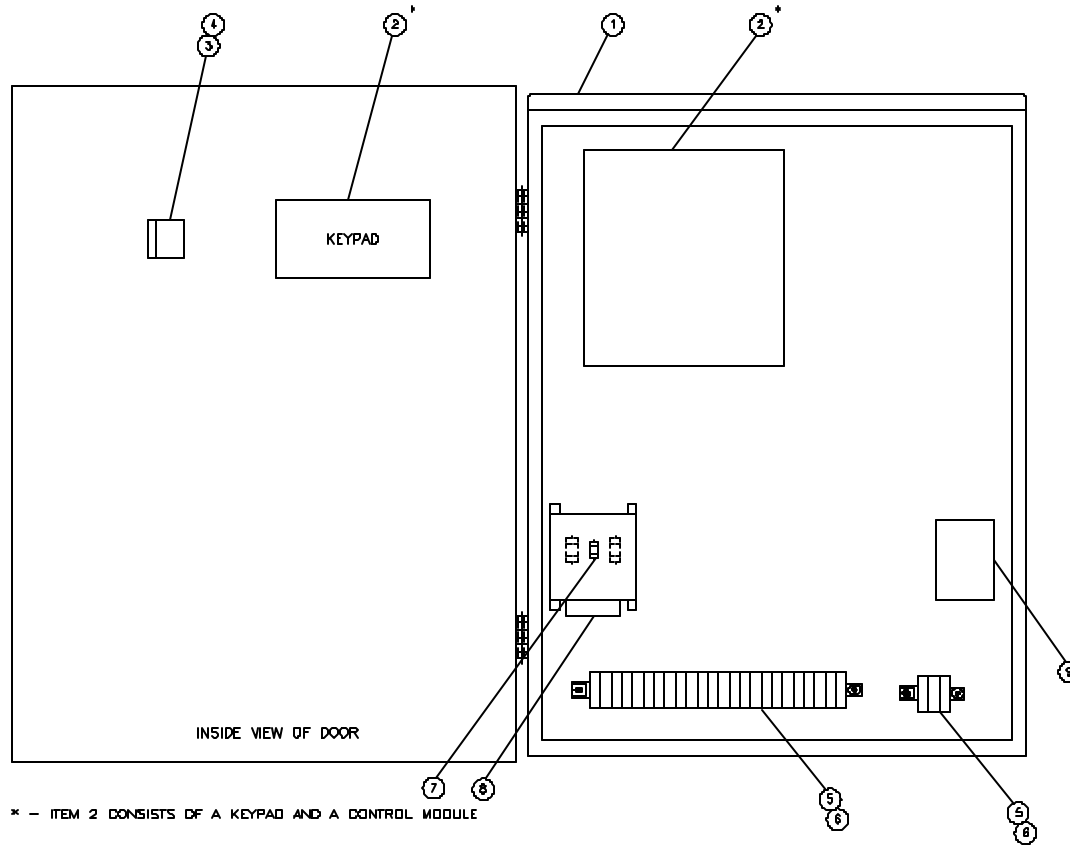
	QTY.	200V	230V	460V	575V
NEMA 12 CONTROL BOX (RS2000).....		317EFC466	321EFC466	319EFC466	323EFC466
NEMA 4 CONTROL BOX (RS2000).....		318EFC466	322EFC466	320EFC466	324EFC466
NEMA 12 CONTROL BOX (AIRPILOT+).....		345EFC466	349EFC466	347EFC466	351EFC466
NEMA 4 CONTROL BOX (AIRPILOT+).....		346EFC466	350EFC466	348EFC466	352EFC466
1 CONTROL/STARTER BOX (NEMA 12).....	1	300EFC179	300EFC179	300EFC179	300EFC179
CONTROL/STARTER BOX (NEMA 4).....	1	301EFC179	301EFC179	301EFC179	301EFC179
2 CONTROLLER ASSEMBLY (RS2000).....	(See Pages 33 & 34)				
CONTROLLER ASSEMBLY (AIRPILOT+).....	(See Pages 33 & 34)				
3 OPERATOR.....	1	24CA2907	24CA2907	24CA2907	24CA2907
4 CONTACT BLOCK.....	1	24CA2908	24CA2908	24CA2908	24CA2908
5 BLOCK-TERMINAL CONTACT.....	7	24CA2551	24CA2551	24CA2551	24CA2551
6 BLOCK-TERMINAL END.....	2	24CA2552	24CA2552	24CA2552	24CA2552
7 FUSE.....	1	24CA3725	24CA3725	24CA3725	24CA3725
8 TRANSFORMER.....	1	24CA5182	24CA5181	24CA5181	24CA5183
9 CONTACTOR.....	3	24CA3258	24CA3258	24CA2609	24CA2609
10 COIL.....	3	2116124	2116124	2116923	2116923
11 RELAY.....	1	24CA4087	24CA4087	24CA4086	24CA4086
12 CONTACT AUXILIARY.....	1	24CA2503	24CA2503	24CA2503	24CA2503

Order by Part Number and Description. Reference Numbers are for your convenience only.

CONTROLLER ASSEMBLY – WYE DELTA STARTER – 25 & 30 HP

	QTY.	200V	230V	460V	575V
NEMA 12 CONTROL BOX (RS2000).....		317EFC466	321EFC466	319EFC466	323EFC466
NEMA 4 CONTROL BOX (RS2000).....		318EFC466	322EFC466	320EFC466	324EFC466
NEMA 12 CONTROL BOX (AIRPILOT+).....		345EFC466	349EFC466	347EFC466	351EFC466
NEMA 4 CONTROL BOX (AIRPILOT+).....		346EFC466	350EFC466	348EFC466	352EFC466
1 CONTROL/STARTER BOX (NEMA 12).....	1	300EFC179	300EFC179	300EFC179	300EFC179
CONTROL/STARTER BOX (NEMA 4).....	1	301EFC179	301EFC179	301EFC179	301EFC179
2 CONTROLLER ASSEMBLY (RS2000).....	(See Pages 33 & 34)				
CONTROLLER ASSEMBLY (AIRPILOT+).....	(See Pages 33 & 34)				
3 OPERATOR.....	1	24CA2907	24CA2907	24CA2907	24CA2907
4 CONTACT BLOCK.....	1	24CA2908	24CA2908	24CA2908	24CA2908
5 BLOCK-TERMINAL CONTACT.....	7	24CA2551	24CA2551	24CA2551	24CA2551
6 BLOCK-TERMINAL END.....	2	24CA2552	24CA2552	24CA2552	24CA2552
7 FUSE.....	1	24CA3725	24CA3725	24CA3725	24CA3725
8 TRANSFORMER.....	1	24CA5182	24CA5181	24CA5181	24CA5183
9 CONTACTOR.....	3	24CA3258	24CA3258	24CA2609	24CA2609
10 COIL.....	3	2116124	2116124	2116923	2116923
11 RELAY.....	1	24CA4087	24CA4087	24CA4086	24CA4086
12 CONTACT AUXILIARY.....	1	24CA2503	24CA2503	24CA2503	24CA2503

CONTROLLER ASSEMBLY – LESS MAIN MOTOR STARTER



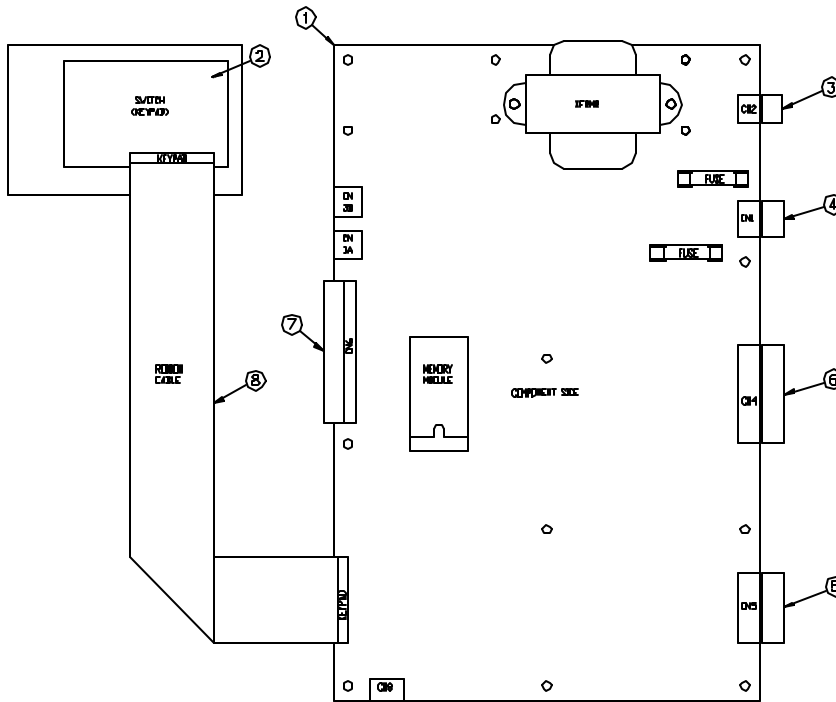
311EFC810-A
(Ref. Drawing)

Order by Part Number and Description. Reference Numbers are for your convenience only.

CONTROLLER ASSEMBLY – LESS MAIN MOTOR STARTER

	QTY.	200V	230V	460V	575V
NEMA 12 CONTROL BOX (RS2000).....		325EFC466	327EFC466	327EFC466	329EFC466
NEMA 4 CONTROL BOX (RS2000).....		326EFC466	328EFC466	328EFC466	330EFC466
NEMA 12 CONTROL BOX (AIRPILOT+).....		353EFC466	355EFC466	355EFC466	357EFC466
NEMA 4 CONTROL BOX (AIRPILOT+).....		354EFC466	356EFC466	356EFC466	358EFC466
1 CONTROL/STARTER BOX (NEMA 12).....	1	300EFC179	300EFC179	300EFC179	300EFC179
CONTROL/STARTER BOX (NEMA 4).....	1	301EFC179	301EFC179	301EFC179	301EFC179
2 CONTROLLER ASSEMBLY (RS2000).....	(See Pages 33 & 34)				
CONTROLLER ASSEMBLY (AIRPILOT+).....	(See Pages 33 & 34)				
3 OPERATOR.....	1	24CA2907	24CA2907	24CA2907	24CA2907
4 CONTACT BLOCK.....	1	24CA2908	24CA2908	24CA2908	24CA2908
5 BLOCK-TERMINAL CONTACT.....	9	24CA2551	24CA2551	24CA2551	24CA2551
6 BLOCK-TERMINAL END.....	2	24CA2552	24CA2552	24CA2552	24CA2552
7 FUSE.....	1	24CA3725	24CA3725	24CA3725	24CA3725
8 TRANSFORMER.....	1	24CA5182	24CA5181	24CA5181	24CA5183
9 RELAY	1	24CA4711	24CA4711	24CA4711	24CA4711

Order by Part Number and Description. Reference Numbers are for your convenience only.

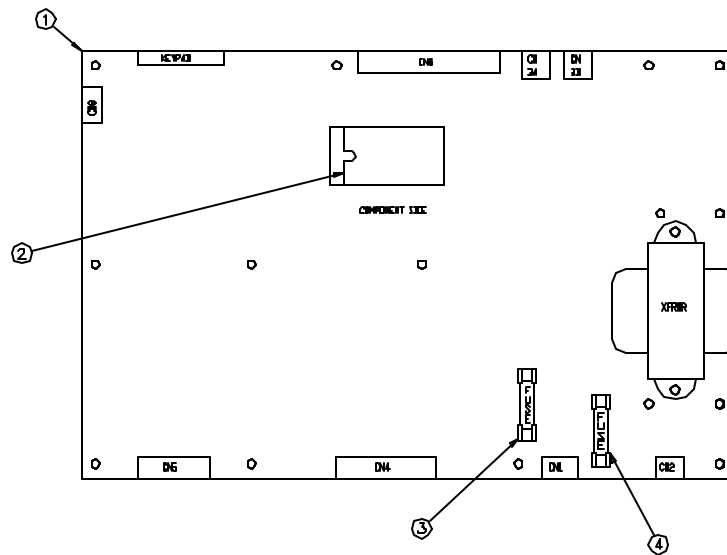


300EBC810-B
(Ref. Drawing)

CONTROLLER ASSEMBLY

Ref. No.	Name of Part	Qty.	RS2000	AIRPILOT+
			B/M: 300EBC2006	B/M: 300EFD2006
			Part No.	Part No.
1	CONTROLLER ASSEMBLY – BOARD.....	1	300EBC560	300EFD560
2	SWITCH (KEYPAD)	1	300EVE375	300EVE375
3	PLUG-CONNECTOR	1	24CA4240	24CA4240
4	PLUG-CONNECTOR	1	24CA3401	24CA3401
5	PLUG-TERMINAL.....	1	24CA4823	24CA4823
6	PLUG-TERMINAL.....	1	24CA4999	24CA4999
7	PLUG-CONNECTOR	1	24CA3306	24CA3306
8	CABLE	1	24CA5178	24CA5178

Order by Part Number and Description. Reference Numbers are for your convenience only.



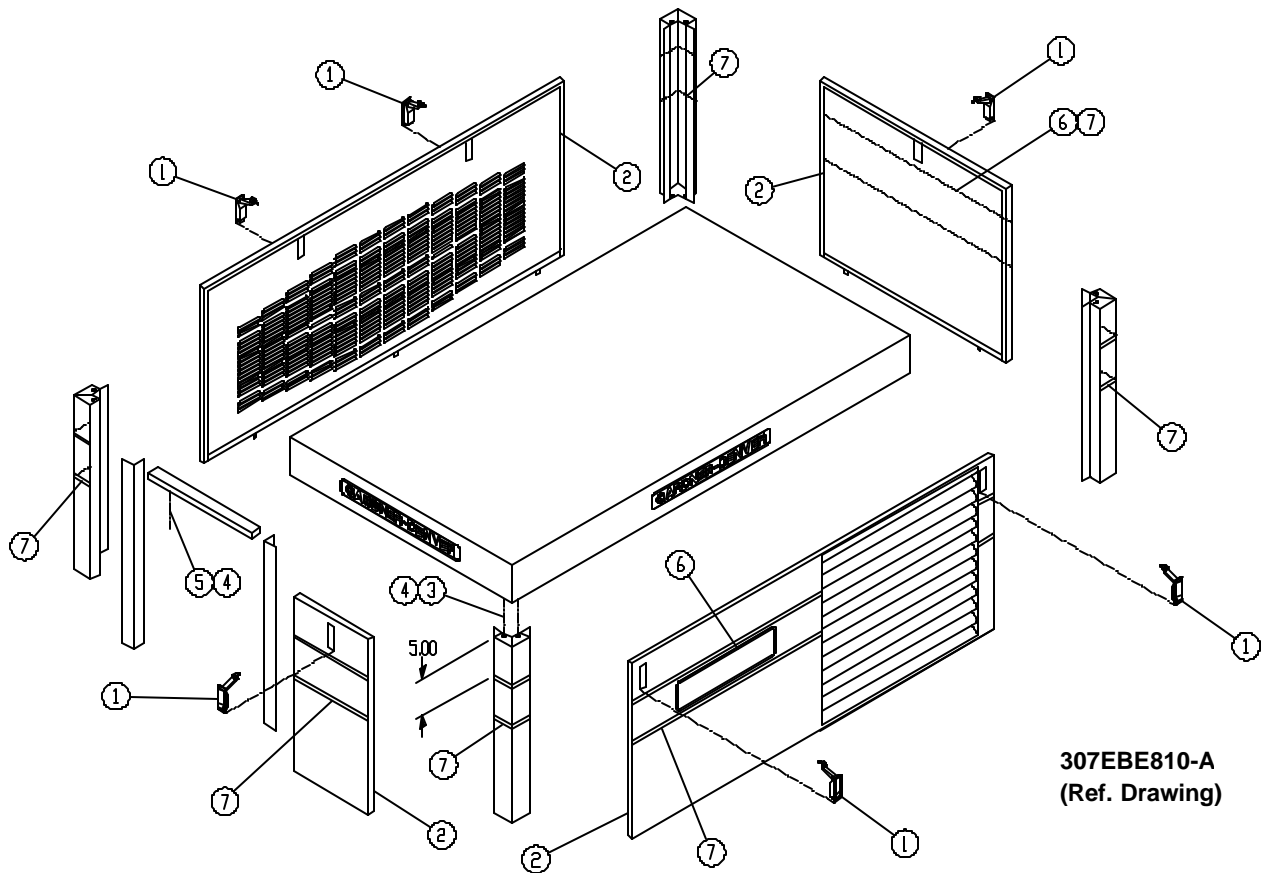
301EBC810-C
(Ref. Drawing)

CONTROLLER ASSEMBLY - BOARD

Ref. No.	Name of Part	Qty.	RS2000 B/M: 300EBC560 Part No.	AIRPILOT+ B/M: 300EFD560 Part No.
1	CONTROLLER.....	1	*	*
2	MEMORY MODULE	1	300EBC566	300EFD566
3	FUSE.....	1	24CA2932	24CA2932
4	FUSE.....	1	24CA2932	24CA2932

* Part number not available for Repair

Order by Part Number and Description. Reference Numbers are for your convenience only.

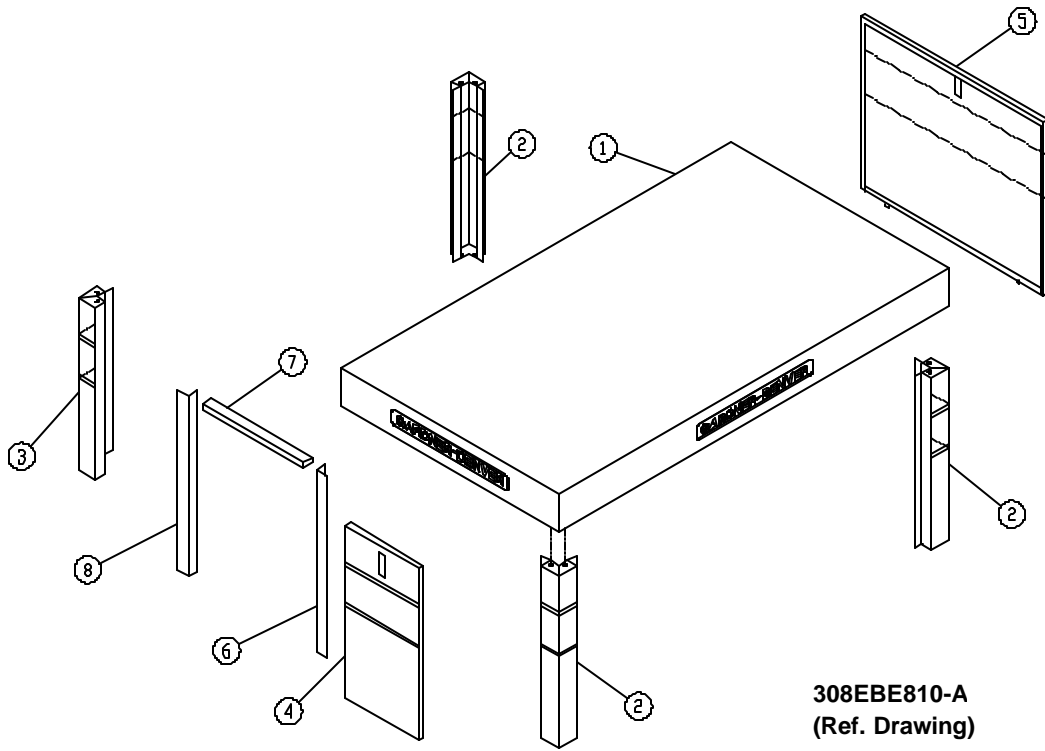


ENCLOSURE – HARDWARE & DECALS

B/M: 303EBE4017

Ref. No.	Name of Part	Qty.	Part No.
1	LATCH.....	6	31D51
2	SEAL.....	28	32E12
3	SCREW.....	20	75LM51
4	NUT.....	22	50AW5
6	DECAL.....	2	200ECP077
7	DECAL.....	2	203ESO077

Order by Part Number and Description. Reference Numbers are for your convenience only.

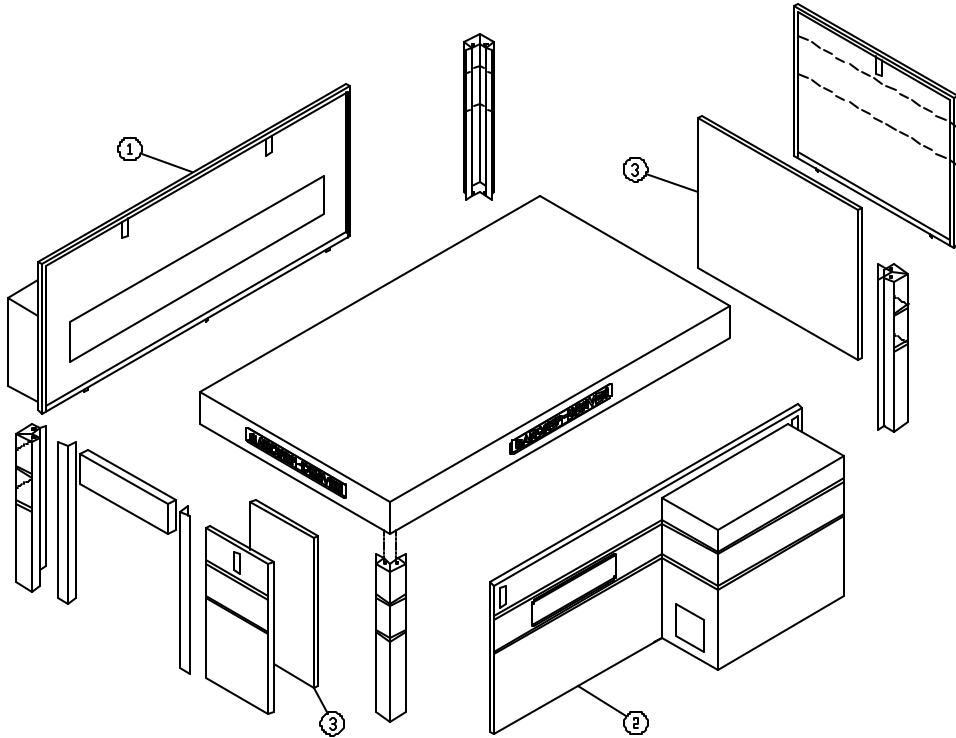


ENCLOSURE – BASIC PARTS

B/M: 301EBE4017

Ref. No.	Name of Part	Qty.	Part No.
1	HOOD.....	1	200EBE053
2	POST.....	3	206EBE313
3	POST.....	1	207EBE313
4	PANEL.....	1	205EBE216
5	PANEL.....	1	203EBE216
6	BRACKET.....	1	301EBE142
7	BRACKET (FORMED)	1	300EBE142
8	BRACKET.....	1	302EBE142

Order by Part Number and Description. Reference Numbers are for your convenience only.



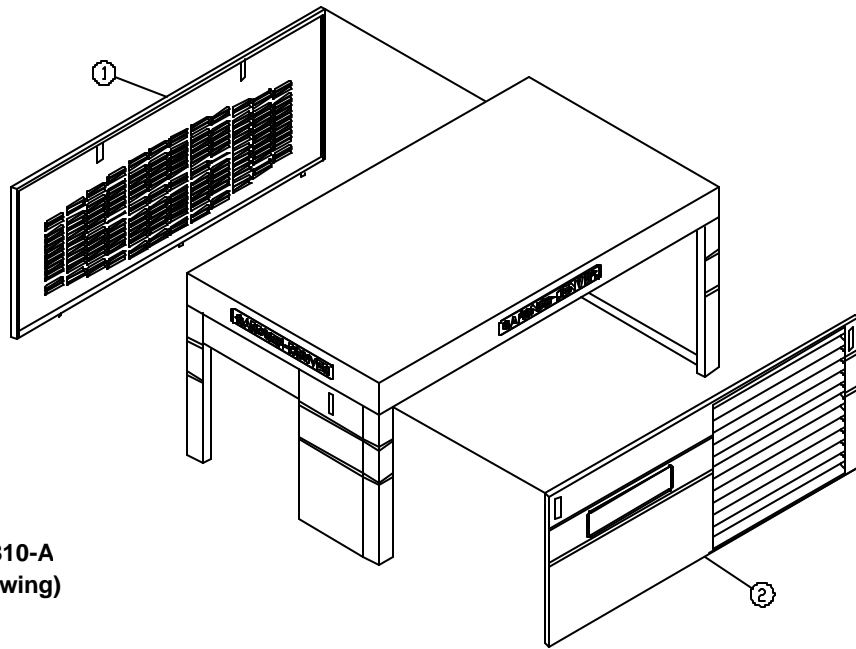
268EBE810-A
(Ref. Drawing)

QUIET ENCLOSURE – ODP MOTOR ONLY

B/M: 211EBE4017

Ref. No.	Name of Part	Qty.	Part No.
1	BAFFLE	1	201EBE840
2	BAFFLE	1	203EBE840
3	INSULATION.....	1	200EJB470

Order by Part Number and Description. Reference Numbers are for your convenience only.



269EBE810-A
(Ref. Drawing)

ENCLOSURE – PANELS

B/M: 209EBE4017 ODP Motors B/M: 210EBE4017 TEFC Motors

Ref. No.	Name of Part	Qty.	Part No.	Part No.
1	PANEL	1	204EBE216	207EBE216
2	PANEL	1	210EBE216	210EBE216

OVERLOAD RELAY HEATER CONVERSION LISTING

Refer to Motor Nameplate “Amperage” and Decal in Control Panel for Selection of Overload Relay Heater Packs

CUTLER-HAMMER PART NUMBER	GARDNER DENVER PART NUMBER
H2002B	24CA4101
H2003B	24CA4102
H2004B	24CA4103
H2005B	24CA4104
H2006B	24CA4105
H2007B	24CA4106
H2008B	24CA4107
H2009B	24CA4108
H2010B	24CA4109
H2011B	24CA4110
H2012B	24CA4111
H2013B	24CA4112
H2014B	24CA4113
H2015B	24CA4114
H2016B	24CA4115
H2017B	24CA4116
H2018	24CA2924
H2019	24CA2925
H2020	24CA2926
H2021	24CA2927
H2022	24CA2893
H2023	24CA2894
H2024	24CA2928

IDENTIFICATION AND INSTRUCTION GROUP

B/M: 300EBE4011

Ref. No.	Name of Part	Qty.	Part No.
1	DECAL, WARNING	1	222EAQ077
2	DECAL, WARNING – ELECTRICAL SHOCK	1	216EAQ077
3	DECAL, P/L & OPER. MAN.....	1	204EDE077
4	DECAL, CAUTION – USE FLOOR PLATE	1	221EAQ077
5	DECAL, SAVER II	2	200ECP077
6	DECAL (16" WIDE GD SLANT).....	2	319EAQ077
9	DECAL, ROTATION ARROW	1	204EBE077
10	DECAL, WARNING	1	227EAQ077
11	DECAL - DANGER – AIR/OIL UNDER PRESSURE	2	212EAQ077
12	DECAL - QUALITY WITHOUT QUESTION.....	1	251EAQ077
13	DECAL, WARNING – INSPECT RESERVOIR.....	1	217EAQ077
14	DECAL, DANGER – DO NOT MODIFY.....	1	218EAQ077
15	DECAL, WARNING – ROTATING MACHINERY	1	211EAQ077
16	DECAL, CAUTION – DO NOT LIFT.....	1	208EAQ077
17	DECAL – WARNING	4	207EAQ077
18	DECAL – DANGER – DO NOT BREATHE DISCH. AIR.....	2	206EAQ077
19	DECAL, OIL LEVEL.....	1	200EJB077
20	DECAL	1	302EFC077
21	DECAL, DRAIN MOISTURE DAILY	1	205ESO077
22	DECAL, OIL FILTER ELEMENT 2116128/26C27	1	205EBE077
23	DECAL, NOTICE – USE GD PARTS	1	214EAQ077
24	DECAL, OIL SEPARATOR CANISTER.....	1	211EBE077
25	DECAL - MADE IN USA (NOT SOLD FOR AFTERMKT).....	1	69F64

**MAIN MOTOR (STANDARD ODP/TEFC & HI-EFF, ODP/TEFC)
(FULL VOLTAGE)**

Name of Part	15 HP Part No.	20 HP Part No.	25 HP Part No.	30 HP Part No.
---------------------	---------------------------	---------------------------	---------------------------	---------------------------

OPEN DRIP PROOF

MOTOR, 200V	24AW8	24AW9	24AW10	24AW11
MOTOR, 230V	24AW24	24AW25	24AW26	24AW27
MOTOR, 460V	24AW24	24AW25	24AW26	24AW27
MOTOR, 575V	24AW43	24AW44	24AW45	24AW46

HI-EFF. OPEN DRIP PROOF

MOTOR, 200V	24CA1489	24CA1490	24CA1491	24CA1492
MOTOR, 230V	24CA1509	24CA1510	24CA1511	24CA1512
MOTOR, 460V	24CA1509	24CA1510	24CA1511	24CA1512
MOTOR, 575V	24CA1536	24CA1537	24CA1538	24CA1539

TOTALLY ENCLOSED FAN COOLED

MOTOR, 200V	24CA2385	24CA2388	24CA2391	24CA2394
MOTOR, 230V	24CA2386	24CA2389	24CA2392	24CA2395
MOTOR, 460V	24CA2386	24CA2389	24CA2392	24CA2395
MOTOR, 575V	24CA2387	24CA2390	24CA2393	24CA2396

HI-EFF. TOTALLY ENCLOSED FAN COOLED

MOTOR, 200V	24CA2654	24CA2655	24CA2656	24CA2657
MOTOR, 230V	24CA2650	24CA2651	24CA2651	24CA2652
MOTOR, 460V	24CA2650	24CA2651	24CA2651	24CA2652
MOTOR, 575V	24CA2660	24CA2661	24CA2662	24CA2663

MOTOR BASES

HP	Motor Frame	Part No.
15	254	24AZ21
20	256	24AZ22
25	284	24AZ23
30	286	24AZ24

**MAIN MOTOR (STANDARD ODP/TEFC & HI-EFF, ODP/TEFC)
(WYE DELTA)**

Name of Part	15 HP Part No.	20 HP Part No.	25 HP Part No.	30 HP Part No.
OPEN DRIP PROOF				
MOTOR, 200V	24CA5432	24CA5434	24CA5436	24CA5438
MOTOR, 230V	24CA3336	24CA3337	24CA3338	24CA3339
MOTOR, 460V	24CA3336	24CA3337	24CA3338	24CA3339
MOTOR, 575V	24CA5433	24CA5435	24CA5437	24CA5439
HI-EFF. OPEN DRIP PROOF				
MOTOR, 200V	24CA5440	24CA5443	24CA5446	24CA5449
MOTOR, 230V	24CA5441	24CA5444	24CA5447	24CA5450
MOTOR, 460V	24CA5441	24CA5444	24CA5447	24CA5450
MOTOR, 575V	24CA5442	24CA5445	24CA5448	24CA5451
TOTALLY ENCLOSED FAN COOLED				
MOTOR, 200V	24CA5452	24CA5454	24CA5456	24CA5458
MOTOR, 230V	24CA3340	24CA3341	24CA3342	24CA3343
MOTOR, 460V	24CA3340	24CA3341	24CA3342	24CA3343
MOTOR, 575V	24CA5453	24CA5455	24CA5457	24CA5459
HI-EFF. TOTALLY ENCLOSED FAN COOLED				
MOTOR, 200V	24CA5460	24CA5463	24CA5466	24CA5469
MOTOR, 230V	24CA5461	24CA5464	24CA5467	24CA5470
MOTOR, 460V	24CA5461	24CA5464	24CA5467	24CA5470
MOTOR, 575V	24CA5462	24CA5465	24CA5468	24CA5471

REPAIR KITS

Your Gardner Denver rotary screw compressor is designed and manufactured for many years of reliable operation. All components are engineered to exacting specifications, which will function together as a system to provide maximum efficiency. To insure the continuing integrity of compressor operation, use only original quality genuine Gardner Denver replacement parts and accessories.

Name of Part	Qty.	Part No.
ROUTINE MAINTENANCE KIT.....		EBE80665
ELEMENT, AIR FILTER.....	2	2116150
ELEMENT, OIL FILTER.....	3	2116128
PERIODIC MAINTENANCE KIT (Inlet Valve).....		302EBE6013
O-RING	1	25BC440
SPRING.....	1	78H22
SPRING.....	1	78W59
O-RING	1	25AM15
RING-RETAINING.....	1	74D87
GASKET (ELIMINATOR)	1	25BC222
PERIODIC OVERHAUL KIT, (SSEBBM)		202SSE6013
BEARING-ROLLER.....	1	12BA130
BEARING-ROLLER.....	1	12BA129
BEARING-ROLLER.....	1	12BA127
BEARING-ROLLER.....	1	12BA128
SEAL-OIL	1	60DD679
SHIM	1	77C58
SPRING.....	1	78W91
SHIM	1	77H54
GASKET (ELIMINATOR)	1	25BC222
O-RING	1	54C210
O-RING	1	25BC380
SEAL-OIL	1	60DD543
OIL SEPARATOR ELEMENT.....	1	2116717
KIT, OIL SEAL.....		302SSH6013
SLEEVE	1	80M12
OIL SEAL	1	60DD679
OIL SEAL	1	60DD690
O-RING	1	8502140
O-RING	1	25BC165
GASKET (ELIMINATOR)	1	25BC222
VALVE-CHECK	1	90AR923
FIELD ENCLOSURE KIT (ODP Motor)(Field Conversion Kit).....	1	300EBE6005

REPAIR KITS (CONTINUED)

Name of Part	Qty.	Part No.
FIELD ENCLOSURE KIT (TEFC Motor)(Field Conversion Kit)	1	301EBE6005
QUIET ENCLOSURE KIT (ODP Motor) (Field Conversion Kit)	1	301EBE6005
ELECTRICAL CONTROL KIT	1	303EBE6013
THERMISTOR PROBE	2	21D264
VALVE-SOLENOID	1	91B70
VALVE-SOLDNOID	1	91B223
SWITCH-VACUUM	1	88H195
TRANSDUCER	2	88H242
PNEUMATIC CONTROL KIT	1	300EBE6013
VALVE-SUBTRACTIVE PILOT	1	2009398
VALVE-SHUTTLE	1	90AR1034
VALVE-CHECK	1	90AR261
GASKET ELIMINATOR	1	25BC222
LUBRICANT (AEON 4000)		
5-GALLON PAIL	1	28H57
55-GALLON DRUM	1	28H36
TOUCH-UP PAINT (White)		
5-GALLON	1	28H76
1-GALLON	1	28H84
1-QUART CAN	1	28H83
WEAR SLEEVE INSTALLATION/REMOVAL KIT	1	SSE81282
WEAR SLEEVE PULLER	1	300SSE219
PLATE PULLER	1	300SSE340
SCREW	1	655EE030
SCREW	1	655ED120
SCREW	1	75D176
GUIDE	1	300SSE450
TOOL	1	200SSH074

Gardner --- **Denver**

Specifications subject to change without notice.

Copyright © 1999 Gardner Denver, Inc.

Litho in U.S.A.

<http://www.gardnerdenver.com> mktg@gardnerdenver.com

For additional information contact your local representative or



Gardner Denver Compressor and Pump Division,
1800 Gardner Expressway, Quincy, Illinois 62301
Customer Service Department Telephone:
(800) 682-9868 FAX: (217) 224-7814

Sales and Service in all major cities.

For parts information, contact Gardner Denver,
Master Distribution Center, Memphis, TN

Telephone: (800) 245-4946 FAX: (901) 542-6159