

---

---

**GARDNER DENVER<sup>®</sup>**

13-9-561  
1st Edition  
September, 1998

**ELECTRA-SAVER II<sup>®</sup>**  
**BASE-MOUNTED COMPRESSORS**

**AUTO SENTRY<sup>®</sup>-ES+ CONTROLS**

**MODELS**

**EBH99E – 40 & 50 HP**

**60 HZ**

**175 & 200 PSI**

**PARTS LIST**

**Gardner**  

---

**Denver**

## **INSTRUCTIONS FOR ORDERING REPAIR PARTS**

When ordering parts, specify Compressor MODEL, Method of Cooling, HORSE-POWER and SERIAL NUMBER (see nameplate on unit). The Serial Number is also stamped on top of the cylinder flange to the right of the inlet housing.

All orders for Parts should be placed with the nearest authorized distributor.

Where NOT specified, quantity of parts required per compressor or unit is one (1); where more than one is required per unit, quantity is indicated in parenthesis. SPECIFY EXACTLY THE NUMBER OF PARTS REQUIRED.

DO NOT ORDER BY SETS OR GROUPS.

To determine the Right Hand and Left Hand side of a compressor, stand at the motor end and look toward the compressor. Right Hand and Left Hand are indicated in parenthesis following the part name, i.e. (RH) & (LH), when appropriate.

**For Operating and Service Instructions see:**

**SERVICE MANUAL      13-9/10-641**

**CONTROLLER MANUAL 13-9/10-647**

**MAINTAIN COMPRESSOR RELIABILITY AND PERFORMANCE WITH  
GENUINE GARDNER DENVER® COMPRESSOR  
PARTS AND SUPPORT SERVICES**

Gardner Denver® Compressor genuine parts, engineered to original tolerances, are designed for optimum dependability — specifically for Gardner Denver compressor systems. Design and material innovations are the result of years of experience with hundreds of different compressor applications. Reliability in materials and quality assurance are incorporated in our genuine replacement parts.

Your authorized Gardner Denver® Compressor distributor offers all the backup you'll need. A worldwide network of authorized distributors provides the finest product support in the air compressor industry. Your local authorized distributor maintains a large inventory of genuine parts and he is backed up for emergency parts by direct access to the Gardner Denver Master Distribution Center (MDC) in Memphis, Tennessee.

Your authorized distributor can support your Gardner Denver® air compressor with these services:

1. Trained parts specialists to assist you in selecting the correct replacement parts.
2. Factory warranted new and remanufactured rotary screw air ends. Most popular model remanufactured air ends are maintained in stock at MDC for purchase on an exchange basis with liberal core credit available for the replacement unit.
3. A full line of factory tested AEON™ compressor lubricants specifically formulated for use in Gardner Denver compressors.
4. Repair and maintenance kits designed with the necessary parts to simplify servicing your compressor.

Authorized distributor service technicians are factory-trained and skilled in compressor maintenance and repair. They are ready to respond and assist you by providing fast, expert maintenance and repair services.

**For the location of your local authorized Gardner Denver Air Compressor distributor refer to the yellow pages of your phone directory or contact:**

Distribution Center:  
Gardner Denver  
Master Distribution Center  
5585 East Shelby Drive  
Memphis, TN 38141  
Phone: (901) 542-6100  
(800) 245-4946  
Fax: (901) 542-6159

Factory:  
Gardner Denver  
1800 Gardner Expressway  
Quincy, IL 62301  
Phone: (217) 222-5400  
Fax: (217) 224-7814

**REMANUFACTURED AIR ENDS**

Whenever an air end requires replacement or repair, Gardner Denver offers an industry unique, factory remanufactured air end exchange program. From its modern Remanufacturing Center in Indianapolis, IN, Gardner Denver is committed to supplying you with the highest quality, factory remanufactured air ends that are guaranteed to save you time, aggravation and money.

**Immediately Available**

Repair downtime costs you money, which is why there are over 200 remanufactured units in inventory at all times, ready for immediate delivery.

**Skilled Craftsmen**

Our Remanufacturing assembly technicians average over 20 years experience with air compression products.

**Precision Remanufacturing**

All potentially usable parts are thoroughly cleaned, inspected and analyzed. Only those parts that can be brought back to original factory specifications are remanufactured. Every remanufactured air end receives

a new overhaul kit: bearings, gears, seals, sleeves and gaskets.

**Extensive Testing**

Gardner Denver performs testing that repair houses just don't do. Magnaflux and ultrasonic inspection spot cracked or stressed castings, monochromatic light analysis exposes oil leaks, and coordinate measurement machine inspects to +/- .0001", insuring that all remanufactured air ends meet factory performance specifications.

**Warranty**

Gardner Denver backs up every remanufactured air end with a new warranty . . . 18 months from purchase, 12 months from service.

Gardner Denver remanufactured air ends deliver *quality without question . . . year in and year out.*

Call Gardner Denver for information on the air end exchange program and the name of your authorized distributor.

Phone Number: 800-245-4946 or  
FAX: 901-542-6159

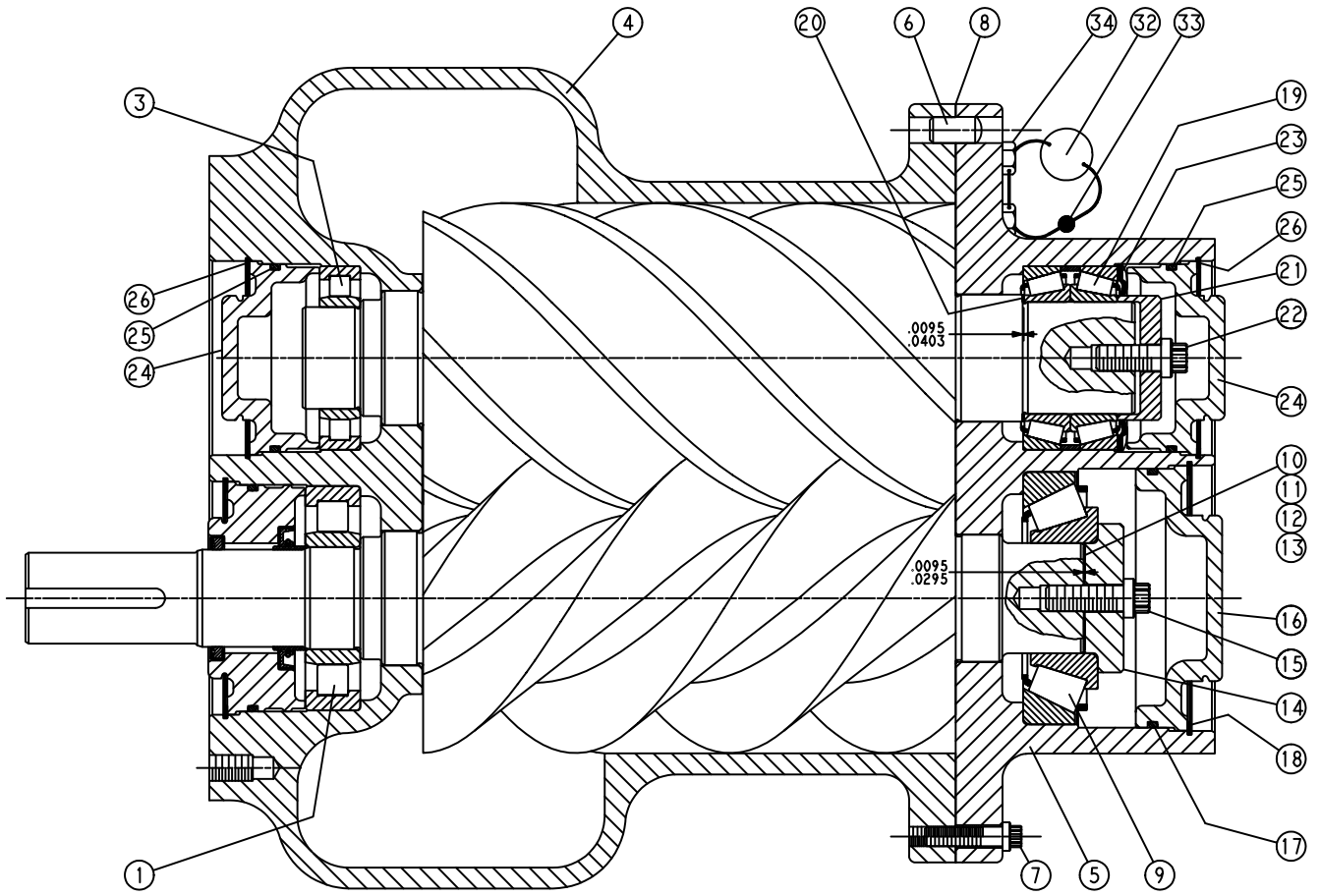
## TABLE OF CONTENTS

Page No.

---

Instructions For Ordering Repair Parts .....	1
Maintain Compressor Reliability and Performance with Genuine Gardner Denver® Compressor	
Parts and Support Services .....	2
Remanufactured Air Ends .....	2
Bare Compressor .....	4, 5
Oil Seal Detail .....	6
C-Flange Motor Adaptor .....	7
Inlet Valve .....	8
Air Filter .....	9
Base Group .....	10
Oil Reservoir .....	11
Oil Return Line .....	12
Discharge Manifold .....	13
Oil Piping .....	14
Air Cooled Discharge Piping .....	15
Water Cooled Heat Exchanger (With Aftercooler) .....	16, 17
Water Cooled Heat Exchanger (Without Aftercooler) .....	18, 19
Final Discharge Piping .....	20
Oil Filter .....	21
Thermal Valve (Thermostatic Mixing) .....	22
Minimum Pressure Valve .....	23
Control Tubing Schematic .....	24, 25
Controller Assembly – Full Voltage Starters .....	26, 27
Controller Assembly – Wye Delta Starters .....	28, 29
Controller Assembly – Without Starter .....	30, 31
Overload Relay Heater Conversion Listing .....	32
Motor Group (Main Drive Motors) .....	33
Motor Group – Air Cooled Fan Motor (Cooling Module) .....	33
Enclosure Group – Common Parts – Air/Water Cooled .....	34
Water Cooled Enclosure Panels .....	35
Air Cooled Enclosure Panels .....	36
Enclosure Hardware .....	37
Vent Fan Group .....	38
Identification and Instruction Group .....	39
Repair Kits .....	40, 41

**BARE COMPRESSOR**



**300SSF810  
(Ref. Drawing)**

**AIREND SELECTION BY PSI**

HP	PSI	AIREND	REMANUFACTURED AIREND
40	175	SSFCBH03	SSFCBH03X
	200	SSFCBH04	SSFCBH04X
50	175	SSFCBH01	SSFCBH01X
	200	SSFCBH02	SSFCBH02X

Order by Part Number and Description. Reference Numbers are for your convenience only.

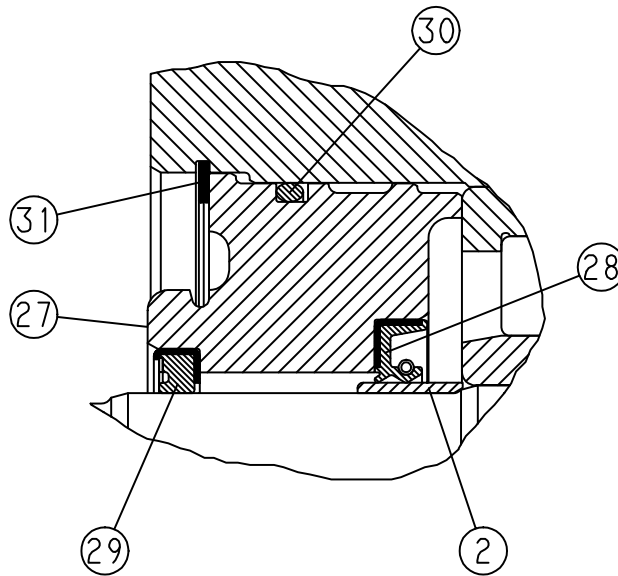
**BARE COMPRESSOR**

Ref. No.	Name of Part	Qty.	Part No.
* 1	BEARING .....	1	12BA130
3	BEARING .....	1	**
4	CYLINDER-AIR .....	1	**
5	HOUSING-BEARING .....	1	**
6	PIN-DOWEL .....	2	**
7	SCREW .....	15	**
8	GASKET .....	1	**
* 9	BEARING .....	1	12BA91
* 10	SHIM .....	2	77H54015
* 11	SHIM .....	3	77H54005
* 12	SHIM .....	3	77H54003
* 13	SHIM .....	3	77H54002
14	PLATE-BEARING RETAINER .....	1	**
15	SCREW .....	1	**
16	COVER .....	1	**
* 17	O-RING .....	1	25BC157
18	RING-RETAINING .....	1	**
* 19	BEARING .....	1	12BA90
* 20	SHIM .....	1	77H67
21	PLATE-BEARING RETAINER .....	1	**
22	SCREW .....	1	**
23	SPRING .....	3	78W48
24	COVER .....	2	**
* 25	O-RING .....	2	25BC298
* 26	RING-RETAINING .....	2	74D53
32	TAG-INSTRUCTION .....	1	**
33	SEAL .....	1	**
34	SCREW .....	2	**
35	PLUG .....	1	**
36	PLUG .....	3	**
37	PLUG .....	1	**
38	PLUG .....	1	**

\* Parts included in Periodic Overhaul Kit number 306SSF6013. Refer to page 40.

\*\* Shown for reference only.

Order by Part Number and Description. Reference Numbers are for your convenience only.



**300SSF810**  
(Ref. Drawing)

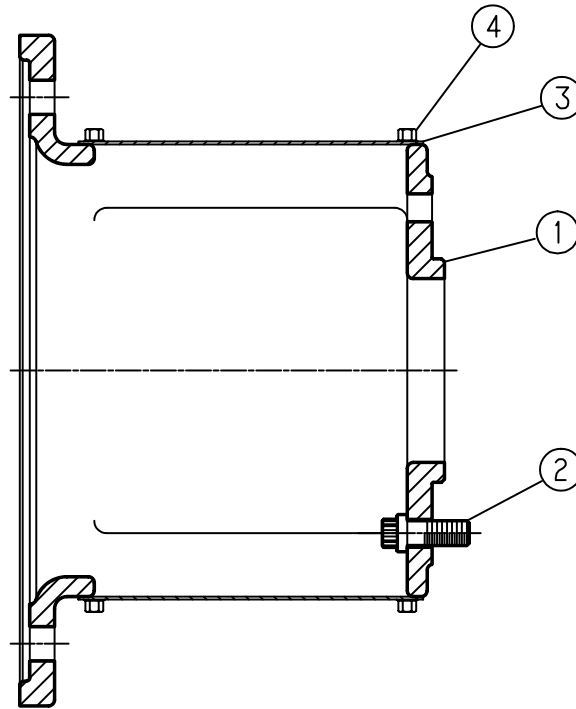
**OIL SEAL DETAIL**

Ref. No.	Name of Part	Qty.	Part No.
* 2	SLEEVE .....	1	80M12
27	HOUSING-SEAL .....	1	202SSE362
* 28	SEAL-OIL .....	1	60DD679
* 29	SEAL-OIL .....	1	60DD543
* 30	O-RING .....	1	8500958
* 31	RING-RETAINING .....	1	74D48

\* Parts included in Oil Seal Kit number 300SSF6013. Refer to page 40.

Wear Sleeve Installation/Removal Kit number 200SSH4017. Refer to page 40.

Order by Part Number and Description. Reference Numbers are for your convenience only.

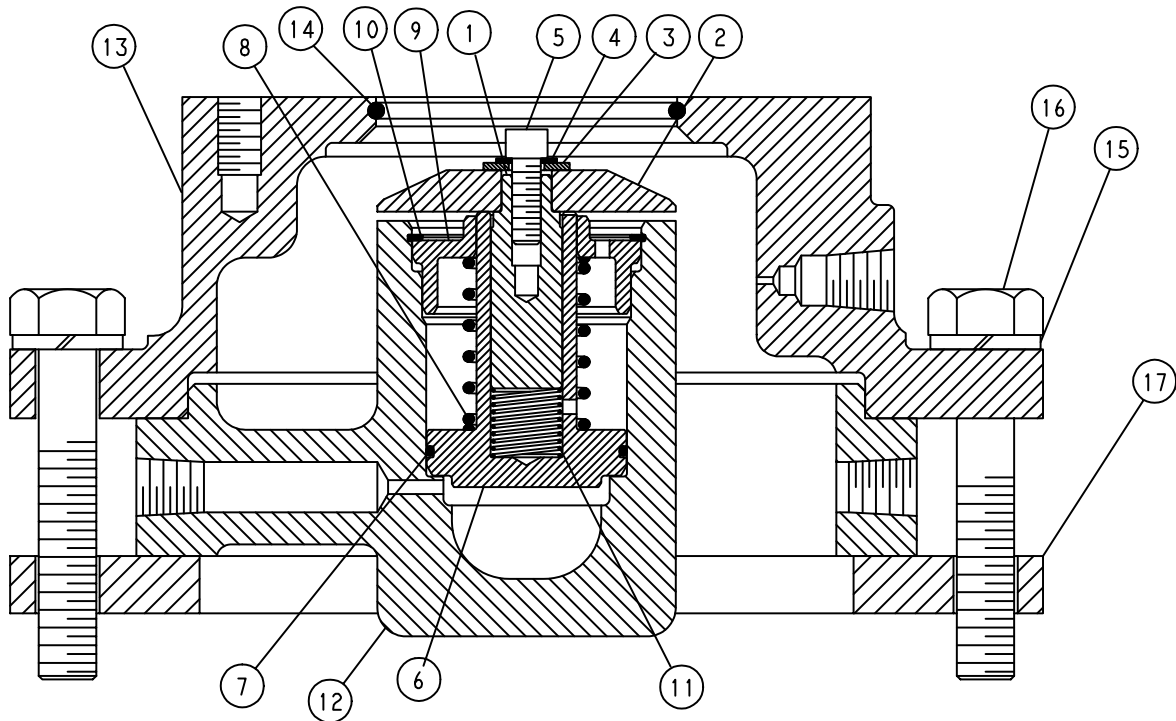


301SSF810  
(Ref. Drawing)

C-FLANGE MOTOR ADAPTOR

Ref. No.	Name of Part	Qty.	Part No.
1	ADAPTOR .....	1	201SSF170
2	SCREW .....	7	75LM123
3	GUARD-COUPLING .....	1	200SSF339
4	SCREW .....	4	75LM47

Order by Part Number and Description. Reference Numbers are for your convenience only.



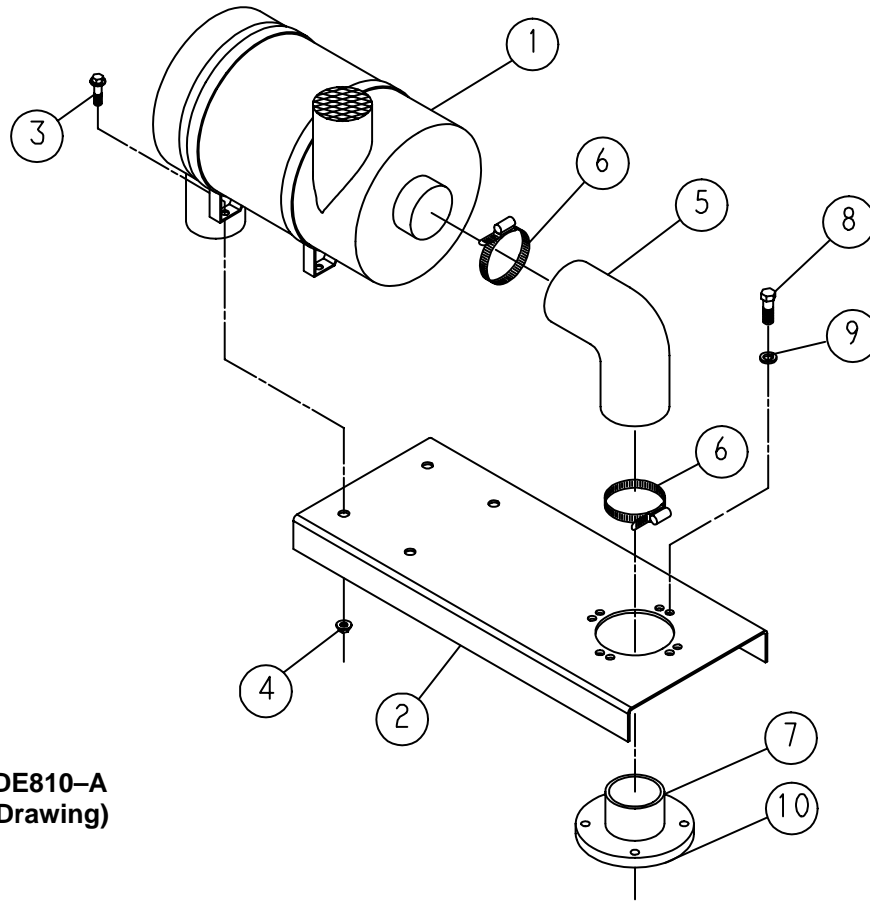
**308SSF810-A**  
(Ref. Drawing)

**INLET VALVE**

Ref. No.	Name of Part	Qty.	Part No.
1	GUIDE-VALVE .....	1	201SSE483
2	VALVE-INLET .....	1	202SSE044
3	WASHER .....	1	95A1
4	WASHER .....	1	95H56
5	SCREW .....	1	655EC03N
6	PISTON-INLET VALVE .....	1	202SSE043
* 7	O-RING .....	1	25BC440
* 8	SPRING .....	1	78H22
9	RETAINER .....	1	200SSE205
* 10	RING-RETAINING .....	1	74D87
* 11	SPRING .....	1	78W59
12	HOUSING-INLET .....	1	205SSE041
13	SEAT .....	1	204SSE256
* 14	O-RING .....	1	25AM15
15	WASHER .....	8	95B5
16	SCREW .....	8	655EE120
17	PLATE .....	1	201SSF247

\* Parts included in Periodic Maintenance Kit number 302EBE6013. Refer to page 40.

Order by Part Number and Description. Reference Numbers are for your convenience only.



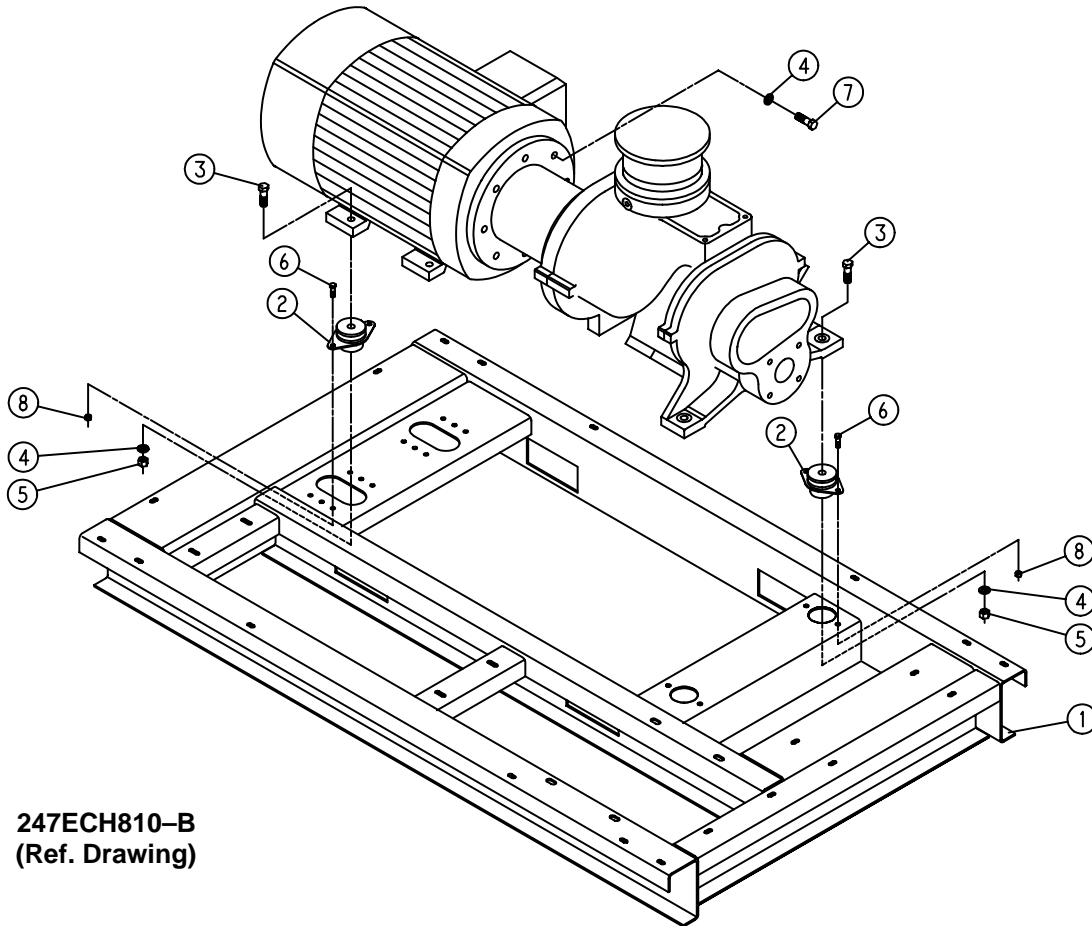
**238EDE810-A**  
(Ref. Drawing)

**AIR FILTER**

Ref. No.	Name of Part	Qty.	Part No.
1	FILTER-AIR .....	1	5L260
2	BRACKET .....	1	203EDE389
3	SCREW-FLANGED .....	4	75LM50
4	NUT-FLANGED .....	4	50AW4
5	HOSE-MOLDED .....	1	29Z108
6	CLAMP-HOSE .....	2	29B36
7	ADAPTOR-FILTER .....	1	200EDE070
8	SCREW .....	4	655ED080
9	LOCKWASHER .....	4	95B3
10	GASKET ELIMINATOR .....	1	25BC222
*	FOR REPAIR: ELEMENT, AIR FILTER .....	1	2116701

\* Not shown.

Order by Part Number and Description. Reference Numbers are for your convenience only.

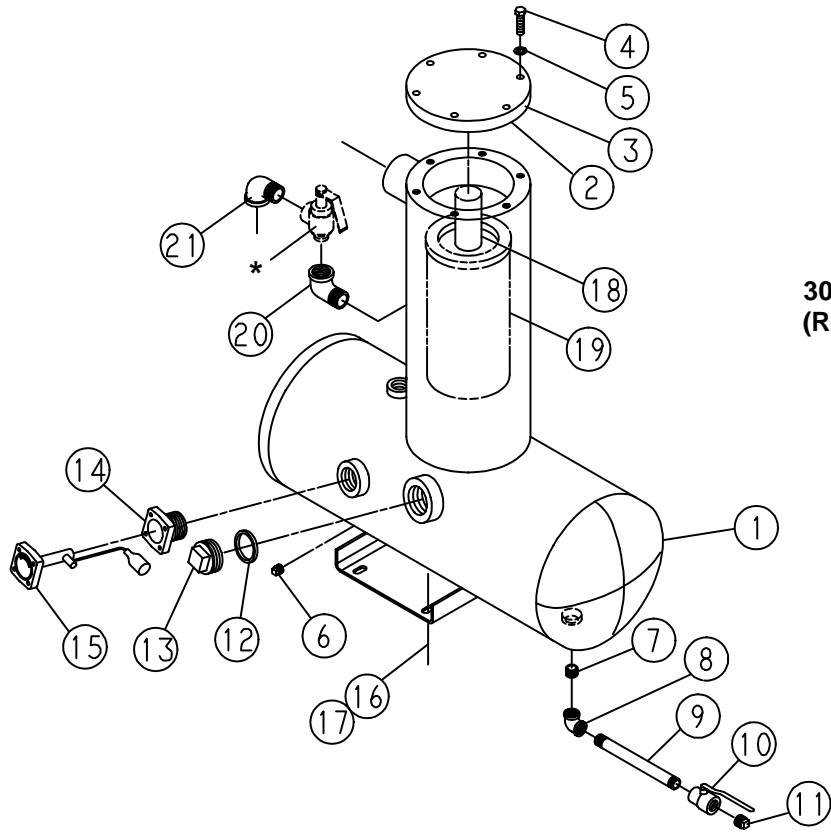


247ECH810-B  
(Ref. Drawing)

**BASE GROUP**

Ref. No.	Name of Part	Qty.	Part No.
1	BASE .....	1	300EBH285
2	ISOLATOR-VIBRATION .....	4	49C46
3	SCREW .....	4	655EF200
4	LOCKWASHER .....	8	95B7
5	NUT .....	4	50B7
6	SCREW-FLANGED .....	8	75LM51
7	SCREW .....	4	655EF070
8	NUT-FLANGED .....	8	50AW5
*	COUPLING-DRIVE .....	1	51L58

\* Not shown – furnish (6) 2116477 CUSHIONS for repair – See Page 41.



304EBH810-A  
(Ref. Drawing)

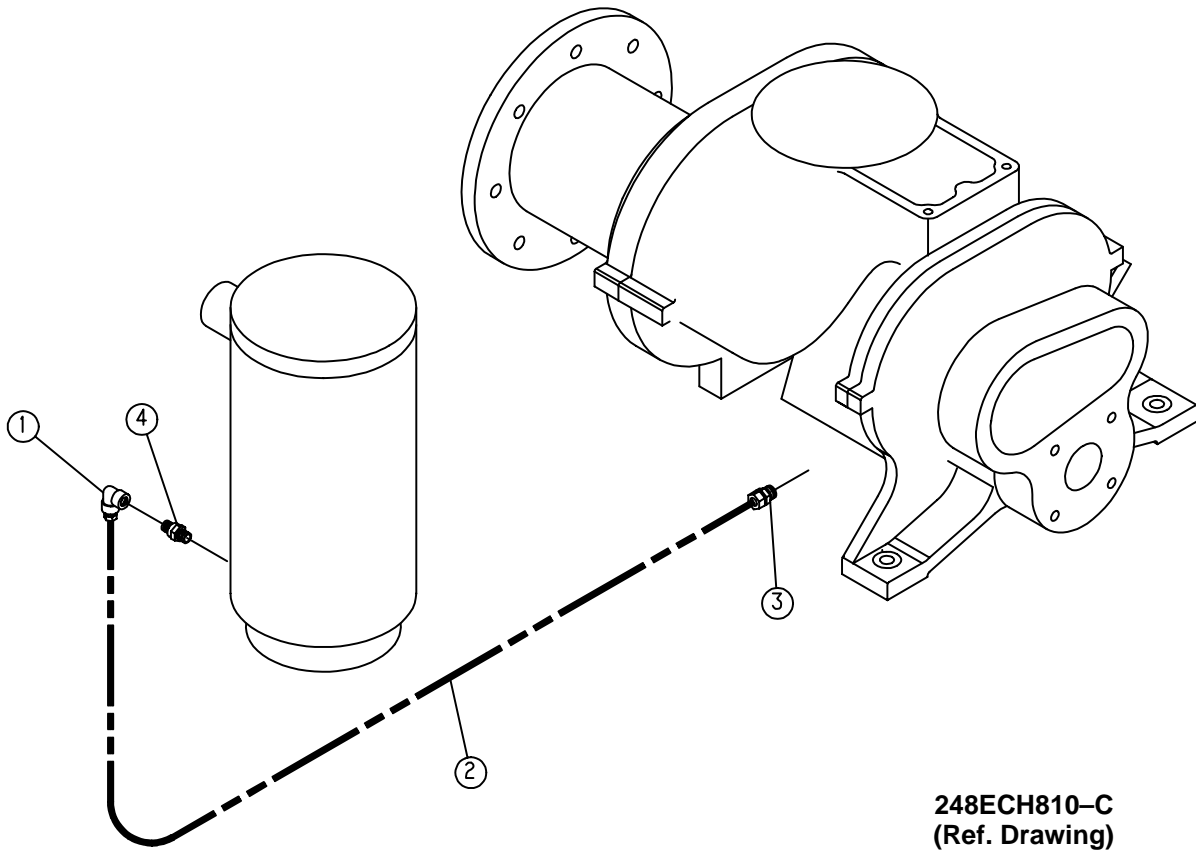
OIL RESERVOIR

Ref. No.	Name of Part	Qty.	Part No.
1	RESERVOIR-OIL .....	1	302EBH037
2	GASKET ELIMINATOR .....	1	25BC222
3	COVER .....	1	301EBP225
4	SCREW .....	6	655EE070
5	WASHER .....	6	95B5
6	PLUG .....	1	64AA5
7	NIPPLE .....	1	63U8X14
8	ELBOW .....	1	64C19G
9	NIPPLE .....	1	63U8X80
10	VALVE-BALL .....	1	90AR360
11	PLUG .....	1	64AA7
12	O-RING .....	1	54C214
13	COVER-FILLER .....	1	200SPF156
14	ADAPTOR-GAUGE .....	1	200EDE058
15 **	GAUGE-FLOAT .....	1	300EBM303
16	SCREW .....	4	75LM135
17	NUT .....	4	50AW35
18	SPACER (TUBE/PIPE) .....	1	300EBH392
19	SEPARATOR-AIR/OIL .....	1	200ECH035
20	ELBOW .....	1	64D15G
21	ELBOW .....	1	64D10G

\* RELIEF VALVE: 175 PSI - 90AR171  
200 PSI - 90AR197

\*\* For Repair: Float Gauge Gasket - order Part Number 54C204

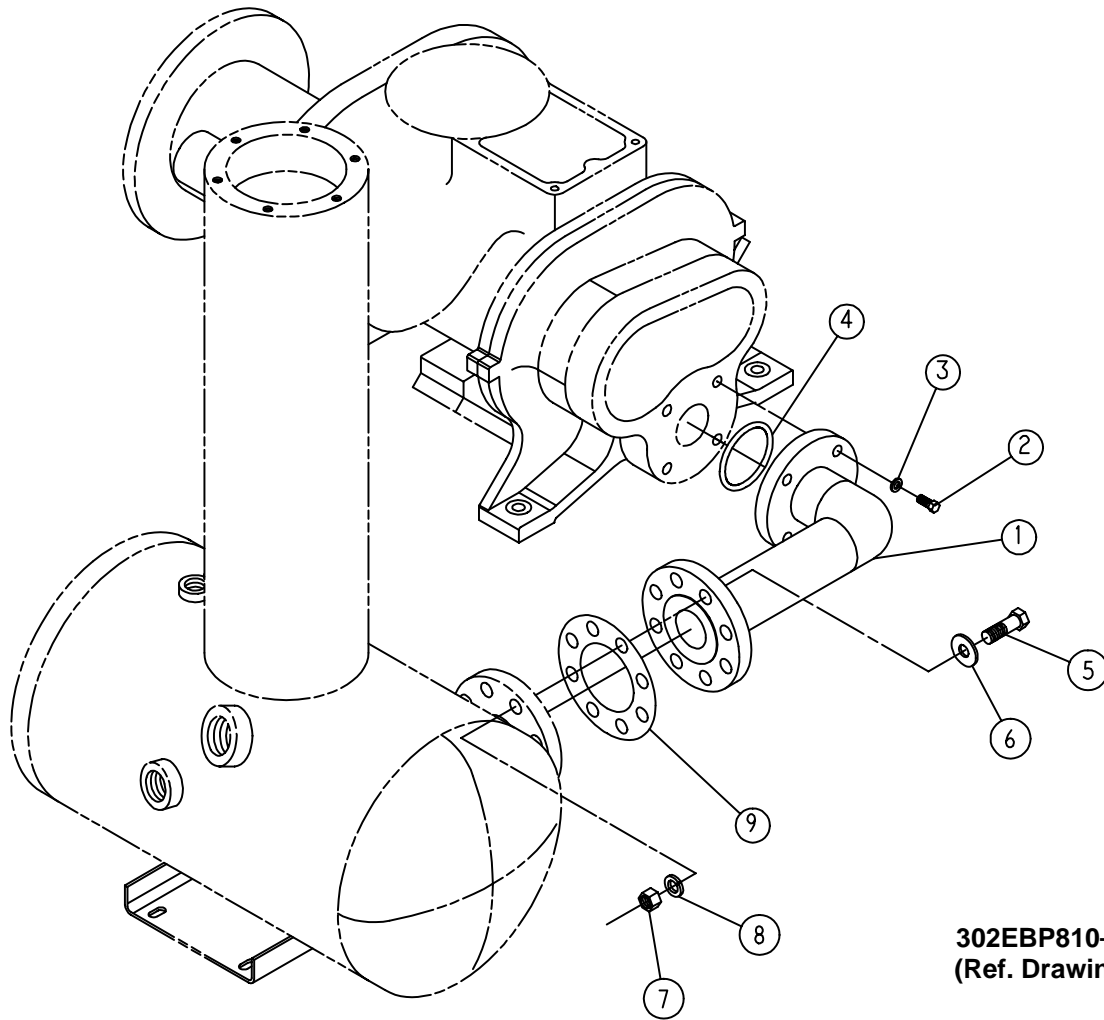
Order by Part Number and Description. Reference Numbers are for your convenience only.



**OIL RETURN LINE**

Ref. No.	Name of Part	Qty.	Part No.
1	ELBOW-TUBE .....	1	86N276
2	TUBE .....	10 Ft.	85K3
3	CONNECTOR-TUBE .....	1	86N325
4	VALVE-CHECK .....	1	90AR261

Order by Part Number and Description. Reference Numbers are for your convenience only.

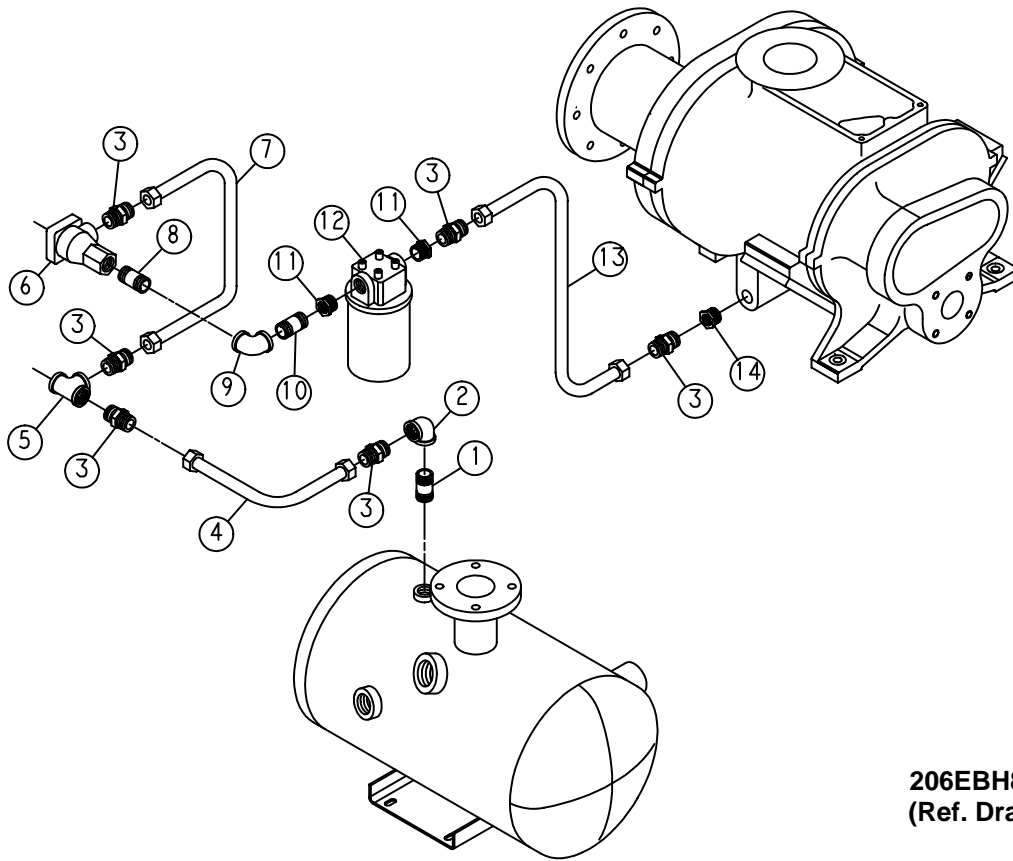


302EBP810-A  
(Ref. Drawing)

**DISCHARGE MANIFOLD**

Ref. No.	Name of Part	Qty.	Part No.
1	MANIFOLD .....	1	300EBH286
2	SCREW .....	4	655EF070
3	WASHER .....	4	95B7
4	O-RING .....	1	25BC686
5	SCREW .....	8	655EG140
6	WASHER .....	8	95A8
7	NUT .....	8	50B8
8	WASHER .....	8	95B8
9	GASKET .....	1	25C513N

Order by Part Number and Description. Reference Numbers are for your convenience only.



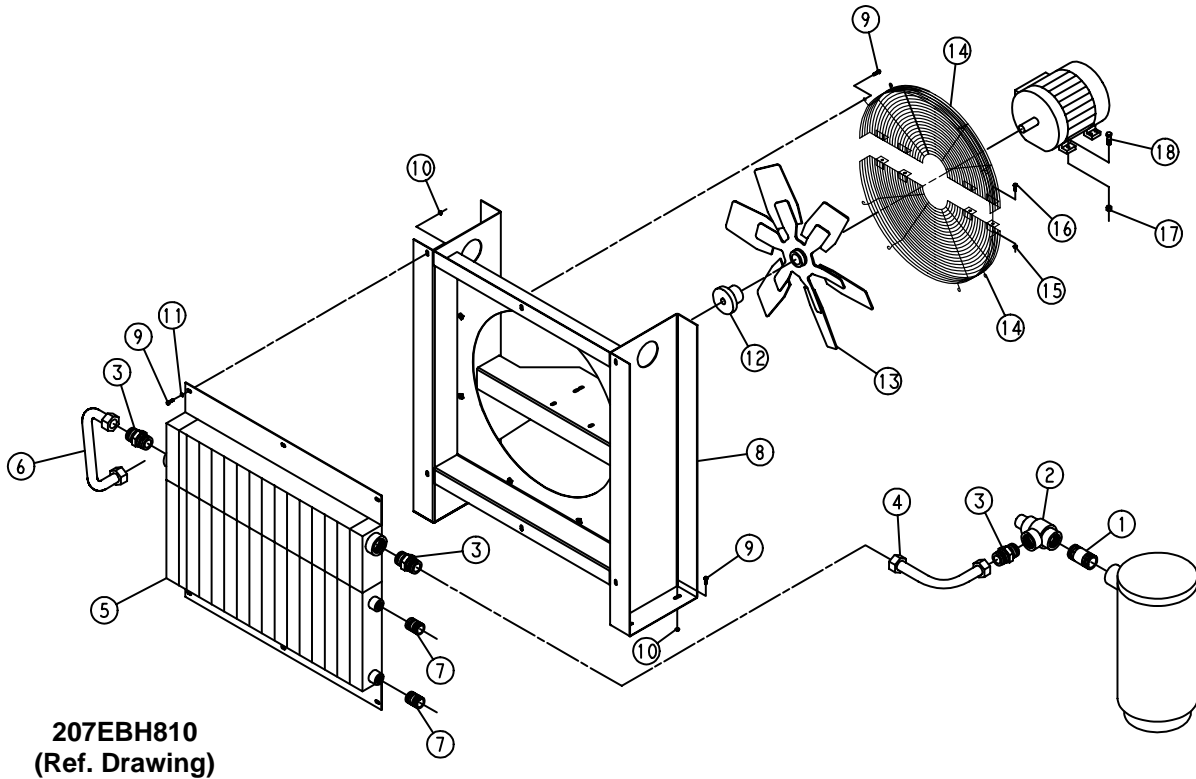
206EBH810-A  
(Ref. Drawing)

OIL PIPING

Ref. No.	Name of Part	Qty.	Part No.
1	NIPPLE .....	1	63U12X20
2	ELBOW .....	1	64C18G
3	CONNECTOR-TUBE .....	6	86H137
4	TUBE WITH FITTINGS .....	1	300EBH863
5	TEE-PIPE .....	1	64G18G
6	VALVE-THERMAL (For Repair Parts see page 22) .....	1	90AR991
7	TUBE WITH FITTINGS .....	1	202EBH863
8	NIPPLE-PIPE .....	1	63U12X13
9	ELBOW .....	1	64C18G
10	NIPPLE .....	1	63U12X13
11	BUSHING-PIPE .....	2	64E36
12 *	FILTER-OIL (For Repair Parts see page 21) .....	1	300EBM369
13	TUBE WITH FITTINGS .....	1	301EBH863
14	BUSHING-PIPE .....	1	64E36

\* Repair Element Part Number is 2117146.

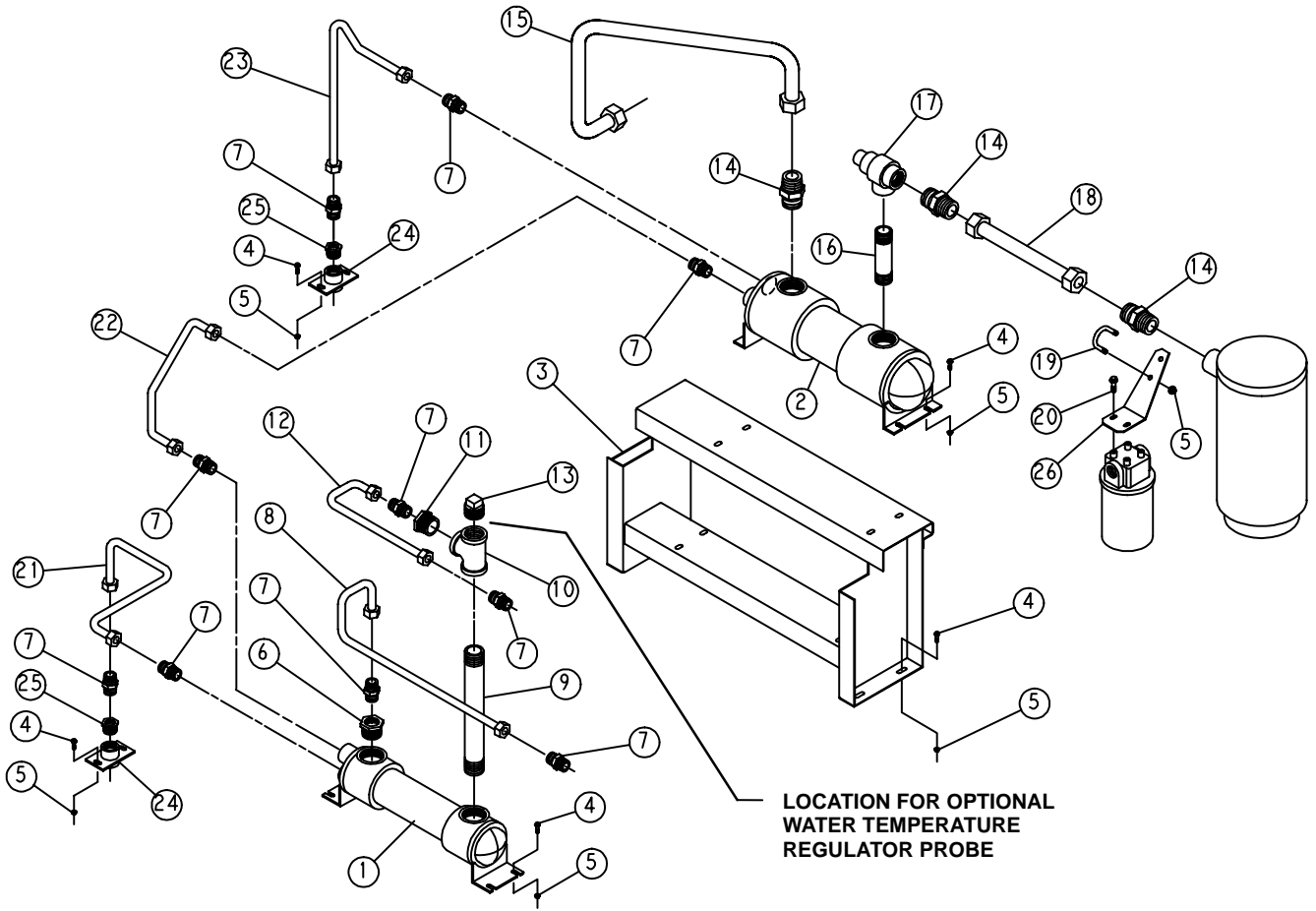
Order by Part Number and Description. Reference Numbers are for your convenience only.



**AIR COOLED DISCHARGE PIPING**

Ref. No.	Name of Part	Qty.	Part No.
1	NIPPLE .....	1	63U20X15
2	VALVE-MINIMUM PRESSURE .....	1	300EBH527
3	CONNECTOR-TUBE .....	3	86H140
4	TUBE WITH FITTINGS .....	1	203EBH863
5	COOLER-OIL/AIR-RADIATOR .....	1	300EBH201
	COOLER-OIL/AIR-RADIATOR - SEACOAST OPTION .....	1	301EBH201
6	TUBE WITH FITTINGS .....	1	204EBH863
7	NIPPLE .....	2	63U12X30
8	SUPPORT .....	1	200ECH165
9	SCREW-FLANGED .....	18	75LM51
10	NUT-FLANGED .....	10	50AW4
11	WASHER .....	6	95A3
12	BUSHING-HUB .....	1	22G4
13	FAN .....	1	200ESJ701
14	GUARD-FAN .....	1	202ECH393
15	NUT-FLANGED .....	4	50AW4
16	SCREW-FLANGED .....	4	75LM50
17	NUT-FLANGED .....	4	50AW4
18	SCREW-FLANGED .....	4	75LM97

# WATER COOLED HEAT EXCHANGER (WITH AFTERCOOLER)



**208EBH810**  
**(Ref. Drawing)**

Order by Part Number and Description. Reference Numbers are for your convenience only.

**WATER COOLED HEAT EXCHANGER (WITH AFTERCOOLER)**

Ref. No.	Name Of Part	Qty.	Part No.
1	EXCHANGER-HEAT – Fresh Water – Standard .....	1	200EBH349
*	EXCHANGER-HEAT – Salt Water Option .....	1	201EBH349
	BONNET-IN & OUT (For Repair – Fresh Water) .....	1	2117753
	BONNET-RETURN (For Repair – Fresh Water) .....	1	2117754
	GASKET-IN & OUT (For Repair – Fresh Water & Salt Water) .	1	2109059
	GASKET-RETURN (For Repair – Fresh Water & Salt Water) .	1	2117755
2	AFTERCOOLER – Fresh Water – Standard .....	1	200EBH292
*	AFTERCOOLER – Salt Water Option .....	1	201EBH292
	BONNET-IN & OUT (For Repair – Fresh Water) .....	1	2117753
	BONNET-RETURN (For Repair – Fresh Water) .....	1	2117754
	GASKET-IN & OUT (For Repair – Fresh Water & Salt Water) .	1	2109059
	GASKET-RETURN (For Repair – Fresh Water & Salt Water) .	1	2117755
3	SUPPORT .....	1	200EBH165
4	SCREW-FLANGED .....	16	75LM51
5	NUT-FLANGED .....	18	50AW5
6	BUSHING-PIPE .....	1	64E6G
7	CONNECTOR-TUBE .....	10	86H137
8	TUBE WITH FITTINGS .....	1	209EBH863
9	NIPPLE .....	1	63U20X110
10	TEE-PIPE .....	1	64EB168G
11	BUSHING-PIPE .....	1	64E6G
12	TUBE WITH FITTINGS .....	1	210EBH863
13	PLUG .....	1	64A26
14	CONNECTOR-TUBE .....	3	86H140
15	TUBE WITH FITTINGS .....	1	211EBH863
16	NIPPLE .....	1	63U20X44
17	VALVE-MINIMUM PRESSURE .....	1	300EBH527
18	TUBE WITH FITTINGS .....	1	212EBH863
19	U-BOLT .....	1	15U72
20	SCREW-FLANGED .....	2	75LM50
21	TUBE WITH FITTINGS .....	1	208EBH863
22	TUBE WITH FITTINGS .....	1	207EBH863
23	TUBE WITH FITTINGS .....	1	205EBH863
24	MANIFOLD-WATER .....	2	200ECM072
25	BUSHING-PIPE .....	2	64E36
26	BRACKET-FILTER .....	1	200EBH389
*	WATER TEMPERATURE REGULATOR .....	1	90AR326
*	WATER SOLENOID VALVE (N4) .....	1	91B167

\* Optional items.



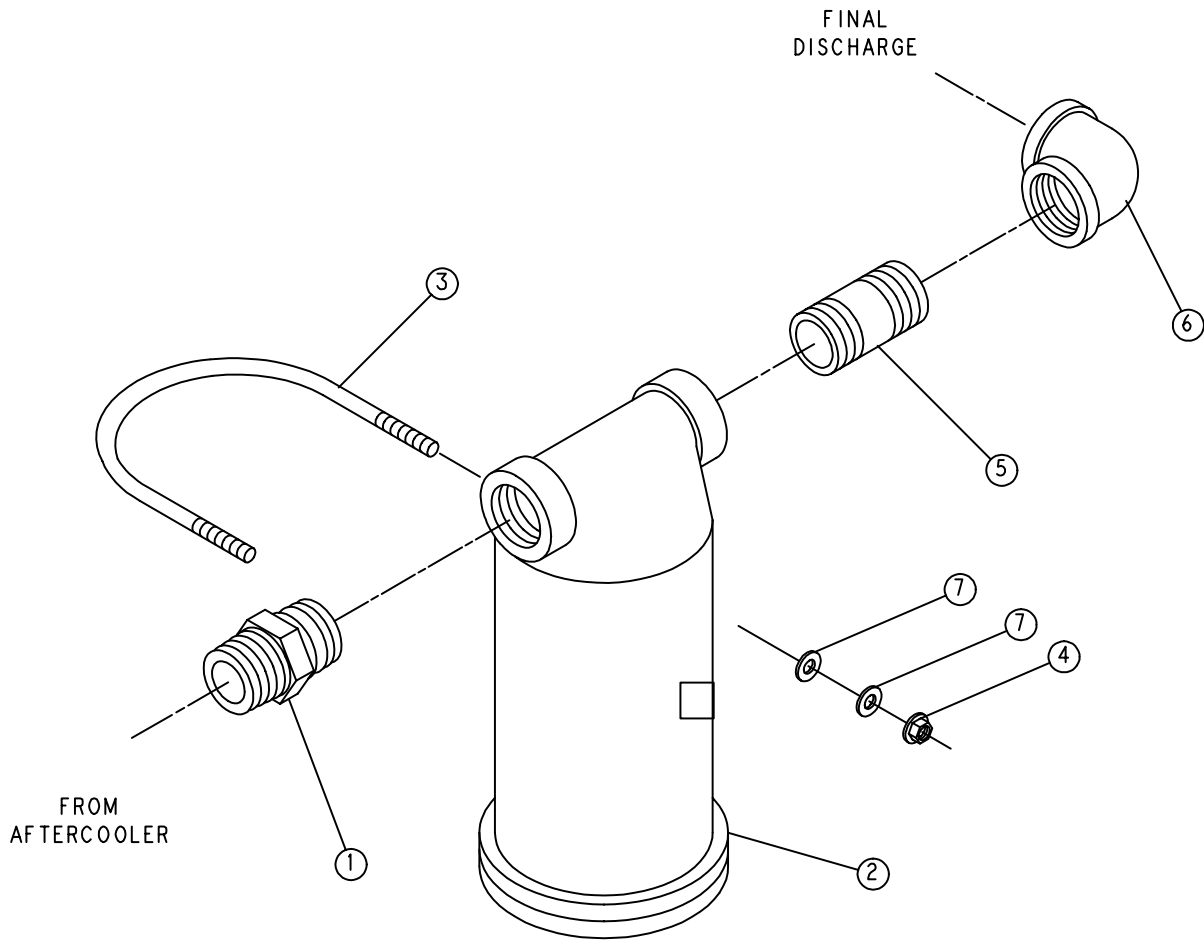
Order by Part Number and Description. Reference Numbers are for your convenience only.

**WATER COOLED HEAT EXCHANGER (WITHOUT AFTERCOOLER)**

Ref. No.	Name Of Part	Qty.	Part No.
1	EXCHANGER-HEAT – Fresh Water – Standard . . . . .	1	200EBH349
*	EXCHANGER-HEAT – Salt Water Option . . . . .	1	201EBH349
	BONNET-IN & OUT (For Repair – Fresh Water) . . . . .	1	2117753
	BONNET-RETURN (For Repair – Fresh Water) . . . . .	1	2117754
	GASKET-IN & OUT (For Repair – Fresh Water & Salt Water) . . . . .	1	2109059
	GASKET-RETURN (For Repair – Fresh Water & Salt Water) . . . . .	1	2117755
2	TUBE WITH FITTINGS . . . . .	1	213EBH863
3	SUPPORT . . . . .	1	200EBH165
4	SCREW-FLANGED . . . . .	16	75LM51
5	NUT-FLANGED . . . . .	18	50AW5
6	BUSHING-PIPE . . . . .	1	64E6G
7	CONNECTOR-TUBE . . . . .	8	86H137
8	TUBE WITH FITTINGS . . . . .	1	209EBH863
9	NIPPLE . . . . .	1	63U20X110
10	TEE-PIPE . . . . .	1	64EB168G
11	BUSHING-PIPE . . . . .	1	64E6G
12	TUBE WITH FITTINGS . . . . .	1	210EBH863
13	PLUG . . . . .	1	64A26
14	NIPPLE . . . . .	1	63U20X70
15	ELBOW . . . . .	1	64C21G
16	NIPPLE . . . . .	1	63U20X15
17	VALVE-MINIMUM PRESSURE . . . . .	1	300EBH527
18	CONNECTOR-TUBE . . . . .	1	86H140
19	U-BOLT . . . . .	1	15U72
20	SCREW-FLANGED . . . . .	2	75LM50
21	U-BOLT . . . . .	2	15U58
22	BRACKET-PIPE . . . . .	2	200ECH108
23	NUT-FLANGED . . . . .	4	50AW5
24	MANIFOLD-WATER . . . . .	2	200ECM072
25	BUSHING-PIPE . . . . .	2	64E36
26	BRACKET-FILTER . . . . .	1	200EBH389
27	TUBE WITH FITTINGS . . . . .	1	208EBH863
28	TUBE WITH FITTINGS . . . . .	1	206EBH863
*	WATER TEMPERATURE REGULATOR . . . . .	1	90AR326
*	WATER SOLENOID VALVE (N4) . . . . .	1	91B167

\* Optional items.

Order by Part Number and Description. Reference Numbers are for your convenience only.



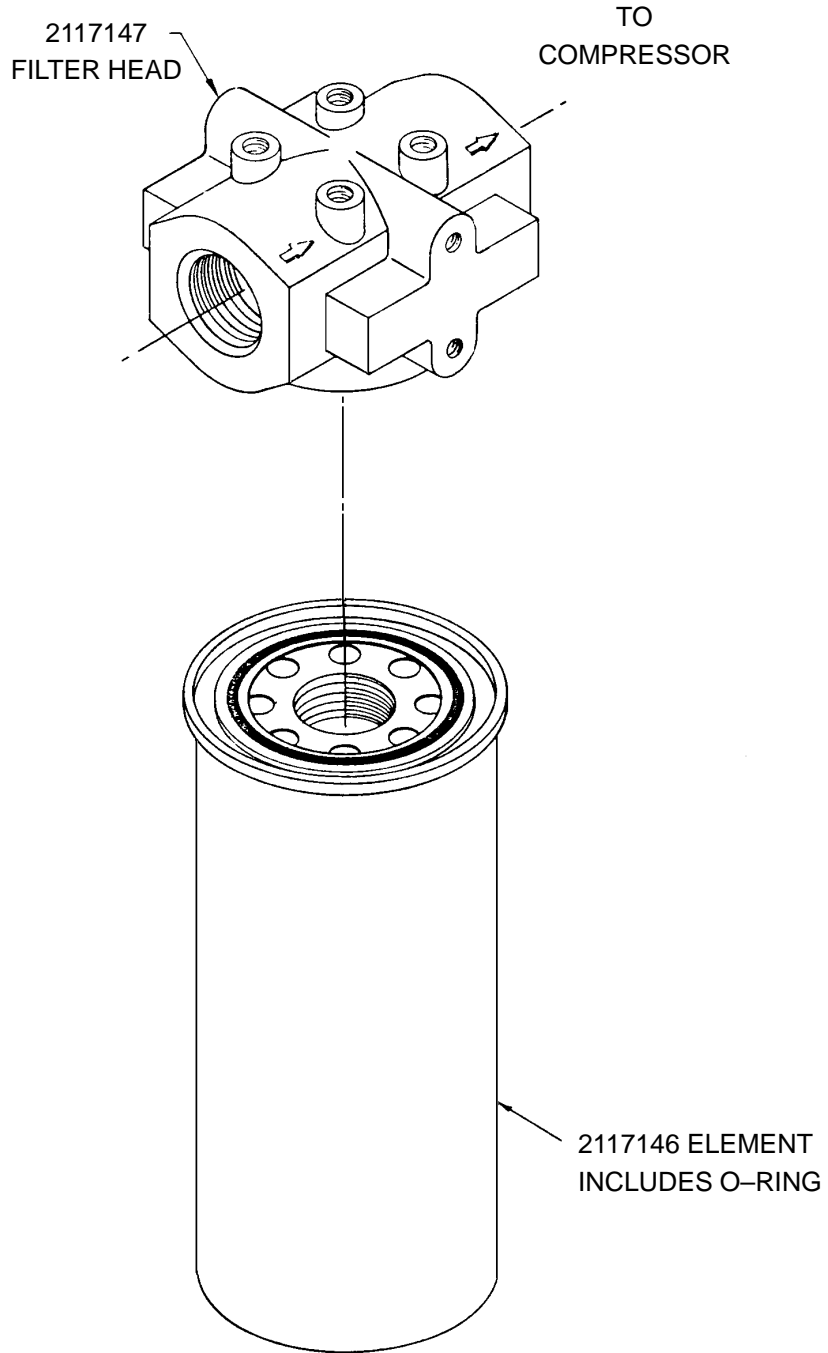
**210EBH810-A**  
**(Ref. Drawing)**

**FINAL DISCHARGE PIPING**

Ref. No.	Name of Part	Qty.	Part No.
1	CONNECTOR-TUBE .....	1	86H140
2 *	TRAP .....	1	83C83
3	U-BOLT .....	1	143742
4	NUT-FLANGED .....	2	50AW5
5	NIPPLE .....	1	63U20X15
6	ELBOW .....	1	64C21G
7	WASHER .....	4	95A3

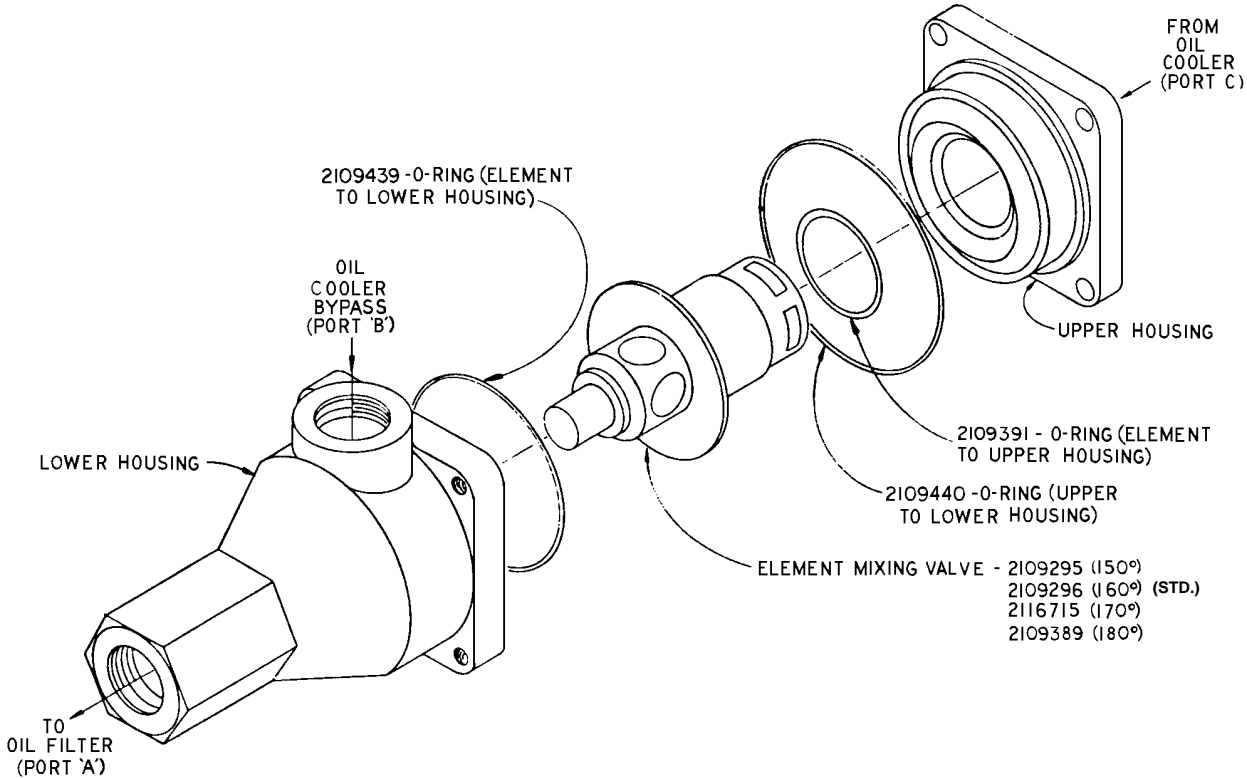
\* Repair Parts Kits for Moisture Separator:      2117587 – Valve & Seat Assembly  
                                                                                  2117588 – Cover Gasket  
                                                                                  2117589 – Float & Spindle

**OIL FILTER – 300EBM369**



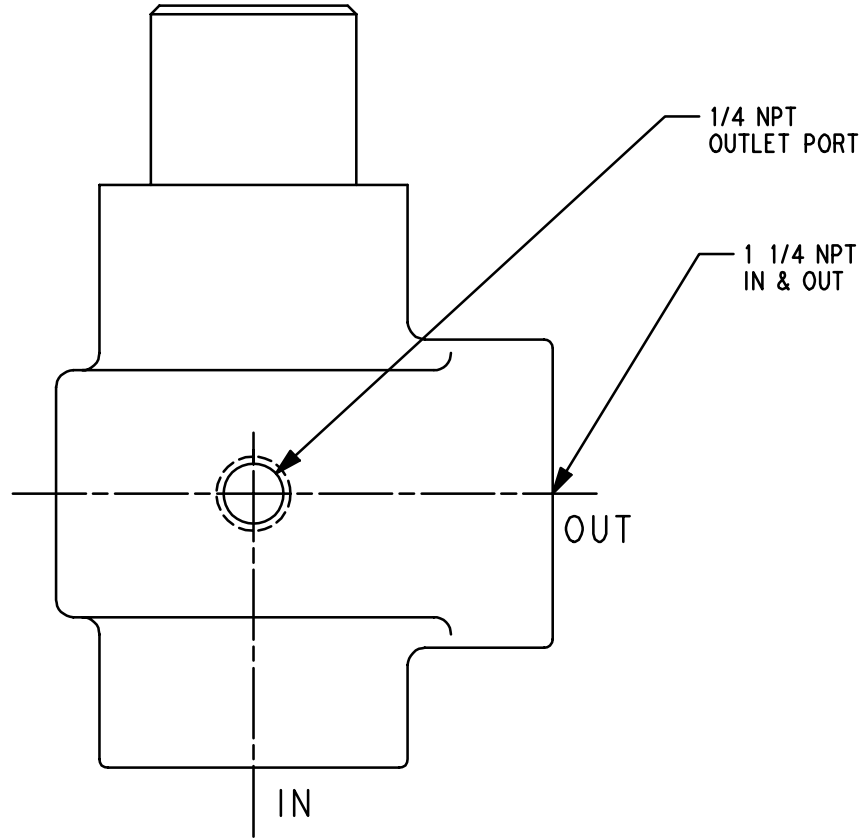
**WITH 321EAQ077 DECAL AFFIXED TO ELEMENT**

**THERMAL VALVE  
(Thermostatic Mixing)**



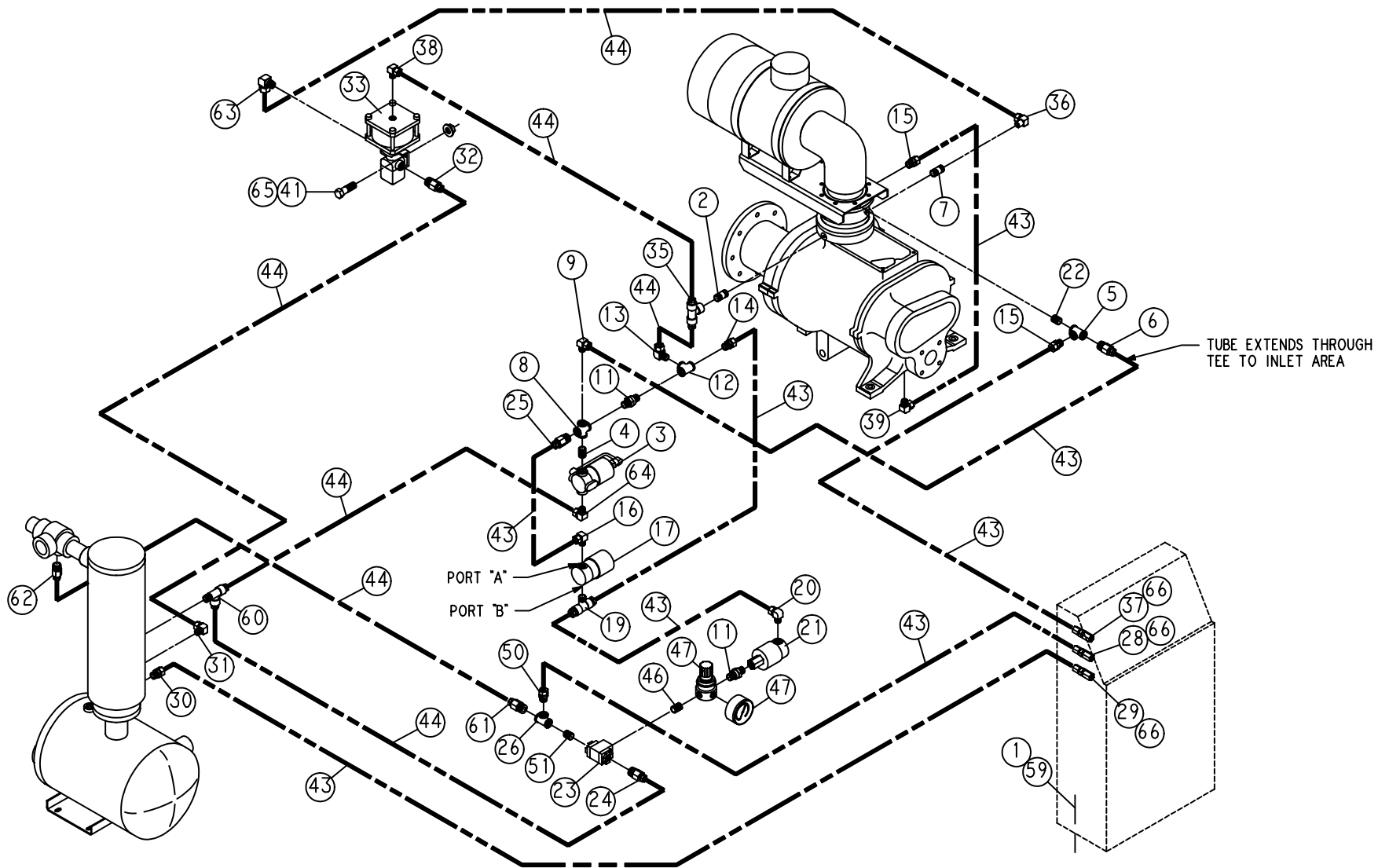
**90AR991 THERMAL VALVE (ALUMINUM HOUSING)**

**MINIMUM PRESSURE VALVE**



**300EBH527  
(Ref. Drawing)**

# CONTROL TUBING SCHEMATIC



TUBE EXTENDS THROUGH TEE TO INLET AREA

287ECM810-P  
(Ref. Drawing)

Order by Part Number and Description. Reference Numbers are for your convenience only.

CONTROL TUBING SCHEMATIC

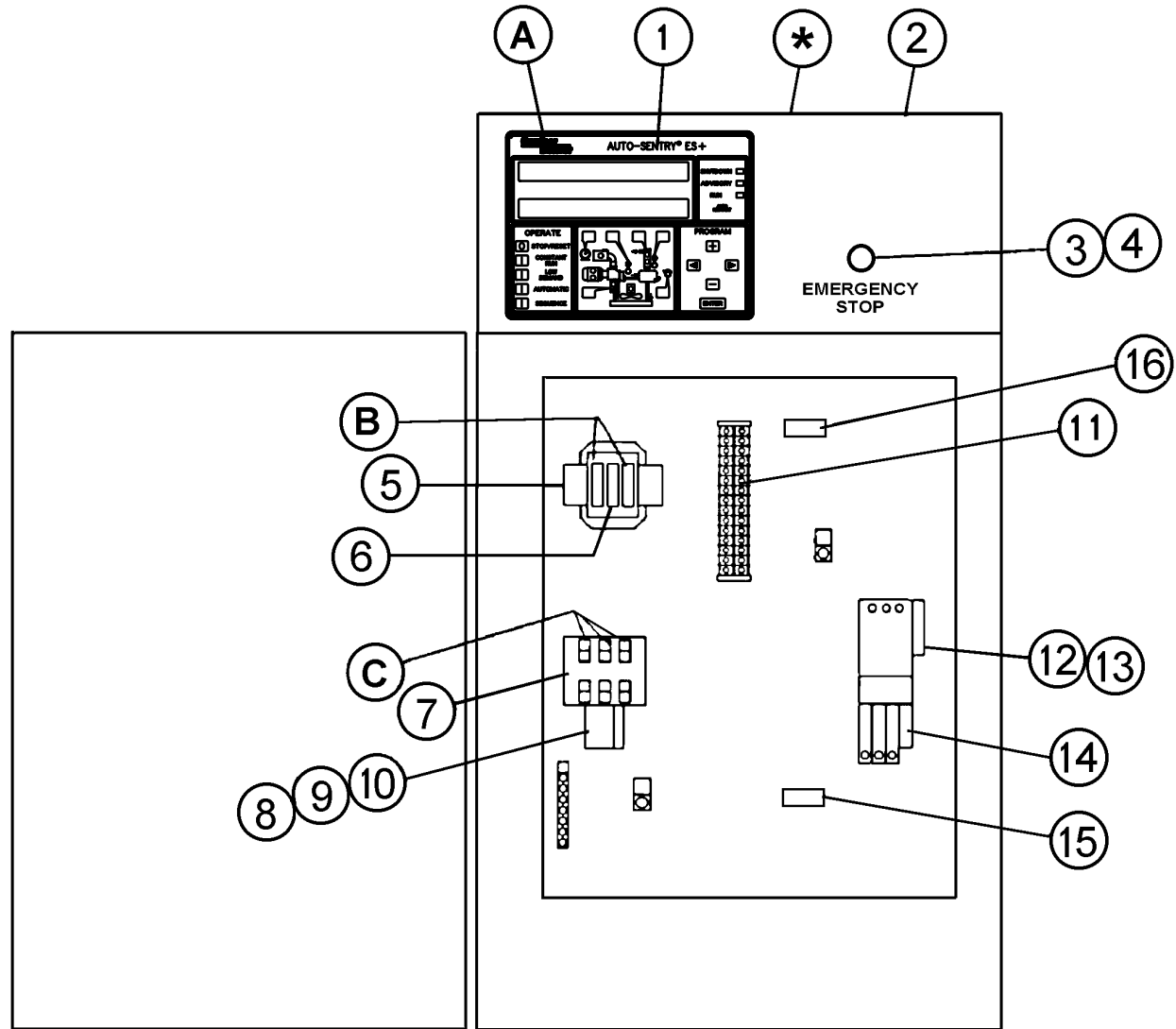
Ref. No.	Name of Part	Qty.	Part No.	Ref. No.	Name of Part	Qty.	Part No.
1	SCREW .....	4	75LM51	31	ELBOW .....	1	BM11573S64
2	NIPPLE .....	1	63U4X20	32	CONNECTOR-TUBE .....	1	86N311
3 ***	VALVE-SOLENOID (BDV) ...	1	91B70	33 *	VALVE-CONTROL .....	1	90AR35
4	NIPPLE .....	1	63U4X7	35	TEE .....	1	86N319
5	TEE .....	1	64G19G	36	ELBOW .....	1	86N320
6	CONNECTOR-TUBE .....	1	86N272	37	CONNECTOR-TUBE .....	1	86N287
7	NIPPLE .....	1	63U4X20	38	ELBOW .....	1	BM11573S64
8	CROSS .....	1	64K14G	39	ELBOW .....	1	86N277
9	ELBOW .....	1	86N277	41	NUT .....	2	50AW3
11	VALVE .....	2	90AR261	43	TUBE .....	28	85K3
12	TEE .....	1	64G19G	44	TUBE .....	24	85K5
13	ELBOW .....	1	BM11573S64	46	NIPPLE .....	1	63U4X7
14	CONNECTOR-TUBE .....	1	86N289	47	REGULATOR .....	1	88H139
15	CONNECTOR-TUBE .....	2	86N276		GAUGE (For Repair) .....	1	2116732
16	ELBOW .....	1	86N277	50	CONNECTOR-TUBE .....	1	86N276
17	VALVE-SOLENOID (IVO) ....	1	91B81	51	NIPPLE .....	1	63U4X7
18	BUSHING-PIPE .....	1	64E2G	59	NUT .....	4	50AW5
19	TEE .....	1	86N318	60	TEE .....	1	86N317
20	NIPPLE .....	1	63U4X7	61	CONNECTOR-TUBE .....	1	86N311
20	ELBOW .....	1	86N277	62	CONNECTOR-TUBE .....	1	86N311
21	VALVE-SOLENOID (IVC) ....	1	91B80	63	ELBOW .....	1	BM11573S64
23	VALVE-CONTROL .....	1	90AR1034	64	ELBOW .....	1	BM11573S64
24	CONNECTOR-TUBE .....	1	86N311	65	SCREW .....	2	75LM48
25	CONNECTOR-TUBE .....	1	86N276	66	O-RING .....	3	165011
26	TEE .....	1	64G19G				
28	CONNECTOR-TUBE .....	1	86N316	**	PROBE-ELECTRICAL .....	2	21D264
29	CONNECTOR-TUBE .....	1	86N316	**	PRESSURE TRANSDUCER ..	2	88H314
30	CONNECTOR-TUBE .....	1	86N276	**	VACUUM SWITCH .....	1	88H195

\* For Repair Kit order Part Number 2117619 (does not include Diaphragm), or for Repair Diaphragm only, order Part Number 2116130.

\*\* Not shown.

\*\*\* For Repair Kit (includes Springs, Seals, Piston Assembly, Plunger Assembly, Nut and O-Ring), order part number 2116077 or For Coil, order part number 2116078.

CONTROLLER ASSEMBLY – FULL VOLTAGE STARTERS



Refer to parts list on page 27.

**CONTROLLER ASSEMBLY – FULL VOLTAGE STARTERS**

	Qty.	40 HP 200V	40 & 50 HP 230V	40 & 50 HP 460V	40 & 50 HP 575V	50 HP 200V
* ASSEMBLED PANEL – <b>ES+</b> : NEMA 12, Without Current Monitor .....	1	306EBH466	302EBH466	300EBH466	312EBH466	308EBH466
* ASSEMBLED PANEL – <b>ES+</b> : NEMA 4, Without Current Monitor .....	1	307EBH466	303EBH466	301EBH466	313EBH466	309EBH466
* ASSEMBLED PANEL – <b>ES+</b> : NEMA 12, With Current Monitor .....	1	346EBH466	342EBH466	340EBH466	352EBH466	348EBH466
* ASSEMBLED PANEL – <b>ES+</b> : NEMA 4, With Current Monitor .....	1	347EBH466	343EBH466	341EBH466	353EBH466	349EBH466
A FUSE, CONTROL BOARD (A1, AGC) .....	1	24CA2932	24CA2932	24CA2932	24CA2932	24CA2932
B FUSE, TRANSFORMER PRIMARY (–A, FNQ–R) ...	2	24CA2786 (6A)	24CA2786 (6A)	24CA2783 (3A)	24CA3722 (2.25A)	24CA2786 (6A)
C FUSE, FAN MOTOR, AIR COOLED (–A, LP–CC) ...	3	24CA4094 (8A)	24CA4094 (8A)	24CA4091 (4A)	24CA4090 (3A)	24CA4094 (8A)
C FUSE, FAN MOTOR, WATER COOLED (–A, LB–CC)	3	24CA4093 (7A)	24CA4093 (7A)	24CA4091 (4A)	24CA4090 (3A)	24CA4093 (7A)
1 ES+ ELECTRONIC CONTROLLER (See Note 2 below) .....	1	200EAU1173	200EAU1173	200EAU1173	200EAU1173	200EAU1173
2 BOX–CONTROL .....	1	200ECH179	200ECH179	200ECH179	200ECH179	200ECH179
3 OPERATOR .....	1	24CA2907	24CA2907	24CA2907	24CA2907	24CA2907
4 CONTACT BLOCK .....	1	24CA2908	24CA2908	24CA2908	24CA2908	24CA2908
5 TRANSFORMER .....	1	2116371	2116372	2116372	2116373	2116371
6 FUSE, CONTROL TRANSFORMER, SECONDARY (3A, MDL) .....	1	24CA3728	24CA3728	24CA3728	24CA3728	24CA3728
7 FUSEHOLDER .....	1	24CA4098	24CA4098	24CA4098	24CA4098	24CA4098
8 STARTER, FAN MOTOR .....	1	24CA4408	24CA4408	24CA4408	24CA4408	24CA4408
9 COIL .....	1	2115950	2115950	2115950	2115950	2115950
10 OVERLOAD RELAY .....	1	24CA4086	24CA4086	24CA4086	24CA4086	24CA4086
11 TERMINAL BLOCK .....	6	24CA2633	24CA2633	24CA2633	24CA2633	24CA2633
12 STARTER, MAIN MOTOR .....	1	24CA3881	24CA3881	24CA3880	24CA3880	24CA3490
13 COIL .....	1	2115952	2115952	2116555	2116555	2115952
14 OVERLOAD RELAY .....	1	24CA4086	24CA4086	24CA2905	24CA2905	24CA4086
15 TRANSFORMER (See Note 1 below) .....	1	24CA4242	24CA4242	24CA4242	24CA4242	24CA4242
16 TRANSDUCER (See Note 1 below) .....	1	24CA4241	24CA4241	24CA4241	24CA4241	24CA4241

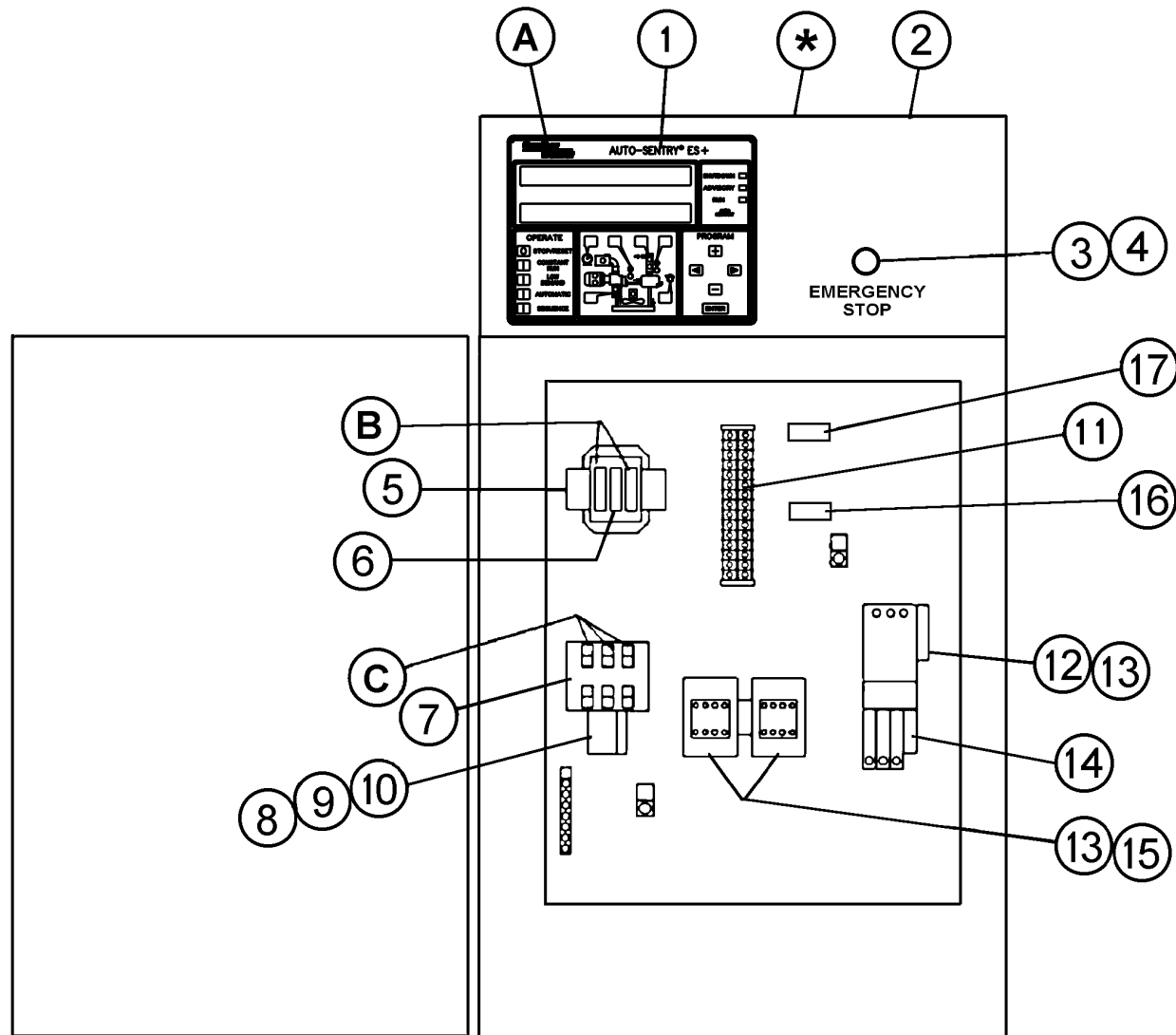
Refer to illustration on page 26.

NOTE 1: Items 15 and 16 are used with ES+ with Current Monitoring Units only.

NOTE 2: Controller software version V2.14 must be installed for high pressure packages.

Software 25–1–620 (included with the package) installs special software versions from a PC into a standard 200EAU1173 controller.

# CONTROLLER ASSEMBLY – WYE DELTA STARTERS



Refer to parts list on page 29.

**CONTROLLER ASSEMBLY – WYE DELTA STARTERS**

	Qty.	40 & 50 HP 200V	40 & 50 HP 230V	40 & 50 HP 460V	40 HP 575V	50 HP 575V
* ASSEMBLED PANEL – <b>ES+</b> : NEMA 12, Without Current Monitor . . . . .	1	324EBH466	320EBH466	318EBH466	328EBH466	330EBH466
* ASSEMBLED PANEL – <b>ES+</b> : NEMA 4, Without Current Monitor . . . . .	1	325EBH466	321EBH466	319EBH466	329EBH466	331EBH466
* ASSEMBLED PANEL – <b>ES+</b> : NEMA 12, With Current Monitor . . . . .	1	364EBH466	360EBH466	358EBH466	368EBH466	370EBH466
* ASSEMBLED PANEL – <b>ES+</b> : NEMA 4, With Current Monitor . . . . .	1	365EBH466	361EBH466	359EBH466	369EBH466	371EBH466
A FUSE, CONTROL BOARD (A1, AGC) . . . . .	1	24CA2932	24CA2932	24CA2932	24CA2932	24CA2932
B FUSE, TRANSFORMER PRIMARY (–A, FNQ–R) . . . . .	2	24CA2786 (6A)	24CA2786 (6A)	24CA2783 (3A)	24CA3722 (2.25A)	24CA3722 (2.25A)
C FUSE, FAN MOTOR, AIR COOLED (–A, LP–CC) . . . . .	3	24CA4094 (8A)	24CA4094 (8A)	24CA4091 (4A)	24CA4090 (3A)	24CA4090 (3A)
C FUSE, FAN MOTOR, WATER COOLED (–A, LP–CC) . . . . .	3	24CA4093 (7A)	24CA4093 (7A)	24CA4091 (4A)	24CA4090 (3A)	24CA4090 (3A)
1 ES+ ELECTRONIC CONTROLLER (See Note 2 below) . . . . .	1	200EAU1173	200EAU1173	200EAU1173	200EAU1173	200EAU1173
2 BOX–CONTROL . . . . .	1	200ECH179	200ECH179	200ECH179	200ECH179	200ECH179
3 OPERATOR . . . . .	1	24CA2907	24CA2907	24CA2907	24CA2907	24CA2907
4 CONTACT BLOCK . . . . .	1	24CA2908	24CA2908	24CA2908	24CA2908	24CA2908
5 TRANSFORMER . . . . .	1	2116371	2116372	2116372	2116373	2116373
6 FUSE, CONTROL TRANSFORMER, SECONDARY (3A, MDL) . . . . .	1	24CA3728	24CA3728	24CA3728	24CA3728	24CA3728
7 FUSEHOLDER . . . . .	1	24CA4098	24CA4098	24CA4098	24CA4098	24CA4098
8 STARTER, FAN MOTOR . . . . .	1	24CA4408	24CA4408	24CA4408	24CA4408	24CA4408
9 COIL . . . . .	1	2115950	2115950	2115950	2115950	2115950
10 OVERLOAD RELAY . . . . .	1	24CA4086	24CA4086	24CA4086	24CA4086	24CA4086
11 TERMINAL BLOCK . . . . .	6	24CA2633	24CA2633	24CA2633	24CA2633	24CA2633
12 STARTER, MAIN MOTOR . . . . .	1	24CA3255	24CA3255	24CA4142	24CA4137	24CA4142
13 COIL . . . . .	3	2116555	2116555	2116124	2115950	2116124
14 OVERLOAD RELAY . . . . .	1	24CA4086	24CA4086	24CA4087	24CA4086	24CA4087
15 CONTACTOR (WYE DELTA) . . . . .	2	24CA3259	24CA3259	24CA3258	24CA2609	24CA3258
16 TRANSFORMER (See Note 1 below) . . . . .	1	24CA4242	24CA4242	24CA4242	24CA4242	24CA4242
17 TRANSDUCER (See Note 1 below) . . . . .	1	24CA4241	24CA4241	24CA4241	24CA4241	24CA4241

Refer to illustration on page 28.

NOTE 1: Items 16 and 17 are used with ES+ with Current Monitoring Units only.

NOTE 2: Controller software version V2.14 must be installed for high pressure packages.  
Software 25–1–620 (included with the package) installs special software versions from a PC into a standard 200EAU1173 controller.



**CONTROLLER ASSEMBLY – WITHOUT STARTER**

		40 & 50 HP 200V	40 & 50 HP 230V	40 & 50 HP 460V	40 & 50 HP 575V	
*	ASSEMBLED PANEL – <b>ES+</b> : NEMA 12, W/O Current Monitor .	1	334EBH466	332EBH466	332EBH466	338EBH466
*	ASSEMBLED PANEL – <b>ES+</b> : NEMA 4, W/O Current Monitor .	1	335EBH466	333EBH466	333EBH466	339EBH466
*	ASSEMBLED PANEL – <b>ES+</b> : NEMA 12, With Current Monitor .	1	374EBH466	372EBH466	372EBH466	378EBH466
*	ASSEMBLED PANEL – <b>ES+</b> : NEMA 4, With Current Monitor .	1	375EBH466	373EBH466	373EBH466	379EBH466
A	FUSE, CONTROL BOARD (A1, AGC) .....	1	24CA2932	24CA2932	24CA2932	24CA2932
B	FUSE, TRANSFORMER PRIMARY (-A, FNQ-R) .....	2	24CA2786 (6A)	24CA2786 (6A)	24CA2783 (3A)	24CA3722 (2.25A)
C	FUSE, FAN MOTOR, AIR COOLED (-A, LP-CC) .....	3	24CA4094 (8A)	24CA4094 (8A)	24CA4091 (4A)	24CA4090 (3A)
C	FUSE, FAN MOTOR, WATER COOLED (-A, LP-CC) .....	3	24CA4093 (7A)	24CA4093 (7A)	24CA4091 (4A)	24CA4090 (3A)
1	ES+ ELECTRONIC CONTROLLER (See Note 2 below) .....	1	200EAU1173	200EAU1173	200EAU1173	200EAU1173
2	BOX-CONTROL .....	1	200ECH179	200ECH179	200ECH179	200ECH179
3	OPERATOR .....	1	24CA2907	24CA2907	24CA2907	24CA2907
4	CONTACT BLOCK .....	1	24CA2908	24CA2908	24CA2908	24CA2908
5	TRANSFORMER .....	1	2116371	2116372	2116372	2116373
6	FUSE, CONTROL TRANSFORMER, SECONDARY (3A, MDL) ..	1	24CA3728	24CA3728	24CA3728	24CA3728
7	FUSEHOLDER .....	1	24CA4098	24CA4098	24CA4098	24CA4098
8	STARTER, FAN MOTOR .....	1	24CA4408	24CA4408	24CA4408	24CA4408
9	COIL .....	1	2115950	2115950	2115950	2115950
10	OVERLOAD RELAY .....	1	24CA4086	24CA4086	24CA4086	24CA4086
11	TERMINAL BLOCK .....	7	24CA2633	24CA2633	24CA2633	24CA2633
12	CONTROL RELAY .....	1	24CA3896	24CA3896	24CA3896	24CA3896
13	TRANSFORMER (See Note 1 below) .....	1	24CA4242	24CA4242	24CA4242	24CA4242
14	TRANSDUCER (See Note 1 below) .....	1	24CA4241	24CA4241	24CA4241	24CA4241

Refer to illustration on page 30.

NOTE 1: Items 13 and 14 are used with ES+ with Current Monitoring Units only.

NOTE 2: Controller software version V2.14 must be installed for high pressure packages.

Software 25-1-620 (included with the package) installs special software versions from a PC into a standard 200EAU1173 controller.

## OVERLOAD RELAY HEATER CONVERSION LISTING

**Refer to Motor Nameplate “Amperage” and Decal in Control Panel for Selection of Overload Relay Heater Packs.**

<b>CUTLER-HAMMER PART NUMBER</b>	<b>GARDNER DENVER PART NUMBER</b>
H2002B .....	24CA4101
H2003B .....	24CA4102
H2004B .....	24CA4103
H2005B .....	24CA4104
H2006B .....	24CA4105
H2007B .....	24CA4106
H2008B .....	24CA4107
H2009B .....	24CA4108
H2010B .....	24CA4109
H2011B .....	24CA4110
H2012B .....	24CA4111
H2013B .....	24CA4112
H2014B .....	24CA4113
H2015B .....	24CA4114
H2016B .....	24CA4115
H2017B .....	24CA4116
H2018 .....	24CA2924
H2019 .....	24CA2925
H2020 .....	24CA2926
H2021 .....	24CA2927
H2022 .....	24CA2893
H2023 .....	24CA2894
H2024 .....	24CA2928

<b>MOTOR GROUP (MAIN DRIVE MOTORS)</b>				
<b>NAME OF PART</b>	<b>FULL VOLTAGE</b>		<b>WYE-DELTA</b>	
	<b>40 HP PART NO.</b>	<b>50 HP PART NO.</b>	<b>40 HP PART NO.</b>	<b>50 HP PART NO.</b>
<b>OPEN DRIP PROOF (60 HZ – ODP)</b>				
MOTOR, 200V	24CA3734	24CA3737	24CA3060	24CA3065
MOTOR, 230V	24CA3735	24CA3738	24CA3061	24CA3066
MOTOR, 460V	24CA3735	24CA3738	24CA3061	24CA3066
MOTOR, 575V	24CA3736	24CA3739	24CA3064	24CA3069
<b>OPEN DRIP PROOF (60 HZ – ODP – HIGH EFFICIENCY)</b>				
MOTOR, 200V	24CA3749	24CA3752	24CA3070	24CA3075
MOTOR, 230V	24CA3750	24CA3753	24CA3071	24CA3076
MOTOR, 460V	24CA3750	24CA3753	24CA3071	24CA3076
MOTOR, 575V	24CA3751	24CA3754	24CA3074	24CA3079
<b>TOTALLY ENCLOSED FAN COOLED (60 HZ – TEFC)</b>				
MOTOR, 200V	24CA3764	24CA3767	24CA3080	24CA3085
MOTOR, 230V	24CA3765	24CA3768	24CA3081	24CA3086
MOTOR, 460V	24CA3765	24CA3768	24CA3081	24CA3086
MOTOR, 575V	24CA3766	24CA3769	24CA3084	24CA3089
<b>TOTALLY ENCLOSED FAN COOLED (60 HZ – TEFC – HIGH EFFICIENCY)</b>				
MOTOR, 200V	24CA3779	24CA3782	24CA3090	24CA3095
MOTOR, 230V	24CA3780	24CA3783	24CA3091	24CA3096
MOTOR, 460V	24CA3780	24CA3783	24CA3091	24CA3096
MOTOR, 575V	24CA3781	24CA3784	24CA3094	24CA3099

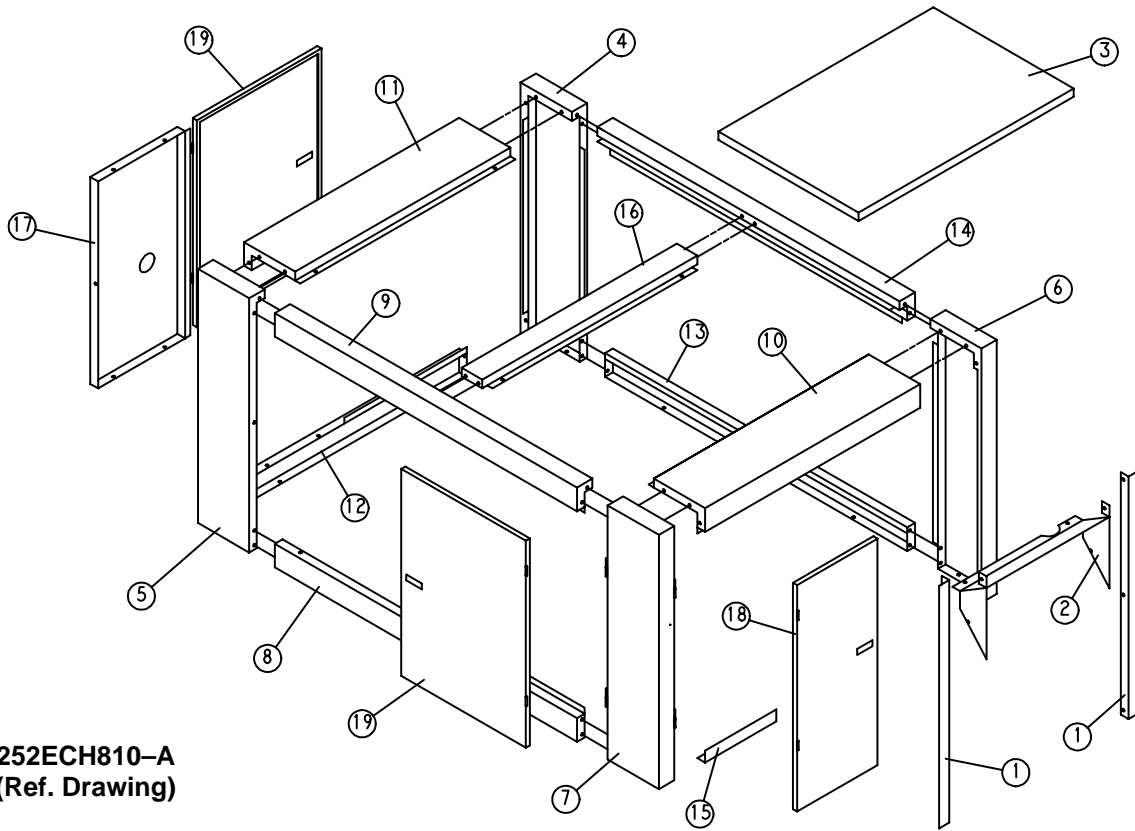
**MOTOR GROUP  
AIR COOLED FAN MOTOR (COOLING MODULE)  
(TEFC, 1 HP, 1.15 S.F., 1200 RPM, 60 HZ)**

<b>VOLTAGE</b>	<b>PART NO.</b>
MOTOR, 200V	24CA3311
MOTOR, 230V	24CA3312
MOTOR, 460V	24CA3312
MOTOR, 575V	24CA3313

**WATER COOLED FAN MOTOR (ENCLOSURE VENT FAN)  
(TEFC, 1200 RPM, 60 HZ, 1.0 S.F.)**

<b>VOLTAGE</b>	<b>PART NO.</b>	<b>HP</b>
MOTOR, 200V	24CA4177	1/4
MOTOR, 230V	24CA2464	1/4
MOTOR, 460V	24CA2464	1/4
MOTOR, 575V	24CA4178	1/4

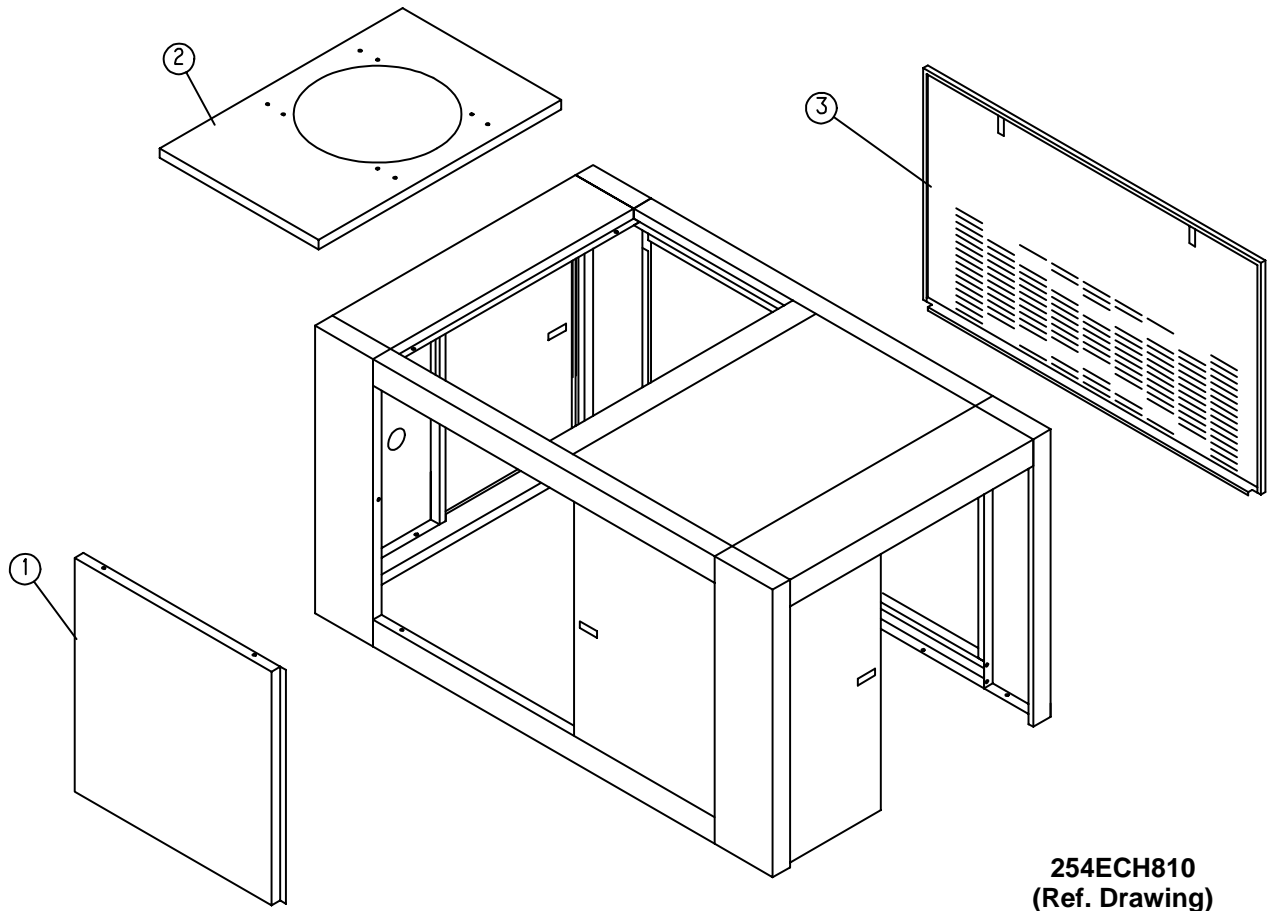
**ENCLOSURE GROUP  
COMMON PARTS – AIR/WATER COOLED**



**252ECH810-A  
(Ref. Drawing)**

Ref. No.	Name of Part	Qty.	Part No.
1	BRACKET .....	2	202ECH142
2	BRACKET .....	1	201ECH142
3	PANEL .....	1	209ECH216
4	POST .....	1	209ECH313
5	POST .....	1	208ECH313
6	POST .....	1	207ECH313
7	POST .....	1	206ECH313
8	FRAME .....	1	209ECH314
9	FRAME .....	1	210ECH314
10	FRAME .....	1	211ECH314
11	FRAME .....	1	212ECH314
12	FRAME .....	1	213ECH314
13	FRAME .....	1	214ECH314
14	FRAME .....	1	215ECH314
15	FRAME .....	1	216ECH314
16	BRACE .....	1	202ECH326
17	BRACE .....	1	203ECH326
18	DOOR-CANOPY .....	1	203ECH334
19	DOOR-CANOPY .....	2	204ECH334

Order by Part Number and Description. Reference Numbers are for your convenience only.



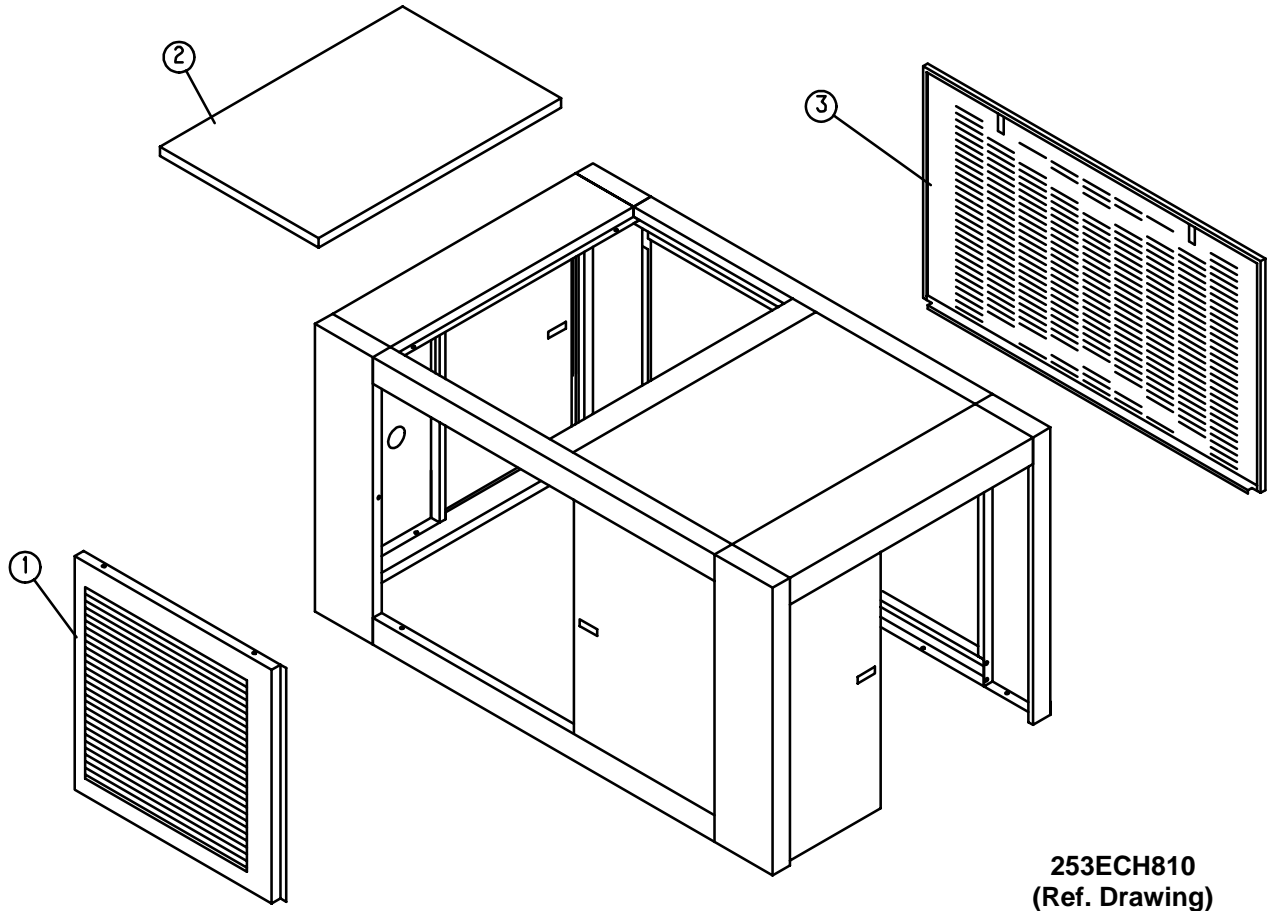
254ECH810  
(Ref. Drawing)

**WATER COOLED ENCLOSURE PANELS**

Ref. No.	Name of Part	Qty.	Part No.
1	PANEL .....	1	213ECH216
2 *	PANEL-VENT FAN .....	1	210ECH216
3	PANEL .....	1	212ECH216

\* REFER TO PAGE 38 FOR VENT FAN PARTS.

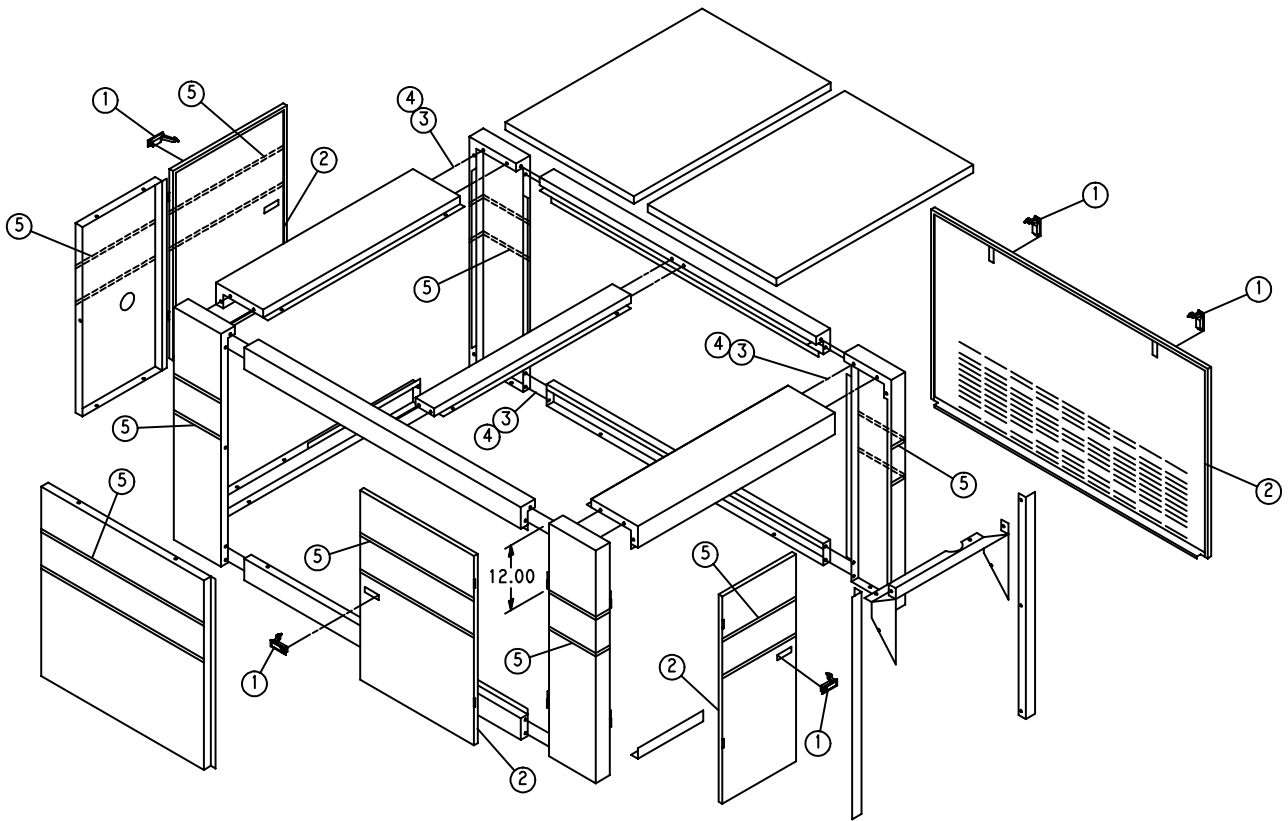
Order by Part Number and Description. Reference Numbers are for your convenience only.



**AIR COOLED ENCLOSURE PANELS**

Ref. No.	Name of Part	Qty.	Part No.
1	PANEL .....	1	214ECH216
2	PANEL .....	1	209ECH216
3	PANEL .....	1	211ECH216

Order by Part Number and Description. Reference Numbers are for your convenience only.

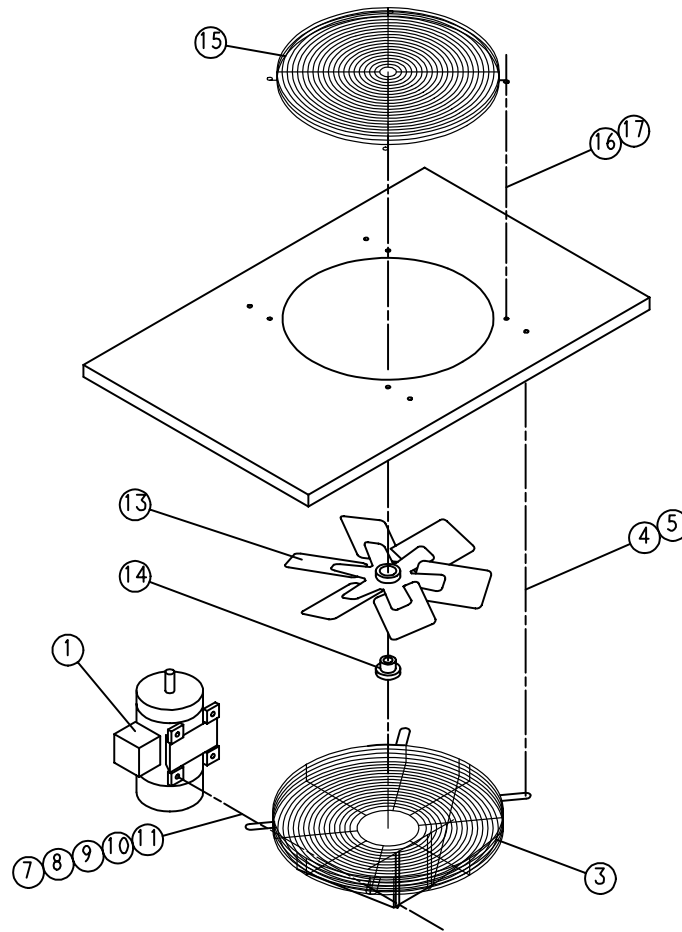


203EBH810-A  
(Ref. Drawing)

ENCLOSURE HARDWARE

Ref. No.	Name of Part	Qty.	Part No.
1	LATCH .....	5	31D58
2	SEAL .....	51	32E12
3	SCREW-FLANGED .....	86	75LM51
4	NUT-FLANGED .....	78	50AW5
5	DECAL .....	6	203ESO077

Order by Part Number and Description. Reference Numbers are for your convenience only.



285ECM810  
(Ref. Drawing)

**VENT FAN GROUP**

Ref. No.	Name of Part	Qty.	Part No.
1	MOTOR .....	1	See page 33
3	GUARD-FAN .....	1	202ECM393
4	SCREW-FLANGED .....	4	75K48
5	WASHER .....	4	95A5
7	SCREW .....	4	75A35
8	RETAINER .....	4	2014731
9	WASHER .....	4	95A2
10	LOCKWASHER .....	4	95B2
11	NUT .....	4	50B2
13	FAN .....	1	202ECM701
14	HUB BUSHING .....	1	22G27
15	GUARD-FAN .....	1	200ECM393
16	SCREW-FLANGED .....	4	75LM51
17	NUT-FLANGED .....	4	50AW5

**IDENTIFICATION AND INSTRUCTION GROUP**

Name of Part	Qty.	Part No.
DECAL, OPERATION & MAINTENANCE .....	1	217ECM077
DECAL, WARNING .....	1	227EAQ077
DECAL, PARTS LIST/SERVICE MANUAL # .....	1	204EDE077
DECAL, WARNING – ELECTRICAL SHOCK .....	1	314EAQ077
DECAL, DANGER – HOT OIL UNDER PRESSURE .....	1	212EAQ077
DECAL, WARNING – INSPECT OIL RESERVOIR .....	1	217EAQ077
DECAL .....	1	243EAQ077
DECAL, NOTICE – USE GARDNER DENVER PARTS .....	1	214EAQ077
DECAL, NOTICE – USE GARDNER DENVER PARTS .....	1	212ECM077
DECAL, CAUTION – DO NOT LIFT .....	1	208EAQ077
DECAL, WARNING – ROTATING MACHINERY .....	1	211EAQ077
DECAL, DANGER – DO NOT BREATHE .....	1	206EAQ077
DECAL, DRAIN MOISTURE DAILY .....	1	205ESO077
DECAL, GARDNER DENVER LOGO .....	1	69F18
RIVET .....	4	70E13
DECAL, HEAT EXCHANGER “IN” .....	1	200ESP077
DECAL, HEAT EXCHANGER “OUT” .....	1	201ESP077
DECAL, SAVER II LOGO .....	1	201ECP077
DECAL, SAVER II LOGO .....	3	200ECP077
TAG–INSTRUCTION .....	1	203EAQ304
DECAL, NAMEPLATE .....	1	69F64
DECAL, OIL FILL INSTRUCTION .....	1	240EAQ077
DECAL, QUALITY WITHOUT QUESTION .....	1	251EAQ077
TAG–INSTRUCTION .....	1	204EAQ304
TAG–INSTRUCTION .....	1	205EAQ304
POCKET .....	1	200EAQ1304

## REPAIR KITS

Name of Part	Qty.	Part No.
ROUTINE MAINTENANCE KIT – HEAVY DUTY AIR FILTER .....		300EBH6013
(Includes next two items)		
ELEMENT, AIR FILTER .....	2	2116701
ELEMENT, OIL FILTER .....	3	2117146
PERIODIC MAINTENANCE KIT (INLET VALVE) (Includes next five items) ..		302EBE6013
O-RING .....	1	25BC440
SPRING .....	1	78H22
SPRING .....	1	78W59
O-RING .....	1	25AM15
RETAINER-RING .....	1	74D87
PERIODIC OVERHAUL KIT (Includes next seven items) .....		306SSF6013
GASKET KIT (See below) .....	1	307SSF6013
OIL SEAL KIT (See below) .....	1	300SSF6013
ROLLER BEARING .....	1	12BA130
ROLLER BEARING .....	1	12BA136
ROLLER BEARING .....	1	12BA91
ROLLER BEARING .....	1	12BA90
SPRING .....	1	78W48
GASKET KIT (Includes next ten items) .....		307SSF6013
PERIODIC MAINTENANCE KIT (See above) .....	1	302EBE6013
SHIM SET (SHAFT) .....	1	77H54
SHIM SET .....	1	77H67
O-RING .....	1	25BC157
O-RING .....	2	25BC298
RETAINER-RING .....	1	74D52
RETAINER-RING .....	2	74D53
O-RING (AIR END TO DISCHARGE MANIFOLD) .....	1	25BC686
GASKET (DISCHARGE MANIFOLD TO RESERVOIR) .....	1	25C513N
GASKET ELIMINATOR .....	1	25BC222
OIL SEAL KIT (Includes next five items) .....		300SSF6013
WEAR SLEEVE .....	1	80M12
OIL SEAL .....	1	60DD679
OIL SEAL .....	1	60DD543
O-RING .....	1	8500958
RETAINER-RING .....	1	74D48
WEAR SLEEVE INSTALLATION/REMOVAL KIT (Includes next seven items)		200SSH4017
PULLER .....	1	200SSH219
PLATE-PULLER .....	1	200SSH340
SCREW .....	1	75LM192
SCREW .....	1	655ED120
SCREW .....	2	75D176
GUIDE .....	1	200SSH450
TOOL .....	1	200SSH074

## REPAIR KITS (Continued)

Name of Part	Qty.	Part No.
SEPARATOR KIT (Includes next three items) .....		202ECH6013
OIL SEPARATOR .....	1	200ECH035
GASKET ELIMINATOR .....	1	25BC632
LUBRICANT (OIL SEAL GREASE) .....	1	2116755
PNEUMATIC CONTROLS & GAUGES (Includes next five items) .....		302EAQ6013
CHECK VALVE .....	2	90AR261
SHUTTLE VALVE .....	2	90AR1034
PURGE VALVE .....	1	90AR35
PRESSURE REGULATOR .....	1	88H139
PRESSURE GAUGE .....	1	2116732
ELECTRICAL CONTROL KIT (Includes next six items) .....		300EBP6013
SOLENOID VALVE .....	1	91B70
SOLENOID VALVE .....	1	91B80
SOLENOID VALVE .....	1	91B81
THERMISTOR PROBE .....	2	21D264
TRANSDUCER .....	2	88H314
VACUUM SWITCH .....	1	88H195
DRIVE COUPLING KIT (Includes next item) .....		200EDH6003
CUSHIONS .....	6	2116477
LUBRICANT (AEON 9000 SP)		
5-GALLON PAIL .....	1	28H109
55-GALLON DRUM .....	1	28H110
TOUCH-UP PAINT		
5-GALLON PAIL .....	1	28H76
1-GALLON CAN .....	1	28H84
1-QUART CAN .....	1	28H83
WATER TEMPERATURE REGULATOR (Optional) .....		90AR326
MAGNETIC WATER SHUTOFF VALVE – NEMA 1 (Optional) .....		91B168
MAGNETIC WATER SHUTOFF VALVE – NEMA 4 (Optional) .....		91B167
FIELD INSTALLED ENCLOSURE KITS		
AIR COOLED .....		234ECH4017
WATER COOLED .....		235ECH4017

**Gardner**  

---

**Denver**

For additional information contact your local representative or  
Gardner Denver, Customer Service Department,  
1800 Gardner Expressway, Quincy, Illinois 62301  
Telephone: (800) 682-9868 FAX: (217) 224-7814



Sales and Service in all major cities.

For parts information, contact Gardner Denver,  
Master Distribution Center, Memphis, TN  
Telephone: (800) 245-4946 FAX: (901) 542-6159

Specifications subject to change without notice.  
Copyright 1998 Gardner Denver, Inc.

Litho in U.S.A.