

GARDNER-DENVER®

13-9-558X
1st Edition

"EBQ"

**ELECTRA-SAVER II® STATIONARY
BASE-MOUNTED COMPRESSORS**

MODELS

EBQQNB, EBQSNB - 125 HP

EBQQOB, EBQSOB - 150 HP

50 HZ - INTERNATIONAL

PARTS LIST

**COOPER**

**Gardner-Denver
Industrial Machinery**

TABLE OF CONTENTS

GROUP NAME	Models
	EBQQNB, EBQQOB EBQSNB, EBQSOB
Thirteen Character Model Designations	Page 2
Introduction.....	Page 3
Ordering Instructions.....	Page 3
Bare Compressor.....	Page 4 thru 7
Inlet Valve	Page 8
Air Filter Group.....	Page 9
Oil Reservoir Group	Page 10
Separator Housing Group	Pages 11 & 12
Discharge Piping.....	Page 13
Oil Return Line.....	Page 14
Compressor Base Group.....	Page 15
Cooler Group	Pages 16 & 17
Water Cooled Piping.....	Pages 18 thru 21
Control Piping	Pages 22 & 23
Minimum Pressure Valve	Page 24
Filter Assy. (Stat/Fil).....	Page 25
Enclosure	Pages 26 thru 29
Vent Fan Group.....	Page 30
Motor Mounting Parts.....	Page 31
Motor Selectives	Page 32
Decal Location	Page 33
Controller Assembly.....	Pages 34 thru 36
Repair Kits	Pages 37 & 38

**MODELS EBQ_NB & EBQ_OB 125/150 HP Air/Water-Cooled Base-Mounted Units
Electra-Saver II® Compressors – Matrix/Menu**

Notice to Customer – To find the construction options for your compressor unit, FILL IN THE BALANCE OF LETTERS OR NUMBERS FROM YOUR UNIT NAMEPLATE. . .

E	B	Q	B									
1	2	3	4	5	6	7	8	9	10	11	12	13

Column Number:

Follow the line down and over from each space thus filled in to find the appropriate construction with which your machine is equipped. The number "9" in any column space indicates "NOT APPLICABLE." The number "8" in any column space indicates special design – Refer to Factory Order Ticket.

COLUMNS 1, 2 & 3 - ELECTRA-SAVER II® Family – Single Stage

COLUMN 4 - CONSTRUCTION

- Q. Air-Cooled
- S. Water-Cooled

COLUMN 5 - HORSEPOWER

- N. 125 HP
- O. 150 HP

COLUMN 6 - DESIGN VERSION

- B. 2nd

COLUMN 7 - PRESSURE & HZ

- E. 100 PSIG - 50 HZ
 - F. 125 PSIG - 50 HZ
 - G. 150 PSIG - 50 HZ
- Note: 125 H.P. - 100/125/150 PSI; 150 H.P. - 100 PSI only

COLUMN 8 - CONTROL BOX STARTER - HP/NEMA (Description only)

- A. 125 HP - N 12
- B. 125 HP - N 4
- C. 150 HP - N 12
- D. 150 HP - N 4
- E. W/O Motor Starter - N12
- F. W/O Motor Starter - N4

COLUMN 9 - CONTROL BOX STARTER - (Per HP/Voltage/NEMA (Box & Wiring Harness Gp.))

- A. 220V - 50 Hz
- B. 380V - 50 Hz
- C. 400V - 50 Hz
- D. 415 V - 50 Hz
- E. 440V - 50 Hz
- F. 550V - 50 Hz

COLUMN 10 - ENCLOSURE

- A. No Enclosure (air/water Cooled)
- B. Air Cooled Only (w/enclosure)
- C. W/Enclosure Water Cooled - 220v Or Air Cooled W/rem Cooler
- D. W/Enclosure Water Cooled - 380v Or Air Cooled W/rem Cooler
- E. W/Enclosure Water Cooled - 400v Or Air Cooled W/rem Cooler
- F. W/Enclosure Water Cooled - 415v Or Air Cooled W/rem Cooler
- G. W/Enclosure Water Cooled - 440v Or Air Cooled W/rem Cooler
- H. W/Enclosure Water Cooled - 550v Or Air Cooled W/rem Cooler

COLUMN 11 - OIL COOLERS

- A. Air Cld - W/Aft, Remote, Remote Elev, Local Pkg. Mdg; Wa Cld-W/WO Aft With Std Cir - 50 Hz
- B. With Seacoast Cooler - 50 Hz
- C. Air Cld - W/Aft - Rem Mtd-See Col. 12 for Mtr Str Local Mtd on Cir Mod (NEMA 4) With Std Cir - 50 Hz
- D. With Seacoast Cooler - 50 Hz
- E. Air Cld - W/Aft - Rem Mtd-See Col. 12 for Mtr Str Local Mtd on Cir Mod (NEMA 4) w/Elev Cir Kit With Std Cir - 50 Hz
- F. With Seacoast Cooler - 50 Hz

Note: Rem/Rem Elev Oil Coolers are to have fan mtr str mtd on side of clg mod (Col. Designators C-F) Col. 12 for mtr str gps (Nema 4 for Rem/Rem Elev Cirs).

- G. Wa Cld - W/WO Aft - Fresh Water Service - Wa Temp. Reg.
- H. Fresh Water - W/O Aft
- I. Fresh Water - W/O Aft -W/Wa Temp. Reg.
- J. Fresh Water - W/Aft -W/Wa Temp. Reg.

COLUMN 12 - COOLER ELECTRICS

- | | |
|---|--|
| <ul style="list-style-type: none"> A. Air Cld-Local Pkg. Mtd Oil Cirs G. 220V - 50 HZ B. 380V - 50 HZ H. 380V - 50 HZ C. 400V - 50 HZ I. 400V - 50 HZ D. 415V - 50 HZ J. 415V - 50 HZ E. 440V - 50 HZ K. 440V - 50 HZ F. 550V - 50 HZ L. 550V - 50 HZ M. Less Mtr Str. | <ul style="list-style-type: none"> N. NEMA 1 P. No Water Shutoff Valve |
|---|--|

COLUMN 13 - COMPRESSOR DRIVE MOTOR

- | | |
|--|--|
| <ul style="list-style-type: none"> A. ODP (STD. EFF.) G. 220V - 50 HZ B. 380V - 50 HZ H. 380V - 50 HZ C. 400V - 50 HZ I. 400V - 50 HZ D. 415V - 50 HZ J. 415V - 50 HZ E. 440V - 50 HZ K. 440V - 50 HZ F. 550V - 50 HZ L. 550V - 50 HZ Q. Less Motor - 404 & 405 Frames R. Less Motor - 444 to 449 Frames | <ul style="list-style-type: none"> G. TEFC (STD. EFF.) H. 220V - 50 HZ I. 380V - 50 HZ J. 380V - 50 HZ K. 400V - 50 HZ L. 400V - 50 HZ M. 415V - 50 HZ N. 415V - 50 HZ O. 440V - 50 HZ P. 440V - 50 HZ Q. 550V - 50 HZ R. Less Motor - 404 & 405 Frames S. Less Motor - 444 to 449 Frames |
|--|--|

**MAINTAIN COMPRESSOR RELIABILITY AND PERFORMANCE WITH
GENUINE GARDNER-DENVER AND JOY COMPRESSOR
PARTS AND SUPPORT SERVICES**

Gardner-Denver and Joy Compressor genuine parts, engineered to original tolerances, are designed for optimum dependability — specifically for Gardner-Denver and Joy compressor systems. Design and material innovations are the result of years of experience with hundreds of different compressor applications. Reliability in materials and quality assurance are incorporated in our genuine replacement parts.

Your authorized Gardner-Denver and Joy Compressor distributor offers all required services. A worldwide network of authorized distributors provides the finest product support in the air compressor industry.

Local authorized distributors maintain a large inventory of genuine parts and are backed for emergency parts by direct access to the Gardner-Denver Industrial

Machinery Master Distribution Center (MDC) in Memphis, Tennessee.

Authorized distributors can support Gardner-Denver or Joy air compressor with these services:

1. Trained parts specialists to assist you in selecting the correct replacement parts.
2. Repair and maintenance kits designed with the necessary parts to simplify servicing Gardner-Denver or Joy compressor.

Authorized distributor service technicians are factory-trained and skilled in compressor maintenance and repair. They are ready to respond and assist you by providing fast, expert maintenance and repair services.

For information concerning Gardner-Denver or Joy Compressors consult the business pages of the phone directory or contact:

**Gardner-Denver Industrial Machinery
Attn. International Customer Service
1800 Gardner Expressway
Quincy, IL 62301
Phone: (217) 222-5400
Fax: (217) 223-5897
Telex: 40-4332 EDCO QUI**

**or/
Memphis Distribution Center
P.O. Box 750010
Memphis, TN 38175-0010
Phone: (901) 363-6100
Fax: (901) 363-1095
Telex: 211600**

INSTRUCTIONS FOR ORDERING REPAIR PARTS

When ordering parts, specify Compressor **MODEL**, Method of Cooling, **HORSEPOWER** and **SERIAL NUMBER** (see nameplate on unit). Serial Number is also stamped on top of the cylinder flange to the right of the inlet housing.

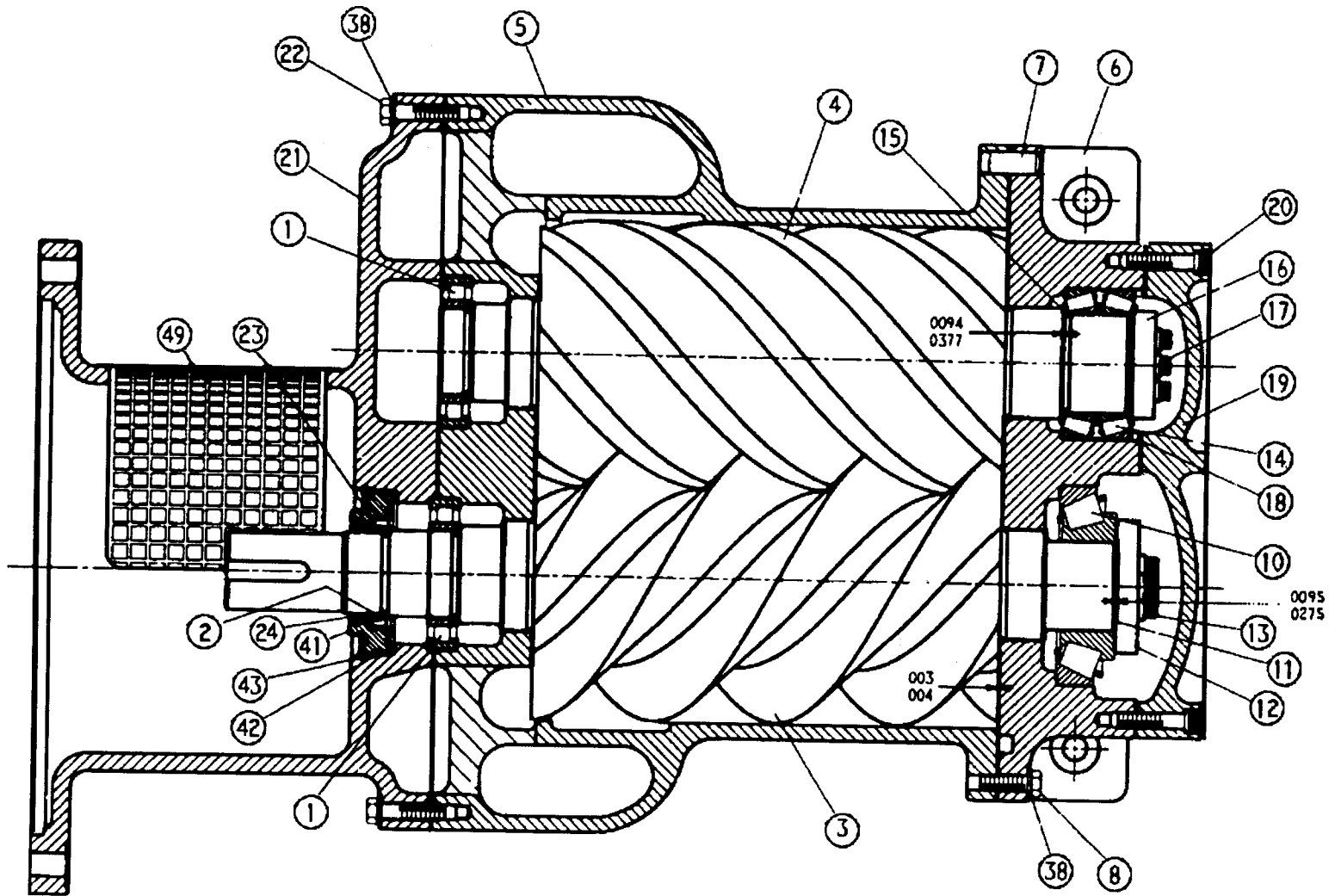
All orders for Parts should be placed with the nearest authorized distributor.

Where NOT specified, quantity of parts required per compressor or unit is one (1); where more than one is

required per unit, quantity is indicated in parenthesis. **SPECIFY EXACTLY THE NUMBER OF PARTS REQUIRED.**

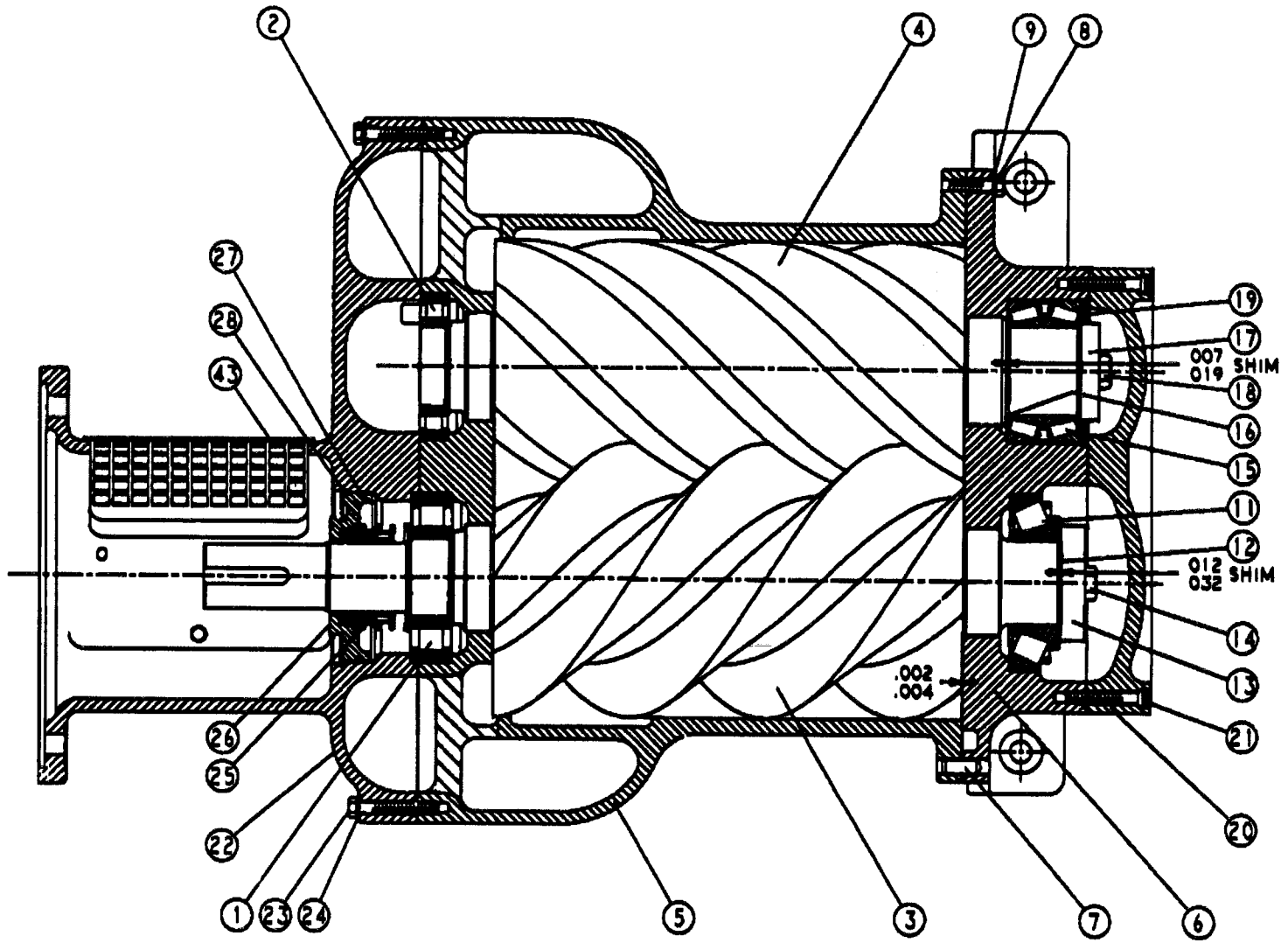
DO NOT ORDER BY SETS OR GROUPS.

To determine the Right Hand and Left Hand side of an Electra-Screw® compressor, stand at the motor end and look toward the compressor. Right Hand and Left Hand are indicated in parenthesis following the part name, i.e. (RH) & (LH).



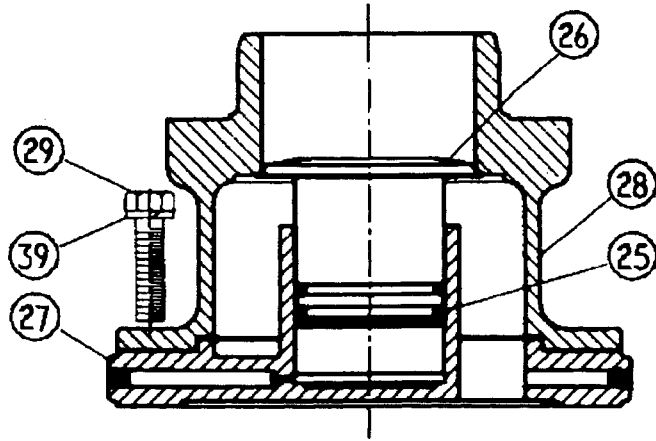
219SSQ810

Ref. No.	Name of Part	Qty.	125 HP-7F	125 HP-7E	125 HP-7G
	BARE COMPRESSOR		Part No. SSQNBA01	Part No. SSQNBA02	Part No. SSQNBA04
1	BEARING-ROLLER.....	2	12BA126	12BA126	12BA126
2	SLEEVE-WEAR.....	1	80M28	80M28	80M28
3	ROTOR.....	1	212SSQ010	210SSQ010	214SSQ010
4	ROTOR.....	1	213SSQ010	211SSQ010	215SSQ010
5	CYLINDER.....	1	217SSQ002	216SSQ002	218SSQ002
6	HOUSING-BEARING.....	1	214SSQ006	214SSQ006	214SSQ006
7	PIN-DOWELL.....	1	62M112	62M112	62M112
8	SCREW-HEX CAP.....	20	655EE070	655EE070	655EE070
9	GASKET-ELIMINATOR.....	1	25BC256	25BC256	25BC256
10	BEARING-ROLLER.....	1	12BA138	12BA138	12BA138
11	SHIM SET-SHAFT.....	1	77C36	77C36	77C36
12	PLATE-BEARING RETAINER.....	1	202SSQ253	202SSQ253	202SSQ253
13	SCREW-12 PT CAP.....	3	75LM125N	75LM125N	75LM125N
14	BEARING-ROLLER.....	1	12BA78	12BA78	12BA78
15	SHIM.....	2	77H50015	77H50015	77H50015
15	SHIM.....	3	77H50002	77H50002	77H50002
15	SHIM.....	3	77H50003	77H50003	77H50003
15	SHIM.....	3	77H50005	77H50005	77H50005
16	PLATE-BEARING RETAINER.....	1	201SSU253	201SSU253	201SSU253
17	SCREW-12 PT CAP.....	3	2009630N	2009630N	2009630N
18	SPRING-WAVE.....	1	78W49	78W49	78W49
19	PLATE-BEARING COVER.....	1	208SSQ315	208SSQ315	208SSQ315
20	SCREW-12 PT CAP.....	22	75P78	75P78	75P78
21	ADAPTOR.....	1	203SSQ170	203SSQ170	203SSQ170
22	SCREW-HEX CAP.....	22	655EE090	655EE090	655EE090
23	SEAL-OIL (VITON).....	1	60DD571	60DD571	60DD571
24	SEAL-OIL.....	1	60DD562	60DD562	60DD562
33	SCREW-HEX CAP.....	46	655ED050	655ED050	655ED050
34	PLUG-SQHD PIPE.....	1	64AA6	64AA6	64AA6
35	GASKET.....	1	214SSQ715N	214SSQ715N	214SSQ715N
36	GASKET.....	2	215SSQ715N	215SSQ715N	215SSQ715N
37	WASHER-LOCK.....	46	95B3	95B3	95B3
38	WASHER-LOCK.....	44	95B5	95B5	95B5
41	HOUSING-SEAL.....	1	206SSQ362	206SSQ362	206SSQ362
42	O-RING.....	1	25BC378	25BC378	25BC378
43	RING-RETAINER.....	1	74D55	74D55	74D55
44	PLUG-SqHd PIPE.....	5	64AA5	64AA5	64AA5
45	TAG-INSPECTION.....	1	202EAQ304	202EAQ304	202EAQ304
46	SEAL-BLANK LEAD.....	1	01228421 0025	01228421 0025	01228421 0022
47	SCREW-HEX CAP.....	2	00900050 0044	00900050 0044	00900050 0044
49	GUARD-COUPLING.....	1	200SSQ339	200SSQ339	200SSQ339
50	SCREW-FLANGED.....	4	75LM150	75LM150	75LM150



214SSP810

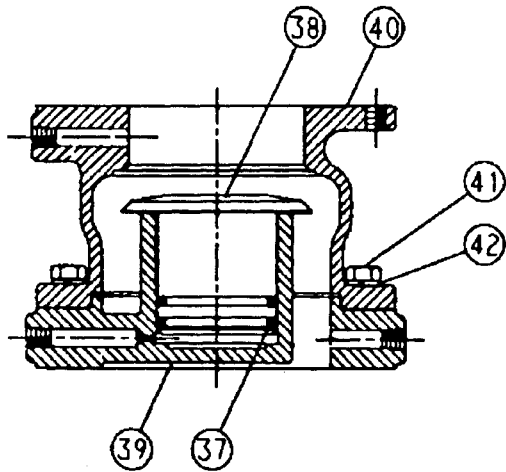
Ref. No.	Name of Part	Qty.	150 HP-7E
	BARE COMPRESSOR		Part No. SSPNBAO2
1	BEARING-ROLLER	1	12BA104
2	BEARING-ROLLER	1	12BA103
3	ROTOR	1	204SSP010
4	ROTOR	1	206SSP010
5	CYLINDER	1	205SSP002
6	HOUSING-BEARING	1	204SSP006
7	PIN-DOWELL	2	62M83
8	SCREW-HEX CAP	14	655ED060
9	WASHER-LOCK	16	95B3
10	GASKET-ELIMINATOR	1	25BC256
11	BEARING-ROLLER	1	12BA105
12	SHIM	1	77H83
13	PLATE-BEARING RETAINER.....	1	201SSP253
14	SCREW-HEX HD	1	655EF06N
15	BEARING-ROLLER	1	12BA106
16	SHIM	2	77H82
17	PLATE-BEARING RETAINER.....	1	200SSP253
18	SCREW-HEX HD CAP.....	1	655EF06N
19	SPRING-WAVE.....	1	78W52
20	PLATE-BEARING COVER.....	1	202SSP315
21	SCREW-12 PT CAP	18	75P60
22	ADAPTOR.....	1	203SSP170
23	SCREW-HEX CAP	20	655ED100
24	WASHER-LOCK	20	95B3
25	SEAL-OIL.....	1	60DD595
26	HOUSING-SEAL.....	1	203SSP362
27	O-RING	1	25BC378
28	RING-RETAINER	1	74D55
43	GUARD-COUPLING	1	200SSM339
*	PLUG-SqHd PIPE	4	64AA5
*	TAG-INSPECTION	1	202EAQ304
*	SEAL-BLANK LEAD	1	01228421 0025



219SSQ810

**INLET VALVE
(SSQNBA Units)**

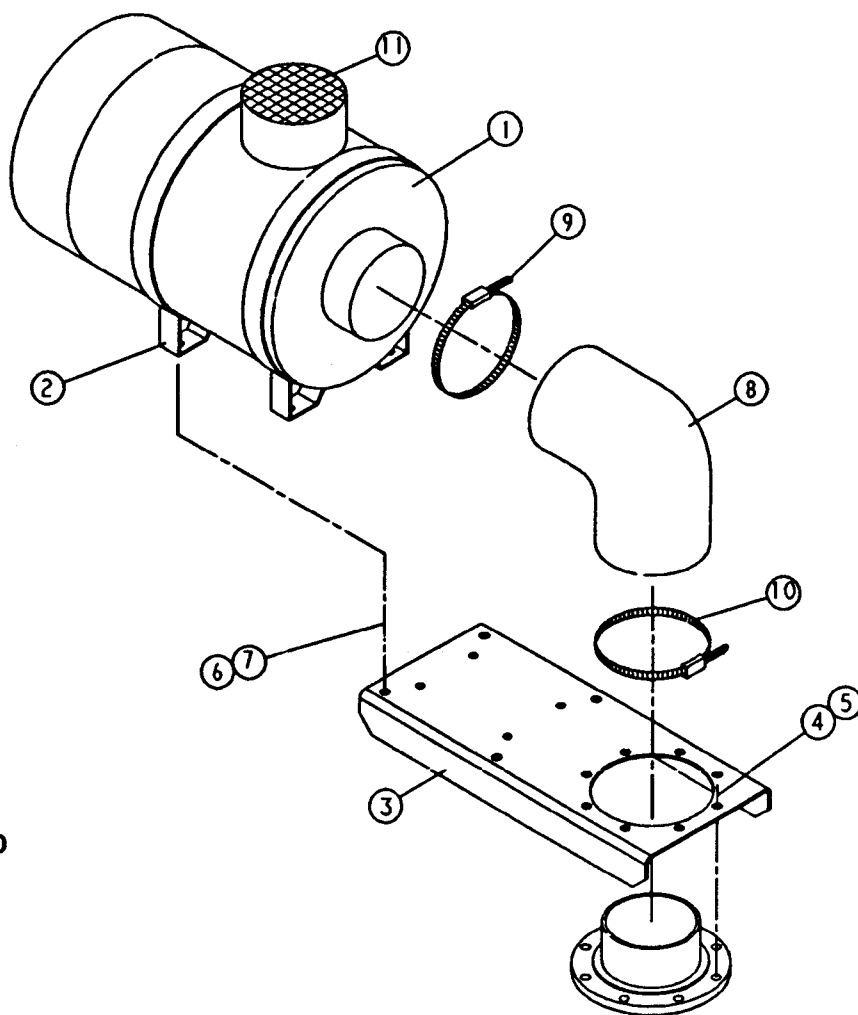
DET. NO.	NAME OF PART	QTY	PART NO.
25	PACKING-RING	2	60DD561
26	PISTON-INLET VALVE.....	1	200SSQ043
27	HOUSING-INLET	1	203SSQ041
28	SEAT.....	1	201SSQ256
29	SCREW-HEX CAP.....	8	655EG120
39	WASHER-LOCK.....	8	95B8



214SSQ810

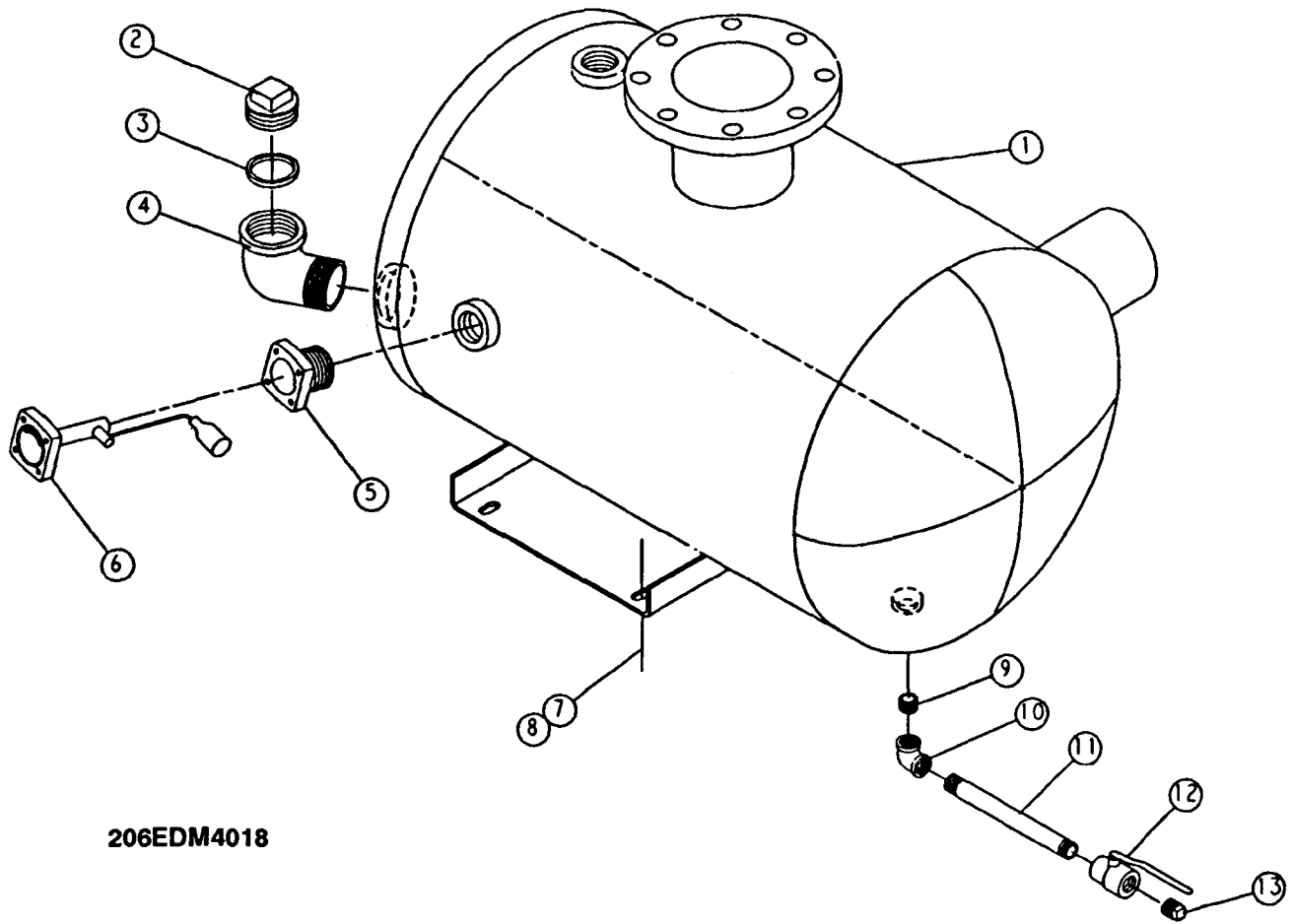
**INLET VALVE
(SSPNBA Units)**

DET. NO.	NAME OF PART	QTY	PART NO.
37	PACKING-RING	2	60DD21
38	PISTON-INLET VALVE	1	200SSM043
39	HOUSING-INLET	1	203SSM041
40	SEAT	1	201SSM256
41	SCREW-HEX CAP	8	655EE120
42	WASHER-LOCK.....	8	95B5



279ECM810

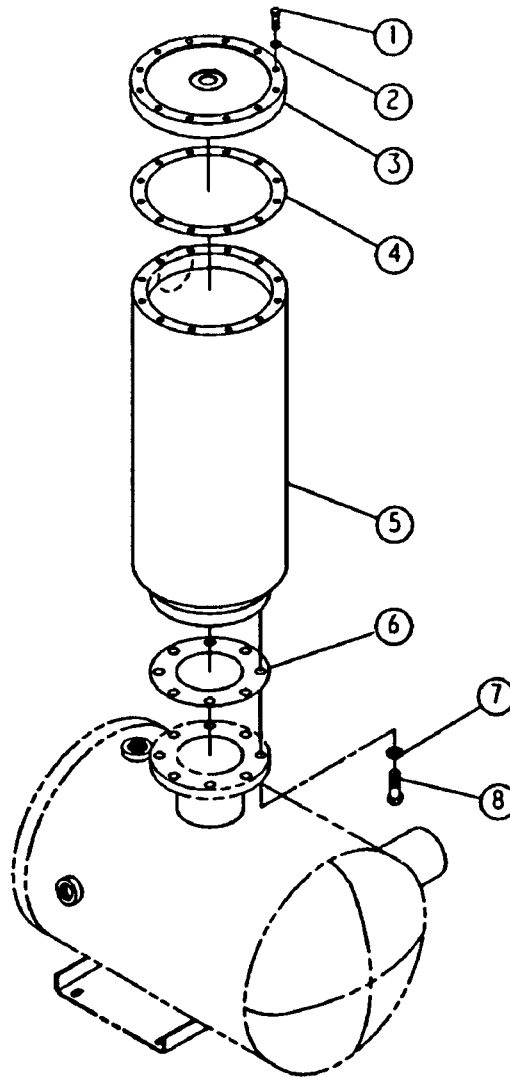
DET. NO.	NAME OF PART	QTY	PART NO.
1	FILTER-AIR	1	5L8
2	BAND-MOUNTING	2	2010066
3	BRACKET-FILTER	1	203EAQ389
4	SCREW-HEX HD	4	655EE040
5	WASHER-LOCK.....	4	95B5
6	SCREW-FLANGED.....	4	75K48
7	NUT-FLANGED.....	4	50AW5
8	HOSE-MOLDED	1	29Z96
9	CLAMP-HOSE	1	2009499
10	CLAMP-HOSE	1	29B46
11	CAP-SCREEN ASM	1	5L9
--	ELEMENT-AIR FILTER (Repair)	1	2010509



206EDM4018

OIL RESERVOIR

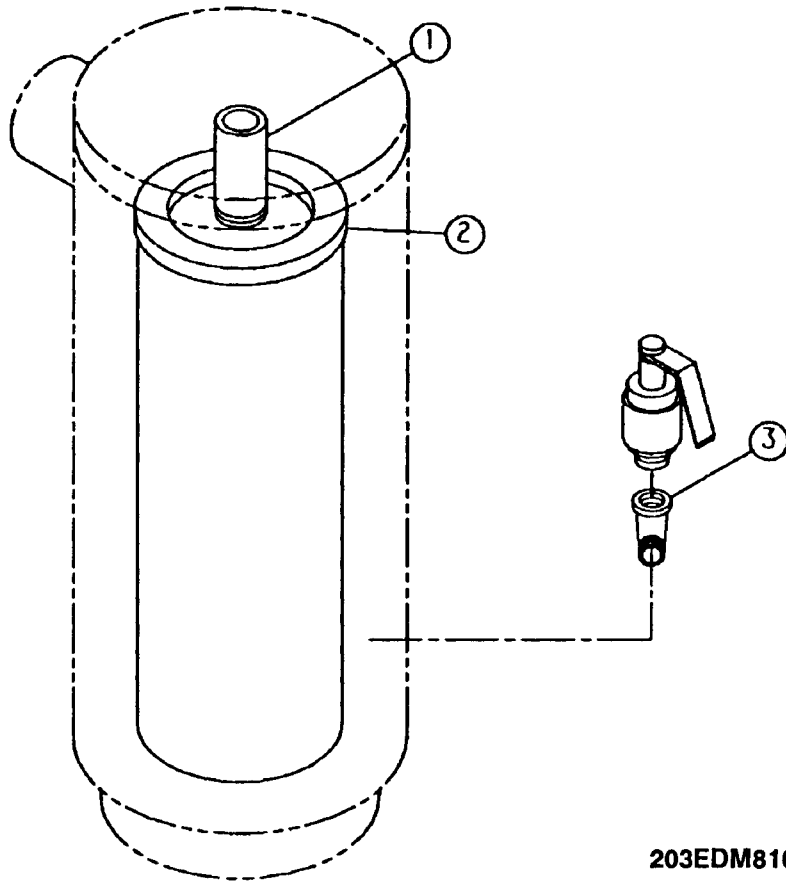
DET. NO.	NAME OF PART	QTY	PART NO.
1	RESERVOIR-OIL.....	1	200EDM037
2	COVER-FILTER.....	1	200SPF156
3	O-RING.....	1	25AH5
4	ELBOW.....	1	200LSF262
5	ADAPTOR-GAUGE.....	1	200EDE058
6	GAUGE-FLOAT.....	1	200ECM303
7	SCREW-FLANGED.....	4	75LM135
8	NUT-FLANGED.....	4	50AW35
9	NIPPLE-PIPE.....	1	63F1G
10	ELBOW-PIPE.....	1	64C4G
11	NIPPLE-PIPE.....	1	63F15G
12	VALVE-BALL.....	1	90AR360
13	PLUG-SQHD PIPE.....	1	64AA7
--	GASKET-FLOAT GAUGE.....	1	54C204



209EDM810

SEPARATOR HOUSING

DET. NO.	NAME OF PART	QTY	PART NO.
1	SCREW-HEX HD	12	655EE090
2	WASHER-LOCK	12	95B5
3	COVER.....	1	200EDM225
4	GASKET.....	1	200EDM715N
5	HOUSING.....	1	200EDM405
6	GASKET.....	1	25C807N
7	WASHER-LOCK	8	95B8
8	SCREW-HEX HD	8	655EG080

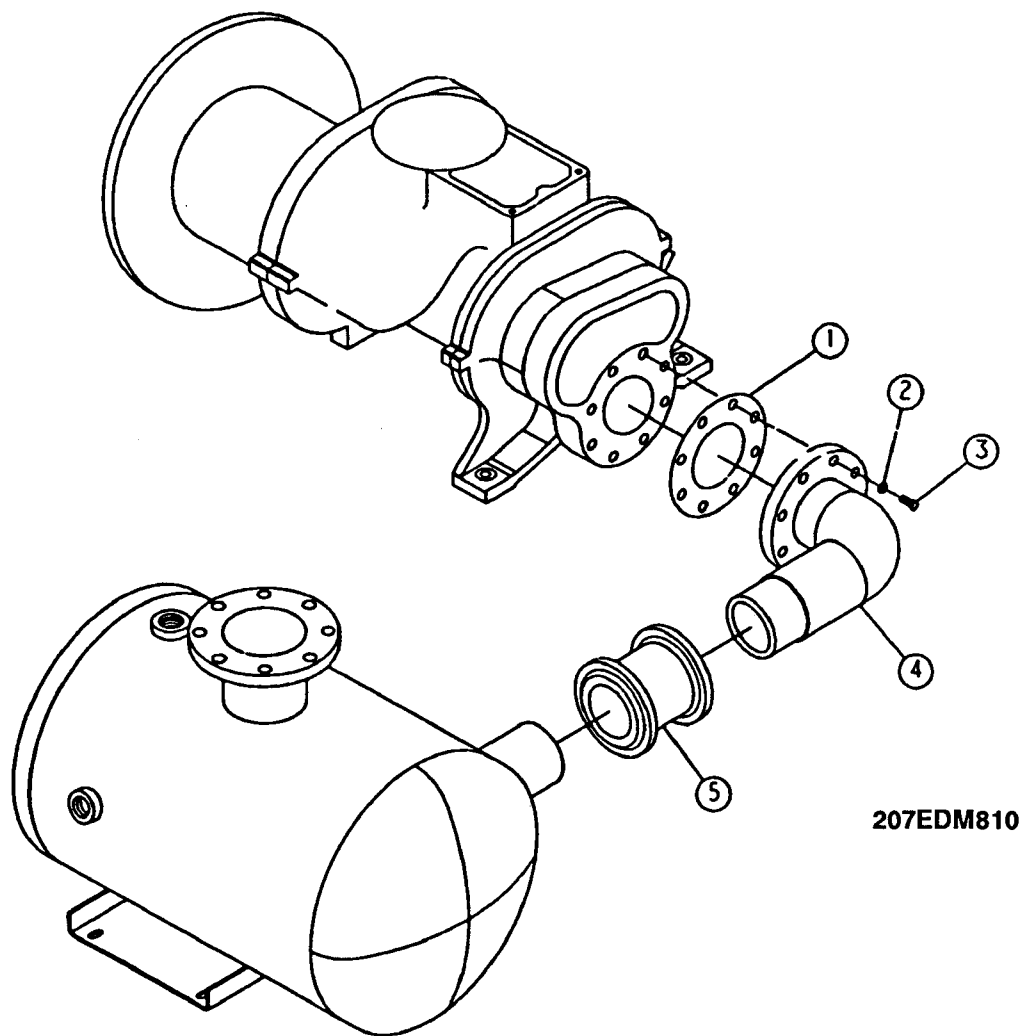


203EDM810

SEPARATOR GROUP

DET. NO.	NAME OF PART	QTY	PART NO.
1	NIPPLE-PIPE	1	201EDM392
2	OIL SEPARATOR.....	1	55B44
3	ELBOW-PIPE ST	1	64D8G
-	RELIEF VALVE.....	1	
	100 PSI.....		90AR510
	125 PSI.....		90AR532
	150 PSI.....		90AR649

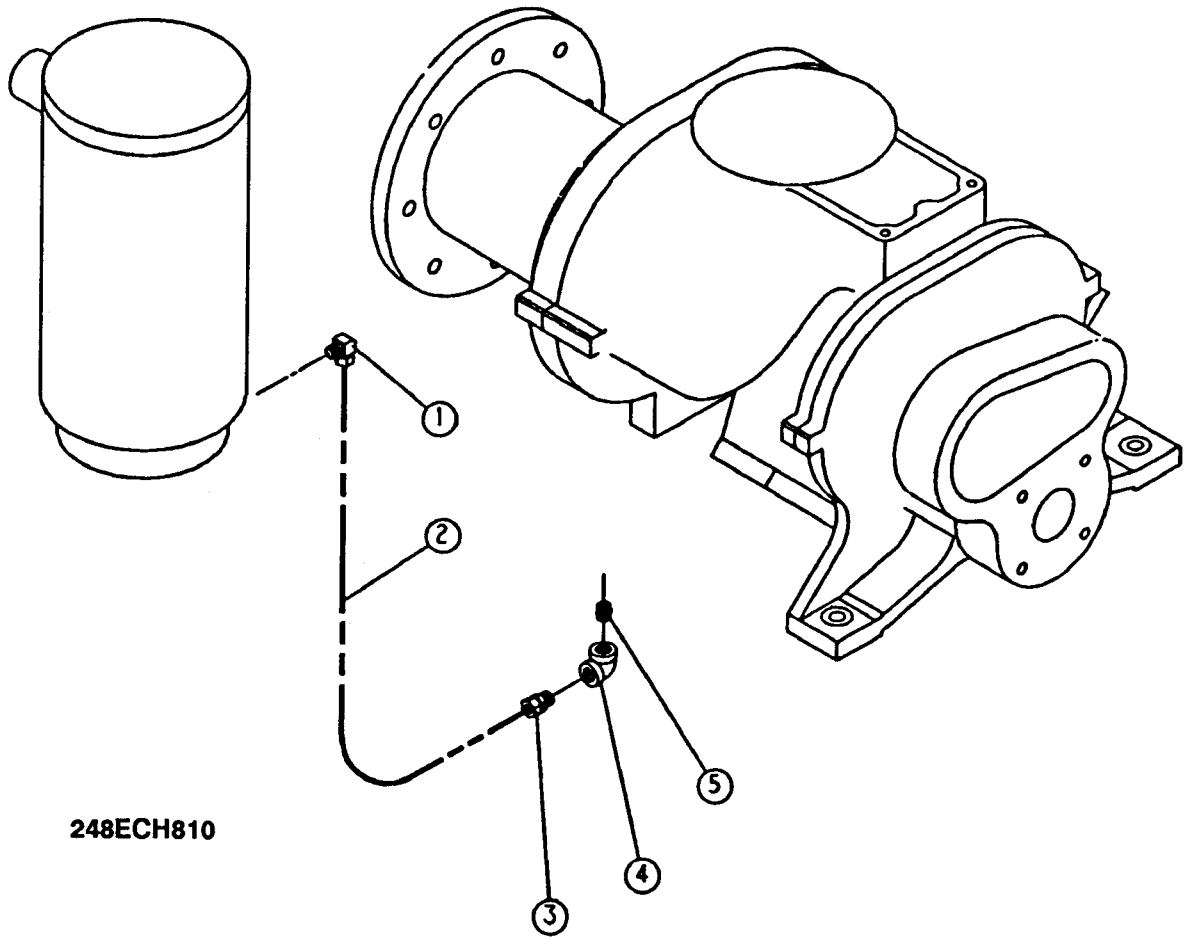
SEPARATOR REPAIR KIT - 202EDP6013 (55B44 OIL SEPARATOR & 200EDM715N GASKET)



207EDM810

COMPRESSOR DISCHARGE PIPING

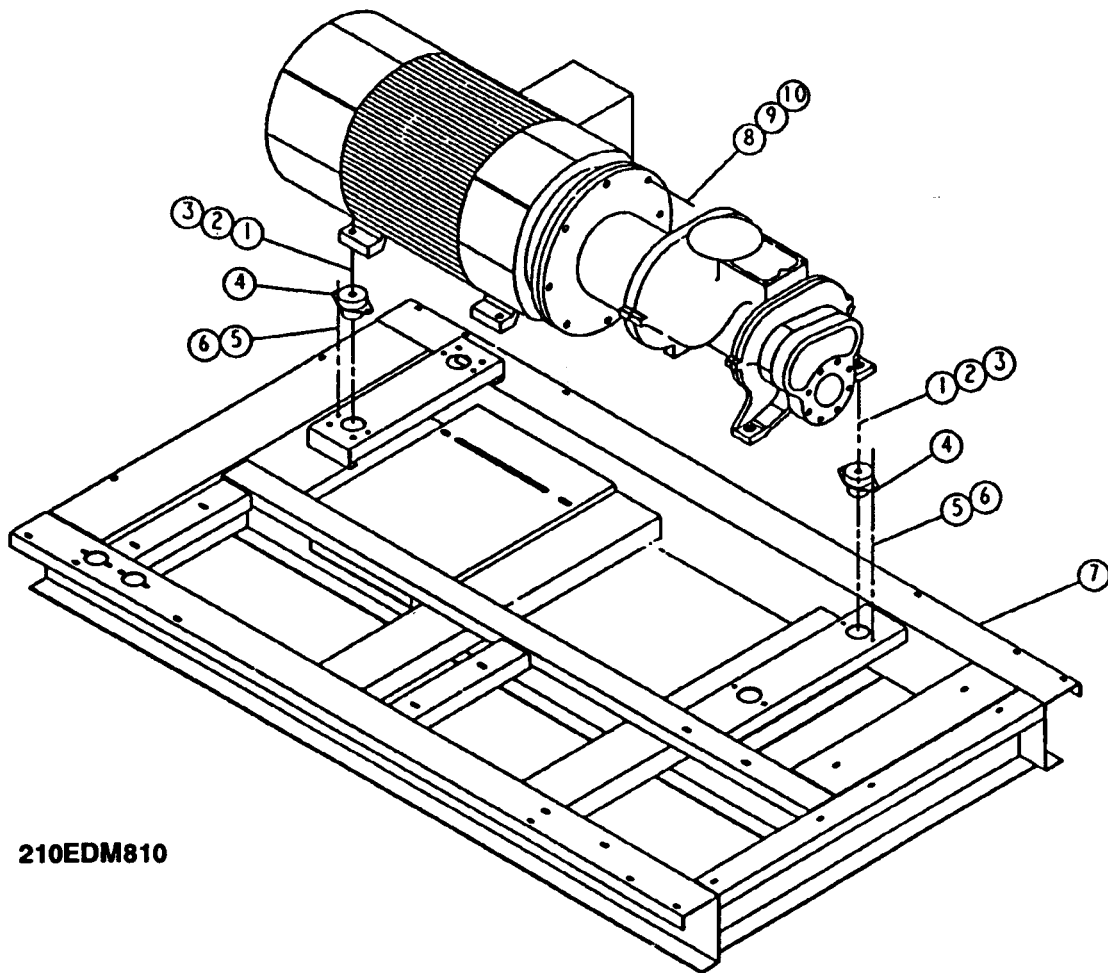
DET. NO.	NAME OF PART	QTY	PART NO.
1	GASKET RING.....	1	25C603N
2	WASHER-LOCK.....	8	95B7
3	SCREW-HEX HD.....	8	655EF080
4	MANIFOLD.....	1	200EDM286
5	COUPLING-FLEX.....	1	64EB329
--	GASKET, FLEX COUPLING.....	2	2109776



248ECH810

OIL RETURN LINE

DET. NO.	NAME OF PART	QTY	PART NO.
1	ELBOW-TUBE	1	86E60
2	TUBE.....	10 FT.	85K3
3	CONNECTOR-TUBE.....	1	86E4
4	ELBOW-PIPE.....	1	64C3G
5	NIPPLE-PIPE.....	1	63C1G

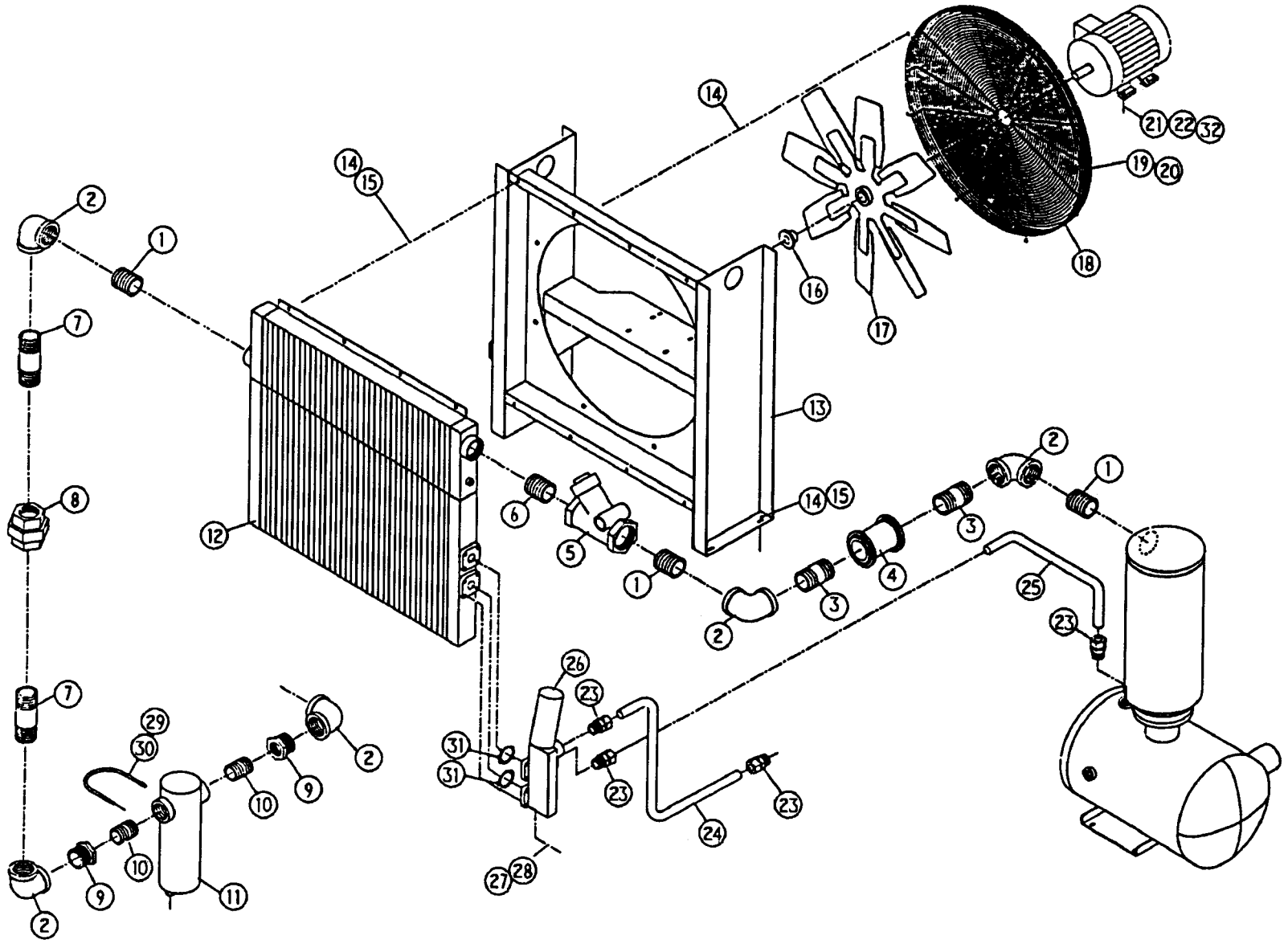


210EDM810

BASE AND MOUNTING

DET. NO.	NAME OF PART	QTY	PART NO.
1	SCREW-HEX CAP	4	655EF200
2	WASHER-LOCK.....	4	95B7
3	NUT-HEX	4	50B7
4	ISOLATOR-VIB	4	49C48
5	SCREW-FLANGED.....	8	75LM135
6	NUT-FLANGED.....	8	50AW35
7	BASE.....	1	206EAQ285
8	NUT-HEX	8	50B8
9	WASHER-LOCK.....	8	95B8
10	SCREW-HEX HD	8	655EG140
*	KEY-SQ.....	1	35B243
*	COUPLING-FLEX (See Page 31).....	-	----

* NOT SHOWN

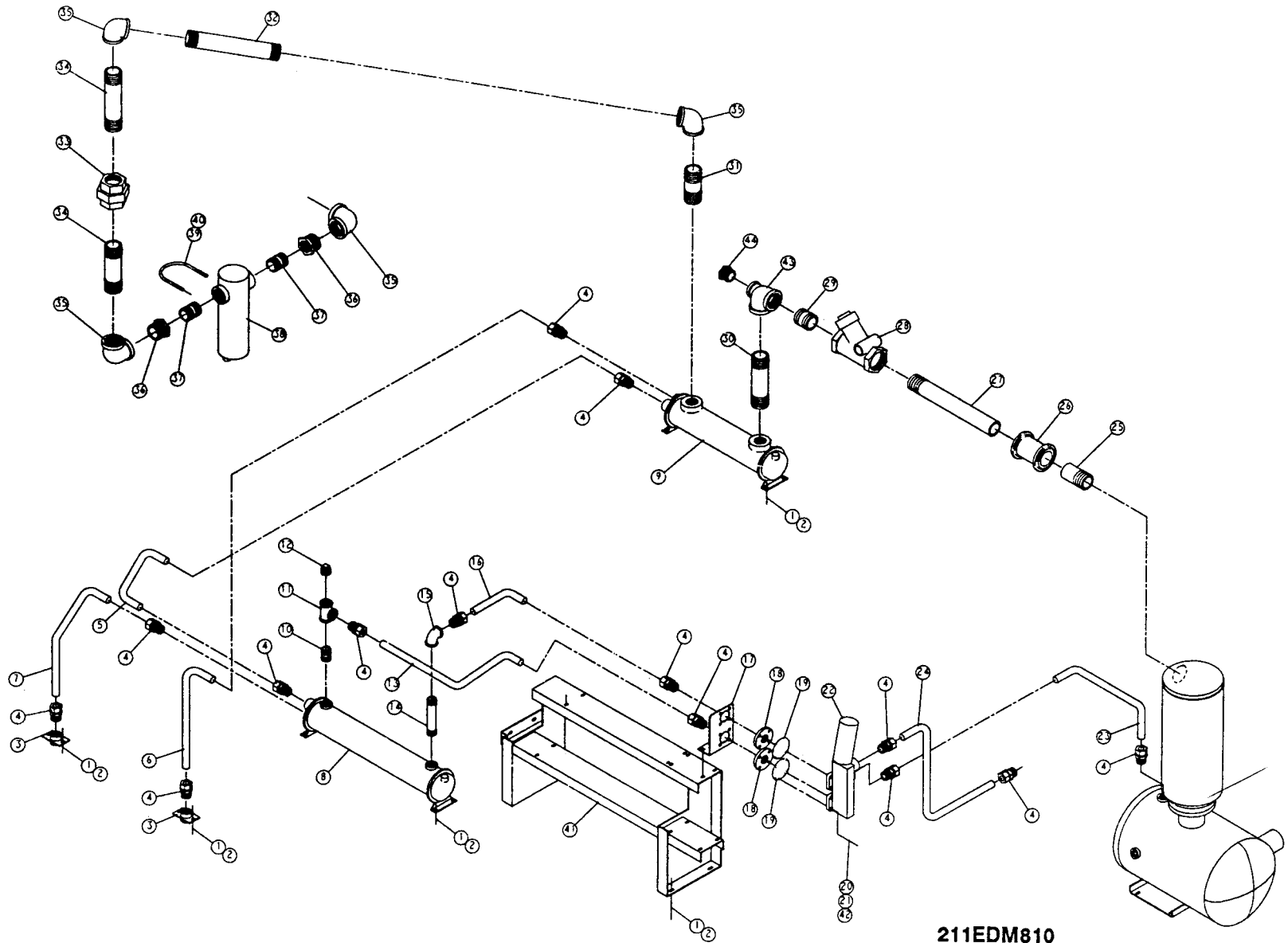


205EDM810

COOLER GROUP

DET. NO.	NAME OF PART	QTY	PART NO.
1	NIPPLE-PIPE.....	3	63P1G
2	ELBOW-PIPE	5	64C10G
3	NIPPLE-PIPE.....	2	63AJ48X44G
4	COUPLING-FLEX.....	1	64EB328
5	VALVE-M/PRESS & CHECK..	1	200EDM527
6	PIPE NIPPLE.....	1	63P10G
7	NIPPLE-PIPE.....	2	63P17G
8	UNION-STRAIGHT.....	1	64Z21
9	BUSHING-PIPE.....	2	64E33
10	NIPPLE-PIPE.....	2	63M3G
11	SEPARATOR-MOISTURE.....	1	83C92
12	COOLER-OIL	1	200EDM201
13	SUPPORT.....	1	200EDM165
14	SCREW-FLANGED	20	75LM51
15	NUT-FLANGED.....	12	50AW5
16	BUSHING-HUB.....	1	22G2

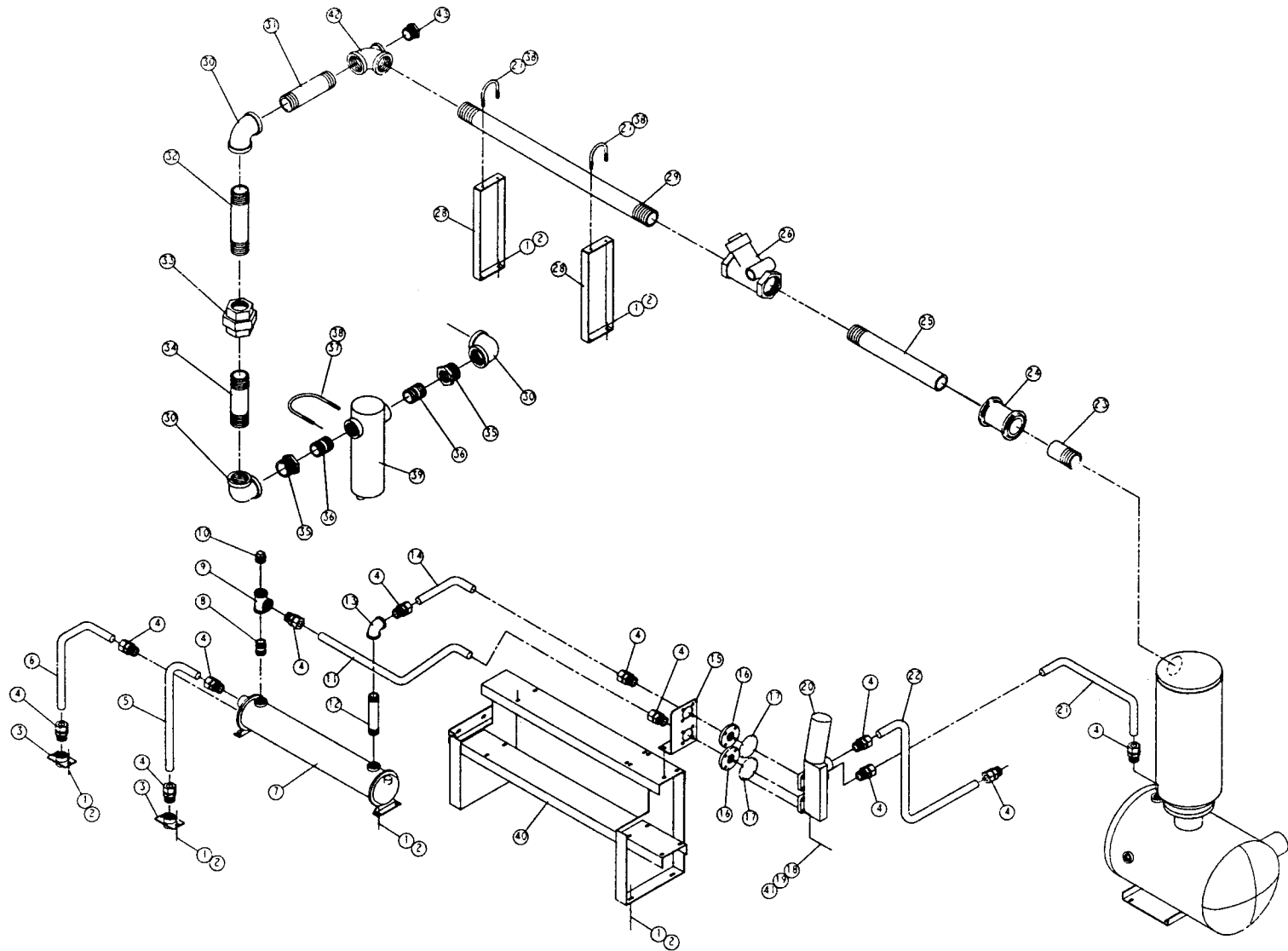
DET. NO.	NAME OF PART	QTY	PART NO.
17	FAN.....	1	200EAQ701
18	GUARD-FAN.....	1	200EDM393
19	SCREW-FLANGED.....	4	75LM50
20	NUT-FLANGED.....	4	50AW4
21	SCREW-FLANGED	4	75LM78
22	NUT-FLANGED.....	4	50AW5
23	CONNECTOR-TUBE	4	86N105
24	TUBE-FORMED.....	1	200EBQ857
25	TUBE-FORMED.....	1	200EDM857
26	ASM-STAT/FILTER	1	200EDM2045
27	SCREW-HEX HD	8	655EE060
28	WASHER-LOCK.....	8	95B5
29	U-BOLT	1	15U75
30	NUT-FLANGED.....	2	50AW35
31	O-RING	2	25BC387
32	WASHER-PLAIN.....	4	95W15
--	GASKET, FLEX COUPLING ...	2	2109775



211EDM810

WATER COOLED PIPING WITH AFTERCOOLER

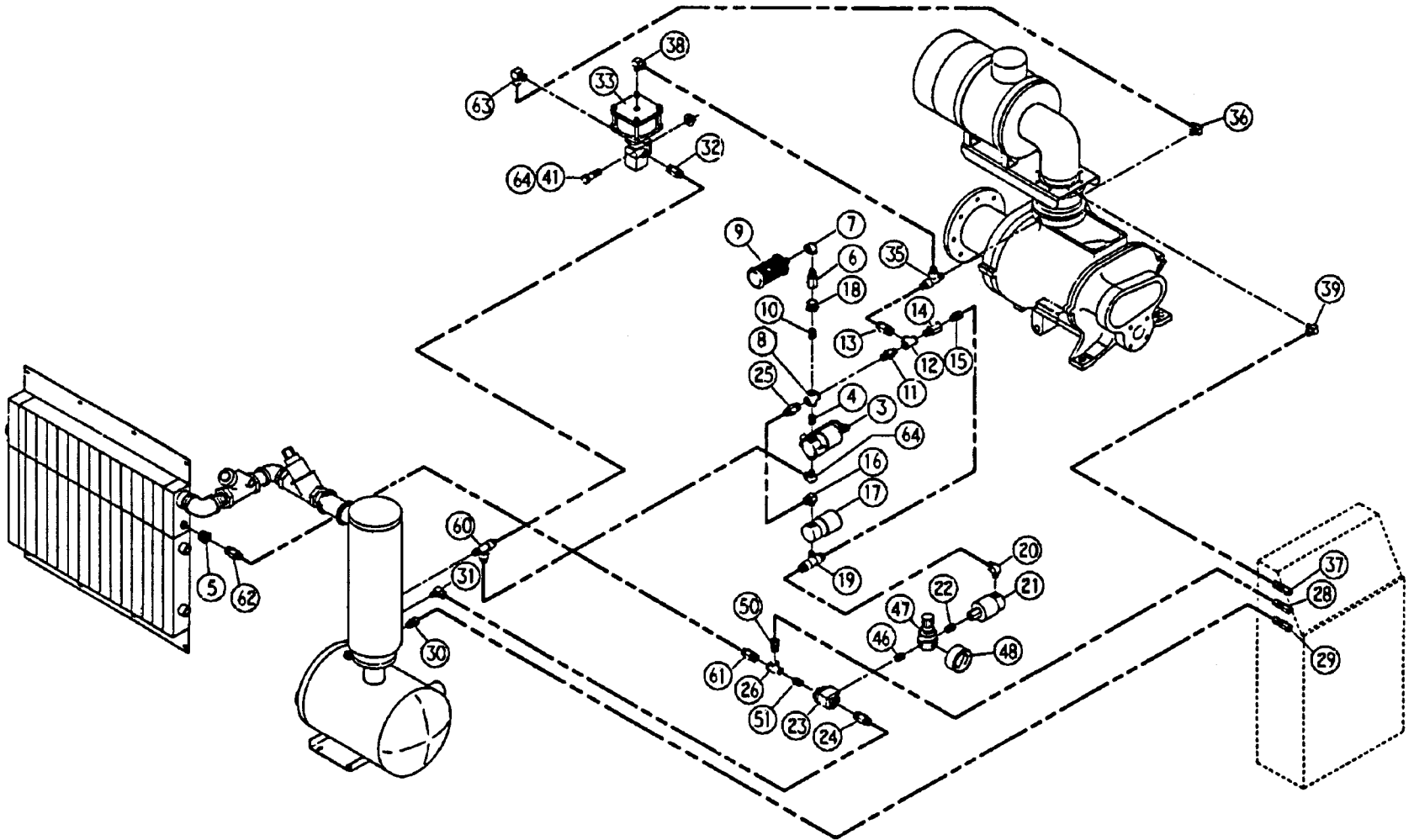
DET. NO.	NAME OF PART	QTY	PART NO.	DET. NO.	NAME OF PART	QTY	PART NO.
1	SCREW-FLANGED.....	18	75LM51	25	NIPPLE-PIPE.....	1	63AJ48X50G
2	NUT-FLANGED.....	18	50AW5	26	COUPLING-FLEX.....	1	64EB328
3	MANIFOLD-WATER.....	2	200EDM072	27	NIPPLE-PIPE.....	1	63AJ48X200G
4	CONNECTOR-TUBE.....	14	86N105	28	VALVE-M/PRESS & CHECK..	1	200EDM527
5	TUBE-FORMED.....	1	206EDM857	29	NIPPLE-PIPE.....	1	63P1G
6	TUBE-FORMED.....	1	207EDM857	30	NIPPLE-PIPE.....	1	63N48X134G
7	TUBE-FORMED.....	1	209EDM857	31	NIPPLE-PIPE.....	1	63P15G
8	HEAT EXCHANGER.....	1	200EDM349	32	NIPPLE-PIPE.....	1	63N48X200G
9	AFTERCOOLER.....	1	200EDM292	33	UNION-STRAIGHT.....	1	64Z21
10	NIPPLE-PIPE.....	1	63K20G	34	NIPPLE-PIPE.....	2	63P17G
11	TEE-PIPE.....	1	64G11G	35	ELBOW-PIPE.....	4	64C10G
12	PLUG-SQHD PIPE.....	1	64A8	36	BUSHING-PIPE.....	2	64E33
13	TUBE-FORMED.....	1	204EDM857	37	NIPPLE-PIPE.....	2	63M3G
14	NIPPLE-PIPE.....	1	63K10G	38	SEPARATOR-MOISTURE.....	1	83C92
15	ELBOW-PIPE.....	1	64C8G	39	U-BOLT.....	1	15U75
16	TUBE-FORMED.....	1	205EDM857	40	NUT-FLANGED.....	2	50AW35
17	BRACKET (FORMED).....	1	200EDM142	41	SUPPORT.....	1	201EDM165
18	FLANGE-THREADED.....	2	64DC3	42	NUT-HEX.....	8	50B5
19	O-RING.....	2	25BC387	44	BUSHING-PIPE.....	1	64E60
20	SCREW-HEX HD.....	8	655EE060	45	TEE-PIPE.....	1	8503783
21	WASHER-LOCK.....	8	95B5	--	GASKET, FLEX CPLG.....	2	2104775
22	ASM-STAT/FILTER.....	1	200EDM2045		WATER VALVES (OPTIONAL)		
23	TUBE-FORMED.....	1	202EDM857		WATER TEMP. REGULATOR		90AR151
24	TUBE-FORMED.....	1	201EBQ857		WATER SOLENOID VALVE - N1		91B3
					WATER SOLENOID VALVE - N4		91B24



208EDM810

WATER COOLED PIPING (NO AFTERCOOLER)

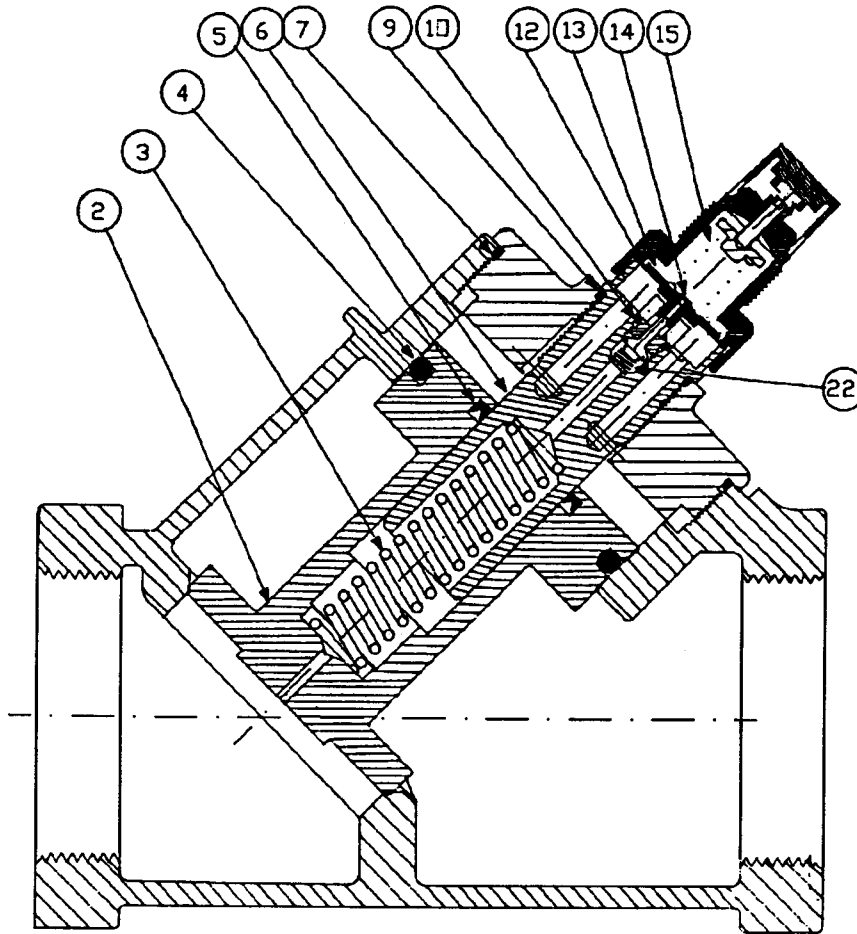
DET. NO.	NAME OF PART	QTY	PART NO.	DET. NO.	NAME OF PART	QTY	PART NO.
1	SCREW-FLANGED.....	18	75LM51	25	NIPPLE-PIPE.....	1	63AJ48X200G
2	NUT-FLANGED.....	18	50AW5	26	VALVE-M/PRESS & CHECK..	1	200EDM527
3	MANIFOLD-WATER.....	2	200EDM072	27	U-BOLT	2	15U87
4	CONNECTOR-TUBE	12	86N105	28	BRACKET-PIPE.....	2	200EDM108
5	TUBE-FORMED	1	206EDM857	29	NIPPLE-PIPE.....	1	63N48X430G
6	TUBE-FORMED	1	207EDM857	30	ELBOW-PIPE	3	63C10G
7	HEAT EXCHANGER	1	200EDM349	31	NIPPLE-PIPE.....	1	63P21G
8	NIPPLE-PIPE	1	63K20G	32	NIPPLE-PIPE.....	1	63P25G
9	TEE-PIPE	1	64G11G	33	UNION-STRAIGHT.....	1	64Z21
10	PLUG-SQHD PIPE.....	1	64A8	34	NIPPLE-PIPE.....	1	63P20G
11	TUBE-FORMED	1	204ECM857	35	BUSHING-PIPE.....	2	64E33
12	NIPPLE-PIPE	1	63K10G	36	NIPPLE-PIPE.....	2	63M3G
13	ELBOW-PIPE.....	1	64C8G	37	U-BOLT	1	15U75
14	TUBE-FORMED	1	205EDM857	38	NUT-FLANGED.....	6	50AW35
15	BRACKET (FORMED)	2	200EDM142	39	SEPARATOR-MOISTURE.....	1	83C92
16	FLANGE-THREADED	2	64DC3	40	SUPPORT	1	201EDM165
17	O-RING	2	25BC387	41	NUT-HEX.....	8	50B5
18	SCREW-HEX HD	8	655EE060	42	TEE-PIPE.....	1	8503783
19	WASHER-LOCK.....	8	95B5	43	BUSHING-PIPE.....	1	64E60
20	ASM-STAT/FILTER	1	200EDM2045	--	GASKET-HEX CPLG.....	2	2109775
21	TUBE-FORMED	1	202EDM857		WATER VALVES (OPTIONAL)		
22	TUBE-FORMED	1	201EBQ857		WATER TEMP. REGULATOR		90AR151
23	NIPPLE-PIPE	1	63AJ48X50G		WATER SOLENOID VALVE - N1		91B3
24	COUPLING-FLEX.....	1	64EB328		WATER SOLENOID VALVE - N4		91B24



287ECM810

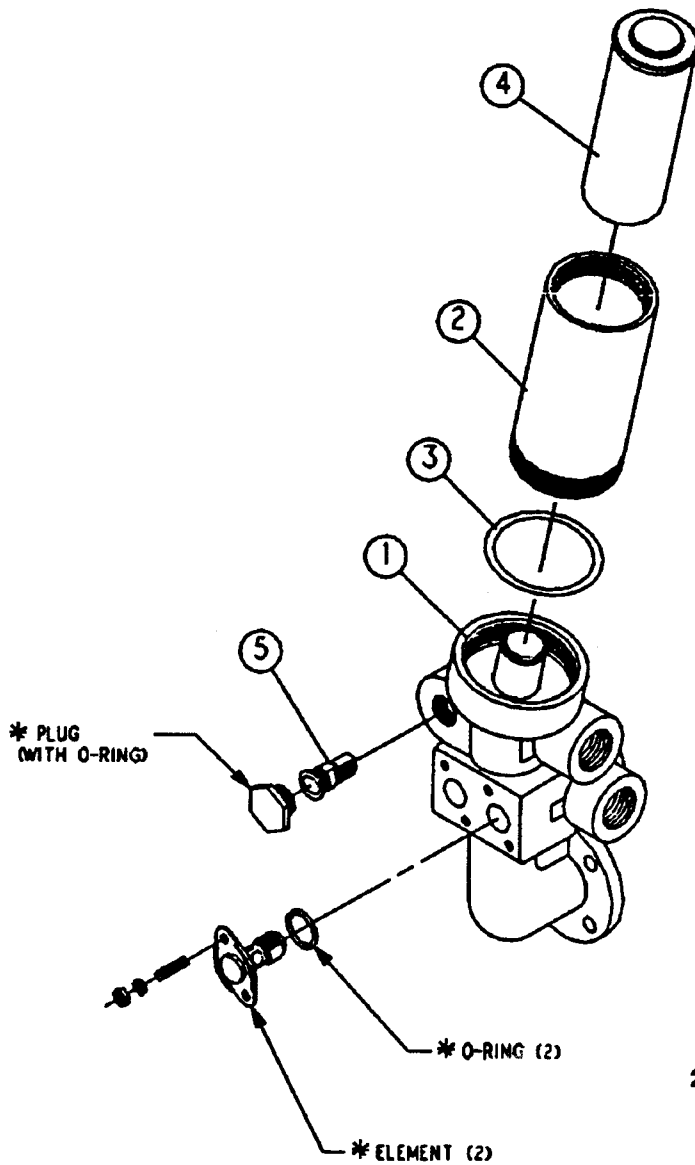
DET. NO.	NAME OF PART	QTY	PART NO.
1	CONNECTOR-TUBE.....	1	86E9
2	ELBOW-TUBE.....	1	86E60
3	VALVE-SOLENOID.....	1	91B70
4	NIPPLE-PIPE.....	1	63D1G
5	BUSHING-PIPE.....	1	64E2
6	ORIFICE.....	1	200ECM814
7	ELBOW-PIPE.....	1	64C4G
8	CROSS-PIPE.....	1	64K1G
9	MUFFLER.....	1	43E6
10	NIPPLE-PIPE.....	1	63D1G
11	VALVE-CHECK.....	1	90AR261
12	TEE-PIPE.....	1	64G3G
13	CONNECTOR-TUBE.....	1	86E9
14	ORIFICE.....	1	2011768
15	CONNECTOR-TUBE.....	1	86E4
16	ELBOW-TUBE.....	1	86E60
17	VALVE, SOLENOID.....	1	91B80
18	BUSHING-PIPE.....	1	64E2
19	TEE-TUBE.....	1	86E119
20	ELBOW-TUBE.....	1	86E60
21	VALVE, SOLENOID.....	1	91B81
22	NIPPLE-PIPE.....	1	63D1G
23	VALVE.....	1	90AR107
24	ELBOW-TUBE.....	1	86E64
25	CONNECTOR-TUBE.....	1	86E4
26	TEE-PIPE.....	1	64G3G
27	CONNECTOR-TUBE.....	1	86E9
28	CONNECTOR.....	1	86N218
29	CONNECTOR.....	1	86N218
30	CONNECTOR-TUBE.....	1	86E4
31	ELBOW-TUBE.....	1	86E64
32	CONNECTOR-TUBE.....	1	86E9

DET. NO.	NAME OF PART	QTY	PART NO.
33	VALVE-AIR CONT.....	1	90AR35
34	CONNECTOR-TUBE.....	1	86E9
35	TEE-TUBE.....	1	86E136
36	ELBOW-TUBE.....	1	86E64
37	CONNECTOR.....	1	86N218
38	ELBOW-TUBE.....	1	86E64
39	ELBOW-TUBE.....	1	86E60
40	SCREW-HEX CAP.....	2	655EC060
41	NUT-FLANGED.....	2	50AW3
43	TUBE.....	30 FT.	85K3
44	TUBE.....	20 FT.	85K5
46	NIPPLE-PIPE.....	1	63D1G
47	REGULATOR-PRESSURE.....	1	88H139
48	GAUGE.....	1	27P109
49	CONNECTOR-TUBE.....	1	86E9
50	CONNECTOR-TUBE.....	1	86E4
51	NIPPLE-PIPE.....	1	63D1G
52	TEE-PIPE.....	1	64G3G
53	CONNECTOR-TUBE.....	1	86E4
54	NIPPLE-PIPE.....	1	63D1G
55	SEAL PLUG.....	1	24CA2597
56	FITTING-CONDUIT.....	1	24A341
57	GASKET.....	1	24A342
58	COVER.....	1	24A343
59	NUT-FLANGED.....	4	50AW5
60	TEE-TUBE.....	1	86E136
61	CONNECTOR-TUBE.....	1	86E9
62	CONNECTOR-TUBE.....	1	86E9
63	ELBOW-TUBE.....	1	86E64
64	ELBOW-TUBE.....	1	86E64
65	SCREW-SO HD CAP.....	2	75P4



**MINIMUM PRESSURE & CHECK VALVE - 200EDM527
(COMPLETE ASSEMBLY)**

DET. NO.	NAME OF PART	QTY	PART NO.
2	VALVE	1	2116606
3	MAIN SPRING	1	2116232
4	O-RING	1	2116608
5	U-CUP 1-3/8 x 1-3/4 x 3/16	1	2116609
6	REGULATOR HOUSING	1	2116610
7	O-RING	1	2116611
9	O-RING	1	2116612
10	O-RING	1	2116613
12, 13 & 14	DIAPHRAGM-ASSY	1	2116614
	INCLUDES (1) EACH DIAPHRAGM, SUPPORT & RETAINER		
15	MAIN SPRING	1	2116615
22	VALVE SPRING	1	2116616



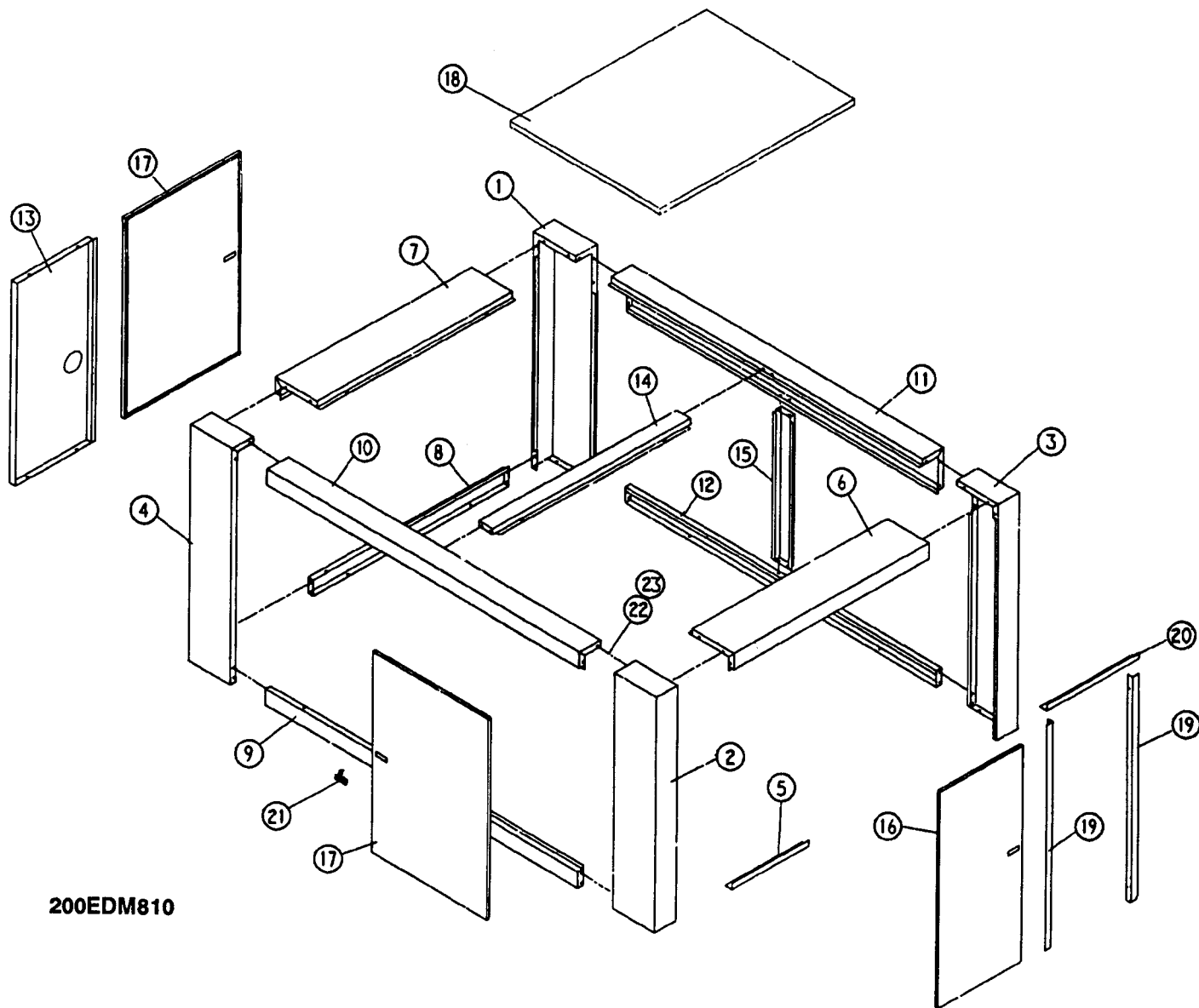
212EDM810

**FILTER ASSEMBLY - 200EDM2045
(WITH 150° ELEMENT - STD.)**

DET. NO.	NAME OF PART	QTY	PART NO.
1	MANIFOLD-OIL.....	1	200EDM116
2	BODY-OIL FILTER.....	1	200EDM032
3	O-RING.....	1	25BC380
4	FILTER-OIL.....	1	200EDM369
5	CARTRIDGE-FILTER.....	1	2116640

* FOR REPAIR: 2116676 PLUG - WITH O-RING (VITON)
 2116677 ELEMENT - WITH O-RING (VITON) (150°)
 2116678 ELEMENT - WITH O-RING (VITON) (160°)
 2116679 ELEMENT - WITH O-RING (VITON) (180°)

ENCLOSURE
COMMON PARTS - AIR/WATER COOLED



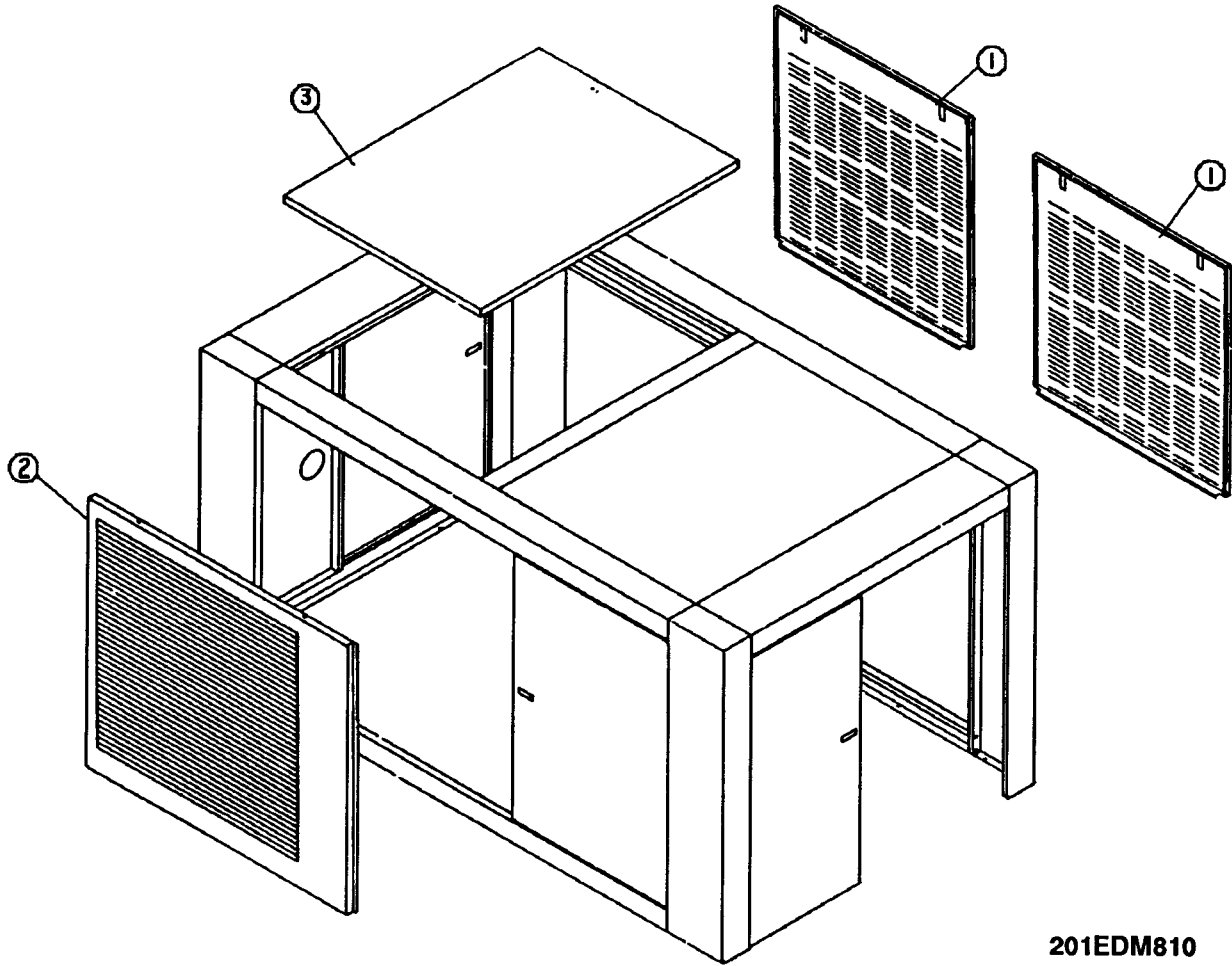
200EDM810

**ENCLOSURE
COMMON PARTS - AIR/WATER COOLED**

DET. NO.	NAME OF PART	QTY	PART NO.	DET. NO.	NAME OF PART	QTY	PART NO.
1	POST	1	200EDM313	13	BRACE.....	1	200EDM326
2	POST	1	201EDM313	14	BRACE.....	1	201EDM326
3	POST	1	202EDM313	15	BRACE.....	1	202EDM326
4	POST	1	203EDM313	16	DOOR-CANOPY	1	200EDM334
5	FRAME.....	1	200EDM314	17	DOOR-CANOPY	2	201EDM334
6	FRAME.....	1	201EDM314	18	PANEL.....	1	203EDM216
7	FRAME.....	1	202EDM314	19	BRACKET	2	201EDM142
8	FRAME.....	1	203EDM314	20	BRACKET	1	202EDM142
9	FRAME.....	1	204EDM314	21	LATCH.....	7	31D51
10	FRAME.....	1	205EDM314	22	SCREW-FLANGED	90	75LM51
11	FRAME.....	1	206EDM314	23	NUT-FLANGED	82	50AW5
12	FRAME.....	1	207EDM314	*	TRIM SEAL.....	75	32E12

* NOT SHOWN.

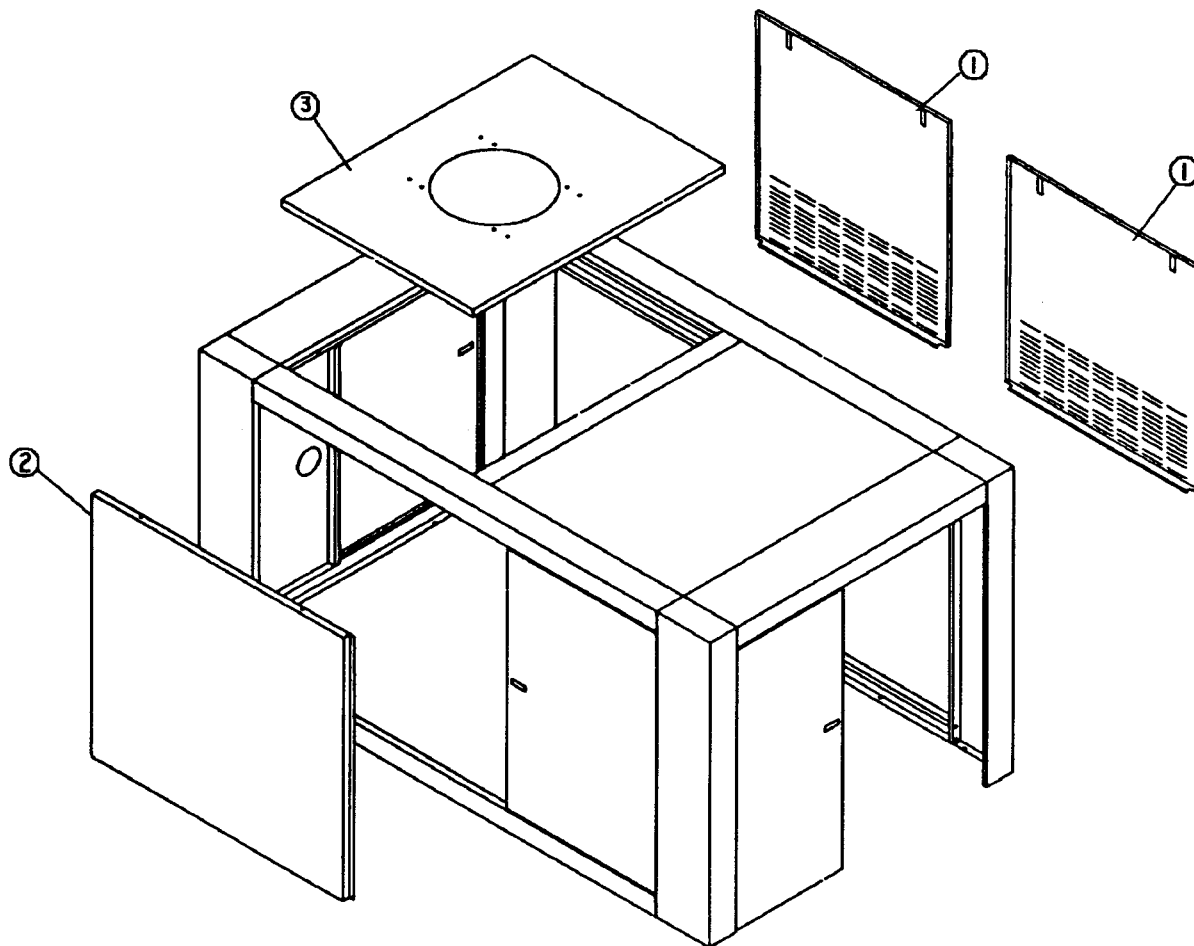
NOTE: Det. No. 21, 22, 23 & TRIM SEAL - not furnished in Enclosure Kits - Furnished by Factory.



201EDM810

ENCLOSURE - AIR COOLED

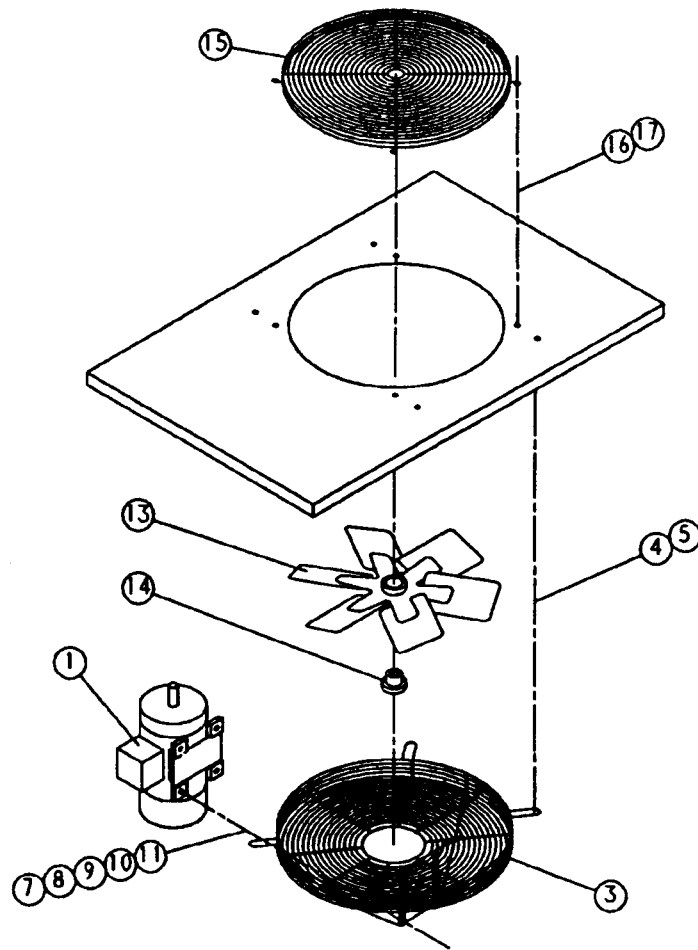
DET. NO.	NAME OF PART	QTY	PART NO.
1	PANEL	2	200EDM216
2	PANEL	1	202EDM216
3	PANEL	1	203EDM216



202EDM810

ENCLOSURE - WATER COOLED

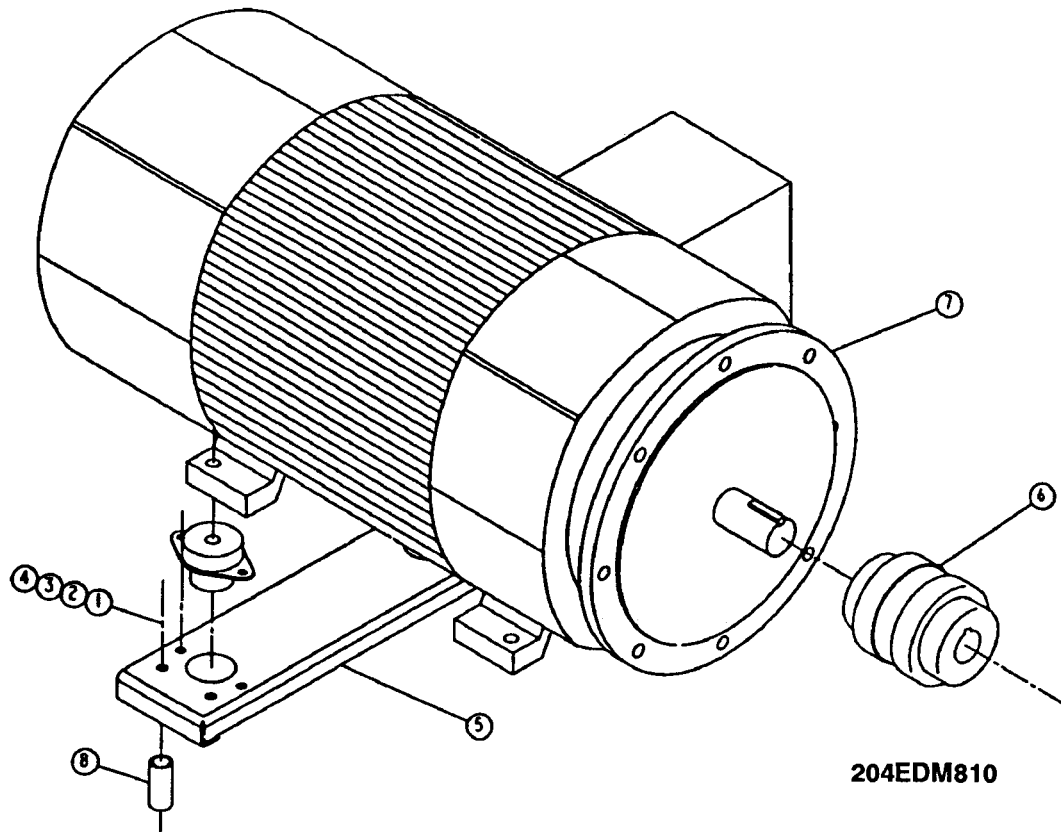
DET. NO.	NAME OF PART	QTY	PART NO.
1	PANEL	2	201EDM216
2	PANEL	1	204EDM216
3	PANEL	1	205EDM216



285ECM810

VENT FAN GROUP

DET. NO.	NAME OF PART	QTY	PART NO.
1	MOTOR.....	1	See Page 32
3	GUARD-FAN.....	1	202ECM393
4	SCREW-FLANGED.....	4	75K48
5	WASHER-PLAIN.....	4	95A5
7	SCREW-HEX CAP.....	4	75A35
8	RETAINER.....	4	2014731
9	WASHER-PLAIN.....	4	95A2
10	WASHER-LOCK.....	4	95B2
11	NUT-HEX.....	4	50B2
13	FAN.....	1	202ECM701
14	HUB BUSHING.....	1	22G27
15	GUARD-FAN.....	1	200ECM393
16	SCREW-FLANGED.....	4	75LM51
17	NUT-FLANGED.....	4	50AW5



DET. NO.	NAME OF PART	QTY	PART NO.
1	WASHER-PLAIN.....	4	95A7
2	WASHER-LOCK.....	4	95B7
3	NUT-HEX.....	4	50B7
4	SCREW-HEX HD.....	4	655EF160
5	SUPPORT-MOTOR.....	1	*
6	COUPLING-FLEX.....	1	*
7	MOTOR.....	1	SEE PAGE 32
8	NIPPLE-PIPE.....	4	63AM12X32G

* NOTE: FLEX COUPLING (See Pages 15 & 32)
 51L29 COUPLING - (2-1/8 Mtr. Shaft Dia.) (404/405 Frame)
 51L30 COUPLING - (2-3/8 Mtr. Shaft Dia.) (444-449 Frame)
 MOTOR SUPPORT
 404 & 405 FRAME - 201EDM602
 444 - 449 FRAME - 200EDM620

**MOTOR GROUP
(MAIN DRIVE MOTORS)
(WYE-DELTA)**

COLUMN CODE	NAME OF PART	125 HP PART NO.	150 HP PART NO.
OPEN DRIP PROOF (50 HZ - ODP)			
13A	MOTOR, 230V	24CA3577	24CA3583
13B	MOTOR, 380V	24CA3578	24CA3584
13C	MOTOR, 400V	24CA3579	24CA3585
13D	MOTOR, 415V	24CA3580	24CA3586
13E	MOTOR, 440V	24CA3581	24CA3587
13F	MOTOR, 550V	24CA3582	24CA3588

**TOTALLY ENCLOSED FAN COOLED
(50 HZ - TEFC)**

13G	MOTOR, 200V	24CA3601	24CA3607
13H	MOTOR, 230V	24CA3602	24CA3608
13I	MOTOR, 460V	24CA3603	24CA3609
13J	MOTOR, 575V	24CA3604	24CA3610
13K	MOTOR, 440V	24CA3605	24CA3611
13L	MOTOR, 550V	24CA3606	24CA3612

**MOTOR GROUP (FAN MOTORS)
AIR COOLED COOLING MODULES**

**AIR COOLED COOLING MODULE FAN MOTOR
(3 HP, T.E.F.C., 1000 RPM, 50 HZ, 1.0 S.F.)**

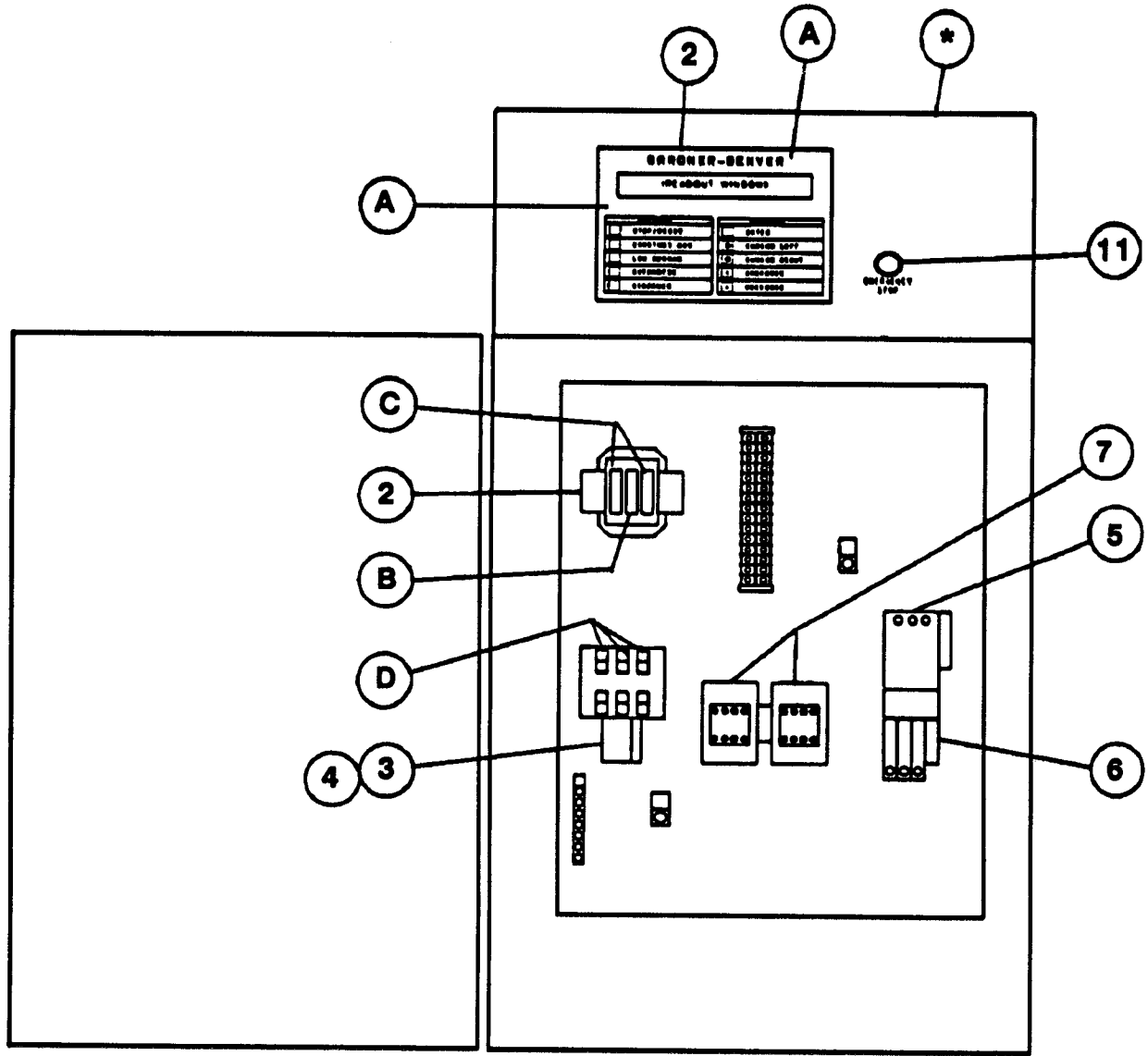
VOLTAGE	PART NUMBER
230V	24CA2630
380V	24CA463
400V	24CA2474
415V	24CA662
440V	24CA2630
550V	23CA1480

**ENCLOSURE VENT FAN - WATER COOLED UNITS OR
AIR COOLED WITH REMOTE AIR COOLER COOLING MODULE
(1/2 H.P., T.E.F.C., 1500 RPM, 50 HZ, 1.0 S.F.)**

VOLTAGE	PART NUMBER
MOTOR, 230V	24CA522
MOTOR, 380V	24CA523
MOTOR, 400V	24CA2645
MOTOR, 415V	24CA523
MOTOR, 440V	24CA778
MOTOR, 550V	24CA524

IDENTIFICATION & INSTRUMENT GROUP

NAME	QTY.	PART NO.
DECAL, G-D LOGO.....	1	69F18
DECAL, SAVER II LOGO	3	200ECP077
DECAL, SAVER II LOGO	1	201ECP077
DECAL, PARTS LIST/SERVICE MANUAL #	1	204EDE077
DECAL, DRAIN MOISTURE DAILY	1	205ESO077
DECAL, DANGER - DO NOT BREATHE	1	206EAQ077
DECAL, CAUTION - DO NOT LIFT	1	208EAQ077
DECAL, AEON 9000 LUBRICANT	1	210EAQ077
DECAL, WARNING - ROTATING MACHINERY	1	211EAQ077
DECAL, DANGER - HOT OIL UNDER PRESSURE.....	1	212EAQ077
DECAL, WARNING - ELECTRICAL SHOCK.....	1	213EAQ077
DECAL, NOTICE - USE GD PARTS.....	1	214EAQ077
DECAL, WARNING - READ OPERATOR MANUAL	1	215EAQ077
DECAL, WARNING - ELECTRICAL SHOCK.....	1	216EAQ077
DECAL, WARNING - INSPECT OIL RESERVOIR	1	217EAQ077
DECAL, DANGER - DO NOT MODIFY.....	1	218EAQ077
DECAL, CAUTION - USE FLOOR PLATE	1	221EAQ077
DECAL, WARNING - SEE WIRING DIAGRAM	1	222EAQ077
DECAL, OPERATION & MAINTENANCE.....	1	217ECM077
DECAL, WARNING	1	227EAQ077
DECAL, NOTICE - USE G-D PARTS	1	224EAQ077
DECAL, HEAT EXC. "IN".....	1	200ESP077
DECAL, HEAT EXC. "OUT"	1	201ESP077



CONTROLLER ASSEMBLY

150 HP

	QTY.	220V	380-400-415V	440V	550V
* ASSEMBLED PANEL: NEMA 12.....	1	202EDM466	206EDM466	200EDM466	204EDM466
* ASSEMBLED PANEL: NEMA 4.....	1	211EDM466	215EDM466	209EDM466	213EDM466
A FUSE, CONTROL BOARD (1 AMP).....	1	24CA2932	24CA2932	24CA2932	24CA2932
FUSE, CONTROL BOARD (2 AMP).....	1	24CA1267	24CA1267	24CA1267	24CA1267
B FUSE, TRANSFORMER SECONDARY	1	24CA2797	24CA2797	24CA2797	24CA2797
C FUSE, TRANSFORMER PRIMARY	2	24CA617	24CA276	24CA276	24CA2621
D FUSE, FAN MOTOR, AIR COOLED.....	3	24CA2478	24CA2478	24CA2744	24CA2744
D FUSE, FAN MOTOR, WATER COOLED.....	3	24CA2476	24CA2476	24CA2475	24CA2475
1 ELECTRONIC CONTROLLER ASSEMBLY.....	1	202EAP1173	202EAP1173	202EAP1173	202EAP1173
2 CONTROL TRANSFORMER, 550VA	1	2116287	2116289	2116287	2116288
3 STARTER, FAN MOTOR	1	24CA3256	24CA3256	24CA3256	24CA3256
4 HEATER, FAN MOTOR OVERLOAD	3	24CA2488	24CA2487	24CA2486	24CA2485
4 HEATER, FAN MOTOR OVERLOAD	3	24CA2482	24CA2481	24CA2480	24CA2480
WATER COOLED					
5 STARTER, MAIN MOTOR	1	24CA3490	24CA3255	24CA3255	24CA3255
6 HEATER, MAIN MOTOR OVERLOAD	3	24CA2483	24CA2483	24CA2482	24CA2482
7 CONTACTOR, MAIN MOTOR-WYE DELTA.....	2	24CA3696	24CA3259	24CA3259	24CA3259
8 REPLACEMENT COIL FOR ITEMS 5 & 7.....	(3)	2115952	2116555	2116555	2116555
9 REPLACEMENT COIL FOR ITEM 3.....	(1)	2115950	2115950	2115950	2115950
10 OPERATOR, 22mm PUSH-PULL E-STOP	1	24CA2907	24CA2907	24CA2907	24CA2907
11 CONTACT BLOCK E22B1 SPNC.....	1	24CA2908	24CA2908	24CA2908	24CA2908

**CONTROLLER ASSEMBLY
125 HP**

	QTY.	220V	380-400-415V	440V	550V
* ASSEMBLED PANEL: NEMA 12.....	1	202EDM466	206EDM466	200EDM466	204EDM466
* ASSEMBLED PANEL: NEMA 4.....	1	211EDM466	215EDM466	209EDM466	213EDM466
A FUSE, CONTROL BOARD (1 AMP).....	1	24CA2932	24CA2932	24CA2932	24CA2932
FUSE, CONTROL BOARD (2 AMP).....	1	24CA1267	24CA1267	24CA1267	24CA1267
B FUSE, TRANSFORMER SECONDARY	1	24CA2797	24CA2797	24CA2797	24CA2797
C FUSE, TRANSFORMER PRIMARY	2	24CA617	24CA276	24CA276	24CA2621
D FUSE, FAN MOTOR, AIR COOLED.....	3	24CA2478	24CA2478	24CA2744	24CA2744
D FUSE, FAN MOTOR, WATER COOLED.....	3	24CA2476	24CA2476	24CA2475	24CA2475
1 ELECTRONIC CONTROLLER ASSEMBLY	1	202EAP1173	202EAP1173	202EAP1173	202EAP1173
2 CONTROL TRANSFORMER, 550VA	1	2116287	2116289	2116287	2116288
3 STARTER, FAN MOTOR	1	24CA3256	24CA3256	24CA3256	24CA3256
4 HEATER, FAN MOTOR OVERLOAD	3	24CA2488	24CA2487	24CA2486	24CA2485
4 HEATER, FAN MOTOR OVERLOAD	3	24CA2482	24CA2481	24CA2480	24CA2480
WATER COOLED					
5 STARTER, MAIN MOTOR	1	24CA3490	24CA3255	24CA3255	24CA3255
6 HEATER, MAIN MOTOR OVERLOAD	3	24CA2484	24CA2482	24CA2482	24CA2481
7 CONTACTOR, MAIN MOTOR-WYE DELTA.....	2	24CA3696	24CA3259	24CA3259	24CA3259
8 REPLACEMENT COIL FOR ITEMS 5 & 7.....	(3)	2115952	2116555	2116555	2116555
9 REPLACEMENT COIL FOR ITEM 3.....	(1)	2115950	2115950	2115950	2115950
10 OPERATOR, 22mm PUSH-PULL E-STOP	1	24CA2907	24CA2907	24CA2907	24CA2907
11 CONTACT BLOCK E22B1 SPNC	1	24CA2908	24CA2908	24CA2908	24CA2908

REPAIR KITS

		(SSQ) 125 HP	(SSP) 150 HP
1) ROUTINE MAINTENANCE KIT (3000 HOURS) H.P. AIR FILTER		200EDM6013	200EDM6013
(2) ELEMENT, AIR FILTER	2010509		
(3) OIL FILTER (STAT/FIL)	200EDM369		
2) PERIODIC MAINTENANCE KIT (9000 HOURS)		201EDM6013	201EAP6013
(2) PACKING-RING		60DD561	60DD21
(1) O-RING		25BC378	25BC378
(1) ELEMENT (MIXING VALVE)		-----	2109295
3) PERIODIC OVERHAUL		SSQ81162	200EBP6013
(2) BEARING-ROLLER		12BA126	12BA51
(1) BEARING-ROLLER		12BA138	12BA103
(1) BEARING-ROLLER		12BA78	12BA104
(1) BEARING-ROLLER		-----	12BA105
(1) BEARING-ROLLER		-----	12BA106
(1) SLEEVE-WEAR		80M28	-----
(1) SPRING-WAVE		78W49	-----
(1) SEAL-OIL (VITON)		60DD571	-----
(1) SEAL-OIL		60DD562	60DD595
(1) GASKET KIT		SSQ81160	
(1) SHIM		-----	77H63
(1) SHIM		-----	77H62
4) SEPARATOR KIT		202EDP6013	202EDP6013
(1) OIL SEPARATOR	55B44		
(1) GASKET	200EDM715N		
5) PNEUMATIC CONTROLS & GAUGES (18,000 HOURS)		205EAP6013	205EAP6013
(2) VALVE-CHECK	90AR261		
(2) VALVE-SHUTTLE	90AR107		
(1) VALVE-AIR CONTROL	90AR35		
(1) REGULATOR-PRESSURE	88H139		
(1) GAUGE-PRESSURE	27P109		

REPAIR KITS (CONTINUED)

		125 HP	150 HP
6) ELECTRICAL CONTROL KIT		206EAP6013	206EAP6013
(1) SOLENOID VALVE	91B70		
(1) SOLENOID VALVE	91B80		
(1) SOLENOID VALVE	91B81		
(2) THERMISTOR PROBE	21D231		
(1) TRANSDUCER	88H178		
(1) VAC SWITCH	88H195		
KIT (MISC.) - DRIVE COUPLING (51L29/51L30)		ECK77781	ECK77781
(1) CUSHION ASSY - (6) CUSHIONS	2109116		



**Gardner-Denver
Industrial Machinery**

For additional information, contact Gardner-Denver Industrial Machinery
Division, 1800 Gardner Expressway, Quincy, Illinois 62305-4024
Telephone (217) 224-8800 FAX 217-224-7814 Telex 404332.

Specifications subject to change without notice.
COPYRIGHT © 1992 Cooper Industries, Inc.

Litho in USA. 7C-1-92