
GARDNER DENVER®

13-9-557X
3rd Edition
September, 1997

ELECTRA-SAVER II®
BASE-MOUNTED
COMPRESSORS

AUTO SENTRY®-ES+ CONTROLS
AUTO SENTRY®-ES CONTROLS

MODELS

EBMQKG	-	AIR-COOLED	-	60 HP
EBMSKG	-	WATER-COOLED	-	60 HP
EBMQLG	-	AIR-COOLED	-	75 HP
EBMSLG	-	WATER-COOLED	-	75 HP
EBMQMG	-	AIR-COOLED	-	100 HP
EBMSMG	-	WATER-COOLED	-	100 HP

50 HZ ONLY

PARTS LIST

Gardner
Denver

INSTRUCTIONS FOR ORDERING REPAIR PARTS

When ordering parts, specify Compressor MODEL, Method of Cooling, HORSE-POWER and SERIAL NUMBER (see nameplate on unit). The Serial Number is also stamped on top of the cylinder flange to the right of the inlet housing.

All orders for Parts should be placed with the nearest authorized distributor.

Where NOT specified, quantity of parts required per compressor or unit is one (1); where more than one is required per unit, quantity is indicated in parenthesis. SPECIFY EXACTLY THE NUMBER OF PARTS REQUIRED.

DO NOT ORDER BY SETS OR GROUPS.

To determine the Right Hand and Left Hand side of a compressor, stand at the motor end and look toward the compressor. Right Hand and Left Hand are indicated in parenthesis following the part name, (RH) & (LH), when appropriate.

For Operating and Service Instructions see:

SERVICE MANUAL 13-9/10-641

CONTROLLER MANUAL 13-9/10-647

**MAINTAIN COMPRESSOR RELIABILITY AND PERFORMANCE WITH
GENUINE GARDNER DENVER® COMPRESSOR
PARTS AND SUPPORT SERVICES**

Gardner Denver® Compressor genuine parts, engineered to original tolerances, are designed for optimum dependability — specifically for Gardner Denver compressor systems. Design and material innovations are the result of years of experience with hundreds of different compressor applications. Reliability in materials and quality assurance are incorporated in our genuine replacement parts.

Your authorized Gardner Denver® Compressor distributor offers all the backup you'll need. A worldwide network of authorized distributors provides the finest product support in the air compressor industry. Your local authorized distributor maintains a large inventory of genuine parts and he is backed up for emergency parts by direct access to the Gardner Denver Machinery Inc. Master Distribution Center (MDC) in Memphis, Tennessee.

Your authorized distributor can support your Gardner

Denver® air compressor with these services:

1. Trained parts specialists to assist you in selecting the correct replacement parts.
2. Factory warranted new and remanufactured rotary screw air ends. Most popular model remanufactured air ends are maintained in stock at MDC for purchase on an exchange basis with liberal core credit available for the replacement unit.
3. A full line of factory tested AEON™ compressor lubricants specifically formulated for use in Gardner Denver compressors.
4. Repair and maintenance kits designed with the necessary parts to simplify servicing your compressor.

Authorized distributor service technicians are factory-trained and skilled in compressor maintenance and repair. They are ready to respond and assist you by providing fast, expert maintenance and repair services.

For the location of your local authorized Gardner Denver Air Compressor distributor refer to the yellow pages of your phone directory or contact:

Distribution Center:
Gardner Denver Machinery Inc.
Master Distribution Center
5585 East Shelby Drive
Memphis, TN 38141
Phone: (901) 542-6100
(800) 245-4946
Fax: (901) 542-6159

Factory:
Gardner Denver Machinery Inc.
1800 Gardner Expressway
Quincy, IL 62301
Phone: (217) 222-5400
Fax: (217) 224-7814

REMANUFACTURED AIR ENDS

Whenever an air end requires replacement or repair, Gardner Denver offers an industry unique, factory remanufactured air end exchange program. From its modern Remanufacturing Center in Indianapolis, IN, Gardner Denver is committed to supplying you with the highest quality, factory remanufactured air ends that are guaranteed to save you time, aggravation and money.

Immediately Available

Repair downtime costs you money, which is why there are over 200 remanufactured units in inventory at all times, ready for immediate delivery.

Skilled Craftsmen

Our Remanufacturing assembly technicians average over 20 years experience with air compression products.

Precision Remanufacturing

All potentially usable parts are thoroughly cleaned, inspected and analyzed. Only those parts that can be brought back to original factory specifications are remanufactured. Every remanufactured air end receives

a new overhaul kit: bearings, gears, seals, sleeves and gaskets.

Extensive Testing

Gardner Denver performs testing that repair houses just don't do. Magnaflux and ultrasonic inspection spot cracked or stressed castings, monochromatic light analysis exposes oil leaks, and coordinate measurement machine inspects to +/- .0001", insuring that all remanufactured air ends meet factory performance specifications.

Warranty

Gardner Denver backs up every remanufactured air end with a new warranty . . . 18 months from purchase, 12 months from service.

Gardner Denver remanufactured air ends deliver *quality without question . . . year in and year out.*

Call Gardner Denver today for a quote.

Phone Number: 800-245-4946 or
FAX: 901-542-6159

TABLE OF CONTENTS

Page No.

Instructions For Ordering Repair Parts	Inside Front Cover
Maintain Compressor Reliability and Performance with Genuine Gardner Denver® Compressor	
Parts and Support Services	1
Remanufactured Air Ends	1
Matrix/Menu	3
Bare Compressor – 60, 75 and 100 HP	4, 5
Bare Compressor – 100 HP	6, 7
Oil Seal Detail	8
Inlet Valve	9
Air Filter	10
Oil Reservoir Group	11
Separator Housing Group	12
Discharge Piping	13
Oil Piping Group	14
Oil Filter – 200EBM369	15
Oil Piping Line	16
Oil Scavenge Line	17
Compressor Base Group	18
Minimum Pressure Valve	19
Thermal Valve (Thermostatic Mixing)	20
Enclosure – Vent Fan Assembly (Water Cooled Units Only)	21
Air Discharge Piping	22
Air Cooled Cooler Group	23
Water Cooled Heat Exchanger – With Aftercooler	24, 25
Water Cooled Heat Exchanger – Without Aftercooler	26, 27
Oil Piping Schematic	28, 29
Enclosure (Common Parts – Air/Water Cooled)	30, 31
Enclosure – Hardware	32
Enclosure – Air Cooled Units	33
Enclosure – Water Cooled Units	34
Main Motor Group	35
Controller Assembly (60/75/100 HP Wye Delta Starters)	36, 37, 38
Controller Assembly (60/75/100 HP Less Main Motor Starter)	39, 40
Overload Relay Heater Conversion Listing	41
Main Motors	42, 43
Motor Group (Fan Motors)	44
Identification and Instruction Group	45
Repair Kits	46, 47

**ELECTRA-SAVER II® COMPRESSORS – MODELS EBM_G
60, 75 & 100 HP Air / Water-Cooled Base-Mounted Units – 50 Hz Only – Matrix/Menu**

NOTICE TO CUSTOMER – To find the construction options for your compressor unit, FILL IN THE BALANCE OF LETTERS OR NUMBERS FROM YOUR UNIT NAMEPLATE.

E			B			M			G			
1	2	3	4	5	6	7	8	9	10	11	12	13

Follow the line down and over from each space thus filled in to find the appropriate construction option with which your machine is equipped. The number "9" in any column space indicates "NOT APPLICABLE." The number "8" in any column space indicates SPECIAL DESIGN – REFER TO FACTORY ORDER TICKET.

COLUMNS 1, 2 & 3 – ELECTRA-SAVER II® FAMILY – Single Stage

COLUMN 4 – TYPE OF CONSTRUCTION

- Q. Air-Cooled Base Mounted (Std.)
- S. Water-Cooled Base Mounted (Std.)

COLUMN 5 – HORSEPOWER

- N. 60 HP
- O. 75 HP
- M. 100 HP

COLUMN 6 – ENGINEERING SPECIFICATION

COLUMN 7 – PRESSURE & HZ

- E. 100 PSIG – 50 HZ
- F. 125 PSIG – 50 HZ
- G. 150 PSIG – 50 HZ

COLUMN 8 – CONTROL BOX & MAIN MOTOR STARTING

- | | |
|------------------------------|------------------------------|
| A. 220 V – 50 HZ – Wye Delta | E. 415 V – 50 HZ – Wye Delta |
| B. 380 V – 50 HZ – Wye Delta | F. 440 V – 50 HZ – Wye Delta |
| C. 400 V – 50 HZ – Wye Delta | G. 550 V – 50 HZ – Wye Delta |

COLUMN 9 – CONTROL BOX / STARTER

- A. ES Control – Nema 12 – With Starter
- B. ES Control – Nema 4 – With Starter
- C. ES Control – Nema 12 – Without Starter
- D. ES Control – Nema 4 – Without Starter
- E. ES+ Control – Nema 12 – With Starter – Without Current Monitor
- F. ES+ Control – Nema 4 – With Starter – Without Current Monitor
- G. ES+ Control – Nema 12 – Without Starter – Without Current Monitor
- H. ES+ Control – Nema 4 – Without Starter – Without Current Monitor
- I. ES+ Control – Nema 12 – With Starter – With Current Monitor
- J. ES+ Control – Nema 4 – With Starter – With Current Monitor
- K. ES+ Control – Nema 12 – Without Starter – With Current Monitor
- L. ES+ Control – Nema 4 – Without Starter – With Current Monitor

COLUMN 10 – ENCLOSURE

- A. No Enclosure
- B. With Enclosure

COLUMN 11 – OIL COOLERS – AIR & WATER

- A. Standard Coolers with Aftercooler (Air or Water Cooled)
- B. Seacoast (Salt Water) Cooler With Aftercooler (Air or Water Cooled)
- C. Standard Coolers Less Aftercooler (Water Cooled Only)
- D. Salt Water Cooler Less Aftercooler (Water Cooled Only)

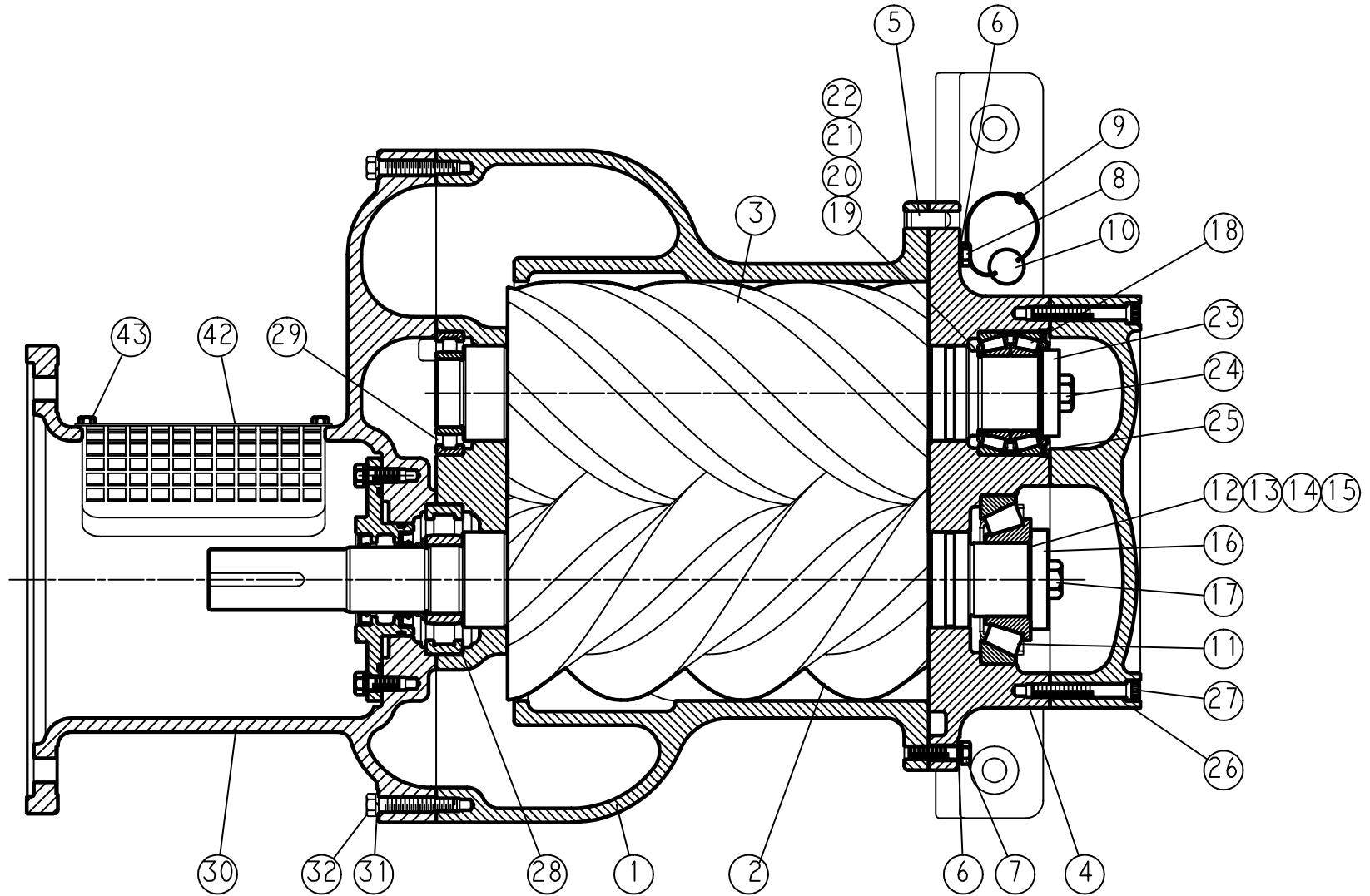
COLUMN 12 – COOLER ELECTRICS

- A. Air Cooled
- B. Water Cooled – Without Water Temperature Regulator – Without Shutoff Valve
- C. Water Cooled – With Water Temperature Regulator – With Shutoff Valve
- D. Water Cooled – With Water Temperature Regulator – Without Shutoff Valve
- E. Water Cooled – Without Water Temperature Regulator – With Shutoff Valve

COLUMN 13 – COMPRESSOR DRIVE MOTOR

- A. ODP
- B. TEFC
- E. Less Main Motor – ODP
- F. Less Main Motor – TEFC

BARE COMPRESSOR – 60, 75 AND 100 HP



BARE COMPRESSOR – 60, 75 AND 100 HP

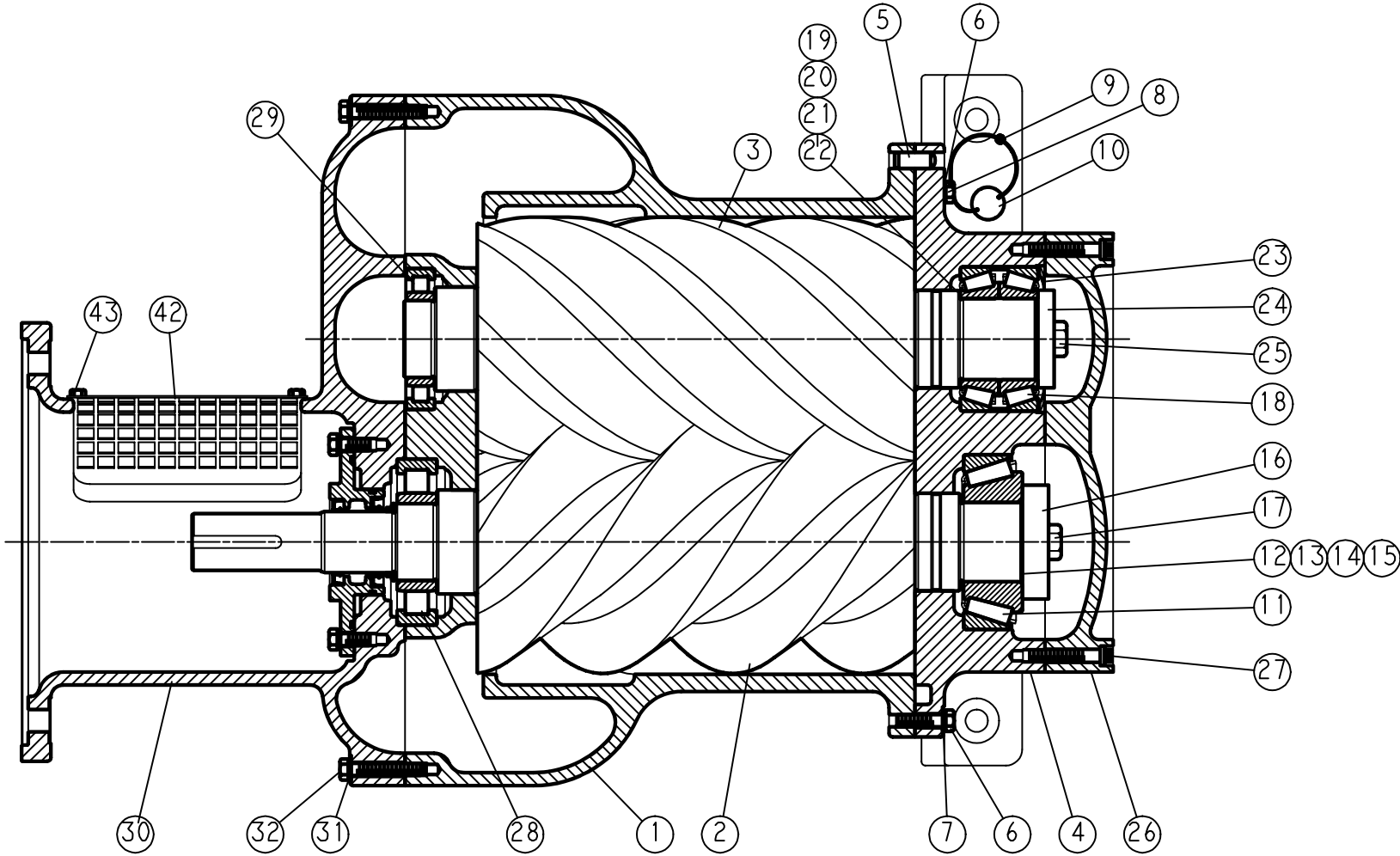
Ref. No.	Name of Part	Qty.	Part No.	Ref. No.	Name of Part	Qty.	Part No.
1	CYLINDER	1	204SSH002	22	SHIM	3	77H53002
2	ROTOR (MAIN)	1	Selective Below	23	PLATE BEARING RETAINER	1	200SSH253
3	ROTOR (SECONDARY)	1	Selective Below	24	SCREW	1	655EF06N
4	HOUSING-BEARING	1	204SSH006	25	SPRING	1	78W48
5	PIN-DOWEL	2	62M83	26	PLATE-BEARING COVER	1	201SSH315
6	LOCKWASHER	14	95B3	27	SCREW	18	75P62
7	SCREW	10	655ED060	28	BEARING-ROLLER	1	12BA130
8	SCREW	2	00900050 0033	29	BEARING-ROLLER	1	12BA136
9	SEAL	1	01228421 0025	30	ADAPTOR	1	202SSH170
10	TAG-INSTRUCTION	1	202EAQ304	31	LOCKWASHER	16	95B3
11	BEARING-ROLLER	1	12BA91	32	SCREW	16	655ED090
12	SHIM	2	77H54015	42	GUARD COUPLING	1	200SSM339
13	SHIM	3	77H54005	43	SCREW-FLANGED	4	75LM150
14	SHIM	3	77H54003	*	PLUG	4	64AA5
15	SHIM	3	77H54002	*	PLUG	1	64AA6
16	PLATE-BEARING RETAINER ...	1	200SSM253	*	PLUG	1	64B14
17	SCREW	1	655EF06N	*	PLUG	1	64B15
18	BEARING-ROLLER	1	12BA90	*	GASKET-ELIMINATOR	1	25BC256
19	SHIM	2	77H53015	*	SCREW	2	655ED080
20	SHIM	3	77H53005	*	PLUG	2	64AA5
21	SHIM	3	77H53003	*	CHECK VALVE	1	90AR923

* Not shown on illustration

AIR END & ROTOR SELECTION BY HORSEPOWER & PSI

HP	PSI	AIR END	SECONDARY ROTOR	MAIN ROTOR
60	100	SSHCBD04	209SSH010	205SSH010
	125	SSHCBD01	206SSH010	205SSH010
	150	SSHCBD01	206SSH010	205SSH010
75	100	SSHCBD02	207SSH010	205SSH010
	125	SSHCBD03	208SSH010	205SSH010
	150	SSHCBD04	209SSH010	205SSH010
100	125	SSHCBD01	206SSH010	205SSH010
	150	SSHCBD02	206SSH010	205SSH010

BARE COMPRESSOR – 100 HP



13-9-557X Page 6

209SSM810-B
(Ref. Drawing)

BARE COMPRESSOR – 100 HP

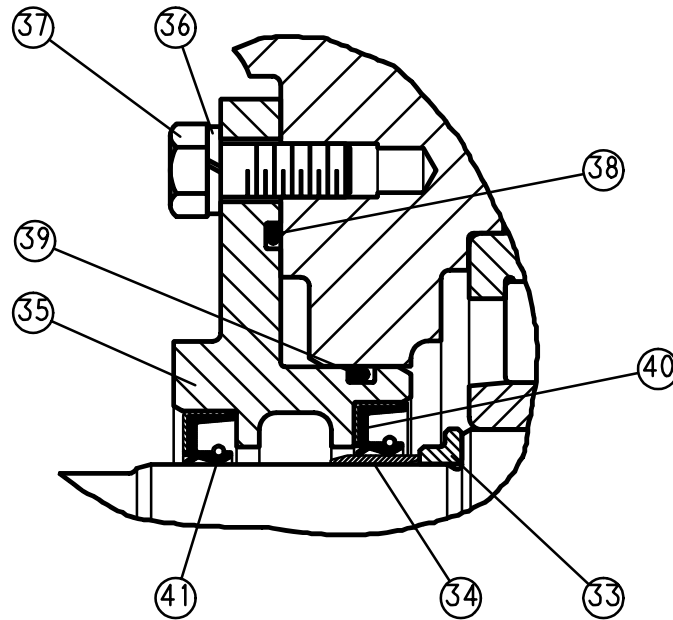
Ref. No.	Name of Part	Qty.	Part No.	Ref. No.	Name of Part	Qty.	Part No.
1	CYLINDER	1	204SSM002	21	SHIM	3	77H57003
2	ROTOR (MAIN)	1	Selective Below	22	SHIM	3	77H57002
3	ROTOR (SECONDARY)	1	Selective Below	23	SPRING, WAVE (SSM)	1	78W53
4	HOUSING-BEARING	1	204SSM006	24	PLATE-BEARING RETAINER ...	1	200SSM253
5	PIN-DOWEL	2	62M83	25	SCREW HEX HD	1	655EF06N
6	SCREW	14	655ED060	26	PLATE-BEARING COVER	1	202SSM315
7	LOCKWASHER	16	95B3	27	SCREW	18	75P60
8	SCREW HEX CAP	2	00900050 0033	28	BEARING-ROLLER	1	12W34
9	SEAL	1	202EAQ304	29	BEARING-ROLLER	1	12BA93
10	TAG-INSTRUCTION	1	01228421 0025	30	ADAPTOR	1	203SSM170
11	BEARING-ROLLER	1	12BA92	31	LOCKWASHER	16	95B3
12	SHIM	2	77H56015	32	SCREW-HEX HD	16	655ED090
13	SHIM	3	77H56005	42	GUARD COUPLING	1	200SSM339
14	SHIM	3	77H56003	43	SCREW-FLANGED	4	75LM150
15	SHIM	3	77H56002	*	PLUG	6	64AA5
16	PLATE-BEARING RETAINER ...	1	201SSM253	*	PLUG	1	64AA6
17	SCREW HEX HD	1	655EF06N	*	PLUG	1	64B14
18	BEARING-ROLLER	1	12BA94	*	PLUG	1	64B15
19	SHIM	2	77H57015	*	GASKET-ELIMINATOR	1	25BC256
20	SHIM	3	77H57005	*	CHECK VALVE	1	90AR923

* Not shown on illustration

AIR END & ROTOR SELECTION BY HORSEPOWER & PSI

HP	PSI	AIR END	MAIN ROTOR	SECONDARY ROTOR
100	100	SSMNBB01	207SSM010	206SSM010

Order by Part Number and Description. Reference Numbers are for your convenience only.



207SSH810-C
209SSM810-B
(Ref. Drawing)

OIL SEAL DETAIL

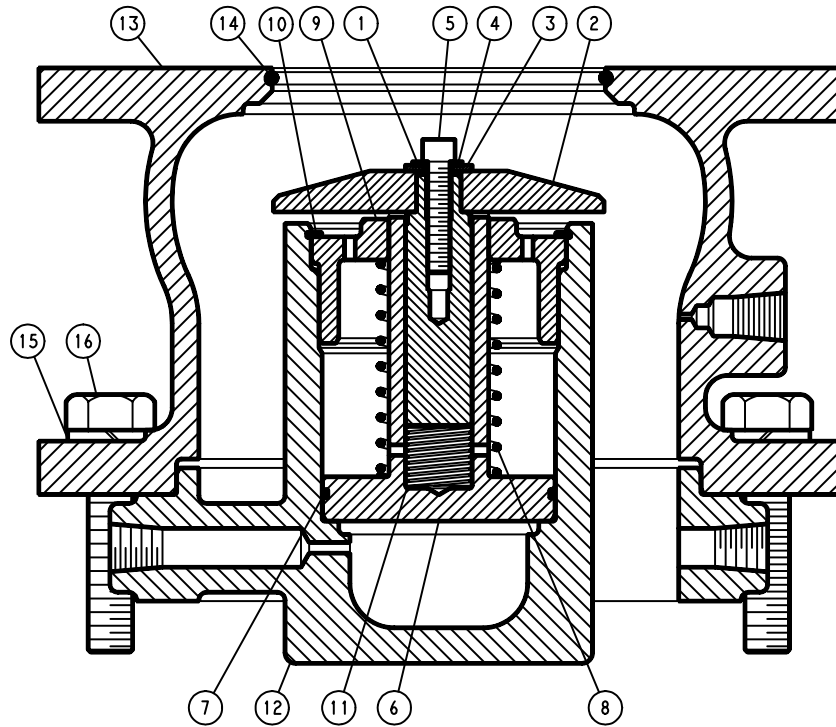
Ref. No.	Name of Part	Qty.	Part No.
33	SPACER-SHAFT	1	200SSH600
34 *	SLEEVE	1	80M12
35	HOUSING-SEAL	1	202SSH362
36	LOCKWASHER	8	95B5
37	SCREW	8	655EE050
38 *	O-RING	1	8502140
39 *	O-RING	1	25BC165
40 *	SEAL-OIL	1	60DD679
41 *	SEAL-OIL	1	60DD690
	VALVE-CHECK (Not shown)	1	90AR923

* Included in Oil Seal Kit, see page 47.

To replace oil seal, order kit # 302SSH6013 consisting of reference items 34, 38, 39, 40 and 41.

Wear Sleeve installation and removal kit part # 200SSH4017 (includes wear sleeve puller and installation tool).

Order by Part Number and Description. Reference Numbers are for your convenience only.



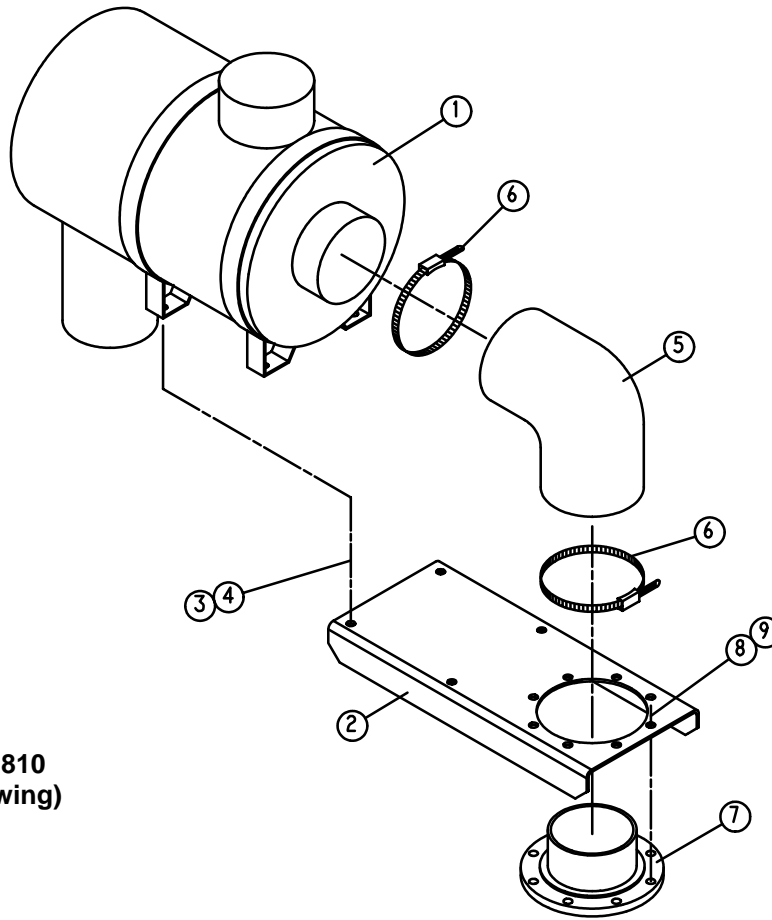
208SSM810-C
(Ref. Drawing)

INLET VALVE

Ref. No.	Name of Part	Qty.	Part No.
1	GUIDE-VALVE	1	200SSM483
2	VALVE-INLET	1	200SSM044
3	WASHER-PLAIN	1	95A1
4	LOCKWASHER	1	95H56
5	SCREW	1	655EC05N
6	PISTON-INLET VALVE	1	201SSM043
* 7	O-RING	1	25BC447
* 8	SPRING	1	78G19
9	RETAINER	1	200SSM205
* 10	RING-RETAINING	1	74D88
* 11	SPRING	1	78W63
12	HOUSING-INLET	1	205SSM041
13	SEAT	1	203SSM256
* 14	O-RING	1	25AM29
15	LOCKWASHER	8	95B5
16	SCREW	8	655ED100

* Parts included in Periodic Maintenance Kit, Part # 302SSM6013. Refer to page 46.

Order by Part Number and Description. Reference Numbers are for your convenience only.



289ECM810
(Ref. Drawing)

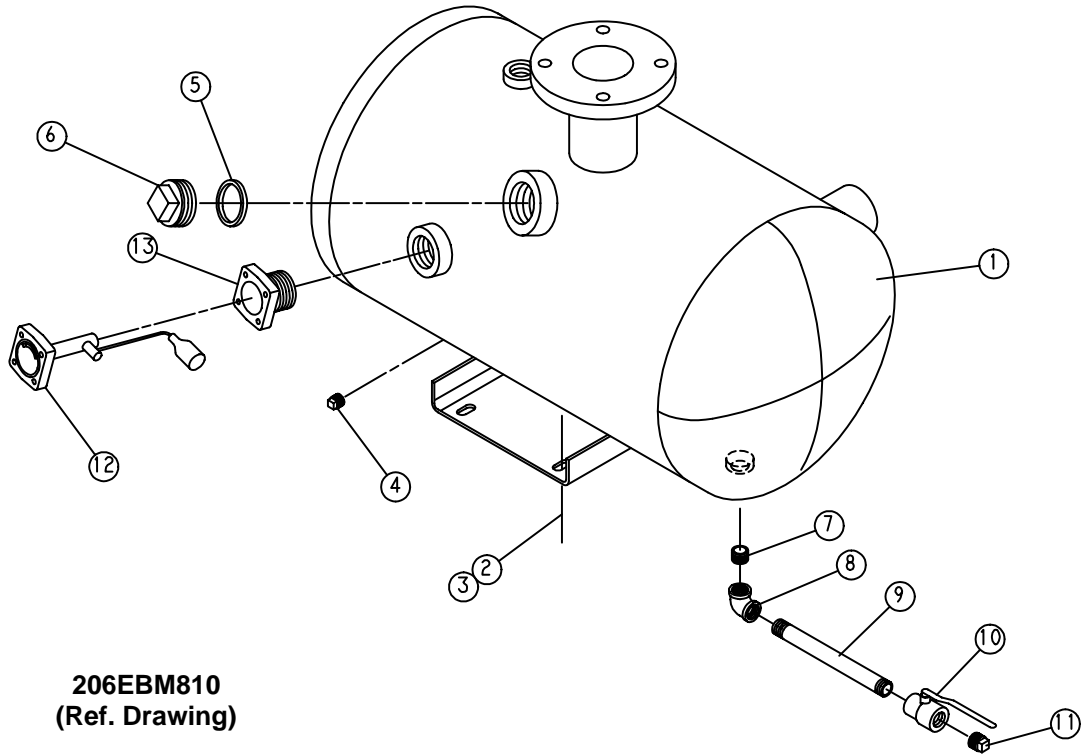
AIR FILTER

Ref. No.	Name of Part	Qty.	Part No.
1	FILTER-AIR	1	5L263
2	BRACKET-FILTER	1	202ECM389
3	SCREW-FLANGED	4	75LM51
4	NUT-FLANGED	4	50AW5
5	HOSE MOLDED	1	2009503
6	CLAMP-HOSE	2	2009644
7	ADAPTOR-FILTER	1	200EBM070
8	SCREW	8	655EE060
9	LOCKWASHER	8	95B5
*	GASKET-ELIMINATOR	1	25BC256
**	ELEMENT, AIR FILTER	1	2116713

* Not shown.

** Repair element for air filter.

Order by Part Number and Description. Reference Numbers are for your convenience only.

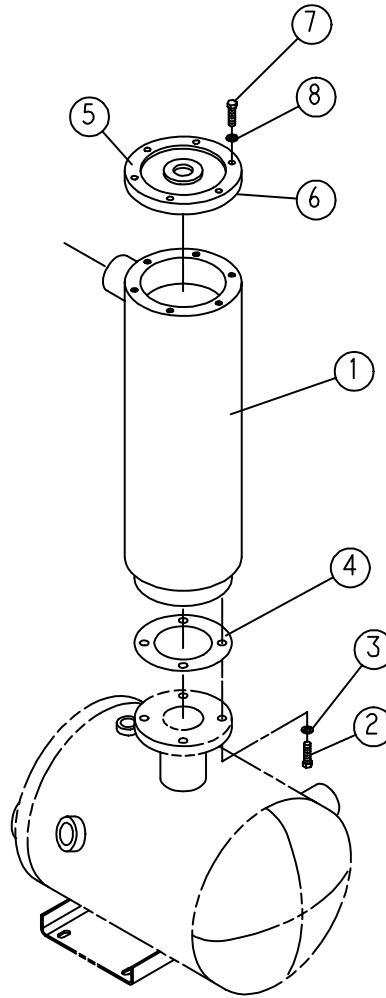


206EBM810
(Ref. Drawing)

OIL RESERVOIR GROUP

Ref. No.	Name of Part	Qty.	Part No.
1	RESERVOIR-OIL	1	200EBM037
2	SCREW-FLANGED	4	75LM135
3	NUT-FLANGED	4	50AW35
4	PLUG	1	64AA5
5	O-RING	1	54C214
6	COVER-FILLER	1	200SPF156
7	NIPPLE	1	63F1G
8	ELBOW	1	64C4G
9	NIPPLE	1	63F13G
10	VALVE-BALL	1	90AR360
11	PLUG	1	64AA7
12	GAUGE-FLOAT	1	300EBM303
13	ADAPTOR-GAUGE	1	200EDE058

Order by Part Number and Description. Reference Numbers are for your convenience only.

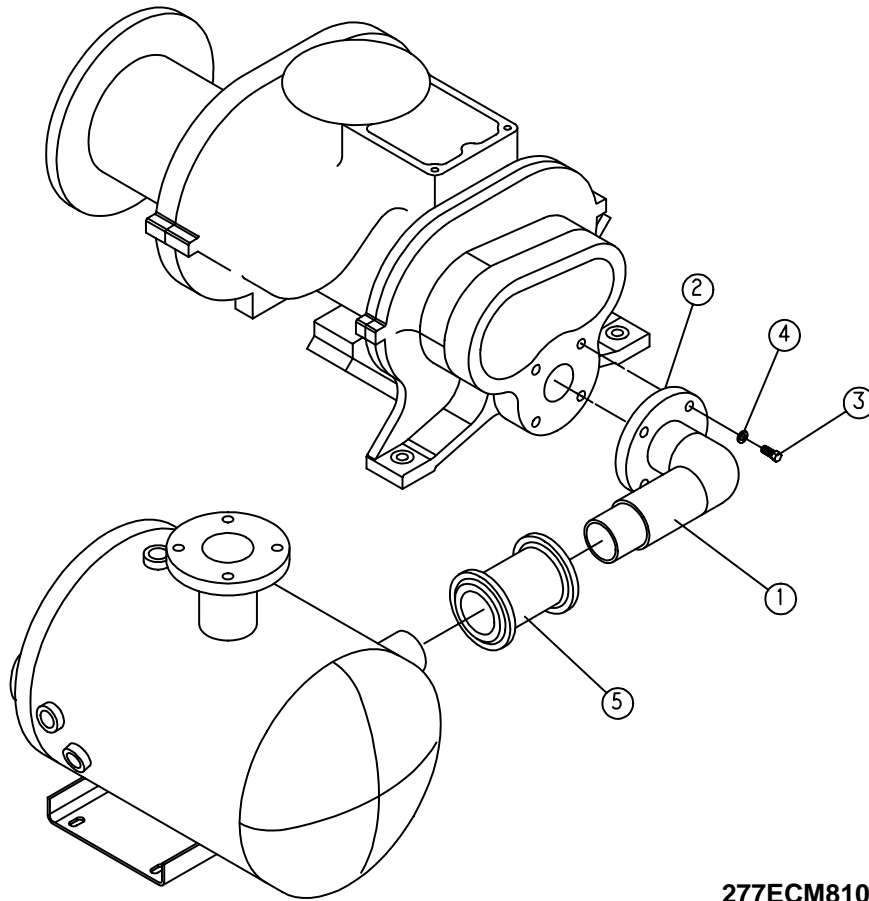


274ECM810-B
(Ref. Drawing)

SEPARATOR HOUSING GROUP

Ref. No.	Name of Part	Qty.	Part No.
1	HOUSING	1	200ECM405
2	SCREW	4	655EF070
3	LOCKWASHER	4	95B7
4	GASKET	1	25C802
5	COVER	1	203ECM225
6	GASKET ELIMINATOR	1	25BC222
7	SCREW	6	655EE070
8	LOCKWASHER	6	95B5

Order by Part Number and Description. Reference Numbers are for your convenience only.



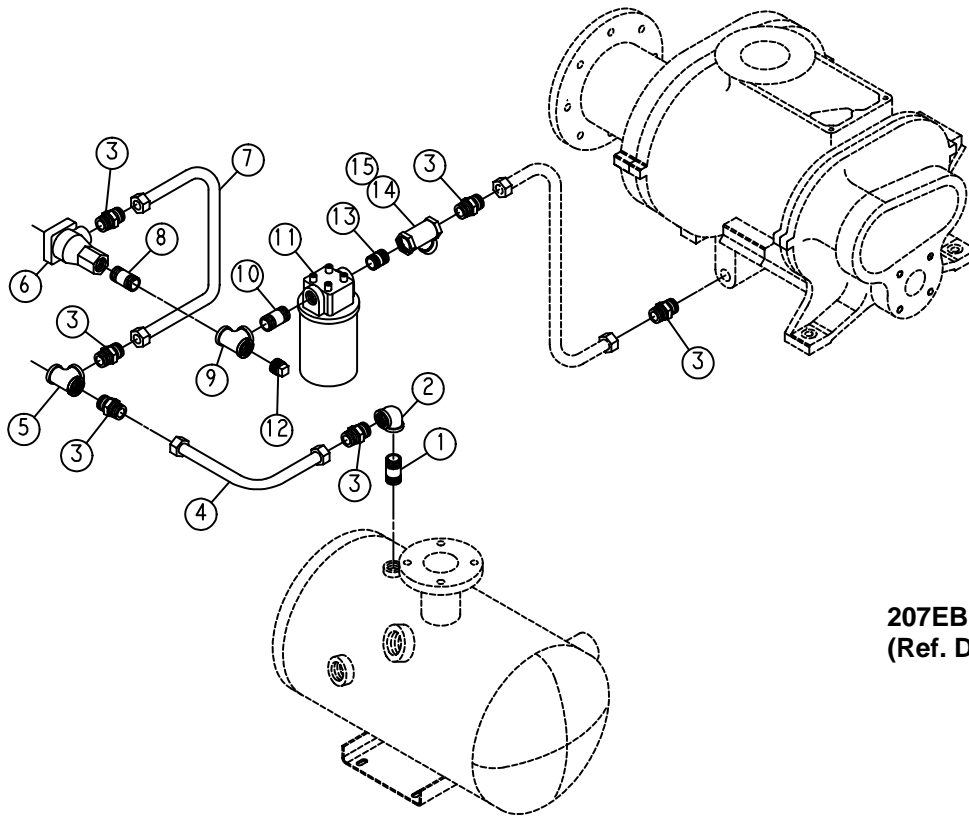
277ECM810-A
(Ref. Drawing)

DISCHARGE PIPING

Ref. No.	Name of Part	Qty.	Part No.
1	MANIFOLD	1	201ECM286
2	GASKET ELIMINATOR	1	25BC222
3	SCREW	4	655EF070
4	LOCKWASHER	4	95B7
5	COUPLING-FLEXIBLE	1	64EB802
*	GASKET, FLEXIBLE COUPLING (For Repair)	2	2117160

* Not shown.

Order by Part Number and Description. Reference Numbers are for your convenience only.



207EBM810-A
(Ref. Drawing)

OIL PIPING GROUP

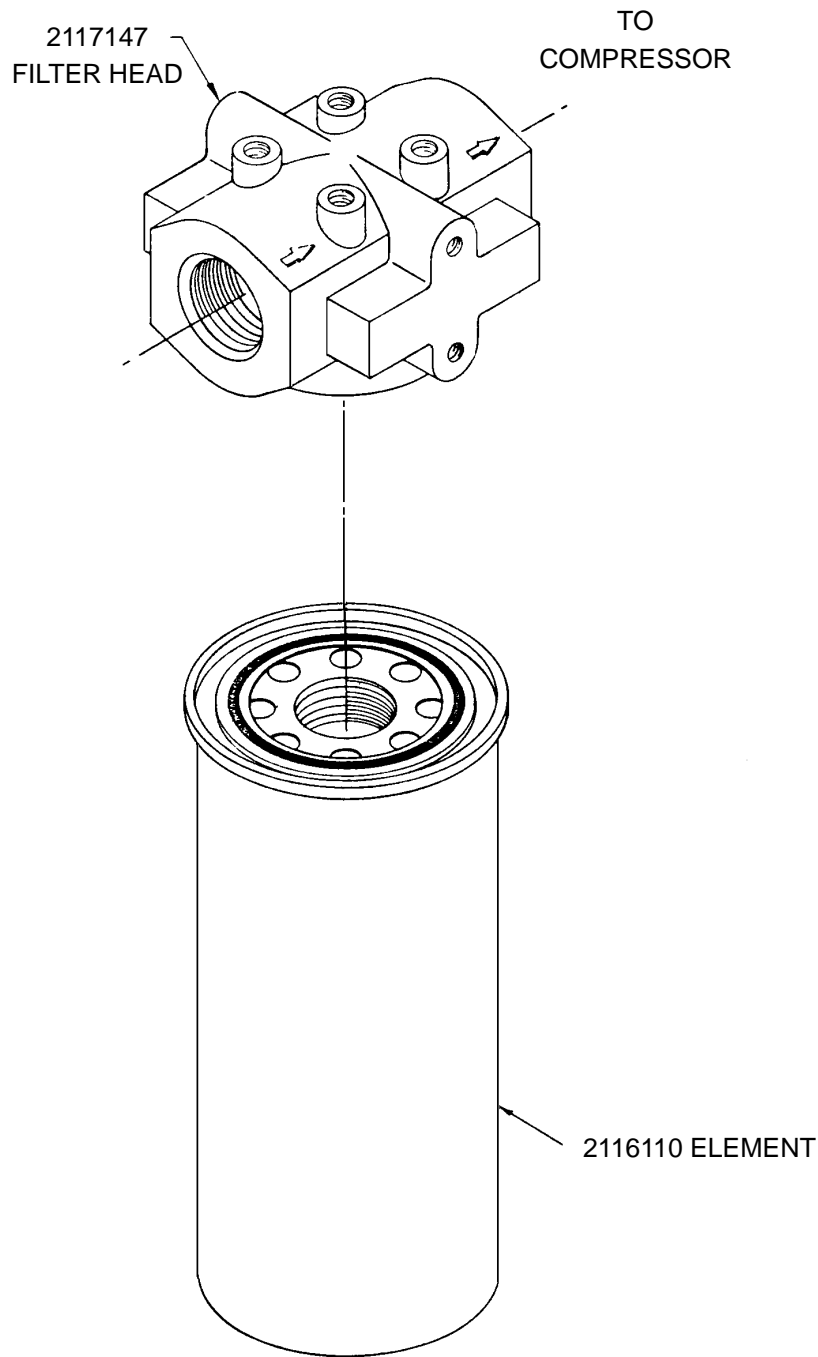
Ref. No.	Name of Part	Qty.	Part No.
1	NIPPLE	1	63H2G
2	ELBOW	1	64C6G
3	CONNECTOR-TUBE	6	86H138
4	TUBE-WITH FITTINGS	1	202EBM863
5	TEE-PIPE	1	64G8G
6	VALVE-THERMAL (See page 20)	1	90AR167
7	TUBE-WITH FITTINGS	1	201EBM863
8	NIPPLE	1	63H1G
9	TEE-PIPE	1	64G8G
10	NIPPLE	1	63H1G
11	* FILTER-OIL	1	200EBM369
12	PLUG	1	64AA1
13	NIPPLE	1	63H1G
14	STRAINER	1	82E39
15	PLUG	1	64AA3

* FOR REPAIR:

FILTER ELEMENT – Order Part Number 2116110

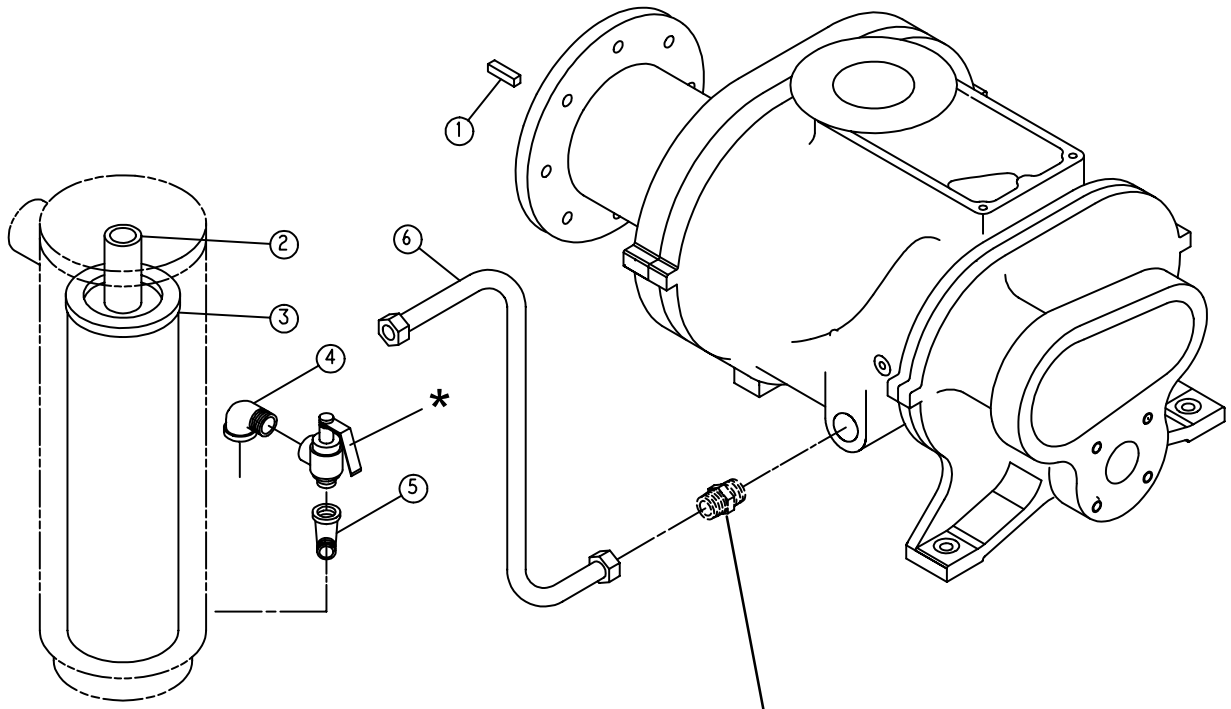
FILTER HEAD – Order Part Number 2117147

OIL FILTER – 200EBM369



WITH 212ECM077 DECAL AFFIXED TO ELEMENT

Order by Part Number and Description. Reference Numbers are for your convenience only.



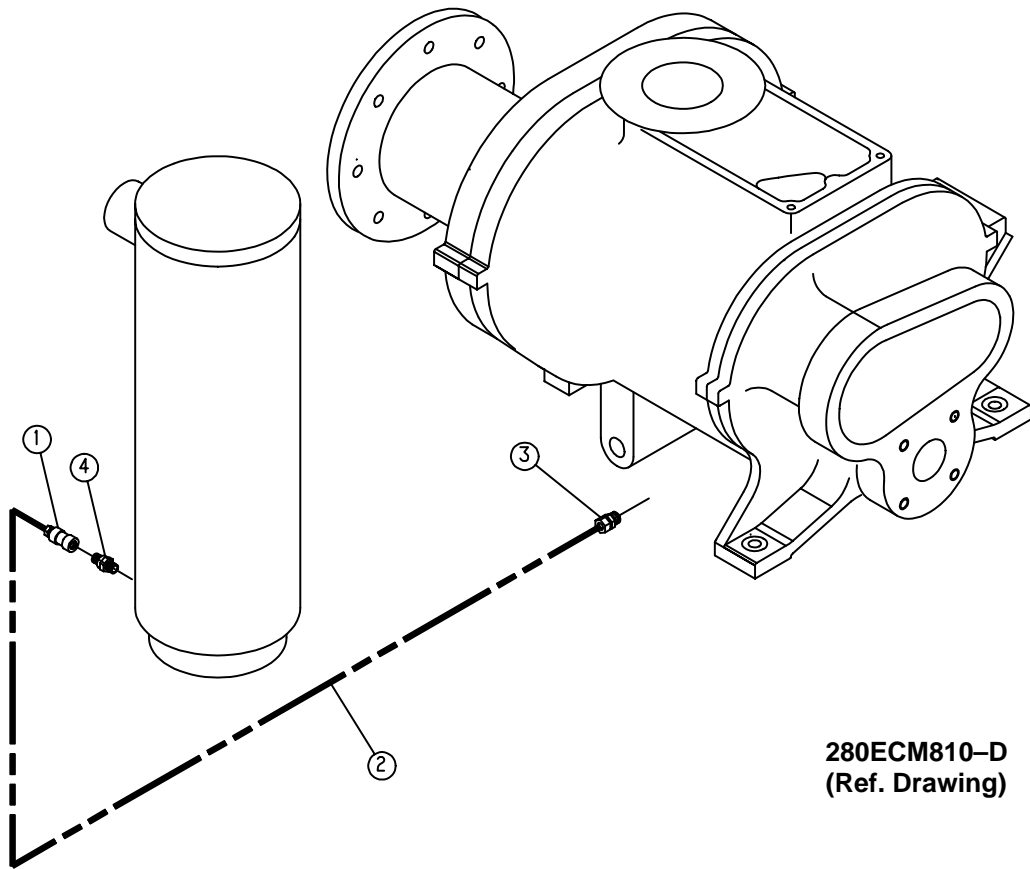
FOR REFERENCE ONLY
SEE PAGE 14

212EBM810
(Ref. Drawings)

OIL PIPING LINE

Ref. No.	Name of Part	Qty.	Part No.
1	KEY-SQUARE	1	8500109
2	SPACER (PIPE)	1	200ECM392
3 **	SEPARATOR-AIR/OIL	1	200ECM035
4	ELBOW	1	64D10G
5	ELBOW	1	64D6G
6	TUBE WITH FITTINGS (SSM AIR END)	1	300EBM863
	TUBE WITH FITTINGS (SSH AIR END)	1	300EDH863
*	RELIEF VALVES		
	100 PSI UNITS		90AR381
	125 PSI UNITS		90AR382
	150 PSI UNITS		90AR146

** Refer to page 46, Separator Kit 204EAP6013, for parts listing.

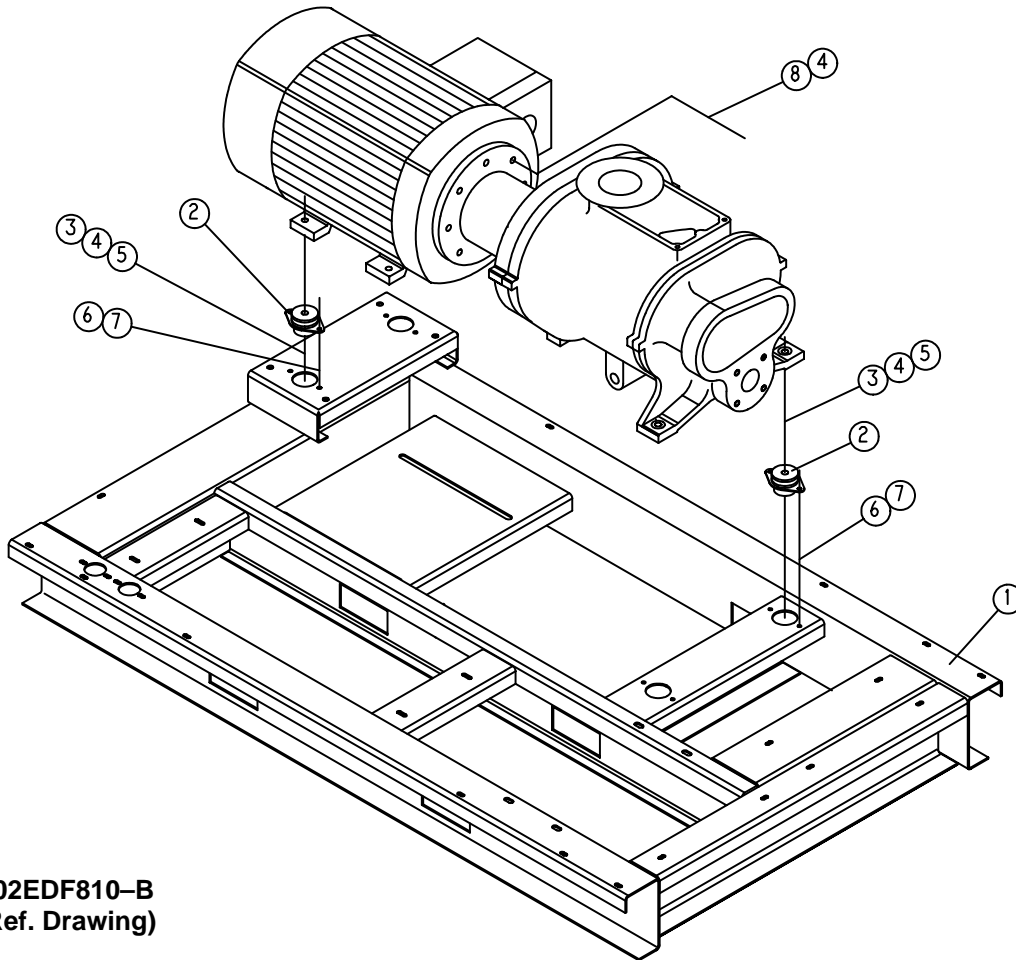


280ECM810-D
(Ref. Drawing)

OIL SCAVENGE LINE

Ref. No.	Name of Part	Qty.	Part No.
1	ELBOW-TUBE	1	86E28
2	TUBE	5 Ft.	85K3
3	CONNECTOR-TUBE	1	86E4
4	VALVE-CHECK	1	90AR261

Order by Part Number and Description. Reference Numbers are for your convenience only.

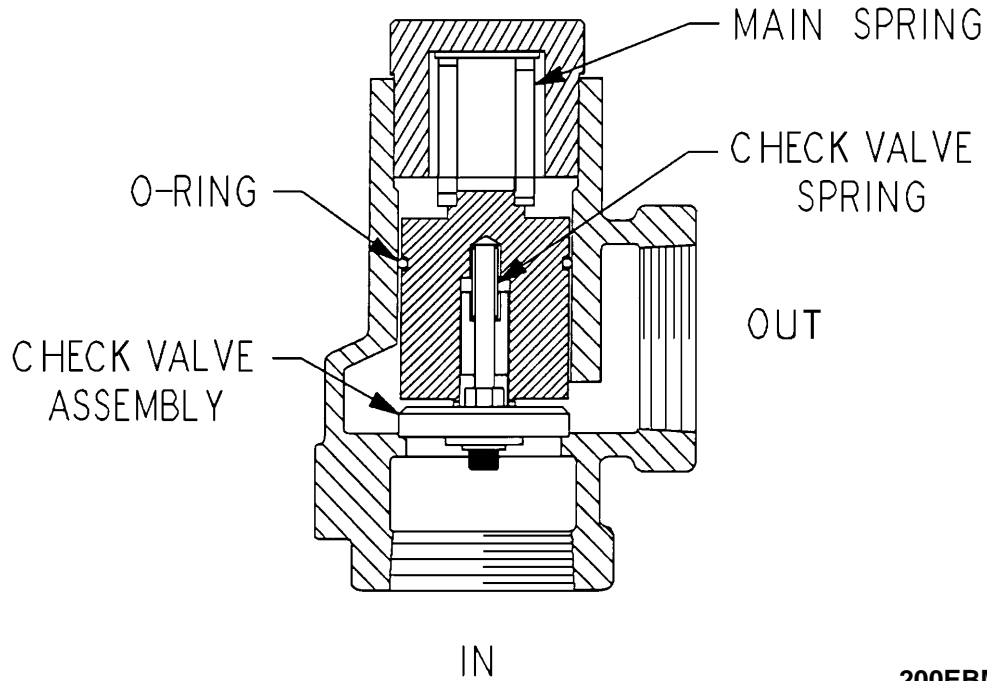


202EDF810-B
(Ref. Drawing)

COMPRESSOR BASE GROUP

Ref. No.	Name of Part	Qty.	Part No.
1	BASE	1	201EDF285
2	VIBRATION-ISOLATOR	4	49C47
3	SCREW	4	655EF200
4	LOCKWASHER	12	95B7
5	NUT	4	50B7
6	SCREW-FLANGED	8	75LM51
7	NUT-FLANGED	8	50AW5
8	SCREW	8	655EF070

Order by Part Number and Description. Reference Numbers are for your convenience only.

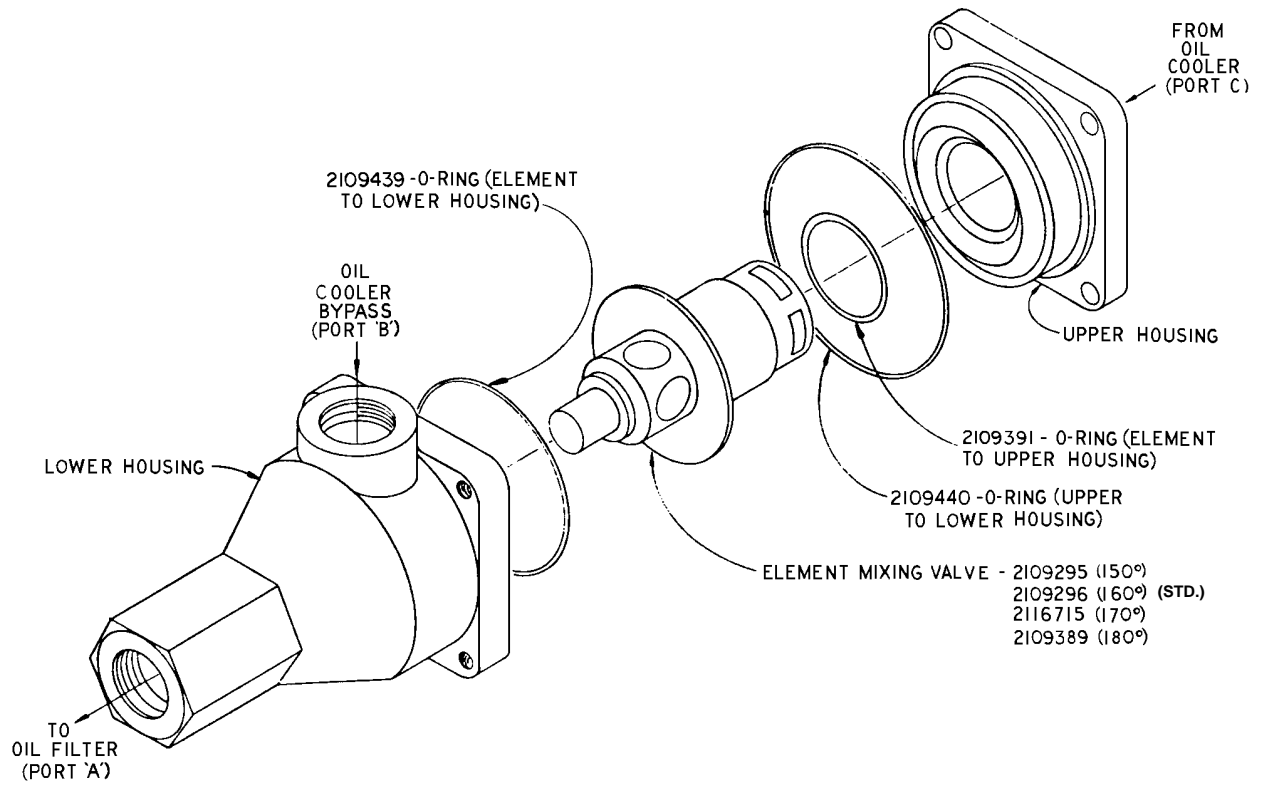


200EBM810
(Ref. Drawing)

MINIMUM PRESSURE VALVE

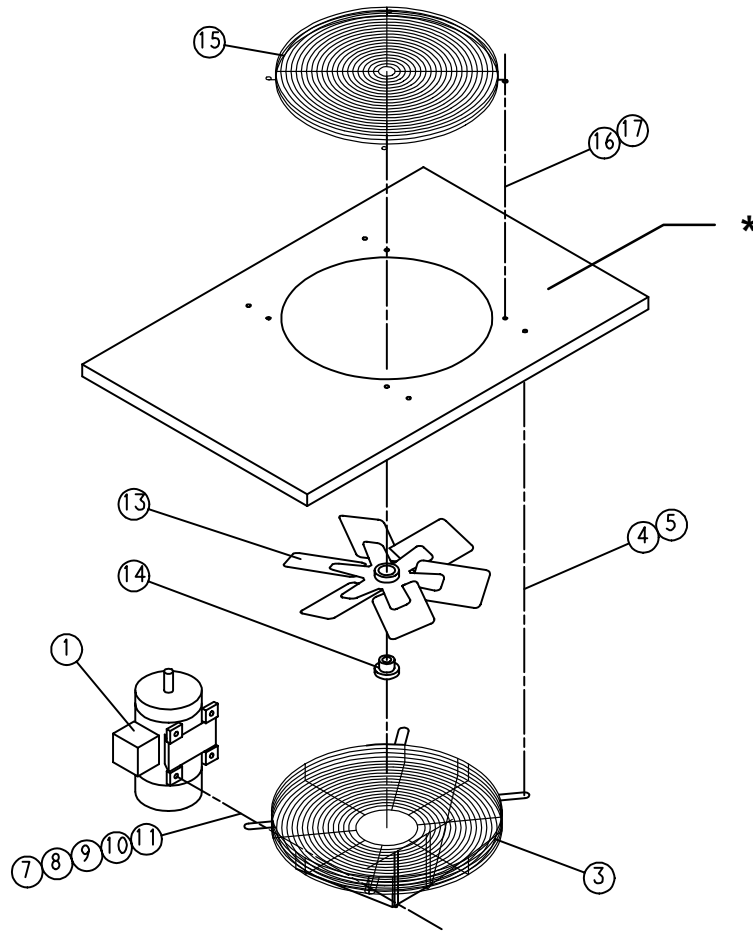
Ref. No.	Name of Part	Qty.	Part No.
	MINIMUM PRESSURE VALVE ASSEMBLY	1	200EBM527
	REPAIR KIT – Includes the following:	1	2116854
	O-RING	1	
	SPRING, CHECK VALVE	1	
	CHECK VALVE ASSEMBLY	1	
	SPRING, MAIN	1	

**THERMAL VALVE
(THERMOSTATIC MIXING)**



90AR167 THERMAL VALVE (ALUMINUM HOUSING)

Order by Part Number and Description. Reference Numbers are for your convenience only.



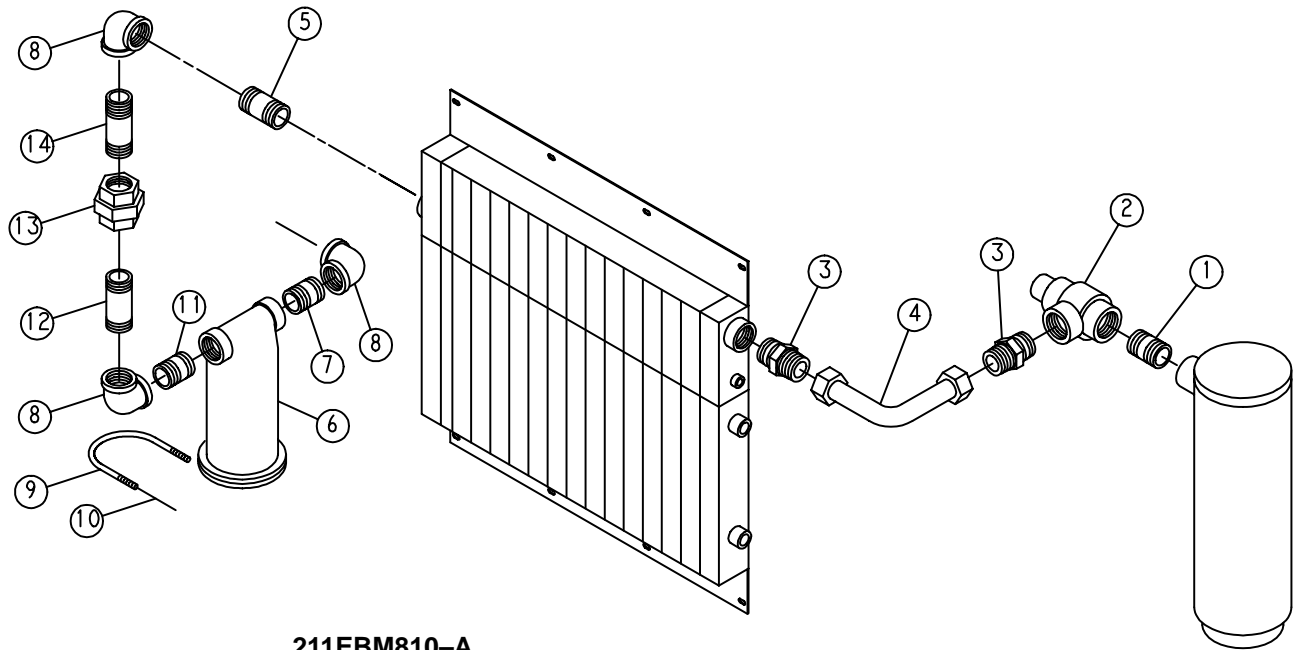
285ECM810
(Ref. Drawing)

ENCLOSURE – VENT FAN ASSEMBLY (WATER COOLED UNITS ONLY)

Ref. No.	Name of Part	Qty.	Part No.
1	MOTOR	1	See Page 44
3	GUARD-FAN	1	202ECM393
4	SCREW-FLANGED	4	75K48
5	WASHER	4	95A5
7	SCREW	4	75A35
8	RETAINER	4	2014731
9	WASHER	4	95A2
10	LOCKWASHER	4	95B2
11	NUT	4	50B2
13	FAN	1	202ECM701
14	HUB BUSHING	1	22G27
15	GUARD-FAN	1	200ECM393
16	SCREW-FLANGED	4	75LM51
17	NUT-FLANGED	4	50AW5

* Refer to page 34 for Vent Fan Panel.

Order by Part Number and Description. Reference Numbers are for your convenience only.

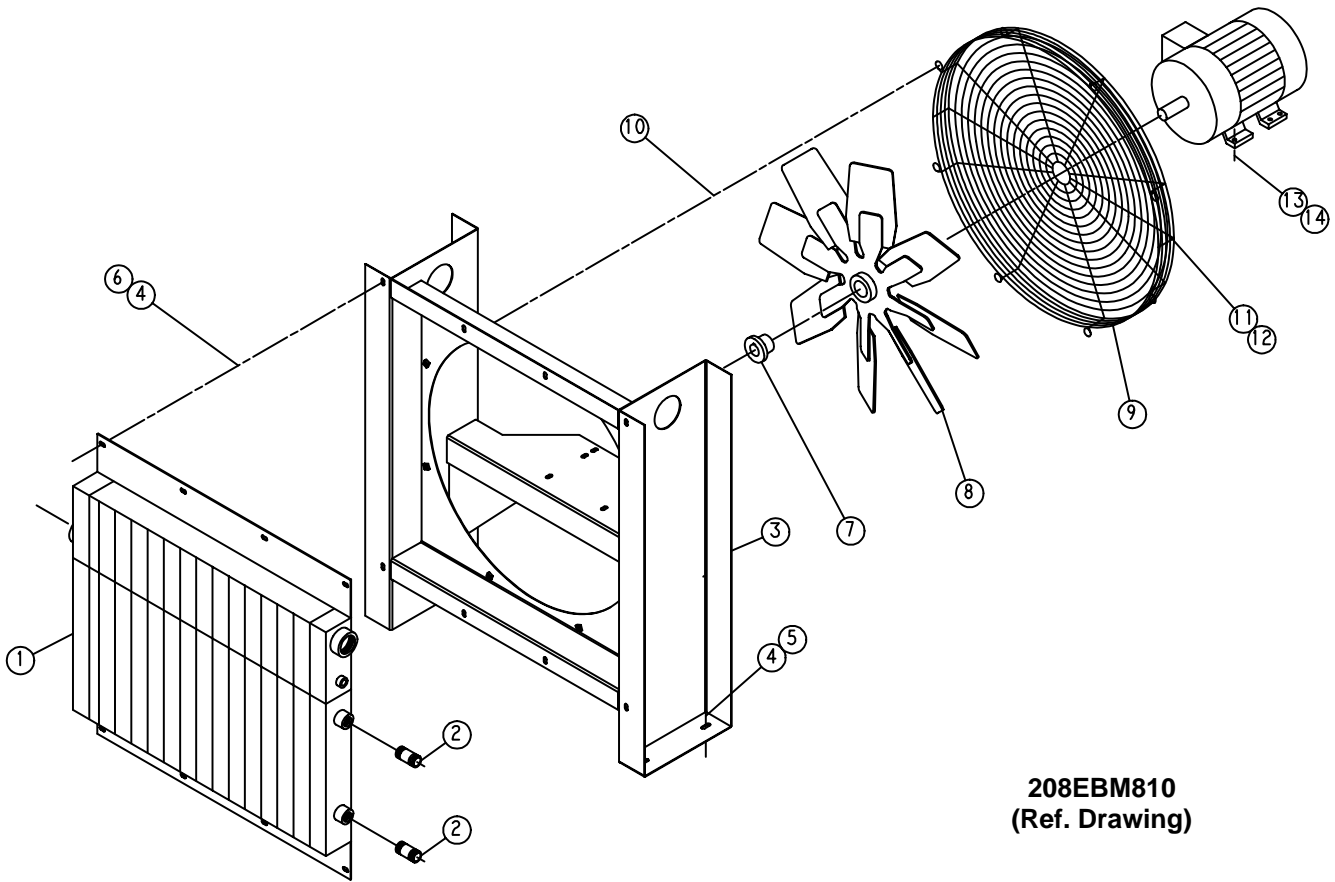


211EBM810-A
(Ref. Drawing)

AIR DISCHARGE PIPING

Ref. No.	Name of Part	Qty.	Part No.
1	NIPPLE	1	63L1G
2	VALVE—MINIMUM PRESSURE (See page 19)	1	200EBM527
3	CONNECTOR—TUBE	2	86H142
4	TUBE WITH FITTINGS	1	204EBM863
5	NIPPLE	1	63L15G
6	TRAP	1	83C84
7	NIPPLE	1	63L1G
8	ELBOW	3	64C9G
9	U—BOLT	1	15U64
10	NUT—FLANGED	2	50AW5
11	NIPPLE	1	63L9G
12	NIPPLE	1	63L20G
13	UNION—STRAIGHT	1	64Z2
14	NIPPLE	1	63L22G

Order by Part Number and Description. Reference Numbers are for your convenience only.

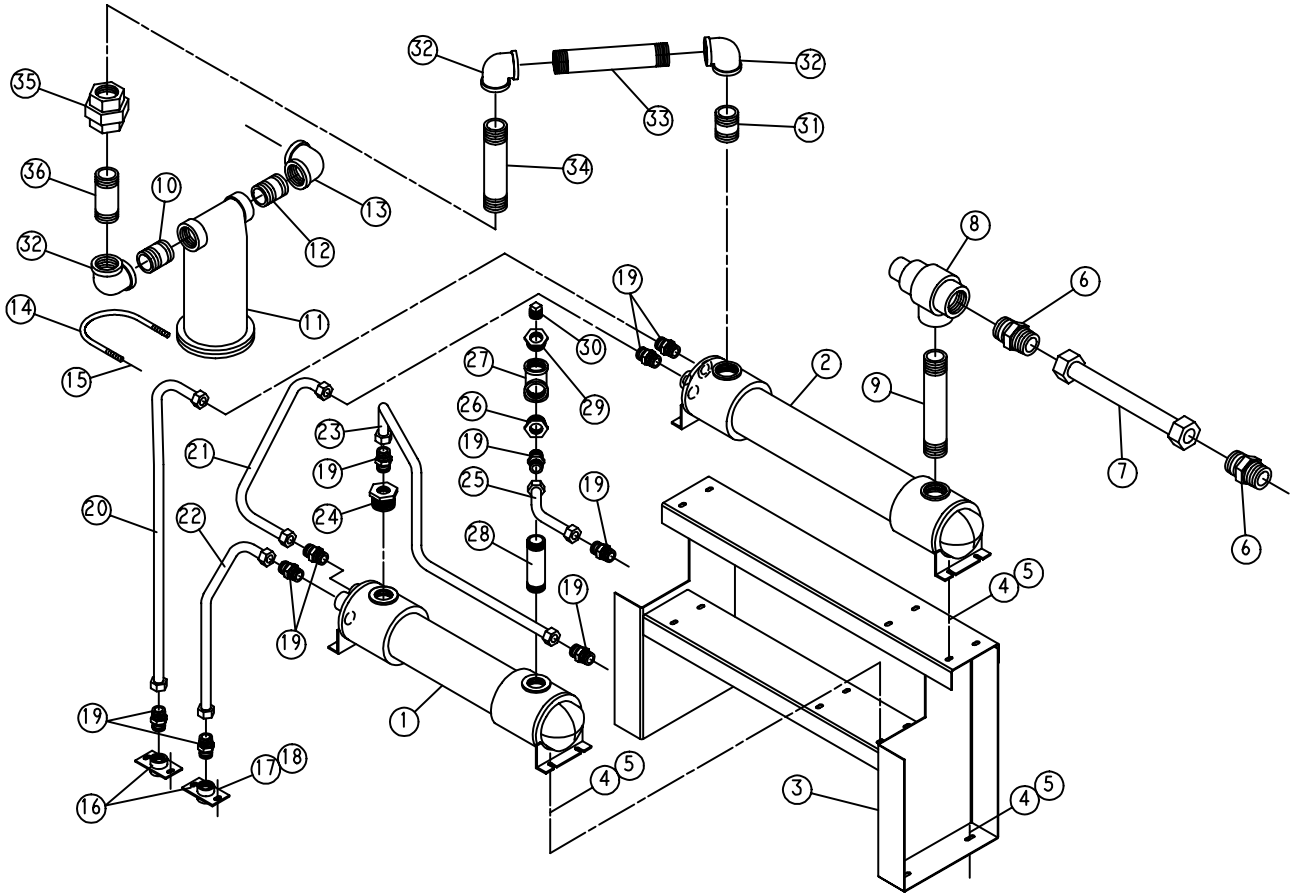


208EBM810
(Ref. Drawing)

AIR COOLED COOLER GROUP

Ref. No.	Name of Part	Qty.	60 – 75 HP Part No.	100 HP Part No.
1	COOLER-OIL/AIR	1	200EBM201	200EBP201
	COOLER-OIL/AIR SEACOAST (OPTIONAL)	1	201EBM201	201EBP201
2	NIPPLE-PIPE	2	63H4G	63H4G
3	SUPPORT	1	200EBM165	200EBM165
4	SCREW-FLANGED	12	75LM51	75LM51
5	NUT-FLANGED	12	50AW5	50AW5
6	WASHER	8	95A3	95A3
7	BUSHING-HUB	1	22G2	22G2
8	FAN	1	201ECM701	201ECM701
9	GUARD-FAN	1	200EBM393	200EBM393
10	SCREW-FLANGED	8	75LM51	75LM51
11	SCREW-FLANGED	4	75LM50	75LM50
12	NUT-FLANGED	4	50AW4	50AW4
13	SCREW-FLANGED	4	75K48	75LM78
14	NUT-FLANGED	4	50AW5	50AW5

WATER COOLED HEAT EXCHANGER – WITH AFTERCOOLER



209EBM810-A
(Ref. Drawing)

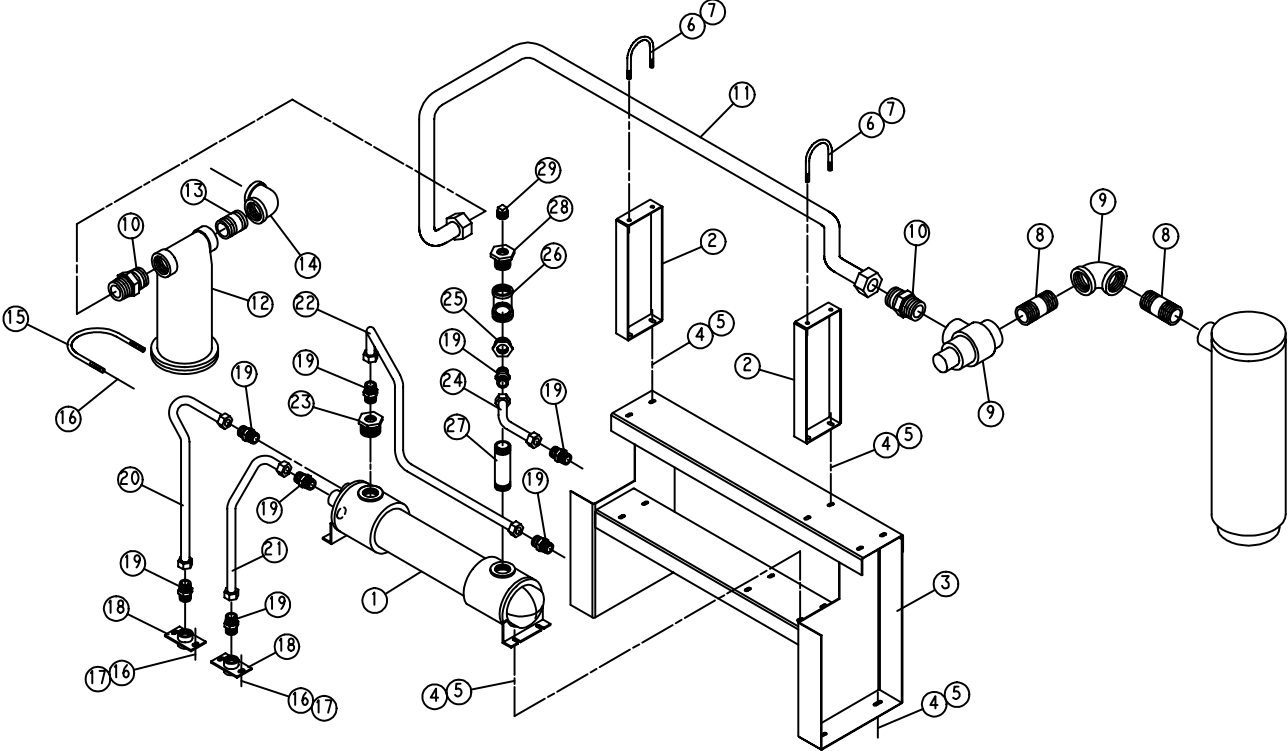
Order by Part Number and Description. Reference Numbers are for your convenience only.

WATER COOLED HEAT EXCHANGER – WITH AFTERCOOLER

Ref. No.	Name of Part	Qty.	60 HP Part No.	75/100 HP Part No.
1	EXCHANGER-HEAT (OIL/WATER)	1	202ESJ349	204ESM349
	EXCHANGER-HEAT (OIL/WATER) – SEACOAST OPTION	1	203ESJ349	203ESM349
	BONNET-IN & OUT (For Repair)	1	2109060	2109060
	BONNET-RETURN (For Repair)	1	2109061	2109061
	GASKET-IN & OUT (For Repair)	1	2109058	2109058
	GASKET-RETURN (For Repair)	1	2109059	2109059
2	AFTERCOOLER	1	200ESL292	201ESM292
	AFTERCOOLER – SEACOAST OPTION	1	201ESL292	202ESM292
	BONNET-IN & OUT (For Repair)	1	2109060	2109060
	BONNET-RETURN (For Repair)	1	2109061	2109061
	GASKET-IN & OUT (For Repair)	1	2109058	2109058
	GASKET-RETURN (For Repair)	1	2109059	2109059
3	SUPPORT	1	213ECM165	213ECM165
4	SCREW-FLANGED	12	75LM51	75LM51
5	NUT-FLANGED	12	50AW5	50AW5
6	CONNECTOR-TUBE	2	86H142	86H142
7	TUBE WITH FITTINGS	1	206EBM863	202EBP863
8	VALVE-MINIMUM PRESSURE (See page 19)	1	200EBM527	200EBM527
9	NIPPLE	1	63L28G	63L28G
10	NIPPLE	1	63L9G	63L9G
11	TRAP	1	83C84	83C84
12	NIPPLE	1	63L9G	63L9G
13	ELBOW	1	64C9G	64C9G
14	U-BOLT	1	15U64	15U64
15	NUT-FLANGED	2	50AW5	50AW5
16	MANIFOLD-WATER	2	200ECM072	200ECM072
17	SCREW-FLANGED	4	75LM51	75LM51
18	NUT-FLANGED	4	50AW5	50AW5
19	CONNECTOR-TUBE	10	86H138	86H138
20	TUBE WITH FITTINGS	1	209EBM863	209EBM863
21	TUBE WITH FITTINGS	1	208EBM863	208EBM863
22	TUBE WITH FITTINGS	1	210EBM863	210EBM863
23	TUBE WITH FITTINGS	1	207EBM863	207EBM863
24	BUSHING-PIPE	1	64E13	64E13
25	TUBE WITH FITTINGS	1	205EBM863	201EBP863
26	BUSHING-PIPE	1	64E13	64E13
27	TEE	1	64G11G	64G11G
28	NIPPLE	1	63K6G	63K6G
29	BUSHING-PIPE	1	64E13	64E13
30	PLUG-SQHD PIPE	1	64AA1	64AA1
31	NIPPLE	1	63L9G	63L9G
32	ELBOW	3	64C9G	64C9G
33	NIPPLE	1	63L34G	63L34G
34	NIPPLE	1	63L27G	63L27G
35	UNION-STRAIGHT	1	64Z2	64Z2
36	NIPPLE	1	63L20G	63L20G
*	TEMPERATURE REGULATOR	1	90AR326	90AR326
*	SOLENOID VALVE (NEMA 1)	1	90AC118	90AC118
*	SOLENOID VALVE (NEMA 4)	1	90AC103	90AC103

* Not Shown.

WATER COOLED HEAT EXCHANGER – WITHOUT AFTERCOOLER



210EBM810
(Ref. Drawing)

Order by Part Number and Description. Reference Numbers are for your convenience only.

WATER COOLED HEAT EXCHANGER – WITHOUT AFTERCOOLER

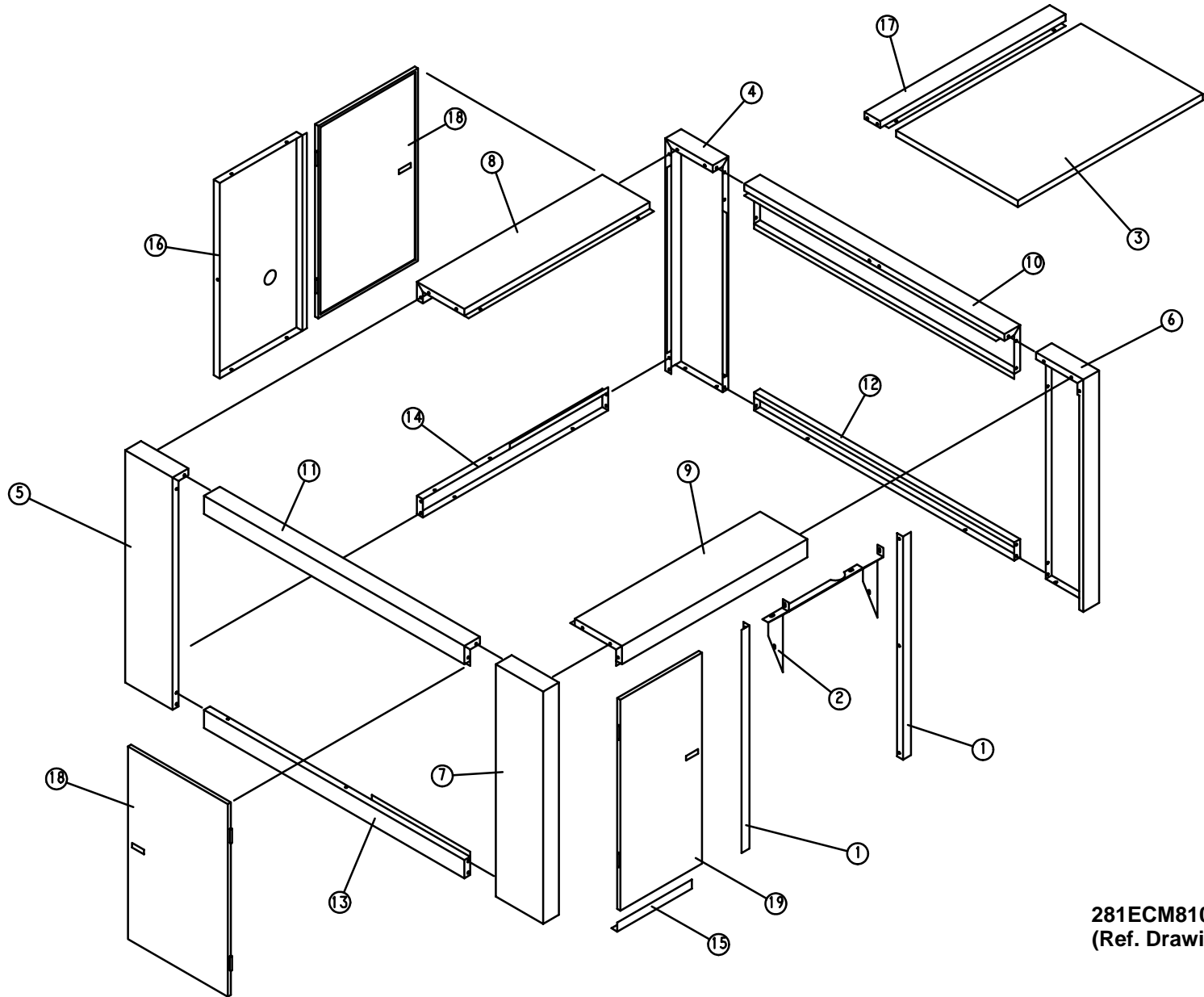
Ref. No.	Name of Part	Qty.	60 HP Part No.	75/100 HP Part No.
1	EXCHANGER-HEAT (OIL/WATER)	1	202ESJ349	204ESM349
	EXCHANGER-HEAT (OIL/WATER) – SEACOAST OPTION	1	203ESJ349	203ESM349
	BONNET-IN & OUT (For Repair)	1	2109060	2109060
	BONNET-RETURN (For Repair)	1	2109061	2109061
	GASKET-IN & OUT (For Repair)	1	2109058	2109058
	GASKET-RETURN (For Repair)	1	2109059	2109059
2	BRACKET-PIPE	2	201ECM108	201ECM108
3	SUPPORT	1	213ECM165	213ECM165
4	SCREW-FLANGED	12	75LM51	75LM51
5	NUT-FLANGED	12	50AW5	50AW5
6	U-BOLT	2	15U111	15U111
7	NUT-FLANGED	4	50AW5	50AW5
8	NIPPLE	2	63L9G	63L9G
9	VALVE-MINIMUM PRESSURE (See page 19)	1	200EBM527	200EBM527
10	CONNECTOR-TUBE	2	86H142	86H142
11	TUBE WITH FITTINGS	1	213EBM863	213EBM863
12	TRAP	1	83C84	83C84
13	NIPPLE	1	63L1G	63L1G
14	ELBOW	1	64C9G	64C9G
15	U-BOLT	1	15U64	15U64
16	NUT-FLANGED	6	50AW5	50AW5
17	SCREW-FLANGED	4	75LM51	75LM51
18	MANIFOLD-WATER	2	200ECM072	200ECM072
19	CONNECTOR-TUBE	8	86H138	86H138
20	TUBE WITH FITTINGS	1	211EBM863	211EBM863
21	TUBE WITH FITTINGS	1	210EBM863	210EBM863
22	TUBE WITH FITTINGS	1	207EBM863	207EBM863
23	BUSHING-PIPE	1	64E13	64E13
24	TUBE WITH FITTINGS	1	205EBM863	201EBP863
25	BUSHING-PIPE	1	64E13	64E13
26	TEE	1	64G11G	64G11G
27	NIPPLE	1	63K6G	63K6G
28	BUSHING-PIPE	1	64E13	64E13
29	PLUG.	1	64AA1	64AA1
*	TEMPERATURE REGULATOR	1	90AR326	90AR326
*	SOLENOID VALVE (NEMA 1)	1	90AC118	90AC118
*	SOLENOID VALVE (NEMA 4)	1	90AC103	90AC103

* Not Shown.

OIL PIPING SCHEMATIC

Ref. No.	Name of Part	Qty.	Part No.	Ref. No.	Name of Part	Qty.	Part No.
1	SCREW-FLANGED	4	75LM51	29	CONNECTOR-TUBE	1	86N287
2	NIPPLE	1	63D5G	30	CONNECTOR-TUBE	1	86E4
3	VALVE-SOLENOID	1	91B70	31	ELBOW	1	86E64
4	NIPPLE	1	63D1G	32	CONNECTOR-TUBE	1	86E9
5	TEE-PIPE	1	64G3G	33	VALVE-CONTROL	1	90AR35
6	CONNECTOR	1	86N272	35	TEE	1	86E147
7	NIPPLE	1	63D5G	36	ELBOW	1	86E82
8	CROSS	1	64K1G	37	CONNECTOR-TUBE	1	86N287
9	ELBOW	1	86E60	38	ELBOW	1	86E64
11	VALVE-CHECK	1	90AR261	39	ELBOW	1	86E60
12	TEE	1	64G3G	41	NUT-FLANGED	2	50AW3
13	CONNECTOR-TUBE	1	86E64	43	TUBE	28	85K3
14	ORIFICE	1	86N289	44	TUBE	24	85K5
15	CONNECTOR-TUBE	2	86E4	46	NIPPLE	1	63D1G
16	ELBOW	1	86E60	47	REGULATOR	1	88H139
17	VALVE-SOLENOID	1	91B81		GAUGE (For Repair)	1	2116732
18	BUSHING-PIPE	1	64E2G	50	CONNECTOR-TUBE	1	86E4
19	TEE	1	86E119	51	NIPPLE	1	63D1G
20	ELBOW	1	86E60	59	NUT-FLANGED	4	50AW5
21	VALVE-SOLENOID	1	91B80	60	TEE	1	86E136
22	NIPPLE	1	63D1G	61	CONNECTOR-TUBE	1	86E9
23	VALVE-CONTROL	1	90AR107	62	CONNECTOR-TUBE	1	86E9
24	CONNECTOR-TUBE	1	86E9	63	ELBOW	1	86E64
25	CONNECTOR-TUBE	1	86E4	64	ELBOW	1	86E64
26	TEE	1	64G3G	65	SCREW	2	75P4
28	CONNECTOR-TUBE	1	86N287	66	O-RING	3	165011

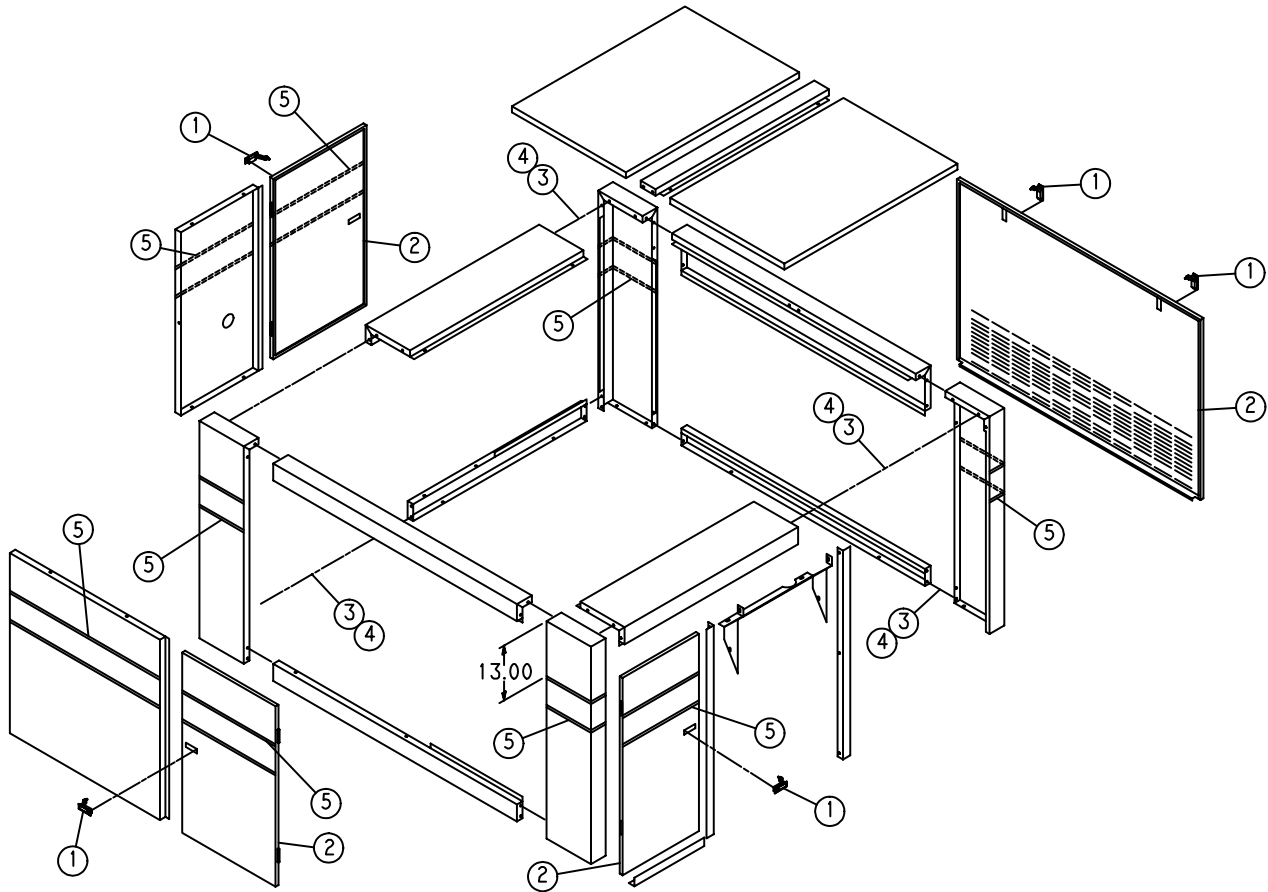
ENCLOSURE
(COMMON PARTS - AIR/WATER COOLED)



**ENCLOSURE
(COMMON PARTS – AIR/WATER COOLED)**

Ref. No.	Name of Part	Qty.	Part No.
1	BRACKET	2	215ECM142
2	BRACKET	1	216ECM142
3	PANEL	1	217ECM216
4	POST	1	208ECM313
5	POST	1	209ECM313
6	POST	1	213ECM313
7	POST	1	214ECM313
8	FRAME	1	215ECM314
9	FRAME	1	216ECM314
10	FRAME	1	217ECM314
11	FRAME	1	218ECM314
12	FRAME	1	219ECM314
13	FRAME	1	220ECM314
14	FRAME	1	221ECM314
15	FRAME	1	222ECM314
16	BRACE	1	206ECM326
17	BRACE	1	205ECM326
18	DOOR-CANOPY	2	210ECM334
19	DOOR-CANOPY	1	211ECM334

Order by Part Number and Description. Reference Numbers are for your convenience only.

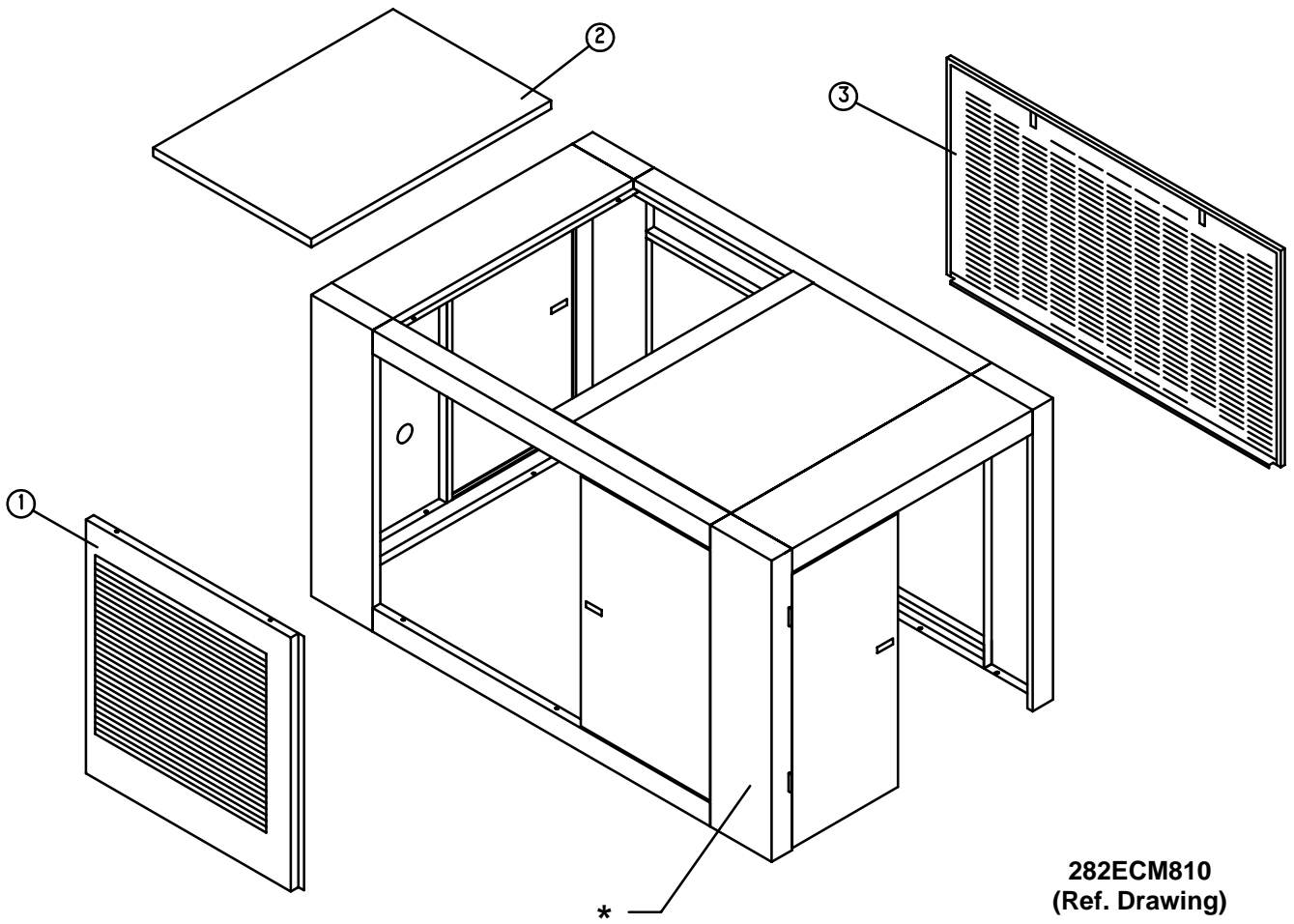


205EBM810-B
(Ref. Drawing)

ENCLOSURE – HARDWARE

Ref. No.	Name of Part	Qty.	Part No.
1	LATCH	5	31D58
2	SEAL	51 Ft.	32E12
3	SCREW-FLANGED	86	75LM51
4	NUT-FLANGED	78	50AW5
5	DECAL	6	203ESO077

Order by Part Number and Description. Reference Numbers are for your convenience only.

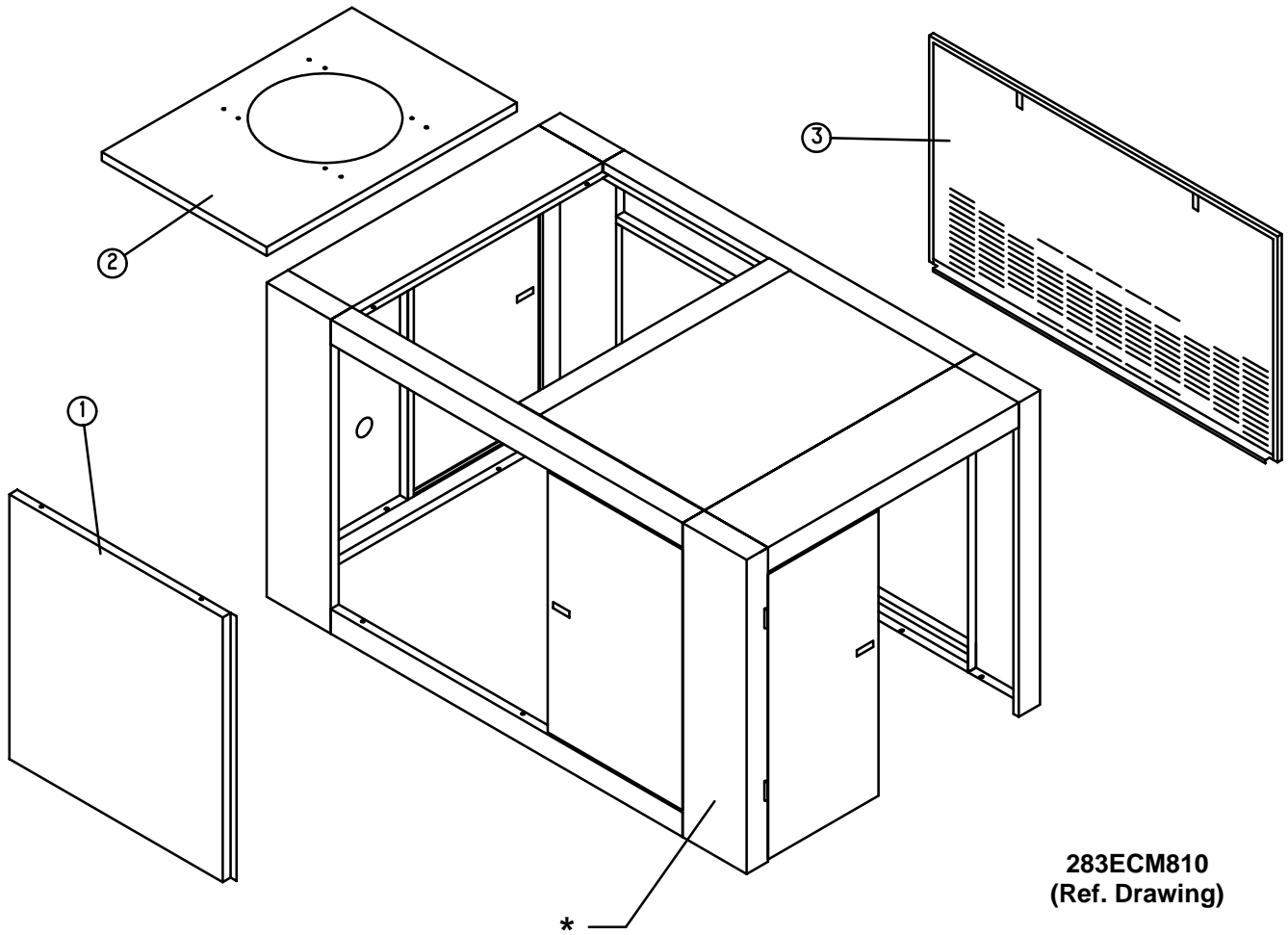


ENCLOSURE – AIR COOLED UNITS

Ref. No.	Name of Part	Qty.	Part No.
1	PANEL	1	220ECM216
2	PANEL	1	217ECM216
3	PANEL	1	215ECM216

* Refer to pages 30 and 31 for Enclosure Parts and page 32 for Enclosure Hardware.

Order by Part Number and Description. Reference Numbers are for your convenience only.

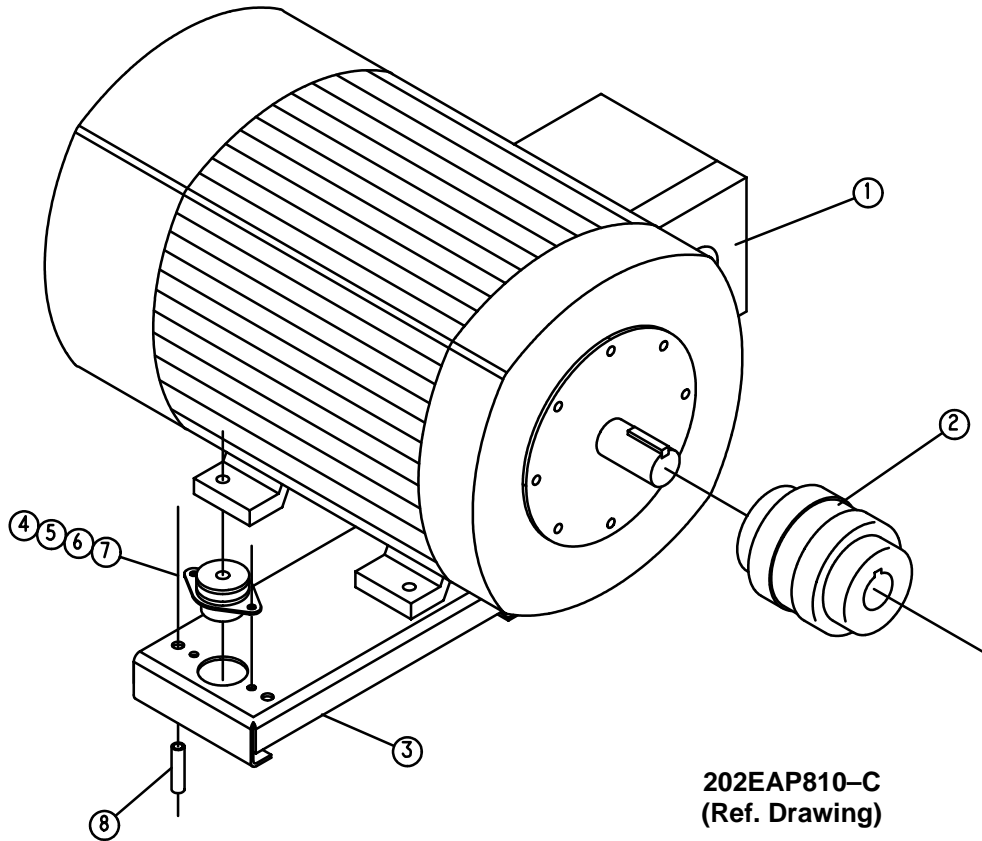


ENCLOSURE – WATER COOLED UNITS

Ref. No.	Name of Part	Qty.	Part No.
1	PANEL	1	219ECM216
2	PANEL	1	216ECM216
3	PANEL	1	218ECM216

* Refer to pages 30 and 31 for Enclosure Parts and page 32 for Enclosure Hardware.

Order by Part Number and Description. Reference Numbers are for your convenience only.



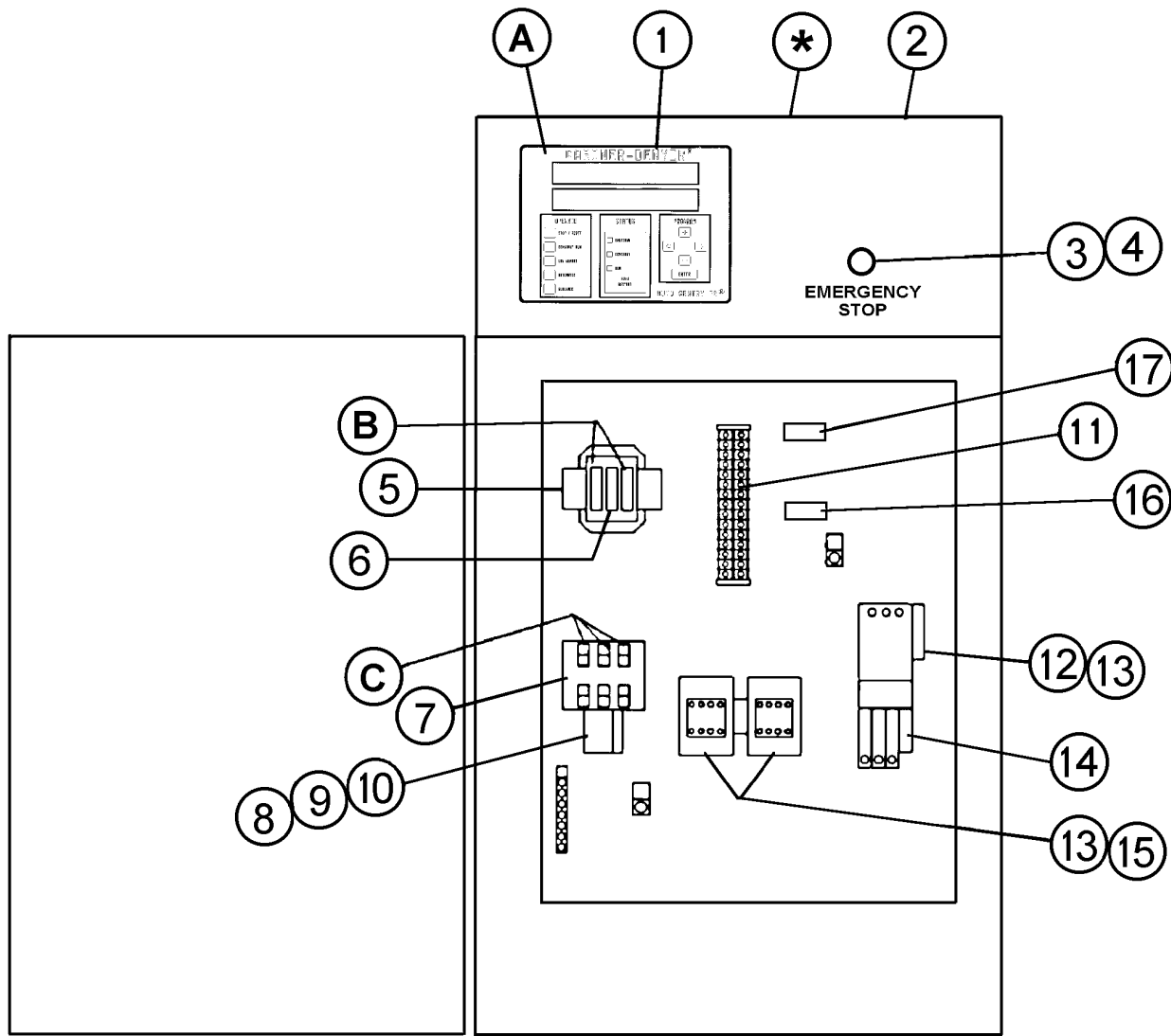
MAIN MOTOR GROUP

Ref. No.	Name of Part	Qty.	Part No.
1	MOTOR	1	*
2	COUPLING-FLEXIBLE (326TSC, 364TSC & 365TSC Frame Motor) ..	1	51L167**
	COUPLING-FLEXIBLE (404 TSC & 405 TSC Frame Motor)	1	51L61**
3	SUPPORT-MOTOR (326TSC Frame Motor)	1	202EDF620
	SUPPORT-MOTOR (364TSC & 365TSC Frame Motor)	1	201EDF620
	SUPPORT-MOTOR (404TSC & 405TSC Frame Motor)	1	200EDH620
4	SCREW	4	655EF160
5	WASHER	4	95A7
6	LOCKWASHER	4	95B7
7	NUT	4	50B7
8	NIPPLE (326TSC Frame Motor)	4	63AM12X36G
	NIPPLE (364TSC & 365TSC Frame Motor)	4	63AM12X26G
	NIPPLE (404TSC & 405TSC Frame Motor)	4	63AM12X16G

* Selective – see pages 42 and 43.

** DRIVE COUPLING KIT – ECK77781 (Includes (6) 2109116 Cushions)

**CONTROLLER ASSEMBLY
(60/75/100 HP WYE DELTA STARTERS)**



Refer to parts list on pages 37 and 38.

**CONTROLLER ASSEMBLY
(60/75/100 HP WYE DELTA STARTERS)
(Refer to drawing on page 36)**

		60/75 HP 220V	60/75/100 HP 380/400/415V	60 HP 440V	75/100 HP 440V	
*	ASSEMBLED PANEL – ES : NEMA 12	1	361EAP466	366EAP466	360EAP466	361EAP466
*	ASSEMBLED PANEL – ES : NEMA 4	1	363EAP466	367EAP466	362EAP466	363EAP466
*	ASSEMBLED PANEL – ES+ : NEMA 12, W/O Current Monitor .	1	297EAP466	302EAP466	296EAP466	297EAP466
*	ASSEMBLED PANEL – ES+ : NEMA 4, W/O Current Monitor .	1	299EAP466	303EAP466	298EAP466	299EAP466
*	ASSEMBLED PANEL – ES+ : NEMA 12, With Current Monitor .	1	329EAP466	334EAP466	328EAP466	329EAP466
*	ASSEMBLED PANEL – ES+ : NEMA 4, With Current Monitor .	1	331EAP466	335EAP466	330EAP466	331EAP466
A	FUSE, CONTROL BOARD	1	24CA2932	24CA2932	24CA2932	24CA2932
B	FUSE, TRANSFORMER PRIMARY	2	24CA2786	24CA3723	24CA2783	24CA2783
C	FUSE, FAN MOTOR, AIR COOLED	3	24CA4096	24CA4095	24CA4094	24CA4094
C	FUSE, FAN MOTOR, WATER COOLED	3	24CA4092	24CA4091	24CA4090	24CA4090
1	ELECTRICAL CONTROL ASSEMBLY – ES CONTROLLER ...	1	202EAP1173	202EAP1173	202EAP1173	202EAP1173
1	ELECTRICAL CONTROL ASSEMBLY – ES+ CONTROLLER .	1	200EAU1173	200EAU1173	200EAU1173	200EAU1173
2	ELECTRICAL CONTROL ENCLOSURE	1	200EAP179	200EAP179	200EAP179	200EAP179
3	OPERATOR, 22mm PUSH/PULL EMERGENCY STOP	1	24CA2907	24CA2907	24CA2907	24CA2907
4	CONTACT BLOCK, 22mm SPNC	1	24CA2908	24CA2908	24CA2908	24CA2908
5	CONTROL TRANSFORMER	1	2116372	2116864	2116372	2116372
6	FUSE, TRANSFORMER SECONDARY	1	24CA3728	24CA3725	24CA3728	24CA3728
7	FUSEHOLDER	1	24CA4098	24CA4098	24CA4098	24CA4098
8	STARTER, FAN MOTOR	1	24CA4408	24CA4408	24CA4408	24CA4408
9	REPLACEMENT COIL FOR ITEM 8	1	2115950	2115950	2115950	2115950
10	OVERLOAD RELAY	1	24CA4086	24CA4086	24CA4086	24CA4086
11	TERMINAL BLOCK	6	24CA2633	24CA2633	24CA2633	24CA2633
12	STARTER, MAIN MOTOR	1	24CA3255	24CA3255	24CA4142	24CA3255
13	REPLACEMENT COIL FOR ITEMS 12 AND 15	3	2116555	2116555	2116124	2116555
14	OVERLOAD RELAY	1	24CA4086	24CA4086	24CA4087	24CA4086
15	CONTACTOR	2	24CA3259	24CA3259	24CA3258	24CA3259
16	CURRENT TRANSFORMER (SEE NOTE BELOW)	1	24CA4242	24CA4242	24CA4242	24CA4242
17	CURRENT TRANSDUCER (SEE NOTE BELOW)	1	24CA4241	24CA4241	24CA4241	24CA4241

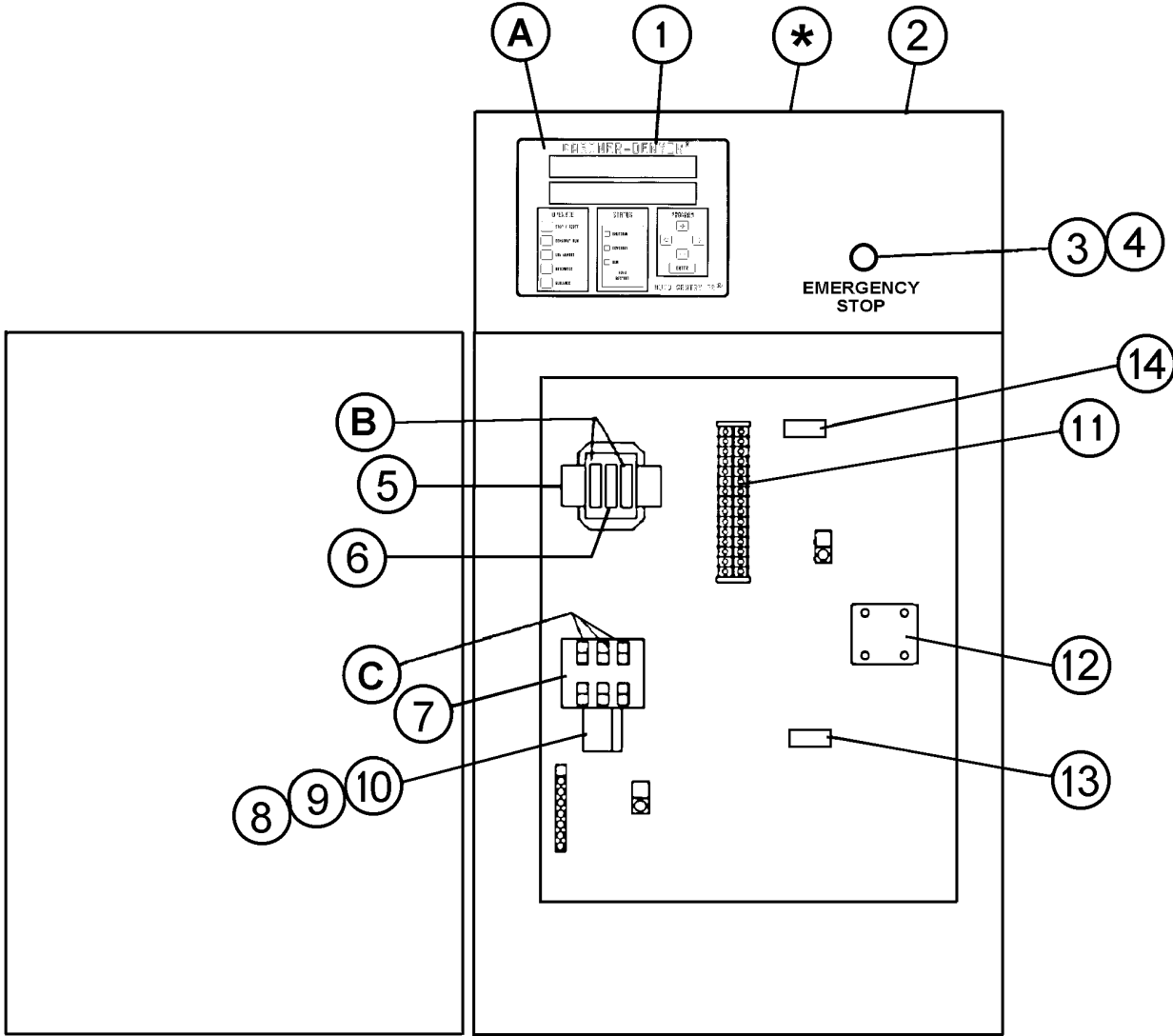
NOTE: USED WITH ES+ WITH CURRENT MONITORING UNITS ONLY.

**CONTROLLER ASSEMBLY
(60/75/100 HP WYE DELTA STARTERS)
(Refer to drawing on page 36)**

	QTY.	60/75 HP 550V	100 HP 550V
* ASSEMBLED PANEL – ES : NEMA 12	1	368EAP466	369EAP466
* ASSEMBLED PANEL – ES : NEMA 4	1	370EAP466	371EAP466
* ASSEMBLED PANEL – ES+ : NEMA 12, W/O Current Monitor	1	304EAP466	305EAP466
* ASSEMBLED PANEL – ES+ : NEMA 4, W/O Current Monitor	1	306EAP466	307EAP466
* ASSEMBLED PANEL – ES+ : NEMA 12, With Current Monitor	1	336EAP466	337EAP466
* ASSEMBLED PANEL – ES+ : NEMA 4, With Current Monitor	1	338EAP466	339EAP466
A FUSE, CONTROL BOARD	1	24CA2932	24CA2932
B FUSE, TRANSFORMER PRIMARY	2	24CA3722	24CA3722
C FUSE, FAN MOTOR, AIR COOLED	3	24CA4092	24CA4092
C FUSE, FAN MOTOR, WATER COOLED	3	24CA4090	24CA4090
1 ELECTRICAL CONTROL ASSEMBLY – ES CONTROLLER	1	202EAP1173	202EAP1173
1 ELECTRICAL CONTROL ASSEMBLY – ES+ CONTROLLER	1	200EAU1173	200EAU1173
2 ELECTRICAL CONTROL ENCLOSURE	1	200EAP179	200EAP179
3 OPERATOR, 22mm PUSH/PULL EMERGENCY STOP	1	24CA2907	24CA2907
4 CONTACT BLOCK, 22mm SPNC	1	24CA2908	24CA2908
5 CONTROL TRANSFORMER	1	2116373	2116373
6 FUSE, TRANSFORMER SECONDARY	1	24CA3728	24CA3728
7 FUSEHOLDER	1	24CA4098	24CA4098
8 STARTER, FAN MOTOR	1	24CA4408	24CA4408
9 REPLACEMENT COIL FOR ITEM 8	1	2115950	2115950
10 OVERLOAD RELAY	1	24CA4086	24CA4086
11 TERMINAL BLOCK	6	24CA2633	24CA2633
12 STARTER, MAIN MOTOR	1	24CA4142	24CA3255
13 REPLACEMENT COIL FOR ITEMS 12 AND 15	3	2116124	2116555
14 OVERLOAD RELAY	1	24CA4087	24CA4086
15 CONTACTOR	2	24CA3258	24CA3259
16 CURRENT TRANSFORMER (SEE NOTE BELOW)	1	24CA4242	24CA4242
17 CURRENT TRANSDUCER (SEE NOTE BELOW)	1	24CA4241	24CA4241

NOTE: USED WITH ES+ WITH CURRENT MONITORING UNITS ONLY.

**CONTROLLER ASSEMBLY
(60/75/100 HP LESS MAIN MOTOR STARTER)**



Refer to parts list on page 40.

**CONTROLLER ASSEMBLY
(60/75/100 HP LESS MAIN MOTOR STARTER)
(Refer to drawing on page 39)**

		QTY.	220V	380/400/415V	440V	550V
*	ASSEMBLED PANEL – ES : NEMA 12	1	372EAP466	374EAP466	372EAP466	375EAP466
*	ASSEMBLED PANEL – ES : NEMA 4	1	376EAP466	378EAP466	376EAP466	379EAP466
*	ASSEMBLED PANEL – ES+ : NEMA 12, W/O Current Monitor .	1	308EAP466	302EAP466	308EAP466	311EAP466
*	ASSEMBLED PANEL – ES+ : NEMA 4, W/O Current Monitor	1	312EAP466	314EAP466	312EAP466	315EAP466
*	ASSEMBLED PANEL – ES+ : NEMA 12, With Current Monitor .	1	340EAP466	342EAP466	340EAP466	343EAP466
*	ASSEMBLED PANEL – ES+ : NEMA 4, With Current Monitor	1	344EAP466	346EAP466	344EAP466	347EAP466
A	FUSE, CONTROL BOARD	1	24CA2932	24CA2932	24CA2932	24CA2932
B	FUSE, TRANSFORMER PRIMARY	2	24CA2786	24CA3723	24CA2783	24CA3722
C	FUSE, FAN MOTOR, AIR COOLED	3	24CA4096	24CA4095	24CA4094	24CA4092
C	FUSE, FAN MOTOR, WATER COOLED	3	24CA4092	24CA4091	24CA4090	24CA4090
1	ELECTRICAL CONTROL ASSEMBLY – ES CONTROLLER . . .	1	202EAP1173	202EAP1173	202EAP1173	202EAP1173
1	ELECTRICAL CONTROL ASSEMBLY – ES+ CONTROLLER .	1	200EAU1173	200EAU1173	200EAU1173	200EAU1173
2	ELECTRICAL CONTROL ENCLOSURE	1	200EAP179	200EAP179	200EAP179	200EAP179
3	OPERATOR, 22mm PUSH/PULL EMERGENCY STOP	1	24CA2907	24CA2907	24CA2907	24CA2907
4	CONTACT BLOCK, 22mm SPNC	1	24CA2908	24CA2908	24CA2908	24CA2908
5	CONTROL TRANSFORMER	1	2116372	2116864	2116372	2116373
6	FUSE, TRANSFORMER SECONDARY	1	24CA3728	24CA3725	24CA3728	24CA3728
7	FUSEHOLDER	1	24CA4098	24CA4098	24CA4098	24CA4098
8	STARTER, FAN MOTOR	1	24CA4408	24CA4408	24CA4408	24CA4408
9	REPLACEMENT COIL FOR ITEM 8	1	2115950	2115950	2115950	2115950
10	OVERLOAD RELAY	1	24CA4086	24CA4086	24CA4086	24CA4086
11	TERMINAL BLOCK	7	24CA2633	24CA2633	24CA2633	24CA2633
12	CONTROL RELAY	1	24CA3896	24CA3896	24CA3896	24CA3896
13	CURRENT TRANSFORMER (SEE NOTE BELOW)	1	24CA4242	24CA4242	24CA4242	24CA4242
14	CURRENT TRANSDUCER (SEE NOTE BELOW)	1	24CA4241	24CA4241	24CA4241	24CA4241

NOTE: USED WITH ES+ WITH CURRENT MONITORING UNITS ONLY.

OVERLOAD RELAY HEATER CONVERSION LISTING

Refer to Motor Nameplate “Amperage” and Decal in Control Panel for Selection of Overload Relay Heater Packs.

CUTLER-HAMMER PART NUMBER	GARDNER DENVER PART NUMBER
H2002B	24CA4101
H2003B	24CA4102
H2004B	24CA4103
H2005B	24CA4104
H2006B	24CA4105
H2007B	24CA4106
H2008B	24CA4107
H2009B	24CA4108
H2010B	24CA4109
H2011B	24CA4110
H2012B	24CA4111
H2013B	24CA4112
H2014B	24CA4113
H2015B	24CA4114
H2016B	24CA4115
H2017B	24CA4116
H2018	24CA2924
H2019	24CA2925
H2020	24CA2926
H2021	24CA2927
H2022	24CA2893
H2023	24CA2894
H2024	24CA2928

**MAIN MOTORS – 50 HZ
(STANDARD EFFICIENCY)**

60 HP – 1500 RPM MOTORS

VOLTAGE	UNIT PSI	PART NO.
ODP (OPEN DRIP PROOF)		
MOTOR, 220V	125/150	24CA3507
MOTOR, 380V	125/150	24CA3508
MOTOR, 400V	125/150	24CA3509
MOTOR, 415V	125/150	24CA3510
MOTOR, 440V	125/150	24CA3511
MOTOR, 550V	125/150	24CA3512

TEFC (TOTALLY ENCLOSED FAN COOLED)

MOTOR, 220V	125/150	24CA3513
MOTOR, 380V	125/150	24CA3514
MOTOR, 400V	125/150	24CA3515
MOTOR, 415V	125/150	24CA3516
MOTOR, 440V	125/150	24CA3517
MOTOR, 550V	125/150	24CA3518

60 HP – 3000 RPM MOTORS

VOLTAGE	UNIT PSI	PART NO.
ODP (OPEN DRIP PROOF)		
MOTOR, 220V	100	24CA3519
MOTOR, 380V	100	24CA3461
MOTOR, 400V	100	24CA3462
MOTOR, 415V	100	24CA3463
MOTOR, 440V	100	24CA3464
MOTOR, 550V	100	24CA3466

TEFC (TOTALLY ENCLOSED FAN COOLED)

MOTOR, 220V	100	24CA3522
MOTOR, 380V	100	24CA3523
MOTOR, 400V	100	24CA3524
MOTOR, 415V	100	24CA3525
MOTOR, 440V	100	24CA3526
MOTOR, 550V	100	24CA3527

**MAIN MOTORS – 50 HZ
(STANDARD EFFICIENCY)**

75 HP – 3000 RPM MOTORS

VOLTAGE	UNIT PSI	PART NO.
ODP (OPEN DRIP PROOF)		
MOTOR, 220V	100/125/150	24CA3520
MOTOR, 380V	100/125/150	24CA3467
MOTOR, 400V	100/125/150	24CA3468
MOTOR, 415V	100/125/150	24CA3469
MOTOR, 440V	100/125/150	24CA3470
MOTOR, 550V	100/125/150	24CA3472

TEFC (TOTALLY ENCLOSED FAN COOLED)

MOTOR, 220V	100/125/150	24CA3528
MOTOR, 380V	100/125/150	24CA3529
MOTOR, 400V	100/125/150	24CA3530
MOTOR, 415V	100/125/150	24CA3531
MOTOR, 440V	100/125/150	24CA3532
MOTOR, 550V	100/125/150	24CA3533

100 HP – 3000 RPM MOTORS

VOLTAGE	UNIT PSI	PART NO.
ODP (OPEN DRIP PROOF)		
MOTOR, 220V	100/125/150	24CA3521
MOTOR, 380V	100/125/150	24CA3473
MOTOR, 400V	100/125/150	24CA3474
MOTOR, 415V	100/125/150	24CA3475
MOTOR, 440V	100/125/150	24CA3476
MOTOR, 550V	100/125/150	24CA3478

TEFC (TOTALLY ENCLOSED FAN COOLED)

MOTOR, 220V	100/125/150	24CA3534
MOTOR, 380V	100/125/150	24CA3535
MOTOR, 400V	100/125/150	24CA3536
MOTOR, 415V	100/125/150	24CA3537
MOTOR, 440V	100/125/150	24CA3538
MOTOR, 550V	100/125/150	24CA3539

MOTOR GROUP (FAN MOTORS)

**AIR COOLED COOLING MODULE FAN MOTOR
(3 HP, T.E.F.C., 1000 RPM, 50 HZ, 1.0 S.F.)**

VOLTAGE	PART NO.
MOTOR, 220V	24CA2630
MOTOR, 380V	24CA463
MOTOR, 400V	24CA2474
MOTOR, 415V	24CA662
MOTOR, 440V	24CA2630
MOTOR, 550V	24CA1480

**ENCLOSURE VENT FAN – WATER COOLED FAN MOTOR OR
AIR COOLED WITH REMOTE AIR COOLED COOLING MODULE
(1/2 HP, T.E.F.C., 1500 RPM, 50 HZ, 1.0 S.F.)**

VOLTAGE	PART NO.
MOTOR, 220V	24CA522
MOTOR, 380V	24CA523
MOTOR, 400V	24CA2645
MOTOR, 415V	24CA523
MOTOR, 440V	24CA778
MOTOR, 550V	24CA524

IDENTIFICATION AND INSTRUCTION GROUP

Ref. No.	Name of Part	Qty.	Part No.
1	DECAL, OPERATION & MAINTENANCE	1	217ECM077
2	DECAL, WARNING	1	227EAQ077
3	DECAL, PARTS LIST/SERVICE MANUAL #	1	204EDE077
4	DECAL, WARNING – ELECTRICAL SHOCK	1	216EAQ077
5	DECAL, DANGER – DO NOT MODIFY	1	218EAQ077
6	DECAL, WARNING – ELECTRICAL SHOCK	1	213EAQ077
7	DECAL, WARNING – READ OPERATOR MANUAL	1	215EAQ077
8	DECAL, CAUTION – USE FLOOR PLATE	1	221EAQ077
9	DECAL, WARNING – SEE WIRING DIAGRAM	1	222EAQ077
10	DECAL, DANGER – HOT OIL UNDER PRESSURE	1	212EAQ077
11	DECAL, WARNING – INSPECT OIL RESERVOIR	1	217EAQ077
12	DECAL	1	243EAQ077
13	DECAL, NOTICE – USE GARDNER DENVER PARTS	1	214EAQ077
14	DECAL, NOTICE – USE GARDNER DENVER PARTS	1	214EAQ077
15	DECAL, CAUTION – DO NOT LIFT	1	208EAQ077
16	DECAL, WARNING – ROTATING MACHINERY	1	211EAQ077
17	DECAL, DANGER – DO NOT BREATHE	1	206EAQ077
18	DECAL, DRAIN MOISTURE DAILY	1	205ESO077
19	DECAL, GARDNER DENVER LOGO	1	69F18
20	RIVET	4	70E13
21	DECAL, HEAT EXCHANGER “IN”	1	200ESP077
22	DECAL, HEAT EXCHANGER “OUT”	1	201ESP077
23	DECAL, SAVER II LOGO	1	201ECP077
24	DECAL, SAVER II LOGO	3	200ECP077
25	TAG–INSTRUCTION	1	203EAQ304
26	DECAL, NAMEPLATE	1	69F64
28	DECAL	1	240EAQ077
29	DECAL	1	251EAQ077
30	TAG–INSTRUCTION	1	204EAQ304
31	TAG–INSTRUCTION	1	205EAQ304

REPAIR KITS

Name of Part	Qty.	Part No.
ROUTINE MAINTENANCE KIT – HEAVY DUTY AIR FILTER (Includes next two items)		202ECM6013
ELEMENT, AIR FILTER	2	2116713
ELEMENT, OIL FILTER	3	2116110
PERIODIC MAINTENANCE KIT (INLET VALVE) (Includes next five items) ..		302SSM6013
O-RING	1	25BC447
SPRING	1	78G19
SPRING	1	78W63
O-RING	1	25AM29
RETAINER RING	1	74D88
SEPARATOR KIT (Includes next three items)		204EAP6013
OIL SEPARATOR	1	200ECM035
GASKET	1	25C1788N
LUBRICANT	1	2116755
PNEUMATIC CONTROLS & GAUGES (Includes next five items)		302EAQ6013
CHECK VALVE	2	90AR261
SHUTTLE VALVE	2	90AR107
PURGE VALVE	1	90AR35
PRESSURE REGULATOR	1	88H139
PRESSURE GAUGE	1	27P104
ELECTRICAL CONTROL KIT (Includes next six items)		206EAP6013
SOLENOID VALVE	1	91B70
SOLENOID VALVE	1	91B80
SOLENOID VALVE	1	91B81
THERMISTOR PROBE	2	21D264
TRANSDUCER	1	88H242
VACUUM SWITCH	1	88H195
DRIVE COUPLING KIT (Includes next item)	1	ECK77781
CUSHIONS (Includes 6)		2109116
LUBRICANT (AEON 9000 SP)		
5-GALLON PAIL	1	28H109
55-GALLON DRUM	1	28H110
TOUCH-UP PAINT, WHITE		
5-GALLON PAIL	1	28H76
1-GALLON CAN	1	28H84
1-QUART CAN	1	28H83
WATER TEMPERATURE REGULATOR (Optional)		90AR326
MAGNETIC WATER SHUTOFF VALVE – NEMA 4 (Optional)		ECH75596

REPAIR KITS (Continued)

Name of Part	Qty.	Part No.
PERIODIC OVERHAUL KIT (SSM AIR END) (Includes next seven items) . . .		303SSM6013
GASKET KIT (SEE BELOW)	1	304SSM6013
OIL SEAL KIT (SEE BELOW)	1	302SSH6013
ROLLER BEARING	1	12BA92
ROLLER BEARING	1	12BA94
ROLLER BEARING	1	12W34
ROLLER BEARING	1	12BA93
SPRING	1	78W53
GASKET KIT (SSM AIR END) (Includes next five items)		304SSM6013
PERIODIC MAINTENANCE KIT (SEE ABOVE)	1	302SSM6013
SHIM SET (SHAFT)	1	77H56
SHIM SET	1	77H57
GASKET (AIR END TO DISCHARGE MANIFOLD)	1	25C1230N
GASKET ELIMINATOR	1	25BC222
PERIODIC OVERHAUL KIT (SSH AIR END) (Includes next seven items) . . .		303SSH6013
GASKET KIT (SEE BELOW)	1	304SSH6013
OIL SEAL KIT (SEE BELOW)	1	302SSH6013
ROLLER BEARING	1	12BA91
ROLLER BEARING	1	12BA90
ROLLER BEARING	1	12BA130
ROLLER BEARING	1	12BA136
SPRING	1	78W48
GASKET KIT (SSH AIR END) (Includes next five items)		304SSH6013
PERIODIC MAINTENANCE KIT (SEE ABOVE)	1	302SSM6013
SHIM SET (SHAFT)	1	77H54
SHIM SET	1	77H53
GASKET (AIR END TO DISCHARGE MANIFOLD)	1	25C1230N
GASKET ELIMINATOR	1	25BC222
OIL SEAL KIT (SSH AND SSM AIR ENDS) (Includes next seven items)		302SSH6013
WEAR SLEEVE	1	80M12
OIL SEAL	1	60DD679
OIL SEAL	1	60DD690
O-RING	1	8502140
O-RING	1	25BC165
GASKET ELIMINATOR	1	25BC222
CHECK VALVE	1	90AR923
WEAR SLEEVE INSTALLATION / REMOVAL KIT		200SSH4017
(Includes next seven items)		
PULLER	1	200SSH219
PLATE-PULLER	1	200SSH340
SCREW	1	75LM192
SCREW	1	655ED120
SCREW	2	75D176
GUIDE	1	200SSH450
TOOL	1	200SSH074

Gardner

Denver

For additional information contact your local representative or Gardner Denver Machinery Inc., Customer Service Department, 1800 Gardner Expressway, Quincy, Illinois 62301
Telephone: (800) 682-9868 FAX: (217) 224-7814



Sales and Service in all major cities.

For parts information, contact Gardner Denver, Master Distribution Center, Memphis, TN
Telephone: (800) 245-4946 FAX: (901) 542-6159

Specifications subject to change without notice.
Copyright 1997 Gardner Denver Machinery Inc.

Litho in U.S.A.