

GARDNER-DENVER®

13-9-548
1st Edition

Revised 1-25-12
pg.33

**"ECP"
ELECTRA-SAVER II®
STATIONARY
BASE-MOUNTED COMPRESSORS**

MODELS

100 HP

**ECPQME - AIR-COOLED
ECPSME - WATER COOLED**

PARTS LIST

**COOPER**

**Gardner-Denver Industrial
Machinery Division**

TABLE OF CONTENTS

GROUP NAME	Models ECPQME ECPSME
Thirteen Character Model Designations.....	Page 2
Introduction	Page 3
Ordering Instructions	Page 3
Bare Compressor.....	Page 4
Parts List	Page 5
Inlet Valve	Page 6
Air Filter Group	Page 7
Oil Reservoir Group.....	Page 8
Separator Housing Group.....	Page 9
Discharge Piping	Page 10
Heat Exchanger Piping	Page 11
Oil Piping Group.....	Page 12
Oil Filter.....	Page 13
Oil Piping Line	Page 14
Oil Return Line.....	Page 15
Compressor Base Group.....	Page 16
Minimum Pressure Valve.....	Page 17
Thermal Mixing Valve	Page 18
Air Cooled Fan Assembly.....	Page 19
Air Cooled Remote Cooler Group	Page 20
Parts List	Page 21
Heat Exchanger Group	Pages 22 & 23
Oil Piping Schematic.....	Page 24
Parts List	Page 25
Enclosure.....	Page 26
Parts List	Page 27
Enclosure.....	Pages 28 & 29
Motor Group Selectives	Page 30
Main Motor Group.....	Page 31
Controller Assembly.....	Page 32
Parts List	Page 33
Decal Location.....	Page 34
Repair Kits.....	Pages 35 & 36

**MODELS ECPQ & ECPS 100 HP Air or Water-Cooled Base-Mounted
Electra-Saver II® Compressors – Matrix/Menu**

Notice to Customer -- To find the construction options for your compressor unit, FILL IN THE BALANCE OF LETTERS OR NUMBERS FROM YOUR UNIT NAMEPLATE. . .
Column Number:

E		C		P		M		E				
1	2	3	4	5	6	7	8	9	10	11	12	13

Follow the line down and over from each space thus filled in to find the appropriate construction with which your machine is equipped. The number "9" in any column space indicates "NOT APPLICABLE." The number "8" in any column space indicates special design -- Refer to Factory Order Ticket.

COLUMNS 1 & 2 - ELECTRA-SAVER II® Family -- Single Stage

COLUMN 3 - AIR END

- P. SSP Air End -- 100 HP Units

COLUMN 4 - CONSTRUCTION

- Q. Air-Cooled - Base Mounted (Std)
- S. Water-Cooled - Base Mounted (Std)

COLUMN 5 - HORSEPOWER

- M. 100 HP

COLUMN 6 - ENGINEERING SPECIFICATION

COLUMN 7 - PRESSURE & HZ

- A. 100 PSIG - 60 HZ
- B. 125 PSIG - 60 HZ
- C. 150 PSIG - 60 HZ

COLUMN 8 - CONTROL TYPE (Constant Speed or PC)

- | | | |
|------------------------------|------------------------------|-----------------------|
| NO OPTIONS | | WITH VIBRATION SWITCH |
| A. AIR COOLED - YD STARTER | D. AIR COOLED - YD STARTER | |
| B. WATER COOLED - YD STARTER | E. WATER COOLED - YD STARTER | |
| C. WITHOUT MAIN MTR. STR. | F. WITHOUT MAIN MTR. STR. | |

COLUMN 9 - CONTROL BOX STARTER (Per HP/Voltage)/NEMA

- | | |
|---------------------------|--------------------------|
| * A. 100 HP - 200V - N 12 | * E. 100 HP - 200V - N 4 |
| B. 100 HP - 230V - N 12 | F. 100 HP - 230V - N 4 |
| C. 100 HP - 460V - N 12 | G. 100 HP - 460V - N 4 |
| D. 100 HP - 575V - N 12 | H. 100 HP - 575V - N 4 |

* Note: 200 V applications not available with main motor starter.

COLUMN 10 - ENCLOSURE

- A. NO ENCLOSURE (AIR/WATER COOLED)
- B. AIR COOLED ONLY (W/ENCLOSURE)
- D. WATER COOLED - 200V OR AIR COOLED W/REM COOLER
- E. WATER COOLED - 230V OR AIR COOLED W/REM COOLER
- F. WATER COOLED - 460V OR AIR COOLED W/REM COOLER
- G. WATER COOLED - 575V OR AIR COOLED W/REM COOLER

COLUMN 11 - OIL COOLERS - AIR & WATER

- | | |
|---------------------------------|----------------------------------|
| AIR COOLED - W/AFTERCOOLER | WATER COOLED - FRESH WATER |
| A. WITH STD CLR - 60 HZ | G. WITHOUT AFTERCOOLER |
| B. WITH SEACOAST COOLER - 60 HZ | H. WITH AFTERCOOLER |
| | I. WITHOUT AFT - WITH TEMP. REG. |
| | J. WITH AFT - WITH TEMP. REG. |

COLUMN 12 - COOLER ELECTRICS

- | | |
|-----------------|-----------------------------|
| AIR COOLED | WATER COOLED |
| A. 200V - 60 HZ | J. NEMA 1 |
| B. 230V - 60 HZ | K. NEMA 4 |
| C. 460V - 60 HZ | L. LESS WATER SHUTOFF VALVE |
| D. 575V - 60 HZ | |

COLUMN 13 - COMPRESSOR DRIVE MOTOR

- | | |
|-----------------|--|
| ODP (STD. EFF.) | TEFC (STD. EFF.) |
| A. 200V - 60 HZ | I. 200V - 60 HZ |
| B. 230V - 60 HZ | J. 230V - 60 HZ |
| C. 460V - 60 HZ | K. 460V - 60 HZ |
| D. 575V - 60 HZ | L. 575V - 60 HZ |
| ODP (HI-EFF.) | TEFC (HI-EFF.) |
| E. 200V - 60 HZ | M. 200V - 60 HZ |
| F. 230V - 60 HZ | N. 230V - 60 HZ |
| G. 460V - 60 HZ | O. 460V - 60 HZ |
| H. 575V - 60 HZ | P. 575V - 60 HZ |
| | Q. LESS MOTOR - 404TSC FR. - ODP ONLY |
| | R. LESS MOTOR - 405TSC FR. - TEFC ONLY |

INTRODUCTION

CONTENTS:

This Parts List Manual contains repair parts for all models in the Electra-Saver[®] Stationary Screw Compressor line shown on the cover.

Following is a list of comments to guide you in the selection of pages that are applicable to your particular unit.

MODEL DESIGNATIONS:

The new thirteen digit Model Designations will reflect the optional or selective types of construction available on these units, however, if an "8" appears in any column, the original order and subsequent machine ticket must always be referred to when ordering repair parts for that option (see Ordering Instructions below).

Early model designations DO NOT reflect the optional or selective types of construction available on these units. The original order and subsequent machine ticket must always be referred to when ordering repair parts (see Ordering Instruction Page).

The following are offered as a guide in showing the various types of construction:

- Air Cooled (With Radiator Module) vs. Water Cooled (With Heat Exchanger).
- With or without Aftercooler for both Air-Cooled and Water-Cooled Units.
- "Fresh Water" or "Salt Water" Service with Water-Cooled Units.

- Pressure ratings (100, 125 or 150 PSIG) - these differences are reflected in the selection offered for Gear Kits and Pressure Relief Valves.
- "Steel" or "Aluminum" Radiator Modules with the Air-Cooled Units.
- Standard Control is referred to as "Constant Speed With Low-Demand Mode Switch". Other controls, such as "Automatic Start-Timed Stop" are also available. These cover both 60 Hz (Domestic) and 50 Hz (International) and NEMA I or NEMA IV Enclosures.

Above items are covered in this Parts List Manual. Additional items NOT covered are as follows:

Motors, Motor Starters, Overload Heaters, and various electrical components. There is a wide selection of these items available in all of the constructions listed above. All repair orders for these items must be referred to the factory.

QUALITY OF PARTS:

Numerous mounting components, such as piping, tubing, fasteners, minor electrical parts and wiring, etc., may be purchased from your local supply source. However, it is emphasized that **IT IS THE RESPONSIBILITY OF THE CUSTOMER** when purchasing repair parts locally to use only parts that are of **EQUAL** or better quality than those used in the original construction.

* * * * *

INSTRUCTIONS FOR ORDERING REPAIR PARTS

When ordering parts, specify Compressor **MODEL**, Method of Cooling, **HORSEPOWER** and **SERIAL NUMBER** (see nameplate on unit). Serial Number is also stamped on top of the cylinder flange to the right of the inlet housing.

All orders for Parts should be placed with the nearest Sales and Service Office.

Where NOT specified, quantity of parts required per compressor or unit is one (1); where more than one is required per unit, quantity is indicated in parenthesis. **SPECIFY EXACTLY THE NUMBER OF PARTS REQUIRED.**

DO NOT ORDER BY SETS OR GROUPS.

To determine the Right Hand and Left Hand side of an Electra-Screw[®] compressor, stand at the motor end and look toward the compressor. Right Hand and Left Hand are indicated in parenthesis following part name, i.e. (RH) & (LH).

PARTS RETURNED

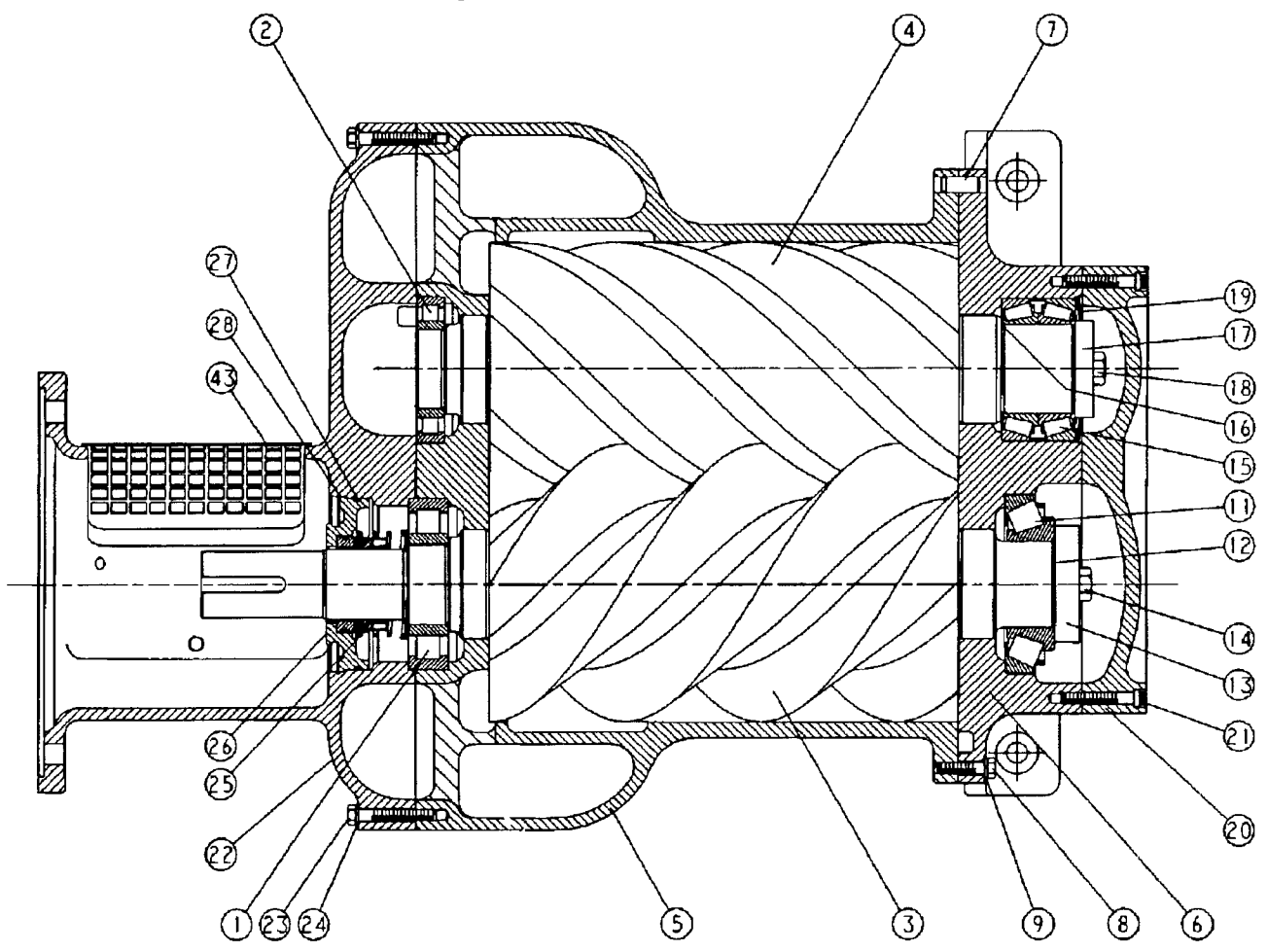
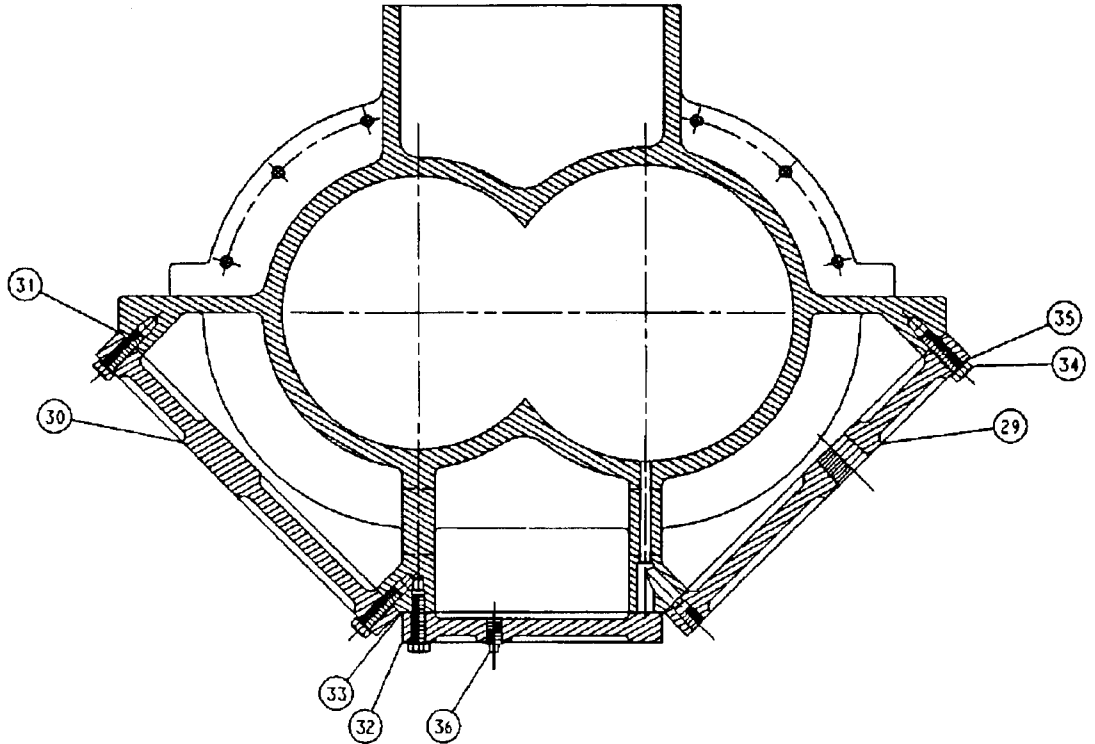
All claims must be made within five days after receipt of goods. If order has been filled correctly, we cannot allow the return of the goods without our consent and

then only on a basis of a charge for service and rehandling plus transportation charges.

Transportation charges must be prepaid. If it is necessary to return a part to the factory for duplication or inspection, do not fail to do the following:

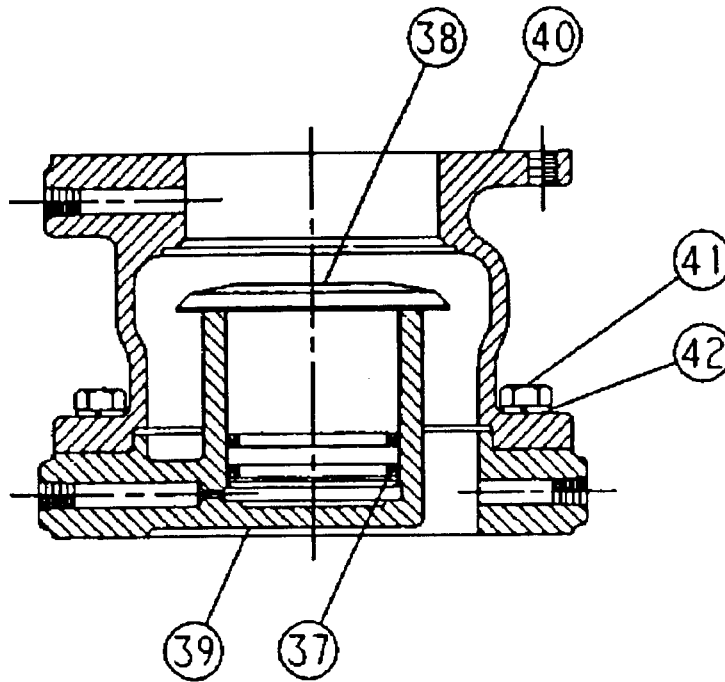
1. Write the nearest Sales and Service Office a letter advising what material you wish to return and why.
2. After receiving permission to return the item or items, obtain from the Sales and Service Office the correct forms filled out by that office for the proper return of material.
3. Place a tag in the package showing your name and address.
4. Tag each article in the box or package stating what and how many are returned.
5. Always give the serial number of the machine from which the parts were removed or the invoice number on which the parts were originally shipped.

All parts returned for credit should be handled in the same manner as that for duplication or inspection.



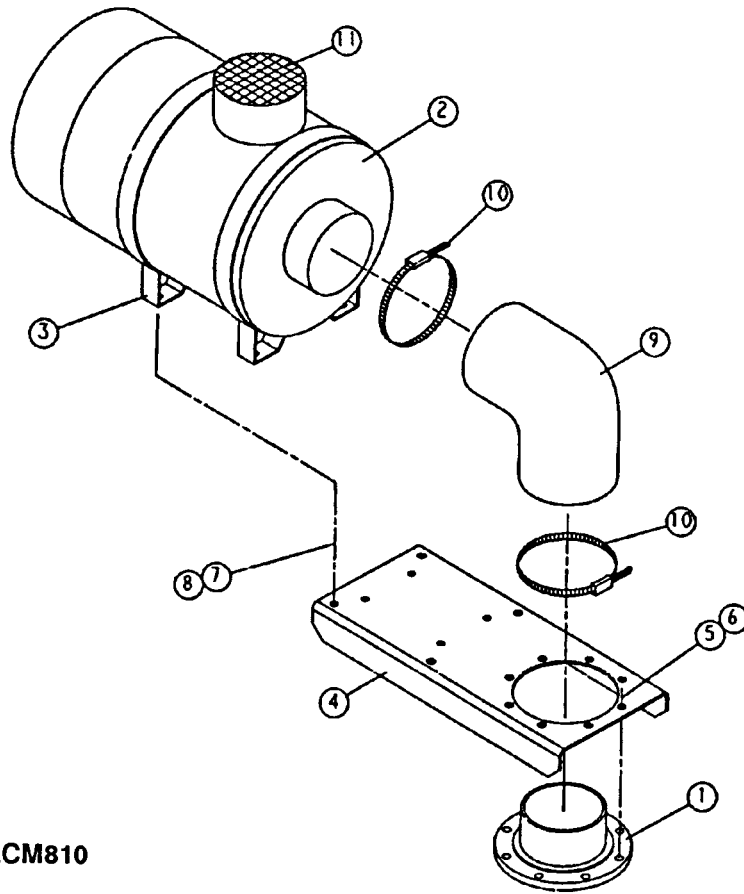
Order by Part Number and Description. Reference Numbers are for your convenience only.

Ref No.	Name of Part	Qty. Req. Per Comp.	100 H.P. 7D-7N	100 H.P. 7F-7P	100 H.P. 7H-7R
	BARE COMPRESSOR		Part No.	Part No.	Part No.
			SSPMBD01	SSPMBD02	SSPMBD03
1	BEARING-ROLLER	1	12BA104	12BA104	12BA104
2	BEARING-ROLLER	1	12BA103	12BA103	12BA103
3	ROTOR	1	204SSP010	204SSP010	204SSP010
4	ROTOR	1	205SSP010	206SSP010	207SSP010
5	CYLINDER	1	204SSP002	204SSP002	204SSP002
6	HOUSING-BRG	1	204SSP006	204SSP006	204SSP006
7	PIN-DOWEL	2	62M83	62M83	62M83
8	SCREW-HEX CAP	14	75A7	75A7	75A7
9	WASHER-LOCK	16	95B3	95B3	95B3
10	GASKET-ELIMINATOR	1	25BC256	25BC256	25BC256
11	BEARING-ROLLER	1	12BA105	12BA105	12BA105
12	SHIM	1	77H63	77H63	77H63
13	PLATE-BRG RET	1	201SSP253	201SSP253	201SSP253
14	SCREW HEX CAP	1	75A29N	75A29N	75A29N
15	BEARING-ROLLER	1	12BA106	12BA106	12BA106
16	SHIM	1	77H62	77H62	77H62
17	PLATE-BRG RET	1	200SSP253	200SSP253	200SSP253
18	SCREW-HEX CAP	1	75A29N	75A29N	75A29N
19	SPRING-WAVE	1	78W52	78W52	78W52
20	PLATE-BRG COVER	1	202SSP315	202SSP315	202SSP315
21	SCREW 12PT CAP	18	75LM206	75LM206	75LM206
22	ADAPTOR	1	201SSP170	201SSP170	201SSP170
23	SCREW-HEX CAP	20	75A36	75A36	75A36
24	WASHER-LOCK	20	95B3	95B3	95B3
25	SEAL-OIL	1	60DD595	60DD595	60DD595
26	HOUSING-SEAL	1	203SSP362	203SSP362	203SSP362
27	O-RING	1	25AH30	25AH30	25AH30
28	RING-RETAINING	1	75D55	75D55	75D55
29	COVER	1	203SSP225	203SSP225	203SSP225
30	COVER	1	204SSP225	204SSP225	204SSP225
31	GASKET	2	202SSP715N	202SSP715N	202SSP715N
32	COVER	1	205SSP225	205SSP225	205SSP225
33	GASKET	1	203SSP715N	203SSP715N	203SSP715N
34	SCREW-HEX CAP	48	75A7	75A7	75A7
35	WASHER-LOCK	48	95B3	95B3	95B3
36	PLUG-SQHD PIPE	1	64AA5	64AA5	64AA5
43	GUARD, COUPLING	1	200SSM339	200SSM339	200SSM339
--	SCREW, GUARD	4	75LM150	75LM150	75LM150



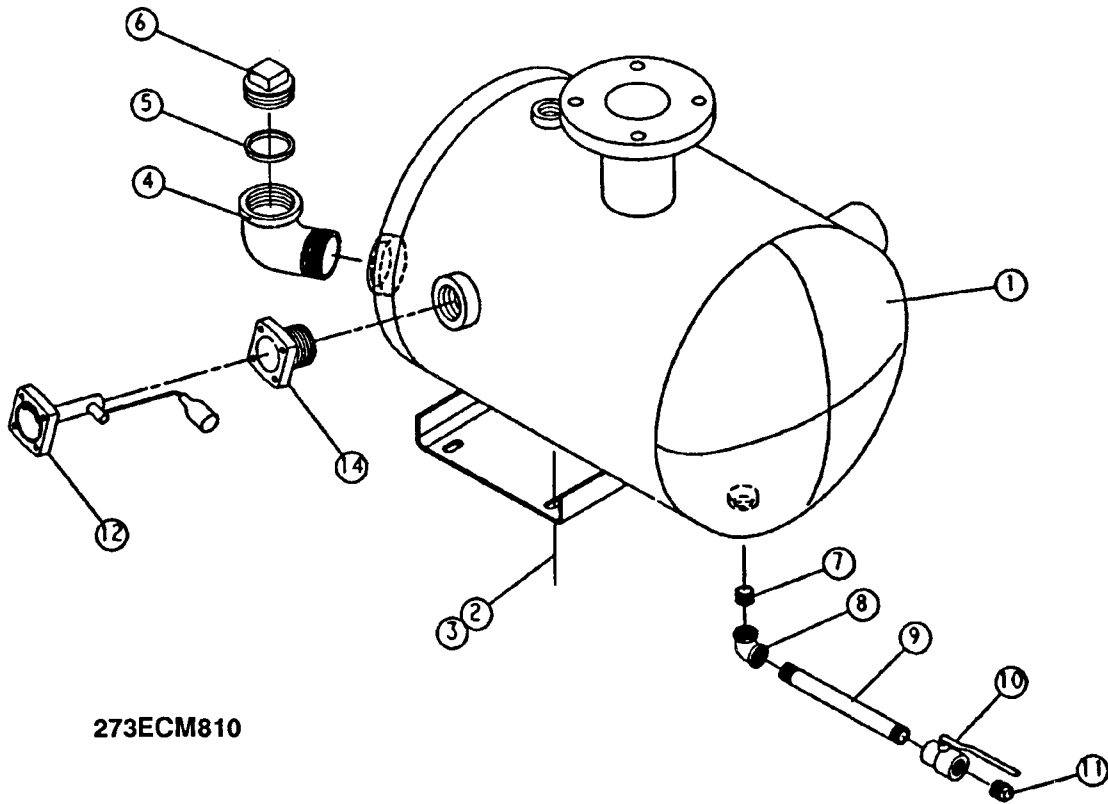
Order by Part Number and Description. Reference Numbers are for your convenience only.

Ref No.	Name of Part	Qty. Req. Per Comp.	100 HP - 7D, 7F 7H, 7N, 7P, 7R	Part No.
	BARE COMPRESSOR			SSPMB01, 02, 03
37	PACKING-RING.....	2		60DD21
38	PISTON-INLET VALVE.....	1		200SSM043
39	HOUSING-INLET	1		202SSM041
40	SEAT.....	1		201SSM256
41	SCREW-HEX CAP	8		75A67
42	WASHER-LOCK.....	8		95B5



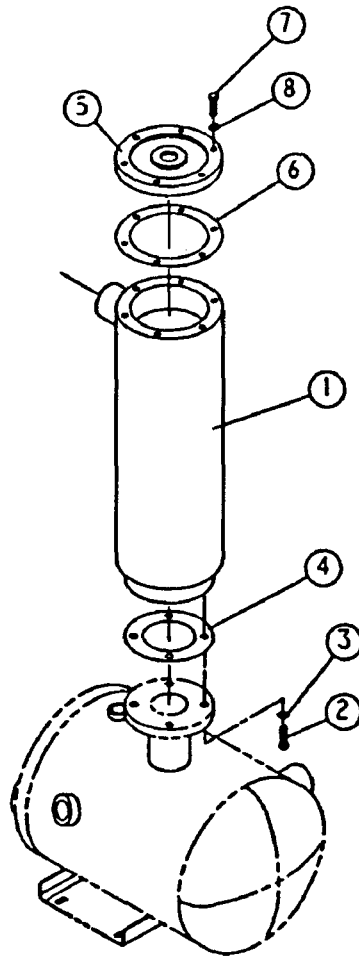
279ECM810

Det. No.	Description	Qty. Req.	Part No.
1	ADAPTOR FILTER	1	202SSM070
2	FILTER-AIR	1	5L8
3	BAND-MOUNTING	2	2010066
4	BRACKET-FILTER	1	204EAQ389
5	SCREW-HEX CAP	8	75A20
6	WASHER-LOCK.....	8	95B5
7	SCREW-FLANGED.....	4	75K48
8	NUT-FLANGED.....	4	50AW5
9	HOSE-MOLDED	1	2009734
10	CLAMP-HOSE	2	29B46
11	CAP-SCREEN ASM.....	1	5L9
*	ELEMENT, AIR FILTER	1	2010509
	* NOT SHOWN		



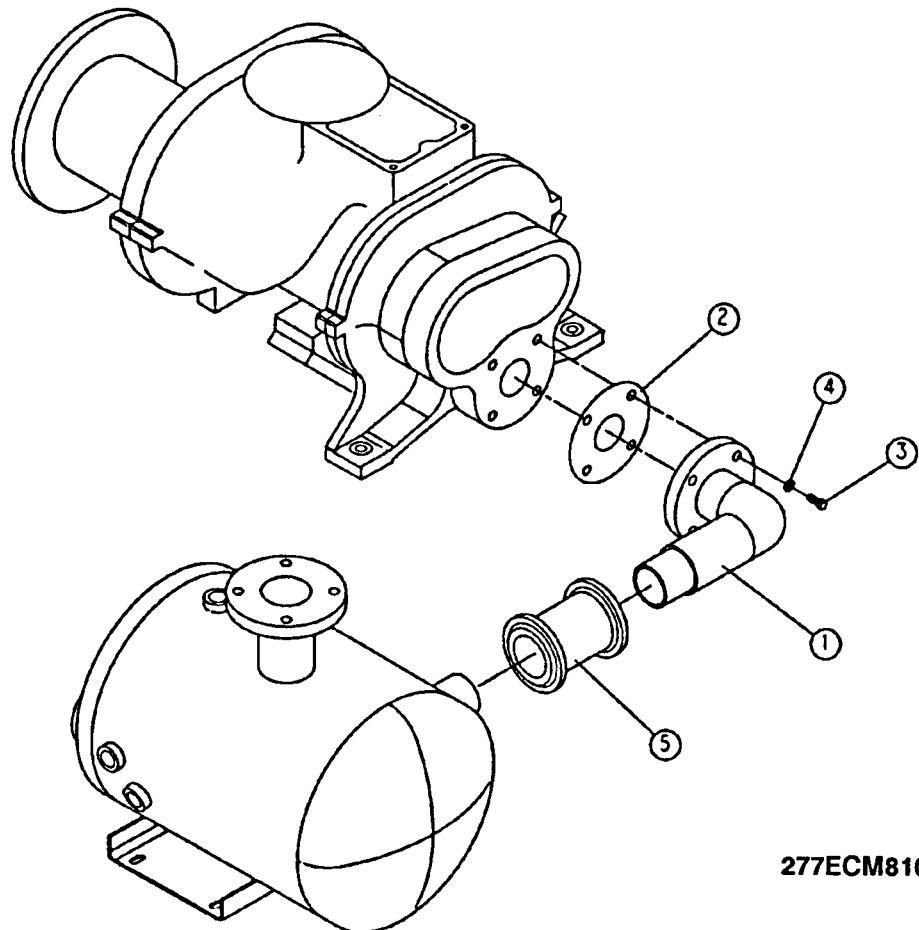
273ECM810

Det. No.	Description	Qty. Req.	Part No.
1	RESERVOIR.....	1	204ECM037
2	SCREW-FLANGED.....	4	75LM135
3	NUT-FLANGED.....	4	50AW35
4	ELBOW.....	1	200LSF262
5	O-RING.....	1	25AH5
6	COVER-FILLER.....	1	200SPF156
7	NIPPLE-PIPE.....	1	63F35G
8	ELBOW-PIPE.....	1	64C4G
9	NIPPLE-PIPE.....	1	63F13G
10	VALVE-BALL.....	1	90AR360
11	PLUG-SQHD PIPE.....	1	64AA7
12	GAUGE-FLOAT.....	1	200ECM303
14	ADAPTOR-GAUGE.....	1	200EDE058
*	GASKET, FLOAT GAUGE.....	1	54C204
	* NOT SHOWN		



274ECM810

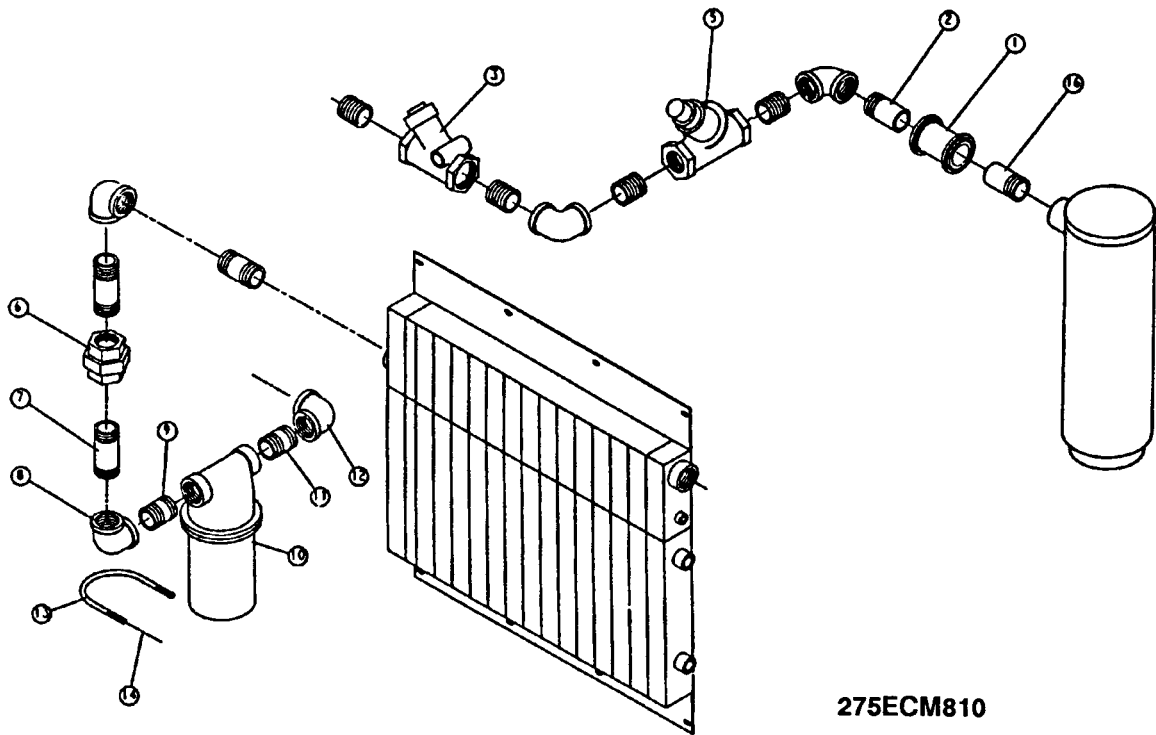
Det. No.	Description	Qty. Req.	Part No.
1	HOUSING	1	200ECM405
2	SCREW-HEX CAP	4	75A17
3	WASHER-LOCK.....	4	95B7
4	GASKET	1	25C2211N
5	COVER.....	1	203ECM225
6	GASKET	1	25C1788N
7	SCREW-HEX CAP	6	75A39
8	WASHER-LOCK.....	6	95B5



277ECM810

Det. No.	Description	Qty. Req.	Part No.
1	MANIFOLD	1	201ECM286
2	GASKET-RING.....	1	25C1230N
3	SCREW-HEX CAP	4	75A17
4	WASHER-LOCK.....	4	95B7
5	COUPLING-FLEX.....	1	64EB57
*	GASKET, FLEX COUPLING	2	2010680

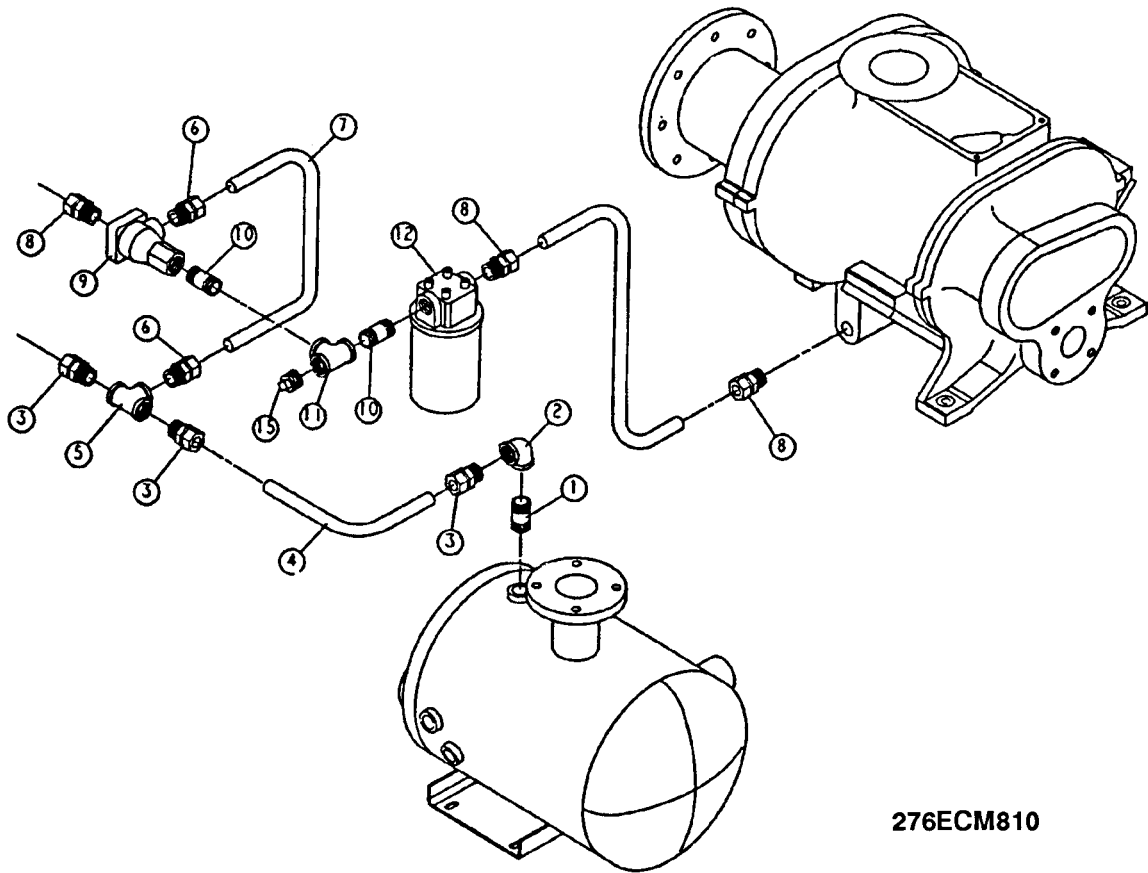
* NOT SHOWN



275ECM810

Det. No.	Description	Qty. Req.	Part No.
1	COUPLING-FLEX	1	2009589
2	NIPPLE-PIPE	2	63AJ32X30G
3	VALVE-CHECK	1	90J113
5	VALVE-M/PRESS	1	200ECM527
6	UNION-STRAIGHT	1	64Z2
7	NIPPLE-PIPE	1	63L20C
8	ELBOW-PIPE	1	64C9G
9	NIPPLE-PIPE	1	63L9G
10	TRAP	1	83C84
11	NIPPLE-PIPE	1	63L15G
12	ELBOW-PIPE	1	64C9G
13	BOLT-U	1	15U64
14	NUT-FLANGED	2	50AW5
16	NIPPLE-PIPE	1	63AJ32X26G
*	GASKET, FLEX COUPLING	2	2010363

* NOT SHOWN



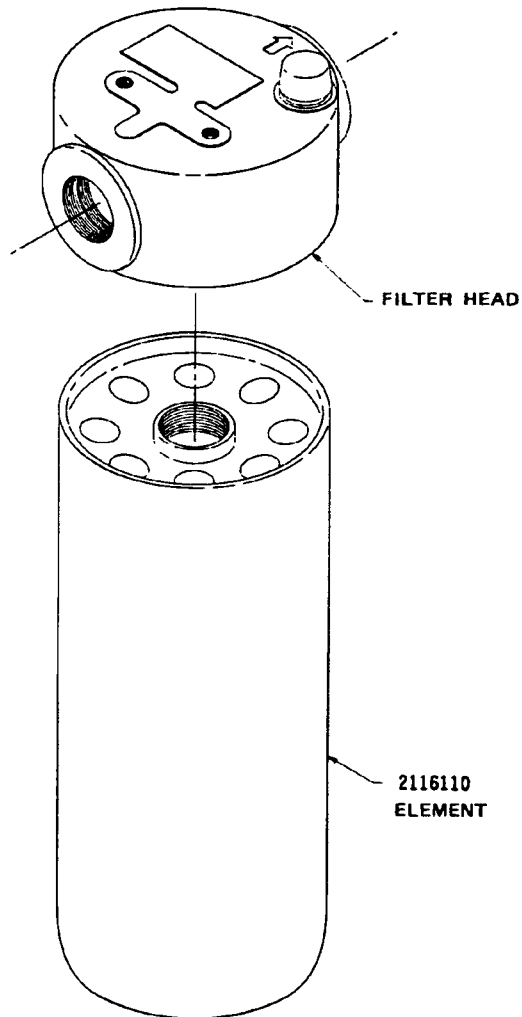
276ECM810

Det.

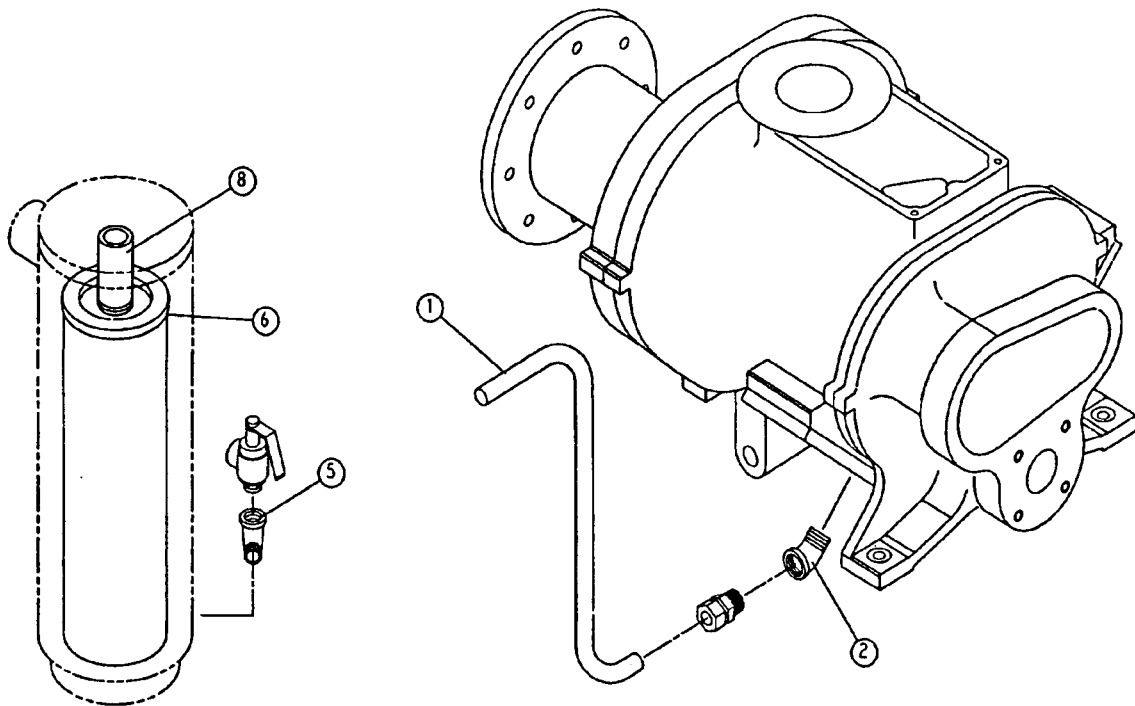
No.	Description	Qty. Req.	Part No.
1	PIPE-NIPPLE	1	63H2G
2	ELBOW-PIPE	1	64C6G
3	CONNECTOR-TUBE	3	86N120
4	TUBE	1	265ECM857
5	TEE-PIPE	1	64G8G
6	CONNECTOR-TUBE	2	86N120
7	TUBE	1	254ECM857
8	CONNECTOR-TUBE	1	86N120
9	VALVE-THERM	1	90AR166
10	PIPE-NIPPLE	2	63H2G
11	TEE-PIPE	1	64G8G
12	FILTER-OIL	1	26C26
15	PLUG-SQHD PIPE.....	1	64AA5
*	ELEMENT, OIL FILTER.....	1	2116110

* NOT SHOWN

**OIL FILTER
26C26**



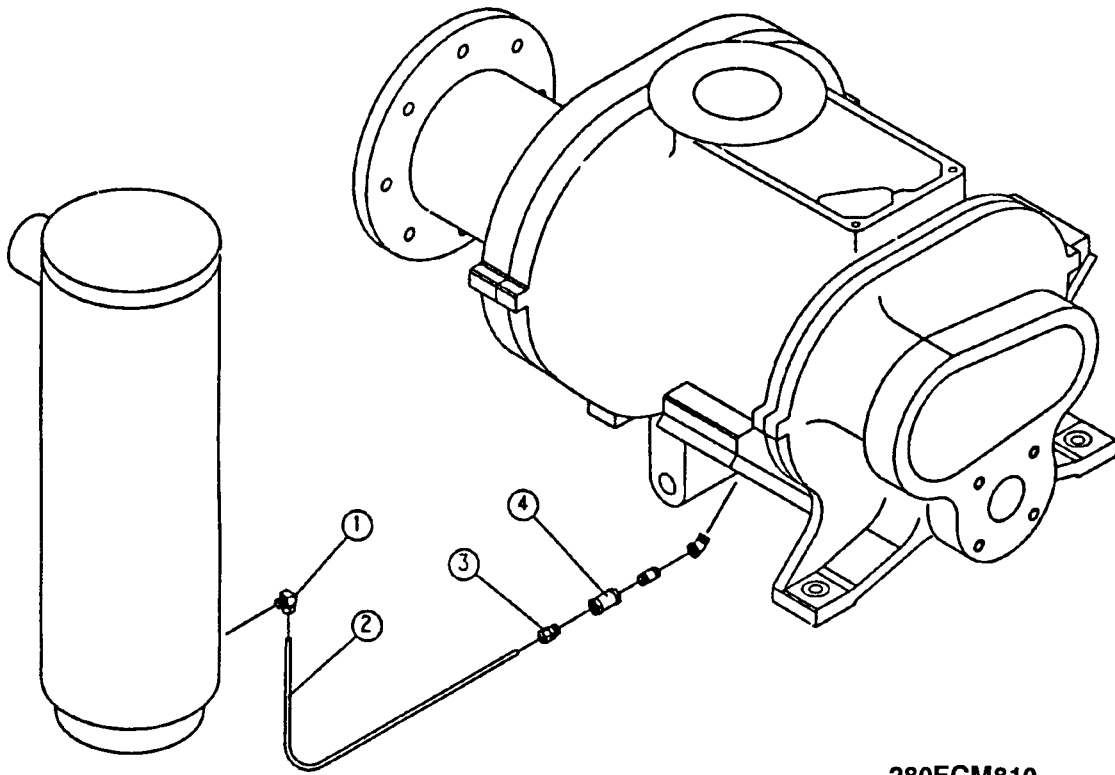
WITH 211ECM077 DECAL AFFIXED TO ELEMENT



208SSP810

Det. No.	Description	Qty. Req.	Part No.
1	TUBE	1	204ECP857
2	ELBOW-PIPE	1	64X6G
5	ELBOW-PIPE	1	64D6G
6	SEPARATOR	1	55B42
8	NIPPLE-PIPE.....	1	63AM24X47G

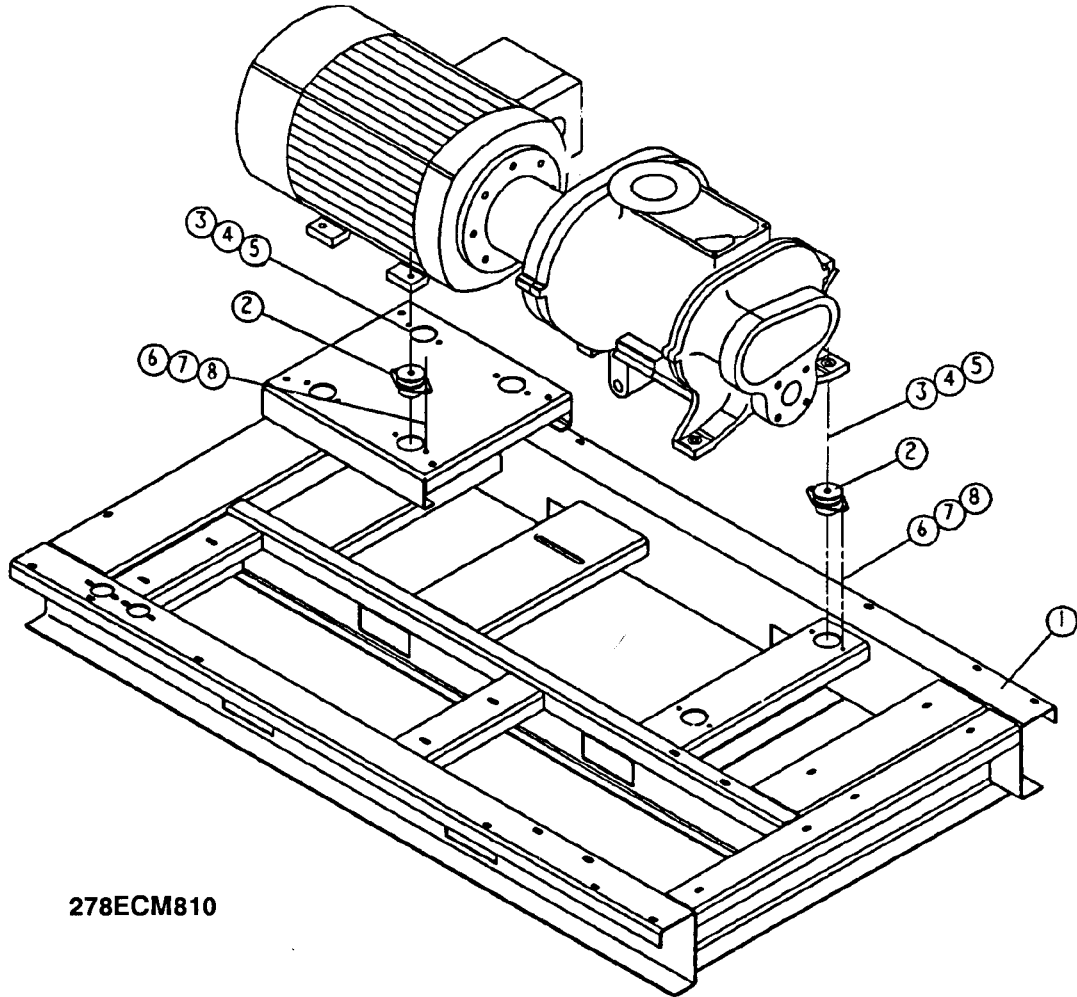
SEPARATOR REPAIR KIT # 204EAP6013 - INCLUDES: 55B42 SEPR, (1) 25C1788N GASKET.



280ECM810

Det.

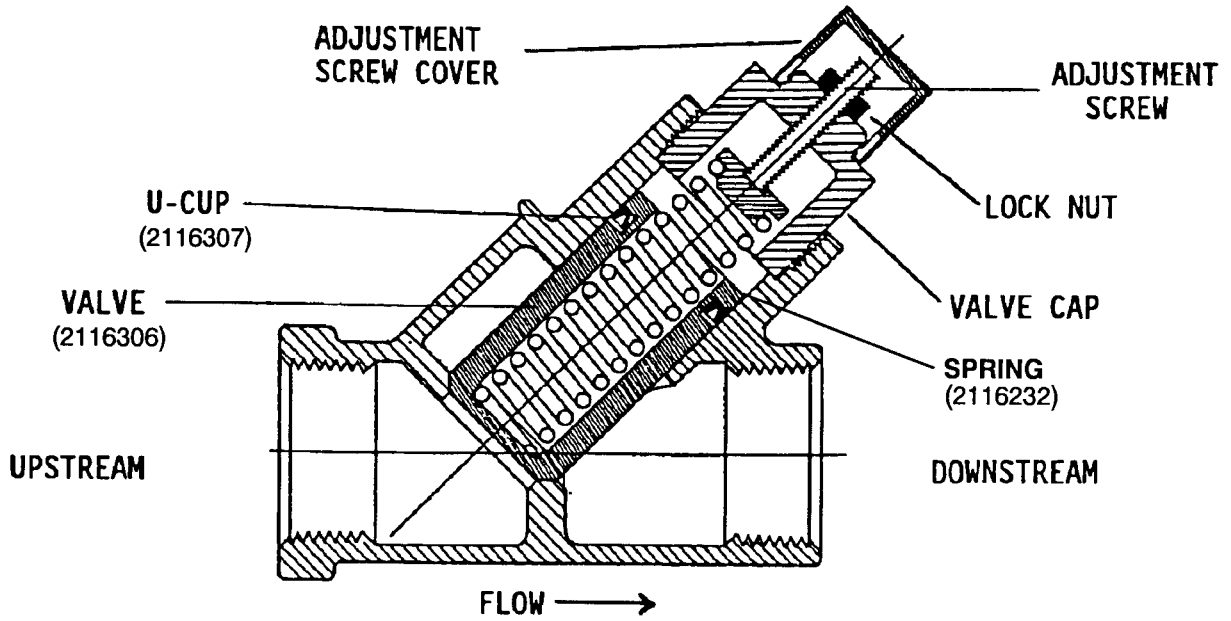
No.	Description	Qty. Req.	Part No.
1	ELBOW-TUBE.....	1	86E60
2	TUBE.....	5	85K3
3	CONNECTOR-TUBE.....	1	86E4
4	VALVE-CHECK.....	1	90AR261
6	ELBOW-PIPE.....	1	64C4G



278ECM810

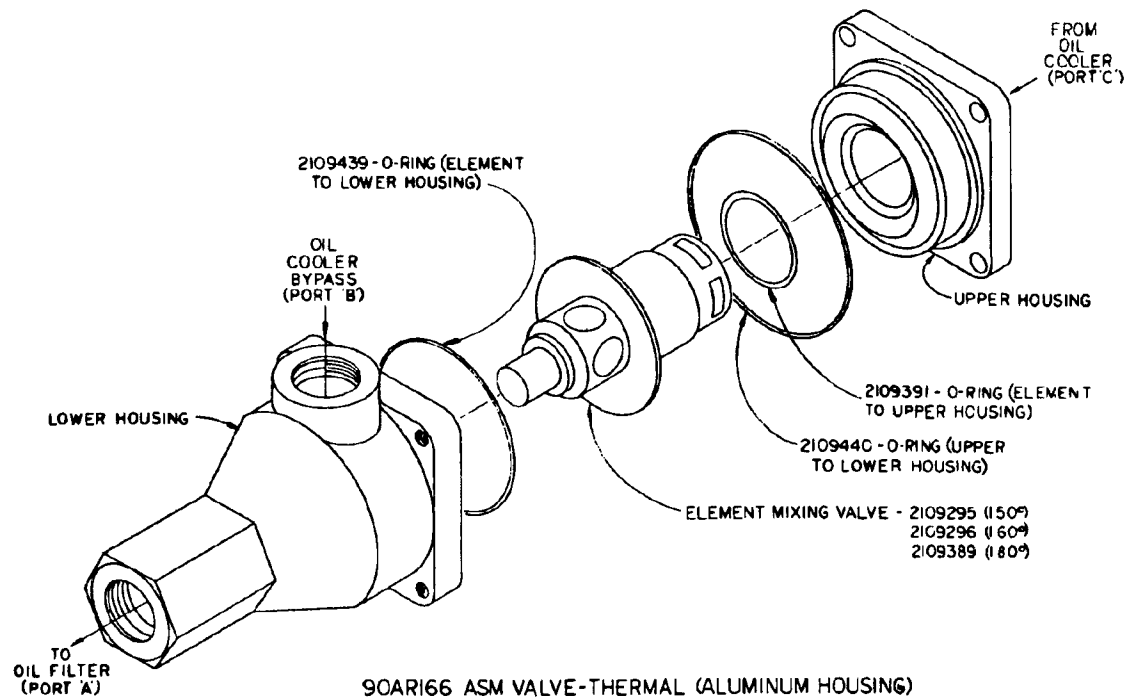
Det. No.	Description	Qty. Req.	Part No.
1	BASE.....	1	205ECM285
2	ISOLATOR-VIB	6	49C47
3	SCREW-HEX CAP	6	75A222
4	WASHER-LOCK.....	6	95B7
5	NUT-HEX	6	50B7
6	SCREW-HEX CAP	12	75A1
7	WASHER-LOCK.....	12	95B5
8	NUT-HEX	12	50B5
10	WASHER.....	1	95A7

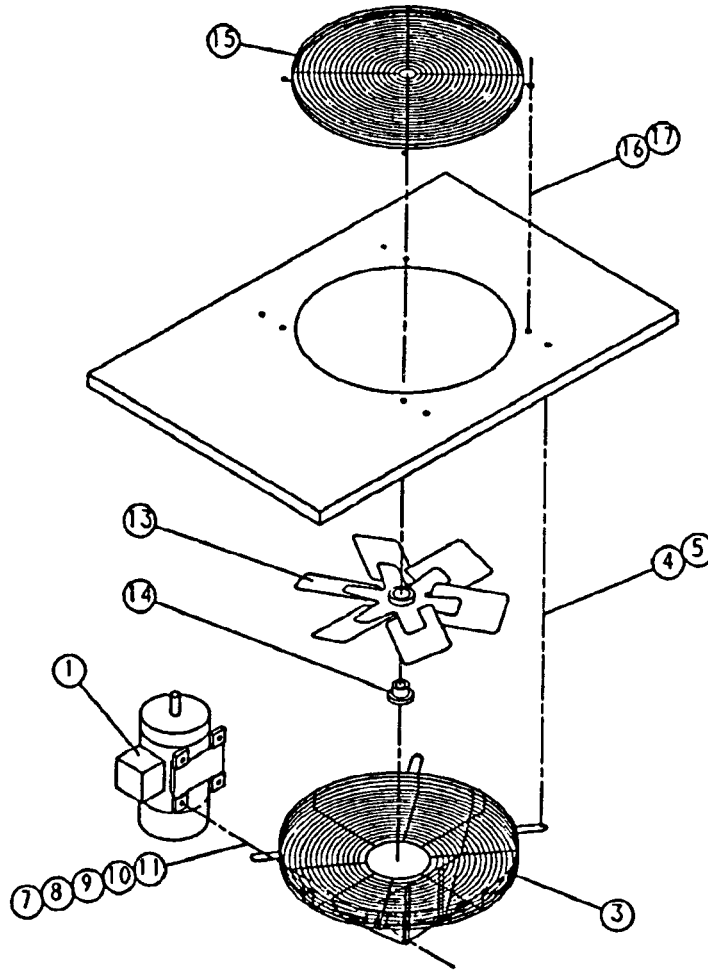
MINIMUM PRESSURE VALVE



200ECM527

THERMOSTATIC MIXING VALVE



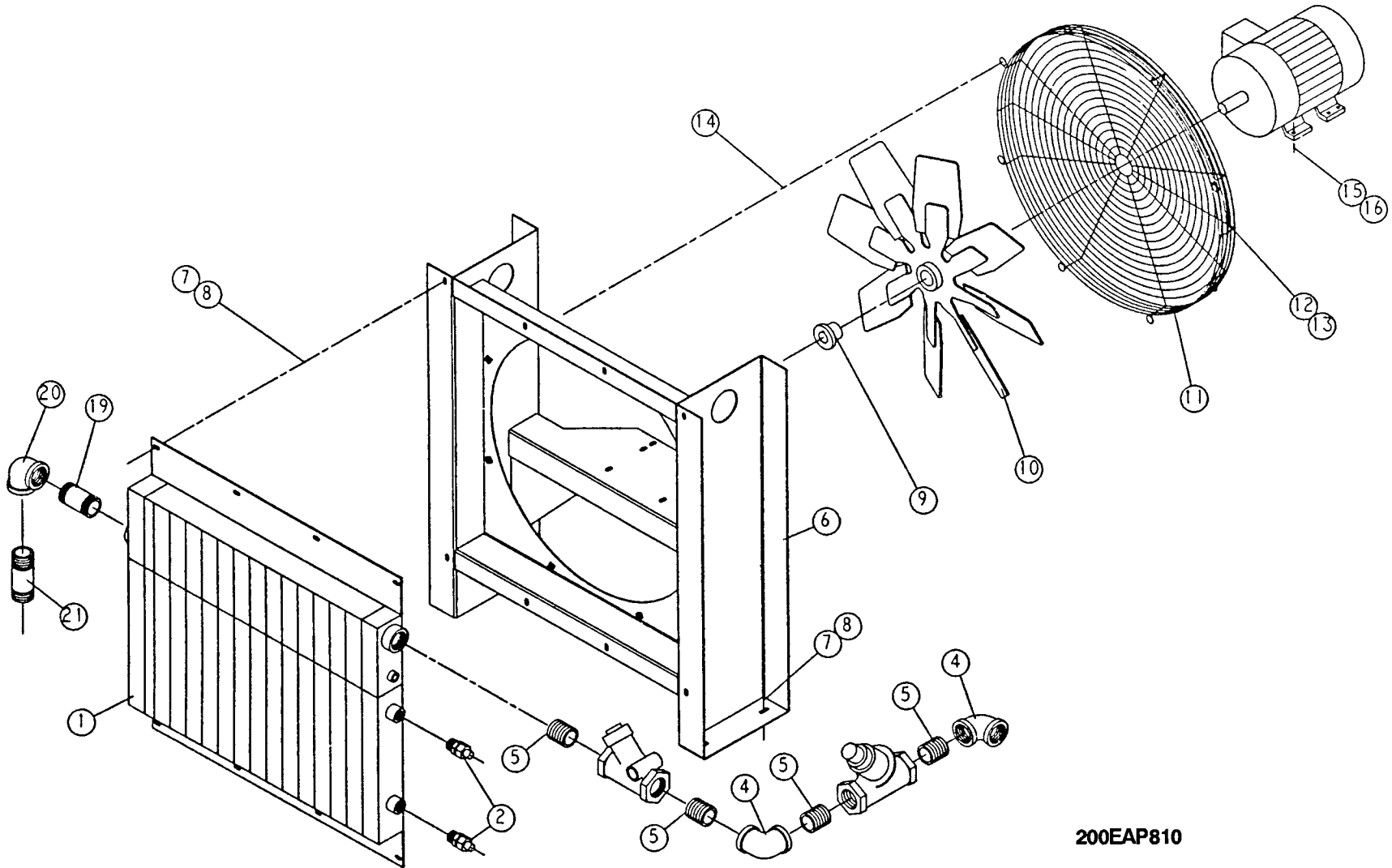


285ECM810

Det.

No.	Description	Qty. Req.	Part No.
1	MOTOR.....	1	24CA2463
3	GUARD-FAN.....	1	202ECM393
4	SCREW-FLANGED.....	4	75K48
5	WASHER-PLAIN.....	4	95A5
7	SCREW-HEX CAP.....	4	75A35
8	RETAINER.....	4	2014731
9	WASHER-PLAIN.....	4	95A2
10	WASHER-LOCK.....	4	95B2
11	NUT-HEX.....	4	50B2
13	FAN.....	1	202ECM701
14	HUB BUSHING.....	1	22G27
15	GUARD-FAN.....	1	200ECM393
16	SCREW-FLANGED.....	4	75LM51
17	NUT-FLANGED.....	4	50AW5

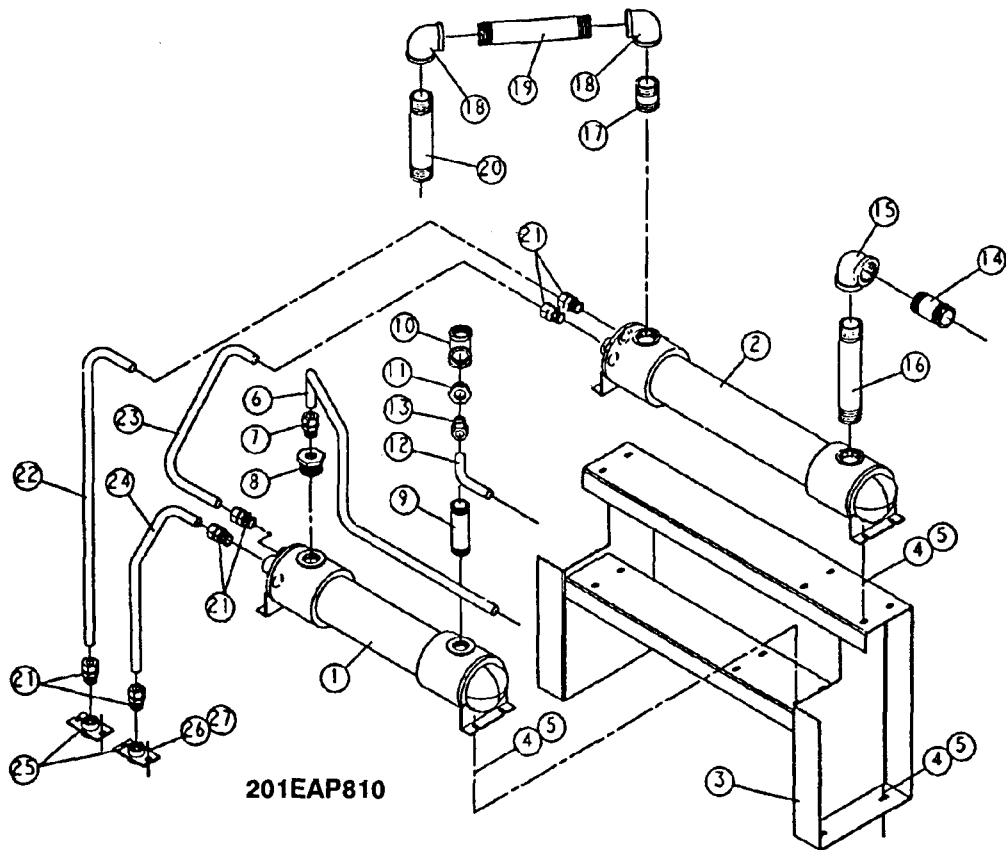
AIR COOLED REMOTE COOLER GROUP



200EAP810

Det.

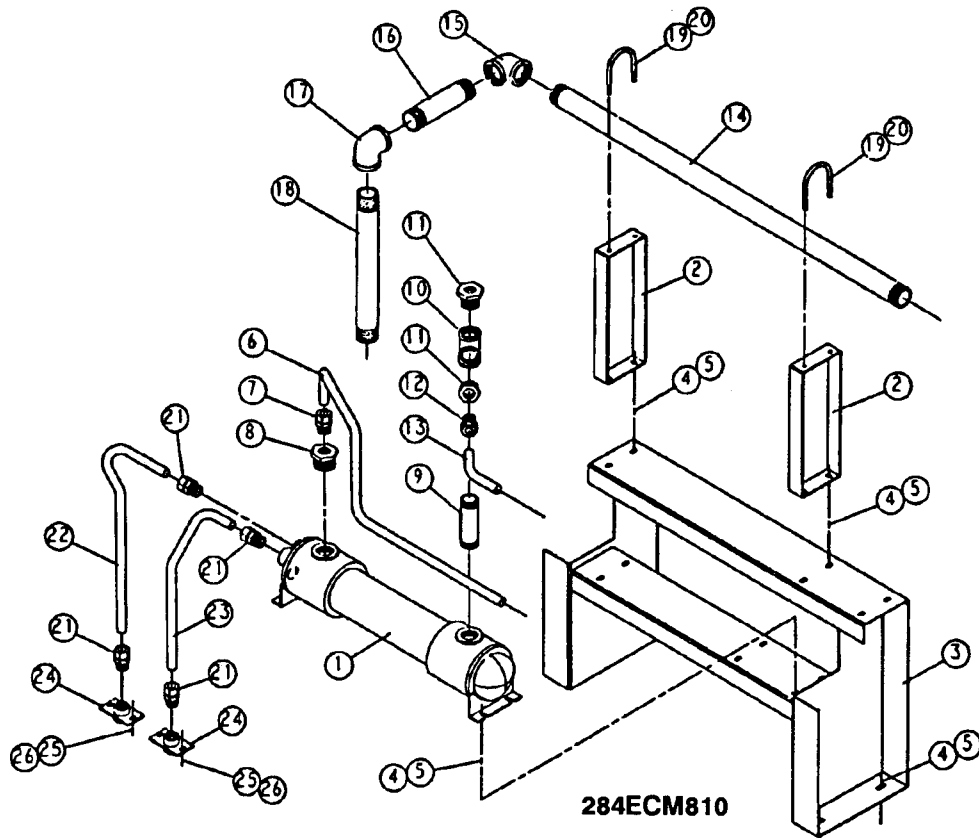
No.	Description	Qty. Req.	Part No.
DRAWING 200EAP810			
1	COOLER-OIL	1	207ECM201
2	ADAPTOR-TUBE.....	2	86N117
4	ELBOW-PIPE	2	64C9G
6	SUPPORT	1	212ECM165
7	SCREW-FLANGED.....	12	75LM51
8	NUT-FLANGED.....	12	50AW5
9	BUSHING-HUB.....	1	22G2
10	FAN	1	201ECM701
11	GUARD-FAN	1	200ESM393
12	SCREW-FLANGED.....	4	75LM50
13	NUT-FLANGED.....	4	50AW4
14	SCREW-FLANGED.....	8	75LM51
15	SCREW-FLANGED.....	4	75K48
16	NUT-FLANGED.....	4	50AW5
19	NIPPLE-PIPE	1	63L2G
20	ELBOW-PIPE	1	64C9G
21	NIPPLE-PIPE	1	63L22G



201EAP810

Det.

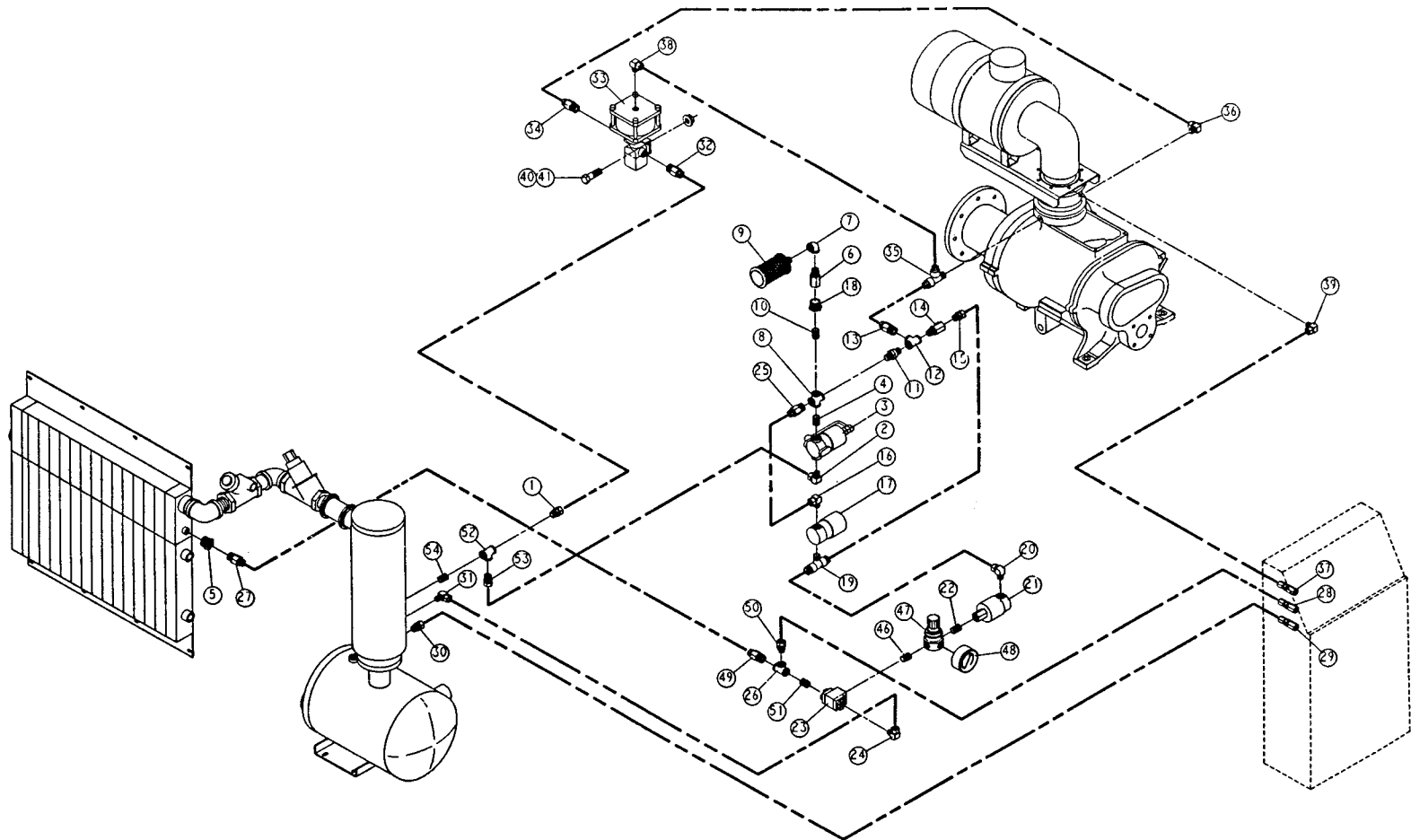
No.	Description	Qty. Req.	Part No.
1	HEAT EXCHANGER	1	204ESM349
2	AFTERCOOLER	1	201ESM292
3	SUPPORT	1	213ECM165
4	SCREW-FLANGED	12	75LM51
5	NUT-FLANGED	12	50AW5
6	TUBE	1	271ECM857
7	CONNECTOR-TUBE	1	86N120
8	BUSHING-PIPE	1	64E13
9	NIPPLE-PIPE	1	63K6G
10	TEE-PIPE	1	64G11G
11	BUSHING-PIPE	2	64E13
12	TUBE	1	204EAP857
13	CONNECTOR-TUBE	1	86N120
14	NIPPLE-PIPE	1	63L16G
15	ELBOW-PIPE	1	64C9G
16	NIPPLE-PIPE	1	63L30G
17	NIPPLE-PIPE	1	63L9G
18	ELBOW-PIPE	2	64C9G
19	NIPPLE-PIPE	1	63L34G
20	NIPPLE-PIPE	1	63L27G
21	CONNECTOR-TUBE	6	86N120
22	TUBE	1	267ECM857
23	TUBE	1	264ECM857
24	TUBE	1	269ECM857
25	MANIFOLD-WATER	2	200ECM072
26	SCREW-FLANGED	4	75LM51
27	NUT-FLANGED	4	50AW5



Det.

No.	Description	Qty. Req.	Part No.
1	HEAT EXCHANGER	1	202ESJ349
2	BRACKET-PIPE	2	201ECM108
3	SUPPORT	1	213ECM165
4	SCREW-FLANGED	12	75LM51
5	NUT-FLANGED	12	50AW5
6	TUBE	1	271ECM857
7	CONNECTOR-TUBE	1	86N120
8	BUSHING-PIPE	1	64E13
9	NIPPLE-PIPE	1	63K6G
10	TEE-PIPE	1	64G11G
11	BUSHING-PIPE	2	64E13
12	CONNECTOR-TUBE	1	86N120
13	TUBE	1	207ECM857
14	NIPPLE-PIPE	1	63N32X440G
15	ELBOW-PIPE	1	64C9G
16	NIPPLE-PIPE	1	63L28G
17	ELBOW-PIPE	1	64C9G
18	NIPPLE-PIPE	1	63N32X156G
19	BOLT-U	2	15U101
20	NUT-FLANGED	4	50AW35
21	CONNECTOR-TUBE	4	86N120
22	TUBE	1	268ECM857
23	TUBE	1	269ECM857
24	MANIFOLD-WATER	2	200ECM072
25	SCREW-FLANGED	4	75LM51
26	NUT-FLANGED	4	50AW5

OIL PIPING SCHEMATIC

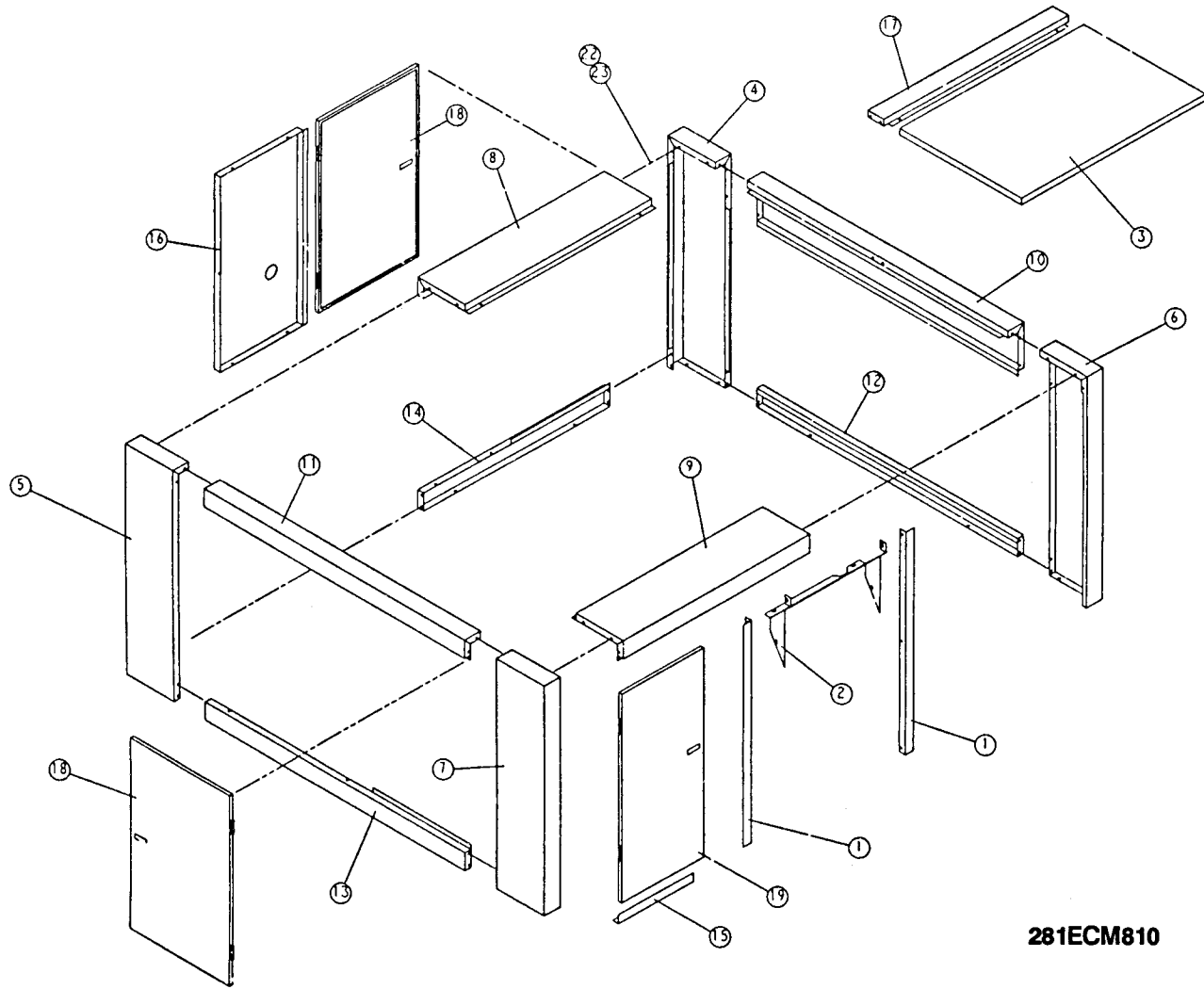


287ECM810

Det. No.	Description	Qty. Req.	Part No.
1	CONNECTOR-TUBE.....	1	86E9
2	ELBOW-TUBE.....	1	86E60
3	VALVE-SOLENOID.....	1	91B70
4	NIPPLE-PIPE.....	1	63D1G
5	BUSHING-PIPE.....	1	64E2
6	ORIFICE.....	1	200ECM814
7	ELBOW-PIPE.....	1	64C4G
8	CROSS-PIPE.....	1	64K1G
9	MUFFLER.....	1	43E6
10	NIPPLE-PIPE.....	1	63D1G
11	VALVE-CHECK.....	1	90AR261
12	TEE-PIPE.....	1	64G3G
13	CONNECTOR-TUBE.....	1	86E9
14	ORIFICE.....	1	2011768
15	CONNECTOR-TUBE.....	1	86E4
16	ELBOW-TUBE.....	1	86E60
17	VALVE, SOLENOID.....	1	91B80
18	BUSHING-PIPE.....	1	64E2
19	TEE-TUBE.....	1	86E119
20	ELBOW-TUBE.....	1	86E60
21	VALVE, SOLENOID.....	1	91B81
22	NIPPLE-PIPE.....	1	63D1G
23	VALVE.....	1	90AR107
24	ELBOW-TUBE.....	1	86E64
25	CONNECTOR-TUBE.....	1	86E4
26	TEE-PIPE.....	1	64G3G
27	CONNECTOR-TUBE.....	1	86E9
28	CONNECTOR.....	1	86N218
29	CONNECTOR.....	1	86N218
30	CONNECTOR-TUBE.....	1	86E4
31	ELBOW-TUBE.....	1	86E64
32	CONNECTOR-TUBE.....	1	86E9
33	VALVE-AIR CONT.....	1	90AR35
34	CONNECTOR-TUBE.....	1	86E9
35	TEE-TUBE.....	1	86E136
36	ELBOW-TUBE.....	1	86E64
37	CONNECTOR.....	1	86N218
38	ELBOW-TUBE.....	1	86E64
39	ELBOW-TUBE.....	1	86E60
40	SCREW-HEX CAP.....	2	75A51
41	NUT-FLANGED.....	2	50AW3
43	TUBE.....	30 FT.	85K3
44	TUBE.....	20 FT.	85K5
46	NIPPLE-PIPE.....	1	63D1G
47	REGULATOR-PRESSURE.....	1	88H139
48	GAUGE.....	1	27P109
49	CONNECTOR-TUBE.....	1	86E9
50	CONNECTOR-TUBE.....	1	86E4
51	NIPPLE-PIPE.....	1	63D1G
52	TEE-PIPE.....	1	64G3G
53	CONNECTOR-TUBE.....	1	86E4
54	NIPPLE-PIPE.....	1	63D1G
55	SEAL PLUG.....	1	24CA2597
56	FITTING-CONDUIT.....	1	24A341
57	GASKET.....	1	24A342
58	COVER.....	1	24A343
*	VALVE REPAIR KIT (90AR35) INCL. 2116130 DIAPHRAGM.....	1	2109652
*	DIAPHRAGM ONLY - 90AR35 VALVE.....	1	2116130

* NOT SHOWN

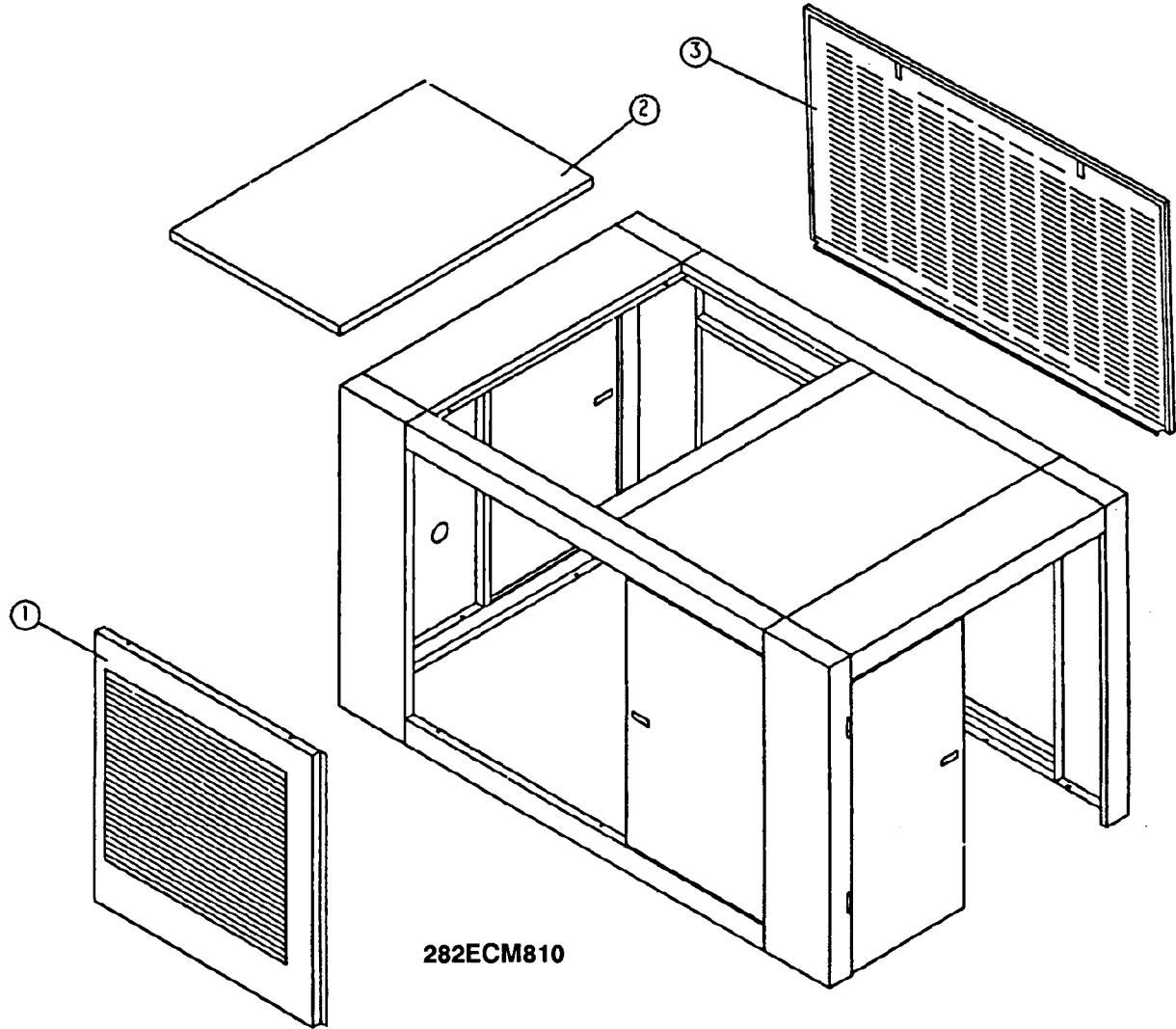
ENCLOSURE



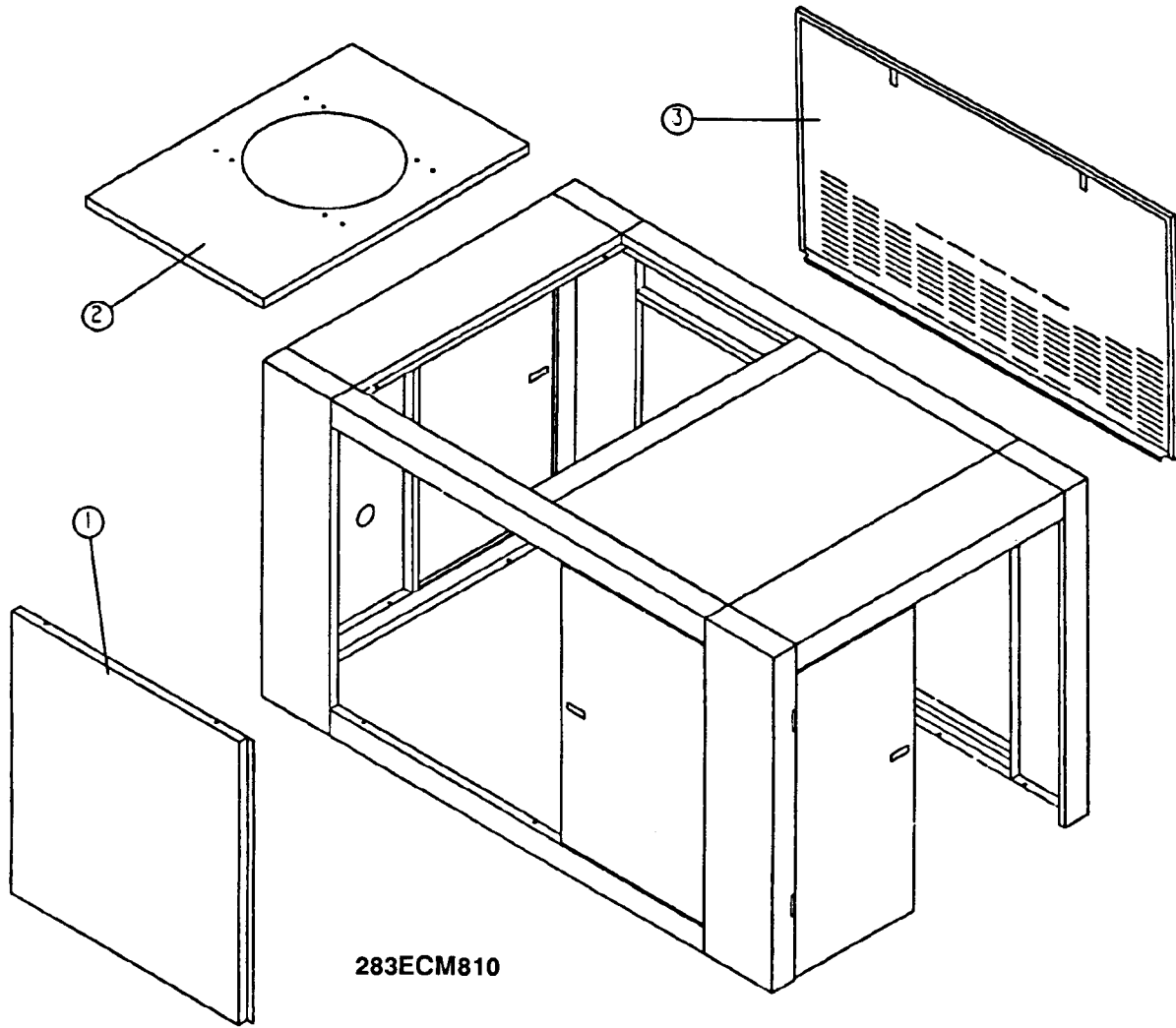
281ECM810

Det. No.	Description	Qty. Req.	Part No.
1	BRACKET	2	215ECM142
2	BRACKET	1	216ECM142
3	PANEL.....	1	217ECM216
4	POST.....	1	208ECM313
5	POST.....	1	209ECM313
6	POST.....	1	210ECM313
7	POST.....	1	211ECM313
8	FRAME	1	215ECM314
9	FRAME	1	216ECM314
10	FRAME	1	217ECM314
11	FRAME	1	218ECM314
12	FRAME	1	219ECM314
13	FRAME	1	220ECM314
14	FRAME	1	221ECM314
15	FRAME	1	222ECM314
16	BRACE	1	204ECM326
17	BRACE	1	205ECM326
18	DOOR-CANOPY	2	208ECM334
19	DOOR-CANOPY	1	209ECM334
*	LATCH.....	5	31D51
*	TRIM SEAL.....	51	32E12
22	SCREW-FLANGED	86	75LM51
23	NUT-FLANGED.....	78	50AW5

* NOT SHOWN



Det. No.	Description	Qty. Req.	Part No.
1	PANEL.....	1	220ECM216
2	PANEL.....	1	217ECM216
3	PANEL.....	1	215ECM216



283ECM810

Det.

No.	Description	Qty. Req.	Part No.
1	PANEL.....	1	219ECM216
2	PANEL.....	1	216ECM216
3	PANEL.....	1	218ECM216

**MOTOR GROUP
(MAIN DRIVE MOTORS)**

COLUMN CODE	NAME OF PART	100 HP PART NO.
	OPEN DRIP PROOF (60 HZ - ODP)	
13A	MOTOR, 200V	24CA2960
13B	MOTOR, 230V	24CA3015
13C	MOTOR, 460V	24CA3015
13D	MOTOR, 575V	24CA2963

**OPEN DRIP PROOF
(60 HZ - ODP - HIGH EFFICIENCY)**

13E	MOTOR, 200V	24CA2976
13F	MOTOR, 230V	24CA3019
13G	MOTOR, 460V	24CA3019
13H	MOTOR, 575V	24CA2979

**TOTALLY ENCLOSED FAN COOLED
(60 HZ - TEFC)**

13I	MOTOR, 200V	24CA2992
13J	MOTOR, 230V	24CA3023
13K	MOTOR, 460V	24CA3023
13L	MOTOR, 575V	24CA2995

**TOTALLY ENCLOSED FAN COOLED
(60 HZ - TEFC - HIGH EFFICIENCY)**

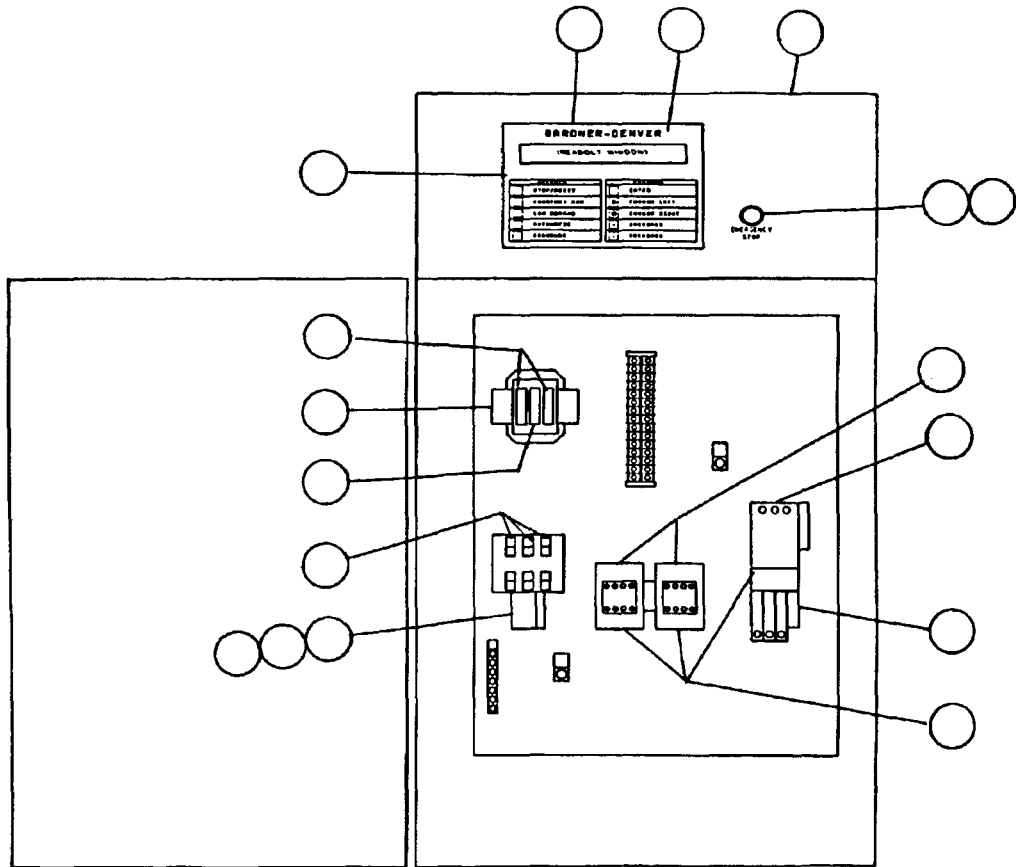
13M	MOTOR, 200V	24CA3004
13N	MOTOR, 230V	24CA3026
13O	MOTOR, 460V	24CA3026
13P	MOTOR, 575V	24CA3007

**MOTOR GROUP
AIR COOLED FAN MOTOR**

VOLTAGE	P/N
MOTOR, 200V	24CA189
MOTOR, 230V	24CA190
MOTOR, 460V	24CA190
MOTOR, 575V	24CA191

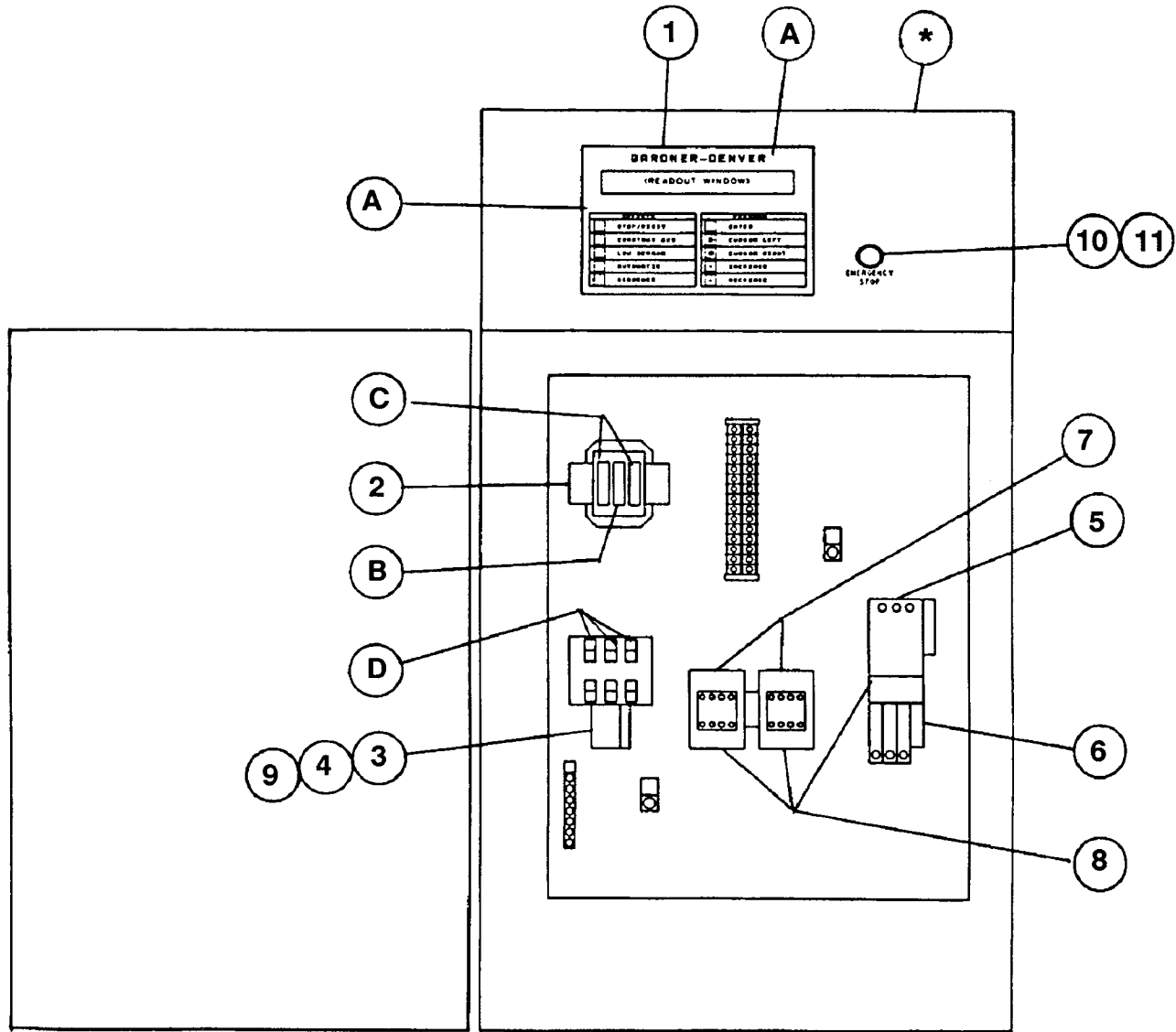
WATER COOLED FAN MOTOR

VOLTAGE	P/N
MOTOR, 200V	24CA2463
MOTOR, 230V	24CA2464
MOTOR, 460V	24CA2464
MOTOR, 575V	24CA2465



202EAP810

Det. No.	Description	Qty. Req.	Part No.
1	MOTOR, 404TSC	1	24CA2962
2	COUPLING-FLEX.....	1	51L10
3	SUPPORT-MOTOR	1	200EAP620
4	SCREW-HEX CAP	4	75A83
5	WASHER-PLAIN.....	4	95A7
6	WASHER-LOCK	4	95B7
7	NUT-HEX.....	4	50B7
	FOR FLEX CPLG. REPAIR (INCL. (6) 2109116 CUSHIONS)	1	ECK77781



CONTROLLER ASSEMBLY

	QTY	460V 75-100 HP	230V 75-100 HP	200V 75 HP	380V 75 HP	380V 100 HP	575V 75-100 HP
* ASSEMBLED PANEL: NEMA 12	1	200EAP466	201EAP466	204EAP466	206EAP466	207EAP466	210EAP466
* ASSEMBLED PANEL: NEMA 4	1	202EAP466	203EAP466	205EAP466	208EAP466	209EAP466	211EAP466
A FUSE, CONTROL BOARD	2	24CA3257	24CA3257	24CA3257	24CA3257	24CA3257	24CA3257
B FUSE, TRANSFORMER SECONDARY	1	24CA2915	24CA2915	24CA2915	24CA2915	24CA2915	24CA2915
C FUSE, TRANSFORMER PRIMARY	2	24CA276	24CA617	24CA617	24CA276	24CA276	24CA2621
D FUSE, FAN MOTOR, AIR-COOLED	3	24CA2477	24CA2478	24CA2478	24CA2478	24CA2478	24CA2477
D FUSE, FAN MOTOR, WATER-COOLED	3	24CA2475	24CA2476	24CA2476	24CA2476	24CA2476	24CA2475
1 ELECTRONIC CONTROLLER ASSEMBLY	1	201EAP7006	201EAP7006	201EAP7006	201EAP7006	201EAP7006	201EAP7006
2 CONTROL TRANSFORMER, 275 VA	1	2116372	2116372	2116371	2116374	2116374	2116373
3 STARTER, FAN MOTOR	1	24CA3256	24CA3256	24CA3256	24CA3256	24CA3256	24CA3256
4 HEATER, FAN MOTOR OVERLOAD, AIR-COOLED	3	24CA2486	24CA2488	24CA2488	24CA2487	24CA2487	24CA2485
4 HEATER, FAN MOTOR OVERLOAD, WATER-COOLED	3	24CA2480	24CA2482	24CA2482	24CA2481	24CA2481	24CA2480
5 STARTER, MAIN MOTOR	1	24CA3175	24CA3255	24CA3255	24CA3175	24CA3255	24CA3175
6 HEATER, MAIN MOTOR OVERLOAD 75 HP	3	24CA2608	24CA2928	24CA2928	24CA2608		24CA2607
HEATER, MAIN MOTOR OVERLOAD 100 HP	3	24CA2608	24CA2928			24CA2894	24CA2608
7 CONTACTOR, MAIN MOTOR-WYE DELTA	2	24CA3258	24CA3259	24CA3259	24CA3258	24CA3259	24CA3258
8 REPLACEMENT COIL FOR ITEMS 5 & 7	(3)	2116124	2116555	2116555	2116124	2116555	2116124
9 REPLACEMENT COIL FOR ITEM 3	(1)	2115950	2115950	2115950	2115950	2115950	2115950
10 OPERATOR, 22mm PUSH-PULL E-STOP	1	24CA2907	24CA2907	24CA2907	24CA2907	24CA2907	24CA2907
11 CONTACT BLOCK E22B1 SPNC	1	24CA2908	24CA2908	24CA2908	24CA2908	24CA2908	24CA2908

NOTE: P/N 24CA3255 - 24CA3259 ON ECN E900521.

IDENTIFICATION & INSTRUMENT GROUP

NAME	QTY.	PART NO.
DECAL, CONTROL VOLTAGE	1	69D38
DECAL, GROUNDING	1	208ESG077
DECAL, COPPER WIRE ONLY	1	214ESG077
DECAL, WARNING	2	202ESG077
DECAL, PARTS LIST/SERVICE MANUAL #	1	204EDE077
DECAL, DRAIN MOISTURE DAILY	1	205ESO077
DECAL, DANGER - DO NOT BREATHE	1	206EAQ077
DECAL, WARNING - AUTO RESTART	3	207EAQ077
DECAL, CAUTION - DO NOT LIFT	1	208EAQ077
DECAL, AEON 9000 LUBRICANT	1	210EAQ077
DECAL, WARNING - ROTATING MACHINERY	1	211EAQ077
DECAL, DANGER - HOT OIL UNDER PRESSURE	1	212EAQ077
DECAL, WARNING - ELECTRICAL SHOCK	1	213EAQ077
DECAL, NOTICE - USE GD PARTS	1	214EAQ077
DECAL, WARNING - READ OPERATOR MANUAL	1	215EAQ077
DECAL, WARNING - ELECTRICAL SHOCK	1	216EAQ077
DECAL, WARNING - INSPECT OIL RESERVOIR	1	217EAQ077
DECAL, DANGER - DO NOT MODIFY	1	218EAQ077
DECAL, CAUTION - USE FLOOR PLATE	1	221EAQ077
DECAL, WARNING - SEE WIRING DIAGRAM	1	222EAQ077
DECAL, OPERATION & MAINTENANCE	1	217ECM077
DECAL, WARNING	1	227ECM077

REPAIR KITS

- 1) ROUTINE MAINTENANCE KIT (3000 HOURS) H.P. AIR FILTER 200EAP6013
 - (2) ELEMENT, AIR FILTER 2010509
 - (3) ELEMENT, OIL FILTER 2116110

- 2) PERIODIC MAINTENANCE KIT (9000 HOURS) 201EAP6013
 - (2) 60DD21 PACKING-RING
 - (1) 25AH30 O-RING
 - (1) 2109295

- 3) PERIODIC OVERHAUL (18,000 HOURS) 203EAP6013
 - (1) 12BA104 BEARING
 - (1) 12BA103 BEARING
 - (1) 12BA105 BEARING
 - (1) 12BA51 BEARING
 - (1) 77H63 SHIM
 - (1) 12BA106 BEARING
 - (1) 60DD595 SEAL-OIL
 - (1) 25BC222 GASKET (ELIMINATOR)
 - (2) GASKET 202SSP715N
 - (1) GASKET 203SSP715N

- 4) SEPARATOR KIT (18,000 HOURS) 204EAP6013
 - (1) 55B42 OIL SEPARATOR
 - (1) 25C1788N GASKET

- 5) PNEUMATIC CONTROLS & GAUGES (18,000 HOURS) 205EAP6013
 - (2) 90AR261 VALVE-CHECK
 - (2) 90AR107 VALVE-SHUTTLE
 - (1) 90AR35 VALVE-AIR CONTROL
 - (1) 88H139 REGULATOR-PRESSURE
 - (1) 27P109 GAUGE-PRESSURE

REPAIR KITS (CONTINUED)

- | | | |
|----|--|-------------------|
| 6) | ELECTRICAL CONTROL KIT (18,000 HOURS) | 206EAP6013 |
| | (1) 91B70 | SOLENOID VALVE |
| | (1) 91B80 | SOLENOID VALVE |
| | (1) 91B81 | SOLENOID VALVE |
| | (2) 21D231 | THERMISTOR PROBE |
| | (1) 88H178 | TRANSDUCER |
| | (1) 88H154 | VAC SWITCH |
| 7) | DRIVE COUPLING KIT (51L10) | ECK77781 |
| | (6) 2109116 | |



**Gardner-Denver Industrial
Machinery Division**

For additional information, contact Gardner-Denver Industrial Machinery
Division, 1800 Gardner Expressway, Quincy, Illinois 62305-4024
Telephone (217) 224-8800 FAX 217-224-7814 Telex 404332.

Specifications subject to change without notice.
COPYRIGHT © 1991 Cooper Industries, Inc.

Litho in USA.

1M-2-91