

*MODEL ECM
ELECTRA-SCREW[®]*

Series "E"

AIR or WATER COOLED

60 & 75 HP

BASE MOUNTED

COMPRESSORS

13-9-539

Parts List



GARDNER-DENVER
INDUSTRIAL MACHINERY DIVISION

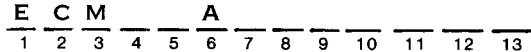
TABLE OF CONTENTS
("A" Construction)

Parts List: 13-9-537
Service Manual: 13-9-629

Group Name	Page No.
Thirteen (13) Character "ARISTA" Model Designations	ECM Mini-Matrix/ Menu
Ordering Instructions	P/L 139-500b
Bare Compressor Illustration	139-A39-1
Bare Compressor List of Parts (60 HP)	139-A39-1 a
Bare Compressor List of Parts (75 HP)	139-A39-1 b
Inlet Valve & Mounting Group (SSH Air Ends)	139-A39-2
Inlet Valve & Air Filter Group (SSM Air Ends)	139-A39-3
Standard Air Filter Group (SSH Units)	139-A39-4
Heavy Duty Air Filter Group	139-A39-5
Oil Reservoir Group/Separator & Discharge Manifold	139-A39-6
Blowdown Valve, Check Valve, Safety Valve, Minimum Pressure Valve & Temperature Switch Probe	
Minimum Pressure Valve (Component Parts)	139-A39-7
Oil Piping Group	139-A39-8
Oil Filter, Mixing Valve & Temperature Switch Probe	
Oil Filter (Component Parts)	139-A39-9
Thermostatic Mixing Valve (Component Parts)	139-A39-10
Air-Cooled Oil Cooler (No Aftercooler)	139-A39-11
Air-Cooled Oil Cooler With Aftercooler	139-A39-12
Water-Cooled Oil Cooler (No Aftercooler)	139-A39-13
Water-Cooled Oil Cooler With Aftercooler	139-A39-14
Instrument Panel Group	139-A39-15
Control Lines	139-A39-16
Subtractive Pilot Valve	139-A39-17
Purge Valve Group	139-A39-18
Compressor Base Group	139-A39-19
Enclosure Group	139-A39-20
Baffle Assembly	139-A39-21
Vent Fan Group	139-A39-22
Coupling Guard Group and Identification & Instruction Group	139-A39-23
Repair Kits	139-A39-24

MODELS ECMQ__A & ECMS__A 60 & 75 HP Air or Water-Cooled Base-Mounted
Electra-Screw® Compressors — Thirteen (13) Character "ARISTA" Model Designations

NOTICE TO CUSTOMER — To find the construction options for your compressor unit, FILL IN THE BALANCE OF LETTERS OR NUMBERS FROM YOUR UNIT NAMEPLATE
Column Number:



FOLLOW THE LINE DOWN AND OVER FROM EACH SPACE THUS FILLED IN TO FIND THE APPROPRIATE CONSTRUCTION WITH WHICH YOUR MACHINE IS EQUIPPED. THE NUMBER "9" IN ANY COLUMN SPACE INDICATES "NOT APPLICABLE", THE NUMBER "8" IN ANY COLUMN SPACE INDICATES SPECIAL DESIGN — REFER TO FACTORY ORDER TICKET.

COLUMNS 1 & 2 — **ELECTRA-SCREW®** FAMILY SINGLE-STAGE

COLUMN 3 — AIR END
M. SSH or SSM Air End — 60 & 75 HP Units

COLUMN 4 — CONSTRUCTION
Q. Air Cooled — Base Mounted (Std) S. Water Cooled — Base Mounted (Std)

COLUMN 5 — HORSEPOWER
K. 60 HP L. 75 HP

COLUMN 6 — ENGINEERING SPECIFICATION

COLUMN 7 — PRESSURE & HZ
D. 100 PSIG — 60 Hz N. 100 PSIG — 50 Hz
F. 125 PSIG — 60 Hz P. 125 PSIG — 50 Hz
H. 150 PSIG — 60 Hz R. 150 PSIG — 50 Hz

COLUMN 8 — CONTROLS, VOLTAGE TO TRANSFORMER & NEMA CLASS
CONSTANT SPEED — LOW DEMAND MODE — AIR COOLED — 60 Hz
A. 200 Volt Nema 1 B. 230/460/575 Volt Nema 1
C. 200 Volt Nema 4 D. 230/460/575 Volt Nema 4
CONSTANT SPEED — LOW DEMAND MODE — AIR COOLED — 50 Hz
E. 380/415 Volt Nema 1 F. 380/415 Volt Nema 4
CONSTANT SPEED — LOW DEMAND MODE — WATER COOLED — 60 Hz
G. 200 Volt Nema 1 H. 230/460/575 Volt Nema 1
I. 200 Volt Nema 4 J. 230/460/575 Volt Nema 4
CONSTANT SPEED — LOW DEMAND MODE — WATER COOLED — 50 Hz
K. 380/415 Volt Nema 1 L. 380/415 Volt Nema 4
AUTO-START/TIMED STOP — AIR COOLED — 60 Hz
M. 200 Volt Nema 1 N. 230/460/575 Volt Nema 1
O. 200 Volt Nema 4 P. 230/460/575 Volt Nema 4
AUTO-START/TIMED STOP — AIR COOLED — 50 Hz
Q. 380/415 Volt Nema 1 R. 380/415 Volt Nema 4
AUTO-START/TIMED STOP — WATER COOLED — 60 Hz
S. 200 Volt Nema 1 T. 230/460/575 Volt Nema 1
U. 200 Volt Nema 4 V. 230/460/575 Volt Nema 4
AUTO-START/TIMED STOP — WATER COOLED — 50 Hz
W. 380/415 Volt Nema 1 X. 380/415 Volt Nema 4

COLUMN 9 — CONTROL — MAIN STARTER

	200 Volt	230 Volt	460 Volt	575 Volt
Mag. Starter/Nema 1	A	B	C	D
Mag. Starter/Nema 4	E	F	G	H

Y. Less Starter

COLUMN 10 — ENCLOSURE

A. Standard — Air Cooled F. Water Cooled — 500/525/550 V — 50 Hz
B. Water Cooled — 208 V — 60 Hz G. Standard — Air Cooled — Quiet
C. Water Cooled — 230/460/575 V — 60 Hz H. No Enclosure (Standard Filter — SSM Air End)
D. Water Cooled — 220/440 V — 50 Hz I. No Enclosure (Heavy Duty Filter)
E. Water Cooled — 380/400/415 V — 50 Hz S. No Enclosure (Standard Filter — SSH Air End)

COLUMN 11 — OIL COOLERS — AIR & WATER

AIR COOLED:
A. STEEL — W/O Aftercooler C. STEEL — W/Aftercooler
WATER COOLED:
I. Fresh Water W/O Aftercooler U. Salt Water W/O Aftercooler
K. Fresh Water W/Aftercooler V. Salt Water W/Aftercooler
M. Fresh Water W/O Aftercooler W/Water Temp. Regulator W. Salt Water W/O Aftercooler W/Water Temp. Regulator
O. Fresh Water W/Aftercooler W/Water Temp. Regulator X. Salt Water W/Aftercooler W/Water Temp. Regulator

COLUMN 12 — COOLER ELECTRICAL

AIR COOLED — NEMA 1 Starter Enclosure:
A. 200 V — 60 Hz D. 575 V — 60 Hz G. 415 V — 50 Hz
B. 230 V — 60 Hz E. 220 V — 50 Hz H. 440 V — 50 Hz
C. 460 V — 60 Hz F. 380 V — 50 Hz I. LESS MOTOR
AIR COOLED — NEMA 4 Starter Enclosure:
J. 200 V — 60 Hz N. 220 V — 50 Hz R. LESS MOTOR
K. 230 V — 60 Hz O. 380 V — 50 Hz S. LESS MOTOR & STARTER
L. 460 V — 60 Hz P. 415 V — 50 Hz
M. 575 V — 60 Hz Q. 440 V — 50 Hz
WATER COOLED — MAGNETIC SHUTOFF VALVE
T. Nema 1 — Fresh Water U. Nema 4 — Fresh Water X. NO WATER SHUTOFF VALVE

COLUMN 13 — COMPRESSOR DRIVE MOTOR

OPEN DRIP-PROOF MOTORS
A. 200 V — 60 Hz D. 575 V — 60 Hz I. 415 V — 50 Hz
B. 230 V — 60 Hz G. 220 V — 50 Hz J. 440 V — 50 Hz
C. 460 V — 60 Hz H. 380 V — 50 Hz K. 550 V — 50 Hz
TOTALLY ENCLOSED — FAN COOLED
M. 200 V — 60 Hz P. 575 V — 60 Hz U. 415 V — 50 Hz
N. 230 V — 60 Hz S. 220 V — 50 Hz V. 440 V — 50 Hz
O. 460 V — 60 Hz T. 380 V — 50 Hz W. 550 V — 50 Hz
Y. LESS MOTOR (ODP/TEFC)

INSTRUCTIONS FOR ORDERING REPAIR PARTS

When ordering parts, specify Compressor **MODEL**, Method of Cooling, **HORSEPOWER** and **SERIAL NUMBER** (see nameplate on unit). Serial Number is also stamped on top of the cylinder flange to the right of the inlet housing.

All orders for Parts should be placed with the nearest Sales and Service Office.

Where NOT specified, quantity of parts required per compressor or unit is one (1); where more than one is required per unit, quantity is indicated in parenthesis. **SPECIFY EXACTLY THE NUMBER OF PARTS REQUIRED.**

DO NOT ORDER BY SETS OR GROUPS.

To determine the Right Hand and Left Hand side of an Electra-Screw® compressor, stand at the motor end and look toward the compressor. Right Hand and Left Hand are indicated in parenthesis following part name, i.e. (RH) & (LH).

PARTS RETURNED

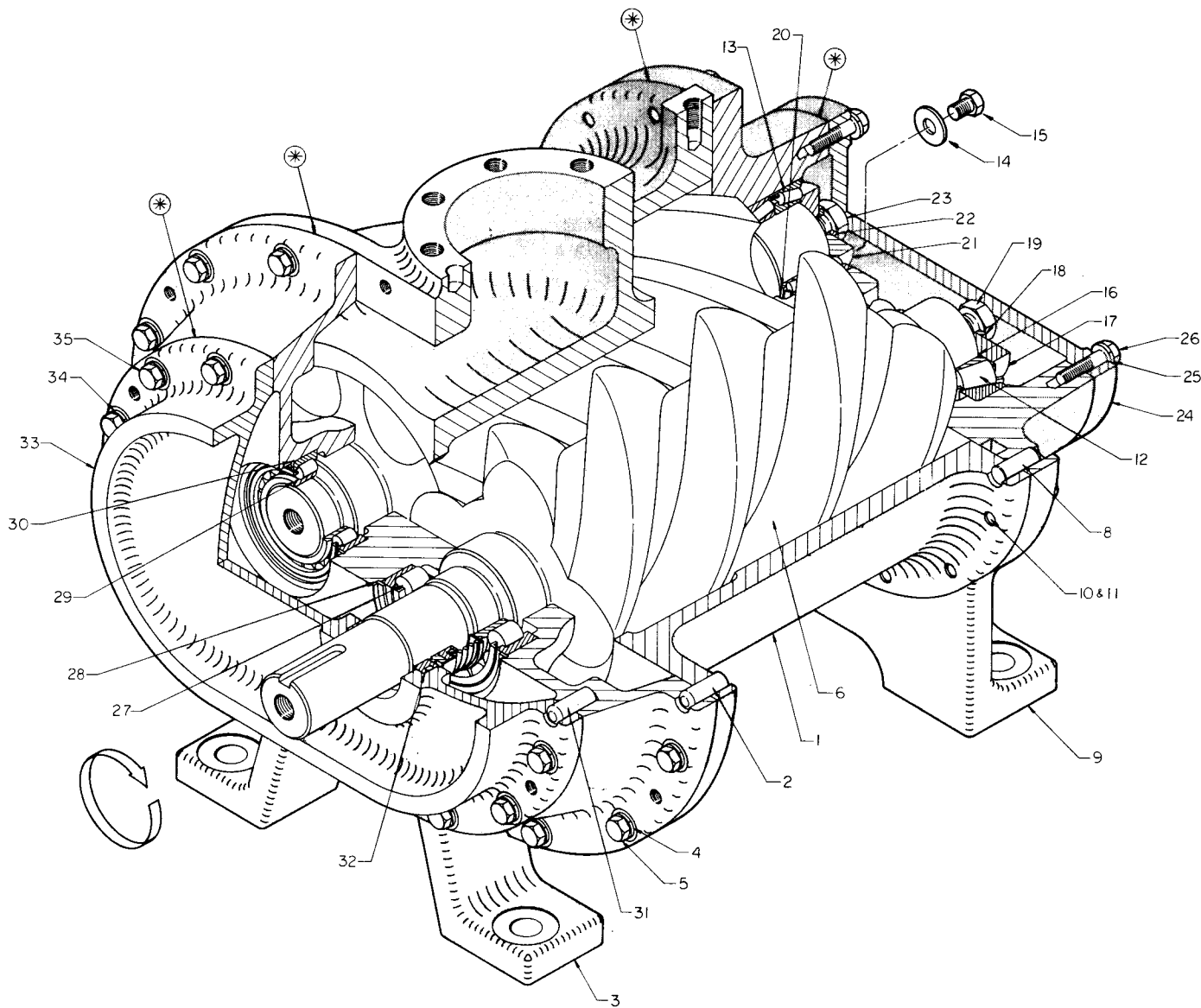
All claims must be made within five days after receipt of goods. If order has been filled correctly, we cannot allow the return of the goods without our consent and then only on a basis of a charge for service and rehandling plus transportation charges.

Transportation charges must be prepaid. If it is necessary to return a part to the factory for duplication or inspection, do not fail to do the following:

1. Write the nearest Sales and Service Office a letter advising what material you wish to return and why.
2. After receiving permission to return the item or items, obtain from the Sales and Service Office the correct forms filled out by that office for the proper return of material.
3. Place a tag in the package showing your name and address.
4. Tag each article in the box or package stating what and how many are returned.
5. Always give the serial number of the machine from which the parts were removed or the invoice number on which the parts were originally shipped.

All parts returned for credit should be handled in the same manner as that for duplication or inspection.

BARE COMPRESSOR



139-A39-1

For list of parts see pages 139-A39-1a and 139-A39-1b.

E76595

Order by Part Number and Description. Reference Numbers for reference only.

Ref. No	Name of Part	Qty. Req. Per Comp	**Column Code 5K	**Column Code 5K	**Column Code 5K	**Column Code 5K
			**Column Code 7D & 7N	**Column Code 7F	**Column Code 7H	**Column Code 7P
BARE COMPRESSOR			SSMCBA03	SSHCBA01	SSHCBA02	SSMCBA05
			Part No	Part No	Part No	Part No
1	CYLINDER, Compressor	1	200SSM002	200SSH002	200SSH002	200SSM002
2	PIN-DOWEL, Inlet Bearing Housing to Cylinder	2	62M83	62M83	62M83	62M83
3	HOUSING-BEARING, Inlet End	1	201SSM006	200SSH006	200SSH006	201SSM006
4	WASHER-LOCK, Bearing Housing to Cylinder	16	95B3	95B3	95B3	95B3
5	SCREW-HEX CAP, Bearing Housing to Cylinder	16	75A7	75A2	75A2	75A7
6	ROTOR KIT (Main & Secondary Pair)	1	SSM77087	SSH77081	SSH77082	SSM77088
8	PIN-DOWEL, Discharge Bearing Housing to Cylinder	2	62M83	62M83	62M83	62M83
9	HOUSING-BEARING, Discharge End	1	200SSM006	201SSH006	201SSH006	200SSM006
10	WASHER-LOCK, Bearing Housing to Cylinder	15	95B3	95B3	95B3	95B3
11	SCREW-HEX CAP, Housing to Cylinder	15	75A9	75A9	75A9	75A9
‡	PLUG-CSK PIPE, Discharge Bearing Housing	1	64B5	64B5	64B5	64B5
12	BEARING-ROLLER, Discharge End Main Rotor	1	12BA92	12BA91	12BA91	12BA92
13	BEARING-ROLLER, Discharge End Secondary Rotor (Consists of Two (2) Bearings & Cup Spacer)	1	12BA94	12BA90	12BA90	12BA94
14	WASHER-PLAIN, Outer Race Retainer	2	95A3	95A3	95A3	95A3
15	SCREW-HEX CAP, Outer Race Retainer	2	75A188	75A188	75A188	75A188
16	SHIM SET, Discharge End Main Rotor Bearing	1	77H56	77H54	77H54	77H56
17	PLATE-BEARING RETAINER, Discharge End Main Rotor Bearing	1	201SSM253	201SSH253	201SSH253	201SSM253
18	WASHER-LOCK, Bearing Retainer	1	95B7	95B7	95B7	95B7
19	SCREW-HEX CAP, Bearing Retainer	1	75A29	75A29N	75A29N	75A29
20	SHIM SET, Discharge End Secondary Rotor Bearing	1	77H57	77H53	77H53	77H57
21	PLATE-BEARING RETAINER, Discharge End Secondary Rotor Bearing	1	200SSM253	200SSH253	200SSH253	200SSM253
22	WASHER-LOCK, Bearing Retainer	1	95B7	None	None	95B7
23	SCREW-HEX CAP, Bearing Retainer	1	75A29	75A29N	75A29N	75A29
24	PLATE-BEARING COVER, Discharge End	1	200SSM315	200SSH315	200SSH315	200SSM315
25	WASHER-LOCK, Cover to Bearing Housing	12	95B3	95B3	95B3	95B3
26	SCREW-HEX CAP, Cover to Bearing Housing	12	75A7	75A7	75A7	75A7
27	BEARING-ROLLER, Inlet End Main Rotor	1	12W34	12BA89	12BA89	12W34
28	RING-RETAINER, Inlet End Main Rotor Bearing	1	74D39	74D38	74D38	74D34
29	BEARING-ROLLER, Inlet End Secondary Rotor	1	12BA93	12BA88	12BA88	12BA93
30	RING-RETAINER, Inlet End Secondary Rotor Bearing	1	74D38	74D37	74D37	74D38
31	PIN-DOWEL, Seal Housing to Bearing Housing	2	62M83	62M83	62M83	62M83
32	SEAL-SHAFT, Main Rotor	1	60DD98	60DD98	60DD98	60DD98
33	HOUSING-SEAL, Inlet End	1	200SSM362	200SSH362	200SSH362	200SSM362
34	WASHER-LOCK, Seal Housing to Bearing Housing	16	95B3	95B3	95B3	95B3
35	SCREW-HEX CAP, Seal Housing to Bearing Housing	16	75A2	75A2	75A2	75A2
‡	PLUG-HEX HEAD PIPE	2	64T50	64T50	64T50	64T50
‡	ADAPTOR-UNLOADER	1	None	None	None	200ECH186
‡	SCREW-HEX CAP, Adaptor to Cylinder	8	None	None	None	75A80
‡	WASHER-LOCK, Adaptor to Cylinder	8	None	None	None	95B5

* Joints marked with asterisk sealed with Gardner-Denver® Gasket Eliminator Part No. 25BC256.

** See Mini-Matrix/Menu Page for Column 7 designator.

‡ Not shown on illustration.

139-A39-1a

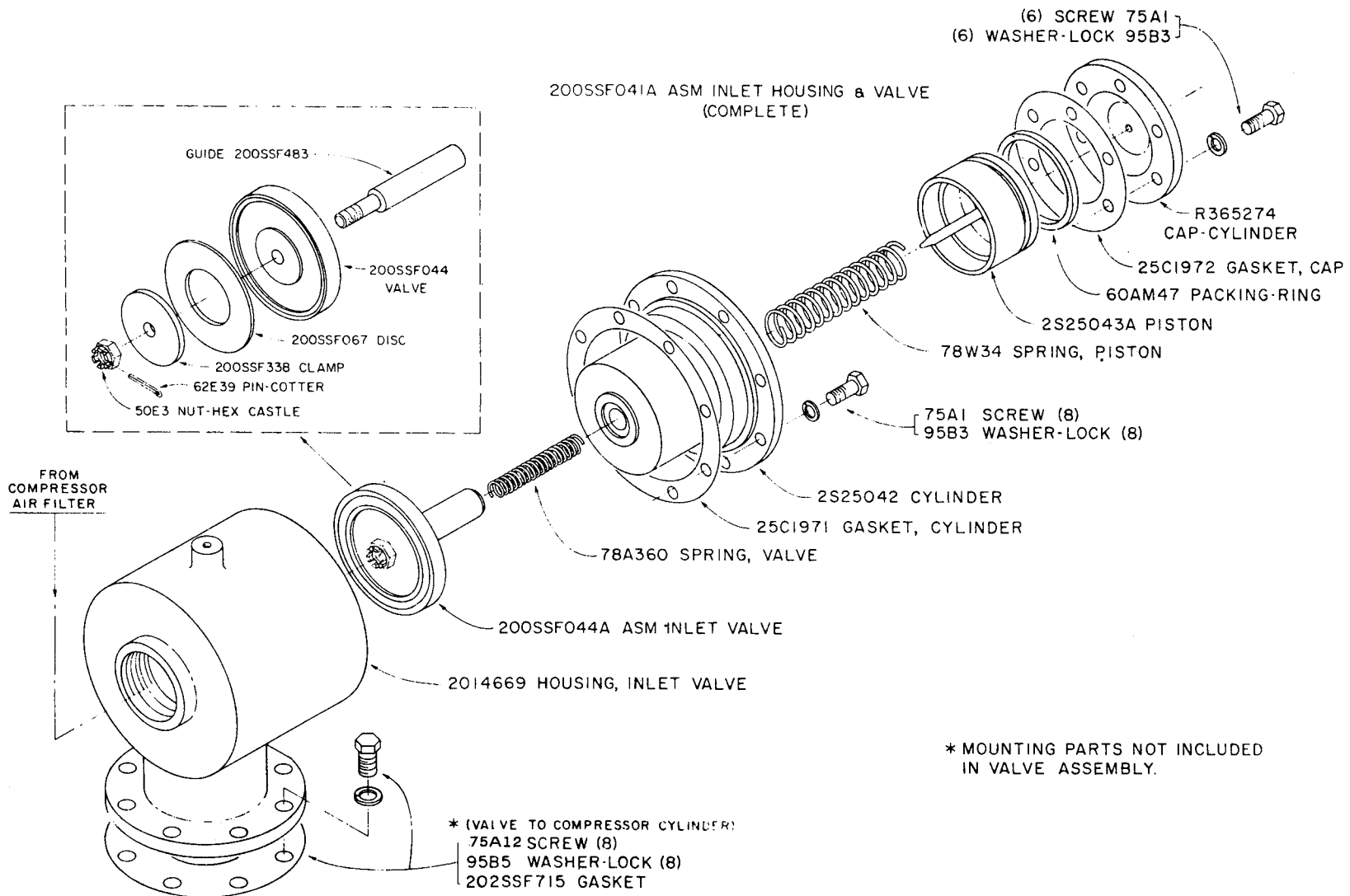
Order by Part Number and Description. Reference Numbers for your convenience only.

Ref. No.	Name of Part	Qty. Req Per Comp.	**Column Code 5L **Column Code 7D & 7N	**Column Code 5L **Column Code 7F & 7P	**Column Code 5L **Column Code 7H & 7R
			SSMCBA01 Part No.	SSMCBA02 Part No.	SSMCBA03 Part No.
BARE COMPRESSOR					
1	CYLINDER, Compressor	1	200SSM002	200SSM002	200SSM002
2	PIN-DOWEL, Inlet Bearing Housing to Cylinder	2	62M83	62M83	62M83
3	HOUSING-BEARING, Inlet End	1	201SSM006	201SSM006	201SSM006
4	WASHER-LOCK, Bearing Housing to Cylinder	16	95B3	95B3	95B3
5	SCREW-HEX CAP, Bearing Housing to Cylinder	16	75A7	75A7	75A7
6	ROTOR KIT (Main & Secondary Pair)	1	SSM77085	SSM77086	SSM77087
8	PIN-DOWEL, Discharge Bearing Housing to Cylinder	2	62M83	62M83	62M83
9	HOUSING-BEARING, Discharge End	1	200SSM006	200SSM006	200SSM006
10	WASHER-LOCK, Bearing Housing to Cylinder	15	95B3	95B3	95B3
11	SCREW-HEX CAP, Housing to Cylinder	15	75A9	75A9	75A9
‡	PLUG-CSK PIPE, Discharge Bearing Housing	1	64B5	64B5	64B5
12	BEARING-ROLLER, Discharge End Main Rotor	1	12BA92	12BA92	12BA92
13	BEARING-ROLLER, Discharge End Secondary Rotor (Consists of Two [2] Bearings & Cup Spacer)	1	12BA94	12BA94	12BA94
14	WASHER-PLAIN, Outer Race Retainer	2	95A3	95A3	95A3
15	SCREW-HEX CAP, Outer Race Retainer	2	75A188	75A188	75A188
16	SHIM SET, Discharge End Main Rotor Bearing	1	77H56	77H56	77H56
17	PLATE-BEARING RETAINER, Discharge End Main Rotor Bearing	1	201SSM253	201SSM253	201SSM253
18	WASHER-LOCK, Bearing Retainer	1	95B7	95B7	95B7
19	SCREW-HEX CAP, Bearing Retainer	1	75A29	75A29	75A29
20	SHIM SET, Discharge End Secondary Rotor Bearing	1	77H57	77H57	77H57
21	PLATE-BEARING RETAINER, Discharge End Secondary Rotor Bearing	1	200SSM253	200SSM253	200SSM253
22	WASHER-LOCK, Bearing Retainer	1	95B7	95B7	95B7
23	SCREW-HEX CAP, Bearing Retainer	1	75A29	75A29	75A29
24	PLATE-BEARING COVER, Discharge End	1	200SSM315	200SSM315	200SSM315
25	WASHER-LOCK, Cover to Bearing Housing	12	95B3	95B3	95B3
26	SCREW-HEX CAP, Cover to Bearing Housing	12	75A7	75A7	75A7
27	BEARING-ROLLER, Inlet End Main Rotor	1	12W34	12W34	12W34
28	RING-RETAINER, Inlet End Main Rotor Bearing	1	74D39	74D39	74D39
29	BEARING-ROLLER, Inlet End Secondary Rotor	1	12BA93	12BA93	12BA93
30	RING-RETAINER, Inlet End Secondary Rotor Bearing	1	74D38	74D38	74D38
31	PIN-DOWEL, Seal Housing to Bearing Housing	2	62M83	62M83	62M83
32	SEAL-SHAFT, Main Rotor	1	60DD98	60DD98	60DD98
33	HOUSING-SEAL, Inlet End	1	200SSM362	200SSM362	200SSM362
34	WASHER-LOCK, Seal Housing to Bearing Housing	16	95B3	95B3	95B3
35	SCREW-HEX CAP, Seal Housing to Bearing Housing	16	75A2	75A2	75A2
‡	PLUG-HEX HEAD PIPE, Bottom of Cylinder	2	64T50	64T50	64T50

* Joints marked with asterisk sealed with Gardner-Denver® Gasket Eliminator Part No.25BC256.
 ** See Mini-Matrix/Menu Page for Column 7 designator.
 ‡ Not shown on illustration.

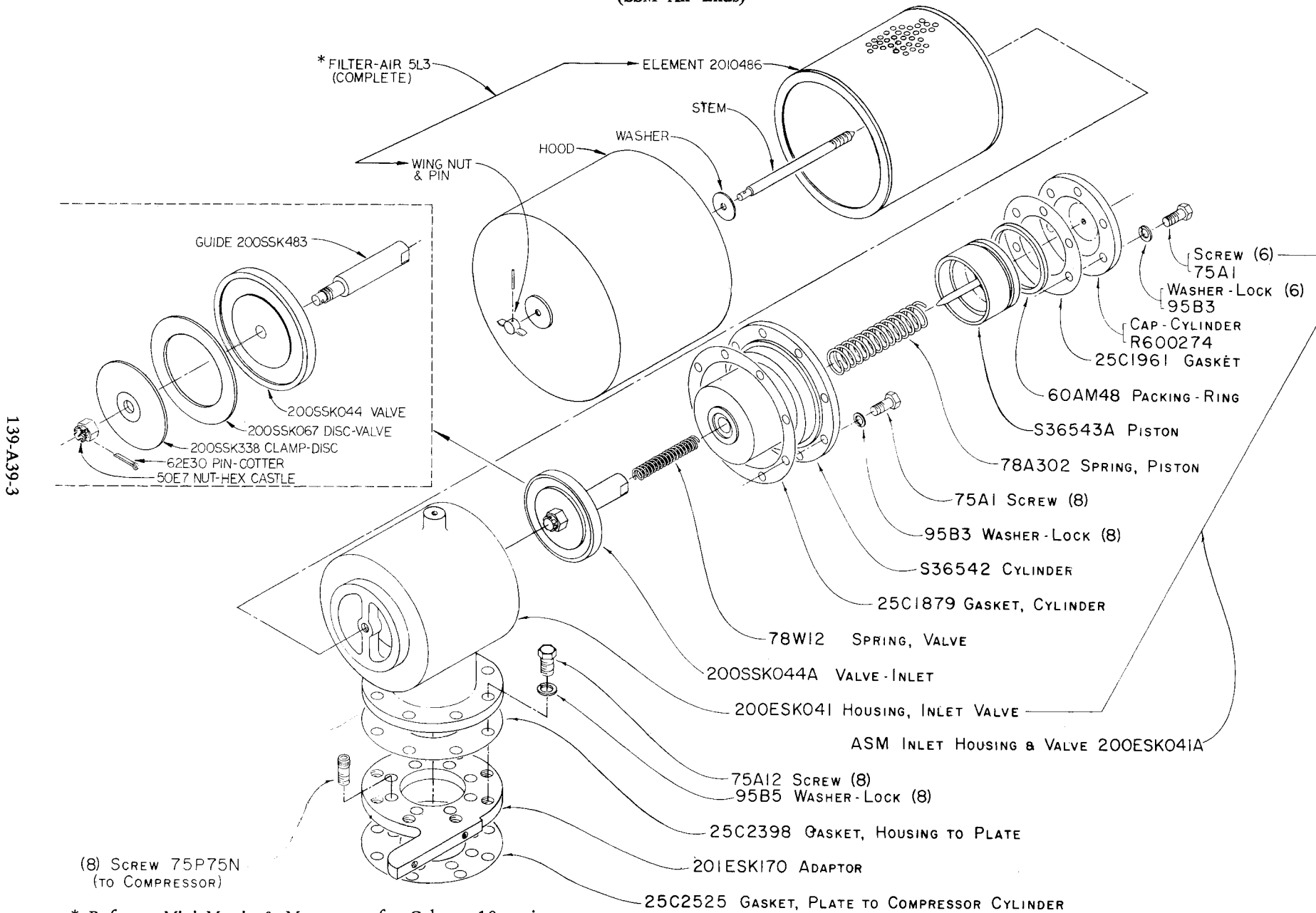
139-A39-1b

**INLET VALVE & MOUNTING GROUP
(SSH Air Ends)**



139-A39-2

**INLET VALVE & AIR FILTER GROUP
(SSM Air Ends)**

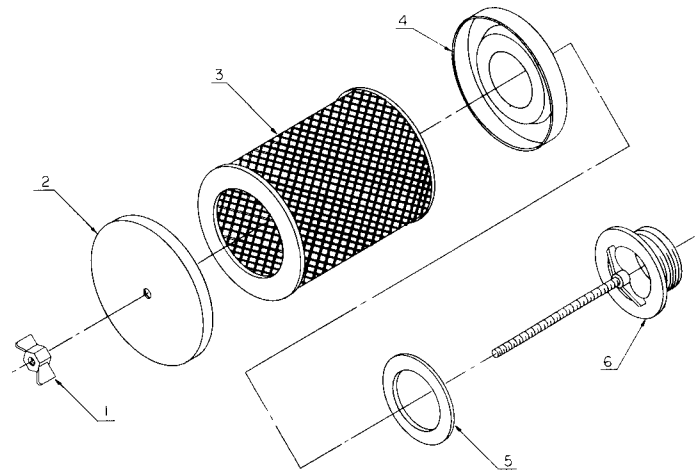


139-A39-3

* Refer to Mini-Matrix & Menu page for Column 10 option.

E75154

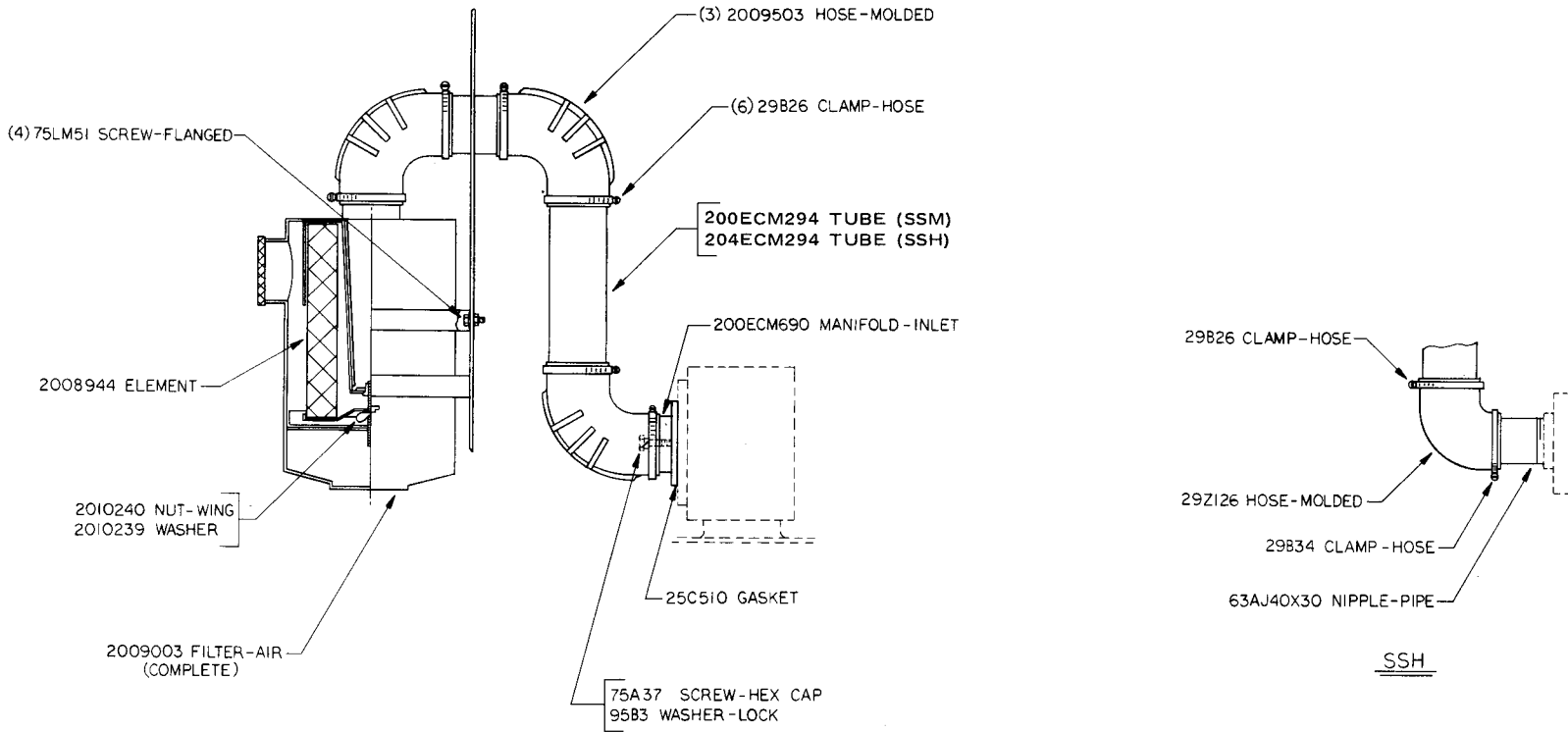
Order by Part Number and Description. Reference Numbers for your convenience only.



C76763

Ref. No.	Name of Part	Qty. Req. Per Comp.	Model Column Option 10S
AIR FILTER GROUP — STANDARD (Nonmetallic)			Part No.
	COMPLETE AIR FILTER, Incl Ref. No 1 thru 6	1	5L109
1	NUT-WING	1	2109583
2	TOP	1	2109708
3	ELEMENT	1	2008616
4	PLATE-BASE	1	2109587
5	GASKET	1	2008150
6	BASE & STEM	1	-----

HEAVY-DUTY AIR FILTER

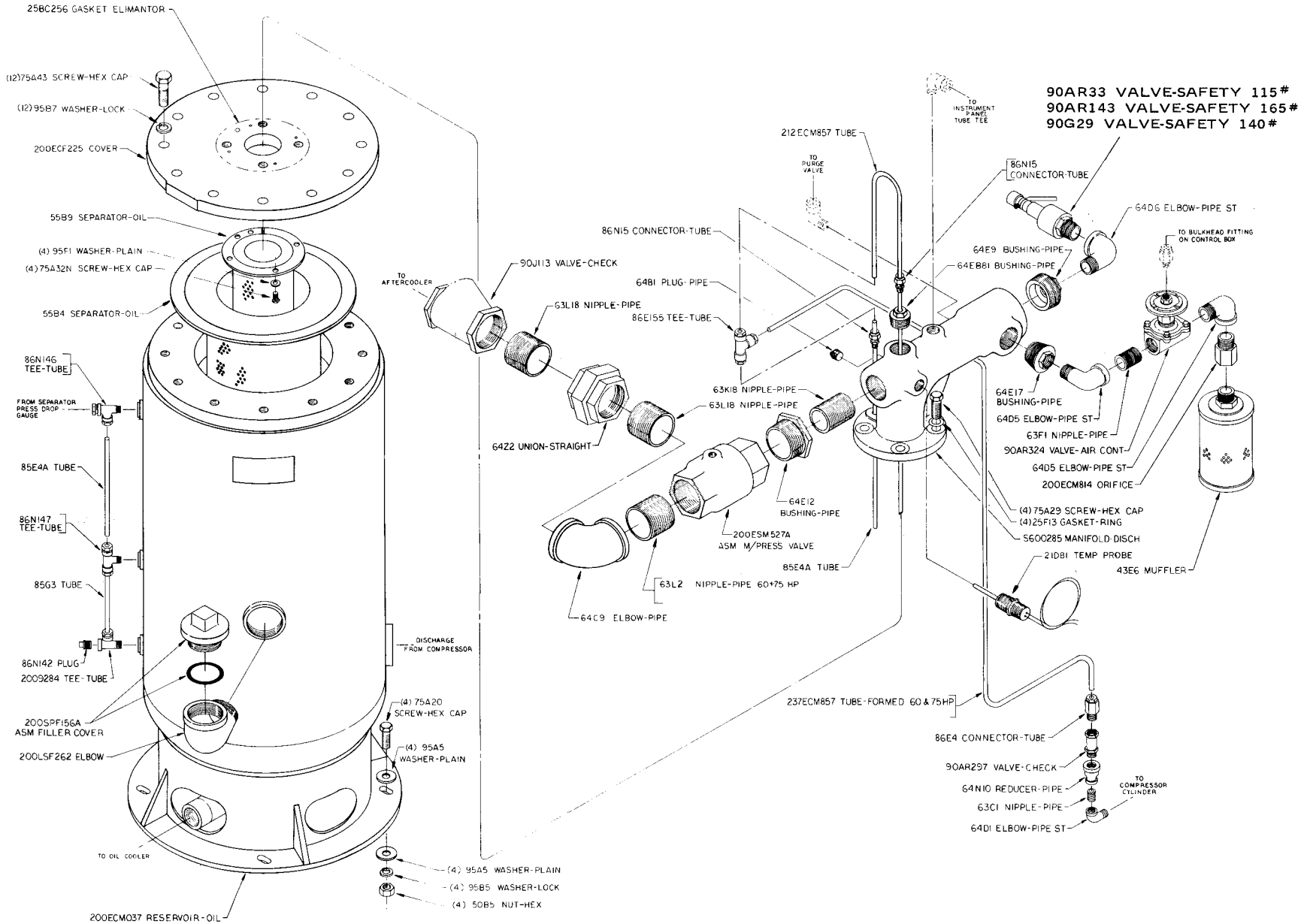


139-A39-5

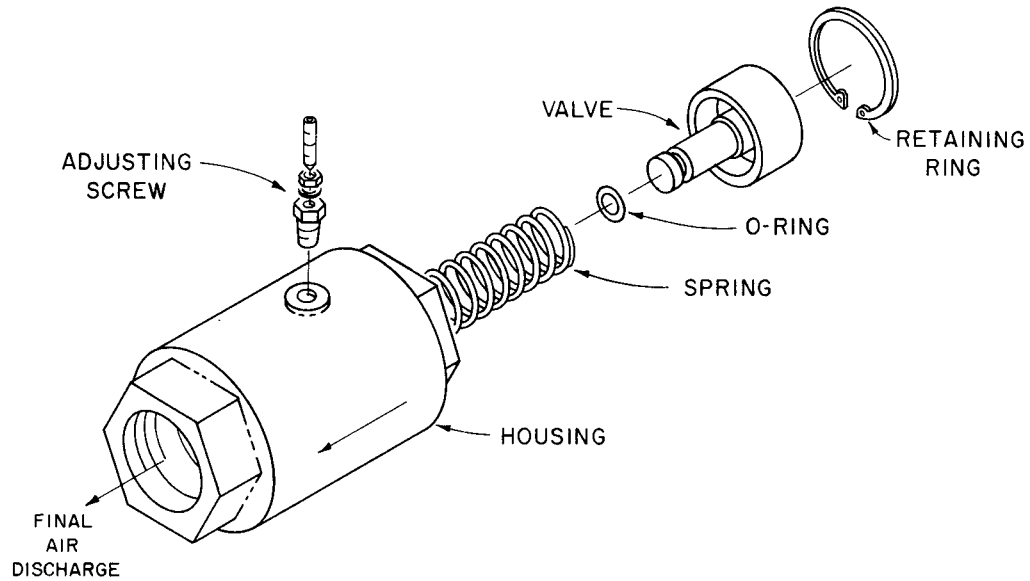
D76870

OIL RESERVOIR GROUP

139-A39-6



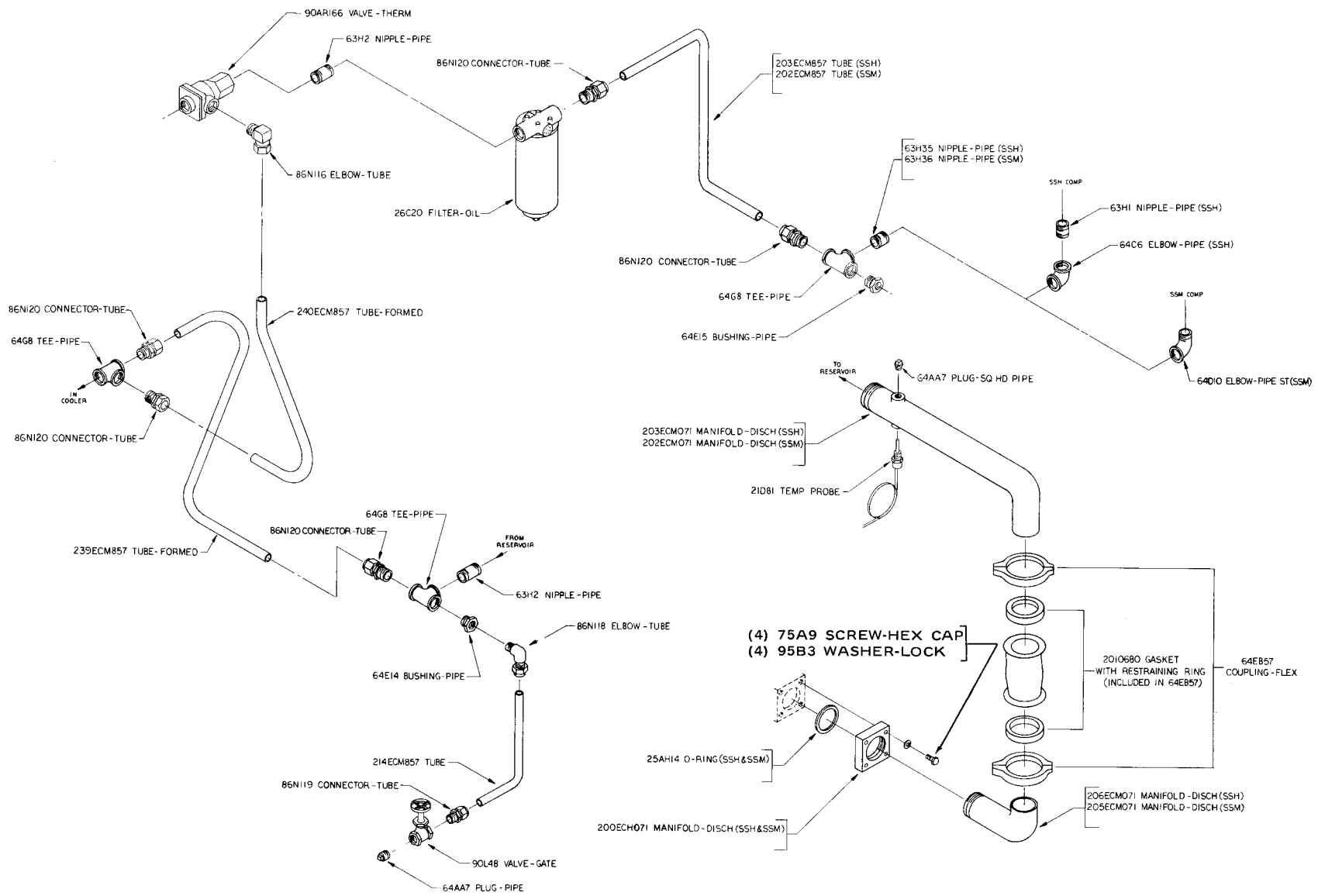
MINIMUM PRESSURE VALVE



C75812

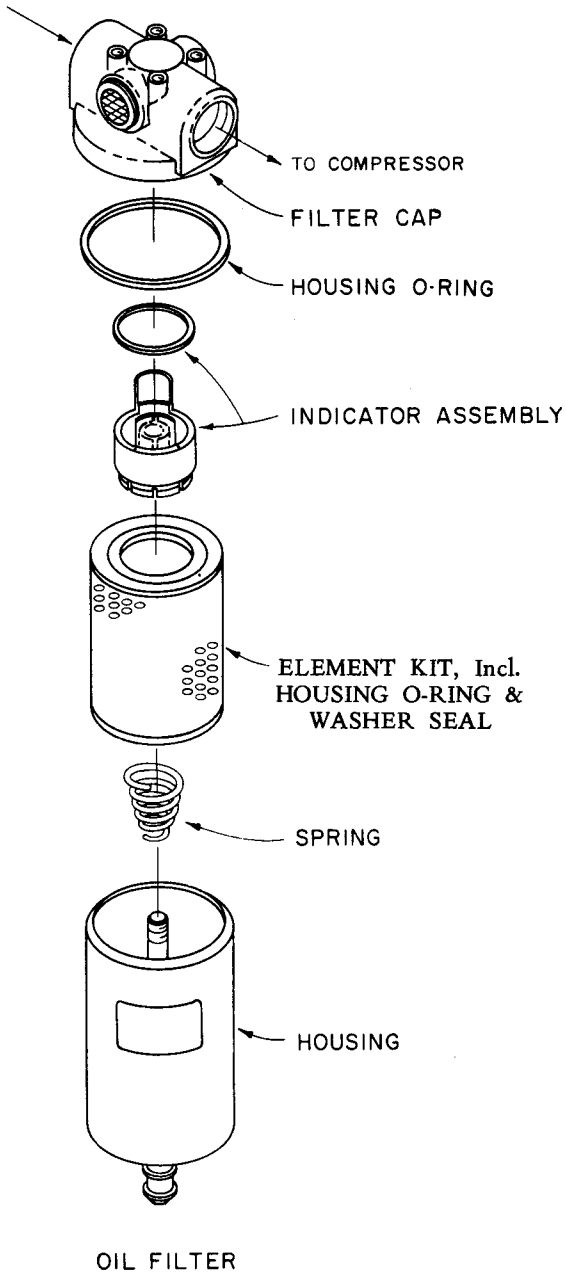
Name of Part	Part No.
ASM MINIMUM PRESSURE VALVE, Includes Following Items	200ESM527A
HOUSING	201ESM182
SPRING	78W6
O-RING	2009222
VALVE-MINIMUM PRESSURE	200ESM527
RING-RETAINING	74D7
ADJUSTING SCREW	200ESM176
ADAPTOR, Adjusting Screw	200ESM170
GASKET-RING, Adjusting Screw	25F29
LOCKNUT, Adjusting Screw	50AW17

OIL PIPING GROUP



139-A39-8

E76876

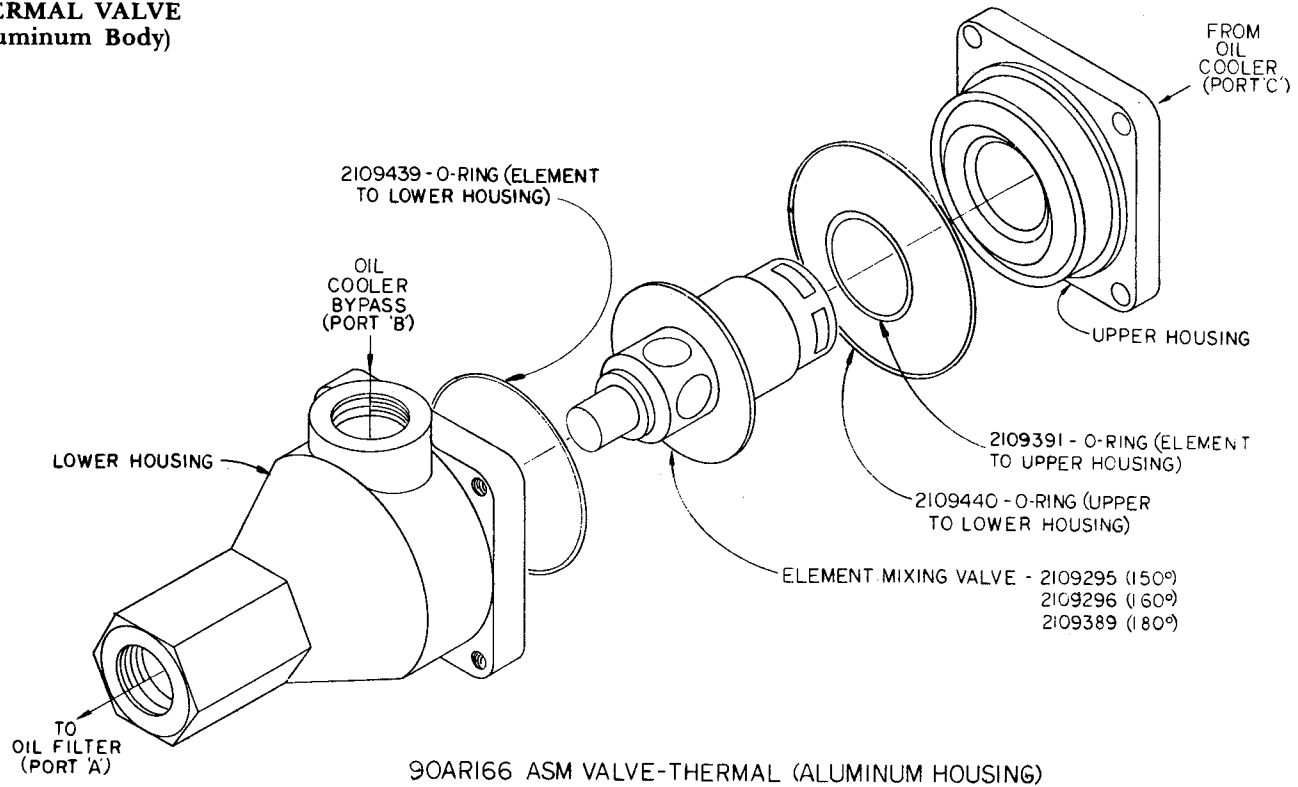


139-A39-9

Name of Part	All Models ECM
OIL FILTER	
FILTER-OIL, Includes Following Items	26C21
WINDOW ASSEMBLY — Includes Housing O-Ring	2109463
INDICATOR ASSEMBLY (Bypass Valve) — Includes O-Ring	2109125
BOLT, Hex Head	2109774
ELEMENT ASSEMBLY	2109093
WASHER, Gasket	2109411
SPRING	2109126

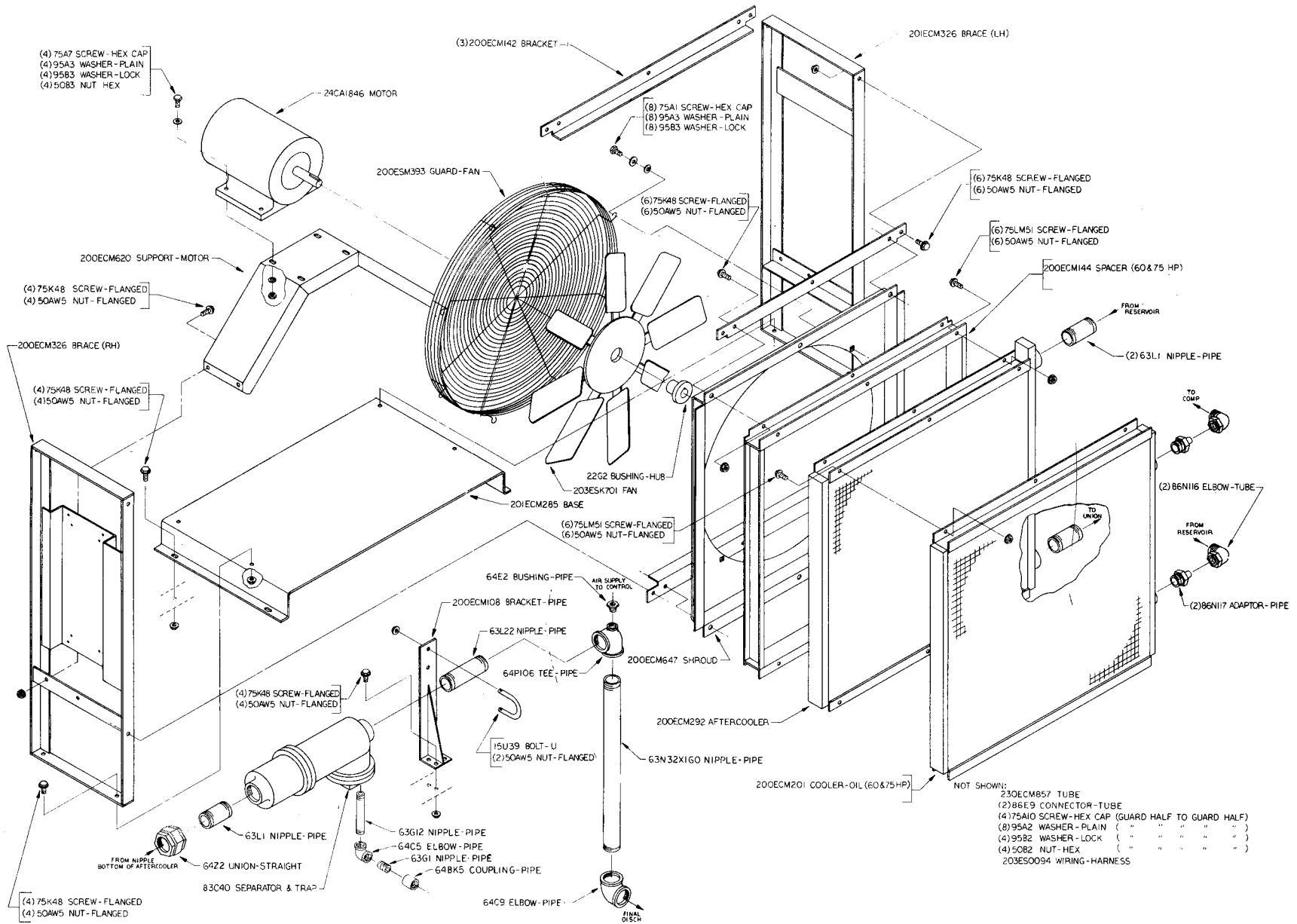
THERMOSTATIC MIXING VALVE

THERMAL VALVE (Aluminum Body)



139-A39-10

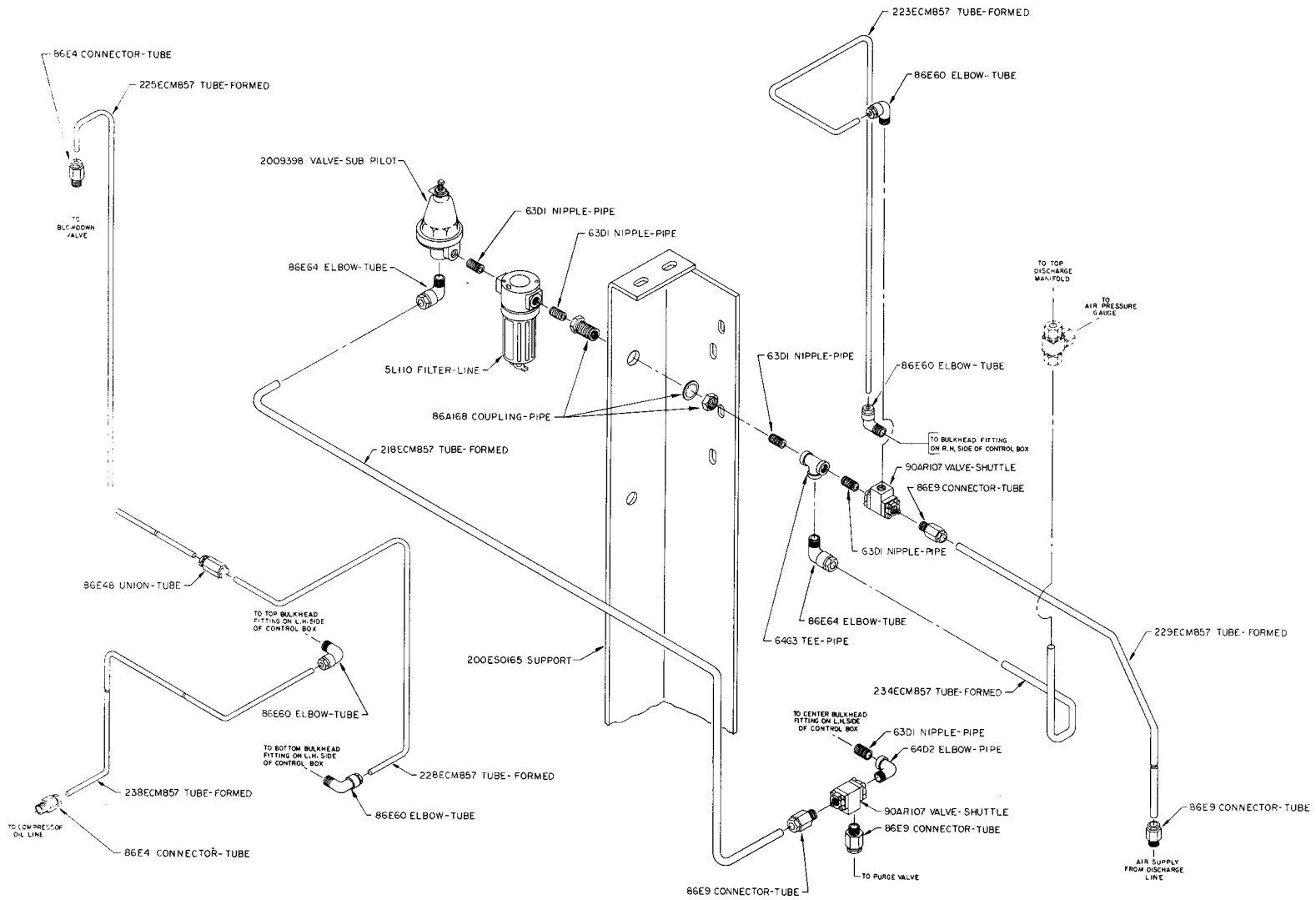
AIR-COOLED OIL COOLER WITH AFTERCOOLER



E76873

139-A39-12

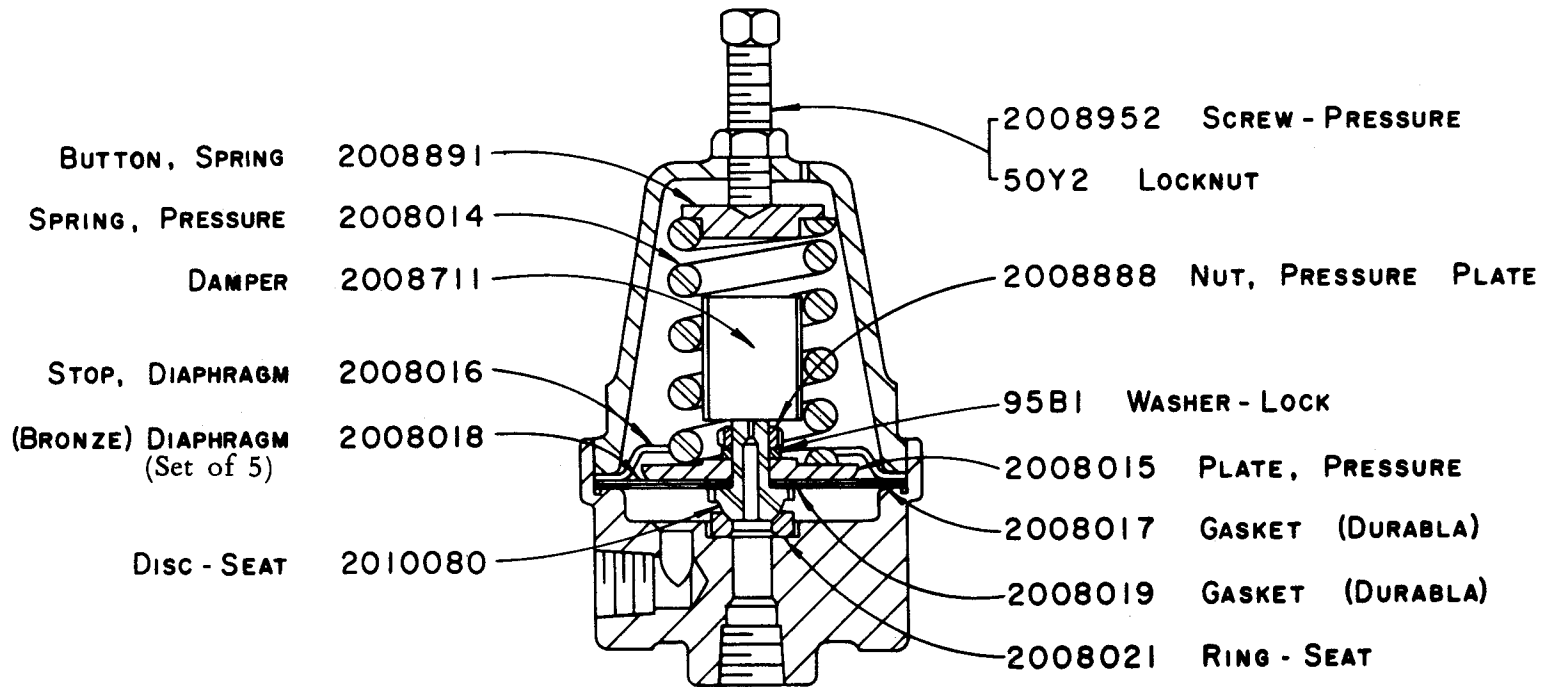
CONTROL LINES GROUP



139-A39-16

E76882

SUBTRACTIVE PILOT VALVE - 2009398
(See Note)

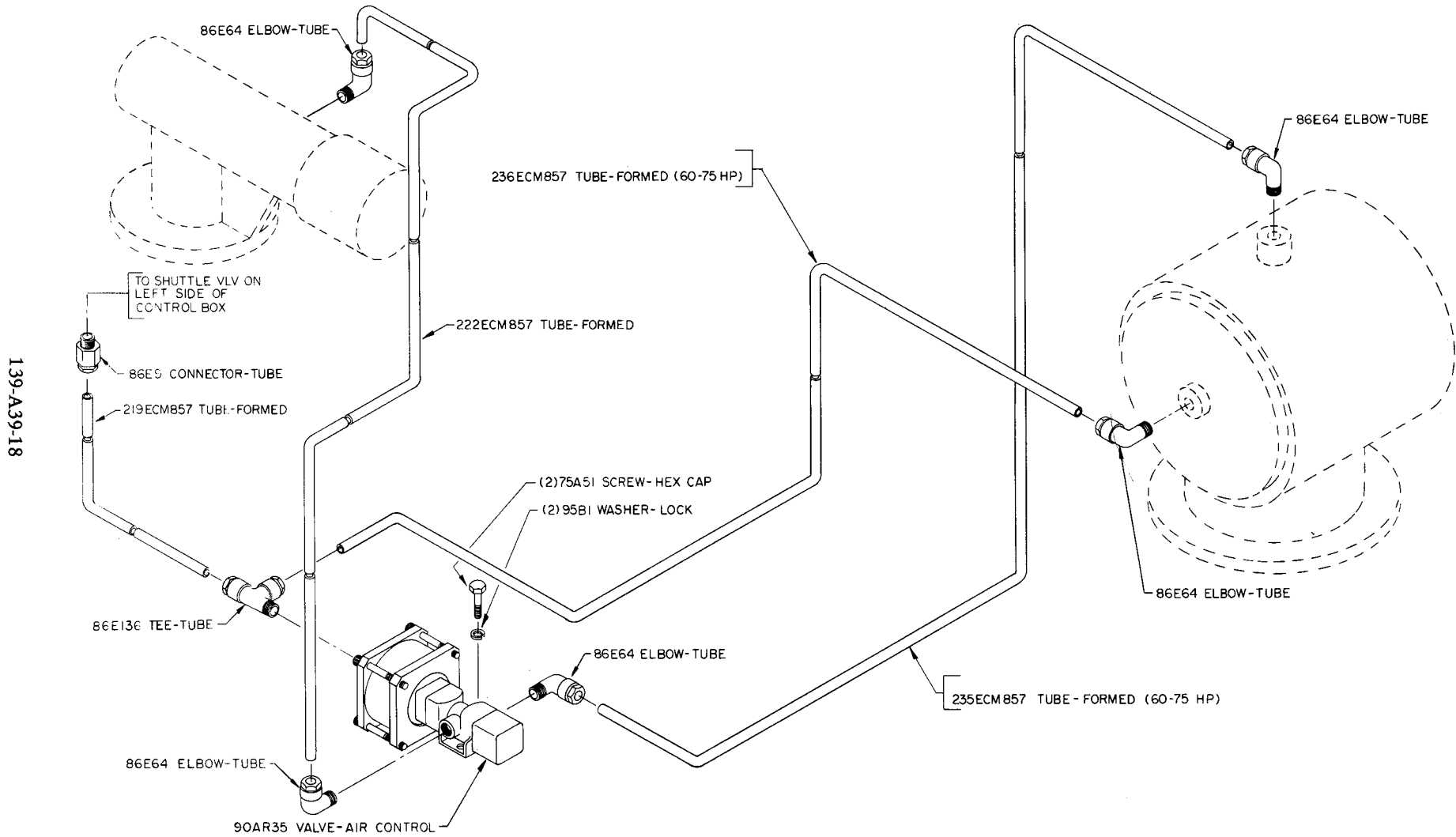


139-A39-17

NOTE: It is necessary to replace some parts in groups to insure satisfactory repair. When replacing diaphragm also replace both diaphragm and seat gaskets. When replacing seat disc or seat ring replace also the mating seat ring or disc and the seat disc gasket.

B74408X

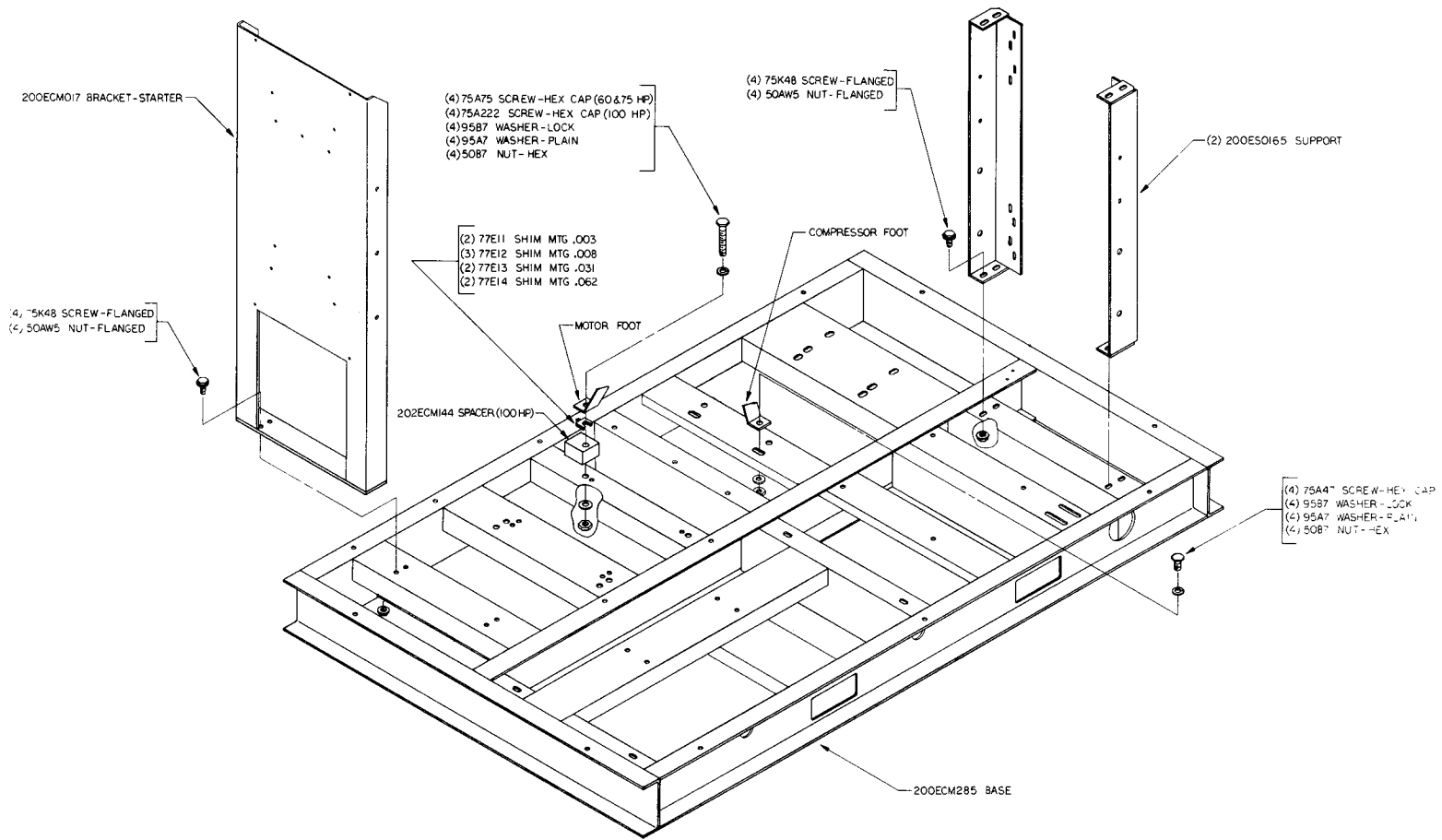
PURGE VALVE GROUP



139-A39-18

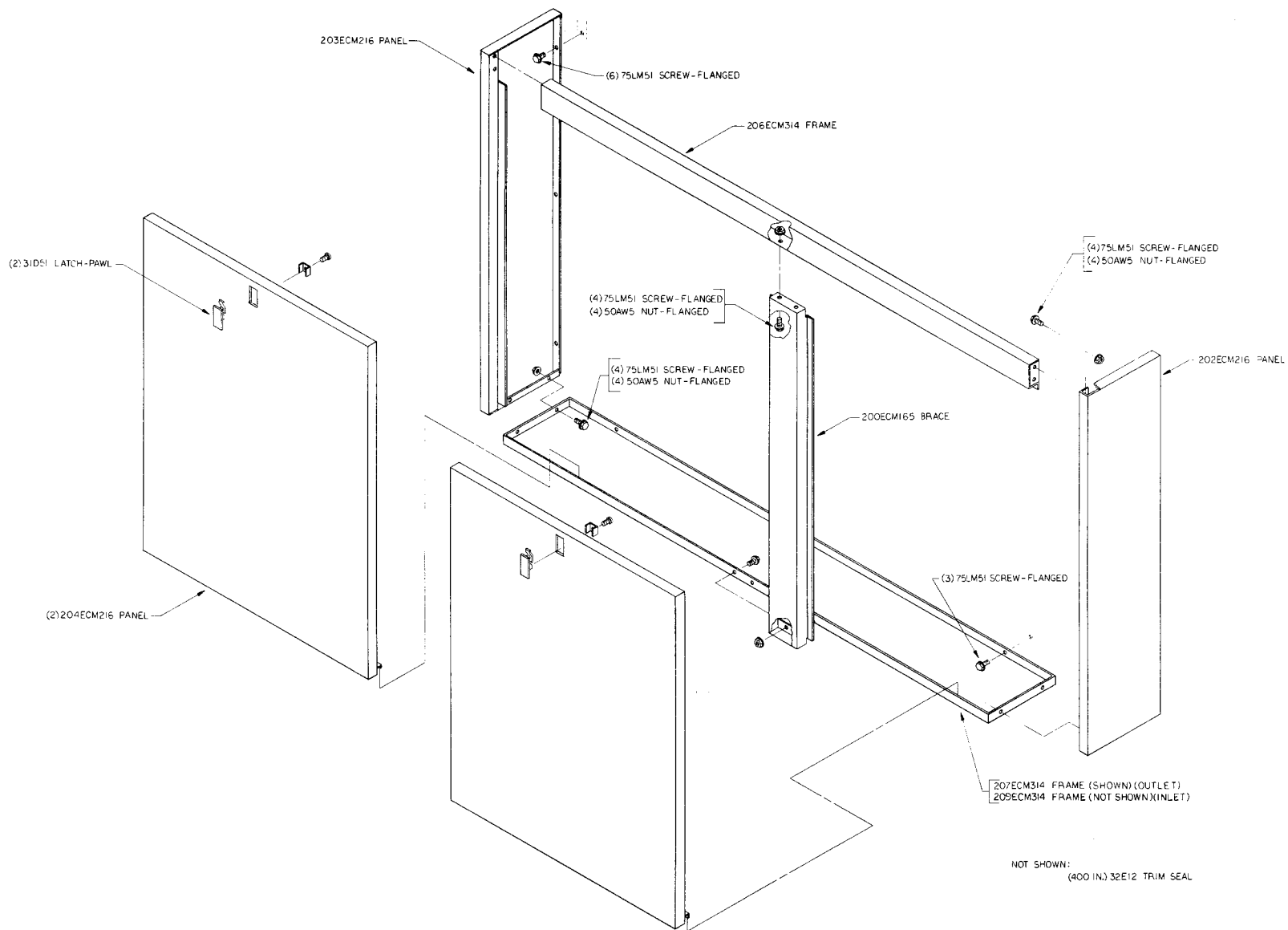
D76869

COMPRESSOR BASE GROUP



139-A39-19

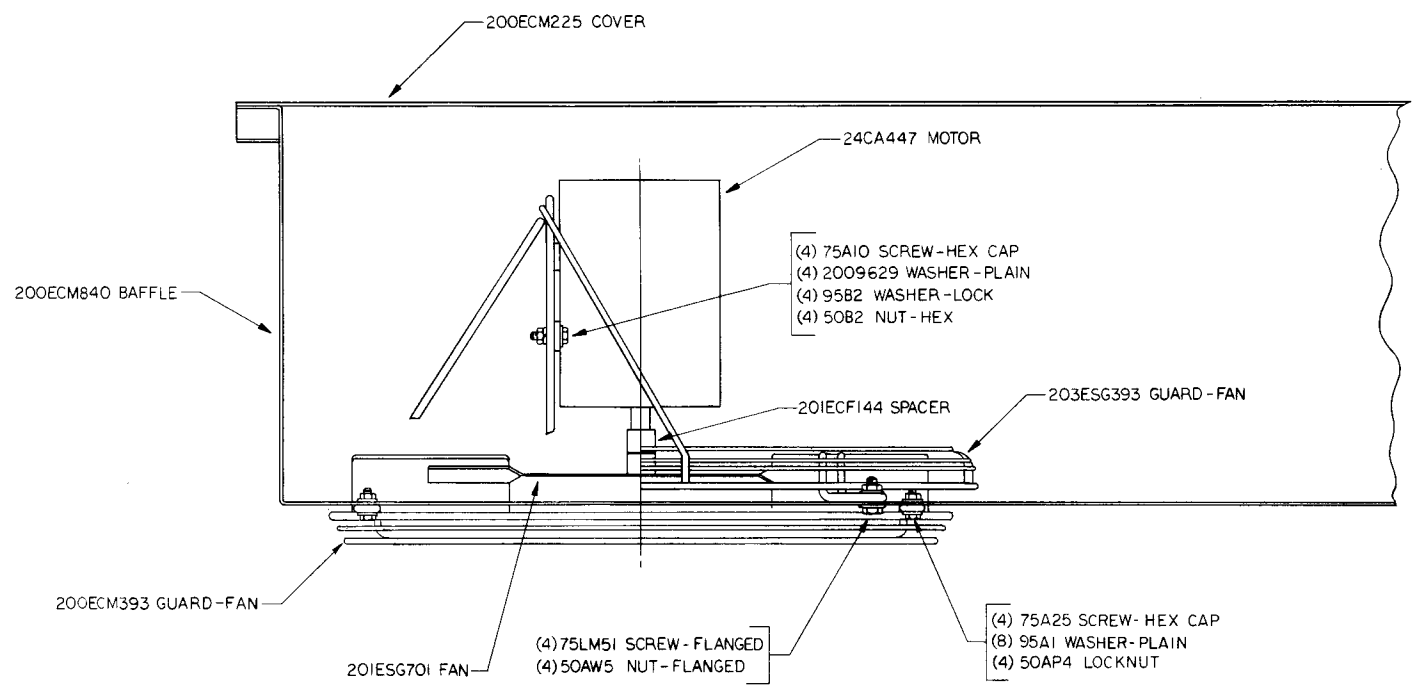
BAFFLE ASSEMBLY



139-A39-21

E76877

VENT FAN



NOT SHOWN:
CONTROL ASM-ECM 76521
WIRING HARNESS-ECM 77169

139-A39-22

D76868

Name of Part	Qty. Req. Per Comp.	60 & 75 HP With Enclosure	60 & 75 HP Without Enclosure
COUPLING GUARD GROUP		Part No.	Part No.
GUARD-COUPLING, Flexible Coupling	2	204ECM339	205ECM339
SCREW-FLANGED, Guards to Base	4	75LM51	75LM51
NUT-FLANGED, Guards to Base	4	50AW5	50AW5
 IDENTIFICATION & INSTRUCTION GROUP			
DECAL, Drain Moisture	1	205ESO077	205ESO077
DECAL, G-D Vertical	2	69F18	69F18
DECAL, Control Voltage	1	69D38	69D38
DECAL, Grounding	1	208ESG077	208ESG077
DECAL, Copper Wire Only	1	214ESG077	214ESG077
DECAL, Warning — Do Not Breathe Air	1	209SPH077	209SPH077
TAG-INSTRUCTION, Coupling Alignment	1	200ESP304	200ESP304
DECAL, Warning Shock	2	202ESG077	202ESG077
PLATE-DATA, Oil Level	1	200ESG454	200ESG454
DECAL, Filled at Factory with GD-800	1	200EBE077	200EBE077
DECAL, Caution	1	203ESF077	203ESF077
DECAL, Operating & Maintenance	1	200ECM077	200ECM077
DECAL, Oil Reservoir	1	None	200ECH077
DECAL, <i>Electra-Saver</i> ®	3	201ECM077	None
DECAL, Red with Black Border	4	203ESO077	None
ASM DRAWING, Decal Locations	0	219ECM810	219ECM810

REPAIR KITS

Name of Parts	Quantity	Model SSH Units*	Model SSM Units*
Routine Maintenance Kit (3000 Hours) STANDARD FILTER		ECH78464	ECM77062
Includes following items:			
ELEMENT, Air Filter	2	2008616	2010486
ELEMENT, Oil Filter	3	2109093	2109093
Routine Maintenance Kit (3000 Hours) HEAVY-DUTY FILTER		ECM77067	ECM77067
Includes following items:			
ELEMENT, Air Filter	2	2008944	2008944
ELEMENT, Oil Filter	3	2109093	2109093
Periodic Maintenance Kit (9000 Hours)		ECH75592	ECM77076
Includes following items:			
DISCHARGE VALVE, Inlet Valve	1	200SSF067	200SSK067
SPRING, Inlet Valve	1	78A360	78W12
SPRING, Inlet Valve Piston	1	78W34	78A302
PACKING-RING, Block Vee	2	60AM47	60AM48
Periodic Overhaul Kit (18000 Hours)		ECH75593	EAP77077
Includes following items:			
SEAL-SHAFT, Drive Shaft	1	60DD98	60DD98
BEARING-ROLLER, Inlet End Main Rotor	1	12BA89	12W34
BEARING-ROLLER, Inlet End Secondary Rotor	1	12BA88	12BA93
BEARING-ROLLER, Discharge End Main Rotor	2	12BA91	12BA92
BEARING-ROLLER, Discharge End Secondary Rotor	2	12BA90	12BA94
KIT (Gasket & Shim)	1	ECH76365	SSM77775
Separator Kit (18000 Hours)		ECM77079	ECM77079
Includes following items:			
SEPARATOR KIT, First Stage	1	ESM66049	ESM66049
SEPARATOR KIT, Second Stage	1	2010742	2010742
CONNECTOR, Discharge Manifold	2	86N15	86N15
TEE-TUBE, Dip Tube Connections	1	86E155	86E155
TUBE, Dip Tube Second Stage	1	212ECM857	212ECM857
TUBE, Dip Tube First Stage	27 Inches	85E4A	85E4A
TAG-INSTRUCTION, Separator Replacement Parts	1	200ECH304	200ECH304
GASKET (Eliminator), Discharge Manifold to Cover	1	25BC222	25BC222
PAINT (Primer/Cleaner) Manifold & Cover	1	25BC223	25BC223
Pneumatic Control & Gauges Kit (18000 Hours)		ECH76318	ECH76318
Includes following items:			
REGULATOR-PRESSURE, Set 15#	1	88H26	88H26
GAUGE, Air Pressure	1	2009562	2009562
THERMOMETER, Compressor Discharge Temperature	1	93F1	93F1
VALVE, Shuttle	1	90AR107	90AR107
VALVE-AIR CONTROL, Blowdown Valve	1	90AR324	90AR324
VALVE-SUBTRACTIVE PILOT	1	2009398	2009398
GAUGE, Oil Separator Differential	1	27P11	27P11
Electrical Control Kit (18000 Hours)		EAQ73721	EAQ73721
Includes following items:			
SWITCH-PRESSURE, Air	1	2009006	2009006
SWITCH-PRESSURE, Oil	1	88A301	88A301
SWITCH-TEMPERATURE	1	21D80	21D80
SWITCH-TEMPERATURE, Probe	2	21D81	21D81
RELAY, Timing (Set 10 Seconds Maximum)	1	24CA285	24CA285
VALVE-SOLENOID, 4-Way — 120 VAC	1	91B34	91B34
SWITCH-PRESSURE, Reservoir Pressure	1	88H99	88H99
Drive Coupling Kit		ECK77777	ECK77777
Includes following item:			
SPIDER, Coupling	1	2010219	2010219

* For applicable kit refer to page 139-A39-1a or 139-A39-1b for proper Bare Compressor.



Litho in U.S.A.

12C-10-83



GARDNER-DENVER

INDUSTRIAL MACHINERY DIVISION



1800 GARDNER EXPRESSWAY • QUINCY, ILLINOIS 62301 • (217) 222-5400

SALES AND SERVICE OFFICES IN ALL PRINCIPAL CITIES