

13-9-535
2nd Edition
Replaces 13-9-534 1st Edition
& 13-9-535 1st Edition

ELECTRA-SCREW[®]

STATIONARY

COMPRESSOR

Models

<i>ECFQGA,</i>	<i>ECFQGB</i>	—	<i>30 HP</i>
<i>ECFSGA,</i>	<i>ECFSGB</i>	—	<i>30 HP</i>
<i>ECFQHA,</i>	<i>ECFQHB</i>	—	<i>40 HP</i>
<i>ECFSHA,</i>	<i>ECFSHB</i>	—	<i>40 HP</i>
<i>ECFQJA,</i>	<i>ECFQJB</i>	—	<i>50 HP</i>
<i>ECFSJA,</i>	<i>ECFSJB</i>	—	<i>50 HP</i>

13-9-535

Parts List



GARDNER-DENVER

INDUSTRIAL MACHINERY DIVISION

TABLE OF CONTENTS

Models: ECF_GA (30 HP)	Models: ECF_GB (30 HP)
ECF_HA (40 HP)	ECF_HB (40 HP)
ECF_JA (50 HP)	ECF_JB (50 HP)
Parts List: 13-9-535	Parts List: 13-9-535
Service Manual: 13-9-621	Service Manual: 13-9-622
Starting Serial Number: 737114	Starting Serial Number: 739643

GROUP NAME	Page Number	Page Number
Ordering Instructions	P/L 139-500b	P/L 139-500b
Thirteen Digit Model Designation	ECF Mini Matrix	ECF Mini Matrix
Bare Compressor Illustration	139-A34-1b	139-A34-1b
Bare Compressor Parts List	139-A34-1c	139-A34-1c
Repair Kits, Bare Compressor	139-A34-2a	139-A34-2a
Air Filter, Standard	139-A34-3a	139-A34-3a
Air Filter, Heavy Duty	139-A34-4a	139-A34-4a
Inlet Valve & Mounting Group	139-A34-5a	139-A34-5a
Minimum Pressure Valve	139-A34-6a	139-A34-6a
Oil Reservoir Group (Dual Separators) Illustration	139-A34-7d	139-A34-7d
Oil Reservoir Group (Dual Separators) Parts List	139-A34-7e	139-A34-7e
Separator Repair Kits		
High Temperature Shutdown Switch		
Air Discharge Piping (Air- or Water-Cooled without Aftercooler) Illustration	139-A34-9b	139-A34-9b
Air Discharge Piping (Air- or Water-Cooled without Aftercooler) Parts List	139-A34-9c	139-A34-9c
Air Discharge Piping (Air-Cooled with Aftercooler) Illustration	139-A34-10d	139-A34-10d
Air Discharge Piping (Air-Cooled with Aftercooler) Parts List	139-A34-10e	139-A34-10e
Air Discharge Piping (Water-Cooled with Aftercooler) Illustration	139-A34-11b	139-A34-11b
Air Discharge Piping (Water-Cooled with Aftercooler) Parts List	139-A34-11c	139-A34-11c
Oil Piping Group (Air-Cooled) Illustration	139-A34-13d	139-A34-13d
Oil Piping Group (Air-Cooled) Parts List	139-A34-13e	139-A34-13e
Oil & Water Piping Group (Water-Cooled without Aftercooler) Illustration	139-A34-14b	139-A34-14b
Oil & Water Piping Group (Water-Cooled without Aftercooler) Parts List	139-A34-14c	139-A34-14c
Oil & Water Piping Group (Water-Cooled with Aftercooler) Illustration	139-A34-15b	139-A34-15b
Oil & Water Piping Group (Water-Cooled with Aftercooler) Parts List	139-A34-15c	139-A34-15c
Oil Piping — Sump AND Selective Items (Fresh Water Service)	139-A34-16a	139-A34-16a
Heat Exchanger		
Aftercooler		
Thermal Valve	139-A34-17b	139-A34-17b
Oil Filter	139-A34-17c	139-A34-17c
Radiator Group Illustration	139-A34-18d	139-A34-18f
Radiator Group Parts List	139-A34-18e	139-A34-18g
Coupling & Fan Group (Air Cooled)	139-A34-20b	- - - -
Coupling & Fan Group (Water Cooled) AND Base & Mounting Group	139-A34-20c	- - - -
Coupling, Fan, Base & Mounting Groups	- - - -	139-A34-20d
Control Groups (Optional & Selective)	139-A34-21a	139-A34-21a
Control Assembly (Dual Control) Illustration	139-A34-22b	139-A34-22b
Control Assembly (Dual Control) Parts List	139-A34-22c	139-A34-22c
Control Assembly (Duomatic Control) Illustration	139-A34-23b	139-A34-23b
Control Assembly (Duomatic Control) Parts List	139-A34-23c	139-A34-23c
Control Tubing (Dual Control) Illustration	139-A34-24b	139-A34-24b
Control Tubing (Dual Control) Parts List	139-A34-24c	139-A34-24c
Control Tubing (Duomatic Control)	139-A34-25a	139-A34-25a
Subtractive Pilot Valve	139-A34-26a	139-A34-26a
Recommended Spares	139-A34-27c	139-A34-27c
Identification & Instruction Group	139-A34-28a	139-A34-28a
Enclosure Illustration	Consult Quincy	139-A34-29
Enclosure Parts List	Consult Quincy	139-A34-29a

ELECTRA-SCREW® STATIONARY COMPRESSOR
30 HP — 40 HP — 50 HP
THIRTEEN DIGIT MODEL DESIGNATIONS

NOTICE TO CUSTOMER — To find the construction options for your compressor unit, FILL THE BALANCE OF LETTERS FROM YOUR COMPRESSOR NAMEPLATE.

	E	C	F										
COLUMN NUMBER:	1	2	3	4	5	6	7	8	9	10	11	12	13

FOLLOW THE LINE DOWN AND OVER FROM EACH LETTER THUS FILLED IN TO FIND THE APPROPRIATE CONSTRUCTION OPTION WITH WHICH YOUR MACHINE IS EQUIPPED, THE NUMBER "9" IN ANY COLUMN SPACE INDICATES "NOT APPLICABLE", THE NUMBER "8" IN ANY COLUMN SPACE INDICATES SPECIAL DESIGN — REFER TO FACTORY ORDER TICKET.

COLUMNS 1, 2 & 3 — COMPRESSOR TYPE & SIZE

COLUMN 4 — TYPE OF CONSTRUCTION
Q. Air Cooled Base Mounted
S. Water Cooled Base Mounted

COLUMN 5 — HORSEPOWER
G. 30
H. 40
J. 50

COLUMN 6 — ENGINEERING SPEC.

COLUMN 7 — OPERATING PRESSURE
D. 100 PSIG — 60 Hz
F. 125 PSIG — 60 Hz
H. 150 PSIG — 60 Hz
N. 100 PSIG — 50 Hz
P. 125 PSIG — 50 Hz
R. 150 PSIG — 50 Hz

COLUMN 8 — CONTROL
E thru H. Dual Control, NEMA I or NEMA IV, 50 or 60 Hz
I thru L. Duomatic, NEMA I or NEMA IV, 50 or 60 Hz

COLUMN 9 — CONTROL, MAIN MOTOR STARTER & OPTIONS — *Letter varies with options*
(Air & Water Cooled With/Without Enclosure)
A thru L. NEMA I, 200V thru 415V, 50 or 60 Hz
M thru X. NEMA IV, 200V thru 415V, 50 or 60 Hz

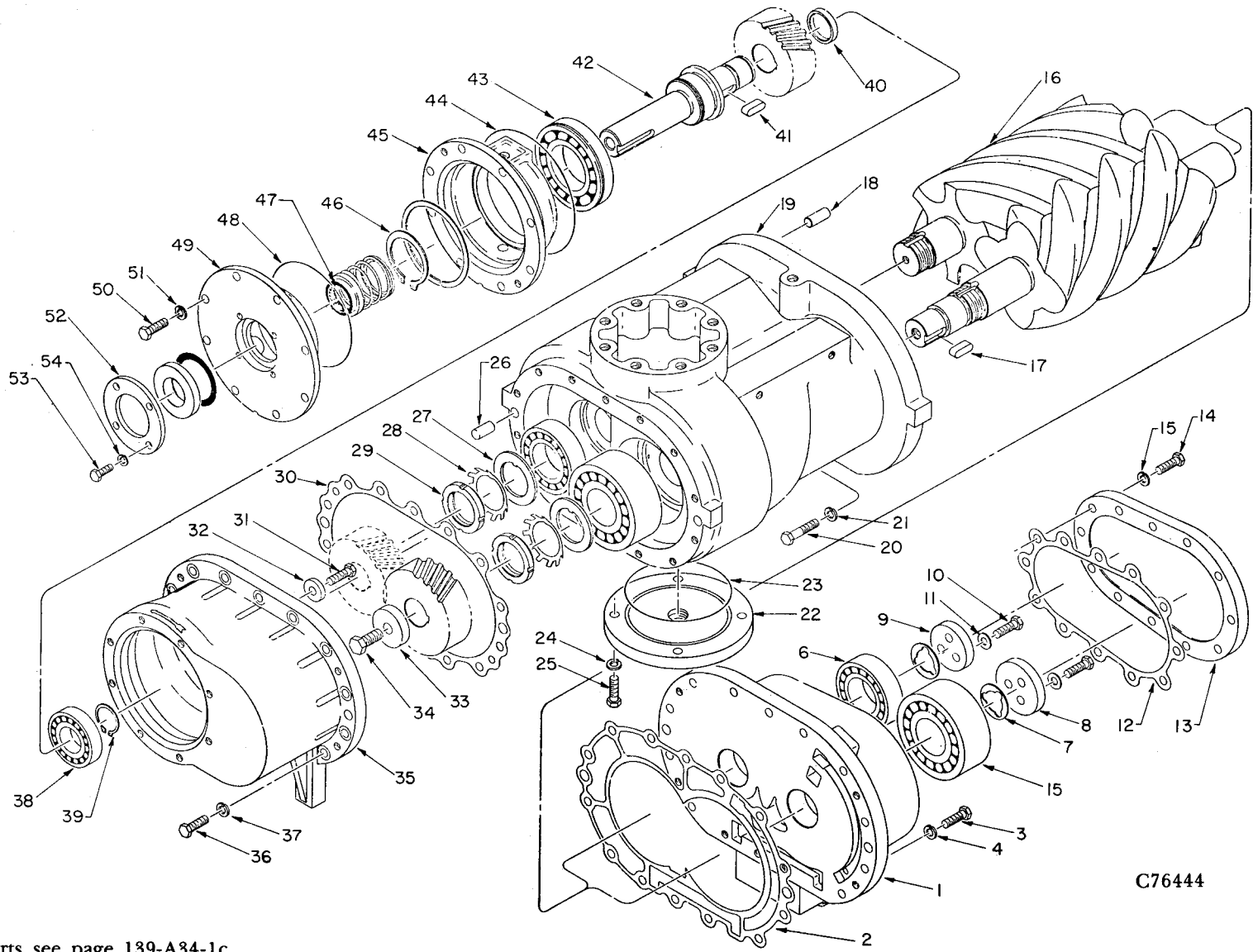
COLUMN 10 — ENCLOSURE & AIR FILTER — *Letter varies with type enclosure, filter & cooling system*
A thru P. Air Cooled
Q thru X. Water Cooled

COLUMN 11 — COOLERS — *Letters vary with Material, Manufacturer & Aftercooler (if used)*
A thru D. Air Cooled, With/Without Aftercooler, No Remote Elevated Kit
E thru H. Air Cooled, With/Without Aftercooler, With Remote Elevated Kit
I thru L. Fresh Water Cooled, With/Without Aftercooler, No Water Regulator
M thru T. Fresh Water Cooled, With/Without Aftercooler, With Water Regulator
U and V. Salt Water Cooled, With/Without Aftercooler, No Water Regulator
W and X. Salt Water Cooled, With/Without Aftercooler, With Water Regulator

COLUMN 12 — COOLER ELECTRICAL — *Letter varies with Voltage and Hz*
A thru I. Air Cooled, NEMA I Starter Enclosure, 50 or 60 Hz
J thru S. Air Cooled, NEMA IV Starter Enclosure, 50 or 60 Hz
T thru X. Fresh or Salt Water Cooled, NEMA I or NEMA IV, Magnetic Water Shutoff Valve

COLUMN 13 — COMPRESSOR DRIVE MOTOR
MOTOR NOT LISTED IN THIS BOOK — When ordering replacement motor for your unit it is MOST IMPORTANT THAT THE COMPLETE thirteen (13) digit model number is given in order to obtain correct drive motor.

BARE COMPRESSOR



139-A34-1b

C76444

For list of parts see page 139-A34-1c.

ORDER BY PART NUMBER AND DESCRIPTION. REFERENCE NUMBERS FOR YOUR CONVENIENCE ONLY.

Ref. No.	Name of Part	Qty. Req. Per Comp.	Models
			ECF__GA, GB ECF__HA, HB ECF__JA, JB
BARE COMPRESSOR			
			Part No.
1	HOUSING-BEARING, Discharge	1	203SSF006
‡	SWITCH-TEMPERATURE, High Temperature Shutdown *	1	21D23
2	GASKET, Housing to Cylinder	1	205SSF715
3	SCREW-HEX CAP, Housing to Cylinder	11	75A7
4	WASHER-LOCK, Housing to Cylinder	11	95B3
5	BEARING-ROLLER, Main Rotor	2	12BA33
6	BEARING-ROLLER, Secondary Rotor	2	12BA34
7	SHIM, Discharge End of Rotors	4	77H28
8	PLATE-BEARING RETAINER, Main Rotor	1	201SSF253
9	PLATE-BEARING RETAINER, Secondary Rotor	1	1S12515
10	SCREW-HEX CAP, Plates to Rotors	6	75A2N
11	WASHER-PLAIN, Plates to Rotors	6	95U3
12	GASKET, Bearing Cover to Housing	1	207SSF715
13	PLATE-BEARING COVER	1	202SSF315
14	SCREW-HEX CAP, Cover to Housing	12	75A2
15	WASHER-LOCK, Cover to Housing	12	95B3
16	ROTOR, Secondary	1	204SSF010
16A	ROTOR, Main	1	205SSF010
17	KEY-SQUARE	1	35C179
18	PIN-DOWEL, Discharge Housing to Cylinder	2	62M83
19	CYLINDER	1	203SSF002
20	SCREW-HEX CAP, Cylinder to Housing	3	75A9
21	WASHER-LOCK, Cylinder to Housing	3	95B3
22	COVER, Oil Sump	1	200SSF225
23	O-RING, Sump to Cylinder Gasket	1	25BC157
24	SCREW-HEX CAP, Sump to Cylinder Gasket	4	75A2
25	WASHER-LOCK, Sump to Cylinder Gasket	4	95B3
26	PIN-DOWEL, Gear Housing to Cylinder	2	62M82
27	WASHER-KEYED, Bearing	2	95W24
28	WASHER-LOCK, Suction End	2	95W25
29	LOCKNUT-BEARING, Suction End	2	50Z9
30	GASKET, Gear Housing to Cylinder	1	209SSF715
31	SCREW-HEX CAP, Gear Housing	2	75A5N
32	RETAINER, Gear Housing	2	2014731
33	RETAINER, Main Rotor Shaft	1	2013208
34	SCREW-HEX CAP, Retainer to Shaft	1	75A12N
35	HOUSING-GEAR	1	201SSF151
36	SCREW-HEX CAP, Housing to Cylinder	14	75A2
37	WASHER-LOCK, Housing to Cylinder	14	95B3
38	BEARING-ROLLER, Inner Drive Shaft	1	12BA41
39	RING-RETAINING, Inner Bearing	1	65W1
40	SPACER-SHAFT, Gear to Inner Bearing	1	200SSF600
41	KEY-SQUARE	1	35C179
42	SHAFT-DRIVE	1	202SSF050
43	BEARING-BALL, Drive Shaft (Outer)	1	12J61
44	O-RING, Bearing Housing to Gear Housing	1	25AH38
45	HOUSING-BEARING, Drive Shaft	1	201SSF006
46	RING-RETAINING, Outer Bearing	1	74D27
47	SEAL-SHAFT, Drive Shaft	1	60DD52
48	O-RING, Seal to Bearing Housing	1	25AH32
49	HOUSING-SEAL, Drive Shaft	1	201SSF362
50	SCREW-HEX CAP	8	75A2
51	WASHER-LOCK	8	95B3
52	PLATE, Drive Shaft Seal	1	2013210
53	SCREW-HEX CAP, Plate to Seal	4	75A34
54	WASHER-LOCK, Plate to Seal	4	95B2

‡ Not shown on illustration.

* Probe mounted in Discharge Bearing Housing, Switch on Control Panel Support Bracket.

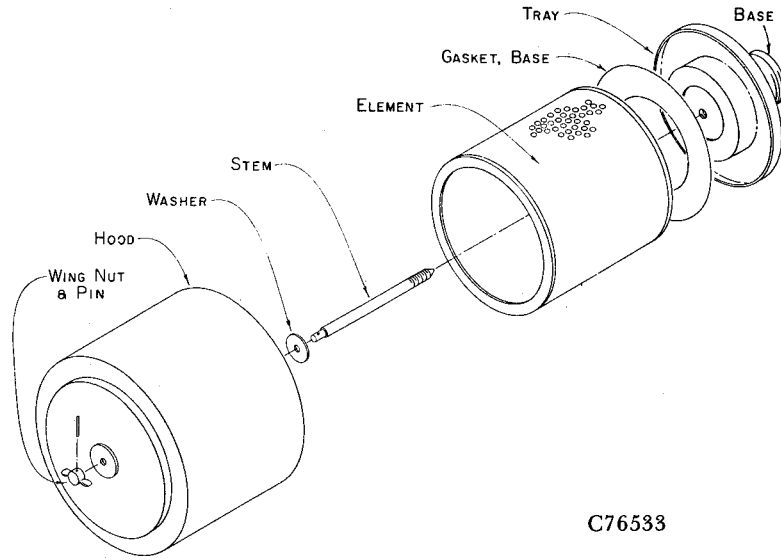
**BARE COMPRESSOR REPAIR KITS
ALL MODELS
(30, 40 & 50 HP)**

PSI	HP	MODEL	BARE COMPRESSOR FIELD REPLACEMENT (INCLUDES GEARS)		
			GEAR KIT*		GASKET KIT**
			Part No.	Part No.	Part No.
100	30	SSFCBA07	SSF65897	SSF71198	ECF69016
100	40	SSFCBA08	SSF65898	SSF71199	ECF69016
100	50	SSFCBA09	SSF65899	SSF71200	ECF69016
125	30	SSFCBA10	SSF65900	SSF71201	ECF69016
125	40	SSFCBA11	SSF65901	SSF71202	ECF69016
125	50	SSFCBA12	SSF65902	SSF71203	ECF69016
150	40	SSFCBA07	SSF65897	SSF71198	ECF69016
150	50	SSFCBA08	SSF65898	SSF71199	ECF69016

* Gear Kit includes Gears, Keys, Gear Housing Gasket and O-Rings.

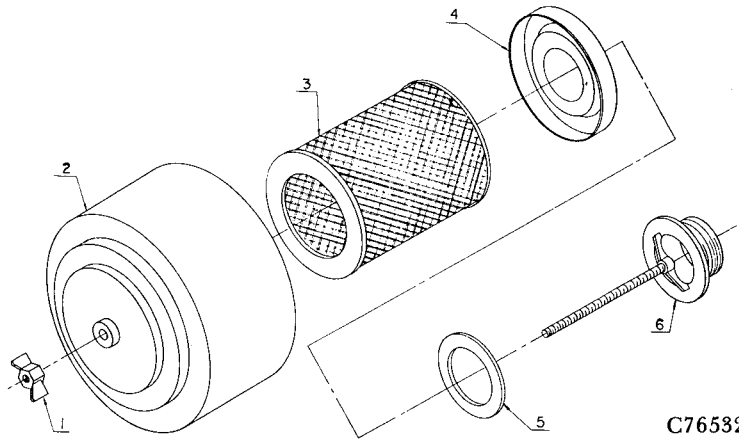
** Gasket Kits are for Complete Unit, Less Motor.

ORDER BY PART NUMBER AND DESCRIPTION. REFERENCE NUMBERS FOR YOUR CONVENIENCE ONLY.



C76533

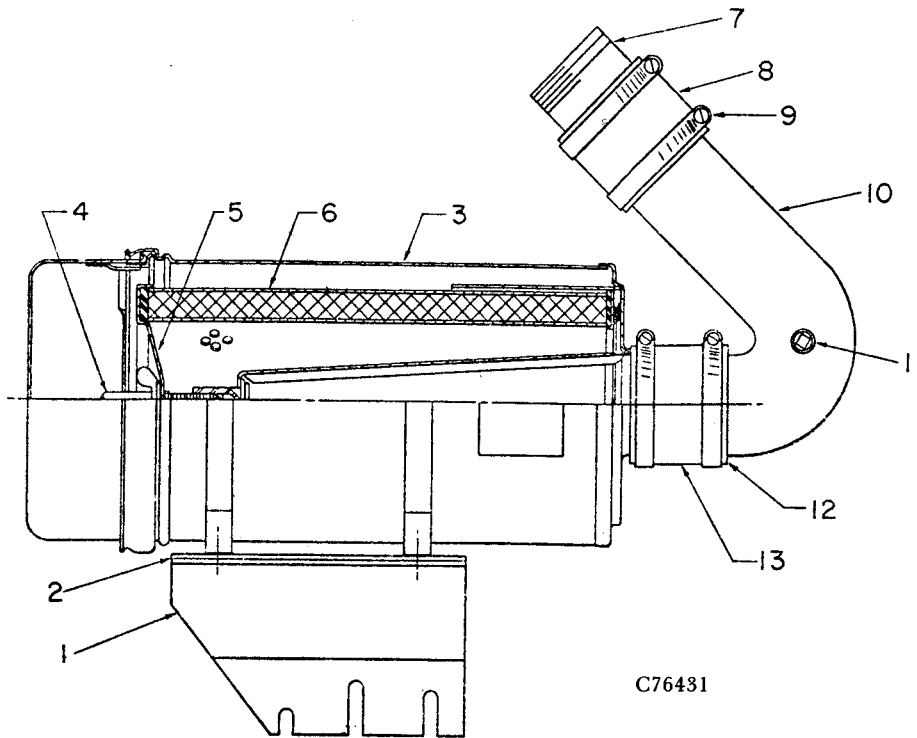
Name of Part	Qty. Req. Per Comp.	Models ECF_GA, GB ECF_HA, HB	Models ECF_JA, JB
AIR FILTER GROUP (Metallic — Early Units ONLY)			
COMPLETE AIR FILTER	1	5L7	5A460
ELEMENT	1	2010265	2008616
GASKET, Base	1	2008150	None
TRAY	1	2109586	2109587



C76532

Ref. No.	Name of Part	Qty. Req. Per Comp.	Models ECF_GB ECF_HB	Models ECF_JB
AIR FILTER GROUP (Nonmetallic)				
	COMPLETE AIR FILTER, Incl. Ref. No. 1 thru 6	1	5L7	5A460
1	NUT-WING	1	2109583	2109583
2	HOOD	1	2109584	2109585
3	ELEMENT	1	2010265	2008616
4	PLATE-BASE	1	2109586	2109587
5	GASKET	1	2008150	2008150
6	BASE & STEM	1	-----	-----

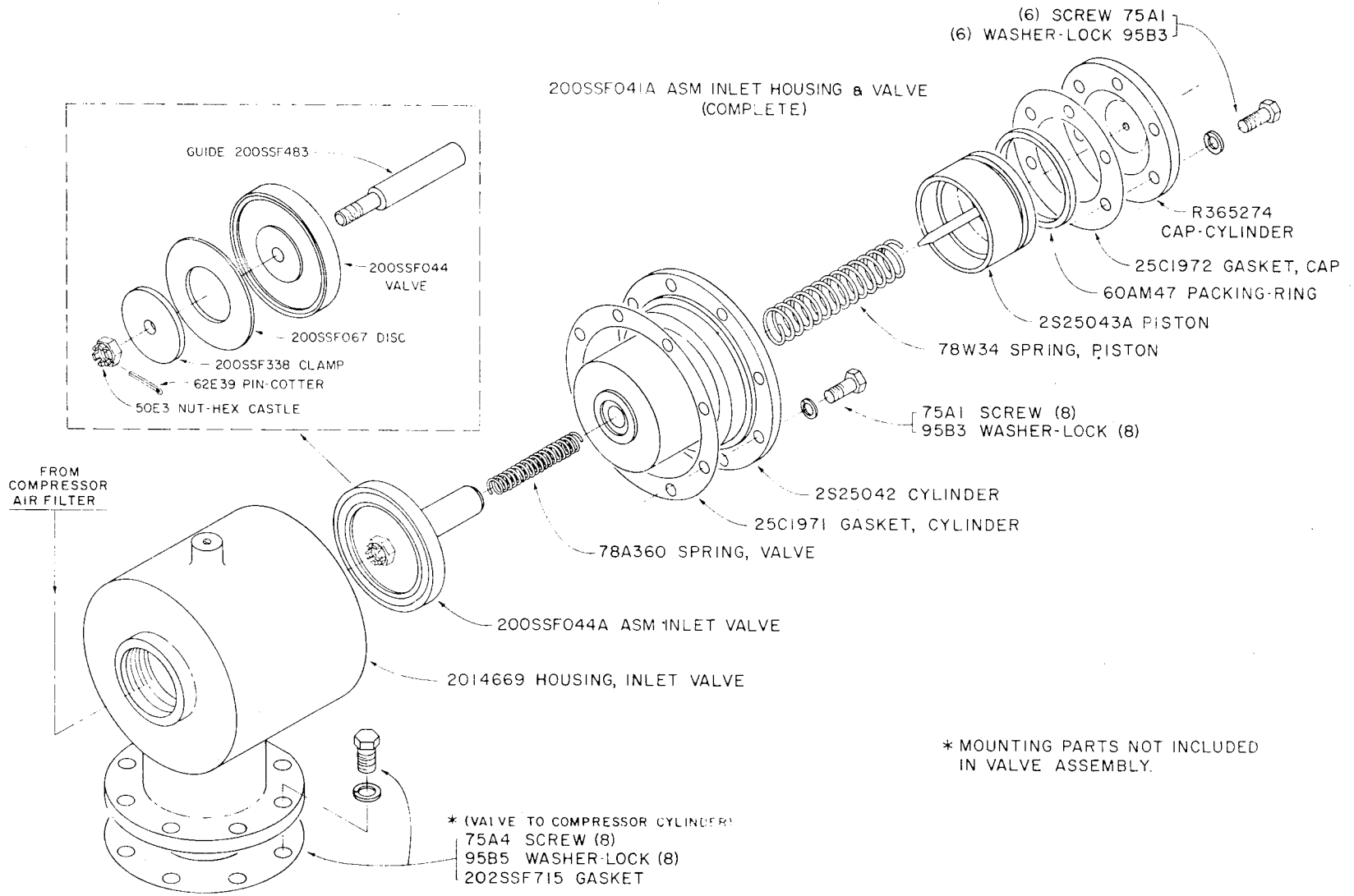
ORDER BY PART NUMBER AND DESCRIPTION. REFERENCE NUMBERS FOR YOUR CONVENIENCE ONLY.



Ref. No.	Name of Part	Qty. Req. Per Comp.	Models ECF_GA, GB ECF_HA, HB ECF_JA, JB	Part No.
AIR FILTER GROUP — HEAVY DUTY				
1	BRACKET-FILTER	1		201ECF389
2	BRACKET-FILTER	1		202ECF389
‡	SCREW-HEX CAP, Bracket to Cylinder	1		75A4
‡	WASHER-PLAIN, Bracket to Cylinder	1		95A5
‡	WASHER-LOCK, Bracket to Cylinder	1		95B5
3	FILTER-AIR	1		5B476
4	BOLT-WING, Air Filter	1		2010229
5	WASHER-SEAL, Air Filter	1		2010230
6	ASM ELEMENT, Air Filter	1		2010228
7	NIPPLE-PIPE, Inlet Valve	1		63AJ40X40
8	HOSE-MOLDED, Straight	1		29Z40
9	CLAMP-HOSE	2		29B36
10	MANIFOLD-INLET	1		200ESG690
11	PLUG-SqHd PIPE, Manifold	1		64AA5
12	CLAMP-HOSE	2		29B36
13	HOSE-MOLDED, Straight	1		29Z40
‡	SCREW-HEX CAP, Filter to Bracket	4		75A1
‡	WASHER-PLAIN, Filter to Bracket	4		95A3
‡	WASHER-LOCK, Filter to Bracket	4		95B3
‡	NUT-HEX, Filter to Bracket	4		50B3
‡	INDICATOR-FILTER	1		92B7
‡	SCREW-HEX CAP, Indicator Mounting	2		75A25
‡	WASHER-LOCK, Indicator Mounting	2		95B1
‡	NUT-HEX, Indicator Mounting	2		50B1
‡	CONNECTOR-TUBE, Indicator	1		86E4
‡	TUBE, Indicator to Inlet Manifold	1		85G3X480
‡	ELBOW-TUBE, Inlet Manifold	1		86E60

‡ Not shown on illustration.
NOTE: For assembly drawing see 221ECF810.

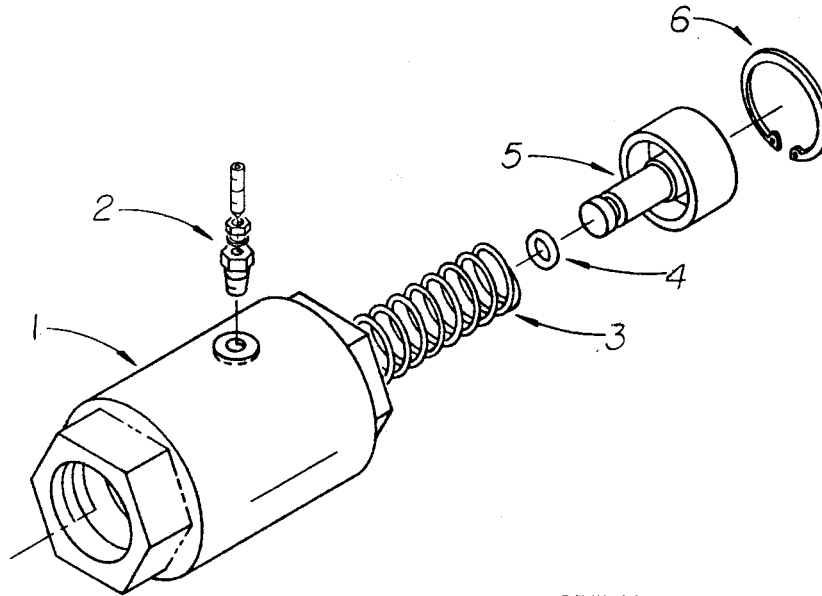
INLET VALVE & MOUNTING GROUP



139-A34-5a

D75740

ORDER BY PART NUMBER AND DESCRIPTION. REFERENCE NUMBERS FOR YOUR CONVENIENCE ONLY.

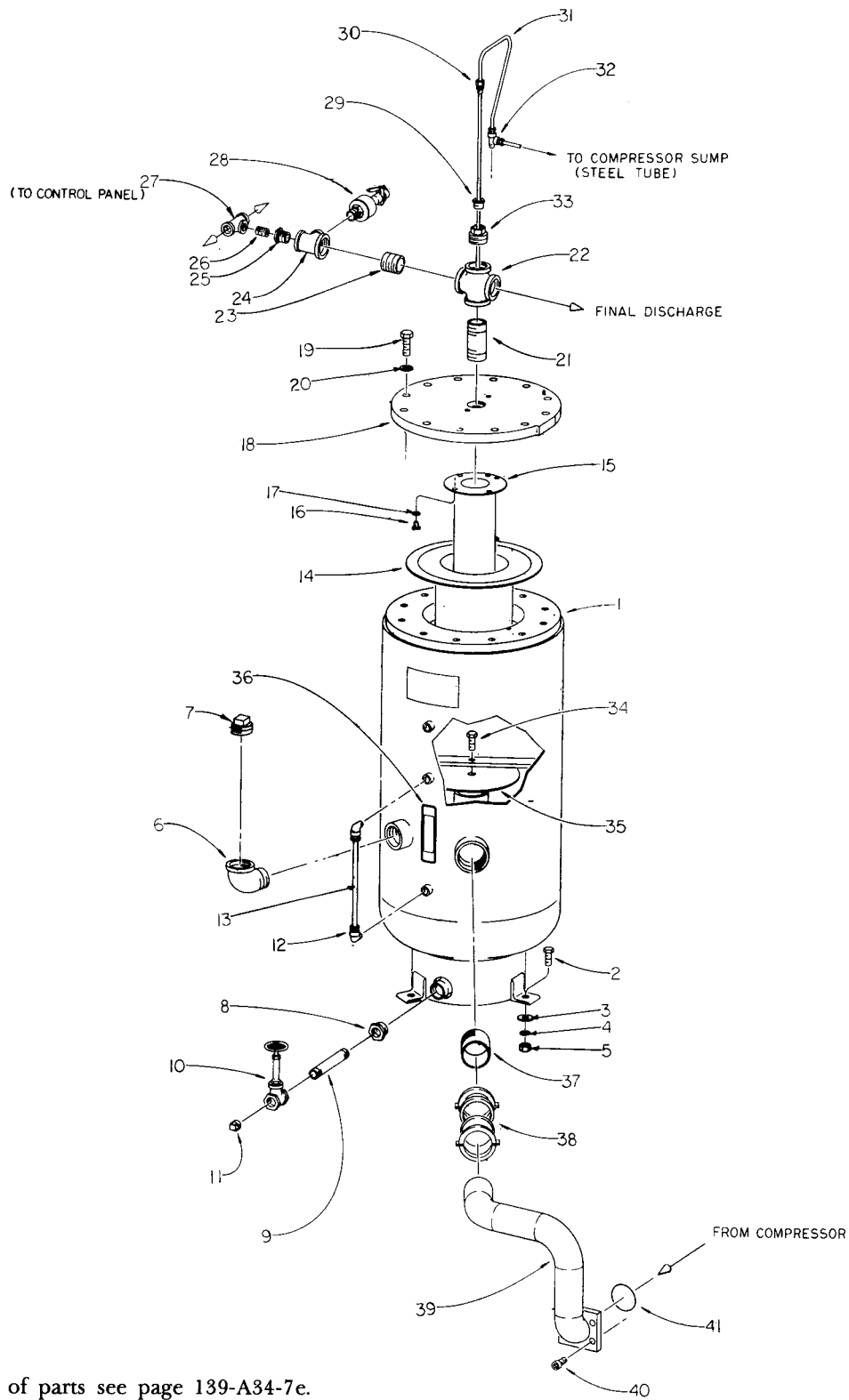


C75769X

Models
ECF__GA, GB
ECF__HA, HB
ECF__JA, JB

Ref. No.	Name of Part	Qty. Req. Per Comp.	Part No.
MINIMUM PRESSURE VALVE			
	ASM MINIMUM PRESSURE VALVE, Incl. Ref. No.		
	1 thru 6	1	200SPF527A
1	HOUSING, Valve	1	202SPF182
2	ASM ADJUSTING SCREW	1	200ESM176A
3	SPRING	1	78W13
4	O-RING	1	25AN18
5	VALVE	1	200SPF527
6	RING-RETAINING	1	65W44

RESERVOIR GROUP



For list of parts see page 139-A34-7e.

D76473

ORDER BY PART NUMBER AND DESCRIPTION. REFERENCE NUMBERS FOR YOUR CONVENIENCE ONLY.

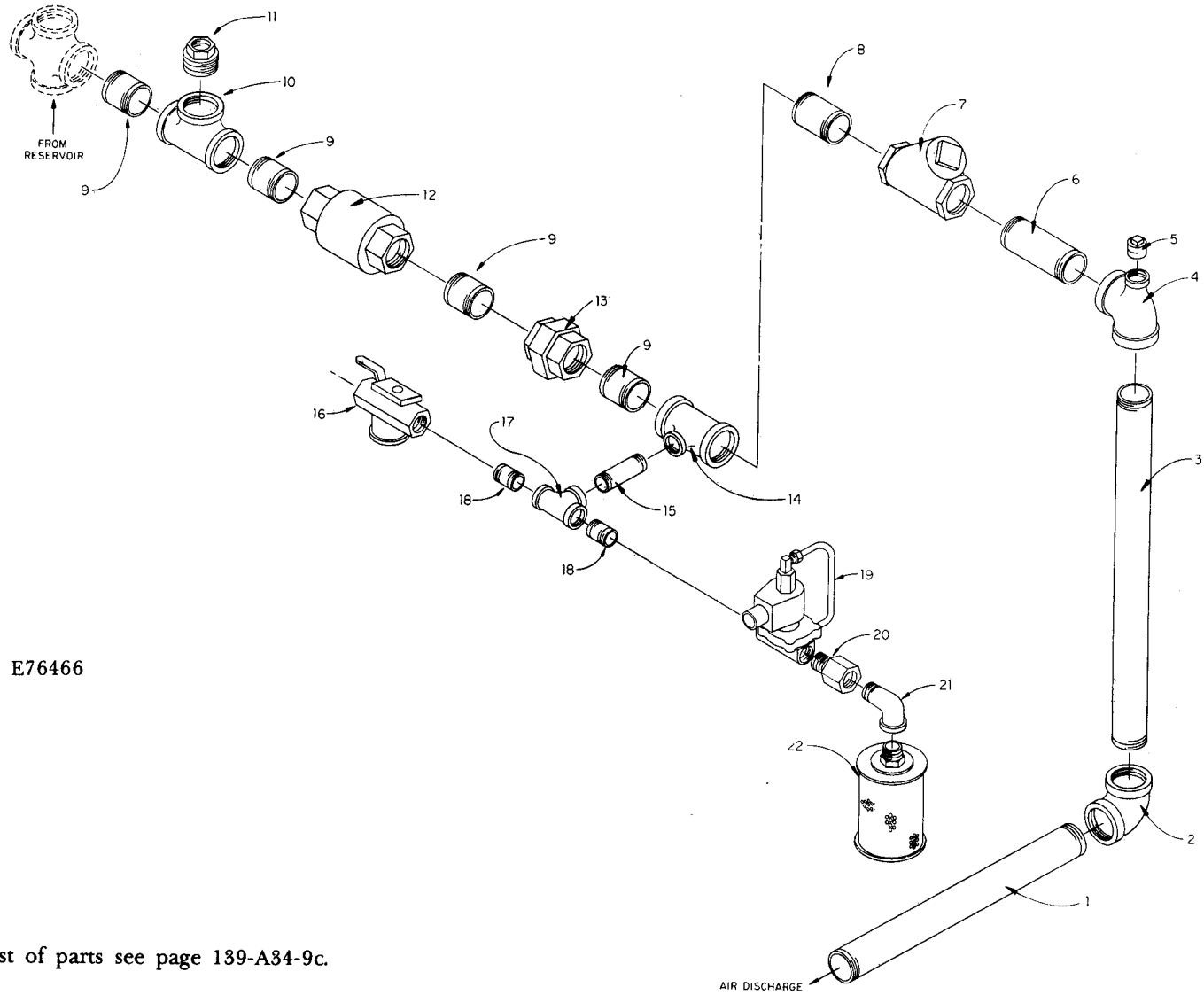
Ref. No.	Name of Part	Qty. Req. Per Comp.	Models
			ECF_GA, GB ECF_HA, HB ECF_JA, JB
RESERVOIR GROUP			
			Part No.
1	RESERVOIR	1	203ECF037
2	SCREW-HEX CAP	3	75A12
3	WASHER-PLAIN	3	95A5
4	WASHER-LOCK	3	95B5
5	NUT-HEX	3	50B5
6	ELBOW-PIPE, Fill Port	1	200LSF262
7	ASM FILLER COVER	1	200SPF156A
8	BUSHING-PIPE, Drain	1	64E14
9	NIPPLE-PIPE, Drain	1	63F10
10	VALVE-GATE, Drain	1	90L48
11	PLUG-SqHd PIPE, Drain	1	64AA7
12	ELBOW-TUBE, Oil Level Gauge	2	86E60
13	TUBE, Plastic	1	85G3X100
14	SEPARATOR-OIL, First Stage	1	55B5
‡	REPAIR KIT-OIL SEPARATOR, First Stage (Incl. Separator & Fittings)	1	2109430
15	SEPARATOR-OIL, Second Stage	1	55B17
‡	REPAIR KIT-OIL SEPARATOR, Second Stage (Incl. Separator & Fittings)	1	2109429
‡	Tube Fittings in Separator Repair Kits:		
	CONNECTOR-TUBE	1	86E48
	TUBE, Pressure	1	85G3X300
	CONNECTOR, Cover	1	86E3
16	SCREW-HEX CAP	4	75A32N
17	WASHER-PLAIN	4	95F1
18	COVER	1	201ECF225
19	SCREW-HEX CAP	12	75A17
20	WASHER-LOCK	12	95B7
21	NIPPLE-PIPE	1	63J28
22	CROSS-PIPE	1	64K19
23	NIPPLE-PIPE	1	63J15
24	TEE-PIPE	1	64P37
25	BUSHING-PIPE	1	64E3
26	NIPPLE-PIPE	1	63D1
27	TEE-PIPE	1	64G3
28	VALVE-SAFETY (115 PSIG)	1	90AR33
28	VALVE-SAFETY (135 PSIG)	1	90G261
28	VALVE-SAFETY (165 PSIG)	1	90G33
29	BUSHING-PIPE *	1	64E23
30	CONNECTOR *	1	86N15
31	TUBE-FORMED, Second Stage Separator *	1	200ECF857
32	TEE-TUBE, Cover	1	86E133
‡	TUBE, To Compressor (Steel)	1	85E4A350
‡	ELBOW-TUBE	1	86E59
33	BUSHING-PIPE	1	64E17
34	SCREW-HEX CAP, Deflector	1	75A12
35	DEFLECTOR	1	200ECF104
36	PLATE-DATA	1	200ESG454
37	NIPPLE-PIPE	1	63AJ32X40
38	COUPLING-FLEXIBLE, Manifold to Inlet	1	2009589
39	MANIFOLD-DISCHARGE, Compressor	1	200ECF071
40	SCREW-SoHd CAP, Manifold to Compressor	4	75P76N
41	O-RING, Manifold to Compressor	1	25AH6
‡	SWITCH, High Temperature Shutdown	1	21D23

‡ Not shown on illustration.

* When ordering formed tube for repair, also order related tube fittings as shown on illustration.

NOTE: For assembly drawing see 212ECF810.

AIR DISCHARGE PIPING
(Air or Water Cooled Without Aftercooler)



E76466

For list of parts see page 139-A34-9c.

139-A34-9b

GARDNER-DENVER COMPRESSOR

139-A34-9b
June, 1981

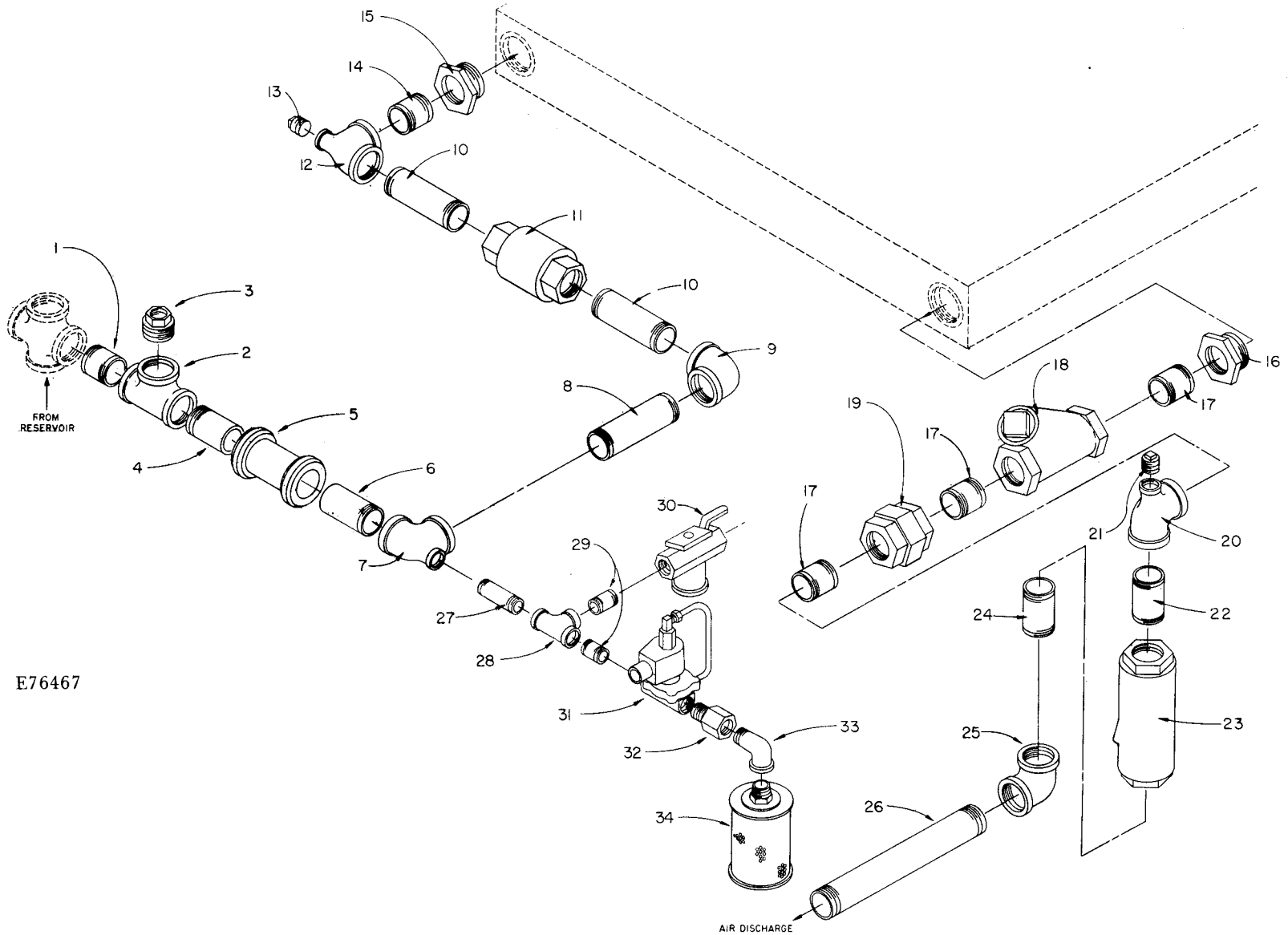
ORDER BY PART NUMBER AND DESCRIPTION. REFERENCE NUMBERS FOR YOUR CONVENIENCE ONLY.

Ref. No.	Name of Part	Qty. Req. Per Comp.	Models
			ECF_GA, GB ECF_HA, HB ECF_JA, JB
AIR DISCHARGE PIPING			Part No.
(Air or Water Cooled Without Aftercooler)			
1	NIPPLE-PIPE	1	63N20X150
2	ELBOW-PIPE	1	64C7
3	NIPPLE-PIPE	1	63N20X196
4	TEE-PIPE, Reducing	1	64P34
5	PLUG-SqHd PIPE	1	64AA7
6	NIPPLE-PIPE	1	63AA13
7	VALVE-CHECK	1	90J131
8	NIPPLE-PIPE	1	63J26
9	NIPPLE-PIPE	4	63J15
10	TEE-PIPE	1	64G9
11	BUSHING-PIPE	1	64E17
‡	SWITCH-TEMP, High Temperature Shutdown *	1	21D23
12	ASM MINIMUM PRESSURE VALVE	1	See 139-A34-6a
13	UNION-STRAIGHT	1	64Z7
14	TEE-PIPE, Reducing	1	64P36
15	NIPPLE-PIPE	1	63F3
16	VALVE-AIR CONTROL, Manual Blowdown	1	90A37
17	TEE-PIPE	1	64G6
18	NIPPLE-PIPE	2	63F21
19	VALVE-SOLENOID, Blowdown — Nema 1	1	90AC162
19	VALVE-SOLENOID, Blowdown — Nema 4	1	90AC163
20	ORIFICE	1	2011762
21	ELBOW-PIPE STREET	1	64D5
22	MUFFLER	1	43F6
‡	BRACKET-PIPE, Final Discharge	1	203ESG108
‡	BOLT-U, Pipe to Bracket	1	15U72
‡	SCREW-HEX CAP, Bracket to Control Support	2	75A1
‡	WASHER-PLAIN, Bracket to Control Support	4	95A3
‡	WASHER-LOCK, Bracket to Control Support	4	95B3
‡	NUT-HEX, Bracket to Control Support	4	50B3

‡ Not shown on illustration.

* Probe installed in Bushing (Ref. No. 11), Switch mounted on Control Panel Support Bracket.

AIR DISCHARGE PIPING
(Air Cooled With Aftercooler)



139-A34-10d

E76467

For list of parts see page 139-A34-10e.

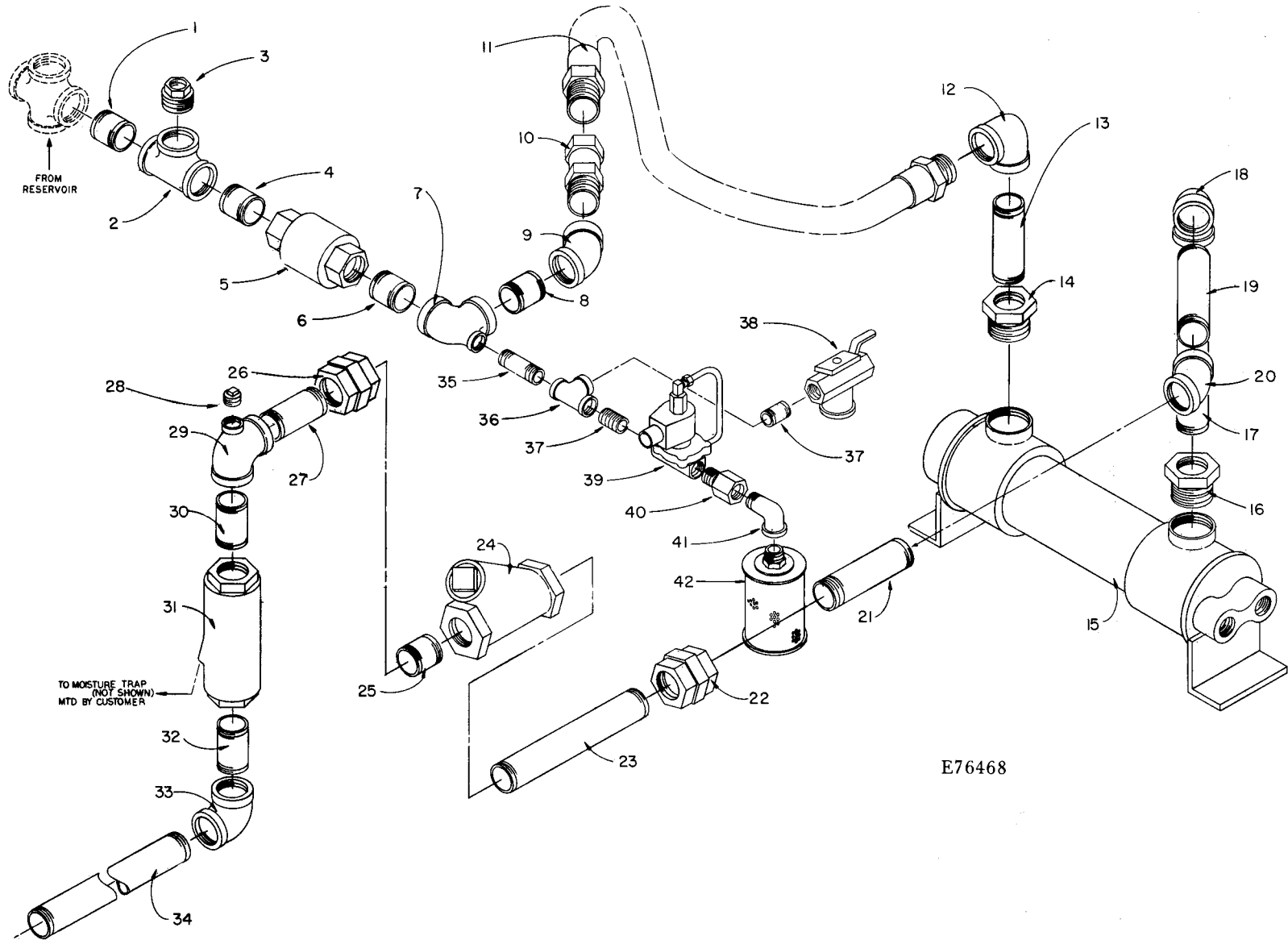
ORDER BY PART NUMBER AND DESCRIPTION. REFERENCE NUMBERS FOR YOUR CONVENIENCE ONLY.

Ref. No.	Name of Part	Qty. Req. Per Comp.	Models
			ECFQGA, GB ECFQHA, HB ECFQJA, JB
AIR DISCHARGE PIPING (Air Cooled with Aftercooler)			Part No.
(Reservoir to Aftercooler)			
1	NIPPLE-PIPE	1	63J15
2	TEE-PIPE	1	64G9
3	BUSHING-PIPE	1	64E17
‡	SWITCH-TEMP, High Temperature Shutdown *	1	21D23
4	NIPPLE-PIPE, Half	1	63AJ20X24
5	COUPLING-FLEXIBLE	1	64DZ5
6	NIPPLE-PIPE, Half	1	63AJ20X30
7	TEE-PIPE, Reducing	1	64P34
8	NIPPLE-PIPE	1	63J29
9	ELBOW-PIPE	1	64C7
10	NIPPLE-PIPE	2	63J7
11	ASM MINIMUM PRESSURE VALVE	1	See 139-A34-6a
12	TEE-PIPE, Reducing	1	64P34
13	PLUG-SqHd PIPE	1	64AA7
14	NIPPLE-PIPE	1	63J15
15	BUSHING-PIPE	1	64E31
(Aftercooler Outlet Line)			
16	BUSHING-PIPE	1	64E31
17	NIPPLE-PIPE	1	63J15
18	VALVE-CHECK, Swing	1	90J131
19	UNION-STRAIGHT	1	64Z5
20	TEE-PIPE, Reducing	1	64P34
21	PLUG-SqHd PIPE	1	64AA7
22	NIPPLE-PIPE	1	63J16
23	SEPARATOR, Moisture	1	83C22
‡	TRAP, Moisture	1	83C41
24	NIPPLE-PIPE	1	63J5
25	ELBOW-PIPE	1	64C7
26	NIPPLE-PIPE	1	63N20X150
‡	BRACKET-PIPE, Final Discharge	1	203ESG108
‡	BOLT-U, Discharge Pipe to Bracket	1	15U72
‡	SCREW-HEX CAP, Bracket to Control Support	2	75A1
‡	WASHER-PLAIN, Bracket to Control Support	4	95A3
‡	WASHER-LOCK, Bracket to Control Support	4	95B3
‡	NUT-HEX, Bracket to Control Support	4	50B3
(Blowdown Piping)			
27	NIPPLE-PIPE	1	63F3
28	TEE-PIPE	1	64G6
29	NIPPLE-PIPE	2	63F21
30	VALVE-AIR CONTROL, Manual Blowdown	1	90A37
31	VALVE-SOLENOID, Blowdown — Nema 1	1	90AC162
31	VALVE-SOLENOID, Blowdown — Nema 4	1	90AC163
32	ORIFICE	1	2011762
33	ELBOW-PIPE STREET	1	64D5
34	MUFFLER	1	43F6

‡ Not shown on illustration.

* Probe installed in Bushing (Ref. No. 3), Switch mounted on Control Panel Support Bracket.

AIR DISCHARGE PIPING
(Water Cooled With Aftercooler)



139-A34-11b

For list of parts see page 139-A34-11c.

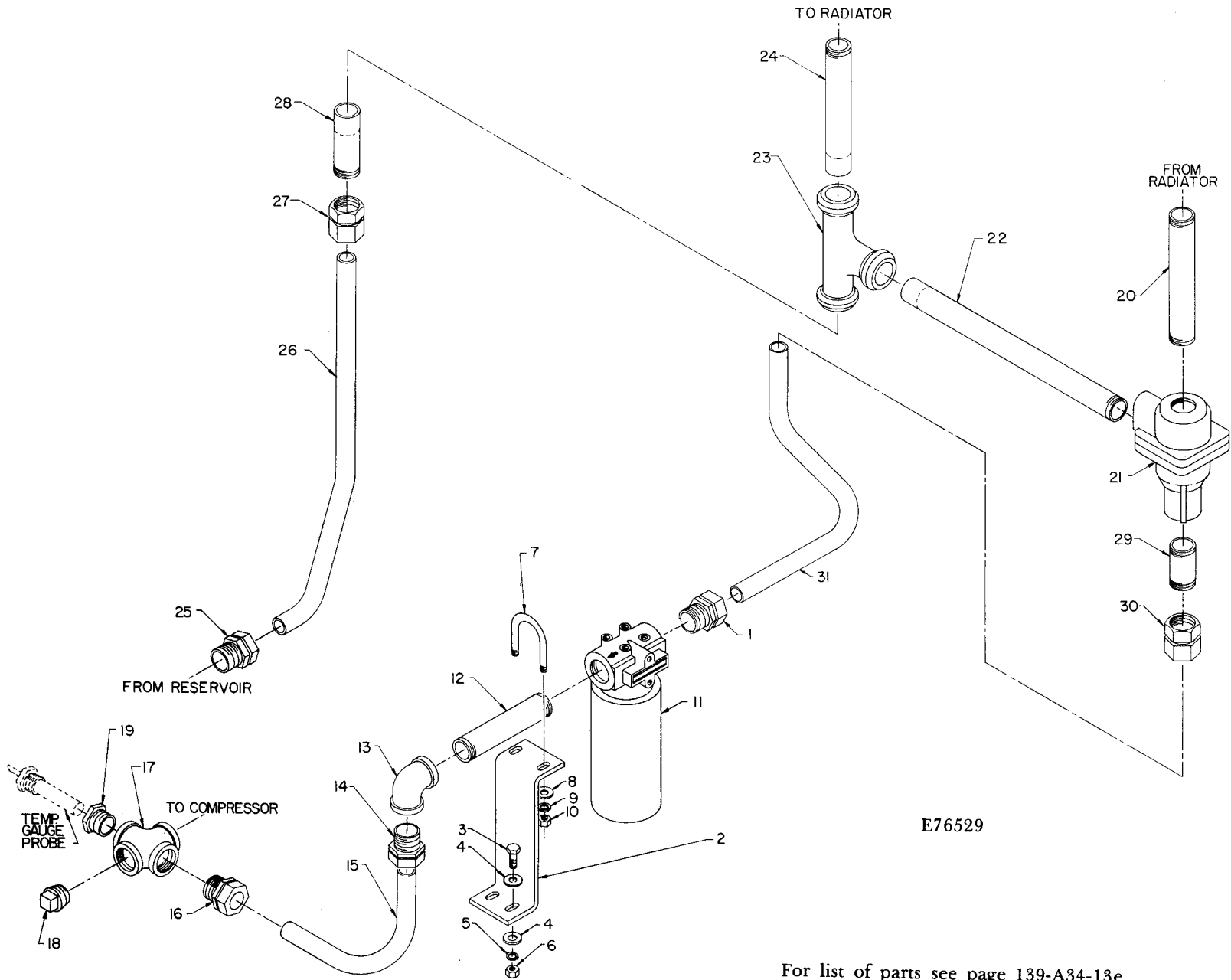
ORDER BY PART NUMBER AND DESCRIPTION. REFERENCE NUMBERS FOR YOUR CONVENIENCE ONLY.

Ref. No.	Name of Part	Qty. Req. Per Comp.	Models ECFSGA, GB ESFSHA, HB ECFSJA, JB
AIR DISCHARGE PIPING (Water Cooled with Aftercooler)			
(Reservoir to Aftercooler)			
1	NIPPLE-PIPE	1	63J15
2	TEE-PIPE	1	64G9
3	BUSHING-PIPE	1	64E17
‡	SWITCH-TEMP, High Temperature Shutdown *	1	21D23
4	NIPPLE-PIPE	1	63J15
5	ASM MINIMUM PRESSURE VALVE	1	See 139-A34-6a
6	NIPPLE-PIPE	1	63J15
7	ELBOW-PIPE, Reducing	1	64P34
8	NIPPLE-PIPE	1	63J15
9	ELBOW-PIPE, 45°	1	64V7
10	ADAPTOR-HOSE	1	29Q15
11	ASM HYDRAULIC HOSE	1	29Z174
12	ELBOW-PIPE	1	64C7
13	NIPPLE-PIPE	1	63J31
14	BUSHING-PIPE	1	64E31
15	AFTERCOOLER	1	See 139-A34-15c
(Aftercooler to Final Discharge)			
16	BUSHING-PIPE	1	64E31
17	NIPPLE-PIPE	1	63J36
18	ELBOW-PIPE	1	64C7
19	NIPPLE-PIPE	1	63J32
20	ELBOW-PIPE, 45°	1	64V7
21	NIPPLE-PIPE	1	63J4
22	UNION-STRAIGHT	1	64Z7
23	NIPPLE-PIPE	1	63J39
24	VALVE-CHECK	1	90J131
25	NIPPLE-PIPE	1	63J5
26	UNION-STRAIGHT	1	64Z7
27	NIPPLE-PIPE	1	63J15
28	PLUG-SqHd PIPE	1	64AA7
29	TEE-PIPE, Reducing	1	64P34
30	NIPPLE-PIPE	1	63J30
31	SEPARATOR, Moisture	1	83C22
‡	TRAP, Separator Moisture	1	83C41
32	NIPPLE-PIPE	1	63J7
33	ELBOW-PIPE	1	64C7
34	NIPPLE-PIPE	1	63N20X150
‡	BRACKET-PIPE, Final Discharge	1	203ESG108
‡	BOLT-U, Discharge Pipe to Bracket	1	15U72
‡	SCREW-HEX CAP, Bracket to Control Support	2	75A1
‡	WASHER-PLAIN	4	95A3
‡	WASHER-LOCK	4	95B3
‡	NUT-HEX CAP	4	50B3
(Blowdown Piping)			
35	NIPPLE-PIPE	1	63F3
36	TEE-PIPE	1	64C6
37	NIPPLE-PIPE	2	63F21
38	VALVE-AIR CONTROL, Manual Blowdown	1	90A37
39	VALVE-SOLENOID, Blowdown — Nema 1	1	90AC162
39	VALVE-SOLENOID, Blowdown — Nema 4	1	90AC163
40	ORIFICE	1	2011762
41	ELBOW-PIPE STREET	1	64D5
42	MUFFLER	1	43F6

‡ Not shown on illustration.

* Probe mounted in Bushing (Ref. No. 3), Switch mounted on Control Panel Support Bracket.

**OIL PIPING GROUP
(Air Cooled)**



139-A34-13d

For list of parts see page 139-A34-13e.

GARDNER-DENVER COMPRESSOR

139-A34-13d
June, 1981

ORDER BY PART NUMBER AND DESCRIPTION. REFERENCE NUMBERS FOR YOUR CONVENIENCE ONLY.

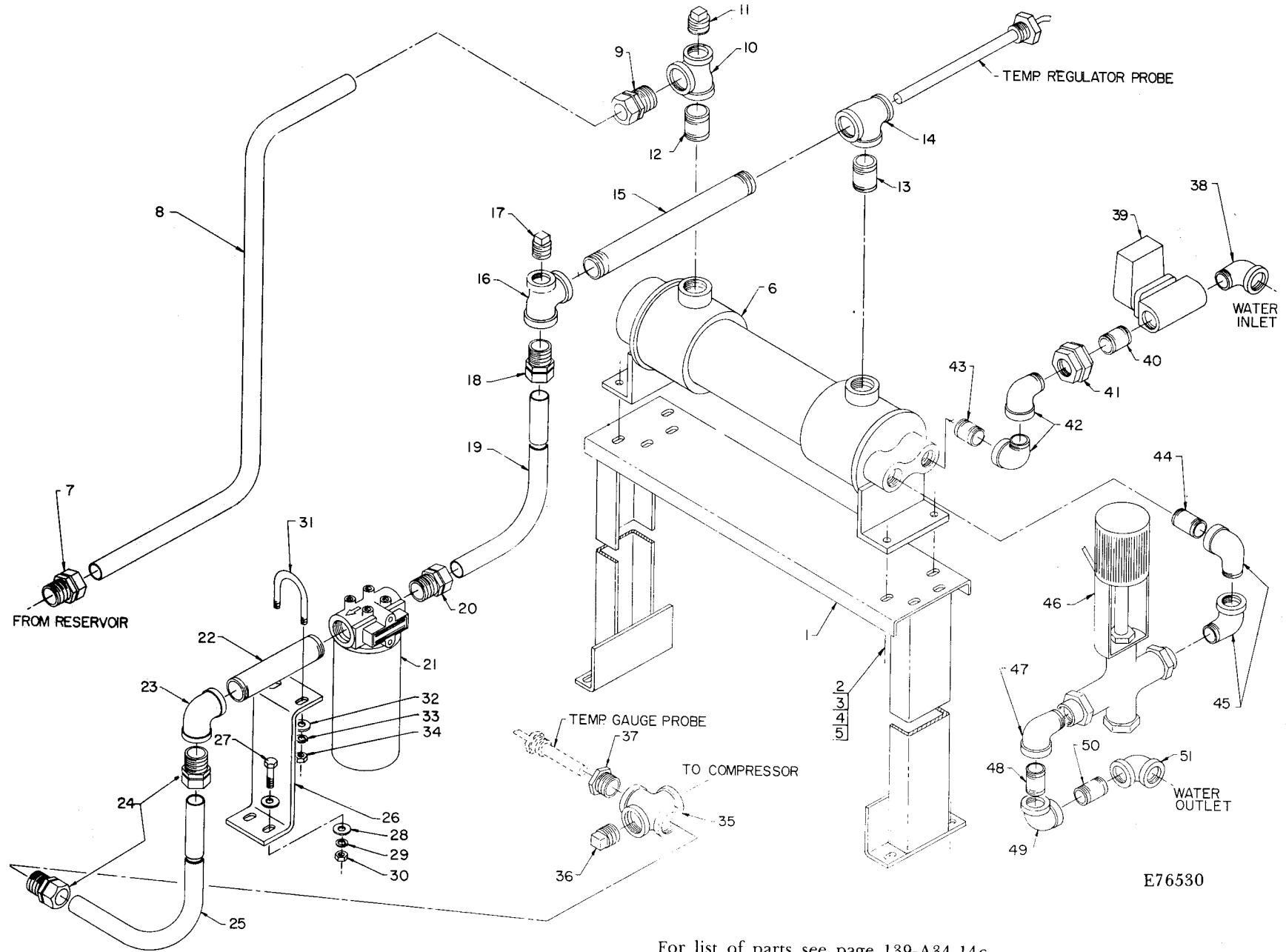
Ref. No.	Name of Part	Qty. Req. Per Comp.	Models		Models		
			ECFQGA, GB ECFQHA, HB ECFQJA, JB 30, 40, 50 HP Without Aftercooler	Part No.	ECFQGA, GB ECFQHA, HB 30 & 40 HP With Aftercooler	Part No.	ECFQJA, JB 50 HP With Aftercooler
OIL PIPING GROUP (Air Cooled)							
1	CONNECTOR-TUBE, Radiator to Filter	1	86A176		86A176		86A176
2	BRACKET-FILTER, Oil Filter Support	1	203ECF389		203ECF389		203ECF389
3	SCREW-HEX CAP, Bracket to Base	2	75A2		75A2		75A2
4	WASHER-PLAIN, Bracket to Base	4	95A3		95A3		95A3
5	WASHER-LOCK, Bracket to Base	2	95B3		95B3		95B3
6	NUT-HEX, Bracket to Base	2	50B3		50B3		50B3
7	BOLT-U, Filter Piping to Bracket	1	15U72		15U72		15U72
8	WASHER-PLAIN, U-Bolt	2	95A3		95A3		95A3
9	WASHER-LOCK, U-Bolt	2	95B3		95B3		95B3
10	NUT-HEX, U-Bolt	2	50B3		50B3		50B3
11	FILTER-OIL (For components see page 30)	1	26C15		26C15		26C15
12	NIPPLE-PIPE	1	63H20		63H20		63H20
13	ELBOW-PIPE	1	64C6		64C6		64C6
14	CONNECTOR-TUBE	1	86A176		86A176		86A176
15	TUBE-FORMED	1	202ECF857		202ECF857		202ECF857
16	CONNECTOR-TUBE	1	86A176		86A176		86A176
17	CROSS-PIPE	1	64K18		64K18		64K18
18	PLUG-SqHd PIPE	1	64AA1		64AA1		64AA1
19	BUSHING-PIPE, Temperature Probe	1	64E16		64E16		64E16
20	NIPPLE-PIPE	1	63U16X80		63U16X80		63U16X80
21	VALVE-THERMOSTATIC, Mixing	1	90AR166		90AR166		90AR166
22	NIPPLE-PIPE, Half (1 x 15-1/2)	1	63AJ16X154		63AJ16X154		63AJ16X154
23	COUPLING-FLEXIBLE, Tee	1	64EB92		64EB92		64EB92
24	NIPPLE-PIPE, Half (1 x 8)	1	63AP9X80		63AP9X80		63AP9X80
25	CONNECTOR-TUBE, Reservoir to Radiator	1	86A176		86A176		86A176
26	TUBE-FORMED, Reservoir to Radiator	1	206ECF857		206ECF857		206ECF857
27	CONNECTOR-TUBE, Reservoir to Radiator	1	86N92		86N92		86N92
28	NIPPLE-PIPE, Half	1	63AJ16X40		63AJ16X60		63AJ16X70
29	NIPPLE-PIPE, Mixing Valve to Filter	1	63H3		63H30		63H18
30	CONNECTOR-TUBE, Mixing Valve to Filter	1	86N92		86N92		86N92
31	TUBE-FORMED, Mixing Valve to Filter	1	205ECF857		205ECF857		205ECF857

139-A34-13e

GARDNER-DENVER COMPRESSOR

139-A34-13e
June, 1981

OIL & WATER PIPING
(Water Cooled Without Aftercooler)



139-A34-14b

GARDNER-DENVER COMPRESSOR

E76530

For list of parts see page 139-A34-14c.

139-A34-14b
June, 1981

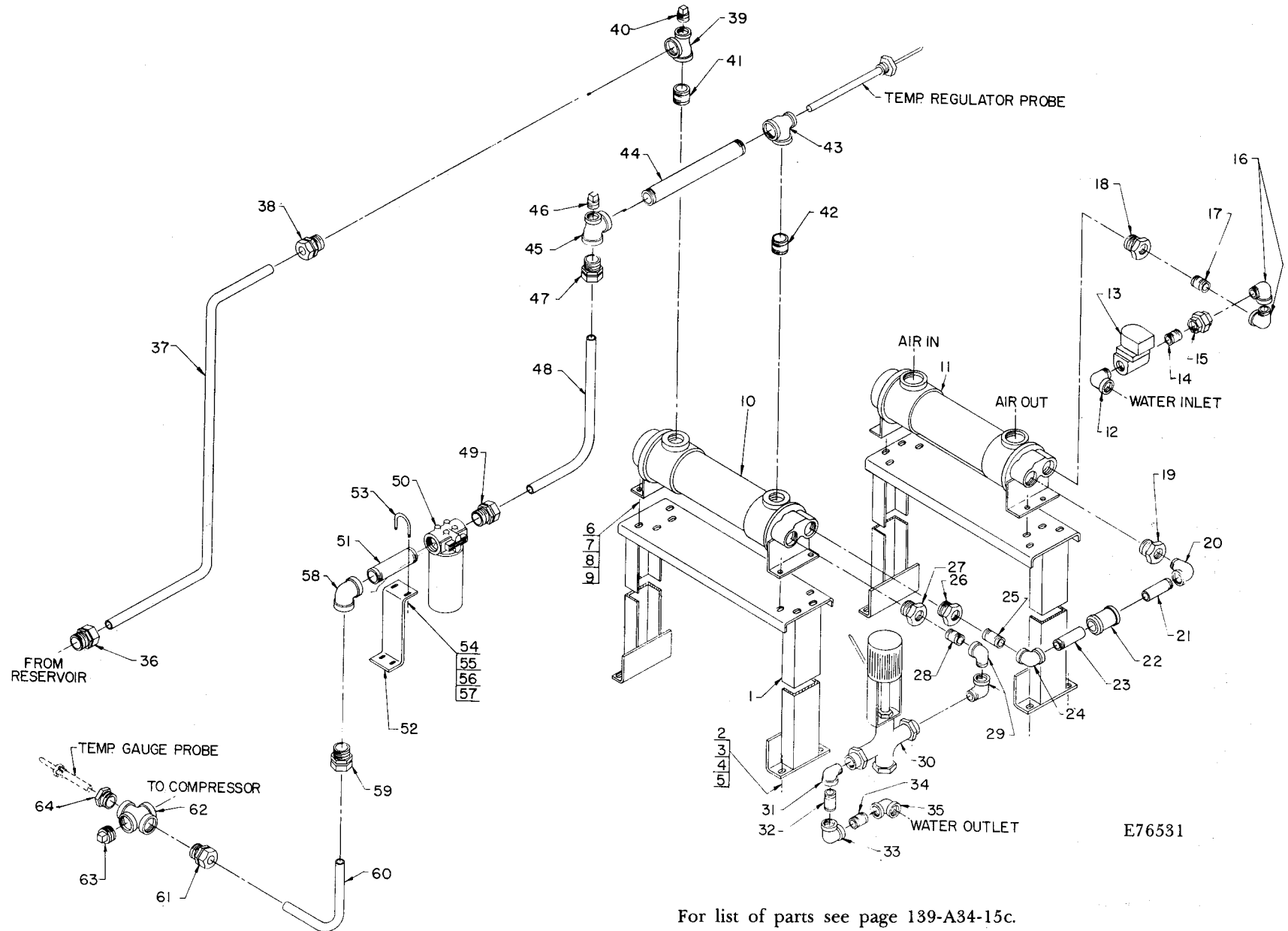
ORDER BY PART NUMBER AND DESCRIPTION. REFERENCE NUMBERS FOR YOUR CONVENIENCE ONLY.

Ref. No.	Name of Part	Qty. Req. Per Comp.	Models	Models
			ECFSGA, GB ECFSHA, HB 30, 40 HP	ECFSJA, JB 50 HP
OIL & WATER PIPING (Water Cooled Without Aftercooler)			Part No.	Part No.
1	SUPPORT	1	209ESG165	209ESG165
‡	SCREW-HEX CAP, Support to Base	4	75A2	75A2
‡	WASHER-LOCK, Support to Base	4	95B3	95B3
‡	WASHER-PLAIN, Support to Base	6	95A3	95A3
‡	NUT-HEX, Support to Base	4	50B3	50B3
2	SCREW-HEX CAP, Exchanger to Support	4	75A1	75A1
3	WASHER-PLAIN, Exchanger to Support	8	95A3	95A3
4	WASHER-LOCK, Exchanger to Support	4	95B3	95B3
5	NUT-HEX CAP, Exchanger to Support	4	50B3	50B3
6	HEAT EXCHANGER*, Thermal Transfer	1	205ESG349	202ESJ349
6	HEAT EXCHANGER*, Young	1	200ESG349	48C45
(Oil Piping — Reservoir to Heat Exchanger)				
7	CONNECTOR-TUBE	1	86A176	86A176
8	TUBE-FORMED	1	204ECF857	207ECF857
9	CONNECTOR-TUBE	1	86A176	86A176
10	TEE-PIPE, Reducing	1	64P91	64P91
11	PLUG-SqHd PIPE	1	64AA3	64AA3
12	NIPPLE-PIPE	1	63H1	63H1
(Oil Piping — Exchanger to Compressor)				
13	NIPPLE-PIPE	1	63H1	63H1
14	TEE-PIPE, Reducing	1	64P91	64P91
15	NIPPLE-PIPE	1	63N16X140	63N16X140
16	TEE-PIPE, Reducing	1	64P91	64P91
17	PLUG-SqHd PIPE	1	64AA3	64AA3
18	CONNECTOR-TUBE	1	86A176	86A176
19	TUBE-FORMED	1	201ECF857	203ECF857
20	CONNECTOR-TUBE	1	86A176	86A176
21	FILTER-OIL (For components see page 30)	1	26C15	26C15
22	NIPPLE-PIPE	1	63H20	63H20
23	ELBOW-PIPE	1	64C6	64C6
24	CONNECTOR-TUBE	2	86A176	86A176
25	TUBE-FORMED	1	202ECF857	202ECF857
26	BRACKET-FILTER, Support	1	203ECF389	203ECF389
27	SCREW-HEX CAP, Bracket to Base	2	75A2	75A2
28	WASHER-PLAIN, Bracket to Base	4	95A3	95A3
29	WASHER-LOCK, Bracket to Base	2	95B3	95B3
30	NUT-HEX CAP, Bracket to Base	2	50B3	50B3
31	BOLT-U, Filter Piping to Bracket	1	15U72	15U72
32	WASHER-PLAIN, U-Bolt	2	95A3	95A3
33	WASHER-LOCK, U-Bolt	2	95B3	95B3
34	NUT-HEX CAP, U-Bolt	2	50B3	50B3
35	CROSS-PIPE	1	64K18	64K18
36	PLUG-SqHd PIPE	1	64AA1	64AA1
37	BUSHING-PIPE, Temperature Gauge Probe	1	64E16	64E16
(Water Piping — To Heat Exchanger)				
38	ELBOW-PIPE STREET	1	64D6	64D6
39	VALVE-SOLENOID, Magnetic Water — Nema 1	1	90AC118	90AC118
39	VALVE-SOLENOID, Magnetic Water — Nema 4	1	90AC103	90AC103
39	VALVE-SOLENOID, Magnetic Water — Explosion-Proof	1	90AC108	90AC108
40	NIPPLE-PIPE	1	63G1	63G1
41	UNION-STRAIGHT	1	64Z10	6Z10
42	ELBOW-PIPE STREET	2	64D6	64D6
43	NIPPLE-PIPE	1	63G1	63G1
(Water Piping — From Heat Exchanger)				
44	NIPPLE-PIPE	1	63G2	63G2
45	ELBOW-PIPE STREET	2	64D6	64D6
46	REGULATOR-TEMPERATURE (Powers), Includes Next Item	1	90AR98	90AR98
‡	ASM STEM PACKING (Powers ONLY)	1	2109051	2109051
46	REGULATOR-TEMPERATURE (Trerice), Includes Next Item	1	90AC192	90AC192
‡	ASM STEM PACKING (Trerice ONLY)	1	2010803	2010803
47	ELBOW-PIPE STREET	1	64D6	64D6
48	NIPPLE-PIPE	1	63G2	63G2
49	ELBOW-PIPE	1	64C5	64C5
50	NIPPLE-PIPE	1	63G1	63G1
51	ELBOW-PIPE	1	64C5	64C5

‡ Not shown on illustration.

* These water-cooled units are for FRESH WATER ONLY.

OIL & WATER PIPING
(Water Cooled With Aftercooler)



For list of parts see page 139-A34-15c.

E76531

139-A34-15b

139-A34-15b
June, 1981

GARDNER-DENVER COMPRESSOR

ORDER BY PART NUMBER AND DESCRIPTION. REFERENCE NUMBERS FOR YOUR CONVENIENCE ONLY.

Ref. No.	Name of Part	Qty. Req. Per Comp.	Models ECFSGA, GB ECFSHA, HB 30, 40 HP	Models ECFSHA, JB 50 HP	Ref. No.	Name of Part	Qty. Req. Per Comp.	Models ECFSGA, GB ECFSHA, HB 30, 40 HP	Models ECFSHA, JB 50 HP
OIL & WATER PIPING (Water Cooled With Aftercooler)					OIL & WATER PIPING (Water Cooled With Aftercooler) (Continued)				
			Part No.	Part No.				Part No.	Part No.
1	SUPPORT, Heat Exchanger & Aftercooler	2	209ESG165	209ESG165	30	REGULATOR-TEMPERATURE (Trexice), Incl. Next Item	1	90AC192	90AC192
2	SCREW-HEX CAP, Support to Base	8	75A2	75A2	‡	ASM STEM PACKING (Trexice ONLY)	1	2010803	2010803
3	WASHER-PLAIN, Support to Base	8	95A3	95A3	31	ELBOW-PIPE STREET	1	64D6	64D6
4	WASHER-LOCK, Support to Base	8	95B3	95B3	32	NIPPLE-PIPE	1	63G2	63G2
5	NUT-HEX, Support to Base	8	50B3	50B3	33	ELBOW-PIPE	1	64C5	64C5
6	SCREW-HEX CAP, Exchanger & Cooler to Support	8	75A1	75A1	34	NIPPLE-PIPE	1	63G1	63G1
7	WASHER-PLAIN, Exchanger & Cooler to Support	16	95A3	95A3	35	ELBOW-PIPE	1	64C5	64C5
8	WASHER-LOCK, Exchanger & Cooler to Support	8	95B3	95B3	(Oil Piping — Reservoir to Heat Exchanger)				
9	NUT-HEX, Exchanger & Cooler to Support	8	50B3	50B3	36	CONNECTOR-TUBE	1	86A176	86A176
10	HEAT EXCHANGER*, Thermal Transfer	1	205ESG349	202ESJ349	37	TUBE-FORMED	1	204ECF858	207ECF857
10	HEAT EXCHANGER*, Young	1	200ESG349	48C45	38	CONNECTOR-TUBE	1	86A176	86A176
11	AFTERCOOLER*, Water Cooled	1	201ESG292	201ESG292	39	TEE-PIPE, Reducing	1	64P91	64P91
					40	PLUG-PIPE	1	64AA3	64AA3
					41	NIPPLE-PIPE	1	63H1	63H1
					(Oil Piping — Exchanger to Filter)				
					42	NIPPLE-PIPE	1	63H1	63H1
12	ELBOW-PIPE STREET	1	64D6	64D6	43	TEE-PIPE, Reducing	1	64P91	64P91
13	SOLENOID VALVE, Magnetic Water — Nema 1	1	90AC118	90AC118	44	NIPPLE-PIPE	1	63N16X140	63N16X140
13	SOLENOID VALVE, Magnetic Water — Nema 4	1	90AC103	90AC103	45	TEE-PIPE, Reducing	1	64P91	64P91
13	SOLENOID VALVE, Magnetic Water — Explosion Proof	1	90AC103	90AC103	46	PLUG-PIPE	1	64AA3	64AA3
14	NIPPLE-PIPE	1	63G1	63G1	47	CONNECTOR-TUBE	1	86A176	86A176
15	UNION-PIPE STRAIGHT	1	64Z10	64Z10	48	TUBE-FORMED	1	201ECF857	203ECF857
16	ELBOW-PIPE STREET	2	64D6	64D6	49	CONNECTOR-TUBE	1	86A176	86A176
17	NIPPLE-PIPE	1	63G1	63G1	(Oil Piping — Filter to Compressor)				
18	BUSHING-PIPE	1	64E16	64E16	50	FILTER-OIL (For components see page 30)	1	26C15	26C15
					51	NIPPLE-PIPE	1	63H20	63H20
19	BUSHING-PIPE	1	64E16	64E16	52	BRACKET	1	203ECF389	203ECF389
20	ELBOW-PIPE STREET	1	64D6	64D6	53	BOLT-U, Nipple to Bracket	1	15U72	15U72
21	NIPPLE-PIPE	1	63AJ12X34	63AJ12X34	54	SCREW-HEX CAP, Bracket to Base	2	75A2	75A2
22	COUPLING-FLEXIBLE	1	64DZ3	64DZ3	55	WASHER-PLAIN, U-Bolt & Bracket to Base	6	95A3	95A3
23	NIPPLE-PIPE	1	63AJ12X34	63AJ12X34	56	WASHER-LOCK, U-Bolt & Bracket to Base	4	95B3	95B3
24	ELBOW-PIPE	1	64C5	64C5	57	NUT-HEX, U-Bolt & Bracket to Base	4	50B3	50B3
25	NIPPLE-PIPE	1	63G29	63G1	58	ELBOW-PIPE	1	64C6	64C6
26	BUSHING-PIPE	1	None	64E16	59	CONNECTOR-TUBE	1	86A176	86A176
					60	TUBE-FORMED	1	202ECF857	202ECF857
					61	CONNECTOR-TUBE	1	86A176	86A176
27	BUSHING-PIPE	1	None	64E16	62	CROSS-PIPE	1	64K18	64K18
28	NIPPLE-PIPE	1	63G2	63G2	63	PLUG-PIPE	1	64AA1	64AA1
29	ELBOW-PIPE STREET	2	64D6	64D6	64	BUSHING-PIPE	1	64E16	64E16
30	REGULATOR-TEMPERATURE (Powers), Includes Next Item	1	90AR98	90AR98					
‡	ASM STEM PACKING (Powers ONLY)	1	2109051	2109051					

‡ Not shown on illustration.

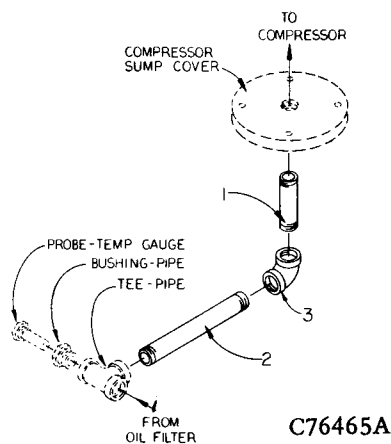
* These water-cooled units are for FRESH WATER ONLY.

139-A34-15C

GARDNER-DENVER COMPRESSOR

139-A34-15C
June, 1981

ORDER BY PART NUMBER AND DESCRIPTION. REFERENCE NUMBERS FOR YOUR CONVENIENCE ONLY.



Ref. No.	Name of Part	Qty. Req. Per Comp.	Models ECF_GA, GB ECF_HA, HB ECF_JA, JB
OIL PIPING — SUMP (Dual Control)			
			Part No.
1	NIPPLE-PIPE	1	63G32
2	NIPPLE-PIPE	1	63H12
3	ELBOW-PIPE, Reducing	1	64S5

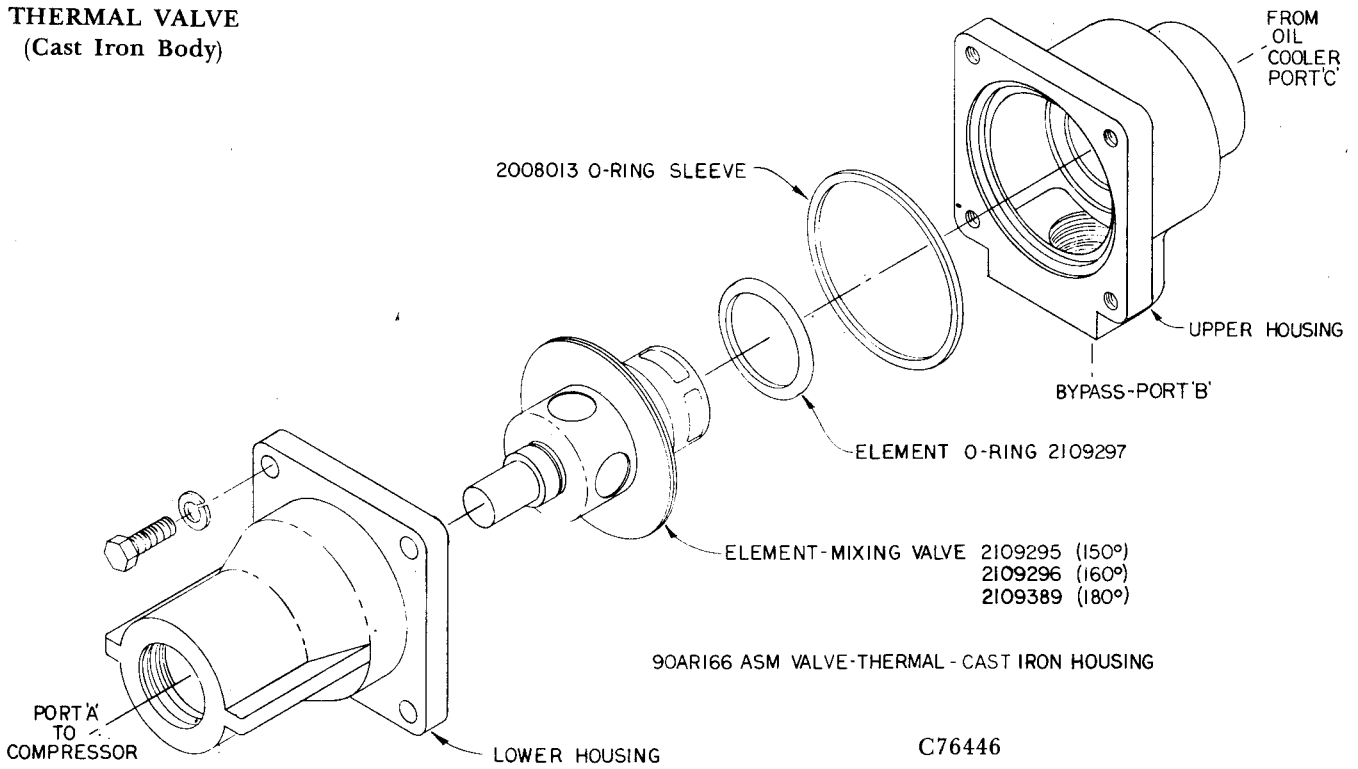
NOTE: Use this oil piping to compressor sump for constant speed, automatic start/stop and dual controls.

**SELECTIVE ITEMS — WATER-COOLED UNITS
(Fresh Water Service)**

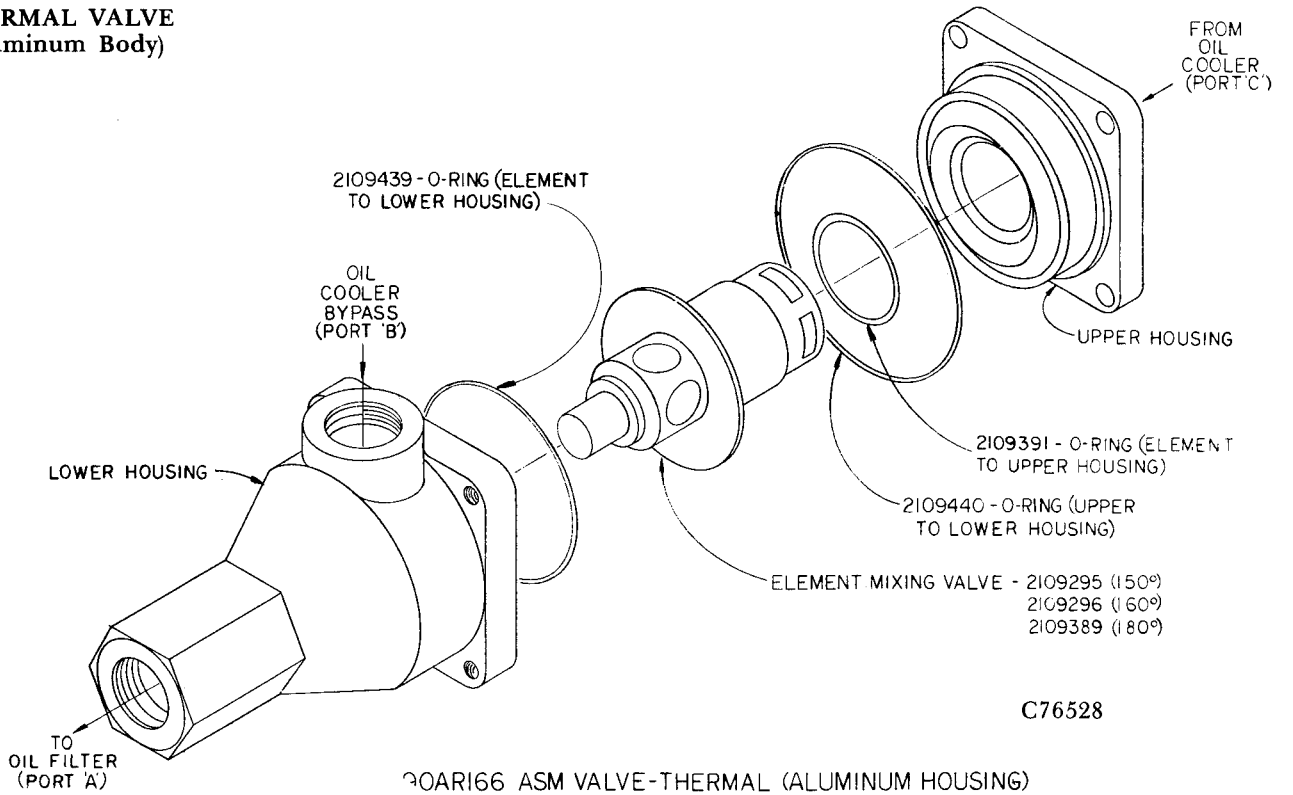
Name of Part	Models ECF_GA, GB ECF_HA, HB 30, 40 HP	Models ECF_GA, GB ECF_HA, HB 30, 40 HP	Model ECF_JA, JB 50 HP	Model ECF_JA, JB 50 HP
	(Young)	(Thermal Transfer)	(Young)	(Thermal Transfer)
HEAT EXCHANGER, Incl. next 6 Parts	200ESG349	205ESG349	48C45	202ESJ349
BRACKET, Mounting (2)	2010319	2109056	2010214	2109062
GASKET, Inlet-Outlet	2010316	2109052	2010211	2109058
BONNET, Inlet-Outlet	2010314 *	2109054	2010210 *	2109060
GASKET, Return	2010317	2109053	2010213	2109059
BONNET, Return	2010315 *	2109055	2010212 *	2109061
ANODE-ZINC (2)	2010283	2109057	2010283	2109057
AFTERCOOLER, Incl. next 6 Parts	-----	201ESG292	-----	201ESG292
BRACKET, Mounting (2)	-----	2109062	-----	2109062
GASKET, Inlet-Outlet	-----	2109058	-----	2109058
BONNET, Inlet-Outlet	-----	2109060	-----	2109060
GASKET, Return	-----	2109059	-----	2109059
BONNET, Return	-----	2109061	-----	2109061
ANODE-ZINC (2)	-----	2109057	-----	2109057

* When purchasing Bonnet for "YOUNG" Heat Exchangers, Gasket and Pipe Plugs are included.

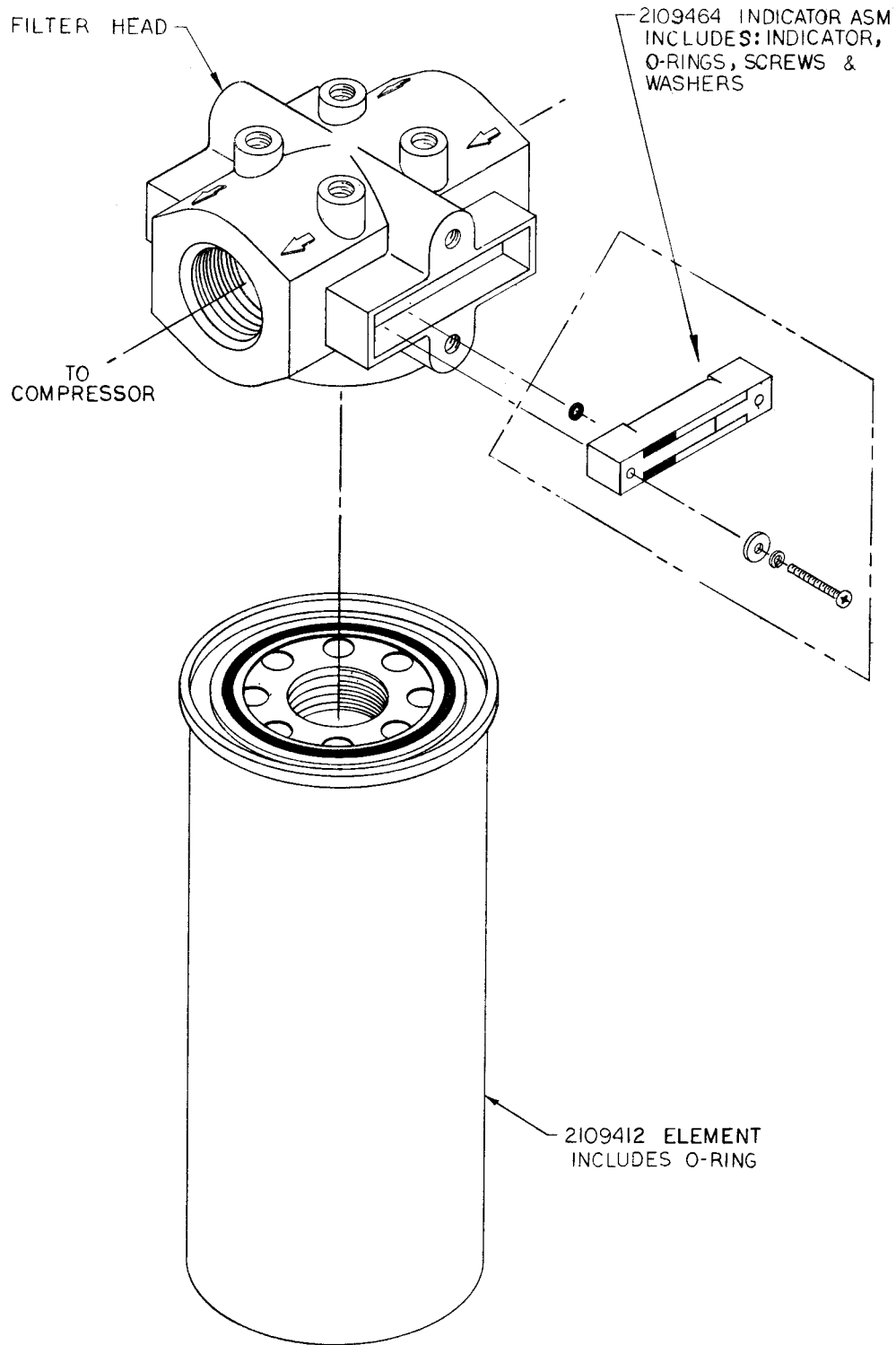
THERMAL VALVE
(Cast Iron Body)



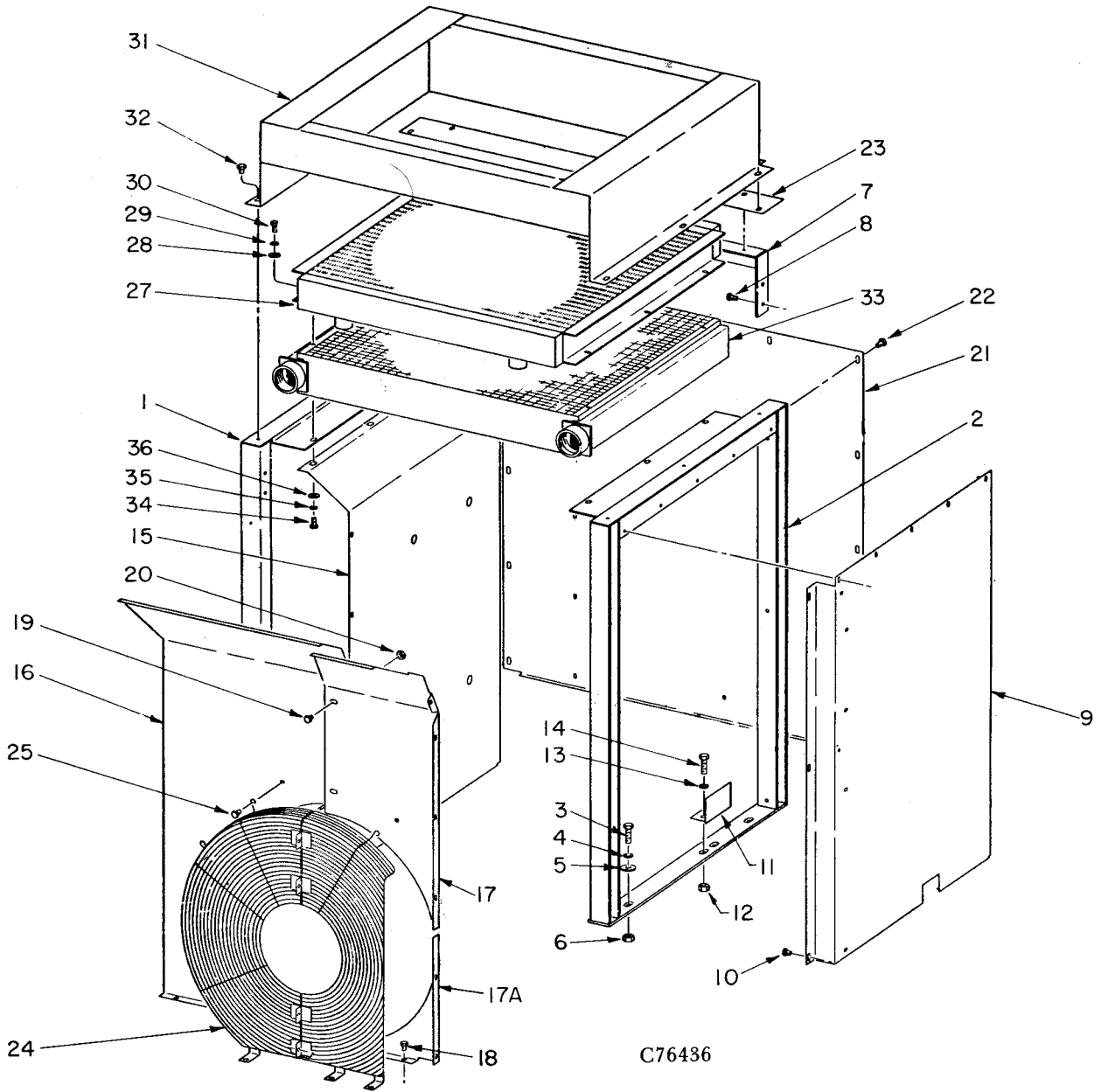
THERMAL VALVE
(Aluminum Body)



OIL FILTER — 26C15



RADIATOR GROUP



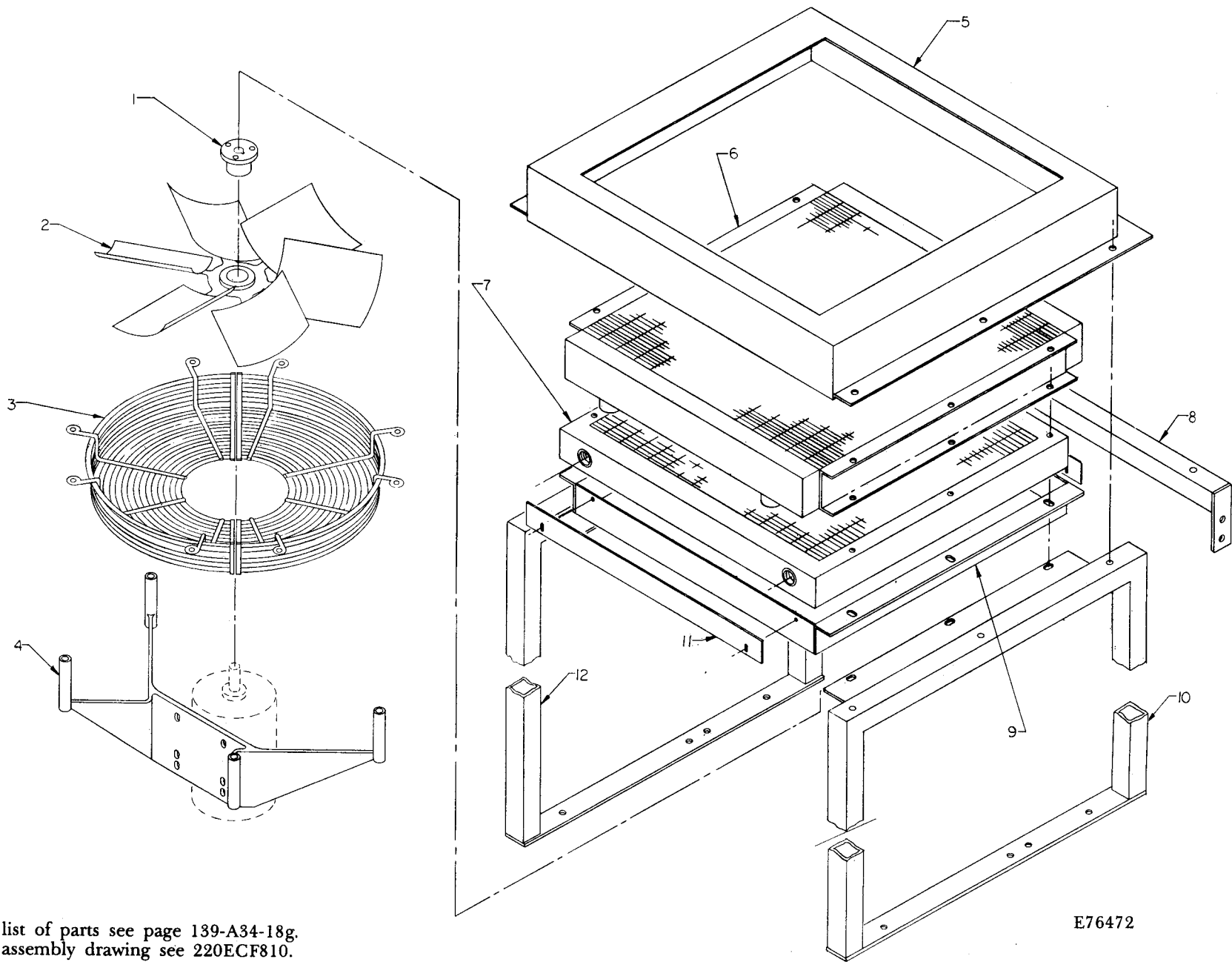
For list of parts see page 139-A34-18e.

ORDER BY PART NUMBER AND DESCRIPTION. REFERENCE NUMBERS FOR YOUR CONVENIENCE ONLY.

Ref. No.	Name of Part	Qty. Req. Per Comp.	Models	
			ECF__GA ECF__HA ECF__JA With Aftercooler	ECF__GA ECF__HA ECF__JA Without Aftercooler
RADIATOR (Oil Cooler) GROUP				
			Part No.	Part No.
1	SUPPORT, Right Hand	1	200ESJ165	200ESJ165
2	SUPPORT, Left Hand	1	201ESJ165	201ESJ165
3	SCREW-HEX CAP, Supports to Base	8	75A20	75A20
4	WASHER-LOCK, Supports to Base	8	95B5	95B5
5	WASHER-PLAIN, Supports to Base	8	95A5	95A5
6	NUT-HEX, Supports to Base	8	50B5	50B5
7	BRACE	1	200ESJ326	200ESJ326
8	SCREW-TAPPING, Brace to Support	4	75LM72	75LM72
9	DUCT, Left Hand Panel	1	200ECF856	200ECF856
10	SCREW-TAPPING, Duct to Support	6	75LM70	75LM70
‡	SCREW-TAPPING, Duct to Support	5	75LM39	75LM39
11	PLATE, Cover Mounting Pads	1	200ECF247	200ECF247
12	NUT-HEX, Plate to Base	2	50B5	50B5
13	WASHER-LOCK, Plate to Base	2	95B5	95B5
14	SCREW-HEX CAP, Plate to Base	2	75A12	75A12
15	PANEL, Air Duct — Right Hand	1	201ECF216	201ECF216
‡	SCREW-TAPPING, Duct to Base	4	75LM70	75LM70
16	DUCT, Orifice Half	1	202ECF856	202ECF856
17	DUCT, Orifice Half	1	201ECF856	201ECF856
17A	DUCT, Orifice	1	208ECF856	208ECF856
18	SCREW-TAPPING, Duct to Base	5	75LM70	75LM70
‡	SCREW-TAPPING, Orifice Halves to Panel	11	75LM39	75LM39
19	SCREW-FLANGED, Orifice Halves	2	75K54	75K54
20	NUT-FLANGED, Orifice Halves	2	50AW4	50AW4
21	PANEL, Air Duct — Rear	1	200ECF216	200ECF216
22	SCREW-TAPPING, Panel to Supports	13	75LM70	75LM70
‡	SCREW-TAPPING, Panel to Duct	6	75LM39	75LM39
23	PLATE	1	201ECF247	201ECF247
‡	SCREW-TAPPING, Plate to Supports	5	75LM70	75LM70
24	GUARD-FAN	1	200ECF393	200ECF393
25	SCREW-FLANGED, Fan Guard	7	75LM51	75LM51
‡	SCREW-HEX CAP, Guard to Guard	4	75A10	75A10
‡	WASHER-PLAIN, Guard to Guard	8	95A2	95A2
‡	WASHER-LOCK, Guard to Guard	4	95B2	95B2
‡	NUT-HEX, Guard to Guard	4	50B2	50B2
27	RADIATOR, Three Row	1	200ESH300	200ESH300
28	WASHER-PLAIN, Radiator to Support	6	95A3	95A3
29	WASHER-LOCK, Radiator to Support	6	95B3	95B3
30	SCREW-HEX CAP, Radiator to Support	6	75A5	75A2
‡	NUT-HEX, Radiator to Support	6	None	50B3
31	SHROUD	1	205ESJ647	201ESJ647
32	SCREW-TAPPING, Shroud to Support	9	75LM70	75LM70
33	AFTERCOOLER, Two Row	1	200ESG292	None
34	SCREW-HEX CAP, Aftercooler to Radiator	6	75A5	None
35	WASHER-LOCK, Aftercooler to Radiator	6	95B3	None
36	WASHER-PLAIN, Aftercooler to Radiator	6	95A3	None

‡ Not shown on illustration.

RADIATOR GROUP



139-A34-18f

For list of parts see page 139-A34-18g.
For assembly drawing see 220ECF810.

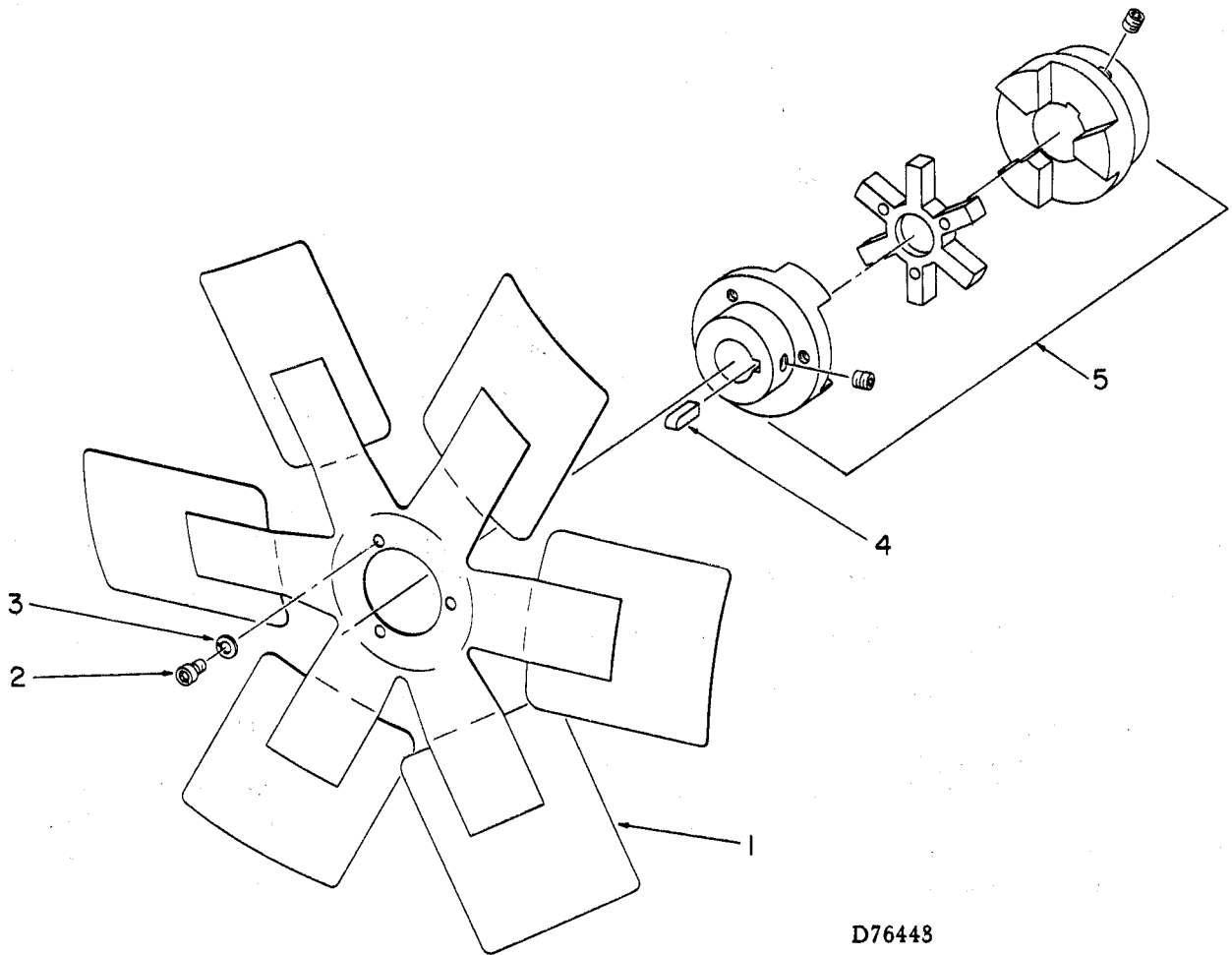
E76472

ORDER BY PART NUMBER AND DESCRIPTION. REFERENCE NUMBERS FOR YOUR CONVENIENCE ONLY.

Ref. No.	Name of Part	Qty. Req. Per Comp.	Models	
			ECF_GB ECF_HB ECF_JB With Aftercooler	ECF_GB ECF_HB ECF_JB Without Aftercooler
RADIATOR (Oil Cooler) GROUP			Part No.	Part No.
1	BUSHING-HUB	1	22G4	22G4
2	FAN (30 & 40 HP)	1	205ESG701	200ESG701
2	FAN (50 HP)	1	205ESG701	200ESJ701
3	GUARD-FAN	1	200ESJ393	200ESJ393
‡	SCREW-HEX CAP, Guard to Shroud	8	75A1	75A1
‡	WASHER-PLAIN, Guard to Shroud	8	95A3	95A3
‡	WASHER-LOCK, Guard to Shroud	8	95B3	95B3
‡	SCREW-HEX CAP, Guard Half to Guard Half	4	75A10	75A10
‡	WASHER-PLAIN, Guard Half to Guard Half	8	95A2	95A2
‡	WASHER-LOCK, Guard Half to Guard Half	4	95B2	95B2
‡	NUT-HEX, Guard Half to Guard Half	4	50B2	50B2
4	BRACKET-FAN	1	200ESJ129	200ESJ129
‡	SCREW-HEX CAP, Motor to Bracket	4	75A35	75A35
‡	WASHER-PLAIN, Motor to Bracket	4	95A2	95A2
‡	WASHER-LOCK, Motor to Bracket	4	95B2	95B2
‡	NUT-HEX, Motor to Bracket	4	50B2	50B2
‡	SCREW-HEX CAP, Bracket to Shroud	4	75AA224	75AA224
‡	WASHER-PLAIN, Bracket to Shroud	8	95A3	95A3
‡	WASHER-LOCK, Bracket to Shroud	4	95B3	95B3
‡	NUT-HEX, Bracket to Shroud	4	50B3	50B3
5	SHROUD	1	205ESJ647	201ESJ647
6	RADIATOR	1	200ESH300	200ESH300
7	AFTERCOOLER (30 & 40 HP)	1	200ESG292	None
7	AFTERCOOLR (50 HP)	1	200ESJ292	None
8	BRACE	1	200ESJ326	200ESJ326
‡	SCREW-HEX CAP, Brace to Support	4	75A10	75A10
‡	WASHER-PLAIN, Brace to Support	8	95A2	95A2
‡	WASHER-LOCK, Brace to Support	4	95B2	95B2
‡	NUT-HEX, Brace to Support	4	50B2	50B2
9	SHROUD	1	202ESJ647	202ESJ647
‡	SCREW-HEX CAP, Radiator to Shroud & Radiator to Support	See ()	75A2 (4)	75A2 (10)
‡	WASHER-PLAIN, Radiator to Shroud & Radiator to Support ...	18	95A3	95A3
‡	WASHER-LOCK, Radiator to Shroud & Radiator to Support ...	10	95B3	95B3
‡	NUT-HEX, Radiator to Shroud & Radiator to Support	See ()	50B3 (6)	50B3 (10)
‡	BRACE, Support (RH)	1	200ECF326	200ECF326
10	SUPPORT (LH)	1	200ESJ165	200ESJ165
11	BAFFLE	2	200ESG840	None
‡	SCREW-FLANGED, Baffle Mounting	4	75LM48	None
12	SUPPORT (RH)	1	200ESJ165	200ESJ165
‡	SCREW-HEX CAP, Support to Base	8	75A20	75A20
‡	WASHER-PLAIN, Support to Base	8	95A5	95A5
‡	WASHER-LOCK, Support to Base	8	95B5	95B5
‡	NUT-HEX, Support to Base	8	50B5	50B5

‡ Not shown on illustration.

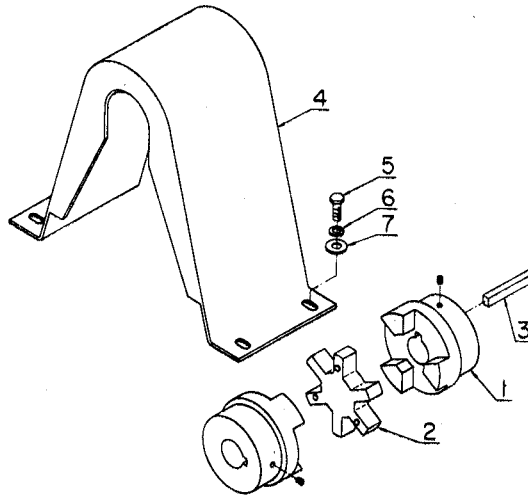
ORDER BY PART NUMBER AND DESCRIPTION. REFERENCE NUMBERS FOR YOUR CONVENIENCE ONLY.



D76448

Ref. No.	Name of Part	Qty. Req. Per Comp.	Model	Models
			ECF_GA 30 HP	ECF_HA ECF_JA 40, 50 HP
AIR-COOLED COUPLING & FAN GROUP			Part No.	Part No.
1	FAN	1	201ECF701	201ECF701
2	SCREW-SoHd CAP, Fan to Coupling	3	75P6N	75P6N
3	WASHER-LOCK, Fan to Coupling	3	95B3	95B3
4	KEY-SQUARE	1	35L24	35L24
5	COUPLING-FLEXIBLE, Compressor & Motor	1	51L38	51L37

ORDER BY PART NUMBER AND DESCRIPTION. REFERENCE NUMBERS FOR YOUR CONVENIENCE ONLY.

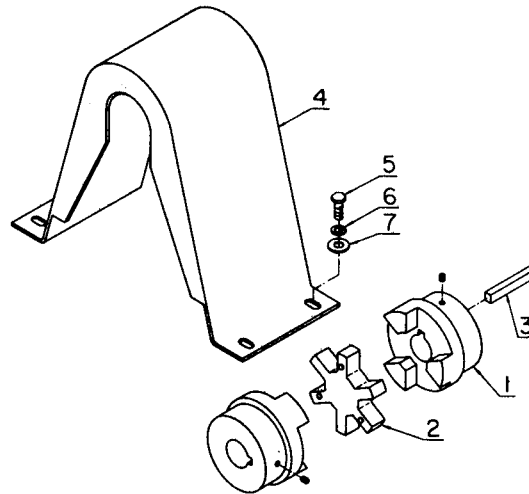


C75332

Ref. No.	Name of Part	Qty. Req. Per Comp.	Model ECF_GA 30 HP	Models ECF_HA ECF_JA 40, 50 HP
WATER-COOLED COUPLING GROUP				
			Part No.	Part No.
1	COUPLING, Incl. Ref. No. 2	1	51K12	51K11
2	SPIDER	1	2010385	2010218
3	KEY, To Compressor	1	35L24	35L24
4	ASM COUPLING GUARD	1	200ECF339A	200ECF339A
5	SCREW, Guard to Base (3/8 x 1)	4	75A1	75A1
6	WASHER-LOCK	4	95B3	95B3
7	WASHER-PLAIN	4	95A3	95A3
BASE & MOUNTING GROUP				
‡	BASE	1	200ECF285	200ECF285
‡	SCREW, Motor to Base	4	75A54	75A75
‡	WASHER-LOCK	4	95B5	95B7
‡	WASHER-PLAIN	4	95A5	95A7
‡	NUT-HEX	4	50B5	50B7
‡	SCREW, Compressor to Base (1/2 x 1)	4	75A4	75A4
‡	WASHER-LOCK (1/2)	4	95B5	95B5
‡	SHIM, Motor to Base (.003)	8	77E11	77E11
‡	SHIM, Motor to Base (.008)	8	77E12	77E12
‡	SHIM, Motor to Base (.031)	2	77E13	77E13
‡	SHIM, Motor to Base (.062)	4	77E14	77E14

‡ Not shown on illustration.

ORDER BY PART NUMBER AND DESCRIPTION. REFERENCE NUMBERS FOR YOUR CONVENIENCE ONLY.



C75332

Ref. No.	Name of Part	Qty. Req. Per Comp.	Model ECF_GB 30 HP	Models ECF_HB ECF_JB 40, 50 HP
COUPLING GROUP				
1	COUPLING, Incl. Ref. No. 2	1	51K12	51K11
2	SPIDER	1	2010385	2010218
3	KEY, To Compressor	1	35L24	35L24
4	ASM COUPLING GUARD	1	200ECF339A	200ECF339A
5	SCREW, Guard to Base (3/8 x 1)	4	75A1	75A1
6	WASHER-LOCK	4	95B3	95B3
7	WASHER-PLAIN	4	95A3	95A3
BASE & MOUNTING GROUP				
‡	BASE	1	200ECF285	200ECF285
‡	SCREW, Motor to Base	4	75A54	75A75
‡	WASHER-LOCK	4	95B5	95B7
‡	WASHER-PLAIN	4	95A5	95A7
‡	NUT-HEX	4	50B5	50B7
‡	SCREW, Compressor to Base (1/2 x 1)	4	75A4	75A4
‡	WASHER-LOCK (1/2)	4	95B5	95B5
‡	SHIM, Motor to Base (.003)	8	77E11	77E11
‡	SHIM, Motor to Base (.008)	8	77E12	77E12
‡	SHIM, Motor to Base (.031)	2	77E13	77E13
‡	SHIM, Motor to Base (.062)	4	77E14	77E14
‡	MOTOR, Enclosure Vent Fan *	1	24CA447	24CA447
‡	SPACER, Vent Fan *	1	201ECF144	201ECF144
‡	FAN, Enclosure Vent *	1	201ESG701	201ESG701

‡ Not shown on illustration.

* Water-cooled units with enclosure ONLY.

CONTROL GROUPS (30 THRU 50 HP)

Models ECF_GA, ECF_HA & ECF_JA
Models ECF_GB, ECF_HB & ECF_JB

Name of Part	Dual NEMA 1	Dual NEMA 4	Timed Duomatic NEMA 1	Timed Duomatic NEMA 4
SELECTIVE *	Part No.	Part No.	Part No.	Part No.
PANEL, Gauge	201ESG386	201ESG386	202ESG386	202ESG386
PANEL, Instrument	211ESG386	211ESG386	212ESG386	212ESG386
BOX-CONTROL	200ESG179	201ESG179	200ESG179	202ESG179
PANEL, Instrument	208ESG386	208ESG386	208ESG386	208ESG386
SWITCH, Control	24CA48	24CA48	24CA49	24CA49
LAMP, Indicator	24CA40	24CA40	24CA40	24CA40
HOURMETER (60 Hz)	2009369	2009369	2009369	2009369
HOURMETER (50 Hz)	2009370	2009370	2009370	2009370
GASKET, Hourmeter	- - - - -	201ESK715	- - - - -	201ESK715
BOOT, Transparent (Push Button or Pilot Light) ...	- - - - -	24CA281	- - - - -	24CA281
VALVE-SOLENOID (Unloader)	- - - - -	- - - - -	90AC183	2009442
VALVE-CHECK (In Blowdown Line)	- - - - -	- - - - -	2009283	2009283
VALVE-CONTROL (In Compressor Sump)	- - - - -	- - - - -	2007300	2007300
RELAY (Adjustable Timer)	- - - - -	- - - - -	24A482	24A482
BOX-CONTROL, Timer	- - - - -	- - - - -	- - - - -	200ESK179
GASKET, Control Box	- - - - -	- - - - -	- - - - -	202ESK715
COVER, Plexiglass	- - - - -	- - - - -	- - - - -	202ESK225
GASKET, Cover	- - - - -	- - - - -	- - - - -	203ESK715
SWITCH, Pressure	2009353	88A303	2009353	88A303

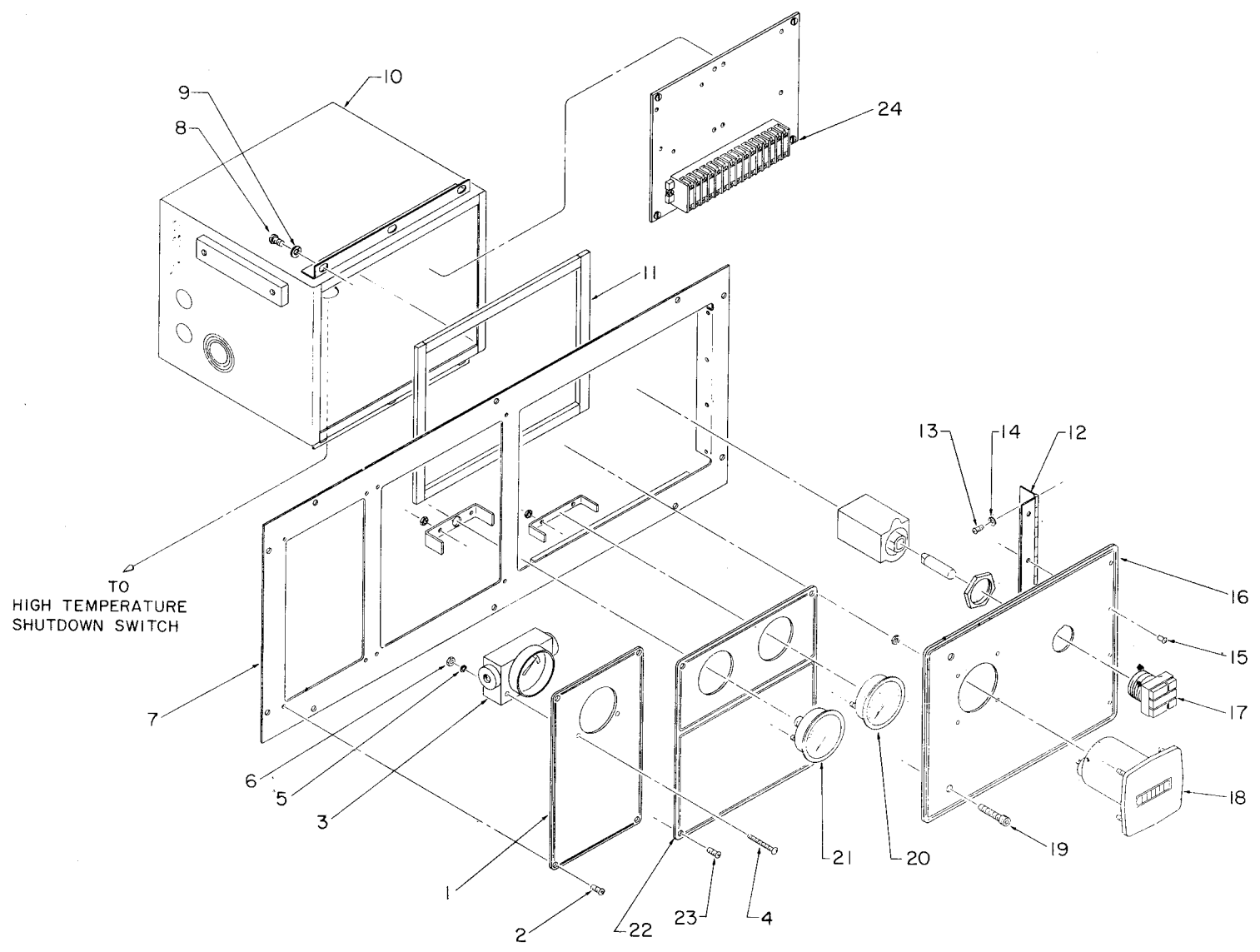
Name of Part	Low Oil Pressure Shutdown NEMA 1	Low Oil Pressure Shutdown NEMA 4
OPTIONAL †	Part No.	Part No.
SWITCH, Pressure (Oil)	88A302	88A303
BLOCK-CONTACT **	24CA217	24CA217
RELAY, Reset	24CA541	24CA541
RELAY (Adjustable Timer)	24CA285	24CA285
BOX, Control	206ESG179	206ESG179

* NEMA 1 illustrations for Panels and Tubing (with mounting parts) are shown on pages 139-A34-22b & c, -23b & c, -24b & c and -25a. For accuracy in servicing units equipped with other than NEMA 1 Controls, refer to Order Ticket or consult Quincy Sales and Service Office.

** Contact Block shown above is used with Duomatic Control only. Contact Block 24CA543 is used with other controls.

† Additional Equipment — items shown are used in conjunction with Specified Control Group.

CONTROL ASSEMBLY (Dual Control)



For list of parts see page 139-A34-22c.
For assembly drawing see 216ECF810.

E76442

139-A34-22B

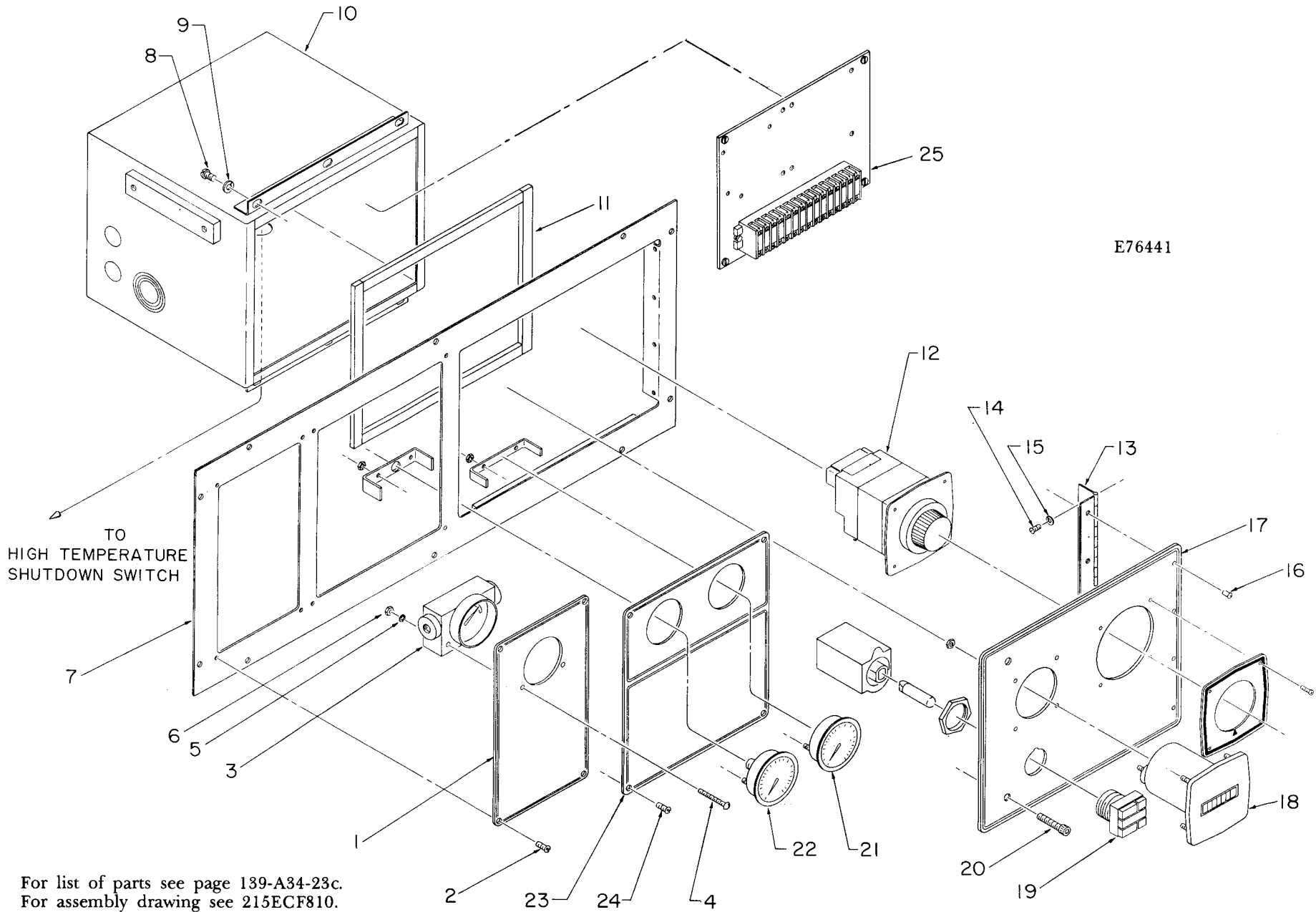
ORDER BY PART NUMBER AND DESCRIPTION. REFERENCE NUMBERS FOR YOUR CONVENIENCE ONLY.

Ref. No.	Name of Part	Qty. Req. Per Comp.	Models
			ECF__GA, GB ECF__HA, HB ECF__JA, JB
CONTROL ASSEMBLY (Dual Control)			Part No.
1	PANEL-INSTRUMENT	1	208ESG386
2	SCREW-TAPPING, Panel to Frame	4	2009516
3	GAUGE, Separator Pressure Drop	1	27P9
4	SCREW-MACHINE, Gauge to Panel	2	75LM106
5	WASHER-LOCK, Gauge to Panel	2	95B14
6	NUT-HEX MACHINE, Gauge to Panel	2	50K8
7	FRAME, Panel Support	1	202ESG314
8	SCREW-MACHINE	6	75G2
9	WASHER-LOCK	6	95H34
10	BOX-CONTROL	1	200ESG179
11	GASKET-COVER (Specify 36" Length)	1	2009592
12	HINGE, Box Lid	1	2007084
13	SCREW-TAPPING, Hinge to Plate	4	2009368
14	WASHER-LOCK, Hinge to Plate	4	95H47
15	RIVET, Hinge to Lid	4	2009307
16	PANEL-INSTRUMENT, Door	1	211ESG386
17	SWITCH	1	24CA48
18	METER-HOUR, 60 Hz	1	2009369
18	METER-HOUR, 50 Hz	1	2009370
19	SCREW-SoHd CAP	2	75P24
20	GAUGE-AIR PRESSURE	1	27P18
21	GAUGE-TEMPERATURE, Oil	1	2009490
22	PANEL-INSTRUMENT	1	201ESG386
23	SCREW-TAPPING	4	2009516
‡	LUG-TERMINAL, No. 10 Fork	1	24A477
‡	LUG-TERMINAL, No. 6 Fork	1	24A517
‡	LUG-TERMINAL, No. 6 Fork	1	24A478
‡	LUG-TERMINAL, No. 8 Fork	2	24A476
24	BLOCK-TERMINAL	15	24CA925
‡	BLOCK-TERMINAL, End	1	24CA924
‡	JUMPER, Terminal Block	6	24CA926
‡	SCREW-MACHINE	3	75G22
‡	WASHER-LOCK	3	95H41
‡	SUPPORT-CONTROL, Instrument Panel	1	207ESG146

‡ Not shown on illustration.

CONTROL ASSEMBLY
(Duomatic Control)

E76441



139-A34-23b

For list of parts see page 139-A34-23c.
For assembly drawing see 215ECF810.

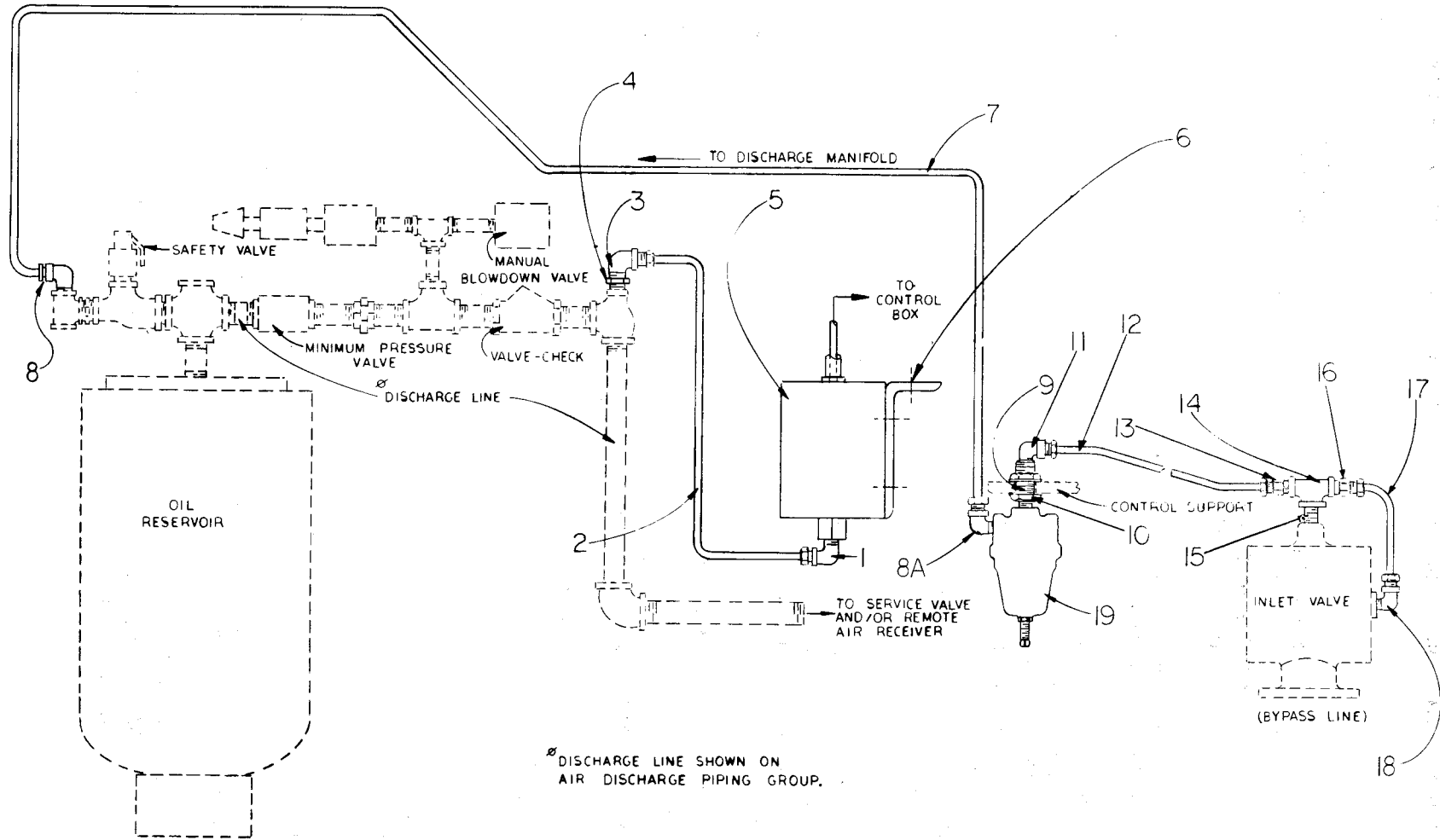
139-A34-23b
June, 1981

ORDER BY PART NUMBER AND DESCRIPTION. REFERENCE NUMBERS FOR YOUR CONVENIENCE ONLY.

Ref. No.	Name of Part	Qty. Req. Per Comp.	Models
			ECF__GA, GB ECF__HA, HB ECF__JA, JB
CONTROL ASSEMBLY			Part No.
(Duomatic Control)			
1	PANEL-INSTRUMENT	1	208ESG386
2	SCREW-TAPPING, Panel to Frame	4	2009516
3	GAUGE, Separator Pressure Drop	1	27P9
4	SCREW-MACHINE, Gauge to Panel	2	75LM106
5	WASHER-LOCK, Gauge to Panel	2	95B14
6	NUT-HEX, Gauge to Panel	2	50K8
7	FRAME, Panel Support	1	202ESG314
8	SCREW-MACHINE	6	75G2
9	WASHER-LOCK	6	95H34
10	BOX-CONTROL — Nema 1	1	200ESG179
10	BOX-CONTROL — Nema 4	1	202ESG179
11	GASKET-COVER (Specify 36" Length)	1	2009592
12	RELAY, Adjustable	1	24A482
13	HINGE, Box Lid	1	2007084
14	SCREW-TAPPING, Hinge to Plate	4	2009368
15	WASHER-LOCK, Hinge to Plate	4	95H47
16	RIVET, Pop — Hinge to Lid	4	2009307
17	PANEL-INSTRUMENT, Door	1	212ESG386
18	METER-HOUR, 60 Hz	1	2009369
18	METER-HOUR, 50 Hz	1	2009370
19	SWITCH	1	24CA49
20	SCREW-SoHd CAP, Box Lid Clamp	2	75P24
21	GAUGE-AIR PRESSURE	1	27P18
22	GAUGE-TEMPERATURE, Oil	1	2009490
23	PANEL-INSTRUMENT	1	202ESG386
24	SCREW-TAPPING, Cover to Panel	8	2009516
25	BLOCK-TERMINAL	15	24CA925
‡	BLOCK-TERMINAL, End	1	24CA924
‡	JUMPER, Terminal Block	6	24CA926
‡	SCREW-MACHINE	3	75G22
‡	WASHER-LOCK	3	95H41
‡	SUPPORT-CONTROL, Instrument Panel	1	207ESG146

‡ Not shown on illustration.

CONTROL TUBING
(Dual Control)



139-A34-24b

C76464

For list of parts see page 139-A34-24c.
For assembly drawing see 209ECF810.

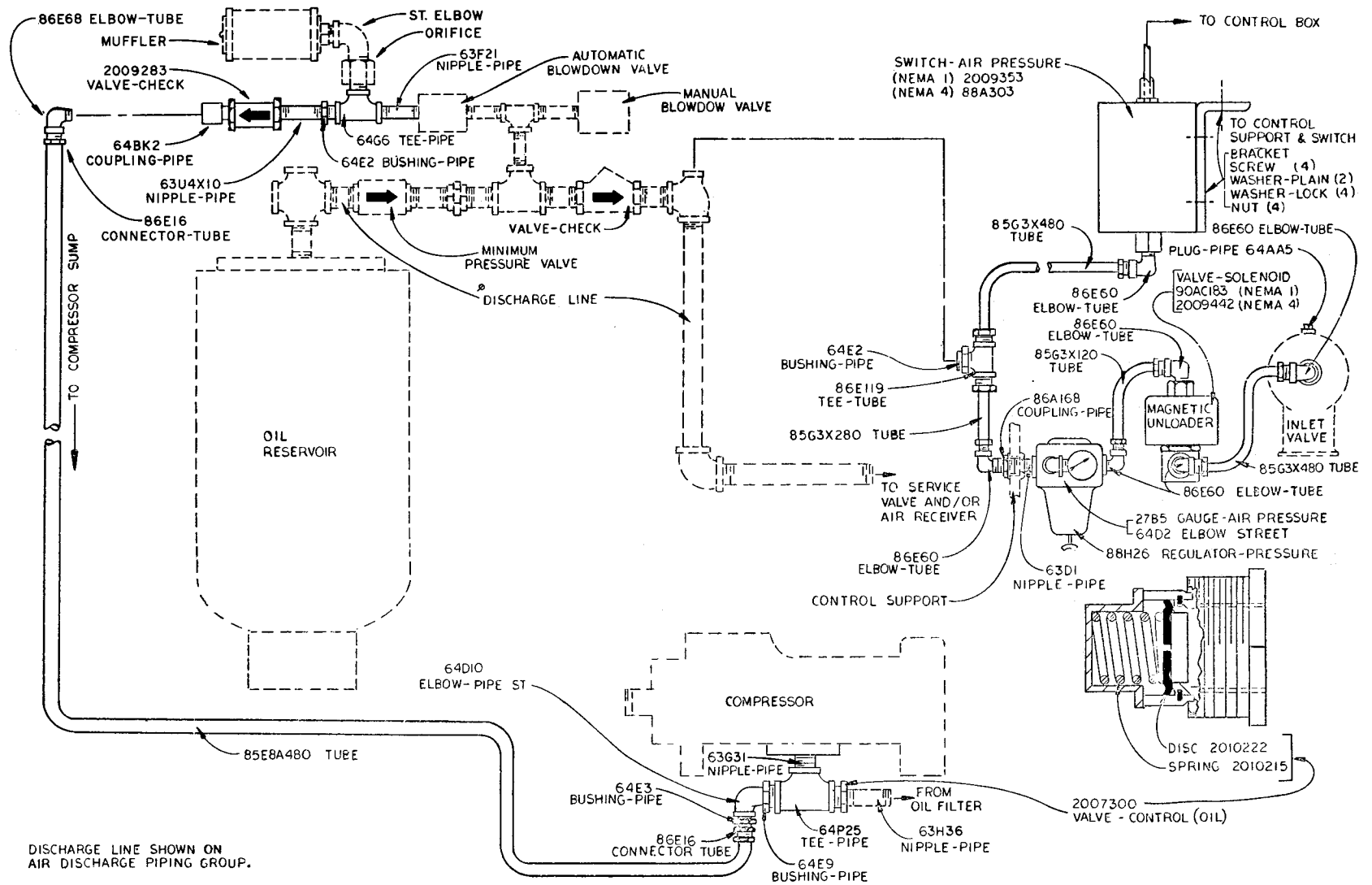
ORDER BY PART NUMBER AND DESCRIPTION. REFERENCE NUMBERS FOR YOUR CONVENIENCE ONLY.

Ref. No.	Name of Part	Qty. Req. Per Comp.	Models
			ECF__GA, GB ECF__HA, HB ECF__JA, JB
CONTROL TUBING (Dual Control)			Part No.
(Pressure Switch to Discharge)			
1	ELBOW-TUBE, Pressure Switch	1	86E60
2	TUBE	1	85G3X480
3	ELBOW-TUBE, Discharge Tee	1	86E60
4	BUSHING-PIPE, Discharge Tee	1	64E2
5	SWITCH-AIR PRESSURE — Nema 1	1	2009353
5	SWITCH-AIR PRESSURE — Nema 4	1	88A303
‡	SCREW-MACHINE, Switch to Bracket	2	75G1
‡	WASHER-LOCK, Switch to Bracket	2	95B13
‡	NUT-HEX, Switch to Bracket	2	50K1
6	BRACKET	1	200ESG141
‡	SCREW-HEX CAP, Bracket to Support	2	75A26
‡	WASHER-PLAIN, Bracket to Support	2	95A1
‡	WASHER-LOCK, Bracket to Support	2	95B1
‡	NUT-HEX	2	50B1
(Pilot to Discharge Manifold)			
7	TUBE	1	85G5X360
8	ELBOW-TUBE	1	86E64
8A	CONNECTOR-TUBE, Discharge Manifold	1	86E9
(Pilot to Inlet Valve)			
9	NIPPLE-PIPE	1	63D1
10	COUPLING-PIPE, Bulkhead	1	86A168
11	ELBOW-TUBE	1	86E64
12	TUBE	1	85G5X480
13	CONNECTOR-TUBE	1	86E9
14	TEE-BYPASS	1	64G3
15	NIPPLE-PIPE	1	63D3
(Inlet Valve Bypass)			
16	CONNECTOR-TUBE	1	86E4
17	TUBE	1	85G3X180
18	ELBOW-TUBE	1	86E60
19	VALVE-SUBTRACTIVE PILOT	1	*

‡ Not shown on illustration.

* Models ECF__GA, HA & JA use 88B40; Models ECF__GB, HB & JB use 2009398; see page 139-A34-26a for breakdown of parts.

CONTROL TUBING
(Duomatic Control)



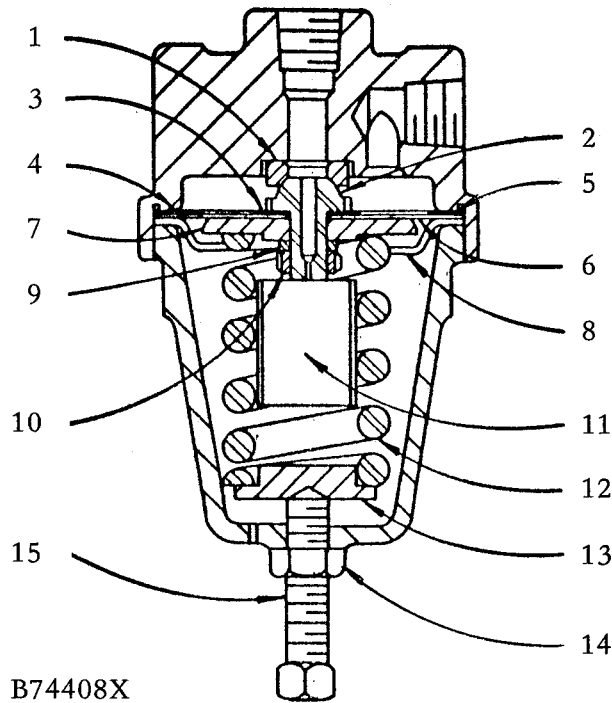
DISCHARGE LINE SHOWN ON AIR DISCHARGE PIPING GROUP.

C76438

139-A34-25a

For assembly drawing see 208ECF810.

ORDER BY PART NUMBER AND DESCRIPTION. REFERENCE NUMBERS FOR YOUR CONVENIENCE ONLY.



B74408X

Ref. No.	Name of Part	Qty. Req. Per Comp.	Early Units	Late Units
SUBTRACTIVE PILOT VALVE			Part No.	Part No.
	VALVE-SUBTRACTIVE PILOT, Incl. Ref. No. 1 thru 15		88B40	2009398
1	RING-SEAT	1	2008095	2008021
2	DISC-SEAT	1	2008094	2010080
3	GASKET-DURABLA	1	2008091	2008019
4	GASKET-DURABLA	1	2008093	2008017
5	GASKET-BRASS	1	2008090	None
6	DIAPHRAGM	See ()	2008092 (4)	2008018 (5)
7	PLATE-PRESSURE	1	2008088	2008015
8	STOP-DIAPHRAGM	1	2008089	2008016
9	WASHER-LOCK	1	- - - -	95B1
10	NUT-PRESSURE PLATE	1	- - - -	2008888
11	DAMPER	1	2008789	2008711
12	SPRING-PRESSURE	1	2008087	2008014
13	BUTTON-SPRING	1	2010049	2008891
14	LOCKNUT	1	50Y1	50Y2
15	SCREW-PRESSURE	1	2008819	2008952

NOTE: It is necessary to replace some parts in groups to insure satisfactory repair. When replacing diaphragm, also replace both diaphragm and seat gaskets. When replacing seat disc or seat ring, replace also the mating seat ring or disc and the seat disc gasket.

RECOMMENDED SPARES

The following kits are separated according to service and locations. These are made available to aid the customer in stocking parts to allow on-site maintenance and/or repair. Quantities shown are for one unit only. It is the responsibility of the Owner-Operator to apply a multiplier for multiple units, operating conditions and/or for hours of operation. Refer to Instruction Manual for recommended replacement time for critical parts. **KITS 1 and 2 DO NOT INCLUDE OIL SEPARATORS, ELECTRICAL OR CONTROL ITEMS — THESE MUST BE PURCHASED SEPARATELY.**

Ordering Instructions

KIT NO. 1 — These are suggested as the minimum quantity of parts a customer should stock. They are usually the first items which require renewal. Order quantities of this kit to suit your requirements or particular service. One kit contains three (3) oil filter elements which require changing at least every 1000 hours under normal conditions.

KIT NO. 2 — These are suggested as the minimum spares a customer should stock for continuous operation for one year. When ordering for this service, order Kits No. 1 and 2.

KITS NO. 3, 4, 5 & 6 — These are suggested as the minimum spares a customer should stock for continuous operation for two (2) years. These parts include those which possibly would need renewal in an overhaul. When ordering for this service, order Kits No. 1, 2, 3, 4, 5 and 6. Apply proper multiplier for each kit to get total quantity of parts for the operational time and number of units involved.

APPLY THE PROPER MULTIPLIER BASED ON NUMBER OF UNITS AND HOURS OF OPERATION;
Example: For four (4) units, four (4) of Kit No. 1 and only one (1) each of Kits 2 thru 6 may be sufficient.

COMPRESSOR MODEL	ECF_GA	ECF_GB	ECF_HA	ECF_HB	ECF_JA	ECF_JB
	ECF_GA	ECF_GB	ECF_HA	ECF_HB	ECF_JA	ECF_JB
	ECF_GA	ECF_GB	ECF_HA	ECF_HB	ECF_JA	ECF_JB
	ECF_GA	ECF_GB	ECF_HA	ECF_HB	ECF_JA	ECF_JB
HOURS OF OPERATION	3000	3000	9000	18000	18000	
PART NUMBER (Complete Kit) For Units						
With: Standard Air Filter	ECF71191	ECF71204	ECF71192	ECF71193	ECF74081	
Heavy-Duty Air Filter	ECF71194	ECF71194	-----	-----	-----	
Description	KIT NO. 1 Qty. Per Kit	KIT NO. 1 Qty. Per Kit	KIT NO. 2 Qty. Per Kit	KIT NO. 3 Qty. Per Kit	KIT NO. 3 Qty. Per Kit	

**KIT NO. 1 —
ROUTINE MAINTENANCE**

Air Filter Element	1	1			
Oil Filter Element	3	3			

KIT NO. 2 — PERIODIC MAINTENANCE

Compressor Shaft Seal	1				
Inlet Valve Assembly	1				
Inlet Valve Spring	1				
Inlet Valve Piston Spring	1				
Inlet Valve Packing Ring	1				
Gasket Kit	1				
Subtractive Pilot	1				

**KIT NO. 3 — PERIODIC OVERHAUL
(Mechanical)**

Gear Drive Ball Bearing (Inner)	1	1			
Gear Drive Ball Bearing (Outer)	1	1			
Roller Bearing	2	2			
Ball Bearing	4	4			
Gasket Kit	1	1			
Cushion, Coupling	1	1			

RECOMMENDED SPARES
(Continued)

COMPRESSOR MODEL	ECF_GA	ECF_GA	ECF_GA
	ECF_GB	ECF_GB	ECF_GB
	ECF_HA	ECF_HA	ECF_HA
	ECF_HB	ECF_HB	ECF_HB
	ECF_JA	ECF_JA	ECF_JA
	ECF_JB	ECF_JB	ECF_JB
HOURS OF OPERATION	18000	18000	18000
PART NO. (Complete Kit) For Units With:			
Standard Air Filter	ECF74690	ECF74085	ECF74086

Description	KIT NO. 4 Qty. Per Kit	KIT NO. 5 Qty. Per Kit	KIT NO. 6 Qty. Per Kit
-------------	---------------------------	---------------------------	---------------------------

**KIT NO. 4 —
OIL SEPARATORS**

Oil Separator (1st Stage)	1		
Oil Separator (2nd Stage)	1		
Tubing & Fittings	1 ea.		

**KIT NO. 5 —
PNEUMATIC CONTROL & GAUGE**

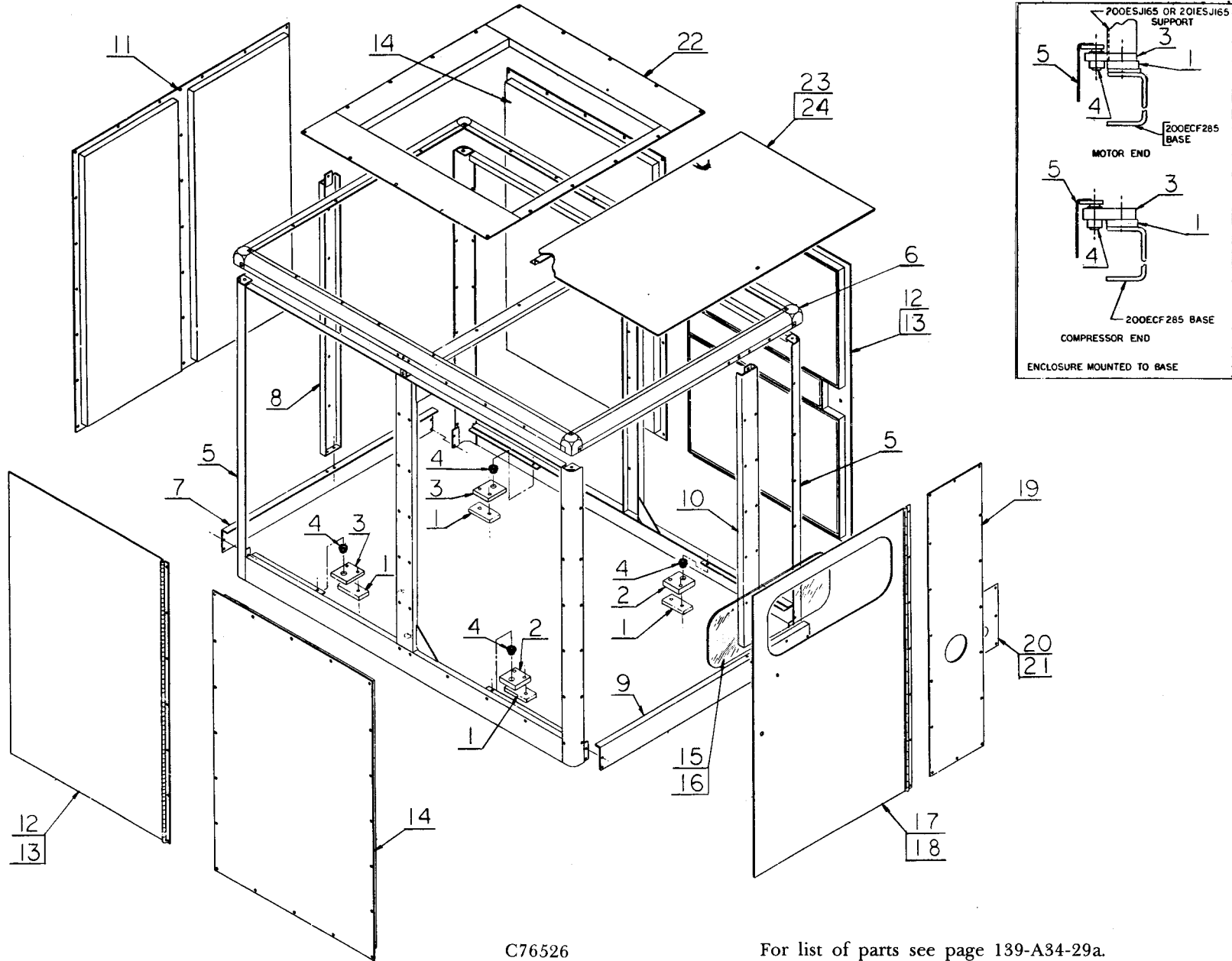
Pressure Regulator	1		
Air Pressure Gauge	1		
Solenoid (Blowdown) Valve	1		

**KIT NO. 6 —
ELECTRICAL CONTROL**

Air Pressure Switch	1		
High Air Temperature Shutdown Switch	1		

Name of Part	Qty. Req. Per Comp.	All Models ECF
IDENTIFICATION & INSTRUCTION GROUP		
		Part No.
DECAL <i>WARNING — ELECTRICAL SHOCK MAY BE FATAL</i> <i>1. This compressor must be grounded, etc.</i> <i>2. Disconnect the compressor unit, etc.</i> (Located inside Control Box Door)	1	208ESG077
DECAL <i>WARNING — 1. Electrical shock can be fatal.</i> <i>2. Open main disconnect switch, etc.</i> (Located outside Control Box)	1	202ESG077
DECAL <i>DANGER — Do not use the air discharged from this unit</i> <i>for breathing, etc.</i>	1	209SPH077
DECAL <i>USE COPPER WIRE ONLY</i> (Located outside Control Box)	1	214ESG077
DECAL <i>MAGNETIC CONTROL SYSTEM DATA PLATE</i> (Located outside Control Box Door)	1	69D38
DECAL <i>INSTALLATION (Oil Filter) (On Oil Filter Cannister)</i>	1	201ECF077
DECAL <i>Oil Filter Identification Plate (Located on Reservoir</i> <i>Mounting Frame)</i>	1	200ECF077
DECAL <i>GARDNER-DENVER (Vertical) (Located both sides</i> <i>of Frame)</i>	2	69F18
PLATE-DATA <i>CAUTION — This unit has been carefully aligned before</i> <i>shipment, etc. (Located on Reservoir Mounting Frame)</i>	1	69B16
PLATE-DATA <i>OIL LEVEL INDICATION (Located on Oil Reservoir</i> <i>at Oil Level Gauge)</i>	1	200ESG454
PLATE-NAME (Located Left Lower Front of Frame)	1	69A138
SCREW-DRIVE, Plate to Base	4	75K1
DECAL — Name Plate (Located on Air Receiver & Front Side Canopies)	3	212ESG077
TAG-INSTRUCTION, Coupling Alignment	1	200ESP304

ENCLOSURE



C76526

For list of parts see page 139-A34-29a.

139-A34-29

GARDNER-DENVER COMPRESSOR

139-A34-29
June, 1981

ORDER BY PART NUMBER AND DESCRIPTION. REFERENCE NUMBERS FOR YOUR CONVENIENCE ONLY.

Ref. No.	Name of Part	Qty. Req. Per Comp.	Models	Model	Models	Models
			ECFQGB ECFQHB Air Cooled With Aftercooler	ECFQJB Air Cooled With Aftercooler	ECFQGB ECFQHB ECFQJB Air Cooled Without Aftercooler	Models ECFSGB ECFSHB ECFSJB Water Cooled
ENCLOSURE			Part No.	Part No.	Part No.	Part No.
1	SPACER	4	200ECF144	None	None	None
2	SUPPORT, Compressor End	2	200ESG165	200ESG165	200ESG165	200ESG165
3	SUPPORT, Motor End	2	203ESG165	203ESG165	203ESG165	200ESG165
4	ISOLATOR-VIBRATION	4	49C15	49C15	49C15	49C15
5	FRAME, Side	2	200ESG314	200ESG314	200ESG314	200ESG314
6	FRAME, Top	1	201ESG314	201ESG314	201ESG314	201ESG314
7	SUPPORT, Motor End	1	201ESG165	201ESG165	201ESG165	201ESG165
8	POST, Motor End	1	200ESG313	200ESG313	200ESG313	200ESG313
9	SUPPORT, Compressor End	1	202ESG165	202ESG165	202ESG165	202ESG165
10	POST, Compressor End	1	201ESG313	201ESG313	201ESG313	201ESG313
11	PANEL, Motor End	1	204ESG216	204ESG216	204ESG216	204ESG216
12	DOOR, Side	2	201ESG334	201ESG334	201ESG334	201ESG334
13	LATCH-PAWL	2	31D9	31D9	31D9	31D9
14	PANEL, Side	2	200ESG216	200ESG216	200ESG216	200ESG216
15	PLATE-INSPECTION	1	200ESG052	200ESG052	200ESG052	200ESG052
16	MOLDING-RUBBER	1	32E4	32E4	32E4	32E4
17	DOOR, Compressor End	1	202ESG334	202ESG334	202ESG334	202ESG334
18	LATCH-PAWL	1	31D9	31D9	31D9	31D9
19	PANEL, Compressor End	1	204ECF216	204ECF216	204ECF216	204ECF216
20	PANEL	1	205ECF216	205ECF216	205ECF216	205ECF216
21	MOLDING-RUBBER	1	2009669	2009669	2009669	2009669
22	DUCT (Rectangular Opening)	1	209ECF856	205ESG856	209ECF856	None
22	DUCT (Circular Opening)	1	None	None	None	202ECF216
23	PANEL, Removable	1	203ECF216	203ECF216	203ECF216	203ECF216
24	LATCH-PAWL	1	31D9	31D9	31D9	31D9
‡	SHROUD *	1	None	None	201ESJ647	None

‡ Not shown on illustration.

* Shroud is mounted on cooler supports under the 209ECF856 Duct.

139-A34-29a

GARDNER-DENVER COMPRESSOR

139-A34-29a
June, 1981



13C-7-81

Litho in U.S.A.



GARDNER-DENVER

INDUSTRIAL MACHINERY DIVISION



1800 GARDNER EXPRESSWAY • QUINCY, ILLINOIS 62301 • (217) 222-5400

SALES AND SERVICE OFFICES IN ALL PRINCIPAL CITIES