

P/L 500 C 255

13-9-525

7-10-74

**Parts List**

**ELECTRA-SCREW<sup>®</sup>  
STATIONARY  
COMPRESSOR**

**MODELS: ESQ.....250 HP  
          ESR.....300 HP  
          ESS.....350 HP  
          EST.....400 HP**

**SERIAL NO. \_\_\_\_\_**

13-9-525



**GARDNER-DENVER COMPANY**

QUINCY, ILLINOIS

## TABLE OF CONTENTS

GROUP NAME	PAGE NO.
Ordering Instructions	P/L 139-500b
Bare Compressor (w/Gears)	139-A10-1
Repair Kits, Bare Compressor	139-A10-1a
Inlet Valve	139-A10-2
Oil Reservoir Group (Dual Separators) Oil Level Gauge	139-B10-3
Oil Reservoir Group (Air Piping) Valve, Globe Valve, Check	139-B10-3a
Oil Reservoir Group (Selective Items) Valve, Safety Valve-Solenoid (Blowdown) Switch, Hi Temperature Shutdown Oil Separators (Repair Kits) Oil Return Line	139-B10-3b
Air Filter Group	139-A10-4
Oil Filter Piping Group	139-A10-5
Radiator Module Oil Piping (Air-Cooled Units)	139-A10-5 (F)
Oil Piping Between Modules (Air-Cooled Units)	139-A10-5a (F)
Oil & Water Piping Group (Water-Cooled Units)	139-A10-5 (W)
Oil & Water Piping Group (Selective Items)	139-A10-5a (W)
Oil Filter, Minimum Pressure & Mixing Valves	139-A10-6
Radiator Module, Less Piping (Air-Cooled Units) Piping Groups (Selective)	139-A10-7 (F)
Coupling & Base	139-A10-8
Control, Constant Speed:                      Panel (w/Pilot)    Tubing	139-A10-12
Subtractive Pilot Valve	139-A10-12a
	139-A7-12b
Control, Duomatic:                                Panel (w/Unloader Valve)                                Tubing	139-A10-13
Recommended Spare Parts (Kits)	139-A10-13a
	139-A10-16

## INSTRUCTIONS FOR ORDERING REPAIR PARTS

When ordering parts, specify Compressor **SERIAL NUMBER** (see nameplate on unit), **MODEL**, **OPERATING PRESSURE**, **HORSEPOWER** and **METHOD OF COOLING**. Serial Number is also stamped on top of the cylinder flange.

All orders for Parts should be placed with the nearest Sales and Service Office listed on the back cover of this book.

**DO NOT ORDER BY SETS OR GROUPS.** Where NOT specified, quantity of parts required per compressor or unit is one (1); where more than one is required per unit, quantity is indicated in parenthesis. **SPECIFY EXACTLY THE NUMBER OF PARTS REQUIRED.**

**PARTS NOT SHOWN OR LISTED:** Special parts such as Solenoid and Safety Valves, Motors, Starters, Transformers, etc. that require ordering according to voltage, pressure or speed, must be referred to the **FACTORY** and **MUST BE ORDERED** by **MODEL** and **SERIAL NUMBER**.

Piping, copper tubing, hardware and electrical connections may be purchased locally. However, **IT IS THE RESPONSIBILITY OF THE CUSTOMER** when making repairs to purchase parts of **EQUAL** or **BETTER** quality as those used in the original construction. Refer to Operating Instructions and Service Manual for Piping Schematics and Electrical Diagrams.

### PARTS RETURNED

All claims must be made within five days after receipt of goods. If order has been filled correctly, we cannot allow the return of the goods without our consent and then only on a basis of a charge for service and rehandling plus transportation charges.

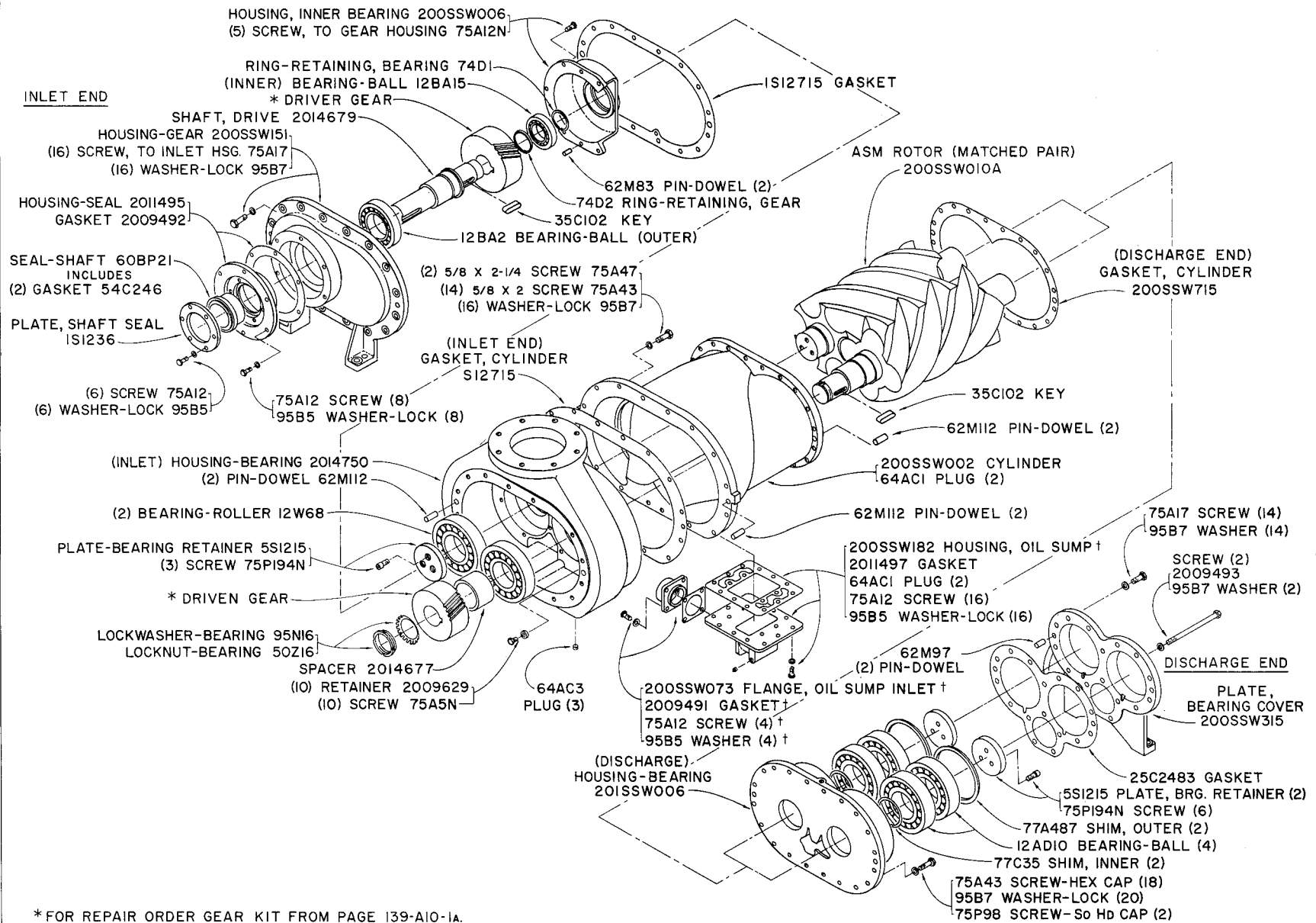
Transportation charges must be prepaid. If it is necessary to return a part to the factory for duplication or inspection, do not fail to do the following:

1. Write the nearest Sales and Service Office a letter advising what material you wish to return and why.
2. After receiving permission to return the item or items, obtain from the Sales and Service Office the correct forms filled out by that office for the proper return of material.
3. Place a tag in the package showing your name and address.
4. Tag each article in the box or package stating what and how many are returned.
5. Always give the serial number of the machine from which the parts were removed or the invoice number on which the parts were originally shipped.

All parts returned for credit should be handled in the same manner as that for duplication or inspection.

ASM SSWC

COMPRESSOR (250, 300, 350 & 400 HP)



\* FOR REPAIR ORDER GEAR KIT FROM PAGE 139-A10-1a.

† WHEN DUOMATIC CONTROL IS SPECIFIED THESE PARTS ARE REPLACED (SEE PAGE 139-A10-13a).

E75210

139-A10-1

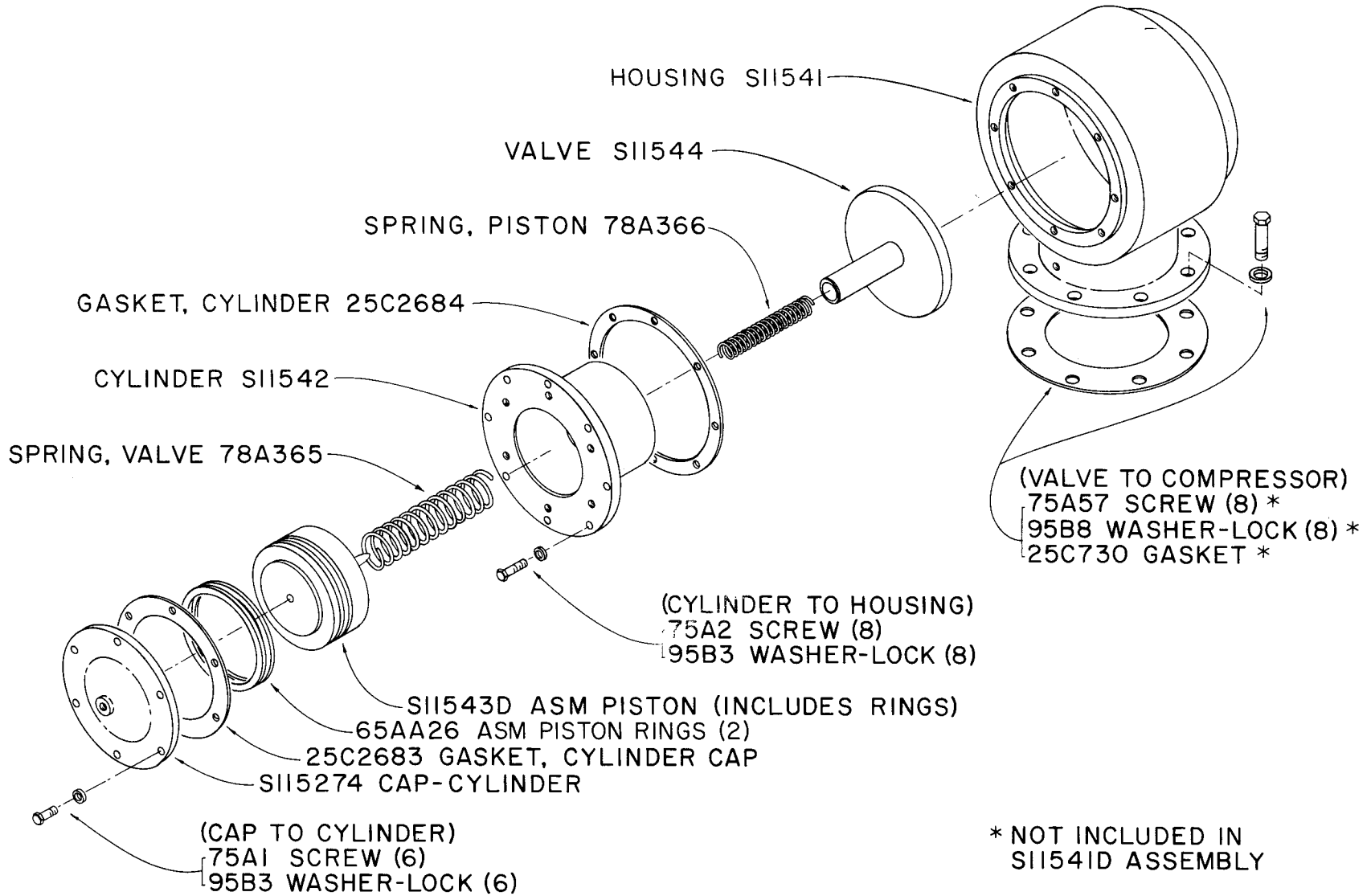
BARE COMPRESSOR REPAIR KITS

(250, 300, 350 & 400 HP)

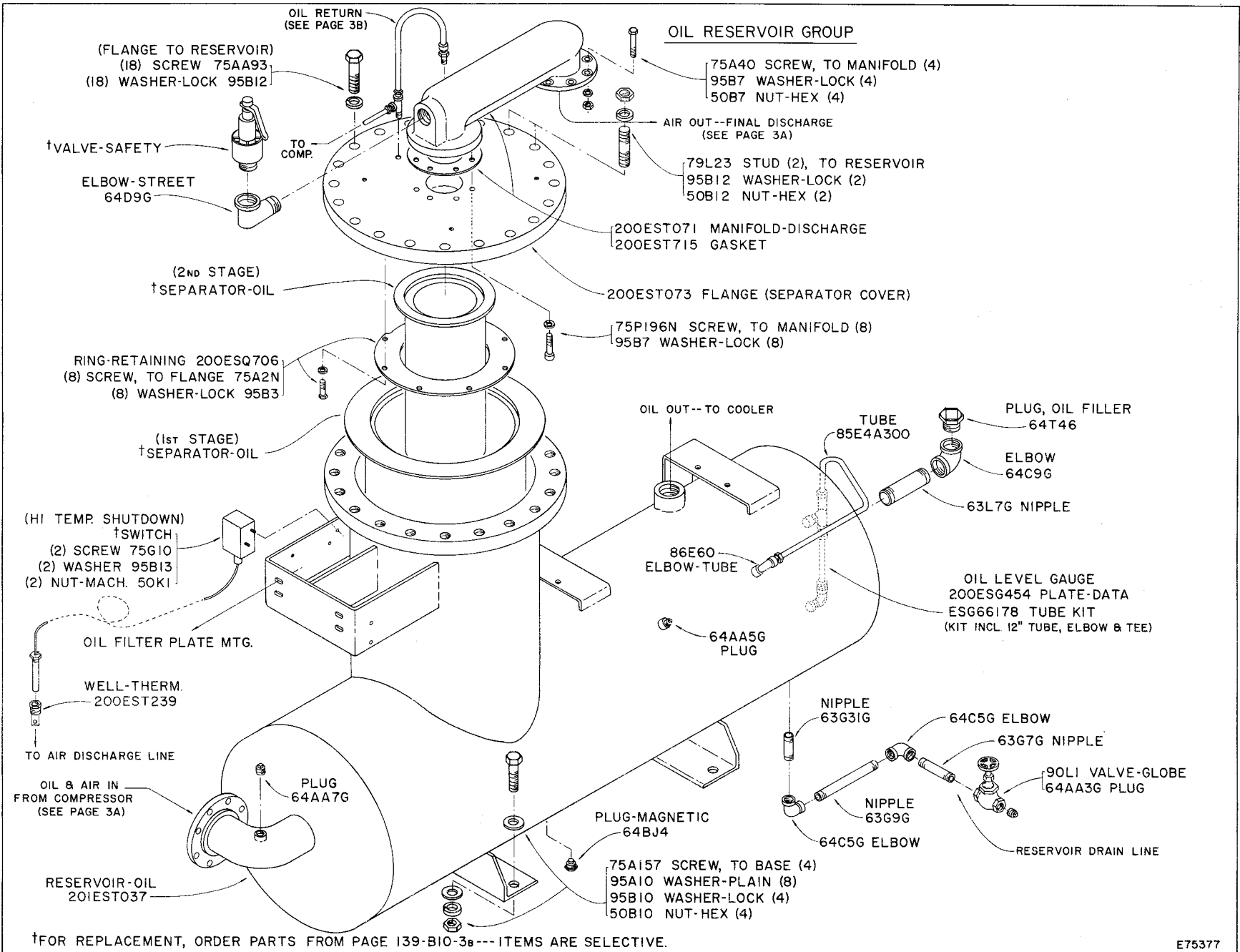
PSI	HP	Model	Gear Kit φ	Bare Compressor Field Replacement (Includes Gears)	Gasket Kit *
			Part No.	Part No.	Part No.
100	250	ESQAE, ESQAF	SSW65905	ESQ65957	SSW65889
	300	ESRAE, ESRAF ESRAJ	SSW65906 SSW65906	ESR65958 ESR65958	SSW65889 SSW65889
	350	ESSAE, ESSAF ESSAH	SSW66195 SSW65907	ESS66218 ESS65959	SSW65889 SSW65889
	400	ESTAE, ESTAF	SSW66244	EST65960	SSW65889
125	250	ESQBE, ESQBF	SSW65909	ESQ65961	SSW65889
	300	ESRBE, ESRBF ESRBJ	SSW65905 SSW65905	ESQ65957 ESQ65957	SSW65889 SSW65889
	350	ESSBE, ESSBF	SSW65906	ESR65958	SSW65889
	400	ESTBE, ESTBF	SSW66195	ESS66218	SSW65889
150	250	ESQCE	-----	-----	-----
	300	ESRCE ESRCJ	----- SSW65905	----- ESQ65957	----- SSW65889
	350	ESSCE	-----	-----	-----
	400	ESTCE	-----	-----	-----

φ Gear Kit includes Gears, Keys, Seal Housing and Gear Housing Gaskets.  
\* Gasket Kit is for complete unit, less motor.

INLET VALVE ASSEMBLY--S11541D



D75211

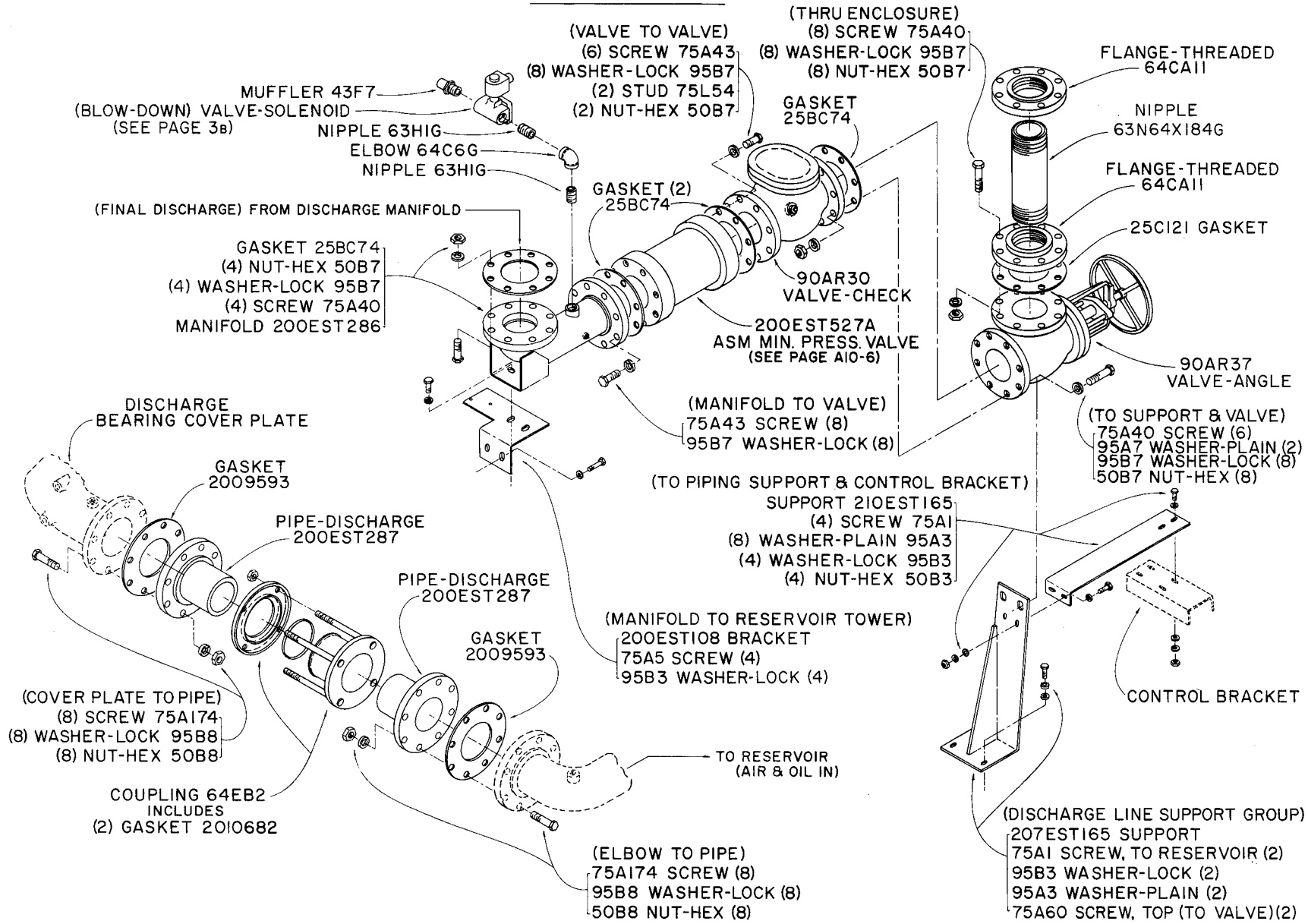


139-B10-3

↑ FOR REPLACEMENT, ORDER PARTS FROM PAGE 139-B10-3B---ITEMS ARE SELECTIVE.

E75377

AIR PIPING GROUP



139-B10-3A

E75378

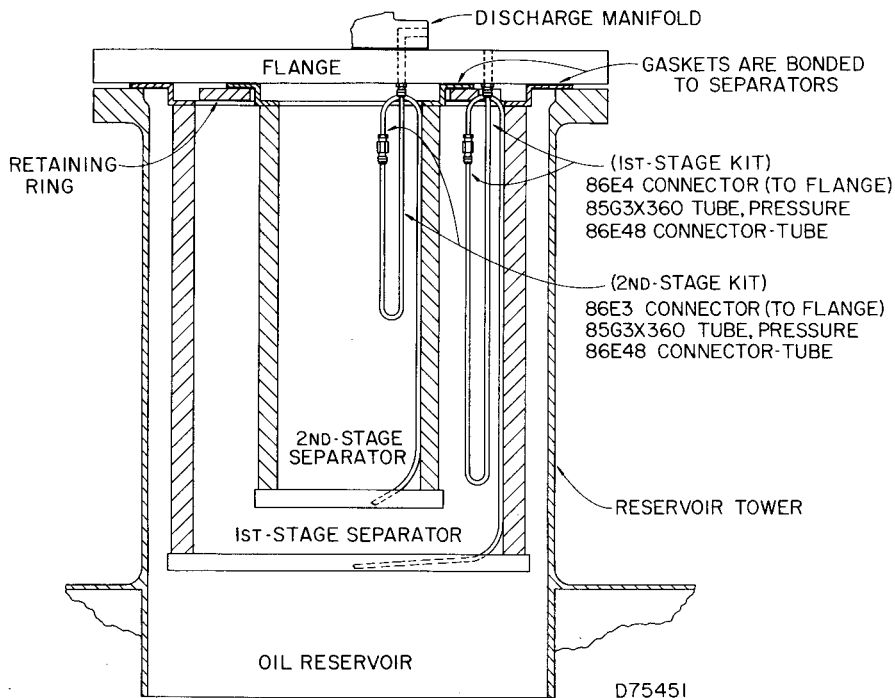
FEBRUARY, 1974

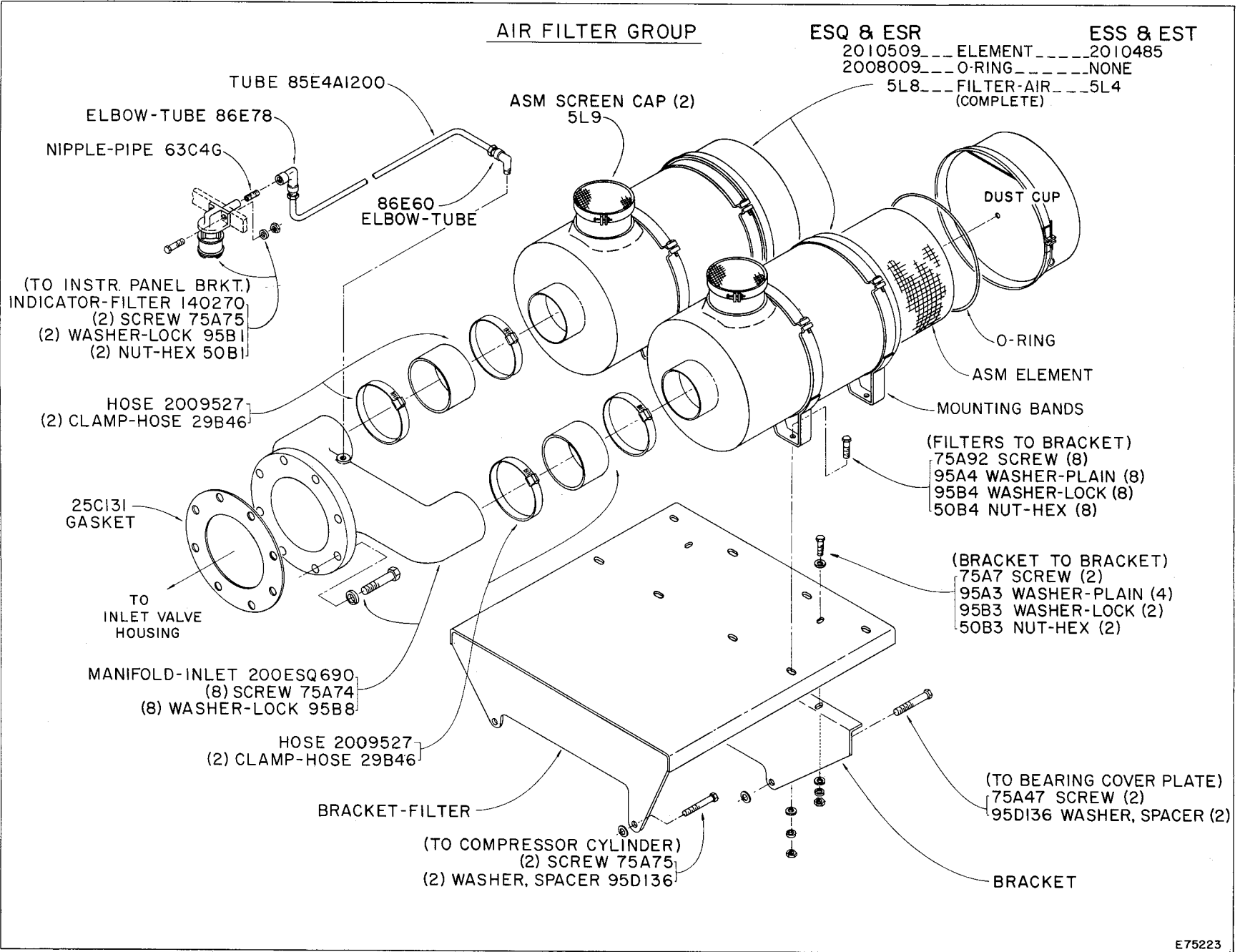
139-B10-3A

**OIL RESERVOIR GROUP**

(SELECTIVE ITEMS)

PART NAME & DESCRIPTION	250, 300, 350 & 400 HP
Valve-Safety (Set 115 Lbs.)	90AR32
Valve-Safety (Set 135 Lbs.)	90G188
Valve-Safety (Set 165 Lbs.)	90G21
Valve-Solenoid, Blowdown (NEMA 1)	91B15
Valve-Solenoid, Blowdown (NEMA 4)	91B18
Valve-Solenoid, Blowdown (Explosion-Proof)	91B18
Switch, Hi Temperature Shutdown (NEMA 1)	2009547
Switch, Hi Temperature Shutdown (NEMA 4)	2009548
Switch, Hi Temperature Shutdown (Explosion-Proof)	2009549
<b>OIL SEPARATOR GROUP</b>	
Repair Kit, Separator 55B2 (1st Stage)	EST65994
Repair Kit, Separator 2009601 (2nd Stage)	2014830
<i>NOTE: Repair Kit includes Separator, Top Manifold Gaskets and Tubing as shown in illustration below.</i>	
(Oil Return Line – Manifold to Compressor)	
Connector-Tube (In Manifold) (1/4 P x 1/4 T)	86E4
Tube (1/4 T)	85E4A120
Tee-Tube (In Flange) (1/4 T x 1/4 P x 1/4 T)	86E119
Tube (From Tee) (1/4 T) (Cut at Assembly)	85E4A1200
Connector-Tube (1/4 T)	86E48
Elbow-Tube (In Compressor) (1/4 T x 1/8 P x 45°)	86E106

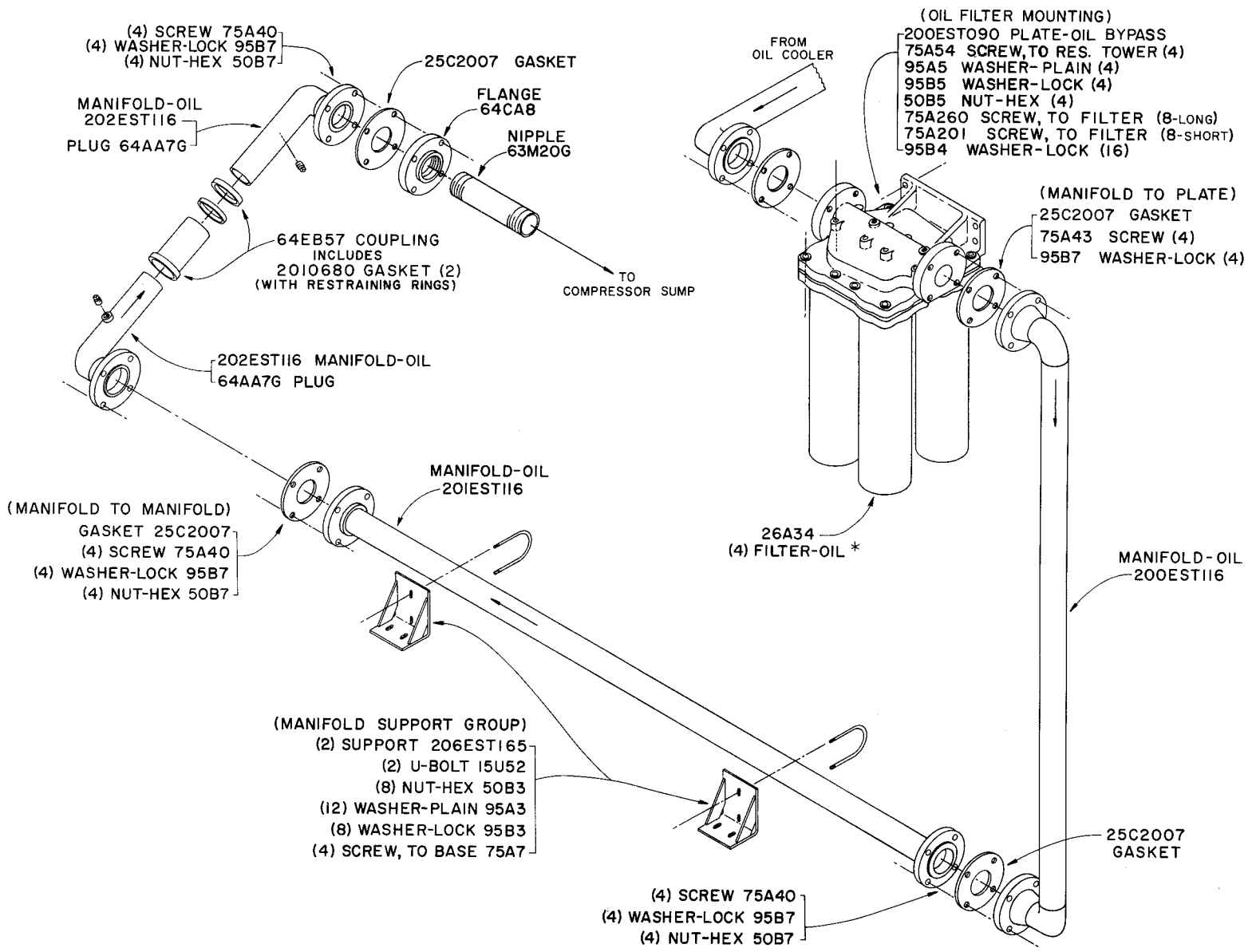




E75223

139-A10-4

OIL FILTER PIPING GROUP



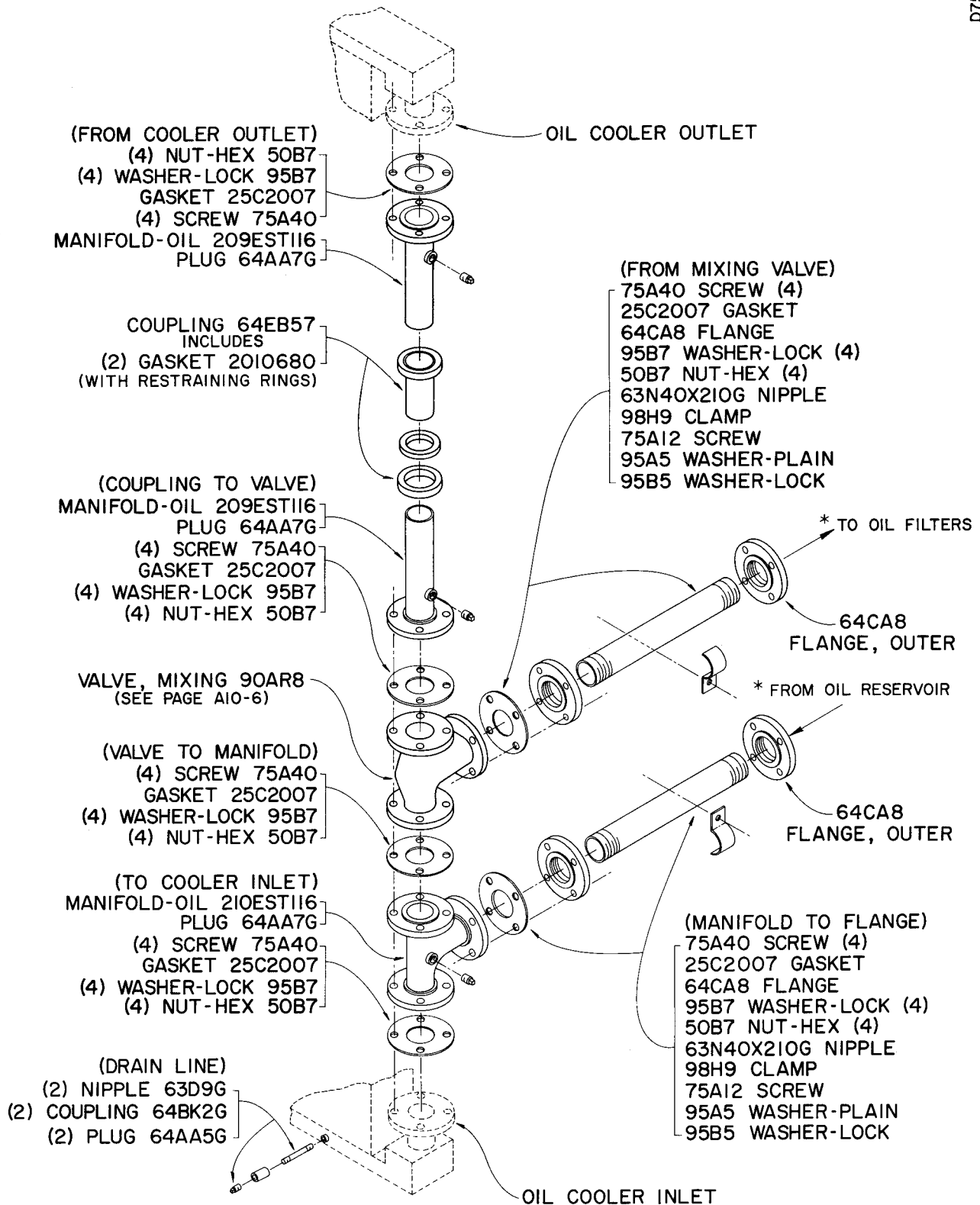
\* FOR COMPONENT PARTS OF OIL FILTER SEE PAGE 139-AIO-6.

E75225

139-AIO-5

D75226

**RADIATOR MODULE  
OIL PIPING (AIR COOLED UNITS)**



\* FOR BALANCE OF OIL PIPING SEE PAGE A10-5A(F) --- (SELECTIVE).

**\* OIL PIPING (COMPRESSOR TO RADIATOR MODULE)**

(SELECTIVE)

PART NAME & DESCRIPTION	250, 300, 350 & 400 HP
<b>† CLOSE COUPLED</b>	
<b>(Reservoir To Module)</b>	
Nipple, Reservoir (2-1/2 x 2-1/2)	63M2G
Flange-Threaded (2-1/2" – 150 Lbs.)	64CA8
Gasket	25C2007
Manifold-Oil	206EST116
Coupling-Flexible, Incl. Next Part:	64EB57
Gasket (w/Restraining Rings)	2010680 (2)
Manifold-Oil	207EST116
<b>(Oil Filters To Module)</b>	
Manifold-Oil (To Filters)	211EST116
Gasket	25C2007
<b>(Between Modules)</b>	
Manifold-Oil	212EST116 (4)
Gasket	25C2007 (4)
Coupling-Flexible, Incl. Next Part:	64EB57 (2)
Gasket (w/Restraining Rings)	2010680 (4)
Control (Selective):   Constant Speed Or Duomatic	See Page 139-A10-12 See Page 139-A10-13
<b>† REMOTE MOUNTED</b>	
<b>(Reservoir To Cooler Inlet Line)</b>	
Manifold-Oil	213EST116
Coupling-Flexible, Incl. Next Part:	64EB57
Gasket (w/Restraining Rings)	2010680 (2)
Manifold-Oil	214EST116
Coupling-Pipe	64AB22
<b>(Cooler Outlet Line To Oil Filters)</b>	
Coupling-Pipe	64AB22
Manifold-Oil	215EST116
Coupling-Flexible, Incl. Next Part:	64EB57
Gasket (w/Restraining Rings)	2010680 (2)
Manifold-Oil (To Filters)	208EST116
Gasket	25C2007

PART NAME & DESCRIPTION	250, 300, 350 & 400 HP
<b>REMOTE MOUNTED (Continued)</b>	
Control:           Constant Speed Only	See Page 139-A10-12
<i>NOTE: Customer to furnish Approved Piping (both Inlet &amp; Outlet Lines) and Electrical Connections between Radiator Module and the Compressor Unit.</i>	
<b>† ELEVATED REMOTE MOUNTED</b>	
Piping – Same as REMOTE MOUNTED except omit Pipe Couplings and add:	
Valve-Check, Cooler Inlet Line	90J132
Valve-Air Control, Cooler Outlet Line	90AR68
<b>(Pressure Relief &amp; Syphon Break)</b>	
Valve-Check, Pressure Relief (1/4")	2009283
Valve-Check, Syphon Break (1/4")	90AR42
Breather Vent	5L17
Coupling, Bulkhead	86A168
Control:           Constant Speed Only	See Page 139-A10-12
<i>NOTE: Customer to furnish Approved Piping (both Inlet &amp; Outlet Lines) and Electrical Connections between Radiator Module and the Compressor Unit.</i>	

139-A10-5a (F)

\* Only Major Components are shown in above groups. For balance of Oil Piping, refer Pages 139-A10-5 (Oil Filter Piping) & 139-A10-7 (F) (Radiator Module Piping).  
 † Piping, tubing, hardware and electrical connections may be purchased locally. However, **IT IS THE RESPONSIBILITY OF THE CUSTOMER** when making repairs to purchase parts of **EQUAL** or **BETTER** quality as those used in the original construction. Refer Ordering Instructions in front of book.



## PIPING GROUP (WATER-COOLED UNITS)

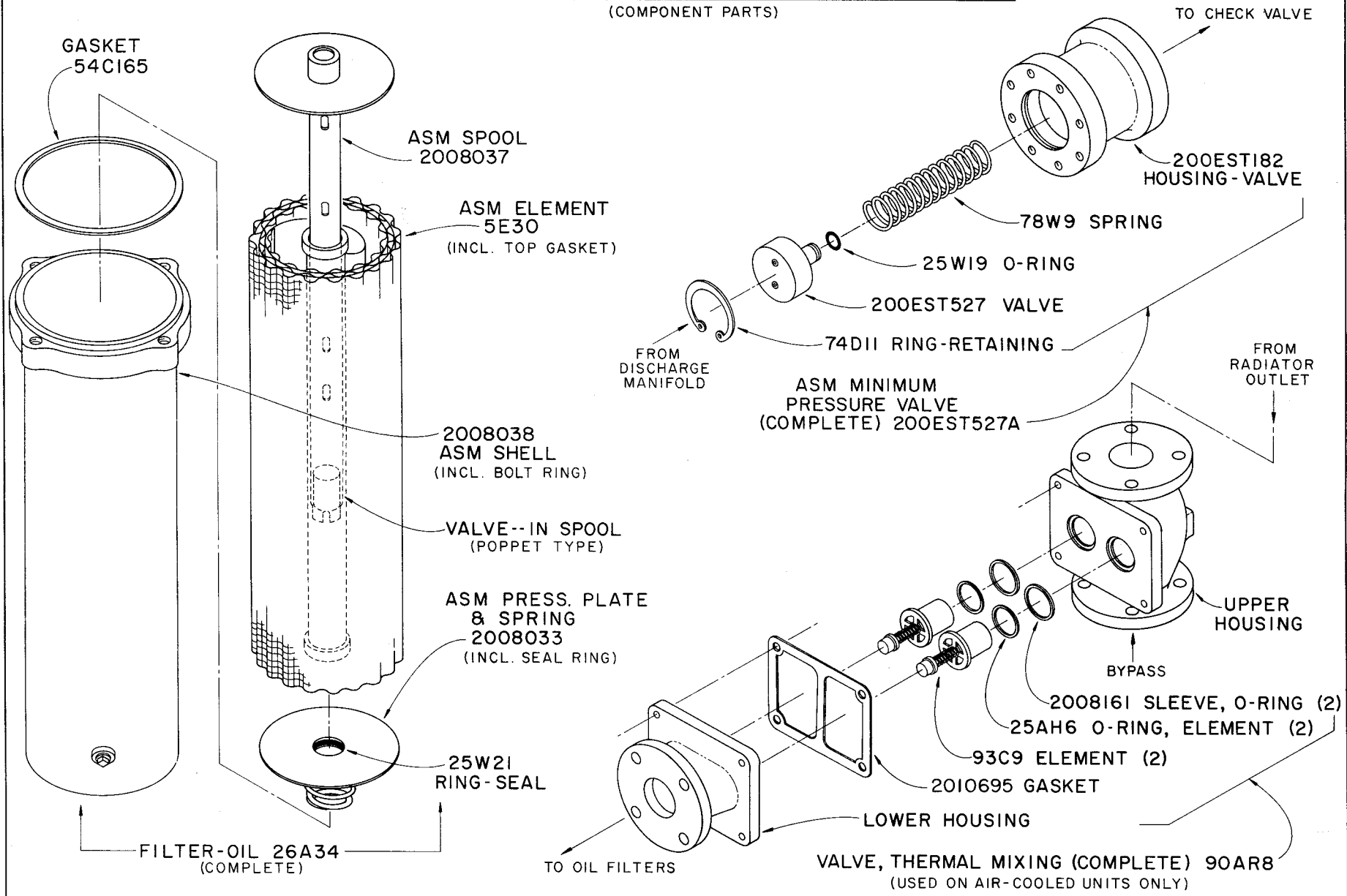
(SELECTIVE ITEMS)

PART NAME & DESCRIPTION	250 HP	300 HP	350 HP	400 HP
<b>FRESH WATER SERVICE</b>				
Heat Exchanger (2), Incl. Next 5 Parts:	48C47	200ESO349	201ESS349	201ESP349
Bonnet, Inlet-Outlet (2)	2010210	2010280	2010280	2010280
Gasket, Inlet-Outlet (2)	2010211	2010252	2010252	2010252
Bonnet, Return (2)	2010212	2010281	2010281	2010281
Gasket, Return (2)	2010213	2010204	2010204	2010204
Anode-Zinc (4)	2010238	2010284	2010284	2010284
Manifold-Oil, Heat Exchanger to Oil Filters	208EST116	200ESR116	208EST116	208EST116
Bracket, Heat Exchanger	200ESQ142	200EST142	200EST142	200EST142
Regulator-Temperature, Incl. Next Part ASM Stem Packing	90AR10 2010803	90AR10 2010803	90AR10 2010803	90AR10 2010803
Valve-Solenoid, Water (NEMA 1)	91B2	91B2	91B2	91B2
Valve-Solenoid, Water (NEMA 4)	91B23	91B23	91B23	91B23
Valve-Solenoid, Water (Explosion-Proof)	91B23	91B23	91B23	91B23
<b>SALT WATER SERVICE</b>				
Heat Exchanger (2), Incl. Next 5 Parts:				
<i>(Use Brass Fittings)</i>				
Regulator-Temperature, Incl. Next Part ASM Stem Packing				

### OIL FILTER, MINIMUM PRESSURE & MIXING VALVES

(COMPONENT PARTS)

139-A10-6



D75227

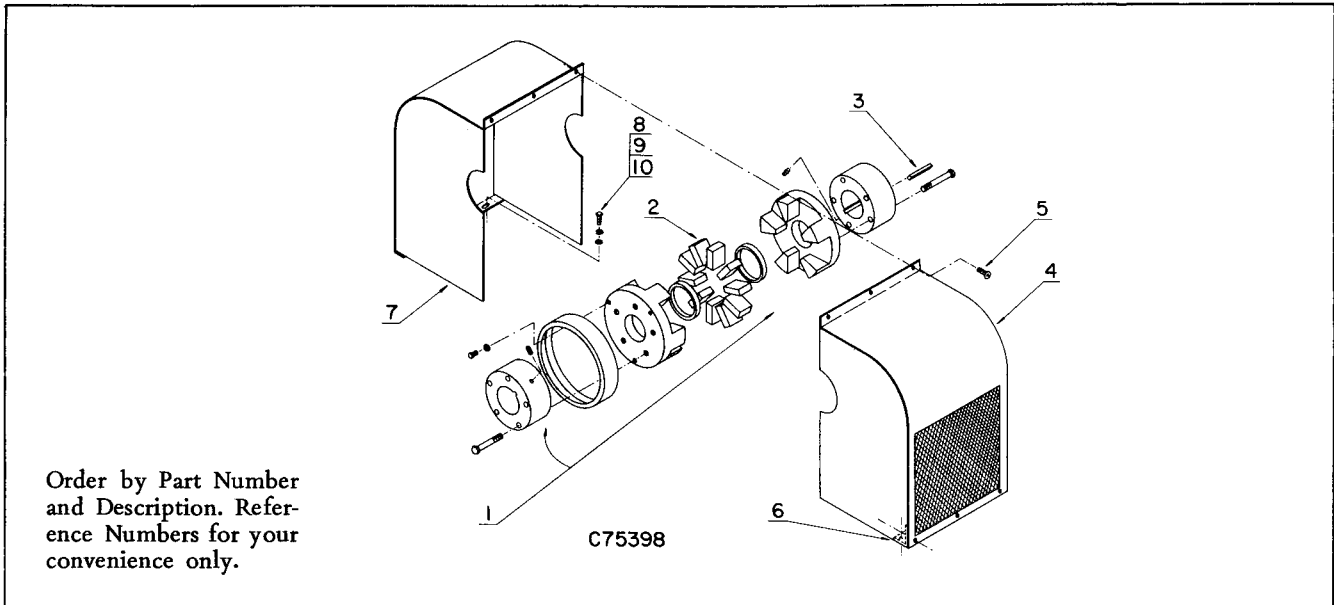
**RADIATOR MODULE, LESS PIPING**

(AIR-COOLED UNITS)

PART NAME & DESCRIPTION	250 HP	300, 350 & 400 HP
<b>RADIATOR GROUP †</b>		
Base Radiator (Oil Cooler) Shroud, Cooler Bracket, Motor Feet Brace Shroud, Front Grille Panel, Side Panel, Rear Support, Control Plate-Name Cover-Filler, Oil Fill Gasket, Cover	204EST285 200ESQ300 204EST647 201EST141 200EST326 203EST647 200EST736 200EST216 201EST216 200EST146 69A17 200EST156 25C2578	204EST285 201EST300 204EST647 201EST141 200EST326 203EST647 200EST736 200EST216 201EST216 200EST146 69A17 200EST156 25C2578
<b>FAN GROUP †</b>		
Fan, Cooling Bushing-Hub (1-7/8 Bore, 1/2 x 1/4 Keyway) Shroud, Fan (Orifice Ring) Bracket, Motor Mounting (Upper) Bracket, Motor Mounting (Lower) Bracket, Motor Mounting (Side) Guard-Fan (Split)	200EST701 22G7 202EST647 203EST129 204EST129 205EST129 200EST393	200EST701 22G7 202EST647 203EST129 204EST129 205EST129 200EST393
<b>PIPING BETWEEN MODULES</b>		
Selective — Refer Page 139-A10-5a (F)		

† Only MAJOR COMPONENTS are shown. Mounting hardware may be purchased locally — refer Ordering Instructions page in front of book.

COUPLING & BASE



Order by Part Number and Description. Reference Numbers for your convenience only.

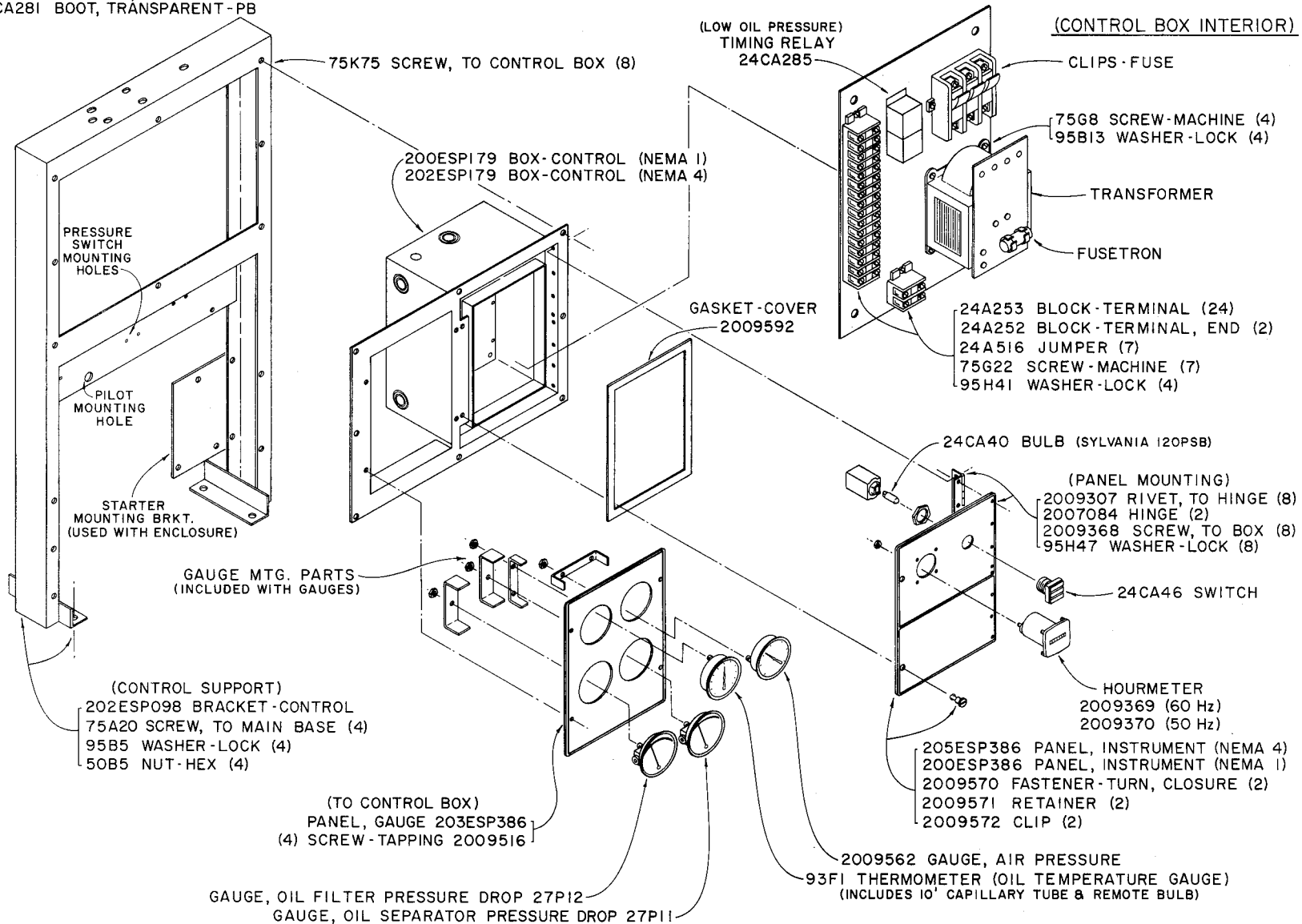
REF. NO.	PART NAME & DESCRIPTION	QTY.	250 & 300 HP	350 & 400 HP
<b>COUPLING GROUP</b>				
1	Coupling (With Set Screws), Incl. Next Part:	1	51L8	2011977
2	Cushion (Urethane)	10	2010387	2010387
3	Key-Square, Compressor Drive (3/4 x 3/4 x 2-15/16)	1	35B123	35B123
4	Guard-Coupling (Half)	1	202EST339	204EST339
5	Screw-Tapping, Guard to Guard & Bracket (5/16 x 3/4)	6	75LM72	75LM72
6	Bracket, Coupling Guard to Subbase	1	202EST141	202EST141
7	Guard-Coupling, Half (Motor Duct Side)	1	203EST339	205EST339
8	Screw, Guard & Bracket to Subbase (3/8 x 3/4)	4	75A5	75A5
9	Washer-Lock (3/8)	4	95B3	95B3
10	Washer-Plain (3/8)	4	95A3	95A3
<b>BASE MOUNTING GROUP</b>				
	Base, Main	1	201EST285	201EST285
	Base (Subbase)	1	201ESQ285	203EST285
	Mounting-Vibration (Isolator)	8	49C14	49C14
	Screw, Isolator to Main Base (1 x 7)	8	75AA46	75AA46
	Washer-Plain (1")	24	95A10	95A10
	Locknut (1-8 UNC)	8	50AP14	50AP14
	Screw, Compressor to Subbase (3/4 x 2)	4	75A27	75A27
	Washer-Lock (3/4)	4	95B8	95B8
	Pin-Dowel, Gear Housing to Subbase (3/4 x 1-1/2)	2	62M112	62M112
	Shim, Motor to Subbase (.003)	2	77E11	77E11
	Shim, Motor to Subbase (.008)	3	77E12	77E12
	Shim, Motor to Subbase (.031)	1	77E13	77E13
	Shim, Motor to Subbase (.062)	1	77E14	77E14
	Pin-Dowel, Motor to Subbase (No. 8)	2	2AUX60	2AUX60
	Screw, Motor to Subbase	4	75A43	75A101
	Washer-Lock, Motor to Subbase	4	95B7	95B8
	Enclosure Group (With Vent Fan & Motor) *		-----	-----

\* For information or repairs on the Enclosure Group consult your nearest Gardner-Denver Sales and Service Office.

CONTROL PANEL (CONSTANT SPEED) \*

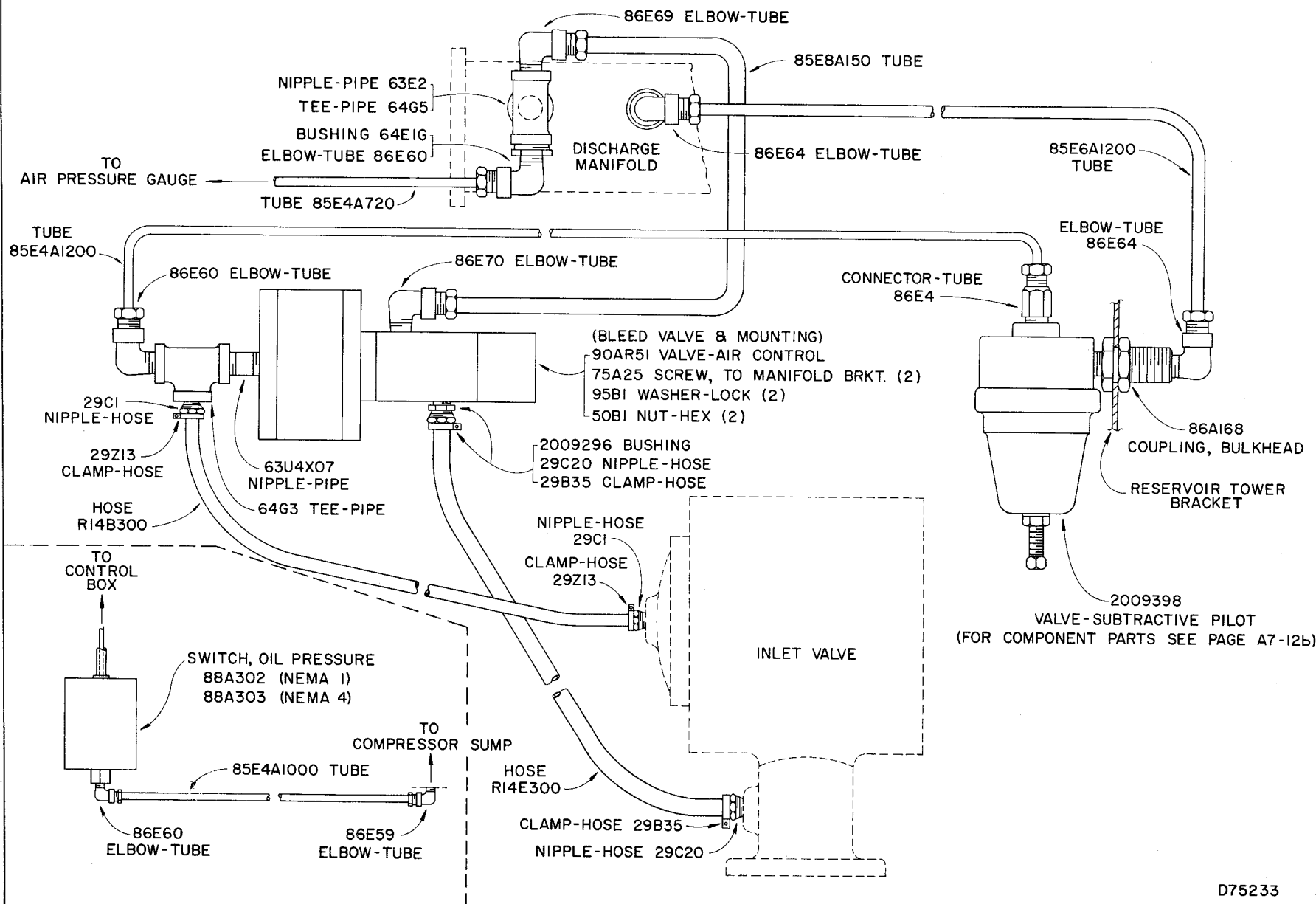
NOT SHOWN:  
(NEMA 4 ONLY)  
20IESK715 GASKET, HOURMETER  
24CA281 BOOT, TRANSPARENT-PB

139-AIO-12



\* FOR CONSTANT SPEED CONTROL TUBING SEE PAGE 139-AIO-12A.

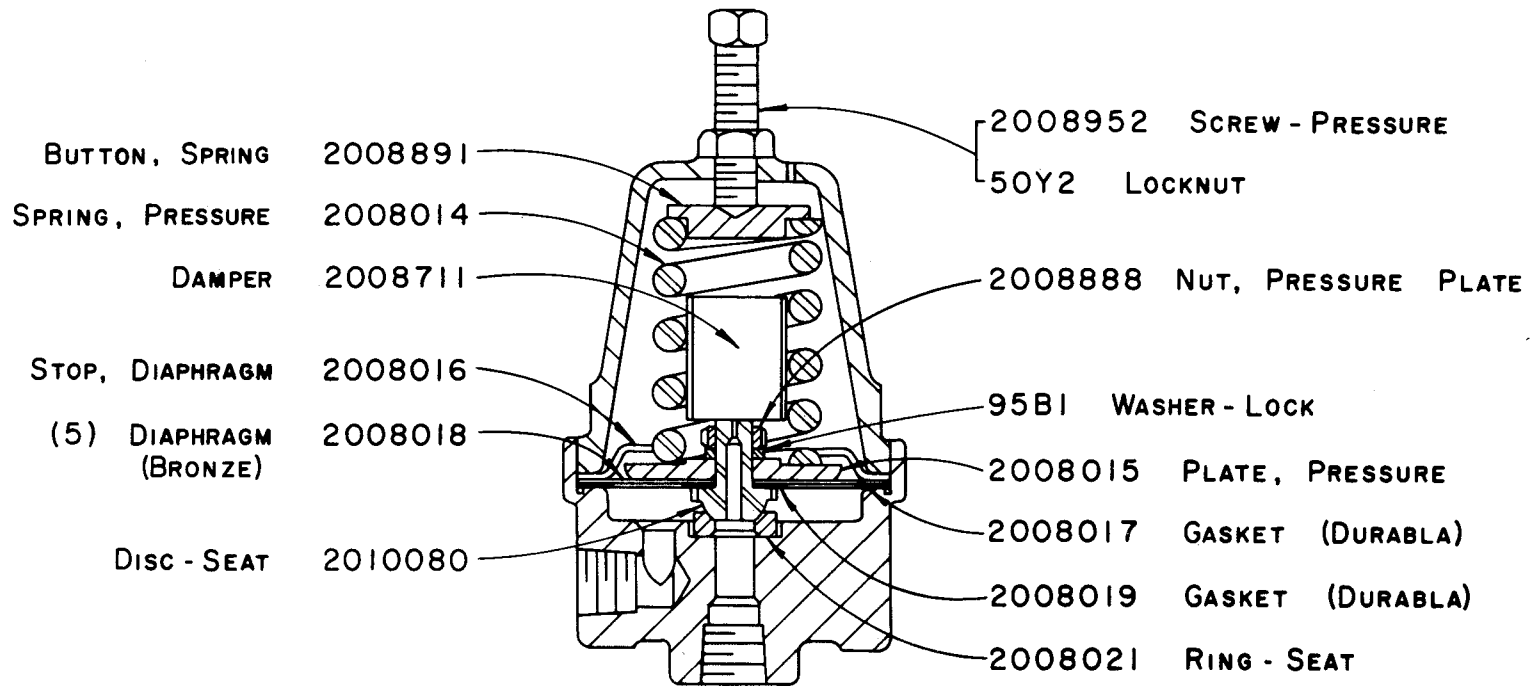
### CONTROL TUBING (CONSTANT SPEED)



139-A10-12A

D75233

SUBTRACTIVE PILOT VALVE - 2009398  
(SEE NOTE)



B74480

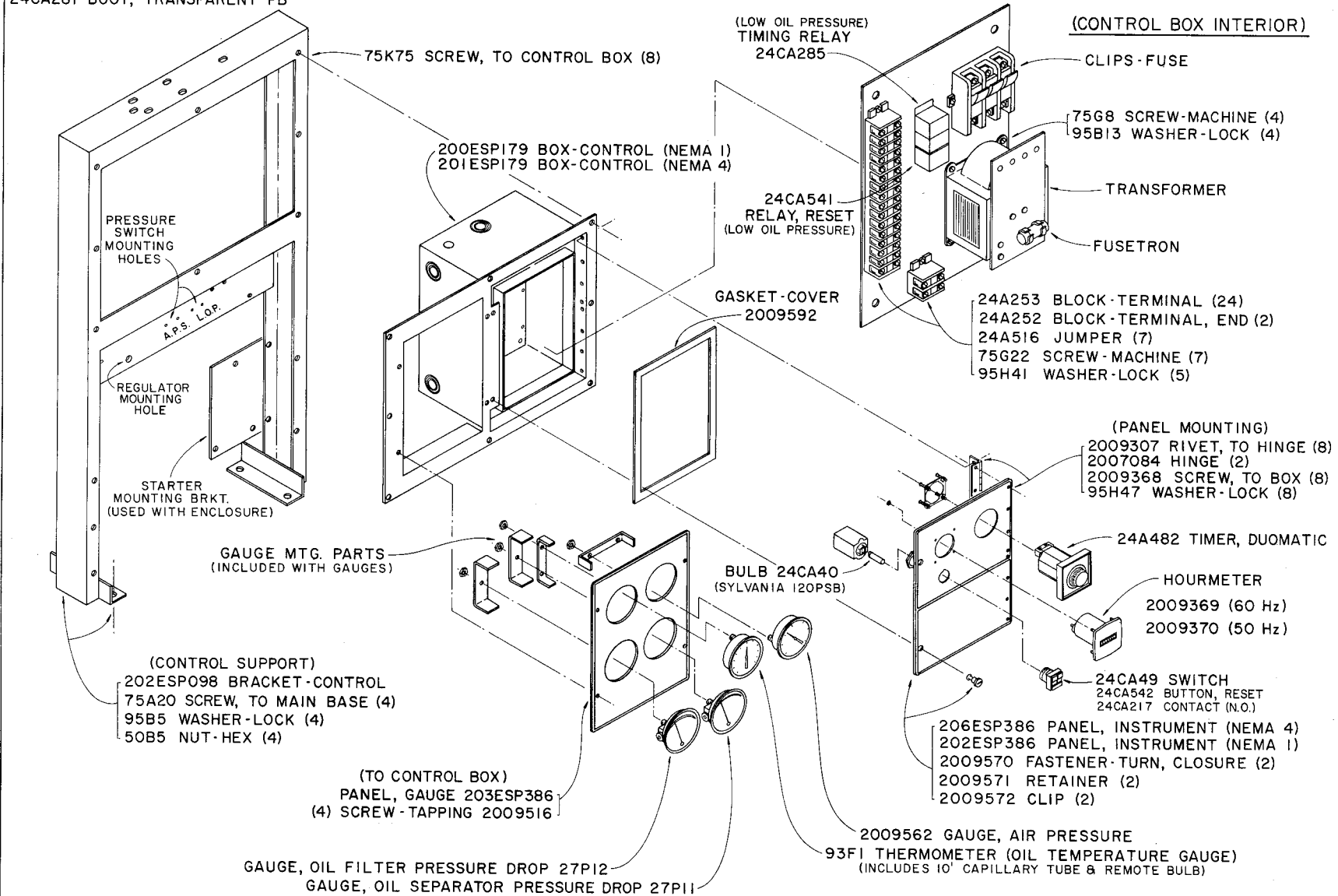
NOTE: IT IS NECESSARY TO REPLACE SOME PARTS IN GROUPS TO INSURE SATISFACTORY REPAIR. WHEN REPLACING DIAPHRAGM ALSO REPLACE BOTH DIAPHRAGM & SEAT GASKETS. WHEN REPLACING SEAT DISC OR SEAT RING REPLACE ALSO THE MATING SEAT RING OR DISC AND THE SEAT DISC GASKET.

139-A7-12b

**CONTROL PANEL (DUOMATIC)\***

NOT SHOWN:  
(NEMA 4 ONLY)  
201ESK715 GASKET, HOURMETER  
24CA281 BOOT, TRANSPARENT-PB

139-A10-13



\* FOR DUOMATIC CONTROL TUBING SEE PAGE 139-A10-13A.

E75359



**RECOMMENDED SPARES - MODELS ESQ, ESR, ESS, EST**

The following kits are separated according to service and locations. These are made available to aid the customer in stocking parts to allow on-site maintenance and/or repair. Quantities shown are for one unit only. It is the responsibility of the Owner-Operator to apply a multiplier for multiple units, operating conditions and/or for hours of operation. Refer to Instruction Manual for recommended replacement time for critical parts. **KITS DO NOT INCLUDE OIL SEPARATORS, ELECTRICAL OR CONTROL ITEMS - THESE MUST BE PURCHASED SEPARATELY.**

**Ordering Instructions**

**KIT NO. 1 - Routine Maintenance:** These are suggested as the minimum quantity of parts a customer should stock. They are usually the first items which require renewal. Order quantities of this kit to suit your requirements or particular service. One kit contains twelve (12) oil filter elements which require changing at least every 1000 hours under normal conditions (four [4] filters required on each unit).

**KIT NO. 2 - Domestic Service:** These are suggested as the minimum spares a customer should stock for continuous operation for one year. When ordering for this service, order Kits No. 1 and 2.

**KIT NO. 3 - Isolated Domestic or Export Service:** These are suggested as the minimum spares a customer should stock for continuous operation. These parts include those which possibly would need renewal in an overhaul. When ordering for this service, order Kits No. 1, 2 and 3.

APPLY THE PROPER MULTIPLIER BASED ON NUMBER OF UNITS AND HOURS OF OPERATION;  
Example: For four (4) units, Four (4) of Kit No. 1 and only One (1) each of Kits 2 and 3 may be sufficient.

COMPRESSOR MODEL . . . . .		ESQ, ESR	ESS, EST	All Air Cooled	All Water Cooled	All
HOURS OF OPERATION . . . . .		3000		9000		18000
PART NO. (COMPLETE KIT) . . . . .		ESQ65995	EST65997	ESQ66261	ESQ65990	ESQ65991
		<b>KIT NO. 1</b>		<b>KIT NO. 2</b>		<b>KIT NO. 3</b>
Description	Page No.	Qty. Per Kit		Qty. Per Kit		Qty. Per Kit
<b>KIT NO. 1 ROUTINE MAINTENANCE</b>						
Air Filter Element	139- 4	2	2			
Oil Filter Element Assembly (w/Gasket)	139- -6	12	12			
<b>KIT NO. 2 DOMESTIC SERVICE</b>						
Compressor Shaft Seal	139- -1			1	1	
Seal Housing Gasket	139- -1			1	1	
Inlet Valve	139- -2			1	1	
Inlet Valve Spring	139- -2			1	1	
Inlet Valve Piston Spring	139- -2			1	1	
Inlet Valve Ring Assembly	139- -2			2	2	
Gasket Kit	139- -1a			1	1	
Mixing Valve Element & O-Ring	139- -6			2 ea.	None	
Mixing Valve Gasket	139- -6			1	None	
<b>KIT NO. 3 ISOLATED DOMESTIC OR EXPORT SERVICE</b>						
Gear Drive Ball Bearing (Inner)	139- -1					1
Gear Drive Ball Bearing (Outer)	139- -1					1
Roller Bearing, Inlet End	139- -1					2
Ball Bearing, Discharge End	139- -1					4
Gasket Kit	139- -1a					1

# SALES AND SERVICE OFFICES

## UNITED STATES

ATLANTA (STONE MOUNTAIN), GEORGIA - 30083  
1545 Mountain Industrial Blvd. (Ph. 404-938-6633-4)

BAKERSFIELD, CALIFORNIA - 93308  
3506 Gilmore Avenue (Ph. 805-327-5713)

BALTIMORE (ELLICOTT CITY), MARYLAND - 21043  
3515 Chevrolet Drive (Ph. 301-465-1155-6 Baltimore)  
(Ph. 202-638-2540 Washington)

BIRMINGHAM, ALABAMA - 35209  
817 Green Springs Highway (Ph. 205-871-3543)

BOISE, IDAHO - 83706  
3422 Americana Terrace (Ph. 208-345-4182)

BOSTON (HOPKINTON), MASSACHUSETTS - 01748  
4 South Street (Ph. 617-435-6311)

BUFFALO, NEW YORK - 14226  
4532 Bailey Avenue (Ph. 716-836-8300)

CASPER, WYOMING - 82601  
310 North 2nd Avenue (Ph. 307-235-5794-5-6)

CHARLOTTE, NORTH CAROLINA - 28211  
723 South Sharon Amity Road (Ph. 704-366-8532)

CHICAGO (BROADVIEW), ILLINOIS - 60153  
2535 S. 25th Avenue (Ph. 312-681-2210 Broadview)  
(Ph. 312-261-1467 Chicago)

CINCINNATI (SPRINGDALE), OHIO - 45246  
12145 Centron Place (Ph. 513-671-7270-1-2)

CLEVELAND, OHIO - 44125  
5400 Warner Road (Ph. 216-524-1856)

CORPUS CHRISTI, TEXAS - 78408  
4512 Baldwin Blvd. (Ph. 512-882-6155)

DALLAS, TEXAS - 75240  
13725 Omega Road (Ph. 214-233-0100)

DENVER, COLORADO - 80216  
3801 East 50th Avenue (Ph. 303-399-1321)

DETROIT (LIVONIA), MICHIGAN - 48150  
37250 Plymouth Road (Ph. 313-525-9110)

DULUTH, MINNESOTA - 55811  
3185 Miller Trunk Highway (Ph. 218-729-9290)

EL PASO, TEXAS - 79902  
1230 Wyoming Avenue (Ph. 915-542-1621)

GRAND JUNCTION, COLORADO - 81501  
2909 North Avenue (Ph. 303-242-4157)

HARTFORD (BLOOMFIELD), CONNECTICUT - 06002  
81 Old Windsor Road (Ph. 203-243-0311)

HOUSTON, TEXAS - 77027  
3325 South Rice Avenue (Ph. 713-626-2220)

INDIANAPOLIS, INDIANA - 46203  
2228 Shelby Street (Ph. 317-634-2167)

KANSAS CITY (SHAWNEE MISSION), KANSAS - 66201  
9101 Bond Street (Ph. 913-888-1040)

KNOXVILLE, TENNESSEE - 37917  
709 North Fifth Avenue (Ph. 615-523-6195)

LAFAYETTE, LOUISIANA - 70501  
200 Vanway Street (Ph. 318-232-3190)

LOS ANGELES (WHITTIER), CALIFORNIA - 90601  
2555 Pellissier Place (Ph. 213-692-1258 Whittier)  
(Ph. 213-723-8711 Los Angeles)

LOUISVILLE, KENTUCKY - 40207  
4050 Westport Road (Ph. 502-363-2679)

MILWAUKEE, WISCONSIN - 53226  
11800 West Ripley Avenue (Ph. 414-774-2210-1-2)

MINNEAPOLIS, MINNESOTA - 55431  
1701 West 80th Street (Ph. 612-888-4647)

NEW ORLEANS (HARVEY), LOUISIANA - 70058  
1100 Destrehan Avenue (Ph. 504-347-1451)

NEW YORK DOMESTIC (MAHWAH, NEW JERSEY) - 07430  
386 State Highway No. 17 (Ph. 201-529-4760)

ODESSA, TEXAS - 79760  
2303 Interstate 20 (Ph. 915-563-1350)  
(Ph. 915-333-3236 & 7)

OKLAHOMA CITY, OKLAHOMA - 73129  
2200 South Prospect Avenue (Ph. 405-677-5737)

PHILADELPHIA (HORSHAM) PENNSYLVANIA - 19044  
406 Caredean Drive (Ph. 215-672-3003-4-5)

PHOENIX, ARIZONA - 85005  
2020 N. Black Canyon Highway (Ph. 602-272-0451-2-3)

PITTSBURGH, PENNSYLVANIA - 15205  
Parkway West - 4499 Campbells Run Road (Ph. 412-923-1511)

QUINCY, ILLINOIS - 62301  
So. Gardner Expressway (Ph. 217-223-8282)

ROCHESTER, NEW YORK - 14615  
1229 Ridgeway Avenue (Ph. 716-254-1260)

ST. LOUIS (BRIDGETON), MISSOURI - 63044  
1400 Boulder Industrial Drive (Ph. 314-291-2800-1-2-3)

SALT LAKE CITY, UTAH - 84115  
35 West Louise Avenue (Ph. 801-466-8610)

SAN DIEGO, CALIFORNIA - 92123  
5345 Overland Avenue (Ph. 714-278-6000)

SAN FRANCISCO (SOUTH SAN FRANCISCO), CALIFORNIA - 94060  
144 West Harris Avenue (Ph. 415-589-3305)  
(Ph. 415-761-0303)

SEATTLE, WASHINGTON - 98104  
623 Eighth Avenue, South (Ph. 206-624-1115)

SHREVEPORT, LOUISIANA - 71107  
1025 Joseph Street (Ph. 318-424-4446-7)

TOLEDO, OHIO - 43815  
5020 Angola Road (Ph. 419-385-3916)

TULSA, OKLAHOMA - 74145  
4259 So. 76th East Avenue (Ph. 918-622-2800)

WALLACE, IDAHO - 83873  
502 Bank Street (Ph. 208-752-6291)

## CANADA

### GARDNER-DENVER COMPANY (CANADA), LIMITED

EDMONTON, ALBERTA - 9835 - 42 Ave. - T6E 0A3  
(Ph. 403-435-3771)

MONCTON, NEWBRUNSWICK - E1C 8L9 - East Main St.  
(Ph. 506-399-9637)

MONTREAL, QUEBEC - H4A 2G1 - 5825 St. James St., West  
(Ph. 514-481-7781)

SUDBURY (VAL CARON), ONTARIO - Box 39, Site 9, R.R. 2  
(Ph. 705-897-4948)

TORONTO (SCARBOROUGH), ONTARIO - M1X 5C2 - 1800 Ellesmere Rd.  
(Ph. 416-438-6260)

VANCOUVER, BRITISH COLUMBIA - V6J 3C7 - 1775 Pine St.  
(Ph. 604-732-7641)

WINNIPEG, MANITOBA - R3E 0G5 - 1380 Sargent Ave.  
(Ph. 204-775-8115)

## INTERNATIONAL

### GARDNER-DENVER INTERNATIONAL

ADMINISTRATIVE OFFICE: 1545 West Mockingbird Lane  
Dallas, Texas 75235

GENERAL SALES OFFICE: 386 State Highway No. 17  
Mahway, New Jersey 07430

ARGENTINA -- BUENOS AIRES  
AUSTRALIA -- SYDNEY, MELBOURNE, HOBART, BRISBANE,  
ADELAIDE, PERTH, KALGOORLIE, MOUNT ISA

BELGIUM -- BRUSSELS  
BRAZIL -- BELO HORIZONTE, SAO PAULO, RIO DE JANEIRO

CHILE -- SANTIAGO  
COLUMBIA -- BARRANQUILLA, BOGOTA  
GREECE -- ATHENS  
HOLLAND -- SCHIPHOL  
ITALY -- MILAN  
MEXICO -- MEXICO CITY

NEW ZEALAND -- AUCKLAND  
PERU -- LIMA  
REPUBLIC OF SINGAPORE -- SINGAPORE  
REPUBLIC OF ZAIRE -- LUBUMBASHI  
SOUTH AFRICA -- DURBAN, JOHANNESBURG, KIMBERLEY,  
PORT ELIZABETH, WINDHOEK

SPAIN -- MADRID  
SWEDEN -- STOCKHOLM, GÖTEBORG  
UNITED KINGDOM -- LONDON  
VENEZUELA -- CARACAS, PUERTO ORDAZ  
ZAMBIA -- NDOLA

## FACTORIES

DALLAS, TEXAS  
DENVER, COLORADO  
GRAND HAVEN, MICHIGAN  
GREEN BAY, WISCONSIN  
JOHANNESBURG, SOUTH AFRICA  
LA GRANGE, MISSOURI  
MEXICO, D. F., MEXICO  
PRYOR, OKLAHOMA

QUINCY, ILLINOIS  
REED CITY, MICHIGAN  
RIO DE JANEIRO, BRAZIL  
WESTHAUSEN, WEST GERMANY  
WOODSTOCK, ONTARIO, CANADA  
YORK, PENNSYLVANIA  
SALEM, VIRGINIA



# GARDNER-DENVER COMPANY

QUINCY, ILLINOIS

LITHO - IN U.S.A.