

P/L 500c 90  
7-28-71

13-9-508  
1st EDITION  
Supersedes SO-41  
November, 1969

Parts List

**ELECTRA-SCREW<sup>®</sup>**  
**TWO-STAGE**  
**STATIONARY**  
**COMPRESSORS**

**MODELS: ET75, ET100,**  
**ET125, ET150,**  
**ET200, ET250**

**SERIAL NO \_\_\_\_\_**

13-9-508



**GARDNER-DENVER COMPANY**  
QUINCY, ILLINOIS

INTRODUCTION

CONTENTS: This Parts List Manual contains repair parts for all models in the Electra-Screw<sup>®</sup>, Two-Stage (ET), Stationary Compressor line as follows:

ET75A *	ET100A *	ET125A *	ET150A *	ET200A *	ET250A *
ET75B	ET100B	ET125B	ET150C	ET200C	ET250B
ET75C *	ET100C	ET125C	ET150D *	ET200D *	ET250C
ET75D	ET100D *	ET125D *	ET150E	ET200E	ET250D *
	ET100E	ET125E			ET250E

\* These are Fan-Cooled Units; all others are Water-Cooled Units.

1. COLUMN HEADINGS: All users are cautioned to check the column headings closely for correct model number when ordering parts. Also, some vendor items are listed by column headings only. Footnotes, as required, will explain the procedure for ordering component parts for these items.
2. FOOTNOTES: Users are cautioned to read all footnotes carefully. These contain pertinent information relative to model differences, obsolete equipment, optional construction, etc.
3. MOUNTING PARTS: Numerous groups of parts, such as might appear in the Oil Reservoir and Piping Groups, do not show all tubing and mounting parts. These are usually considered standard commercial items and may be purchased locally or from the Gardner-Denver Company. However, for your convenience, these are listed (with specifications) in a mounting parts group near the back of the book. NOTE: Diameter only is given for nipples in the piping groups - these must be purchased to length required.
4. QUALITY OF PARTS: In the Piping Groups, specifications only are shown for some standard fittings and tubing instead of Gardner-Denver part numbers. IT IS THE RESPONSIBILITY OF THE CUSTOMER when purchasing these items LOCALLY (for repair) to purchase parts of equal or better quality as those used in the original construction. Hard piping and/or fittings must be GALVANIZED, SCHEDULE #40, able to withstand up to 150# PRESSURE and must be FREE OF ALL DEFECTS before installing.
5. WATER-COOLED PACKAGE UNITS: Also available as optional equipment are aftercoolers and air receivers. For information and repairs on these units consult your nearest Sales and Service Office.

INSTRUCTIONS FOR ORDERING REPAIR PARTS

When ordering parts, specify Compressor MODEL and SERIAL NUMBER (See name plate on unit). Serial Number is also stamped on top of the cylinder flange to the right of the inlet housing.

All orders for Parts should be placed with the nearest Gardner-Denver Sales and Service Office listed on the back cover of this book.

Reference numbers shown in the left hand column of the Parts Lists are used to help locate the parts shown on the Drawings and Sectional Views. DO NOT ORDER BY REFERENCE NUMBERS.

After locating the reference number, the part number may be found for your particular Electra-Screw<sup>®</sup> compressor unit under the correct Model Number column.

Specify exactly the number of parts required (see column "Qty. Req."). DO NOT ORDER BY SETS.

To determine the Right Hand and Left Hand side of an Electra-Screw<sup>®</sup> compressor, stand at the motor end and look toward the compressor.

PARTS RETURNED

All claims must be made within five days after receipt of goods. If order has been filled correctly, we cannot allow the return of the

goods without our consent and then only on a basis of a charge for service and rehandling plus transportation charges.

Transportation charges must be prepaid. If it is necessary to return a part to the factory for duplication or inspection, do not fail to do the following:

1. Write the nearest Sales and Service Office a letter advising what material you wish to return and why.
2. After receiving permission to return the item or items, obtain from the Sales and Service Office the correct forms filled out by that office for the proper return of material.
3. Place a tag in the package showing your name and address.
4. Tag each article in the box or package stating what and how many are returned.
5. Always give the serial number of the machine from which the parts were removed or the invoice number on which the parts were originally shipped.

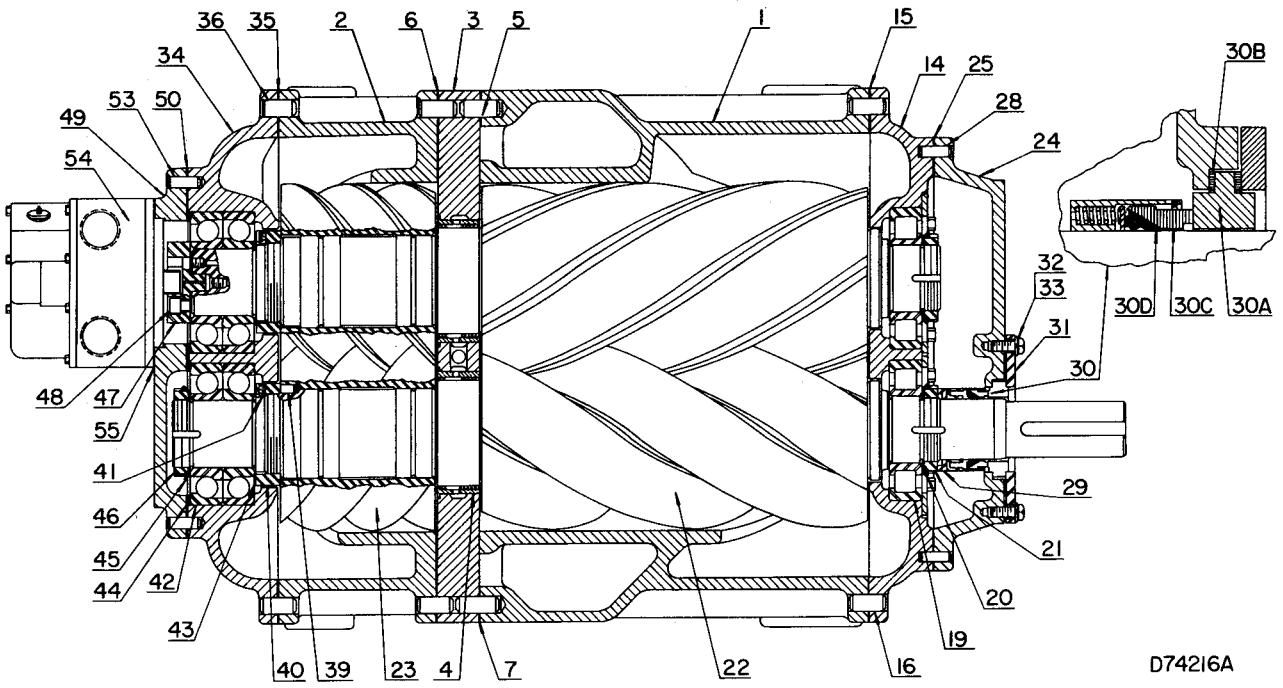
All parts returned for credit should be handled in the same manner as that for duplication or inspection.

INDEX

Air Filter . . . . .	10, 11
Air Filter Mounting Groups . . . . .	6 thru 9
Compressor . . . . .	2, 3
Compressor, Bare (Field Replacement) . . . . .	32
Control Box Mounting . . . . .	30, 31
Control Group: Subtractive Pilot . . . . .	33
Unloaded Horsepower . . . . .	34
Coupling . . . . .	32
Discharge Valve Group . . . . .	5
Fan Mounting Group (Fan-Cooled Units) . . . . .	29
Gasket Lists . . . . .	32
Hose Assemblies . . . . .	28
Inlet Valve Group . . . . .	4

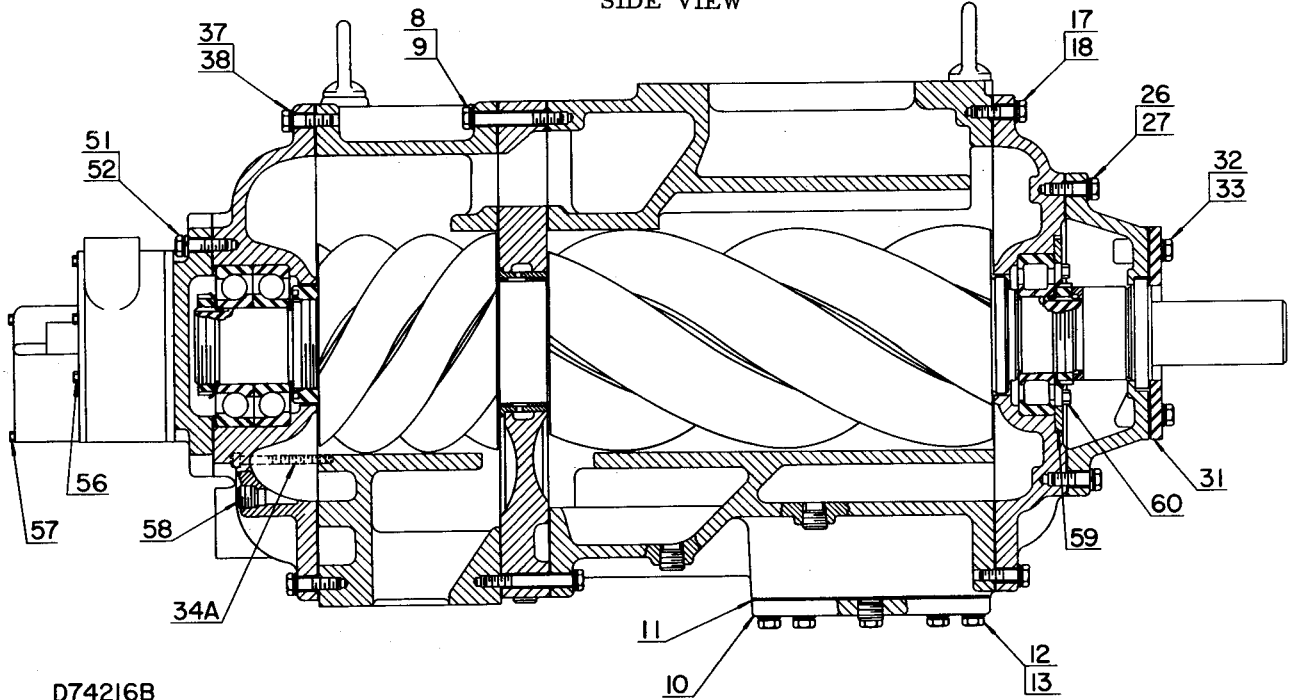
Miscellaneous Parts & Accessories . . . . .	32
Mounting Parts & Tubing . . . . .	30, 31
Oil Filter . . . . .	18
Oil Piping Group (Radiator Type) . . . . .	20, 21, 24, 25
Oil Piping Group (Heat Exchanger Type) . . . . .	22, 23, 26, 27
Oil Reservoir Group . . . . .	12 thru 17
Oil Separator . . . . .	18
Ordering Instructions . . . . .	1
Spare Parts . . . . .	35
Valve, Blowdown . . . . .	33 or 34
Valve, Control (For Unloaded Horsepower Control) . . . . .	19
Valve, Mixing (For Fan-Cooled Units) . . . . .	19
Valve, Subtractive Pilot (For Pilot-Operated Control) . . . . .	33

TOP VIEW



D74216A

SIDE VIEW



D74216B

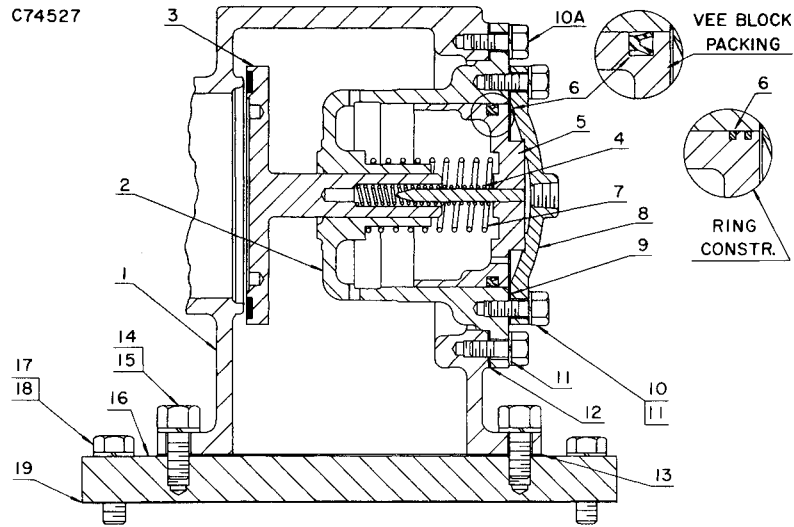
FOR LIST OF PARTS SEE PAGE 3.

ORDER BY PART NUMBER AND DESCRIPTION. REFERENCE NUMBERS FOR YOUR CONVENIENCE ONLY.

REF. NO.	NAME OF PART	QTY. REQ. PER COMP.	MODELS ET75	MODELS ET150	MODELS ET100	MODELS ET200	MODELS ET125	MODELS ET250
	<u>COMPRESSOR</u>		PART NO.	PART NO.	PART NO.	PART NO.	PART NO.	PART NO.
1	CYLINDER, Low Pressure	1	S7002	S7002	S9252	S9252	S1152	S1152
2	CYLINDER, High Pressure	1	1S7002	1S7002	1S9252	1S9252	1S1152	1S1152
3	PLATE-INTERSTAGE	1	S70015	S70015	S92515	S92515	S11515	S11515
4	SEAL, Interstage	2	S7008	S7008	S9258	S9258	S1158	S1158
5	PIN-DOWEL	4	62M112	62M112	62M112	62M112	62M112	62M112
6	SHIM	1	S700732	S700732	S925732	S925732	S115732	S115732
7	SHIM	1	1S700732	1S700732	1S925732	1S925732	1S115732	1S115732
8	SCREW	See ( )	75A208 (22)	75A208 (22)	75A135 (28)	75A135 (28)	75A135 (22)	75A135 (22)
9	WASHER-LOCK	See ( )	95B5 (24)	95B5 (24)	95B5 (28)	95B5 (28)	95B5 (22)	95B5 (22)
6	SCREW-SoHd (1/2 x 3-1/2)	See ( )	75P83 (2)	75P83 (2)	None	None	75P83 (6)	75P83 (6)
10	PLATE, Oil Sump	1	1S11536	1S11536	1S11536	1S11536	1S11536	1S11536
11	GASKET	1	S115715	S115715	S115715	S115715	S115715	S115715
12	SCREW	8	75A12	75A12	75A12	75A12	75A12	75A12
13	WASHER-LOCK	8	95B5	95B5	95B5	95B5	95B5	95B5
14	HOUSING-BEARING (Inlet End)	1	S70027	S70027	S92527	S92527	S11527	S11527
15	SHIM	1	2S700732	2S700732	2S925732	2S925732	2S115732	2S115732
16	PIN-DOWEL	2	62M112	62M112	62M112	62M112	62M112	62M112
17	SCREW	See ( )	75A20 (24)	75A20 (24)	75A20 (28)	75A20 (28)	75A39 (28)	75A39 (28)
18	WASHER-LOCK	See ( )	95B5 (24)	95B5 (24)	95B5 (28)	95B5 (28)	95B5 (28)	95B5 (28)
19	BEARING-ROLLER	2	12W69	12W69	12W65	12W65	12W81	12W81
20	LOCKWASHER-BEARING	2	95N12	95N12	95N14	95N14	95N15	95N15
21	LOCKNUT-BEARING	2	50Z12	50Z12	50Z14	50Z14	50Z15	50Z15
22	ASM ROTOR, Low Pressure	1	S7001A	S7001A	S9251A	S9251A	S1151A	S1151A
23	ASM ROTOR, High Pressure	1	1S7001A	1S7001A	1S9251A	1S9251A	1S1151A	1S1151A
24	COVER-BEARING (Inlet End)	1	S70013	S70013	S92513	S92513	S11513	S11513
25	GASKET	1	2S700715	2S700715	2S925715	2S925715	2S115715	2S115715
26	SCREW	20	75A20	75A20	75A20	75A20	75A20	75A20
27	WASHER-LOCK	20	95B5	95B5	95B5	95B5	95B5	95B5
28	PIN-DOWEL	2	62M84	62M84	62M84	62M84	62M84	62M84
29	SPACER, Shaft Seal	1	2S7008	2S7008	2S9258	2S9258	2S1158	2S1158
30	SEAL-SHAFT, incl. next 4 parts	1	60BP31	60BP31	60BP22	60BP22	60BP23	60BP23
30A	SEAT	1	2008646	2008646	54C247	54C247	54C229	54C229
30B	RING, Seat	2	2008647	2008647	54C248	54C248	54C231	54C231
30C	WASHER, Carbon	1	2008648	2008648	54C249	54C249	54C226	54C226
30D	RING, Teflon	1	2008649	2008649	54C250	54C250	54C227	54C227
31	PLATE-RETAINER, Shaft Seal	1	1S70036	1S70036	1S25036	1S25036	9S60036	9S60036
32	SCREW	6	75A1	75A1	75A130	75A130	75A12	75A12
33	WASHER-LOCK	6	95B3	95B3	95B3	95B3	95B5	95B5
34	HOUSING-BEARING (Discharge End)	1	1S70027	1S70027	1S92527	1S92527	1S11527	1S11527
34A	SCREW-SoHd	2	75LM18N	75LM18N	75P64N	75P64N	75LM18N	75LM18N
35	SHIM	1	3S700732	3S700732	2S925732	2S925732	3S115732	3S115732
36	PIN-DOWEL	2	62M112	62M112	62M112	62M112	62M112	62M112
37	SCREW	See ( )	75A20 (24)	75A20 (24)	75A20 (28)	75A20 (28)	75A39 (28)	75A39 (28)
38	WASHER-LOCK	See ( )	95B5 (24)	95B5 (24)	95B5 (28)	95B5 (28)	95B5 (28)	95B5 (28)
39	PIN-DOWEL	1	62M22	62M22	62M48	62M48	62M48	62M48
40	NUT, Rotor Lock	2	1S7008	1S7008	1S9258	1S9258	1S1158	1S1158
41	SET SCREW-SoHd, Nylok	2	76F28N	76F28N	76F30N	76F30N	76F30N	76F30N
42	BEARING-BALL	4	12AD21	12AD21	12AD20	12AD20	12AD18	12AD18
43	SHIM (Shaft)	2	77C36	77C36	77C33	77C33	77C53	77C53
44	SHIM (Housing)	2	77A488	77A488	77A483	77A483	77A532	77A532
45	LOCKWASHER-BEARING	1	95N12	95N12	95N14	95N14	95N15	95N15
46	LOCKNUT-BEARING	1	50Z12	50Z12	50Z14	50Z14	50Z15	50Z15
47	ADAPTOR, Oil Pump Drive	1	1S700809	S700809	1S925809	S925809	S115809	S115809
48	SCREW	See ( )	75P76N (4)	75P76N (2)	75P76N (4)	75P76N (4)	75P76N (4)	75P76N (4)
49	PLATE-BEARING COVER (Disch. End)	1	2S70036	S70036	S92536	S92536	S11536	S11536
50	GASKET	1	1S700715	1S700715	1S925715	1S925715	1S115715	1S115715
51	SCREW	See ( )	75A20 (8)	75A20 (16)	75A20 (8)	75A20 (16)	75A39 (16)	75A39 (16)
52	WASHER-LOCK	See ( )	95B5 (8)	95B5 (16)	95B5 (8)	95B5 (16)	95B5 (16)	95B5 (16)
6	SCREW, Cover Plate (1/2 x 1-1/2)	8	75P2N	None	75P2N	75P2N	None	None
53	PIN-DOWEL	2	62M84	62M84	62M84	62M84	62M84	62M84
54	PUMP-OIL	1	46C45	46C56	46C42	46C59	46C43	46C55
55	GASKET	1	25C2390	S925715	25C2390	S925715	25C2390	25C2390
56	SCREW	See ( )	75A256 (6)	75A251 (3)	75AA223 (6)	75A251 (3)	75AA226 (6)	75A257 (3)
57	SCREW	See ( )	75AA231 (2)	75AA221 (1)	75AA224 (2)	75AA221 (1)	75AA225 (2)	75AA225 (1)
6	WASHER-LOCK (3/8)	See ( )	95B3 (8)	95B2 (4)	95B3 (8)	95B3 (4)	95B3 (8)	95B3 (4)
6	ADAPTOR, Oil Pump	1	None	None	None	None	None	S25063
6	SCREW, Adaptor	4	None	None	None	None	None	75P61N
6	GASKET	1	None	None	None	None	None	4S115715
58	PLUG-Csk, Drain (1/2)	See ( )	64B2 (3)	64B2 (3)	64B2 (3)	64B2 (3)	64B2 (3)	64B2 (3)
6	PLUG	1	64AC3	64AC3	64AA5	64AA5	64AA5	64AA5
6	PLUG-SoHd (1")	2	64AC6	64AC6	None	None	None	None
6	PLUG-SoHd (1/2)	See ( )	64AC4G (2)	64AC4G (2)	64AC4G (5)	64AC4G (5)	64AC4G (5)	64AC4G (5)
59	PLATE-BEARING RETAINER	2	1S70015	1S70015	1S92515	1S92515	1S11515	1S11515
60	SCREW	8	75P188N	75P188N	75P188N	75P188N	75P188N	75P188N

6 Not shown on illustration.

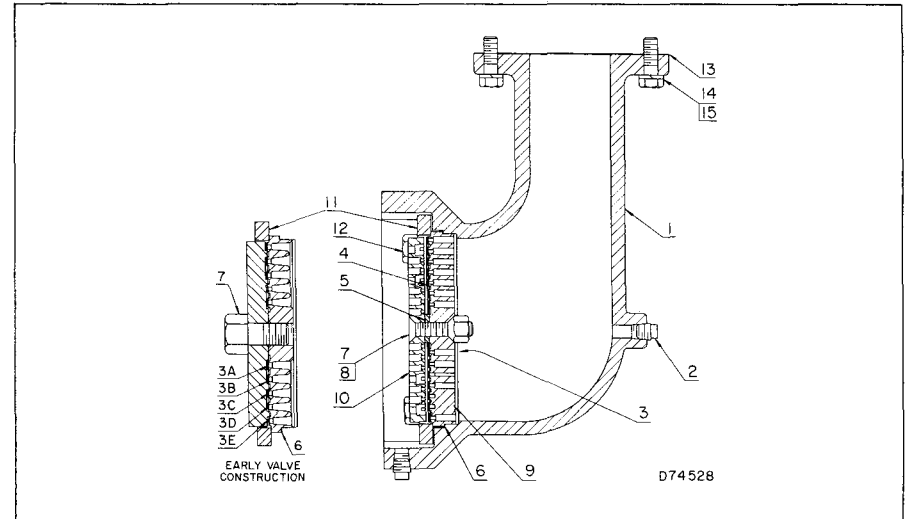
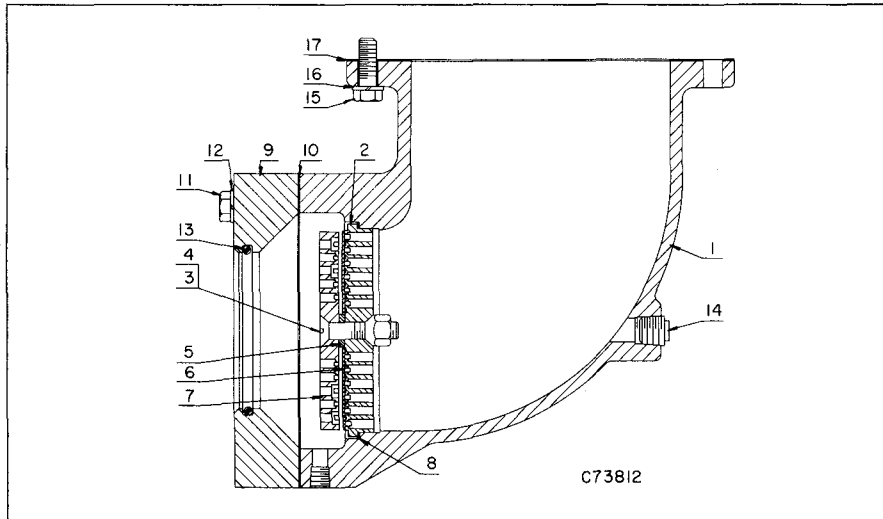
ORDER BY PART NUMBER AND DESCRIPTION. REFERENCE NUMBERS FOR YOUR CONVENIENCE ONLY.



REF. NO.	NAME OF PART	QTY. REQ. PER COMP.	MODELS ET75A & B	MODELS ET75C & D	MODELS ET100A, B & C ET125A, B & C ET150A & C	MODELS ET100D & E ET125D & E ET150D & E	ALL MODELS ET200 ET250
	<u>INLET VALVE GROUP</u>		PART NO.	PART NO.	PART NO.	PART NO.	PART NO.
	ASM VALVE & HOUSING, Incl. Ref. #1 thru 12	1	1S70041A	2011811	5S90041B	2011835	S11541A
1	HOUSING	1	1S70041	1S70041	5S90041	5S90041	S11541
∅	PLUG, Housing (1/4)	1	None	64AA5G	64AA5G	64AA5G	64AA5G
2	CYLINDER	1	S36542	S36542	S90042	S90042	S11542
3	VALVE	1	S60044	S60044	S90044	S90044	S11544
4	SPRING, Valve	1	78A363	78A363	78A361	78A361	78A365
5	ASM PISTON	1	S36543A	2011806	S90043A	2011827	S11543B
6	PACKING-RING	1	60AM48	60AM48	None	None	None
6	RING	2	None	None	65AA19	65AA19	65AA26
7	SPRING, Piston	1	78A390	78A390	78A303	78A303	78A366
8	CAP-CYLINDER	1	R600274	R600274	R900274	R900274	S115274
9	GASKET, Cylinder Cap	1	25C1961	25C1961	25C1962	25C1962	25C2683
10	SCREW, Cap to Cylinder	6	75A1	75A1	75A1	75A1	75A1
10A	SCREW, Cylinder to Housing	8	75A1	75A1	75A1	75A1	75A2
11	WASHER-LOCK	14	95B3	95B3	95B3	95B3	95B3
12	GASKET, Cylinder	1	25C1879	25C1879	25C1955	25C1955	25C2684
13	GASKET, Housing	1	25C2398	25C2398	25C2398	25C2398	25C730
14	SCREW, Housing	8	75A12	75A12	75A12	75A12	75A28
15	WASHER-LOCK	8	95B5	95B5	95B5	95B5	95B8
16	PLATE, Adaptor (to Comp.)	1	None	None	S11560	S11560	None
17	SCREW, Adaptor to Cylinder	8	None	None	75A27	75A27	None
18	WASHER-LOCK	8	None	None	95B8	95B8	None
19	GASKET	1	None	None	25C730	25C730	None

∅ Not shown on illustration.

ORDER BY PART NUMBER AND DESCRIPTION. REFERENCE NUMBERS FOR YOUR CONVENIENCE ONLY.



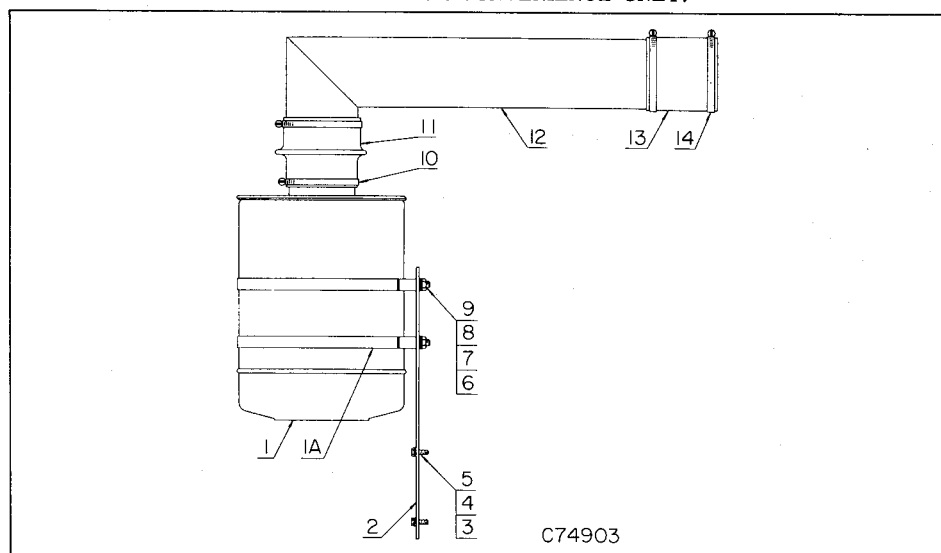
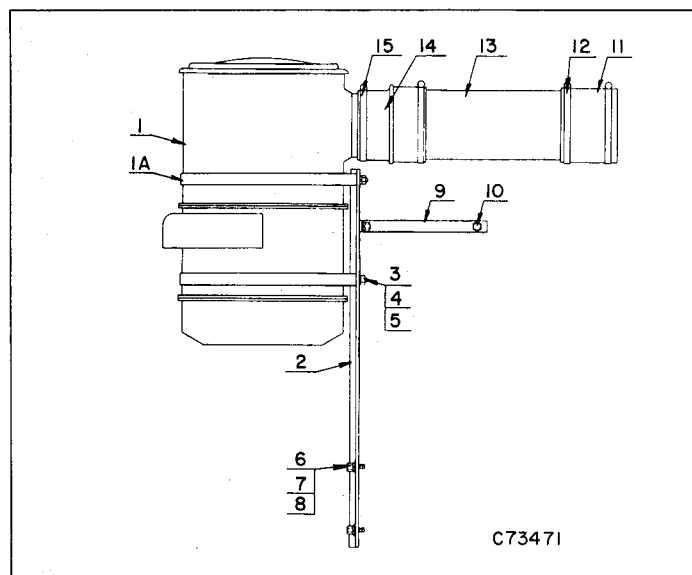
REF. NO.	NAME OF PART	QTY. REQ. PER COMP.	ALL MODELS ET75 ET150	ALL MODELS ET100 ET200	CURRENT CON-STRUCTION
	<u>DISCHARGE VALVE GROUP</u>		PART NO.	PART NO.	PART NO.
1	ASM VALVE & HOUSING, Incl. Ref. #1 thru 14	1	S70041A	S92541A	S92541A
	HOUSING	1	S70041	S92541	S92541
	ASM DISCHARGE VALVE, Incl. Ref. #2 thru 8	1	*	*	200VBK307
2	SEAT	1	*	*	200VBK203
3	SCREW-FLAT SoHd	1	75LM5	75LM5	75A18
4	NUT	1	1VB118	1VB118	None
5	GUIDE-LIFT	1	VB67260	VB67260	200VBL260
6	DISC-VALVE	1	1VB5867	1VB5867	1VB5867
7	BUMPER	1	*	*	200VBK128
8	GASKET-RING	1	25L11	25L11	25L11
∅	SCREW, Valve Retaining (3/8 x 3/4)	4	75A5N	75A5N	75A5N
∅	RETAINER	4	2014731	2014731	2014731
9	COVER-VALVE	1	1S92536	1S92536	1S92536
10	GASKET, Valve Cover	1	2S900715	2S900715	2S900715
11	SCREW, Valve Cover	8	75A84	75A84	75A84
12	WASHER-LOCK	8	95B5	95B5	95B5
13	O-RING, High Temperature	1	25AM7	25AM7	25AM7
14	PLUG	2	64AA5	64AA5	64AA5
15	SCREW, Housing	12	75A20	75A20	75A20
16	WASHER-LOCK	12	95B5	95B5	95B5
17	GASKET, Housing	1	S700715	3S925715	3S925715

REF. NO.	NAME OF PART	QTY. REQ. PER COMP.	MODELS ET125A, B & C ET250A, B & C	MODELS ET125D & E ET250D & E	CURRENT CON-STRUCTION
	<u>DISCHARGE VALVE GROUP</u>		PART NO.	PART NO.	PART NO.
	ASM VALVE & HOUSING, Incl. Ref. #1 thru 12	1	*	1S11541A	1S11541A
1	HOUSING	1	1S11541	1S11541	1S11541
2	PLUG	2	64AA5	64AA5	64AA5
3	ASM DISCHARGE VALVE, Incl. Ref. #4 thru 10	1	*	*	200VBL307
3A	DISC (Inner)	1	90V36	None	None
3B	DISC	1	90V37	None	None
3C	DISC	1	90V38	None	None
3D	DISC	1	90V39	None	None
3E	DISC (Outer)	1	90V43	None	None
4	DISC-VALVE	1	None	1VB6767	1VB6767
5	GUIDE-LIFT	1	None	VB67260	200VBL260
6	GASKET, Seat	1	25L9	25L9	25L9
7	SCREW	1	75D17	75LM5	75A18
8	NUT	1	None	1VB118	None
9	SEAT	1	*	*	200VBK203
10	BUMPER	1	*	*	200VBL128
11	PLATE, Valve Retainer	1	S12706	S12706	S12706
12	SCREW, Retainer Plate	4	75A4N	75A4N	75A4N
13	GASKET, Housing	1	3S115715	3S115715	3S115715
14	SCREW, Housing	12	75A20	75A20	75A20
15	WASHER-LOCK	12	95B5	95B5	95B5

∅ Not shown on illustration.

\* Original inner valve assembly is no longer available. If seat, bumper or complete inner valve is needed for repair, the INTERCHANGEABLE Valve Assembly shown in Column 3 must be purchased (seat and bumper are NOT interchangeable). Remaining individual parts of the original assemblies shown in Columns 1 and 2 may be purchased separately.

ORDER BY PART NUMBER AND DESCRIPTION. REFERENCE NUMBERS FOR YOUR CONVENIENCE ONLY.



REF. NO.	NAME OF PART	QTY. REQ. PER COMP.	MODEL ET75A	MODELS ET100A ET100B
	<u>AIR FILTER</u> <u>MTG. GROUP</u>		PART NO.	PART NO.
1	FILTER-AIR *	1	5B354	5B354
1A	ASM BAND, Mounting	2	2010066	2010066
2	BRACKET-FILTER	1	1S92517	1S92517
3	SCREW, Filter to Bracket	4	75A1	75A1
4	WASHER-LOCK	4	95B3	95B3
5	NUT	4	50B3	50B3
6	SPACER	4	80C35	80C35
6	SCREW, Bracket to Brace	4	75A1	75A1
7	WASHER	4	95A3	95A3
8	WASHER-LOCK	4	95B3	95B3
9	BRACE, to Compressor	1	2006237	2S92517
10	SCREW, Brace to Comp.	1	75A2	75A54
11	HOSE	1	29A242	29A166
12	CLAMP-HOSE	3	29B18	29B46
13	TUBE, Inlet	1	S70069	2S115857
14	HOSE	1	29A242	5D12
15	CLAMP-HOSE	1	29B18	29B18
∅	INDICATOR, Air Service	1	92B7	92B7
∅	NIPPLE, Indicator	1	63C2G	63C2G

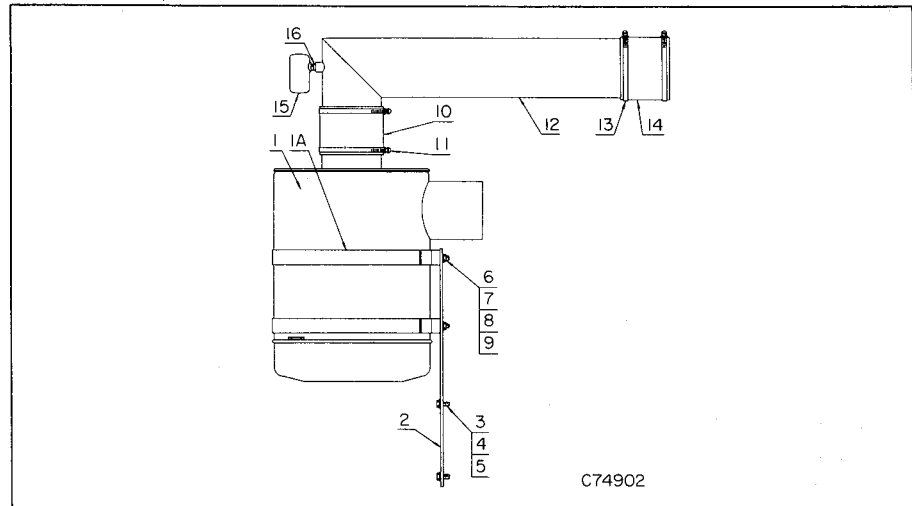
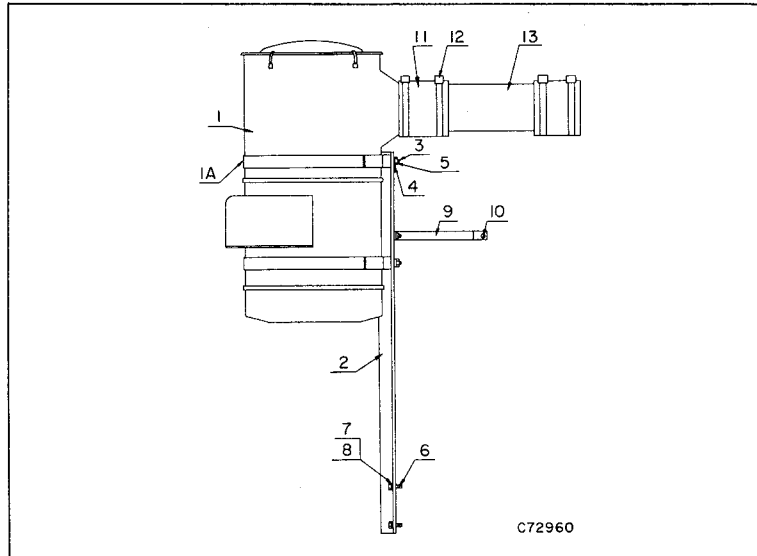
REF. NO.	NAME OF PART	QTY. REQ. PER COMP.	MODEL ET75B	MODELS ET75C ET75D	MODEL ET100C	MODELS ET100D ET100E
	<u>AIR FILTER</u> <u>MTG. GROUP</u>		PART NO.	PART NO.	PART NO.	PART NO.
1	FILTER-AIR *	1	2009003	5B467	5B467	5B467
1A	ASM BAND, Mounting	2				
2	BRACKET-FILTER	1	2005088	2011682	2005377	2011682
3	SCREW, Bracket to Comp. or Base	4	75A1	75A1	75A1	75A1
4	WASHER	4	95A3	95A3	95A3	95A3
5	WASHER-LOCK	4	95B3	95B3	95B3	95B3
6	SCREW, Filter to Bracket	4	75A1	75A12	75A1	75A12
7	WASHER	4	95A3	95A5	95A3	95A5
8	WASHER-LOCK	4	95B3	95B5	95B3	95B5
9	NUT	4	50B3	50B5	50B3	50B5
∅	BRACE, to Motor	1	None	None	None	2S92517
∅	SCREW, Brace to Motor	1	None	None	None	75A54
10	CLAMP-HOSE	1	29B26	29B18	29B18	29B18
11	HOSE	1	5D11	29A242	5D12	5D12
12	MANIFOLD-INLET	1	2005093	2005093	2006986	2006986
13	HOSE	1	29A266	2009506	29A166	**
14	CLAMP-HOSE	3	29B18	29B18	29B46	29B46
∅	INDICATOR, Air Service	1	92B7	92B7	92B7	92B7
∅	NIPPLE, Indicator	1	63C2G	63C2G	63C2G	63C2G

∅ Not shown on illustration.

\* For component parts of Air Filter see page 10 or 11 under correct filter column.

\*\* Model ET100D uses 29A285 Hose; Model ET100E uses 29A166 Hose.

ORDER BY PART NUMBER AND DESCRIPTION. REFERENCE NUMBERS FOR YOUR CONVENIENCE ONLY.

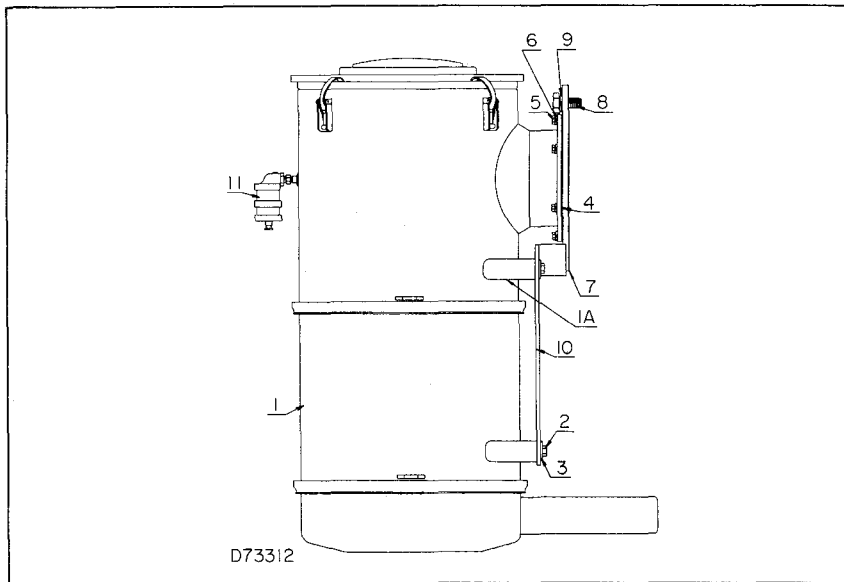


REF. NO.	NAME OF PART	QTY. REQ. PER COMP.	MODELS ET125A ET125B	MODEL ET150A
	<u>AIR FILTER</u> <u>MTG. GROUP</u>		PART NO.	PART NO.
1	FILTER-AIR *	1	5B353	5B353
1A	ASM BAND, Mounting	2	2010038	2010038
2	BRACKET-FILTER	1	5S11517	S70017
3	SCREW, Filter to Bracket	4	75A1	75A1
4	WASHER-LOCK	4	95B3	95B3
5	NUT	4	50B3	50B3
6	SCREW, Bracket to Base	5	75A1	75A1
7	WASHER	5	95A3	95A3
8	WASHER-LOCK	5	95B3	95B3
9	BRACE, to Compressor	1	6S11517	None
10	SCREW, Brace to Comp.	1	75A54	None
11	HOSE	2	29A166	29A166
12	CLAMP-HOSE	4	29B46	29B46
13	TUBE, Inlet	1	2S115857	S700857
∅	INDICATOR, Air Service	1	92B7	92B7
∅	NIPPLE, Indicator	1	63C2G	63C2G

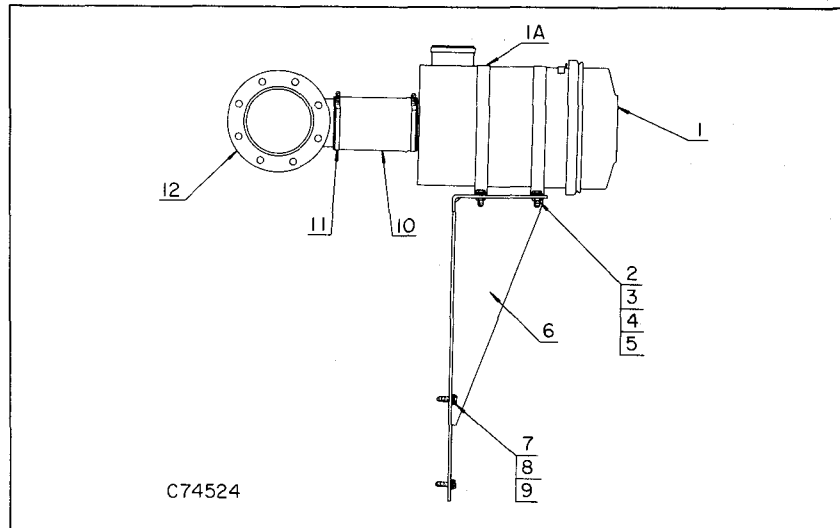
REF. NO.	NAME OF PART	QTY. REQ. PER COMP.	MODELS ET125C ET150C	MODELS ET125D ET125E	MODELS ET150D ET150E
	<u>AIR FILTER</u> <u>MTG. GROUP</u>		PART NO.	PART NO.	PART NO.
1	FILTER-AIR *	1	5B446	5B467	5B467
1A	ASM BAND, Mounting	2	2010038		
2	BRACKET-FILTER	1	2005224	2011682	2011682
∅	BRACE, to Compressor	1	None	6S11517	None
∅	SCREW, Brace to Comp.	1	None	75A54	None
3	SCREW, Bracket to Base	4	75A1	75A1	75A1
4	WASHER	4	95A3	95A3	95A3
5	WASHER-LOCK	4	95B3	95B3	95B3
6	SCREW, Filter to Bracket	4	75A1	75A12	75A12
7	WASHER	4	95A3	95A5	95A5
8	WASHER-LOCK	4	95B3	95B5	95B5
9	NUT	4	50B3	50B5	50B5
10	HOSE	1	29A166	5D12	5D12
11	CLAMP-HOSE	1	29B46	29B18	29B18
12	MANIFOLD-INLET	1	2005221	2006986	2006986
13	CLAMP-HOSE	3	29B46	29B46	29B46
14	HOSE	1	29A166	**	**
15	INDICATOR, Air Service	1	92B7	92B7	92B7
16	NIPPLE, Indicator	1	63C2G	63C2G	63C2G

\* For component parts of air filter see page 10 or 11 under correct filter column.  
 \*\* Models ET125D and ET150D use Hose 29A285; Models ET125E and ET150E use Hose 29A166.  
 ∅ Not shown on illustration.

ORDER BY PART NUMBER AND DESCRIPTION. REFERENCE NUMBERS FOR YOUR CONVENIENCE ONLY.



D73312



C74524

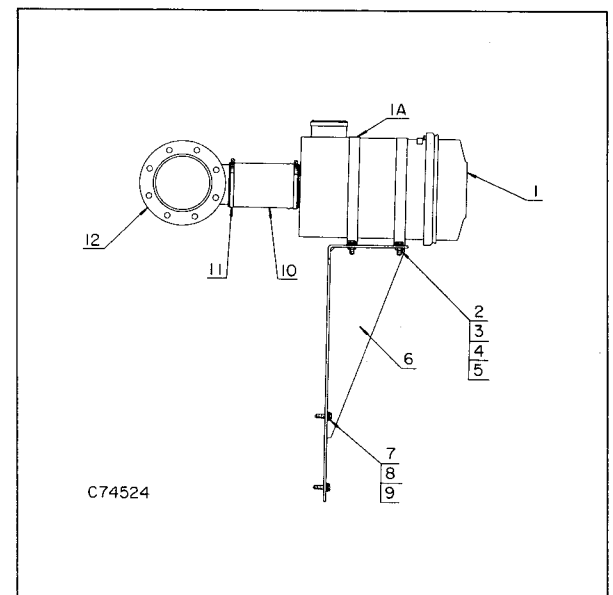
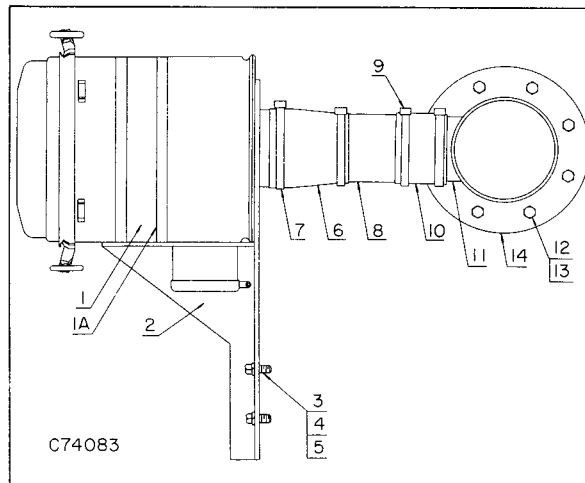
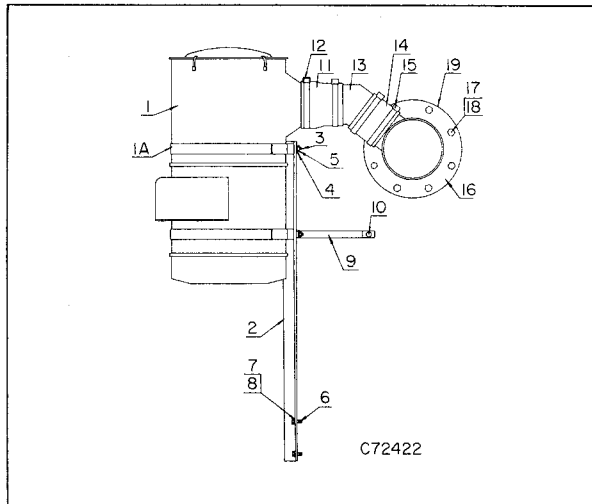
REF. NO.	NAME OF PART	QTY. REQ. PER COMP.	MODEL ET200A
	<u>AIR FILTER MTG. GROUP</u>		PART NO.
1	FILTER-AIR *	1	5B418
1A	ASM BAND, Mounting	2	2010038
2	SCREW, Filter to Bracket	4	75A13
3	WASHER	4	95A4
φ	WASHER-LOCK	4	95B4
4	GASKET	1	25C2655
5	SCREW, Filter to Manifold	6	75A68
6	WASHER-LOCK	6	95B3
7	GASKET	1	25C1078
8	SCREW, Filter to Inlet Housing	8	75A28
9	WASHER-LOCK	8	95B8
10	BRACKET-FILTER	1	S92517
11	INDICATOR, Air Service	1	92B7

REF. NO.	NAME OF PART	QTY. REQ. PER COMP.	MODEL ET200C	MODELS ET200D ET200E
	<u>AIR FILTER MTG. GROUP</u>		PART NO.	PART NO.
1	FILTER-AIR *	2	5B467	5B467
1A	ASM BAND, Mounting	4		
2	SCREW, Filter to Bracket	8	75A1	75A49
3	WASHER	8	95A3	95A7
4	WASHER-LOCK	8	95B3	95B6
5	NUT	8	50B3	50B6
6	BRACKET-FILTER	1	2005867	2012053
7	SCREW, Bracket to Base	4	75A1	75A1
8	WASHER	4	95A3	95A3
9	WASHER-LOCK	4	95B3	95B3
10	HOSE	2	29A242	29A242
11	CLAMP-HOSE	4	29B18	29B18
12	MANIFOLD-INLET	1	2005866	2011906
φ	INDICATOR, Air Service	1	92B7	92B7
φ	NIPPLE, Indicator	1	63C2G	63C2G

\* For component parts of air filter see page 11 under correct filter column.

φ Not shown on illustration.

ORDER BY PART NUMBER AND DESCRIPTION. REFERENCE NUMBERS FOR YOUR CONVENIENCE ONLY.



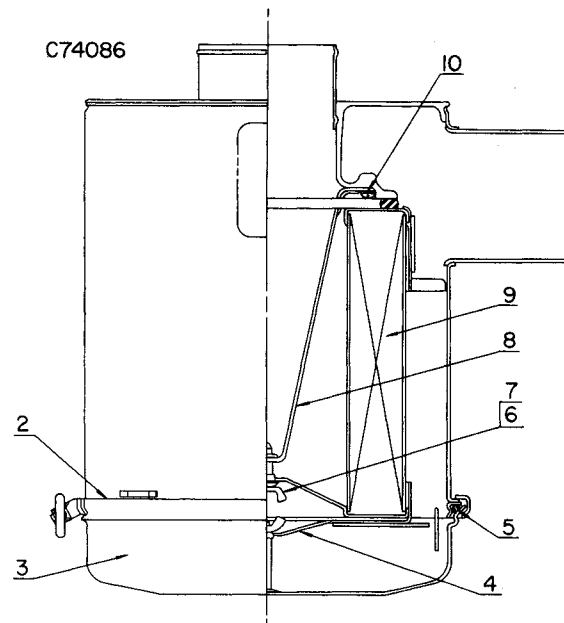
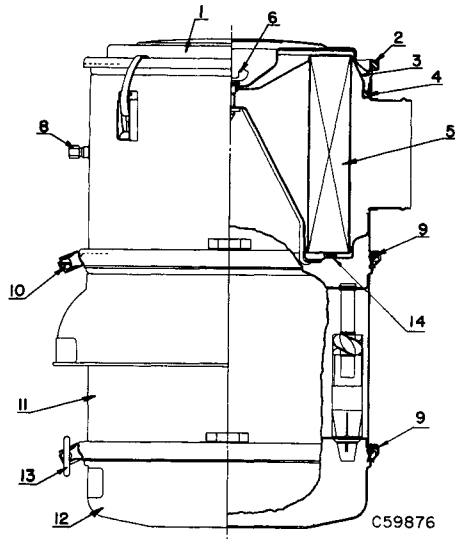
REF. NO.	NAME OF PART	QTY. REQ. PER COMP.	MODELS ET250A ET250B
	<u>AIR FILTER MTG. GROUP</u>		<u>PART NO.</u>
1	FILTER-AIR *	2	5B353
1A	ASM BAND, Mounting	4	2010038
2	BRACKET-FILTER	1	2S11517
3	SCREW, Filter to Bracket	8	75A1
4	WASHER-LOCK	8	95B3
5	NUT	8	50B3
6	SCREW, Bracket to Base	4	75A1
7	WASHER	4	95A3
8	WASHER-LOCK	4	95B3
9	BRACE, to Compressor	1	3S11517
10	SCREW, Brace to Comp.	1	75A54
11	HOSE	2	5D12
12	CLAMP-HOSE	2	29B46
13	TUBE, Inlet	2	S115857
14	HOSE	2	29A242
15	CLAMP-HOSE	6	29B18
16	MANIFOLD-INLET	1	S11569
17	SCREW, to Housing	8	75A74
18	WASHER-LOCK	8	95B8
19	GASKET	1	25C730
∅	INDICATOR, Air Service	2	92B7

REF. NO.	NAME OF PART	QTY. REQ. PER COMP.	MODEL ET250C
	<u>AIR FILTER MTG. GROUP</u>		<u>PART NO.</u>
1	FILTER-AIR *	2	5B446
1A	ASM BAND, Mounting	4	2010038
∅	SCREW, to Bracket	8	75A1
∅	WASHER	8	95A3
∅	WASHER-LOCK	8	95B3
∅	NUT	8	50B3
2	BRACKET-FILTER	1	10S11517
3	SCREW, Bracket to Base	4	75A1
4	WASHER	4	95A3
5	WASHER-LOCK	4	95B3
6	HOSE	2	5D12
7	CLAMP-HOSE	2	29B46
8	TUBE, Inlet	2	6S115857
9	CLAMP-HOSE	6	29B18
10	HOSE	2	29A242
11	MANIFOLD-INLET	1	2S11569
12	SCREW, to Housing	8	75A74
13	WASHER-LOCK	8	95B8
14	GASKET, to Housing	1	25C730
∅	INDICATOR, Air Service	1	92B7
∅	NIPPLE, Indicator	1	63C2G

REF. NO.	NAME OF PART	QTY. REQ. PER COMP.	MODELS ET250D ET250E
	<u>AIR FILTER MTG. GROUP</u>		<u>PART NO.</u>
1	FILTER-AIR *	2	5B467
1A	ASM BAND, Mounting	4	
2	SCREW, Filter to Bracket	8	75A12
3	WASHER	8	95A5
4	WASHER-LOCK	8	95B5
5	NUT	8	50B5
6	BRACKET-FILTER	1	2012053
7	SCREW, Bracket to Base	4	75A1
8	WASHER	4	95A3
9	WASHER-LOCK	4	95B3
10	HOSE	2	2009554
11	CLAMP-HOSE	4	29B18
12	MANIFOLD-INLET	1	2011906
∅	INDICATOR, Air Service	1	92B7
∅	NIPPLE, Indicator	1	63C2G

\* For component parts of air filter see page 10 or 11 under correct filter column.  
 ∅ Not shown on illustration.

ORDER BY PART NUMBER AND DESCRIPTION. REFERENCE NUMBERS FOR YOUR CONVENIENCE ONLY.

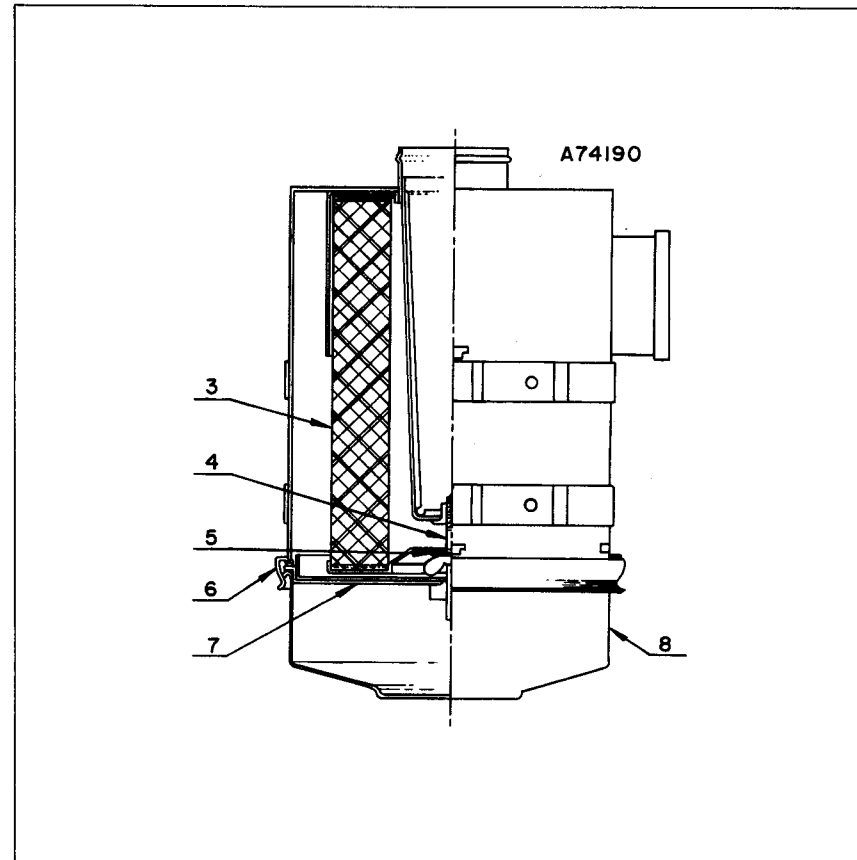
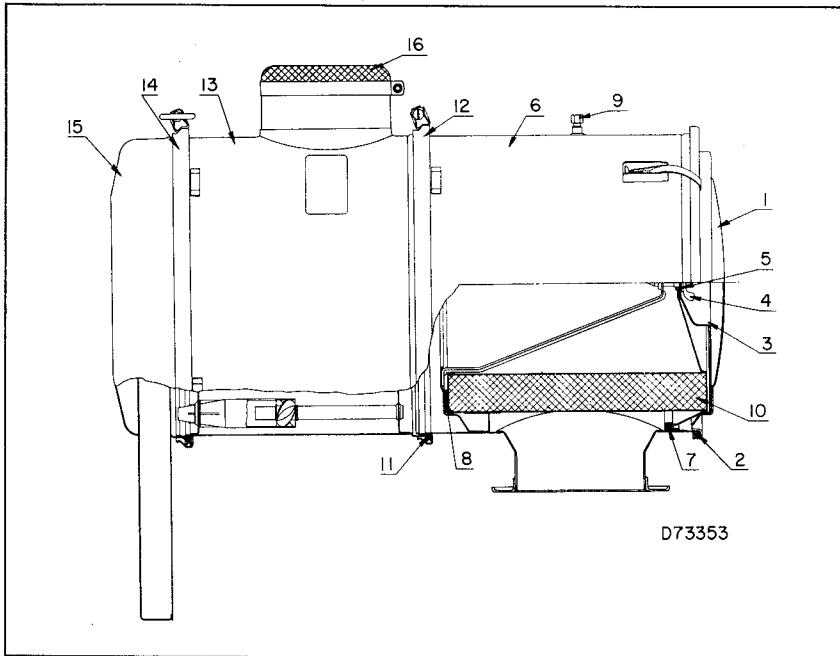


REF. NO.	NAME OF PART	QTY. REQ. PER FLTR.	AIR FILTER 5B354	AIR FILTER 5B353
	<u>COMPONENT PARTS</u>		PART NO.	PART NO.
1	COVER, Outer (w/Gasket)	1	2010155	2008824
2	GASKET, Cover	1	2008005	2008177
3	COVER, Inner	1	2008948	2008197
4	GASKET, Inner Cover	1	2008850	2008192
5	ELEMENT (w/Gasket)	1	2008007	2008071
6	ASM BOLT & GASKET	1	2008008	2008008
8	CAP	1	2008899	2008899
9	O-RING	2	2008009	2008176
10	ASM CLAMP, Body	1	2010157	2010020
11	ASM LOWER BODY	1	2010156	2008193
12	ASM CUP	1	2010100	2010021
13	ASM CLAMP, Cup	1	2010101	2010022
14	GASKET, Element	1	2008010	2008178

REF. NO.	NAME OF PART	QTY. REQ. PER FLTR.	AIR FILTER 5B446
	<u>COMPONENT PARTS</u>		PART NO.
2	ASM CLAMP	1	2010022
3	ASM CUP	1	2010021
4	ASM BAFFLE	1	
5	O-RING	2	2008176
6	ASM WING BOLT	1	2008678
7	WASHER	1	2008189
8	YOKE	1	
9	ASM ELEMENT (w/Gasket)	1	2008947
10	SCREW & LOCK WASHER	1	

NOTE: Part numbers are shown only for those parts normally furnished for repairs.

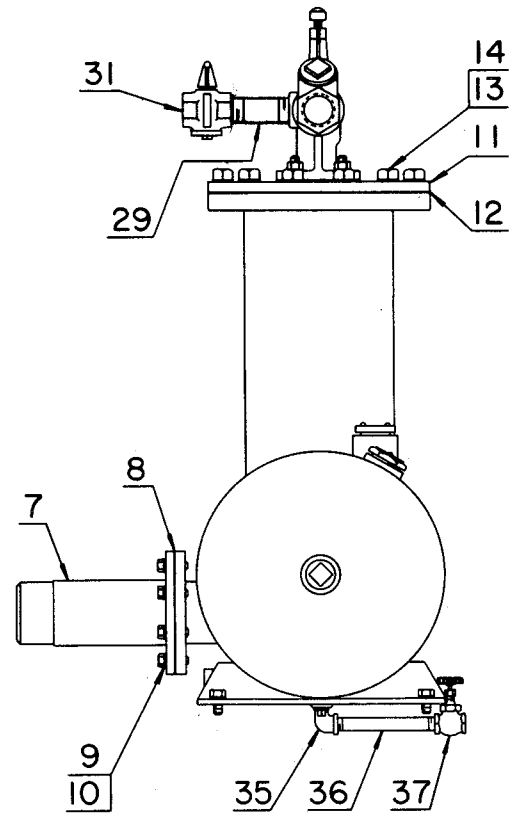
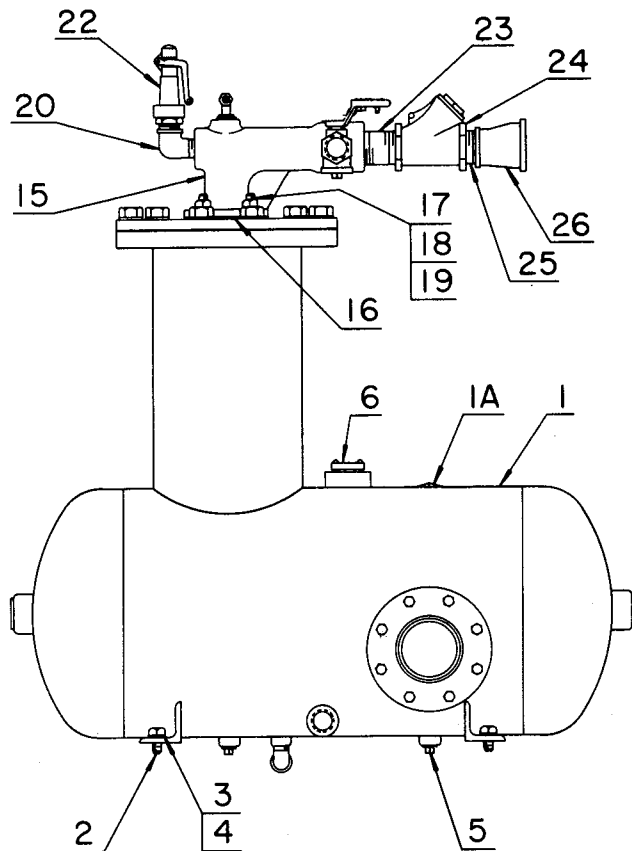
ORDER BY PART NUMBER AND DESCRIPTION. REFERENCE NUMBERS FOR YOUR CONVENIENCE ONLY.



REF. NO.	NAME OF PART	QTY. REQ. PER FLTR.	AIR FILTER 5B418
<u>COMPONENT PARTS</u>			<u>PART NO.</u>
1	COVER, Outer (w/Gasket)	1	2008824
2	GASKET, Cover	1	2008177
3	COVER, Inner	1	2008197
4	ASM BOLT & GASKET	1	2008008
5	WASHER	1	2008189
7	GASKET, Inner Cover	1	2008006
8	GASKET, Element	1	2008178
9	CAP	1	2008899
10	ELEMENT (w/Gasket)	1	2008200
11	O-RING	2	2008176
12	ASM CLAMP, Body	1	2010020
13	ASM LOWER BODY	1	
14	ASM CLAMP, Cup	1	2010022
15	ASM CUP	1	
16	HOOD-INLET	1	

REF. NO.	NAME OF PART	QTY. REQ. PER FLTR.	AIR FILTER 2009003	AIR FILTER 5B467
<u>COMPONENT PARTS</u>			<u>PART NO.</u>	<u>PART NO.</u>
3	ELEMENT	1	2008944	2008694
4	NUT-WING	1		
5	WASHER	1		
6	CLAMP	1		
7	PLATE-LOUVER	1		
8	CUP	1		

NOTE: Part numbers are shown only for those parts normally furnished for repairs.



D74526

FOR LIST OF PARTS SEE PAGE 13.

ORDER BY PART NUMBER AND DESCRIPTION. REFERENCE NUMBERS FOR YOUR CONVENIENCE ONLY.

REF. NO.	NAME OF PART	QTY. REQ. PER COMP.	MODEL ET75A	MODEL ET75B	MODEL ET75C	MODEL ET75D	MODEL ET150A	MODEL ET150C	MODEL ET150D	MODEL ET150E
	<u>OIL RESERVOIR GROUP</u>		PART NO.	PART NO.	PART NO.	PART NO.	PART NO.	PART NO.	PART NO.	PART NO.
1	RESERVOIR-OIL	1	S70037	S70037	S70037	S70037	S92537	S92537	S92537	S92537
1A	PLUG, Oil Filler *	1	64T46	64T46	64T46	64T46	64T46	64T46	64T46	64T46
2	SCREW, Reservoir to Base	4	75A29	75A18	75A29	75A18	75A18	75A18	75A18	75A18
3	WASHER	4	95A7	95A7	95A7	95A7	95A7	95A7	95A7	95A7
4	WASHER-LOCK	4	95B7	95B7	95B7	95B7	95B7	95B7	95B7	95B7
∅	SHIM, Reservoir to Base (.008)	4	77E17	77E17	77E17	77E17	77E17	77E17	77E17	77E17
∅	SHIM, Reservoir to Base (1/32)	4	77E18	77E18	77E18	77E18	77E18	77E18	77E18	77E18
∅	SHIM, Reservoir to Base (1/16)	8	77E19	77E19	77E19	77E19	77E19	77E19	77E19	77E19
5	PLUG-MAGNETIC	2	64BJ4G	64BJ4G	64BJ4G	64BJ4G	64BJ4G	64BJ4G	64BJ4G	64BJ4G
6	GAUGE-FLOAT, Oil Level	1	2006518	2006518	2006518	2006518	27N23	27N23	27N23	27N23
∅	GASKET, Float Gauge	1	54C204	54C204	54C204	54C204	54C204	54C204	54C204	54C204
7	MANIFOLD-DISCHARGE (Reservoir)	1	S92520	S92520	S92520	S92520	S92520	S92520	S92520	S92520
8	GASKET	1	25C1988	25C1988	25C1988	25C1988	25C1988	25C1988	25C1988	25C1988
9	SCREW (to Reservoir)	8	75A17	75A17	75A17	75A17	75A17	75A17	75A17	75A17
10	WASHER-LOCK	8	95B7	95B7	95B7	95B7	95B7	95B7	95B7	95B7
11	SEPARATOR-OIL **	1	55A7	55A7	55A7	55A7	55A4	55A4	55A4	55A4
12	GASKET	1	25C2479	25C2479	25C2479	25C2479	25C2431	25C2431	25C2431	25C2431
13	SCREW (to Reservoir)	12	75A52	75A52	75A52	75A52	75A134	75A134	75A134	75A134
14	GASKET-RING (Washer)	12	25F40	25F40	25F40	25F40	25F57	25F57	25F57	25F57
∅	ELBOW	2	86E58	86E58	86E58	86E58	86E58	86E58	86E58	86E58
∅	TUBE (Separator Return Line)	1	85E3A440	85E3A440	85E3A440	85E3A440	85E3A440	85E3A440	85E3A440	85E3A440
∅	BUSHING	2	64E28	64E28	64E28	64E28	64E28	64E28	64E28	64E28
15	MANIFOLD-DISCHARGE (Separator)	1	S600285	S600285	S600285	S600285	S900285	S900285	S900285	S900285
16	GASKET	1	25C2487	25C2487	25C2487	25C2487	25C2432	25C2432	25C2432	25C2432
17	STUD (to Separator)	4	79A67	79A67	79A67	79A67	79A67	79A67	79A67	79A67
18	WASHER-LOCK	4	95B7	95B7	95B7	95B7	95B7	95B7	95B7	95B7
19	NUT	4	50B7	50B7	50B7	50B7	50B7	50B7	50B7	50B7
20	ELBOW-STREET	1	64D8G	64D8G	64D8G	64D8G	64D9G	64D9G	64D9G	64D9G
∅	BUSHING (Elbow to Valve) †	1	64E22G	64E22G	64E22G	64E22G	None	None	None	None
22	VALVE-SAFETY (125#)	1	90G5	90G5	90G5	90G5	90G180	90G180	90G180	90G180
22	VALVE-SAFETY (150#)	1	90G75	90G75	90G75	90G75	90G124	90G124	90G124	90G124
23	NIPPLE (to Discharge Line)	1	63L1G	63L17G	63L1G	63L17G	63U48X30G	63P11G	63P1G	63P11G
24	VALVE-CHECK	1	90J113	90J113	90J113	90J113	90J114	90J114	90J114	90J114
25	NIPPLE	1	63L1G	63L17G	None	None	None	None	None	None
26	REDUCER (Coupling)	1	64N36G	64N36G	None	None	None	None	None	None
∅	PLUG, Manifold (3/8)	1	64AA4G	64AA4G	64AA4G	64AA4G	64AA4G	64AA4G	64AA4G	64AA4G
	(Discharge Manifold to Blowdown Valve)				††	††			††	††
29	NIPPLE	1	63J30G	63J15G			63J25G	63J25G		
31	VALVE (Manual)	1	90A39	90A39			90A39	90A39		
∅	NIPPLE, Reservoir Drain	1	None	None	None	None	63F5G	None	63F5G	None
35	ELBOW, Reservoir Drain	1	64D5G	64D5G	64D5G	64D5G	64C4G	64D5G	64C4G	64D5G
36	NIPPLE	1	63F25G	63F25G	63F25G	63F25G	63N8X164G	63F24G	63N8X164G	63F24G
37	VALVE-GLOBE	1	90L5	90L5	90L5	90L5	90L5	90L5	90L5	90L5

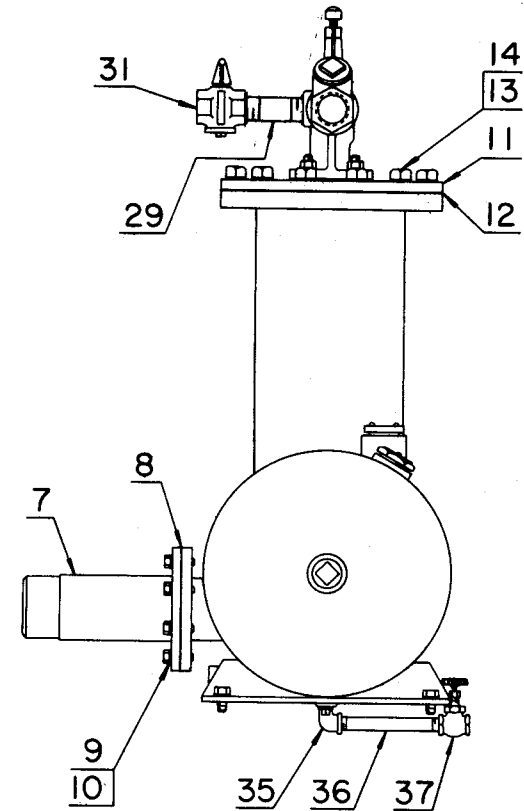
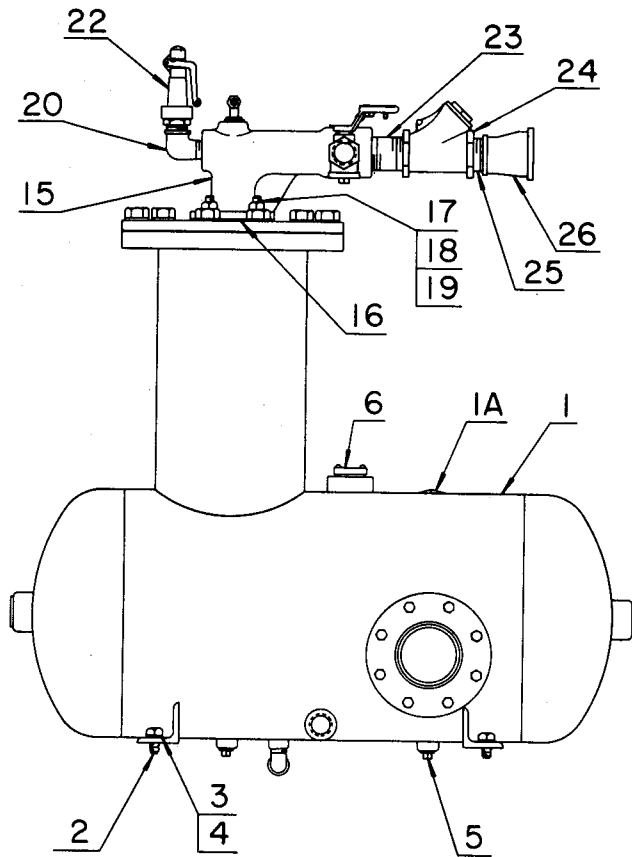
∅ Not shown on illustration.

\* Oil filler plug replaces cover plate and related parts used on earlier models.

\*\* For component parts of Oil Separator see page 18 under correct separator column.

† Bushing used only with 90G5 Safety Valve.

†† For list of parts see page 33 or 34 as applicable.



D74526

FOR LIST OF PARTS SEE PAGE 15.

ORDER BY PART NUMBER AND DESCRIPTION. REFERENCE NUMBERS FOR YOUR CONVENIENCE ONLY.

REF. NO.	NAME OF PART	QTY. REQ. PER COMP.	MODELS ET100A ET100B	MODEL ET100C	MODEL ET100D	MODEL ET100E	MODEL ET200A	MODEL ET200C	MODEL ET200D	MODEL ET200E
	OIL RESERVOIR GROUP		PART NO.	PART NO.	PART NO.	PART NO.	PART NO.	PART NO.	PART NO.	PART NO.
1	RESERVOIR-OIL	1	1S92537	1S92537	1S92537	1S92537	S92537	S92537	S92537	S92537
1A	PLUG, Oil Filler *	1	64T46	64T46	64T46	64T46	64T46	64T46	64T46	64T46
2	SCREW, Reservoir to Base	4	75A20	75A12	75A20	75A12	75A18	75A196	75A18	75A196
3	WASHER	4	95A5	95A5	95A5	95A5	95A7	95A8	95A7	95A8
4	WASHER-LOCK	4	95B5	95B5	95B5	95B5	95B7	95B8	95B7	95B8
∅	SHIM, Reservoir to Base (.008)	4	77E17	77E17	77E17	77E17	77E17	77E17	77E17	77E17
∅	SHIM, Reservoir to Base (1/32)	4	77E18	77E18	77E18	77E18	77E18	77E18	77E18	77E18
∅	SHIM, Reservoir to Base (1/16)	8	77E19	77E19	77E19	77E19	77E19	77E19	77E19	77E19
5	PLUG-MAGNETIC	2	64BJ4G	64BJ4G	64BJ4G	64BJ4G	64BJ4G	64BJ4G	64BJ4G	64BJ4G
6	GAUGE-FLOAT, Oil Level	1	27N14	27N14	27N14	27N14	27N23	27N14	27N23	27N14
∅	GASKET, Float Gauge	1	54C204	54C204	54C204	54C204	54C204	54C204	54C204	54C204
7	MANIFOLD-DISCHARGE (Reservoir)	1	S92520	S92520	S92520	S92520	S92520	S92520	S92520	S92520
8	GASKET	1	25C1988	25C1988	25C1988	25C1988	25C1988	25C1988	25C1988	25C1988
9	SCREW (to Reservoir)	8	75A17	75A17	75A17	75A17	75A17	75A17	75A17	75A17
10	WASHER-LOCK	8	95B7	95B7	95B7	95B7	95B7	95B7	95B7	95B7
11	SEPARATOR-OIL **	1	55A3	55A3	55A3	55A3	55A4	55A4	55A4	55A4
12	GASKET	1	25C1909	25C1909	25C1909	25C1909	25C2431	25C2431	25C2431	25C2431
13	SCREW (to Reservoir)	12	75A57	75A57	75A57	75A57	75A134	75A134	75A134	75A134
14	GASKET-RING (Washer)	12	25F24	25F24	25F24	25F24	25F57	25F57	25F57	25F57
∅	ELBOW	2	86E58	86E58	86E58	86E58	86E58	86E58	86E58	86E58
∅	TUBE (Separator Return Line)	1	85E3A440	85E3A440	85E3A440	85E3A440	85E3A440	85E3A440	85E3A720	85E3A440
∅	BUSHING	2	64E28	64E28	64E28	64E28	64E28	64E28	64E28	64E28
15	MANIFOLD-DISCHARGE (Separator)	1	S600285	S600285	S600285	S600285	S900285	S900285	S900285	S900285
16	GASKET	1	25C2487	25C2487	25C2487	25C2487	25C2432	25C2432	25C2432	25C2432
17	STUD (to Separator)	4	79A67	79A67	79A67	79A67	79A67	79A67	79A67	79A67
18	WASHER-LOCK	4	95B7	95B7	95B7	95B7	95B7	95B7	95B7	95B7
19	NUT	4	50B7	50B7	50B7	50B7	50B7	50B7	50B7	50B7
20	ELBOW-STREET	1	64D8G	64D8G	64D8G	64D8G	64D8G	64D8G	64D8G	64D8G
∅	BUSHING †	1	64E22G	64E22G	64E22G	64E22G	64E12G	64E12G	64E12G	64E12G
22	VALVE-SAFETY (125#)	1	90G5	90G5	90G5	90G5	90G180	90G180	90G180	90G180
22	VALVE-SAFETY (150#)	1	90G75	90G75	90G75	90G75	90G124	90G124	90G124	90G124
23	NIPPLE (to Discharge Line)	1	63L1G	63L2G	63L1G	63L2G	63P1G	63P11G	63P1G	63P1G
24	VALVE-CHECK	1	90J113	90J113	90J113	90J113	90J114	90J114	90J114	90J114
25	NIPPLE	1	63L1G	None	None	None	None	None	None	None
26	REDUCER (Coupling)	1	64N36G	None	None	None	None	None	None	None
∅	PLUG, Manifold (3/8)	1	64AA4G	64AA4G	64AA4G	64AA4G	64AA4G	64AA4G	64A25G	64A25G
	(Discharge Manifold to Blowdown Valve)				††	††			††	††
29	NIPPLE	1	63J15G	63J15G			63J25G	63J25G		
31	VALVE (Manual)	1	90A39	90A39			90A39	90A39		
∅	NIPPLE, Reservoir Drain	1	63F2G	None	63F2G	None	None	None	None	None
35	ELBOW, Reservoir Drain	1	64C4G	64D5G	64C4G	64D5G	64D5G	64D5G	64D5G	64D5G
36	NIPPLE	1	63F14G	63F14G	63F14G	63F14G	63N8X152G	63F24G	63N8X152G	63F24G
37	VALVE-GLOBE	1	90L5	90L5	90L5	90L5	90L5	90L5	90L5	90L5
∅	NIPPLE	1	63F15G	None	63F15G	None	None	None	None	None
∅	CAP	1	64AD4G	None	64AD4G	None	None	None	None	None

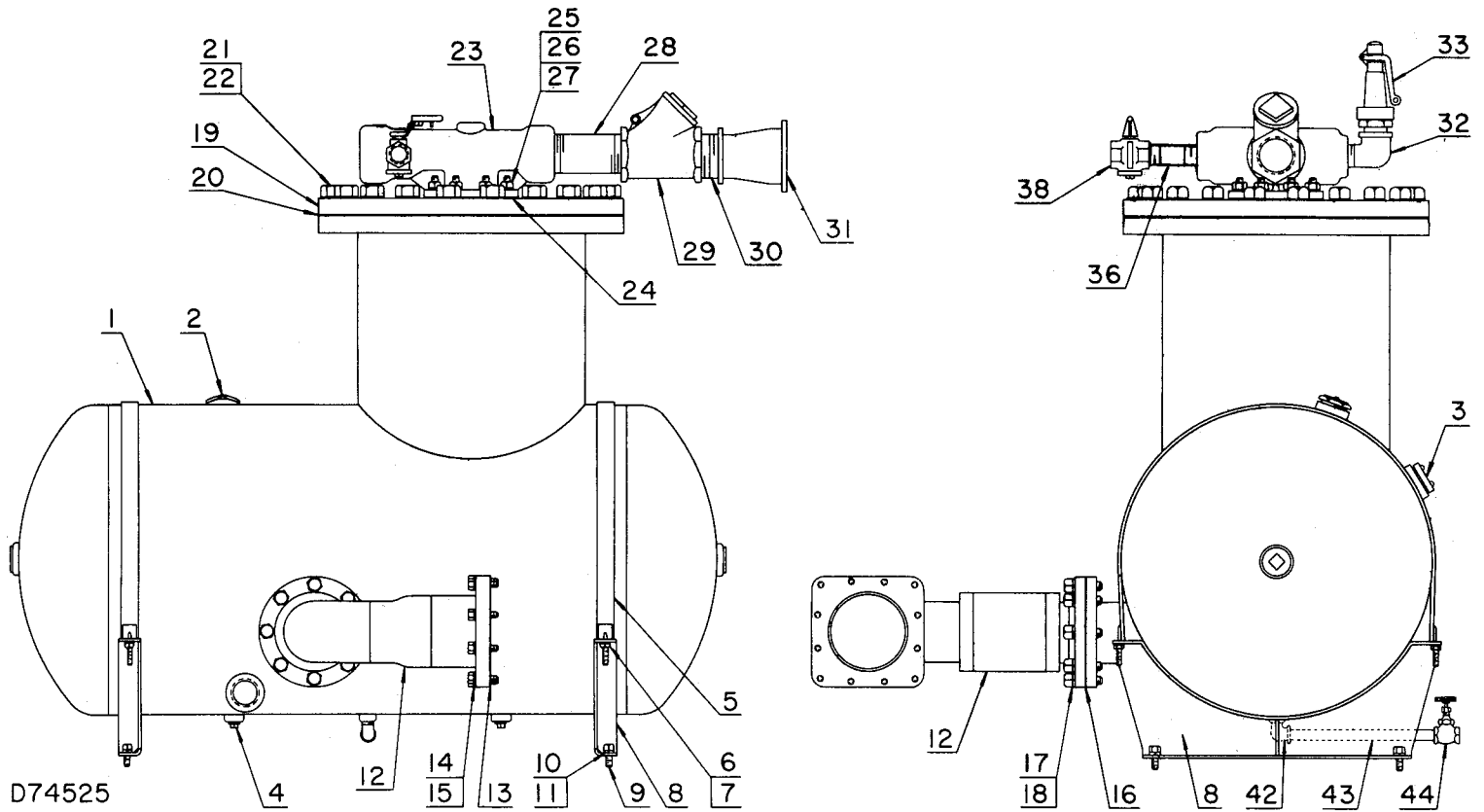
∅ Not shown on illustration.

\* Oil filler plug replaces cover plate and related parts used on earlier models.

\*\* For component parts of Oil Separator see page 18 under correct separator column.

† Bushing used only with 90G5 Safety Valve.

†† For list of parts see page 33 or 34 as applicable.



FOR LIST OF PARTS SEE PAGE 17.

ORDER BY PART NUMBER AND DESCRIPTION. REFERENCE NUMBERS FOR YOUR CONVENIENCE ONLY.

REF. NO.	NAME OF PART	QTY. REQ. PER COMP.	MODELS	MODEL	MODEL	MODEL	MODELS	MODEL	MODEL	MODEL
			ET125A ET125B	ET125C	ET125D	ET125E	ET250A ET250B	ET250C	ET250D	ET250E
	<u>OIL RESERVOIR GROUP</u>		PART NO.	PART NO.	PART NO.	PART NO.	PART NO.	PART NO.	PART NO.	PART NO.
1	RESERVOIR-OIL	1	S11537	S11537	S11537	S11537	S11537	1S1237	1S1237	1S1237
2	PLUG, Oil Filler *	1	64T46	64T46	64T46	64T46	64T46	64T46	64T46	64T46
3	GAUGE-FLOAT, Oil Level	1	27N14	27N14	27N14	27N14	27N31	27N31	27N31	27N31
φ	GASKET, Float Gauge	1	54C204	54C204	54C204	54C204	54C204	54C204	54C204	54C204
4	PLUG-MAGNETIC	2	64BJ4G	64BJ4G	64BJ4G	64BJ4G	64BJ4G	64BJ4G	64BJ4G	64BJ4G
5	STRAP, Reservoir	2	1S600290	1WHD290	1S600290	1WHD290	S12290	S115290	S12290	S115290
6	WASHER-LOCK	4	95B3	95B3	95B3	95B3	95B3	95B3	95B3	95B3
7	NUT	4	50B3	50B3	50B3	50B3	50B3	50B3	50B3	50B3
8	SADDLE, Reservoir	2	S60040	2005162	S60040	2005162	S1240	S11540	S1240	S11540
9	SCREW (to Base)	4	75A20	75A4	75A20	75A4	75A29	75A4	75A29	75A4
10	WASHER	See ( )	95A5 (8)	95A5 (4)	95A5 (8)	95A5 (4)	95A7 (8)	95A5 (4)	95A7 (8)	95A5 (4)
11	WASHER-LOCK	4	95B5	95B5	95B5	95B5	95B7	95B5	95B7	95B5
φ	NUT	4	50B5	None	50B5	None	50B7	None	50B7	50B5
12	MANIFOLD-DISCHARGE (Reservoir)	1	1S11520	1S11520	1S11520	1S11520	S11520	S11520	S11520	S11520
13	GASKET, Housing	1	25C2497	25C2497	25C2497	25C2497	25C2497	25C2497	25C2497	25C2497
14	SCREW (to Housing)	12	75A54	75A54	75A54	75A54	75A54	75A54	75A54	75A54
15	WASHER-LOCK	12	95B5	95B5	95B5	95B5	95B5	95B5	95B5	95B5
16	GASKET, Reservoir	1	25C802	25C802	25C802	25C802	25C2501	25C2501	25C2501	25C2501
17	SCREW (to Reservoir)	See ( )	75A17 (8)	75A17 (4)	75A17 (4)	75A17 (4)	75A27 (8)	75A27 (8)	75A27 (8)	75A27 (8)
18	WASHER-LOCK	See ( )	95B7 (8)	95B7 (4)	95B7 (4)	95B7 (4)	95B8 (8)	95B8 (8)	95B8 (8)	95B8 (8)
19	SEPARATOR-OIL **	1	55A3	55A3	55A3	55A3	55A8	55A8	55A8	55A8
20	GASKET, Separator	1	25C1909	25C1909	25C1909	25C1909	25C2506	25C2506	25C2506	25C2506
21	SCREW (to Reservoir)	See ( )	75A57 (12)	75A57 (12)	75A57 (12)	75A57 (12)	75AA63 (20)	75AA63 (20)	75AA63 (20)	75AA63 (20)
22	GASKET-RING (Washer)	See ( )	25F24 (12)	25F24 (12)	25F24 (12)	25F24 (12)	25F56 (20)	25F56 (20)	25F56 (20)	25F56 (20)
φ	TUBE, Separator Return Line	1	85E3A440	85E3A440	85E3A440	85E3A440	85E3A440	85E3A440	85E3A440	85E3A440
φ	ELBOW	2	86E58	86E58	86E58	86E58	86E58	86E58	86E58	86E58
φ	BUSHING	2	64E28	64E28	64E28	64E28	64E28	64E28	64E28	64E28
23	MANIFOLD-DISCHARGE (Separator)	1	S600285	S600285	S600285	S600285	S12285	S12285	S12285	S12285
24	GASKET, Manifold	1	25C2487	25C2487	25C2487	25C2487	25C2560	25C2560	25C2560	25C2560
25	STUD (to Separator)	See ( )	79A67 (4)	79A67 (4)	79A67 (4)	79A67 (4)	79A67 (8)	79A67 (8)	79A67 (8)	79A67 (8)
26	WASHER-LOCK	See ( )	95B7 (4)	95B7 (4)	95B7 (4)	95B7 (4)	95B7 (8)	95B7 (8)	95B7 (8)	95B7 (8)
27	NUT	See ( )	50B7 (4)	50B7 (4)	50B7 (4)	50B7 (4)	50B7 (8)	50B7 (8)	50B7 (8)	50B7 (8)
φ	PLUG, Manifold	1	64AA4G	64AA4G	64AA4G	64AA4G	64AA5G	64AA5G	64AA5G	64AA5G
28	NIPPLE, Discharge	1	63L1G	63L1G	63L1G	63L1G	63U48X80G	63U48X80G	63P11G	63U48X80G
29	VALVE-CHECK	1	90J113	90J113	90J113	90J113	90J82	90J114	90J82	90J114
30	NIPPLE	1	63L1G	None	None	None	63P11G	63P11G	None	None
31	REDUCER	1	64N36G	None	None	None	64N18G	64N18G	None	None
32	ELBOW	1	64D8G	64D8G	64D8G	64D8G	64D9G	64D9G	64D9G	64D9G
φ	BUSHING †	1	64E22G	64E22G	64E22G	64E22G	None	None	None	None
33	VALVE-SAFETY (125#)	1	90G5	90G5	90G5	90G5	90G180	90G180	90G180	90G180
33	VALVE-SAFETY (150#)	1	90G75	90G75	90G75	90G75	90G124	90G124	90G124	90G124
	(Discharge Manifold to Blowdown Valve)				††	††			††	††
36	NIPPLE	1	63J15G	63J15G			63L15G	63L15G		
38	VALVE (Manual)	1	90A39	90A39			90A60	90A60		
42	ELBOW, Reservoir Drain	1	64D5G	64D5G	64D5G	64D5G	64D5G	64D5G	64D5G	64D5G
43	NIPPLE	1	63N8X164G	63F14G	63F14G	63F14G	63N8X204G	63N8X176G	63N8X204G	63N8X176G
44	VALVE	1	90L5	90L5	90L5	90L5	90L5	90L5	90L5	90L5

φ Not shown on illustration.

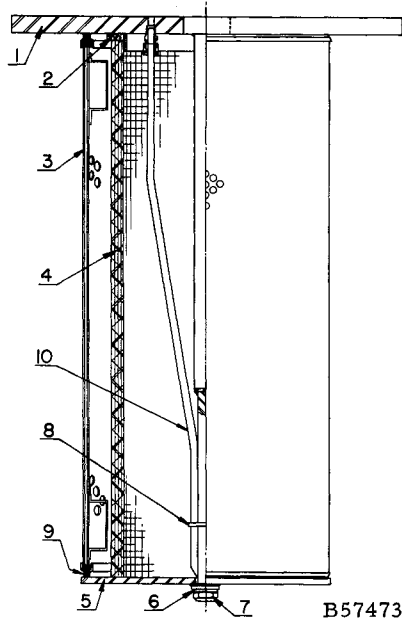
\* Oil filler plug replaces cover plate and related parts used on earlier models.

\*\* For component parts of Oil Separator see page 18 under correct separator column.

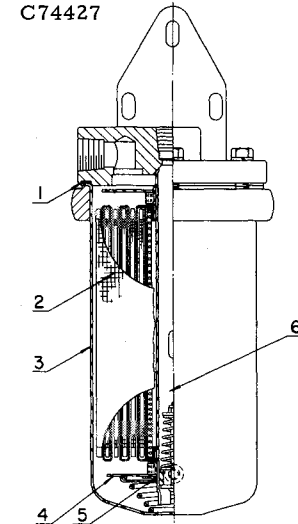
† Bushing used only with 90G5 Safety Valve.

†† For list of parts see page 33 or 34 as applicable.

ORDER BY PART NUMBER AND DESCRIPTION. REFERENCE NUMBERS FOR YOUR CONVENIENCE ONLY.



B57473



C74427

REF. NO.	NAME OF PART	QTY. REQ. PER SEP.	OIL SEP. 55A3	OIL SEP. 55A4	OIL SEP. 55A7	OIL SEP. 55A8
	<u>COMPONENT PARTS</u>		PART NO.	PART NO.	PART NO.	PART NO.
1	ASM PLATE, Top	1	2008873	†	†	†
2	GASKET	1	2008022	2008064	2008084	2008121
3	ELEMENT KIT, Agglomerator *	1	2008026	2008065	2008127	2008070
4	ELEMENT, Screen	1	2008023	2008063	2008125	2008120
5	PLATE, Bottom	1	2008794	2008845	†	2008996
6	WASHER	1	2008028	2008028	2008028	2008028
7	NUT	1	50V41	50V41	50V41	50V41
8	ADAPTOR	1	2008877	2008877	2008877	2008877
9	GASKET KIT **	1	2008027	2008602	2008066	2008693
10	DRAIN TUBE KIT	1	2008069	2008069	2008069	2008069

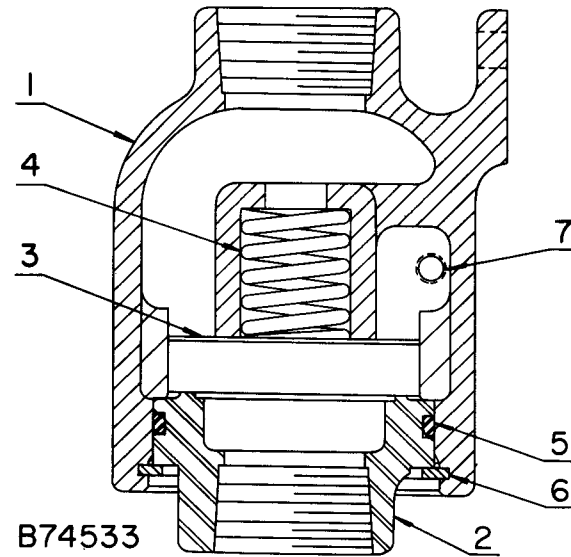
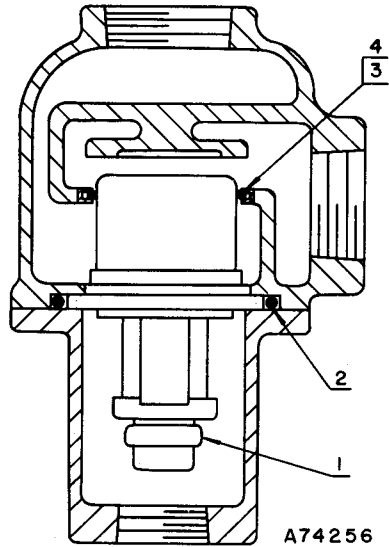
REF. NO.	NAME OF PART	QTY. REQ. PER FLTR.	OIL FILTER 26A34
	<u>COMPONENT PARTS</u>		PART NO.
1	GASKET, Cover	1	54C165
2	ASM ELEMENT (w/Gasket)	1	5E30
3	ASM SHELL (w/Bolt Ring)	1	2008038
4	ASM PRESS. PLATE & SPRING, Incl. Ref. #5	1	2008033
5	RING-SEAL	1	25W21
6	ASM SPOOL (w/Bypass)	1	2008037

\* Agglomerator element kit includes Ref. #2, 6, 7 and 9. When ordering kit also order separator and manifold gaskets shown on reservoir group covering your model (Pages 13, 15 or 17).

\*\* Gaskets are bonded to element but may be purchased separately. Kit includes (2) gaskets and bonding agent.

† Not normally furnished for repair.

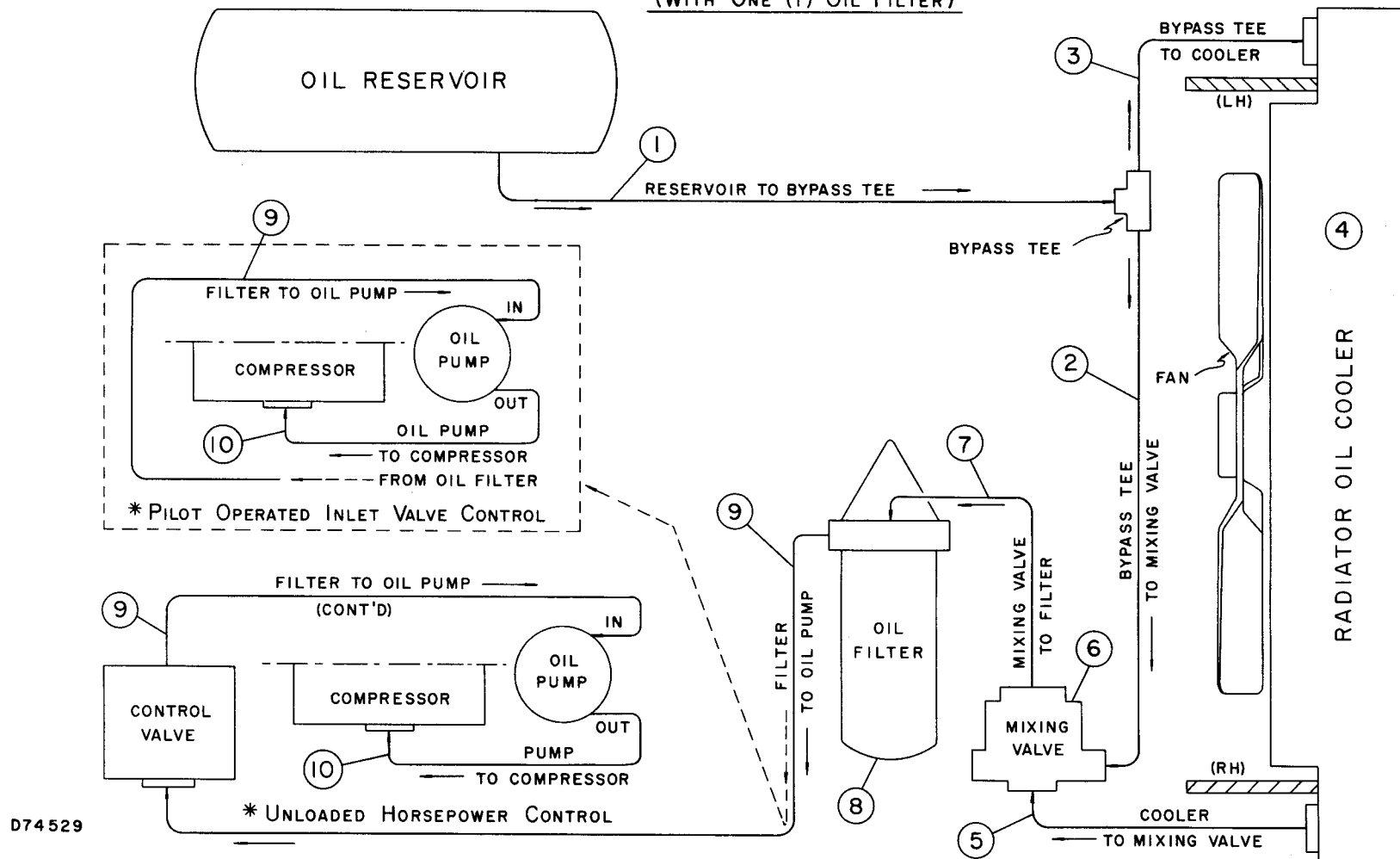
ORDER BY PART NUMBER AND DESCRIPTION. REFERENCE NUMBERS FOR YOUR CONVENIENCE ONLY.



REF. NO.	NAME OF PART	QTY. REQ. PER VALVE	MIXING VALVE 90K154	MIXING VALVE 90K156
	<u>COMPONENT PARTS</u>		PART NO.	PART NO.
1	ELEMENT	See ( )	93C8 (2)	93C9 (1)
2	O-RING, Housing	See ( )	2008013 (2)	25W39 (1)
3	O-RING, Element	See ( )	25W24 (2)	25AH6 (1)
4	SLEEVE, Element O-Ring	1	None	2008161

REF. NO.	NAME OF PART	QTY. REQ. PER VALVE	CONTROL VALVE 2007173	CONTROL VALVE 2007188
	<u>COMPONENT PARTS</u>		PART NO.	PART NO.
1	BODY-UNLOADER	1	2007172	2007187
2	SEAT	1	2007171	2007186
3	DISC-VALVE	1	2007170	2007185
4	SPRING	1	78A402	78A403
5	O-RING	1	25W41	25W38
6	RING-RETAINING	1	65W59	65W60
7	PLUG	2	64AA6	64AA6

OIL PIPING GROUP -- FAN COOLED, RADIATOR TYPE  
 (WITH ONE (1) OIL FILTER)



FOR LIST OF PARTS SEE PAGE 21.

\* CONSTRUCTION OF LINE FROM OIL FILTER TO OIL PUMP (GROUP 9) DEPENDS ON TYPE OF CONTROL. REFER TO PAGE 33 OR 34 AS APPLICABLE.

ORDER BY PART NUMBER AND DESCRIPTION. REFERENCE NUMBERS FOR YOUR CONVENIENCE ONLY.

REF. NO.	NAME OF PART	QTY. REQ. PER COMP.	MODEL ET75A	MODEL ET75C	MODEL ET100A	MODEL ET100D	MODEL ET150A	MODEL ET150D
	<b>↑ OIL PIPING GROUP - RADIATOR TYPE</b> (With (1) Oil Filter)		<b>PART NO. or SIZE</b>	<b>PART NO. or SIZE</b>	<b>PART NO. or SIZE</b>	<b>PART NO. or SIZE</b>	<b>PART NO. or SIZE</b>	<b>PART NO. or SIZE</b>
1	<i>(RESERVOIR TO BYPASS TEE)</i> NIPPLE BUSHING ELBOW or SWIVEL ADAPTOR (90°) ASM HYDRAULIC HOSE ADAPTOR, Straight TEE, Bypass	1 1 1 1 1 1	(1-1/4 Dia) None (1-1/4 x 90°) 29R105 29Q15 (1-1/4)	(1-1/4 Dia) None (1-1/4 x 90°) 29R105 29Q15 (1-1/4)	None (1-1/2 x 1-1/4) (1-1/4 x 90°) 29R17 None (1-1/4)	None (1-1/2 x 1-1/4) 29Q23 29R17 None (1-1/4)	None (1-1/2 x 1-1/4) 29Q23 29R105 None (1-1/4)	None (1-1/2 x 1-1/4) 29Q23 29R105 None (1-1/4)
2	<i>(BYPASS TEE TO MIXING VALVE)</i> NIPPLE or ASM HYDRAULIC HOSE ELBOW-PIPE or ADAPTOR PLUG, Adaptor (1/4) NIPPLE	1 1 1 1	(1-1/4 Dia) (1-1/4 x 90°) None (1-1/4 Dia)	(1-1/4 Dia) (1-1/4 x 90°) None (1-1/4 Dia)	29R64 S40057 64AA5G None	29R64 S40057 64AA5G None	29R64 S40057 64AA5G None	29R64 S40057 64AA5G None
3	<i>(BYPASS TEE TO COOLER)</i> ASM HYDRAULIC HOSE or NIPPLE ADAPTOR or ELBOW PLUG, Adaptor (1/4) ASM HYDRAULIC HOSE BUSHING FLANGE O-RING	1 1 1 1 1 1 1	29R73 29Q23 None None None None None	29R73 S40057 64AA5G None None None None	(1-1/4 Dia) (1-1/4 x 90°) None None 29R41 (1-1/4 x 1-1/2) 29Q166 25AH3	(1-1/4 Dia) (1-1/4 x 90°) None None 29R41 (1-1/2 x 1-1/2) 29Q166 25AH3	(1-1/4 Dia) (1-1/4 x 90°) None None 29R41 (1-1/4 x 1-1/2) 29Q166 25AH3	(1-1/4 Dia) (1-1/4 x 90°) None None 29R41 (1-1/4 x 1-1/2) 29Q166 25AH3
4	<i>(RADIATOR GROUP)</i> ASM OIL COOLER or RADIATOR RIVNUT SHROUD BRACE (75 H.P. Motor) BRACE (100 H.P. Motor) BRACE (LH) BRACE (RH)	1 6 1 1 1 1 1	2013541 2009765 S700647 1S70017 2S70017 None None	2013541 2009765 S700647 1S70017 2S70017 None None	8A100 None S115647 None None S115695 S115695	8A100 None S115647 None None S115695 S115695	200ETF300 None S115647 None None S115695 S115695	200ETF300 None S115647 None None S115695 S115695
5	<i>(COOLER TO MIXING VALVE)</i> ELBOW-STREET NIPPLE ELBOW or TEE (w/Plug) O-RING FLANGE BUSHING ASM HYDRAULIC HOSE ADAPTOR PLUG, Adaptor (1/4) ELBOW-STREET	1 1 1 1 1 1 1 1 1 1	(1-1/4 x 90°) (1-1/4 Dia) (1-1/4 x 90°) None None None None None None (1-1/4 x 90°)	(1-1/4 x 90°) (1-1/4 Dia) 64P34G None None None None None None (1-1/4 x 90°)	None None None 25AH3 29Q166 (1-1/2 x 1-1/4) 29R15 29Q23 None None	None None None 25AH3 29Q166 (1-1/2 x 1-1/4) 29R15 29Q23 S40057 64AA5G None	None None None 25AH3 29Q166 (1-1/2 x 1-1/4) 29R15 29Q23 None None	None None None 25AH3 29Q166 (1-1/2 x 1-1/4) 29R15 S40057 64AA5G None
6	VALVE-THERMOSTATIC (3-Way Mixing) * BRACKET, Mixing Valve	1 1	90K154 2S36517	90K154 2S36517	90K154 2S36517	90K154 2S36517	90K154 2S36517	90K154 2S36517
7	<i>(MIXING VALVE TO FILTER)</i> ASM HYDRAULIC HOSE or NIPPLE ADAPTOR or ELBOW PLUG, Adaptor (1/4) NIPPLE ELBOW or TEE (w/Plug) NIPPLE	1 1 1 1 1 1	2009201 29Q23 None None None None	2009201 S40057 64AA5G None None None	2009246 (1-1/4 x 90°) None None (1-1/4 Dia) (1-1/4 x 90°) None	2009515 29Q119 None None (1-1/4 Dia) (1-1/4 x 90°) None	2009255 (1-1/4 x 90°) None None (1-1/4 Dia) (1-1/4 x 90°) None	29R41 29Q119 None None (1-1/4 Dia) 64P34G (1-1/4 Dia)
8	<b>FILTER-OIL *</b> PLATE-OIL BYPASS	1 1	26A34 1S36590	26A34 1S36590	26A34 1S36590	26A34 1S36590	26A34 1S36590	26A34 1S36590
9	<i>(FILTER TO OIL PUMP)</i> ADAPTOR ASM HYDRAULIC HOSE ADAPTOR or ELBOW NIPPLE ADAPTOR or ELBOW ASM HYDRAULIC HOSE ELBOW or ADAPTOR TEE BUSHING NIPPLE (to Gauge) COUPLING GAUGE-TEMPERATURE BUSHING NIPPLE	1 1 1 1 1 1 1 1 1 1 1 1 1 1	None 29R117 29Q119 (1-1/4 Dia) 29Q119 29R17 (1-1/4 x 90°) 64P34G (1/2 x 1/4) None None 27H11 None (1-1/4 Dia)	*** 29Q23 29R15 29Q119 (1-1/4 Dia) (1-1/4 x 90°) 29R35 29Q23 64P34G (1/2 x 1/4) None None 27H11 None (1-1/4 Dia)	29Q23 29R15 (1-1/4 x 90°) (1-1/4 Dia) (1-1/4 x 90°) 29R35 29Q23 64P34G (1/2 x 1/4) None None 27H11 None (1-1/4 Dia)	*** 29Q23 29R15 (1-1/4 x 90°) (1-1/4 Dia) 29Q119 29R82 None 64P89G (3/4 x 1/4) (1/4 Dia) (1/4) 27H11 (1-1/4 x 1) (1-1/4 Dia)	*** 29Q23 29R15 (1-1/4 x 90°) (1-1/4 Dia) 29Q119 29R82 None 64P89G (3/4 x 1/4) (1/4 Dia) (1/4) 27H11 (1-1/4 x 1) (1-1/4 Dia)	
10	<i>(OIL PUMP TO COMPRESSOR)</i> NIPPLE BUSHING ELBOW or CONNECTOR ADAPTOR or TEE (w/Plug) TUBE or ASM HYDRAULIC HOSE ELBOW NIPPLE ELBOW or ADAPTOR NIPPLE BUSHING	1 1 1 1 1 1 1 1 1 1	None (1-1/4 x 1) (1" x 90°) None 2S700857 None None (1" x 90°) None (1 x 1-1/4)	(1-1/4 Dia) None (1-1/4 x 90°) 29Q23 29R49 (1-1/4 x 90°) None (1-1/4 Dia) (1-1/4 x 90°) None None	None None (1-1/4 x 90°) None 1S925857 29R41 None None (1-1/4 x 90°) None None	(1-1/4 Dia) None (1-1/4 x 90°) 64P34G 29R41 None None (1-1/4 Dia) None None	None None (1" Conn) None 1S700857 29R49 None None (1" x 90°) None (1 x 1-1/4)	(1" Dia) (1 x 1-1/4) (1-1/4 x 90°) 29Q23 29R49 (1-1/4 x 90°) None (1-1/4 Dia) (1-1/4 x 90°) (1-1/4 Dia) None
	CONVERSION LIST (to Unloaded Horsepower)**	1	2012241	None	2012243	None	2012247	None
	CONVERSION LIST (to Pilot Operated Control)**	1	None	2013982	None	2013982	None	2013982

† All parts are listed in order of assembly within each group.

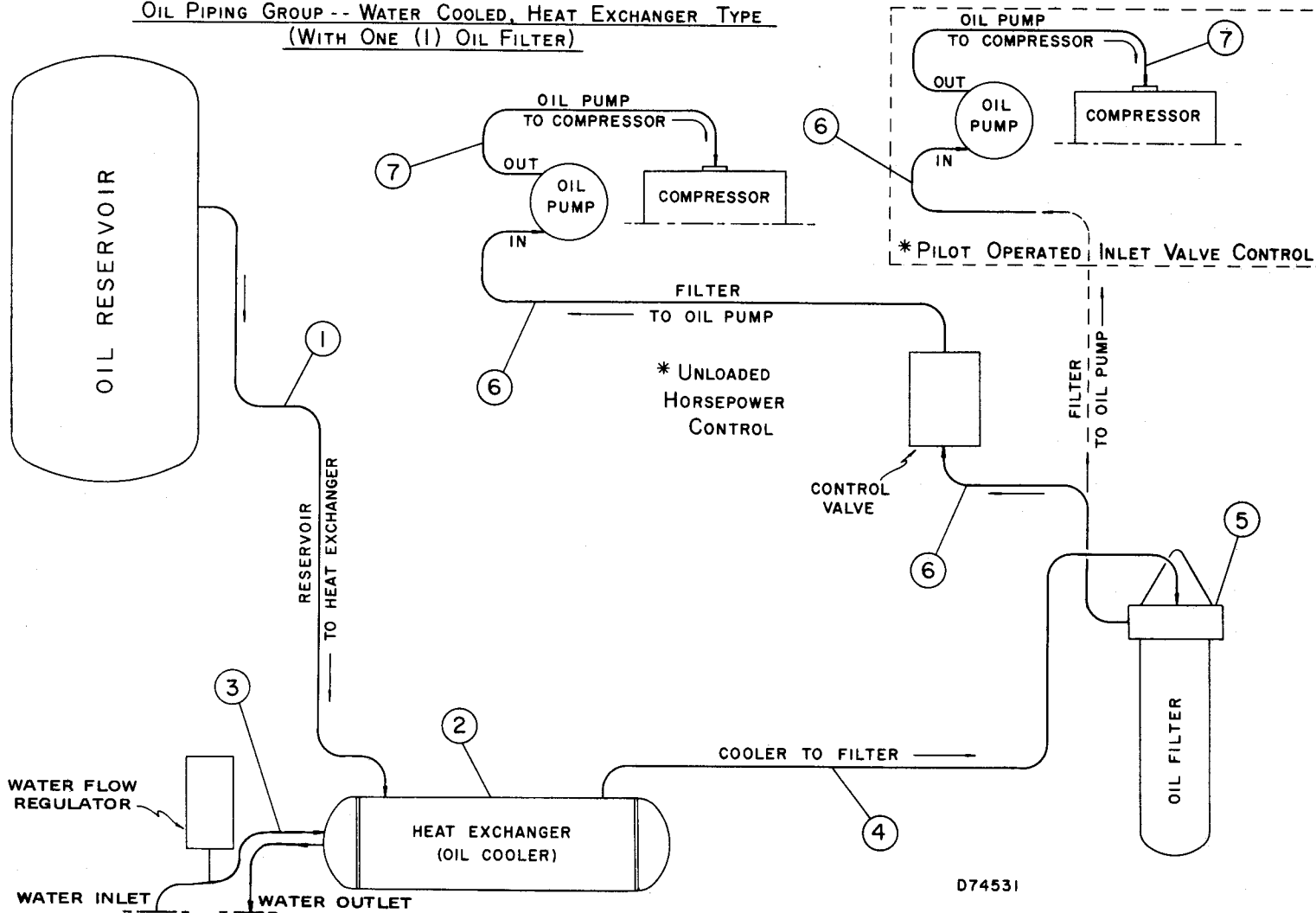
\* For component parts of Mixing Valve and Control Valve see page 19; for Oil Filter see page 18.

\*\* Optional construction - customer may convert either way by use of Conversion List.

\*\*\* Parts differ depending on type of control. For part numbers see page 33 or 34 as applicable.

NOTE: Fittings shown by size only may be purchased locally - see notes 3 and 4 on introduction page. Hose assemblies and other parts shown by part number must be purchased from Gardner-Denver Company. See page 28 for breakdown of Hose Assemblies.

OIL PIPING GROUP -- WATER COOLED, HEAT EXCHANGER TYPE  
 (WITH ONE (1) OIL FILTER)



FOR LIST OF PARTS SEE PAGE 23.

\* CONSTRUCTION OF LINE FROM OIL FILTER TO OIL PUMP (GROUP 6) DEPENDS ON TYPE OF CONTROL.  
 REFER TO PAGE 33 OR 34 AS APPLICABLE.

ORDER BY PART NUMBER AND DESCRIPTION. REFERENCE NUMBERS FOR YOUR CONVENIENCE ONLY.

REF. NO.	NAME OF PART	QTY., REQ. PER COMP.	MODEL ET75B	MODEL ET75D	MODEL ET100B	MODEL ET100C	MODEL ET100E	MODEL ET150C	MODEL ET150E
	<b>† OIL PIPING GROUP - HEAT EXCHANGER TYPE (With One (1) Oil Filter)</b>		<b>PART NO. or SIZE</b>	<b>PART NO. or SIZE</b>	<b>PART NO. or SIZE</b>	<b>PART NO. or SIZE</b>	<b>PART NO. or SIZE</b>	<b>PART NO. or SIZE</b>	<b>PART NO. or SIZE</b>
1	<b>(RESERVOIR TO HEAT EXCHANGER)</b>								
	NIPPLE or BUSHING	1	None	(1-1/4 Dia)	(1-1/2 x 1-1/4)	None	None	(2 x 1-1/4)	(2" Dia)
	ELBOW or ADAPTOR	1	(1-1/4 x 90°)	(1-1/4 x 1-1/2)	29Q23	29Q119	(1-1/2 x 2)	(1-1/4 x 90°)	(2" x 90°)
	ELBOW-STREET	1	None	(1-1/2 x 90°)	None	None	(2" x 90°)	None	None
	NIPPLE	1	None	(1-1/2 Dia)	None	None	(2" Dia)	None	(2" Dia)
	UNION-STRAIGHT	1	None	(1-1/2)	None	None	(2")	None	(2")
	NIPPLE	1	None	(1-1/2 Dia)	None	None	(2" Dia)	None	(2" Dia)
	ELBOW-PIPE	1	None	None	None	None	(2" x 90°)	None	(2" x 90°)
	NIPPLE	1	None	None	None	None	(2" Dia)	None	(2" Dia)
	ELBOW-PIPE	1	None	(1-1/2 x 90°)	None	None	(2" x 90°)	None	(2" x 90°)
	ASM HYDRAULIC HOSE or NIPPLE	1	29R35	(1-1/2 Dia)	29R16	29R72	(2" Dia)	29R17	(2" Dia)
	ADAPTOR or ELBOW	1	29Q119	(1-1/2 x 90°)	(1-1/4 x 90°)	(1-1/4 x 90°)	(2" x 90°)	29Q119	(2" x 90°)
	BRACKET, U-Bolt	1	7S11517	7S11517	None	None	None	7S11517	None
	NIPPLE	1	(1-1/4 Dia)	(1-1/2 Dia)	(1-1/4 Dia)	(1-1/4 Dia)	(2" Dia)	(1-1/4 Dia)	(1-1/4 Dia)
	ELBOW or TEE (w/Plug)	1	(1-1/4 x 90°)	64P24G	(1-1/4 x 90°)	(1-1/4 x 90°)	64P108G	(1-1/4 x 90°)	64P108G
	NIPPLE or BUSHING	1	None	(1-1/2 Dia)	(1-1/4 x 1-1/2)	(1-1/4 x 1-1/2)	(2" Dia)	(1-1/4 x 1-1/2)	(2" Dia)
2	<b>(HEAT EXCHANGER GROUP)</b>								
	HEAT EXCHANGER (Oil Cooler), Incl. next 3 parts	1	*	48C47	*	*	2013387	*	48C46
	GASKET, Inlet-Outlet	1	*	2010211	*	*	2010252	*	2010252
	GASKET, Return	1	*	2010213	*	*	2010204	*	2010204
	BRACKET, Mounting	2	*	2010214	*	*	2010207	*	2010207
	ELBOW-STREET, Cooler Drain	4	(3/8 x 90°)	(3/8 x 90°)	None	(3/8 x 90°)	(3/8 x 90°)	(1/4 x 90°)	(3/8 x 90°)
	NIPPLE, Cooler Drain	2	(3/8 Dia.)	(3/8 Dia)	None	(3/8 Dia)	(3/8 Dia)	(1/4 Dia)	(3/8 Dia)
	CAP, Cooler Drain	2	(3/8)	(3/8)	None	(3/8)	(3/8)	(1/4)	(3/8)
	CONVERSION LIST (to New Heat Exch.)*	1	2013073	None	2013999	2014015	None	2014016	None
3	<b>(WATER PIPING GROUP)</b>								
	BUSHING, Inlet	1	None	(1 x 3/4)	None	None	(1-1/2 x 1)	(1-1/4 x 1)	(1-1/2 x 1)
	NIPPLE, Inlet	1	(3/4 Dia)	None	(1" Dia)	None	None	None	None
	ELBOW-STREET, Inlet	1	(3/4 x 90°)	(3/4 x 90°)	None	(1" x 90°)	(1" x 90°)	(1" x 90°)	(1" x 90°)
	NIPPLE, Inlet	1	None	(3/4 Dia)	None	None	None	(1" Dia)	None
	ELBOW, Inlet	1	(3/4 x 90°)	(3/4 x 90°)	None	(1" x 90°)	(1" x 90°)	(1" x 90°)	(1" x 90°)
	NIPPLE, Inlet	1	(3/4 Dia)	(3/4 Dia)	None	(1" Dia)	(1" Dia)	None	(1" Dia)
	REGULATOR-TEMPERATURE	1	90AC192	90AC192	90AC196	90AC196	90AC196	90AC196	90AC196
	ELBOW-STREET, Inlet	1	(3/4 x 90°)	None	None	None	(1" x 90°)	(1" x 90°)	(1" x 90°)
	BUSHING, Outlet	1	None	(1 x 3/4)	None	None	(1-1/2 x 1)	None	(1-1/2 x 1)
	NIPPLE, Outlet	1	None	(3/4 Dia)	None	None	(1" Dia)	None	(1" Dia)
	ELBOW-PIPE, Outlet	1	None	(3/4 x 90°)	None	None	(1" x 90°)	None	(1" x 90°)
4	<b>(COOLER TO FILTER)</b>								
	NIPPLE	1	(1-1/4 Dia)	(1-1/2 Dia)	(1-1/2 Dia)	(1-1/2 Dia)	(2" Dia)	(1-1/2 Dia)	(2" Dia)
	BUSHING	1	(1-1/4 x 1-1/2)	None	None	None	None	None	None
	TEE	1	64P24G	64P24G	64P24G	64P24G	64P108G	64P24G	64P108G
	NIPPLE	1	(1-1/2 Dia)	(1-1/2 Dia)	(1-1/2 Dia)	(1-1/2 Dia)	(2" Dia)	(1-1/2 Dia)	(2" Dia)
	ELBOW (90°) or ADAPTOR (w/Plug)	1	(1-1/2 x 1-1/4)	(1-1/2 x 90°)	(1-1/2 x 1-1/4)	(1-1/2 x 1-1/4)	5S900782	(1-1/2 x 1-1/4)	(2 x 1-1/2)
	NIPPLE	1	None	(1-1/2 Dia)	None	None	None	None	(1-1/2 Dia)
	ADAPTOR (w/Plug)	1	None	15600782	None	None	None	None	15600782
	ASM HYDRAULIC HOSE	1	29R117	29X4X55	29R82	29R41	29X6X65	29R20	29X4X71
	ADAPTOR	1	29Q119	5600782	29Q23	29Q119	5S900782	29Q119	5600782
	NIPPLE	1	None	(1-1/2 Dia)	None	None	(2" Dia)	None	(1-1/2 Dia)
	ELBOW-PIPE	1	None	(1-1/2 x 90°)	None	None	None	None	(1-1/2 x 90°)
	NIPPLE	1	(1-1/4 Dia)	(1-1/2 Dia)	None	(1-1/4 Dia)	None	(1-1/4 Dia)	(1-1/2 Dia)
	ELBOW	1	(1-1/4 x 90°)	(1-1/2 x 1-1/4)	None	(1-1/4 x 90°)	(2" x 90°)	(1-1/4 x 90°)	(1-1/2 x 1-1/4)
	BUSHING	1	None	None	None	None	(2 x 1-1/4)	None	None
	NIPPLE	1	None	(1-1/4 Dia)	None	None	(1-1/4 Dia)	None	(1-1/4 Dia)
5	<b>FILTER-OIL **</b>	1	26A34	26A34	26A34	26A34	26A34	26A34	26A34
	PLATE-OIL BYPASS	1	1S36590	1S36590	1S36590	1S36590	1S36590	1S36590	1S36590
6	<b>(FILTER TO OIL PUMP)</b>								
	ELBOW or ADAPTOR	1	(1-1/4 x 90°)	***	29Q23	(1-1/4 x 90°)	***	(1-1/4 x 90°)	***
	ASM HYDRAULIC HOSE	1	None	None	29R15	None	None	None	None
	ELBOW	1	None	None	(1-1/4 x 90°)	None	None	None	None
	NIPPLE	1	None	None	(1-1/4 Dia)	None	None	None	None
	ELBOW-PIPE	1	None	None	(1-1/4 x 90°)	None	None	None	None
	ASM HYDRAULIC HOSE	1	29R84	29R35	29R72	29R19	29R19	29R19	29R19
	ADAPTOR	1	29Q23	29Q23	29Q23	29Q23	29Q23	29Q23	29Q23
	TEE	1	64P34G	64P34G	64P34G	64P34G	64P89G	64P89G	64P89G
	BUSHING or NIPPLE	1	(1/2 x 1/4)	(1/2 Dia)	(1/2 Dia)	(1/2 x 1/4)	(3/4 x 1/4)	(3/4 x 1/4)	(3/4 x 1/4)
	GAUGE-TEMPERATURE	1	27H11	27H11	27H11	27H11	27H11	27H11	27H11
	REDUCER or BUSHING	1	None	None	(1/2 x 1/4)	None	None	(1-1/4 x 1)	(1-1/4 x 1)
	NIPPLE	1	(1-1/4 Dia)	(1-1/4 Dia)	(1-1/4 Dia)	(1-1/4 Dia)	(1" Dia)	(1" Dia)	(1" Dia)
7	<b>(OIL PUMP TO COMPRESSOR)</b>								
	NIPPLE	1	None	(1-1/4 Dia)	None	None	(1-1/4 Dia)	None	(1" Dia)
	BUSHING	1	(1-1/4 x 1)	None	None	None	None	None	(1 x 1-1/4)
	ELBOW or CONNECTOR	1	(1" x 90°)	(1-1/4 x 90°)	(1-1/4 x 90°)	(1-1/4 x 90°)	(1-1/4 x 90°)	(1" Conn)	(1-1/4 x 90°)
	ADAPTOR or TEE (w/Plug)	1	None	29Q23	None	None	64P34G	None	29Q23
	TUBE or ASM HYDRAULIC HOSE	1	25700857	29R49	1S925857	1S925857	29R41	15700857	29R49
	ELBOW-PIPE	1	None	(1-1/4 x 90°)	None	None	None	None	(1-1/4 x 90°)
	NIPPLE	1	None	(1-1/4 Dia)	None	None	None	None	(1-1/4 Dia)
	ELBOW or ADAPTOR	1	(1" x 90°)	(1-1/4 x 90°)	(1-1/4 x 90°)	(1-1/4 x 90°)	29Q119	(1" x 90°)	(1-1/4 x 90°)
	NIPPLE	1	None	(1-1/4 Dia)	None	None	(1-1/4 Dia)	None	(1-1/4 Dia)
	BUSHING	1	(1 x 1-1/4)	None	None	None	(1 x 1-1/4)	None	None
	CONVERSION LIST (to Unloaded Horsepower Control) †	1	2012242	None	2012243	2012244	None	2012248	None
	CONVERSION LIST (to Pilot Operated Control) ‡	1	None	2013982	None	None	2013982	None	2013982

† All parts are listed in order of assembly within each group.

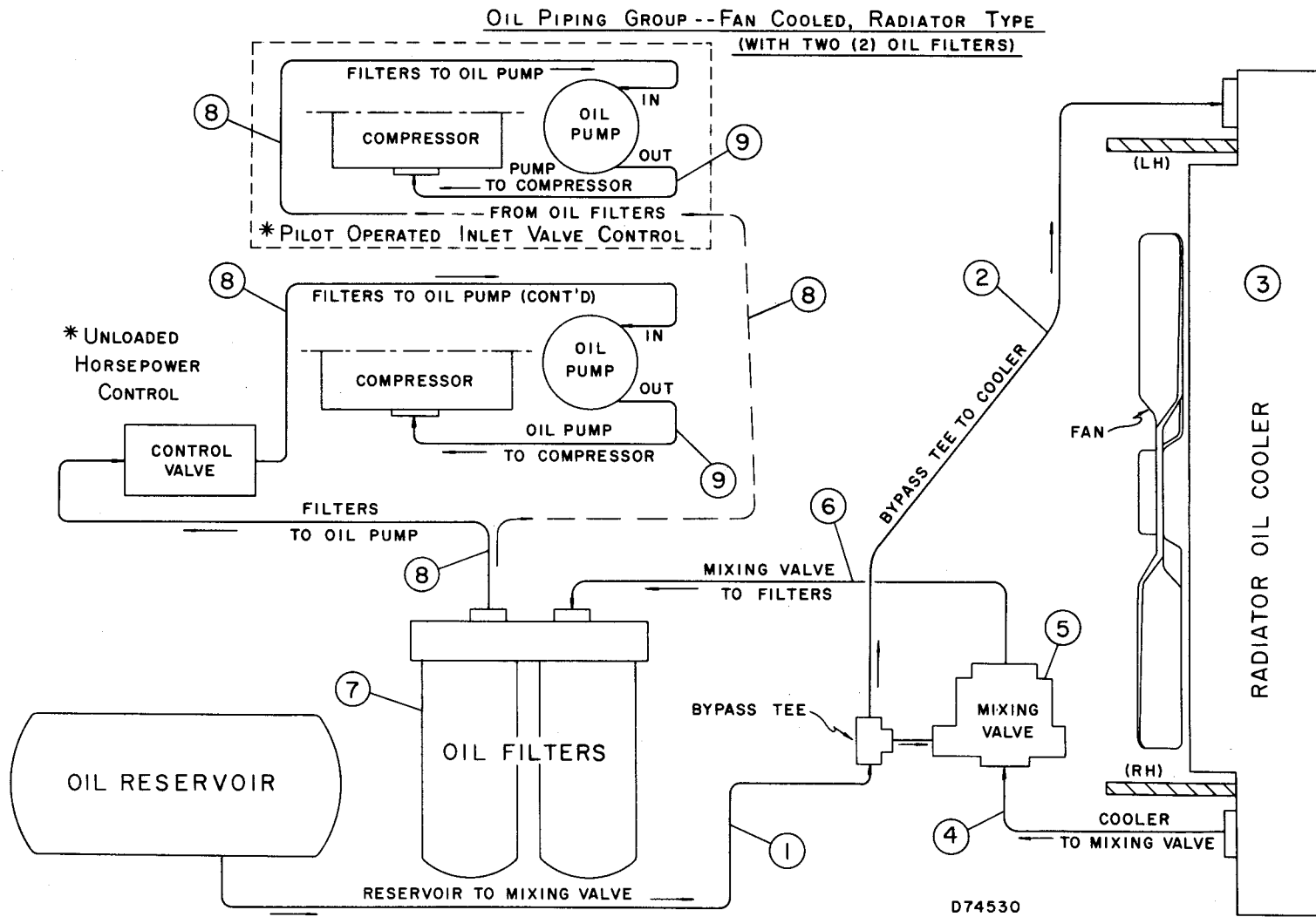
\* Original Heat Exchanger no longer available - for repairs order Conversion List (last line of Group 2).

\*\* For component parts of Oil Filter see page 18.

\*\*\* Parts differ depending on type of control. For part numbers see page 33 or 34 as applicable.

† Optional construction - customer may convert either way by use of Conversion List.

NOTE: Fittings shown by size only may be purchased locally - see notes 3 and 4 on introduction page. Hose assemblies and other parts shown by part number must be purchased from Gardner-Denver Company. See page 28 for breakdown of Hose Assemblies.



FOR LIST OF PARTS SEE PAGE 25.

\* CONSTRUCTION OF LINE FROM OIL FILTER TO OIL PUMP (GROUP 8) DEPENDS ON TYPE OF CONTROL. REFER TO PAGE 33 OR 34 AS APPLICABLE.

ORDER BY PART NUMBER AND DESCRIPTION. REFERENCE NUMBERS FOR YOUR CONVENIENCE ONLY.

REF. NO.	NAME OF PART	QTY. REQ. PER COMP.	MODEL ET125A	MODEL ET125D	MODEL ET200A	MODEL ET200D	MODEL ET250A	MODEL ET250D
	<b>† OIL PIPING GROUP - RADIATOR TYPE</b> (With (2) Oil Filters)		PART NO. or SIZE	PART NO. or SIZE	PART NO. or SIZE	PART NO. or SIZE	PART NO. or SIZE	PART NO. or SIZE
	<i>(RESERVOIR TO MIXING VALVE)</i>							
1	BUSHING	1	None	None	(2 x 1-1/2)	(2 x 1-1/2)	(2 x 1-1/2)	(2 x 1-1/2)
	NIPPLE	1	(1-1/2 Dia)	(1-1/2 Dia)	(1-1/2 Dia)	(1-1/2 Dia)	(1-1/2 Dia)	(1-1/2 Dia)
	ADAPTOR (w/Plug)	1	6S600782	6S600782	S600782	S600782	S600782	S600782
	ASM HYDRAULIC HOSE	1	29X18X394	29X18X364	29X18X220	29X18X220	29X1X464	29X1X384
	ADAPTOR (w/Plug)	1	1S600782	1S600782	S600782	S600782	1S600782	1S600782
	NIPPLE	1	(1-1/2 Dia)	(1-1/2 Dia)	(1-1/2 Dia)	(1-1/2 Dia)	(1-1/2 Dia)	(1-1/2 Dia)
	ELBOW-STREET	1	(1-1/2 x 90°)	(1-1/2 x 90°)	None	None	(1-1/2 x 90°)	(1-1/2 x 90°)
	ADAPTOR or TEE (Bypass)	1	3S600782	3S600782	(1-1/2 Tee)	(1-1/2 Tee)	3S600782	3S600782
	NIPPLE	1	(1-1/2 Dia)	(1-1/2 Dia)	(1-1/2 Dia)	(1-1/2 Dia)	(1-1/2 Dia)	(1-1/2 Dia)
2	<i>(BYPASS TEE TO COOLER)</i>							
	ASM HYDRAULIC HOSE	1	29X5X100	29X5X100	None	None	29X5X92	29X5X92
	ADAPTOR (w/Plug)	1	1S600782	1S600782	None	None	1S600782	1S600782
	NIPPLE	1	(1-1/2 Dia)	(1-1/2 Dia)	None	None	(1-1/2 Dia)	(1-1/2 Dia)
	ELBOW-PIPE	1	(1-1/2 x 90°)	(1-1/2 x 90°)	None	None	(1-1/2 x 90°)	(1-1/2 x 90°)
	NIPPLE	1	(1-1/2 Dia)	(1-1/2 Dia)	(1-1/2 Dia)	(1-1/2 Dia)	None	None
	ADAPTOR (w/Plug)	1	1S600782	1S600782	1S600782	1S600782	None	None
	ASM HYDRAULIC HOSE	1	29X4X42	29X4X42	29X4X106	29X4X106	29X4X52	29X4X52
3	<i>(RADIATOR GROUP)</i>							
	COOLER-OIL (Radiator)	1	200ETF300	200ETF300	200ETF300	200ETF300	200ETF300	200ETF300
	SHROUD	1	S115647	S115647	S115647	S115647	S115647	S115647
	BRACE (LH)	1	1S115695	1S115695	None	None	1S115695	1S115695
	BRACE (RH)	1	S115695	S115695	None	None	S115695	S115695
4	<i>(COOLER TO MIXING VALVE)</i>							
	ASM HYDRAULIC HOSE	1	29X18X120	29X18X120	29X18X124	29X18X124	29X18X130	29X18X130
	ADAPTOR (w/Plug)	1	1S600782	1S600782	1S600782	1S600782	1S600782	1S600782
	NIPPLE	1	None	None	(1-1/2 Dia)	(1-1/2 Dia)	None	None
	ELBOW-PIPE	1	None	None	(1-1/2)	(1-1/2)	None	None
	NIPPLE	1	(1-1/2 Dia)	(1-1/2 Dia)	(1-1/2 Dia)	(1-1/2 Dia)	(1-1/2 Dia)	(1-1/2 Dia)
5	<b>VALVE-THERMOSTATIC (3-Way Mixing) *</b>	1	90K156	90K156	90K156	90K156	90K156	90K156
	BRACKET, Mixing Valve	1	29S60017	29S60017	None	None	29S60017	29S60017
6	<i>(MIXING VALVE TO FILTERS)</i>							
	NIPPLE	1	(1-1/2 Dia)	(1-1/2 Dia)	(1-1/2 Dia)	(1-1/2 Dia)	(1-1/2 Dia)	(1-1/2 Dia)
	ELBOW-PIPE	1	(1-1/2 x 90°)	(1-1/2 x 90°)	(1-1/2 x 90°)	(1-1/2 x 90°)	(1-1/2 x 90°)	(1-1/2 x 90°)
	NIPPLE, Half	1	(1-1/2 Dia)	(1-1/2 Dia)	None	None	(1-1/2 Dia)	(1-1/2 Dia)
	COUPLING	1	(1-1/2)	(1-1/2)	None	None	(1-1/2)	(1-1/2)
	NIPPLE, Half	1	(1-1/2 Dia)	(1-1/2 Dia)	None	None	(1-1/2 Dia)	(1-1/2 Dia)
	ELBOW-STREET or TEE (w/Plug)	1	(1-1/2 x 90°)	64P28G	None	None	(1-1/2 x 90°)	(1-1/2 x 90°)
	NIPPLE	1	None	(1-1/2 Dia)	(1-1/2 Dia)	(1-1/2 Dia)	None	None
	FLANGE	1	29Q166	29Q166	29Q166	29Q166	29Q166	29Q166
	O-RING	1	25AH3	25AH3	25AH3	25AH3	25AH3	25AH3
7	<b>FILTER-OIL *</b>	2	26A34	26A34	26A34	26A34	26A34	26A34
	PLATE-OIL BYPASS	1	2S1290	2S1290	2S1290	2S1290	2S1290	2S1290
8	<i>(FILTERS TO OIL PUMP)</i>			***		***		***
	ASM HYDRAULIC HOSE	1	29X5X140		29X5X196		29X5X190	
	ADAPTOR	1	1S600782		1S600782		1S600782	
	NIPPLE	1	(1-1/2 Dia)		(1-1/2 Dia)		(1-1/2 Dia)	
	ADAPTOR (w/Plug)	1	S600782		S600782		S600782	
	ASM HYDRAULIC HOSE	1	29X5X160		29X1X204		29X18X174	
	ADAPTOR (w/Plug)	1	1S600782		6S600782		4S600782	
	NIPPLE	1	(1-1/2 Dia)		None		None	
	ELBOW-STREET	2	(1-1/2 x 90°)		(1-1/2 x 90°)		None	
	BUSHING	1	(1-1/4 x 1/4)		(1-1/4 x 1/4)		(1-1/4 x 1/4)	
	GAUGE-TEMPERATURE	1	27H11		27H11		27H11	
	NIPPLE	1	None		(1" Dia)		(1-1/4 Dia)	
	BUSHING	1	(1-1/2 x 2)		(1-1/2 x 1)		None	
9	<i>(OIL PUMP TO COMPRESSOR)</i>							
	BUSHING	1	(2 x 1-1/4)	(2 x 1-1/4)	None	(1 x 1-1/4)	None	None
	NIPPLE	1	None	(1-1/4 Dia)	None	(1" Dia)	None	None
	ELBOW or TEE (w/Plug)	1	(1-1/4 x 90°)	(1-1/4 x 90°)	(1-1/4 x 90°)	64P34G	None	(1-1/4 x 90°)
	NIPPLE	1	None	None	None	None	None	(1-1/4 Dia)
	ELBOW	1	None	(1-1/4 x 90°)	None	(1-1/4 x 90°)	(1-1/4 x 90°)	(1-1/4 x 90°)
	TUBE or ASM HYDRAULIC HOSE	1	3S115857	29R96	1S115857	29R41	1S115857	29R41
	CONNECTOR or ADAPTOR	1	(1-1/4 Conn)	29Q119	(1-1/4 Conn)	29Q119	(1-1/4 Conn)	29Q119
	NIPPLE	1	None	(1-1/4 Dia)	None	(1-1/4 Dia)	(1-1/4 Dia)	(1-1/4 Dia)
	CONVERSION LIST (to Unloaded Horsepower)**	1	2012245	None	2012249	None	2012251	None
	CONVERSION LIST (to Pilot Operated Control)**	1	None	2013982	None	2013982	None	2013982

† All parts are listed in order of assembly within each group.

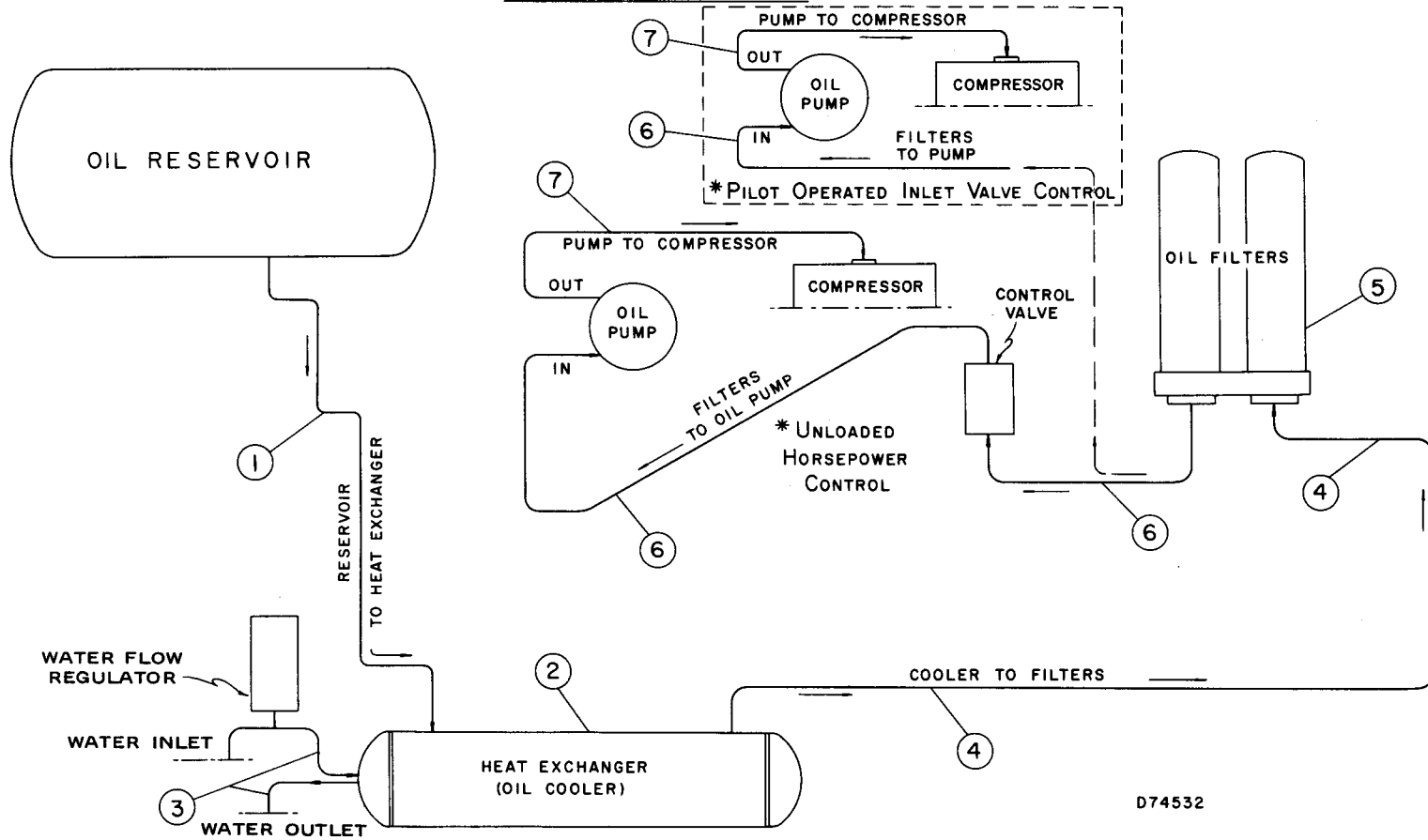
\* For component parts of Mixing Valve see page 19; for Oil Filter see page 18.

\*\* Optional construction - customer may convert either way by use of Conversion List.

\*\*\* Parts differ depending on type of control. For part numbers see page 33 or 34 as applicable.

NOTE: Fittings shown by size only may be purchased locally - see notes 3 and 4 on introduction page. Hose assemblies and other parts shown by part number must be purchased from Gardner-Denver Company. See page 28 for breakdown of Hose Assemblies.

OIL PIPING GROUP -- WATER COOLED, HEAT EXCHANGER TYPE  
(WITH TWO (2) OIL FILTERS)



D74532

FOR LIST OF PARTS SEE PAGE 27.

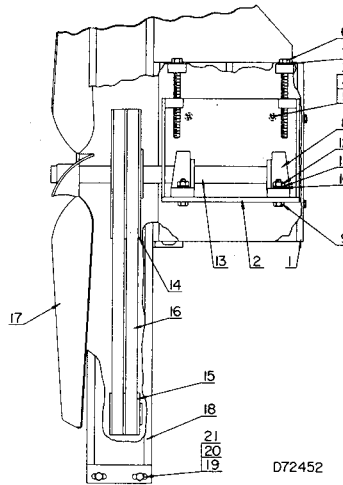
\* CONSTRUCTION OF LINE FROM OIL FILTER TO OIL PUMP (GROUP 6) DEPENDS ON TYPE OF CONTROL. REFER TO PAGE 33 OR 34 AS APPLICABLE.

ORDER BY PART NUMBER AND DESCRIPTION. REFERENCE NUMBERS FOR YOUR CONVENIENCE ONLY.

REF. NO.	NAME OF PART	QTY. REQ. PER COMP.	MODEL ET125B	MODEL ET125C	MODEL ET125E	MODEL ET200C	MODEL ET200E	MODEL ET250B	MODEL ET250C	MODEL ET250E
	<b>† OIL PIPING GROUP - HEAT EXCHANGER TYPE (With 2) Oil Filters)</b>		PART NO. or SIZE	PART NO. or SIZE	PART NO. or SIZE	PART NO. or SIZE	PART NO. or SIZE	PART NO. or SIZE	PART NO. or SIZE	PART NO. or SIZE
1	<b>(RESERVOIR TO HEAT EXCHANGER)</b>									
	BUSHING	1	None	None	None	(1-1/2 x 2)	None	(1-1/2 x 2)	(1-1/2 x 2)	None
	NIPPLE	1	(1-1/2 Dia)	(1-1/2 Dia)	(1-1/2 Dia)	(2" Dia)	(2" Dia)	(1-1/2 Dia)	(1-1/2 Dia)	(2" Dia)
	ADAPTOR or ELBOW	1	6S600782	S600782	(1-1/2 x 2 x 90°)	(1-1/2 x 90°)	(2" x 90°)	S600782	S600782	(2" x 90°)
	ELBOW or NIPPLE	1	None	None	(2" x 90°)	(1-1/2 Dia)	(2" x 90°)	None	None	(2" x 90°)
	ASM HYDRAULIC HOSE or NIPPLE	1	29X18X624	29X18X220	(2" Dia)	None	(2" Dia)	29X1X740	29X1X290	(2" Dia)
	UNION or ADAPTOR	1	None	None	(2" Un)	S600782	(2" Un)	None	None	(2" Un)
	NIPPLE or ASM HYDRAULIC HOSE	1	None	None	(2" Dia)	(2" Dia)	(2" Dia)	None	None	(2" Dia)
	ADAPTOR (w/Plug) or ELBOW	1	1S600782	1S600782	None	1S600782	(2" x 90°)	1S600782	1S600782	None
	NIPPLE	1	None	(1-1/2 Dia)	None	None	(2" Dia)	None	None	(2" Dia)
	BRACKET	1	None	7S11517	None	7S11517	None	None	7S11517	None
	ELBOW	1	None	None	(2" x 90°)	None	(2" x 90°)	None	None	(2" x 90°)
	ELBOW	1	None	(1-1/2 x 90°)	None	None	(2" x 90°)	None	None	(2" x 90°)
	NIPPLE	1	None	None	(2" Dia)	(1-1/2 Dia)	(2" Dia)	None	None	(2" Dia)
	ELBOW	1	None	None	(2" x 90°)	(1-1/2 x 90°)	(2" x 90°)	None	None	(2" x 90°)
	NIPPLE	1	(1-1/2 Dia)	(1-1/2 Dia)	(2" Dia)	(1-1/2 Dia)	(2" Dia)	(1-1/2 Dia)	(1-1/2 Dia)	None
	ELBOW or TEE (w/Plug)	1	(1-1/2 x 90°)	(1-1/2 x 90°)	64P108G	(1-1/2 x 90°)	64P108G	(1-1/2 x 90°)	(1-1/2 x 90°)	64P108G
	NIPPLE or BUSHING	1	None	None	(2" Dia)	None	(2" Dia)	(1-1/2 x 2)	(1-1/2 x 2)	(2" Dia)
2	<b>(HEAT EXCHANGER GROUP)</b>									
	HEAT EXCHANGER (Oil Cooler), Incl. next 3 parts	1	*	*	48C48	*	48C46	*	*	48C46
	GASKET, Inlet-Outlet	1	*	*	2010252	*	2010252	*	*	2010252
	GASKET, Return	1	*	*	2010204	*	2010204	*	*	2010204
	BRACKET, Mounting	2	*	*	2010207	*	2010207	*	*	2010207
	NIPPLE, Cooler Drain	1	(3/8 Dia)	None	None	None	(1/2 Dia)	None	None	None
	ELBOW, Cooler Drain	4	(3/8 x 90°)	(3/8 x 90°)	(3/8 x 90°)	(1/4 x 90°)	(3/8 x 90°)	(1/2 x 90°)	(1/2 x 90°)	(3/8 x 90°)
	NIPPLE, Cooler Drain	2	(3/8 Dia)	(3/8 Dia)	(3/8 Dia)	(1/4 Dia)	(3/8 Dia)	(1/2 Dia)	(1/2 Dia)	(3/8 Dia)
	CAP, Cooler Drain	2	(3/8)	(3/8)	(3/8)	(1/4)	(3/8)	(1/2)	(1/2)	(3/8)
	CONVERSION LIST (to New Heat Exch.)	1	2013710	2013710	None	2014017	None	2014018	2013765	None
3	<b>(WATER PIPING GROUP)</b>									
	BUSHING, Inlet	1	None	None	(1-1/2 x 1)	(1-1/4 x 1)	(1-1/2 x 1)	(1-1/2 x 1)	(1-1/2 x 1)	(1-1/2 x 1)
	ELBOW-STREET, Inlet	2	None	(1" x 90°)	(2" x 90°)	(1" x 90°)	(1" x 90°)	None	(1" x 90°)	(1" x 90°)
	NIPPLE, Inlet	1	(1" Dia)	(1" Dia)	(1" Dia)	(1" Dia)	(1" Dia)	(1" Dia)	(1" Dia)	(1" Dia)
	REGULATOR-TEMPERATURE	1	90AC196	90AC196	90AC196	90AC196	90AC196	90AC196	90AC196	90AC196
	ELBOW, Inlet	1	None	None	(1" x 90°)	None	(1" x 90°)	None	None	(1" x 90°)
	BUSHING, Outlet	1	None	None	(1-1/2 x 1)	(1-1/4 x 1)	(1-1/2 x 1)	None	(1-1/2 x 1)	(1-1/2 x 1)
	NIPPLE, Outlet	1	None	None	(1" Dia)	None	(1" Dia)	None	None	None
	ELBOW-PIPE, Outlet	1	None	None	(1" x 90°)	None	(1" x 90°)	None	None	None
4	<b>(COOLER TO FILTERS)</b>									
	BUSHING	1	None	None	None	None	None	(1-1/2 x 2)	(1-1/2 x 2)	None
	NIPPLE	1	(1-1/2 Dia)	(1-1/2 Dia)	(2" Dia)	(1-1/2 Dia)	(2" Dia)	(1-1/2 Dia)	(1-1/2 Dia)	(2" Dia)
	TEE, Reducing	1	64P24G	64P24G	64P108G	64P24G	64P108G	64P24G	64P24G	64P108G
	NIPPLE	1	(1-1/2 Dia)	(1-1/2 Dia)	(2" Dia)	(1-1/2 Dia)	(2" Dia)	(1-1/2 Dia)	(1-1/2 Dia)	(2" Dia)
	ELBOW	1	None	(1-1/2 x 90°)	(2" x 90°)	None	(2" x 90°)	None	None	(2" x 90°)
	NIPPLE	1	None	None	(2" Dia)	None	(2" Dia)	None	None	(2" Dia)
	ADAPTOR (w/Plug)	1	1S600782	1S600782	1S900782	1S600782	1S900782	1S600782	1S600782	1S900782
	ASM HYDRAULIC HOSE	1	29X1X210	29X1X121	29X6X102	29X1X8X80	29X6X102	29X1X3780	29X4X157	29X6X102
	ADAPTOR (w/Plug)	1	None	1S600782	5S900782	1S600782	5S900782	None	6S600782	5S900782
	NIPPLE	1	None	(1-1/2 Dia)	(2" Dia)	(1-1/2 Dia)	(2" Dia)	None	(1-1/2 Dia)	(2" Dia)
	ELBOW	1	None	(1-1/2 x 90°)	(2x1-1/2 x 90°)	(1-1/2 x 90°)	(2x1-1/2 x 90°)	None	(1-1/2 x 90°)	(2x1-1/2 x 90°)
	NIPPLE	1	None	None	None	(1-1/2 Dia)	None	None	None	(1-1/2 Dia)
	FLANGE	1	None	29Q166	29Q166	29Q166	29Q166	None	29Q166	29Q166
	O-RING	1	None	25AH3	25AH3	25AH3	25AH3	None	25AH3	25AH3
5	<b>FILTER-OIL **</b>	2	26A34	26A34	26A34	26A34	26A34	26A34	26A34	26A34
	PLATE-OIL BYPASS	1	2S1290	2S1290	2S1290	2S1290	2S1290	2S1290	2S1290	2S1290
6	<b>(FILTERS TO OIL PUMP)</b>									
	O-RING	1	None	25AH3	***	None	***	None	None	***
	FLANGE	1	None	29Q166	None	None	None	None	None	None
	ASM HYDRAULIC HOSE	1	29X5X160	None	29X8X220	29X5X190	29X18X114	29X18X114	29X18X114	29X18X114
	ADAPTOR	1	S600782	None	S600782	S600782	S600782	S600782	S600782	S600782
	NIPPLE	1	(1-1/2 Dia)	(1-1/2 Dia)	(1-1/2 Dia)	(1-1/2 Dia)	(1-1/2 Dia)	(1-1/2 Dia)	(1-1/2 Dia)	(1-1/2 Dia)
	ADAPTOR (w/Plug)	1	1S600782	S600782	None	None	1S600782	None	None	1S600782
	ASM HYDRAULIC HOSE	1	29X5X80	29X1X53	None	None	29X18X174	None	None	29X18X174
	ADAPTOR (w/Plug)	1	1S600782	S600782	None	None	4S600782	None	None	4S600782
	NIPPLE	1	(1-1/2 Dia)	(1-1/2 Dia)	None	None	None	None	None	None
	ELBOW	1	(1-1/2 x 90°)	None	None	None	None	None	None	None
	ELBOW	1	(1-1/2 x 90°)	(1-1/2 x 90°)	(1-1/2 x 90°)	(1-1/2 x 90°)	(1-1/2 x 90°)	(1-1/2 x 90°)	(1-1/2 x 90°)	(1-1/2 x 90°)
	BUSHING, Gauge	1	(2 x 1-1/2)	(2 x 1-1/2)	(2 x 1-1/2)	(2 x 1-1/2)	(2 x 1-1/2)	(2 x 1-1/2)	(2 x 1-1/2)	(2 x 1-1/2)
	GAUGE-TEMPERATURE	1	27H11	27H11	27H11	27H11	27H11	27H11	27H11	27H11
	BUSHING	1	(1-1/2 x 2)	(2 x 1-1/2)	None	None	None	None	(1-1/4 x 1-1/2)	(1-1/4 x 1-1/2)
	NIPPLE	1	None	None	None	None	(1-1/4 Dia)	None	(1-1/4 Dia)	(1-1/4 Dia)
7	<b>(OIL PUMP TO COMPRESSOR)</b>									
	ELBOW or NIPPLE	1	None	None	(1-1/4 Dia)	None	(1" Dia)	None	None	(1-1/4 x 90°)
	BUSHING or NIPPLE	1	(2 x 1-1/4)	(2 x 1-1/4)	(2 x 1-1/4)	None	(1 x 1-1/4)	None	None	(1-1/4 Dia)
	ELBOW or TEE (w/Plug)	1	(1-1/4 x 90°)	(1-1/4 x 90°)	(1-1/4 x 90°)	(1-1/4 x 90°)	None	None	None	None
	ELBOW	1	None	None	(1-1/4 x 90°)	None	(1-1/4 x 90°)	(1-1/4 x 90°)	(1-1/4 x 90°)	(1-1/4 x 90°)
	TUBE or ASM HYDRAULIC HOSE	1	3S115857	3S115857	29R41	1S925857	29R41	1S115857	1S115857	29R41
	CONNECTOR or ADAPTOR	1	(1-1/4 Conn)	(1-1/4 Conn)	29Q119	(1-1/4 Conn)	29Q119	(1-1/4 Conn)	(1-1/4 Conn)	29Q119
	NIPPLE	1	None	None	(1-1/4 Dia)	None	(1-1/4 Dia)	None	None	(1-1/4 Dia)
	CONVERSION LIST (to Unloaded Horsepower Control) †	1	2012246	2012246	None	2012250	None	2012251	2012252	None
	CONVERSION LIST (to Pilot Operated Control) ‡	1	None	None	2013982	None	2013982	None	None	2013982

† All parts are listed in order of assembly within each group.  
 \* Original Heat Exchanger no longer available - for repairs order Conversion List (last line of Group 2).  
 \*\* For component parts of Oil Filter see page 18.  
 \*\*\* Parts differ depending on type of control. For part numbers see page 33 or 34 as applicable.  
 †† Optional construction - customer may convert either way by use of Conversion List.  
 NOTE: Fittings shown by size only may be purchased locally - see notes 3 and 4 on introduction page. Hose assemblies and other parts shown by part number must be purchased from Gardner-Denver Company. See page 28 for breakdown of Hose Assemblies.





REF. NO.	NAME OF PART	QTY. PER COMP.	MODELS ET75A ET75C	MODELS ET100A ET100D	MODELS ET125A ET125D	MODELS ET150A ET150D	MODELS ET200A ET200D	MODELS ET250A ET250D
	<u>FAN &amp; MOUNTING GROUP</u>		<u>PART NO.</u>	<u>PART NO.</u>	<u>PART NO.</u>	<u>PART NO.</u>	<u>PART NO.</u>	<u>PART NO.</u>
1	BRACKET-FAN (Mounting)	1	None	1S11517	1S11517	1S11517	1S11517	1S11517
2	BRACKET-FAN (Drive)	1	None	S11517	S11517	S11517	64S90017	S11517
3	SCREW, Bracket	8	None	75A1	75A1	75A1	75A1	75A1
4	WASHER	8	None	95A3	95A3	95A3	95A3	95A3
5	WASHER-LOCK	8	None	95B3	95B3	95B3	95B3	95B3
6	SCREW, Fan Adjusting	2	None	75AA101	75AA101	75AA101	75AA101	75AA101
7	WASHER or NUT	2	None	95A5	95A5	95A5	50F5	95A5
8	BLOCK-PILLOW	2	None	12AS11	12AS11	12AS11	12AS11	12AS11
9	SCREW, Block to Bracket	4	None	75A54	75A54	75A54	75A39	75A54
10	WASHER-LOCK	4	None	95A5	95F5	95A5	None	95A5
11	WASHER	4	None	95B5	95B5	95B5	95B5	95B5
12	NUT	4	None	50B5	50B5	50B5	50B5	50B5
13	SHAFT-STUB	1	None	S1155	S1155	S1155	S1155	S1155
14	SHEAVE, Fan (125 HP)	1	None	73M23V56	73M23V56	None	None	None
14	SHEAVE, Fan (150 HP)	1	None	None	73M23V69	73M23V140	None	None
14	SHEAVE, Fan (200-300 HP)	1	None	None	None	None	73M23V140	73M23V106
15	SHEAVE, Motor (125 HP)	1	None	73M23V30	73M23V30	None	None	None
15	SHEAVE, Motor (150 HP)	1	None	None	73M23V36	73M23V36	None	None
15	SHEAVE, Motor (200-300 HP)	1	None	None	None	None	73M23V36	73M23V34
∅	BUSHING, Fan Sheave (125 HP)	1	None	22F22SH	22F22SH	None	None	None
∅	BUSHING, Fan Sheave (150 HP)	1	None	None	22F22SDS	22F22SK	None	None
∅	BUSHING, Fan Sheave (200-300 HP)	1	None	None	None	None	22F22SK	22F22SK
∅	BUSHING, Motor Sheave (125 HP)	1	None	22F20JA	22F20JA	None	None	None
∅	BUSHING, Motor Sheave (150 HP)	1	None	None	22F24SH	22F22SH	None	None
∅	BUSHING, Motor Sheave (200-300 HP)	1	None	None	None	None	22F22SH	22F22SH
16	BELT, Fan (Set of 2 - 125 HP)	1	None	13N4752	13N4502	None	None	None
16	BELT, Fan (Set of 2 - 150 HP)	1	None	None	13N5302	13N6302	None	None
16	BELT, Fan (Set of 2 - 200-300 HP)	1	None	None	None	None	13N6002	13N6002
∅	KEY, Fan	1	35B140	35B136	35B136	35B136	35B136	35B136
∅	KEY, Fan Sheave	1	None	35C178	35C178	35C178	35C178	35C178
17	FAN	1	2005001	9B84	9B84	9B84	9B84	9B84
∅	BUSHING, Fan	1	2009002	22B6	22B6	22B6	22B6	22B6
18	GUARD, Fan	1	2014022	2S115977	S115977	2S115977	S925977	S115977
19	SCREW, Guard	4	75A1	75A1	75A1	75A1	75A5	75A1
20	WASHER	4	95D132	95A3	95A3	95A3	95A3	95A3
21	WASHER-LOCK	4	95B3	95B3	95B3	95B3	95B3	95B3
∅	SCREW, Guard to Bracket (5/16 x 1/2)	2	None	75K75	75K75	75K75	None	75K75
∅	NIPPLE, Bearing Grease (1/8 x 1)	2	None	63C2G	63C2G	63C2G	63C2G	63C2G
∅	ELBOW, Bearing Grease (1/8 x 45°)	2	None	64V1G	64V1G	64U1G	64V1G	64V1G
∅	NIPPLE, Bearing Grease	2	None	63C28G	63C8G	63C28G	None	63C8G
∅	COUPLING, Bearing Grease	2	None	64BK1G	64BK1G	64BK1G	None	64BK1G

∅ Not shown on illustration.

NAME OF PART	QTY. REQ. PER COMP.	MODELS	MODELS	MODELS	MODELS	MODELS	MODELS
		ET75A ET75C	ET75B ET75D	ET100A ET100D	ET100B ET100C ET100E	ET150A ET150D	ET150C ET150E
<u>TUBING &amp; MOUNTING PARTS</u> (Not Shown on Illustrations)							
(Manifold to Solenoid Valve)							
ELBOW-TUBE (90° Male)	1	(1/2P x 1/2T)	(1/2P x 1/2T)	(1/2P x 1/2T)	(1/2P x 1/2T)	(1/2P x 1/2T)	(1/2P x 1/2T)
TUBE	1	(1/2 x 90")	(1/2 x 90")	(1/2 x 90")	(1/2 x 90")	(1/2 x 90")	(1/2 x 90")
CONNECTOR-TUBE (Straight Male)	1	(1/2P x 1/2T)	(1/2P x 1/2T)	(1/2P x 1/2T)	(1/2P x 1/2T)	(1/2P x 1/2T)	(1/2P x 1/2T)
NIPPLE-PIPE	1	(1/2 x 3-1/2)	(1/2 x 3-1/2)	(1/2 x 3-1/2)	None	(1/2 x 3-1/2)	(1/2 x 3-1/2)
BUSHING-PIPE (Outside Hex)	1	(1 x 1/2)	(1 x 1/2)	(1 x 1/2)	(1 x 1/2)	(1 x 1/2)	(1 x 1/2)
CLAMP, Heavy Conduit	1	(1/2P x 1/4H)	(1/2P x 1/4H)	(1/2P x 1/4H)	(1/2P x 1/4H)	(1/2P x 1/4H)	(1/2P x 1/4H)
SCREW-HEX CAP	1	(1/4 x 1/2)	(1/4 x 1/2)	(1/4 x 1/2)	(1/4 x 1/2)	(1/4 x 1/2)	(1/4 x 1/2)
WASHER-LOCK	1	(1/4)	(1/4)	(1/4)	(1/4)	(1/4)	(1/4)
(Control Tubing)							
CONNECTOR-TUBE (Straight Male)	1	(1/4P x 1/4T)	(1/4P x 1/4T)	(1/4P x 1/4T)	(1/4P x 1/4T)	(1/4P x 1/4T)	(1/4P x 1/4T)
TUBE	1	(1/4 x 96")	(1/4 x 60")	(1/4 x 96")	(1/4 x 96")	(1/4 x 96")	(1/4 x 96")
ELBOW-TUBE (90° Male)	1	(1/4)	(1/4)	(1/4)	(1/4)	(1/4)	(1/4)
(Nipple Support Group)							
CLAMP or U-BOLT	See ( )	98H6 (2)	15U58 (1)	15U60 (3)	None	15U60 (3)	None
SCREW	2	75A1	None	None	None	None	None
WASHER-LOCK	See ( )	None	95B3 (2)	95B1 (6)	None	95B1 (6)	None
WASHER-PLAIN	See ( )	95A3 (2)	95A3 (2)	95A1 (6)	None	95A1 (6)	None
NUT	See ( )	50B3 (2)	50B3 (2)	50B1 (6)	None	50B1 (6)	None
(Control Box Mounting)							
SCREW-MACHINE, Isolator to Guard	8	(8-32 x 1/2)	(8-32 x 1/2)	(8-32 x 1/2)	(8-32 x 1/2)	(8-32 x 1/2)	(8-32 x 1/2)
NUT	8	(8-32)	(8-32)	(8-32)	(8-32)	(8-32)	(8-32)
SCREW-HEX CAP, Isolator to Box	4	(1/4 x 1-3/4)	(1/4 x 1-3/4)	(1/4 x 1-3/4)	(1/4 x 1-1/4)	(1/4 x 1-3/4)	(1/4 x 1-1/4)
NUT-HEX	4	(1/4)	(1/4)	(1/4)	(1/4)	(1/4)	(1/4)
WASHER-LOCK	4	(1/4)	(1/4)	(1/4)	(1/4)	(1/4)	(1/4)
SPACER	4	80A102	80A102	None	None	80A102	None
(Oil Cooler Mounting)							
SCREW, Cooler or Radiator to Base	4	(3/8 x 1")	(3/8 x 5/8)	(1/2 x 1-1/2)	(3/8 x 1-1/4)	(1/2 x 1-1/2)	(3/8 x 1")
WASHER	4	(3/8)	(3/8)	(1/2)	(3/8)	(1/2)	(3/8)
WASHER-LOCK	4	(3/8)	(3/8)	(1/2)	(3/8)	(1/2)	(3/8)
SCREW, Shroud to Cooler & Base	12	(3/8 x 1-1/4)	None	(3/8 x 3/4)	None	(3/8 x 3/4)	None
WASHER	12	(3/8)	None	(3/8)	None	(3/8)	None
WASHER-LOCK	12	None	None	(3/8)	None	(3/8)	None
(Oil Filter Mounting)							
SCREW, Filter to Plate	4	(7/16 x 2")	(7/16 x 2")	(7/16 x 2")	(7/16 x 2")	(7/16 x 2")	(7/16 x 2")
WASHER-LOCK	4	(7/16)	(7/16)	(7/16)	(7/16)	(7/16)	(7/16)
SCREW, Plate to Base	3	(3/8 x 1-1/4)	(7/16 x 1-1/4)	(3/8 x 1-1/4)	(3/8 x 1-1/4)	(3/8 x 1-1/4)	(3/8 x 1-1/4)
WASHER	3	(3/8)	(7/16)	(3/8)	(3/8)	(3/8)	(3/8)
WASHER-LOCK	3	(3/8)	(1/2)	(3/8)	(3/8)	(3/8)	(3/8)
(Mixing Valve Mounting)							
SCREW, Valve to Bracket	3	(5/16 x 1-1/4)	None	(5/16 x 1-1/4)	None	(5/16 x 1-1/4)	None
WASHER	3	None	None	None	None	None	None
WASHER-LOCK	3	(5/16)	None	(5/16)	None	(5/16)	None
SCREW, Bracket to Base	3	(1/2 x 3/4)	None	(1/2 x 3/4)	None	(1/2 x 3/4)	None
WASHER	3	(1/2)	None	(1/2)	None	(1/2)	None
WASHER-LOCK	3	(1/2)	None	(1/2)	None	(1/2)	None
(Control Valve Mounting) *							
SCREW, Valve to Base	2	(3/8 x 7/8)	(3/8 x 7/8)	(3/8 x 7/8)	(3/8 x 7/8)	(3/8 x 7/8)	(3/8 x 7/8)
WASHER	2	(3/8)	(3/8)	(3/8)	(3/8)	(3/8)	(3/8)
WASHER-LOCK	2	(3/8)	(3/8)	(3/8)	(3/8)	(3/8)	(3/8)
(Discharge Piping) **							
NIPPLE-PIPE	1	None	None	(1-1/2 x 1-3/4)	(1-1/2 x 1-3/4)	None	None
TEE-PIPE	1	None	None	(1-1/2)	(1-1/2)	None	(1-1/2)
BUSHING-PIPE (Outside Hex)	1	None	None	(1-1/2 x 1-1/4)	(1-1/2 x 1-1/4)	(1/2 x 1")	(1-1/2 x 2")

\* Used only on Unloaded Horsepower Control units.

\*\* Used only on Pilot Operated Control units.

NOTE: Unless otherwise specified, screw threads are Unified National Coarse Series (UNC), and all pipe fittings are National Pipe Thread Series (NPT).  
Tube fittings show size of pipe tap (P) and tube connection (T).

NAME OF PART	QTY. REQ. PER COMP.	MODELS	MODELS	MODELS	MODELS	MODELS	MODELS
		ET125A ET125D	ET125B ET125C ET125E	ET200A ET200D	ET200C ET200E	ET250A ET250D	ET250B ET250C ET250E
<b>TUBING &amp; MOUNTING PARTS</b> (Not Shown on Illustrations)							
(Manifold to Solenoid Valve)							
ELBOW-TUBE (90° Male)	1	(1/2P x 1/2T)	(1/2P x 1/2T)	(1/2P x 1/2T)	(1/2P x 1/2T)	(1/2P x 1/2T)	(1/2P x 1/2T)
TUBE	1	(1/2 x 80")	(1/2 x 90")	(1/2 x 80")	(1/2 x 80")	(1/2 x 110")	(1/2 x 110")
CONNECTOR-TUBE (Straight Male)	1	(1/2P x 1/2T)	(1/2P x 1/2T)	(1/2P x 1/2T)	(1/2P x 1/2T)	(1/2P x 1/2T)	(1/2P x 1/2T)
NIPPLE-PIPE	1	(1/2 x 3-1/2)	None	(1/2 x 3-1/2)	(1/2 x 3-1/2)	None	None
BUSHING-PIPE (Outside Hex)	1	None	(1 x 1/2)	None	None	None	(1 x 1/2)
CLAMP, Heavy Conduit	1	(1/2P x 1/4H)	(1/2P x 1/4H)	(1/2P x 1/4H)	(1/2P x 1/4H)	(1/2P x 1/4H)	(1/2P x 1/4H)
SCREW-HEX CAP	1	(1/4 x 1/2)	(1/4 x 1/2)	(1/4 x 1/2)	(1/4 x 1/2)	(1/4 x 1/2)	(1/4 x 1/2)
WASHER-LOCK	1	(1/4)	(1/4)	(1/4)	(1/4)	(1/4)	(1/4)
(Control Tubing)							
CONNECTOR-TUBE (Straight Male)	1	(1/4P x 1/4T)	(1/4P x 1/4)	(1/4P x 1/4T)	(1/4P x 1/4T)	(1/4P x 1/4T)	(1/4P x 1/4T)
TUBE	1	(1/4 x 96")	(1/4 x 96")	(1/4 x 96")	(1/4 x 96")	(1/4 x 60")	(1/4 x 60")
ELBOW-TUBE (90° Male)	1	(1/4P x 1/4T)	(1/4P x 1/4T)	(1/4P x 1/4T)	(1/4P x 1/4T)	(1/4P x 1/4T)	(1/4P x 1/4T)
(Nipple Support Group)							
CLAMP or U-BOLT	See ( )	15U58 (3)	None	98H7 (2)	None	15U58 (3)	None
SCREW	2	None	None	75A5 (2)	None	None	None
WASHER-LOCK	See ( )	95B3 (6)	None	95B3 (2)	None	95B3 (6)	None
WASHER-PLAIN	See ( )	95A3 (6)	None	None	None	95A3 (6)	None
NUT	See ( )	50B3 (6)	None	None	None	50B3 (6)	None
(Control Box Mounting)							
SCREW-MACHINE, Isolator to Guard	8	(8-32 x 1/2)	(8-32 x 1/2)	(8-32 x 1/2)	(8-32 x 1/2)	(8-32 x 1/2)	(8-32 x 1/2)
NUT	8	(8-32)	(8-32)	(8-32)	(8-32)	(8-32)	(8-32)
SCREW-HEX CAP, Isolator to Box	4	(1/4 x 1-1/4)	(1/4 x 1-1/4)	(1/4 x 1-1/4)	(1/4 x 1-1/4)	(1/4 x 1-3/4)	(1/4 x 1-3/4)
NUT-HEX	4	(1/4)	(1/4)	(1/4)	(1/4)	(1/4)	(1/4)
WASHER-LOCK	4	(1/4)	(1/4)	(1/4)	(1/4)	(1/4)	(1/4)
SPACER	4	None	None	None	None	80A102	80A102
(Oil Cooler Mounting)							
SCREW, Cooler or Radiator to Base	4	(1/2 x 1-1/2)	(3/8 x 1-1/4)	(1/2 x 1-1/4)	(3/8 x 1")	(1/2 x 1-1/2)	(3/8 x 1-1/4)
WASHER	4	(1/2)	None	(1/2)	None	(1/2)	None
WASHER-LOCK	4	(1/2)	(3/8)	(1/2)	(3/8)	(1/2)	(3/8)
SCREW, Shroud to Cooler & Base	12	(3/8 x 3/4)	None	(3/8 x 3/4)	None	(3/8 x 3/4)	None
WASHER	12	(3/8)	None	(3/8)	None	(3/8)	None
WASHER-LOCK	12	(3/8)	None	(3/8)	None	(3/8)	None
(Oil Filter Mounting)							
SCREW, Filter to Plate (Short)	6	(7/16 x 1-3/4)	(7/16 x 1-3/4)	(7/16 x 1-3/4)	(7/16 x 1-3/4)	(7/16 x 1-3/4)	(7/16 x 1-3/4)
SCREW, Filter to Plate (Long)	2	(7/16 x 4")	(7/16 x 4")	(7/16 x 4")	(7/16 x 4")	(7/16 x 4")	(7/16 x 4")
WASHER-LOCK	8	(7/16)	(7/16)	(7/16)	(7/16)	(7/16)	(7/16)
SCREW, Plate to Base	4	(3/8 x 1-1/2)	(3/8 x 1-1/2)	(3/8 x 1-1/2)	(3/8 x 1-3/4)	(3/8 x 1-1/2)	(3/8 x 1-1/4)
WASHER	4	(3/8)	(3/8)	(3/8)	(3/8)	(3/8)	(3/8)
WASHER-LOCK	4	(3/8)	(3/8)	(3/8)	(3/8)	(3/8)	(3/8)
(Mixing Valve Mounting)							
SCREW, Valve to Bracket	3	(3/8 x 1-1/4)	None	(3/8 x 1-1/4)	None	(3/8 x 1-1/2)	None
WASHER	3	(3/8)	None	(3/8)	None	(3/8)	None
WASHER-LOCK	3	(3/8)	None	(3/8)	None	(3/8)	None
SCREW, Bracket to Base	3	(3/8 x 3/4)	None	(3/8 x 3/4)	None	(3/8 x 3/4)	None
WASHER	3	(3/8)	None	(3/8)	None	(3/8)	None
WASHER-LOCK	3	(3/8)	None	(3/8)	None	(3/8)	None
(Control Valve Mounting) *							
SCREW, Valve to Base	2	(3/8 x 1-1/2)	(3/8 x 1-1/2)	(3/8 x 7/8)	(3/8 x 7/8)	(3/8 x 1-1/2)	(3/8 x 1-1/2)
WASHER	2	(3/8)	(3/8)	(3/8)	(3/8)	(3/8)	(3/8)
WASHER-LOCK	2	(3/8)	(3/8)	(3/8)	(3/8)	(3/8)	(3/8)
(Discharge Piping) **							
NIPPLE-PIPE	1	(1/2 x 1-3/4)	(1-1/4 x 14")	(2" x 2-1/2)	(2" x 2")	(3" x 2-5/8)	None
TEE-PIPE	1	(1-1/2)	(1-1/2)	(2")	(2")	None	None
BUSHING-PIPE (Outside Hex)	1	(1-1/2 x 1-1/4)	(1" x 1/2)	(2" x 1-1/4)	(2" x 1-1/4)	None	None
ELBOW-PIPE	1	None	(1-1/4 x 90°)	None	None	None	None

\* Used only on Unloaded Horsepower Control units.

\*\* Used only on Pilot Operated Control units.

NOTE: Unless otherwise specified, screw threads are Unified National Coarse Series (UNC), and all pipe fittings are National Pipe Thread Series (NPT).  
Tube fittings show size of pipe tap (P) and tube connection (T).

NAME OF PART	QTY. REQ. PER COMP.	MODELS	MODELS	MODELS	MODELS	MODELS	MODELS
		ET75A ET75C	ET75B ET75D	ET100A ET100B ET100D	ET100C ET100E	ET125A ET125B ET125D	ET125C ET125E
<u>MISCELLANEOUS PARTS &amp; ACCESSORIES</u>		PART NO.	PART NO.	PART NO.	PART NO.	PART NO.	PART NO.
BARE COMPRESSOR (Field Replacement)	1	2005137	2005137	ET65032	2005352	ET65031	ET65031
GASKET KIT (Bare Compressor)	1	ET65571	ET65571	ET64705	ET64705	ET64518	ET64518
GASKET KIT (Complete Unit - Includes Bare Compressor Kit)	1	2013581	2013581	2013721	2013721	2013754	2013754
KEY, Compressor to Coupling	1	35B47	35B47	35B65	35B65	35B8	35B8
COUPLING (75 HP Motor) †	1	51L1	51L1	None	None	None	None
COUPLING (100 HP Motor) †	1	51L4	51L4	51L2	51L2	None	None
COUPLING (125 HP Motor) †	1	None	None	51L2	51L5	51L3	51L3
COUPLING (150 HP Motor) †	1	None	None	None	None	51L7	51L7
GUARD-COUPLING	1	S700977	2005094	S700977	2006633	1S115977	2006633
ISOLATOR-VIBRATION	1	32B8	32B8	32B8	32B8	32B8	32B8
SUPPORT or BRACKET (Control)	1	None	2005089	None	65S90017	None	65S90017

NAME OF PART	QTY. REQ. PER COMP.	MODELS	MODELS	MODELS	MODELS	MODELS	MODELS
		ET150A ET150D	ET150C ET150E	ET200A ET200D	ET200C ET200E	ET250A ET250B ET250D	ET250C ET250E
<u>MISCELLANEOUS PARTS &amp; ACCESSORIES</u>		PART NO.	PART NO.	PART NO.	PART NO.	PART NO.	PART NO.
BARE COMPRESSOR (Field Replacement)	1	ET65030	ET65030	ET65029	ET65029	ET65028	ET65028
GASKET KIT (Bare Compressor)	1	ET64876	ET64876	ET64705	ET64705	ET64518	ET64518
GASKET KIT (Complete Unit - Includes Bare Compressor Kit)	1	2013859	2013859	2013866	2013866	2013770	2013770
KEY, Compressor to Coupling	1	35B47	35B47	35B65	35B65	35B8	35B8
COUPLING (150 HP Motor) †	1	51L4	51L4	None	None	None	None
COUPLING (200 HP Motor) †	1	51L6	51L6	51L5	51L5	None	None
COUPLING (250 HP Motor) †	1	None	None	51L5	51L5	51L7	51L7
COUPLING (300 HP Motor) †	1	None	None	None	None	51L7	51L7
GUARD-COUPLING	1	S700977	2006633	1S115977	2006633	1S115977	3S115977
ISOLATOR-VIBRATION	1	32B8	32B8	32B12	32B8	32B8	32B8
SUPPORT or BRACKET (Control)	1	None	65S90017	None	65S90017	None	65S90017

† Internal repair parts for coupling must be purchased from coupling manufacturer.

NOTE: See control bulletin for Subtractive Pilot, Gauges, Hourmeter and related control parts.

SUBTRACTIVE PILOT CONTROL GROUP

NAME OF PART	QTY. REQ. PER COMP.	MODEL ET75C	MODEL ET75D	MODEL ET100D	MODEL ET100E	MODEL ET125D	MODEL ET125E	MODEL ET150D	MODEL ET150E	MODEL ET200D	MODEL ET200E	MODEL ET250D	MODEL ET250E
		PART NO. OR SIZE	PART NO. OR SIZE	PART NO. OR SIZE	PART NO. OR SIZE	PART NO. OR SIZE	PART NO. OR SIZE	PART NO. OR SIZE	PART NO. OR SIZE	PART NO. OR SIZE	PART NO. OR SIZE	PART NO. OR SIZE	PART NO. OR SIZE
(Discharge Manifold to Blowdown Valve)		(1-1/4 P)	(1-1/4 P)	(1-1/4 P)	(1-1/4 P)	(1-1/4 P)	(1-1/4 P)	(1-1/4 P)	(1-1/4 P)	(1-1/4 P)	(1-1/4 P)	(2" P)	(1-1/4 P)
BUSHING (2-1/2 x 2)	1	None	None	None	None	None	None	None	None	None	None	64E25G	None
BUSHING (2-1/2 x 1-1/4)	1	None	None	None	None	None	None	None	None	None	None	None	64E28G
NIPPLE-PIPE	1	63J15G	63J15G	63J15G	63J15G	63J15G	63J15G	63J15G	63J15G	63J15G	63J15G	63L15G	63J15G
VALVE, Manual Blowdown	1	90A39	90A39	90A39	90A39	90A39	90A39	90A39	90A39	90A39	90A39	90A60	90A39
(Inlet Valve to Subtractive Pilot)		(1/4 P)	(1/4 P)	(1/4 P)	(1/4 P)	(1/4 P)	(1/4 P)	(1/4 P)	(1/4 P)	(1/4 P)	(1/4 P)	(1/4 P)	(1/4 P)
NIPPLE-PIPE	1	63U4X10G	63U4X10G	63U4X10G	63U4X10G	63U4X10G	63U4X10G	63U4X10G	63U4X10G	63U4X10G	63U4X10G	63U4X10G	63U4X10G
ELBOW-PIPE (90°)	1	64C2G	64C2G	64C2G	64C2G	64C2G	64C2G	64C2G	64C2G	64C2G	64C2G	64C2G	64C2G
NIPPLE-PIPE	1	63U4X10G	63U4X10G	63U4X10G	63U4X10G	63U4X10G	63U4X10G	63U4X10G	63U4X10G	63U4X10G	63U4X10G	63U4X10G	63U4X10G
VALVE-SUBTRACTIVE PILOT *	1	88B39	88B39	88B39	88B39	88B39	88B39	88B39	88B39	88B39	88B39	88B39	88B39
(Subtractive Pilot to Discharge Manifold)		(1/4Px3/8T)	(1/4Px3/8T)	(1/4Px3/8T)	(1/4Px3/8T)	(1/4Px1/4T)	(1/4Px1/4T)	(1/4Px3/8T)	(1/4Px3/8T)	(1/4Px3/8T)	(1/4Px3/8T)	(1/4Px3/8T)	(1/4Px3/8T)
NIPPLE-PIPE	1	63D1G	63D1G	63U4X10G	63U4X10G	None	None	63U4X10G	63U4X10G	63U4X10G	63U4X10G	63U4X10G	63U4X10G
TEE-TUBE	1	86E147	None	None	None	86E119	None	86E147	None	86E147	None	86E147	86E147
CONNECTOR-TUBE	1	None	86E9	None	86E9	None	86E4	None	86E9	None	86E9	None	None
TUBE	1	85D6B720	85D6B720	85D6B720	85D6B720	85E4A360	85E4A360	85D6B720	85D6B720	85D6B720	85D6B720	85D6B720	85D6B720
ELBOW-TUBE	1	86E64	86E64	86E64	86E64	86E60	86E60	86E64	86E64	86E64	86E64	86E64	86E64
(Oil Piping - Filter(s) to Oil Pump) **		(1-1/4 P)	(1-1/4 P)	(1-1/4 P)	(1-1/4 P)	(1-1/2 P)	(1-1/2 P)	(1-1/4 P)	(1-1/4 P)	(1-1/2 P)	(1-1/2 P)	(1-1/2 P)	(1-1/2 P)
FLANGE, O-Ring Pipe	1	None	None	None	None	None	29Q166	None	None	None	None	None	None
O-RING	1	None	None	None	None	None	25AH3	None	None	None	None	None	None
ELBOW-PIPE (90°) or ADAPTOR	1	None	64D7G	64C7G	64D7G	None	None	64C7G	64D7G	None	None	None	None
ASM HYDRAULIC HOSE †	1	29R117	29R84	29R15	29R72	29X5X140	None	29R15	29R18	29X5X196	29X8X220	29X18X390	29X5X270
ADAPTOR, Female Hose (90°)	1	29Q119	29Q23	29Q23	29Q23	S600782	None	29Q23	29Q23	S600782	6S600782	1S600782	1S600782
NIPPLE-PIPE	1	63N20X570G	None	63N20X540G	None	(1-1/2 G) φ	63K2G	63N20X500G	None	63N24X520G	63K27G	(1-1/2 G) φ	63K18G
ADAPTOR, Female Hose (90°)	1	29Q119	None	29Q23	None	1S600782	6S600782	29Q119	None	S600782	None	S600782	None
ASM HYDRAULIC HOSE †	1	29R17	None	29R35	None	29X44X300	29X28X230	29R35	None	29X1X204	None	29X5X190	None
ELBOW-STREET (90°)	1	64D7G	None	None	None	None	None	64D7G	None	64D8G	64U4G	64D8G	64D8G
ADAPTOR (90°)	1	None	None	None	None	6S600782	6S600782	None	None	6S600782	None	None	None
NIPPLE-PIPE	1	None	None	None	None	63K4G	63K4G	None	None	None	None	63K18G	63K18G
TEE-PIPE	1	64P34G	64P34G	64P34G	64P34G	64P24G	64P28G	64P89G	64P89G	None	None	64P28G	64P28G
BUSHING	1	64E2G	64E2G	64E2G	64E2G	64E3G	64E2G	64E3G	64E3G	None	64E26G	64E22G	64E22G
PLUG-PIPE (1/4)	See ( )	64AA5G (1)	64AA5G (1)	64AA5G (1)	64AA5G (1)	64AA5G (1)	64AA5G (2)	64AA5G (1)	64AA5G (1)	64AA5G (2)	64AA5G (1)	64AA5G (1)	64AA5G (1)
NIPPLE-PIPE	1	63J15G	63J15G	63J15G	63J15G	63K18G	63K18G	63H1G	63H1G	63H2G	None	63J15G	None
BUSHING-PIPE	1	None	None	None	None	64E12G	64E12G	None	None	64E13G	None	64E2G	64E2G
GAUGE, Oil Temperature	1	27H11	27H11	27H11	27H11	27H11	27H11	27H11	27H11	27H11	27H11	27H11	27H11

\* For component parts of Subtractive Pilot, Gauges, Hourmeter, etc., refer to control bulletin.

\*\* For illustration see page 20, 22, 24 or 26 as applicable (dashed lines).

† For breakdown of Hose Assemblies see page 28.

φ Length of nipple depends on choice of motor and skid mounting.

UNLOADED HORSEPOWER CONTROL GROUP

NAME OF PART	QTY. REQ. PER COMP.	MODEL ET75C	MODEL ET75D	MODEL ET100D	MODEL ET100E	MODEL ET125D	MODEL ET125E	MODEL ET150D	MODEL ET150E	MODEL ET200D	MODEL ET200E	MODEL ET250D	MODEL ET250E
		PART NO. OR SIZE	PART NO. OR SIZE	PART NO. OR SIZE	PART NO. OR SIZE	PART NO. OR SIZE	PART NO. OR SIZE	PART NO. OR SIZE	PART NO. OR SIZE	PART NO. OR SIZE	PART NO. OR SIZE	PART NO. OR SIZE	PART NO. OR SIZE
(Discharge Manifold to Blowdown Valve)		(1-1/4 P)	(1-1/4 P)	(1-1/4 P)	(1-1/4 P)	(1-1/4 P)	(1-1/4 P)	(1-1/4 P)	(1-1/4 P)	(1-1/4 P)	(1-1/4 P)	(1-1/4 P)	(1-1/4 P)
BUSHING-PIPE	1	None	None	None	None	None	None	None	None	64E31G	64E31G	64E48G	64E48G
NIPPLE-PIPE	1	63J15G	63J15G	63J15G	63J15G	63J15G	63J15G	63J15G	63J15G	63J15G	63J15G	63J15G	63J15G
TEE-PIPE	1	64P57G	64P57G	64P57G	64P57G	64P57G	64P57G	64P57G	64P57G	64P57G	64P57G	64P57G	64P57G
NIPPLE-PIPE	1	63J15G	63J15G	63J15G	63J15G	63J15G	63J15G	63J15G	63J15G	63J15G	63J15G	63J15G	63J15G
VALVE, Manual Blowdown	1	90A39	90A39	90A39	90A39	90A39	90A39	90A39	90A39	90A39	90A39	90A39	90A39
ORIFICE	1	2013718	2013718	2013718	2013718	2013718	2013718	2013717	2013717	2013717	2013717	2013716	2013716
VALVE, Air Actuated Blowdown	1	2009509	2009509	2009509	2009509	2009509	2009509	2009509	2009509	2009509	2009509	2009509	2009509
MUFFLER	1	43E1	43E1	43E1	43E1	43E1	43E1	43E1	43E1	43E1	43E1	43E1	43E1
(Inlet Valve to Air Receiver)		(1/4Px3/8T)	(1/4Px3/8T)	(1/4Px3/8T)	(1/4Px3/8T)	(1/4Px3/8T)	(1/4Px3/8T)	(1/4Px3/8T)	(1/4Px3/8T)	(1/4Px3/8T)	(1/4Px3/8T)	(1/4Px3/8T)	(1/4Px3/8T)
NIPPLE-PIPE	1	63U4X07G	63U4X07G	63U4X07G	63U4X07G	63U4X07G	63U4X07G	63U4X07G	63U4X07G	63U4X07G	63U4X07G	63U4X07G	63U4X07G
REGULATOR, Pressure	1	65NR302EW	65NR302EW	65NR302EW	65NR302EW	65NR302EW	65NR302EW	65NR302EW	65NR302EW	65NR302EW	65NR302EW	65NR302EW	65NR302EW
NIPPLE-PIPE	1	63D1G	63D1G	63D1G	63D1G	63D1G	63D1G	63D1G	63D1G	63D1G	63D1G	63D1G	63D1G
TEE-PIPE	1	64G3G	64G3G	64G3G	64G3G	64G3G	64G3G	64G3G	64G3G	64G3G	64G3G	64G3G	64G3G
CONNECTOR-TUBE	1	86E9	86E9	86E9	86E9	86E9	86E9	86E9	86E9	86E9	86E9	86E9	86E9
ELBOW-PIPE (90°)	1	64D2G	64D2G	64D2G	64D2G	64D2G	64D2G	64D2G	64D2G	64D2G	64D2G	64D2G	64D2G
GAUGE, Air Pressure	1	27A15	27A15	27A15	27A15	27A15	27A15	27A15	27A15	27A15	27A15	27A15	27A15
UNLOADER PILOT, Air Receiver *	1	5AUX525B	5AUX525B	5AUX525B	5AUX525B	5AUX525B	5AUX525B	5AUX525B	5AUX525B	5AUX525B	5AUX525B	5AUX525B	5AUX525B
(Regulator to Air Actuated Blowdown Valve)		(1/4 T)	(1/4 T)	(1/4 T)	(1/4 T)	(1/4 T)	(1/4 T)	(1/4 T)	(1/4 T)	(1/4 T)	(1/4 T)	(1/4 T)	(1/4 T)
CONNECTOR-TUBE	1	86E4	86E4	86E4	86E4	86E4	86E4	86E4	86E4	86E4	86E4	86E4	86E4
TUBE	1	85D4A960	85D4A960	85D4A960	85D4A960	85D4A960	85D4A960	85D4A960	85D4A960	85D4A960	85D4A960	85D4A960	85D4A960
ELBOW-TUBE (90°)	1	86E60	86E60	86E60	86E60	86E60	86E60	86E60	86E60	86E60	86E60	86E60	86E60
(Oil Piping - Filter(s) to Oil Pump) **		(1-1/4 P)	(1-1/4 P)	(1-1/4 P)	(1-1/4 P)	(1-1/2 P)	(1-1/2 P)	(1-1/4 P)	(1-1/4 P)	(1-1/2 P)	(2" P)	(1-1/2 P)	(1-1/2 P)
FLANGE or ADAPTOR	1	None	None	29Q23	None	None	29Q166	29Q23	None	None	29Q166	None	29Q166
O-RING, Flange	1	None	None	None	None	None	None	25AH3	None	None	25AH3	None	25AH3
ASM HYDRAULIC HOSE †	1	29R117	None	29R15	None	29X5X120	None	29R15	None	29X5196	None	29X18X194	None
ADAPTOR or ELBOW (90°)	1	29Q119	64D7G	64C7G	64D7G	S600782	None	64C7G	64D7G	S600782	None	1S600782	None
NIPPLE-PIPE	1	63N20X570G	63J10G	63N20X540G	63J37G	(1-1/2 P) †	63K18G	63N24X500G	63J4G	63N24X520G	63L30G	(1-1/2 P) †	63K10G
ADAPTOR	1	None	None	None	None	None	None	None	None	None	None	S600782	None
ELBOW (90°) or TEE (With Plug)	1	64C7G	64P34G	64C7G	64P34G	64D8G	64D8G	64P34G	64P34G	64C8G	64C9G	64P28G	64C8G
NIPPLE-PIPE	1	None	None	None	None	None	63K15G	None	None	63K18G	63L1G	63K2G	63K20G
UNION, Straight	1	None	None	None	None	64Z1G	64Z1G	None	None	64Z1G	64Z2G	64Z1G	64Z1G
NIPPLE-PIPE	1	None	None	63J11G	None	None	None	63J15G	None	63K18G	63L2G	63K2G	63K18G
ADAPTOR or ELBOW (90°)	1	29Q120	29Q23	29Q23	29Q23	64D8G	64D8G	29Q23	29Q23	64D8G	64D9G	64C8G	64D8G
ASM HYDRAULIC HOSE or NIPPLE	1	29R41	2009008	2009008	2009201	63K18G	None	2009008	2009201	None	None	63K23G	None
ASM CONTROL VALVE ***	1	2007188	2007188	2007188	2007188	2007173	2007173	2007188	2007188	2007173	2007173	2007173	2007173
NIPPLE-PIPE	1	None	63J9G	63J5G	63J21G	63K7G	63K18G	63J5G	63J3G	None	63L24G	63K18G	63K18G
ELBOW-PIPE (90°)	1	64D7G	64C7G	64C7G	64C7G	None	64C8G	64C7G	64C7G	64D8G	64U6G	64C8G	64C8G
NIPPLE-PIPE	1	None	None	None	None	None	63K18G	None	None	63K31G	(1-1/2 P) †	63K8G	63K18G
ADAPTOR (With Plug)	1	None	None	None	None	1S600782	None	None	None	1S600782	S600782	6S600782	1S600782
ASM HYDRAULIC HOSE †	1	29R18	29R15	29Z12	29Z12	29X18X204	29X32X300	29R15	29R15	29X18X104	29X4X140	29X5X190	29X32X140
ADAPTOR (With Plug)	1	29Q23	29Q23	29Q23	29Q23	6S600782	6S600782	29Q23	29Q23	6S600782	S600782	6S600782	S600782
NIPPLE-PIPE	1	None	None	None	None	None	None	None	None	None	63K18G	63K21G	63K24G
ELBOW-PIPE (90°)	1	None	None	None	None	None	None	None	None	None	64D8G	None	64C8G
NIPPLE-PIPE	1	None	None	None	None	63K15G	63K2G	None	None	63K18G	None	None	63K15G
TEE-PIPE	1	64P34G	64P34G	64P34G	64P34G	64P24G	64P28G	64P34G	64P34G	64P28G	64P28G	64P28G	64P28G
BUSHING-PIPE	1	64E2G	64E2G	64E2G	64E2G	64E3G	64E2G	64E2G	64E2G	64E2G	64E2G	64E2G	64E2G
GAUGE, Temperature	1	27H11	27H11	27H11	27H11	27H11	27H11	27H11	27H11	27H11	27H11	27H11	27H11
BUSHING-PIPE	1	None	None	None	None	64E12G	64E12G	64E7G	64E7G	64E14G	64E13G	64E22G	64E22G
NIPPLE-PIPE	1	63J15G	63J15G	63J15G	63J27G	63K18G	63K18G	63H1G	63H1G	63H1G	63H1G	63J15G	63J15G

\* Internal Valve in Unloader Pilot available for repair as Part No. 2009781.

\*\* For illustration see page 20, 22, 24 or 26 as applicable (solid lines).

\*\*\* For component parts of Control Valve see page 19 (check column heading for correct valve).

† For breakdown of Hose Assemblies see page 28.

‡ Length of nipple depends on choice of motor and skid mounting.

RECOMMENDED SPARES

The following kits are separated according to locations and hours of service. Quantities shown are for one unit only and are based on normally clean industrial conditions. In areas of abnormal operating conditions, more frequent replacements may be needed. It is the responsibility of the Owner-Operator to apply a multiplier for multiple units, operating conditions and hours of operation. Refer to Instruction Manual for recommended replacement time for critical parts. Kits do not include electrical items -- these must be purchased separately.

Ordering Instructions

**KIT #1 - Routine Maintenance:** These are suggested as the minimum quantity of parts a customer should stock. They are usually the first items which require renewal. Order quantities of this kit to suit your requirements or particular service. One kit contains three oil filter elements which require changing every 1000 hours under normal conditions. (Six elements included in Kit for units using two filters).

**KIT #2 - Domestic Service:** These are suggested as the minimum spares a customer should stock for continuous operation for one year. When ordering for this service, order Kits #1 and 2.

**KIT #3 - Isolated Domestic or Export Service:** These are suggested as the minimum spares a customer should stock for continuous operation. These parts include those which possibly would need renewal in an overhaul. When ordering for this service, order Kits #1, 2 and 3.

APPLY THE PROPER MULTIPLIER BASED ON NUMBER OF UNITS AND HOURS OF OPERATION

MODEL	KIT #1 Part No.	KIT #2 Part No.	KIT #3 Part No.	NAME OF PART	Page No.	KIT #1 Qty. Per Kit	KIT #2 Qty. Per Kit	KIT #3 Qty. Per Kit
ET75C	2013577	2013578	2013580	<u>KIT #1 - ROUTINE MAINTENANCE</u>				
ET75D	2013577	2013579	2013580	Air Filter Element	10 or 11	1-2		
				Oil Separator Element Kit	18	1		
ET100A	2013719	2013724	2013722	Separator Discharge Manifold Gasket	13, 15 or 17	1		
ET100C	2013720	2013723	2013722	Separator Gasket	13, 15 or 17	1		
ET100D	2013720	2013724	2013722	Oil Filter Element Assembly (w/Gasket)	18	3-6		
ET100E	2013720	2013723	2013722					
ET125A	2013755	2013758	2013753	<u>KIT #2 - DOMESTIC SERVICE</u>				
ET125C	2013756	2013759	2013753	Compressor Shaft Seal	3		1	
ET125D	2013757	2013758	2013753	Inlet Valve Piston Spring, Packing (ϕϕ), Valve & Valve Spring	4		1 ea.	
ET125E	2013757	2013759	2013753	Oil Separator Drain Tube Kit & Gasket Kit	18		1 ea.	
ET150A	2013860	2013864	2013865	Mixing Valve Element, Element O-Ring & Housing			2 ea.	
ET150C	2013861	2013863	2013865	O-Ring (90K154) *	19		or	
ET150D	2013862	2013864	2013865	Mixing Valve Element, Element O-Ring & Housing			1 ea.	
ET150E	2013862	2013863	2013865	O-Ring (90K156) *	19			
ET200A	2013867	2013869	2013871	Inlet Water Control Temperature Regulator **	23 or 27		1	
ET200C	2013868	2013870	2013871	Gasket Kit (Bare Compressor Only)	32		1	
ET200D	2013868	2013869	2013871					
ET200E	2013868	2013870	2013871	<u>KIT #3 - ISOLATED DOMESTIC or EXPORT SERVICE.</u>				
ET250A	2013771	2013774	2013769	Compressor Roller Bearing	3			2
ET250C	2013772	2013775	2013769	Compressor Ball Bearing	3			4
ET250D	2013773	2013774	2013769	Discharge Valve Assembly	5			1
ET250E	2013773	2013775	2013769	Gasket Kit (Complete Unit)	32			1

\* Mixing valve parts not included in kits for water-cooled units.

\*\* Water temperature regulator not included in kits for fan-cooled units.

ϕϕ Two (2) rings are included in kit for inlet valves using ring packing.

# SALES AND SERVICE OFFICES

## UNITED STATES and MEXICO

ATLANTA (STONE MOUNTAIN), GEORGIA - 30083  
1545 Mountain Industrial Blvd  
BAKERSFIELD, CALIFORNIA - 93308  
3506 Gilmore Avenue  
BALTIMORE (ELLCOTT CITY), MARYLAND - 21043  
3515 Chevrolet Drive  
BIRMINGHAM, ALABAMA - 35209  
817 Green Springs Highway  
BOISE, IDAHO - 83706  
3422 Americana Terrace  
BOSTON (NEEDHAM HEIGHTS), MASSACHUSETTS - 02194  
65 Crawford Street  
BUFFALO, NEW YORK - 14226  
4532 Bailey Avenue  
BUTTE, MONTANA - 59701  
215 East Park Street  
CASPER, WYOMING - 82601  
310 North 2nd Avenue  
CHARLOTTE, NORTH CAROLINA - 28211  
723 South Sharon Amity Road  
CHICAGO (BROADVIEW), ILLINOIS - 60153  
2535 S. 25th Avenue  
CINCINNATI (SPRINGDALE), OHIO - 45246  
12145 Centron Place  
CLEVELAND, OHIO - 44125  
5400 Warner Road  
CORPUS CHRISTI, TEXAS - 78408  
4512 Baldwin Blvd.  
DALLAS, TEXAS - 75226  
4700 Scyene Road  
DENVER, COLORADO - 80216  
3801 East 50th Avenue  
DETROIT (OAK PARK), MICHIGAN - 48237  
12700 Capital Avenue  
DULUTH, MINNESOTA - 55811  
3185 Miller Trunk Highway  
EL PASO, TEXAS - 79902  
1230 Wyoming Avenue  
GRAND JUNCTION, COLORADO - 81501  
2909 North Avenue  
HARTFORD (BLOOMFIELD), CONNECTICUT - 06002  
81 Old Windsor Road  
HOUSTON, TEXAS - 77027  
3325 South Rice Avenue  
INDIANAPOLIS, INDIANA - 46203  
2228 Shelby Street  
KANSAS CITY (SHAWNEE MISSION), KANSAS - 66201  
9101 Bond Street

KNOXVILLE, TENNESSEE - 37917  
709 North Fifth Avenue  
LAFAYETTE, LOUISIANA - 70501  
200 Vanway Street  
LOS ANGELES (WHITTIER), CALIFORNIA - 90601  
2555 ReHissier Place  
LOUISVILLE, KENTUCKY - 40207  
4050 Westport Road  
MILWAUKEE, WISCONSIN - 53226  
11800 West Ripley Avenue  
MINNEAPOLIS, MINNESOTA - 55431  
1701 West 80th Street  
NEW ORLEANS (HARVEY), LOUISIANA - 70058  
1100 Destrehan Avenue  
NEW YORK DOMESTIC (MAHWAH, NEW JERSEY) - 07430  
386 State Highway No. 17  
ODESSA, TEXAS - 79760  
East Highway 80  
OKLAHOMA CITY, OKLAHOMA - 73129  
2200 South Prospect Avenue  
PHILADELPHIA (HORSHAM) PENNSYLVANIA - 19044  
408 Caredean Drive  
PHOENIX, ARIZONA - 85009  
2020 N. Black Canyon Highway  
PITTSBURGH, PENNSYLVANIA - 15205  
Parkway West - 4499 Campbell's Run Road  
QUINCY, ILLINOIS - 62301  
So. Gardner Expressway  
ST. LOUIS (BRIDGETON), MISSOURI - 63044  
140 Boulder Industrial Drive  
SALT LAKE CITY, UTAH - 84115  
35 West Louise Avenue  
SAN DIEGO, CALIFORNIA - 92123  
5345 Overland Avenue  
SAN FRANCISCO (SOUTH SAN FRANCISCO), CALIFORNIA - 94080  
144 West Harris Avenue  
SEATTLE, WASHINGTON - 98104  
623 Eighth Avenue, South  
SHREVEPORT, LOUISIANA - 71107  
1025 Joseph Street  
TULSA, OKLAHOMA - 74145  
4259 So. 76th East Avenue  
WALLACE, IDAHO - 83873  
502 Bank Street  
MEXICO 1, D. F. MEXICO  
Apartado 575

## CANADA

### GARDNER-DENVER COMPANY (CANADA) LIMITED

EDMONTON, ALBERTA - 9835 - 42 Ave. - Zone 72  
MONCTON, NEW BRUNSWICK - East Main St.  
MONTREAL 24, Quebec - 6825 St. James St. West  
NORTH BAY, ONTARIO - 693 Cassells St.

SUDBURY, ONTARIO - 1889 LaSalle Blvd., East  
TORONTO (SCARBOROUGH), ONTARIO -  
1800 Ellesmere Road  
VANCOUVER 9, BRITISH COLUMBIA - 1375 Pine St.  
WINNIPEG 21, MANITOBA - 1380 Sprague Ave.

## INTERNATIONAL

GARDNER-DENVER INTERNATIONAL -- QUINCY, ILLINOIS  
GARDNER-DENVER INTERNATIONAL -- 386 State Highway No. 17  
Mahwah, New Jersey 07430

ARGENTINA -- BUENOS AIRES  
AUSTRALIA -- SYDNEY, MELBOURNE, HOBART, BRISBANE,  
ADELAIDE, PERTH, KALGOORLIE, MOUNT ISA  
BELGIUM -- BRUSSELS  
BRAZIL -- BELO HORIZONTE, RIO DE JANEIRO,  
SAO PAULO  
CHILE -- SANTIAGO  
COLUMBIA -- BARRANQUILLA, BOGOTA  
CONGO -- LUBUMBASHI  
GREECE -- ATHENS

HOLLAND -- SCHIPHOL  
ITALY -- MILAN  
NEW ZEALAND -- OTARA (AUCKLAND)  
PERU -- LIMA  
REPUBLIC OF SINGAPORE -- SINGAPORE  
SOUTH AFRICA -- CAPE TOWN, JOHANNESBURG,  
PORT ELIZABETH, WINDHOEK  
SWEDEN -- STOCKHOLM, GÖTEBORG  
UNITED KINGDOM -- LONDON  
VENEZUELA -- CARACAS, PUERTO ORDAZ  
ZAMBIA -- NDOLA

## FACTORIES

DALLAS, TEXAS  
DENVER, COLORADO  
GRAND HAVEN, MICHIGAN  
GREEN BAY, WISCONSIN  
LA GRANGE, MISSOURI  
QUINCY, ILLINOIS

REED CITY, MICHIGAN  
YORK, PENNSYLVANIA  
JOHANNESBURG, S. AFRICA  
RIO DE JANEIRO, BRAZIL  
WOODSTOCK, ONTARIO, CANADA  
WESTHAUSEN, GERMANY



# GARDNER-DENVER COMPANY

QUINCY, ILLINOIS

IB-808

LITHO - IN U.S.A.

8C-8-71