

13-9-507  
PL500c 77  
4-28-71

13-9-507  
1st Edition  
Supersedes SO-23  
January, 1970

**Parts List**

**ELECTRA-SCREW®**

**STATIONARY**

**COMPRESSOR**

**MODELS ES60A, ES60B,  
ES60E, ES60F**

13-9-507



## INTRODUCTION

This parts list manual contains repair parts and information for the following units:

- MODEL ES60A - Fan Cooled, W/Radiator (With Oil Pump)
- ES60B - Water Cooled, W/Heat Exchanger (With Oil Pump)
  
- ES60E - Fan Cooled, W/Radiator (Pumpless)
- ES60F - Water Cooled, W/Heat Exchanger (Pumpless)

## INDEX

Air Filter (Standard) . . . . .	8
Air Filter Group (Heavy Duty). . . . .	9
Compressor . . . . .	4, 5, 6, 7
Coupling Group . . . . .	19
Discharge Valve . . . . .	10, 11
Fan Mounting Group . . . . .	18
Gasket Kits . . . . .	19
Heat Exchanger . . . . .	14, 15
Inlet Valve Group . . . . .	3
Oil Filter . . . . .	17
Oil Piping Group . . . . .	12, 13, 14, 15
Oil Reservoir Group . . . . .	10, 11
Oil Separator . . . . .	16
Ordering Instructions . . . . .	2
Radiator Group . . . . .	18
Spare Parts Kits . . . . .	20

## INSTRUCTIONS FOR ORDERING REPAIR PARTS

When ordering parts, specify Compressor MODEL and SERIAL NUMBER (see name plate on unit). Serial Number is also stamped on top of the cylinder flange to the right of the inlet housing.

All orders for Parts should be placed with the nearest Sales and Service Office listed on the back cover of this book.

Reference numbers shown in the left hand column of the Parts Lists are used to help locate the parts shown on the Drawings and Sectional Views. DO NOT ORDER BY REFERENCE NUMBERS.

After locating the reference number, the part number may be found for your particular compressor unit under the correct Model Number column.

Specify exactly the number of parts required (see column "Qty. Req. Per Comp. "). DO NOT ORDER BY SETS.

To determine the Right Hand and Left Hand side of an Electra-Screw<sup>®</sup> compressor, stand at the motor end and look toward the compressor.

### PARTS RETURNED

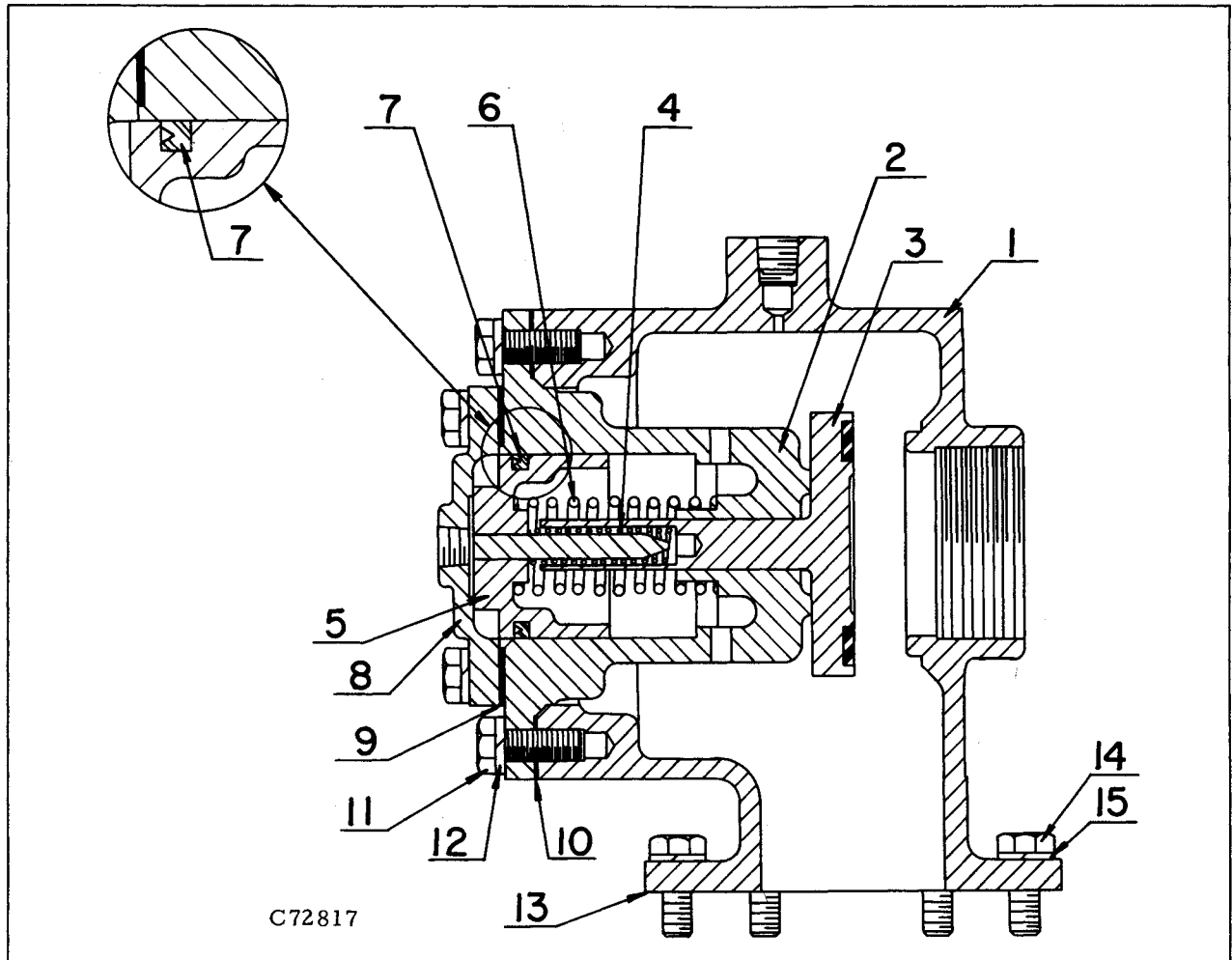
All claims must be made within five days after receipt of goods. If order has been filled correctly, we cannot allow the return of the goods without our consent and then only on a basis of a charge for service and rehandling plus transportation charges.

Transportation charges must be prepaid. If it is necessary to return a part to the factory for duplication or inspection, do not fail to do the following:

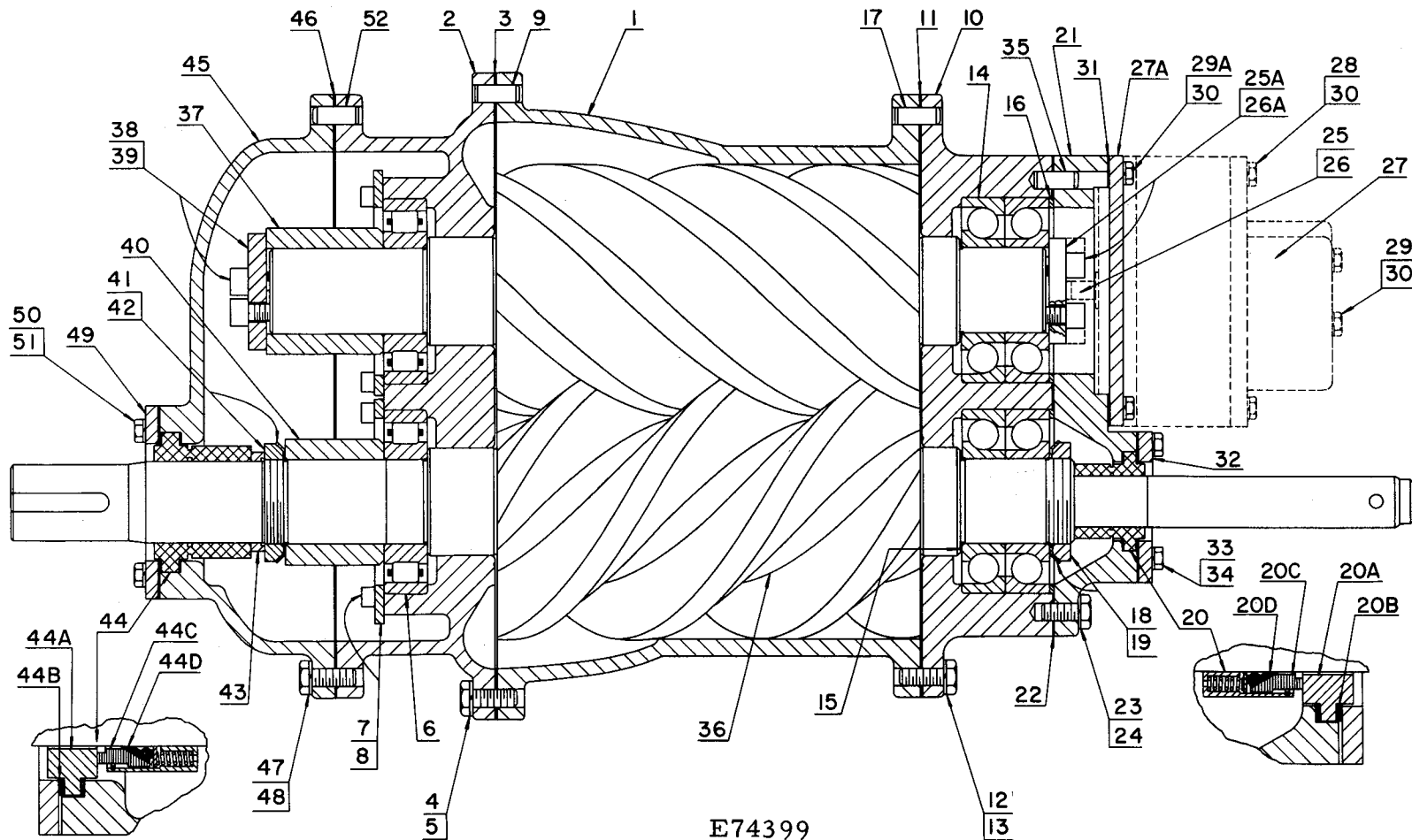
1. Write the nearest Sales and Service Office a letter advising what material you wish to return and why.
2. After receiving permission to return the item or items, obtain from the Sales and Service Office the correct forms filled out by that office for the proper return of material.
3. Place a tag in the package showing your name and address.
4. Tag each article in the box or package stating what and how many are returned.
5. Always give the serial number of the machine from which the parts were removed or the invoice number on which the parts were originally shipped.

All parts returned for credit should be handled in the same manner as that for duplication or inspection.

Order by Part Number and Description. Reference Numbers for your convenience only.



REF. NO.	NAME OF PART	QTY. REQ. PER COMP.	MODELS ES60A ES60B ES60E ES60F
	<u>INLET VALVE GROUP</u>		PART NO.
	ASM INLET VALVE & HOUSING, Incl. Ref. #1 thru 12	1	6S25041A
1	HOUSING	1	6S25041
2	CYLINDER	1	2S25042
3	VALVE-INLET	1	S25044
4	SPRING, Valve	1	78A362
5	ASM PISTON & PIN	1	2S25043A
6	SPRING, Piston	1	78A389
7	PACKING-RING, Block Vee	1	60AM47
8	CAP-CYLINDER	1	R365274
9	GASKET, Cylinder Cap	1	25C1972
10	GASKET, Cylinder to Housing	1	25C1971
11	SCREW, Cylinder & Cylinder Cap	14	75A1
12	WASHER-LOCK	14	95B3
13	GASKET, Housing to Compressor	1	25C2525
14	SCREW	8	75A12
15	WASHER-LOCK	8	95B5



FOR LIST OF PARTS SEE PAGE 5.

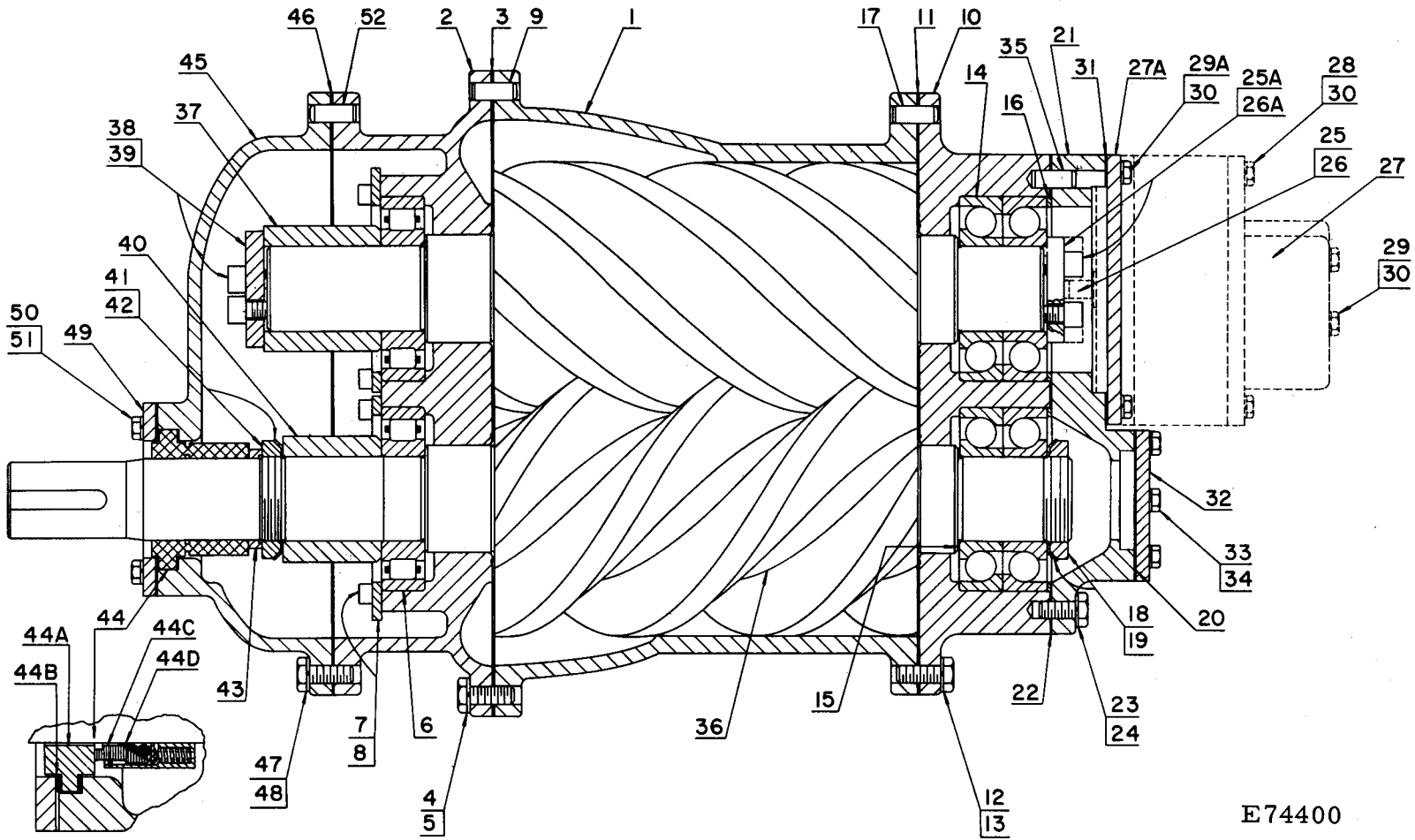
ORDER BY PART NUMBER AND DESCRIPTION. REFERENCE NUMBERS FOR YOUR CONVENIENCE ONLY.

REF. NO.	NAME OF PART	QTY. REQ. PER COMP.	MODEL ES60A	† MODEL ES60E	REF. NO.	NAME OF PART	QTY. REQ. PER COMP.	MODEL ES60A	† MODEL ES60E
	<u>COMPRESSOR *</u>		PART NO.	PART NO.		<u>COMPRESSOR * (Continued)</u>		PART NO.	PART NO.
1	CYLINDER	1	4S2502	4S2502	23	SCREW, to Housing (1/2 x 1-1/2)	4	75A20	75A20
φ	PLATE, Oil Sump	1	24S25036	24S25036	24	WASHER-LOCK	4	95B5	95B5
φ	GASKET, Oil Sump Plate	1	12S250715	12S250715	25	ADAPTOR, Oil Pump †	1	3S250809	None
φ	SCREW, Oil Sump Plate (1/2 x 3-1/2)	6	75A208	75A208	25A	PLATE-BEARING RETAINER	1	None	1S40015
φ	SCREW, Oil Sump Plate (1/2 x 1-1/2)	14	75A20	75A20	26	SCREW, Adaptor (1/2 x 1)	2	75P75N	None
φ	WASHER-LOCK	20	95B5	95B5	26A	SCREW, Retainer Plate (1/2 x 1-1/4)	3	None	75A12N
φ	PLUG (1-1/4)	1	64AC7	64AC7	27	PUMP-OIL †	1	46C63	None
φ	PLUG (1/8)	5	64AC1	64AC1	27A	PLATE, Compressor End	1	None	2011380
2	HOUSING-BEARING (Inlet End)	1	11S25027	11S25027	28	SCREW, Oil Pump (3/8 x 4-1/2)	5	75A256	None
3	GASKET	1	13S250715	13S250715	29	SCREW, Oil Pump (3/8 x 6-3/4)	3	75AA231	None
4	SCREW, to Cylinder (1/2 x 1-1/2)	12	75A20	75A20	29A	SCREW, End Plate (3/8 x 7/8)	8	None	75A130
φ	SCREW, to Cylinder (1/2 x 3)	2	75A67	75A67	30	WASHER-LOCK	8	95B3	95B3
φ	SCREW, to Cylinder (1/2 x 1-3/4)	2	75P1N	75P1N	31	GASKET	1	25C2390	25C2390
5	WASHER-LOCK	14	95B5	95B5	32	PLATE, Shaft Seal	1	22S25036	22S25036
6	BEARING-ROLLER	2	12W69	12W69	33	SCREW (3/8 x 3/4)	6	75A5	75A5
7	PLATE-BEARING RETAINER	2	S25015	S25015	34	WASHER-LOCK	6	95B3	95B3
8	SCREW (3/8 x 3/4)	12	75A5N	75A5N	35	PIN-DOWEL (1/2 x 1-1/4)	2	62M83	62M83
9	PIN-DOWEL (1/2 x 1-1/4)	2	62M83	62M83	36	ASM ROTOR (Matched Pair)	1	6S2501A	2013395
10	HOUSING-BEARING (Discharge End)	1	9S25027	9S25027	37	SPACER-SHAFT (Secondary Rotor)	1	6S2506	6S2506
11	GASKET	1	2005855	2005855	38	PLATE-BEARING RETAINER	1	1S40015	1S40015
12	SCREW, to Cylinder (1/2 x 1-1/2)	14	75A20	75A20	39	SCREW (1/2 x 1-1/4)	3	75P76N	75P76N
φ	SCREW, to Cylinder (1/2 x 1-3/4)	2	75P1N	75P1N	40	SPACER-SHAFT (Main Rotor)	1	5S2506	5S2506
13	WASHER-LOCK	12	95B5	95B5	41	LOCKWASHER-BEARING	1	95N12	95N12
14	BEARING-BALL, Angular Contact	4	12AD11	12AD11	42	LOCKNUT-BEARING	1	50Z12	50Z12
15	SHIM, Inner Race	2	77C36	77C36	43	SPACER-SHAFT SEAL	1	S4008	S4008
16	SHIM, Outer Race	2	77A488	77A488	44	SEAL-SHAFT, Inlet End	1	60BP22	60BP22
17	PIN-DOWEL (1/2 x 1-1/4)	2	62M83	62M83	44A	SEAT	1	54C247	54C247
18	LOCKWASHER-BEARING	1	95N12	95N12	44B	GASKET, Seat	2	54C248	54C248
19	LOCKNUT-BEARING	1	50Z12	50Z12	44C	WASHER, Carbon	1	54C249	54C249
20	SEAL-SHAFT (Discharge End)	1	60BP25	60BP25	44D	RING, Teflon	1	54C250	54C250
20A	SEAT	1	54C237	54C237	45	HOUSING-FLYWHEEL	1	3S25013	3S25013
20B	GASKET, Seat	2	54C234	54C234	46	GASKET	1	25C2512	25C2512
20C	WASHER, Carbon	1	54C199	54C199	47	SCREW (1/2 x 1-1/4)	16	75A12	75A12
20D	RING, Teflon	1	54C200	54C200	48	WASHER-LOCK	16	95B5	95B5
21	PLATE-BEARING COVER	1	21S25036	21S25036	49	PLATE, Shaft Seal	1	1S25036	1S25036
22	GASKET	1	10S250715	10S250715	50	SCREW (3/8 x 3/4)	6	75A5	75A5
φ	SCREW, to Housing (1/2 x 1-1/4 Nyllok)	6	75P76N	75P76N	51	WASHER-LOCK	6	95B3	95B3
					52	PIN-DOWEL (1/2 x 1-1/4)	2	62M83	62M83
					φ	PLUG, Bearing Housing (1/4)	1	64AA5	64AA5

† Oil pump, adaptor and related parts are not used on Model ES60E.

\* Field replacement compressor (less inlet valve assembly) available as part number 2011584.

φ Not shown on illustration.



FOR LIST OF PARTS SEE PAGE 7.

E74400

ORDER BY PART NUMBER AND DESCRIPTION. REFERENCE NUMBERS FOR YOUR CONVENIENCE ONLY.

REF. NO.	NAME OF PART	QTY. REQ. PER COMP.	MODEL ES60B	† MODEL ES60F
	<u>COMPRESSOR *</u>		PART NO.	PART NO.
1	CYLINDER	1	4S2502	4S2502
∅	PLATE, Oil Sump	1	24S25036	24S25036
∅	GASKET, Oil Sump Plate	1	12S250715	12S250715
∅	SCREW, Oil Sump Plate (1/2 x 3-1/2)	6	75A208	75A208
∅	SCREW, Oil Sump Plate (1/2 x 1-1/2)	14	75A20	75A20
∅	WASHER-LOCK	20	95B5	95B5
∅	PLUG (1/4)	1	64AC7	64AC7
∅	PLUG (1/8)	5	64AC1	64AC1
2	HOUSING-BEARING (Inlet End)	1	11S25027	11S25027
3	GASKET	1	13S250715	13S250715
4	SCREW, to Cylinder (1/2 x 1-1/2)	12	75A20	75A20
∅	SCREW, to Cylinder (1/2 x 3)	2	75A67	75A67
∅	SCREW, to Cylinder (1/2 x 1-3/4)	2	75P1N	75P1N
5	WASHER-LOCK	14	95B5	95B5
6	BEARING-ROLLER	2	12W69	12W69
7	PLATE-BEARING RETAINER	2	S25015	S25015
8	SCREW (3/8 x 3/4)	12	75A5N	75A5N
9	PIN-DOWEL (1/2 x 1-1/4)	2	62M83	62M83
10	HOUSING-BEARING (Discharge End)	1	9S25027	9S25027
11	GASKET	1	2005855	2005855
12	SCREW, to Cylinder (1/2 x 1-1/2)	14	75A20	75A20
∅	SCREW, to Cylinder (1/2 x 1-3/4)	2	75P1N	75P1N
13	WASHER-LOCK	12	95B5	95B5
14	BEARING-BALL	4	12AD11	12AD11
15	SHIM, Inner Race	2	77C36	77C36
16	SHIM, Outer Race	2	77A488	77A488
17	PIN-DOWEL (1/2 x 1-1/4)	2	62M83	62M83
18	LOCKWASHER-BEARING	1	95N12	95N12
19	LOCKNUT-BEARING	1	50Z12	50Z12
20	GASKET	1	15S250715	15S250715
21	PLATE-BEARING COVER	1	21S25036	21S25036
22	GASKET	1	10S250715	10S250715
∅	SCREW, to Housing (1/2 x 1-1/4 Nylok)	6	75P76N	75P76N
23	SCREW, to Housing (1/2 x 1-1/2)	4	75A20	75A20
24	WASHER-LOCK	4	95B5	95B5

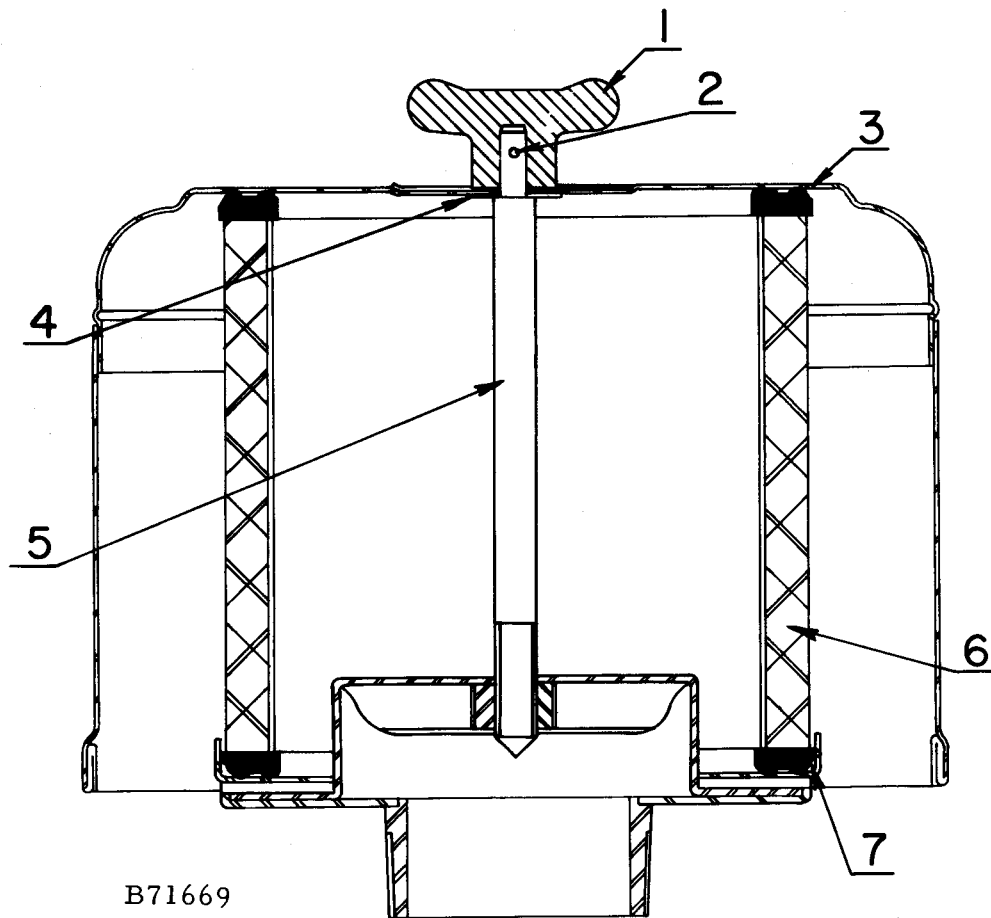
REF. NO.	NAME OF PART	QTY. REQ. PER COMP.	MODEL ES60B	† MODEL ES60F
	<u>COMPRESSOR * (Continued)</u>		PART NO.	PART NO.
25	ADAPTOR, Oil Pump	1	3S250809	None
25A	PLATE-BEARING RETAINER	1	None	1S40015
26	SCREW, Adaptor (1/2 x 1)	2	75P75N	None
26A	SCREW, Retainer Plate (1/2 x 1-1/4)	3	None	75A12N
27	PUMP-OIL †	1	46C63	None
27A	PLATE, Compressor End	1	None	2011380
28	SCREW, Oil Pump (3/8 x 4-1/2)	5	75A256	None
29	SCREW, Oil Pump (3/8 x 6-3/4)	3	75AA231	None
29A	SCREW, End Plate (3/8 x 7/8)	8	None	75A130
30	WASHER-LOCK	8	95B3	95B3
31	GASKET	1	25C2390	25C2390
32	PLATE	1	27S25036	27S25036
33	SCREW (3/8 x 3/4)	6	75A5	75A5
34	WASHER-LOCK	6	95B3	95B3
35	PIN-DOWEL (1/2 x 1-1/4)	2	62M83	62M83
36	ASM ROTOR (Matched Pair)	1	8S2501B	2013396
37	SPACER-SHAFT (Secondary Rotor)	1	6S2506	6S2506
38	PLATE-BEARING RETAINER	1	1S40015	1S40015
39	SCREW (1/2 x 1-1/4)	3	75P76N	75P76N
40	SPACER-SHAFT (Main Rotor)	1	5S2506	5S2506
41	LOCKWASHER-BEARING	1	95N12	95N12
42	LOCKNUT-BEARING	1	50Z12	50Z12
43	SPACER-SHAFT SEAL	1	S4008	S4008
44	SEAL-SHAFT	1	60BP22	60BP22
44A	SEAT	1	54C247	54C247
44B	GASKET, Seat	2	54C248	54C248
44C	WASHER, Carbon	1	54C249	54C249
44D	RING, Teflon	1	54C250	54C250
45	HOUSING-FLYWHEEL	1	3S25013	3S25013
46	GASKET	1	25C2512	25C2512
47	SCREW (1/2 x 1-1/4)	16	75A12	75A12
48	WASHER-LOCK	16	95B5	95B5
49	PLATE, Shaft Seal	1	1S25036	1S25036
50	SCREW (3/8 x 3/4)	6	75A5	75A5
51	WASHER-LOCK	6	95B3	95B3
52	PIN-DOWEL (1/2 x 1-1/4)	2	62M83	62M83
∅	PLUG, Bearing Housing (1/4)	1	64AA5	64AA5

† Oil pump and related parts are not used on Model ES60F.

\* Field replacement compressor (less inlet valve assembly) available as part number 2011585.

∅ Not shown on illustration.

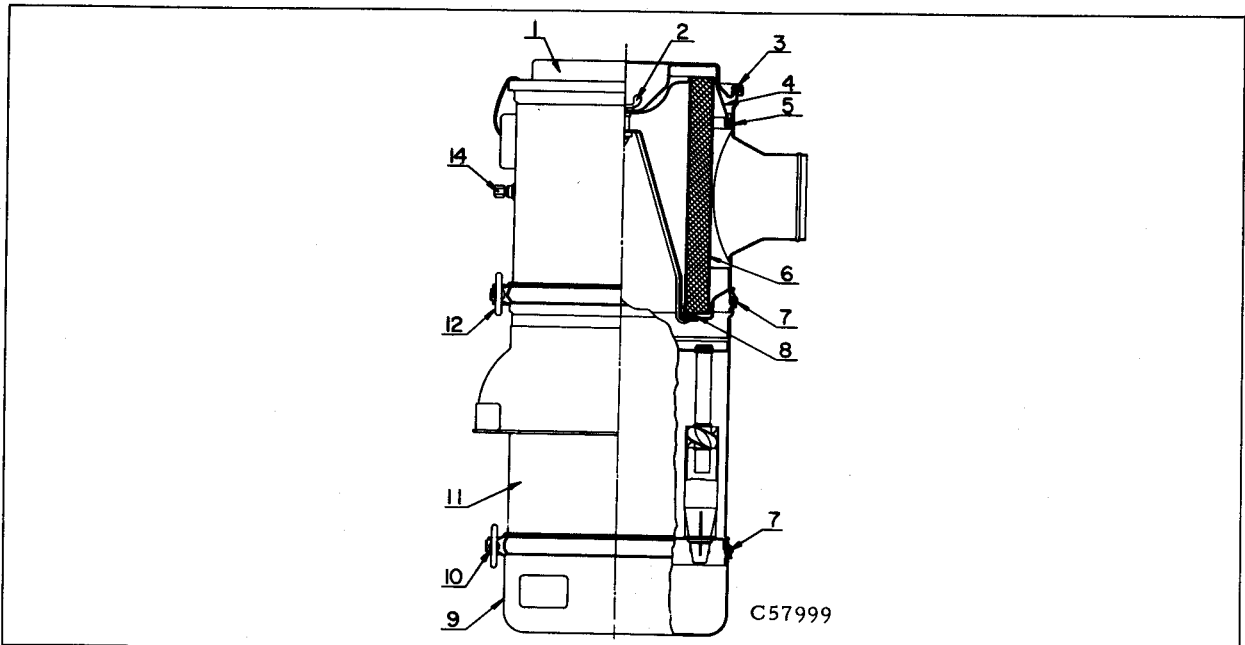
Order by Part Number and Description. Reference Numbers for your convenience only.



REF. NO.	NAME OF PART	QTY. REQ. PER COMP.	MODELS ES60A ES60B ES60E ES60F
<u>AIR FILTER</u> <u>(STANDARD)</u>			PART NO.
1	FILTER-AIR (Complete)	1	5A460
2	NUT-WING	1	
3	PIN, Cross	1	
4	HOOD	1	
5	WASHER	1	
6	STEM	1	
7	ELEMENT (with Gaskets)	1	2008616
7	TRAY, Base	1	

NOTE: Part numbers shown only for those parts normally furnished for repairs.

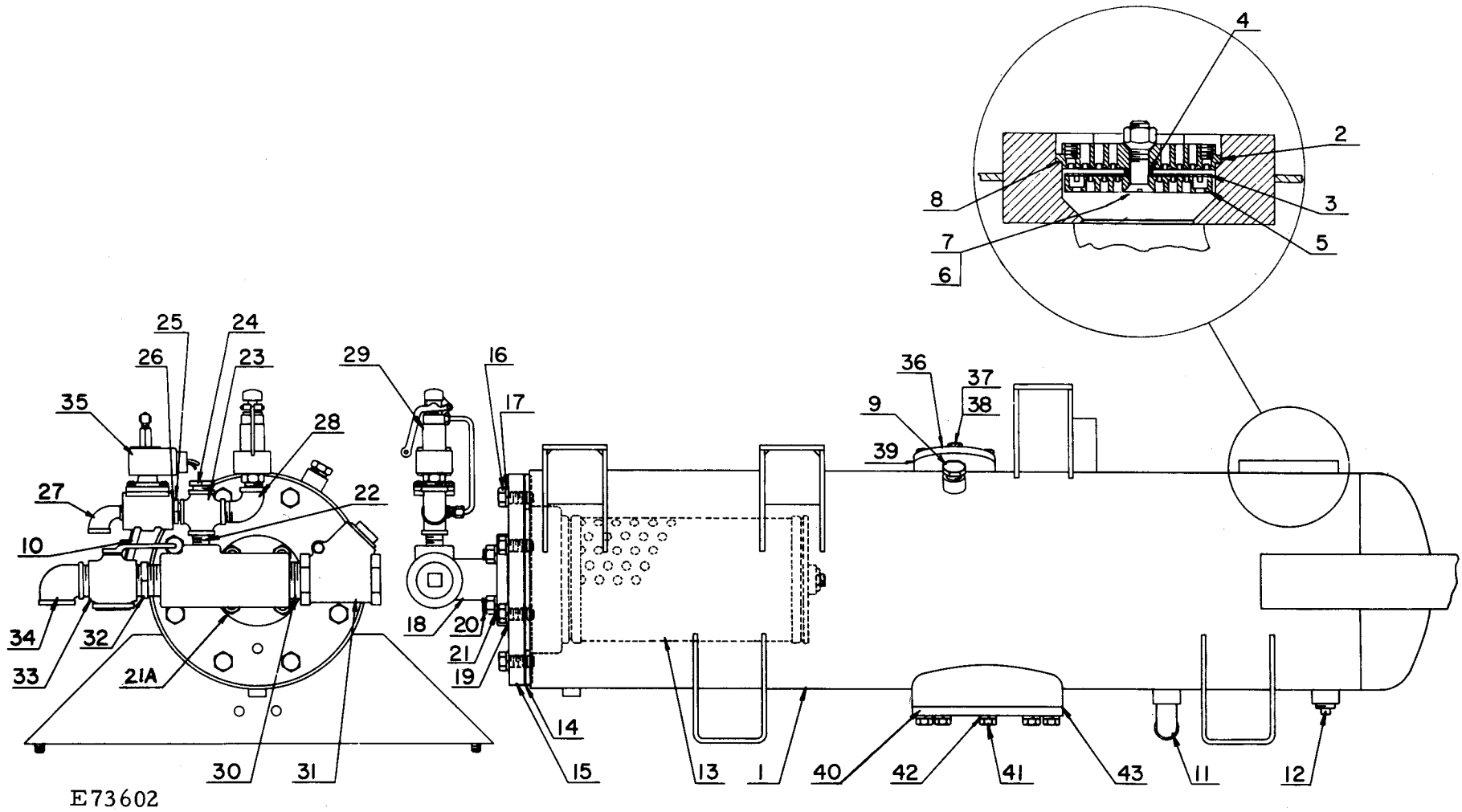
ORDER BY PART NUMBER AND DESCRIPTION.. REFERENCE NUMBERS FOR YOUR CONVENIENCE ONLY.



REF. NO.	NAME OF PART	QTY. REQ. PER COMP.	MODELS ES60A ES60B ES60E ES60F
	<u>AIR FILTER GROUP (HEAVY DUTY)</u> (Optional Equipment) *		PART NO.
1	FILTER-AIR (Complete), Incl. Ref. #2 thru 14	1	5B348
2	ASM BOLT & GASKET	1	2008008
3	GASKET, Cover	1	2008187
4	COVER, Inner	1	2008198
5	GASKET, Inner Cover	1	2008195
6	ELEMENT (with Gasket)	1	2008194
7	O-RING	2	2008190
8	GASKET, Element	1	2008188
9	ASM CUP	1	2008981
10	ASM CLAMP (Cup)	1	2008795
11	ASM LOWER BODY	1	2008604
12	ASM CLAMP (Body)	1	2008795
∅	ASM BAND, Mounting	2	2008256
14	CAP	1	2008899
∅	(Connections & Mounting Parts)		
	HOSE	1	29A268
	CLAMP-HOSE	2	29B26
	ELBOW	1	64D13G
	NIPPLE	1	63M2G
	BUSHING	1	64E33
	COUPLING	1	64BY11
	BRACKET-FILTER	1	50S25017
	SCREW, Bracket (1/2 x 2-1/4)	3	75AA30
	WASHER	3	95D195
	WASHER-LOCK	3	95B5
	NUT	3	50AQ5
	SCREW, Mounting (3/8 x 1)	4	75A1
	WASHER-LOCK	4	95B3
	NUT	4	50B3

\* Replaces standard filter shown on page 8.

∅ Not shown on illustration.



FOR LIST OF PARTS SEE PAGE 11.

ORDER BY PART NUMBER AND DESCRIPTION. REFERENCE NUMBERS FOR YOUR CONVENIENCE ONLY.

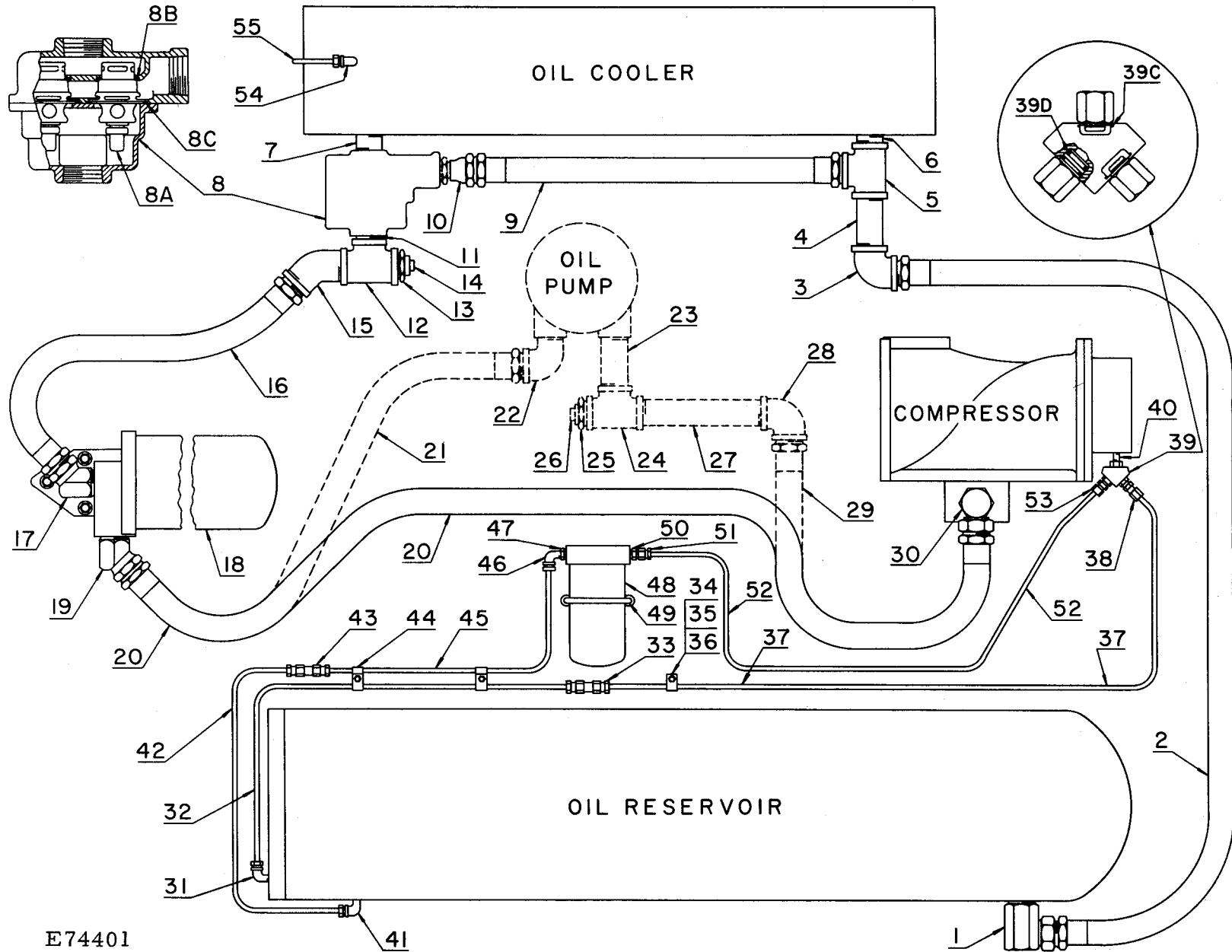
REF. NO.	NAME OF PART	QTY. REQ. PER COMP.	MODELS ES60A ES60B ES60E ES60F	REF. NO.	NAME OF PART	QTY. REQ. PER COMP.	MODELS ES60A ES60B ES60E ES60F
	<u>OIL RESERVOIR GROUP</u>		PART NO.		<u>OIL RESERVOIR GROUP (Continued)</u>		PART NO.
1	RESERVOIR-OIL, Incl. Ref. #36 thru 43	1	4S25037	ϕ	PLUG (3/4)	1	64AA3G
ϕ	SHIM, Compressor (.008)	2	77E12	12	PLUG-MAGNETIC	1	64BJ4G
ϕ	SHIM, Compressor (.031)	2	77E13	13	SEPARATOR-OIL *	1	55A12
ϕ	SHIM, Compressor (.062)	2	77E14	14	GASKET, Oil Separator	2	11S250715
ϕ	SCREW, to Compressor (1/2 x 1-1/4)	2	75A12	15	PLATE, Oil Separator	1	12S250782
ϕ	WASHER-LOCK	2	95B5	16	SCREW (1 x 2-1/2)	12	75A134
ϕ	SHIM, Motor (.003)	8	77E11	17	GASKET-RING, Oil Separator	12	25F30
ϕ	SHIM, Motor (.008)	8	77E12	18	MANIFOLD-DISCHARGE	1	1S250285
ϕ	SHIM, Motor (.031)	8	77E13	19	GASKET, Discharge Manifold	1	25C802
ϕ	SCREW, to Motor (5/8 x 2-3/4)	4	75A94	20	STUD, Manifold (5/8 x 2-1/4)	4	79A22
ϕ	WASHER	4	95A7	21	WASHER-LOCK	4	95B7
ϕ	WASHER-LOCK	4	95B7	21A	NUT (5/8)	4	50B7
ϕ	NUT	4	50B7	ϕ	PLUG, Manifold (3/4)	1	64AA3G
	ASM DISCHARGE VALVE, Incl. Ref. #2 thru 8	1	VB42202D	22	NIPPLE	1	63G1G
2	SEAT	1	VB42202	23	CROSS-PIPE	1	64K8G
3	DISC	1	1VB4267	24	BUSHING, Manifold (1/4 x 3/4)	1	64E3G
4	GUIDE-LIFT	1	VB42260	25	BUSHING-PIPE (1/2 x 3/4)	1	64E5G
5	BUMPER	1	VB42164	26	NIPPLE, Air Control Valve	1	63F21G
6	SCREW	1	75K80	27	ELBOW-STREET (1/2)	1	64D5G
7	NUT	1	VB118	28	ELBOW-STREET (3/4)	1	64D6G
8	GASKET	1	25L6	29	VALVE-SAFETY (110#)	1	90G8
ϕ	SCREW, Valve Mounting (5/8 x 5/8)	4	75A68N	29	VALVE-SAFETY (150#)	1	90G121
ϕ	RETAINER	4	2014731	29	VALVE-SAFETY (165#)	1	90G33
ϕ	ADAPTOR, Compressor Discharge	1	7S25041	30	NIPPLE	1	63L2G
ϕ	GASKET, Compressor Discharge	1	25C2691	31	VALVE-CHECK	1	90J113
ϕ	SCREW, Compressor Discharge (1/2 x 1-1/8)	4	75AA1	32	BUSHING	1	64E9G
ϕ	WASHER-LOCK	4	95B5	33	VALVE-AIR CONTROL	1	90A25
ϕ	GASKET, Adaptor	1	7S250715	34	ELBOW	1	64C5G
ϕ	SCREW, Adaptor (3/8 x 1)	8	75A1	35	VALVE-SOLENOID	1	**
ϕ	WASHER-LOCK	8	95B3	36	COVER-FILLER †	1	7S90036
ϕ	NIPPLE (1/2 x 1-1/8)	1	63F21G	37	SCREW †	4	75A12
ϕ	TEE (1/2)	1	64G6G	38	WASHER-LOCK †	4	95B5
9	PLUG-FUSIBLE	1	64AN1	39	O-RING †	1	25W35
ϕ	VALVE-SAFETY	1	2009384	40	PLATE, Separator Drain	1	37S12536
10	GAUGE-FLOAT, Oil Level	1	27N18	41	SCREW	8	75A12
ϕ	GASKET, Float Gauge	1	54C204	42	WASHER-LOCK	8	95B5
11	ELBOW-STREET, Drain	1	64D6G	43	O-RING	1	25W60

ϕ Not shown on illustration.

\* For component parts of oil separator see page 16.

\*\* Refer to Control Sheets for correct valve.

† Later construction Reservoirs use a 64T46 Plug (2") in place of Oil Filler Cover and related parts (Ref. No. 36, 37, 38 & 39).



E74401

FOR LIST OF PARTS SEE PAGE 13.

ORDER BY PART NUMBER AND DESCRIPTION. REFERENCE NUMBERS FOR YOUR CONVENIENCE ONLY.

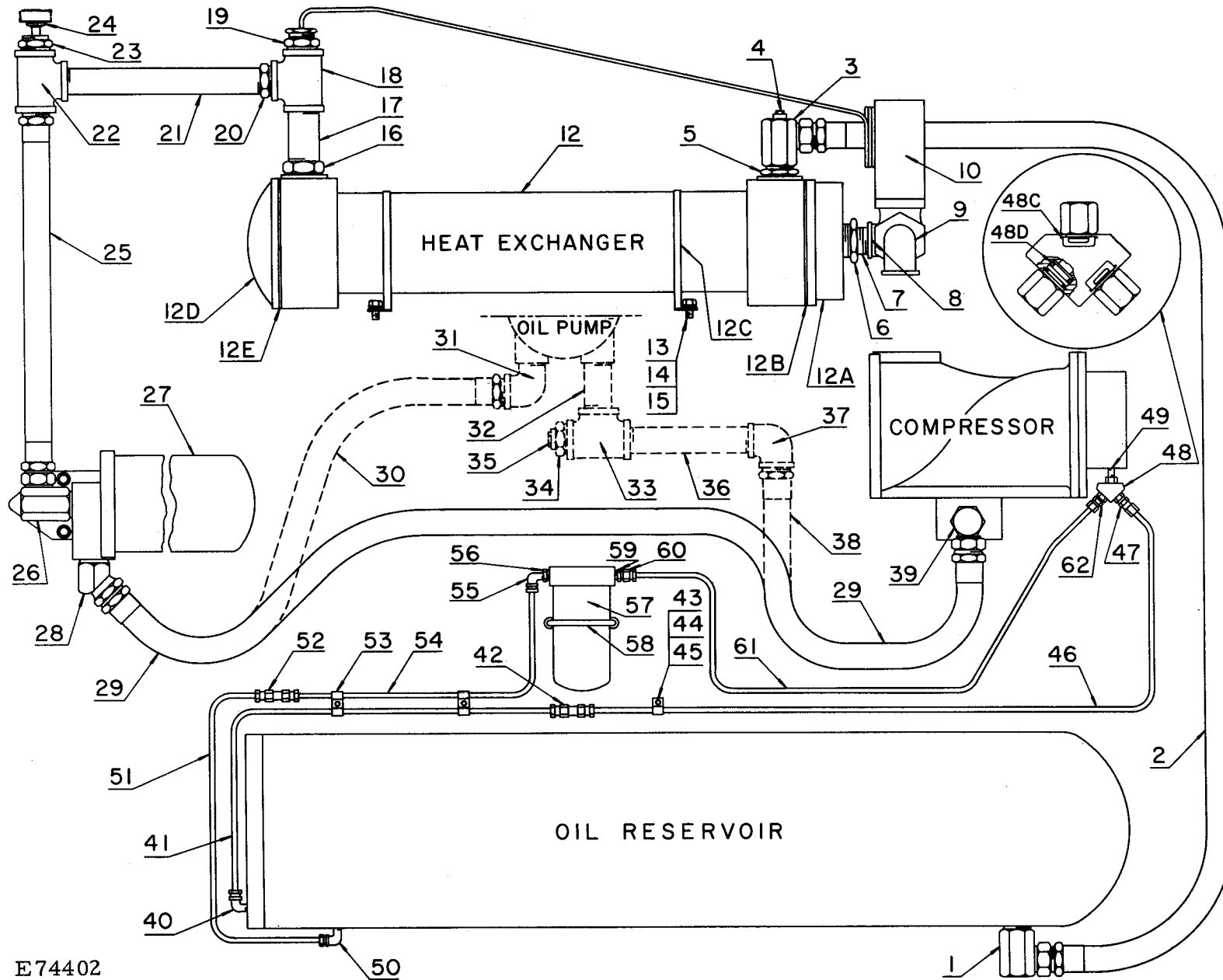
REF. NO.	NAME OF PART	QTY. REQ. PER COMP.	MODEL ES60A	† MODEL ES60E	REF. NO.	NAME OF PART	QTY. REQ. PER COMP.	MODEL ES60A	† MODEL ES60E
	<u>OIL PIPING GROUP</u>		PART NO.	PART NO.		<u>OIL PIPING GROUP (Continued)</u>		PART NO.	PART NO.
	(Oil Reservoir to Oil Cooler)					(Oil Separator Return Line)			
1	ADAPTOR-HOSE (90°)	1	29Q23	29Q23	31	ELBOW, Separator Outlet	1	86E59	86E59
2	ASM HYDRAULIC HOSE	1	29R117	29R117	32	TUBE (FORMED)	1	11S250857	11S250857
3	ELBOW	1	64C7G	64C7G	33	CONNECTOR	1	86E48	86E48
4	NIPPLE	1	63J5G	63J5G	34	CLAMP-TUBE	3	98A5	98A5
5	TEE	1	64G9G	64G9G	35	SCREW, Tube Clamp (1/4 x 1/2)	3	75A32	75A32
6	NIPPLE	1	63J15G	63J15G	36	WASHER-LOCK	3	95B1	95B1
	(Cooler to Mixing Valve & Bypass Line)				37	TUBE (FORMED)	1	15S250857	15S250857
7	NIPPLE	1	63J25G	63J25G	38	CONNECTOR	1	86E3	86E3
8	VALVE-MIXING, Incl. Ref. #9, 10 & 11	1	90K154	90K154					
8A	ELEMENT, Thermostat	2	93C8	93C8	39	ORIFICE (Compressor), Incl. next 2 parts	1	S250814	S250814
8B	O-RING, Element	2	25W24	25W24	39C	CLIP	3	86L3	86L3
∅	GASKET, Housing *	2	2008054	2008054	39D	O-RING	3	86L4	86L4
8C	O-RING, Housing *	2	2008013	2008013					
9	ASM HYDRAULIC HOSE (Bypass)	1	2009008	2009008	40	NIPPLE	1	63U2X10G	63U2X10G
10	ADAPTOR-HOSE (Straight)	1	29Q15	29Q15		(Oil Reservoir Return Line)			
	(Mixing Valve to Oil Filter)				41	ELBOW, Reservoir Outlet	1	86E59	86E59
11	NIPPLE	1	63J15G	63J15G	42	TUBE (FORMED)	1	10S250857	10S250857
12	TEE	1	64G9G	64G9G	43	CONNECTOR	1	86E48	86E48
13	BUSHING	1	64E26G	64E26G	44	CLAMP-TUBE	2	98A5	98A5
14	PLUG (1/4)	1	64AA5	64AA5	45	TUBE (FORMED)	1	2005601	2005601
15	ELBOW-STREET (45°)	1	64X7G	64X7G	46	ELBOW	1	86E60	86E60
16	ASM HYDRAULIC HOSE	1	29R41	29R41	47	BUSHING	1	64E1G	64E1G
17	ADAPTOR-HOSE (45° Swivel)	1	29Q120	29Q120	48	STRAINER	1	82A1	82A1
18	FILTER-OIL **	1	26A34	26A34	49	U-BOLT	1	15U72	15U72
	(Oil Filter to Oil Pump to Compressor)				∅	WASHER-LOCK, U-bolt (3/8)	2	95B3	95B3
19	ADAPTOR-HOSE (45° Swivel)	1	29Q120	29Q120	∅	NUT, U-bolt (3/8)	2	50B3	50B3
20	ASM HYDRAULIC HOSE (Filter to Compressor)	1	None	29R117	50	BUSHING	1	64E44G	64E44G
21	ASM HYDRAULIC HOSE (Filter to Pump)	1	29Z12	None	51	CONNECTOR	1	86E2	86E2
22	ELBOW-STREET	1	64D7G	None	52	TUBE (FORMED)	1	16S250857	16S250857
23	NIPPLE	1	63J29G	None	53	CONNECTOR	1	86E2	86E2
24	TEE	1	64G9G	None		(Oil Cooler Air Bleed Line)			
25	BUSHING	1	64E26G	None	54	ELBOW	1	86E59	None
26	PLUG	1	64AA5	None	55	TUBE (FORMED)	1	14S250857	None
27	NIPPLE	1	63J37G	None	∅	CLAMP-TUBE	1	98A5	None
28	ELBOW	1	64C7G	None	∅	SCREW, Tube Clamp (1/4 x 1/2)	1	75A32	None
29	ASM HYDRAULIC HOSE (Pump to Compressor)	1	29R41	None	∅	WASHER	3	95A1	None
30	ADAPTOR-HOSE	1	29Q23	29Q120	∅	WASHER-LOCK	1	95B1	None
					∅	ELBOW, Bottom Header (1/4 x 1/8)	1	86E59	None
					∅	PLUG-CSK, Bottom Header Drain (1/4)	2	64B15G	64B15G

† Oil pump and connections (Ref. No. 21 thru 29) are not used on Model ES60E.

\* Early design mixing valve housing used a flat gasket; later design housing modified to accept O-ring.

\*\* For component parts of oil filter (and mounting parts) see page 17.

∅ Not shown on illustration.



E74402

FOR LIST OF PARTS SEE PAGE 15.

ORDER BY PART NUMBER AND DESCRIPTION. REFERENCE NUMBERS FOR YOUR CONVENIENCE ONLY.

REF. NO.	NAME OF PART	QTY. REQ. PER COMP.	MODEL ES60B	† MODEL ES60F
	<u>OIL PIPING GROUP &amp; HEAT EXCHANGER GROUP</u>		PART NO.	PART NO.
	(Oil Reservoir to Heat Exchanger)			
1	ADAPTOR-HOSE	1	29Q23	29Q23
2	ASM HYDRAULIC HOSE	1	29R84	29R84
3	ADAPTOR-SWIVEL	1	S40057	S40057
4	PLUG (1/4)	1	64AA5G	64AA5G
5	BUSHING	1	64E31G	64E31G
	(Water Service & Connections)			
6	BUSHING, Water Inlet	1	64E9G	64E9G
7	NIPPLE	2	63G1G	63G1G
8	TEE	1	64P14G	64P14G
6	PLUG (1/4)	1	64AA5G	64AA5G
9	ELBOW-STREET	1	64D6G	64D6G
10	REGULATOR-TEMPERATURE	1	90AC192	90AC192
6	BUSHING, Water Outlet	1	64E9G	64E9G
	(Heat Exchanger Group)			
12	HEAT EXCH. Incl. next 6 parts	1	48C44	48C44
6	ANODE-ZINC	1	2010284	2010284
12A	BONNET, 2-Pass	1	2010203	2010203
12B	GASKET, 2-Pass	1	2010204	2010204
12C	BRACKET, Mounting	2	2010207	2010207
12D	BONNET, Return	1	2010205	2010205
12E	GASKET, Return	1	2010206	2010206
13	SCREW, Mounting (1/4 x 3/4)	4	75A25	75A25
14	WASHER	4	95A1	95A1
15	WASHER-LOCK	4	95B1	95B1
	(Heat Exchanger to Oil Filter)			
16	BUSHING	1	64E12G	64E12G
17	NIPPLE	1	63K28G	63K28G
18	TEE	1	64G11G	64G11G
19	BUSHING, Temperature Control	1	64E8G	64E8G
20	BUSHING	1	64E98G	64E98G
21	NIPPLE	1	63J12G	63J12G
22	TEE	1	64G9G	64G9G
23	BUSHING	1	64E26G	64E26G
24	GAUGE-TEMPERATURE	1	27H11	27H11
25	ASM HYDRAULIC HOSE	1	29R117	29R117
26	ADAPTOR-HOSE	1	29Q23	29Q23
27	FILTER-OIL *	1	26A34	26A34
	(Oil Filter to Oil Pump to Compressor)			
28	ADAPTOR-HOSE (45°)	1	29Q120	29Q120
29	ASM HYDRAULIC HOSE (Filter to Compressor)	1	None	29R117

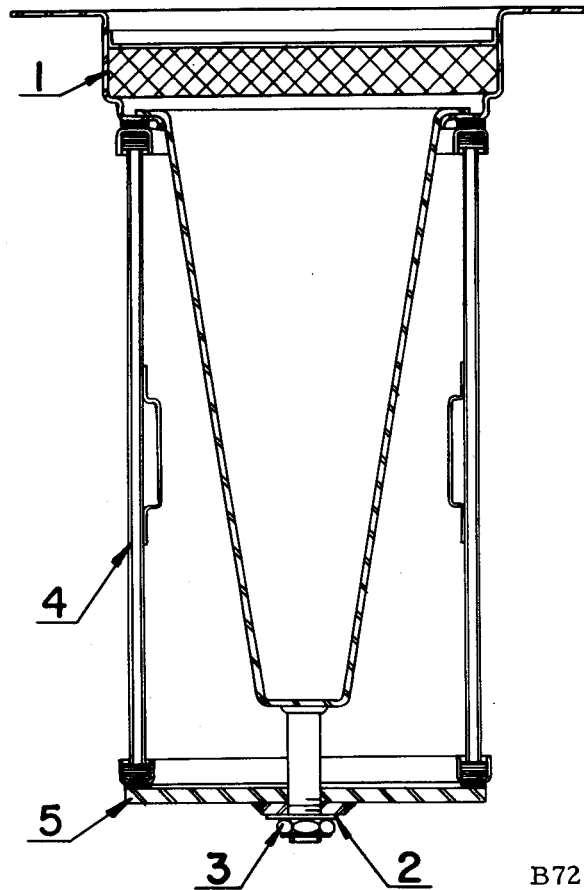
REF. NO.	NAME OF PART	QTY. REQ. PER COMP.	MODEL ES60B	† MODEL ES60F
	<u>OIL PIPING GROUP &amp; HEAT EXCHANGER GROUP (Continued)</u>		PART NO.	PART NO.
30	ASM HYDRAULIC HOSE (Filter to Pump)	1	29R73	None
31	ELBOW-STREET	1	64D7G	None
32	NIPPLE	1	63J29G	None
33	TEE	1	64G9G	None
34	BUSHING	1	64E26G	None
35	PLUG (1/4)	1	64AA5	None
36	NIPPLE	1	63J37G	None
37	ELBOW	1	64C7G	None
38	ASM HYDRAULIC HOSE (Pump to Compressor)	1	29R41	None
39	ADAPTOR-HOSE	1	29Q23	29Q120
6	BUSHING (3/4 x 2) (Oil Separator Return Line)	2	None	64E9G
40	ELBOW, Separator Outlet	1	86E59	86E59
41	TUBE (FORMED)	1	11S250857	11S250857
42	CONNECTOR	1	86E48	86E48
43	CLAMP-TUBE	3	98A5	98A5
44	SCREW, Tube Clamp (1/4 x 1/2)	3	75A32	75A32
45	WASHER-LOCK	3	95B1	95B1
46	TUBE (FORMED)	1	15S250857	15S250857
47	CONNECTOR	1	86E3	86E3
48	ORIFICE (Compressor), Incl. next 2 parts	1	S250814	S250814
48C	CLIP	3	86L3	86L3
48D	O-RING	3	86L4	86L4
49	NIPPLE	1	63U2X10G	63U2X10G
	(Oil Reservoir Return Line)			
50	ELBOW, Reservoir Outlet	1	86E59	86E59
51	TUBE (FORMED)	1	10S250857	10S250857
52	CONNECTOR	1	86E48	86E48
53	CLAMP-TUBE	2	98A5	98A5
54	TUBE (FORMED)	1	2005601	2005601
55	ELBOW	1	86E60	86E60
56	BUSHING	1	64E1G	64E1G
57	STRAINER	1	82A1	82A1
58	U-BOLT	1	15U72	15U72
6	WASHER-LOCK, U-bolt (3/8)	2	95B3	95B3
6	NUT, U-bolt (3/8)	2	50B3	50B3
59	BUSHING	1	64E44G	64E44G
60	CONNECTOR	1	86E2	86E2
61	TUBE (FORMED)	1	16S250857	16S250857
62	CONNECTOR	1	86E2	86E2

† Oil pump and connections (Ref. No. 30 thru 38) are not used on Model ES60F.

6 Not shown on illustration.

\* For component parts of oil filter (and mounting parts) see page 17.

Order by Part Number and Description. Reference Numbers for your convenience only.



REF. NO.	NAME OF PART	QTY. REQ. PER SEP.	MODELS ES60A ES60B ES60E ES60F
	<u>OIL SEPARATOR</u> (See Note)		PART NO.
	SEPARATOR-OIL (Complete)	1	55A12
1	FILTER, Media 2nd Stage	1	2008812
2	WASHER	1	2008028
3	NUT	1	2008756
4	ELEMENT KIT, Agglomerator †	1	2008692
5	COVER	1	*
∅	GASKET KIT **	1	2008027

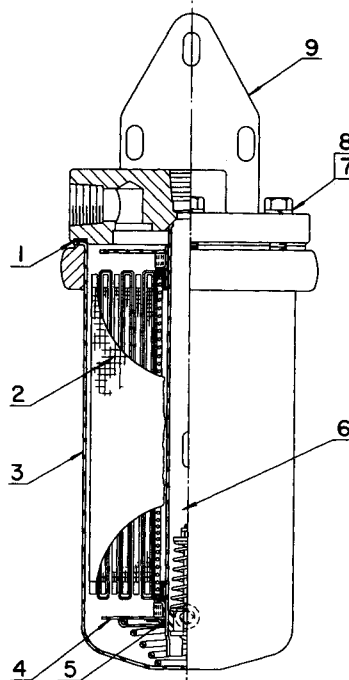
∅ Not shown on illustration.

\* Not normally furnished for repair.

\*\* Gaskets are bonded to element but may be purchased separately. Kit includes (2) gaskets and bonding agent.

† Element kit includes washer and nut (Ref. No. 2 and 3) in addition to bonded gaskets. When ordering replacement element, also order Gaskets, (2) 11S250715 and (1) 25C802 shown on page 11 (Ref. No. 14 and 19).

Order by Part Number and Description. Reference Numbers for your convenience only.

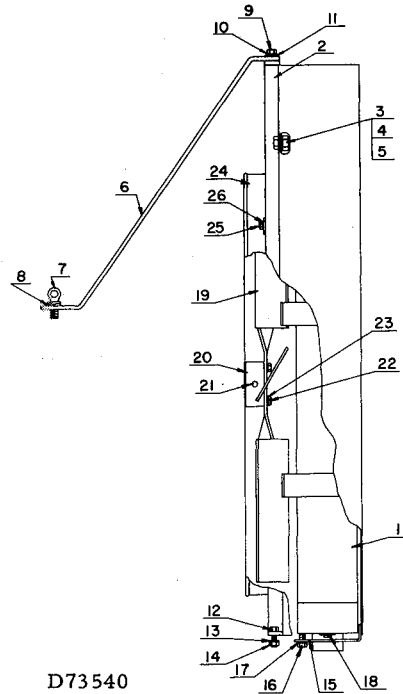


REF. NO.	NAME OF PART	QTY. REQ. PER COMP.	MODELS ES60A ES60B ES60E ES60F
	<u>OIL FILTER &amp; MOUNTING GROUP</u> (See Note) *		PART NO.
	FILTER-OIL, Incl. Ref. #1 thru 6	1	26A34
1	GASKET, Cover	1	54C165
2	ASM ELEMENT (with Gasket)	1	5E30
3	ASM SHELL (with Bolt Ring)	1	2008038
4	ASM PRESSURE PLATE & SPRING, Incl. Ref. #5	1	2008033
5	RING-SEAL	1	25W21
6	ASM SPOOL (with Bypass) *	1	2008037
7	SCREW (7/16 x 2), Filter to Plate	4	75A190
8	WASHER-LOCK	4	95B4
9	PLATE-OIL BYPASS	1	1S36590
∅	SCREW (7/16 x 1), Plate to Base	3	75A11
∅	WASHER	3	95A4
∅	WASHER-LOCK	3	95B4

∅ Not shown on illustration.

\* Earlier models had ball relief valve in spool. Replacement parts for this type are no longer available. Spool assembly shown above includes poppet type valve and is interchangeable with earlier construction spool containing the ball relief valve.

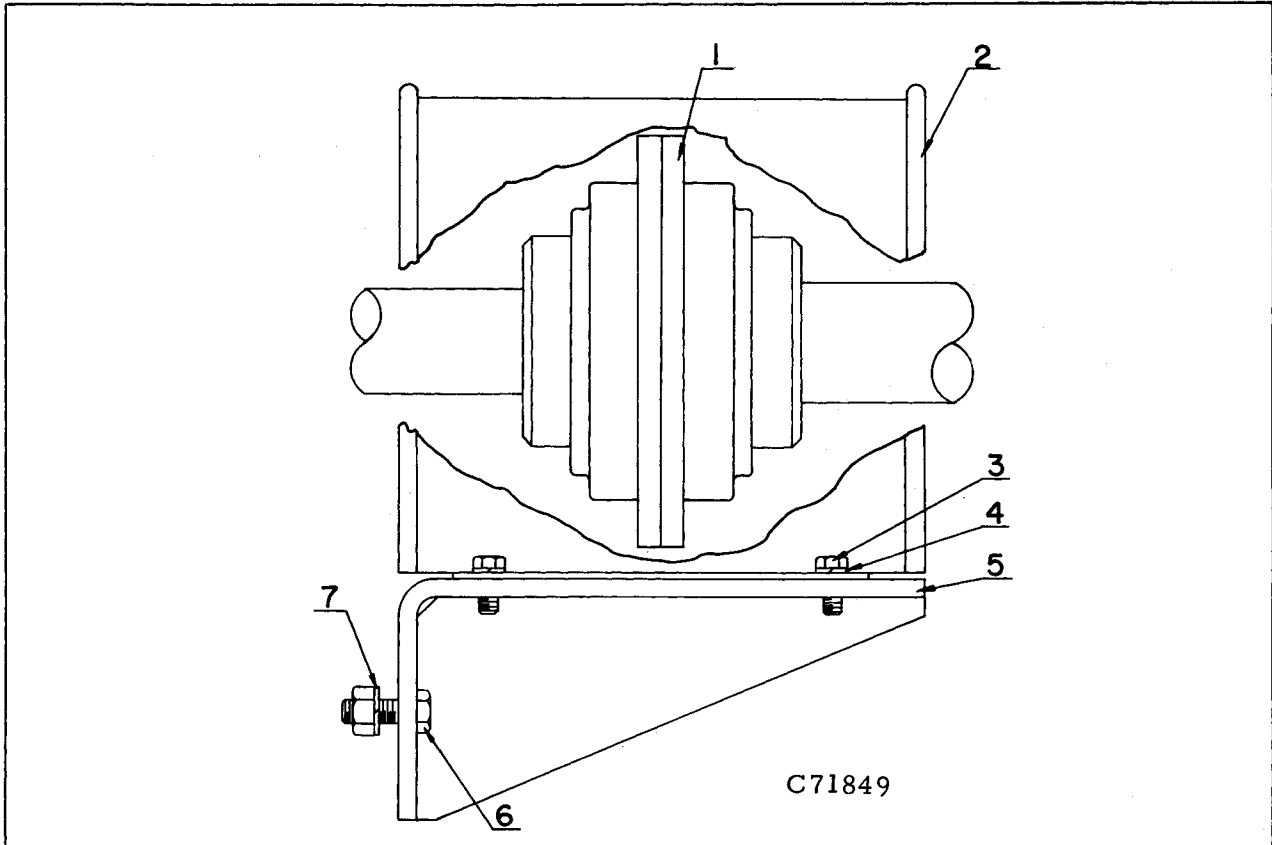
ORDER BY PART NUMBER AND DESCRIPTION. REFERENCE NUMBERS FOR YOUR CONVENIENCE ONLY.



REF. NO.	NAME OF PART	QTY. REQ. PER COMP.	MODELS ES60A ES60E
	<u>RADIATOR &amp; FAN GROUPS</u>		PART NO.
1	RADIATOR	1	S250200
2	SHROUD	1	S250647
3	SCREW, Radiator (3/8 x 3/4)	6	75A5
4	WASHER-LOCK	6	95B3
5	NUT	6	50B3
φ	RIVNUT	4	2009731
6	BRACE, to Compressor	1	44S25017
7	SCREW, Brace to Compressor (1/2 x 15/16)	1	75A136
8	WASHER-LOCK	1	95B5
9	SCREW, Brace to Shroud (3/8 x 3/4)	1	75A5
10	WASHER	1	95A3
11	WASHER-LOCK	1	95B3
12	SCREW, Shroud to Base (15/16 x 1)	2	75A10
13	WASHER-LOCK	2	95B2
14	NUT	2	50B2
15	BRACKET	1	25S25036
16	SCREW, Bracket (3/8 x 1/2)	5	75A188
17	WASHER-LOCK	5	95B3
φ	PLUG, Knockout (2")	2	24A394
18	PLUG, Drain (1")	2	24A60
19	FAN	1	9B75
20	HUB, Fan	1	2S25048
21	PIN, Fan Hub	1	62R176
22	SCREW, Fan to Hub (5/16 x 5/8)	4	75A115
23	WASHER-LOCK	4	95B2
24	GUARD-FAN	1	2014023
25	SCREW, Fan Guard (3/8 x 1)	4	75A1
26	WASHER-LOCK	4	95B3
φ	RETAINER	4	2014731

φ Not shown on illustration.

Order by Part Number and Description. Reference Numbers for your convenience only.



REF. NO.	NAME OF PART	QTY. REQ. PER COMP.	MODELS ES60A ES60B ES60E ES60F
	<u>COUPLING GROUP</u>		<u>PART NO.</u>
1	COUPLING, Compressor to Motor	1	51K8
∅	KEY, Coupling to Compressor	1	35B149
2	GUARD-COUPLING	1	9S250977
3	SCREW, Guard (1/4 x 5/8)	4	75A185
4	WASHER-LOCK	4	95B1
∅	NUT (1/4)	4	50B1
5	BRACKET, Coupling Guard	1	48S25017
6	SCREW, Bracket to Base (3/8 x 5/8)	4	75A68
7	WASHER-LOCK	4	95B3

∅ Not shown on illustration.

MODELS ES60A & ES60E

GASKET KIT (Bare Compressor Only) . . . . . ES64477

GASKET KIT (Complete Unit) . . . . . ES64938

MODELS ES60B & ES60F

GASKET KIT (Bare Compressor Only) . . . . . ES65290

GASKET KIT (Complete Unit) . . . . . ES65291

# SALES AND SERVICE OFFICES

## UNITED STATES and MEXICO

ATLANTA (STONE MOUNTAIN), GEORGIA - 30083  
1545 Mountain Industrial Blvd.  
BAKERSFIELD, CALIFORNIA - 93308  
3506 Gilmore Avenue  
BALTIMORE (ELLCOTT CITY), MARYLAND - 21043  
3515 Chevrolet Drive  
BIRMINGHAM, ALABAMA - 35209  
817 Green Springs Highway  
BOISE, IDAHO - 83706  
3422 Americana Terrace  
BOSTON (NEEDHAM HEIGHTS), MASSACHUSETTS - 02194  
65 Crawford Street  
BUFFALO, NEW YORK - 14226  
4532 Batley Avenue  
BUTTE, MONTANA - 59701  
215 East Park Street  
CASPER, WYOMING - 82601  
310 North 2nd Avenue  
CHARLESTON, WEST VIRGINIA - 25301  
1018 Kanawha Blvd., E.  
CHARLOTTE, NORTH CAROLINA - 28211  
723 South Sharon Amity Road  
CHICAGO (BROADVIEW), ILLINOIS - 60153  
2535 S. 25th Avenue  
CINCINNATI (SPRINGDALE), OHIO - 45246  
12145 Centron Place  
CLEVELAND, OHIO - 44125  
5400 Warner Road  
CORONA, NEW YORK - 11368  
110 - 34 Corona Avenue  
CORPUS CHRISTI, TEXAS - 78408  
4512 Baldwin Blvd.  
DALLAS, TEXAS - 75210  
4700 Scyeno Road  
DENVER, COLORADO - 80216  
3801 East 50th Avenue  
DETROIT (OAK PARK), MICHIGAN - 48237  
12700 Capital Avenue  
DULUTH, MINNESOTA - 55811  
3185 Miller Trunk Highway  
EL PASO, TEXAS - 79902  
1230 Wyoming Avenue  
GRAND JUNCTION, COLORADO - 81501  
2909 North Avenue  
HARTFORD (BLOOMFIELD), CONNECTICUT - 06002  
81 Old Windsor Road  
HIALEAH, FLORIDA - 33013  
3630 East 10th Court  
HOUSTON, TEXAS - 77027  
3325 South Rice Avenue  
INDIANAPOLIS, INDIANA - 46203  
2228 Shelby Street

KANSAS CITY (SHAWNEE MISSION), KANSAS - 66201  
9101 Bond Street  
KNOXVILLE, TENNESSEE - 37917  
709 North Fifth Avenue  
LAFAYETTE, LOUISIANA - 70501  
200 Vanway Street  
LOS ANGELES (WHITTIER), CALIFORNIA - 90601  
2555 Pellissier Place  
LOUISVILLE, KENTUCKY - 40207  
4050 Westport Road  
MILWAUKEE, WISCONSIN - 53209  
5148 North Teutonia Avenue  
MINNEAPOLIS, MINNESOTA - 55431  
1701 West 80th Street  
NEW ORLEANS (HARVEY), LOUISIANA - 70058  
1100 Destrehan Avenue  
NEW YORK DOMESTIC (MAHWAH, NEW JERSEY) - 07430  
386 State Highway No. 17  
ODESSA, TEXAS - 79760  
East Highway 80  
OKLAHOMA CITY, OKLAHOMA - 73129  
2200 South Prospect Avenue  
PHILADELPHIA (HORSHAM) PENNSYLVANIA - 19044  
406 Caredean Drive  
PHOENIX, ARIZONA - 85009  
2020 N. Black Canyon Highway  
PITTSBURGH, PENNSYLVANIA - 15205  
Parkway West - 4499 Campbell's Run Road  
QUINCY, ILLINOIS - 62301  
Gardner Expressway  
ST. LOUIS (HAZELWOOD), MISSOURI - 63042  
6011 N. Lindbergh Blvd.  
SALT LAKE CITY, UTAH - 84115  
35 West Louise Avenue  
SAN DIEGO, CALIFORNIA - 92123  
5345 Overland Avenue  
SAN FRANCISCO (SOUTH SAN FRANCISCO), CALIFORNIA - 94080  
144 West Harris Avenue  
SEATTLE, WASHINGTON - 98104  
623 Eighth Avenue, South  
SHREVEPORT, LOUISIANA - 71107  
1025 Joseph Street  
TOLEDO, OHIO - 43614  
2415 S. Byrne Road  
TULSA, OKLAHOMA - 74145  
4259 So. 76th East Avenue  
WALLACE, IDAHO - 83873  
502 Bank Street  
MEXICO I, D. F. MEXICO  
Apartado 575

## CANADA

### GARDNER-DENVER COMPANY (CANADA), LIMITED

EDMONTON, ALBERTA - 9925 - 42 Ave.  
MONCTON, NEW BRUNSWICK - East Main St.  
MONTREAL 28, QUEBEC - 5325 St. James St. West  
NELSON, BRITISH COLUMBIA - 808 Railway St.  
NORTH BAY, ONTARIO - 683 Cassette St.

SUDBURY, ONTARIO - 1889 LaSalle Blvd., East  
TORONTO (SCARBOROUGH), ONTARIO  
1800 Ellesmere Road  
VANCOUVER 9, BRITISH COLUMBIA - 1775 Pine St.  
WINNIPEG 21, MANITOBA - 1380 Sargent Ave.

## INTERNATIONAL

### GARDNER-DENVER INTERNATIONAL -- QUINCY, ILLINOIS GARDNER-DENVER INTERNATIONAL -- 233 Broadway, New York, N. Y.

ARGENTINA -- BUENOS AIRES  
AUSTRALIA -- SYDNEY, MELBOURNE, HOBART, BRISBANE,  
ADELAIDE, PERTH, KALGOORLIE, MOUNT ISA  
BELGIUM -- BRUSSELS  
BRAZIL -- BELO HORIZONTE, RIO DE JANEIRO,  
SAO PAULO  
CHILE -- SANTIAGO  
COLUMBIA -- BARRANQUILLA  
ENGLAND -- LONDON  
GREECE -- ATHENS

HOLLAND -- SCHIPHOL  
ITALY -- MILAN  
NEW ZEALAND -- OTARA (AUCKLAND)  
PERU -- LIMA  
SINGAPORE -- SINGAPORE  
SOUTH AFRICA -- JOHANNESBURG,  
PORT ELIZABETH, CAPE TOWN

SWEDEN -- STOCKHOLM  
VENEZUELA -- CARACAS, PUERTO ORDAZ  
ZAMBIA -- NDOLA

## FACTORIES

DALLAS, TEXAS  
DENVER, COLORADO  
GRAND HAVEN, MICHIGAN  
GREEN BAY, WISCONSIN  
LA GRANGE, MISSOURI  
QUINCY, ILLINOIS

REED CITY, MICHIGAN  
YORK, PENNSYLVANIA  
JOHANNESBURG, S. AFRICA  
RIO DE JANEIRO, BRAZIL  
WOODSTOCK, ONTARIO, CANADA  
WESTHAUSEN, GERMANY



# GARDNER-DENVER COMPANY

QUINCY, ILLINOIS