

13-9-503  
1st EDITION  
Supersedes SO-16  
April, 1969

**ELECTRA-SCREW** <sup>®</sup>

**STATIONARY**

**COMPRESSOR**

**MODELS ES30A**

**ES30D**

**ES30E**

**Parts List**

13-9-503



**GARDNER-DENVER COMPANY**

**QUINCY, ILLINOIS**

INSTRUCTIONS FOR ORDERING REPAIR PARTS

When ordering parts, specify Compressor MODEL and SERIAL NUMBER (see name plate on unit). Serial Number is also stamped on top of the cylinder flange to the right of the inlet housing.

All orders for Parts should be placed with the nearest Sales and Service Office listed on the back cover of this book.

Reference Numbers shown in the left hand column of the Parts Lists are used to help locate the parts shown on the Drawings and Sectional Views. DO NOT ORDER BY REFERENCE NUMBERS.

After locating the reference number, the part number may be found for your particular compressor unit under the correct Model Number column.

Specify exactly the number of parts required (see column "Qty. Req."). DO NOT ORDER BY SETS.

To determine the Right Hand and Left Hand side of an Electra-Screw® compressor, stand at the motor end and look toward the compressor.

PARTS RETURNED

All claims must be made within five days after receipt of goods. If order has been filled correctly, we cannot allow the return of the goods without our consent and then only on a basis of a charge for service and rehandling plus transportation charges.

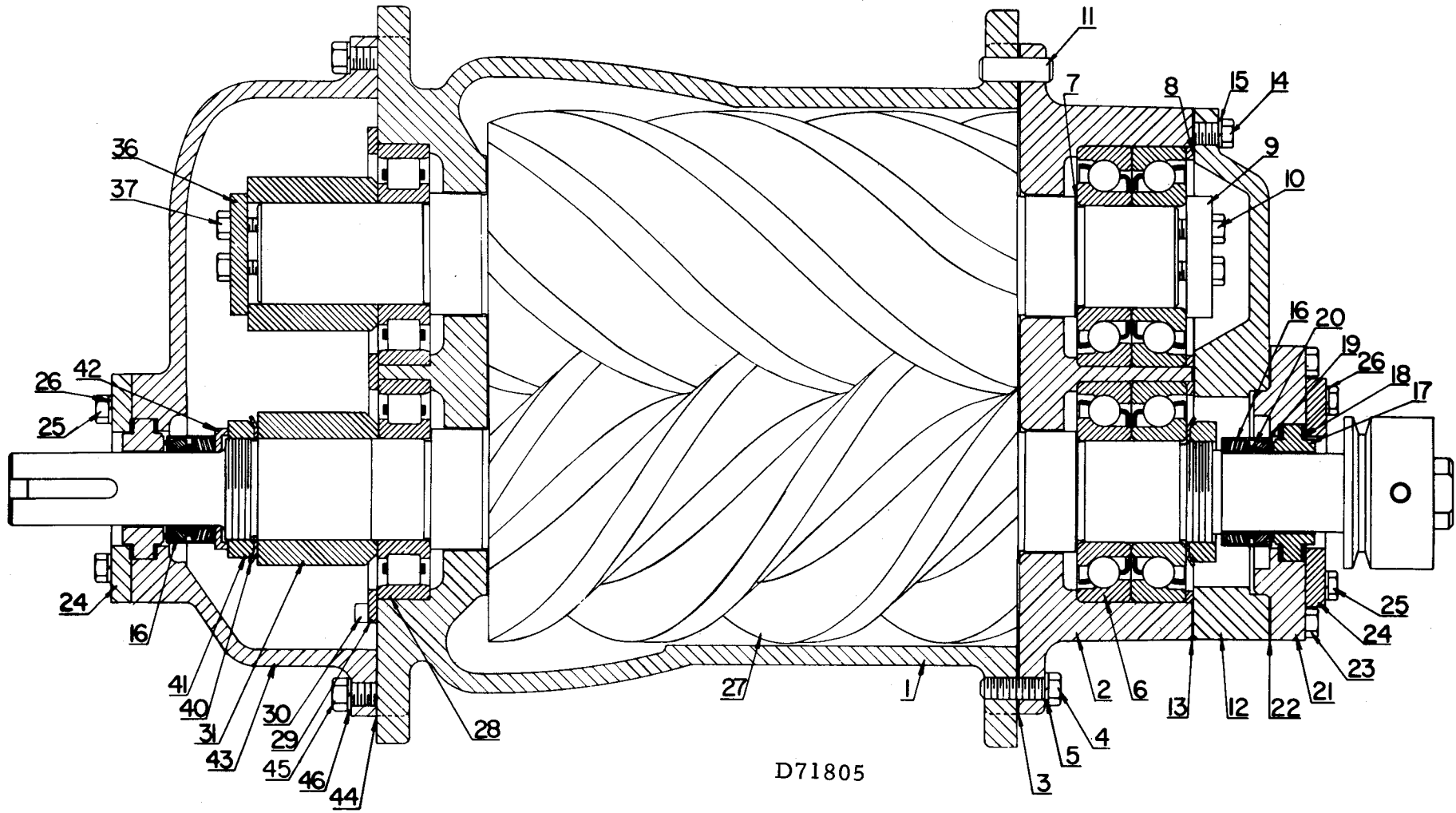
Transportation charges must be prepaid. If it is necessary to return a part to the factory for duplication or inspection, do not fail to do the following:

1. Write the nearest Sales and Service Office a letter advising what material you wish to return and why.
2. After receiving permission to return the item or items, obtain from the Sales and Service Office the correct forms filled out by that office for proper return of material.
3. Place a tag in the package showing your name and address.
4. Tag each article in the box or package stating what and how many are returned.
5. Always give the serial number of the machine from which the parts were removed or the invoice number on which the parts were originally shipped.

All parts returned for credit should be handled in the same manner as that for duplication or inspection.

INDEX

Air Filter (Heavy Duty) . . . . .	11	Inlet Valve Group . . . . .	6, 7
Air Filter (Standard) . . . . .	10	Oil Cooler Group. . . . .	20
Compressor . . . . .	2, 3, 4, 5	Oil Filter . . . . .	19
Coupling Group . . . . .	9	Oil Piping Group. . . . .	14, 15, 16, 17
Discharge Valve Group . . . . .	8	Oil Pump Group . . . . .	20
Fan Group . . . . .	20	Oil Reservoir Group. . . . .	12, 13
Gasket Kits . . . . .	3, 5	Oil Separator. . . . .	18
Heat Exchanger . . . . .	16, 17	Ordering Instructions . . . . .	1



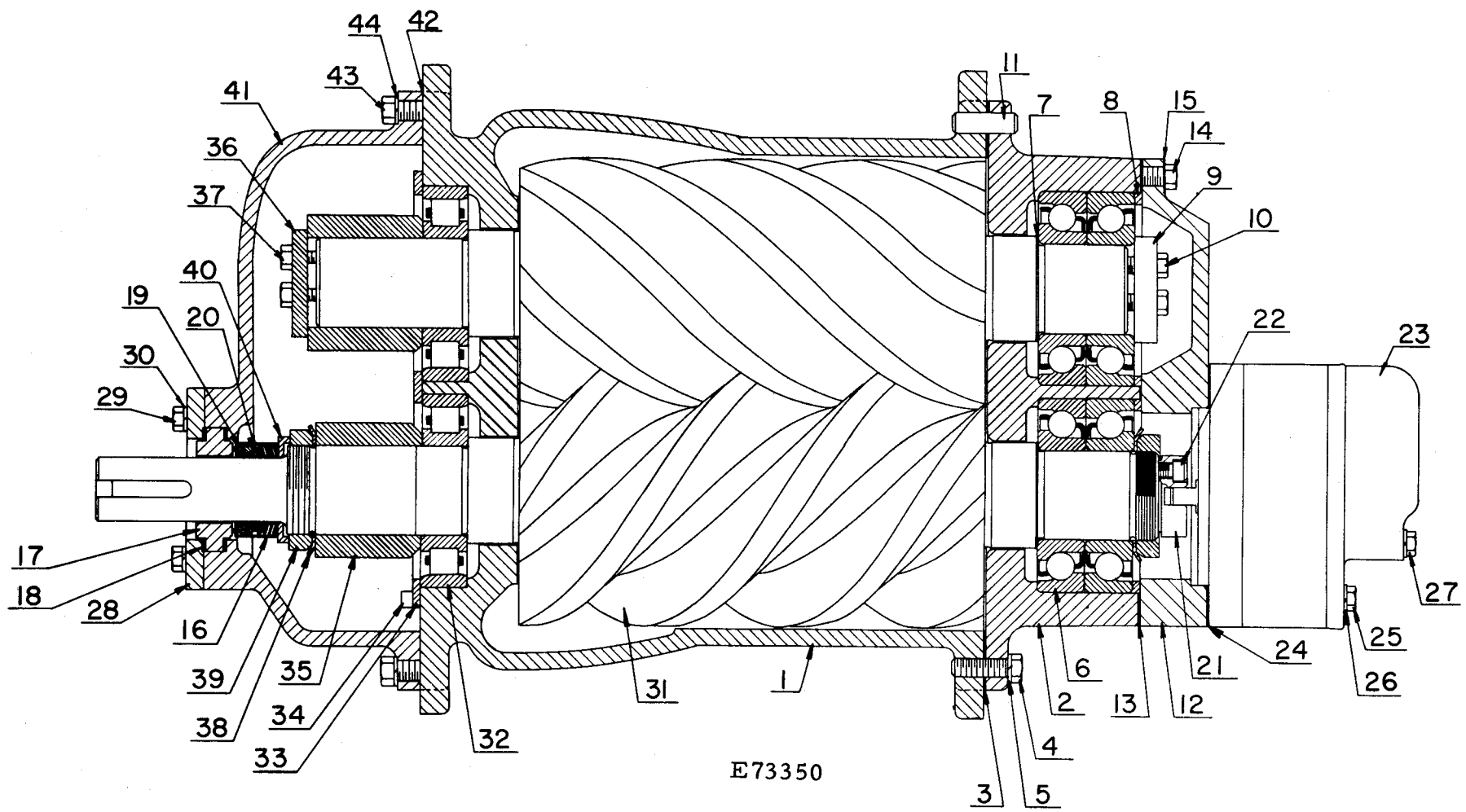
FOR LIST OF PARTS SEE PAGE 3.

ORDER BY PART NUMBER AND DESCRIPTION. REFERENCE NUMBERS FOR YOUR CONVENIENCE ONLY.

REF. NO.	NAME OF PART	QTY. REQ. PER UNIT	MODELS ES30A ES30E
	<u>COMPRESSOR</u>		PART NO.
1	CYLINDER	1	2S1252
∅	PLATE, Oil Sump	1	22S12536
∅	GASKET, Oil Sump	1	25C2586
∅	SCREW (3/8 x 1-1/4)	14	75A2
∅	WASHER-LOCK	14	95B3
∅	PLUG (3/4)	2	64AC5
∅	PLUG (1/8)	5	64AC1
2	HOUSING-BEARING	1	2S12527
∅	PLUG, Housing (1/8)	1	64AA6
3	GASKET	1	2005113
∅	SCREW, Housing (3/8 x 1-1/4)	1	75P56N
4	SCREW, Housing (3/8 x 1)	11	75A1
5	WASHER-LOCK	11	95B3
6	BEARING-BALL	4	12AD8
7	SHIM, Ball Bearing	2	77C27
8	SPACER, Ball Bearing	2	77A482
9	PLATE-BEARING RETAINER	1	1S12515
10	SCREW, Retainer Plate	3	75P55N
11	PIN-DOWEL	2	62M83
12	PLATE-BEARING COVER	1	S12536
13	GASKET	1	25C2419
∅	SCREW, Cover Plate (3/8 x 1-1/2)	7	75P57N
14	SCREW, Cover Plate (3/8 x 1)	5	75A1
15	WASHER-LOCK	5	95B3
∅	PIN-DOWEL (5/16)	2	62M35
16	SEAL-SHAFT, Incl. next 4 parts	2	60BP25
17	DISC	2	54C237
18	GASKET	4	54C234
19	WASHER, Carbon	2	54C199
20	RING, Teflon	2	54C200

REF. NO.	NAME OF PART	QTY. REQ. PER UNIT	MODELS ES30A ES30E
	<u>COMPRESSOR (Continued)</u>		PART NO.
21	ADAPTOR, Shaft Seal	1	23S12536
22	GASKET	1	25C2421
23	SCREW, Adaptor	4	75P9N
24	PLATE, Shaft Seal	2	21S12536
25	SCREW, Plate	12	75A1
26	WASHER-LOCK	12	95B3
27	ASM ROTOR (Matched Pair)	1	5S1251B
28	BEARING-ROLLER	2	12W64
29	PLATE-BEARING RETAINER	1	S12515
30	SCREW, Retainer Plate	10	75A5N
31	SPACER-SHAFT	2	2S1256
36	PLATE-BEARING RETAINER	1	1S12515
37	SCREW, Retainer Plate	3	75P55N
40	LOCKWASHER-BEARING	2	95N10
41	LOCKNUT-BEARING	2	50Z10
42	SPACER, Shaft Seal	1	1S1258
43	COVER-BEARING	1	3S12513
∅	PLUG, Housing (1/8)	1	64AC1
44	GASKET	1	25C2418
∅	PIN-DOWEL (1/2 x 1-1/4)	2	62M83
∅	SCREW, Housing (3/8 x 1-1/4)	2	75P56N
45	SCREW, Housing (3/8 x 1)	10	75A1
46	WASHER-LOCK	10	95B3
	BARE COMPRESSOR (Field Replacement)	1	2014708
	GASKET KIT (Complete Bare Compressor)	1	SP63825

∅ Not shown on illustration.



E73350

FOR LIST OF PARTS SEE PAGE 5.

ORDER BY PART NUMBER AND DESCRIPTION. REFERENCE NUMBERS FOR YOUR CONVENIENCE ONLY.

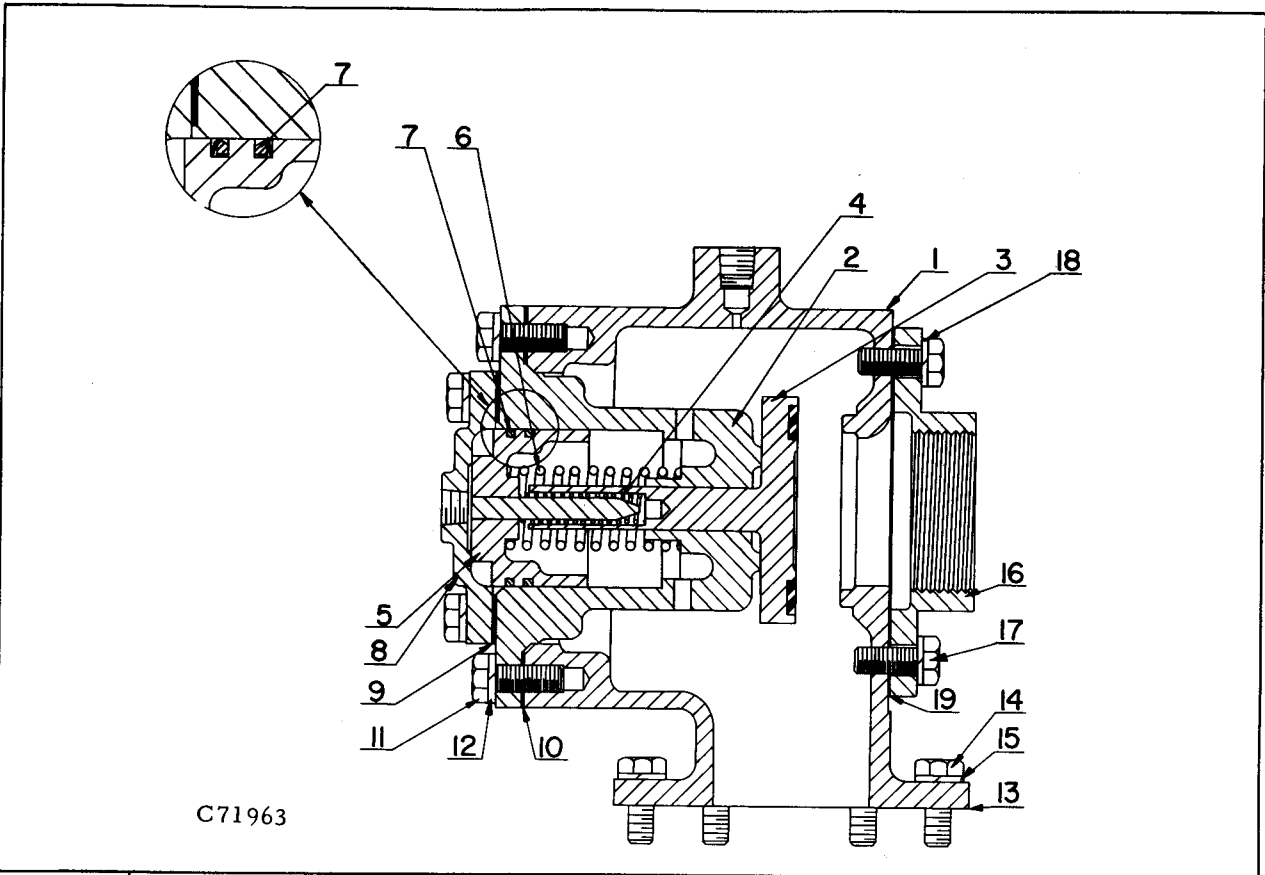
REF. NO.	NAME OF PART	QTY. REQ. PER UNIT	MODEL ES30D
	<u>COMPRESSOR</u>		PART NO.
1	CYLINDER	1	2S1252
∅	PLATE, Oil Sump	1	22S12536
∅	GASKET, Oil Sump	1	25C2586
∅	SCREW (3/8 x 1-1/4)	14	75A2
∅	WASHER-LOCK	14	95B3
∅	PLUG (3/4)	2	64AC5
∅	PLUG (1/8)	5	64AC1
2	HOUSING-BEARING	1	2S12527
3	GASKET	1	2005113
∅	SCREW, Housing (3/8 x 1-1/4)	1	75P56N
4	SCREW, Housing (3/8 x 1)	11	75A1
5	WASHER-LOCK	11	95B3
6	BEARING-BALL	4	12AD8
7	SHIM, Ball Bearing	2	77C27
8	SPACER, Ball Bearing	2	77A482
9	PLATE-BEARING RETAINER	1	1S12515
10	SCREW, Retainer Plate	3	75P55N
11	PIN-DOWEL	2	62M83
12	PLATE-BEARING COVER	1	S12536
13	GASKET	1	25C2419
∅	SCREW, Cover Plate (3/8 x 1-1/2)	7	75P57N
14	SCREW, Cover Plate (3/8 x 1)	5	75A1
15	WASHER-LOCK	5	95B3
∅	PIN-DOWEL (5/16)	2	62M35
16	SEAL-SHAFT, Incl. next 4 parts	1	60BP25
17	DISC	1	54C237
18	GASKET	2	54C234
19	WASHER, Carbon	1	54C199
20	RING, Teflon	1	54C200
21	ADAPTOR, Oil Pump	1	S125809
22	SCREW, Adaptor	3	75P40N

REF. NO.	NAME OF PART	QTY. REQ. PER UNIT	MODEL ES30D
	<u>COMPRESSOR (Continued)</u>		PART NO.
23	PUMP-OIL, Circulating *	1	46C44
24	GASKET	1	25C2421
25	SCREW, Oil Pump (5/16 x 3-1/4)	3	75A248
26	WASHER-LOCK	4	95B2
27	SCREW, Oil Pump (5/16 x 5)	1	75A253
28	PLATE, Shaft Seal	1	21S12536
29	SCREW, Plate	6	75A1
30	WASHER-LOCK	6	95B3
31	ASM ROTOR (Matched Pair)	1	3S1251A
32	BEARING-ROLLER	2	12W64
33	PLATE-BEARING RETAINER	1	S12515
34	SCREW, Retainer Plate	10	75A5N
35	SPACER-SHAFT	2	2S1256
36	PLATE-BEARING RETAINER	1	1S12515
37	SCREW, Retainer Plate	3	75P55N
38	LOCKWASHER-BEARING	2	95N10
39	LOCKNUT-BEARING	2	50Z10
40	SPACER, Shaft Seal	1	1S1258
41	COVER-BEARING	1	3S12513
∅	PLUG, Housing (1/8)	1	64AC1
42	GASKET	1	25C2418
∅	PIN-DOWEL (1/2 x 1-1/4)	2	62M83
∅	SCREW, Housing (3/8 x 1-1/4)	2	75P56N
43	SCREW, Housing (3/8 x 1)	10	75A1
44	WASHER-LOCK	10	95B3
	BARE COMPRESSOR (Field Replacement)	1	2014709
	GASKET KIT (Complete Bare Compressor)	1	SP63825

∅ Not shown on illustration.

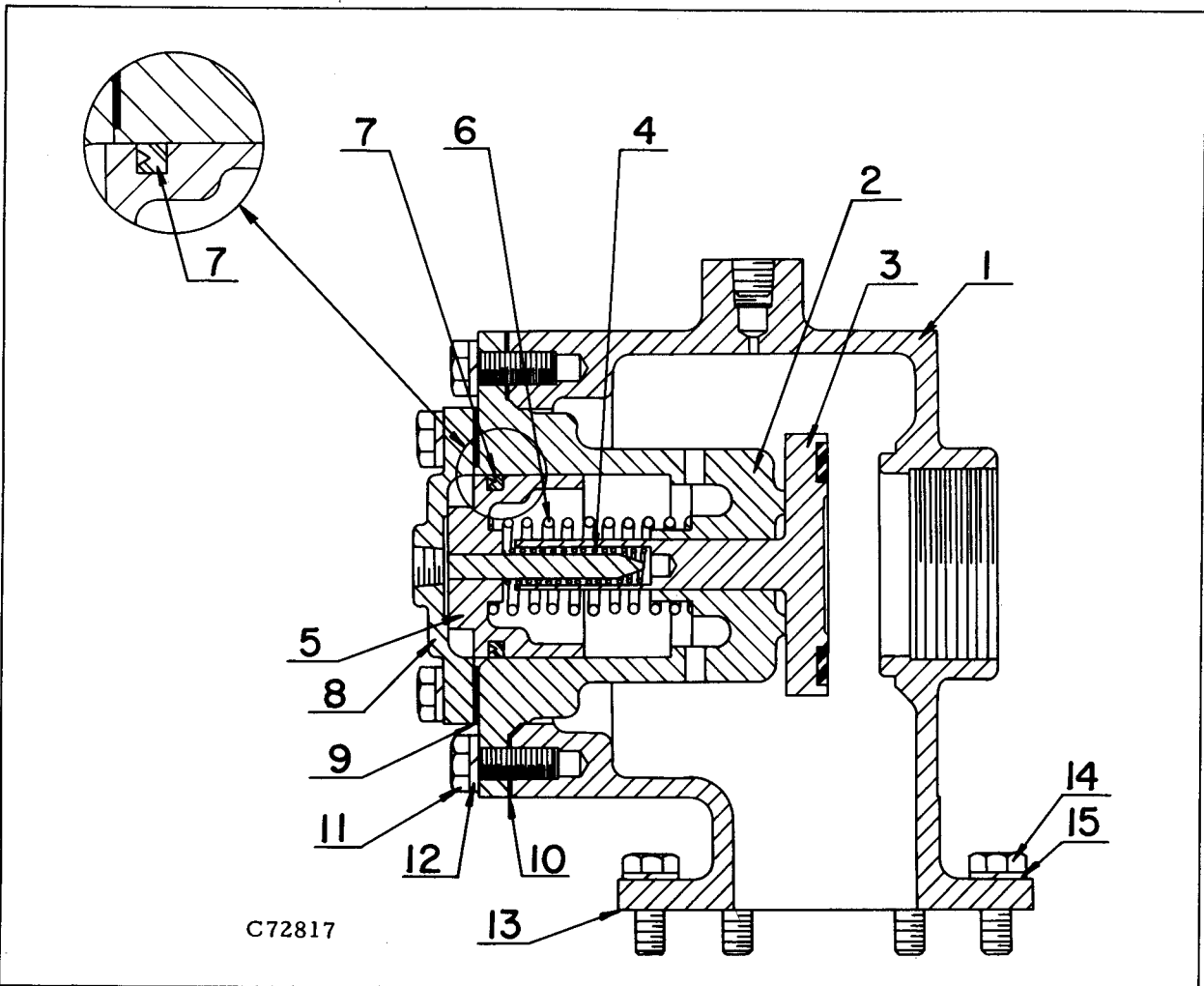
\* For repairs to oil pump relief valve, order (1) each 2008846 (large) and 2008847 (small) O-Rings plus (2) Internal Pump Gaskets 2008285.

Order by Part Number and Description. Reference Numbers for your convenience only.



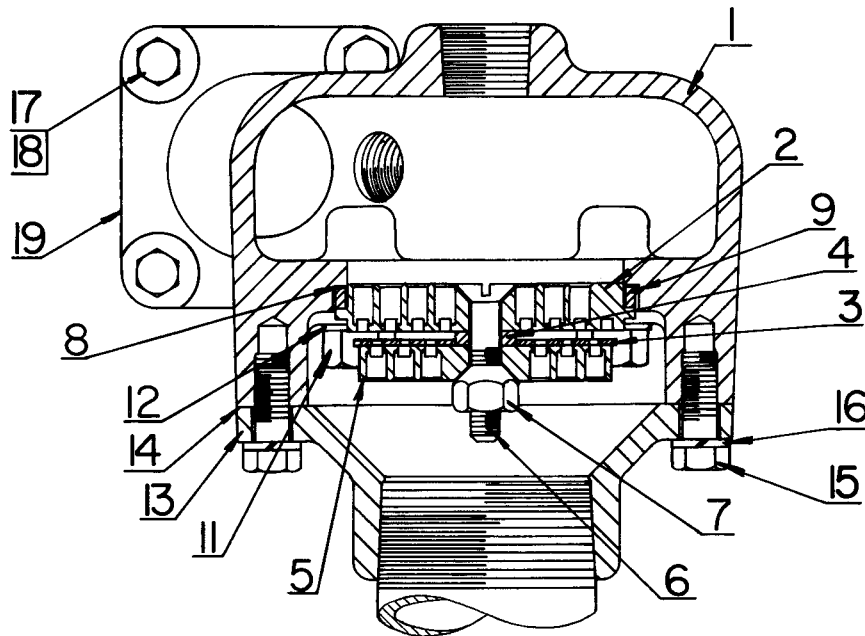
REF. NO.	NAME OF PART	QTY. REQ. PER UNIT	MODEL ES30A
	<u>INLET VALVE GROUP</u>		PART NO.
	ASM INLET VALVE HOUSING, Incl. Ref. #1 thru 12 & 16 thru 19	1	6S12541A
1	HOUSING	1	6S12541
2	CYLINDER	1	S12542
3	VALVE	1	S12544
4	SPRING, Valve	1	78A362
5	PISTON (with Pin)	1	S12543A
6	SPRING, Piston	1	78A356
7	RING-PISTON	2	65AA41
8	CAP-CYLINDER	1	R125274
9	GASKET, Cylinder Cap	1	25C2050
10	GASKET, Cylinder	1	25C2049
11	SCREW, Cap & Cylinder	14	75A1
12	WASHER-LOCK	14	95B3
13	GASKET, Housing	1	25C2426
14	SCREW, Housing	6	75A1
15	WASHER-LOCK	6	95B3
16	ADAPTOR, Air Filter	1	24S12536
17	SCREW, Adaptor	6	75A1
18	WASHER-LOCK	6	95B3
19	GASKET, Adaptor	1	25C2420

Order by Part Number and Description. Reference Numbers for your convenience only.



REF. NO.	NAME OF PART	QTY. REQ. PER UNIT	MODELS ES30D ES30E
	<u>INLET VALVE GROUP</u>		PART NO.
	ASM INLET VALVE HOUSING, Incl. Ref. #1 thru 12	1	6S12541B
1	HOUSING	1	6S12541
2	CYLINDER	1	1S12542
3	VALVE	1	S12544
4	SPRING, Valve	1	78A362
5	PISTON (with Pin)	1	1S12543A
6	SPRING, Piston	1	78A387
7	PACKING-RING, Vee Block	1	60AM44
8	CAP-CYLINDER	1	R125274
9	GASKET, Cylinder Cap	1	25C2050
10	GASKET, Cylinder	1	25C2049
11	SCREW, Cap & Cylinder	14	75A1
12	WASHER-LOCK	14	95B3
13	GASKET, Housing	1	25C2446
14	SCREW, Housing	6	75A1
15	WASHER-LOCK	6	95B3

ORDER BY PART NUMBER AND DESCRIPTION. REFERENCE NUMBERS FOR YOUR CONVENIENCE ONLY.

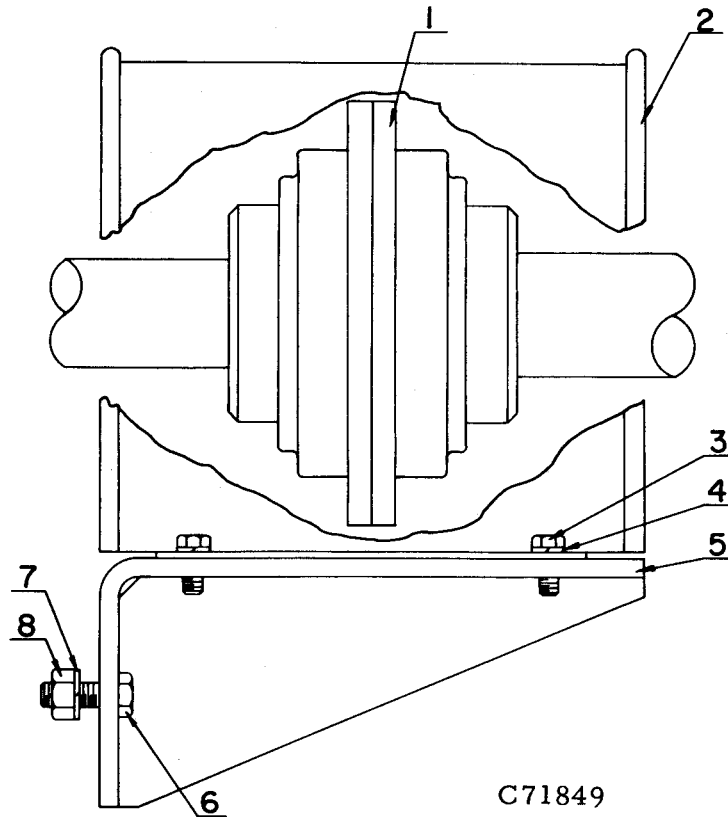


B71792

REF. NO.	NAME OF PART	QTY. REQ. PER UNIT	MODELS ES30A ES30D ES30E
<u>DISCHARGE VALVE GROUP</u>			PART NO.
1	ASM DISCHARGE VALVE HOUSING, Incl. Ref. #1 thru 16	1	8S12541B
	HOUSING	1	8S12541
φ	PLUG, Housing (1/2)	1	64AA7
2	ASM DISCHARGE VALVE (Inner), Incl. Ref. #2 thru 9	1	1VA30202E
	SEAT	1	VB30202
3	DISC-VALVE	1	1VB3067
4	GUIDE-LIFT	1	3VA30260
5	BUMPER	1	VB30164
6	SCREW	1	75K69
7	NUT	1	8AUX171
8	GASKET-RING	2	25L4
9	SPACER	1	VA30200
11	SCREW, Valve Retaining	4	75A68N
12	RETAINER	4	2014732
13	COVER-VALVE	1	30S12536
14	GASKET, Cover	1	25C2533
15	SCREW, Cover	6	75A1
16	WASHER-LOCK	6	95B3
17	SCREW, Housing	4	75A1
18	WASHER-LOCK	4	95B3
19	GASKET, Housing	1	25C2428

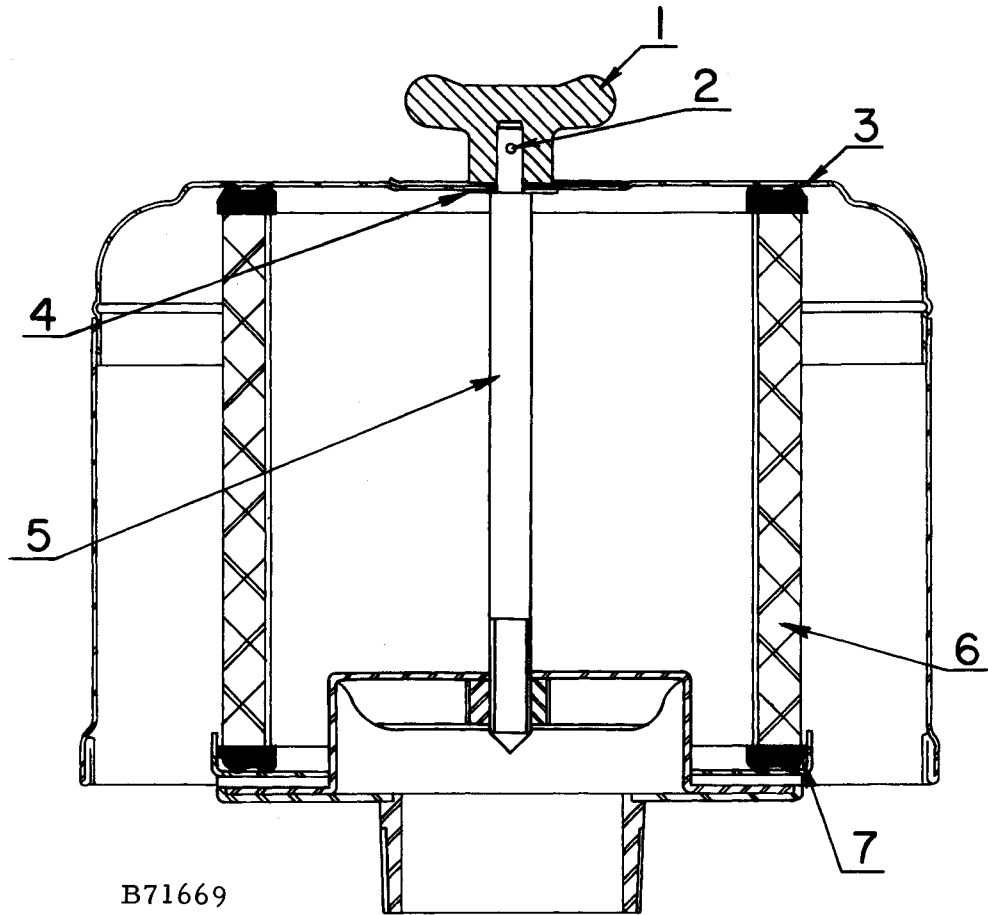
φ Not shown on illustration.

Order by Part Number and Description. Reference Numbers for your convenience only.



REF. NO.	NAME OF PART	QTY. REQ. PER UNIT	MODELS ES30A ES30D ES30E
	<u>COUPLING GROUP</u>		PART NO.
1	COUPLING, Compressor to Motor (30 H.P.)	1	51K7
1	COUPLING, Compressor to Motor (40 H.P.)	1	51K9
∅	KEY, Coupling to Compressor	1	35B35
2	GUARD-COUPLING	1	4S125977
3	SCREW, Coupling Guard	4	75A185
4	WASHER-LOCK	4	95B1
5	BRACKET, Guard	1	60S12517
6	SCREW, Bracket to Base	2	75A33
7	WASHER-LOCK	2	95B2
8	NUT	2	50B2

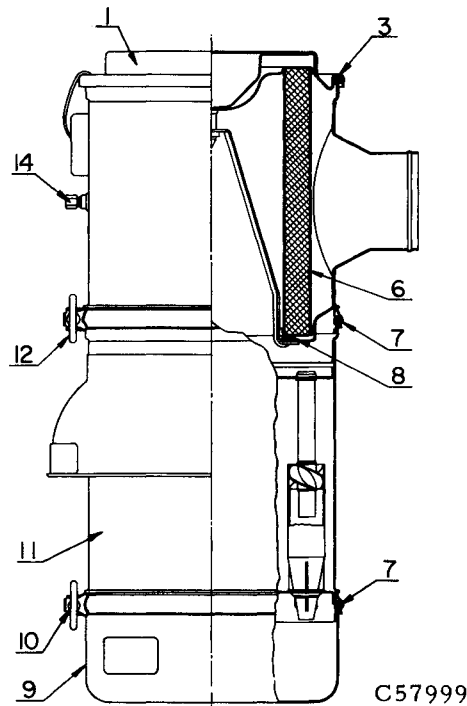
Order by Part Number and Description. Reference Numbers for your convenience only.



B71669

REF. NO.	NAME OF PART	QTY. REQ. PER FILTER	MODELS ES30A ES30D ES30E
<u>AIR FILTER (Standard)</u>			PART NO.
1	FILTER-AIR (Complete)	1	5A392
2	NUT-WING	1	2008749
3	PIN, Cross	1	2008750
4	HOOD	1	2008751
5	WASHER	1	2008752
6	STEM	1	2008753
7	ELEMENT (with Gaskets)	1	2008219
	TRAY, Base	1	2008755

Order by Part Number and Description. Reference Numbers for your convenience only.

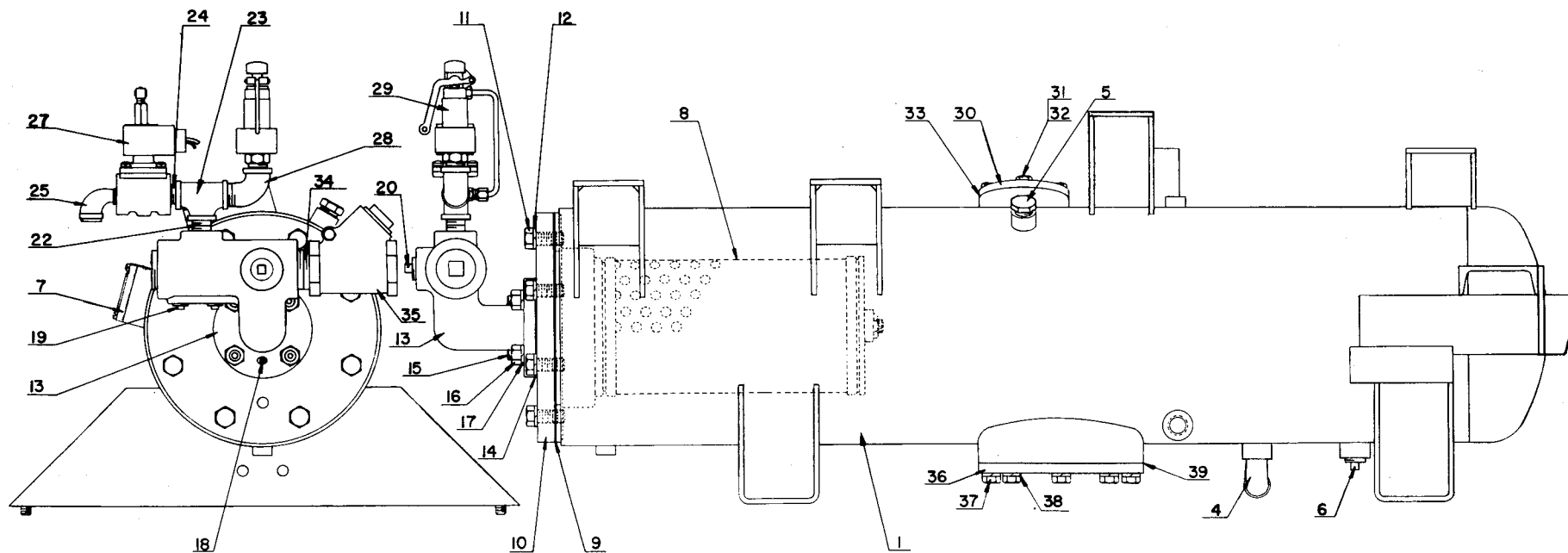


REF. NO.	NAME OF PART	QTY. REQ. PER FILTER	MODELS ES30A ES30D ES30E
	<u>AIR FILTER (Heavy Duty)</u> (Optional Equipment) *		PART NO.
1	FILTER-AIR (Complete), Incl. Ref. #3 thru 14	1	5B420
3	GASKET, Cover	1	2008955
6	ELEMENT (with Gasket)	1	2008191
7	O-RING	2	2010246
8	GASKET, Element	1	2008956
9	ASM CUP	1	**
10	ASM CLAMP	1	**
11	ASM LOWER BODY	1	2008957
12	ASM CLAMP	1	**
∅	ASM BAND, Mounting	2	**
14	CAP	1	2008899
∅	(Connections & Mounting Parts)		
	NIPPLE-PIPE	1	63L1G
	ELBOW-STREET	1	64D9G
	COUPLING-PIPE (Half)	1	2009098
	HOSE	1	29A270
	CLAMP-HOSE	2	29B34
	BRACKET-FILTER	1	73S12517

\* When required, this filter with mounting parts shown above replaces standard filter shown on page 10.

\*\* Not normally furnished for repair.

∅ Not shown on illustration.



E71870

FOR LIST OF PARTS SEE PAGE 13.

ORDER BY PART NUMBER AND DESCRIPTION. REFERENCE NUMBERS FOR YOUR CONVENIENCE ONLY.

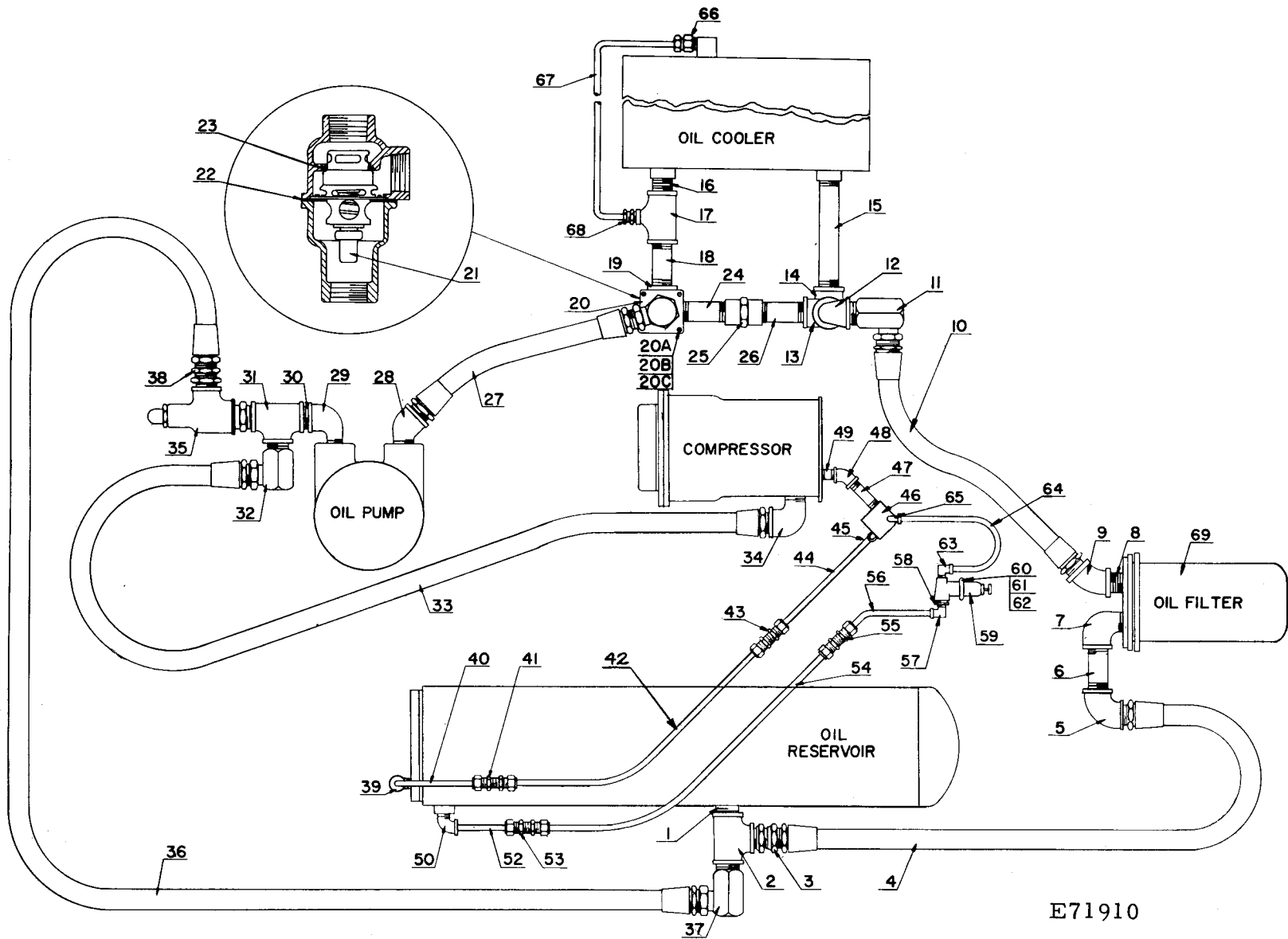
REF. NO.	NAME OF PART	QTY. REQ. PER UNIT	MODELS ES30A ES30D ES30E	REF. NO.	NAME OF PART	QTY. REQ. PER UNIT	MODELS ES30A ES30D ES30E
	<u>OIL RESERVOIR GROUP</u>		PART NO.		<u>OIL RESERVOIR GROUP (Continued)</u>		PART NO.
1	RESERVOIR-OIL	1	*	13	MANIFOLD-DISCHARGE	1	S125285
∅	SCREW, to Compressor (1/2 x 1-1/4)	4	75A12	14	GASKET	1	25C2444
∅	WASHER-LOCK	4	95B5	15	STUD	4	79A6
∅	SCREW, to Motor (5/8 x 2-1/4)	4	75A47	16	NUT	4	50B5
∅	WASHER	4	95A7	17	WASHER-LOCK	4	95B5
∅	WASHER-LOCK	4	95B7	18	PLUG, Manifold (1/8)	1	64AA6
∅	NUT	4	50B7	19	PLUG, Manifold (3/4)	1	64AA3
				20	PLUG, Manifold (3/8)	2	64AA4
∅	SHIM, to Motor (.003)	2	77E11	22	NIPPLE, Throttle Valve	1	63G1G
∅	SHIM, to Motor (.008)	3	77E12	23	TEE	1	64G7G
∅	SHIM, to Motor (.031)	1	77E13	∅	BUSHING	1	64E5
∅	SHIM, to Motor (.062)	1	77E14	24	NIPPLE	1	63F21G
				25	ELBOW	1	64D5G
∅	ADAPTOR, Discharge	1	1S12562	27	VALVE-SOLENOID	1	***
∅	GASKET, Adaptor	1	25C798	28	ELBOW, Safety Valve	1	64D6G
∅	SCREW, Adaptor (5/8 x 1-1/2)	4	75A29	29	VALVE-SAFETY (110#)	1	90G8
∅	WASHER-LOCK	4	95B7	29	VALVE-SAFETY (150#)	1	90G121
∅	COUPLING, Flexible (2")	1	64BC8	29	VALVE-SAFETY (165#)	1	90G33
4	ELBOW, Drain	1	64D6G	30	COVER-FILLER	1	7S90036
∅	PLUG-PIPE (3/4)	1	64AA3	31	SCREW	4	75A12
5	PLUG-FUSIBLE	1	64AN1	32	WASHER-LOCK	4	95B5
6	PLUG-MAGNETIC	1	64BJ4	33	O-RING	1	25W35
∅	NIPPLE (1/2 x 1-1/8)	1	63F21G	34	NIPPLE, Check Valve	1	63K2G
∅	TEE (1/2)	1	64G6G	35	VALVE-CHECK	1	90J112
				∅	BUSHING (1-1/2 x 3/4)	1	64E8
∅	VALVE-SAFETY (1/4)	1	2009384	∅	VALVE-THROTTLE (3/4)	1	90A25
7	GAUGE-FLOAT, Oil Level	1	27N24	∅	ELBOW (3/4)	1	64C5G
∅	GASKET, Float Gauge	1	54C204	36	PLATE, Bottom Cleanout	1	37S12536
8	SEPARATOR-OIL **	1	55A11	37	SCREW	8	75A12
9	GASKET, Separator	2	1S125715	38	WASHER-LOCK	8	95B5
10	PLATE	1	2011159	39	O-RING	1	25W60
11	SCREW	8	75A29				
12	GASKET, Plate	8	25F13				

∅ Not shown on illustration.

\* Models ES30A and ES30E use Oil Reservoir 6S12537; Model ES30D uses Oil Reservoir 9S12537.

\*\* For component parts of oil separator see page 18.

\*\*\* See Control Sheet.



E71910

FOR LIST OF PARTS SEE PAGE 15.

ORDER BY PART NUMBER AND DESCRIPTION. REFERENCE NUMBERS FOR YOUR CONVENIENCE ONLY.

REF. NO.	NAME OF PART	QTY. REQ. PER UNIT	MODELS ES30A ES30E	REF. NO.	NAME OF PART	QTY. REQ. PER UNIT	MODELS ES30A ES30E
	<u>OIL PIPING GROUP</u>		PART NO.		<u>OIL PIPING GROUP (Continued)</u>		PART NO.
	(Oil Reservoir to Oil Filter)						
1	NIPPLE	1	63G2G	31	TEE	1	64G7G
2	TEE	1	64G7G	32	ADAPTOR-HOSE, 90° Swivel	1	S12557
3	ADAPTOR-HOSE, Straight Male	1	29Q16	33	ASM HYDRAULIC HOSE	1	29R24
4	ASM HYDRAULIC HOSE	1	29R13	34	ELBOW-STREET (90°)	1	64D6G
5	ELBOW (90°)	1	64C5G	φ	PLUG (1/4)	1	64AA5
6	NIPPLE	1	63G30G		(Oil Pump to Reservoir - Overflow)		
7	ELBOW-STREET (90°)	1	64D6G	35	VALVE-RELIEF	1	90Q73
	(Oil Filter to Oil Cooler)			36	ASM HYDRAULIC HOSE	1	29R51
8	NIPPLE	1	63G30G	37	ADAPTOR-HOSE, 90° Male	1	29Q17
9	ELBOW-STREET (45°)	1	64V5G	38	ADAPTOR-HOSE, Straight Male	1	29Q16
10	ASM HYDRAULIC HOSE	1	29R24		(Oil Separator Return Line Tubing)		
11	ADAPTOR-HOSE, 90° Male	1	29Q17	39	ELBOW, 90° Male	1	86E59
12	ELBOW-STREET (90°)	1	64D6G	40	TUBE, Separator Outlet	1	S125857
13	TEE	1	64G7G	41	UNION	1	86E195
φ	NIPPLE (3/4 x 1-3/8)	1	63G1G	42	TUBE	1	85E4A355
14	ELBOW (90°)	1	64C5G	43	UNION	1	86E195
15	NIPPLE	1	64G35G	44	TUBE, Compressor Inlet	1	2S125857
	(Oil Cooler to Mixing Valve)			45	ELBOW, 90° Male	1	86E59
16	NIPPLE *	1	63G1G	46	ORIFICE	1	S125814
17	TEE *	1	64P20G	47	NIPPLE	1	63C13G
18	NIPPLE *	1	63N12X23G	48	ELBOW (45°)	1	64V1G
19	ELBOW-STREET (90°)	1	64D6G	49	NIPPLE	1	63C4G
	(Mixing Valve Group)				(Oil Reservoir Return Line Tubing)		
20	VALVE-THERMOSTATIC, Incl. Ref. #21, 22 & 23)	1	90K107	50	ELBOW, 90° Male	1	86E59
20A	SCREW, Valve to Bracket	4	75A26	52	TUBE, Reservoir Outlet	1	4S125857
20B	WASHER	4	95A1	53	UNION	1	86E195
20C	WASHER-LOCK	4	95B1	54	TUBE	1	85E4A355
φ	BRACKET-VALVE	1	71S12517	55	UNION	1	86E195
φ	SCREW, Bracket to Base	2	75A26	56	TUBE, Strainer Inlet	1	9S125857
φ	WASHER-LOCK	2	95B1	57	ELBOW, 90° Male	1	86E60
φ	NUT	2	50B1	58	BUSHING	1	64E1
21	ELEMENT	1	93C8	59	STRAINER, Oil Line	1	82A1
22	O-RING, Housing ††	1	2008013	60	U-BOLT	1	15U72
23	O-RING, Element	1	25W24	61	WASHER-LOCK	2	95B3
24	NIPPLE, Oil Cooler Bypass **	1	63N12X67G	62	NUT	2	50B3
25	UNION **	1	64Z10	63	ELBOW, 90° Male	1	86E60
26	NIPPLE **	1	63N12X67G	64	TUBE, Strainer to Compressor	1	8S125857
	(Mixing Valve to Oil Pump)			65	ELBOW, 90° Male	1	86E59
φ	ADAPTOR-HOSE, 90° Male	1	29Q17		(Oil Cooler Bleed Line Tubing) ***		
φ	ELBOW-STREET (90°)	1	64D6G	66	CONNECTOR, Straight Male	1	86E3
φ	NIPPLE (3/4 x 1-1/8)	1	63G1G	67	TUBE	1	5S125857
φ	TEE (3/4 x 3/4 x 1/4)	1	64P20G	68	CONNECTOR, Straight Male	1	86E4
φ	PLUG (1/4)	1	64AA5	φ	CLAMP-TUBE	1	98A5
φ	ADAPTOR-HOSE, Straight Male	1	29Q16	φ	SCREW, Tube Clamp (1/4 x 1/2)	1	75A32
27	ASM HYDRAULIC HOSE	1	29R12	φ	WASHER-LOCK	1	95B1
28	ELBOW-STREET (45°)	1	64X5G	φ	NUT	1	50B1
	(Oil Pump to Compressor)				(Oil Filter Group)		
29	ELBOW-STREET (90°)	1	64D6G	69	FILTER-OIL †	1	26A29
30	NIPPLE	1	63G1G	φ	SCREW, Filter to Base (7/16 x 1-1/2)	3	75A92
				φ	WASHER-LOCK	3	95B4
				φ	NUT	3	50B4

φ Not shown on illustration.

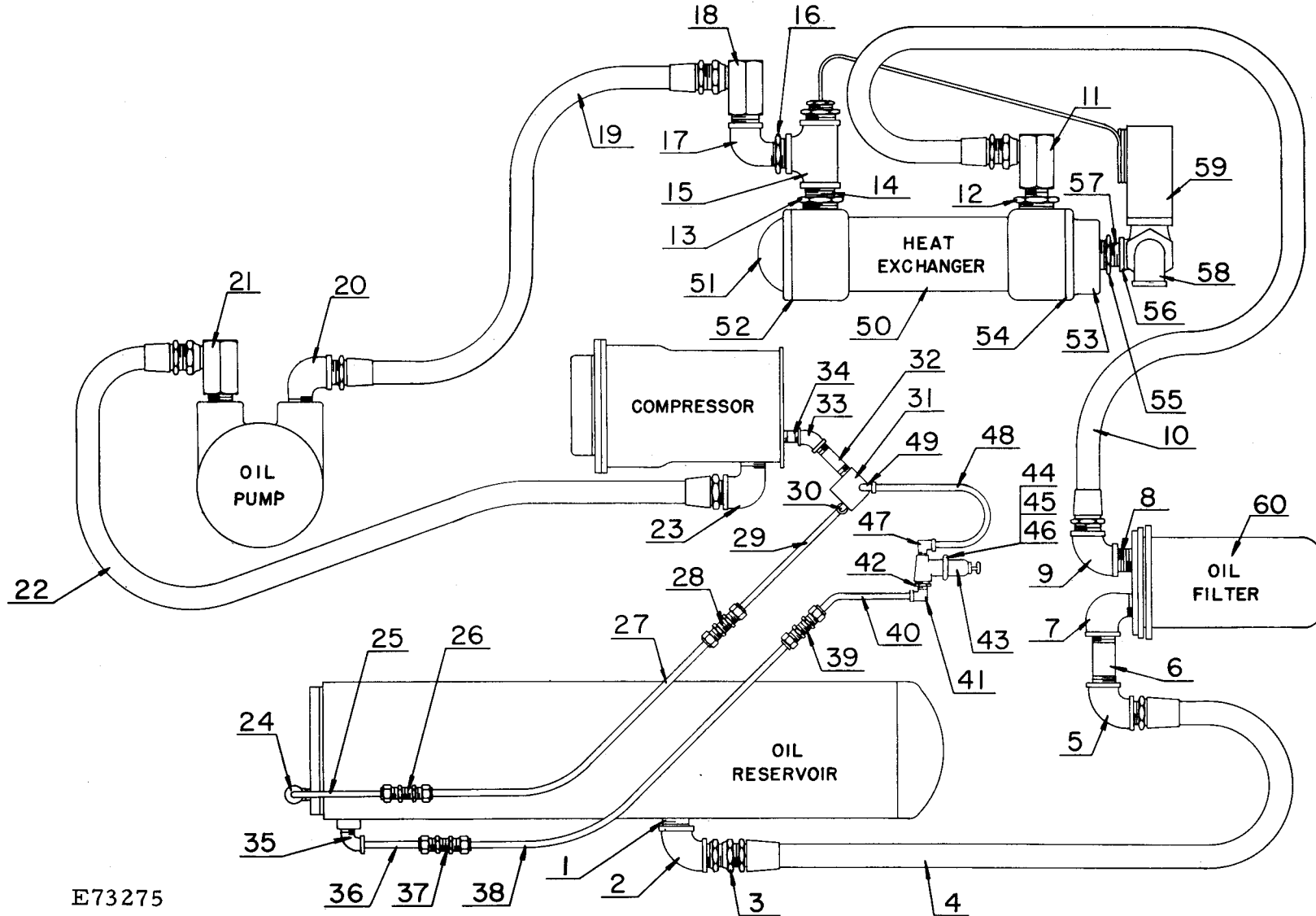
\* In later construction, bleed line has been eliminated. These three parts (Ref. No. 16, 17 and 18) are replaced by (1) Nipple 63G7G.

\*\* In later construction, these three parts (Ref. No. 24, 25 and 26) are replaced by (1) Hose Assembly 2009009 and (1) Adaptor 29Q16.

\*\*\* Oil cooler bleed line has been eliminated on later construction. Refer also to footnote (\*) on page 20.

† For component parts of oil filter see page 19.

†† Early design mixing valve housing used Flat Gasket 2008053; later design housing modified to accept O-ring.



E73275

FOR LIST OF PARTS SEE PAGE 17.

ORDER BY PART NUMBER AND DESCRIPTION. REFERENCE NUMBERS FOR YOUR CONVENIENCE ONLY.

REF. NO.	NAME OF PART	QTY. REQ. PER UNIT	MODEL ES30D
	<u>HEAT EXCHANGER &amp; OIL PIPING GROUP</u>		PART NO.
	(Oil Reservoir to Oil Filter)		
1	NIPPLE	1	63G2G
2	ELBOW (90°)	1	64C5G
3	ADAPTOR-HOSE, Straight Male	1	29Q16
4	ASM HYDRAULIC HOSE	1	29R13
5	ELBOW (90°)	1	64C5G
6	NIPPLE	1	63G30G
7	ELBOW-STREET (90°)	1	64D6G
	(Oil Filter to Heat Exchanger)		
8	NIPPLE	1	63G30G
9	ELBOW (90°)	1	64C5G
10	ASM HYDRAULIC HOSE	1	29R13
11	ADAPTOR-HOSE, 90° Swivel	1	S12557
φ	THERMOMETER, Inlet (1/4)	1	27H11
12	BUSHING	1	64E9G
	(Heat Exchanger to Oil Pump)		
13	BUSHING	1	64E12G
14	NIPPLE	1	63K15G
15	TEE	1	64G11G
16	BUSHING	2	64E8G
φ	NIPPLE, Outlet (3/4 x 1-3/8)	1	63G1G
17	TEE	1	64P14G
φ	PLUG (1/4)	1	64AA5
18	ADAPTOR-HOSE, 90° Female	1	29Q76
19	ASM HYDRAULIC HOSE	1	29R24
20	ELBOW-STREET (90°)	1	64D6G
φ	NIPPLE (3/4 x 3)	1	63G4G
	(Oil Pump to Compressor)		
21	ADAPTOR-HOSE, 90° Swivel	1	S12557
φ	PLUG (1/4)	1	64AA5
22	ASM HYDRAULIC HOSE	1	29R13
23	ELBOW-STREET (90°)	2	64D6G
	(Oil Separator Return Line Tubing)		
24	ELBOW, 90° Male	1	86E59
25	TUBE, Separator Outlet	1	1S125857
26	UNION	1	86E195
27	TUBE	1	85E4A355
28	UNION	1	86E195
29	TUBE, Compressor Inlet	1	2S125857
30	ELBOW, 90° Male	1	86E59
31	ORIFICE	1	S125814
32	NIPPLE	1	63C13G

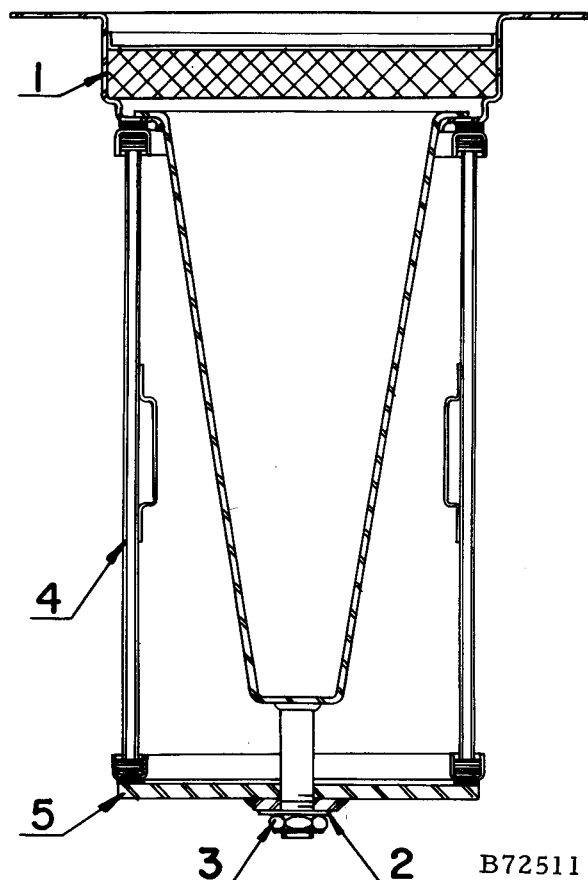
REF. NO.	NAME OF PART	QTY. REQ. PER UNIT	MODEL ES30D
	<u>HEAT EXCHANGER &amp; OIL PIPING GROUP (Continued)</u>		PART NO.
33	ELBOW (45°)	1	64V1G
34	NIPPLE	1	63C4G
	(Oil Reservoir Return Line Tubing)		
35	ELBOW, 90° Male	1	86E59
36	TUBE, Reservoir Outlet	1	4S125857
37	UNION	1	86E195
38	TUBE	1	85E4A355
39	UNION	1	86E195
40	TUBE, Strainer Inlet	1	9S125857
41	ELBOW, 90° Male	1	86E60
42	BUSHING	1	64E1
43	STRAINER, Oil Line	1	82A1
44	U-BOLT	1	15U72
45	WASHER-LOCK	2	95B3
46	NUT	2	50B3
47	ELBOW, 90° Male	1	86E60
48	TUBE, Strainer to Compressor	1	8S125857
49	ELBOW, 90° Male	1	86E59
	(Heat Exchanger Group)		
50	HEAT EXCHANGER, Incl. next 6 parts *	1	48C45
φ	ANODE-ZINC	2	2010283
φ	BRACKET (Mounting Band)	2	2010214
51	BONNET, Return	1	2010212
52	GASKET, Return	1	2010213
53	BONNET, 2-Pass	1	2010210
54	GASKET, 2-Pass	1	2010211
φ	SCREW, Band to Bracket (3/8 x 3/4)	4	75A5
φ	WASHER-LOCK	8	95B5
φ	BRACKET, Exchanger to Base	2	2011836
φ	SCREW, Bracket to Base (3/8 x 1)	4	75A1
	(Water Piping Group)		
55	BUSHING	1	64E8
56	TEE	1	64P14G
φ	PLUG (1/4)	1	64AA5
57	NIPPLE	2	63G1G
58	ELBOW-STREET (90°)	1	64D6G
59	REGULATOR, Water Temperature	1	90AC192
	(Oil Filter Group)		
60	FILTER-OIL **	1	26A29
φ	SCREW, Filter to Base (7/16 x 1-1/2)	3	75A92
φ	WASHER-LOCK	3	95B4
φ	NUT	3	50B4

φ Not shown on illustration.

\* Heat exchanger and connections originally furnished are no longer available. Exchanger shown above is NOT interchangeable. For repairs on models with earlier construction, order Kit #2012497 which includes Heat Exchanger 48C45 and mounting parts.

\*\* For component parts of oil filter see page 19.

Order by Part Number and Description. Reference Numbers for your convenience only.

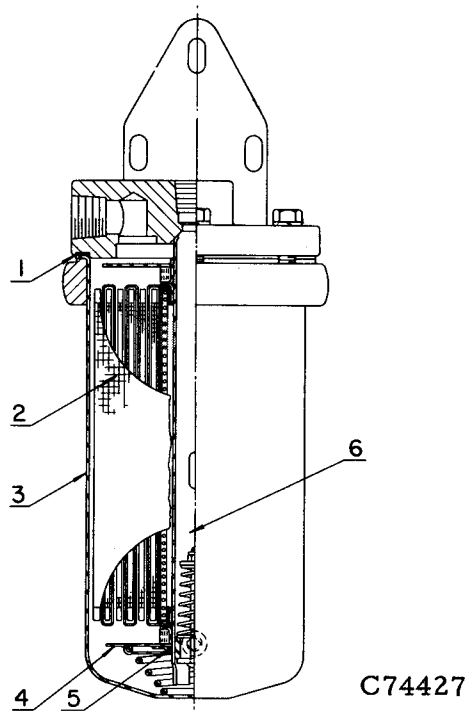


REF. NO.	NAME OF PART	QTY. REQ. PER SEP.	MODELS ES30A ES30D ES30E
	<u>OIL SEPARATOR</u>		PART NO.
1	SEPARATOR-OIL (Complete)	1	55A11
2	FILTER	1	2008113
3	WASHER	1	2008028
4	NUT	1	2008756
5	ELEMENT KIT *	1	2008116
	COVER	1	2008697
	GASKET KIT **	1	2008112

\* Element kit includes bonded gaskets and Ref. No. 2 and 3. When replacing element, also order (2) Separator Gaskets 1S125715 and Manifold Gasket 25C2444 shown on page 13 (Ref. No. 9 and 14).

\*\* Gaskets are bonded to element but may be purchased separately. Kit includes (2) gaskets and bonding agent. These are not referenced on illustration.

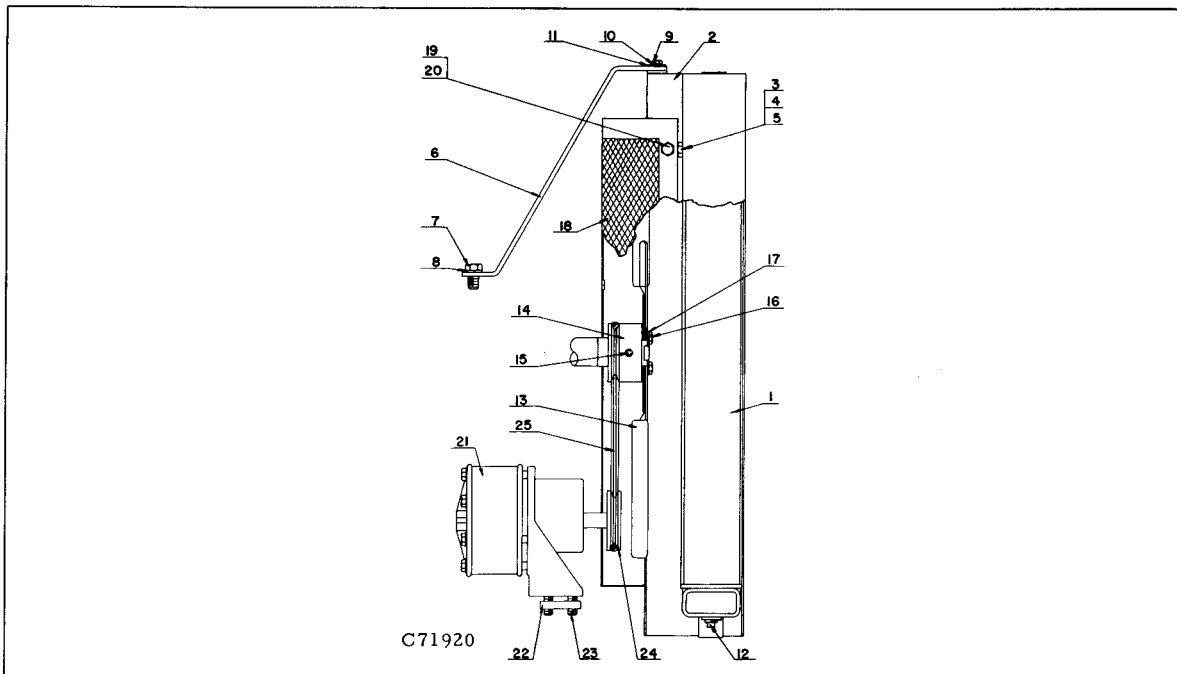
Order by Part Number and Description. Reference Numbers for your convenience only.



REF. NO.	NAME OF PART	QTY. REQ. PER FILTER	MODELS ES30A ES30D ES30E
<u>OIL FILTER 26A29</u> (See Note) *			PART NO.
1	GASKET, Cover	1	54C165
2	ASM ELEMENT (with Gasket)	1	5E29
3	ASM SHELL (with Bolt Ring)	1	2008810
4	ASM PRESSURE PLATE & SPRING, Incl. Ref. #5	1	2008033
5	RING-SEAL	1	25W21
6	ASM SPOOL (with Bypass) *	1	2008598

\* Earlier models had ball relief valve in spool. Replacement parts for this type are no longer available. Spool assembly shown above includes poppet type valve and is interchangeable with earlier construction spool containing the ball relief valve.

ORDER BY PART NUMBER AND DESCRIPTION. REFERENCE NUMBERS FOR YOUR CONVENIENCE ONLY.



REF. NO.	NAME OF PART	QTY. REQ. PER UNIT	MODELS ES30A ES30E
<u>OIL COOLER, OIL PUMP &amp; FAN GROUPS</u>			PART NO.
1	COOLER-OIL *	1	8A94
2	SHROUD	1	2S125647
3	SCREW, Cooler to Shroud	6	75A33
4	WASHER-LOCK	6	95B2
5	NUT	6	50B2
φ	SCREW, Shroud to Base (5/16 x 1)	2	75A10
φ	WASHER-LOCK	2	95B2
φ	NUT	2	50B2
6	BRACKET	1	56S12517
7	SCREW, Bracket to Compressor	1	75A136
8	WASHER-LOCK	1	95B5
9	SCREW, Bracket to Shroud	1	75A25
10	WASHER	1	95A1
11	WASHER-LOCK	1	95B1
φ	ELBOW-STREET (1/4)	2	64D2G
12	PLUG, Drain (1/4)	2	64AA5
13	FAN	1	9B74
14	HUB	1	3S12548
15	PIN, Hub to Shaft	1	62R176
16	SCREW, Fan Hub	4	75A33
17	WASHER-LOCK	4	95B2
18	GUARD-FAN	1	3S125977
19	SCREW, Guard to Shroud	4	75A185
20	WASHER-LOCK	4	95B1
21	PUMP-OIL **	1	46C53
φ	GUARD-AUXILIARY, Oil Pump †	1	2013134
22	PLATE, Retainer	1	S125706
23	SCREW, Pump to Base	4	75A92
φ	WASHER-LOCK (7/16)	4	95B4
24	SHEAVE	1	73N13V30
φ	HUB, Sheave	1	22E12A
φ	KEY, Hub (3/16 x 3/4 Woodruff)	1	35D2
25	BELT, Oil Pump Vee	1	13N3551

\* The oil cooler bleed line has been eliminated in later construction. The opening is closed with a 1/4" Plug, part number 64AA5.

\*\* For repairs to oil pump gasket and seal, order part number 2008953; for housing gasket order part number 2008916.

† Auxiliary Guard mounting parts included two (2) each: 75A68 Screw (3/8 x 5/8), 95B3 Lock Washer and 95A3 Plain Washer.

# SALES AND SERVICE OFFICES

## UNITED STATES and MEXICO

ATLANTA (STONE MOUNTAIN), GEORGIA - 30083  
1545 Mountain Industrial Blvd.  
BAKERSFIELD, CALIFORNIA - 93308  
3506 Gilmore Avenue  
BALTIMORE (ILLICOTT CITY), MARYLAND - 21043  
3515 Chevrolet Drive  
BIRMINGHAM, ALABAMA - 35209  
817 Green Springs Highway  
BOISE, IDAHO - 83706  
3422 American Terrace  
BOSTON (NEEDHAM HEIGHTS), MASSACHUSETTS - 02194  
65 Crawford Street  
BUFFALO, NEW YORK - 14226  
4532 Bailey Avenue  
BUTTE, MONTANA - 59701  
215 East Park Street  
CASPER, WYOMING - 82501  
310 North 2nd Avenue  
CHARLESTON, WEST VIRGINIA - 25301  
1018 Kanawha Blvd., E.  
CHARLOTTE, NORTH CAROLINA - 28211  
723 South Sharon Amity Road  
CHICAGO (BROADVIEW), ILLINOIS - 60153  
2535 S. 25th Avenue  
CINCINNATI (SPRINGDALE), OHIO - 45246  
12145 Centron Place  
CLEVELAND, OHIO - 44125  
5400 Warner Road  
CORONA, NEW YORK - 11368  
110 - 34 Corona Avenue  
CORPUS CHRISTI, TEXAS - 78408  
4512 Baldwin Blvd.  
DALLAS, TEXAS - 75210  
4700 Scvenc Road  
DENVER, COLORADO - 80216  
3801 East 50th Avenue  
DETROIT (OAK PARK), MICHIGAN - 48237  
12700 Capital Avenue  
DULUTH, MINNESOTA - 55811  
3185 Miller Trunk Highway  
EL PASO, TEXAS - 79902  
1230 Wyoming Avenue  
GRAND JUNCTION, COLORADO - 81501  
2909 North Avenue  
HARTFORD (BLOOMFIELD), CONNECTICUT - 06002  
81 Old Windsor Road  
HIALEAH, FLORIDA - 33013  
3630 East 10th Court  
HOUSTON, TEXAS - 77027  
3325 South Rice Avenue  
INDIANAPOLIS, INDIANA - 46203  
2228 Shelby Street

KANSAS CITY (SHAWNEE MISSION), KANSAS - 66201  
9101 Bond Street  
KNOXVILLE, TENNESSEE - 37917  
709 North Fifth Avenue  
LAFAYETTE, LOUISIANA - 70501  
200 Vanway Street  
LOS ANGELES (WHITTIER), CALIFORNIA - 90601  
2555 Pellissier Place  
LOUISVILLE, KENTUCKY - 40207  
4050 Westport Road  
MILWAUKEE, WISCONSIN - 53209  
5148 North Teutonia Avenue  
MINNEAPOLIS, MINNESOTA - 55431  
1701 West 80th Street  
NEW ORLEANS (HARVEY), LOUISIANA - 70058  
1130 Destrehan Avenue  
NEW YORK DOMESTIC (MAHWAH, NEW JERSEY) - 07430  
386 State Highway No. 17  
ODESSA, TEXAS - 79760  
East Highway 80  
OKLAHOMA CITY, OKLAHOMA - 73129  
2200 South Prospect Avenue  
PHILADELPHIA (HORSHAM) PENNSYLVANIA - 19044  
406 Caredean Drive  
PHOENIX, ARIZONA - 85009  
2020 N. Black Canyon Highway  
PITTSBURGH, PENNSYLVANIA - 15205  
Parkway West - 4498 Campbells Run Road  
QUINCY, ILLINOIS - 62301  
Gardner Expressway  
ST. LOUIS (HAZELWOOD), MISSOURI - 63042  
6011 N. Lindbergh Blvd.  
SALT LAKE CITY, UTAH - 84115  
35 West Louise Avenue  
SAN DIEGO, CALIFORNIA - 92123  
5345 Overland Avenue  
SAN FRANCISCO (SOUTH SAN FRANCISCO), CALIFORNIA - 94080  
144 West Harris Avenue  
SEATTLE, WASHINGTON - 98104  
623 Eighth Avenue, South  
SHREVEPORT, LOUISIANA - 71107  
1025 Joseph Street  
TOLEDO, OHIO - 43614  
2415 S. Byrne Road  
TULSA, OKLAHOMA - 74145  
4259 So. 76th East Avenue  
WALLACE, IDAHO - 83873  
502 Bank Street  
MEXICO 1, D. F. MEXICO  
Apartado 575

## CANADA

### GARDNER-DENVER COMPANY (CANADA), LIMITED

EDMONTON, ALBERTA - 9835 - 42 Ave.  
MONCTON, NEW BRUNSWICK - East Main St.  
MONTREAL 28, QUEBEC - 5825 St. James St., West  
NELSON, BRITISH COLUMBIA - 808 Railway St.  
NORTH BAY, ONTARIO - 693 Cassells St.

SUDBURY, ONTARIO - 1869 LaSalle Blvd., East  
TORONTO (SCARBOROUGH), ONTARIO -  
1800 Ellesmere Road  
VANCOUVER 9, BRITISH COLUMBIA - 1775 Pine St.  
WINNIPEG 21, MANITOBA - 1380 Sargent Ave.

## INTERNATIONAL

### GARDNER-DENVER INTERNATIONAL -- QUINCY, ILLINOIS GARDNER-DENVER INTERNATIONAL -- 233 Broadway, New York, N. Y.

ARGENTINA -- BUENOS AIRES  
AUSTRALIA -- SYDNEY, MELBOURNE, HOBART, BRISBANE,  
ADELAIDE, PERTH, KALGOORLIE, MOUNT ISA  
BELGIUM -- BRUSSELS  
BRAZIL -- BELO HORIZONTE, RIO DE JANEIRO,  
SAO PAULO  
CHILE -- SANTIAGO  
COLUMBIA -- BARRANQUILLA  
ENGLAND -- LONDON  
GREECE -- ATHENS

HOLLAND -- SCHIPHOL  
ITALY -- MILAN  
NEW ZEALAND -- OTARA (AUCKLAND)  
PERU -- LIMA  
SINGAPORE -- SINGAPORE  
SOUTH AFRICA -- JOHANNESBURG,  
PORT ELIZABETH, CAPE TOWN  
SWEDEN -- STOCKHOLM  
VENEZUELA -- CARACAS, PUERTO ORDAZ  
ZAMBIA -- NDOLA

## FACTORIES

DALLAS, TEXAS  
DENVER, COLORADO  
GRAND HAVEN, MICHIGAN  
GREEN BAY, WISCONSIN  
LA GRANGE, MISSOURI  
QUINCY, ILLINOIS

REED CITY, MICHIGAN  
YORK, PENNSYLVANIA  
JOHANNESBURG, S. AFRICA  
RIO DE JANEIRO, BRAZIL  
WOODSTOCK, ONTARIO, CANADA  
WESTHAUSEN, GERMANY



# GARDNER-DENVER COMPANY

QUINCY, ILLINOIS