

13-9-501
1st EDITION
Supersedes SO-40
November, 1969

ELECTRA-SCREW [®]

STATIONARY

COMPRESSOR

MODELS ES40C

ES40D

Parts List

13-9-501



GARDNER-DENVER COMPANY

QUINCY, ILLINOIS

INDEX

<u>SUBJECT</u>	<u>PAGE NO.</u>
Air Filter (Standard)	7
Air Filter (Heavy Duty)	9
Air Filter Mounting Group (Heavy Duty)	8
Bare Compressor, Field Replacement (Footnote)	5
Compressor	3, 4, 5
Control Group	24, 25
Coupling Group	20
Discharge Valve	10, 11
Fan Drive Group	16
Gasket Kits	21
Heat Exchanger	18, 19
Inlet Valve Group	6
Instrument Panel Group	22, 23
Motor & Accessories	21
Oil Filter	17
Oil Piping Group (Air Cooled Units)	14, 15
Oil Piping Group (Water Cooled Units)	18, 19
Oil Reservoir Group	10, 11
Oil Separator	12
Ordering Instructions	2
Radiator	16
Rotor Shaft Seal	5
Spare Parts Kits	26
Valve, Minimum Discharge Pressure	13
Valve, Mixing	15
Valve, Oil Restriction Flow Control	15, 19
Valve, Safety	11
Valve, Solenoid Dump	25

INSTRUCTIONS FOR ORDERING REPAIR PARTS

When ordering parts, specify Compressor MODEL and SERIAL NUMBER (see name plate on unit). Serial Number is also stamped on top of the cylinder flange to the right of the inlet housing.

All orders for Parts should be placed with the nearest Sales and Service Office listed on the back cover of this book.

Reference numbers shown in the left hand column of the Parts Lists are used to help locate the parts shown on the Drawings and Sectional Views. DO NOT ORDER BY REFERENCE NUMBERS.

After locating the reference number, the part number may be found for your particular compressor unit under the correct Model Number column.

Specify exactly the number of parts required (see column "Qty. Req. Per Unit"). DO NOT ORDER BY SETS.

To determine the Right Hand and Left Hand side of an Electra-Screw[®] compressor, stand at the motor end and look toward the compressor.

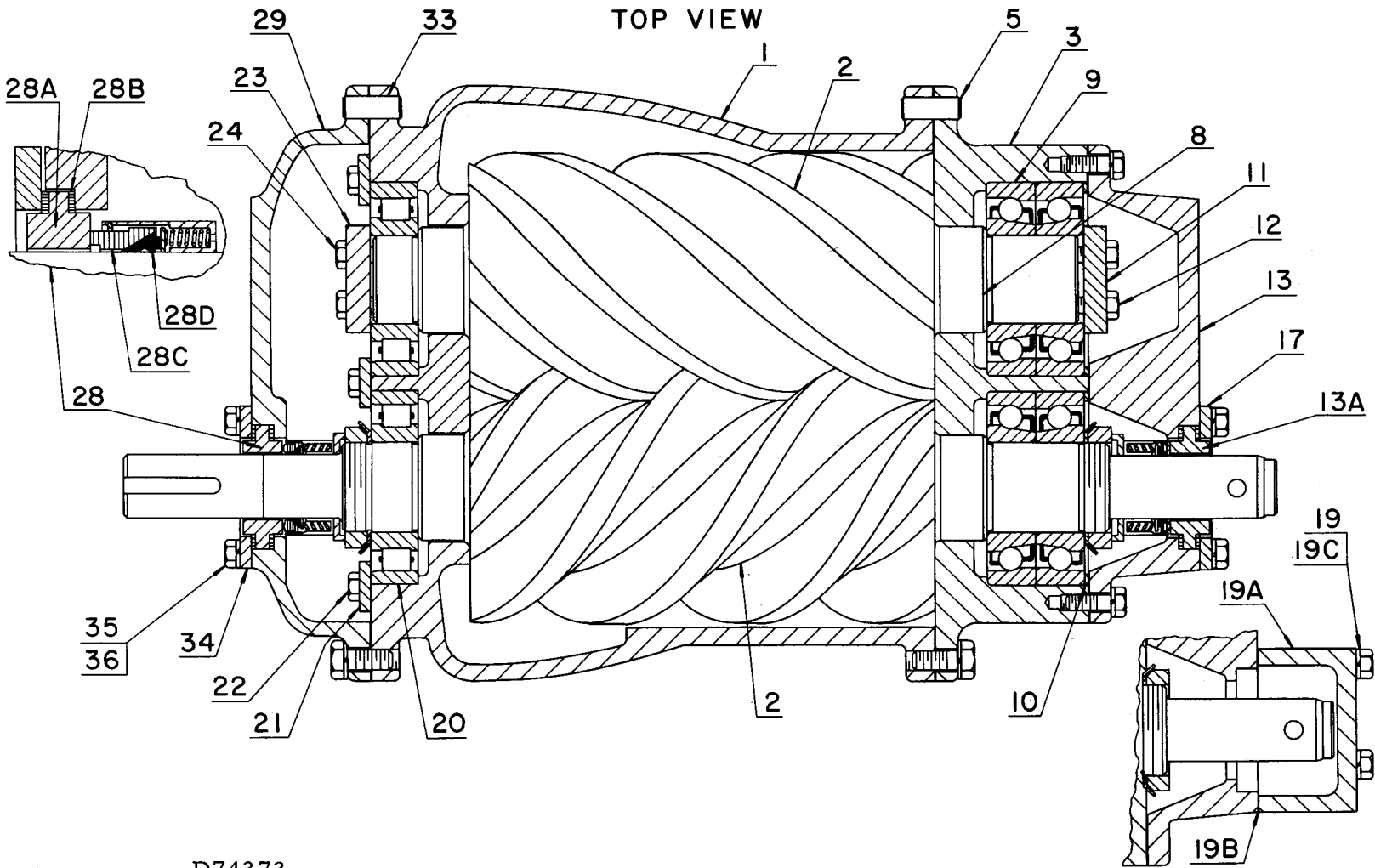
PARTS RETURNED

All claims must be made within five days after receipt of goods. If order has been filled correctly, we cannot allow the return of the goods without our consent and then only on a basis of a charge for service and rehandling plus transportation charges.

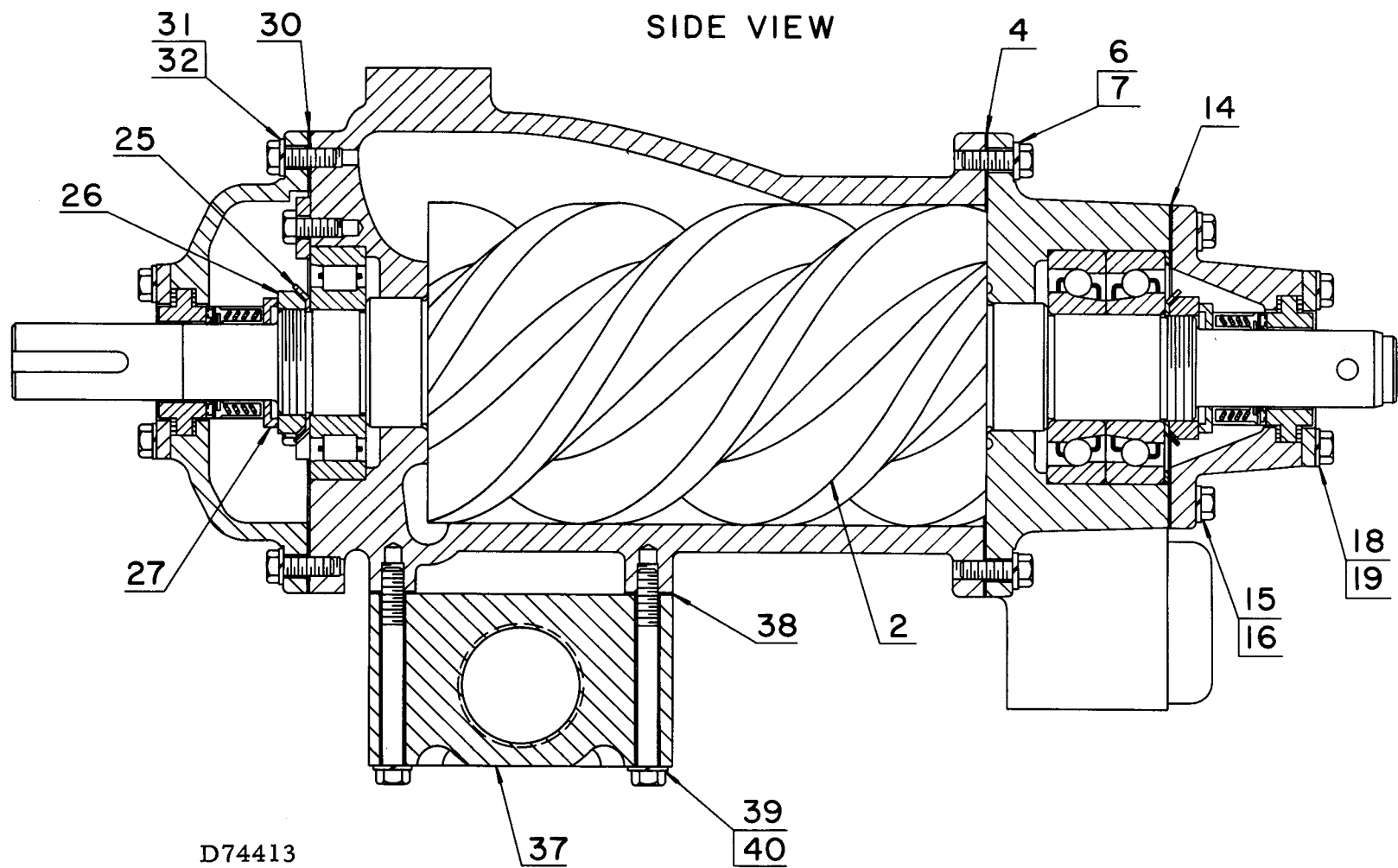
Transportation charges must be prepaid. If it is necessary to return a part to the factory for duplication or inspection, do not fail to do the following:

1. Write the nearest Sales and Service Office a letter advising what material you wish to return and why.
2. After receiving permission to return the item or items, obtain from the Sales and Service Office the correct forms filled out by that office for the proper return of material.
3. Place a tag in the package showing your name and address.
4. Tag each article in the box or package stating what and how many are returned.
5. Always give the serial number of the machine from which the parts were removed or the invoice number on which the parts were originally shipped.

All parts returned for credit should be handled in the same manner as that for duplication or inspection.



FOR LIST OF PARTS SEE PAGE 5.



FOR LIST OF PARTS SEE PAGE 5.

ORDER BY PART NUMBER AND DESCRIPTION. REFERENCE NUMBERS FOR YOUR CONVENIENCE ONLY.

REF. NO.	NAME OF PART	QTY. REQ. PER UNIT	MODEL ES40C	MODEL ES40D
	<u>COMPRESSOR †</u>		PART NO.	PART NO.
1	CYLINDER	1	2006996	2006996
2	ASM ROTOR (Matched Pair)	1	2007002	2007002
3	HOUSING-BEARING	1	2S12527	2S12527
∅	PLUG, Bearing Housing (1/8)	1	64AA6	64AA6
4	GASKET	1	2007064	2007064
5	PIN-DOWEL	2	62M83	62M83
6	SCREW (3/8 x 1)	11	75A1	75A1
∅	SCREW (3/8 x 1-1/4)	1	75A2	75A2
7	WASHER-LOCK	12	95B3	95B3
8	SHIM, Rotor Bearing	2	77C27	77C27
9	BEARING-BALL, Angular Contact	4	12AD8	12AD8
10	SPACER, Bearing	2	77A482	77A482
11	PLATE-BEARING RETAINER	1	1S12515	1S12515
12	SCREW, Retainer Plate	3	75A1N	75A1N
13	PLATE-BEARING COVER (Discharge End)	1	2006999	2006999
∅	PLUG, Cover Plate (1/2)	1	64AC4G	64AC4G
∅	PIN-DOWEL	2	62M35	62M35
13A	SEAL-SHAFT (Discharge End) *	1	60BP25	None
14	GASKET	1	25C2419	25C2419
15	SCREW	12	75A1	75A1
16	WASHER-LOCK	12	95B3	95B3
17	PLATE, Shaft Seal (Discharge End)	1	2007062	None
18	SCREW	4	75A5	None
19	WASHER-LOCK	4	95B3	95B3
19A	COVER-SHAFT EXTENSION	1	None	2007063
19B	GASKET	1	None	2007061
19C	SCREW	4	None	75A37

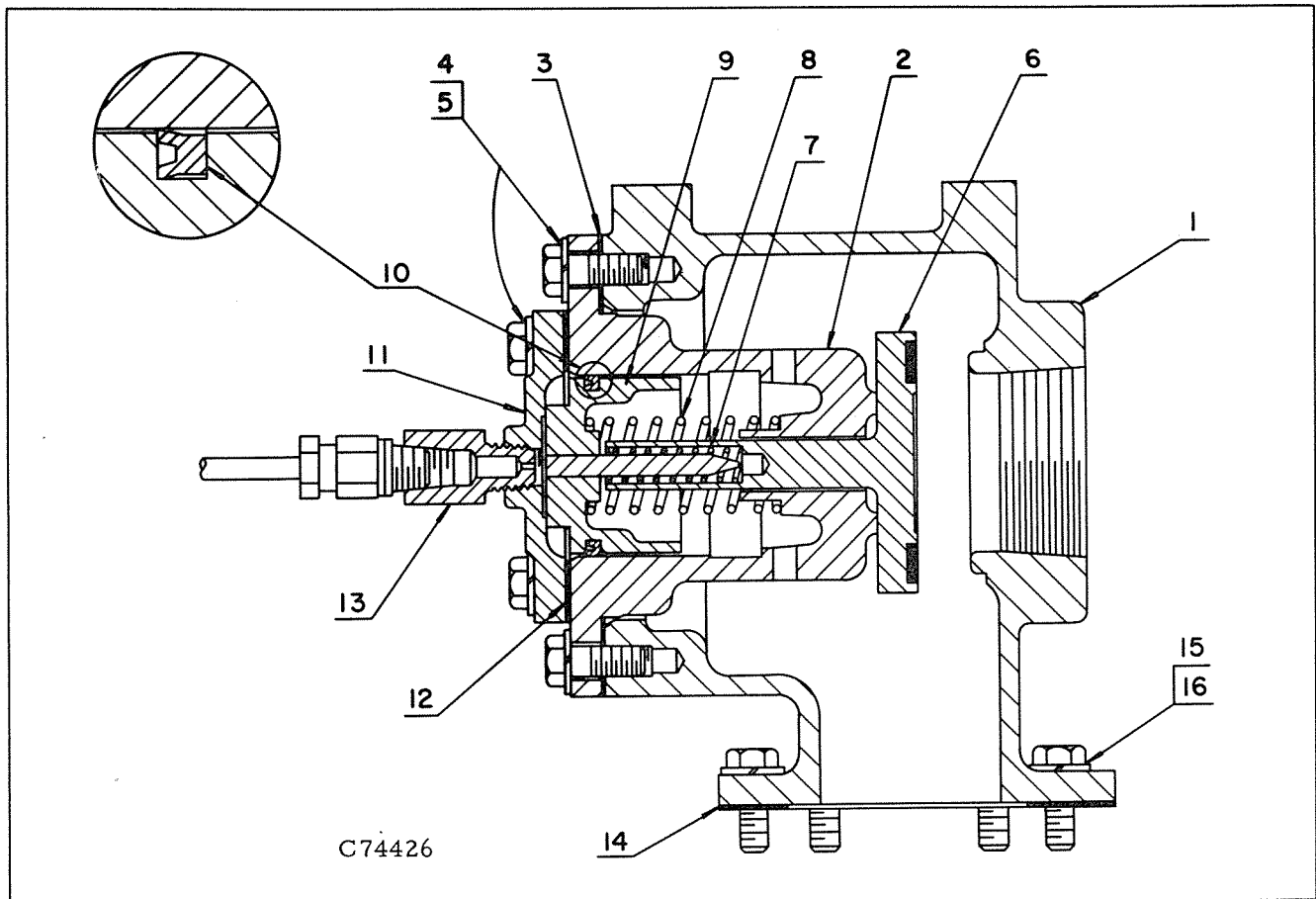
REF. NO.	NAME OF PART	QTY. REQ. PER UNIT	MODEL ES40C	MODEL ES40D
	<u>COMPRESSOR † (Continued)</u>		PART NO.	PART NO.
20	BEARING-ROLLER	2	12W64	12W64
21	RETAINER	5	2014731	2014731
22	SCREW	5	75A5N	75A5N
23	PLATE-BEARING RETAINER	1	1S12515	1S12515
24	SCREW	3	75P55N	75P55N
25	LOCKWASHER-BEARING	2	95N10	95N10
26	LOCKNUT-BEARING	2	50Z10	50Z10
27	SPACER-SHAFT SEAL	See ()	1S1258 (2)	1S1258 (1)
28	SEAL-SHAFT (Inlet End)	1	60BP25	60BP25
28A	DISC	1	54C237	54C237
28B	GASKET, Seat	2	54C234	54C234
28C	WASHER, Carbon	1	54C199	54C199
28D	RING, Teflon	1	54C200	54C200
29	PLATE-BEARING COVER (Inlet End)	1	2007000	2007000
30	GASKET	1	2006993	2006993
31	SCREW	14	75A1	75A1
32	WASHER-LOCK	14	95B3	95B3
33	PIN-DOWEL	2	62M83	62M83
34	PLATE, Shaft Seal (Inlet End)	1	2007062	2007062
35	SCREW	4	75A5	75A5
36	WASHER-LOCK	4	95B3	95B3
37	PLATE, Oil Sump	1	2006997	2006997
38	GASKET	1	2006998	2006998
39	SCREW	6	75A225	75A225
40	WASHER-LOCK	6	95B3	95B3
∅	BUSHING (2 x 1/4)	1	64E60	64E60
∅	PLUG (1/8)	4	64AC1	64AC1

† Bare Compressor (Field Replacement): for Model ES40C order 2011949; for Model ES40D order 2011950.

∅ Not shown on illustration.

* Internal parts are same as those shown for inlet end shaft seal (Ref. No. 28).

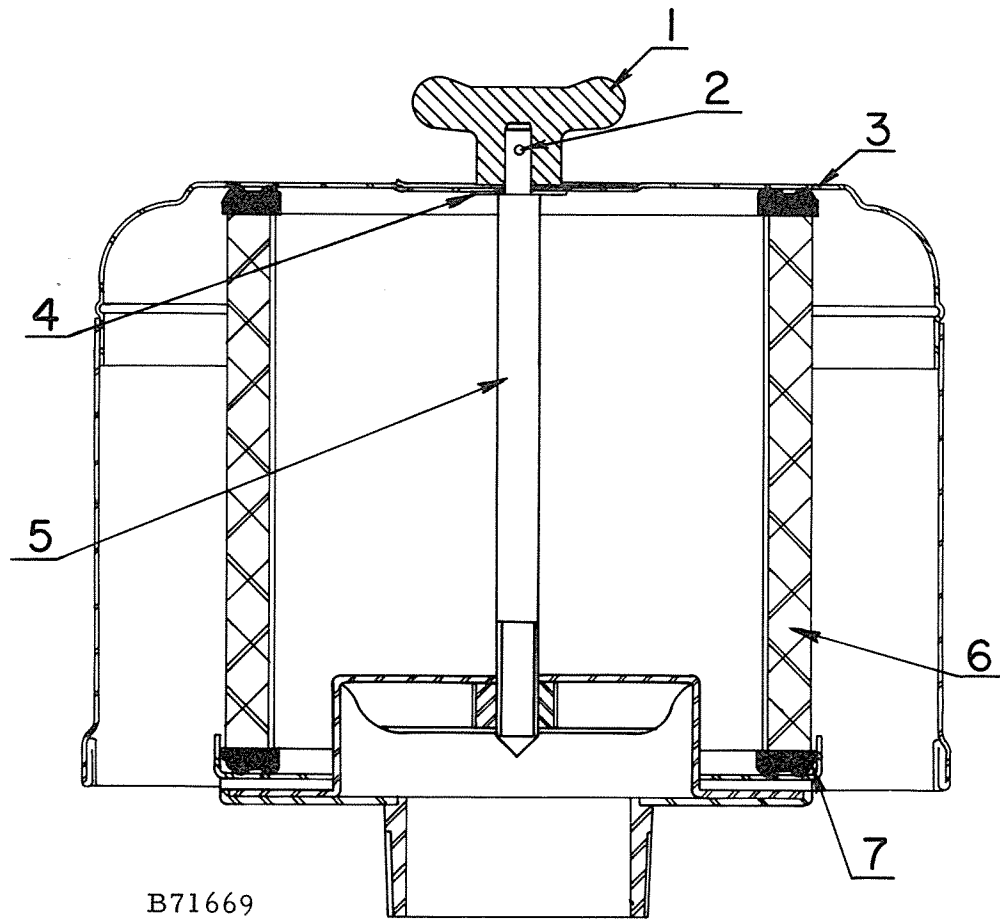
Order by Part Number and Description. Reference Numbers for your convenience only.



REF. NO.	NAME OF PART	QTY. REQ. PER UNIT	MODELS ES40C ES40D
	<u>INLET VALVE GROUP</u>		PART NO.
	ASM INLET HOUSING & VALVE, Incl. Ref. #1 thru 13	1	2007343
1	HOUSING-INLET	1	2007065
2	CYLINDER	1	1S12542
3	GASKET, Cylinder	1	25C2049
4	SCREW, Cap & Cylinder	12	75A1
5	WASHER-LOCK	12	95B3
6	VALVE-INLET	1	S12544
7	SPRING, Valve	1	78A362
8	SPRING, Piston	1	78A387
9	PISTON	1	1S12543A
10	PACKING-RING, Vee Block	1	60AM44
11	CAP-CYLINDER	1	R125274
12	GASKET, Cylinder Cap	1	25C2050
13	ORIFICE	1	2011768
14	GASKET, Housing	1	25C2426
15	SCREW, Housing to Compressor	6	75A1
16	WASHER-LOCK	6	95B3

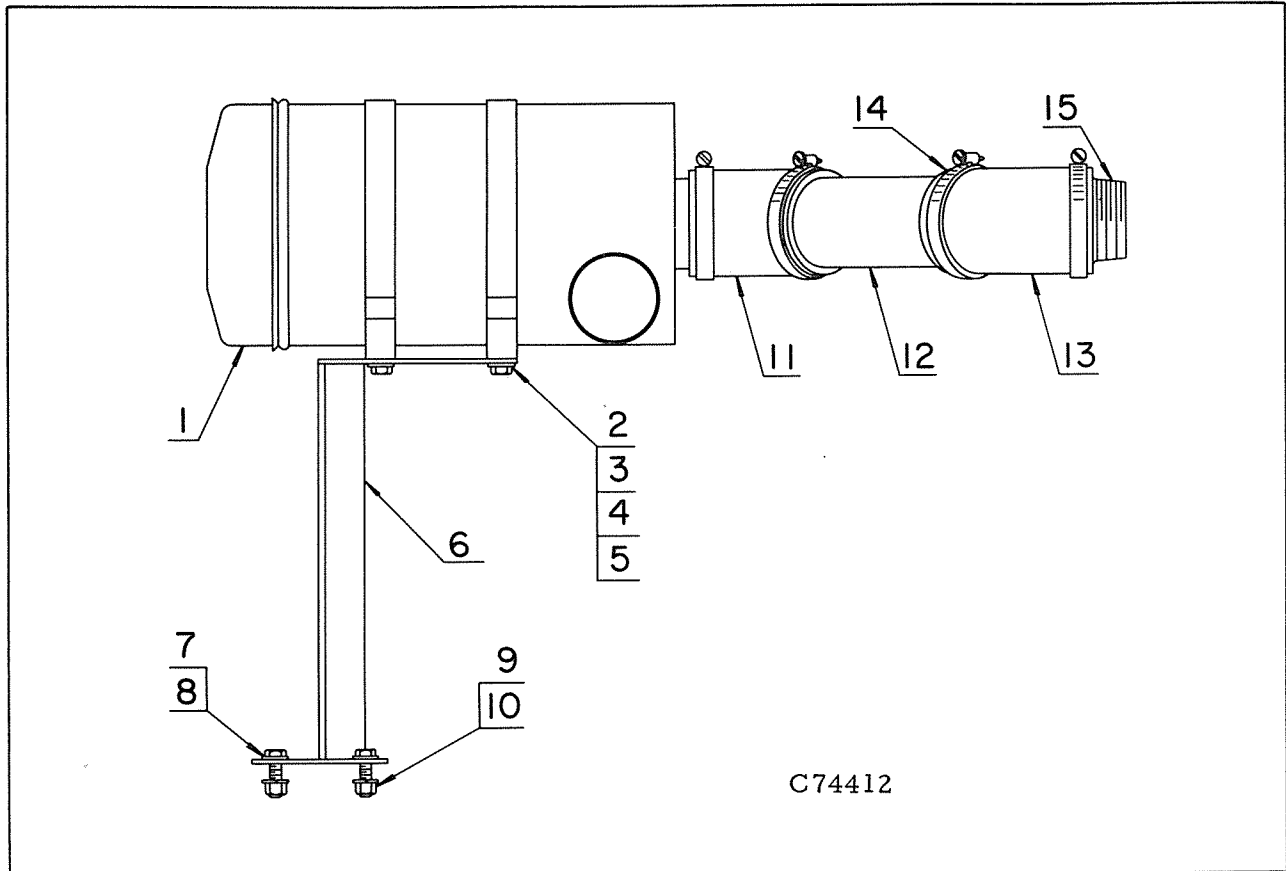
∅ Not shown on illustration.

Order by Part Number and Description. Reference Numbers for your convenience only.



REF. NO.	NAME OF PART	QTY. REQ. PER UNIT	MODELS ES40C ES40D
<u>STANDARD AIR FILTER</u>			PART NO.
	FILTER-AIR (Complete)		5A392
1	NUT-WING	1	2008749
2	PIN, Cross	1	2008750
3	HOOD	1	2008751
4	WASHER	1	2008752
5	STEM	1	2008753
6	ELEMENT (with Gaskets)	1	2008219
7	TRAY, Base	1	2008755

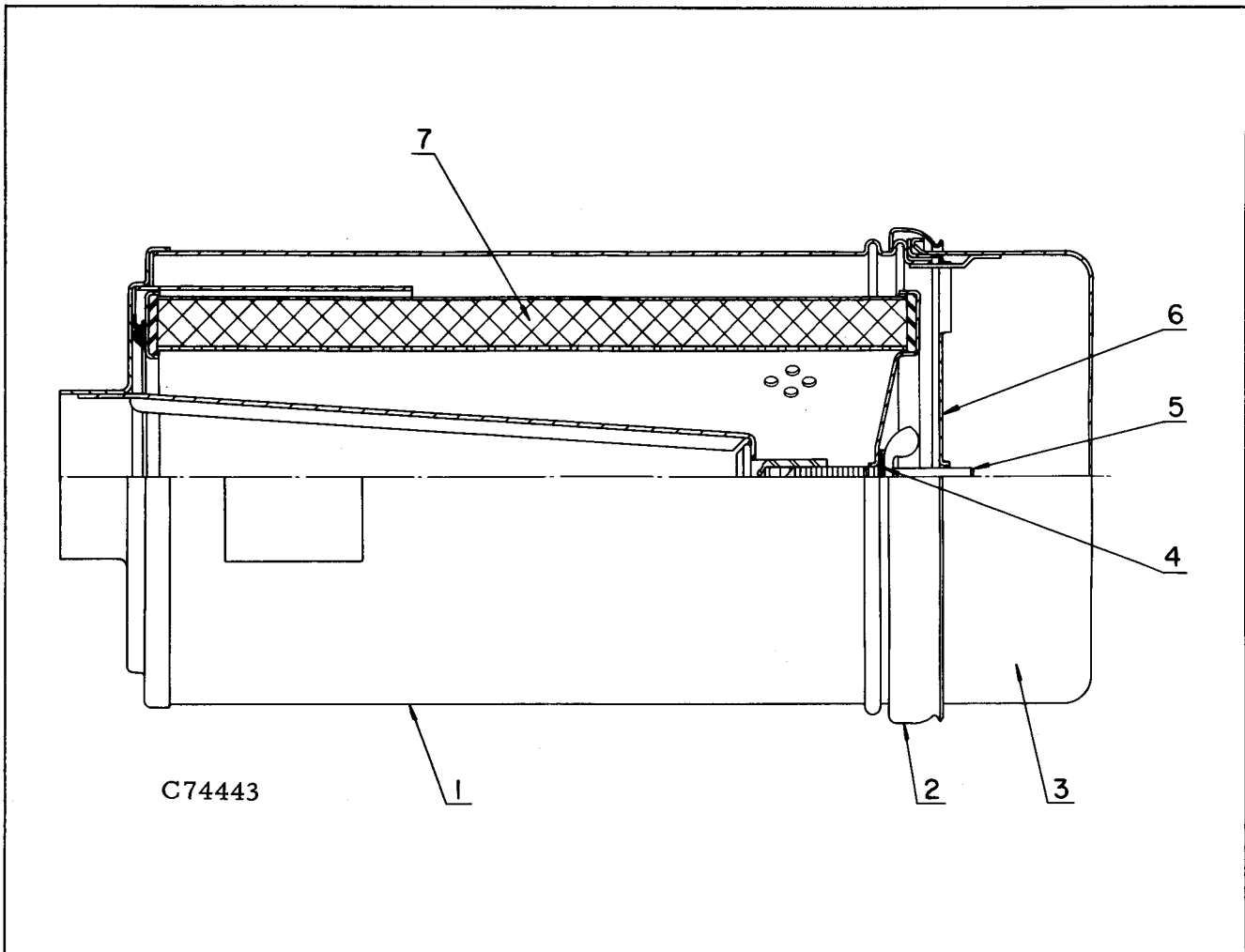
Order by Part Number and Description. Reference Numbers for your convenience only.



REF. NO.	NAME OF PART	QTY. REQ. PER UNIT	MODELS ES40C ES40D
	<u>HEAVY DUTY AIR FILTER GROUP</u> (Optional Equipment)		PART NO.
1	FILTER-AIR, Heavy Duty *	1	5B476
2	SCREW, Filter to Bracket	4	75A1
3	WASHER	4	95A3
4	WASHER-LOCK	4	95B3
5	NUT	4	50B3
6	BRACKET-FILTER	1	2012454
7	SCREW, Bracket to Reservoir	2	75A2
8	WASHER	2	95A3
9	WASHER-LOCK	2	95B3
10	NUT	2	50B3
11	HOSE-MOLDED	1	2009598
12	TUBE	1	2012453
13	HOSE-MOLDED	1	2009598
14	CLAMP-HOSE	4	29B34
15	CONNECTOR	1	2012452

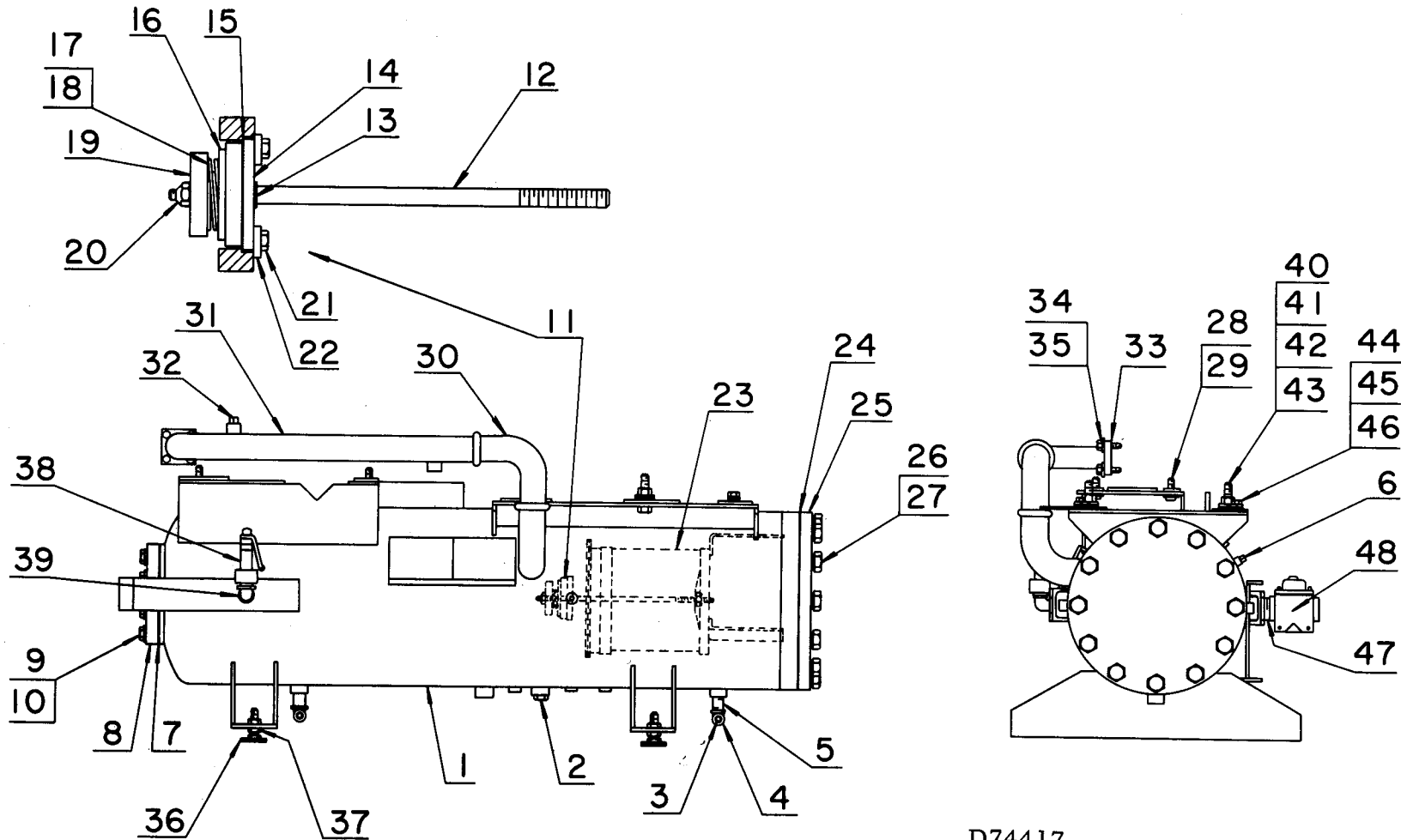
* For component parts of heavy duty air filter see page 9.

Order by Part Number and Description. Reference Numbers for your convenience only.



REF. NO.	NAME OF PART	QTY. REQ. PER UNIT	MODELS ES40C ES40D
	<u>HEAVY DUTY AIR FILTER</u> (Optional Equipment) *		PART NO.
1	FILTER-AIR (Complete)		5B476
2	ASM CLAMP	1	**
3	BOWL	1	**
4	WASHER, Seal	1	2010230
5	BOLT-WING (Special)	1	2010229
6	PLATE, Louver	1	**
7	ASM ELEMENT	1	2010228

* When required, this filter (together with mounting group on previous page) replaces standard filter shown on page 7.
 ** Not normally furnished for repair.



D74417

FOR LIST OF PARTS SEE PAGE 11.

ORDER BY PART NUMBER AND DESCRIPTION. REFERENCE NUMBERS FOR YOUR CONVENIENCE ONLY.

REF. NO.	NAME OF PART	QTY. REQ. PER UNIT	MODELS ES40C ES40D
	<u>OIL RESERVOIR GROUP</u>		PART NO.
1	RESERVOIR-OIL (with Air Receiver)	1	2007157
2	PLUG-MAGNETIC (3/4)	1	64BJ4G
3	PLUG, Oil Drain (3/4)	4	64AA3G
4	TEE	2	64G7G
5	NIPPLE	2	63G1G
6	PLUG, Separator Pressure Check (1/8)	2	64AA6G
7	GASKET	1	25C1988
8	FLANGE-BLIND, Receiver End	1	2009290
9	SCREW	8	75A43
10	WASHER-LOCK	8	95B7
11	ASM DISCHARGE VALVE, Incl. Ref. #12 thru 20	1	2011102
12	ROD	1	2011101
13	WIRE, Lead	1	97A26
14	SEAT	1	2007082
15	GASKET-RING	1	2009517
16	DISC-VALVE	1	2007104
17	SPRING	1	78A401
18	GUIDE-LIFT	1	2007102
19	BUMPER	1	2007106
20	LOCKNUT	1	50V44
21	SCREW, Valve Mounting	4	75A68N
22	RETAINER	4	2014731
23	SEPARATOR, Oil *	1	2011097
∅	GASKET, Oil Separator	1	200ESG715
24	GASKET, Reservoir Flange	1	2011711
25	FLANGE-BLIND (Oil Separator End)	1	2009671
26	SCREW	12	75A88
27	WASHER-LOCK	12	95B9

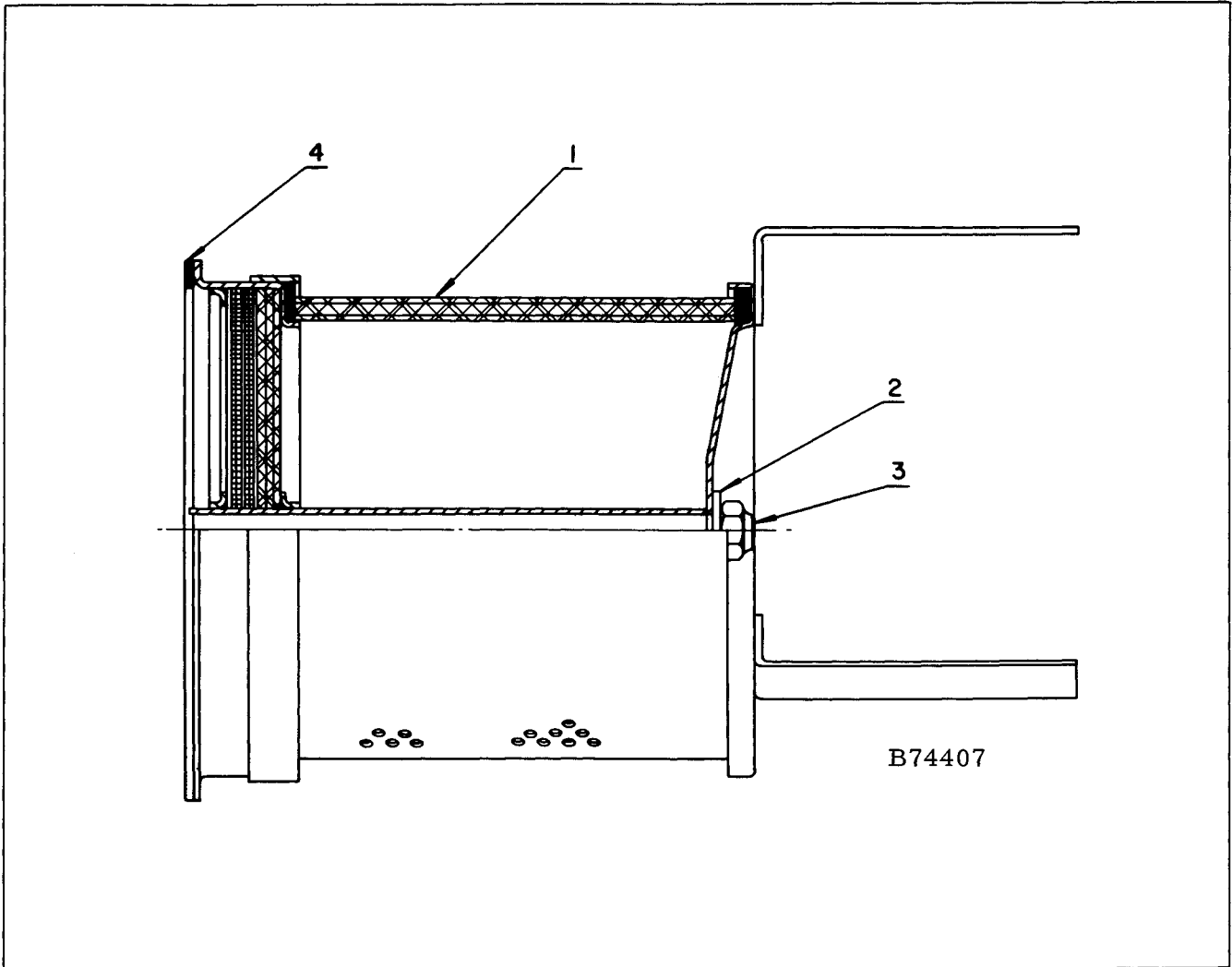
REF. NO.	NAME OF PART	QTY. REQ. PER UNIT	MODELS ES40C ES40D
	<u>OIL RESERVOIR GROUP (Continued)</u>		PART NO.
28	SCREW, Reservoir to Compressor	4	75A12
29	WASHER-LOCK	4	95B5
∅	GASKET, Coupling (w/Restr. Ring)	2	2010363
30	COUPLING-FLEXIBLE	1	2009278
31	MANIFOLD, Air-Oil Discharge	1	2007087
32	PLUG, Manifold (3/4)	1	64AA3G
33	GASKET, Discharge Manifold	1	25C2428
34	SCREW, Manifold to Compressor	4	75A1
35	WASHER-LOCK	4	95B3
36	LEVELER-LOAD, Screw Adjusting	4	2009375
37	NUT-HEX JAM	8	50W5
∅	BUSHING, Safety Valve (3/4 x 1-1/2)	1	64E8G
38	VALVE-SAFETY (110#)	1	90G8
38	VALVE-SAFETY (135#)	1	90G261
38	VALVE-SAFETY (165#)	1	90G33
39	ELBOW-STREET (90°)	1	64D6G
40	SCREW, Reservoir to Motor	4	75A94
41	WASHER	4	95A7
42	WASHER-LOCK	4	95B7
43	NUT	4	50B7
∅	SHIM, Motor Mounting (.003)	2	77E11
∅	SHIM, Motor Mounting (.008)	3	77E12
∅	SHIM, Motor Mounting (.031)	1	77E13
∅	SHIM, Motor Mounting (.062)	1	77E14
44	SCREW, Reservoir to Starter Bracket	2	75A1
45	WASHER	2	95A3
46	WASHER-LOCK	2	95B3
47	NIPPLE	1	63K18G
48	VALVE-AIR CONTROL (Minimum Discharge Air Pressure)		**

∅ Not shown on illustration.

* When replacing Oil Separator order Kit #ESG65643. For component parts of Separator see page 12.

** For component parts of Air Control Valve see page 13. Valve, together with plugs, shown also on page 25.

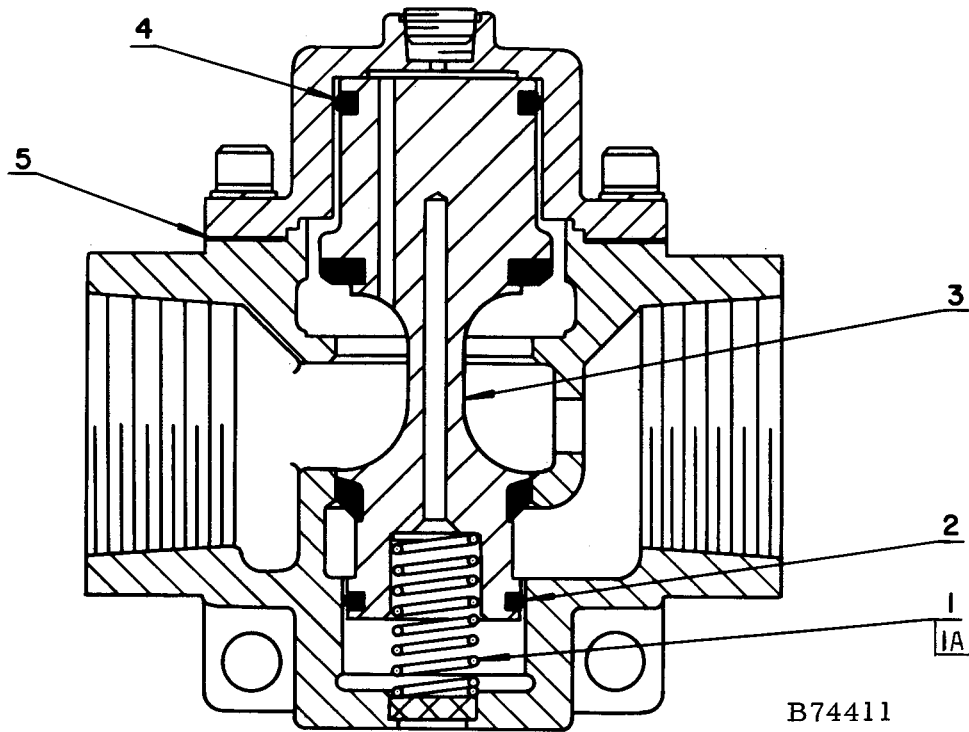
Order by Part Number and Description. Reference Numbers for your convenience only.



REF. NO.	NAME OF PART	QTY. REQ. PER UNIT	MODELS ES40C ES40D
	<u>OIL SEPARATOR</u> *		PART NO.
1	SEPARATOR, Oil (Incl. Ref. #2 & 3)		2011097
2	WASHER	1	2010233
3	NUT	1	2008756
4	GASKET KIT	1	200ESG715

* See Footnote (*) on page 11.

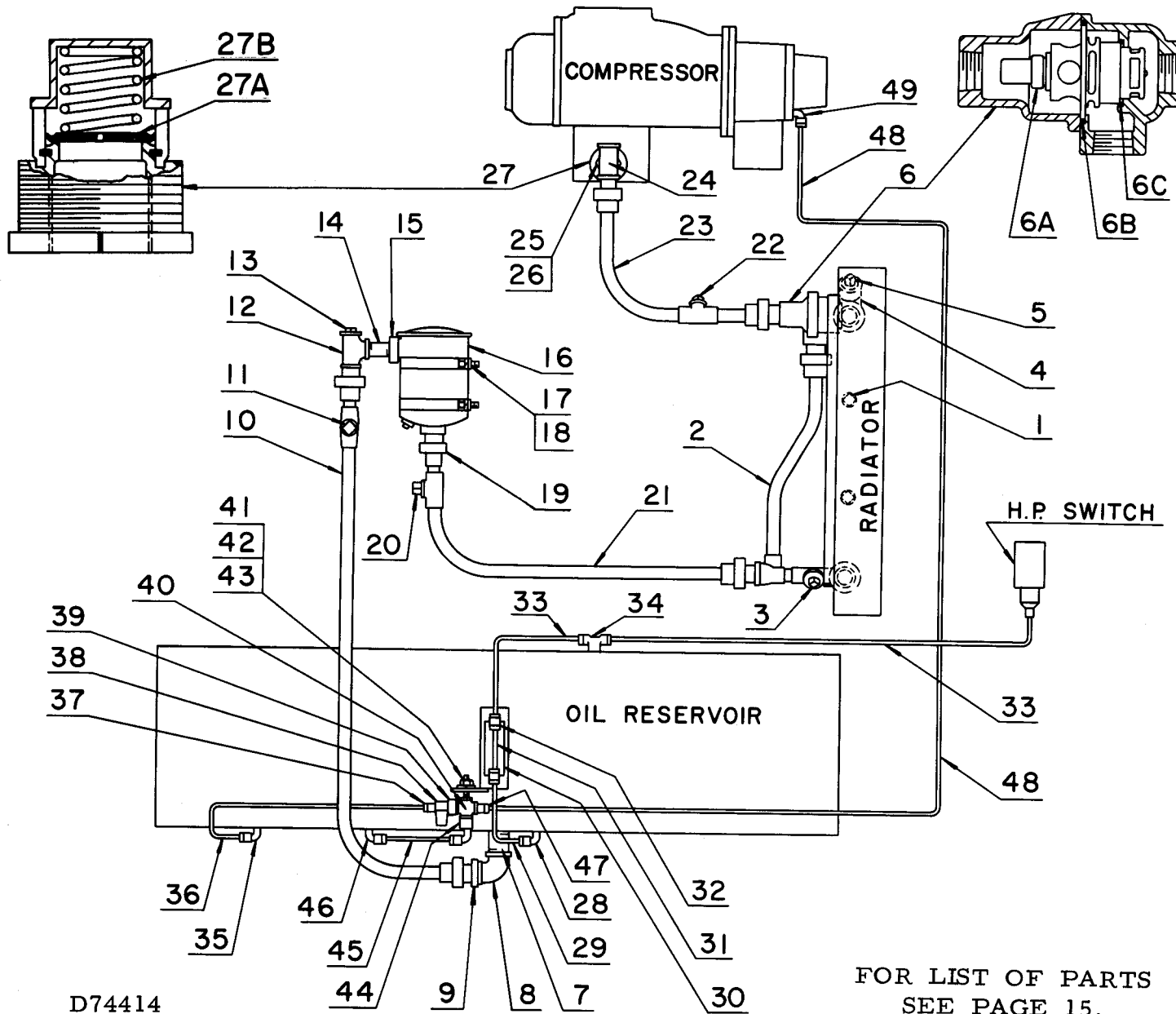
Order by Part Number and Description. Reference Numbers for your convenience only.



REF. NO.	NAME OF PART	QTY. REQ. PER UNIT	MODELS ES40C ES40D
	<u>MINIMUM DISCHARGE PRESSURE VALVE</u>		<u>PART NO.</u>
	VALVE-AIR CONTROL (Complete)		2009405
1	SPRING, Return (Outside)	1	2010272
1A	SPRING, Return (Inside)	1	2010273
2	SEAL, Spool (Lower)	1	2010195
3	SPOOL	1	*
4	SEAL, Spool (Upper)	1	2010197
5	GASKET	1	2010196
φ	SCREW, Mounting	4	*
φ	WASHER-LOCK	4	*

* Not normally furnished for repair.

φ Not shown on illustration.



D74414

FOR LIST OF PARTS
SEE PAGE 15.

ORDER BY PART NUMBER AND DESCRIPTION. REFERENCE NUMBERS FOR YOUR CONVENIENCE ONLY.

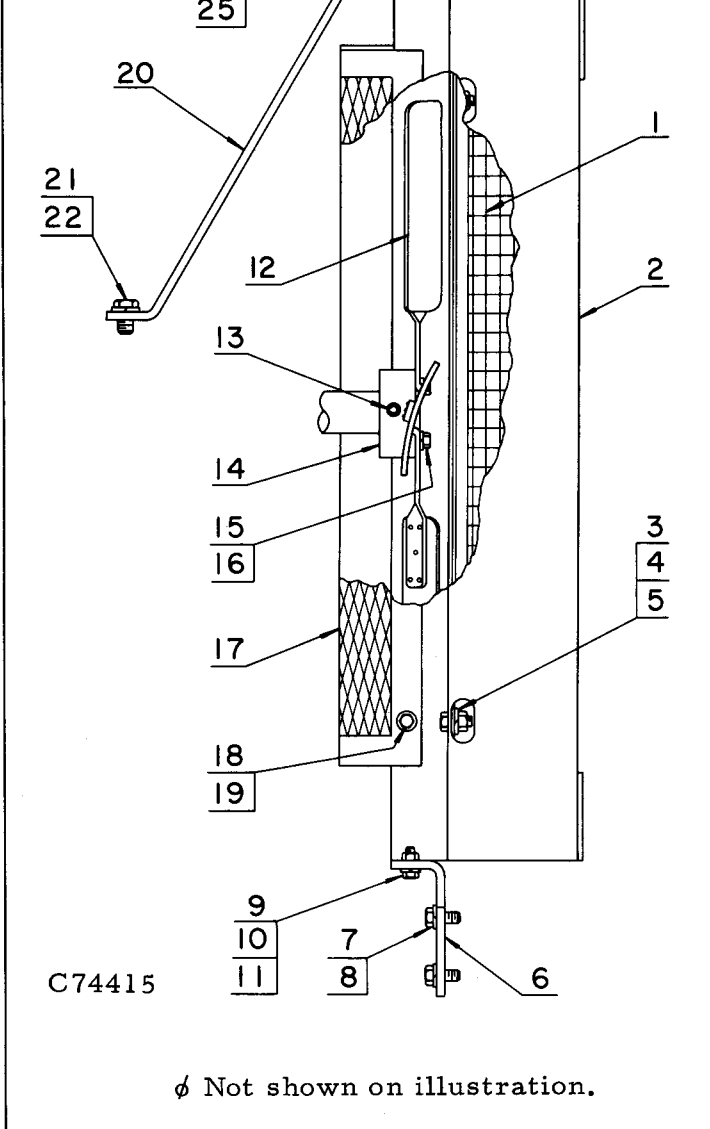
REF. NO.	NAME OF PART	QTY. REQ. PER UNIT	MODEL ES40C	REF. NO.	NAME OF PART	QTY. REQ. PER UNIT	MODEL ES40C
	<u>OIL PIPING GROUP</u>		PART NO.		<u>OIL PIPING GROUP (Continued)</u>		PART NO.
1	PLUG, Radiator Drain (1/4)	2	65AA5G	24	TEE	1	64G7G
∅	PLUG, Air Vent (1/8)	1	64AA6G	25	NIPPLE	1	63G28G
2	MANIFOLD-OIL, Radiator Filter	1	2007009	26	BUSHING	1	64E16G
3	PLUG, Manifold (3/4)	1	64AA3G	27	VALVE, Oil Restriction Flow Control (Incl. next 2 parts)	1	2007300
4	MANIFOLD-OIL, to Compressor Sump	1	2007190	27A	DISC, Valve	1	2010222
5	PLUG, Manifold (3/4)	1	64AA3G	27B	SPRING, Valve	1	2010215
6	VALVE-THERMOSTATIC (3-Way Mixing), Incl. next 3 parts	1	90K107		(Oil Pressure Shutdown Tubing)		
6A	ELEMENT	1	93C8	28	ELBOW (90°)	1	86E60
6B	O-RING, Housing	1	2008013	29	TUBE	1	2013085
6C	O-RING, Element	1	25W24	30	DECAL, Oil Level	1	2007108
	(Reservoir to Oil Filter)			31	TUBE, Nylon	1	**
7	NIPPLE	1	63H1G	32	UNION	2	**
8	ELBOW (90°)	1	64C6G	33	TUBE	1	2013084
9	BUSHING	1	64E16G	34	TEE	1	86E119
10	MANIFOLD-OIL	1	2007078		(Reservoir Wet Sump to Orifice)		
11	PLUG, Manifold (1/2)	1	64AA7G	35	ELBOW, Male (90°)	1	86E59
12	TEE	1	64G7G	36	TUBE	1	2013072
13	PLUG (3/4)	1	64AA3G	37	CONNECTOR, Male	1	86E4
14	NIPPLE	1	63G1G	38	FILTER	1	5F35
15	BUSHING	1	64E6G	39	ORIFICE	1	2011456
	(Oil Filter Mounting)			40	CROSS-PIPE	1	2009487
16	FILTER-OIL *	1	26A35	41	ADAPTOR, Cross to Reservoir	1	2011458
17	SCREW, Filter to Reservoir	4	75A5	42	WASHER-LOCK	1	95B2
18	WASHER-LOCK	4	95B3	43	NUT	1	50B2
	(Filter to Radiator)				(Pipe Cross to Reservoir Dry Sump)		
19	BUSHING	1	64E6G	44	ORIFICE	1	2011502
20	PLUG, Manifold (1/2)	1	64AA7G	∅	ELBOW, Male (45°)	1	86E106
21	MANIFOLD-OIL	1	2007008	45	TUBE	1	2013079
	(Radiator to Compressor Sump)			46	ELBOW, Male (90°) (Pipe Cross to Compressor)	1	86E59
22	PLUG, Manifold (3/4)	1	64AA3G	47	CONNECTOR, Male	1	86E3
23	MANIFOLD-OIL	1	2007192	48	TUBE	1	2013087
				49	ELBOW, Male (45°)	1	86E106

∅ Not shown on illustration.

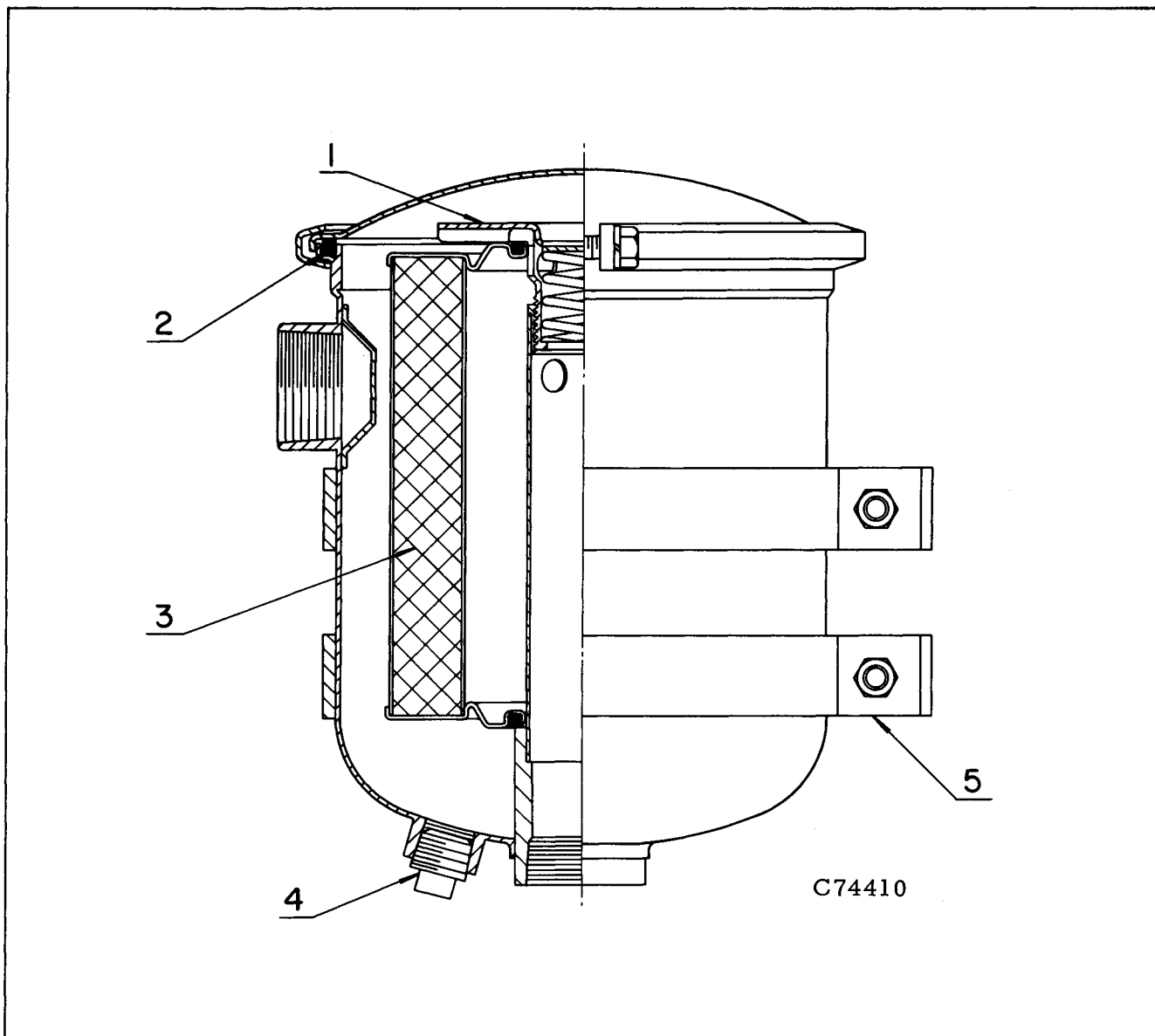
* For component parts of Oil Filter see page 17.

** For repair order Tube Kit 2014841.

ORDER BY PART NUMBER AND DESCRIPTION. REFERENCE NUMBERS FOR YOUR CONVENIENCE ONLY.

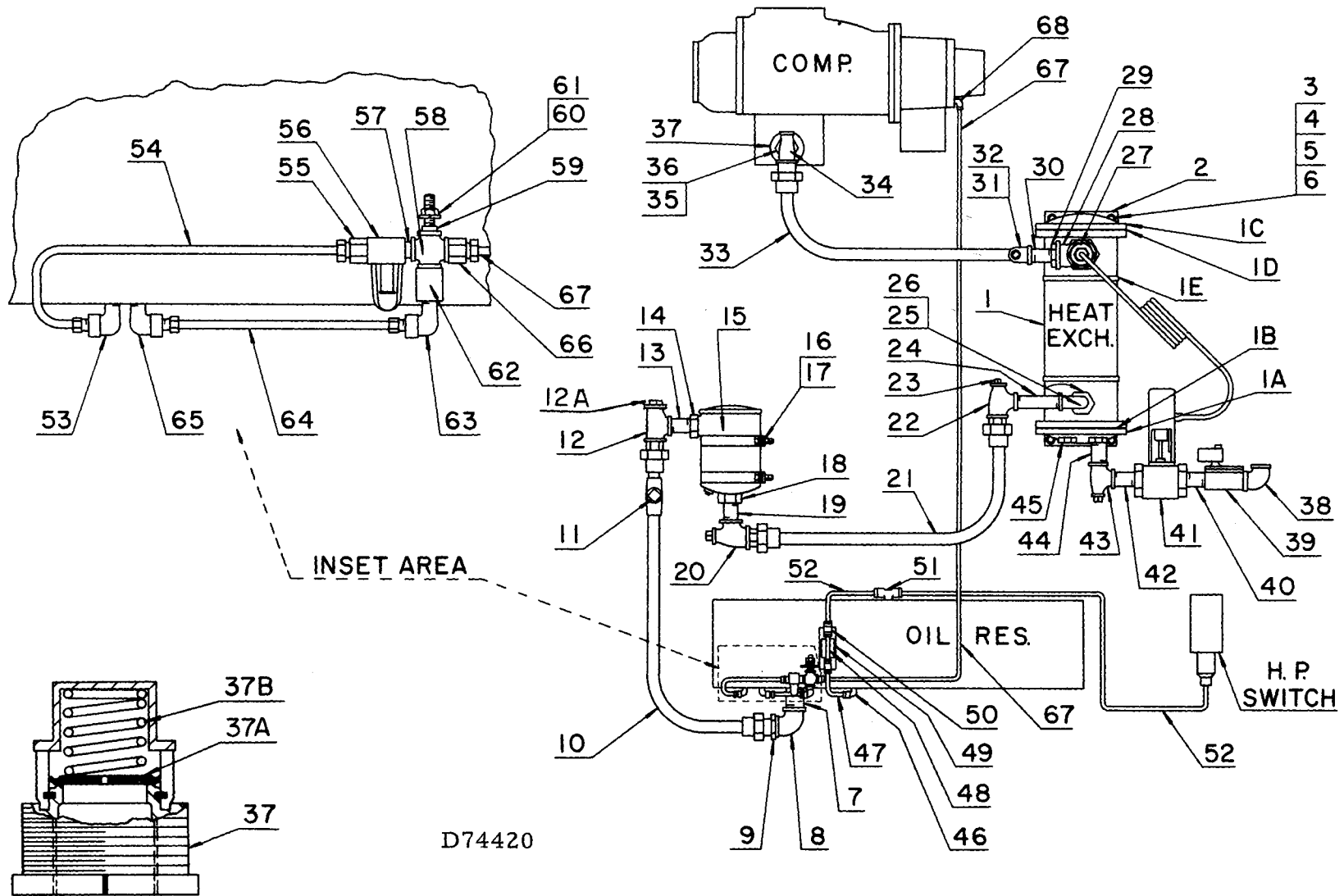
	REF. NO.	NAME OF PART	QTY. REQ. PER UNIT	MODEL ES40C
 <p data-bbox="280 1324 393 1351">C74415</p> <p data-bbox="408 1428 834 1457">φ Not shown on illustration.</p>		<u>RADIATOR & FAN MOUNTING GROUP</u>		<u>PART NO.</u>
	1	RADIATOR	1	2007111
	2	SHROUD	1	2007090
	3	SCREW, Radiator to Shroud	6	75A5
	4	WASHER-LOCK	6	95B3
	5	NUT	6	50B3
	6	BRACKET, Shroud to Reservoir	2	2006978
	7	SCREW, Bracket to Reservoir	4	75A5
	8	WASHER-LOCK	4	95B3
	9	SCREW, Shroud to Bracket	2	75A10
	10	WASHER-LOCK	2	95B2
	11	NUT	2	50B2
	12	FAN	1	2007103
	13	PIN, Hub to Rotor	1	62R172
	14	HUB, Fan	1	2S25048
	15	SCREW, Fan to Hub	4	75A33
	16	WASHER-LOCK	4	95B2
	17	GUARD-FAN	1	2014021
	φ	RIVNUT	4	2009731
	18	SCREW, Guard to Shroud	4	75A1
	19	WASHER-LOCK	4	95B3
	φ	WASHER	4	95D132
	20	BRACE, Shroud to Compressor	1	2007080
	21	SCREW, Brace to Compressor	1	75A192
	22	WASHER-LOCK	1	95B5
23	SCREW, Brace to Shroud	1	75A185	
24	WASHER	1	95A1	
25	WASHER-LOCK	1	95B1	

Order by Part Number and Description. Reference Numbers for your convenience only.



REF. NO.	NAME OF PART	QTY. REQ. PER UNIT	MODELS ES40C ES40D
	<u>OIL FILTER</u>		PART NO.
1	FILTER-OIL (Complete)	1	26A35
2	ASM VALVE, Relief	1	2010192
3	GASKET	1	2010193
4	ASM ELEMENT	1	5E37
5	PLUG, Drain (1/2)	1	*
	ASM BAND, Mounting	2	*

* Not normally furnished for repair.



D74420

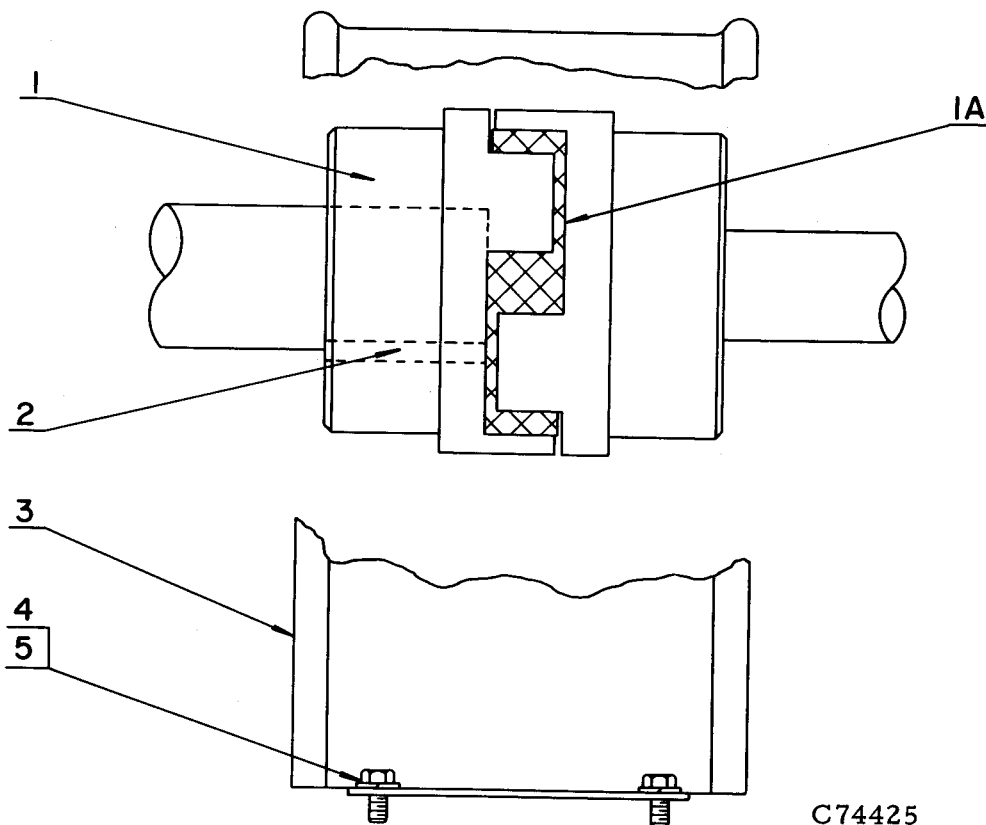
FOR LIST OF PARTS SEE PAGE 19.

ORDER BY PART NUMBER AND DESCRIPTION. REFERENCE NUMBERS FOR YOUR CONVENIENCE ONLY.

REF. NO.	NAME OF PART	QTY. REQ. PER UNIT	MODEL ES40D	REF. NO.	NAME OF PART	QTY. REQ. PER UNIT	MODEL ES40D
	<u>HEAT EXCHANGER & OIL PIPING GROUP</u>		PART NO.		<u>HEAT EXCHANGER & OIL PIPING GROUP (Continued)</u>		PART NO.
1	EXCHANGER-HEAT, Incl. next 6 parts	1	48C45		(Water Piping - to Heat Exchanger)		
∅	ANODE-ZINC	2	2010283	38	ELBOW-STREET	1	64D6G
1A	BONNET, 2-Pass	1	2010210	39	VALVE-SOLENOID, Water Shutoff	1	90AC118
1B	GASKET, 2-Pass	1	2010211	40	NIPPLE	1	63G1G
1C	BONNET, Return	1	2010212	41	REGULATOR-TEMPERATURE	1	90AC192
1D	GASKET, Return	1	2010213	42	NIPPLE	1	63C1G
1E	BRACKET, Exchanger Mounting	2	2010214	43	TEE	1	64P14G
2	BRACKET, Exchanger to Reservoir	2	2010242	44	NIPPLE	1	63G1G
3	SCREW, Bracket to Bracket	4	75A1	45	BUSHING	2	64E16G
4	WASHER	4	95A3				
5	WASHER-LOCK	4	95B3		(Electrical Fittings - Solenoid Valve to Panel)		
6	NUT	4	50B3	∅	LOCKNUT, Nipple (1/2)	1	24A77
∅	SCREW, Bracket to Reservoir	4	75A5		NIPPLE (1/2)	1	24A503
∅	WASHER-LOCK	4	95B3		FITTING-CONDUIT (1/2)	1	24A486
	(Reservoir to Oil Filter)				GASKET, Unilet	1	24A342
7	NIPPLE	1	63H1G		COVER, Unilet	1	24A343
8	ELBOW	1	64C6G		LUG-TERMINAL	4	24A487
9	BUSHING	1	64E16G		SCREW-MACHINE (#8-32 x 1/4)	2	75G17
10	MANIFOLD-OIL	1	2007078		NUT (#8-32)	2	50K8
11	PLUG, Manifold (1/2)	1	64AA7G		FITTING, Unilet to Conduit (St. x 1/2)	1	24A378
12	TEE	1	64C5G		CONDUIT (1/2 x 13 Lg.)	1	24A402
12A	PLUG, Top of Tee (3/4)	1	64AA3G		FITTING, Conduit to Panel (1/2 x 90° EL)	1	24A380
13	NIPPLE	1	63G1G		WIRE, #14 GA. Red	1	97H1R6
14	BUSHING	1	64E6G		FITTING, Conduit (1/2")	1	24A340
	(Oil Filter Group)				(Oil Pressure Shutdown Tubing)		
15	FILTER-OIL *	1	26A35	46	ELBOW	1	86E60
16	SCREW, Filter to Reservoir	4	75A5	47	TUBE	1	2013085
17	WASHER-LOCK	4	95B3	48	TUBE, Nylon (Cut at Assembly)	1	**
	(Filter to Heat Exchanger)			49	DECAL, Oil Level	1	2007108
18	BUSHING	1	64E6G	50	UNION	2	**
19	NIPPLE	1	63G1G	51	TEE-TUBE	1	86E119
20	TEE	1	64P78G	52	TUBE	1	2013084
21	MANIFOLD-OIL	1	2007193	∅	TEE-TUBE	1	2009284
22	TEE	1	64P14G		(Reservoir Wet Sump to Orifice)		
23	PLUG	1	64AA5G	53	ELBOW, Male (45°)	1	86E106
24	NIPPLE	1	63G19G	54	TUBE	1	2013072
∅	NIPPLE (3/4 x 2-1/2)	1	63G3G	55	CONNECTOR, Male	1	86E4
25	ELBOW-STREET	1	64C5G	56	FILTER	1	5F35
26	BUSHING	1	64E8G	57	ORIFICE	1	2011456
	(Heat Exchanger to Compressor Sump)			58	CROSS-PIPE	1	2009487
27	BUSHING	1	64E8G	59	ADAPTOR, Cross to Reservoir	1	2011458
∅	NIPPLE (1-1/2 x 6)	1	63K5G	60	WASHER-LOCK	1	95B2
28	TEE	1	64G11G	61	NUT	1	50B2
29	BUSHING	1	64E8G		(Pipe Cross to Reservoir Dry Sump)		
30	NIPPLE	1	63G1G	62	ORIFICE	1	2011502
31	TEE	1	64P14G	63	ELBOW (90°)	1	86E59
32	PLUG	1	64AA5G	64	TUBE	1	2013079
33	MANIFOLD-OIL	1	2007194	65	ELBOW (90°)	1	86E59
34	TEE	1	64P78G		(Pipe Cross to Compressor)		
35	NIPPLE	1	63G1G	66	CONNECTOR	1	86E3
36	BUSHING	1	64E16G	67	TUBE	1	2013087
37	VALVE, Oil Restriction Flow Control (Incl. next 2 parts)	1	2007300	68	ELBOW (45°)	1	86E106
37A	DISC, Valve	1	2010222				
37B	SPRING, Valve	1	2010215				

∅ Not shown on illustration.
 * For component parts of Oil Filter see page 17.
 ** For repair order Tube Kit 2014841.

Order by Part Number and Description. Reference Numbers for your convenience only.



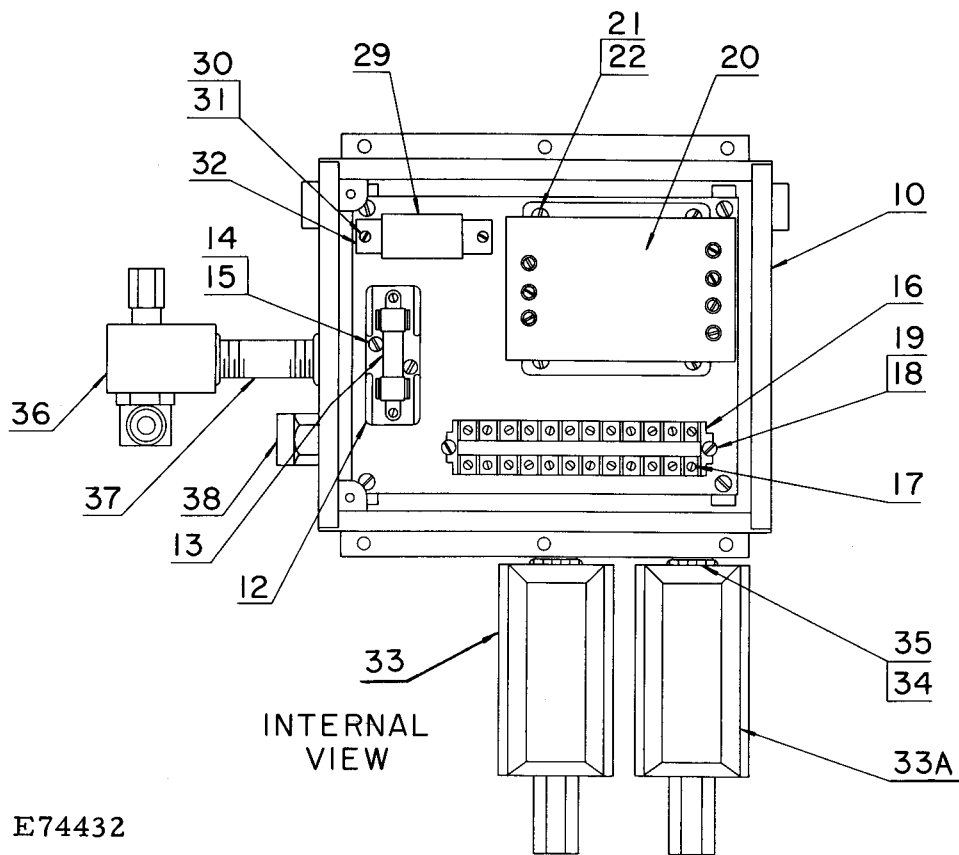
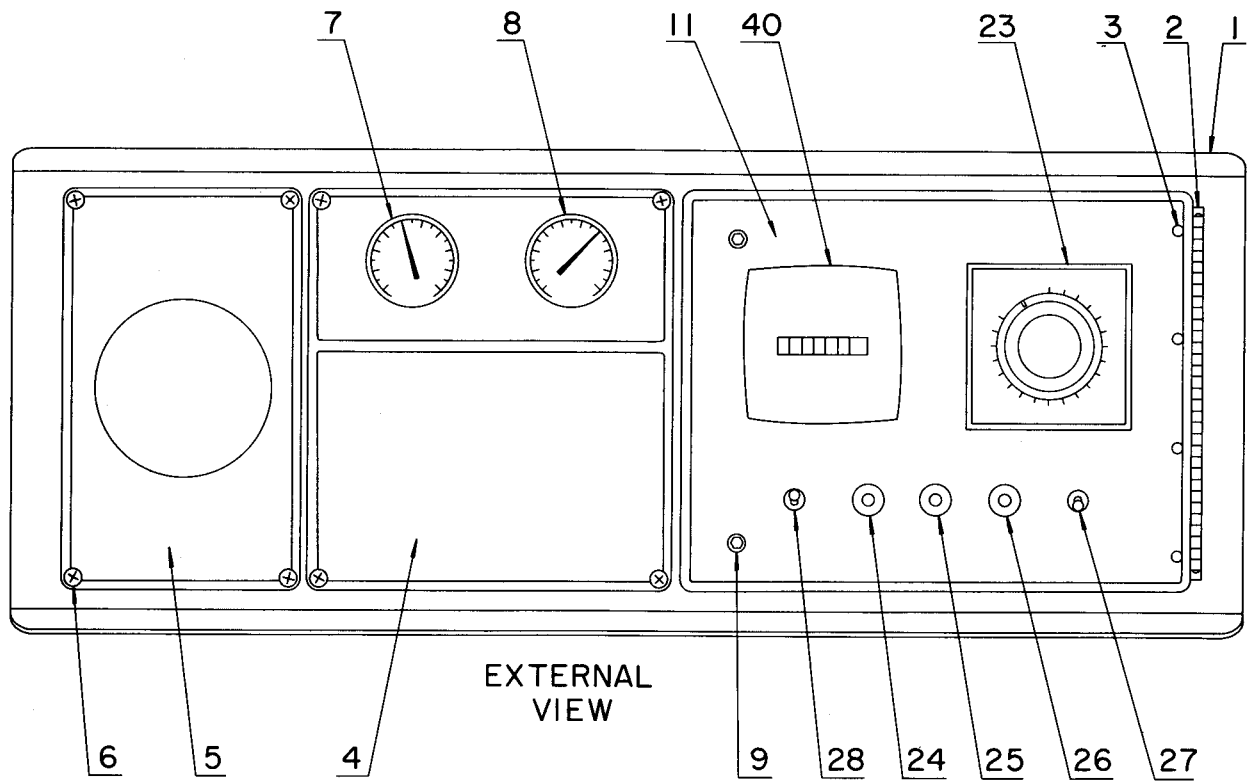
REF. NO.	NAME OF PART	QTY. REQ. PER UNIT	MODELS ES40C ES40D
	<u>COUPLING GROUP</u>		PART NO.
1	COUPLING, Incl. #1A	1	51K11
1A	SPIDER, Coupling	1	2010218
2	KEY, Coupling to Compressor	1	35B35
3	GUARD-COUPLING	1	2007088
4	SCREW, Guard to Reservoir	4	75A32
5	WASHER-LOCK	4	95B1

NAME OF PART	QTY. REQ. PER UNIT	MODELS
		ES40C ES40D
<u>MOTOR & ACCESSORIES</u>		PART NO.
MOTOR (40 HP - 60 Hz., Drip-Proof)	1	24BB3
STARTER (460V - 60 Hz., Nema Size 3)	1	24H141
OVERLOAD (for starter 24H141)	3	24T143
STARTER (230V - 60 Hz., Nema Size 4)	1	24H142
OVERLOAD (for starter 24H142)	3	24T140
ENCLOSURE, Starter	1	24A490
BRACKET, Starter Mounting	1	2007425
SCREW, Bracket to Box (1/4 x 1-1/4)	3	75A183
WASHER	6	95A1
WASHER-LOCK	3	95B1
NUT	3	50B1
LUGS-TERMINAL (Motor Leads)	3	24A479
SCREW, Motor Lead (1/4-20 x 1/2)	6	2009536
WASHER-LOCK	6	95H16
NUT	6	50X16
WIRE, #1 GA. x 10' (Cut at Assembly) *	1	2009321
CANOPY (Enclosure) -- Optional Equipment	1	**

* Suitable for either 230V or 460V.

** For ES40C order Part No. 2012973; for ES40D order Part No. 2012334.

GASKET KITS	
<u>MODEL ES40C</u>	
Bare Compressor Only	2011952
Complete Unit -- Less Motor	2013009
<u>MODEL ES40D</u>	
Bare Compressor Only	2011951
Complete Unit -- Less Motor	2013008



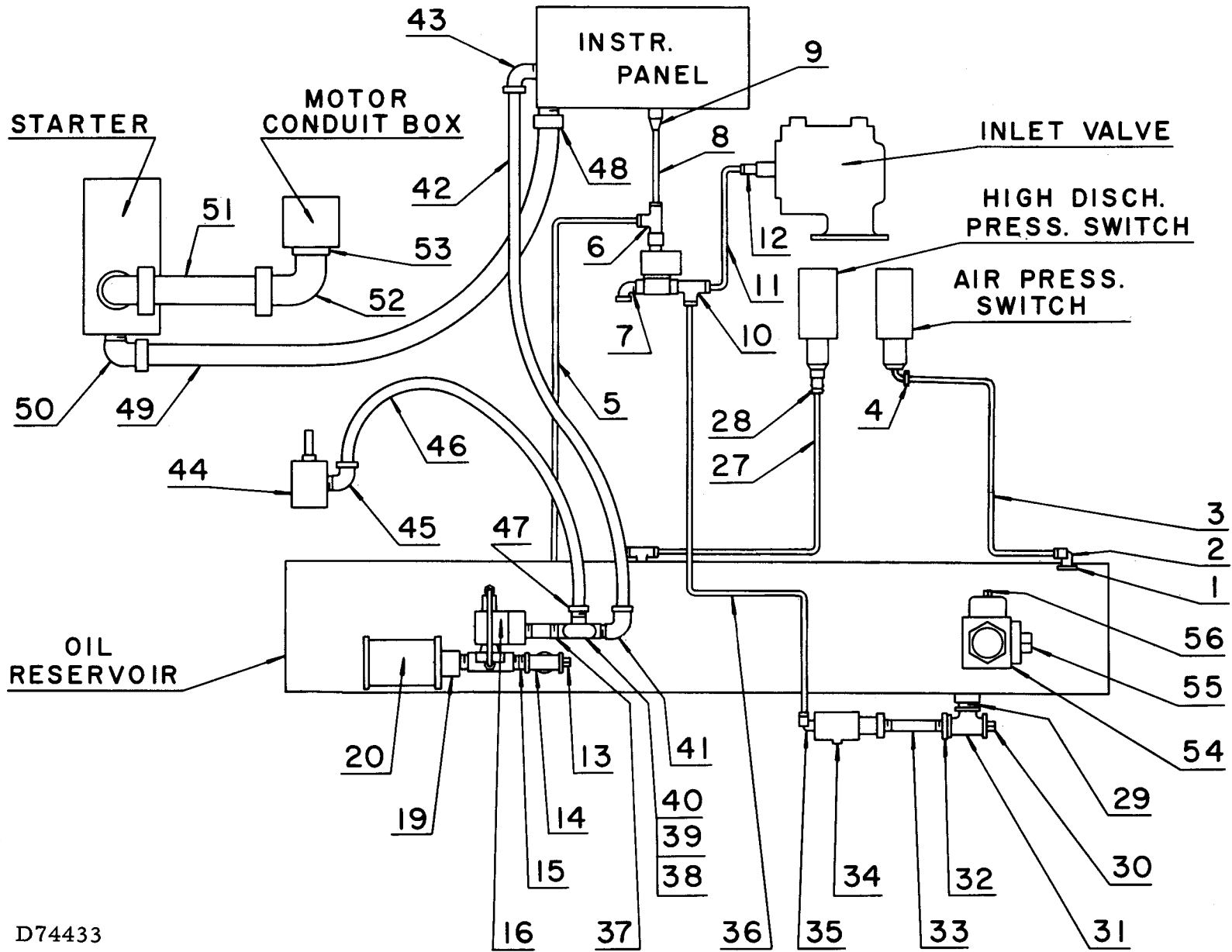
E74432

FOR LIST OF PARTS SEE PAGE 23.

ORDER BY PART NUMBER AND DESCRIPTION. REFERENCE NUMBERS FOR YOUR CONVENIENCE ONLY.

REF. NO.	NAME OF PART	QTY. REQ. PER UNIT	MODELS ES40C ES40D
	<u>INSTRUMENT PANEL GROUP *</u>		PART NO.
1	FRAME (Panel Support)	1	2007215
∅	SCREW-MACHINE (1/4 x 3/8)	6	75G2
∅	WASHER-LOCK (1/4)	6	95H34
2	HINGE, Box Lid	1	2007084
3	RIVET, Hinge to Lid	4	2009307
∅	GASKET, Lid (Cut at Assembly)	1	2009592
∅	SCREW, Hinge to Plate (#8-32 x 3/8)	4	2009368
∅	WASHER-LOCK (#8)	4	95H47
4	PANEL-INSTRUMENT, Gauge & Instruction	1	2007086
5	COVER	1	2007091
6	SCREW, Self Tapping	8	2009516
7	GAUGE-TEMPERATURE, Oil	1	2009490
8	GAUGE-AIR PRESSURE	1	2009489
9	SCREW-MACHINE	2	75P4
10	BOX-CONTROL	1	2007214
11	PANEL-INSTRUMENT, Box Lid	1	2007085
12	BLOCK-FUSE	1	24A466
13	FUSE (2 AMP - 250 VOLT)	1	24A480
14	SCREW-MACHINE	2	75G22
15	WASHER-LOCK	2	95B14
16	BLOCK-TERMINAL, End	1	24A252
17	BLOCK-TERMINAL, Contact	12	24A253
18	SCREW-MACHINE	2	75G22
19	WASHER-LOCK	2	95B14
20	TRANSFORMER (230/460/575 V to 115/95 V 50/60 Hz 200 VA)	1	24A481
20	TRANSFORMER (208/277/380 V to 115/95 V 50/60 Hz 200 VA)	1	24A485
21	SCREW-MACHINE	4	75G8
22	WASHER-LOCK	4	95B13
23	TIMER, Adjustable (110/120 VAC - 50/60 Hz)	1	24A482
24	LIGHT-INDICATOR (Red Lens)	1	2009316
25	LIGHT-INDICATOR (Amber Lens)	1	2009317
26	LIGHT-INDICATOR (White Lens)	1	2009318
∅	LAMP-INDICATOR (NE51H)	3	24A484
27	SWITCH-TOGGLE, Lamp Test	1	24C124
28	SWITCH-TOGGLE	1	24A125
∅	TIES-CABLE	12	24A461
29	RELAY, Lock Out	1	24A491
30	SCREW-MACHINE	2	75G22
31	WASHER-LOCK	2	95B14
32	BASE, Lock Out Relay	1	24A492
∅	WIRE, #14 GA. Green (Cut at Assembly)	1	97H1G1
∅	WIRE, #14 GA. Red (Cut at Assembly)	1	97H1R10
∅	TERMINAL (#8 Fork)	12	24A476
∅	TERMINAL (#10 Fork)	9	24A477
∅	TERMINAL (#6 Fork)	30	24A478
33	SWITCH-PRESSURE (High Discharge)	1	88A305
33A	SWITCH-PRESSURE (Air)	1	88A305
34	CONNECTOR (1/2" Box)	2	2009927
35	LOCKNUT, Nipple	4	24A77
36	VALVE-SOLENOID (Unloader)	1	90AC183
37	NIPPLE-PIPE, Unloader	1	63F3G
38	CONNECTOR (3/4" Hub)	1	2009878
∅	REDUCER (3/4 x 1/2)	1	24A410
∅	JUMPER, Terminal Block	2	24A516
40	HOUR METER (60 Hz)	1	2009369

* Also available as optional equipment is "Pressure Drop" Instrument Panel Group, Part No. 2007321. For information on this construction consult your nearest Sales and Service Office.
 ∅ Not shown on illustration.



D74433

FOR LIST OF PARTS SEE PAGE 25.

ORDER BY PART NUMBER AND DESCRIPTION. REFERENCE NUMBERS FOR YOUR CONVENIENCE ONLY.

REF. NO.	NAME OF PART	QTY. REQ. PER UNIT	MODELS ES40C ES40D	REF. NO.	NAME OF PART	QTY. REQ. PER UNIT	MODELS ES40C ES40D
	<u>CONTROL GROUP</u>		PART NO.		<u>CONTROL GROUP (Continued)</u>		PART NO.
	(Oil Reservoir to Pressure Switch)				(Instrument Panel* Mounting Group)		
1	BUSHING	1	64E43	φ	BRACKET-PANEL	1	2012227
2	ELBOW, Male (90°)	1	86E60	φ	SCREW, Panel Mounting (3/8 x 5/8)	4	75A68
3	TUBE	1	2014299	φ	SCREW, to Inlet Housing (3/8 x 3/4)	4	75A5
4	ELBOW-TUBE	1	86E60	φ	WASHER	8	95A3
φ	BUSHING (1/4 x 3/4)	1	64E3G	φ	WASHER-LOCK	8	95B3
	(Tube Tee to Magnetic Unloader)			φ	WIRING DIAGRAM	1	2007302
5	TUBE	1	2014300		(Dump Valve to Instrument Panel)		
6	TEE-TUBE	1	2009284	37	NIPPLE	1	24A503
7	ELBOW-STREET	1	64D2	38	FITTING-CONDUIT (Unilet)	1	24A341
φ	ELBOW-TUBE	1	86E60	39	GASKET, Unilet	1	24A343
	(Magnetic Unloader to Pressure Gauge)			40	COVER, Unilet	1	24A342
8	TUBE	1	85E4A40	φ	LUG-TERMINAL	4	24A487
9	NUT-TUBE	1	86A5	φ	SCREW-MACHINE (#8-32 x 1/4)	2	75G17
	(Magnetic Unloader to Inlet Valve)			φ	NUT	2	50K8
10	TEE-TUBE	1	2009284	41	CONNECTOR-CONDUIT (90° Elbow)	1	24A380
11	TUBE	1	2013101	42	CONDUIT, Flexible (Cut at Assembly)	1	24A402
12	CONNECTOR, Male	1	86E4	43	CONNECTOR-CONDUIT (90° Elbow)	1	24A380
	(Oil Reservoir to Dump Valve)				(Temperature Switch to Tee)		
13	PLUG	1	64AA7G	44	SWITCH, High Air-Oil Temperature	1	21B90
14	TEE-PIPE	1	64G6G	φ	LUG-TERMINAL	4	24A487
15	NIPPLE	2	63F1G	φ	SCREW-MACHINE (#8-32 x 1/4)	2	75G17
16	VALVE, Solenoid Dump	1	90AC162	φ	NUT	2	50K8
19	ORIFICE	1	2011762	45	CONNECTOR-CONDUIT (90° Elbow)	1	24A380
20	MUFFLER	1	43E6	46	CONDUIT, Flexible (Cut at Assembly)	1	24A402
	(Oil Reservoir to Pressure Switch)			47	CONNECTOR-CONDUIT (Straight)	1	24A378
27	TUBE	1	2013100		(Instrument Panel to Starter)		
28	CONNECTOR, Male	1	86E4	48	FITTING-CONDUIT (90° Elbow)	1	2009325
	(Oil Reservoir to Magnetic Unloader)			49	CONDUIT, Flexible (Cut at Assembly)	1	2009314
29	NIPPLE	1	63G1G	50	FITTING-CONDUIT (90° Elbow)	1	2009325
30	PLUG	1	64AA3G	φ	WIRE, #12 GA. Black (Cut at Assembly)	1	2009319
31	TEE	1	64G7G	φ	WIRE, #14 GA. Red (Cut at Assembly)	1	97HIR70
32	BUSHING	1	64E10G	φ	LUG-TERMINAL	2	24A517
33	NIPPLE	1	63E25G	51	CONDUIT, Flexible (Cut at Assembly)	1	2009315
34	VALVE, Ejector	1	90K84	52	FITTING-CONDUIT (90° Elbow)	2	2009335
35	ELBOW, Male (90°)	1	86E60	53	BUSHING	1	24A483
36	TUBE	1	2013103		(Minimum Pressure Discharge Valve Group)		
				54	VALVE-AIR CONTROL **	1	2009405
				55	PLUG (1-1/2)	1	64B26G
				56	PLUG (1/4)	1	64AC2G

φ Not shown on illustration.

* For component parts of instrument panel group see page 23.

** For component parts of minimum pressure discharge valve see page 13.

RECOMMENDED SPARES -- MODELS ES40C & ES40D

(See Note)

The following kits are separated according to locations and hours of service. Quantities shown are for one unit only and are based on normally clean industrial conditions. In areas of abnormal operating conditions, more frequent replacements may be needed. It is the responsibility of the Owner-Operator to apply a multiplier for multiple units, operating conditions and hours of operation. Refer to Instruction Manual (OCS-30) for recommended replacement time for critical parts.

Ordering Instructions

KIT #1 - Routine Maintenance: These are suggested as the minimum quantity of parts a customer should stock. They are usually the first items which require renewal. Order quantities of this kit to suit your requirements or particular service. One kit contains three oil filter elements which require changing every 1000 hours under normal conditions.

KIT #2 - Domestic Service: These are suggested as the minimum spares a customer should stock for continuous operation for one year. When ordering for this service, order Kits #1 and 2.

KIT #3 - Isolated Domestic or Export Service: These are suggested as the minimum spares a customer should stock for continuous operation. These parts include those which possibly would need renewal in an overhaul. When ordering for this service, order Kits #1, 2 and 3.

APPLY THE PROPER MULTIPLIER BASED ON NUMBER OF UNITS AND HOURS OF OPERATION

COMPRESSOR MODEL		ES40C & ES40D	ES40C	ES40D	ES40C	ES40D
PART NO. (COMPLETE KIT)		2013014	2013013	2013012	2013011	2013010
		KIT #1	KIT #2		KIT #3	
Description	Page No.	Qty. Per Kit	Qty. Per Kit		Qty. Per Kit	
<u>KIT #1 - ROUTINE MAINTENANCE</u>						
Includes the following 5 items:						
Air Filter Element	7	1				
Oil Reservoir Flange Gasket (Oil Separator End)	11	1				
Discharge Manifold Gasket	11	1				
Oil Separator Gasket Kit	12	1				
Oil Filter Element Assembly	17	3				
<u>KIT #2 - DOMESTIC SERVICE</u>						
Includes the following 13 items:						
Shaft Seal (Inlet End)	5		1	1		
Shaft Seal (Discharge End)	5		1			
Inlet Valve	6		1	1		
Inlet Valve Piston Spring	6		1	1		
Inlet Valve Spring	6		1	1		
Inlet Valve Block Vee Packing (Set)	6		1	1		
Discharge Manifold Gasket	11		1	1		
Oil Separator Kit	11		1	1		
Thermostat Mixing Valve Element	15		1			
Mixing Valve Element O-Ring	15		1			
Mixing Valve Housing O-Ring	15		1			
Gasket Kit (Bare Compressor)	21		1	1		
<u>KIT #3 - ISOLATED DOMESTIC OR EXPORT SERVICE</u>						
Includes the following 4 items:						
Roller Bearing	5				2	2
Angular Contact Ball Bearing	5				4	4
Discharge Valve Assembly	11				1	1
Gasket Kit (Complete Unit, Less Motor)	21				1	1

NOTE: These kits are made available to aid the customer in stocking parts to allow on-site maintenance and/or repair. Kits do not include electrical or control items -- these must be purchased separately.

SALES AND SERVICE OFFICES

UNITED STATES and MEXICO

ATLANTA (STONE MOUNTAIN), GEORGIA - 30083
1545 Mountain Industrial Blvd.
BAKERSFIELD, CALIFORNIA - 93308
3506 Gilmore Avenue
BALTIMORE (ELICOTT CITY), MARYLAND - 21043
3515 Chevrolet Drive
BIRMINGHAM, ALABAMA - 35209
817 Green Springs Highway
BOISE, IDAHO - 83706
3422 Americana Terrace
BOSTON (NEEDHAM HEIGHTS), MASSACHUSETTS - 02194
65 Crawford Street
BUFFALO, NEW YORK - 14226
4532 Bailey Avenue
BUTTE, MONTANA - 59701
215 East Park Street
CASPER, WYOMING - 82601
310 North 2nd Avenue
CHARLESTON, WEST VIRGINIA - 25301
1018 Kanawha Blvd., E.
CHARLOTTE, NORTH CAROLINA - 28211
723 South Sharon Amity Road
CHICAGO (BROADVIEW), ILLINOIS - 60153
2535 S. 25th Avenue
CINCINNATI (SPRINGDALE), OHIO - 45246
12145 Centron Place
CLEVELAND, OHIO - 44125
5400 Warner Road
CORONA, NEW YORK - 11368
110 - 34 Corona Avenue
CORPUS CHRISTI, TEXAS - 78408
4512 Baldwin Blvd.
DALLAS, TEXAS - 75210
4700 Sevens Road
DENVER, COLORADO - 80216
3801 East 50th Avenue
DETROIT (OAK PARK), MICHIGAN - 48237
12700 Capital Avenue
DULUTH, MINNESOTA - 55811
3185 Miller Trunk Highway
EL PASO, TEXAS - 79902
1230 Wyoming Avenue
GRAND JUNCTION, COLORADO - 81501
2909 North Avenue
HARTFORD (BLOOMFIELD), CONNECTICUT - 06002
81 Old Windsor Road
HALEAH, FLORIDA - 33013
3630 East 10th Court
HOUSTON, TEXAS - 77027
3325 South Rice Avenue
INDIANAPOLIS, INDIANA - 46203
2228 Shelby Street

KANSAS CITY (SHAWNEE MISSION), KANSAS - 66201
9101 Bond Street
KNOXVILLE, TENNESSEE - 37917
709 North Fifth Avenue
LAFAYETTE, LOUISIANA - 70501
200 Vanevy Street
LOS ANGELES (WHITTIER), CALIFORNIA - 90601
2555 Pellissier Place
LOUISVILLE, KENTUCKY - 40207
4050 Westport Road
MILWAUKEE, WISCONSIN - 53209
5148 North Teutonia Avenue
MINNEAPOLIS, MINNESOTA - 55431
1701 West 80th Street
NEW ORLEANS (HARVEY), LOUISIANA - 70058
1100 Destrehan Avenue
NEW YORK DOMESTIC (MAHWAH, NEW JERSEY) - 07430
386 State Highway No. 17
ODESSA, TEXAS - 79760
East Highway 80
OKLAHOMA CITY, OKLAHOMA - 73129
2200 South Prospect Avenue
PHILADELPHIA (HORSHAM) PENNSYLVANIA - 19044
406 Caredean Drive
PHOENIX, ARIZONA - 85009
2020 N. Black Canyon Highway
PITTSBURGH, PENNSYLVANIA - 15205
Parkway West - 4499 Campbell's Run Road
QUINCY, ILLINOIS - 62301
Gardner Expressway
ST. LOUIS (HAZELWOOD), MISSOURI - 63042
6011 N. Lindbergh Blvd.
SALT LAKE CITY, UTAH - 84115
35 West Louise Avenue
SAN DIEGO, CALIFORNIA - 92123
5345 Overland Avenue
SAN FRANCISCO (SOUTH SAN FRANCISCO), CALIFORNIA - 94080
144 West Harris Avenue
SEATTLE, WASHINGTON - 98104
623 Eighth Avenue, South
SHREVEPORT, LOUISIANA - 71107
1025 Joseph Street
TOLEDO, OHIO - 43614
2415 S. Byrne Road
TULSA, OKLAHOMA - 74145
4259 So. 76th East Avenue
WALLACE, IDAHO - 83873
502 Bank Street
MEXICO 1, D. F. MEXICO
Apartado 575

CANADA

GARDNER-DENVER COMPANY (CANADA), LIMITED

EDMONTON, ALBERTA - 9835 - 42 Ave.
MONCTON, NEW BRUNSWICK - East Main St.
MONTREAL 28, QUEBEC - 5825 St. James St., West
NELSON, BRITISH COLUMBIA - 608 Railway St.
NORTH BAY, ONTARIO - 693 Cassels St.

SUDBURY, ONTARIO - 1869 LaSalle Blvd., East
TORONTO (SCARBOROUGH), ONTARIO -
1800 Ellesmere Road
VANCOUVER 9, BRITISH COLUMBIA - 1775 Pine St.
WINNIPEG 21, MANITOBA - 1880 Sargent Ave.

INTERNATIONAL

GARDNER-DENVER INTERNATIONAL -- QUINCY, ILLINOIS GARDNER-DENVER INTERNATIONAL -- 233 Broadway, New York, N. Y.

ARGENTINA -- BUENOS AIRES
AUSTRALIA -- SYDNEY, MELBOURNE, HOBART, BRISBANE,
ADELAIDE, PERTH, KALGOORLIE, MOUNT ISA
BELGIUM -- BRUSSELS
BRAZIL -- BELO HORIZONTE, RIO DE JANEIRO,
SAO PAULO
CHILE -- SANTIAGO
COLUMBIA -- BARRANQUILLA
ENGLAND -- LONDON
GREECE -- ATHENS

HOLLAND -- SCHIPHOL
ITALY -- MILAN
NEW ZEALAND -- OTARA (AUCKLAND)
PERU -- LIMA
SINGAPORE -- SINGAPORE
SOUTH AFRICA -- JOHANNESBURG,
PORT ELIZABETH, CAPE TOWN
SWEDEN -- STOCKHOLM
VENEZUELA -- CARACAS, PUERTO ORDAZ
ZAMBIA -- NDOLA

FACTORIES

DALLAS, TEXAS
DENVER, COLORADO
GRAND HAVEN, MICHIGAN
GREEN BAY, WISCONSIN
LA GRANGE, MISSOURI
QUINCY, ILLINOIS

REED CITY, MICHIGAN
YORK, PENNSYLVANIA
JOHANNESBURG, S. AFRICA
RIO DE JANEIRO, BRAZIL
WOODSTOCK, ONTARIO, CANADA
WESTHAUSEN, GERMANY



GARDNER-DENVER COMPANY

QUINCY, ILLINOIS