
GARDNER DENVER®

13-8-512
1st Edition
October, 1998
Replaces 13-9-549

Manual Updated 4/7/2021 Page 9

ELECTRA-SCREW®

STATIONARY

BASE-MOUNTED

COMPRESSORS

AUTO SENTRY® “S” CONTROL

MODELS

EDH99C – 100 HP

PARTS LIST

**Gardner
Denver**

INSTRUCTIONS FOR ORDERING REPAIR PARTS

When ordering parts, specify Compressor MODEL, Method of Cooling, HORSE-POWER and SERIAL NUMBER (see nameplate on unit). The Serial Number is also stamped on top of the cylinder flange to the right of the inlet housing.

All orders for Parts should be placed with the nearest authorized distributor.

Where NOT specified, quantity of parts required per compressor or unit is one (1); where more than one is required per unit, quantity is indicated in parenthesis. SPECIFY EXACTLY THE NUMBER OF PARTS REQUIRED.

DO NOT ORDER BY SETS OR GROUPS.

To determine the Right Hand and Left Hand side of a compressor, stand at the motor end and look toward the compressor. Right Hand and Left Hand are indicated in parenthesis following the part name, (RH) & (LH), when appropriate.

For Operating and Service Instructions see:

SERVICE MANUAL # 13-8-606

**MAINTAIN COMPRESSOR RELIABILITY AND PERFORMANCE WITH
GENUINE GARDNER DENVER® COMPRESSOR
PARTS AND SUPPORT SERVICES**

Gardner Denver® Compressor genuine parts, engineered to original tolerances, are designed for optimum dependability — specifically for Gardner Denver compressor systems. Design and material innovations are the result of years of experience with hundreds of different compressor applications. Reliability in materials and quality assurance are incorporated in our genuine replacement parts.

Your authorized Gardner Denver® Compressor distributor offers all the backup you'll need. A worldwide network of authorized distributors provides the finest product support in the air compressor industry. Your local authorized distributor maintains a large inventory of genuine parts and he is backed up for emergency parts by direct access to the Gardner Denver Master Distribution Center (MDC) in Memphis, Tennessee.

Your authorized distributor can support your Gardner Denver® air compressor with these services:

1. Trained parts specialists to assist you in selecting the correct replacement parts.
2. Factory warranted new and remanufactured rotary screw air ends. Most popular model remanufactured air ends are maintained in stock at MDC for purchase on an exchange basis with liberal core credit available for the replacement unit.
3. A full line of factory tested AEON™ compressor lubricants specifically formulated for use in Gardner Denver compressors.
4. Repair and maintenance kits designed with the necessary parts to simplify servicing your compressor.

Authorized distributor service technicians are factory-trained and skilled in compressor maintenance and repair. They are ready to respond and assist you by providing fast, expert maintenance and repair services.

For the location of your local authorized Gardner Denver Air Compressor distributor refer to the yellow pages of your phone directory or contact:

Distribution Center:
Gardner Denver
Master Distribution Center
5585 East Shelby Drive
Memphis, TN 38141
Phone: (901) 542-6100
(800) 245-4946
Fax: (901) 542-6159

Factory:
Gardner Denver
1800 Gardner Expressway
Quincy, IL 62301
Phone: (217) 222-5400
Fax: (217) 224-7814

REMANUFACTURED AIR ENDS

Whenever an air end requires replacement or repair, Gardner Denver offers an industry unique, factory remanufactured air end exchange program. From its modern Remanufacturing Center in Indianapolis, IN, Gardner Denver is committed to supplying you with the highest quality, factory remanufactured air ends that are guaranteed to save you time, aggravation and money.

Immediately Available

Repair downtime costs you money, which is why there are over 200 remanufactured units in inventory at all times, ready for immediate delivery.

Skilled Craftsmen

Our Remanufacturing assembly technicians average over 20 years experience with air compression products.

Precision Remanufacturing

All potentially usable parts are thoroughly cleaned, inspected and analyzed. Only those parts that can be brought back to original factory specifications are remanufactured. Every remanufactured air end receives

a new overhaul kit: bearings, gears, seals, sleeves and gaskets.

Extensive Testing

Gardner Denver performs testing that repair houses just don't do. Magnaflux and ultrasonic inspection spot cracked or stressed castings, monochromatic light analysis exposes oil leaks, and coordinate measurement machine inspects to +/- .0001", insuring that all remanufactured air ends meet factory performance specifications.

Warranty

Gardner Denver backs up every remanufactured air end with a new warranty . . . 18 months from purchase, 12 months from service.

Gardner Denver remanufactured air ends deliver *quality without question . . . year in and year out.*

Call Gardner Denver for information on the air end exchange program and the name of your authorized distributor.

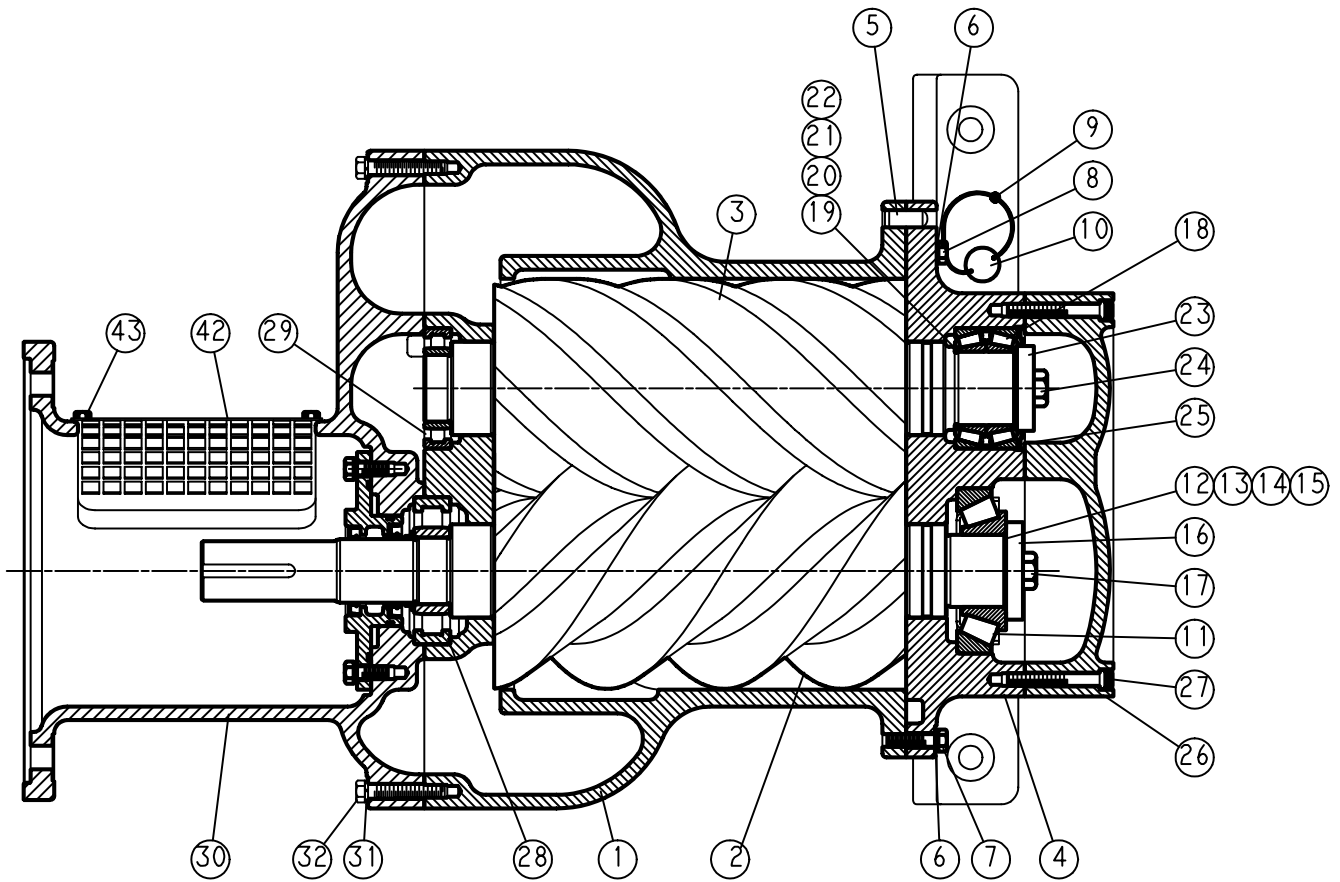
Phone Number: 800-245-4946 or
FAX: 901-542-6159

TABLE OF CONTENTS

Page No.

Instructions For Ordering Repair Parts	1
Maintain Compressor Reliability and Performance with Genuine Gardner Denver® Compressor Parts and Support Services	2
Remanufactured Air Ends	2
Bare Compressor	4, 5
Oil Seal Detail	6
Inlet Valve	7
Air Filter	8
Oil Reservoir Group	9
Oil Return Line	10
Separator Housing Group	11
Discharge Piping	12
Oil Piping	13
Oil Filter – 200EBM369	14
Oil Piping Line	15
Minimum Pressure Valve	16
Thermal Valve (Thermostatic Mixing)	17
Air Discharge Piping	18
Subtractive Pilot Valve	19
Air Cooled Cooler Group	20, 21
Water Cooled Heat Exchanger – With Aftercooler	22, 23
Water Cooled Heat Exchanger – Without Aftercooler	24, 25
Control Schematic	26, 27
Enclosure (Common Parts – Air/Water Cooled)	28, 29
Enclosure – Hardware	30
Enclosure – Air Cooled Units	31
Enclosure – Water Cooled Units	32
Air-Cooled Fan Assembly	33
Compressor Base Group	34
Main Motor Group	35
Controller Assembly – Full Voltage	36, 37
Motor Group (Main Drive Motors)	38
Overload Relay Heater Conversion Listing	39
Identification and Instruction Group	40
Repair Kits	41, 42

BARE COMPRESSOR



**207SSH810-C
(Ref. Drawing)**

AIREND SELECTION

HP	PSI	AIREND	REMANUFACTURED AIREND
100	100	SSHCBD01	SSHCBD01X
100	125	SSHCBD02	SSHCBD02X

Order by Part Number and Description. Reference Numbers are for your convenience only.

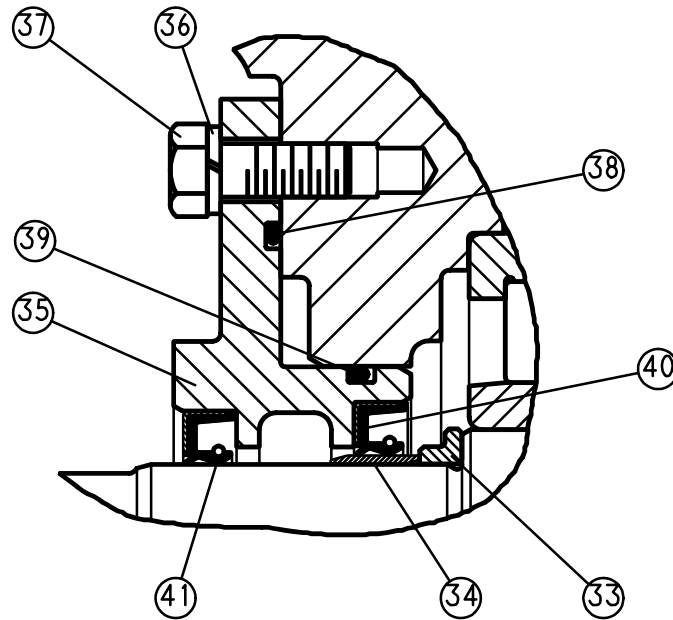
BARE COMPRESSOR

Ref. No.	Name of Part	Qty.	Part No.
1	CYLINDER	1	**
2	ROTOR	1	**
3	ROTOR	1	**
4	HOUSING-BEARING	1	**
5	PIN-DOWEL	2	**
6	LOCKWASHER	14	**
7	SCREW	10	**
8	SCREW	2	**
9	SEAL	1	**
10	TAG-INSTRUCTION	1	**
* 11	BEARING-ROLLER		12BA91
* 11	SHIM SET, Includes next four items	1	77H54
* 12	SHIM	2	77H54015
* 13	SHIM	3	77H54005
* 14	SHIM	3	77H54003
* 15	SHIM	3	77H54002
16	PLATE-BEARING RETAINER	1	**
17	SCREW	1	**
* 18	BEARING-ROLLER	1	12BA90
* 18	SHIM SET, Includes next four items	1	77H53
* 19	SHIM	2	77H53015
* 20	SHIM	3	77H53005
* 21	SHIM	3	77H53003
* 22	SHIM	3	77H53002
23	PLATE-BEARING RETAINER	1	**
24	SCREW	1	**
* 25	SPRING	1	78W48
26	PLATE-BEARING COVER	1	**
27	SCREW	18	**
* 28	BEARING-ROLLER	1	12BA130
* 29	BEARING-ROLLER	1	12BA136
30	ADAPTOR	1	**
31	LOCKWASHER	16	**
32	SCREW	16	**
42	GUARD COUPLING	1	**
43	SCREW-FLANGED	4	**

* Parts included in Periodic Overhaul Kit. Refer to page 41.

** Shown for reference only.

Order by Part Number and Description. Reference Numbers are for your convenience only.



207SSH810-C
(Ref. Drawing)

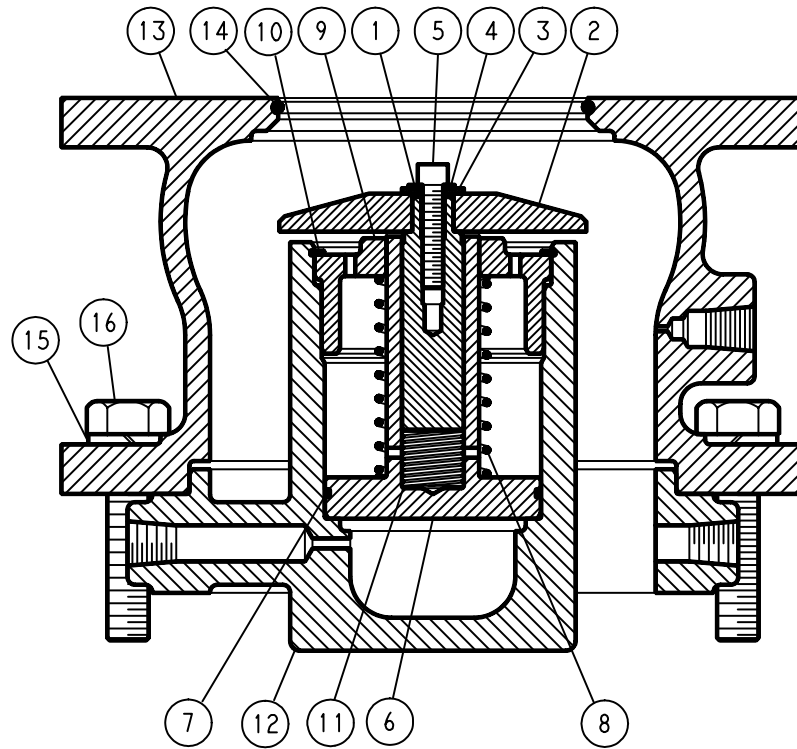
OIL SEAL DETAIL

Ref. No.	Name of Part	Qty.	Part No.
33	SPACER-SHAFT	1	200SSH600
* 34	WEAR SLEEVE	1	80M12
35	HOUSING-SEAL	1	202SSH362
36	LOCKWASHER	8	95B5
37	SCREW	8	655EE050
* 38	O-RING	1	8502140
* 39	O-RING	1	25BC165
* 40	SEAL-OIL	1	60DD679
* 41	SEAL-OIL	1	60DD690
*	CHECK VALVE (Not shown)	1	90AR923

* Parts included in Oil Seal Kit, part number 302SSH6013. Refer to page 41.

Wear Sleeve Installation/Removal Kit, part number 200SSH4017. Refer to page 41.

Order by Part Number and Description. Reference Numbers are for your convenience only.



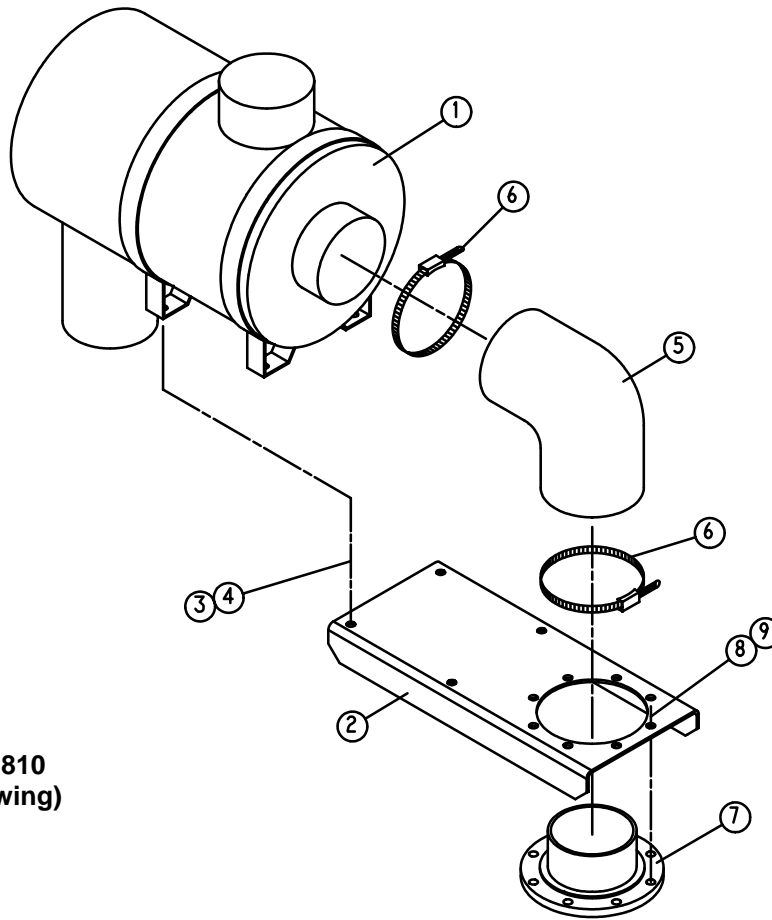
208SSM810-C
(Ref. Drawing)

INLET VALVE

Ref. No.	Name of Part	Qty.	Part No.
1	GUIDE-VALVE	1	200SSM483
2	VALVE-INLET	1	200SSM044
3	WASHER	1	95A1
4	LOCKWASHER	1	95H56
5	SCREW	1	655EC05N
6	PISTON-INLET VALVE	1	201SSM043
*	7 O-RING	1	25BC447
*	8 SPRING	1	78G19
	9 RETAINER	1	200SSM205
*	10 RING-RETAINING	1	74D88
*	11 SPRING	1	78W63
	12 HOUSING-INLET	1	205SSM041
	13 SEAT	1	203SSM256
*	14 O-RING	1	25AM29
	15 LOCKWASHER	8	95B5
	16 SCREW	8	655EE100

* Parts included in Periodic Maintenance Kit, part number 302SSM6013. Refer to page 41.

Order by Part Number and Description. Reference Numbers are for your convenience only.



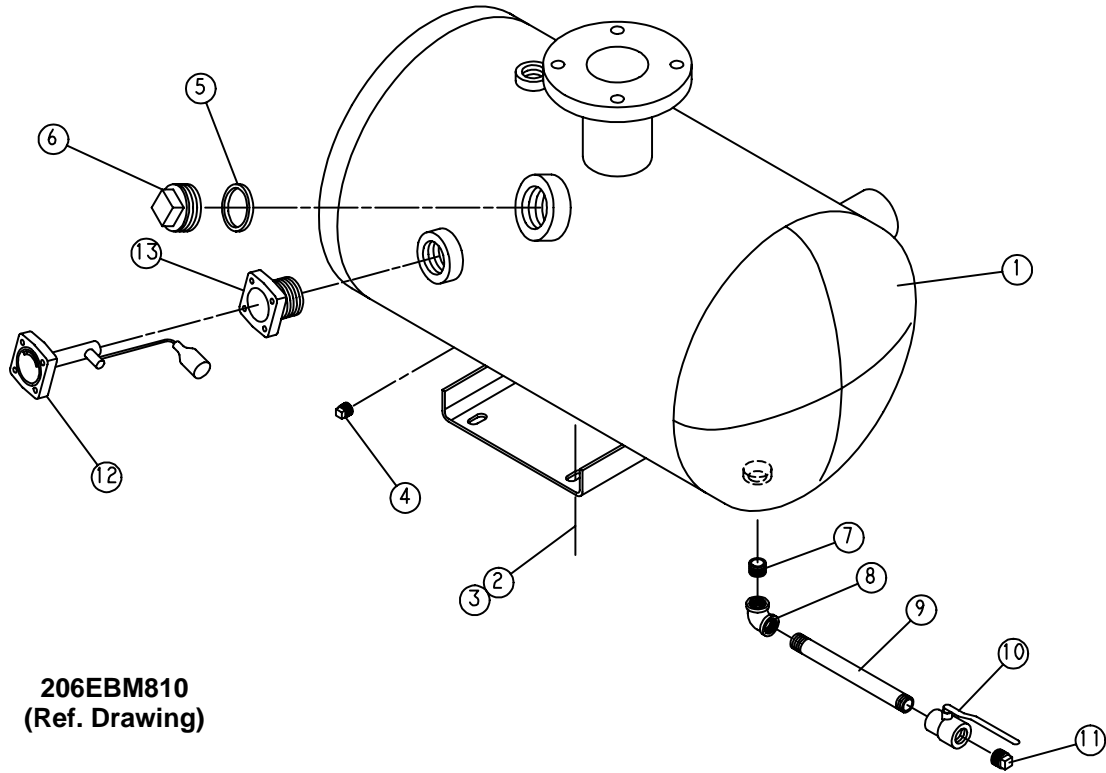
289ECM810
(Ref. Drawing)

AIR FILTER

Ref. No.	Name of Part	Qty.	Part No.
1	FILTER-AIR	1	5L263
2	BRACKET-FILTER	1	202ECM389
3	SCREW-FLANGED	4	75LM51
4	NUT-FLANGED	4	50AW5
5	HOSE MOLDED	1	2009503
6	CLAMP-HOSE	2	2009644
7	ADAPTOR-FILTER	1	200EBM070
8	SCREW	8	655EE060
9	LOCKWASHER	8	95B5
*	GASKET-ELIMINATOR	1	25BC222
*	ELEMENT, AIR FILTER	1	2116713

* Not shown.

Order by Part Number and Description. Reference Numbers are for your convenience only.



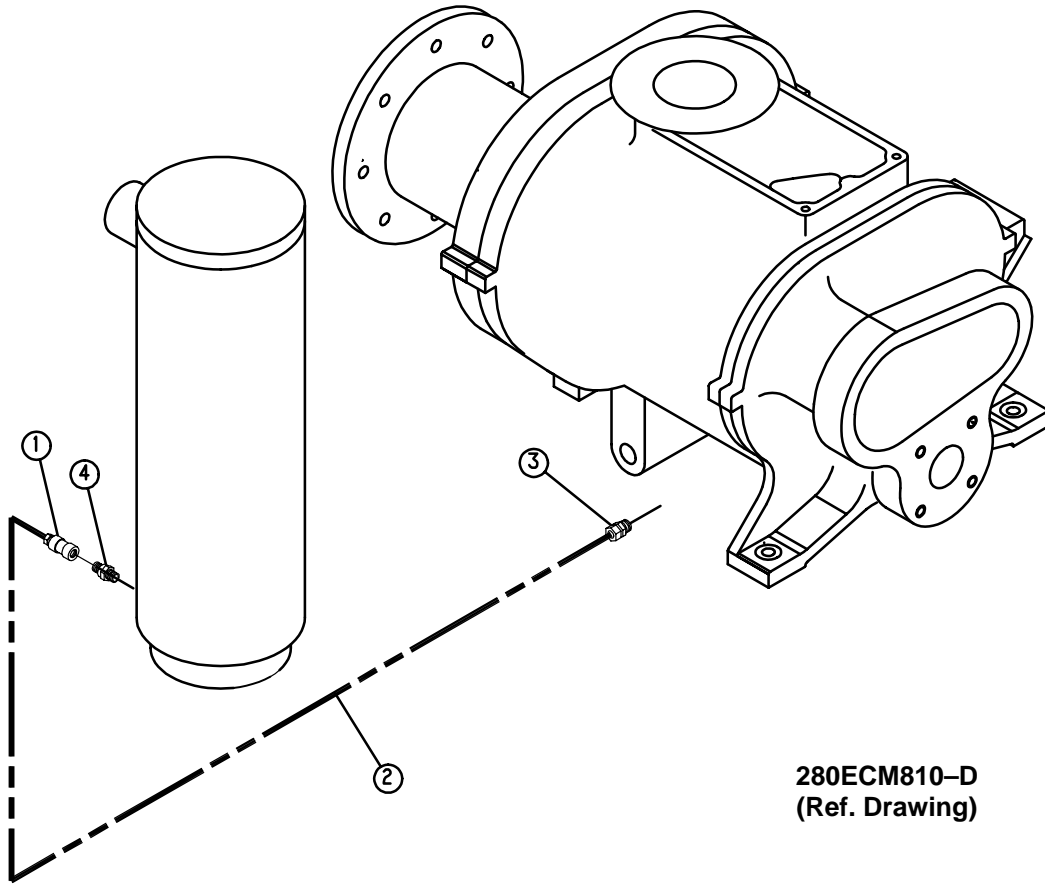
206EBM810
(Ref. Drawing)

OIL RESERVOIR GROUP

Ref. No.	Name of Part	Qty.	Part No.
1	RESERVOIR	1	200EBM037
2	SCREW-FLANGED	4	75LM135
3	NUT-FLANGED	4	50AW35
4	PLUG	1	64AA5
5	O-RING	1	54C214
6	COVER-FILLER	1	200SPF156
7	NIPPLE	1	63F1G
8	ELBOW	1	64C4G
9	NIPPLE	1	63F13G
10	VALVE-BALL	1	90AR360
11	PLUG	1	64AA7
12	GAUGE-FLOAT	1	300EBM303
13	ADAPTOR-GAUGE	1	200EDE058
*	GASKET, FLOAT GAUGE	1	54C204

* Not shown.

Order by Part Number and Description. Reference Numbers are for your convenience only.



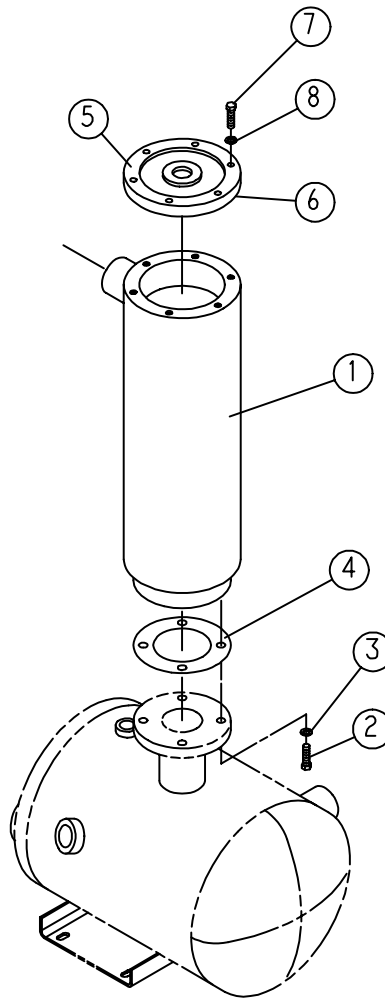
280ECM810-D
(Ref. Drawing)

OIL RETURN LINE

Ref. No.	Name of Part	Qty.	Part No.
1	CONNECTOR-TUBE	1	86E28
2	TUBE	5 ft.	85K3
3	CONNECTOR-TUBE	1	86E4
4	VALVE-CHECK	1	90AR261

Order by Part Number and Description. Reference Numbers are for your convenience only.

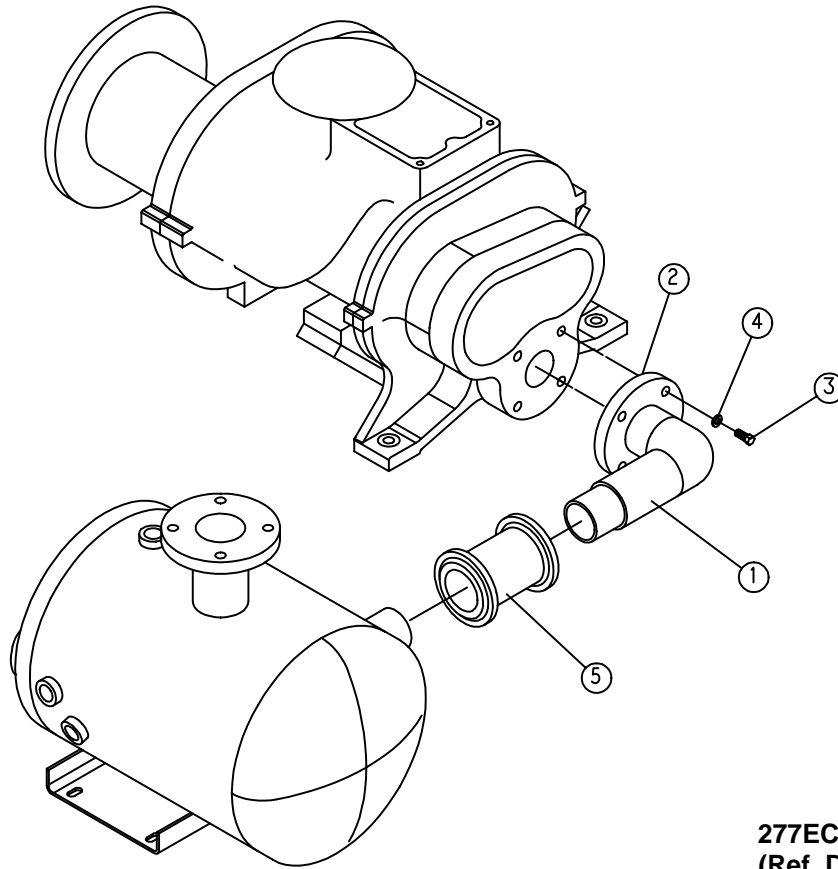
274ECM810-B
(Ref. Drawing)



SEPARATOR HOUSING GROUP

Ref. No.	Name of Part	Qty.	Part No.
1	HOUSING	1	200ECM405
2	SCREW	4	655EF070
3	LOCKWASHER	4	95B7
4	GASKET	1	25C802
5	COVER	1	203ECM225
6	GASKET ELIMINATOR	1	25BC222
7	SCREW	6	655EE070
8	LOCKWASHER	6	95B5

Order by Part Number and Description. Reference Numbers are for your convenience only.



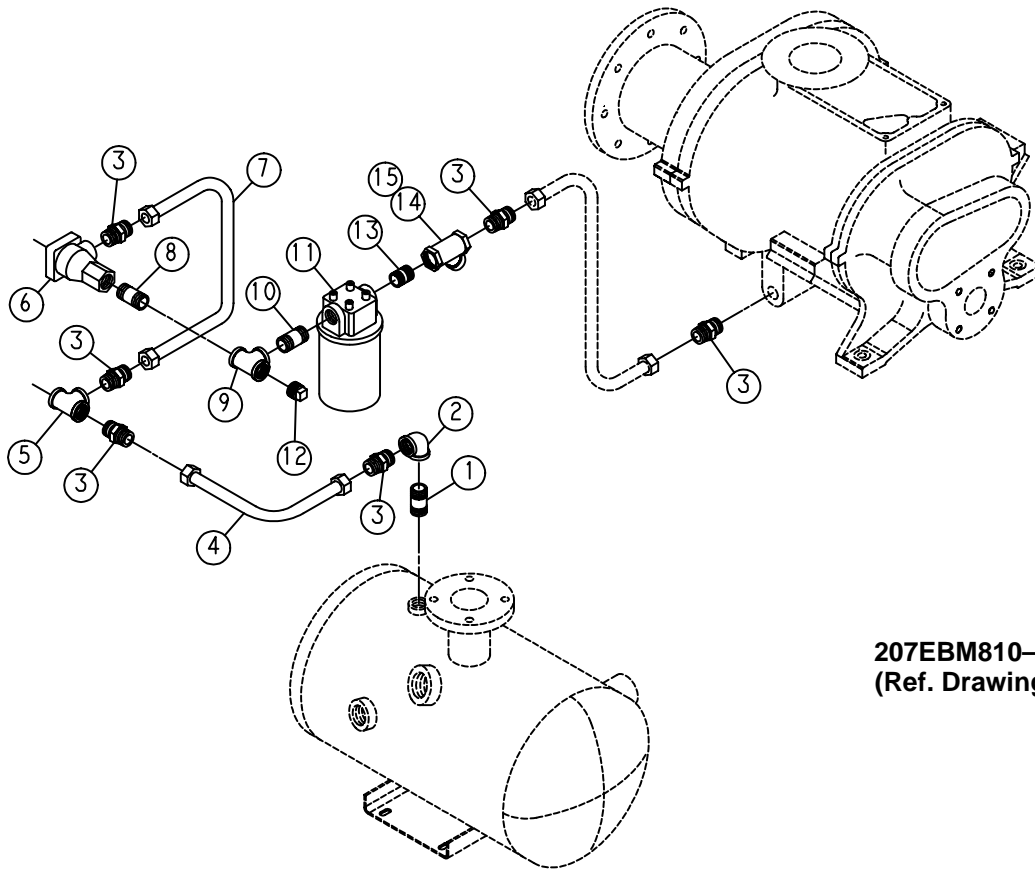
277ECM810-A
(Ref. Drawing)

DISCHARGE PIPING

Ref. No.	Name of Part	Qty.	Part No.
1	MANIFOLD	1	201ECM286
2	GASKET ELIMINATOR	1	25BC222
3	SCREW	4	655EF070
4	LOCKWASHER	4	95B7
5	FLEXIBLE COUPLING	1	64EB802
*	GASKET, FLEXIBLE COUPLING (For Repair)	2	2117160

* Not shown.

Order by Part Number and Description. Reference Numbers are for your convenience only.



207EBM810-A
(Ref. Drawing)

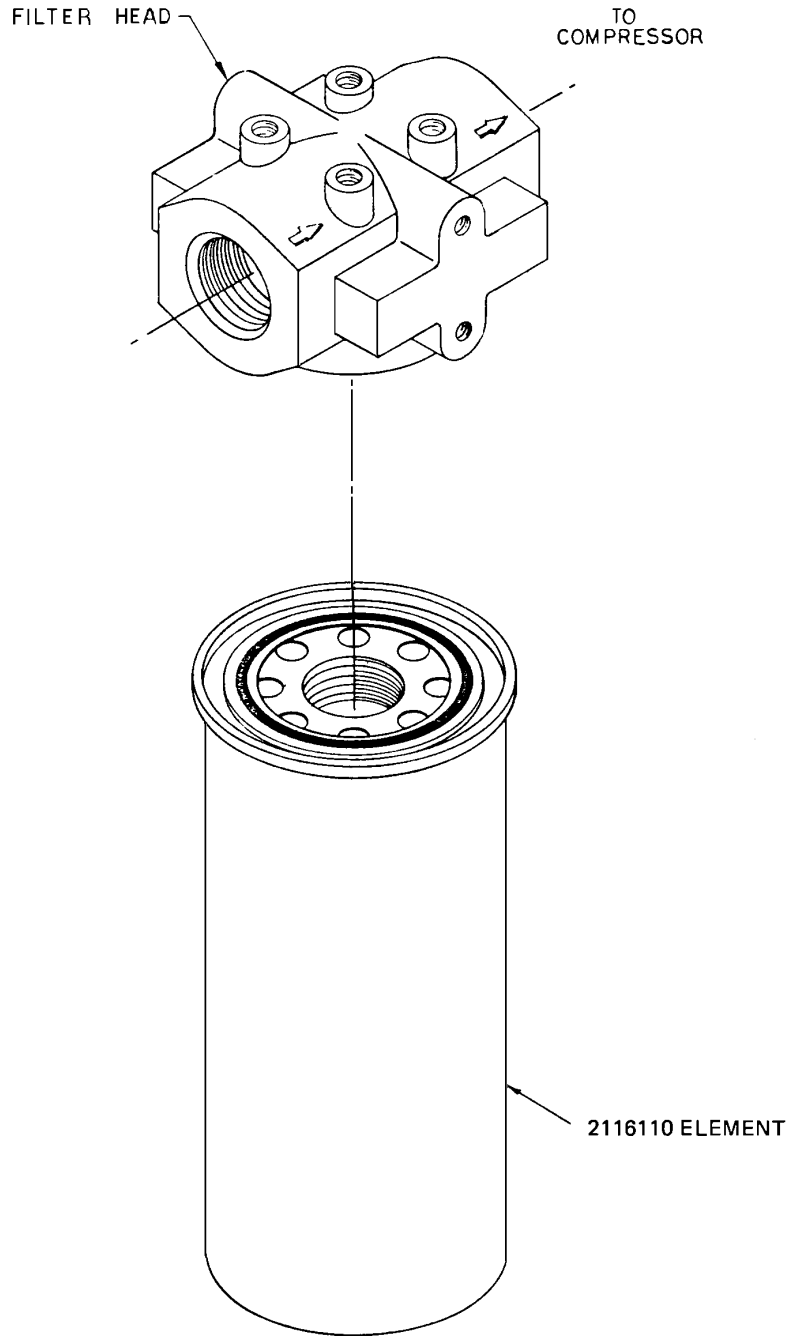
OIL PIPING

Ref. No.	Name of Part	Qty.	Part No.
1	NIPPLE	1	63H2G
2	ELBOW	1	64C6G
3	CONNECTOR-TUBE	6	86H138
4	TUBE WITH FITTINGS	1	202EBM863
5	TEE	1	64G8G
6	VALVE-THERMAL (See page 17)	1	90AR166
7	TUBE WITH FITTINGS	1	201EBM863
8	NIPPLE	1	63H2G
9	TEE	1	64G8G
10	NIPPLE	1	63H2G
11 **	FILTER-OIL (See page 14)	1	200EBM369
12	PLUG	1	64AA1
13	NIPPLE	1	63H1G
14 *	STRAINER	1	82E39
15	PLUG	1	64AA3

* Repair Parts for Strainer: 2117306 – 100 Mesh Screen, 2117309 – Blow-off Bushing.

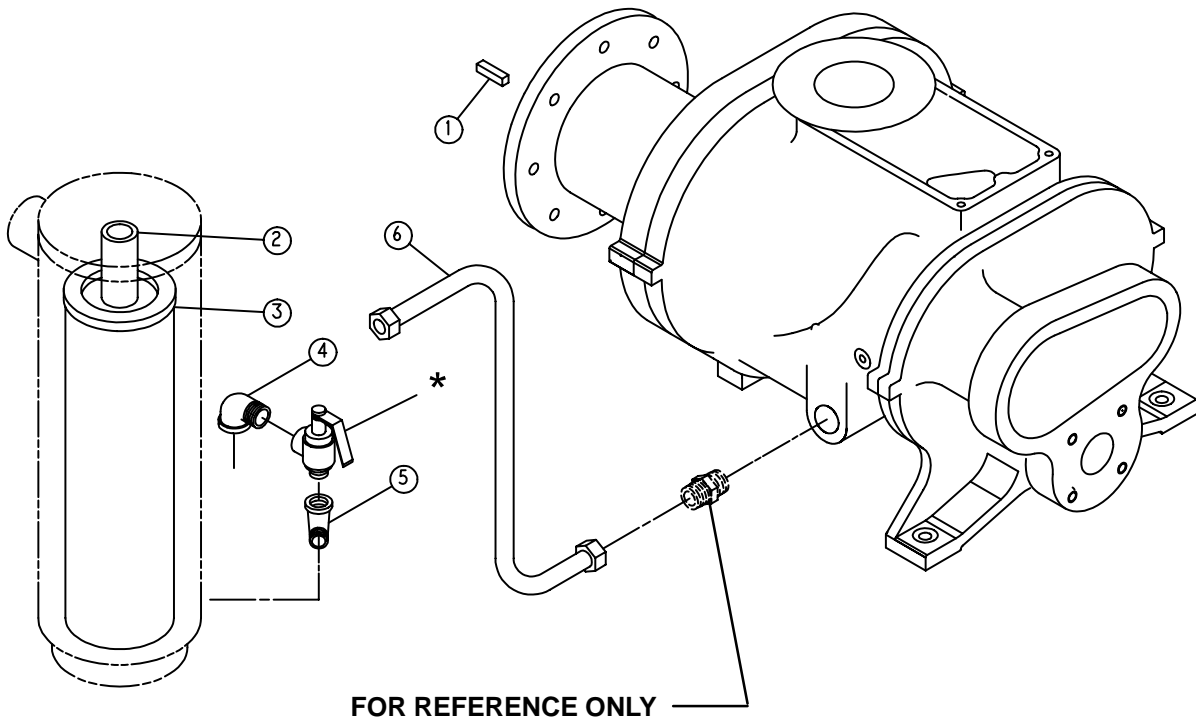
** Oil Filter Element part number: 2116110

OIL FILTER – 200EBM369



WITH 212ECM077 DECAL AFFIXED TO ELEMENT

Order by Part Number and Description. Reference Numbers are for your convenience only.

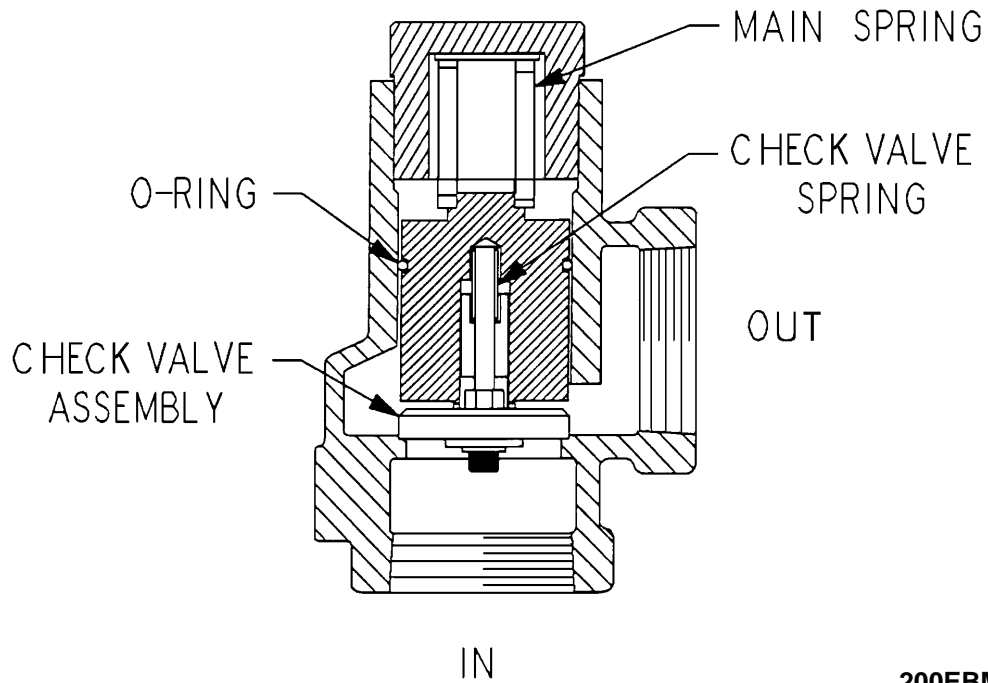


212EBM810
(Ref. Drawing)

OIL PIPING LINE

Ref. No.	Name of Part	Qty.	Part No.
1	KEY-SQUARE	1	8500109
2	SPACER (PIPE)	1	200ECM392
3 **	SEPARATOR	1	200ECM035
4	ELBOW	1	64D10G
5	ELBOW	1	64D6G
6	TUBE WITH FITTINGS	1	300EDH863
*	RELIEF VALVES		
	100 PSI UNITS		90AR381
	125 PSI UNITS		90AR382

** Refer to page 42, Separator Kit 208EAP6013, for parts listing.

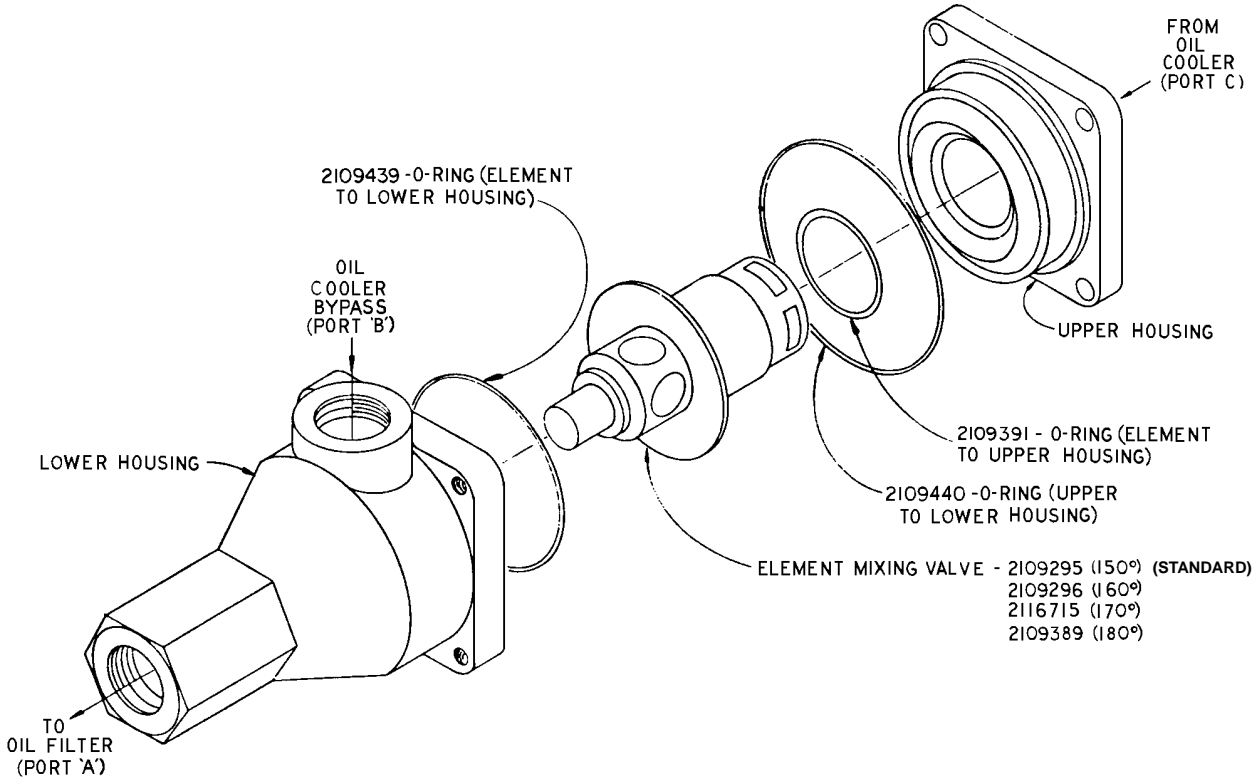


200EBM810
(Ref. Drawing)

MINIMUM PRESSURE VALVE

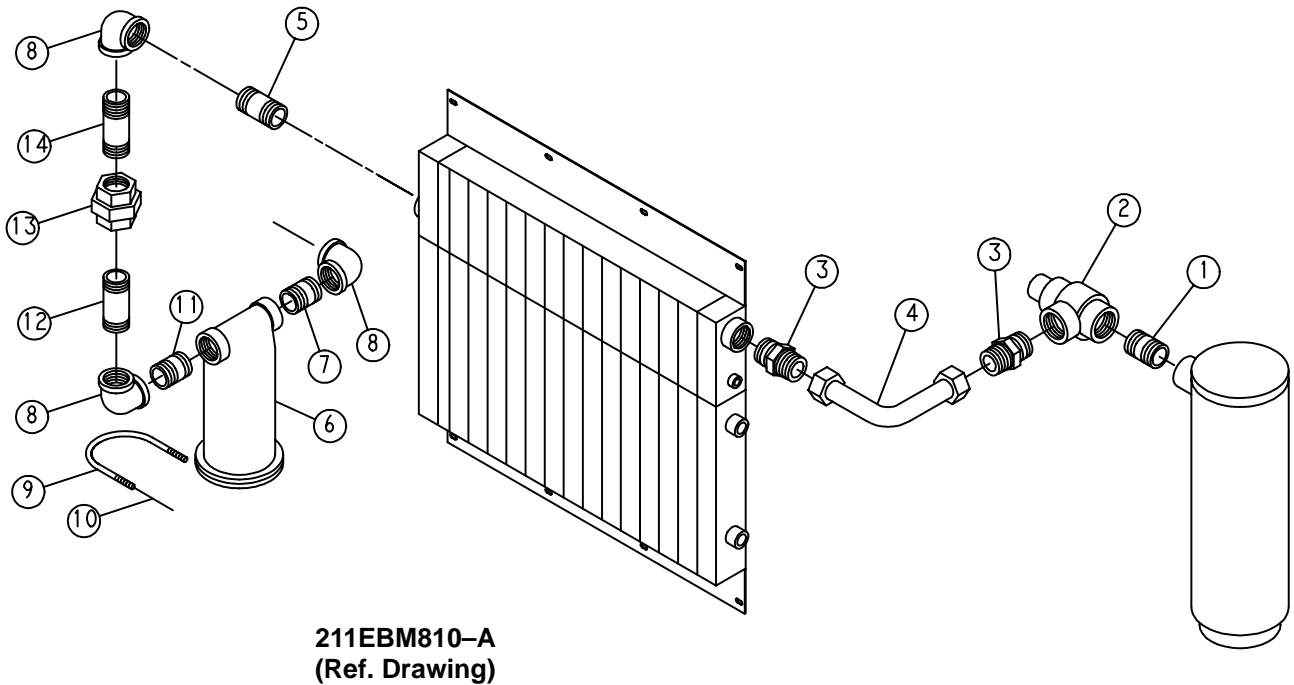
Name of Part	Qty.	Part No.
MINIMUM PRESSURE VALVE ASSEMBLY	1	200EBM527
REPAIR KIT – Includes the following:	1	2116854
O-RING	1	
SPRING, CHECK VALVE	1	
CHECK VALVE ASSEMBLY	1	
SPRING, MAIN	1	

**THERMAL VALVE
(Thermostatic Mixing)**



90AR166 THERMAL VALVE (ALUMINUM HOUSING)

Order by Part Number and Description. Reference Numbers are for your convenience only.

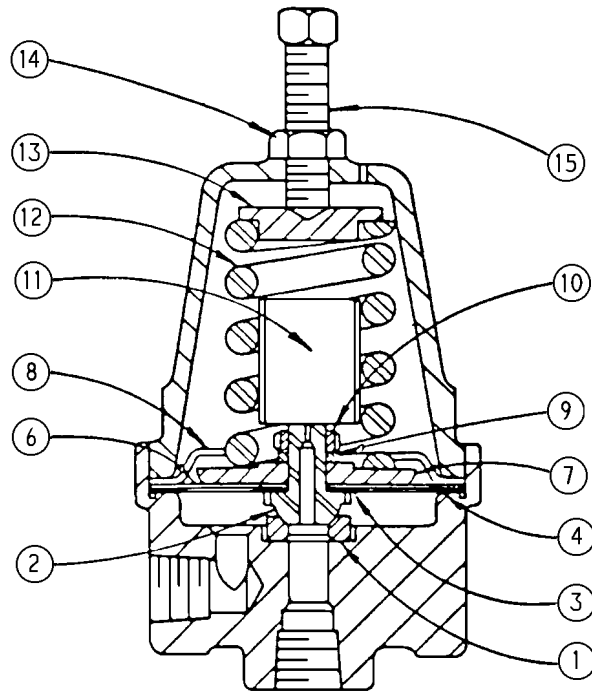


AIR DISCHARGE PIPING

Ref. No.	Name of Part	Qty.	Part No.
1	NIPPLE	1	63L1G
2	VALVE-MINIMUM PRESSURE (See page 16 for Repair Kit)	1	200EBM527
3	CONNECTOR-TUBE	2	86H142
4	TUBE WITH FITTINGS	1	204EBM863
5	NIPPLE	1	63L15G
6*	TRAP (SEPARAROR)	1	83C84
7	NIPPLE	1	63L1G
8	ELBOW	3	64C9G
9	U-BOLT	1	15U64
10	NUT-FLANGED	2	50AW5
11	NIPPLE	1	63L9G
12	NIPPLE	1	63L20G
13	UNION-STRAIGHT	1	64Z2
14	NIPPLE	1	63L22G

* Repair Parts Kits for Separator Trap:
 2117587 – Valve & Seat Assembly
 2117588 – Cover Gasket
 2117589 – Float & Spindle

Order by Part Number and Description. Reference Numbers are for your convenience only.

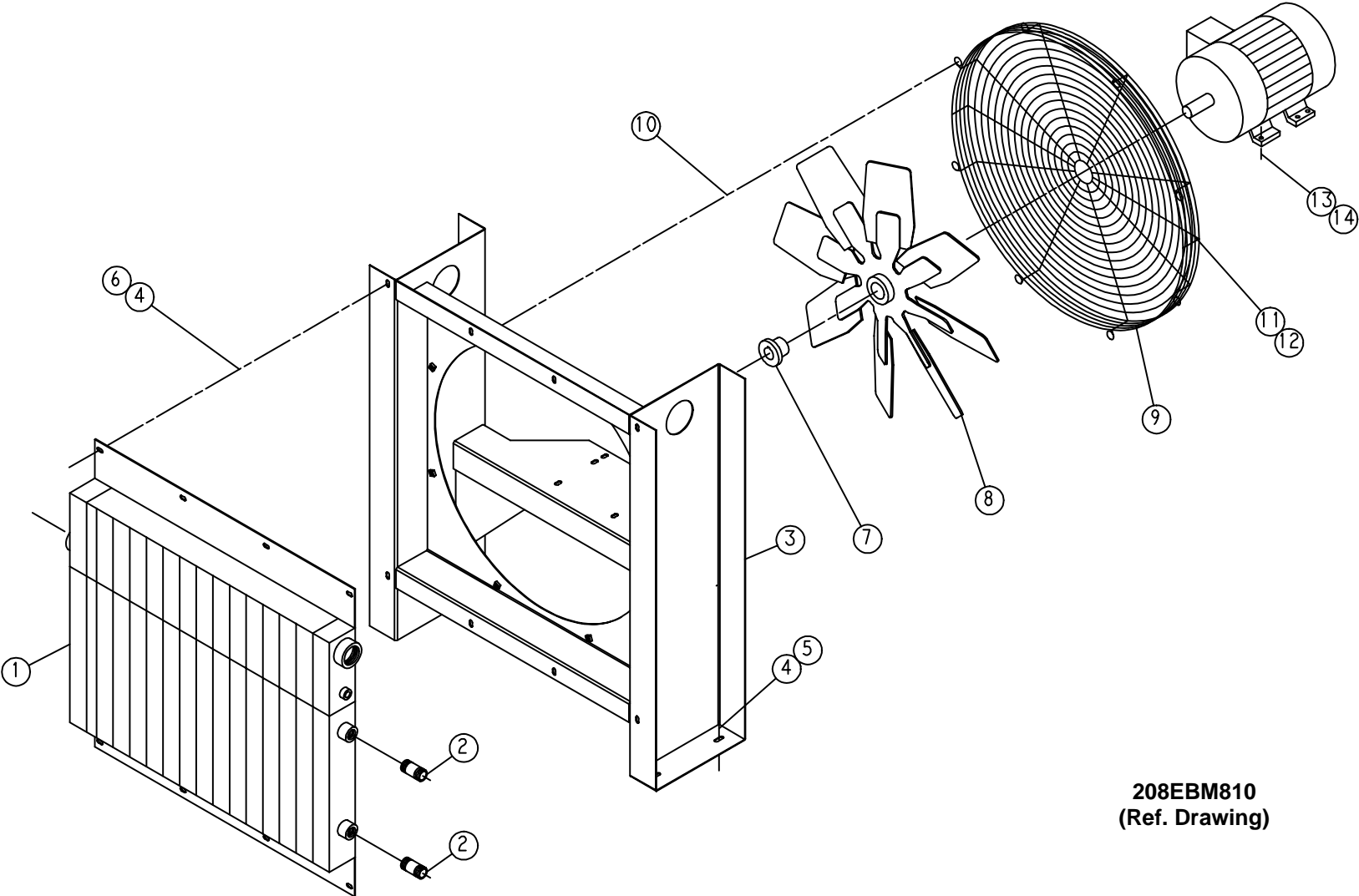


SUBTRACTIVE PILOT VALVE

Ref. No.	Name of Part	Qty.	Part No.
	VALVE-SUBTRACTIVE PILOT, Includes Ref. No. 1 thru 15		2009398
1	RING-SEAT	1	2008021
2	DISC-SEAT	1	2010080
3	GASKET-DURABLA	1	2008019
4	GASKET-DURABLA	1	2008017
6	DIAPHRAGM	5	2008018
7	PLATE-PRESSURE	1	2008015
8	STOP-DIAPHRAGM	1	2008016
9	LOCKWASHER	1	95B1
10	NUT-PRESSURE PLATE	1	2008888
11	DAMPER	1	2008711
12	SPRING-PRESSURE	1	2008014
13	BUTTON-SPRING	1	2008891
14	LOCKNUT	1	50Y2
15	SCREW-PRESSURE	1	2008952

NOTE: It is necessary to replace some parts in groups to insure satisfactory repair. When replacing diaphragm, also replace both diaphragm and seat gaskets. When replacing seat disc or seat ring, replace also the mating seat ring or disc and the seat disc gasket.

AIR COOLED COOLER GROUP



208EBM810
(Ref. Drawing)

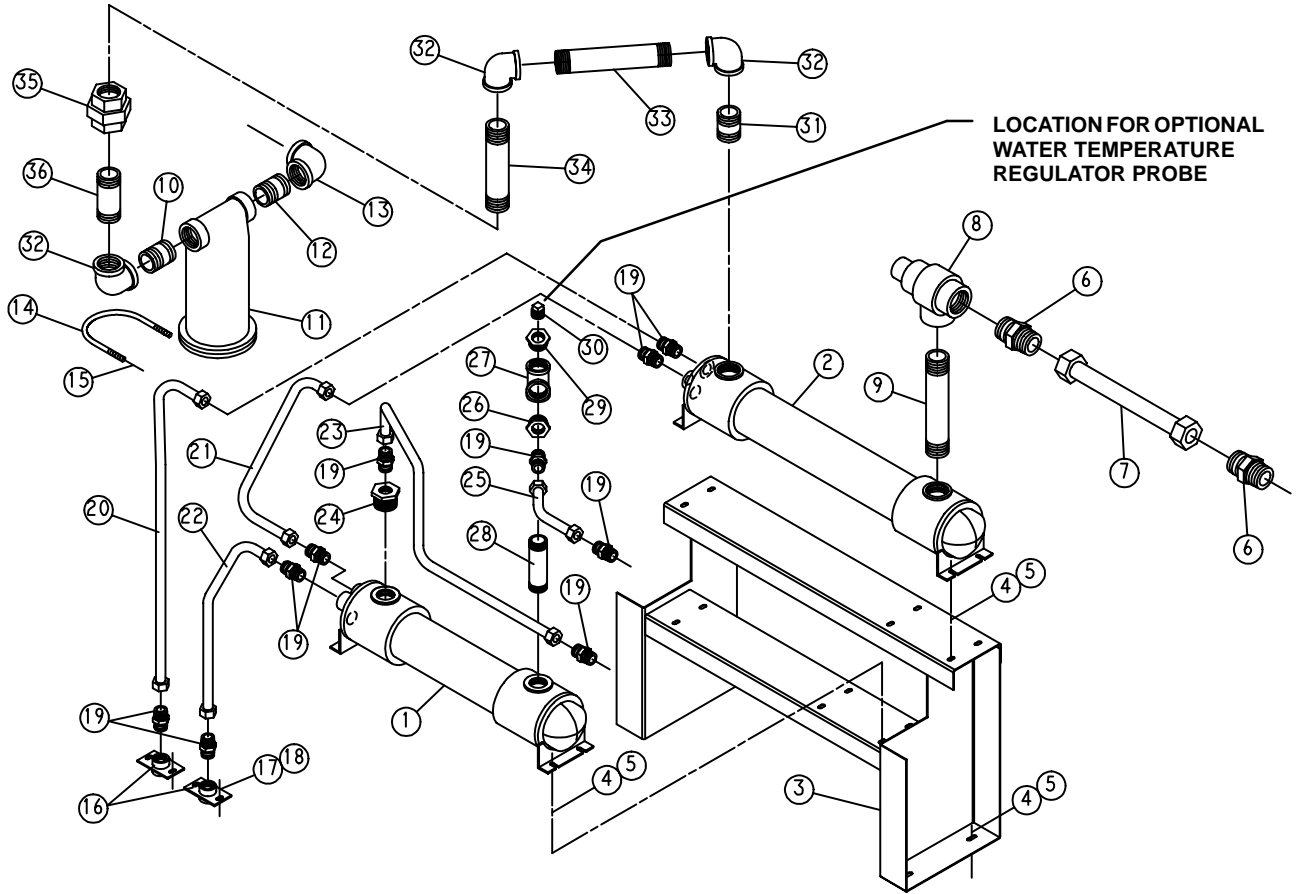
Order by Part Number and Description. Reference Numbers are for your convenience only.

AIR COOLED COOLER GROUP

Ref. No.	Name of Part	Qty.	Part No.
1	COOLER-OIL	1	200EBP201
	COOLER-OIL SEACOAST (OPTIONAL)	1	201EBP201
2	NIPPLE	2	63H4G
3	SUPPORT	1	200EBM165
4	SCREW-FLANGED	12	75LM51
5	NUT-FLANGED	12	50AW5
6	WASHER	8	95A3
7	BUSHING-HUB	1	22G2
8	FAN	1	201ECM701
9	GUARD-FAN	1	200EBM393
10	SCREW-FLANGED	8	75LM51
11	SCREW-FLANGED	4	75LM50
12	NUT-FLANGED	4	50AW4
13	SCREW-FLANGED	4	75LM78
14	NUT-FLANGED	4	50AW5

NOTE: For Fan Motor Part Numbers see page 38.

WATER COOLED HEAT EXCHANGER – WITH AFTERCOOLER



209EBM810-A
(Ref. Drawing)

Order by Part Number and Description. Reference Numbers are for your convenience only.

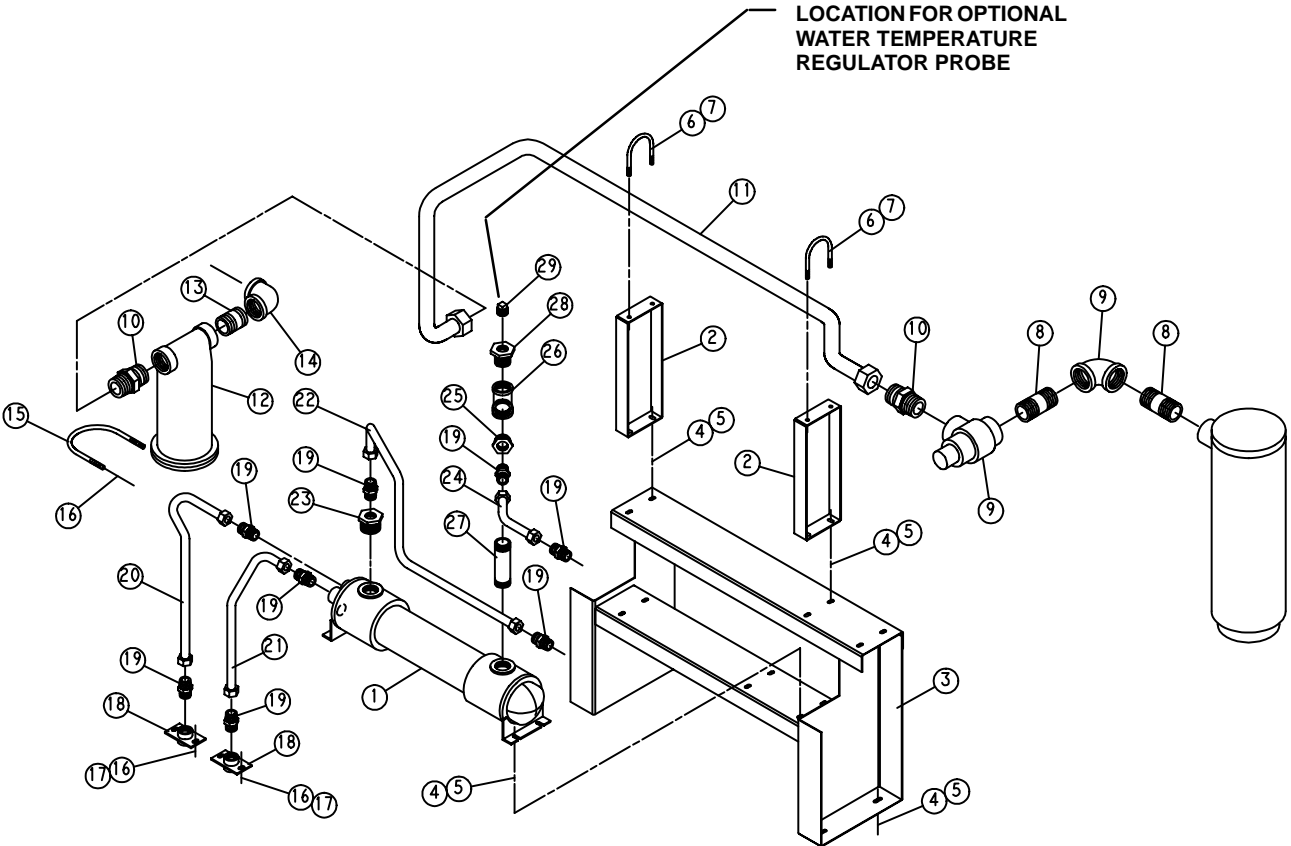
WATER COOLED HEAT EXCHANGER – WITH AFTERCOOLER

Ref. No.	Name of Part	Qty.	Part No.
1	EXCHANGER–HEAT (OIL/WATER) Fresh Water – Standard	1	204ESM349
	EXCHANGER–HEAT (OIL/WATER) Salt Water Option	1	203ESM349
	BONNET–IN & OUT (For Repair – Fresh Water)	1	2109060
	BONNET–IN & OUT (For Repair – Salt Water Option)	1	2117756
	BONNET–RETURN (For Repair – Fresh Water)	1	2109061
	BONNET–RETURN (For Repair – Salt Water Option)	1	2109074
	GASKET–IN & OUT (For Repair – Fresh Water & Salt Water Option)	1	2109058
	GASKET–RETURN (For Repair – Fresh Water & Salt Water Option)	1	2109059
2	AFTERCOOLER – Fresh Water – Standard	1	201ESM292
	AFTERCOOLER – Salt Water Option	1	202ESM292
	BONNET–IN & OUT (For Repair – Fresh Water)	1	2109060
	BONNET–IN & OUT (For Repair – Salt Water Option)	1	2117756
	BONNET–RETURN (For Repair – Fresh Water)	1	2109061
	BONNET–RETURN (For Repair – Salt Water Option)	1	2109074
	GASKET–IN & OUT (For Repair – Fresh Water & Salt Water Option)	1	2109058
	GASKET–RETURN (For Repair – Fresh Water & Salt Water Option)	1	2109059
3	SUPPORT	1	213ECM165
4	SCREW–FLANGED	12	75LM51
5	NUT–FLANGED	12	50AW5
6	CONNECTOR–TUBE	2	86H142
7	TUBE WITH FITTINGS	1	202EBP863
8	VALVE–MINIMUM PRESSURE (See page 16 for Repair Kit)	1	200EBM527
9	NIPPLE	1	63L28G
10	NIPPLE	1	63L9G
11 **	TRAP	1	83C84
12	NIPPLE	1	63L9G
13	ELBOW	1	64C9G
14	U–BOLT	1	15U64
15	NUT–FLANGED	2	50AW5
16	MANIFOLD–WATER	2	200ECM072
17	SCREW–FLANGED	4	75LM51
18	NUT–FLANGED	4	50AW5
19	CONNECTOR–TUBE	10	86H138
20	TUBE WITH FITTINGS	1	209EBM863
21	TUBE WITH FITTINGS	1	208EBM863
22	TUBE WITH FITTINGS	1	210EBM863
23	TUBE WITH FITTINGS	1	207EBM863
24	BUSHING–PIPE	1	64E13
25	TUBE WITH FITTINGS	1	201EBP863
26	BUSHING–PIPE	1	64E13
27	TEE	1	64G11G
28	NIPPLE	1	63K6G
29	BUSHING–PIPE	1	64E13
30	PLUG	1	64AA1
31	NIPPLE	1	63L9G
32	ELBOW	3	64C9G
33	NIPPLE	1	63L34G
34	NIPPLE	1	63L27G
35	UNION–STRAIGHT	1	64Z2
36	NIPPLE	1	63L20G
*	TEMPERATURE REGULATOR (Optional Equipment)	1	90AR326
*	SOLENOID VALVE (Optional Equipment)	1	91B167

* Not shown.

** Repair Parts Kits for Separator Trap: 2117587 – Valve & Seat Assembly, 2117588 – Cover Gasket and 2117589 – Float & Spindle

WATER COOLED HEAT EXCHANGER – WITHOUT AFTERCOOLER



210EBM810
(Ref. Drawing)

Order by Part Number and Description. Reference Numbers are for your convenience only.

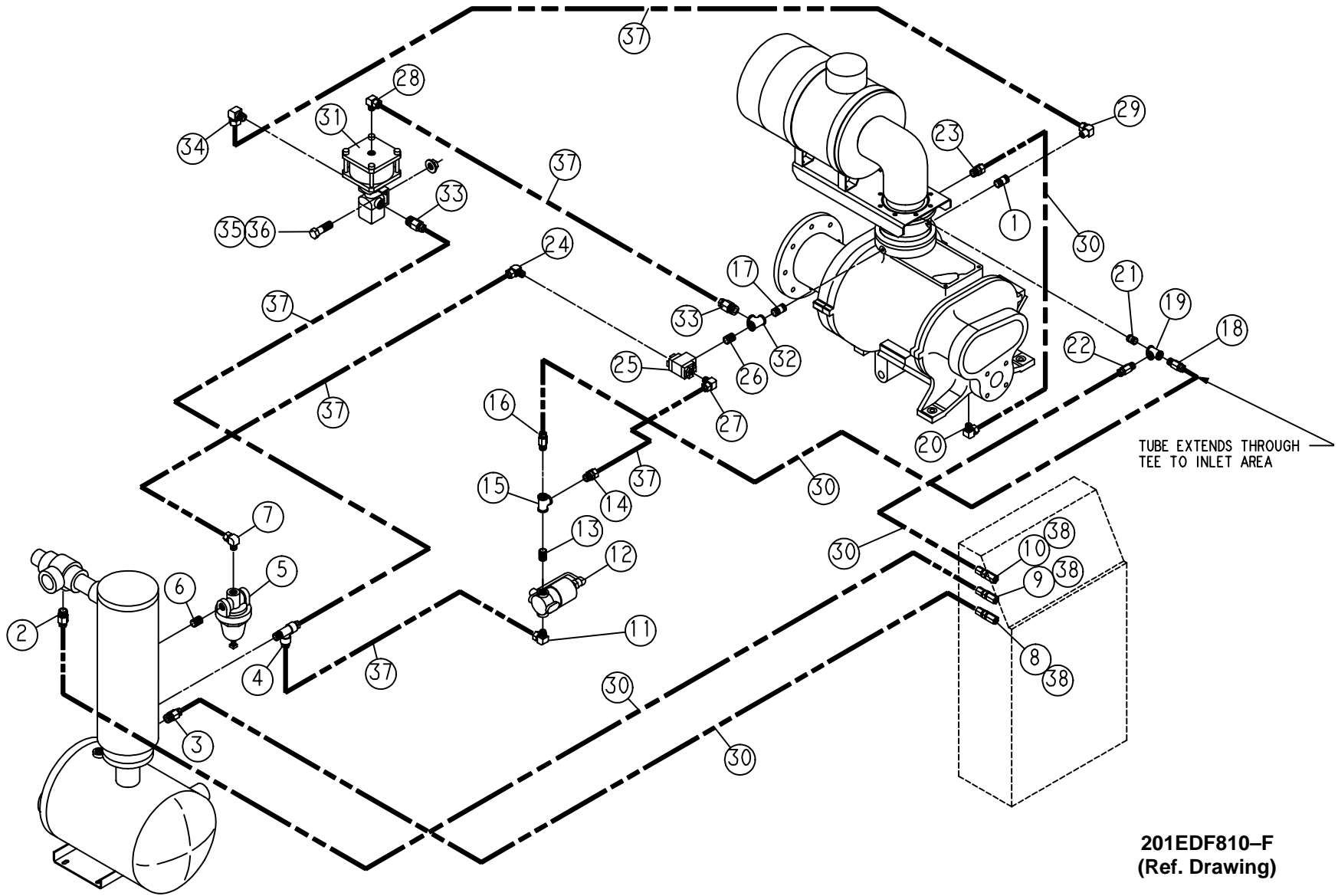
WATER COOLED HEAT EXCHANGER – WITHOUT AFTERCOOLER

Ref. No.	Name of Part	Qty.	Part No.
1	EXCHANGER–HEAT (OIL/WATER) Fresh Water – Standard	1	204ESM349
	EXCHANGER–HEAT (OIL/WATER) Salt Water Option	1	203ESM349
	BONNET–IN & OUT (For Repair – Fresh Water)	1	2109060
	BONNET–IN & OUT (For Repair – Salt Water Option)	1	2117756
	BONNET–RETURN (For Repair – Fresh Water)	1	2109061
	BONNET–RETURN (For Repair – Salt Water Option)	1	2109074
	GASKET–IN & OUT (For Repair – Fresh Water & Salt Water Option)	1	2109058
	GASKET–RETURN (For Repair – Fresh Water & Salt Water Option)	1	2109059
2	BRACKET–PIPE	2	201ECM108
3	SUPPORT	1	213ECM165
4	SCREW–FLANGED	12	75LM51
5	NUT–FLANGED	12	50AW5
6	U–BOLT	2	15U111
7	NUT–FLANGED	4	50AW5
8	NIPPLE	2	63L9G
9	VALVE–MINIMUM PRESSURE (See page 16 for Repair Kit)	1	200EBM527
10	CONNECTOR–TUBE	2	86H142
11	TUBE WITH FITTINGS	1	213EBM863
12 **	TRAP	1	83C84
13	NIPPLE	1	63L1G
14	ELBOW	1	64C9G
15	U–BOLT	1	15U64
16	NUT–FLANGED	6	50AW5
17	SCREW–FLANGED	4	75LM51
18	MANIFOLD–WATER	2	200ECM072
19	CONNECTOR–TUBE	8	86H138
20	TUBE WITH FITTINGS	1	211EBM863
21	TUBE WITH FITTINGS	1	210EBM863
22	TUBE WITH FITTINGS	1	207EBM863
23	BUSHING–PIPE	1	64E13
24	TUBE WITH FITTINGS	1	201EBP863
25	BUSHING–PIPE	1	64E13
26	TEE	1	64G11G
27	NIPPLE	1	63K6G
28	BUSHING–PIPE	1	64E13
29	PLUG	1	64AA1
*	TEMPERATURE REGULATOR (Optional Equipment)	1	90AR326
*	SOLENOID VALVE (Optional Equipment)	1	91B167

* Not shown.

** Repair Parts Kits for Separator Trap: 2117587 – Valve & Seat Assembly, 2117588 – Cover Gasket and 2117589 – Float & Spindle

CONTROL SCHEMATIC



Order by Part Number and Description. Reference Numbers are for your convenience only.

CONTROL SCHEMATIC

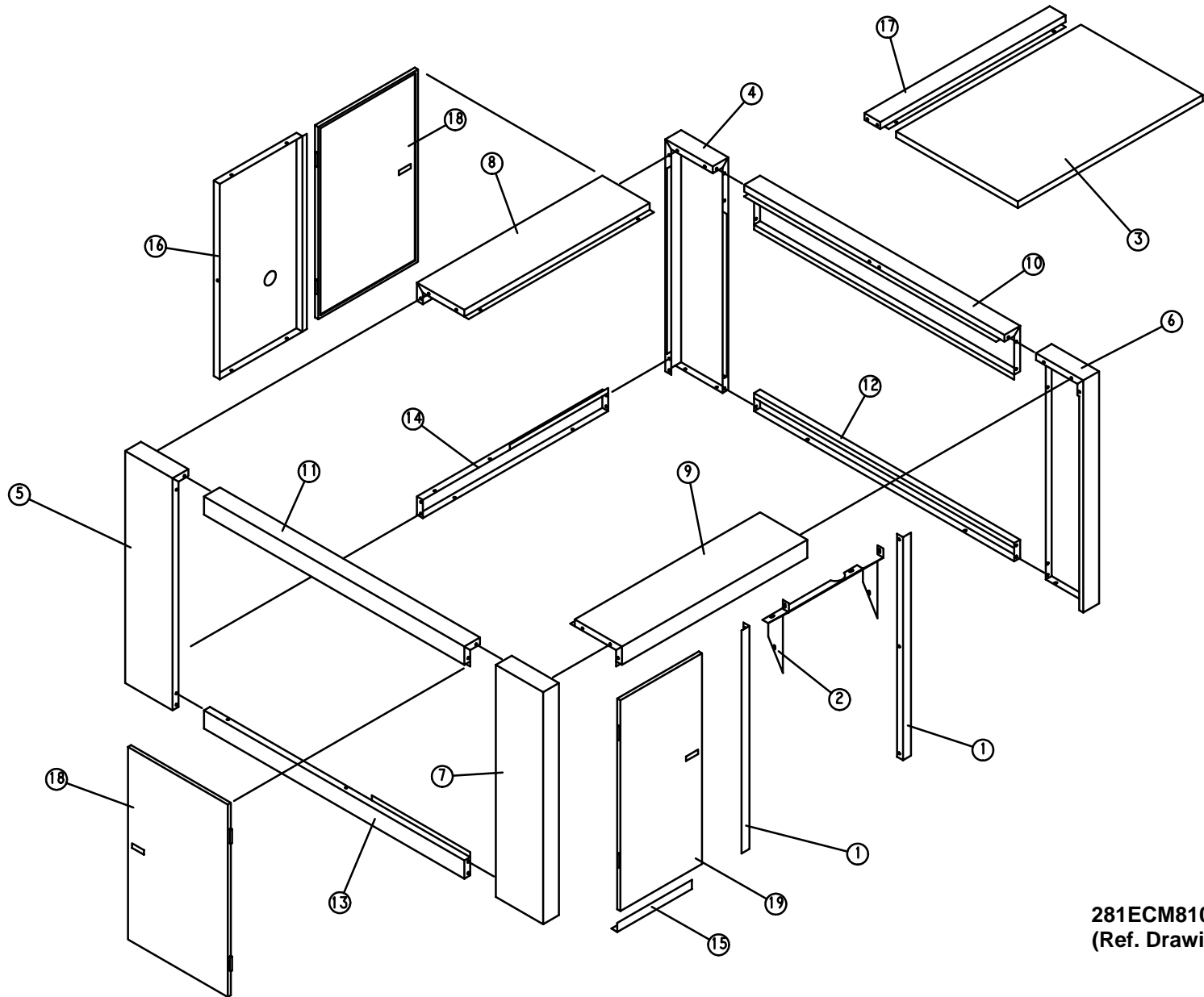
Ref. No.	Name of Part	Qty.	Part No.	Ref. No.	Name of Part	Qty.	Part No.
1	NIPPLE	1	63D5G	20	ELBOW-TUBE	1	86E60
2	CONNECTOR-TUBE	1	86E4	21	NIPPLE	1	63D1G
3	CONNECTOR-TUBE	1	86E4	22	CONNECTOR-TUBE	1	86E4
4	TEE	1	86E136	23	CONNECTOR-TUBE	1	86E4
5 **	VALVE-SUBTRACTIVE PILOT .	1	2009398	24	ELBOW	1	86E64
6	NIPPLE	1	63D1G	25	VALVE-CONTROL	1	90AR1034
7	ELBOW-TUBE	1	86E60	26	NIPPLE	1	63D1G
8	CONNECTOR-TUBE	1	86N287	27	ELBOW	1	86E64
9	CONNECTOR-TUBE	1	86N287	28	ELBOW-TUBE	1	86E63
10	CONNECTOR-TUBE	1	86N287	29	ELBOW	1	86E64
11	ELBOW-TUBE	1	86E60	30	TUBE	38	85K3
12 ***	VALVE-SOLENOID	1	91B77	31 *	VALVE-CONTROL	1	90AR35
13	NIPPLE	1	63D1G	32	TEE-PIPE	1	64G3G
14	CONNECTOR-TUBE	1	86E9	33	CONNECTOR-TUBE	2	86E9
15	TEE-PIPE	1	64G3G	34	ELBOW	2	86E64
16	ORIFICE	1	86N291	35	NUT-FLANGED	2	50AW3
17	NIPPLE	1	63D5G	36	SCREW	2	75LM48
18	CONNECTOR	1	86N272	37	TUBE	1	85K5
19	TEE-PIPE	1	64G3G	38	O-RING	3	165011

* For Repair Kit order Part Number 2117619 (does not include Diaphragm), or for Repair Diaphragm only, order Part Number 2116130.

** See page 19 for repair part numbers.

*** For Repair Kit (includes Springs, Seals, Piston Assembly, Plunger Assembly, Nut and O-Ring) order part number 2116077.

ENCLOSURE
(COMMON PARTS - AIR/WATER COOLED)

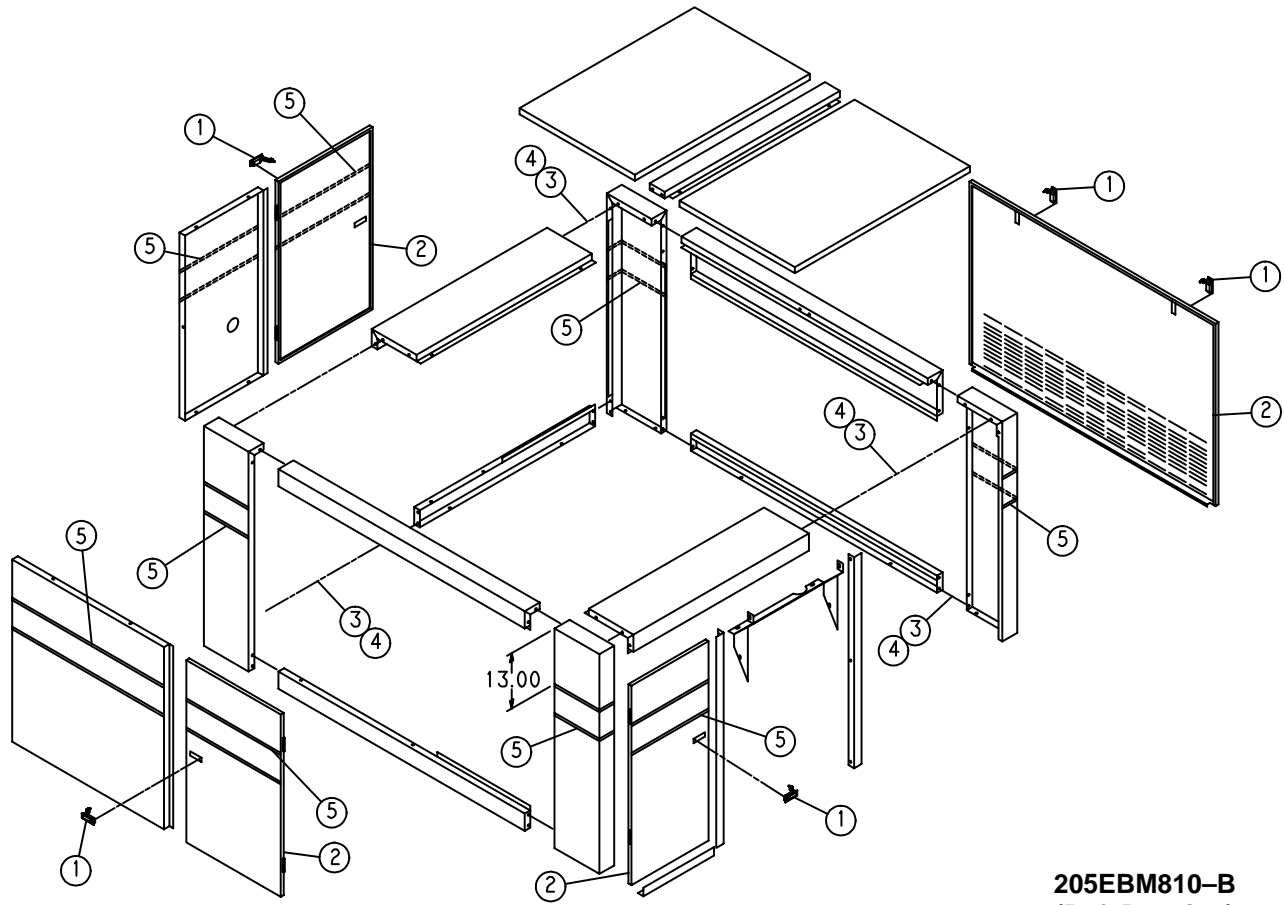


Order by Part Number and Description. Reference Numbers are for your convenience only.

ENCLOSURE
(COMMON PARTS – AIR/WATER COOLED)

Ref. No.	Name of Part	Qty.	Part No.
1	BRACKET	2	215ECM142
2	BRACKET	1	216ECM142
3	PANEL	1	217ECM216
4	POST	1	208ECM313
5	POST	1	209ECM313
6	POST	1	210ECM313
7	POST	1	211ECM313
8	FRAME	1	215ECM314
9	FRAME	1	216ECM314
10	FRAME	1	217ECM314
11	FRAME	1	218ECM314
12	FRAME	1	219ECM314
13	FRAME	1	220ECM314
14	FRAME	1	221ECM314
15	FRAME	1	222ECM314
16	BRACE	1	204ECM326
17	BRACE	1	205ECM326
18	DOOR-CANOPY	2	208ECM334
19	DOOR-CANOPY	1	209ECM334

Order by Part Number and Description. Reference Numbers are for your convenience only.

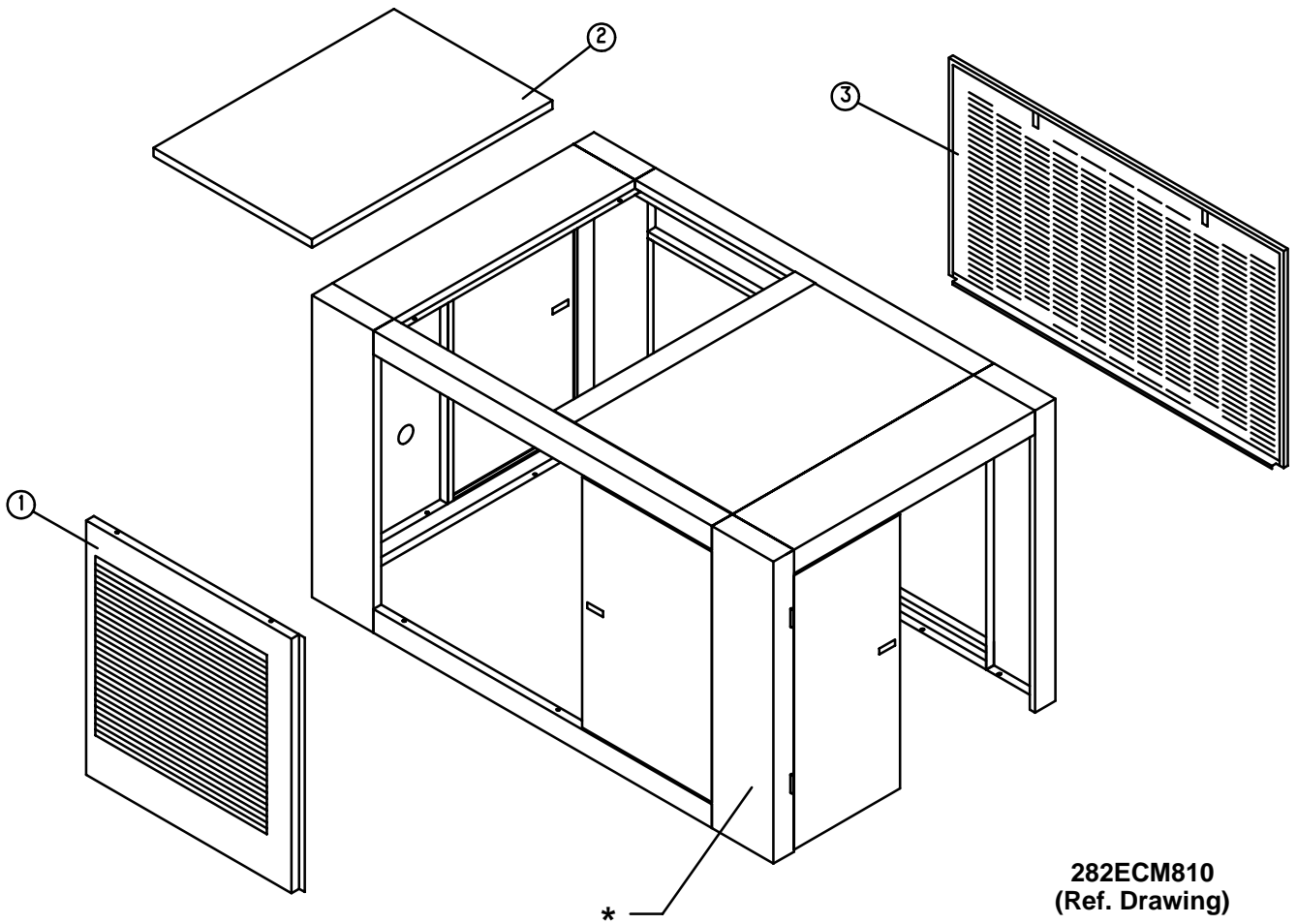


205EBM810-B
(Ref. Drawing)

ENCLOSURE – HARDWARE

Ref. No.	Name of Part	Qty.	Part No.
1	LATCH	5	31D58
2	SEAL	51 Ft.	32E12
3	SCREW-FLANGED	86	75LM51
4	NUT-FLANGED	78	50AW5
5	DECAL	6	203ESO077

Order by Part Number and Description. Reference Numbers are for your convenience only.

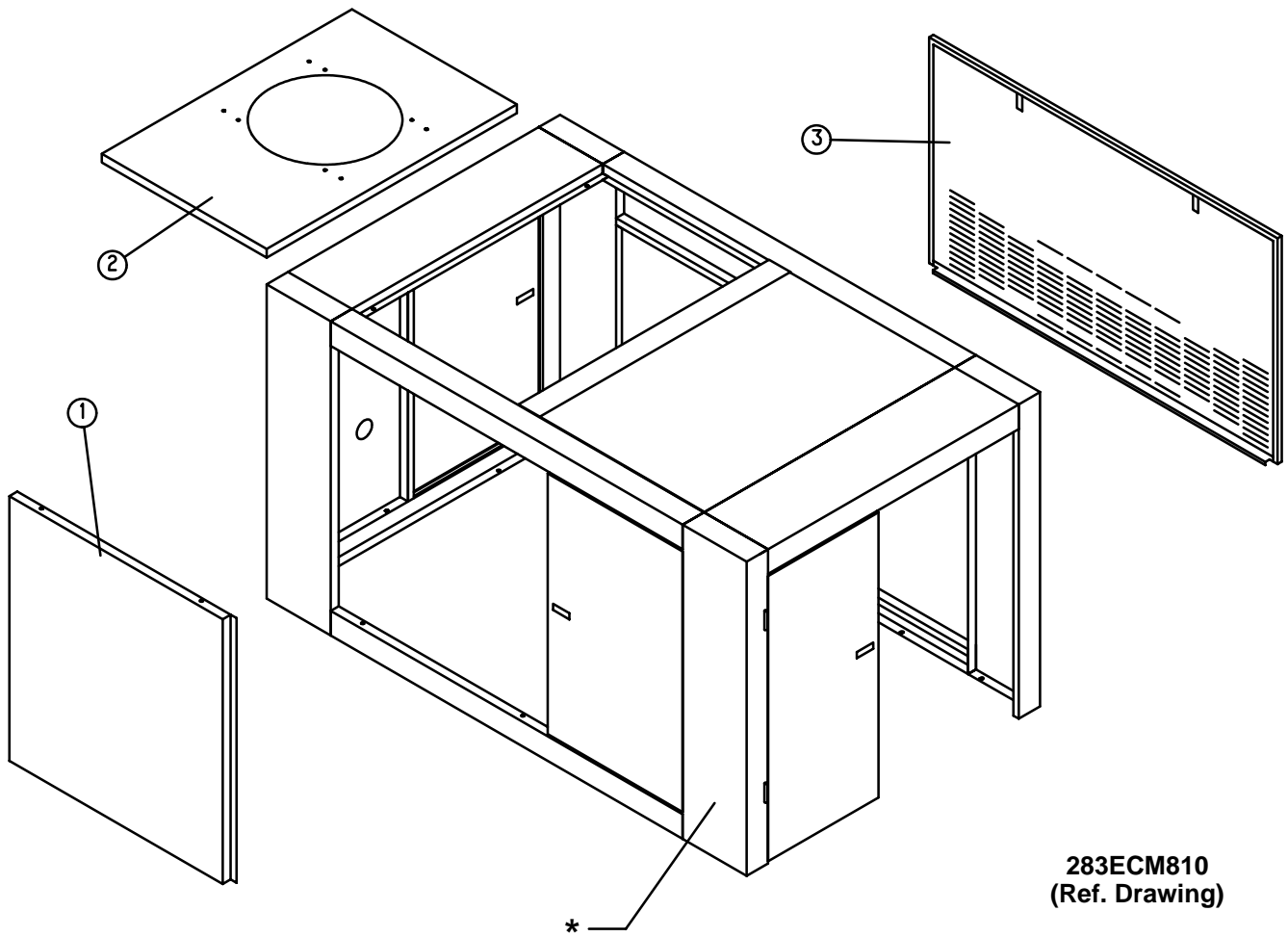


ENCLOSURE – AIR COOLED UNITS

Ref. No.	Name of Part	Qty.	Part No.
1	PANEL	1	220ECM216
2	PANEL	1	217ECM216
3	PANEL	1	215ECM216

* Refer to pages 28 and 29 for Enclosure Parts and page 30 for Enclosure Hardware.

Order by Part Number and Description. Reference Numbers are for your convenience only.



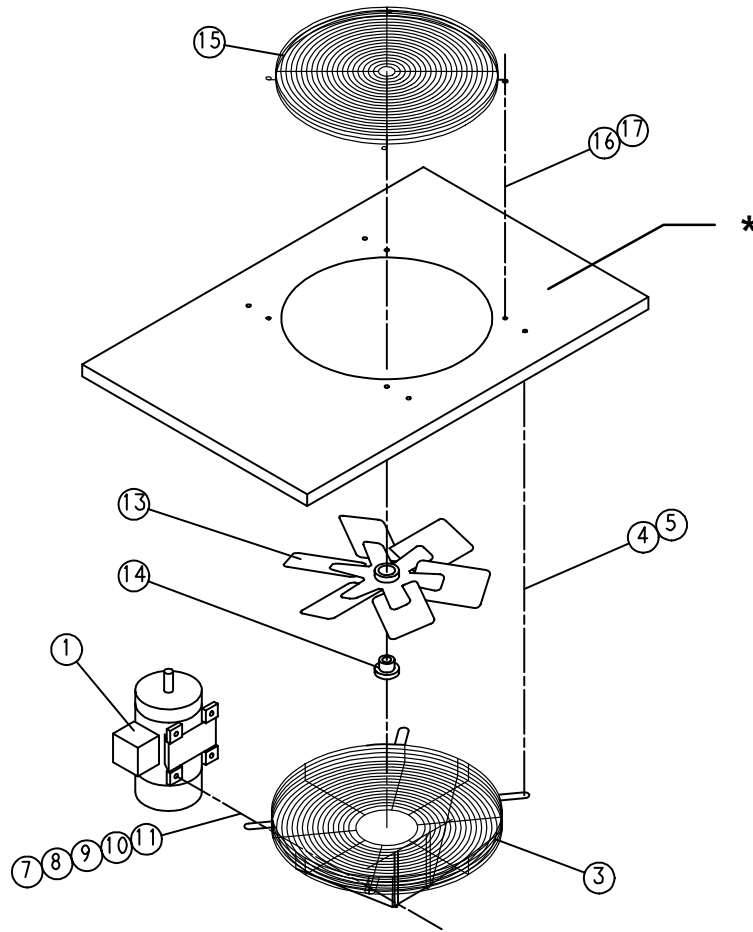
283ECM810
(Ref. Drawing)

ENCLOSURE – WATER COOLED UNITS

Ref. No.	Name of Part	Qty.	Part No.
1	PANEL	1	219ECM216
2	PANEL	1	216ECM216
3	PANEL	1	218ECM216

* Refer to pages 28 and 29 for Enclosure Parts and page 30 for Enclosure Hardware.

Order by Part Number and Description. Reference Numbers are for your convenience only.



285ECM810
(Ref. Drawing)

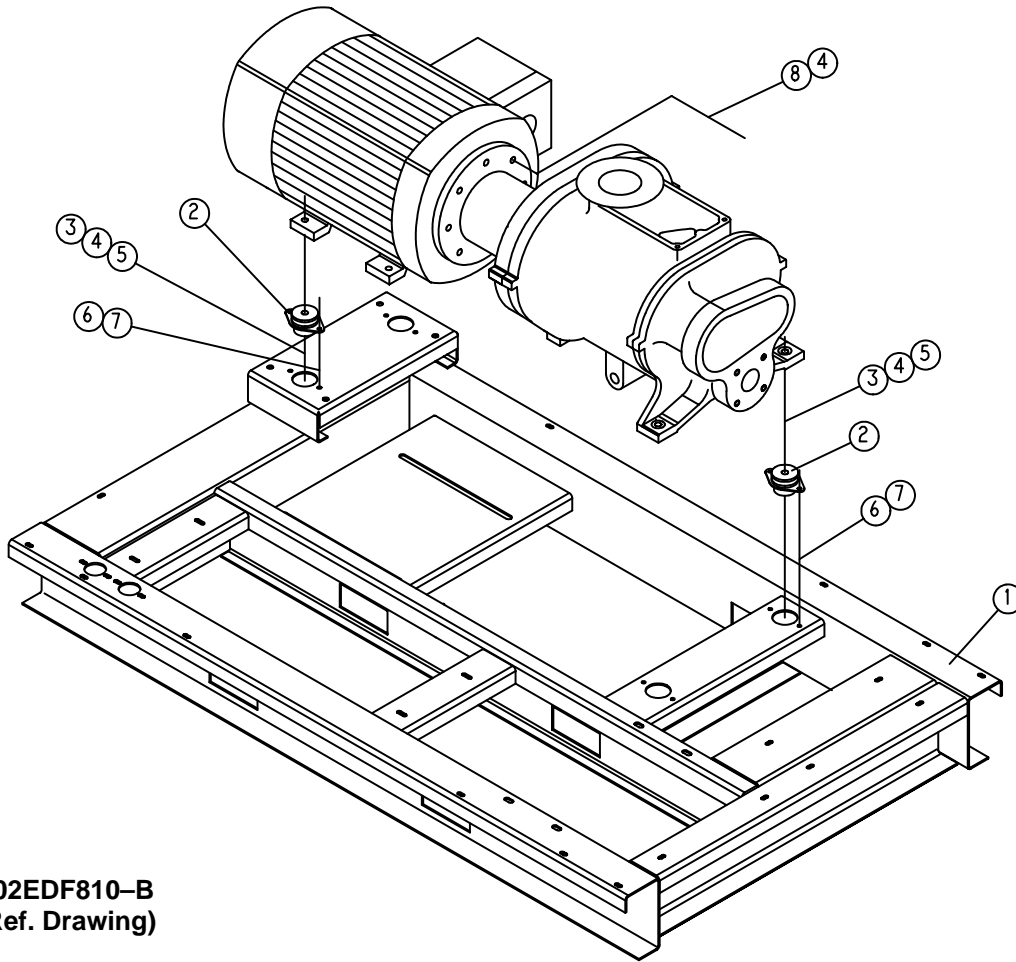
AIR-COOLED FAN ASSEMBLY

Ref. No.	Name of Part	Qty.	Part No.
1	MOTOR	1	**
3	GUARD-FAN	1	202ECM393
4	SCREW-FLANGED	4	75K48
5	WASHER	4	95A5
7	SCREW	4	75A35
8	RETAINER	4	2014731
9	WASHER	4	95A2
10	LOCKWASHER	4	95B2
11	NUT	4	50B2
13	FAN	1	202ECM701
14	HUB BUSHING	1	22G27
15	GUARD-FAN	1	200ECM393
16	SCREW-FLANGED	4	75LM51
17	NUT-FLANGED	4	50AW5

* Refer to page 32 for Vent Fan Panel.

** See page 38 for Fan Motor Selective.

Order by Part Number and Description. Reference Numbers are for your convenience only.

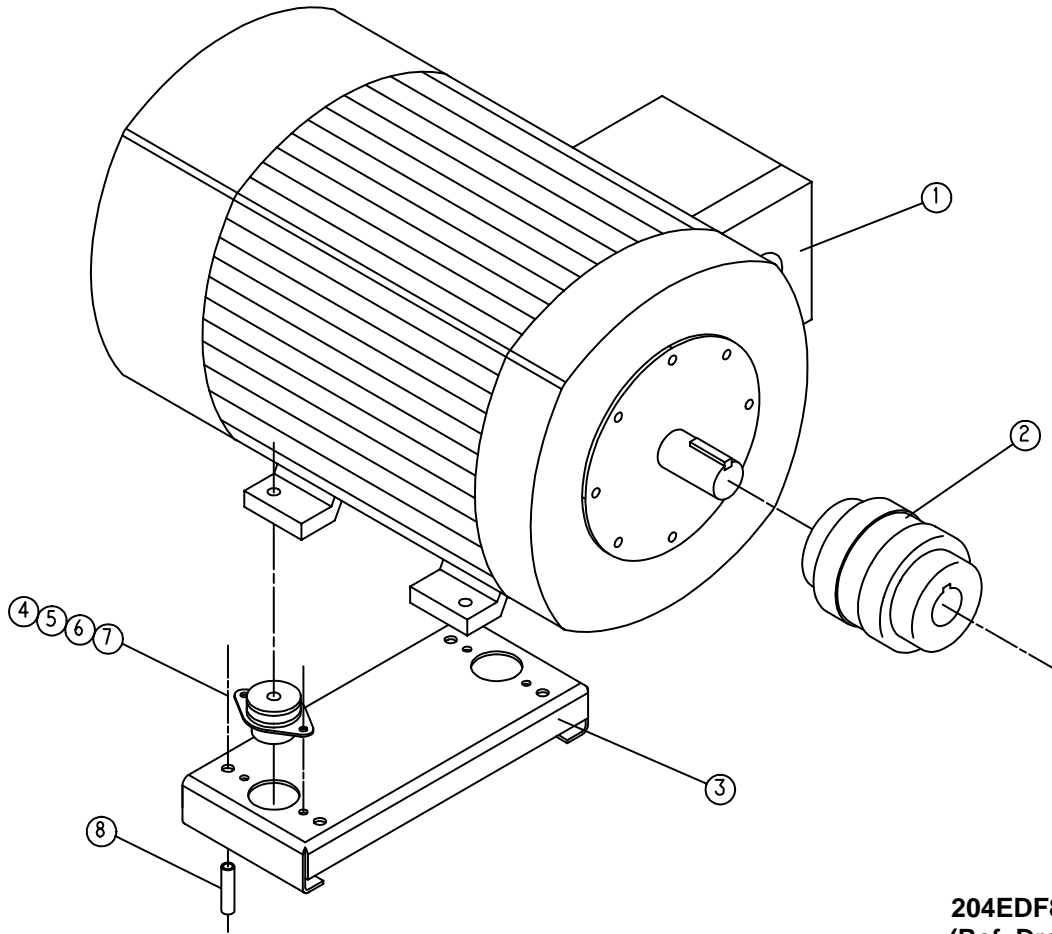


202EDF810-B
(Ref. Drawing)

COMPRESSOR BASE GROUP

Ref. No.	Name of Part	Qty.	Part No.
1	BASE	1	201EDF285
2	ISOLATOR-VIBRATION	4	49C47
3	SCREW	4	655EF200
4	LOCKWASHER	4	95B7
5	NUT	4	50B7
6	SCREW-FLANGED	8	75K48
7	NUT-FLANGED	8	50AW5
8	SCREW	8	655EF060

Order by Part Number and Description. Reference Numbers are for your convenience only.



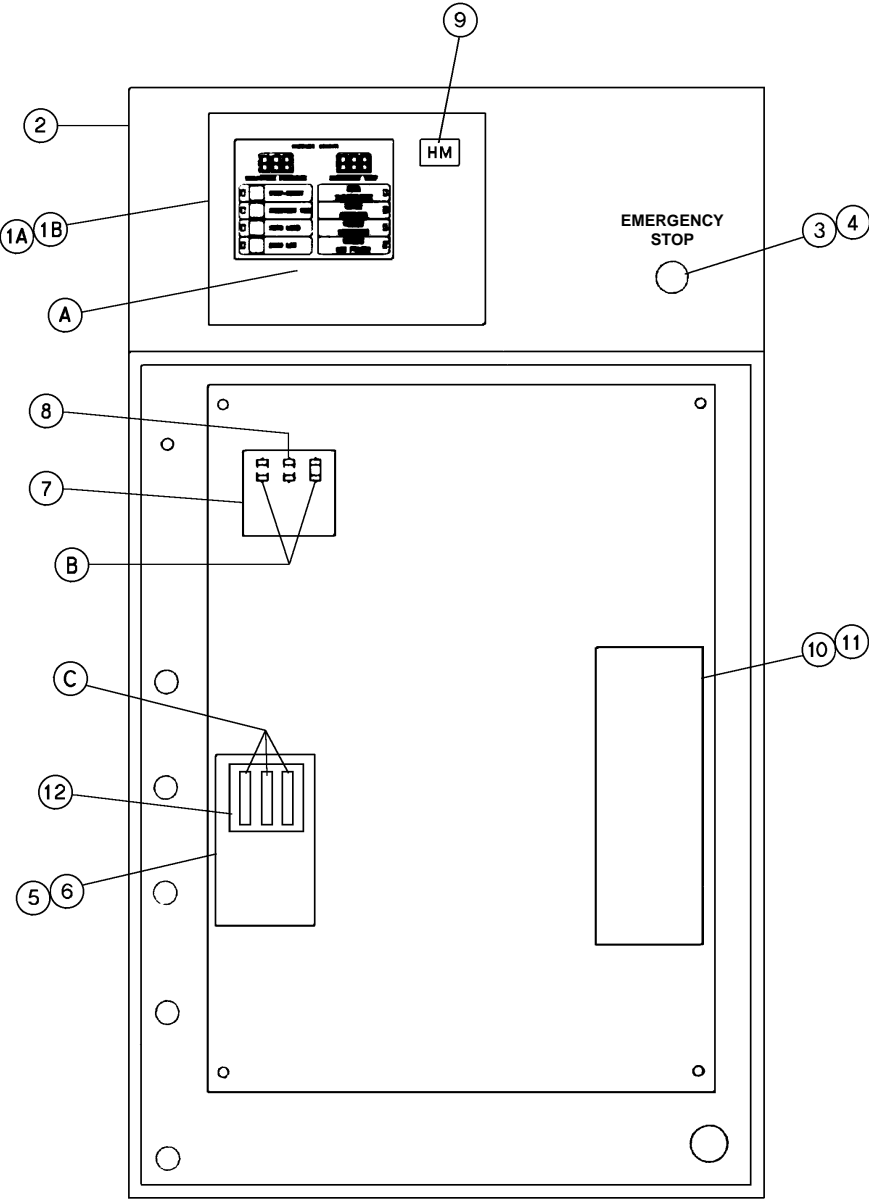
204EDF810-A
(Ref. Drawing)

MAIN MOTOR GROUP

Ref. No.	Name of Part	Qty.	ODP 365TSC Part No.	TEFC 405TSC Part No.
1	MOTOR	1	(See Page 38)	(See Page 38)
2 *	COUPLING-FLEXIBLE	1	51L58	51L59
3	SUPPORT-MOTOR	1	201EDF620	200EDH620
4	SCREW	4	655EF200	655EF200
5	WASHER	4	95A7	95A7
6	LOCKWASHER	4	95B7	95B7
7	NUT	4	50B7	50B7
8	NIPPLE	4	63AM12X26G	63AM12X16G

* Drive Coupling Kit, For Repair Order (6) 2116477 Cushions.

AUTO SENTRY "S" CONTROLLER ASSEMBLY - FULL VOLTAGE



Order by Part Number and Description. Reference Numbers for your convenience only.

AUTO SENTRY "S" CONTROLLER ASSEMBLY – FULL VOLTAGE

			230V	460V	575V
*	ASSEMBLED PANEL: NEMA 12	1	274EDF466	280EDF466	282EDF466
*	ASSEMBLED PANEL: NEMA 4	1	275EDF466	281EDF466	283EDF466
A	FUSE, CONTROL BOARD (1A, AGC)	1	24CA2932	24CA2932	24CA2932
B	FUSE, TRANSFORMER PRIMARY (-A, FNQ-R)	1	24CA2781 (2A)	24CA2779 (1A)	24CA2898 (.8A)
C	FUSE, FAN MOTOR, AIR-COOLED (-A, JJS)	1	24CA2478 (30A)	24CA2477 (15A)	24CA2477 (15A)
C	FUSE, FAN MOTOR, WATER-COOLED (-A, JJS)	1	24CA2476 (6A)	24CA2475 (3A)	24CA2475 (3A)
1A	KEYPAD	1	200EBE375	200EBE375	200EBE375
1B	ELECTRONIC CONTROLLER ASSEMBLY	1	200EBE1173	200EBE1173	200EBE1173
2	BOX-CONTROL ENCLOSURE	1	200EAP179	200EAP179	200EAP179
3	OPERATOR, 22mm PUSH-PULL E-STOP	1	24CA2907	24CA2907	24CA2907
4	CONTACT BLOCK	1	24CA2908	24CA2908	24CA2908
5	STARTER, FAN MOTOR	1	24CA4133	24CA4133	24CA4133
6	REPLACEMENT COIL FOR ITEM 5	1	2116394	2116394	2116394
7	CONTROL TRANSFORMER, 105 VA	1	2116617	2116617	2116619
8	FUSE, TRANSFORMER SECONDARY (6A, MDL)	1	24CA3729	24CA3729	24CA3729
9	HOURMETER	1	24CA2895	24CA2895	24CA2895
10	STARTER, MAIN MOTOR	1	24CA4129	24CA3939	24CA3940
11	REPLACEMENT COIL FOR ITEM 10	1	2116849	2116722	2116850
12	HOLDER, FUSE	1	24CA2554	24CA2554	24CA2554

**MOTOR GROUP
(MAIN DRIVE MOTORS)**

NAME OF PART	100 HP PART NO.
---------------------	----------------------------

**OPEN DRIP PROOF
(60 HZ – ODP)**

MOTOR, 200V	24CA3208
MOTOR, 230V	24CA3653
MOTOR, 460V	24CA3653
MOTOR, 575V	24CA3214

**OPEN DRIP PROOF
(60 HZ – ODP – HIGH EFFICIENCY)**

MOTOR, 200V	24CA3217
MOTOR, 230V	24CA3220
MOTOR, 460V	24CA3220
MOTOR, 575V	24CA3223

**TOTALLY ENCLOSED FAN COOLED
(60 HZ – TEFC)**

MOTOR, 200V	24CA3226
MOTOR, 230V	24CA3229
MOTOR, 460V	24CA3229
MOTOR, 575V	24CA3232

**TOTALLY ENCLOSED FAN COOLED
(60 HZ – TEFC – HIGH EFFICIENCY)**

MOTOR, 200V	24CA3235
MOTOR, 230V	24CA3238
MOTOR, 460V	24CA3238
MOTOR, 575V	24CA3241

**MOTOR GROUP
AIR COOLED FAN MOTOR (COOLING MODULE)
(T.E.F.C., 3 H.P., 1200 RPM, 60 HZ, 1.33 S.F.)**

VOLTAGE	Part No.
MOTOR, 200V	24CA4259
MOTOR, 230V	24CA4260
MOTOR, 460V	24CA4260
MOTOR, 575V	24CA4261

**WATER COOLED FAN MOTOR (ENCLOSED VENT FAN)
(T.E.F.C., 1200 RPM, 60 HZ, 1.0 S.F.)**

VOLTAGE	Part No.	H.P.
MOTOR, 200V	24CA4177	1/4
MOTOR, 230V	24CA2464	1/4
MOTOR, 460V	24CA2464	1/4
MOTOR, 575V	24CA4178	1/4

OVERLOAD RELAY HEATER CONVERSION LISTING

Refer to Motor Nameplate “Amperage” and Decal in Control Panel for Selection of Overload Relay Heater Packs.

CUTLER-HAMMER PART NUMBER	GARDNER DENVER PART NUMBER
H2002B	24CA4101
H2003B	24CA4102
H2004B	24CA4103
H2005B	24CA4104
H2006B	24CA4105
H2007B	24CA4106
H2008B	24CA4107
H2009B	24CA4108
H2010B	24CA4109
H2011B	24CA4110
H2012B	24CA4111
H2013B	24CA4112
H2014B	24CA4113
H2015B	24CA4114
H2016B	24CA4115
H2017B	24CA4116
H2018	24CA2924
H2019	24CA2925
H2020	24CA2926
H2021	24CA2927
H2022	24CA2893
H2023	24CA2894
H2024	24CA2928

IDENTIFICATION AND INSTRUCTION GROUP

Name of Part	Qty.	Part No.
DECAL, OPERATION & MAINTENANCE INSTRUCTION	1	217ECM077
DECAL, WARNING	1	227EAQ077
DECAL, PARTS LIST & OPER/SERVICE	1	204EDE077
DECAL, INSIDE CONTROL BOX	1	314EAQ077
DECAL, DANGER-AIR & OIL UNDER PRESSURE	1	212EAQ077
DECAL, WARNING-INSPECT RESERVOIR	1	217EAQ077
DECAL, NOTICE-USE GD PARTS	1	214EAQ077
DECAL, OIL FILTER ELEMENT	1	212ECM077
DECAL, CAUTION-DO NOT LIFT	2	208EAQ077
DECAL, WARNING-ROTATING MACHINERY	1	211EAQ077
DECAL, DANGER-DO NOT BREATH DISCHARGE AIR	1	206EAQ077
DECAL, DRAIN MOISTURE DAILY	1	205ESO077
DECAL	1	69F18
RIVET	4	70E13
DECAL, IN HEAT EXCHANGER	1	200ESP077
DECAL, OUT HEAT EXCHANGER	1	201ESP077
DECAL, ELECTRA-SCREW	1	216ECM077
DECAL, ELECTRA-SCREW	3	214ECM077
TAG-INSTRUCTION	1	203EAQ304
DECAL-MADE IN USA	1	69F64
PLATE-NAME	1	208EAQ496
DECAL, OIL FILL INSTRUCTION	1	240EAQ077
DECAL, QUALITY WITHOUT QUESTION	1	251EAQ077
DECAL, AUTO SENTRY-S	1	206EJB077
POCKET	1	200EAQ1304

REPAIR KITS

Name of Part	Qty.	Part No.
ROUTINE MAINTENANCE KIT – HEAVY DUTY AIR FILTER		202ECM6013
(Includes next two items)		
ELEMENT, AIR FILTER	2	2116713
ELEMENT, OIL FILTER	3	2116110
PERIODIC MAINTENANCE KIT (INLET VALVE)		302SSM6013
(Includes next five items)		
O–RING	1	25BC447
SPRING	1	78G19
SPRING	1	78W63
O–RING	1	25AM29
RETAINER–RING	1	74D88
PERIODIC OVERHAUL KIT (Includes next seven items)	1	303SSH6013
GASKET KIT (See below)	1	304SSH6013
OIL SEAL KIT (See below)	1	302SSH6013
ROLLER BEARING	1	12BA91
ROLLER BEARING	1	12BA90
ROLLER BEARING	1	12BA130
ROLLER BEARING	1	12BA136
SPRING	1	78W48
GASKET KIT (Includes next five items)		304SSH6013
PERIODIC MAINTENANCE KIT (INLET VALVE)	1	302SSM6013
SHIM SET (SHAFT)	1	77H54
SHIM SET	1	77H53
GASKET	1	25C1230N
GASKET ELIMINATOR	1	25BC222
OIL SEAL KIT (Includes next seven items)		302SSH6013
WEAR SLEEVE	1	80M12
OIL SEAL	1	60DD679
OIL SEAL	1	60DD690
O–RING	1	8502140
O–RING	1	25BC165
GASKET ELIMINATOR	1	25BC222
CHECK VALVE	1	90AR923
WEAR SLEEVE INSTALLATION / REMOVAL KIT		200SSH4017
(Includes next seven items)		
PULLER	1	200SSH219
PLATE–PULLER	1	200SSH340
SCREW	1	75LM192
SCREW	1	655ED120
SCREW	2	75D176
GUIDE	1	200SSH450
TOOL	1	200SSH074

REPAIR KITS (Continued)

Name of Part	Qty.	Part No.
SEPARATOR KIT (Includes next three items)		208EAP6013
OIL SEPARATOR	1	200ECM035
GASKET ELIMINATOR	1	25BC222
LUBRICANT (OIL SEAL GREASE)	1	2116755
PNEUMATIC CONTROLS AND GAUGES (Includes next four items) ...		300EDF6013
SUBTRACTIVE PILOT VALVE	1	2009398
CONTROL VALVE	2	90AR1034
CONTROL VALVE	1	90AR35
CHECK VALVE	2	90AR261
ELECTRICAL CONTROL KIT (Includes next six items)		301EBE6013
SOLENOID VALVE	1	91B77
THERMISTOR PROBE	2	21D264
TRANSDUCER	2	88H242
VACUUM SWITCH	1	88H195
DRIVE COUPLING KIT (Includes next item)	1	200EDH6003
CUSHIONS (Includes 6)		2116477
LUBRICANT (AEON 4000)		
5 GALLON PAIL		28H57
55 GALLON DRUM		28H36
TOUCH-UP PAINT		
5 GALLON PAIL		28H76
1 GALLON CAN		28H84
1 QUART CAN		28H83
WATER TEMPERATURE REGULATOR (Optional)		90AR326
MAGNETIC WATER SHUTOFF VALVE (Optional)		91B167
AIR COOLED FIELD INSTALLED ENCLOSURE KIT		282ECM4017
WATER COOLED FIELD INSTALLED ENCLOSURE KIT		283ECM4017

Gardner

Denver

For additional information contact your local representative or
Gardner Denver, Customer Service Department,
1800 Gardner Expressway, Quincy, Illinois 62301
Telephone: (800) 682-9868 FAX: (217) 224-7814



Sales and Service in all major cities.

For parts information, contact Gardner Denver,
Master Distribution Center, Memphis, TN
Telephone: (800) 245-4946 FAX: (901) 542-6159

Specifications subject to change without notice.
Copyright 1998 Gardner Denver, Inc.

Litho in U.S.A.