

---

---

**GARDNER DENVER®**

13-8-510  
6th Edition  
October, 1998

**ELECTRA-SCREW®**  
**STATIONARY BASE-MOUNTED**  
**COMPRESSORS**

**MODELS**  
**EDE99K – 40 & 50 HP**  
**60 HZ**

**PARTS LIST**

**Gardner**  

---

**Denver**

**TOTAL PRODUCT SUPPORT – GARDNER DENVER’S  
CONTINUING COMMITMENT  
TO YOUR AIR COMPRESSOR PERFORMANCE**

Commitment to total product support continues long after the purchase of your quality Gardner Denver® rotary screw compressor.

Gardner Denver original parts incorporate years of experience and improvements in design, materials and quality assurance. Maintaining your compressor investment with Gardner Denver® parts will insure protection for the air compressor unit and long, dependable service life.

Your authorized Gardner Denver® compressor distributor maintains a complete stock of all common maintenance parts, factory approved AEON™ lubricants, and Gardner Denver® factory warranted exchange air ends. In addition, authorized distributor technicians are factory trained, and can provide complete diagnostic, compressor maintenance and repair services.

This manual is designed to assist you in maintaining high performance and receiving many years of dependable service you expect from your Gardner Denver compressor.

**For Operating and Service Instructions see:**

**SERVICE MANUAL # 13-8-610**

**MAINTAIN COMPRESSOR RELIABILITY AND PERFORMANCE WITH  
GENUINE GARDNER DENVER® COMPRESSOR  
PARTS AND SUPPORT SERVICES**

Gardner Denver® Compressor genuine parts, engineered to original tolerances, are designed for optimum dependability — specifically for Gardner Denver compressor systems. Design and material innovations are the result of years of experience with hundreds of different compressor applications. Reliability in materials and quality assurance are incorporated in our genuine replacement parts.

Your authorized Gardner Denver® Compressor distributor offers all the backup you'll need. A worldwide network of authorized distributors provides the finest product support in the air compressor industry. Your local authorized distributor maintains a large inventory of genuine parts and he is backed up for emergency parts by direct access to the Gardner Denver Master Distribution Center (MDC) in Memphis, Tennessee.

Your authorized distributor can support your Gardner Denver® air compressor with these services:

1. Trained parts specialists to assist you in selecting the correct replacement parts.
2. Factory warranted new and remanufactured rotary screw air ends. Most popular model remanufactured air ends are maintained in stock at MDC for purchase on an exchange basis with liberal core credit available for the replacement unit.
3. A full line of factory tested AEON™ compressor lubricants specifically formulated for use in Gardner Denver compressors.
4. Repair and maintenance kits designed with the necessary parts to simplify servicing your compressor.

Authorized distributor service technicians are factory-trained and skilled in compressor maintenance and repair. They are ready to respond and assist you by providing fast, expert maintenance and repair services.

**For the location of your local authorized Gardner Denver Air Compressor distributor refer to the yellow pages of your phone directory or contact:**

Distribution Center:  
Gardner Denver  
Master Distribution Center  
5585 East Shelby Drive  
Memphis, TN 38141  
Phone: (901) 542-6100  
(800) 245-4946  
Fax: (901) 542-6159

Factory:  
Gardner Denver  
1800 Gardner Expressway  
Quincy, IL 62301  
Phone: (217) 222-5400  
Fax: (217) 224-7814

**REMANUFACTURED AIR ENDS**

Whenever an air end requires replacement or repair, Gardner Denver offers an industry unique, factory remanufactured air end exchange program. From its modern Remanufacturing Center in Indianapolis, IN, Gardner Denver is committed to supplying you with the highest quality, factory remanufactured air ends that are guaranteed to save you time, aggravation and money.

**Immediately Available**

Repair downtime costs you money, which is why there are over 200 remanufactured units in inventory at all times, ready for immediate delivery.

**Skilled Craftsmen**

Our Remanufacturing assembly technicians average over 20 years experience with air compression products.

**Precision Remanufacturing**

All potentially usable parts are thoroughly cleaned, inspected and analyzed. Only those parts that can be brought back to original factory specifications are remanufactured. Every remanufactured air end receives

a new overhaul kit: bearings, gears, seals, sleeves and gaskets.

**Extensive Testing**

Gardner Denver performs testing that repair houses just don't do. Magnaflux and ultrasonic inspection spot cracked or stressed castings, monochromatic light analysis exposes oil leaks, and coordinate measurement machine inspects to +/- .0001", insuring that all remanufactured air ends meet factory performance specifications.

**Warranty**

Gardner Denver backs up every remanufactured air end with a new warranty . . . 18 months from purchase, 12 months from service.

Gardner Denver remanufactured air ends deliver *quality without question . . . year in and year out.*

Call Gardner Denver for information on the air end exchange program and the name of your authorized distributor.

Phone Number: 800-245-4946 or  
FAX: 901-542-6159

## TABLE OF CONTENTS

Page No.

---

Total Product Support – Gardner Denver’s Continuing Commitment To Your Air Compressor Performance . . . .	1
Maintain Compressor Reliability and Performance with Genuine Gardner Denver® Compressor Parts and Support Services . . . . .	2
Remanufactured Air Ends . . . . .	2
Bare Compressor Repair And Replacement . . . . .	4
Gardner Denver Air End Exchange Program . . . . .	4
Remanufactured Product Warranty . . . . .	5
Bare Compressor . . . . .	6, 7
Oil Seal Detail . . . . .	8
Inlet Valve . . . . .	9
Cooler Group . . . . .	10
Cooler Group . . . . .	11
Heavy Duty Air Filter And Mounting . . . . .	12
Thermal Valve (Thermostatic Mixing) . . . . .	13
Oil Reservoir Group . . . . .	14
Oil Reservoir Group . . . . .	15
Oil Piping Group . . . . .	16
Oil Piping Group . . . . .	17
Oil Filter – 200EBM369 . . . . .	18
Subtractive Pilot Valve . . . . .	19
Control Piping . . . . .	20, 21
Drive Group, Belts and Sheaves . . . . .	22
Motor Group (Main Drive Motors) (F2 Conduit Box Mounting) . . . . .	23
Motor Bases . . . . .	23
Controller Assembly – Illustration . . . . .	24
Controller Assembly – Full Voltage Starters – 40 H.P. Units . . . . .	25
Controller Assembly – Full Voltage Starters – 50 H.P. Units . . . . .	26
Enclosure – Common Parts . . . . .	27
Enclosure – TEFC Motor . . . . .	28
Enclosure – Hardware & Mounting . . . . .	29
Quiet Enclosure . . . . .	30
Quiet Enclosure – Hardware . . . . .	31
Identification And Instruction Group . . . . .	32
Overload Relay Heater Conversion Listing . . . . .	33
Repair Kits and Accessories . . . . .	34, 35

**BARE COMPRESSOR  
REPAIR AND REPLACEMENT**

Gardner Denver rotary screw compressor air ends are designed, manufactured, assembled, and tested to exacting standards. All new and factory remanufactured air ends are warranted by Gardner Denver. Unauthorized disassembly or field repair may void the warranty and adversely effect operation.

**GARDNER DENVER AIR END  
EXCHANGE PROGRAM**

Should your air end require replacement, both new and factory remanufactured units are stocked by your authorized distributor or at the Gardner Denver Distribution Center in Memphis, Tennessee.

Remanufactured and warranted compressor air end exchange units provide a quick, reliable, and economical method for field replacement. Your compressor may be returned to service promptly and the exchange core returned later for credit.

Air ends are remanufactured at the Gardner Denver Remanufacturing Center in Indianapolis, Indiana, and factory warranted. The Indianapolis facility is staffed with experienced, skilled technicians dedicated to the remanufacture and repair of Gardner Denver compressor units. The latest improvements are incorporated in the remanufacturing process. A new or rebuilt Gardner Denver exchange compressor is your guarantee of optimum performance and reliability.

---

	<b>REMANUFACTURED AIR END EXCHANGE</b>	<b>NEW AIR END EXCHANGE</b>
40/50 HP	SSEBBKX (With Inlet Valve)	SSEBBK (With Inlet Valve)

---

**REMANUFACTURED PRODUCTS**

- **Reciprocating Compressors**
- **Rotary Screw Compressors**
- **Blowers**

**GENERAL PROVISIONS AND LIMITATIONS**

Gardner Denver (the "Company") warrants to each original retail purchaser ("Purchaser") of its products from the Company or its authorized distributor that such products are, at the time of delivery to the Purchaser, made with good material and workmanship. No warranty is made with respect to:

1. Any product which has been repaired or altered in such a way, in the Company's judgment, as to affect the product adversely.
2. Any product which has, in the Company's judgment been subject to negligence, accident, improper storage, or improper installation or application.
3. Any product which has not been operated or maintained in accordance with normal practice and with the recommendations of the Company.
4. Components or accessories manufactured, warranted and serviced by others.

Claims for items described in (4) above should be submitted directly to the manufacturer.

**WARRANTY PERIOD**

The Company's obligation under this warranty is limited to repairing or, at its option, replacing, during normal business hours at an authorized service facility of the Company, any part which in its judgment proved not to be as warranted within the applicable Warranty Period as follows.

Remanufactured reciprocating compressors, rotary screw compressors, air ends and blowers, including all parts within, are warranted for 12 months from date of initial use or 15 months (blowers 18 months) from date of shipment to the first purchaser, whichever occurs first.

Any disassembly or partial disassembly of the blower, or rotary screw air end, or failure to return the "unopened" air end per Company instructions, will be cause for denial of warranty.

**LABOR TRANSPORTATION AND INSPECTION**

The Company will provide labor, by Company representative or authorized service personnel, for repair or replacement of any product or part thereof which in the Company's judgment is proved not to be as warranted.

Labor shall be limited to the amount specified in the Company's labor rate schedule.

Labor costs in excess of the Company rate schedules caused by, but not limited to, location or inaccessibility of the equipment, or labor provided by unauthorized service personnel is not provided by this warranty.

All costs of transportation of product, labor or parts claimed not to be as warranted and, of repaired or replacement parts to or from such service facility shall be borne by the Purchaser. The Company may require the return of any part claimed not to be as warranted to one of its facilities as designated by Company, transportation prepaid by Purchaser, to establish a claim under this warranty.

Replacement parts provided under the terms of the warranty are warranted for the remainder of the Warranty Period of the product upon which installed to the same extent as if such parts were original components.

**DISCLAIMER**

THE FOREGOING WARRANTY IS EXCLUSIVE AND IT IS EXPRESSLY AGREED THAT, EXCEPT AS TO TITLE, THE COMPANY MAKES NO OTHER WARRANTIES, EXPRESSED, IMPLIED OR STATUTORY, INCLUDING ANY IMPLIED WARRANTY OF MERCHANTABILITY.

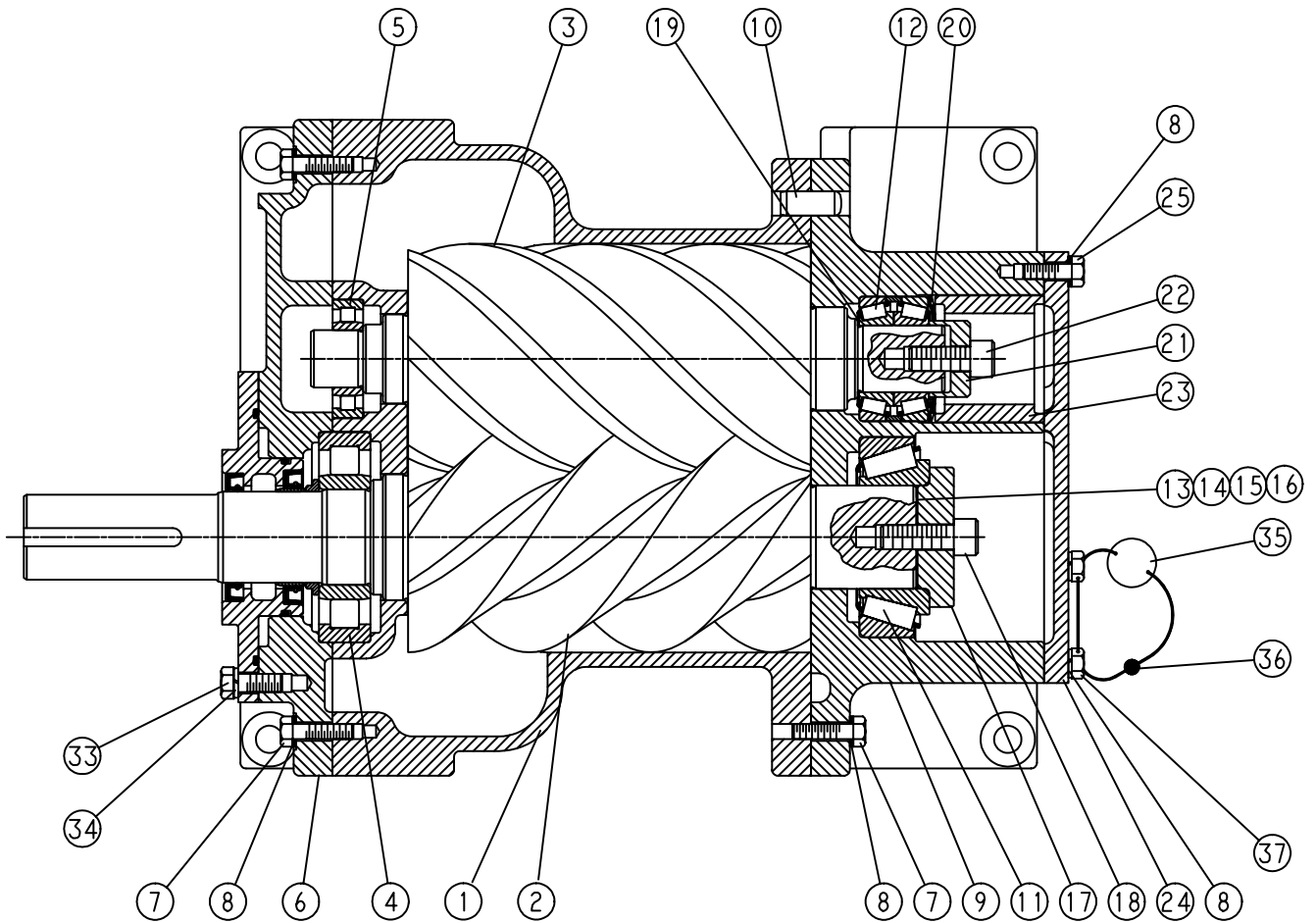
THE REMEDY PROVIDED UNDER THIS WARRANTY SHALL BE THE SOLE, EXCLUSIVE AND ONLY REMEDY AVAILABLE TO PURCHASER AND IN NO CASE SHALL THE COMPANY BE SUBJECT TO ANY OTHER OBLIGATIONS OR LIABILITIES. UNDER NO CIRCUMSTANCES SHALL THE COMPANY BE LIABLE FOR SPECIAL, INDIRECT, INCIDENTAL OR CONSEQUENTIAL DAMAGES, EXPENSES, LOSSES OR DELAYS HOWSOEVER CAUSED.

No statement, representation, agreement, or understanding, oral or written, made by any agent, distributor, representative, or employee of the Company which is not contained in this Warranty will be binding upon the Company unless made in writing and executed by an officer of the Company.

This warranty shall not be effective as to any claim which is not presented within 30 days after the date upon which the product is claimed not to have been as warranted. Any action for breach of this warranty must be commenced within one year after the date upon which the cause of action occurred.

Any adjustment made pursuant to this warranty shall not be construed as an admission by the Company that any product was not as warranted.

# BARE COMPRESSOR



210SSE810-A  
(Ref. Drawing)

Order by Part Number and Description. Reference Numbers are for your convenience only.

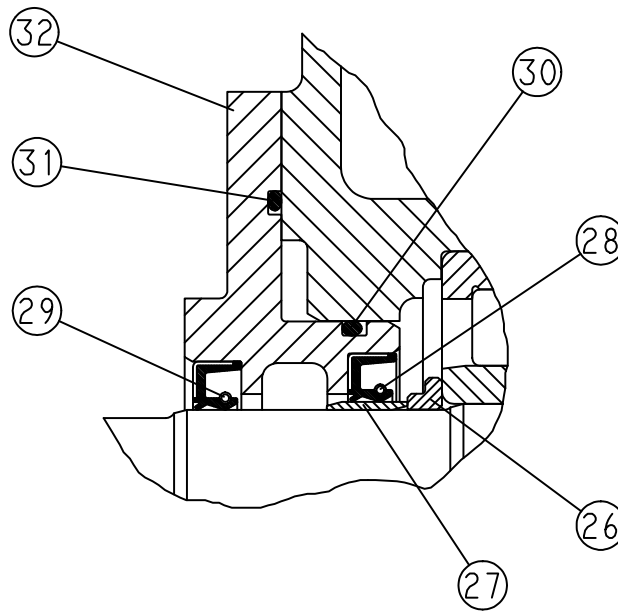
**BARE COMPRESSOR**

Ref. No.	Name of Part	Qty.	Part No.
1	CYLINDER .....		**
2	ROTOR .....		**
3	ROTOR .....		**
* 4	BEARING-ROLLER .....	1	12BA130
* 5	BEARING-ROLLER .....	1	12BA129
6	PLATE-BEARING COVER .....		**
7	SCREW .....		**
8	LOCKWASHER .....		**
9	HOUSING-BEARING .....		**
10	PIN-DOWEL .....		**
* 11	BEARING-ROLLER .....	1	12BA127
* 12	BEARING-ROLLER .....	1	12BA128
* 13	SHIM .....	3	77H54002
* 14	SHIM .....	3	77H54003
* 15	SHIM .....	3	77H54005
* 16	SHIM .....	2	77H54015
17	PLATE-BEARING RETAINER .....		**
18	SCREW .....		**
* 19	SHIM .....	1	77C58
* 20	SPRING-WAVE .....	2	78W47
21	PLATE-BEARING RETAINER .....		**
22	SCREW .....		**
23	SPACER .....		**
24	PLATE-BEARING COVER .....		**
32	LOCKWASHER .....		**

\* Parts included in Periodic Overhaul Kit number 300SSE6013. Refer to page 34.

\*\* Shown for reference only. See repair kit section for field replacement components.

Order by Part Number and Description. Reference Numbers are for your convenience only.



210SSE810-A  
(Ref. Drawing)

ROTOR SHAFT  
(Reference)

OIL SEAL DETAIL

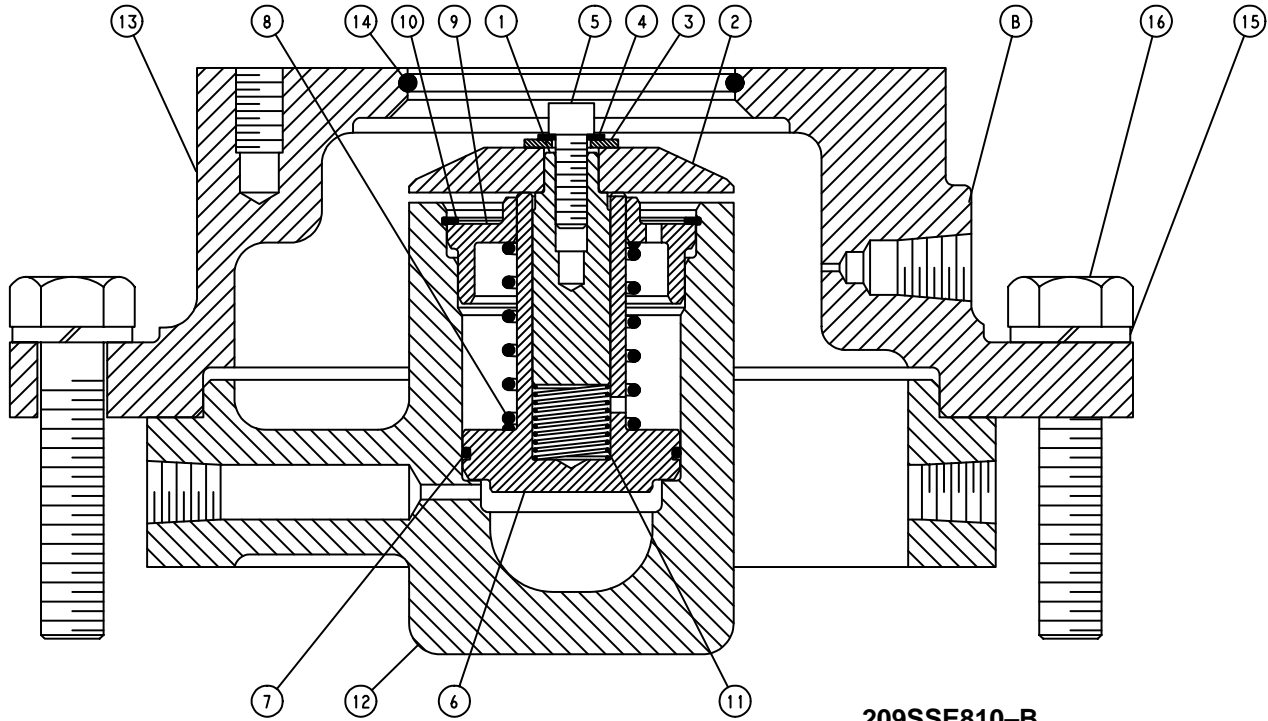
Ref. No.	Name of Part	Qty.	Part No.
26	SPACER-SHAFT .....	1	200SSH600
* 27	SLEEVE-WEAR .....	1	80M12
* 28	SEAL-OIL .....	1	60DD679
* 29	SEAL-OIL .....	1	60DD690
* 30	O-RING .....	1	25BC165
* 31	O-RING .....	1	8502140
32	HOUSING-SEAL .....	1	206SSE362
* **	CHECK VALVE .....	1	90AR923
* **	GASKET ELIMINATOR .....	1	25BC222

\* Parts included in Oil Seal Kit number 302SSH6013. Refer to page 34.

Wear Sleeve Installation and Removal Kit number SSE81282. Refer to page 34.  
(Includes wear sleeve puller and installation tool.)

\*\* Not shown.

Order by Part Number and Description. Reference Numbers are for your convenience only.



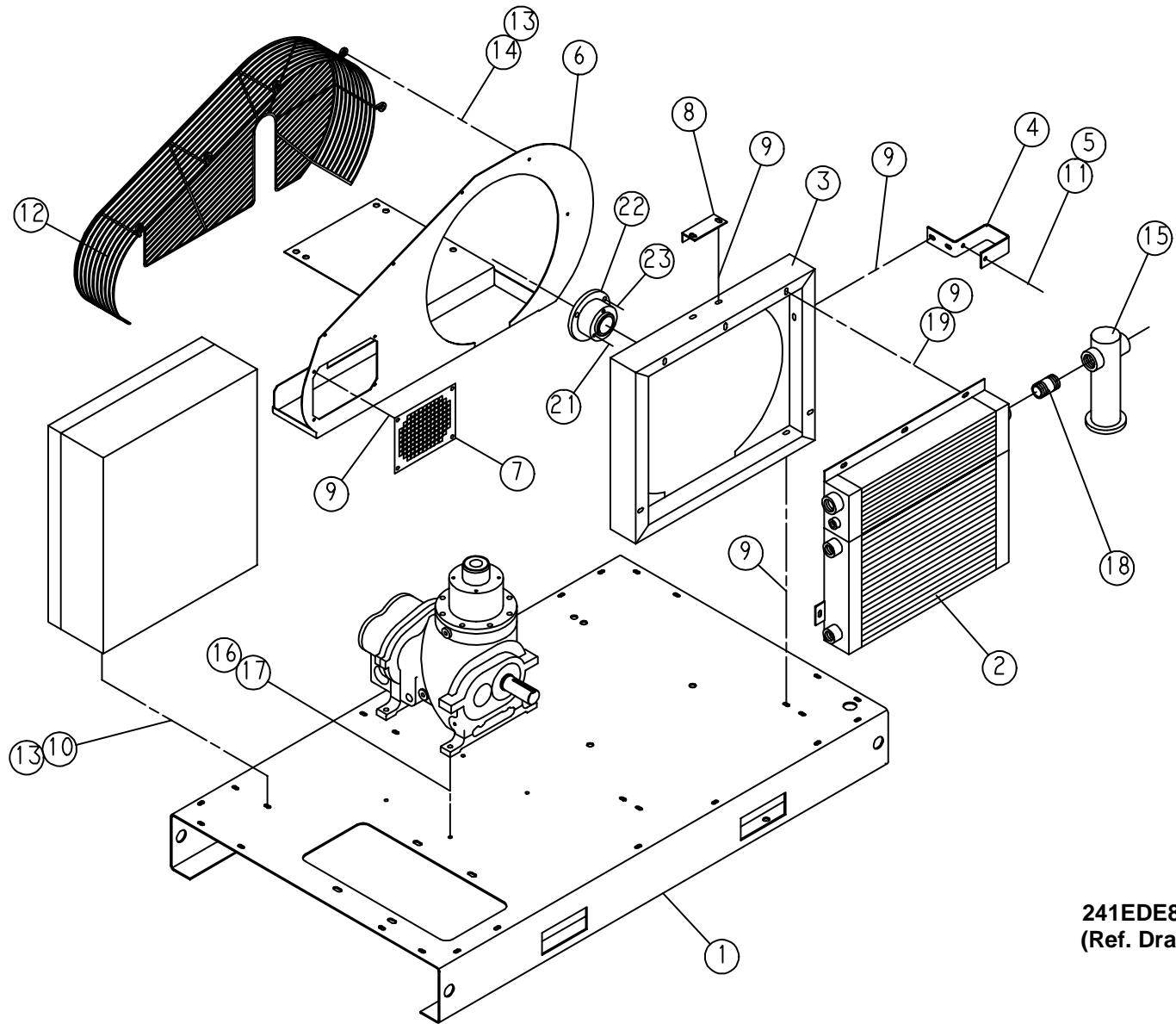
**209SSE810-B**  
(Ref. Drawing)

**INLET VALVE**

Ref. No.	Name of Part	Qty.	Part No.
1	GUIDE-VALVE .....	1	201SSE483
2	VALVE-INLET .....	1	202SSE044
3	WASHER-PLAIN .....	1	95A1
4	LOCKWASHER .....	1	95H56
5	SCREW .....	1	655EC03N
6	PISTON-INLET VALVE .....	1	202SSE043
* 7	O-RING .....	1	25BC440
* 8	SPRING .....	1	78H22
9	RETAINER .....	1	200SSE205
* 10	RING-RETAINING .....	1	74D87
* 11	SPRING .....	1	78W59
12	HOUSING-INLET .....	1	205SSE041
13	SEAT .....	1	204SSE256
* 14	O-RING .....	1	25AM15
15	LOCKWASHER .....	8	95B5
16	SCREW .....	8	655EE100

\* Parts included in Inlet Valve Repair Kit number 302SSE6013. Refer to page 35.

# COOLER GROUP



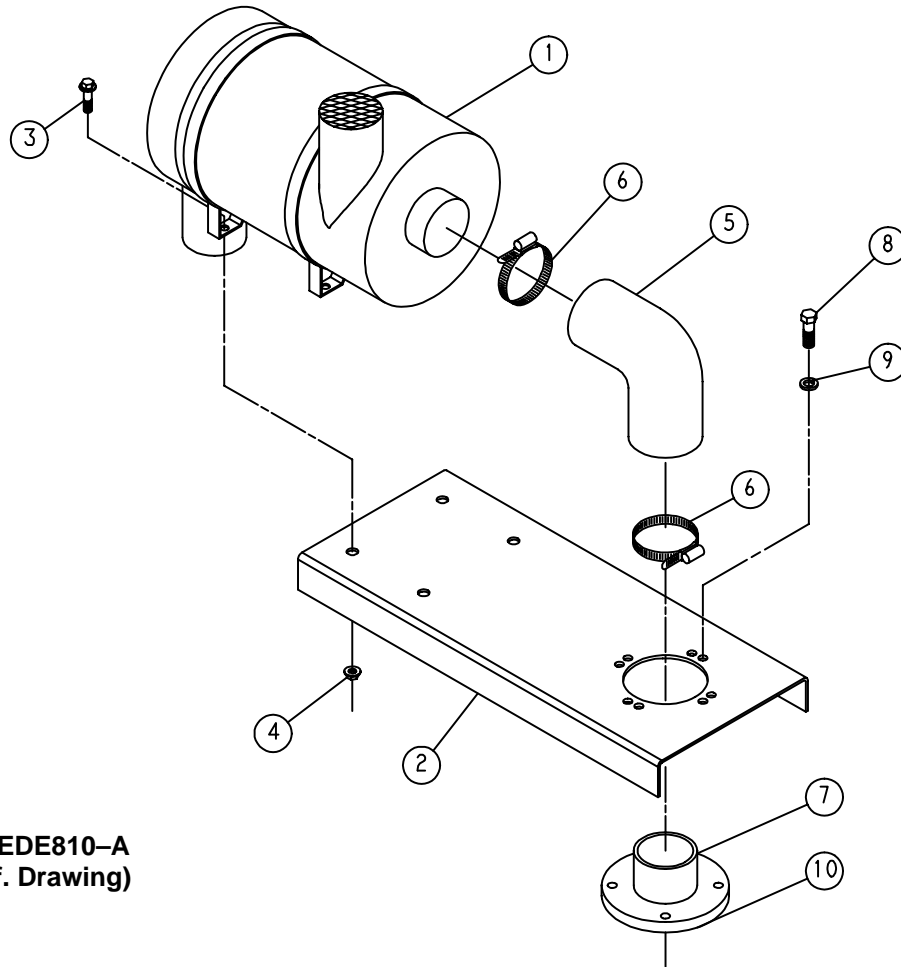
Order by Part Number and Description. Reference Numbers are for your convenience only.

COOLER GROUP

Ref. No.	Name Of Part	Qty.	Part No.	Ref. No.	Name Of Part	Qty.	Part No.
1	BASE .....	1	202EDE285	11	NUT-FLANGED .....	1	50AW5
2	COOLER-OIL/AIR-RADIATOR			12	GUARD-FAN .....	1	200EDE393
	Fresh Water - Standard ...	1	206EDE201	13	SCREW-FLANGED .....	9	75LM150
	COOLER-OIL/AIR-RADIATOR			14	WASHER .....	10	95A3
	Seacoast Option .....	1	301EDE201	15 *	TRAP .....	1	83C83
3	BAFFLE .....	1	204EDE840	16	SCREW .....	4	655EE080
4	BRACKET (FORMED) .....	1	200EDE142	17	LOCKWASHER .....	4	95B5
5	SCREW .....	1	655ED170	18	NIPPLE-PIPE .....	1	63J26G
6	ORIFICE .....	1	204EDE814	19	WASHER .....	5	95A3
7	PLATE-INSPECTION .....	1	200EBE052				
8	BRACKET .....	1	200EBE142	21	SCREW .....	3	75P6N
9	SCREW-FLANGED .....	17	75LM51	22	ADAPTOR-FAN .....	1	200EDE649
10	NUT-FLANGED .....	1	50AW5	23	SCREW-12 PT .....	3	75LM189N

\* Repair Parts Kits for Moisture Separator:   2117587 - Valve & Seat Assembly  
   2117588 - Cover Gasket  
   2117589 - Float & Spindle

Order by Part Number and Description. Reference Numbers are for your convenience only.



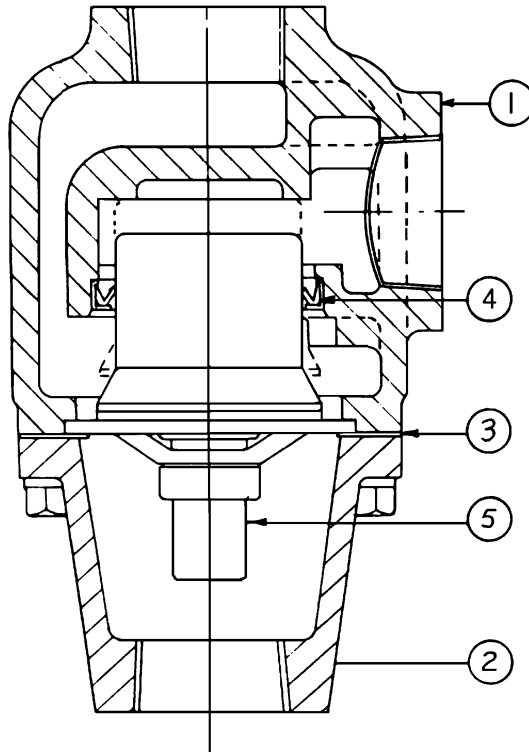
238EDE810-A  
(Ref. Drawing)

**HEAVY DUTY AIR FILTER AND MOUNTING**

Ref. No.	Name of Part	Qty.	Part No.
1	FILTER-AIR .....	1	5L260
2	BRACKET-FILTER .....	1	203EDE389
3	SCREW-FLANGED .....	4	75LM50
4	NUT-FLANGED .....	4	50AW4
5	HOSE-MOLDED .....	1	29Z108
6	CLAMP-HOSE .....	2	29B36
7	ADAPTOR-FILTER .....	1	200EDE070
8	SCREW .....	4	655ED080
9	LOCKWASHER .....	4	95B3
10	GASKET ELIMINATOR .....	1	25BC256
*	ELEMENT-AIR FILTER (ORDER FOR REPAIR) .....	1	2116701

\* Not shown.

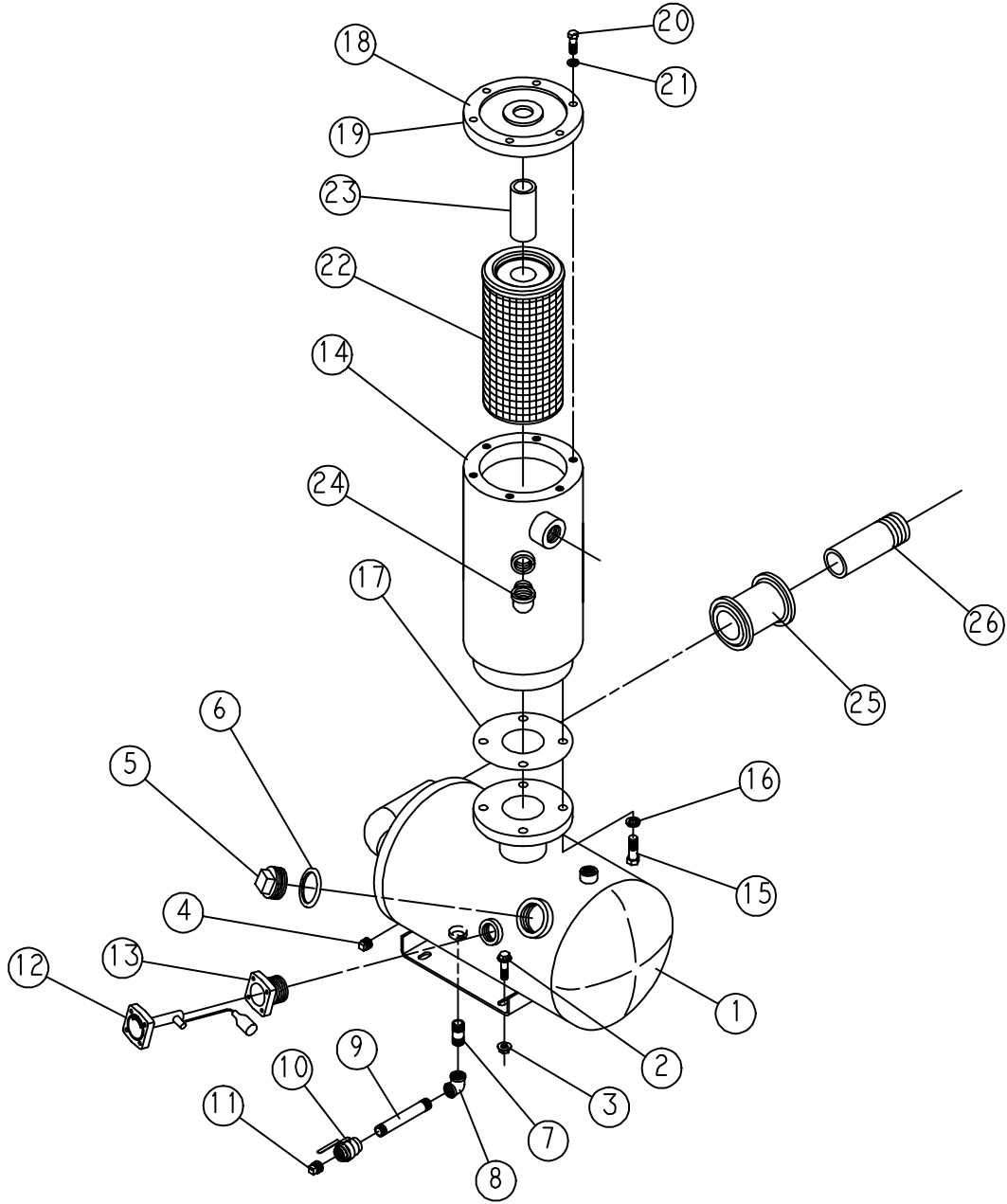
**THERMAL VALVE  
(Thermostatic Mixing)**



**90AR942 VALVE ASSEMBLY – THERMAL (ALUMINUM HOUSING)**

Ref. No.	Name of Part	Qty.	Part No.
1	VALVE BODY (3/4") .....	1	2117072
2	VALVE COVER (3/4") .....	1	2117073
	VALVE KIT (Includes Reference Nos. 3, 4 and 5) .....	1	
	150° THERMOSTAT (Optional) .....		2115542
	160° THERMOSTAT (Standard) .....		2115543
	170° THERMOSTAT (Optional) .....		2117074
	180° THERMOSTAT (Optional) .....		2117075
3	O-RING (Included in VALVE KIT) .....	1	
4	LIP SEAL (Included in VALVE KIT) .....	1	
5	ELEMENT (Included in VALVE KIT) .....	1	

# OIL RESERVOIR GROUP



242EDE810-A  
(Ref. Drawing)

Order by Part Number and Description. Reference Numbers are for your convenience only.

OIL RESERVOIR GROUP

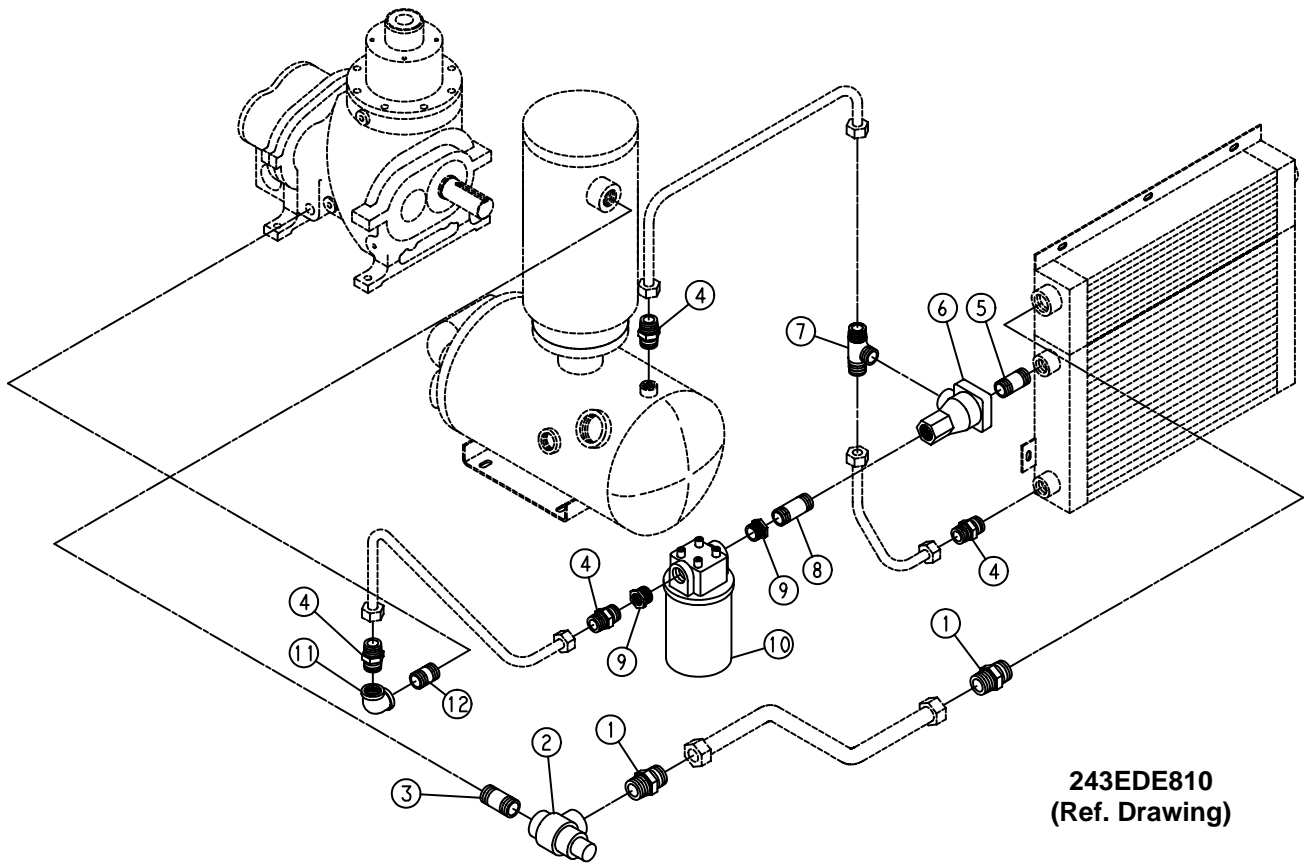
Ref. No.	Name of Part	Qty.	Part No.
1	RESERVOIR-OIL .....	1	300EDE037
2	SCREW-FLANGED .....	4	75LM135
3	NUT-FLANGED .....	4	50AW35
4	PLUG .....	1	64AA5
5	COVER-FILLER .....	1	200SPF156
6	O-RING .....	1	54C214
7	NIPPLE-PIPE .....	1	63F1G
8	ELBOW-PIPE .....	1	64C4G
9	NIPPLE-PIPE .....	1	63F1G
10	VALVE-BALL .....	1	90AR360
11	PLUG .....	1	64AA7
12 *	GAUGE-FLOAT .....	1	300EBH303
13	ADAPTOR-GAUGE .....	1	200EDE058
14	HOUSING .....	1	200ECH405
15	SCREW .....	4	655EF070
16	LOCKWASHER .....	4	95B7
17	GASKET .....	1	25C802
18	COVER .....	1	203ECM225
19	GASKET ELIMINATOR .....	1	25BC222
20	SCREW .....	6	655EE070
21	LOCKWASHER .....	6	95B5
22 ***	SEPARATOR-AIR/OIL (See below for ordering information) .....	1	200ECH035
23	SPACER (PIPE) .....	1	200ECH392
24	ELBOW .....	1	64D6G
25 **	COUPLING-FLEXIBLE .....	1	64EB801
26	NIPPLE-PIPE .....	1	63AJ32X74G

\* For Repair Gasket – Order Part Number 54C204

\*\* For Repair Gasket – Order Part Number 2117159, (2) Required

\*\*\* For Repair Kit – Order Part Number 200ECH6013.

Order by Part Number and Description. Reference Numbers are for your convenience only.

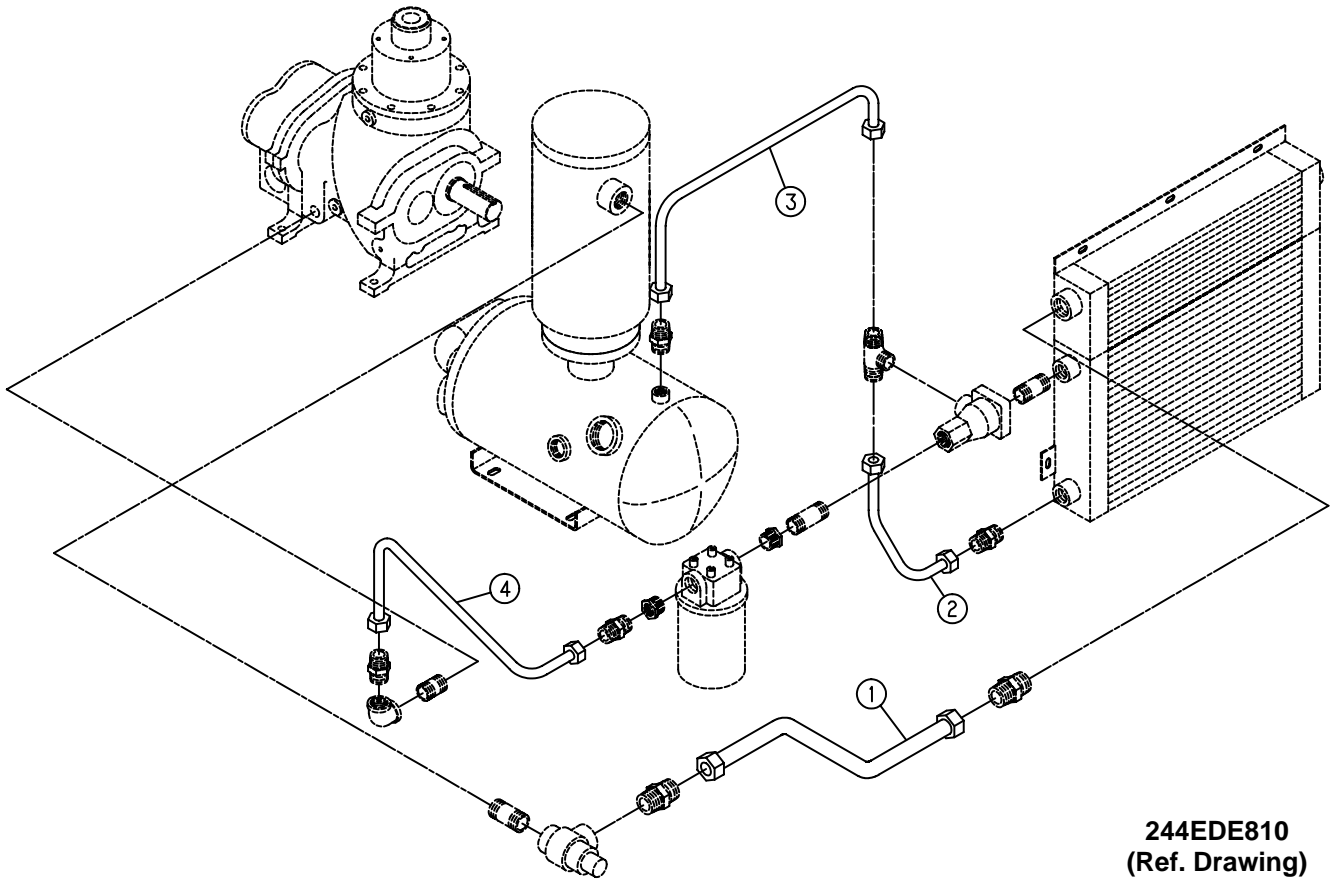


**OIL PIPING GROUP**

Ref. No.	Name of Part	Qty.	Part No.
1	CONNECTOR .....	2	86H140
2	VALVE-MINIMUM PRESSURE .....	1	200EDE527
3	NIPPLE .....	1	63J15G
4	CONNECTOR .....	4	86H137
5	NIPPLE .....	1	63G19G
6	VALVE-THERMAL (See page 13) .....	1	90AR942
7	TEE .....	1	86N286
8	NIPPLE .....	1	63G5G
9	BUSHING-PIPE .....	2	64E36
10 *	FILTER-OIL (See page 18) .....	1	200EBM369
11	ELBOW .....	1	64C5G
12	NIPPLE .....	1	63G31G

\* For Oil Filter Element – Order Part Number 2116110

Order by Part Number and Description. Reference Numbers are for your convenience only.

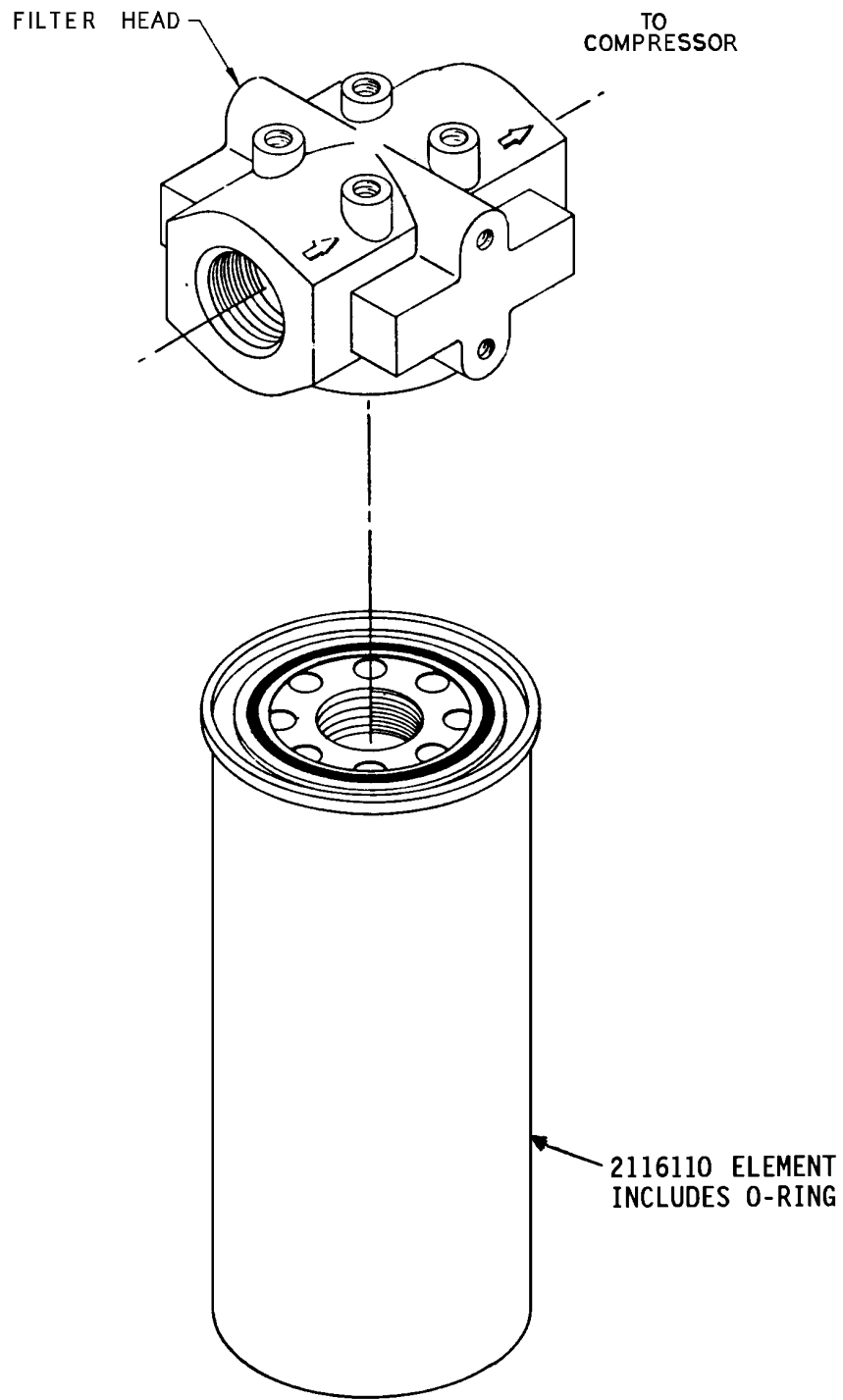


**244EDE810**  
(Ref. Drawing)

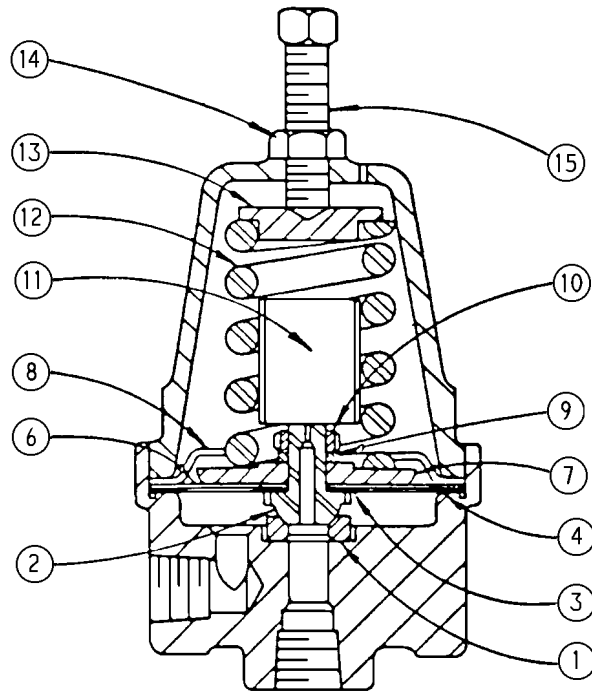
**OIL PIPING GROUP**

Ref. No.	Name of Part	Qty.	Part No.
1	TUBE (With Fittings) .....	1	200EDE863
2	TUBE (With Fittings) .....	1	202EDE863
3	TUBE (With Fittings) .....	1	201EDE863
4	TUBE (With Fittings) .....	1	203EDE863

OIL FILTER – 200EBM369



Order by Part Number and Description. Reference Numbers are for your convenience only.

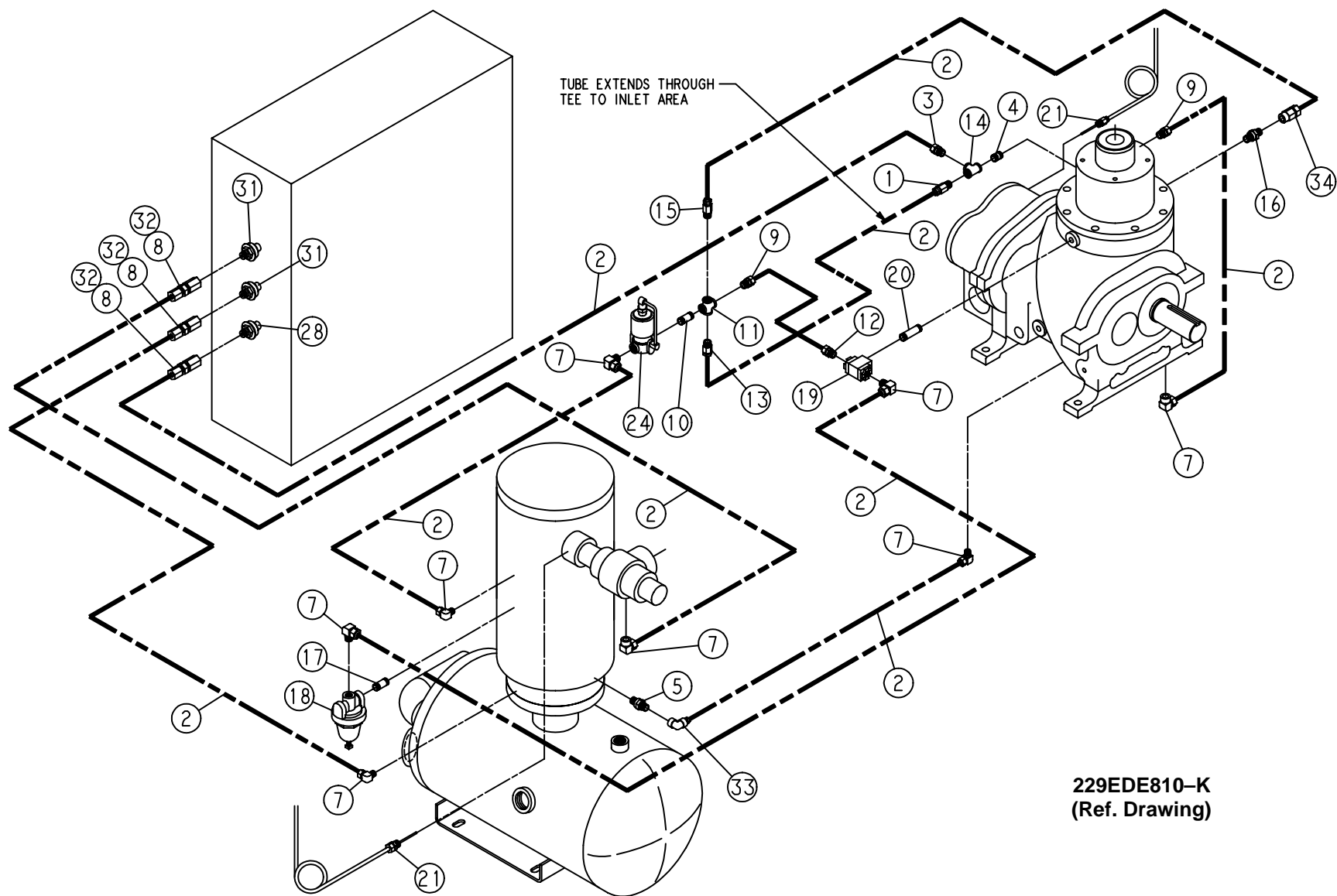


**SUBTRACTIVE PILOT VALVE**

Ref. No.	Name of Part	Qty.	Part No.
	VALVE-SUBTRACTIVE PILOT, Includes Ref. No. 1 thru 15 .....		2009398
1	RING-SEAT .....	1	2008021
2	DISC-SEAT .....	1	2010080
3	GASKET-DURABLA .....	1	2008019
4	GASKET-DURABLA .....	1	2008017
6	DIAPHRAGM .....	5	2008018
7	PLATE-PRESSURE .....	1	2008015
8	STOP-DIAPHRAGM .....	1	2008016
9	WASHER-LOCK .....	1	95B1
10	NUT-PRESSURE PLATE .....	1	2008888
11	DAMPER .....	1	2008711
12	SPRING-PRESSURE .....	1	2008014
13	BUTTON-SPRING .....	1	2008891
14	LOCKNUT .....	1	50Y2
15	SCREW-PRESSURE .....	1	2008952

NOTE: It is necessary to replace some parts in groups to insure satisfactory repair. When replacing diaphragm, also replace both diaphragm and seat gaskets. When replacing seat disc or seat ring, replace also the mating seat ring or disc and the seat disc gasket.

# CONTROL PIPING



229EDE810-K  
(Ref. Drawing)

Order by Part Number and Description. Reference Numbers are for your convenience only.

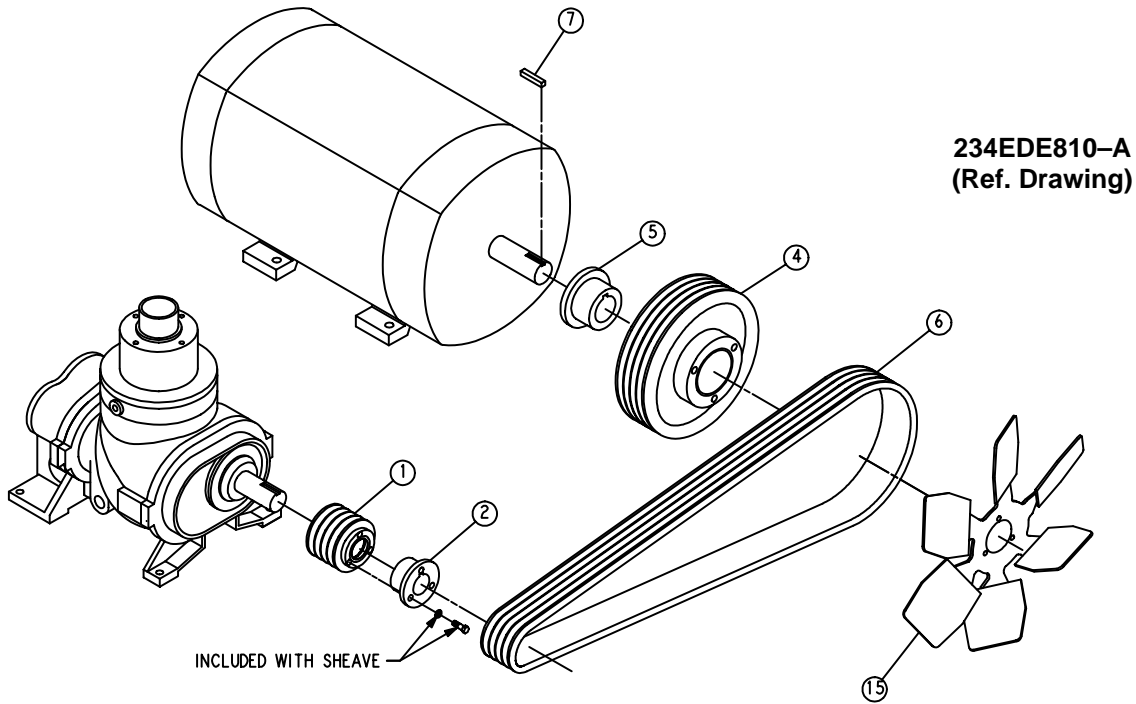
CONTROL PIPING

Ref. No.	Name Of Part	Qty.	Part No.	Ref. No.	Name Of Part	Qty.	Part No.
1	CONNECTOR .....	1	86N272	18	VALVE-SUBTRACTIVE PILOT	1	2009398
2	TUBE .....	35	85K3	19	CONTROL VALVE .....	1	90AR1034
3	CONNECTOR .....	1	86E4	20	NIPPLE .....	1	63D6G
4	NIPPLE-PIPE .....	1	63D1G	21	PROBE-ELECTRICAL .....	2	21D264
5	CHECK VALVE .....	1	90AR261	24 **	SOLENOID VALVE .....	1	91B77
7	ELBOW-TUBE .....	9	86E60	28	SWITCH-VACUUM .....	1	88H195
8	CONNECTOR .....	3	86N287	31	TRANSDUCER-PRESSURE .	2	88H242
9	CONNECTOR .....	1	86E4	32	O-RING .....	3	165011
10	NIPPLE .....	1	63D1G	33	ELBOW .....	1	86E193
11	CROSS .....	1	64K1G	34	CONNECTOR-TUBE .....	1	86E28
12	ORIFICE .....	1	86N291	*	SEAL-PLUG .....	1	24A415
13	ORIFICE .....	1	86N291	*	O-RING .....	2	24A383
14	TEE-PIPE .....	1	64G3G	*	NIPPLE-CHASE .....	1	24A4641
15	ORIFICE .....	1	86N289	*	LOCKNUT-CONDUIT .....	1	24A77
16	CHECK VALVE .....	1	90AR261	*	WIRE .....	8	97H2R
17	NIPPLE .....	1	63D3G	*	LUG TERMINAL .....	2	24A476

\* Not shown.

\*\* For Repair Kit (includes Springs, Seals, Piston Assembly, Plunger Assembly, Nut and O-Ring), order part number 2116077.

Order by Part Number and Description. Reference Numbers are for your convenience only.



**DRIVE GROUP, BELTS AND SHEAVES**

Ref. No.	Name of Part	Qty.	Part No. Per Pressure			
			100	125	150	175
	40 H.P. DRIVE GROUP ...		EDE81825	EDE81826	EDE81827	200EDE4004
1	SHEAVE, COMPRESSOR .	1	73M45V59	73M45V49	73M45V59	73M45V55
2	HUB-BUSHING .....	1	22F28SD	22F28SD	22F28SD	22F28SD
4	SHEAVE, MOTOR .....	1	73M45V125	73M45V90	73M45V97	73M45V80
5	HUB-BUSHING .....	1	22F34E	22F34E	22F34E	22F34E
6	BELT SET .....	1	13AH7504	13AH6704	13AH7104	13AH6704
7	KEY .....	1	8500116	8500116	8500116	8500116
15	FAN .....	1	201EDE701	201EDE701	201EDE701	201EDE701
*	VALVE, PRESS RELIEF ...	1	90AR381	90AR382	90AR146	90AR171

Ref. No.	Name of Part	Qty.	Part No. Per Pressure			
			100	125	150	175
	50 H.P. DRIVE GROUP ...		EDE81829	EDE81830	EDE81831	201EDE4004
1	SHEAVE, COMPRESSOR .	1	73M45V49	73M45V49	73M45V59	73M45V59
2	HUB-BUSHING .....	1	22F28SD	22F28SD	22F28SD	22F28SD
4	SHEAVE, MOTOR .....	1	73M45V125	73M45V113	73M45V118	73M45V109
5	HUB-BUSHING .....	1	22F34E	22F34E	22F34E	22F34E
6	BELT SET .....	1	13AH7504	13AH7104	13AH7504	13AH7104
7	KEY .....	1	8500116	8500116	8500116	8500116
15	FAN .....	1	201EDE701	201EDE701	201EDE701	201EDE701
*	VALVE, PRESS RELIEF ...	1	90AR381	90AR382	90AR146	90AR171

\* Not shown.

**MOTOR GROUP (MAIN DRIVE MOTORS)  
(F2 CONDUIT BOX MOUNTING)**

NAME OF PART	40 HP PART NO.	50 HP PART NO.
--------------	-------------------	-------------------

**OPEN DRIP PROOF  
(60 HZ – ODP)**

MOTOR, 200V	24AW12F2	24AW13F2
MOTOR, 230V	24AW28F2	24AW29F2
MOTOR, 460V	24AW28F2	24AW29F2
MOTOR, 575V	24AW47F2	24AW48F2

**OPEN DRIP PROOF  
(60 HZ – ODP – HIGH EFFICIENCY)**

MOTOR, 200V	24CA1553	24CA3700
MOTOR, 230V	24CA1558	24CA3701
MOTOR, 460V	24CA1558	24CA3701
MOTOR, 575V	24CA1563	24CA3702

**TOTALLY ENCLOSED FAN COOLED  
(60 HZ – TEFC)**

MOTOR, 200V	24CA3703	24CA3706
MOTOR, 230V	24CA3704	24CA3707
MOTOR, 460V	24CA3704	24CA3707
MOTOR, 575V	24CA3705	24CA3708

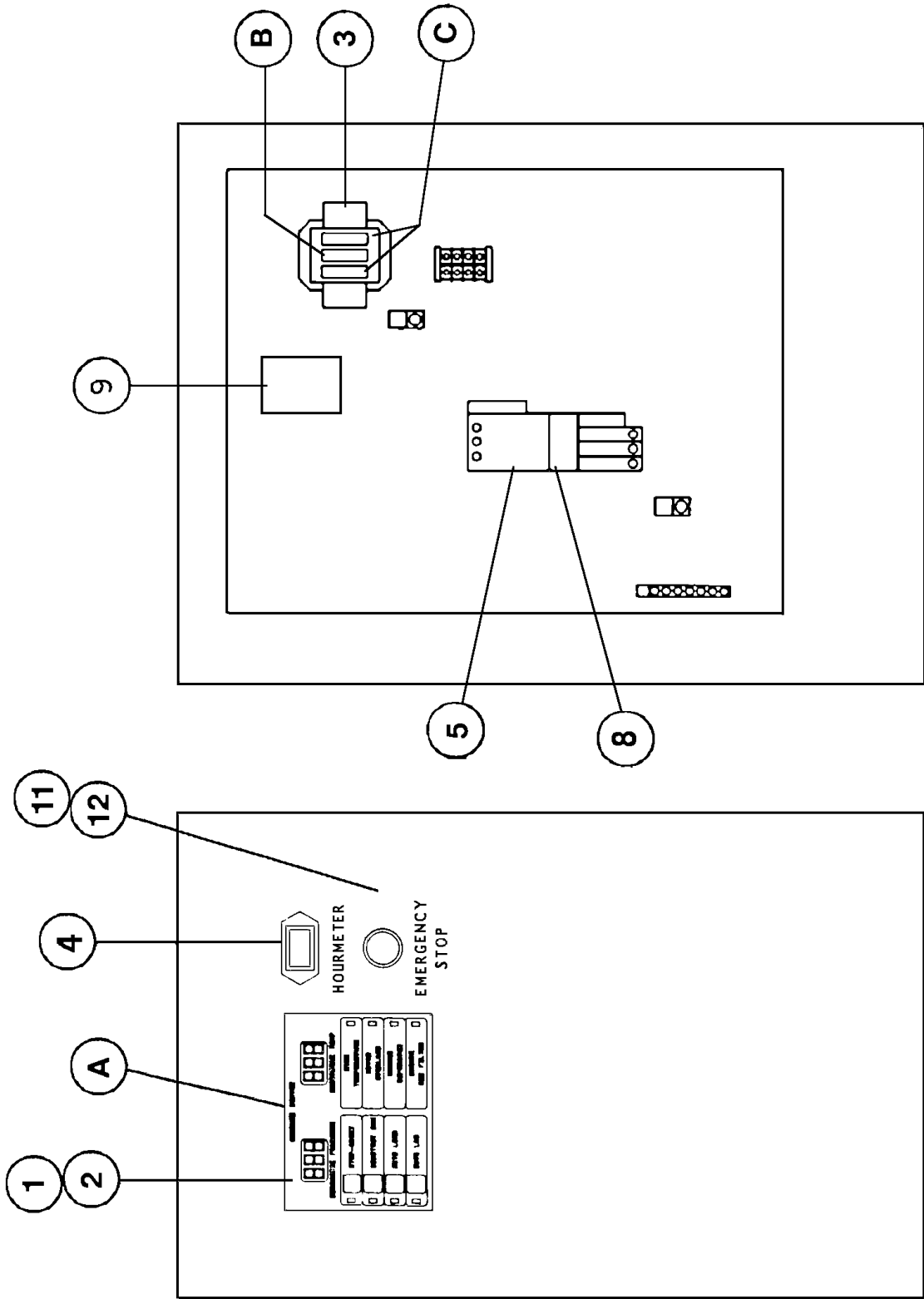
**TOTALLY ENCLOSED FAN COOLED  
(60 HZ – TEFC – HIGH EFFICIENCY)**

MOTOR, 200V	24CA3709	24CA3712
MOTOR, 230V	24CA3710	24CA3713
MOTOR, 460V	24CA3710	24CA3713
MOTOR, 575V	24CA3711	24CA3714

**MOTOR BASES**

HP	FRAME NO.	PART NO.
40	324T	24AZ25
50	326T	24AZ26

CONTROLLER ASSEMBLY



FRONT VIEW - (DOOR)

**CONTROLLER ASSEMBLY – FULL VOLTAGE STARTERS  
– 40 H.P. UNITS –**

		QTY.	200V	230V	460V	575V
	ASSEMBLED PANEL: NEMA 12 .....	1	281EDE466	281EDE466	280EDE466	280EDE466
	ASSEMBLED PANEL: NEMA 4 .....	1	284EDE466	284EDE466	283EDE466	283EDE466
A	FUSE, CONTROL BOARD .....	2	24CA2932	24CA2932	24CA2932	24CA2932
B	FUSE, TRANSFORMER SECONDARY .....	1	24CA3726	24CA3726	24CA3726	24CA3726
C	FUSE, TRANSFORMER PRIMARY .....	2	24CA3722	24CA2781	24CA2779	24CA2898
1	KEYPAD .....	1	200EBE375	200EBE375	200EBE375	200EBE375
2	ELECTRONIC CONTROLLER ASSEMBLY .....	1	200EBE1173	200EBE1173	200EBE1173	200EBE1173
3	CONTROL TRANSFORMER .....	1	2116695	2116695	2116695	2116695
4	HOURMETER (60 HZ) .....	1	24CA2895	24CA2895	24CA2895	24CA2895
5	STARTER, MAIN MOTOR .....	1	24CA3828	24CA3828	24CA4141	24CA4141
8	REPLACEMENT COIL FOR ITEM 5 .....	1	2116396	2116396	2116395	2116395
9	CONTROL RELAY .....	1	24CA3315	24CA3315	24CA3315	24CA3315
11	OPERATOR, 22mm PUSH-PULL E-STOP .....	1	24CA2907	24CA2907	24CA2907	24CA2907
12	CONTACT BLOCK SPNC .....	1	24CA2908	24CA2908	24CA2908	24CA2908

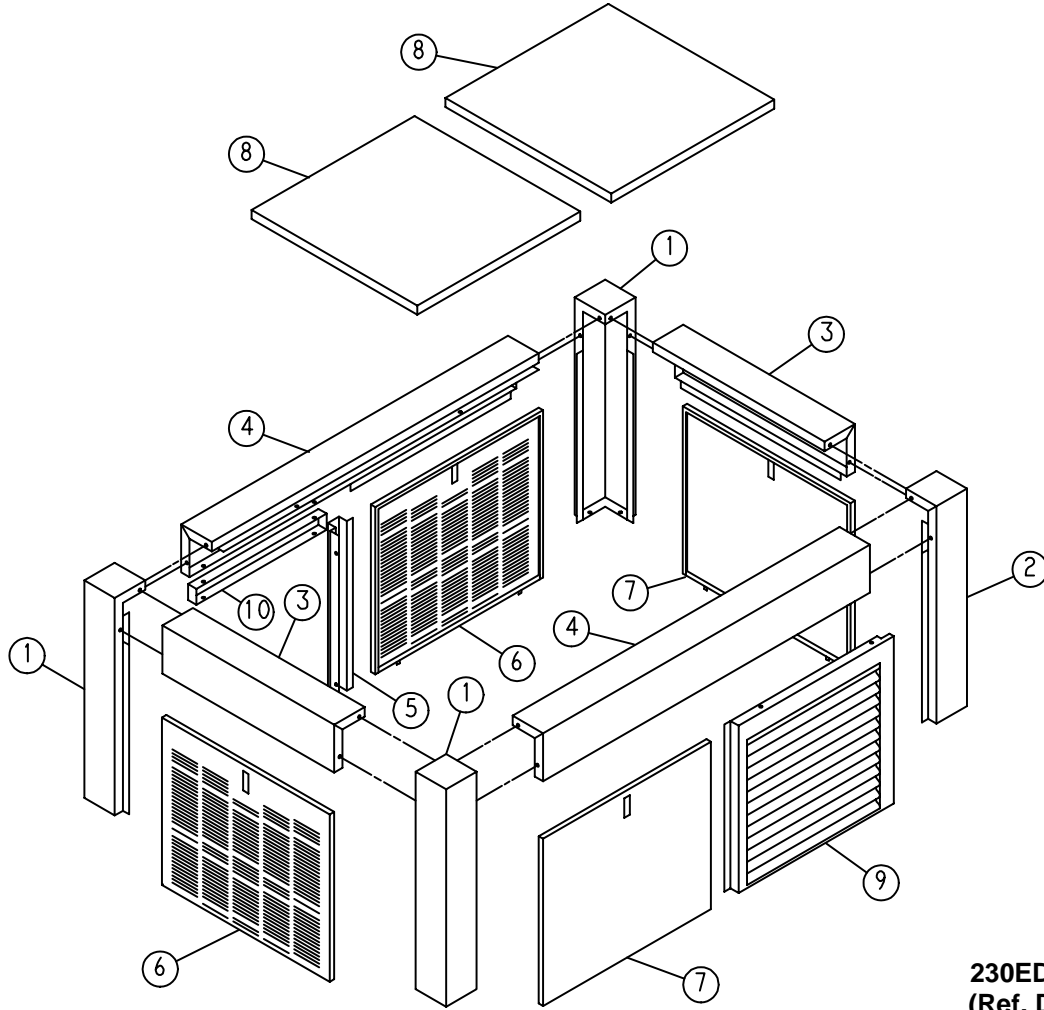
Refer to illustration on page 24.

**CONTROLLER ASSEMBLY – FULL VOLTAGE STARTERS  
– 50 H.P. UNITS –**

		QTY.	200V	230V	460V	575V
	ASSEMBLED PANEL: NEMA 12 .....	1	282EDE466	281EDE466	280EDE466	280EDE466
	ASSEMBLED PANEL: NEMA 4 .....	1	285EDE466	284EDE466	283EDE466	283EDE466
A	FUSE, CONTROL BOARD .....	2	24CA2932	24CA2932	24CA2932	24CA2932
B	FUSE, TRANSFORMER SECONDARY .....	1	24CA3885	24CA3726	24CA3726	24CA3726
C	FUSE, TRANSFORMER PRIMARY .....	2	24CA2786	24CA2781	24CA2779	24CA2898
1	KEYPAD .....	1	200EBE375	200EBE375	200EBE375	200EBE375
2	ELECTRONIC CONTROLLER ASSEMBLY .....	1	200EBE1173	200EBE1173	200EBE1173	200EBE1173
3	CONTROL TRANSFORMER .....	1	2116778	2116695	2116695	2116695
4	HOURLMETER (60 HZ) .....	1	24CA2895	24CA2895	24CA2895	24CA2895
5	STARTER, MAIN MOTOR .....	1	24CA3887	24CA3828	24CA4141	24CA4141
8	REPLACEMENT COIL FOR ITEM 5 .....	1	2116396	2116396	2116395	2116395
9	CONTROL RELAY .....	1	24CA3315	24CA3315	24CA3315	24CA3315
11	OPERATOR, 22mm PUSH-PULL E-STOP .....	1	24CA2907	24CA2907	24CA2907	24CA2907
12	CONTACT BLOCK SPNC .....	1	24CA2908	24CA2908	24CA2908	24CA2908

Refer to illustration on page 24.

Order by Part Number and Description. Reference Numbers are for your convenience only.

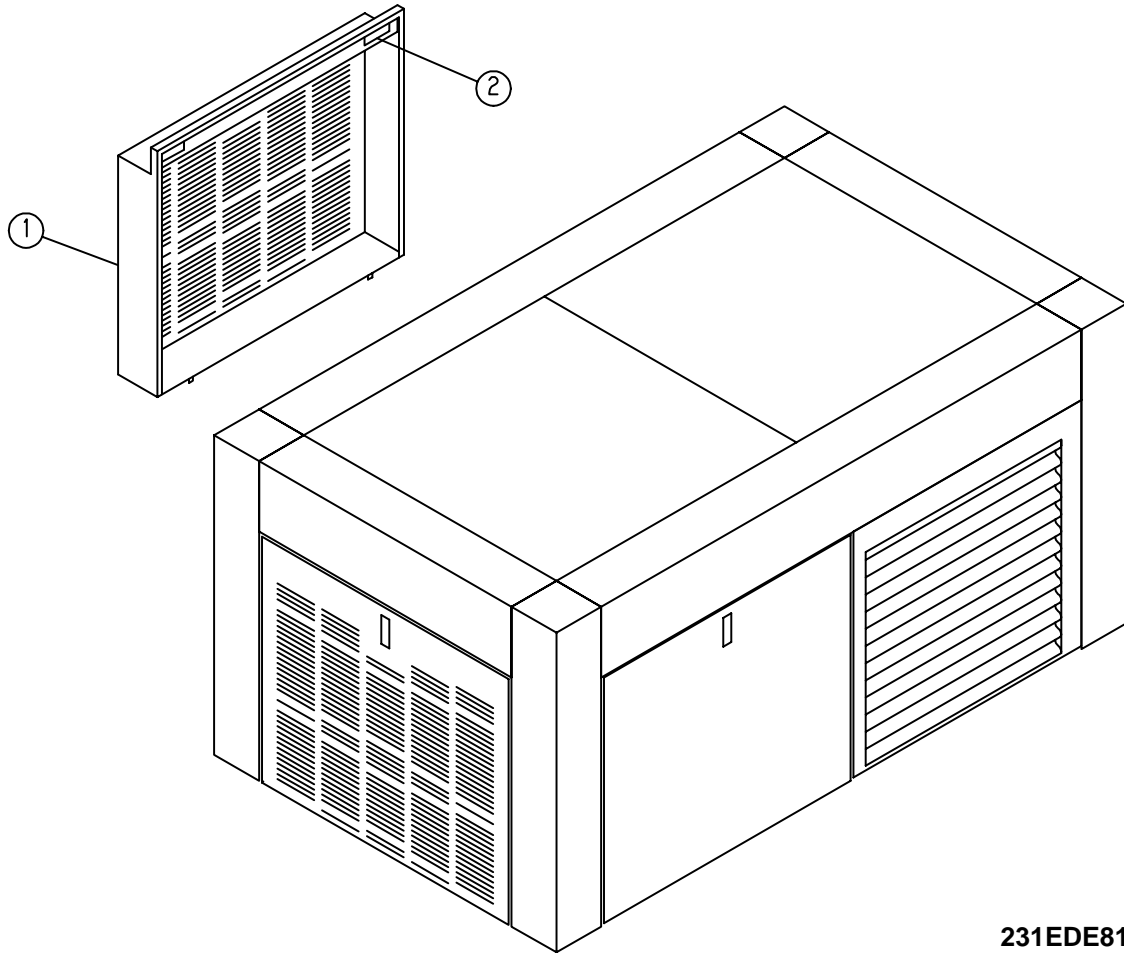


230EDE810-D  
(Ref. Drawing)

**ENCLOSURE – COMMON PARTS**

Ref. No.	Name of Part	Qty.	Part No.
1	POST .....	3	200EDE313
2	POST .....	1	206EDE313
3	FRAME .....	2	203EDE314
4	FRAME .....	2	204EDE314
5	BRACKET (FORMED) .....	1	201EDE142
6	PANEL .....	2	202EDE216
7	PANEL .....	2	203EDE216
8	PANEL .....	2	204EDE216
9	PANEL .....	1	209EDE216
10	BRACKET(FORMED) .....	1	203EDE142

Order by Part Number and Description. Reference Numbers are for your convenience only.

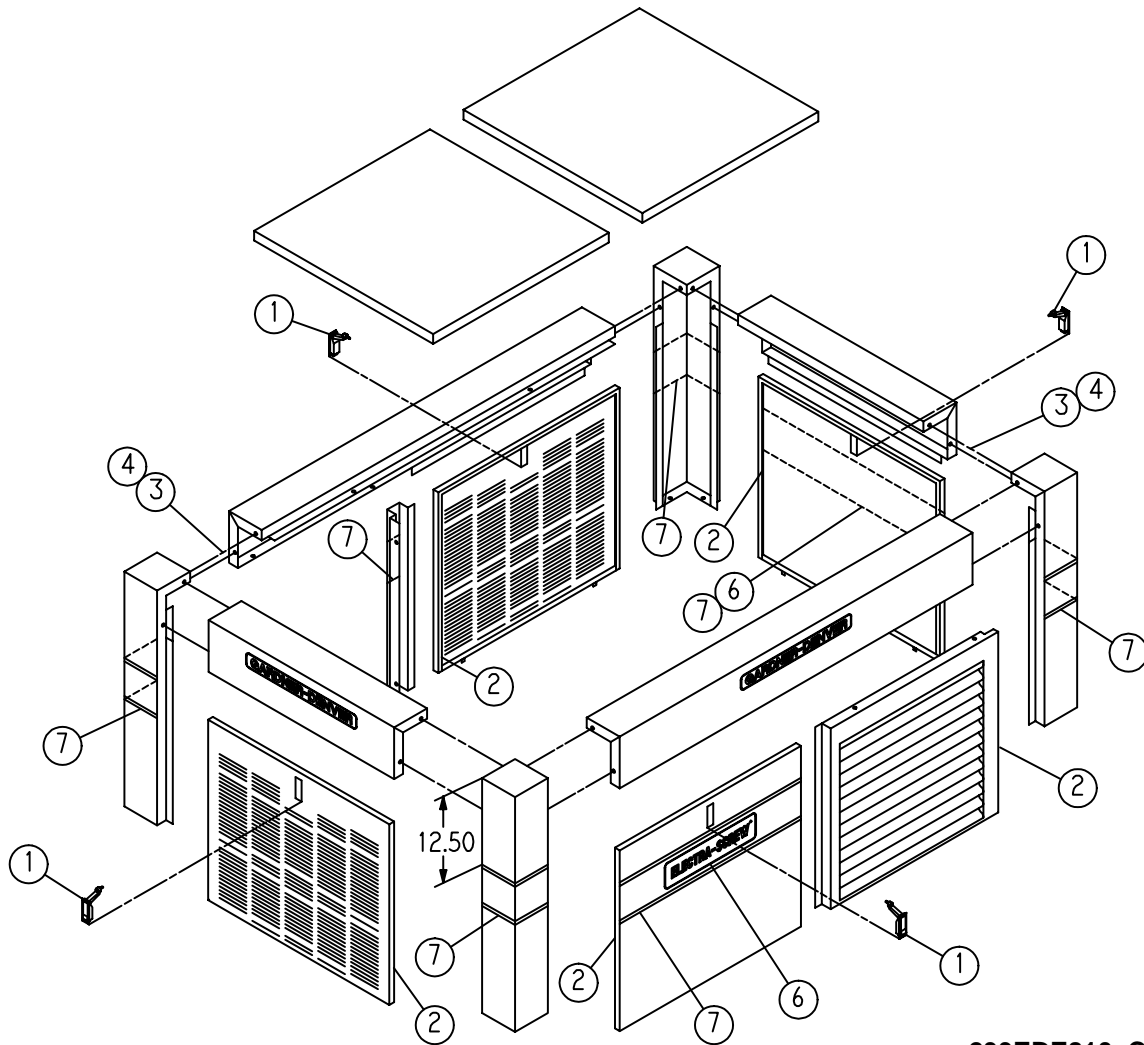


**231EDE810**  
(Ref. Drawing)

**ENCLOSURE – TEFC MOTOR**

Ref. No.	Name of Part	Qty.	Standard Enclosure Part No.	Quiet Enclosure Part No.
1	PANEL .....	1	206EDE216	300EDE216
2	LATCH .....	1	31D58	31D58

Order by Part Number and Description. Reference Numbers are for your convenience only.

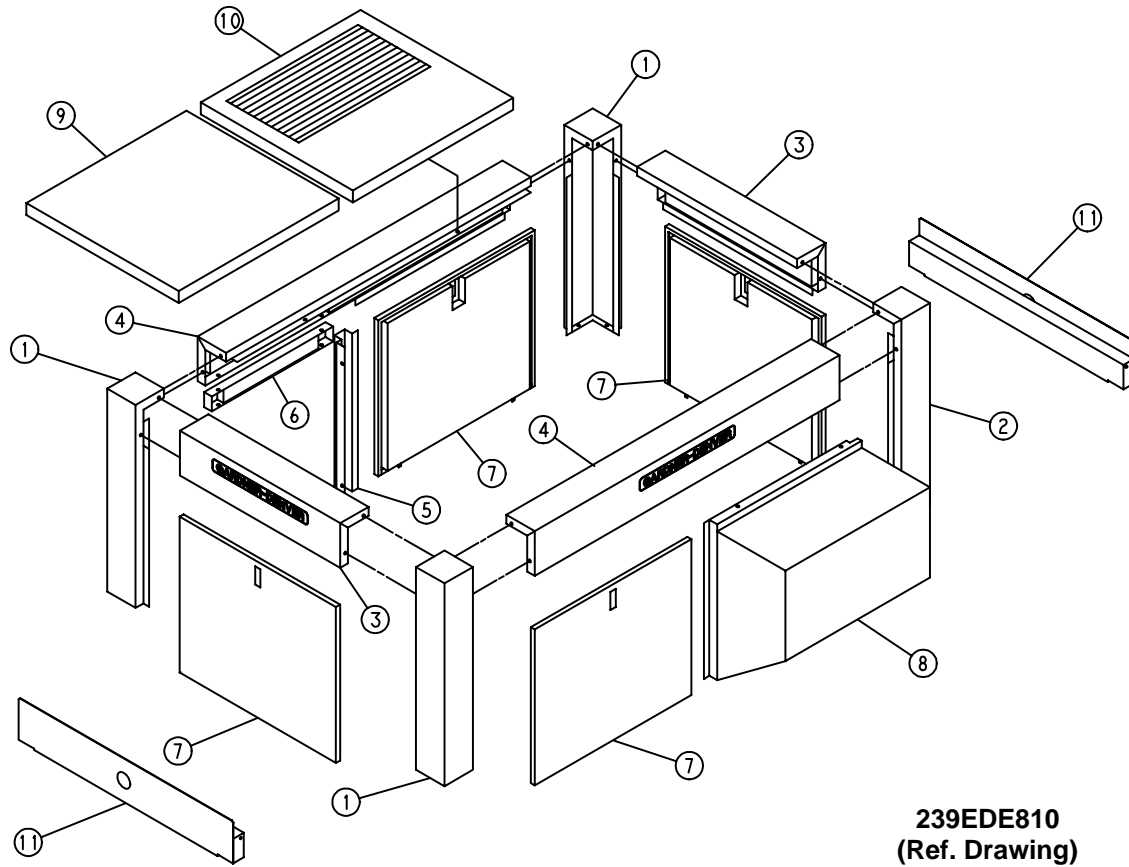


233EDE810-C  
(Ref. Drawing)

**ENCLOSURE – HARDWARE & MOUNTING**

Ref. No.	Name of Part	Qty.	Part No.
1	LATCH .....	4	31D58
2	SEAL .....	30	32E12
3	SCREW-FLANGED .....	32	75LM51
4	NUT-FLANGED .....	28	50AW5
6	DECAL .....	2	214ECM077
7	DECAL .....	2	203ESO077

Order by Part Number and Description. Reference Numbers are for your convenience only.

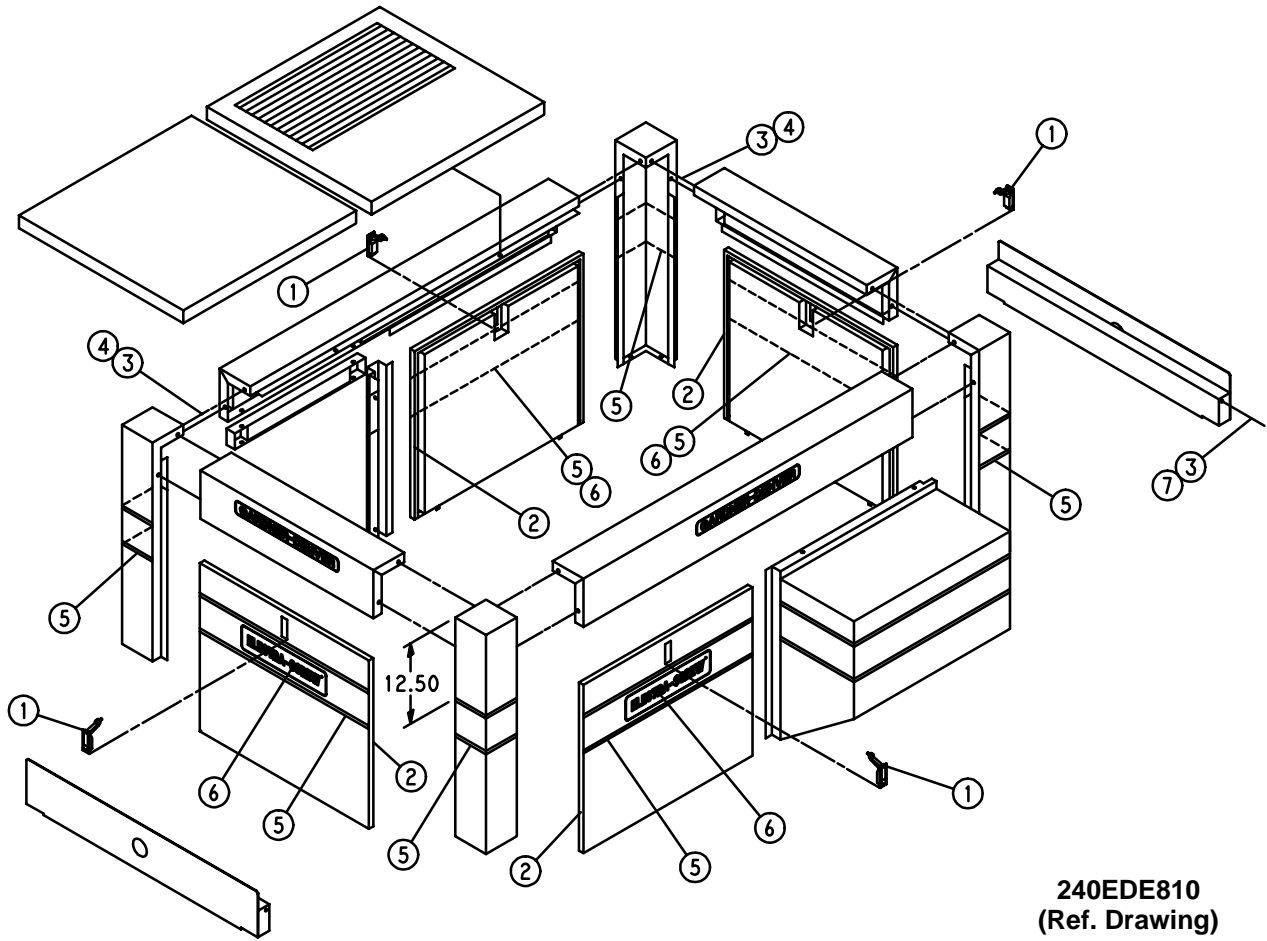


239EDE810  
(Ref. Drawing)

**QUIET ENCLOSURE**

Ref. No.	Name of Part	Qty.	ODP Part No.	TEFC Part No.
1	POST .....	3	204EDE313	204EDE313
2	POST .....	1	208EDE313	208EDE313
3	FRAME .....	2	206EDE314	206EDE314
4	FRAME .....	2	207EDE314	207EDE314
5	BRACKET (FORMED) .....	1	201EDE142	201EDE142
6	BRACKET .....	1	204EDE142	204EDE142
7	PANEL .....	4	208EDE216	300EDE216
8	BAFFLE .....	1	206EDE840	206EDE840
9	PANEL .....	1	210EDE216	210EDE216
10	PANEL .....	1	211EDE216	211EDE216
11	PANEL .....	2	212EDE216	212EDE216

Order by Part Number and Description. Reference Numbers are for your convenience only.



**QUIET ENCLOSURE – HARDWARE**

Ref. No.	Name of Part	Qty.	Part No.
1	LATCH .....	4	31D58
2	SEAL .....	30	32E12
3	SCREW-FLANGED .....	36	75LM51
4	NUT-FLANGED .....	28	50AW5
5	DECAL .....	5	203ESO077
6	DECAL .....	4	214ECM077
7	WASHER-PLAIN .....	4	95W19C

**IDENTIFICATION AND INSTRUCTION GROUP**

<b>Name of Part</b>	<b>Qty.</b>	<b>Part No.</b>
DECAL, WARNING – SEE WIRING DIAGRAM .....	2	222EAQ077
DECAL, DANGER – HOT OIL UNDER PRESSURE .....	1	212EAQ077
DECAL, WARNING – INSPECT OIL RESERVOIR .....	1	217EAQ077
DECAL, DANGER – DO NOT MODIFY .....	1	218EAQ077
DECAL, WARNING – ELECTRICAL SHOCK .....	1	216EAQ077
DECAL, WARNING – ROTATING MACHINERY .....	4	211EAQ077
DECAL, CAUTION – DO NOT LIFT .....	1	208EAQ077
DECAL, WARNING – AUTO RESTART .....	1	207EAQ077
DECAL, DANGER – DO NOT BREATHE .....	1	206EAQ077
DECAL, ID & INSTRUCTION .....	1	201EJB077
DECAL, PARTS LIST/SERVICE MANUAL # .....	1	204EDE077
DECAL .....	2	213ECM077
DECAL, GROUND .....	2	203AUX077
DECAL, L1 .....	1	236AUX077
DECAL, L2 .....	1	237AUX077
DECAL, L3 .....	1	238AUX077
NAMEPLATE .....	1	208EAQ496
RIVET .....	4	70E13
DECAL, CAUTION – USE FLOOR PLATE .....	1	221EAQ077
INSTRUCTION TAG, WARNING .....	1	201EAQ077
DECAL, ROTATION ARROW .....	1	204EBE077
DECAL, WARNING .....	1	227EAQ077
DECAL, GARDNER–DENVER VERTICAL .....	2	69F62
DECAL, CAUTION .....	1	203ESF077
DECAL, OIL FILTER ELEMENT .....	1	212ECM077
DECAL, NOTICE – USE GD PARTS .....	1	214EAQ077
DECAL, DO NOT MODIFY .....	1	218EAQ077
NAMEPLATE, MADE IN THE USA .....	1	69F64
DECAL, AUTO SENTRY–S .....	1	206EJB077
DECAL, OIL FILL INSTRUCTIONS .....	1	240EAQ077
DECAL, QUALITY WITHOUT QUESTION .....	1	251EAQ077

**OVERLOAD RELAY HEATER CONVERSION LISTING**

**Refer to Motor Nameplate "Amperage" and Decal in Control Panel for Selection of Overload Relay Heater Packs.**

**CUTLER-HAMMER  
PART NUMBER**

**GARDNER DENVER  
PART NUMBER**

---

H2002B .....	24CA4101
H2003B .....	24CA4102
H2004B .....	24CA4103
H2005B .....	24CA4104
H2006B .....	24CA4105
H2007B .....	24CA4106
H2008B .....	24CA4107
H2009B .....	24CA4108
H2010B .....	24CA4109
H2011B .....	24CA4110
H2012B .....	24CA4111
H2013B .....	24CA4112
H2014B .....	24CA4113
H2015B .....	24CA4114
H2016B .....	24CA4115
H2017B .....	24CA4116
H2018 .....	24CA2924
H2019 .....	24CA2925
H2020 .....	24CA2926
H2021 .....	24CA2927
H2022 .....	24CA2893
H2023 .....	24CA2894
H2024 .....	24CA2928

## REPAIR KITS AND ACCESSORIES

Your Gardner Denver rotary screw compressor is designed and manufactured for many years of reliable operation. All components are engineered to exacting specifications, which will function together as a system to provide maximum efficiency. To insure the continuing integrity of compressor operation, use only original quality genuine Gardner Denver replacement parts and accessories.

Name of Part	Qty.	Part No.
ROUTINE MAINTENANCE KIT, Heavy Duty Air Filter (Includes next two items)		201ECH6013
ELEMENT, Air Filter .....	2	2116701
ELEMENT, Oil Filter .....	3	2116110
PERIODIC MAINTENANCE KIT (Inlet Valve) (Includes next five items) .....		302EBE6013
O-RING .....	1	25BC440
SPRING .....	1	78H22
SPRING .....	1	78W59
O-RING .....	1	25AM15
RING-RETAINING .....	1	74D87
PERIODIC OVERHAUL KIT (Includes next seven items) .....		300SSE6013
GASKET KIT (See Below) .....	1	301SSE6013
OIL SEAL KIT (See Below) .....	1	302SSH6013
ROLLER BEARING .....	1	12BA130
ROLLER BEARING .....	1	12BA129
ROLLER BEARING .....	1	12BA127
ROLLER BEARING .....	1	12BA128
SPRING .....	2	78W47
GASKET KIT (Includes next four items) .....		301SSE6013
PERIODIC MAINTENANCE KIT (See Above) .....	1	302EBE6013
SHIM SET (SHAFT) .....	1	77H54
SHIM SET .....	1	77C58
GASKET ELIMINATOR .....	1	25BC222
OIL SEAL KIT (Includes next seven items) .....	1	302SSH6013
WEAR SLEEVE .....	1	80M12
OIL SEAL .....	1	60DD679
OIL SEAL .....	1	60DD690
O-RING .....	1	8502140
O-RING .....	1	25BC165
GASKET (ELIMINATOR) .....	1	25BC222
CHECK VALVE .....	1	90AR923
WEAR SLEEVE INSTALLATION / REMOVAL KIT .....		SSE81282
(Includes next seven items)		
PULLER .....	1	300SSE219
PLATE-PULLER .....	1	300SSE340
SCREW .....	1	655EE030
SCREW .....	1	655ED120
SCREW .....	2	75D176
GUIDE .....	1	300SSE450
TOOL .....	1	200SSH074

**REPAIR KITS AND ACCESSORIES (Continued)**

INLET VALVE REPAIR KIT (Includes next five items) .....		302SSE6013
O-RING .....	1	25BC440
SPRING .....	1	78H22
RING-RETAINING .....	1	74D87
SPRING .....	1	78W59
O-RING .....	1	25AM15
 SEPARATOR KIT (Includes next three items) .....		200ECH6013
OIL SEPARATOR .....	1	200ECH035
GASKET .....	1	25C1788N
LUBRICANT (OIL SEAL GREASE) .....	1	2116755
 PNEUMATIC CONTROL KIT (Includes next two items) .....		EJB81375
SUBTRACTIVE PILOT VALVE .....	1	2009398
SHUTTLE VALVE .....	1	90AR1034
 ELECTRICAL CONTROL KIT (Includes next four items) .....		EJB81373
THERMISTOR PROBE .....	2	21D264
SOLENOID VALVE .....	1	91B77
TRANSDUCER .....	2	88H242
VACUUM SWITCH .....	1	88H195
 LUBRICANT (AEON 4000 – STANDARD)		
5-GALLON PAIL .....	1	28H57
55-GALLON DRUM .....	1	28H36
 LUBRICANT (AEON 9000 SP – OPTIONAL)		
5-GALLON PAIL .....	1	28H109
55-GALLON DRUM .....	1	28H110
 TOUCH-UP PAINT		
5-GALLON PAIL .....	1	28H76
1-GALLON CAN .....	1	28H84
1-QUART CAN .....	1	28H83

**Gardner**  
**Denver**

For additional information contact your local representative or Gardner Denver Machinery Inc., Customer Service Department, 1800 Gardner Expressway, Quincy, Illinois 62301  
Telephone: (800) 682-9868 FAX: (217) 224-7814



Sales and Service in all major cities.

For parts information, contact Gardner Denver, Master Distribution Center, Memphis, TN  
Telephone: (800) 245-4946 FAX: (901) 542-6159

Specifications subject to change without notice.  
Copyright 1996 Gardner Denver Machinery Inc.

Litho in U.S.A.