
GARDNER DENVER®

13-8-509
6th Edition
July, 1996

**ELECTRA-SCREW® STATIONARY
BASE-MOUNTED & TANK MOUNTED
COMPRESSORS**

MODELS

EBE_DH - 15 HP

EBE_EH - 20 HP

EBE_FH - 25 HP

EBE_GH - 30 HP

60 HZ

PARTS LIST

**Gardner
Denver**

**TOTAL PRODUCT SUPPORT – GARDNER DENVER’S
CONTINUING COMMITMENT
TO YOUR AIR COMPRESSOR PERFORMANCE**

Commitment to total product support continues long after the purchase of your quality Gardner Denver® rotary screw compressor.

Gardner Denver original parts incorporate years of experience and improvements in design, materials and quality assurance. Maintaining your compressor investment with Gardner Denver® parts will insure protection for the air compressor unit and long, dependable service life.

Your authorized Gardner Denver® compressor distributor maintains a complete stock of all common maintenance parts, factory approved AEON™ lubricants, and Gardner Denver® factory warranted exchange air ends. In addition, authorized distributor technicians are factory trained, and can provide complete diagnostic, compressor maintenance and repair services.

This manual is designed to assist you in maintaining high performance and receiving many years of dependable service you expect from your Gardner Denver compressor.

For Operating and Service Instructions see:

SERVICE MANUAL # 13-8-609

TABLE OF CONTENTS

Page No.

Total Product Support – Gardner Denver’s Continuing Commitment To Your Air Compressor Performance	1
Maintain Compressor Reliability and Performance With Genuine Gardner Denver Compressor Parts and Support Services	3
Remanufactured Air Ends	3
Model EBE –15, 20, 25, & 30 HP – Air-cooled – Matrix/Menu	4
Bare Compressor	5
Bare Compressor – Repair And Replacement	6
Gardner Denver Air End Exchange Program	6
Remanufactured Product Warranty	7
Oil Seal Detail	8
Inlet Valve	9
Severe Duty Air Filter and Mounting (Optional)	10
Heavy Duty Air Filter (Standard)	10
Oil Cooler Group	11
Oil Reservoir	12
Oil Filter – 200EBE369	13
Oil Line Fittings	14
Oil Line Tubes	15
Air Receiver Group	16
Discharge Piping – Base Mounted Units	17
Discharge Piping – Tank Mounted Units	18
Discharge Piping – Tank Mounted Units (Without Separator–Trap)	19
Piping Group	20, 21
Thermal Valve (Thermostatic Mixing)	22
Subtractive Pilot Valve	23
Discharge Piping – Tank Mounted Units	24, 25
Control Panel Group	26
Control Panel Group	27
Control/Starter Box (With Overload Heaters & Fusetrans) With Main Motor Starter	28
Without Main Motor Starter	28
Overload Relay Heater Conversion Listing	29
Enclosure – Hardware & Decals	30
Enclosure – Basic Parts	31
Quiet Enclosure – ODP Only	32
Enclosure – ODP Motors	33
Identification and Instruction Group	34
Main Motor (Standard ODP/TEFC & HI-EFF. ODP)	35
Repair Kits and Accessories	36, 37

**MAINTAIN COMPRESSOR RELIABILITY AND PERFORMANCE WITH
GENUINE GARDNER DENVER® COMPRESSOR
PARTS AND SUPPORT SERVICES**

Gardner Denver® Compressor genuine parts, engineered to original tolerances, are designed for optimum dependability — specifically for Gardner Denver compressor systems. Design and material innovations are the result of years of experience with hundreds of different compressor applications. Reliability in materials and quality assurance are incorporated in our genuine replacement parts.

Your authorized Gardner Denver® Compressor distributor offers all the backup you'll need. A worldwide network of authorized distributors provides the finest product support in the air compressor industry. Your local authorized distributor maintains a large inventory of genuine parts and is backed up for emergency parts by direct access to the Gardner Denver Machinery Inc. Master Distribution Center (MDC) in Memphis, Tennessee.

Your authorized distributor can support your Gardner

For the location of your local authorized Gardner Denver Air Compressor distributor refer to the yellow pages of your phone directory or contact:

Distribution Center:
Gardner Denver Machinery Inc.
Master Distribution Center
5585 East Shelby Drive
Memphis, TN 38141
Phone: (901) 542-6100
(800) 245-4946
Fax: (901) 542-6159

Factory:
Gardner Denver Machinery Inc.
1800 Gardner Expressway
Quincy, IL 62301
Phone: (217) 222-5400
Fax: (217) 223-5897

Denver® air compressor with these services:

1. Trained parts specialists to assist you in selecting the correct replacement parts.
2. Factory warranted new and remanufactured rotary screw air ends. Most popular model remanufactured air ends are maintained in stock at MDC for purchase on an exchange basis with liberal core credit available for the replacement unit.
3. A full line of factory tested AEON™ compressor lubricants specifically formulated for use in Gardner Denver compressors.
4. Repair and maintenance kits designed with the necessary parts to simplify servicing your compressor.

Authorized distributor service technicians are factory-trained and skilled in compressor maintenance and repair. They are ready to respond and assist you by providing fast, expert maintenance and repair services.

REMANUFACTURED AIR ENDS

Whenever an air end requires replacement or repair, Gardner Denver offers an industry unique, factory remanufactured air end exchange program. From its modern Remanufacturing Center in Indianapolis, IN, Gardner Denver is committed to supplying you with the highest quality, factory remanufactured air ends that are guaranteed to save you time, aggravation and money.

Immediately Available

Repair downtime costs you money, which is why there are over 200 remanufactured units in inventory at all times, ready for immediate delivery.

Skilled Craftsmen

Our Remanufacturing assembly technicians average over 20 years experience with air compression products.

Precision Remanufacturing

All potentially usable parts are thoroughly cleaned, inspected and analyzed. Only those parts that can be brought back to original factory specifications are remanufactured. Every remanufactured air end receives

a new overhaul kit: bearings, gears, seals, sleeves and gaskets.

Extensive Testing

Gardner Denver performs testing that repair houses just don't do. Magnaflux and ultrasonic inspection spot cracked or stressed castings, monochromatic light analysis exposes oil leaks, and coordinate measurement machine inspects to +/- .0001", insuring that all remanufactured air ends meet factory performance specifications.

Warranty

Gardner Denver backs up every remanufactured air end with a new warranty . . . 18 months from purchase, 12 months from service.

Gardner Denver remanufactured air ends deliver *quality without question . . . year in and year out.*

Call Gardner Denver for information on the air end exchange program and the name of your authorized distributor.

Phone Number: 800-245-4946 or
FAX: 901-542-6159

ELECTRA-SCREW® COMPRESSORS – MODEL EBE 15, 20, 25, & 30 HP Air-Cooled – Matrix/Menu

NOTICE TO CUSTOMER – To find the construction options for your compressor unit, FILL IN THE BALANCE OF LETTERS OR NUMBERS FROM YOUR UNIT NAMEPLATE.

	E	B	E		H								
COLUMN NUMBER:	1	2	3	4	5	6	7	8	9	10	11	12	13

Follow the line down and over from each space thus filled in to find the appropriate construction option with which your machine is equipped. The number "9" in any column space indicates "NOT APPLICABLE." The number "8" in any column space indicates SPECIAL DESIGN – REFER TO FACTORY ORDER TICKET.

COLUMNS 1, 2 & 3 – COMPRESSOR TYPE & SIZE

COLUMN 4 – TYPE OF CONSTRUCTION

- Q. Base Mounted
- R. Tank Mounted

COLUMN 5 – HORSEPOWER

- D. 15 HP
- F. 25 HP
- E. 20 HP
- G. 30 HP

COLUMN 6 – ENGINEERING SPECIFICATION

COLUMN 7 – PRESSURE & HZ

- A. 100 PSIG – 60 HZ (ALL)
- C. 150 PSIG – 60 HZ (20–25–30 HP ONLY)
- B. 125 PSIG – 60 HZ (ALL)
- D. 175 PSIG – 60 HZ (25–30 HP ONLY)

COLUMN 8 – AIR FILTER & MOUNTING

- A. Standard Filter
- B. Heavy Duty Filter

COLUMN 9 – CONTROL BOX STARTER (Per Voltage) (With/Without Main Motor Starter)

- | | |
|--|--|
| <ul style="list-style-type: none"> With Starter A. 200 Volt – N12 B. 230 Volt – N12 C. 460 Volt – N12 D. 575 Volt – N12 E. 200 Volt – N4 F. 230 Volt – N4 G. 460 Volt – N4 H. 575 Volt – N4 | <ul style="list-style-type: none"> Without Starter I. 200/230/460/575 Volt – N12 J. 200/230/460/575 Volt – N4 |
|--|--|

COLUMN 10 – ENCLOSURE

- A. Without Enclosure
- B. With Enclosure – ODP Motor
- C. With Enclosure – TEFC Motor
- D. Quiet Enclosure – ODP Motor Only

COLUMN 11 – AIR RECEIVER/BASE MOUNTING GROUPS

- | | |
|---|--|
| <ul style="list-style-type: none"> A. Base Mounted B. 120 Gallon Tank – W/O Cond. Drain Vlv C. 120 Gallon Tank – With Cond. Drain Vlv D. 120 Gallon Mass. Tank – W/O Cond. Drain Vlv E. 120 Gallon Mass. Tank – With Cond. Drain Vlv | <ul style="list-style-type: none"> F. 200 Gallon Tank W/O Cond. Drain Vlv G. 200 Gallon Tank With Cond. Drain Vlv H. 200 Gallon Mass. Tank W/O Cond. Drain Vlv I. 200 Gallon Mass. Tank With Cond. Drain Vlv |
|---|--|

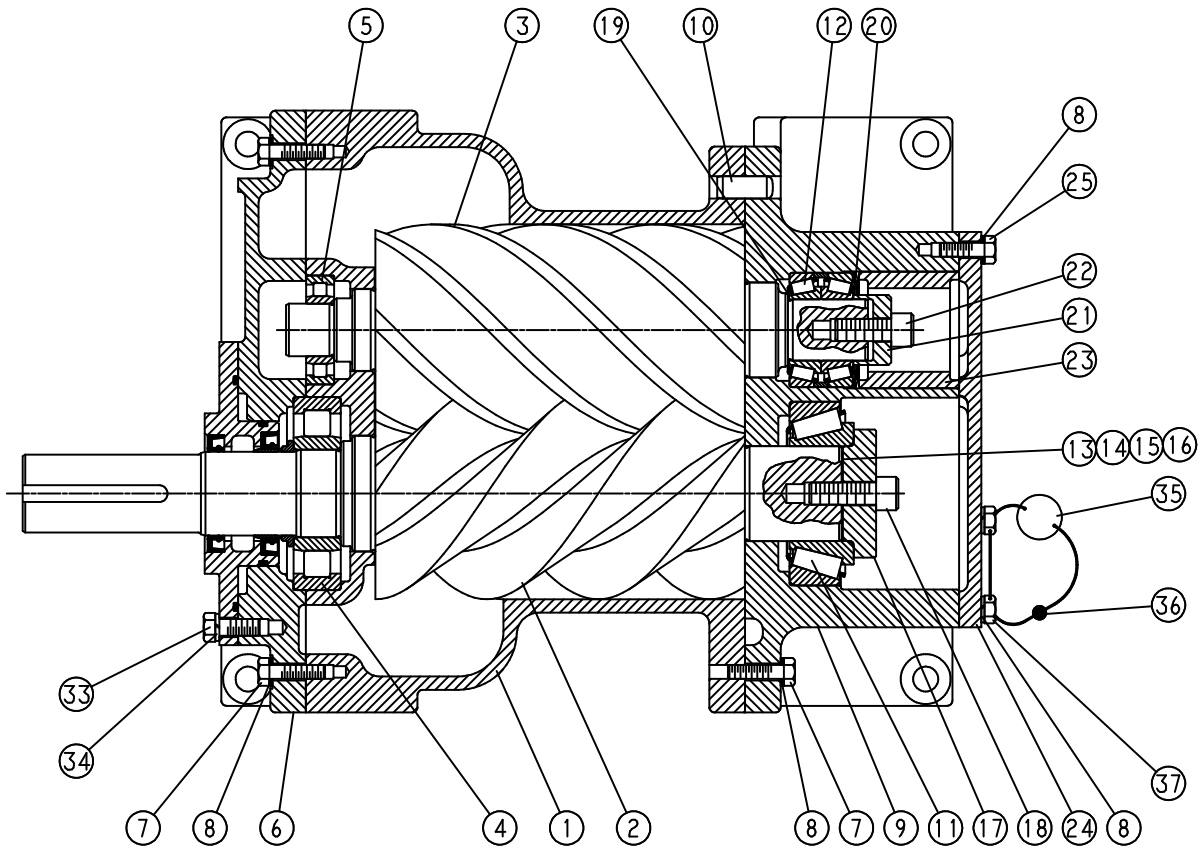
COLUMN 12 – SEPARATOR/TRAP

- A. Base Mounted
- B. Tank Mounted
- C. Without Separator/trap – (Tank Mounted Units Only)

COLUMN 13 – COMPRESSOR DRIVE MOTOR

- | | | |
|--|--|---|
| <ul style="list-style-type: none"> A. 200 V – 60 HZ – ODP B. 230 V – 60 HZ – ODP C. 460 V – 60 HZ – ODP D. 575 V – 60 HZ – ODP E. 200 V – 60 HZ – ODP – HI EFF F. 230 V – 60 HZ – ODP – HI EFF | <ul style="list-style-type: none"> G. 460 V – 60 HZ – ODP – HI EFF H. 575 V – 60 HZ – ODP – HI EFF I. 200 V – 60 HZ – TEFC J. 230 V – 60 HZ – TEFC K. 460 V – 60 HZ – TEFC L. 575 V – 60 HZ – TEFC | <ul style="list-style-type: none"> M. Less Motor – ODP/TEFC (Motor Base Only) (See Column 7) N. 200 V – 60 HZ – TEFC – HI-EFF O. 230 V – 60 HZ – TEFC – HI-EFF P. 460 V – 60 HZ – TEFC – HI-EFF Q. 575 V – 60 HZ – TEFC – HI-EFF |
|--|--|---|

Reference numbers and description are provided for your convenience.
Refer to repair kit section for ordering field replacement components.



210SSE810
(Ref. Drawing)

BARE COMPRESSOR

Ref. No.	Description	Ref. No.	Description
1	CYLINDER	* 16	SHIM
2	ROTOR	17	PLATE-BEARING RETAINER
3	ROTOR	18	SCREW
* 4	BEARING-ROLLER	* 19	SHIM
* 5	BEARING-ROLLER	* 20	SPRING
6	PLATE-BEARING COVER	21	PLATE-BEARING RETAINER
7	SCREW	22	SCREW
8	LOCKWASHER	23	SPACER
9	HOUSING-BEARING	24	PLATE-BEARING COVER
10	PIN-DOWEL	25	SCREW
* 11	BEARING-ROLLER	33	SCREW
* 12	BEARING-ROLLER	34	LOCKWASHER
* 13	SHIM	35	TAG-INSTRUCTION
* 14	SHIM	36	SEAL
* 15	SHIM	37	SCREW

* Parts included in Periodic Overhaul Kit. Refer to page 36.

**BARE COMPRESSOR
REPAIR AND REPLACEMENT**

Gardner Denver rotary screw compressor air ends are designed, manufactured, assembled, and tested to exacting standards. All new and factory remanufactured air ends are warranted by Gardner Denver. Unauthorized disassembly or field repair may void the warranty and adversely effect operation.

**GARDNER DENVER AIR END
EXCHANGE PROGRAM**

Should your air end require replacement, both new and factory remanufactured units are stocked by your authorized distributor or at the Gardner Denver Machinery Inc. Distribution Center in Memphis, Tennessee.

Remanufactured and warranted compressor air end exchange units provide a quick, reliable, and economical method for field replacement. Your compressor may be returned to service promptly and the exchange core returned later for credit.

Air ends are remanufactured at the Gardner Denver Machinery Inc. Remanufacturing Center in Indianapolis, Indiana, and factory warranted. The Indianapolis facility is staffed with experienced, skilled technicians dedicated to the remanufacture and repair of Gardner Denver compressor units. The latest improvements are incorporated in the remanufacturing process. A new or rebuilt Gardner Denver exchange compressor is your guarantee of optimum performance and reliability.

	REMANUFACTURED AIR END EXCHANGE (Furnished Without Inlet Valve)	NEW AIR END EXCHANGE (Furnished With Inlet Valve)
15 HP	SSEBBKX	SSEBBK
20 HP	SSEBBKX	SSEBBK
25 HP	SSEBBKX	SSEBBK
30 HP	SSEBBKX	SSEBBK

REMANUFACTURED PRODUCTS

- **Reciprocating Compressors**
- **Rotary Screw Compressors**
- **Blowers**

GENERAL PROVISIONS AND LIMITATIONS

Gardner Denver Machinery Inc. (the "Company") warrants to each original retail purchaser ("Purchaser") of its products from the Company or its authorized distributor that such products are, at the time of delivery to the Purchaser, made with good material and workmanship. No warranty is made with respect to:

1. Any product which has been repaired or altered in such a way, in the Company's judgment, as to affect the product adversely.
2. Any product which has, in the Company's judgment been subject to negligence, accident, improper storage, or improper installation or application.
3. Any product which has not been operated or maintained in accordance with normal practice and with the recommendations of the Company.
4. Components or accessories manufactured, warranted and serviced by others.

Claims for items described in (4) above should be submitted directly to the manufacturer.

WARRANTY PERIOD

The Company's obligation under this warranty is limited to repairing or, at its option, replacing, during normal business hours at an authorized service facility of the Company, any part which in its judgment proved not to be as warranted within the applicable Warranty Period as follows.

Remanufactured reciprocating compressors, rotary screw compressors, air ends and blowers, including all parts within, are warranted for 12 months from date of initial use or 15 months (blowers 18 months) from date of shipment to the first purchaser, whichever occurs first.

Any disassembly or partial disassembly of the blower, or rotary screw air end, or failure to return the "unopened" air end per Company instructions, will be cause for denial of warranty.

LABOR TRANSPORTATION AND INSPECTION

The Company will provide labor, by Company representative or authorized service personnel, for repair or replacement of any product or part thereof which in the Company's judgment is proved not to be as warranted.

Labor shall be limited to the amount specified in the Company's labor rate schedule.

Labor costs in excess of the Company rate schedules caused by, but not limited to, location or inaccessibility of the equipment, or labor provided by unauthorized service personnel is not provided by this warranty.

All costs of transportation of product, labor or parts claimed not to be as warranted and, of repaired or replacement parts to or from such service facility shall be borne by the Purchaser. The Company may require the return of any part claimed not to be as warranted to one of its facilities as designated by Company, transportation prepaid by Purchaser, to establish a claim under this warranty.

Replacement parts provided under the terms of the warranty are warranted for the remainder of the Warranty Period of the product upon which installed to the same extent as if such parts were original components.

DISCLAIMER

THE FOREGOING WARRANTY IS EXCLUSIVE AND IT IS EXPRESSLY AGREED THAT, EXCEPT AS TO TITLE, THE COMPANY MAKES NO OTHER WARRANTIES, EXPRESSED, IMPLIED OR STATUTORY, INCLUDING ANY IMPLIED WARRANTY OF MERCHANTABILITY.

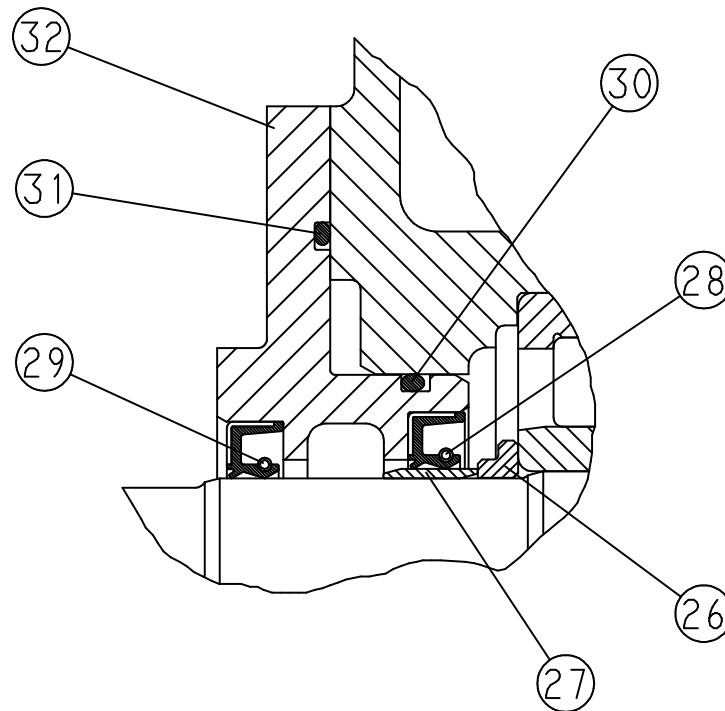
THE REMEDY PROVIDED UNDER THIS WARRANTY SHALL BE THE SOLE, EXCLUSIVE AND ONLY REMEDY AVAILABLE TO PURCHASER AND IN NO CASE SHALL THE COMPANY BE SUBJECT TO ANY OTHER OBLIGATIONS OR LIABILITIES. UNDER NO CIRCUMSTANCES SHALL THE COMPANY BE LIABLE FOR SPECIAL, INDIRECT, INCIDENTAL OR CONSEQUENTIAL DAMAGES, EXPENSES, LOSSES OR DELAYS HOWSOEVER CAUSED.

No statement, representation, agreement, or understanding, oral or written, made by any agent, distributor, representative, or employee of the Company which is not contained in this Warranty will be binding upon the Company unless made in writing and executed by an officer of the Company.

This warranty shall not be effective as to any claim which is not presented within 30 days after the date upon which the product is claimed not to have been as warranted. Any action for breach of this warranty must be commenced within one year after the date upon which the cause of action occurred.

Any adjustment made pursuant to this warranty shall not be construed as an admission by the Company that any product was not as warranted.

Order by Part Number and Description. Reference Numbers for your convenience only.



210SSE810
(Ref. Drawing)

OIL SEAL DETAIL

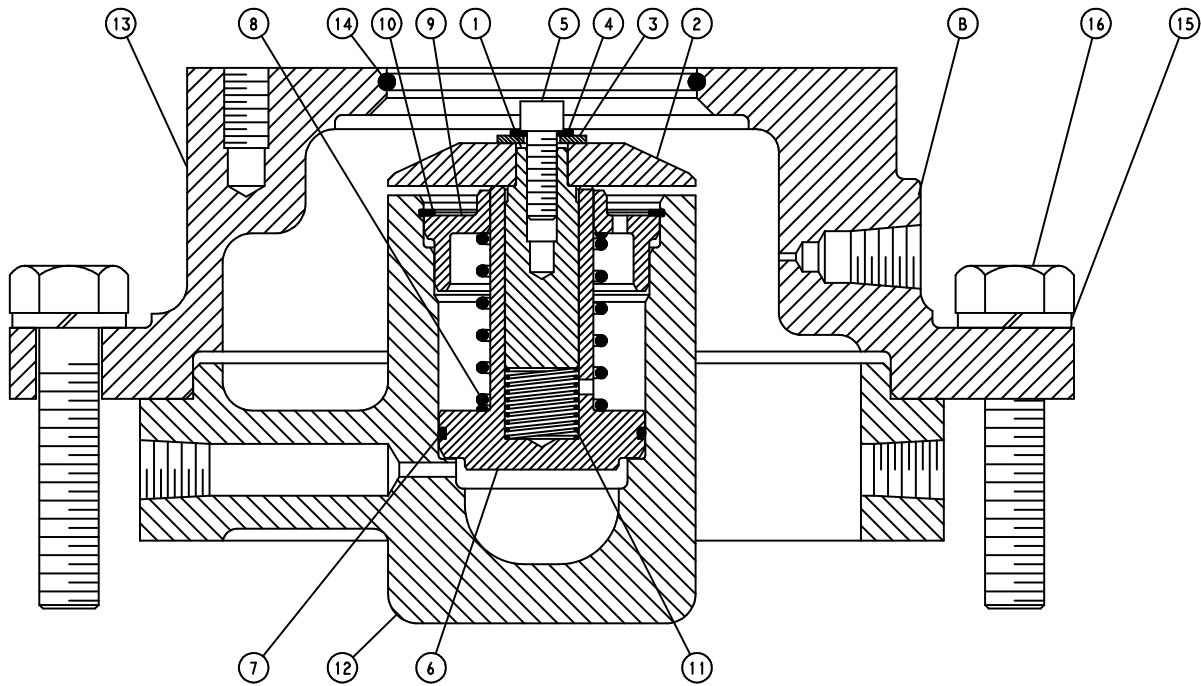
Ref. No.	Name of Part	Qty.	Part No.
26	SPACER-SHAFT	1	201SSH600
* 27	SLEEVE-WEAR	1	80M12
* 28	SEAL-OIL	1	60DD679
* 29	SEAL-OIL	1	60DD690
* 30	O-RING	1	25BC165
* 31	O-RING	1	8502140
32	HOUSING-SEAL	1	205SSE362

* Parts included in Periodic Overhaul Kit. Refer to page 36.

To replace oil seal, order kit 302SSH6013 consisting of reference number items 27, 28, 29, 30 and 31.

Wear Sleeve Installation And Removal Kit # SSE81282.
(Includes wear sleeve puller and installation tool.)

Order by Part Number and Description. Reference Numbers for your convenience only.



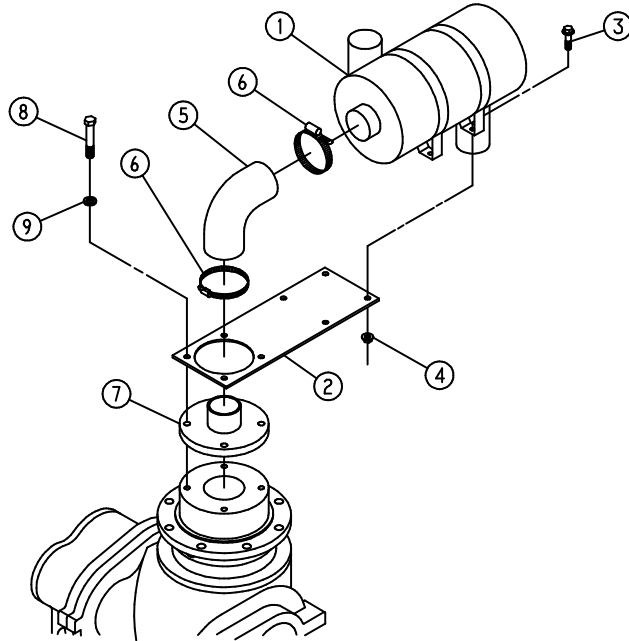
209SSE810-B
(Ref. Drawing)

INLET VALVE

Ref. No.	Name of Part	Qty.	Part No.
1	GUIDE-VALVE	1	201SSE483
2	VALVE-INLET	1	202SSE044
3	WASHER	1	95A1
4	LOCKWASHER	1	95H56
5	SCREW	1	655EC03N
6	PISTON-INLET VALVE	1	202SSE043
* 7	O-RING	1	25BC440
* 8	SPRING	1	78H22
9	RETAINER	1	200SSE205
* 10	RING-RETAINING	1	74D87
* 11	SPRING	1	78W59
12	HOUSING-INLET	1	205SSE041
13	SEAT	1	204SSE256
* 14	O-RING	1	25AM15
15	LOCKWASHER	8	95B5
16	SCREW	8	655EE100

* Parts included in Inlet Valve Repair Kit, Part Number 302SSE6013.

Order by Part Number and Description. Reference Numbers for your convenience only.



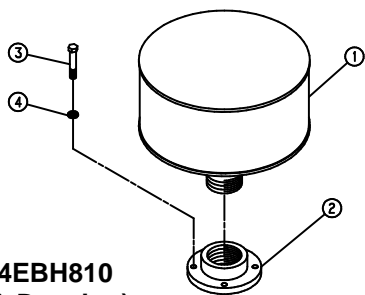
274EBE810-A
(Ref. Drawing)

SEVERE DUTY AIR FILTER AND MOUNTING (OPTIONAL)

Ref. No.	Name of Part	Qty.	Part No.
1	FILTER-AIR	1	5L220
2	BRACKET-FILTER	1	203EBE389
3	SCREW-FLANGED	4	75LM50
4	NUT-FLANGED	4	50AW4
5	HOSE-MOLDED	1	29Z97
6	CLAMP-HOSE	2	29B32
7	ADAPTOR-FILTER	1	201EBE070
8	SCREW	4	655ED080
9	LOCKWASHER	4	95B3
*	ELEMENT (REPAIR)	1	2116150

* Not shown on Severe Duty illustration.

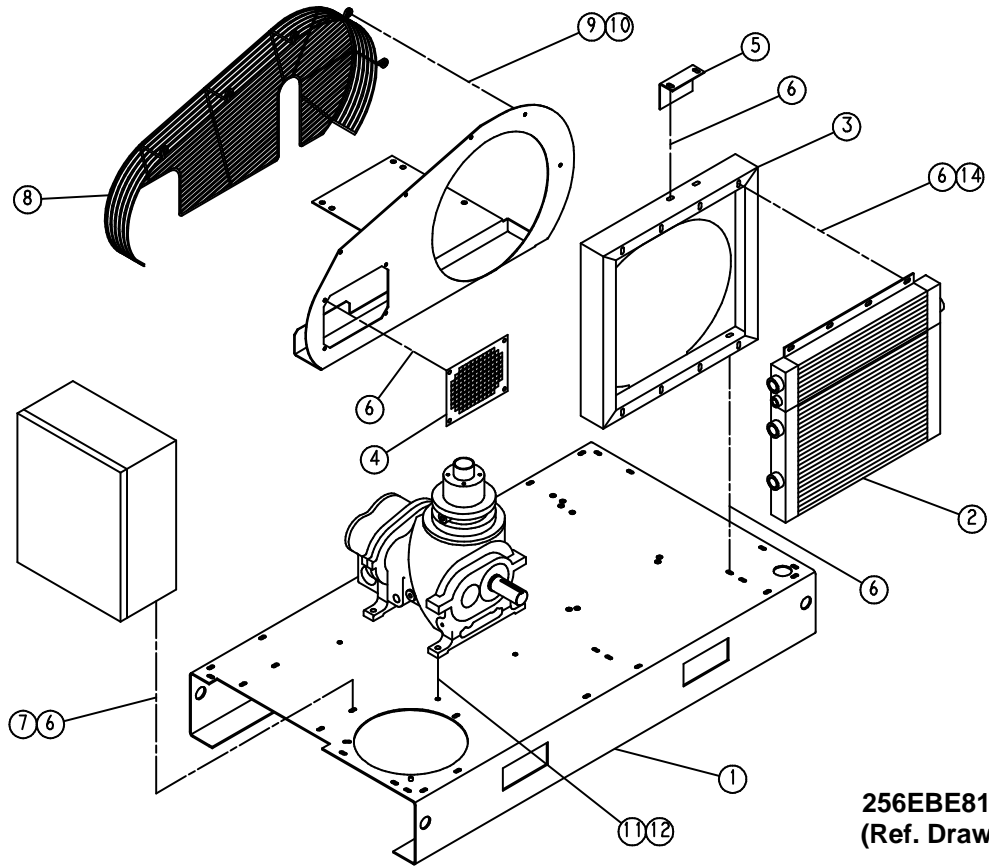
HEAVY DUTY AIR FILTER (STANDARD)



204EBH810
(Ref. Drawing)

Ref. No.	Name of Part	Qty.	Part No.
1	FILTER-AIR	1	200EBE059
2	ADAPTOR-FILTER	1	200EBE070
3	SCREW	4	655ED080
4	LOCKWASHER	4	95B3

Order by Part Number and Description. Reference Numbers for your convenience only.

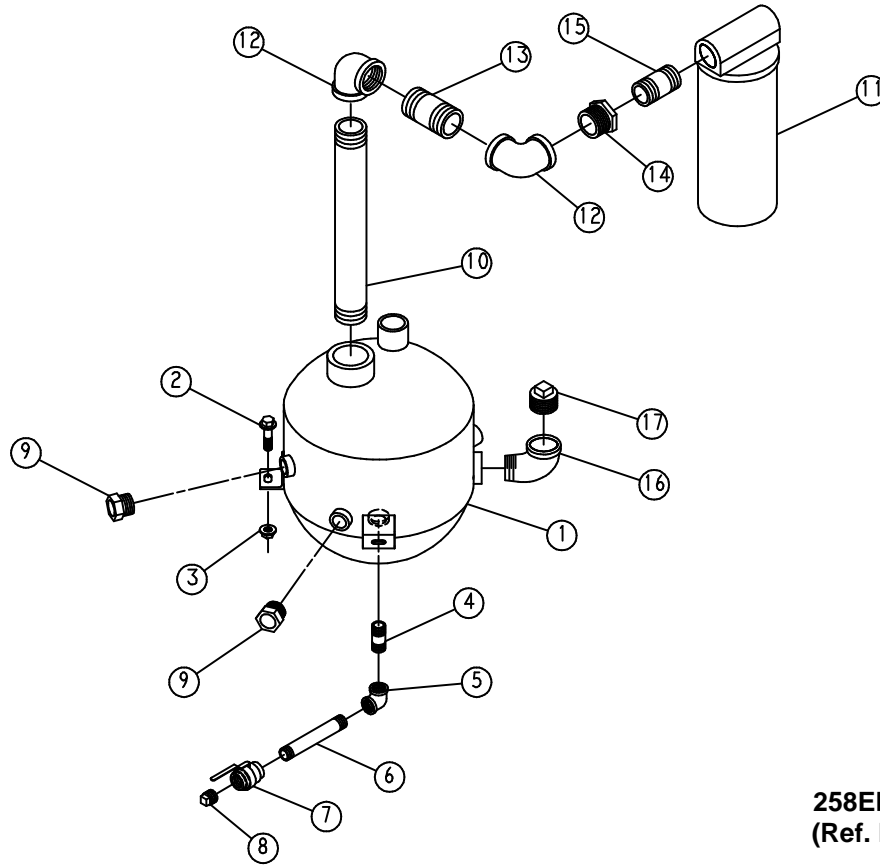


OIL COOLER GROUP

Ref. No.	Name of Part	Qty.	15/20 H.P. Part No.	25/30 H.P. Part No.
1	BASE	1	203EBE285	203EBE285
2	COOLER-OIL	1	202EBE201	202EBE201
3	BAFFLE	1	200EBE840	200EBE840
4	PLATE-INSPECTION	1	200EBE052	200EBE052
5	BRACKET	1	200EBE142	200EBE142
6	SCREW-FLANGED	22	75LM51	75LM51
7	NUT-FLANGED	4	50AW5	50AW5
8	GUARD-FAN	1	203EBE393	203EBE393
9	SCREW-FLANGED	5	75LM150	75LM150
10	RETAINER	5	2014731	2014731
11	SCREW	4	655EE080	655EE080
12	LOCKWASHER	4	95B5	95B5
14	WASHER	8	95A3	95A3
*	ORIFICE	1	206EBE814	207EBE814

* Not shown on illustration.

Order by Part Number and Description. Reference Numbers for your convenience only.



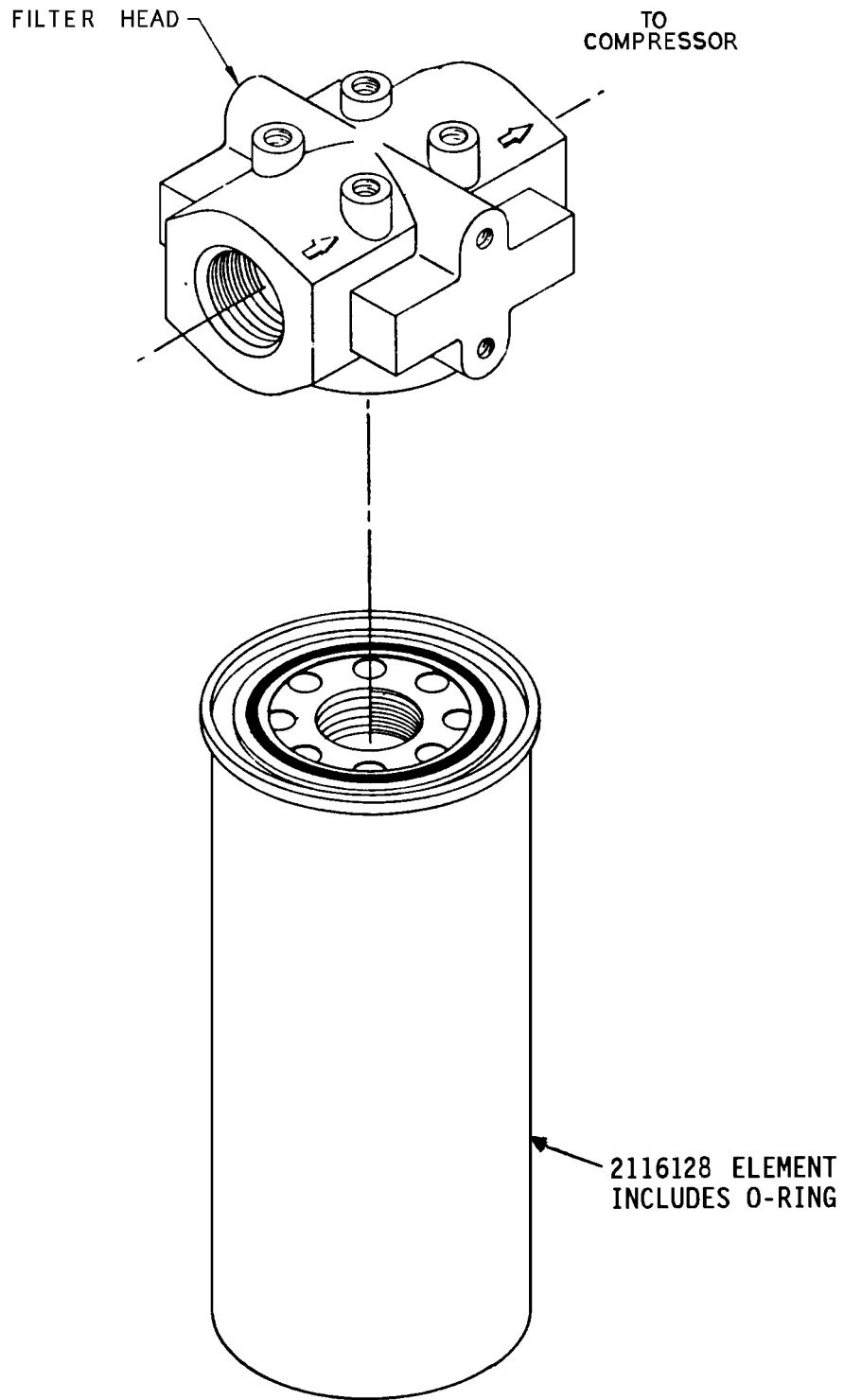
258EBE810-A
(Ref. Drawing)

OIL RESERVOIR

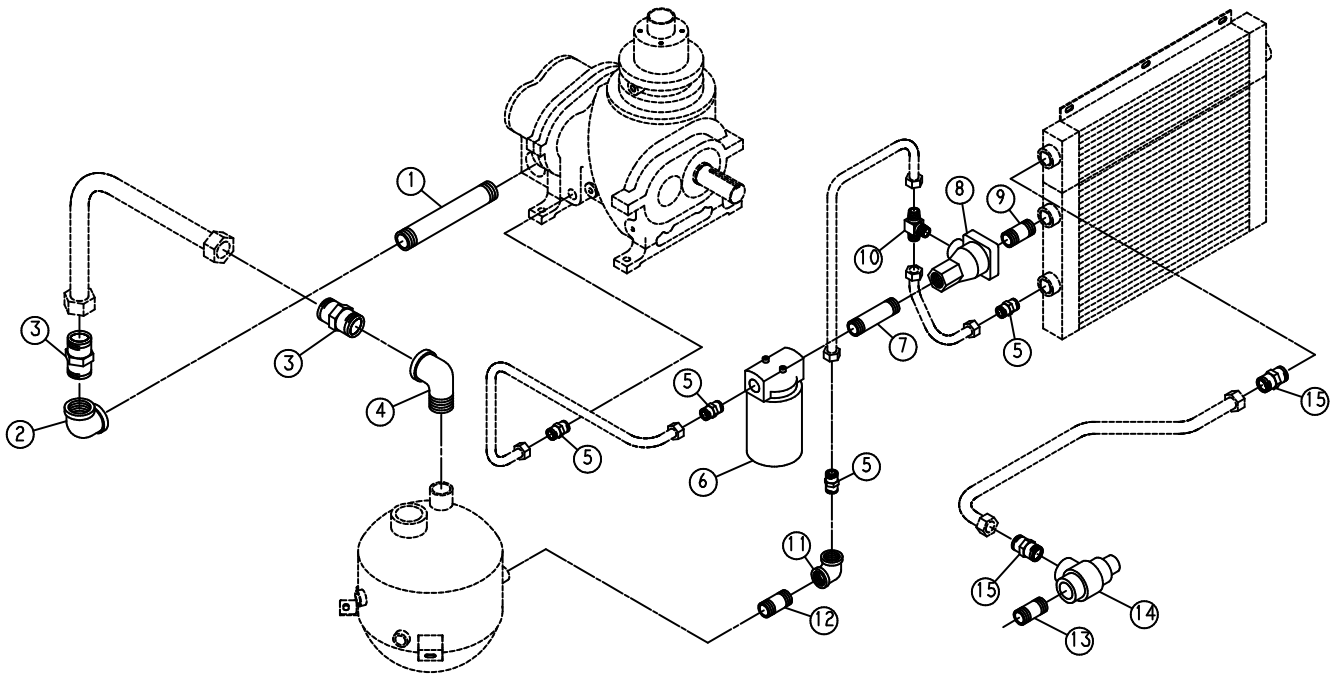
Ref. No.	Name of Part	Qty.	Part No.
1	RESERVOIR-OIL	1	203EBE037
2	SCREW-FLANGED	3	75LM51
3	NUT-FLANGED	3	50AW5
4	NIPPLE	1	63F1G
5	ELBOW	1	64C4G
6	NIPPLE	1	63F6G
7	VALVE-BALL	1	90AR360
8	PLUG	1	64AA7
9	GAUGE (LIQUID LEVEL)	2	00914483 0012
10	NIPPLE	1	63K34G
* 11	SEPARATOR-OIL	1	55B57
12	ELBOW	2	64C8G
13	NIPPLE	1	63K18G
14	BUSHING	1	64E98
15	NIPPLE	1	63J15G
16	ELBOW	1	64D7G
17	PLUG	1	64A26

* For Replacement Element and O-Ring order 2116717. For Replacement Head order 2116716.

OIL FILTER - 200EBE369



Order by Part Number and Description. Reference Numbers for your convenience only.

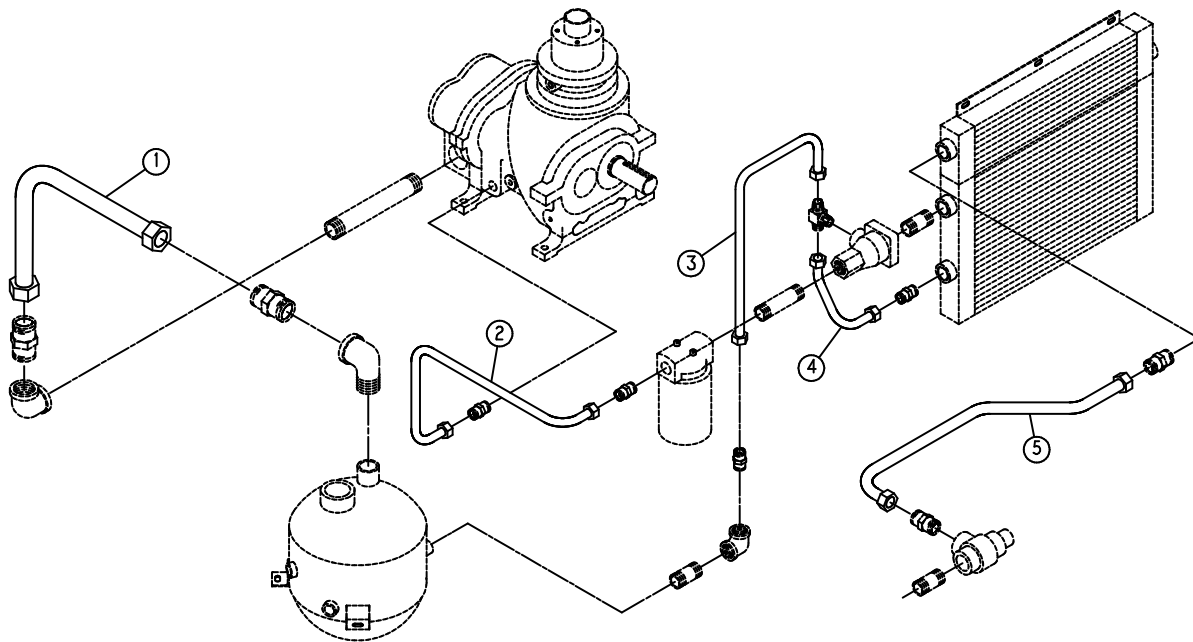


279EBE810
(Ref. Drawing)

OIL LINE FITTINGS

Ref. No.	Name of Part	Qty.	Part No.
1	NIPPLE	1	63L5G
2	ELBOW	1	64C9G
3	CONNECTOR-TUBE	2	86H142
4	ELBOW	1	64U6G
5	CONNECTOR-TUBE	4	86H137
6	FILTER-OIL	1	200EBE369
7	NIPPLE	1	63G28G
8	VALVE-THERMAL	1	90AR942
9	NIPPLE	1	63G32G
10	TEE	1	86N286
11	ELBOW	1	64C5G
12	NIPPLE	1	63G1G
13	NIPPLE	1	63J15G
14	VALVE-MINIMUM PRESSURE	1	200EDE527
15	CONNECTOR-TUBE	2	86H138

Order by Part Number and Description. Reference Numbers for your convenience only.

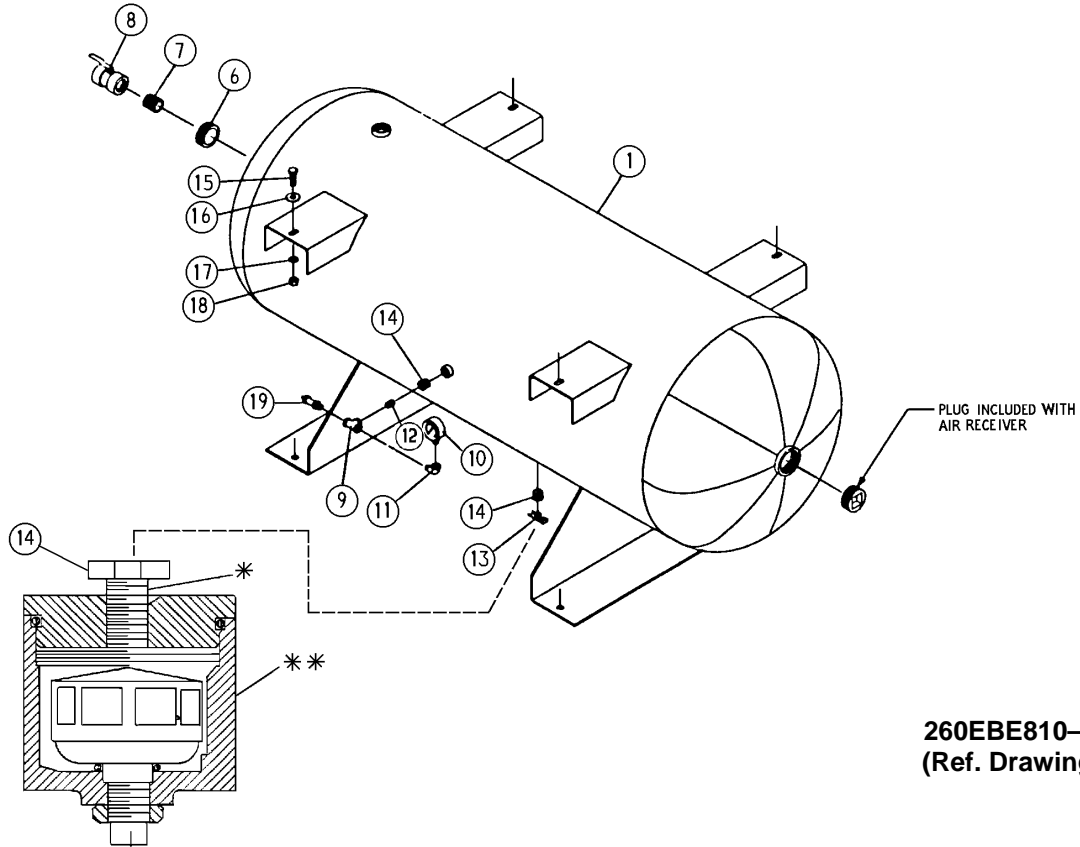


280EBE810
(Ref. Drawing)

OIL LINE TUBES

Ref. No.	Name of Part	Qty.	Part No.
1	TUBE WITH FITTINGS	1	207EBE863
2	TUBE WITH FITTINGS	1	201EBE863
3	TUBE WITH FITTINGS	1	200EBE863
4	TUBE WITH FITTINGS	1	202EBE863
5	TUBE WITH FITTINGS	1	206EBE863

Order by Part Number and Description. Reference Numbers for your convenience only.

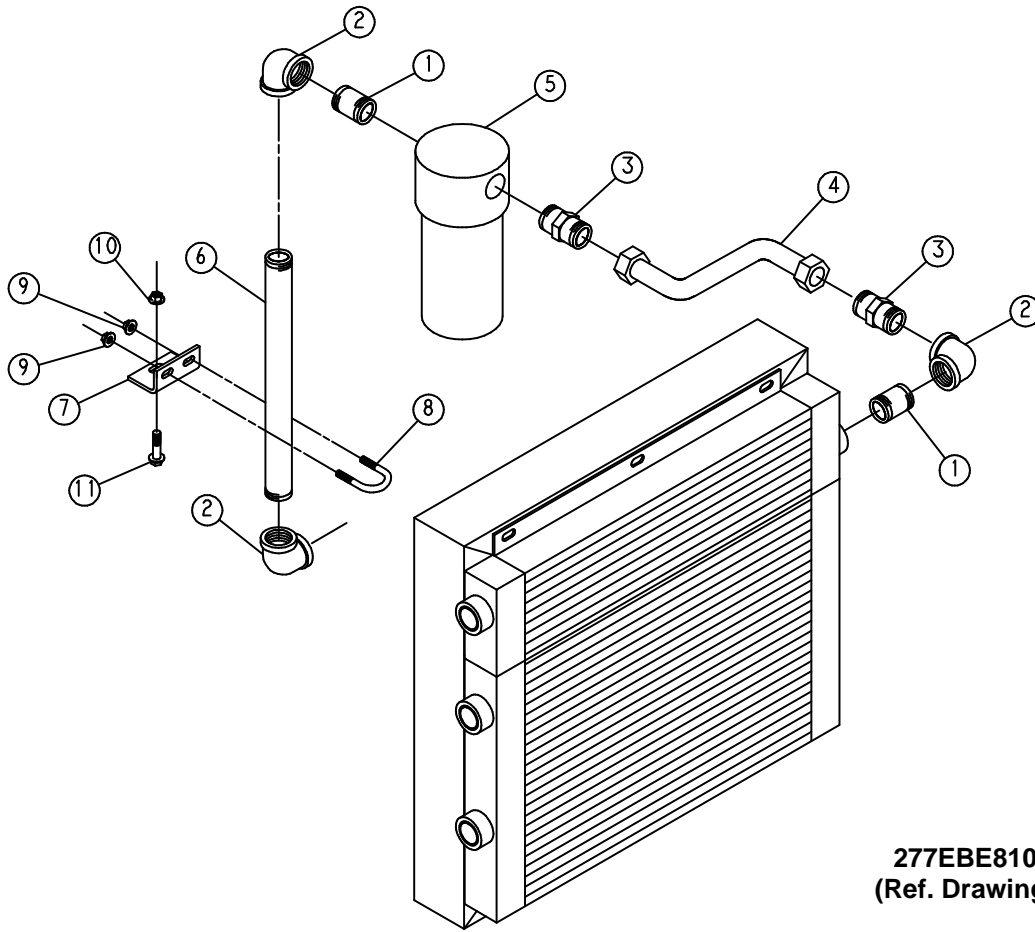


260EBE810-B
(Ref. Drawing)

AIR RECEIVER GROUP

Ref. No.	Name of Part	Qty.	Part No.
1	RECEIVER-AIR	1	
	120 GALLON		200EJB645
	200 GALLON		201EJB645
6	BUSHING-PIPE	1	64E11
7	NIPPLE	1	63H1G
8	VALVE-BALL	1	90AR362
9	TEE-PIPE	1	64G3G
10	GAUGE-AIR PRESSURE	1	27A114
11	ELBOW	1	64D2G
12	NIPPLE	1	63D1G
13	COCK	1	90C12
14	BUSHING	2	64E2G
15	SCREW	4	655EE060
16	WASHER	8	95A5
17	LOCKWASHER	4	95B5
18	NUT	4	50B5
19	VALVE-PRESSURE RELIEF	1	90AR657
*	NIPPLE (OPTIONAL)	1	63F21G
**	EJECTOR VALVE (OPTIONAL)	1	90AR319

Order by Part Number and Description. Reference Numbers for your convenience only.

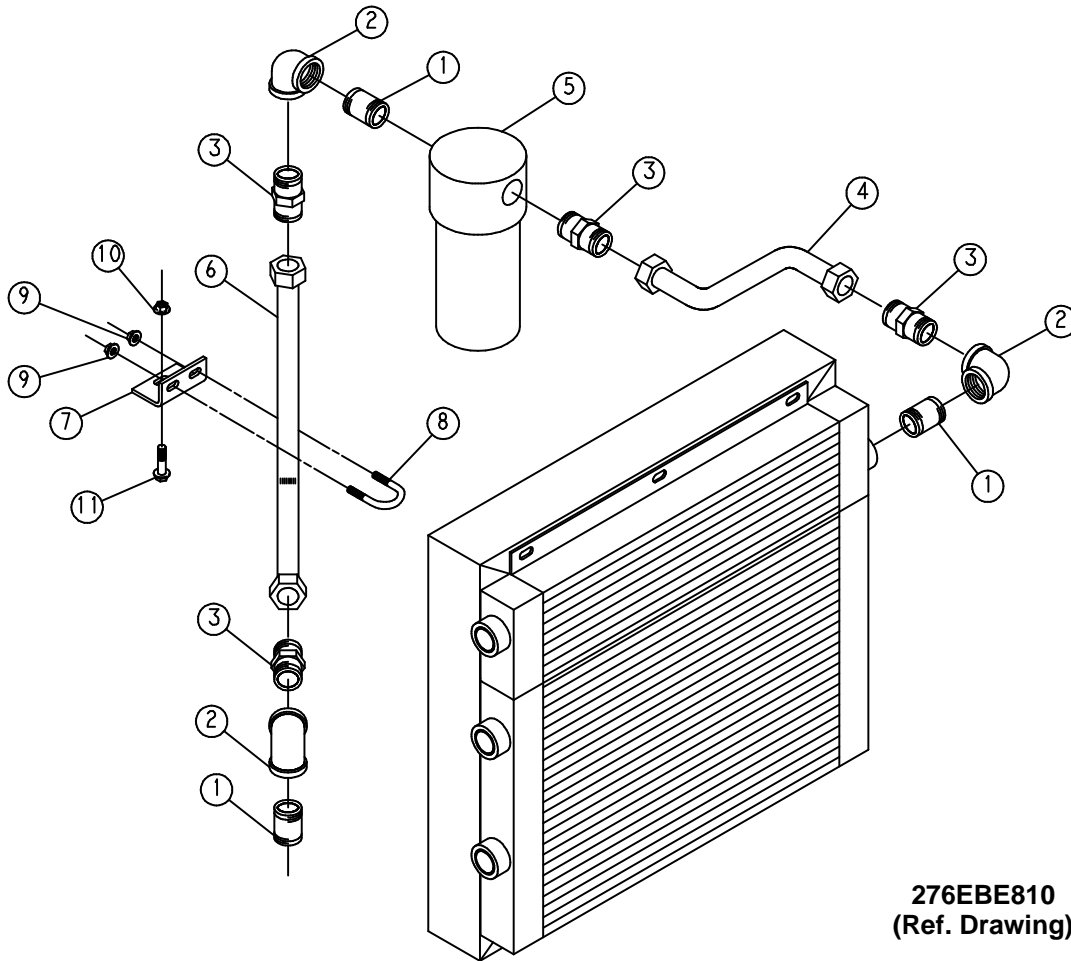


277EBE810
(Ref. Drawing)

DISCHARGE PIPING – BASE MOUNTED UNITS

Ref. No.	Name of Part	Qty.	Part No.
1	NIPPLE	2	63H1G
2	ELBOW	3	64C6G
3	CONNECTOR-TUBE	2	86H138
4	TUBE WITH FITTINGS	1	203EBE863
5	TRAP	1	83C78
6	NIPPLE	1	63N16X134G
7	BRACKET	1	204EJB142
8	U-BOLT	1	143738
9	NUT-FLANGED	2	50AW4
10	NUT-FLANGED	1	50AW5
11	SCREW-FLANGED	1	75LM51

Order by Part Number and Description. Reference Numbers for your convenience only.

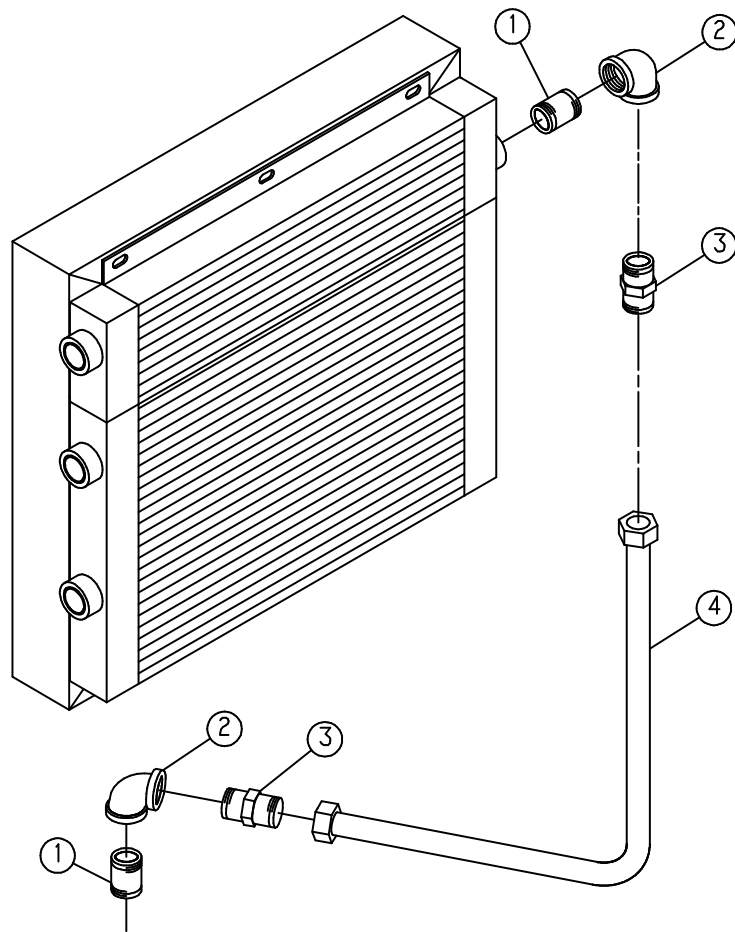


276EBE810
(Ref. Drawing)

DISCHARGE PIPING – TANK MOUNTED UNITS

Ref. No.	Name of Part	Qty.	Part No.
1	NIPPLE	3	63H1G
2	ELBOW	3	64C6G
3	CONNECTOR-TUBE	4	86H138
4	TUBE WITH FITTINGS	1	203EBE863
5	TRAP	1	83C78
6	TUBE WITH FITTINGS	1	204EBE863
7	BRACKET	1	202EJB142
8	U-BOLT	1	15U59
9	NUT-FLANGED	2	50AW3
10	NUT-FLANGED	1	50AW5
11	SCREW-FLANGED	1	75LM51

Order by Part Number and Description. Reference Numbers for your convenience only.

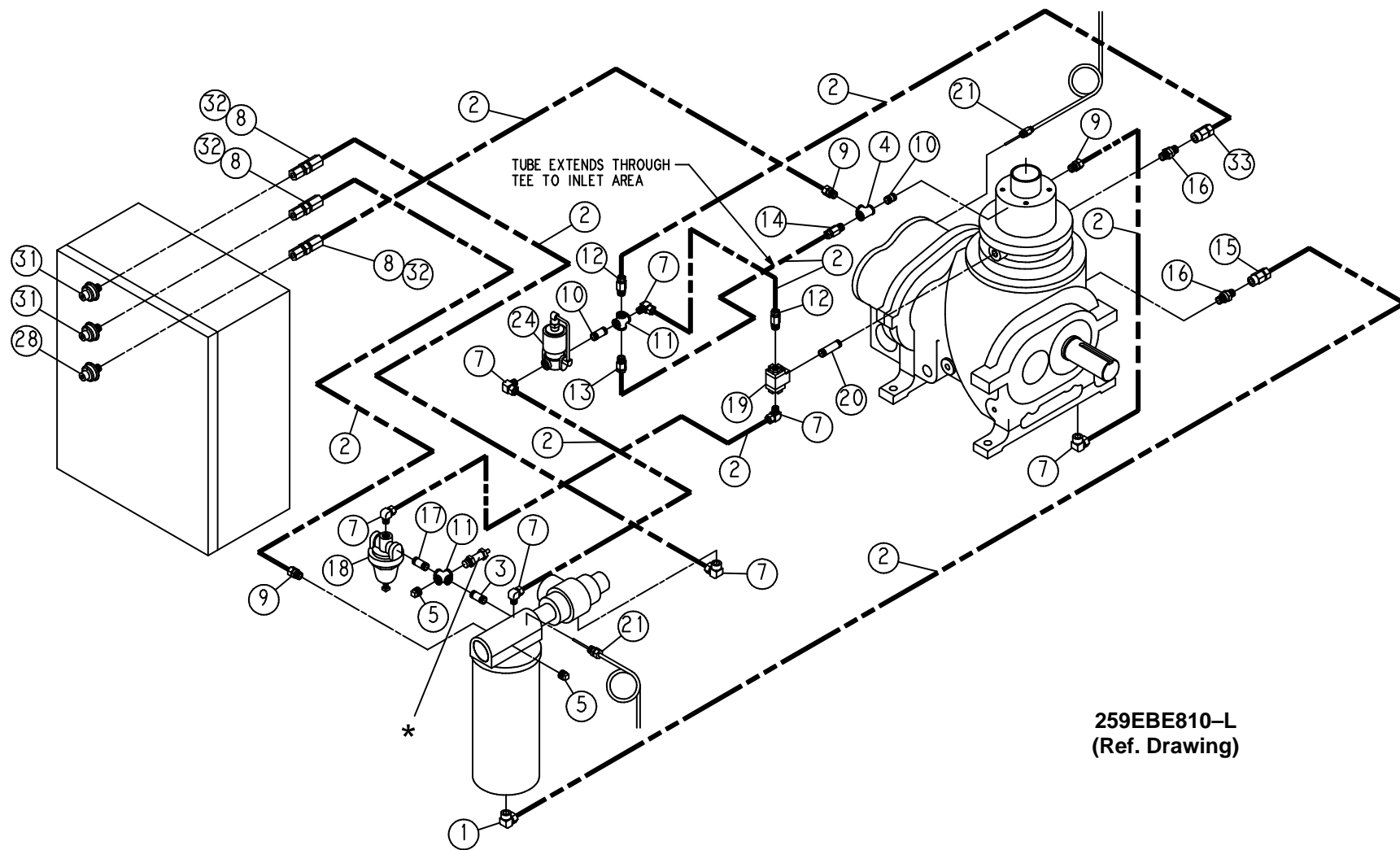


278EBE810
(Ref. Drawing)

**DISCHARGE PIPING – TANK MOUNTED UNITS
(WITHOUT SEPARATOR-TRAP)**

Ref. No.	Name of Part	Qty.	Part No.
1	NIPPLE	2	63H1G
2	ELBOW	2	64C6G
3	CONNECTOR-TUBE	2	86H138
4	TUBE WITH FITTINGS	1	205EBE863

PIPING GROUP



259EBE810-L
(Ref. Drawing)

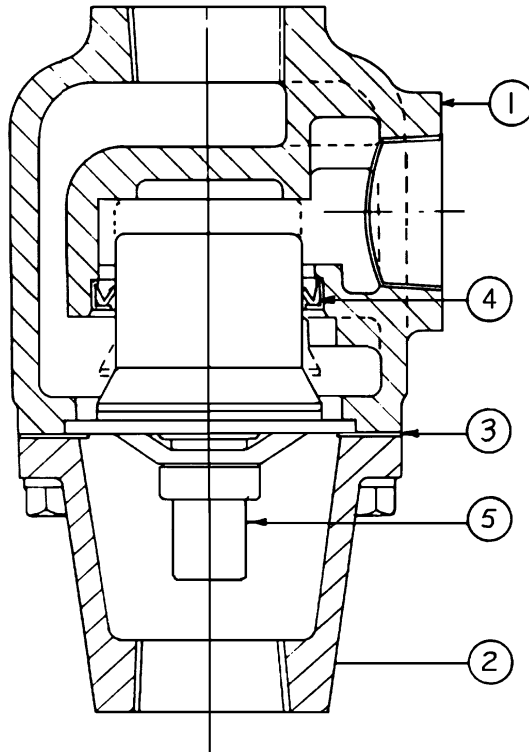
* See Relief Valve Selective on pages 24 and 25. Select by Horsepower and PSI.

PIPING GROUP

Ref. No.	Name Of Part	Qty.	Part No.	Ref. No.	Name Of Part	Qty.	Part No.
1	ELBOW-TUBE	1	86E59	18	VALVE-SUB/PILOT	1	2009398
2	TUBE	35	85K3	19	VALVE-CONTROL	1	90AR107
3	NIPPLE-PIPE	3	63D3G	20	NIPPLE-PIPE	1	63D6G
4	TEE-PIPE	1	64G3G	21	PROBE-ELECTRICAL	2	21D264
5	PLUG	2	64AA5	24	VALVE-SOLENOID	1	91B77
7	ELBOW-TUBE	7	86E60	28	SWITCH-VACUUM	1	88H195
8	CONNECTOR(TUBE/PIPE) ..	3	86N287	31	TRANSDUCER-PRESSURE .	2	88H242
9	CONNECTOR(TUBE/PIPE) ..	3	86E4	32	RING (O-RING)	3	165011
10	NIPPLE-PIPE	2	63D1G	33	CONNECTOR-TUBE	1	86E28
11	CROSS	2	64K1G				
12	ORIFICE	2	86N290	*	SEAL-PLUG	1	24A415
13	ORIFICE	1	86N290	*	RING (O-RING)	1	24A383
14	CONNECTOR	1	86N272	*	NIPPLE-CHASE	1	24A437
15	CONNECTOR-TUBE	1	86E28	*	LOCKNUT-CONDUIT	1	24A77
16	VALVE-CHECK	2	90AR261	*	WIRE	8	97H2R
17	NIPPLE-PIPE	1	63D3G	*	LUG TERMINAL	2	24A476

* Not shown on illustration.

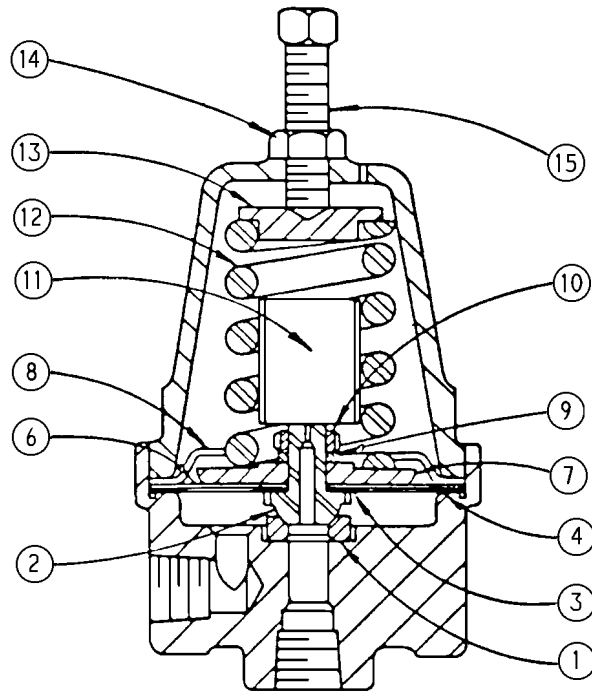
**THERMAL VALVE
(Thermostatic Mixing)**



90AR942 ASM VALVE – THERMAL (ALUMINIM HOUSING)

Ref. No.	Name of Part	Qty.	Part No.
1	VALVE BODY (3/4")	1	2117072
2	VALVE COVER (3/4")	1	2117073
	VALVE KIT (Includes Reference Nos. 3, 4 and 5)	1	
	150° THERMOMETER		2115542
	160° THERMOMETER		2115543
	170° THERMOMETER		2117074
	180° THERMOMETER		2117075
3	O-RING	1	
4	LIP SEAL	1	
4	ELEMENT	1	

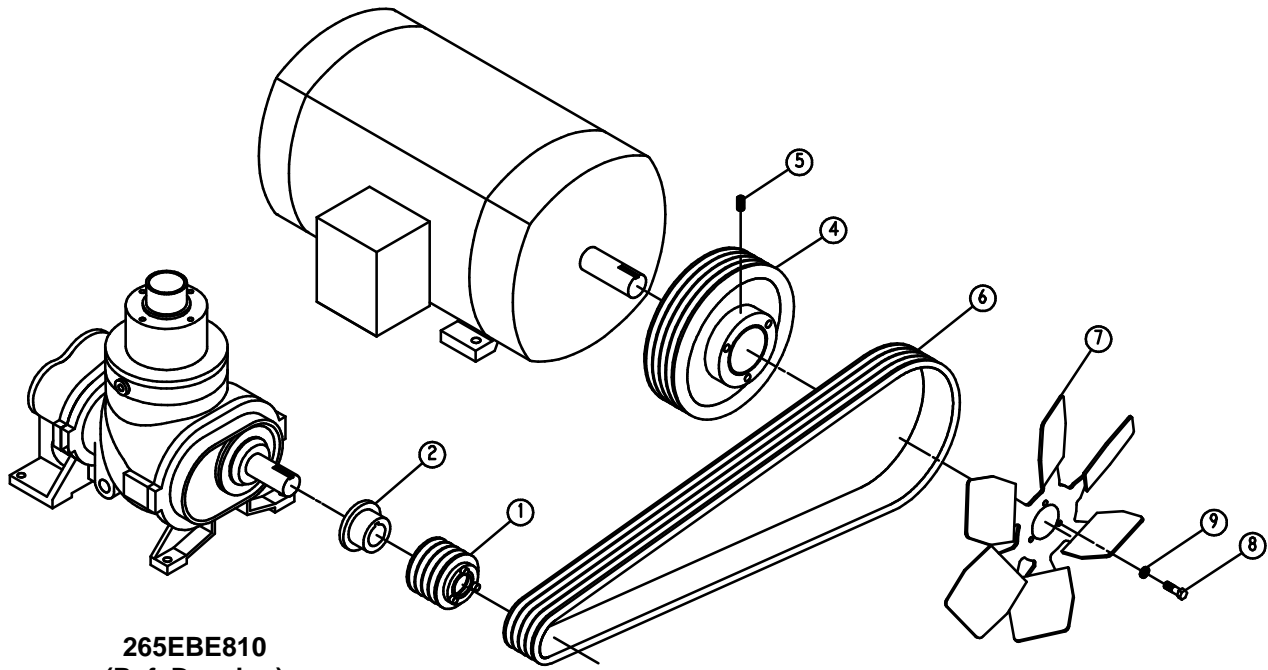
Order by Part Number and Description. Reference Numbers for your convenience only.



SUBTRACTIVE PILOT VALVE

Ref. No.	Name of Part	Qty.	Part No.
	VALVE-SUBTRACTIVE PILOT, Includes Ref. No. 1 thru 15		2009398
1	RING-SEAT	1	2008021
2	DISC-SEAT	1	2010080
3	GASKET-DURABLA	1	2008019
4	GASKET-DURABLA	1	2008017
6	DIAPHRAGM SET (Set of 5)	1	2008018
7	PLATE-PRESSURE	1	2008015
8	STOP-DIAPHRAGM	1	2008016
9	WASHER-LOCK	1	95B1
10	NUT-PRESSURE PLATE	1	2008888
11	DAMPER	1	2008711
12	SPRING-PRESSURE	1	2008014
13	BUTTON-SPRING	1	2008891
14	LOCKNUT	1	50Y2
15	SCREW-PRESSURE	1	2008952

NOTE: It is necessary to replace some parts in groups to insure satisfactory repair. When replacing diaphragm, also replace both diaphragm and seat gaskets. When replacing seat disc or seat ring, replace also the mating seat ring or disc and the seat disc gasket.



265EBE810
(Ref. Drawing)

DISCHARGE PIPING – TANK MOUNTED UNITS

Ref. No.	Name of Part	Qty.	Part No. Per Pressure			
			100	125	150	175
	15 H.P. DRIVE GROUP ...		200EBE4004	201EBE4004		
1	SHEAVE, COMPRESSOR .	1	73M43V65	73M43V80		
2	HUB-BUSHING	1	22F28SK	22F28SK		
4	SHEAVE, MOTOR	1	208EBE099	208EBE099		
5	SET SCREW	2	76F65	76F65		
6	BELT SET	1	13AG6004	13AG6004		
7	FAN	1	203EBE701	203EBE701		
8	SCREW	3	655ED030	655ED030		
9	LOCKWASHER	3	95B3	95B3		
10 +	RELIEF VALVE	1	90AR661	90AR662		

Ref. No.	Name of Part	Qty	Part No. Per Pressure			
			100	125	150	175
	20 H.P. DRIVE GROUP ...		202EBE4004	203EBE4004	204EBE4004	
1	SHEAVE, COMPRESSOR .	1	73M43V56	73M43V80	73M43V65	
2	HUB-BUSHING	1	22F28SDS	22F28SK	22F28SK	
4	SHEAVE, MOTOR	1	201EBE099	205EBE099	202EBE099	
5	SET SCREW	2	76F65	76F65	76F65	
6	BELT SET	1	13AG6004	13AG6304	13AG6004	
7	FAN	1	203EBE701	203EBE701	203EBE701	
8	SCREW	3	655ED030	655ED030	655ED030	
9	LOCKWASHER	3	95B3	95B3	95B3	
10 +	RELIEF VALVE	1	90AR661	90AR662	90AR663	

+ Not shown on drawing. See Page 20.

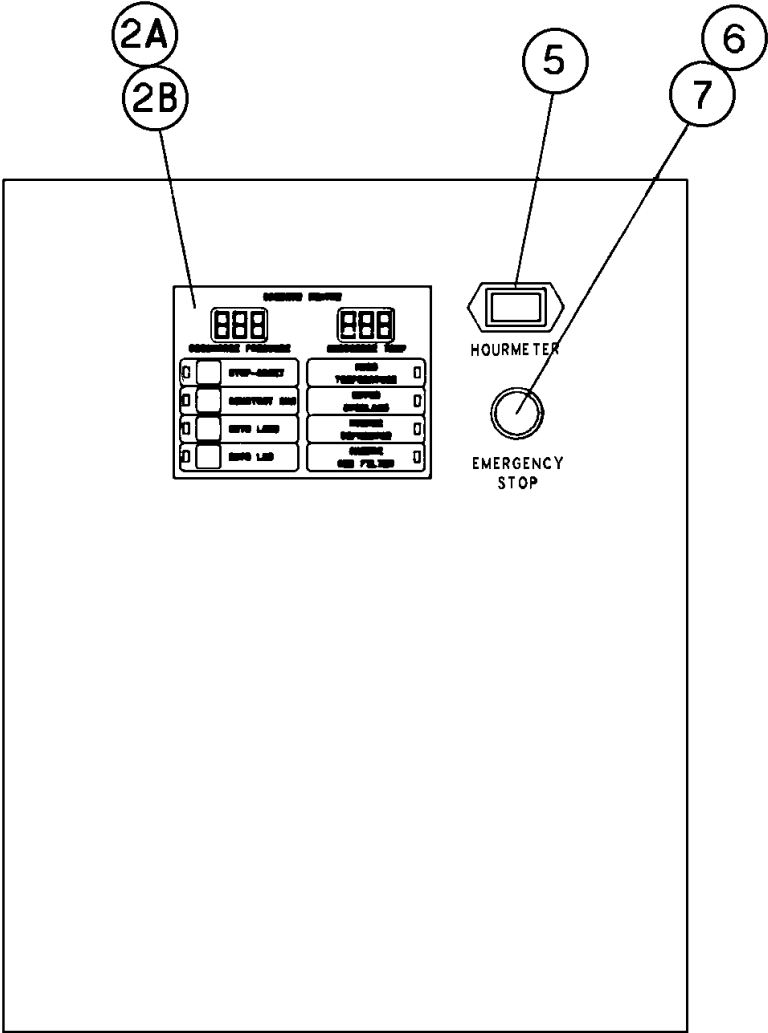
Ref. No.	Name of Part	Qty.	Part No. Per Pressure			
			100	125	150	175
	25 H.P. DRIVE GROUP ...		205EBE4004	206EBE4004	207EBE4004	208EBE4004
1	SHEAVE, COMPRESSOR .	1	73M43V65	73M43V80	73M43V80	73M43V80
2	HUB-BUSHING	1	22F28SK	22F28SK	22F28SK	22F28SK
4	SHEAVE, MOTOR	1	203EBE099	204EBE099	207EBE099	206EBE099
5	SET SCREW	2	76F65	76F65	76F65	76F65
6	BELT SET	1	13AG6704	13AG6704	13AG6704	13AG6704
7	FAN	1	202EBE701	202EBE701	202EBE701	202EBE701
8	SCREW	3	655ED030	655ED030	655ED030	655ED030
9	LOCKWASHER	3	95B3	95B3	95B3	95B3
10 +	RELIEF VALVE	1	*	90AR662	90AR663	90AR657

Ref. No.	Name of Part	Qty.	Part No. Per Pressure			
			100	125	150	175
	30 H.P. DRIVE GROUP.		209EBE4004	210EBE4004	211EBE4004	212EBE4004
1	SHEAVE, COMPRESSOR .	1	73M43V56	73M43V65	73M43V65	73M43V65
2	HUB-BUSHING	1	22F28SDS	22F28SK	22F28SK	22F28SK
4	SHEAVE, MOTOR	1	203EBE099	203EBE099	207EBE099	206EBE099
5	SET SCREW	2	76F65	76F65	76F65	76F65
6	BELT SET	1	13AG6304	13AG6704	13AG6304	13AG6304
7	FAN	1	202EBE701	202EBE701	202EBE701	202EBE701
8	SCREW	3	655ED030	655ED030	655ED030	655ED030
9	LOCKWASHER	3	95B3	95B3	95B3	95B3
10 +	RELIEF VALVE	1	*	90AR662	90AR663	90AR657

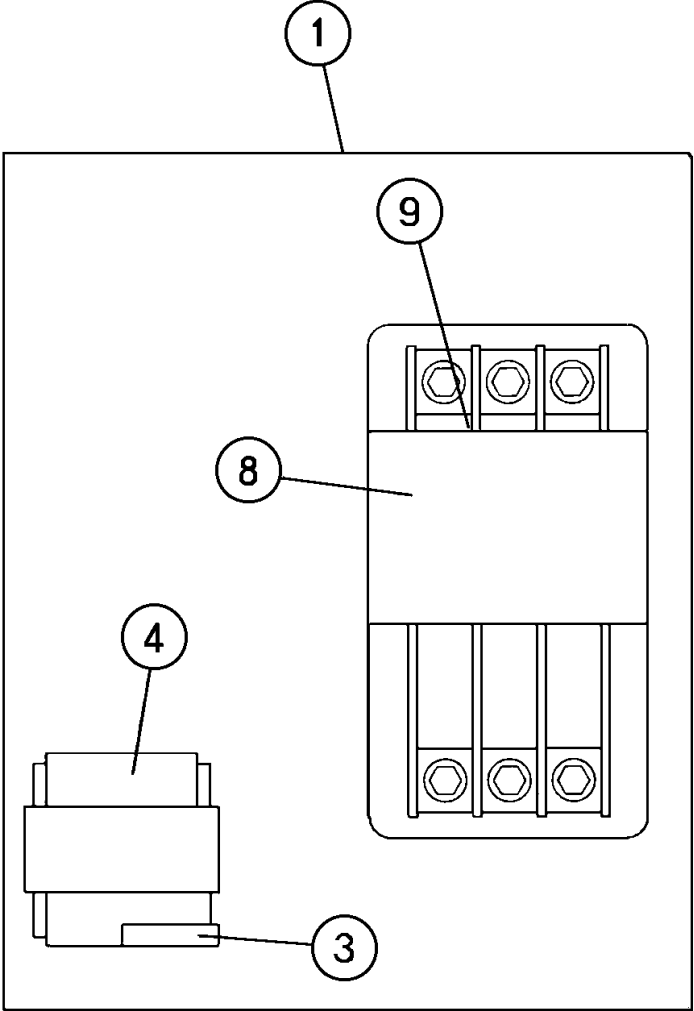
* (2) 90AR661 RELIEF VALVES REQUIRED

+ Not shown on drawing. See Page 20.

CONTROLLER ASSEMBLY



FRONT VIEW - (DOOR)



FRONT VIEW - CONTROL CABINET

CONTROLLER ASSEMBLY

Ref. No.	NAME OF PART	QTY.	15-20 HP 460V	15-20 HP 200V 15-20 HP 230V	25-30 HP 200V 25-30 HP 230V
			15-25 HP 575V	25-30 HP 460V 30 HP 575V	
	ASSEMBLED PANEL: NEMA 12	1	308EBE466	309EBE466	310EBE466
	ASSEMBLED PANEL: NEMA 4	1	312EBE466	313EBE466	314EBE466
1	BOX-CONTROL	1	203EBE179	203EBE179	203EBE179
2A	KEYPAD	1	200EBE375	200EBE375	200EBE375
2B	CONTROL BOARD	1	200EBE1173	200EBE1173	200EBE1173
3	SECONDARY FUSE	1	24CA3725	24CA3726	24CA3727
4	TRANSFORMER	1	2116694	2116695	2116696
5	HOURMETER (60 HZ)	1	24CA2895	24CA2895	24CA2895
6	OPERATOR 22MM PUSH-PULL E-STOP	1	24CA2907	24CA2907	24CA2907
7	CONTACT BLOCK E22B1 SPNC	1	24CA2908	24CA2908	24CA2908
8	STARTER	1	24CA4135	24CA4141	24CA3828
9	COIL-STARTER	1	2116394	2116395	2116396
10	REPLACEMENT CONTACTOR / CONTACTS	1	24CA2906	24CA3863	2116384
11	REPLACEMENT OVERLOAD RELAY	1	24CA4086	24CA4087	24CA2905

* Not shown.

**CONTROL/STARTER BOX
(WITH OVERLOAD HEATERS & FUSETRONS)
WITH MAIN MOTOR STARTER**

H.P.	VOLTAGE	CONTROL/STARTER BOX		O.L. * WIRING HARNESS GP	PRIMARY HEATERS (3)	PRIMARY FUSE (2)	SECONDARY FUSE DECAL	SECONDARY FUSE (1)	FUSE DECAL
		NEMA 12	NEMA 4						
15	200	309EBE466	313EBE466	217EBE4014	Refer To	24CA3722	294AUX077	24CA3726	298AUX077
15	230	309EBE466	313EBE466	218EBE4014	Conversion	24CA2781	260AUX077	24CA3726	298AUX077
15	460	308EBE466	312EBE466	219EBE4014	Listing On	24CA2897	272AUX077	24CA3725	297AUX077
15	575	308EBE466	312EBE466	220EBE4014	Page 29	24CA3718	290AUX077	24CA3725	297AUX077
20	200	309EBE466	313EBE466	221EBE4014		24CA3722	294AUX077	24CA3726	298AUX077
20	230	309EBE466	313EBE466	222EBE4014		24CA2781	260AUX077	24CA3726	298AUX077
20	460	308EBE466	312EBE466	223EBE4014		24CA2897	272AUX077	24CA3725	297AUX077
20	575	308EBE466	312EBE466	224EBE4014		24CA3718	290AUX077	24CA3725	297AUX077
25	200	310EBE466	314EBE466	208EBE4014		24CA3723	295AUX077	24CA3727	299AUX077
25	230	310EBE466	314EBE466	209EBE4014		24CA2783	262AUX077	24CA3727	299AUX077
25	460	309EBE466	313EBE466	225EBE4014		24CA2779	258AUX077	24CA3726	298AUX077
25	575	308EBE466	312EBE466	226EBE4014		24CA3718	290AUX077	24CA3725	297AUX077
30	200	310EBE466	314EBE466	212EBE4014		24CA3723	295AUX077	24CA3727	299AUX077
30	230	310EBE466	314EBE466	213EBE4014		24CA2783	262AUX077	24CA3727	299AUX077
30	460	309EBE466	313EBE466	227EBE4014		24CA2779	258AUX077	24CA3726	298AUX077
30	575	309EBE466	313EBE466	228EBE4014		24CA2898	273AUX077	24CA3726	298AUX077

* INCLUDES O.L. HEATERS (3) & FUSETRONS (2) AS INDICATED; ALSO WIRING COMPONENTS FOR BOX TO MOTOR

WITHOUT MAIN MOTOR STARTER

15	200	311EBE466	315EBE466	249EBE4014	-----	24CA3720	292AUX077	24CA3725	297AUX077
20	220	311EBE466	315EBE466	250EBE4014	-----	24CA2779	258AUX077	24CA3725	297AUX077
25	460	311EBE466	315EBE466	252EBE4014	-----	24CA2897	272AUX077	24CA3725	297AUX077
30	575	311EBE466	315EBE466	253EBE4014	-----	24CA3718	290AUX077	24CA3725	297AUX077

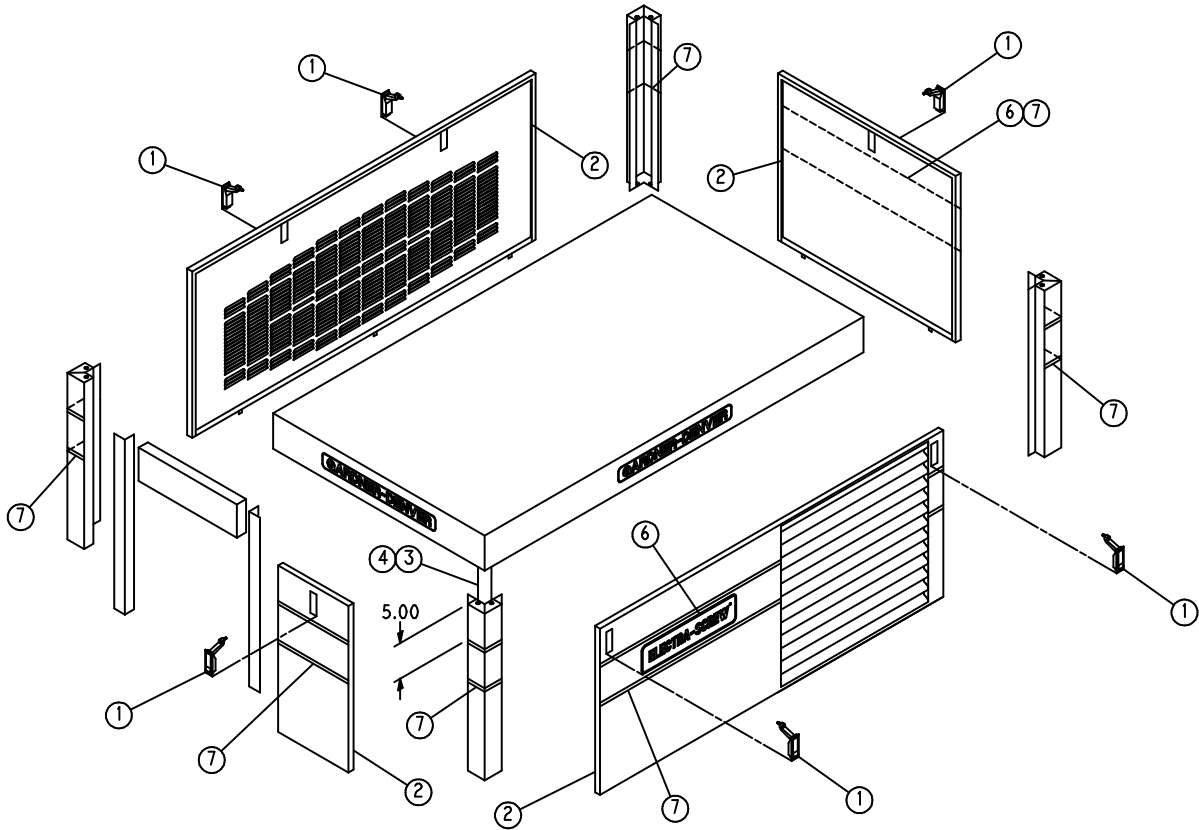
OVERLOAD RELAY HEATER CONVERSION LISTING

Refer to Motor Nameplate “Amperage” and Decal in Control Panel for Selection of Overload Relay Heater Packs.

**CUTLER-HAMMER
PART NUMBER**

**GARDNER DENVER
PART NUMBER**

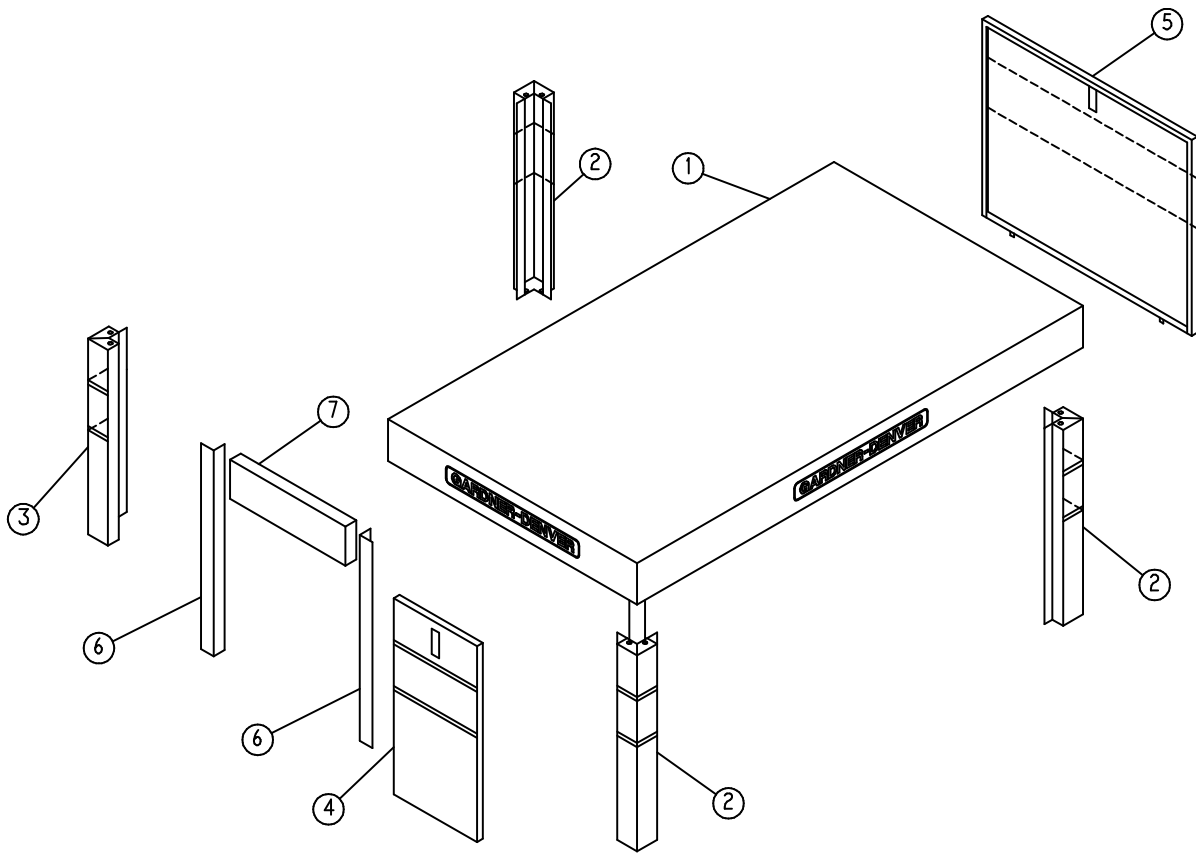
H2002B	24CA4101
H2003B	24CA4102
H2004B	24CA4103
H2005B	24CA4104
H2006B	24CA4105
H2007B	24CA4106
H2008B	24CA4107
H2009B	24CA4108
H2010B	24CA4109
H2011B	24CA4110
H2012B	24CA4111
H2013B	24CA4112
H2014B	24CA4113
H2015B	24CA4114
H2016B	24CA4115
H2017B	24CA4116
H2018	24CA2924
H2019	24CA2925
H2020	24CA2926
H2021	24CA2927
H2022	24CA2893
H2023	24CA2894
H2024	24CA2928



271EBE810-A
(Ref. Drawing)

ENCLOSURE – HARDWARE & DECALS

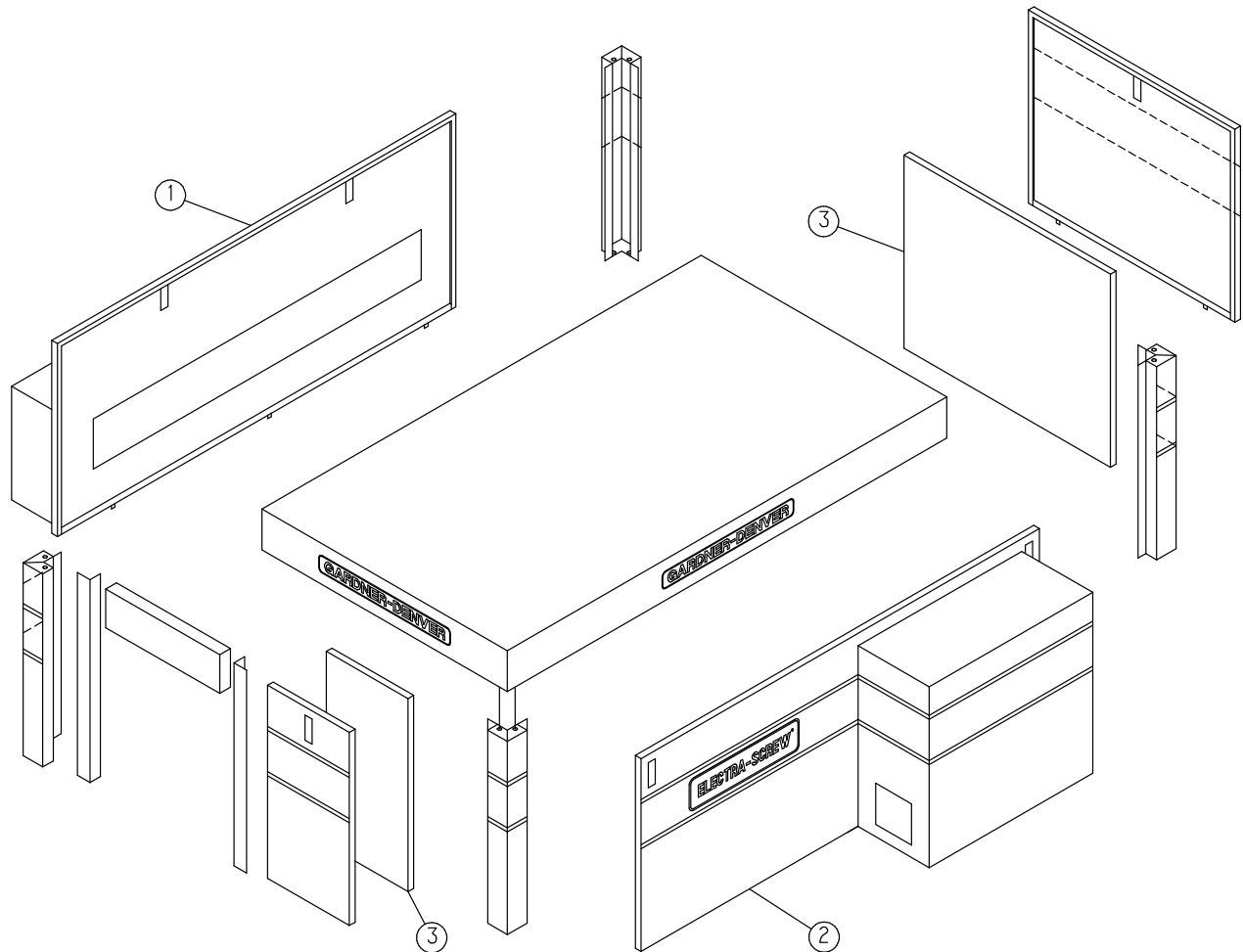
Ref. No.	Name of Part	Qty.	Part No.
1	LATCH	6	31D58
2	SEAL	28	32E12
3	SCREW-FLANGED	24	75LM51
4	NUT-FLANGED	24	50AW5
6	DECAL	2	214ECM077
7	DECAL	2	203ESO077



270EBE810
(Ref. Drawing)

ENCLOSURE – BASIC PARTS

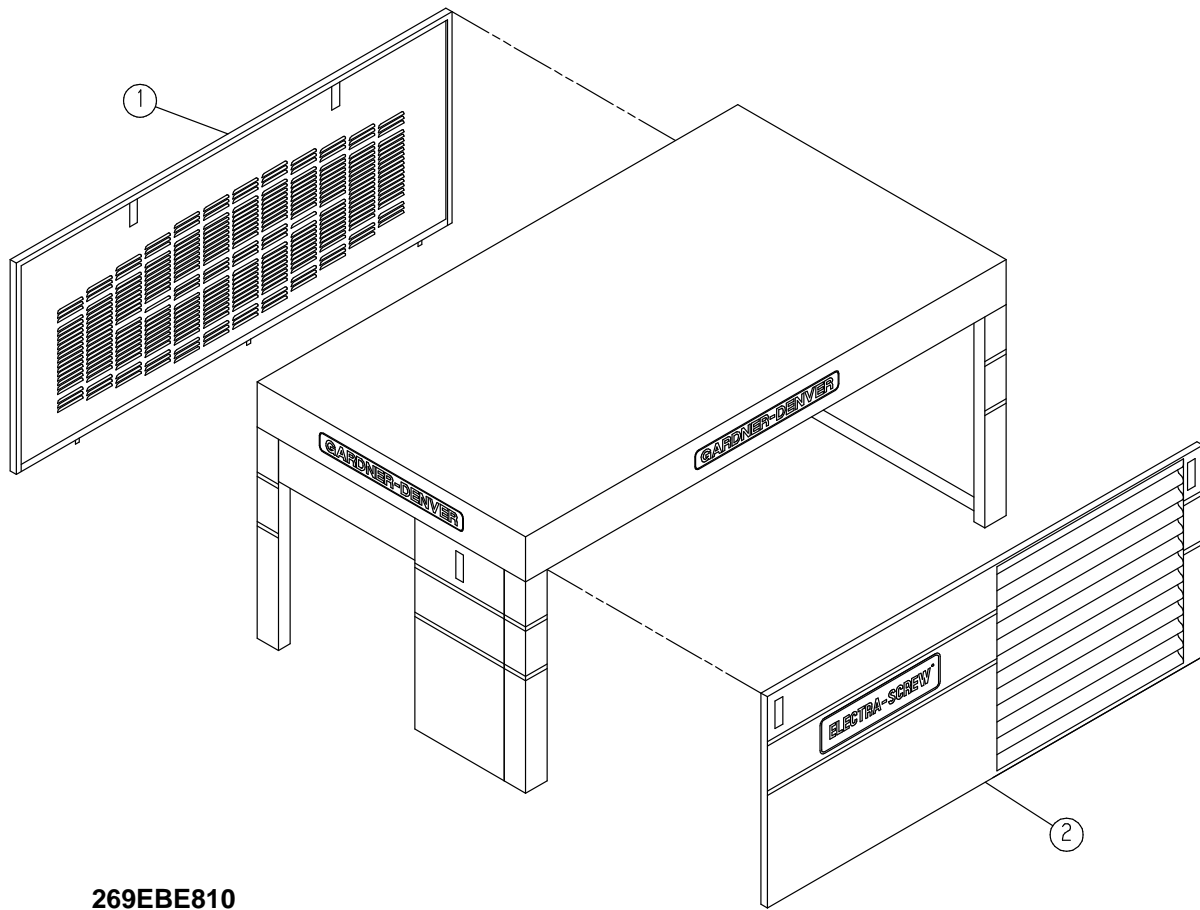
Ref. No.	Name of Part	Qty.	Part No.
1	HOOD	1	200EBE053
2	POST	3	206EBE313
3	POST	1	207EBE313
4	PANEL	1	205EBE216
5	PANEL	1	203EBE216
6	BRACKET	2	201EBE142
7	BRACKET (FORMED)	1	203EBE142



268EBE810
(Ref. Drawing)

QUIET ENCLOSURE – ODP MOTOR ONLY

Ref. No.	Name of Part	Qty.	Part No.
1	BAFFLE	1	201EBE840
2	BAFFLE	1	203EBE840
3	INSULATION	1	200EJB470



269EBE810
(Ref. Drawing)

ENCLOSURE – PANELS

Ref. No.	Name of Part	Qty.	ODP Motors Part No.	TEFC Motors Part No.
1	PANEL	1	204EBE216	207EBE216
2	PANEL	1	210EBE216	210EBE216

IDENTIFICATION AND INSTRUCTION GROUP

Ref. No.	Name of Part	Qty.	Part No.
1	DECAL, WARNING – SEE WIRING DIAGRAM	1	222EAQ077
2	DECAL, WARNING – ELECTRICAL SHOCK	1	216EAQ077
3	DECAL, PARTS LIST/SERVICE MANUAL #	1	204EDE077
4	DECAL, L1	1	236AUX077
5	DECAL, L2	1	237AUX077
6	DECAL, L3	1	238AUX077
7	RIVET	4	70E13
8	TAG-INSTRUCTION	1	201EAQ304
9	DECAL, ROTATION ARROW	1	204EBE077
10	DECAL, WARNING	1	227EAQ077
11	DECAL, DANGER – HOT OIL UNDER PRESSURE	2	212EAQ077
12	DECAL, AEON 4000 LUBRICANT	1	228EAQ077
13	DECAL, WARNING – INSPECT OIL RESERVOIR	1	217EAQ077
14	DECAL, DANGER – DO NOT MODIFY	1	218EAQ077
15	DECAL, WARNING – ROTATING MACHINERY	1	211EAQ077
16	DECAL, CAUTION – DO NOT LIFT	1	208EAQ077
17	DECAL, WARNING – AUTO RESTART	4	207EAQ077
18	DECAL, DANGER – DO NOT BREATHE	2	206EAQ077
19	DECAL, OIL LEVEL	1	200EJB077
20	DECAL, ID & INSTRUCTION	1	201EJB077
21	DECAL, DRAIN MOISTURE DAILY	1	205ESO077
22	DECAL, OIL FILTER ELEMENT	1	205EBE077
23	DECAL, NOTICE – USE GARDNER DENVER PARTS	1	214EAQ077
24	DECAL, AUTO SENTRY-S	1	206EJB077
25	NAMEPLATE	1	69F64
26	DECAL, OIL SEPARATOR CANISTER	1	211EBE077
27	DECAL, CAUTION – USE FLOOR PLATE	1	221EAQ077
28	DECAL	2	213ECM077
29	DECAL	2	212EBE077
30	LUBRICANT P/L	3.50	28H61
31	DECAL	1	251EAQ077

MAIN MOTOR (STANDARD ODP/TEFC & HI-EFF. ODP)

**OPEN DRIP PROOF
(60 HZ – ODP)**

COLUMN CODE	NAME OF PART	15 HP PART NO.	20 HP PART NO.	25 HP PART NO.	30 HP PART NO.
13A	MOTOR, 200V	24AW8	24AW9	24AW10	24AW11
13B	MOTOR, 230V	24AW24	24AW25	24AW26	24AW27
13C	MOTOR, 460V	24AW24	24AW25	24AW26	24AW27
13D	MOTOR, 575V	24AW43	24AW44	24AW45	24AW46

**HI-EFF. OPEN DRIP PROOF
(60 HZ – ODP)**

13E	MOTOR, 200V	24CA1489	24CA1490	24CA1491	24CA1492
13F	MOTOR, 230V	24CA1509	24CA1510	24CA1511	24CA1512
13G	MOTOR, 460V	24CA1509	24CA1510	24CA1511	24CA1512
13H	MOTOR, 575V	24CA1536	24CA1537	24CA1538	24CA1539

**TOTALLY ENCLOSED FAN COOLED
(60 HZ – TEFC)**

13I	MOTOR, 200V	24CA2385	24CA2388	24CA2391	24CA2394
13J	MOTOR, 230V	24CA2386	24CA2389	24CA2392	24CA2395
13K	MOTOR, 460V	24CA2386	24CA2389	24CA2392	24CA2395
13L	MOTOR, 575V	24CA2387	24CA2390	24CA2393	24CA2396

**HI-EFF. TOTALLY ENCLOSED FAN COOLED
(60 HZ – TEFC)**

13N	MOTOR, 200V	24CA2654	24CA2655	24CA2656	24CA2657
13O	MOTOR, 230V	24CA2650	24CA2651	24CA2651	24CA2562
13P	MOTOR, 460V	24CA2650	24CA2651	24CA2651	24CA2562
13Q	MOTOR, 575V	24CA2660	24CA2661	24CA2662	24CA2663

REPAIR KITS AND ACCESSORIES

Your Gardner Denver rotary screw compressor is designed and manufactured for many years of reliable operation. All components are engineered to exacting specifications, which will function together as a system to provide maximum efficiency. To insure the continuing integrity of compressor operation, use only original quality genuine Gardner Denver replacement parts and accessories.

Name of Part	Qty.	Part No.
ROUTINE MAINTENANCE KIT (3000 Hrs.), Heavy Duty Air Filter		EBE80665
ELEMENT, Air Filter	2	2116150
ELEMENT, Oil Filter	3	2116128
ROUTINE MAINTENANCE KIT (3000 Hrs.), Standard Air Filter		203EBE6013
ELEMENT, Air Filter	2	200EBE059
ELEMENT, Oil Filter	3	2116128
PERIODIC MAINTENANCE KIT (Inlet Valve)		302EBE6013
O-RING	1	25BC440
SPRING	1	78H20
SPRING	1	78W59
O-RING	1	25AM15
RING-RETAINING	1	74D87
PERIODIC OVERHAUL KIT, Air End (See pages 5 and 8 for Parts Listing)		202SSE6013
BEARING-ROLLER	1	12BA130
BEARING-ROLLER	1	12BA129
BEARING-ROLLER	1	12BA127
BEARING-ROLLER	1	12BA128
SEAL-OIL	1	60DD679
SHIM	1	77C58
SPRING	2	78W47
SHIM	1	77H54
GASKET (ELIMINATOR)	1	25BC222
O-RING	1	54C210
O-RING	1	25BC380
SEAL-OIL	1	60DD543
OIL SEPARATOR ELEMENT	1	2116717
KIT, OIL SEAL	1	302SSH6013
SLEEVE	1	80M12
OIL SEAL	1	60DD679
OIL SEAL	1	60DD690
O-RING	1	8502140
O-RING	1	25BC165
GASKET (ELIMINATOR)	1	25BC222
VALVE-CHECK	1	90AR923

REPAIR KITS AND ACCESSORIES (Continued)

FIELD ENCLOSURE KIT (ODP Motor)	1	217EBE4023
FIELD ENCLOSURE KIT (TEFC Motor)	1	218EBE4023
QUIET ENCLOSURE KIT (ODP Motor Only) (Field Enclosure)	1	219EBE4023
ELECTRICAL CONTROL KIT		EJB81373
THERMISTOR PROBE	2	21D264
VALVE-SOLENOID	1	91B77
SWITCH-VACUUM	1	88H195
TRANSDUCER	2	88H242
PNEUMATIC CONTROL KIT		EJB81375
VALVE-SUBTRACTIVE PILOT	1	2009398
VALVE-SHUTTLE	1	90AR107
GASKET ELIMINATOR	1	25BC222
LUBRICANT (AEON 4000)		
5-GALLON PAIL	1	28H57
55-GALLON DRUM	1	28H36
TOUCH-UP PAINT, White		
5-GALLON PAIL	1	28H76
1-GALLON CAN	1	28H84
1-QUART CAN	1	28H83
WEAR SLEEVE INSTALLATION/REMOVAL KIT	1	SSE81282

Gardner
Denver

For additional information contact your local representative or Gardner Denver Machinery Inc., Customer Service Department, 1800 Gardner Expressway, Quincy, Illinois 62301
Telephone: (800) 682-9868 FAX: (217) 224-7814



Sales and Service in all major cities.

For parts information, contact Gardner Denver, Master Distribution Center, Memphis, TN
Telephone: (800) 245-4946 FAX: (901) 542-6159

Specifications subject to change without notice.
Copyright 1996 Gardner Denver Machinery Inc.

Litho in U.S.A.