



13-8-506
1st Edition

GARDNER-DENVER®

ELECTRA-SCREW®

STATIONARY

BASE-MOUNTED

COMPRESSOR

MODELS

40 HP - EDEQH

50 HP - EDEQJ

Parts List



INDUSTRIAL MACHINERY

TABLE OF CONTENTS

GROUP NAME	PAGE NUMBER
Ordering Instructions	2
Model Designations Matrix/Menu.....	3
Bare Compressor.....	4, 5
Inlet Valve & Mounting Group	6
Base & Mounting.....	7
Air Filter, Heavy Duty	7
Compressor Discharge Piping	9
Oil Reservoir Group	10, 11
Oil Piping.....	12, 13
Oil Reservoir To Cooler Discharge Piping	14
Oil Cooler/Aftercooler Mounting Group.....	15-17
Minimum Pressure Valve	18
Oil Filter	19
Thermostatic Mixing Valve.....	20
Control Group - Modulating	21
Control Group - Probes/Sol. Vlv/Vac Sw./Transducer	22
Subtractive Pilot Valve	23
Drive Gps., Belts, Sheaves	24, 25
Main Motors/Motor Bases	26
Control/Starter Box (Full Voltage-Standard).....	27-29
Control/Starter Box (Wye-Delta-Optional)	30, 31
Enclosure Group.....	32
Identification & Instruction Group	33, 34
Repair Kits	35

INSTRUCTIONS FOR ORDERING REPAIR PARTS

When ordering parts, specify Compressor **MODEL**, Method of Cooling, **HORSEPOWER** and **SERIAL NUMBER** (see nameplate on unit). Serial Number is also stamped on top of the cylinder flange to the right of the inlet housing.

All orders for parts should be placed with the nearest Sales and Service Office.

Where NOT specified, quantity of parts required per compressor or unit is one (1); where more than one is required per unit, quantity is indicated in parenthesis. **SPECIFY EXACTLY THE NUMBER OF PARTS REQUIRED.**

DO NOT ORDER BY SETS OR GROUPS.

To determine the Right Hand and Left Hand side of compressor, stand at the motor end and look toward the compressor. Right Hand and Left Hand are indicated in parenthesis following part name, i.e. (RH) and (LH).

PARTS RETURNED

All claims must be made within five days after receipt of goods. If order has been filled correctly, we cannot allow the return of the goods without our consent and then only on a basis of a charge for service and rehandling plus transportation charges.

Transportation charges must be prepaid. If it is necessary to return a part to the factory for duplication or inspection, do not fail to do the following:

1. Write the nearest Sales and Service Office a letter advising what material you wish to return and why.
2. After receiving permission to return the item or items, obtain from the Sales and Service Office the correct forms filled out by that office for the proper return of material.
3. Place a tag in the package showing your name and address.
4. Tag each article in the box or package stating what and how many are returned.
5. Always give the serial number of the machine from which the parts were removed or the invoice number on which the parts were originally shipped.

All parts returned for credit should be handled in the same manner as that for duplication or inspection.

**MODEL EDE
40 & 50 HP AIR-COOLED BASE-MOUNTED
ELECTRA-SCREW[®] COMPRESSOR
MATRIX/MENU**

NOTICE TO CUSTOMER - To find the construction options for your compressor unit, FILL IN THE BALANCE OF LETTERS OR NUMBERS FROM YOUR UNIT NAMEPLATE.

E	D	E	Q							9	9		
1	2	3	4	5	6	7	8	9	10	11	12	13	

COLUMN NUMBER:

Follow the line down and over from each space thus filled in to find the appropriate construction option with which your machine is equipped. The number "9" in any column space indicates "NOT APPLICABLE." The number "8" in any column space indicates SPECIAL DESIGN - REFER TO FACTORY ORDER TICKET.

COLUMNS 1, 2 & 3 - COMPRESSOR TYPE & SIZE _____

COLUMN 4 - TYPE OF CONSTRUCTION _____

- Q. Air Cooled Base Mounted

COLUMN 5 - HORSEPOWER _____

- H. 40 HP
- J. 50 HP

COLUMN 6 - ENGINEERING SPECIFICATION _____

COLUMN 7 - PRESSURE & HZ _____

- A. 100 PSIG - 60 HZ
- B. 125 PSIG - 60 HZ
- C. 150 PSIG - 60 HZ

COLUMN 8 - CONTROL TYPE _____

- A. Dual
- B. Modulating

COLUMN 9 - MAIN MOTOR CONTROL/STARTER BOX _____

- | | |
|-------------------|------------------|
| A. 40 HP-200V-N12 | I. 40 HP-200V-N4 |
| B. 40 HP-230V-N12 | J. 40 HP-230V-N4 |
| C. 40 HP-460V-N12 | K. 40 HP-460V-N4 |
| D. 40 HP-575V-N12 | L. 40 HP-575V-N4 |
| E. 50 HP-200V-N12 | M. 50 HP-200V-N4 |
| F. 50 HP-230V-N12 | N. 50 HP-230V-N4 |
| G. 50 HP-460V-N12 | O. 50 HP-460V-N4 |
| H. 50 HP-575V-N12 | P. 50 HP-575V-N4 |

COLUMN 10 - ENCLOSURE _____

- A. W/ENCL-HD FILTER (STD.)
- B. W/O ENCL-HD FILTER (STD.)

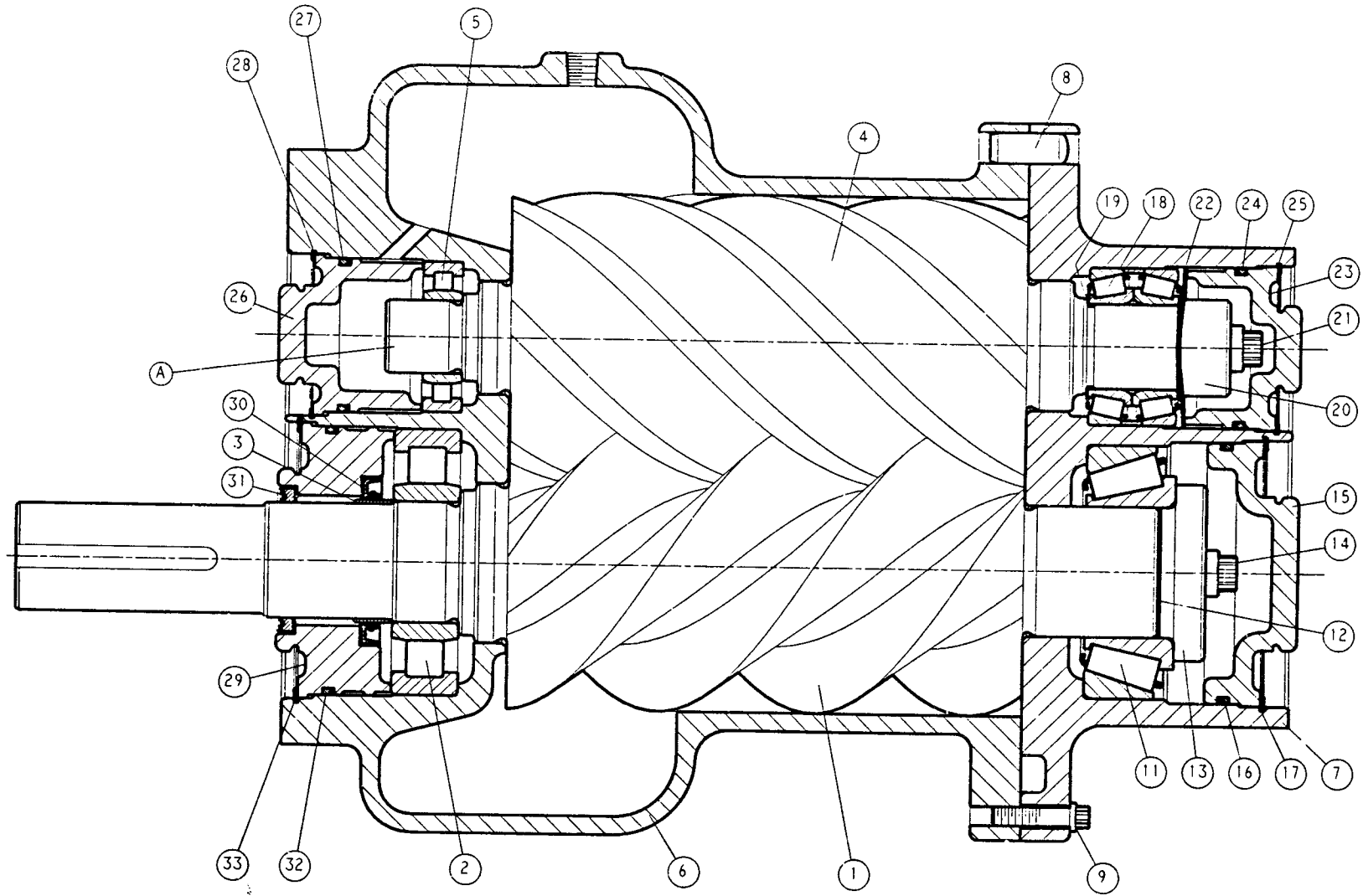
COLUMN 11 - SKIP - ENTER A "9" IN THIS COLUMN _____

COLUMN 12 - SKIP - ENTER A "9" IN THIS COLUMN _____

COLUMN 13 - COMPRESSOR DRIVE MOTOR _____

- | | |
|-----------------|------------------|
| ODP (STD. EFF.) | TEFC (STD. EFF.) |
| A. 200V-60 HZ | I. 200V-60 HZ |
| B. 230V-60 HZ | J. 230V-60 HZ |
| C. 460V-60 HZ | K. 460V-60 HZ |
| D. 575V-60 HZ | L. 575V-60 HZ |
| ODP (HI-EFF.) | TEFC (HI-EFF.) |
| E. 200V-60 HZ | M. 200V-60 HZ |
| F. 230V-60 HZ | N. 230V-60 HZ |
| G. 460V-60 HZ | O. 460V-60 HZ |
| H. 575V-60 HZ | P. 575V-60 HZ |

- Q. LESS MOTOR - ODP/TEFC-324 FR. SIZE-40 HP
- R. LESS MOTOR - ODP/TEFC-326 FR. SIZE-50 HP



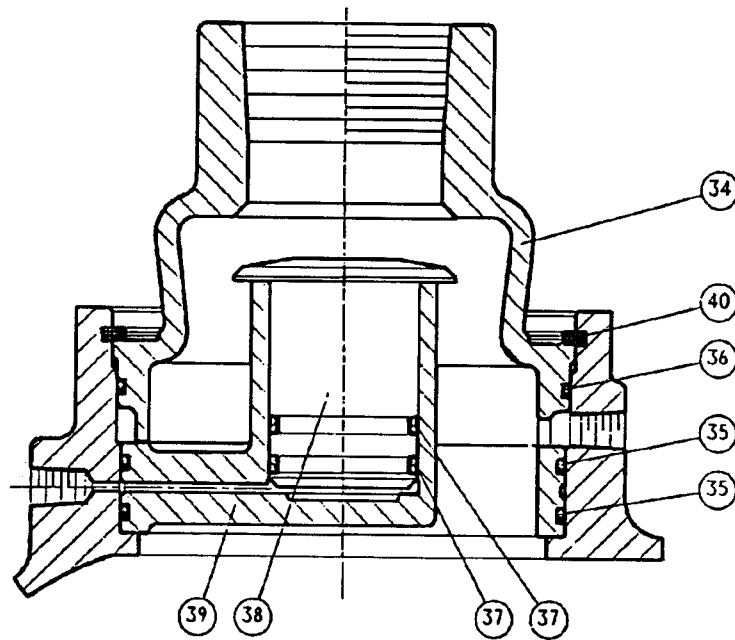
204SSE810

FOR LIST OF PARTS SEE PAGE 5.

BARE COMPRESSOR

Ref. No.	Name of Part	Qty.	MODEL EDE 75 HP-7C* Part No.	Ref. No.	Name of Part	Qty.	MODEL EDE 75 HP-7C* Part No.
	BARE COMPRESSOR	1	SSEBBC	18	BEARING-ROLLER.....	1	12BA128
1	ROTOR.....	1	204SSE010	19	SHIM.....	1	77C58
2	BEARING-ROLLER.....	1	12BA130	20	PLATE-BEARING RET.....	1	201SSE253
3	SLEEVE-WEAR.....	1	80M12	21	SCREW-12 PT. CAP.....	1	75LM123N
4	ROTOR.....	1	205SSE010	22	SPRING WAVE.....	2	78W47
5	BEARING-ROLLER.....	1	12BA129	23	COVER.....	1	207SSE225
6	CYLINDER.....	1	205SSE002	24	O-RING.....	1	54C2111
7	HOUSING-BEARING.....	1	205SSE006	25	RING-RETAINING.....	1	74D54
8	PIN-DOWEL.....	2	62M83	26	COVER.....	1	206SSE225
9	SCREW-12 PT. CAP.....	17	75LM116N	27	O-RING.....	1	25BC164
10	GASKET-ELIMINATOR.....	01	25BC256	28	RING-RETAINING.....	1	74D22
11	BEARING-ROLLER.....	1	12BA127	29	HOUSING-SEAL.....	1	202SSE362
12-1	SHIM.....	2	77H54015	30	SEAL-OIL.....	1	60DD570
12-2	SHIM.....	3	77H54002	31	SEAL-OIL.....	1	60DD543
12-3	SHIM.....	3	77H54003	32	O-RING.....	1	8500958
12-4	SHIM.....	3	77H54005	33	RING-RETAINING.....	1	74D48
13	PLATE-BEARING RET.....	1	200SSE253	41	FOOT.....	2	201SSE166
14	SCREW-12 PT. CAP.....	1	2009630N	42	SCREW-12 PT. CAP.....	4	75LM123
15	COVER.....	1	209SSE225	43	PLUG-SoHd PIPE.....	2	64EB153
16	O-RING.....	1	25BC347	44	PLUG-SoHd PIPE.....	1	64AC1
17	RING-RETAINING.....	1	74D38	45	PLUG-SoHd PIPE.....	2	64AC2

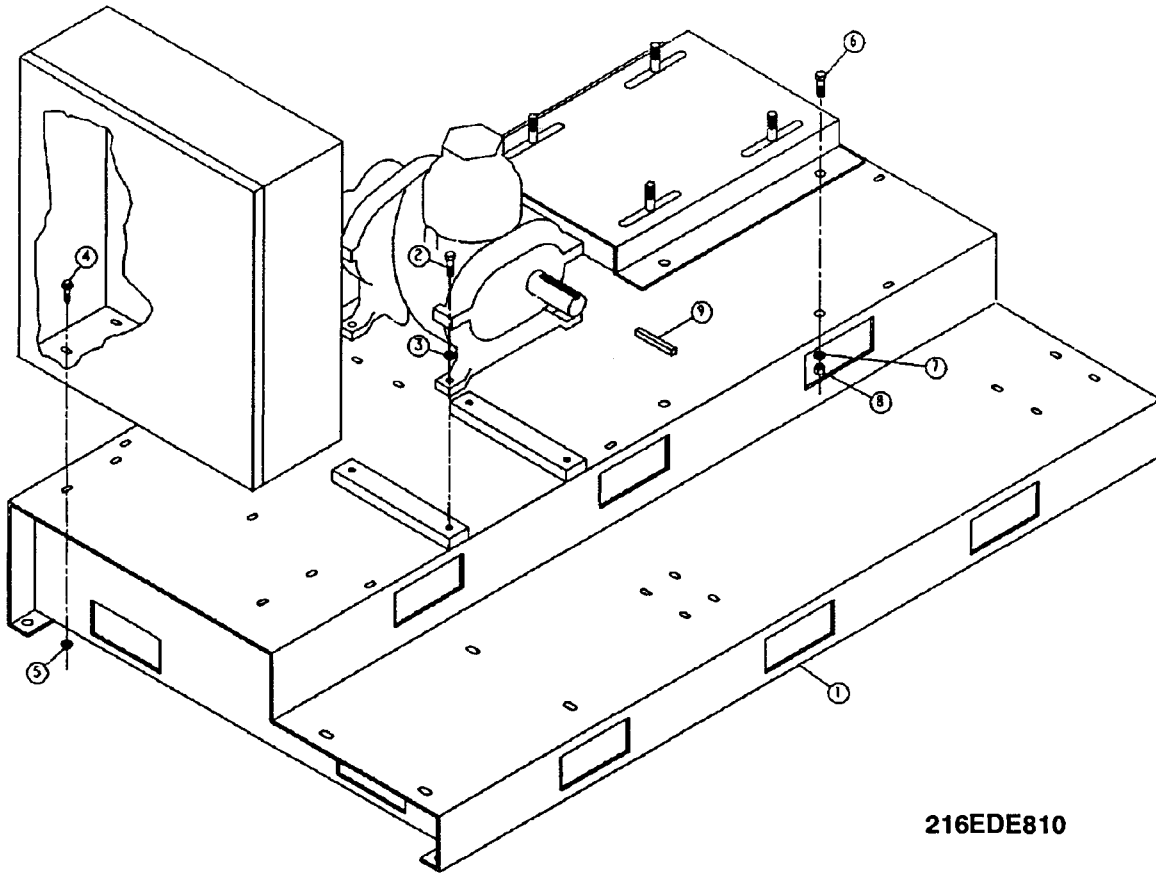
INLET VALVE & MOUNTING GROUP



204SSE810

DET. NO.	NAME OF PART	QTY.	PART NO.
34	SEAT.....	1	200SSE256
35	O-RING.....	2	25AH34
36	O-RING.....	1	25AH35
37	PACKING-RING.....	2	60AM46
38	PISTON-INLET VALVE.....	1	201SSE043
39	HOUSING-INLET.....	1	202SSE041
40	RING-RETAINING.....	1	74D50

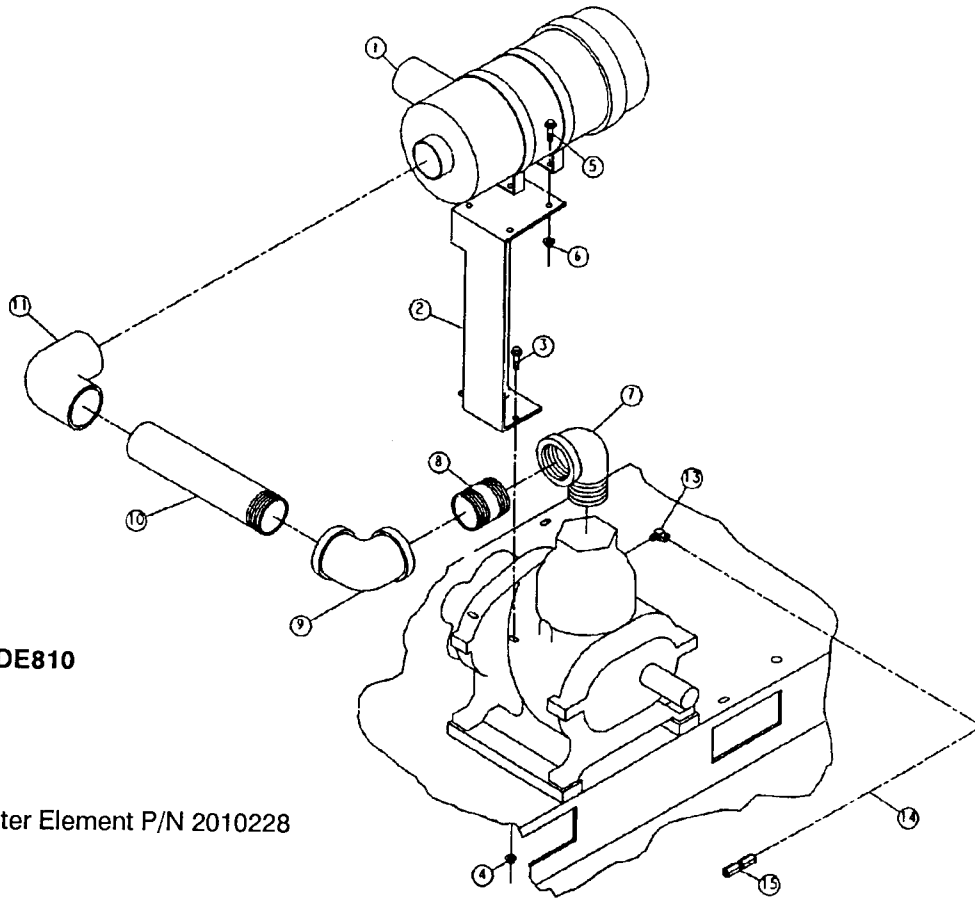
BASE & MOUNTING



216EDE810

DET. NO.	NAME OF PART	QTY.	PART NO.
1	BASE.....	1	200EDE285
2	SCREW-HEX HD	4	655EE060
3	WASHER-LOCK	4	95B5
4	SCREW-FLANGED.....	4	75LM51
5	NUT-FLANGED	4	50AW5
6	SCREW-HEX HD	4	655EF060
7	WASHER-LOCK	4	95B7
8	NUT-HEX.....	4	50B7
9	KEY-RECTANGULAR.....	1	35L53

HEAVY DUTY AIR FILTER

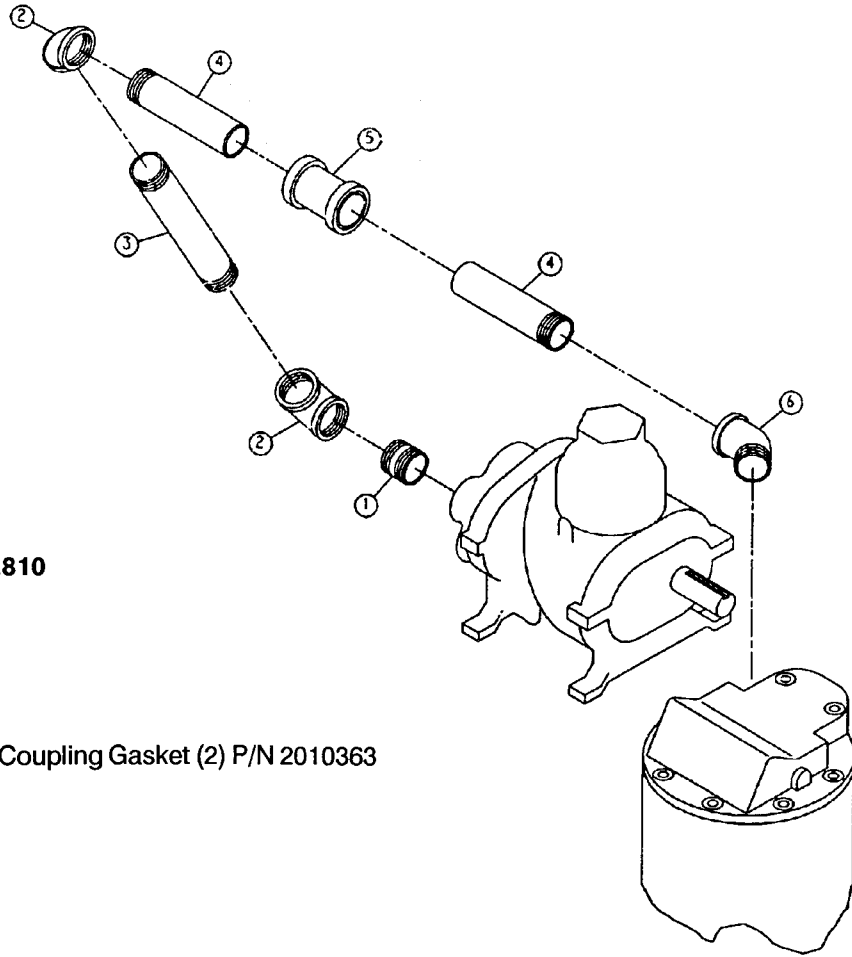


223EDE810

REPAIR: Air Filter Element P/N 2010228

Det. No.	Name of Part	Qty.	Part No.
1	FILTER-AIR	1	5B476
2	BRACKET-FILTER	1	202EDE389
3	SCREW-FLANGED	2	75LM51
4	NUT-FLANGED	2	50AW5
5	SCREW-FLANGED	4	75LM50
6	NUT-FLANGED	4	50AW4
7	ELBOW-PIPE ST	1	64D13G
8	NIPPLE-PIPE	1	63M2G
9	ELBOW-PIPE	1	64C14G
10	NIPPLE-PIPE	1	63AJ40X90G
11	HOSE-MOLDED	1	29Z108
12	CLAMP-HOSE	2	29B34
13	ELBOW-TUBE	1	86E60
14	TUBE	10	85K3
15	CONNECTOR	1	86N218

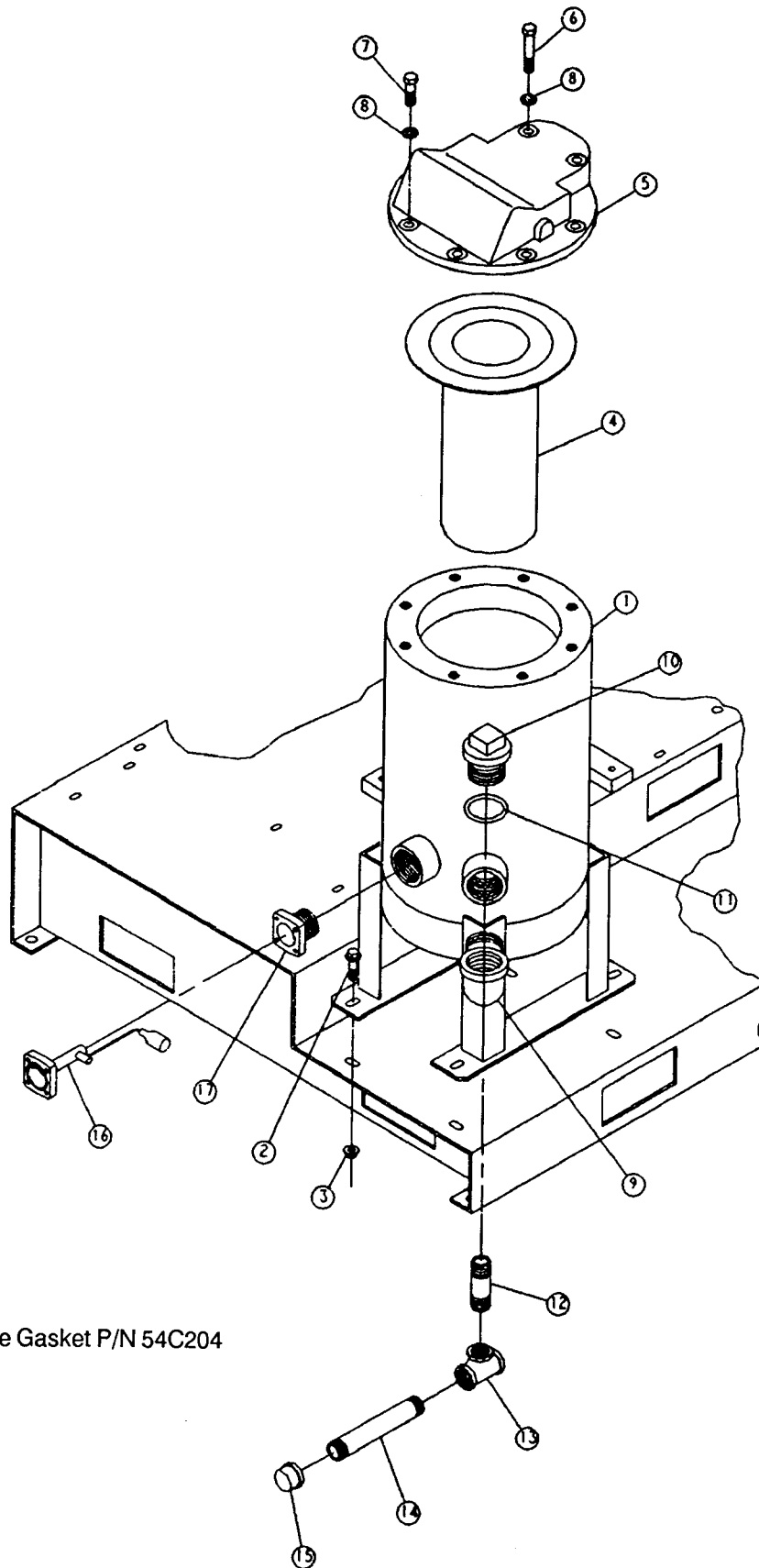
COMPRESSOR DISCHARGE PIPING



218EDE810

REPAIR: Flex Coupling Gasket (2) P/N 2010363

Det. No.	Name of Part	Qty.	Part No.
1	NIPPLE-PIPE	1	63L1G
2	ELBOW-PIPE	2	64C9G
3	NIPPLE-PIPE	1	63N32X140G
4	NIPPLE-PIPE	1	63AJ32X92G
5	COUPLING-FLEX	1	2009589
6	ELBOW-STREET.....	1	64X9G
7	NIPPLE-PIPE	1	63AJ32X92G

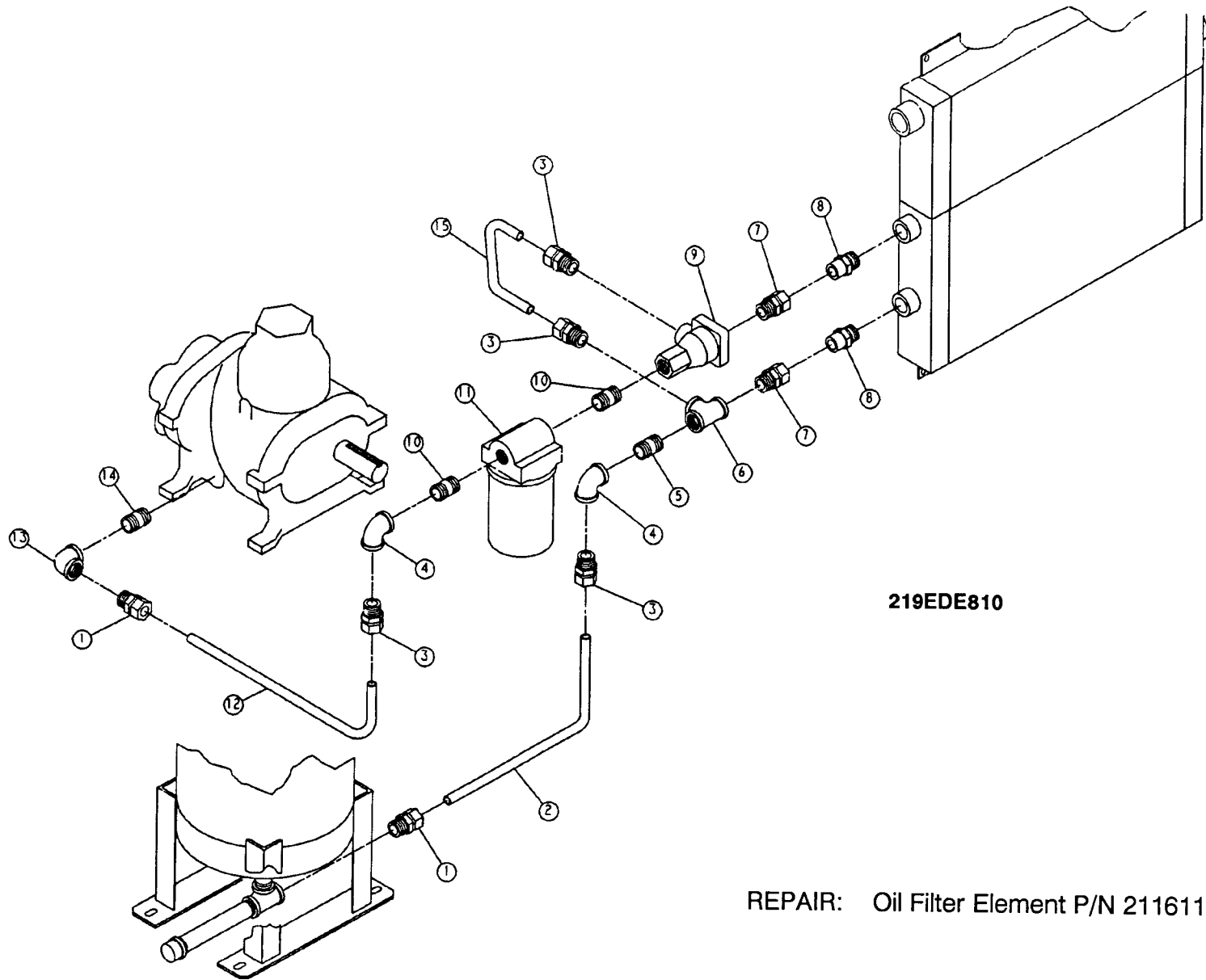


217EDE810

REPAIR: Float Gauge Gasket P/N 54C204

OIL RESERVOIR GROUP

Det. No.	Name of Part	Qty.	Part No.
1	RESERVOIR.....	1	201EDE037
2	SCREW-FLANGED.....	4	75LM135
3	NUT-FLANGED	4	50AW35
4	SEPARATOR-OIL	1	55B34
5	COVER.....	1	201EDE225
6	SCREW-HEX HD	2	655EF140
7	SCREW-HEX HD	6	655EF060
8	WASHER-LOCK	8	95B7
9	ELBOW	1	200LSF262
10	COVER-FILLER	1	200SPF156
11	O-RING	1	25AH5
12	NIPPLE-PIPE	1	63G1G
13	TEE-PIPE	1	64G7G
14	NIPPLE-PIPE	1	63G14G
15	CAP-PIPE.....	1	64AD5
16	GAUGE-FLOAT	1	200EAQ303
17	ADAPTOR-GAUGE.....	1	200EDE058



219EDE810

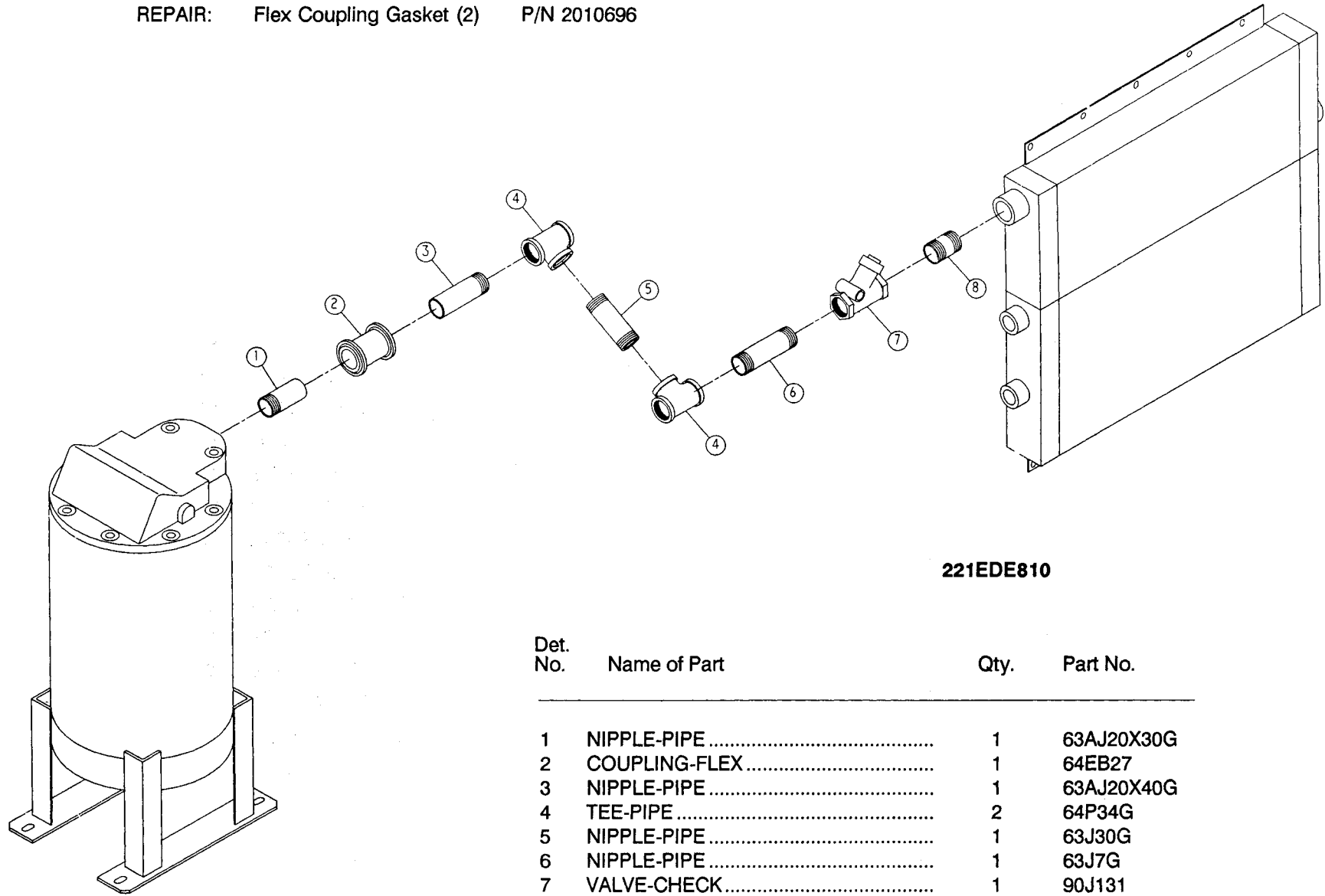
REPAIR: Oil Filter Element P/N 2116110

OIL PIPING GROUP

Det. No.	Name of Part	Qty.	Part No.
1	CONNECTOR-TUBE	1	86N150
2	TUBE	1	202EDE857
3	CONNECTOR-TUBE	4	86N95
4	ELBOW-PIPE	2	64C6G
5	PIPE-NIPPLE	1	63H2G
6	TEE-PIPE	1	64G8G
7	CONNECTOR-TUBE	2	86N120
8	ADAPTOR-TUBE.....	2	86N117
9	VALVE-THERM	1	90AR166
10	NIPPLE-PIPE	2	63H1G
11	FILTER-OIL	1	26C26
12	TUBE	1	203EDE857
13	ELBOW-PIPE	1	64C5G
14	NIPPLE-PIPE	1	63G31G
15	TUBE	1	236ECH857

REPAIR: Flex Coupling Gasket (2) P/N 2010696

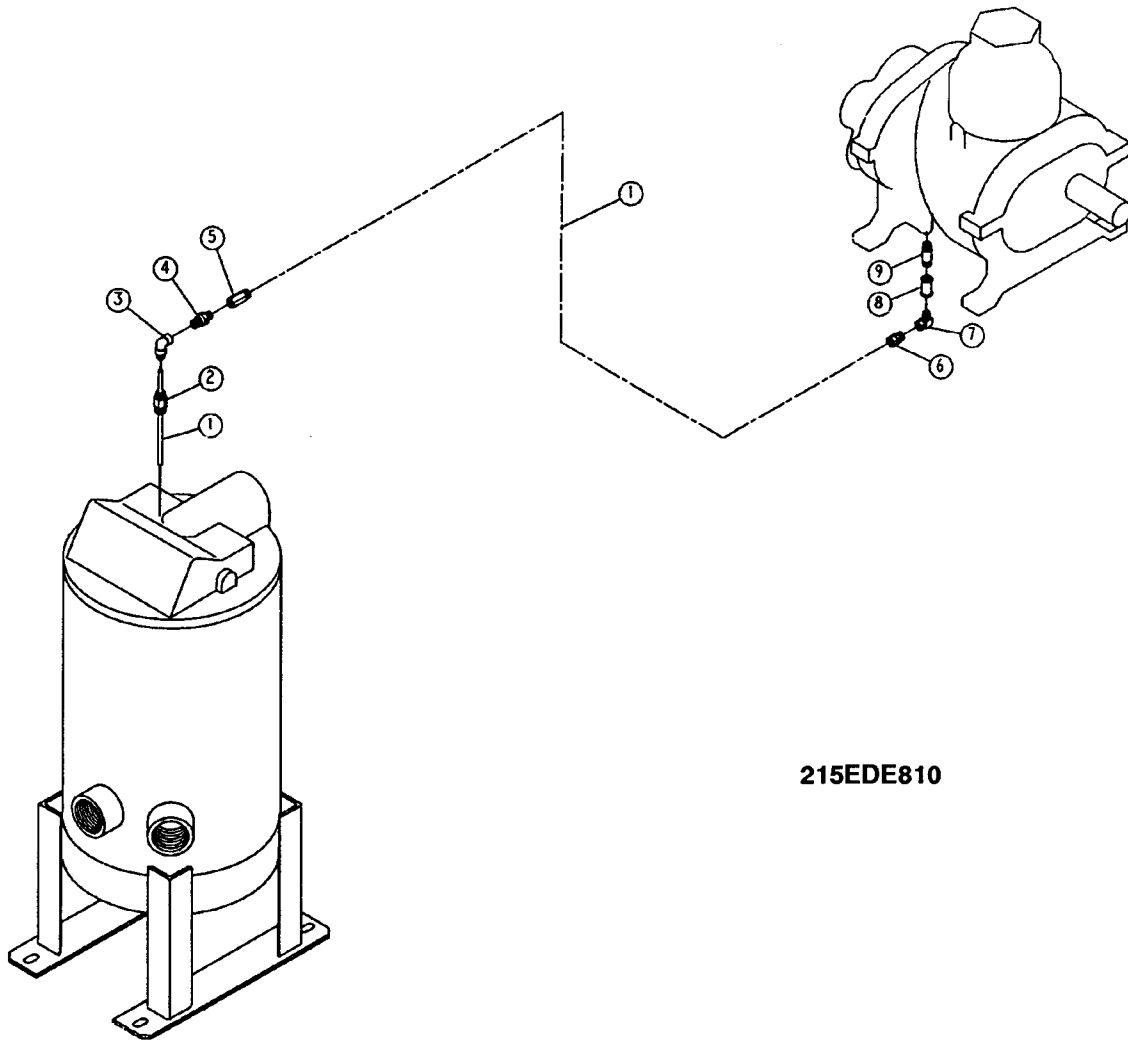
13-8-506 Page 14



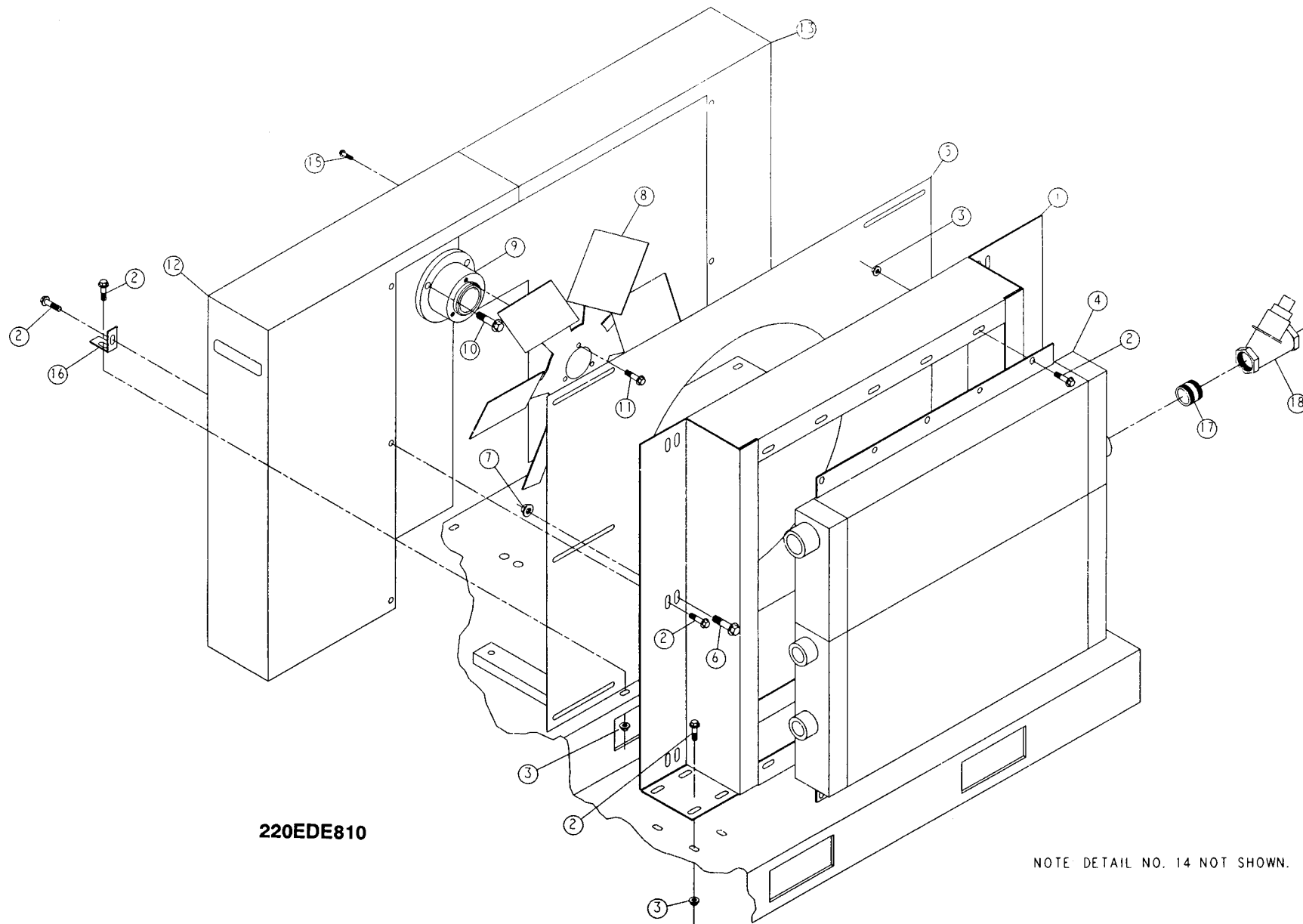
221EDE810

Det. No.	Name of Part	Qty.	Part No.
1	NIPPLE-PIPE	1	63AJ20X30G
2	COUPLING-FLEX	1	64EB27
3	NIPPLE-PIPE	1	63AJ20X40G
4	TEE-PIPE	2	64P34G
5	NIPPLE-PIPE	1	63J30G
6	NIPPLE-PIPE	1	63J7G
7	VALVE-CHECK	1	90J131
8	NIPPLE-PIPE	1	63J15G

OIL COOLER GROUP



Det. No.	Name of Part	Qty.	Part No.
1	TUBE.....	10	85K3
2	CONNECTOR.....	1	86N15
3	ELBOW-TUBE	1	86E193
4	VALVE-CHECK.....	1	90AR261
5	CONNECTOR-TUBE.....	1	86E28
6	CONNECTOR-TUBE.....	1	86E4
7	ELBOW-PIPE ST	1	64D55
8	COUPLING-PIPE.....	1	64BK2
9	NIPPLE-PIPE.....	1	63D1G



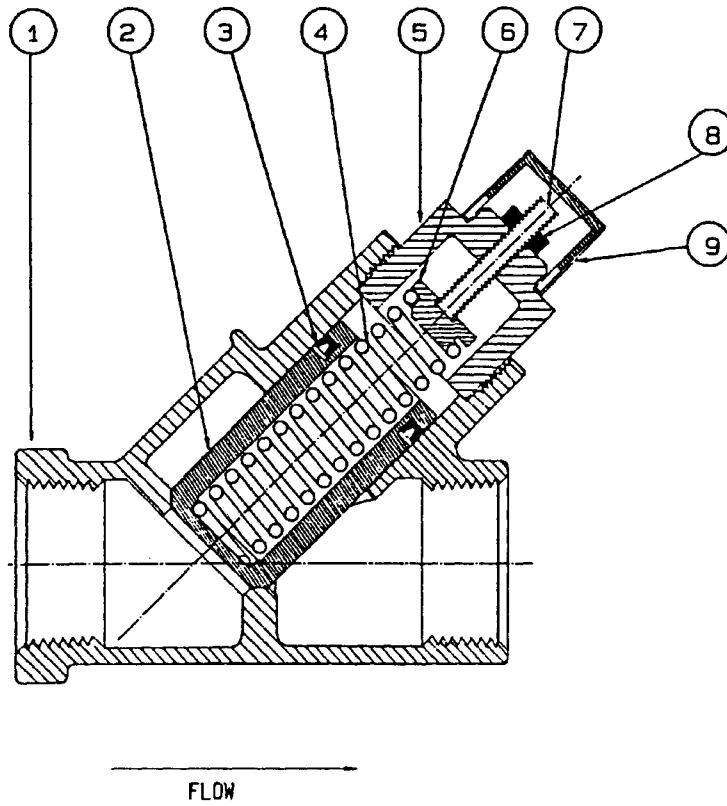
220EDE810

NOTE: DETAIL NO. 14 NOT SHOWN.

OIL COOLER GROUP

Det. No.	Name of Part	Qty.	Part No.
1	BRACKET	1	200EDE017
2	SCREW-FLANGED.....	28	75LM51
3	NUT-FLANGED	20	50AW5
4	COOLER-OIL.....	1	200EDE201
5	ORIFICE	1	200EDE814
6	SCREW-FLANGED.....	6	75LM135
7	NUT-FLANGED	6	50AW35
8	FAN.....	1	200EDE701
9	ADAPTOR-FAN	1	200EDE649
10	SCREW-12 PT. CAP	3	75LM189N
11	SCREW-Sq Hd CAP	3	75P6N
12	GUARD-DRIVE	1	200EDE120
13	GUARD-DRIVE	1	201EDE120
14	EDGE TRIM	4	32E16
15	SCREW-FLANGED.....	2	75LM47
16	BRACKET	2	200EDE141
17	NIPPLE-PIPE.....	1	63AA13G
18	VALVE-M/PRESS	1	200ECH527
19	TRAP.....	1	83C83

MINIMUM PRESSURE VALVE



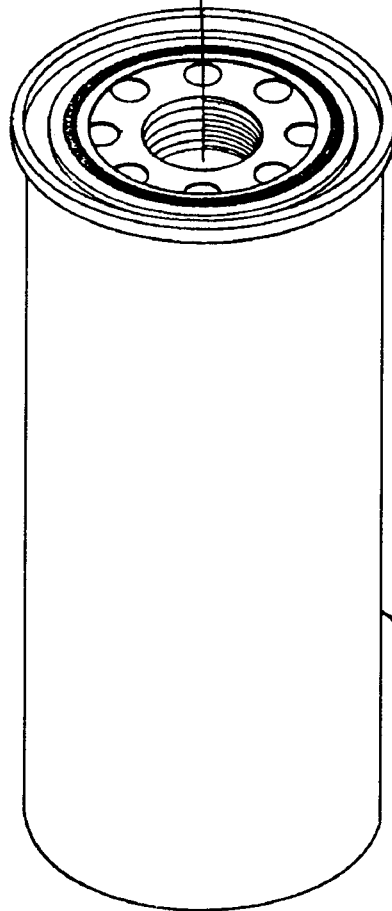
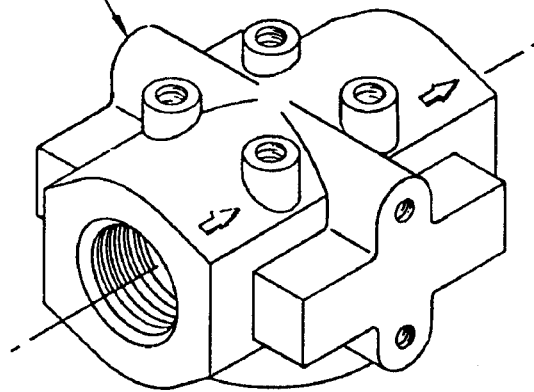
200ECH527

Det. No.	Name of Part	Qty.	Part No.
1	VALVE HOUSING.....	1	----
2	VALVE.....	1	2116230
3	U-CUP, 1" ID x 3/16 CS-NEOPRENE	1	2116231
4	SPRING	1	2116232
5	END CLOSURE.....	1	----
6	SPRING REST	1	----
7	1/4-20NC - 2A x 1-1/4 SCREW.....	1	----
8	NUT 1/4-20NC.....	1	----
9	KNOB.....	1	----

OIL FILTER - 26C26

FILTER HEAD

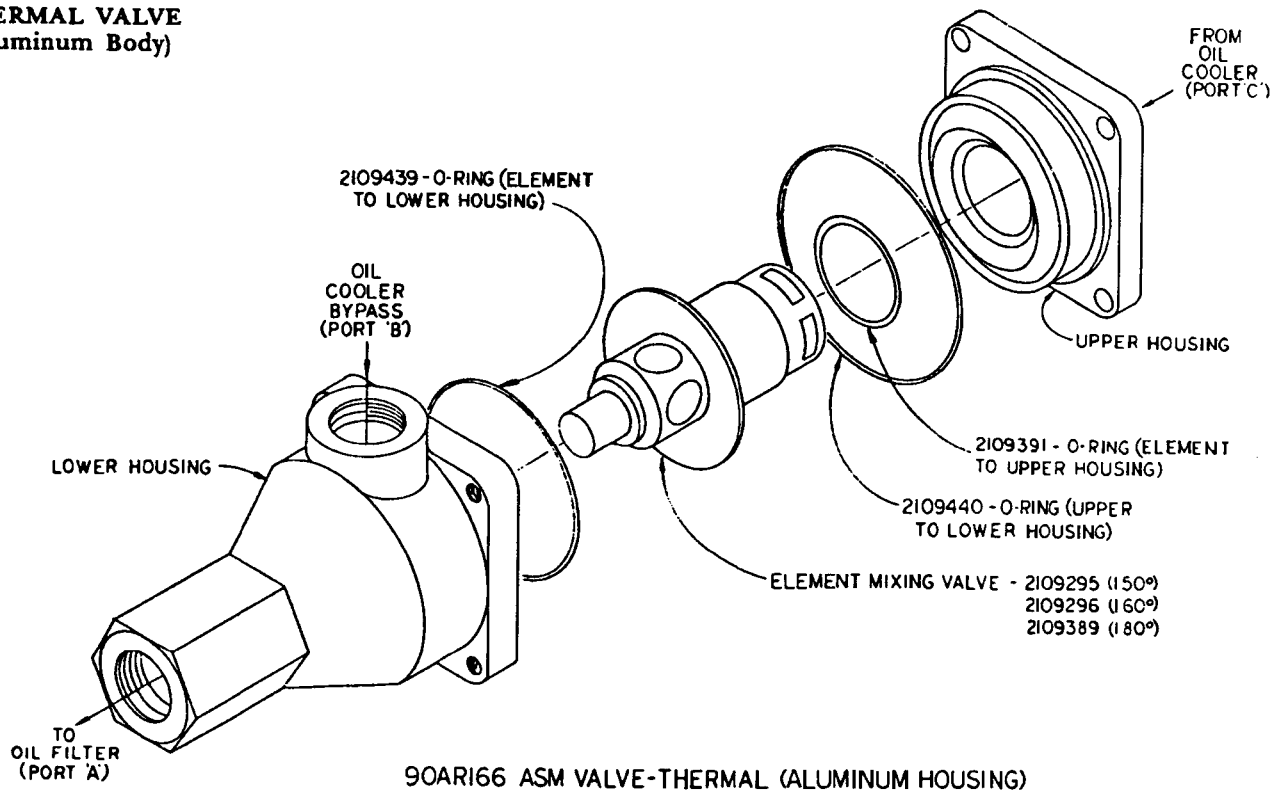
TO
COMPRESSOR



2116110 ELEMENT
INCLUDES O-RING
(w/212ECM077 ELEMENT DECAL)

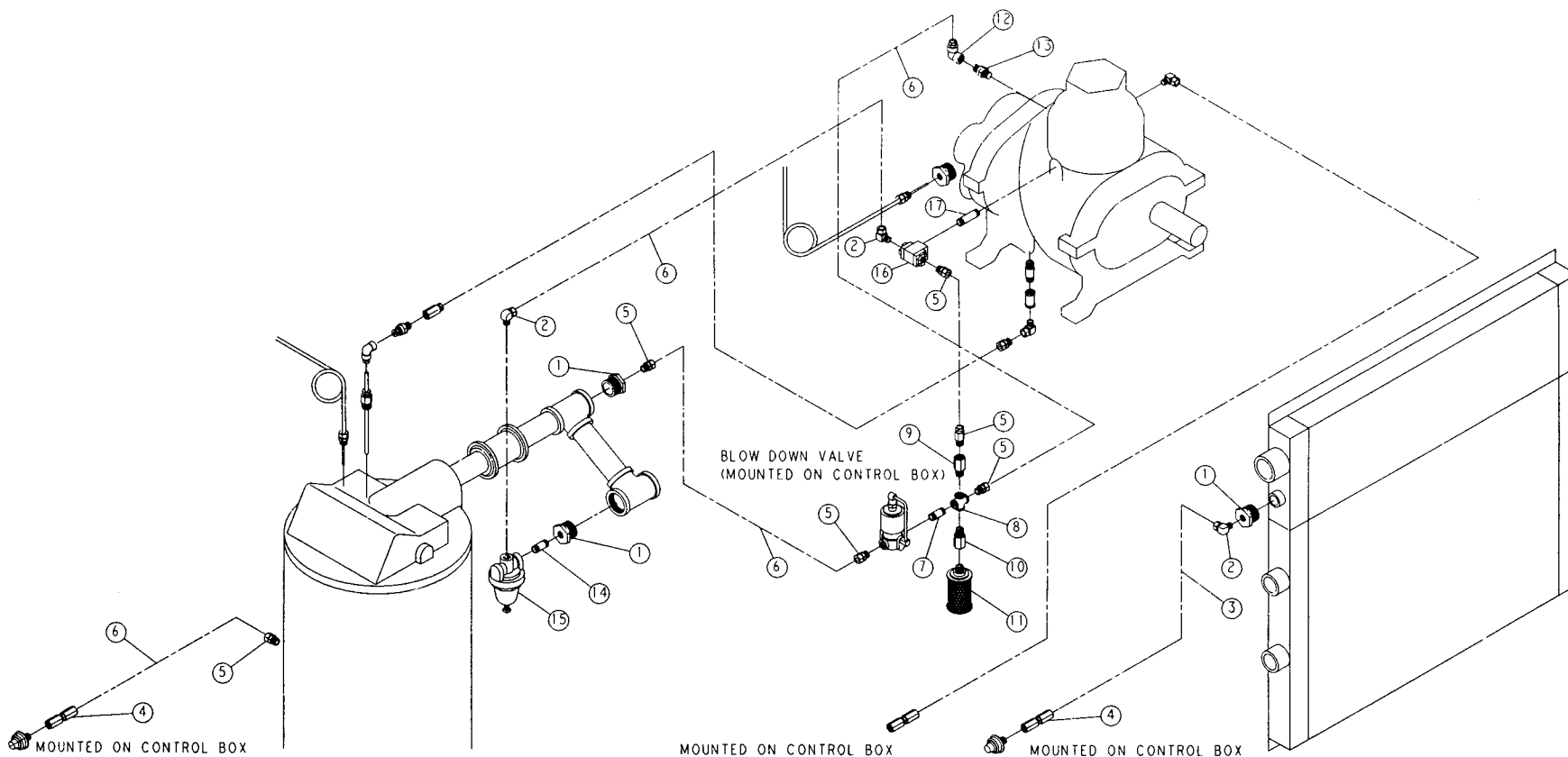
THERMAL VALVE (Thermostatic Mixing)

THERMAL VALVE (Aluminum Body)



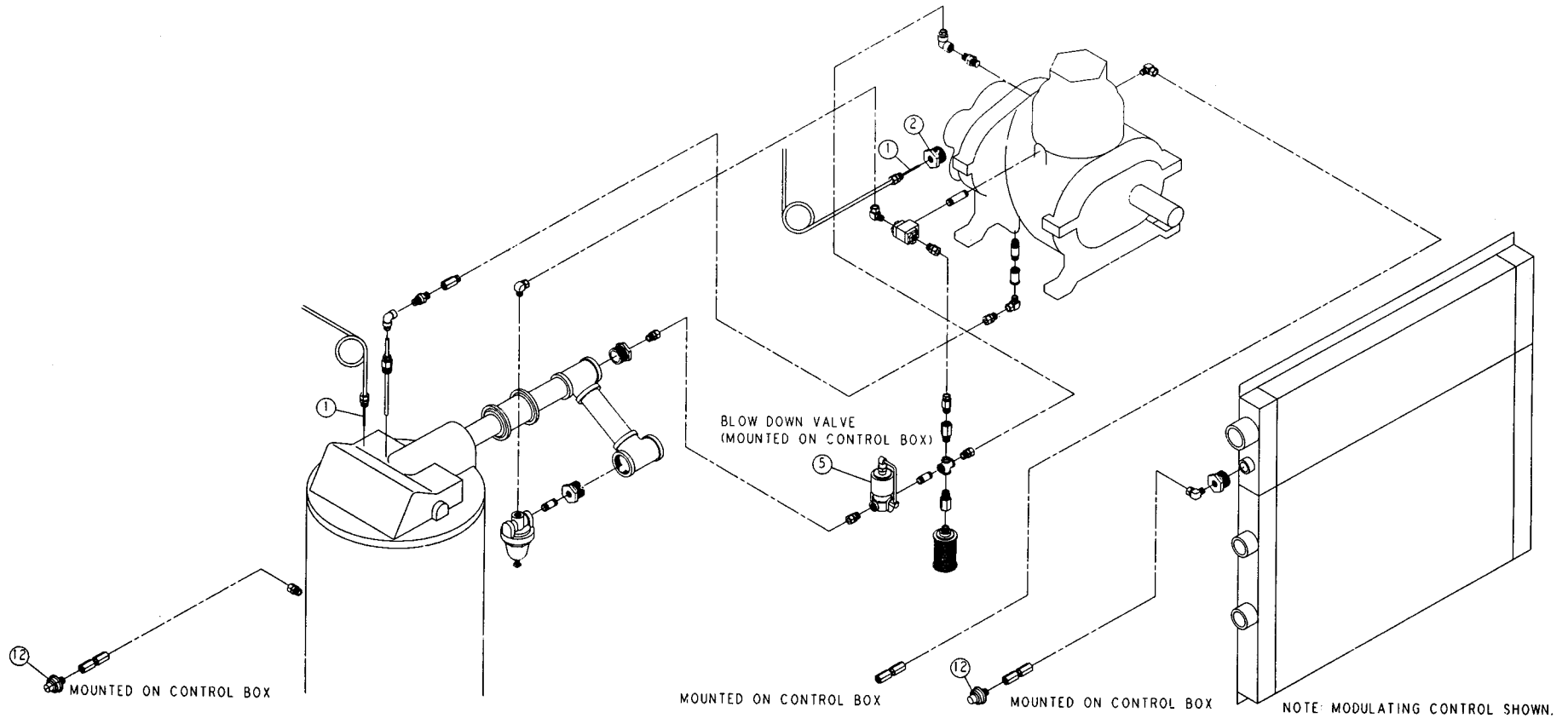
CONTROL GROUP - MODULATING

13-8-506 Page 21



Det. No.	Name of Part	Qty.	Part No.	Det. No.	Name of Part	Qty.	Part No.
1	BUSHING-PIPE.....	3	64E43	10	ORIFICE.....	1	201EDE814
2	ELBOW-TUBE.....	3	86E60	11	MUFFLER.....	1	43E4
3	TUBE.....	25	85K3	12	ELBOW-TUBE.....	1	86E193
4	CONNECTOR.....	2	86N218	13	VALVE-CHECK.....	1	90AR261
5	CONNECTOR-TUBE.....	6	86E4	14	NIPPLE-PIPE.....	1	63D3G
6	TUBE.....	25	85K3	15	VALVE-SUBTRACTIVE PILOT.....	1	2009398
7	NIPPLE-PIPE.....	1	63D1G	16	VALVE.....	1	90AR107
8	CROSS-PIPE.....	1	64K1G	17	NIPPLE-PIPE.....	1	63D3G
9	ORIFICE.....	1	201EDE814	18	ORIFICE.....	1	200SSQ814

**CONTROL GROUP - MODULATING
(PROBES/SOL VLV/VAC SW/TRANSDUCER)**



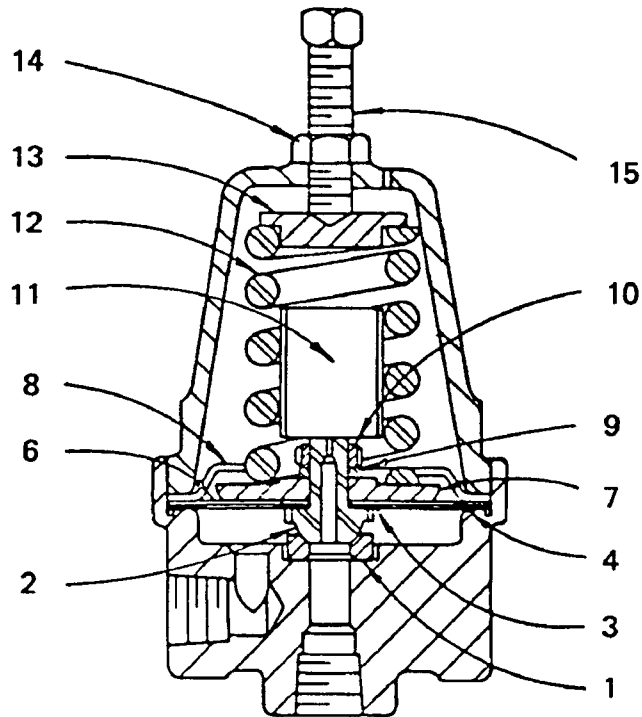
13-8-506 Page 22

NOTE: DETAILS NO. 3, 4, 6, 7, 8, 9, 10 AND 11 NOT SHOWN.

214EDE810

Det. No.	Name of Part	Qty.	Part No.	Det. No.	Name of Part	Qty.	Part No.
1	THERMISTOR PROBE.....	1	21D231	7	NIPPLE-CHASE.....	1	24A437
2	BUSHING-PIPE.....	1	8504150	8	LOCKNUT-CONDUIT.....	1	24A77
3	CONNECTOR CABLE.....	1	00600704 0582	9	SWITCH-VACUUM.....	1	88H154
4	SEAL-PLUG.....	1	24A415	10	WIRE.....	8	97H2R
5	VALVE-SOLENOID.....	1	91B77	11	LUG-TERMINAL.....	2	24A476
6	O-RING.....	1	24A383	12	TRANSDUCER.....	2	88H175

Order by Part Number and Description. Reference Numbers for your convenience only.

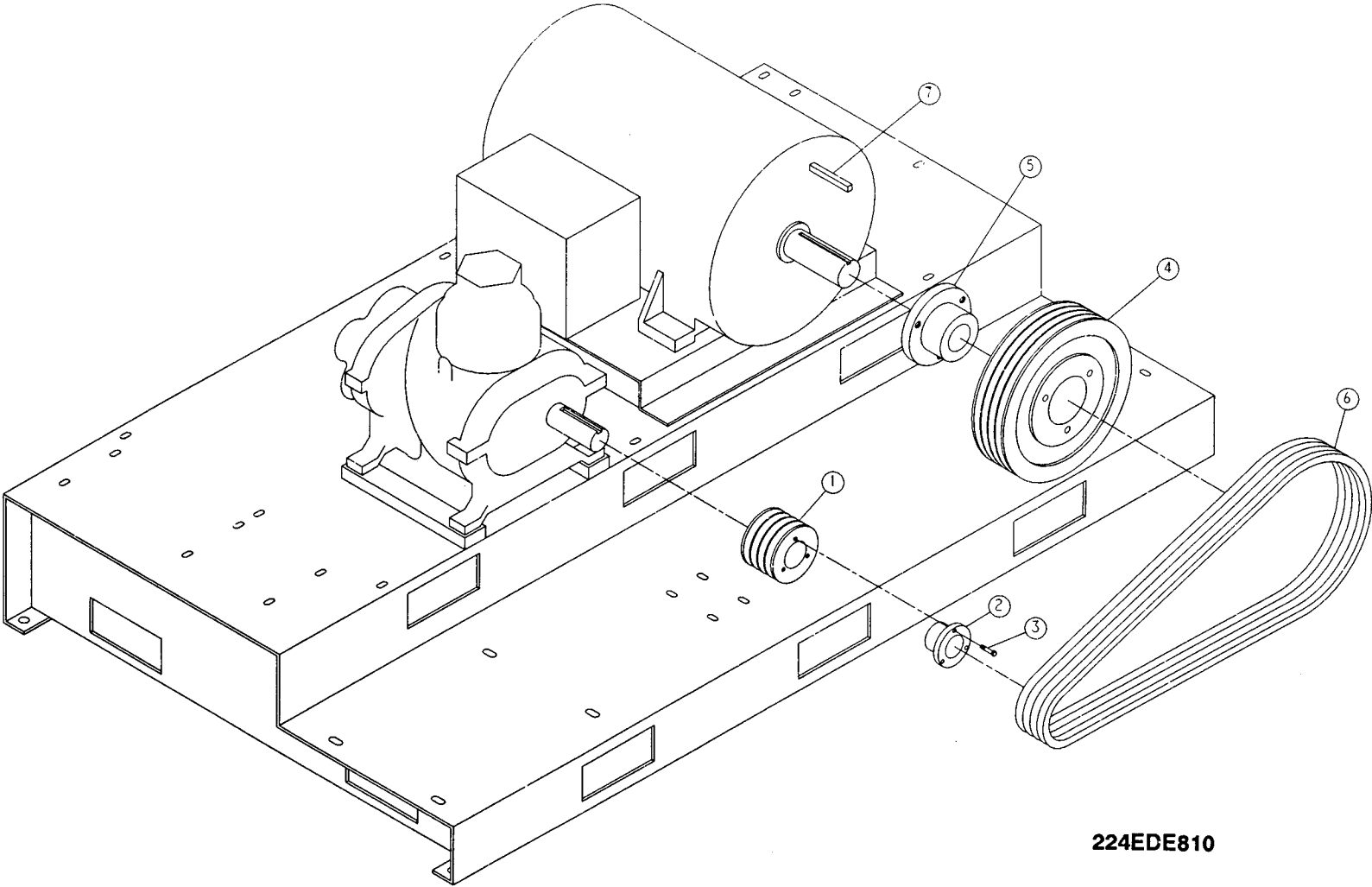


B74480X

Ref. No.	Name of Part	Quantity	Part No.
SUBTRACTIVE PILOT VALVE			
	VALVE-SUBTRACTIVE PILOT, Incl. Ref. No. 1 thru 15		2009398
1	RING-SEAT	1	2008021
2	DISC-SEAT	1	2010080
3	GASKET-DURABLA	1	2008019
4	GASKET-DURABLA	1	2008017
6	DIAPHRAGM.....	5	2008018
7	PLATE-PRESSURE.....	1	2008015
8	STOP-DIAPHRAGM.....	1	2008016
9	WASHER-LOCK.....	1	95B1
10	NUT-PRESSURE PLATE	1	2008888
11	DAMPER	1	2008711
12	SPRING-PRESSURE	1	2008014
13	BUTTON-SPRING.....	1	2008891
14	LOCKNUT	1	50Y2
15	SCREW-PRESSURE.....	1	2008952

NOTE: It is necessary to replace some parts in groups to insure satisfactory repair. When replacing diaphragm, also replace both diaphragm and seat gaskets. When replacing seat disc or seat ring, replace also the mating seat ring or disc and the seat disc gasket.

NOTE: DISCARD SQUARE KEY FURNISHED WITH MOTOR.



224EDE810

NOTE: Detail No. 8 Not Shown (Press Relief Vlv).

Ref. No.	Name of Part	Qty.	Part No. Per Pressure		
			100	125	150
	40 H.P. DRIVE GROUP		EDE81825	EDE81826	EDE81827
1	SHEAVE, COMPRESSOR.....	1	73M45V59	73M45V49	73M45V59
2	HUB-BUSHING.....	1	22F28SD	22F28SD	22F28SD
3	SCREW, HEX HD	3	75A51	75A51	75A51
4	SHEAVE-MOTOR	1	73M45V125	73M45V90	73M45V97
5	HUB-BUSHING.....	1	22F34E	22F34E	22F34E
6	BELT SET.....	1	13AH7504	13AH6704	13AH7104
7	KEY	1	35L52	35L52	35L52
8	VALVE-PRESSURE/RELIEF	1	90AR381	90AR382	90AR146
9	FAN.....	1	200EDE701	200EDE701	200EDE701
10	ADAPTOR, FAN.....	1	200EDE649	200EDE649	200EDE649
11	SCREW-HEX CAP	3	75P6N	75P6N	75P6N
12	SCREW-12 PT.	3	75LM189	75LM189	75LM189

Ref. No.	Name of Part	Qty.	Part No. Per Pressure		
			100	125	150
	50 H.P. DRIVE GROUP		EDE81829	EDE81830	EDE81831
1	SHEAVE, COMPRESSOR.....	1	73M45V49	73M45V49	73M45V59
2	HUB-BUSHING.....	1	22F28SD	22F28SD	22F28SD
3	SCREW, HEX HD	3	75A51	75A51	75A51
4	SHEAVE-MOTOR	1	73M45V125	73M45V113	73M45V118
5	HUB-BUSHING.....	1	22F34E	22F34E	22F34E
6	BELT SET.....	1	13AH7504	13AH7104	13AH7504
7	KEY	1	35L52	35L52	35L52
8	VALVE-PRESSURE/RELIEF	1	90AR381	90AR382	90AR146
9	FAN.....	1	200EDE701	200EDE701	200EDE701
10	ADAPTOR, FAN.....	1	200EDE649	200EDE649	200EDE649
11	SCREW-HEX CAP	3	75P6N	75P6N	75P6N
12	SCREW-12 PT.	3	75LM189	75LM189	75LM189

**MOTOR GROUP
(MAIN DRIVE MOTORS - WYE DELTA)**

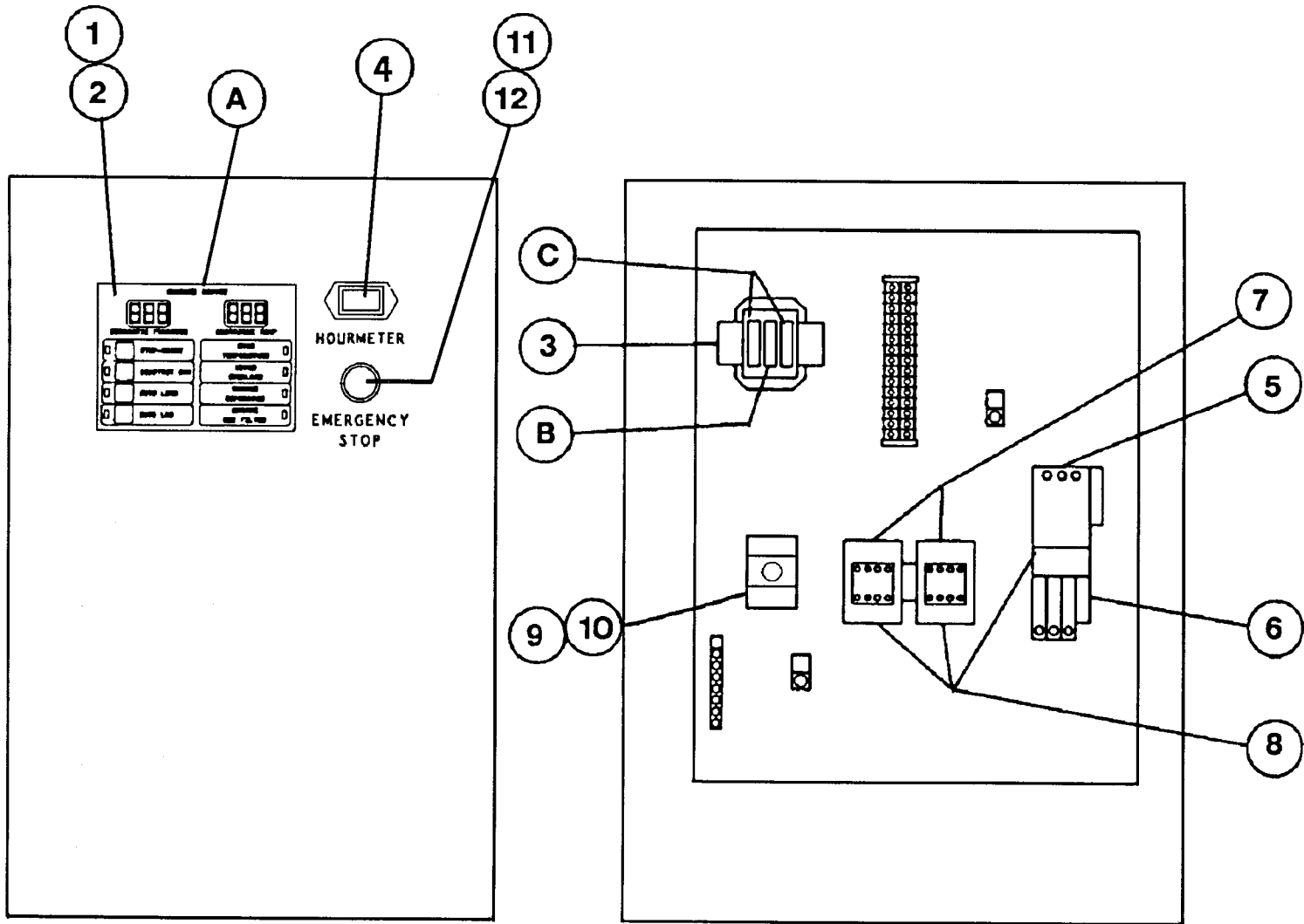
COLUMN CODE	NAME OF PART	40 HP PART NO.	50 HP PART NO.
OPEN DRIP PROOF (60 HZ-ODP)			
13A	MOTOR, 200V	24AW64	24AW65
13B	MOTOR, 230V	24CA3243	24CA3244
13C	MOTOR, 460V	24CA3243	24CA3244
13D	MOTOR, 575V	24AW70	24AW71

OPEN DRIP PROOF (60 HZ-ODP-HIGH EFFICIENCY)			
13E	MOTOR, 200V	24CA2314	24CA2318
13F	MOTOR, 230V	24CA3245	24CA3246
13G	MOTOR, 460V	24CA3245	24CA3246
13H	MOTOR, 575V	24CA2317	24CA2321

TOTALLY ENCLOSED FAN COOLED (60 HZ-TEFC)			
13I	MOTOR, 200V	24CA2400	24CA2407
13J	MOTOR, 230V	24CA3247	24CA3248
13K	MOTOR, 460V	24CA3247	24CA3248
13L	MOTOR, 575V	24CA2403	24CA2410

TOTALLY ENCLOSED FAN COOLED (60 HZ-TEFC-HIGH EFFICIENCY)			
13M	MOTOR, 200V	24CA3049	24CA3050
13N	MOTOR, 230V	24CA3249	24CA3250
13O	MOTOR, 460V	24CA3249	24CA3250
13P	MOTOR, 575V	24CA3055	24CA3056

MOTOR BASES		
HP.	FR. #	PART NO.
40	324T	24AZ25
50	326T	24AZ26



FRONT VIEW - (DOOR)

**CONTROLLER ASSEMBLY - FULL VOLTAGE STARTERS (STANDARD)
- 40 H.P. UNITS -**

	QTY.	200V	230V	460V	575V
* ASSEMBLED PANEL: NEMA 12	1	200EDE466	204EDE466	210EDE466	212EDE466
* ASSEMBLED PANEL: NEMA 4	1	202EDE466	205EDE466	211EDE466	213EDE466
A FUSE, CONTROL BOARD.....	2	24CA2932	24CA2932	24CA2932	24CA2932
B FUSE, TRANSFORMER SECONDARY	1	24CA3324	24CA3324	24CA3324	24CA3324
C FUSE, TRANSFORMER PRIMARY.....	2	24CA617	24CA617	24CA276	24CA2621
1 KEYPAD	1	200EJB375	200EJB375	200EJB375	200EJB375
2 ELECTRONIC CONTROLLER ASSEMBLY.....	1	202EJB1173	202EJB1173	202EJB1173	202EJB1173
3 CONTROL TRANSFORMER, 105VA.....	1	2116618	2116617	2116617	2116619
4 HOURMETER (60 HZ)	1	24CA2895	24CA2895	24CA2895	24CA2895
5 STARTER, MAIN MOTOR.....	1	24CA3322	24CA3320	24CA3318	24CA3352
6 HEATER, MAIN MOTOR OVERLOAD.....	3	24CA2928	24CA2894	24CA2608	24CA2606
8 REPLACEMENT COIL FOR ITEM 5	(1)	2116622	2116624	2116627	2116630
9 CONTROL RELAY.....	1	24CA3315	24CA3315	24CA3315	24CA3315
11 OPERATOR, 22mm PUSH-PULL E-STOP	1	24CA2907	24CA2907	24CA2907	24CA2907
12 CONTACT BLOCK SPNC.....	1	24CA2908	24CA2908	24CA2908	24CA2908

**CONTROLLER ASSEMBLY - FULL VOLTAGE STARTERS (STANDARD)
- 50 H.P. UNITS -**

	QTY.	200V	230V	460V	575V
* ASSEMBLED PANEL: NEMA 12	1	201EDE466	204EDE466	210EDE466	212EDE466
* ASSEMBLED PANEL: NEMA 4	1	203EDE466	205EDE466	211EDE466	213EDE466
A FUSE, CONTROL BOARD	2	24CA2932	24CA2932	24CA2932	24CA2932
B FUSE, TRANSFORMER SECONDARY	1	24CA3324	24CA3324	24CA3324	24CA3324
C FUSE, TRANSFORMER PRIMARY	2	24CA617	24CA617	24CA276	24CA2621
1 KEYPAD	1	200EJB375	200EJB375	200EJB375	200EJB375
2 ELECTRONIC CONTROLLER ASSEMBLY	1	202EJB1173	202EJB1173	202EJB1173	202EJB1173
3 CONTROL TRANSFORMER, 105VA	1	2116618	2116617	2116617	2116619
4 HOURMETER (60 HZ)	1	24CA2895	24CA2895	24CA2895	24CA2895
5 STARTER, MAIN MOTOR	1	**	24CA3320	24CA3318	24CA3352
6 HEATER, MAIN MOTOR OVERLOAD	3	24CA 2483	24CA2928	24CA2893	24CA2927
8 REPLACEMENT COIL FOR ITEM 5	(1)	**	2 116624	2116627	2116630
9 CONTROL RELAY	1	24CA3315	24CA3315	24CA3315	24CA3315
11 OPERATOR, 22mm PUSH-PULL E-STOP	1	24CA2907	24CA2907	24CA2907	24CA2907
12 CONTACT BLOCK E22B1 SPNC	1	24CA2908	24CA2908	24CA2908	24CA2908

** See Engineering for Part Number.

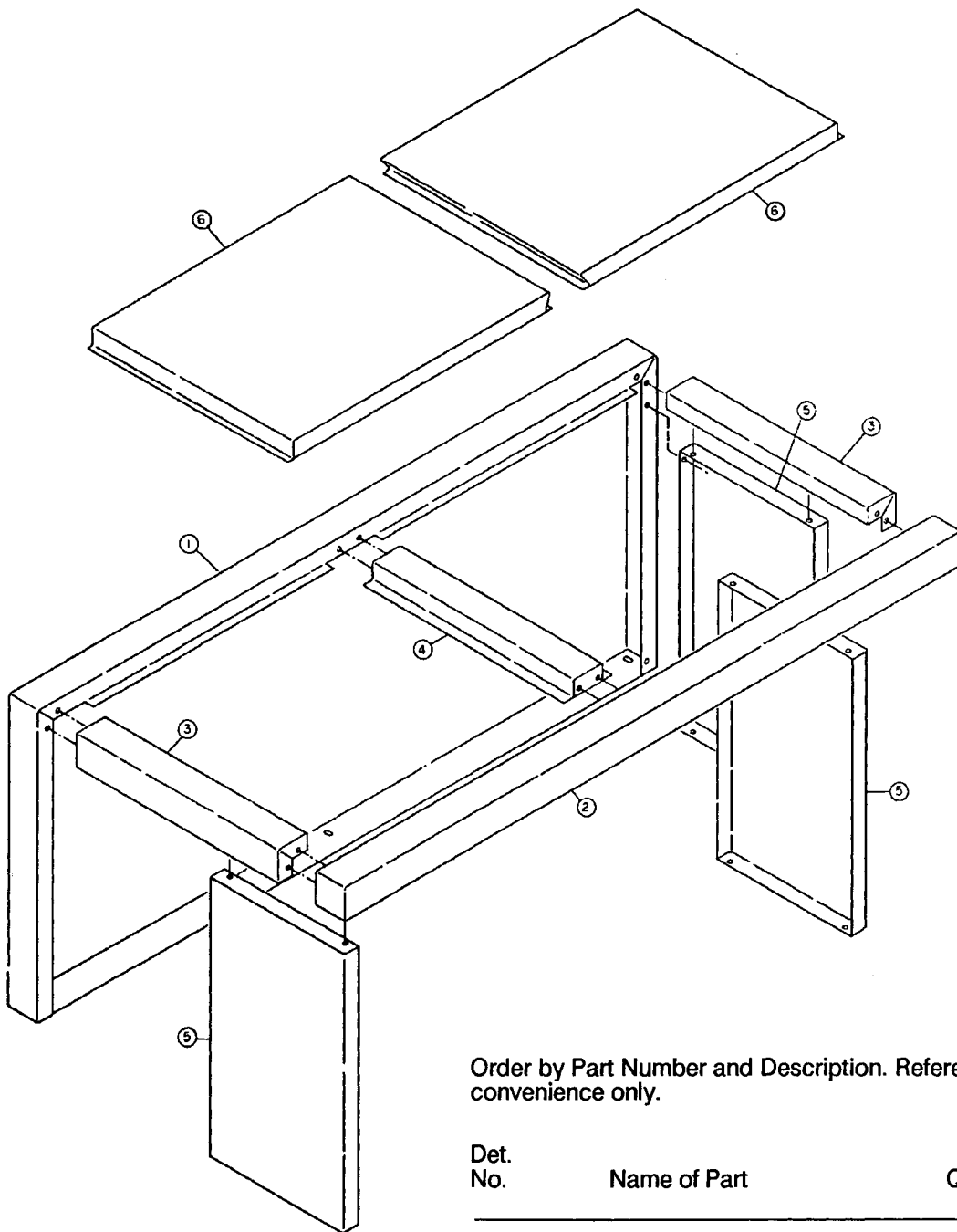
CONTROLLER ASSEMBLY - WYE-DELTA STARTERS (OPTIONAL)
- 40 H.P. UNITS -

	QTY.	200V	230V	460V	575V
* ASSEMBLED PANEL: NEMA 12.....	1	214EDE466	218EDE466	224EDE466	228EDE466
* ASSEMBLED PANEL: NEMA 4.....	1	216EDE466	220EDE466	226EDE466	229EDE466
A FUSE, CONTROL BOARD	2	24CA2932	24CA2932	24CA2932	24CA2932
B FUSE, TRANSFORMER SECONDARY	1	24CA3324	24CA3324	24CA3324	24CA3324
C FUSE, TRANSFORMER PRIMARY	2	24CA617	24CA617	24CA276	24CA2621
1 KEYPAD.....	1	200EJB375	200EJB375	200EJB375	200EJB375
2 ELECTRONIC CONTROLLER ASSEMBLY	1	202EJB1173	202EJB1173	202EJB1173	202EJB1173
3 CONTROL TRANSFORMER, 105VA	1	2116618	2116617	2116617	2116619
4 HOURMETER (60 HZ).....	1	24CA2895	24CA2895	24CA2895	24CA2895
5 STARTER, MAIN MOTOR	1	24CA3320	24CA3319	24CA3317	24CA3316
6 HEATER, MAIN MOTOR OVERLOAD	3	24CA2608	24CA2608	24CA2604	24CA2604
7 CONTACTOR, MAIN MOTOR-WYE DELTA	2	24CA3330	24CA3328	24CA3326	24CA3325
8 REPLACEMENT COIL FOR ITEMS 5 & 7.....	(3)	2116621	2116623	2116626	2116628
9 CONTROL RELAY	1	24CA3315	24CA3315	24CA3315	24CA3315
10 TIMER MODULE.....	1	24CA3314	24CA3314	24CA3314	24CA3314
11 OPERATOR, 22mm PUSH-PULL E-STOP	1	24CA2907	24CA2907	24CA2907	24CA2907
12 CONTACT BLOCK E22B1 SPNC.....	1	24CA2908	24CA2908	24CA2908	24CA2908

CONTROLLER ASSEMBLY - WYE-DELTA STARTERS (OPTIONAL)
- 50 H.P. UNITS -

	QTY.	200V	230V	460V	575V
* ASSEMBLED PANEL: NEMA 12.....	1	215EDE466	219EDE466	225EDE466	228EDE466
* ASSEMBLED PANEL: NEMA 4.....	1	217EDE466	221EDE466	227EDE466	229EDE466
A FUSE, CONTROL BOARD.....	2	24CA2932	24CA2932	24CA2932	24CA2932
B FUSE, TRANSFORMER SECONDARY.....	1	24CA3324	24CA3324	24CA3324	24CA3324
C FUSE, TRANSFORMER PRIMARY.....	2	24CA617	24CA617	24CA276	24CA2621
1 KEYPAD.....	1	200EJB375	200EJB375	200EJB375	200EJB375
2 ELECTRONIC CONTROLLER ASSEMBLY.....	1	202EJB1173	202EJB1173	202EJB1173	202EJB1173
3 CONTROL TRANSFORMER, 105VA.....	1	2116618	2116617	2116617	2116619
4 HOURMETER (60 HZ).....	1	24CA2895	24CA2895	24CA2895	24CA2895
5 STARTER, MAIN MOTOR.....	1	24CA3322	24CA3320	24CA3318	24CA3316
6 HEATER, MAIN MOTOR OVERLOAD.....	3	24CA2894	24CA2893	24CA2606	24CA2604
7 CONTACTOR, MAIN MOTOR-WYE DELTA.....	2	24CA3331	24CA3329	24CA3327	24CA3325
8 REPLACEMENT COIL FOR ITEMS 5 & 7.....	(3)	2116622	2116624	2116627	2116628
9 CONTROL RELAY.....	1	24CA3315	24CA3315	24CA3315	24CA3315
10 TIMER MODULE.....	1	24CA3314	24CA3314	24CA3314	24CA3314
11 OPERATOR, 22mm PUSH-PULL E-STOP.....	1	24CA2907	24CA2907	24CA2907	24CA2907
12 CONTACT BLOCK E22B1 SPNC.....	1	24CA2908	24CA2908	24CA2908	24CA2908

ENCLOSURE GROUP

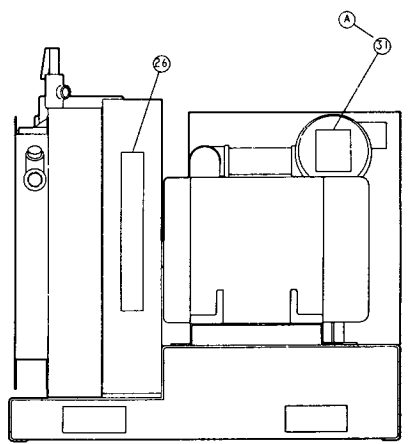
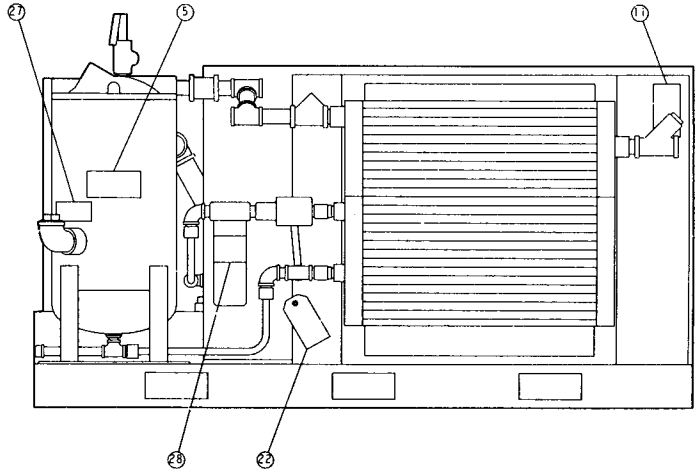
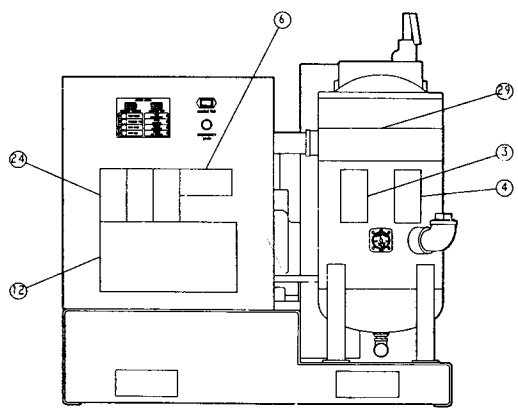
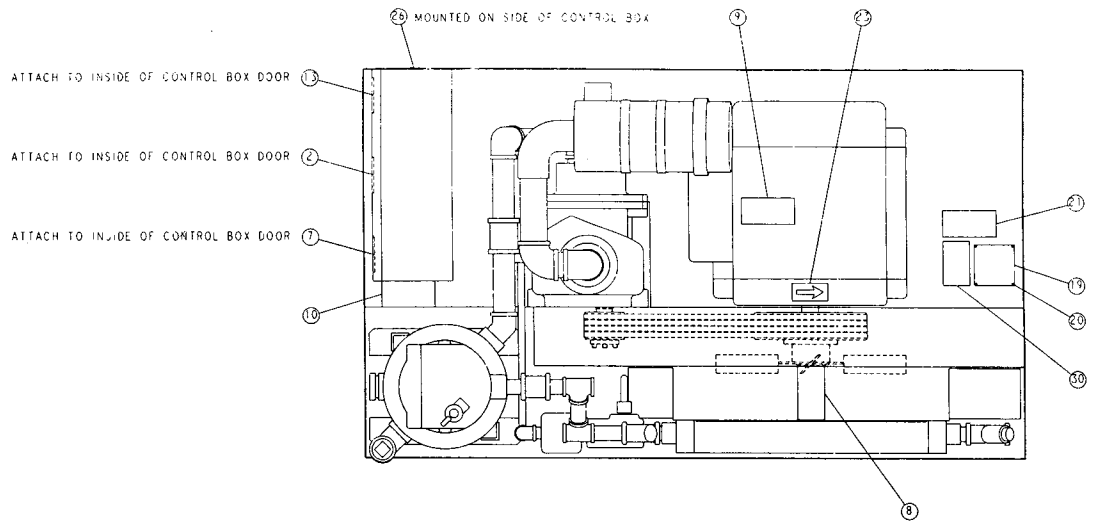


208EDE810

Order by Part Number and Description. Reference Numbers for your convenience only.

Det. No.	Name of Part	Qty.	Part No.
1	FRAME.....	1	200EDE314
2	FRAME.....	1	201EDE314
3	FRAME.....	2	202EDE314
4	BRACE.....	1	200EDE326
5	PANEL.....	3	201EDE216
6	PANEL.....	2	200EDE216
+	SCREW-FLANGED.....	33	75LM51
+	NUT-FLANGED.....	33	50AW5

+ NOT SHOWN ON ILLUSTRATION.DECAL GROUP



NOTE DETAILS NO. 1, 14, 15, 16, 17, 18, AND 25 NOT SHOWN.

DECAL GROUP

Det. No.	Name of Part	Qty.	Part No.
1			
2	DECAL.....	2	222EAQ077
3	DECAL.....	1	212EAQ077
4	DECAL.....	1	228EAQ077
5	DECAL.....	1	217EAQ077
6	DECAL.....	1	218EAQ077
7	DECAL.....	1	216EAQ077
8	DECAL.....	1	211EAQ077
9	DECAL.....	1	208EAQ077
10	DECAL.....	1	207EAQ077
11	DECAL.....	1	206EAQ077
12	DECAL.....	1	201EJB077
13	DECAL.....	1	204EDE077
14	DECAL.....	1	279AUX077
15	DECAL.....	2	203AUX077
16	DECAL.....	1	236AUX077
17	DECAL.....	1	237AUX077
18	DECAL.....	1	238AUX077
19	PLATE-NAME.....	1	208EAQ496
20	RIVET.....	4	70E13
21	DECAL.....	1	221EAQ077
22	TAG-INSPECTION.....	1	201EAQ304
23	DECAL.....	1	204EBE077
24	DECAL.....	2	227EAQ077
26	DECAL.....	2	69F62
27	DECAL.....	1	203ESF077
28	DECAL.....	1	212ECM077
29	DECAL.....	1	206EDE077
30	DECAL.....	1	210EBE077
31	DECAL.....	1	69F14

REPAIR KITS

Name of Part	Quantity	Part No.
ROUTINE MAINTENANCE KIT (3000 Hrs.), Heavy Duty Air Filter.....		EDE80757
ELEMENT, Air Filter	2	2010228
ELEMENT, Oil Filter	3	2116110
PERIODIC MAINTENANCE KIT (9000 Hrs.)		EDE80492
O-RING, Inlet Housing & Seat.....	2	25AH34
PACKING-RING, Block Vee.....	2	60AM46
O-RING.....	1	25AH35
RING-RETAINING	1	74D50
PERIODIC OVERHAUL KIT (18000 Hrs.)		EDE80670
BEARING-ROLLER	1	12BA130
BEARING-ROLLER	1	12BA127
BEARING-ROLLER	1	12BA129
BEARING-ROLLER	1	12BA128
SHIM.....	1	77H54
SHIM.....	1	77C58
SLEEVE-WEAR.....	1	80M12
SEAL-OIL.....	1	60DD570
SEAL-OIL.....	1	60DD543
SPRING-WAVE.....	2	78W47
O-RING.....	1	8500958
O-RING.....	1	25BC164
O-RING.....	1	25BC211
O-RING.....	1	54C211
GASKET-ELIMINATOR	1	25BC222
RING-RETAINING	1	74D48
RING-RETAINING	1	74D22
RING-RETAINING	1	74D38
RING-RETAINING	1	74D47
OIL SEPARATOR KIT (18000 Hrs.).....		EDE80560
SEPARATOR	1	55B34
TUBE (1/4 O.D.)	1.333 Ft.	85K3
ELBOW-TUBE	1	86E95
CONNECTOR-TUBE.....	1	86N15
ELECTRICAL CONTROL KIT (18000 Hrs.).....		200EDE6013
THERMISTOR PROBE.....	2	21D231
VALVE-SOLENOID.....	1	91B77
SWITCH-VACUUM.....	1	88H154
TRANSDUCER 0-200#	2	88H175
TRANSDUCER	2	88H178
VALVE-CHECK.....	2	90AR261
VALVE-SUBTRACTIVE PILOT	1	2009398
VALVE.....	1	90AR107
KIT-TOUCH UP PAINT.....		200EDE6003
PAINT (1 Qt. Can - Machine).....	1	28H62
PAINT (1 Qt. Can - Enclosure)	1	28H63



INDUSTRIAL MACHINERY

1800 GARDNER EXPRESSWAY • QUINCY, ILLINOIS 62305-4024 • (217) 222-5400