



GARDNER-DENVER®

13-8-502
2nd Edition

1-26-90

**ELECTRA-SCREW®
STATIONARY
BASE-MOUNTED
COMPRESSOR**

MODELS

40 HP - EDEQH *AB*

50 HP - EDEQJ *AB*

Parts List



INDUSTRIAL MACHINERY

TABLE OF CONTENTS

GROUP NAME	PAGE NUMBER
Ordering Instructions.....	2
Model Designations Matrix/Menu.....	3
Bare Compressor.....	4, 5
Inlet Valve & Mounting Group.....	6
Base & Mounting Group.....	7
Air Filter, Standard.....	8
Air Filter, Heavy Duty.....	8A
Minimum Pressure Valve.....	9
Oil Reservoir Group.....	10
Oil Reservoir Cover, Gauges, Air Control Valve, Temperature Switch & Safety Valve.....	11
Air Discharge Piping.....	12
Oil Piping - Reservoir to Compressor.....	13
Oil Filter.....	14
Thermal Valve (Thermostatic Mixing).....	15
Air-Cooled Oil Cooler, Bracket, Fan Orifice & Coupling Guard.....	16
Drive Components: Belts, Motor, Sheave, Fan & Base.....	17
Control Tubing.....	18, 19
Subtractive Pilot.....	20
Main Motor & Mounting Groups.....	21
Control/Starter Box.....	22
Enclosure Group.....	23
Control Panel Group.....	24, 25
Identification & Instruction Group.....	26
Repair Components, Spare Parts & Paint Kits.....	27, 28

INSTRUCTIONS FOR ORDERING REPAIR PARTS

When ordering parts, specify Compressor **MODEL**, Method of Cooling, **HORSEPOWER** and **SERIAL NUMBER** (see nameplate on unit). Serial Number is also stamped on top of the cylinder flange to the right of the inlet housing.

All orders for parts should be placed with the nearest Sales and Service Office.

Where NOT specified, quantity of parts required per compressor or unit is one (1); where more than one is required per unit, quantity is indicated in parenthesis. **SPECIFY EXACTLY THE NUMBER OF PARTS REQUIRED.**

DO NOT ORDER BY SETS OR GROUPS.

To determine the Right Hand and Left Hand side of compressor, stand at the motor end and look toward the compressor. Right Hand and Left Hand are indicated in parenthesis following part name, i.e. (RH) and (LH).

PARTS RETURNED

All claims must be made within five days after receipt of goods. If order has been filled correctly, we cannot allow the return of the goods without our consent and then only on a basis of a charge for service and rehandling plus transportation charges.

Transportation charges must be prepaid. If it is necessary to return a part to the factory for duplication or inspection, do not fail to do the following:

1. Write the nearest Sales and Service Office a letter advising what material you wish to return and why.
2. After receiving permission to return the item or items, obtain from the Sales and Service Office the correct forms filled out by that office for the proper return of material.
3. Place a tag in the package showing your name and address.
4. Tag each article in the box or package stating what and how many are returned.
5. Always give the serial number of the machine from which the parts were removed or the invoice number on which the parts were originally shipped.

All parts returned for credit should be handled in the same manner as that for duplication or inspection.

**MODEL EDE
40 & 50 HP AIR-COOLED BASE-MOUNTED
ELECTRA-SCREW® COMPRESSOR
MATRIX/MENU**

NOTICE TO CUSTOMER - To find the construction options for your compressor unit, FILL IN THE BALANCE OF LETTERS OR NUMBERS FROM YOUR UNIT NAMEPLATE. - - - - -

E	D	E	Q						
1	2	3	4	5	6	7	8	9	10

COLUMN NUMBER:

FOLLOW THE LINE DOWN AND OVER FROM EACH SPACE THUS FILLED IN TO FIND THE APPROPRIATE CONSTRUCTION OPTION WITH WHICH YOUR MACHINE IS EQUIPPED. THE NUMBER "9" IN ANY COLUMN SPACE INDICATES "NOT APPLICABLE". THE NUMBER "8" IN ANY COLUMN SPACE INDICATES SPECIAL DESIGN - REFER TO FACTORY ORDER TICKET.

COLUMNS 1, 2 & 3 - COMPRESSOR TYPE & SIZE

COLUMN 4 - TYPE OF CONSTRUCTION
Q. Air Cooled Base Mounted

COLUMN 5 - HORSEPOWER
H. 40 HP
J. 50 HP

COLUMN 6 - ENGINEERING SPECIFICATION

COLUMN 7 - PRESSURE & HZ
A. 100 PSIG - 60 HZ
B. 125 PSIG - 60 HZ
C. 150 PSIG - 60 HZ

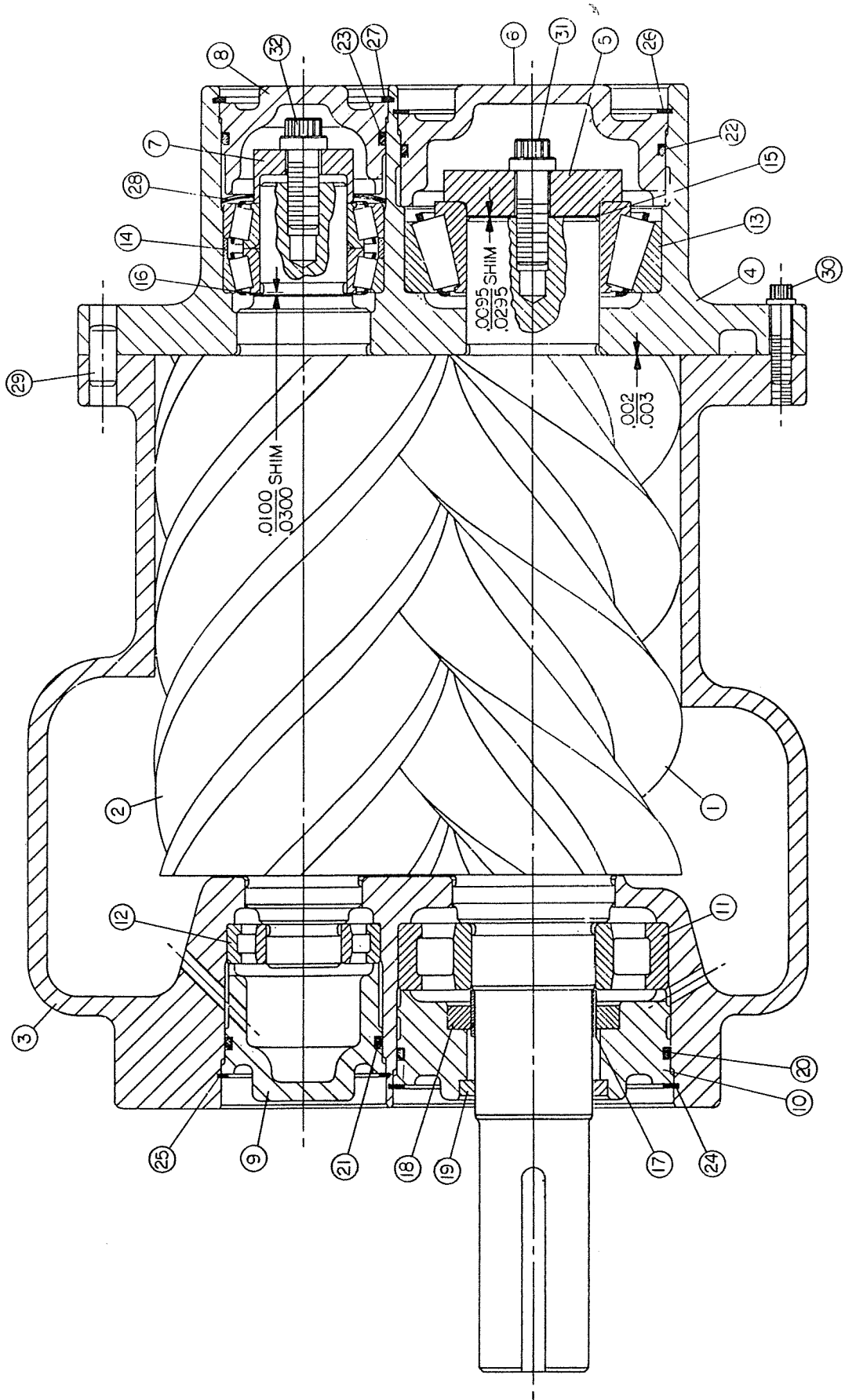
COLUMN 8 - MAIN MOTOR STARTER
B. 40 HP - 230 V
C. 40 HP - 460 V
D. 40 HP - 575 V
F. 50 HP - 230 V
G. 50 HP - 460 V
H. 50 HP - 575 V
I. Less Control Starter

NOTE: 200 V applications not coded - see Engineering for Part/BOM Numbers.

COLUMN 9 - ENCLOSURE & AIR FILTER GROUP
A. W/Enclosure - Standard Filter
B. W/Enclosure - HD Filter
C. W/O Enclosure - Standard Filter
D. W/O Enclosure - HD Filter

COLUMN 10 - COMPRESSOR DRIVE MOTOR
A. 230 V - 60 HZ - ODP
C. 460 V - 60 HZ - ODP
D. 575 V - 60 HZ - ODP
K. 230 V - 60 HZ - TEFC
L. 460 V - 60 HZ - TEFC
M. 575 V - 60 HZ - TEFC

BARE COMPRESSOR



Order by Part Number and Description. Reference Numbers for your convenience only.

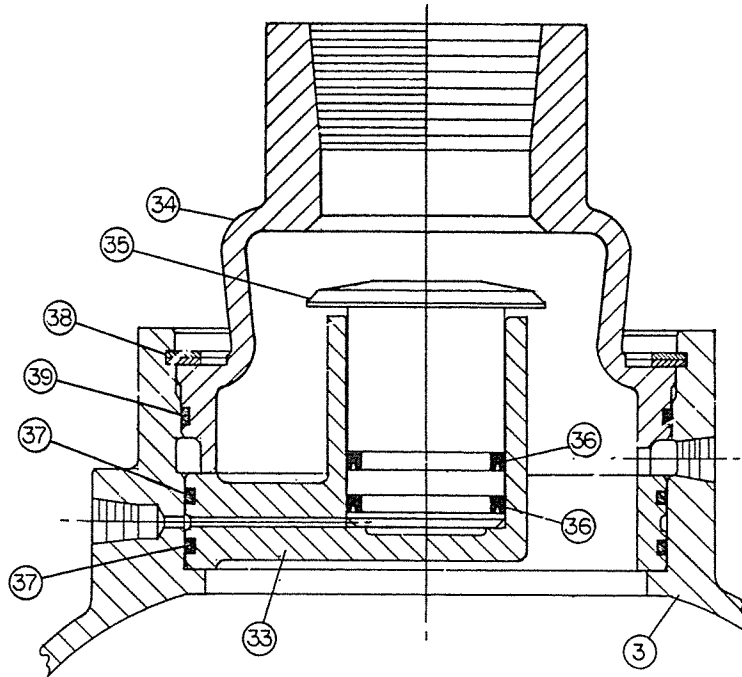
Ref. No.	Name of Part	Quantity	Part No.
BARE COMPRESSOR			
<i>SSEBBE y</i>			
1	ROTOR, Main.....	1	204SSE010
2	ROTOR, Gate.....	1	205SSE010
3	CYLINDER.....	1	204SSE002
4	HOUSING-BEARING, Discharge.....	1	204SSE006
5	PLATE-BEARING RETAINER, Main Rotor Discharge.....	1	200SSE253
6	COVER, Main Rotor Discharge.....	1	208SSE225
7	PLATE-BEARING RETAINER, Gate Rotor Discharge.....	1	201SSE253
8	COVER, Gate Rotor Discharge.....	1	207SSE225
9	COVER, Gate Rotor Inlet.....	1	206SSE225
10	HOUSING-SEAL, Main Rotor Inlet.....	1	200SSE362
11	BEARING-ROLLER, Main Rotor Inlet.....	1	12BA130
12	BEARING-ROLLER, Gate Rotor Inlet.....	1	12BA129
13	BEARING-ROLLER, Main Rotor Discharge.....	1	12BA127
14	BEARING-ROLLER, Gate Rotor Discharge.....	1	12BA128
15	SHIM, Main Rotor Discharge.....	1	77H54
16	SHIM, Gate Rotor Discharge.....	1	77C58
17	SLEEVE-WEAR, Main Rotor Inlet.....	1	80M12
18	SEAL, Main Rotor Inlet.....	1	60DD544
19	SEAL, Main Rotor Inlet.....	1	60DD543
20	O-RING, Main Rotor Inlet.....	1	25AH21
21	O-RING, Gate Rotor Inlet.....	1	25AH6
22	O-RING, Main Rotor Discharge.....	1	25AH20
23	O-RING, Gate Rotor Discharge.....	1	25AH7
24	RING-RETAINING, Main Rotor Inlet.....	1	74D48
25	RING-RETAINING, Gate Rotor Inlet.....	1	74D22
26	RING-RETAINING, Main Rotor Discharge.....	1	74D38
27	RING-RETAINING, Gate Rotor Discharge.....	1	74D47
28	SPRING, Gate Rotor Discharge.....	2	78W47
29	PIN-DOWEL, Discharge Bearing Housing to Cylinder..	2	62M83
30	SCREW-12 PT CAP, Discharge Bearing Housing to Cylinder.....	16	75LM116
31	SCREW-12 PT CAP, Main Rotor Discharge.....	1	2009630N
32	SCREW-12 PT CAP, Gate Rotor Discharge.....	1	75LM123N
33	HOUSING-INLET, Inlet Valve.....	1	202SSE041
34	SEAT, Inlet Valve.....	1	200SSE256
35	PISTON-INLET VALVE.....	1	201SSE043
36	PACKING-RING, Inlet Valve Piston.....	2	60AM46
37	O-RING, Inlet Valve.....	2	25AH34
38	RING-RETAINING, Inlet Valve.....	1	74D50
39	O-RING, Inlet Valve Seat.....	1	25AH35
+	FOOT, Compressor.....	2	200SSE166
+	SCREW-12 PT CAP, Foot to Cylinder.....	4	75LM123
+	PLUG-SOHD, Main/Gate Rotor Bearing Oil Line.....	2	64EB153
+	PLUG-SOHD, Cylinder-Gate Rotor Side.....	1	64AC1
+	PLUG-SOHD, Cylinder Side.....	2	64AC2
+	GASKET-ELIM, Discharge Bearing Housing to Cylinder	1	25BC256

679

+ Not shown on illustration.

300 55F6013

INLET VALVE & MOUNTING GROUP

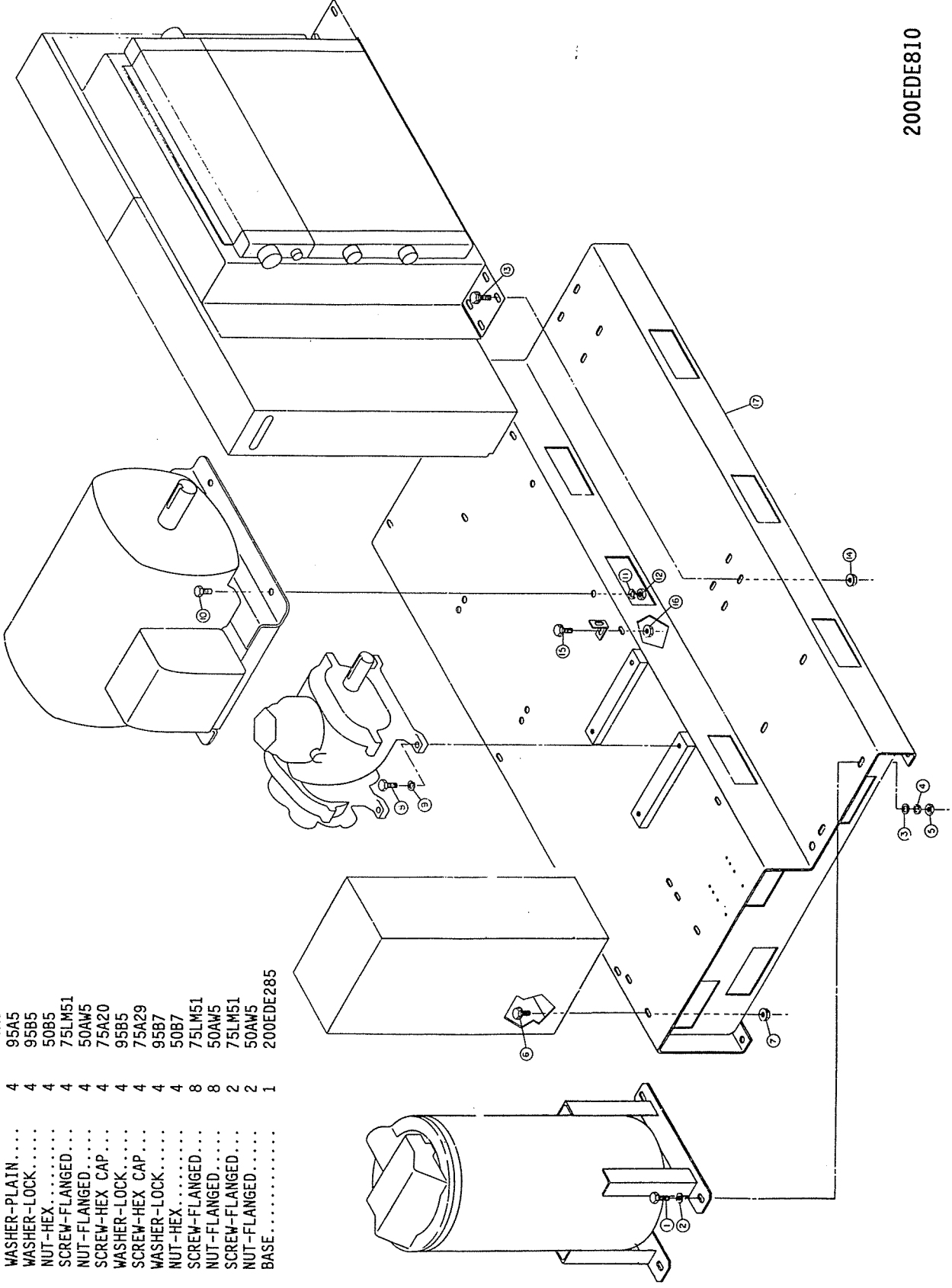


202SSE799

See page 5 for part numbers.

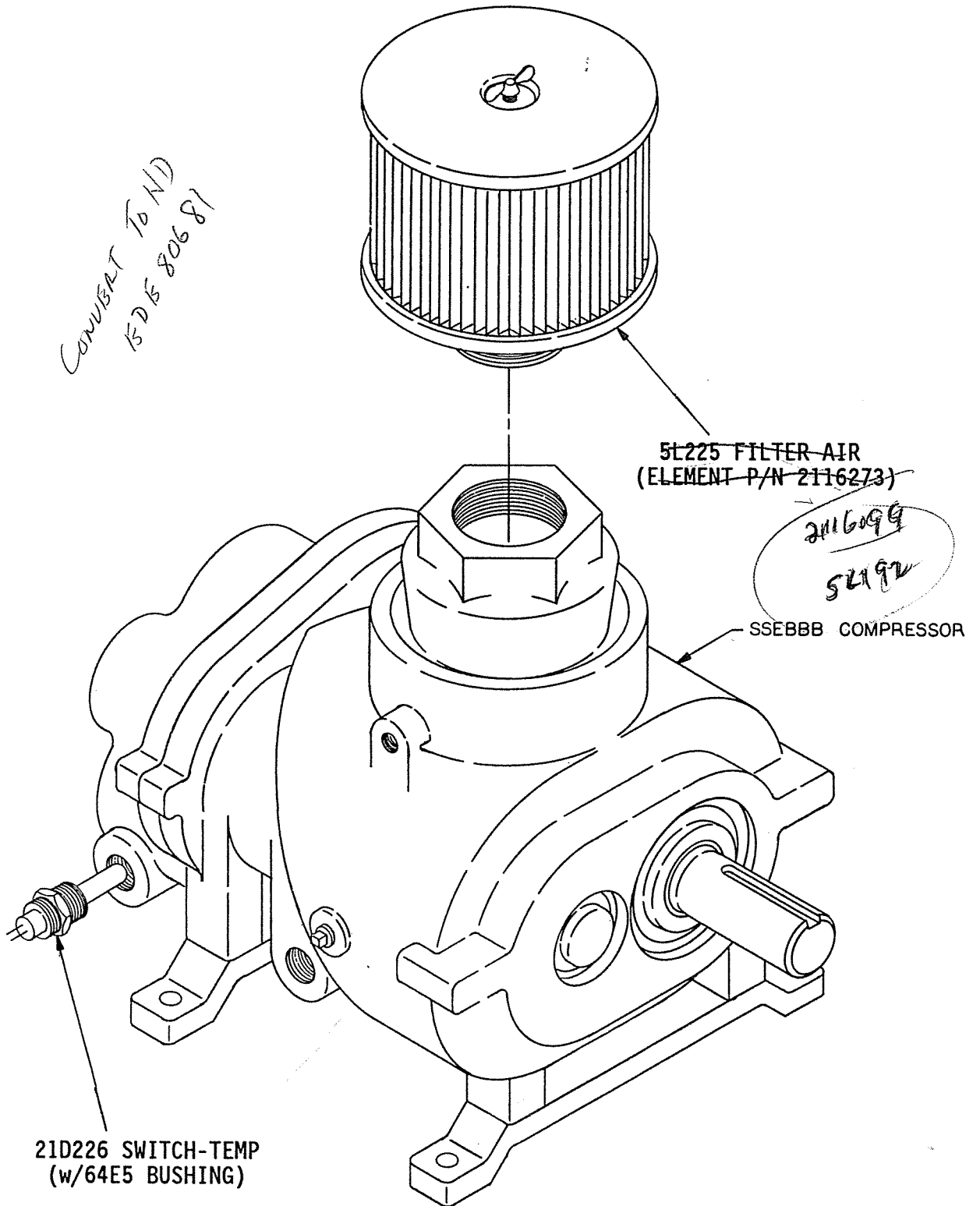
BASE & MOUNTING GROUP

Ref. No.	Name of Part	Qty.	Part No.
1	SCREW-HEX CAP	4	75A20
2	WASHER-PLAIN	4	95A5
3	WASHER-PLAIN	4	95A5
4	WASHER-LOCK	4	95B5
5	NUT-HEX	4	50B5
6	SCREW-FLANGED	4	75LM51
7	NUT-FLANGED	4	50AW5
8	SCREW-HEX CAP	4	75A20
9	WASHER-LOCK	4	95B5
10	SCREW-HEX CAP	4	75A29
11	WASHER-LOCK	4	95B7
12	NUT-HEX	4	50B7
13	SCREW-FLANGED	8	75LM51
14	NUT-FLANGED	8	50AW5
15	SCREW-FLANGED	2	75LM51
16	NUT-FLANGED	2	50AW5
17	BASE	1	200EDE285



200EDE810

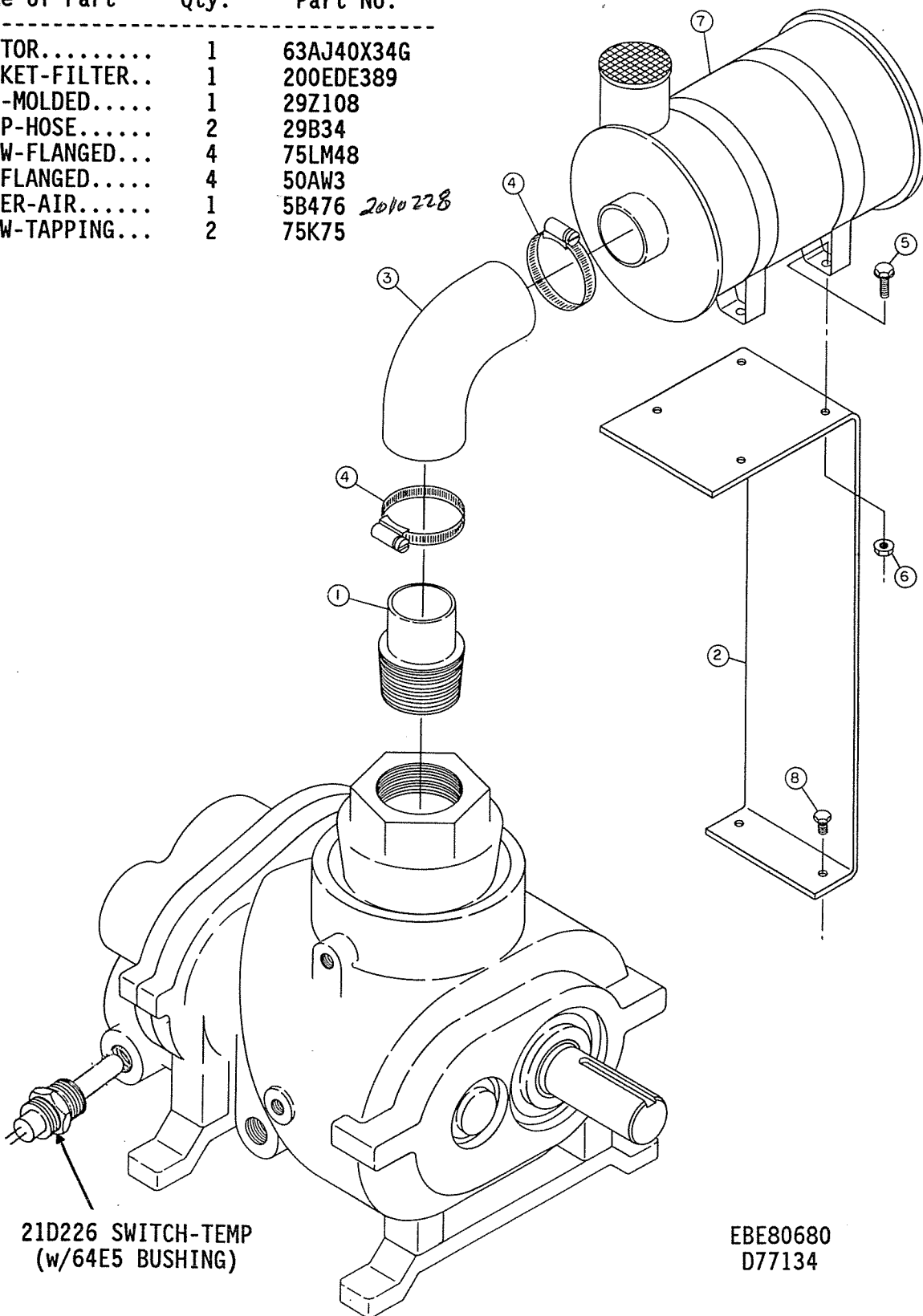
STANDARD AIR FILTER & TEMP SWITCH



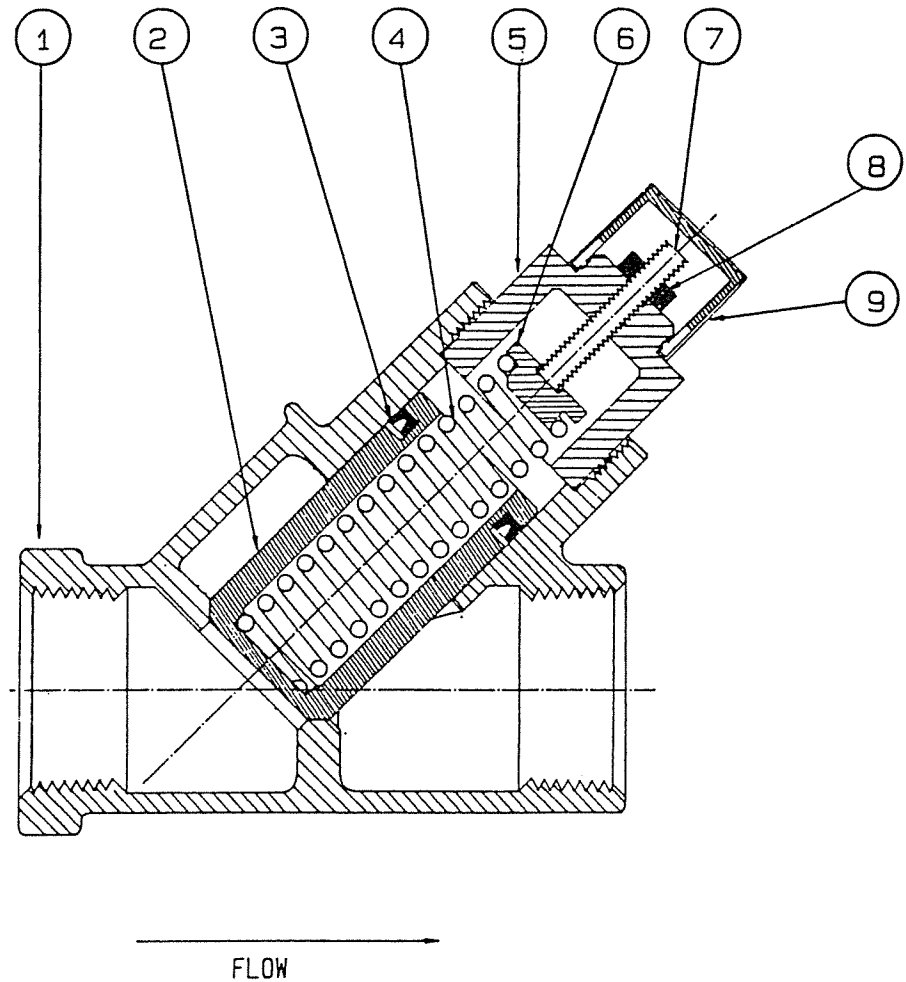
209EDE810

HEAVY DUTY AIR FILTER & TEMP SWITCH

Ref. No.	Name of Part	Qty.	Part No.
1	ADAPTOR.....	1	63AJ40X34G
2	BRACKET-FILTER..	1	200EDE389
3	HOSE-MOLDED.....	1	29Z108
4	CLAMP-HOSE.....	2	29B34
5	SCREW-FLANGED...	4	75LM48
6	NUT-FLANGED.....	4	50AW3
7	FILTER-AIR.....	1	5B476 <i>2010 228</i>
8	SCREW-TAPPING...	2	75K75



Order by Part Number and Description. Reference Numbers for your convenience only.



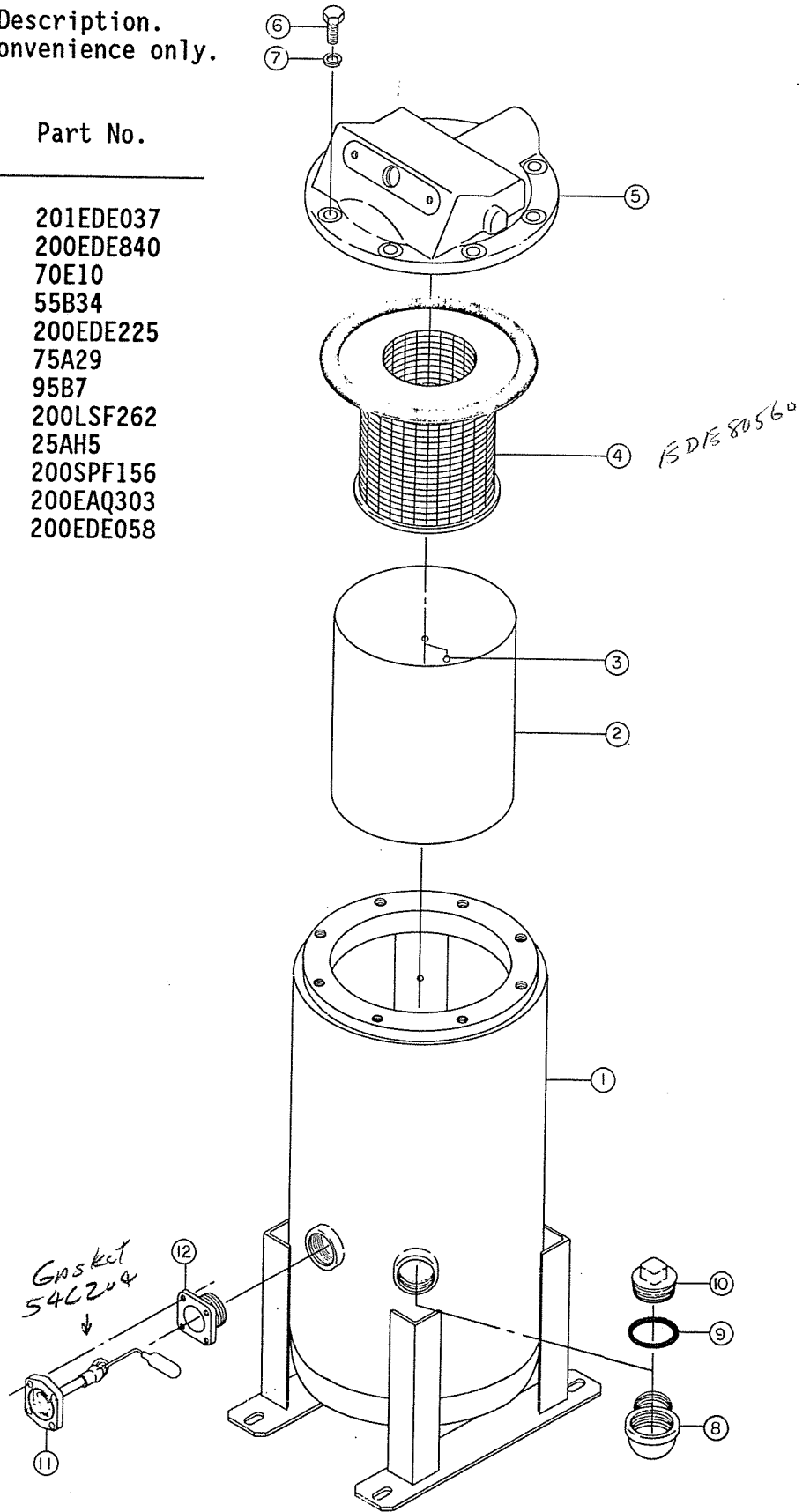
MINIMUM PRESSURE VALVE 200ECH527

DET. NO.	QTY.	DESCRIPTION	G-D VENDOR REPAIR NO.
1	1	VALVE HOUSING	-----
2	1	VALVE	2116230
3	1	U-CUP 1" ID x 3/16 CS-NEOPRENE	2116231
4	1	SPRING	2116232
5	1	END CLOSURE	-----
6	1	SPRING REST	-----
7	1	1/4-20NC-2A x 1-1/4 SCREW	-----
8	1	NUT 1/4-20NC	-----
9	1	KNOB	-----

OIL RESERVOIR GROUP

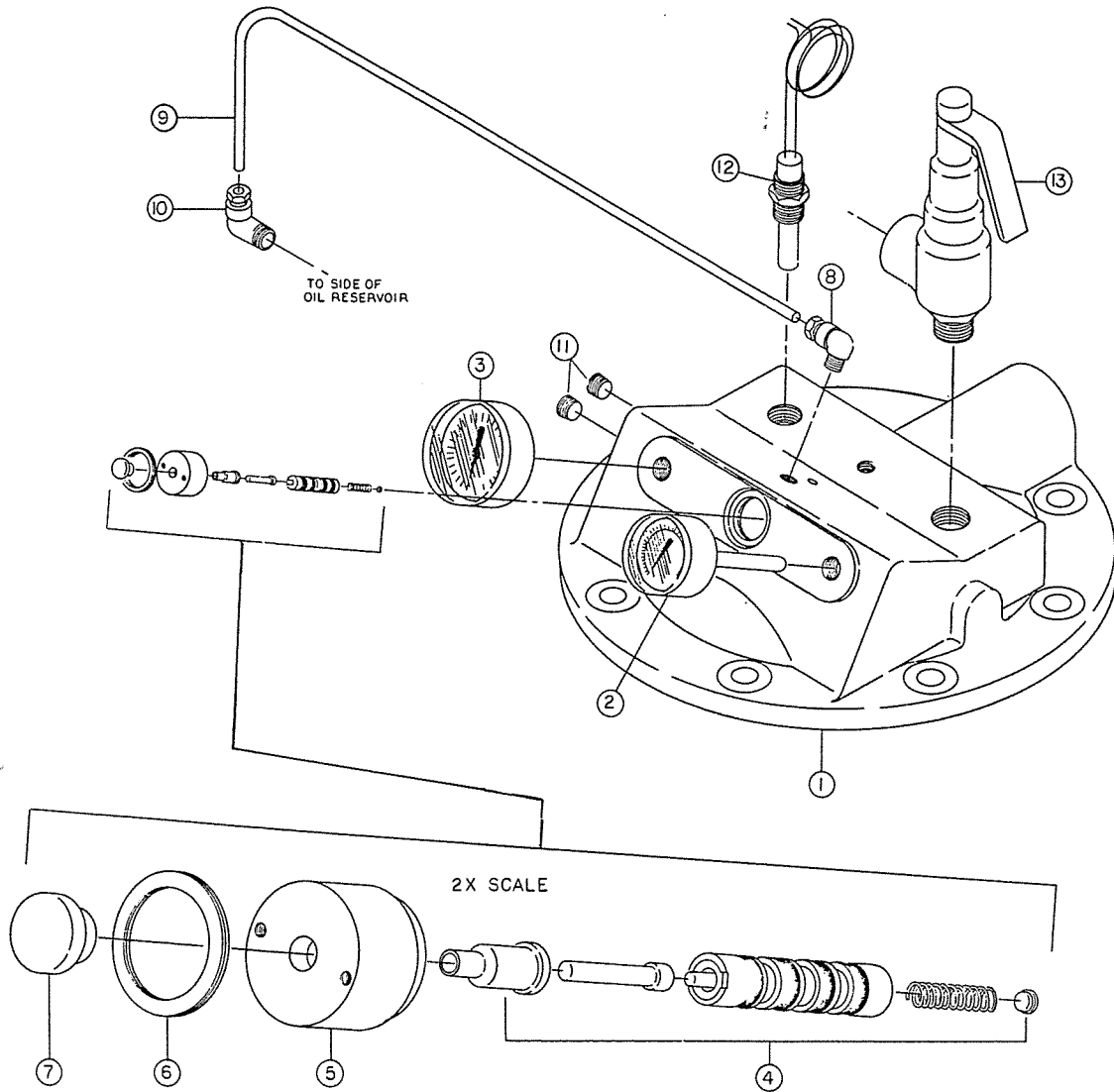
Order by Part Number and Description.
Reference Numbers for your convenience only.

Ref. No.	Name of Part	Qty.	Part No.
1	RESERVOIR-OIL...	1	201EDE037
2	BAFFLE.....	1	200EDE840
3	RIVET-POP.....	2	70E10
4	SEPARATOR-OIL...	1	55B34
5	COVER-RESERVOIR.	1	200EDE225
6	SCREW-HEX CAP...	8	75A29
7	WASHER-LOCK.....	8	95B7
8	ELBOW.....	1	200LSF262
9	O-RING.....	1	25AH5
10	COVER-FILLER....	1	200SPF156
11	GAUGE-OIL LEVEL.	1	200EAQ303
12	ADAPTOR.....	1	200EDE058



201EDE810

Order by Part Number and Description. Reference Numbers for your convenience only.



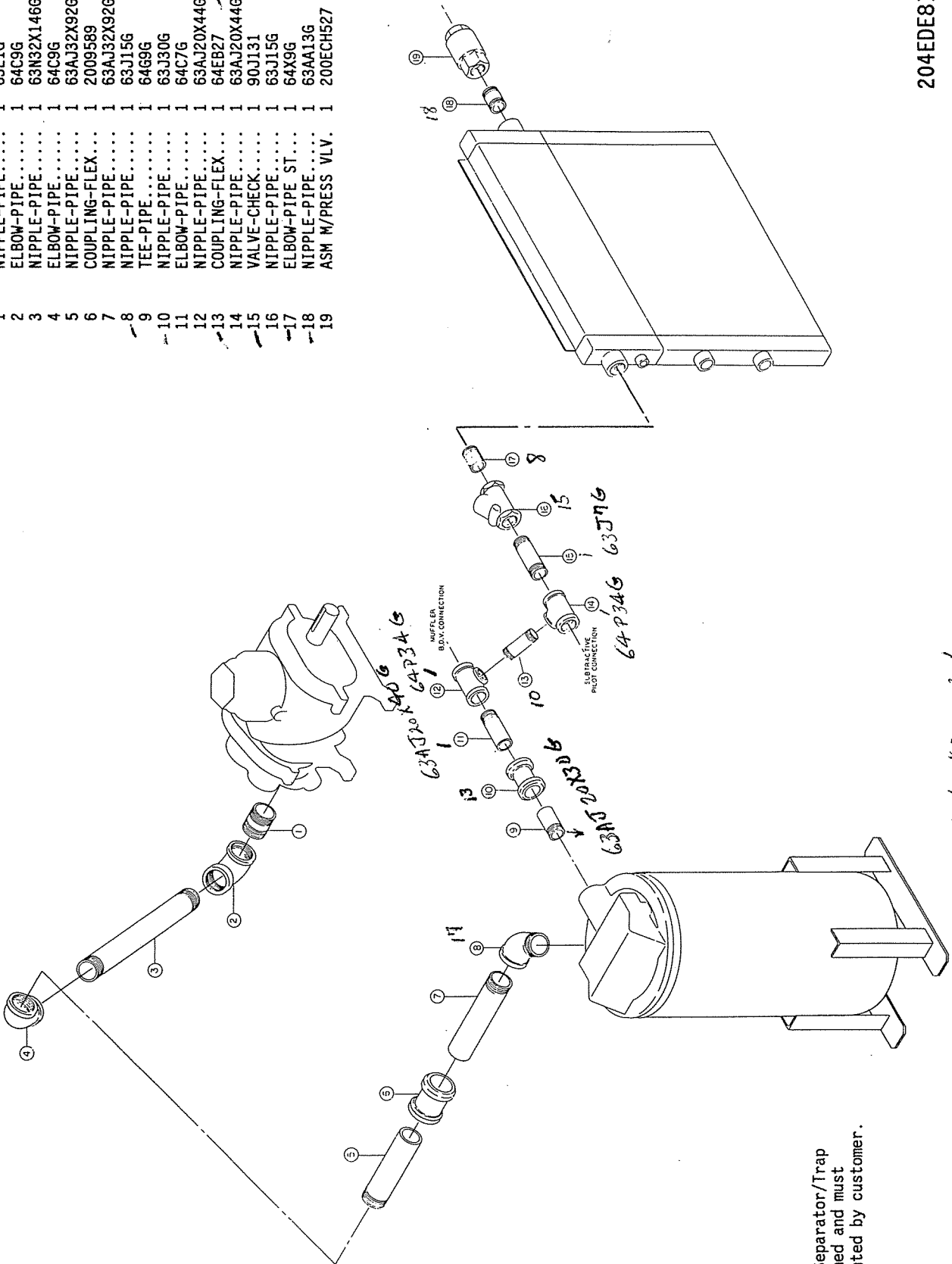
202EDE810

Ref. No.	Name of Part	Quantity	Part No.
RESERVOIR COVER GROUP			
1	COVER-RESERVOIR.....	1	200EDE225
2	GAUGE-TEMPERATURE.....	1	27P197
3	GAUGE-PRESSURE.....	1	27P196
4	VALVE-AIR CONTROL.....	1	200EDE238
5	RETAINER-VALVE.....	1	200EDE205
6	RING-RETAINING.....	1	74D49
7	KNOB-BUTTON.....	1	90AR400
8	ELBOW-TUBE.....	1	86E59
9	TUBE.....	1	85K3
10	ELBOW-TUBE.....	1	86E60
11	PLUG-PIPE.....	1	64AC2
12	SWITCH-TEMPERATURE.....	1	21D226
13	VALVE-SAFETY (125#).....	1	90AR381

AIR DISCHARGE PIPING GROUP

Ref. No.	Name of Part	Qty.	Part No.
1	NIPPLE-PIPE.....	1	63L1G
2	ELBOW-PIPE.....	1	64C9G
3	NIPPLE-PIPE.....	1	63N32X146G
4	ELBOW-PIPE.....	1	64C9G
5	NIPPLE-PIPE.....	1	63AJ32X92G
6	COUPLING-FLEX...	1	2009589
7	NIPPLE-PIPE.....	1	63AJ32X92G
8	NIPPLE-PIPE.....	1	63J15G
9	TEE-PIPE.....	1	64G9G
10	NIPPLE-PIPE.....	1	63J30G
11	ELBOW-PIPE.....	1	64C7G
12	NIPPLE-PIPE.....	1	63AJ20X44G
13	COUPLING-FLEX...	1	64EB27
14	NIPPLE-PIPE.....	1	63AJ20X44G
15	VALVE-CHECK.....	1	90J131
16	NIPPLE-PIPE.....	1	63J15G
17	ELBOW-PIPE ST...	1	64X9G
18	NIPPLE-PIPE.....	1	63AA13G
19	ASM W/PRESS VLV.	1	200ECH527

2616 363
2610 696



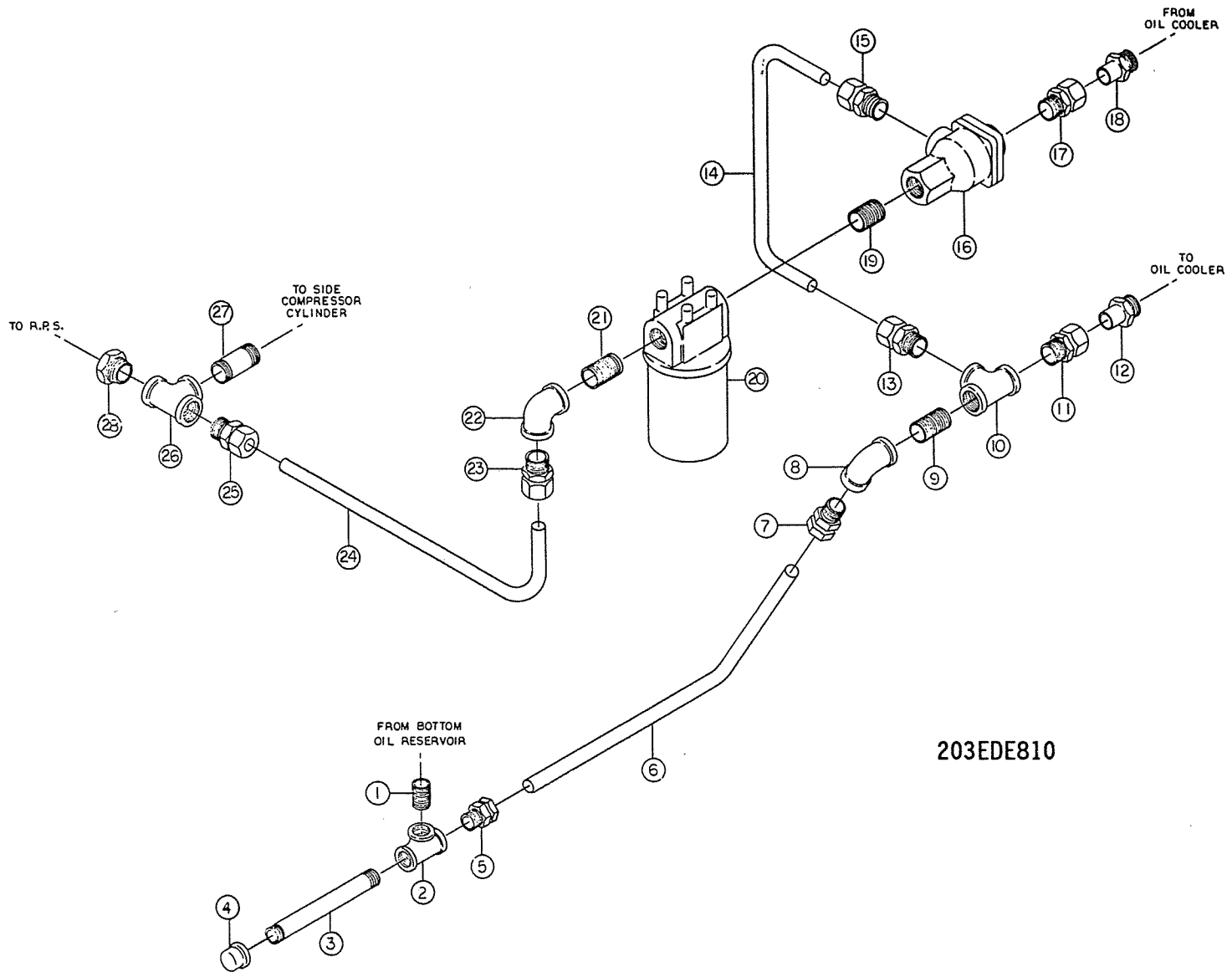
NOTE:
83C83 Separator/Trap
furnished and must
be mounted by customer.

* Hawkins 1/3/92

204EDE810

Order by Part Number and Description. Reference Numbers for your convenience only.

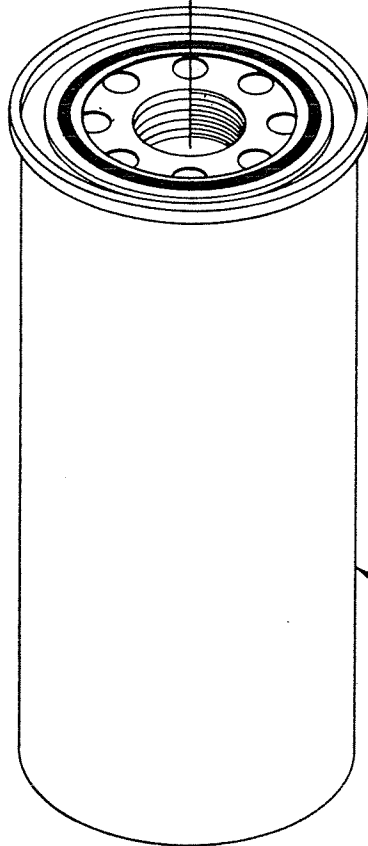
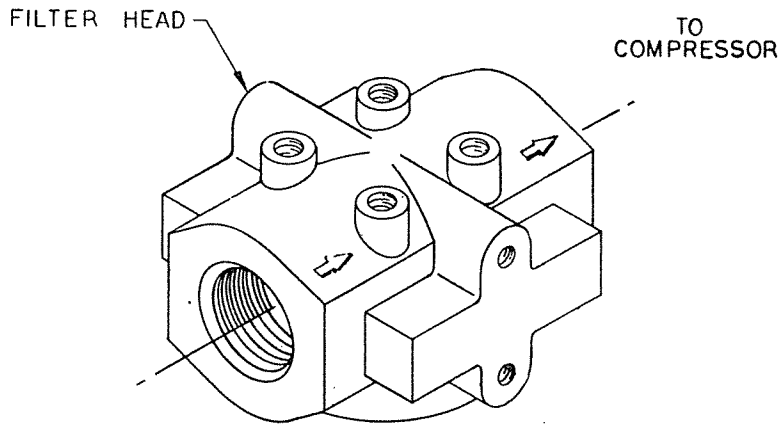
OIL PIPING - RESERVOIR TO COMPRESSOR



203EDE810

Ref. No.	Name of Part	Qty.	Part No.	Ref. No.	Name of Part	Qty.	Part No.
1	NIPPLE-PIPE.....	1	63G1G	15	CONNECTOR-TUBE...	1	86N95
2	TEE-PIPE.....	1	64G7G	16	VALVE-MIXING.....	1	90AR166
3	NIPPLE-PIPE.....	1	63G14G	17	CONNECTOR-TUBE...	1	86N120
4	CAP-PIPE.....	1	64AD5G	18	ADAPTOR-TUBE.....	1	86N117
5	CONNECTOR-TUBE...	1	86N150	19	NIPPLE-PIPE.....	1	63H1G
6	TUBE-FORMED.....	1	202EDE857	20	FILTER-OIL.....	1	26C26
7	CONNECTOR-TUBE...	1	86N95	21	NIPPLE-PIPE.....	1	63H1G
8	ELBOW-PIPE.....	1	64C6G	22	ELBOW-PIPE.....	1	64C6G
9	NIPPLE-PIPE.....	1	63H2G	23	CONNECTOR-TUBE...	1	86N95
10	TEE-PIPE.....	1	64G8G	24	TUBE-FORMED.....	1	203EDE857
11	CONNECTOR-TUBE...	1	86N120	25	CONNECTOR-TUBE...	1	86N150
12	ADAPTOR-TUBE.....	1	86N117	26	TEE-PIPE.....	1	64G7G
13	CONNECTOR-TUBE...	1	86N95	27	BUSHING-PIPE.....	1	63G31G
14	TUBE-FORMED.....	1	236ECH857	28	BUSHING-PIPE.....	1	64E3

OIL FILTER - 26C26

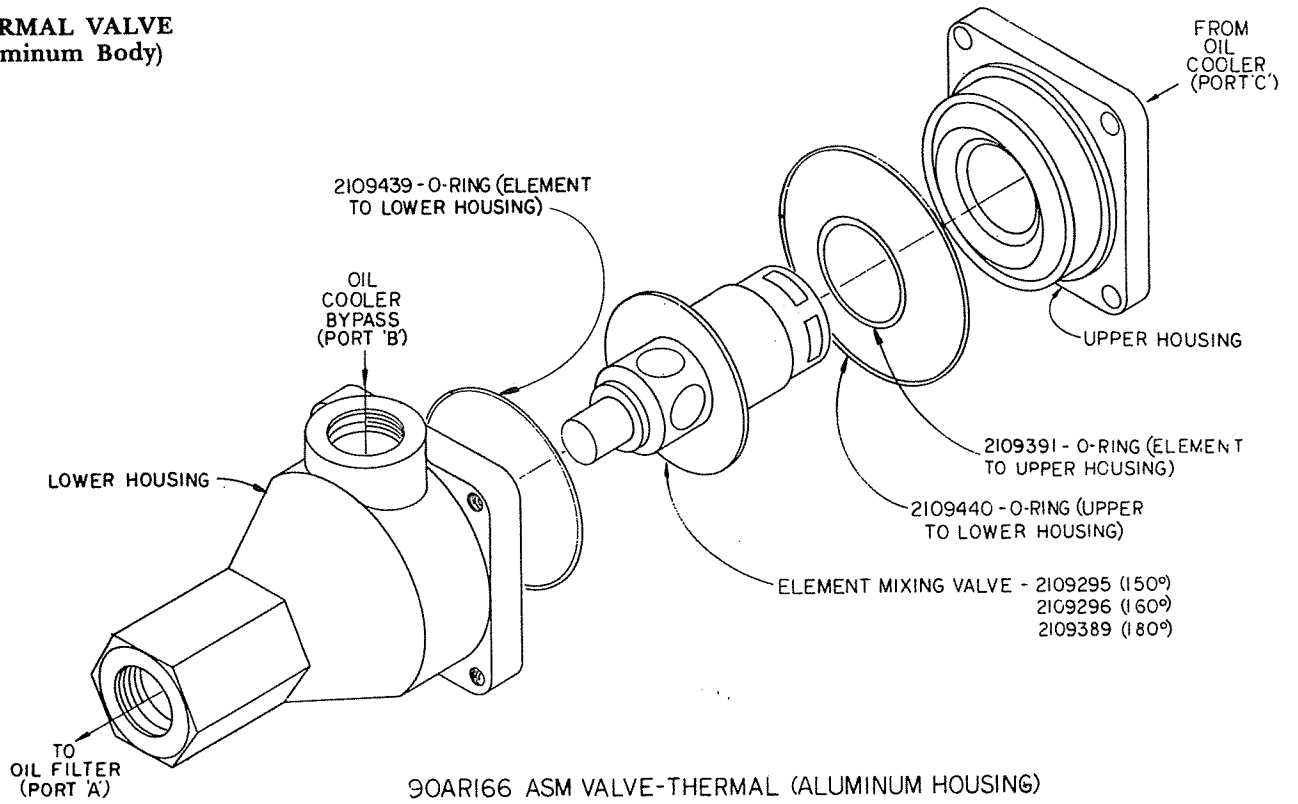


26C26
200EBM369

2116110 ELEMENT
INCLUDES O-RING
(w/212ECM077 ELEMENT DECAL)

THERMAL VALVE (Thermostatic Mixing)

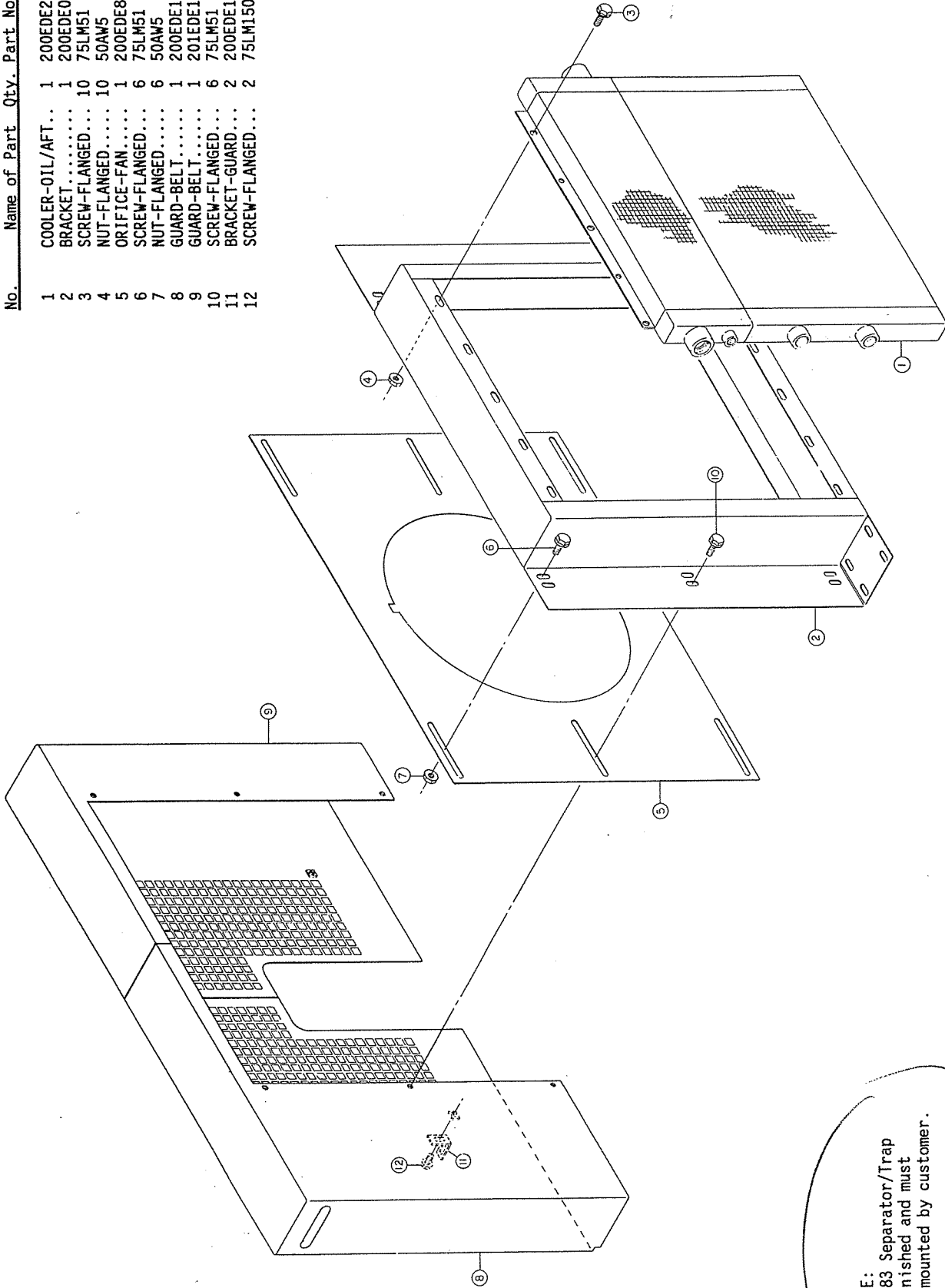
THERMAL VALVE
(Aluminum Body)



C76528

COOLER & MOUNTING GROUP

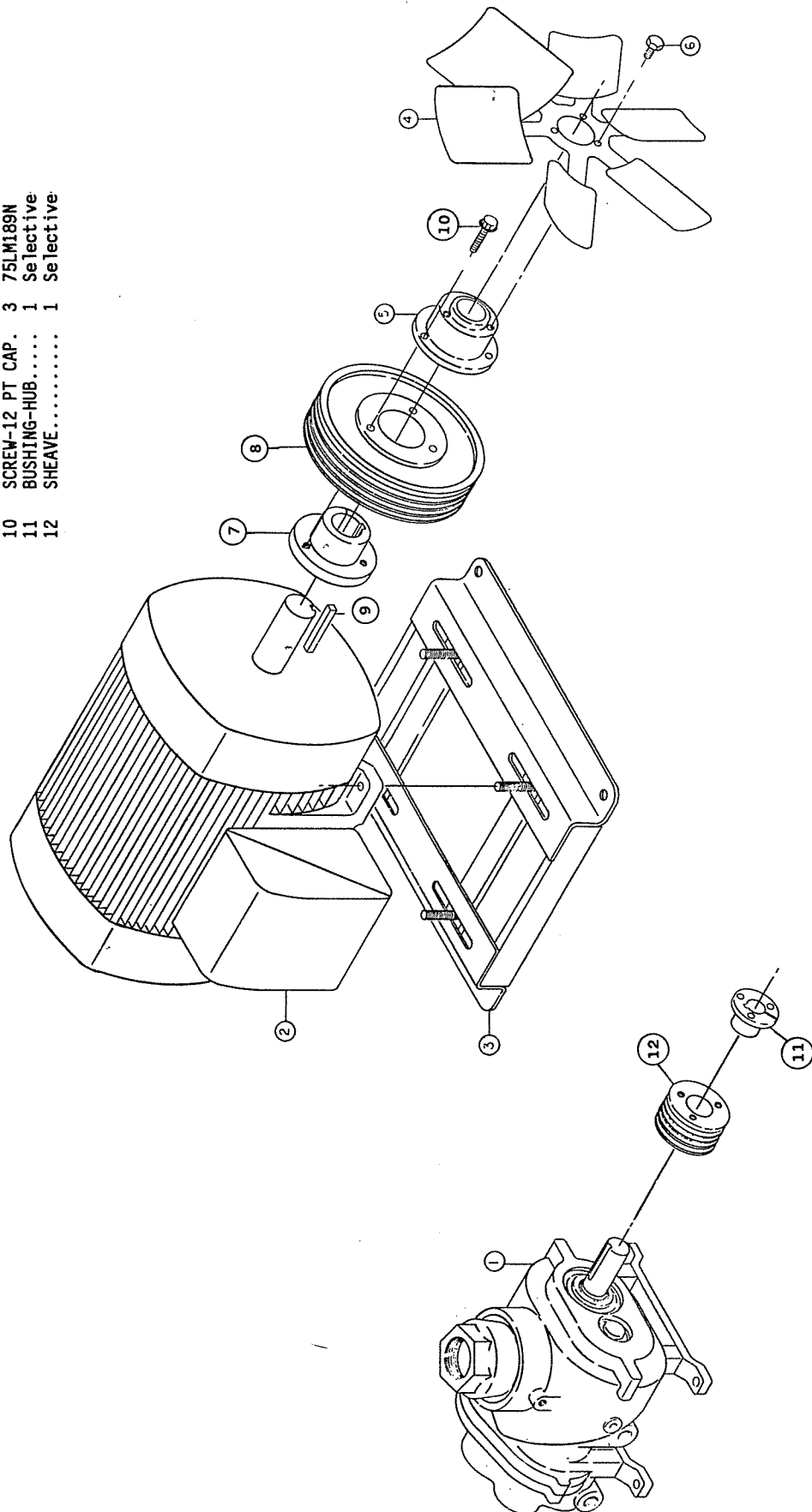
Ref. No.	Name of Part	Qty.	Part No.
1	COOLER-OIL/AFT..	1	200EDE201
2	BRACKET.....	1	200EDE017
3	SCREW-FLANGED...	10	75LM51
4	NUT-FLANGED.....	10	50AW5
5	ORIFICE-FAN.....	1	200EDE814
6	SCREW-FLANGED...	6	75LM51
7	NUT-FLANGED.....	6	50AW5
8	GUARD-BELT.....	1	200EDE120
9	GUARD-BELT.....	1	201EDE120
10	SCREW-FLANGED...	6	75LM51
11	BRACKET-GUARD...	2	200EDE141
12	SCREW-FLANGED...	2	75LM150



NOTE: Separator/Trap 83C83 furnished and must be mounted by customer.

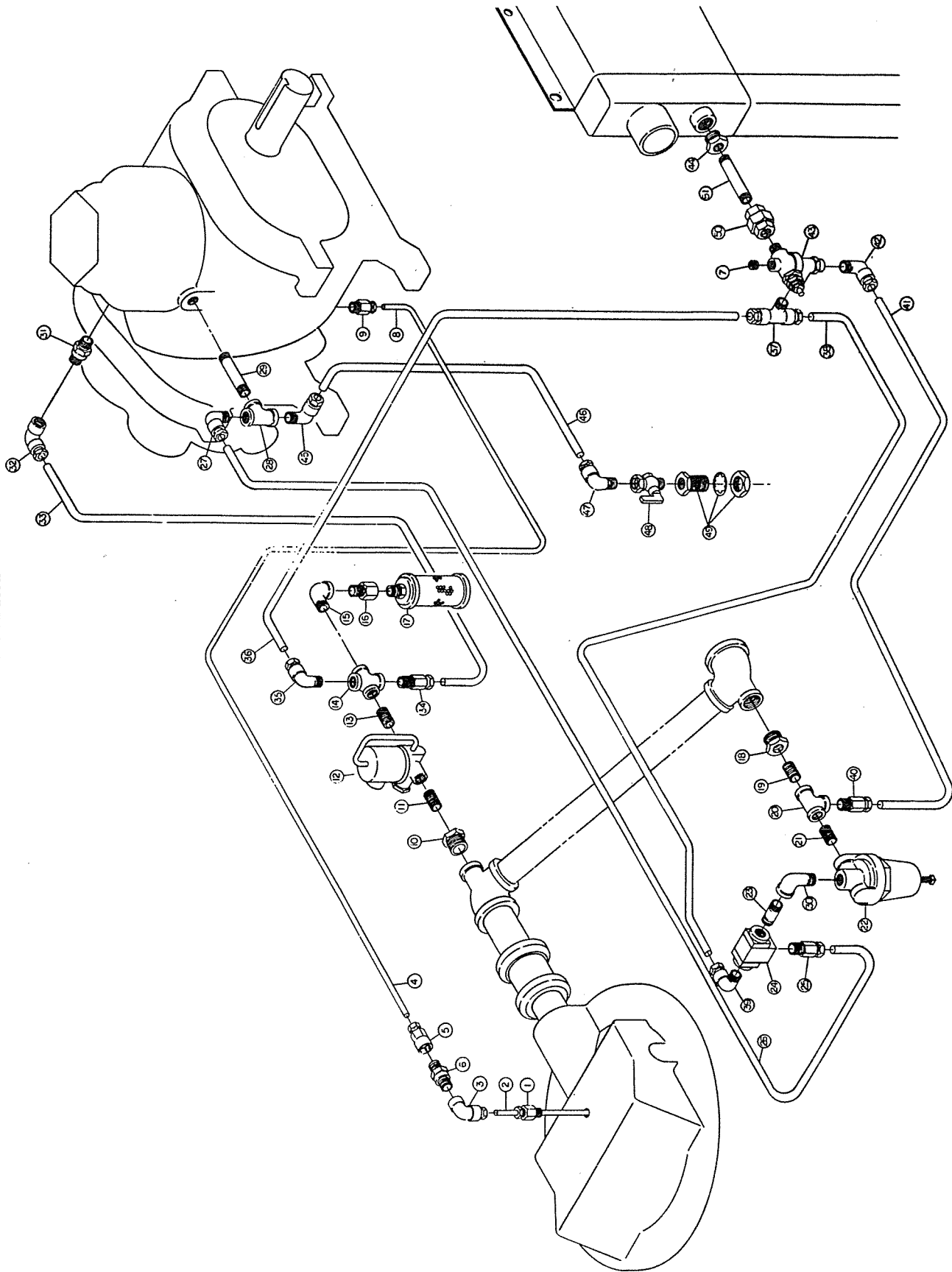
DRIVE GROUP

Ref. No.	Name of Part	Qty.	Part No.
1	COMPRESSOR.....	1	SSEBBB
2	MOTOR.....	1	Selective
3	BASE-MOTOR.....	1	Selective
4	FAN.....	1	200E701
5	ADAPTOR-FAN.....	1	200E649
6	SCREW-HEX CAP.....	3	75P6N
7	BUSHING-HUB.....	1	Selective
8	SHEAVE.....	1	Selective
9	KDY-SQUARE.....	1	35L52
10	SCREW-12 PT CAP.....	3	75LM189N
11	BUSHING-HUB.....	1	Selective
12	SHEAVE.....	1	Selective



206E810

CONTROL TUBING



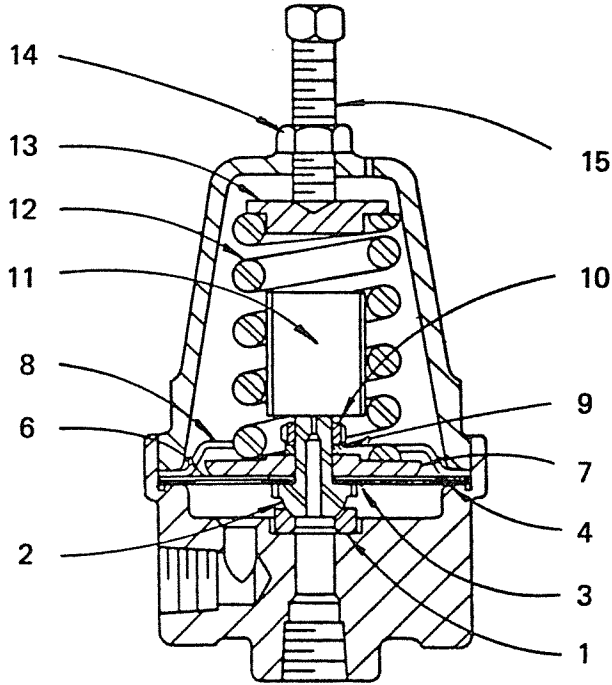
207EDE810

For list of parts see page 19.

Order by Part Number and Description. Reference Numbers for your convenience only.

Ref. No.	Name of Part	Quantity	Part No.
CONTROL TUBING			
1	CONNECTOR-TUBE.....	1	86N15
2	TUBE.....	-	85K3
3	ELBOW-TUBE.....	1	86E95
4	TUBE.....	-	85K3
5	CONNECTOR-TUBE.....	1	86E4
6	VALVE-CHECK.....	1	90AR297
7	CONNECTOR-TUBE.....	1	86E4
8	TUBE.....	-	85K3
9	CONNECTOR-TUBE.....	1	86E4
10	BUSHING-PIPE.....	1	145246
11	NIPPLE-PIPE.....	1	63D1G
12	VALVE-SOLENOID.....	1	91B70
13	NIPPLE-PIPE.....	1	63D1G
14	CROSS-PIPE.....	1	64K1G
15	ELBOW-PIPE STREET.....	1	64D2G
16	ORIFICE.....	1	201EDE814
17	MUFFLER.....	1	43E4
18	BUSHING-PIPE.....	1	145246
19	NIPPLE-PIPE.....	1	63D1G
20	TEE-PIPE.....	1	64G3G
21	NIPPLE-PIPE.....	1	63D1G
22	VALVE-SUBTRACTIVE PILOT.....	1	2009398
23	NIPPLE-PIPE.....	1	63D1G
24	VALVE-SHUTTLE.....	1	90AR107
25	CONNECTOR-TUBE.....	1	86E9
26	TUBE.....	1	85K5
27	CONNECTOR-TUBE.....	1	86E9
28	TEE-PIPE.....	1	64G3G
29	NIPPLE-PIPE.....	1	63D6G
30	NIPPLE-PIPE.....	1	63D1G
31	VALVE-CHECK.....	1	90AR261
32	ELBOW-TUBE.....	1	86E64
33	TUBE.....	-	85K5
34	CONNECTOR-TUBE.....	1	86E9
35	ELBOW-TUBE.....	1	86E64
36	TUBE.....	1	85K5
37	TEE-TUBE.....	1	86E122
38	TUBE.....	-	85K5
39	ELBOW-TUBE.....	1	86E64
40	ELBOW-TUBE.....	1	86E64
41	TUBE.....	1	85K5
42	ELBOW-TUBE.....	1	86E64
43	VALVE-UNLOADER.....	1	201EDE238
44	BUSHING-PIPE.....	1	64E43
45	CONNECTOR-TUBE.....	1	86E9
46	TUBE.....	1	85K5
47	ELBOW-TUBE.....	1	86E64
48	DRAIN-COCK.....	1	90A19
49	COUPLING-PIPE.....	1	64EB368
50	UNION-PIPE.....	1	64Z4
51	NIPPLE-PIPE.....	1	63U4X30G

Order by Part Number and Description. Reference Numbers for your convenience only.



B74480X

Ref. No.	Name of Part	Quantity	Part No.
----------	--------------	----------	----------

SUBTRACTIVE PILOT VALVE

	VALVE-SUBTRACTIVE PILOT, Incl. Ref. No. 1 thru 15		2009398
1	RING-SEAT.....	1	2008021
2	DISC-SEAT.....	1	2010080
3	GASKET-DURABLA.....	1	2008019
4	GASKET-DURABLA.....	1	2008017
6	DIAPHRAGM.....	5	2008018
7	PLATE-PRESSURE.....	1	2008015
8	STOP-DIAPHRAGM.....	1	2008016
9	WASHER-LOCK.....	1	95B1
10	NUT-PRESSURE PLATE.....	1	2008888
11	DAMPER.....	1	2008711
12	SPRING-PRESSURE.....	1	2008014
13	BUTTON-SPRING.....	1	2008891
14	LOCKNUT.....	1	50Y2
15	SCREW-PRESSURE.....	1	2008952

NOTE: It is necessary to replace some parts in groups to insure satisfactory repair. When replacing diaphragm, also replace both diaphragm and seat gaskets. When replacing seat disc or seat ring, replace also the mating seat ring or disc and the seat disc gasket.

MAIN MOTOR, VOLTAGE MARKER & OVERLOAD HEATERS

		OPEN DRIP-PROOF (60 HZ) (ODP)			TOTALLY ENCLOSED FAN-COOLED (60 HZ) (TEFC)				
Column Option Number		200V	230V	460V	575V	200V	230V	460V	575V
		10-A	10-B	10-C	10-D	10-J	10-K	10-L	10-M
Motor		24AW12	24AW28	24AW28	24AW47	24CA2397	24CA2398	24CA2398	24CA2399
Voltage Marker		69F50	69F51	69F52	69F60	69F50	69F51	69F52	69F60
Overload Heater (3 Req'd)		24CA972	24CA971	24CA2607	24CA2606	24CA972	24CA971	24CA2607	24CA2606
Motor		24AW13	24AW29	24AW29	24AW48	24CA2404	24CA2405	24CA2405	24CA2406
Voltage Marker		69F50	69F51	69F52	69F60	69F50	69F51	69F52	69F60
Overload Heater (3 Req'd)		24CA1790	24CA1789	24CA966	24CA964	24CA1790	24CA1789	24CA966	24CA964

CONTROL/STARTER BOX

40 HP - WITH COMPRESSOR MOTOR STARTER

Voltage	Column Code	Control/Starter Box	Starter Size	* Wiring Harness Group
230	8	216EBE466	4DP	ECH75573
460	8	217EBE466	J-60A	ECH75600
575	8	218EBE466	J-60A	ECH75600

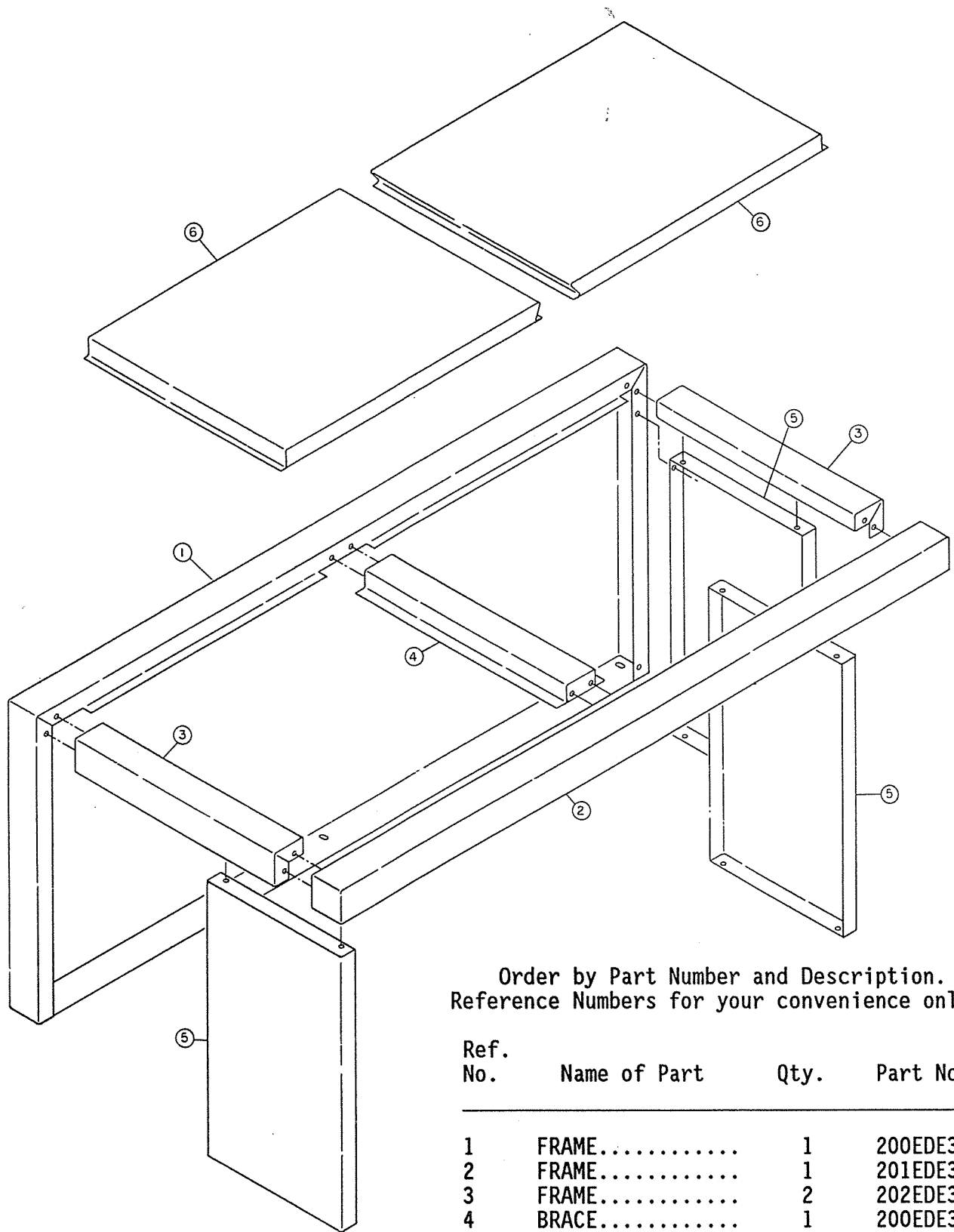
50 HP - WITH COMPRESSOR MOTOR STARTER

Voltage	Column Code	Control/Starter Box	Starter Size	* Wiring Harness Group
230	8	216EBE466	4DP	ECH75574
460	8	220EBE466	3DP	ECH75600
575	8	221EBE466	3DP	ECH75600

* Wiring between Control/Starter Box and Main Motor.

NOTE: Contact Engineering for 200 V applications.

ENCLOSURE GROUP



Order by Part Number and Description.
Reference Numbers for your convenience only.

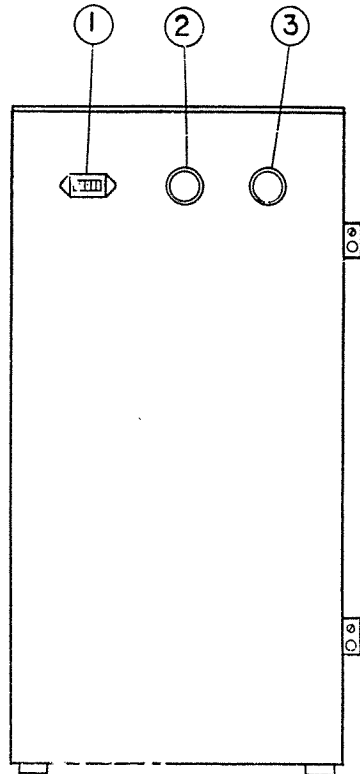
Ref. No.	Name of Part	Qty.	Part No.
1	FRAME.....	1	200EDE314
2	FRAME.....	1	201EDE314
3	FRAME.....	2	202EDE314
4	BRACE.....	1	200EDE326
5	PANEL.....	3	201EDE216
6	PANEL.....	2	200EDE216
+	SCREW-FLANGED....	33	75LM51
+	NUT-FLANGED.....	33	50AW5

+ Not shown on illustration.

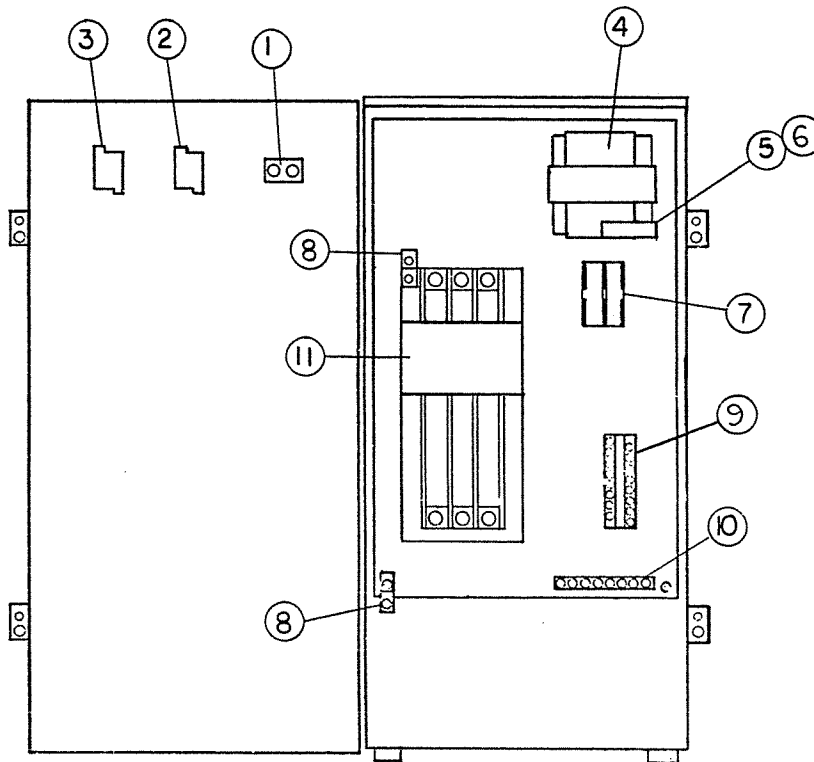
208EDE810

*Kit
EDE 80566
DRAW*

CONTROL PANEL GROUP



FRONT VIEW - COVER (DOOR)



REAR VIEW - COVER (DOOR)

FRONT VIEW - CONTROL CABINET

For list of parts see page 25.

Order by Part Number and Description. Reference Numbers for your convenience only.

Ref. No.	Name of Part	Quantity	Part No.
CONTROL PANEL GROUP			
1	METER-HOUR (60 HZ).....	1	24CA1994
+	METER-HOUR (50 HZ).....	1	24CA1995
2	PUSH-BUTTON, Start (Black).....		
2	BUTTON-EXTENDED, Operator.....	1	24CA2511
2	SWITCH-CONTACT SPSTNO.....	1	24CA2174
2	PLATE-DATA, Start-Legend.....	1	24CA2626
3	PUSH-BUTTON, Stop (Red).....		
3	BUTTON-EXTENDED, Operator.....	1	24CA2512
3	SWITCH-CONTACT SPSTNC.....	1	24CA2508
3	PLATE-DATA, Stop-Legend.....	1	24CA2627
4	TRANSFORMER, .120KVA (120 VA) 115 Volt Secondary - Select Per Voltage:		
	208 Volt.....	1	2116137
	230/460 Volt.....	1	2116135
	575 Volt.....	1	2116137
4	TRANSFORMER, .200KVA (200 VA) 115 Volt Secondary - Select Per Voltage:		
	208 Volt.....	1	2116136
	230/460 Volt.....	1	2116134
	575 Volt.....	1	2116136
5	FUSE BLOCK (2 CC Fuses).....	1	24CA2553
6	FUSE, Transformer, 115 Volt Secondary - Select Per Voltage:		
	(120 VA XFMR) MDL1.....	1	24CA2636
	(200 VA XFMR) MDL2.....	1	24CA2637
7	FUSE, Primary, Select Per Voltage & Transformer Size:		
	(120 VA XFMR) 350 V or - KTKR2.....	2	24CA2621
	(120 VA XFMR) 380 V or + KTKR1.....	2	24CA2620
	(200 VA XFMR) 350 V or - KTKR4.....	2	24CA473
	(200 VA XFMR) 380 V or + KTKR2.....	2	24CA2621
8	LUG, Ground.....	2	24CA2555
9	TERMINAL BLOCK, 4-4 Point (16 Pt).....	4	24CA2633
10	BAR-GROUND, 2-4 Point (8 Pt).....	2	24CA612
11	STARTER, Compressor Motor - Size J (Optional) - (Less N.O. Aux. Contact).....	1	24CA2616
	RELAY, 3 Pole, 110/120 V, 50/60 Hz, Coil J (Less N.O. Aux. Contact).....	1	24CA2610
	CONTACT, Kit - 3 Pole.....	1	2116127
	COIL, 110/120 V, 50/60 Hz.....	1	2116124
	RELAY, 3 Pole O.L., 75 Amp Max.....	1	24CA2611
	CONTACT-AUX, N.O.....	1	24CA2503
11	STARTER, Compressor Motor - Size 3DP (Optional) - (Less N.O. Aux. Contact).....	1	24CA2613
	CONTACT, Kit - 3 Pole.....	1	2109786
	COIL, 110/120 V, 50/60 Hz.....	1	2115951
	CONTACT-AUX, N.O.....	1	24CA2618
	RELAY, 3 Pole O.L., (1) N.C. Contact.....	1	2116142
11	STARTER, Compressor Motor - Size 4DP (Optional) - (Less N.O. Aux. Contact).....	1	24CA2614
	CONTACT, Kit - 3 Pole.....	1	2109787
	COIL, 110/120 V, 50/60 Hz.....	1	2115952
	CONTACT-AUX, N.O.....	1	24CA2619
	RELAY, 3 Pole O.L., (1) N.C. Contact.....	1	2116143
+	DECAL, Fuse - Transformer, Primary		
	1 Amp (KTKR1).....	1	249AUX077
	2 Amp (KTKR2).....	1	250AUX077
	4 Amp (KTKR4).....	1	248AUX077
+	DECAL, Fuse - Transformer, Secondary		
	1 Amp.....	1	253AUX077
	2 Amp.....	1	254AUX077

+ Not shown on illustration.

New
460 Volt
1-24CA 2318
2-24CA 2327

IDENTIFICATION & INSTRUCTION GROUP

Name of Part	Quantity	Part No.
DECAL - WARNING - ELECTRICAL SHOCK MAY BE FATAL..... (Located Inside Control Box Door) 1. This compressor must be grounded, etc. 2. Disconnect the compressor unit, etc.	1	208ESG007
DECAL - WARNING (Located Outside Control Box)..... 1. Electrical shock can be fatal. 2. Open main disconnect switch, etc.	1	202ESG077
DECAL - INSTRUCTION.....	1	200ES0077
DECAL - ROTATION.....	1	204EBE077
DECAL - USE COPPER WIRE ONLY (Located Outside Control Box).	1	214ESG077
DECAL - MAGNETIC CONTROL SYSTEM DATA PLATE..... (Located Outside Control Box Door)	1	69D38
DECAL - "G-D" (Vertical).....	2	69F62
DECAL - FILLED AT FACTORY WITH "GD800".....	1	200EBE077
DECAL - DRAIN MOISTURE.....	1	205ES0077
DECAL - INSTALLATION..... (Oil Filter - Mounted On Oil Filter Canister)	1	212ECM077
DECAL - SEPARATOR PRESSURE DIFFERENTIAL.....	1	200EDE077
DECAL - OPERATING & MAINTENANCE (Constant Speed Control)...	1	201EDE077
PLATE-DATA - OIL LEVEL INDICATION..... (Located On Oil Reservoir At Oil Level Gauge)	1	200ESG454
PLATE-DATA - DANGER - FAN & CAUTION - COOLING.....	1	200ECH454
PLATE-NAME (Located Left Lower Front Of Frame).....	1	203EAQ496
RIVET, Plate to Base.....	4	70E13
DECAL - WARNING - CHECK FAN ORIFICE AFTER BELT ADJUSTMENT..	1	210EBE077
DECAL - PARTS LIST BOOK & OPER/SERVICE MANUAL..... (Book Numbers to be written on Decal - Decal applied to inside of control box door)	1	204EDE077

REPAIR KITS

Name of Part	Quantity	Part No.
ROUTINE MAINTENANCE KIT (3000 Hrs.) Standard Air Filter....		EDE80576
ELEMENT, Air Filter.....	2	2116099
ELEMENT, Oil Filter.....	3	2116110
ROUTINE MAINTENANCE KIT (3000 Hrs.) Heavy Duty Air Filter..		EDE81180
ELEMENT, Air Filter.....	2	2116273
ELEMENT, Oil Filter.....	3	2116110
PERIODIC MAINTENANCE KIT (9000 Hrs.).....		EDE80492
O-RING, Inlet Housing & Seat.....	2	25AH34
PACKING-RING, Block Vee.....	2	60AM46
O-RING.....	1	25AH35
RING-RETAINING.....	1	74D50
PERIODIC OVERHAUL KIT (18000 Hrs.).....		EDE80670
BEARING-ROLLER.....	1	12BA130
BEARING-ROLLER.....	1	12BA127
BEARING-ROLLER.....	1	12BA129
BEARING-ROLLER.....	1	12BA128
SHIM.....	1	77H54
SHIM.....	1	77C58
SLEEVE-WEAR.....	1	80M12
SEAL-OIL.....	1	60DD570
SEAL-OIL.....	1	60DD543
SPRING-WAVE.....	2	78W47
O-RING.....	1	25AH21
O-RING.....	1	25AH6
O-RING.....	1	25AH20
O-RING.....	1	25AH7
GASKET-ELIMINATOR.....	1	25BC222
RING-RETAINING.....	1	74D48
RING-RETAINING.....	1	74D22
RING-RETAINING.....	1	74D38
RING-RETAINING.....	1	74D47
OIL SEPARATOR KIT (18000 Hrs.).....		EDE80560
SEPARATOR.....	1	55B34
TUBE (1/4 O.D.).....	1.333 Ft.	85K3
ELBOW-TUBE.....	1	86E95
CONNECTOR-TUBE.....	1	86N15
PNEUMATIC CONTROLS & GAUGES (18000 Hrs.).....		EDE80563
VALVE-SHUTTLE.....	1	90AR107
VALVE-SUBTRACTIVE PILOT.....	1	2009398
VALVE-SOLENOID.....	1	91B70
GAUGE-PRESSURE.....	1	27P196
GAUGE-TEMPERATURE.....	1	27P197
VALVE, Piloted Unloader.....	1	201EDE238
VALVE, Air Control.....	1	200EDE238

REPAIR KITS (Continued)

Name of Part	Quantity	Part No.
ELECTRICAL CONTROL KIT (18000 Hrs.).....		EDE80564
SWITCH-TEMPERATURE.....	2	21D226
SWITCH-PRESSURE (R.P.S.).....	1	88H144
PAINT KIT.....		EDE80591
12 OZ. AEROSOL CAN (Machine).....	1	28H41
12 OZ. AEROSOL CAN (Enclosure).....	1	28H42

101
61
62

40HP for 150 PSI EDE 81074 Diesel Group
50HP for 150 PSI EDE 81075

88H153 Pressure
202 EDE 6005



INDUSTRIAL MACHINERY

1800 GARDNER EXPRESSWAY • QUINCY, ILLINOIS 62305-4024 • (217) 222-5400

Specifications subject to change without notice.

COPYRIGHT © 1989 Cooper Industries, Inc

15C-11-89

Litho in USA