



13-21-501  
Version: 05  
October 10, 2016

**ELECTRA-SAVER II  
BASE-MOUNTED & TANK MOUNTED  
COMPRESSOR**

**AIRSMART™ CONTROLS**

**MODELS**

**EBE99R**

**20, 25, 30 HP  
(15, 19, 22 KW)**

**50 HZ**

**PARTS LIST**



**MAINTAIN COMPRESSOR RELIABILITY AND PERFORMANCE WITH  
GENUINE GARDNER DENVER® COMPRESSOR PARTS AND SUPPORT SERVICES**

Gardner Denver® Compressor genuine parts, manufactured to design tolerances, are developed for optimum dependability . specifically for Gardner Denver compressor systems. Design and material innovations are the result of years of experience with hundreds of different compressor applications. Reliability in materials and quality assurance is incorporated in our genuine replacement parts.

Your authorized Gardner Denver Compressor distributor offers all the backup you need. A worldwide network of authorized distributors provides the finest product support in the air compressor industry.

Your authorized distributor can support your Gardner Denver air compressor with these services:

1. Trained parts specialists to assist you in selecting the correct replacement parts.
2. Factory warranted new and remanufactured rotary screw airends. Most popular model remanufactured airends are maintained in stock at the factory, for purchase on an exchange basis with liberal core credit available for the replacement unit.
3. A full line of factory tested AEONi compressor lubricants specifically formulated for use in Gardner Denver compressors.
4. Repair and maintenance kits designed with the necessary parts to simplify servicing your compressor.

Authorized distributor service technicians are factory trained and skilled in compressor maintenance and repair. They are ready to respond and assist you by providing fast, expert maintenance and repair services.

**To Contact Gardner Denver or locate your local distributor:**

**visit: [www.gardnerdenver.com/industrials](http://www.gardnerdenver.com/industrials)**

**or**

**call: (800)682-9868**

**INSTRUCTIONS FOR ORDERING REPAIR PARTS**

When ordering parts, specify Compressor MODEL, Method of Cooling, HORSEPOWER and SERIAL NUMBER (see nameplate on unit). The Airend Serial Number is also stamped on top of the discharge bearing carrier casting.

All orders for Parts should be placed with the nearest authorized distributor.

Where NOT specified, quantity of parts required per compressor or unit is one (1); where more than one is required per unit, quantity is indicated in parenthesis. SPECIFY EXACTLY THE NUMBER OF PARTS REQUIRED.

DO NOT ORDER BY SETS OR GROUPS.

To determine the Right-Hand and Left-Hand side of a compressor, stand at the motor end and look toward the compressor. Right-Hand and Left- Hand are indicated in parenthesis following the part name, i.e. (RH) and (LH), when appropriate.

## **TOTAL PRODUCT SUPPORT – GARDNER DENVER’S CONTINUING COMMITMENT TO YOUR AIR COMPRESSOR PERFORMANCE**

Commitment to total product support continues long after the purchase of your quality Gardner Denver rotary screw compressor.

Gardner Denver original parts incorporate years of experience and improvements in design, materials and quality assurance. Maintaining your compressor investment with Gardner Denver parts will insure protection for the air compressor unit and long, dependable service life.

Your authorized Gardner Denver compressor distributor maintains a complete stock of all common maintenance parts, factory approved AEON lubricants, and Gardner Denver factory warranted exchange airends. In addition, authorized distributor technicians are factory trained, and can provide complete diagnostic, compressor maintenance and repair services.

This manual is designed to assist you in maintaining high performance and receiving many years of dependable service you expect from your Gardner Denver compressor.

### **REMANUFACTURED AIRENDS**

Whenever an airend requires replacement or repair, Gardner Denver offers an industry unique, factory remanufactured airend exchange program. From its modern factory, Gardner Denver is committed to supplying you with the highest quality, factory remanufactured airends that are guaranteed to save you time and money.

#### **Immediately Available**

Repair downtime costs you money, which is why the most popular models are in inventory at all times.

#### **Skilled Craftsmen**

Our Remanufacturing assembly technicians average over 20 years experience with air compression products.

#### **Precision Remanufacturing**

All potentially usable parts are thoroughly cleaned, inspected and analyzed. Only those parts that can be brought back to original factory specifications are remanufactured. Every remanufactured airend receives a new overhaul kit: bearings, gears, seals, sleeves and gaskets.

#### **Extensive Testing**

Gardner Denver performs testing that repair houses just don't do. Magnaflux and ultrasonic inspection spot cracked or stressed castings, monochromatic light analysis exposes oil leaks, and coordinate measurement machine inspects to +/- .0001+, insuring that all remanufactured airends meet factory performance specifications.

#### **Warranty**

Gardner Denver backs up every remanufactured airend with a warranty of 27 months from purchase.

Gardner Denver remanufactured airends deliver *quality without question...year in and year out.*

Call Gardner Denver for information on the airend exchange program and the name of your authorized distributor.

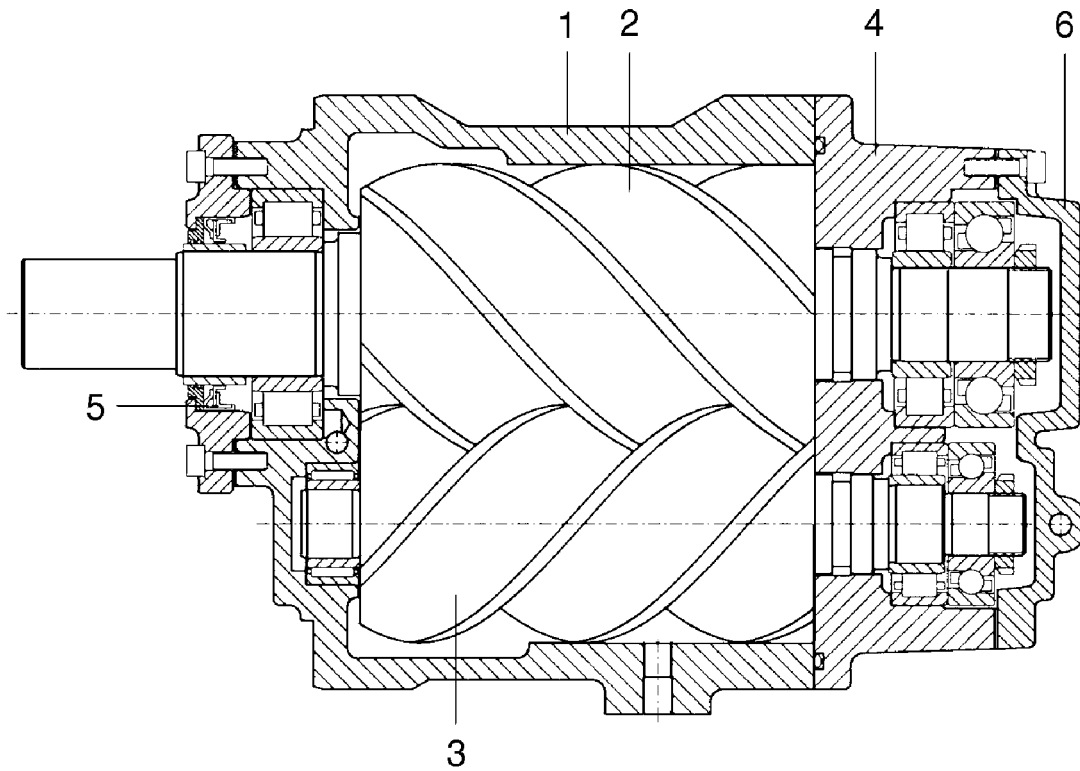
Phone Number: 217-222-5400 or

Fax: 217-224-7814

## TABLE OF CONTENTS

Maintain Compressor Reliability And Performance With Genuine Gardner Denver Compressor Parts And Support Services.....	1
Instructions For Ordering Repair Parts.....	1
Total Product Support . Gardner Denver's Continuing Commitment To Your Air Compressor Performance .....	2
Remanufactured Airends .....	2
Bare Compressor .....	4
Inlet Valve .....	5
Severe Duty Air Filter And Mounting (Standard).....	6
Base And Oil Cooler Mounting.....	7
Oil Reservoir .....	8
Oil Filter . 26C27 .....	9
Oil Line Fittings .....	10, 11
Air Receiver Group.....	12
Discharge Piping . Base Mounted Units (With Separator).....	13
Discharge Piping . Tank Mounted Units (With Separator).....	14
Discharge Piping . Tank Mounted Units (Without Separator) .....	15
Thermal Valve.....	16
Subtractive Pilot Valve.....	17
Control Group.....	18, 19
Drive Groups . 20, 25 & 30 HP (15, 19 & 22 Kw).....	20
Drive Groups . 20 HP (15 Kw) .....	21
Drive Groups . 25 HP (19 Kw) .....	22
Drive Groups . 30 HP (22 Kw) .....	22
Main Motor Group .....	23
Controller Assembly . (380 Volt) Wye Delta Starter . 20, 25 & 30 HP (15, 19 & 22 Kw).....	24, 25
Controller Assembly . (380 Volt) Less Main Motor Starter .....	26, 27
Motor Wiring . 380 Volt .....	28, 29
Motor Wiring Less Starter . 380 Volt .....	30
Enclosure . Hardware & Decals .....	31
Enclosure . Basic Parts.....	32
Quiet Enclosure . Odp Motor Only .....	33
Enclosure . Panels .....	34
Main Motor (Standard ODP & TEFC).....	35
Identification And Instruction Group .....	36, 37
Repair Kits .....	38, 39

<b>For Operating and Service Manual, see</b>	
<b>SERVICE MANUAL</b>	<b>13-21-600</b>
<b>CONTROL MANUAL</b>	<b>13-17-600</b>
<b>COMM. MODULE:</b>	<b>13-17-604</b>



**BARE COMPRESSOR**

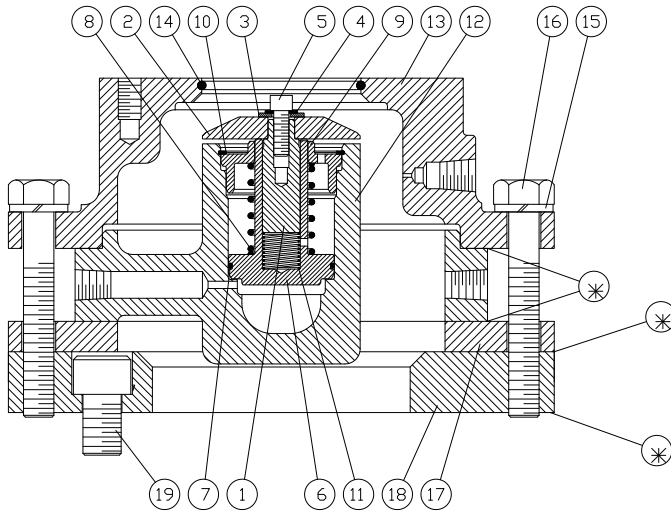
<b>Ref. No.</b>	<b>Name of Part</b>
1	CYLINDER
2	MAIN ROTOR
3	SECONDARY ROTOR
4	DISCHARGE BEARING HOUSING
5	DRIVE SHAFT SEAL
6	DISCHARGE END PLATE

For Replacement Airend, order Part Number 300EBE1095.

For Periodic Overhaul Kit, order Part Number 307EFD6013. See page 39.

For Seal Repair Kit, order Part Number 300EFD6029. See page 39.

Order by Part Number and Description. Reference Numbers are for your convenience only.



313EBE810-A  
(Ref. Drawing)

\*GASKET ELIMINATOR REQUIRED

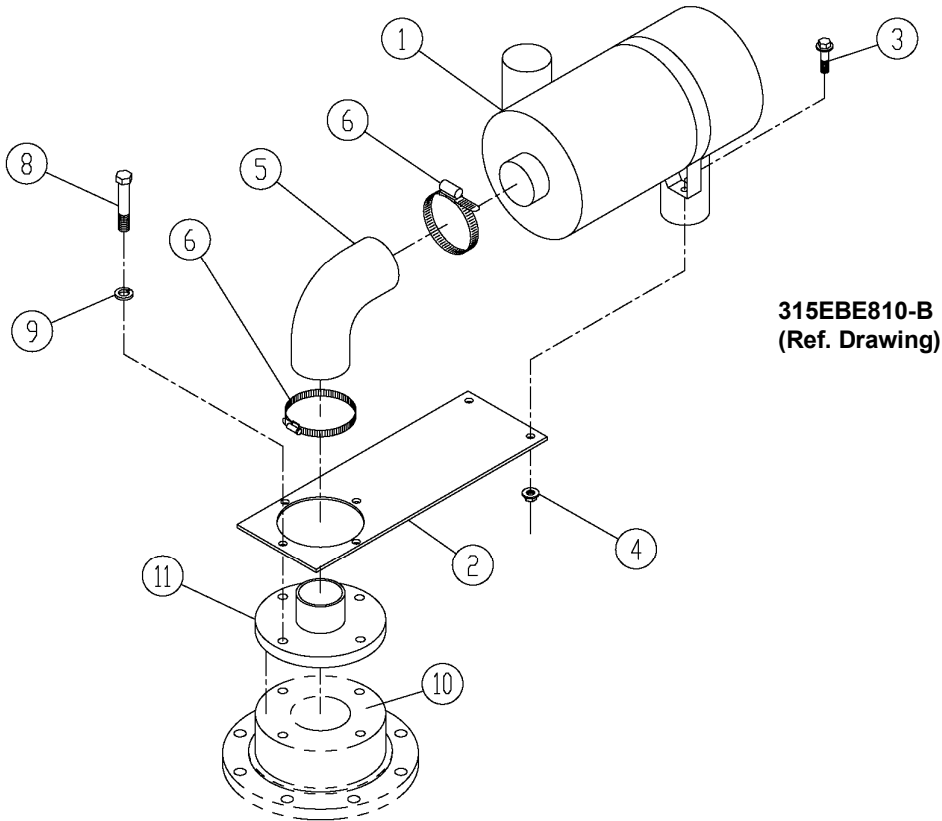
**INLET VALVE**

**B/M: 300EBE4030**

Ref. No.	Name of Part	Qty.	Part No.
1	GUIDE-VALVE .....	1	201SSE483
2	VALVE-INLET .....	1	202SSE044
3	WASHER-PLAIN .....	1	95A1
4	LOCKWASHER .....	1	95H56
5	SCREW.....	1	655EC03N
6	PISTON-INLET VALVE.....	1	202SSE043
+ 7	O-RING .....	1	25BC440
+ 8	SPRING .....	1	78H22
9	RETAINER.....	1	200SSE205
+ 10	RING-RETAINING.....	1	74D87
+ 11	SPRING .....	1	78W59
12	HOUSING-INLET .....	1	205SSE041
13	SEAT.....	1	204SSE256
+ 14	O-RING .....	1	25AM15
15	LOCKWASHER.....	8	95B5
16	SCREW.....	8	655EE140
17	PLATE-RETAINER.....	1	300EBE168
18	ADAPTOR.....	1	300EBE170
19	SCREW (METRIC).....	4	665SMCA160250
+ 19	GASKET ELIMINATOR .....	1	25BC222

+ Parts included in Periodic Maintenance Kit Part Number 302EBE6013. Refer to page 38.

Order by Part Number and Description. Reference Numbers are for your convenience only.

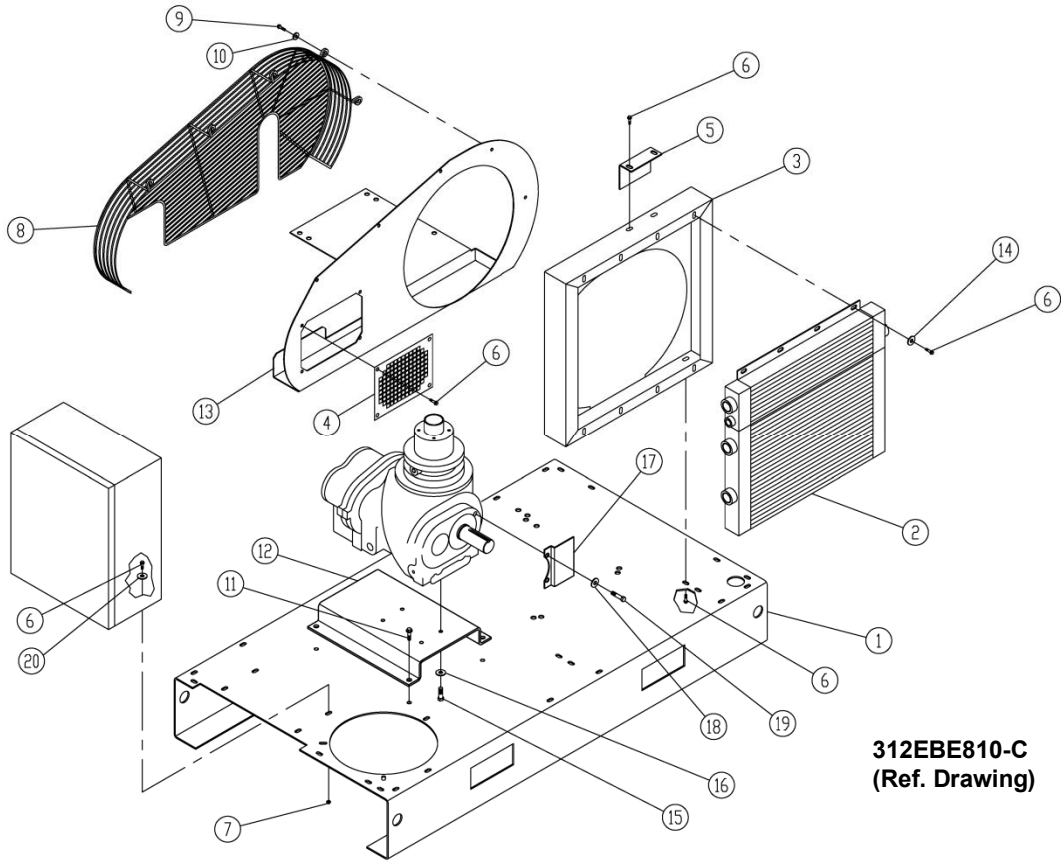


**SEVERE DUTY AIR FILTER AND MOUNTING (STANDARD)**

B/M: 300, 301EBE4054

Ref. No.	Name of Part	Qty.	Part No.
1	FILTER-AIR .....	1	5L350
2	BRACKET-FILTER.....	1	300EBE389
3	SCREW .....	2	75LM97
4	NUT .....	2	50AW4
5	HOSE.....	1	29Z468
6	CLAMP .....	2	2009395
8	SCREW .....	4	655ED080
9	LOCKWASHER.....	4	95B3
10	GASKET-ELIMINATOR.....	1	25BC222
11	FILTER .....	1	201EBE070
	ELEMENT (REPAIR) (AIR FILTER).....	1	2118314

Order by Part Number and Description. Reference Numbers are for your convenience only.



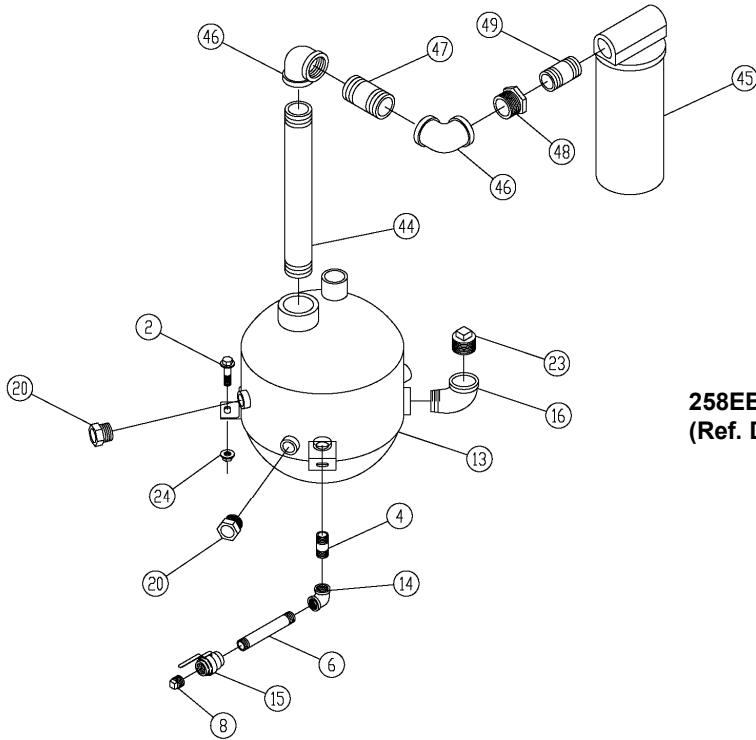
312EBE810-C  
(Ref. Drawing)

**BASE AND OIL COOLER MOUNTING**

B/M: 300EBE4003    B/M: 300EBE4003  
 200EBE4013        201EBE4013

Ref. No.	Name of Part	Qty.	20 HP Part No.	25/30 HP Part No.
1	BASE .....	1	203EBE285	203EBE285
2	COOLER-OIL.....	1	202EBE201	202EBE201
3	BAFFLE .....	1	200EBE840	200EBE840
4	PLATE-INSPECTION.....	1	200EBE052	200EBE052
5	BRACKET .....	1	200EBE142	200EBE142
6	SCREW .....	22	75LM51	75LM51
7	NUT .....	4	50AW5	50AW5
8	GUARD-FAN.....	1	300EBE393	300EBE393
9	SCREW .....	5	75LM150	75LM150
10	RETAINER.....	5	2014731	2014731
11	SCREW .....	4	75LM135	75LM135
12	SUPPORT.....	1	300EBE165	300EBE165
13	ORIFICE .....	1	206EBE814	207EBE814
14	WASHER-PLAIN.....	8	95A3	95A3
15	SCREW (METRIC).....	4	665HMCA100200	665HMCA100200
16	WASHER-PLAIN.....	4	95A3	95A3
17	GUARD-DRIVE .....	1	300EBE477	300EBE477
18	LOCKWASHER.....	2	95B7	95B7
19	SCREW (METRIC).....	2	655SMCA160250	655SMCA160250
20	WASHER.....	4	95A3Z	95A3Z

Order by Part Number and Description. Reference Numbers are for your convenience only.



**258EBE810-B**  
**(Ref. Drawing)**

**OIL RESERVOIR**

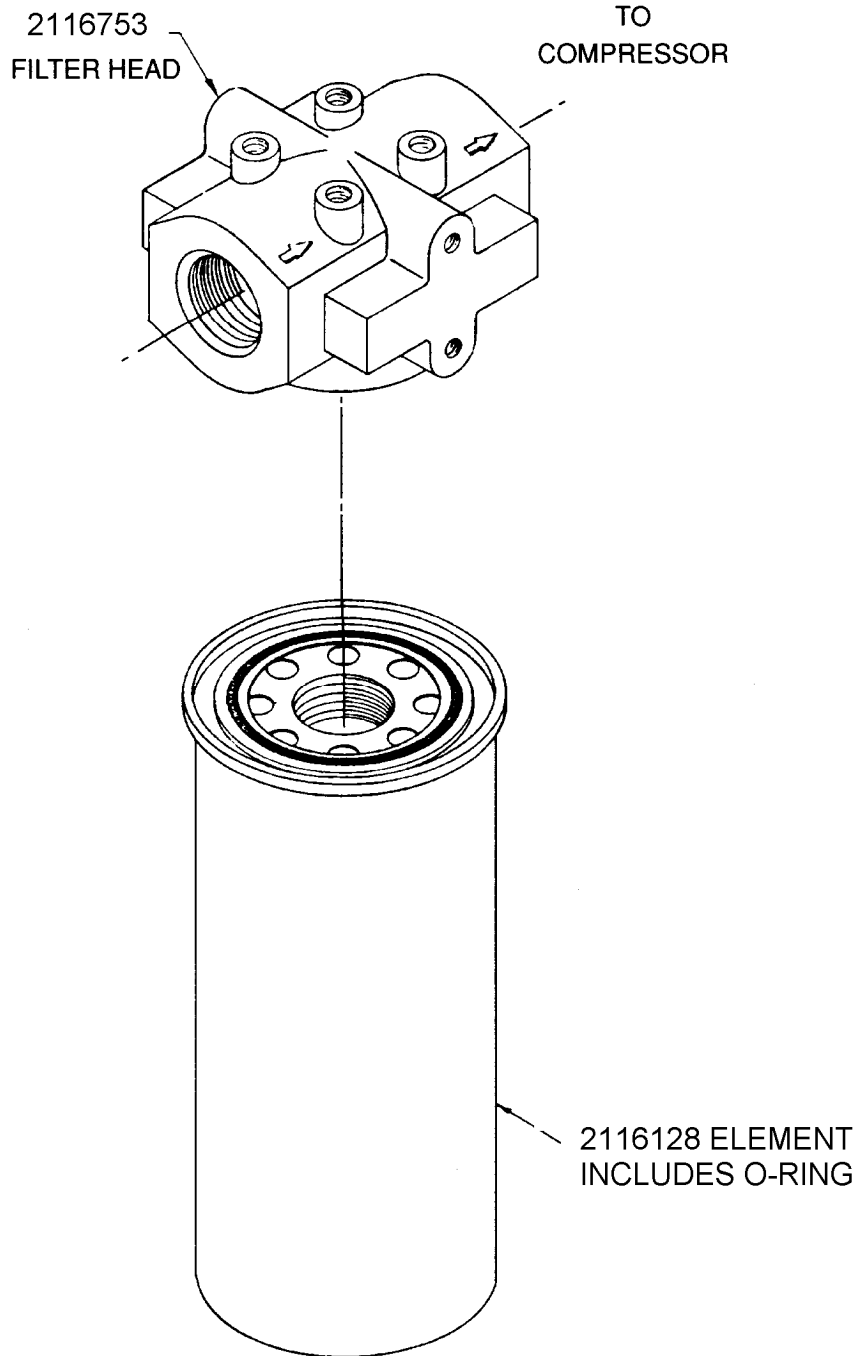
**B/M: 200EBE4018;**  
**300EBE4018;**  
**304EBE4002**

Ref. No.	Name of Part	Qty.	Part No.
2	SCREW .....	3	75LM51
4	NIPPLE.....	1	63F1G
6	NIPPLE.....	1	63F6G
8	PLUG.....	1	64AA7
13	OIL RESERVOIR .....	1	203EBE037
14	ELBOW.....	1	64C4G
15	BALL VALVE.....	1	90AR360
16	ELBOW.....	1	64D7G
20	GAUGE.....	2	40P11
23	PLUG.....	1	64A26
24	NUT.....	3	50AW5
44	NIPPLE.....	1	63K34G
* 45	OIL SEPARATOR .....	1	300EBE035
46	ELBOW.....	2	64C8G
47	NIPPLE.....	1	63K3G
48	PIPE BUSHING.....	1	64E98
49	NIPPLE.....	2	63J15G

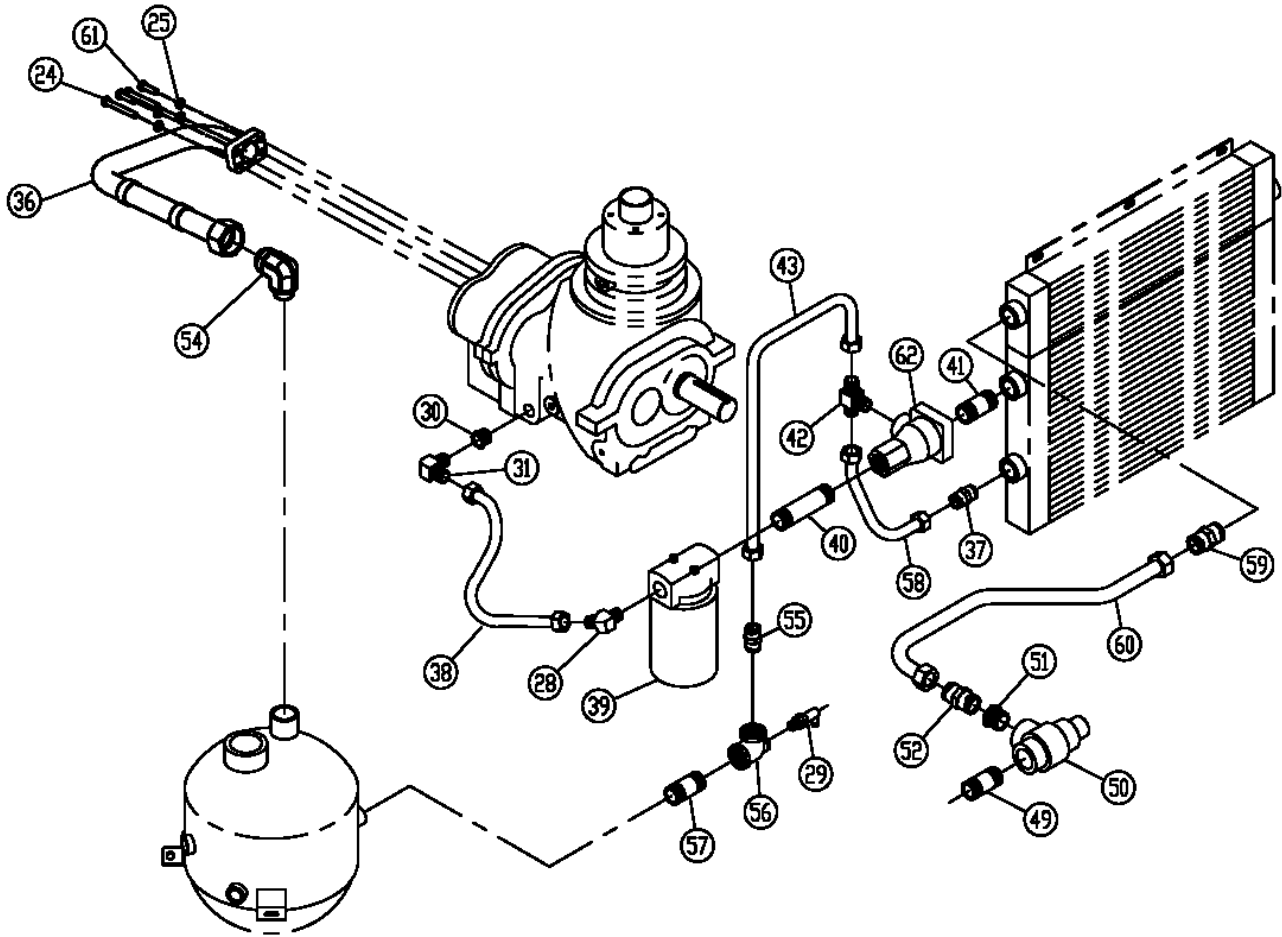
\* For replacement Element and O-ring, order Part No. 2116717.

\* For replacement Head, order Part No. 2116716.

OIL FILTER – 26C27



# OIL LINE FITTINGS



324EBE810-A  
(Ref. Drawing)

Order by Part Number and Description. Reference Numbers are for your convenience only.

OIL LINE FITTINGS

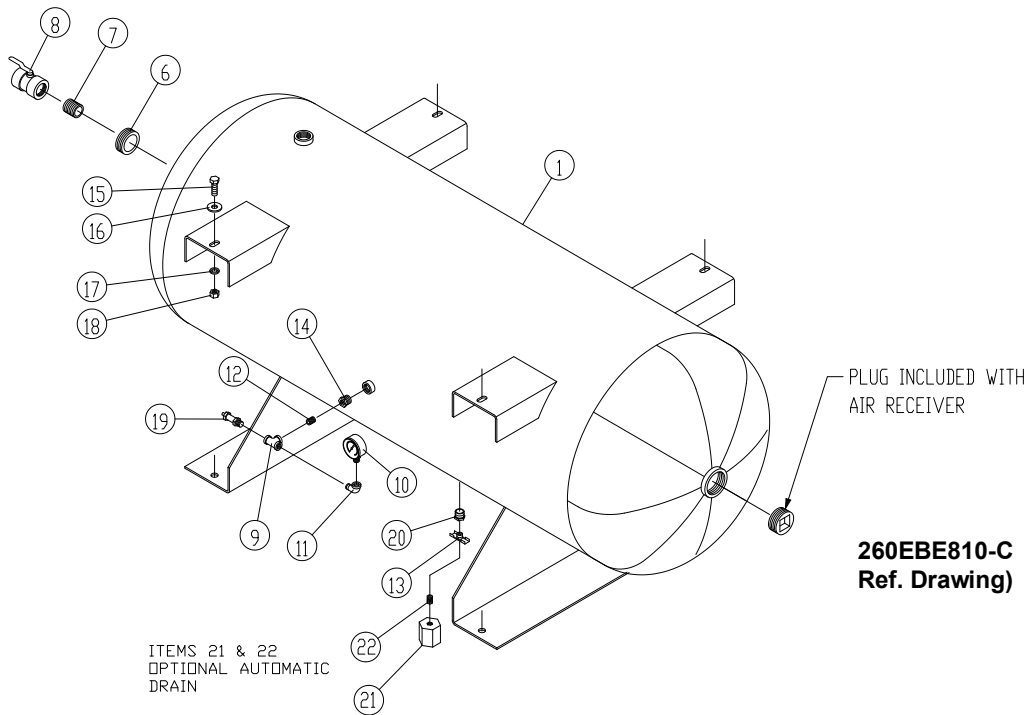
B/M: 304EBE4019; 302EBE4018  
301 & 302EBE4030; 304EBE4002

Ref. No.	Name of Part	Qty.	Part No.
24	SCREW .....	2	665HMCA12100Z
25	LOCKWASHER .....	4	95B5
28	ADAPTOR .....	1	29Z226
29	OIL SAMPLING VALVE .....	1	86H345
30	BUSHING .....	1	86H156
31	ADAPTOR .....	1	29Z241
32	NIPPLE.....	1	63K23G
33	PIPE BUSHING .....	1	64EB304
34	TEE .....	1	64P106G
35	CONNECTOR.....	1	86H142
36	MANIFOLD .....	1	300EBE286
37	TUBE CONNECTOR .....	1	86H137
38	HOSE .....	1	306EFB127
** 39	OIL FILTER.....	1	26C27
40	NIPPLE.....	1	63G2G
41	NIPPLE.....	1	63G33G
42	TEE .....	1	86N286
43	TUBE WITH FITTING .....	1	200EBE863
49	NIPPLE.....	2	63J15G
50	MINIMUM PRESSURE VALVE .....	1	200EDE527
51	PIPE BUSHING .....	1	64E97
52	TUBE CONNECTOR .....	1	86H138
53	TUBE CONNECTOR .....	1	86H142
54	ADAPTOR .....	1	86H326
55	TUBE CONNECTOR .....	1	86H137
56	TEE .....	1	64P14G
57	NIPPLE.....	1	63G1G
58	TUBE WITH FITTING .....	1	202EBE863
59	TUBE CONNECTOR .....	1	86H138
60	TUBE WITH FITTING .....	1	206EBE863
61	SCREW .....	2	665HMCA12045Z
* 62	THERMO VALVE		
	170° .....	1	90AR1093
	180° .....	1	90AR1100

\* See page 6 for repair part numbers.

\*\* See page 9 for repair part numbers.

Order by Part Number and Description. Reference Numbers are for your convenience only.

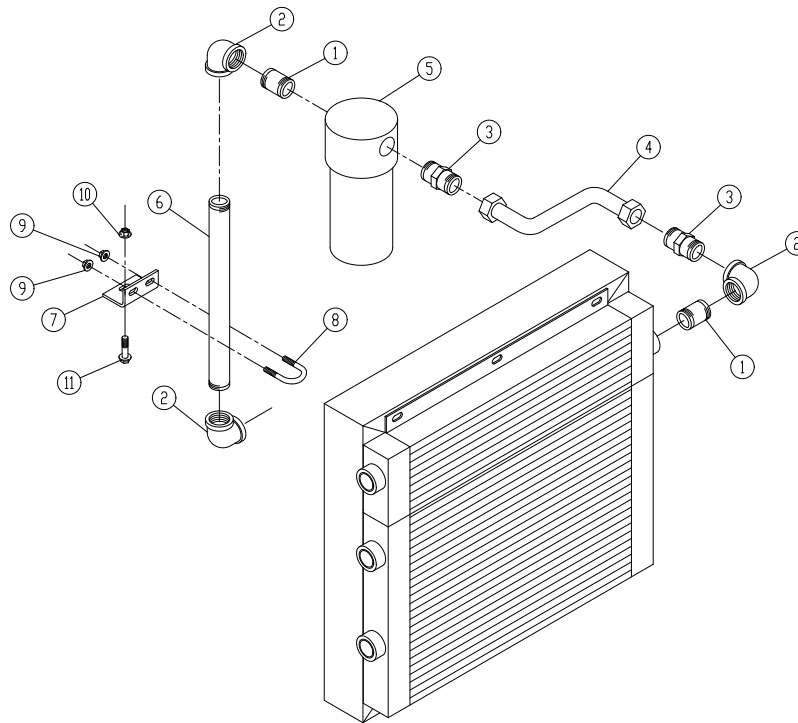


**AIR RECEIVER GROUP**

**B/M: 202EBE4023  
203EBE4023, 204EBE4023  
207EBE4023**

Ref. No.	Name of Part	Qty.	Part No.
1	RECEIVER-AIR		
	120 GALLON .....	1	200EJB645
	200 GALLON .....	1	201EJB645
6	BUSHING-PIPE .....	1	64E11
7	NIPPLE.....	1	63H1G
8	VALVE-BALL .....	1	90AR362
9	TEE .....	1	64G3G
10	GAUGE-AIR PRESSURE.....	1	27A114
11	ELBOW.....	1	64D2G
12	NIPPLE.....	1	63D1G
13	COCK (Not required with Automatic Drain).....	1	90C12
14	BUSHING-PIPE .....	1	64E2G
15	SCREW .....	4	655EE060
16	WASHER.....	8	95A5
17	LOCKWASHER .....	4	95B5
18	NUT.....	4	50B5
19	VALVE-PRESSURE RELIEF .....	1	90AR657
20	BUSHING-PIPE .....	1	64E2G
21	AUTOMATIC DRAIN VALVE (Optional).....	1	90AR319
22	PIPE-NIPPLE (Optional).....	1	63F21G

Order by Part Number and Description. Reference Numbers are for your convenience only.



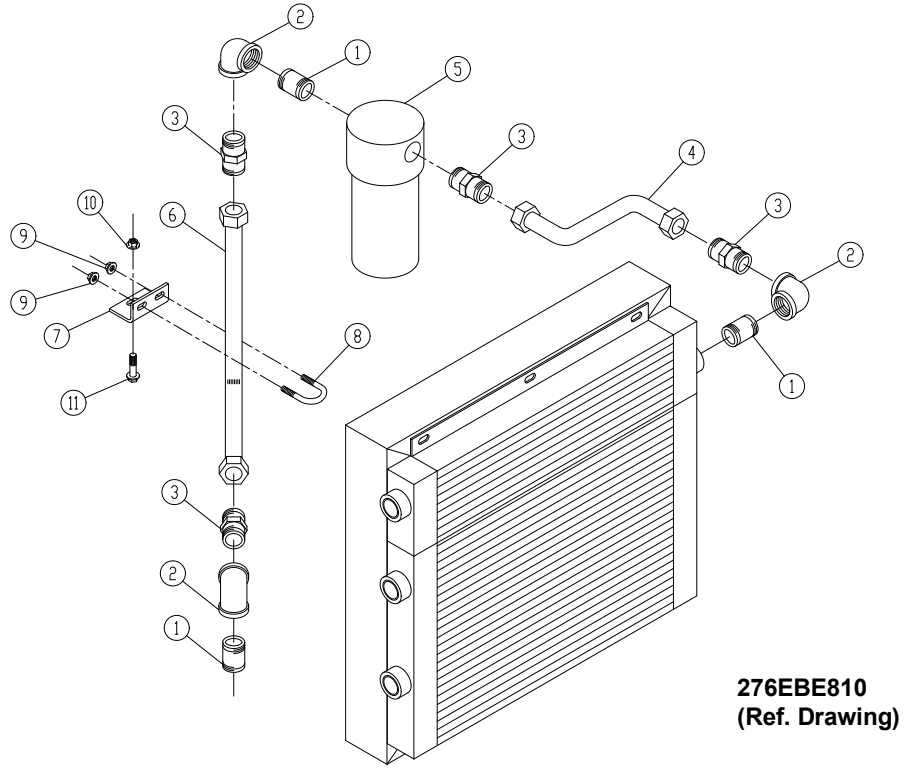
277EBE810  
(Ref. Drawing)

**DISCHARGE PIPING – BASE MOUNTED UNITS  
(WITH SEPARATOR)**

B/M: 211EBE4019  
303EBE4019

Ref. No.	Name of Part	Qty.	Part No.
1	NIPPLE .....	2	63H1G
2	ELBOW .....	3	64C6G
3	CONNECTOR-TUBE .....	2	86H138
4	TUBE WITH FITTINGS .....	1	203EBE863
5	TRAP .....	1	83C78
6	NIPPLE .....	1	63N16X134G
7	BRACKET .....	1	204EJB142
8	U-BOLT .....	1	143738
9	NUT .....	2	50AW4
10	NUT .....	1	50AW5
11	SCREW .....	1	75LM51

Order by Part Number and Description. Reference Numbers are for your convenience only.

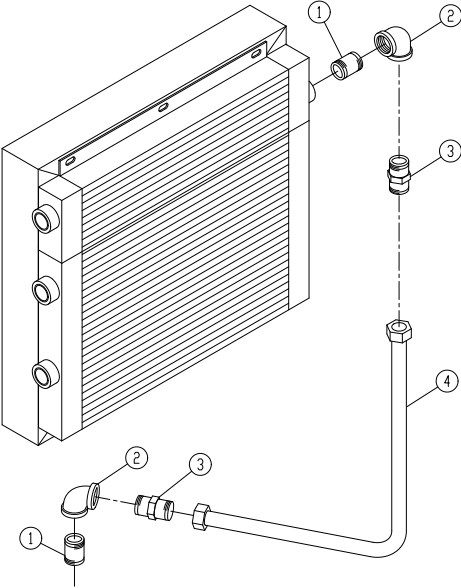


**DISCHARGE PIPING – TANK MOUNTED UNITS  
(WITH SEPARATOR)**

**B/M: 210EBE4019**

Ref. No.	Name of Part	Qty.	Part No.
1	NIPPLE.....	3	63H1G
2	ELBOW .....	3	64C6G
3	CONNECTOR-TUBE .....	4	86H138
4	TUBE WITH FITTINGS .....	1	203EBE863
5	TRAP.....	1	83C78
6	TUBE WITH FITTINGS .....	1	204EBE863
7	BRACKET.....	1	202EJB142
8	U-BOLT .....	1	15U59
9	NUT.....	2	50AW3
10	NUT.....	1	50AW5
11	SCREW.....	1	75LM51

Order by Part Number and Description. Reference Numbers are for your convenience only.



278EBE810  
(Ref. Drawing)

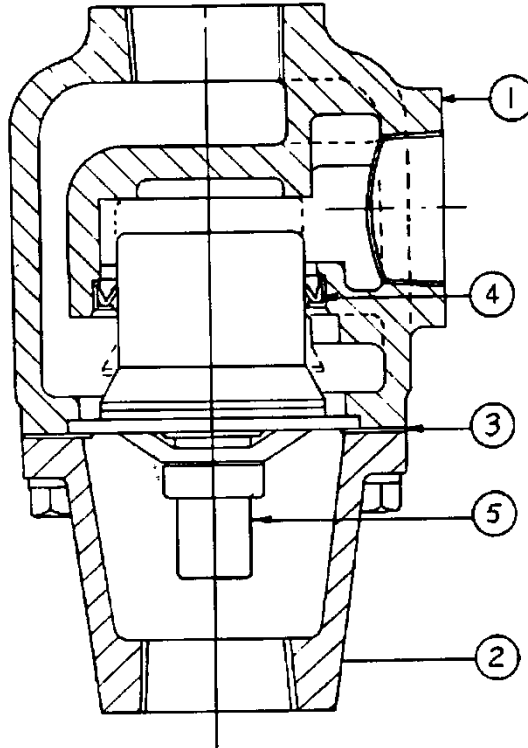
**DISCHARGE PIPING – TANK MOUNTED UNITS  
(WITHOUT SEPARATOR – TRAP)**

B/M: 212EBE4019

Ref. No.	Name of Part	Qty.	Part No.
1	NIPPLE.....	2	63H1G
2	ELBOW .....	2	64C6G
3	CONNECTOR-TUBE .....	2	86H138
4	TUBE WITH FITTINGS.....	1	205EBE863

Order by Part Number and Description. Reference Numbers are for your convenience only.

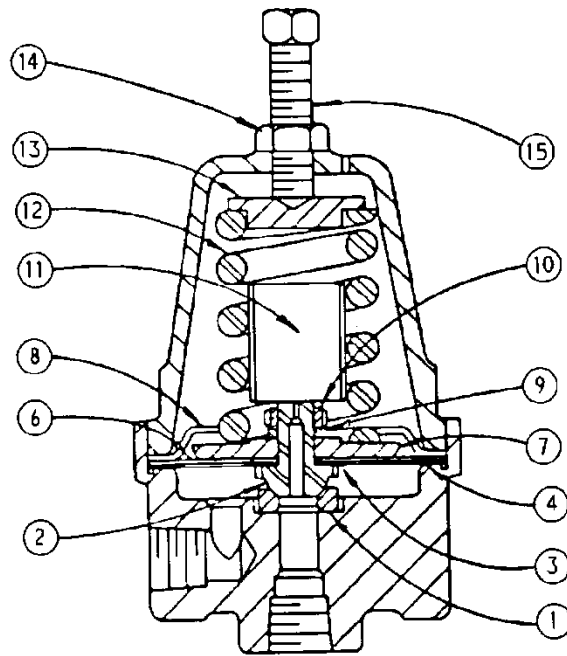
**THERMAL VALVE  
(Thermostatic Mixing)**



**90AR1093 ASSEMBLY VALVE – THERMAL (ALUMINUM HOUSING)**

Ref. No.	Name of Part	Qty.	Part No.
1	VALVE BODY (3/4+).....	1	2117072
2	VALVE COVER (3/4+) .....	1	2117073
	VALVE KIT (Includes Items 3, 4 & 5)		
	150° THERMOSTAT (Optional) .....	1	2115542
	160° THERMOSTAT (Optional) .....	1	2115543
	170° THERMOSTAT (Standard).....	1	2117074
	180° THERMOSTAT (Optional).....	1	2117075
3	O-RING (Included in Valve Kit).....	1	
4	LIP SEAL (Included in Valve Kit) .....	1	
5	ELEMENT (Included in Valve Kit).....	1	

Order by Part Number and Description. Reference Numbers are for your convenience only.

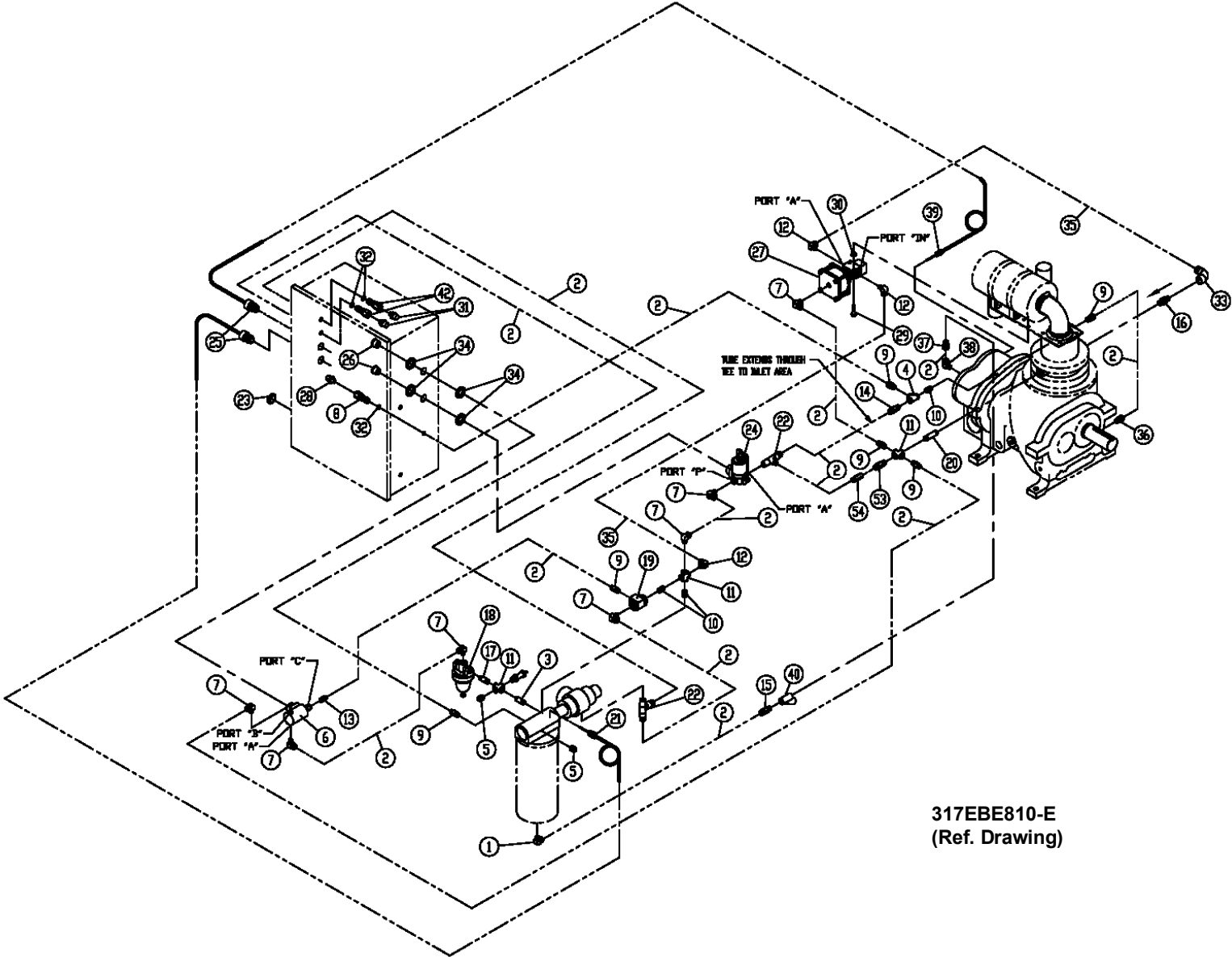


**SUBTRACTIVE PILOT VALVE**

Ref. No.	Name of Part	Qty.	Part No.
	VALVE-SUBTRACTIVE PILOT (Includes Items 1 thru 15)		2009398
1	RING-SEAT .....	1	2008021
2	DISC-SEAT .....	1	2010080
3	GASKET .....	1	2008019
4	GASKET .....	1	2008017
6	DIAPHRAGM SET (Set of 5) .....	1	2008018
7	PLATE-PRESSURE .....	1	2008015
8	STOP-DIAPHRAGM.....	1	2008016
9	LOCKWASHER.....	1	95B1
10	NUT .....	1	2008888
11	DAMPER .....	1	2008711
12	SPRING .....	1	2008014
13	BUTTON-SPRING.....	1	2008891
14	LOCKNUT.....	1	50Y2
15	SCREW .....	1	2008952

NOTE: It is necessary to replace some parts in groups to insure satisfactory repair. When replacing diaphragm, also replace both diaphragm and seat gaskets. When replacing seat disc or seat ring, replace the mating seat ring or disc and the seat disc gasket.

CONTROL GROUP



317EBE810-E  
(Ref. Drawing)

Order by Part Number and Description. Reference Numbers are for your convenience only.

CONTROL GROUP

B/M: 303 & 304EBE4002  
301EBE4054

Ref. No.	Name of Part	Qty.	Part No.	Ref. No.	Name of Part	Qty.	Part No.
1	TUBE FITTING.....	1	86E219	22	TUBE FITTING .....	2	86E236
2	TUBE (IN FEET).....	25	85K3	23	SEAL-PLUG .....	1	24A415
3	NIPPLE .....	1	63D3G	+ *	24 VALVE-SOLENOID.....	1	91B250
4	TEE.....	1	64G3G	25	FITTING-ELECTRICAL.....	2	24CA2865
5	PLUG.....	2	64AC2	26	NIPPLE.....	2	24CA4641
+ 6	VALVE SOLENOID .....	1	91B248	++ **	27 CONTROL VALVE .....	1	90AR1082
7	TUBE FITTING.....	2	86E220	+ 28	SWITCH.....	1	88H195
8	CONNECTOR-TUBE.....	1	86N287	29	SCREW .....	2	75LM48
9	TUBE FITTING.....	6	86E210	30	NUT.....	2	50AW3
10	NIPPLE .....	3	63D1G	+ 31	TRANSDUCER-PRESSURE.....	2	88H365
11	CROSS .....	3	64K1G	32	O-RING .....	3	165011
12	TUBE FITTING.....	3	86E222	33	TUBE FITTING .....	1	86E231
13	TUBE FITTING.....	1	86E210	34	O-RING .....	4	24A383
14	TUBE FITTING.....	1	86E242	35	TUBE (IN FEET) .....	5	85K5
15	TUBE FITTING.....	1	86E210	36	CONNECTOR-TUBE .....	1	86H159
++ 16	VALVE-CHECK.....	1	90AR261	37	ORIFICE.....	1	86N339
17	NIPPLE .....	1	63D3G	38	ELBOW-TUBE .....	1	86H160
*** ++ 18	VALVE-SUB/PILOT .....	1	2009398	+ 39	THERMISTOR PROBE.....	1	21D264
++ 19	VALVE-CONTROL .....	1	90AR1034	40	FILTER.....	1	82E46
20	NIPPLE .....	1	63D6G	42	CONNECTOR-TUBE .....	2	86E250
+ 21	PROBE-ELECTRICAL.....	1	21D264	53	CHECK VALVE.....	1	90AR261
				54	TUBE FITTING .....	1	86E218

\* For Repair Kit, (Includes Springs, Seals, Piston Assembly, Plunger Assembly, Nut and O-Ring), order Part Number 2116077 or for Coil, order Part Number 2116078.

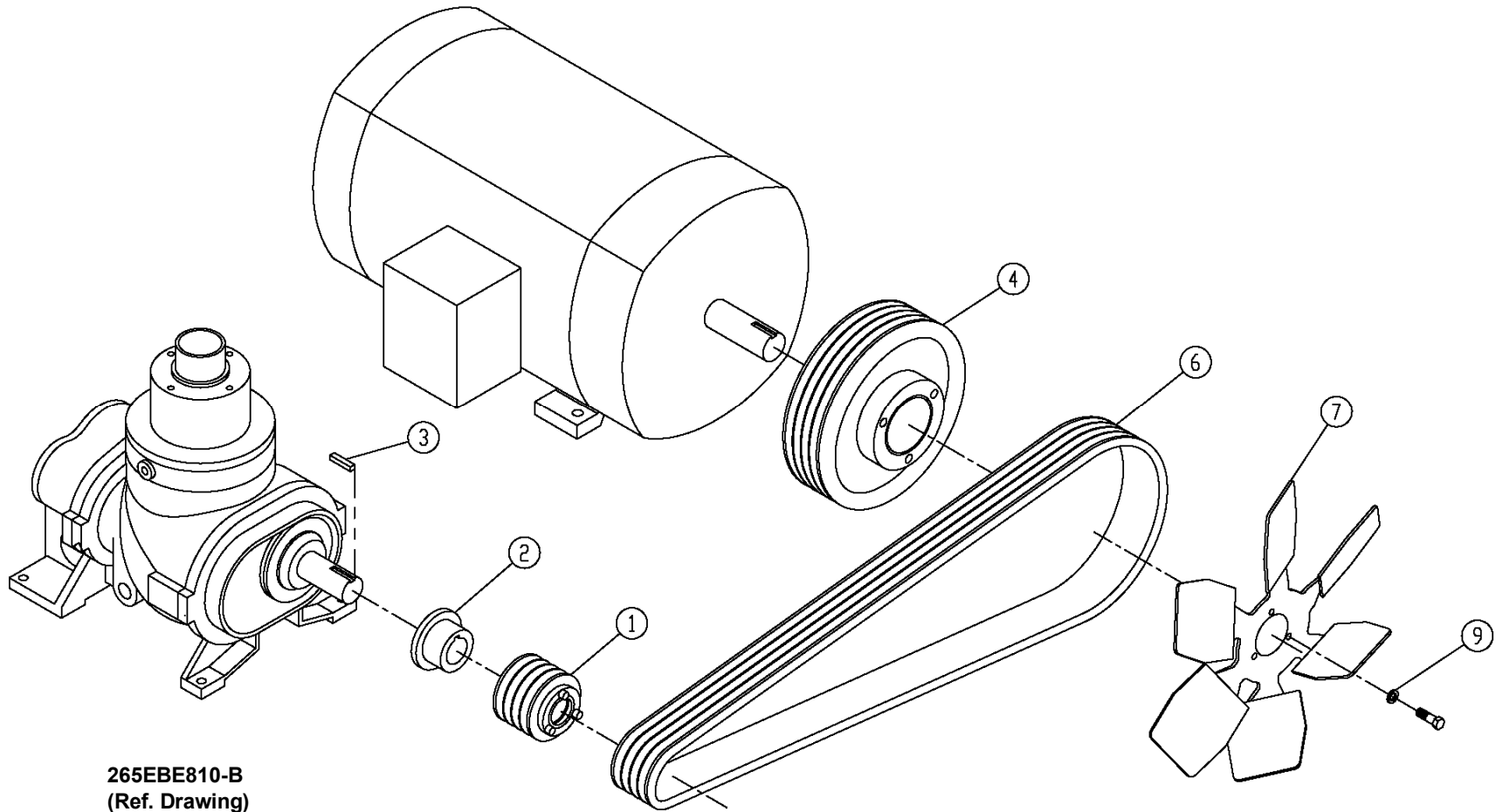
\*\* For repair of U-Cup (Piston Seal), order Part Number 2117904; For O-Ring (Top Plate), order Part Number 2117905.

\*\*\* For Repair parts, see page 17.

+ Parts included in Electrical Control Kit Part Number 307EBE6013. Refer to page 38.

++ Parts included in Pneumatic Control Kit Part Number 300EBE6013. Refer to page 38.

DRIVE GROUPS – 20, 25 & 30 HP (15, 19 & 22 KW)



265EBE810-B  
(Ref. Drawing)

Order by Part Number and Description. Reference Numbers are for your convenience only.

DRIVE GROUPS – 20 HP (15 KW)

Ref. No.	Name of Part	Qty.	100 PSIG 321EBE4004 Part No.	125 PSIG 322EBE4004 Part No.	150 PSIG 323EBE4004 Part No.	175 PSIG 324EBE4004 Part No.
1	SHEAVE.....	1	73N43V41	73N43V50	73N43V53	300EBE099
2	BUSHING-HUB .....	1	22K35D	22K35D	22K35D	22K35F
4	SHEAVE.....	1	205EBE099	205EBE099	205EBE099	205EBE099
6	BELT-SET 4 PC. ....	1	13AG6004	13AG6004	13AG6004	13AG6004
7	FAN.....	1	203EBE701	203EBE701	203EBE701	203EBE701
8	SCREW.....	3	655ED030	655ED030	655ED030	655ED030
9	LOCKWASHER.....	3	95B3	95B3	95B3	95B3
* 10	VALVE-PRESSURE/RELIEF .....	1	90AR662	90AR663	90AR657	90AR657

\* Not shown on drawing.

Order by Part Number and Description. Reference Numbers are for your convenience only.

**DRIVE GROUPS – 25 HP (19 KW)**

Ref. No.	Name of Part	Qty.	100 PSIG 325EBE4004 Part No.	125 PSIG 326EBE4004 Part No.	150 PSIG 327EBE4004 Part No.	175 PSIG 328EBE4004 Part No.
1	SHEAVE.....	1	73N43V50	73N43V56	301EBE099	302EBE099
2	BUSHING-HUB .....	1	22K35D	22K35D	22K35F	22K35F
4	SHEAVE.....	1	203EJB099	203EBE099	203EBE099	203EBE099
6	SET-BELT 4 PC .....	1	13AG6704	13AG6704	13AG6704	13AG6704
7	FAN.....	1	202EBE701	202EBE701	202EBE701	202EBE701
8	SCREW.....	3	655ED030	655ED030	655ED030	655ED030
9	LOCKWASHER.....	3	95B3	95B3	95B3	95B3
+ 10	VALVE-PRESSURE/RELIEF .....	1	*	90AR663	90AR657	90AR657

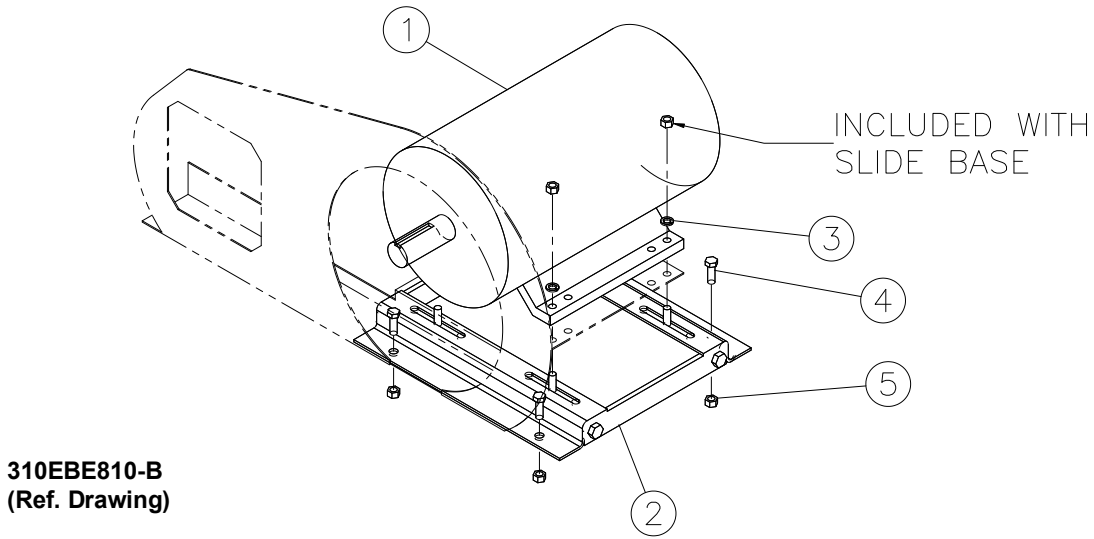
**DRIVE GROUPS – 30 HP (22 KW)**

Ref. No.	Name of Part	Qty.	100 PSIG 329EBE4004 Part No.	125 PSIG 330EBE4004 Part No.	150 PSIG 331EBE4004 Part No.	175 PSIG 332EBE4004 Part No.
1	SHEAVE.....	1	73N43V50	73N43V56	301EBE099	302EBE099
2	BUSHING-HUB .....	1	22K35D	22K35D	22K35F	22K35F
4	SHEAVE.....	1	202EJB099	202EJB099	202EJB099	202EJB099
6	BELT-SET 4 PC. ....	1	13AG6704	13AG7104	13AG7104	13AG7104
7	FAN.....	1	202EBE701	202EBE701	202EBE701	202EBE701
8	SCREW.....	3	655ED030	655ED030	655ED030	655ED030
9	LOCKWASHER.....	3	95B3	95B3	95B3	95B3
+ 10	VALVE-PRESSURE/RELIEF .....	1	*	90AR663	90AR657	90AR657

+ Not shown on drawing.

- (2) 90AR662 Relief Valves required.
-

Order by Part Number and Description. Reference Numbers are for your convenience only.

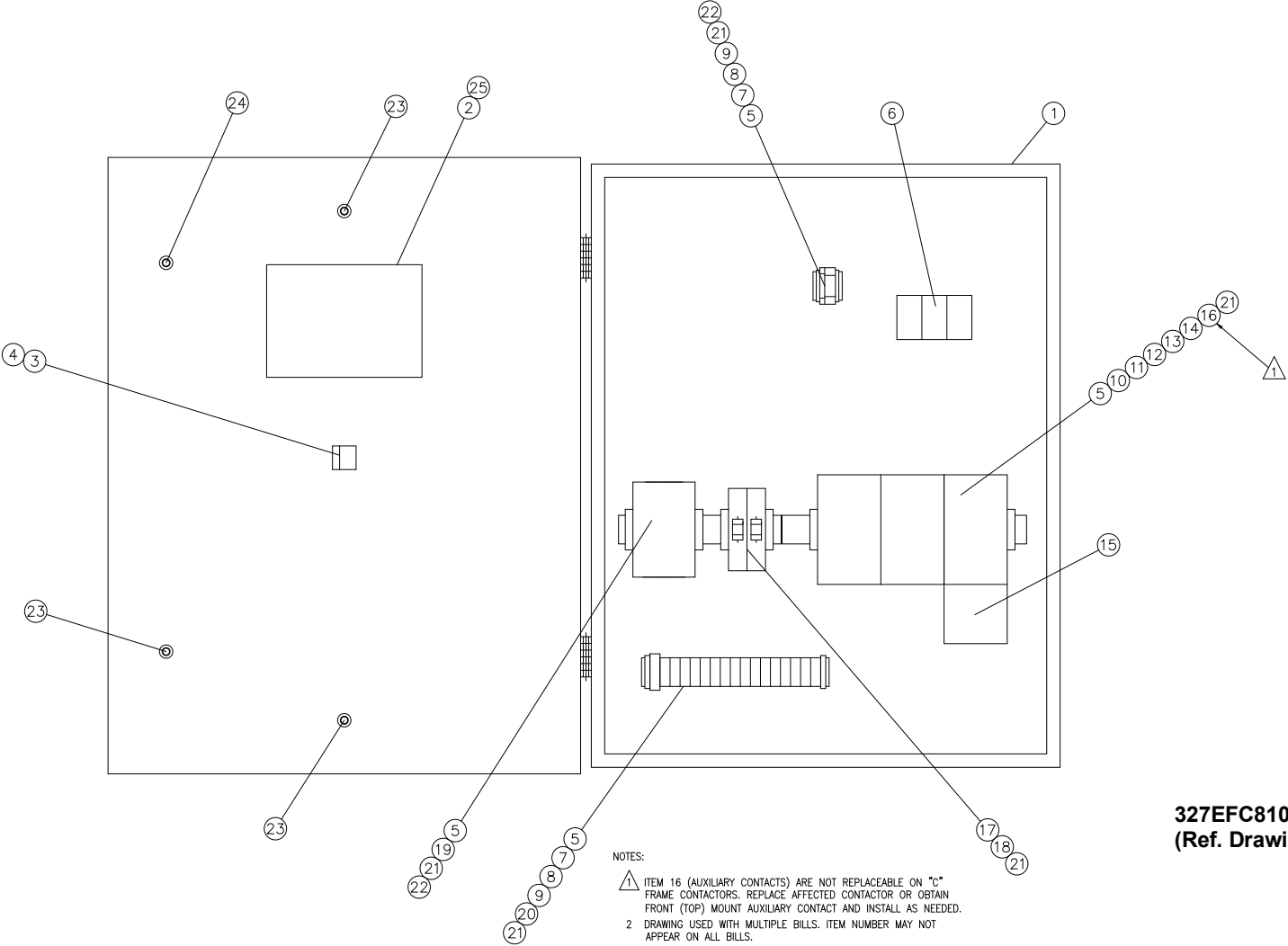


**MAIN MOTOR GROUP**

Ref. No.	Name of Part	Qty.	15 HP	20 HP	25 HP	30 HP
			343EBE4015 Part No.	355EBE4015 Part No.	367EBE4015 Part No.	379EBE4015 Part No.
1	MOTOR.....	1	*	*	*	*
2	BASE .....	1	24AZ21	24AZ22	24AZ23	24AZ24
3	LOCKWASHER.....	4	95B5	95B5	95B5	95B5
4	SCREW.....	4	75LM135	75LM135	75LM135	75LM135
5	NUT .....	4	50AW35	50AW35	50AW35	50AW35

\* Selective -- See page 35

**CONTROLLER ASSEMBLY – (380 VOLT) WYE DELTA STARTER – 20, 25 & 30 HP (15, 19, & 22 KW)**



**327EFC810-B  
(Ref. Drawing)**

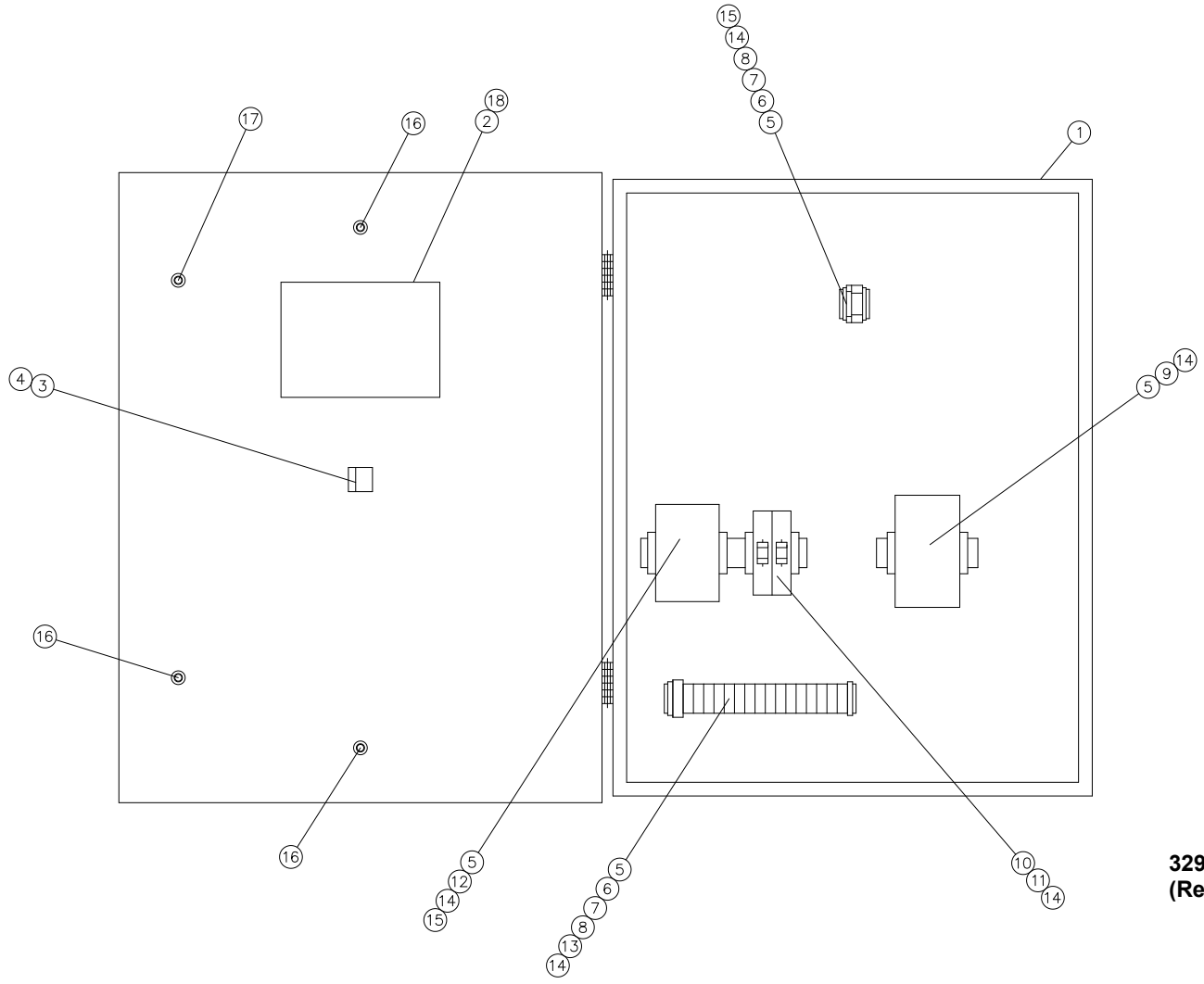
NOTES:  
 ⚠ ITEM 16 (AUXILIARY CONTACTS) ARE NOT REPLACEABLE ON "C" FRAME CONTACTORS. REPLACE AFFECTED CONTACTOR OR OBTAIN FRONT (TOP) MOUNT AUXILIARY CONTACT AND INSTALL AS NEEDED.  
 2 DRAWING USED WITH MULTIPLE BILLS. ITEM NUMBER MAY NOT APPEAR ON ALL BILLS.

Order by Part Number and Description. Reference Numbers are for your convenience only.

**CONTROLLER ASSEMBLY – (380VOLT) WYE DELTA STARTER – 20, 25 & 30 HP (15, 19 & 22 KW)**

		QTY.	20 HP	25 HP	30 HP
	NEMA 4 CONTROL BOX (AIRSMART).....		390EFC466	391EFC466	392EFC466
1	ENCLOSURE .....	1	304EFC179	304EFC179	304EFC179
2	AIRSMART CONTROLLER .....	1	89864799	89864799	89864799
3	OPERATOR .....	1	24CA2907	24CA2907	24CA2907
4	CONTACT BLOCK .....	1	24CA2908	24CA2908	24CA2908
5	DIN RAIL.....	1	24CA5991	24CA5991	24CA5991
6	POWER DISTRIBUTION BLOCK.....	1	24CA5983	24CA5983	24CA5983
7	GROUND BLOCK.....	2	24CA5989	24CA5989	24CA5989
8	GROUND BLOCK.....	2	24CA5986	24CA5986	24CA5986
9	TERMINAL BLOCK END PLATE .....	2	24CA5993	24CA5993	24CA5993
10	CONTACTOR.....	1	24CA5969	24CA6013	24CA6014
11	CONTACTOR.....	2	24CA5970	24CA6021	24CA6014
12	COIL.....	3	2118574	2118574	2118575
13	CONTACTORS.....	1	24CA6044	24CA6044	24CA6045
14	CONTACTORS.....	1	24CA6047	24CA6047	24CA6048
15	OVERLOAD RELAY .....	1	24CA6024	24CA5971	24CA6028
16	AUXILIARY CONTACT .....	3	-----	-----	24CA6043
17	FUSE BLOCK.....	2	24CA5910	24CA5910	24CA5910
18	FUSE.....	2	24CA5981	24CA5981	24CA5981
19	POWER SUPPLY .....	1	24CA6050	24CA6050	24CA6050
20	TERMINAL BLOCK.....	15	24CA5992	24CA5992	24CA5992
21	TERMINAL BLOCK.....	8	24CA5987	24CA5987	24CA5987
22	TERMINAL END STOP.....	2	24CA6052	24CA6052	24CA6052
23	LATCH .....	3	31D80	31D80	31D80
24	LATCH .....	1	31D79	31D79	31D79
25	GASKET.....	1	VP1033867	VP1033867	VP1033867
100	SEAL PLUG (not shown).....	3	24CA7023	24CA7023	24CA7023

# CONTROLLER ASSEMBLY – (380 VOLT) LESS MAIN MOTOR STARTER



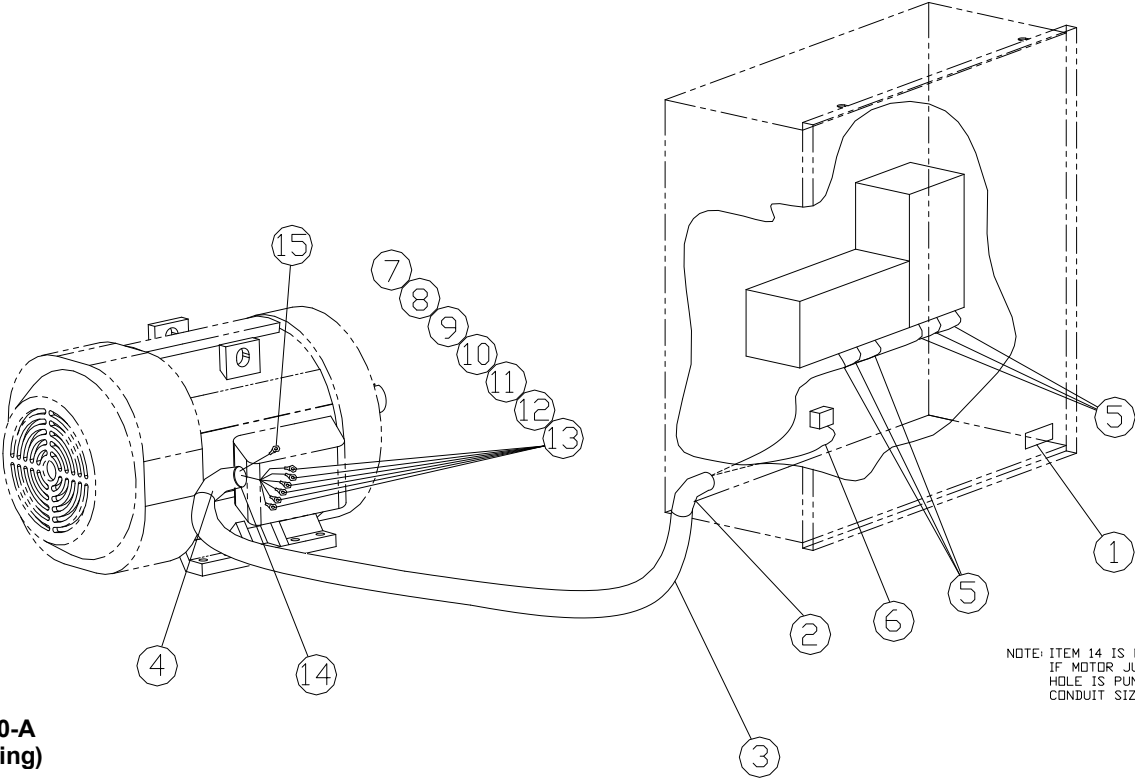
329EFC810-B  
(Ref. Drawing)

Order by Part Number and Description. Reference Numbers are for your convenience only.

**CONTROLLER ASSEMBLY – (380 VOLT) LESS MAIN MOTOR STARTER**

		<b>QTY.</b>	<b>380/400/415V</b>
	NEMA 4 CONTROL BOX (AIRSMART).....		403EFC466
1	ENCLOSURE .....	1	304EFC179
2	AIRSMART CONTROLLER.....	1	89864799
3	OPERATOR .....	1	24CA2907
4	CONTACT BLOCK .....	1	24CA2908
5	DIN RAIL .....	1	24CA5991
6	GROUND BLOCK.....	2	24CA5989
7	GROUND BLOCK.....	2	24CA5986
8	TERMINAL BLOCK END PLATE .....	2	24CA5993
9	RELAY .....	1	24CA5979
10	FUSE BLOCK.....	2	24CA5910
11	FUSE.....	2	24CA5981
12	POWER SUPPLY .....	1	24CA6050
13	TERMINAL BLOCK.....	18	24CA5992
14	TERMINAL BLOCK.....	8	24CA5987
15	TERMINAL END STOP.....	2	24CA6052
16	LATCH .....	3	31D80
17	LATCH .....	1	31D79
18	GASKET.....	1	VP1033867
100	SEAL PLUG (not shown).....	1	24CA7023

MOTOR WIRING – 380 VOLT



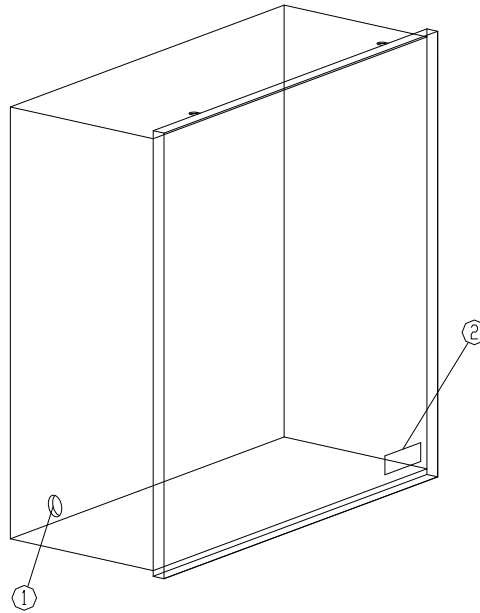
319EBE810-A  
(Ref. Drawing)

Order by Part Number and Description. Reference Numbers are for your convenience only

MOTOR WIRING – 380 VOLT

Ref. No.	Name of Part	QTY.	B/M: 358EBE4007	B/M: 359EBE4007
			20 HP	25 & 30 HP
1	VOLTAGE MARKER	1	69F55	69F55
2	FITTING.....	1	24A386	2009325
3	CONDUIT.....	3	24A443	2009314
4	FITTING.....	1	24A385	2009324
5	WIRE (IN FEET).....	30	2009800	2009801
6	WIRE (IN FEET).....	5	2009989	97J39
7	TERMINAL LUG.....	6	24CA1980	24A165
8	SCREW .....	9	655EC03B	655EC03B
9	NUT .....	9	50X16	50X16
10	WASHER.....	9	95H16	95H16
11	TERMINAL LUG.....	12	24CA1980	24CA1980
12	TAPE .....	1	24CA882	24CA882
13	TAPE .....	1	24CA883	24CA883
14	WASHER.....	2	24CA78	2009872
15	TERMINAL LUG.....	1	24A298	2009946

Order by Part Number and Description. Reference Numbers are for your convenience only

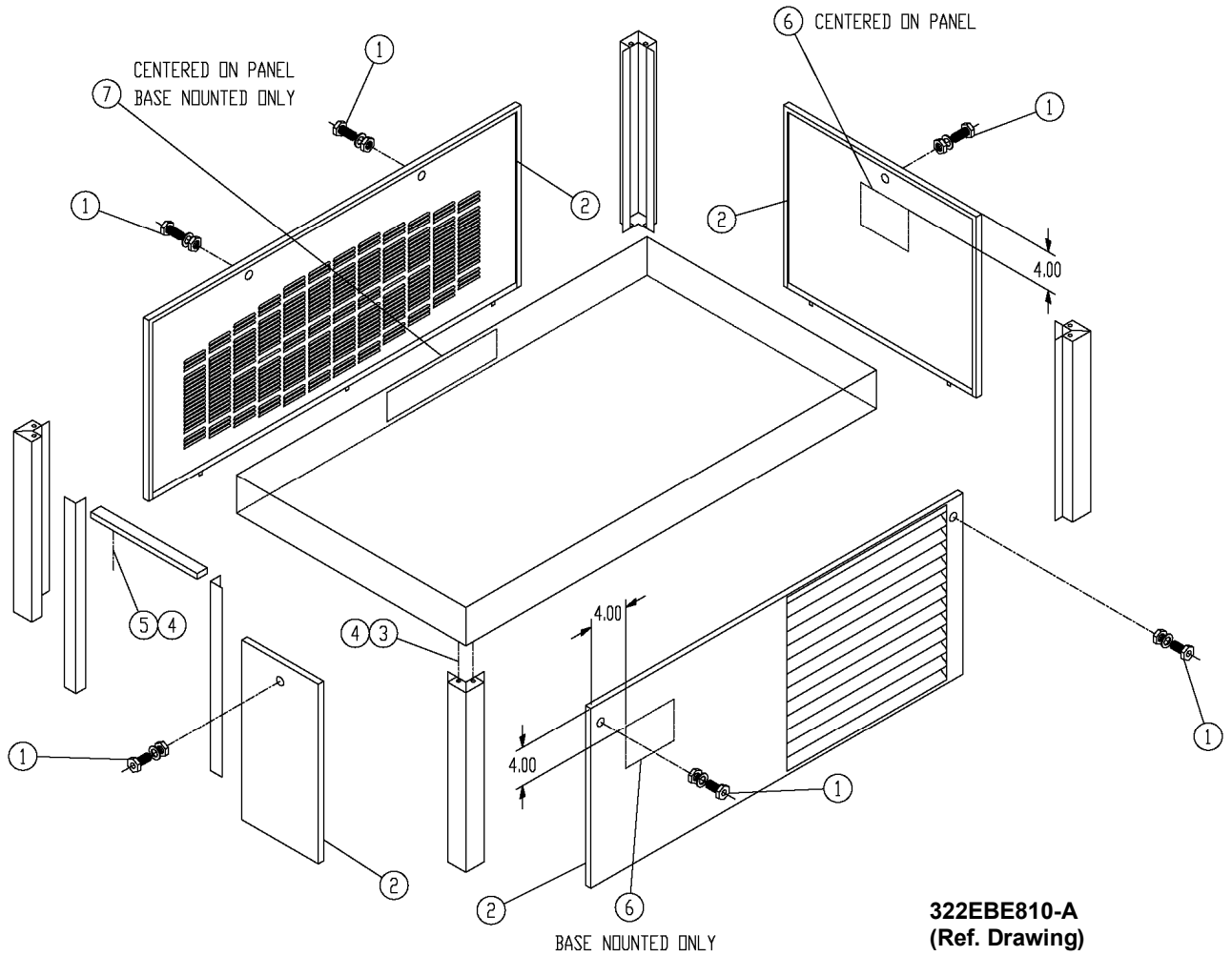


**MOTOR WIRING LESS STARTER – 380 VOLT**

**B/M: 360EBE4007**

Ref. No.	Name of Part	QTY.	
1	PLUG .....	1	24A415
2	VOLTAGE MARKER.....	1	69F55

Order by Part Number and Description. Reference Numbers are for your convenience only.



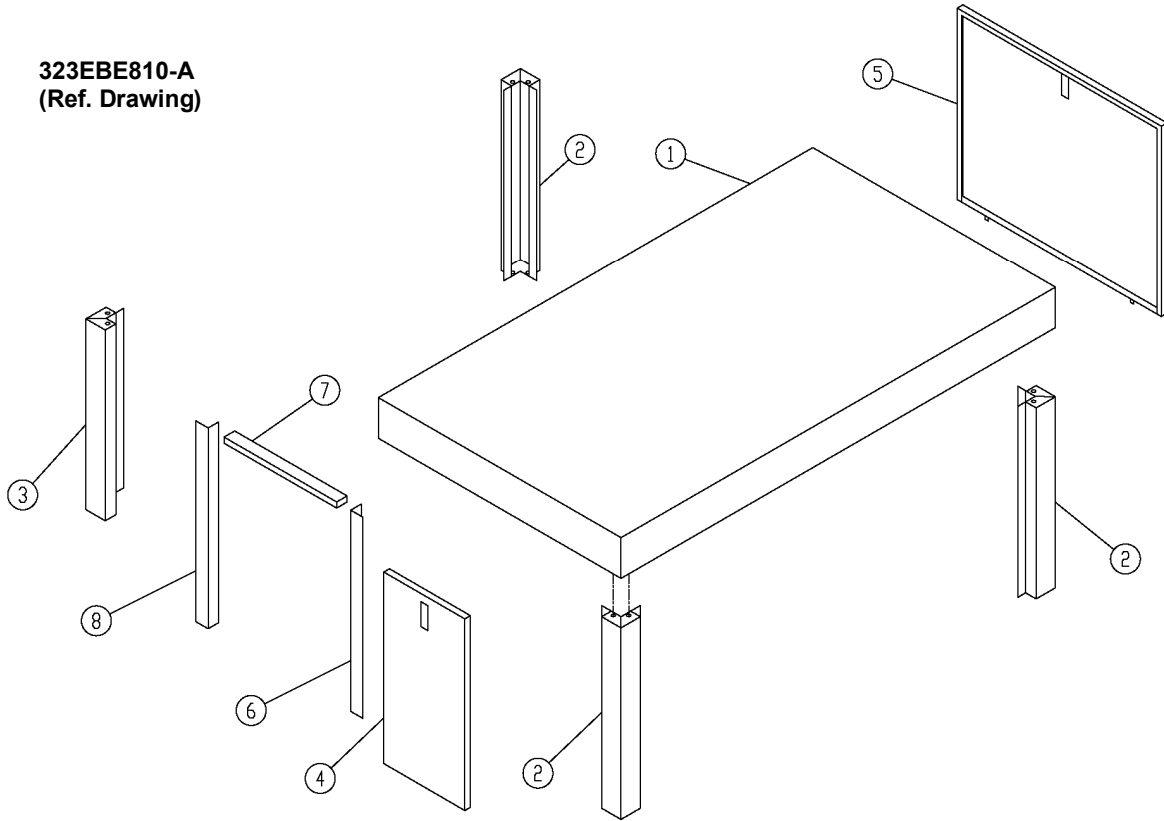
**ENCLOSURE – HARDWARE & DECALS**

**B/M: 305EBE4017**

Ref. No.	Name of Part	Qty.	Part No.
1	LATCH.....	6	31D68
2	SEAL (IN FEET).....	28	32E12
3	SCREW .....	20	75LM150
4	NUT .....	22	50AW5
5	SCREW .....	2	75LM78
6	DECAL GD .....	2	VP1039380
7	DECAL (GARDNER DENVER).....	1	VP1044830
8	KEY (NOT SHOWN) .....	2	VP1049035

Order by Part Number and Description. Reference Numbers are for your convenience only.

323EBE810-A  
(Ref. Drawing)

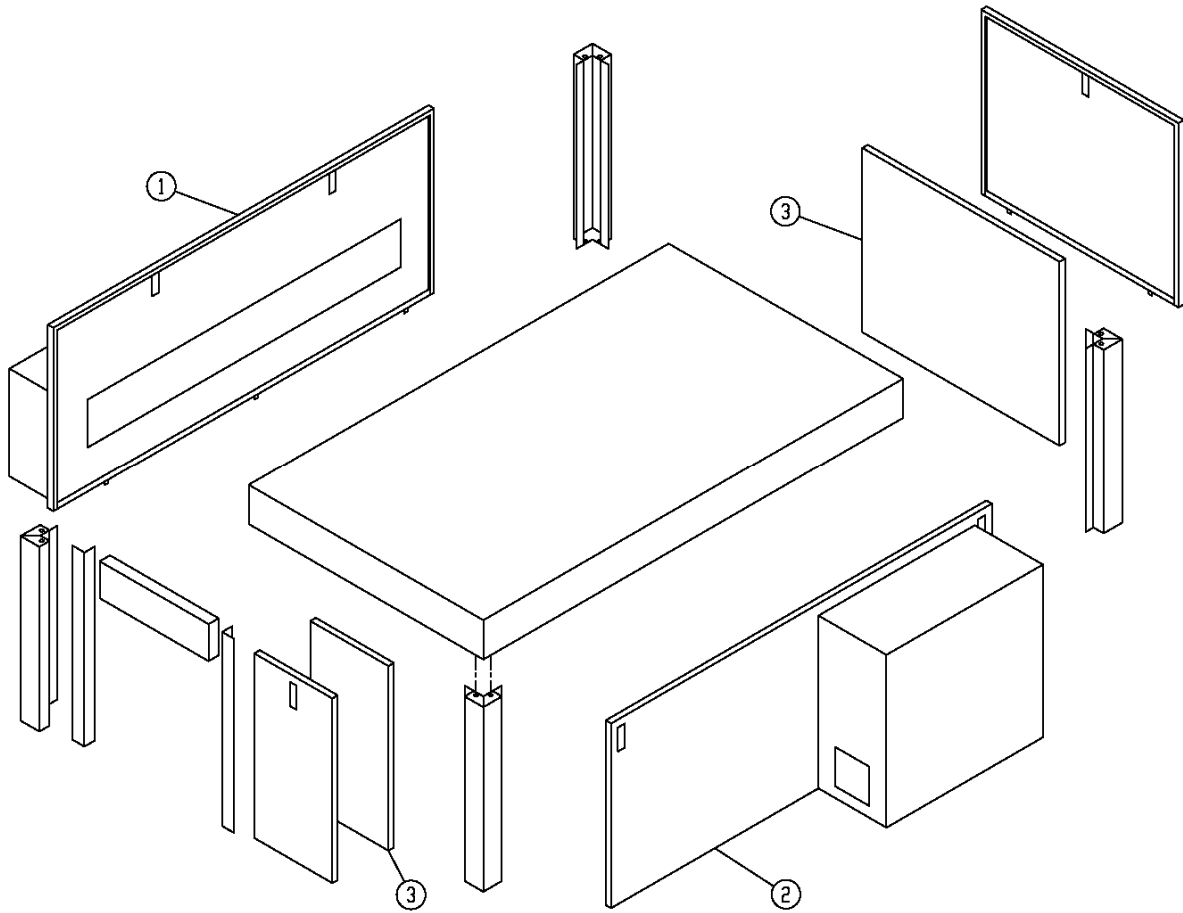


**ENCLOSURE – BASIC PARTS**

B/M: 304EBE4017

Ref. No.	Name of Part	Qty.	Part No.
1	HOOD.....	1	200EBE053
2	POST.....	3	CC1045543
3	POST.....	1	CC1045544
4	PANEL.....	1	CC1016658
5	PANEL.....	1	CC1016656
6	BRACKET RH SIDE OF CONTROL BOX .....	1	301EBE142
7	BRACKET (FORMED) TOP OF CONTROL BOX .....	1	300EBE142
8	BRACKET LH SIDE OF CONTROL BOX .....	1	302EBE142

Order by Part Number and Description. Reference Numbers are for your convenience only.



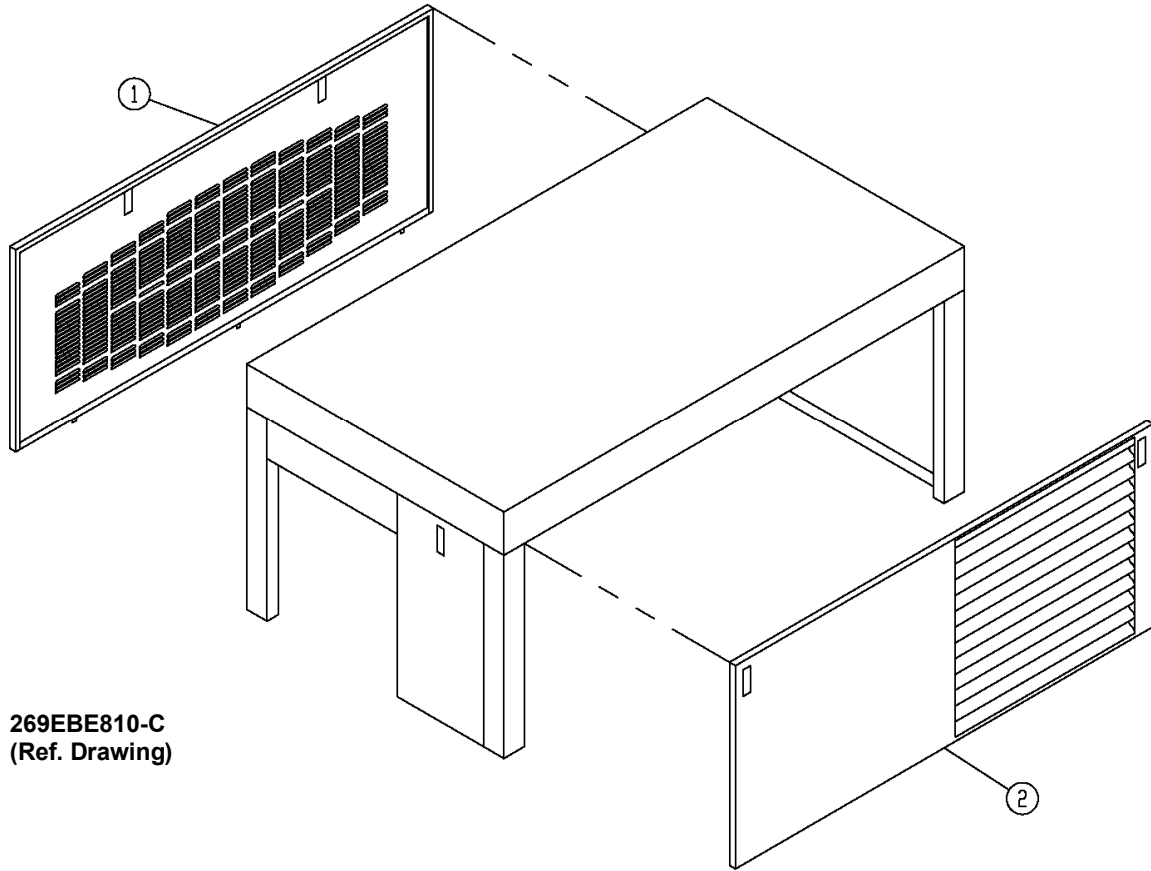
268EBE810-C  
(Ref. Drawing)

**QUIET ENCLOSURE – ODP MOTOR ONLY**

**B/M: 211EBE4017**

Ref. No.	Name of Part	Qty.	Part No.
1	PANEL .....	1	CC1016661
2	PANEL .....	1	CC1016662
3	INSULATION.....	1	200EJB470

Order by Part Number and Description. Reference Numbers are for your convenience only.



**ENCLOSURE – PANELS**

Ref. No.	Name of Part	Qty.	B/M: 209EBE4017 ODP Motors		B/M: 210EBE4017 TEFC Motors	
			Part No.	Part No.	Part No.	Part No.
1	PANEL.....	1	CC1016657		CC1016659	
2	PANEL.....	1	CC1016660		CC1016660	

**MAIN MOTOR (STANDARD ODP & TEFC)  
(WYE DELTA)**

<b>Name of Part</b>	<b>20 HP (15 KW) Part No.</b>	<b>25 HP (19 KW) Part No.</b>	<b>30 HP (22 KW) Part No.</b>
---------------------	-----------------------------------	-----------------------------------	-----------------------------------

**OPEN DRIP PROOF**

MOTOR, 380V	24CA4342	24CA4343	24CA4344
-------------	----------	----------	----------

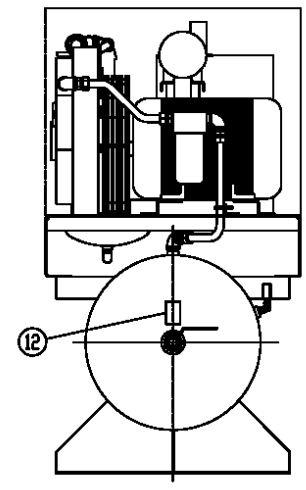
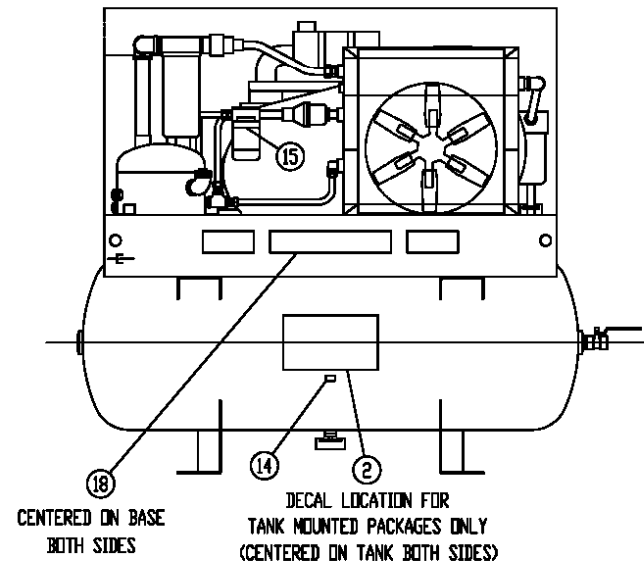
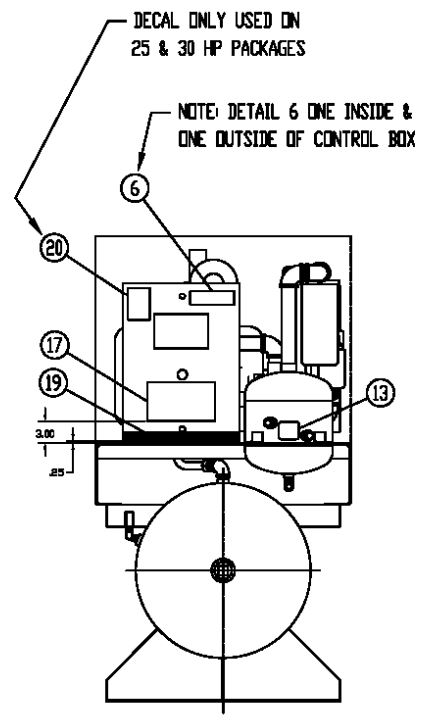
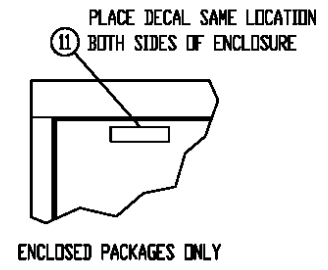
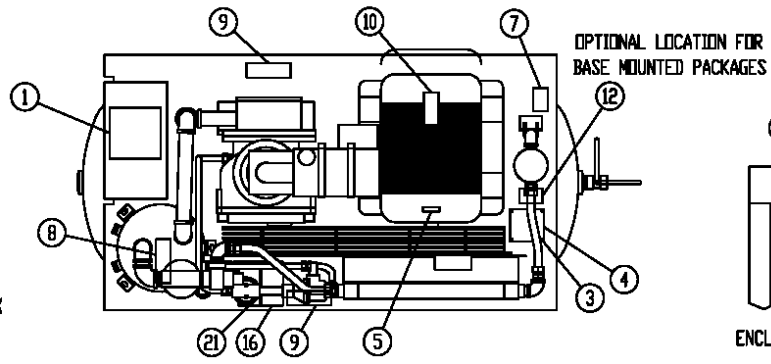
**TOTALLY ENCLOSED FAN COOLED**

MOTOR, 380V	24CA4354	24CA4355	24CA4356
-------------	----------	----------	----------

**MOTOR BASES**

<b>HP</b>	<b>Motor Frame</b>	<b>Part No.</b>
20	256	24AZ22
25	284	24AZ23
30	286	24AZ24

# IDENTIFICATION AND INSTRUCTION GROUP



321EBE810-C  
(Ref. Drawing)

Order by Part Number and Description. Reference Numbers are for your convenience only

IDENTIFICATION AND INSTRUCTION GROUP

B/M: 301 thru 306EBE4011

Ref. No.	Name of Part	Qty.	Part No.
1	DECAL, CD MANUALS.....		
	ENGLISH.....	1	VP1009795
	FRENCH.....	1	VP1012949
	MEXICAN SPANISH.....	1	VP1012948
* 2	DECAL, GARDNER DENVER PRODUCT LOGO.....	2	VP1051554
* 5	DECAL, ROTATION ARROW .....	1	304EFC077
* 6	DECAL, ISO WARNING . CONTROL BOX.....	2	VP1009371
* 7	DECAL, ISO WARNING . OIL FILTER .....	2	VP1009379
* 8	DECAL, ISO WARNING . SEPARATOR TANK .....	1	VP1009376
* 9	DECAL, ISO WARNING . FAN/COOLER HOUSING .....	2	VP1009582
* 10	DECAL, ISO WARNING . MOTOR .....	1	VP1009374
11	DECAL, ISO WARNING (SIDES ABOVE DOORS).....	2	VP1009372
* 12	DECAL, ISO WARNING . PACKAGE DISCHARGE AIR.....	1	VP1009623
* 13	DECAL OIL LEVEL .....	1	200EJB077
14	DECAL (DRAIN MOISTURE DAILY) .....	1	205ESO077
15	DECAL OIL FILL ELEMENT.....	1	205EBE077
* 16	DECAL, NOTICE (USE GENUINE GD PARTS).....	2	CC1009474
17	DECAL, GD LOGO (SMALL).....	1	VP1051555
18	DECAL, ELECTRA SAVER II (LARGE).....	2	VP1051551
19	DECAL, STRIPE (SMALL) .....	1	VP1051553
20	DECAL, CAGI PERFORMANCE .....	1	CC1031484
21	IDENTIFICATION & INSTRUCTION GROUPS.....		
	DECAL, AEON 4000 .....	1	228EAQ077
	DECAL, AEON 6000FG .....	1	241EAQ077
	DECAL, AEON 9000SP .....	1	243EAQ077
	DECAL, AEON 2000 .....	1	253EAQ077
	DECAL, AEON BIO .....	1	315EBE077
	DECAL, AEON 9000TH.....	1	325EAQ077
	DECAL, AEON 6000FG-68 .....	1	CC1010087

\* For Replacement Decals Order Part Number CC1010403 Decal Group Sheet.

## REPAIR KITS

Your Gardner Denver rotary screw compressor is designed and manufactured for many years of reliable operation. All components are engineered to exacting specifications, which will function together as a system to provide maximum efficiency. To insure the continuing integrity of compressor operation, use only original quality genuine Gardner Denver replacement parts and accessories.

Name of Part	Qty.	Part No.
<b>ROUTINE MAINTENANCE KIT</b>		<b>304EBE6013</b>
ELEMENT, AIR FILTER.....	2	2118314
ELEMENT, OIL FILTER.....	3	2116128
<b>PERIODIC MAINTENANCE KIT (Inlet Valve)</b>		<b>302EBE6013</b>
O-RING .....	1	25BC440
SPRING .....	1	78H22
SPRING .....	1	78W59
O-RING .....	1	25AM15
RING-RETAINING.....	1	74D87
GASKET (ELIMINATOR).....	1	25BC222
<b>OIL SEPARATOR ELEMENT.....</b>	<b>1</b>	2116717
<b>FIELD ENCLOSURE KIT (ODP Motor)(Field Conversion Kit) (Std).....</b>	<b>1</b>	300EBE6005
<b>FIELD ENCLOSURE KIT (TEFC Motor)(Field Conversion Kit) (Std).....</b>	<b>1</b>	301EBE6005
<b>QUIET ENCLOSURE KIT (ODP Motor) (Field Conversion Kit) (Quiet).....</b>	<b>1</b>	302EBE6005
<b>ELECTRICAL CONTROL KIT</b>		<b>307EBE6013</b>
THERMISTOR PROBE.....	2	21D264
VALVE-SOLENOID.....	1	91B250
VALVE-SOLDNOID .....	1	91B248
SWITCH-VACUUM.....	1	88H195
TRANSDUCER.....	2	88H365
<b>PNEUMATIC CONTROL KIT</b>		<b>300EBE6013</b>
VALVE-SUBTRACTIVE PILOT .....	1	2009398
VALVE-CONTROL .....	1	90AR1034
VALVE-CHECK .....	3	90AR261
CONTROL VALVE.....	1	90AR1082

**REPAIR KITS (CONTINUED)**

Name of Part	Qty.	Part No.
<b>LUBRICANT (AEON 4000)</b>		
5-GALLON PAIL .....	1	28H57
55-GALLON DRUM .....	1	28H36
<b>TOUCH-UP PAINT (White)</b>		
5-GALLON.....	1	28H76
1-GALLON.....	1	28H84
1-QUART CAN .....	1	28H83
<b>DRIVE SHAFT SEAL KIT</b>		<b>301EFD6029</b>
OIL SHAFT SEAL .....	1	89532919
GASKET .....	1	30805908
WEAR SLEEVE .....	1	89533499
GASKET ELIMINATOR.....	1	25BC632
DUST SEAL .....	1	89599799
<b>DRIVE SHAFT SEAL TOOL KIT</b>		<b>305EBE6013</b>
SHAFT SEAL TOOL (Drift).....	1	03416008
ASSEMBLY TOOL.....	1	37917818
SHAFT SEAL TOOL .....	1	03424708
WEAR SLEEVE PULLER .....	1	EFC89587189
<b>PERIODIC OVERHAUL KIT</b>		<b>307EFD6013</b>
GASKET.....	1	22318708
ROLLER-BEARING .....	1	87089359
ROLLER-BEARING .....	1	12BA226
ROLLER-BEARING .....	1	12BA227
ROLLER-BEARING .....	1	12BA228
ROLLER-BEARING .....	1	12BA229
ROLLER-BEARING .....	1	12BA230
LOCKNUT .....	1	87252589
LOCKNUT .....	1	86912899
INNER RING .....	1	89533499
SHAFT OIL SEAL .....	1	89532919
O-RING .....	2	87908849
O-RING .....	1	87090019
DOWEL-PIN .....	2	62M178
DUST SEAL .....	1	89599799
LOCTITE THREAD SEALANT (Quick Stick) .....	1	25BC888
O-RING .....	1	89558369
O-RING .....	1	89565109
O-RING .....	1	89873429
<b>WARRANTY KIT (EBE99R)</b>		<b>323EBE6032</b>
ELEMENT OIL FILTER W/SEAL RING(12AT).....	4	2116128
ELEMENT(AIR FILTER) .....	2	2118314
AIR/OIL SEPARATOR ELEMENT (LSE).....	1	2118961
BOTTLE, AEON OIL SAMPLE KIT, ONE EACH .....	2	VP1074048





# Gardner Denver®

For additional information, contact your local representative or visit:  
[www.gardnerdenver.com/industrials](http://www.gardnerdenver.com/industrials)

©2016 Gardner Denver, Inc. Printed in U.S.A.



Member



Please recycle after use.