

Manual Updated 1/19/2021, Page 21

**VARIABLE SPEED
SINGLE STAGE
BASE-MOUNTED
COMPRESSOR**

AIRSMART™ - CONTROLLER

MODELS

VS200-250B

200, 250 kW

60 HZ

PARTS LIST

THIS PAGE INTENTIONALLY LEFT BLANK

**MAINTAIN COMPRESSOR RELIABILITY AND PERFORMANCE WITH
GENUINE GARDNER DENVER® COMPRESSOR PARTS AND SUPPORT SERVICES**

Gardner Denver® Compressor genuine parts, manufactured to design tolerances, are developed for optimum dependability – specifically for Gardner Denver compressor systems. Design and material innovations are the result of years of experience with hundreds of different compressor applications. Reliability in materials and quality assurance is incorporated in our genuine replacement parts.

Your authorized Gardner Denver Compressor distributor offers all the backup you'll need. An AirSmart™ network of authorized distributors provides the finest product support in the air compressor industry.

Your authorized distributor can support your Gardner Denver air compressor with these services:

1. Trained parts specialists to assist you in selecting the correct replacement parts.
2. Factory warranted new and remanufactured rotary screw airends. Most popular model remanufactured airends are maintained in stock at the factory, for purchase on an exchange basis with liberal core credit available for the replacement unit.
3. A full line of factory tested AEON™ compressor lubricants specifically formulated for use in Gardner Denver compressors.
4. Repair and maintenance kits designed with the necessary parts to simplify servicing your compressor.

Authorized distributor service technicians are factory trained and skilled in compressor maintenance and repair. They are ready to respond and assist you by providing fast, expert maintenance and repair services.

To Contact Gardner Denver or locate your local distributor:

Visit: www.contactgd.com/compressors

Or

Call: (800) 682-9868

INSTRUCTIONS FOR ORDERING REPAIR PARTS

When ordering parts, specify Compressor MODEL, Method of Cooling, POWER and SERIAL NUMBER (see nameplate on unit). The Airend Serial Number is also stamped on top of the discharge bearing carrier castings.

All orders for Parts should be placed with the nearest authorized distributor.

Where NOT specified, quantity of parts required per compressor or unit is one (1); where more than one is required per unit, quantity is indicated in parenthesis. SPECIFY EXACTLY THE NUMBER OF PARTS REQUIRED.

DO NOT ORDER BY SETS OR GROUPS.

To determine the Right-Hand and Left-Hand side of a compressor, stand at the motor end and look toward the compressor. Right-Hand and Left- Hand are indicated in parenthesis following the part name, i.e. (RH) and (LH), when appropriate.

TOTAL PRODUCT SUPPORT – GARDNER DENVER’S CONTINUING COMMITMENT TO YOUR AIR COMPRESSOR PERFORMANCE

Commitment to total product support continues long after the purchase of your quality Gardner Denver rotary screw compressor.

Gardner Denver original parts incorporate years of experience and improvements in design, materials and quality assurance. Maintaining your compressor investment with Gardner Denver parts will insure protection for the air compressor unit and long, dependable service life.

Your authorized Gardner Denver compressor distributor maintains a complete stock of all common maintenance parts, factory approved AEON lubricants, and Gardner Denver factory warranted exchange airends. In addition, authorized distributor technicians are factory trained, and can provide complete diagnostic, compressor maintenance and repair services.

This manual is designed to assist you in maintaining high performance and receiving many years of dependable service you expect from your Gardner Denver compressor.

REMANUFACTURED AIRENDS

Whenever an airend requires replacement or repair, Gardner Denver offers an industry unique, factory remanufactured airend exchange program. From its modern factory, Gardner Denver is committed to supplying you with the highest quality, factory remanufactured airends that are guaranteed to save you time and money.

Immediately Available

Repair downtime costs you money, which is why the most popular models are in inventory at all times.

Skilled Craftsmen

Our Remanufacturing assembly technicians average over 20 years of experience with air compression products.

Precision Remanufacturing

All potentially usable parts are thoroughly cleaned, inspected and analyzed. Only those parts that can be brought back to original factory specifications are remanufactured. Every remanufactured airend receives a new overhaul kit: bearings, gears, seals, sleeves and gaskets.

Extensive Testing

Gardner Denver performs testing that repair houses just don't do. Magnaflux and ultrasonic inspection spot cracked or stressed castings, monochromatic light analysis exposes oil leaks, and coordinate measurement machine inspects to +/- .0001", insuring that all remanufactured airends meet factory performance specifications.

Warranty

Gardner Denver backs up every remanufactured airend with a new warranty...27 months from purchase, 24 months from service.

Gardner Denver remanufactured airends deliver quality without question...year in and year out.

Call Gardner Denver for information on the airend exchange program and the name of your authorized distributor.

Phone Number: (217) 222-5400 or
Fax: (217) 224-7814

TABLE OF CONTENTS

Maintain Compressor Reliability And Performance With Genuine Gardner Denver Compressor Parts And Support Services.....	1
Instructions For Ordering Repair Parts	1
Total Product Support – Gardner Denver’s Continuing Commitment To Your Air Compressor Performance	2
Remanufactured Airends.....	2
Airend – SQT (Main Assembly)	4-5
Airend – SQT (Wear Sleeve And Seal Installation)	6-7
Discharge Bearing Retainer & Plugs	8-9
Inlet Valve Adaptor Plate.....	10
Inlet Valve.....	11
Base, Airend, Motors And Reservoir.....	12-13
Motor Grease And Grounding	14-15
Oil Distribution System	16-17
Cooler Assembly – VS200 & VS250 (Air-Cooled)	18-19
Air-Cooled Fan Assembly.....	20-21
Air-Cooled Fan Wiring.....	22-23
Air Filter Assembly.....	24-25
Cooler Assembly – VS200 & VS250 (Water-Cooled)	26-27
Control Option - Water-Cooled	28
Oil Filter Assembly.....	29
Minimum Pressure/Check Valve.....	30
Moisture Separator With Trap (Optional)	31
Control Tubing	32-35
Internal Enclosure Parts	36-37
External Enclosure Parts.....	38-39
Main Motor Wiring.....	40-41
Heat Shield Assembly.....	42-43
Control Box – VS200 & VS250 (Air-Cooled)	44-45
Control Box – VS200 & VS250 (Water-Cooled)	46-47
Decal Layout (Package Exterior)	48-49
Decal Layout (Package Interior)	50-51
Outline – Bare Unit.....	52-56
Repair Kits.....	57-58

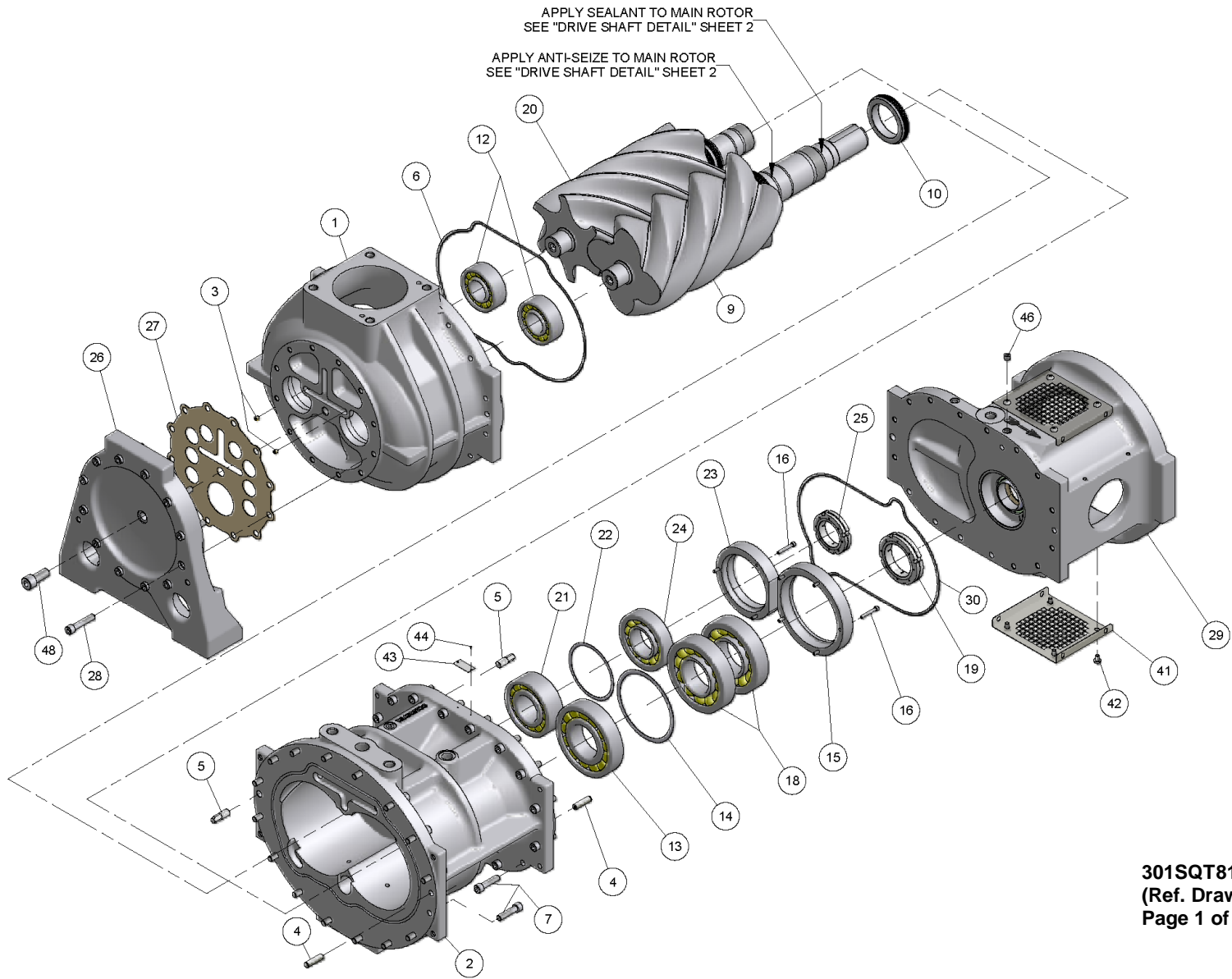
For Operating and Service Instructions, See:

SERVICE MANUAL:	13-18-614
AIRSMART CONTROLLER MANUAL:	13-17-600
COMMUNICATION MODULE:	13-17-604

AIREND SELECTION AND REPAIR KITS

Model	KW	PSI	Airend	Reman Airend	Drive Shaft Seal Kit
VS200-250B	200, 250	100-175	SQTDVACE01S	SQTDNAAE01X	300SQT6029

AIREND – SQT (MAIN ASSEMBLY)



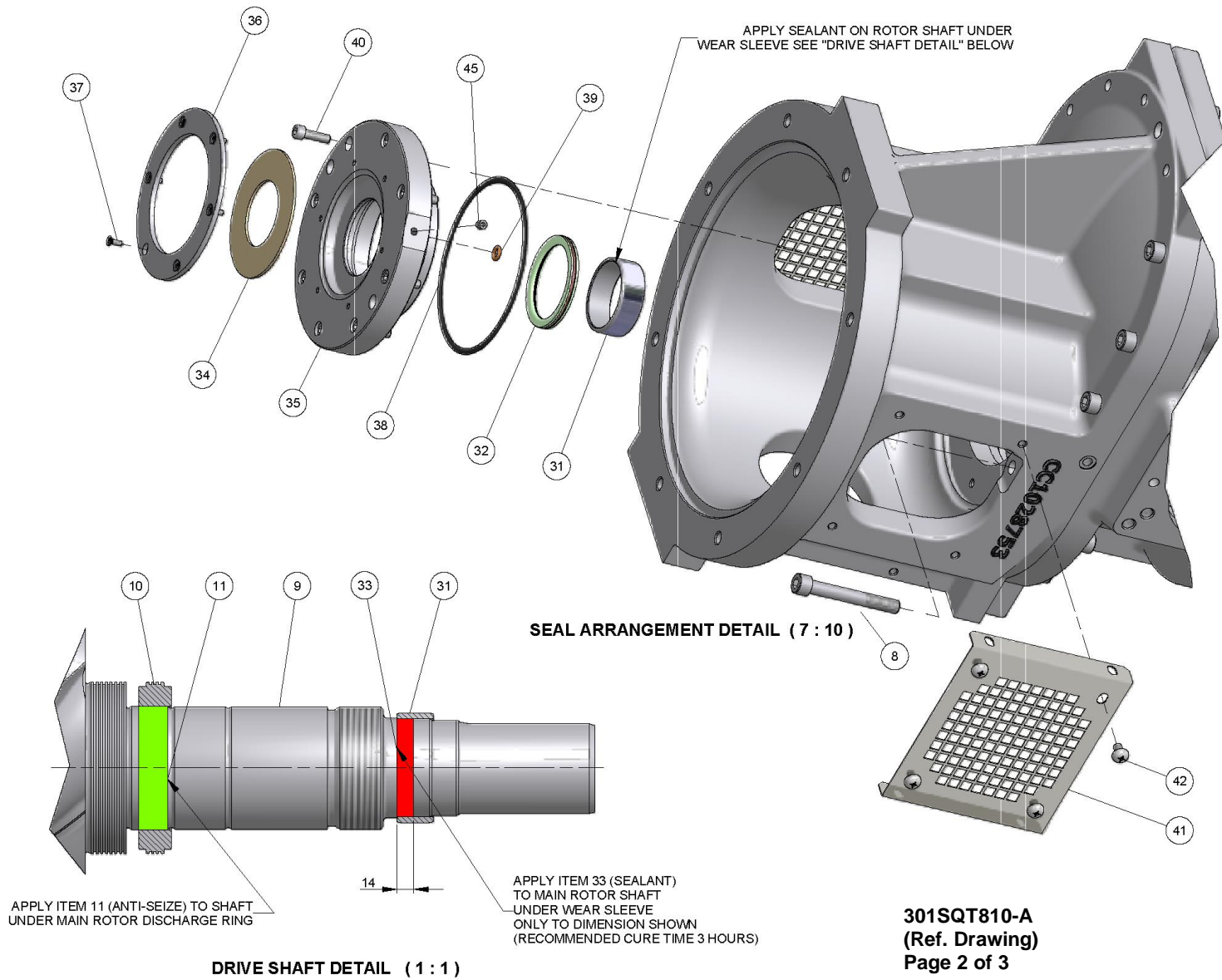
301SQT810-A
(Ref. Drawing)
Page 1 of 3

**AIREND – SQT
(MAIN ASSEMBLY)**

B/M: SQTDVACE01S

Ref. No.	Name of Part	Qty.	Part No.	Ref. No.	Name of Part	Qty.	Part No.
1	AIR CYLINDER	1		19	BEARING	1	
2	BEARING HOUSING	1		20	ROTOR	1	
3	PLUG	4		21	BEARING	1	
4	PIN	2		22	GASKET	1	
5	PIN	2		23	RETAINING RING	1	
6	O-RING	1		24	BEARING	1	
7	SCREW	29		25	BEARING	1	
9	MAIN ROTOR	1		26	COVER	1	
10	RETAINING RING	1		27	GASKET	1	
12	BEARING	2		28	SCREW	12	
13	BEARING	1		29	ADAPTOR	1	
14	SPACER	1		30	O-RING	1	
15	RETAINING RING	1		41	COUPLING-GUARD	2	
16	SCREW	8		42	SCREW	8	
18	BEARING	2		46	PLUG	1	
				48	SCREW	1	

**AIREND – SQT
(WEAR SLEEVE AND SEAL INSTALLATION)**



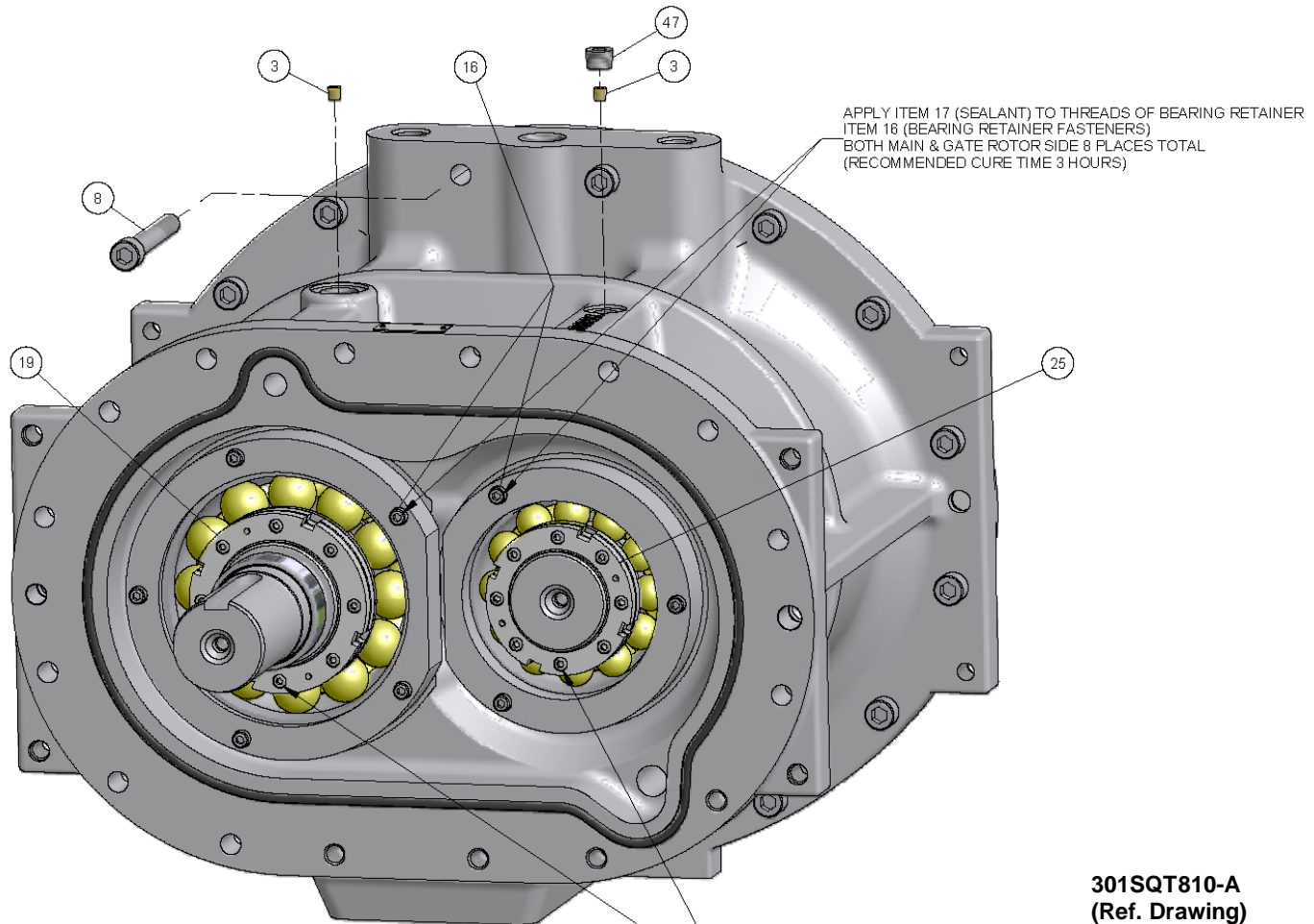
**AIREND – SQT
(WEAR SLEEVE AND SEAL INSTALLATION)**

B/M: SQTDVACE01S			
Ref. No.	Name of Part	Qty.	Part No.
8	SCREW	3	665SMCA161200
9	MAIN ROTOR	1	
10	SEAL RING	1	
* 11	ANIT-SEIZE	1	25BC850
* 31	WEAR SLEEVE	1	VP1038580
* 32	SEAL	1	VP1038581
33	LOCTITE SEALANT	1	25BC848
34	SEAL	1	CC1028765
35	HOUSING	1	CC1028758
* 36	SEAL	1	CC1028764
37	SCREW	6	75LM289
* 38	O-RING.....	1	25BC111
* 39	O-RING.....	1	90500080
40	SCREW	8	665SMCA100350
41	COUPLING GUARD	2	CC1028767
42	SCREW	8	75G67
45	PLUG.....	1	64AA55

* Parts included in Oil Seal Kit Part Number 300SQT6029. Refer to page 58.

Wear Sleeve Installation/Removal Kit Part Number 301CGG6031, includes Wear Sleeve Puller and Installation Tool. Refer to page 58.

DISCHARGE BEARING RETAINER & PLUGS



APPLY ITEM 17 (SEALANT) TO THREADS OF BEARING RETAINER
ITEM 16 (BEARING RETAINER FASTENERS)
BOTH MAIN & GATE ROTOR SIDE 8 PLACES TOTAL
(RECOMMENDED CURE TIME 3 HOURS)

AFTER SETTING DISCHARGE CLEARANCE SECURE ITEMS 19 & 25 (BEARING LOCKS)
TO SHAFT THREADS BY APPLYING ITEM 17 (SEALANT) TO THREADS OF LOCK NUT FASTENERS (M8x1)
TIGHTEN LOCK NUT FASTENERS TO TORQUE VALUES OF 9,1-9,9 Nm [81-88 in-lbs] (DRY)
BOTH MAIN & GATE ROTOR SIDE 16 PLACES TOTAL
(RECOMMENDED CURE TIME 3 HOURS) TIGHTENING LOCK NUT FASTENERS

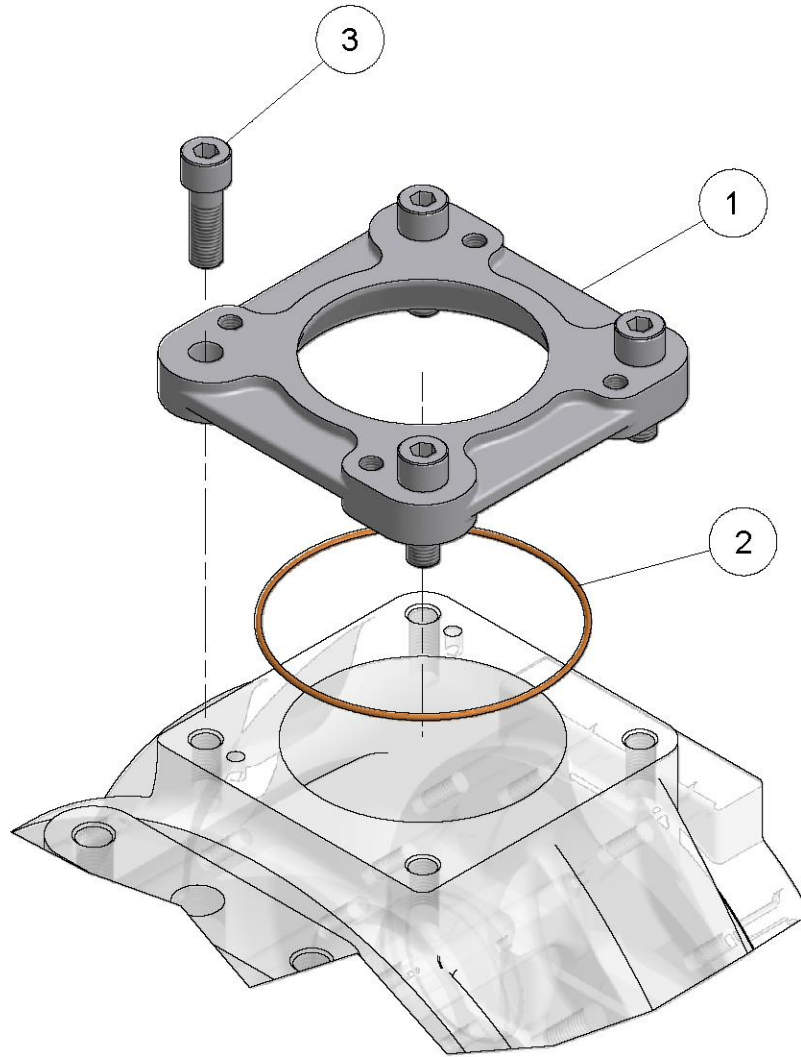
301SQT810-A
(Ref. Drawing)
Page 3 of 3

DISCHARGE BEARING RETAINER DETAIL (9 : 10)

DISCHARGE BEARING RETAINER & PLUGS

B/M: SQTDVACE01S

Ref. No.	Name of Part	Qty.	Part No.
3	PLUG	4	VP1031833
8	SCREW	3	665SMCA161200
16	SCREW	8	665SMCA080550
19	LOCKNUT.....	1	
25	LOCKNUT.....	1	
47	PLUG	1	64AA49

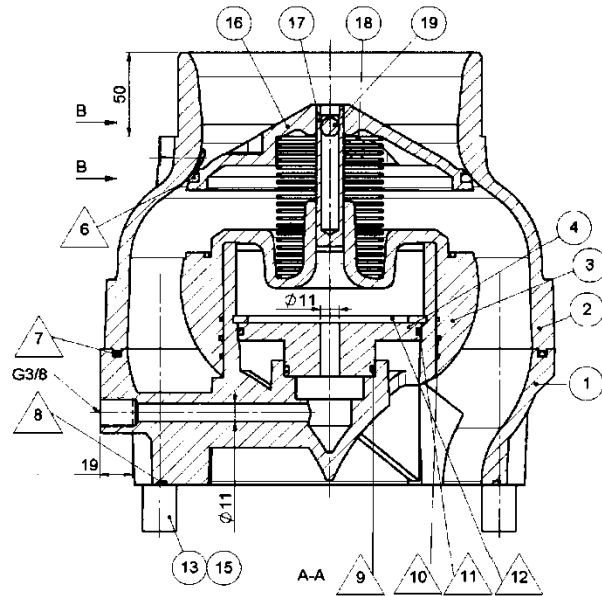


300SNT810-A
(Ref. Drawing)

INLET VALVE ADAPTOR PLATE

B/M: 300SNT6020

Ref. No.	Name of Part	Qty.	Part No.
1	INLET MANIFOLD	1	CC1041578
2	O-RING.....	1	25BC688
3	SCREW	4	89512969



INLET VALVE

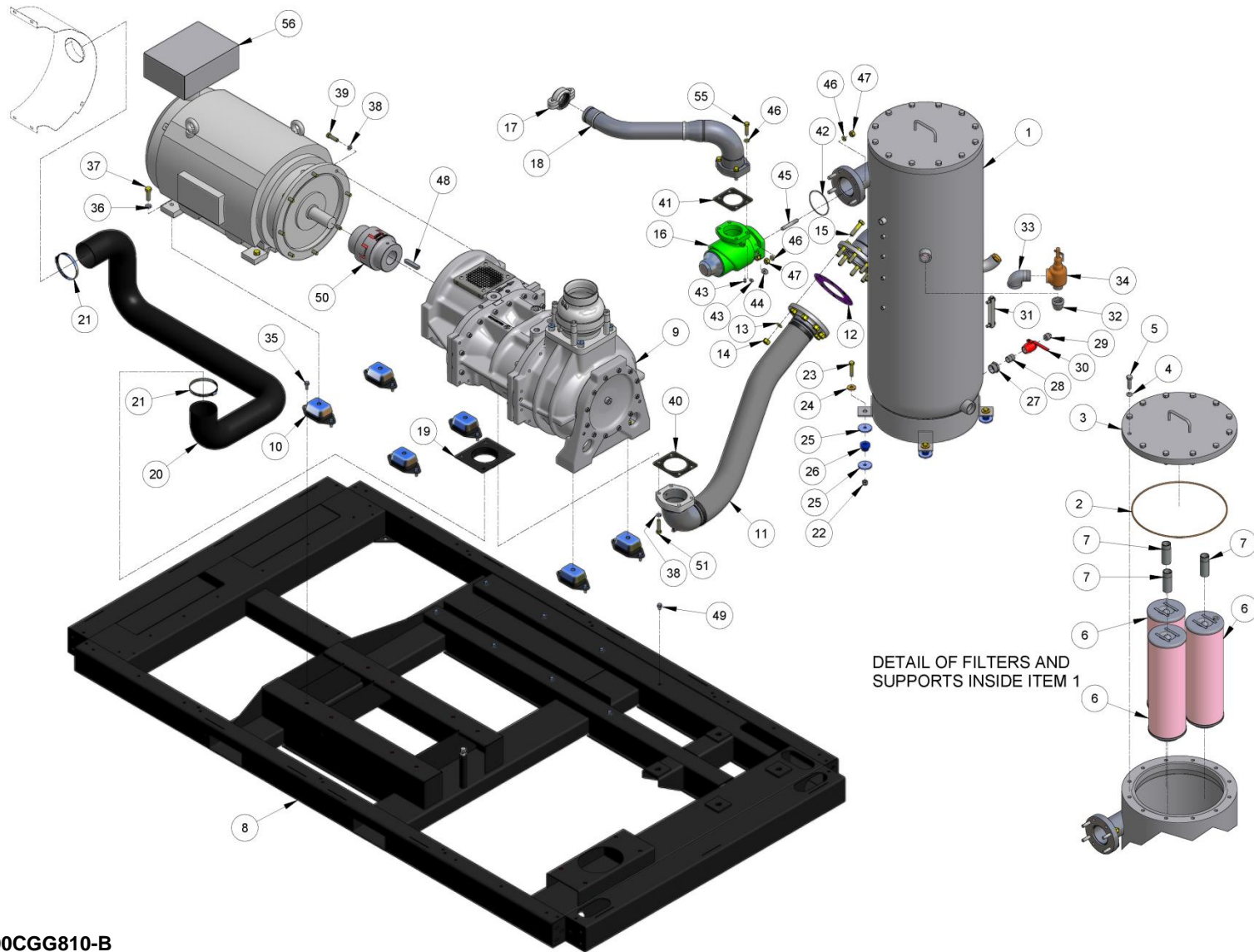
B/M: CC1036372

Ref. No.	Name of Part	Qty.	Part No.
1	INLET HOUSING	1	VP1033981
2	INLET HOUSING	1	VP1033982
* 3	PISTON	1	VP1033983
4	COVER	1	VP1036378
+ 6	GASKET	1	VP1033984
+ 7	O-RING	1	VP1033988
+ 8	O-RING	1	VP1033989
+ 9	O-RING	1	VP1033990
+ 10	O-RING	1	VP1033992
+ 11	O-RING	1	VP1033993
+ 12	RETAINER	1	VP1033997
13	SCREW	4	VP1034000
15	NUT	4	VP1033986
* 16	PLATE	1	VP1034812
* 17	PIN	1	VP1034813
* 18	VALVE SPRING	1	VP1034814
* 19	BALL BEARING	1	VP1034815

- * Parts included in Inlet Valve Repair Kit Part Number VP1036375. Refer to page 58 .
- + Parts included in Inlet Valve Seal Kit Part Number VP1036374. Refer to page 58.

NOTE: Individual Parts in Kits are not available for sale.

BASE, AIREND, MOTORS AND RESERVOIR



300CGG810-B
(Ref. Drawing)

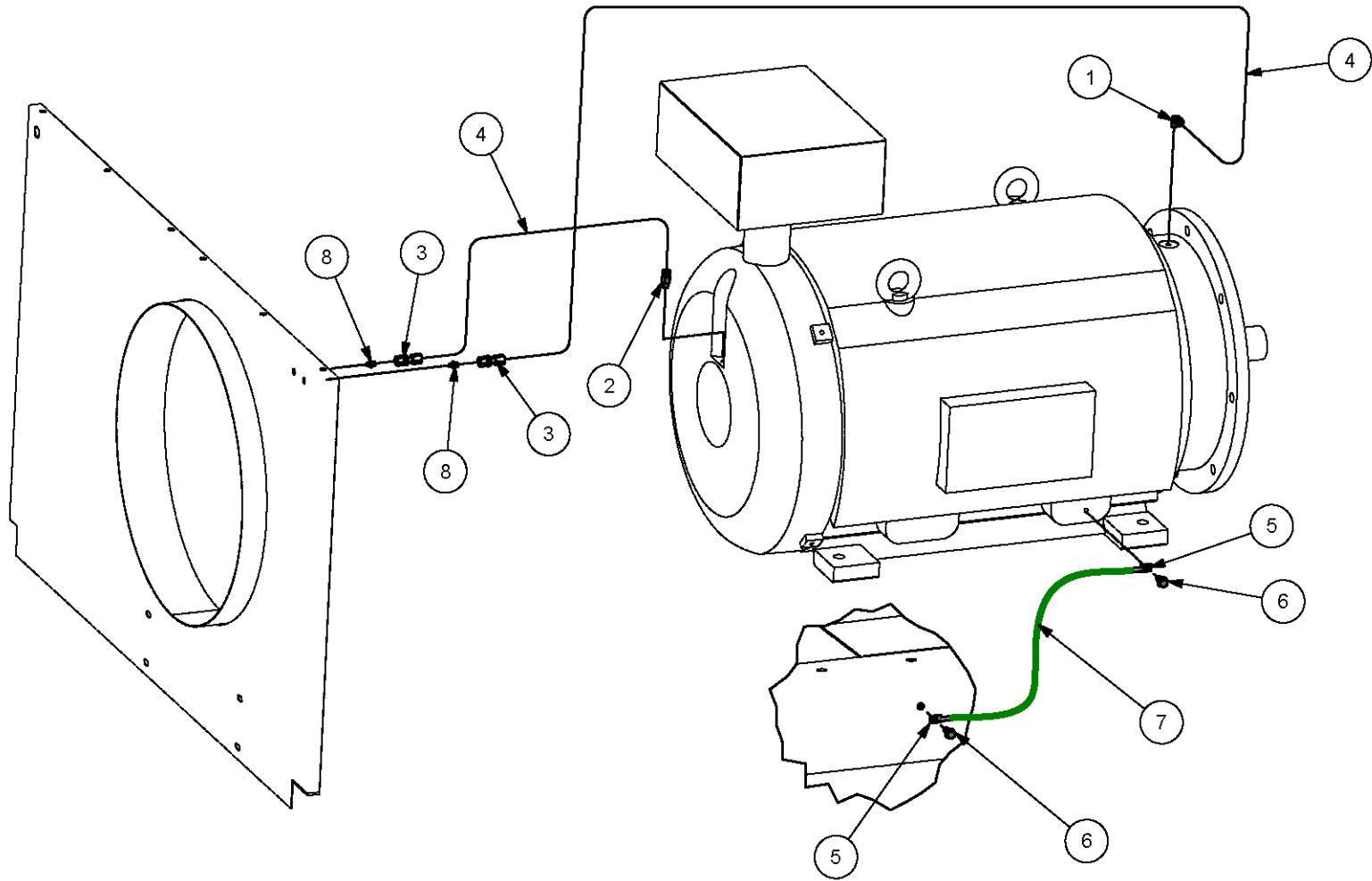
BASE, AIREND, MOTORS AND RESERVOIR

**B/M:300CGG4001;
302ETW4013; 300 &
301CGG4015**

Ref. No.	Name of Part	Qty.	Part No.	Ref. No.	Name of Part	Qty.	Part No.
++	1 OIL RESERVOIR.....	1	CC1022532	30	VALVE.....	1	90AR362
*	2 O-RING.....	1	25BC868	31	OIL LEVEL GAUGE.....	1	40P77
	3 COVER.....	1	CC1022533	32	ELBOW.....	1	64D8G
	4 LOCKWASHER.....	12	95B8Z	33	ELBOW.....	3	64D9G
	5 SCREW.....	12	655EG10Z	+	34 PRESSURE RELIEF VALVE.....	1	90AR1168
*	6 OIL SEPARATOR.....	3	300EBQ035	35	SCREW.....	12	75LM135
	7 PIPE-NIPPLE.....	3	63AJ24X54G	36	WASHER.....	6	671HLHR20Z
	8 BASE.....	1	CC1033949	37	SCREW.....	6	665HMCA20060Z
	9 BARE AIREND(See Page 4-8).....	1	SQTDVACE01S	38	WASHER.....	12	671HLHR16Z
	10 ISOLATOR.....	6	49C126	39	SCREW.....	8	665HMCA16060Z
	11 MANIFOLD.....	1	CC1033950	40	GASKET.....	1	25BC854
	12 GASKET.....	1	25C2719N	41	GASKET.....	1	25BC852
	13 LOCKWASHER.....	8	95B8Z	42	O-RING.....	1	25BC429
	14 NUT.....	8	50B8Z	43	PLUG.....	2	64AA5G
	15 SCREW.....	8	655EG13Z	44	PLUG.....	1	64AA3G
	16 MIN PRESS VALVE (See page 24).....	1	301ETW527	45	STUD.....	4	79L233
+++	17 PIPE COUPLING.....	1	VP1009575	46	LOCK WASHER.....	12	95B7Z
	18 MANIFOLD.....	1	CC1033951	47	NUT.....	8	50B31Z
	19 AIR GUIDE.....	1	CC1033954	48	KEY.....	1	35L99
	20 HOSE.....	10	29BB2557	49	SCREW.....	8	75LM51
	21 CLAMP.....	2	2009825	**	50 COUPLING.....	1	CC1035246
	22 NUT.....	4	2009125		COUPLING HUB AIREND.....	1	VP1035247
	23 SCREW.....	4	655EF12Z		COUPLING HUB MOTOR.....	1	VP1035250
	24 WASHER.....	4	95A7Z		SPIDER.....	1	VP1035251
	25 WASHER.....	8	VP1034471	51	SCREW.....	4	665HMCA16070Z
	26 ISOLATOR.....	4	VP1034486	55	SCREW.....	4	655EF10Z
	27 BUSHING.....	1	64E13G	***	56 MOTOR		
	28 NIPPLE.....	1	63H1G		VS200(460V).....	1	300CGG348
	29 PLUG.....	1	64A25G		VS250(460V).....	1	90500019

* Parts included in Oil Separator Kit Part Number 306ETW6003. Refer to page 57.
 ** Coupling Installation requires Tool Kit Part Number 300CGG6031, refer to page 58.
 *** Refer to page 57 for Motor Bearing Grease part number.
 + Part included in Pneumatic Control Kit Part Number 300CGG6013. Refer to page 57.
 ++ Oil Reservoir Fill Plug Part Number 2118518; O-Ring Part Number 2118519.
 +++ For Repair, Order Replacement Gasket Part Number 2118512

MOTOR GREASE AND GROUNDING



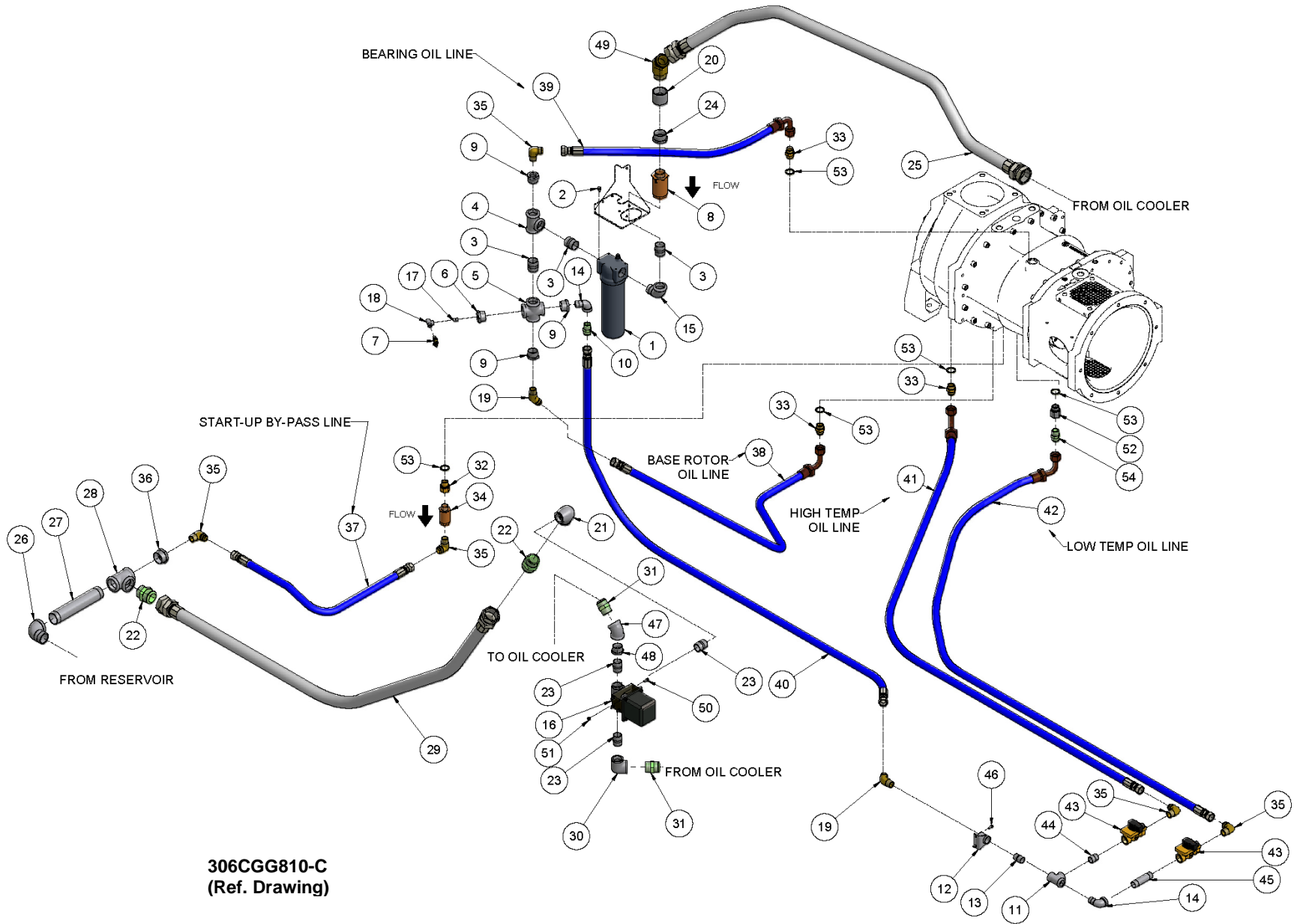
314CGG810-A
(Ref. Drawing)

MOTOR GREASE AND GROUNDING

B/M: 306CGG4013

Ref. No.	Name of Part	Qty.	Part No.
1	FITTING.....	1	86H163
2	FITTING.....	1	86H162
3	CONNECTOR.....	2	86N287
4	TUBE (IN FEET).....	10	85G3
5	TERMIMAL LUG.....	2	24CA518
6	SCREW	2	75LM51
7	WIRE (IN FEET).....	1.5	97J77
8	FITTING.....	2	40E7

OIL DISTRIBUTION SYSTEM



306CGG810-C
(Ref. Drawing)

OIL DISTRIBUTION SYSTEM

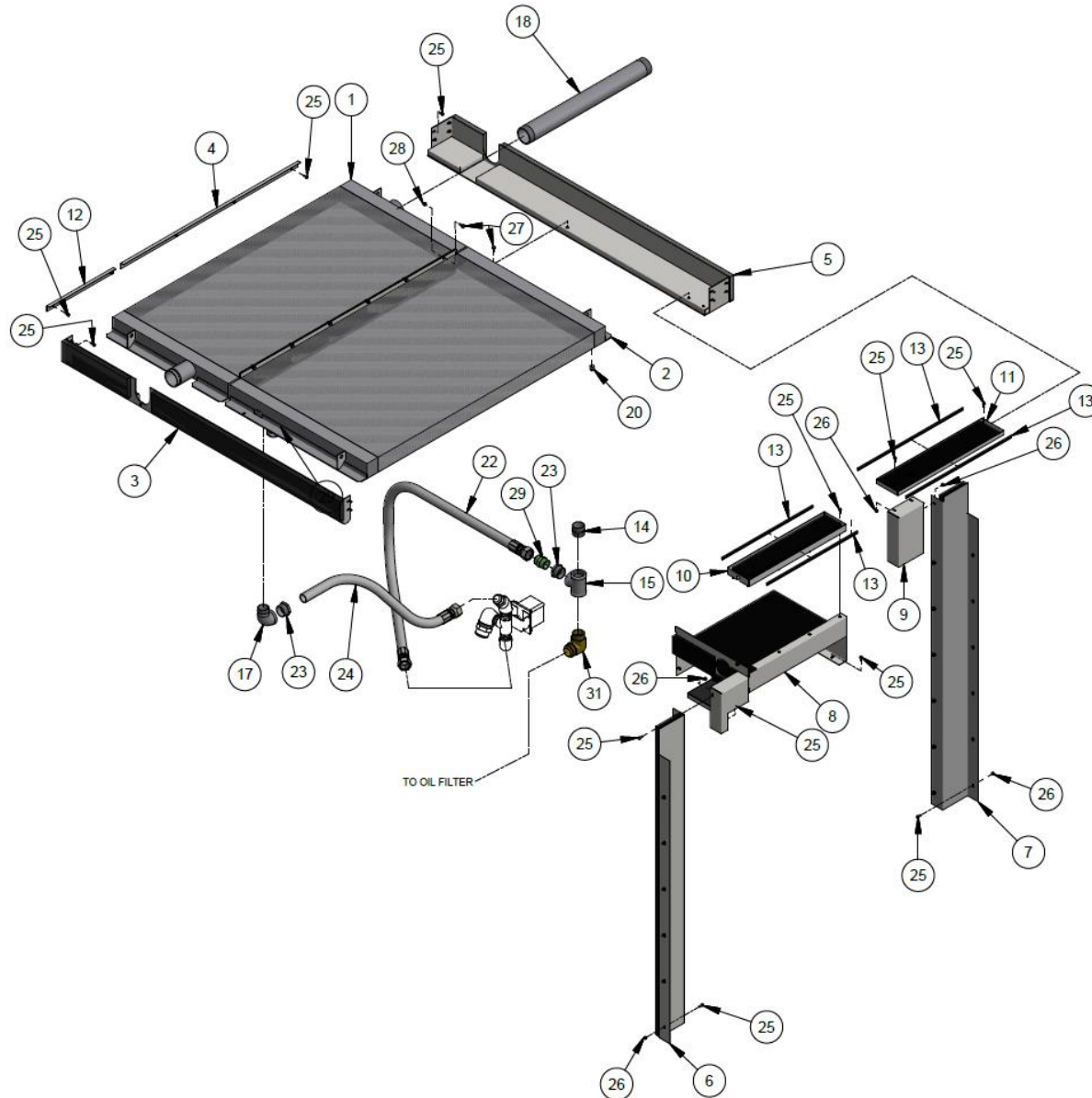
B/M; 304CGG4013

Ref. No.	Name of Part	Qty.	Part No.	Ref. No.	Name of Part	Qty.	Part No.
1	FILTER (See page 23)	1	CC1038500	28	TEE	1	64G1G
2	SCREW	4	75K54	29	HOSE	1	VP1053671
3	PIPE-NIPPLE	3	63AP40G	30	ELBOW	1	64S9G
4	TEE	1	64G11G	31	TUBE CONNECTOR	2	86H141
5	PIPE	1	64K20G	32	ADAPTER	1	86H179
6	BUSHING	1	64E39G	33	ADAPTER	3	86H192
7	OIL SAMPLING VALVE	1	86N345	* 34	CHECK VALVE	1	90AR1136
* 8	CHECK VALVE	1	90AR1147	35	ADAPTOR	5	29Z244
9	BUSHING	3	64E13G	36	BUSHING	1	64E113G
10	TUBE CONNECTOR	1	86H138	37	HOSE	1	VP1042337
11	TEE	1	64G8G	38	HOSE	1	VP1042341
12	BRACKET	1	CC1023809	39	HOSE	1	VP1042340
13	NIPPLE	1	63H25G	40	HOSE	1	VP1042338
14	ELBOW	2	64D10G	41	HOSE	1	VP1042342
15	ELBOW	1	64D8G	42	HOSE	1	VP1042342
16	PRECISION MIXING VALVE	1	91B241	** 43	CONTROL VALVE	2	90AR1216
17	NIPPLE	1	63D1G	44	NIPPLE	1	63H1G
18	TEE	1	64G3G	45	NIPPLE	1	63H30G
19	ADAPTOR	2	29Z202	46	SCREW	2	75LM48
20	COUPLING	1	64BK9G	47	ELBOW	1	64V8G
21	ELBOW	1	64EB494G	48	BUSHING	1	64E22G
22	TUBE CONNECTOR	2	86H142	49	TUBE CONNECTOR	1	86H189
23	NIPPLE	3	63AA13G	50	SCREW	4	75LM48
24	BUSHING	1	64E12G	51	NUT	4	50AW3
25	HOSE	1	VP1034438	52	ADAPTOR	1	300ETV170
26	ELBOW	1	64D9G	53	GASKET	5	25BC876
27	NIPPLE	1	63L34G	54	CONNECTOR	1	86H138

* Parts included in Pneumatic Control Kit Part Number 300CGG6013. Refer to page 57.

** Parts included in Electrical Control Kit Part Number 301CGG6013. Refer to page 57

**COOLER ASSEMBLY – VS200 & VS250
(AIR-COOLED)**



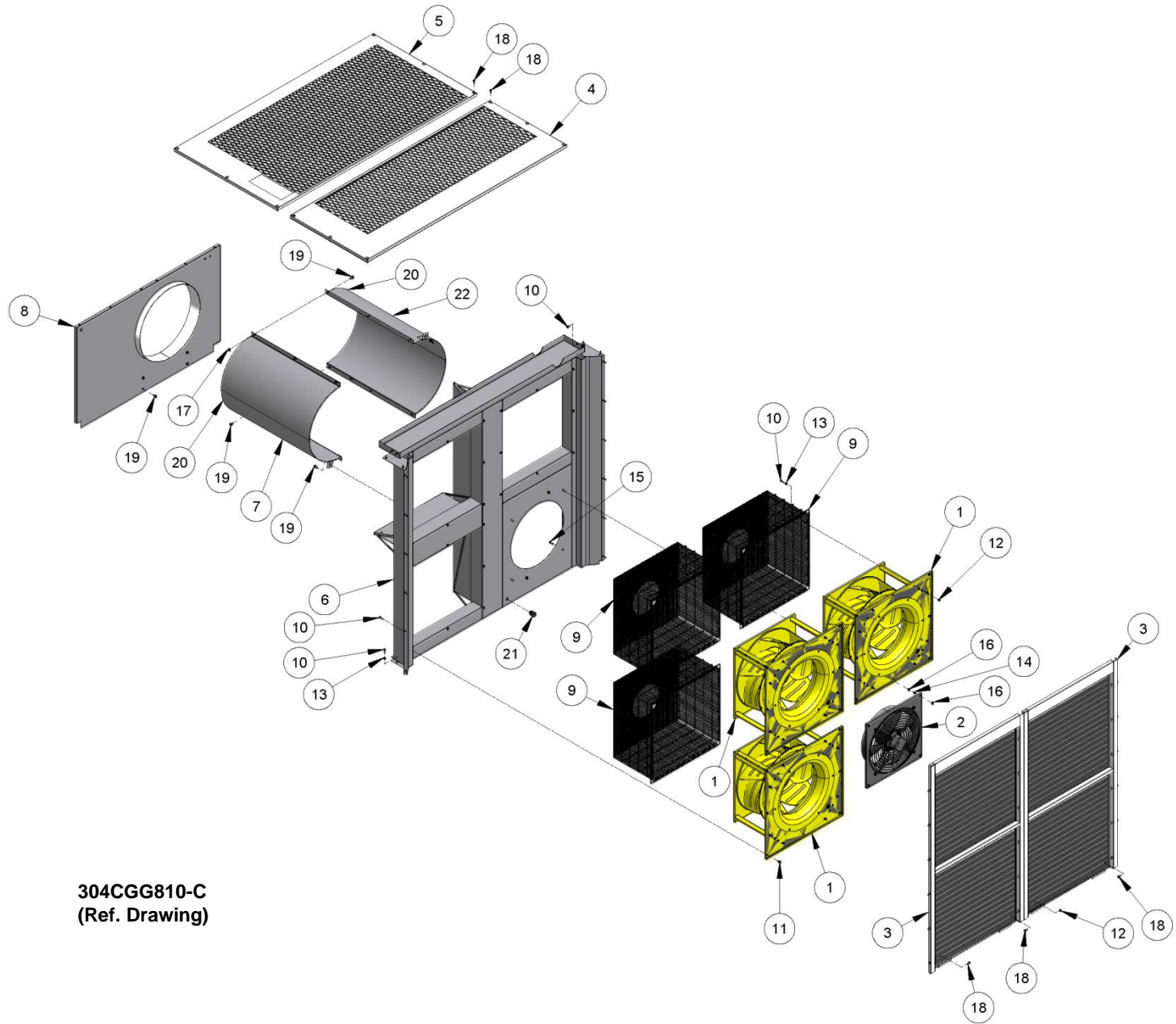
**305CGG810-C
(Ref. Drawing)**

**COOLER ASSEMBLY – VS200 & VS250
(AIR-COOLED)**

B/M; 301 & 303CGG4003;
304CGG4017; 309CGG4013

Ref. No.	Name of Part	Qty.	Part No.	Ref. No.	Name of Part	Qty.	Part No.
1	AFTERCOOLER			13	SEAL	9	32E22
	STANDARD	1	VP1030660	14	NIPPLE	1	63L1G
	SEACOAST.....	1	VP1042809	15	TEE	1	64G1G
2	COOLER.....			16	ADAPTOR.....	1	119446
	STANDARD	1	VP1030659	17	ELBOW	1	64D9G
	SEACOAST.....	1	VP1042811	18	PIPE	1	63N48X330G
3	SUPPORT.....	1	CC1033866	20	PLUG	1	64AA7G
4	SUPPORT.....	1	CC1033886	22	HOSE	1	VP1029916
5	SUPPORT.....	1	CC1033869	23	BUSHING.....	2	64E12G
6	PANEL	1	CC1033870	24	HOSE	1	VP1088586
7	PANEL	1	CC1033871	25	SCREW	59	75LM48
8	PANEL	1	CC1033872	26	NUT.....	30	50AW3
9	PANEL	1	CC1033873	27	SCREW	13	75LM50
10	PANEL	1	CC1033874	28	NUT.....	12	50AW4
11	PANEL	1	CC1033875	29	TUBE CONNECTOR.....	1	86H141
12	SUPPORT.....	1	CC1034125				

AIR-COOLED FAN ASSEMBLY



304CGG810-C
(Ref. Drawing)

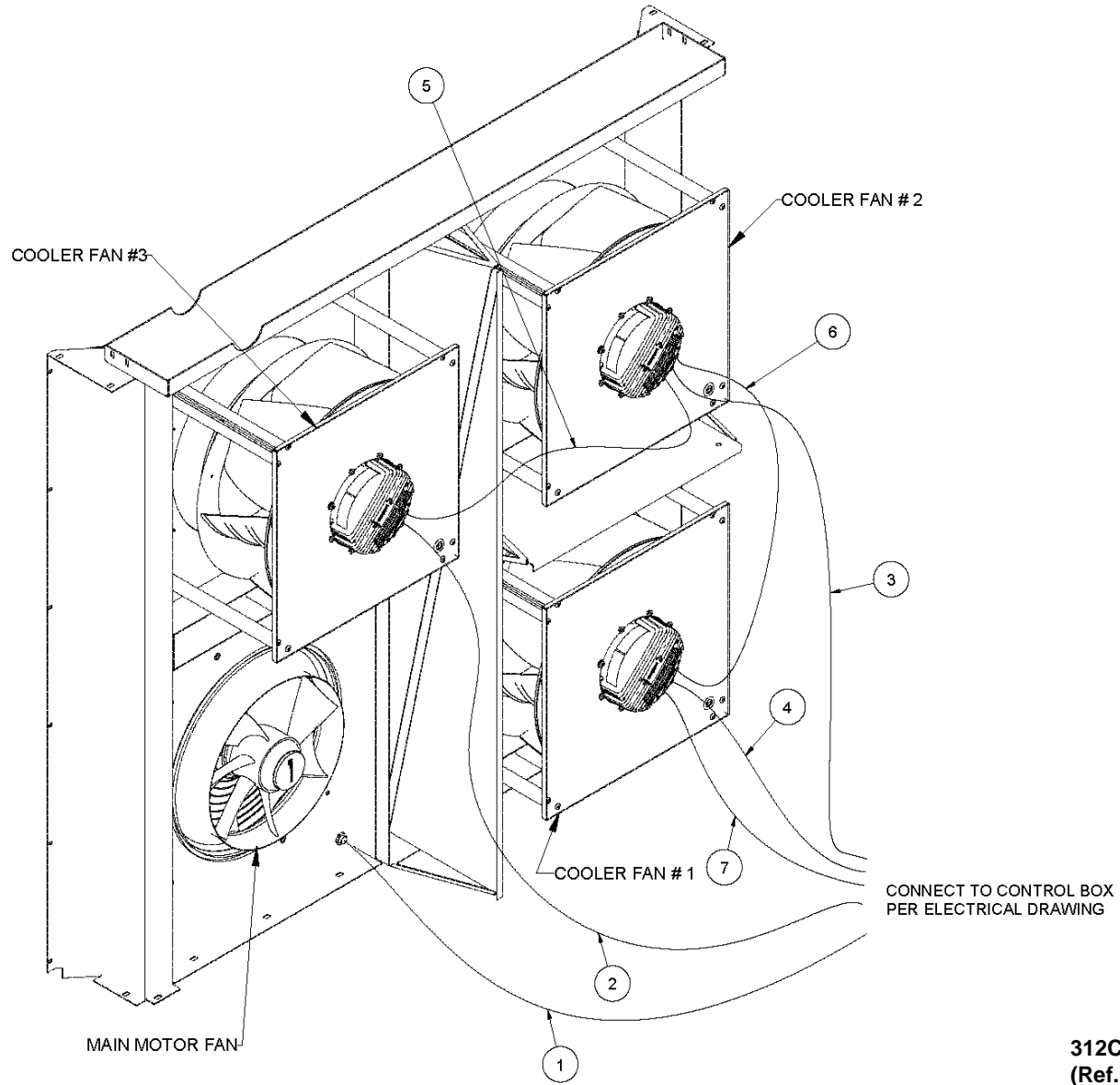
AIR-COOLED FAN ASSEMBLY

**B/M: 302CGG4017;
300CGG4058;
300CGG4003**

Ref. No.	Name of Part	Qty.	Part No.
1	RADIAL FAN (460V)	3	VP1164107
2	FAN (460V)	1	89875609
3	PANEL	2	CC1033463
4	PANEL	1	CC1033464
5	PANEL	1	CC1033465
6	SUPPORT	1	CC1033308
7	SHROUD	1	CC1033467
8	SUPPORT	1	CC1033516
9	FAN GUARD	3	CC1019028
10	SCREW	54	75LM53
11	SCREW	18	75LM50
12	NUT	30	50AW3
13	WASHER	34	95A1Z
14	NUT	4	50B2Z
15	SCREW	4	75LM97
16	NUT	8	50AW4
17	NUT	6	50AW5
18	SCREW	30	75LM48
19	SCREW	12	75LM51
20	TRIM SEAL (IN FEET)	6	32E26
21	ELECTRICAL FITTING	1	24CA610
22	BAFFLE	1	CC1099382

NOTE: Must use a dedicated line reactor kit 321CGF6028 when replacing all or one of the radial fans. New Radial Fan is VP1164107. Once 321CGF6028 is installed, VP1164107 Radial Fan can be used as a stand-alone replacement.

AIR-COOLED FAN WIRING



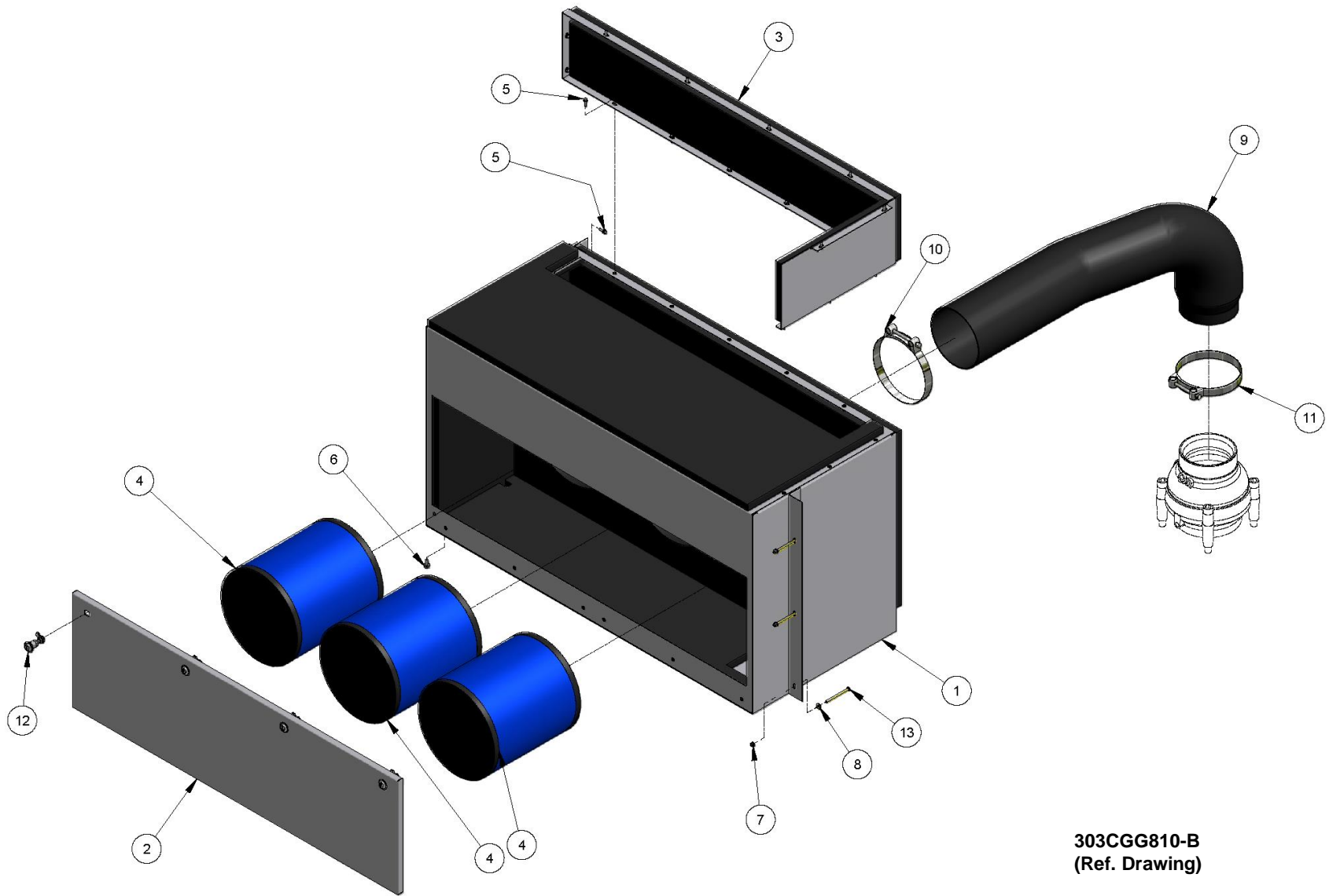
312CGG810-A
(Ref. Drawing)

AIR-COOLED FAN WIRING

B/M: 303CGG4007

Ref. No.	Name of Part	Qty.	Part No.
1	CABLE WIRE (IN FEET).....	12	97J83
2	CABLE WIRE (IN FEET).....	14	97J83
3	CABLE WIRE (IN FEET).....	10	97J83
4	CABLE WIRE (IN FEET).....	7	97J83
5	CABLE (IN FEET).....	4	97J94
6	CABLE (IN FEET).....	4	97J94
7	CABLE (IN FEET).....	7	97J94

AIR FILTER ASSEMBLY



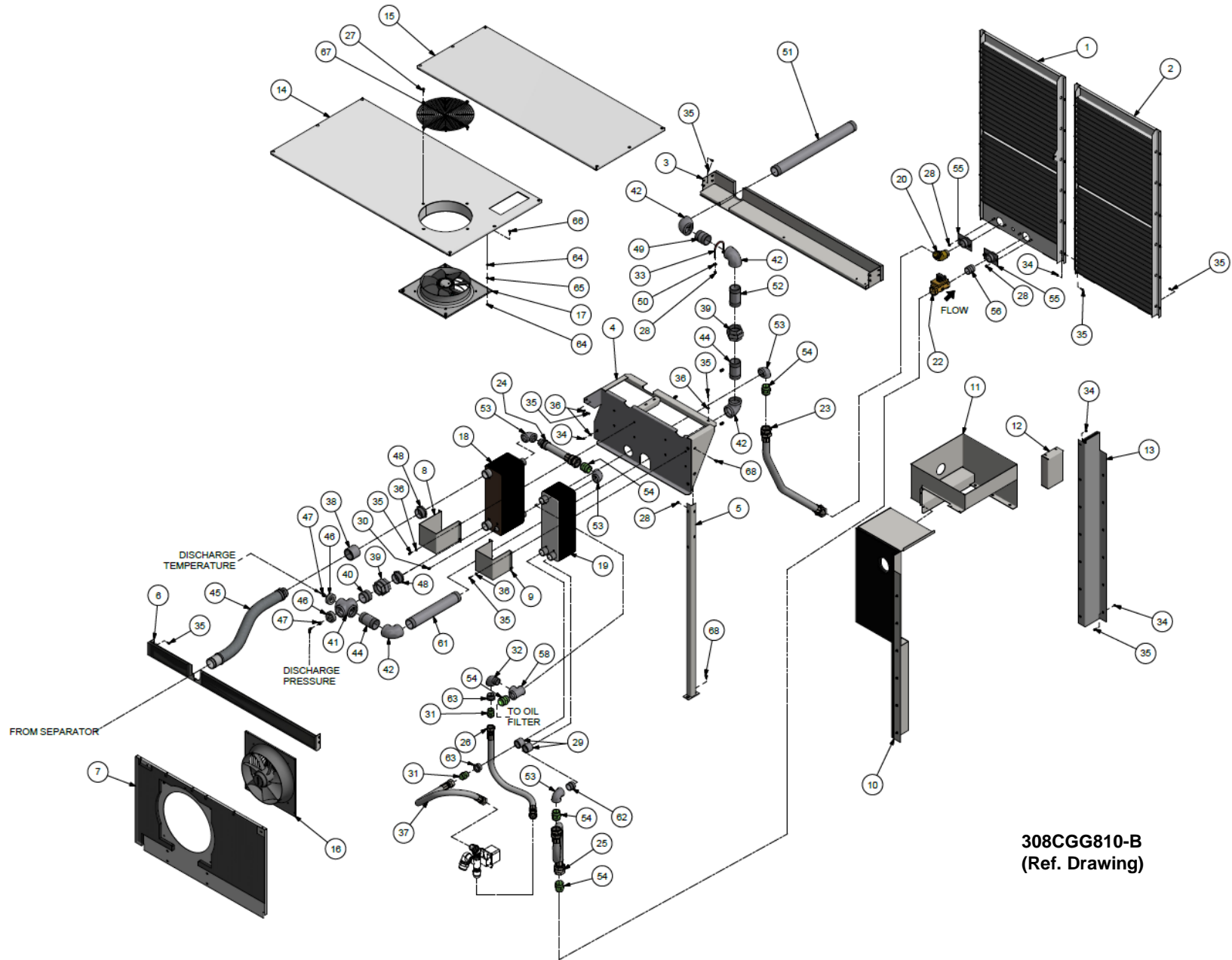
AIR FILTER ASSEMBLY

**B/M: 303CGG4017;
302CGG4013**

Ref. No.	Name of Part	Qty.	Part No.
1	BAFFLE	1	CC1033861
2	COVER	1	CC1033862
3	SUPPORT.....	1	CC1033863
* 4	FILTER.....	3	5L356
5	SCREW.....	19	75LM48
6	SCREW.....	3	75LM51
7	NUT.....	3	50AW3
8	WASHER	34	95A1Z
9	INLET HOSE.....	1	VP1034530
10	CLAMP.....	1	VP1028539
11	CLAMP.....	1	VP1029611
12	LATCH	4	31D68
13	SCREW.....	3	655EC15Z

* Part Included in Routine Maintenance Kit Part Number 303CGG6003. Refer to page 57

**COOLER ASSEMBLY – VS200 & VS250
(WATER-COOLED)**

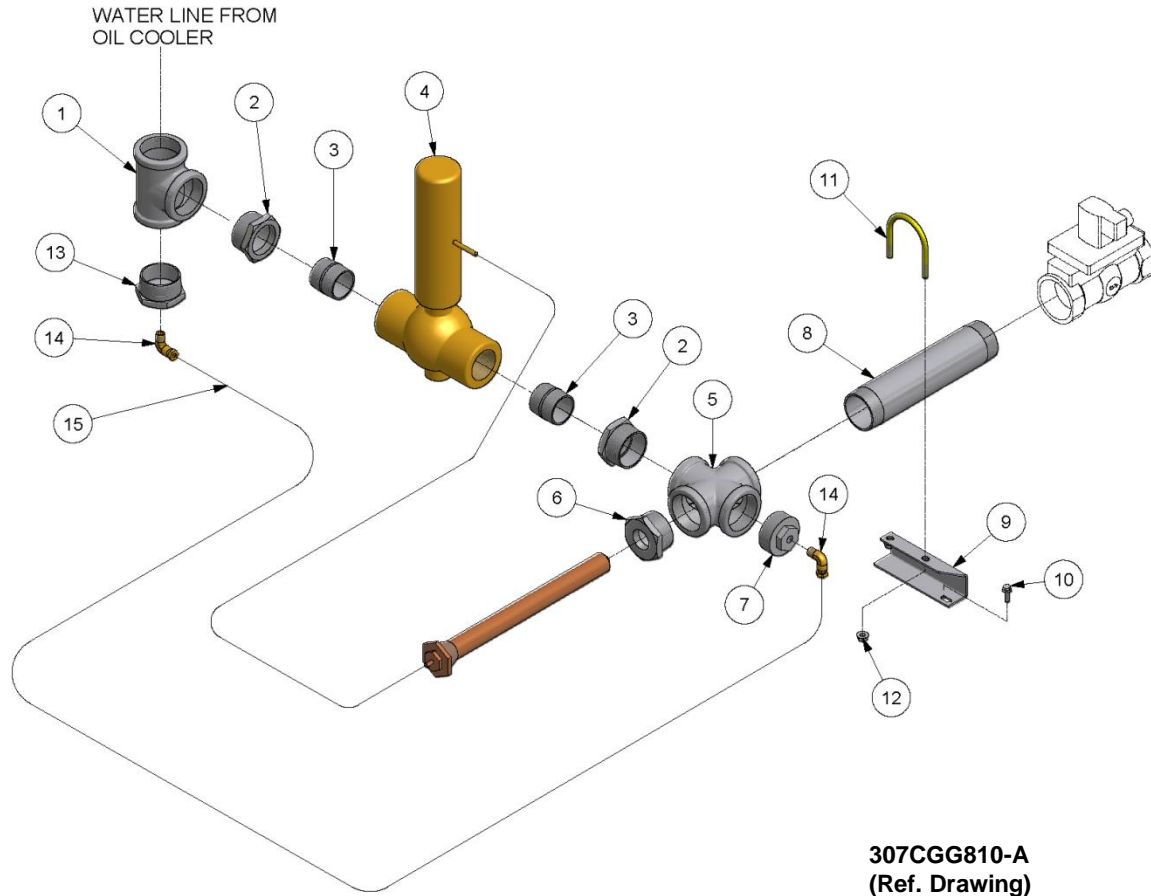


**308CGG810-B
(Ref. Drawing)**

**COOLER ASSEMBLY – VS200 & VS250
(WATER-COOLED)**

**B/M: 304CGG4003;
305CGG4017
301CGG4058**

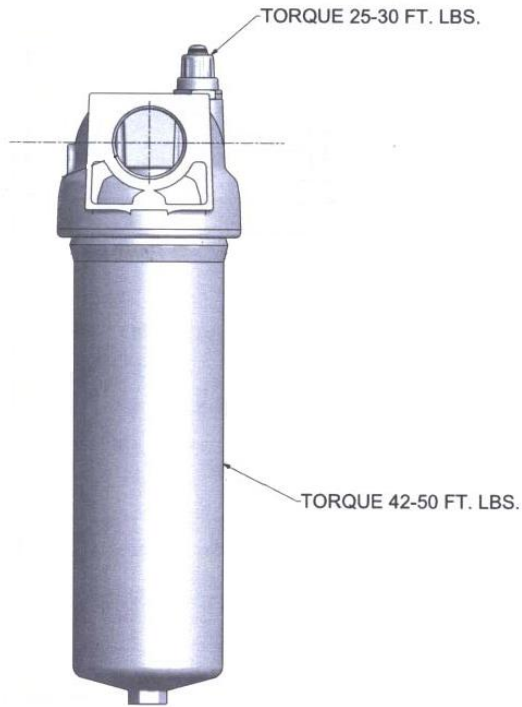
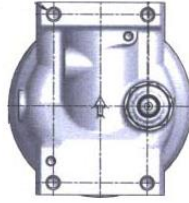
Ref. No.	Name of Part	Qty.	Part No.	Ref. No.	Name of Part	Qty.	Part No.
1	PANEL	1	CC1037169	34	NUT	29	50AW3
2	PANEL	1	CC1033463	35	SCREW	71	75LM48
3	SUPPORT	1	CC1033869	36	WASHER	13	95A1Z
4	SUPPORT	1	CC1037164	37	HOSE	1	VP1042664
5	SUPPORT	1	CC1042352	38	COUPLING	1	64BK11G
6	SUPPORT	1	CC1033866	39	UNION	2	64Z21G
7	PANEL	1	CC1037172	40	NIPPLE-PIPE	1	63P11G
8	SUPPORT	1	CC1037165	41	CROSS	1	64K26G
9	SUPPORT	1	CC1037166	42	ELBOW	4	64C10G
10	PANEL	1	CC1037168	44	NIPPLE	2	63P10G
11	BAFFLE	1	CC1037167	45	HOSE	1	VP1042662
12	PANEL	1	CC1033873	46	BUSHING	2	64E105
13	PANEL	1	CC1033871	47	BUSHING	2	64E2G
14	PANEL	1	CC1037171	48	BUSHING	2	64E33G
15	PANEL	1	CC1037170	49	NIPPLE	1	63P14G
16	FAN	1	VP1128042	50	WASHER	2	95A3Z
17	FAN	1	VP1128045	51	NIPPLE	1	63N48X360G
18	HEAT EXCHANGER (AIR)	1	VP1036532	52	NIPPLE	1	63P18G
19	HEAT EXCHANGER (OIL)	1	VP1036535	53	ELBOW	4	64C9G
20	TUBE CONNECTOR	1	86H189	54	CONNECTOR	5	86H142
22	CONTROL VALVE	1	90AR1151	55	WATER MANIFOLD	2	300EHG072
23	HOSE	1	VP1042666	56	NIPPLE	1	63L9G
24	HOSE	1	VP1042665	58	TEE	1	64G1G
25	HOSE	1	VP1042667	60	NIPPLE	1	63N48X230G
26	HOSE	1	VP1042663	62	NIPPLE	1	63L1G
27	SCREW	8	75K48	63	PIPE BUSHING	2	64E12G
28	NUT	10	50AW5	64	NUT	16	50AW4
29	COUPLING	2	64BK9G	65	NUT	8	50B2Z
30	PLUG	1	64AA5G	66	SCREW	8	75LM97
31	CONNECTOR	2	86H141	67	FAN GUARD	1	301ETK393
32	ELBOW	1	64D9G	68	SCREW	6	75LM51
33	U-BOLT	1	146032				



CONTROL OPTION - WATER-COOLED

B/M: 305CGG4013

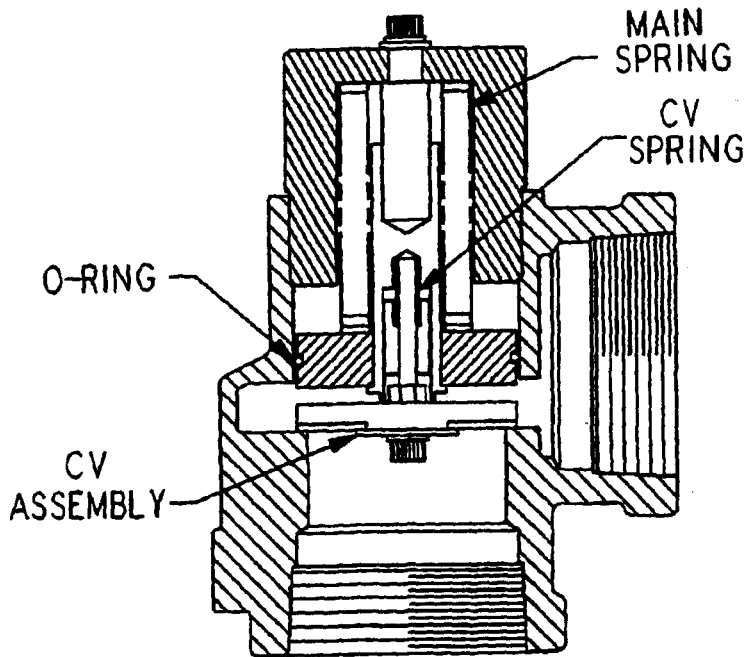
Ref. No.	Name of Part	Qty.	Part No.
1	TEE	1	64G1G
2	PIPE BUSHING	2	64EB304G
3	NIPPLE.....	2	63K18G
4	REGULATOR	1	90AR1116
5	CROSS.....	1	64K21G
6	PIPE BUSHING.....	1	64E77G
7	PIPE BUSHING.....	1	64E60G
8	NIPPLE.....	1	63L30G
9	SUPPORT	1	CC1028217
10	SCREW	1	75LM48
11	U BOLT	1	143740
12	NUT.....	1	50AW4
13	PIPE BUSHING.....	1	64E116G
14	TUBE FITTING.....	2	86E220
15	TUBE (IN FEET).....	2	85G3



OIL FILTER ASSEMBLY

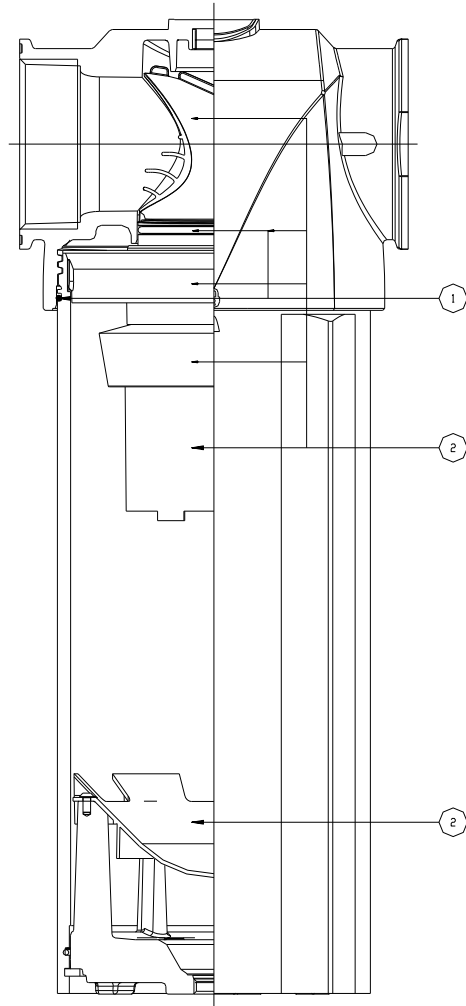
DESCRIPTION	PART NUMBER
OIL FILTER	CC10138500
REPAIR PARTS	
HEAD	VP1013594
* ELEMENT	2118345
LONG BOWL.....	VP1017509
SERVICE INDICATOR.....	VP1013599
BOWL O-RING (VITON)	2118539

* Part included in Routine Maintenance Kit Part Number 303CGG6003. Refer to page 57.



MINIMUM PRESSURE/CHECK VALVE

Name Of Part	Qty.	Part No.
MINIMUM PRESSURE VALVE ASSEMBLY.....	1	300ETV527
REPAIR KIT:	1	2118549
CHECK VALVE ASSEMBLY	1	
MAIN SPRING	1	
CHECK VALVE SPRING	1	
O-RING.....	1	

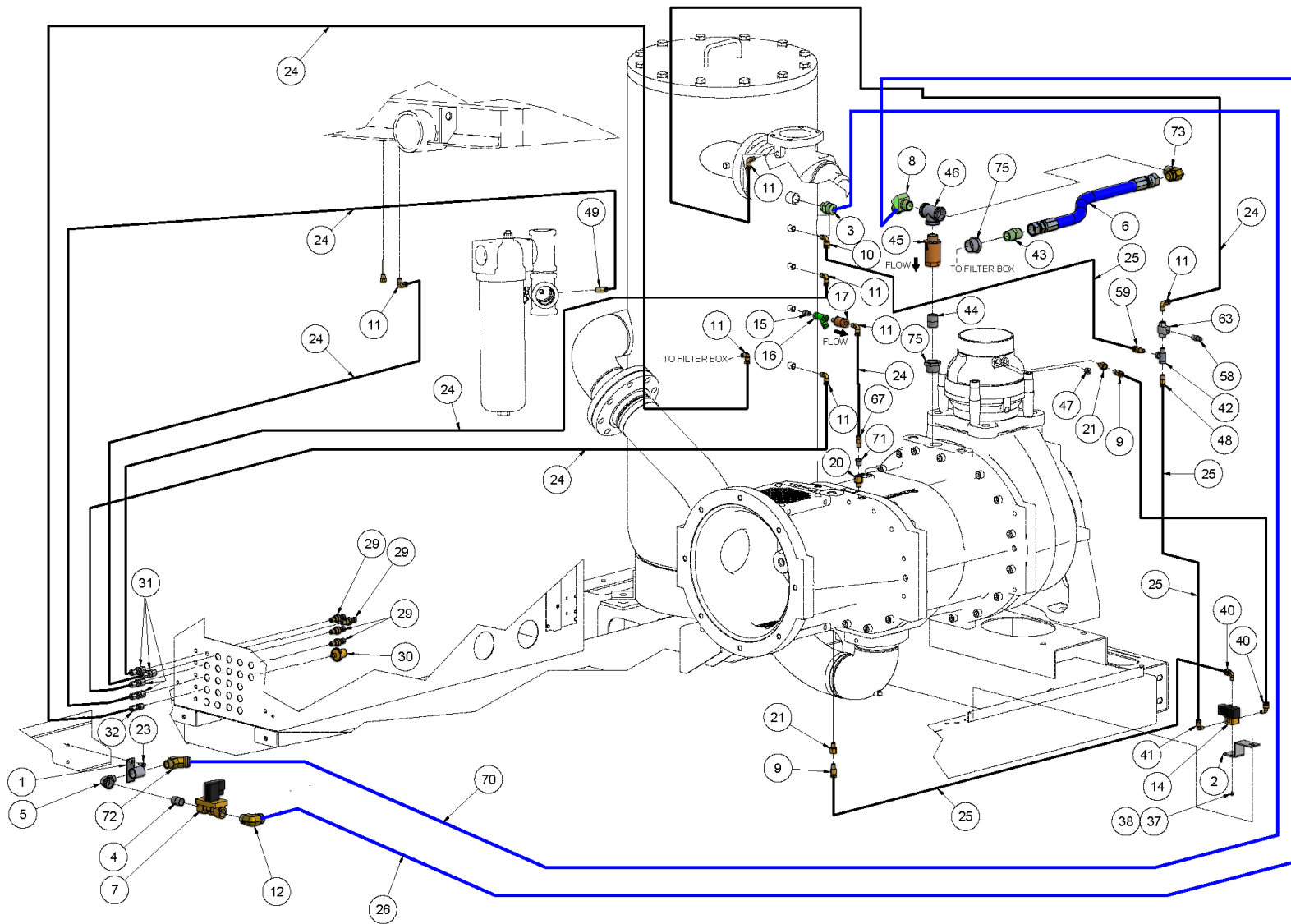


**MOISTURE SEPARATOR WITH TRAP (OPTIONAL)
(VP1021707)**

Ref. No.	Name of Part	Qty.	Part No.
	SEPARATOR (LESS TRAP)	1	2118547
1	O-RING KIT	1	2118586
2	INTERNAL KIT	1	2118590
3	ISOLATION VALVE	1	2118388
*	TRAP (EXTERNAL)	1	VP1010053

* Not shown

CONTROL TUBING



309CGG810-B
(Ref. Drawing)
Page 1 of 2

CONTROL TUBING

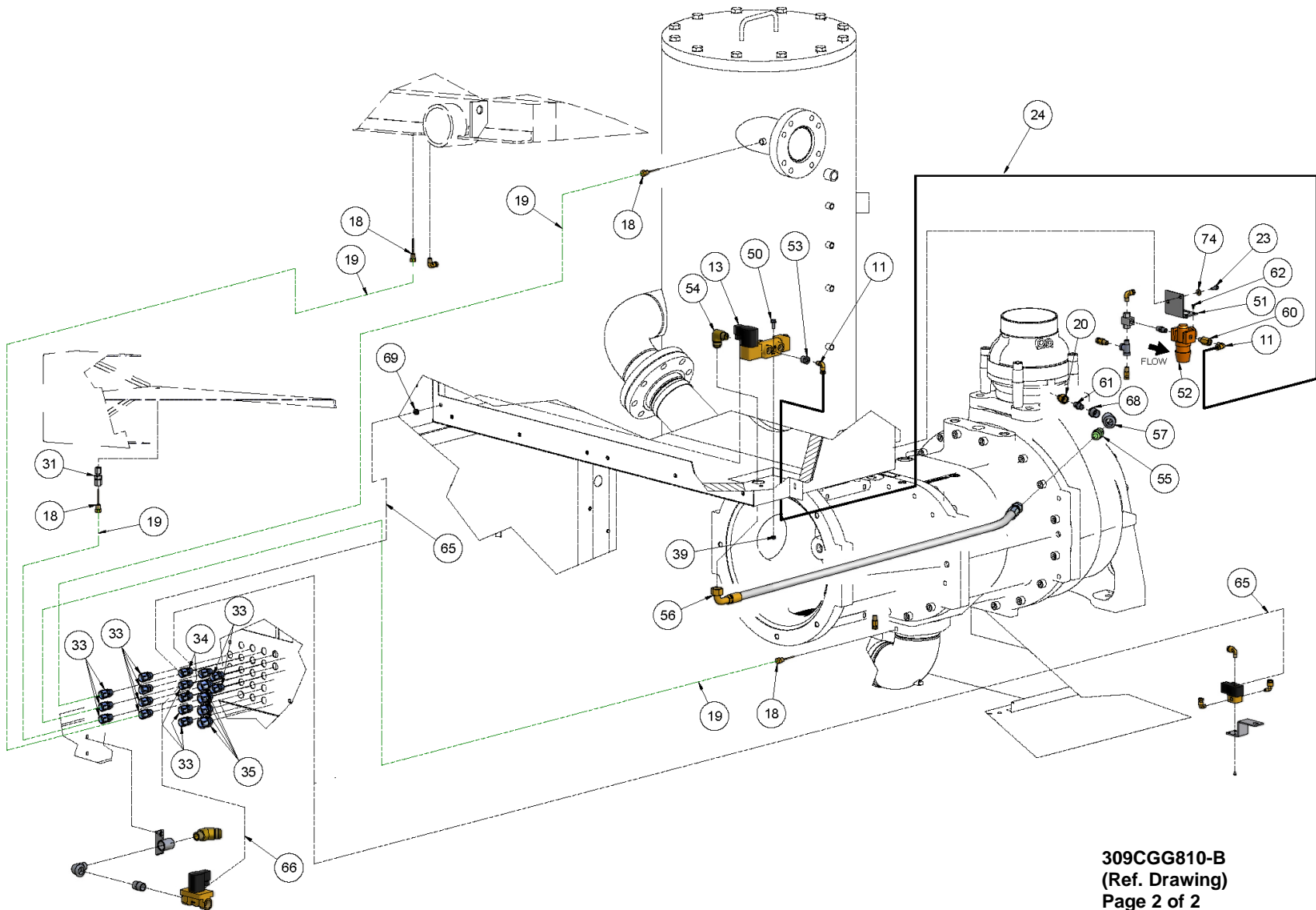
B/M: 300 & 301CGG4052;

Ref. No.	Name of Part	Qty.	Part No.	Ref. No.	Name of Part	Qty.	Part No.
1	BRACKET.....	1	CC1023811	32	TUBE CONNECTOR	1	86N287
2	BRACKET.....	1	CC1025288	36	CABLE (not shown) (IN FEET).....	26	97J94
3	TUBE CONNECTOR.....	1	86H183	37	SCREW.....	4	75G71
4	NIPPLE.....	1	63G1G	38	LOCKWASHER	4	42140300
5	ELBOW.....	1	64D6G	40	TUBE FITTING	2	86E221
6	HOSE	1	VP1042713	41	TUBE FITTING	1	86E219
* 7	CONTROL VALVE	1	90AR1215	42	TUBE FITTING	1	64EB1850
8	ADAPTOR	1	86H283	43	CONNECTOR	1	86H138
9	TUBE FITTING	2	86E212	44	NIPPLE	1	63H1G
10	TUBE FITTING	1	86E222	** 45	CHECK VALVE	1	90AR1136
11	TUBE FITTING	7	86E220	46	TEE	1	64G8G
12	ADAPTOR	1	119442	47	PLUG	1	64AA56
* 14	SOLENOID VALVE	1	91B264	48	TUBE FITTING	1	86E210
15	NIPPLE.....	1	63D1G	49	TUBE CONNECTOR	1	86E220
** 16	STRAINER.....	1	82E46	** 58	FILTER.....	1	82E54
** 17	CHECK VALVE.....	1	90AR1138	59	TUBE FITTING	1	86E212
21	ADAPTER.....	2	86H175	** 63	CONTROL VALVE.....	1	90AR1034
23	SCREW	2	75LM48	67	ORIFICE.....	1	86N339
24	TUBE (IN FEET)	65	85G3	70	HOSE.....	1	VP1042343
25	TUBE.....	30	85G5	71	BUSHING	1	64E1G
26	HOSE	1	VP1042339	72	ADAPTOR.....	1	119368
* 29	PRESSURE TRANSDUCER	4	VP1011577	73	ADAPTOR.....	1	29Z244
* 30	VACUUM SWITCH	1	88H195	75	BUSHING	2	64E7G

** Parts included in Pneumatic Control Kit Part Number 300CGG6013. Refer to page 57.

* Parts included in Electrical Control Kit Part Number 301CGG6013. Refer to page 57.

CONTROL TUBING



309CGG810-B
(Ref. Drawing)
Page 2 of 2

CONTROL TUBING

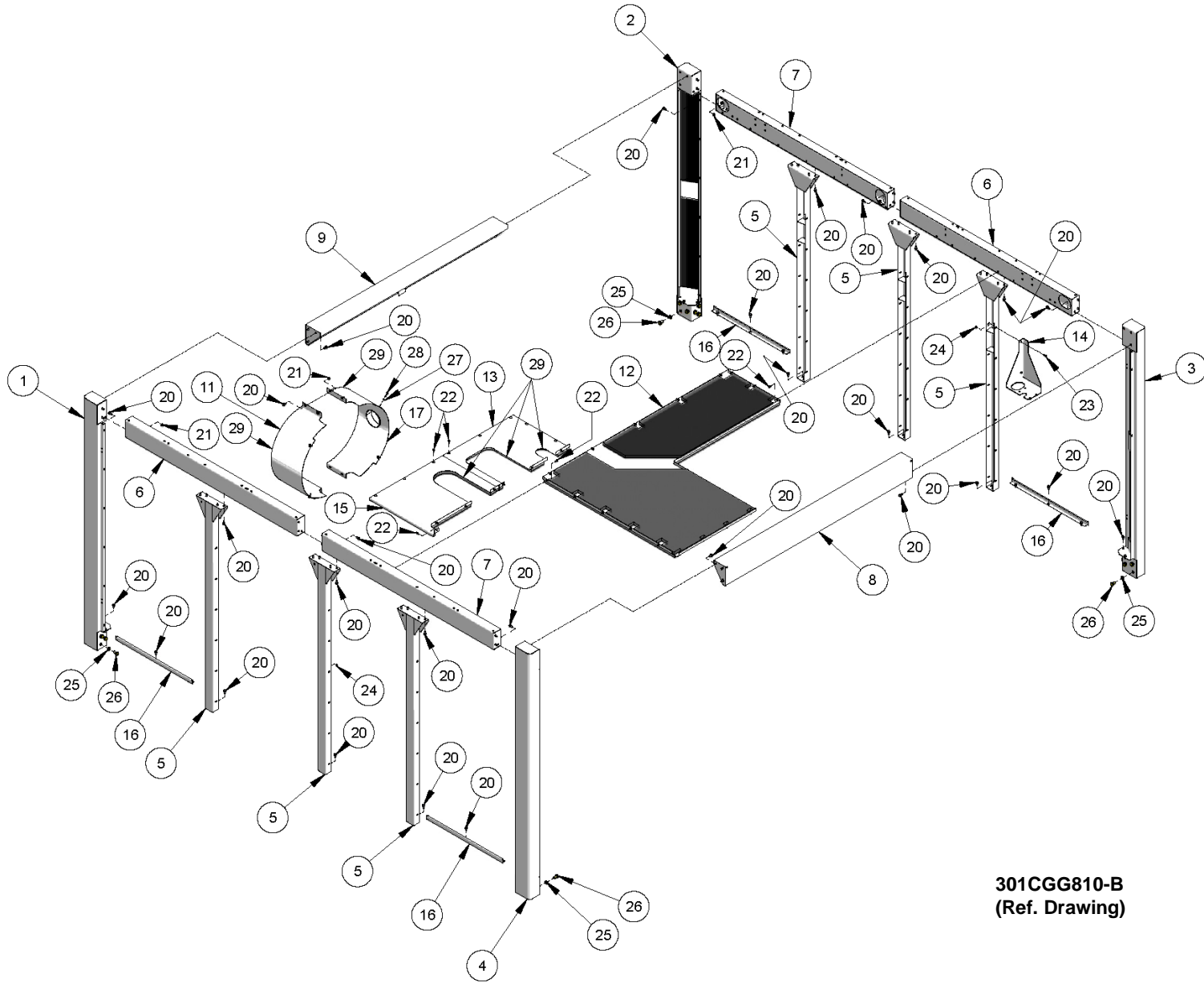
B/M: 300 & 301CGG4052

Ref. No.	Name of Part	Qty.	Part No.
11	TUBE FITTING	2	86E220
* 13	SOLENOID VALVE.....	1	91B255
* 18	THERMISTOR.....	4	VP1018671
* 19	CABLE (30FEET)	4	VP1018672
20	ADAPTER.....	1	86H176
23	SCREW	2	75LM48
24	TUBE (IN FEET).....	65	85G3
31	TUBE CONNECTOR	1	86E250
33	ELECTRICAL FITTING.....	13	24CA2865
34	ELECTRICAL FITTING.....	2	24CA615
35	ELECTRICAL FITTING.....	4	24CA610
39	NUT	2	50AW4
50	SCREW	2	75LM50
51	BRACKET.....	1	CC1026999
**52	REGULATOR	1	88H345
53	BUSHING	1	64E2G
54	ADAPTOR	1	119440
55	TUBE CONNECTOR	1	86H137
56	HOSE	1	VP1045153
57	ELBOW.....	1	64V5G
60	ORIFICE	1	VP1027026
61	NIPPLE.....	1	86N402
62	SCREW	4	2009516
* 65	CORD (7 METERS).....	2	VP1010780
* 66	CORD (2 METERS).....	1	VP1010781
68	BUSHING	1	64E10G
69	GROMMET.....	1	VP1036056
74	WASHER.....	2	95A1Z

* * Parts included in Pneumatic Control Kit Part Number 300CGG6013. Refer to page 57

* Parts included in Electrical Control Kit Part Number 301CGG6013. Refer to page 57

INTERNAL ENCLOSURE PARTS



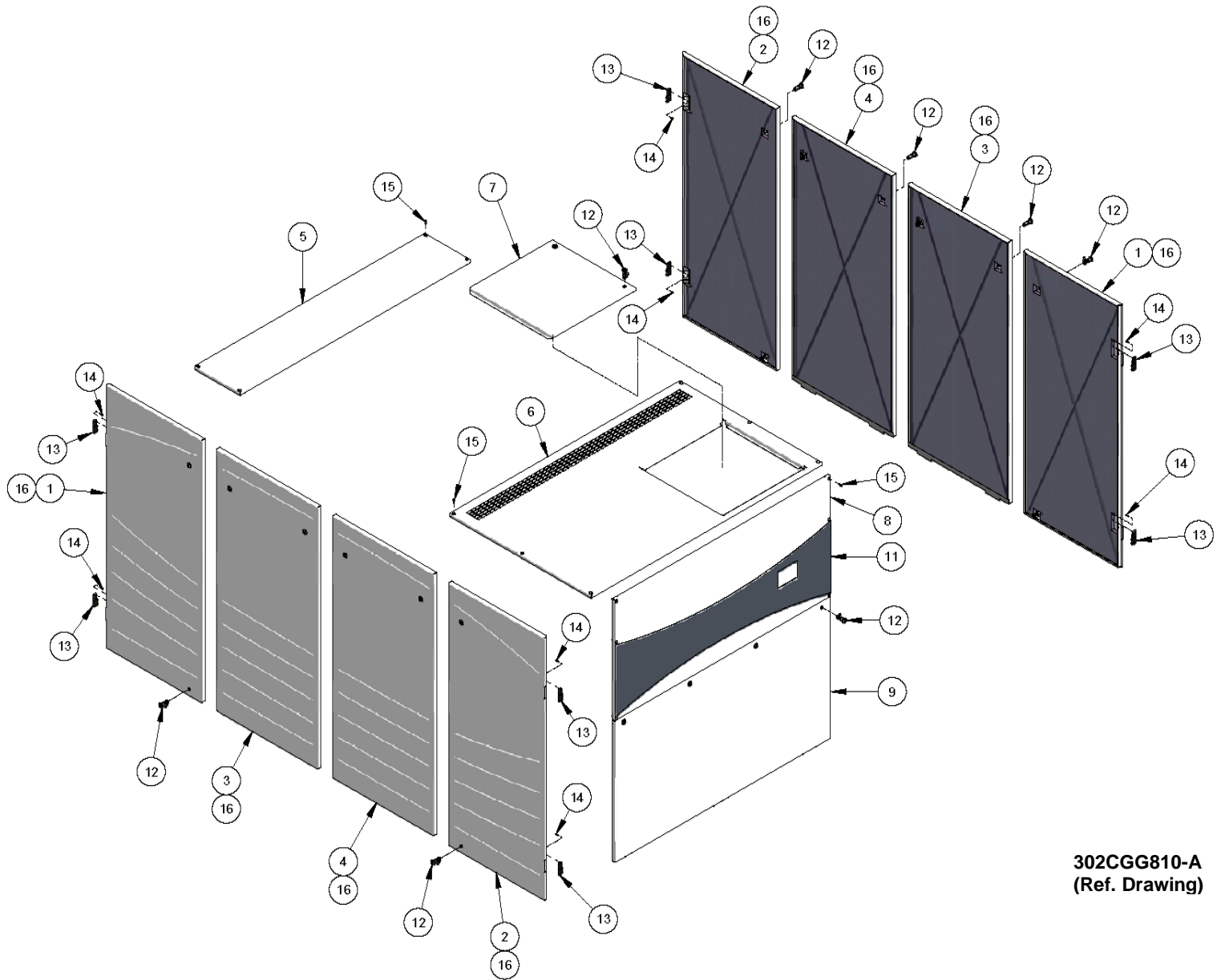
301CGG810-B
(Ref. Drawing)

INTERNAL ENCLOSURE PARTS

**B/M: 300CGG4017;
300CGG4013**

Ref. No.	Name of Part	Qty.	Part No.	Ref. No.	Name of Part	Qty.	Part No.
1	POST	1	CC1014736	15	PANEL	1	CC1033519
2	POST	1	CC1014737	16	BRACE.....	4	CC1015114
3	POST	1	CC1014738	17	SHROUD	1	300CGG647
4	POST	1	CC1014739	20	SCREW.....	90	75LM51
5	SUPPORT.....	6	CC1027382	21	NUT	10	50AW5
6	SUPPORT.....	2	CC1033511	22	SCREW.....	33	75LM54
7	SUPPORT.....	2	CC1033513	23	SCREW.....	2	75LM48
8	SUPPORT.....	1	CC1033515	24	NUT	3	50AW3
9	SUPPORT.....	1	CC1033514	25	LOCKWASHER	24	95B7Z
12	PANEL	1	CC1033530	26	SCREW.....	25	655EF04Z
13	PANEL	1	CC1033517	27	WASHER	4	95A5Z
14	BRACKET	1	CC1015111	28	SCREW.....	4	75K48
				29	SEAL (IN FEET).....	15	32E26

EXTERNAL ENCLOSURE PARTS



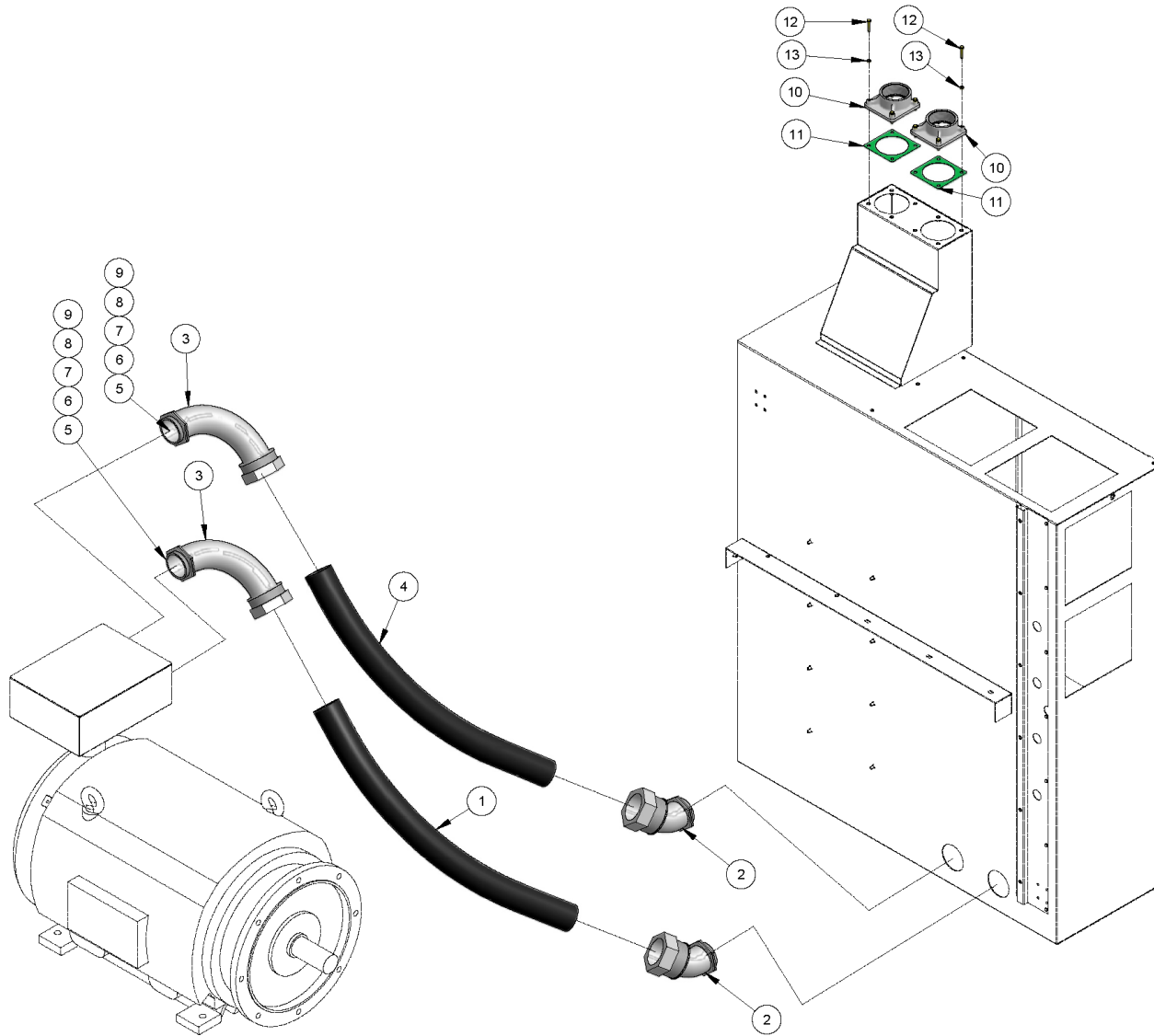
302CGG810-A
(Ref. Drawing)

EXTERNAL ENCLOSURE PARTS

**B/M: 301CGG4017;
301CGG4013**

Ref. No.	Name of Part	Qty.	Part No.	Ref. No.	Name of Part	Qty.	Part No.
1	LEFT DOOR	2	CC1032352	9	PANEL	1	CC1033509
2	RIGHT DOOR	2	CC1032353	11	GRAY CONTROLLER DECAL	1	CC1033531
3	CENTER DOOR	2	CC1033510	12	LATCH	22	31D68
4	RIGHT DOOR	2	CC1033523	13	HINGE	8	89561179
5	PANEL	1	CC1033505	14	SCREW	32	80051979
6	PANEL	1	CC1033506	15	SCREW	16	75LM48
7	DOOR	1	CC1033507	16	SEAL (IN FEET)	60	32E26
8	PANEL	1	CC1033508		KEY (not shown)	2	VP1049035

MAIN MOTOR WIRING

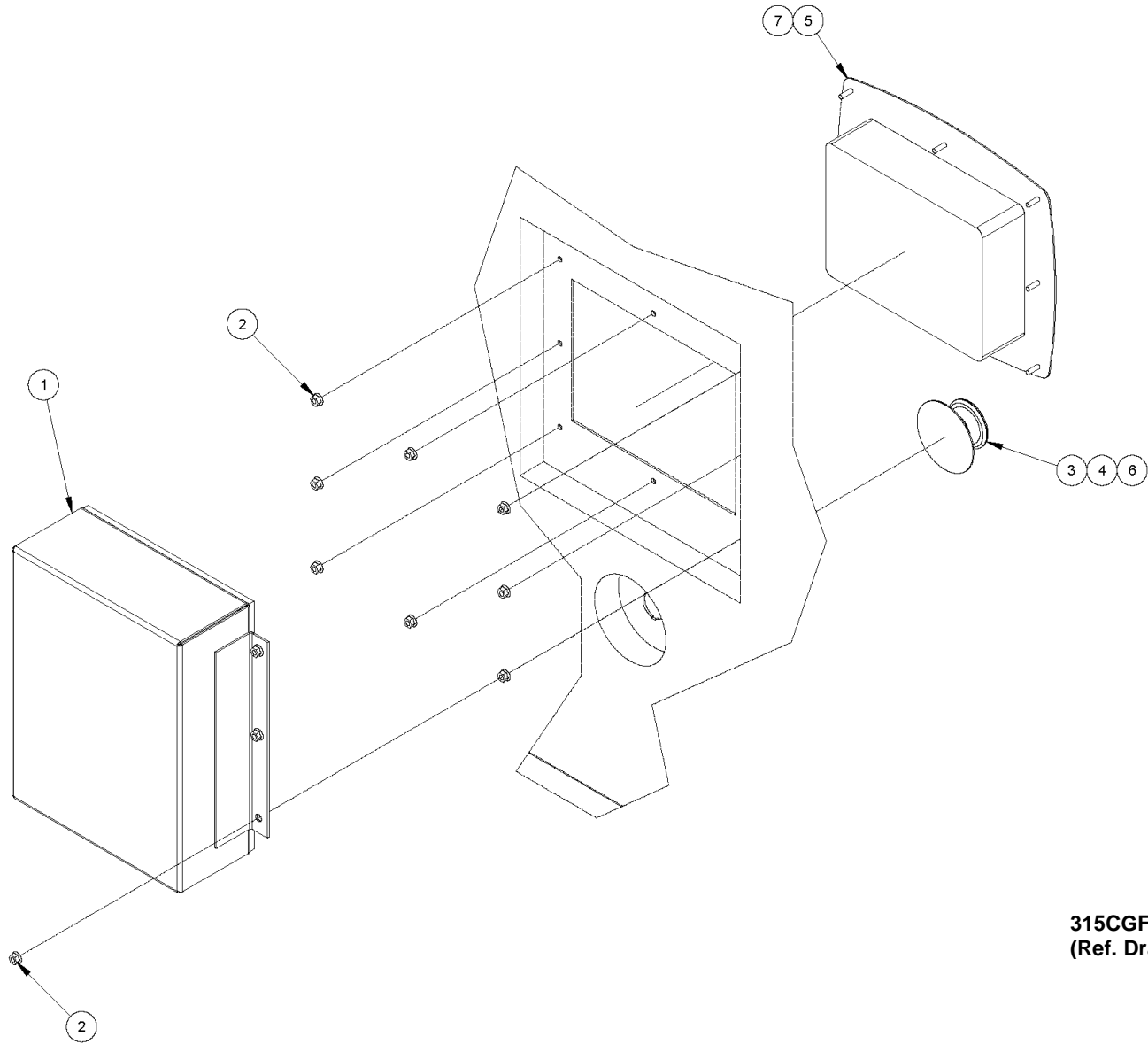


310CGG810-A
(Ref. Drawing)

MAIN MOTOR WIRING

Ref. No.	Name of Part	Qty.	B/M: 300CGG4007; 302CGG4007	B/M: 301CGG4007; 302CGG4007
			Part No. VS200	Part No. VS250
1	CONDUIT (IN FEET).....	4	2009424	2009424
2	CONNECTOR	2	2009346	2009346
3	CONDUIT	2	2009347	2009347
4	CONDUIT (IN FEET).....	4	2009424	2009424
5	WIRE (IN FEET).....	60	2009803	2009465
6	WIRE (IN FEET).....	20	2009522	2009522
7	TERMINAL LUG	12	2009533	2009534
8	TAPE.....	1	24CA898	24CA898
9	TERMINAL LUG	4	24CA2088	24CA2088
10	CONDUIT	2	24CA6073	24CA6073
11	GASKET	2	25BC872	25BC872
12	SCREW.....	8	655EC06Z	655EC06Z
13	LOCKWASHER	8	95B1Z	95B1Z

HEAT SHIELD ASSEMBLY



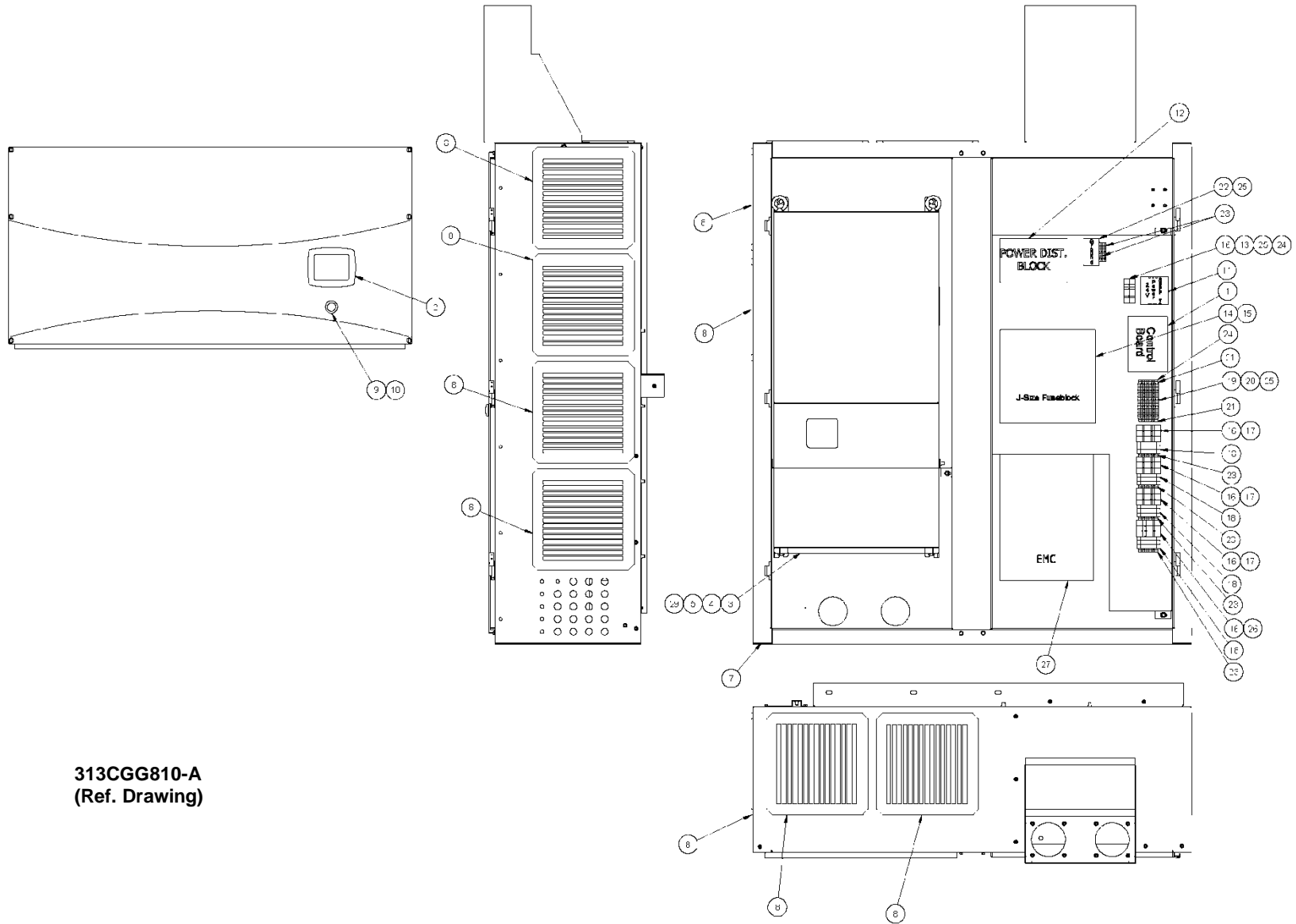
315CGF810-B
(Ref. Drawing)

HEAT SHIELD ASSEMBLY

B/M: 303CGF4013

Ref. No.	Name of Part	Qty.	Part No.
10	HEAT SHIELD.....	1	VP1024679
20	NUT.....	14	VP1029847
30	OPERATOR EMERGENCY STOP	1	24CA2907
40	CONTACT BLOCK.....	1	24CA2908
50	DISPLAY MODULE.....	1	300ETK375
60	CABLE	26	97J81
70	CORD (IN FEET).....	26	98J45
80	CABLE (IN FEET)	26	97J93

**CONTROL BOX – VS200 & VS250
(AIR-COOLED)**



**313CGG810-A
(Ref. Drawing)**

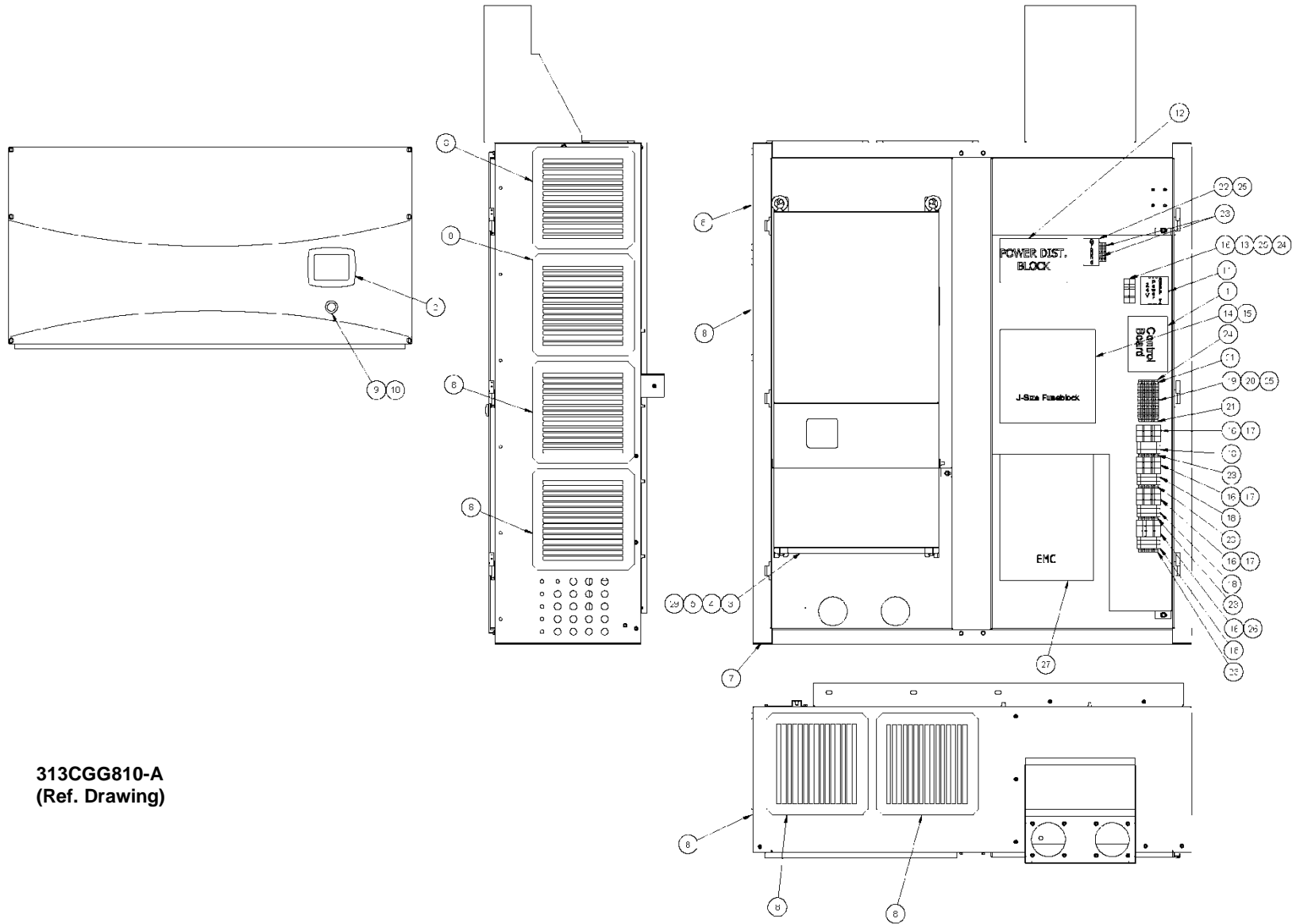
**CONTROL BOX – VS200 & VS250
(AIR-COOLED)**

Ref. No.	Name of Part	Qty	AIR-COOLED 200 kW 460V	AIR-COOLED 250 kW 460V
	ASSEMBLED CONTROL BOX WITHOUT EMC FILTER	1	300CGG1189	301CGG1189
	ASSEMBLED CONTROL BOX WITH EMC FILTER.....	1	303CGG1189	305CGG1189
1	AIRSMART CONTROLLER	1	300ETK1173	300ETK1173
2	DISPLAY MODULE.....	1	300ETK375	300ETK375
3	VARIABLE FREQUENCY DRIVE	1	90500038B	90500039B
4	SPLITTER CABLE	1	24CA5899	24CA5899
5	PLUG KIT.....	1	24CA5933	24CA5933
7	CONTROL BOX, (VS200A, VS250A).....	1	CC1032632	CC1032632
** 8	BLACK GRILLE FILTER	8	24CA5914	24CA5914
9	OPERATOR.....	1	24CA2907	24CA2907
10	CONTACT BLOCK.....	1	24CA2908	24CA2908
11	POWER SUPPLY	1	24CA6050	24CA6050
12	POWER DISTRIBUTION BLOCK	1	24CA5978	24CA5978
13	FUSE.....	2	24CA5981	24CA5981
14	FUSE HOLDER	1	24CA5924	24CA5924
15	FUSE.....	3	24CA6088	24CA6088
16	FUSE BLOCK	14	24CA5910	24CA5910
17	FUSE.....	9	24CA4094	24CA4094
18	RELAY	4	24CA6854	24CA6854
19	TERMINAL BLOCK.....	22	24CA5984	24CA5984
20	TERMINAL BLOCK.....	1	24CA5985	24CA5985
21	GROUND BLOCK.....	2	24CA5986	24CA5986
22	GROUND BLOCK.....	2	24CA5988	24CA5988
23	GROUND BLOCK.....	6	24CA5989	24CA5989
24	TERMINAL BLOCK	4	24CA5987	24CA5987
25	DIN RAIL.....	1	24CA5991	24CA5991
26	FUSE.....	3	24CA4090	24CA4090
* 27	EMC FILTER.....	1	90500160	90500160
29	NUT.....	4	50AW4	50AW4

* Only used with EMC Filter Control Box

** For Replacement Filter Element Order Part Number 24CA5929

**CONTROL BOX – VS200 & VS250
(WATER-COOLED)**



**313CGG810-A
(Ref. Drawing)**

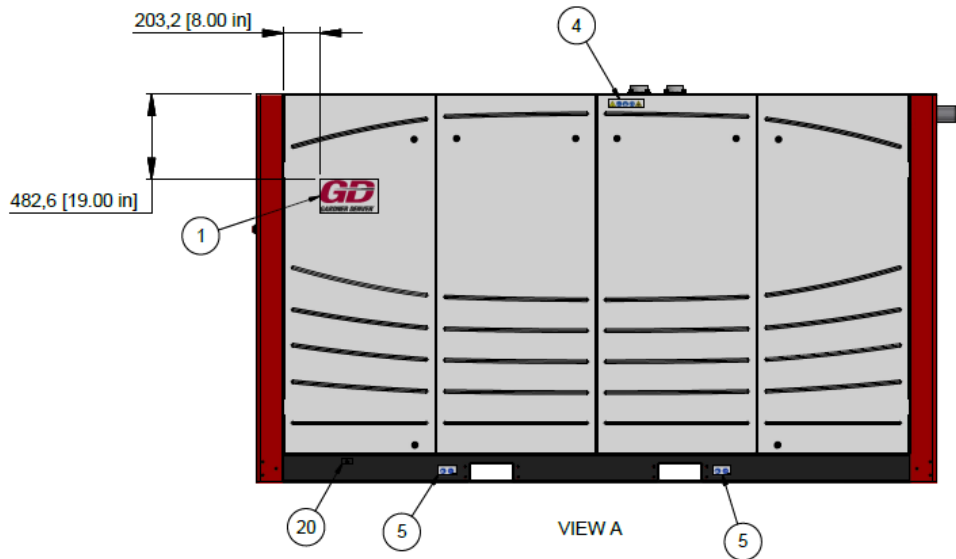
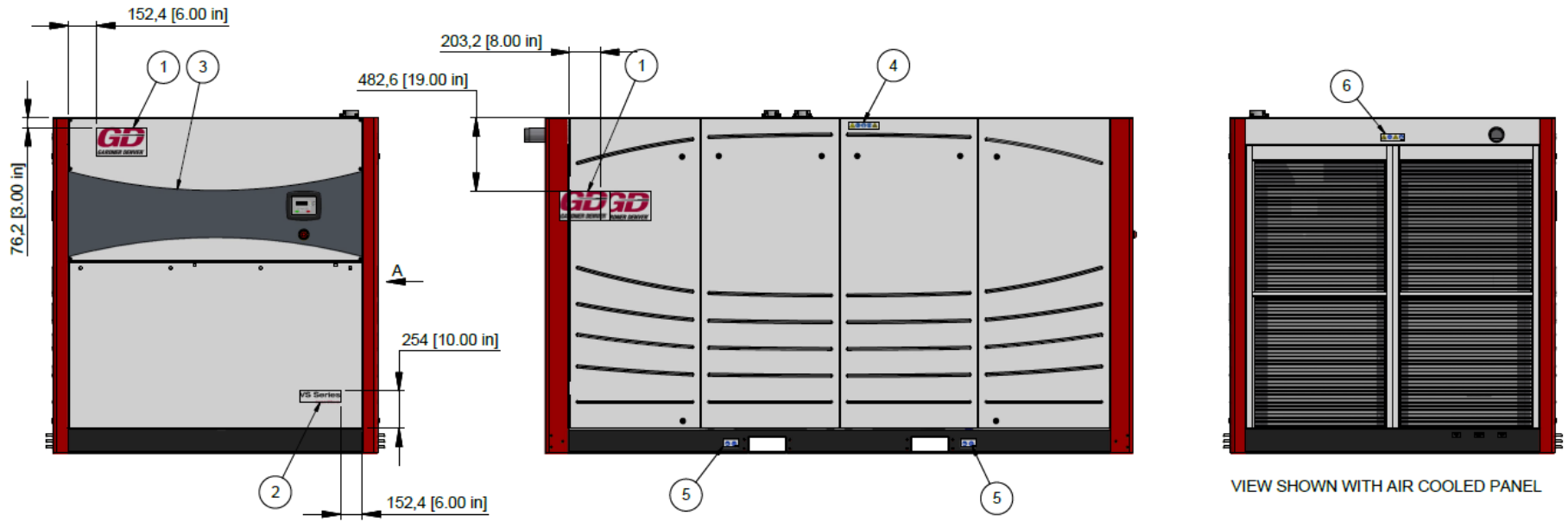
**CONTROL BOX – VS200 & VS250
(WATER-COOLED)**

Ref. No.	Name of Part	Qty	WATER-COOLED 200 kW 460V	WATER-COOLED 250 kW 460V
	ASSEMBLED CONTROL BOX WITHOUT EMC FILTER..	1	306CGG1189	307CGG1189
	ASSEMBLED CONTROL BOX WITH EMC FILTER	1	309CGG1189	311CGG1189
1	AIRSMART CONTROLLER.....	1	300ETK1173	300ETK1173
2	DISPLAY MODULE	1	300ETK375	300ETK375
3	VARIABLE FREQUENCY DRIVE	1	90500038B	90500039B
4	SPLITTER CABLE	1	24CA5899	24CA5899
5	PLUG KIT	1	24CA5933	24CA5933
7	CONTROL BOX, (VS135A, VS170A)	1	CC1032632	CC1032632
** 8	BLACK GRILLE FILTER	8	24CA5914	24CA5914
9	OPERATOR.....	1	24CA2907	24CA2907
10	CONTACT BLOCK	1	24CA2908	24CA2908
11	POWER SUPPLY	1	24CA6050	24CA6050
12	POWER DISTRIBUTION BLOCK	1	24CA5978	24CA5978
13	FUSE	2	24CA5981	24CA5981
14	FUSE HOLDER	1	24CA5924	24CA5924
15	FUSE	3	24CA6088	24CA6088
16	FUSE BLOCK.....	5	24CA5910	24CA5910
18	RELAY	1	24CA6854	24CA6854
19	TERMINAL BLOCK	22	24CA5984	24CA5985
20	TERMINAL BLOCK	1	24CA5985	24CA5986
21	GROUND BLOCK.....	2	24CA5986	24CA5988
22	GROUND BLOCK.....	2	24CA5988	24CA5989
23	GROUND BLOCK.....	3	24CA5989	24CA5989
24	TERMINAL BLOCK	4	24CA5987	24CA5987
25	DIN RAIL.....	1	24CA5991	24CA5991
26	FUSE	3	24CA4091	24CA4091
* 27	EMC FILTER	1	90500160	90500160
29	NUT	4	50AW4	50AW4

* Only used with EMC Filter Control Box

** For Replacement Filter Element Order Part Number 24CA5929

DECAL LAYOUT (PACKAGE EXTERIOR)



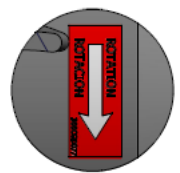
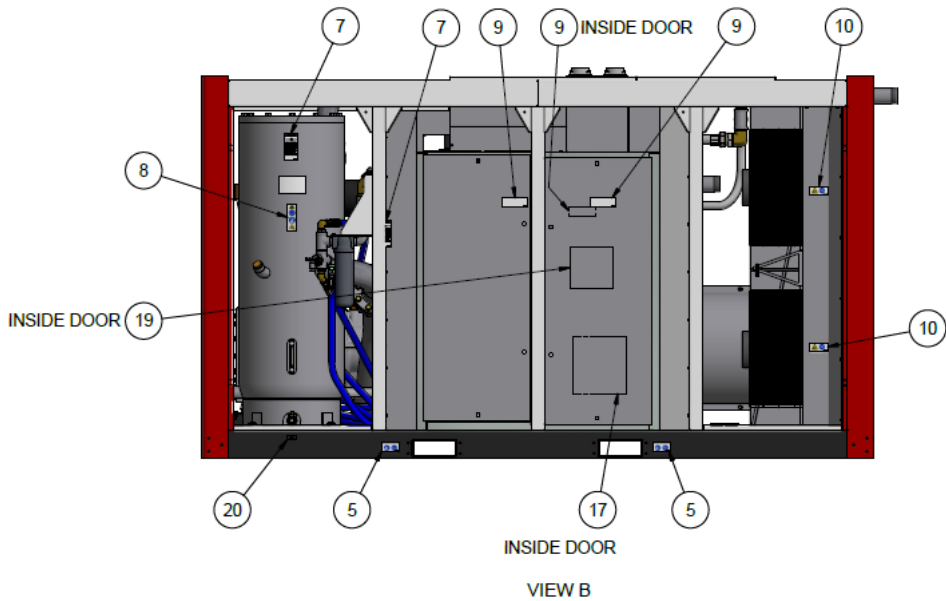
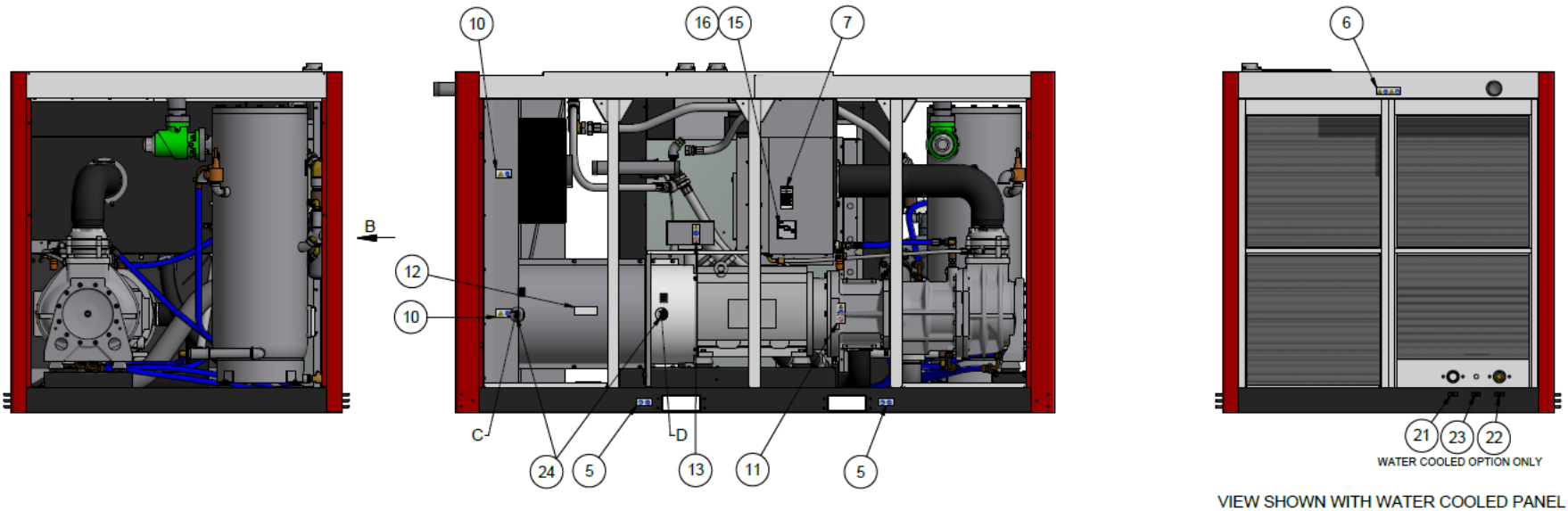
311CGG810-05
(Ref. Drawing)
Page 1 of 2

**DECAL LAYOUT
(PACKAGE EXTERIOR)**

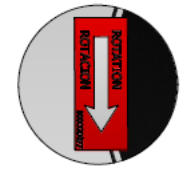
B/M: 300CGG4011

Ref. No.	Name of Part	Qty.	Part No.
1	DECAL, GARDNER DENVER PACKAGE LOGO.....	3	VP1042952
2	DECAL, VS SERIES (Large).....	1	VP1044841
3	DECAL-GRAY	1	CC1033531
4	DECAL, ISO WARNING (Sides Above Doors).....	2	VP1009372
5	DECAL, ISO WARNING (Fork Pocket)	4	VP1009373
6	DECAL, ISO WARNING (Fan/Auto Start)	1	VP1009377
20	DATA PLATE (Oil Drain).....	1	300EHG454

**DECAL LAYOUT
(PACKAGE INTERIOR)**



C (2 : 1)
FOR 89875609
FAN ASSEMBLY
(AIR COOLED)



D (2 : 1)
FOR 89875609
FAN ASSEMBLY
(WATER COOLED)

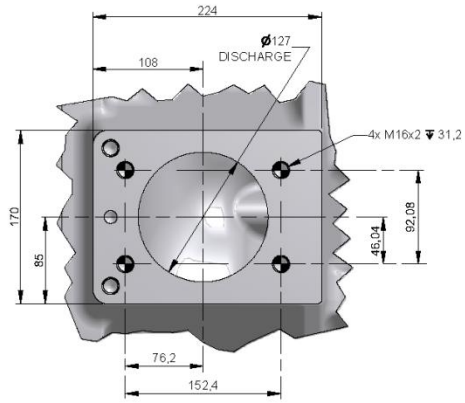
**DECAL LAYOUT
(PACKAGE INTERIOR)**

**B/M: 300, 303, 304,
305, 306CGG4011**

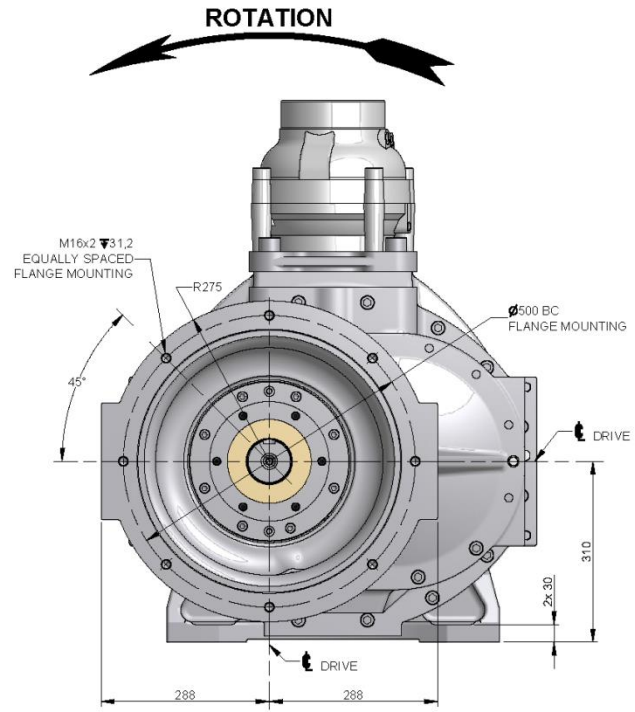
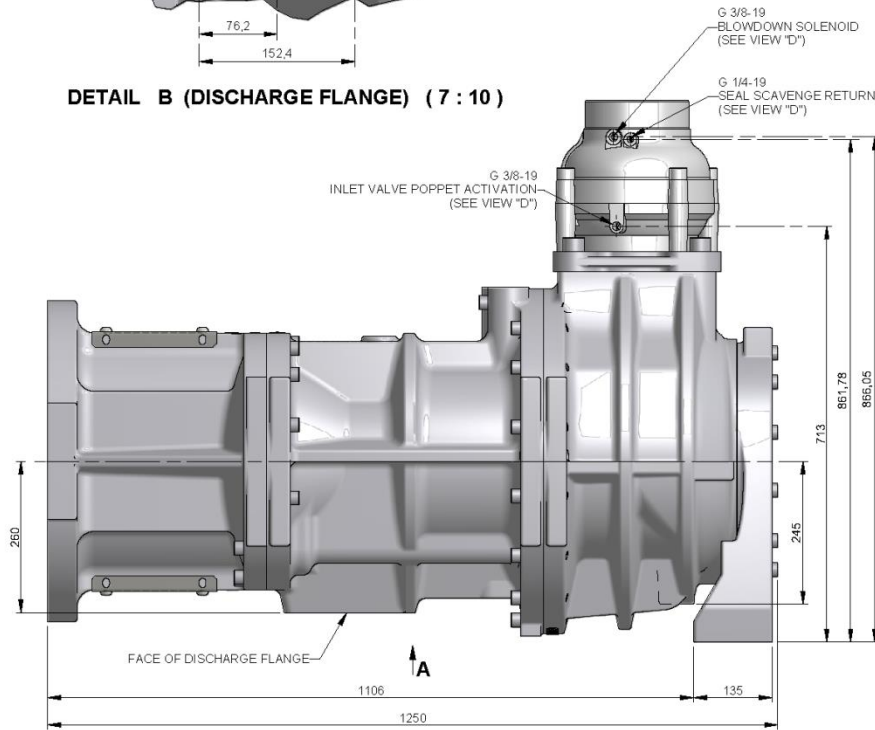
Ref. No.	Name of Part	Qty.	Part No.
5	DECAL, ISO WARNING (Fork Pocket)	4	VP1009373
6	DECAL, ISO WARNING (Fan/Auto Start)	1	VP1009377
7	DECAL-NOTICE (Use Genuine Gardner Denver Parts)	3	CC1009474
8	DECAL, ISO WARNING (Separator Tank).....	1	VP1009376
9	DECAL, ISO WARNING (Control Box).....	3	VP1009371
10	DECAL, ISO WARNING (Rotating Fans)	4	VP1009640
11	DECAL, ISO WARNING (Coupling Housing)	1	VP1009375
12	DECAL, ISO WARNING (Fan/Cooler Housing).....	1	VP1009582
13	DECAL, ISO WARNING (Motor)	1	VP1009374
17	POCKET	1	VP1009797
18	DECAL GROUP DECAL SHEET (not shown)	1	CC1010403
19	DECAL (CD MANUAL)		
	ENGLISH	1	VP1009795
	FRENCH CANADIAN.....	1	VP1012949
	MEXICAN SPANISH	1	VP1012948
20	DATA PLATE (Oil Drain).....	1	300EHG454
21	DATA PLATE (Cool Water Out)	1	202EWD454
22	DATA PLATE (Cool Water In).....	1	203EWD454
23	DATA PLATE (Condensate Drain).....	1	CC1009381
24	DECAL, ROTATION ARROW.....	1	300CGD077

OUTLINE – BARE UNIT

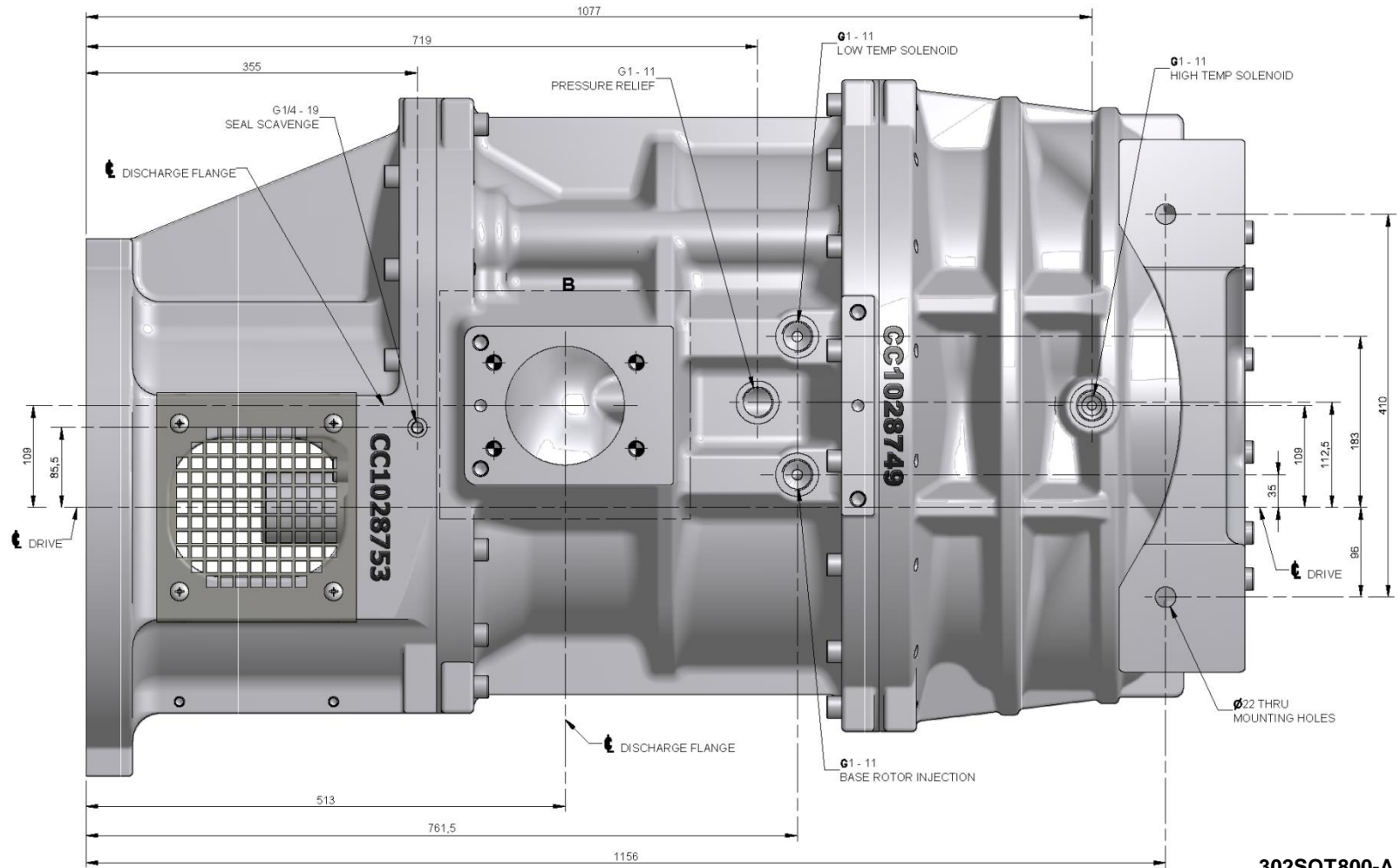
302SQT800-A
 (Ref. Drawing)
 Page 1 of 5



DETAIL B (DISCHARGE FLANGE) (7 : 10)



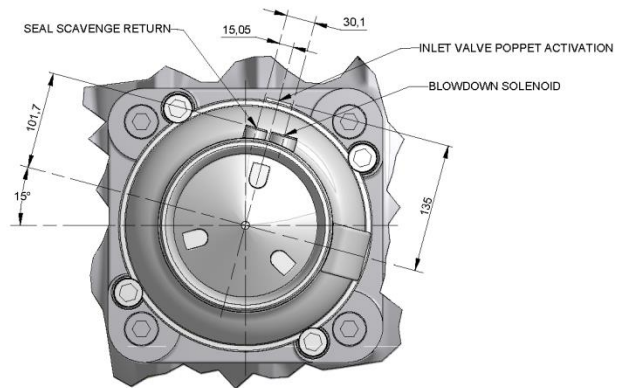
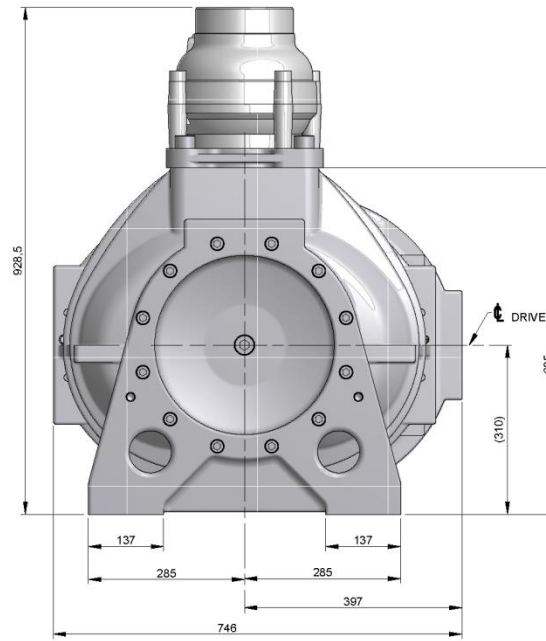
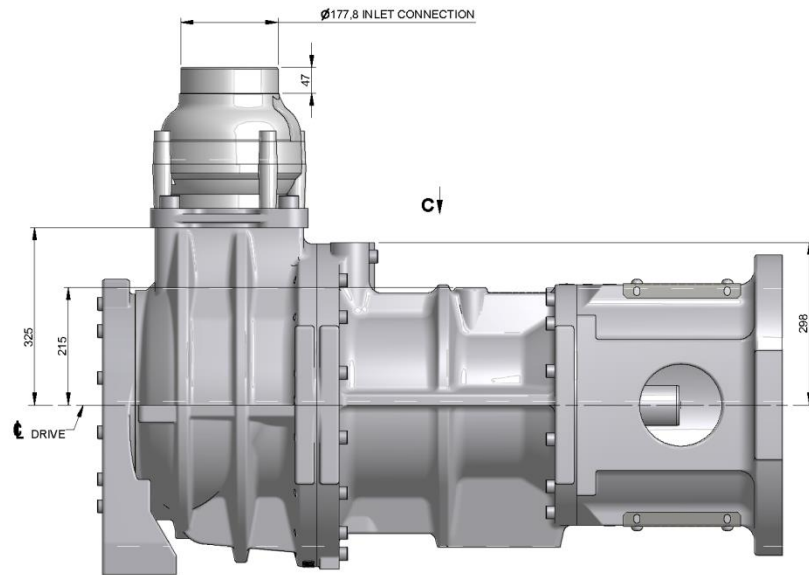
OUTLINE – BARE UNIT



VIEW A (BOTTOM OR DISCHARGE VIEW) (7 : 10)

302SQT800-A
 (Ref. Drawing)
 Page 2 of 5

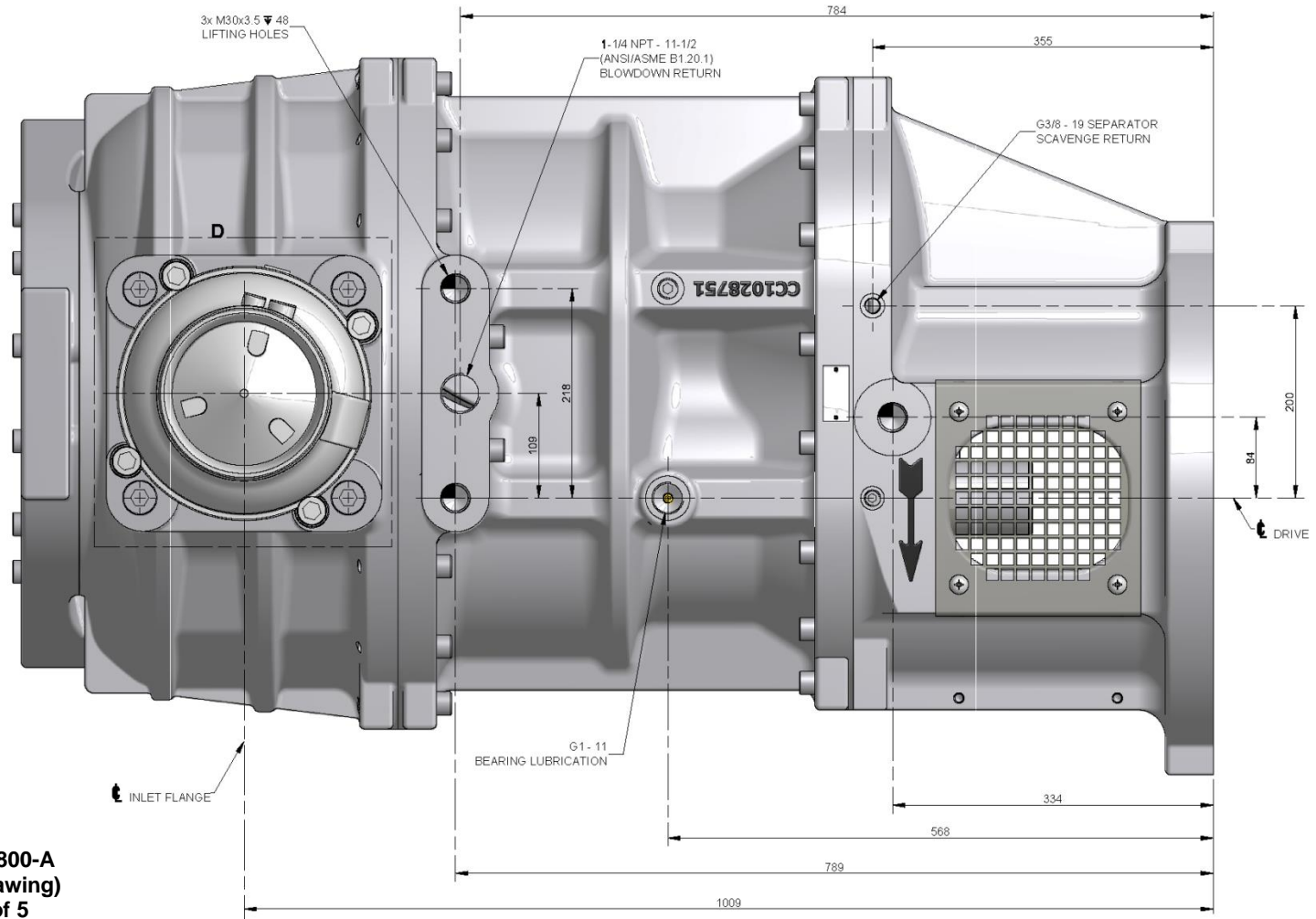
OUTLINE – BARE UNIT



VIEW D (INLET FLANGE) (7 : 10)

**302SQT800-A
(Ref. Drawing)
Page 3 of 5**

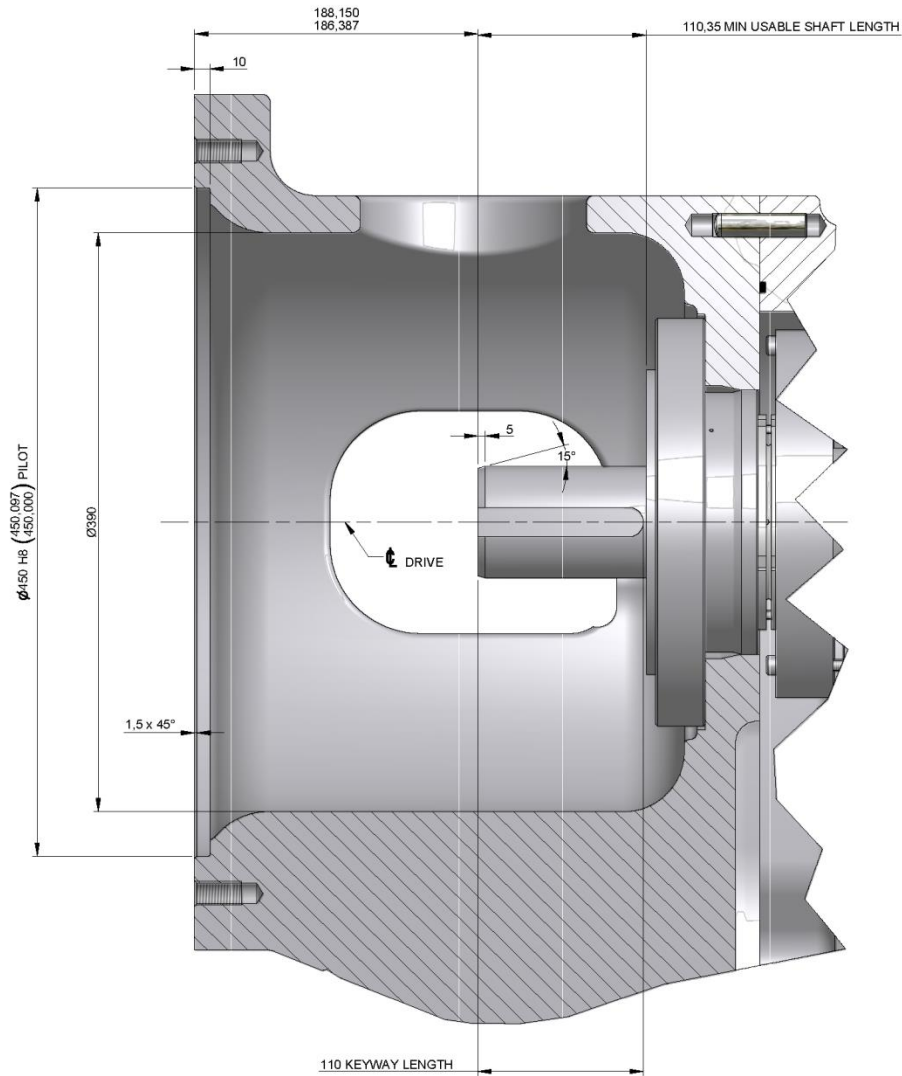
OUTLINE – BARE UNIT



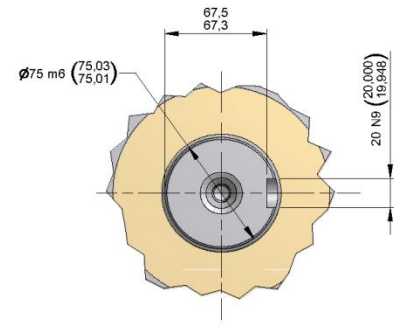
302SQT800-A
 (Ref. Drawing)
 Page 4 of 5

VIEW C (TOP OR INLET VIEW) (7 : 10)

OUTLINE – BARE UNIT



FLANGE MOUNTING DETAIL (1 : 1)



DRIVE SHAFT DETAIL (1 : 1)

**302SQT800-A
(Ref. Drawing)
Page 5 of 5**

REPAIR KITS

Your Gardner Denver rotary screw compressor is designed and manufactured for many years of reliable operation. All components are engineered to exacting specifications, which will function together as a system to provide maximum efficiency. To insure the continuing integrity of compressor operation, use only original quality genuine Gardner Denver replacement parts and accessories.

Name of Part	Qty.	Part No.
ROUTINE MAINTENANCE KIT		303CGG6003
ELEMENT, AIR FILTER	6	5L356
ELEMENT, OIL FILTER	3	2118345
OIL SEPARATOR KIT.....		306ETW6003
OIL SEPARATOR	3	VP1040693
O-RING.....	1	25BC868
O-RING LUBRICANT	1	2116755
PNEUMATIC CONTROLS AND GAUGES		300CGG6013
PRESSURE RELIEF VALVE	1	90AR1168
STRAINER.....	1	82E46
CHECK VALVE	1	90AR1138
CHECK VALVE	2	90AR1136
PRESSURE REGULATOR.....	1	88H345
CONTROL VALVE	1	90AR1034
FILTER	1	82E54
CHECK VALVE	1	90AR1147
ELECTRICAL CONTROL GROUP.....		301CGG6013
PRESSURE TRANSDUCER	4	VP1011577
THERMISTOR	4	VP1018671
SOLENOID VALVE	1	91B264
SOLENOID VALVE	1	91B255
VACUUM SWITCH.....	1	88H195
CORD (30 FEET)	3	VP1018672
CONTROL VALVE	1	90AR1215
CORD (8 FEET)	1	VP1018675
CORD (7 METERS)	2	VP1010780
CORD (2 METERS)	1	VP1010781
CONTROL VALVE	2	90AR1216
MOTOR BEARING GREASE		
400 GRAM CARTRIDGE.....	1	28H311
1 KILOGRAM CAN.....	1	28H312
25 KILOGRAM PAIL.....	1	28H313
LUBRICANT (AEON 9000SP) STANDARD		
5 GALLON PAIL.....	1	28H109
55 GALLON DRUM.....	1	28H110
LUBRICANT (AEON 9000TH) OPTIONAL		
5 GALLON PAIL.....	1	28H286
55 GALLON DRUM.....	1	28H270
TOUCH-UP PAINT		
5 GALLON PAIL (WHITE)	1	28H76
1 GALLON CAN (WHITE).....	1	28H84
1 QUART CAN (WHITE)	1	28H83
5 GALLON PAIL (RED)	1	28H325
1 GALLON CAN (RED)	1	28H324
1 QUART CAN (RED)	1	28H323

REPAIR KITS (Continued)

Name of Part	Qty.	Part No.
OIL SEAL KIT		300SQT6029
OIL SEAL.....	1	VP1038581
WEAR SLEEVE	1	VP1038580
O-RING.....	1	25BC111
SEAL	1	CC1028764
O-RING.....	1	90500080
SEALANT	1	25BC632
ANTI-SEIZE	1	25BC850
COUPLING INSTALLATION SHEET	1	MP167
OIL SEAL INSTALLATION & REMOVAL KIT		301CGG6031
COUPLING INSTALLATION TOOL	1	CC1030337
PULLER.....	1	VP1039033
TOOL, WEAR SLEEVE PUSHER.....	1	CC1030334
TOOL, SEAL INSTALLATION	1	300SQT6031
TOOL, SEAL ONTO WEAR SLEEVE	1	CC1030332
PULLER ASSEMBLY	1	20500162
COUPLING INSTALLATION SHEET	1	MP167
COUPLING INSTALLATION & REMOVAL TOOL KIT		300CGG6031
COUPLING INSTALLATION TOOL	1	CC1030337
PULLER.....	1	VP1039033
COUPLING INSTALLATION SHEET	1	MP167
INLET VALVE SPARE PARTS KIT		VP1036374
GASKET	1	VP1033984
O-RING.....	1	VP1033988
O-RING.....	1	VP1033989
O-RING.....	1	VP1033990
O-RING.....	1	VP1033992
O-RING.....	1	VP1033993
RETAINER.....	1	VP1033997
INLET VALVE SEAL REPAIR KIT		VP1036375
PISTON	1	VP1033983
PLATE	1	VP1034812
PIN	1	VP1034813
SPRING.....	1	VP1034814
BALL BEARING	1	VP1034815



Gardner Denver®

For additional information, contact your local representative or visit:
www.contactgd.com/compressors

©2019 Gardner Denver, Inc. Printed in U.S.A.



Please recycle after use.