

VARIABLE SPEED, TWO-STAGE BASE-MOUNTED COMPRESSOR

VST55-90B

60 Hz

Parts List Manual



MODELS

VST55

55 kW
75 HP

VST75

75 kW
100 HP

VST90

90 kW
125 HP

13-17-503
Version 03
April 12, 2021

MAINTAIN COMPRESSOR RELIABILITY AND PERFORMANCE WITH GENUINE GARDNER DENVER® COMPRESSOR PARTS AND SUPPORT SERVICES

Gardner Denver® Compressor genuine parts, manufactured to design tolerances, are developed for optimum dependability, specifically for Gardner Denver compressor systems. Design and material innovations are the result of years of experience with hundreds of different compressor applications. Reliability in materials and quality assurance is incorporated in our genuine replacement parts.

Your authorized Gardner Denver Compressor distributor offers all the backup you'll need. An AirSmart network of authorized distributors provides the finest product support in the air compressor industry.

Your authorized distributor can support your Gardner Denver air compressor with these services:

1. Trained parts specialists to assist you in selecting the correct replacement parts.
2. Factory warranted new and remanufactured rotary screw airends. Most popular model remanufactured airends are maintained in stock at the factory, for purchase on an exchange basis with liberal core credit available for the replacement unit.
3. A full line of factory tested AEON™ compressor lubricants specifically formulated for use in Gardner Denver compressors.
4. Repair and maintenance kits designed with the necessary parts to simplify servicing your compressor.

Authorized distributor service technicians are factory trained and skilled in compressor maintenance and repair. They are ready to respond and assist you by providing fast, expert maintenance and repair services.

To Contact Gardner Denver or locate your local distributor:

Visit: www.gardnerdenver.com/industrials

or

Call: (800) 682-9868

INSTRUCTIONS FOR ORDERING REPAIR PARTS

When ordering parts, specify Compressor MODEL, Method of Cooling, POWER and SERIAL NUMBER (see nameplate on unit). The Airend Serial Number is also stamped on top of the discharge bearing carrier castings.

All orders for Parts should be placed with the nearest authorized distributor.

Where NOT specified, quantity of parts required per compressor or unit is one (1); where more than one is required per unit, quantity is indicated in parenthesis. SPECIFY EXACTLY THE NUMBER OF PARTS REQUIRED.

DO NOT ORDER BY SETS OR GROUPS.

To determine the Right-Hand and Left-Hand side of a compressor, stand at the motor end and look toward the compressor. Right-Hand and Left- Hand are indicated in parenthesis following the part name, i.e. (RH) and (LH), when appropriate.

TOTAL PRODUCT SUPPORT, GARDNER DENVER'S CONTINUING COMMITMENT TO YOUR AIR COMPRESSOR PERFORMANCE

Commitment to total product support continues long after the purchase of your quality Gardner Denver rotary screw compressor.

Gardner Denver original parts incorporate years of experience and improvements in design, materials and quality assurance. Maintaining your compressor investment with Gardner Denver parts will insure protection for the air compressor unit and long, dependable service life.

Your authorized Gardner Denver compressor distributor maintains a complete stock of all common maintenance parts, factory approved AEON lubricants, and Gardner Denver factory warranted exchange airends. In addition, authorized distributor technicians are factory trained, and can provide complete diagnostic, compressor maintenance and repair services.

This manual is designed to assist you in maintaining high performance and receiving many years of dependable service you expect from your Gardner Denver compressor.

REMANUFACTURED AIRENDS

Whenever an airend requires replacement or repair, Gardner Denver offers an industry unique, factory remanufactured airend exchange program. From its modern factory, Gardner Denver is committed to supplying you with the highest quality, factory remanufactured airends that are guaranteed to save you time and money.

Immediately Available

Repair downtime costs you money, which is why the most popular models are in inventory at all times.

Skilled Craftsmen

Our Remanufacturing assembly technicians average over 20 years of experience with air compression products.

Precision Remanufacturing

All potentially usable parts are thoroughly cleaned, inspected and analyzed. Only those parts that can be brought back to original factory specifications are remanufactured. Every remanufactured airend receives a new overhaul kit: bearings, gears, seals, sleeves and gaskets.

Extensive Testing

Gardner Denver performs testing that repair houses just don't do. Magnaflux and ultrasonic inspection spot cracked or stressed castings, monochromatic light analysis exposes oil leaks, and coordinate measurement machine inspects to +/- .0001", insuring that all remanufactured airends meet factory performance specifications.

Warranty

Gardner Denver backs up every remanufactured airend with a warranty...27 months from purchase.

Gardner Denver remanufactured airends deliver *quality without question...year in and year out.*

Call Gardner Denver for information on the airend exchange program and the name of your authorized distributor.

TABLE OF CONTENTS

Maintain Compressor Reliability And Performance, Compressor Parts And Support Services	1
Instructions For Ordering Repair Parts	1
Total Product Support	2
Remanufactured Airends	2
Airend Selection And Repair Kits	4
Seal And Wear Sleeve Sealant Application	5
Airend – SBK 1st Stage (Plugs)	6
Airend – SBK (Main Assembly) 1st Stage	7, 8
Airend – SBG (Main Assembly) 2nd Stage	9, 10
2nd Stage Assembly Drawing – SBG	11
Inter-Stage Manifold Assembly	12
Base Airends And Motors	13, 14
Separator/Reservoir Assembly	15, 16
Fan/Cooler Group (Air-Cooled)	17, 18
Water-Cooled Coolers	19, 20
Minimum Pressure Valve	21
Thermal Valve	22
Optional Water Temperature Regulator & Shut-Off Valve Assembly (Water-Cooled)	23
Shut – Off Valve Assembly (Option)	24
Inlet Valve/Filter Assembly	25, 26
Inlet Valve	27, 28
Oil Distribution	29, 30
Control Lines	31, 32
Control Lines – Temperature & Pressure	33, 34
Control Box (Air-Cooled)	35, 36
Control Box (Water-Cooled)	37, 38
Enclosure	39, 40
Control Box	41
Vent Fan	42
Cooling Fan (Air-Cooled Only)	43
Main Motor Wiring	44
Electrical Conversion Grounding Kit	45, 46
Decal Layout (Package Exterior)	47, 48
Decal Layout (Package Interior)	49, 50
Outline – 1st Stage	51, 52
Outline – 2nd Stage	53, 54
Repair Kits	55, 56, 57

For Operating and Service Instructions, see:

SERVICE MANUAL	13-17-618
CONTROLLER MANUAL	13-17-600
COMMUNICATION MODULE	13-17-604

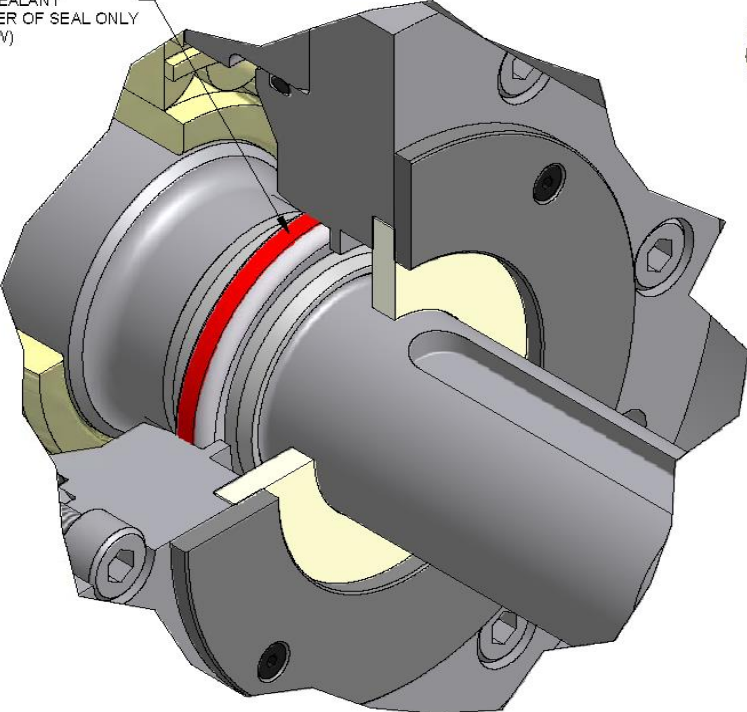
AIREND SELECTION AND REPAIR KITS

Model	KW	PSI	Airend 1st Stage	Reman Airend 1st Stage	Airend 2nd Stage	Reman Airend 2nd Stage	Drive Shaft Seal Kit
VST55 VST75 VST90	55 75 90	100-175	SBKFNABE00S	SBKFNABE00X	SBGSNACE00S	SBGSNACE00X	300SBK6029 300SBG6029

See Repair Kit Section, pages 55 thru 57 for listing of Repair Parts included in Kit numbers above.

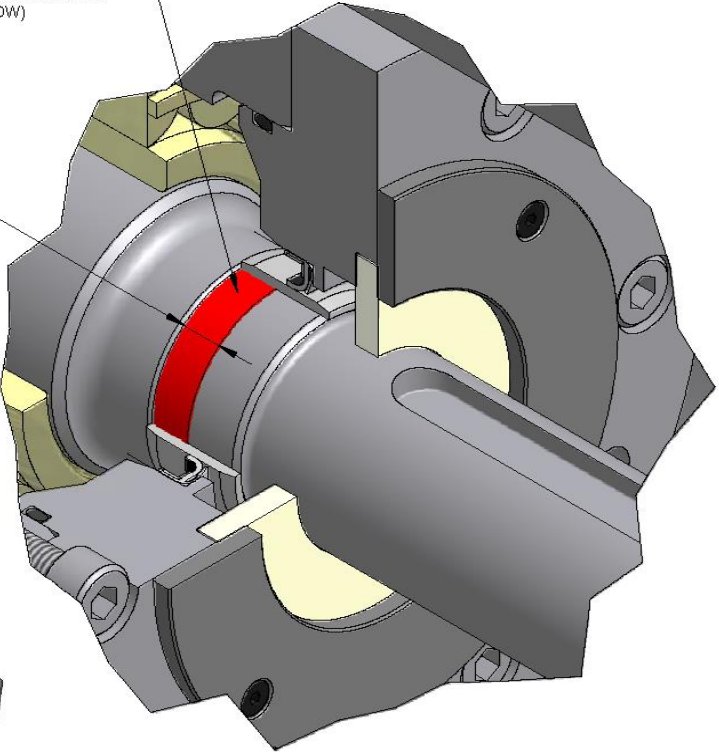
SEAL AND WEAR SLEEVE SEALANT APPLICATION

APPLY 25BC632 SEALANT
OUTSIDE DIAMETER OF SEAL ONLY
(SEE NOTE BELOW)



APPLY 25BC632 SEALANT
TO SHAFT UNDER WEAR SLEEVE
ONLY TO DIMENSION SHOWN
(SEE NOTE BELOW)

10 [3/8 IN.]

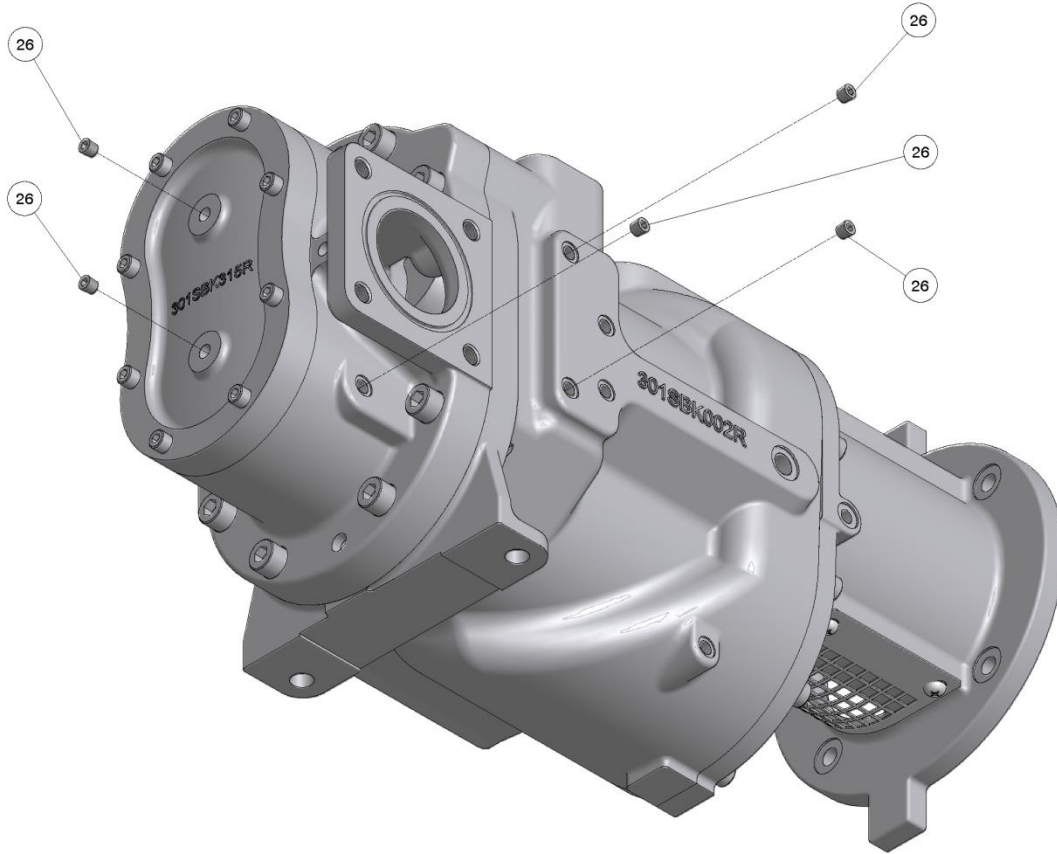


NOTE:

RECOMMENDED CURE TIME 3 HOURS

**302SBK810-C
(Ref. Drawing)**

AIREND – SBK 1st STAGE
(Plugs)

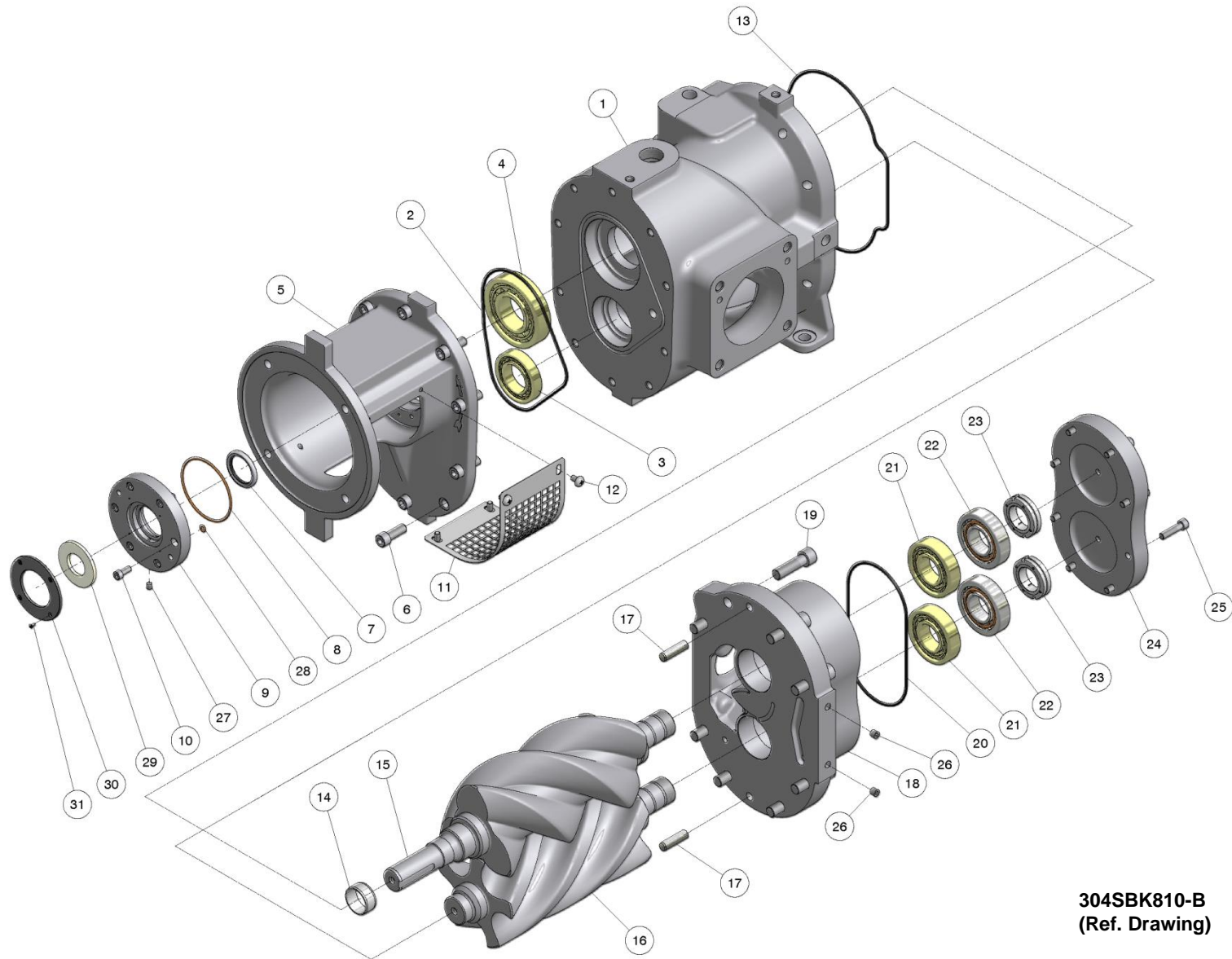


304SBK810-B
(Ref. Drawing)

B/M: SBKFNABE00S

Ref. No.	Name of Part	Qty.	Part No.
26	PLUG.....	5	64AA50

AIREND – SBK
(Main Assembly)
1st Stage



304SBK810-B
(Ref. Drawing)

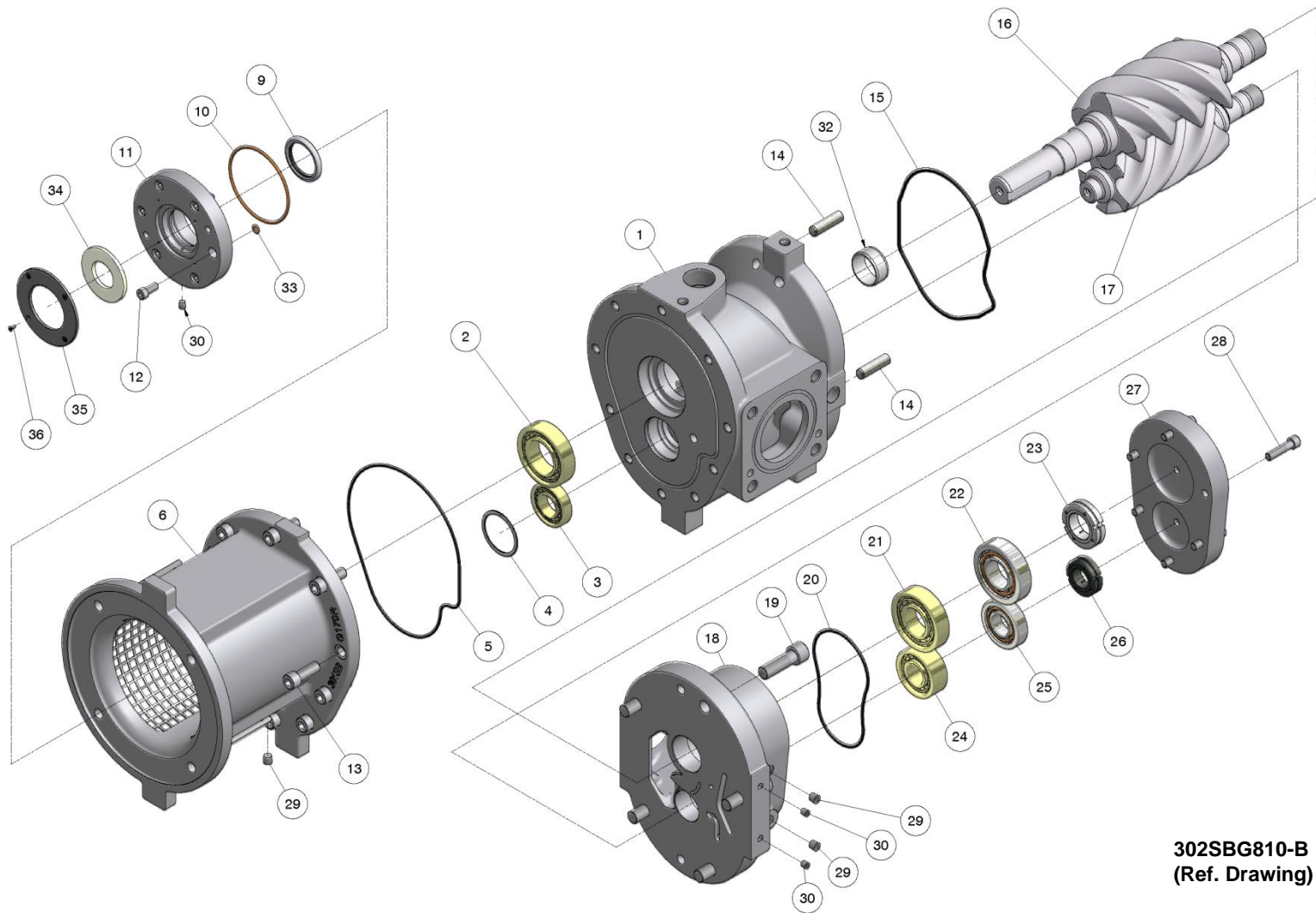
AIREND – SBK
(Main Assembly)
1st Stage

B/M: SBKFNABE00S

Ref. No.	Name of Part	Qty.	Part No.	Ref. No.	Name of Part	Qty.	Part No.
1	CYLINDER	1		17	DOWEL PIN	2	
2	O-RING	1		18	BEARING HOUSING	1	
3	ROLLER BEARING	1		19	SCREW	8	
4	ROLLER BEARING	1		20	O-RING	1	
5	ADAPTOR	1		21	ROLLER BEARING	2	
6	SCREW	10		22	BALL BEARING	2	
* 7	SEAL	1	89556219	23	NUT	2	
* 8	O-RING	1	25BC800	24	BEARING COVER PLATE	1	
9	SEAL HOUSING	1	302SBK362	25	SCREW	8	
10	SCREW	6	665SMCA100250	26	PLUG	2	64AA50
11	COUPLING GUARD	1	300SBK339	27	PLUG	1	64AA55
12	SCREW	4	75G67	* 28	O-RING	1	25BC844
13	O-RING	1		* 29	DUST SEAL	1	300SBG316
* 14	WEAR SLEEVE	1	89535409	30	RETAINER	1	300SBJ205
15	ROTOR	1		31	SCREW	4	75LM279
16	ROTOR	1		32	SEALANT (not shown)	1	25BC848
				33	GASKET (not shown)	1	25BC669

* Parts included in Drive Shaft Seal Kit Part Number 300SBK6029. Refer to page 56.

AIREND – SBG
(Main Assembly)
2nd Stage



302SBG810-B
(Ref. Drawing)

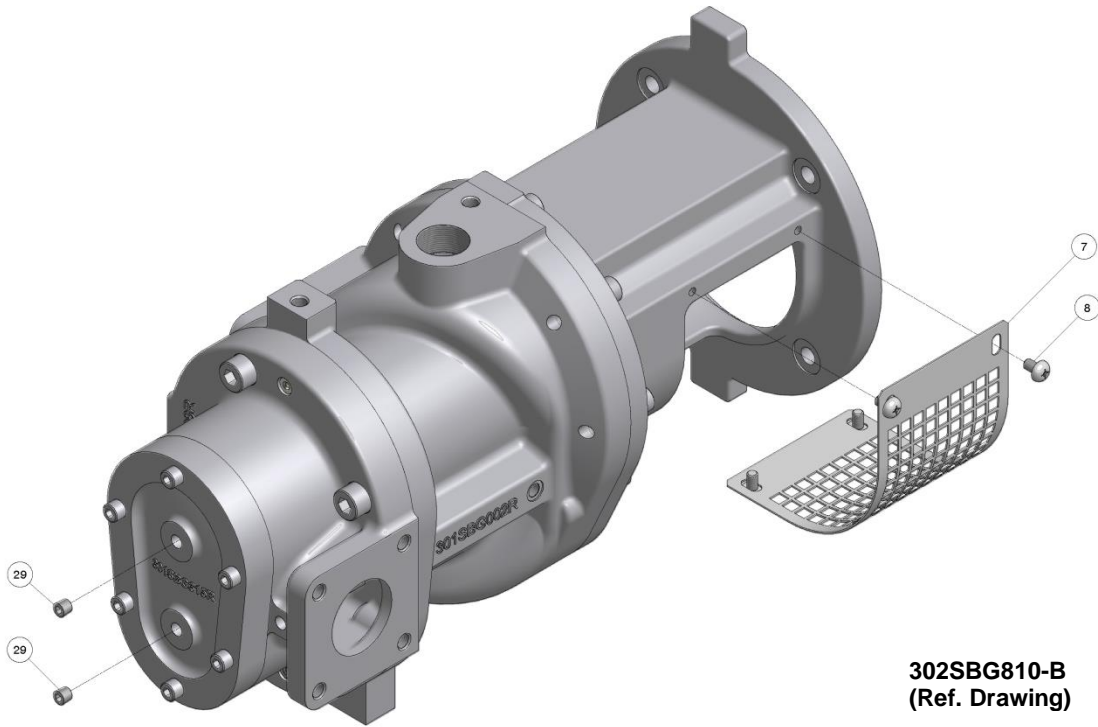
AIREND – SBG
(Main Assembly)
2nd Stage

B/M: SBGSNACE00S

Ref. No.	Name of Part	Qty.	Part No.	Ref. No.	Name of Part	Qty.	Part No.
1	CYLINDER	1		21	ROLLER BEARING	1	
2	ROLLER BEARING	1		22	BALL BEARING	1	
3	ROLLER BEARING	1		23	NUT	1	
4	RETAINING RING	1		24	ROLLER BEARING	1	
5	O-RING	1		25	BALL BEARING	1	
6	ADAPTOR	1		26	NUT	1	
* 9	SEAL	1	89556219	27	BEARING COVER PLATE	1	
* 10	O-RING	1	25BC800	28	SCREW	6	
11	SEAL HOUSING	1	302SBG362	29	PLUG	3	64AA50
12	SCREW	6	665SMCA100250	30	PLUG	3	64AA55
13	SCREW	10		* 32	WEAR SLEEVE	1	89535409
14	DOWEL PIN	2		* 33	O-RING	1	25BC844
15	O-RING	1		* 34	DUST SEAL	1	300SBG316
16	ROTOR	1		35	RETAINER	1	300SBJ205
17	ROTOR	1		36	SCREW	4	75LM279
18	BEARING HOUSING	1		37	SEALANT (not shown)	1	25BC848
19	SCREW	5		38	GASKET (not shown)	1	25BC669
20	O-RING	1					

* Parts included in Drive Shaft Seal Kit Part Number 300SBG6029. Refer to page 56.

2nd STAGE ASSEMBLY DRAWING – SBG

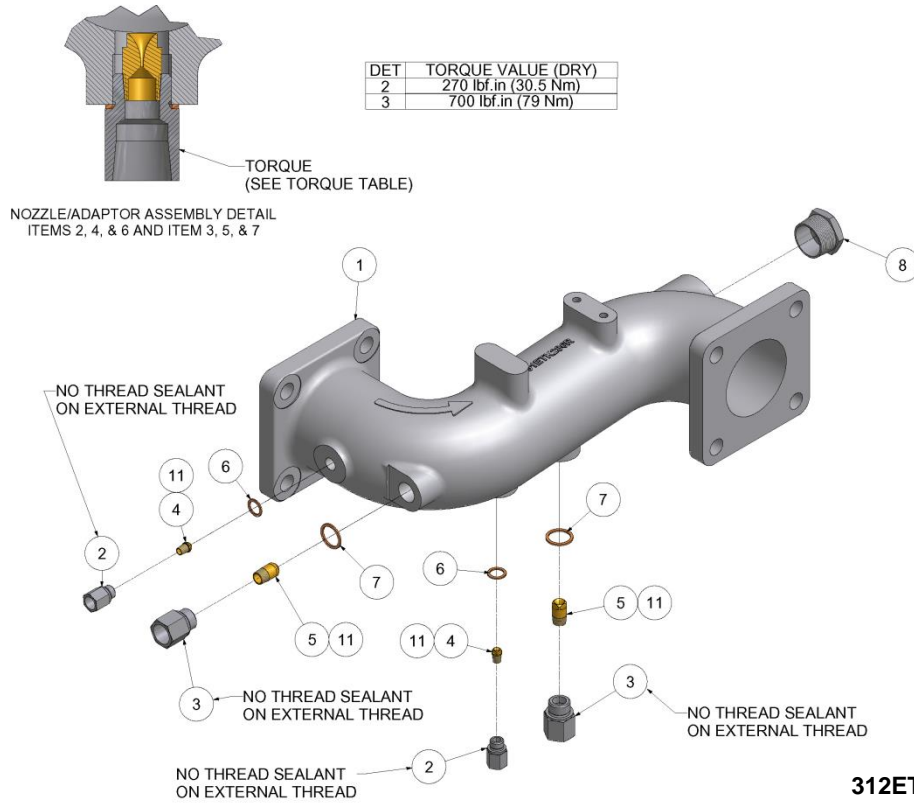


302SBG810-B
(Ref. Drawing)

B/M: SBGSNACE00S

Ref. No.	Name of Part	Qty.	Part No.
7	COUPLING GUARD.....	1	300SBK339
8	SCREW.....	4	75G67
29	PLUG.....	2	64AA50

INTER-STAGE MANIFOLD ASSEMBLY

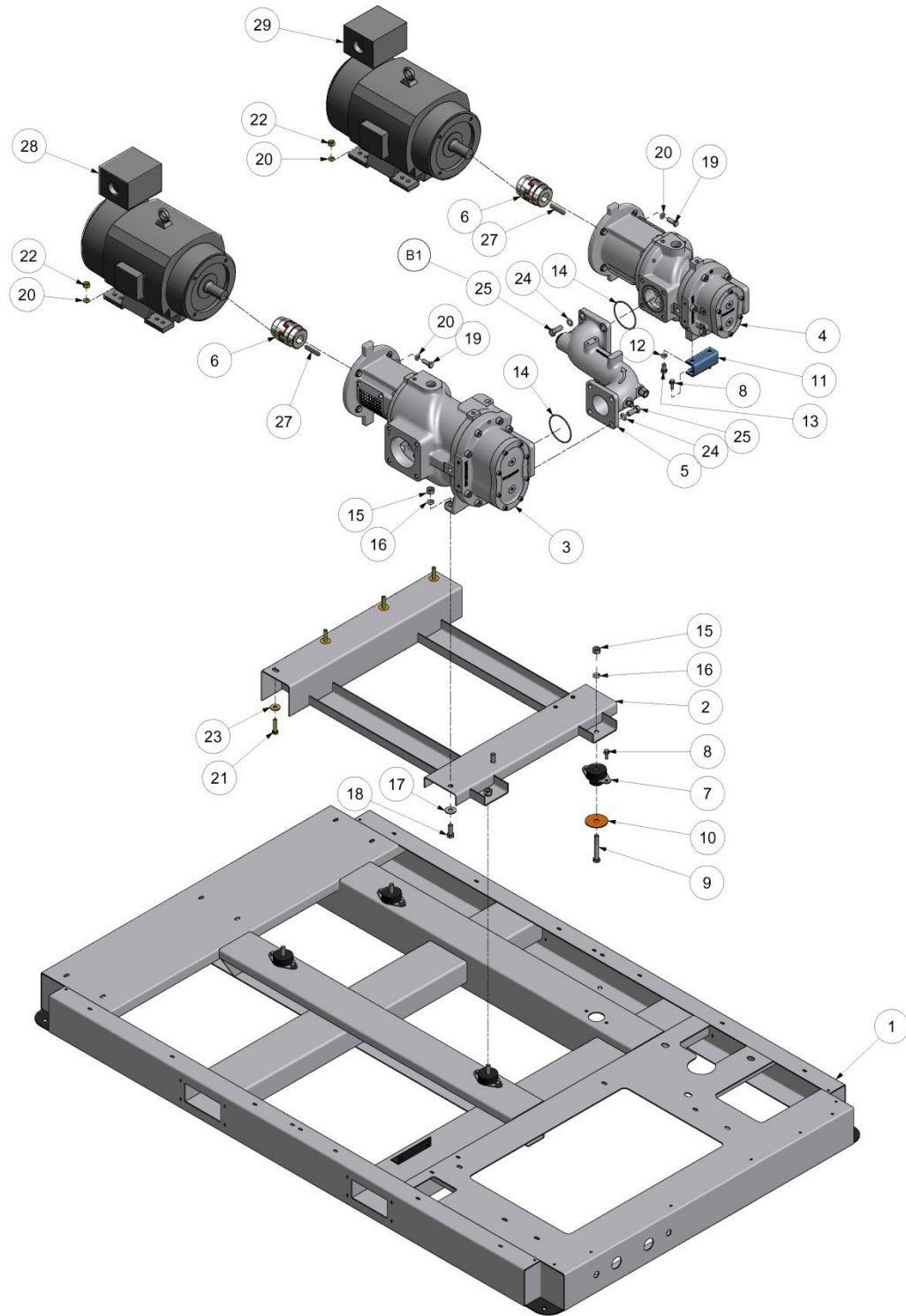


B/M: 308ETK4013

Ref. No.	Name of Part	Qty.	Part No.
** 1	MANIFOLD.....	1	303ETK286
* 2	ADAPTOR.....	2	300ETK170
* 3	ADAPTOR.....	2	301ETK170
* 4	NOZZLE.....	2	52C6
* 5	NOZZLE.....	2	52C7
* 6	GASKET (VITON WASHER).....	2	25BC871
* 7	GASKET (VITON WASHER).....	2	25BC861
** 8	PIPE BUSHING.....	1	64E100G
* 11	GASKET (THREAD LOCKER).....	1	25BC669

* Parts included in Nozzle Repair Kit Part Number 302VST6003. Refer to page 55
 ** Parts Included In Manifold Field Repair Kit Part Number 300ETK6020. Refer to page 56.

BASE, AIRENDS AND MOTORS



300ETK810-C
(Ref. Drawing)

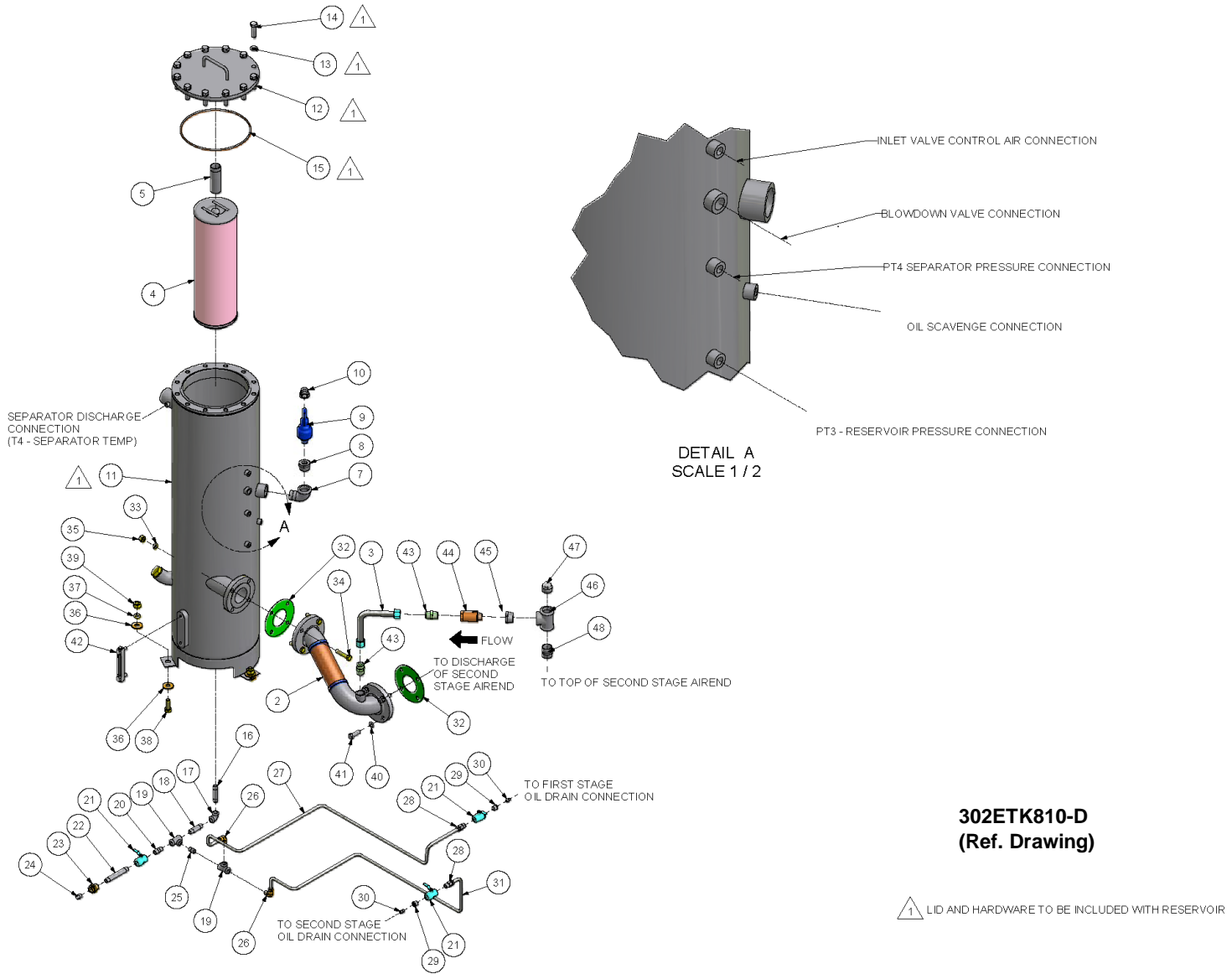
BASE, AIRENDS AND MOTORS

**B/M: 300ETK4001;
300ETK4015; 301ETK4015;
302ETK4015**

Ref. No.	Name of Part	Qty.	Part No.
1	BASE	1	300ETK285
2	SUB-BASE	1	301ETK285
3	MODEL-BARE SCREW (See page 6-8).....	1	SBKFNABE00S
4	MODEL-BARE SCREW (See page 9-11).....	1	SBGSNACE00S
5	INTER-STAGE MANIFOLD ASSEMBLY (See page 12)	1	308ETK4013
6	FLEXIBLE COUPLING	2	CC1008813
	COUPLING HUB, AIREND	1	VP1008519
	COUPLING HUB, MOTOR	1	VP1008812
	SPIDER	1	VP1008521
7	VIBRATION ISOLATOR	4	49C48
8	SCREW	10	75LM135
9	SCREW	4	655EG20Z
10	PLATE	4	301EHG247
11	FOOT	1	300ETK166
12	WASHER.....	2	671HLHR16Z
13	SCREW	2	665HMCA16030Z
14	O-RING	2	25BC833
15	NUT	6	50B8
16	WASHER.....	6	95B8
17	WASHER.....	2	95A8
18	SCREW	2	655EG08Z
19	SCREW	8	655EF07Z
20	WASHER.....	12	95B7
21	SCREW	4	655EF10Z
22	NUT	4	50B7
23	WASHER.....	4	95A7
24	WASHER.....	8	671HLHR20Z
25	SCREW	8	665HMCA20050Z
27	KEY	2	35L94
** 28	MOTOR (1st STAGE)		
	27.5 kW, 460V	1	90500056
	37.5 kW, 460V	1	90500058
	45 kW, 460V	1	90500060
** 29	MOTOR (2nd STAGE)		
	27.5 kW, 460V	1	90500057
	37.5 kW, 460V	1	90500059
	45 kW, 460V	1	90500061

** See Page 55 for Motor Bearing Grease Part Numbers.

SEPARATOR / RESERVOIR ASSEMBLY



SEPARATOR / RESERVOIR ASSEMBLY

**B/M: 302ETK4013;
300ETK037A**

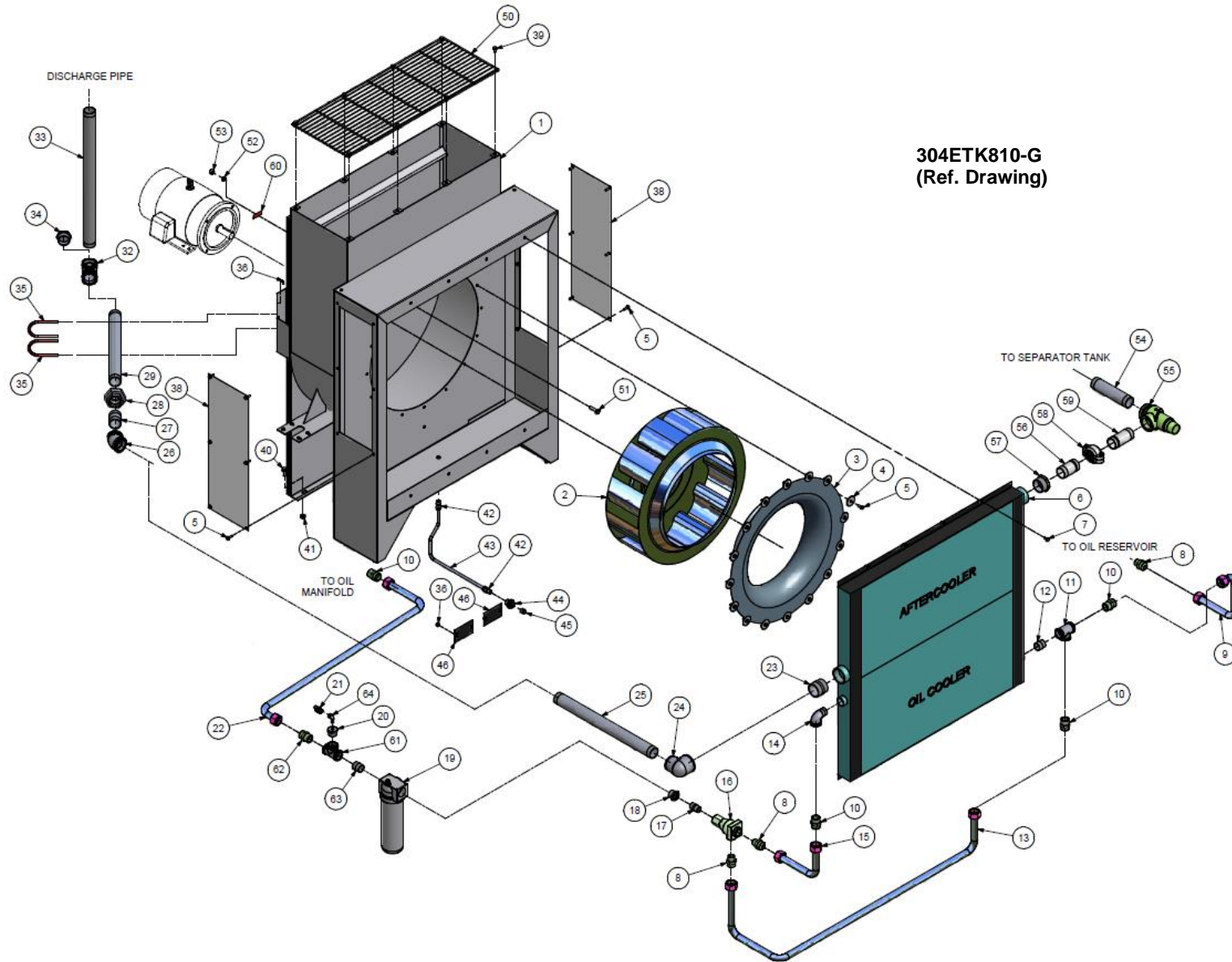
Ref. No.	Name of Part	Qty.	Part No.	Ref. No.	Name of Part	Qty.	Part No.
2	MANIFOLD.....	1	302ETK286	26	TUBE FITTING.....	2	86E227
3	HOSE.....	1	VP1085576	27	TUBE (IN FEET).....	6	85K6
+ 4	AIR/OIL SEPARATOR	1	300EBQ035	28	TUBE FITTING.....	2	86E215
5	NIPPLE	1	63AJ24X54G	29	BUSHING	2	64E2G
7	ELBOW	1	64D8G	30	NIPPLE.....	2	86N416
8	BUSHING.....	1	64E117G	31	TUBE (IN FEET).....	7	85K6
9	PRESSURE RELIEF VALVE ...	1	90AR1165	32	GASKET	2	25C802
10	ELBOW	1	64D10G	33	WASHER.....	4	95B7
*++ 11	OIL RESERVOIR	1	CC1053276	34	SCREW	4	655EF12Z
* 12	COVER	1	300ETK225	35	NUT	4	50B7
* 13	LOCKWASHER.....	12	95B8	36	WASHER.....	6	95A8
* 14	SCREW.....	12	655EG08Z	37	WASHER.....	3	95B8
* + 15	O-RING	1	25BC436	38	SCREW	3	655EG08Z
16	NIPPLE	1	63F5G	39	NUT	3	50B8
17	ELBOW	1	64C4G	40	WASHER.....	4	671HLHR16Z
18	NIPPLE	1	63F4G	41	SCREW	4	665HMCA16050Z
19	TEE	2	64G6G	42	OIL LEVEL GAUGE.....	1	40P77
20	NIPPLE	1	63F34G	43	TUBE CONNECTOR.....	2	86H138
21	BALL VALVE.....	3	90AR241	44	CHECK VALVE	1	90AR1136
22	NIPPLE	1	63F16G	45	BUSHING	1	64E13G
23	COUPLING	1	64EB613	46	TEE	1	64G11G
24	PLUG	1	64AA7G	47	PLUG.....	1	64A27G
25	NIPPLE	1	63F21G	48	NIPPLE.....	1	63AP40G

+ Parts included in Oil Separator Kit Part Number 300ETK6013. Refer to page 55.

++ For Repair of Oil-Fill Plug, order Part Number 2118518 (O-Ring Part Number 2118519 included).

* Cover and Hardware included with Replacement Reservoir Part Number 300ETK037A.

FAN/COOLER GROUP
(Air-Cooled)



FAN/COOLER GROUP – (Air-Cooled)

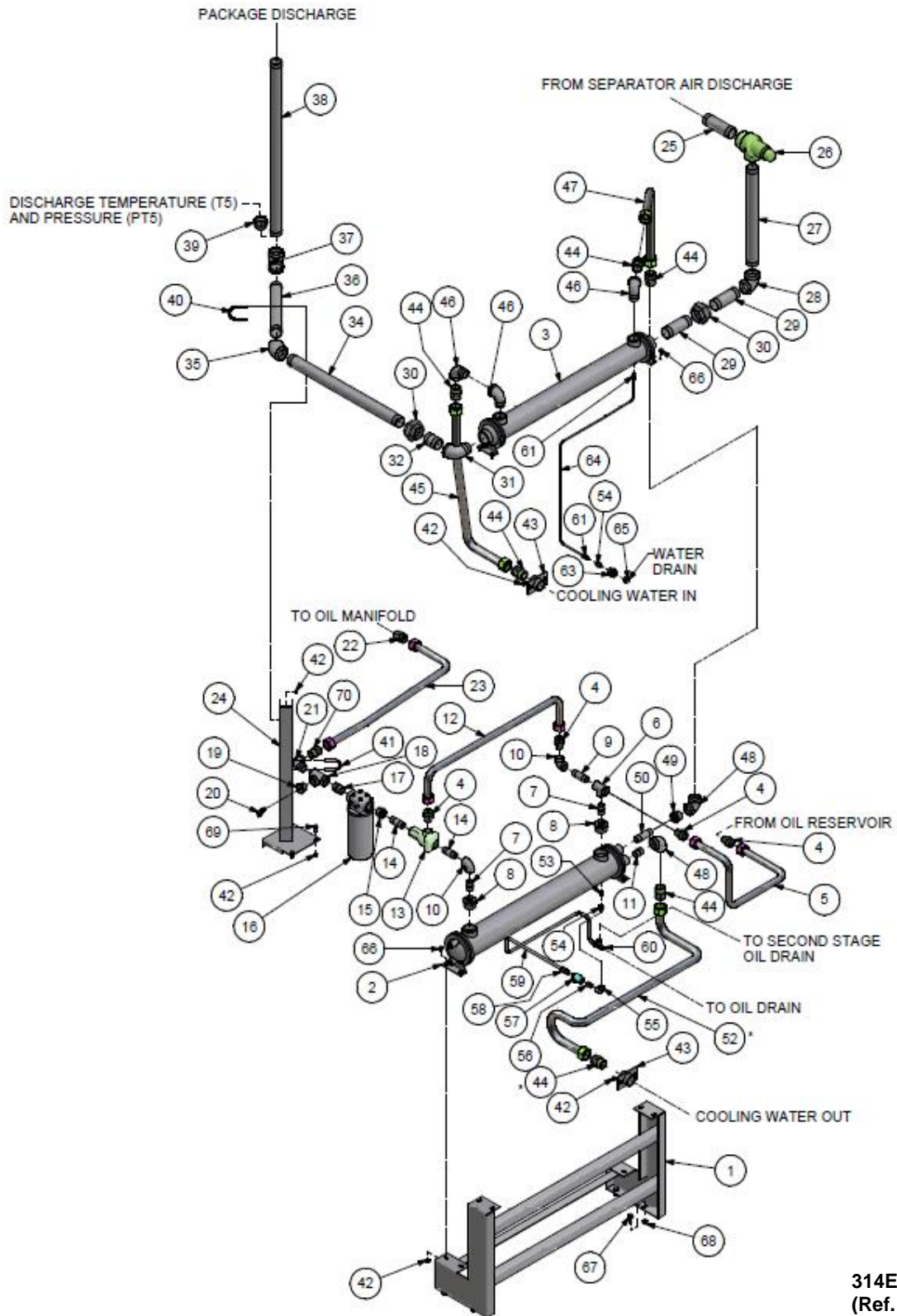
**B/M: 319ETK4013;
320ETK4013**

Ref. No.	Name of Part	Qty.	Part No.	Ref. No.	Name of Part	Qty.	Part No.
1	SUPPORT	1	300ETK165	32	TEE	1	64G1G
2	FAN	1	300ETK701	33	NIPPLE	1	63N32X320G
3	CONE	1	300ETK378	34	BUSHING	1	64E60G
4	WASHER	16	95D166	35	U BOLT	2	15U57
5	SCREW	28	75LM97	36	NUT	8	50AW5
6	AIR/OIL COOLER			37	SCREW	4	75K54
	STANDARD	1	302ETK201	38	COVER	2	301ETK225
	SEACOAST	1	303ETK201	39	SCREW	8	75LM51
7	SCREW	8	75LM50	40	SCREW	6	75LM135
8	TUBE CONNECTOR	3	86H169	41	NUT	6	50AW35
9	TUBE WITH FITTING	1	301ETK863	42	TUBE FITTING	2	86E215
10	TUBE CONNECTOR	4	86H140	43	TUBE (IN FEET)	4	85K6
11	TEE	1	64G9G	44	COUPLING	1	64EB613
12	NIPPLE	1	63J15G	45	PLUG	1	64AA7G
13	TUBE WITH FITTING	1	300ETK863	46	COVER	2	305ETK225
14	ELBOW	1	64D7G	50	FAN GUARD	1	300ETK393
15	TUBE WITH FITTING	1	302ETK863	51	SCREW	4	655EE08Z
16	THERMAL VALVE (see page 22)	1	90AR1158	52	WASHER	4	95B5
17	NIPPLE	1	63H3G	53	NUT	4	50B5
18	BUSHING	1	64EB303G	54	NIPPLE	1	63L29G
* 19	FILTER ASSEMBLY	1	CC1013600	55	MINIMUM PRESSURE VALVE (See page 21)	1	300ETK527
20	BUSHING	1	64E39G	56	PIPE ADAPTOR	1	VP1009577
21	OIL SAMPLING VALVE	1	86N345	57	BUSHING	1	64E25G
22	TUBE WITH FITTING	1	303ETK863	** 58	PIPE COUPLING	1	VP1009574
23	NIPPLE	1	63M2G	59	PIPE ADAPTOR	1	VP1010681
24	ELBOW	1	64S17G	60	DECAL, ROTATION ARROW	1	304EFC077
25	NIPPLE	1	63N32X264G	61	TEE	1	64G11G
26	ELBOW	1	64V9G	62	TUBE CONNECTOR	1	86H197
27	NIPPLE	1	63L2G	63	NIPPLE	1	63K18G
28	UNION	1	64Z2G	64	ELBOW	1	64D2G
29	NIPPLE	1	63N32X156G				

* For Repair, order Filter Element Part Number 2118345 & Head Part Number VP1013594.

** For Repair, order Replacement Gasket Part Number 2118511.

WATER-COOLED COOLERS



STANDARD ASSEMBLY
 (* ITEMS 44 & 52 ARE REMOVED FOR OPTIONS)

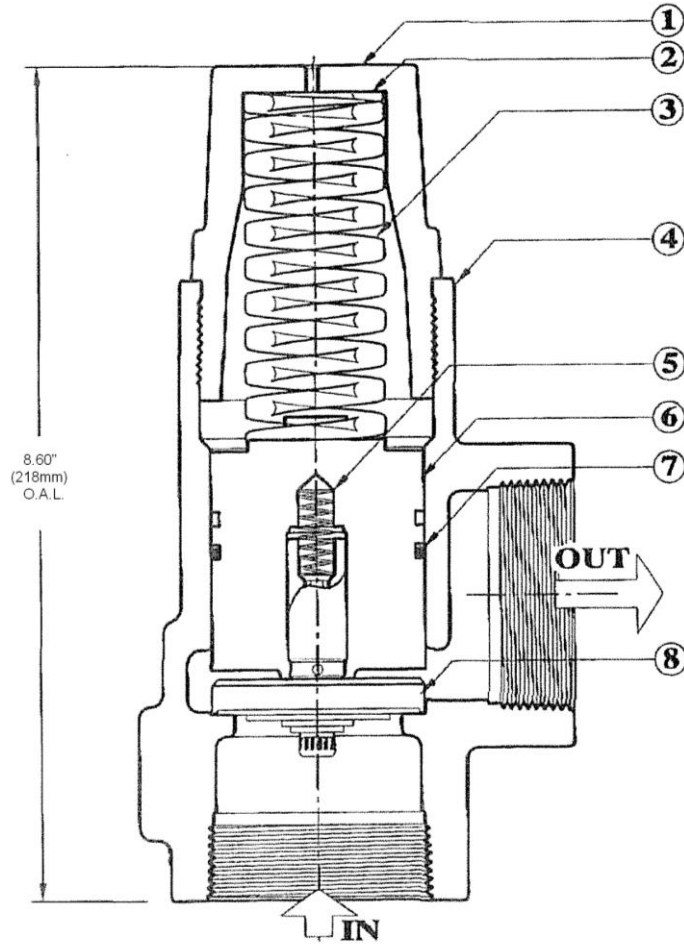
314ETK810-C
 (Ref. Drawing)

WATER-COOLED COOLERS

**B/M: 321ETK4013;
312ETK4013; 322ETK4013**

Ref. No.	Name of Part	Qty.	Part No.	Ref. No.	Name of Part	Qty.	Part No.
1	SUPPORT	1	303ETK165	34	NIPPLE	1	63N32X236G
2	HEAT EXCHANGER (OW)			35	ELBOW	1	64V9G
	STANDARD	1	300ETK349	36	NIPPLE	1	63N32X156G
	SALT WATER	1	301ETK349	37	TEE	1	64G1G
3	AFTERCOOLER			38	NIPPLE	1	63N32X410G
	STANDARD	1	300ETK292	39	PIPE BUSHING	1	64E60G
	SALT WATER	1	301ETK292	40	U BOLT	1	15U18
4	TUBE CONNECTOR	4	86H169	41	U BOLT	1	15U113
5	TUBE WITH FITTING	1	306ETK863	42	NUT	18	50AW5
6	TEE	1	64G8G	43	WATER MANIFOLD	2	200EDM072
7	NIPPLE	2	63H2G	44	TUBE CONNECTOR	5	86H141
8	PIPE BUSHING	2	64E77G	45	TUBE WITH FITTING	1	309ETK863
9	NIPPLE	1	63H10G	46	ELBOW	3	64D8G
10	ELBOW	2	64C6G	47	TUBE WITH FITTING	1	310ETK863
11	NIPPLE	1	63H25G	48	ELBOW	2	64C8G
12	TUBE WITH FITTING	1	307ETK863	49	PIPE BUSHING	1	64EB303G
13	THERMAL VALVE (See page 22)	1	90AR1158	50	NIPPLE	1	63H5G
14	NIPPLE	2	63H4G	52	TUBE WITH FITTING	1	311ETK863
15	PIPE BUSHING	1	64E13G	53	NIPPLE	1	86N384
* 16	FILTER ASSEMBLY	1	CC1013600	54	PIPE BUSHING	2	64E2G
17	NIPPLE	1	63K18G	55	ELBOW	1	64C4G
18	TEE	1	64G11G	56	NIPPLE	1	63F21G
19	PIPE BUSHING	1	64E39G	57	BALL VALVE	1	90AR241
20	OIL SAMPLING VALVE	1	86N345	58	TUBE FITTING	1	86E215
21	ELBOW	1	64D8G	59	TUBE (IN FEET)	6	85K6
22	TUBE CONNECTOR	1	86H140	60	TUBE FITTING	1	86E238
23	TUBE WITH FITTING	1	308ETK863	61	TUBE FITTING	2	86E210
24	SUPPORT	1	304ETK165	63	PIPE COUPLING	1	64EB613
25	NIPPLE	1	63L5G	64	TUBE (IN FEET)	6	85K3
26	MINIMUM PRESS/RLF VALVE (See Page 21) ..	1	300ETK527	65	PLUG	1	64AA7G
27	NIPPLE	1	63N32X230G	66	SCREW	8	75LM51
28	ELBOW	1	64C9G	67	SCREW	4	75LM135
29	NIPPLE	2	63L4G	68	NUT	4	50AW35
30	ROTARY UNION	2	64Z2G	69	SCREW	2	75K48
31	ELBOW	1	64D9G	70	TUBE CONNECTOR	1	86H197
32	NIPPLE	1	63L2G				

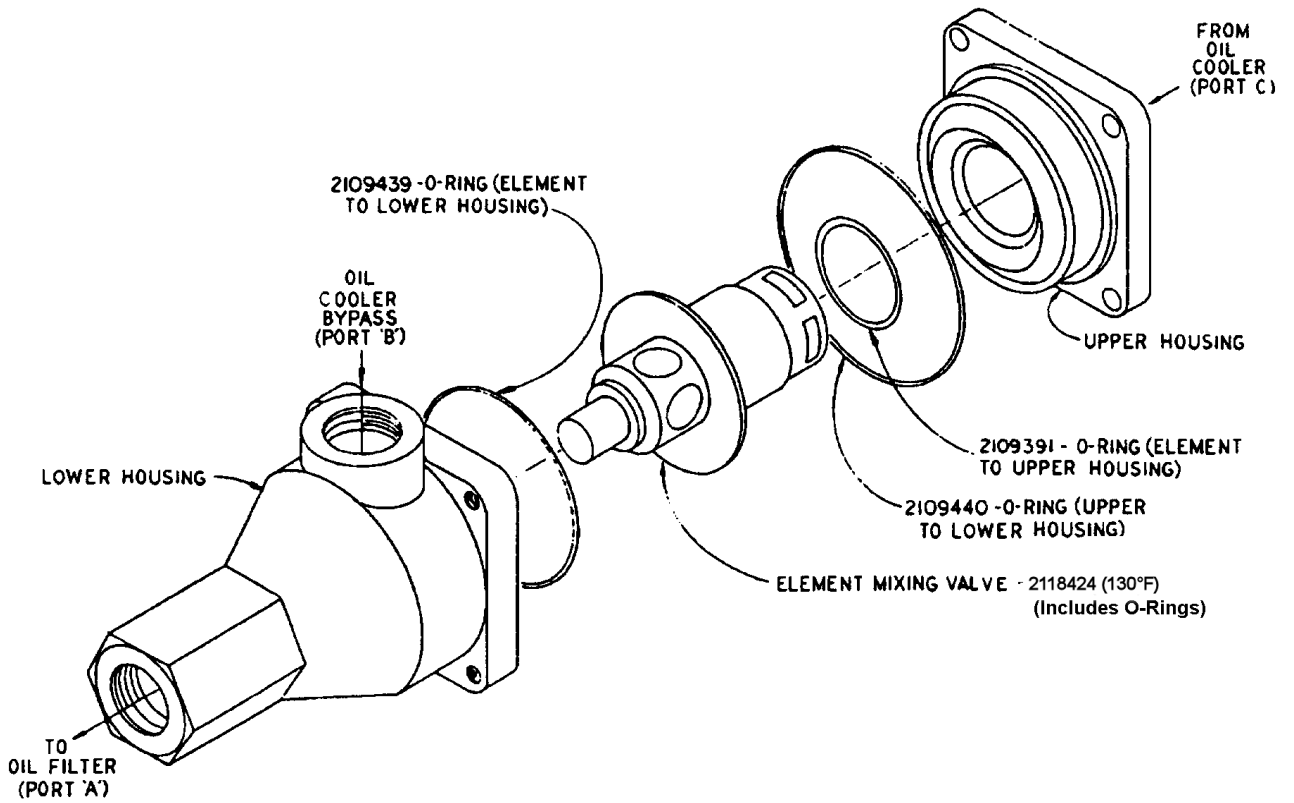
* For Repair, order Filter Element Part Number 2118345 & Head Part Number VP1013594.



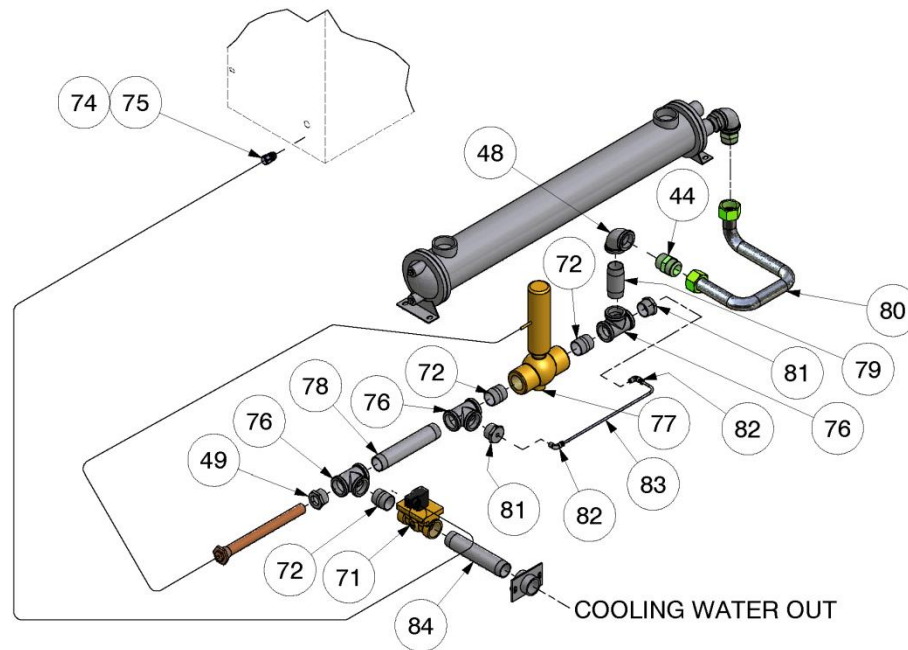
MINIMUM PRESSURE VALVE

Name Of Part	Qty.	Part No.
MINIMUM PRESSURE VALVE ASSEMBLY	1	300ETK527
* REPAIR KIT - Includes the following:	1	2118385
1 CAP	1	
2 SPACER	1	
* 3 SPRING (MAIN)	1	
4 BODY	1	
* 5 SPRING (CV)	1	
6 PISTON	1	
* 7 O-RING	1	
* 8 CV ASSEMBLY	1	

THERMAL VALVE



OPTIONAL WATER TEMPERATURE REGULATOR & SHUT-OFF VALVE ASSEMBLY
(Water-Cooled)

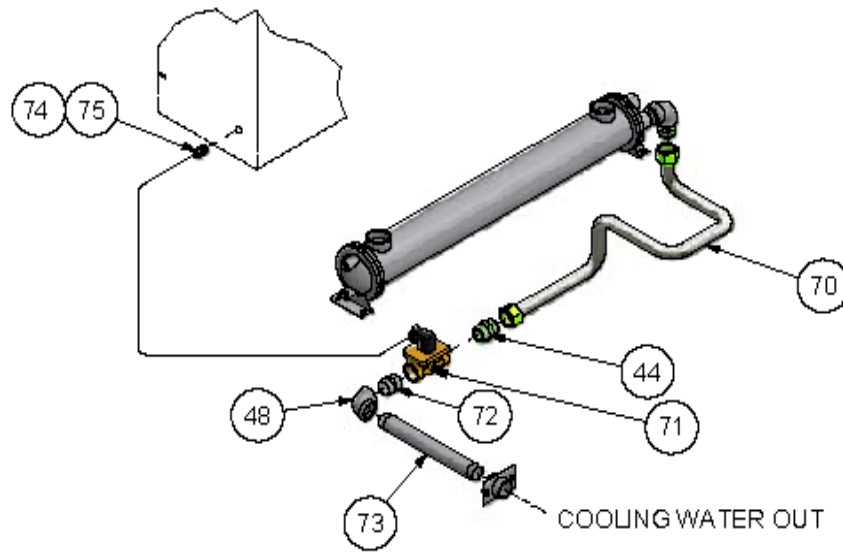


314ETK810-B
(Ref. Drawing)

B/M: 314ETK4013

Ref. No.	Name of Part	Qty.	Part No.
44	TUBE CONNECTOR.....	1	86H141
48	ELBOW	1	64C8G
49	PIPE BUSHING	1	64EB303G
71	CONTROL VALVE	1	90AR1150
72	NIPPLE.....	3	63AP40G
74	CORD.....	1	VP1010780
75	ELECTRICAL FITTING	1	24CA2865
76	TEE	3	64G11G
77	TEMPERATURE REGULATOR	1	90AR1116
78	NIPPLE.....	1	63K11G
79	NIPPLE.....	1	63K24G
80	TUBE WITH FITTING.....	1	313ETK863
81	PIPE BUSHING	2	64E39G
82	FITTING	2	86E220
83	TUBE (IN FEET).....	2	85K3
84	NIPPLE.....	1	63K31G

SHUT – OFF VALVE ASSEMBLY (OPTION)



**314ETK810-B
(Ref. Drawing)**

B/M: 311ETK4013

Ref. No.	Name of Part	Qty.	Part No.
44	TUBE CONNECTOR.....	1	86H141
48	ELBOW	1	64C8G
70	TUBE.....	1	312ETK863
71	CONTROL VALVE	1	90AR1150
72	NIPPLE.....	1	63AP40G
73	PIPE NIPPLE	1	63AP52G
74	CORD.....	20	97J81
75	ELECTRICAL FITTING	1	24CA2865

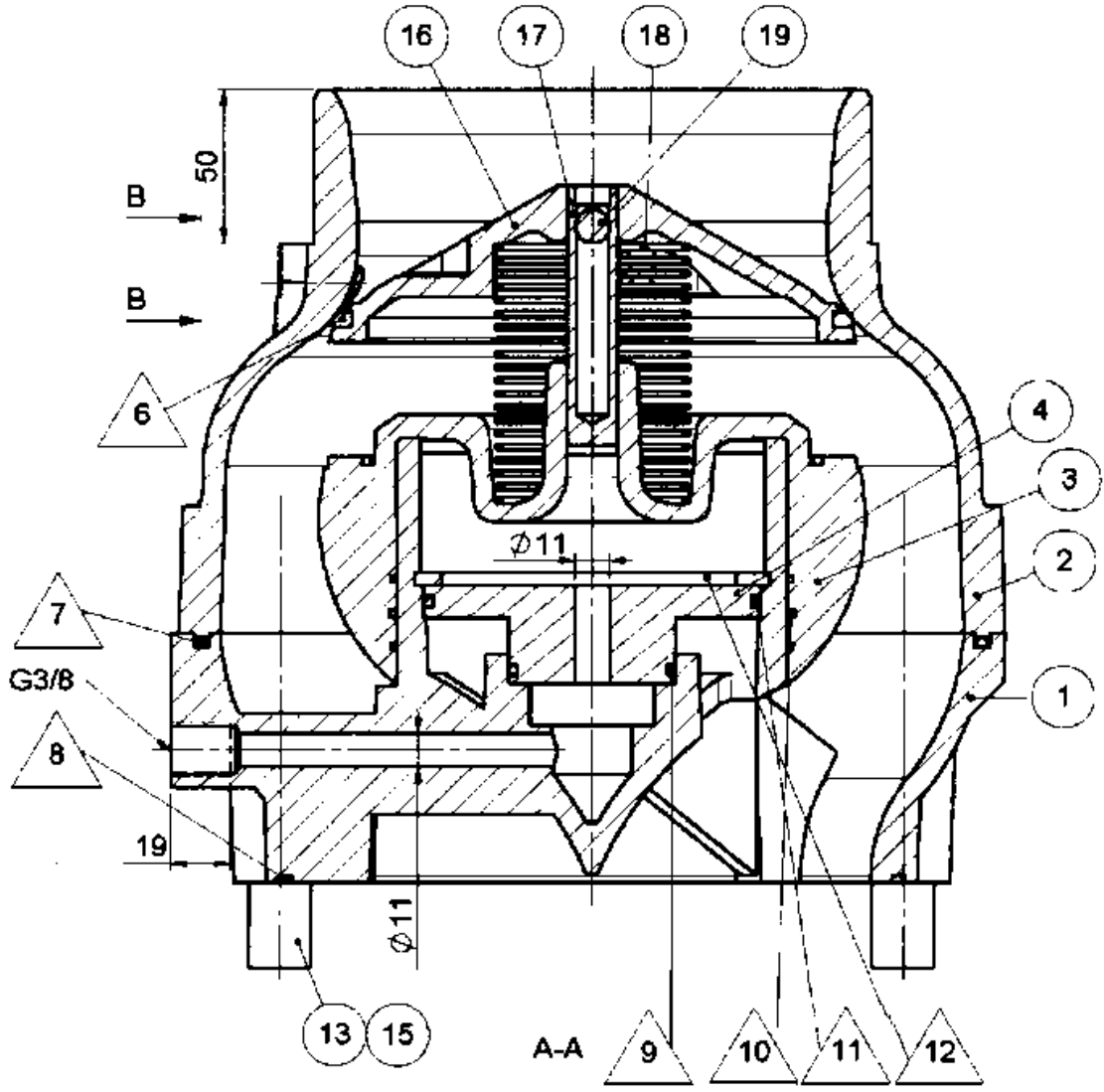
INLET VALVE/FILTER ASSEMBLY

B/M: 303ETK4013

Ref. No.	Name of Part	Qty.	Part No.
1	INLET ELBOW	1	CC1054228
**2	INLET VALVE	1	CC1036372
3	STUD	2	VP1056387
4	STUD	2	VP1056388
5	WASHER	4	671HLHR20Z
6	NUT	4	668RMCA20Z
7	O-RING	1	25BC203
8	BOLT	4	75LM51
9	HOSE (IN FEET).....	5	29BB2558
10	CLAMP	6	2009499
*11	AIR FILTER.....	1	5L355
12	HOSE (IN FEET).....	7	29BB2558
13	SUPPORT	1	CC1071762
14	SCREW	4	75LM78
15	NUT	8	50AW5
16	SUPPORT	1	CC1071743
17	HOSE (IN FEET).....	1.6	29BB2558
18	MANIFOLD	1	300ETK690
*	AIR FILTER ELEMENT (For Repair) not shown.....	1	5L356

**For Repair: use seal kit part number: VP1036374 or use rebuild kit part number: VP1036375 (includes seal kit).

INLET VALVE



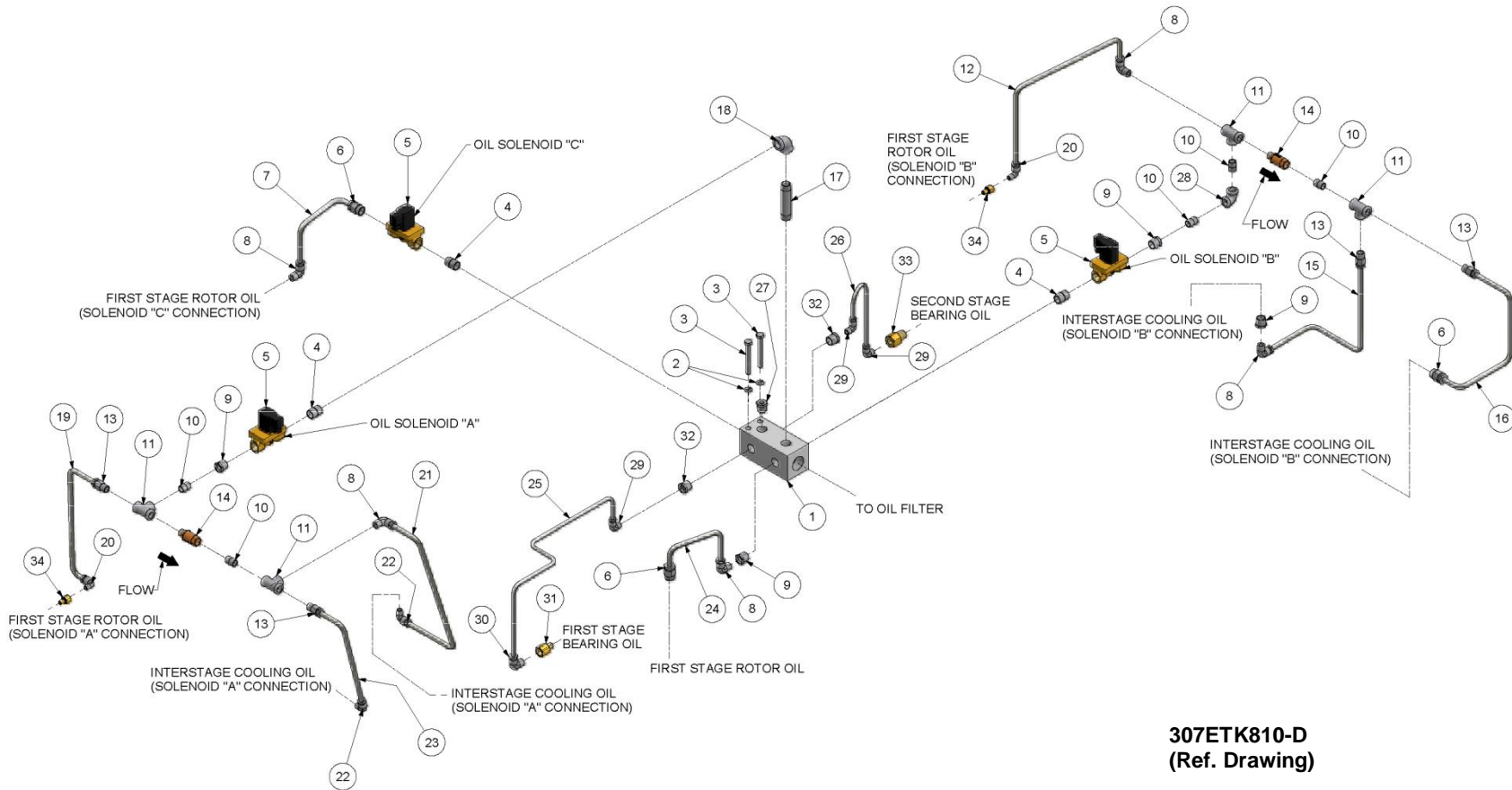
INLET VALVE

B/M: CC1036372

Ref. No.	Name of Part	Qty.	Part No.
1	INLET HOUSING	1	VP1033981
2	INLET HOUSING	1	VP1033982
+ 3	PISTON	1	VP1033983
4	COVER	1	VP1036378
* 6	GASKET	1	VP1033984
* 7	O-RING	1	VP1033988
* 8	O-RING	1	VP1033989
* 9	O-RING	1	VP1033990
* 10	O-RING	1	VP1033992
* 11	O-RING	1	VP1033993
* 12	RETAINER	1	VP1033997
13	SCREW	4	VP1034000
15	NUT	4	VP1033986
+ 16	PLATE	1	VP1034812
+ 17	PIN	1	VP1034813
+ 18	VALVE SPRING	1	VP1034814
+ 19	BALL BEARING	1	VP1034815

* Parts included in Inlet Valve Seal Kit Part Number VP1036374. Refer to page 57.
 + Parts included in Inlet Valve Repair Kit Part Number VP1036375. Refer to page 57.
 NOTE: Individual Parts in Kits are not available for sale.

OIL DISTRIBUTION



OIL DISTRIBUTION

B/M: 307ETK4013

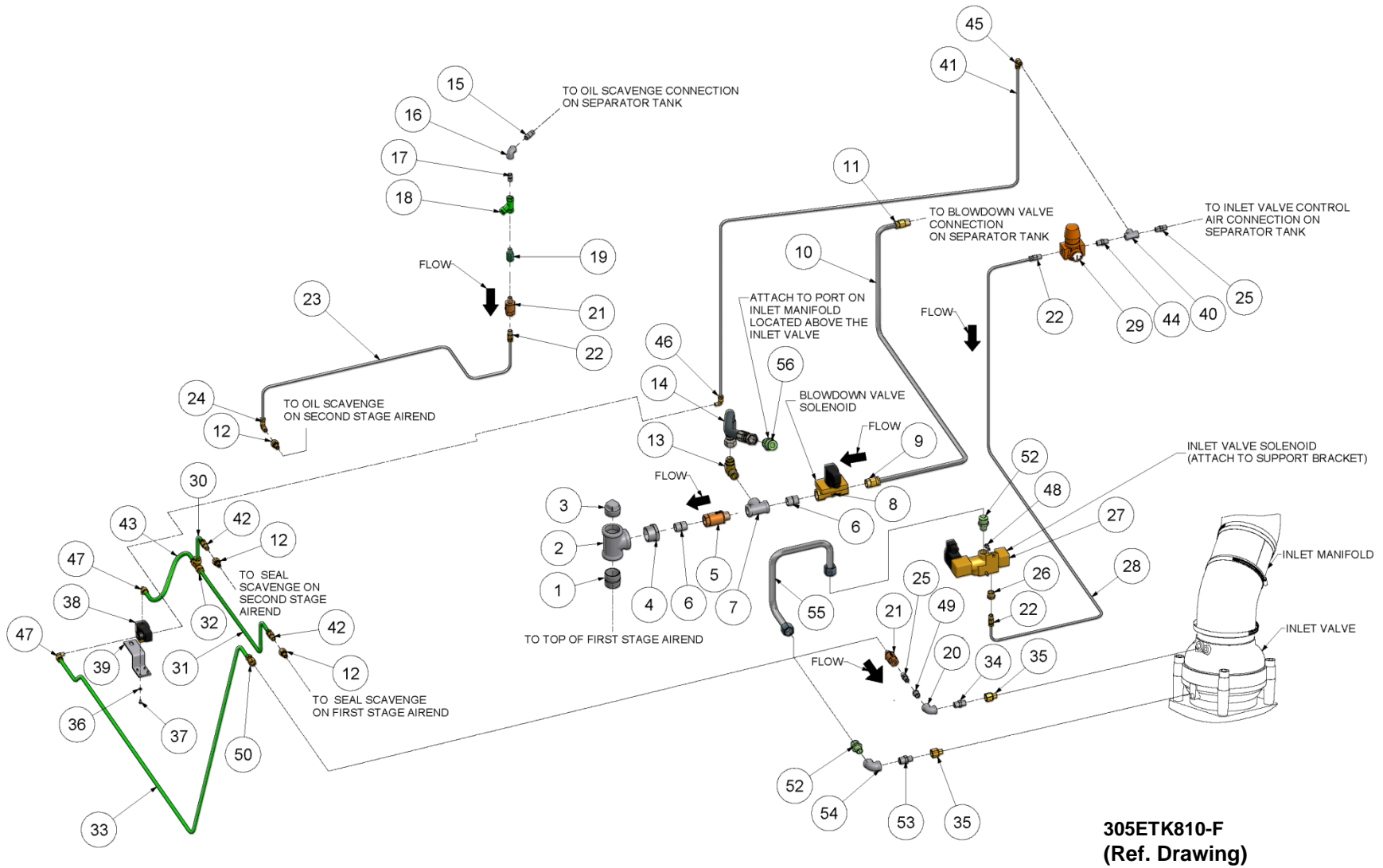
Ref. No.	Name of Part	Qty.	Part No.	Ref. No.	Name of Part	Qty.	Part No.
				18	ELBOW	1	64C5G
1	OIL INJECTION MANIFOLD.....	1	300ETK116	19	TUBE (IN FEET).....	1	85K6
2	WASHER	2	671HLHR12Z	20	TUBE FITTING.....	2	86E225
3	SCREW	2	665HMCA12100Z	21	TUBE (IN FEET).....	1	85K6
4	NIPPLE	3	63G1G	22	TUBE FITTING.....	2	86E226
* Δ	5 CONTROL VALVE.....	3	90AR1215	23	TUBE (IN FEET).....	1	85K6
6	TUBE FITTING	3	86E251	24	TUBE (IN FEET).....	1	85K6
7	TUBE (IN FEET).....	1	85K6	25	TUBE (IN FEET).....	1	85K5
8	TUBE FITTING	5	86E227	26	TUBE (IN FEET).....	1	85K5
9	BUSHING	4	64E5G	27	BUSHING	1	64E3G
10	NIPPLE	5	63F21G	28	ELBOW	1	64C4G
11	TEE.....	4	64G6G	29	FITTING	3	86E223
12	TUBE (IN FEET).....	1	85K6	30	FITTING	1	86E224
13	TUBE FITTING	4	86E215	31	ADAPTOR.....	1	86H207
**	14 CHECK VALVE.....	2	90AR1134	32	PIPE BUSHING.....	2	64E10G
15	TUBE (IN FEET).....	1	85K6	33	ADAPTOR BUSHING.....	1	86H206
16	TUBE (IN FEET).....	1	85K6	34	ADAPTOR.....	2	86H175
17	NIPPLE	1	63G19G				

* Parts included in Electrical Control Kit Part Number 300VST6013. Refer to page 55.

** Parts included in Pneumatic Control Kit Part Number 301VST6013. Refer to page 55.

Δ For Repair of Din Connector, order Part Number 2118514.

CONTROL LINES



CONTROL LINES

B/M: 305ETK4013

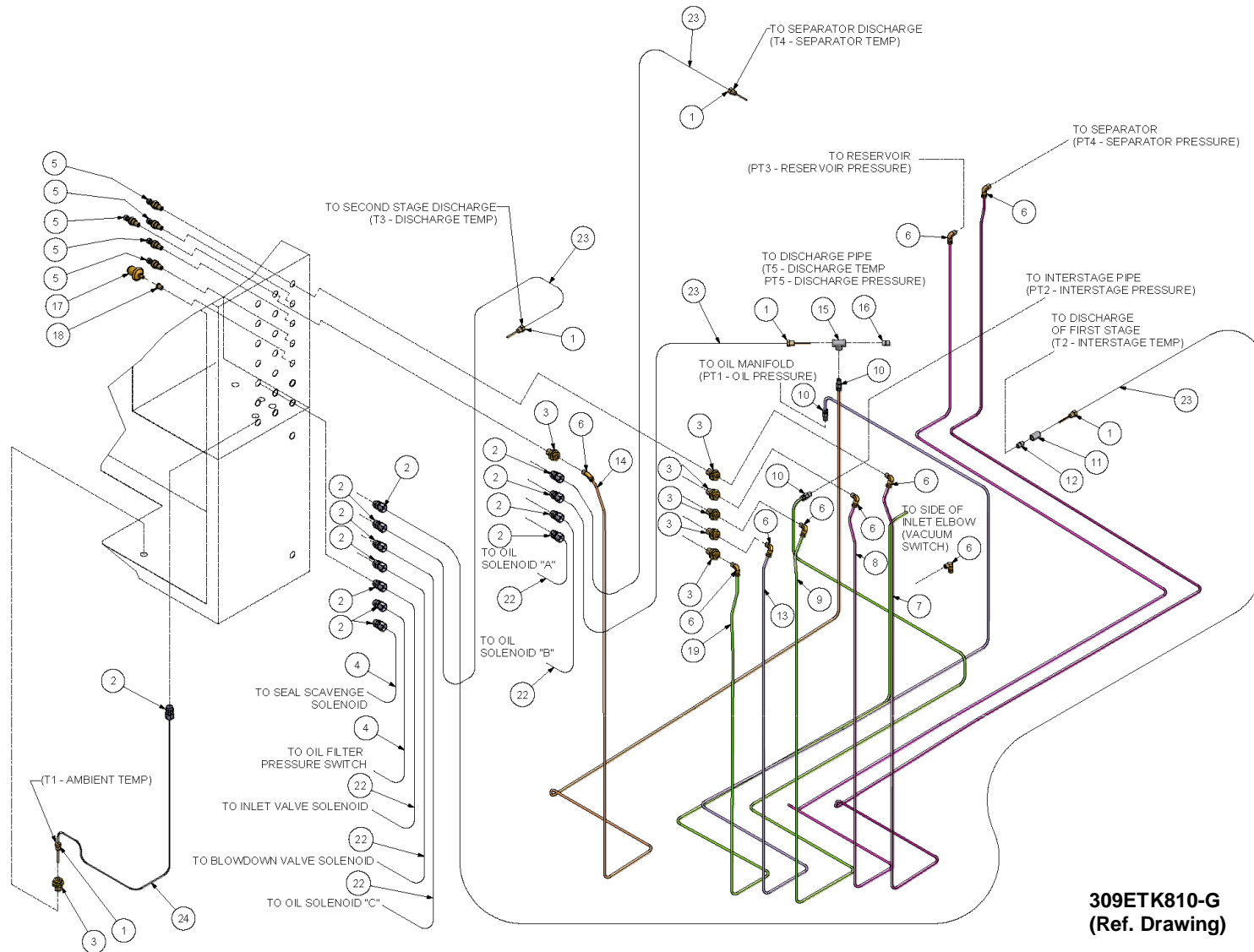
Ref. No.	Name of Part	Qty.	Part No.	Ref. No.	Name of Part	Qty.	Part No.
1	NIPPLE	1	63K18G	** 29	REGULATOR.....	1	TEN000580
2	TEE	1	64G11G	30	TUBE (IN FEET)	2	85G5
3	PLUG	1	64A27G	31	TUBE (IN FEET)	4	85G5
4	BUSHING.....	1	64E117G	32	TUBE FITTING.....	1	TEN001737
** 5	CHECK VALVE.....	1	90AR1135	33	TUBE (IN FEET)	4	85G5
6	NIPPLE	2	63G1G	34	NIPPLE	1	86N402
7	TEE	1	64G7G	35	ADAPTOR.....	2	86H176
* Δ 8	CONTROL VALVE	1	90AR1215	36	LOCK WASHER.....	4	671HLHR05Z
9	TUBE FITTING.....	1	TEN001706	37	SCREW.....	4	75G68
10	TUBE (IN FEET)	8	85K6	* 38	SOLENOID VALVE	1	91B264
11	TUBE FITTING.....	1	TEN001705	39	BRACKET	1	CC1025288
12	ADAPTOR.....	3	86H175	40	TEE	1	64G3G
13	ADAPTOR.....	1	29Z241	41	TUBE (IN FEET)	10	85K3
14	HOSE.....	1	VP1055390	42	TUBE FITTING.....	2	TEN001701
15	NIPPLE	1	63D3G	43	TUBE (IN FEET)	1	85G5
16	ELBOW	1	64C2G	44	FILTER.....	1	82E54
17	NIPPLE	1	63D3G	45	TUBE FITTING.....	1	86E230
** 18	STRAINER.....	1	82E46	46	TUBE FITTING.....	1	TEN001711
19	ORIFICE	1	300ETK814	47	TUBE FITTING.....	2	TEN001713
20	ELBOW	1	64C3G	48	SCREW.....	2	75LM48
** 21	CHECK VALVE.....	2	90AR1138	49	BUSHING.....	1	64E1G
22	TUBE FITTING.....	3	TEN001699	50	TUBE FITTING.....	1	VP1071890
23	TUBE (IN FEET)	4	85K3	52	TUBE CONNECTOR	2	86H145
24	TUBE FITTING.....	1	TEN001712	53	PIPE.....	1	163308
25	NIPPLE	2	86N384	54	ELBOW	1	64C4G
26	BUSHING.....	1	64E2G	55	TUBE FITTING.....	1	CC1071886
* Δ 27	SOLENOID VALVE	1	91B255	57	TUBE FITTING.....	1	8504804
28	TUBE (IN FEET)	8	85K3				

* Parts included in Electrical Control Kit Part Number 300VST6013. Refer to page 55.

** Parts included in Pneumatic Control Kit Part Number 301VST6013. Refer to page 55.

Δ For Repair of Din Connector, order Part Number 2118514.

CONTROL LINES – TEMPERATURE & PRESSURE



CONTROL LINES – TEMPERATURE & PRESSURE

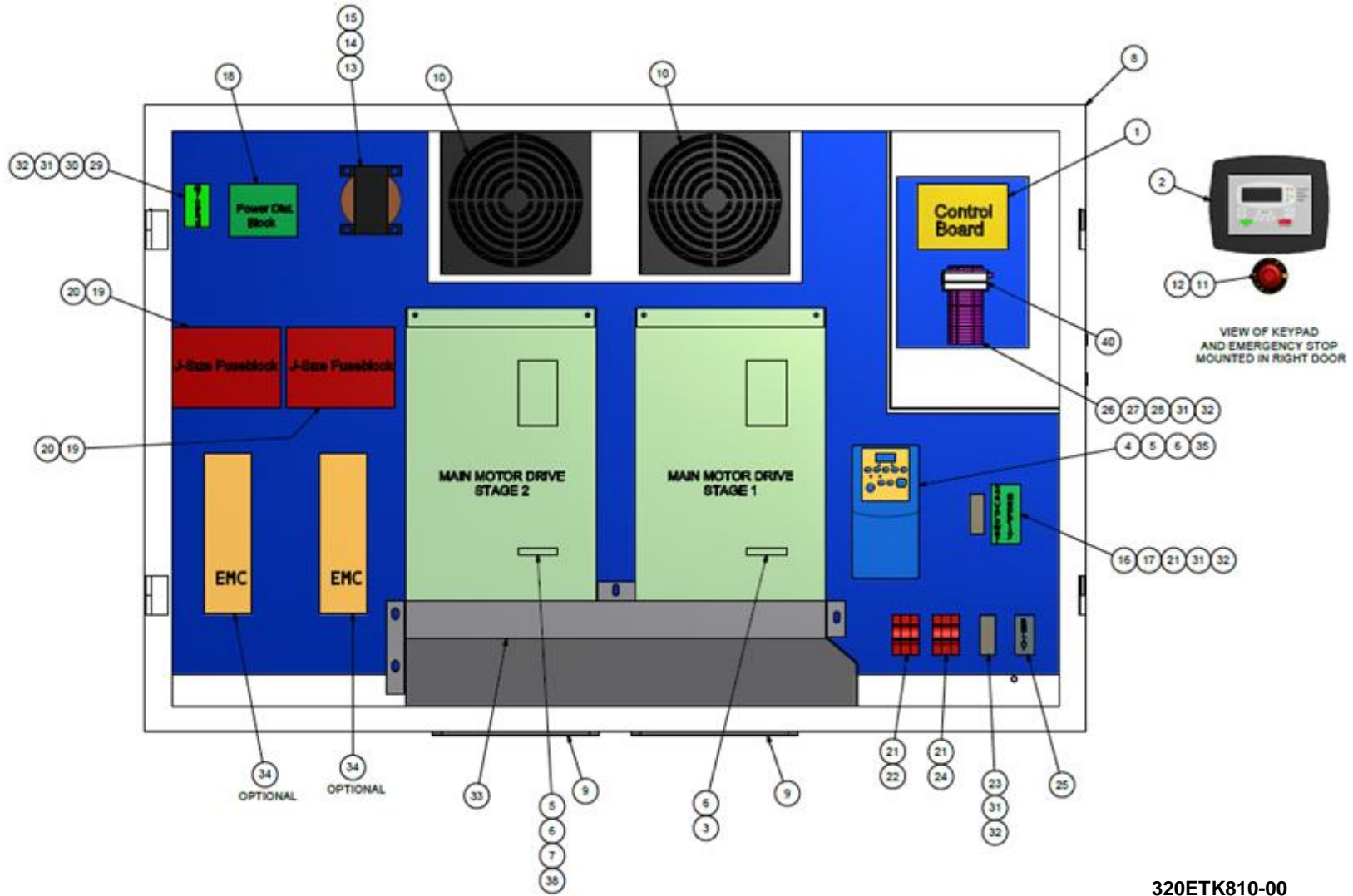
B/M: 301 & 302VST4052

Ref. No.	Name of Part	Qty.	Part No.
* 1	THERMISTOR-ELECTRICAL.....	5	VP1018671
2	ELECTRICAL FITTINGS	12	24CA2865
3	TUBE CONNECTOR	7	64EB368
4	CORD (IN FEET).....	2	VP1010780
* 5	PRESSURE TRANSDUCER	5	88H365
6	TUBE FITTING	2	TEN001712
7	TUBE (IN FEET).....	20	85K3
8	TUBE (IN FEET).....	20	85K3
9	TUBE (IN FEET).....	18	85K3
10	TUBE FITTING	4	TEN001699
11	COUPLING	1	64BK2G
12	NIPPLE	1	63D1G
13	TUBE (IN FEET).....	15	85K3
14	TUBE (IN FEET).....	12	85K3
15	TEE.....	1	64G3G
16	NIPPLE	1	63D1G
* 17	VACUUM SWITCH.....	1	88H195
18	BUSHING	1	64E28
19	TUBE (IN FEET).....	10	85K3
22	CORD (7 METER)	5	VP1010780
* 23	CORD (30 FOOT).....	4	VP1018672
* 24	CORD (8 FOOT).....	1	VP1018675
25	ADAPTOR	1	86H175

* Parts included in Electrical Control Group Part Number 300VST6013. Refer to page 55.

Note: For AirSmart Communication Module Kit see Part Number 300ETK6028. Refer to page 56.

CONTROL BOX
(Air-Cooled)



VIEW OF KEYPAD AND EMERGENCY STOP MOUNTED IN RIGHT DOOR

VIEW WITH DOORS REMOVED

320ETK810-00
(Ref. Drawing)

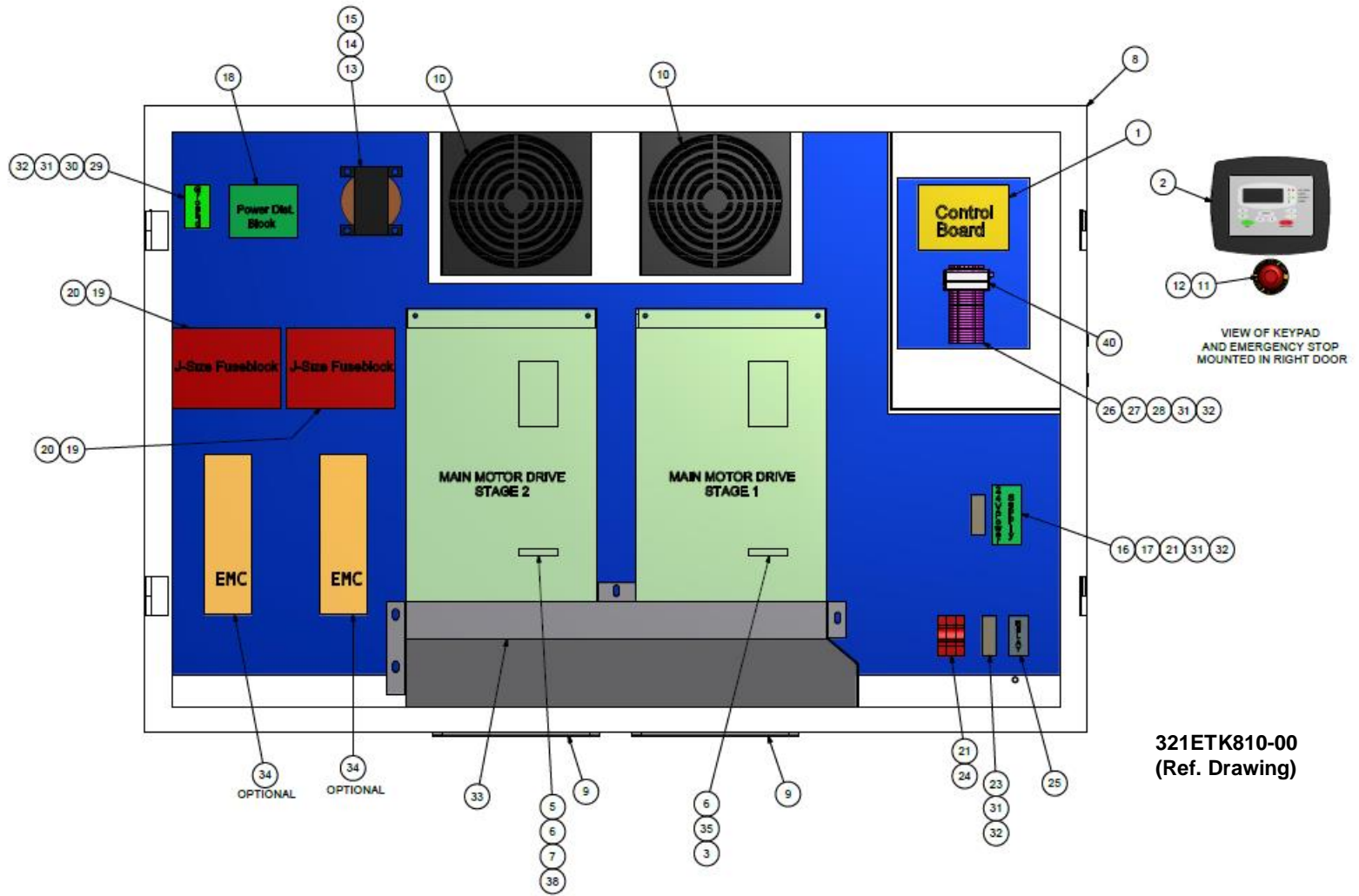
CONTROL BOX
(Air-Cooled)

Ref. No.		QTY.	55 KW	75 KW	90 KW
	VFD GROUP	1	300-305ETK4014	301-304ETK4014	302-305ETK4014
	CONTROL BOX ASSEMBLY (WITHOUT EMC FILTER).....		315ETK1189	316ETK1189	317ETK1189
1	CONTROL ASSEMBLY	1	300ETK1173	300ETK1173	300ETK1173
2	KEY PAD	1	300ETK375	300ETK375	300ETK375
** 3	VARIABLE SPEED DRIVE (1st STAGE).....	1	90500055	89864409	89864389
4	VARIABLE SPEED DRIVE (AIR COOLED ONLY).....	1	90500022	90500022	90500022
5	CABLE	2	24CA5898	24CA5898	24CA5898
6	SPLITTER	3	24CA5899	24CA5899	24CA5899
7	RESISTOR	1	24CA5900	24CA5900	24CA5900
8	CONTROL BOX	1	300ETK179	300ETK179	300ETK179
* 9	FILTER	2	24CA5914	24CA5914	24CA5914
* 10	FAN/FILTER	2	24CA7828	24CA7828	24CA7828
11	EMERGENCY STOP OPERATOR.....	1	24CA2907	24CA2907	24CA2907
12	CONTACT BLOCK.....	1	24CA2908	24CA2908	24CA2908
13	CONTROL TRANSFORMER.....	1	2118244	2118244	2118244
14	FUSE	2	24CA2783	24CA2783	24CA2783
15	FUSE	1	24CA5901	24CA5901	24CA5901
16	POWER SUPPLY.....	1	24CA6050	24CA6050	24CA6050
17	FUSE	2	24CA4088	24CA4088	24CA4088
18	POWER DISTRIBUTION BLOCK.....	1	24CA5913	24CA5913	24CA5913
19	FUSE HOLDER.....	2	24CA5919	24CA5919	24CA5903
20	FUSE	6	24CA5918	24CA5917	24CA5902
21	FUSE BLOCK.....	8	24CA5910	24CA5910	24CA5910
22	FUSE	3	24CA468	24CA468	24CA468
23	RELAY.....	1	24CA6854	24CA6854	24CA6854
24	FUSE	3	24CA2784	24CA2784	24CA2784
25	OVERLOAD RELAY	1	24CA5990	24CA5990	24CA5990
26	TERMINAL BLOCK	24	24CA5984	24CA5984	24CA5984
27	TERMINAL BLOCK	1	24CA5985	24CA5985	24CA5985
28	GROUND BLOCK	2	24CA5986	24CA5986	24CA5986
29	GROUND BLOCK	2	24CA6071	24CA6071	24CA6071
30	GROUND BLOCK	2	24CA5989	24CA5989	24CA5989
31	TERMINAL BLOCK	8	24CA5987	24CA5987	24CA5987
32	DIN RAIL	1	24CA5991	24CA5991	24CA5991
33	BAFFLE	1	303ETK840	304ETK840	305ETK840
34	FILTER (OPTIONAL)	1	301ETK784	89864669	89864669
35	SCREW TERMINAL PLUG.....	1	24CA5933	24CA5933	24CA5933
37	DECAL, CONTROL BOX (not shown).....	1	301ETK077	301ETK077	301ETK077
** 38	VARIABLE SPEED DRIVE (2nd STAGE).....	1	90500055	89864409	89864389
40	ICONN MODEM.....	1	251167531	251167531	251167531

* For Replacement Element, order Part Number 24CA5929. Note: For AirSmart Communication Module Kit see Part Number 300ETK6028. Refer to page 56.

** For VFD cooling fan replacement kit for VFD part number 89864409 and 89864389, order kit Part Number 24CA7613.

CONTROL BOX (Water-Cooled)



**321ETK810-00
(Ref. Drawing)**

VIEW WITH DOORS REMOVED

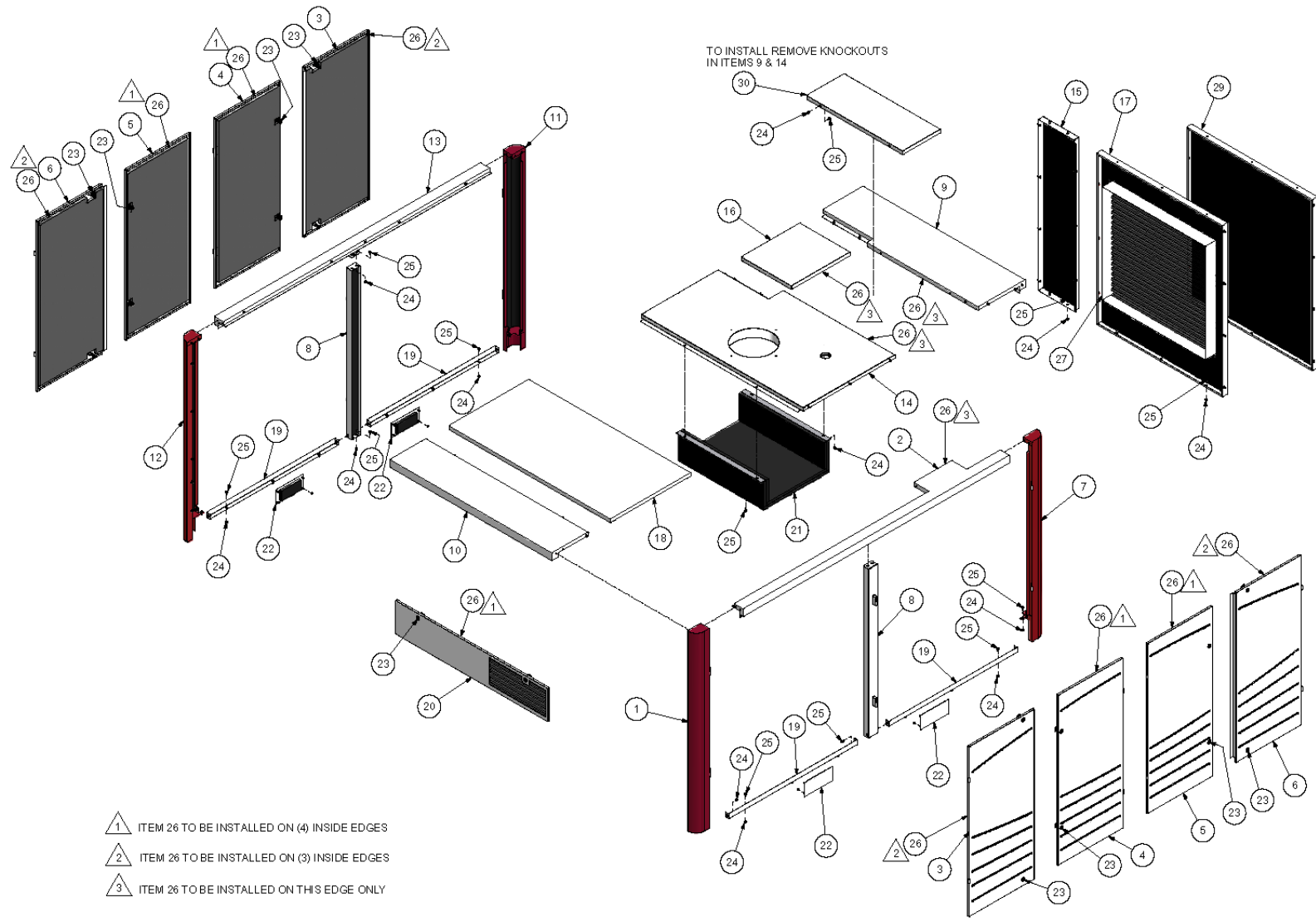
CONTROL BOX
(Water Cooled)

Ref. No.		QTY.	55 KW	75 KW	90 KW
	VFD GROUP	1	306-309ETK4014	307-310ETK4014	308-311ETK4014
	CONTROL BOX ASSEMBLY (WITHOUT EMC FILTER).....		318ETK1189	319ETK1189	320ETK1189
	CONTROL BOX ASSEMBLY (WITH EMC FILTER)		309ETK1189	310ETK1189	311ETK1189
1	CONTROL ASSEMBLY	1	300ETK1173	300ETK1173	300ETK1173
2	KEY PAD	1	300ETK375	300ETK375	300ETK375
-** 3	VARIABLE SPEED DRIVE (1st STAGE).....	1	90500055	89864409	89864389
5	CABLE	1	24CA5898	24CA5898	24CA5898
6	SPLITTER	2	24CA5899	24CA5899	24CA5899
7	RESISTOR	1	24CA5900	24CA5900	24CA5900
8	CONTROL BOX	1	300ETK179	300ETK179	300ETK179
* 9	FILTER	2	24CA5914	24CA5914	24CA5914
* 10	FAN/FILTER	2	24CA7828	24CA7828	24CA7828
11	EMERGENCY STOP OPERATOR.....	1	24CA2907	24CA2907	24CA2907
12	CONTACT BLOCK.....	1	24CA2908	24CA2908	24CA2908
13	CONTROL TRANSFORMER.....	1	2118244	2118244	2118244
14	FUSE	2	24CA2783	24CA2783	24CA2783
15	FUSE	1	24CA5901	24CA5901	24CA5901
16	POWER SUPPLY.....	1	24CA6050	24CA6050	24CA6050
17	DIN RAIL KIT.....	2	24CA4088	24CA4088	24CA4088
18	POWER DISTRIBUTION BLOCK.....	1	24CA5913	24CA5913	24CA5913
19	FUSE HOLDER.....	2	24CA5919	24CA5919	24CA5903
20	FUSE	6	24CA5918	24CA5917	24CA5902
21	FUSE BLOCK.....	5	24CA5910	24CA5910	24CA5910
23	RELAY	1	24CA6854	24CA6854	24CA6854
24	FUSE	3	24CA2784	24CA2784	24CA2784
25	OVERLOAD RELAY.....	1	24CA5990	24CA5990	24CA5990
26	TERMINAL BLOCK.....	24	24CA5984	24CA5984	24CA5984
27	TERMINAL BLOCK	1	24CA5985	24CA5985	24CA5985
28	GROUND BLOCK	2	24CA5986	24CA5986	24CA5986
29	GROUND BLOCK	2	24CA6071	24CA6071	24CA6071
30	GROUND BLOCK	2	24CA5989	24CA5989	24CA5989
31	TERMINAL BLOCK.....	8	24CA5987	24CA5987	24CA5987
32	DIN RAIL	1	24CA5991	24CA5991	24CA5991
33	BAFFLE	1	303ETK840	304ETK840	305ETK840
34	FILTER (OPTIONAL)	1	301ETK784	89864669	89864669
35	SCREW TERMINAL PLUG.....	1	24CA5933	24CA5933	24CA5933
37	DECAL, CONTROL BOX.....	1	301ETK077	301ETK077	301ETK077
** 38	VARIABLE SPEED DRIVE (2nd STAGE).....	1	90500055	89864409	89864389
40	ICONN MODEM	1	251167531	251167531	251167531

* For Replacement Element, order Part Number 24CA5929. Note: For AirSmart Communication Module Kit see Part Number 300ETK6028. Refer to page 56.

** For VFD cooling fan replacement kit for VFD part number 89864409 and 89864389, order kit Part Number 24CA7613.

ENCLOSURE



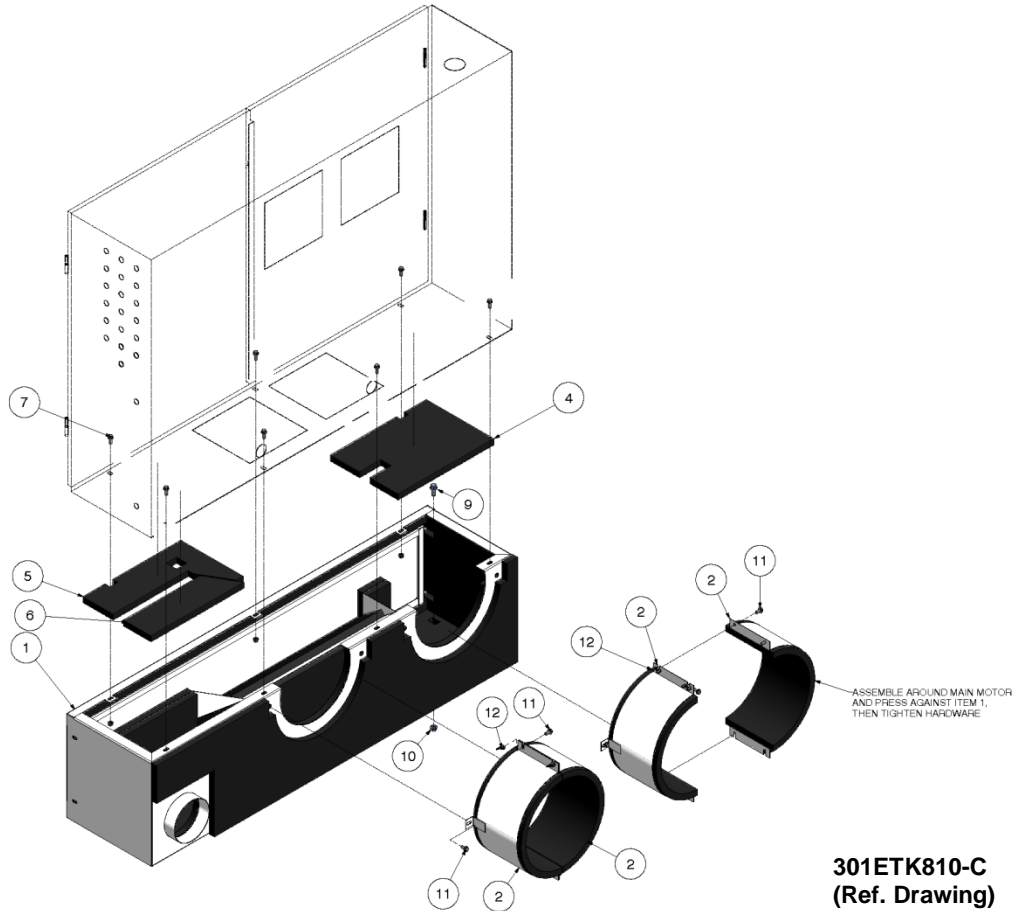
306ETK810-B
(Ref. Drawing)

ENCLOSURE

**B/M: 300ETK4017;
306ETK4013;
300ETK4023;
301ETK4023**

Ref. No.	Name of Part	Qty.	Part No.	Ref. No.	Name of Part	Qty.	Part No.
1	POST.....	1	300ETK313	16	PANEL.....	1	306ETK216
2	FRAME.....	1	300ETK314	17	PANEL (AIR-COOLED ONLY).....	1	301ETK216
3	DOOR.....	2	300ETK334	18	PANEL.....	1	302ETK216
4	DOOR.....	2	301ETK334	19	FRAME.....	4	303ETK314
5	DOOR.....	2	302ETK334	20	PANEL.....	1	307ETK216
6	DOOR.....	2	303ETK334	21	BAFFLE.....	1	302ETK840
7	POST.....	1	303ETK313	22	COVER.....	4	306ETK225
8	BRACE.....	2	300ETK326	23	LATCH.....	18	31D68
9	FRAME.....	1	301ETK314	24	NUT.....	64	50AW5
10	FRAME.....	1	302ETK314	25	SCREW.....	106	75LM51
11	POST.....	1	302ETK313	26	SEAL (IN FEET).....	128	32E12
12	POST.....	1	301ETK313	27	SEAL (IN FEET).....	15	32E18
13	FRAME.....	1	304ETK314	28	KEY (not shown).....	2	VP1049035
14	PANEL.....	1	303ETK216	29	PANEL, END (WATER-COOLED ONLY)...	1	304ETK216
15	PANEL.....	1	305ETK216	30	PANEL, TOP (WATER-COOLED ONLY)...	1	308ETK216
				31	NUT.....	16	50AW3

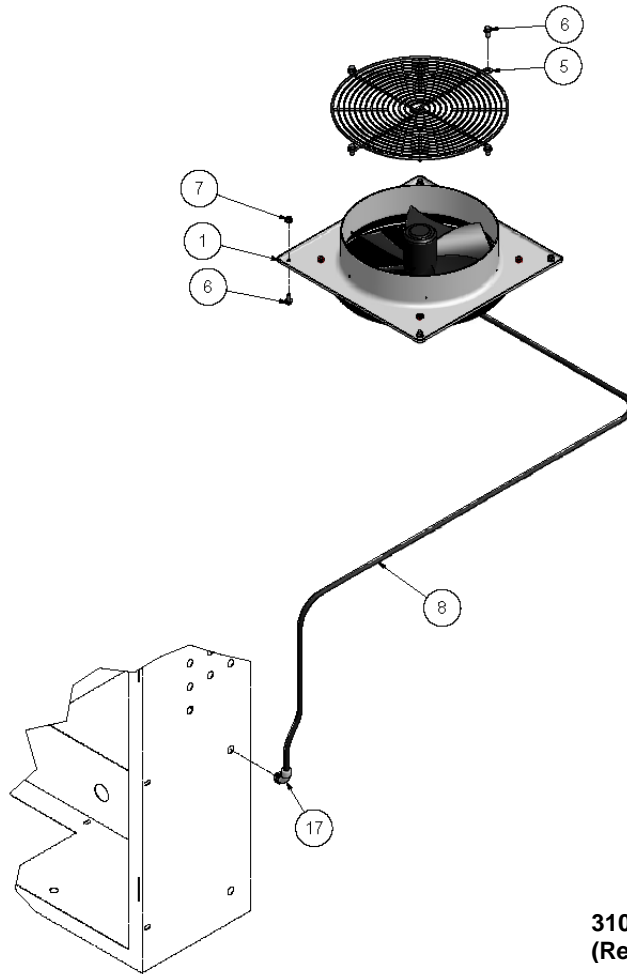
CONTROL BOX



B/M: 301ETK4013;
301ETK4017

Ref. No.	Name of Part	Qty.	Part No.
1	BAFFLE	1	300ETK840
2	BAFFLE	4	301ETK840
4	ACOUSTICAL FOAM	1	301ETK1101
5	ACOUSTICAL FOAM	1	302ETK1101
6	ACOUSTICAL FOAM	1	303ETK1101
7	SCREW	7	75K48
8	NUT	7	50AW5
9	SCREW	6	75LM135
10	NUT	6	50AW35
11	SCREW	12	75LM51
12	NUT	8	50H1

VENT FAN

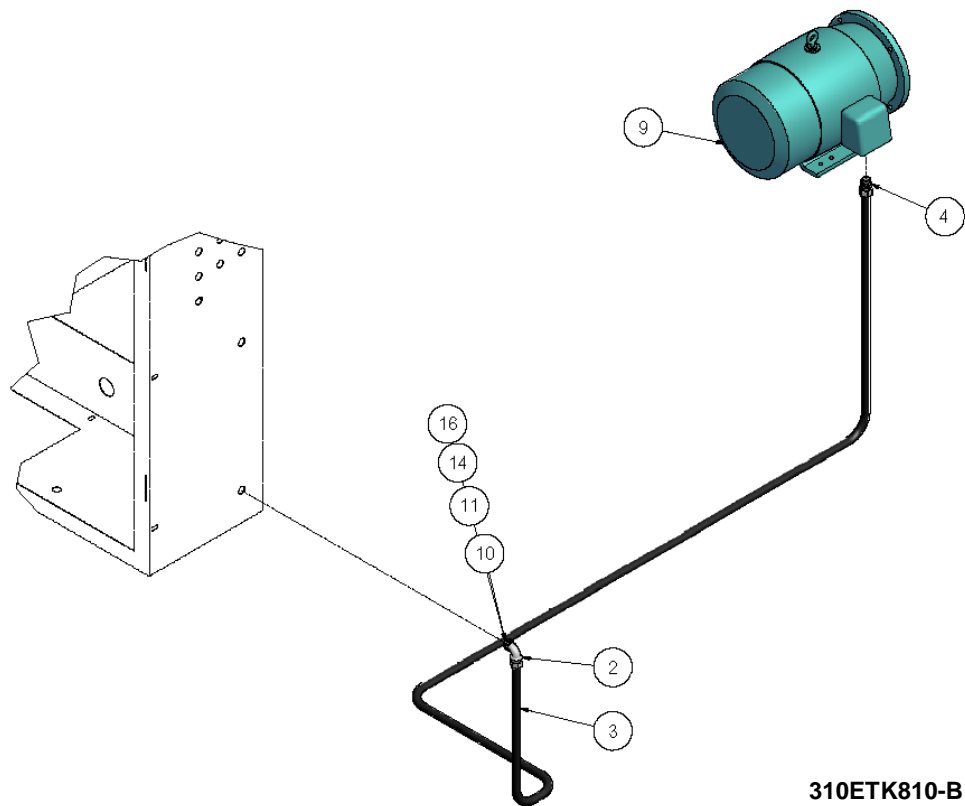


**310ETK810-B
(Ref. Drawing)**

B/M: 300 & 304ETK4007

Ref. No.	Name of Part	Qty.	Part No.
1	FAN (460 VOLT).....	1	VP1128045
5	FAN GUARD	1	301ETK393
6	SCREW	8	75LM51
7	NUT	4	50AW5
8	WIRE (IN FEET).....	12	97J83
17	ELECTRICAL FITTING	1	24CA4196

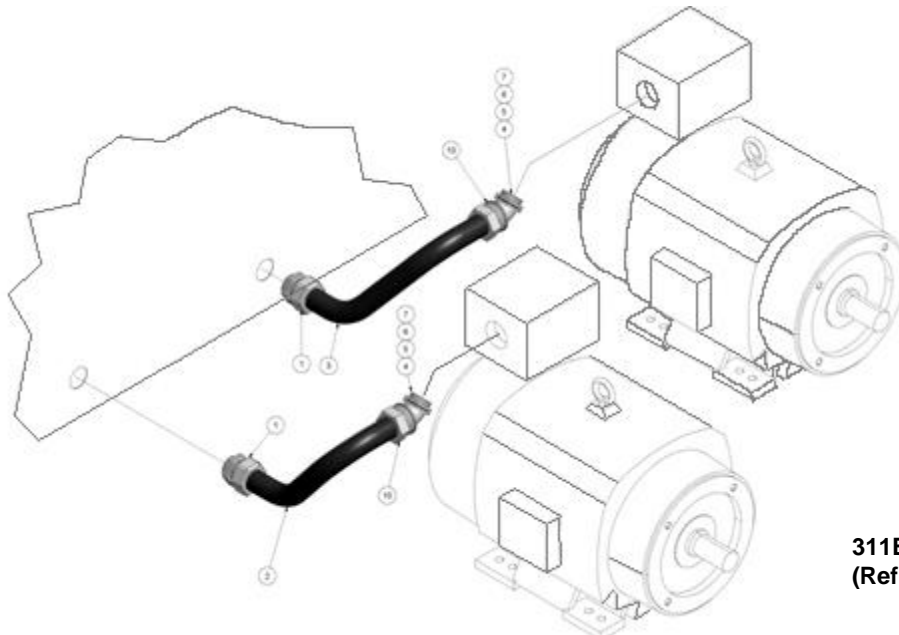
**COOLING FAN
(Air-Cooled Only)**



**310ETK810-B
(Ref. Drawing)**

B/M: 302 & 305ETK4007

Ref. No.	Name of Part	Qty.	Part No.
2	TUBE CONNECTOR.....	1	24A380
3	CONDUIT (IN FEET).....	15	24A402
4	ELECTRICAL FITTING	1	24A378
9	MOTOR (460 VOLT)	1	90500115
10	WIRE (IN FEET).....	60	2009319
11	WIRE (IN FEET).....	20	2009988
14	NYLON CONNECTOR	6	24CA2068
16	TERMINAL LUG	1	24A298



311ETK810-D
(Ref. Drawing)

MAIN MOTOR WIRING

B/M: 303VST4007

VST55

Ref. No.	Name of Part	Qty.	Part No.
1	CONDUIT FITTING	2	2009333
2	CONDUIT (IN INCHES).....	15	2009315
3	CONDUIT (IN INCHES).....	18	2009315
4	WIRE (5 FEET LONG).....	6	2009708
5	WIRE (5 FEET LONG).....	2	97J39
6	TERMINAL LUG	6	2009531
7	TERMINAL LUG	2	24A166
10	CONDUIT FITTING	2	2009334

B/M: 304VST4007

VST75

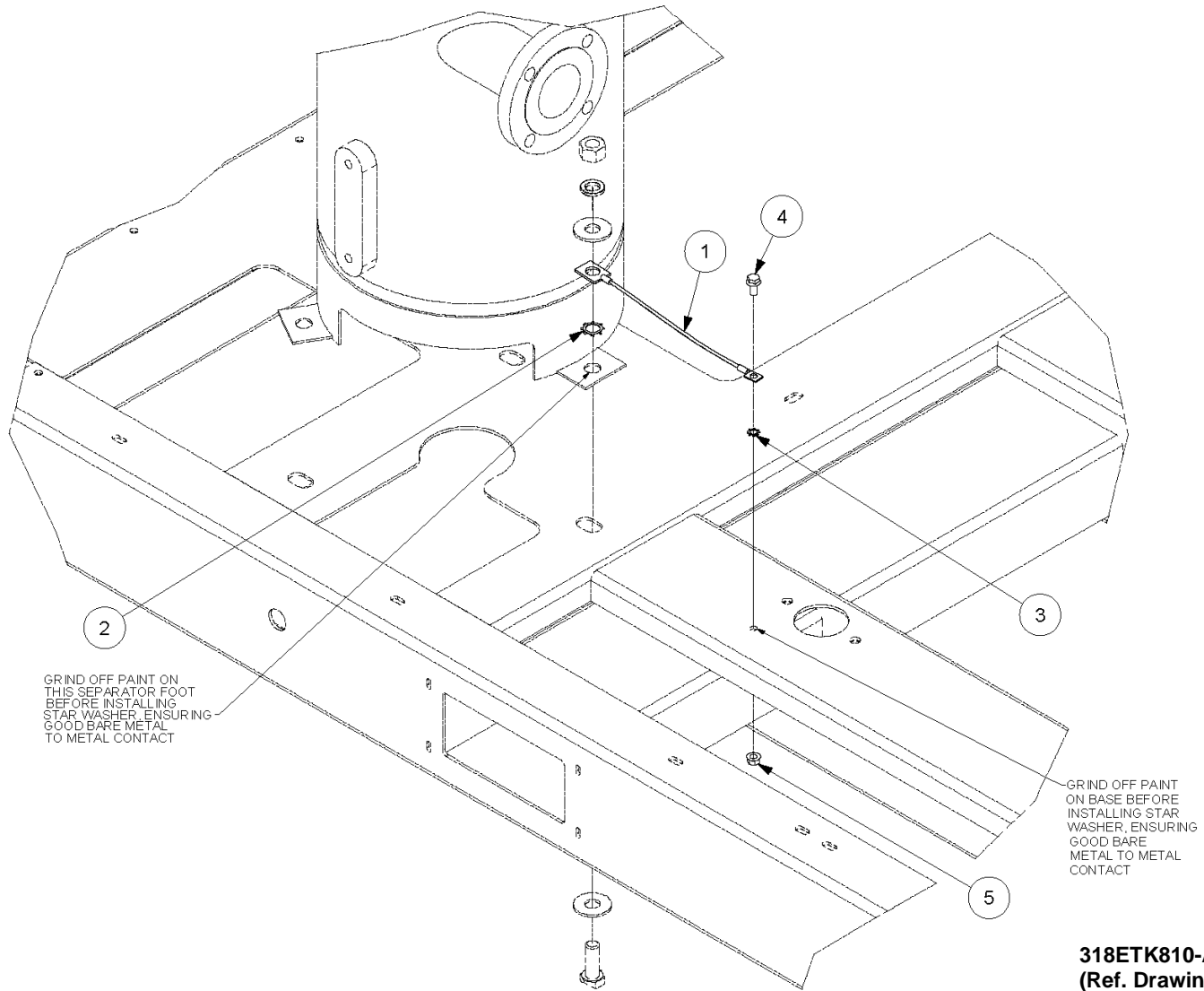
Ref. No.	Name of Part	Qty.	Part No.
1	CONDUIT FITTING	2	2009333
2	CONDUIT (IN INCHES).....	15	2009315
3	CONDUIT (IN INCHES).....	18	2009315
4	WIRE (5 FEET LONG).....	6	2009410
5	WIRE (5 FEET LONG).....	2	97J77
6	TERMINAL LUG	6	24CA202
10	CONDUIT FITTING	2	2009334

B/M: 301ETK4007

VST90

Ref. No.	Name of Part	Qty.	Part No.
1	CONDUIT FITTING	2	2009333
2	CONDUIT (IN INCHES).....	15	2009315
3	CONDUIT (IN INCHES).....	18	2009315
4	WIRE (5 FEET LONG).....	6	2009708
5	WIRE (5 FEET LONG).....	2	97J65
6	TERMINAL LUG	6	2009531
7	TERMINAL LUG	2	24A306
10	CONDUIT FITTING	2	2009334

ELECTRICAL CONVERSION GROUNDING KIT

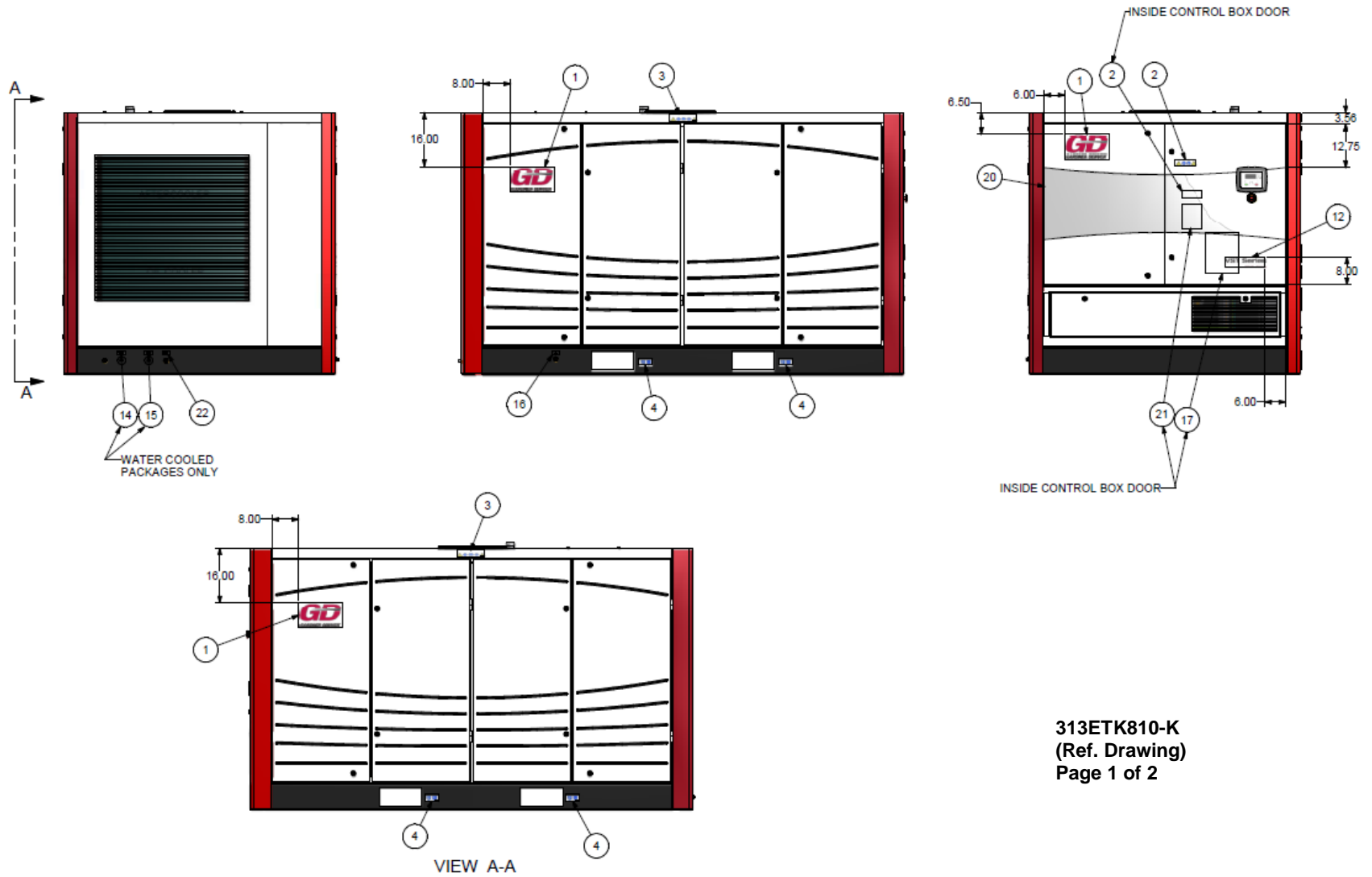


ELECTRICAL CONVERSION GROUNDING KIT

Ref. No.	Name of Part	B/M Qty.	306ETW6005 Part No.
1	ELECTRICAL GROUP (GROUNDING WIRE & LUGS).....	1	306ETW4007
2	LOCK WASHER	1	95H8
3	WASHER	1	95H3
4	SCREW.....	1	75LM51
5	NUT.....	1	50AW5

All Parts Included in Field Repair Kit Part Number 307ETW6005.
Refer to page 57.

DECAL LAYOUT (Package Exterior)



313ETK810-K
(Ref. Drawing)
Page 1 of 2

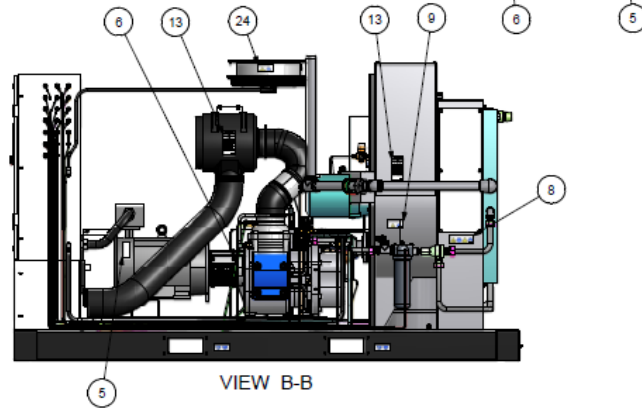
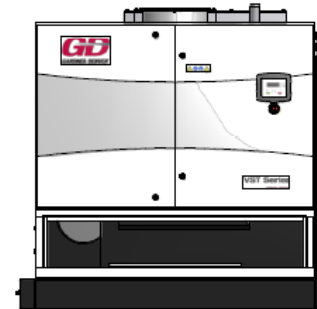
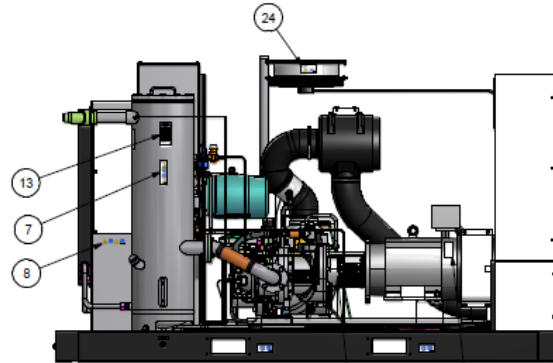
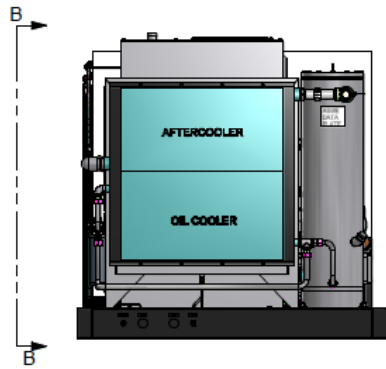
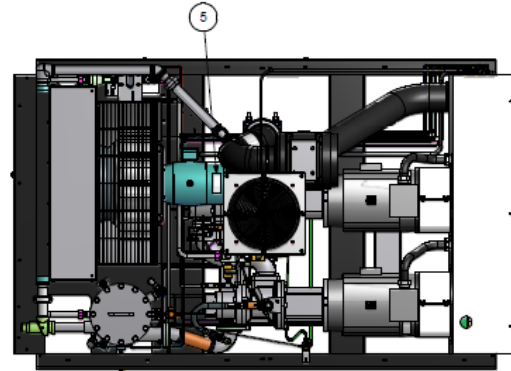
DECAL LAYOUT
(Package Exterior)

B/M: 301 thru 308ETK4011

Ref. No.	Name of Part	Qty.	Part No.
1	DECAL – GD	3	VP1042952
* 2	DECAL – ISO WARNING – CONTROL BOX	2	VP1009371
* 3	DECAL – ISO WARNING – SIDE	2	VP1009372
* 4	DECAL – ISO WARNING – FORK POCKET	4	VP1009373
12	DECAL, VST SERIES		
	DECAL, VS-55	1	TEN005183
	DECAL, VST-75	1	TEN005185
	DECAL, VST-90	1	TEN005186
14	PLATE-DATA – COOL WATER IN	1	203EWD454
15	PLATE-DATA – COOL WATER OUT	1	202EWD454
16	PLATE-DATA – OIL DRAIN	1	300EHG454
17	POCKET – 10 X 12 ADHESIVE BACKED	1	VP1009797
20	DECAL – CONTROL BOX	1	301ETK077
21	DECAL, CD MANUALS		
	ENGLISH	1	VP1009795
	FRENCH CANADIAN	1	VP1012949
	MEXICAN SPANISH	1	VP1012948
22	PLATE-DATA – CONDENSATE DRAIN	1	CC1009381

* For Replacement Decals Order Part Number CC1010403 Decal Group Sheet

**DECAL LAYOUT
(Package Interior)**



**313ETK810-K
(Ref. Drawing)
Page 2 of 2**

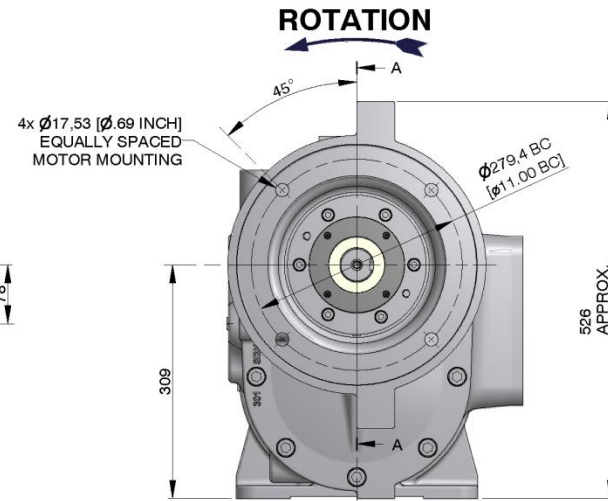
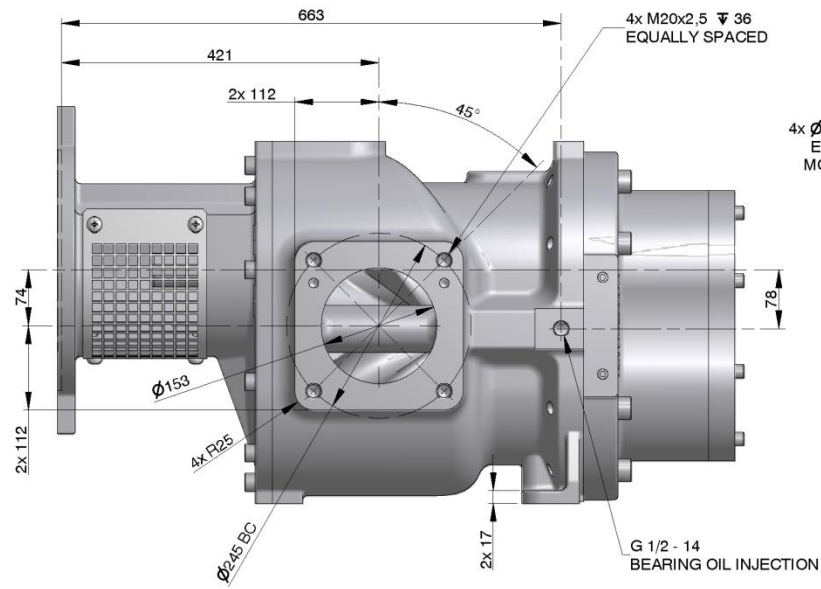
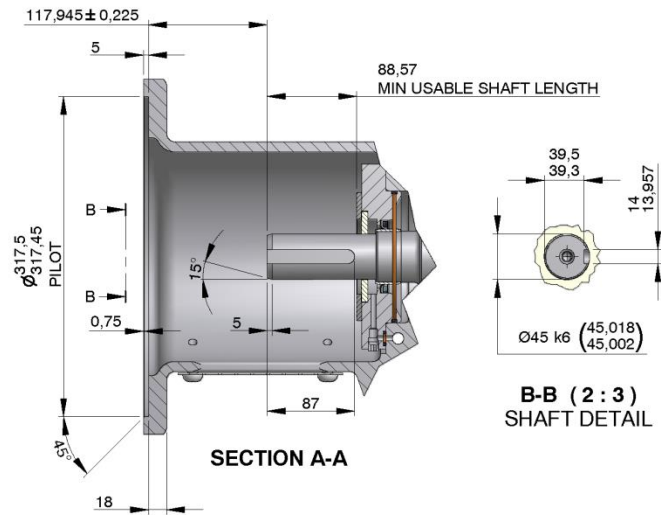
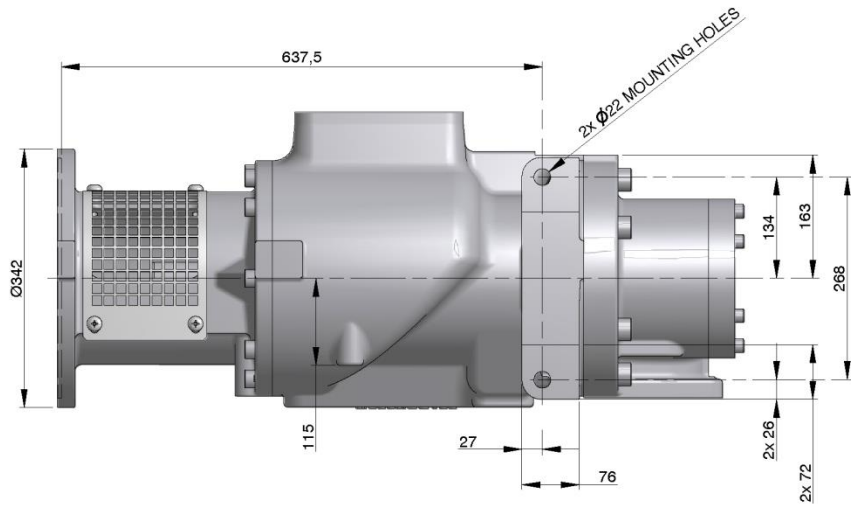
DECAL LAYOUT
(Package Interior)

B/M: 308ETK4011

Ref. No.	Name of Part	Qty.	Part No.
* 5	DECAL – ISO WARNING – MOTOR.....	3	VP1009374
* 6	DECAL – ISO WARNING – COUPLING HOUSING.....	2	VP1009375
* 7	DECAL – ISO WARNING – RESERVOIR.....	1	VP1009376
* 8	DECAL – ISO WARNING – FAN/COOLER HOUSING	2	VP1009377
* 9	DECAL – ISO WARNING – OIL FILTER.....	1	VP1009379
* 13	DECAL – NOTICE (USE GENUINE GD PARTS).....	3	CC1009474
* 24	DECAL – ISO WARNING – ROTATING FAN	2	VP1009640

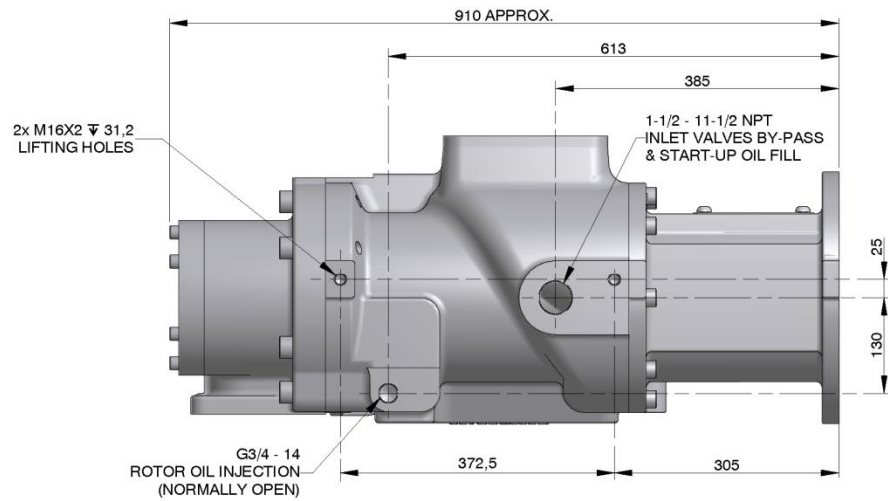
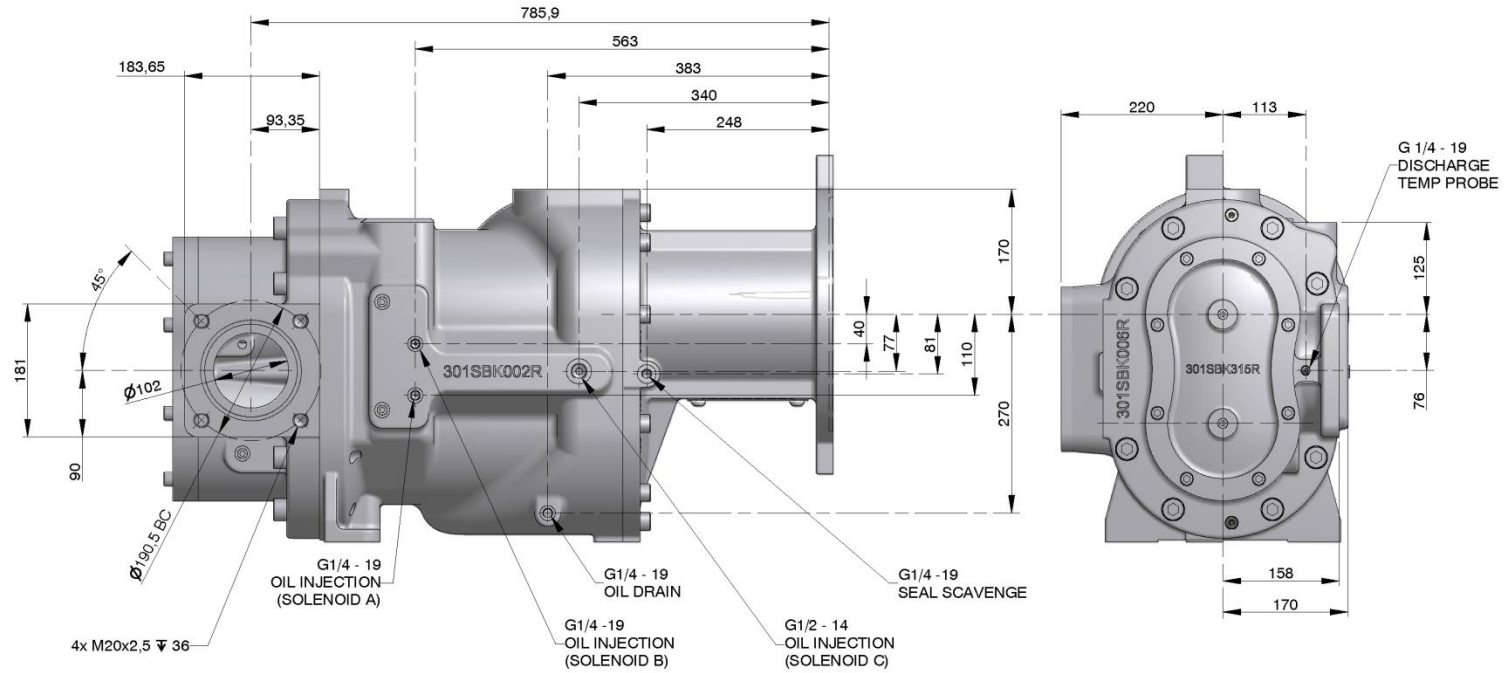
* For Replacement Decals Order Part Number CC1010403 Decal Group Sheet

OUTLINE - 1ST STAGE



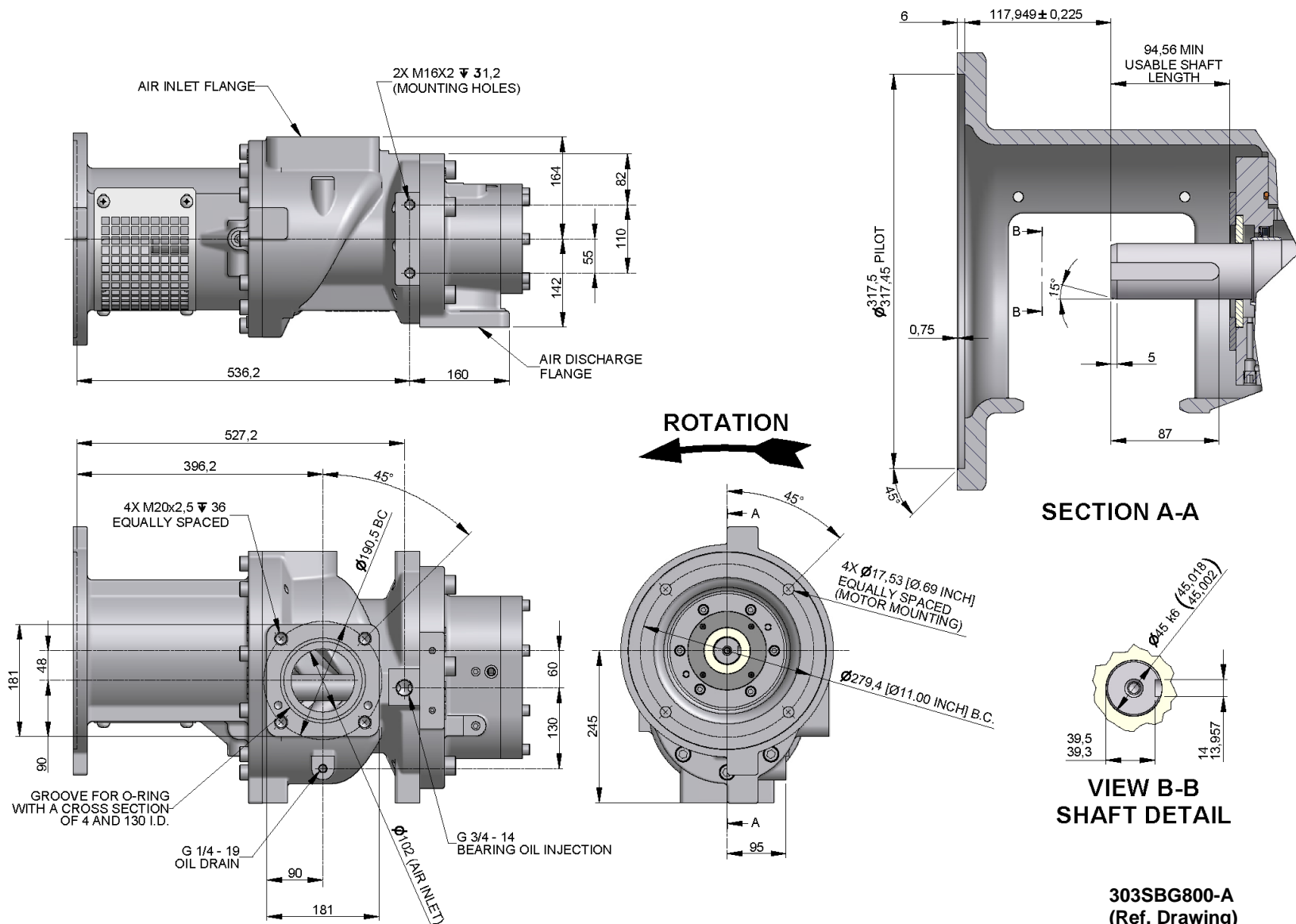
302SBK800-A
(Ref. Drawing)
Page 1 of 2

OUTLINE - 1ST STAGE



302SBK800-A
(Ref. Drawing)
Page 2 of 2

OUTLINE – 2ND STAGE



303SBG800-A
 (Ref. Drawing)
 Page 1 of 2

REPAIR KITS

Your Gardner Denver rotary screw compressor is designed and manufactured for many years of reliable operation. All components are engineered to exacting specifications, which will function together as a system to provide maximum efficiency. To insure the continuing integrity of compressor operation, use only original quality genuine Gardner Denver replacement parts and accessories.

Name of Part	Qty.	Part No.
ROUTINE MAINTENANCE KIT		306VST6003
ELEMENT, AIR FILTER	2	5L356
ELEMENT, OIL FILTER	3	2118345
OIL SEPARATOR KIT		300ETK6013
OIL SEPARATOR	1	300EBQ035
O-RING	1	25BC436
O-RING LUBRICANT	1	2116755
PNEUMATIC CONTROLS AND GAUGES		301VST6013
CHECK VALVE	2	90AR1134
CHECK VALVE	1	90AR1135
CHECK VALVE	1	90AR1138
PRESSURE REGULATOR.....	1	TEN000580
STRAINER.....	1	82E46
ELECTRICAL CONTROL GROUP		300VST6013
CONTROL VALVE	4	90AR1215
SOLENOID VALVE	1	91B255
SOLENOID VALVE	1	91B264
THERMISTOR	5	VP1018671
PRESSURE TRANSDUCER	5	88H365
VACUUM SWITCH.....	1	88H195
CORD 30 FT	4	VP1018672
CORD 8 FT	1	VP1018675
NOZZLE REPAIR KIT		302VST6003
LOCTITE.....	1	25BC669
ADAPTER.....	2	300ETK170
ADAPTER.....	2	301ETK170
NOZZLE	2	52C6
NOZZLE	2	52C7
GASKET	2	25BC871
GASKET	2	25BC861
PLUG.....	1	64A27G
MOTOR BEARING GREASE		
400 GRAM CARTRIDGE.....	1	28H311
1 KILOGRAM CAN.....	1	28H312
25 KILOGRAM PAIL.....	1	28H313
LUBRICANT (AEON 9000TH)		
5 GALLON PAIL.....	1	28H286
55 GALLON DRUM.....	1	28H270
TOUCH-UP PAINT		
1 GALLON CAN (White).....	1	28H84
1 QUART CAN (White).....	1	28H83
5 GALLON PAIL (White).....	1	28H76
5 GALLON PAIL (Red).....	1	28H325
1 GALLON CAN (Red).....	1	28H324
1 QUART CAN (Red).....	1	28H323

REPAIR KITS (Continued)

Name of Part	Qty.	Part No.
WATER TEMPERATURE REGULATOR (OPTIONAL).....		90AR1116
WATER SHUT-OFF VALVE (OPTIONAL).....		90AR1150
OIL SEAL KIT (1st STAGE).....		300SBK6029
SHAFT SEAL.....	1	89556219
O-RING.....	1	25BC800
WEAR SLEEVE.....	1	89535409
O-RING.....	1	25BC844
SEAL.....	1	300SBG316
GASKET ELIMINATOR.....	1	25BC632
COMPOUND ANTI SEIZE.....	1	25BC850
COUPLING INSTALLATION SHEET.....	1	MP167
OIL SEAL KIT (2nd STAGE).....		300SBG6029
SHAFT SEAL.....	1	89556219
O-RING.....	1	25BC800
WEAR SLEEVE.....	1	89535409
O-RING.....	1	25BC844
SEAL.....	1	300SBG316
GASKET ELIMINATOR.....	1	25BC632
COMPOUND ANTI SEIZE.....	1	25BC850
COUPLING INSTALLATION SHEET.....	1	MP167
COUPLING INSTALLATION & REMOVAL TOOL KIT.....		300VST6031
COUPLING INSTALLATION TOOL.....	1	301SBK074
PULLER.....	1	90500151
COUPLING INSTALLATION SHEET.....	1	MP167
SEAL & COUPLING INSTALLATION & REMOVAL TOOL KIT.....		300ETK6031
TOOL.....	1	301SBK074
PULLER.....	1	90500151
TOOL.....	1	300SBK074
SEAL SHAFT TOOL.....	1	EFC30851748
SEAL SHAFT TOOL.....	1	EFC03423678
WEAR SLEEVE PULLER.....	1	20500162
COUPLING INSTALLATION SHEET.....	1	MP167
AIRSMART COMMUNICATION MODULE KIT.....		300ETK6028
INTER-STAGE MANIFOLD FIELD REPAIR KIT.....		300ETK6020
MANIFOLD.....	1	303ETK286
ADAPTOR.....	2	300ETK170
ADAPTOR.....	2	301ETK170
NOZZLE.....	2	52C6
NOZZLE.....	2	52C7
GASKET (VITON WASHER).....	2	25BC871

REPAIR KITS (Continued)

Name of Part	Qty.	Part No.
SEPARATOR GROUNDING, FIELD REPAIR KIT.....		307ETW6005
ELECTRICAL GROUP (GROUNDING WIRE & LUGS).....	1	306ETW4007
LOCK WASHER.....	1	95H8
LOCK WASHER.....	1	95H3
SCREW	1	75LM51
NUT	1	50AW5
INLET VALVE SEAL KIT.....		VP1036374
GASKET	1	VP1033984
O-RING.....	1	VP1033988
O-RING.....	1	VP1033989
O-RING.....	1	VP1033990
O-RING.....	1	VP1033992
O-RING.....	1	VP1033993
RETAINER.....	1	VP1033997
INLET VALVE REPAIR KIT.....		VP1036375
PISTON	1	VP1033983
PLATE	1	VP1034812
PIN	1	VP1034813
VALVE SPRING.....	1	VP1034814
BALL BEARING	1	VP1034815
10 YEAR WARRANTY KITS		
10 YEAR WARRANTY KIT.....		304ETK6032
ELEMENT	2	2118345
ELEMENT - AIR FILTER.....	2	5L356
KIT, OIL SEPARATOR.....	1	300ETK6013
BOTTLE, AEON OIL SAMPLE KIT, ONE EACH.....	2	VP1074048
FAN/FILTERS (5 PACK).....	4	24CA5929



Gardner Denver®

For additional information, contact your local representative or visit:
www.gardnerdenver.com/industrials

©2021 Gardner Denver, Inc. Printed in U.S.A.



Member



Please recycle after use.