
GARDNER DENVER®

13-11-503
2nd Edition
June, 1996

TWISTAIR®
OIL-FREE ROTARY SCREW
COMPRESSORS

60 HZ

MODELS

AIR COOLED
ewdq_d – 40 to 75 HP

WATER COOLED
ewds_d – 40 to 75 HP

PARTS LIST

Gardner

Denver

INSTRUCTIONS FOR ORDERING REPAIR PARTS

When ordering parts, specify Compressor MODEL, Method of Cooling, HORSE-POWER and SERIAL NUMBER (see nameplate on unit). The Serial Number is also stamped on top of the cylinder flange to the right of the inlet housing.

All orders for Parts should be placed with the nearest authorized distributor.

Where NOT specified, quantity of parts required per compressor or unit is one (1); where more than one is required per unit, quantity is indicated in parenthesis. SPECIFY EXACTLY THE NUMBER OF PARTS REQUIRED.

DO NOT ORDER BY SETS OR GROUPS.

To determine the Right Hand and Left Hand side of a compressor, stand at the motor end and look toward the compressor. Right Hand and Left Hand are indicated in parenthesis following the part name, i.e. (RH) & (LH), when appropriate.

TABLE OF CONTENTS

Page No.

Instructions For Ordering Repair Parts	Inside Front Cover
Maintain Compressor Reliability and Performance with Genuine Gardner Denver® Compressor Parts and Support Services	3
Remanufactured Air Ends	3
Matrix/Menu	4
Bare Compressor	5 thru 9
Inlet Valve Group	10
Air End Replacements	11
Air Filter Mounting	12
Base and Mounting	13
Compressor Mounting	14
Compressor Discharge	15
Oil Level Gauge and Fittings	16
Oil Piping	17
Separator Mounting	18
System Water Filter To Compressor	19
Final Discharge Piping	20, 21
Separator Drain	22
Tubing – Oil Reservoir To Oil Pump	23
Tubing – Oil Pump To Compressor	24, 25
Seal Purge Air	26
Oil Pressure Transducer Line	27
Blowdown Piping	28, 29
Control Piping	30, 31
Water Filter Fittings	32, 33
Separator Drain Piping	34, 35
Purge Valve Piping	36
Air Filter Vacuum Switch Tubing	37
Controller Assembly – Full Voltage Starters	38 Thru 41
Controller Assembly – Wye Delta Starters	42 Thru 45
Controller Assembly – Less Main Starter	46
Air Cooled Units with Aftercooler	48, 49
Water Filter Differential Solenoid Piping – Air Cooled	50
Water Filter Differential Solenoid Piping – Water Cooled	51

TABLE OF CONTENTS (cont'd)

Page No.

Water Cooled Units with Aftercooler	52
Air Cooled Units with Aftercooler	53
Aftercooler Drain Piping – Air Cooled	54
Aftercooler Drain Piping – Water Cooled	55
Optional Water Valves (Temperature Regulator and Solenoid)	56
Enclosure Vent Fan Assembly (Water Cooled Units Only)	57
Enclosure Group – Common Parts – Air/Water Cooled	58
Skirting – Air Cooled Units	59
Skirting – Water Cooled Units	60
Enclosure Group, Water Cooled	61
Enclosure Group, Air Cooled	62
Identification and Instruction Group	63
Overload Relay Heater Conversion Listing	64
Motor Mounting Group	65
Motor Group – Main Drive Motors – Full Voltage	66
Motor Group – Main Drive Motors – Wye Delta	67
Vent Fan Motors (Enclosure)	68
Oil Pump & Fan Motors (Air Cooled Units)	68
Repair Kits	69

For Operating and Service Instructions see:

SERVICE MANUAL 13-11-602

**MAINTAIN COMPRESSOR RELIABILITY AND PERFORMANCE WITH
GENUINE GARDNER DENVER® COMPRESSOR
PARTS AND SUPPORT SERVICES**

Gardner Denver® Compressor genuine parts, engineered to original tolerances, are designed for optimum dependability — specifically for Gardner Denver compressor systems. Design and material innovations are the result of years of experience with hundreds of different compressor applications. Reliability in materials and quality assurance are incorporated in our genuine replacement parts.

Your authorized Gardner Denver® Compressor distributor offers all the backup you'll need. A worldwide network of authorized distributors provides the finest product support in the air compressor industry. Your local authorized distributor maintains a large inventory of genuine parts and he is backed up for emergency parts by direct access to the Gardner Denver Machinery Inc. Master Distribution Center (MDC) in Memphis, Tennessee.

Your authorized distributor can support your Gardner

Denver® air compressor with these services:

1. Trained parts specialists to assist you in selecting the correct replacement parts.
2. Factory warranted new and remanufactured rotary screw air ends. Most popular model remanufactured air ends are maintained in stock at MDC for purchase on an exchange basic with liberal core credit available for the replacement unit.
3. A full line of factory tested AEON™ compressor lubricants specifically formulated for use in Gardner Denver compressors.
4. Repair and maintenance kits designed with the necessary parts to simplify servicing your compressor.

Authorized distributor service technicians are factory-trained and skilled in compressor maintenance and repair. They are ready to respond and assist you by providing fast, expert maintenance and repair services.

For the location of your local authorized Gardner Denver Air Compressor distributor refer to the yellow pages of your phone directory or contact:

Distribution Center:
Gardner Denver Machinery Inc.
Master Distribution Center
5585 East Shelby Drive
Memphis, TN 38141
Phone: (901) 542-6100
(800) 245-4946
Fax: (901) 542-6159

Factory:
Gardner Denver Machinery Inc.
1800 Gardner Expressway
Quincy, IL 62301
Phone: (217) 222-5400
Fax: (217) 223-5897

REMANUFACTURED AIR ENDS

Whenever an air end requires replacement or repair, Gardner Denver offers an industry unique, factory remanufactured air end exchange program. From its modern Remanufacturing Center in Indianapolis, IN, Gardner Denver is committed to supplying you with the highest quality, factory remanufactured air ends that are guaranteed to save you time, aggravation and money.

Immediately Available

Repair downtime costs you money, which is why there are over 200 remanufactured units in inventory at all times, ready for immediate delivery.

Skilled Craftsmen

Our Remanufacturing assembly technicians average over 20 years experience with air compression products.

Precision Remanufacturing

All potentially usable parts are thoroughly cleaned, inspected and analyzed. Only those parts that can be brought back to original factory specifications are remanufactured. Every remanufactured air end receives

a new overhaul kit: bearings, gears, seals, sleeves and gaskets.

Extensive Testing

Gardner Denver performs testing that repair houses just don't do. Magnaflux and ultrasonic inspection spot cracked or stressed castings, monochromatic light analysis exposes oil leaks, and coordinate measurement machine inspects to +/- .0001", insuring that all remanufactured air ends meet factory performance specifications.

Warranty

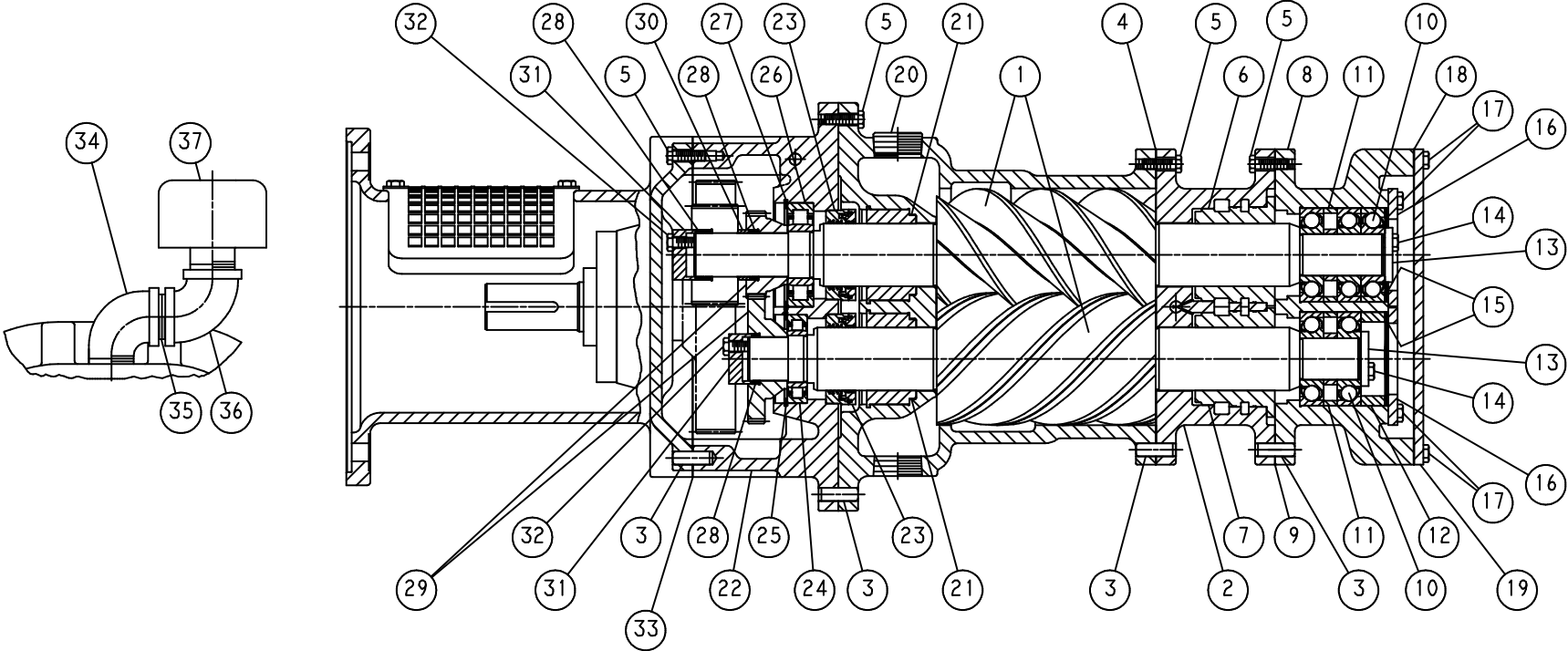
Gardner Denver backs up every remanufactured air end with a new warranty . . . 18 months from purchase, 12 months from service.

Gardner Denver remanufactured air ends deliver *quality without question . . . year in and year out.*

Call Gardner Denver for information on the air end exchange program and the name of your authorized distributor.

Phone Number: 800-245-4946 or
FAX: 901-542-6159

BARE COMPRESSOR

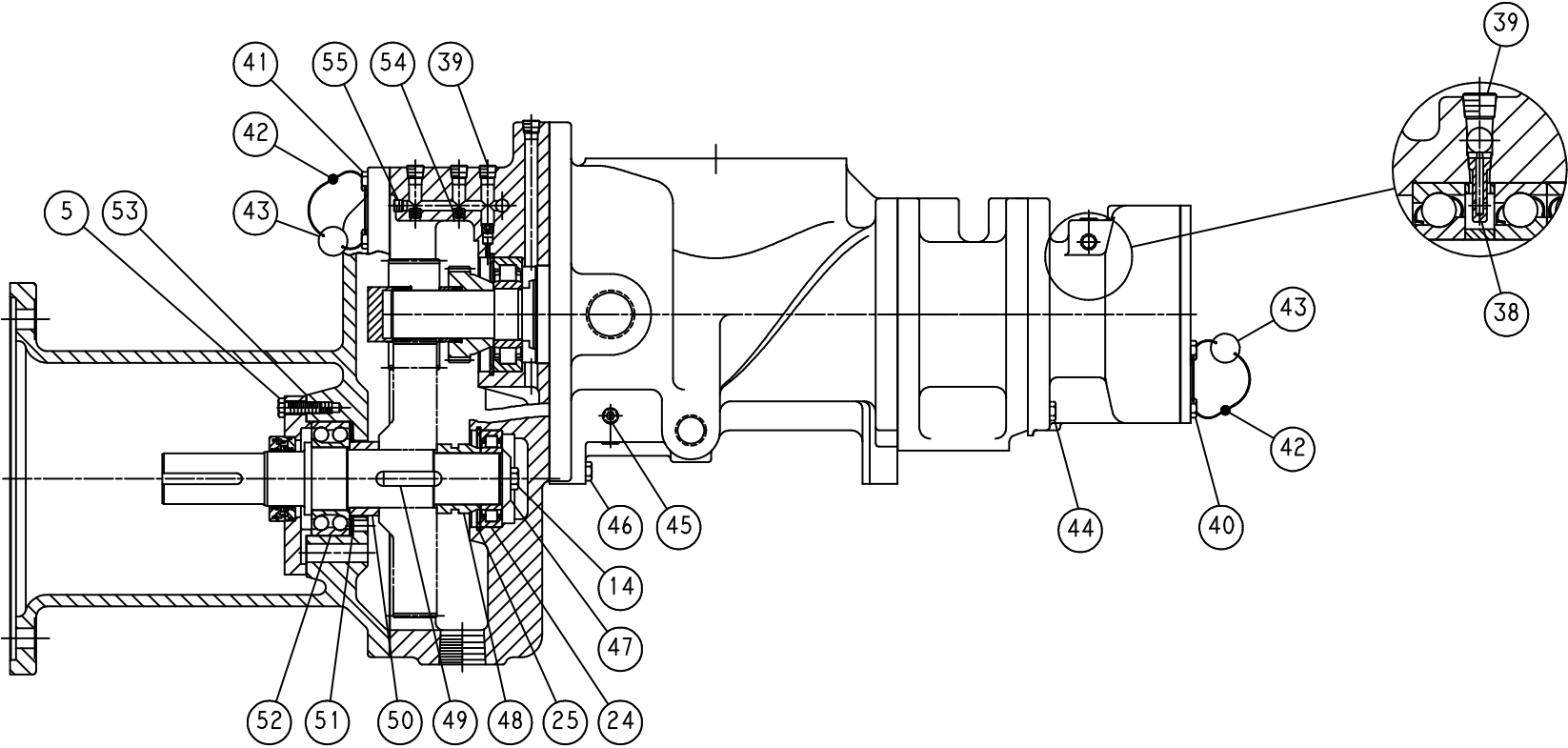


13-11-503 Page 5

303JWD810
(Ref. Drawing)

See page 7 for Parts List

BARE COMPRESSOR



13-11-503 Page 6

303JWD810
(Ref. Drawing)

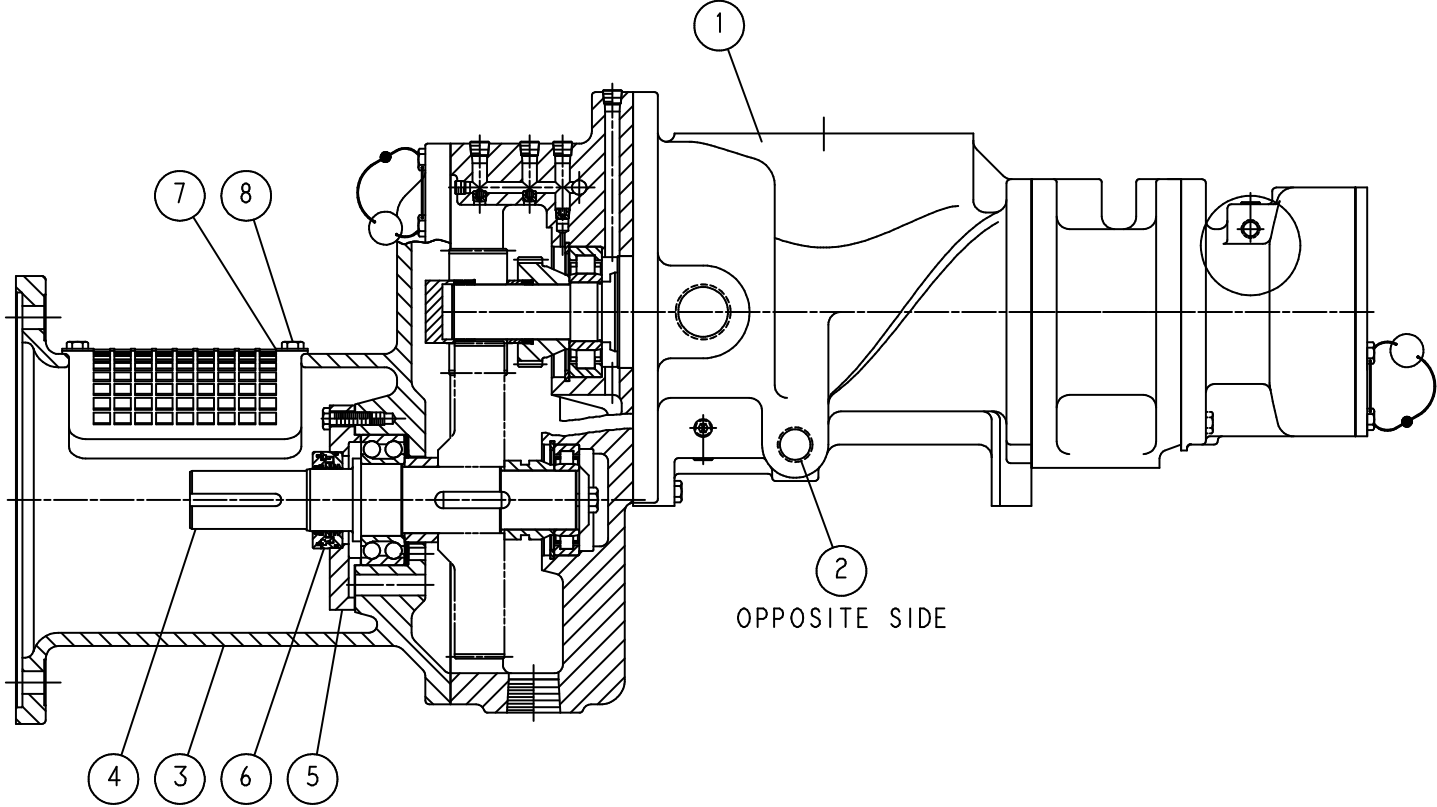
See page 7 for Parts List

Order by Part Number and Description. Reference Numbers for your convenience only.

BARE COMPRESSOR

Ref. No.	Name of Part	Qty.	Ref. No.	Name of Part	Qty.
1	GRP-ROTOR	1	29	KIT-GEAR	1
2	HOUSING-DISCHARGE	1	30	SPACER	1
3	PIN-DOWEL	8	31	FLANGE	2
4	GASKET	1	32	SCREW	6
5	SCREW	52	33	GASKET	1
6	SEAL	1	34	ELBOW	1
7	SEAL	1	35	NIPPLE	1
8	HOUSING-BEARING	1	36	ELBOW	1
9	GASKET-ELIMINATOR	1 Tube	37	BREATHER	1
10	BEARING	5	38	INJECTOR OIL	2
11	SPACER	2	39	PLUG	17
12	SPACER BEARING	1	40	SCREW	2
13	RETAINER BEARING	2			
14	SCREW	5	41	SCREW	2
15	SPRING	2	42	SEAL	2
16	RETAINER BEARING	2	43	TAG-INSTRUCTION	2
17	SCREW	18	44	SCREW	1
18	GASKET	1	45	PLUG	6
19	COVER	1	46	SCREW	2
20	PLUG	1	47	RETAINER	1
21	KIT-SEAL	2	48	SPACER BEARING	1
22	HOUSING GEAR	1	49	KEY	1
23	SEAL	2	50	SPACER BEARING	1
24	BEARING	2	51	SPRING-SPIRAL WOUND	1
25	RING-RETAINING	2	52	BEARING	1
26	BEARING	1	53	GASKET	1
27	RING-SNAP	1	54	ORIFICE	7
28	RING-RETAINING	4	55	PLUG	3

BARE COMPRESSOR



**304JWD810
(Ref. Drawing)**

See page 9 for Parts List

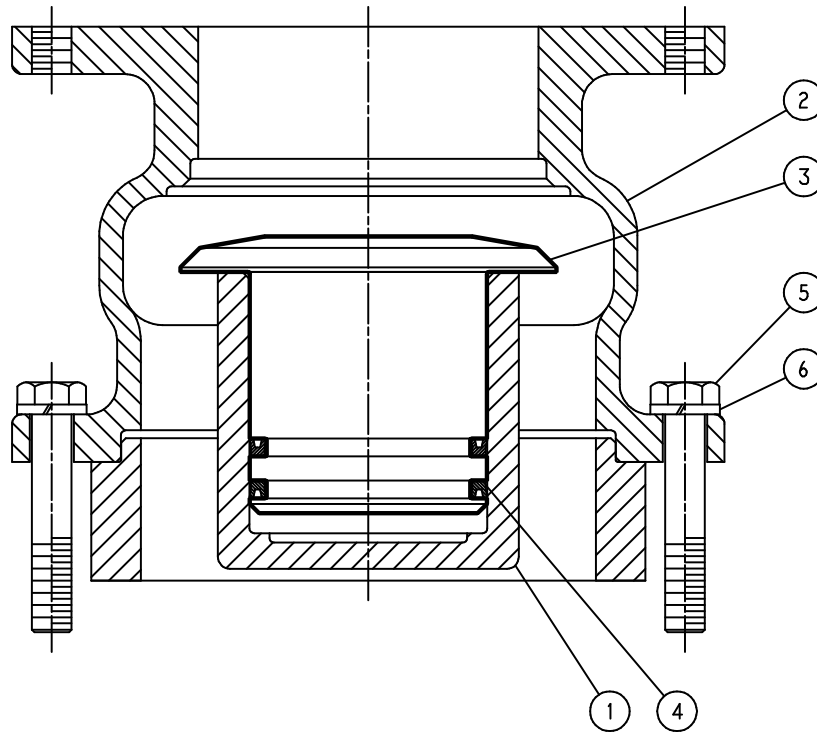
Order by Part Number and Description. Reference Numbers for your convenience only.

BARE COMPRESSOR

Ref. No.	Name of Part	Qty.	Part No.
1	CYLINDER	1	*
2	PLUG	1	*
3	ADAPTOR	1	*
4	SHAFT	1	*
5	HOUSING-SEAL	1	201JWD362
6	SEAL	1	60DD723
7	GUARD COUPLING	1	*
8	SCREW-FLANGED	4	*

* Shown for reference only.

Order by Part Number and Description. Reference Numbers for your convenience only.



201JWD810
(Ref. Drawing)

INLET VALVE GROUP

Ref. No.	Name of Part	Qty.	Part No.
1	HOUSING-INLET	1	201JWD041
2	SEAT	1	201JWD256
3	PISTON-INLET VALVE	1	200SSM043
4	PACKING-RING	2	60DD21
5	SCREW	8	655EE110
6	LOCKWASHER	8	95B5

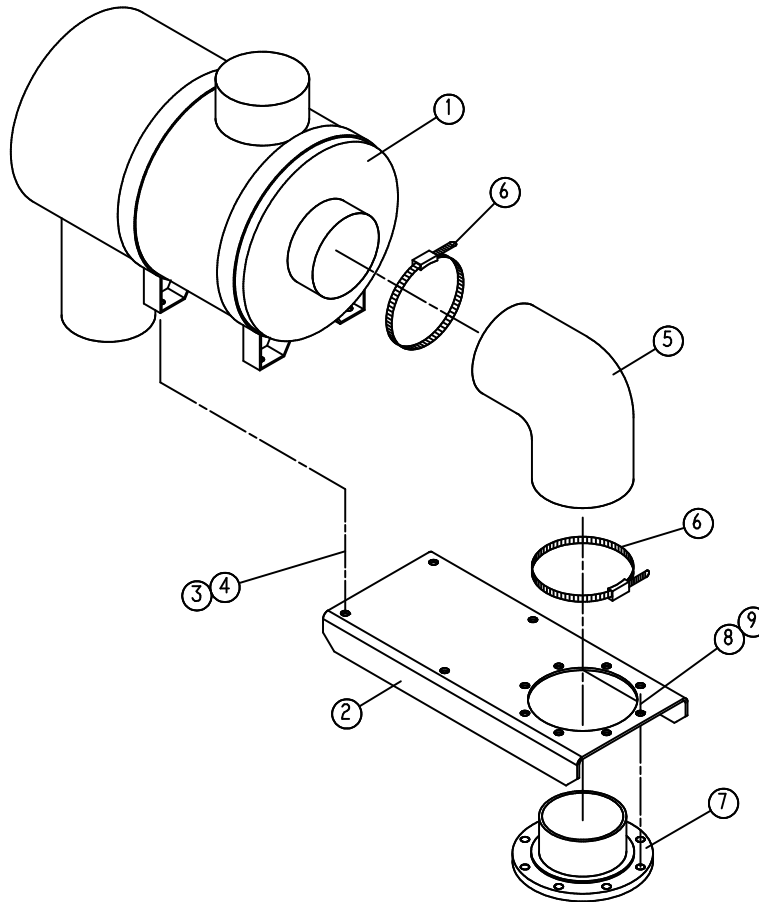
AIR END REPLACEMENTS

HP	PSI	NEW AIR END	REMANUFACTURED AIR END
40	100	JWDEBD15	JWDEBD15X
40	125	JWDEBD16	JWDEBD16X
50	100	JWDEBD12	JWDEBD12X
50	125	JWDEBD14	JWDEBD14X
60	100	JWDEBD09	JWDEBD09X
60	125	JWDEBD12	JWDEBD12X
75	100	JWDEBD07	JWDEBD07X
75	125	JWDEBD09	JWDEBD09X

NOTICE

**New and Remanufactured Air Ends are available from
the Gardner Denver Master Distribution Center.**

Order by Part Number and Description. Reference Numbers for your convenience only.



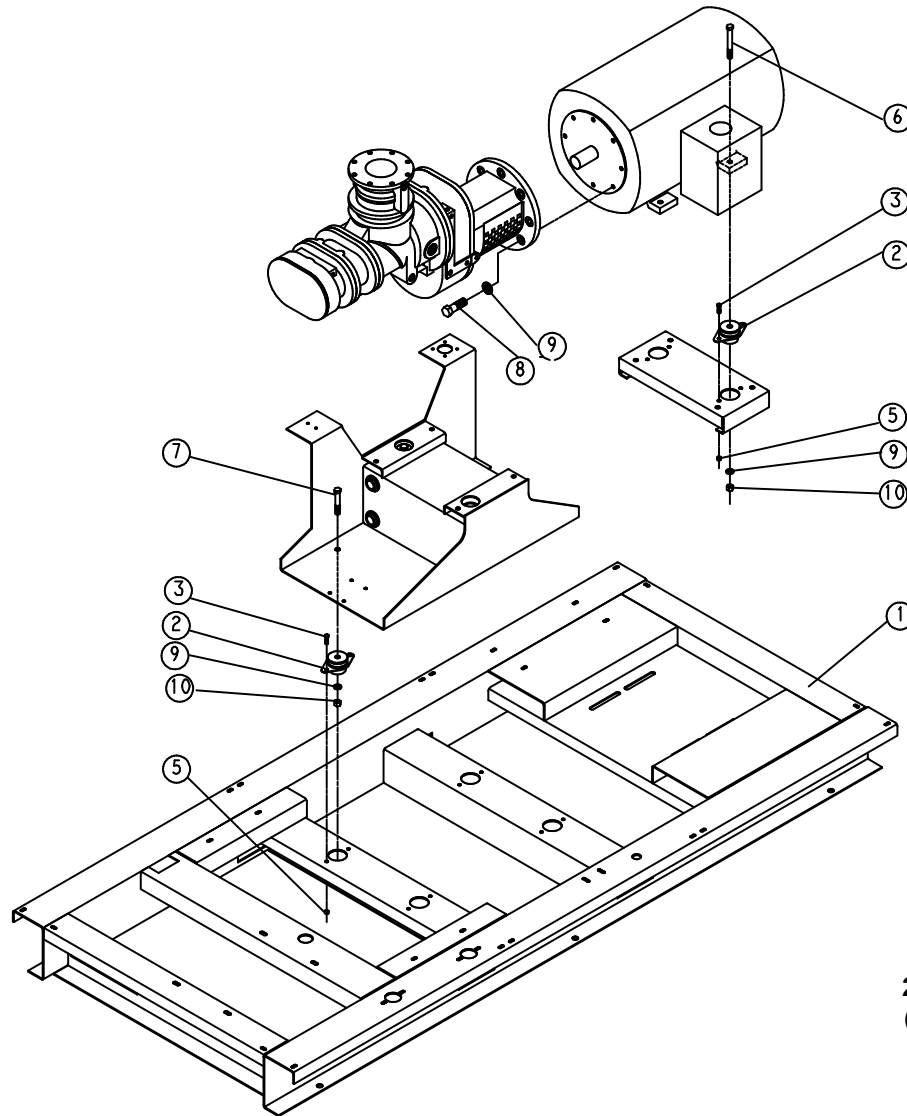
289ECM810
(Ref. Drawing)

AIR FILTER MOUNTING

Ref. No.	Name of Part	Qty.	Part No.
1*	FILTER-AIR	1	5L263
2	BRACKET-FILTER	1	202ECM389
3	SCREW-FLANGED	4	75LM51
4	NUT-FLANGED	4	50AW5
5	HOSE MOLDED	1	2009503
6	CLAMP	2	2009644
7	ADAPTOR-FILTER	1	200EWD070
8	SCREW	8	655EE060
9	LOCKWASHER	8	95B5
10	GASKET-ELIMINATOR	1 Tube	25BC222

* For Repair – Reference Number 1: (1) 2116713 Element

Order by Part Number and Description. Reference Numbers for your convenience only.

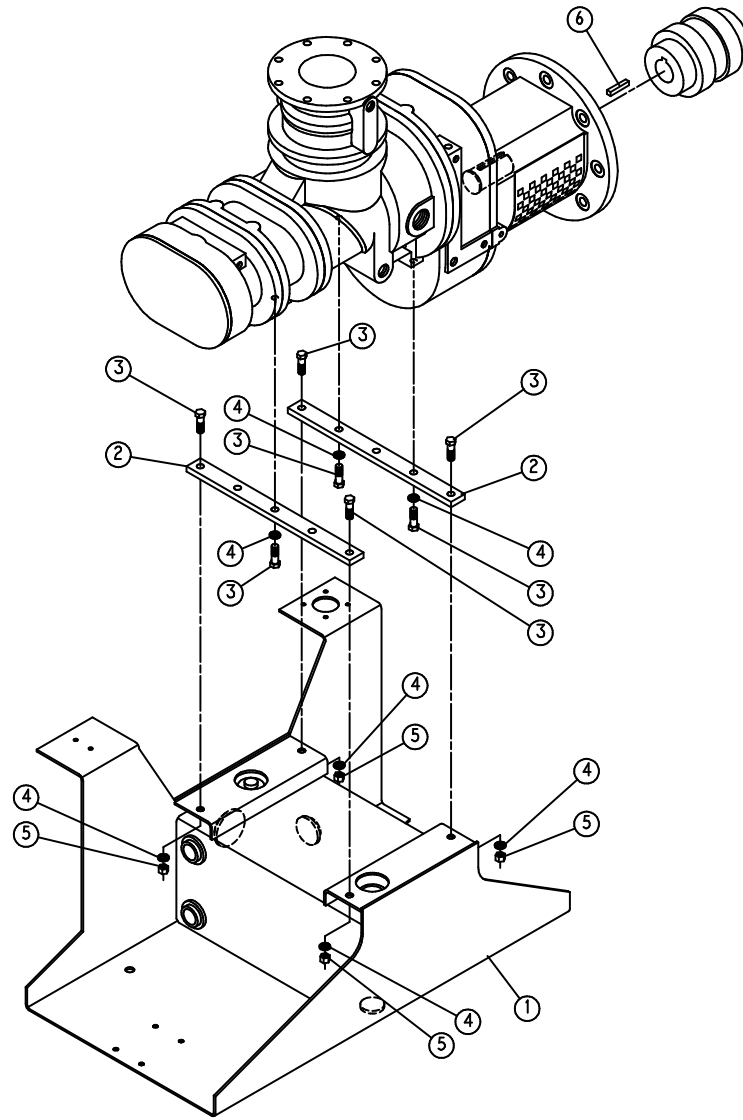


201EWD810-A
(Ref. Drawing)

BASE AND MOUNTING

Ref. No.	Name of Part	Qty.	Part No.
1	BASE	1	201EWD285
2	ISOLATOR-VIBRATION	6	49C47
3	SCREW-FLANGED	12	75K48
5	NUT-FLANGED	12	50AW5
6	SCREW	2	655EF200
7	SCREW	4	655EF160
8	SCREW	8	655EF070
9	LOCKWASHER	14	95B7
10	NUT	6	50B7

Order by Part Number and Description. Reference Numbers for your convenience only.

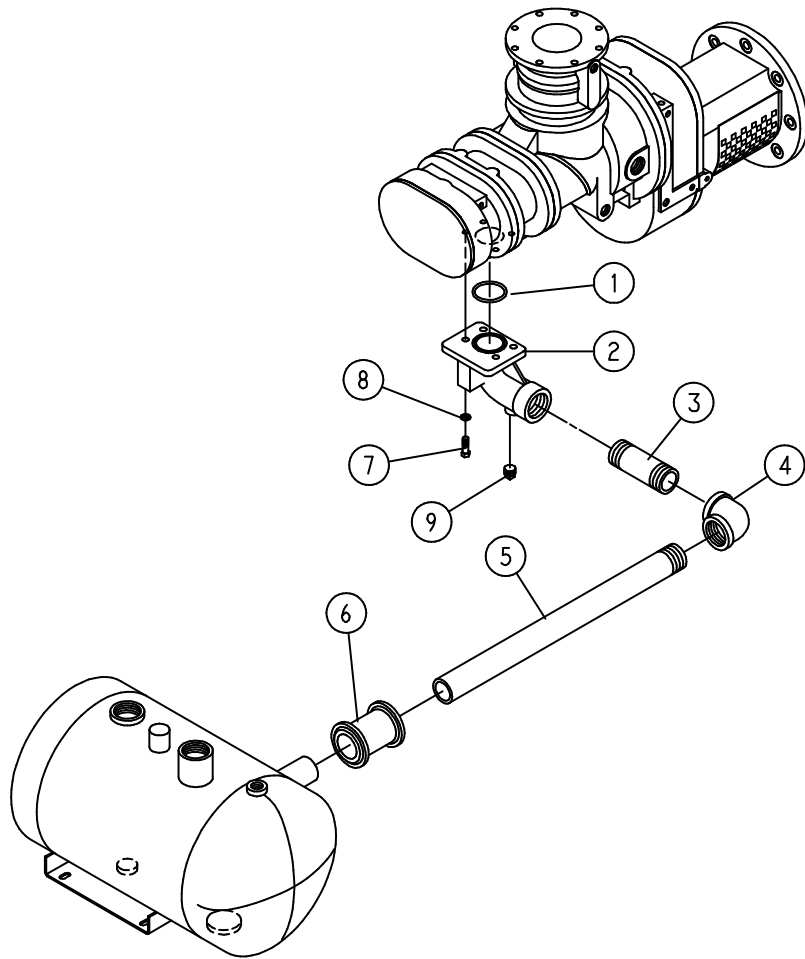


202EWD810
(Ref. Drawing)

COMPRESSOR MOUNTING

Ref. No.	Name of Part	Qty.	Part No.
1	SUPPORT	1	204EWD165
2	SPACER	2	200EWD144
3	SCREW	7	655EE060
4	LOCKWASHER	7	95B5
5	NUT	4	50B5
6	KEY	1	35L35

Order by Part Number and Description. Reference Numbers for your convenience only.



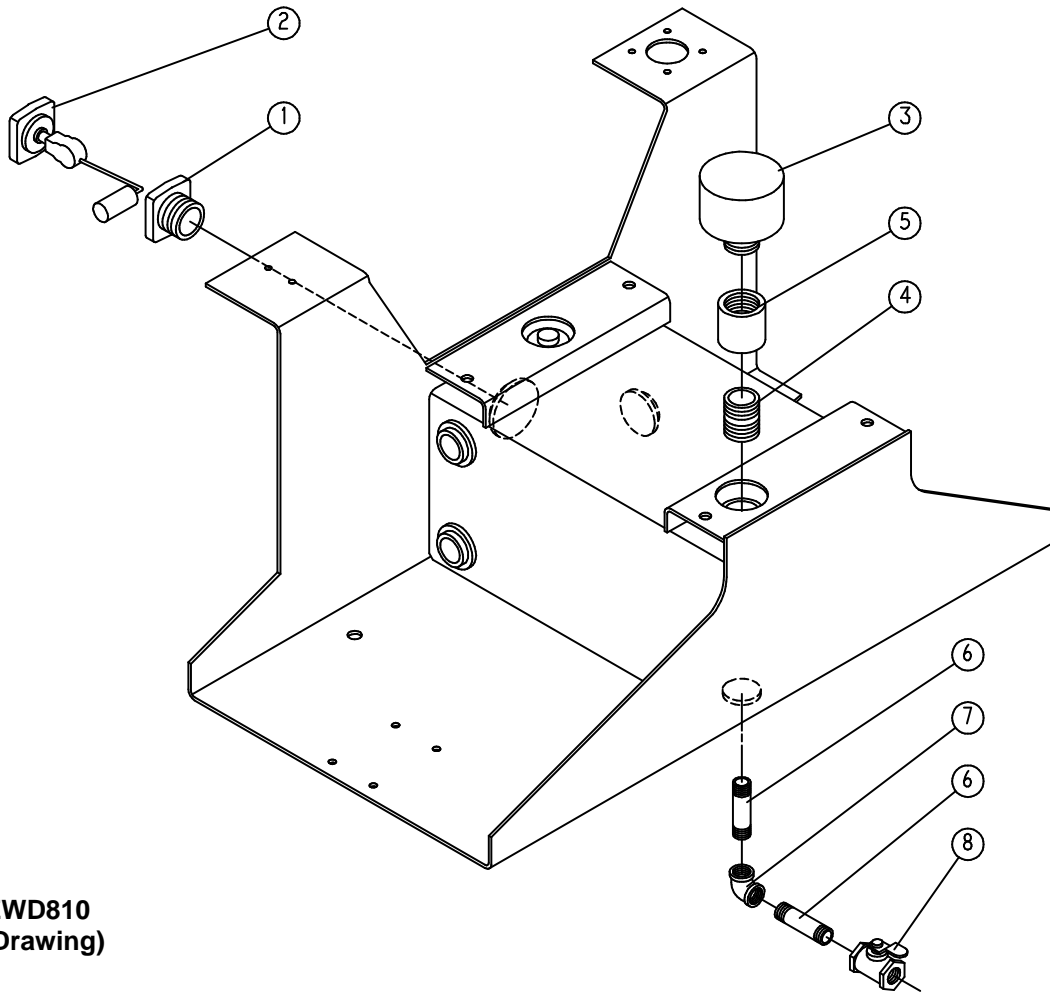
203EWD810-A
(Ref. Drawing)

COMPRESSOR DISCHARGE

Ref. No.	Name of Part	Qty.	Part No.
1	PACKING	1	00907864 0232
2	ELBOW-DISCHARGE	1	01663814 0007
3	NIPPLE	1	64EB576
4	ELBOW	1	64EB255
5	NIPPLE	1	64EB520
6 *	FLEXIBLE COUPLING	1	64EB533
7	SCREW	4	655EE050
8	LOCKWASHER	4	95B5
9	PLUG	1	64AJ4

* For Repair – Reference Number 6: (2) 2010363 – Gaskets

Order by Part Number and Description. Reference Numbers for your convenience only.

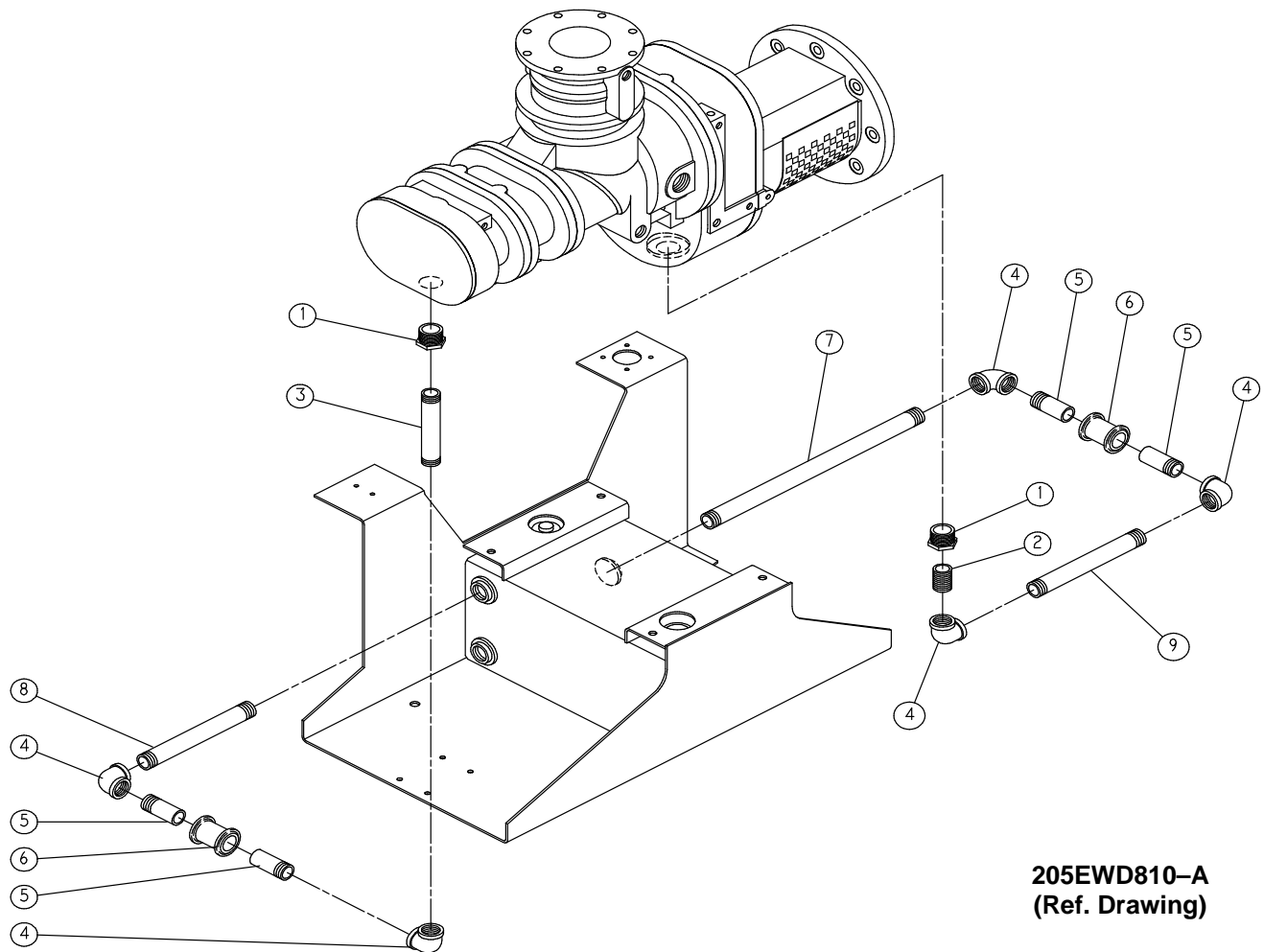


204EWD810
(Ref. Drawing)

OIL LEVEL GAUGE AND FITTINGS

Ref. No.	Name of Part	Qty.	Part No.
1	ADAPTOR-GAUGE	1	200EDE058
2	GAUGE-FLOAT	1	200EDE303
3	BREATHER	1	00526160
4	NIPPLE	1	63J15G
5	COUPLING-PIPE	1	64BK7
6	NIPPLE	2	63F3G
7	ELBOW	1	64C4G
8	VALVE-BALL	1	90AR241

Order by Part Number and Description. Reference Numbers for your convenience only.



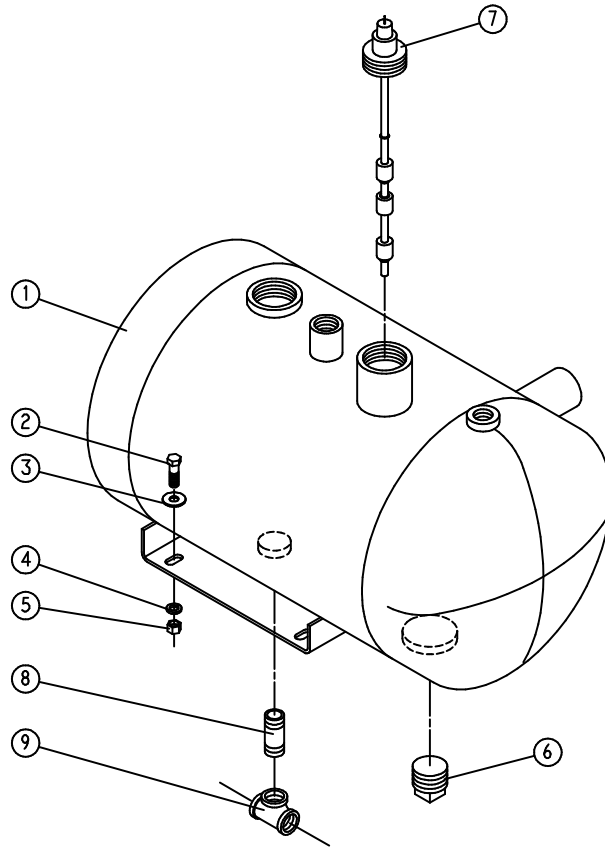
205EWD810-A
(Ref. Drawing)

OIL PIPING

Ref. No.	Name of Part	Qty.	Part No.
1	BUSHING-PIPE	2	64E97
2	NIPPLE	1	63H1G
3	NIPPLE	1	63H18G
4	ELBOW	5	64C6G
5	NIPPLE	4	63AJ16X30G
6 *	COUPLING-FLEX	2	64EB41
7	NIPPLE	1	63H36G
8	NIPPLE	1	63H11G
9	NIPPLE	1	63H6G

* For Repair – Reference Number 6: (2) 2010493 – Gaskets

Order by Part Number and Description. Reference Numbers for your convenience only.



206EWD810-A
(Ref. Drawing)

SEPARATOR MOUNTING

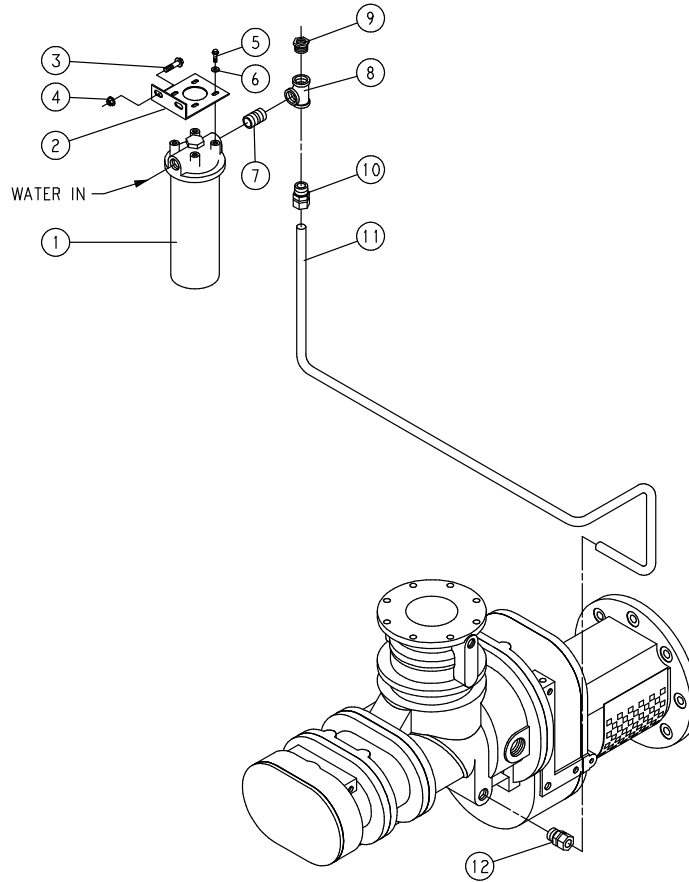
Ref. No.	Name of Part	Qty.	Part No.
1	SEPARATOR-MOISTURE	1	201EWD1443
2	SCREW	4	655EE060
3	WASHER	4	95A5
4	LOCKWASHER	4	95B5
5	NUT	4	50B5
6	PLUG	1	64AJ8
7	SWITCH	1	202EWD375
8	NIPPLE	1	64EB651
9	TEE	1	64EB530
*	PLUG	2	64AJ2
*	ELBOW	1	64EB55

For Repair:

Relief Valve – 100# PSI (Not Shown)	90AR381
Relief Valve – 125# PSI (Not Shown)	90AR382

* Not Shown on Drawing.

Order by Part Number and Description. Reference Numbers for your convenience only.

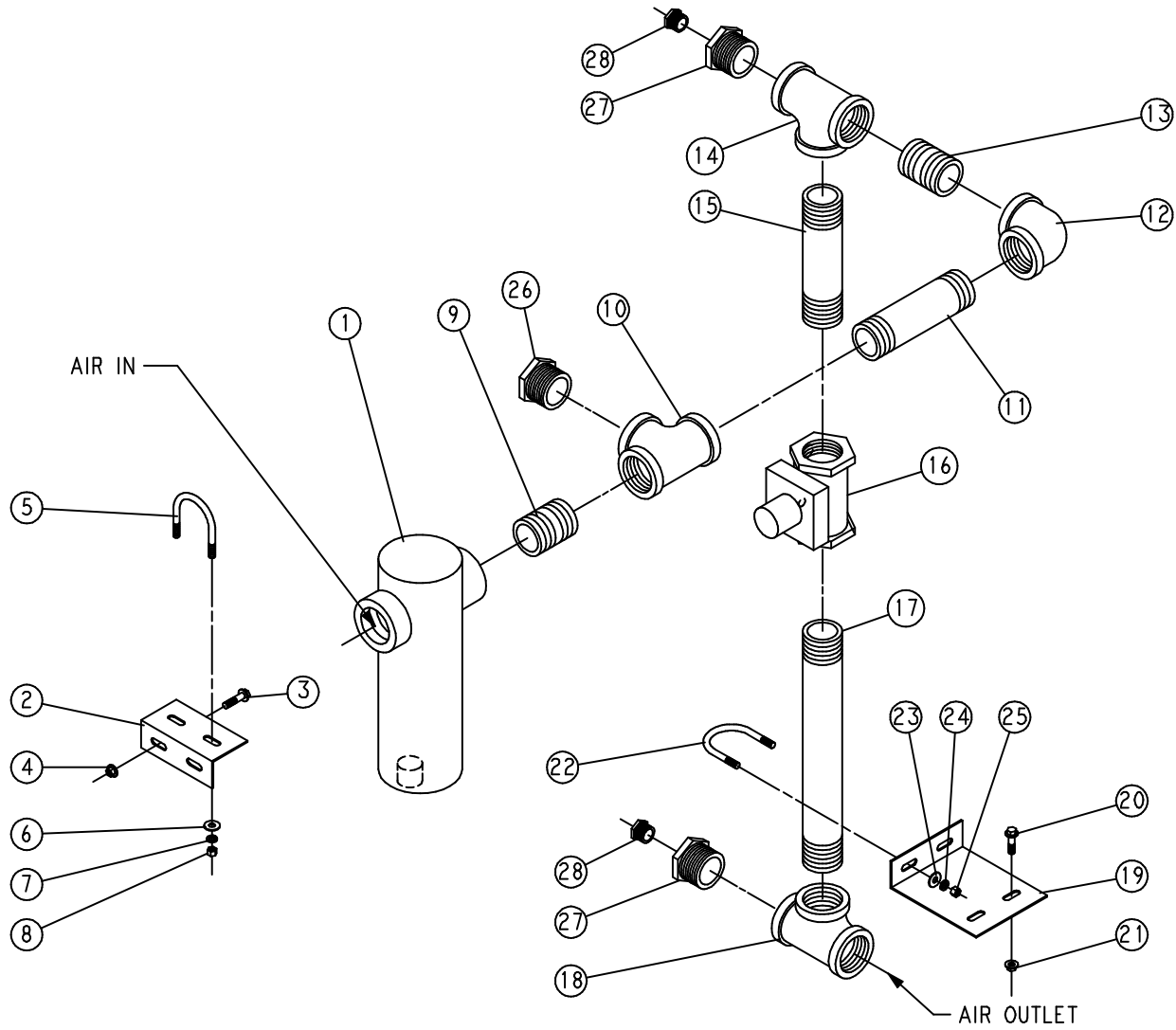


208EWD810-A
(Ref. Drawing)

SYSTEM WATER FILTER TO COMPRESSOR

Ref. No.	Name of Part	Qty.	Part No.
1*	FILTER (WATER)	1	26C34
2	BRACKET (FORMED)	1	201EWD142
3	SCREW-FLANGED	2	75LM51
4	NUT-FLANGED	2	50AW5
5	SCREW-FLANGED	4	75LM47
6	WASHER	4	95A1
7	NIPPLE	1	64EB52
8	TEE	1	64EB530
9	BUSHING-PIPE	1	64E71
10	CONNECTOR-TUBE	1	86N220
11	TUBE-FORMED	1	203EWD857
12	CONNECTOR-TUBE	1	86N220
* For Repair – Reference Number 1:			
	ELEMENT		2117275
	O-RING (SHELL)		2116644
	O-RING (DRAIN AND COVER NUT)		2116645
	O-RING (GASKET, SEAL)		2116646

FINAL DISCHARGE PIPING



209EWD810-B
(Ref. Drawing)

Order by Part Number and Description. Reference Numbers for your convenience only.

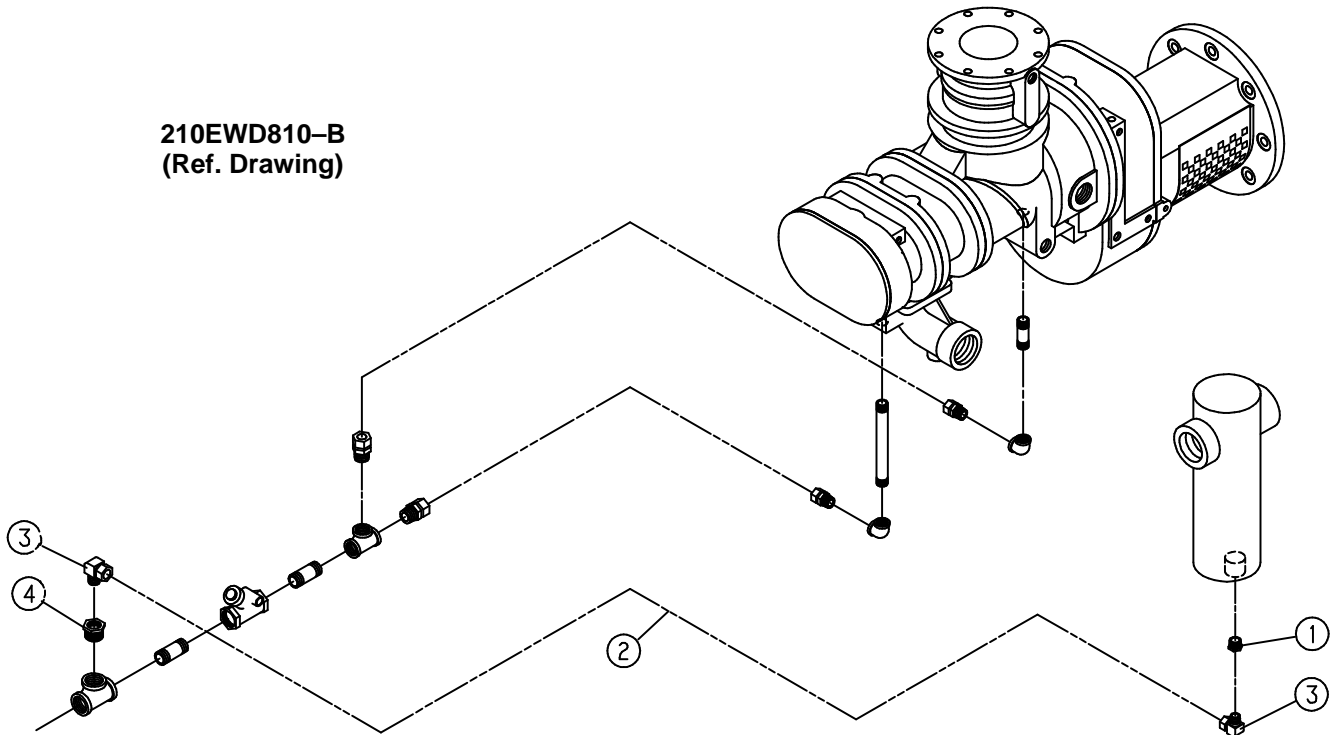
FINAL DISCHARGE PIPING

Ref. No.	Name of Part	Qty.	Part No.	Ref. No.	Name of Part	Qty.	Part No.
1	TRAP	1	83C100	15	NIPPLE	1	64EB317
2	BRACKET (FORMED)	1	202EWD142	16*	VALVE	1	90AR853
3	SCREW-FLANGED	2	75LM51	17	NIPPLE	1	64EB668
4	NUT-FLANGED	2	50AW5	18	TEE	1	64EB256
5	U-BOLT	1	15U18	19	BRACKET (FORMED)	1	203EWD142
6	WASHER	2	95A3	20	SCREW-FLANGED	2	75LM51
7	LOCKWASHER	2	95B3	21	NUT-FLANGED	2	50AW5
8	NUT	2	50B3	22	U-BOLT	1	15U18
9	NIPPLE	1	64EB100	23	WASHER	2	95A3
10	TEE	1	64EB256	24	LOCKWASHER	2	95B3
11	NIPPLE	1	64EB317	25	NUT	2	50B3
12	ELBOW	1	64EB255	26	BUSHING-PIPE	1	64EB521
13	NIPPLE	1	64EB100	27	BUSHING-PIPE	2	64EB521
14	TEE	1	64EB256	28	BUSHING-PIPE	2	64E71

* For Repair – Reference Number 16:
 2116641 – O-RING
 2116642 – O-RING
 2116643 – SEAT

Order by Part Number and Description. Reference Numbers for your convenience only.

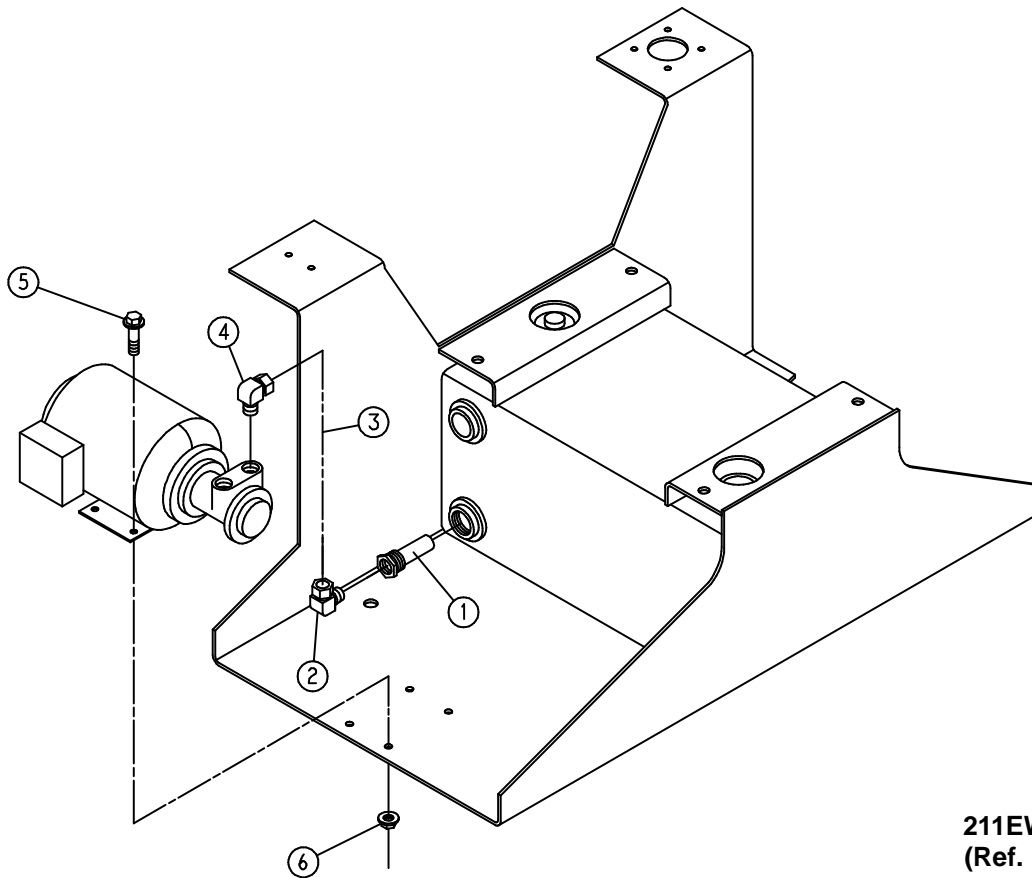
210EWD810-B
(Ref. Drawing)



SEPARATOR DRAIN

Ref. No.	Name of Part	Qty.	Part No.
1	BUSHING-PIPE	1	64E62
2	TUBE	10	85K5
3	ELBOW-TUBE	2	86E199
4	BUSHING-PIPE	1	64E71

Order by Part Number and Description. Reference Numbers for your convenience only.



211EWD810-A
(Ref. Drawing)

TUBING – OIL RESERVOIR TO OIL PUMP *

Ref. No.	Name of Part	Qty.	Part No.
1	STRAINER OIL	1	00543298 0011
2	ELBOW-TUBE	1	86E70
3	TUBE	2 ft.	85D8B
4	ELBOW-TUBE	1	86E70
5	SCREW-FLANGED	4	75LM50
6	NUT-FLANGED	4	50AW4

* See page 68 for Oil Pump Part Numbers.

Order by Part Number and Description. Reference Numbers for your convenience only.

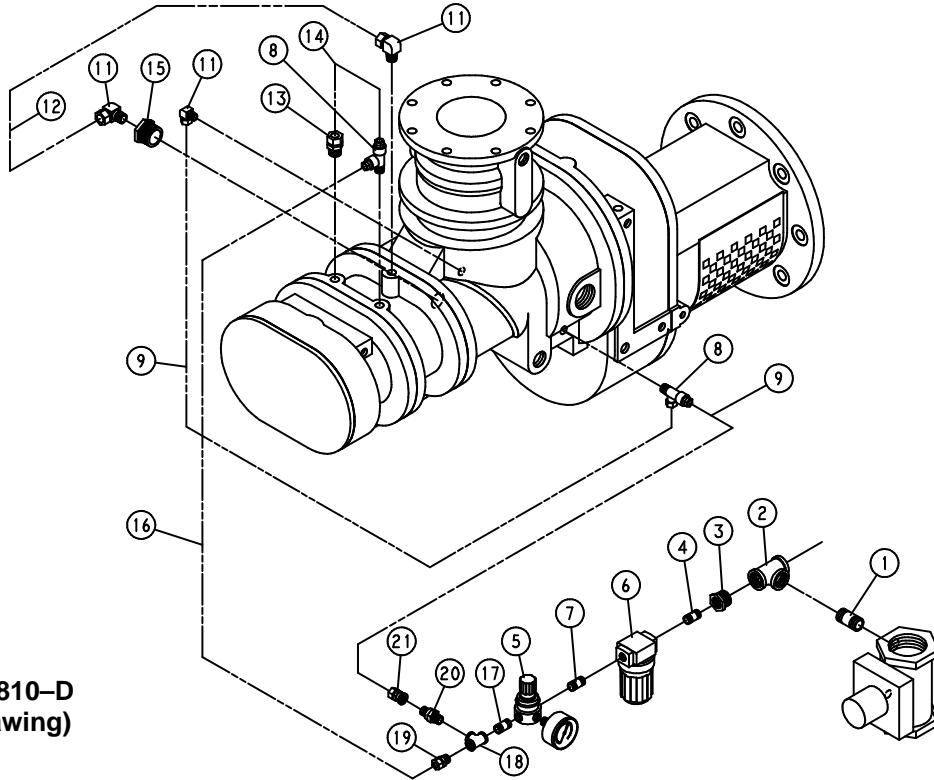
TUBING – OIL PUMP TO COMPRESSOR **

Ref. No.	Name of Part	Qty.	Part No.
1	ELBOW-TUBE.	1	86E70
2	TUBE	3 ft.	85D8B
3	CONNECTOR-TUBE	1	86E19
4	TEE-PIPE	1	64P14G
5	NIPPLE	1	63G1G
6*	FILTER-OIL	1	200EBE389
7	SCREW-FLANGED	2	75LM54
8	NIPPLE-PIPE	1	63G1G
9	CROSS-PIPE	1	64K8G
10	CONNECTOR-TUBE	1	86E19
11	TUBE	3 ft.	85D8B
12	TEE-PIPE	1	64G6G
13	TUBE	3 ft.	85D8B
14	CONNECTOR-TUBE	1	86E16
15	PLUG.	1	64A24
16	BUSHING-PIPE	1	64E3
17	NIPPLE	1	63G1G
18	BUSHING-PIPE	1	2009296
19	CONNECTOR-TUBE	1	86E18
20	ELBOW-TUBE	1	86E70

* For Repair – Reference Number 6: 2116128 – Element

** See page 68 for Oil Pump Part Numbers.

Order by Part Number and Description. Reference Numbers for your convenience only.



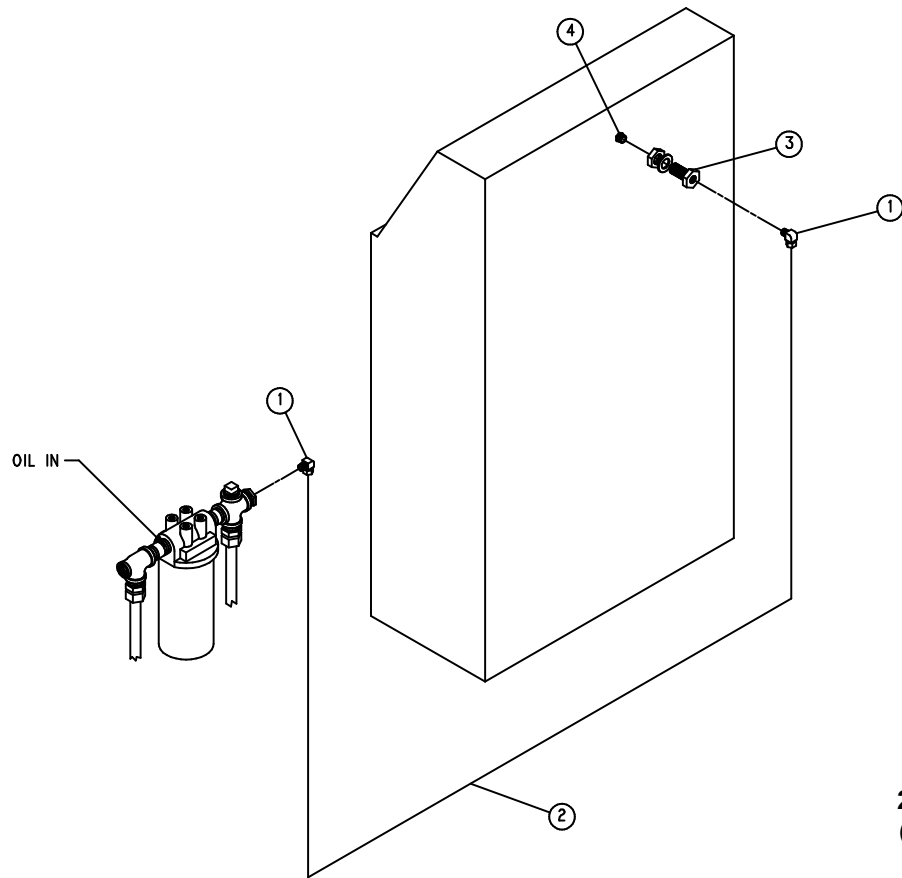
217EWD810-D
(Ref. Drawing)

SEAL PURGE AIR & BUFFERING WATER

Ref. No.	Name of Part	Qty.	Part No.
1	NIPPLE	1	63AP36
2	TEE	1	64EB429
3	BUSHING-PIPE	1	64E62
4	NIPPLE	1	64EB525
5 *	REGULATOR	1	88H139
6	FILTER-LINE	1	5L110
7	NIPPLE	1	64EB525
8	TEE-TUBE	1	2009284
9	TUBE	4	85K3
11	ELBOW-TUBE	3	86E60
12	TUBE	2	85K3
13	CONNECTOR-TUBE	1	86E4
14	TUBE	1	85K3
15	BUSHING-PIPE	1	64E71
16	TUBE	6	85K3
17	NIPPLE	1	64EB525
18	TEE-PIPE	1	64G15
19	CONNECTOR-TUBE	1	86E4
20	VALVE-CHECK	1	90AR261
21	CONNECTOR-TUBE	1	86E28

* For Repair – Reference Number 5: 2116732 – Pressure Gauge

Order by Part Number and Description. Reference Numbers for your convenience only.

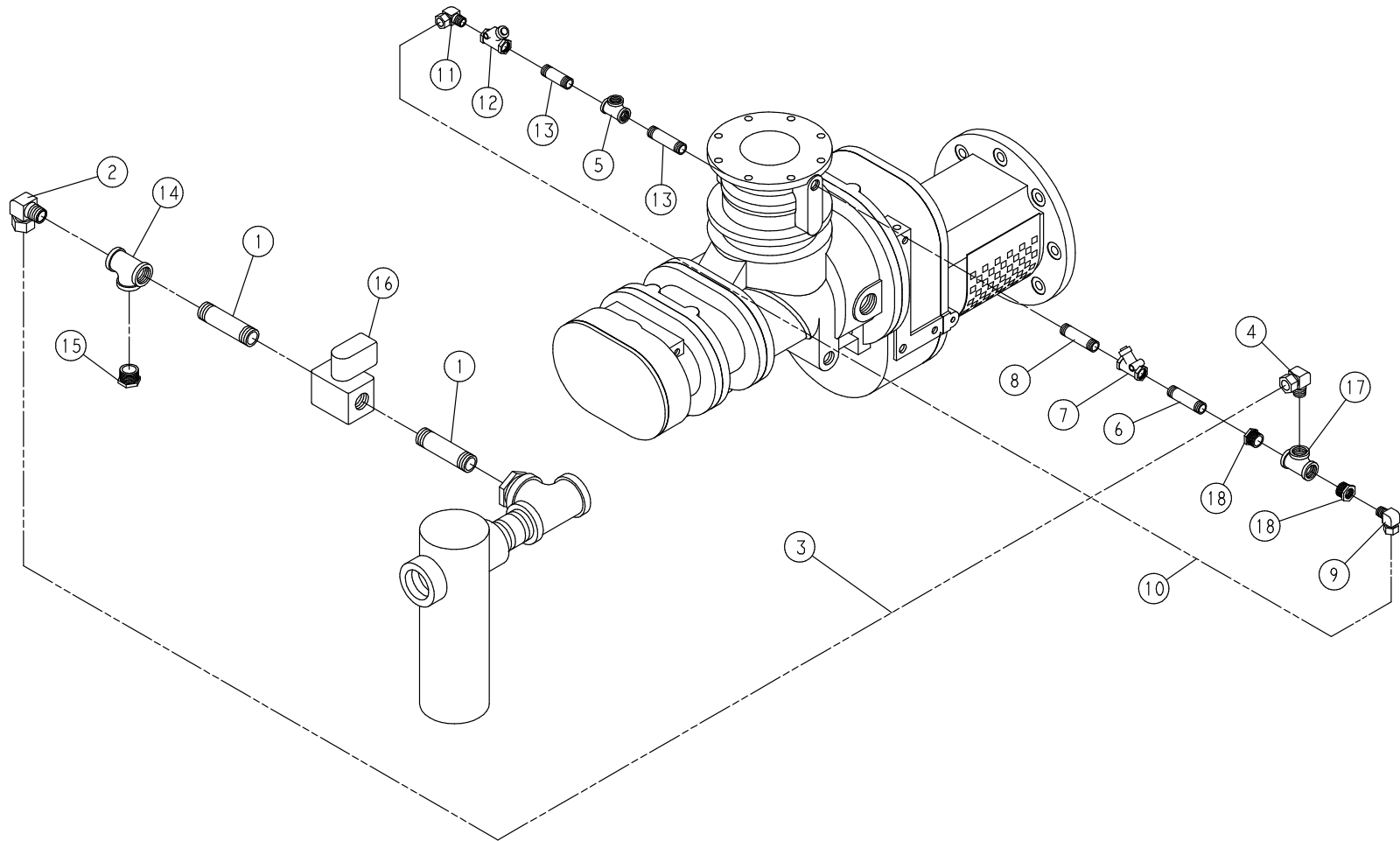


225EWD810-A
(Ref. Drawing)

OIL PRESSURE TRANSDUCER LINE

Ref. No.	Name of Part	Qty.	Part No.
1	ELBOW	2	86E64
2	TUBE	6 ft.	85K5
3	COUPLING-PIPE	1	64EB368
4	BUSHING-PIPE	1	64E28

BLOWDOWN PIPING

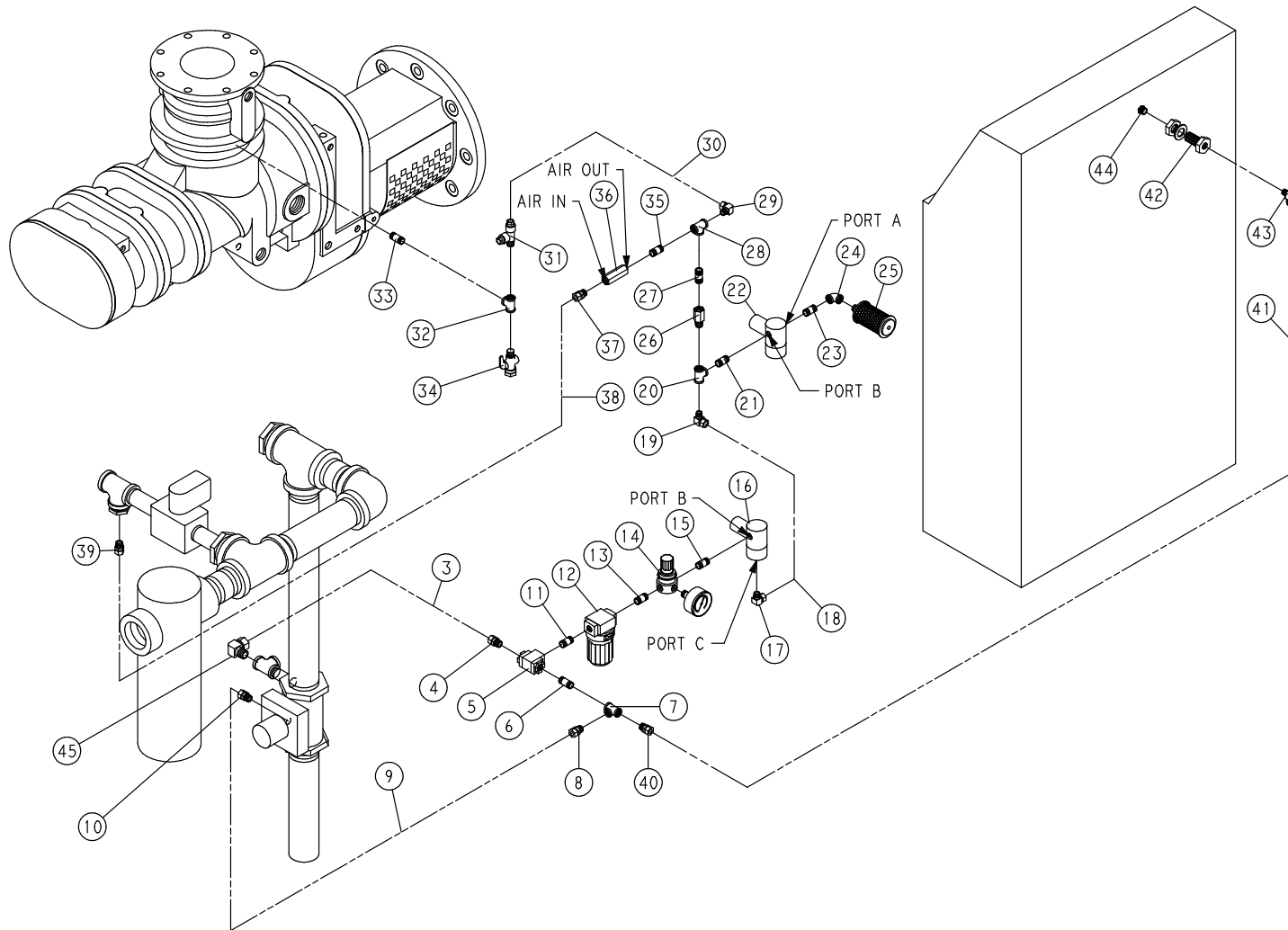


Order by Part Number and Description. Reference Numbers for your convenience only.

BLOWDOWN PIPING

Ref. No.	Name of Part	Qty.	Part No.
1	NIPPLE	2	64EB52
2	ELBOW-TUBE	1	86E73
3	TUBE	4 ft.	85D12D
4	ELBOW-TUBE	1	86E73
5	TEE	1	64EB429
6	NIPPLE	1	63Z20
7	VALVE-CHECK	1	90J121
8	NIPPLE	1	63Z20
9	ELBOW-TUBE	1	86E70
10	TUBE	4 ft.	85D8B
11	ELBOW-TUBE	1	86E70
12	VALVE-CHECK	1	90J121
13	NIPPLE	2	63Z20
14	TEE	1	64EB530
15	BUSHING-PIPE	1	64E71
16	VALVE-SOLENOID	1	91B95
17	TEE	1	64EB530
18	BUSHING-PIPE (BRASS)	2	64EB524

CONTROL PIPING



Order by Part Number and Description. Reference Numbers for your convenience only.

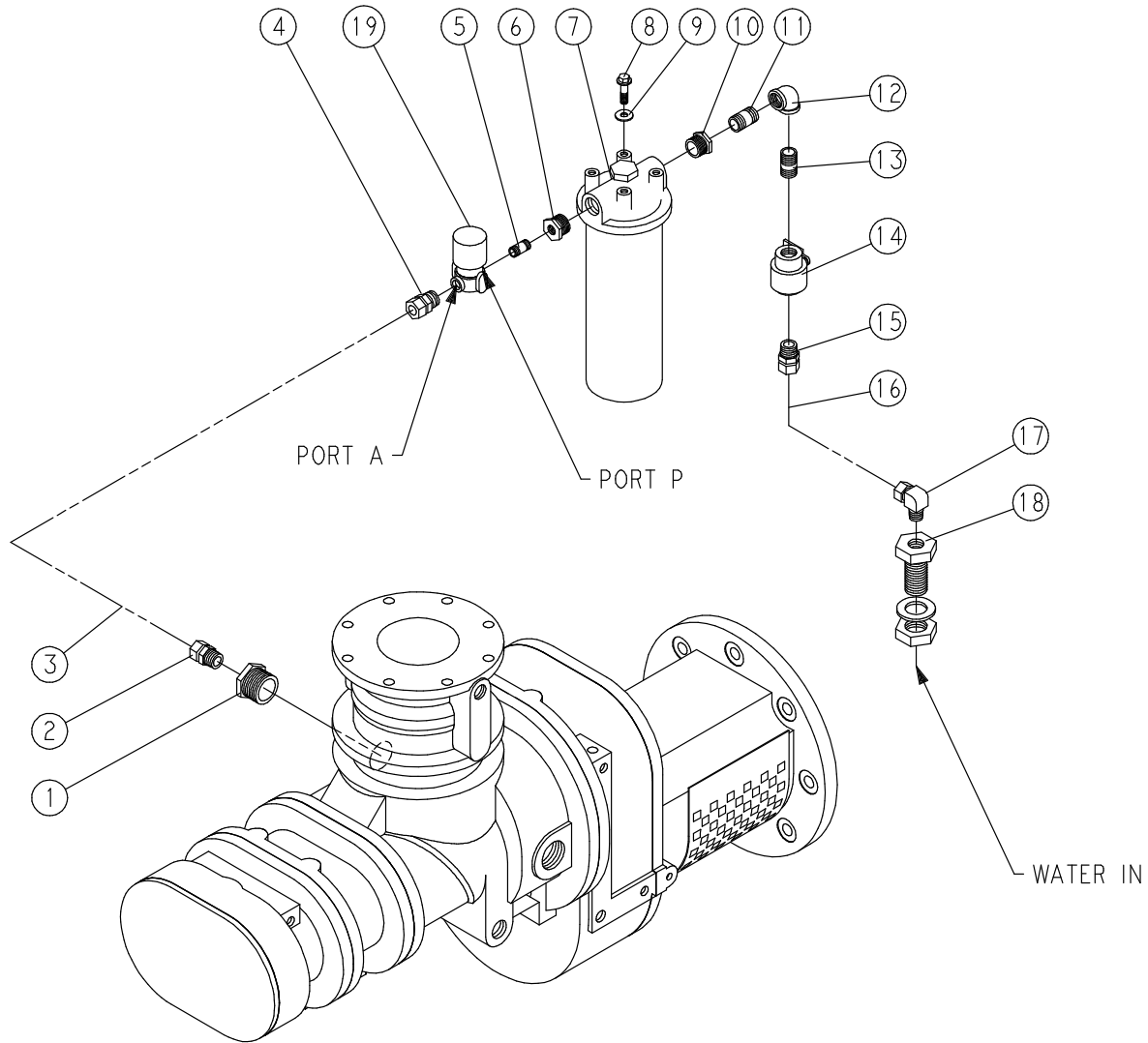
CONTROL PIPING

Ref. No.	Name of Part	Qty.	Part No.	Ref. No.	Name of Part	Qty.	Part No.
3	TUBE	6 ft.	85K5	24	ELBOW-PIPE	1	64C37
4	CONNECTOR-TUBE	1	86E9	25	MUFFLER	1	43E4
5	VALVE-CONTROL	1	90AR107	26	ORIFICE	1	2011768
6	NIPPLE	1	64EB525	27	NIPPLE	1	64EB525
7	TEE-PIPE	1	64G15	28	TEE-PIPE	1	64G15
8	CONNECTOR-TUBE	1	86E9	29	ELBOW	1	86E64
9	TUBE	6 ft.	85K5	30	TUBE	6 ft.	85K5
10	CONNECTOR-TUBE	1	86E9	31	TEE	1	86E136
11	NIPPLE	1	64EB525	32	TEE-PIPE	1	64G15
12 *	FILTER-LINE	1	5L110	33	NIPPLE	1	64EB741
13	NIPPLE	1	64EB525	34	COCK	1	90A19
				35	NIPPLE	1	64EB525
14 **	REGULATOR	1	88H139	36	VALVE-CHECK	1	90J173
15	CHECK VALVE	1	90AR261	37	CONNECTOR-TUBE	1	86E9
16	VALVE-SOLENOID	1	91B147	38	TUBE	6 ft.	85K5
17	ELBOW	1	86E64	39	ELBOW	1	86E64
18	TUBE	2 ft.	85K5	40	CONNECTOR-TUBE	1	86E9
19	ELBOW	1	86E64	41	TUBE	6 ft.	85K5
20	TEE-PIPE	1	64G15	42	COUPLING-PIPE	1	64EB368
21	NIPPLE	1	64EB525	43	ELBOW	1	86E64
22	VALVE-SOLENOID	1	91B148	44	BUSHING-PIPE	1	64E28
23	NIPPLE	1	64EB515	45	ELBOW-TUBE	1	86E199

For Repair:

- * Reference Number 12 – 2109620 – Element
2116000 – O-Ring & Gasket
- ** Reference Number 14 – 2116732 – Pressure Gauge

WATER FILTER FITTINGS



231EWD810-A
(Ref. Drawing)

Order by Part Number and Description. Reference Numbers for your convenience only.

WATER FILTER FITTINGS

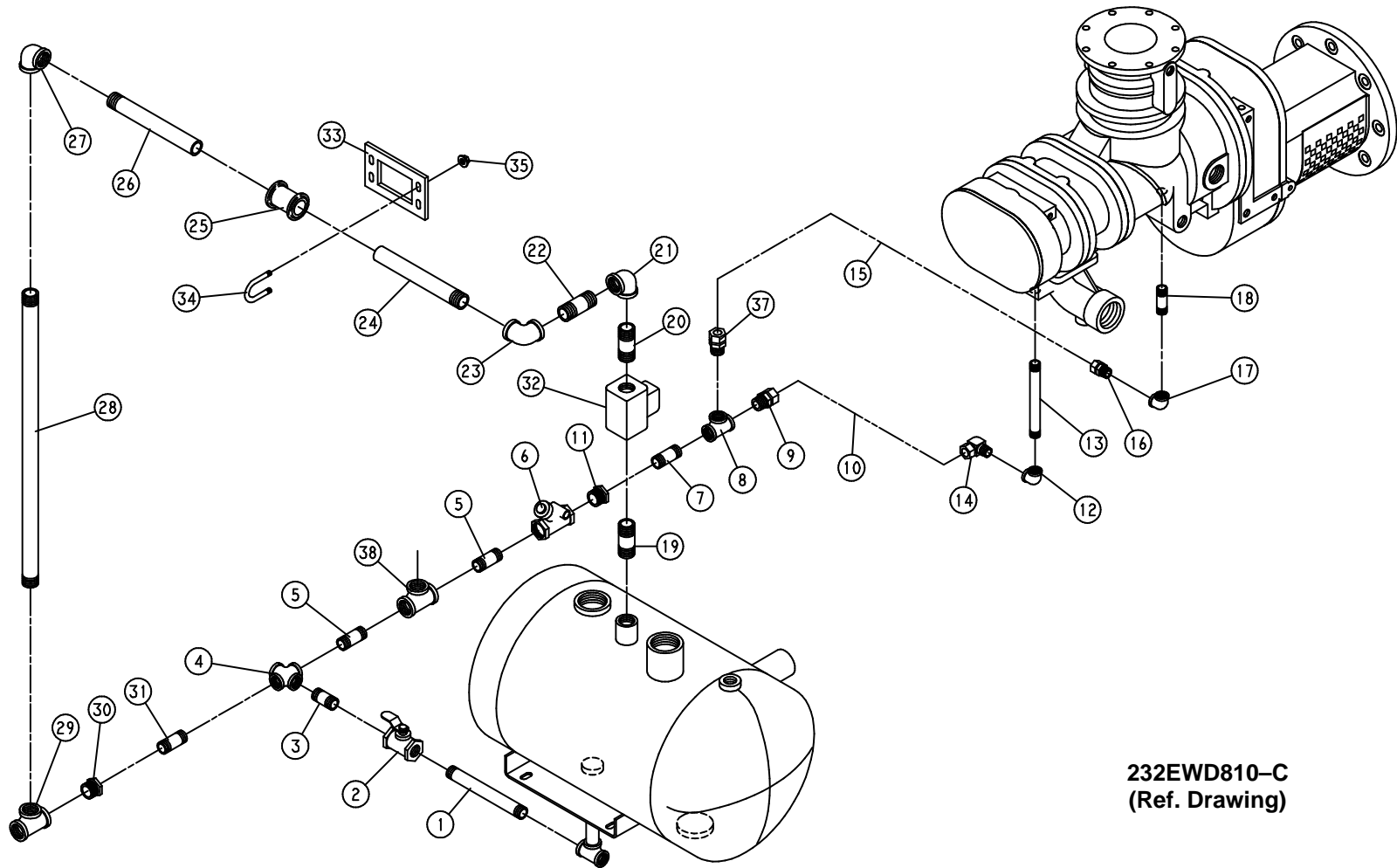
Ref. No.	Name of Part	Qty.	Part No.
1	BUSHING-PIPE	1	64EB522
2	CONNECTOR-TUBE	1	86E18
3	TUBE	1 ft.	85D8B
4	CONNECTOR-TUBE	1	86E16
5	NIPPLE	1	64EB525
6	BUSHING-PIPE	1	64E71
7 *	FILTER (WATER)	1	26C34
8	SCREW-FLANGED.	4	75LM47
9	WASHER-PLAIN	4	95A1
10	BUSHING-PIPE (BRASS)	1	64EB524
11	NIPPLE	1	63AP35
12	ELBOW	1	64EB428
13	NIPPLE	1	63AP35
14	VALVE-BALL	1	90AR241
15	CONNECTOR-TUBE	1	86E18
16	TUBE	1 ft.	85D8B
17	ELBOW-TUBE	1	86E70
18	COUPLING-PIPE	1	64EB613
19	VALVE-SOLENOID	1	91B110
**	ELEMENT	1	2116559

* For Repair – Reference Number 7:

- 2116559 – Element
- 2116644 – O-Ring (Shell)
- 2116645 – O-Ring (Drain & Cover Nut)
- 2116646 – O-Ring (Gasket, Seal)

** Not Shown on Drawing

SEPARATOR DRAIN PIPING



232EWD810-C
(Ref. Drawing)

Order by Part Number and Description. Reference Numbers for your convenience only.

SEPARATOR DRAIN PIPING

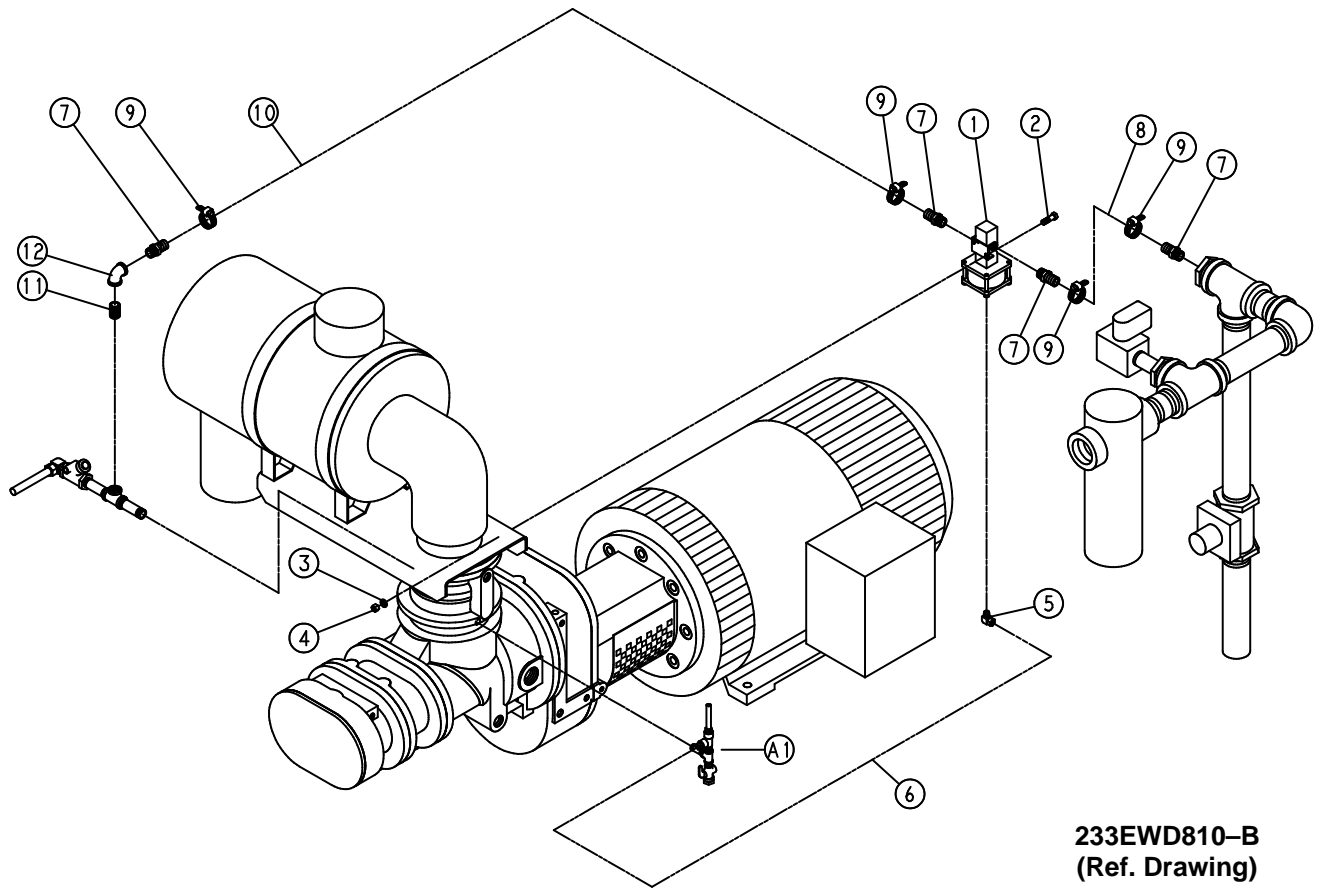
Ref. No.	Name of Part	Qty.	Part No.	Ref. No.	Name of Part	Qty.	Part No.
1	NIPPLE	1	64EB138	20	NIPPLE	1	64EB514
2	VALVE-BALL	1	90AR60	21	ELBOW	1	64EB526
3	NIPPLE	1	64EB175	22	NIPPLE	1	64EB515
4	CROSS	1	64EB666	23	ELBOW	1	64EB526
5	NIPPLE	2	64EB52	24	NIPPLE	1	64EB736
6	VALVE-CHECK	1	90J117	25 *	COUPLING-FLEXIBLE	1	64EB707
7	NIPPLE	1	63Z20	26	NIPPLE	1	64EB736
8	TEE	1	64EB429	27	ELBOW	1	64EB526
9	CONNECTOR-TUBE	1	86M13	28	NIPPLE	1	64EB669
10	TUBE	4	85D12D	29	TEE	1	64EB529
11	BUSHING-PIPE (BRASS)	1	64EB524	30	BUSHING-PIPE	1	64EB54
12	ELBOW	1	64EB428	31	NIPPLE	1	64EB175
13	NIPPLE	1	63AP51	32 ***	VALVE-SOLENOID	1	91B109
14	ELBOW	1	86M22	33	BRACKET-PIPE	1	202EWD108
15	TUBE	4	85D8B	34	U-BOLT	2	15U40
16	CONNECTOR-TUBE	1	86E18	35	NUT-FLANGED	4	50AW5
17	ELBOW	1	64EB428	37	CONNECTOR-TUBE	1	86E18
18	NIPPLE	1	63AP50	38	TEE	1	64EB530
19	NIPPLE	1	63Z47	**	UNION-TUBE	2	86E52

* For Repair – Reference Number 25 – (2) 2010493 – Gaskets

** Not shown on drawing.

*** For Repair – Reference Number 32 – (1) 2117282 Repair Kit

Order by Part Number and Description. Reference Numbers for your convenience only.

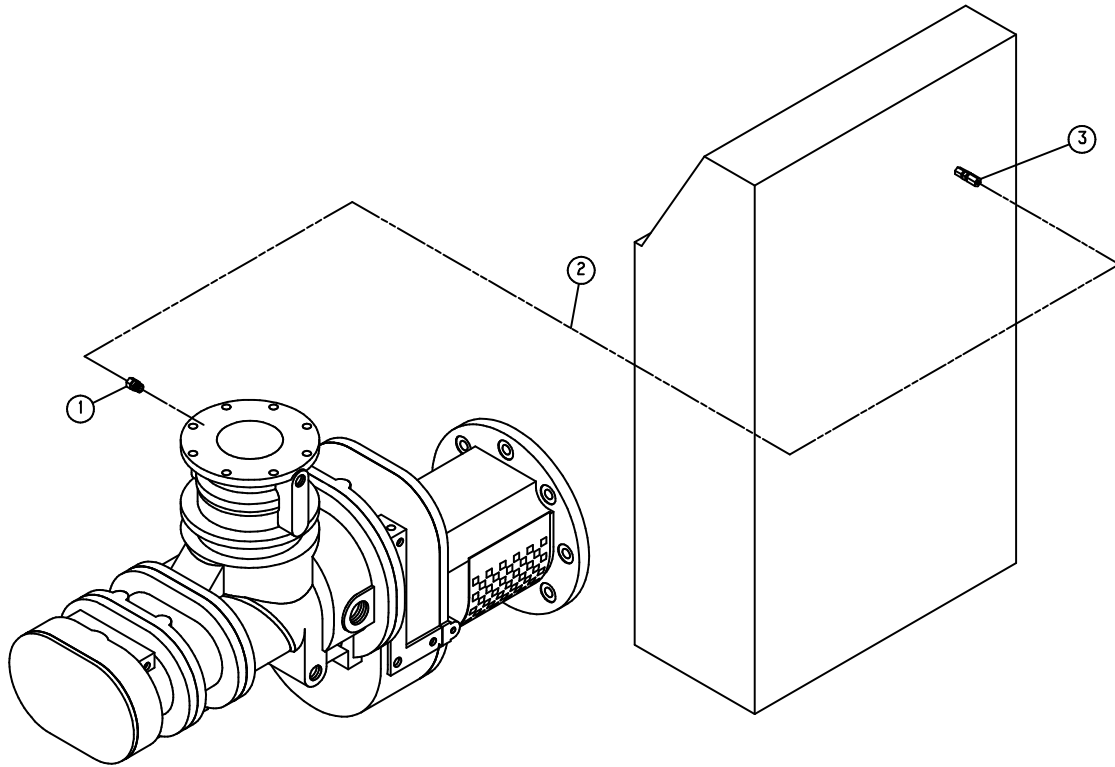


PURGE VALVE PIPING

Ref. No.	Name of Part	Qty.	Part No.
1 *	VALVE-CONTROL	1	90AR992
2	SCREW	2	655EC030
3	WASHER	2	95B1
4	NUT	2	50B1
5	ELBOW	1	86E64
6	TUBE	6	85K5
7	NIPPLE-HOSE	4	29C26
8	HOSE-OIL	2	R14E
9	CLAMP-HOSE	1	29B35
10	HOSE-OIL	2	R14E
11	NIPPLE	1	63AP35
12	ELBOW	1	64EB428

* For Repair – Reference Number 1: 2109652 – Valve Repair Kit (With Diaphragm)

Order by Part Number and Description. Reference Numbers for your convenience only.

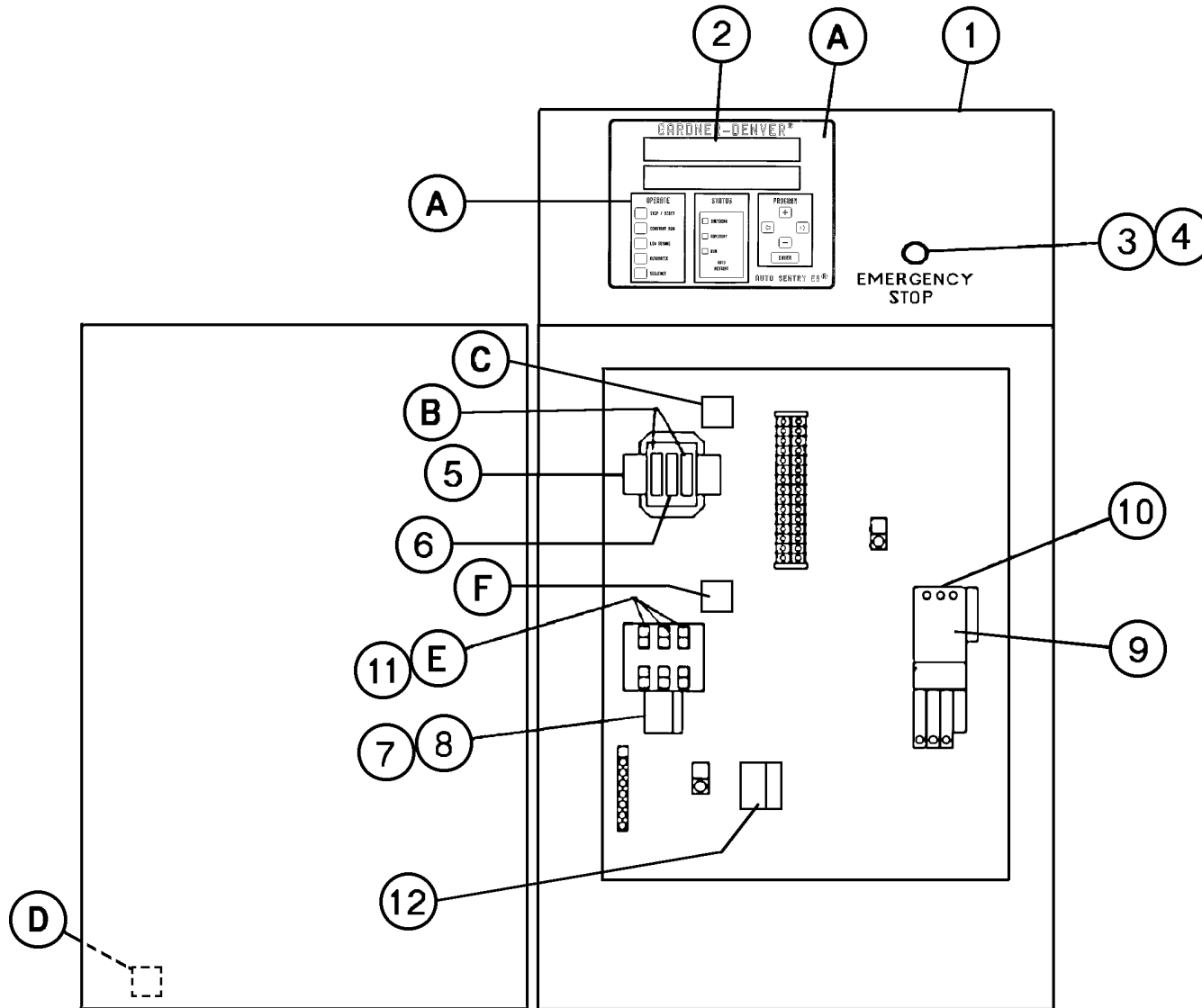


226EWD810
(Ref. Drawing)

AIR FILTER VACUUM SWITCH TUBING

Ref. No.	Name of Part	Qty.	Part No.
1	CONNECTOR-TUBE	1	86E4
2	TUBE	4 ft.	85K5
3	CONNECTOR-TUBE	1	86N218

CONTROLLER ASSEMBLY – FULL VOLTAGE STARTERS



Refer to pages 39 through 41 for Part Number References.

**CONTROLLER ASSEMBLY – FULL VOLTAGE STARTERS
40 H.P. UNITS**

	Qty.	200V	230V	460V	575V	380V
ASSEMBLED PANEL: NEMA 12	1	215EWD466	213EWD466	212EWD466	220EWD466	218EWD466
ASSEMBLED PANEL: NEMA 4	1	225EWD466	223EWD466	222EWD466	230EWD466	228EWD466
1 ELECTRICAL CONTROL ENCLOSURE	1	200EAP179	200EAP179	200EAP179	200EAP179	200EAP179
2 ELECTRICAL CONTROL ASSEMBLY	1	203EWD1173	203EWD1173	203EWD1173	203EWD1173	203EWD1173
3 OPERATOR, 22mm PUSH-PULL E-STOP	1	24CA2907	24CA2907	24CA2907	24CA2907	24CA2907
4 CONTACT BLOCK E22B1 SPNC	1	24CA2908	24CA2908	24CA2908	24CA2908	24CA2908
5 CONTROL TRANSFORMER	1	2116371	2116372	2116372	2116373	2116864
6 FUSE, TRANSFORMER SECONDARY	1	24CA3728	24CA3728	24CA3728	24CA3728	24CA3725
7 STARTER, FAN MOTOR	1	24CA4134	24CA4134	24CA4134	24CA4134	24CA4134
8 REPLACEMENT COIL FOR ITEM 7	1	2115950	2115950	2115950	2115950	2115950
9 STARTER, MAIN MOTOR	1	24CA3255	24CA3255	24CA4142	24CA4142	24CA3255
10 REPLACEMENT COIL FOR ITEM 9	1	2116555	2116555	2116124	2116124	2116555
11 FUSE HOLDER	1	24CA4098	24CA4098	24CA4098	24CA4098	24CA4098
12 OVERLOAD RELAY	1	24CA4086	24CA4086	24CA4086	24CA4086	24CA4086
A FUSE, CONTROL BOARD	2	24CA2932	24CA2932	24CA2932	24CA2932	24CA2932
B FUSE, TRANSFORMER PRIMARY	2	24CA2786	24CA2786	24CA2783	24CA3722	24CA3723
C DECAL, PRIMARY FUSE	1	265AUX077	265AUX077	262AUX077	294AUX077	295AUX077
D DECAL, VOLTAGE	1	69F50	69F51	69F52	69F60	69F55
E FUSE, FAN MOTOR, AIR COOLED	3	24CA2478	24CA2478	24CA2477	24CA2477	24CA2478
F DECAL, FAN FUSES, AIR COOLED	1	244AUX077	244AUX077	243AUX077	243AUX077	244AUX077
E FUSE, FAN MOTOR, WATER COOLED	3	24CA2744	24CA2744	24CA2476	24CA2476	24CA2476
F DECAL, FAN FUSES, WATER COOLED	1	257AUX077	257AUX077	242AUX077	242AUX077	242AUX077

Refer to page 38 for illustration.

**CONTROLLER ASSEMBLY – FULL VOLTAGE STARTERS
50 H.P. UNITS**

	Qty.	200V	230V	460V	575V	380V
ASSEMBLED PANEL: NEMA 12	1	216EWD466	214EWD466	213EWD466	220EWD466	218EWD466
ASSEMBLED PANEL: NEMA 4	1	226EWD466	224EWD466	223EWD466	230EWD466	228EWD466
1 ELECTRICAL CONTROL ENCLOSURE	1	200EAP179	200EAP179	200EAP179	200EAP179	200EAP179
2 ELECTRICAL CONTROL ASSEMBLY	1	203EWD1173	203EWD1173	203EWD1173	203EWD1173	203EWD1173
3 OPERATOR, 22mm PUSH-PULL E-STOP	1	24CA2907	24CA2907	24CA2907	24CA2907	24CA2907
4 CONTACT BLOCK E22B1 SPNC	1	24CA2908	24CA2908	24CA2908	24CA2908	24CA2908
5 CONTROL TRANSFORMER	1	2116371	2116372	2116372	2116373	2116864
6 FUSE, TRANSFORMER SECONDARY	1	24CA3728	24CA3728	24CA3728	24CA3728	24CA3725
7 STARTER, FAN MOTOR	1	24CA4134	24CA4134	24CA4134	24CA4134	24CA4134
8 REPLACEMENT COIL FOR ITEM 7	1	2115950	2115950	2115950	2115950	2115950
9 STARTER, MAIN MOTOR	1	24CA3490	24CA3490	24CA3255	24CA4142	24CA3255
10 REPLACEMENT COIL FOR ITEM 9	1	2115952	2115952	2116555	2116124	2116555
11 FUSE HOLDER	1	24CA4098	24CA4098	24CA4098	24CA4098	24CA4098
12 OVERLOAD RELAY	1	24CA4086	24CA4086	24CA4086	24CA4086	24CA4086
A FUSE, CONTROL BOARD	2	24CA2932	24CA2932	24CA2932	24CA2932	24CA2932
B FUSE, TRANSFORMER PRIMARY	2	24CA2786	24CA2786	24CA2783	24CA3722	24CA3723
C DECAL, PRIMARY FUSE	1	265AUX077	265AUX077	262AUX077	294AUX077	295AUX077
D DECAL, VOLTAGE	1	69F50	69F51	69F52	69F60	69F55
E FUSE, FAN MOTOR, AIR COOLED	3	24CA2478	24CA2478	24CA2477	24CA2477	24CA2478
F DECAL, FAN FUSES, AIR COOLED	1	244AUX077	244AUX077	243AUX077	243AUX077	244AUX077
E FUSE, FAN MOTOR, WATER COOLED	3	24CA2744	24CA2744	24CA2476	24CA2476	24CA2476
F DECAL, FAN FUSES, WATER COOLED	1	257AUX077	257AUX077	242AUX077	242AUX077	242AUX077

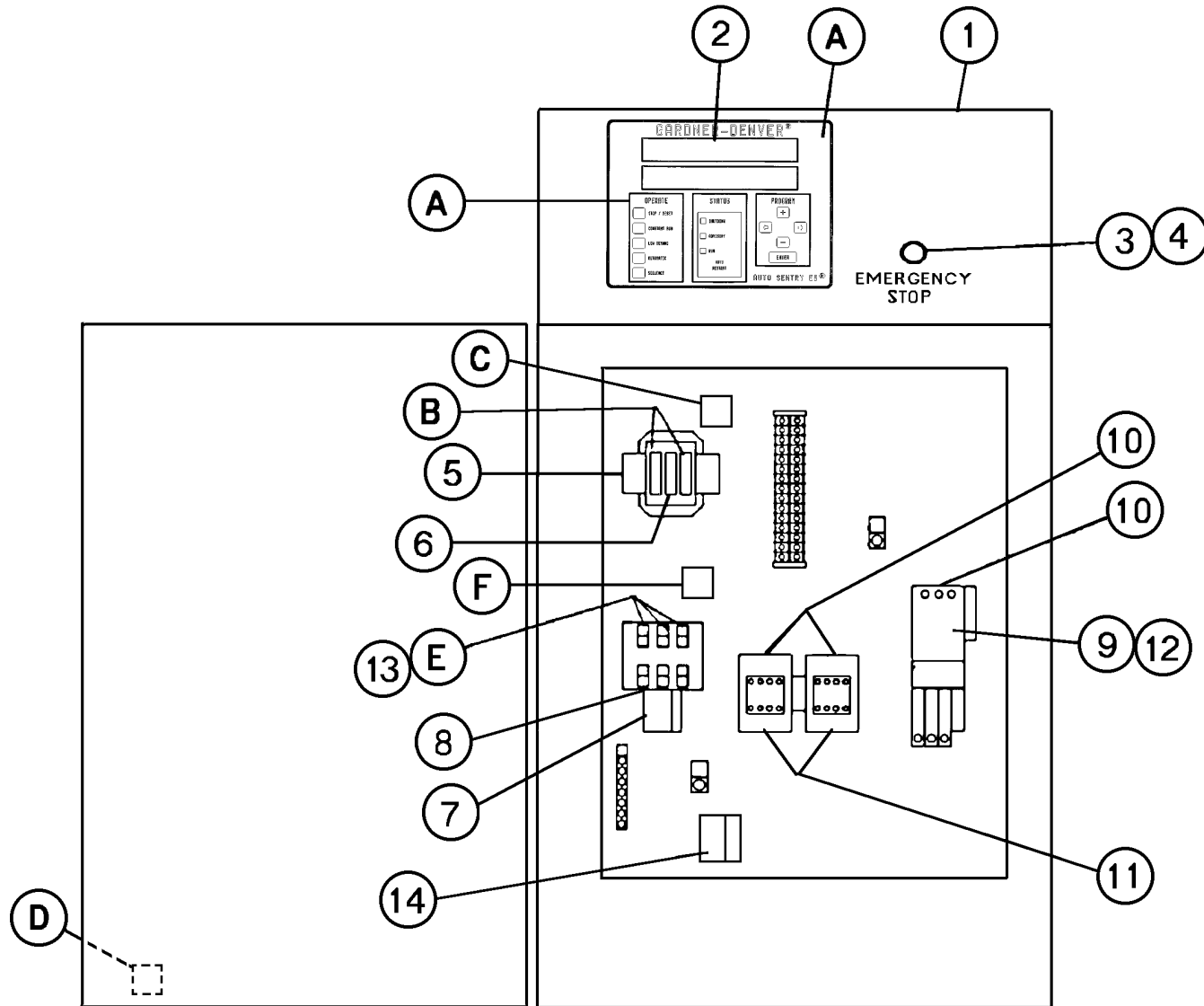
Refer to page 38 for illustration.

**CONTROLLER ASSEMBLY – FULL VOLTAGE STARTERS
60 & 75 H.P. UNITS**

	Qty.	200V	230V	460V	575V	380V
ASSEMBLED PANEL: NEMA 12	1	216EWD466	214EWD466	213EWD466	221EWD466	218EWD466
ASSEMBLED PANEL: NEMA 4	1	226EWD466	224EWD466	223EWD466	231EWD466	228EWD466
1 ELECTRICAL CONTROL ENCLOSURE	1	200EAP179	200EAP179	200EAP179	200EAP179	200EAP179
2 ELECTRICAL CONTROL ASSEMBLY	1	203EWD1173	203EWD1173	203EWD1173	203EWD1173	203EWD1173
3 OPERATOR, 22mm PUSH-PULL E-STOP	1	24CA2907	24CA2907	24CA2907	24CA2907	24CA2907
4 CONTACT BLOCK E22B1 SPNC	1	24CA2908	24CA2908	24CA2908	24CA2908	24CA2908
5 CONTROL TRANSFORMER	1	2116371	2116372	2116372	2116373	2116864
6 FUSE, TRANSFORMER SECONDARY	1	24CA3728	24CA3728	24CA3728	24CA3728	24CA3725
7 STARTER, FAN MOTOR	1	24CA4134	24CA4134	24CA4134	24CA4134	24CA4134
8 REPLACEMENT COIL FOR ITEM 7	1	2115950	2115950	2115950	2115950	2115950
9 STARTER, MAIN MOTOR	1	24CA3490	24CA3490	24CA3255	24CA3255	24CA3255
10 REPLACEMENT COIL FOR ITEM 9	1	2115952	2115952	2116555	2116555	2116555
11 FUSE HOLDER	1	24CA4098	24CA4098	24CA4098	24CA4098	24CA4098
12 OVERLOAD RELAY	1	24CA4086	24CA4086	24CA4086	24CA4086	24CA4086
A FUSE, CONTROL BOARD	2	24CA2932	24CA2932	24CA2932	24CA2932	24CA2932
B FUSE, TRANSFORMER PRIMARY	2	24CA2786	24CA2786	24CA2783	24CA3722	24CA3723
C DECAL, PRIMARY FUSE	1	265AUX077	265AUX077	262AUX077	294AUX077	295AUX077
D DECAL, VOLTAGE	1	69F50	69F51	69F52	69F60	69F55
E FUSE, FAN MOTOR, AIR COOLED	3	24CA2478	24CA2478	24CA2477	24CA2477	24CA2478
F DECAL, FAN FUSES, AIR COOLED	1	244AUX077	244AUX077	243AUX077	243AUX077	244AUX077
E FUSE, FAN MOTOR, WATER COOLED	3	24CA2744	24CA2744	24CA2476	24CA2476	24CA2476
F DECAL, FAN FUSES, WATER COOLED	1	257AUX077	257AUX077	242AUX077	242AUX077	242AUX077

Refer to page 38 for illustration.

CONTROLLER ASSEMBLY – WYE DELTA STARTERS



Refer to pages 43 through 45 for Part Number References.

**CONTROLLER ASSEMBLY – WYE–DELTA STARTERS
40 H.P. UNITS**

	Qty.	200V	230V	460V	575V	380V
ASSEMBLED PANEL: NEMA 12	1	234EWD466	233EWD466	232EWD466	237EWD466	236EWD466
ASSEMBLED PANEL: NEMA 4	1	240EWD466	239EWD466	238EWD466	243EWD466	242EWD466
1 ELECTRICAL CONTROL ENCLOSURE	1	200EAP179	200EAP179	200EAP179	200EAP179	200EAP179
2 ELECTRICAL CONTROL ASSEMBLY	1	203EWD1173	203EWD1173	203EWD1173	203EWD1173	203EWD1173
3 OPERATOR, 22mm PUSH–PULL E–STOP	1	24CA2907	24CA2907	24CA2907	24CA2907	24CA2907
4 CONTACT BLOCK E22B1 SPNC	1	24CA2908	24CA2908	24CA2908	24CA2908	24CA2908
5 CONTROL TRANSFORMER	1	2116371	2116372	2116372	2116373	2116864
6 FUSE, TRANSFORMER SECONDARY	1	24CA3728	24CA3728	24CA3728	24CA3728	24CA3725
7 STARTER, FAN MOTOR	1	24CA4134	24CA4134	24CA4134	24CA4134	24CA4134
8 REPLACEMENT COIL FOR ITEM 7	1	2115950	2115950	2115950	2115950	2115950
9 STARTER, MAIN MOTOR	1	24CA3255	24CA3255	24CA4142	24CA4142	24CA4142
10 REPLACEMENT COIL FOR ITEM 9	3	2116555	2116555	2116124	2116124	2116124
11 CONTACTOR	2	24CA3259	24CA3259	24CA3258	24CA3258	24CA3258
12 TIMER	1	24CA3314	24CA3314	24CA3314	24CA3314	24CA3314
13 FUSEHOLDER	1	24CA4098	24CA4098	24CA4098	24CA4098	24CA4098
14 OVERLOAD RELAY	1	24CA4086	24CA4086	24CA4086	24CA4086	24CA4086
A FUSE, CONTROL BOARD	2	24CA2932	24CA2932	24CA2932	24CA2932	24CA2932
B FUSE, TRANSFORMER PRIMARY	2	24CA2786	24CA2786	24CA2783	24CA3722	24CA3723
C DECAL, PRIMARY FUSE	1	265AUX077	265AUX077	262AUX077	294AUX077	295AUX077
D DECAL, VOLTAGE	1	69F50	69F51	69F52	69F60	69F55
E FUSE, FAN MOTOR, AIR COOLED	3	24CA2478	24CA2478	24CA2477	24CA2477	24CA2478
F DECAL, FAN FUSES, AIR COOLED	1	244AUX077	244AUX077	243AUX077	243AUX077	244AUX077
E FUSE, FAN MOTOR, WATER COOLED	3	24CA2744	24CA2744	24CA2476	24CA2476	24CA2476
F DECAL, FAN FUSES, WATER COOLED	1	257AUX077	257AUX077	242AUX077	242AUX077	242AUX077

Refer to page 42 for illustration.

**CONTROLLER ASSEMBLY – WYE-DELTA STARTERS
50 H.P. UNITS**

	Qty.	200V	230V	460V	575V	380V
ASSEMBLED PANEL: NEMA 12	1	234EWD466	233EWD466	232EWD466	237EWD466	236EWD466
ASSEMBLED PANEL: NEMA 4	1	240EWD466	239EWD466	238EWD466	243EWD466	242EWD466
1 ELECTRICAL CONTROL ENCLOSURE	1	200EAP179	200EAP179	200EAP179	200EAP179	200EAP179
2 ELECTRICAL CONTROL ASSEMBLY	1	203EWD1173	203EWD1173	203EWD1173	203EWD1173	203EWD1173
3 OPERATOR, 22mm PUSH-PULL E-STOP	1	24CA2907	24CA2907	24CA2907	24CA2907	24CA2907
4 CONTACT BLOCK E22B1 SPNC	1	24CA2908	24CA2908	24CA2908	24CA2908	24CA2908
5 CONTROL TRANSFORMER	1	2116371	2116372	2116372	2116373	2116864
6 FUSE, TRANSFORMER SECONDARY	1	24CA3728	24CA3728	24CA3728	24CA3728	24CA3725
7 STARTER, FAN MOTOR	1	24CA4134	24CA4134	24CA4134	24CA4134	24CA4134
8 REPLACEMENT COIL FOR ITEM 7	1	2115950	2115950	2115950	2115950	2115950
9 STARTER, MAIN MOTOR	1	24CA3255	24CA3255	24CA4142	24CA4142	24CA4142
10 REPLACEMENT COIL FOR ITEM 9	3	2116555	2116555	2116124	2116124	2116124
11 CONTACTOR	2	24CA3259	24CA3259	24CA3258	24CA3258	24CA3258
12 TIMER	1	24CA3314	24CA3314	24CA3314	24CA3314	24CA3314
13 FUSEHOLDER	1	24CA4098	24CA4098	24CA4098	24CA4098	24CA4098
14 OVERLOAD RELAY	1	24CA4086	24CA4086	24CA4086	24CA4086	24CA4086
A FUSE, CONTROL BOARD	2	24CA2932	24CA2932	24CA2932	24CA2932	24CA2932
B FUSE, TRANSFORMER PRIMARY	2	24CA2786	24CA2786	24CA2783	24CA3722	24CA3723
C DECAL, PRIMARY FUSE	1	265AUX077	265AUX077	262AUX077	294AUX077	295AUX077
D DECAL, VOLTAGE	1	69F50	69F51	69F52	69F60	69F55
E FUSE, FAN MOTOR, AIR COOLED	3	24CA2478	24CA2478	24CA2477	24CA2477	24CA2478
F DECAL, FAN FUSES, AIR COOLED	1	244AUX077	244AUX077	243AUX077	243AUX077	244AUX077
E FUSE, FAN MOTOR, WATER COOLED	3	24CA2744	24CA2744	24CA2476	24CA2476	24CA2476
F DECAL, FAN FUSES, WATER COOLED	1	257AUX077	257AUX077	242AUX077	242AUX077	242AUX077

Refer to page 42 for illustration.

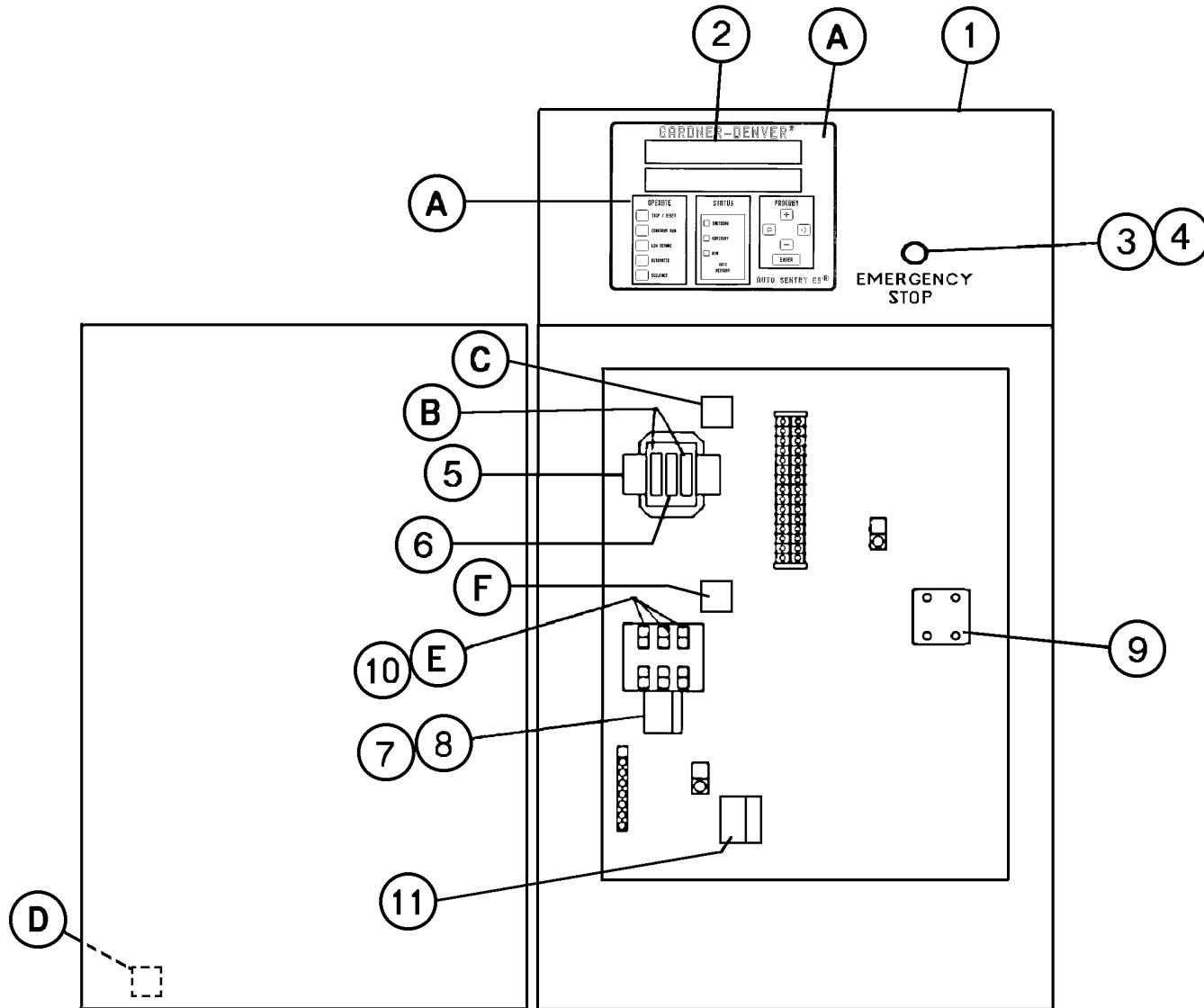
**CONTROLLER ASSEMBLY – WYE-DELTA STARTERS
60 & 75 H.P. UNITS**

	Qty.	200V *	230V	460V	575V	380V
ASSEMBLED PANEL: NEMA 12	1	234EWD466	233EWD466	232EWD466	237EWD466	284EWD466
ASSEMBLED PANEL: NEMA 4	1	240EWD466	239EWD466	238EWD466	243EWD466	285EWD466
1 ELECTRICAL CONTROL ENCLOSURE	1	200EAP179	200EAP179	200EAP179	200EAP179	200EAP179
2 ELECTRICAL CONTROL ASSEMBLY	1	203EWD1173	203EWD1173	203EWD1173	203EWD1173	203EWD1173
3 OPERATOR, 22mm PUSH-PULL E-STOP	1	24CA2907	24CA2907	24CA2907	24CA2907	24CA2907
4 CONTACT BLOCK E22B1 SPNC	1	24CA2908	24CA2908	24CA2908	24CA2908	24CA2908
5 CONTROL TRANSFORMER	1	2116371	2116372	2116372	2116373	2116864
6 FUSE, TRANSFORMER SECONDARY	1	24CA3728	24CA3728	24CA3728	24CA3728	24CA3725
7 STARTER, FAN MOTOR	1	24CA4134	24CA4134	24CA4134	24CA4134	24CA4134
8 REPLACEMENT COIL FOR ITEM 7	1	2115950	2115950	2115950	2115950	2115950
9 STARTER, MAIN MOTOR	1	24CA3255	24CA3255	24CA4142	24CA4142	24CA3255
10 REPLACEMENT COIL FOR ITEM 9	3	2116555	2116555	2116124	2116124	2116555
11 CONTACTOR	2	24CA3259	24CA3259	24CA3258	24CA3258	24CA3259
12 TIMER	1	24CA3314	24CA3314	24CA3314	24CA3314	24CA3314
13 FUSEHOLDER	1	24CA4098	24CA4098	24CA4098	24CA4098	24CA4098
14 OVERLOAD RELAY	1	24CA4086	24CA4086	24CA4086	24CA4086	24CA4086
A FUSE, CONTROL BOARD	2	24CA2932	24CA2932	24CA2932	24CA2932	24CA2932
B FUSE, TRANSFORMER PRIMARY	2	24CA2786	24CA2786	24CA2783	24CA3722	24CA3723
C DECAL, PRIMARY FUSE	1	265AUX077	265AUX077	262AUX077	294AUX077	295AUX077
D DECAL, VOLTAGE	1	69F50	69F51	69F52	69F60	69F55
E FUSE, FAN MOTOR, AIR COOLED	3	24CA2478	24CA2478	24CA2477	24CA2477	24CA2478
F DECAL, FAN FUSES, AIR COOLED	1	244AUX077	244AUX077	243AUX077	243AUX077	244AUX077
E FUSE, FAN MOTOR, WATER COOLED	3	24CA2744	24CA2744	24CA2476	24CA2476	24CA2476
F DECAL, FAN FUSES, WATER COOLED	1	257AUX077	257AUX077	242AUX077	242AUX077	242AUX077

* 200 Volt on 60 HP Units Only.

Refer to page 42 for illustration.

CONTROLLER ASSEMBLY – LESS MAIN STARTER



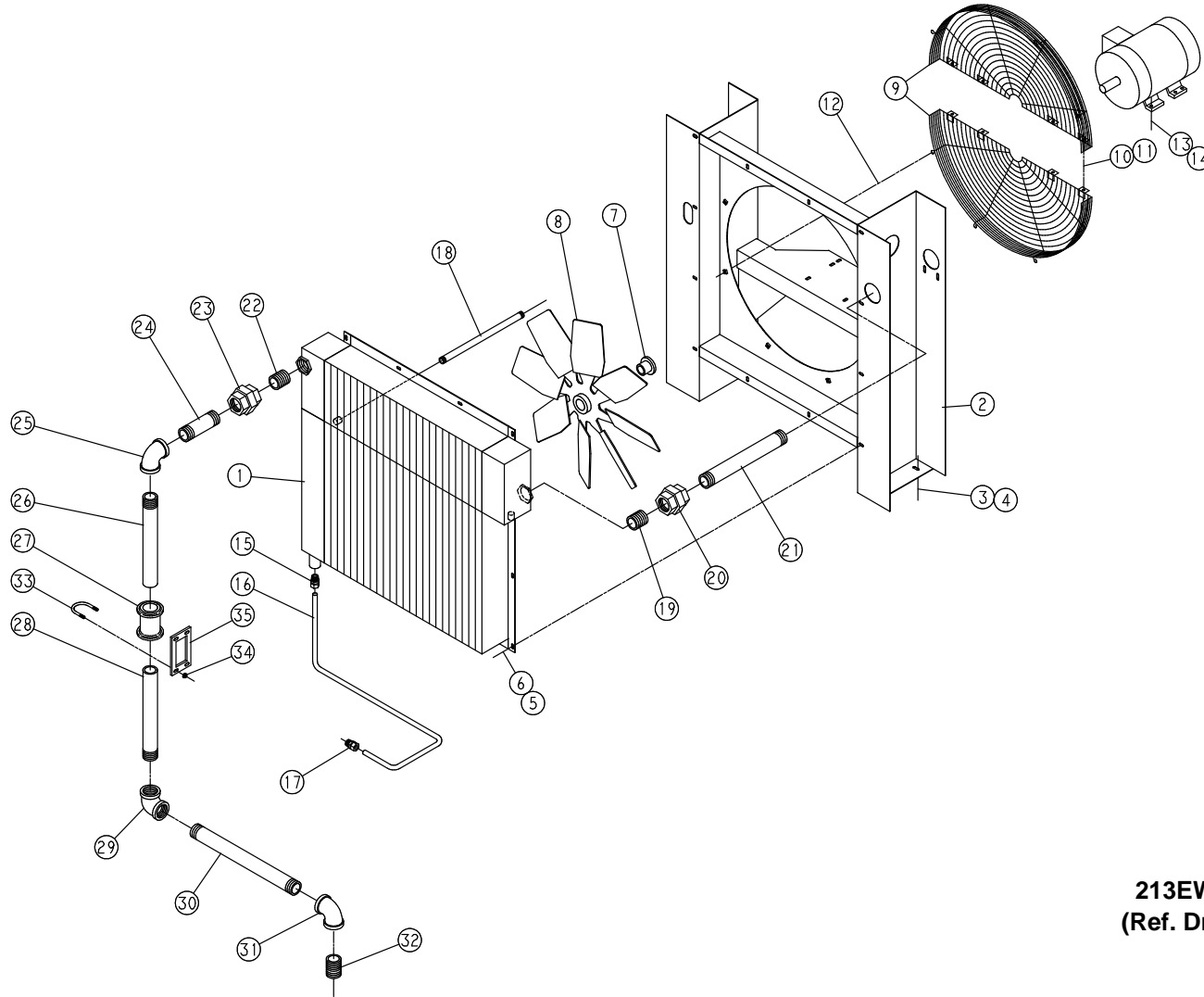
Refer to page 47 for Part Number References.

CONTROLLER ASSEMBLY – LESS MAIN STARTER

	Qty.	200V	230V	460V	575V	380V
ASSEMBLED PANEL: NEMA 12	1	245EWD466	244EWD466	244EWD466	247EWD466	246EWD466
ASSEMBLED PANEL: NEMA 4	1	249EWD466	248EWD466	248EWD466	251EWD466	250EWD466
1 ELECTRICAL CONTROL ENCLOSURE	1	200EAP179	200EAP179	200EAP179	200EAP179	200EAP179
2 ELECTRICAL CONTROL ASSEMBLY	1	203EWD1173	203EWD1173	203EWD1173	203EWD1173	203EWD1173
3 OPERATOR, 22mm PUSH-PULL E-STOP	1	24CA2907	24CA2907	24CA2907	24CA2907	24CA2907
4 CONTACT BLOCK E22B1 SPNC	1	24CA2908	24CA2908	24CA2908	24CA2908	24CA2908
5 CONTROL TRANSFORMER	1	2116371	2116372	2116372	2116373	2116864
6 FUSE, TRANSFORMER SECONDARY	1	24CA3728	24CA3728	24CA3728	24CA3728	24CA3725
7 STARTER, FAN MOTOR	1	24CA4134	24CA4134	24CA4134	24CA4134	24CA4134
8 REPLACEMENT COIL FOR ITEM 7	1	2115950	2115950	2115950	2115950	2115950
9 STARTER, MAIN MOTOR	1	24CA3896	24CA3896	24CA3896	24CA3896	24CA3896
10 FUSE HOLDER	1	24CA4098	24CA4098	24CA4098	24CA4098	24CA4098
11 OVERLOAD RELAY	1	24CA4086	24CA4086	24CA4086	24CA4086	24CA4086
A FUSE, CONTROL BOARD	2	24CA2932	24CA2932	24CA2932	24CA2932	24CA2932
B FUSE, TRANSFORMER PRIMARY	2	24CA2786	24CA2786	24CA2783	24CA3722	24CA3723
C DECAL, PRIMARY FUSE	1	265AUX077	265AUX077	262AUX077	294AUX077	295AUX077
D DECAL, VOLTAGE	1	69F50	69F51	69F52	69F60	69F55
E FUSE, FAN MOTOR, AIR COOLED	3	24CA2478	24CA2478	24CA2477	24CA2477	24CA2478
F DECAL, FAN FUSES, AIR COOLED	1	244AUX077	244AUX077	243AUX077	243AUX077	244AUX077
E FUSE, FAN MOTOR, WATER COOLED	3	24CA2744	24CA2744	24CA2476	24CA2476	24CA2476
F DECAL, FAN FUSES, WATER COOLED	1	257AUX077	257AUX077	242AUX077	242AUX077	242AUX077

Refer to page 46 for illustration.

AIR COOLED UNITS WITH AFTERCOOLER



213EWD810
(Ref. Drawing)

Order by Part Number and Description. Reference Numbers for your convenience only.

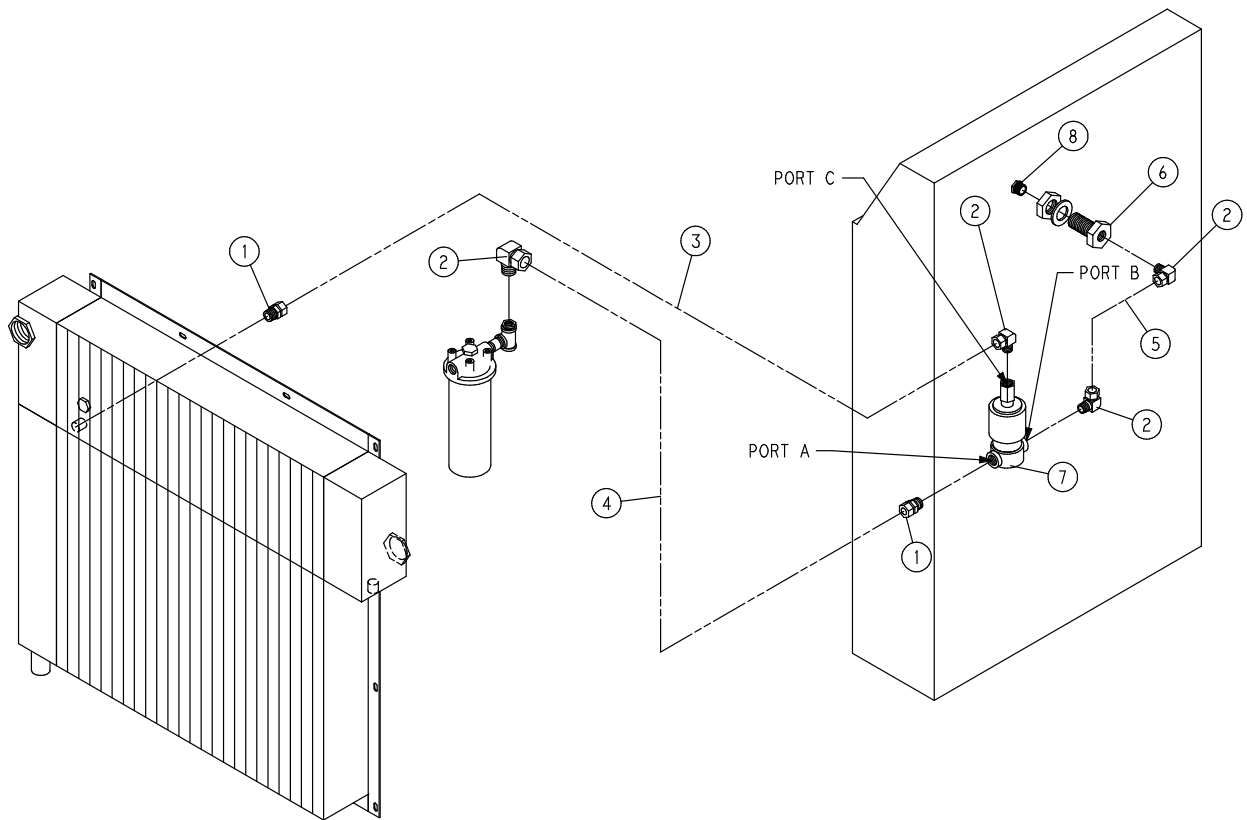
AIR COOLED UNITS WITH AFTERCOOLER

Ref. No.	Name of Part	Qty.	Part No.	Ref. No.	Name of Part	Qty.	Part No.
1	COOLER-WATER	1	203EWD257	19	NIPPLE	1	64EB318
2	SUPPORT	1	205EWD165	20	UNION	1	64EB259
3	SCREW-FLANGED	4	75LM51	21	NIPPLE	1	64EB280
4	NUT-FLANGED	4	50AW5	22	NIPPLE	1	64EB100
5	SCREW-FLANGED	12	75LM51	23	UNION	1	64EB259
6	NUT-FLANGED	12	50AW5	24	NIPPLE	1	64EB656
7	BUSHING-HUB	1	22G2	25	ELBOW	1	64EB255
8	FAN	1	201ECM701	26	NIPPLE	1	64EB664
9	GUARD-FAN	1	200ESM393	27 *	COUPLING-FLEXIBLE	1	64EB533
10	SCREW-FLANGED	4	75LM50				
11	NUT-FLANGED	4	50AW4	28	NIPPLE	1	64EB664
12	SCREW-FLANGED	8	75LM51	29	ELBOW	1	64EB255
13	SCREW-FLANGED	4	75K48	30	NIPPLE	1	64EB657
14	NUT-FLANGED	4	50AW5	31	ELBOW	1	64EB255
15	CONNECTOR-TUBE	1	86N220	32	NIPPLE	1	64EB654
16	TUBE-FORMED	1	204EWD857	33	U-BOLT	2	15U18
17	CONNECTOR-TUBE	1	86N220	34	NUT-FLANGED	4	50AW5
18	NIPPLE	1	64EB652	35	BRACKET-PIPE	1	201ESO108

* For Repair – Reference Number 27: (2) 2010363 – Gaskets

For Motor Part Numbers, see page 68.

Order by Part Number and Description. Reference Numbers for your convenience only.

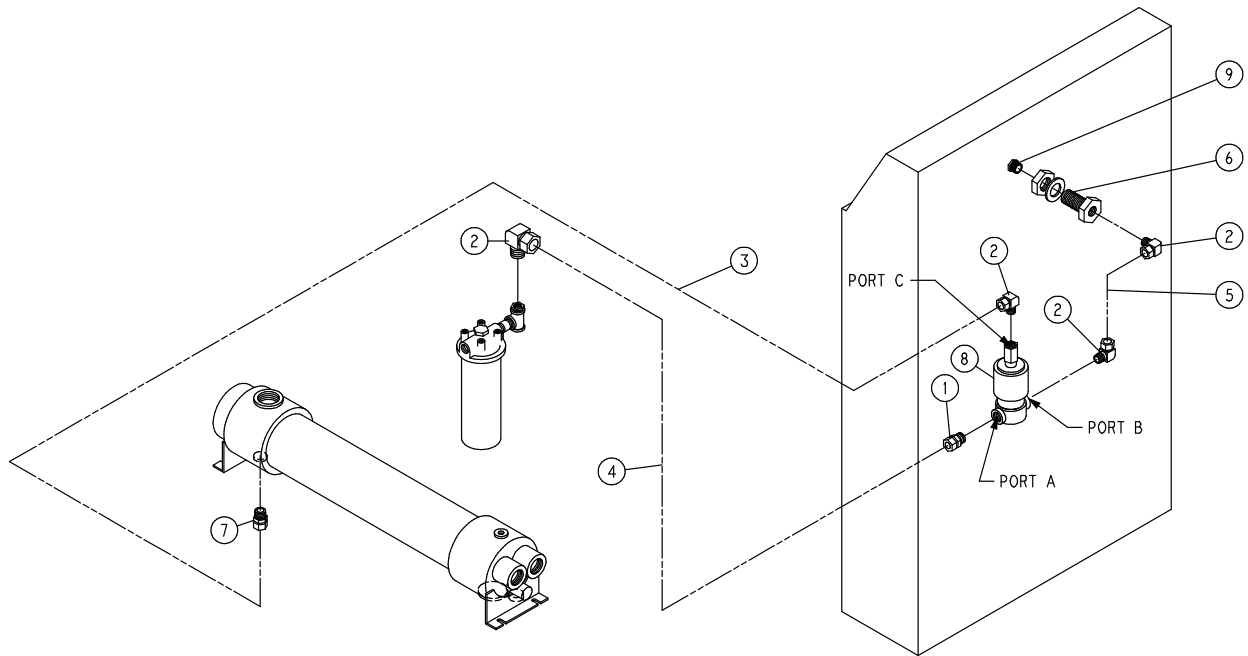


227EWD810-B
(Ref. Drawing)

WATER FILTER DIFFERENTIAL SOLENOID PIPING – AIR COOLED

Ref. No.	Name of Part	Qty.	Part No.
1	CONNECTOR-TUBE	2	86E9
2	ELBOW	4	86E64
3	TUBE	6 ft.	85K5
4	TUBE	4 ft.	85K5
5	TUBE	2 ft.	85K5
6	COUPLING-PIPE	1	64EB368
7	VALVE-SOLENOID	1	91B113
8	BUSHING-PIPE	1	64E28

Order by Part Number and Description. Reference Numbers for your convenience only.

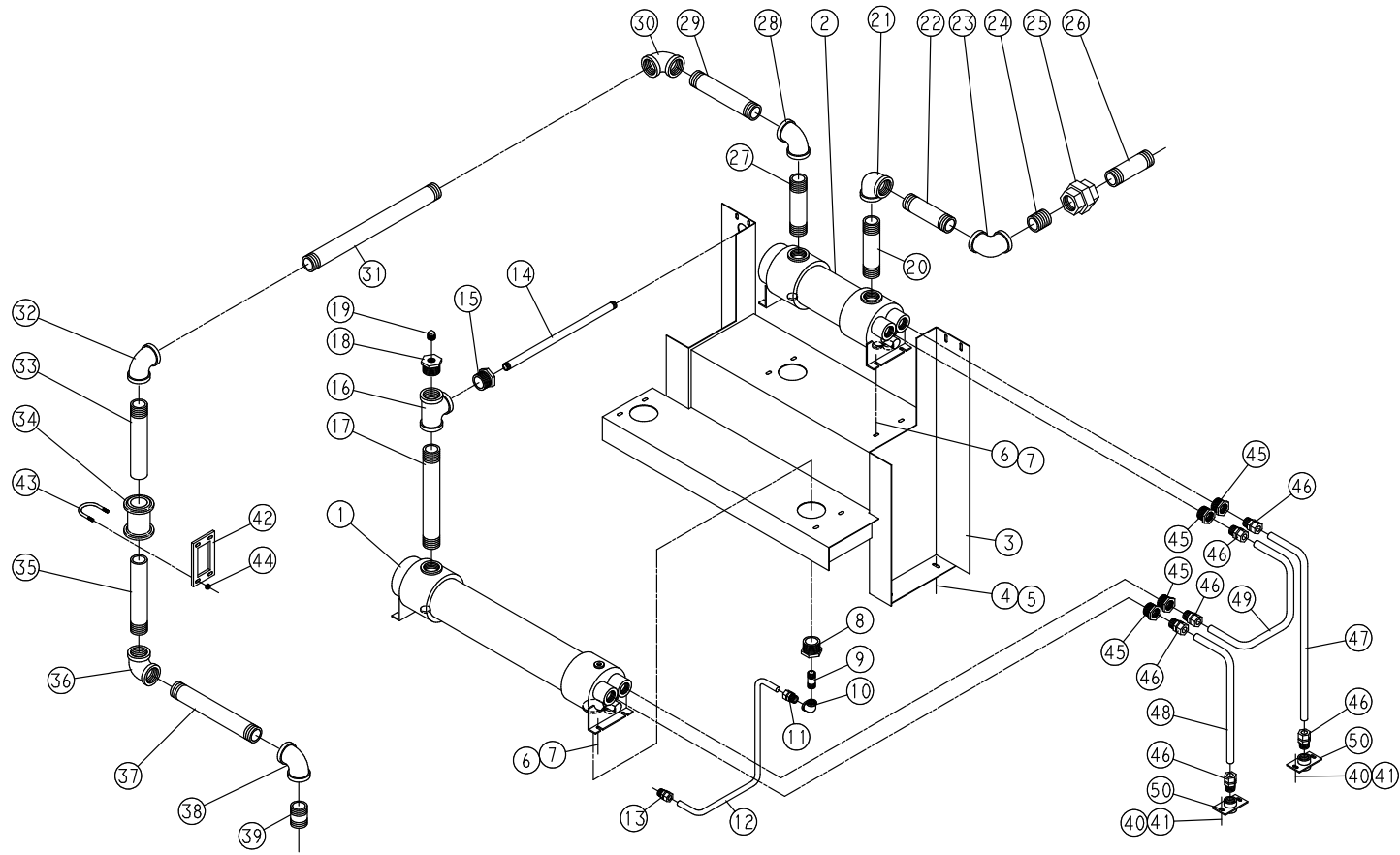


228EWD810-B
(Ref. Drawing)

WATER FILTER DIFFERENTIAL SOLENOID PIPING – WATER COOLED

Ref. No.	Name of Part	Qty.	Part No.
1	CONNECTOR-TUBE	2	86E9
2	ELBOW	4	86E64
3	TUBE	6 ft.	85K5
4	TUBE	4 ft.	85K5
5	TUBE	2 ft.	85K5
6	COUPLING-PIPE	1	64EB368
7	CONNECTOR-TUBE	1	86E10
8	VALVE-SOLENOID	1	91B113
9	BUSHING-PIPE	1	64E28

WATER COOLED UNITS WITH AFTERCOOLER



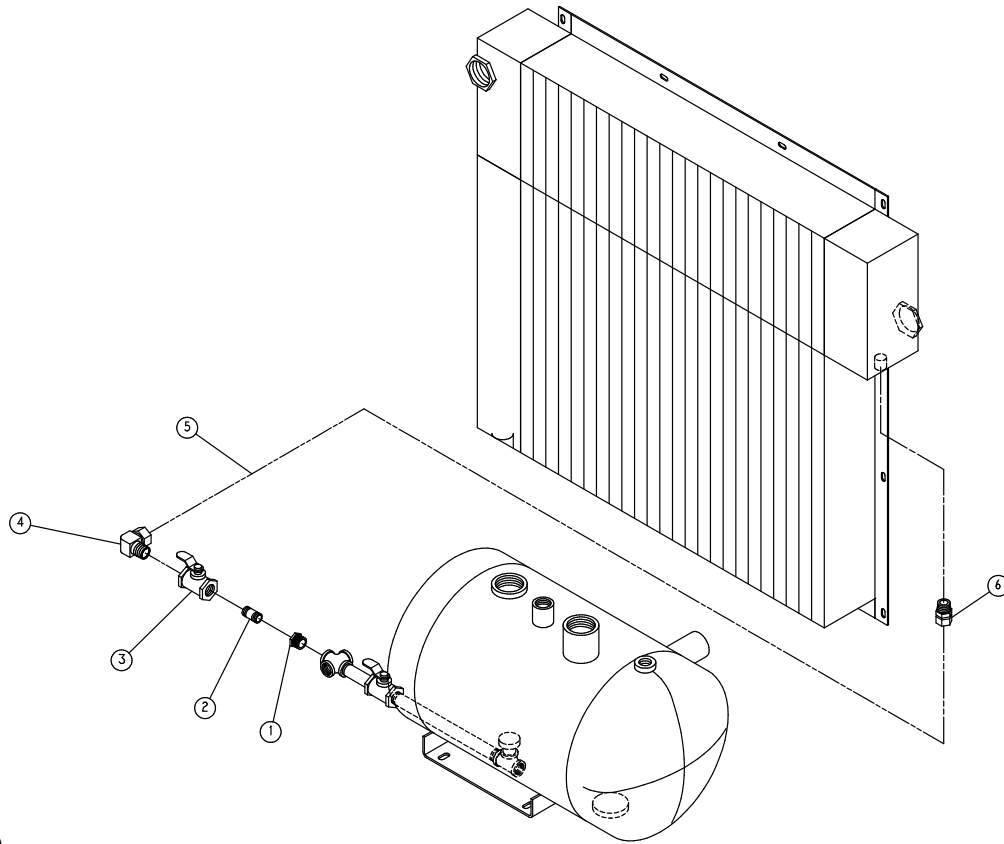
Order by Part Number and Description. Reference Numbers for your convenience only.

AIR COOLED UNITS WITH AFTERCOOLER

Ref. No.	Name of Part	Qty.	Part No.	Ref. No.	Name of Part	Qty.	Part No.
1	EXCHANGER-HEAT	1	200EWD349	26	NIPPLE	1	64EB280
2	AFTERCOOLER	1	200EWD292	27	NIPPLE	1	64EB659
3	SUPPORT	1	206EWD165	28	ELBOW	1	64EB255
4	SCREW-FLANGED	4	75LM51	29	NIPPLE	1	64EB661
5	NUT-FLANGED	4	50AW5	30	ELBOW	1	64EB255
6	SCREW-FLANGED	8	75LM51	31	NIPPLE	1	64EB662
7	NUT-FLANGED	8	50AW5	32	ELBOW	1	64EB255
8	BUSHING PIPE	1	64EB521	33	NIPPLE	1	64EB665
9	NIPPLE	1	64EB651	34 *	COUPLING-FLEXIBLE	1	64EB533
10	ELBOW	1	64EB137	35	NIPPLE	1	64EB665
11	CONNECTOR-TUBE	1	86N220	36	ELBOW	1	64EB255
12	TUBE-FORMED	1	205EWD857	37	NIPPLE	1	64EB663
13	CONNECTOR-TUBE	1	86N220	38	ELBOW	1	64EB255
14	NIPPLE	1	64EB653	39	NIPPLE	1	64EB654
15	BUSHING PIPE	1	64EB521	40	SCREW-FLANGED	4	75LM51
16	TEE	1	64EB256	41	NUT-FLANGED	4	50AW5
17	NIPPLE	1	64EB658	42	BRACKET-PIPE	1	201ESO108
18	BUSHING PIPE	1	64EB521	43	U-BOLT	2	15U18
19	PLUG	1	64AJ16	44	NUT-FLANGED	4	50AW5
20	NIPPLE	1	64EB659	45	BUSHING-PIPE	4	64EB303
21	ELBOW	1	64EB255	46	CONNECTOR-TUBE	6	86N120
22	NIPPLE	1	64EB660	47	TUBE-FORMED	1	200EWD857
23	ELBOW	1	64EB255	48	TUBE-FORMED	1	201EWD857
24	NIPPLE	1	64EB100	49	TUBE-FORMED	1	202EWD857
25	UNION	1	64EB259	50	MANIFOLD-WATER	2	200ECM072

* For Repair – Reference Number 34: (2) 2010363 – Gaskets

Order by Part Number and Description. Reference Numbers for your convenience only.

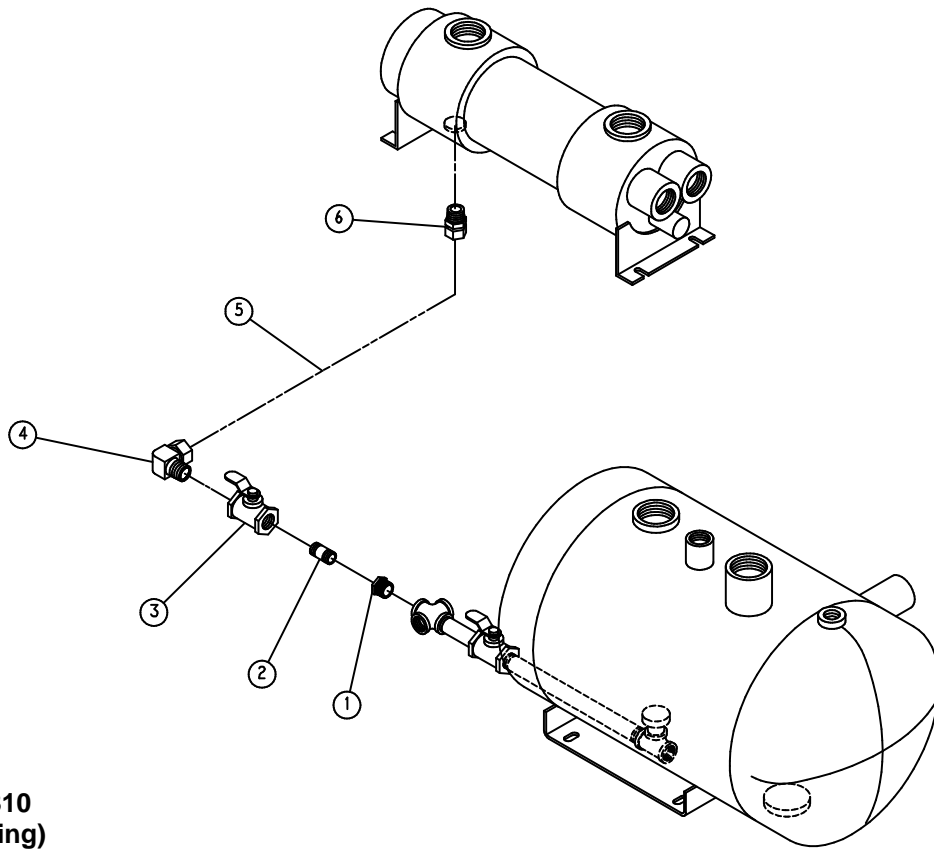


219EWD810
(Ref. Drawing)

AFTERCOOLER DRAIN PIPING – AIR COOLED

Ref. No.	Name of Part	Qty.	Part No.
1	BUSHING-PIPE (BRASS)	1	64EB524
2	NIPPLE	1	63AP36
3	VALVE-BALL	1	90AR241
4	ELBOW-TUBE	1	86E199
5	TUBE	4 ft.	85K5
6	CONNECTOR-TUBE	1	86E9

Order by Part Number and Description. Reference Numbers for your convenience only.

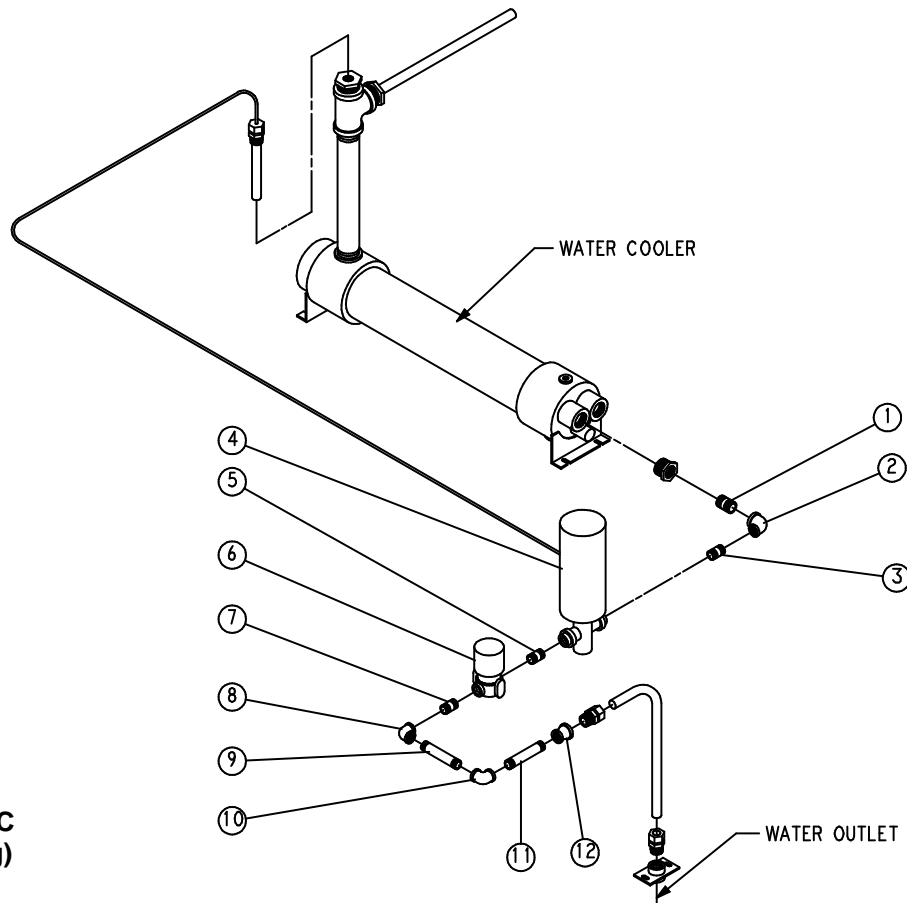


218EWD810
(Ref. Drawing)

AFTERCOOLER DRAIN PIPING – WATER COOLED

Ref. No.	Name of Part	Qty.	Part No.
1	BUSHING–PIPE (BRASS)	1	64EB524
2	NIPPLE	1	63AP36
3	VALVE–BALL	1	90AR241
4	ELBOW–TUBE	1	86E199
5	TUBE	4 ft.	85K5
6	CONNECTOR–TUBE	1	86E9

Order by Part Number and Description. Reference Numbers for your convenience only.

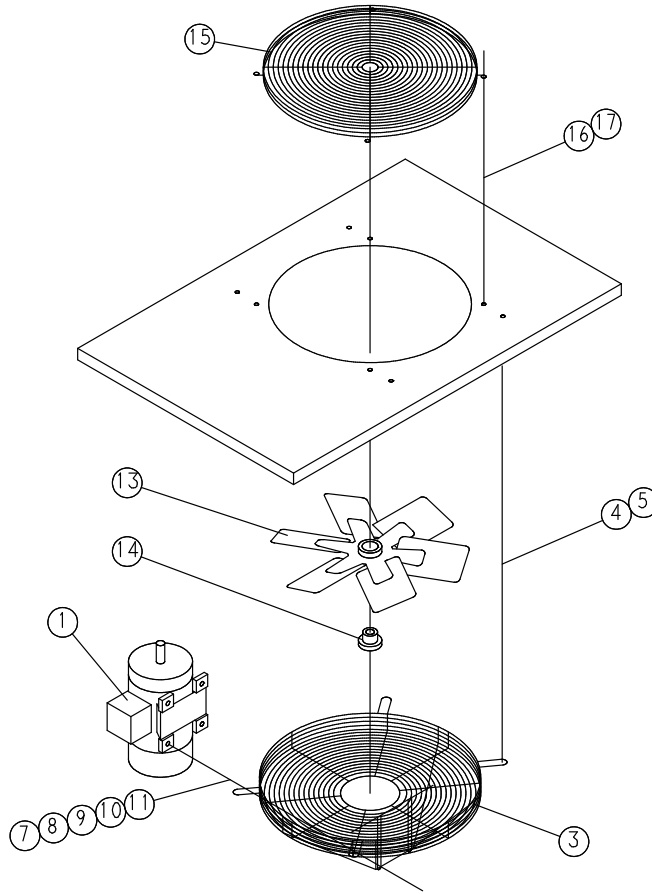


215EWD810-C
(Ref. Drawing)

OPTIONAL WATER VALVES (TEMPERATURE REGULATOR AND SOLENOID)

Ref. No.	Name of Part	Qty.	Part No.
1	NIPPLE	1	63H1G
2	ELBOW	1	64S5G
3	NIPPLE	1	63G1G
4	REGULATOR	1	90AR96
5	NIPPLE	1	63G1G
6	VALVE-SOLENOLD	1	91B109
7	NIPPLE	1	63G1G
8	ELBOW	1	64C5G
9	NIPPLE	1	63G33G
10	ELBOW	1	64C5G
11	NIPPLE	1	63G33G
12	REDUCER-PIPE	1	64N3G

Order by Part Number and Description. Reference Numbers for your convenience only.

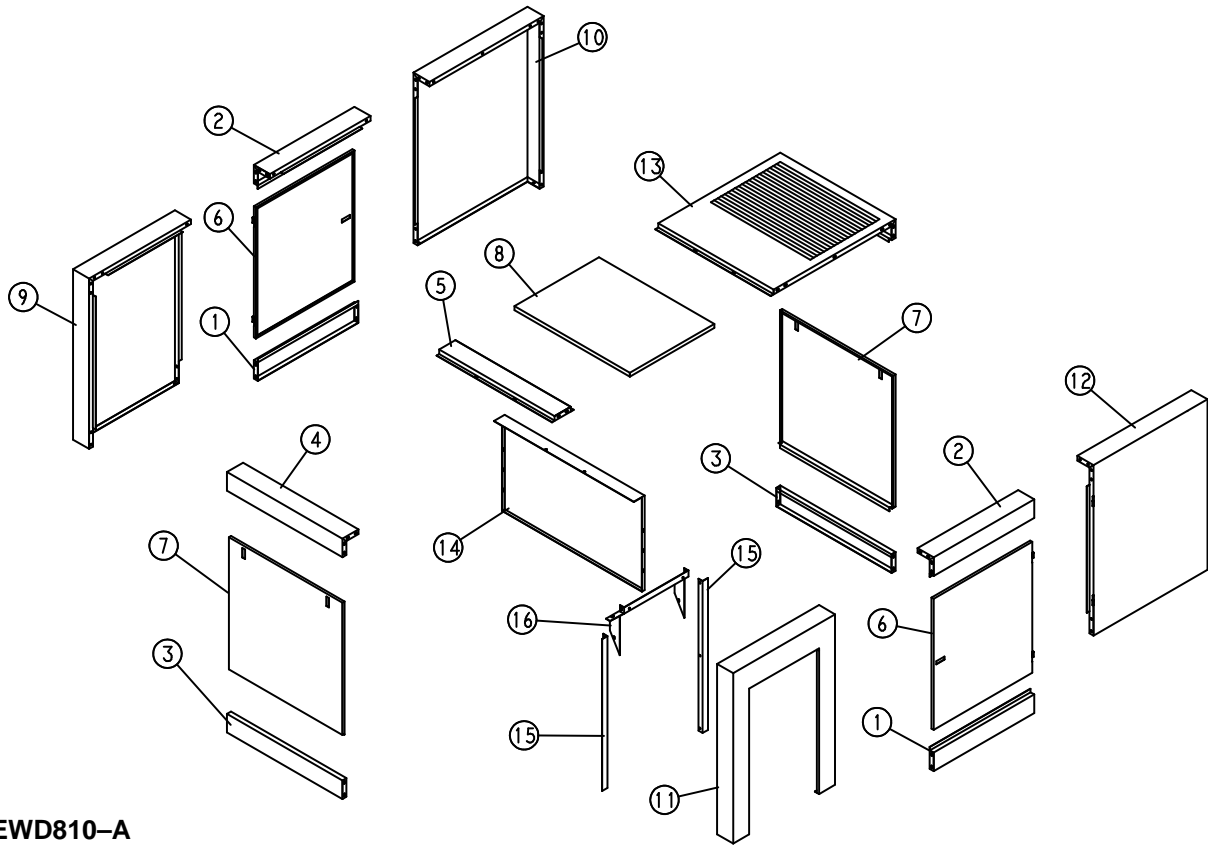


285ECM810-D
(Ref. Drawing)

ENCLOSURE VENT FAN ASSEMBLY (WATER COOLED UNITS ONLY)

Ref. No.	Name of Part	Qty.	Part No.
1	MOTOR	1	SEE PAGE 68
3	GUARD-FAN	1	202ECM393
4	SCREW-FLANGED	4	75K48
5	WASHER	4	95A5
7	SCREW	4	75A35
8	RETAINER	4	2014731
9	WASHER	4	95A2
10	LOCKWASHER	4	95B2
11	NUT	4	50B2
13	FAN	1	202ECM701
14	BUSHING-SHEAVE	1	22G27
15	GUARD-FAN	1	200ECM393
16	SCREW-FLANGED	4	75LM51
17	NUT-FLANGED	4	50AW5

Order by Part Number and Description. Reference Numbers for your convenience only.

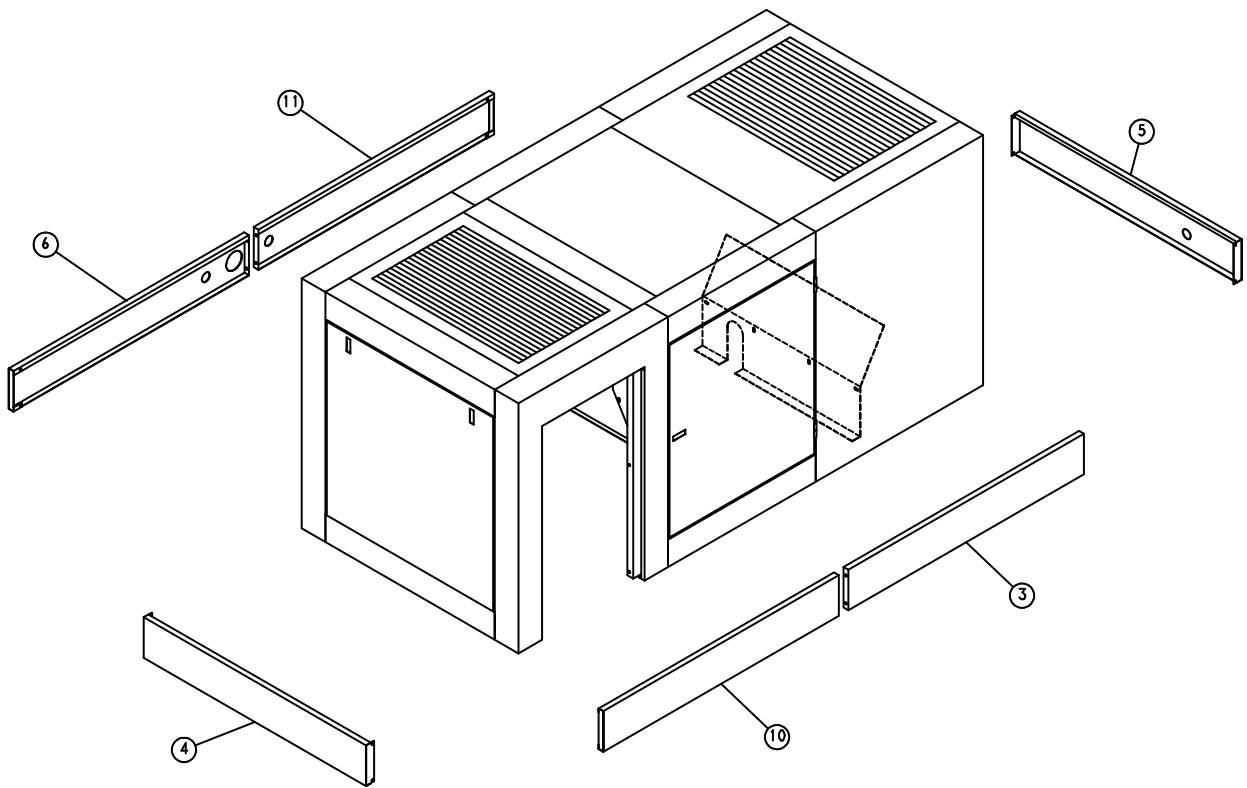


236EWD810-A
(Ref. Drawing)

ENCLOSURE GROUP – COMMON PARTS – AIR/WATER COOLED

Ref. No.	Name of Part	Qty.	Part No.
1	FRAME	2	203EWD314
2	FRAME	2	204EWD314
3	FRAME	2	205EWD314
4	FRAME	1	206EWD314
5	FRAME	1	207EWD314
6	DOOR	2	201EWD334
7	PANEL	2	214EWD216
8	PANEL	1	215EWD216
9	PANEL	1	216EWD216
10	PANEL	1	217EWD216
11	PANEL	1	218EWD216
12	PANEL	1	219EWD216
13	PANEL	1	220EWD216
14	BAFFLE	1	200EWD840
15	BRACKET	2	215ECM142
16	BRACKET	1	242ECM142

Order by Part Number and Description. Reference Numbers for your convenience only.



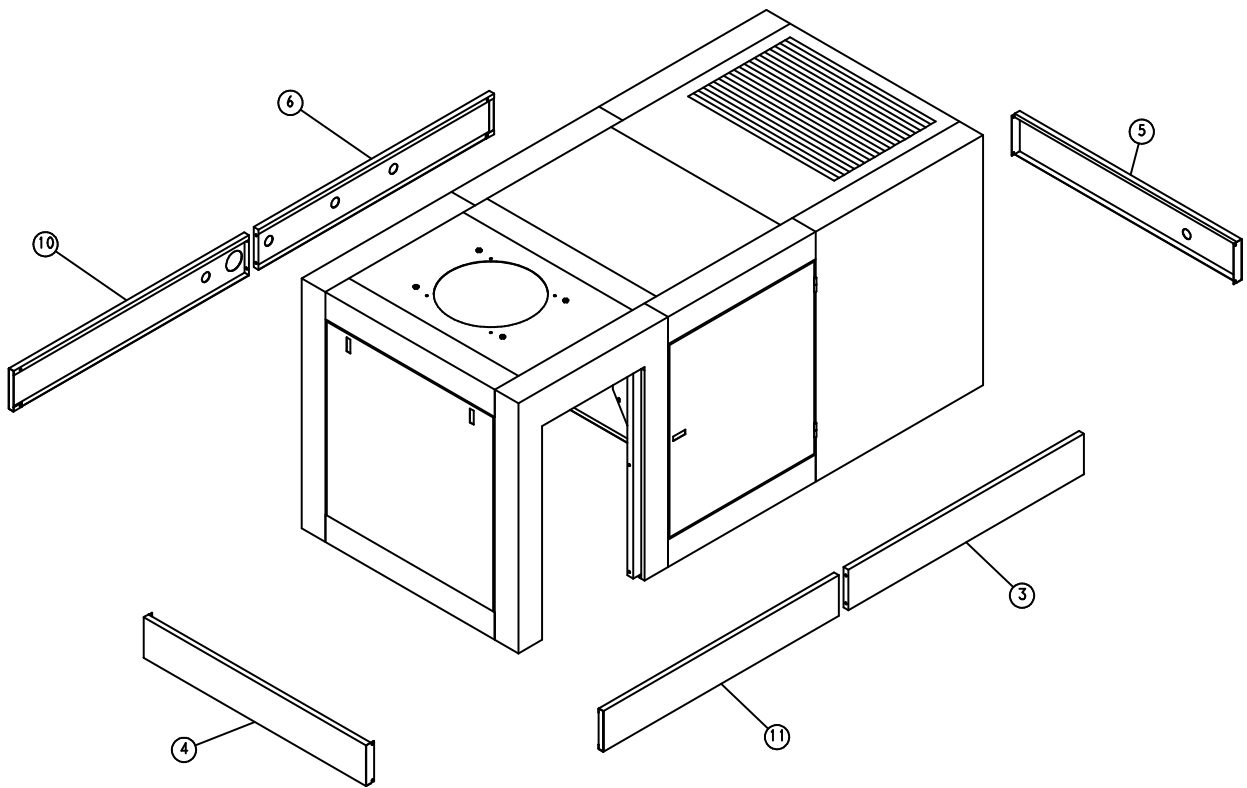
239EWD810-B
(Ref. Drawing)

SKIRTING – AIR COOLED UNITS

Ref. No.	Name of Part	Qty.	Part No.
3	PANEL	1	223EWD216
4	PANEL	1	224EWD216
5	PANEL	1	225EWD216
6	PANEL	1	226EWD216
10	PANEL	1	228EWD216
11	PANEL	1	229EWD216
*	SUPPORT	6	207EWD165

* Not Shown on Drawing.

Order by Part Number and Description. Reference Numbers for your convenience only.



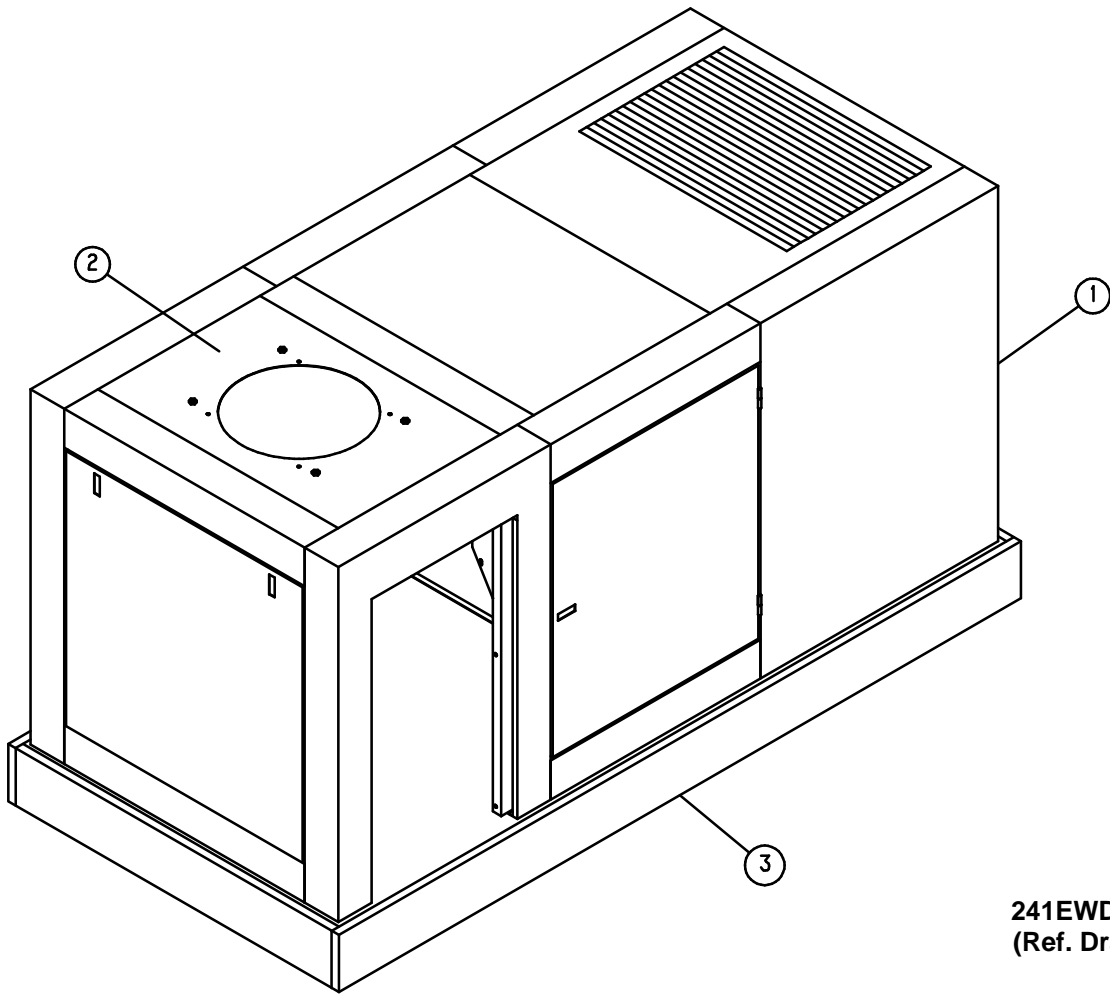
240EWD810-B
(Ref. Drawing)

SKIRTING – WATER COOLED UNITS

Ref. No.	Name of Part	Qty.	Part No.
3	PANEL	1	223EWD216
4	PANEL	1	224EWD216
5	PANEL	1	225EWD216
6	PANEL	1	227EWD216
10	PANEL	1	226EWD216
11	PANEL	1	228EWD216
*	SUPPORT	6	207EWD165

* Not Shown on Drawing.

Order by Part Number and Description. Reference Numbers for your convenience only.



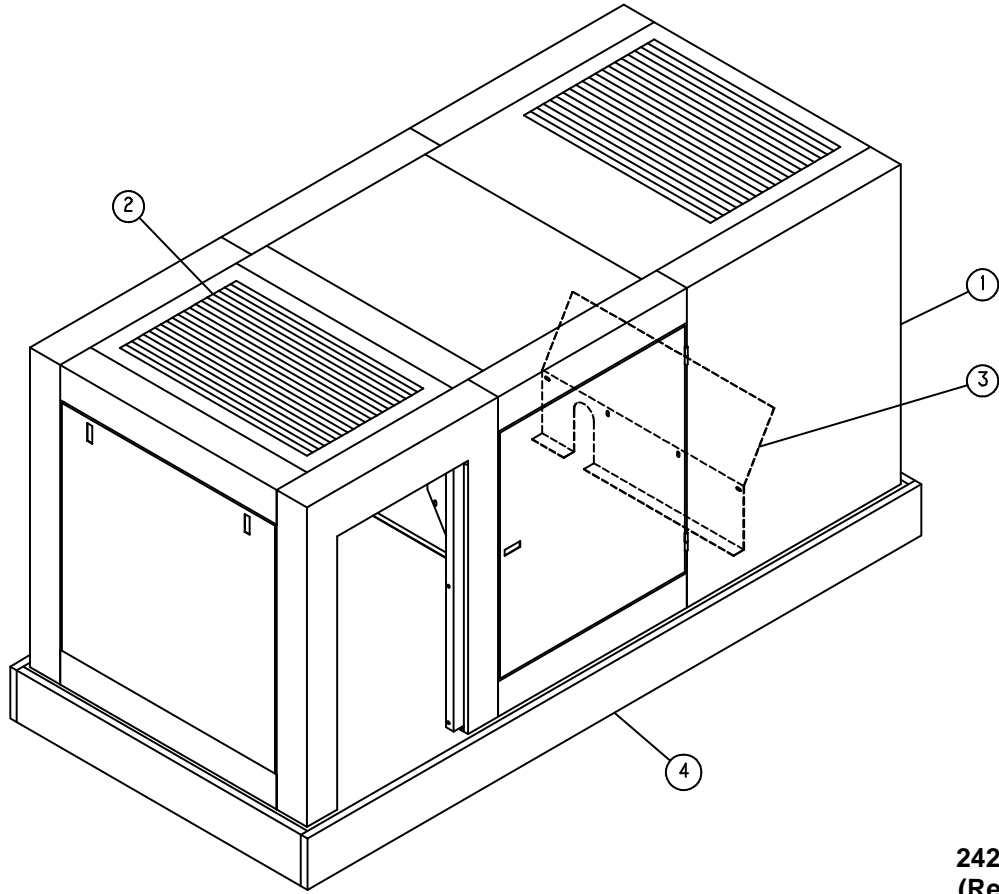
241EWD810-A
(Ref. Drawing)

**ENCLOSURE GROUP
WATER COOLED**

Ref. No.	Name of Part	Qty.	Part No.
1	MOUNTING GROUP (Detail Shown on Page 58)	1	300EWD4017
2	PANEL	1	221EWD216
3	MOUNTING GROUP (Detail Shown on Page 58)	1	302EWD4017
*	LATCH	6	31D58
*	SEAL	90 ft.	32E12
*	SCREW-FLANGED	84	75LM51
*	NUT-FLANGED	84	50AW5

* Not Shown on Drawing.

Order by Part Number and Description. Reference Numbers for your convenience only.



242EWD810-A
(Ref. Drawing)

**ENCLOSURE GROUP
AIR COOLED**

Ref. No.	Name of Part	Qty.	Part No.
1	MOUNTING GROUP (Detail Shown on Page 58)	1	300EWD4017
2	PANEL	1	222EWD216
3	BAFFLE	1	201EWD840
4	MOUNTING GROUP (Detail Shown on Page 58)	1	301EWD4017
*	LATCH	6	31D58
*	SEAL	90 ft.	32E12
*	SCREW-FLANGED	84	75LM51
*	NUT-FLANGED	84	50AW5

* Not Shown on Drawing.

IDENTIFICATION AND INSTRUCTION GROUP

Ref. No.	Name of Part	Qty.	Part No.
1	PLATE-DATA.	1	200EWD454
2	DATA PLATE.	1	201EWD454
3	DECAL, OPERATING AND MAINTENANCE	1	201EWD077
4	DECAL, OIL FREE	2	202EWD077
5	DECAL, TWISTAIR STRIPE	2	203EWD077
6	DECAL, TWISTAIR PLAIN STRIPE	4	204EWD077
7	DECAL, HORIZONTAL GD	4	205EWD077
8	DECAL, WATER SEPARATOR	1	206EWD077
9	DECAL, COMBUSTIBLE SURFACE MOUNTING	1	202EAQ077
10	DECAL, DANGER – DO NOT BREATHE	2	206EAQ077
11	DECAL, WARNING – AUTO START	4	207EAQ077
12	DECAL, CAUTION – DO NOT LIFT	1	208EAQ077
13	DECAL, WARNING – ROTATING MAHCINERY	1	211EAQ077
14	DECAL, DANGER – HOT OIL UNDER PRESSURE	1	212EAQ077
15	DECAL, NOTICE – USE GD PARTS	1	214EAQ077
16	DECAL, WARNING – READ OPERATOR MANUAL	1	215EAQ077
17	DECAL, WARNING – ELECTRICAL SHOCK	1	216EAQ077
18	DECAL, DANGER – DO NOT MODIFY	1	218EAQ077
19	DECAL, CAUTION – USE FLOOR PLATE	1	221EAQ077
20	DECAL, SEE WIRING DIAGRAM	1	222EAQ077
22	DECAL, AEON 9000 SP LUBRICANT	1	243EAQ077
23	DECAL, WARNING	1	202ESG077
24	DECAL, GROUND WARNING	1	208ESG077
25	DECAL, WARNING – LIVE CIRCUIT	1	203ECH077
26	TAG-INSTRUCTION	1	203EAQ304
27	DECAL, WATER “IN” ARROW	1	200ESP077
28	DECAL, WATER “OUT” ARROW	1	201ESP077
29	DECAL, MADE IN THE USA	1	69F64
30	RIVET	4	70E13
31	PAINT	20 Qts.	28H76
32	SEALANT	0.50	25BC448
33	LUBRICANT	6 Gal.	28G31

OVERLOAD RELAY HEATER CONVERSION LISTING

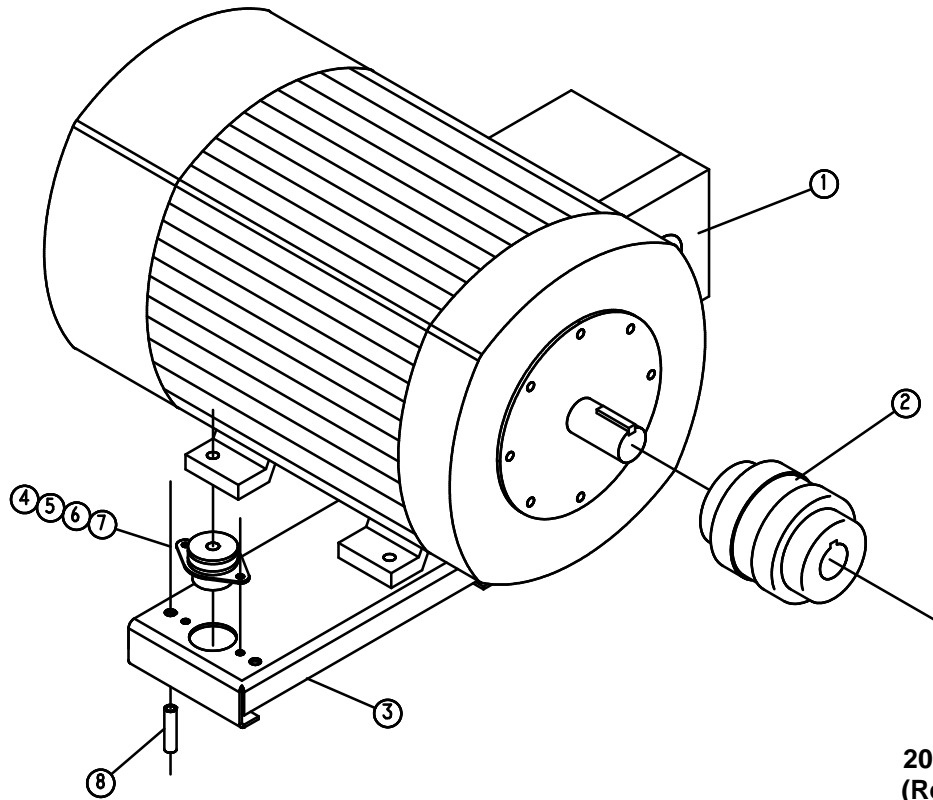
Refer to Motor Nameplate “Amperage” and Decal in Control Panel for Selection of Overload Relay Heater Packs.

**CUTLER-HAMMER
PART NUMBER**

**GARDNER DENVER
PART NUMBER**

H2002B	24CA4101
H2003B	24CA4102
H2004B	24CA4103
H2005B	24CA4104
H2006B	24CA4105
H2007B	24CA4106
H2008B	24CA4107
H2009B	24CA4108
H2010B	24CA4109
H2011B	24CA4110
H2012B	24CA4111
H2013B	24CA4112
H2014B	24CA4113
H2015B	24CA4114
H2016B	24CA4115
H2017B	24CA4116
H2018	24CA2924
H2019	24CA2925
H2020	24CA2926
H2021	24CA2927
H2022	24CA2893
H2023	24CA2894
H2024	24CA2928

Order by Part Number and Description. Reference Numbers for your convenience only.



202EAP810-B
(Ref. Drawing)

MOTOR MOUNTING GROUP

Ref. No.	Name of Part	Qty.	ODP/TEFC 40-75 HP Part No.	For 364/365 Frame Mtrs. Part No.	For 404/405 Frame Mtrs. Part No.
1	MOTOR	1	*	Less Motor	Less Motor
2	FLEXIBLE COUPLING	1	51L58	51L60	51L61
3	MOTOR SUPPORT	1	202EDF620	201EDF620	200EDH620
4	SCREW	4	655EF240	655EF160	655EF120
5	WASHER	4	95A7	95A7	95A7
6	LOCKWASHER	4	95B7	95B7	95B7
7	NUT	4	50B7	50B7	50B7

* See page 66 for Motor Part Numbers.

** See page 69 for DRIVE COUPLING Repair Numbers.

**MOTOR GROUP
MAIN DRIVE MOTORS
FULL VOLTAGE**

Name of Part	40 HP Part No.	50 HP Part No.	60 HP Part No.	75 HP Part No.
OPEN DRIP PROOF (60 HZ-ODP)				
MOTOR, 200V	24CA3734	24CA3737	24CA3740	24CA3743
MOTOR, 230V	24CA3735	24CA3738	24CA3741	24CA3744
MOTOR, 460V	24CA3735	24CA3738	24CA3741	24CA3744
MOTOR, 575V	24CA3736	24CA3739	24CA3742	24CA3745
OPEN DRIP PROOF (60 HZ-ODP-HIGH EFFICIENCY)				
MOTOR, 200V	24CA3749	24CA3752	24CA3755	24CA3758
MOTOR, 230V	24CA3750	24CA3753	24CA3756	24CA3759
MOTOR, 460V	24CA3750	24CA3753	24CA3756	24CA3759
MOTOR, 575V	24CA3751	24CA3754	24CA3757	24CA3760
TOTALLY ENCLOSED FAN COOLED (60 HZ-TEFC)				
MOTOR, 200V	24CA3764	24CA3767	24CA3770	24CA3773
MOTOR, 230V	24CA3765	24CA3768	24CA3771	24CA3774
MOTOR, 460V	24CA3765	24CA3768	24CA3771	24CA3774
MOTOR, 575V	24CA3766	24CA3769	24CA3772	24CA3775
TOTALLY ENCLOSED FAN COOLED (60 HZ-TEFC-HIGH EFFICIENCY)				
MOTOR, 200V	24CA3779	24CA3782	24CA3785	24CA3788
MOTOR, 230V	24CA3780	24CA3783	24CA3786	24CA3789
MOTOR, 460V	24CA3780	24CA3783	24CA3786	24CA3789
MOTOR, 575V	24CA3781	24CA3784	24CA3787	24CA3790

**MOTOR GROUP
MAIN DRIVE MOTORS
WYE DELTA**

Name of Part	40 HP Part No.	50 HP Part No.	60 HP Part No.	75 HP Part No.
OPEN DRIP PROOF (60 HZ-ODP)				
MOTOR, 200V	24CA3060	24CA3065	24CA2952	24CA2956
MOTOR, 230V	24CA3061	24CA3066	24CA3013	24CA3014
MOTOR, 460V	24CA3061	24CA3066	24CA3013	24CA3014
MOTOR, 575V	24CA3064	24CA3069	24CA2955	24CA2959
OPEN DRIP PROOF (60 HZ-ODP-HIGH EFFICIENCY)				
MOTOR, 200V	24CA3070	24CA3075	24CA2968	24CA2972
MOTOR, 230V	24CA3071	24CA3076	24CA3017	24CA3018
MOTOR, 460V	24CA3071	24CA3076	24CA3017	24CA3018
MOTOR, 575V	24CA3074	24CA3079	24CA2971	24CA2975
TOTALLY ENCLOSED FAN COOLED (60 HZ-TEFC)				
MOTOR, 200V	24CA3080	24CA3085	24CA2984	24CA2988
MOTOR, 230V	24CA3081	24CA3086	24CA3021	24CA3022
MOTOR, 460V	24CA3081	24CA3086	24CA3021	24CA3022
MOTOR, 575V	24CA3084	24CA3089	24CA2987	24CA2991
TOTALLY ENCLOSED FAN COOLED (60 HZ-TEFC-HIGH EFFICIENCY)				
MOTOR, 200V	24CA3090	24CA3095	24CA2996	24CA3000
MOTOR, 230V	24CA3091	24CA3096	24CA3024	24CA3025
MOTOR, 460V	24CA3091	24CA3096	24CA3024	24CA3025
MOTOR, 575V	24CA3094	24CA3099	24CA2999	24CA3003

MOTORS (Continued)

**VENT FAN MOTORS
(ENCLOSURE)**

VOLTAGE	FAN MOTOR
200	24CA2463
230/460	24CA2464
575	24CA2465

**OIL PUMP & FAN MOTORS
(AIR COOLED UNITS)**

VOLTAGE	OIL PUMP	FAN MOTOR
200	200EWD188	24CA189
230	200EWD188	24CA190
460	200EWD188	24CA190
575	201EWD188	24CA191

REPAIR KITS

Name of Part	Qty.	Part No.
ROUTINE MAINTENANCE KIT (4000 HOURS) (Includes next four items) . .		208EWD6013
ELEMENT, AIR FILTER	2	2116713
ELEMENT, OIL FILTER	1	2116128
ELEMENT, WATER FILTER	4	2117275
PERIODIC MAINTENANCE KIT (Includes next ten items)		207EWD6013
PACKING RING	2	60DD21
O-RING (BUNA N)	1	2116641
O-RING (MPV)	1	2116642
SEAT (# 15192)	1	2116643
O-RING	2	2116644
O-RING	2	2116645
GASKET	2	2116646
ELEMENT	1	2109620
GASKET	2	2010363
GASKET	2	2010696
ELECTRICAL CONTROL KIT (Includes next nine items)		209EWD6013
SOLENOID VALVE	1	91B95
SOLENOID VALVE	1	91B147
SOLENOID VALVE	1	91B148
SOLENOID VALVE	1	91B110
SOLENOID VALVE	1	91B109
SWITCH	1	202EWD375
VACUUM SWITCH	1	88H195
THERMISTOR PROBE	3	21D264
TRANSDUCER	3	88H198
DRIVE COUPLING KIT (51L58) (Includes next item)	1	200EDH6003
CUSHION (Includes 1)		2116477
DRIVE COUPLING KIT (51L60 and 51L61) (Includes next item)	1	ECK77781
CUSHIONS (Includes 6)		2109116
TOUCH-UP PAINT		200EWD6003
1 QUART CAN		28H8
LUBRICANT		
5 GALLON PAIL		28G29

Gardner
Denver

For additional information contact your local representative or Gardner Denver Machinery Inc., Customer Service Department, 1800 Gardner Expressway, Quincy, Illinois 62301
Telephone: (800) 682-9868 FAX: (217) 224-7814



Sales and Service in all major cities.

For parts information, contact Gardner Denver, Master Distribution Center, Memphis, TN
Telephone: (800) 245-4946 FAX: (901) 542-6159

Specifications subject to change without notice.
Copyright 1996 Gardner Denver Machinery Inc.

Litho in U.S.A.