



13-10-519  
Version: 14  
September 05, 2013



**ELECTRA-SAVER<sup>®</sup>**  
**STATIONARY BASE-MOUNTED**  
**COMPRESSOR**

**AUTO SENTRY<sup>®</sup> - ES+ CONTROLS**  
**MODELS**

**EAU99P - 200, 250, 300 HP**

**PARTS LIST**

**MAINTAIN COMPRESSOR RELIABILITY AND PERFORMANCE WITH  
GENUINE GARDNER DENVER® COMPRESSOR PARTS AND SUPPORT SERVICES**

Gardner Denver® Compressor genuine parts, manufactured to design tolerances, are developed for optimum dependability – specifically for Gardner Denver compressor systems. Design and material innovations are the result of years of experience with hundreds of different compressor applications. Reliability in materials and quality assurance is incorporated in our genuine replacement parts.

Your authorized Gardner Denver Compressor distributor offers the entire backup you'll need. A worldwide network of authorized distributors provides the finest product support in the air compressor industry.

Your authorized distributor can support your Gardner Denver air compressor with these services:

1. Trained parts specialists to assist you in selecting the correct replacement parts.
2. Factory warranted new and remanufactured rotary screw airends. Most popular model remanufactured airends are maintained in stock at the factory, for purchase on an exchange basis with liberal core credit available for the replacement unit.
3. A full line of factory tested AEON™ compressor lubricants specifically formulated for use in Gardner Denver compressors.
4. Repair and maintenance kits designed with the necessary parts to simplify servicing your compressor.

Authorized distributor service technicians are factory trained and skilled in compressor maintenance and repair. They are ready to respond and assist you by providing fast, expert maintenance and repair services.

**To Contact Gardner Denver or locate your local distributor:**

visit: [www.contactgd.com/compressors](http://www.contactgd.com/compressors)

or

call: (217)222-5400

**INSTRUCTIONS FOR ORDERING REPAIR PARTS**

When ordering parts, specify Compressor MODEL, Method of Cooling, POWER and SERIAL NUMBER (see nameplate on unit). The Airend Serial Number is also stamped on top of the discharge bearing carrier castings.

All orders for Parts should be placed with the nearest authorized distributor.

Where NOT specified, quantity of parts required per compressor or unit is one (1); where more than one is required per unit, quantity is indicated in parenthesis. SPECIFY EXACTLY THE NUMBER OF PARTS REQUIRED.

DO NOT ORDER BY SETS OR GROUPS.

To determine the Right-Hand and Left-Hand side of a compressor, stand at the motor end and look toward the compressor. Right-Hand and Left- Hand are indicated in parenthesis following the part name, i.e. (RH) and (LH), when appropriate.

## **TOTAL PRODUCT SUPPORT – GARDNER DENVER’S CONTINUING COMMITMENT TO YOUR AIR COMPRESSOR PERFORMANCE**

Commitment to total product support continues long after the purchase of your quality Gardner Denver rotary screw compressor.

Gardner Denver original parts incorporate years of experience and improvements in design, materials and quality assurance. Maintaining your compressor investment with Gardner Denver parts will insure protection for the air compressor unit and long, dependable service life.

Your authorized Gardner Denver compressor distributor maintains a complete stock of all common maintenance parts, factory approved AEON lubricants, and Gardner Denver factory warranted exchange airends. In addition, authorized distributor technicians are factory trained, and can provide complete diagnostic, compressor maintenance and repair services.

This manual is designed to assist you in maintaining high performance and receiving many years of dependable service you expect from your Gardner Denver compressor.

### **REMANUFACTURED AIRENDS**

Whenever an airend requires replacement or repair, Gardner Denver offers an industry unique, factory remanufactured airend exchange program. Gardner Denver is committed to supplying you with the highest quality, factory remanufactured airends that are guaranteed to save you time, and money.

#### **Immediately Available**

Repair downtime costs you money, which is why the most popular models are in inventory at all times.

#### **Skilled Craftsmen**

Our Remanufacturing assembly technicians average over 20 years experience with air compression products.

#### **Precision Remanufacturing**

All potentially usable parts are thoroughly cleaned, inspected and analyzed. Only those parts that can be brought back to original factory specifications are remanufactured. Every remanufactured airend receives a new overhaul kit: bearings, gears, seals, sleeves and gaskets.

#### **Extensive Testing**

Gardner Denver performs testing that repair houses just don't do. Magnaflux and ultrasonic inspection spot cracked or stressed castings, monochromatic light analysis exposes oil leaks, and coordinate measurement machine inspects to +/- .0001", insuring that all remanufactured airends meet factory performance specifications.

#### **Warranty**

Gardner Denver backs up every remanufactured airend with a new warranty...27 months from purchase, 24 months from service.

Gardner Denver remanufactured airends deliver quality without question...year in and year out.

Call Gardner Denver for information on the airend exchange program and the name of your authorized distributor.

Phone Number: (217) 222-5400 or  
Fax: (217) 224-7814

## Table of Contents

Maintain Compressor Reliability And Performance With Genuine Gardner Denver Compressor Parts And Support Services .....	1
Instructions For Ordering Repair Parts .....	1
Total Product Support – Gardner Denver’s Continuing Commitment To Your Air Compressor Performance.....	2
Remanufactured Airends .....	2
Airend Selection And Repair Kits .....	4
Cylinder Group (Turn Valve) .....	5
Cylinder, Turn Valve Group.....	6
Discharge Housing Group.....	7, 8
Mounting Group .....	9
Drive Group, Gear Driven .....	10
Seal Kit, Lip, Gear Driven.....	11
Group-Control, Auto Turn Valve .....	12
Miscellaneous Group Parts .....	13
Group-Mounting Air Filter Air-Maze .....	14
Compressor Base Group .....	15, 16
Group-Oil System Air Reservoir.....	17, 18
Oil Separator Group .....	19
Mixing Valve And Oil Filter .....	20
Water Cooled Heat Exchanger – With Aftercooler .....	21, 22
Water Cooled Heat Exchanger – Without Aftercooler .....	23, 24
Repair Parts For Heat Exchangers And Aftercoolers .....	25
Minimum Pressure/Check Valve .....	26
Air Cooled Cooler Group.....	27, 28
Control Piping.....	29, 30
Turn Valve Actuator .....	31
Enclosure Group .....	32
Enclosure – Air Cooled Panels .....	33
Enclosure – Water Cooled Panels .....	34
Enclosure – Hardware (All Units) .....	35
Enclosure – Hardware (Quiet Baffle - Air Cooled) .....	36
Enclosure (Quiet Baffle - Air Cooled) .....	37
Enclosure – Skirt (Air Cooled - Quiet) .....	38
Enclosure – Skirt (Water Cooled - Quiet).....	39
Enclosure – Vent Fan Assembly.....	40
Overload Relay Heater Conversion Listing.....	41
Motor Group (Main Drive Motors) .....	42
Miscellaneous Electrical Parts .....	43
Controller Assembly .....	44
Control Box Assembly – 200/250/300 HP .....	45
Control Box Assembly – 200 HP.....	46
Control Box Assembly - 250 HP .....	47
Control Box Assembly – 300 HP.....	48
Control Box Assembly – Less Main Motor Starters .....	49, 50
Identification And Instruction Group.....	51, 52
Repair Kits.....	53-55

**For Operating and Service Instructions, see:**

<b>SERVICE MANUAL:</b>	<b>13-10-615</b>
<b>CONTROLLER MANUAL:</b>	<b>13-9-653</b>

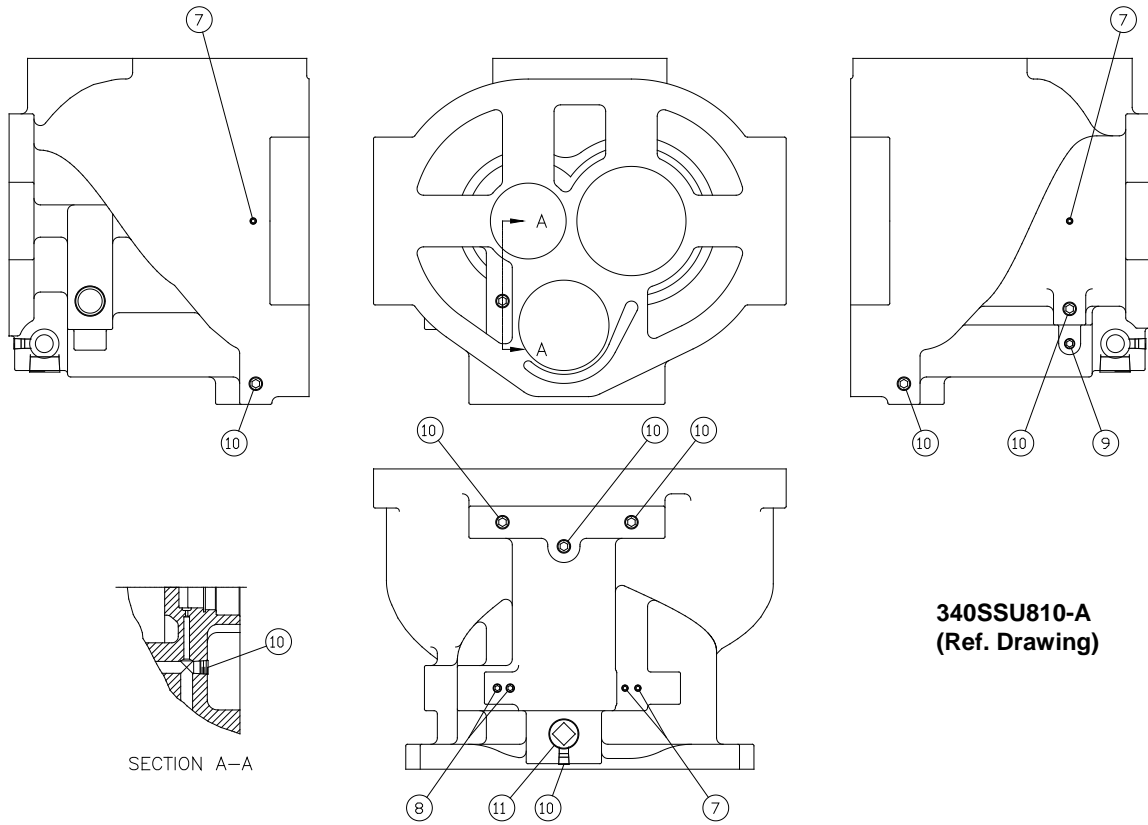
### AIREND SELECTION AND REPAIR KITS

Model	HP	PSI	Airend w/Inlet Valve	Reman Airend w/Inlet Valve	Bearing Kit *	Gasket Kit	Inlet Valve Kit	Turn Valve Kit	Drive Shaft Seal Kit	Drive Shaft Wear Sleeve Removal & Installation Kit
EAU	200	100	SSUAHACM0IS	SSUAHACM0IX	339SSU6013	333SSU6013	201SSU6003	315SSU6013	302SSU6013	302SSU4017
		125	SSUAHACM04S	SSUAHACM04X	339SSU6013	333SSU6013	201SSU6003	315SSU6013	302SSU6013	302SSU4017
		150	SSUAHACM04S	SSUAHACM04X	339SSU6013	333SSU6013	201SSU6003	315SSU6013	302SSU6013	302SSU4017
EAU	250	100	SSUAHACM02S	SSUAHACM02X	339SSU6013	333SSU6013	201SSU6003	315SSU6013	302SSU6013	302SSU4017
		125	SSUAHACM05S	SSUAHACM05X	339SSU6013	333SSU6013	201SSU6003	315SSU6013	302SSU6013	302SSU4017
		150	SSUAHACM0IS	SSUAHACM01X	339SSU6013	333SSU6013	201SSU6003	315SSU6013	302SSU6013	302SSU4017
EAU	300	100	SSUAHACM03S	SSUAHACM03X	339SSU6013	333SSU6013	201SSU6003	315SSU6013	302SSU6013	302SSU4017
		125	SSUAHACM02S	SSUAHACM02X	339SSU6013	333SSU6013	201SSU6003	315SSU6013	302SSU6013	302SSU4017
		150	SSUAHACM05S	SSUAHACM05X	339SSU6013	333SSU6013	201SSU6003	315SSU6013	302SSU6013	302SSU4017

\* When ordering Bearing Kits, also order Gasket Kit and Drive Shaft Seal Kit.

For listing of Repair Parts included in Kit numbers above, see Repair Kit Section page 52-54.

Order by Part Number and Description. Reference Numbers are for your convenience only.



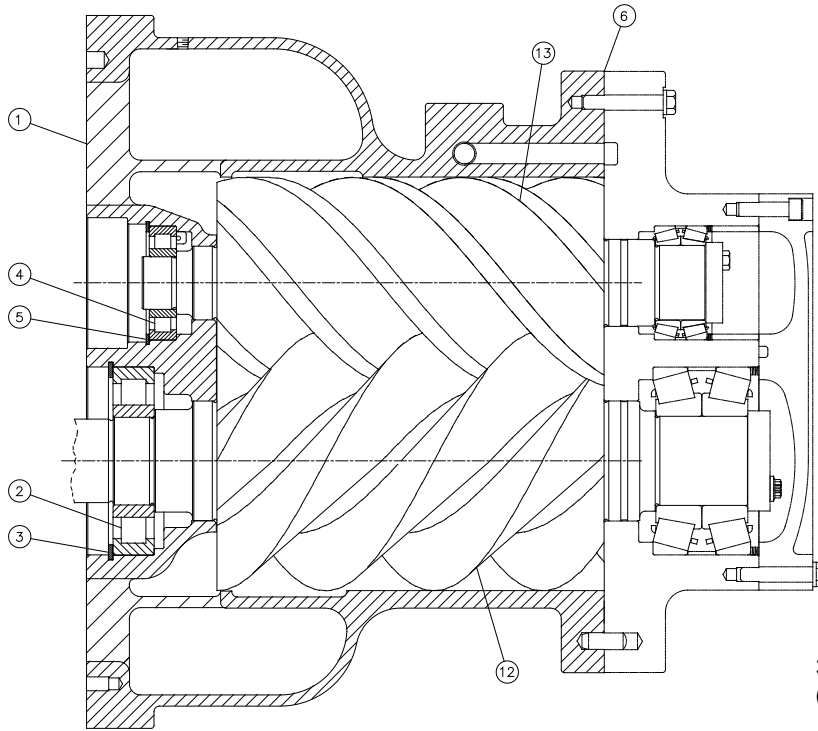
340SSU810-A  
(Ref. Drawing)

**CYLINDER GROUP (TURN VALVE)**

**B/M: 300SSU4042**

Ref. No.	Name of Part	Qty.	Part No.
7	PLUG .....	4	64AA5
8	PLUG .....	2	64AA4
9	PLUG .....	1	64AA7
10	PLUG .....	8	64AA3
11	PLUG .....	1	64B7

Order by Part Number and Description. Reference Numbers are for your convenience only.



339SSU810-B  
(Ref. Drawing)

**CYLINDER, TURN VALVE GROUP**

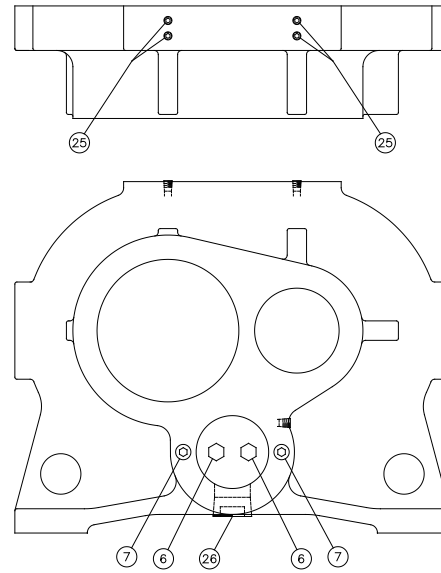
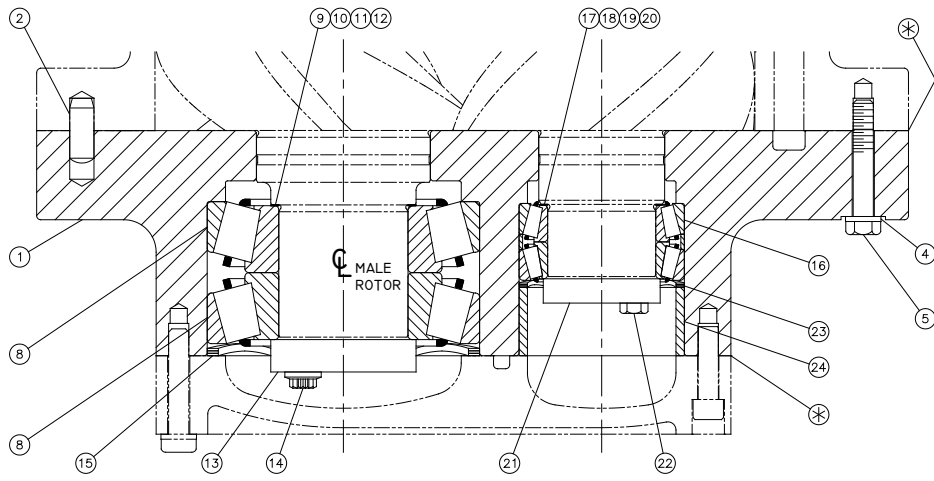
**B/M: 300SSU4042**

Ref. No.	Name of Part	Qty.	Part No.
1	CYLINDER-AIR, TURN VALVE .....	1	**
* 2	ROLLER BEARING .....	1	12BA52
* 3	RING-RETAINER .....	1	65W61
* 4	BEARING-ROLLER.....	1	12W34
* 5	RING-RETAINING .....	1	65W14
6	GASKET-ELIMINATOR.....	1	25BC222

\* Parts included in Periodic Overhaul Kit Part Number 339SSU6013. Refer to page 54.

\*\* For Reference Only

# DISCHARGE HOUSING GROUP



⊗ DESIGNATES JOINTS REQUIRING GASKET ELIMINATOR  
REFER TO RELATED BILLS OF MATERIAL FOR PART NUMBER

**342SSU810-B**  
**(Ref. Drawing)**

Order by Part Number and Description. Reference Numbers are for your convenience only.

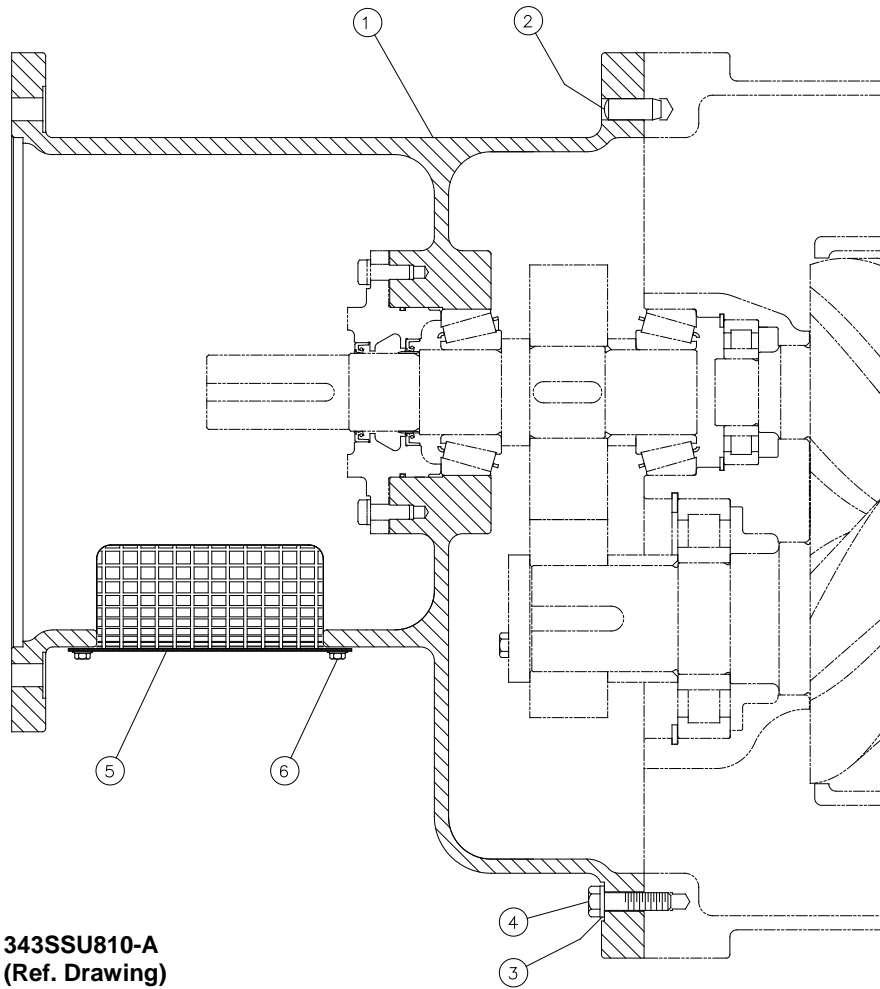
DISCHARGE HOUSING GROUP

B/M: 310SSU4044

Ref. No.	Name of Part	Qty.	Part No.
1	HOUSING-BEARING.....	1	**
2	PIN.....	1	**
3	PIN (Not Shown).....	1	**
4	LOCKWASHER .....	24	**
5	SCREW .....	22	**
6	SCREW .....	2	**
7	SCREW .....	2	**
*** 8	BEARING .....	2	12BA79
+ 9	SHIM.....	3	77H116002
+ 10	SHIM.....	3	77H116003
+ 11	SHIM.....	3	77H116005
+ 12	SHIM.....	2	77H116015
13	PLATE-BEARING RETAINER .....	1	**
14	SCREW .....	3	**
*** 15	SPRING .....	1	78W110
*** 16	BEARING .....	1	12BA192
+ 17	SHIM.....	3	77H50002
+ 18	SHIM.....	3	77H50003
+ 19	SHIM.....	3	77H50005
+ 20	SHIM.....	2	77H50015
21	PLATE-BEARING RETAINER .....	1	**
22	SCREW .....	3	**
*** 23	SPRING.....	1	78W90
24	SPACER.....	1	**
25	PLUG.....	5	**
26	PLUG.....	1	**
+ *	GASKET ELIMINATOR .....	1	25BC222

- \* Gasket Eliminator, see drawing.
- \*\* Shown for Reference Only.
- \*\*\* Parts included in Periodic Overhaul Kit Part Number 339SSU6013. Refer to page 54.
- + Parts included in Gasket Kit Part Number 333SSU6013. Refer to page 55.

Order by Part Number and Description. Reference Numbers are for your convenience only.

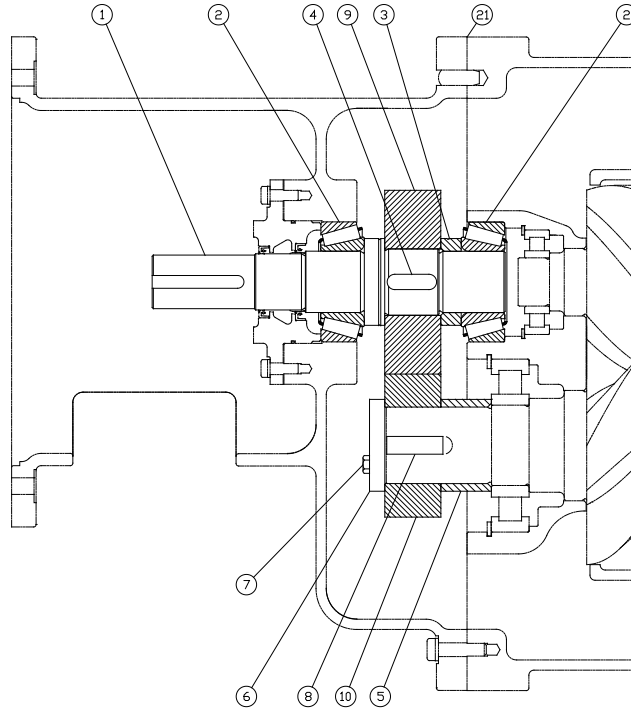


**MOUNTING GROUP**

**B/M: 300SSU4017**

Ref. No.	Name of Part	Qty.	Part No.
1	HOUSING-GEAR .....	1	201SSU151
2	PIN.....	2	62M112
3	LOCKWASHER .....	20	95B7
4	SCREW .....	20	655EF100
5	GUARD-COUPLING.....	1	200SSU339
6	SCREW .....	4	75LM51
7	PLUG (not shown).....	2	64AA5

Order by Part Number and Description. Reference Numbers are for your convenience only.



352SSU810-A  
(Ref. Drawing)

**DRIVE GROUP, GEAR DRIVEN**

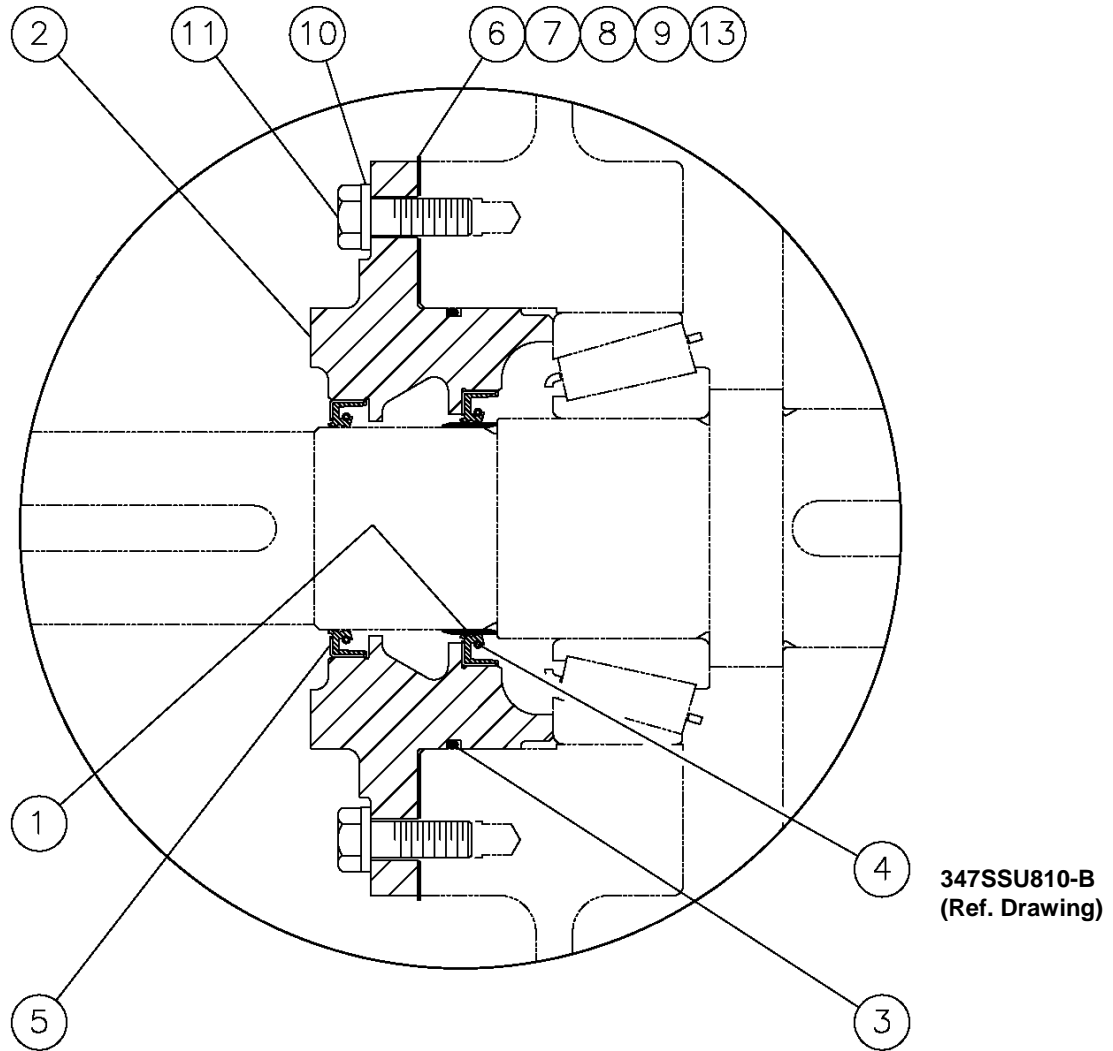
**B/M: 301SSU4004**

Ref. No.	Name of Part	Qty.	Part No.
1	SHAFT .....	1	300SSU050
* 2	BEARING .....	2	12C96
3	SHAFT SPACER.....	1	302SSU600
* 4	KEY .....	1	35L3
5	SHAFT SPACER.....	1	200SSU600
6	PLATE-BEARING RETAINER .....	1	2012387
7	SCREW.....	3	655EE06N
* 8	KEY .....	1	35L16

\* Parts included in Periodic Overhaul Kit Part Number 339SSU6013. Refer to page 54.

Airend	Ref. No.	Name of Part	Part No.	Qty	Ref. No.	Name of Part	Part No.	Qty
01	9	Gear-Drive	200SSU181	1	10	Gear-Driven	200SSU280	1
02	9	Gear-Drive	201SSU181	1	10	Gear-Driven	201SSU280	1
03	9	Gear-Drive	202SSU181	1	10	Gear-Driven	202SSU280	1
04	9	Gear-Drive	203SSU181	1	10	Gear-Driven	203SSU280	1
05	9	Gear-Drive	204SSU181	1	10	Gear-Driven	204SSU280	1

Order by Part Number and Description. Reference Numbers are for your convenience only.

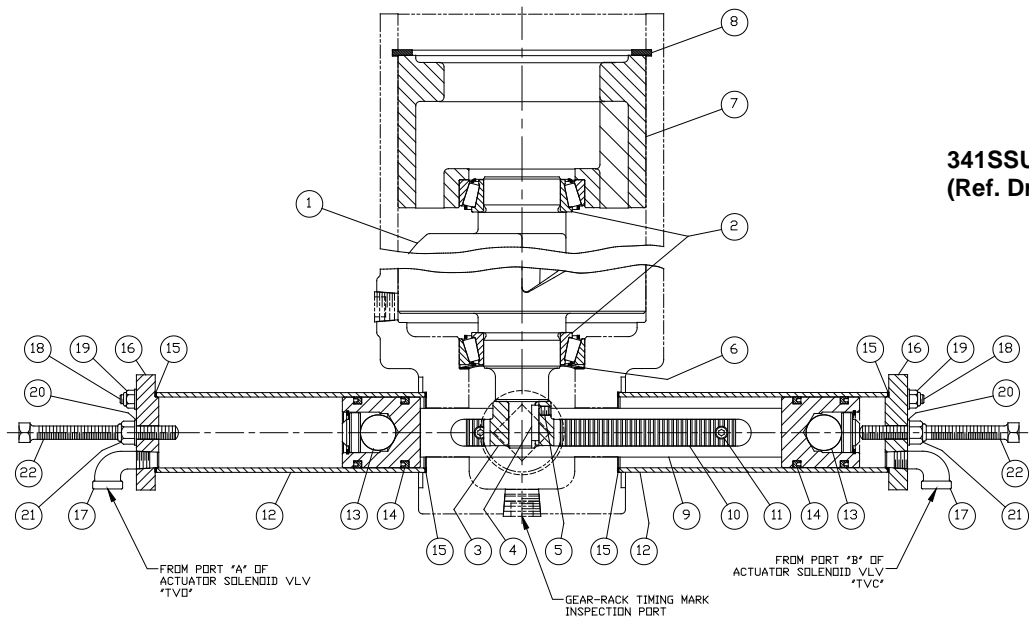


SEAL KIT, LIP, GEAR DRIVEN

B/M: 301SSU6029

Ref. No.	Name of Part	Qty.	Part No.
* 1	SLEEVE-WEAR.....	1	80M28
2	HOUSING-SEAL .....	1	203SSU362
* 3	O-RING.....	1	25BC205
* 4	SEAL-OIL.....	1	60DD571
* 5	SEAL-OIL.....	1	60DD689
* 6	SHIM.....	12	204SSY732
* 7	SHIM.....	12	205SSY732
* 8	SHIM.....	6	207SSY732
* 9	SHIM.....	6	208SSY732
10	LOCKWASHER .....	6	95B5
11	SCREW .....	6	655EE060
* 12	VALVE-CHECK (not shown) .....	1	90AR923
13	SHIM.....	12	203SSY732
14	LOCTITE SEALANT (not shown) .....	1	25BC848
* Parts included in Oil Seal Kit Part Number 302SSU6013, refer to page.55			

Order by Part Number and Description. Reference Numbers are for your convenience only.



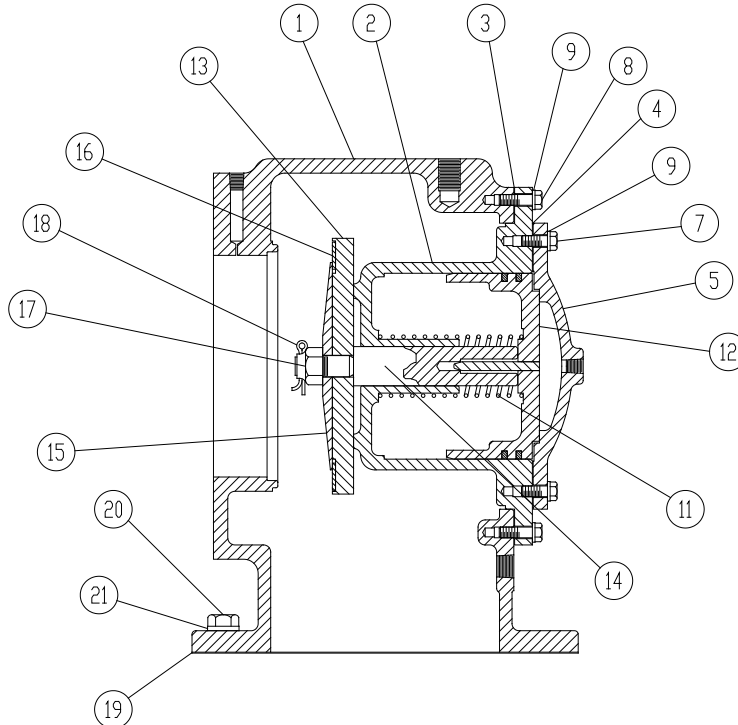
341SSU810-A  
(Ref. Drawing)

**GROUP-CONTROL, AUTO TURN VALVE**

**B/M: 300SSU4052**

Ref. No.	Name of Part	Qty.	Part No.
1	TURN VALVE .....	1	203SSU238
* 2	ROLLER BEARING .....	2	12BA51
3	GEAR-AUXILIARY PINION .....	1	200SSU031
* 4	KEY .....	1	35C114
5	SCREW .....	1	76G21P
* 6	SPRING .....	1	78W50
7	RETAINER .....	1	207SSU205
8	RING-RETAINING .....	1	100522
9	SHAFT-CONTROL .....	1	200SSU081
10	RACK .....	1	200SSU360
11	SCREW .....	2	75P11N
12	CYLINDER.....	2	200SSU082
13	PISTON GROUP (Includes next four items) .....	2	300SSU4056
	PISTON CONTROL.....	1	201SSU084
*	BUMPER .....	1	32E15
*	PLATE RETAINER .....	1	300SSU168
*	RING RETAINING .....	1	74D49
* 14	PACKING-RING .....	4	60AM46
* 15	GASKET .....	4	25BC138N
16	HEAD-CONTROL CYLINDER .....	2	302SSY083
17	ELBOW.....	2	64D2G
18	STUD .....	8	79AL5
19	NUT .....	8	50AW24
* 20	SEAL-FASTENER .....	2	60DD801
21	LOCKNUT .....	2	50AW38
22	SCREW-SET .....	2	76D49
* Parts included in Turn Valve Kit, Part Number 315SSU6013, refer to page 55.			

Order by Part Number and Description. Reference Numbers are for your convenience only.



206SSU810-B  
(Ref. Drawing)

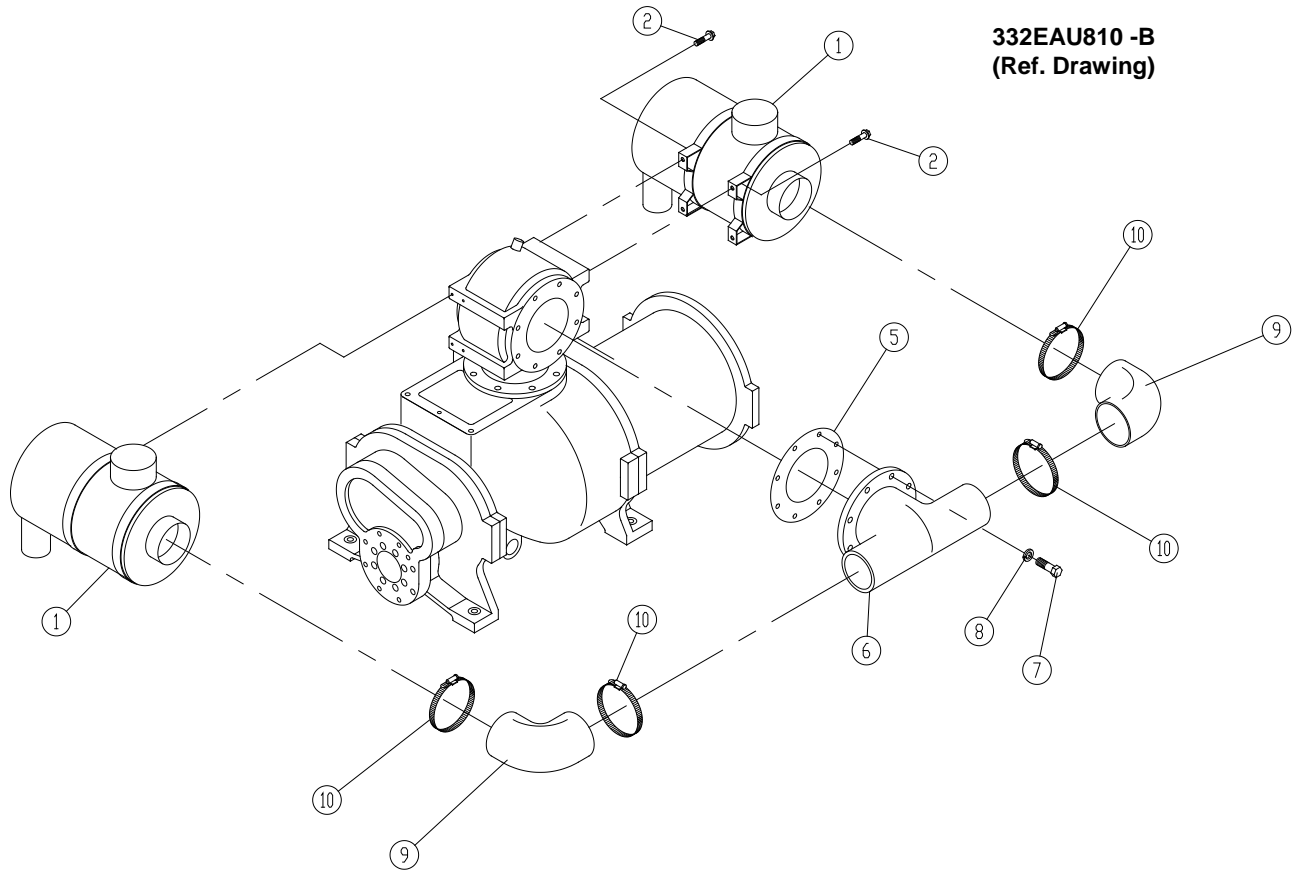
MISCELLANEOUS GROUP PARTS, INLET VALVE, HORIZONTAL

B/M:204SSU4013

Ref. No.	Name of Part	Qty.	Part No.
1	HOUSING-INLET .....	1	200SSU041
2	CYLINDER-INLET VALVE .....	1	S11542
* 3	GASKET .....	1	203SSU715N
* 4	GASKET .....	1	25C2683N
5	CAP-CYLINDER.....	1	S115274
6	PIN (not shown).....	1	62R101
7	SCREW .....	6	655ED040
8	SCREW .....	8	655ED050
9	LOCKWASHER .....	14	95B3
* 11	SPRING .....	1	78A366
12	INLET VALVE PISTON ASSEMBLY (Includes next 2 items) ..	1	S11543D
	PISTON-INLET VALVE .....	1	S11543C
* 12	RING-PISTON.....	2	65A319
13	VALVE-INLET.....	1	200SSW044
14	GUIDE-VALVE .....	1	200SSW483
15	CLAMP-DISC .....	1	200SSW338
* 16	DISC-VALVE .....	1	200SSW067
17	NUT .....	1	50E9
* 18	PIN.....	1	62E30
* 19	GASKET RING .....	1	25BC160
20	SCREW .....	8	655EG070
21	LOCKWASHER .....	8	95B8

\* Parts included in Inlet Valve Kit Part Number 201SSU6003, refer to page 54.

Order by Part Number and Description. Reference Numbers are for your convenience only.



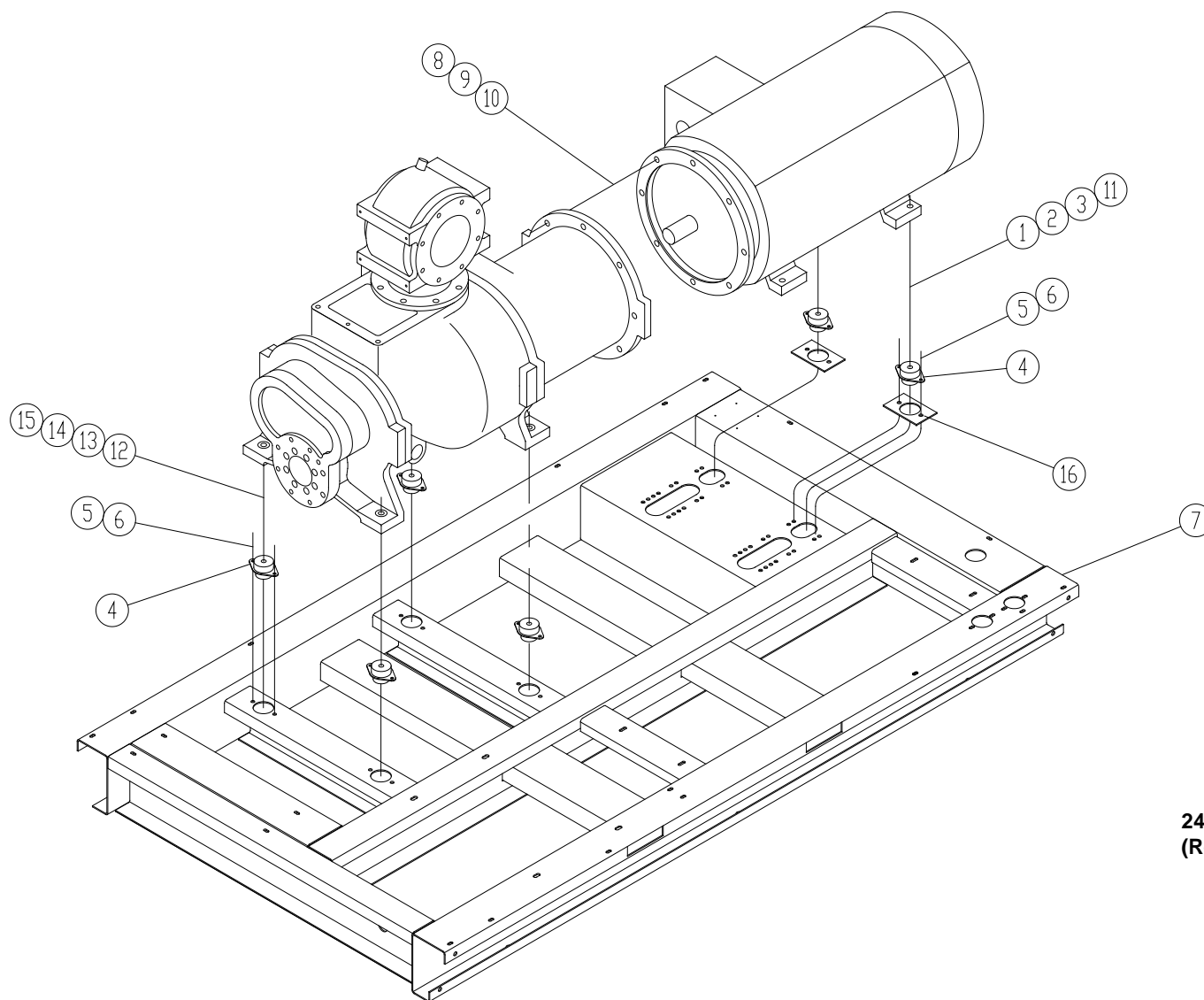
**GROUP-MOUNTING AIR FILTER AIR-MAZE**

**B/M:300EAU4054**

Ref. No.	Name of Part	Qty.	Part No.
* 1	FILTER-AIR .....	2	5L353
2	SCREW .....	8	75LM51
5	GASKET .....	1	25C2721N
6	MANIFOLD-INLET.....	1	203EAU690
7	SCREW .....	8	655EG080
8	LOCKWASHER .....	8	95B8
9	HOSE.....	2	2009734
10	CLAMP .....	4	29B46

\* For Repair, order Element Part Number 2118349.

# COMPRESSOR BASE GROUP



246EAU810-B  
(Ref. Drawing)

Order by Part Number and Description. Reference Numbers are for your convenience only.

**COMPRESSOR BASE GROUP**

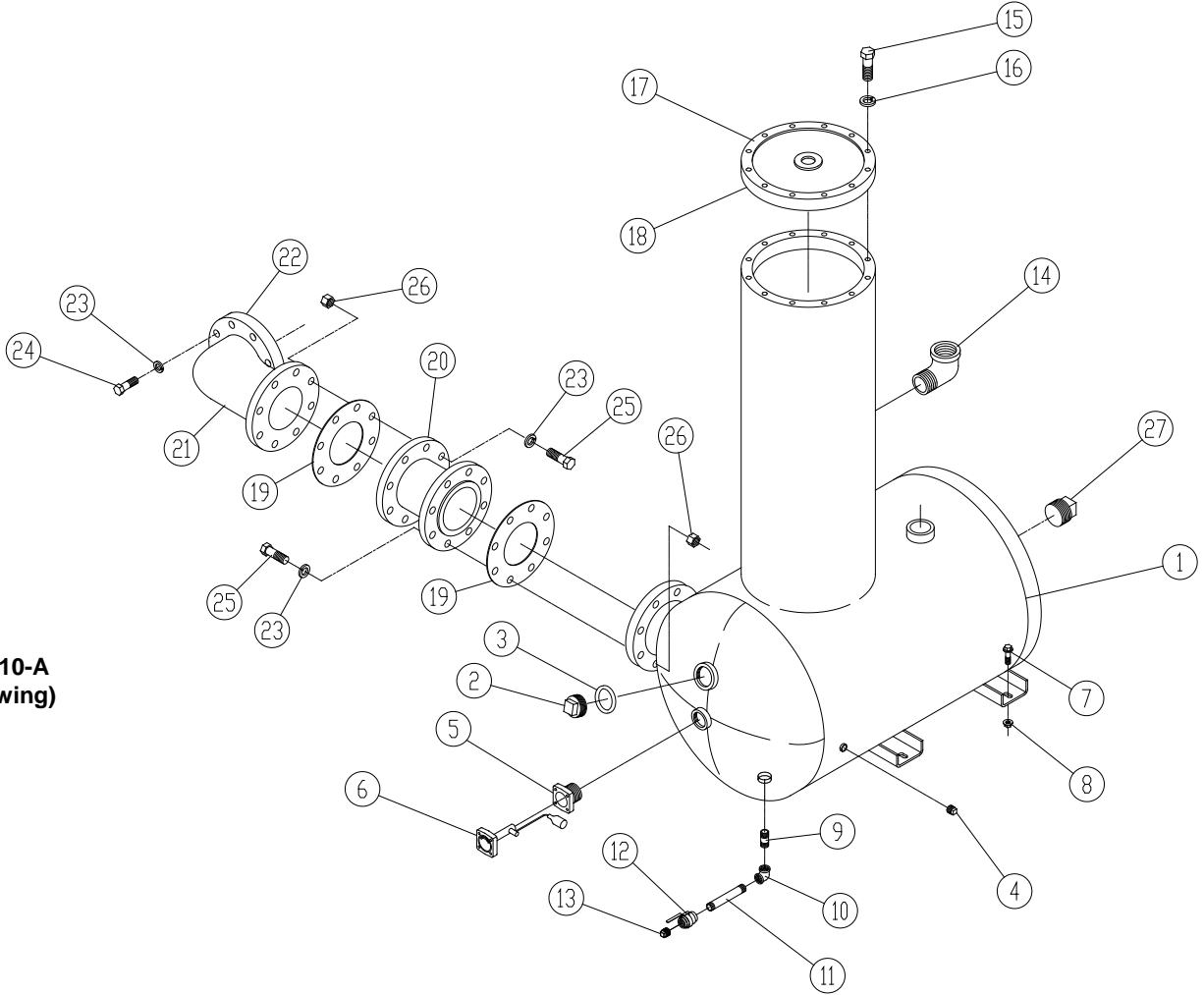
**B/M:310EAU4017**

Ref. No.	Name of Part	Qty.	Part No.
1	SCREW .....	2	655EG240
2	WASHER-.....	2	95A8
3	LOCKWASHER.....	2	95B8
4	ISOLATOR-VIBRATION.....	6	49C48
5	SCREW .....	12	75LM135
6	NUT .....	12	50AW35
7	BASE .....	1	302EAU285
8	NUT .....	8	50B8
9	WASHER.....	8	95B8
10	SCREW .....	8	655EG140
11	NUT .....	2	50B8
12	WASHER.....	4	95A8
13	LOCKWASHER.....	4	95B8
14	NUT .....	4	50B8
15	SCREW .....	4	655EG240
16	SUPPORT .....	2	300EAU165
*	FLEX DRIVE COUPLINGS – 200 HP (not shown).....	1	51L221
**	FLEX DRIVE COUPLINGS – 250-300 HP (not shown).....	1	51L224
	KEY (not shown) .....	1	35L27

\* For Repair, order Drive Coupling Spider Part Number 2118273.

\*\* For Repair, order Drive Coupling Spider Part Number 2118274.

**GROUP-OIL SYSTEM AIR RESERVOIR**



**328EAU810-A**  
**(Ref. Drawing)**

Order by Part Number and Description. Reference Numbers are for your convenience only.

**GROUP-OIL SYSTEM AIR RESERVOIR**

**B/M: 300EAU4018**

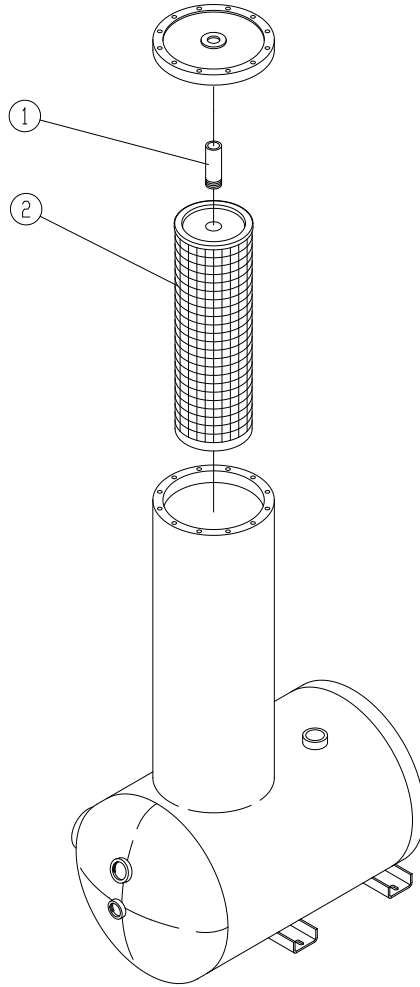
Ref. No.	Name of Part	Qty	Part No.	Ref. No.	Name of Part	Qty.	Part No.
2	COVER-FILLER FREE FIT	1	200SPF156	15	SCREW.....	12	655EE090
3	O-RING .....	1	25BC900	16	LOCKWASHER.....	12	95B5
4	PLUG.....	1	64AA5	17	COVER .....	1	202EAU225
5	ADAPTOR-GAUGE .....	1	200EDE058	18	GASKET.....	1	200EAU715N
* 6	GAUGE-FLOAT .....	1	200EAU303	19	GASKET.....	2	25C807N
7	SCREW .....	4	75LM135	20	EXPANSION-JOINT .....	1	300EAU535
8	NUT .....	4	50AW35	21	DISCHARGE MANIFOLD .....	1	300EAU286
9	NIPPLE.....	1	63F2G	22	GASKET-ELIMINATOR .....	1	25BC222
10	ELBOW .....	1	64C4G	23	LOCKWASHER.....	24	95B8
11	NIPPLE.....	1	63F10G	24	SCREW .....	8	655EG100
12	VALVE-BALL.....	1	90AR360	25	SCREW .....	16	655EG120
13	PLUG.....	1	64AA7	26	NUT .....	16	50B8
14	ELBOW .....	1	64D9G	27	PLUG .....	1	64AA9

\* For Repair: Float Gauge Gasket – Order Part Number 54C204.

**\*\* PRESSURE RELIEF VALVE PART NUMBER MATRIX**

	100 PSIG	125 PSIG	150 PSIG
200 HP	90AR510	90AR532	90AR909
250 HP	90AR511	90AR533	90AR909
300 HP	90AR511	90AR533	90AR909

Order by Part Number and Description. Reference Numbers are for your convenience only.



247EAU810  
(Ref. Drawing)

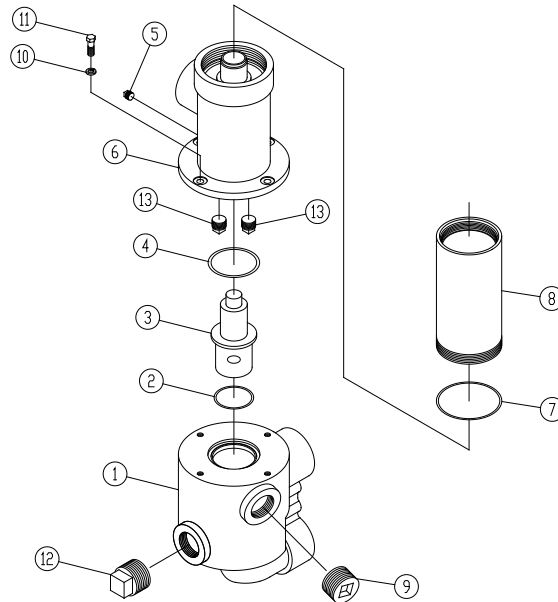
**OIL SEPARATOR GROUP**

**B/M: 307EAU4013**

Ref. No.	Name of Part	Qty.	Part No.
1	SPACER TUBE .....	1	300EAU392
* 2	SEPARATOR-AIR/OIL.....	1	302EAU035

For Separator Repair Kit order Part Number 306EAU6013. Refer to page 53.

Order by Part Number and Description. Reference Numbers are for your convenience only.



333EAU810-B  
(Ref. Drawing)

**MIXING VALVE AND OIL FILTER  
(With 150° Element)**

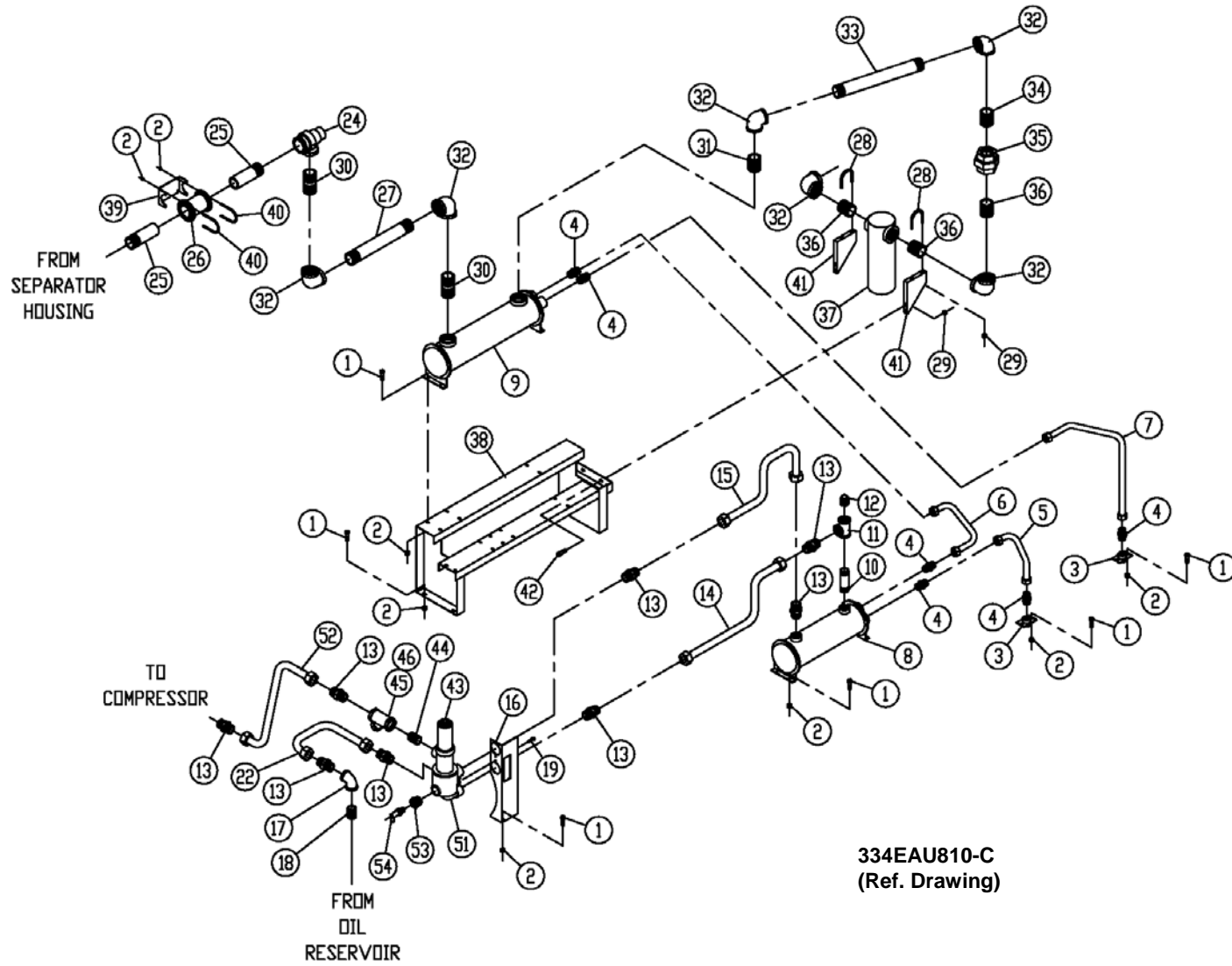
**250 – 300 HP  
B/M: 301EAU2045  
302EAU2045**

**200 HP  
B/M: 303EAQ2045  
304EAQ2045**

Ref. No.	Name of Part	Qty.	Part No.	Part No.
1	MANIFOLD-OIL .....	1	200EAU116	200EAU116
2	O-RING .....	1	25BC127	25BC127
3	ELEMENT			
	ELEMENT (140° - OPTIONAL) .....	1	2109366	2117381
	ELEMENT (150° - STANDARD) .....	1	2109365	2117382
	ELEMENT (160° - OPTIONAL) .....	1	2109364	2117383
	ELEMENT (180° - OPTIONAL) .....	1	2109084	2117384
4	O-RING .....	1	25BC175	25BC175
5	PLUG .....	1	64AC2	64AC2
6	MANIFOLD-OIL .....	1	201EAU116	201EAU116
7	O-RING .....	1	25BC380	25BC380
* 8	BODY-OIL FILTER .....	1	200EDM032	200EDM032
9	PLUG .....	1	64B7	64B7
10	LOCKWASHER .....	4	95B3	95B3
11	SCREW .....	4	655ED050	655ED050
12	PLUG .....	1	64AA2	64AA2
13	PLUG .....	2	2118347	2118347

\* For Repair or Filter Element, order Part Number 2118342.

# WATER COOLED HEAT EXCHANGER – WITH AFTERCOOLER



Order by Part Number and Description. Reference Numbers are for your convenience only.

WATER COOLED HEAT EXCHANGER – WITH AFTERCOOLER

B/M:355-360EAU4003; 302-303EAU4013; 301EAU4019; 308-309EAQ4013

Ref. No.	Name of Part	Qty	Part No.	Ref. No.	Name of Part	Qty.	Part No.
1	SCREW-FLANGED .....	18	75LM51	25	NIPPLE .....	2	63AJ48X50G
2	NUT-FLANGED.....	22	50AW5	* 26	COUPLING-FLEXIBLE.....	1	64EB803
3	MANIFOLD-WATER.....	2	200EDM072	27	NIPPLE .....		
4	CONNECTOR-TUBE.....	6	86H141		200 HP .....	1	63N48X280G
5	TUBE WITH FITTINGS .....	1	306EAU863		250 HP .....	1	63N48X230G
6	TUBE WITH FITTINGS .....	1	307EAU863		300 HP .....	1	63N48X190G
7	TUBE WITH FITTINGS .....	1	308EAU863	28	U-BOLT.....	2	15U87
8	EXCHANGER-HEAT			29	NUT-FLANGED.....	8	50AW35
	Standard – 200 HP .....	1	200EAU349	30	NIPPLE .....	2	63P15G
	Salt Water – 200 HP .....	1	203EAU349	31	NIPPLE .....	1	63P5G
	Standard – 250 HP .....	1	201EAU349	32	ELBOW .....	6	64C10G
	Salt-Water – 250 HP .....	1	204EAU349	33	NIPPLE .....	1	63N48X276G
	Standard – 300 HP .....	1	202EAU349	34	NIPPLE .....	1	63P16G
	Salt-Water – 300 HP .....	1	205EAU349	35	UNION .....	1	64Z21
9	AFTERCOOLER			36	NIPPLE .....	3	63P2G
	Standard – 200 HP .....	1	204EAU292	37	TRAP .....	1	83C103
	Salt Water – 200 HP .....	1	206EAU292	38	SUPPORT.....	1	208EAU165
	Standard – 250 HP .....	1	203EAU292	39	BRACKET-PIPE .....	1	200EAQ108
	Salt-Water – 250 HP .....	1	207EAU292	40	U-BOLT.....	2	15U108
	Standard – 300 HP .....	1	200EAU292	41	BRACKET (FORMED).....	2	205EAU142
	Salt-Water – 300 HP .....	1	208EAU292	42	SCREW-FLANGED.....	4	75LM135
10	NIPPLE .....	1	63L24G	***43	FILTER-OIL.....	1	300EAQ369
11	TEE.....	1	64G1G	44	NIPPLE .....	1	63L2G
** 12	PLUG .....	1	64B7	+ 45	STRAINER.....	1	82E50
13	CONNECTOR-TUBE.....	8	86H142	46	PLUG .....	1	64AA1
14	TUBE WITH FITTINGS .....	1	302EAU863	51	ASSEMBLY FILTER		
15	TUBE WITH FITTINGS				250-300 HP (150°) See Page 20 .....	1	301EAU2045
	200 HP.....	1	303EAU863		250-300 HP (180°) See Page 20 .....	1	302EAU2045
	250 HP.....	1	304EAU863		200 HP (150°) See Page 20 .....	1	303EAQ2045
	300 HP.....	1	305EAU863		200 HP (180°) See Page 20 .....	1	304EAQ2045
16	BRACKET (FORMED).....	1	300EAU142	52	TUBE WITH FITTINGS .....	1	319EAU863
17	ELBOW-PIPE .....	1	64C9G	53	BUSHING-PIPE .....	1	64E61
18	NIPPLE .....	1	63L9G	54	OIL SAMPLING VALVE.....	1	86N345
19	SCREW.....	2	75LM51		WATER VALVES		
22	TUBE WITH FITTINGS .....	1	300EAU863		WATER SOLENOID – N4.....		91B24
24	VALVE-MINIMUM PRESSURE See Page 26 ....	1	201EDM527		WATER-TEMPERATURE. REGULATOR.....		90AR152

\* For Repair: (2) Gaskets - 2109775

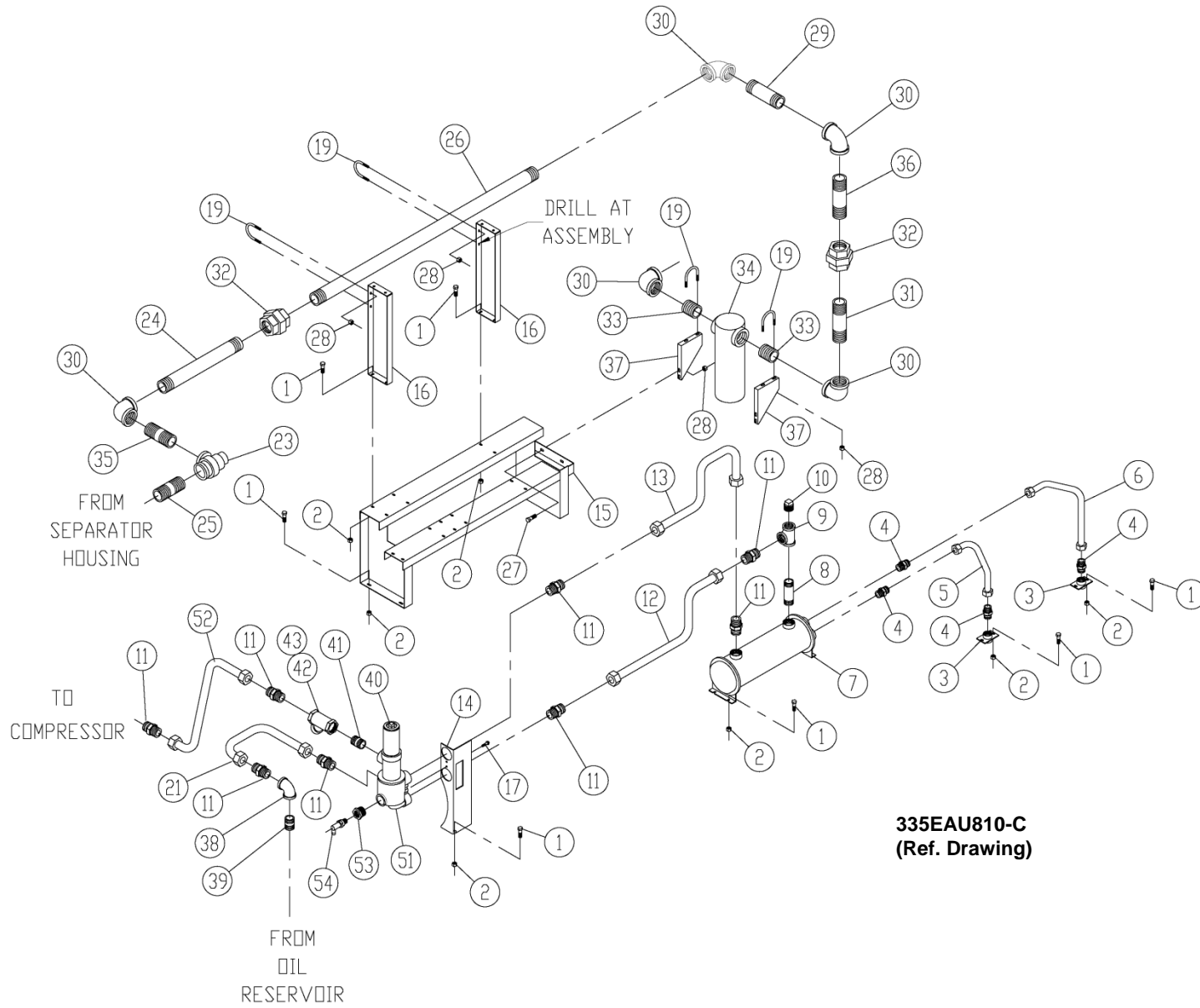
\*\* Remove this plug & install temperature probe when water temperature regulator option is used.

\*\*\* Repair Element Part Number 2118342.

+ Repair parts for Strainer (100 Mesh Screen): 2118379; Blow-Off Bushing: 2118382.

Note: For Repair Part Numbers for Heat Exchangers and Aftercoolers, see page 25.

# WATER COOLED HEAT EXCHANGER – WITHOUT AFTERCOOLER



Order by Part Number and Description. Reference Numbers are for your convenience only.

WATER COOLED HEAT EXCHANGER – WITHOUT AFTERCOOLER

B/M:361-366EAU4003; 302-303EAU4013; 308-309EAQ4013; 301EAU4019

Ref. No.	Name of Part	Qty	Part No.	Ref. No.	Name of Part	Qty.	Part No.
1	SCREW-FLANGED .....	18	75LM51	27	SCREW .....	4	75LM135
2	NUT .....	22	50AW5	28	NUT .....	12	50AW35
3	MANIFOLD-WATER .....	2	200EDM072	29	NIPPLE .....	1	63N48X150G
4	CONNECTOR-TUBE .....	4	86H141	30	ELBOW .....	5	64C10G
5	TUBE WITH FITTINGS .....	1	306EAU863	31	NIPPLE .....	1	63P22G
6	TUBE WITH FITTINGS .....	1	309EAU863	32	UNION .....	2	64Z21G
7	EXCHANGER-HEAT			33	NIPPLE .....	2	63P2G
	Standard – 200 HP .....	1	200EAU349	34	TRAP .....	1	83C103
	Salt Water – 200 HP .....	1	203EAU349	35	NIPPLE .....	1	63P1G
	Standard – 250 HP .....	1	201EAU349	36	NIPPLE .....	1	63P2G
	Salt-Water – 250 HP .....	1	204EAU349	37	BRACKET (FORMED) .....	2	205EAU142
	Standard – 300 HP .....	1	202EAU349	38	ELBOW-PIPE .....	1	64C9G
	Salt-Water – 300 HP .....	1	205EAU349	39	NIPPLE .....	1	63L9G
8	NIPPLE .....	1	63L24G	+ 40	FILTER-OIL .....	1	300EAQ369
9	TEE .....	1	64G1G	41	NIPPLE .....	1	63L2G
** 10	PLUG .....	1	64B7	∇ 42	STRAINER .....	1	82E50
11	CONNECTOR-TUBE .....	8	86H142	43	PLUG .....	1	64AA1
12	TUBE WITH FITTINGS .....	1	302EAU863	51	ASSEMBLY FILTER		
13	TUBE WITH FITTINGS .....				250-300 HP (150°) See Page 20 .....	1	301EAU2045
	200 HP .....	1	303EAU863		250-300 HP (180°) See Page 20 .....	1	302EAU2045
	250 HP .....		304EAU863		200 HP (150°) See Page 20 .....	1	303EAQ2045
	300 HP .....		305EAU863		200 HP (180°) See Page 20 .....	1	304EAQ2045
14	BRACKET (FORMED) .....	1	300EAU142	52	TUBE WITH FITTINGS .....	1	319EAU863
15	SUPPORT .....	1	208EAU165	53	BUSHING-PIPE .....	1	64E61
16	BRACKET – PIPE .....	1	201EAU108	54	OIL SAMPLING VALVE .....	1	86N345
17	SCREW .....	2	75LM51		WATER VALVES		
19	U-BOLT .....	4	15U87		WATER SOLENOID – N4 .....		91B24
23	VALVE-MINIMUM PRESSURE See Page 26 .....	1	201EDM527		WATER TEMP. REG. ....		90AR152
24	NIPPLE .....	1	63N48X134G				
* 25	NIPPLE .....	1	63P1G				
26	NIPPLE .....	1	63N48X660G				

- \* For Repair: (2) Gaskets - 2109775
- \*\* Remove this plug & install temperature probe when water temperature regulator option is used.
- + Repair Element Part Number 2118342.
- ∇ Repair Parts for Strainer (100 Mesh Screen): 2118379 Blow-Off Bushing: 2118382.

Note: For Repair Part Numbers for Heat Exchangers and Aftercoolers, see page 25.

**REPAIR PARTS FOR HEAT EXCHANGERS AND AFTERCOOLERS**

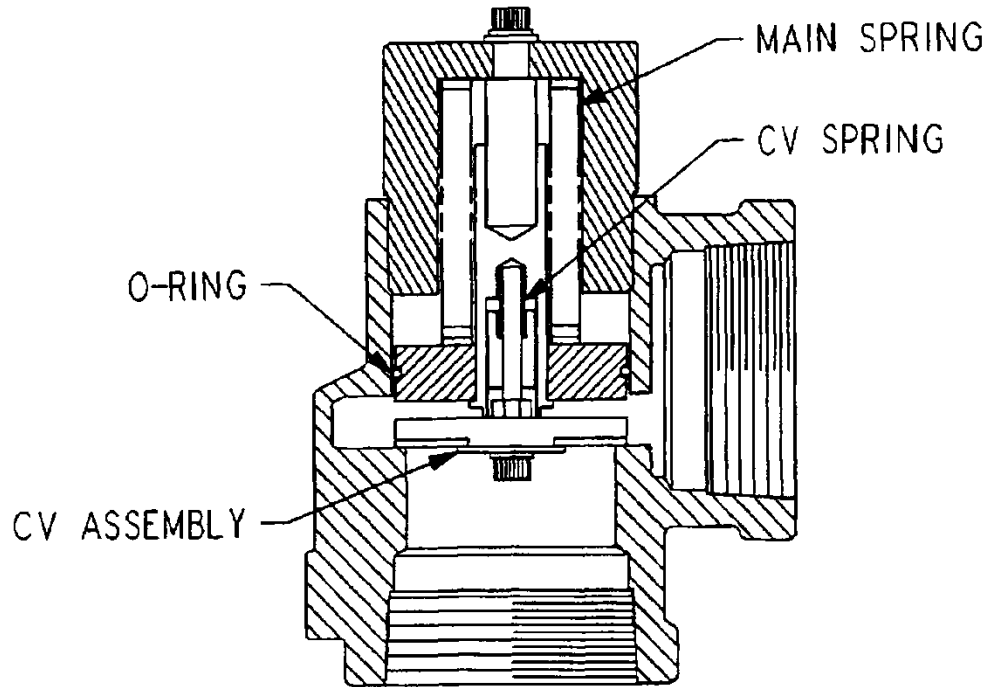
**HEAT EXCHANGERS**

Name of Part	Qty.	Part No.	Name of Part	Qty.	Part No.	Name of Part	Qty.	Part No.
<b>200EAU349 (Fresh Water)</b>			<b>201EAU349 (Fresh Water)</b>			<b>202EAU349 (Fresh Water)</b>		
GASKET-RETURN .....	1	2117105	GASKET-RETURN .....	1	2117105	GASKET-RETURN .....	1	2117105
GASKET-IN/OUT .....	1	2117104	GASKET-IN/OUT .....	1	2117104	GASKET-IN/OUT .....	1	2117104
BONNET-RETURN .....	1	2117103	BONNET-RETURN.....	1	2117103	BONNET-RETURN .....	1	2117103
BONNET-IN/OUT .....	1	2117102	BONNET-IN/OUT .....	1	2117102	BONNET-IN/OUT.....	1	2117102
<b>203EAU349 (Salt Water)</b>			<b>204EAU349 (Salt Water)</b>			<b>205EAU349 (Salt Water)</b>		
BONNET-IN/OUT .....	1	2117757	BONNET-IN/OUT .....	1	2117757	BONNET-IN/OUT .....	1	2117757
BONNET-RETURN .....	1	2117758	BONNET-RETURN.....	1	2117758	BONNET-RETURN .....	1	2117758
GASKET-IN/OUT .....	1	2117104	GASKET-IN/OUT .....	1	2117104	GASKET-IN/OUT .....	1	2117104
GASKET-RETURN .....	1	2117105	GASKET-RETURN .....	1	2117105	GASKET-RETURN .....	1	2117105

**AFTERCOOLERS**

Name of Part	Qty.	Part No.	Name of Part	Qty.	Part No.	Name of Part	Qty.	Part No.
<b>204EAU292 (Fresh Water)</b>			<b>203EAU292 (Fresh Water)</b>			<b>200EAU292 (Fresh Water)</b>		
GASKET-RETURN .....	1	2117105	GASKET-RETURN .....	1	2117105	GASKET-RETURN .....	1	2117105
GASKET-IN/OUT .....	1	2117104	GASKET-IN/OUT .....	1	2117104	GASKET-IN/OUT .....	1	2117104
BONNET-RETURN .....	1	2117103	BONNET-RETURN.....	1	2117103	BONNET-RETURN .....	1	2117103
BONNET-IN/OUT .....	1	2117102	BONNET-IN/OUT .....	1	2117102	BONNET-IN/OUT.....	1	2117102
<b>206EAU292 (Salt Water)</b>			<b>207EAU292 (Salt Water)</b>			<b>208EAU292 (Salt Water)</b>		
BONNET-IN/OUT .....	1	2117757	BONNET-IN/OUT .....	1	2117757	BONNET-IN/OUT .....	1	2117757
BONNET-RETURN .....	1	2117758	BONNET-RETURN.....	1	2117758	BONNET-RETURN .....	1	2117758
GASKET-IN/OUT .....	1	2117104	GASKET-IN/OUT .....	1	2117104	GASKET-IN/OUT .....	1	2117104
GASKET-RETURN .....	1	2117105	GASKET-RETURN .....	1	2117105	GASKET-RETURN .....	1	2117105

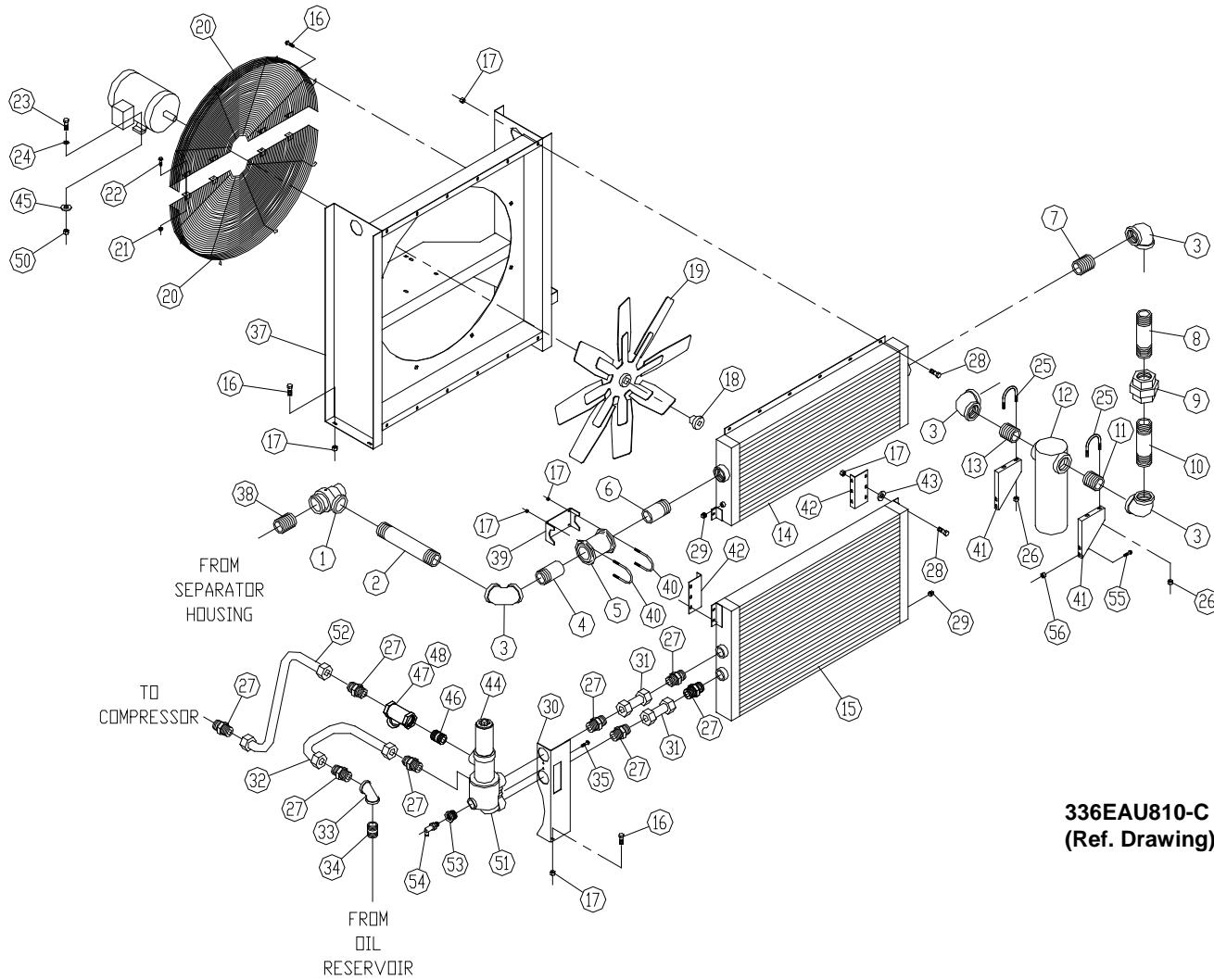
Order by Part Number and Description. Reference Numbers are for your convenience only.



**MINIMUM PRESSURE/CHECK VALVE**

Name of Part	Qty.	Part No.
MINIMUM PRESSURE VALVE ASSEMBLY.....	1	201EDM527
REPAIR KIT .....	1	2116855
CHECK VALVE ASSEMBLY.....	1	
MAIN SPRING.....	1	
CHECK VALVE SPRING .....	1	
O-RING .....	1	

# AIR COOLED COOLER GROUP



Order by Part Number and Description. Reference Numbers are for your convenience only.

AIR COOLED COOLER GROUP

B/M: 367-370EAU4003;  
302-303EAU4013; 308-  
309EAQ4013; 301EAU4019

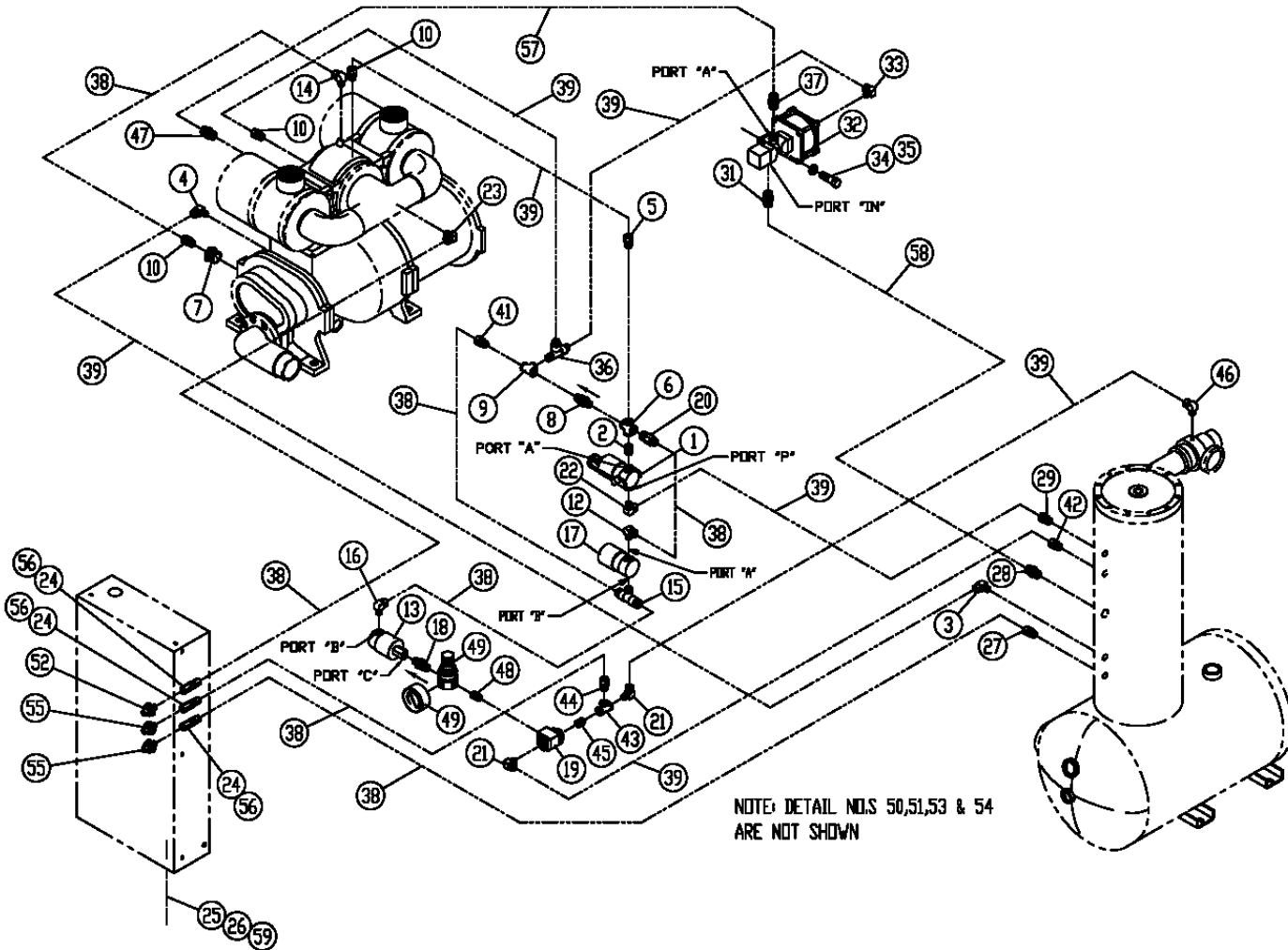
Ref. No.	Name of Part	Qty	Part No.	Ref. No.	Name of Part	Qty.	Part No.
1	VALVE-MINIMUM PRESSURE See Page 26...	1	201EDM527	29	PLUG .....	2	64AC4
2	NIPPLE .....	1	63P22G	30	BRACKET (FORMED).....	1	300EAU142
3	ELBOW .....	4	64C10G	31	TUBE WITH FITTINGS.....	2	314EAU863
4	NIPPLE .....	1	63AJ48X84G	32	TUBE WITH FITTINGS.....	1	300EAU863
* 5	COUPLING-FLEXIBLE .....	1	64EB803	33	ELBOW-PIPE .....	1	64C9G
6	NIPPLE .....	1	63AJ48X84G	34	NIPPLE .....	1	63L9G
7	NIPPLE .....	1	63P11G	35	SCREW.....	2	75LM51
8	NIPPLE .....	1	63P5G	37	SUPPORT .....	1	207EAU165
9	UNION.....	1	64Z21	38	NIPPLE .....	1	63P1G
10	NIPPLE .....	1	63P12G	39	BRACKET-PIPE .....	1	200EAQ108
11	NIPPLE .....	1	63P2G	40	U-BOLT.....	2	15U108
12	TRAP.....	1	83C103	41	BRACKET (FORMED).....	2	205EAU142
13	NIPPLE .....	1	63P2G	42	BRACKET (FORMED).....	2	206EAU142
14	AFTERCooler.....	1	202EAU292	43	WASHER.....	6	95A3
	SEACOAST (OPTIONAL) .....	1	205EAU292	** 44	FILTER-OIL ASSEMBLY .....	1	300EAQ369
15	COOLER-OIL .....	1	201EAU201	45	WASHER.....	4	95W15
	SEACOAST (OPTIONAL) .....	1	301EAU201	46	NIPPLE .....	1	63L2G
16	SCREW.....	16	75LM51	∇ 47	STRAINER .....	1	82E50
17	NUT .....	24	50AW5	48	PLUG .....	1	64AA1
18	BUSHING-SHEAVE.....	1	2009277	49	CLAMP (not shown).....	1	98H3
19	FAN			50	NUT.....	4	50B5
	200 HP.....	1	202EAU701	51	ASSEMBLY FILTER		
	250 & 300 HP.....		204EAU701		250-300 HP (150°) See Page 20 .....	1	301EAU2045
20	GUARD-FAN .....	1	201EAU393		250-300 HP (180°) See Page 20 .....	1	302EAU2045
21	NUT .....	4	50AW4		200 HP (150°) See Page 20 .....	1	303EAQ2045
22	SCREW.....	4	75LM50		200 HP (180°) See Page 20 .....	1	304EAQ2045
23	SCREW.....	4	655EE090	52	TUBE WITH FITTINGS.....	1	319EAU863
24	LOCKWASHER.....	4	95B5	53	BUSHING-PIPE .....	1	64E61
25	U-BOLT.....	2	15U87	54	OIL SAMPLING VALVE .....	1	86N345
26	NUT.....	4	50AW35	55	SCREW .....	4	75LM135
27	CONNECTOR-TUBE.....	8	86H142	56	NUT .....	4	50AW35
28	SCREW.....	18	75K48				

\* For Repair: (2) Gaskets – 2109775.

\*\* Repair Element Part Number 2118342.

∇ Repair parts for Strainer (100 Mesh Bushing): 2118379; Blow-Off Bushing: 2118382.

CONTROL PIPING



NOTE: DETAIL NOS 50,51,53 & 54  
ARE NOT SHOWN

315EAU810-H  
(Ref. Drawing)

Order by Part Number and Description. Reference Numbers are for your convenience only.

CONTROL PIPING

B/M:303EAU4002  
301, 302EAU4052

Ref. No.	Name of Part	Qty	Part No.	Ref. No.	Name of Part	Qty.	Part No.
* + 1	VALVE-SOLENOID - BDV .....	1	91B70	31	CONNECTOR-TUBE .....	1	86H144
2	NIPPLE .....	1	63D1G	++ ** 32	VALVE-AIR CONTROL .....	1	90AR1083
3	TUBE FITTING .....	1	86E222	33	TUBE FITTING .....	1	86E222
4	TUBE FITTING .....	1	86E222	34	LOCKWASHER .....	2	95B2
5	TUBE FITTING .....	1	86E212	35	SCREW .....	2	75P189
6	CROSS .....	1	64K1G	36	TUBE FITTING .....	1	86E237
7	BUSHING-PIPE .....	1	64E3	37	CONNECTOR-TUBE .....	1	86H144
++ 8	VALVE-CHECK .....	1	90AR261	38	TUBE (IN FEET) .....	30	85K3
9	TEE-PIPE .....	1	64G3G	39	TUBE (IN FEET) .....	35	85K5
10	TUBE FITTING .....	3	86E212	41	TUBE FITTING .....	1	86E210
12	ELBOW-TUBE .....	1	86E220	42	TUBE FITTING .....	1	86E212
+ 13	VALVE-SOLENOID .....	1	91B143	43	TEE-PIPE .....	1	64G3G
14	TUBE FITTING .....	1	86E220	44	TUBE FITTING .....	1	86E210
15	TUBE FITTING .....	1	86E239	45	NIPPLE .....	1	63D1G
16	TUBE FITTING .....	1	86E220	46	TUBE FITTING .....	1	86E222
+ 17	VALVE-SOLENOID .....	1	91B81	47	CONNECTOR-TUBE .....	1	86H144
++ 18	VALVE-CHECK .....	1	90AR261	48	NIPPLE .....	1	63D1G
++ 19	VALVE-CONTROL .....	1	90AR1034	++ Δ 49	REGULATOR-PRESS W/GAUGE .	1	88H367
20	TUBE FITTING .....	1	86E210	50	SEALING RING (not shown) .....	1	24A383
21	TUBE FITTING .....	2	86E222	51	LOCKNUT-CONDUIT (not shown) ...	1	24A77
22	TUBE FITTING .....	1	86E222	+ 52	SWITCH-VACUUM .....	1	88H195
23	TUBE FITTING .....	1	86E220	53	WIRE (IN FEET) (not shown) .....	8	97H2R
24	CONNECTOR-TUBE .....	3	86N287	54	TERMINAL LUG (not shown) .....	2	24A476
25	SCREW-FLANGED .....	4	75LM51	+ 55	TRANSDUCER-PRESSURE .....	2	88H359
26	NUT .....	4	50AW5	56	O-RING .....	3	165011
27	TUBE FITTING .....	1	86E210	57	TUBE WITH FITTINGS .....	1	310EAU863
28	CONNECTOR-TUBE .....	1	86H144	58	TUBE WITH FITTINGS .....	1	320EAU863
29	TUBE FITTING .....	1	86E212	59	WASHER .....	4	95A3Z

\* For Repair Kit (includes Springs, Seals, Piston Assembly, Plunger Assembly, Nut & O-Ring, order Part Number 2116077 or for Coil, order Part Number 2116078.

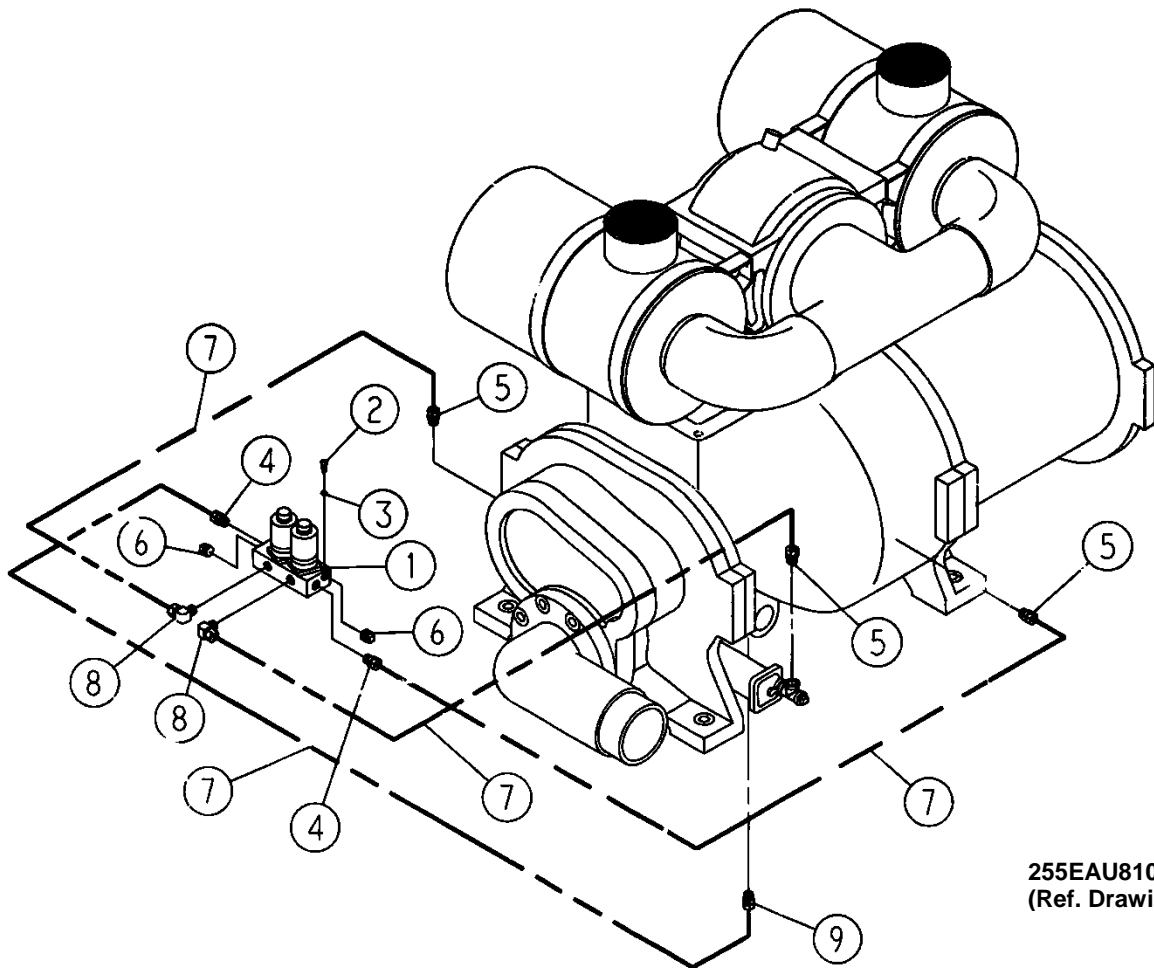
\*\* For Repair of U-Cup (Piston Seal), order Part Number 2117904; For O-Ring (Top Plate), order Part Number 2117905.

Δ For replacement Gauge, order Part Number 2118767.

+ Parts included in Electrical Control Kit Part Number 206EAP6013. Refer to Page 53

++Parts included in Pneumatic Control Kit Part Number 203EAU6013. Refer to page 53 .

Order by Part Number and Description. Reference Numbers are for your convenience only.



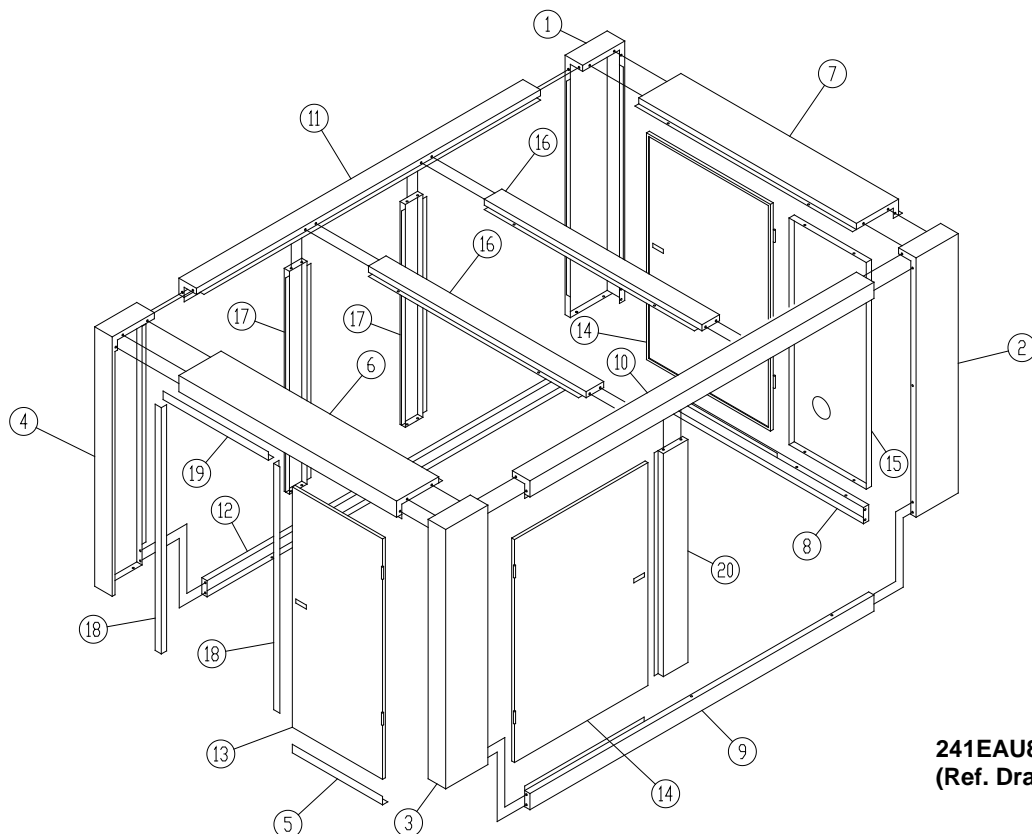
TURN VALVE ACTUATOR

B/M: 203EAU4013

Ref. No.	Name of Part	Qty.	Part No.
* 1	VALVE-SOLENOID.....	1	301EAQ861
2	SCREW.....	2	75P26
3	LOCKWASHER.....	2	95B1
4	TUBE FITTING.....	2	86E211
5	TUBE FITTING.....	3	86E210
6	PLUG.....	2	64AC3
7	TUBE (IN FEET).....	20	85K3
8	TUBE FITTING.....	2	86E220
9	TUBE FITTING.....	1	86E211

\* For O-Ring Repair Kit, Order Part Number 307EAQ6013, refer to page 53.

Order by Part Number and Description. Reference Numbers are for your convenience only.

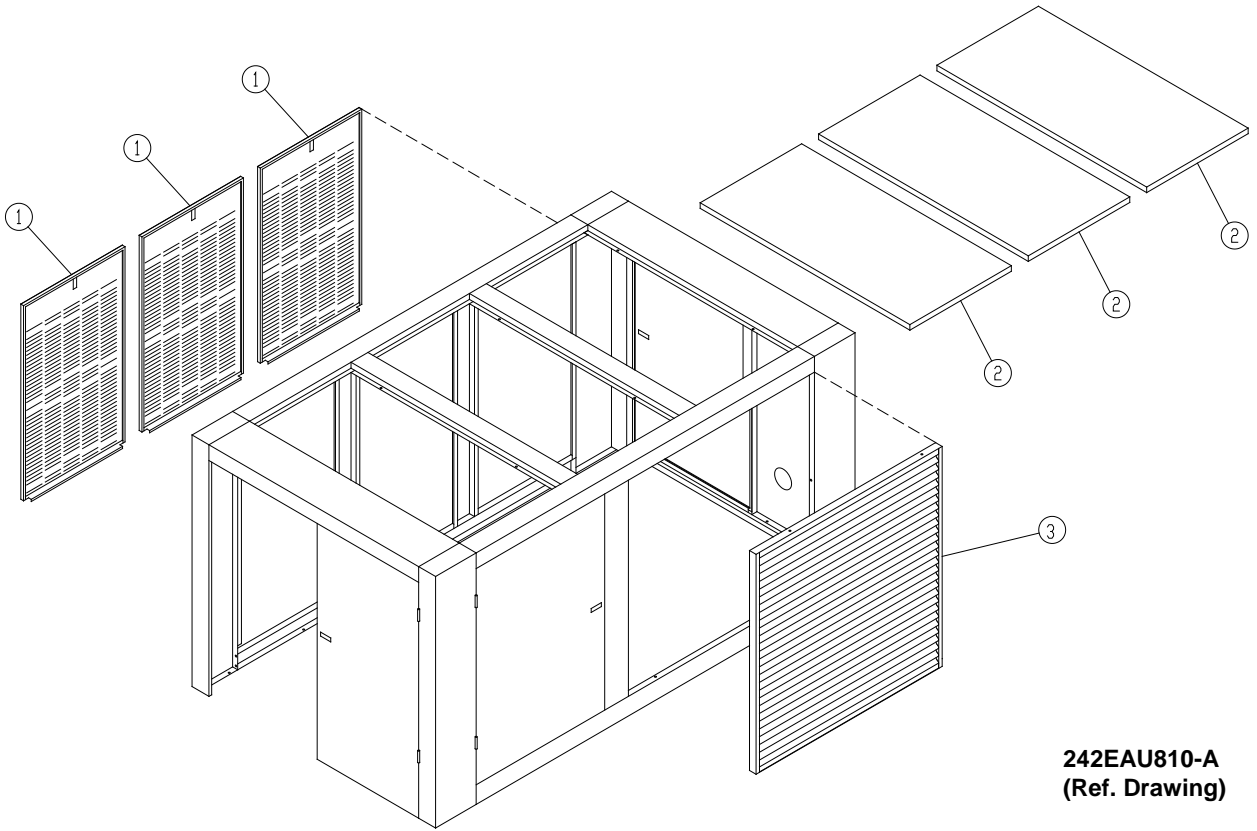


241EAU810-A  
(Ref. Drawing)

**ENCLOSURE GROUP**

Ref. No.	Name of Part	Qty.	B/M: 312EAU4023	B/M: 313EAU4023	B/M: 314EAU4023	B/M: 315EAU4023
			ODP Standard Part No.	ODP Quiet Part No.	TEFC Standard Part No.	TEFC Quiet Part No.
1	POST .....	1	CC1047332	CC1047336	CC1047340	CC1047342
2	POST .....	1	CC1047333	CC1047337	CC1047341	CC1047343
3	POST .....	1	CC0147334	CC1047338	CC1047334	CC1047338
4	POST .....	1	CC1047335	CC1047339	CC1047335	CC1047339
5	FRAME.....	1	211EAU314	211EAU314	211EAU314	211EAU314
6	FRAME.....	1	212EAU314	223EAU314	212EAU314	223EAU314
7	FRAME.....	1	213EAU314	224EAU314	306EAU314	308EAU314
8	FRAME.....	1	214EAU314	225EAU314	307EAU314	309EAU314
9	FRAME.....	1	215EAU314	226EAU314	215EAU314	226EAU314
10	FRAME.....	1	216EAU314	227EAU314	216EAU314	227EAU314
11	FRAME.....	1	217EAU314	228EAU314	217EAU314	228EAU314
12	FRAME.....	1	218EAU314	229EAU314	218EAU314	229EAU314
13	DOOR .....	1	CC1047344	CC1047346	CC1047344	CC1047346
14	DOOR .....	2	CC1047345	CC1047347	CC1047345	CC1047347
15	BRACE.....	1	CC1047348	CC1047349	CC1047348	CC1047349
16	BRACE.....	2	201EAU326	207EAU326	201EAU326	207EAU326
17	BRACE.....	2	202EAU326	208EAU326	202EAU326	208EAU326
18	BRACKET .....	2	201EAU142	201EAU142	201EAU142	201EAU142
19	BRACKET .....	1	202EAU142	202EAU142	202EAU142	202EAU142
20	BRACE.....	1	203EAU326	209EAU326	203EAU326	209EAU326

Order by Part Number and Description. Reference Numbers are for your convenience only.



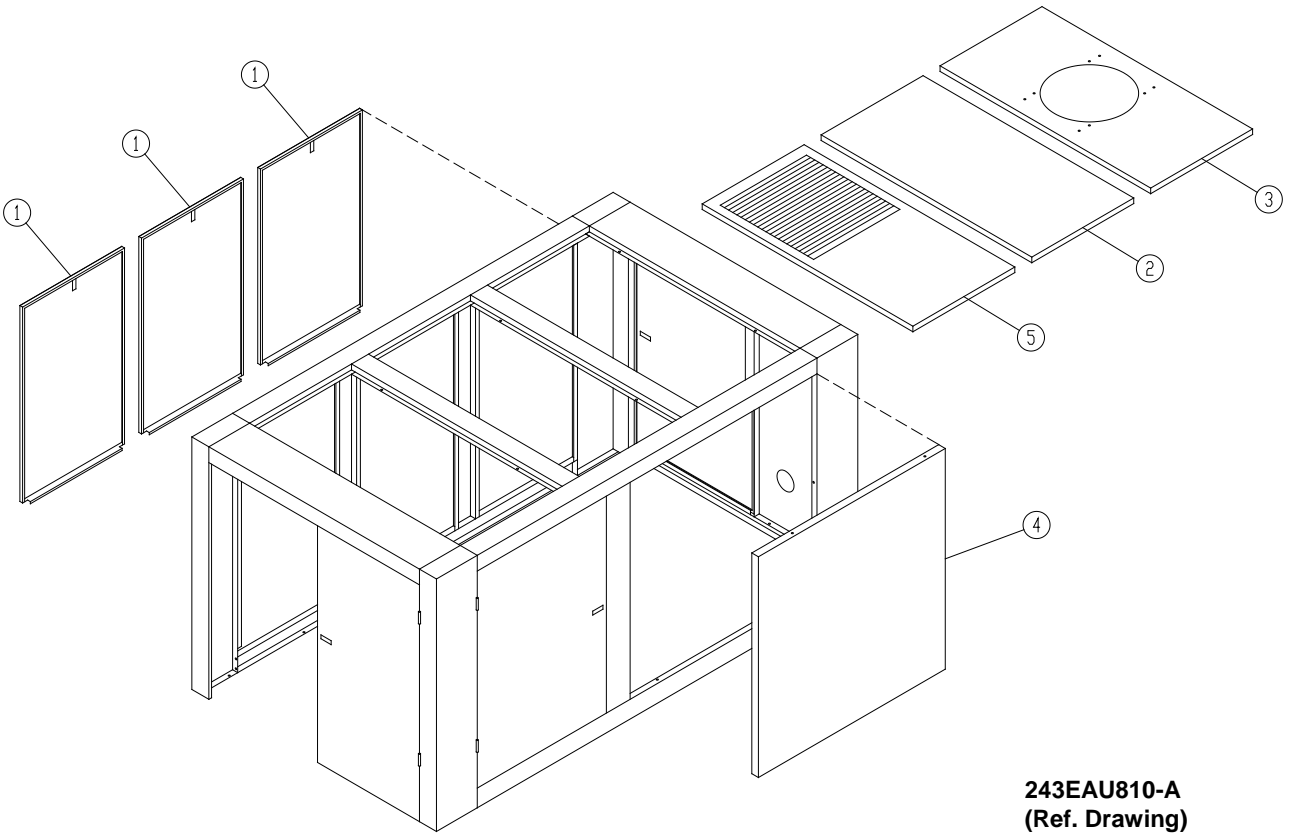
242EAU810-A  
(Ref. Drawing)

**ENCLOSURE – AIR COOLED PANELS  
STANDARD UNITS**

Ref. No.	Name of Part	Qty.	B/M: 201EAU4023 Standard Part No.
1	PANEL.....	3	CC1018284
2	PANEL.....	3	209EAU216
3	PANEL.....	1	212EAU216

Refer to page 32 for Enclosure Part Numbers.

Order by Part Number and Description. Reference Numbers are for your convenience only.



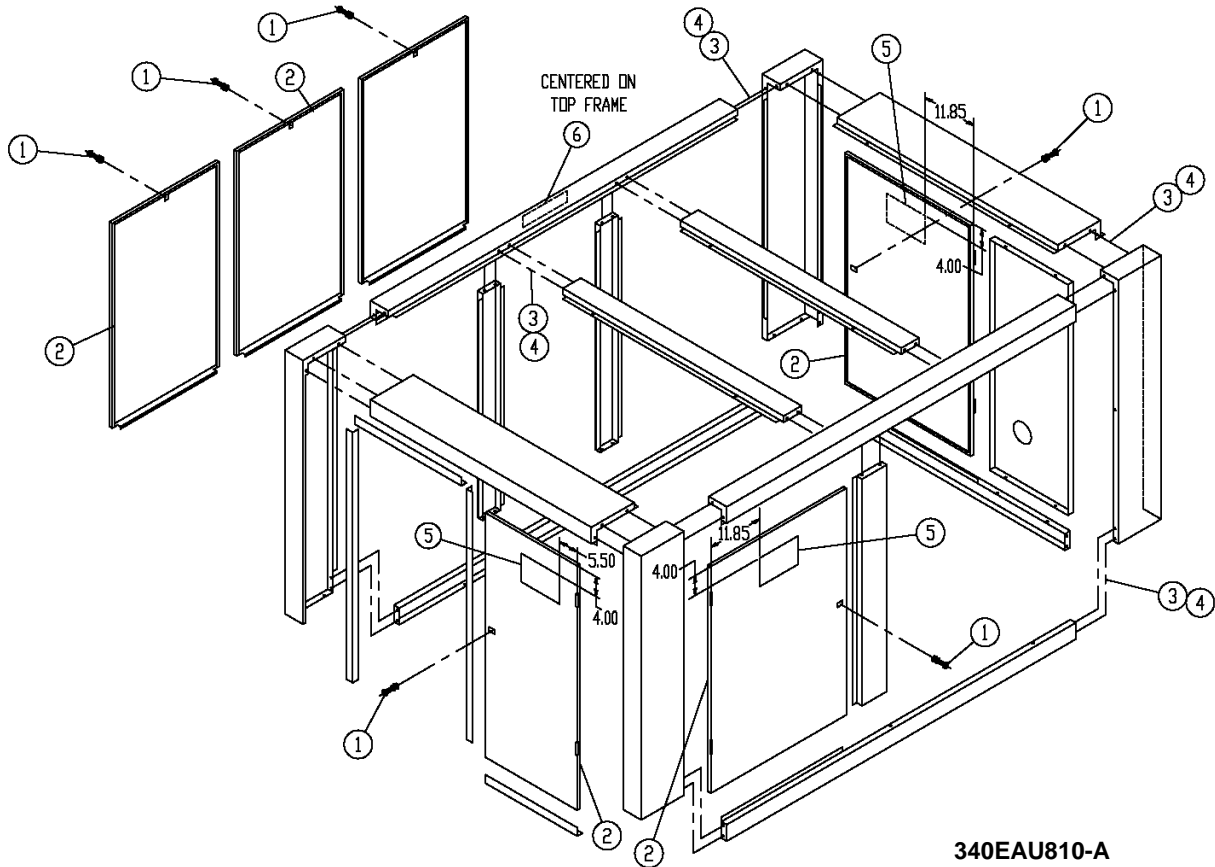
243EAU810-A  
(Ref. Drawing)

**ENCLOSURE – WATER COOLED PANELS  
STANDARD AND QUIET UNITS**

Ref. No.	Name of Part	Qty.	B/M: 202EAU4023	B/M: 207EAU4023
			Standard Part No.	Quiet Part No.
1	PANEL.....	3	CC1018286	CC1018287
2	PANEL.....	1	209EAU216	217EAU216
3	PANEL.....	1	211EAU216	215EAU216
4	PANEL.....	1	210EAU216	216EAU216
5	PANEL.....	1	219EAU216	214EAU216

\* Refer to page 32 for Enclosure Part Numbers.

Order by Part Number and Description. Reference Numbers are for your convenience only.



340EAU810-A  
(Ref. Drawing)

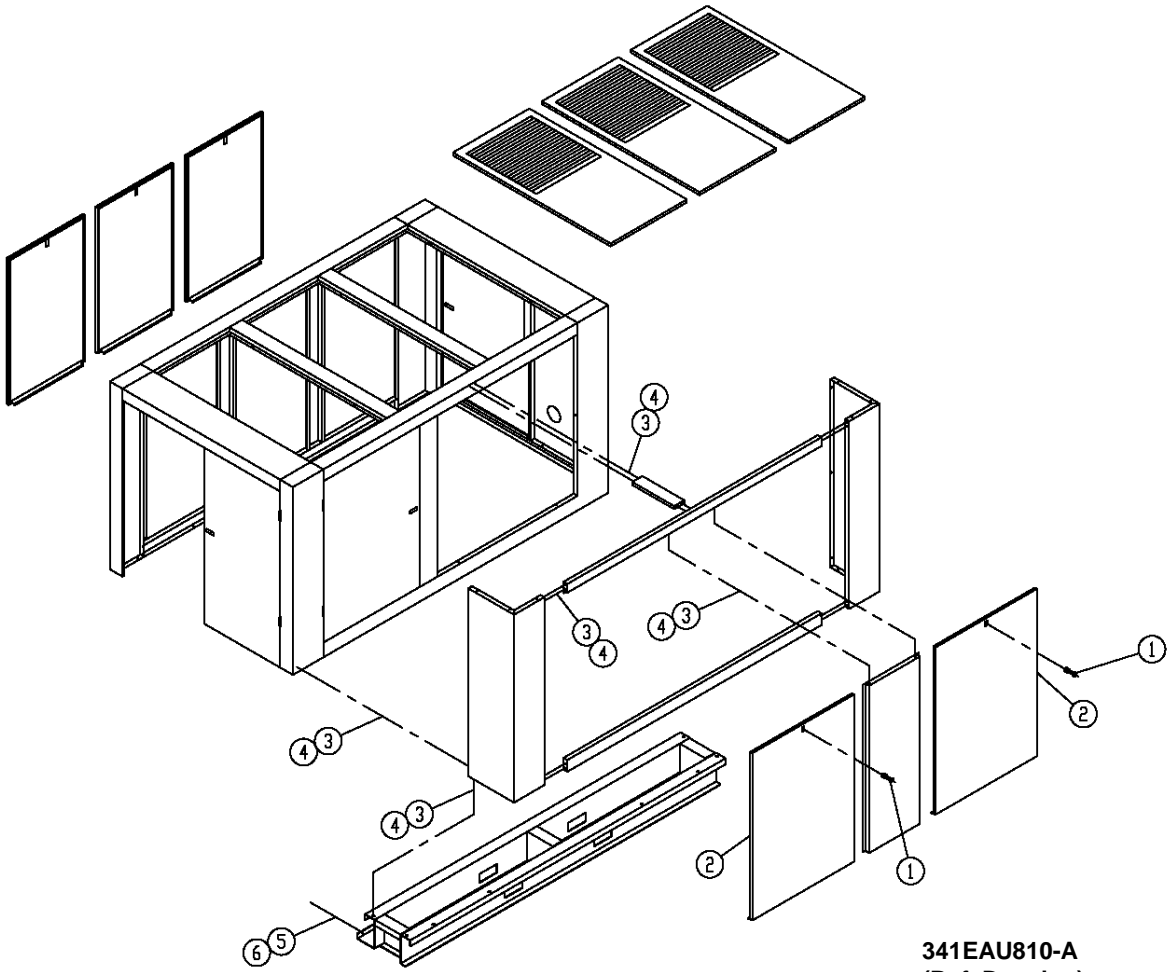
**ENCLOSURE – HARDWARE  
ALL UNITS**

**B/M: 312EAU4017**

Ref. No.	Name of Part	Qty.	Part No.
1	LATCH .....	6	31D68
2	SEAL (not shown) (IN FEET) .....	84	32E12
3	SCREW .....	104	75LM51
4	NUT .....	92	50AW5
5	DECAL .....	3	VP1042952
6	DECAL .....	1	VP1044830
7	KEY (not shown) .....	2	VP1049035

Refer to page 32 for Enclosure Part Numbers.

Order by Part Number and Description. Reference Numbers are for your convenience only.



341EAU810-A  
(Ref. Drawing)

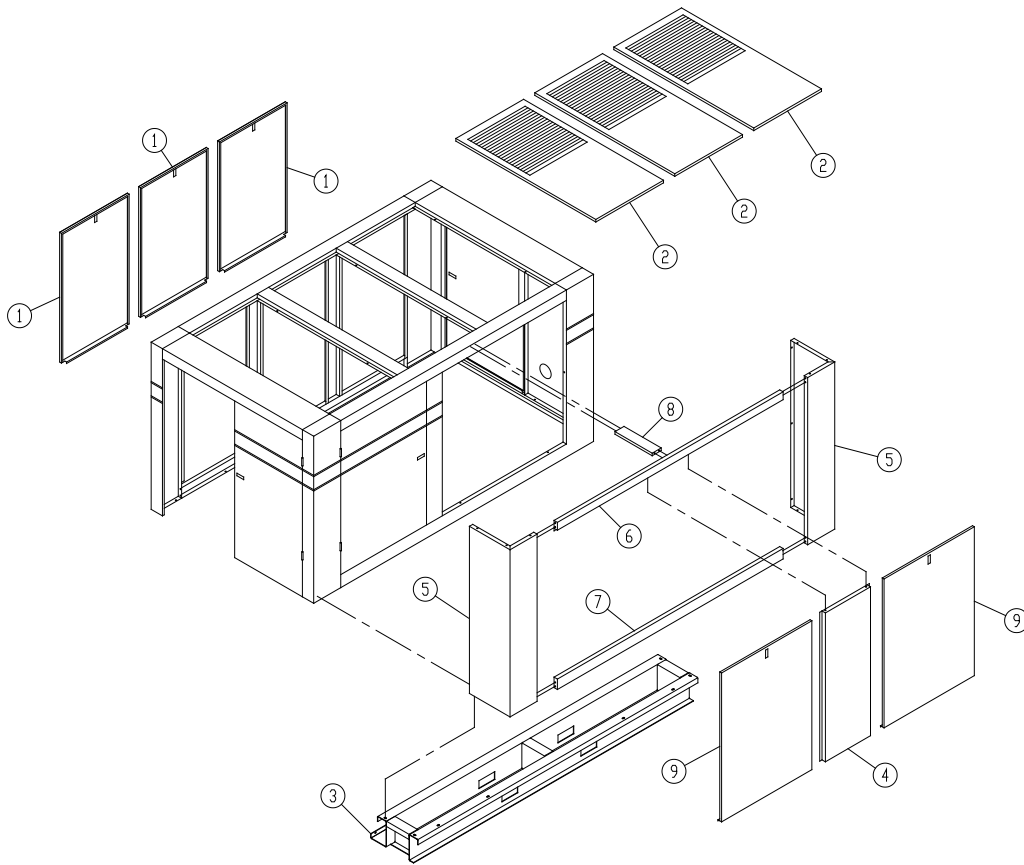
**ENCLOSURE – HARDWARE  
QUIET Baffle UNITS – AIR COOLED**

B/M: 313EAU4017

Ref. No.	Name of Part	Qty.	Part No.
1	LATCH.....	2	31D68
2	SEAL (IN FEET).....	27	32E12
3	SCREW.....	30	75LM51
4	NUT.....	30	50AW5
5	SCREW.....	4	75LM135
6	NUT.....	4	50AW35

Refer to page 32 for Enclosure Part Numbers.

Order by Part Number and Description. Reference Numbers are for your convenience only.



256EAU810-A  
(Ref. Drawing)

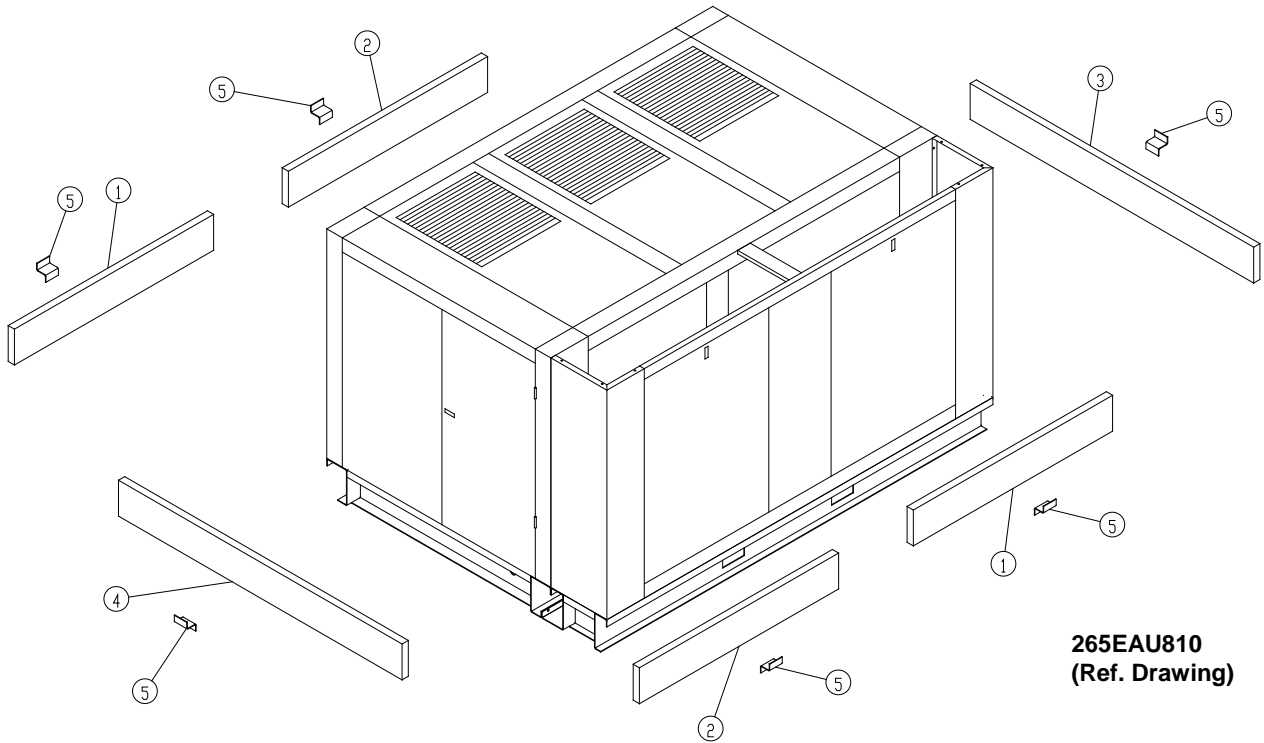
**ENCLOSURE  
QUIET Baffle – AIR COOLED**

**B/M: 316EAU4023**

Ref. No.	Name of Part	Qty.	Part No.
1	PANEL .....	3	CC1018287
2	PANEL .....	3	214EAU216
3	BASE .....	1	215EAU285
4	BRACE .....	1	204EAU326
5	POST .....	2	CC1047370
6	FRAME .....	1	222EAU314
7	FRAME .....	1	221EAU314
8	BRACE .....	1	205EAU326
9	PANEL .....	2	CC1018288

Refer to page 32 for Enclosure Part Numbers.

Order by Part Number and Description. Reference Numbers are for your convenience only.



265EAU810  
(Ref. Drawing)

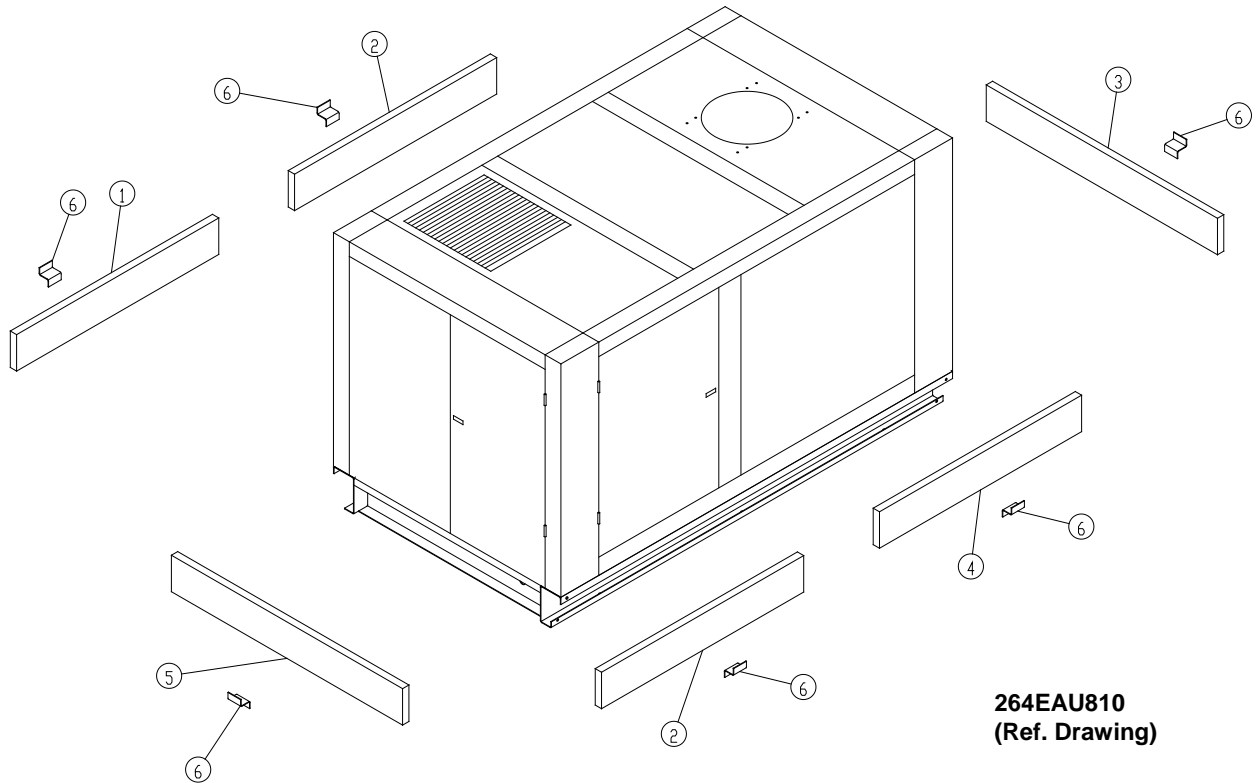
**ENCLOSURE – SKIRT  
AIR COOLED – QUIET**

**B/M: 209EAU4023**

Ref. No.	Name of Part	Qty.	Part No.
1	SKIRT .....	2	200EAU1367
2	SKIRT .....	2	201EAU1367
3	SKIRT .....	1	205EAU1367
4	SKIRT .....	1	206EAU1367
5	HANGER .....	6	200EAU380

Refer to page 32 for Enclosure Part Numbers.

Order by Part Number and Description. Reference Numbers are for your convenience only.



**264EAU810**  
**(Ref. Drawing)**

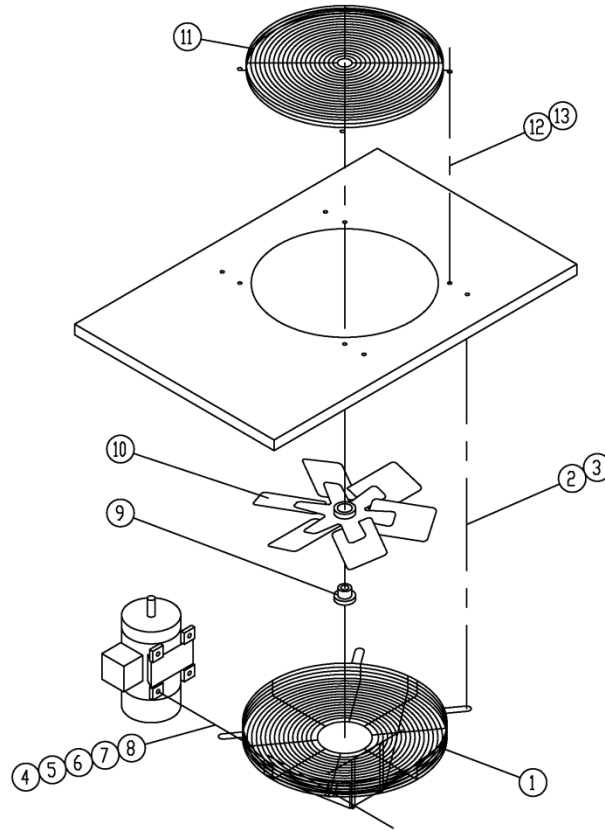
**ENCLOSURE – SKIRT  
WATER COOLED – QUIET**

**B/M: 208EAU4023**

<b>Ref. No.</b>	<b>Name of Part</b>	<b>Qty.</b>	<b>Part No.</b>
1	SKIRT .....	1	200EAU1367
2	SKIRT .....	2	201EAU1367
3	SKIRT .....	1	203EAU1367
4	SKIRT .....	1	202EAU1367
5	SKIRT .....	1	204EAU1367
6	HANGER .....	6	200EAU380

Refer to page 32 for Enclosure Part Numbers.

Order by Part Number and Description. Reference Numbers are for your convenience only.



262EAU810-A  
(Ref. Drawing)

**ENCLOSURE – VENT FAN ASSEMBLY  
(WATER COOLED UNITS ONLY)**

**B/M: 220EAU4017**

Ref. No.	Name of Part	Qty.	Part No.
1	GUARD-FAN .....	1	200EBB393
2	SCREW .....	4	75K48
3	WASHER .....	4	95A5
4	SCREW .....	4	75A35
5	RETAINER.....	4	2014731
6	WASHER .....	4	95A2
7	LOCKWASHER .....	4	95B2
8	NUT .....	4	50B2
9	BUSHING-SHEAVE .....	1	22G27
10	FAN.....	1	200EBB701
11	GUARD-FAN .....	1	200ECM393
12	SCREW .....	4	75LM51
13	NUT .....	4	50AW5

Refer to page 42 for Motor Part Numbers.

## OVERLOAD RELAY HEATER CONVERSION LISTING

**Refer to Motor Nameplate “Amperage” and Decal in Control Panel for Selection of Overload Relay Heater Packs**

<b>CUTLER-HAMMER PART NUMBER</b>	<b>CHAMPION PART NUMBER</b>
H2002B	24CA4101
H2003B	24CA4102
H2004B	24CA4103
H2005B	24CA4104
H2006B	24CA4105
H2007B	24CA4106
H2008B	24CA4107
H2009B	24CA4108
H2010B	24CA4109
H2011B	24CA4110
H2012B	24CA4111
H2013B	24CA4112
H2014B	24CA4113
H2015B	24CA4114
H2016B	24CA4115
H2017B	24CA4116
H2018	24CA2924
H2019	24CA2925
H2020	24CA2926
H2021	24CA2927
H2022	24CA2893
H2023	24CA2894
H2024	24CA2928

**MOTOR GROUP (MAIN DRIVE MOTORS)  
WYE DELTA – 60 HZ**

<b>Name of Part</b>	<b>200 HP Part No.</b>	<b>250 HP Part No.</b>	<b>300 HP Part No.</b>
<b>OPEN DRIP PROOF – (ODP) – EISA EFFICIENCY</b>			
MOTOR, 200V	24CA6435	24CA6443	24CA6451
MOTOR, 230V	24CA6436	24CA6444	24CA6452
MOTOR, 460V	24CA6437	24CA6445	24CA6453
MOTOR, 575V	24CA6438	24CA6446	24CA6454

<b>TOTALLY ENCLOSED FAN COOLED (TEFC) – EISA EFFICIENCY</b>			
MOTOR, 200V	24CA6439	24CA6447	24CA6455
MOTOR, 230V	24CA6440	24CA6448	24CA6456
MOTOR, 460V	24CA6441	24CA6449	24CA6457
MOTOR, 575V	24CA6442	24CA6450	24CA6458

**MOTOR GROUP (FAN MOTORS)  
AIR COOLED FAN MOTOR (COOLING MODULE)  
(T.E.A.O., 10 HP, 900 RPM, 60 HZ 1.40 S.F.)**

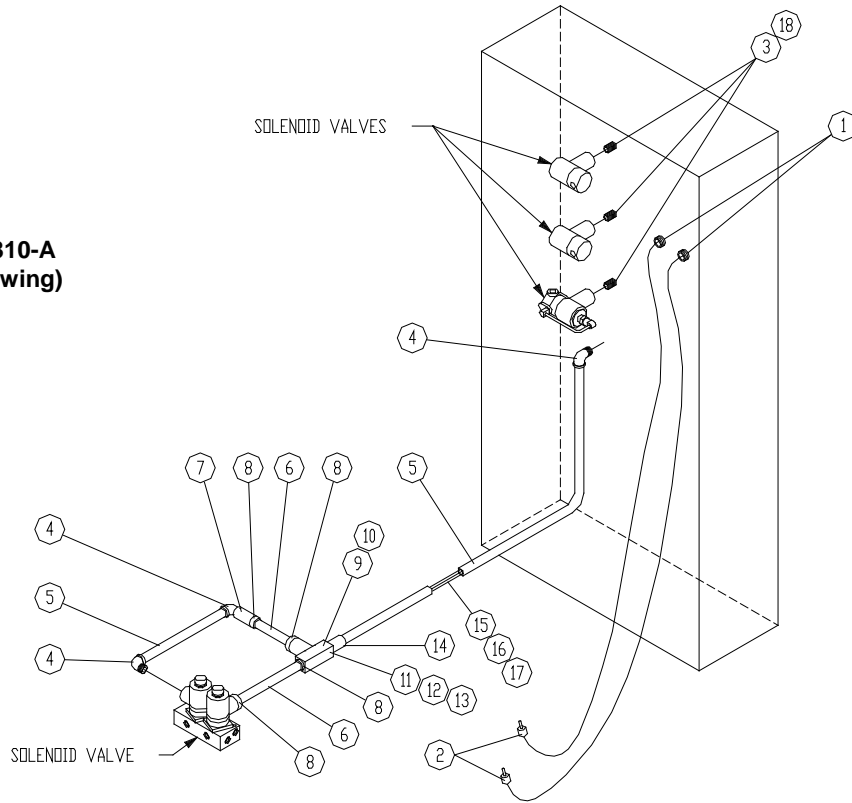
<b>VOLTAGE</b>	<b>PART NO.</b>
MOTOR, 200V	24CA6589
MOTOR, 230V	24CA6590
MOTOR, 460V	24CA6590
MOTOR, 575V	24CA6591

**WATER COOLED FAN MOTOR (ENCLOSURE VENT FAN)  
(TEFC, 1/2 HP, 1800 RPM, 60 HZ, 1.0 S.F.)**

<b>VOLTAGE</b>	<b>PART NO.</b>
MOTOR, 200V	24CA2180
MOTOR, 230V	24CA2182
MOTOR, 460V	24CA2182
MOTOR, 575V	24CA2184

Order by Part Number and Description. Reference Numbers are for your convenience only.

269EAU810-A  
(Ref. Drawing)

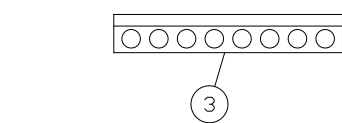
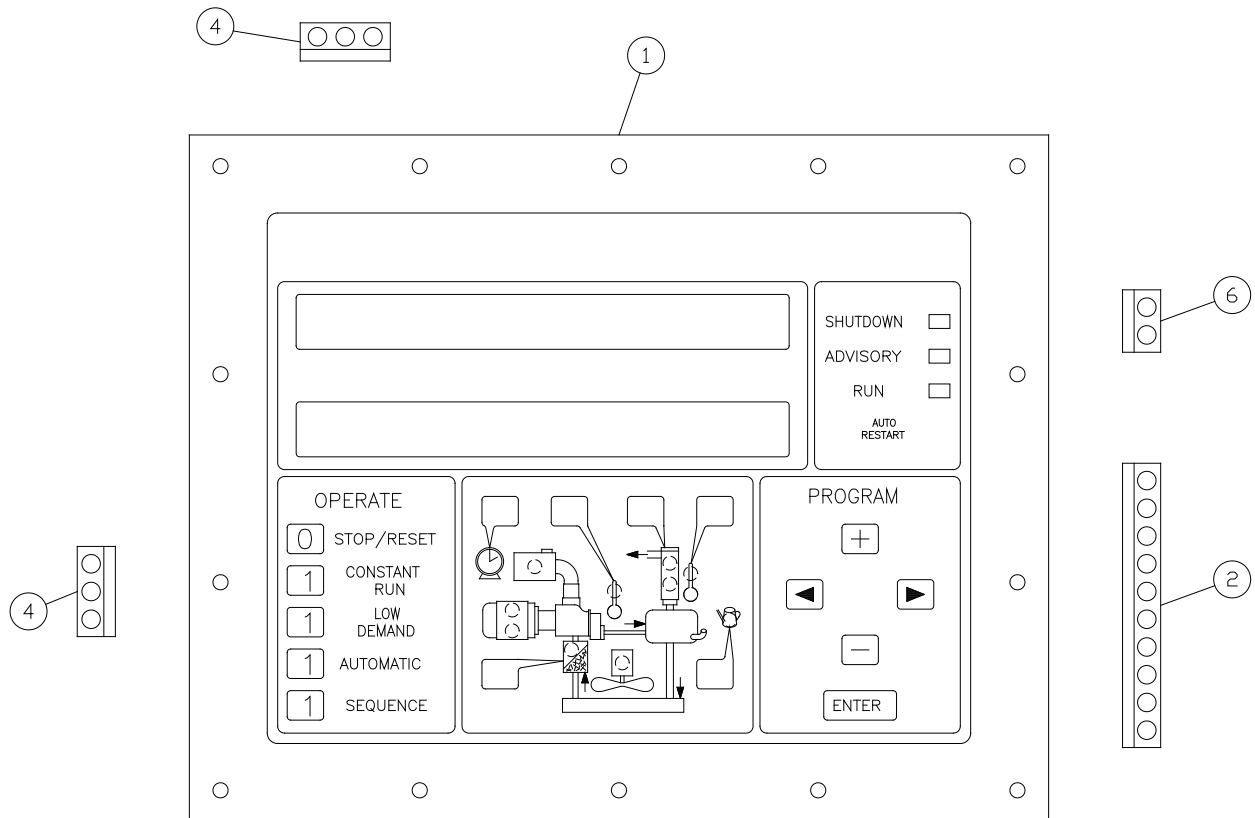


**MISCELLANEOUS ELECTRICAL PARTS**

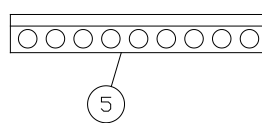
**B/M: 201EAU4014**

Ref. No.	Name of Part	Qty.	Part No.
1	ELECTRICAL FITTING .....	2	24CA2865
2	ELECTRICAL PROBE .....	2	21D264
3	NIPPLE .....	3	24CA4641
4	CONDUIT FITTING .....	3	24A380
5	CONDUIT (IN FEET) .....	2	24A402
6	NIPPLE .....	2	24A503
7	COUPLING .....	1	24A709
8	LOCKNUT.....	4	24A77
9	CONNECTOR .....	2	24CA2068
10	CONNECTOR .....	2	24CA2068
11	FITTING.....	1	24A341
12	GASKET .....	1	24A342
13	COVER .....	1	24A343
14	FITTING .....	1	24A379
15	WIRE (IN FEET) .....	14	97H2R
16	WIRE (IN FEET) .....	7	97H2W
17	WIRE (IN FEET) .....	7	97H2G
18	SEALING RING .....	6	24A383

Order by Part Number and Description. Reference Numbers are for your convenience only.



342EAU810-A  
(Ref. Drawing)



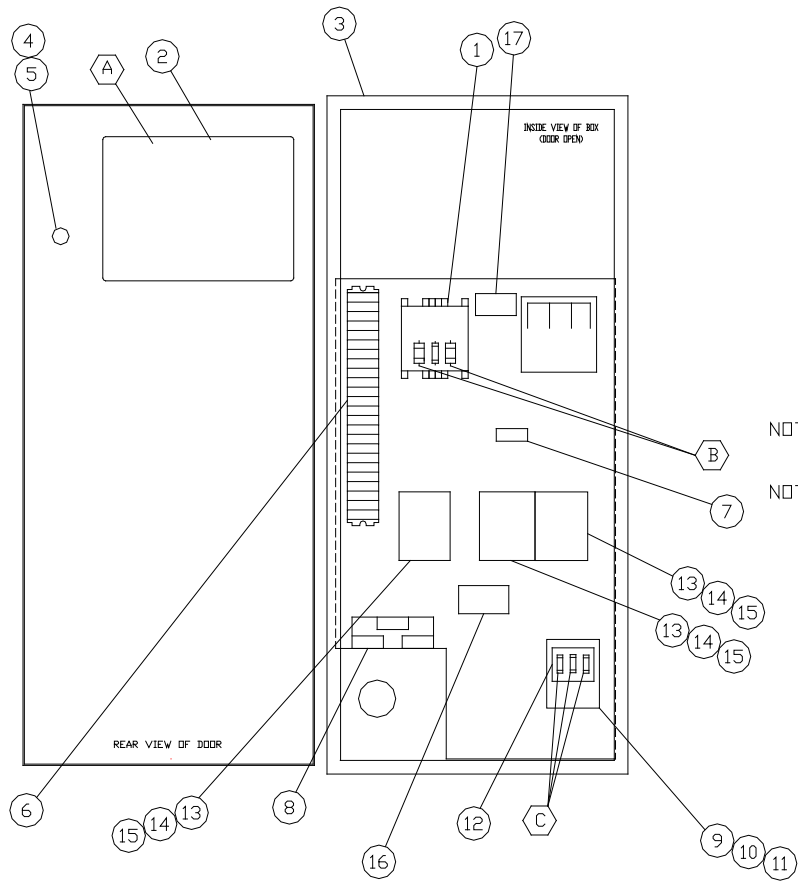
327EAU810-B  
(Ref. Drawing)

**CONTROLLER ASSEMBLY**

**B/M: 302EAU2006**

Ref. No.	Name of Part	Qty.	Part No.
1	CONTROLLER(AUTO SENTRY ES+ .....	1	302EAU1173
2	PLUG-CONNECTOR 10 PIN TERMINAL .....	1	24CA3306
3	PLUG-CONNECTOR 8 PIN TERMINAL .....	1	24CA3400
4	PLUG-CONNECTOR 3 PIN TERMINAL .....	2	24CA3401
5	PLUG-CONNECTOR 9 PIN TERMINAL .....	1	24CA3402
6	PLUG PHOENIX 2 PIN TERMINAL .....	1	24CA4240

**CONTROL BOX ASSEMBLY  
200/250/300 HP – WYE DELTA STARTERS**



NOTE 1 - ITEMS 7 & 17 ARE USED ONLY ON PANELS WITH ES + AND CURRENT MONITORING.

NOTE 2 - ITEMS 10 & 11 ARE INCLUDED IN 9.  
ITEMS 14 & 15 ARE INCLUDED IN 13.

**303EAU797-A  
(Ref. Drawing)**

Order by Part Number and Description. Reference Numbers are for your convenience only.

CONTROL BOX ASSEMBLY 200 HP – WYE DELTA STARTERS

Ref. No.	Name of Part	Qty	230V	460V	575V
	ASSEMBLED PANEL – ES+: NEMA 12, .....	1	276EAU466	272EAU466	280EAU466
	ASSEMBLED PANEL – ES+: NEMA 4, .....	1	277EAU466	273EAU466	281EAU466
A	FUSE, CONTROL ALARM RELAY .....	1	24CA1267	24CA1267	24CA1267
B	FUSE, TRANSFORMER PRIMARY .....	2	24CA2785 (5A)	24CA2783 (3A)	24CA3722 (2.25A)
	DECAL, PRIMARY FUSE .....	1	264AUX077	262AUX077	294AUX077
	FUSE, CONTROL TRANSFORMER, SECONDARY .....	1	24CA3729	24CA3729	24CA3729
	DECAL, SECONDARY FUSE .....	1	301AUX077	301AUX077	301AUX077
C	FUSE, FAN MOTOR, AIR COOLED .....	3	24CA4323 (60A)	24CA4321 (30A)	24CA4097 (25A)
	FUSE, FAN MOTOR WATER COOLED .....	3	24CA4092 (6A)	24CA4090 (3A)	24CA4320 (2.5A)
	DECAL, FAN MOTOR FUSE, AIR COOLED .....	1	324AUX077	322AUX077	315AUX077
	DECAL, FAN MOTOR FUSE WATER COOLED .....	1	310AUX077	308AUX077	321AUX077
1	TRANSFORMER .....	1	2118244	2118244	2118245
* 2	ELECTRONIC CONTROL – ES+ .....	1	302EAU2006	302EAU2006	302EAU2006
3	ELECTRONIC CONTROL ENCLOSURE				
	NEMA 12 .....	1	200EAU179	200EAU179	200EAU179
	NEMA 4 .....	1	201EAU179	201EAU179	201EAU179
4	OPERATOR .....	1	24CA2907	24CA2907	24CA2907
5	CONTACT BLOCK .....	1	24CA2908	24CA2908	24CA2908
6	BLOCK .....	6	24CA2633	24CA2633	24CA2633
7	CURRENT TRANSFORMER .....	1	24CA4242	24CA4242	24CA4242
8	CURRENT TRANSFORMER .....	1	24CA4727	24CA4981	24CA4981
9	STARTER, FAN MOTOR .....	1	24CA4142	24CA4137	24CA4137
10	REPLACEMENT COIL FOR ITEM 9 .....	1	2116124	2116923	2116923
11	OVERLOAD RELAY FOR ITEM 9 .....	1	24CA4086	24CA4086	24CA4086
12	FUSE-HOLDER .....	1	24CA4164	24CA4098	24CA4098
13	CONTACTOR MAIN MOTOR .....	3	24CA4160	24CA4158	24CA4158
14	COIL FOR ITEM 13 .....	3	2116921	2116920	2116920
15	CONTACT KIT FOR ITEM 13 .....	3	2116917	2116915	2116915
16	OVERLOAD RELAY MAIN MOTOR .....	1	24CA4086	24CA4086	24CA4086
17	CURRENT TRANSDUCER .....	1	24CA4241	24CA4241	24CA4241

\* Refer to page 44, for Controller Part Numbers.

Order by Part Number and Description. Reference Numbers are for your convenience only.

CONTROL BOX ASSEMBLY 250 HP – WYE DELTA STARTERS

Ref. No.	Name of Part	Qty	230V	460V	575V
*	ASSEMBLED PANEL – ES+: NEMA 12, .....	1	276EAU466	274EAU466	280EAU466
*	ASSEMBLED PANEL – ES+: NEMA 4, .....	1	277EAU466	275EAU466	281EAU466
A	FUSE, CONTROL ALARM RELAY.....	1	24CA1267	24CA1267	24CA1267
B	FUSE, TRANSFORMER PRIMARY .....	2	24CA2785 (5A)	24CA2783 (3A)	24CA3722 (2.25A)
	DECAL, PRIMARY FUSE.....	1	264AUX077	262AUX077	294AUX077
	FUSE, CONTROL TRANSFORMER, SECONDARY.....	1	24CA3729	24CA3729	24CA3729
	DECAL, SECONDARY FUSE .....	1	301AUX077	301AUX077	301AUX077
C	FUSE,, FAN MOTOR, AIR COOLED.....	3	24CA4323 (60A)	24CA4321 (30A)	24CA4097 (25A)
	FUSE, FAN MOTOR WATER COOLED.....	3	24CA4092 (6A)	24CA4090 (3A)	24CA4320 (2.5A)
	DECAL,, FAN MOTOR FUSE, AIR COOLED.....	1	324AUX077	322AUX077	315AUX077
	DECAL, FAN MOTOR FUSE WATER COOLED.....	1	310AUX077	308AUX077	321AUX077
1	TRANSFORMER .....	1	2118244	2118244	2118245
* 2	ELECTRONIC CONTROL – ES+ .....	1	302EAU2006	302EAU2006	302EAU2006
3	ELECTRONIC CONTROL ENCLOSURE				
	NEMA 12.....	1	200EAU179	200EAU179	200EAU179
	NEMA 4.....	1	201EAU179	201EAU179	201EAU179
4	OPERATOR .....	1	24CA2907	24CA2907	24CA2907
5	CONTACT BLOCK .....	1	24CA2908	24CA2908	24CA2908
6	BLOCK.....	6	24CA2633	24CA2633	24CA2633
7	CURRENT TRANSFORMER .....	1	24CA4242	24CA4242	24CA4242
8	CURRENT TRANSFORMER .....	1	24CA4727	24CA4981	24CA4981
9	STARTER, FAN MOTOR .....	1	24CA4142	24CA4137	24CA4137
10	REPLACEMENT COIL FOR ITEM 9 .....	1	2116124	2116923	2116923
11	OVERLOAD RELAY FOR ITEM 9.....	1	24CA4086	24CA4086	24CA4086
12	FUSE-HOLDER .....	1	24CA4164	24CA4098	24CA4098
13	CONTACTOR MAIN MOTOR.....	3	24CA4160	24CA4159	24CA4158
14	COIL FOR ITEM 13.....	3	2116921	2116920	2116920
15	CONTACT KIT FOR ITEM 13.....	3	2116917	2116916	2116915
16	OVERLOAD RELAY MAIN MOTOR.....	1	24CA4086	24CA4086	24CA4086
17	CURRENT TRANSDUCER .....	1	24CA4241	24CA4241	24CA4241

\* Refer to page 44, for Controller Part Numbers.

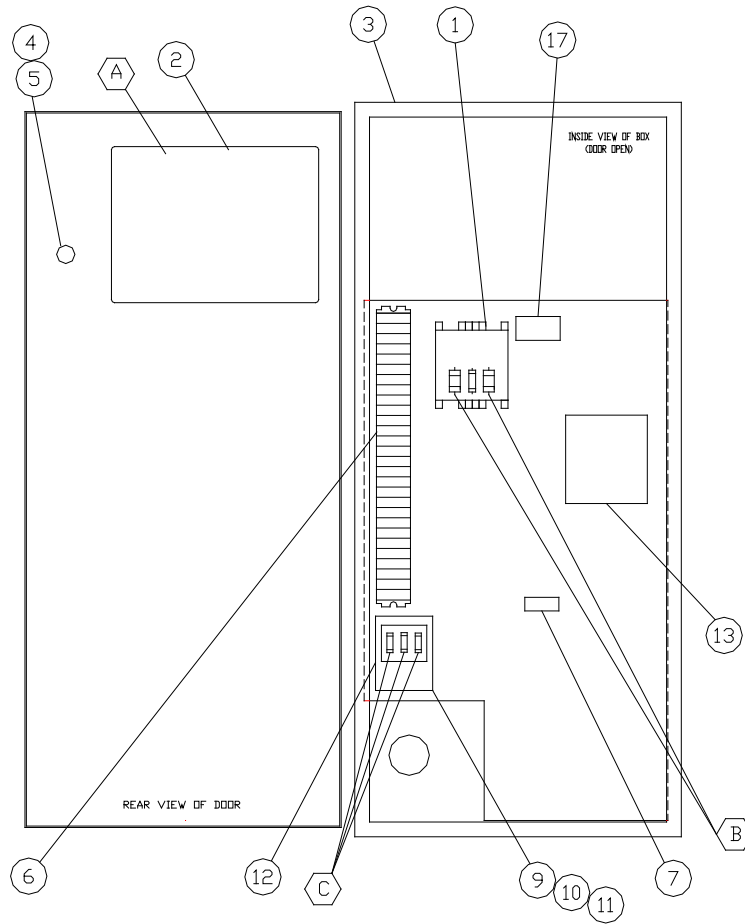
Order by Part Number and Description. Reference Numbers are for your convenience only.

CONTROL BOX ASSEMBLY 300 HP – WYE DELTA STARTERS

Ref. No.	Name of Part	Qty	460V	575V
*	ASSEMBLED PANEL – ES+: NEMA 12, .....	1	274EAU466	282EAU466
*	ASSEMBLED PANEL – ES+: NEMA 4, .....	1	275EAU466	283EAU466
A	FUSE, CONTROL ALARM RELAY .....	1	24CA1267	24CA1267
B	FUSE, TRANSFORMER PRIMARY .....	2	24CA2783 (3A)	24CA2785 (2.25A)
	DECAL, PRIMARY FUSE .....	1	262AUX077	294AUX077
	FUSE, CONTROL TRANSFORMER, SECONDARY .....	1	24CA3729	24CA3729
	DECAL, SECONDARY FUSE .....	1	301AUX077	301AUX077
C	FUSE,, FAN MOTOR, AIR COOLED .....	3	24CA4321 (30A)	24CA4097 (25A)
	FUSE, FAN MOTOR WATER COOLED .....	3	24CA4098 (3A)	24CA4320 (2.5A)
	DECAL,, FAN MOTOR FUSE, AIR COOLED .....	1	322AUX077	315AUX077
	DECAL, FAN MOTOR FUSE WATER COOLED .....	1	24CA4090	321AUX077
1	TRANSFORMER.....	1	2118244	2118245
* 2	ELECTRONIC CONTROL – ES+.....	1	302EAU2006	302EAU2006
3	ELECTRONIC CONTROL ENCLOSURE			
	NEMA 12 .....	1	200EAU179	200EAU179
	NEMA 4 .....	1	201EAU179	201EAU179
4	OPERATOR .....	1	24CA2907	24CA2907
5	CONTACT BLOCK .....	1	24CA2908	24CA2908
6	BLOCK .....	6	24CA2633	24CA2633
7	CURRENT TRANSFORMER.....	1	24CA4242	24CA4242
8	CURRENT TRANSFORMER.....	1	24CA4981	24CA4981
9	STARTER, FAN MOTOR.....	1	24CA4137	24CA4137
10	REPLACEMENT COIL FOR ITEM 9.....	1	2116923	2116923
11	OVERLOAD RELAY FOR ITEM 9 .....	1	24CA4086	24CA4086
12	FUSE-HOLDER .....	1	24CA4098	24CA4098
13	CONTACTOR MAIN MOTOR.....	3	24CA4159	24CA4159
14	COIL FOR ITEM 13 .....	3	2116920	2116920
15	CONTACT KIT FOR ITEM 13.....	3	2116916	2116916
16	OVERLOAD RELAY MAIN MOTOR .....	1	24CA4086	24CA4086
17	CURRENT TRANSDUCER .....	1	24CA4241	24CA4241

\* Refer to page 44, for Controller Part Numbers.

**CONTROL BOX ASSEMBLY  
200/250/300 HP – LESS MAIN MOTOR STARTERS**



NOTE 1 - ITEMS 7 & 17 ARE USED ONLY ON PANELS WITH ES + AND CURRENT MONITORING.

NOTE 2 - ITEMS 10 & 11 ARE INCLUDED IN 9.

**304EAU797-A  
(Ref. Drawing)**

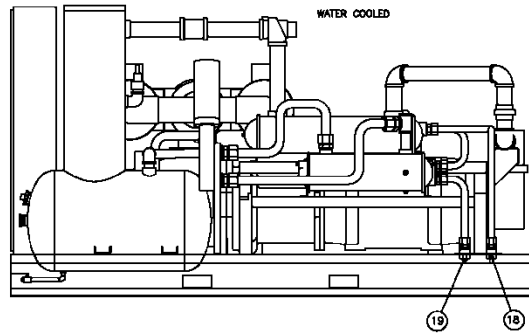
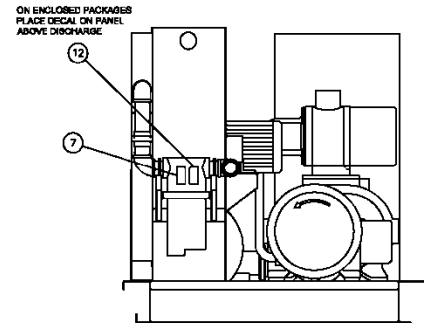
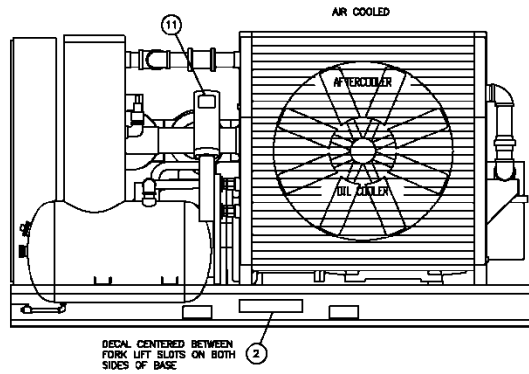
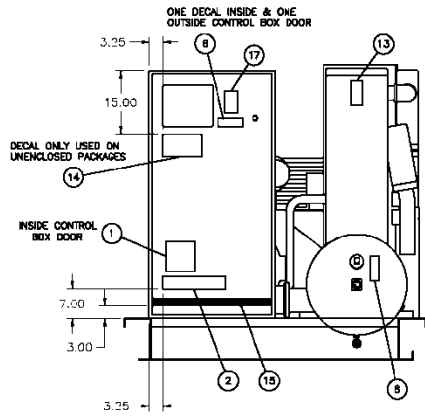
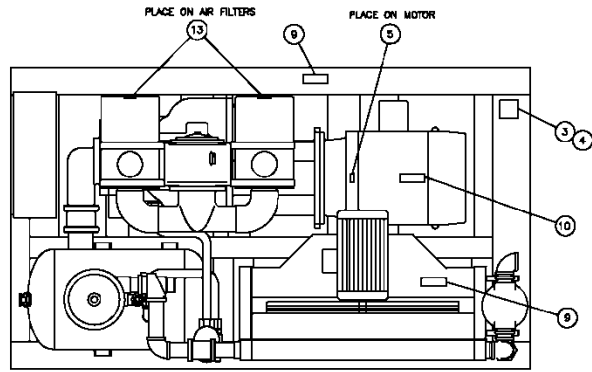
**Order by Part Number and Description. Reference Numbers are for your convenience only.**

**CONTROL BOX ASSEMBLY – LESS STARTERS**

Ref. No.	Name of Part	Qty	200V	230V	460V	575V
*	ASSEMBLED PANEL – ES+: NEMA 12, .....	1	298EAU466	292EAU466	290EAU466	294EAU466
*	ASSEMBLED PANEL – ES+: NEMA 4, .....	1	299EAU466	293EAU466	291EAU466	295EAU466
A	FUSE, CONTROL ALARM RELAY .....	1	24CA1267	24CA1267	24CA1267	24CA1267
B	FUSE, TRANSFORMER PRIMARY .....	2	24CA2786 (6A)	24CA2785 (5A)	24CA2783 (3A)	24CA3722 (2.25A)
	DECAL, PRIMARY FUSE .....	1	265AUX077	264AUX077	262AUX077	294AUX077
	FUSE, CONTROL TRANSFORMER, SECONDARY .....	1	24CA3729	24CA3729	24CA3729	24CA3729
	DECAL, SECONDARY FUSE .....	1	301AUX077	301AUX077	301AUX077	301AUX077
C	FUSE,, FAN MOTOR, AIR COOLED .....	3	24CA4323 (60A)	24CA4323 (60A)	24CA4321 (30A)	24CA4097 (25A)
	FUSE, FAN MOTOR WATER COOLED .....	3	24CA4093 (7A)	24CA4092 (6A)	24CA4090 (3A)	24CA4320 (2.5A)
	DECAL,, FAN MOTOR FUSE, AIR COOLED .....	1	324AUX077	324AUX077	322AUX077	315AUX077
	DECAL, FAN MOTOR FUSE WATER COOLED .....	1	311AUX077	310AUX077	308AUX077	321AUX077
1	TRANSFORMER CONTROL .....	1	2116286	2118244	2118244	2118245
* 2	ELECTRONIC CONTROLLER – ES+ .....	1	302EAU2006	302EAU2006	302EAU2006	302EAU2006
3	ELECTRONIC CONTROLLER ENCLOSURE					
	NEMA 12 .....	1	200EAU179	200EAU179	200EAU179	200EAU179
	NEMA 4 .....	1	201EAU179	201EAU179	201EAU179	201EAU179
4	OPERATOR EMERGENCY STOP .....	1	24CA2907	24CA2907	24CA2907	24CA2907
5	CONTACT BLOCK .....	1	24CA2908	24CA2908	24CA2908	24CA2908
6	TERMINAL BLOCK SECTION .....	7	24CA2633	24CA2633	24CA2633	24CA2633
7	TRANSFORMER .....	1	24CA4242	24CA4242	24CA4242	24CA4242
9	STARTER FAN MOTOR .....	1	24CA4142	24CA4142	24CA4137	24CA4137
10	REPLACEMENT COIL FOR ITEM 9 .....	1	2116124	2116124	2116923	2116923
11	OVERLOAD RELAY FOR ITEM 9 .....	1	24CA4087	24CA4086	24CA4086	24CA4086
12	FUSE-HOLDER .....	1	24CA4164	24CA4164	24CA4098	24CA4098
13	CONTROL RELAY .....	1	24CA3896	24CA3896	24CA3896	24CA3896
17	CURRENT TRANSDUCER .....	1	24CA4241	24CA4241	24CA4241	24CA4241

\* Refer to page 44, for Controller Part Numbers.

# IDENTIFICATION AND INSTRUCTION GROUP



NOTE: DETAIL 18 ONE DECAL FRONT & BACK, BOTTOM EDGE OF ENCLOSURE TOP FRAME & TOP EDGE OF DOOR. (ENCLOSED PACKAGES ONLY.)

342EAU810-A  
(Ref. Drawing)

**IDENTIFICATION AND INSTRUCTION GROUP**

**B/M: 309, 310EAU4011;  
312EAU4011**

<b>Ref. No.</b>	<b>Name of Part</b>	<b>Qty.</b>	<b>Part No.</b>
2	DECAL, ELECTRA SAVER (LARGE) .....	3	VP1051547
* 5	DECAL, ROTATION ARROW .....	1	304EFC077
* 6	DECAL, ISO WARNING –CONTROL BOX.....	2	VP1009371
* 7	DECAL, ISO WARNING – MOISTURE TRAP .....	1	VP1009380
* 8	DECAL, ISO WARNING – SEPARATOR TANK .....	1	VP1009376
* 9	DECAL, ISO WARNING – FAN/COOLER HOUSING.....	2	VP1009582
* 10	DECAL, ISO WARNING – MOTOR.....	1	VP1009374
11	DECAL, OIL FILL ELEMENT INSTALL .....	1	326EAQ077
* 12	DECAL, ISO WARNING – PACKAGE DISCHARGE AIR .....	1	VP1009623
* 13	DECAL, NOTICE (USE GENUINE GD PARTS) .....	3	CC1009474
14	DECAL, GARDNER DENVER LOGO (SMALL).....	1	VP1051555
15	DECAL, STRIPE (LARGE) .....	1	VP1051552
* 16	DECAL, ISO WARNING (SIDES ABOVE DOORS) .....	2	VP1009372
17	DECAL, CAGI PERFORMANCE ... ..	1	CC1031484
18	DECAL, HEAT EXCHANGE “IN” ... ..	1	200ESP077
19	DECAL, HEAT EXCHANGE “OUT” .....	1	201ESP077

\* For Replacement Decals Order Part Number CC1010403 Decal Group Sheet.

## REPAIR KITS

Your Gardner Denver rotary screw compressor is designed and manufactured for many years of reliable operation. All components are engineered to exacting specifications, which will function together as a system to provide maximum efficiency. To insure the continuing integrity of compressor operation, use only original quality genuine Gardner Denver replacement parts and accessories.

Name of Part	Qty.	Part No.
<b>ROUTINE MAINTENANCE KIT (Heavy Duty Air Filter)</b>		<b>302EAU6013</b>
ELEMENT, AIR FILTER.....	4	2118349
ELEMENT, OIL FILTER.....	3	2118342
<b>SEPARATOR KIT</b>		<b>306EAU6013</b>
OIL SEPARATOR.....	1	302EAU035
GASKET.....	1	200EAU715N
LUBRICANT (O-RING GREASE).....	1	2116755
<b>PERIODIC MAINTENANCE KIT (Package)</b>		<b>201EAU6013</b>
ELEMENT (MIXING VALVE – 150°F.).....	1	2109365
KIT (MINIMUM PRESSURE VALVE).....	1	2116855
<b>PNEUMATIC CONTROLS AND GAUGES</b>		<b>203EAU6013</b>
CHECK VALVE.....	2	90AR261
CONTROL VALVE.....	1	90AR1034
AIR CONTROL VALVE.....	1	90AR1083
PRESSURE REGULATOR.....	1	88H367
PRESSURE GAUGE.....	1	2118767
<b>ELECTRICAL CONTROL KIT</b>		<b>206EAP6013</b>
SOLENOID VALVE.....	1	91B70
SOLENOID VALVE.....	1	91B143
SOLENOID VALVE.....	1	91B81
THERMISTOR PROBE.....	2	21D264
TRANSDUCER.....	2	88H359
VACUUM SWITCH.....	1	88H195
<b>TURN VALVE CONTROL VALVE REPAIR KIT</b>		<b>307EAQ6013</b>
O-RING.....	2	25BC738
O-RING.....	2	25BC37
O-RING.....	2	25BC35
O-RING.....	2	2009224
<b>TOUCH-UP PAINT</b>		
5 GALLON PAIL (WHITE).....	1	28H76
1 GALLON CAN (WHITE).....	1	28H84
1 QUART CAN (WHITE).....	1	28H83
5 GALLON PAIL (RED).....	1	28H325
1 GALLON CAN (RED).....	1	28H324
1 QUART CAN (RED).....	1	28H323
<b>WATER TEMPERATURE REGULATOR (Optional)</b>		90AR152
<b>MAGNETIC WATER SHUTOFF VALVE (Optional)</b>	1	91B24

**REPAIR KITS (CONTINUED)**

Name of Part	Qty.	Part No.
<b>LUBRICANT (AEON 9000SP) – STANDARD</b>		
5-GALLON PAIL .....	1	28H109
55-GALLON DRUM .....	1	28H103
<b>LUBRICANT (AEON 9000TH)</b>		
5-GALLON PAIL .....	1	28H286
55-GALLON DRUM .....	1	28H270
<b>LUBRICANT (AEON 6000FG)</b>		
5-GALLON PAIL .....	1	28H99
55-GALLON DRUM .....	1	28H100
<b>LUBRICANT (AEON 6000FG-68)</b>		
5-GALLON PAIL .....	1	28H314
55-GALLON DRUM .....	1	28H315
<b>LUBRICANT (AEON BIO)</b>		
5-GALLON PAIL .....	1	28H102
55-GALLON DRUM .....	1	28H103
 <b><u>AIR END REPAIR KITS (Refer to Page 1 for Selection)</u></b>		
<b>PERIODIC MAINTENANCE KIT (Inlet Valve)</b>		
RING GASKET .....	1	201SSU6003
GASKET .....	1	25BC160
GASKET .....	1	25C2683N
SPRING .....	1	203SSU715N
VALVE DISC .....	1	78A366
RING-PISTON.....	1	200SSW067
PIN-COTTER .....	2	65A319
	1	62E30
 <b>PERIODIC OVERHAUL KIT</b>		
		<b>339SSU6013</b>
BEARING-ROLLER .....	1	12BA52
BEARING-ROLLER .....	1	12W34
BEARING-ROLLER .....	2	12BA252
BEARING-ROLLER .....	1	12BA192
BEARING-ROLLER .....	2	12C96
SPRING-WAVE .....	1	78W90
SPRING-WAVE .....	1	78W110
RETAINING RING .....	1	65W61
RETAINING RING .....	1	65W14
KEY .....	1	35L3
KEY .....	1	35L16

## REPAIR KITS (CONTINUED)

Name of Part	Qty.	Part No.
<b>OIL SEAL KIT</b>		<b>302SSU6013</b>
WEAR SLEEVE .....	1	80M28
OIL SEAL .....	1	60DD571
OIL SEAL .....	1	60DD689
O-RING .....	1	25BC205
SHIM .....	12	204SSY732
SHIM .....	12	205SSY732
SHIM .....	6	207SSY732
SHIM .....	6	208SSY732
CHECK-VALVE.....	1	90AR923
<b>GASKET KIT</b>		<b>333SSU6013</b>
SHIM-SET .....	1	77H116
SHIM-SET .....	1	77H50
GASKET ELIMINATOR .....	1	25BC222
<b>PERIODIC OVERHAUL KIT (TURN VALVE)</b>		<b>315SSU6013</b>
BEARING-ROLLER .....	2	12BA51
SPRING .....	1	78W50
KEY .....	1	35C114
PACKING-RING.....	4	60AM46
SEAL-FASTENER .....	2	60DD801
GASKET.....	4	25BC138N
BUMPER.....	2	32E15
PLATE-RETAINER .....	2	300SSU168
RING-RETAINING .....	2	74D49
SEAL-FASTENER .....	2	60DD65
<b>MOUNTING GROUP</b>		<b>302SSU4017</b>
PULLER WEAR SLEEVE .....	1	200SSQ219
PLATE-PULLER WEAR SLEEVE.....	1	300SSU340
SCREW.....	1	655EE030
SCREW.....	1	655EE120A
SCREW.....	2	75D178
GUIDE.....	1	200SSU450
TOOL .....	1	200SSQ074

# Gardner Denver®

For additional information, contact your local representative or visit:  
[www.contactgd.com/compressors](http://www.contactgd.com/compressors)

©2013 Gardner Denver, Inc. Printed in U.S.A.

