

---

---

**GARDNER DENVER®**

13-10-509  
1st Edition  
August, 1994

**ELECTRA-SAVER®**  
**STATIONARY SCREW**  
**COMPRESSOR**

With **AUTO SENTRY®-ES CONTROLLER**

**MODELS**

**EAU\_PD – 200 HP**

**EAU\_QD – 250 HP**

**EAU\_RD – 300 HP**

**PARTS LIST**

**Gardner**  

---

**Denver**

## TABLE OF CONTENTS

<b>GROUP NAME</b>	<b>Page No.</b>
Ordering Instructions .....	2
Thirteen–Digit Character Model Designations .....	3
Bare Compressor .....	4
Bare Compressor Repair Kits .....	5
Turn Valve .....	6
Inlet Valve and Air Filter (Standard) .....	7
Air Filter Group, Heavy Duty (200 HP) .....	8
Air Filter Group, Heavy Duty (250 & 300 HP) .....	9
Oil Reservoir and Air Discharge Group (200 & 250 HP) .....	10
Oil Reservoir and Air Discharge Group (300 HP) .....	11
Base and Mounting Groups .....	12
Oil Reservoir Group (Selective Items) .....	13
Oil Separator Group .....	13
Oil Piping .....	14
Aftercooler Group (Water–Cooled Units) .....	15
Heat Exchanger and Mounting Group (Water–Cooled Units) .....	16
Selective Items – Water Cooled Units (Fresh Water Service) .....	17
Selective Items – Water Cooled Units (Salt Water Service) .....	18
Selective Items – Air Cooled Units .....	19
Purge Valve and Mounting Group .....	20
Coupling and Misc. Tube Fittings .....	21
Oil Filter, Minimum Pressure and Thermal Valves .....	22
Turn Valve Actuator .....	23
Air Control Piping .....	24, 25
Minimum Pressure/Check Valve – 201EDM527 .....	26
Remote Mounted Oil Cooler Fittings .....	27
Controller Assembly .....	28, 29
Enclosure Group .....	30
Repair Kits .....	31, 32
Ordering Repair Parts .....	32

**For Operating and Service Instructions see:**

**SERVICE MANUAL 13–10–612**

**MAINTAIN COMPRESSOR RELIABILITY AND PERFORMANCE WITH  
GENUINE GARDNER DENVER AND JOY COMPRESSOR  
PARTS AND SUPPORT SERVICES**

Gardner Denver and Joy Compressor genuine parts, engineered to original tolerances, are designed for optimum dependability — specifically for Gardner Denver and Joy compressor systems. Design and material innovations are the result of years of experience with hundreds of different compressor applications. Reliability in materials and quality assurance are incorporated in our genuine replacement parts.

Your authorized Gardner Denver Compressor distributor offers all the backup you'll need. A worldwide network of authorized distributors provides the finest product support in the air compressor industry. Your local authorized distributor maintains a large inventory of genuine parts and he is backed up for emergency parts by direct access to the Gardner Denver Machinery Inc. Master Distribution Center (MDC) in Memphis, Tennessee.

Your authorized distributor can support your Gardner Denver or Joy air compressor with these services:

1. Trained parts specialists to assist you in selecting the correct replacement parts.
2. Factory warranted new and remanufactured rotary screw air ends. Most popular model remanufactured air ends are maintained in stock at MDC for purchase on an exchange basis with liberal core credit available for the replacement unit.
3. A full line of factory tested AEON™ compressor lubricants specifically formulated for use in Gardner Denver and Joy compressors.
4. Repair and maintenance kits designed with the necessary parts to simplify servicing your compressor.

Authorized distributor service technicians are factory-trained and skilled in compressor maintenance and repair. They are ready to respond and assist you by providing fast, expert maintenance and repair services.

**For the location of your local authorized Gardner Denver Air Compressor distributor refer to the yellow pages of your phone directory or contact:**

Distribution Center:  
Gardner Denver Machinery Inc.  
Master Distribution Center  
5585 East Shelby Drive  
Memphis, TN 38141  
Phone: (901) 542-6100  
(800) 245-4946  
Fax: (901) 542-6159

Factory:  
Gardner Denver Machinery Inc.  
1800 Gardner Expressway  
Quincy, IL 62301  
Phone: (217) 222-5400  
Fax: (217) 223-5897

**REMANUFACTURED AIR ENDS**

Whenever an air end requires replacement or repair, Gardner Denver offers an industry unique, factory remanufactured air end exchange program. From its modern Remanufacturing Center in Indianapolis, IN, Gardner Denver is committed to supplying you with the highest quality, factory remanufactured air ends that are guaranteed to save you time, aggravation and money.

**Immediately Available**

Repair downtime costs you money, which is why there are over 200 remanufactured units in inventory at all times, ready for immediate delivery.

**Skilled Craftsmen**

Our Remanufacturing assembly technicians average over 20 years experience with air compression products.

**Precision Remanufacturing**

All potentially usable parts are thoroughly cleaned, inspected and analyzed. Only those parts that can be brought back to original factory specifications are remanufactured. Every remanufactured air end receives

a new overhaul kit: bearings, gears, seals, sleeves and gaskets.

**Extensive Testing**

Gardner Denver performs testing that repair houses just don't do. Magnaflux and ultrasonic inspection spot cracked or stressed castings, monochromatic light analysis exposes oil leaks, and coordinate measurement machine inspects to +/- .0001", insuring that all remanufactured air ends meet factory performance specifications.

**Warranty**

Gardner Denver backs up every remanufactured air end with a new warranty . . . 18 months from purchase, 12 months from service.

Gardner Denver remanufactured air ends deliver *quality without question . . . year in and year out.*

Call Gardner Denver for information on the air end exchange program and the name of your authorized distributor.

Phone Number: 800-245-4946 or  
FAX: 901-542-6159

**ELECTRA-SAVER STATIONARY SCREW COMPRESSOR  
200 HP – 250 HP – 300 HP  
THIRTEEN DIGIT MODEL DESIGNATIONS**

NOTICE TO CUSTOMER – To find the construction options for your compressor unit, FILL IN THE BALANCE OF LETTERS OR NUMBERS FROM YOUR UNIT NAMEPLATE.  
COLUMN NUMBER:

E	A	U			D		8	8					
1	2	3	4	5	6	7	8	9	10	11	12	13	

Follow the line down and over from each space thus filled in to find the appropriate construction option with which your machine is equipped. The number "9" in any column space indicates "NOT APPLICABLE." The number "8" in any column space indicates SPECIAL DESIGN – REFER TO FACTORY ORDER TICKET.

COLUMNS 1, 2 & 3 – COMPRESSOR TYPE & SIZE

COLUMN 4 – TYPE OF CONSTRUCTION

- Q. Air Cooled Base Mounted
- S. Water Cooled Base Mounted

COLUMN 5 – HORSEPOWER

- P. 200 HP
- Q. 250 HP
- R. 300 HP

COLUMN 6 – ENGINEERING SPECIFICATION

COLUMN 7 – OPERATING PRESSURE

- |                     |                     |
|---------------------|---------------------|
| D. 100 PSIG (60 Hz) | N. 100 PSIG (50 Hz) |
| F. 125 PSIG (60 Hz) | P. 125 PSIG (50 Hz) |
| H. 150 PSIG (60 Hz) | R. 150 PSIG (50 Hz) |

COLUMN 8 – CONTROL – Letter varies with Voltage to Transformer

- Refer to pages 28 and 29
- 8 – Special – Auto Sentry–ES

COLUMN 9 – CONTROL ENCLOSURE & STARTER TYPE – Letters vary with options –

- Refer to pages 28 and 29
- 8 – Special – Auto Sentry ES

COLUMN 10 – ENCLOSURE & AIR FILTER – Refer to pages 7, 8, 9 and 33

- A. Standard Enclosure/Standard Air Filter
- B. Standard Enclosure/Optional Air Filter

COLUMN 11 – COOLERS – Letters vary with Material, Manufacturer and

- Aftercooler (if used) – Refer to page 15, 16, 17, 18 and 19
- A thru H – Air Cooled
- I thru T – Fresh Water Cooled
- U thru X – Salt Water Cooled

COLUMN 12 – COOLER ELECTRICAL – Letters vary with Voltage –

- Refer to page 19
- A thru I – Air Cooled NEMA 1
- J thru S – Air Cooled NEMA 4
- T thru X – Water Cooled

COLUMN 13 – COMPRESSOR DRIVE MOTOR

Motors are not listed in this book – When ordering replacement motor for your unit, it is MOST IMPORTANT that the COMPLETE thirteen digit model number is given in order to obtain the correct drive motor.



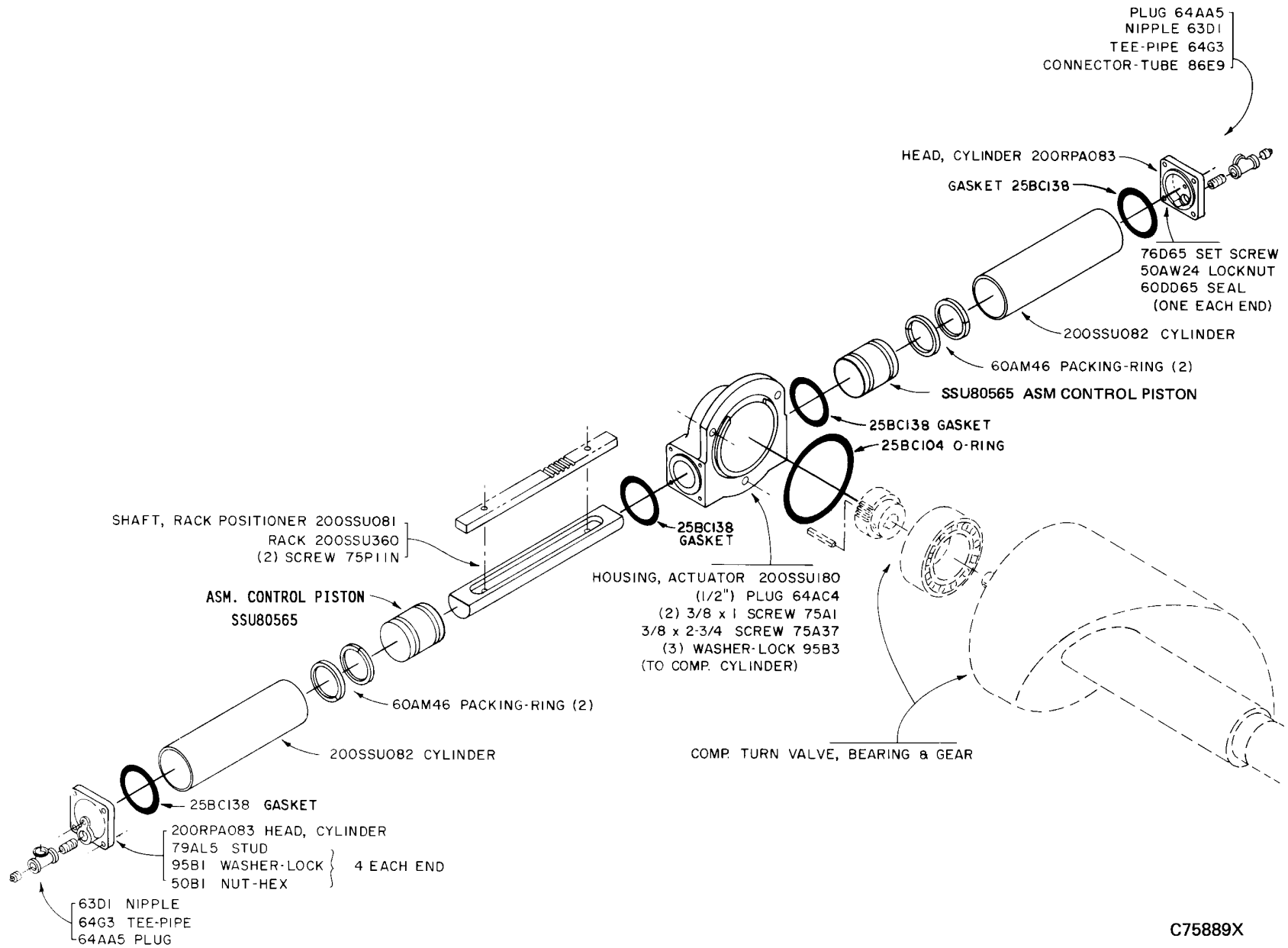
**BARE COMPRESSOR REPAIR KITS  
(200, 250 & 300 HP)**

PSI	HP	Model	+ Gear Kit Part No.		Bare Compressor Field Replacement (Includes Gears)				* Gasket Kit Part No.
			60 Hz	50 Hz	60 Hz New Air End	60 Hz Reman Air End	50 Hz New Air End	50 Hz Reman Air End	
100	200	EAU_P	SSU67270	SSU68145	EAU67704	SSUA AE01	EAU68147	SSUA AE06	SSU74559
	250	EAU_Q	SSU67271	SSU67272	EAU67706	SSUA AE02	EAU67713	SSUA AE03	SSU74559
	300	EAU_R	SSU67272	SSU68146	EAU67713	SSUA AE03	EAU68148	SSUA AE07	SSU74559
125	200	EAU_P	SSU67601	SSU67602	EAU68013	SSUA AE04	EAU67707	SSUA AE05	SSU74559
	250	EAU_Q	SSU67602	SSU67271	EAU67707	SSUA AE05	EAU67706	SSUA AE02	SSU74559
	300	EAU_R	SSU67271	SSU67272	EAU67706	SSUA AE02	EAU67713	SSUA AE03	SSU74559
150	200	EAU_P	SSU67601	SSU67601	EAU68013	SSUA AE04	EAU68013	SSUA AE04	SSU74559
	250	EAU_Q	SSU67270	SSU68145	EAU67704	SSUA AE01	EAU68147	SSUA AE06	SSU74559
	300	EAU_R	SSU67602	SSU67271	EAU67707	SSUA AE05	EAU67706	SSUA AE02	SSU74559

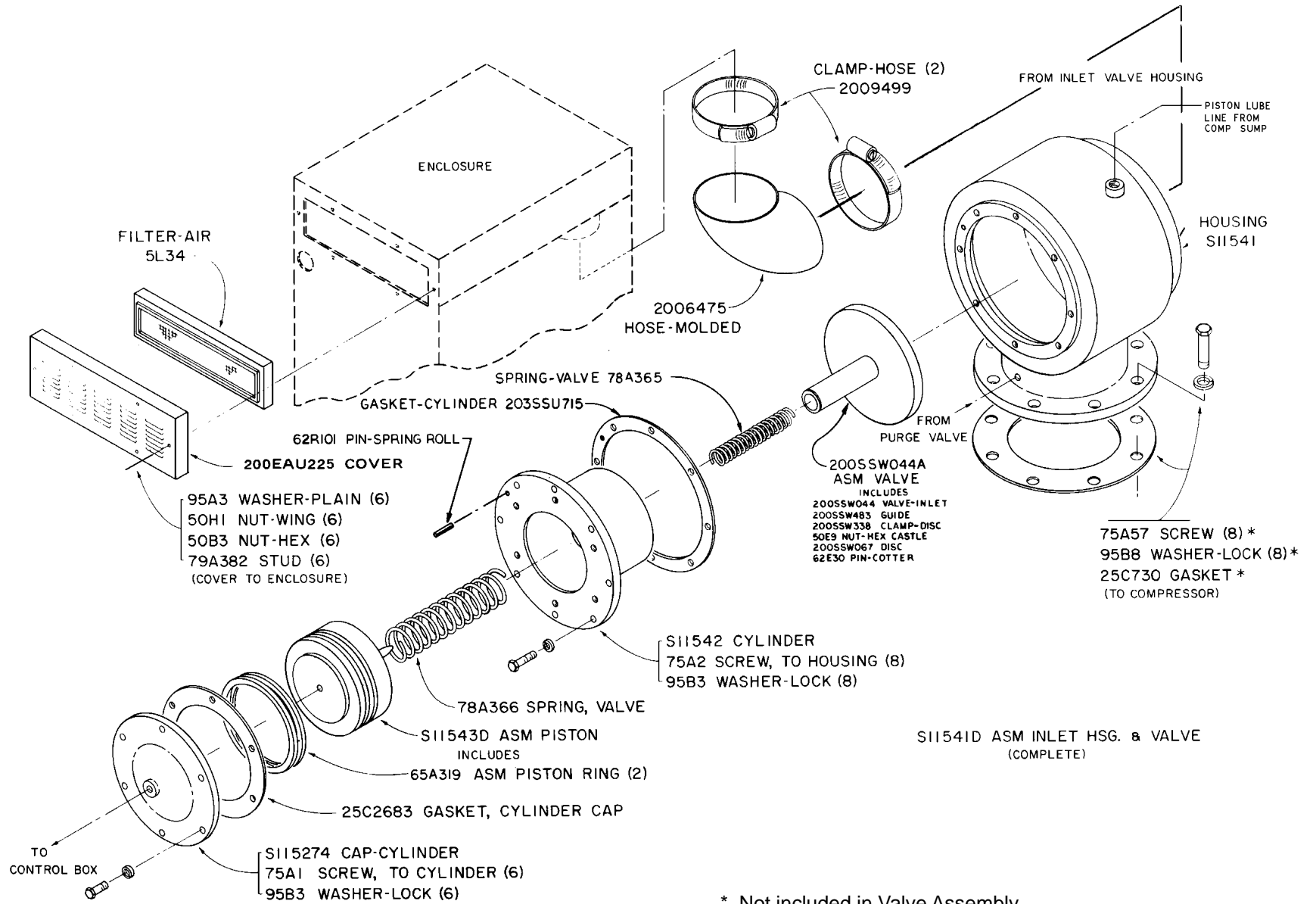
+ Gear Kit includes both gears with keys, gear housing gasket and seal housing O-ring.

\* Gasket Kit is for complete unit, less motor.

# TURN VALVE

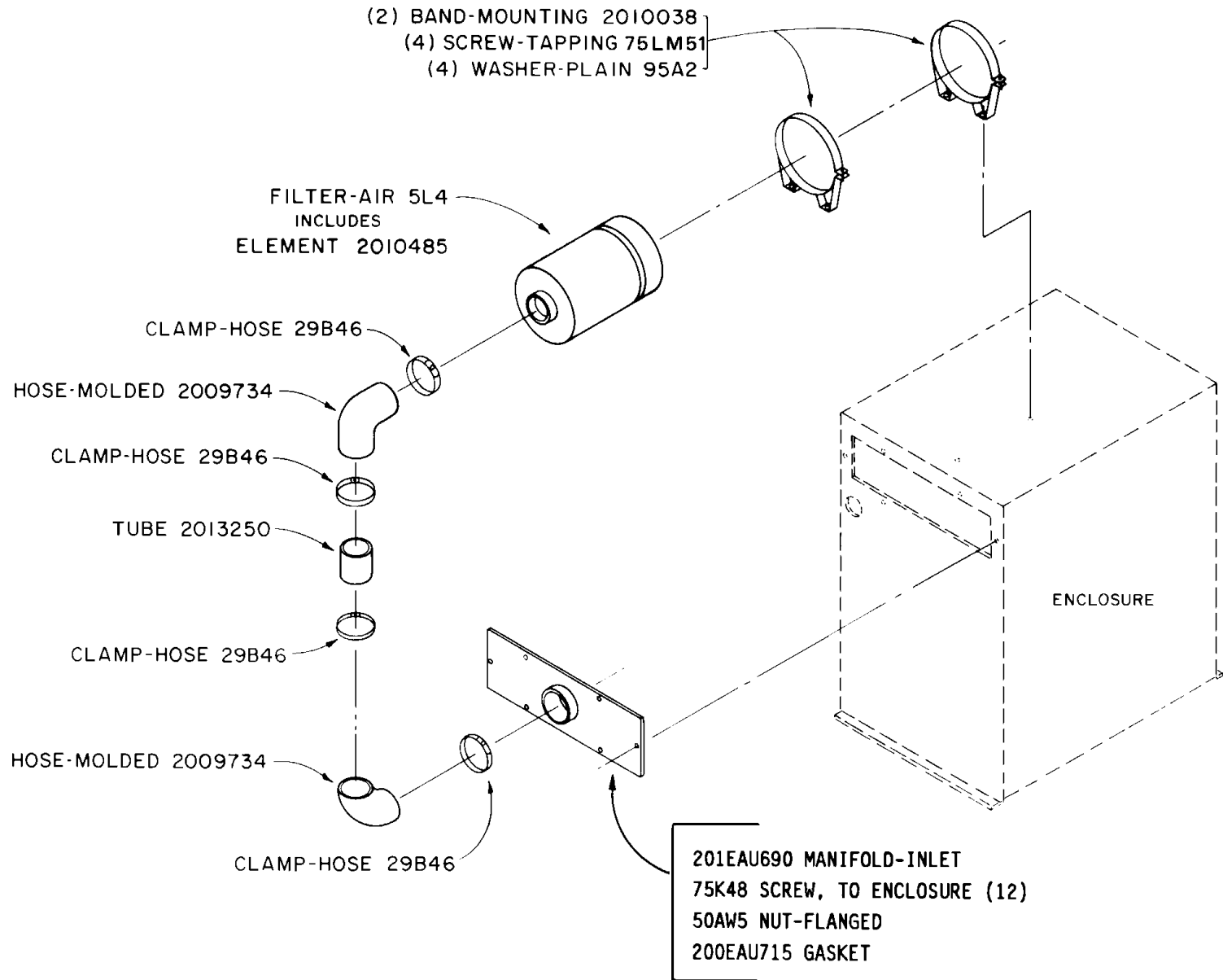


# INLET VALVE & AIR FILTER (STANDARD)



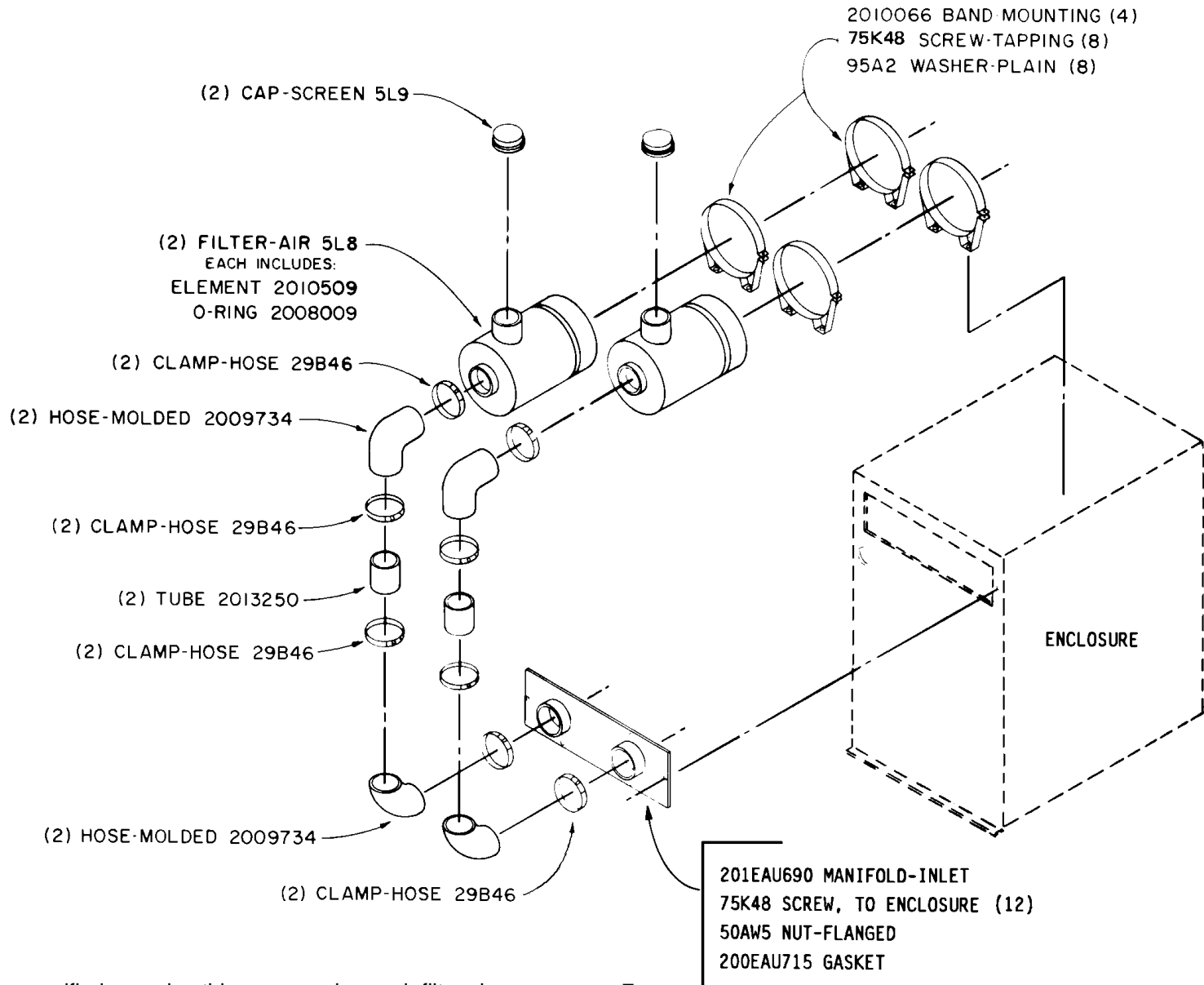
\* Not included in Valve Assembly

**AIR FILTER GROUP, HEAVY DUTY (200 HP)**  
**\* OPTIONAL EQUIPMENT**  
**KIT # EAU79293**



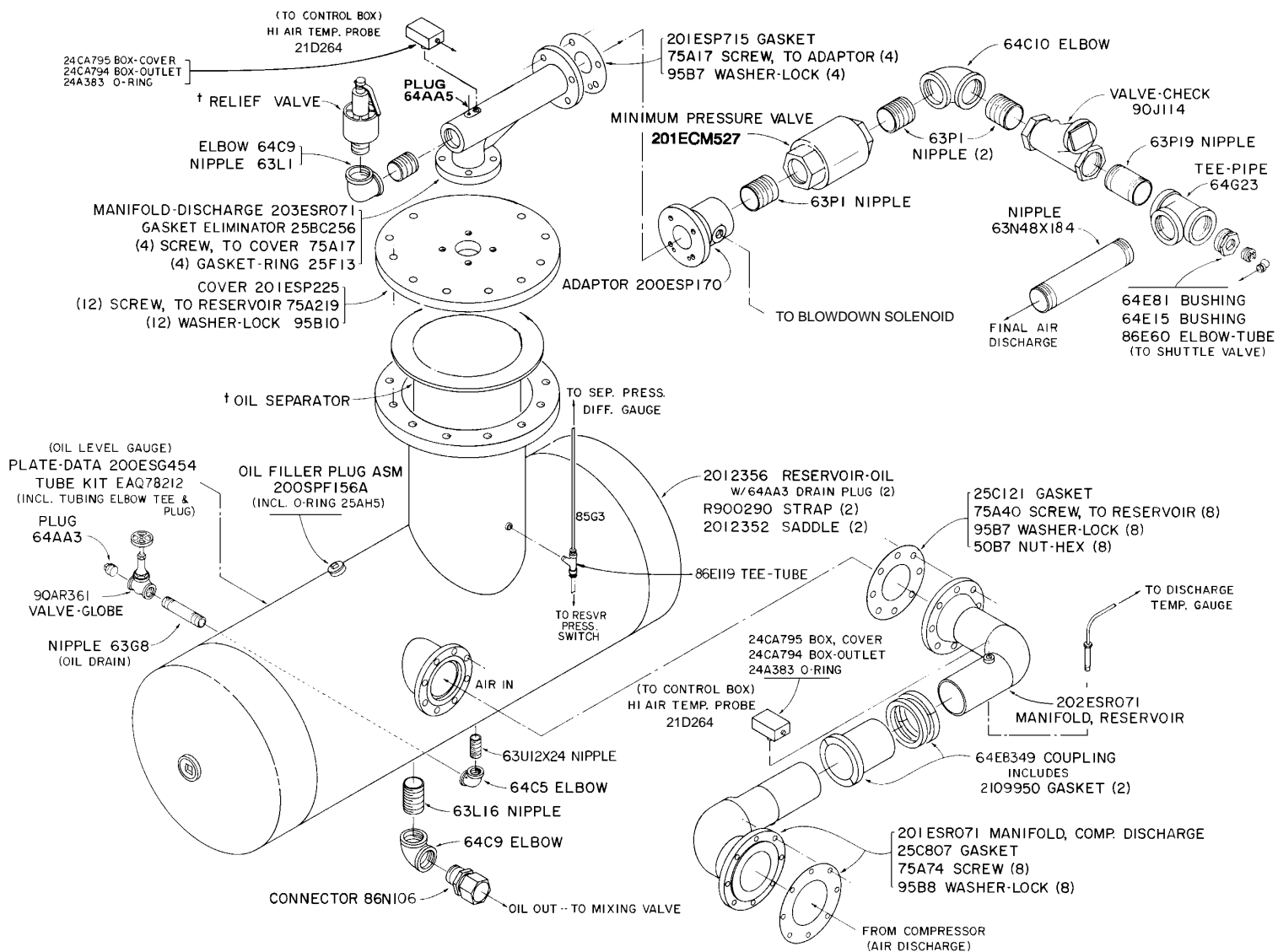
\* When specified on order, this group replaces air filter shown on page 7.

**AIR FILTER GROUP, HEAVY DUTY (250 & 300 HP)**  
**\* OPTIONAL EQUIPMENT**  
**KIT # EAU79303**



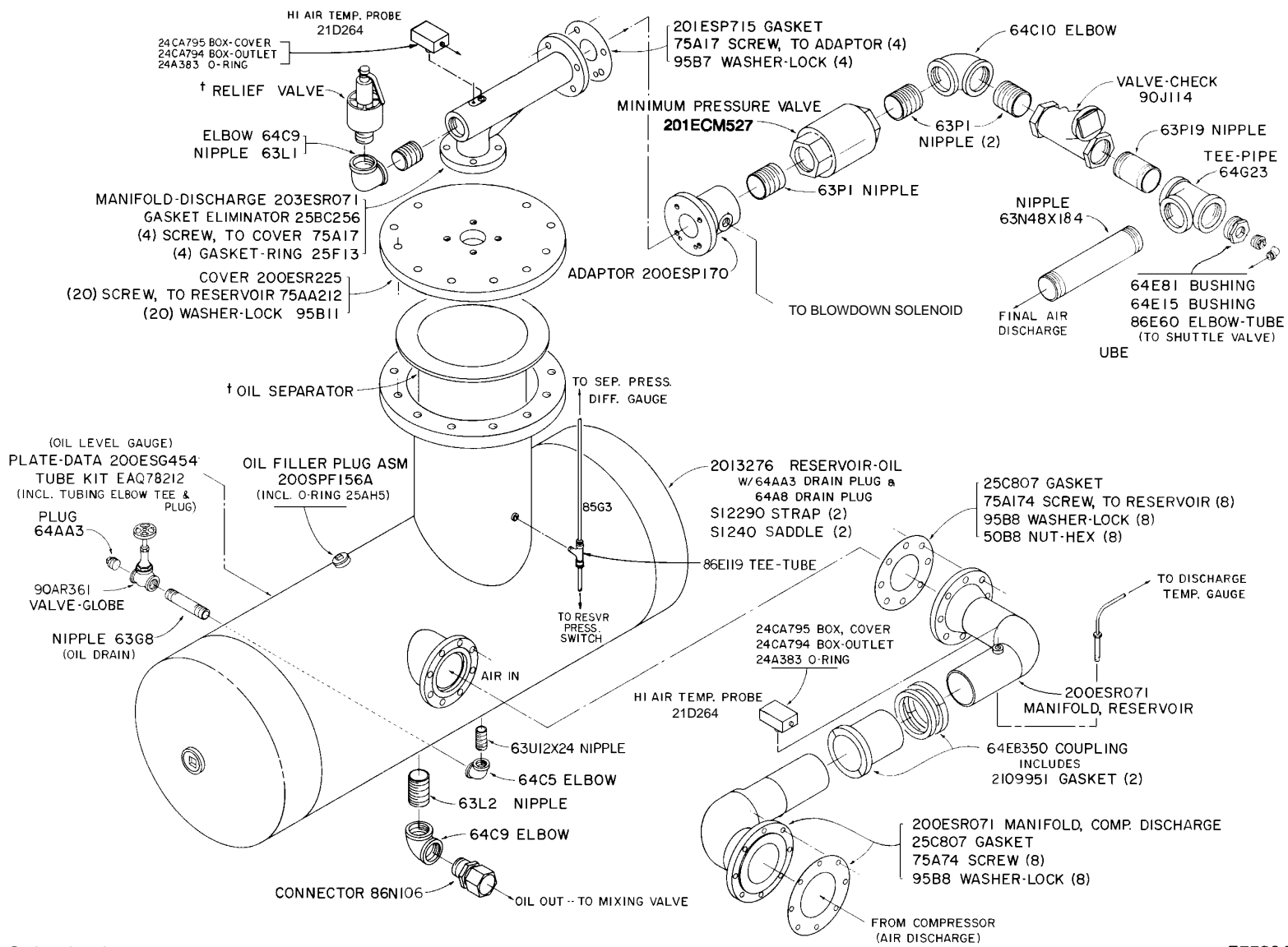
\* When specified on order, this group replaces air filter shown on page 7.

## OIL RESERVOIR & AIR DISCHARGE GROUP (200 & 250 HP)



† Selective items – see page 13.

## OIL RESERVOIR & AIR DISCHARGE GROUP (300 HP)



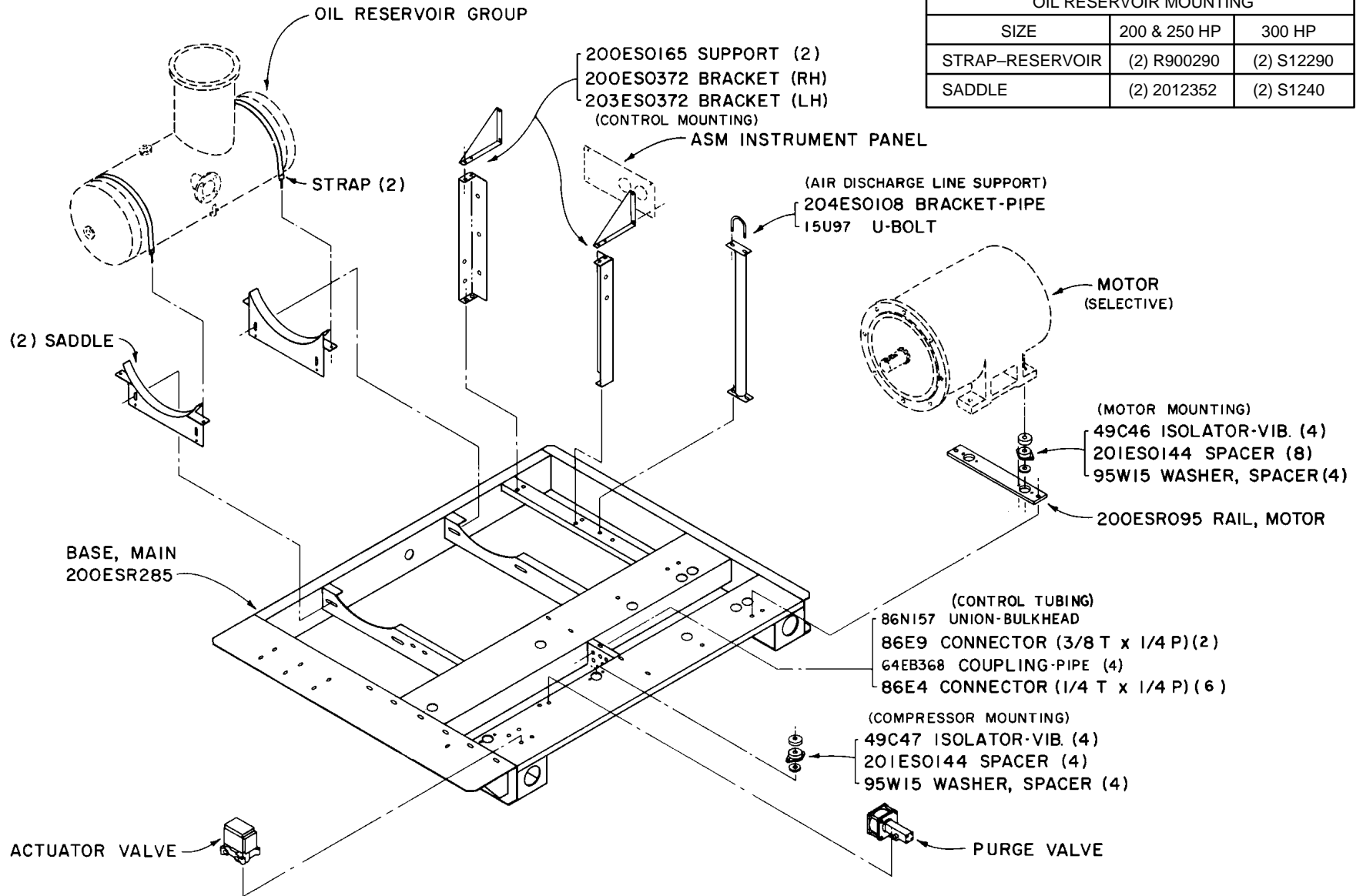
† Selective items – see page 13.

\* For repair order kit No. EAQ78540.

E75894X

### BASE & MOUNTING GROUPS \*

OIL RESERVOIR MOUNTING		
SIZE	200 & 250 HP	300 HP
STRAP-RESERVOIR	(2) R900290	(2) S12290
SADDLE	(2) 2012352	(2) S1240



\* Fasteners (Screws, Nuts, etc.) are not shown. Refer to ordering instructions, page 2.

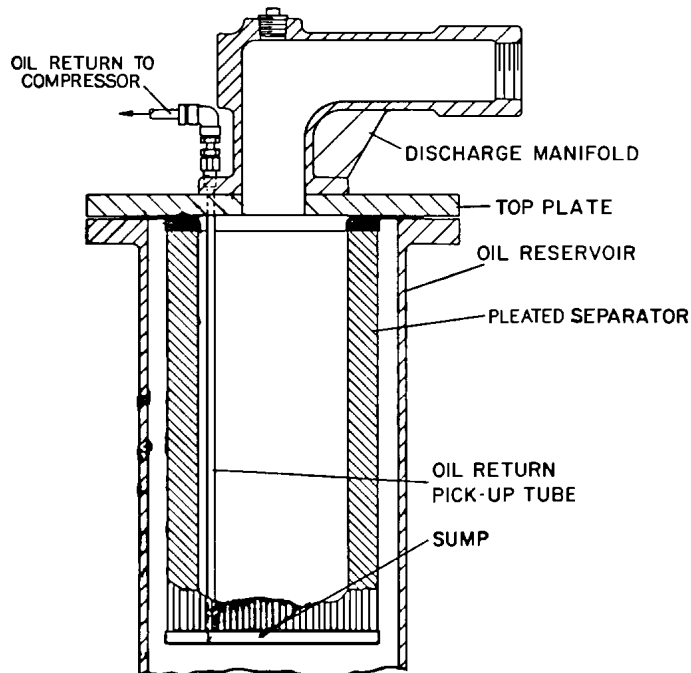
**OIL RESERVOIR GROUP**  
(Selective Items)

<b>Part Name and Description</b>	<b>200 HP</b>	<b>250 HP</b>	<b>300 HP</b>
RELIEF VALVE, 100 PSI (Set 125 Lbs.) .....	90AR510	90AR511	90AR511
RELIEF VALVE, 125 PSI (Set 150 Lbs.) .....	90AR532	90AR533	90AR533
RELIEF VALVE, 150 PSI (Set 165 Lbs.) .....	90AR649	90AR649	90AR649
BUSHING, Relief Valve (1-1/2 x 2) .....	64E12	-----	-----

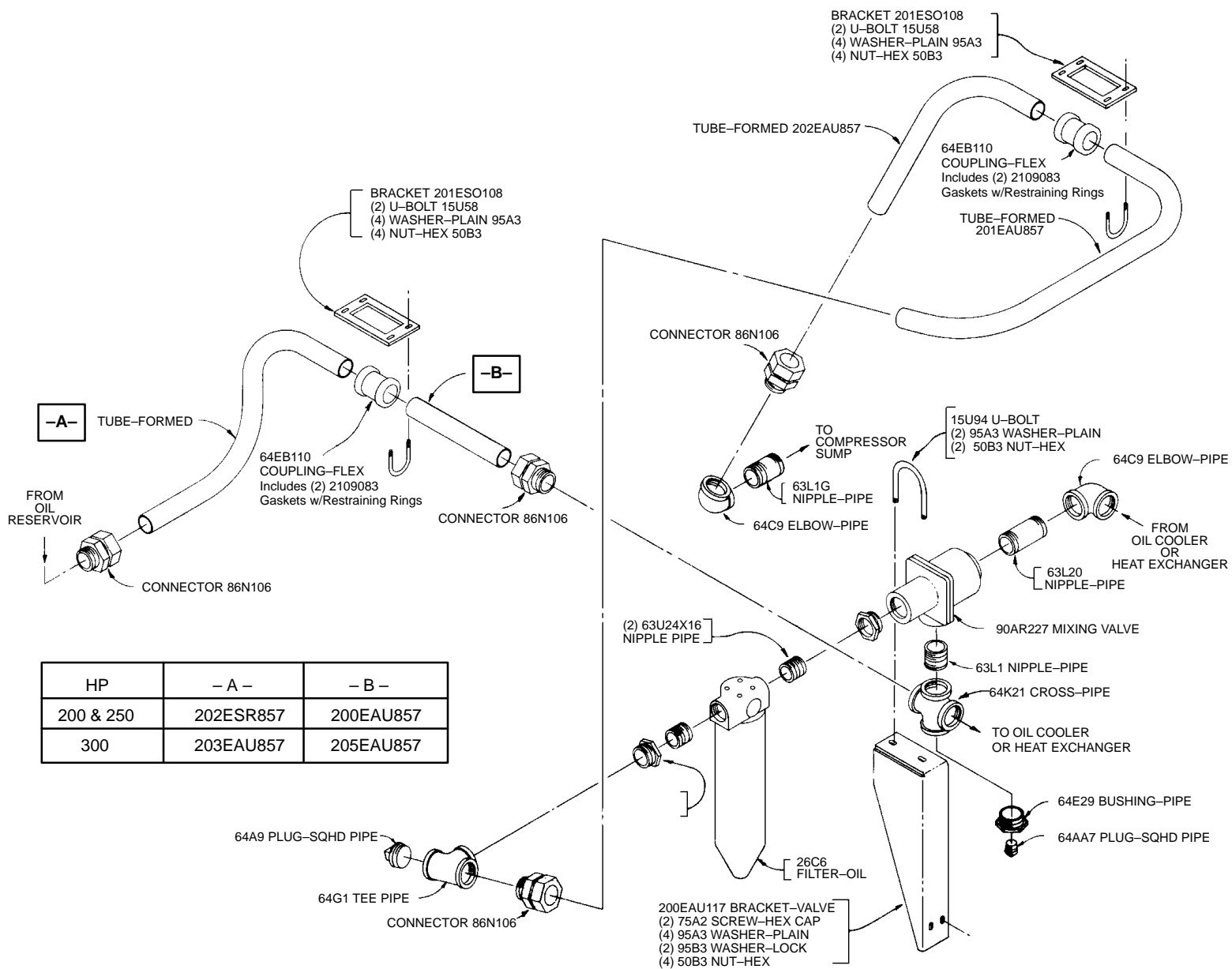
**OIL SEPARATOR GROUP**  
(Pleated Separator)

REPAIR KIT (With Separator 55B28) (200/250 HP) .....	EAU80110
REPAIR KIT (With Separator 55B29) (300 HP) .....	EAU80127

NOTE: Repair Kit includes Separator, Oil Return Pick-up Tube, Tube Fittings and Gasket Eliminator.



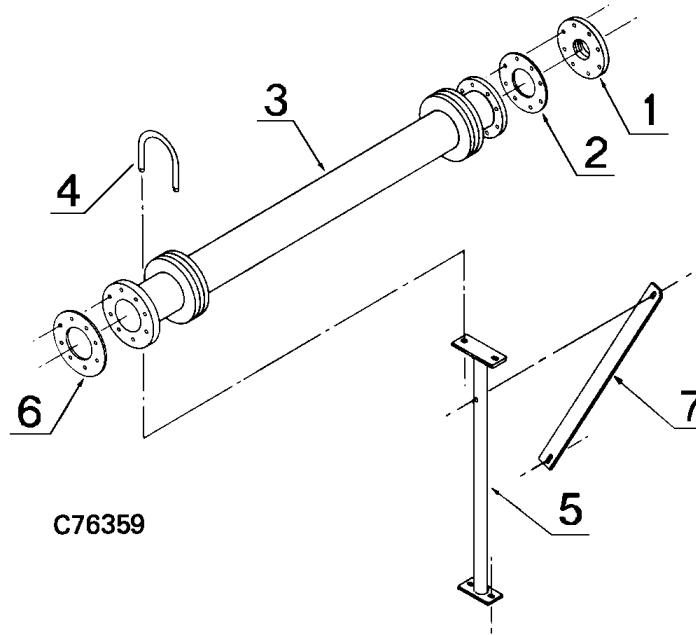
# OIL PIPING



HP	- A -	- B -
200 & 250	202ESR857	200EAU857
300	203EAU857	205EAU857

**AFTERCOOLER GROUP (WATER-COOLED UNITS)**  
**("B" CONSTRUCTION)**

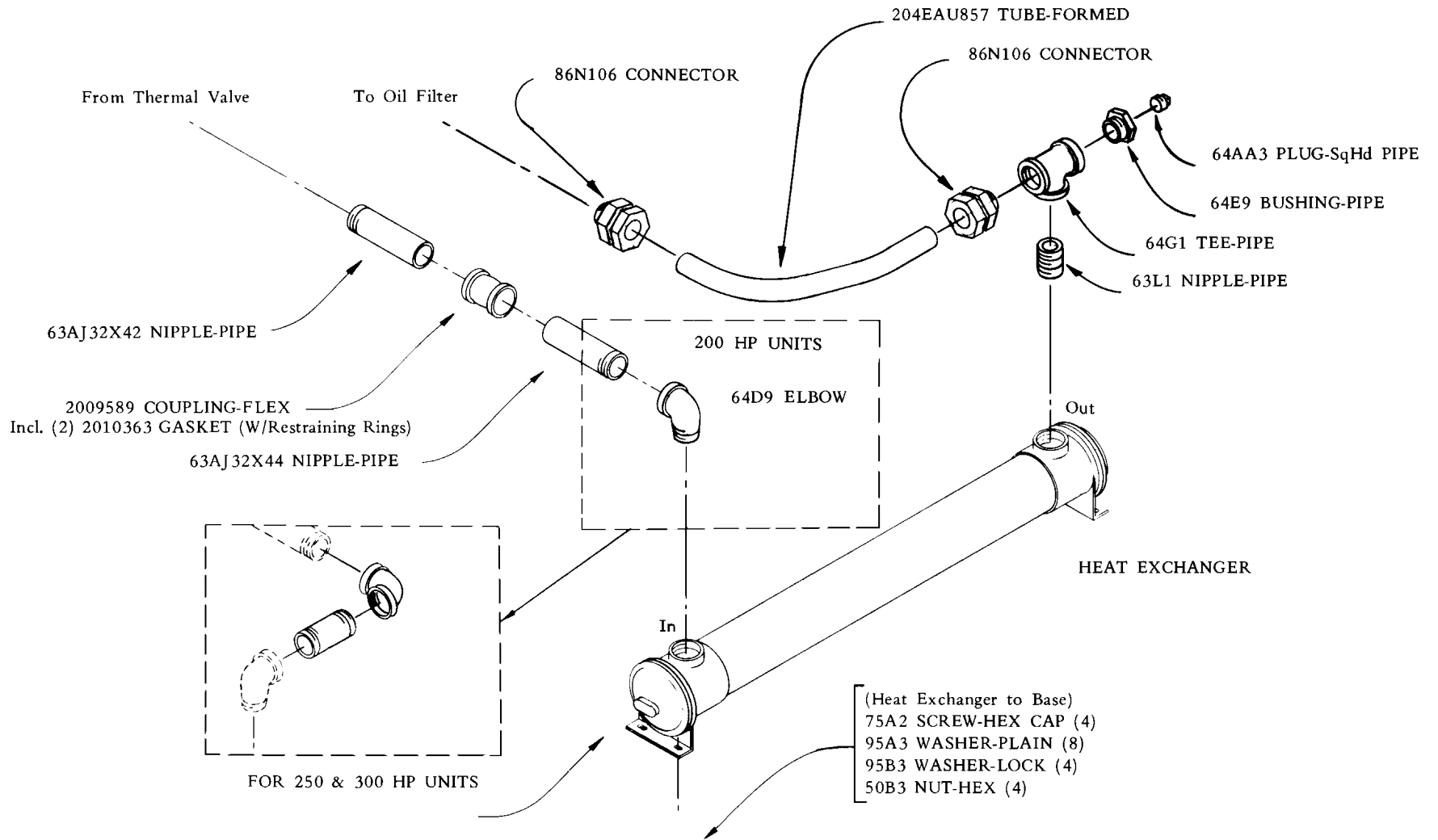
Order by Part Number and Description. Reference Numbers for Your Convenience Only.



Ref. No.	Part Name & Description	Qty.	200 HP	250 HP	300 HP
1	FLANGE, Reducing (Threaded) . . . . .	1	64EB119	64EB120	64EB120
	SCREW, To Aftercooler . . . . .	8	75A40	75A174	75A174
	WASHER-LOCK . . . . .	8	95B7	95B5	95B5
	NUT-HEX . . . . .	8	50B7	59B5	50B5
2	GASKET, To Aftercooler . . . . .	1	25C121	25C807	25C807
3	AFTERCOOLER . . . . .	1	*	*	*
4	U-BOLT, To Bracket . . . . .	1	15U93	15U100	200ESR213
	WASHER-PLAIN . . . . .	2	95A3	95A5	95A3
	NUT-HEX . . . . .	2	50B3	50B5	50B3
5	BRACKET-AFTERCOOLER . . . . .	1	200EAU118	201EAU118	202EAU118
	SCREW, To Base . . . . .	2	75A20	75A20	75A20
	WASHER-PLAIN . . . . .	4	95A5	95A5	95A5
	WASHER-LOCK . . . . .	2	95B5	95B5	95B5
	NUT-HEX . . . . .	2	50B5	50B5	50B5
6	GASKET, To Separator . . . . .	1	25C807	25C701	25C701
	SCREW . . . . .	8	75A214	75A214	75A214
	WASHER-LOCK . . . . .	8	95B8	95B8	95B8
	NUT-HEX . . . . .	8	50B8	50B8	50B8
7	BRACKET . . . . .	1	200ESR326	200ESR326	200ESR326

\* AFTERCOOLER is optional equipment – refer also to page 17.

**HEAT EXCHANGER & MOUNTING GROUP  
(Water-Cooled Units)  
("B" Construction)**



**SELECTIVE ITEMS — WATER COOLED UNITS  
(Fresh Water Service)**

Part Name & Description	Qty.	200 HP	250 HP	300 HP
HEAT EXCHANGER, Includes next 6 items: .....	1	204ESS349	205ESR349	206ESR349
BRACKET, MOUNTING .....	2	2109067	2109067	2109067
GASKET, INLET-OUTLET .....	1	2109063	2109063	2109063
BONNET, INLET-OUTLET .....	1	2109065	2109065	2109065
GASKET, RETURN .....	1	2109064	2109064	2109064
BONNET, RETURN .....	1	2109066	2109066	2109066
ANODE-ZINC .....	2	2109068	2109068	2109068
ELBOW-PIPE (2" x 90°) .....	1	-----	64C9	64C9
NIPPLE (2" Diameter) .....	1	-----	63L4	63N32X150
REGULATOR-TEMPERATURE .....	1	90AR151	90AR152	90AR152
* ASM STEM PACKING (TRERICE) .....	1	2010803	2010803	2010803
* THERMAL SYSTEM KIT (TRERICE) .....	1	2109498	2109498	2109498
REGULATOR-TEMPERATURE .....	1	90AR151	90AR152	90AR152
* ASM STEM PACKING (POWERS) .....	1	2109051	2109051	2109051
* THERMAL SYSTEM KIT (POWERS) .....	1	2109490	2109490	2109490
VALVE-SOLENOID, Water (NEMA 1) .....	1	91B3	91B2	91B2
VALVE-SOLENOID, Water (NEMA 4) .....	1	91B24	91B23	91B23
AFTERCOOLER .....	1	48Z61	48Z62	48Z63
SEPARATOR, MOISTURE .....	1	83C6	83C7	83C7
TRAP, SEPARATOR, Includes next 3 items .....	1	83C41	83C41	83C41
GASKET, CAP .....	1	2109518	2109518	2109518
GASKET, RETAINER .....	1	2109519	2109519	2109519
SCREEN, STRAINER .....	1	2109520	2109520	2109520

\* Furnish as required for repair of complete Temperature Regulator (Kit consists of Remote Bulb, Capillary Tube and Bellows).  
Make selection of ASM Stem Packing or Thermal System Kit according to the manufacturer of the regulator.

**SELECTIVE ITEMS — WATER COOLED UNITS  
(Salt Water Service)**

Part Name & Description	Qty.	200 HP	250 HP	300 HP
HEAT EXCHANGER, Includes next 6 items: .....	1	203ESS349	203ESR349	204ESR349
BRACKET, MOUNTING .....	2	2109067	2109067	2109067
GASKET, INLET-OUTLET .....	1	2109063	2109063	2109063
BONNET, INLET-OUTLET .....	1	2109077	2109077	2109077
GASKET, RETURN .....	1	2109064	2109064	2109064
BONNET, RETURN .....	1	2109076	2109076	2109076
ANODE-ZINC .....	2	2109068	2109068	2109068
(USE BRASS FITTINGS)				
REGULATOR-TEMPERATURE .....	1	90AR104	90AR106	90AR77
* ASM STEM PACKING (TRERICE) .....	1	2010803	2010803	2010803
* THERMAL SYSTEM KIT (TRERICE) .....	1	2109496	2109496	2109496
REGULATOR-TEMPERATURE .....	1	90AR104	90AR106	90AR77
* ASM STEM PACKING (POWERS) .....	1	2109051	2109051	2109051
* THERMAL SYSTEM KIT (POWERS) .....	1	2109490	2109490	2109490

\* Furnish as required for repair of complete Temperature Regulator (Kit consists of Remote Bulb, Capillary Tube and Bellows).  
Make selection of ASM Stem Packing or Thermal System Kit according to the manufacturer of the regulator.

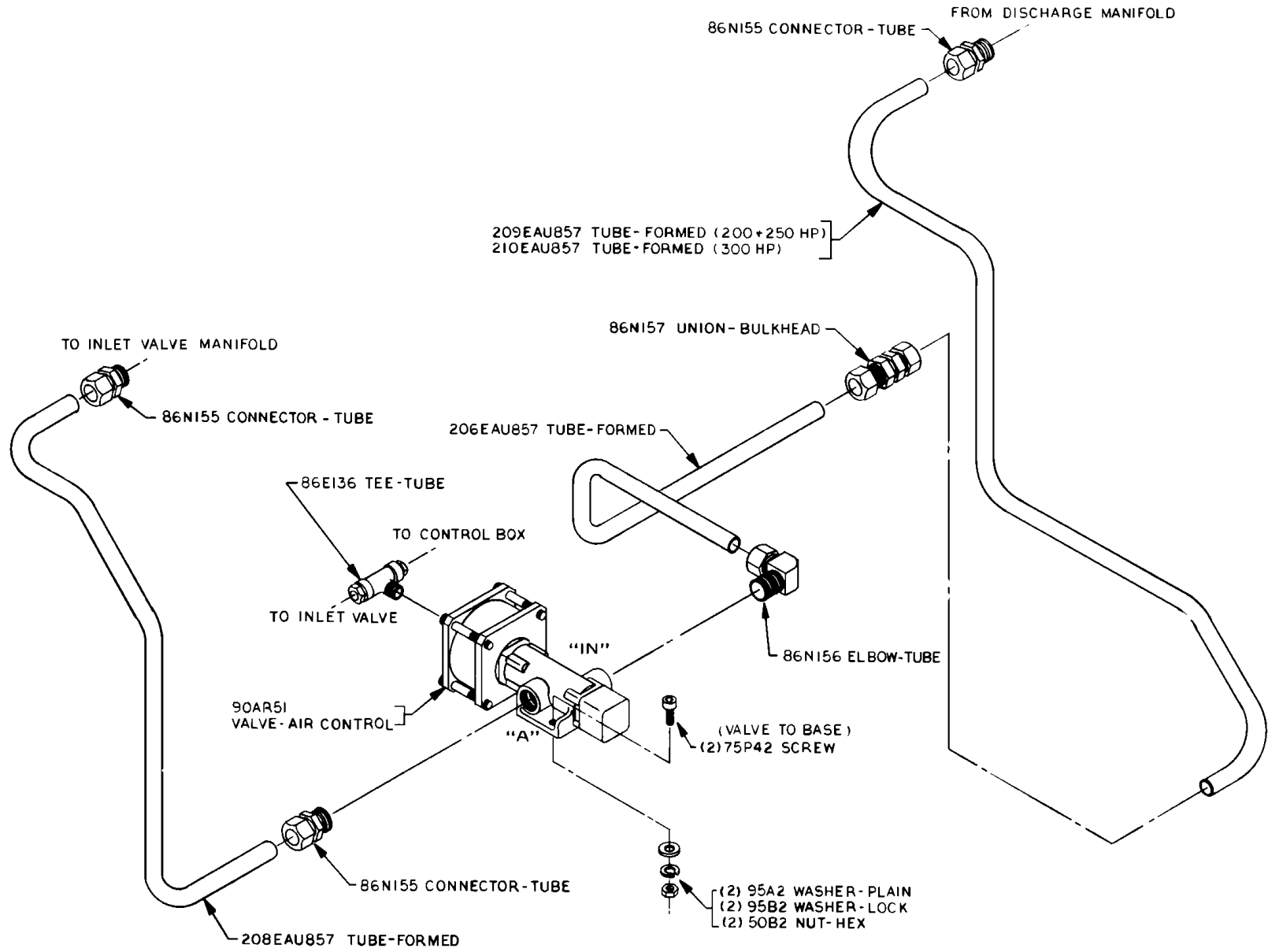
**SELECTIVE ITEMS — AIR COOLED UNITS**

<b>Part Name &amp; Description</b>	<b>200 HP</b>	<b>250 HP</b>	<b>300 HP</b>
<b>WITHOUT AFTERCOOLER</b>			
ASM MODULE (Complete),			
Includes next 4 items: .....	213EAU204	215EAU204	217EAU204
ASM OIL COOLER .....	2109560	2109561	2109561
FAN .....	200ESP701	200ESP701	2109563
GUARD-FAN .....	2109564	2109564	2109565
HUB-BUSHING .....	22G6	22G6	22G7
	(1-5/8 Bore)	(1-5/8 Bore)	(1-7/8 Bore)

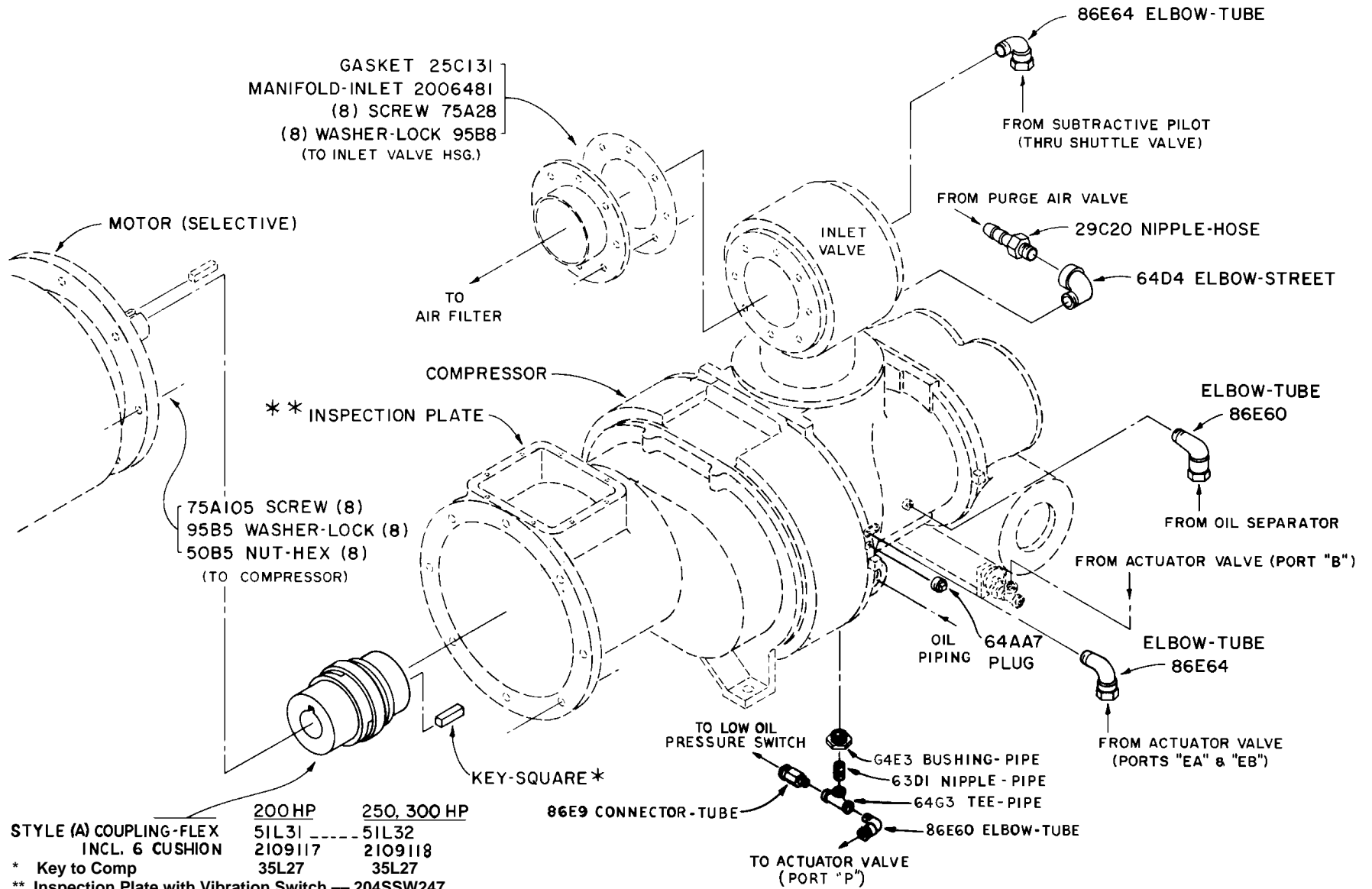
<b>WITH AFTERCOOLER (OPTIONAL)</b>			
ASM MODULE (Complete),			
Includes next 5 items: .....	212EAU204	214EAU204	216EAU204
ASM OIL COOLER .....	2109560	2109561	2109561
ASM AFTERCOOLER .....	2109562	2109562	2109562
FAN .....	200ESP701	200ESP701	2109563
GUARD-FAN .....	2109564	2109564	2109565
HUB-BUSHING .....	22G6	22G6	22G7
	(1-5/8 Bore)	(1-5/8 Bore)	(1-7/8 Bore)

\* Only major components are shown. For information or repair consult Quincy Sales and Service Office.

# PURGE VALVE & MOUNTING GROUP

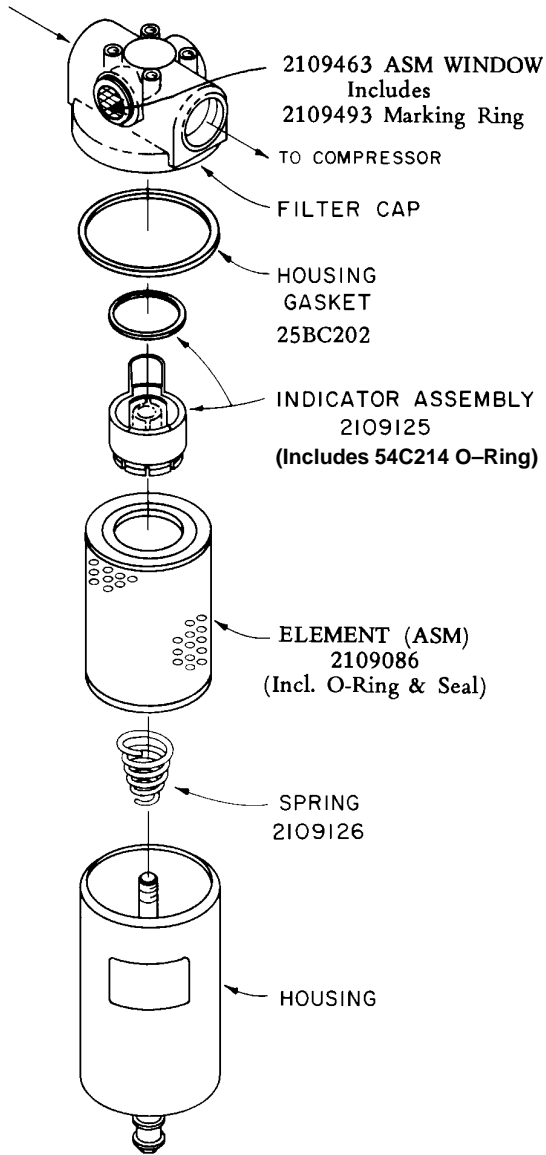


# COUPLING & MISC. TUBE FITTINGS

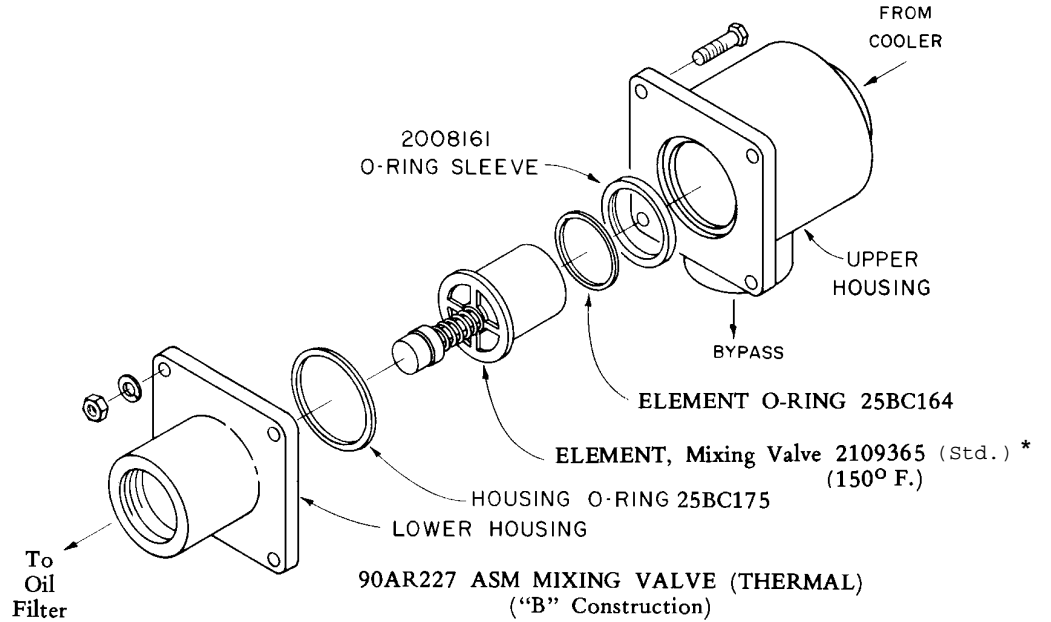


	200 HP	250, 300 HP
STYLE (A) COUPLING-FLEX	51L31	51L32
INCL. 6 CUSHION	2109117	2109118
* Key to Comp	35L27	35L27
** Inspection Plate with Vibration Switch	204SSW247	
without Vibraton Switch	201SSW247	

# OIL FILTER, MINIMUM PRESSURE & THERMAL VALVES



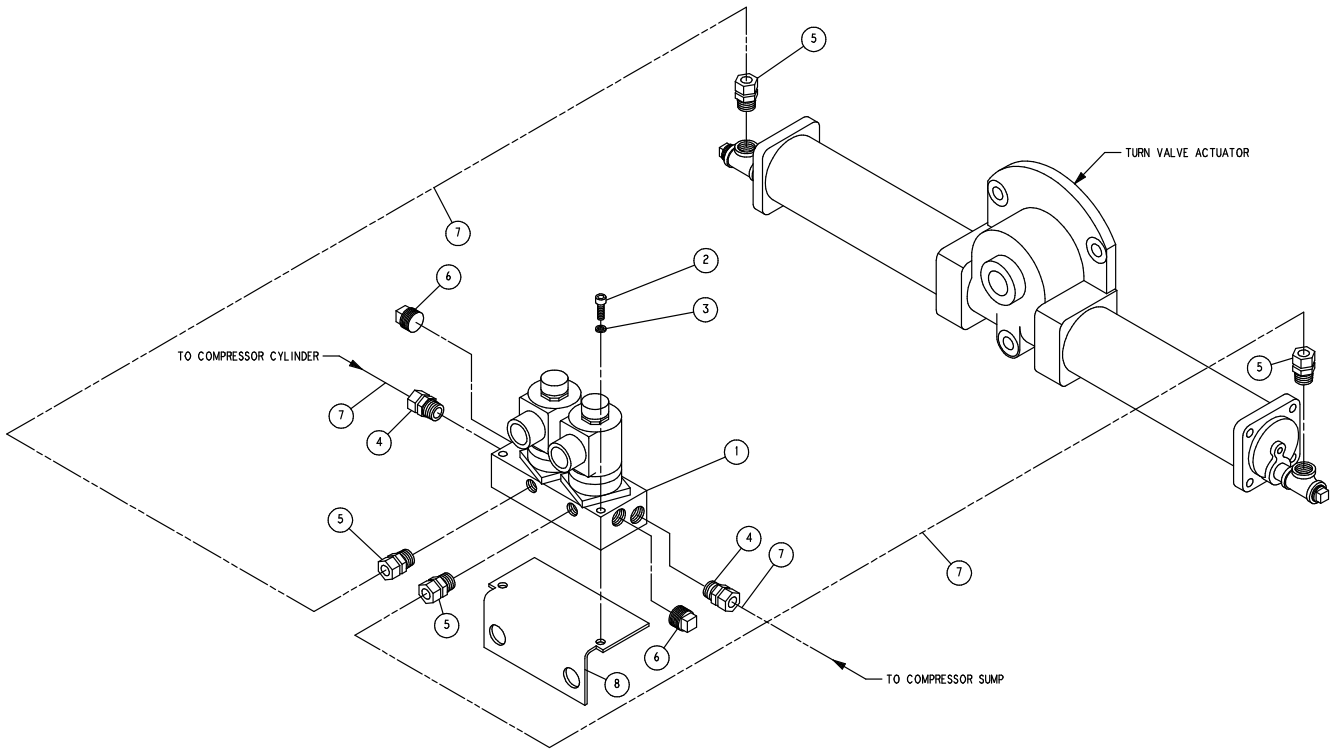
OIL FILTER 26C6



\* Optional Mixing Valve Elements  
2109364 - 160° F Element  
2116901 - 180° F Element

C75897X

Order by Part Number and Description. Reference Numbers for Your Convenience Only.

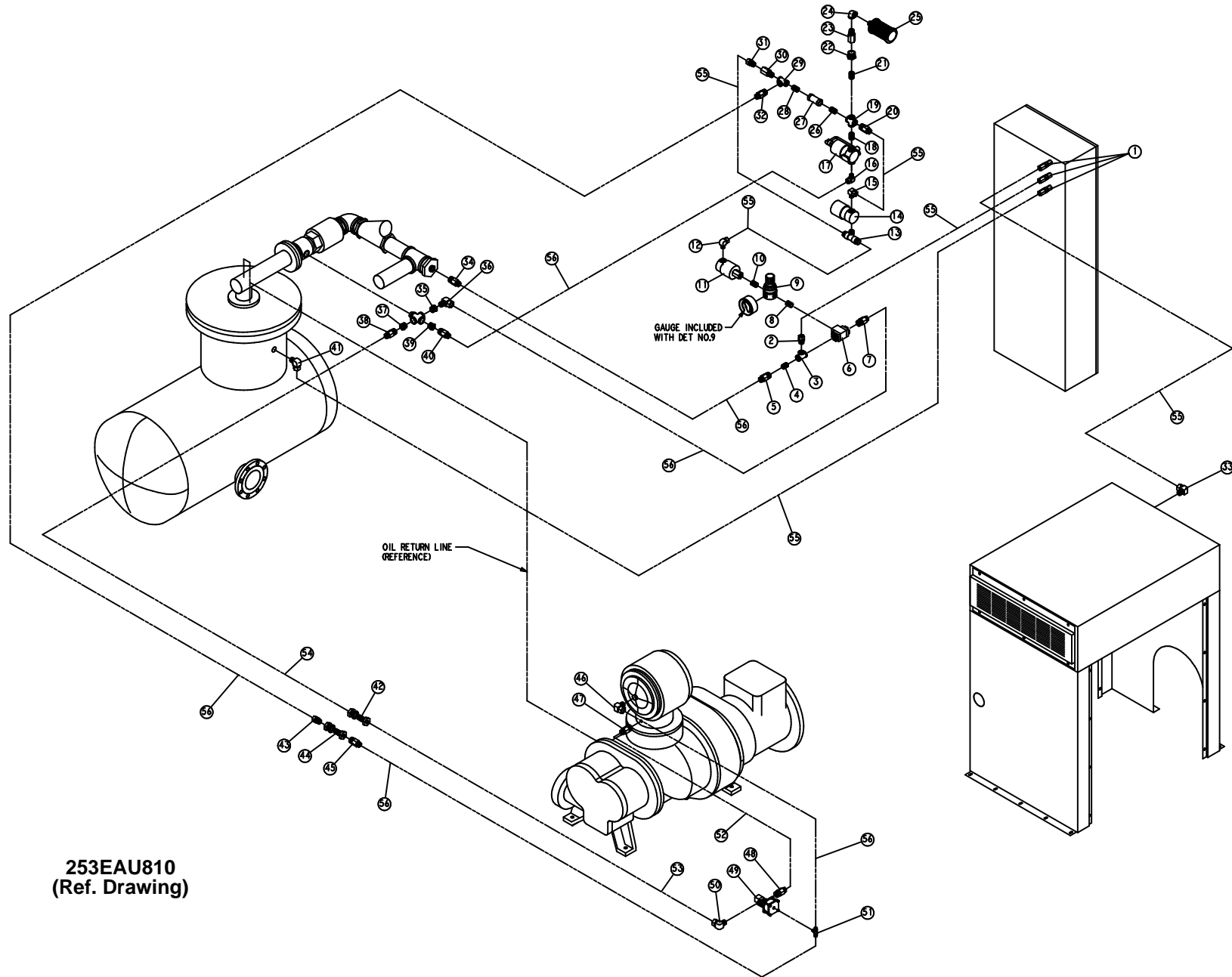


**254EAU810**  
(Ref. Drawing)

**TURN VALVE ACTUATOR**

Ref. No.	Name of Part	Qty.	Part No.
1	VALVE-SOLENOID .....	1	200EAQ861
2	SCREW-SO HD CAP .....	2	75P26
3	WASHER-LOCK .....	2	95B1
4	CONNECTOR-TUBE .....	2	86E5
5	CONNECTOR-TUBE .....	4	86E4
6	PLUG .....	2	64AA4
7	TUBE .....	20 FT.	85K2

# AIR CONTROL PIPING



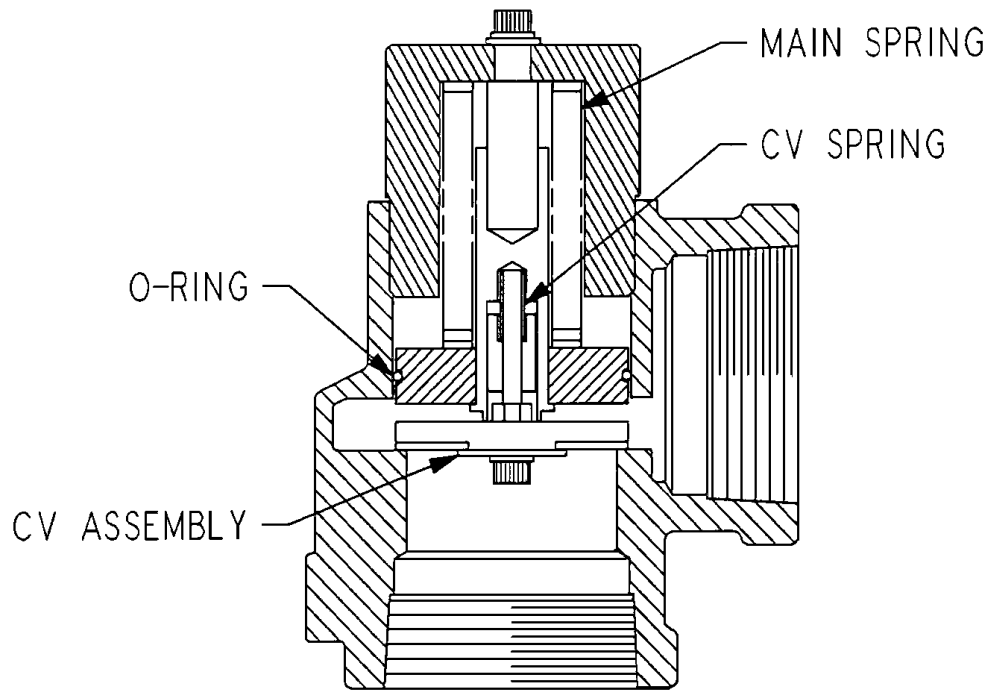
253EAU810  
(Ref. Drawing)

**AIR CONTROL PIPING**

Ref. No.	Name of Part	Qty.	Part No.	Ref. No.	Name of Part	Qty.	Part No.
1	CONNECTOR .....	3	86N218	29	TEE-PIPE .....	1	64G3G
2	CONNECTOR-TUBE .....	1	86E4	30	ORIFICE .....	1	2011768
3	TEE-PIPE .....	1	64G3G	31	CONNECTOR-TUBE .....	1	86E4
4	NIPPLE-PIPE .....	1	63D1G	32	CONNECTOR-TUBE .....	1	86E9
5	CONNECTOR-TUBE .....	1	86E9	33	ELBOW-TUBE .....	1	86E60
6	VALVE .....	1	90AR107	34	CONNECTOR-TUBE .....	1	86E9
7	CONNECTOR-TUBE .....	1	86E9	35	BUSHING-PIPE .....	1	86E27
8	NIPPLE-PIPE .....	1	63D1G	36	ELBOW-TUBE .....	1	86E65
9	REGULATOR-PRESSURE ...	1	88H139	37	BUSHING-PIPE .....	1	86E14
10	NIPPLE-PIPE .....	1	63D1G	38	CONNECTOR-TUBE .....	1	86N155
11	VALVE-SOLENOID (IVC) ....	1	91B80	39	BUSHING-PIPE .....	1	64E10
12	ELBOW-TUBE .....	1	86E60	40	CONNECTOR-TUBE .....	1	86E10
13	TEE-TUBE .....	1	86E119	41	ELBOW-TUBE .....	1	86E60
14	VALVE-SOLENOID (IVO) ....	1	91B81	42	UNION-BULKHEAD .....	1	86N157
15	ELBOW-TUBE .....	1	86E60	43	CONNECTOR-TUBE .....	1	86E9
16	ELBOW-TUBE .....	1	86E64	44	COUPLING-PIPE .....	1	86EB368
17	VALVE-SOLENOID .....	1	91B70	45	CONNECTOR-TUBE .....	1	86E9
18	NIPPLE-PIPE .....	1	63D1G	46	ELBOW-TUBE .....	1	86E64
19	CROSS-PIPE .....	1	64K1G	47	CONNECTOR-TUBE .....	1	86N155
20	CONNECTOR-TUBE .....	1	86E4	48	ELBOW-TUBE .....	1	86N156
21	NIPPLE-PIPE .....	1	63D1G	49	VALVE-AIR CONTROL .....	1	90AR51
22	BUSHING-PIPE .....	1	64E2	50	CONNECTOR-TUBE .....	1	86N155
23	ORIFICE .....	1	200ECM814	51	TEE-TUBE .....	1	86E136
24	ELBOW-PIPE .....	1	64C4G	52	TUBE-FORMED .....	1	208EAU857
25	MUFFLER .....	1	43E6	53	TUBE-FORMED .....	1	206EAU857
26	NIPPLE-PIPE .....	1	63D1G	54	TUBE-FORMED .....	1	209EAU857
27	VALVE-CHECK .....	1	90J140	55	TUBE .....	50 FT.	85K3
28	NIPPLE-PIPE .....	1	63D1G	56	TUBE .....	120 FT.	85K5
				*	SWITCH-VACUUM .....	1	88H195
				*	TRANSDUCER-PRESSURE .	2	88H198

\* Not shown on illustration.

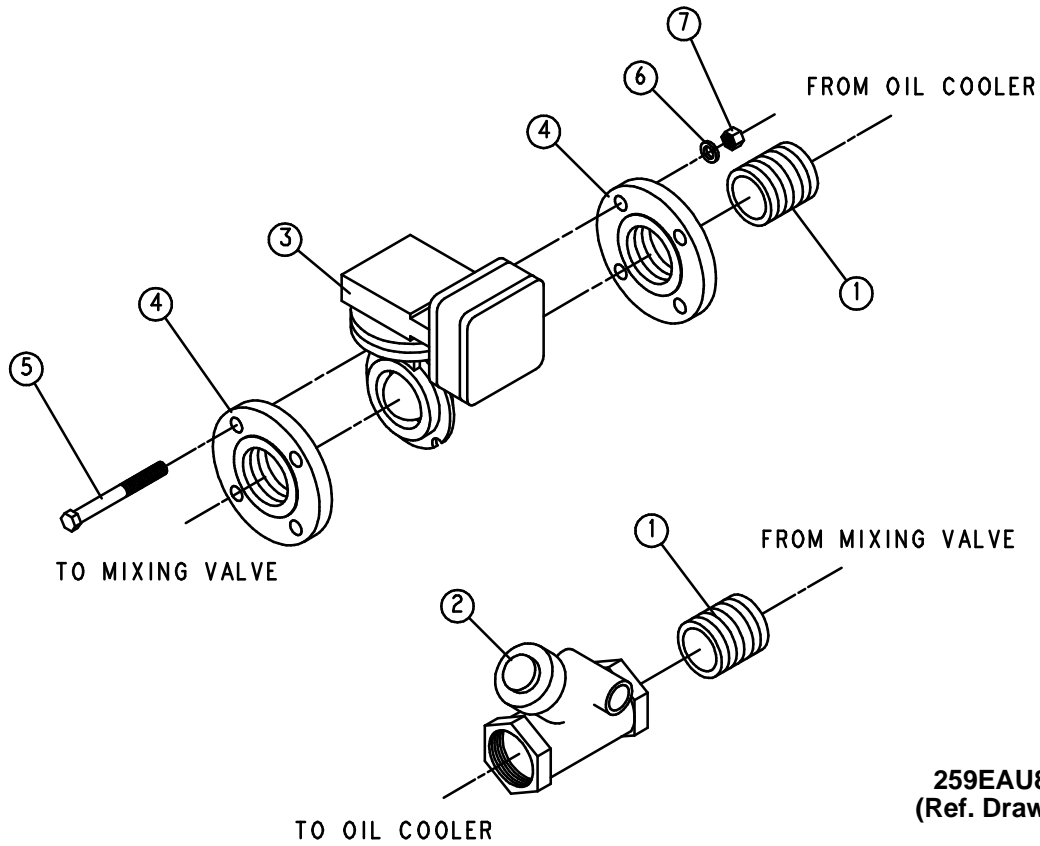
Order by Part Number and Description. Reference Numbers for Your Convenience Only.



**MINIMUM PRESSURE/CHECK VALVE – 201EDM527**

Name of Part	Qty.	Part No.
MINIMUM PRESSURE/CHECK VALVE (Includes next 4 items): .....	1	201EDM527
CHECK VALVE ASSEMBLY .....	1	
MAIN SPRING .....	1	
CHECK VALVE SPRING .....	1	
O-RING (VITON) .....	1	

Order by Part Number and Description. Reference Numbers for Your Convenience Only.

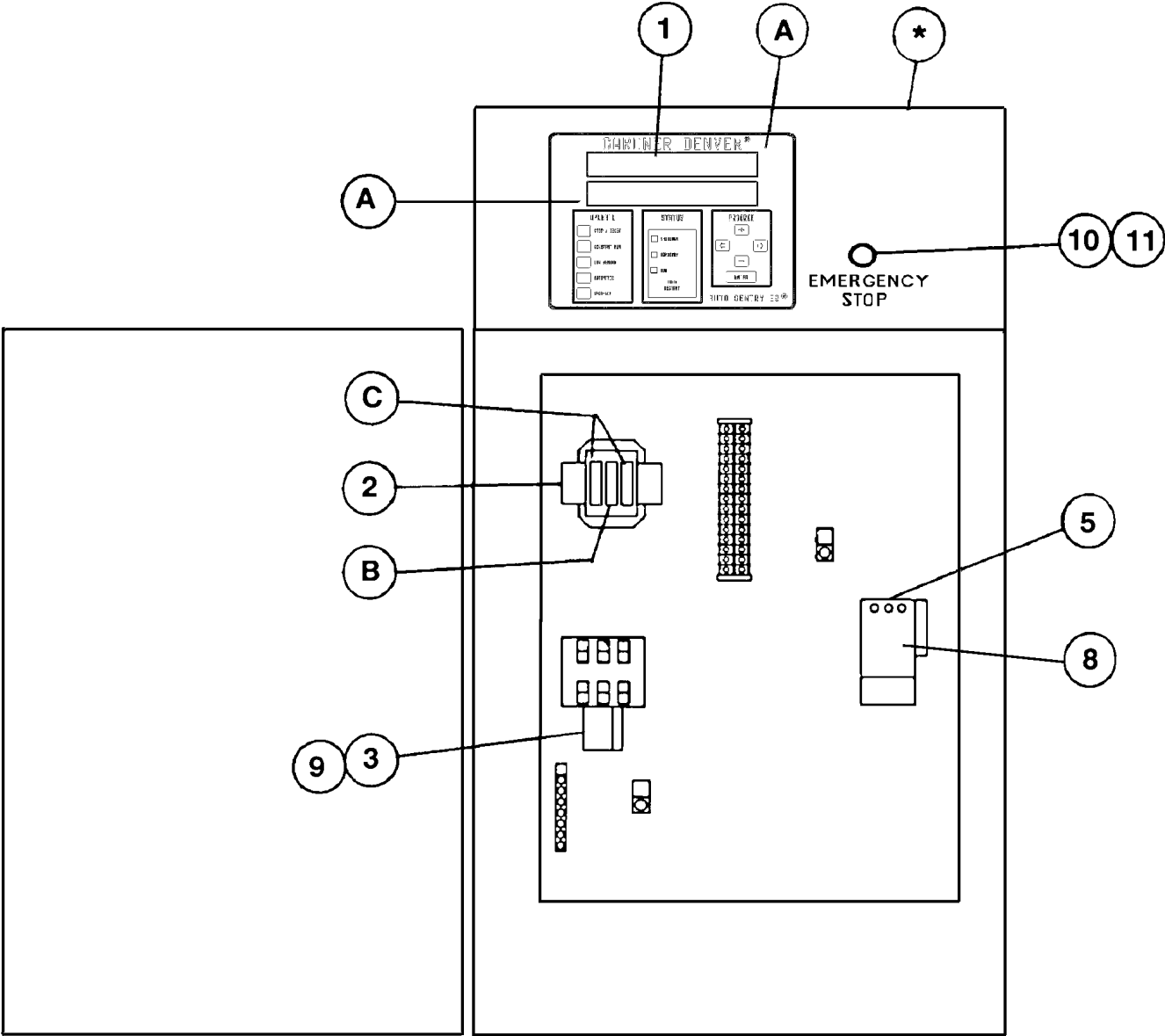


259EAU810  
(Ref. Drawing)

**REMOTE MOUNTED OIL COOLER FITTINGS**

Ref. No.	Name of Part	Qty.	Part No.
1	NIPPLE-PIPE .....	2	63L1G
2	CHECK VALVE .....	1	90J113
3	BUTTERFLY VALVE .....	1	90AR243
4	FLANGE-THREADED .....	2	64CA7
5	SCREW-HEX HD .....	4	655EF180
6	WASHER-LOCK .....	4	95B7
7	NUT-HEX .....	4	50B7
8	ELBOW-TUBE .....	2	86E60
9	TUBE .....	10	85G3

CONTROLLER ASSEMBLY

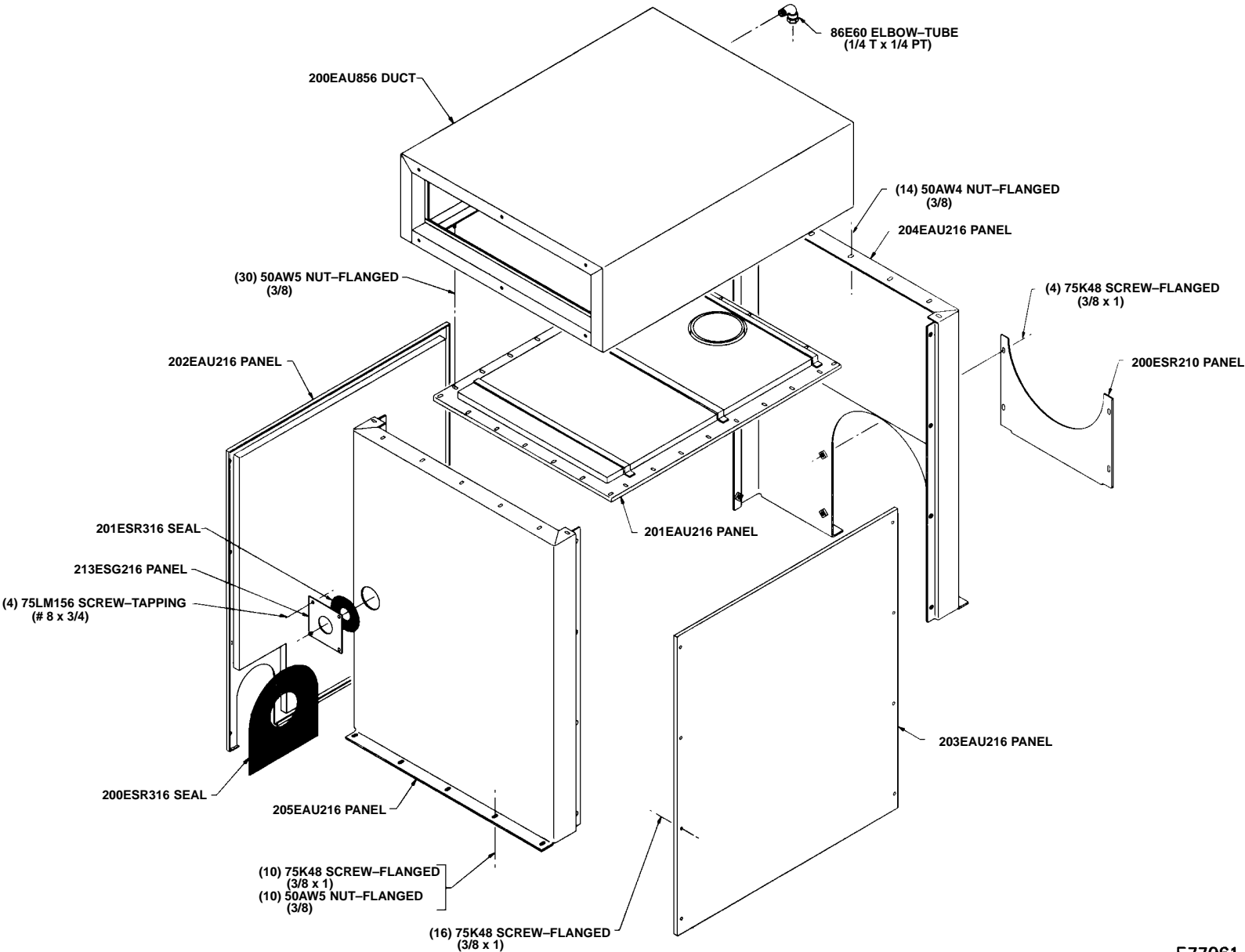


**CONTROLLER ASSEMBLY**

		<b>QTY.</b>	<b>200V</b>	<b>230V</b>	<b>460V</b>	<b>575V</b>	<b>380V</b>
*	ASSEMBLED PANEL: NEMA 12 .....	1	225EAP466	224EAP466	224EAP466	227EAP466	226EAP466
*	ASSEMBLED PANEL: NEMA 4 .....	1	229EAP466	228EAP466	228EAP466	231EAP466	230EAP466
A	FUSE, CONTROL BOARD .....	2	24CA2932	24CA2932	24CA2932	24CA2932	24CA2932
B	FUSE, TRANSFORMER, SECONDARY .....	1	24CA3728	24CA3728	24CA3728	24CA3728	24CA3728
C	FUSE, TRANSFORMER, PRIMARY .....	2	24CA2786	24CA2786	24CA2783	24CA2783	24CA2783
1	ELECTRONIC CONTROLLER ASSEMBLY ...	1	202EAP1173	202EAP1173	202EAP1173	202EAP1173	202EAP1173
2	CONTROL TRANSFORMER, 275 VA .....	1	2116371	2116372	2116372	2116373	2116374
3	STARTER, FAN MOTOR .....	1	24CA3256	24CA3256	24CA3256	24CA3256	24CA3256
5	RELAY .....	1	24CA3896	24CA3896	24CA3896	24CA3896	24CA3896
8	REPLACEMENT COIL FOR ITEM 5 .....	(1)	2115950	2115950	2115950	2115950	2115950
9	REPLACEMENT COIL FOR ITEM 3 .....	(1)	2115950	2115950	2115950	2115950	2115950
10	OPERATOR, 22mm PUSH-PULL E-STOP ...	1	24CA2907	24CA2907	24CA2907	24CA2907	24CA2907
11	CONTACT BLOCK E22B1 SPNC .....	1	24CA2908	24CA2908	24CA2908	24CA2908	24CA2908

NOTE: 200V not available (Main Motor Starter).

# ENCLOSURE GROUP



## REPAIR KITS

Name of Part	Qty.	200 HP	250 HP	300 HP
ROUTINE MAINTENANCE KIT (3000 Hrs.), Standard Filter				
Includes the following items .....		EAU67715	EAU67715	EAU67715
ELEMENT-FILTER .....	3	2109086	2109086	2109086
INDICATOR-ASM .....	1	2109125	2109125	2109125
FILTER-AIR .....	2	5L34	5L34	5L34
ROUTINE MAINTENANCE KIT (3000 Hrs.), Heavy Duty Filter,				
Includes the following items .....		EAU68132	EAU67714	EAU67714
ELEMENT .....	2	2010485	2010509	2010509
ELEMENT-FILTER .....	3	2109086	2109086	2109086
INDICATOR-ASM .....	1	2109125	2109125	2109125
PERIODIC MAINTENANCE KIT, (Mixing Valve & Inlet Valve)				
Includes the following items .....		EAU68805	EAU68805	EAU68805
ELEMENT .....	1	2109365	2109365	2109365
O-RING .....	1	25BC164	25BC164	25BC164
O-RING .....	1	25BC175	25BC175	25BC175
SPRING .....	1	78A365	78A365	78A365
SPRING .....	1	78A366	78A366	78A366
DISC-VALVE .....	1	200SSW067	200SSW067	200SSW067
PERIODIC OVERHAUL KIT *				
Includes Gaskets, Roller Bearings and Shaft Seal .....		EAU77788	EAU77788	EAU77788
SEPARATOR KIT, Pleated,				
Includes the following items .....		EAU80110	EAU80110	EAU80127
SEPARATOR-OIL .....	1	55B28	55B28	55B29
TUBE .....	2.5 FT.	85K3	85K3	85K3
CONNECTOR .....	1	86N15	86N15	86N15
ELBOW-TUBE .....	1	86E95	86E95	86E95
PLUG-SQHD PIPE .....	1	64AA6	64AA6	64AA6
GASKET ELIMINATOR .....	1	25BC222	25BC222	25BC222

\* For New or Remanufactured Air Ends, see page 5.

## REPAIR KITS (Continued)

Name of Part	Qty.	200 HP	250 HP	300 HP
<b>PNEUMATIC CONTROLS &amp; GAUGES</b>				
Includes the following items .....	1	205EAP6013	205EAP6013	205EAP6013
VALVE-CHECK .....	2	90J140	90J140	90J140
VALVE-SHUTTLE .....	2	90AR107	90AR107	90AR107
VALVE-AIR CONTROL .....	1	90AR35	90AR35	90AR35
REGULATOR-PRESSURE .....	1	88H139	88H139	88H139
GAUGE-PRESSURE .....	1	27P109	27P109	27P109
<b>ELECTRICAL CONTROL KIT,</b>				
Includes the following items .....	1	206EAP6013	206EAP6013	206EAP6013
SOLENOID VALVE .....	1	91B70	91B70	91B70
SOLENOID VALVE (IVC) .....	1	91B80	91B80	91B80
SOLENOID VALVE (IVO) .....	1	91B81	91B81	91B81
SOLENOID VALVE .....	1	200EAQ861	200EAQ861	200EAQ861
THERMISTOR PROBE .....	2	21D264	21D264	21D264
TRANSDUCER .....	2	88H198	88H198	88H198
VACUUM SWITCH .....	1	88H195	88H195	88H195

### INSTRUCTIONS FOR ORDERING REPAIR PARTS

When ordering parts, specify Compressor MODEL, Method of Cooling, HORSEPOWER and SERIAL NUMBER (see nameplate on unit). The Serial Number is also stamped on top of the cylinder flange to the right of the inlet housing.

All orders for Parts should be placed with the nearest authorized distributor.

Where NOT specified, quantity of parts required per compressor or unit is one (1); where more than one is

required per unit, quantity is indicated in parenthesis. SPECIFY EXACTLY THE NUMBER OF PARTS REQUIRED.

DO NOT ORDER BY SETS OR GROUPS.

To determine the Right Hand and Left Hand side of a compressor, stand at the motor end and look toward the compressor. Right Hand and Left Hand are indicated in parenthesis following the part name, i.e. (RH) & (LH).

**Gardner**  
**Denver**

For additional information contact your local representative or Gardner Denver Machinery Inc., Customer Service Department, 1800 Gardner Expressway, Quincy, Illinois 62301  
Telephone: (800) 682-9868 FAX: (217) 224-7814



Sales and Service in all major cities.

For parts information, contact Gardner Denver, Master Distribution Center, Memphis, TN  
Telephone: (800) 245-4946 FAX: (901) 542-6159

Specifications subject to change without notice.  
Copyright 1996 Gardner Denver Machinery Inc.

Litho in U.S.A.