

---

---

**GARDNER DENVER®**

13-10-508X  
1st Edition  
March, 1998

**ELECTRA-SAVER® STATIONARY  
BASE-MOUNTED  
COMPRESSORS  
INTERNATIONAL 50 HZ**

**MODELS**

EAQQMJ, EAQSMJ – 74 KW (100 HP)  
EAQQNJ, EAQSNJ – 93 KW (125 HP)  
EAQQOJ, EAQSOJ – 112 KW (150 HP)

**PARTS LIST**

**Gardner  
Denver**

## **INSTRUCTIONS FOR ORDERING REPAIR PARTS**

When ordering parts, specify Compressor MODEL, Method of Cooling, HORSE-POWER and SERIAL NUMBER (see nameplate on unit). The Serial Number is also stamped on top of the cylinder flange to the right of the inlet housing.

All orders for Parts should be placed with the nearest authorized distributor.

Where NOT specified, quantity of parts required per compressor or unit is one (1); where more than one is required per unit, quantity is indicated in parenthesis. SPECIFY EXACTLY THE NUMBER OF PARTS REQUIRED.

**DO NOT ORDER BY SETS OR GROUPS.**

To determine the Right Hand and Left Hand side of a compressor, stand at the motor end and look toward the compressor. Right Hand and Left Hand are indicated in parenthesis following the part name, i.e. (RH) & (LH), when appropriate.

## TABLE OF CONTENTS

Page No.

---

Instructions For Ordering Repair Parts .....	i
Maintain Compressor Reliability and Performance with Genuine Gardner Denver Compressor	
Parts and Support Services .....	2
Matrix/Menu .....	3
Bare Compressor (SSQ) .....	4, 5
Bare Compressor (SSP) .....	6, 7
Inlet Valve .....	8
Turn Valve & Parts .....	9
Air Filter & Mounting .....	10
Oil Reservoir Group .....	11
Separator Housing .....	12
Separator Group .....	13
Discharge Piping .....	14
Oil Return Line .....	15
Cooling Group .....	16, 17
Water Cooled Heat Exchanger – With Aftercooler .....	18, 19
Water Cooled Heat Exchanger – Without Aftercooler .....	20, 21
Control Schematic .....	22, 23
Turn Valve Actuator .....	24
Compressor Base Group .....	25
Minimum Pressure Valve .....	26
Filter Assembly – 200EAU2045 .....	27
Enclosure Vent Fan Assembly (Water Cooled Only) .....	28
Enclosure .....	29
Enclosure – Hardware .....	30
Enclosure – Air Cooled Panels .....	31
Enclosure – Water Cooled Panels .....	32
Main Motor Group .....	33
Motor Group (Main Drive Motors) (Wye–Delta) .....	34
Motor Group (Fan Motors) .....	34
Overload Relay Heater Conversion Listing .....	35
Controller Assembly (EAQ – 74/93/112 KW (100/125/150 HP) Wye–Delta Starters) .....	36, 37
Identification and Instruction Group .....	38
Repair Kits .....	39, 40, 41

**For Operating and Service Instructions see:**

**SERVICE MANUAL 13–9/10–643**

## MAINTAIN COMPRESSOR RELIABILITY AND PERFORMANCE WITH GENUINE GARDNER DENVER® COMPRESSOR PARTS AND SUPPORT SERVICES

Gardner Denver® Compressor genuine parts, engineered to original tolerances, are designed for optimum dependability — specifically for Gardner Denver compressor systems. Design and material innovations are the result of years of experience with hundreds of different compressor applications. Reliability in materials and quality assurance are incorporated in our genuine replacement parts.

**Your authorized international servicing distributor offers all the backup you'll need.** A worldwide network of authorized distributors provides the finest product support in the air compressor industry.

Your authorized international servicing distributor maintains a large inventory of genuine parts and he is backed up for emergency parts by direct access to the Gardner Denver Machinery Inc. Master Distribution Center (MDC) in Memphis, Tennessee.

Your authorized international servicing distributor can support your Gardner Denver® air compressor with these services:

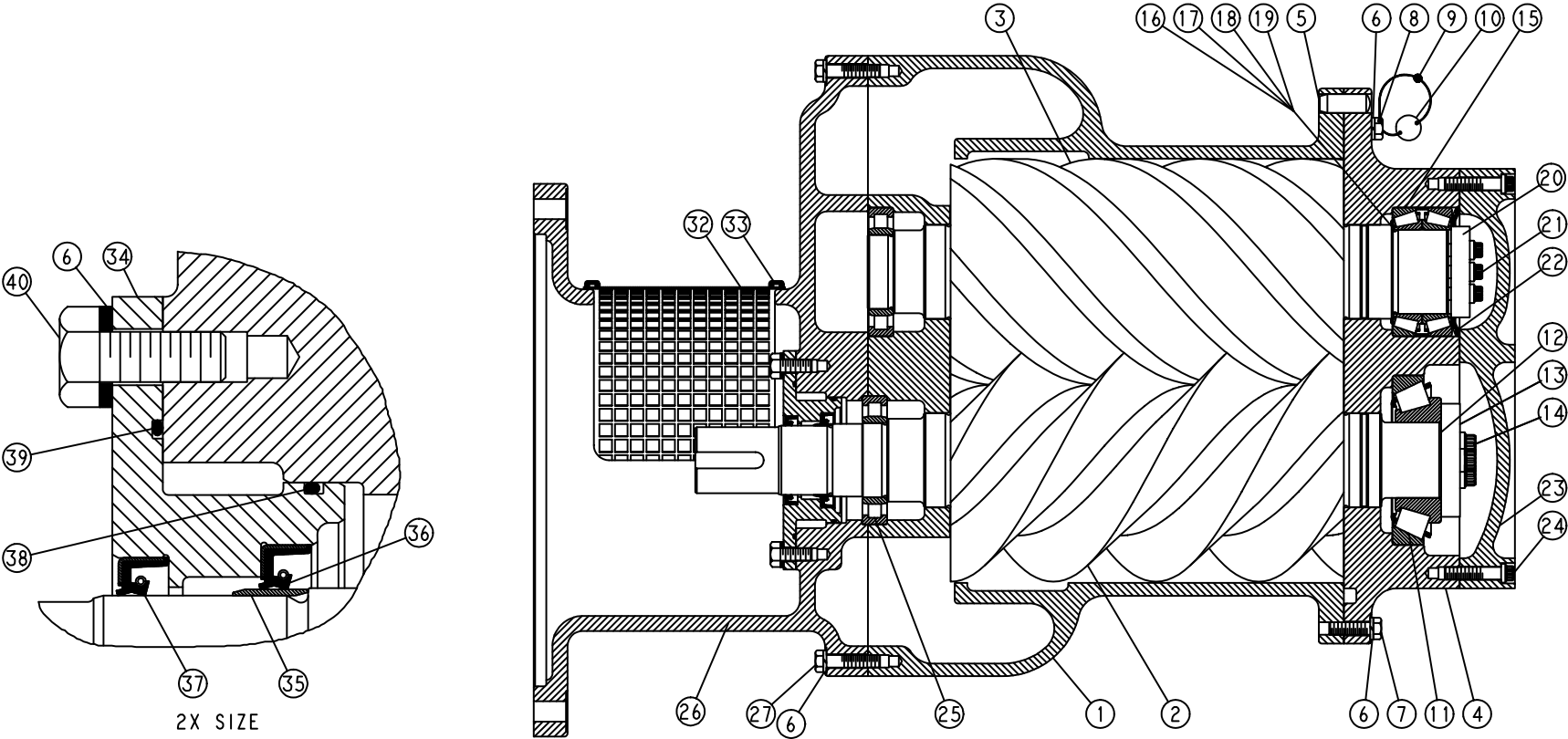
1. Trained parts specialists to assist you in selecting the correct replacement parts.
2. A full line of factory tested AEON™ compressor lubricants specifically formulated for use in Gardner Denver compressors.
3. Repair and maintenance kits designed with the necessary parts to simplify servicing your compressor.

**Authorized international servicing distributor service technicians are factory-trained and skilled in compressor maintenance and repair. They are ready to respond and assist you by providing fast, expert maintenance and repair services.**



BARE COMPRESSOR (SSQ)

13-10-508X Page 4



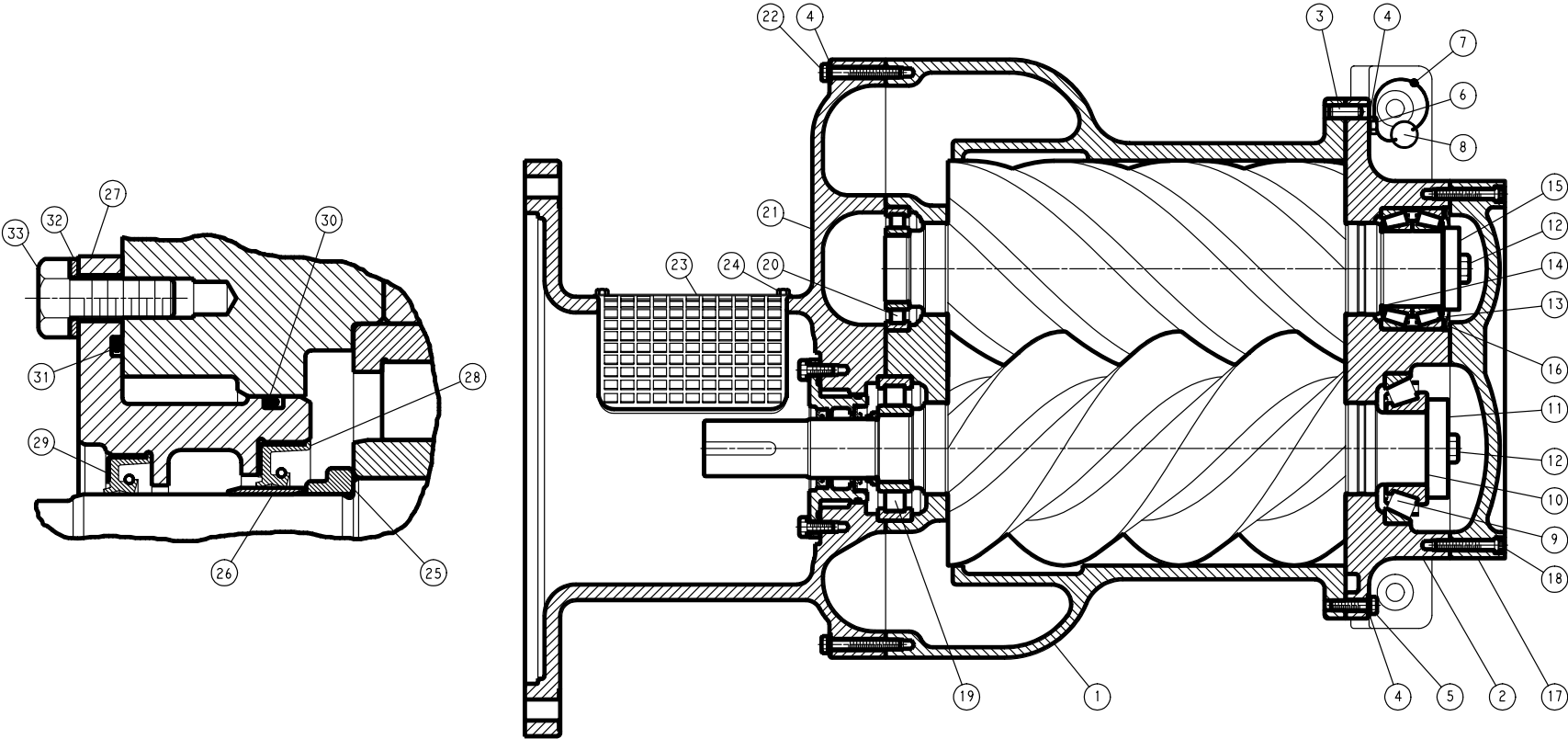
221SSQ810-A  
(Ref. Drawing)

## BARE COMPRESSOR (SSQ)

Ref. No.	Name of Part	Qty.	100 HP, 100 PSI		
			125 HP, 125 PSI Part No.	125 HP, 100 PSI Part No.	100 HP, 125 PSI 125 HP, 150 PSI Part No.
	<b>BARE COMPRESSOR</b> .....		SSQABH01	SSQABH02	SSQABH04
1	CYLINDER .....	1	208SSQ002	207SSQ002	209SSQ002
2	ROTOR .....	1	216SSQ010	217SSQ010	218SSQ010
3	ROTOR .....	1	213SSQ010	211SSQ010	215SSQ010
4	HOUSING-BEARING .....	1	216SSQ006	216SSQ006	216SSQ006
5	PIN-DOWEL .....	2	62M112	62M112	62M112
6	LOCKWASHER .....	52	95B5	95B5	95B5
7	SCREW .....	20	655EE070	655EE070	655EE070
8	SCREW .....	2	655EE07D	655EE07D	655EE07D
9	SEAL .....	1	01228421 0025	01228421 0025	01228421 0025
10	TAG-INSTRUCTION .....	1	202EAQ304	202EAQ304	202EAQ304
11	BEARING-ROLLER .....	1	12BA138	12BA138	12BA138
12	SHIM SET-SHAFT .....	1	77C36	77C36	77C36
13	PLATE-BEARING RETAINER .....	1	202SSQ253	202SSQ253	202SSQ253
14	SCREW - 12 PT CAP .....	3	75LM125N	75LM125N	75LM125N
15	BEARING .....	1	12BA78	12BA78	12BA78
16	SHIM .....	3	77H54002	77H54002	77H54002
17	SHIM .....	3	77H54003	77H54003	77H54003
18	SHIM .....	3	77H54005	77H54005	77H54005
19	SHIM .....	2	77H54015	77H54015	77H54015
20	PLATE-BEARING RETAINER .....	1	201SSU253	201SSU253	201SSU253
21	SCREW - 12 PT CAP .....	3	2009630N	2009630N	2009630N
22	SPRING-WAVE .....	1	78W49	78W49	78W49
23	PLATE-BEARING COVER .....	1	208SSQ315	208SSQ315	208SSQ315
24	SCREW .....	22	75P78	75P78	75P78
25	BEARING-ROLLER .....	2	12BA126	12BA126	12BA126
26	ADAPTOR .....	1	204SSQ170	204SSQ170	204SSQ170
27	SCREW .....	21	655EE100	655EE100	655EE100
32	GUARD-COUPLING .....	1	200SSQ339	200SSQ339	200SSQ339
33	SCREW-FLANGED .....	4	75LM150	75LM150	75LM150
34	HOUSING-SEAL .....	1	207SSQ362	207SSQ362	207SSQ362
35	SLEEVE-WEAR .....	1	80M28	80M28	80M28
36	SEAL-OIL (VITON) .....	1	60DD571	60DD571	60DD571
37	SEAL-OIL .....	1	60DD689	60DD689	60DD689
38	O-RING .....	1	25BC157	25BC157	25BC157
39	O-RING .....	1	25BC431	25BC431	25BC431
40	SCREW .....	8	655EE050	655EE050	655EE050
*	SCREW .....	1	655EE140	655EE140	655EE140
*	PLUG .....	1	64B14	64B14	64B14
*	PLUG .....	1	64B15	64B15	64B15
*	GASKET-ELIMINATOR .....	0.10	25BC256	25BC256	25BC256

\* Not shown.

BARE COMPRESSOR (SSP)



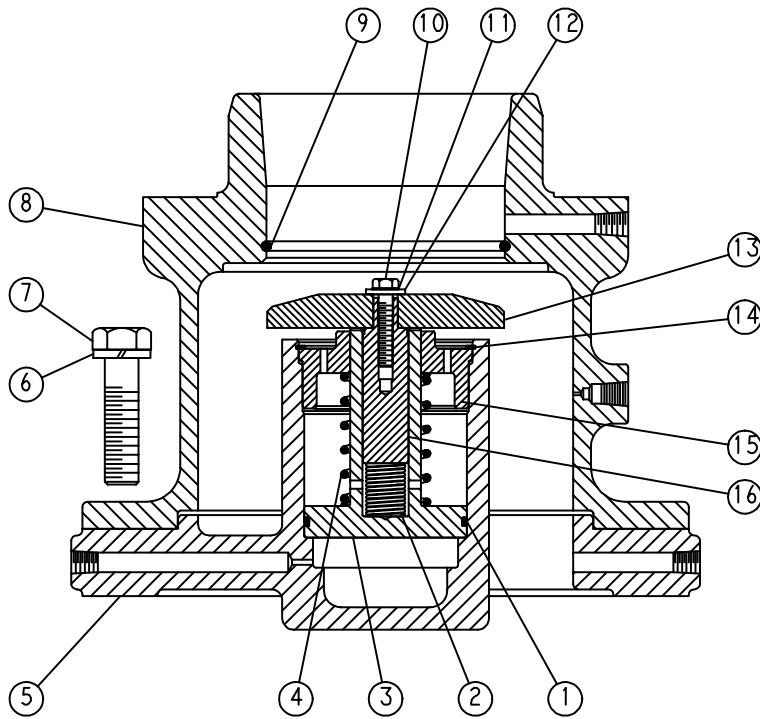
217SSP810-A  
(Ref. Drawing)

## BARE COMPRESSOR (SSP)

Ref. No.	Name of Part	Qty.	150 HP, 100 PSI 150 HP, 125 PSI Part No.
	<b>BARE COMPRESSOR</b> .....		SSPABC01
1	CYLINDER .....	1	203SSP002
2	HOUSING-BEARING .....	1	205SSP006
3	PIN-DOWEL .....	2	62M83
4	WASHER .....	36	95B3
5	SCREW .....	14	655ED060
6	SCREW .....	2	00900050 0033
7	SEAL .....	1	01228421 0025
8	TAG-INSTRUCTION .....	1	202EAQ304
9	BEARING-ROLLER .....	1	12BA105
10	SHIM .....	1	77H63
11	PLATE-BEARING RETAINER .....	1	201SSP253
12	SCREW .....	2	655EF06N
13	BEARING-ROLLER .....	1	12BA106
14	SHIM .....	1	77H62
15	PLATE-BEARING RETAINER .....	1	200SSP253
16	SPRING .....	1	78W52
17	PLATE-BEARING COVER .....	1	203SSP315
18	SCREW .....	18	75P60
19	BEARING-ROLLER .....	1	12BA104
20	BEARING-ROLLER .....	1	12BA103
21	ADAPTOR .....	1	205SSP170
22	SCREW .....	19	655ED100
23	GUARD-COUPLING .....	1	201SSM339
24	SCREW-FLANGED .....	4	75LM150
25	SPACER-SHAFT .....	1	200SSP600
26	SLEEVE-WEAR .....	1	200SSP1458
27	HOUSING-SEAL .....	1	204SSP362
28	SEAL-OIL .....	1	60DD693
29	SEAL-OIL .....	1	60DD692
30	O-RING .....	1	25BC380
31	O-RING .....	1	8502140
32	LOCKWASHER .....	8	95B5
33	SCREW .....	8	655EE050
39	SCREW .....	1	655ED120
*	PLUG .....	1	64B14
*	PLUG .....	1	64B15
*	GASKET-ELIMINATOR .....	0.10	25BC256
*	PLUG .....	2	64AA5

\* Not shown.

Order by Part Number and Description. Reference Numbers are for your convenience only.

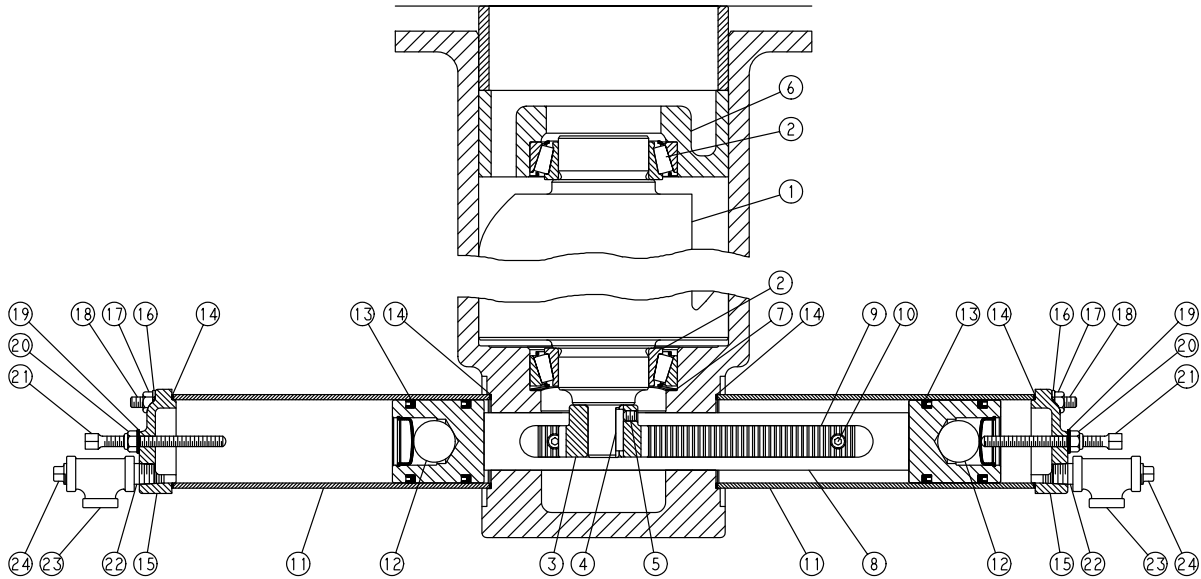


224SSQ810-A  
(Ref. Drawing)

**INLET VALVE**

Ref. No.	Name of Part	Qty.	Part No.
1	O-RING .....	1	25BC298
2	SPRING .....	1	78W62
3	PISTON-INLET VALVE .....	1	201SSQ043
4	SPRING .....	1	78W61
5	HOUSING-INLET .....	1	204SSQ041
6	LOCKWASHER .....	8	95B8
7	SCREW .....	8	655EG120
8	SEAT .....	1	202SSQ256
9	O-RING .....	1	25AM30
10	SCREW .....	1	75A102
11	LOCKWASHER .....	1	95H57
12	WASHER .....	1	95A2
13	VALVE-INLET .....	1	201SSQ044
14	RING-RETAINING .....	1	74D89
15	RETAINER .....	1	200SSQ205
16	GUIDE-VALVE .....	1	201SSQ483

Order by Part Number and Description. Reference Numbers are for your convenience only.

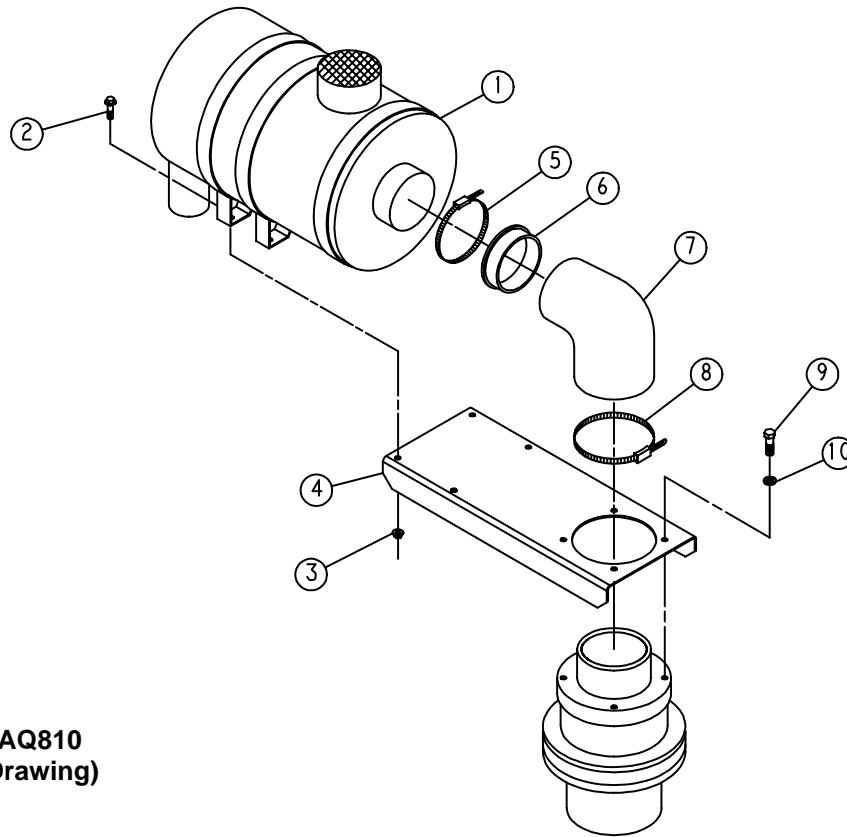


**222SSQ810-A**  
(Ref. Drawing)

**TURN VALVE & PARTS**

Ref. No.	Name of Part	Qty.	Part No.
1	VALVE .....	1	202SSQ238
2	BEARING-ROLLER .....	2	12BA51
3	GEAR-AUXILIARY .....	1	200SSU031
4	KEY-SQUARE .....	1	35C114
5	SETSCREW .....	1	76G21N
6	HOUSING-BEARING .....	1	215SSQ006
7	SPRING .....	1	78W50
8	SHAFT-CONTROL .....	1	200SSU081
9	RACK .....	1	200SSU360
10	SCREW .....	2	75P11N
11	CYLINDER-CONTROL .....	2	200SSU082
12	ASM CONTROL PISTON .....	2	SSU80565
13	PACKING-RING .....	4	60AM46
14	GASKET .....	4	25BC138N
15	HEAD-CONTROL CYLINDER .....	2	200RPA083
18	STUD .....	8	79AL5
19	SEAL-FASTENER .....	2	60DD65
20	NUT .....	2	50AW24
21	SET SCREW .....	2	76D226
22	NIPPLE .....	2	63D1G
23	TEE-PIPE .....	2	64G3G
24	PLUG .....	2	64AA5
25	NUT .....	8	50AW24

Order by Part Number and Description. Reference Numbers are for your convenience only.



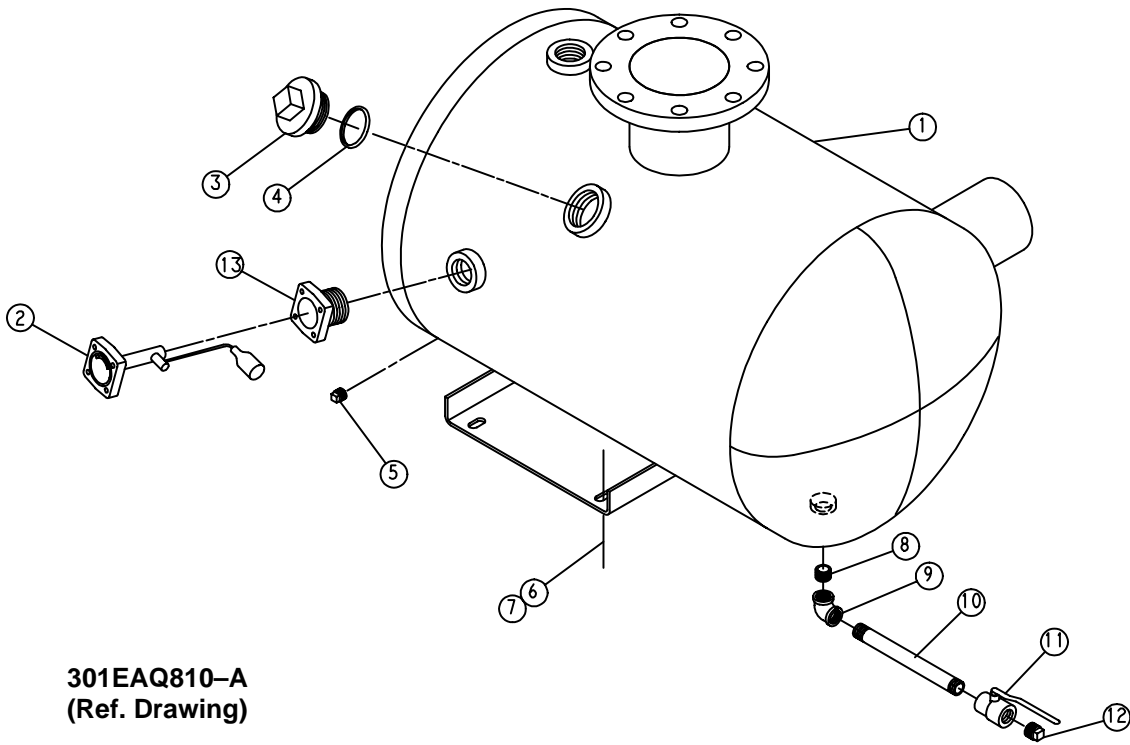
**300EAQ810**  
(Ref. Drawing)

**AIR FILTER & MOUNTING**

Ref. No.	Name of Part	Qty.	Part No.
1	FILTER-AIR .....	1	5L300
2	SCREW-FLANGED .....	4	75K48
3	NUT-FLANGED .....	4	50AW5
4	BRACKET-FILTER .....	1	300EAQ389
5	CLAMP .....	1	29B46
6	REDUCER .....	1	300EAQ1323
7	HOSE-MOLDED .....	1	29Z96
8	CLAMP-HOSE .....	1	2009499
9	SCREW .....	4	655EE040
10	LOCKWASHER .....	4	95B5
*	ELEMENT (AIR FILTER) For Repair .....	1	2117151

\* Not shown.

Order by Part Number and Description. Reference Numbers are for your convenience only.

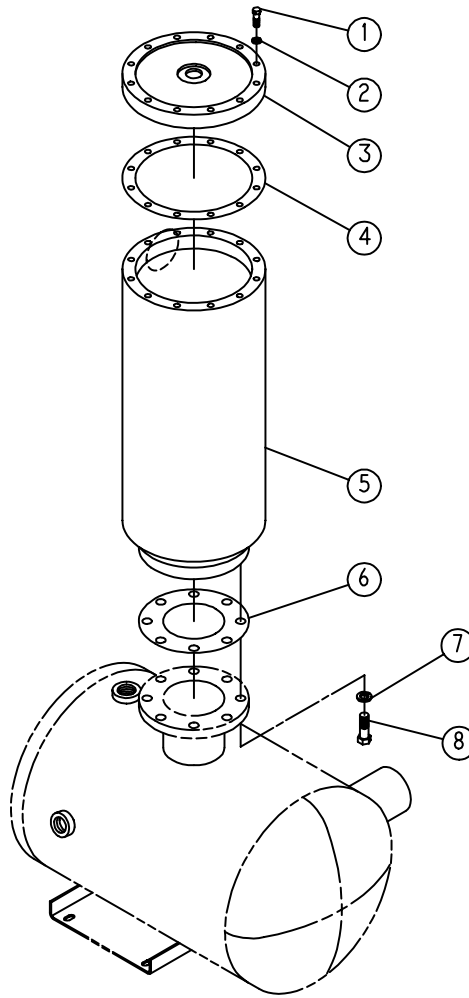


**301EAQ810-A**  
(Ref. Drawing)

**OIL RESERVOIR GROUP**

Ref. No.	Name of Part	Qty.	Part No.
1	RESERVOIR-OIL .....	1	300EAQ037
2	GAUGE-FLOAT .....	1	300EBM303
3	COVER-FILLER .....	1	200SPF156
4	O-RING .....	1	54C214
5	PLUG .....	1	64AA5
6	SCREW-FLANGED .....	4	75LM135
7	NUT-FLANGED .....	4	50AW35
8	NIPPLE .....	1	63F1G
9	ELBOW .....	1	64C4G
10	NIPPLE .....	1	63F15G
11	VALVE-BALL .....	1	90AR360
12	PLUG .....	1	64AA7
13	ADAPTOR-GAUGE .....	1	200EDE058

Order by Part Number and Description. Reference Numbers are for your convenience only.

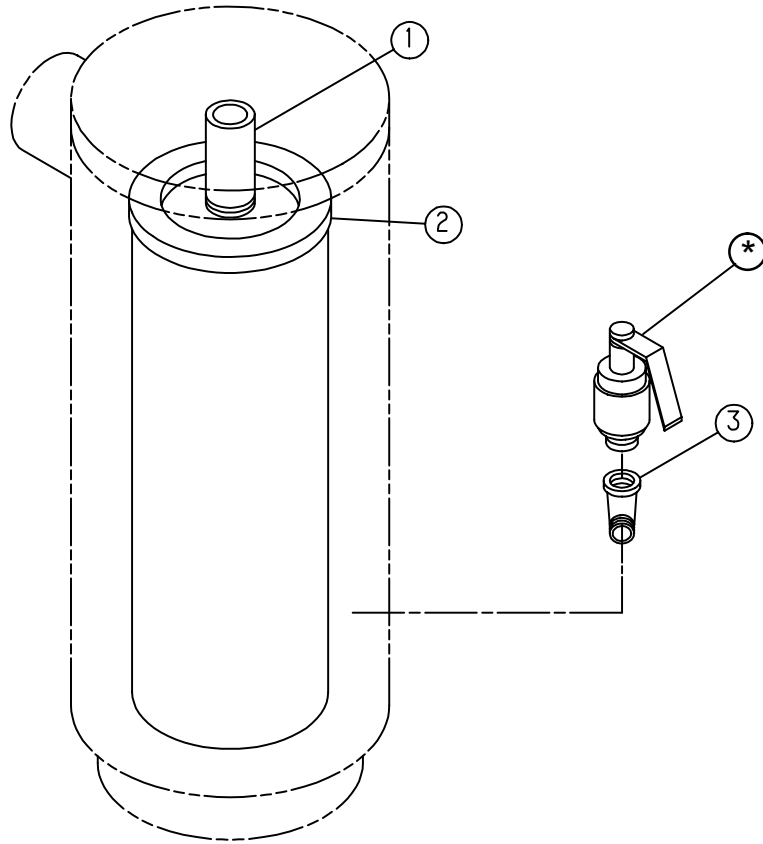


209EDM810  
(Ref. Drawing)

**SEPARATOR HOUSING**

Ref. No.	Name of Part	Qty.	Part No.
1	SCREW .....	12	655EE090
2	LOCKWASHER .....	12	95B5
3	COVER .....	1	200EDM225
4	GASKET .....	1	200EDM715N
5	HOUSING .....	1	200EDM405
6	GASKET .....	1	25C807N
7	LOCKWASHER .....	8	95B8
8	SCREW .....	8	655EG080

Order by Part Number and Description. Reference Numbers are for your convenience only.



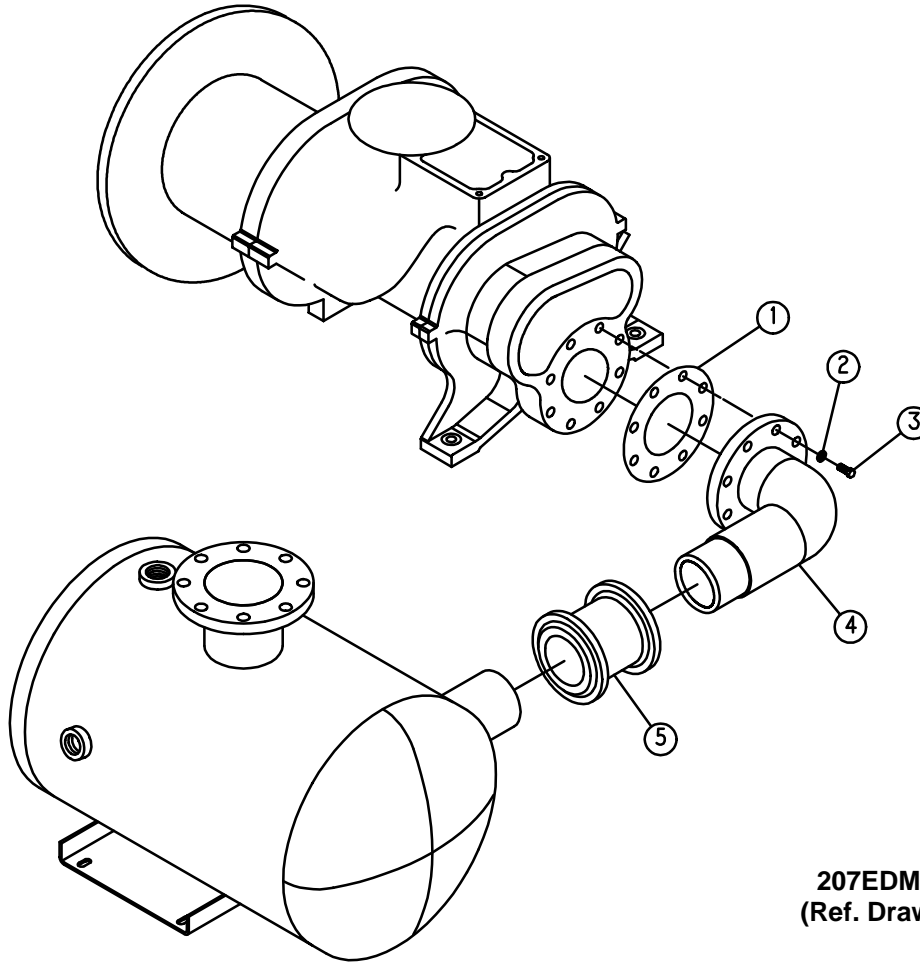
203EDM810-A  
(Ref. Drawing)

**SEPARATOR GROUP**

Ref. No.	Name of Part	Qty.	Part No.
1	SPACER (PIPE) .....	1	201EDM392
2	OIL SEPARATOR .....	1	55B44
3	ELBOW-PIPE ST .....	1	64D8G
*	RELIEF VALVE .....	1	
	100 PSI .....		90AR510
	125 PSI .....		90AR532
	150 PSI .....		90AR649

SEPARATOR REPAIR KIT – SEE PAGE 40.

Order by Part Number and Description. Reference Numbers are for your convenience only.



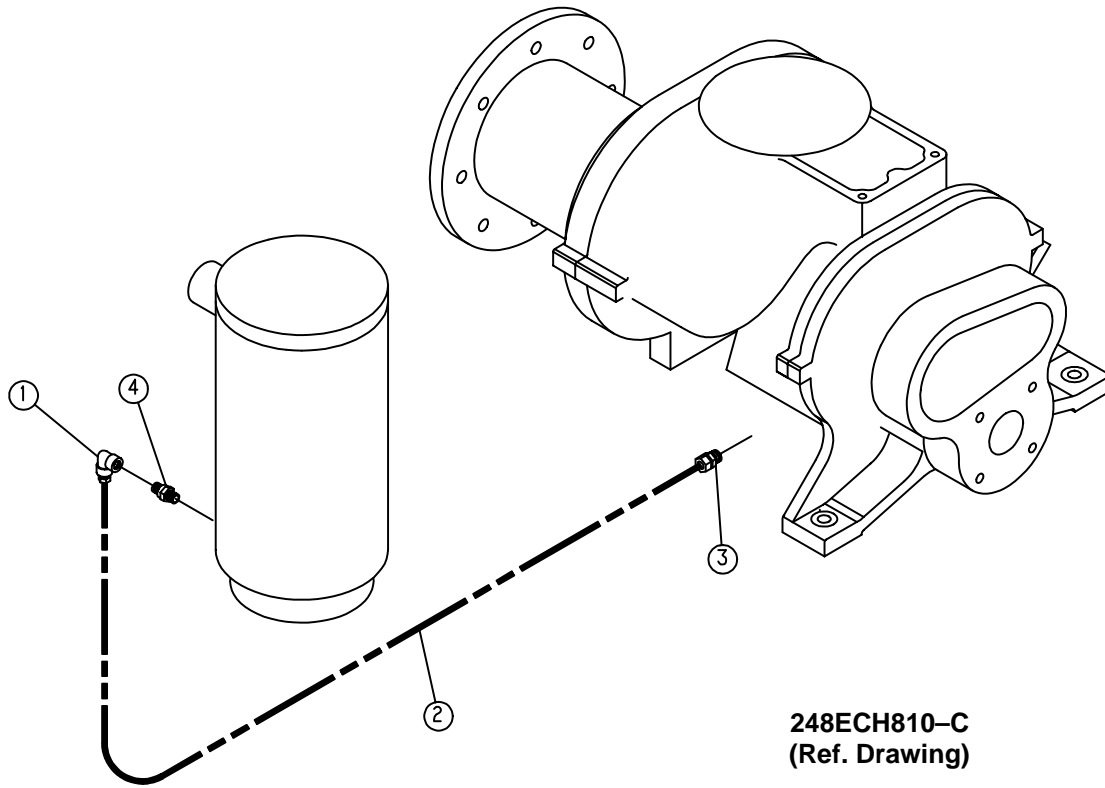
207EDM810  
(Ref. Drawing)

**DISCHARGE PIPING**

Ref. No.	Name of Part	Qty.	Part No.
1	GASKET RING .....	1	25C603N
2	LOCKWASHER .....	8	95B7
3	SCREW .....	8	655EF080
4	MANIFOLD .....	1	200EDM286
5	COUPLING-FLEXIBLE .....	1	64EB804
*	GASKET, FLEXIBLE COUPLING .....	2	2117162

\* Not shown on drawing.

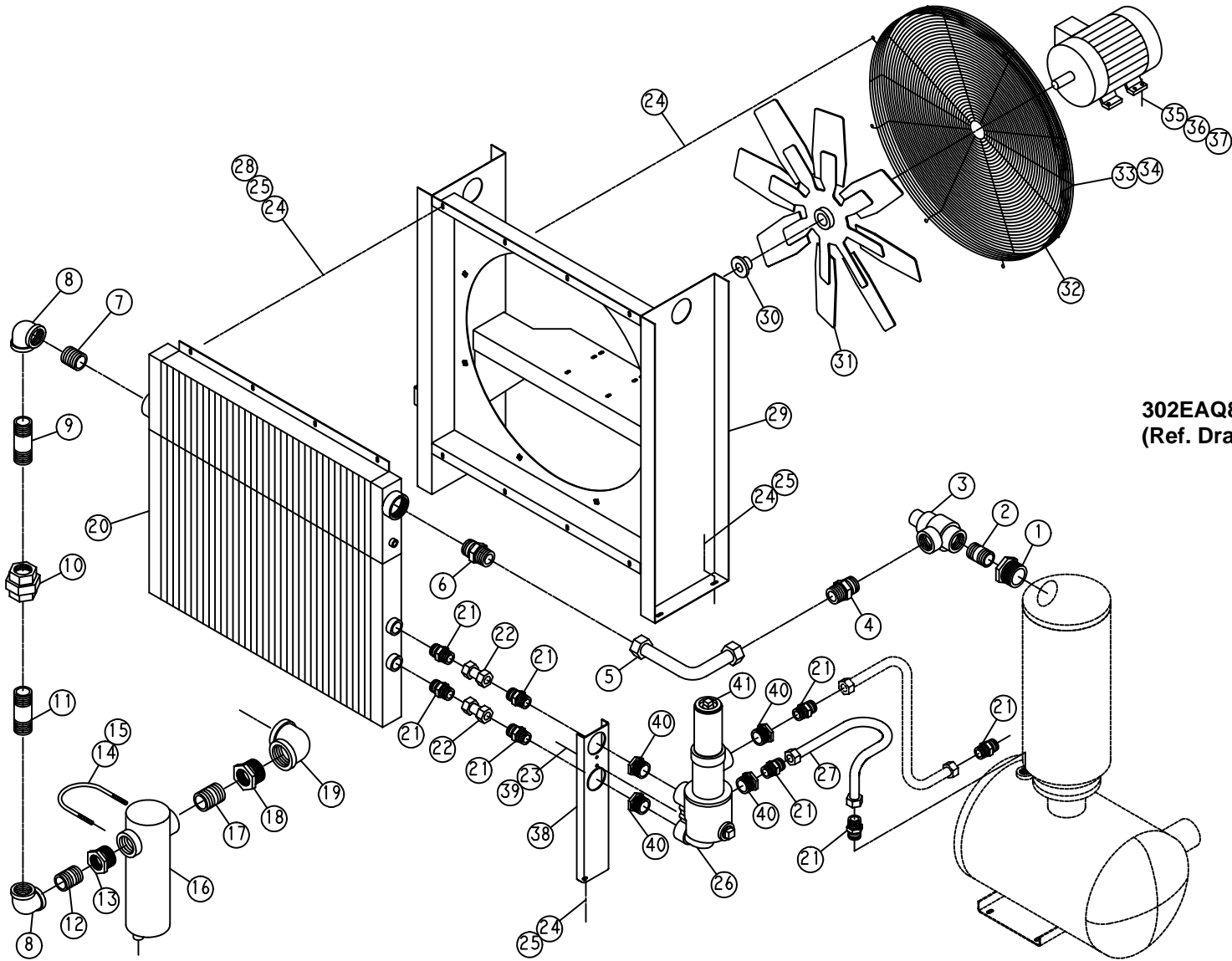
Order by Part Number and Description. Reference Numbers are for your convenience only.



**OIL RETURN LINE**

Ref. No.	Name of Part	Qty.	Part No.
1	ELBOW-TUBE .....	1	86E193
2	TUBE .....	10 ft.	85K3
3	CONNECTOR-TUBE .....	1	86E4
4	VALVE-CHECK .....	1	90AR261

# COOLING GROUP



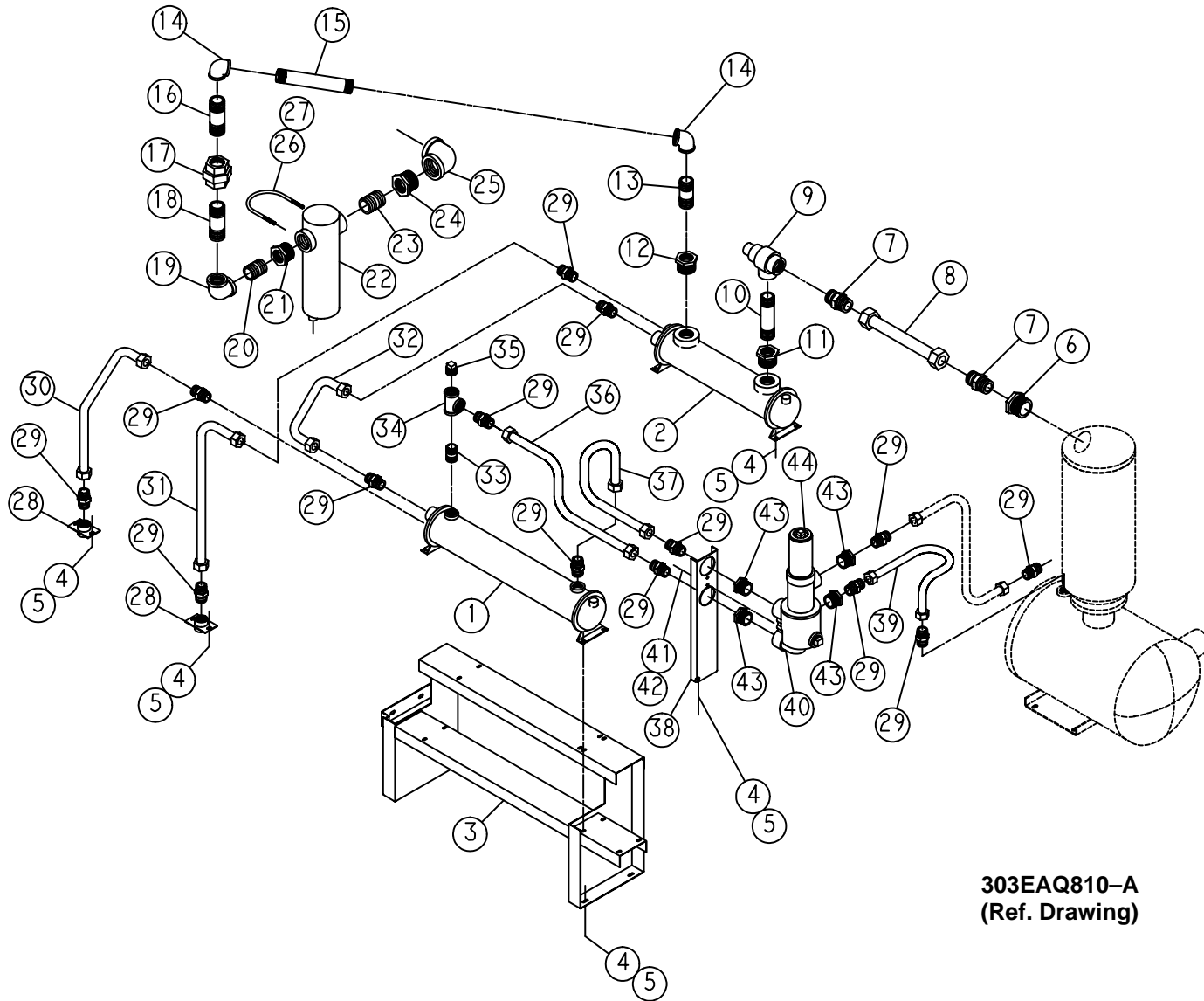
302EAQ810-A  
(Ref. Drawing)

**COOLING GROUP**

Ref. No.	Name of Part	Qty.	Part No.	Ref. No.	Name of Part	Qty.	Part No.
1	BUSHING-PIPE .....	1	64E41	21	CONNECTOR-TUBE .....	8	86H141
2	NIPPLE .....	1	63L25G	22	TUBE WITH FITTING .....	2	311EAQ863
3	VALVE-MINIMUM PRESSURE	1	200EBM527	23	SCREW .....	2	655ED040
4	CONNECTOR-TUBE .....	1	86H142	24	SCREW-FLANGED .....	22	75LM51
5	TUBE WITH FITTINGS .....	1	306EAQ863	25	NUT-FLANGED .....	14	50AW5
6	CONNECTOR-TUBE .....	1	86H142	26	ASM-FILTER .....	1	200EAU2045
7	NIPPLE .....	1	63L16G	27	TUBE WITH FITTINGS .....	1	310EAQ863
8	ELBOW .....	2	64C9G	28	WASHER .....	8	95A3
9	NIPPLE .....	1	63L27G	29	SUPPORT .....	1	200EDM165
10	UNION-STRAIGHT .....	1	64Z2	30	BUSHING-HUB .....	1	22G2
11	NIPPLE .....	1	63L26G				
12	NIPPLE .....	1	63L17G	31	FAN .....	1	201EAQ701
13	BUSHING-PIPE .....	1	64E25	32	GUARD-FAN .....	1	200EDM393
14	U-BOLT .....	1	15U75	33	SCREW-FLANGED .....	4	75LM50
15	NUT-FLANGED .....	2	50AW35	34	NUT-FLANGED .....	4	50AW4
16	SEPARATOR-MOISTURE ....	1	83C92	35	SCREW-FLANGED .....	4	75LM78
17	NIPPLE .....	1	63M3G	36	NUT-FLANGED .....	4	50AW5
18	BUSHING-PIPE .....	1	64E33	37	WASHER .....	4	95W15
19	ELBOW .....	1	64C10G	38	BRACKET (FORMED) .....	1	300EAQ142
20	COOLER-OIL/AIR-RADIATOR	1	300EAQ201	39	WASHER .....	2	95B3
	COOLER-OIL/AIR-RADIATOR	1	301EAQ201	40	BUSHING-PIPE .....	4	64E12
	(SEACOAST) (Optional)			41	FILTER-OIL .....	1	201EDM369

\* Not shown on drawing.

WATER COOLED HEAT EXCHANGER – WITH AFTERCOOLER



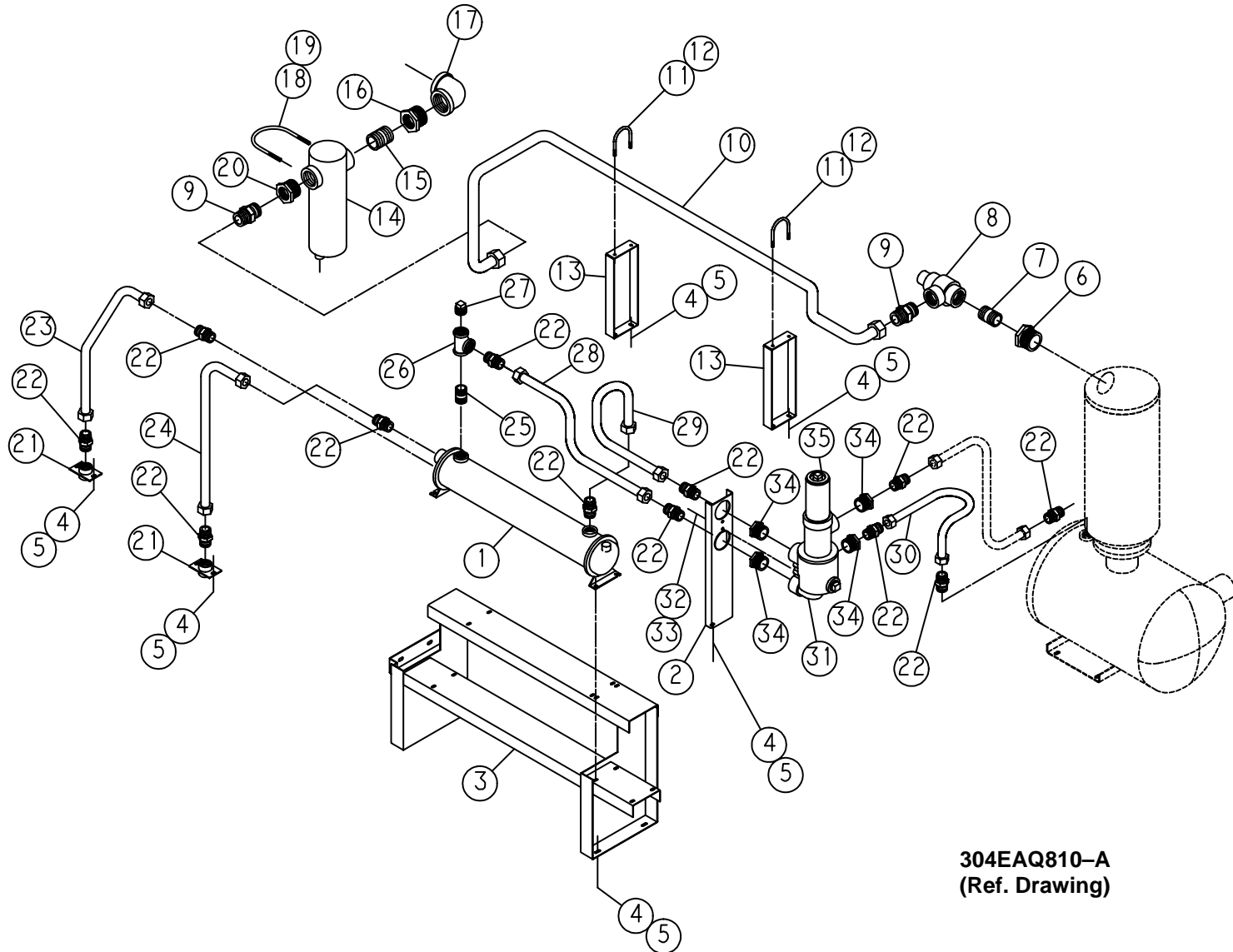
303EAQ810-A  
(Ref. Drawing)

**WATER COOLED HEAT EXCHANGER – WITH AFTERCOOLER**

Ref. No.	Name of Part	Qty.	Part No.	Ref. No.	Name of Part	Qty.	Part No.
1	HEAT EXCHANGER .....	1	200EDM349	15	NIPPLE .....	1	63N32X216G
	BONNET-IN & OUT (For Repair)	1	2117178	16	NIPPLE .....	1	63L27G
	BONNET-RETURN (For Repair)	1	2117179	17	UNION-STRAIGHT .....	1	64Z2
	GASKET-IN & OUT .....	1	2109064	18	NIPPLE .....	1	63L26G
	GASKET-RETURN .....	1	2117180	19	ELBOW .....	1	64C9G
	HEAT EXCHANGER (Salt Water) ..	1	201EDM349	20	NIPPLE .....	1	63L17G
	(Optional)			21	BUSHING-PIPE .....	1	64E25
	BONNET-IN & OUT (For Repair)	1	2117181	22	SEPARATOR-MOISTURE .....	1	83C92
	BONNET-RETURN (For Repair)	1	2117182	23	NIPPLE .....	1	63M3G
	GASKET-IN & OUT .....	1	2109063	24	BUSHING-PIPE .....	1	64E33
	GASKET-RETURN .....	1	2109064	25	ELBOW .....	1	64C10G
2	AFTERCOOLER .....	1	200EDM292	26	U-BOLT .....	1	15U75
	BONNET-IN & OUT (For Repair)	1	2117183	27	NUT-FLANGED .....	2	50AW35
	BONNET-RETURN (For Repair)	1	2117184	28	MANIFOLD-WATER .....	2	200EDM072
	GASKET-IN & OUT .....	1	2109064	29	CONNECTOR-TUBE .....	14	86H141
	GASKET-RETURN .....	1	2117180	30	TUBE WITH FITTINGS .....	1	303EAQ863
	AFTERCOOLER (Salt Water) ....	1	201EDM292	31	TUBE-WITH FITTINGS .....	1	304EAQ863
	(Optional)			32	TUBE-WITH FITTINGS .....	1	301EAQ863
	BONNET-IN & OUT (For Repair)	1	2117185	33	NIPPLE .....	1	63K6G
	BONNET-RETURN (For Repair)	1	2117186	34	TEE .....	1	64G11G
	GASKET-IN & OUT .....	1	2109063	35	PLUG .....	1	64A8
	GASKET-RETURN .....	1	2109064	36	TUBE WITH FITTINGS .....	1	308EAQ863
3	SUPPORT .....	1	300EAQ165	37	TUBE WITH FITTINGS .....	1	309EAQ863
4	SCREW-FLANGED .....	18	75LM51	38	BRACKET (FORMED) .....	1	300EAQ142
5	NUT-FLANGED .....	18	50AW5	39	TUBE WITH FITTINGS .....	1	310EAQ863
6	BUSHING-PIPE .....	1	64E41	40	ASM-FILTER .....	1	200EAU2045
7	CONNECTOR-TUBE .....	2	86H142	41	SCREW .....	2	655ED040
8	TUBE WITH FITTINGS .....	1	307EAQ863	42	WASHER .....	2	95B3
9	VALVE-MINIMUM PRESSURE ...	1	200EBM527	43	BUSHING-PIPE .....	4	64E12
10	NIPPLE .....	1	63L34G	44	FILTER – OIL .....	1	201EDM369
11	BUSHING-PIPE .....	1	64E41		WATER VALVES (Optional)		
12	BUSHING-PIPE .....	1	64E41	*	TEMPERATURE REGULATOR .	1	90AR151
13	NIPPLE .....	1	63L7G	*	SOLENOID VALVE – NEMA 1 ..	1	91B3
14	ELBOW .....	2	64C9G	*	SOLENOID VALVE – NEMA 4 ..	1	91B24

\* Not Shown on drawing.

**WATER COOLED HEAT EXCHANGER – WITHOUT AFTERCOOLER**



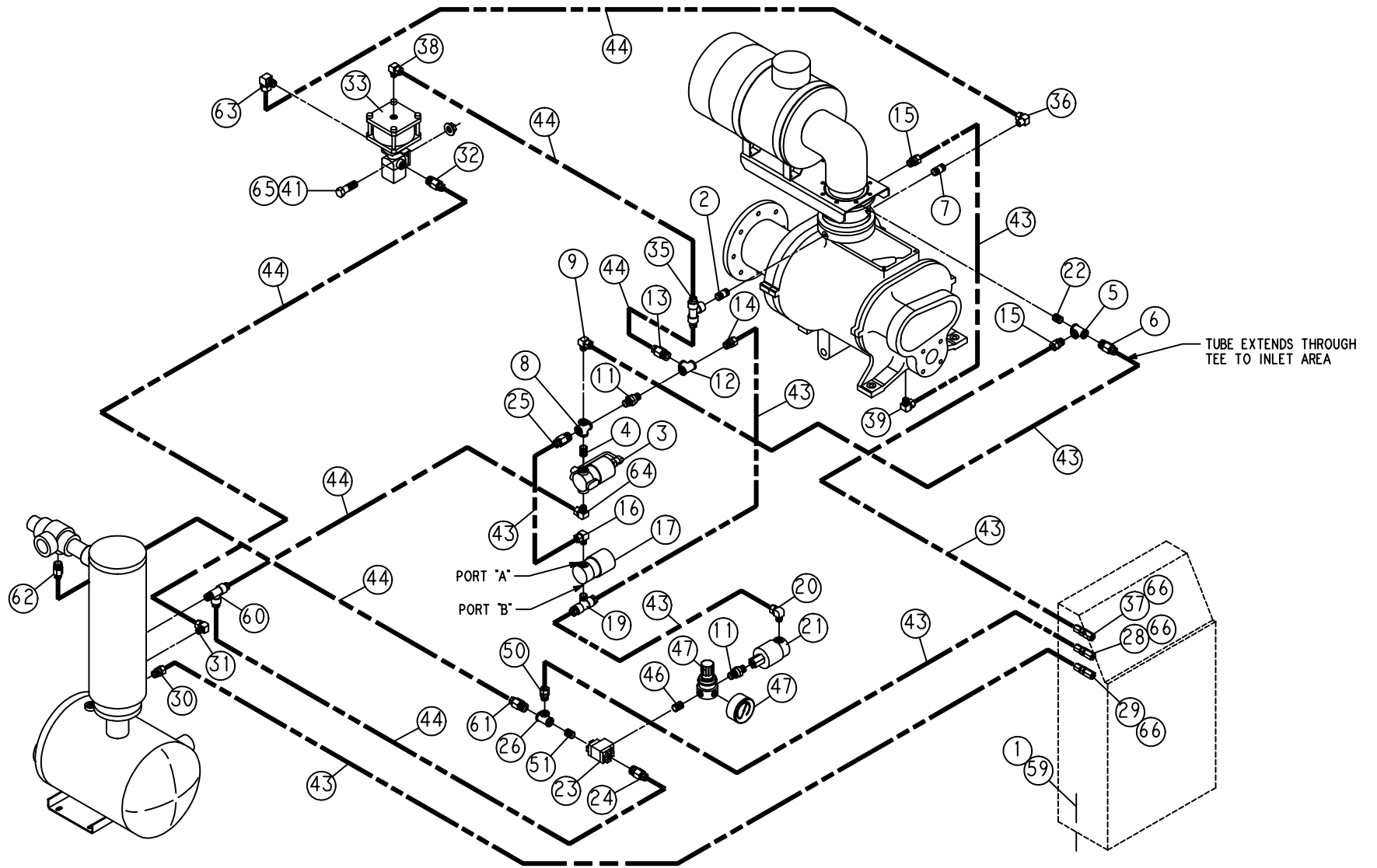
**304EAQ810-A**  
**(Ref. Drawing)**

**WATER COOLED HEAT EXCHANGER – WITHOUT AFTERCOOLER**

Ref. No.	Name of Part	Qty.	Part No.	Ref. No.	Name of Part	Qty.	Part No.
1	HEAT EXCHANGER .....	1	200EDM349	16	BUSHING-PIPE .....	1	64E33
	BONNET-IN & OUT (For Repair)	1	2117178	17	ELBOW .....	1	64C10G
	BONNET-RETURN (For Repair)	1	2117179	18	U-BOLT .....	1	15U75
	GASKET-IN & OUT .....	1	2109064	19	NUT-FLANGED .....	2	50AW35
	GASKET-RETURN .....	1	2117180	20	BUSHING-PIPE .....	1	64E25
	HEAT EXCHANGER (Salt Water) ..	1	201EDM349	21	MANIFOLD-WATER .....	2	200EDM072
	(Optional)			22	CONNECTOR-TUBE .....	12	86H141
	BONNET-IN & OUT (For Repair)	1	2117181	23	TUBE WITH FITTINGS .....	1	303EAQ863
	BONNET-RETURN (For Repair)	1	2117182	24	TUBE WITH FITTINGS .....	1	302EAQ863
	GASKET-IN & OUT .....	1	2109063	25	NIPPLE .....	1	63K6G
	GASKET-RETURN .....	1	2109063	26	TEE .....	1	64G11G
2	BRACKET (FORMED) .....	1	300EAQ142	27	PLUG .....	1	64A8
3	SUPPORT .....	1	300EAQ165	28	TUBE WITH FITTINGS .....	1	308EAQ863
4	SCREW-FLANGED .....	18	75LM51	29	TUBE WITH FITTINGS .....	1	309EAQ863
5	NUT-FLANGED .....	18	50AW5	30	TUBE WITH FITTINGS .....	1	310EAQ863
6	BUSHING-PIPE .....	1	64E41	31	ASM-FILTER .....	1	200EAU2045
7	NIPPLE .....	1	63L9G	32	SCREW .....	2	655ED040
8	VALVE-MINIMUM PRESSURE ...	1	200EBM527	33	WASHER .....	2	95B3
9	CONNECTOR-TUBE .....	2	86H142	34	BUSHING-PIPE .....	4	64E12
10	TUBE-W/FIT .....	1	305EAQ863	35	FILTER – OIL .....	1	201EDM369
11	U-BOLT .....	2	15U111				
12	NUT-FLANGED .....	4	50AW5		WATER VALVES (Optional)		
13	BRACKET-PIPE .....	2	300EAQ108	*	TEMPERATURE REGULATOR ...	1	90AR151
14	SEPARATOR-MOISTURE .....	1	83C92	*	SOLENOID VALVE – NEMA 1 ....	1	91B2
15	NIPPLE .....	1	63M3G	*	SOLENOID VALVE – NEMA 4 ....	1	91B24

\* Not Shown on drawing.

# CONTROL SCHEMATIC



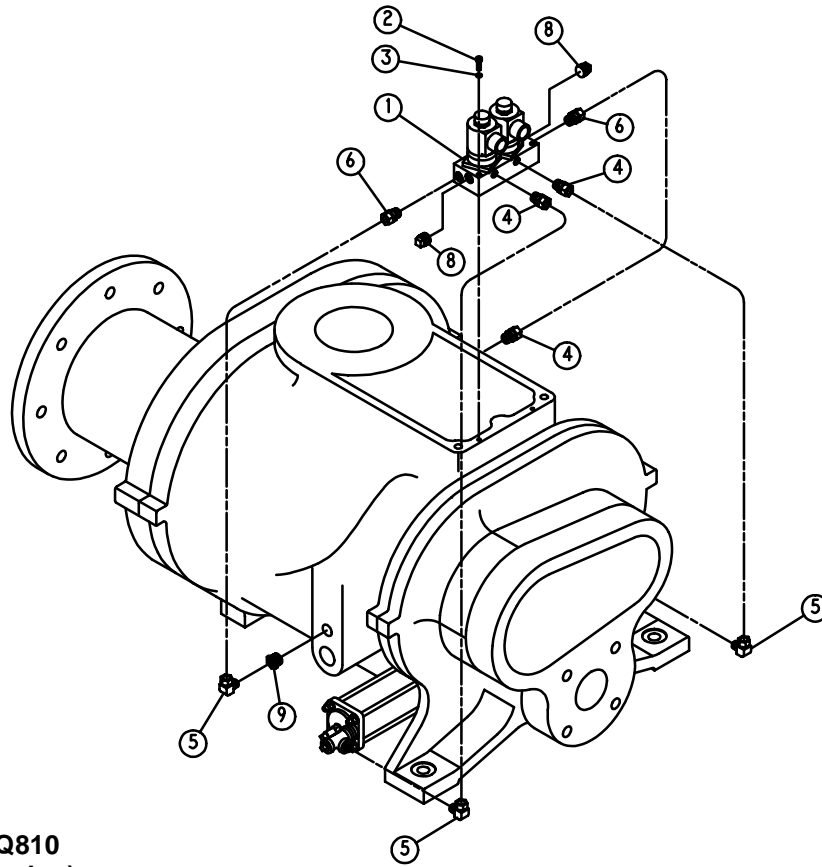
287ECM810-N  
(Ref. Drawing)

**CONTROL SCHEMATIC**

Ref. No.	Name of Part	Qty.	Part No.	Ref. No.	Name of Part	Qty.	Part No.
1	SCREW-FLANGED .....	4	75LM51	29	CONNECTOR-TUBE .....	1	86N287
2	NIPPLE .....	1	63D5G	30	CONNECTOR-TUBE .....	1	86E4
3	VALVE-SOLENOID .....	1	91B70	31	ELBOW .....	1	86E64
4	NIPPLE .....	1	63D1G	32	CONNECTOR-TUBE .....	1	86E9
5	TEE-PIPE .....	1	64G3G	33 *	VALVE-CONTROL .....	1	90AR35
6	CONNECTOR .....	1	86N272	35	TEE .....	1	86E147
7	NIPPLE .....	1	63D5G	36	ELBOW .....	1	86E82
8	CROSS .....	1	64K1G	37	CONNECTOR-TUBE .....	1	86N287
9	ELBOW .....	1	86E60	38	ELBOW .....	1	86E64
11	VALVE-CHECK .....	2	90AR261	39	ELBOW .....	1	86E60
12	TEE .....	1	64G3G	41	NUT-FLANGED .....	2	50AW3
13	CONNECTOR-TUBE .....	1	86E9	43	TUBE .....	28 ft.	85K3
14	ORIFICE .....	1	86N289	44	TUBE .....	24 ft.	85K5
15	CONNECTOR-TUBE .....	2	86E4	46	NIPPLE .....	1	63D1G
16	ELBOW .....	1	86E60	47	REGULATOR .....	1	88H139
17	VALVE-SOLENOID .....	1	91B81		GAUGE (For Repair) .....	1	2116732
18	BUSHING-PIPE .....	1	64E2G	50	CONNECTOR-TUBE .....	1	86E4
19	TEE .....	1	86E119	51	NIPPLE .....	1	63D1G
20	ELBOW .....	1	86E60	59	NUT-FLANGED .....	4	50AW5
21	VALVE-SOLENOID .....	1	91B80	60	TEE .....	1	86E136
22	NIPPLE .....	1	63D1G	61	CONNECTOR-TUBE .....	1	86E9
23	VALVE-CONTROL .....	1	90AR107	62	CONNECTOR-TUBE .....	1	86E9
24	CONNECTOR-TUBE .....	1	86E9	63	ELBOW .....	1	86E64
25	CONNECTOR-TUBE .....	1	86E4	64	ELBOW .....	1	86E64
26	TEE .....	1	64G3G	65	SCREW .....	2	75P4
28	CONNECTOR-TUBE .....	1	86N287	66	O-RING .....	3	165011

\* For Repair Kit order Part Number 2109652, or for Repair Diaphragm only, order Part Number 2116130.

Order by Part Number and Description. Reference Numbers are for your convenience only.



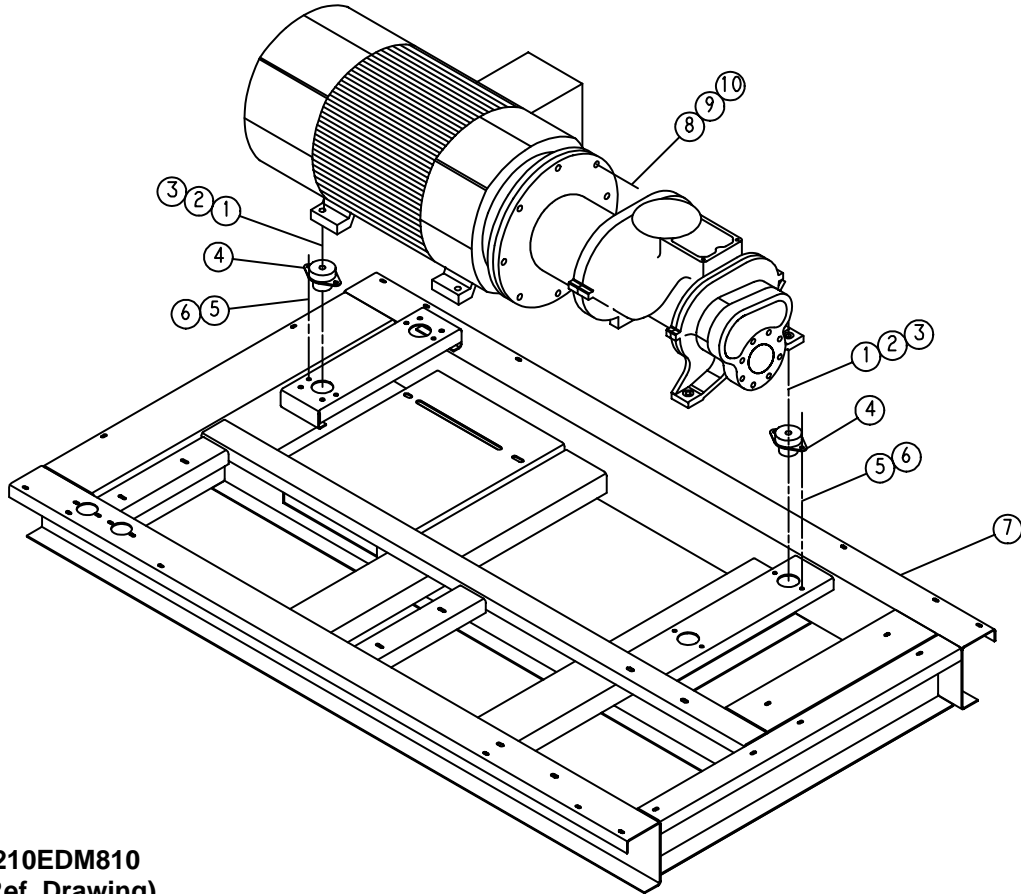
276EAQ810  
(Ref. Drawing)

**TURN VALVE ACTUATOR**

Ref. No.	Name of Part	Qty.	Part No.
1	VALVE-SOLENOID .....	1	200EAQ861
2	SCREW .....	2	75P26
3	WASHER .....	2	95B1
4	CONNECTOR-TUBE .....	3	86E4
5	ELBOW-TUBE .....	3	86E60
6	CONNECTOR-TUBE .....	2	86E5
8	PLUG .....	2	64AA4
9	BUSHING-PIPE .....	1	64E2G
*	TUBE .....	10 ft.	85K3
*	FITTING-CONDUIT .....	1	24A341
*	GASKET .....	1	24A342
*	COVER .....	1	24A343

\* Not shown.

Order by Part Number and Description. Reference Numbers are for your convenience only.



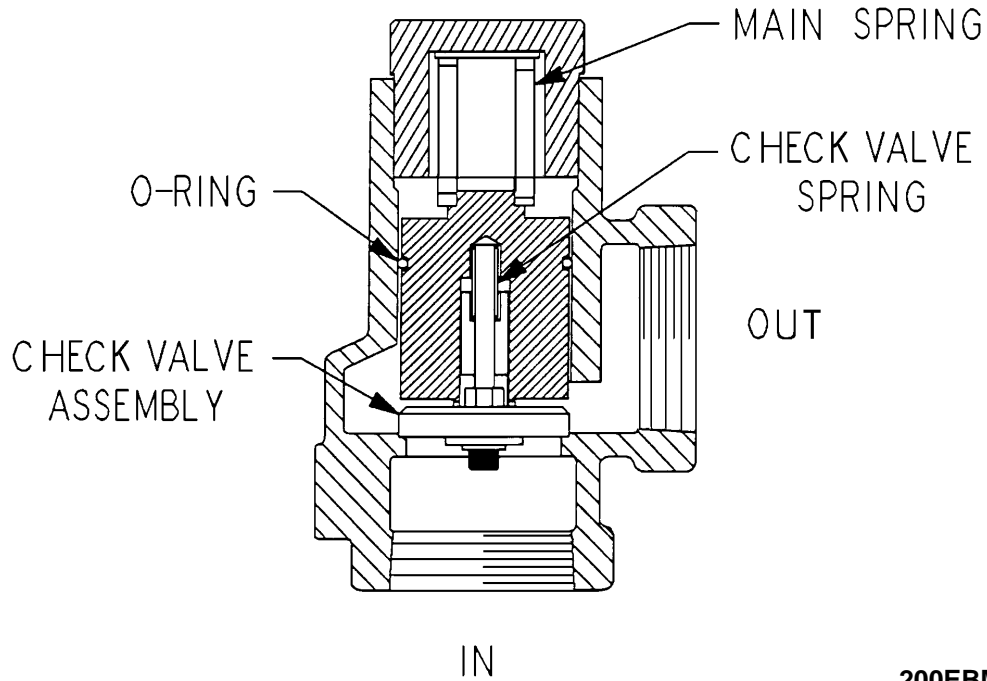
**210EDM810**  
(Ref. Drawing)

**COMPRESSOR BASE GROUP**

Ref. No.	Name of Part	Qty.	Part No.
1	SCREW .....	4	655EF200
2	LOCKWASHER .....	4	95B7
3	NUT .....	4	50B7
4	ISOLATOR-VIBRATION .....	4	49C48
5	SCREW-FLANGED .....	8	75LM135
6	NUT-FLANGED .....	8	50AW35
7	BASE .....	1	206EAQ285
8	NUT .....	8	50B8
9	LOCKWASHER .....	8	95B8
10	SCREW .....	8	655EG140
*	KEY-SQUARE .....	1	35B243

\* Not shown.

Order by Part Number and Description. Reference Numbers are for your convenience only.

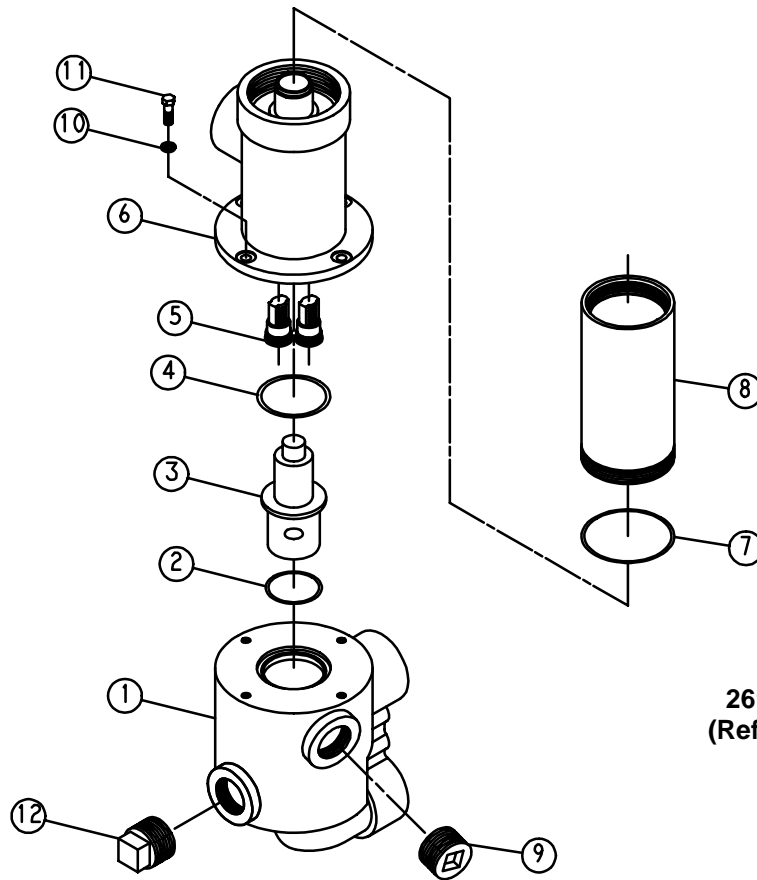


200EBM810  
(Ref. Drawing)

**MINIMUM PRESSURE VALVE**

Ref. No.	Name of Part	Qty.	Part No.
	MINIMUM PRESSURE VALVE ASSEMBLY .....	1	200EBM527
	REPAIR KIT – Includes the following: .....	1	2116854
	O-RING .....	1	
	SPRING, CHECK VALVE .....	1	
	CHECK VALVE ASSEMBLY .....	1	
	SPRING, MAIN .....	1	

Order by Part Number and Description. Reference Numbers are for your convenience only.



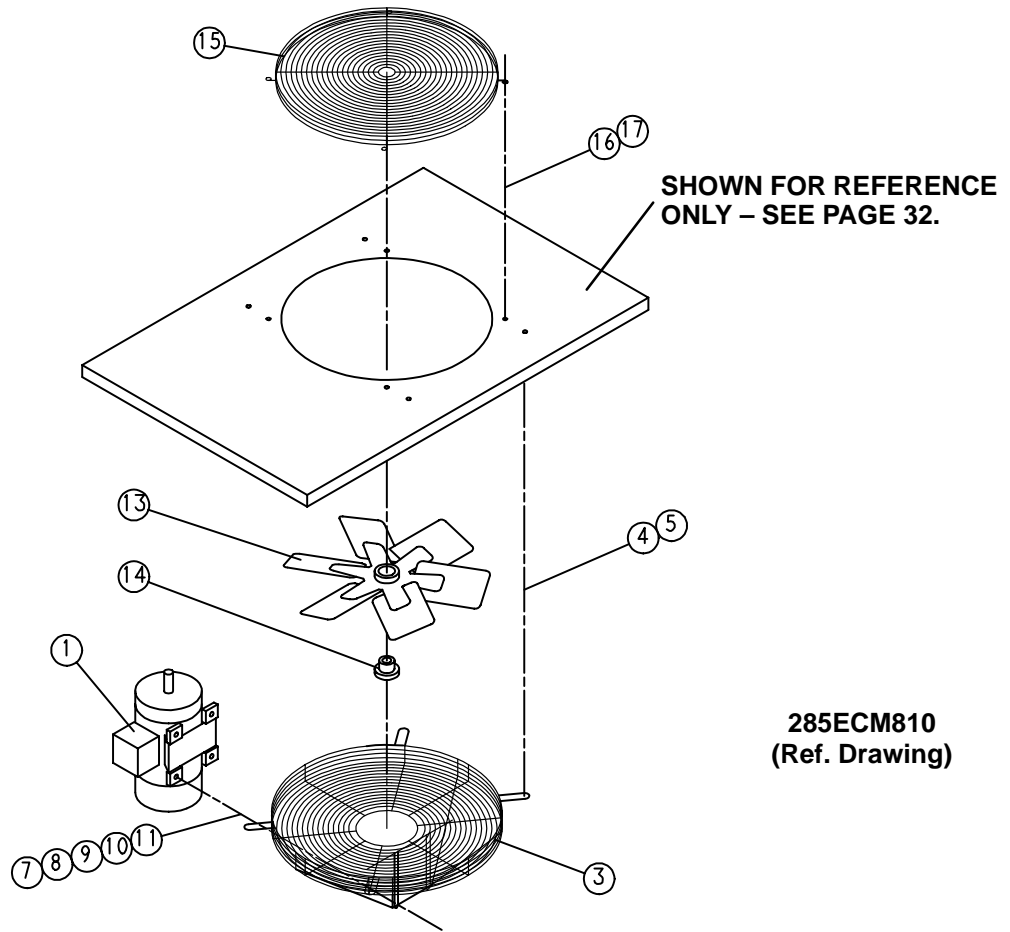
261EAU810  
(Ref. Drawing)

**FILTER ASSEMBLY – 200EAU2045  
(WITH 150° ELEMENT – STD.)**

Ref. No.	Name of Part	Qty.	Part No.
1	MANIFOLD-OIL .....	1	200EAU116
2	O-RING .....	1	25BC127
3	ELEMENT .....	1	2109365
4	O-RING .....	1	25BC175
5	CARTRIDGE-FILTER .....	2	2116640
6	MANIFOLD-OIL .....	1	201EAU116
7	O-RING .....	1	25BC380
8*	BODY-OIL FILTER .....	1	200EDM032
9	PLUG .....	1	64B7
10	WASHER .....	4	95B3
11	SCREW .....	4	655ED050
12	PLUG .....	1	64AA2

\* FILTER ELEMENT, For Repair, Order 201EDM369.

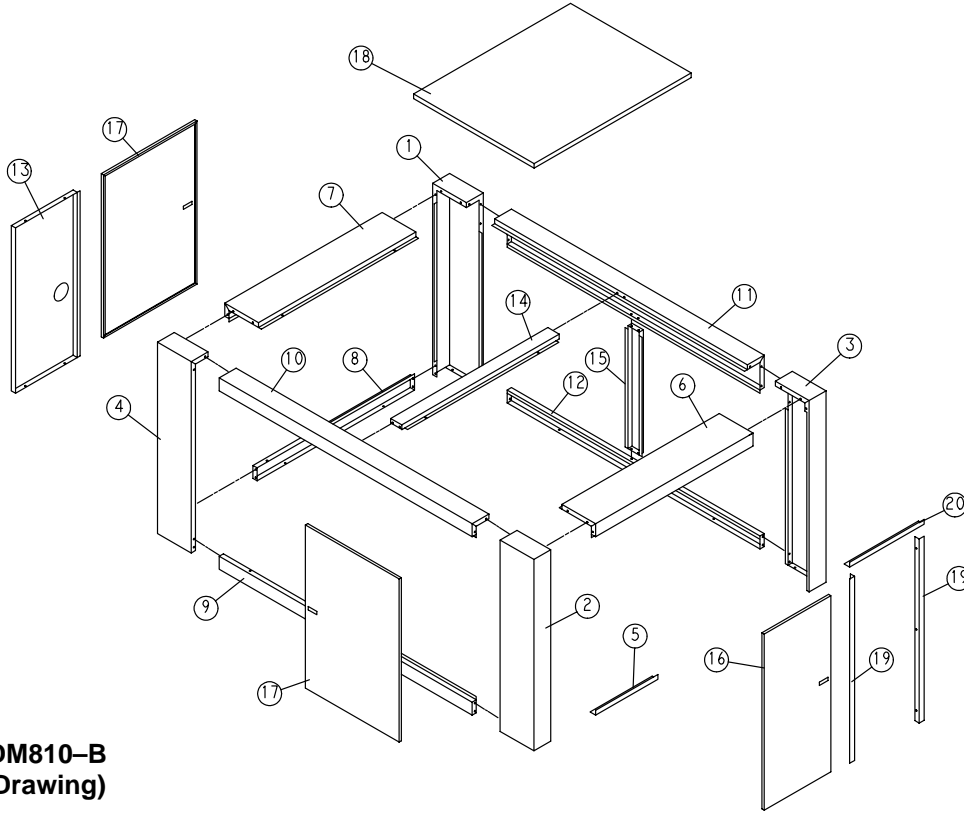
Order by Part Number and Description. Reference Numbers are for your convenience only.



**ENCLOSURE VENT FAN ASSEMBLY  
(WATER COOLED ONLY)**

Ref. No.	Name of Part	Qty.	Part No.
1	MOTOR .....	1	See Page 34
3	GUARD-FAN .....	1	202ECM393
4	SCREW-FLANGED .....	4	75K48
5	WASHER .....	4	95A5
7	SCREW .....	4	75A35
8	RETAINER .....	4	2014731
9	WASHER .....	4	95A2
10	LOCKWASHER .....	4	95B2
11	NUT .....	4	50B2
13	FAN .....	1	203ECM701
14	HUB BUSHING .....	1	22G27
15	GUARD-FAN .....	1	200ECM393
16	SCREW-FLANGED .....	4	75LM51
17	NUT-FLANGED .....	4	50AW5

Order by Part Number and Description. Reference Numbers are for your convenience only.

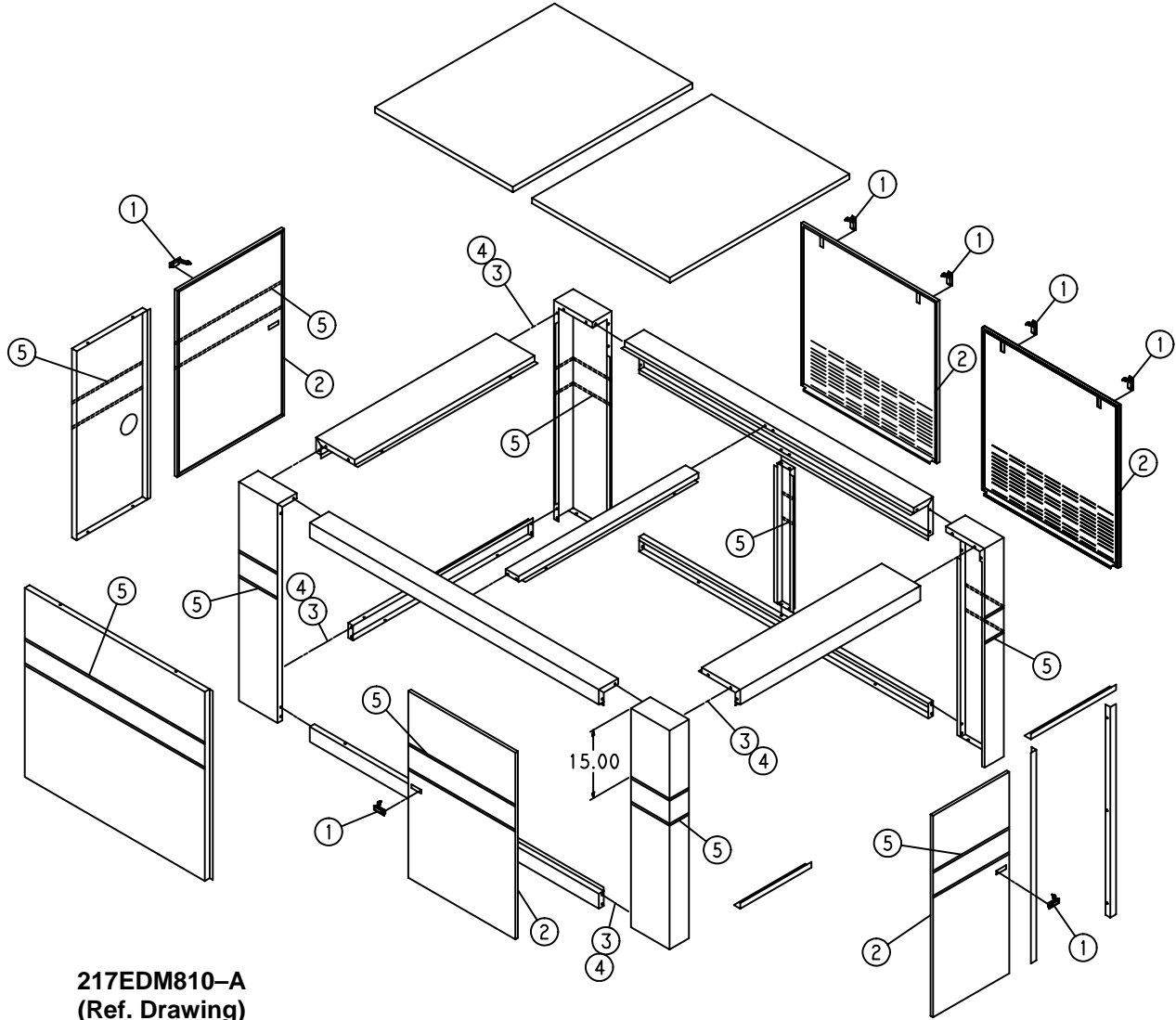


200EDM810-B  
(Ref. Drawing)

**ENCLOSURE**

Ref. No.	Name of Part	Qty.	Part No.
1	POST .....	1	200EDM313
2	POST .....	1	201EDM313
3	POST .....	1	202EDM313
4	POST .....	1	203EDM313
5	FRAME .....	1	200EDM314
6	FRAME .....	1	201EDM314
7	FRAME .....	1	202EDM314
8	FRAME .....	1	203EDM314
9	FRAME .....	1	204EDM314
10	FRAME .....	1	205EDM314
11	FRAME .....	1	206EDM314
12	FRAME .....	1	207EDM314
13	BRACE .....	1	200EDM326
14	BRACE .....	1	201EDM326
15	BRACE .....	1	202EDM326
16	DOOR – CANOPY .....	1	200EDM334
17	DOOR – CANOPY .....	2	201EDM334
18	PANEL .....	1	203EDM216
19	BRACKET .....	2	201EDM142
20	BRACKET .....	1	202EDM142

Order by Part Number and Description. Reference Numbers are for your convenience only.



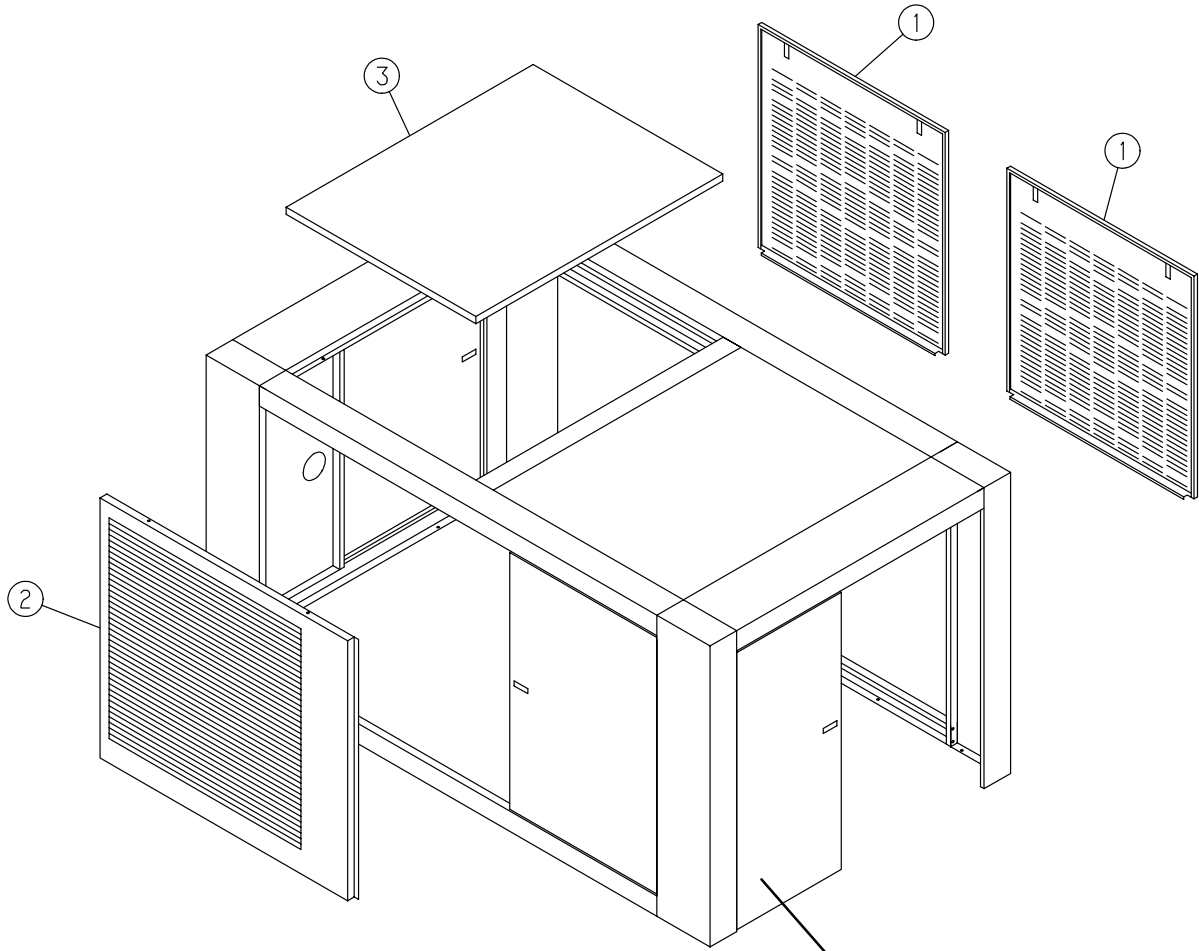
217EDM810-A  
(Ref. Drawing)

**ENCLOSURE – HARDWARE**

Ref. No.	Name of Part	Qty.	Part No.
1	LATCH .....	7	31D58
2	SEAL .....	75 ft.	32E12
3	SCREW-FLANGED .....	90	75LM51
4	NUT-FLANGED .....	82	50AW5
5	DECAL .....	6	203ESO077
*	DECAL .....	3	215ECM077

\* Not shown.

Order by Part Number and Description. Reference Numbers are for your convenience only.



201EDM810-A  
(Ref. Drawing)

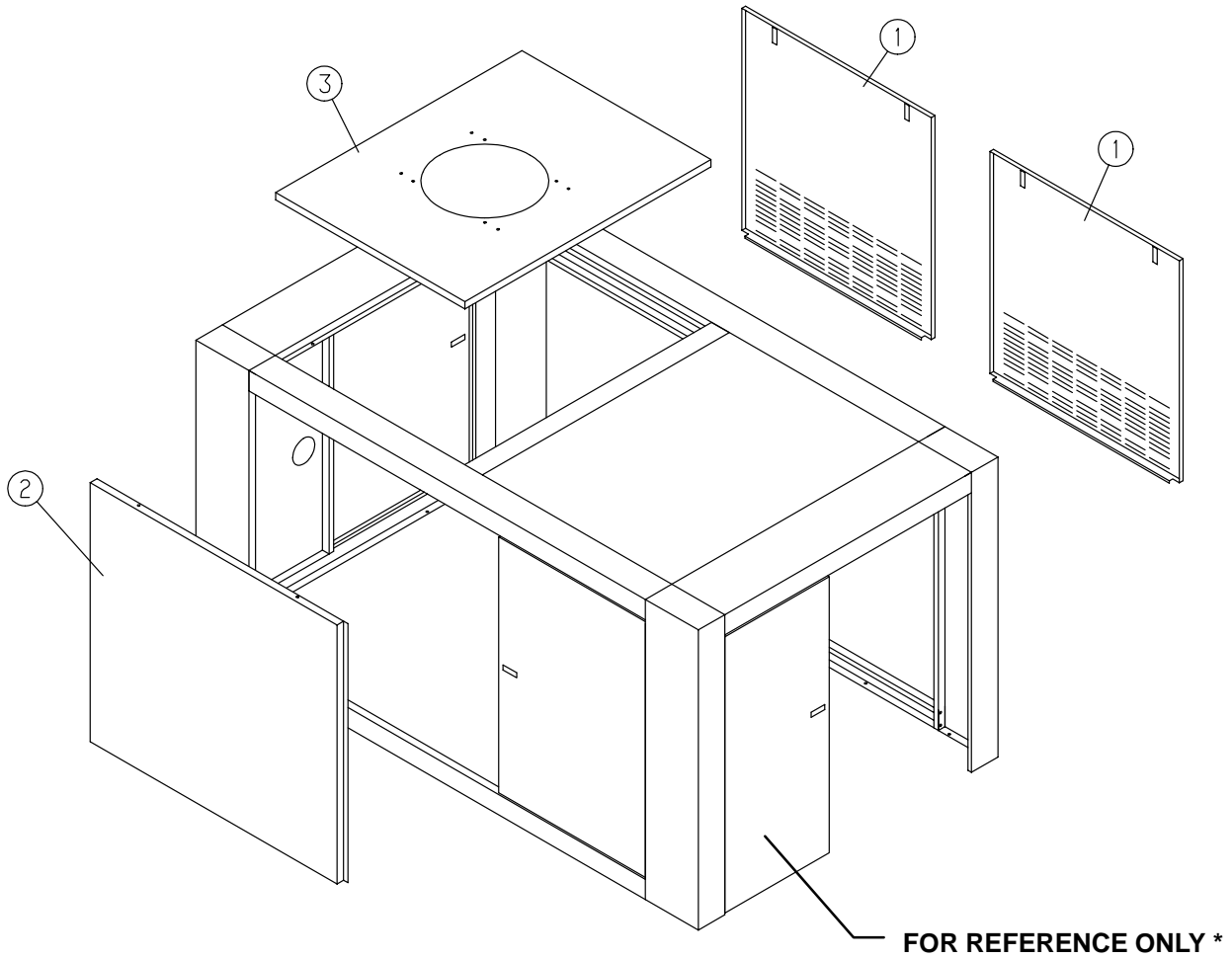
FOR REFERENCE ONLY \*

**ENCLOSURE – AIR COOLED PANELS**

Ref. No.	Name of Part	Qty.	Part No.
1	PANEL .....	2	200EDM216
2	PANEL .....	1	202EDM216
3	PANEL .....	1	203EDM216

\* Refer to Pages 29 & 30 for Enclosure Parts & Hardware.

Order by Part Number and Description. Reference Numbers are for your convenience only.



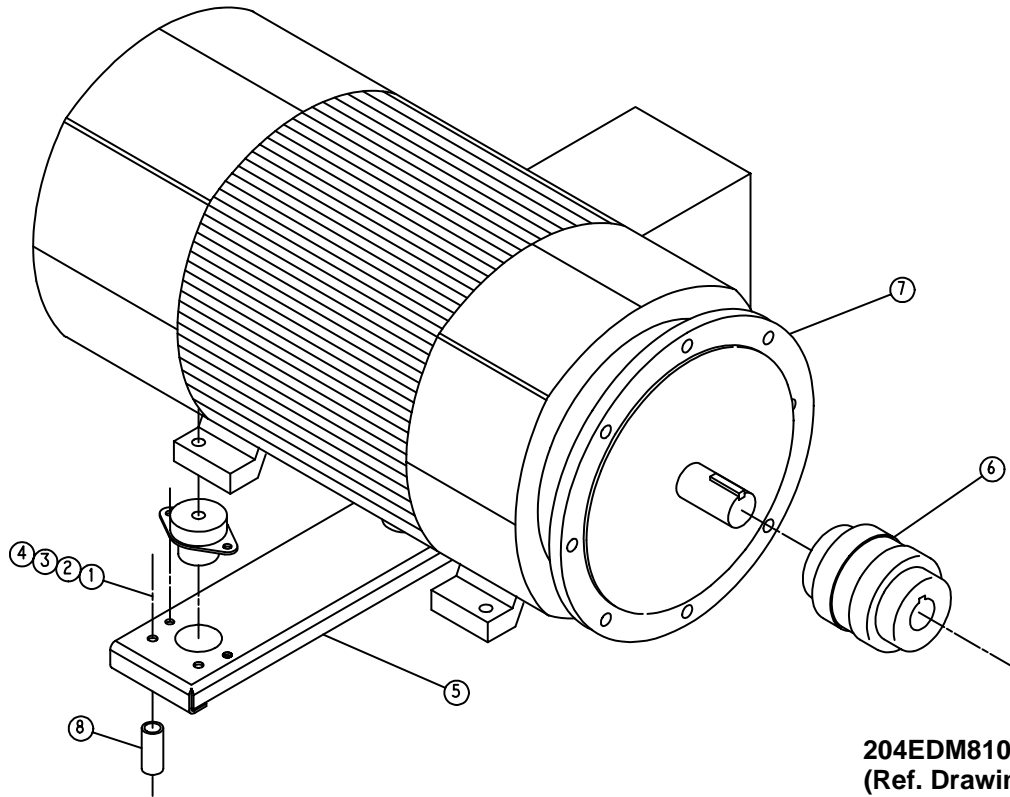
202EDM810-B  
(Ref. Drawing)

**ENCLOSURE – WATER COOLED PANELS**

Ref. No.	Name of Part	Qty.	Part No.
1	PANEL .....	2	201EDM216
2	PANEL .....	1	204EDM216
3	PANEL .....	1	205EDM216

\* Refer to Pages 29 & 30 for Enclosure Parts & Hardware.

Order by Part Number and Description. Reference Numbers are for your convenience only.



**MAIN MOTOR GROUP**

Ref. No.	Name of Part	Qty.	Part No.	Part No.
	<b>MOTOR FRAME</b>		<b>404 &amp; 405</b>	<b>444 - 449</b>
1	WASHER .....	4	95A7	95A7
2	LOCKWASHER .....	4	95B7	95B7
3	NUT .....	4	50B7	50B7
4	SCREW .....	4	655EF180	655EF140
5	SUPPORT-MOTOR .....	1	201EDM620	200EDM620
6	COUPLING-FLEXIBLE (DRIVE) .....	1	51L29	51L30
7	MOTOR .....	1	See Page 34	See Page 34
8	NIPPLE .....	4	63AM12X32G	63AM12X22G

NOTE: DRIVE COUPLING – Repair Cushions (See Page 41)  
 51L29 COUPLING (2-1/8 Motor Shaft Diameter)  
 51L30 COUPLING (2-3/8 Motor Shaft Diameter)

**MOTOR GROUP (MAIN DRIVE MOTORS)  
(WYE-DELTA)**

COLUMN CODE	NAME OF PART	74 KW (100 HP)	93 KW (125 HP)	112 KW (150 HP)
		1500 RPM PART NO.	1500 RPM PART NO.	3000 RPM PART NO.
<b>OPEN DRIP PROOF (50 HZ – ODP)</b>				
13A	MOTOR, 220V	24CA3571	24CA3577	24CA3589
13B	MOTOR, 380V	24CA3572	24CA3578	24CA3590
13C	MOTOR, 400V	24CA3573	24CA3579	24CA3591
13D	MOTOR, 415V	24CA3574	24CA3580	24CA3592
13E	MOTOR, 440V	24CA3575	24CA3581	24CA3593
13F	MOTOR, 550V	24CA3576	24CA3582	24CA3594
<b>TOTALLY ENCLOSED FAN COOLED (50 HZ – TEFC)</b>				
13G	MOTOR, 220V	24CA3595	24CA3601	24CA3613
13H	MOTOR, 380V	24CA3596	24CA3602	24CA3614
13I	MOTOR, 400V	24CA3597	24CA3603	24CA3615
13J	MOTOR, 415V	24CA3598	24CA3604	24CA3616
13K	MOTOR, 440V	24CA3599	24CA3605	24CA3617
13L	MOTOR, 550V	24CA3600	24CA3606	24CA3618

**MOTOR GROUP (FAN MOTORS)**

**AIR COOLED FAN MOTOR (COOLING MODULE)  
(.2.2 KW (3 HP), T.E.F.C., 1000 RPM, 50 HZ, 1.0 S.F.)**

VOLTAGE	P/N
MOTOR, 220V	24CA2630
MOTOR, 380V	24CA463
MOTOR, 400V	24CA2474
MOTOR, 415V	24CA662
MOTOR, 440V	24CA2630
MOTOR, 550V	24CA1480

**WATER COOLED FAN MOTOR (ENCLOSURE VENT FAN)  
(.4 KW (1/2 H.P.), T.E.F.C., 1500 RPM, 50 HZ, 1.0 S.F.)**

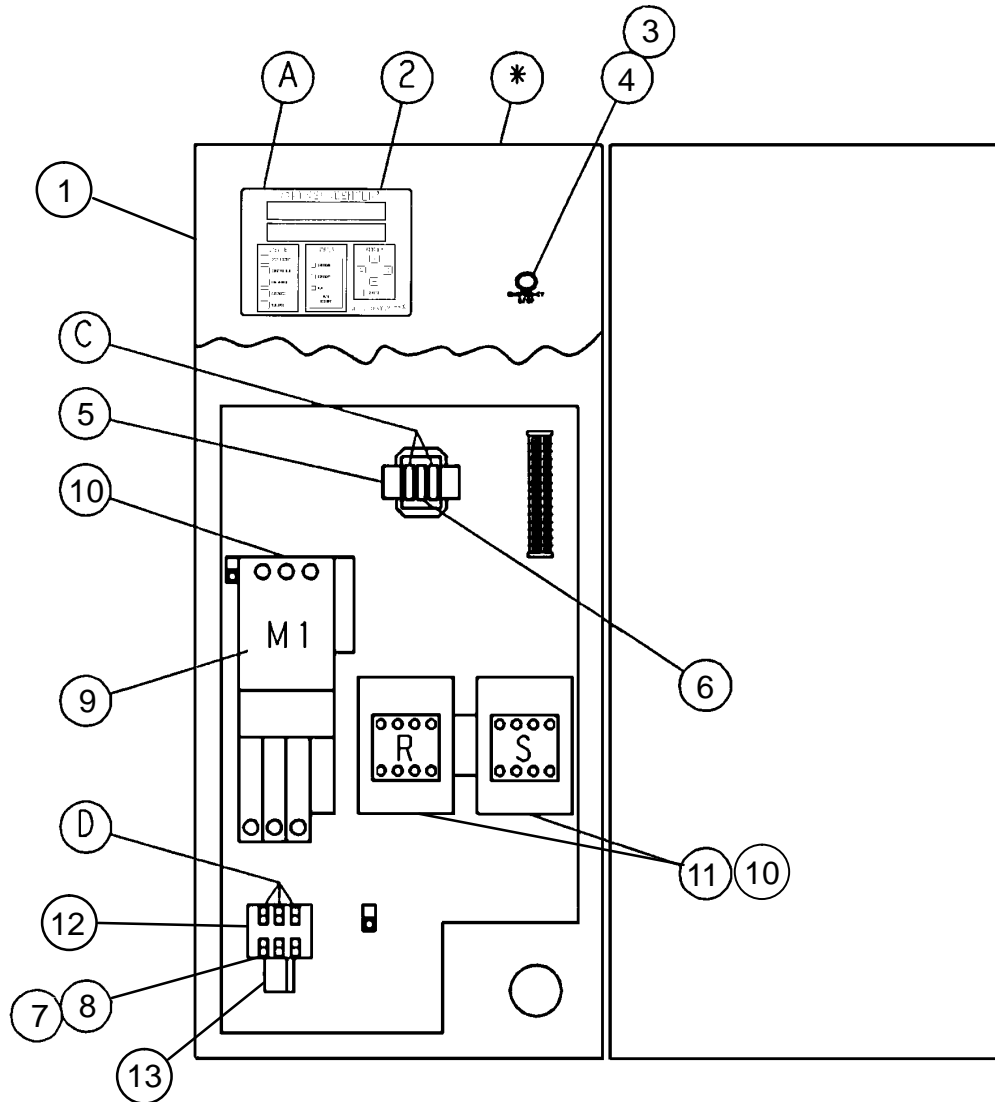
VOLTAGE	P/N
MOTOR, 220V	24CA522
MOTOR, 380V	24CA522
MOTOR, 400V	24CA2645
MOTOR, 415V	24CA523
MOTOR, 440V	24CA778
MOTOR, 550V	24CA524

## OVERLOAD RELAY HEATER CONVERSION LISTING

**Refer to Motor Nameplate “Amperage” and Decal in Control Panel for Selection of Overload Relay Heater Packs.**

<b>CUTLER-HAMMER PART NUMBER</b>	<b>GARDNER DENVER PART NUMBER</b>
H2002B .....	24CA4101
H2003B .....	24CA4102
H2004B .....	24CA4103
H2005B .....	24CA4104
H2006B .....	24CA4105
H2007B .....	24CA4106
H2008B .....	24CA4107
H2009B .....	24CA4108
H2010B .....	24CA4109
H2011B .....	24CA4110
H2012B .....	24CA4111
H2013B .....	24CA4112
H2014B .....	24CA4113
H2015B .....	24CA4114
H2016B .....	24CA4115
H2017B .....	24CA4116
H2018 .....	24CA2924
H2019 .....	24CA2925
H2020 .....	24CA2926
H2021 .....	24CA2927
H2022 .....	24CA2893
H2023 .....	24CA2894
H2024 .....	24CA2928

**CONTROLLER ASSEMBLY**  
**(EAQ – 74/93/112 KW (100/125/150 HP) WYE-DELTA STARTERS)**



Refer to parts list on page 37.

**CONTROLLER ASSEMBLY**  
**(EAQ – 74/93/112 KW (100/125/150 HP) WYE–DELTA STARTERS)**

			<b>200V</b>	<b>380–400</b>	<b>440V</b>	<b>550V</b>
			<b>74–93 KW</b>	<b>–415V</b>	<b>74–93–112 KW</b>	<b>74–93–112 KW</b>
			<b>(100–125 HP)</b>	<b>(100–125</b>	<b>(100–125</b>	<b>(100–125</b>
		<b>QTY.</b>		<b>–150 HP)</b>	<b>–150 HP)</b>	<b>–150 HP)</b>
* ASSEMBLED PANEL: NEMA 12 .....	1	203EDP466	206EDP466	200EDP466	204EDP466	
* ASSEMBLED PANEL: NEMA 4 .....	1	212EDP466	215EDP466	209EDP466	213EDP466	
A FUSE, CONTROL BOARD .....	1	24CA2932	24CA2932	24CA2932	24CA2932	
C FUSE, TRANSFORMER PRIMARY .....	1	24CA4093	24CA3723	24CA2783	24CA3722	
D FUSE, FAN MOTOR, AIR–COOLED .....	1	24CA4096	24CA4095	24CA4094	24CA4092	
D FUSE, FAN MOTOR, WATER–COOLED .....	1	24CA4093	24CA4091	24CA4090	24CA4090	
1 CONTROL BOX .....	1	200EDM179	200EDM179	200EDM179	200EDM179	
2 CONTROLLER .....	1	202EAP1173	202EAP1173	202EAP1173	202EAP1173	
3 OPERATOR .....	1	24CA2907	24CA2907	24CA2907	24CA2907	
4 CONTACT BLOCK .....	1	24CA2908	24CA2908	24CA2908	24CA2908	
5 TRANSFORMER .....	1	2116286	2116865	2116287	2116288	
6 FUSE .....	1	24CA3729	24CA3726	24CA3729	24CA3729	
7 STARTER .....	1	24CA4134	24CA4134	24CA4134	24CA4134	
8 COIL .....	1	2115950	2115950	2115950	2115950	
9 STARTER .....	1	24CA3490	24CA3255	24CA3255	24CA3255	
10 COIL .....	3	2115952	2116555	2116555	2116555	
11 CONTACTOR .....	2	24CA3696	24CA3259	24CA3259	24CA3259	
12 FUSE HOLDER .....	1	24CA4098	24CA4098	24CA4098	24CA4098	
13 OVERLOAD RELAY .....	1	24CA4086	24CA4086	24CA4086	24CA4086	

Refer to drawing on page 36.

**IDENTIFICATION AND INSTRUCTION GROUP**

<b>Ref. No.</b>	<b>Name of Part</b>	<b>Qty.</b>	<b>Part No.</b>
1	DECAL, OPERATION & MAINTENANCE .....	1	217ECM077
2	DECAL, WARNING .....	1	227EAQ077
3	DECAL, PARTS LIST/SERVICE MANUAL # .....	1	204EDE077
4	DECAL, WARNING – ELECTRICAL SHOCK .....	1	216EAQ077
5	DECAL, DANGER – DO NOT MODIFY .....	1	218EAQ077
6	DECAL, WARNING – ELECTRICAL SHOCK .....	1	213EAQ077
7	DECAL, WARNING – READ OPERATOR MANUAL .....	1	215EAQ077
8	DECAL, CAUTION – USE FLOOR PLATE .....	1	221EAQ077
9	DECAL, WARNING – SEE WIRING DIAGRAM .....	1	222EAQ077
10	DECAL, DANGER – HOT OIL UNDER PRESSURE .....	1	212EAQ077
11	DECAL, WARNING – INSPECT OIL RESERVOIR .....	1	217EAQ077
12	DECAL, AEON 9000SP LUBRICANT .....	1	243EAQ077
13	DECAL, NOTICE – USE GD PARTS .....	1	214EAQ077
14	DECAL, NOTICE – USE GD PARTS .....	1	214EAQ077
15	DECAL, CAUTION – DO NOT LIFT .....	1	208EAQ077
16	DECAL, WARNING – ROTATING MACHINERY .....	1	211EAQ077
17	DECAL, DANGER – DO NOT BREATHE .....	1	206EAQ077
18	DECAL, DRAIN MOISTURE DAILY .....	1	205ESO077
19	DECAL, GD LOGO .....	1	69F18
20	RIVET .....	4	70E13
21	DECAL, HEAT EXCHANGER “IN” .....	1	200ESP077
22	DECAL, HEAT EXCHANGER “OUT” .....	1	201ESP077
23	DECAL, ELECTRA–SAVER .....	1	202EAP077
24	DECAL, ELECTRA–SAVER .....	3	201EAP077
25	TAG–INSTRUCTION .....	1	203EAQ304
26	DECAL, NAMEPLATE .....	1	69F64
28	DECAL, OIL FILL INSTRUCTIONS .....	1	240EAQ077
29	DECAL, “QUALITY WITHOUT QUESTION” .....	1	251EAQ077
30	TAG–INSTRUCTION .....	1	204EAQ304
31	TAG–INSTRUCTION .....	1	205EAQ304
32	POCKET .....	1	200EAQ1304

## REPAIR KITS

Name of Part	Qty.	Part No.
ROUTINE MAINTENANCE KIT – HEAVY DUTY AIR FILTER . . . . .		300EAQ6013
(Includes next two items)		
ELEMENT, AIR FILTER . . . . .	2	2117151
ELEMENT, OIL FILTER . . . . .	3	201EDM369
PERIODIC MAINTENANCE KIT (INLET VALVE) . . . . .		301EAQ6013
(Includes next five items)		
O-RING . . . . .	1	25BC298
SPRING . . . . .	1	78W62
SPRING . . . . .	1	78W61
O-RING . . . . .	1	25AM30
RETAINER-RING . . . . .	1	74D89
PERIODIC OVERHAUL KIT (SSQ) (Includes next eight items) . . . . .	1	303EAQ6013
GASKET KIT (See below) . . . . .	1	304EAQ6013
OIL SEAL KIT (See below) . . . . .	1	200SSQ6007
ROLLER BEARING . . . . .	2	12BA126
ROLLER BEARING . . . . .	1	12BA138
ROLLER BEARING . . . . .	1	12BA78
ROLLER BEARING . . . . .	2	12BA51
SPRING . . . . .	1	78W49
SPRING . . . . .	1	78W50
GASKET KIT (SSQ) (Includes next eight items) . . . . .		304EAQ6013
PERIODIC MAINTENANCE KIT (INLET VALVE) . . . . .	1	301EAQ6013
SHIM SET (SHAFT) . . . . .	1	77C36
SHIM SET . . . . .	1	77H50
GASKET RING . . . . .	2	25C603N
PACKING RING . . . . .	4	60AM46
FASTENER SEAL . . . . .	2	60DD65
GASKET . . . . .	4	25BC138N
GASKET ELIMINATOR . . . . .	1	25BC222
OIL SEAL KIT (SSQ) (Includes next seven items) . . . . .		200SSQ6007
WEAR SLEEVE . . . . .	1	80M28
OIL SEAL . . . . .	1	60DD571
OIL SEAL . . . . .	1	60DD689
O-RING . . . . .	1	25BC157
O-RING . . . . .	1	25BC431
GASKET ELIMINATOR . . . . .	1	25BC222
CHECK VALVE . . . . .	1	90AR923
WEAR SLEEVE INSTALLATION / REMOVAL KIT (SSQ) . . . . .		200SSQ4017
(Includes next seven items)		
PULLER . . . . .	1	200SSQ219
PLATE-PULLER . . . . .	1	200SSQ340
SCREW . . . . .	1	655EE030
SCREW . . . . .	1	655ED120
SCREW . . . . .	2	75D176
GUIDE . . . . .	1	200SSQ450
TOOL . . . . .	1	200SSQ074

**REPAIR KITS (Continued)**

Name of Part	Qty.	Part No.
PERIODIC OVERHAUL KIT (SSP) (Includes next nine items) . . . . .	1	302SSP6013
GASKET KIT (See below) . . . . .	1	303SSP6013
OIL SEAL KIT (See below) . . . . .	1	300SSP6013
ROLLER BEARING . . . . .	2	12BA105
ROLLER BEARING . . . . .	1	12BA106
ROLLER BEARING . . . . .	1	12BA104
ROLLER BEARING . . . . .	1	12BA103
ROLLER BEARING . . . . .	2	12BA51
SPRING . . . . .	1	78W50
SPRING . . . . .	1	78W52
GASKET KIT (SSP) (Includes next eight items) . . . . .		303SSP6013
PERIODIC MAINTENANCE KIT (INLET VALVE) . . . . .	1	301EAQ6013
SHIM SET (SHAFT) . . . . .	1	77H63
SHIM SET . . . . .	1	77H62
GASKET RING . . . . .	2	25C603N
PACKING RING . . . . .	4	60AM46
FASTENER SEAL . . . . .	2	60DD65
GASKET . . . . .	4	25BC138N
GASKET ELIMINATOR . . . . .	1	25BC222
OIL SEAL KIT (SSP) (Includes next seven items) . . . . .		300SSP6013
WEAR SLEEVE . . . . .	1	200SSP1458
OIL SEAL . . . . .	1	60DD692
OIL SEAL . . . . .	1	60DD693
O-RING . . . . .	1	8502140
O-RING . . . . .	1	25BC380
GASKET ELIMINATOR . . . . .	1	25BC222
CHECK VALVE . . . . .	1	90AR923
WEAR SLEEVE INSTALLATION / REMOVAL KIT (SSP) . . . . .		200SSP4017
(Includes next seven items)		
PULLER . . . . .	1	200SSP219
PLATE-PULLER . . . . .	1	200SSP340
SCREW . . . . .	1	75LM192
SCREW . . . . .	1	655ED120
SCREW . . . . .	2	75D177
GUIDE . . . . .	1	200SSP450
TOOL . . . . .	1	200SSP074
SEPARATOR KIT (Includes next three items) . . . . .		202EDP6013
OIL SEPARATOR . . . . .	1	55B44
GASKET . . . . .	1	200EDM715N
LUBRICANT (OIL SEAL GREASE) . . . . .	1	2116755
PNEUMATIC CONTROLS AND GAUGES (Includes next five items) . . .		302EAQ6013
CHECK VALVE . . . . .	2	90AR261
SHUTTLE VALVE . . . . .	2	90AR107
PURGE VALVE . . . . .	1	90AR35
PRESSURE REGULATOR . . . . .	1	88H139
PRESSURE GAUGE . . . . .	1	27P104

**REPAIR KITS (Continued)**

Name of Part	Qty.	Part No.
ELECTRICAL CONTROL KIT (Includes next six items) .....		206EAP6013
SOLENOID VALVE .....	1	91B70
SOLENOID VALVE .....	1	91B80
SOLENOID VALVE .....	1	91B81
THERMISTOR PROBE .....	2	21D264
TRANSDUCER .....	2	88H242
VACUUM SWITCH .....	1	88H195
DRIVE COUPLING KIT (Includes next item) .....		ECK77781
CUSHIONS .....	6	2109116
LUBRICANT (AEON 9000 SP)		
5 GALLON PAIL .....		28H109
55 GALLON DRUM .....		28H110
TOUCH-UP PAINT		
5 GALLON PAIL .....		28H76
1 GALLON CAN .....		28H84
1 QUART CAN .....		28H83
WATER TEMPERATURE REGULATOR (Optional) .....		90AR151
MAGNETIC WATER SHUTOFF VALVE – NEMA 1 (Optional) .....		EAQ77013
MAGNETIC WATER SHUTOFF VALVE – NEMA 4 (Optional) .....		EAQ77014

**Gardner**  
**Denver**

For additional information contact your local representative or Gardner Denver Machinery Inc., Customer Service Department, 1800 Gardner Expressway, Quincy, Illinois 62301  
Telephone: (800) 682-9868 FAX: (217) 224-7814



Sales and Service in all major cities.

For parts information, contact Gardner Denver, Master Distribution Center, Memphis, TN  
Telephone: (800) 245-4946 FAX: (901) 542-6159

Specifications subject to change without notice.  
Copyright 1996 Gardner Denver Machinery Inc.

Litho in U.S.A.