
GARDNER DENVER®

13-10-507
3rd Edition
March, 1998

ELECTRA-SAVER®
STATIONARY BASE-MOUNTED
COMPRESSORS

MODELS

100 HP

EAPQMD – AIR COOLED
EAPSMD – WATER COOLED

PARTS LIST

Gardner

Denver

INSTRUCTIONS FOR ORDERING REPAIR PARTS

When ordering parts, specify Compressor MODEL, Method of Cooling, HORSE-POWER and SERIAL NUMBER (see nameplate on unit). The Serial Number is also stamped on top of the cylinder flange to the right of the inlet housing.

All orders for Parts should be placed with the nearest authorized distributor.

Where NOT specified, quantity of parts required per compressor or unit is one (1); where more than one is required per unit, quantity is indicated in parenthesis. SPECIFY EXACTLY THE NUMBER OF PARTS REQUIRED.

DO NOT ORDER BY SETS OR GROUPS.

To determine the Right Hand and Left Hand side of a compressor, stand at the motor end and look toward the compressor. Right Hand and Left Hand are indicated in parenthesis following the part name, i.e. (RH) & (LH), when appropriate.

For Operating and Service Instructions see:

SERVICE MANUAL 13-9/10-641

TABLE OF CONTENTS

Page No.

Instructions For Ordering Repair Parts	Inside Front Cover
Maintain Compressor Reliability And Performance With Genuine Gardner Denver® Compressor Parts And Support Services	2
Remanufactured Air Ends	2
Matrix/Menu	3
Bare Compressor	4, 5
Oil Seal Detail	6
Inlet Valve	7
Turn Valve	8
Air Filter Group	9
Oil Reservoir Group	10
Separator Housing Group	11
Discharge Piping	12
Air Discharge Piping	13
Oil Piping Group	14
Oil Filter – 200EBM369	15
Oil Piping Line	16
Oil Return Line	17
Compressor Base Group	18
Minimum Pressure Valve	19
Thermal Valve (Thermostatic Mixing)	20
Enclosure – Vent Fan Assembly (Water Cooled Only)	21
Air Cooled Cooler Group	22, 23
Water Cooled Heat Exchanger – With Aftercooler	24, 25
Water Cooled Heat Exchanger – Without Aftercooler	26, 27
Oil Piping Schematic	28, 29
Enclosure (Common Parts – Air/Water Cooled)	30, 31
Enclosure – Hardware	32
Enclosure – Air Cooled Units	33
Enclosure – Water Cooled Units	34
Main Motor Group	35
Motor Group (Main Drive Motors)	36
Motor Group (Fan Motors)	36
Overload Relay Heater Conversion Listing	37
Controller Assembly – Wye Delta	38, 39
Solenoid Valve	40
Identification And Instruction Group	41
Repair Kits	42, 43

MAINTAIN COMPRESSOR RELIABILITY AND PERFORMANCE WITH GENUINE GARDNER DENVER® COMPRESSOR PARTS AND SUPPORT SERVICES

Gardner Denver® Compressor genuine parts, engineered to original tolerances, are designed for optimum dependability — specifically for Gardner Denver compressor systems. Design and material innovations are the result of years of experience with hundreds of different compressor applications. Reliability in materials and quality assurance are incorporated in our genuine replacement parts.

Your authorized Gardner Denver® Compressor distributor offers all the backup you'll need. A worldwide network of authorized distributors provides the finest product support in the air compressor industry. Your local authorized distributor maintains a large inventory of genuine parts and he is backed up for emergency parts by direct access to the Gardner Denver Machinery Inc. Master Distribution Center (MDC) in Memphis, Tennessee.

Your authorized distributor can support your Gardner Denver® air compressor with these services:

Call Gardner Denver today for a quote.

1. Trained parts specialists to assist you in selecting the correct replacement parts.
2. Factory warranted new and remanufactured rotary screw air ends. Most popular model remanufactured air ends are maintained in stock at MDC for purchase on an exchange basis with liberal core credit available for the replacement unit.
3. A full line of factory tested AEON™ compressor lubricants specifically formulated for use in Gardner Denver compressors.
4. Repair and maintenance kits designed with the necessary parts to simplify servicing your compressor.

Authorized distributor service technicians are factory-trained and skilled in compressor maintenance and repair. They are ready to respond and assist you by providing fast, expert maintenance and repair services.

For the location of your local authorized Gardner Denver Air Compressor distributor refer to the yellow pages of your phone directory or contact:

Distribution Center:
Gardner Denver Machinery Inc.
Master Distribution Center
5585 East Shelby Drive
Memphis, TN 38141
Phone: (901) 542-6100
(800) 245-4946
Fax: (901) 542-6159

Factory:
Gardner Denver Machinery Inc.
1800 Gardner Expressway
Quincy, IL 62301
Phone: (217) 222-5400
Fax: (217) 224-7814

REMANUFACTURED AIR ENDS

Whenever an air end requires replacement or repair, Gardner Denver offers an industry unique, factory remanufactured air end exchange program. From its modern Remanufacturing Center in Indianapolis, IN, Gardner Denver is committed to supplying you with the highest quality, factory remanufactured air ends that are guaranteed to save you time, aggravation and money.

Immediately Available

Repair downtime costs you money, which is why there are over 200 remanufactured units in inventory at all times, ready for immediate delivery.

Skilled Craftsmen

Our Remanufacturing assembly technicians average over 20 years experience with air compression products.

Precision Remanufacturing

All potentially usable parts are thoroughly cleaned, inspected and analyzed. Only those parts that can be brought back to original factory specifications are remanufactured. Every remanufactured air end receives

a new overhaul kit: bearings, gears, seals, sleeves and gaskets.

Extensive Testing

Gardner Denver performs testing that repair houses just don't do. Magnaflux and ultrasonic inspection spot cracked or stressed castings, monochromatic light analysis exposes oil leaks, and coordinate measurement machine inspects to +/- .0001", insuring that all remanufactured air ends meet factory performance specifications.

Warranty

Gardner Denver backs up every remanufactured air end with a new warranty . . . 18 months from purchase, 12 months from service.

Gardner Denver remanufactured air ends deliver *quality without question . . . year in and year out.*

Call Gardner Denver for information on the air end exchange program and the name of your authorized distributor.

Phone Number: 800-245-4946 or
FAX: 901-542-6159

ELECTRA-SAVER® COMPRESSORS – MODELS EAPQ__ & EAPS__ 100 HP Air or Water-Cooled Base-Mounted Units – Matrix/Menu

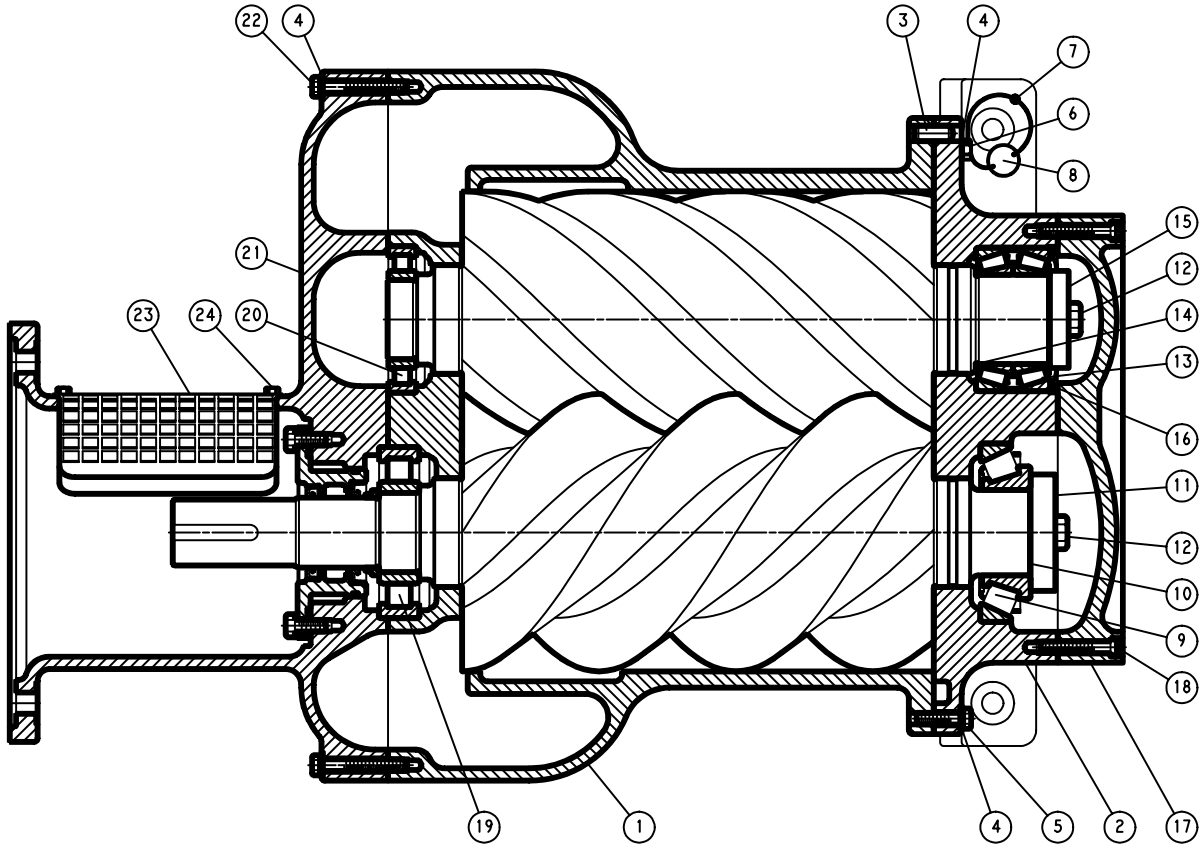
NOTICE TO CUSTOMER – To find the construction options for your compressor unit, FILL IN THE BALANCE OF LETTERS OR NUMBERS FROM YOUR UNIT NAMEPLATE.

E	A	P	M	D								
1	2	3	4	5	6	7	8	9	10	11	12	13

Follow the line down and over from each space thus filled in to find the appropriate construction option with which your machine is equipped. The number "9" in any column space indicates "NOT APPLICABLE." The number "8" in any column space indicates SPECIAL DESIGN – REFER TO FACTORY ORDER TICKET.

<p>COLUMNS 1 & 2 – ELECTRA-SAVER® FAMILY – Single Stage</p> <p>COLUMN 3 – AIR END M. SSP Air End – 100 HP Units</p> <p>COLUMN 4 – TYPE OF CONSTRUCTION Q. Air-Cooled Base Mounted (Standard) S. Water-Cooled Base Mounted (Standard)</p> <p>COLUMN 5 – HORSEPOWER M. 100 HP</p> <p>COLUMN 6 – ENGINEERING SPECIFICATION</p> <p>COLUMN 7 – PRESSURE & HZ A. 100 PSIG – 60 HZ B. 125 PSIG – 60 HZ C. 150 PSIG – 60 HZ</p> <p>COLUMN 8 – CONTROL TYPE (Constant Speed or PC) NO OPTIONS A. Air Cooled – Wye Delta Starter B. Water Cooled – Wye Delta Starter C. Without Main Motor Starter</p> <p>COLUMN 9 – CONTROL BOX STARTER (Per HP/Voltage)/NEMA * A. 100 HP – 200V – Nema 12 B. 100 HP – 230V – Nema 12 C. 100 HP – 460V – Nema 12 D. 100 HP – 575V – Nema 12</p> <p>* Note: 200 V applications not available with main motor starter.</p> <p>COLUMN 10 – ENCLOSURE A. No Enclosure (Air/Water Cooled) B. Air Cooled Only (With Enclosure) D. Water Cooled – 200V or Air Cooled With Remote Cooler E. Water Cooled – 230V or Air Cooled With Remote Cooler F. Water Cooled – 460V or Air Cooled With Remote Cooler G. Water Cooled – 575V or Air Cooled With Remote Cooler</p> <p>COLUMN 11 – OIL COOLERS – AIR & WATER AIR COOLED – W/AFTERCOOLER A. With Standard Cooler – 60 HZ B. With Seacoast Cooler – 60 HZ</p> <p>COLUMN 12 – COOLER ELECTRICS AIR COOLED A. 200V – 60 HZ B. 230V – 60 HZ C. 460V – 60 HZ D. 575V – 60 HZ</p> <p>COLUMN 13 – COMPRESSOR DRIVE MOTOR ODP (STD. EFF.) A. 200V – 60 HZ B. 230V – 60 HZ C. 460V – 60 HZ D. 575V – 60 HZ ODP (HI-EFF.) E. 200V – 60 HZ F. 230V – 60 HZ G. 460V – 60 HZ H. 575V – 60 HZ</p>	<p>COLUMN NUMBER:</p>	<p>WITH VIBRATION SWITCH D. Air Cooled – Wye Delta Starter E. Water Cooled – Wye Delta Starter F. Without Main Motor Starter</p> <p>* E. 100 HP – 200V – Nema 4 F. 100 HP – 230V – Nema 4 G. 100 HP – 460V – Nema 4 H. 100 HP – 575V – Nema 4</p> <p>WATER COOLED – FRESH WATER G. Without Aftercooler H. With Aftercooler I. Without Aftercooler – With Temperature Regulator J. With Aftercooler – With Temperature Regulator</p> <p>WATER COOLED J. NEMA 1 K. NEMA 4 L. Less Water Shutoff Valve</p> <p>TEFC (STD. EFF.) I. 200V – 60 HZ J. 230V – 60 HZ K. 460V – 60 HZ L. 575V – 60 HZ TEFC (HI-EFF.) M. 200V – 60 HZ N. 230V – 60 HZ O. 460V – 60 HZ P. 575V – 60 HZ Q. LESS MOTOR – 404TSC FR. – ODP ONLY R. LESS MOTOR – 405TSC FR. – TEFC ONLY</p>
---	-----------------------	--

BARE COMPRESSOR



**216SSP810-B
(Ref. Drawing)**

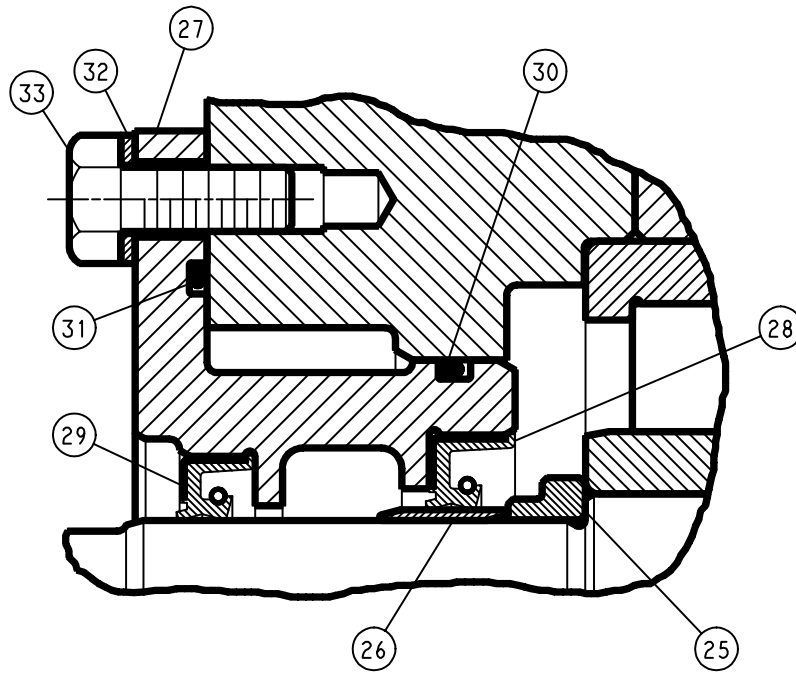
AIR END SELECTION

PSI	AIR END
100	SSPABD01
125	SSPABD01
150	SSPABD01

Order by Part Number and Description. Reference Numbers are for your convenience only.

Ref. No.	Name of Part	Qty.
1	CYLINDER	1
2	HOUSING BEARING	1
3	PIN-DOWEL	2
4	LOCKWASHER	36
5	SCREW	14
6	SCREW	2
7	SEAL	1
8	TAG-INSTRUCTION	1
9	BEARING-ROLLER	1
10	SHIM	1
11	PLATE-BEARING RETAINER	1
12	SCREW	2
13	BEARING-ROLLER	1
14	SHIM	1
15	PLATE-BEARING RETAINER	1
16	SPRING	1
17	PLATE-BEARING COVER	1
18	SCREW	18
19	BEARING-ROLLER	1
20	BEARING-ROLLER	1
21	ADAPTOR	1
22	SCREW	20
23	GUARD COUPLING	1
24	SCREW-FLANGED	4

Order by Part Number and Description. Reference Numbers are for your convenience only.

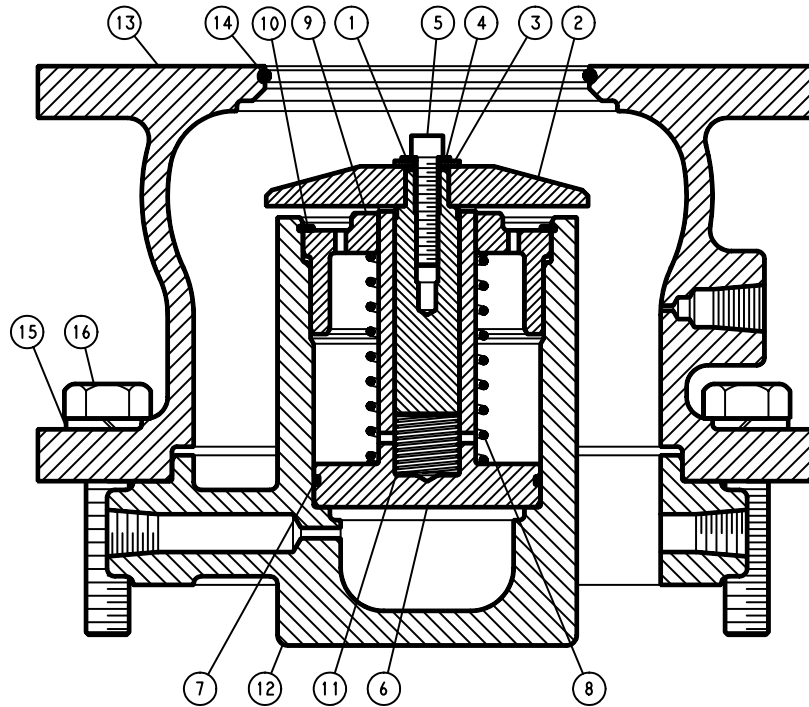


216SSP810-B
(Ref. Drawing)

OIL SEAL DETAIL

Ref. No.	Name of Part	Qty.	Part No.
25	SPACER-SHAFT	1	200SSP600
26	SLEEVE-WEAR	1	200SSP1458
27	HOUSING-SEAL	1	204SSP362
28	SEAL-OIL	1	60DD693
29	SEAL-OIL	1	60DD692
30	O-RING	1	25BC380
31	O-RING	1	8502140
32	LOCKWASHER	8	95B5
33	SCREW	8	655EE050

Order by Part Number and Description. Reference Numbers are for your convenience only.

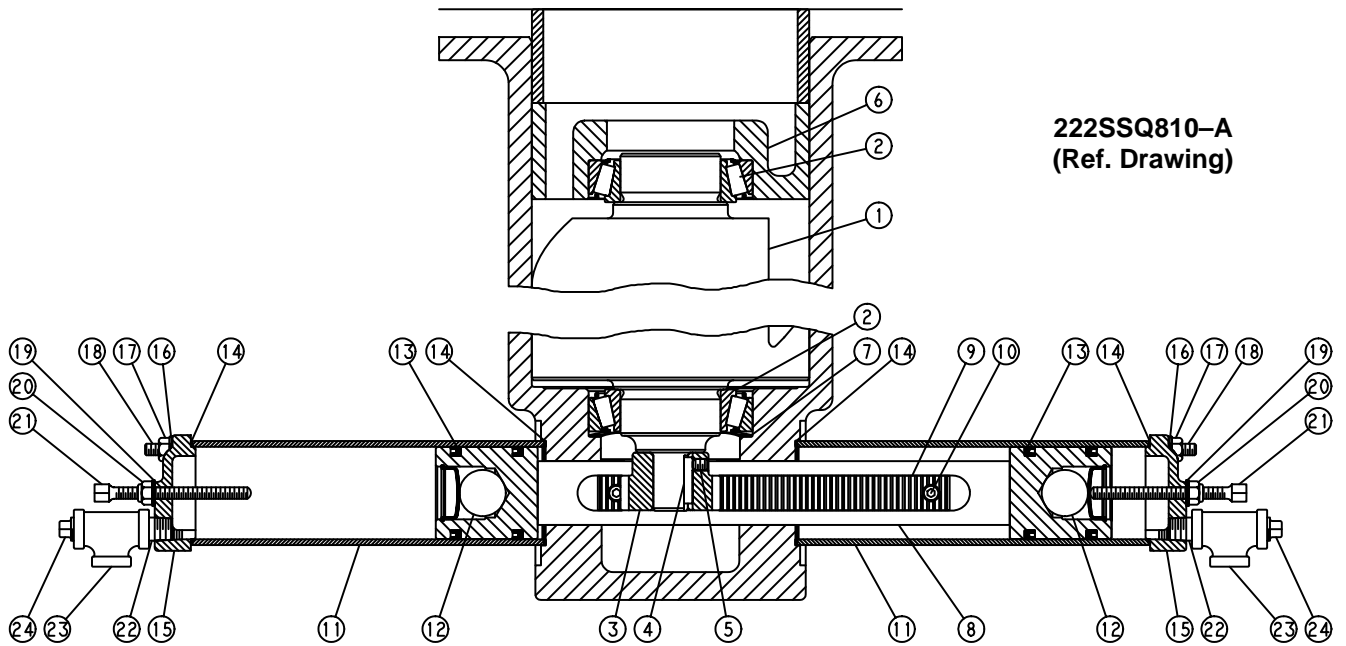


208SSM810-C
(Ref. Drawing)

INLET VALVE

Ref. No.	Name of Part	Qty.	Part No.
1	GUIDE-VALVE	1	200SSM483
2	VALVE-INLET	1	200SSM044
3	WASHER	1	95A1
4	LOCKWASHER	1	95H56
5	SCREW	1	655EC05N
6	PISTON-INLET VALVE	1	201SSM043
7	O-RING	1	25BC447
8	SPRING	1	78G19
9	RETAINER	1	200SSM205
10	RING-RETAINING	1	74D88
11	SPRING	1	78W63
12	HOUSING-INLET	1	205SSM041
13	SEAT	1	203SSM256
14	O-RING	1	25AM29
15	LOCKWASHER	8	95B5
16	SCREW	8	655ED100

Order by Part Number and Description. Reference Numbers are for your convenience only.

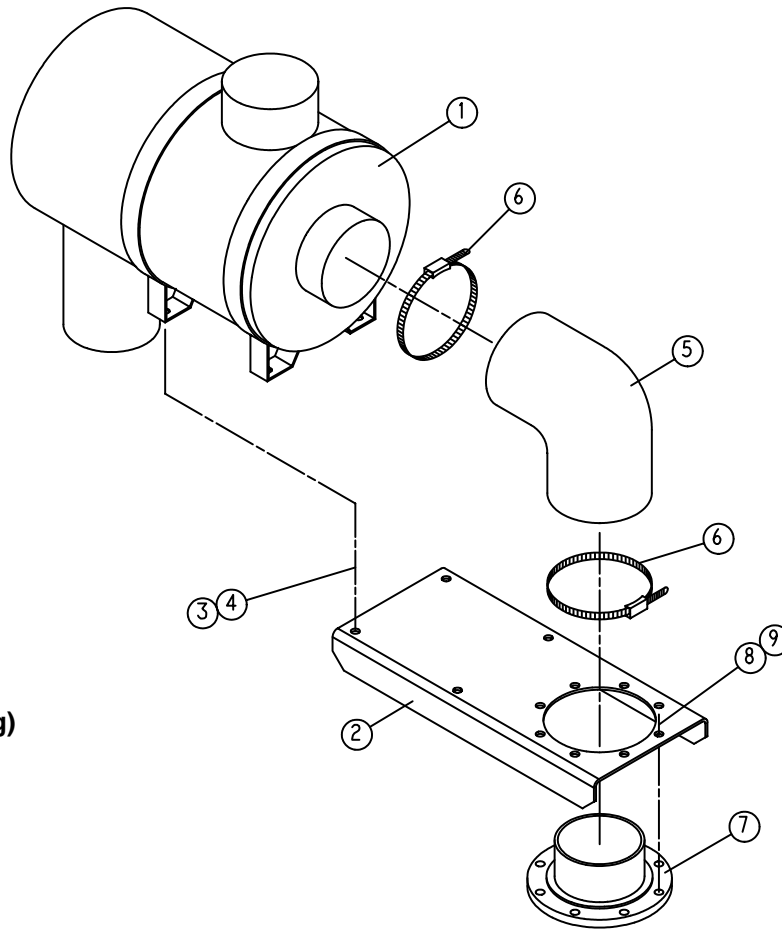


TURN VALVE

Ref. No.	Name of Part	Qty.	Part No.
1	VALVE	1	202SSQ238
2	BEARING-ROLLER	2	12BA51
3	GEAR-AUXILIARY	1	200SSU031
4	KEY-SQUARE	1	35C114
5	SETSCREW	1	76G21N
6	HOUSING-BEARING	1	215SSQ006
7	SPRING	1	78W50
8	SHAFT-CONTROL	1	200SSU081
9	RACK	1	200SSU360
10	SCREW	2	75P11N
11	CYLINDER-CONTROL	2	200SSU082
12	PISTON CONTROL ASSEMBLY	2	SSU80565
13	PACKING-RING	4	60AM46
14	GASKET	4	25BC138N
15	HEAD-CYLINDER CONTROL	2	200RPA083
18	STUD	8	79AL5
19	SEAL-FASTENER	2	60DD65
20	NUT	2	50AW24
21	SET SCREW	2	76D226
22	NIPPLE	2	63D1G
23	TEE-PIPE	2	64G3G
24	PLUG	2	64AA5
25	NUT	8	50AW24

Order by Part Number and Description. Reference Numbers are for your convenience only.

289ECM810
(Ref. Drawing)

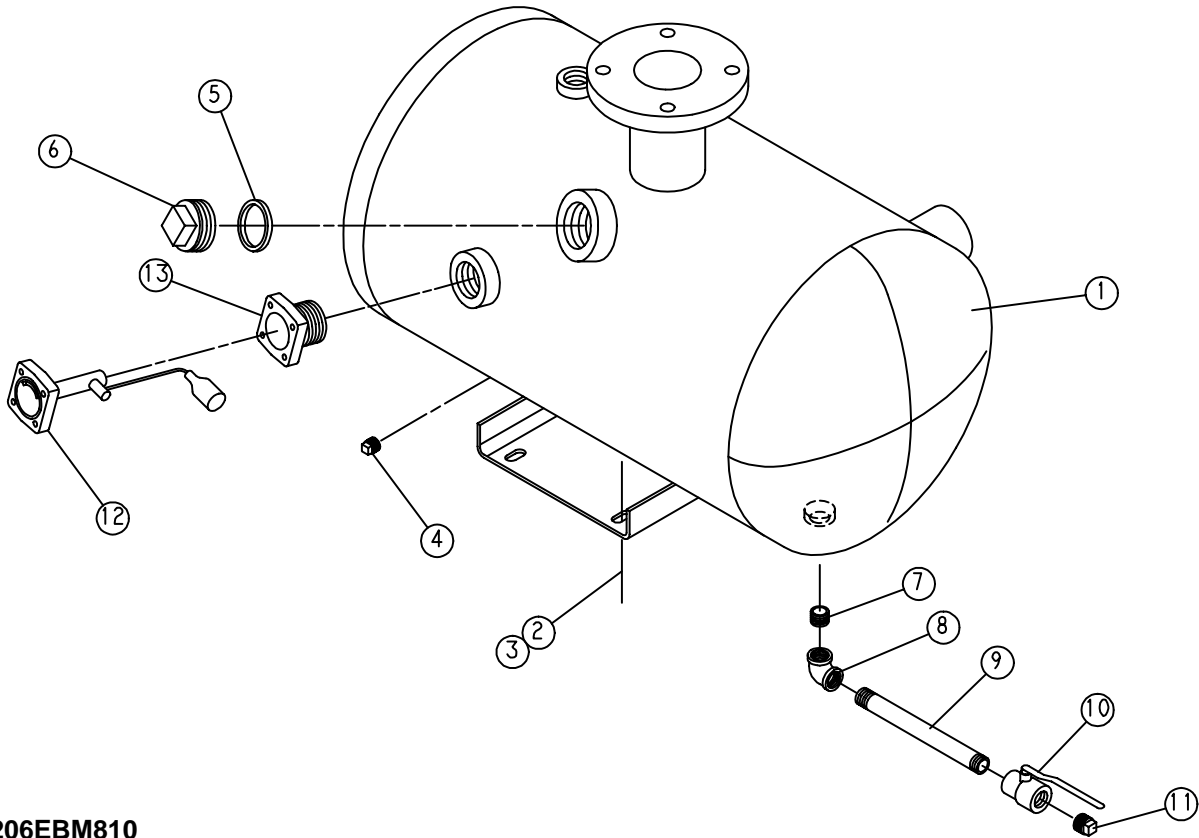


AIR FILTER GROUP

Ref. No.	Name of Part	Qty.	Part No.
1	FILTER-AIR	1	5L263
2	BRACKET-FILTER	1	202ECM389
3	SCREW-FLANGED	4	75LM51
4	NUT-FLANGED	4	50AW5
5	HOSE MOLDED	1	2009503
6	CLAMP	2	2009644
7	ADAPTOR-FILTER	1	201SSM070
8	SCREW	8	655EE060
9	LOCKWASHER	8	95B5
*	GASKET-ELIMINATOR	0.50	25BC256
+	ELEMENT, AIR FILTER	1	2116713

* Not shown on drawing.

Order by Part Number and Description. Reference Numbers are for your convenience only.

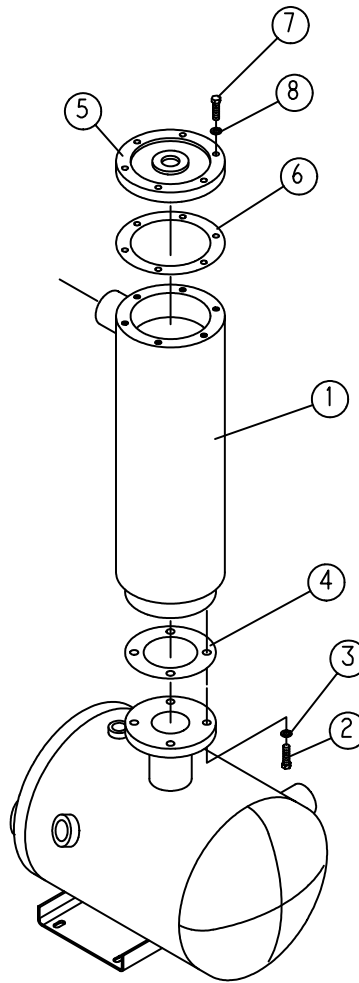


206EBM810
(Ref. Drawing)

OIL RESERVOIR GROUP

Ref. No.	Name of Part	Qty.	Part No.
1	RESERVOIR	1	200EBM037
2	SCREW-FLANGED	4	75LM135
3	NUT-FLANGED	4	50AW35
4	PLUG	1	64AA5
5	O-RING	1	54C214
6	COVER-FILLER	1	200SPF156
7	NIPPLE	1	63F1G
8	ELBOW	1	64C4G
9	NIPPLE	1	63F13G
10	VALVE-BALL	1	90AR360
11	PLUG	1	64AA7
12	GAUGE-FLOAT	1	202ECM303
13	ADAPTOR-GAUGE	1	200EDE058

Order by Part Number and Description. Reference Numbers are for your convenience only.

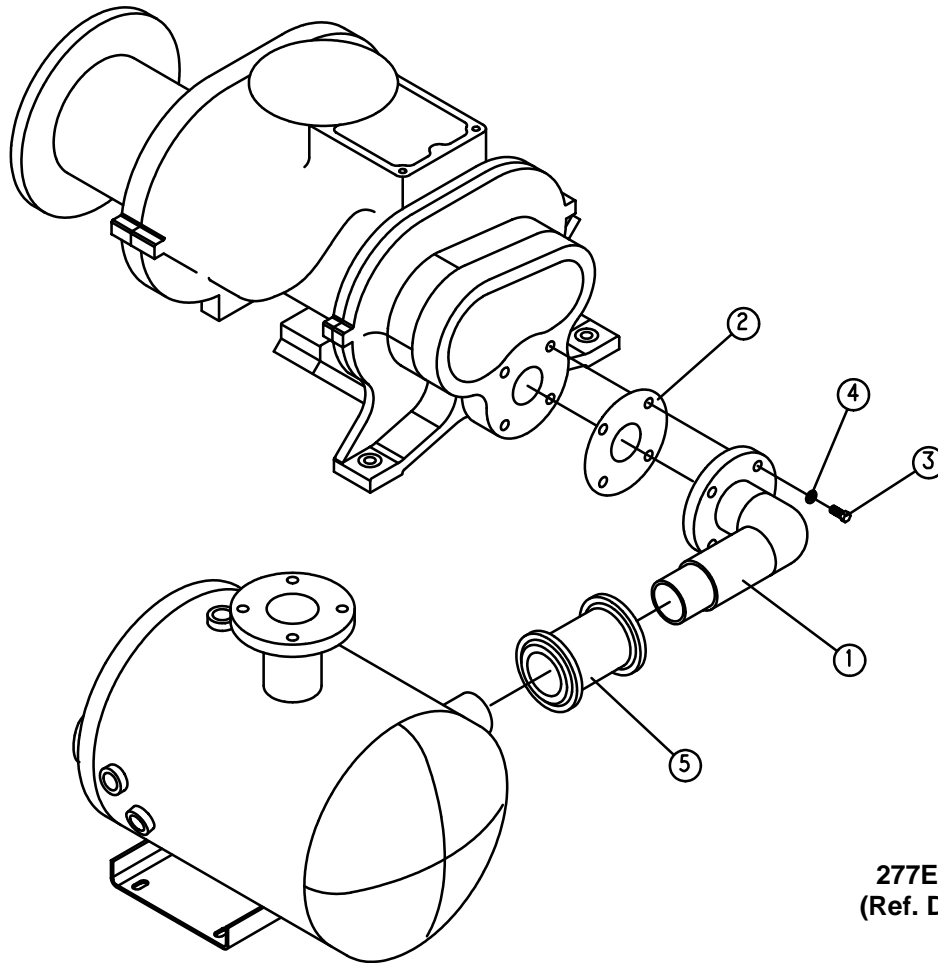


274ECM810-A
(Ref. Drawing)

SEPARATOR HOUSING GROUP

Ref. No.	Name of Part	Qty.	Part No.
1	HOUSING	1	200ECM405
2	SCREW	4	655EF070
3	LOCKWASHER	4	95B7
4	GASKET	1	25C802
5	COVER	1	203ECM225
6	GASKET	1	25C1788N
7	SCREW	6	655EE070
8	LOCKWASHER	6	95B5

Order by Part Number and Description. Reference Numbers are for your convenience only.

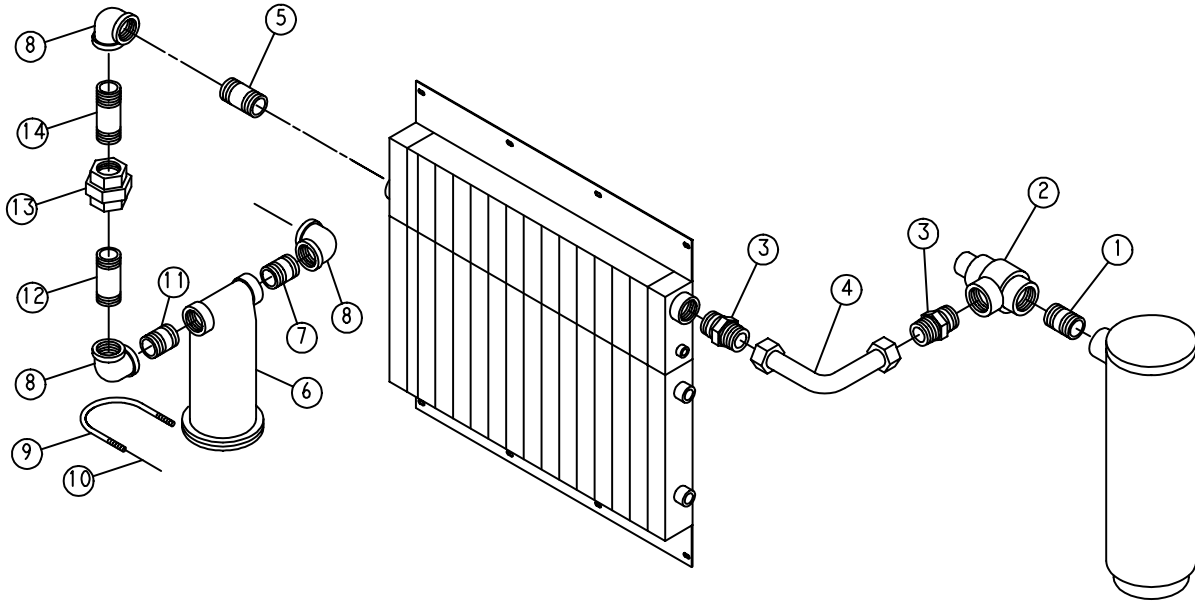


DISCHARGE PIPING

Ref. No.	Name of Part	Qty.	Part No.
1	MANIFOLD	1	201ECM286
2	GASKET-RING	1	25C1230N
3	SCREW	4	655EF070
4	LOCKWASHER	4	95B7
5	FLEXIBLE COUPLING	1	64EB802
*	GASKET, FLEXIBLE COUPLING (For Repair)	2	2117160

* Not shown on drawing.

Order by Part Number and Description. Reference Numbers are for your convenience only.

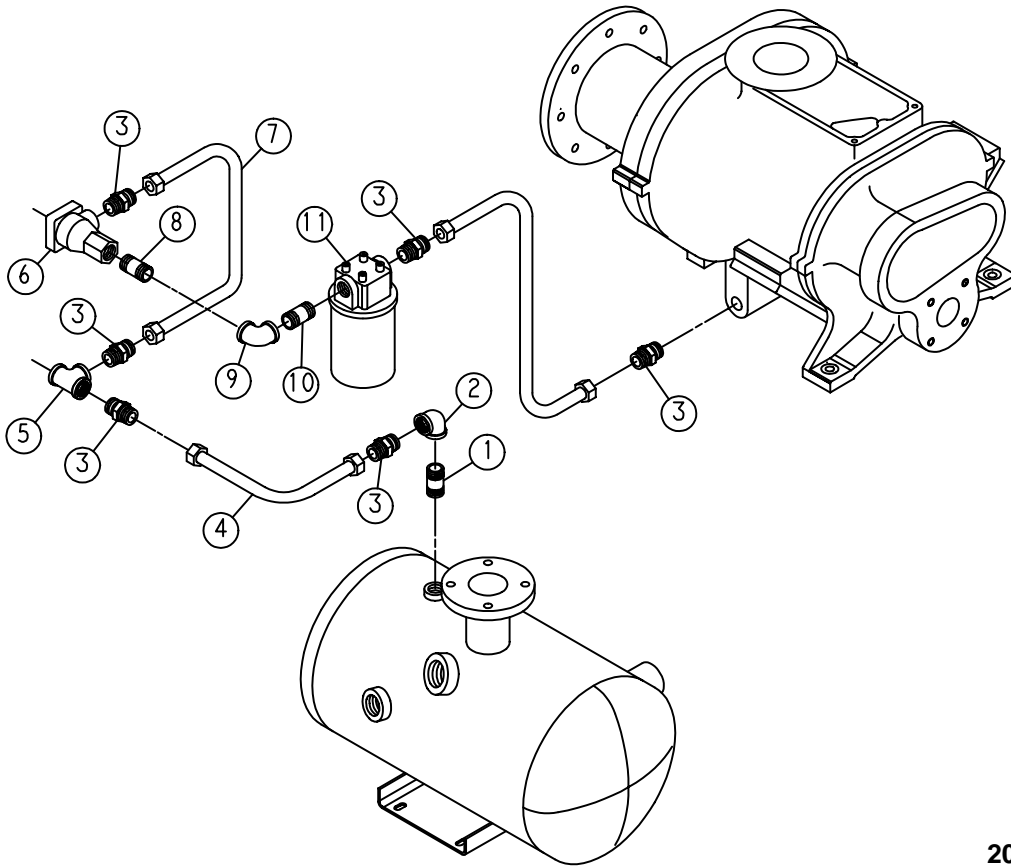


211EBM810
(Ref. Drawing)

AIR DISCHARGE PIPING

Ref. No.	Name of Part	Qty.	Part No.
1	NIPPLE	1	63L9G
2	VALVE-MINIMUM PRESSURE	1	200EBM527
3	CONNECTOR-TUBE	4	86H142
4	TUBE WITH FITTINGS	1	204EBM863
5	TUBE WITH FITTINGS	1	203EBM863
6	TRAP	1	83C84
7	NIPPLE	1	63L1G
8	ELBOW	1	64C9G
9	U-BOLT	1	15U64
10	NUT-FLANGED	2	50AW5

Order by Part Number and Description. Reference Numbers are for your convenience only.

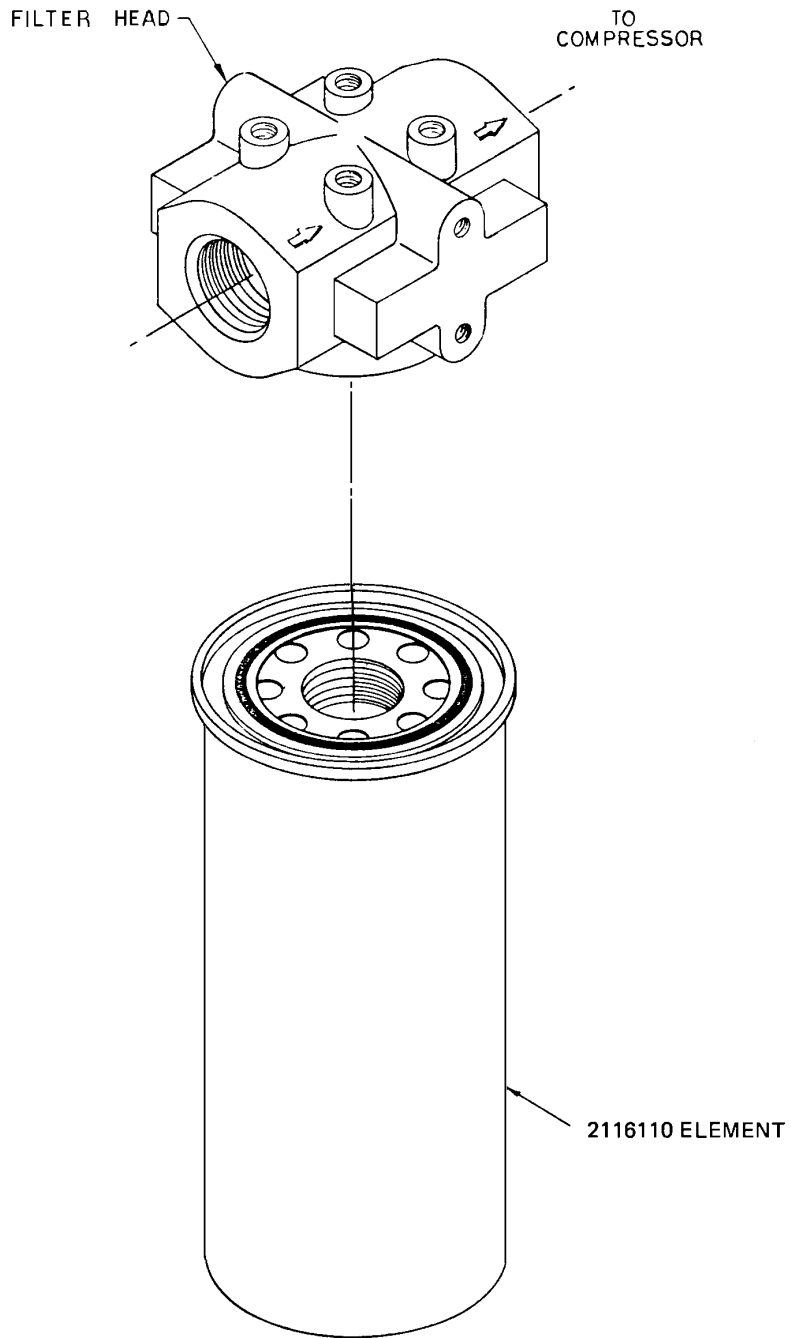


207EBM810
(Ref. Drawing)

OIL PIPING GROUP

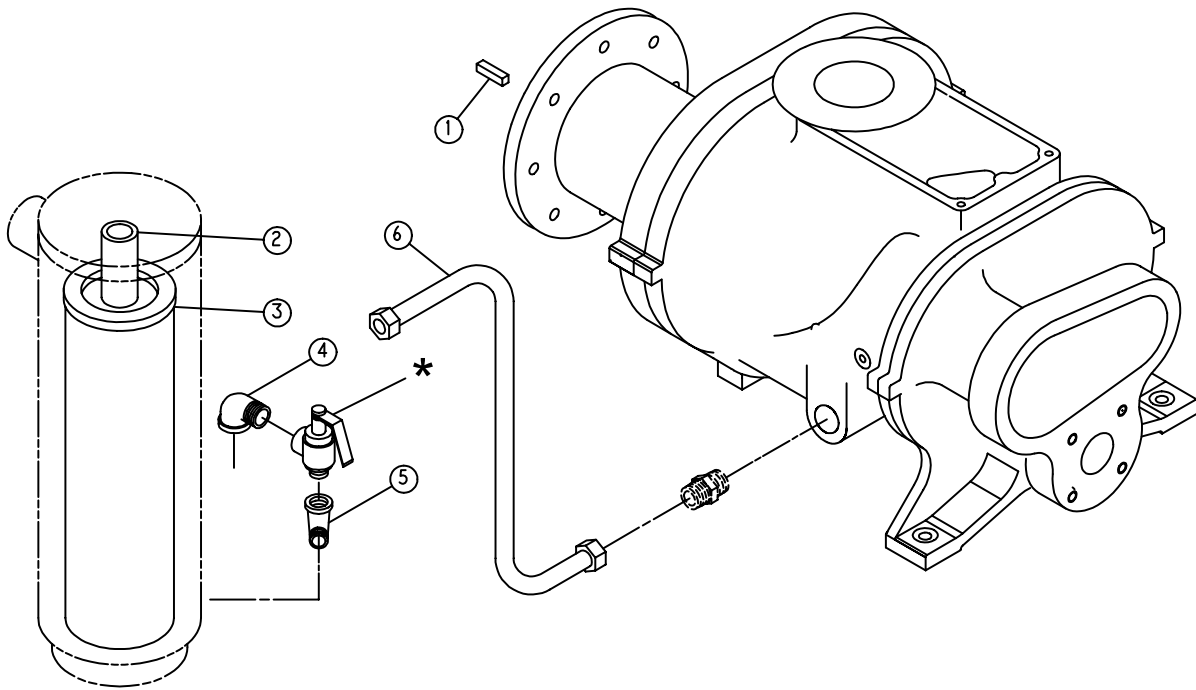
Ref. No.	Name of Part	Qty.	Part No.
1	NIPPLE	1	63H2G
2	ELBOW	1	64C6G
3	CONNECTOR-TUBE	6	86H138
4	TUBE WITH FITTINGS	1	202EBM863
5	ELBOW	1	64C8G
6	VALVE-THERMAL	1	90AR954
7	TUBE WITH FITTINGS	1	201EBM863
8	NIPPLE	1	63H2G
9	ELBOW	1	64C6G
10	NIPPLE	1	63H2G
11	FILTER-OIL	1	200EBM369

OIL FILTER – 200EBM369



WITH 212ECM077 AFFIXED TO ELEMENT

Order by Part Number and Description. Reference Numbers are for your convenience only.



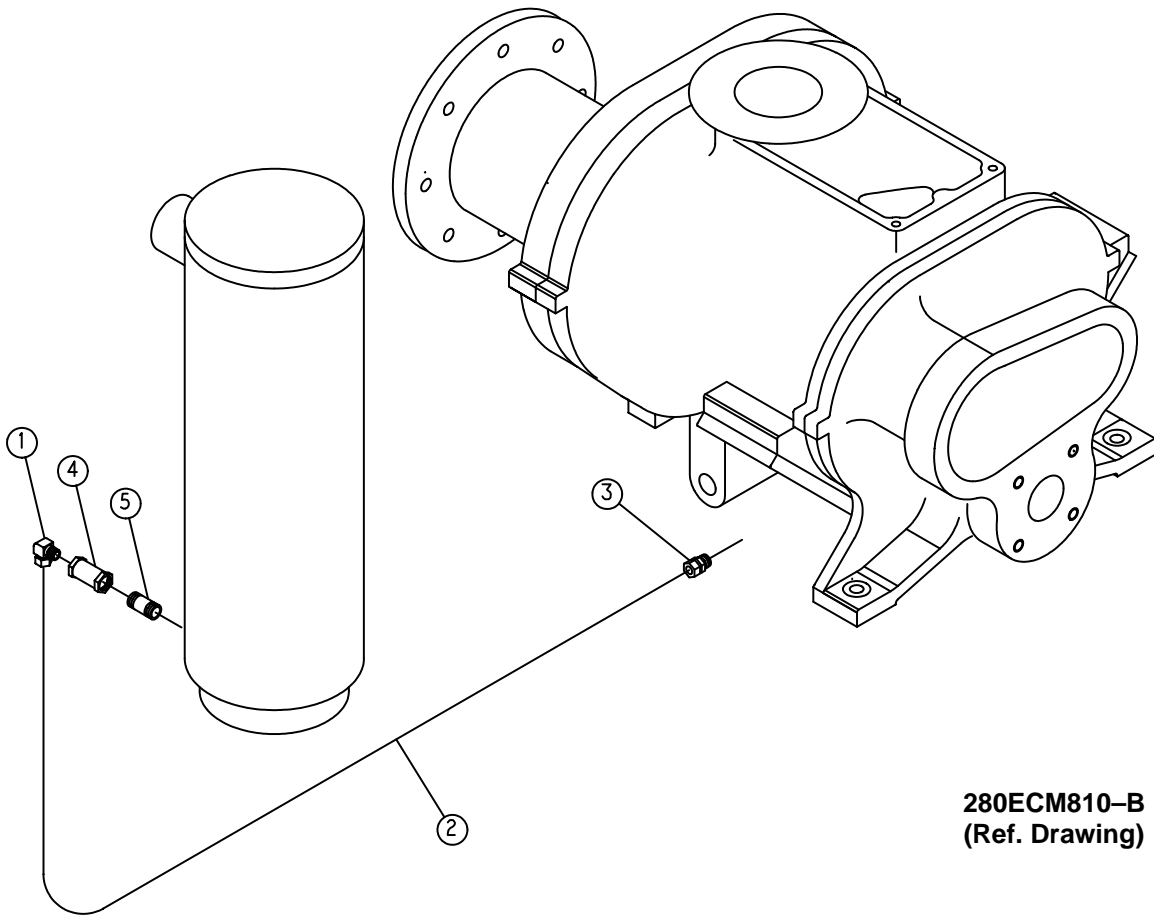
205EAP810
(Ref. Drawing)

OIL PIPING LINE

Ref. No.	Name of Part	Qty.	Part No.
1	KEY-SQUARE	1	8500109
2	SPACER (PIPE)	1	200ECM392
3 **	SEPARATOR	1	200ECM035
4	ELBOW	1	64D10G
5	ELBOW	1	64D6G
6	TUBE WITH FITTINGS	1	200EAP863
*	RELIEF VALVES		
	100 PSI UNITS	1	90AR381
	125 PSI UNITS	1	90AR382
	150 PSI UNITS	1	90AR146

** Refer to page 42, Separator Kit 208EAP6013, for parts listing.

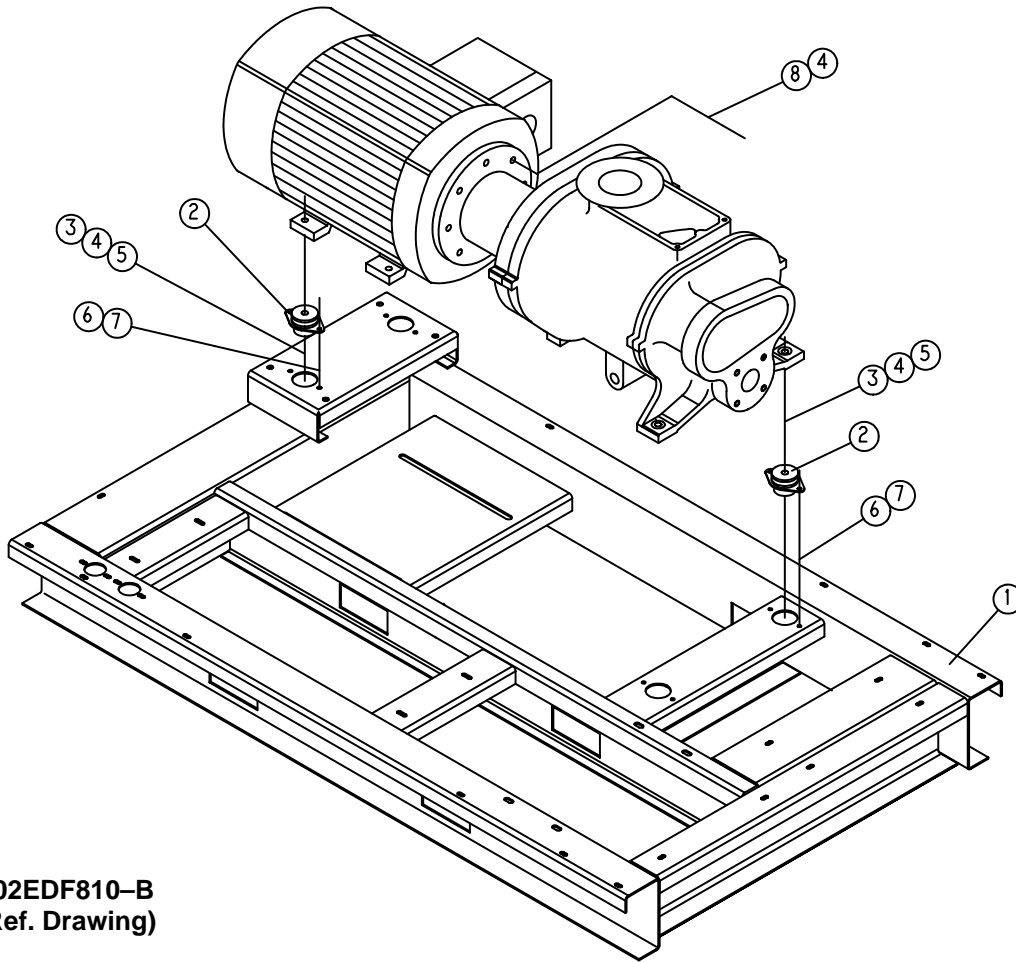
Order by Part Number and Description. Reference Numbers are for your convenience only.



OIL RETURN LINE

Ref. No.	Name of Part	Qty.	Part No.
1	ELBOW-TUBE	1	86E60
2	TUBE	5 Ft.	85K3
3	CONNECTOR-TUBE	1	86E4
4	VALVE-CHECK	1	90K173
5	NIPPLE	1	63D1G

Order by Part Number and Description. Reference Numbers are for your convenience only.

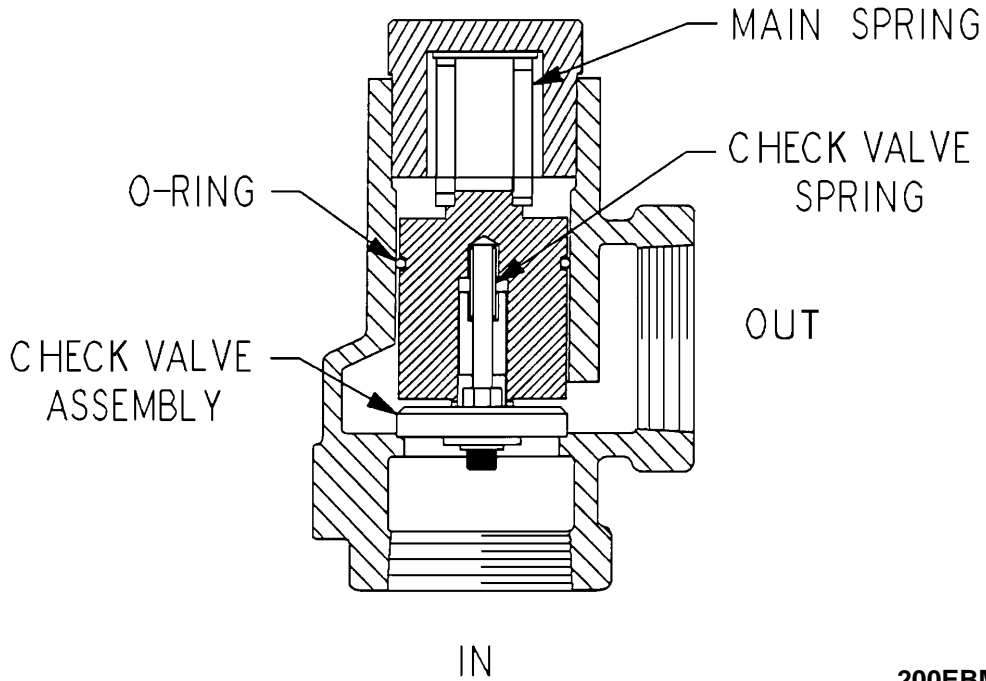


202EDF810-B
(Ref. Drawing)

COMPRESSOR BASE GROUP

Ref. No.	Name of Part	Qty.	Part No.
1	BASE	1	201EDF285
2	ISOLATOR-VIBRATION	4	49C47
3	SCREW	4	655EF200
4	LOCKWASHER	12	95B7
5	NUT	4	50B7
6	SCREW-FLANGED	8	75K48
7	NUT-FLANGED	8	50AW5
8	SCREW	8	655EF070

Order by Part Number and Description. Reference Numbers are for your convenience only.

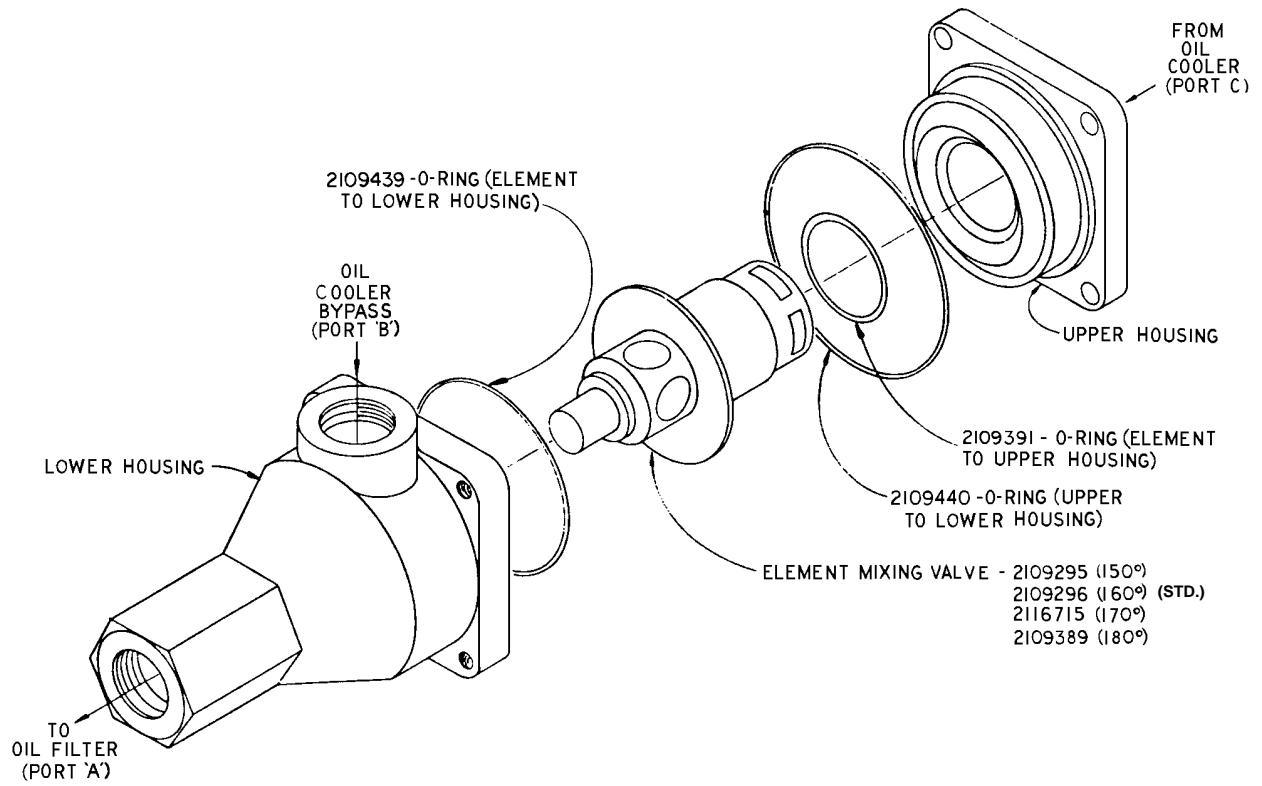


200EBM527
(Ref. Drawing)

MINIMUM PRESSURE VALVE

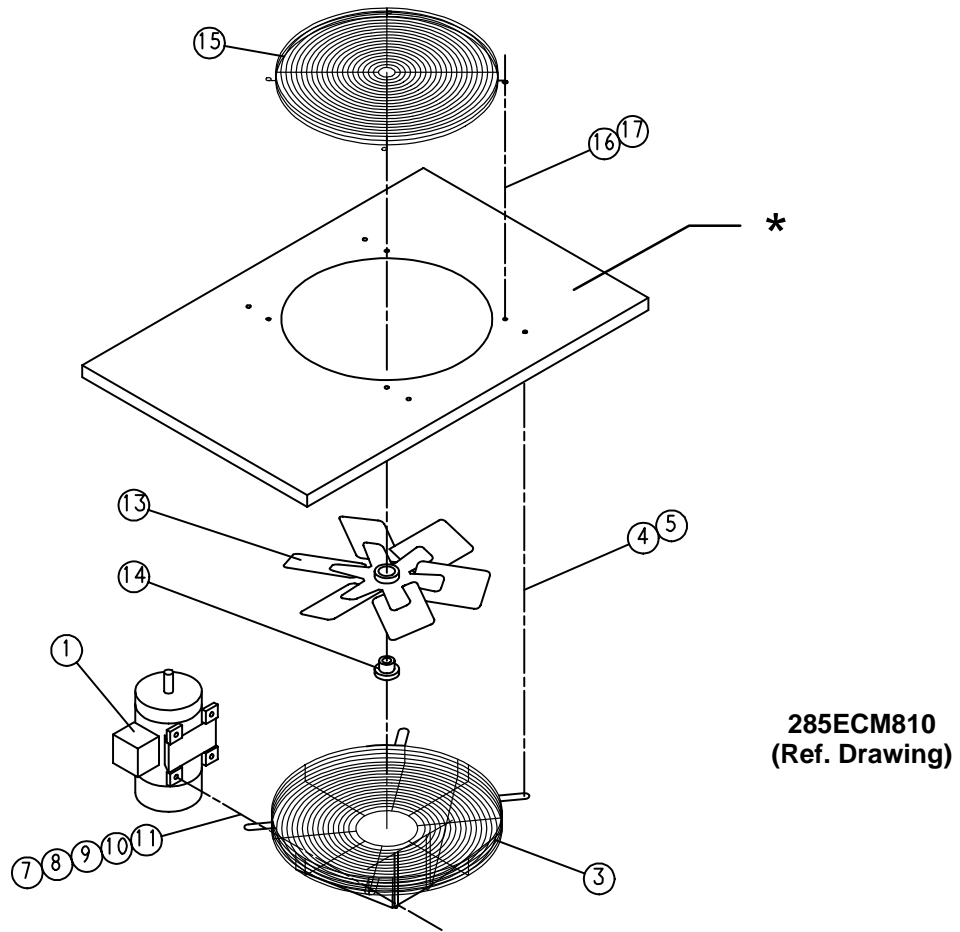
Ref. No.	Name of Part	Qty.	Part No.
	REPAIR KIT – Includes the following:	1	2116854
	O-RING	1	
	SPRING, CHECK VALVE	1	
	CHECK VALVE ASSEMBLY	1	
	SPRING, MAIN	1	

**THERMAL VALVE
(THERMOSTATIC MIXING)**



90AR167 THERMAL VALVE (ALUMINUM HOUSING)

Order by Part Number and Description. Reference Numbers are for your convenience only.

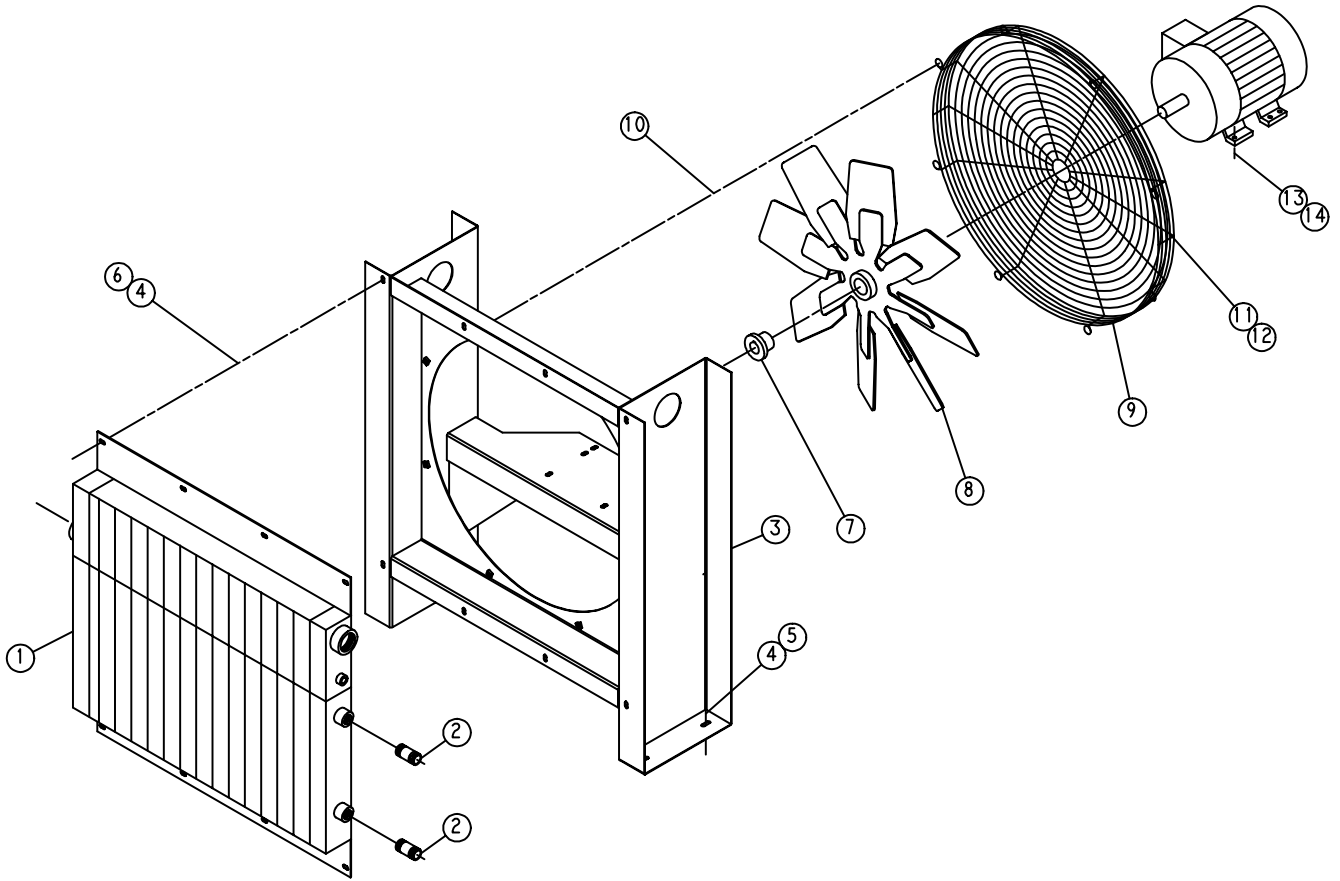


ENCLOSURE – VENT FAN ASSEMBLY (WATER COOLED ONLY)

Ref. No.	Name of Part	Qty.	Part No.
1	MOTOR	1	See Page 36
3	GUARD-FAN	1	202ECM393
4	SCREW-FLANGED	4	75K48
5	WASHER	4	95A5
7	SCREW	4	75A35
8	RETAINER	4	2014731
9	WASHER	4	95A2
10	LOCKWASHER	4	95B2
11	NUT	4	50B2
13	FAN	1	202ECM701
14	HUB BUSHING	1	22G27
15	GUARD-FAN	1	200ECM393
16	SCREW-FLANGED	4	75LM51
17	NUT-FLANGED	4	50AW5

* Refer to page 34 for Vent Fan Panel.

AIR COOLED COOLER GROUP



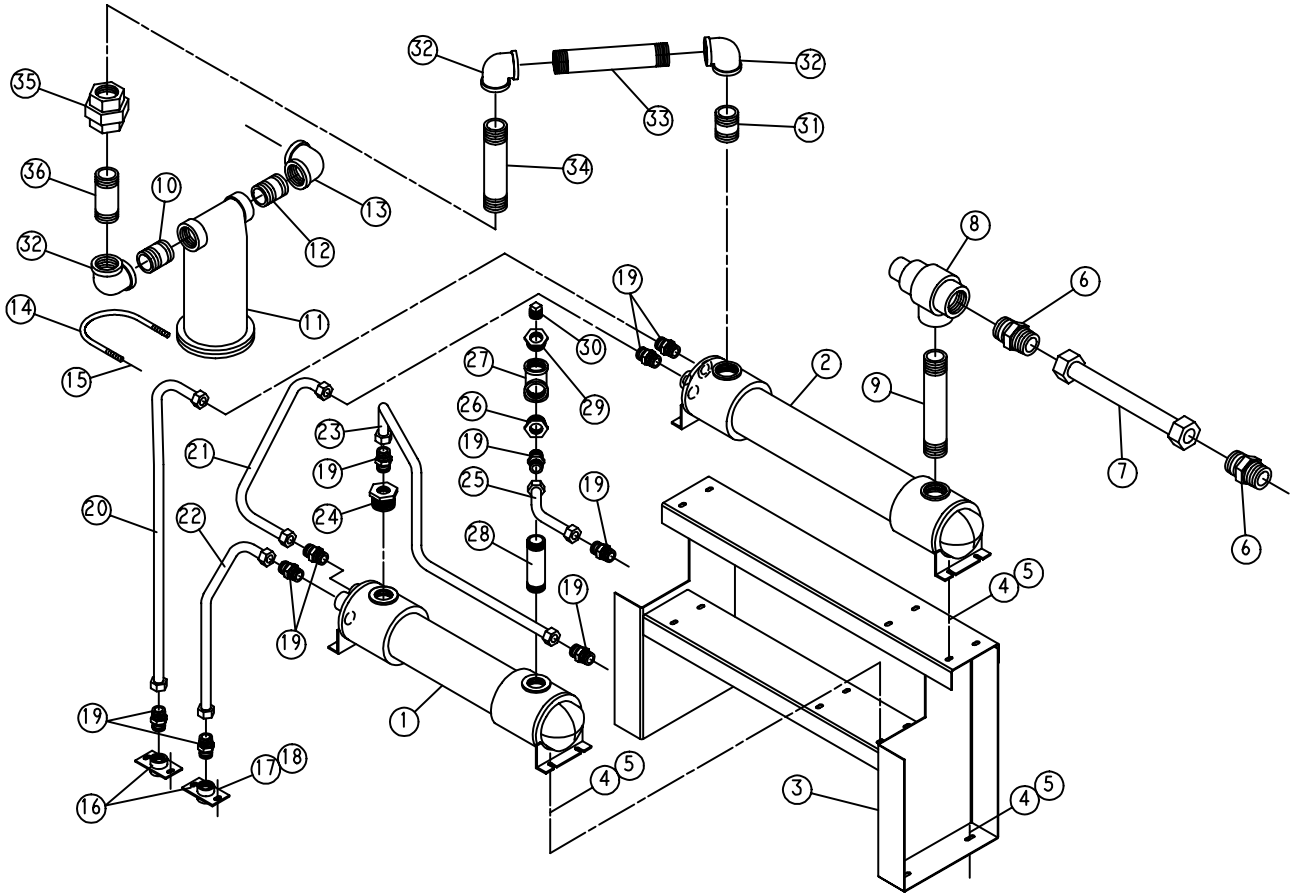
208EBM810
(Ref. Drawing)

Order by Part Number and Description. Reference Numbers are for your convenience only.

AIR COOLED COOLER GROUP

Ref. No.	Name of Part	Qty.	Part No.
1	COOLER-OIL/AIR RADIATOR	1	200EBP201
	COOLER-OIL/AIR RADIATOR SEACOAST (OPTIONAL)	1	201EBP201
2	NIPPLE	2	63H4G
3	SUPPORT	1	200EBM165
4	SCREW-FLANGED	12	75LM51
5	NUT-FLANGED	4	50AW5
6	WASHER	8	95A3
7	BUSHING-HUB	1	22G2
8	FAN	1	201ECM701
9	GUARD-FAN	1	200EBM393
10	SCREW-FLANGED	8	75LM51
11	SCREW-FLANGED	4	75LM50
12	NUT-FLANGED	4	50AW4
13	SCREW-FLANGED	4	75K48
14	NUT-FLANGED	4	50AW5

WATER COOLED HEAT EXCHANGER – WITH AFTERCOOLER



209EBM810-A
(Ref. Drawing)

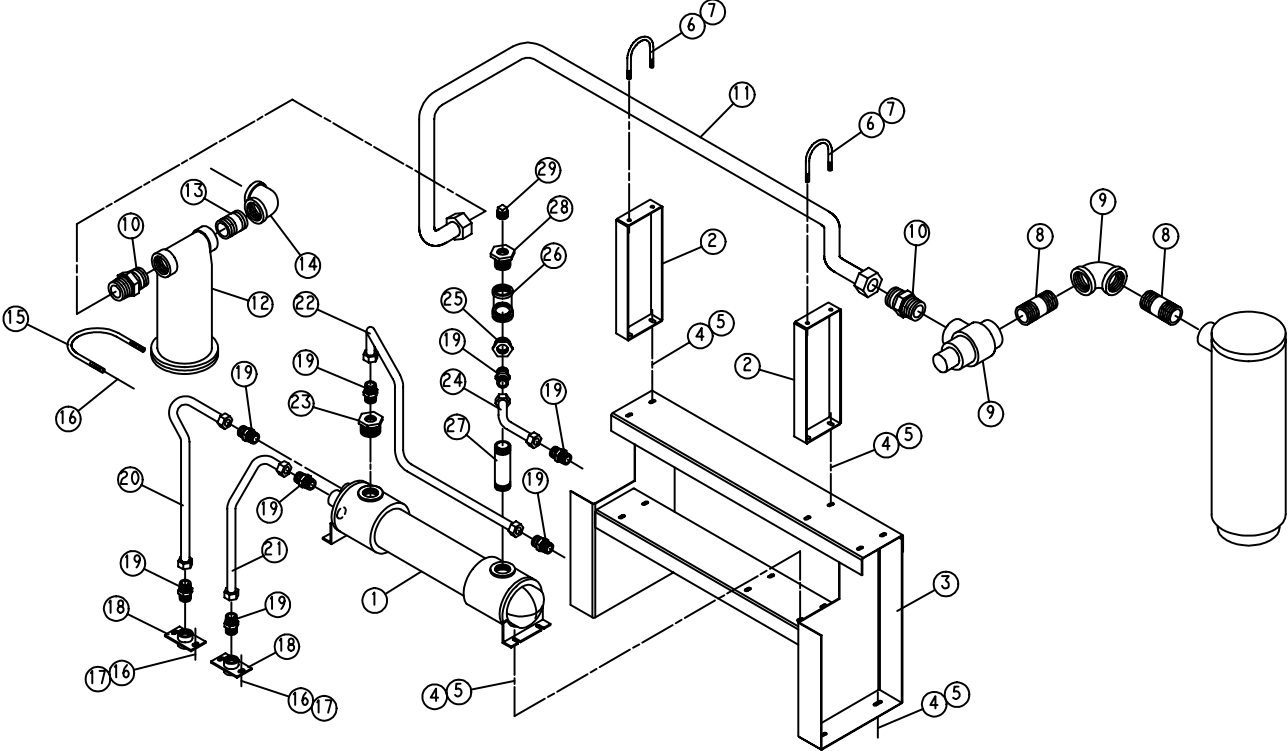
Order by Part Number and Description. Reference Numbers are for your convenience only.

WATER COOLED HEAT EXCHANGER – WITH AFTERCOOLER

Ref. No.	Name of Part	Qty.	Seacoast Option 100 HP Part No.	Fresh Water 100 HP Part No.
1	EXCHANGER-HEAT (OIL/WATER)	1	203ESM349	204ESM349
	BONNET-IN & OUT (For Repair)	1	2109060	2109060
	BONNET-RETURN (For Repair)	1	2109061	2109061
	GASKET-IN & OUT (For Repair)	1	2109058	2109058
	GASKET-RETURN (For Repair)	1	2109059	2109059
2	AFTERCOOLER	1	202ESM292	201ESM292
	BONNET-IN & OUT (For Repair)	1	2109060	2109060
	BONNET-RETURN (For Repair)	1	2109061	2109061
	GASKET-IN & OUT (For Repair)	1	2109058	2109058
	GASKET-RETURN (For Repair)	1	2109059	2109059
3	SUPPORT	1	213ECM165	213ECM165
4	SCREW-FLANGED	12	75LM51	75LM51
5	NUT-FLANGED	12	50AW5	50AW5
6	CONNECTOR-TUBE	2	86H142	86H142
7	TUBE WITH FITTINGS	1	202EBP863	202EBP863
8	VALVE-MINIMUM PRESSURE	1	200EBM527	200EBM527
9	NIPPLE	1	63L29G	63L29G
10	NIPPLE	1	63L9G	63L9G
11	TRAP	1	83C84	83C84
12	NIPPLE	1	63L9G	63L9G
13	ELBOW	1	64C9G	64C9G
14	U-BOLT	1	15U64	15U64
15	NUT-FLANGED	2	50AW5	50AW5
16	MANIFOLD-WATER	2	200ECM072	200ECM072
17	SCREW-FLANGED	4	75LM51	75LM51
18	NUT-FLANGED	4	50AW5	50AW5
19	CONNECTOR-TUBE	10	86H138	86H138
20	TUBE WITH FITTINGS	1	209EBM863	209EBM863
21	TUBE WITH FITTINGS	1	208EBM863	208EBM863
22	TUBE WITH FITTINGS	1	210EBM863	210EBM863
23	TUBE WITH FITTINGS	1	207EBM863	207EBM863
24	BUSHING-PIPE	1	64E13	64E13
25	TUBE WITH FITTINGS	1	201EBP863	201EBP863
26	BUSHING-PIPE	1	64E13	64E13
27	TEE	1	64G11G	64G11G
28	NIPPLE	1	63K6G	63K6G
29	BUSHING-PIPE	1	64E13	64E13
30	PLUG	1	64AA1	64AA1
31	NIPPLE	1	63L9G	63L9G
32	ELBOW	3	64C9G	64C9G
33	NIPPLE	1	63L34G	63L34G
34	NIPPLE	1	63L27G	63L27G
35	UNION-STRAIGHT	1	64Z2	64Z2
36	NIPPLE	1	63L20G	63L20G
*	TEMPERATURE REGULATOR	1	90AR326	90AR326
*	SOLENOID VALVE (NEMA 1)	1	90AC118	90AC118
*	SOLENOID VALVE (NEMA 4)	1	90AC103	90AC103

* Not Shown.

WATER COOLED HEAT EXCHANGER – WITHOUT AFTERCOOLER



210EBM810
(Ref. Drawing)

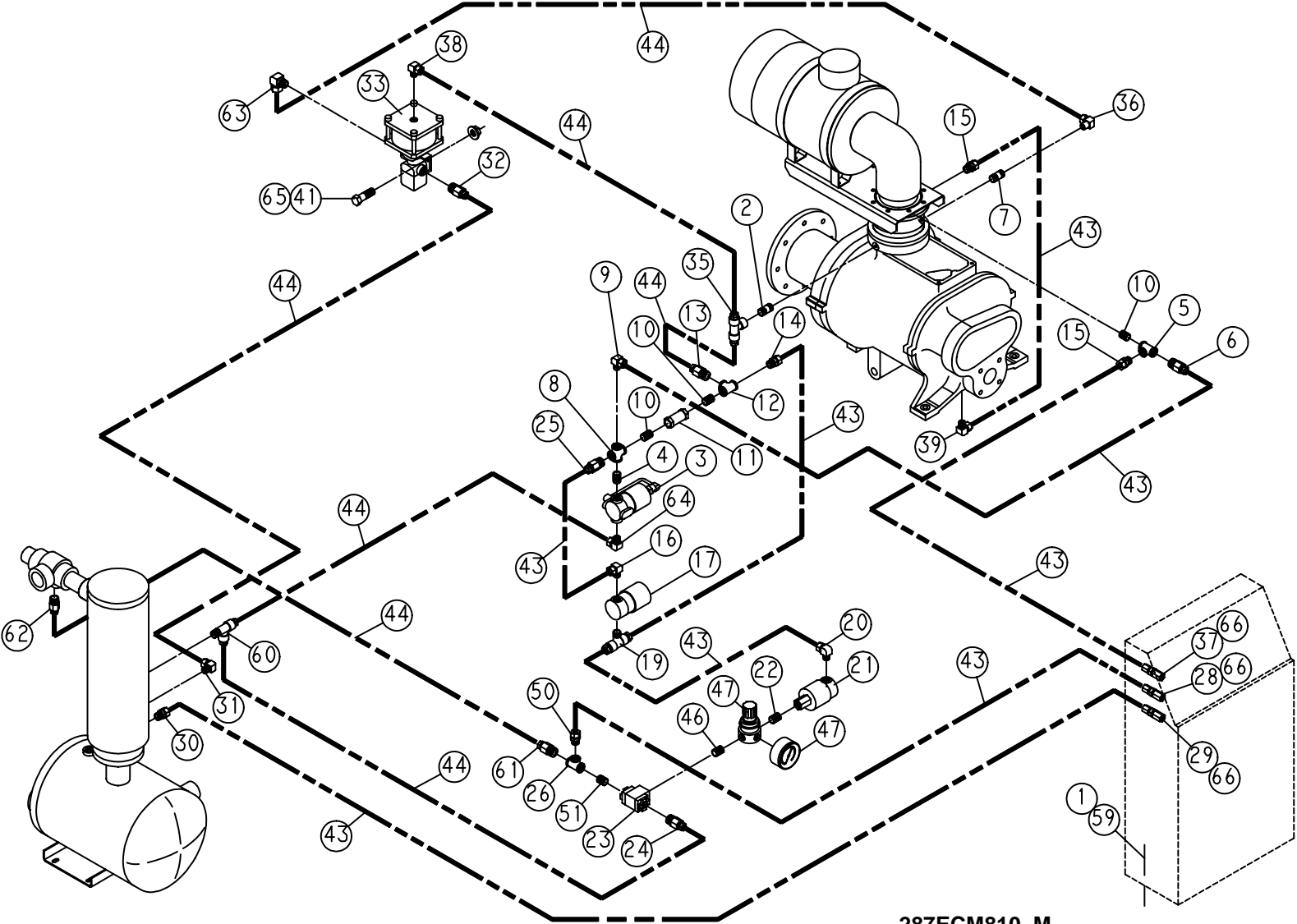
Order by Part Number and Description. Reference Numbers are for your convenience only.

WATER COOLED HEAT EXCHANGER – WITHOUT AFTERCOOLER

Ref. No.	Name of Part	Qty.	Seacoast Option 100 HP Part No.	Fresh Water 100 HP Part No.
1	EXCHANGER-HEAT (OIL/WATER)	1	203ESM349	204ESM349
	BONNET-IN & OUT (For Repair)	1	2109060	2109060
	BONNET-RETURN (For Repair)	1	2109061	2109061
	GASKET-IN & OUT (For Repair)	1	2109058	2109058
	GASKET-RETURN (For Repair)	1	2109059	2109059
2	BRACKET-PIPE	2	201ECM108	201ECM108
3	SUPPORT	1	213ECM165	213ECM165
4	SCREW-FLANGED	12	75LM51	75LM51
5	NUT-FLANGED	12	50AW5	50AW5
6	U-BOLT	2	15U101	15U101
7	NUT-FLANGED	4	50AW35	50AW35
8	NIPPLE	2	63L9G	63L9G
9	VALVE-MINIMUM PRESSURE	1	200EBM527	200EBM527
10	CONNECTOR-TUBE	2	86H142	86H142
11	TUBE WITH FITTINGS	1	213EBM863	213EBM863
12	TRAP	1	83C84	83C84
13	NIPPLE	1	63L1G	63L1G
14	ELBOW	1	64C9G	64C9G
15	U-BOLT	1	15U64	15U64
16	NUT-FLANGED	6	50AW5	50AW5
17	SCREW-FLANGED	4	75LM51	75LM51
18	MANIFOLD-WATER	2	200ECM072	200ECM072
19	CONNECTOR-TUBE	8	86H138	86H138
20	TUBE WITH FITTINGS	1	211EBM863	211EBM863
21	TUBE WITH FITTINGS	1	210EBM863	210EBM863
22	TUBE WITH FITTINGS	1	207EBM863	207EBM863
23	BUSHING-PIPE	1	64E13	64E13
24	TUBE WITH FITTINGS	1	201EBP863	201EBP863
25	BUSHING-PIPE	1	64E13	64E13
26	TEE	1	64G11G	64G11G
27	NIPPLE	1	63K6G	63K6G
28	BUSHING-PIPE	1	64E13	64E13
29	PLUG.	1	64AA1	64AA1
*	TEMPERATURE REGULATOR	1	90AR326	90AR326
*	SOLENOID VALVE (NEMA 1)	1	90AC118	90AC118
*	SOLENOID VALVE (NEMA 4)	1	90AC103	90AC103

* Not Shown.

OIL PIPING SCHEMATIC



287ECM810-M
(Ref. Drawing)

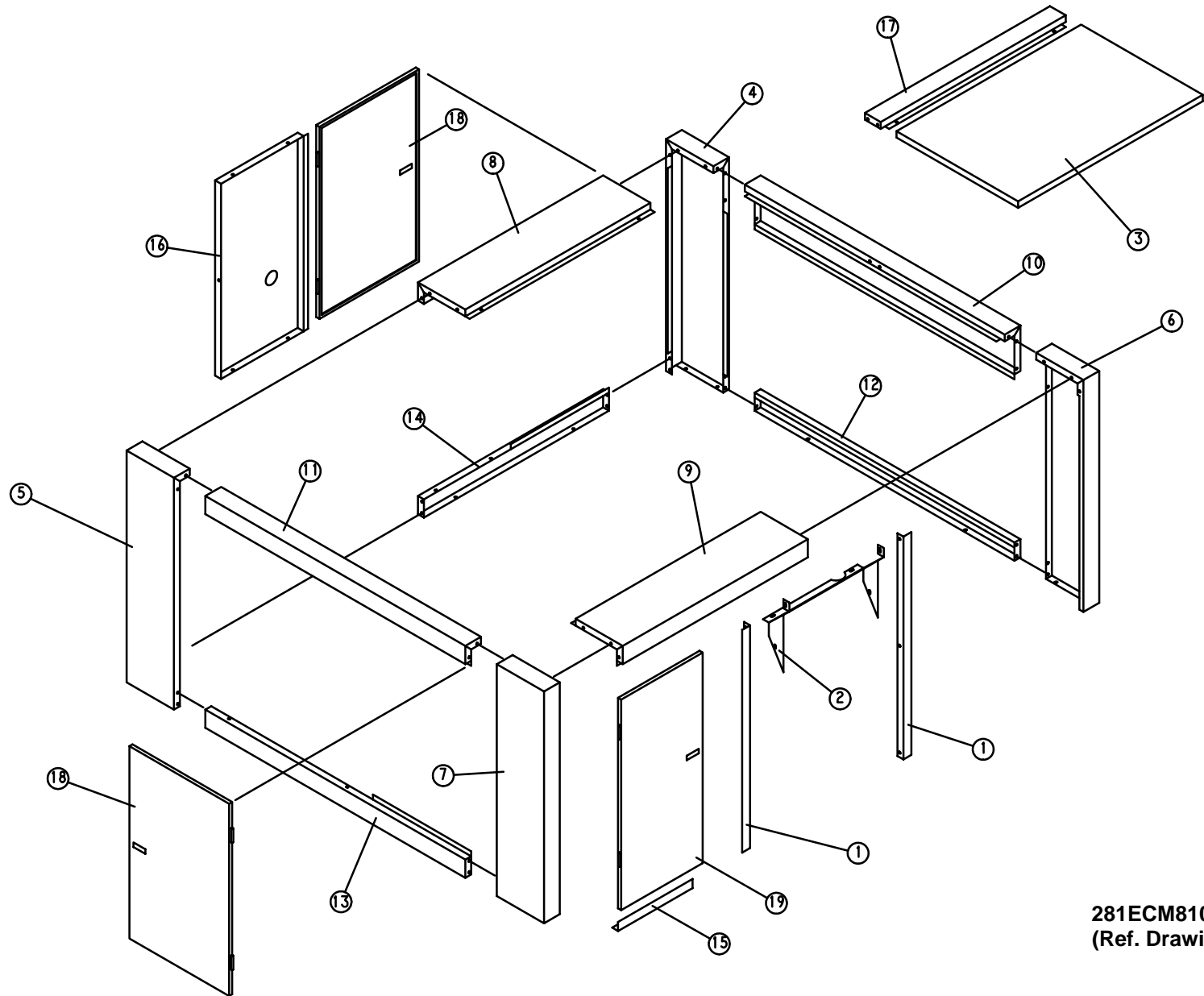
CONTROL PIPING

Ref. No.	Name of Part	Qty	Part No.	Ref. No.	Name of Part	Qty	Part No.
1	SCREW-FLANGED	4	75LM51	29	CONNECTOR-TUBE	1	86N287
2	NIPPLE	1	63D5G	30	CONNECTOR-TUBE	1	86E4
3	VALVE-SOLENOID	1	91B70	31	ELBOW	1	86E64
4	NIPPLE	1	63D1G	32	CONNECTOR-TUBE	1	86E9
5	TEE-PIPE	1	64G3G	33 *	VALVE-CONTROL	1	90AR35
6	CONNECTOR	1	86N272	35	TEE	1	86E147
7	NIPPLE	1	63D5G	36	ELBOW	1	86E82
8	CROSS	1	64K1G	37	CONNECTOR-TUBE	1	86N287
9	ELBOW	1	86E60	38	ELBOW	1	86E64
10	NIPPLE	3	63D1G	39	ELBOW	1	86E60
11	VALVE-CHECK	1	90K173	41	NUT-FLANGED	2	50AW3
12	TEE	1	64G3G	43	TUBE	28	85K3
13	CONNECTOR-TUBE	1	86E9	44	TUBE	24	85K5
14	ORIFICE	1	86N289	46	NIPPLE	1	63D1G
15	CONNECTOR-TUBE	2	86E4	47	REGULATOR	1	88H139
16	ELBOW	1	86E60		GAUGE (For Repair)	1	2116732
17	VALVE-SOLENOID	1	91B81				
18 **	BUSHING-PIPE	1	64E2G	50	CONNECTOR-TUBE	1	86E4
19	TEE	1	86E119	51	NIPPLE	1	63D1G
20	ELBOW	1	86E60	59	NUT-FLANGED	4	50AW5
21	VALVE-SOLENOID	1	91B80	60	TEE	1	86E136
22	NIPPLE	1	63D1G	61	CONNECTOR-TUBE	1	86E9
23	VALVE-CONTROL	1	90AR107	62	CONNECTOR-TUBE	1	86E9
24	CONNECTOR-TUBE	1	86E9	63	ELBOW	1	86E64
25	CONNECTOR-TUBE	1	86E4	64	ELBOW	1	86E64
26	TEE	1	64G3G	65	SCREW	2	75P4
28	CONNECTOR-TUBE	1	86N287	66	O-RING	3	165011

* For Repair Kit order Part Number 2109652, or for Repair Diaphragm only, order Part Number 2116130.

** Not show.

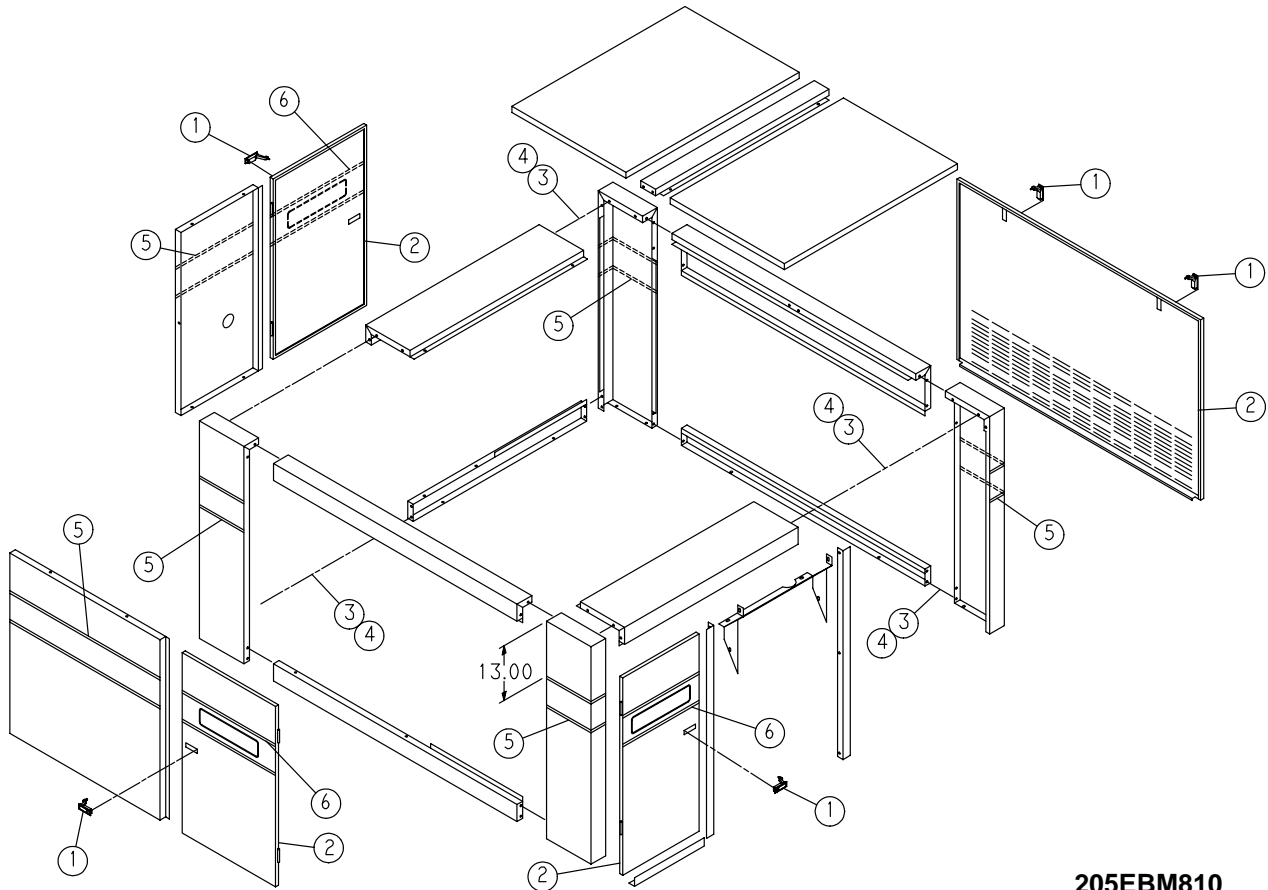
ENCLOSURE
(COMMON PARTS - AIR/WATER COOLED)



**ENCLOSURE
(COMMON PARTS – AIR/WATER COOLED)**

Ref. No.	Name of Part	Qty.	Part No.
1	BRACKET	2	215ECM142
2	BRACKET	1	216ECM142
3	PANEL	1	217ECM216
4	POST	1	208ECM313
5	POST	1	209ECM313
6	POST	1	210ECM313
7	POST	1	211ECM313
8	FRAME	1	215ECM314
9	FRAME	1	216ECM314
10	FRAME	1	217ECM314
11	FRAME	1	218ECM314
12	FRAME	1	219ECM314
13	FRAME	1	220ECM314
14	FRAME	1	221ECM314
15	FRAME	1	222ECM314
16	BRACE	1	204ECM326
17	BRACE	1	205ECM326
18	DOOR-CANOPY	2	208ECM334
19	DOOR-CANOPY	1	209ECM334

Order by Part Number and Description. Reference Numbers are for your convenience only.

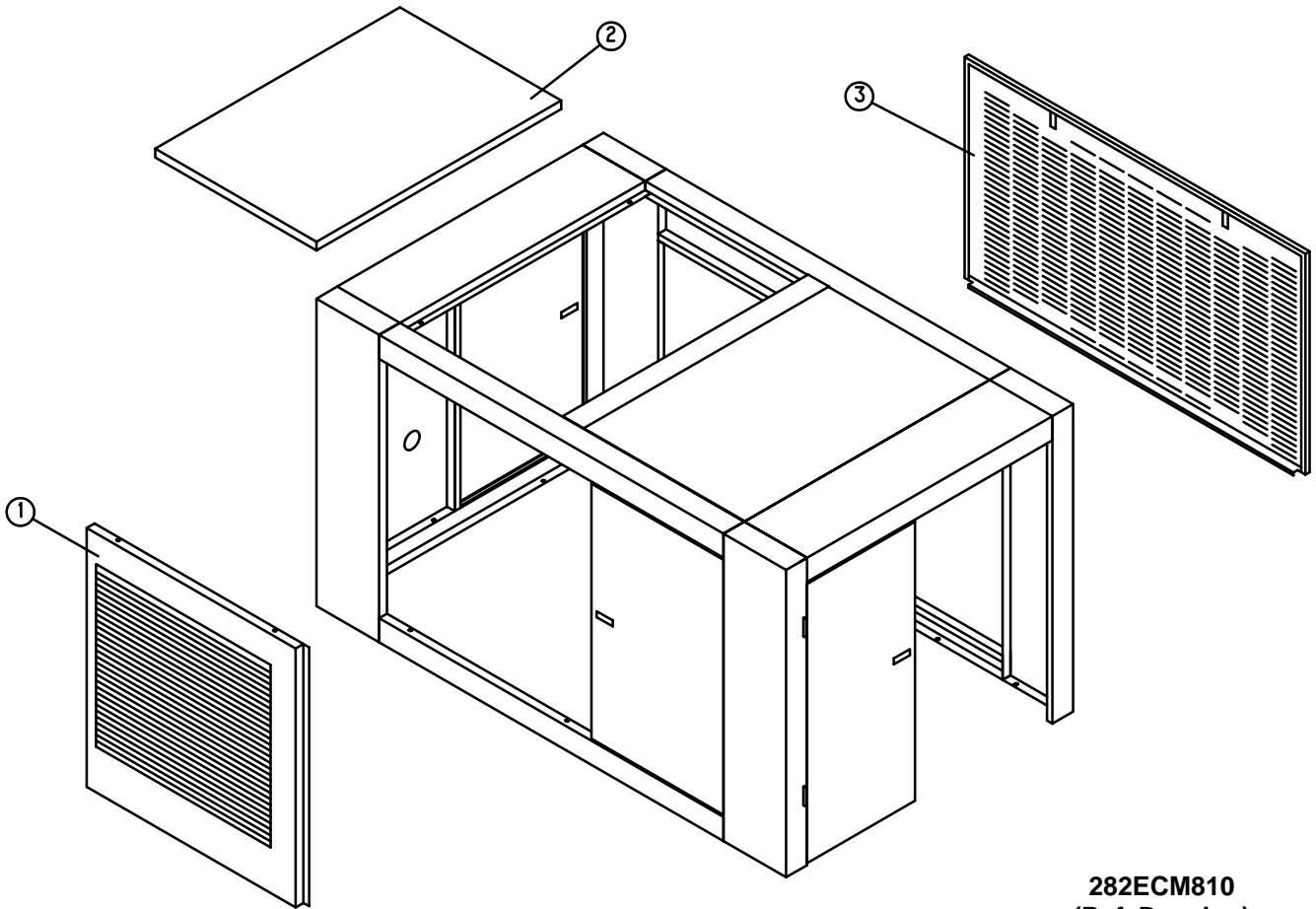


205EBM810
(Ref. Drawing)

ENCLOSURE – HARDWARE

Ref. No.	Name of Part	Qty.	Part No.
1	LATCH	5	31D58
2	SEAL	51	32E12
3	SCREW-FLANGED	86	75LM51
4	NUT-FLANGED	78	50AW5
5	DECAL	6	203ESO077
6	DECAL	3	215ECM077

Order by Part Number and Description. Reference Numbers are for your convenience only.



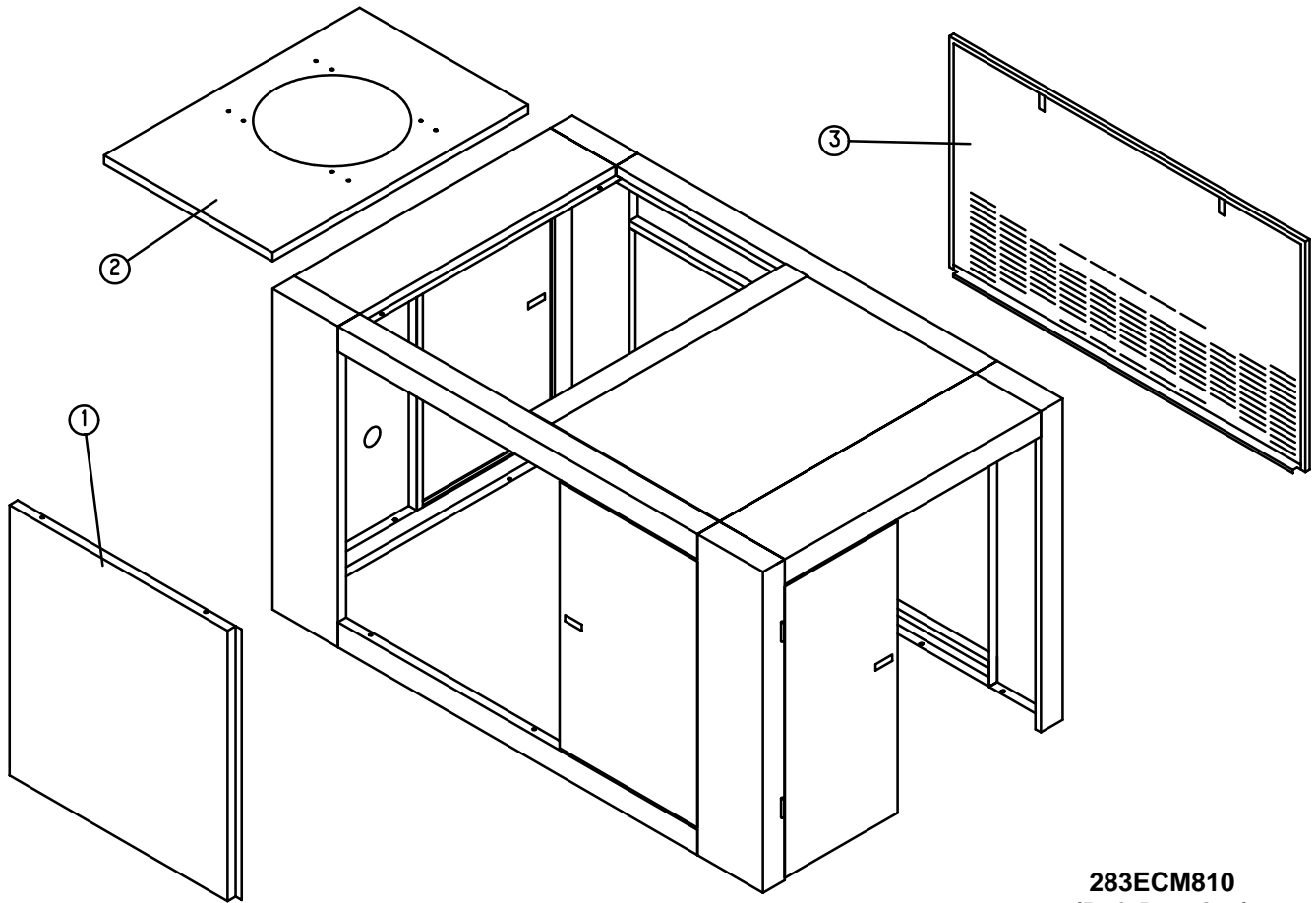
282ECM810
(Ref. Drawing)

ENCLOSURE – AIR COOLED UNITS

Ref. No.	Name of Part	Qty.	Part No.
1	PANEL	1	220ECM216
2	PANEL	1	217ECM216
3	PANEL	1	215ECM216

* Refer to pages 30 and 31 for Enclosure Parts and page 32 for Enclosure Hardware.

Order by Part Number and Description. Reference Numbers are for your convenience only.



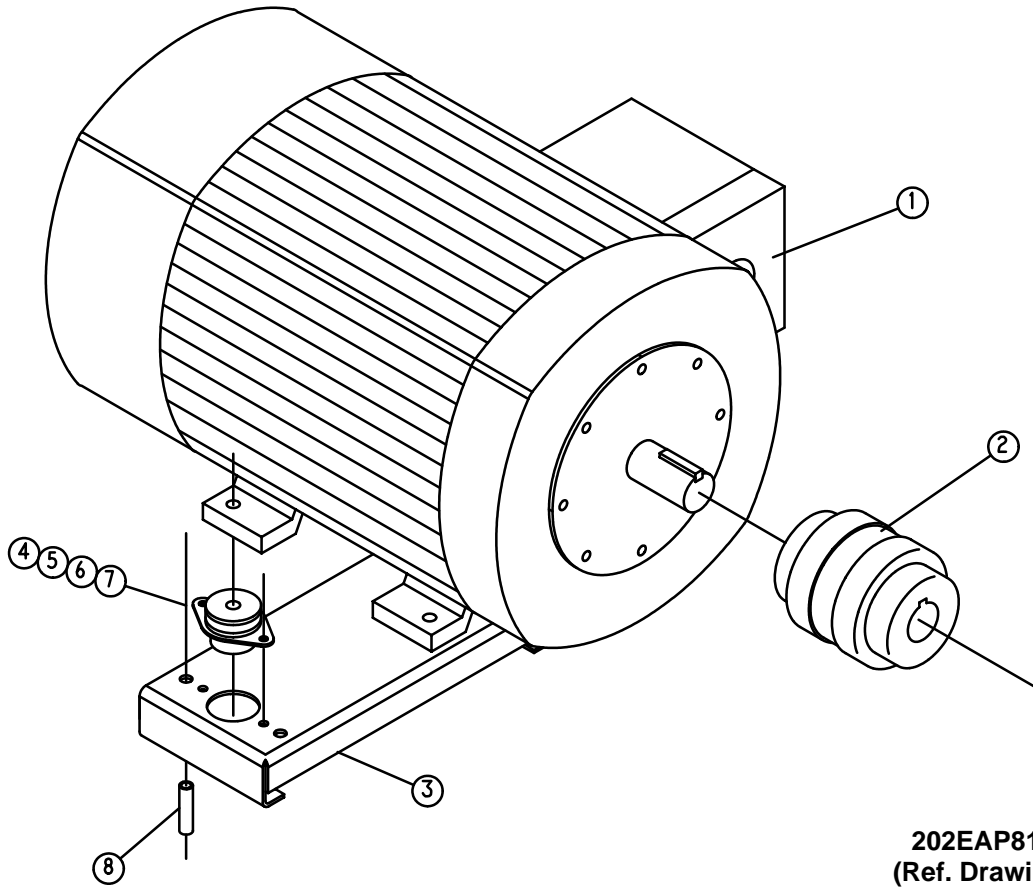
283ECM810
(Ref. Drawing)

ENCLOSURE – WATER COOLED UNITS

Ref. No.	Name of Part	Qty.	Part No.
1	PANEL	1	219ECM216
2	PANEL	1	216ECM216
3	PANEL	1	218ECM216

* Refer to pages 30 and 31 for Enclosure Parts and page 32 for Enclosure Hardware.

Order by Part Number and Description. Reference Numbers are for your convenience only.



MAIN MOTOR GROUP

Ref. No.	Name of Part	Qty.	Part No.
1	MOTOR	1	*
2	COUPLING-FLEXIBLE	1	51L10**
3	SUPPORT-MOTOR – 326 FRAME MOTOR	1	202EDF620
3	SUPPORT-MOTOR – 364 & 365 FRAME MOTOR	1	201EDF620
4	SCREW	4	655EF160
5	WASHER	4	95A7
6	LOCKWASHER	4	95B7
7	NUT	4	50B7

* SELECTIVE – SEE PAGE 36.

** DRIVE COUPLING KIT, For Repair Order (1) ECK77781(which includes (6) 2109116 CUSHIONS)

MOTOR GROUP (MAIN DRIVE MOTORS)

COLUMN CODE	NAME OF PART	100 HP PART NO.
OPEN DRIP PROOF (60 HZ – ODP)		
13A	MOTOR, 200V	24CA2960
13B	MOTOR, 230V	24CA3015
13C	MOTOR, 460V	24CA3015
13D	MOTOR, 575V	24CA2963
OPEN DRIP PROOF (60 HZ – ODP – HIGH EFFICIENCY)		
13E	MOTOR, 200V	24CA2976
13F	MOTOR, 230V	24CA3019
13G	MOTOR, 460V	24CA3019
13H	MOTOR, 575V	24CA2979
TOTALLY ENCLOSED FAN COOLED (60 HZ – TEFC)		
13I	MOTOR, 200V	24CA2992
13J	MOTOR, 230V	24CA3023
13K	MOTOR, 460V	24CA3023
13L	MOTOR, 575V	24CA2995
TOTALLY ENCLOSED FAN COOLED (60 HZ – TEFC – HIGH EFFICIENCY)		
13M	MOTOR, 200V	24CA3004
13N	MOTOR, 230V	24CA3026
13O	MOTOR, 460V	24CA3026
13P	MOTOR, 575V	24CA3007

MOTOR GROUP (FAN MOTORS)

**AIR COOLED FAN MOTOR (COOLING MODULE)
(T.E.F.C., 3 HP, 1200 RPM, 60 HZ, 1.33 S.F.)**

VOLTAGE	P/N
MOTOR, 200V	24CA4259
MOTOR, 230V	24CA4260
MOTOR, 460V	24CA4260
MOTOR, 575V	24CA4261

**WATER COOLED FAN MOTOR (ENCLOSURE VENT FAN)
(T.E.F.C., 1/4 HP, 1200 RPM, 60 HZ, 1.0 S.F.)**

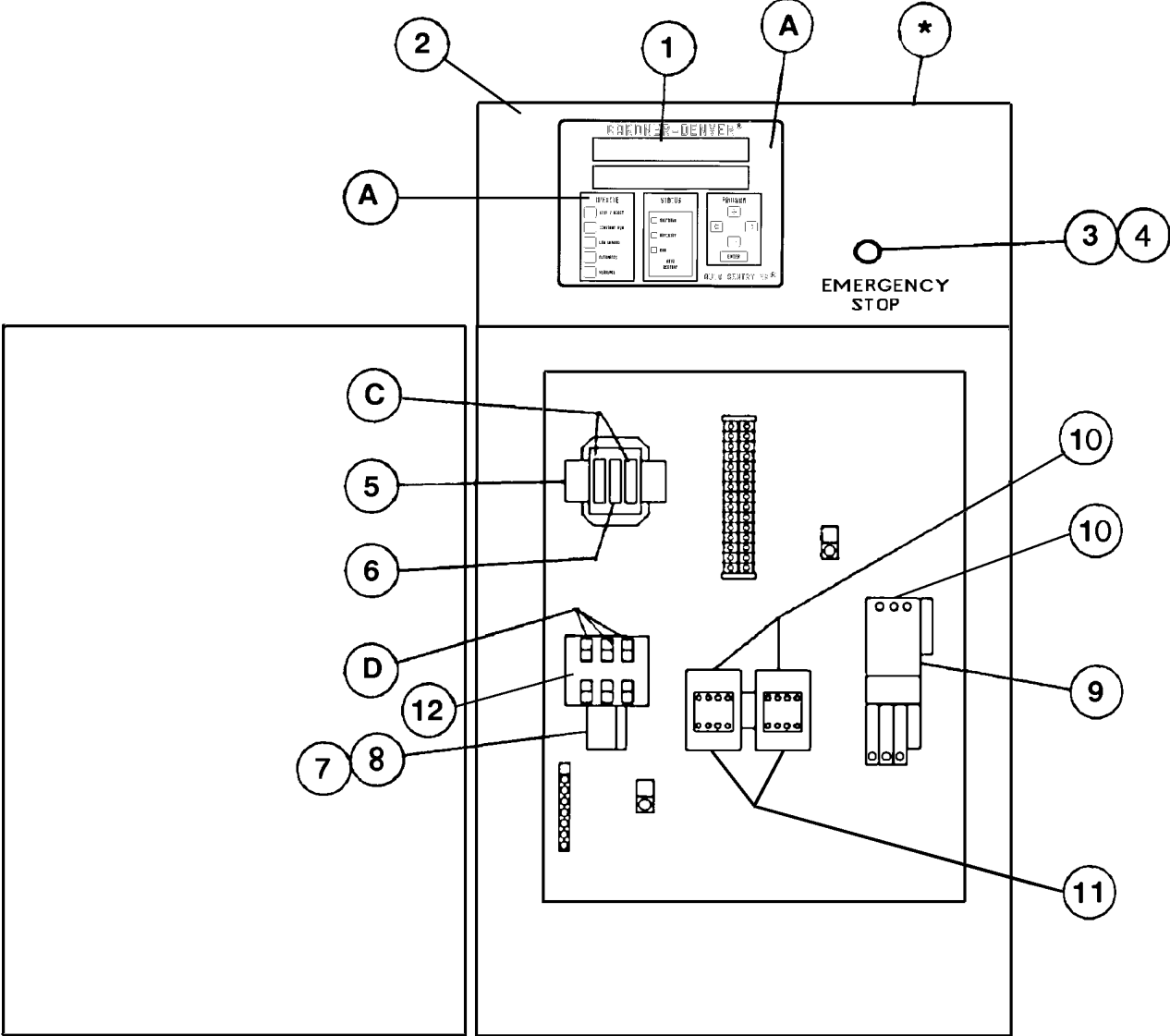
VOLTAGE	P/N
MOTOR, 200V	24CA4177
MOTOR, 230V	24CA2464
MOTOR, 460V	24CA2464
MOTOR, 575V	24CA4178

OVERLOAD RELAY HEATER CONVERSION LISTING

Refer to Motor Nameplate “Amperage” and Decal in Control Panel for Selection of Overload Relay Heater Packs.

CUTLER-HAMMER PART NUMBER	GARDNER DENVER PART NUMBER
H2002B	24CA4101
H2003B	24CA4102
H2004B	24CA4103
H2005B	24CA4104
H2006B	24CA4105
H2007B	24CA4106
H2008B	24CA4107
H2009B	24CA4108
H2010B	24CA4109
H2011B	24CA4110
H2012B	24CA4111
H2013B	24CA4112
H2014B	24CA4113
H2015B	24CA4114
H2016B	24CA4115
H2017B	24CA4116
H2018	24CA2924
H2019	24CA2925
H2020	24CA2926
H2021	24CA2927
H2022	24CA2893
H2023	24CA2894
H2024	24CA2928

CONTROLLER ASSEMBLY – WYE DELTA



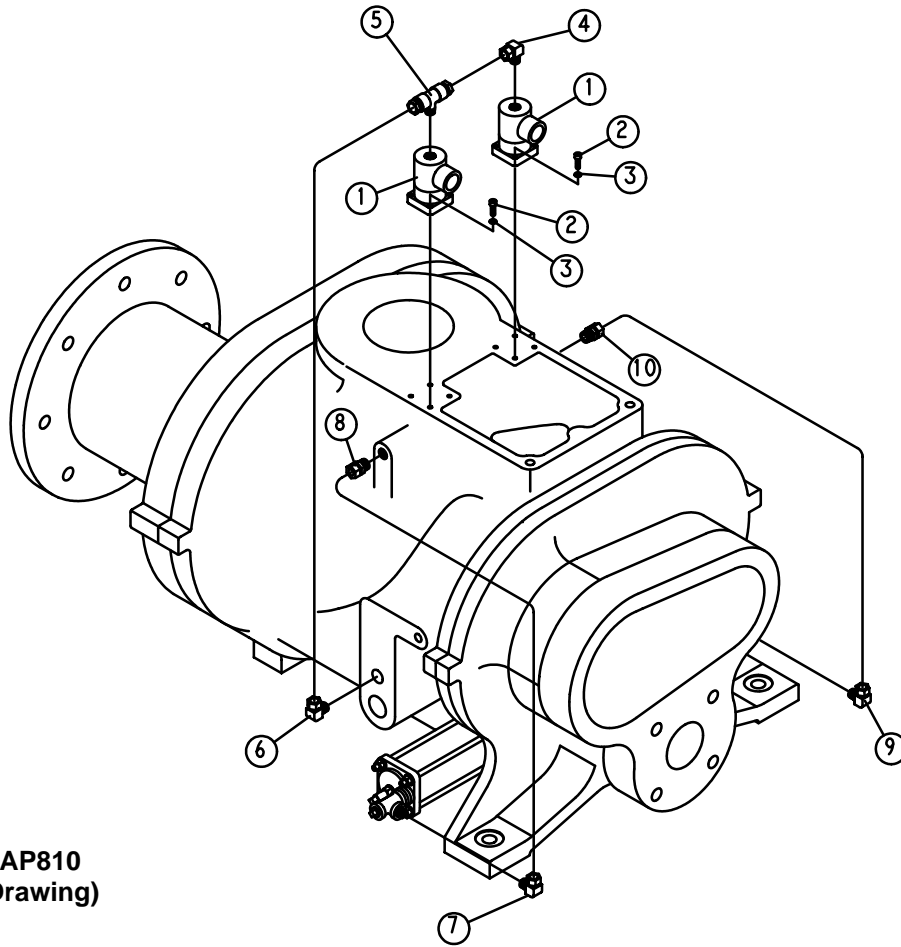
Refer to page 39 for Part Number Reference.

CONTROLLER ASSEMBLY – WYE–DELTA

		QTY.	230V 100 HP	460V 100 HP	575V 100 HP
*	ASSEMBLED PANEL: NEMA 12	1	265EAP466	264EAP466	274EAP466
*	ASSEMBLED PANEL: NEMA 4	1	267EAP466	266EAP466	275EAP466
A	FUSE, CONTROL BOARD	2	24CA2932	24CA2932	24CA2932
C	FUSE, TRANSFORMER (PRIMARY)	2	24CA276	24CA617	24CA2621
D	FUSE, FAN MOTOR, AIR–COOLED	3	24CA2477	24CA2478	24CA2477
D	FUSE, FAN MOTOR, WATER–COOLED	3	24CA2475	24CA2476	24CA2475
1	CONTROLLER	1	201EAP1173	201EAP1173	201EAP1173
2	STARTER ENCLOSURE	1	200EAP179	200EAP179	200EAP179
3	OPERATOR	1	24CA2907	24CA2907	24CA2907
4	CONTACT BLOCK	1	24CA2908	24CA2908	24CA2908
5	TRANSFORMER	1	2116372	2116372	2116372
6	FUSE	1	24CA3728	24CA3728	24CA3728
7	STARTER, FAN MOTOR	1	24CA4132	24CA4132	24CA4132
8	COIL, FAN MOTOR	1	2115950	2115950	2115950
9	STARTER, MAIN MOTOR	1	24CA4142	24CA3255	24CA4142
10	COIL, MAIN MOTOR	3	2116124	2116555	2116124
11	CONTACTOR, MAIN MOTOR	2	24CA3258	24CA3259	24CA3258
12	HOLDER	1	24CA2554	24CA2554	24CA2554

Refer to drawing on page 38.

Order by Part Number and Description. Reference Numbers are for your convenience only.



203EAP810
(Ref. Drawing)

SOLENOID VALVE

Ref. No.	Name of Part	Qty.	Part No.
1	VALVE, SOLENOID	2	91B82
2	SCREW	8	75V3
3	WASHER-LOCK	8	95B13
4	ELBOW-TUBE	1	86E60
5	TEE-TUBE	1	86A41
6	ELBOW-TUBE	1	86E60
7	ELBOW-TUBE	1	86E60
8	CONNECTOR-TUBE	1	86E4
9	ELBOW-TUBE	1	86E60
10	CONNECTOR-TUBE	1	86E4
*	TUBE	10 Ft.	85K3
*	GASKET	1	24A342
*	COVER	1	24A343
*	O-RING, SOLENOID VALVE TO CYLINDER	1	25W7
*	O-RING, SOLENOID VALVE TO CYLINDER	1	126156

* Not shown on drawing.

IDENTIFICATION AND INSTRUCTION GROUP

Ref. No.	Name of Part	Qty.	Part No.
1	DECAL, OPERATION & MAINTENANCE	1	217ECM077
2	DECAL, WARNING	1	227EAQ077
3	DECAL, PARTS LIST/SERVICE MANUAL NUMBER	1	204EDE077
4	DECAL, WARNING – ELECTRICAL SHOCK	1	216EAQ077
5	DECAL, DANGER – DO NOT MODIFY	1	218EAQ077
6	DECAL, WARNING – ELECTRICAL SHOCK	1	213EAQ077
7	DECAL, WARNING – READ OPERATOR MANUAL	1	215EAQ077
8	DECAL, CAUTION – USE FLOOR PLATE	1	221EAQ077
9	DECAL, WARNING – SEE WIRING DIAGRAM	1	222EAQ077
10	DECAL, DANGER – HOT OIL UNDER PRESSURE	1	212EAQ077
11	DECAL, WARNING – INSPECT OIL RESERVOIR	1	217EAQ077
12	DECAL	1	243EAQ077
13	DECAL, NOTICE – USE GARDNER DENVER PARTS	1	214EAQ077
14	DECAL, NOTICE – USE GARDNER DENVER PARTS	1	214EAQ077
15	DECAL, CAUTION – DO NOT LIFT	1	208EAQ077
16	DECAL, WARNING – ROTATING MACHINERY	1	211EAQ077
17	DECAL, DANGER – DO NOT BREATHE	1	206EAQ077
18	DECAL, DRAIN MOISTURE DAILY	1	205ESO077
19	DECAL, GD LOGO	1	69F18
20	RIVET	4	70E13
21	DECAL, HEAT EXCHANGER “IN”	1	200ESP077
22	DECAL, HEAT EXCHANGER “OUT”	1	201ESP077
23	DECAL, SAVER II LOGO	1	201ECP077
24	DECAL, SAVER II LOGO	3	200ECP077
25	TAG–INSTRUCTION	1	203EAQ304
26	DECAL, NAMEPLATE	1	69F64
28	DECAL	1	240EAQ077
29	DECAL	1	251EAQ077
30	TAG–INSTRUCTION	1	204EAQ304
31	TAG–INSTRUCTION	1	205EAQ304
32	POCKET	1	200EAQ134

REPAIR KITS

Name of Part	Qty.	Part No.
ROUTINE MAINTENANCE KIT (3000 HOURS) H.D. AIR FILTER		202ECM6013
(Includes next two items)		
ELEMENT, AIR FILTER	2	2116713
ELEMENT, OIL FILTER	3	2116110
PERIODIC MAINTENANCE KIT (INLET VALVE) (Includes next five items) ..		302SSM6013
O-RING	1	25BC447
SPRING	1	78G19
SPRING	1	78W63
O-RING	1	25AM29
RETAINER-RING	1	74D88
PERIODIC OVERHAUL KIT (Includes next nine items)		302SSP6013
GASKET KIT	1	303SSP6013
OIL SEAL KIT	1	300SSP6013
ROLLER BEARING	2	12BA105
ROLLER BEARING	1	12BA106
ROLLER BEARING	1	12BA104
ROLLER-BEARING	1	12BA103
ROLLER-BEARING	2	12BA51
SPRING	1	78W50
SPRING	1	78W52
GASKET KIT (Includes next eight items)		303SSP6013
PERIODIC MAINTENANCE KIT (INLET VALVE)	1	302SSM6013
SHIM SET (SHAFT)	1	77H63
SHIM SET	1	77H62
GASKET RING	2	25C603N
PACKING RING	4	60AM46
FASTENER SEAL	2	60DD65
GASKET	4	25BC138N
GASKET ELIMINATOR	1	25BC222
OIL SEAL KIT (Includes next seven items)		300SSP6013
WEAR SLEEVE	1	200SSP1458
OIL SEAL	1	60DD692
OIL SEAL	1	60DD693
O-RING	1	8502140
O-RING	1	25BC380
GASKET ELIMINATOR	1	25BC222
CHECK VALVE	1	90AR923
SEPARATOR KIT (Includes next three items)		208EAP6013
OIL SEPARATOR	1	200ECM035
GASKET	1	25C1788N
LUBRICANT (OIL SEAL GREASE)	1	2116755

REPAIR KITS (Continued)

Name of Part	Qty.	Part No.
WEAR SLEEVE INSTALLATION / REMOVAL KIT		200SSP4017
(Includes next seven items)		
PULLER	1	200SSP219
PLATE-PULLER	1	200SSP340
SCREW	1	75LM192
SCREW	1	655ED120
SCREW	2	75D177
GUIDE	1	200SSP450
TOOL	1	200SSP074
PNEUMATIC CONTROLS AND GAUGES (Includes next five items)		302EAQ6013
CHECK VALVE	2	90AR261
SHUTTLE VALVE	2	90AR107
PURGE VALVE	1	90AR35
PRESSURE REGULATOR	1	88H139
PRESSURE GAUGE	1	27P104
ELECTRICAL CONTROL KIT (Includes next six items)		206EAP6013
SOLENOID VALVE	1	91B70
SOLENOID VALVE	1	91B80
SOLENOID VALVE	1	91B81
THERMISTOR PROBE	2	21D264
TRANSDUCER	2	88H242
VACUUM SWITCH	1	88H195
DRIVE COUPLING KIT (Includes next item)	1	ECK77781
CUSHIONS (Includes 6)		2109116
LUBRICANT (AEON 9000 SP)		
5 GALLON PAIL		28H109
55 GALLON DRUM		28H110
TOUCH-UP PAINT		
5 GALLON PAIL		28H76
1 GALLON CAN		28H84
1 QUART CAN		28H83
WATER TEMPERATURE REGULATOR (Optional)		90AR326
MAGNETIC WATER SHUTOFF VALVE – NEMA 1 (Optional)		ECH75554
MAGNETIC WATER SHUTOFF VALVE – NEMA 4 (Optional)		ECH75596

Gardner

Denver

For additional information contact your local representative or Gardner Denver Machinery Inc., Customer Service Department, 1800 Gardner Expressway, Quincy, Illinois 62301
Telephone: (800) 682-9868 FAX: (217) 224-7814



Sales and Service in all major cities.

For parts information, contact Gardner Denver, Master Distribution Center, Memphis, TN
Telephone: (800) 245-4946 FAX: (901) 542-6159

Specifications subject to change without notice.
Copyright 1996 Gardner Denver Machinery Inc.

Litho in U.S.A.