

INGERSOLL-RAND®



**XF/EP/HP/HXP 50 SE
ML/MM/MH/MU 37 SE**

**PARTS LIST
RECOMMENDED SPARES**

Before installation or starting the compressor for the first time, this manual should be studied carefully to obtain a clear knowledge of the unit and of the duties to be performed while operating and maintaining the unit.

RETAIN THIS MANUAL WITH UNIT.

This Technical manual contains **IMPORTANT SAFETY DATA** and should be kept with the air compressor at all times.

More Than Air. Answers.

Online answers: <http://www.air.ingersoll-rand.com>

APDD 755

March 2000

**AIR COMPRESSOR GROUP
BONDED WARRANTY & REGISTERED START UP**

Warranty

The Company warrants that the equipment manufactured by it and delivered hereunder will be free of defects in material and workmanship for a period of twelve months (see extended airend warranty) from the date of placing the Equipment in operation or eighteen months (see extended airend warranty) from the date of shipment from Davidson, NC, whichever shall first occur. The Purchaser shall be obligated to promptly report any failure to conform to this warranty, in writing to the Company in said period, whereupon the Company shall, at its option, correct such nonconformity, by suitable repair to such equipment or, furnish a replacement part F.O.B. point of shipment, provided the Purchaser has stored, installed maintained and operated such Equipment in accordance with good industry practices and has complied with specific recommendations of the Company. Accessories or equipment furnished by the Company, but manufactured by others, shall carry whatever warranty the manufacturers have conveyed to the Company and which can be passed on to the Purchaser. The Company shall not be liable for any repairs, replacements, or adjustments to the Equipment or any costs of labor performed by the Purchaser or others without Company's prior written approval.

The effects of corrosion, erosion and normal wear and tear are specifically excluded. Performance warranties are limited to those specifically stated within the Company's proposal. Unless responsibility for meeting such performance warranties are limited to specified tests, the Company's obligation shall be to correct in the manner and for the period of time provided above.

THE COMPANY MAKES NO OTHER WARRANTY OR REPRESENTATION OF ANY KIND WHATSOEVER, EXPRESSED OR IMPLIED, EXCEPT THAT OF TITLE, AND ALL IMPLIED WARRANTIES OF MERCHANTABILITY AND FITNESS FOR A PARTICULAR PURPOSE, ARE HEREBY DISCLAIMED.

Correction by the Company of nonconformities whether patent or latent, in the manner and for the period of time provided above, shall constitute fulfillment of all liabilities of the Company for such nonconformities whether based on contract, warranty negligence, indemnity, strict liability or otherwise with respect to or arising out of such Equipment.

The purchaser shall not operate Equipment which is considered to be defective, without first notifying the Company in writing of its intention to do so. Any such use of Equipment will be at Purchaser's sole risk and liability.

Limitation of Liability

The remedies of the Purchaser set forth herein are exclusive, and the total liability of the Company with respect to this contract or the Equipment and services furnished hereunder, in connection with the performance or breach thereof, or from the manufacture, sale, delivery, installation, repair or technical direction covered by or furnished under this contract, whether passed on contract, warranty negligence, indemnity, strict liability or otherwise, shall not exceed the purchase price of the unit of Equipment upon which such liability is based.

The Company and its suppliers shall in no event be liable to the Purchaser, any successors in interest or any beneficiary or assignee of this contract for any consequential, incidental, indirect, special or punitive damages arising out of this contract or any breach thereof, or any defect in, or failure of, or malfunction of the Equipment hereunder, whether based upon loss of use, lost profits or revenue, interest, lost goodwill, work stoppage, impairment of other goods, loss by reason of shutdown or non-operation, increased expenses of operation, cost of purchase of replacement power or claims of Purchaser or customers of Purchaser for service interruption whether or not such loss or damage is based on contract, warranty, negligence, indemnity, strict liability or otherwise.

EXTENDED AIREND WARRANTY

The Ingersoll-Rand Company Rotary Screw Air Compressor that has been filled prior to its original shipment from Ingersoll-Rand Company with ULTRA COOLANT and which has been operated solely on ULTRA COOLANT thereafter shall have its AIREND warranted for twenty four (24) months from the date of placing the COMPRESSOR in operation or thirty (30) months from the date of shipment, whichever occurs first.

Except for the above warranty period, the standard warranty provisions shall apply and the conditions outlined herein are understood to be a supplement to the standard Ingersoll-Rand Company warranty.

TABLE OF CONTENTS

Safety And Warnings2
 Introduction3
 Intellisys/Starter Box/Control Piping
 (Full Voltage without Modulation)4,5
 Intellisys/Starter Box/Control Piping
 (Full Voltage with Modulation)6,7
 Intellisys/Starter Box/Control Piping
 (Star-Delta without Modulation)8,9
 Intellisys/Starter Box/Control Piping
 (Star-Delta with Modulation)10,11
 Starter Assembly C85 Full Voltage12,13
 Starter Assembly B180 Full Voltage14,15
 Starter Assembly C60/C43 & C43/C37 Star-Delta .16,17
 Starter Assembly B110/A75 Star-Delta18,19
 Major Components20-22
 Airend Piping24,25
 Inlet Assembly (Full Voltage)26,27
 Inlet Assembly (Star-Delta)28,29
 Heavy Duty Filter Assembly30,31
 Separator Tank Assembly32,33
 Cooler Assembly-With Aftercooler34,35
 Cooler Assembly-No Aftercooler36,37
 Standard Enclosure Assembly38,39
 Table - O-Rings40
 Service and Option Kits41
 Recommended Spare Parts List43

ROTARY SCREW AIR COMPRESSOR

This unit was purchased from

Ingersoll-Rand Company reserves the right to make changes or add improvements without notice and without incurring any obligation to make such changes or add such improvements to products sold previously.

No. of units on order: _____

Customer Order No.: _____

Ingersoll-Rand Co. Order No.: _____

For ready reference:

Record the serial number and model number of your unit here.

Serial Number: _____

Model Number: _____

0.0 SAFETY AND WARNINGS

0.1 SAFETY INSTRUCTIONS

Before you install this air compressor you should take the time to carefully read all the instructions contained in the operators manual APDD 466. Operator manuals may be obtained from your local Ingersoll-Rand Distributor or Air Center.

Electricity and compressed air have the potential to cause severe personal injury or property damage.

Before installing, wiring, starting, operating or making any adjustments, identify the components of the air compressor using this manual as a guide.

The operator should use common sense and good working practices while operating and maintaining this unit. Follow all codes, pipe adequately, understand the starting and stopping sequence. Check the safety devices by following the procedure contained in this manual.

Maintenance should be done by qualified personnel, adequately equipped with proper tools. Follow the maintenance schedules as outlined in the operators manual to ensure problem free operation after start up.

Safety instructions in the operators manual are bold-faced for emphasis. The signal words DANGER, WARNING and CAUTION are used to indicate hazard seriousness levels as follows:



Danger is used to indicate the presence of a hazard which *will cause severe* personal injury, death, or substantial property damage if the warning is ignored.



Warning is used to indicate the presence of a hazard which *can cause severe* personal injury, death, or substantial property damage if the warning is ignored.



Caution is used to indicate the presence of a hazard which *will or can cause minor* personal injury or property damage if the warning is ignored.



Notice is used to notify people of installation, operation, or maintenance information which is important but not hazard-related.

0.2 SAFETY PRECAUTIONS

SAFETY PRECAUTIONS

BEFORE PROCEEDING, READ CAREFULLY BEFORE INSTALLING THE COMPRESSOR OR PERFORMING ANY MAINTENANCE

WARNING

COMPRESSED AIR AND ELECTRICITY ARE DANGEROUS.

BEFORE DOING ANY WORK ON THIS UNIT, BE SURE THE ELECTRICAL SUPPLY HAS BEEN CUT OFF-LOCKED & TAGGED AND THE ENTIRE COMPRESSOR SYSTEM HAS BEEN VENTED OF ALL PRESSURE.

1. Do not remove the covers, loosen or remove any fittings, connections or devices when this unit is in operation. Hot liquid and air under pressure that are contained within this unit can cause severe injury or death.

2. The compressor has high and dangerous voltage in the motor starter and control box. All installations must be in accordance with recognized electrical codes. Before working on the electrical system, be sure to remove voltage from the system by use of a manual-disconnect-switch. A circuit breaker or fused safety switch must be provided in the electrical supply line leading to the compressor.

Those responsible for installation of this equipment must provide suitable grounds, maintenance clearance and lightning arrestors for all electrical components as stipulated in O.S.H.A. 1910.308 through 1910.329.

3. Do not operate the compressor at higher discharge pressure than those specified on the Compressor Nameplate or motor overload will occur. This condition will result in compressor motor shutdown.

4. Use only safety solvent for cleaning the compressor and auxiliary equipment.

5. Install a manual shut off valve (isolation type) in the discharge line. When a safety valve is installed between the isolation valve and the compressor, it must have sufficient capacity to relieve the full capacity of the compressor(s).

6. Whenever pressure is released through the pressure relief valve, it is due to excessive pressure in the system. The cause for the excessive pressure should be investigated immediately.

7. Before doing any mechanical work on the compressor:

a.) Shut the unit down.

b.) Electrically isolate the compressor by use of the manual disconnect switch in the power line to the unit. Lock and tag the switch so that it cannot be operated.

c.) Vent pressure from the compressor and isolate the unit from any other source of air.

8. There can be adverse effects if compressor lubricants are allowed to enter plant air systems.

Air line separators, properly selected and installed, will minimize any liquid carry-over.

The use of plastic bowls on line filters without metal guards can be hazardous. From a safety standpoint, metal bowls should be used on any pressurized system. Review of your plant air line system is recommended.

9. When a receiver is installed, it is recommended that occupational safety and health standards as covered in the Federal Register, Volume 36, number 105, part 11, paragraph 1910.169 be adhered to in the installation and maintenance of this receiver.

10. Before starting the compressor, its maintenance instructions should be thoroughly read and understood.

11. After maintenance functions are completed, covers and guards must be replaced.

PARTS LIST

INTRODUCTION

GENERAL

This manual, which contains an illustrated parts breakdown, has been prepared as an aid in identifying and ordering parts in the SE compressor. All of the compressor parts listed in the parts breakdown are manufactured with the same precision as the original equipment.

Ingersoll-Rand Company service facilities and parts are available worldwide. There are Ingersoll-Rand Company Branch Offices and authorized distributors located in the principle cities of the United States. In Canada, our customers are serviced by the Canadian Ingersoll-Rand Company, Limited. There are also Ingersoll-Rand Company subsidiaries and authorized distributors located in the principle cities throughout the world.

DESCRIPTION

The illustrated parts breakdown illustrates the various assemblies, sub-assemblies and detailed parts which make up this particular SE compressor. A series of illustrations show each part clearly and in it's

correct location relative to the other parts in the illustration. Each part on an illustration is referenced with a number. The number, description and quantity needed per assembly is listed in numerical order on the following pages.

OPTIONAL EQUIPMENT

Several optional accessories items are available for convenience or special application. These accessories have been selected as being particularly suitable for use on the SE compressor.

For complete details on Optional Equipment, contact your Sales Representative.

HOW TO USE THIS PARTS MANUAL

1. Turn to the Parts Section to locate the desired illustrations.
2. Locate the part on the illustration by visual identification and the reference number.
3. Find the referenced number on the Tabulated page, along with the Part Number and Description.

SERIAL NUMBER BREAK

When a part is changed and it doesn't supersede the previous part, this change must be docu-

mented by a serial number break. By using the last (6) digits of the serial number, as outlined below, this change is recorded in the parts list.

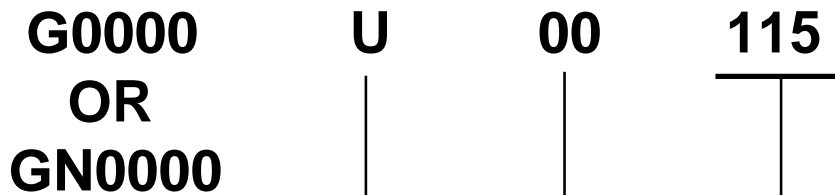
→→ **U00115** indicates part is used on units up to and including serial number ending in **U00115**.

U00115 →→ indicates part is used on units with serial number ending in **U00115** or higher.

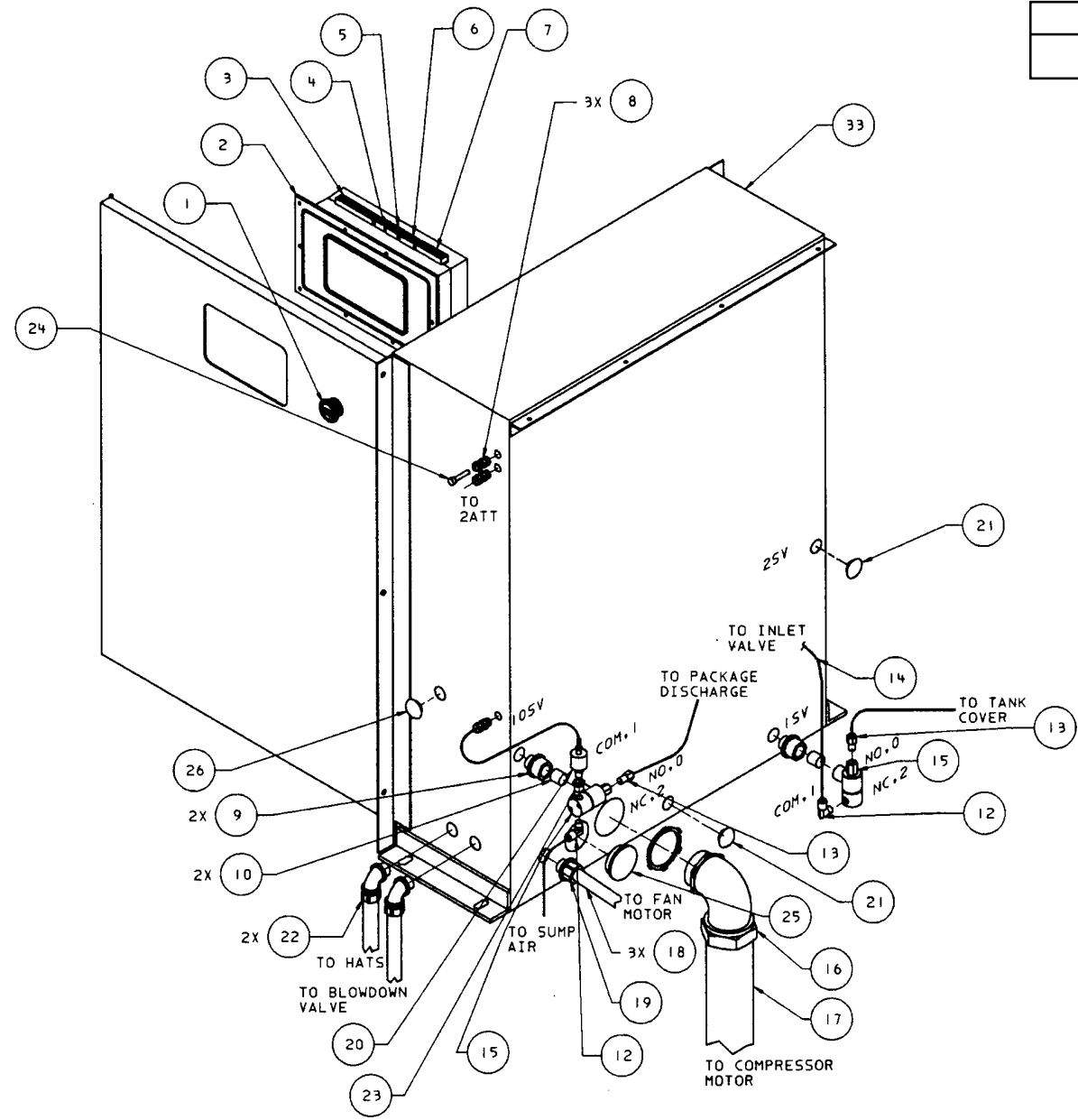
HOW TO ORDER PARTS

In order that all avoidable errors be eliminated when ordering parts, please specify the following:

1. The model number of the unit as shown on the Compressor Data Plate.
2. The serial number of the unit as shown on the Compressor Data Plate.
3. The form number of this manual.
4. The reference number, part number, description and quantity needed exactly as listed.
5. The motor data code shown on the motor data plate.



39908413
REV 03



Assembly, Intellisys/Starter Box/Control Piping (Full Voltage without Modulation)

Ref. No.	Part Number	Qty.	Description	Ref. No.	Part Number	Qty.	Description
1	39549167	1	Switch, Emergency Stop	16	39479506	1	Elbow
2	39817655	1	Controller, Intellisys		39135363	1	Locknut, Sealing
2A	39128533	10	Nut	17	39147194	xxx	Conduit 2.0
3	39191655	1	Plug, 16 Position	18	39139332	xxx	Conduit .50
4	39186101	1	Plug, 4 Position	19	39256699	1	Connector
5	39191630	1	Plug, 5 Position	20	39853809	1	Transducer, Pressure
6	39186093	1	Plug, 6 Position	21	39130000	2	Plug (NEMA 1)
* 7	39191648	1	Plug, 11 Position		39140785	2	Plug (NEMA 4)
8	39173927	3	Gland, Wire	22	39256631	2	Elbow
8A	39173935	3	Locknut, Wire Gland	23	39153861	1	Bushing (NEMA 4)
9	35375494	2	Connector	24	39155353	1	Plug
10	39108592	2	Nipple	25	39195235	1	Plug (NEMA 1)
11	39818869	1	Box, Intellisys/Starter (NEMA 1)		39493663	1	Plug (NEMA 4)
	39818539	1	Box, Intellisys/Starter (NEMA 4)	26	39140785	1	Plug
12	39155577	2	Elbow (NEMA 1)				
	39155478	1	Elbow (NEMA 4)				
13	39156393	2	Connector (NEMA 1)				
	39156435	2	Connector (NEMA 4)				
14	39124813	xxx	Tubing, .25 Synflex (XF, EP, HP, ML, MM, MH Units)				
	39497847	xxx	Tubing, .25 Teflon (HXP, MU Units)				
15	39583943	2	Valve, Solenoid 3-Way (1SV/10SV) (NEMA 1)				
	39497672	2	Valve, Solenoid 3-Way (1SV/10SV) (NEMA 4)				

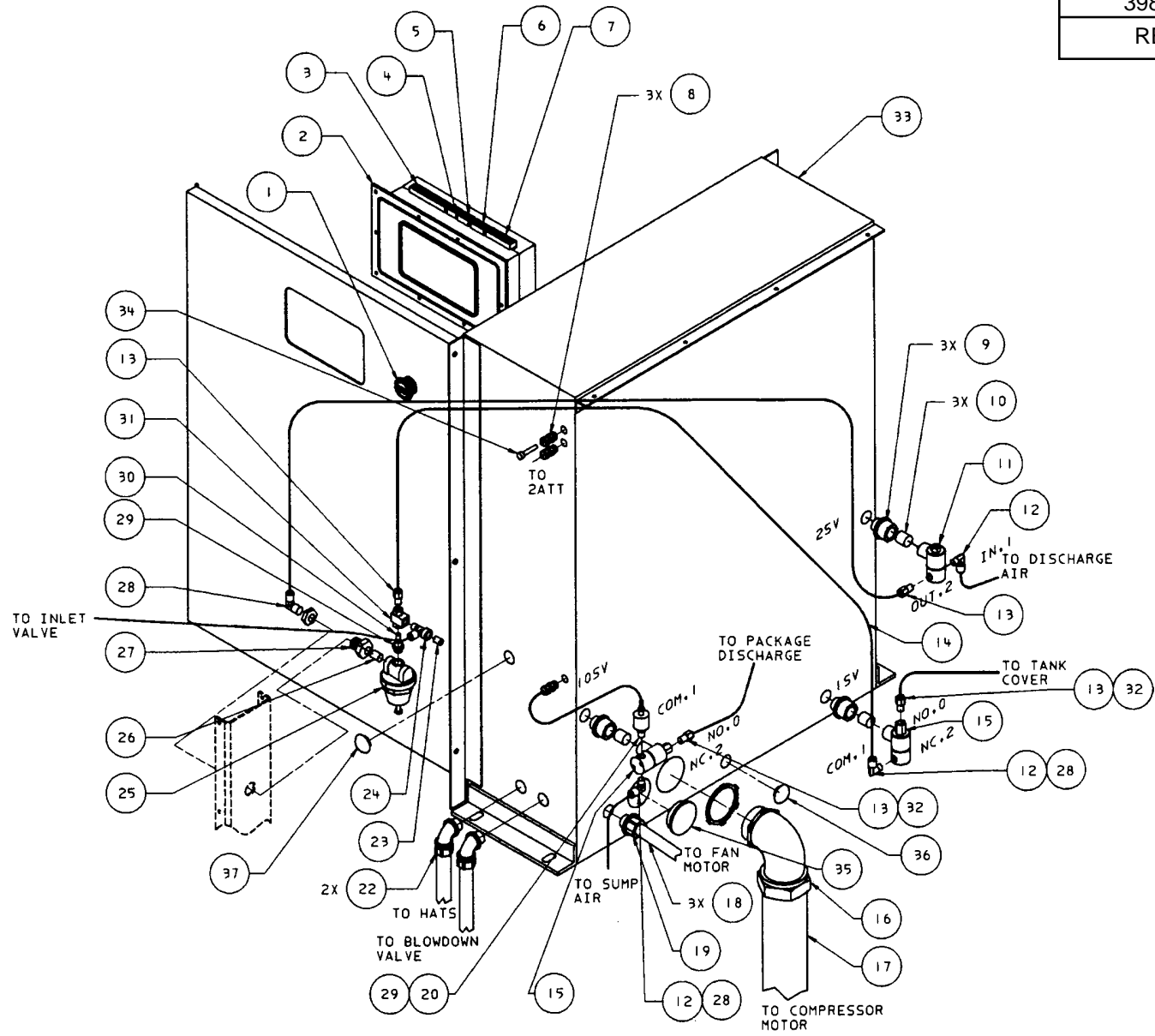
* REMOVE & DISCARD O-RING ON NEMA 1 UNITS.

NOTE:

1. STANDARD FASTENERS SUCH AS NUTS, BOLTS AND SCREWS ARE LISTED AS SUB-ITEMS (EXAMPLE: 2A).

2. XXX - ORDER PER NUMBER OF INCHES REQUIRED.

39821715
REV 06



Assembly, Intellisys/Starter Box/Control Piping (Full Voltage with Modulation)

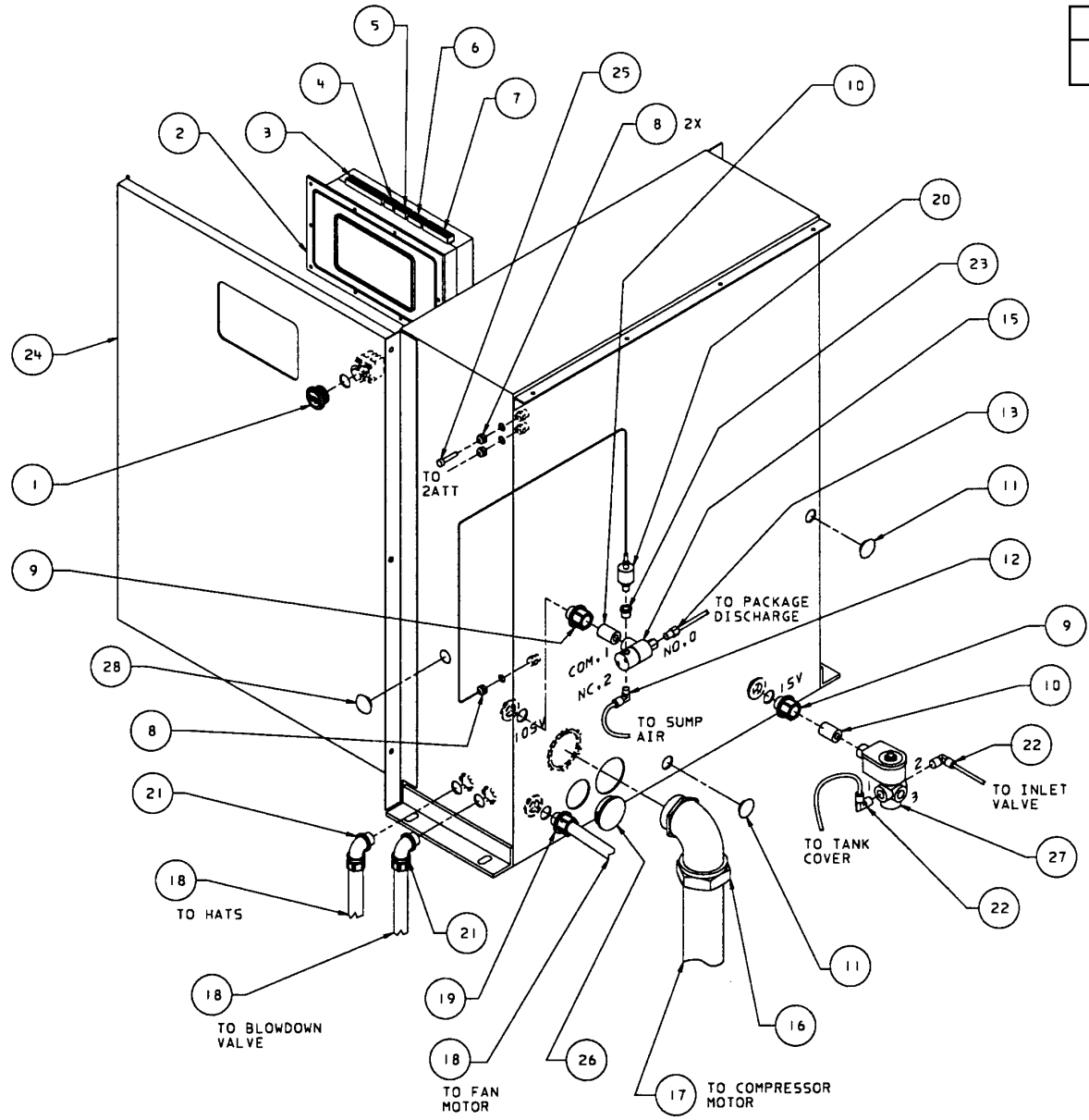
Ref. No.	Part Number	Qty.	Description	Ref. No.	Part Number	Qty.	Description
1	39549167	1	Switch, Emergency Stop	18	39139332	xxx	Conduit
2	39817655	1	Controller, Intellisys (English)	19	39256699	1	Connector
2A	39128533	10	Nut	20	39853809	1	Transducer, Pressure
3	39191655	1	Plug, 16 Position	22	39256631	2	Elbow
4	39186101	1	Plug, 4 Position	23	95928214	1	Plug
5	39191630	1	Plug, 5 Position	24	39156468	1	Tee, Adapter
6	39186093	1	Plug, 6 Position	25	39152442	1	Valve, Regulator (XF, EP, HP, ML, MM, MH Units)
7	39191648	1	Plug, 11 Position				
8	39173927	3	Gland, Wire		39197595	1	Valve, Regulator (HXP, MU Units)
8A	39173935	3	Locknut, Wire Gland	26	95047908	1	Nipple
* 9	35375494	2	Connector	27	39128012	1	Connector, Bulkhead
10	39108592	2	Nipple	28	39155478	3	Elbow
11	39530852	1	Valve, Solenoid 2-Way (2SV) (NEMA 1)	29	95930301	1	Bushing (NEMA 1)
	39497680	1	Valve, Solenoid 2-Way (2SV) (NEMA 4)		95930301	1	Bushing (NEMA 4)
12	39155577	2	Elbow	30	95343679	1	Nipple
13	39156393	2	Connector	31	39127261	1	Valve, Shuttle
14	39124813	xxx	Tubing, .25 Synflex (XF, EP, HP, ML, MM, MH Units)	32	39156435	1	Connector (NEMA 4)
	39497847	xxx	Tubing, .25 Teflon (HXP, MU Units)	33	39818869	1	Box, Intellisys/Starter (NEMA 1)
15	39583943	2	Valve, Solenoid 3-Way (1SV/10SV) (NEMA 1)		39818539	1	Box, Intellisys/Starter (NEMA 4)
	39497672	2	Valve, Solenoid 3-Way (1SV/10SV) (NEMA 4)	34	39155353	1	Plug, Tubing
16	39479506	1	Elbow	35	39195235	1	Plug, (NEMA 1)
	39135363	1	Locknut, Sealing		39493663	1	Plug, (NEMA 4)
17	39147194	xxx	Conduit	36	39130000	1	Plug, (NEMA 1)
					39140785	1	Plug, (NEMA 4)
				37	39140785	1	Plug

* REMOVE & DISCARD O-RING ON NEMA 1 UNITS

NOTE:

1. STANDARD FASTENERS SUCH AS NUTS, BOLTS, AND SCREWS ARE LISTED AS SUB-ITEMS (EXAMPLE: 2A).
2. XXX - ORDER PER NUMBER OF INCHES REQUIRED.

39908462
REV 03



Assembly, Intellisys/Starter Box/Control Piping (Star-Delta without Modulation)

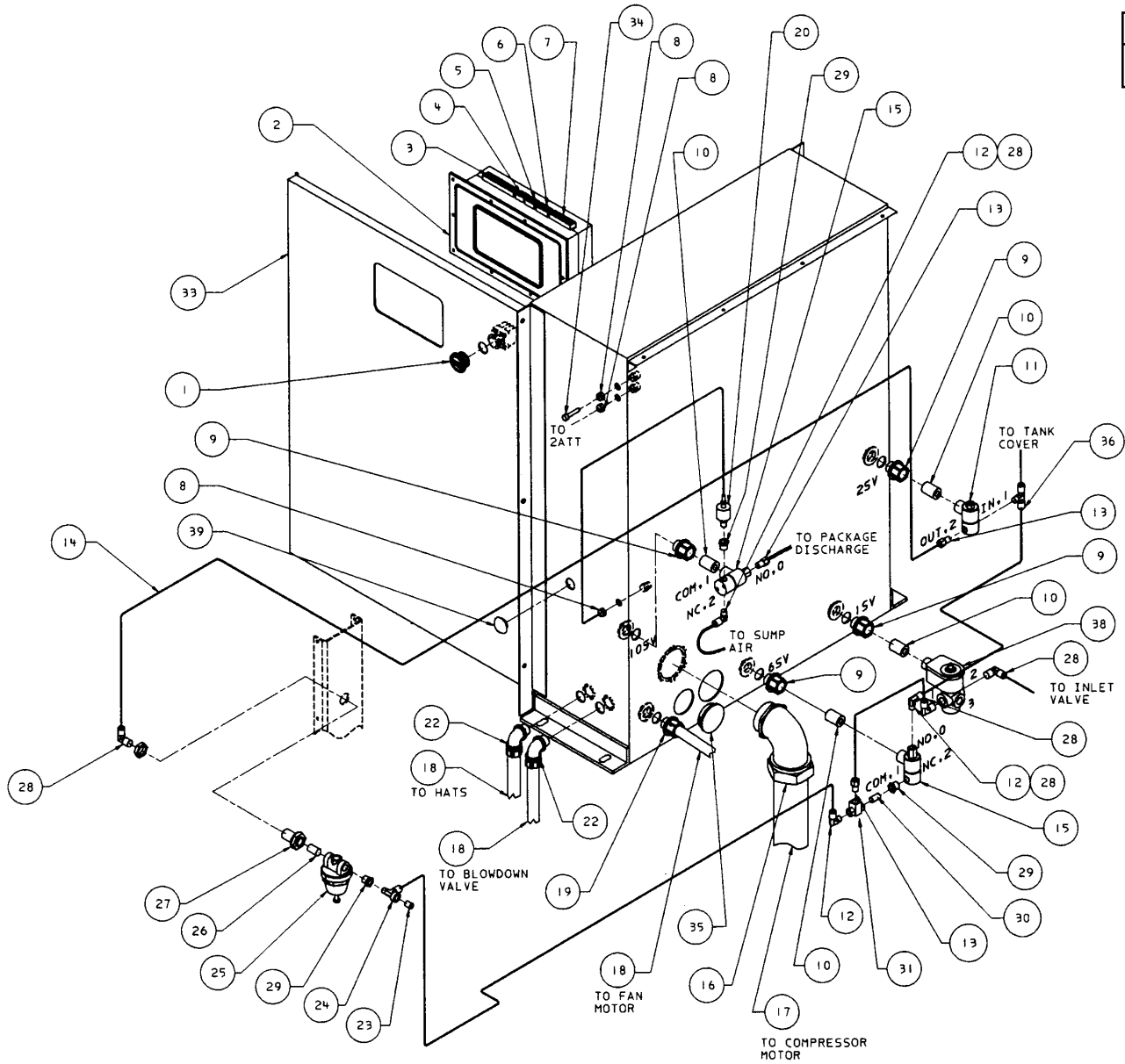
Ref. No.	Part Number	Qty.	Description	Ref. No.	Part Number	Qty.	Description
1	39549167	1	Switch, Emergency Stop	16	39479506	1	Elbow
2	39817655	1	Controller, Intellisys		39135363	1	Locknut, Sealing
2A	39128533	10	Nut	17	39147194	xxx	Conduit
2B	39495874	1	Gasket, Intellisys/Starter Box (NEMA 4)	18	39139332	xxx	Conduit
3	39191655	1	Plug, 16 Position	19	39256699	1	Connector
4	39186101	1	Plug, 4 Position	20	39853809	1	Transducer, Pressure
5	39191630	1	Plug, 5 Position	21	39256631	2	Elbow
6	39186093	1	Plug, 6 Position	22	39155478	2	Elbow
7	39191648	1	Plug, 11 Position	23	39153861	1	Bushing (NEMA 4)
8	39173927	3	Gland, Wire	24	39818869	1	Box, Intellisys/Starter (NEMA 1)
8A	39173935	3	Locknut, Wire Gland		39818539	1	Box, Intellisys/Starter (NEMA 4)
* 9	35375494	2	Connector	25	39155353	1	Plug
10	39108592	2	Nipple	26	39195235	1	Plug (NEMA 1)
11	39130000	2	Plug (NEMA 1)		39493663	1	Plug (NEMA 4)
	39140785	2	Plug (NEMA 4)	27	39418926	1	Valve, Solenoid 3-Way (1SV) (NEMA 1)
12	39155577	1	Elbow (NEMA 1)		39146741	1	Valve, Solenoid 3-Way (1SV) (NEMA 4)
	39155478	1	Elbow (NEMA 4)	28	39140785	1	Plug
13	39156393	1	Connector (NEMA 1)				
	39156435	1	Connector (NEMA 4)				
14	39124813	xxx	Tubing, .25 Synflex (XF, EP, HP, ML, MM, MH Units)				
	39497847	xxx	Tubing, .25 Teflon (HXP, MU Units)				
15	39583943	2	Valve, Solenoid 3-Way (1SV/10SV) (NEMA 1)				
	39497672	2	Valve, Solenoid 3-Way (1SV/10SV) (NEMA 4)				

* REMOVE & DISCARD O-RING ON NEMA 1 UNITS.

NOTE:

1. STANDARD FASTENERS SUCH AS NUTS, BOLTS, AND SCREWS ARE LISTED AS SUB-ITEMS (EXAMPLE: 2A).
2. XXX - ORDER PER NUMBER OF INCHES REQUIRED.

39830120
REV 10



Assembly, Intellisys/Starter Box/ (Star-Delta with Modulation)

Ref. No.	Part Number	Qty.	Description	Ref. No.	Part Number	Qty.	Description
1	39549167	1	Switch, Emergency Stop	20	39853809	1	Transducer, Pressure
2	39817655	1	Controller, Intellisys	22	39256631	2	Elbow
2A	39128533	10	Nut	23	95928214	1	Plug
2B	39495874	1	Gasket, Intellisys/Starter Box (NEMA 4)	24	39156468	1	Tee, Adapter
3	39191655	1	Plug, 16 Position	25	39199476	1	Valve, Regulator (XF, EP, HP, ML, MM, MH Units)
4	39186101	1	Plug, 4 Position				
5	39191630	1	Plug, 5 Position		39199484	1	Valve, Regulator (HXP, MU Units)
6	39186093	1	Plug, 6 Position	26	95047908	1	Nipple
7	39191648	1	Plug, 11 Position	27	39128012	1	Connector, Bulkhead
* 8	39173927	3	Gland, Wire	28	39155478	3	Elbow
8A	39173935	3	Locknut, Wire Gland	29	95930301	1	Bushing
9	35375494	2	Connector		95930301	2	Bushing (NEMA 4)
10	39108592	2	Nipple	30	95343679	1	Nipple
11	39530852	1	Valve, Solenoid 2-Way (2SV) (NEMA 1)	31	39127261	1	Valve, Shuttle
	39497680	1	Valve, Solenoid 2-Way (2SV) (NEMA 4)	33	39818869	1	Box, Intellisys/Starter (NEMA 1)
12	39155577	2	Elbow		39818539	1	Box, Intellisys/Starter (NEMA 4)
13	39156393	2	Connector	34	39155353	1	Plug
14	39124813	xxx	Tubing, .25 Synflex (XF, EP, HP, ML, MM, MH Units)	35	39195235	1	Plug, (NEMA 1)
	39497847	xxx	Tubing, .25 Teflon (HXP, MU Units)		39493663	1	Plug, (NEMA 4)
15	39583943	2	Valve, Solenoid 3-Way (1SV/10SV) (NEMA 1)	36	39156385	1	Tee
	39497672	2	Valve, Solenoid 3-Way (1SV/10SV) (NEMA 4)	38	39418926	1	Valve, Solenoid 3-Way (1SV) (NEMA 1)
16	39479506	1	Elbow		39146741	1	Valve, Solenoid 3-Way (1SV) (NEMA 4)
	39135363	1	Locknut, Sealing	39	39140785	1	Plug
17	39147194	xxx	Conduit				
18	39139332	xxx	Conduit				
19	39256699	1	Connector				

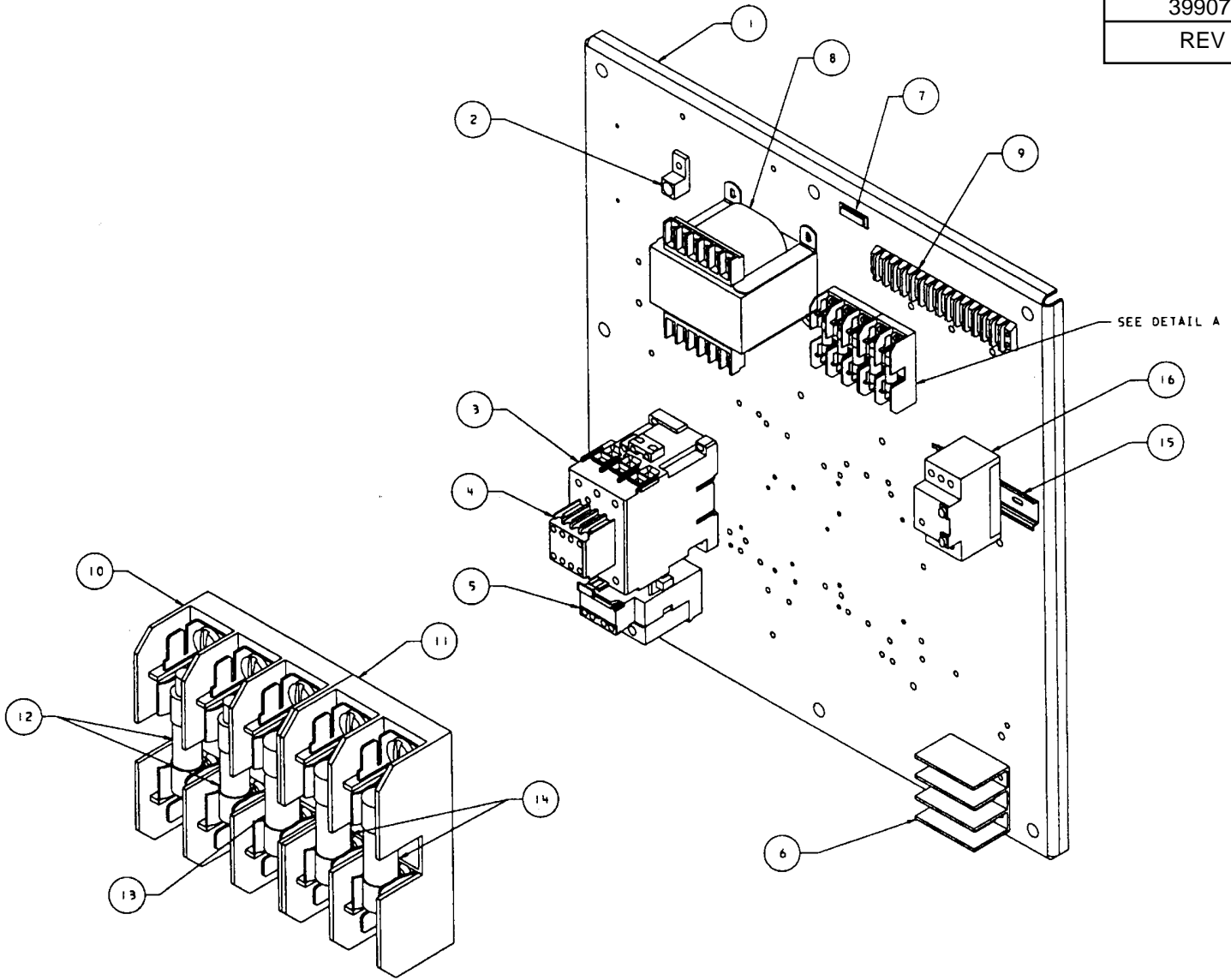
* REMOVE & DISCARD O-RING ON NEMA 1 UNITS.

NOTE:

1. STANDARD FASTENERS SUCH AS NUTS, BOLTS, AND SCREWS ARE LISTED AS SUB-ITEMS (EXAMPLE: 2A).

2. XXX - ORDER PER NUMBER OF INCHES REQUIRED.

39907191
REV 01

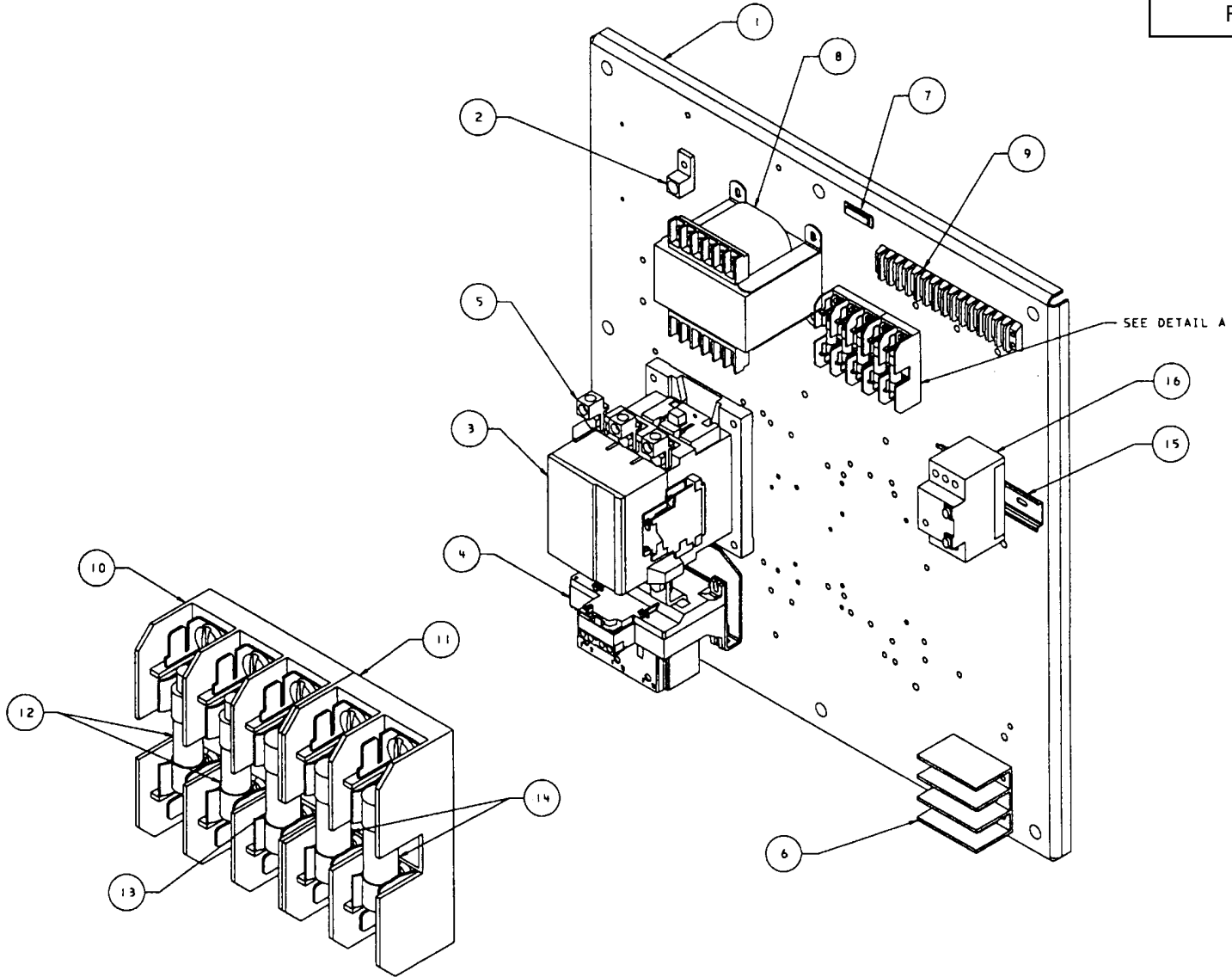


DETAIL A

Assembly, Starter C85 Full Voltage

Ref. No.	Part Number	Qty.	Description
1	39899778	1	Panel, Starter
2	39190939	1	Lug, Ground
2A	39141809	1	Screw
2B	39128541	1	Nut
3	39251020	1	Contactor, C85
3A	39251335	1	Coil
4	39251129	1	Aux. Contact, 4 N.O.
5	39251087	1	Relay, Overload
6	39164520	1	Block, Terminal
7	39196225	1	Light, Power-On
8	39491519	1	Transformer, Control 330VA (200/230/460/575V)
	39499306	1	Transformer, Control 330VA (200/220/400/440V)
	39313143	1	Transformer, Control 330VA (380V)
8A	35252279	4	Screw
9	35267202	1	Block, 14-Terminal
9A	35249721	4	Screw
10	39479035	1	Fuseholder, 3 Pole
10A	35249721	2	Screw
11	39480504	1	Fuseholder, 2 Pole
11A	35249721	2	Screw
12	39178728	2	Fuse, 2.5A (1FU/2FU)
13	39113527	2	Fuse, 3.2A (3FU)
14	39113535	2	Fuse, 2.0A (4FU/5FU)
15	39325485	1	Rain, DIN
16	39251269	1	Starter, Manual Motor, MN 1600 (200V)
	39251251	1	Starter, Manual Motor, MN 1000 (200/230V)
16A	39251285	1	Contact, Auxiliary, 1 N.O.

39907183
REV 01

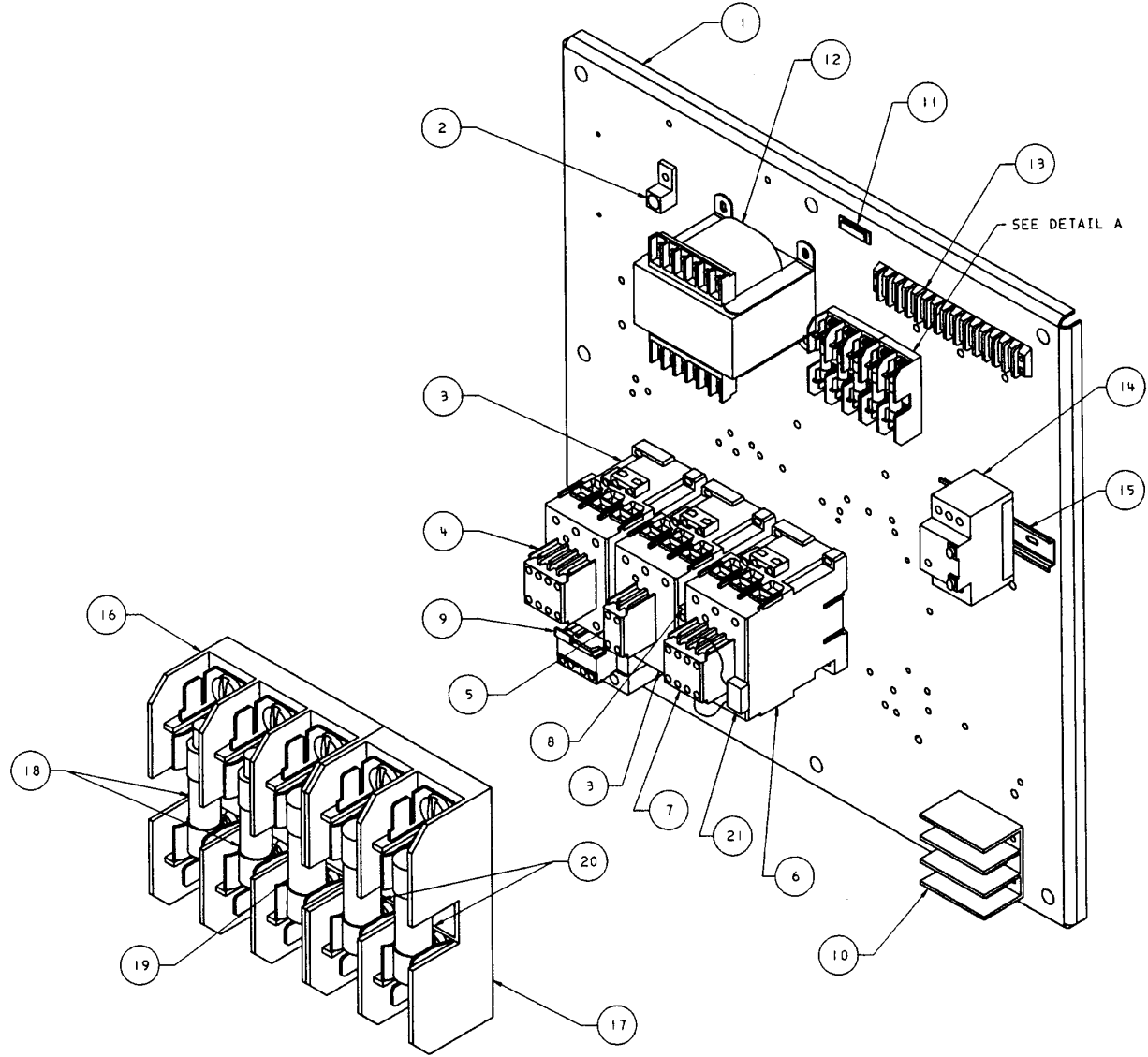


DETAIL A

Assembly, Starter B180 Full Voltage

Ref. No.	Part Number	Qty.	Description
1	39899778	1	Panel, Starter
2	39190939	1	Lug, Ground
2A	39141809	1	Screw
2B	39128541	1	Nut
3	39251046	1	Contact, B180 w/1 N.O. Aux. Contact
3A	39251368	1	Coil
3B	39251400	1	Contacts
3C	39251152	1	Aux. Contact, 1 N.O. (R.H.Side)
3D	39251160	1	Aux. Contact, 2 N.O. (L.H.Side)
4	39251103	1	Relay, Overload
5	39251442	1	Lug, Terminal
6	39164520	1	Block, Terminal
7	39196225	1	Light, Power-On
8	39491519	1	Transformer, Control 330VA (200/230/460/575V)
	39499306	1	Transformer, Control 330VA (200/220/400/440V)
	39313143	1	Transformer, Control 330VA (380V)
8A	35252279	4	Screw
9	35267202	1	Block, 14-Terminal
9A	35249721	4	Screw
10	39479035	1	Fuseholder, 3 Pole
10A	35249721	2	Screw
11	39480504	1	Fuseholder, 2 Pole
11A	35249721	2	Screw
12	39178728	2	Fuse, 2.5A (1FU/2FU)
13	39113527	2	Fuse, 3.2A (3FU)
14	39113535	2	Fuse, 2.0A (4FU/5FU)
15	39325485	1	Rain, DIN
16	39251269	1	Starter, Manual Motor, MN 1600 (200V)
	39251251	1	Starter, Manual Motor, MN 1000 (200/230V)
16A	39251285	1	Contact, Auxiliary, 1 N.O.

54453469
REV A

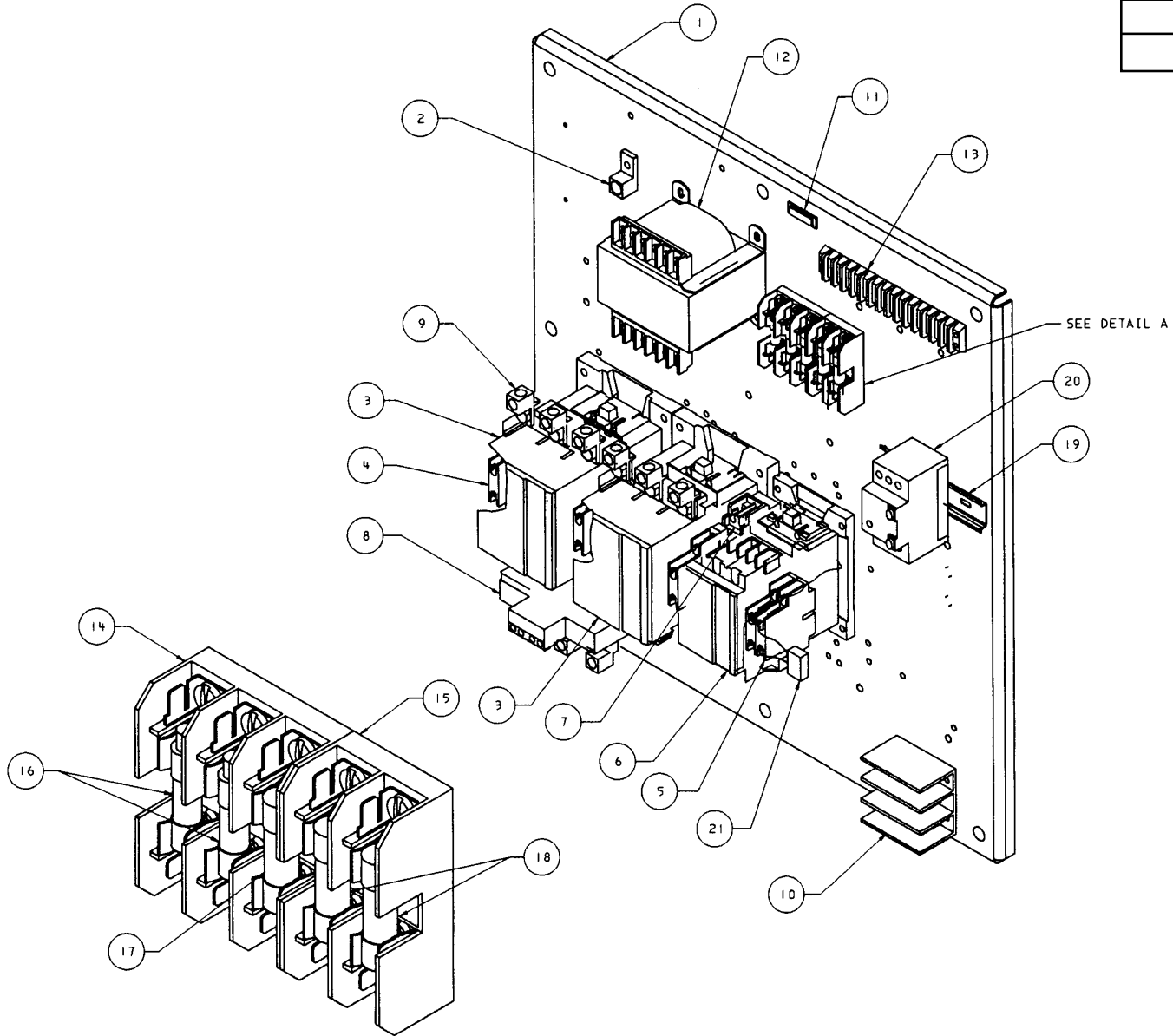


DETAIL A

Assembly, Starter C60/43 and C43/C37 Star-Delta

Ref. No.	Part Number	Qty.	Description
1	39899778	1	Panel, Starter
2	39190939	1	Lug, Ground
2A	39141809	1	Screw
2B	39128541	1	Nut
3	39251004	1	Contact, C60 (1M/2M)
	39250998	1	Contact, C43 (1M/2M)
3A	39251335	1	Coil, C60 (1M/2M)
	39251327	2	Coil, C43 (1M/2M)
4	39251129	1	Aux. Contact, 4 N.O.
5	39251137	1	Aux. Contact, 1 N.O./N.C.
6	39251004	1	Contact, C60 (1S)
	39250998	1	Contact, C43 (1S)
	39251061	1	Contact, C37 (1S)
6A	39251335	1	Coil, C60
	39251327	1	Coil, C43
	39251319	1	Coil, C37
7	39251145	1	Aux. Contact, 2 N.O./2 N.C.
8	39251186	1	Interlock, Mechanical
9	39251087	1	Overload Relay (C60/C43)
	39251079	1	Overload Relay (C43/C37)
10	39164520	1	Block, Terminal
11	39196225	1	Light, Power-On
12	39491519	1	Transformer, Control 330VA (200/230/460/575V)
	39499306	1	Transformer, Control 330VA (200/220/400/440V)
	39313143	1	Transformer, Control 330VA (380V)
	39308142	1	Transformer, Control 330VA (200/380/415/550V)
12A	35252279	4	Screw
13	35267202	1	Block, 14-Terminal
13A	35249721	4	Screw
14	39251244	1	Starter, Manual Motor, MN1000 (380/415V)-(C60/C43)
	39251244	1	Starter, Manual Motor, MN0630 (440/460V)-(C60/C43)
	39251236	1	Starter, Manual Motor, MN0400 (550/575V)-(C43/C37)
14A	39251285	1	Contact, Auxiliary, 1 N.O.
15	39325485	1	Rail, DIN
16	39479035	1	Fuseholder, 3 Pole
16A	35249721	2	Screw
17	39480504	1	Fuseholder, 2 Pole
17A	35249721	2	Screw
18	39178728	2	Fuse, 2.5A (1FU/2FU)
19	39113527	2	Fuse, 3.2A (3FU)
20	39113535	2	Fuse, 2.0A (4FU/5FU)
21	39203443	1	Suppressor, Arc

54453477
REV A



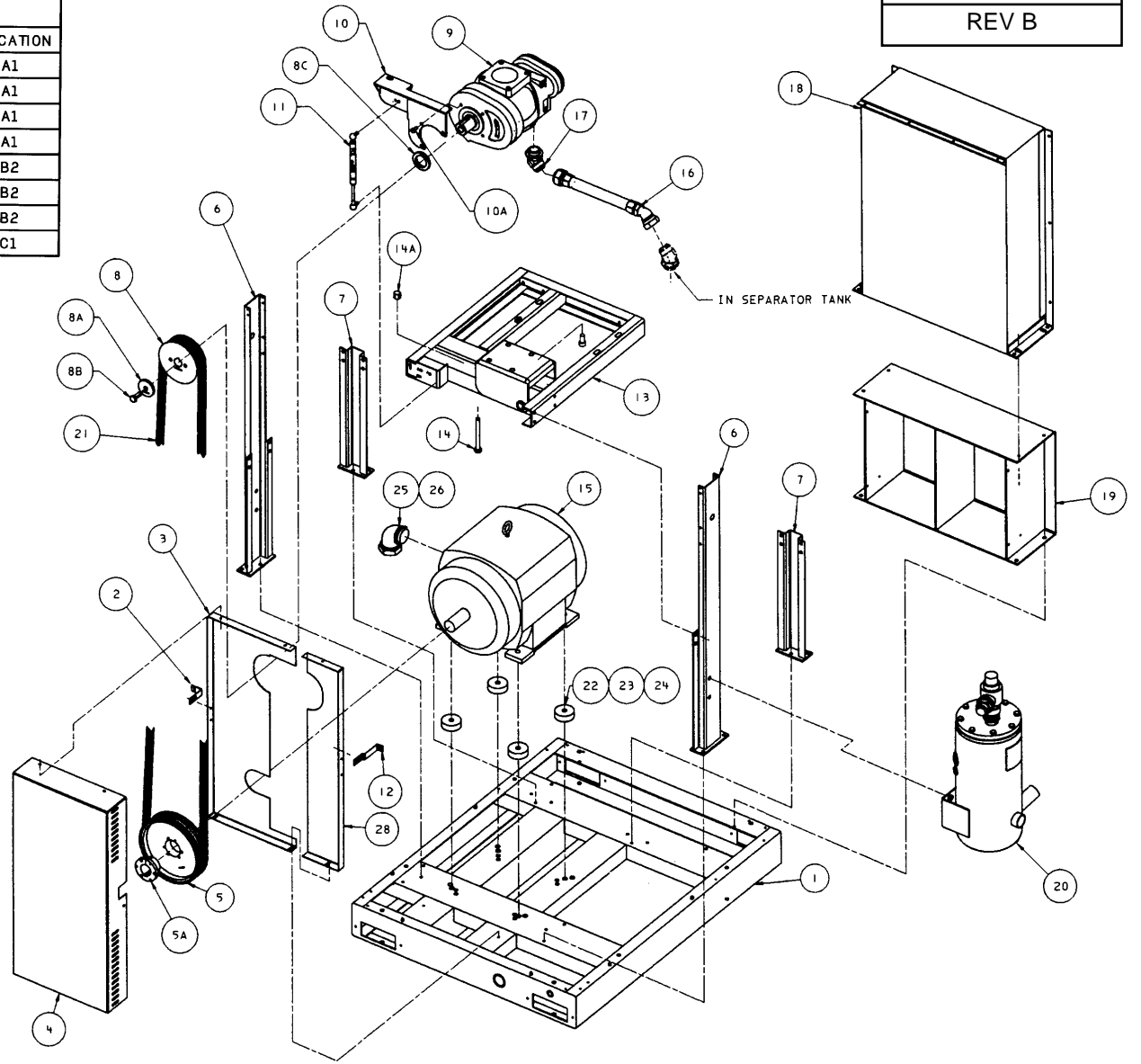
DETAIL A

Assembly, Starter B110/A75 Star-Delta

Ref. No.	Part Number	Qty.	Description
1	39899778	1	Panel, Starter
2	39190939	1	Lug, Ground
2A	39141809	1	Screw
2B	39128541	1	Nut
3	39251038	1	Contact, B110 w/1 N.O. Aux. Contact (1M/2M)
3A	39251350	1	Coil, B110
3B	39251392	1	Contacts, B110
3C	39251152	2	Aux. Contact, 1 N.O. (R.H. Side of 1M & 2M)
3D	39253067	1	Bar, Bus (L1/1M To L3/2M) (Not Shown)
3E	39253075	1	Bar, Bus (L2/1M To L2/2M) (Not Shown)
3F	39253083	1	Bar, Bus (L3/1M To L1/2M) (Not Shown)
4	39251160	1	Aux. Contact, 2 N.O. (L.H. Side of 1M)
5	39251178	1	Aux. Contact, 1 N.O./N.C.
6	39251525	1	Contact, A75 w/1 N.O. Aux. Contact (1S)
6A	39251343	1	Coil, A75
6B	39251384	1	Contacts, A75
6C	39251152	1	Aux. Contact, 1 N.O. (R.H. Side of 1S)
7	39251194	1	Interlock, Mechanical (W/1 N.O. & 1 N.C. Aux. Contacts)
8	39251095	1	Relay, Overload
9	39251434	9	Lug, Terminal
10	39164520	1	Block, Terminal
11	39196225	1	Light, Power-On
12	39491519	1	Transformer, Control 330VA (200/230/460/575V)
	39499306	1	Transformer, Control 330VA (200/220/400/440V)
	39313143	1	Transformer, Control 330VA (380V)
	39308142	1	Transformer, Control 330VA (200/380/415/550V)
12A	35252279	4	Screw
13	35267202	1	Block, 14-Terminal
13A	35249721	4	Screw
14	39479035	1	Fuseholder, 3 Pole
14A	35249721	2	Screw
15	39480504	1	Fuseholder, 2 Pole
15A	35249721	2	Screw
16	39178728	2	Fuse, 2.5A (1FU/2FU)
17	39113527	2	Fuse, 3.2A (3FU)
18	39113535	2	Fuse, 2.0A (4FU/5FU)
19	39325485	1	Rail, DIN
20	39251269	1	Starter, Manual Motor, MN 1600 (200V/200V)
	39251251	1	Starter, Manual Motor, MN 1000 (230V)
20A	39251285	1	Contact, Auxiliary, 1 N.O.
21	39203443	1	Suppressor, Arc

GAS SPRING BRACKET LOCATION			
UNIT	DRIVE SHEAVE	DRIVEN SHEAVE	LOCATION
XF50SE	39856505	54422068	A1
EP50SE	39856505	54422076	A1
HP50SE	39856505	54464599	A1
HXP50SE	39856505	54422092	A1
ML37	39856505	54422100	B2
MM37	39856505	54422118	B2
MH37	39856505	54422126	B2
MU37	39856505	54422076	C1

39933114
REV B



Assembly, Major Components

Ref. No.	Part Number	Qty.	Description	Ref. No.	Part Number	Qty.	Description
1	39905447	1	Base	13	54412895	1	Sub Frame
2	54412861	1	Angle, Belt Guard, Left	13A	39178678	16	Screw
2A	39133145	1	Screw	14	54516398	1	Screw, Tensioning
2B	39128434	1	Screw	14A	95922910	1	Nut
2C	39128541	1	Nut	15	xxxxxxx	1	Motor
3	54412945	1	Guard, Belt, Left Rear	16	39573670	1	Hose
3A	39133145	2	Screw	17	39128673	1	Elbow
4	54412929	1	Guard, Belt Front	18	xxxxxxx	1	Assembly, Starter
4A	39133145	8	Screw	18A	39178678	4	Screw
5	39856505	1	Sheave, Driver	19	54419643	1	Support, Starter
5A	95415550	1	Bushing, QD Taper (60 Hz)	19A	39178678	4	Screw
	95092755	1	Bushing, QD Taper (50 Hz)	20	xxxxxxx	1	Assembly, Separator Tank
6	54412838	2	Leg, Long	20A	39116330	2	Screw
6A	39178678	6	Screw	21	39191366	5	V-Belt, 71" (XF,EP,HP,ML,MM,MH,MU)
7	54412820	2	Leg, Short		54427919	5	V-Belt, 75" (HXP 60 Hz Units)
7A	39178678	6	Screw	22	39492343	4	Spacer, Motor (286 Frame Motors)
8	*	1	Sheave, Driven	22A	95933602	4	Screw
8A	54422605	1	Retainer, Sheave	22B	39116348	4	Nut
8B	39179072	1	Screw	23	39492350	4	Spacer, Motor (326 Frame Motors)
8C	54422613	1	Spacer	23A	95934170	4	Screw
9	xxxxxxx	1	Assembly, Airend/Piping	23B	95925913	4	Nut
9A	39191283	4	Bolt	24	54432752	4	Spacer, Motor (LS 200FR)
10	54412887	1	Bracket, Gas Spring	24A	95933602	4	Screw
10A	96702279	3	Screw	24B	39116348	4	Nut
11	39592951	1	Spring, Gas	25	39479464	1	Connector, Conduit
11A	39128558	2	Nut		39479506	1	Elbow, Conduit (TEFC)
12	54412846	1	Angle, Belt Guard	26	39147194	36"	Conduit
12A	39133145	1	Screw	28	54412937	1	Guard, Belt, Right Rear

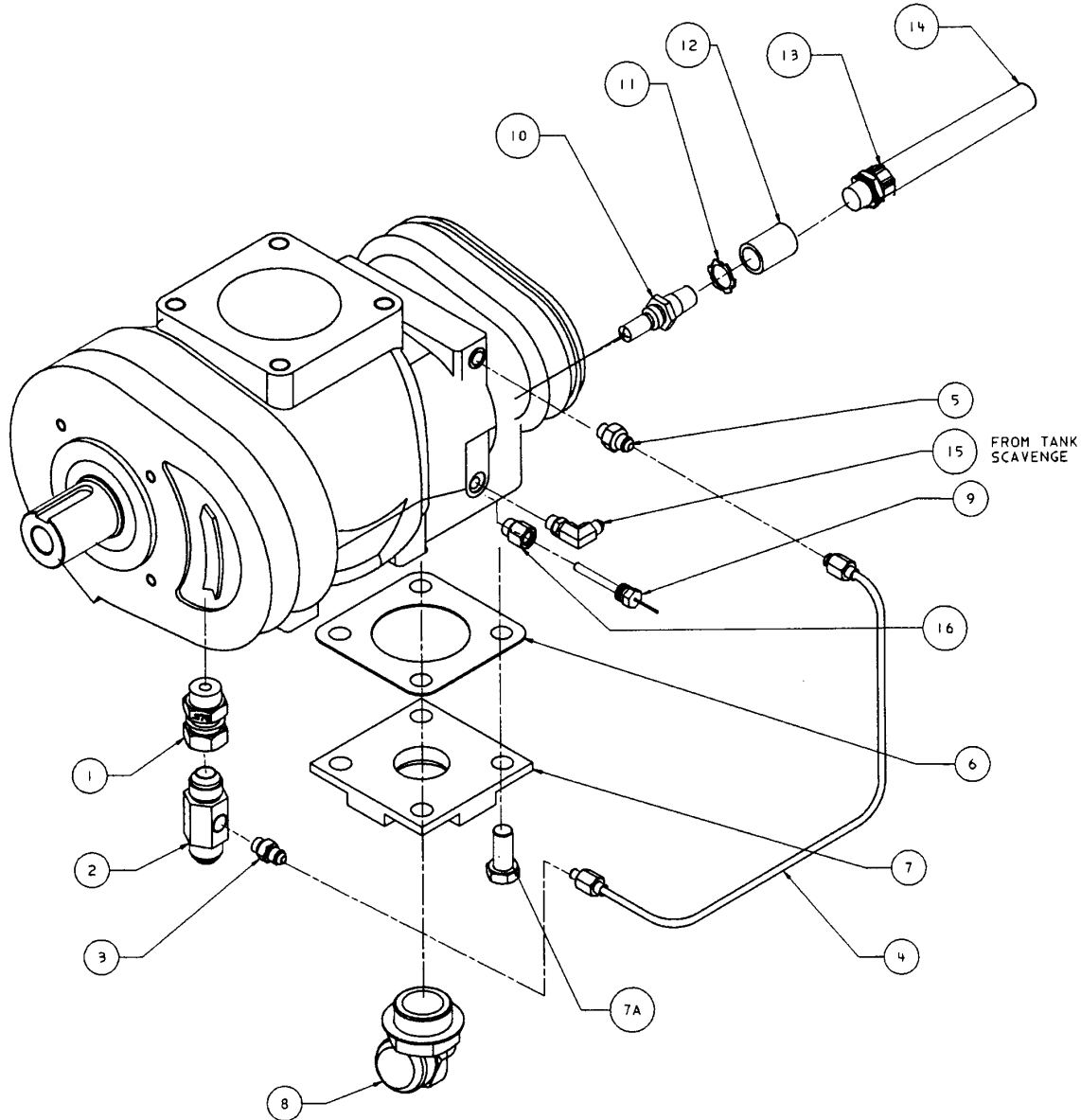
* - SEE SHEAVE TABLE ON NEXT PAGE FOR PART NUMBER

Table For Item 8

Part Number	Qty.	Description	Model
For 60 Hz, Hp/PSI Rated Units			
54422068	1	Sheave, Driven	XF50SE
54422076	1	Sheave, Driven	EP50SE
54464599	1	Sheave, Driven	HP50SE
54422092	1	Sheave, Driven	HXP50SE
For 50 Hz, kW/Bar Rated Units			
54422100	1	Sheave, Driven	ML50SE
54422118	1	Sheave, Driven	MM50SE
54422126	1	Sheave, Driven	MH50SE
54422076	1	Sheave, Driven	MU50SE

NOTES:

39933130
REV B

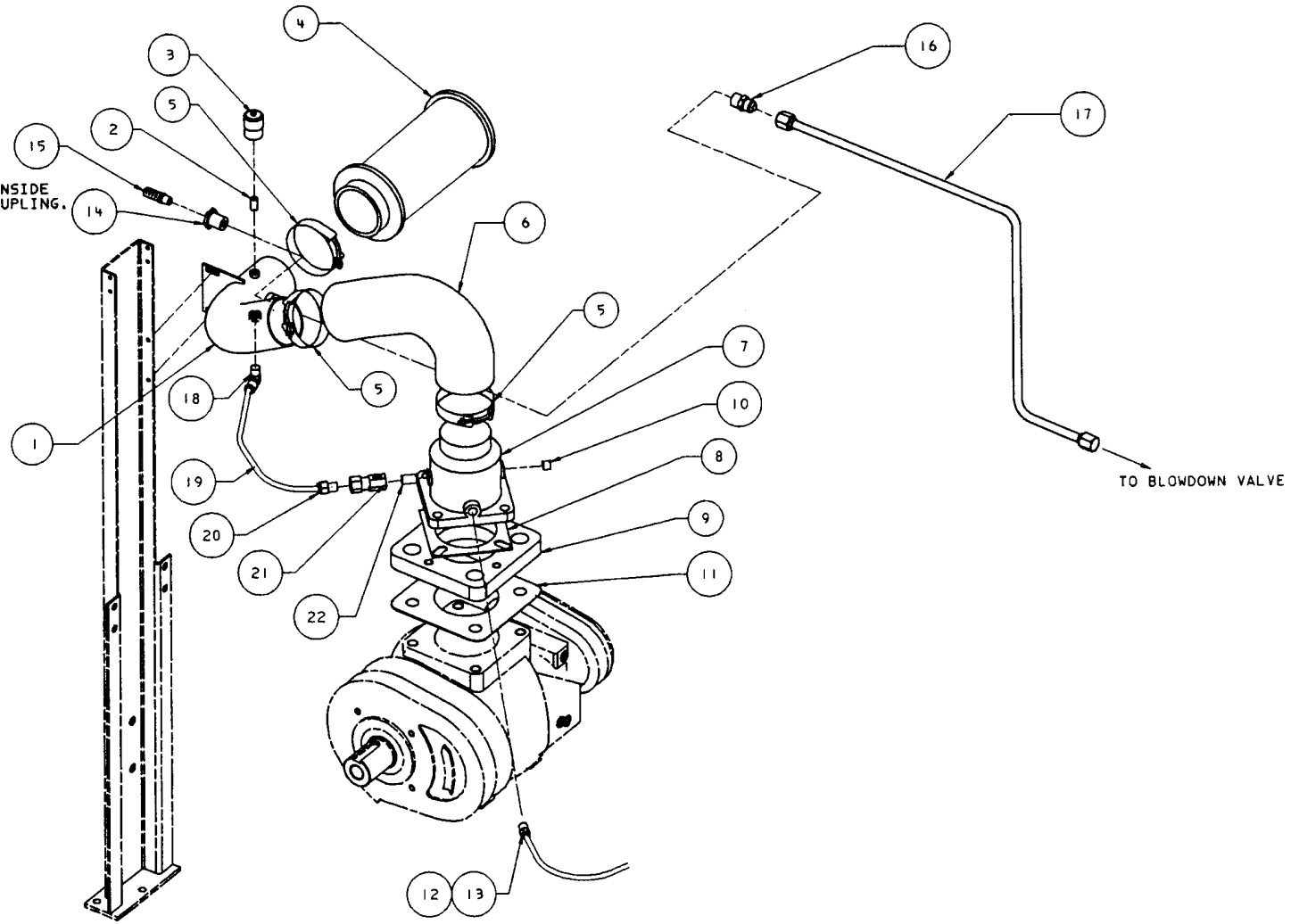


Assembly, Airend Piping

Ref. No.	Part Number	Qty.	Description
1	54441522	1	Orifice
2	93481562	1	Manifold
3	95989695	1	Connector
4	54423520	1	Tube, Oil Feed
5	96739701	1	Connector
6	54440458	1	Gasket, Air Discharge
7	54471818	1	Adapter, Air Discharge Plate
7A	39179080	4	Bolt
8	39139563	1	Elbow, 45°
9	39586227	1	Sensor, Temperature
10	39419668	1	Switch, High Air Temperature
10A	39404165	1	O-Ring
11	39114079	1	Locknut, Electric Star
12	95952388	1	Coupling
13	39256649	1	Connector
14	39139332	32"	Conduit
15	39311618	1	Elbow
16	54461066	1	Adapter

39933163
REV A

NOTE:
ITEM 15 AND 16 GO INSIDE
ITEM 1 IN .50NPT COUPLING.

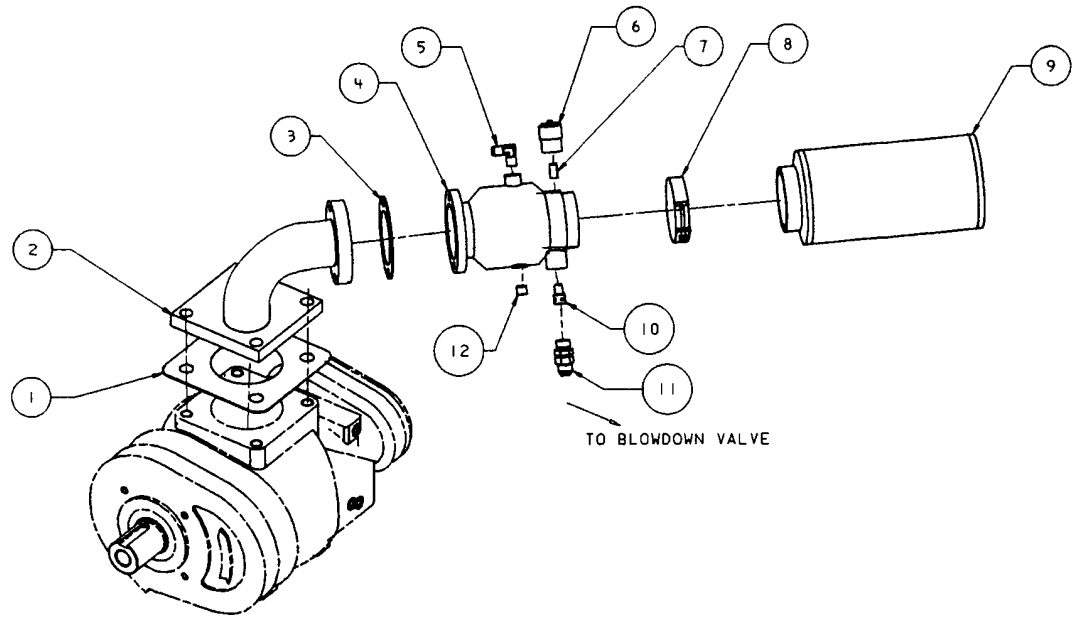


Assembly, Inlet (Full Voltage)

Ref. No.	Part Number	Qty.	Description
1	39869086	1	Tube, Air Filter
1A	39133145	2	Screw
2	95871828	1	Nipple
3	39124722	1	Indicator, Air Filter
4	39588777	1	Filter, Air - Standard
5	39304332	3	Clamp, Band
6	39852447	1	Hose, Air Inlet
7	39824107	1	Valve, Inlet
7A	39128517	4	Screw
8	39466834	1	Gasket, Inlet Valve
9	54422597	1	Adapter, Inlet Valve
9A	39191283	4	Screw
10	39184510	2	Plug
11	36889202	1	Gasket, Inlet Valve
12	39156435	1	Connector
13	39124813	xxx	Tubing, Synflex (XF,EP,HP,MM,ML,MH Units)
	39497847	xxx	Tubing, Teflon (HXP,MU Units)
14	39155767	1	Bushing
15	39314711	1	Silencer
16	95937496	1	Adapter
17	39572268	1	Hose, Blowdown
18	39155650	1	Elbow
19	39124821	xxx	Tubing, Synflex
20	39156419	1	Adapter
21	54482484	1	Valve, Check
22	95323911	1	Nipple

XXX - ORDER BY THE NUMBER OF INCHES REQUIRED.

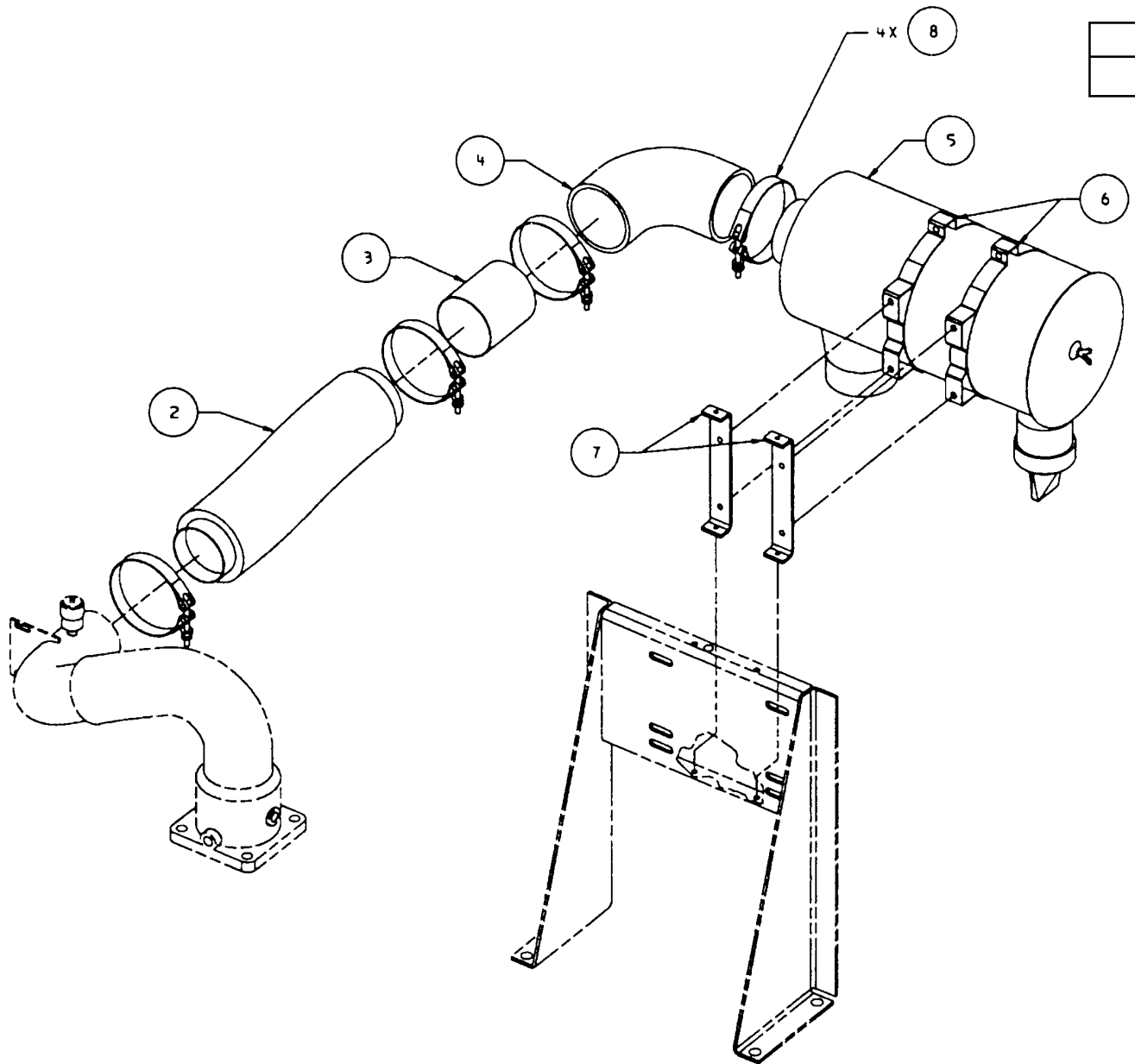
39933171
REV A



Assembly, Inlet (Star-Delta)

Ref. No.	Part Number	Qty.	Description
1	36889202	1	Gasket, Inlet Valve
2	54439112	1	Adapter, Inlet Valve
2A	39310271	4	Screw
3	39496591	1	Gasket, Inlet Valve
4	39840418	1	Valve, Inlet-Star Delta
4A	35273416	6	Screw
4B	39204854	6	Washer
5	39155478	1	Elbow
5A	39124813	xxx	Tubing, .25 Synflex (XF,EP,HP Units)
5B	39497847	xxx	Tubing, .25 Teflon (HXP Units)
6	39124722	1	Indicator, Air Filter
7	95871828	1	Nipple
8	39304332	1	Clamp, Band
9	39588777	1	Filter, Air, Standard
10	39317060	1	Silencer
11	39306485	1	Adapter
12	39184510	1	Plug

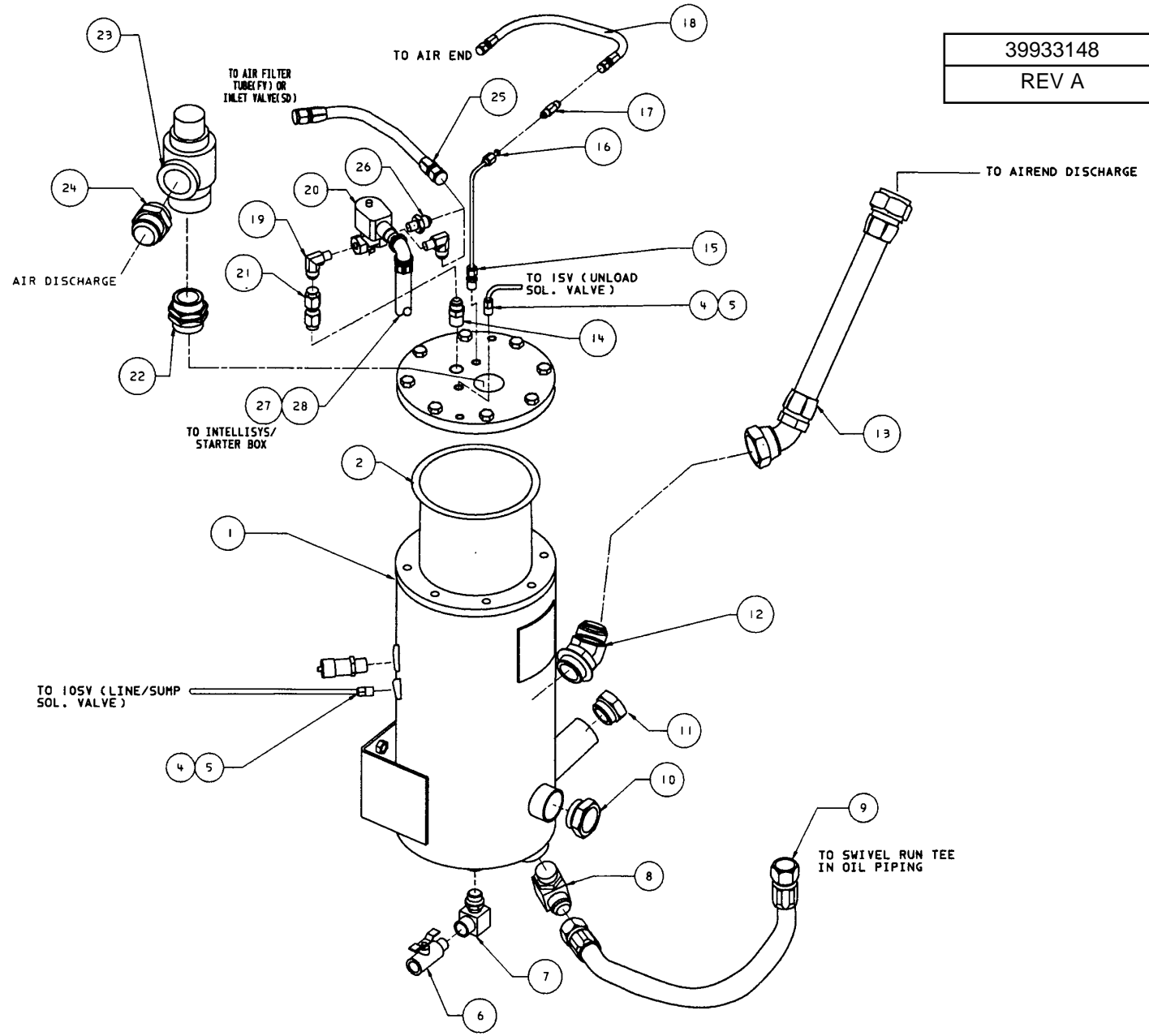
XXX - ORDER BY THE NUMBER INCHES REQUIRED.



39828843
REV 06

Assembly, Filter (Heavy Duty)

Ref. No.	Part Number	Qty.	Description
2	39852439	1	Hose, Air Inlet
3	39196670	1	Tubing, Air Intake
4	39196662	1	Elbow, 90° Rubber
5	39821640	1	Filter, Heavy Duty
6	39144027	2	Clamp, Filter
6A	39128434	4	Screw
6B	39128541	4	Nut
7	39497011	2	Bracket, Filter Mounting
7A	39133152	4	Screw
8	39307871	4	Clamp, Band

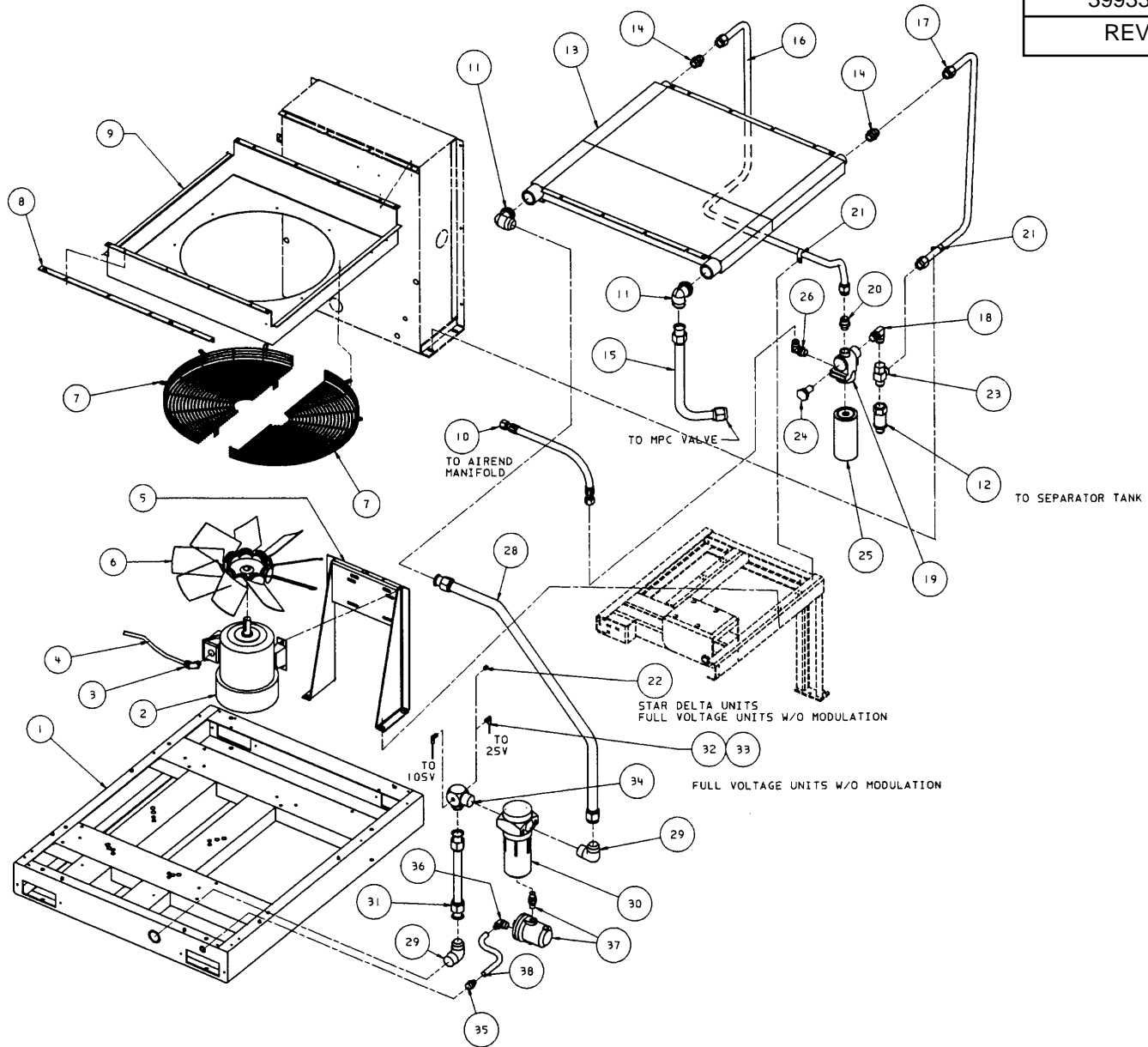


Assembly, Separator Tank

Ref. No.	Part Number	Qty.	Description
1	42427265	1	Tank, Separator (Service Only)
2	39831888	1	Element, Separator
3	39588017	1	Valve, Relief (SV,EP,HP,ML,MM,MH & MU Units)
	39926811	1	Valve, Relief (HXP Unit Only)
4	39156435	2	Connector, Synflex
5	39124813	xxx	Tubing, Synflex (XF,EP,HP,ML,MM, & MH Units)
	39497847	xxx	Tubing, TEflon (HXP, MU Units)
6	39105739	1	Valve, Drain
7	39477526	1	Elbow
8	95938171	1	Elbow
9	39573043	1	Hose, Oil Filter To Manifold
10	39476916	1	Sight Glass
10A	39406996	1	O-Ring
11	39478953	1	Plug, Oil Fill
12	39139563	1	Elbow, 45° Tank Inlet
13	39573670	1	Hose, Airend Discharge
14	95937496	1	Adapter
15	39417118	1	Adapter
16	39796594	1	Tube, Scavenge
17	39303219	1	Orifice
18	39572409	1	Hose, Tank Scavenge
19	95948758	1	Elbow
20	39136932	1	Valve, Blowdown NEMA 1
	39479563	1	Valve, Blowdown NEMA 4
21	39476668	1	Tubing, Blowdown
22	39479944	1	Union
23	39475637	1	Valve, Minimum Pressure Check
24	39128624	1	Adapter
25	39572268	1	Hose, Blowdown (Full Voltage Units)
	39575147	1	Hose, Blowdown (Star Delta Units)
26	95937488	1	Adapter (Full Voltage Units)
	95948758	1	Elbow (Star Delta Units)
27	39256631	1	Elbow
28	39139332	47"	Conduit

XXX - ORDER BY THE NUMBER OF INCHES REQUIRED.

39933122
REV A



Assembly, Air Cooled Coolers w/Aftercooler

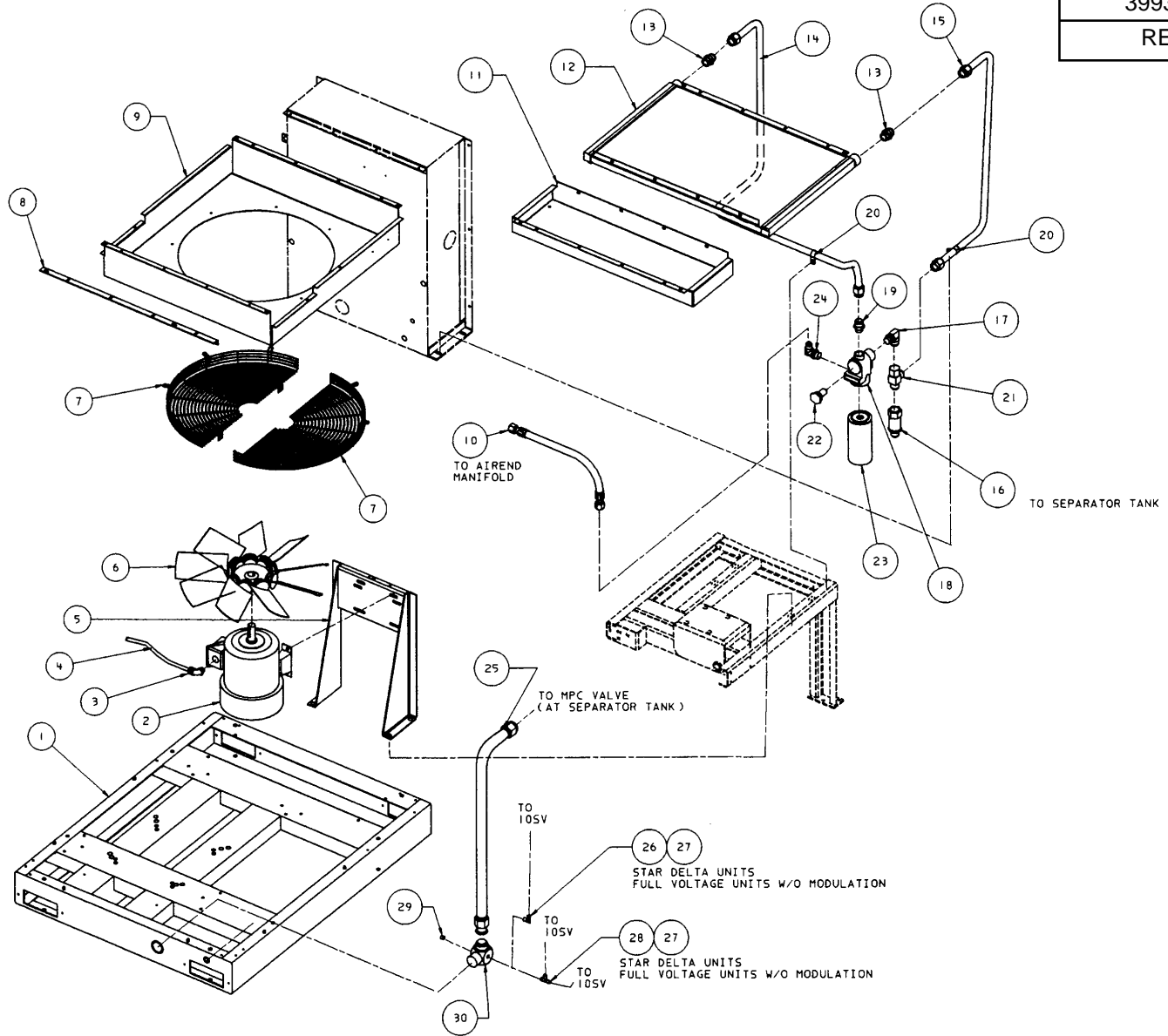
Ref. No.	Part Number	Qty.	Description	Ref. No.	Part Number	Qty.	Description
1	39905047	1	Base	14	39111752	2	Connector
2	xxxxxxx	1	Motor, Fan	15	54446521	1	Tube, Aftercooler To MPCV
2A	39110309	4	Screw	16	54423702	1	Tube, Oilcooler To Thermo Valve
2B	39128566	4	Nut	17	39905286	1	Tube, Thermo Valve To Oilcooler
3	39256631	1	Elbow, Conduit	18	95368890	1	Elbow
3A	39114079	1	Locknut, Conduit	19	39566237	1	Housing, Thermo Valve/Oil Filter
4	39139332	34"	Conduit	20	95955860	1	Connector
5	54412879	1	Support, Fan Motor	21	W88677	2	Clamp, Tube
5A	39116330	4	Screw	22	95380127	1	Plug, Pipe
5B	39116348	4	Nut	23	95937843	1	Tee, Swivel
6	39824024	1	Fan, 24" (60 Hz Only)	24	39441944	1	Element, Thermo Valve
	54441498	1	Fan, 24" (50 Hz Only)	25	39907175	1	Filter, Oil
7	54419387	2	Guard, Fan	26	39152368	1	Elbow
7A	39133152	8	Screw	28	54446539	2	Tube, Aftercooler To Moisture Separator
7B	95929071	8	Washer	29	95949749	2	Elbow
8	39819289	1	Angle, Cooler Support	30	39906334	1	Separator, Moisture
8A	39133145	6	Screw	31	39819834	1	Tube, Moisture Separator To Base Out
9	54423173	1	Box, Cooler	32	39155478	2	Elbow
9A	35140407	xxx	Gasket	33	39124813	xxx	Tubing, .25 Synflex (XF,EP,HP,ML,MM,MH Units)
10	39572094	1	Hose		39497847	xxx	Tubing, .25 Teflon (HXP,MU Units)
11	39128673	2	Elbow	34	39159082	1	Elbow
12	39580055	1	Valve, Check	35	39137542	1	Connector, Barbed
13	39899901	1	Cooler, Oil/Aftercooler	36	39137534	1	Elbow, Barbed
13A	39133152	4	Screw	37	54421698	1	Drain Trap
13B	95929071	4	Washer	38	54423280	1	Union, Trap
				39	39137518	13.5"	Tubing, .38 Synflex

NOTES:

1. STANDARD FASTENERS SUCH AS SCREWS, NUTS AND WASHERS ARE LISTED AS SUB-ITEMS, (EXAMPLE 2A).

2. XXX - ORDER PER NUMBER OF INCHES REQUIRED.

39933189
REV A



Assembly, Air Cooled Cooler w/out Aftercooler (60 Hz Units Only)

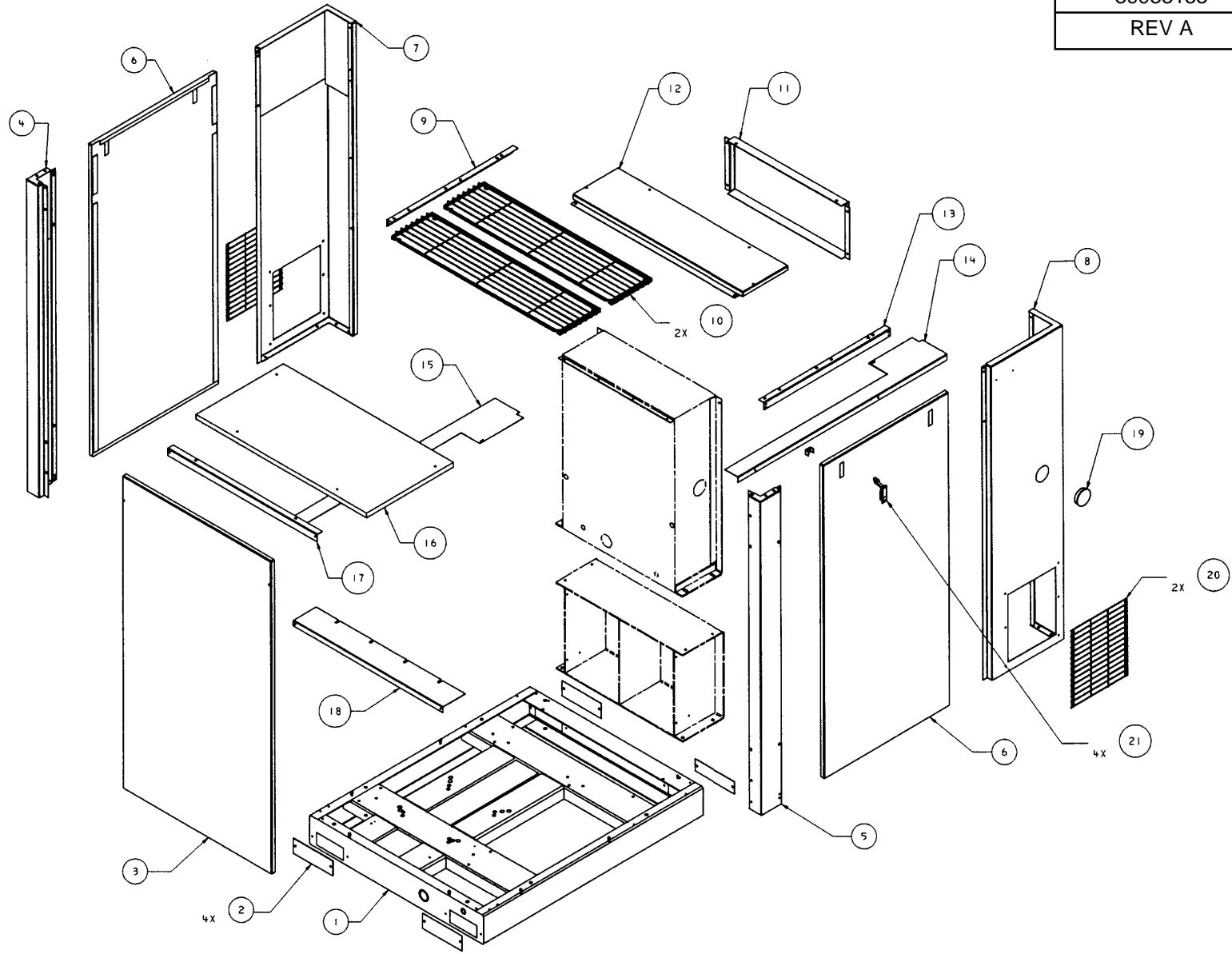
Ref. No.	Part Number	Qty.	Description	Ref. No.	Part Number	Qty.	Description
1	39905047	1	Base	14	54423702	1	Tube, Oilcooler To Thermo Valve
2	xxxxxxx	1	Motor, Fan	15	39905286	1	Tube, Thermo Valve To Oilcooler
2A	39128483	4	Screw	16	39580055	1	Valve, Check
2B	39128566	4	Nut	17	95368890	1	Elbow, Tube
3	39256631	1	Elbow, Conduit	18	39566237	1	Housing, Thermo Valve/Oil Filter
4	39139332	34"	Conduit	19	95955860	1	Connector
5	54412879	1	Support, Fan Motor	20	W88677	2	Clamp, Tube
5A	39116330	4	Screw	21	95937843	1	Tee, Swivel
5B	39116348	4	Nut	22	39441944	1	Element, Thermo
6	39824024	1	Fan, 24" (60 Hz Only)	23	39907175	1	Filter, Oil
	54441498	1	Fan, 24" (50 Hz Only)	24	39152368	1	Elbow
7	54419387	2	Guard, Fan	25	54426259	1	Tube, MPCV To Base Out
7A	39133145	8	Screw	26	39155478	2	Elbow, Synflex
7B	39128426	2	Screw	27	39124813	xxx	Tubing, .25 Synflex (XF,EP,HP,ML,MM,MH Units)
7C	39128541	2	Nut		39497847	xxx	Tubing, .25 Teflon (HXP,MU Units)
8	39819289	8	Angle, Cooler Support	28	39155346	1	Tee
8A	39133145	6	Screw	29	95380127	1	Plug
9	54423157	1	Box, Cooler	30	39159082	1	Elbow
10	39572094	1	Hose				
11	39821046	1	Adapter, No Aftercooler				
12	39820402	1	Oilcooler				
12A	39133152	4	Screw				
12B	95929071	4	Washer, Flat				
13	39111752	2	Connector				

NOTES:

1. STANDARD FASTENERS SUCH AS SCREWS, NUTS AND WASHERS ARE LISTED AS SUB-ITEMS, (EXAMPLE 2A).

2. XXX - ORDER PER NUMBER OF INCHES REQUIRED.

39933155
REV A



Assembly, Standard Enclosure

Ref. No.	Part Number	Qty.	Description	Ref. No.	Part Number	Qty.	Description
1	39905047	1	Base	11	54419650	1	Assembly, Upper Front Panel
2	39480470	4	Cover, Forklift		54419601	1	Panel, Upper Front
2A	39133145	8	Screw		54419577	1	Foam, Upper Front Panel
3	54419718	1	Assembly, Rear Panel	11A	39133145	4	Screw
	54419585	1	Panel, Rear	12	39224936	1	Assembly, Top Front Panel
	39820865	1	Foam, Rear Panel		39869300	1	Panel, Top Front
3A	39142690	2	Screw		39869318	1	Foam, Top Front Panel
3B	35256452	2	Receptacle, Clip On	12A	39142690	4	Screw
4	54419692	1	Assembly, Right Rear Corner	12B	35256452	4	Receptacle, Clip On
	54419619	1	Corner, Rear	13	39869292	1	Angle, Left Side
	39820816	1	Foam, Side Rear Corner	13A	39133145	4	Screw
	39820899	1	Foam, Rear Corner	14	39820394	1	Plenum, Left Side
4A	39133145	6	Screw	14A	39133145	2	Screw
5	54419700	1	Assembly, Left Rear Corner	15	39820428	1	Plenum, Right Side
	54419619	1	Corner, Rear	15A	39133145	2	Screw
	39820816	1	Foam, Side Rear Corner	16	39229240	1	Assembly, Top Rear Panel
	39820899	1	Foam, Rear Corner		39824255	1	Panel, Top Rear
5A	39133145	6	Screw		39820832	1	Foam, Top Rear Panel
6	54419726	2	Assembly, Common Panel	16A	39142690	4	Screw
	54419593	1	Panel, Common	16B	35256452	4	Receptacle, Clip On
	39820873	1	Foam, Common Panel	17	39824248	1	Angle, Rear
7	54419684	1	Assembly, Right Front Corner	17A	39133145	2	Screw
	54419627	1	Corner, Right Front	18	39820725	1	Plenum, Rear
	39820808	1	Foam, Side Front Corner	18A	39133145	2	Screw
	39820881	1	Foam, Front Corner	19	39485818	1	Plug
7A	39133145	7	Screw	20	39820923	2	Grill, Intake
8	54419676	1	Assembly, Left Front Corner	20A	39133145	12	Screw
	54419635	1	Corner, Left Front	21	39133954	4	Latch, Door
	39820808	1	Foam, Side Front Corner				
	39820881	1	Foam, Front Corner				
8A	39133145	7	Screw				
9	39869326	1	Angle, Right Side				
9A	39133145	4	Screw				
10	39825617	2	Guard, Exhaust				
10A	39142690	8	Screw				
10B	35256452	8	Receptacle, Clip On				

NOTE:

1. STANDARD FASTENERS SUCH AS SCREWS, NUTS AND WASHERS ARE LISTED AS SUB-ITEMS, (EXAMPLE 2A).

O-RINGS

Part No.	Size/ Thread	ID	Width	Tube Size
39404157	7/16-20	0.351	0.072	1/4
39404132	9/16-18	0.468	0.078	3/8
39404165	3/4-16	0.644	0.087	1/2
39437074	7/8-14	0.755	0.097	5/8
39407531	1- 1/16-12	0.924	0.116	3/4
39404173	1- 5/16-12	1.171	0.116	1
39404140	1- 5/8-12	1.475	0.118	1-1/4
39406996	1- 7/8-12	1.720	0.118	1-1/2
39410279	2- 1/2-12	2.337	0.118	2

SERVICE AND OPTION KITS

SERVICE KITS:

<u>PART NUMBER</u>	<u>DESCRIPTION</u>	<u>MODELS</u>
42484949	Kit, Service (Gas Spring & V-Belt)	XF / EP / HP 50-SE ML / MM / MH / MU 37-SE
42486571	Kit, Service (Gas Spring & V-Belt)	HXP50-SE

OPTION KITS:

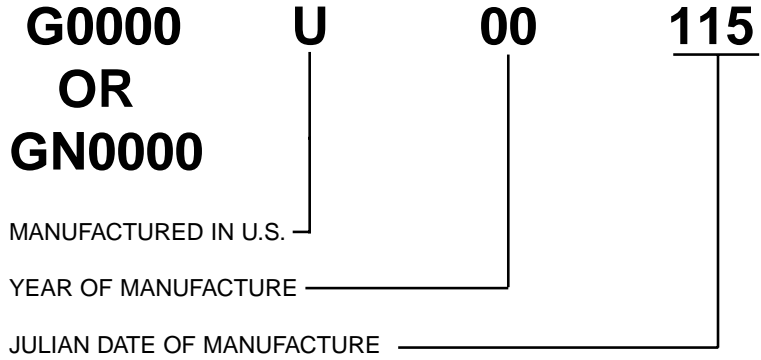
<u>PART NUMBER</u>	<u>DESCRIPTION</u>	<u>MODELS:</u>
39694153	Kit, Field - Automatic Start/Stop	All
39694161	Kit, Field - Remote Start & Stop	All
39694179	Kit, Field - Power Outage Restart (PORO) with Automatic Start/Stop and Remote Start & Stop	All
42457218	Kit, High Dust Filter	All
42451963	Kit, Field - Modulation	XF/EP/HP Units with Full Voltage Starter, NEMA 1
42451971	Kit, Field - Modulation	HXP Units with Full Voltage Starter, NEMA 1
42451989	Kit, Field - Modulation	XF/EP/HP Units with Full Voltage Starter, NEMA 4
42451997	Kit, Field - Modulation	HXP Units with Full Voltage Starter, NEMA 4
42452003	Kit, Field - Modulation	XF/EP/HP/ML/MM/MH Units with Star-Delta Starter, NEMA 1
42452011	Kit, Field - Modulation	HXP/MU Units with Star Delta Starter, NEMA 1
42452029	Kit, Field - Modulation	XF/EP/HP/ML/MM/MH Units with Star-Delta Starter, NEMA 4
42452037	Kit, Field - Modulation	HXP/MU Units with Star Delta Starter, NEMA 4
42365841	Kit, Sequencer Interface 1	All
42484378	Kit, Field - Aftercooler Retrofit	All
42484386	Kit, Field - Standard Enclosure Retrofit	All

RECOMMENDED SPARE PARTS LIST

HOW TO ORDER PARTS

In order that all avoidable errors be eliminated when ordering parts, please specify the following:

1. The model number of the unit as shown on the Compressor Data Plate.
2. The serial number of the unit as shown on the Compressor Data Plate.
3. The form number of this manual.
4. The reference number, part number, description and quantity needed exactly as listed.
5. The motor data code shown on the motor data plate.



SPECIAL NOTE

THE INGERSOLL-RAND AIREND MODULE IS ENGINEERED AND MANUFACTURED TO THE HIGHEST QUALITY STANDARDS. WITH REGULAR MAINTENANCE YOUR AIR COMPRESSOR SYSTEM WILL PROVIDE MANY YEARS OF TROUBLE FREE CONTINUOUS SERVICE.

THE INGERSOLL-RAND AIREND IS BACKED BY A FACTORY WARRANTED AIREND REBUILD-EXCHANGE PROGRAM.

CONTACT YOUR NEAREST INGERSOLL-RAND REPRESENTATIVE FOR DETAILED INFORMATION.

Recommended Spare Parts

Compressor Part	Part No.	Qty. Per Unit	Location or Use
8000 Hr. Service Kit (V-Belts & Spring)	42484949	1	XF/EP/HP50SE/ML/MM/MH/MU37SE
8000 Hr. Service Kit (V-Belts & Spring)	42486571	1	HXP50SE
Maintenance Kit	***	0	Maintenance Kit with Ultra Coolant
Ultra Coolant (5 Gal Container)	39433735	1	Fill 3.2 Gallons
Air Filter	39588777	1	On Air Filter Tube
Coolant Filter Element	39907175	1	On Coolant Filter
Separator Element	39831888	1	In Separator Tank
Thermostatic Control Valve Element, 170°F	39441944	1	In Thermostatic Control Valve Housing
Blowdown Solenoid Valve (NEMA 1)	39136932	1	On Top of Tank (3SV)
Blowdown Solenoid Valve (NEMA 4)	39479563	1	On Top of Tank (3SV)
High Air Temperature Switch	39419668	1	In Airend (1ATS)
O-Ring	39404165	1	On HATS
Inlet Valve (Full Voltage Units)	39824107	1	On Inlet Adapter
Gasket, Inlet Valve (FV)	39466834	1	Under Inlet Valve
Gasket, Inlet Adapter (FV)	36889202	1	Between A/E & Inlet Valve Adapter
Inlet Valve (Star-Delta Units)	39840418	1	On Airend
Gasket, Inlet Valve (SD)	39496591	1	Under Inlet Valve
Gasket, Inlet Adapter (SD)	36889202	1	Between A/E & Inlet Valve Adapter
Minimum Pressure Check Valve	39475637	1	Tank Discharge Line
Safety Valve	39588017	1	On Separator Tank
Fuse (2.5A)	39178728	2	In Starter Box (1FU/2FU)
Fuse (3.2A)	39113527	1	In Starter Box (3FU)
Fuse (2.0A)	39113535	2	In Starter Box, (4FU/5FU)
* Coil	39251319	**	In C37 Contactor
* Coil	39251327	**	In C43 Contactor
* Coil	39251335	**	In C60 Contactor
* Coil	39251350	**	In B110 Contactor
Contact Kit (3 Poles)	39251392	**	In B110 Contactor
* Coil	39251368	**	In B180 Contactor
Contact Kit (3 Poles)	39251400	**	In B180 Contactor
* Coil	39251343	**	In A75 Contactor
Contact Kit (3 Poles)	39251384	**	In A75 Contactor
Panel Locator Pins	39138490	6	On Base
Power On Light	39196225	1	In Starter Cabinet
Emergency Stop Switch	39549167	1	On Intellisys Panel
Pressure Sensor (0-200PSIG)	39853809	1	In Line/Sump Solenoid Valve (3APT)
Temperature Sensor	39586227	1	In Airend (2ATT)
Intellisys Controller (English)	39817655	1	In Starter Box
Intellisys Controller (Spanish/Portuguese)	39830906	1	In Starter Box
Decal Kit (English)	39825500	1	All Units
Decal Kit (Spanish)	39830880	1	All Units
Shaft Seal Kit	42486597	1	In Airend
Unload Solenoid Valve (NEMA 1)	39583943	1	On Starter Box (1SV)
Unload Solenoid Valve (NEMA 4)	39497672	1	On Starter Box (1SV)
Modulate Solenoid Valve (NEMA 1)	39530852	1	On Starter Box (2SV)
Modulate Solenoid Valve (NEMA 4)	39497680	1	On Starter Box (2SV)
Modulate Solenoid Valve (NEMA 1)	39583943	1	On Starter Box (6SV-Star-Delta Only)
Modulate Solenoid Valve (NEMA 4)	39497672	1	On Starter Box (6SV-Star-Delta Only)
Line/Sump Solenoid Valve (NEMA 1)	39583943	1	On Starter Box (10SV)
Line/Sump Solenoid Valve (NEMA 4)	39497672	1	On Starter Box (10SV)
Shuttle Valve	39127261	1	Regulator Valve
Regulation Valve	39152442	1	XF/EP/HP Units (Full Voltage)
Regulation Valve	39197595	1	HXP Units (Full Voltage)
Regulation Valve	39199476	1	XF/EP/HP Units (Star-Delta)
Regulation Valve	39199484	1	HXP Units (Star-Delta)
Hose	39573670	1	Airend To Tank
Hose	39572094	1	Oil Filter To Manifold
Hose	39573043	1	Tank To Check Valve
Hose	39572409	1	Separator Scavenge To Airend
Hose	39572268	1	Blowdown
Hose, Flex Inlet	39852447	1	Inlet Valve To Air Filter Tube
Control, Transformer	***	1	In Separator Box
Fan, 24" (60 Hz Units)	39824024	1	On Fan Motor
Fan, 24" (50 Hz Units)	54441498	1	On Fan Motor

* Good for Both 50 & 60 Hz
 ** Quantity (1) For AAL Starters
 *** Contact Your I-R Distributor or Air Center