



# Ingersoll-Rand®

**XF/EP/HP 125**  
**XF/EP/HP 150**  
**XF/EP/HP/XP 200**  
**ML/MM/MH 90**  
**ML/MM/MH 110**  
**ML/MM/MH 132**  
**ML/MM/MH 160**

**PARTS LIST**  
**RECOMMENDED SPARES**

**RETAIN THIS MANUAL WITH UNIT.**  
This Technical manual contains **IMPORTANT SAFETY DATA** and should be kept with the air compressor at all times.

**More Than Air. Answers.**

Online answers: <http://www.air.ingersoll-rand.com>

**APDD 735A**

February 2001

**AIR COMPRESSOR GROUP  
BONDED WARRANTY & REGISTERED START UP**

**Warranty**

The Company warrants that the equipment manufactured by it and delivered hereunder will be free of defects in material and workmanship for a period of twelve months (see extended airtend warranty) from the date of placing the Equipment in operation or eighteen months (see extended airtend warranty) from the date of shipment from Davidson, NC, whichever shall first occur. The Purchaser shall be obligated to promptly report any failure to conform to this warranty, in writing to the Company in said period, whereupon the Company shall, at its option, correct such nonconformity, by suitable repair to such equipment or, furnish a replacement part F.O.B. point of shipment, provided the Purchaser has stored, installed maintained and operated such Equipment in accordance with good industry practices and has complied with specific recommendations of the Company. Accessories or equipment furnished by the Company, but manufactured by others, shall carry whatever warranty the manufacturers have conveyed to the Company and which can be passed on to the Purchaser. The Company shall not be liable for any repairs, replacements, or adjustments to the Equipment or any costs of labor performed by the Purchaser or others without Company's prior written approval.

The effects of corrosion, erosion and normal wear and tear are specifically excluded. Performance warranties are limited to those specifically stated within the Company's proposal. Unless responsibility for meeting such performance warranties are limited to specified tests, the Company's obligation shall be to correct in the manner and for the period of time provided above.

THE COMPANY MAKES NO OTHER WARRANTY OR REPRESENTATION OF ANY KIND WHATSOEVER, EXPRESSED OR IMPLIED, EXCEPT THAT OF TITLE, AND ALL IMPLIED WARRANTIES OF MERCHANTABILITY AND FITNESS FOR A PARTICULAR PURPOSE, ARE HEREBY DISCLAIMED.

Correction by the Company of nonconformities whether patent or latent, in the manner and for the period of time provided above, shall constitute fulfillment of all liabilities of the Company for such nonconformities whether based on contract, warranty negligence, indemnity, strict liability or otherwise with respect to or arising out of such Equipment.

The purchaser shall not operate Equipment which is considered to be defective, without first notifying the Company in writing of its intention to do so. Any such Equipment will be at Purchaser's sole risk and liability.

**Limitation or Liability**

The remedies of the Purchaser set forth herein are exclusive, and the total liability of the Company with respect to this contract or the Equipment and services furnished hereunder, in connection with the performance or breach thereof, or from the manufacture, sale, delivery, installation, repair or technical direction covered by or furnished under this contract, whether passed on contract, warranty negligence, indemnity, strict liability or otherwise, shall not exceed the purchase price of the unit of Equipment upon which such liability is based.

The Company and its suppliers shall in no event be liable to the Purchaser, any successors in interest or any beneficiary or assignee of this contract for any consequential, incidental, indirect, special or punitive damages arising out of this contract or any breach thereof, or any defect in, or failure of, or malfunction of the Equipment hereunder, whether based upon loss of use, lost profits or revenue, interest, lost goodwill, work stoppage, impairment of other goods, loss by reason of shutdown or non-operation, increased expenses of operation, cost of purchase of replacement power or claims of Purchaser or customers of Purchaser for service interruption whether or not such loss or damage is based on contract, warranty, negligence, indemnity, strict liability or otherwise.

**EXTENDED DRIVETRAIN WARRANTY  
Intellisys Compressors  
50-450 HP**

The Ingersoll-Rand Company Rotary Screw Air Compressor that has been filled prior to its original shipment from Ingersoll-Rand Company with ULTRA COOLANT and which has been operated solely on ULTRA COOLANT thereafter shall have its DRIVETRAIN warranted for twenty four (24) months from the date of placing the COMPRESSOR in operation or thirty (30) months from the date of shipment, whichever occurs first.

Except for the above warranty period, the standard warranty provisions shall apply and the conditions outlined herein are understood to be a supplement to the standard Ingersoll-Rand Company warranty.

This EXTENDED DRIVETRAIN WARRANTY applies only to 50-450 HP Intellisys COMPRESSORS operating on ULTRA COOLANT after February 1, 1990.

# TABLE OF CONTENTS

Safety and Warnings .....	2
Introduction .....	3
Intellisys Controller & Starter Box Assembly .....	4-5
Starter Assembly (C85/C60) .....	6-7
Starter Assembly (B110/A75) .....	8-9
Starter Assembly (B180/B110) .....	10-11
Starter Assembly (B180/B180) .....	12-13
Starter Assembly (B250/B180) .....	14-15
Starter Assembly (B300/B180) .....	16-17
Separator Tank Assembly .....	18-19
Major Component Assembly .....	20-21
Aircooled Cooler Assembly (125 & 150 HP/90 & 110 KW) ..	22-23
Aircooled Cooler Assembly (200 HP/132 & 160 KW) .....	24-25
Watercooled Piping Assembly (125 & 150 HP/90 & 110 KW)	26-27
Watercooled Piping Assembly (200 HP/132 & 160 KW) ...	28-29
Water Piping Options .....	30-31
6" Inlet Valve Assembly .....	32-33
Enclosure Assembly (Standard) .....	34-35
Enclosure Assembly (Outdoor Modification) .....	36-37
Drive Train Assembly .....	38-39
Aircooled Intake Assembly .....	40-41
Watercooled Intake Assembly .....	42-43
O-Rings .....	44
Recommended Spare Parts List .....	45-46

## ROTARY SCREW AIR COMPRESSOR

This unit was purchased from

---

---

---

Ingersoll-Rand Company reserves the right to make changes or add improvements without notice and without incurring any obligation to make such changes or add such improvements to products sold previously.

No. of units on order: \_\_\_\_\_

Customer Order No.: \_\_\_\_\_

Ingersoll-Rand Co. Order No.: \_\_\_\_\_

### For ready reference:

Record the serial number and model number of your unit here.

Serial Number: \_\_\_\_\_

Model Number: \_\_\_\_\_

# SAFETY AND WARNINGS

Before you install this air compressor you should take the time to carefully read all the instructions contained in the operators manual form APDD-738. Operators manuals may be obtained from your local Ingersoll-Rand Distributor or Air Center.

Electricity and compressed air have the potential to cause severe personal injury or property damage.

Before installing, wiring, starting, operating or making any adjustments, identify the components of the air compressor using the operators manual as a guide.

The operator should use common sense and good working practices while operating and maintaining this unit. Follow all codes, pipe adequately, understand the starting and stopping sequence. Check the safety devices by following the procedure contained in this operators manual.

Maintenance should be done by qualified personnel, adequately equipped with proper tools. Follow the maintenance schedules as outlined in the operators manual to ensure problem free operation after start up.

Safety instructions in the operators manual are bold-faced for emphasis. The signal words DANGER, WARNING and CAUTION are used to indicate hazard seriousness levels as follows:



**Danger** is used to indicate the presence of a hazard which *will cause severe personal injury, death, or substantial property damage* if the warning is ignored.



**Warning** is used to indicate the presence of a hazard which *can cause severe personal injury, death, or substantial property damage* if the warning is ignored.



**Caution** is used to indicate the presence of a hazard which *will or can cause minor personal injury or property damage* if the warning is ignored.



**Notice** is used to notify people of installation, operation, or maintenance information which is important but not hazard-related.

## SAFETY PRECAUTIONS

### BEFORE PROCEEDING, READ CAREFULLY BEFORE INSTALLING THE COMPRESSOR OR PERFORMING ANY MAINTENANCE

#### WARNING

COMPRESSED AIR AND ELECTRICITY ARE DANGEROUS.

BEFORE DOING ANY WORK ON THIS UNIT, BE SURE THE ELECTRICAL SUPPLY HAS BEEN CUT OFF-LOCKED & TAGGED AND THE ENTIRE COMPRESSOR SYSTEM HAS BEEN VENTED OF ALL PRESSURE.

1. Do not remove the covers, loosen or remove any fittings, connections or devices when this unit is in operation. Hot liquid and air under pressure that are contained within this unit can cause severe injury or death.

2. The compressor has high and dangerous voltage in the motor starter and control box. All installations must be in accordance with recognized electrical codes. Before working on the electrical system, be sure to remove voltage from the system by use of a manual-disconnect-switch. A circuit breaker or fuse safety switch must be provided in the electrical supply line leading to the compressor.

Those responsible for installation of this equipment must provide suitable grounds, maintenance clearance and lightning arrestors for all electrical components as stipulated in O.S.H.A. 1910.308 through 1910.329.

3. Do not operate the compressor at higher discharge pressure than those specified on the Compressor Nameplate or motor overload will occur. This condition will result in compressor motor shutdown.

4. Use only safety solvent for cleaning the compressor and auxiliary equipment.

5. Install a manual shut off valve (isolation type) in the discharge line. A pressure relief valve, with sufficient capacity to relieve full compressor capacity, must be installed between the compressor and the isolation valve.

6. Whenever pressure is released through the pressure relief valve, it is due to excessive pressure in the system. The cause for the excessive pressure should be investigated immediately.

7. Before doing any mechanical work on the compressor:

a.) Shut the unit down.

b.) Electrically isolate the compressor by use of the manual disconnect switch in the power line to the unit. Lock and tag the switch so that it cannot be operated.

c.) Vent pressure from the compressor and isolate the unit from any other source of air.

8. Air line separators, properly selected and installed, will minimize any liquid carry-over.

The use of plastic bowls on line filters without metal guards can be hazardous. From a safety standpoint, metal bowls should be used on any pressurized system. Review of your plant air line system is recommended.

9. When a receiver is installed, it is recommended that occupational safety and health standards as covered in the Federal Register, Volume 36, number 105, part 11, paragraph 1910.169 be adhered to in the installation and maintenance of this receiver.

10. Before starting the compressor, its maintenance instructions should be thoroughly read and understood.

11. After maintenance functions are completed, covers and guards must be replaced.

# PARTS LIST

## INTRODUCTION

### GENERAL

This manual, which contains an illustrated parts breakdown, has been prepared as an aid in identifying and ordering parts in the SSR compressor. All of the compressor parts listed in the parts breakdown are manufactured with the same precision as the original equipment.

Ingersoll-Rand Company service facilities and parts are available worldwide. There are Ingersoll-Rand company Branch Offices and authorized distributors located in the principle cities of the United States. In Canada, our customers are serviced by the Canadian Ingersoll-Rand Company, Limited. There are also Ingersoll-Rand Company subsidiaries and authorized distributors located in the principle cities throughout the world.

### DESCRIPTION

The illustrated parts breakdown illustrates the various assemblies, sub-assemblies and detailed parts which make up this particular SSR

compressor. A series of illustrations show each part clearly and in its correct location relative to the other parts in the illustration. Each part on an illustration is referenced with a number. The number, description and quantity needed per assembly is listed in numerical order on the following pages.

Items with a description of NSS are not sold separately and must be purchased as an assembly. Items with a description of Ref. indicate that the item is located elsewhere in the parts list.

### OPTIONAL EQUIPMENT

Several optional accessories/items are available for convenience or special application. These accessories have been selected as being particularly suitable for use on the SSR compressor.

For complete details on Optional Equipment, contact your Sales Representative.

## HOW TO USE THIS PARTS MANUAL

1. Turn to the Parts Section to locate the desired illustrations.
2. Locate the part on the illustration by visual identification and the reference number.
3. Find the referenced number on the Tabulated page, along with the Part Number and Description.

### SERIAL NUMBER BREAK

When a part is changed and it doesn't supersede the previous part, this change must be documented by a serial number break. By using the last (6) digits of the serial number, as outlined below, this change is recorded in the parts list.

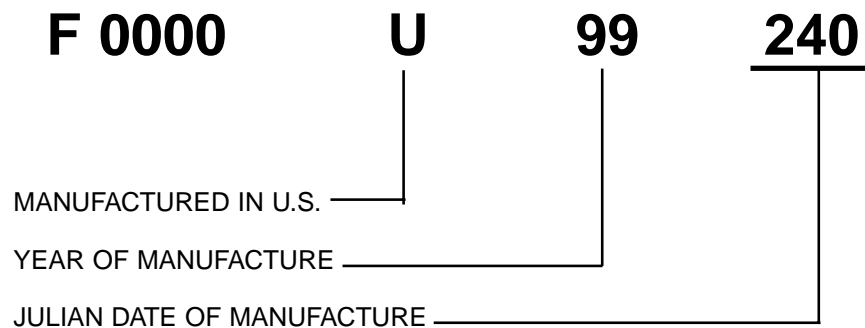
→> U99240 indicates part is used on units up to and including serial number ending in U99240.

U99241 →> indicates part is used on units with serial number ending in U99241 or higher.

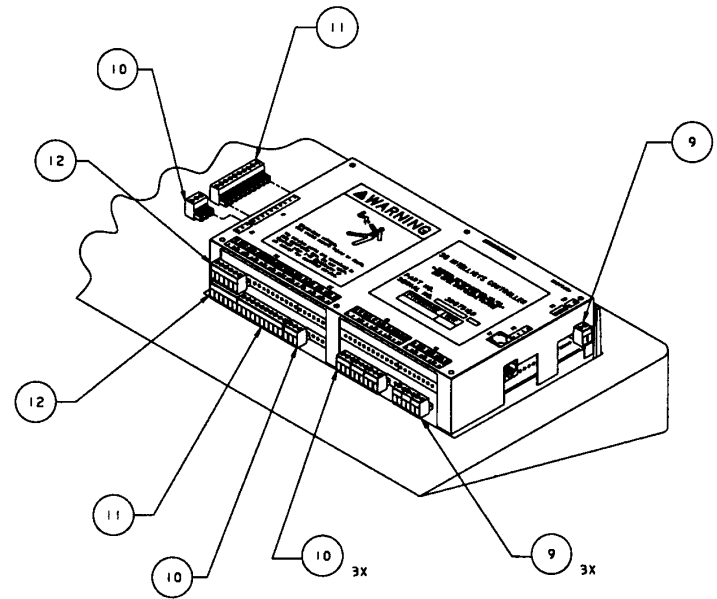
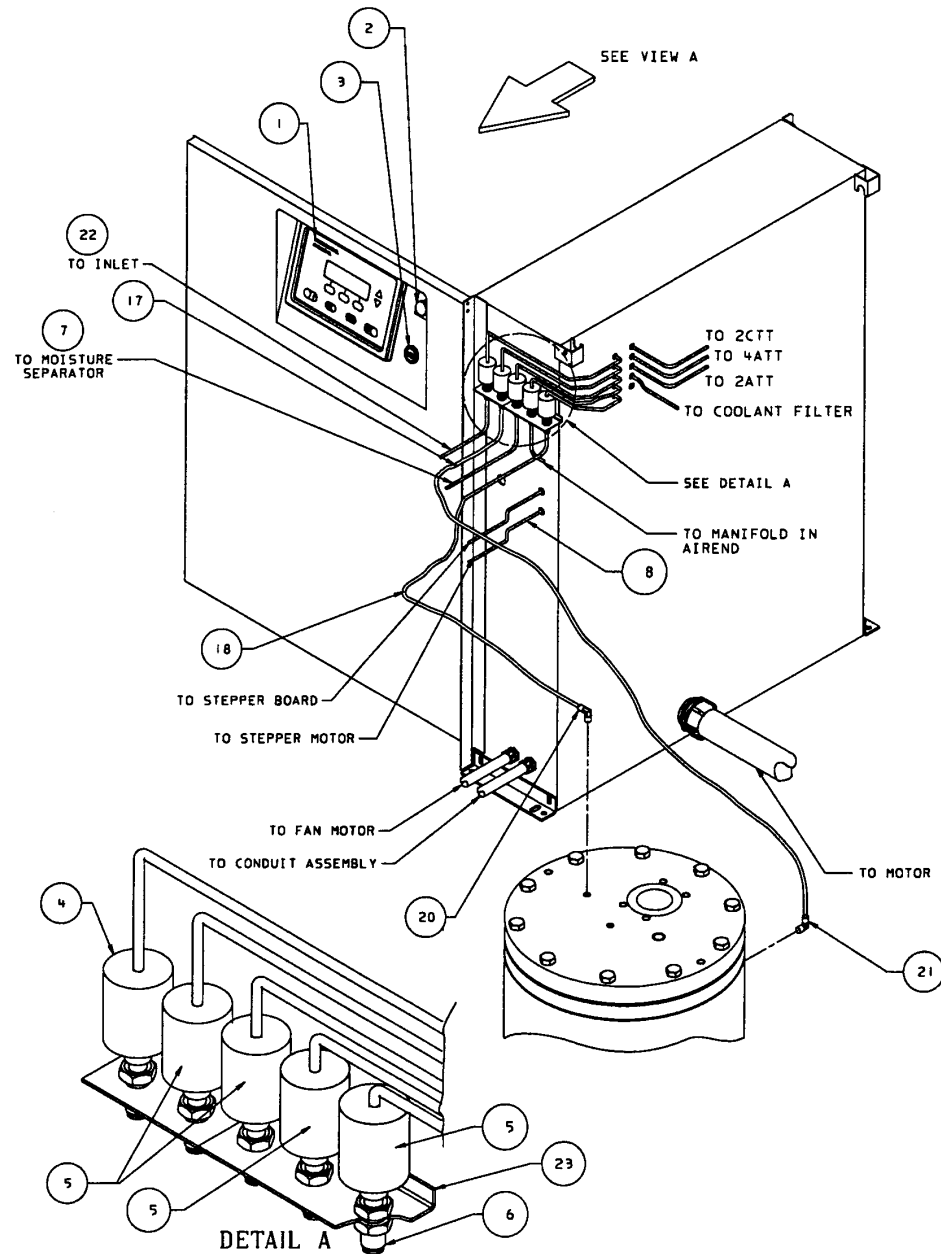
### HOW TO ORDER PARTS

In order that all avoidable errors be eliminated when ordering parts, please specify the following:

1. The model number of the unit as shown on the Compressor Data Plate.
2. The serial number of the unit as shown on the Compressor Data Plate.
3. The form number of this manual (shown on front cover).
4. The reference number, part number, description and quantity needed exactly as listed.
5. The motor data code shown on the motor data plate.



39894613
REV 03



**VIEW A**  
 SCALE: 1/2  
 ( SHOWN IN ISOMETRIC PROJECTION )

**INTELLISYS CONTROLLER AND STARTER BOX ASSEMBLY**

<b>REF. NO.</b>	<b>PART NUMBER</b>	<b>QTY.</b>	<b>DESCRIPTION</b>
1	39875158	1	ASSEMBLY, INTELLISYS CONTROLLER
1A	39874375	1	GASKET
1B	39128988	6	BOLT
1C	95379392	6	WASHER, STAR
2	39485032	1	LIGHT, AMBER COMPLETE
2A	39485024	1	BULB, 24V
3	39549167	1	SWITCH, EMERGENCY STOP
4	39877618	1	TRANSDUCER, 0-15 PSIG
4A	39875570	1	CABLE, TRANSDUCER
5	39875539	4	TRANSDUCER, 0-225 PSIG (TWO STAGE)
5A	39875539	3	TRANSDUCER, 0-225 PSIG (SINGLE STAGE)
5B	39875570	4	CABLE, TRANSDUCER (TWO STAGE)
5C	39875570	3	CABLE, TRANSDUCER (SINGLE STAGE)
6	39461868	5	BULKHEAD CONNECTOR (FOR MTG TRANSDUCER) (TWO STAGE)
6A	39461868	4	BULKHEAD CONNECTOR (FOR MTG TRANSDUCER) (SINGLE STAGE)
6B	95922761	5	WASHER, STAR (TWO STAGE)
6C	95922761	4	WASHER, STAR (SINGLE STAGE)
7	39124813	X	NYLON, TUBE
	39497847	X	TUBING, FLEXIBLE TEFLON (LOW AMBIENT)
8	39476221	1	CABLE, STEPPER MOTOR
9	39242367	4	PLUG, 2 POSITION
10	39204441	5	PLUG, 3 POSITION
11	39242375	2	PLUG, 10 POSITION
12	39186093	2	PLUG, 6 POSITION
17	39124813	X	TUBING, NYLON (NEMA 1 AND 4)
	39497847	X	TUBING, FLEXIBLE TEFLON (LOW AMBIENT)
18	39124813	X	TUBING, NYLON (NEMA 1 AND 4)
	39497847	X	TUBING, FLEXIBLE TEFLON (LOW AMBIENT)
20	39155478	1	ELBOW, 90° (NEMA 1 AND 4)
21	39155478	1	ELBOW, 90° (NEMA 1 AND 4)
22	39124813	1	TUBING, NYLON (NEMA 1 AND 4)
	39497847	X	FLEXIBLE TEFLON (LOW AMBIENT)
23	54428537	1	BRACKET, TRANSDUCER

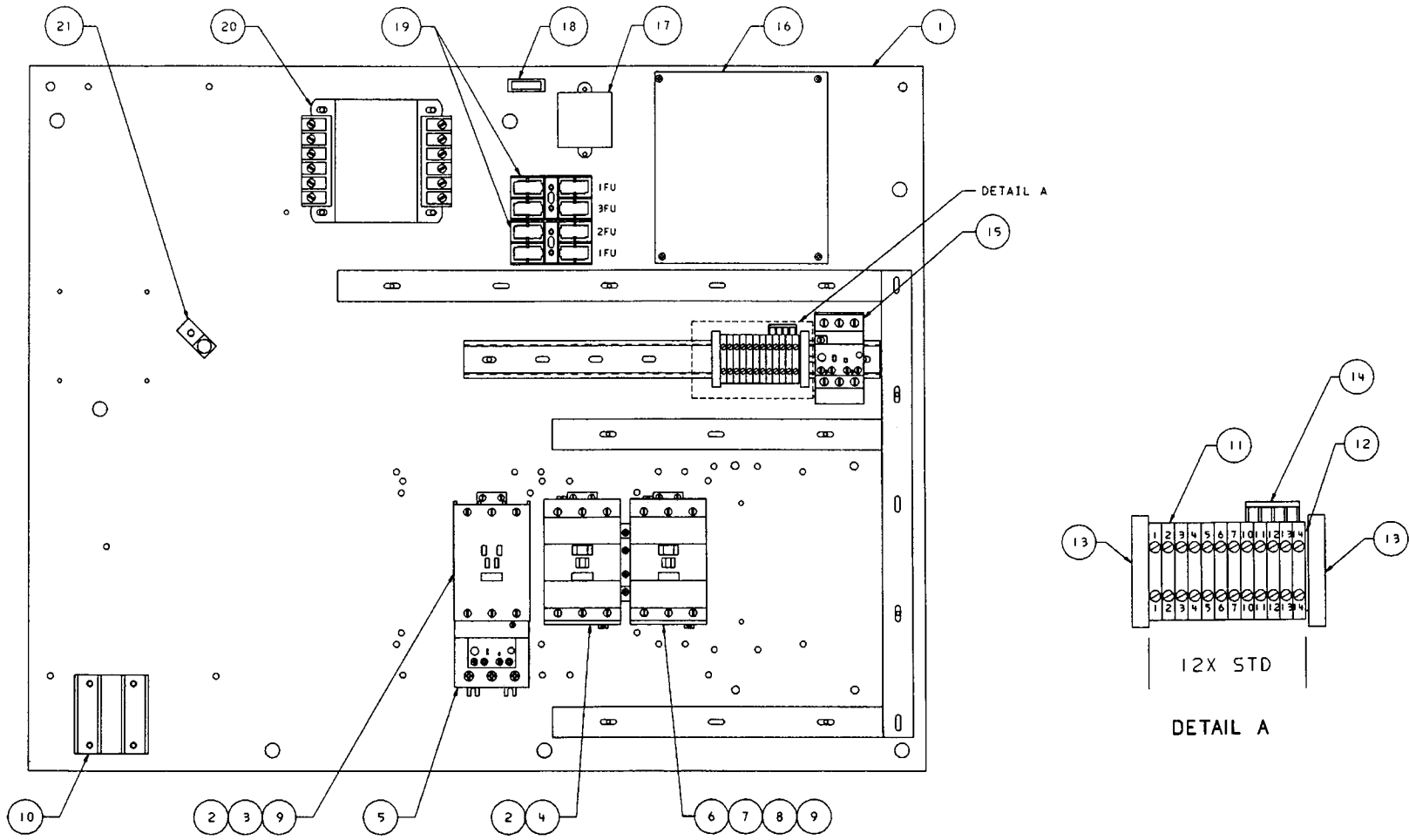
NOTES:

1. X - ORDER PER NUMBER OF INCHES REQUIRED

2. STANDARD FASTENERS SUCH AS NUTS, BOLTS AND SCREWS ARE LISTED AS SUB-ITEMS (EXAMPLE: 2A).

3. ALL CONTROL TUBING FOR LOW AMBIENT UNITS TO BE TEFLON FLEXIBLE TUBING, STAINLESS STEEL TUBING OR METAL FLEX. ALL CONTROL TUBING TO BE HEAT TRACED.

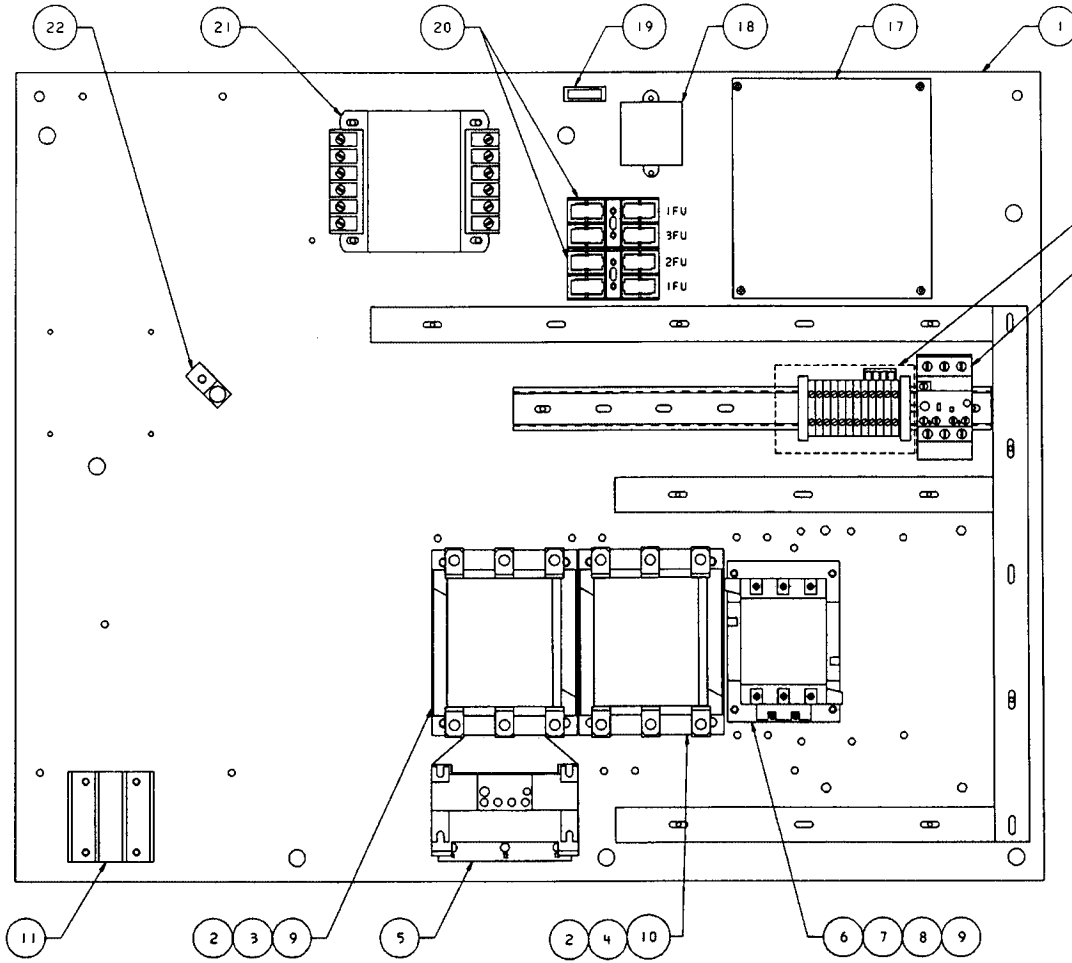
39910237  
REV 02



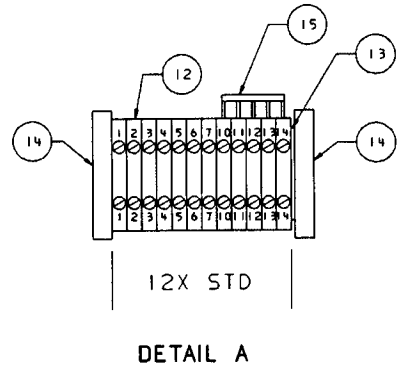
**STARTER ASSEMBLY C85/C60 SD**

<b>REF. NO.</b>	<b>PART NUMBER</b>	<b>QTY.</b>	<b>DESCRIPTION</b>
1	54367628	1	BACKPANEL
2	39251020	2	CONTACTOR, 85 AMP
2A	39251335	2	COIL, CONTACTOR
3	39251129	1	CONTACTOR, AUXILIARY (4 N.O.)
4	39251137	1	CONTACTOR, AUXILIARY - 1N.O., 1N.C.
5	39251087	1	RELAY, OVERLOAD
6	39251186	1	INTERLOCK, MECHANICAL
7	39251004	1	CONTACTOR, 60 AMP
7A	39251335	1	COIL, CONTACTOR
8	39251145	1	CONTACTOR, AUXILIARY - 2N.O., 2N.C.
9	39203443	2	SUPPRESSOR, ARC
10	39164520	1	BLOCK, MOTOR TIE OFF
11	39252903	12	BLOCK, TERMINAL
12	39252929	1	SECTION, END
13	39252937	2	BLOCK, END STOP
14	39252945	1	JUMPER, 5-POLE
15	39251228	1	STARTER, FAN MOTOR 1.7-2.5A
	39251244	1	STARTER, FAN MOTOR 4.1-6.3A
15A	39251285	1	CONTACTOR, AUXILIARY (N.O.)
16	39874425	1	ASSEMBLY, POWER SUPPLY
16A	39173810	4	STANDOFF
17	39201918	1	FILTER, RFI
18	39196225	1	LIGHT, POWER ON
19	39480504	2	HOLDER, FUSE-2 POLE
19A	39178728	2	FUSE, 600V - 2.5A (1FU)
19B	39113527	1	FUSE, 250V - 3.2A (2FU)
19C	39242458	1	FUSE, 600V - 5A (3FU)
20	39318100	1	TRANSFORMER, 380VA, 50HZ, 380, 415, 550V
	39475975	1	TRANSFORMER, 380VA, 60HZ, 200, 230, 460, 575V
	39483292	1	TRANSFORMER, 380VA, 380V-60HZ, 220V-50HZ
21	39190939	1	LUG, GROUND
21A	39141809	1	BOLT, GROUND LUG
21B	39128541	1	NUT, GROUND LUG

39910245  
REV 02



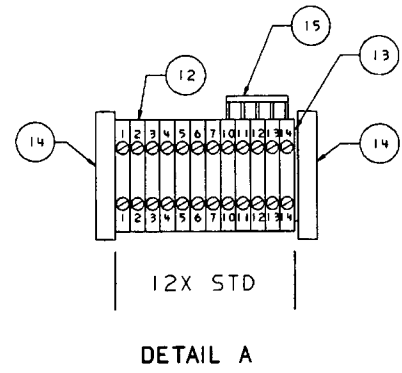
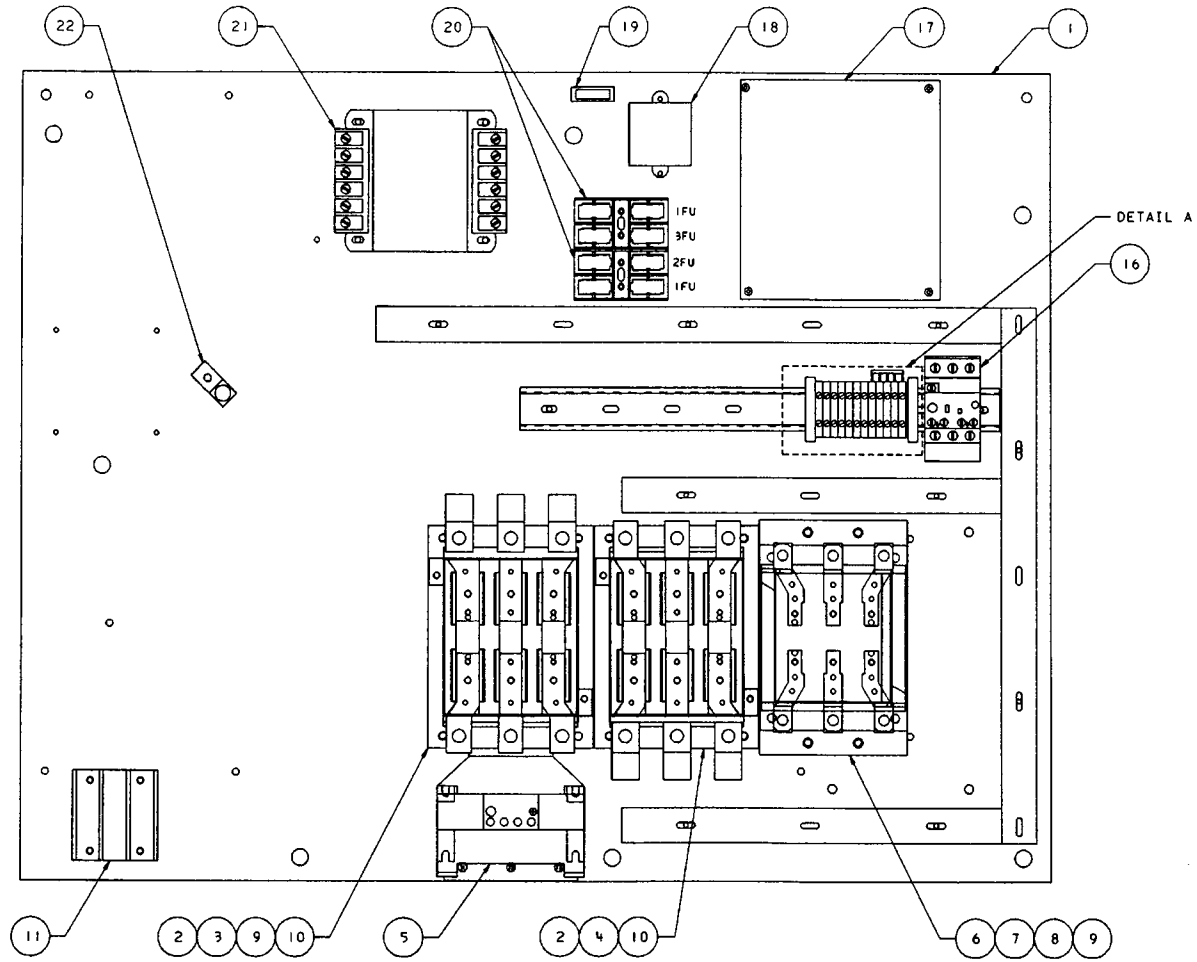
DETAIL A



**STARTER ASSEMBLY B110/A75 SD**

<b>REF. NO.</b>	<b>PART NUMBER</b>	<b>QTY.</b>	<b>DESCRIPTION</b>
1	54367628	1	BACKPANEL
2	39251038	2	CONTACTOR, 110 AMP
2A	39251350	2	ASSEMBLY, COIL
2B	39251392	2	KIT, CONTACT
3	39251160	1	CONTACTOR, AUXILIARY (N.O.)
4	39251152	1	CONTACTOR, AUXILIARY (N.O.)
5	39251095	1	RELAY, OVERLOAD
6	39251194	1	INTERLOCK, MECHANICAL
7	39251525	1	CONTACTOR, 75 AMP
7A	39251343	1	COIL, CONTACTOR
7B	39251384	1	KIT, CONTACT
8	39251178	1	CONTACTOR, AUXILIARY (N.O., N.C.)
9	39203443	2	SUPPRESSOR, ARC
10	39251434	1	KIT, TERMINAL LUG
11	39164520	1	BLOCK, MOTOR TIE OFF
12	39252903	12	BLOCK, TERMINAL
13	39252929	1	SECTION, END
14	39252937	2	BLOCK, END STOP
15	39252945	1	JUMPER, 5-POLE
16	39251228	1	STARTER, FAN MOTOR 1.7-2.5A
	39251251	1	STARTER, FAN MOTOR 6.4-10A
	39251269	1	STARTER, FAN MOTOR 10.1-16A
16A	39251285	1	CONTACTOR, AUXILIARY (N.O.)
17	39874425	1	ASSEMBLY, POWER SUPPLY
17A	39173810	4	STANDOFF
18	39201918	1	FILTER, RFI
19	39196225	1	LIGHT, POWER ON
20	39480504	2	HOLDER, FUSE-2 POLE
20A	39178728	2	FUSE, 600V - 2.5A (1FU)
20B	39113527	1	FUSE, 250V - 3.2A (2FU)
20C	39242458	1	FUSE, 600V - 5A (3FU)
21	39318100	1	TRANSFORMER, 380VA, 50HZ, 380, 415, 550V
	39475975	1	TRANSFORMER, 380VA, 60HZ, 200, 230, 460, 575V
	39483292	1	TRANSFORMER, 380VA, 380V-60HZ, 220V-50HZ
22	39190939	1	LUG, GROUND
22A	39141809	1	BOLT, GROUND LUG
22B	39128541	1	NUT, GROUND LUG

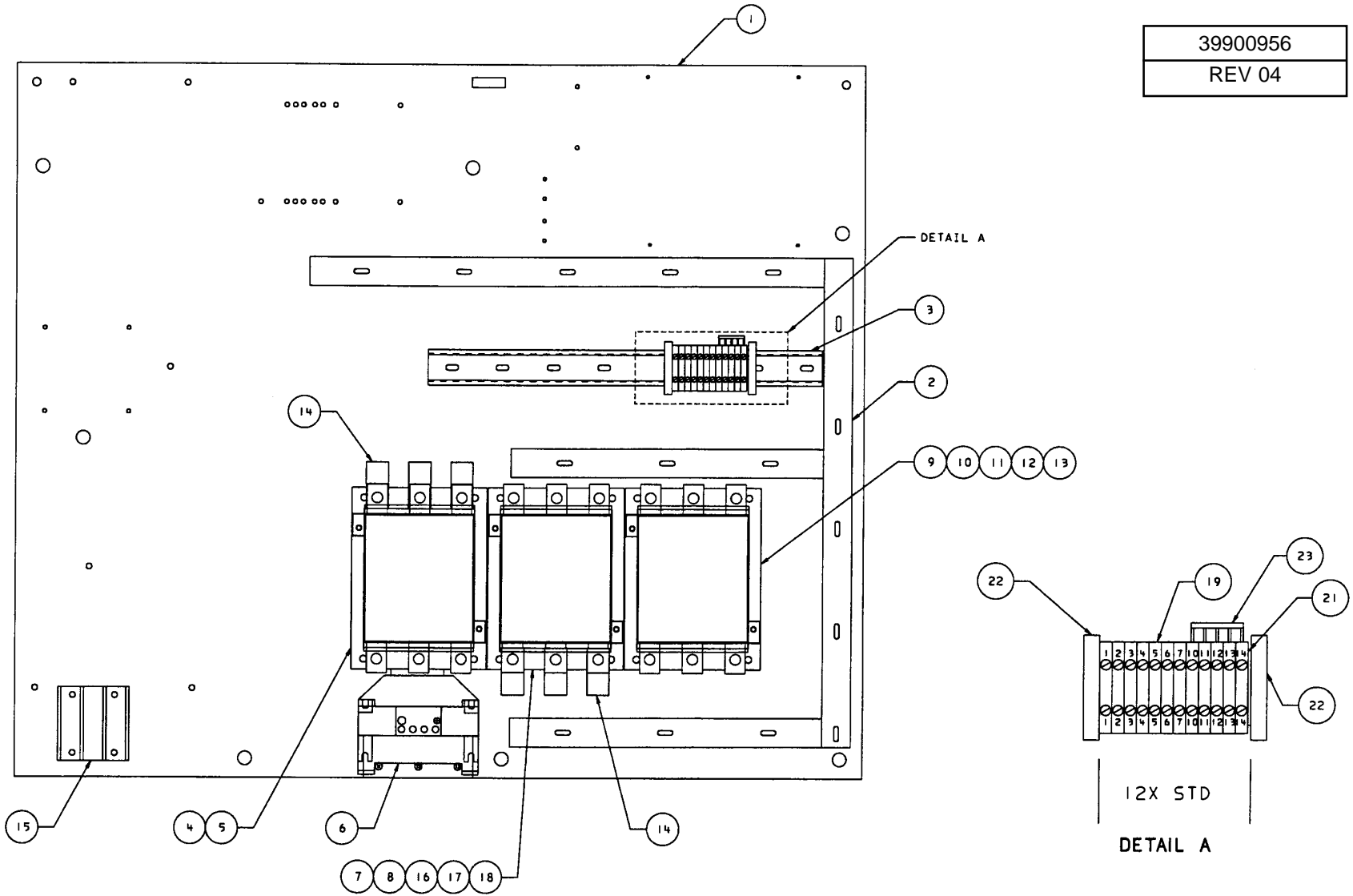
39910252  
REV 02



**STARTER ASSEMBLY B180/B110 SD**

<b>REF. NO.</b>	<b>PART NUMBER</b>	<b>QTY.</b>	<b>DESCRIPTION</b>
1	54367628	1	BACKPANEL
2	39251046	2	CONTACTOR, 180 AMP
2A	39251368	2	ASSEMBLY, COIL
2B	39251400	2	KIT, CONTACT
3	39251160	1	CONTACTOR, AUXILIARY (N.O.)
4	39251152	1	CONTACTOR, AUXILIARY (N.O.)
5	39251103	1	RELAY, OVERLOAD
6	39251194	1	INTERLOCK, MECHANICAL
7	39251038	1	CONTACTOR, 110 AMP
7A	39251350	1	COIL, CONTACTOR
7B	39251392	1	KIT, CONTACT
8	39251178	1	CONTACTOR, AUXILIARY (N.O., N.C.)
9	39203443	2	SUPPRESSOR, ARC
10	39251442	2	KIT, TERMINAL LUG
11	39164520	1	BLOCK, MOTOR TIE OFF
12	39252903	12	BLOCK, TERMINAL
13	39252929	1	SECTION, END
14	39252937	2	BLOCK, END STOP
15	39252945	1	JUMPER, 5-POLE
16	39251228	1	STARTER, FAN MOTOR 1.7-2.5A
	39251244	1	STARTER, FAN MOTOR 4.1-6.3A
	39251269	1	STARTER, FAN MOTOR 10.1-16A
	39251277	1	STARTER, FAN MOTOR 16.1-20A
16A	39251285	1	CONTACTOR, AUXILIARY (N.O.)
17	39874425	1	ASSEMBLY, POWER SUPPLY
17A	39173810	4	STANDOFF
18	39201918	1	FILTER, RFI
19	39196225	1	LIGHT, POWER ON
20	39480504	2	HOLDER, FUSE-2 POLE
20A	39178736	2	FUSE, 600V - 3.5A (1FU)
20B	39118484	1	FUSE, 250V - 5A (2FU)
20C	39242458	1	FUSE, 600V - 5A (3FU)
21	39318118	1	TRANSFORMER, 580VA, 50HZ, 380, 415, 550V
	39475983	1	TRANSFORMER, 580VA, 60HZ, 200, 230, 460, 575V
	39485800	1	TRANSFORMER, 580VA, 380V-60HZ, 220V-50HZ
22	39190939	1	LUG, GROUND
22A	39141809	1	BOLT, GROUND LUG
22B	39128541	1	NUT, GROUND LUG

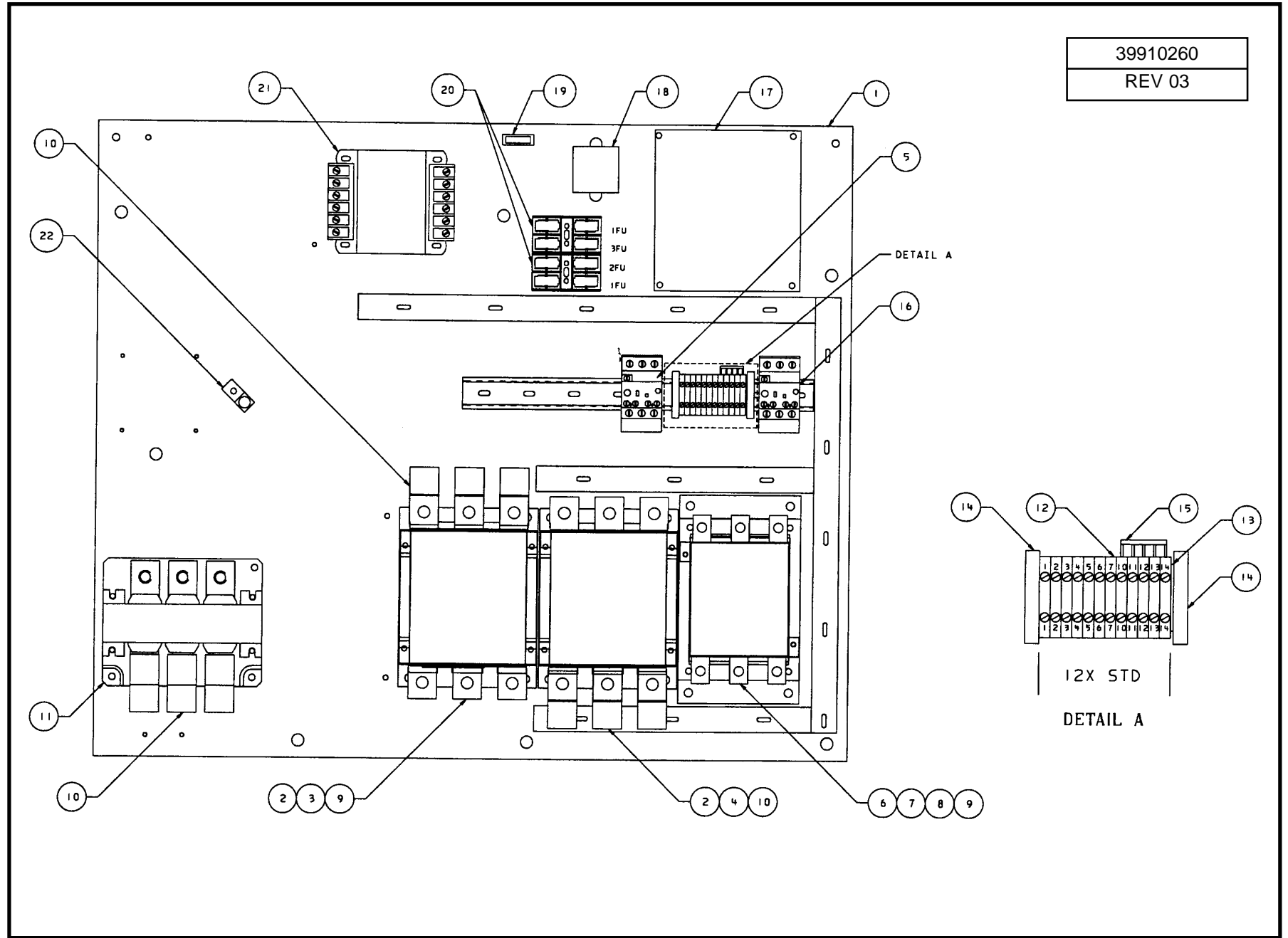
39900956  
REV 04



NOTES:  
1. SEE I-R P/N 39587837 FOR WIRING INFORMATION

**STARTER ASSEMBLY B180/B180 SD**

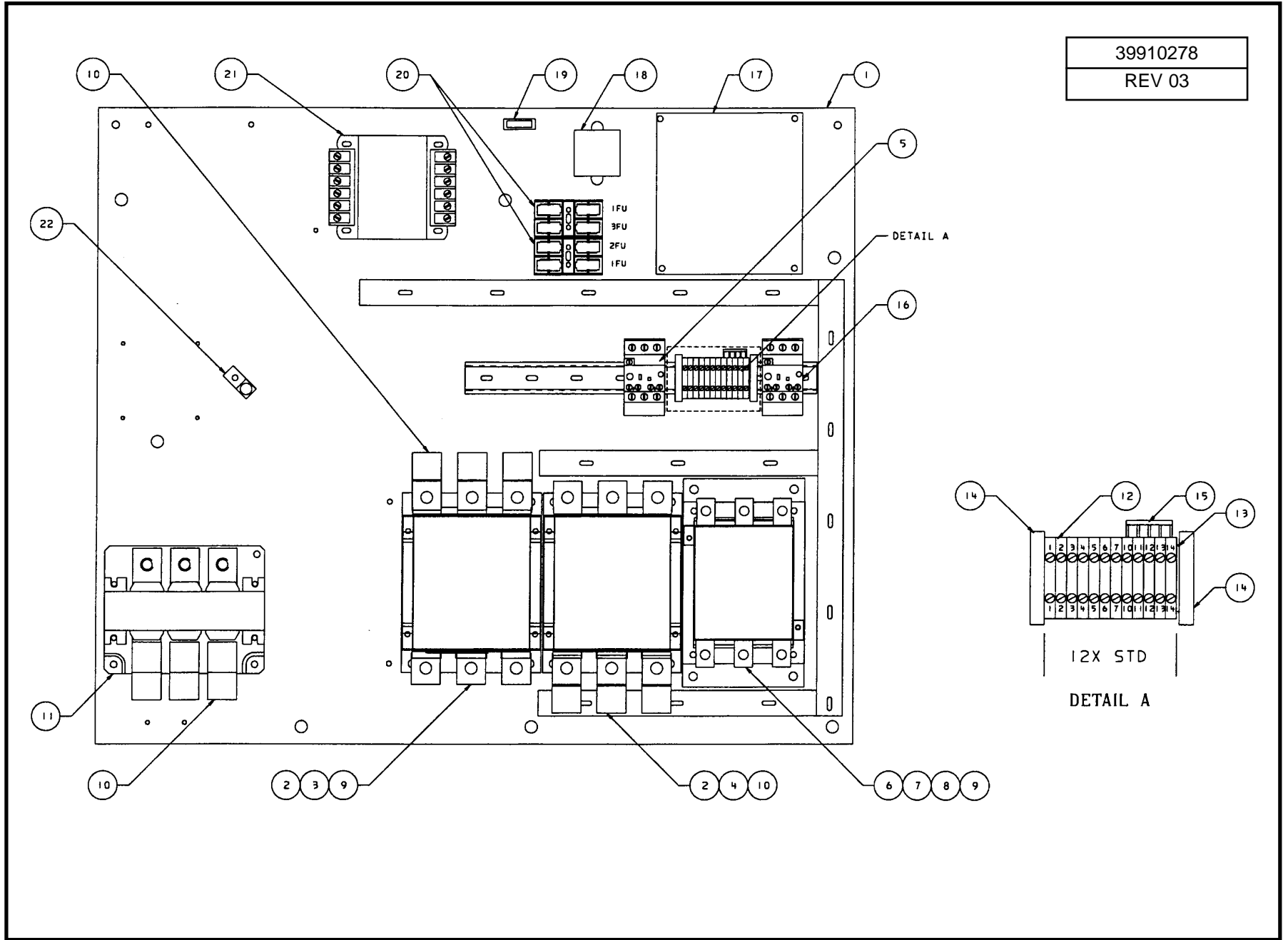
<b>REF. NO.</b>	<b>PART NUMBER</b>	<b>QTY.</b>	<b>DESCRIPTION</b>
1	54367628	1	BACKPANEL
2	39127188	AS REQ'D	DUCT, WIRING
3	N/A	1	RAIL, DIN
4	39251046	1	CONTACTOR, 1M
5	39251160	1	CONTACTOR, AUXILIARY (NORMALLY OPEN)
6	39251103	1	RELAY, OVERLOAD
7	39251046	1	CONTACTOR, 2M
8	39251152	1	CONTACTOR, AUXILIARY (NORMALLY OPEN)
9	39251194	1	INTERLOCK, MECHANICAL
10	39251046	1	CONTACTOR, 1S
11	39251178	1	CONTACTOR, AUXILIARY
12	N/A	1	SHORTING BAR
13	39203443	2	ARC SUPPRESSOR
14	39251442	2	TERMINAL LUG KIT
15	39164520	1	MOTOR TIE OFF BLOCK
16	N/A	2	BUS BAR
17	N/A	2	BUS BAR
18	N/A	2	BUS BAR
19	39252903	12	BLOCK, TERMINAL
21	39252929	1	END SECTION
22	39252937	2	BLOCK, END STOP
23	39252945	1	JUMPER, 5-POLE



**STARTER ASSEMBLY B250/B180 SD**

REF. NO.	PART NUMBER	QTY.	DESCRIPTION
1	54367628	1	BACKPANEL
2	39251053	2	CONTACTOR, 250 AMP
2A	39251376	2	ASSEMBLY, COIL
2B	39251418	2	KIT, CONTACT
3	39251160	1	CONTACTOR, AUXILIARY (N.O.)
4	39251152	1	CONTACTOR, AUXILIARY (N.O.)
5	39253158	1	RELAY, OVERLOAD
6	39251194	1	INTERLOCK, MECHANICAL
7	39251046	1	CONTACTOR, 180 AMP
7A	39251368	1	COIL, CONTACTOR
7B	39251400	1	KIT, CONTACT
8	39251178	1	CONTACTOR, AUXILIARY (N.O., N.C.)
9	39203443	2	SUPPRESSOR, ARC
10	39251459	3	KIT, TERMINAL LUG
11	39253174	1	TRANSFORMER, CURRENT
12	39252903	12	BLOCK, TERMINAL
13	39252929	1	SECTION, END
14	39252937	2	BLOCK, END STOP
15	39252945	1	JUMPER, 5-POLE
16	39251244	1	STARTER, FAN MOTOR 4.1-6.3A
	39252887	1	STARTER, FAN MOTOR 19.1-32A
16A	39251285	1	CONTACTOR, AUXILIARY (N.O.) - USED WITH STARTER #39251244
	39924758	1	CONTACTOR, AUXILIARY (N.O. - N.C.) USED WITH STARTER #39252887
16B	39924741	1	SWITCH, TRIP - USED WITH STARTER PART #39252887
17	39874425	1	ASSEMBLY, POWER SUPPLY
17A	39173810	4	STANDOFF
18	39201918	1	FILTER, RFI
19	39196225	1	LIGHT, POWER ON
20	39480504	2	HOLDER, FUSE-2 POLE
20A	39178736	2	FUSE, 600V - 3.5A (1FU)
20B	39118484	1	FUSE, 250V - 5A (2FU)
20C	39242458	1	FUSE, 600V - 5A (3FU)
21	39318118	1	TRANSFORMER, 580VA, 50HZ, 380, 415, 550V
	39475983	1	TRANSFORMER, 580VA, 60HZ, 200, 230, 460, 575V
	39485800	1	TRANSFORMER, 580VA, 380V-60HZ, 220V-50HZ
22	39190939	1	LUG, GROUND
22A	39141809	1	BOLT, GROUND LUG
22B	39128541	1	NUT, GROUND LUG

39910278  
REV 03



**STARTER ASSEMBLY B300/B180 SD**

REF. NO.	PART NUMBER	QTY.	DESCRIPTION
1	54367628	1	BACKPANEL
2	39252879	2	CONTACTOR, 300 AMP
2A	39251376	2	ASSEMBLY, COIL
2B	39251384	2	KIT, CONTACT
3	39251160	1	CONTACTOR, AUXILIARY (N.O.)
4	39251152	1	CONTACTOR, AUXILIARY (N.O.)
5	39253158	1	RELAY, OVERLOAD
6	39251194	1	INTERLOCK, MECHANICAL
7	39251046	1	CONTACTOR, 180 AMP
7A	39251368	1	COIL, CONTACTOR
7B	39251400	1	KIT, CONTACT
8	39251178	1	CONTACTOR, AUXILIARY (N.O., N.C.)
9	39203443	2	SUPPRESSOR, ARC
10	39251459	3	KIT, TERMINAL LUG
11	39253174	1	TRANSFORMER, CURRENT
12	39252903	12	BLOCK, TERMINAL
13	39252929	1	SECTION, END
14	39252937	2	BLOCK, END STOP
15	39252945	1	JUMPER, 5-POLE
16	39251244	1	STARTER, FAN MOTOR 4.1-6.3A
	39252887	1	STARTER, FAN MOTOR 19.1-32A
16A	39251285	1	CONTACTOR, AUXILIARY (N.O.) USE WITH STARTER #39251244
	39924758	1	CONTACTOR, AUXILIARY (N.O.- N.C.) USE WITH STARTER #39252887
16B	39924741	1	SWITCH, TRIP - USED WITH STARTER PART #39252887
17	39874425	1	ASSEMBLY, POWER SUPPLY
17A	39173810	4	STANDOFF
18	39201918	1	FILTER, RFI
19	39196225	1	LIGHT, POWER ON
20	39480504	2	HOLDER, FUSE-2 POLE
20A	39178736	2	FUSE, 600V - 3.5A (1FU)
20B	39118484	1	FUSE, 250V - 5A (2FU)
20C	39242458	1	FUSE, 600V - 5A (3FU)
21	39318118	1	TRANSFORMER, 580VA, 50HZ, 380, 415, 550V
	39475983	1	TRANSFORMER, 580VA, 60HZ, 200, 230, 460, 575V
	39485800	1	TRANSFORMER, 580VA, 380V-60HZ, 220V-50HZ
22	39190939	1	LUG, GROUND
22A	39141809	1	BOLT, GROUND LUG
22B	39128541	1	NUT, GROUND LUG



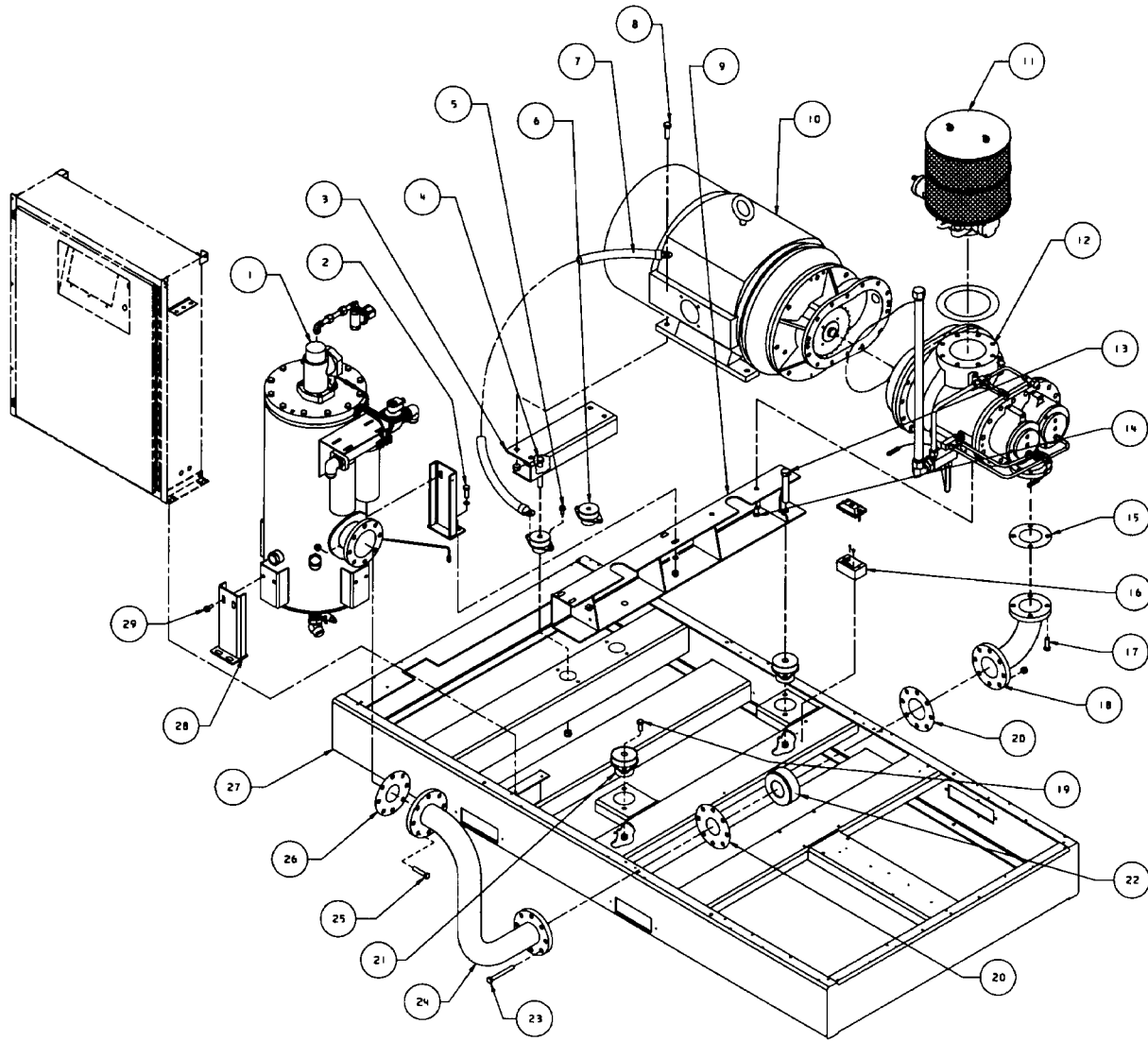
### SEPARATOR TANK ASSEMBLY

REF. NO.	PART NUMBER	QTY.	DESCRIPTION	REF. NO.	PART NUMBER	QTY.	DESCRIPTION
1	98378361	1	PLUG	27	39259676	2	OIL FILTER ELEMENT
2	39105739	1	VALVE, BALL - TANK DRAIN	28	39911631	1	FILTER, OIL
3	39477526	1	ELBOW, 90° - IN TANK DRAIN	28A	39128467	4	SCREW (FILTER TO BRACKET)
4	39139563	1	ELBOW, 45° - SUMP TANK OUT	29	95937686	2	ELBOW, 90° (FILTER DELTA P)
5	39476916	1	SIGHT GLASS	30	95981346	1	CONNECTOR
	39406996	1	O-RING (SIGHT GLASS)	31	39318233	1	VALVE, OIL STOP NEMA 1
6	39478953	1	PLUG, OIL FILL		39318241	1	VALVE, OIL STOP NEMA 4
7	42424739	1	TANK, SEPARATOR (ASME/CANADIAN)	32	39916911	1	TUBE, OIL FEED
	42424598	1	TANK, SEPARATOR (AUSTRALIAN)	33	39916648	1	ELBOW
8	39155478	1	ELBOW	34	39560628	2	SENSOR, TEMPERATURE THERMISTOR
	39124813	X	TUBING, NYLON	35	39419668	1	SWITCH, TEMPERATURE 245°F
9	54509427	1	ELEMENT, SEPARATOR	35A	39404165	1	O-RING
10	39417118	1	ADAPTER (SCAVENGE TUBE)	36	39114079	1	CONDUIT, LOCKNUT
11	39155478	1	ELBOW	37	39106240	2	EXPANDER
12	39478748	1	ELBOW	38	39155478	3	ELBOW
13	39477369	1	VALVE, MINIMUM PRESSURE	39	95037412	1	BUSHING
	95022372	1	O-RING	40	95976775	1	ELBOW
13A	39179403	4	STUD	41	39911284	1	TUBE, FRONT BRG HOUSING
13B	95922910	4	NUT	42	95978235	1	CONNECTOR
14	39802814	1	TUBE, BLOWDOWN	43	39925045	1	ORIFICE, INJECTION 11.5 MM (XF200)
15	54619960	1	TUBE, TANK SCAVENGE		39330626	1	ORIFICE, INJECTION 14 MM (XF125/XF150/EP150/EP200/ HP200/ML90/ML110/MM110/ML132/ MM132/MH132/ML160/MM160/MH160)
16	39303284	1	ORIFICE (.070)				ORIFICE, INJECTION 17MM (EP125/HP125/ HP150/XP150/MM90/MH90/MH110)
17	54619978	1	TUBE, SCAVENGE				
18	95981429	1	CONNECTOR				
19	39588058	1	VALVE, 200# SAFETY				
20	95944104	1	ELBOW, 90° - SAFETY VALVE		39925060	1	
21	39244512	1	SWITCH, OIL DELTA P				
21A	39178827	2	SCREW	43A	95021754	1	O-RING
22	95937579	2	ADAPTER	47	95938049	1	ELBOW
23	39545942	2	TUBE, OIL DELTA P				
24	39798004	1	SUPPORT, OIL FILTER				
24A	39128509	2	SCREW (BRACKET TO TANK)				
25	39479944	1	ADAPTER (OIL FILTER TO OIL STOP VALVE)				
26	39128673	1	ELBOW				
							<b>ITEMS TO BE PLACED IN STARTER BOX</b>
				44	39137542	1	ADAPTER
				45	95220844	1	CLAMP, HOSE
				46	39137518	1	TUBING, SYNDFLEX

NOTE: STANDARD FASTENERS SUCH AS NUTS, BOLTS AND SCREWS ARE LISTED AS SUB-ITEMS (EXAMPLE: 13A).

X - ORDER PER NUMBER OF INCHES REQUIRED.  
 XX - CONTACT FACTORY FOR PART NUMBER..

39878905  
REV 02

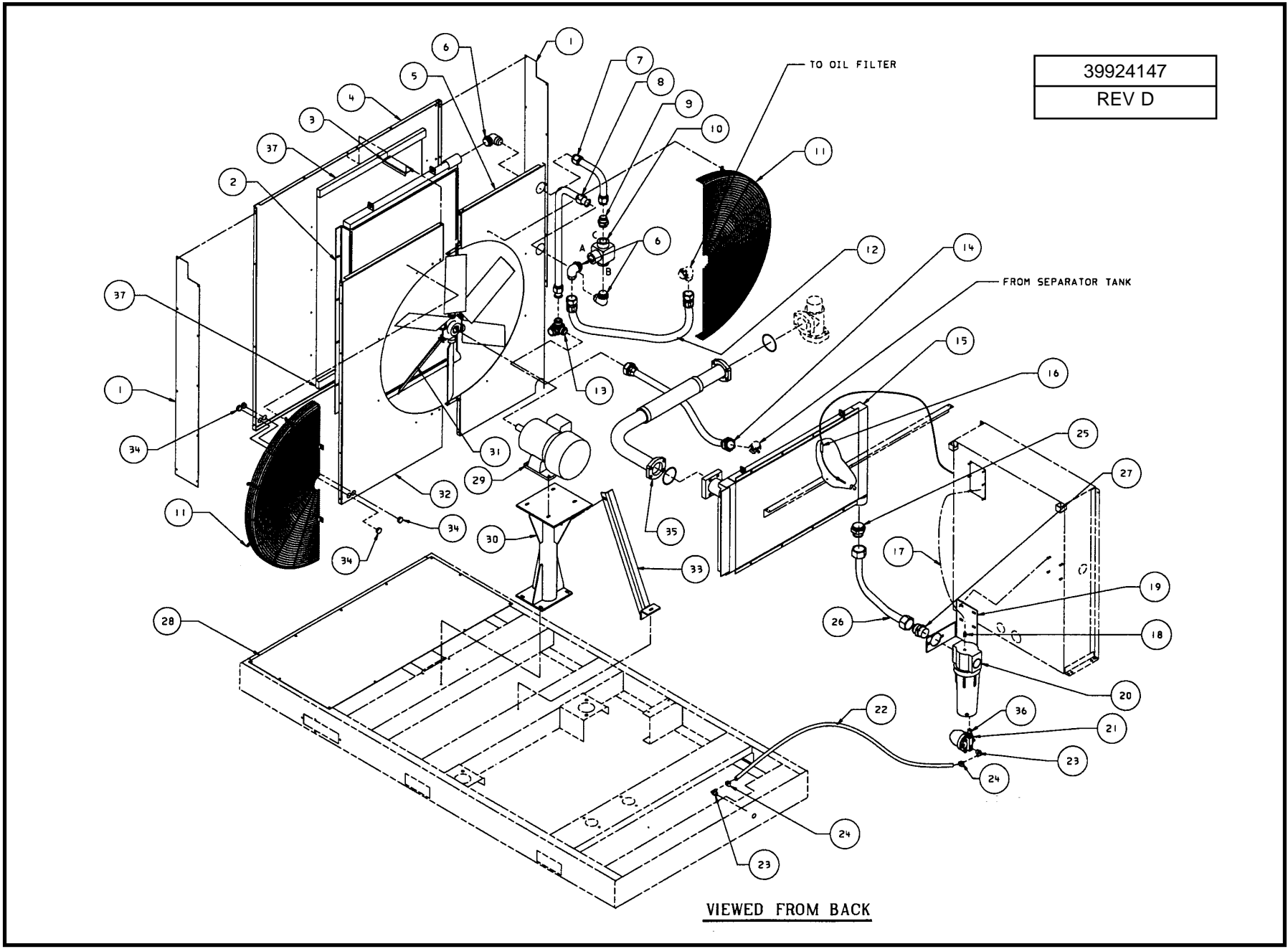


VIEWED FROM FRONT

**MAJOR COMPONENTS ASSEMBLY**

REF. NO.	PART NUMBER	QTY.	DESCRIPTION	REF. NO.	PART NUMBER	QTY.	DESCRIPTION
1	-----	1	TANK, ASSEMBLY	16	-----	1	JUNCTION BOX, CONDUIT ASSEMBLY
2	95694287	4	BOLT, LEG TO BASE	16A	39206271	2	SCREW, JUNCTION BOX
2A	95947651	8	WASHER, FLAT	17	39179072	4	BOLT, AIREND TO PIPE
2B	95923355	4	NUT	18	39797279	1	PIPE, DISCHARGE (AIREND)
3	39851928	1	SUPPORT, MOTOR 405 FRAME (125 & 150 HP)	19	95860748	4	BOLT, MOUNT TO BASE
	39851936	1	SUPPORT, 280MK MOTOR (90 & 110 KW)	19A	95923355	4	NUT
	39851936	1	SUPPORT, MOTOR 445 FRAME (200 HP)	20	39487434	2	GASKET
	39917398	1	SUPPORT, 315MK MOTOR (132 & 160 KW) ROTATE 180°	21	39477096	2	MOUNT, ISOLATION AIREND
4	95929139	2	BOLT, SUPPORT TO MOUNT	22	39479852	1	VALVE, DISCHARGE CHECK
4A	95923363	2	NUT	23	95898151	8	BOLT, AIREND PIPE TO TANK PIPE
5	39178686	4	SCREW, MOUNT TO BASE	23A	95923355	8	NUT
6	39476882	2	MOUNT, ISOLATION MOTOR	24	39797287	1	PIPE, DISCHARGE (TANK)
7	39479860	1	GROUND STRAP	25	95934170	8	BOLT, TANK PIPE TO TANK
8	95929105	2	BOLT, MOTOR TO SUPPORT	25A	95923355	8	NUT
8A	95923363	2	NUT	26	39452362	1	GASKET, PIPE TO TANK
9	39851944	1	SUPPORT, AIREND	27	39843347	1	BASE, STANDARD
10	-----	1	DRIVE ASSEMBLY	28	39878558	2	LEG, TANK
11	-----	1	INLET ASSEMBLY	29	39128509	4	SCREW, LEG TO TANK
12	-----	1	AIREND ASSEMBLY				
13	95861449	2	BOLT, SUPPORT TO MOUNT				
13A	95317707	2	NUT				
14	39179080	2	BOLT, AIREND TO SUPPORT				
15	39454533	1	GASKET, AIREND TO PIPE				

NOTE: STANDARD FASTENERS SUCH AS NUTS AND WASHERS ARE LISTED AS SUB-ITEMS (EXAMPLE: 2A).



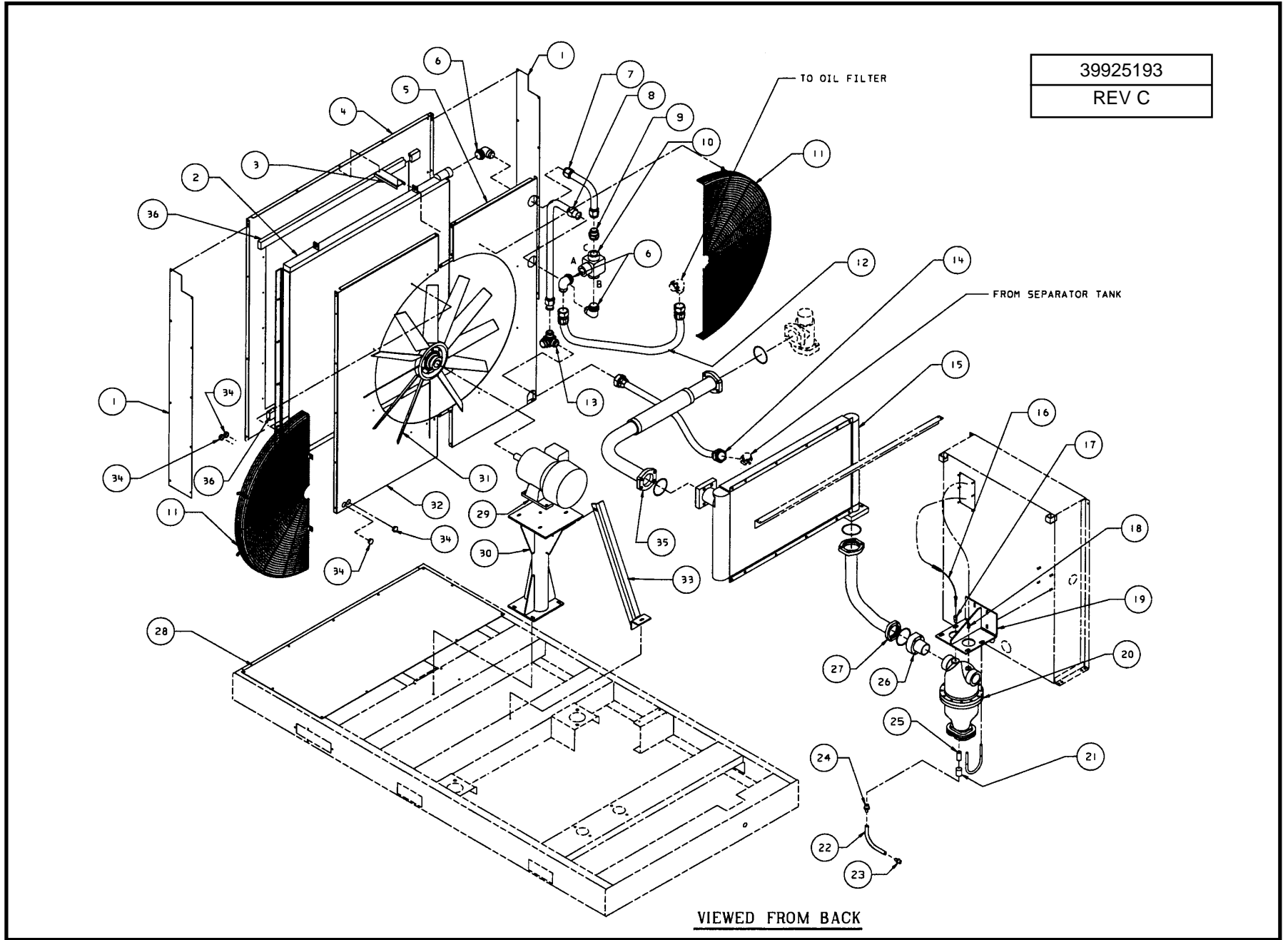
**AIRCOOLED COOLER ASSEMBLY (125 - 150 HP/90-110 KW)**

REF. NO.	PART NUMBER	QTY.	DESCRIPTION	REF. NO.	PART NUMBER	QTY.	DESCRIPTION
1	39480173	2	SIDES, COOLER BOX	26	54370564	2	TUBE-AFTERCOOLER TO MOISTURE SEPARATOR
1A	39133145	18	SCREW	27	95937561	1	CONNECTOR
2	39919394	1	COOLER, OIL	28	39798525	1	PLATE, BOTTOM EXHAUST
2A	39133152	8	SCREW	28A	39133145	11	SCREW
2B	95929071	8	WASHER	29	XXXXXXXXXX	1	MOTOR, FAN
3	39494133	1	BRACE, ORIFICE	29A	39110309	4	BOLT
3A	39133145	3	SCREW	29B	39128566	4	NUT
4	39919428	1	SUPPORT, OIL COOLER	30	39885397	1	SUPPORT, FAN MOTOR
4A	39133145	4	SCREW	30A	39178678	4	BOLT
5	54367404	1	ORIFICE, FAN RIGHT	31	39923628	1	FAN WITH TAPER BUSHING & HUB, 60 HZ
5A	39133145	16	SCREW		39911649	1	FAN WITH TAPER BUSHING & HUB 50 HZ
6	39128673	3	ELBOW	32	54367396	1	ORIFICE, FAN LEFT
7	39479209	1	TUBE, OIL COOLER OUT - THERMO VALVE	32A	39133145	12	SCREW
8	39545843	1	TUBE, OIL COOLER IN - THERMO VALVE	33	39925920	1	BRACE, FAN MTR SUPPORT
9	39128624	1	CONNECTOR	33A	39128483	1	BOLT
10	39478193	1	VALVE, THERMO	33B	39128566	1	NUT
10A	39437645	1	ELEMENT, THERMO VALVE	33C	39178678	1	SCREW
10B	39412127	1	O-RING, BODY	34	39319728	4	PLUG, NYLON BLACK
10C	95022257	1	O-RING, ELEMENT	36	54423280	1	ADAPTER, DRAIN TRAP VENT
11	54634894	2	GUARD, FAN	37	54624622	2	FOAM (BETW. OIL COOLER AND SUPPORT - TOP AND BOTTOM)
11A	39133152	12	SCREW				
11B	95929071	12	WASHER				
12	39572482	1	HOSE, THERMO VALVE - FILTER				
13	39476353	1	TEE, SIDE OUTLET				
14	39572441	1	HOSE, SEPARATOR TANK - OIL COOLER (PORT "IN")				
15	54365945	1	AFTERCOOLER				
15A	39133152	8	SCREW	35	39878343	1	PIPE, DISCHAGE MPV-OUT
15B	95929071	8	WASHER	35A	95934154	4	BOLT, PIPE TO MPV
16	39560628	1	SENSOR, TEMPERATURE	35B	95934741	4	WASHER
16A	39404157	1	O-RING	35C	95022349	1	O-RING
17	39124813	X	TUBING, NYLON	35D	39546775	1	SUPPORT, PIPE
18	39156393	1	CONNECTOR	35E	39133152	2	SCREW
19	39922109	1	BRACKET, MOISTURE SEPARATOR	35F	39128541	2	NUT
19A	39128566	4	NUT	35G	95481800	1	U-BOLT
20	39586292	1	SEPARATOR, MOISTURE	35H	39116348	2	NUT
20A	95920674	2	SCREW				
20B	39128566	2	NUT				
21	39530159	1	TRAP, CONDENSATE				
22	39137518	24	HOSE, MOISTURE SEPARATOR DRAIN				
23	39137534	2	ELBOW				
24	95220844	1	CLAMP				
25	95985578	1	CONNECTOR				

NOTE: STANDARD FASTENERS SUCH AS NUTS AND WASHERS ARE LISTED AS SUB-ITEMS (EXAMPLE: 2A).

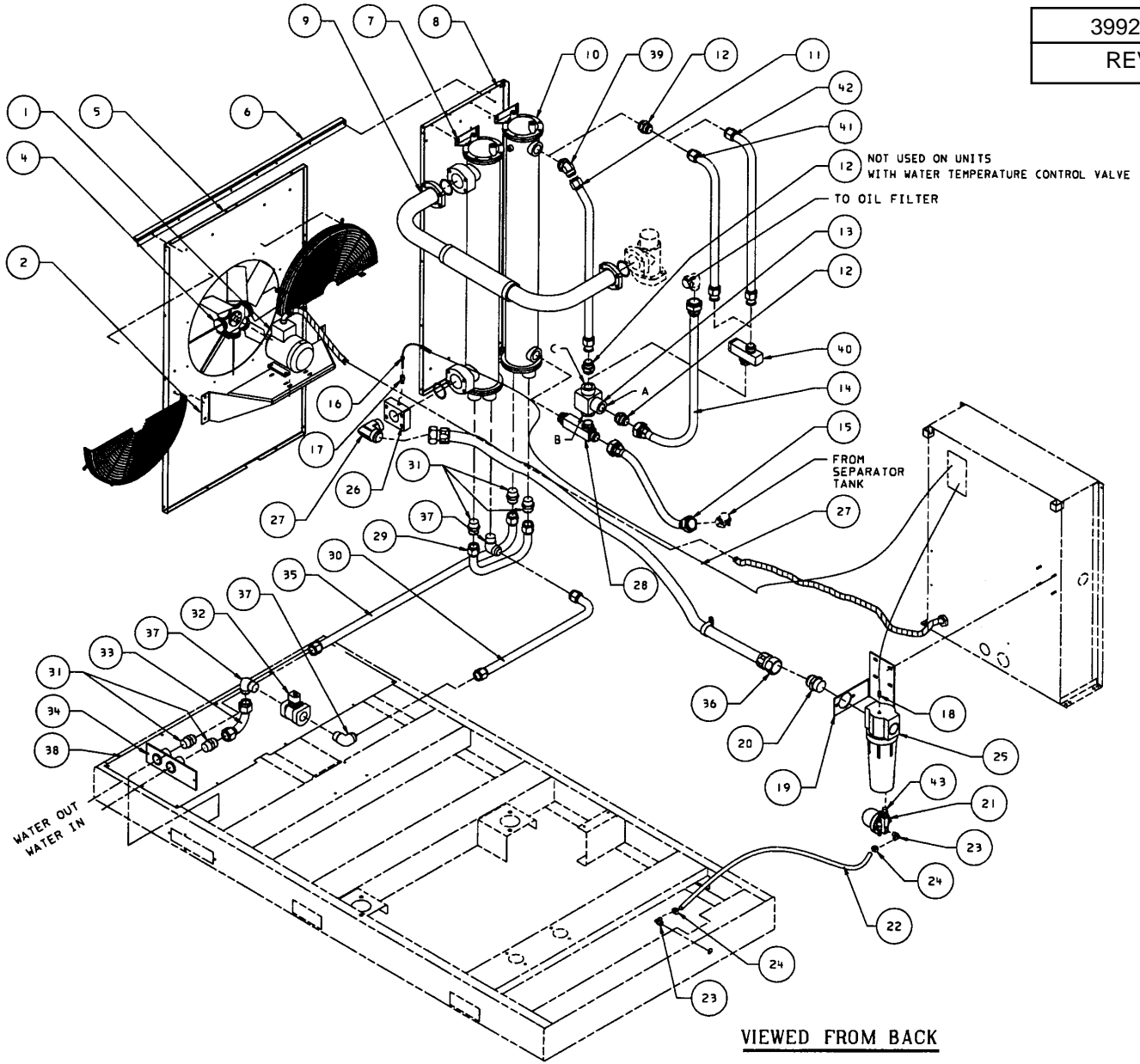
X - ORDER PER NUMBER OF INCHES REQUIRED.

MPV - MINIMUM PRESSURE VALVE



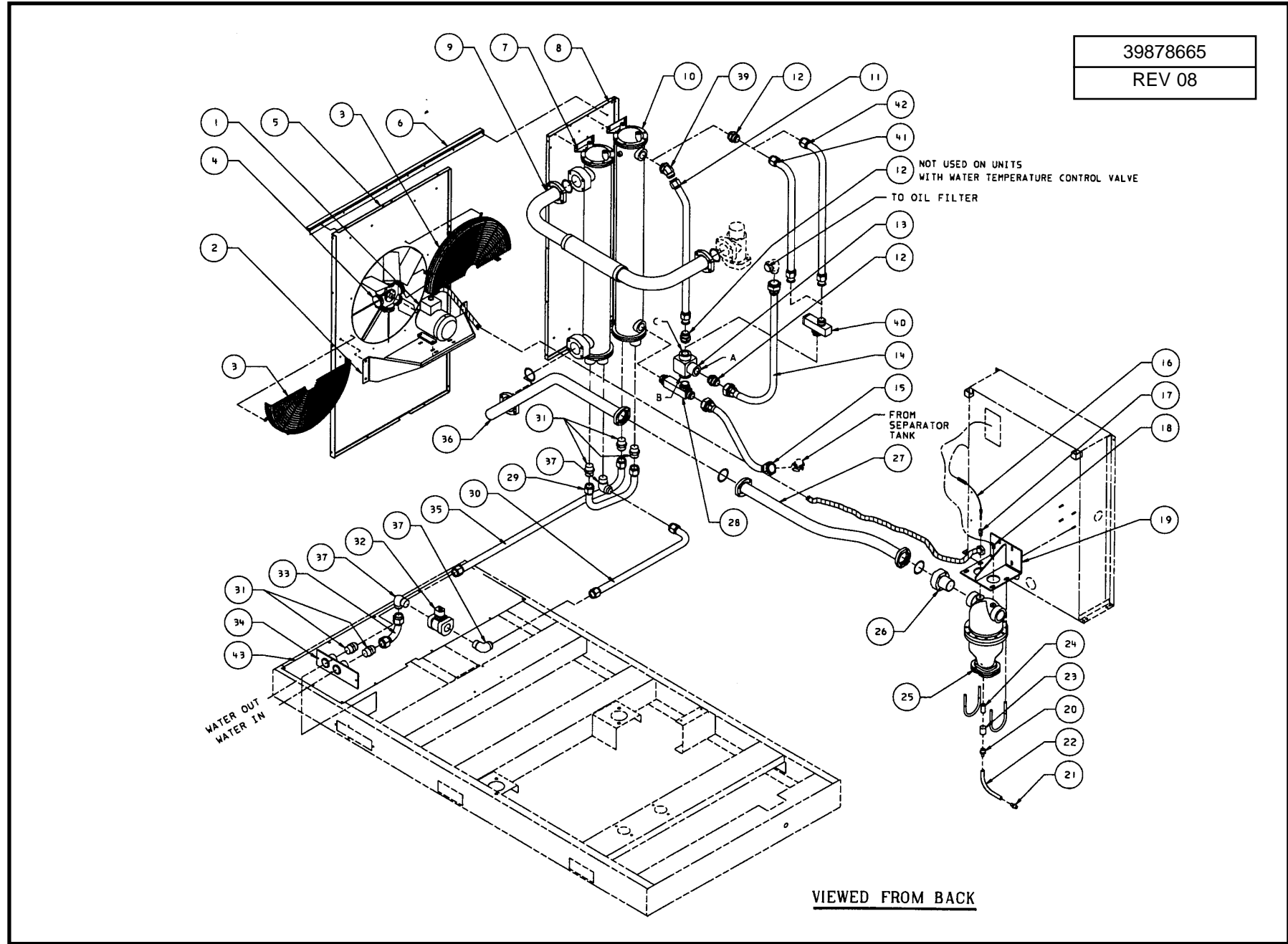


39925219  
REV C



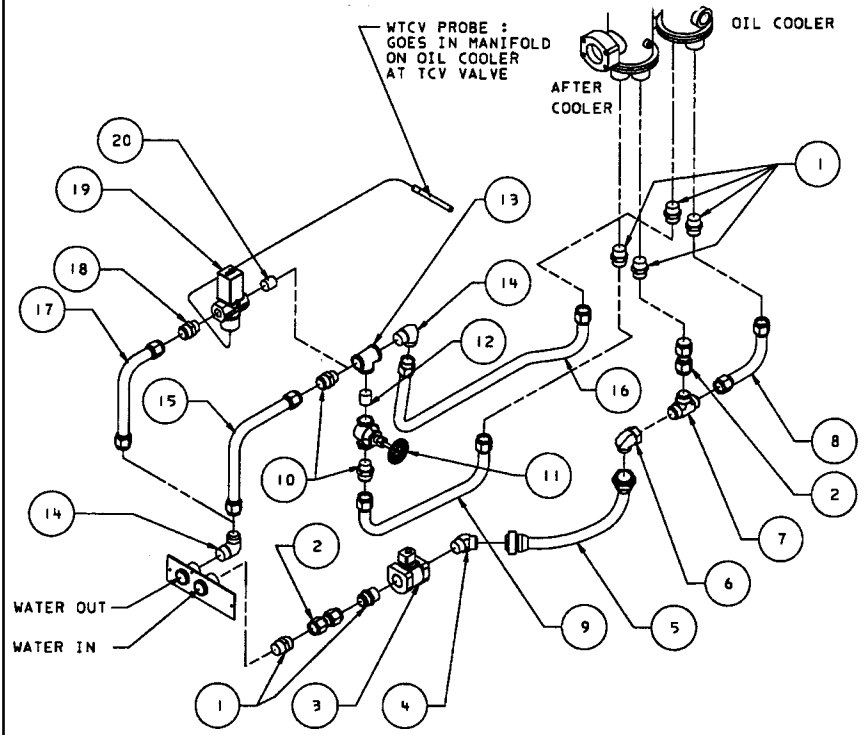
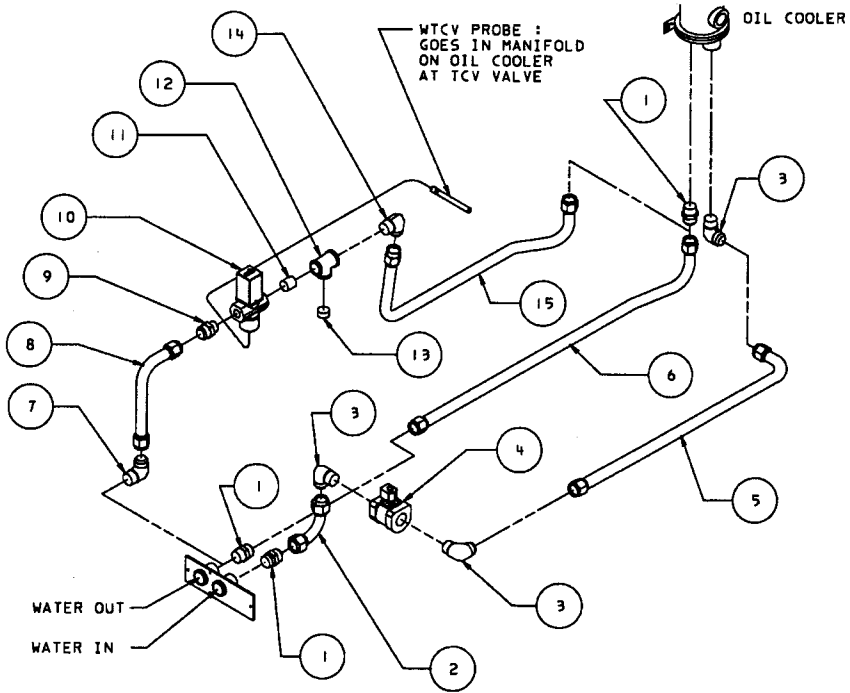
VIEWED FROM BACK







39878665
REV 08



**WATER PIPING OPTIONS (125-200 HP/90-160 KW)**

**SERIES WATER PIPING WITH NO AFTERCOOLER**

REF. NO.	PART NUMBER	QTY.	DESCRIPTION
1	95937553	3	ADAPTER
2	39838990	1	TUBE, BASE IN TO SOLENOID WATER VALVE
3	95279477	3	ELBOW
4	39479811	1	VALVE, SOLENOID WATER
5	39881461	1	TUBE, WATER SHUTOFF VALVE TO OIL CLR INLET
6	39800313	1	TUBE, OIL COOLER TO BASE OUT

**PARALLEL WATER PIPING WITH AFTERCOOLER**

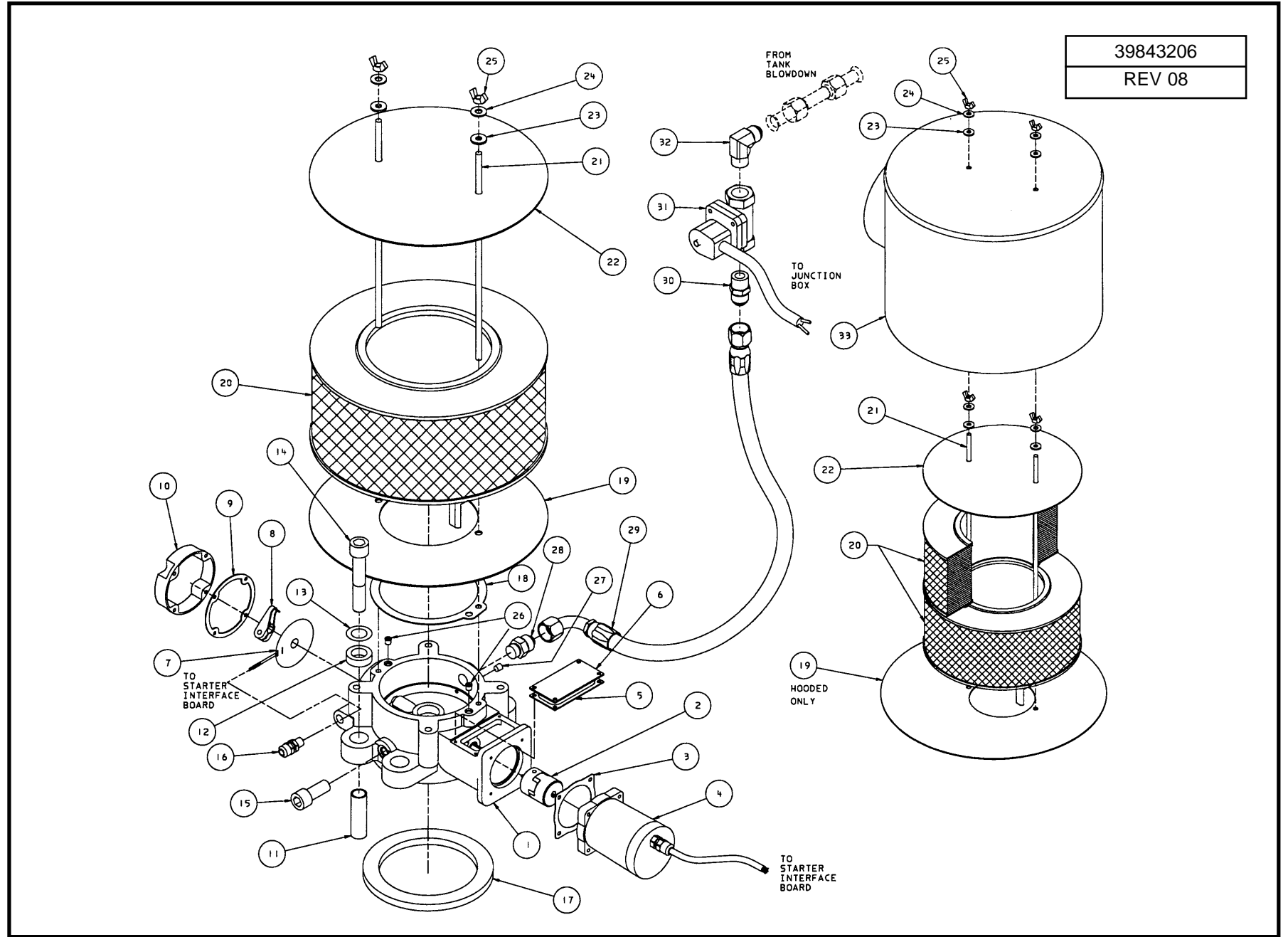
REF. NO.	PART NUMBER	QTY.	DESCRIPTION
1	95937553	6	ADAPTER
2	39546569	2	TUBE, BASE INLET - AFTERCOOLER INLET
3	39479811	1	VALVE, SOLENOID WATER
4	95937751	1	ADAPTER, 45°
5	39572136	1	HOSE
6	95937850	1	ADAPTER, 45°
7	95937165	1	TEE
8	39546650	1	TUBE, TEE TO OIL COOLER INLET
9	39546619	1	TUBE, AFTERCOOLER OUT TO GATE VALVE
10	95939351	2	ADAPTER
11	95067203	1	VALVE, GATE
12	95507109	1	NIPPLE
13	95909248	1	TEE, REDUCING
14	95279477	2	ELBOW
15	39546593	1	TUBE, TEE TO BASE WATER OUT
16	39800305	1	TUBE, OIL COOLER OUT TO TEE

**SERIES WATER PIPING WITH OR WITHOUT AFTERCOOLER - WITH WATER TEMPERATURE CONTROL VALVE**

REF. NO.	PART NUMBER	QTY.	DESCRIPTION
7	95279477	1	ELBOW
8	39546627	1	TUBE, BASE OUT TO WATER TEMPERATURE CONTROL VALVE
9	95939351	1	ADAPTER
10	39143771	1	VALVE, WATER TEMPERATURE CONTROL
11	95507109	1	NIPPLE
12	95909248	1	TEE, REDUCING
13	95898136	1	PLUG
14	95279477	1	ELBOW
15	39800305	1	TUBE, TEE TO OIL COOLER OUT

**PARALLEL WATER PIPING WITH AFTERCOOLER - WITH WATER TEMPERATURE CONTROL VALVE**

REF. NO.	PART NUMBER	QTY.	DESCRIPTION
17	39546627	1	TUBE, BASE OUT TO WATER TEMPERATURE CONTROL VALVE
18	95939351	1	ADAPTER
19	39143771	1	VALVE, WATER TEMPERATURE CONTROL
20	95507109	1	NIPPLE



**6" INLET VALVE ASSEMBLY**

REF. NO.	PART NUMBER	QTY.	DESCRIPTION	REF. NO.	PART NUMBER	QTY.	DESCRIPTION
1	42379040	1	VALVE, INLET 6.0				
2	39495189	1	COUPLING, INLET VALVE				
2A	95229555	2	KEY				
3	39494844	1	GASKET, STEPPER MOTOR				
4	39823950	1	MOTOR, STEPPER				
4A	39198809	4	SCREW				
5	39494869	1	GASKET, COUPLING COVER				
6	39494877	1	COVER, COUPLING				
6A	39198809	4	SCREW				
7	39564364	1	BOARD, PRINTED CIRCUIT				
7A	95073946	3	SCREW				
8	39494851	1	ARM, INDICATOR				
8A	39128434	1	SCREW				
8B	39128541	1	NUT				
9	39494836	1	GASKET, CAP PCB				
10	39823943	1	CAP, PRINTED CIRCUIT BOARD				
10A	39198809	4	SCREW				
11	39483151	4	SPACER, INLET VALVE BOLT ISOLATION				
12	39483169	4	GASKET, BOLT				
13	95081618	4	WASHER, FLAT				
14	96715594	4	BOLT				
15	95946158	1	SCREW				
16	39495395	1	GLAND, WIRE				
17	39483144	1	GASKET, INLET VALVE ISOLATION				
18	39494885	1	GASKET, AIR FILTER				
19	39569439	1	PLATE, AIR FILTER BOTTOM				
<b>125-150 HP</b>							
20	39903281	1	ELEMENT, AIR FILTER	20	39903281	2	ELEMENT, AIR FILTER
	39873112	1	ELEMENT, AIR FILTER (HEAVY DUTY FILTER OPTION - NOT AVAILABLE WITH HOODED OPTION)		39872890	1	ELEMENT, AIR FILTER (HEAVY DUTY FILTER OPTION - NOT AVAILABLE WITH HOODED OPTION)
21	39494893	2	ROD, ONE ELEMENT	21	39494901	2	ROD, TWO ELEMENT
	39308960	2	ROD, AIR FILTER (HEAVY DUTY FILTER OPTION - NOT AVAILABLE WITH HOODED OPTION)		39311295	2	ROD, AIR FILTER (HEAVY DUTY FILTER OPTION - NOT AVAILABLE WITH HOODED OPTION)
				22	39558713	1	PLATE, AIR FILTER TOP
				23	39195151	2	WASHER, RUBBER (QTY 4 FOR HOODED VERSION)
				24	95933313	2	WASHER, FLAT (QTY 4 FOR HOODED VERSION)
				25	95938775	2	NUT, WING (QTY 4 FOR HOODED VERSION)
				26	39160999	2	FITTING, HYDRAULIC
				27	95049359	1	PLUG, SOCKET
				28	39479894	1	ADAPTER, STRAIGHT
				29	39572110	1	HOSE, BLOWDOWN VALVE TO INLET
				30	95937512	1	ADAPTER, BLOWDOWN
				31	39312897	1	VALVE, BLOWDOWN, NEMA 1
					39312905	1	VALVE, BLOWDOWN, NEMA 4
				32	95937637	1	ELBOW
				<b>HOODED OPTION</b>			
				19	39569447	1	PLATE, AIR FILTER BOTTOM
				21	39494919	2	ROD, HOOD
				33	39842695	1	HOOD, AIR FILTER

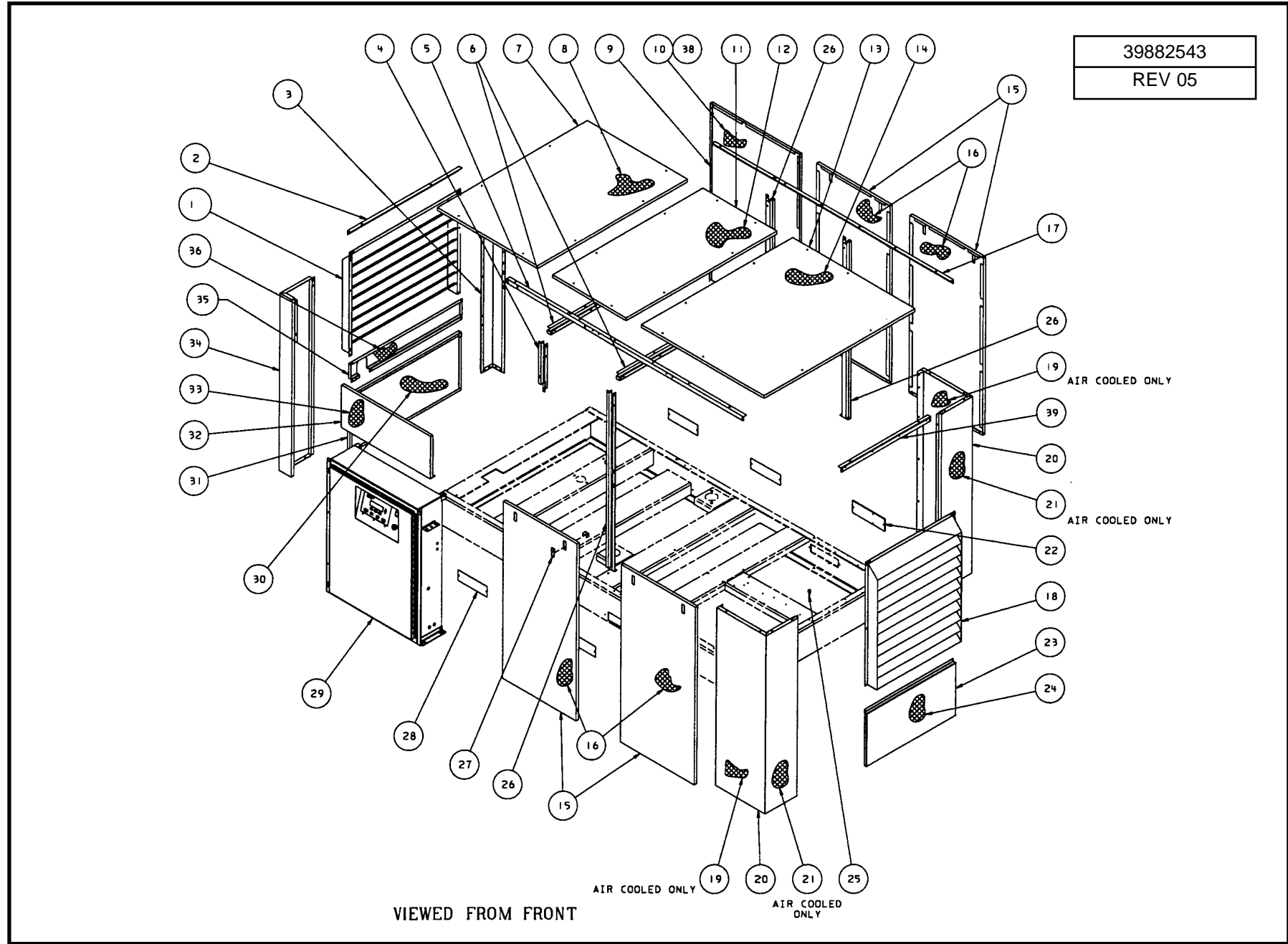


## ENCLOSURE ASSEMBLY

REF. NO.	PART NUMBER	QTY.	DESCRIPTION	REF. NO.	PART NUMBER	QTY.	DESCRIPTION
1	54612254	1	LOUVER, AIR INTAKE (WATER COOLED OUT DOOR MOD. & ALL AIR COOLED)	20A	39133145	8	SCREW
	54393061	1	PANEL, AIR INTAKE (WATER COOLED ONLY)	21	39799366	2	FOAM (END)
1A	39133152	8	SCREW (WATER COOLED ONLY)	22	39546668	1	PLATE, COVER (AIRCOOLED ONLY)
	39133152	10	SCREW (WATER COOLED OUTDOOR MOD. & ALL AIRCOOLED)	22A	39133152	4	SCREW
2	39799127	1	ANGLE, LEFT END	23	39799119	1	PANEL, RIGHT END
2A	39133145	4	SCREW	23A	39142690	2	SCREW
3	39799168	1	CORNER, LEFT REAR	24	39799333	1	FOAM
3A	39133145	4	SCREW	25	39138490	14	PIN, LOCATOR
4	39799291	1	SUPPORT, SHORT	26	39798772	3	SUPPORT, VERTICAL
4A	39133145	2	SCREW	26A	39133145	6	SCREW
5	39799200	1	ANGLE, FRONT	27	39133954	8	LATCH, DOOR
5A	39133145	8	SCREW	28	39495981	4	COVER, FORKLIFT
6	39798624	2	SUPPORT, TOP	28A	39133145	8	SCREW
6A	39133145	8	SCREW	29	39878434	1	STARTER/INTELLISYS ENCLOSURE (NEMA 1)
7	39798806	1	PANEL, TOP LEFT		39877816	1	STARTER/INTELLISYS ENCLOSURE (NEMA 4)
7A	39142690	8	SCREW	29A	39178678	4	SCREW
8	39796339	1	FOAM	30	39799242	1	FOAM
9	39798475	1	PANEL, LEFT REAR	31	39799044	1	PANEL, LEFT END
	39800446	1	PANEL, LEFT REAR (NO AFTERCOOLER ONLY)	31A	39142690	2	SCREW
9A	39142690	2	SCREW	32	39795471	1	PANEL, UPPER FRONT
10	39799259	1	FOAM	32A	39133145	4	SCREW
	39856901	1	FOAM (NO AFTERCOOLER ONLY)	33	39799341	1	FOAM
11	39798798	1	PANEL, TOP CENTER	34	39799150	1	CORNER, LEFT FRONT
11A	39142690	8	SCREW	34A	39133145	5	SCREW
12	39796321	1	FOAM	35	39799028	1	PANEL, DISCHARGE (AFTERCOOLER) (WATERCOOLED STD ENCLOSURE)
13	39798780	1	PANEL, TOP RIGHT		54616040	1	PANEL, DISCHARGE (AFTERCOOLER) (WATERCOOLED OUTDOOR MOD.) (AIRCOOLED)
13A	39142690	8	SCREW		39800479	1	PANEL, DISCHARGE (NO AFTERCOOLER) (WATERCOOLED)
14	39796321	1	FOAM		54624515	1	PANEL, DISCHARGE (NO AFTERCOOLER) (WATERCOOLED OUTDOOR MOD.) (AIRCOOLED)
15	39798814	4	PANEL, COMMON	35A	39133145	4	SCREW
16	39796347	4	FOAM	36	39799267	1	FOAM (WATERCOOLED AFTERCOOLER) (WATERCOOLED NO AFTERCOOLER)
17	39799218	1	ANGLE, REAR		54624531	1	FOAM (NO AFTERCOOLER) (WATERCOOLED OUTDOOR MOD.) (AIRCOOLED)
17A	39133145	8	SCREW	37	39913918	1	FOAM, UPPER
18	39800537	1	GRILL, EXHAUST	38	39913008	1	FOAM, LOWER (AFTERCOOLER ONLY)
18A	39133152	8	SCREW	REF	39117312	X	WEATHERSTRIP
19	39799358	2	FOAM (SIDE)				
20	39798483	2	CORNER, RIGHT END				

NOTE: STANDARD FASTENERS SUCH AS NUTS, BOLTS AND SCREWS ARE LISTED AS SUB-ITEMS (EXAMPLE: 7A).

X ORDER PER NUMBER OF INCHES REQUIRED.



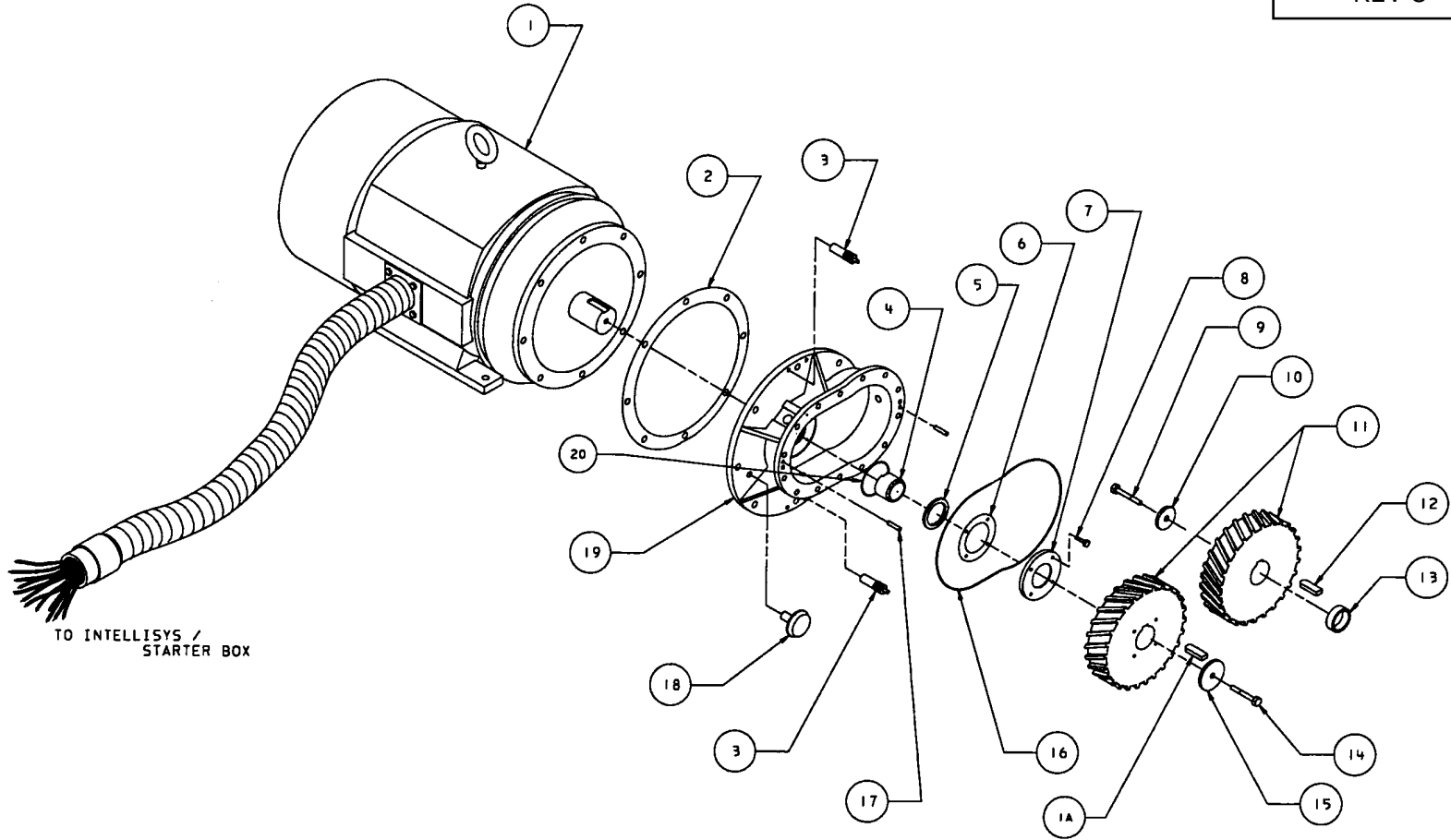
**ENCLOSURE ASSEMBLY — OUTDOOR MODIFICATION**

REF. NO.	PART NUMBER	QTY.	DESCRIPTION	REF. NO.	PART NUMBER	QTY.	DESCRIPTION
1	54612254	1	LOUVER				
	39799051	1	LOUVER, AIR INTAKE (WATERCOOLED ONLY)				
1A	39133152	10	SCREW (AIRCOOLED ONLY)	22A	39133152	4	SCREW
	39133152	8	SCREW (WATERCOOLED ONLY)	23	39801121	1	PANEL, RIGHT END
2	39799127	1	ANGLE, LEFT END	23A	39142690	8	SCREW
2A	39133145	4	SCREW	24	39913926	1	FOAM
3	39799168	1	CORNER, LEFT REAR	25	39138490	14	PIN, LOCATOR
3A	39133145	4	SCREW	26	39798772	3	SUPPORT, VERTICAL
4	39799291	1	SUPPORT, SHORT	26A	39133145	6	SCREW
4A	39133145	2	SCREW	27	39133954	8	LATCH, DOOR
5	39799200	1	ANGLE, FRONT	28	39479878	4	COVER, FORKLIFT
5A	39133145	8	SCREW	28A	39133145	8	SCREW
6	39798624	2	SUPPORT, TOP	29	39877816	1	STARTER/INTELLISYS ENCLOSURE (NEMA 4)
6A	39133145	8	SCREW	29A	39178678	4	SCREW
7	39798806	1	PANEL, TOP LEFT	30	39799242	1	FOAM
7A	39142690	8	SCREW	31	39799044	1	PANEL, LEFT END
8	39796339	1	FOAM	31A	39142690	2	SCREW
9	39798475	1	PANEL, LEFT REAR	32	39795471	1	PANEL, UPPER FRONT
	39800446	1	PANEL, LEFT REAR (NO AFTERCOOLER ONLY)	32A	39133145	4	SCREW
9A	39142690	2	SCREW	33	39799341	1	FOAM
10	39913793	1	FOAM (LOCATED FROM TOP OF PANEL)	34	39799150	1	CORNER, LEFT FRONT
11	39798798	1	PANEL, TOP CENTER	34A	39133145	5	SCREW
11A	39142690	8	SCREW	35	39799028	1	PANEL, DISCHARGE (WATERCOOLED ODM ENCLOSURE)
12	39795321	1	FOAM		54616040	1	PANEL, DISCHARGE (AIRCOOLED ODM ENCLOSURE)
13	39800891	1	PANEL, TOP RIGHT		39800479	1	PANEL, DISCHARGE (WATERCOOLED NO AFTERCOOLER)
13A	39142690	8	SCREW		54624515	1	PANEL, DISCHARGE (AIRCOOLED NO AFTERCOOLER)
14	39804430	1	FOAM				
15	39798814	4	PANEL, COMMON				
16	39919884	4	FOAM				
17	39799218	1	ANGLE, REAR	35A	39133145	4	SCREW
17A	39133145	8	SCREW	36	54624531	1	FOAM (AIRCOOLED AFTERCOOLER AND NO AFTERCOOLER)
18	39801105	1	LOUVER, EXHAUST ODM		39799267	1	FOAM, (WATERCOOLED AFTERCOOLER AND NO AFTERCOOLER)
18A	39142690	4	SCREW				
19	39799358	2	FOAM, SIDE (AIRCOOLED)				
20	39798483	2	CORNER, RIGHT END	37	39913918	1	FOAM, UPPER
20A	39133145	8	SCREW	38	39913900	1	FOAM, REAR PANEL UPPER
21	39799366	2	FOAM, END (AIRCOOLED)	39	39801063	1	ANGLE, RIGHT END
22	39546668	1	PLATE, COVER (AIRCOOLED ONLY)	REF	39117312	X	WEATHERSTRIP

NOTE: STANDARD FASTENERS SUCH AS NUTS, BOLTS, AND SCREWS ARE LISTED AS SUB-ITEMS (EXAMPLE: 7A).

X ORDER PER NUMBER OF INCHES REQUIRED.

39917117
REV C



VIEWED FROM FRONT

**DRIVE TRAIN ASSEMBLY**

<b>REF. NO.</b>	<b>PART NUMBER</b>	<b>QTY.</b>	<b>DESCRIPTION</b>
1	X	1	MOTOR
1A	X	1	KEY, MOTOR
1B	95935201	7	BOLT, GEARCASE TO MOTOR
1C	95934378	1	BOLT, GEARCASE TO MOTOR
1D	95922928	7	NUT
2	39454558	1	GASKET, MOTOR TO GEARCASE
3	39194915	2	TAPER PIN, GEARCASE TO MOTOR
4	39402300	1	SLEEVE, SHAFT (125-200 HP)
	89292460	1	SLEEVE, SHAFT (90-110 KW)
	89292478	1	SLEEVE, SHAFT (132-160 KW)
5	39311501	1	SEAL, SHAFT (125-200 HP)
	89244024	1	SEAL, SHAFT (90-110 KW)
	89292445	1	SEAL, SHAFT (132-160 KW)
6	39454566	1	GASKET, SEAL (125-200 HP)
	95023107	1	GASKET, SEAL (90-110 KW)
	95023388	1	GASKET, SEAL (132-160 KW)
7	39403803	1	HOUSING, SEAL (125-200 HP)
	89244040	1	HOUSING, SEAL (90-110 KW)
	89292452	1	HOUSING, SEAL (132-160 KW)
8	95929154	4	SCREW
9	39191283	1	SCREW, MALE ROTOR
10	35255819	1	RETAINER PLATE, MALE ROTOR
11	XX	1	GEAR SET
12	39167150	1	KEY, MALE ROTOR TO GEAR
13	39326483	1	SPACER, GEAR MALE ROTOR
14	95929170	1	SCREW (125-200 HP)
	95013785	1	SCREW (90-160 KW)
15	39109129	1	RETAINER PLATE (125-200 HP)
	39109129	1	RETAINER PLATE (90-110 KW)
	92539311	1	RETAINER PLATE (132-160 KW)
16	39253992	1	O-RING GEARCASE TO FRONT BEARING HOUSING
17	95239919	2	PIN, GEARCASE TO FRONT BEARING HOUSING
18	39112362	1	BREATHER, SEAL SCAVENGE
19	39797550	1	GEARCASE (125-200 HP)
	39797550	1	GEARCASE (90-110 KW)
	54387485	1	GEARCASE (132-160 KW)
20	89246748	1	O-RING, SEAL (90-110 KW)
	95022125	1	O-RING, SEAL (132-160 KW)

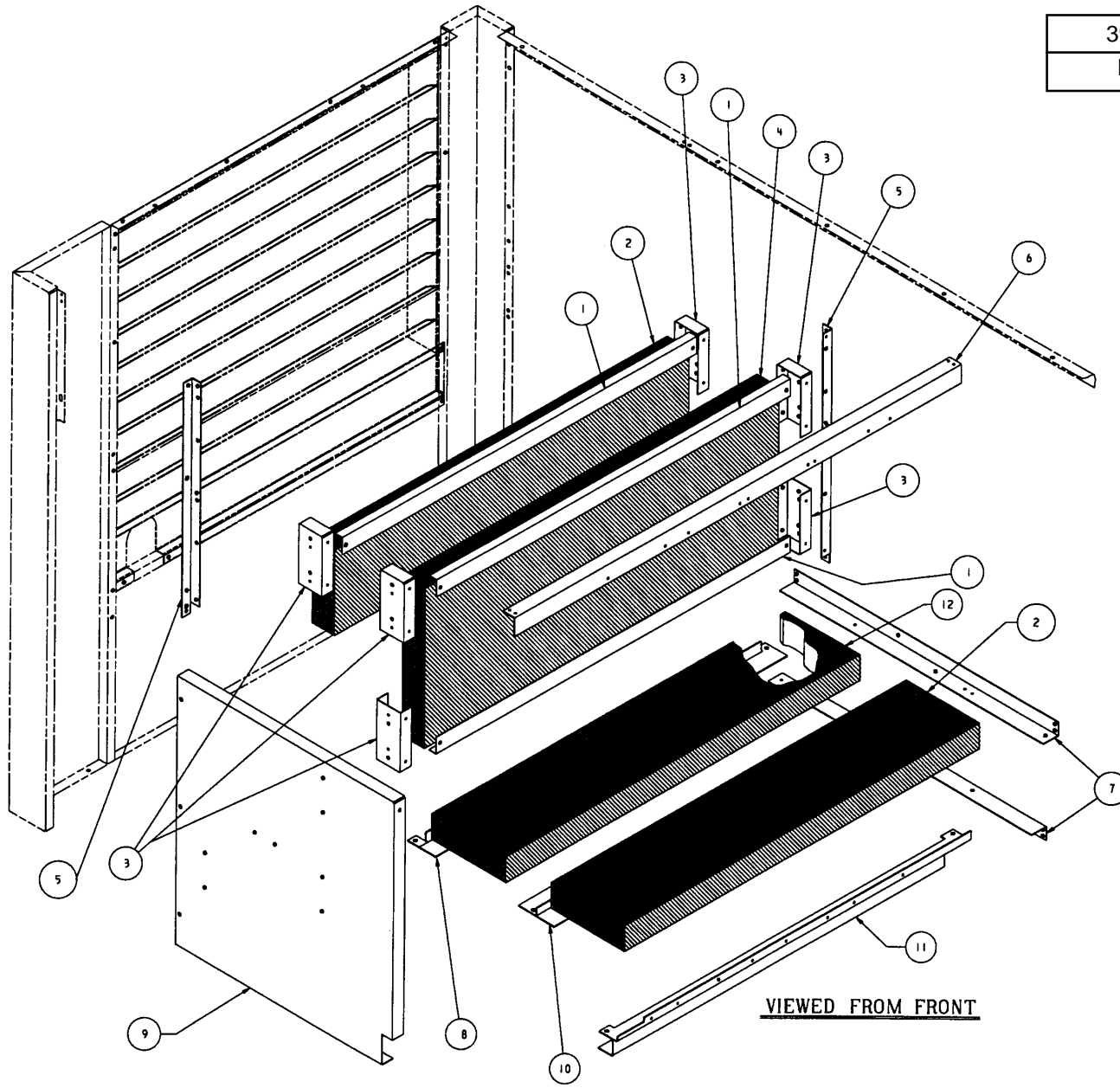
X FURNISH MOTOR PART NO. (STAMPED ON MOTOR NAMEPLATE) WHEN ORDERING REPLACEMENT.

XX GEAR SET PART NO. LOCATED ON GEARCASE (ITEM 19).

NOTE: STANDARD FASTENERS SUCH AS NUTS, BOLTS AND SCREWS ARE LISTED AS SUB-ITEMS (EXAMPLE: 1A).

39800404

REV 08

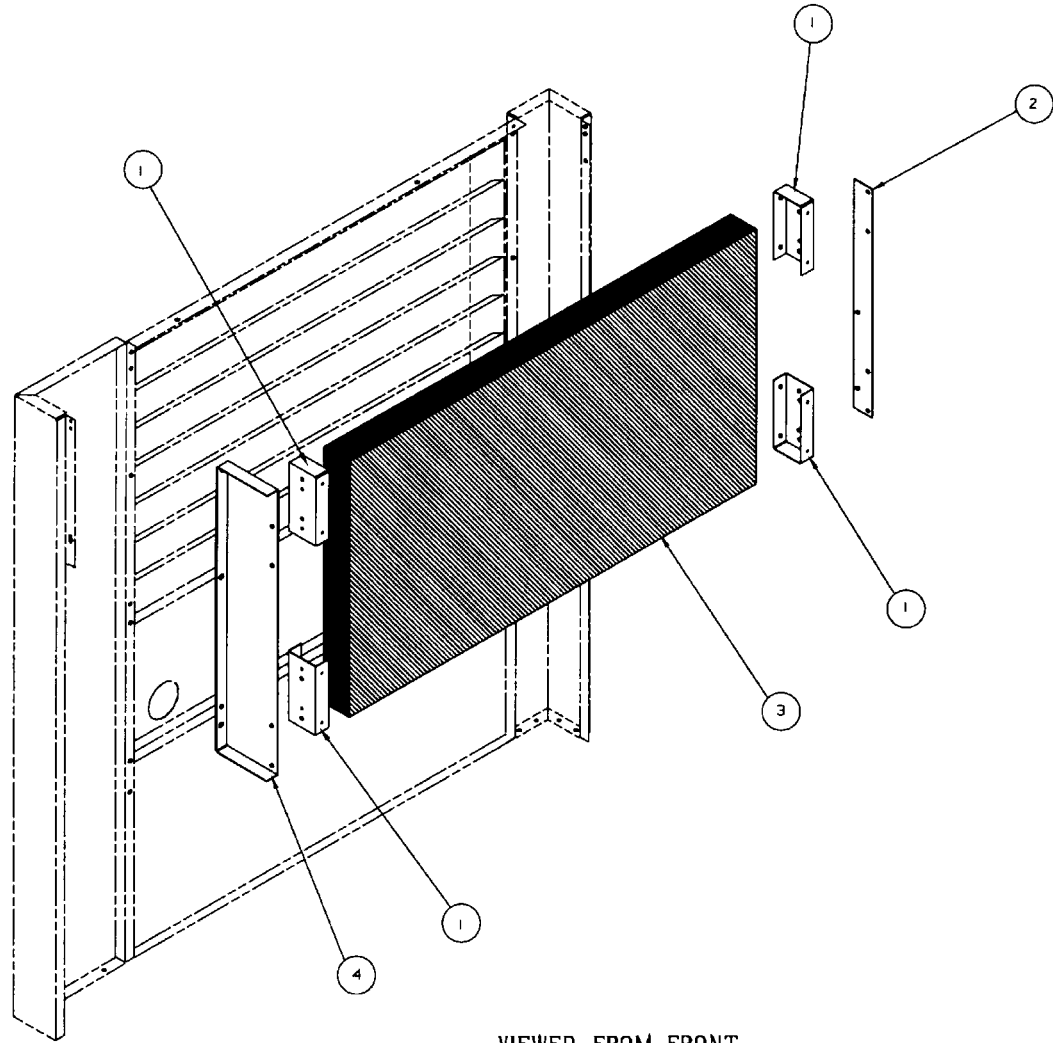


### AIRCOOLED INTAKE ASSEMBLY

REF. NO.	PART NUMBER	QTY.	DESCRIPTION
1	39546981	3	BRACE, ANGLE BATT
1A	39133145	6	SCREW
2	39799002	2	BATT, SMALL
3	39798616	6	RETAINER, BATT
3A	39133145	12	SCREW
4	39798996	1	BATT, LARGE
5	39798921	2	SUPPORT, ANGLE BATT
5A	39133145	4	SCREW
6	39798855	1	SUPPORT, UPPER ANGLE
6A	39133145	5	SCREW
7	39798962	2	SUPPORT, REAR ANGLE
7A	39133145	8	SCREW
8	54614060	1	SUPPORT, BOTTOM ANGLE
8A	39133145	6	SCREW
9	39911250	1	WALL, SILENCER
9A	39133145	3	SCREW
10	54614078	1	SUPPORT, BATT
11	39911243	1	SUPPORT, AFTERCOOLER
11A	39133145	3	SCREW
12	39858444	1	BATT, SMALL

NOTE: STANDARD FASTENERS SUCH AS NUTS, BOLTS AND SCREWS ARE LISTED AS SUB-ITEMS (EXAMPLE: 7A).

39800412
REV 01



VIEWED FROM FRONT

### WATERCOOLED INTAKE ASSEMBLY

REF. NO.	PART NUMBER	QTY.	DESCRIPTION
1	39798616	4	RETAINER, BATT
1A	39133145	8	SCREW
2	39546940	1	SUPPORT, BACK PLATE
2A	39133145	2	SCREW
3	39800792	1	BATT
4	39546932	1	SUPPORT, BATT
4A	39133145	2	SCREW

NOTE: STANDARD FASTENERS SUCH AS NUTS, BOLTS AND SCREWS ARE LISTED AS SUB-ITEMS (EXAMPLE: 4A).

## O-RINGS FOR SAE FITTINGS

<b>Part No.</b>	<b>Size/ Thread</b>	<b>ID</b>	<b>Width</b>	<b>Tube Size</b>
39404157	7/16-20	0.351	0.072	1/4
39404132	9/16-18	0.468	0.078	3/8
39404165	3/4-16	0.644	0.087	1/2
39437074	7/8-14	0.755	0.097	5/8
39407531	1- 1/16-12	0.924	0.116	3/4
39404173	1- 5/16-12	1.171	0.116	1
39404140	1- 5/8-12	1.475	0.118	1-1/4
39406996	1- 7/8-12	1.72	0.118	1-1/2
39410279	2- 1/2-12	2.337	0.118	2

## SSR 125-200HP/90-160KW SPARE PARTS (CONTINUED)

COMPRESSOR PART	PART NO.	QTY. PER UNIT	LOCATION OR USE
Maintenance Kit 125-150 HP (90-110 KW)	39676184	0	Maintenance Kit with Ultra Coolant
Maintenance Kit 200 HP (132-160 KW)	39676192	0	Maintenance Kit with Ultra Coolant
Ultra Coolant - (5 Gal. Container)	39433735	6	Fill (30 Gallons) (113.6 L)
Air Filter Element (125-150HP/90-110KW)	39903281	1	At Airend Inlet
Air Filter Element (200 HP/132-160 KW)	39903281	2	At Airend Inlet
Coolant Filter Element	39911631	2	On Coolant Filter
Separator Element	54509427	1	In Separator Tank
Thermostatic Control Valve Element	39437645	1	In Thermostatic Control Valve
Thermostatic Control Valve	39478193	1	Between Cooler & Oil Filter
Hose	39572300	1	Separator Tank to Oil Cooler (Watercooled)
Hose	39572441	1	Separator Tank to Oil Cooler (Aircooled)
Hose	39572482	1	Thermostatic Valve to Oil Filter
Hose	39572110	1	Blowdown Valve To Inlet
Hose	39572136	1	Water Inlet Line
Blowdown Solenoid Valve NEMA 1	39312897	1	On Inlet Valve (3SV)
Blowdown Solenoid Valve NEMA 4	39312905	1	On Inlet Valve (3SV)
Blowdown Solenoid Valve Rebuild Kit	39225255	0	NEMA 1 & NEMA 4
Oil Stop Solenoid Valve NEMA 1	39318233	1	In Oil Filter Line (5SV)
Oil Stop Solenoid Valve NEMA 4	39318241	1	In Oil Filter Line (5SV)
Oil Stop Solenoid Valve Rebuild Kit	39238639	0	NEMA 1 & NEMA 4
High Air Temperature Switch	39419668	1	In Airend (1ATS)
O-Ring	39404165	1	On HATS
Coolant Filter ΔP Switch	39244512	1	On Coolant Filter Mounting Bracket (1DPS)
Inlet Valve Assembly	42379040	1	Under Air Filter
Inlet Valve Coupling	39495189	1	Between Valve & Stepper Motor
Stepper Motor	39823950	1	On Inlet Valve
Stepper Motor Limit Board	39564364	1	On Inlet Valve
Air Filter Gasket	39494885	1	Under Air Filter
Gasket	39483144	1	Under Inlet Valve
Minimum Pressure Valve	39477369	1	Separator Tank Discharge Line
Minimum Pressure Valve Rebuild Kit	37951761	0	For Minimum Pressure Valve
O-Ring	95022372	1	Minimum Pressure Valve To Separator Tank
Breather Filter	39112362	1	On Gearcase Wall
Dowel Pin	95239919	2	Gearcase to Airend
Dowel Pin	39194915	2	Gearcase to Motor
Sleeve, Shaft (125-200 HP)	39402300	1	On Motor Shaft
Sleeve, Shaft (90-110 KW)	89292460	1	On Motor Shaft
Sleeve, Shaft (132-160 KW)	89292478	1	On Motor Shaft
Seal, Shaft (125-200 HP)	39311501	1	On Motor Shaft
Seal, Shaft (90-110 KW)	39311501	1	On Motor Shaft
Seal, Shaft (132-160 KW)	89292445	1	On Motor Shaft
Gasket, Seal (125-200 HP)	39454566	1	Under Seal Housing
Gasket, Seal (90-110 KW)	95023107	1	Under Seal Housing
Gasket, Seal (132-160 KW)	95023388	1	Under Seal Housing
Gasket	39454558	1	Motor to Gearcase
Discharge Check Valve	39479852	1	Airend Discharge to Separator Tank
Gasket	39487434	2	Both Sides of Check Valve
Fan, 40" (Aircooled Only) 60 Hz	39923628	1	On Fan Motor Drive Shaft
Fan, 40" (Aircooled Only) 50 Hz	39911649	1	On Fan Motor Drive Shaft
Fan, 24" (Watercooled Only) 60 Hz	39197835	1	On Fan Motor Drive Shaft
Fan, 24" (Watercooled Only) 50 Hz	54569546	1	On Fan Motor Drive Shaft
Pressure Relief Valve	39588058	1	On Separator Tank
Panel Locator Pins	39138490	12	On Base
Transformer Fuse (2.0A)	39113535	1	In Starter Box (Remote Starter) (4FU)
Transformer Fuse (2.5A)	39178728	2	In Starter Box - 85/110A (1FU)
Transformer Fuse (3.2A)	39113527	1	In Starter Box - 85/110A (2FU)

## SSR 125-200 HP / 90-160 KW SPARE PARTS

COMPRESSOR PART	PART NO.	QTY. PER UNIT	LOCATION OR USE
Transformer Fuse (2.0 A)	39113535	1	In Starter Box (Remote Starter) (4FU)
Transformer Fuse (2.5 A)	39178728	2	In Starter Box - 85/110A (1FU)
Transformer Fuse (3.2 A)	39113527	1	In Starter Box - 85/110A (2FU)
Transformer Fuse (3.5 A)	39178736	2	In Starter Box - 180/250/300A (1FU)
Transformer Fuse (5.0 A)	39118484	1	In Starter Box - 180/250/300A (2FU)
Transformer Fuse (5.0 A)	39242458	1	In Starter Box - 85/110/180/250/300A (3FU) & Remote Starter (5FU)
Power On Light (110/120V)	39196225	1	On Starter Back Panel
Power On Light (24V)	39485032	1	On Intellisys Panel
Power On Light Bulb (24V)	39485024	1	24V Power On Light
Emergency Stop Switch	39549167	1	On Intellisys Panel
Pressure Sensor (0-225 PSIG)	39883186	2	On Starter Box (3APT, 4APT, 6APT)
Pressure Sensor (0-15 PSIG)	39883137	1	On Starter Box (1AVPT)
Temperature Sensor	39560628	3	In Airend (2ATT), Aftercooler (4ATT), and Oil Piping (2OTT)
Controller, Intellisys	39875158	1	In Starter Box
Gasket, Controller	39874375	1	Intellisys to Starter Box
Coil, for 60/85 Amp Contactors	39251335	*	In 60/85 Amp Contactor
Coil, for 75 Amp Contactor	39251343	*	In 75 Amp Contactor
Coil, for 110 Amp Contactor	39251350	*	In 110 Amp Contactor
Contact Kit, for 110 Amp Contactor	39251392	*	In 110 Amp Contactor
Coil, for 180 Amp Contactor	39251368	*	In 180 Amp Contactor
Contact Kit, for 180 Amp Contactor	39251400	*	In 180 Amp Contactor
Coil, for 250 Amp Contactor	39251376	*	In 250 Amp Contactor
Contact Kit, for 250 Amp Contactor	39251418	*	In 250 Amp Contactor
Coil, for 300 Amp Contactor	39251376	*	In 300 Amp Contactor
Contact Kit, for 300 Amp Contactor	39251384	*	In 300 Amp Contactor
Overload Relay	39251087	*	For 85 Amp Contactor
Overload Relay	39251095	*	For 110 Amp Contactor
Overload Relay	39251103	*	For 180 Amp Contactor
Overload Relay	39253158	*	For 250/300 Amp Contactors
Mechanical/Electrical Interlock	39251186	*	For 85 Amp Contactors
Mechanical/Electrical Interlock	39251194	*	For 110/180/250/300 Amp Contactors
Auxiliary Contact 4 N.O.	39251129	*	For 85 Amp Contactors
Auxiliary Contact 1 N.O./1 N.C.	39251137	*	For 85 Amp Contactors
Auxiliary Contact 2 N.O./2 N.C.	39251145	*	For 60 Amp Contactors
Auxiliary Contact 2 N.O.	39251160	*	For 110/180/250/300 Amp Contactors
Auxiliary Contact 1 N.O.	39251152	*	For 110/180/250/300 Amp Contactors
Auxiliary Contact 1 N.O./1 N.O.	39251178	*	For 75/110/180/250/300 Amp Contactors
Fan Motor Starter 2.5A	39251228	*	Fan Motor Circuit
Fan Motor Starter 4A	39251236	*	Fan Motor Circuit
Fan Motor Starter 6.3A	39251244	*	Fan Motor Circuit
Fan Motor Starter 10A	39251251	*	Fan Motor Circuit
Fan Motor Starter 16A	39251269	*	Fan Motor Circuit
Fan Motor Starter 20A	39251277	*	Fan Motor Circuit
Fan Motor Starter 32A	39252827	*	Fan Motor Circuit
Trip Switch w/32A	39252952	*	Use with 32A Motor Starter
Auxiliary Contact for Fan Motor Starter 1 N.O.	39251285	1	In Fan Motor Starter
A.C. Line Filter	39201918	1	In Starter Box
Power Supply Board	39874425	1	In Starter Box
Decal Kit	39244355	1	All English Units
Stepper Motor Kit	42374942	1	On Inlet Valve
Coupling Set	39181219	1	Between Stepper Motor and Inlet Valve