



***Parts Manual for
QR-25® Series Compressor***

Model 350

Record of Change 104

50217-104

June 1991

Q

U

i

n

C

y



INTRODUCTION

This manual provides information for the following QR-25 Series, Model 350 Compressor versions, per Record of Change 104:

- 350P Control Version P**
plain head assembly & no controls
- 350L Control Version L**
head assembly with 2 unloader towers & a hydraulic unloader
- 350S Control Version S**
head assembly with 2 unloader towers & a pilot valve
- 350LS Control Version LS**
head assembly with 2 unloader towers, a hydraulic unloader, & a pilot valve with a check valve assembly
- 350LVD Control Version LVD**
head assembly with 2 unloader towers, a hydraulic unloader, & a pilot valve with a lockout & check valve

The Model 350 is an aircooled, two stage, two cylinder, pressure lubricated compressor, with up to 200 P.S.I. continuous pressure capability (*201 to 350 P.S.I. intermittent pressure capability with proper configuration; consult factory*). It has a 6" low pressure piston bore & 3 1/4" high pressure piston bore x 3 1/2" stroke, and can be run at 400-940 R.P.M.

Available options included in this manual:

- high pressure rated cylinder & head
- spin-on oil filter
- hooded air filter
- hooded air filter/silencer


Summary of changes since previous printing (dated May 1, 1989):

- new inspection plate to crankcase
- removed side sealer rings from piston & connecting rod group
- added Basic Compressor Repair Kit

TABLE OF CONTENTS

Serial Number Identification	1
Ordering Replacement Parts	1
Crankcase Group	2-3
Crankshaft Groups	4-5
Bearing Carrier Groups	
with oil filter (standard)	6-7
less oil filter (optional).....	8-9
Connecting Rod & Piston Groups	
low pressure side.....	10-11
high pressure side	12-13
Cylinder & Head Groups	
control version P	14-15
control versions L, S, LS, LVD.....	16-17
Head Assemblies	
control version P	18-19
control versions L, S, LS, LVD.....	20-23
Control Groups	
version L.....	24-25
version S	26-27
version LS	28-29
version LVD.....	30-31
Pilot Valves	32
Pilot Valve Repair Kit	33
Differential Setting Chart	33
Suction Valve Unloader Assemblies	34-35
Check Valve Assemblies	35
Gasket Set	36
"O"Ring Kits	36
V.I.P. Kit	37
Recommended Spare Parts	37
Basic Compressor Repair Kit	37
Decals	38

SERIAL NUMBER IDENTIFICATION

	<i>Record of Change No.</i>	
MODEL		
SERIAL NO.		
SIZE		
Coltec Industries	Quincy	
	Compressor Division	
110831		

Serial Number
Identification Tag

The serial number identification tag is located on the handhole plate side of the crankcase. Fill in the numbers from your compressor's tag here and reference this page when ordering replacement parts.

All replacement parts are to be ordered through an authorized Quincy Compressor Distributor. **Insist on genuine Quincy parts only!** Failure to do so may void warranty.

ORDERING REPLACEMENT PARTS

Prompt service can be rendered on repair parts orders if the following information is given:

- Step 1)** The model number, record of change number, & serial number must be given when ordering replacement parts.
- Step 2)** State the exact *part* number needed. Do not order by item numbers.
- Step 3)** State the exact quantity needed.
- Step 4)** State the preferred type of transportation.

CAUTION !

Follow all safety precautions outlined in the QR-25 instruction manual.

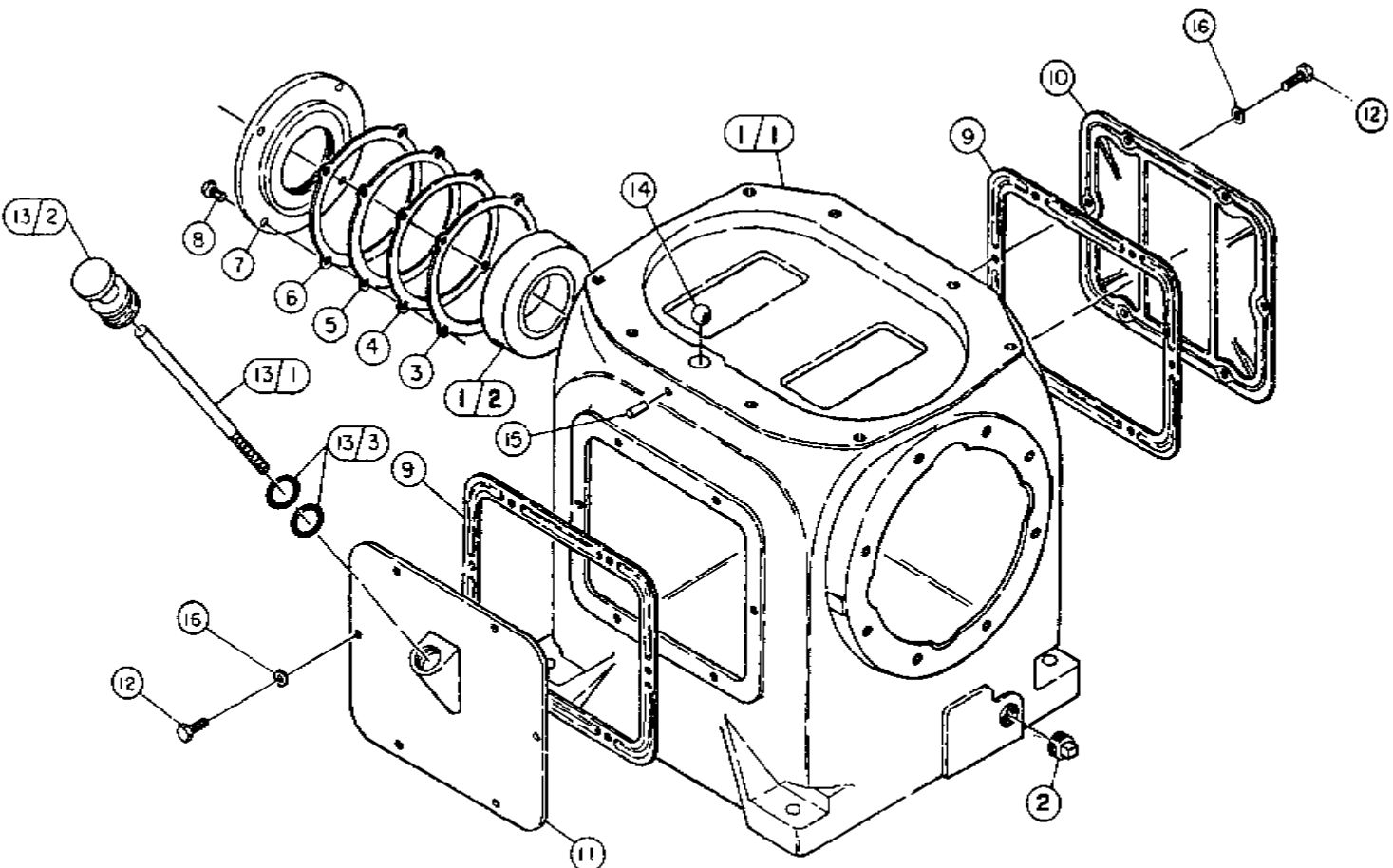
WARNING !

Do not operate this compressor without a totally enclosed belt guard or any other required safety equipment.

DANGER !

Air used for breathing or food processing must meet O.S.H.A. 29 C.F.R. 1910.134 or F.D.A. 21 C.F.R. 178.3570 regulations. Failure to do so may cause severe injury or death

CRANKCASE GROUP 110628



CRANKCASE GROUP 110628

ITEM NUMBER	QTY	PART NUMBER	DESCRIPTION
1	1	6904X	CRANKCASE ASSEMBLY
1/1	1	6904	CRANKCASE
1/2	1	3720	CUP-BEARING
2	1	2057	PLUG-PIPE, 1/2 NPT
3	3	1383	SHIM-BEARING ADJUSTMENT, .005, STEEL
4	*	1383A	SHIM-BEARING ADJUSTMENT, .007, STEEL
5	*	1383B	SHIM-BEARING ADJUSTMENT, .020, STEEL
6	*	1383D	SHIM-BEARING ADJUSTMENT, .002, STEEL
7	1	6930	PLATE-ADJUSTMENT (.0015/.003 CRANKSHAFT END PLAY)
8	4	123478-L12	SCREW-HEX., 5/8-16 UNC X 1.00, GRADE 5 (@ 30FT.-LBS.)
9	2	1315	GASKET-INSPECTION PLATE
10	1	1249-1	PLATE-INSPECTION
11	1	6849-1	PLATE-INSPECTION
12	12	123478-K12	SCREW-HEX., 5/16-18 UNC X 1.00, GRADE 5 (@ 12FT.-LBS.)
13	1	6726X001	OIL GAUGE ASSEMBLY
13/1	1	5488-001	ROD-OIL GAUGE (N.S.S.; ORDER 6726X001)
13/2	1	6726	KNOB-OIL GAUGE (N.S.S.; ORDER 6726X001)
13/3	2	123157-210	"O"RING-1/8 WIDE X 1.00 O.D.
14	1	5783	BALL-BREATHER
15	1	5932	PIN-DRIVE
16	12	110428N031	FLATMASHER-5/16
MAINTENANCE PARTS			
	1	6930-1X	REPLACEMENT ADJUSTMENT PLATE ASSEMBLY INCLUDES:
	1	6930-1	PLATE-ADJUSTMENT
	1	8831	SEAL-OIL

PARTS FOR SPECIAL APPLICATIONS

(For use with diester or phosphate ester synthetic lubricants)

13/3	2	22749-210	"O"RING-1/8 WIDE X 1.00 O.D.
------	---	-----------	------------------------------

@ Indicates torque value in foot pounds (dry threads)

* Quantity as required

N.S.S. = Not Sold Separate

CRANKSHAFT GROUP 110629

ITEM NUMBER	QTY	PART NUMBER	DESCRIPTION
1	1	110221-001	CRANKSHAFT ASSEMBLY
1/1	1	110220-001	CRANKSHAFT (N.S.S.;ORDER 110221-001)
1/2	1	2788	CONE-BEARING
1/3	1	40775	CONE-BEARING
1/4	1	110234	ORIFICE-PIPE PLUG,1/8 NPT
1/5	2	2755S	PLUG-PIPE,1/8 NPT
1/6	1	110705-F17	PIN-ROLL,3/16 X 1.38
2	1	110523X	SHEAVE ASSEMBLY
2/1	1	110523	SHEAVE,19-1/2",3G,B SECT,CCN (N.S.S.;ORDER 110523X) RATED;ORDER 110523X)
2/2	2	124571-N22	SCREW-HEX.,1/2-20 UNF X 3.25,GRADE 5 (@ 90FT.-LBS.)
2/3	2	124373-N02	NUT-SQUARE,1/2-20 UNF
3	1	1466	KEY-TAPER

CRANKSHAFT GROUP 110629-001

(for basic compressors used on FE 350 units)

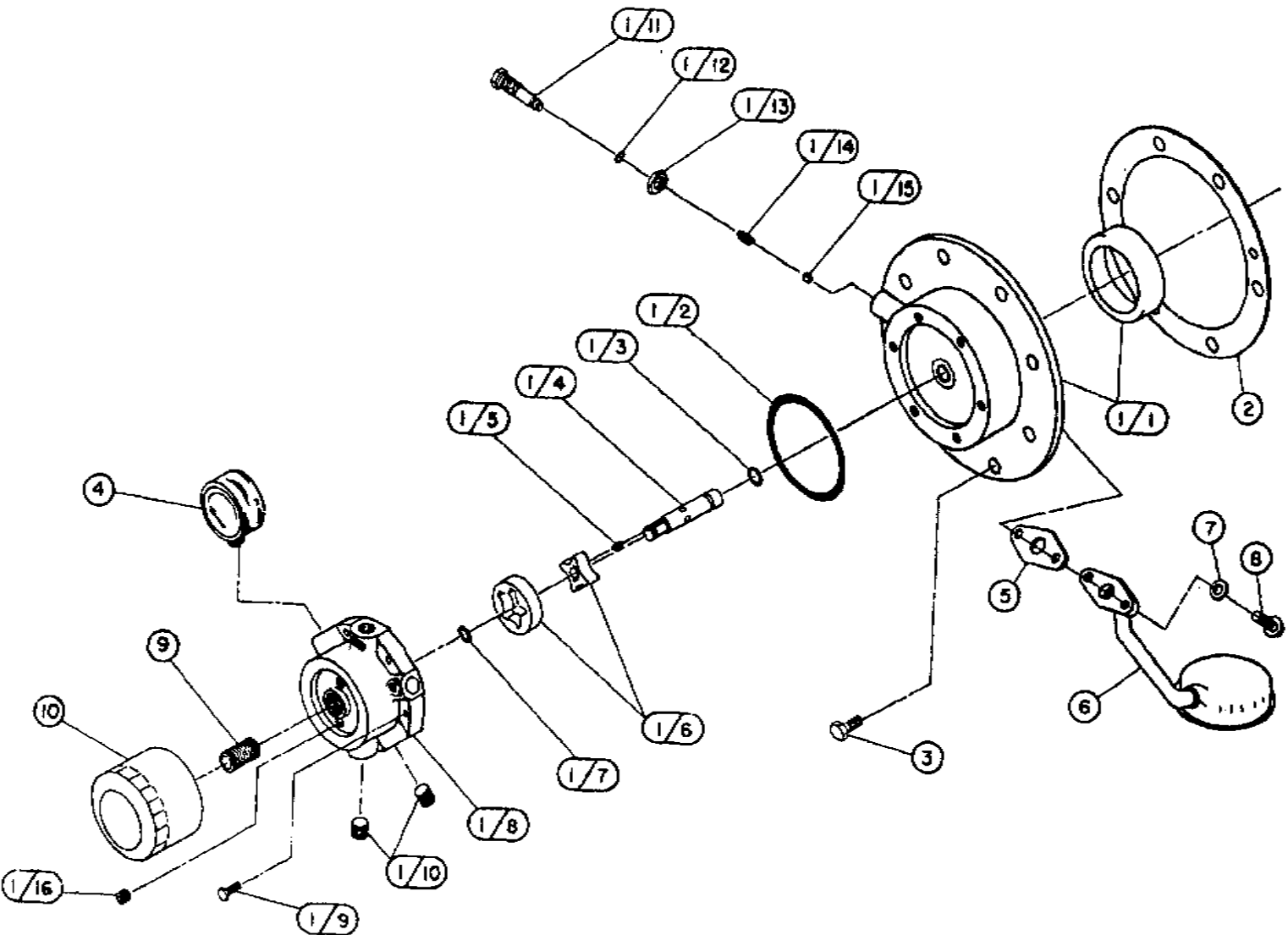
ITEM NUMBER	QTY	PART NUMBER	DESCRIPTION
1	1	110221-001	CRANKSHAFT ASSEMBLY
1/1	1	110220-001	CRANKSHAFT (N.S.S.;ORDER 110221-001)
1/2	1	2788	CONE-BEARING
1/3	1	40775	CONE-BEARING
1/4	1	110234	ORIFICE-PIPE PLUG,1/8 NPT
1/5	2	2755S	PLUG-PIPE,1/8 NPT
1/6	1	110705-F17	PIN-ROLL,3/16 X 1.38
2	1	110975X	SHEAVE ASSEMBLY
2/1	1	110975	SHEAVE,16",2G,B SECT,CCN (N.S.S.;ORDER 110975X)
2/2	2	124571-N22	SCREW-HEX.,1/2-20 UNF X 3.25,GRADE 5 (@ 90FT.-LBS.)
2/3	2	124373-N02	NUT-SQUARE,1/2-20 UNF
3	1	1466	KEY-TAPER

@ Indicates torque value in foot pounds (dry threads)

N.S.S. = Not Sold Separate

Note: For reversal of compressor rotation refer to QR-25 instruction manual.

BEARING CARRIER GROUP 110820-001
(with oil filter)



BEARING CARRIER GROUP 110820-001

(with oil filter)

ITEM NUMBER	QTY	PART NUMBER	DESCRIPTION
* 1	1	110812-003	BEARING CARRIER ASSEMBLY
1/1	1	110812	BEARING CARRIER
			INCLUDES:
	1	2720	CUP-BEARING
	2	160005	BUSHING-BRONZE
* 1/2	1	123157-152	"O"RING-3/32 WIDE X 3.44 O.D. (OIL PUMP COVER PLATE)
* 1/3	1	123157-112	"O"RINGS-3/32 WIDE X .69 O.D. (BAYONET OIL GAUGE)
1/4	1	160002-001	DRIVESHAFT-BEARING CARRIER
1/5	1	160075-001	KEY-DRIVESHAFT
1/6	1	160003	GEROTOR-PUMP
1/7	1	6285	RING-RETAINING
1/8	1	110813-001	HOUSING-OIL PUMP
1/9	6	160077-J14	SCREW-HEX., 1/4-20 UNC X 1.25, W/TOOTH WASHER (@ 6FT.-LBS.)
1/10	2	2719	PLUG-PIPE, 1/4 NPT
1/11	1	5489	SCREW-ADJUSTMENT
* 1/12	1	123157-011	"O"RING-1/16 WIDE X .44 O.D. (OIL PRESSURE ADJUSTMENT SCREW)
1/13	1	124369-P02	JAMNUT-9/16-18 UNF
1/14	1	1160	SPRING
1/15	1	1281	BALL
1/16	1	121160	PLUG-PIPE, 1/8 NPT
2	1	5502	GASKET-BEARING CARRIER
3	8	123478-L12	SCREW-HEX., 3/8-16 UNC X 1.00, GRADE 5 (@ 75FT.-LBS.)
4	1	110822	GAUGE-PRESSURE
5	1	6679	GASKET-OIL INLET BRACKET
6	1	110659	TUBE-OIL PICKUP
7	2	123115-06C	LOCKWASHER-3/8
8	2	123478-L11	SCREW-HEX., 3/8-16 UNC X .88, GRADE 5 (@ 75FT.-LBS.)
9	1	110825	STUD-OIL FILTER
MAINTENANCE PARTS			
* 10	1	110814-001	6 PACK-OIL FILTER ELEMENTS
* *		160079	REPAIR KIT-OIL PUMP
			INCLUDES:
* *	1	123157-152	"O"RING-3/32 WIDE X 3.44 O.D. (OIL PUMP COVER PLATE)
* *	1	123157-112	"O"RING-3/32 WIDE X .69 O.D. (BAYONET OIL GAUGE)
	1	160002-001	DRIVESHAFT-BEARING CARRIER
	1	160075-001	KEY-DRIVESHAFT
	1	160003	GEROTOR-PUMP
	1	6285	RING-RETAINING
* *	1	123157-011	"O"RING-1/16 WIDE X .44 O.D. (OIL PRESSURE ADJUSTMENT SCREW)
* *		110812-003	REPLACEMENT BEARING CARRIER ASSEMBLY
			INCLUDES:
	1	110812-003	BEARING CARRIER ASSEMBLY
	1	110814	OIL-FILTER
	1	110825	STUD-OIL FILTER
	1	5502	GASKET-BEARING CARRIER
	1	6679	GASKET-OIL INLET BRACKET

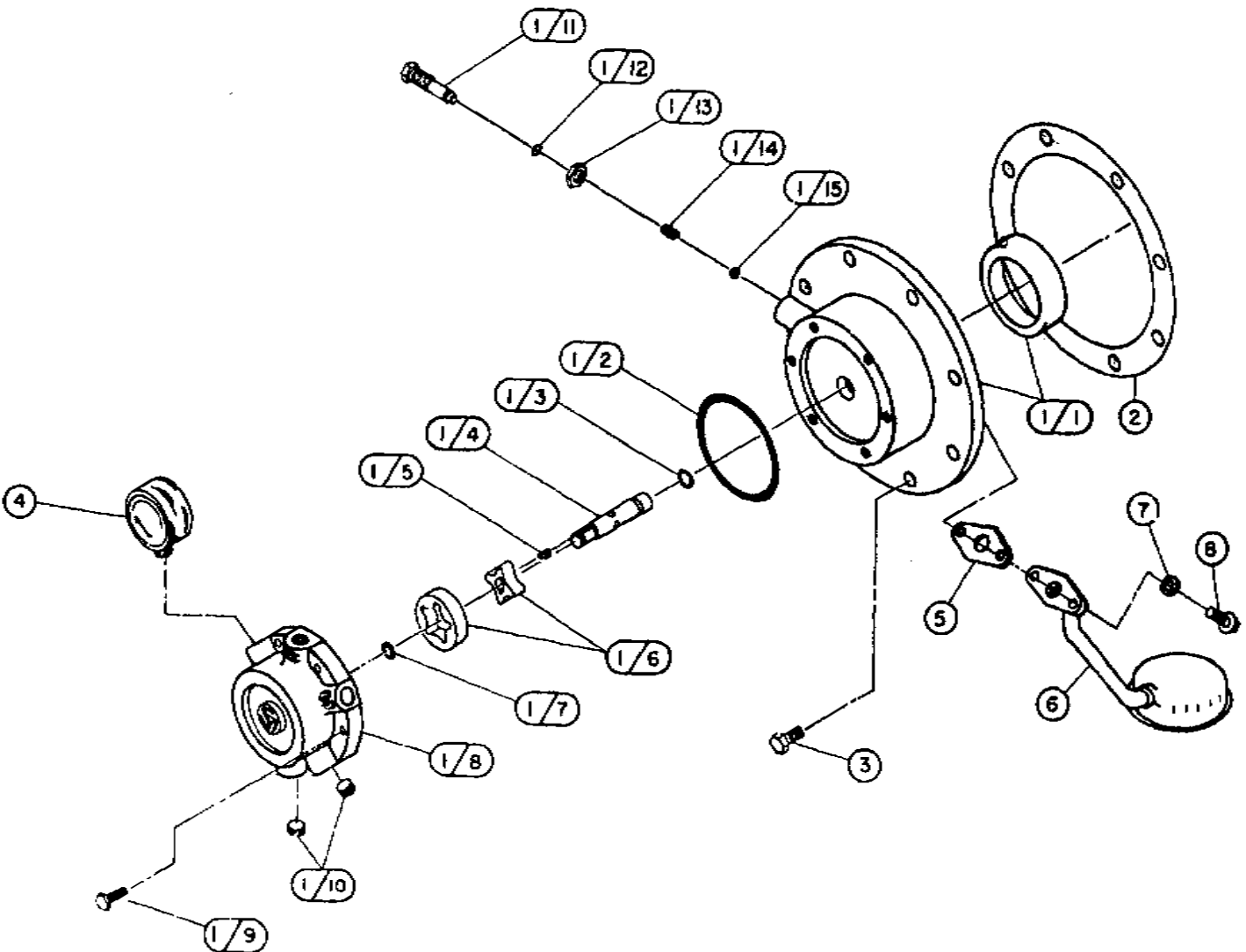
@ Indicates torque value in foot pounds (dry threads)

* Can not be used with diester or phosphate ester synthetic lubricants.

Note: Tighten all bolts & capscrews in any bolt pattern evenly bringing each bolt to torque in even increments while moving about the bolt pattern. This is particularly true of connecting rod & head bolts.

BEARING CARRIER GROUP 110820

(less oil filter)



BEARING CARRIER GROUP 110820

(less oil filter)

ITEM NUMBER	QTY	PART NUMBER	DESCRIPTION
1	1	110812-002	BEARING CARRIER ASSEMBLY
1/1	1	110812	BEARING CARRIER
			INCLUDES:
	1	2720	CUP-BEARING
	2	160005	BUSHING-BRONZE
* 1/2	1	123157-152	"O"RING-3/32 WIDE X 3.44 O.D. (OIL PUMP COVER PLATE)
* 1/3	1	123157-112	"O"RING-3/32 WIDE X .69 O.D. (BAYONET OIL GAUGE)
1/4	1	160002-001	DRIVESHAFT-BEARING CARRIER
1/5	1	160075-001	KEY-DRIVESHAFT
1/6	1	160003	GEROTOR-PUMP
1/7	1	6285	RING-RETAINING
1/8	1	110813	HOUSING-OIL PUMP
1/9	6	160077-J14	SCREW-HEX., 1/4-20 UNC X 1.25, W/TOOTH WASHER (@ 6FT., -LBS.)
1/10	2	2719	PLUG-PIPE, 1/4 NPT
1/11	1	5489	SCREW-ADJUSTMENT
* 1/12	1	123157-011	"O"RING-1/16 WIDE X .44 O.D. (OIL PRESSURE ADJUSTMENT SCREW)
1/13	1	124369-P02	JAMNUT-9/16-18 UNF
1/14	1	1160	SPRING
1/15	1	1281	BALL
2	1	5502	GASKET-BEARING CARRIER
3	8	123478-L12	SCREW-HEX., 3/8-16 UNC X 1.00, GRADE 5 (@ 75FT., -LBS.)
4	1	110822	GAUGE-PRESSURE
5	1	6679	GASKET-OIL INLET BRACKET
6	1	110659	TUBE-OIL PICKUP
7	2	123115-06C	LOCKWASHER-3/8
8	2	123478-L11	SCREW-HEX., 3/8-16 UNC X .88, GRADE 5 (@ 75FT., -LBS.)
MAINTENANCE PARTS			
*		160079	REPAIR KIT-OIL PUMP
			INCLUDES:
* 1	1	123157-152	"O"RING-3/32 WIDE X 3.44 O.D. (OIL PUMP COVER PLATE)
* 1	1	123157-112	"O"RING-3/32 WIDE X .69 O.D. (BAYONET OIL GAUGE)
	1	160002-001	DRIVESHAFT-BEARING CARRIER
	1	160075-001	KEY-DRIVESHAFT
	1	160003	GEROTOR-PUMP
	1	6285	RING-RETAINING
* 1	1	123157-011	"O"RING-1/16 WIDE X .44 O.D. (OIL PRESSURE ADJUSTMENT SCREW)
		110812-002	REPLACEMENT BEARING CARRIER ASSEMBLY
			INCLUDES:
	1	110812-002	BEARING CARRIER ASSEMBLY
	1	5502	GASKET-BEARING CARRIER
	1	6679	GASKET-OIL INLET BRACKET
PARTS FOR SPECIAL APPLICATIONS			
(For use with diester or phosphate ester synthetic lubricants)			
1/2	1	22749-152	"O"RING-3/32 WIDE X 3.44 O.D. (OIL PUMP COVER PLATE)
1/3	1	22749-112	"O"RING-3/32 WIDE X .69 O.D. (BAYONET OIL GAUGE)
1/12	1	22749-011	"O"RING-1/16 WIDE X .44 O.D. (OIL PRESSURE ADJUSTMENT SCREW)
		160079-001	REPAIR KIT-OIL PUMP
			INCLUDES:
	1	22749-152	"O"RING-3/32 WIDE X 3.44 O.D. (OIL PUMP COVER PLATE)
	1	22749-112	"O"RING-3/32 WIDE X .69 O.D. (BAYONET OIL GAUGE)
	1	160002-001	DRIVESHAFT-BEARING CARRIER
	1	160075-001	KEY-DRIVESHAFT
	1	160003	GEROTOR-PUMP
	1	6285	RING-RETAINING
	1	22749-011	"O"RING-1/16 WIDE X .44 O.D. (OIL PRESSURE ADJUSTMENT SCREW)

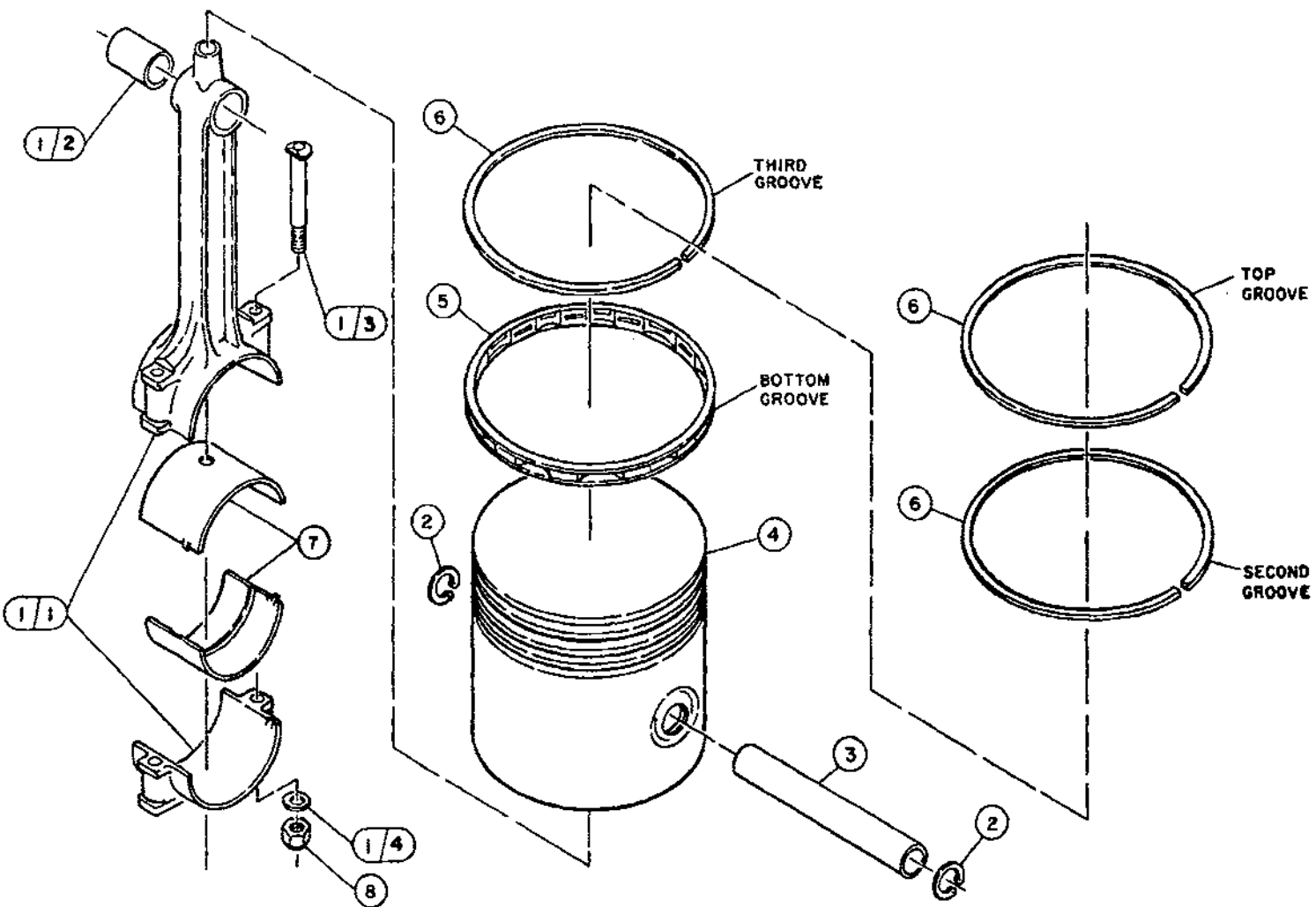
@ Indicates torque value in foot pounds (dry threads)

* Can not be used with diester or phosphate ester synthetic lubricants.

Note: Tighten all bolts & capscrews in any bolt pattern evenly bringing each bolt to torque in even increments while moving about the bolt pattern. This is particularly true of connecting rod & head bolts.

CONNECTING ROD & PISTON GROUP 110462

(low pressure side)



CONNECTING ROD & PISTON GROUP 110462

(low pressure side)

ITEM NUMBER	QTY	PART NUMBER	DESCRIPTION
1	1	40081	CONNECTING ROD ASSEMBLY (N.S.S.;ORDER 6655X)
1/1	1	110803	ROD-CONNECTING (N.S.S.;ORDER 6655X)
1/2	1	6443	BUSHING-CONNECTING ROD (N.S.S.;ORDER 6443SR)
1/3	2	1344	BOLT-CONNECTING ROD,7/16-20 UNF X 3.25
1/4	2	1319	WASHER-CONNECTING ROD
2	2	8648	RING-RETAINING
3	1	8647	PIN-PISTON
4	1	8640	PISTON-COMPRESSOR,L.P.
5	1	90480	RING-PISTON
6	3	9147	RING-PISTON
7	2	6656	INSERT-CONNECTING ROD (SOLD IN PAIRS ONLY;SEE MAINTENANCE PARTS)
8	2	124471-M08	LOCKNUT-7/16-20 UNF (@ 40FT.-LBS.)
MAINTENANCE PARTS			
* 7	1	6656PR	INSERTS(PAIR)-CON ROD BEARING,(STANDARD)
* 7	1	6656-010PR	INSERTS(PAIR)-CON ROD BEARING,(.010 UNDERSIZE)
4	1	8640-010	PISTON-COMPRESSOR,L.P.(.010 OVERSIZE)
4	1	8640-020	PISTON-COMPRESSOR,L.P.(.020 OVERSIZE)
		7527A	RING SET-PISTON,L.P. (STANDARD) NO COLOR CODE
			INCLUDES:
	1	90480	RING-PISTON
	3	9147	RING-PISTON
	1	5787-010	RING SET-PISTON,L.P.(.010 OVERSIZE)(L.BLUE)
			INCLUDES:
	3	9147-010	RING-PISTON
	1	90480-010	RING-PISTON
	1	5787-020	RING SET-PISTON,L.P.(.020 OVERSIZE)(YELLOW)
			INCLUDES:
	3	5847-020	RING-PISTON
	1	5848-020	RING-PISTON
		8640X	PISTON ASSEMBLY,L.P.(STANDARD)
			INCLUDES:
	1	7527	RING SET-PISTON,L.P. (STANDARD) NO COLOR CODE
	1	8640	PISTON-COMPRESSOR,L.P.
	2	8648	RING-RETAINING
	1	8647	PIN-PISTON
		8640X010	PISTON ASSEMBLY,L.P.(.010 OVERSIZE)
			INCLUDES:
	1	8640-010	PISTON-COMPRESSOR,L.P.(.010 OVERSIZE)
	1	8647	PIN-PISTON
	2	8648	RING-RETAINING
	1	5787-010	RING SET-PISTON,L.P.(.010 OVERSIZE)(L.BLUE)
		8640X020	PISTON ASSEMBLY,L.P.(.020 OVERSIZE)
			INCLUDES:
	1	8640-020	PISTON-COMPRESSOR,L.P.(.020 OVERSIZE)
	1	8647	PIN-PISTON
	2	8648	RING-RETAINING
	1	5787-020	RING SET-PISTON,L.P.(.020 OVERSIZE)(YELLOW)
		6655X	REPLACEMENT CONNECTING ROD ASSEMBLY (STANDARD)
			INCLUDES:
	1	40081	CONNECTING ROD ASSEMBLY (N.S.S.;ORDER 6655X)
	1	6656PR	INSERTS(PAIR)-CON ROD BEARING,(STANDARD)
	2	124471-M08	LOCKNUT-7/16-20 UNF
		6655X015	REPLACEMENT CONNECTING ROD ASSEMBLY (.010 UNDERSIZE)
			INCLUDES:
	1	40081	CONNECTING ROD ASSEMBLY (N.S.S.;ORDER 6655X)
	1	6656-010PR	INSERTS(PAIR)-CON ROD BEARING,(.010 UNDERSIZE)
	2	124471-M08	LOCKNUT-7/16-20 UNF

@ Indicates torque value in foot pounds (dry threads)

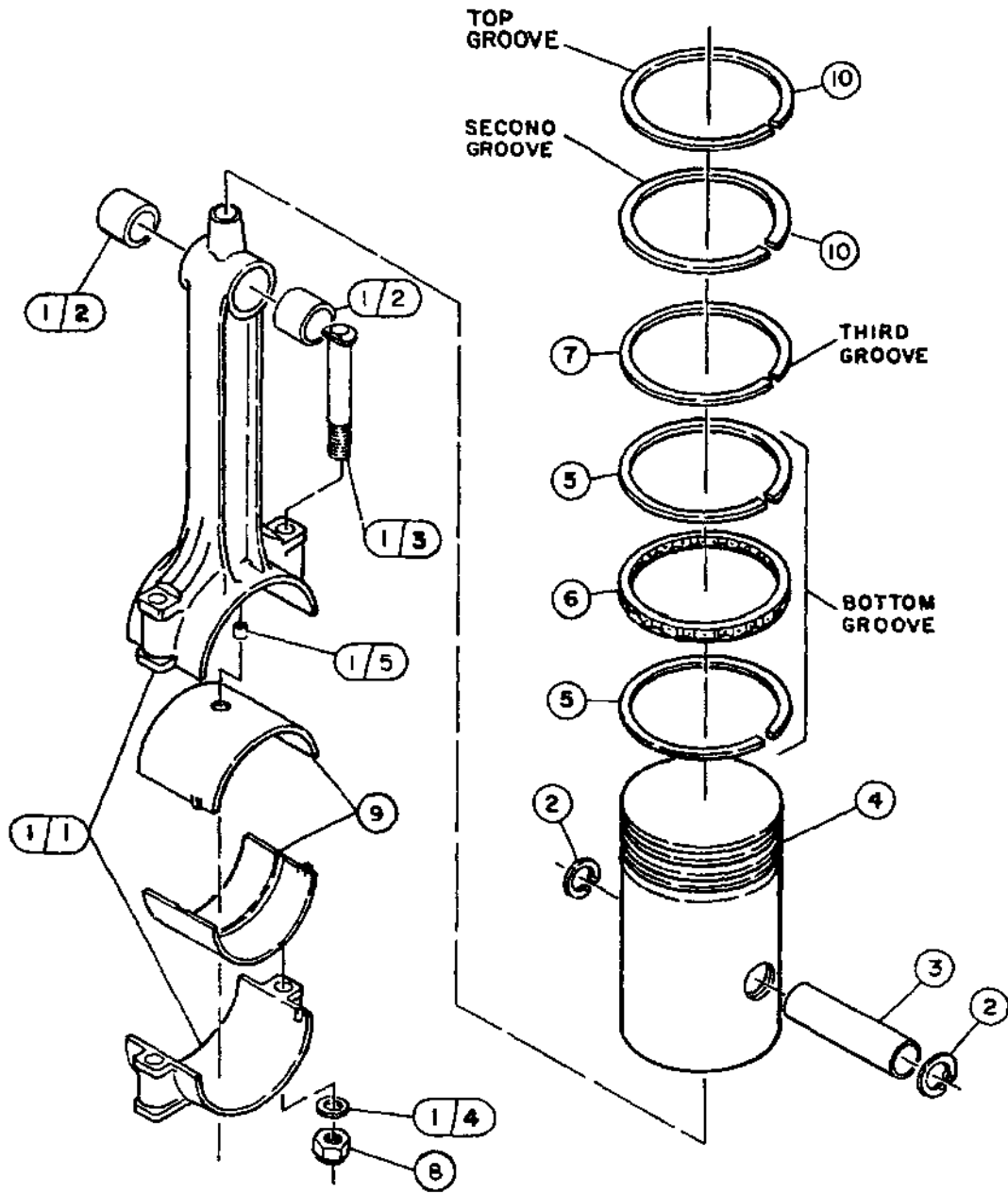
* 1 pair required for each connecting rod assembly.

N.S.S. = Not Sold Separate

Note: Tighten all bolts & capscrews in any bolt pattern evenly bringing each bolt to torque in even increments while moving about the bolt pattern. This is particularly true of connecting rod & head bolts.

CONNECTING ROD & PISTON GROUP 110463

(high pressure side)



CONNECTING ROD & PISTON GROUP 110463

(high pressure side)

ITEM NUMBER	QTY	PART NUMBER	DESCRIPTION
1	1	110804	CONNECTING ROD ASSEMBLY (N.S.S.;ORDER 110804X)
1/1	1	110802	ROD-CONNECTING (N.S.S.;ORDER 110804X)
1/2	2	110799-010	BEARING (NEEDLE)-CONNECTING ROD
1/3	2	1344	BOLT-CONNECTING ROD,7/16-20 UNC X 3.25
1/4	2	1319	MASHER-CONNECTING ROD
1/5	1	110801-001	ORIFICE-PIPE PLUG
2	2	8648	RING-RETAINING
3	1	110190-004	PIN-PISTON (N.S.S.;ORDER 110190-051)
4	1	5846-001	PISTON-COMPRESSOR,H.P.
5	2	7964	RAIL-PISTON
6	1	7966	RING-PISTON,EXPANDER
7	1	6997	RING-COMPRESSOR
8	2	124471-H08	LOCKNUT-7/16-20 UNF (3 40FT.-LBS.)
9	2	6656	INSERT-CONNECTING ROD (SOLD IN PAIRS ONLY;SEE MAINTENANCE PARTS)
10	2	111845	RING-PISTON
MAINTENANCE PARTS			
* 9	1	6656PR	INSERTS(PAIR)-CON ROD BEARING,(STANDARD)
* 9	1	6656-010PR	INSERTS(PAIR)-CON ROD BEARING,(.010 UNDERSIZE)
4	1	5846-011	PISTON-COMPRESSOR,H.P.(.010 OVERSIZE)
4	1	5846-021	PISTON-COMPRESSOR,H.P.(.020 OVERSIZE)
		8168A	RING SET-PISTON,H.P.(STANDARD) NO COLOR CODE
			INCLUDES:
	2	111845	RING-PISTON
	1	6997	RING-COMPRESSOR
	2	7964	RAIL-PISTON
	1	7966	RING-PISTON,EXPANDER
		5788-010	RING SET-PISTON,H.P.(.010 OVERSIZE)(L. BLUE)
			INCLUDES:
	3	5849-010	RING-PISTON
	2	7964-010	RING-PISTON
	1	7966	RING-PISTON,EXPANDER
		5788-020	RING SET-PISTON,H.P.(.020 OVERSIZE)(YELLOW)
			INCLUDES:
	3	5849-020	RING-PISTON
	2	7964-020	RING-PISTON,RAIL
	1	7966-020	RING-PISTON,EXPANDER
		5846X001	PISTON ASSEMBLY,H.P.(STANDARD)
			INCLUDES:
	1	5846-001	PISTON-COMPRESSOR,H.P.
	1	110190-004	PIN-PISTON (N.S.S.;ORDER 110190-051)
	2	8648	RING-RETAINING
	1	8168	RING SET-PISTON,H.P.(STANDARD) NO COLOR CODE
		5846X011	PISTON ASSEMBLY,H.P.(.010 OVERSIZE)
			INCLUDES:
	I	5846-011	PISTON-COMPRESSOR,H.P.(.010 OVERSIZE)
	1	110190-004	PIN-PISTON (N.S.S.;ORDER 110190-051)
	2	8648	RING-RETAINING
	I	5788-010	RING SET-PISTON,H.P.(.010 OVERSIZE)(L. BLUE)
		5846X021	PISTON ASSEMBLY,H.P.(.020 OVERSIZE)
			INCLUDES:
	1	5846-021	PISTON-COMPRESSOR,H.P.(.020 OVERSIZE)
	1	110190-004	PIN-PISTON (N.S.S.;ORDER 110190-051)
	2	8648	RING-RETAINING
	1	5788-020	RING SET-PISTON,H.P.(.020 OVERSIZE)(YELLOW)
		110804X	REPLACEMENT CONNECTING ROD ASSEMBLY (STANDARD)
			INCLUDES:
	1	110804	CONNECTING ROD ASSEMBLY (N.S.S.;ORDER 110804X)
	1	6656PR	INSERTS(PAIR)-CON ROD BEARING,(STANDARD)
	2	124471-H08	LOCKNUT-7/16-20 UNF
		110804X010	REPLACEMENT CONNECTING ROD ASSEMBLY (.010 UNDERSIZE)
			INCLUDES:
	1	110804	CONNECTING ROD ASSEMBLY (N.S.S.;ORDER 110804X)
	1	6656-010PR	INSERTS(PAIR)-CON ROD BEARING,(.010 UNDERSIZE)
	2	124471-H08	LOCKNUT-7/16-20 UNF

@ Indicates torque value in foot pounds (dry threads)

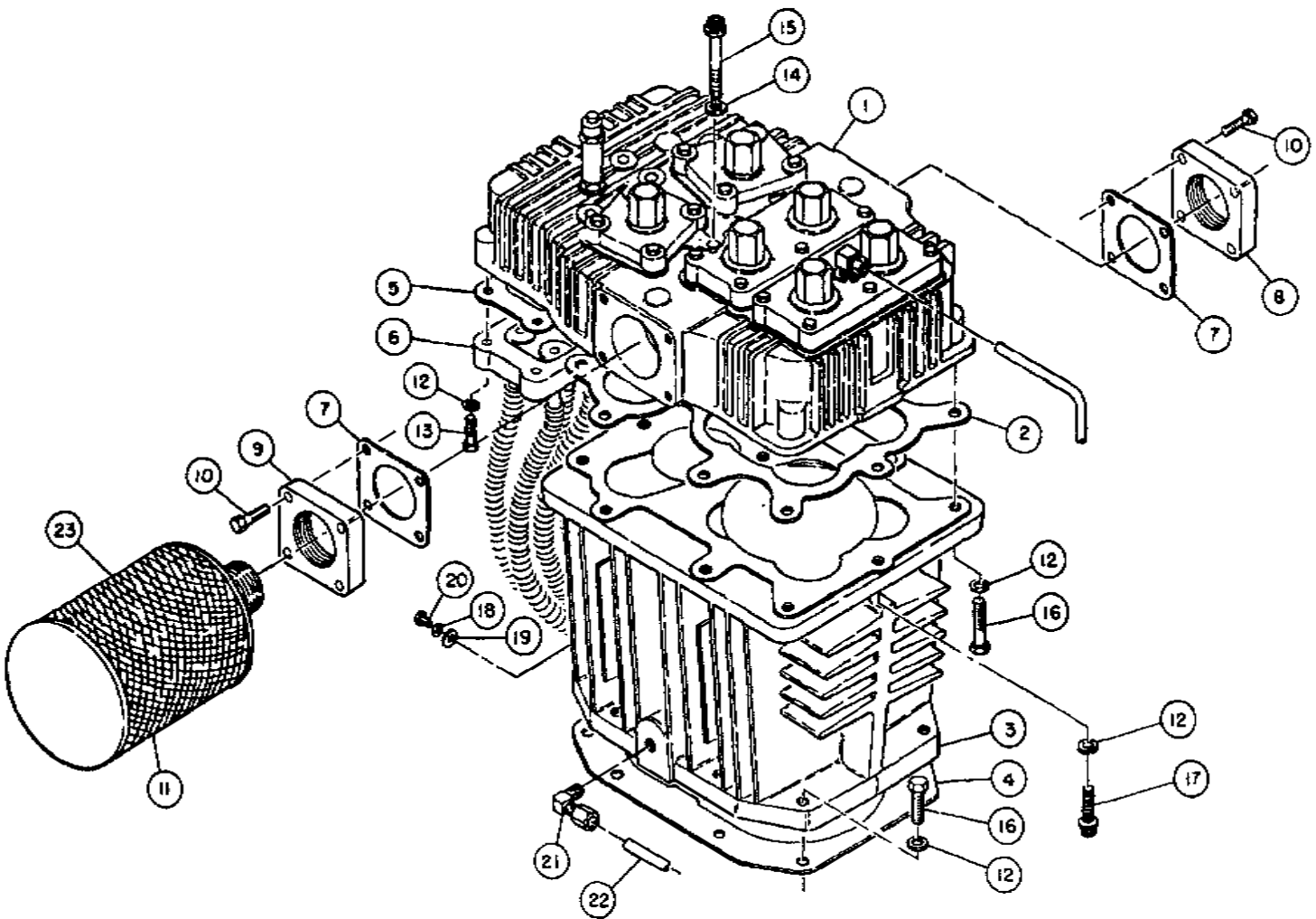
* 1 pair required for each connecting rod assembly.

N.S.S. = Not Sold Separate

Note: Tighten all bolts & capcrews in any bolt pattern evenly bringing each bolt to torque in even increments while moving about the bolt pattern. This is particularly true of connecting rod & head bolts.

CYLINDER & HEAD GROUP 110631

(control version P)



CYLINDER & HEAD GROUP 110631

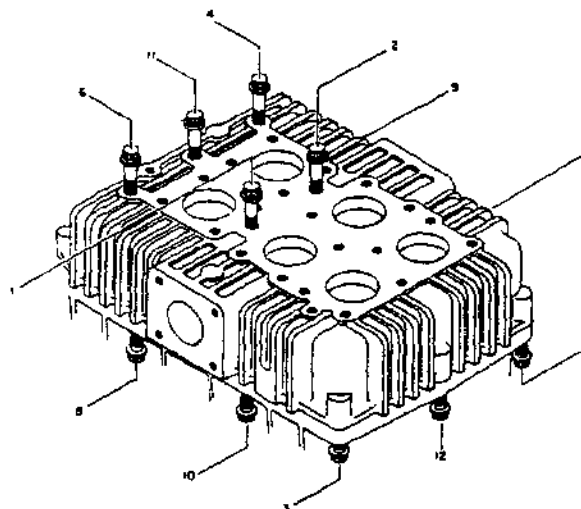
(control version P)

ITEM NUMBER	QTY	PART NUMBER	DESCRIPTION
1	1	7382P-002	HEAD ASSEMBLY-STANDARD PRESSURE (SEE PAGE 19 FOR PARTS BREAKDOWN)
		OR	
1	1	7382P-004	HEAD ASSEMBLY-HIGH PRESSURE (SEE PAGE 19 FOR PARTS BREAKDOWN)
2	1	7403	GASKET-CYLINDER TO HEAD
3	1	7395-1	CYLINDER-COMPRESSOR
4	1	5827	GASKET-CYLINDER TO CRANKCASE
5	1	5860	GASKET-INTERCOOLER TO HEAD
6	1	5857-001	INTERCOOLER
7	2	5828	GASKET-COMPANION FLANGE
8	1	5501	FLANGE-DISCHARGE
9	1	5858	FLANGE-INTAKE
10	8	123478-M15	SCREW-HEX., 7/16-14 UNC X 1.50, GRADE 5 (@ 50FT.-LBS.)
11	1	110377F200	FILTER-AIR
		OR	
11	1	110377H200	FILTER-AIR, HOODED
		OR	
11	1	110377S200	FILTER/SILENCER-AIR, HOODED
12	20	123115-08C	LOCKWASHER-1/2
13	5	123478-N16	SCREW-HEX., 1/2-13 UNC X 1.75, GRADE 5 (@ 65FT.-LBS.)
14	6	1478-1	FLATWASHER
15	6	5863	SCREW-COUNTERBORE, 1/2-13 UNC X 4.25, GRADE 8 (@ 65FT.-LBS.)
16	14	123478-N15	SCREW-HEX., 1/2-13 UNC X 1.50, GRADE 5 (head to cyl.: @ 65FT.-LBS.) (cyl. to c'case.: @ 75FT.-LBS.)
17	1	90386-N14	SCREW-COUNTERBORE, 1/2-13 UNC X 1.25, GRADE 8 (@ 65FT.-LBS.)
18	1	123115-06C	LOCKWASHER-3/8
19	1	110428M038	FLATWASHER-3/8
20	1	123478-L11	SCREW-HEX., 3/8-16 UNC X .88, GRADE 5 (@ 30FT.-LBS.)
21	1	2728	FITTING-TUBE, 90 MALE ELBOW 3/8 TUBE X 3/8 NPT
22	2FT	110515-038	TUBE-COPPER, 3/8 O.D.
			MAINTENANCE PARTS
23	1	110377E200	ELEMENT-AIR FILTER
		7382X16P	REPLACEMENT HEAD ASSEMBLY
			INCLUDES:
	1	7382P-002	HEAD ASSEMBLY-STANDARD PRESSURE (SEE PAGE 19 FOR PARTS BREAKDOWN)
	1	7403	GASKET-CYLINDER TO HEAD
	1	5860	GASKET-INTERCOOLER TO HEAD

@ Indicates torque value in foot pounds (dry threads)

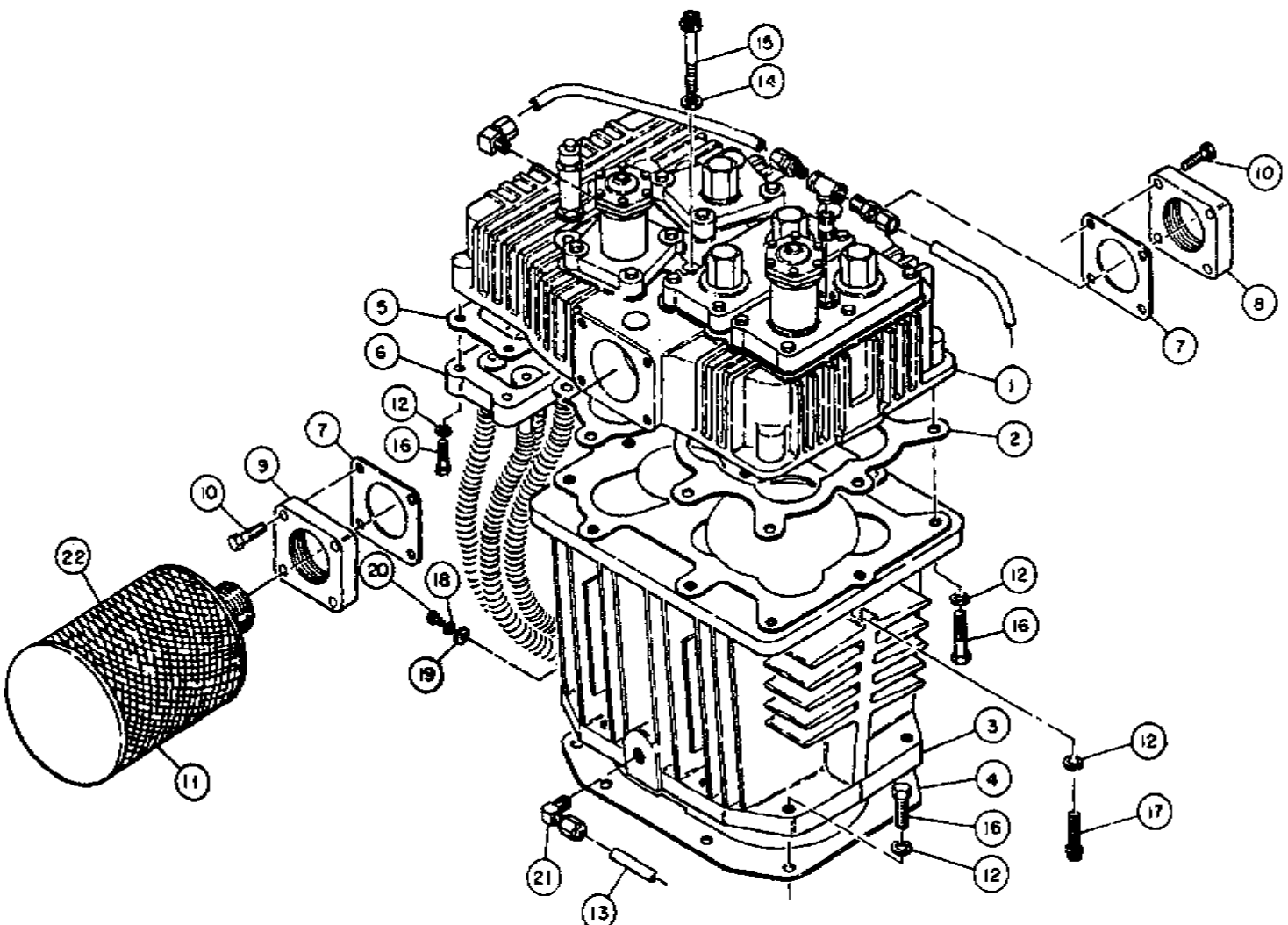
Note: Tighten all bolts & capscrews in any bolt pattern evenly bringing each bolt to torque in even increments while moving about the bolt pattern. This is particularly true of connecting rod & head bolts.

PROPER HEAD BOLT TORQUE SEQUENCE



CYLINDER & HEAD GROUP 110632

(control versions L, S, LS, & LVD)



CYLINDER & HEAD GROUP 110632

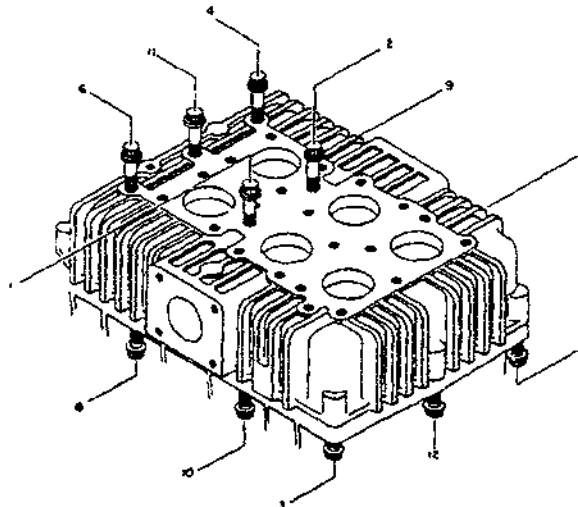
(control versions L, S, LS, & LVD)

ITEM NUMBER	QTY	PART NUMBER	DESCRIPTION
1	1	7382UJ-002	HEAD ASSEMBLY-STD PRESSURE (SEE PAGES 21 & 23 FOR PARTS BREAKDOWN)
		OR	
1	1	7382UJ-004	HEAD ASSEMBLY-HIGH PRESSURE (SEE PAGES 21 & 23 FOR PARTS BREAKDOWN)
2	1	7403	GASKET-CYLINDER TO HEAD
3	1	7395-1	CYLINDER-COMPRESSOR
4	1	5827	GASKET-CYLINDER TO CRANKCASE
5	1	5860	GASKET-INTERCOOLER TO HEAD
6	1	5857-001	INTERCOOLER
7	2	5828	GASKET-COMPANION FLANGE
8	1	5501	FLANGE-DISCHARGE
9	1	5858	FLANGE-INTAKE
10	8	123478-M15	SCREW-HEX., 7/16-14 UNC X 1.50, GRADE 5 (@ 50FT.-LBS.)
11	1	110377F200	FILTER-AIR
		OR	
11	1	110377H200	FILTER-AIR, HOODED
		OR	
11	1	110377S200	FILTER/SILENCER-AIR, HOODED
12	20	123115-08C	LOCKWASHER-1/2
13	2FT	110515-038	TUBE-COPPER, 3/8 O.D.
14	6	1478-1	FLATWASHER
15	6	5863	SCREW-COUNTERBORE, 1/2-13 UNC X 4.25, GRADE 8 (@ 65FT.-LBS.)
16	19	123478-N15	SCREW-HEX., 1/2-13 UNC X 1.50, GRADE 5 (head to cyl.: @ 65FT.-LBS.) (cyl. to c'case.: @ 75FT.-LBS.)
17	1	90386-N14	SCREW-COUNTERBORE, 1/2-13 UNC X 1.25, GRADE 8 (@ 65FT.-LBS.)
18	1	123115-06C	LOCKWASHER-3/8
19	1	110428M038	FLATWASHER-3/8
20	1	123478-L11	SCREW-HEX., 3/8-16 UNC X .88, GRADE 5 (@ 30FT.-LBS.)
21	1	2728	FITTING-TUBE, 90 MALE ELBOW 3/8 TUBE X 3/8 NPT
			MAINTENANCE PARTS
22	1	110377E200	ELEMENT-AIR FILTER
		7382X16L	REPLACEMENT HEAD ASSEMBLY
			INCLUDES:
	1	7382UJ-002	HEAD ASSEMBLY-STD PRESSURE (SEE PAGES 21 & 23 FOR PARTS BREAKDOWN)
	1	7403	GASKET-CYLINDER TO HEAD
	1	5860	GASKET-INTERCOOLER TO HEAD

@ Indicates torque value in foot pounds (dry threads)

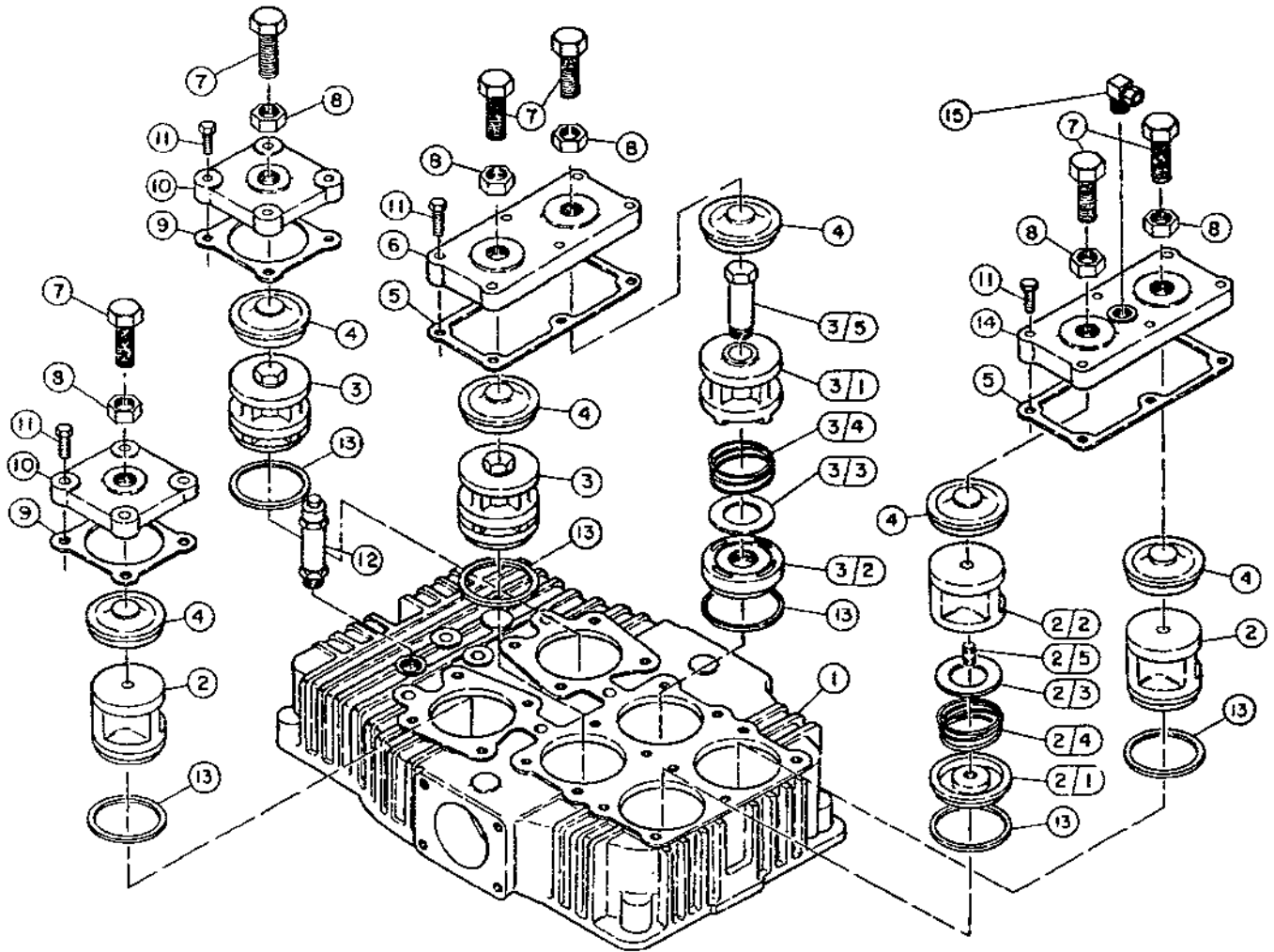
Note: Tighten all bolts & capscrews in any bolt pattern evenly bringing each bolt to torque in even increments while moving about the bolt pattern. This is particularly true of connecting rod & head bolts.

PROPER HEAD BOLT TORQUE SEQUENCE



HEAD ASSEMBLIES 7382P-002 & 7382P-004 *

(control version P)



HEAD ASSEMBLIES 7382P-002 & 7382P-004 *

(control version P)

ITEM NUMBER	QTY	PART NUMBER	DESCRIPTION
* 1	1	7382	HEAD-COMPRESSOR, STANDARD PRESSURE RATINGS (PART OF 7382P-002)
		OR	
* 1	1	7382HP	HEAD-COMPRESSOR, HIGH PRESSURE RATING (PART OF 7382P-004)
2	3	6671X1P	VALVE ASSEMBLY-SUCTION
2/1	1	6671	BUMPER-VALVE
2/2	1	2015P	SEAT-SUCTION VALVE
2/3	1	2036	DISC-VALVE
2/4	1	6909	SPRING-VALVE
2/5	1	1849	STUD
3	3	6670X1	VALVE ASSEMBLY-DISCHARGE
3/1	1	6670	BUMPER-VALVE
3/2	1	5812	SEAT-VALVE
3/3	1	2036	DISC-VALVE
3/4	1	6909	SPRING-VALVE
3/5	1	5731	STUD-VALVE ASSEMBLY
4	6	6668	RETAINER-VALVE
5	2	7398	GASKET-VALVE COVER
6	1	7384	PLATE-COVER
! 7	6	124571-R15	SCREW-HEX., 3/4-16 UNF X 1.50, GRADE 5 (@ 60FT.-LBS.)
8	6	124369-R02	NUT-3/4-16 UNF (@ 75FT.-LBS.)
9	2	2025	GASKET-VALVE PLATE
10	2	6666	PLATE-COVER
! 11	20	7480	SCREW-HEX., 7/16-14 UNC X 1.38, GRADE 5 (@ 50FT.-LBS.)
12	1	2961-100	VALVE-SAFETY
13	6	2024	GASKET-VALVE
14	1	7384-001	PLATE-VALVE COVER, SUCTION
15	1	2614	FITTING-TUBE, 90 MALE ELBOW 3/8 TUBE X 1/4 NPT
MAINTENANCE PARTS			
		6671X	REPLACEMENT VALVE ASSEMBLY-SUCTION
			INCLUDES:
	1	6671X1	VALVE ASSEMBLY-SUCTION
	1	2024	GASKET-VALVE
		6670X	REPLACEMENT VALVE ASSEMBLY-DISCHARGE
			INCLUDES:
	1	6670X1	VALVE ASSEMBLY-DISCHARGE
	1	2024	GASKET-VALVE

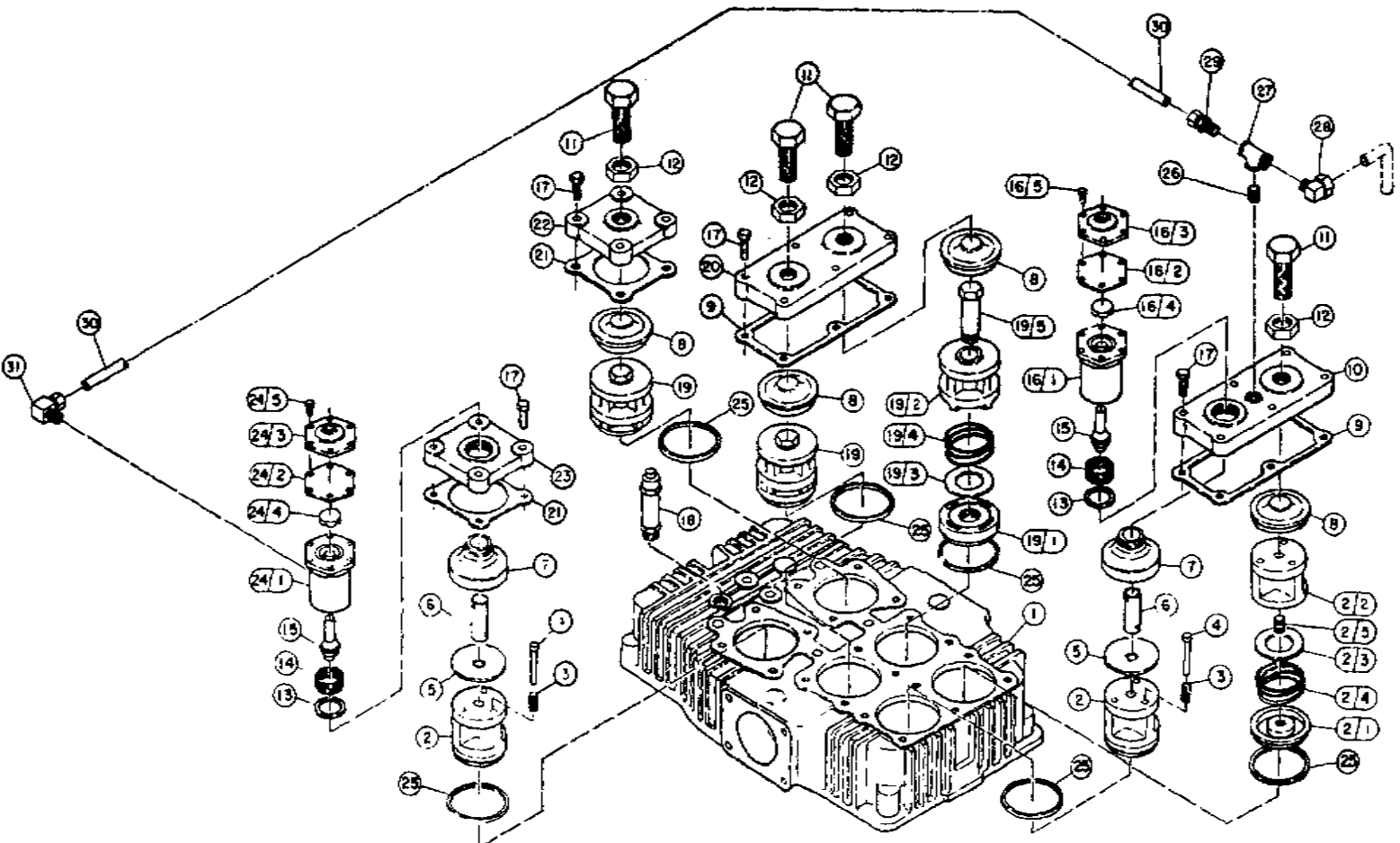
* 7382P-002 has a standard maximum pressure rating of 200 P.S.I.G. 7382P-004 has a high pressure rating of 500 P.S.I.G. maximum. They consist of identical parts with exception to the compressor head.

! Tighten & torque valve cover plate screws (item 11) before tightening valve clamp screws (item 7).

@ Indicates torque value in foot pounds (dry threads)

Note: Tighten all bolts & capscrews in any bolt pattern evenly bringing each bolt to torque in even increments while moving about the bolt pattern. This is particularly true of connecting rod & head bolts.

HEAD ASSEMBLIES 7382UU-002 & 7382UU-004
(Control versions L, S, LS, & LVD) *



HEAD ASSEMBLIES 7382UU-002 & 7382UU-004 *

(control versions L, S, LS, & LVD)

Item Number	Qty.	Part Number	Description
* 1	1	7382	head, standard pressure (part of 7382UU-002)
	or		
* 1	1	7382HP	head, high pressure (part of 7382UU-004)
2	3	6671X1	suction valve assembly
2.1	1	6671	valve bumper
2.2	1	2015	suction valve seat
2.3	1	2036	valve disc
2.4	1	6909	valve spring
2.5	1	1849	stud
3	6	6910	valve spring
4	6	1857	valve pin
5	2	5729	valve platform
6	2	6912-001	unloader pin
7	2	6911	valve retainer
8	4	6668	valve retainer
9	2	7398	valve cover gasket
10	1	7385	valve cover plate
‡ 11	4	124571-R15	hex. screw, 3/4-16 unf x 1.50, grade 5 (60 ft.-lbs.)
12	4	124369-R02	jamnut, 3/4-16 unf (@ 75 ft.-lbs.)
13	2	1556	gasket
14	2	3008	holddown screw/ (@ 60 ft.-lbs.)
15	2	7532X	unloader piston assembly
16	1	40192	unloader assembly (@ 75 ft.-lbs.), (N.S.S.; order 8272X)
16.1	1	8272	unloader body
16.2	1	1855	diaphragm
16.3	1	1818B	diaphragm cover plate
16.4	1	5910	diaphragm disc
16.5	6	7499	hex. screw, 1/4-20 unc x .75, grade 5 (@ 6 ft.-lbs.)
‡ 17	20	7480	hex. screw, 7/16-14 unc x 1.38, grade 5 (@ 50 ft.-lbs.)
18	1	2961-100	safety valve
19	3	6670X1	discharge valve assembly
19.1	1	5812	valve seat
19.2	1	6670	valve bumper
19.3	1	2036	valve disc
19.4	1	6909	valve spring
19.5	1	5731	stud
20	1	7384	cover plate
21	2	2025	valve cover gasket
22	2	6666	cover plate
23	1	6908	cover plate
24	1	40055	unloader assembly (@ 75 ft.-lbs.) (N.S.S.; order 7483X)
24.1	1	7483	unloader body
24.2	1	1855	diaphragm
24.3	1	1818B	diaphragm cover plate
24.4	1	5910	diaphragm disc
24.5	6	7499	hex. screw, 1/4-20 unc x .75, grade 5 (@ 6 ft.-lbs.)
25	6	2024	valve gasket
26	1	125933-001	pipe nipple, 1/4 npt x close
27	1	4574	pipe tee, 1/4 npt x 1/4 npt x 1/4 npt
28	1	2614	tube fitting, 90° male elbow, 3/8 tube x 1/4 npt
29	1	110594-005	tube fitting, male connector, 1/4 tube x 1/4 npt
30	1	110515-025	copper tube, 1/4 o.d.
31	1	1642	tube fitting, 90° male elbow, 1/4 tube x 1/8 npt

CONTINUED ON PAGE 23.

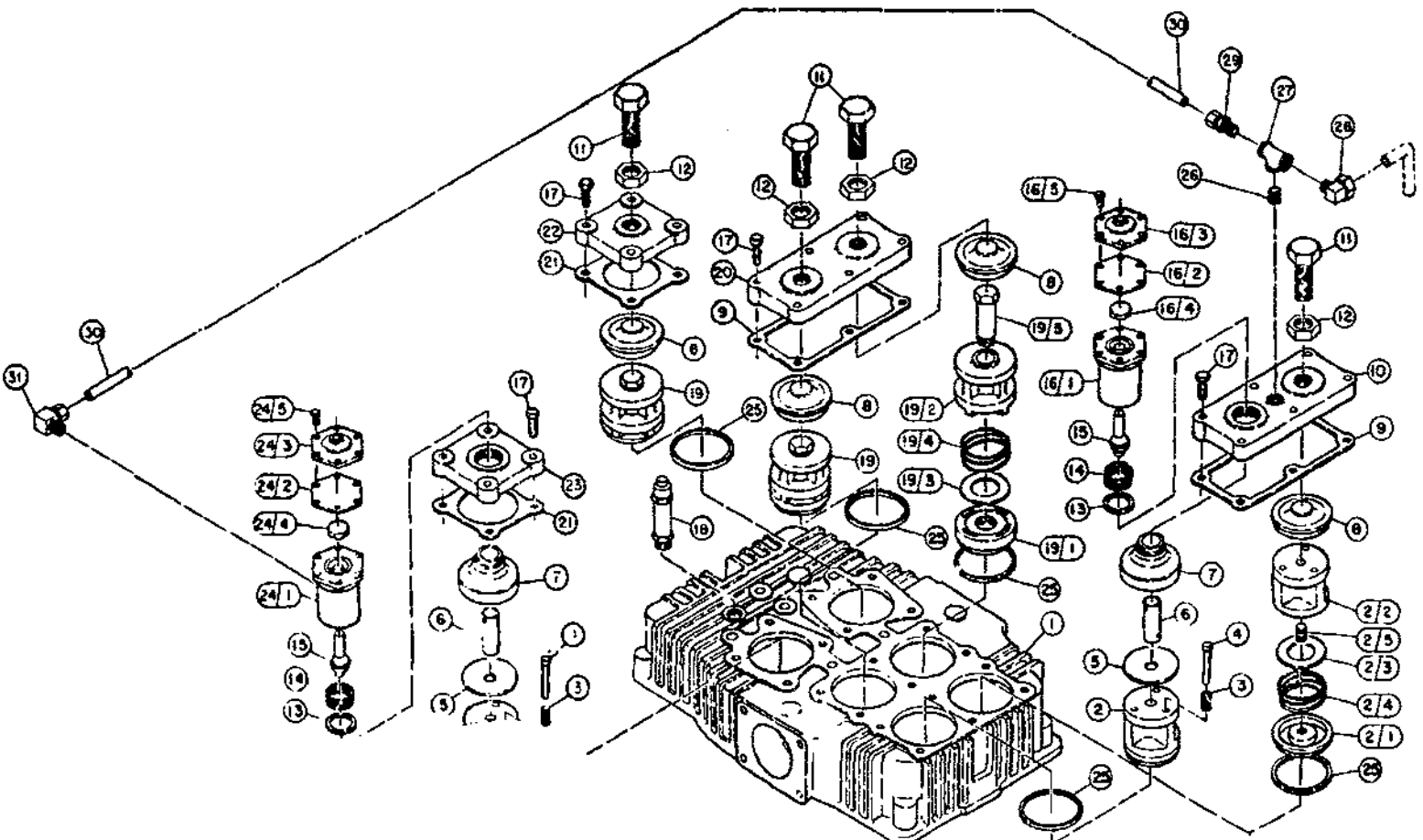
*7382UU-002 has a standard maximum pressure rating of 200 p.s.i.g. 7382UU-004 has a high pressure rating of 500 p.s.i.g. maximum. They consist of identical parts with exception to the compressor head.

‡ Tighten and torque valve cover plate screws (item 17) before tightening valve clamp screws (item 11).

@ Indicates torque value (dry threads). Tighten multiple bolts, capscrews & hex nuts in a criss-cross or alternating pattern. Bring each fastener to the recommended torque specification in even increments.

N.S.S. = Not Sold Separate

HEAD ASSEMBLIES 7382UU-002 & 7382UU-004 *
(control versions L, S, LS, & LVD)



HEAD ASSEMBLIES 7382UU-002 & 7382UU-004 *

(control versions L, S, LS, & LVD)

ITEM NUMBER	QTY	PART NUMBER	DESCRIPTION
MAINTENANCE PARTS			
		6671X	REPLACEMENT VALVE ASSEMBLY-SUCTION
			INCLUDES:
	1	6671X1	VALVE ASSEMBLY-SUCTION
	1	2024	GASKET-VALVE
		6671XU	REPLACEMENT VALVE ASSEMBLY-SUCTION
			INCLUDES:
	1	6671X	REPLACEMENT VALVE ASSEMBLY-SUCTION
	3	6910	SPRING-UNLOADER PIN
	3	1857	PIN-VALVE
	1	2024	GASKET-VALVE
		6670X	REPLACEMENT VALVE ASSEMBLY-DISCHARGE
			INCLUDES:
	1	6670X1	VALVE ASSEMBLY-DISCHARGE
	1	2024	GASKET-VALVE
		7483X	REPLACEMENT UNLOADER ASSEMBLY
			INCLUDES:
	1	121160	PLUG-PIPE, 1/8 MPT
	1	40055	UNLOADER ASSEMBLY (@ 75FT.-LBS.) (N.S.S.; ORDER 7483X)
	1	1556	GASKET-VALVE
	1	7532X	PISTON ASSEMBLY-UNLOADER
		8272X	REPLACEMENT UNLOADER ASSEMBLY
			INCLUDES:
	1	7532X	PISTON ASSEMBLY-UNLOADER
	1	1556	GASKET-VALVE
	1	40192	UNLOADER ASSEMBLY (@ 75FT.-LBS.) (N.S.S.; ORDER 8272X)

! Tighten & torque valve cover plate screws (item 17) before tightening valve clamp screws (item 11).

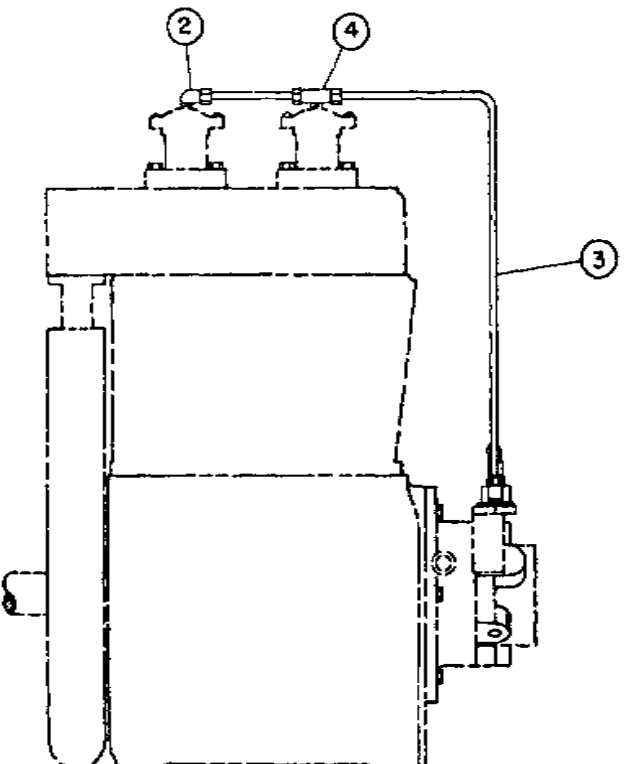
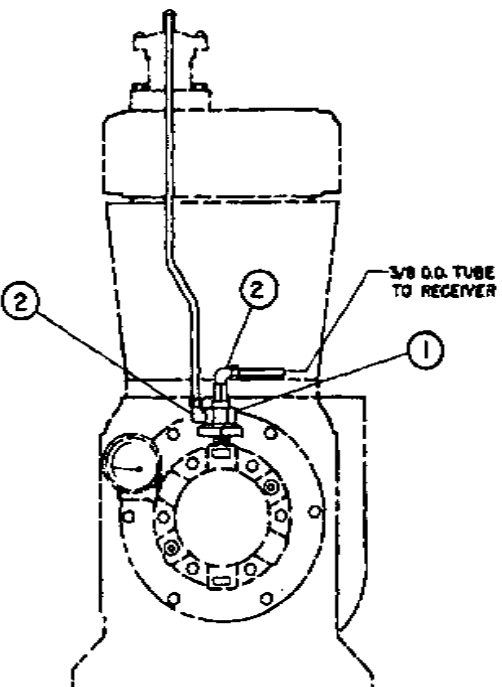
@ Indicates torque value in foot pounds (dry threads)

N.S.S. = Not Sold Separate

Note: Tighten all bolts & capscrews in any bolt pattern evenly bringing each bolt to torque in even increments while moving about the bolt pattern. This is particularly true of connecting rod & head bolts.

CONTROL GROUP 110860

(control version L)



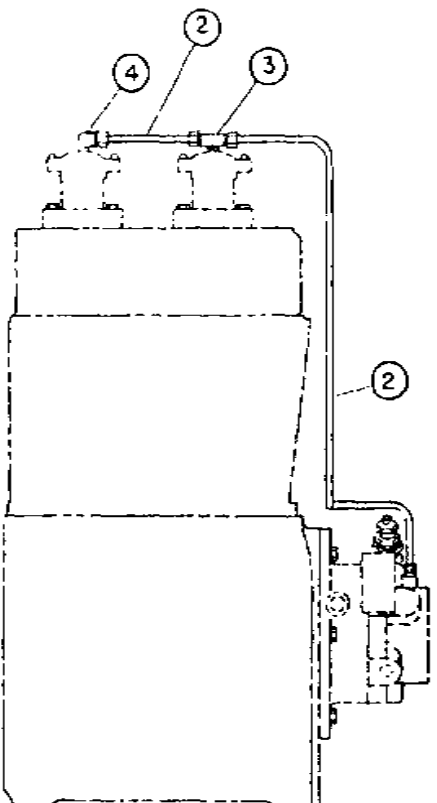
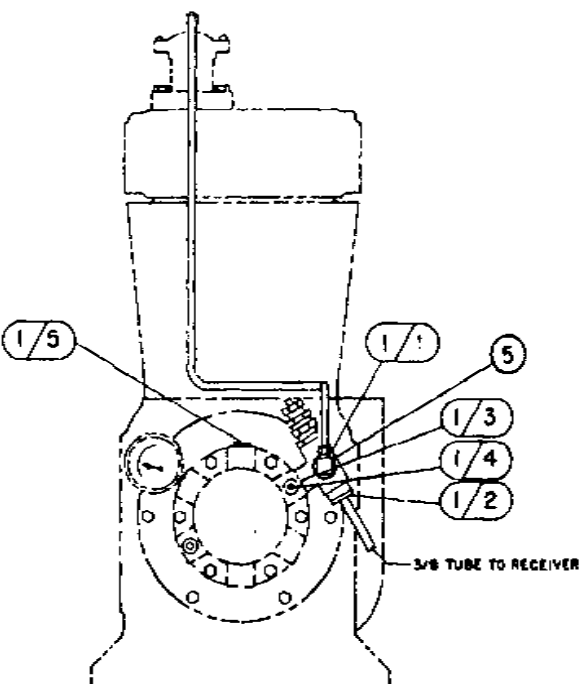
CONTROL GROUP 110860

(control version L)

ITEM NUMBER	QTY	PART NUMBER	DESCRIPTION
<i>(for standard pressure rated compressors)</i>			
1	1	110827-001	HYDRAULIC UNLOADER ASSEMBLY
2	3	1642	FITTING-TUBE,90 MALE ELBOW 1/4 TUBE X 1/8 NPT
3	4FT	110515-025	TUBE-COPPER,1/4 O.D.
4	1	1665	FITTING-TEE,1/4 TUBE X 1/4 TUBE X 1/8 NPT
<i>(for high pressure rated compressors)</i>			
1	1	110827-002	HYDRAULIC UNLOADER ASSEMBLY
2	3	1642	FITTING-TUBE,90 MALE ELBOW 1/4 TUBE X 1/8 NPT
3	4FT	110515-025	TUBE-COPPER,1/4 O.D.
4	1	1665	FITTING-TEE,1/4 TUBE X 1/4 TUBE X 1/8 NPT

CONTROL GROUP 110857

(control version S)



CONTROL GROUP 110857

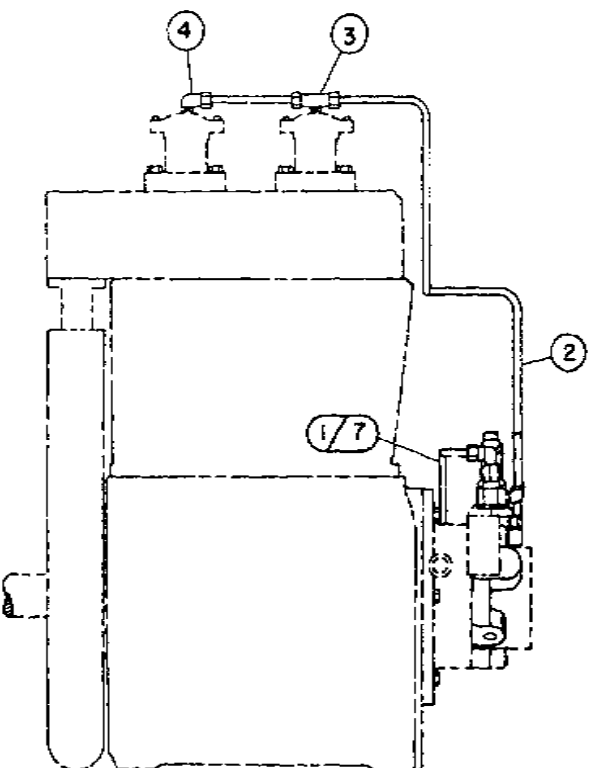
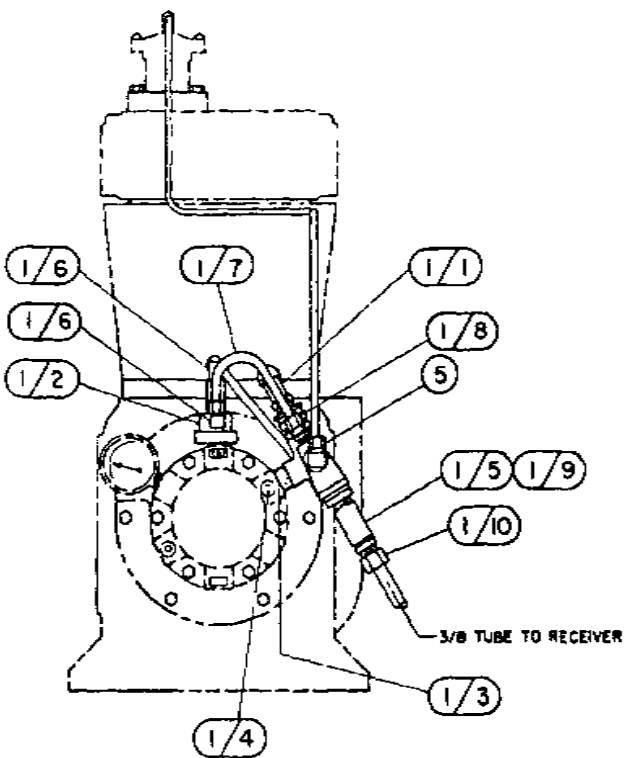
(control version S)

ITEM NUMBER	QTY	PART NUMBER	DESCRIPTION
<i>(for standard pressure rated compressors)</i>			
1	1	110844	PILOT VALVE ASSEMBLY
* 1/1	1	110832-140	PILOT VALVE
1/2	1	2616	FITTING-STRAIGHT, 3/8 TUBE X 1/4 NPT
1/3	2	6317	STUD-MOUNTING
1/4	1	160047-J05	SCREW-SET, 1/4-28 UNF X .38, GRADE 5
1/5	1	2719	PLUG-PIPE, 1/4 NPT
2	4FT	110515-025	TUBE-COPPER, 1/4 O.D.
3	1	1665	FITTING-TEE, 1/4 TUBE X 1/4 TUBE X 1/8 NPT
4	1	1642	FITTING-TUBE, 90 MALE ELBOW 1/4 TUBE X 1/8 NPT
5	1	2708	FITTING-TUBE, 90 MALE ELBOW 1/4 TUBE X 1/4 NPT
<i>(for high pressure rated compressors)</i>			
1	1	110844-001	PILOT VALVE ASSEMBLY
* 1/1	1	110832-999	PILOT VALVE
1/2	1	2616	FITTING-STRAIGHT, 3/8 TUBE X 1/4 NPT
1/3	1	6317	STUD-MOUNTING
1/4	1	160047-J05	SCREW-SET, 1/4-28 UNF X .38, GRADE 5
1/5	1	2719	PLUG-PIPE, 1/4 NPT
2	4FT	110515-025	TUBE-COPPER, 1/4 O.D.
3	1	1665	FITTING-TEE, 1/4 TUBE X 1/4 TUBE X 1/8 NPT
4	1	1642	FITTING-TUBE, 90 MALE ELBOW 1/4 TUBE X 1/8 NPT
5	1	2708	FITTING-TUBE, 90 MALE ELBOW 1/4 TUBE X 1/4 NPT

* See pages 32 & 33 for optional pilot valves that must be used with respective pressure ranges.

CONTROL GROUP 110858

(control version LS)



CONTROL GROUP 110858

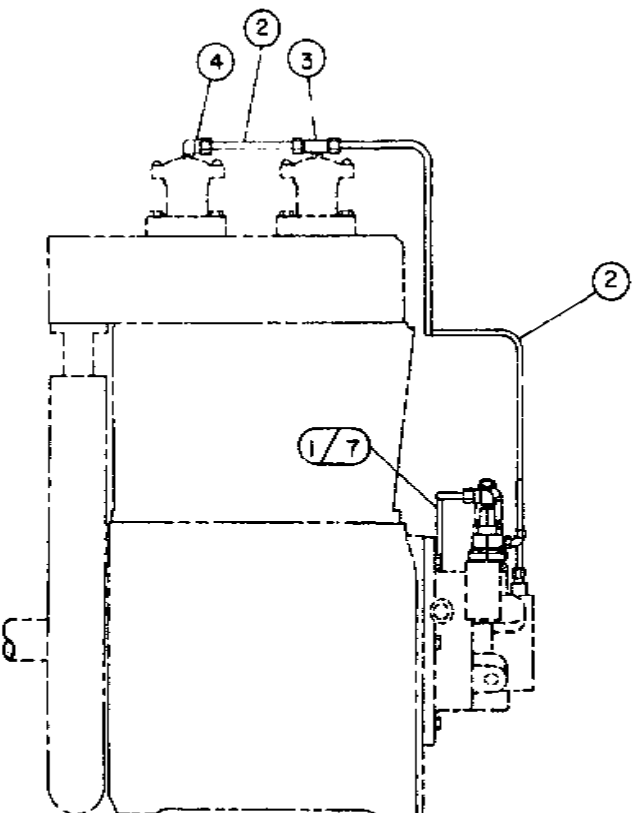
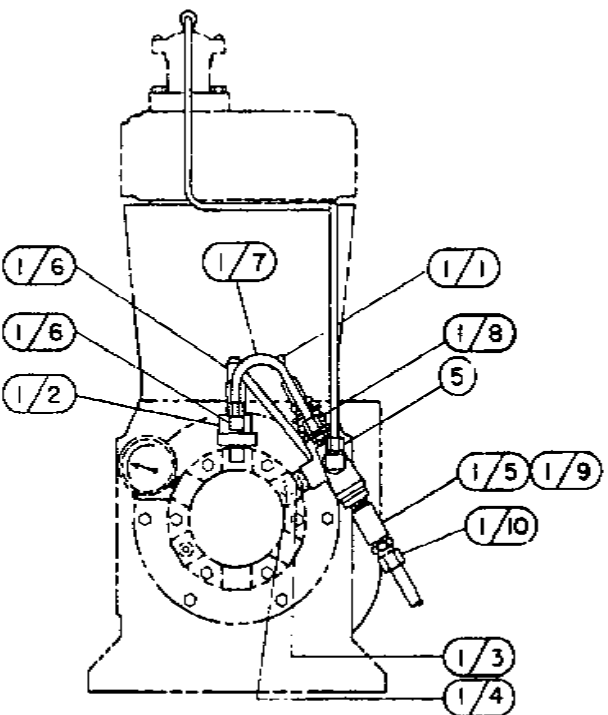
(control version LS)

ITEM NUMBER	QTY	PART NUMBER	DESCRIPTION
<i>(for standard pressure rated compressors)</i>			
1	1	110845	PILOT VALVE ASSEMBLY
* 1/1	1	111422-140	PILOT VALVE
1/2	1	110827-001	HYDRAULIC UNLOADER ASSEMBLY
1/3	1	6317	STUD-MOUNTING
1/4	1	160047-J05	SCREW-SET, 1/4-28 UNF X .38, GRADE 5
1/5	1	7361	TEE-PIPE, 1/4 NPT X 1/4 NPT X 1/4 NPT, BRASS
1/6	2	1642	FITTING-TUBE, 90 MALE ELBOW 1/4 TUBE X 1/8 NPT
1/7	1FT	110515-025	TUBE-COPPER, 1/4 O.D.
1/8	1	1643	FITTING-STRAIGHT, 1/4 TUBE X 1/8 NPT
1/9	1	2708	FITTING-TUBE, 90 MALE ELBOW 1/4 TUBE X 1/4 NPT
1/10	1	2616	FITTING-STRAIGHT, 3/8 TUBE X 1/4 NPT
2	4FT	110515-025	TUBE-COPPER, 1/4 O.D.
3	1	1665	FITTING-TEE, 1/4 TUBE X 1/4 TUBE X 1/8 NPT
4	1	1642	FITTING-TUBE, 90 MALE ELBOW 1/4 TUBE X 1/8 NPT
5	1	2708	FITTING-TUBE, 90 MALE ELBOW 1/4 TUBE X 1/4 NPT
<i>(for high pressure rated compressors)</i>			
1	1	110845-001	PILOT VALVE ASSEMBLY
* 1/1	1	111422-999	PILOT VALVE
1/2	1	110827-002	HYDRAULIC UNLOADER ASSEMBLY
1/3	1	6317	STUD-MOUNTING
1/4	1	160047-J05	SCREW-SET, 1/4-28 UNF X .38, GRADE 5
1/5	1	7361	TEE-PIPE, 1/4 NPT X 1/4 NPT X 1/4 NPT, BRASS
1/6	2	1642	FITTING-TUBE, 90 MALE ELBOW 1/4 TUBE X 1/8 NPT
1/7	1FT	110515-025	TUBE-COPPER, 1/4 O.D.
1/8	1	1643	FITTING-STRAIGHT, 1/4 TUBE X 1/8 NPT
1/9	1	2708	FITTING-TUBE, 90 MALE ELBOW 1/4 TUBE X 1/4 NPT
1/10	1	2616	FITTING-STRAIGHT, 3/8 TUBE X 1/4 NPT
2	4FT	110515-025	TUBE-COPPER, 1/4 O.D.
3	1	1665	FITTING-TEE, 1/4 TUBE X 1/4 TUBE X 1/8 NPT
4	1	1642	FITTING-TUBE, 90 MALE ELBOW 1/4 TUBE X 1/8 NPT
5	1	2708	FITTING-TUBE, 90 MALE ELBOW 1/4 TUBE X 1/4 NPT

* See pages 32 & 33 for optional pilot valves that must be used with respective pressure ranges.

CONTROL GROUP 110859

(control version LVD)



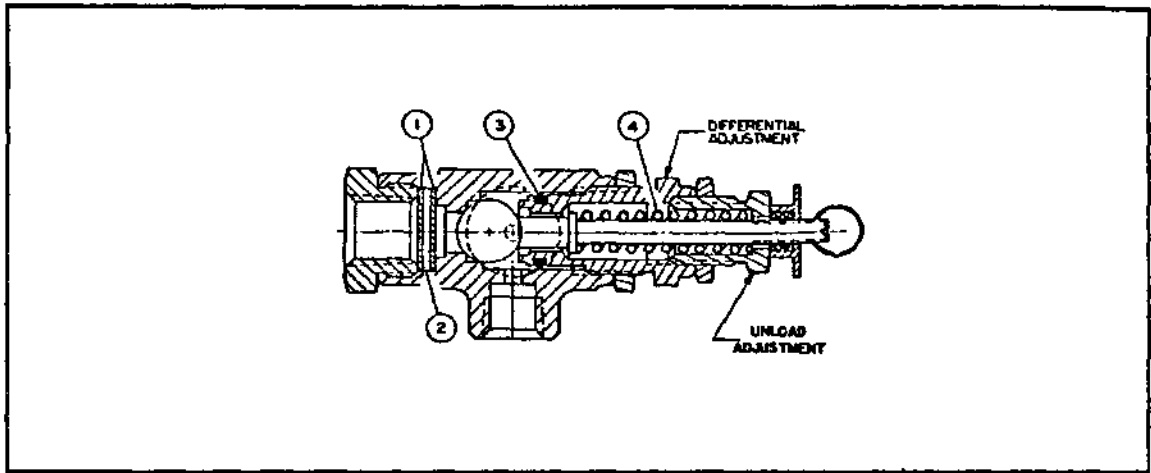
CONTROL GROUP 110859

(control version LVD)

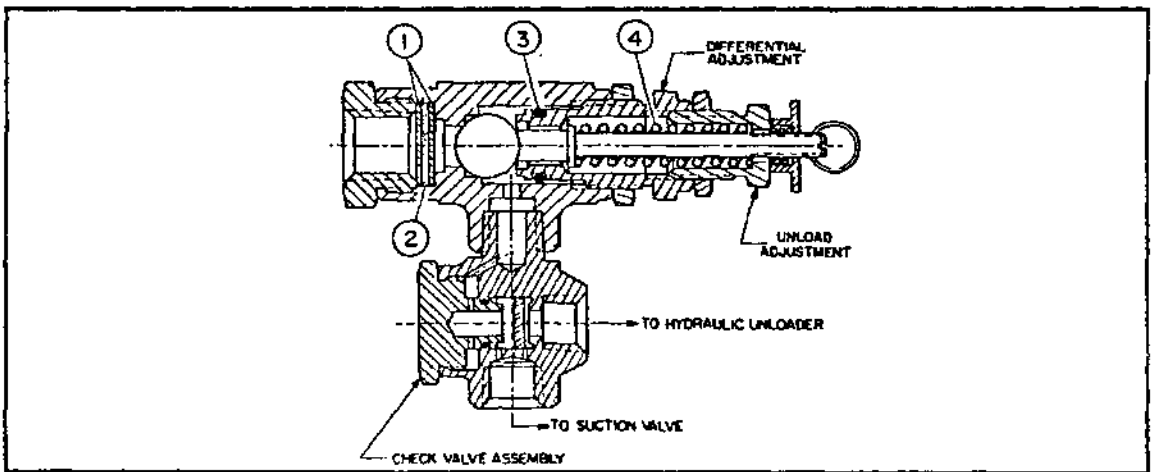
ITEM NUMBER	QTY	PART NUMBER	DESCRIPTION
<i>(for standard pressure rated compressors)</i>			
1	1	110846	PILOT VALVE ASSEMBLY
* 1/1	1	111423-140	PILOT VALVE
1/2	1	110827-001	HYDRAULIC UNLOADER ASSEMBLY
1/3	1	6317	STUD-MOUNTING
1/4	1	160047-J05	SCREW-SET, 1/4-28 UNF X .38, GRADE 5
1/5	1	7361	TEE-PIPE, 1/4 NPT X 1/4 NPT X 1/4 NPT, BRASS
1/6	2	1642	FITTING-TUBE, 90 MALE ELBOM 1/4 TUBE X 1/8 NPT
1/7	1FT	110515-025	TUBE-COPPER, 1/4 O.D.
1/8	1	1643	FITTING-STRAIGHT, 1/4 TUBE X 1/8 NPT
1/9	1	2708	FITTING-TUBE, 90 MALE ELBOM 1/4 TUBE X 1/4 NPT
1/10	1	2616	FITTING-STRAIGHT, 3/8 TUBE X 1/4 NPT
2	4FT	110515-025	TUBE-COPPER, 1/4 O.D.
3	1	1665	FITTING-TEE, 1/4 TUBE X 1/4 TUBE X 1/8 NPT
4	1	1642	FITTING-TUBE, 90 MALE ELBOM 1/4 TUBE X 1/8 NPT
5	1	2708	FITTING-TUBE, 90 MALE ELBOM 1/4 TUBE X 1/4 NPT
<i>(for high pressure rated compressors)</i>			
1	1	110846-001	PILOT VALVE ASSEMBLY
* 1/1	1	111423-999	PILOT VALVE
1/2	1	110827-002	HYDRAULIC UNLOADER ASSEMBLY
1/3	1	6317	STUD-MOUNTING
1/4	1	160047-J05	SCREW-SET, 1/4-28 UNF X .38, GRADE 5
1/5	1	7361	TEE-PIPE, 1/4 NPT X 1/4 NPT X 1/4 NPT, BRASS
1/6	2	1642	FITTING-TUBE, 90 MALE ELBOM 1/4 TUBE X 1/8 NPT
1/7	1FT	110515-025	TUBE-COPPER, 1/4 O.D.
1/8	1	1643	FITTING-STRAIGHT, 1/4 TUBE X 1/8 NPT
1/9	1	2708	FITTING-TUBE, 90 MALE ELBOM 1/4 TUBE X 1/4 NPT
1/10	1	2616	FITTING-STRAIGHT, 3/8 TUBE X 1/4 NPT
2	4FT	110515-025	TUBE-COPPER, 1/4 O.D.
3	1	1665	FITTING-TEE, 1/4 TUBE X 1/4 TUBE X 1/8 NPT
4	1	1642	FITTING-TUBE, 90 MALE ELBOM 1/4 TUBE X 1/8 NPT
5	1	2708	FITTING-TUBE, 90 MALE ELBOM 1/4 TUBE X 1/4 NPT

* See pages 32 & 33 for optional pilot valves that must be used with respective pressure ranges.

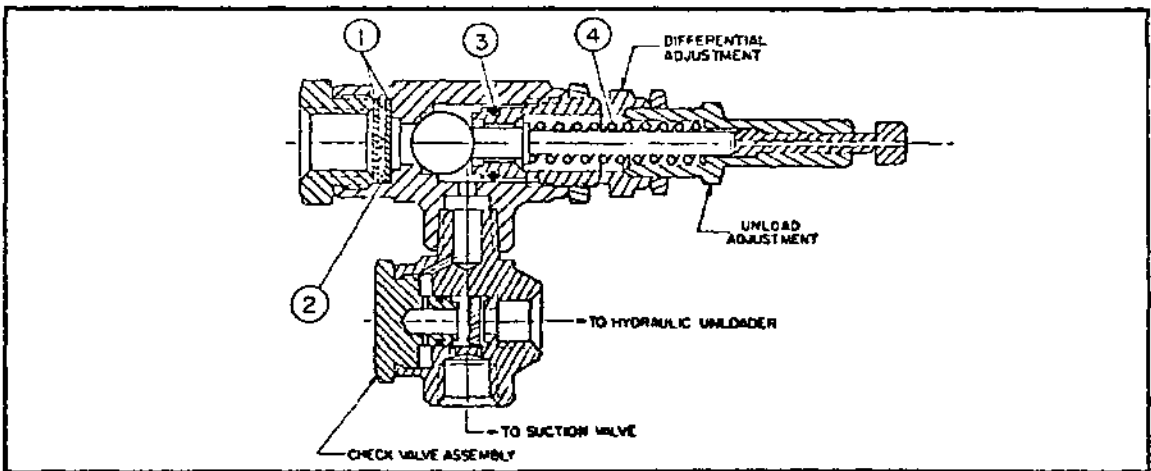
PILOT VALVES



110832-*** (version S)



111422-*** (version L)



111423-*** (version LVD)

*** (dash no.)	Pressure Setting (P.S.I.)	Notes
-140		factory preset to load at 130 P.S.I. / unload at 140 P.S.I.
-997	30-70	adjustable unload pressure / customer to set, see chart below
-998	71-150	adjustable unload pressure / customer to set, see chart below
-999	151-350	adjustable unload pressure / customer to set, see chart below

Note: Item 4 is not part of the pilot valve repair kit. Customer is to specify which spring when ordering pilot valve repair kit.

PILOT VALVE REPAIR KIT 110832-051

Item No.	Qty.	Part No.	Description
1	2		screen
2	1		filter
3	1		"o"ring
4	1	110832-052	replacement spring, 30-70 P.S.I. (red)
	1	110832-053	replacement spring, 71-100 P.S.I. (yellow)
	1	110832-054	replacement spring, 151-350 P.S.I. (green)

Note: Customer is to specify which spring when ordering pilot valve repair kit

DIFFERENTIAL SETTING CHART

Spring Part No. (item 4)	Unload P.S.I.	Min. Differential P.S.I.	Max. Differential P.S.I.
110832-052	30	2	4
"	40	5	8
"	50	5	8
"	60	5	8
"	70	5	10
110832-053	80	5	10
"	90	5	12
"	100	5	13
"	110	5	15
"	120	5	15
"	130	5	18
"	140	5	18
"	150	5	20
110832-054	160	5	15
"	170	5	20
"	175	5	23
"	200	5	25
"	250	10	30
"	300	10	40
"	350	30	50

SUCTION VALVE UNLOADER ASSEMBLIES

Description

The Quincy suction valve unloader assembly consists of unloading arrangements on the suction valves, having a plunger to contact the suction valve disc and an unloader pilot valve (part no.s 110832-***, 111422-***, and 111423-***) to automatically regulate the passing of receiver pressure to the unloading arrangement.

Application

Suction valve unloader assemblies are recommended for use on Quincy compressors where the compressor is to run continuously and a constant pressure is to be maintained. The purpose is to automatically unseat the suction valve of the compressor when the air supply is greater than the demand.

Operation

Unloading occurs when receiver pressure is sufficient to overcome pilot valve spring pressure. The check ball is then unseated, allowing receiver pressure to pass to the unloading arrangements. The compressor will run unloaded until the receiver pressure drops to a predetermined level. At this time, the action of the ball is reversed, shutting off receiver pressure to the unloader arrangement and venting the unloader to atmosphere. This allows the compressor to load. The drive, either electric motor or combustion engine, runs continuously and must be started and stopped manually.

Installation

The unloader pilot valve is to be connected to the air receiver using a minimum of 3/8" O.D. copper tube. Compressors in the field, not equipped with a suction valve unloader assembly, can be converted to constant speed by installing suction valve unloaders and an unloader pilot valve.

Service

The unloader ball is the only moving part in the Quincy ball type unloader pilot valve and should run for a long period without servicing, provided the inlet filter is kept clean inside.

The unloading pressure is adjustable and is regulated by the screw (see cross sectional illustrations of pilot valves) marked "unload adj." (turn clockwise to increase and counterclockwise to decrease).

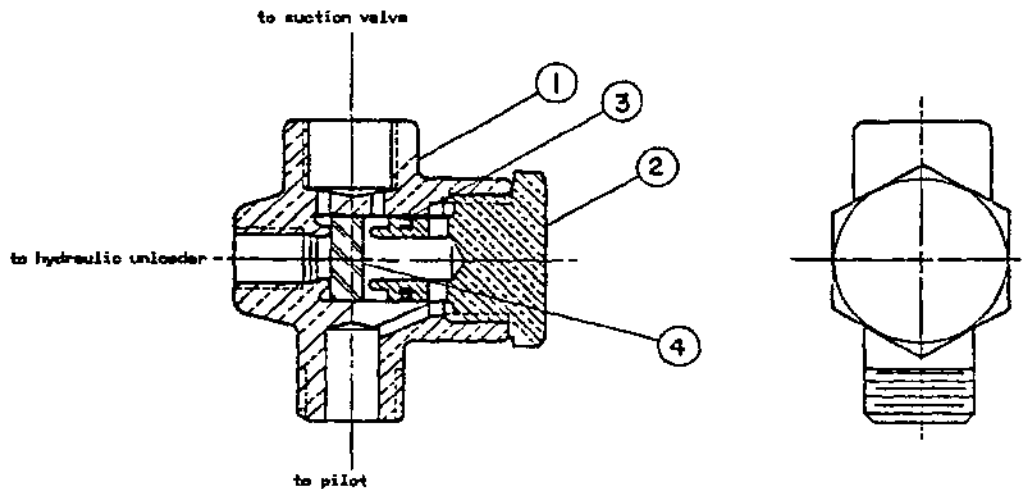
WARNING !

Not all pilots are for use with all compressor systems. Make sure that the pilot you order is set within the safe operating limits of your compressor. Failure to heed this warning could result in an explosion.

The differential (difference between unloading and loading pressure) is set by turning an adjusting screw marked "differential adj." (see cross sectional illustration of pilot valves). Increase by turning clockwise, decrease by turning counterclockwise. Tighten locknuts after adjustment.

CHECK VALVE ASSEMBLIES

(part of 111422-*** & 111423-*** pilot valve assemblies: see page 32)



ITEM NUMBER	QTY	PART NUMBER	DESCRIPTION
-------------	-----	-------------	-------------

MAINTENANCE PARTS for 6194X CHECK VALVE ASSEMBLY

1	1	6194	BODY-CHECK VALVE (NOT AVAILABLE;ORDER 6194X)
2	1	6195	SEAT-CHECK VALVE
3	1	123157-012	"O"RING-1/16 WIDE X .50 O.D.
4	1	6196	DISC-CHECK VALVE

MAINTENANCE PARTS for 6194X1 CHECK VALVE ASSEMBLY

(For use with diester or phosphate ester synthetic lubricants)

1	1	6194	BODY-CHECK VALVE (NOT AVAILABLE;ORDER 6194X)
2	1	6195	SEAT-CHECK VALVE
3	1	22749-012	"O"RING-1/16 WIDE X .50 O.D.
4	1	6196-001	DISC-CHECK VALVE

GASKET SET

ITEM NUMBER	QTY	PART NUMBER	DESCRIPTION
		7503	GASKET SET-COMPLETE OVERHAUL
2		1315	GASKET-INSPECTION PLATE
3		1383	SHIM-BEARING ADJUSTMENT, .005, STEEL
5		1383A	SHIM-BEARING ADJUSTMENT, .007, STEEL
3		1383B	SHIM-BEARING ADJUSTMENT, .020, STEEL
2		1383D	SHIM-BEARING ADJUSTMENT, .002, STEEL
2		1556	GASKET-VALVE
6		2024	GASKET-VALVE
2		2025	GASKET-VALVE PLATE
1		5502	GASKET-BEARING CARRIER
1		5827	GASKET-CYLINDER TO CRANKCASE
2		5828	GASKET-COMPANION FLANGE
1		5860	GASKET-INTERCOOLER TO HEAD
1		6679	GASKET-OIL INLET BRACKET
2		7398	GASKET-VALVE COVER
1		7403	GASKET-CYLINDER TO HEAD

"O"RING KITS

PETROLEUM BASE LUBRICANT

		110774	"O"RING KIT-COMPLETE COMPRESSOR OVERHAUL
1		123157-011	"O"RING-1/16 WIDE X .44 O.D. (OIL PRESSURE ADJUSTMENT SCREW)
1		123157-112	"O"RING-3/32 WIDE X .69 O.D.
1		123157-152	"O"RING-3/32 WIDE X 3.44 O.D. (OIL PUMP COVER PLATE)
2		123157-210	"O"RING-1/8 WIDE X 1.00 O.D.
2		1855	DIAPHRAGM-UNLOADER
1		6196	DISC-CHECK VALVE
2		6286	"QUAD"RING-1/8 WIDE X 1.50 O.D.
1		7958	"V"RING-HYDRAULIC UNLOADER

DIESTER BASE SYNTHETIC LUBRICANT

		110291	"O"RING KIT-COMPLETE COMPRESSOR OVERHAUL
2		1855	DIAPHRAGM-UNLOADER
1		22749-011	"O"RING-1/16 WIDE X .44 O.D. (OIL PRESSURE ADJUSTMENT SCREW)
1		22749-112	"O"RING-3/32 WIDE X .69 O.D. (BAYONET OIL GAUGE)
1		22749-152	"O"RING-3/32 WIDE X 3.44 O.D. (OIL PUMP COVER PLATE)
2		22749-210	"O"RING-1/8 WIDE X 1.00 O.D.
1		6196-001	DISC-CHECK VALVE
2		6286-001	"QUAD"RING-1/8 WIDE X 1.50 O.D.
1		7958-001	"V"RING-HYDRAULIC UNLOADER

PHOSPHATE ESTER BASE SYNTHETIC LUBRICANT

		110296	"O"RING KIT-COMPLETE COMPRESSOR OVERHAUL
2		1855S	DIAPHRAGM-UNLOADER
1		22749-011	"O"RING-1/16 WIDE X .44 O.D. (OIL PRESSURE ADJUSTMENT SCREW)
1		22749-112	"O"RING-3/32 WIDE X .69 O.D. (BAYONET OIL GAUGE)
1		22749-152	"O"RING-3/32 WIDE X 3.44 O.D. (OIL PUMP COVER PLATE)
2		22749-210	"O"RING-1/8 WIDE X 1.00 O.D.
1		6196-001	DISC-CHECK VALVE
2		6286-001	"QUAD"RING-1/8 WIDE X 1.50 O.D.
1		7958-001	"V"RING-HYDRAULIC UNLOADER

V.I.P. KIT

ITEM NUMBER	QTY	PART NUMBER	DESCRIPTION
		110514-350	V.I.P. (VALUE INVESTMENT PROTECTION) KIT
	1	110822	GAUGE-PRESSURE
	2	1855	DIAPHRAGM-UNLOADER
	6	1857	PIN-VALVE
	6	2036	DISC-VALVE
	2	6283	FILTER-HYDRAULIC UNLOADER
	6	6909	SPRING-VALVE
	6	6910	SPRING-UNLOADER PIN
	1	7503	GASKET SET-COMPLETE OVERHAUL

V.I.P. kit may be substituted in lieu of some recommended spare parts.

RECOMMENDED SPARE PARTS

	2	1855	DIAPHRAGM-UNLOADER
	OR		
*	2	1855S	DIAPHRAGM-UNLOADER
	3	6671X	REPLACEMENT VALVE ASSEMBLY-SUCTION
	3	6670X	REPLACEMENT VALVE ASSEMBLY-DISCHARGE
	2	6656PR	INSERTS(PAIR)-CON ROD BEARING,(STANDARD)
	1	110822	GAUGE-PRESSURE
	1	160079	REPAIR KIT-OIL PUMP
	OR		
**	1	160079-001	REPAIR KIT-OIL PUMP
	1	110832-051	PILOT VALVE REPAIR KIT
	1	7503	GASKET SET-COMPLETE OVERHAUL
	1	110377E200	ELEMENT-AIR FILTER

* For phosphate ester synthetic lubricated models.

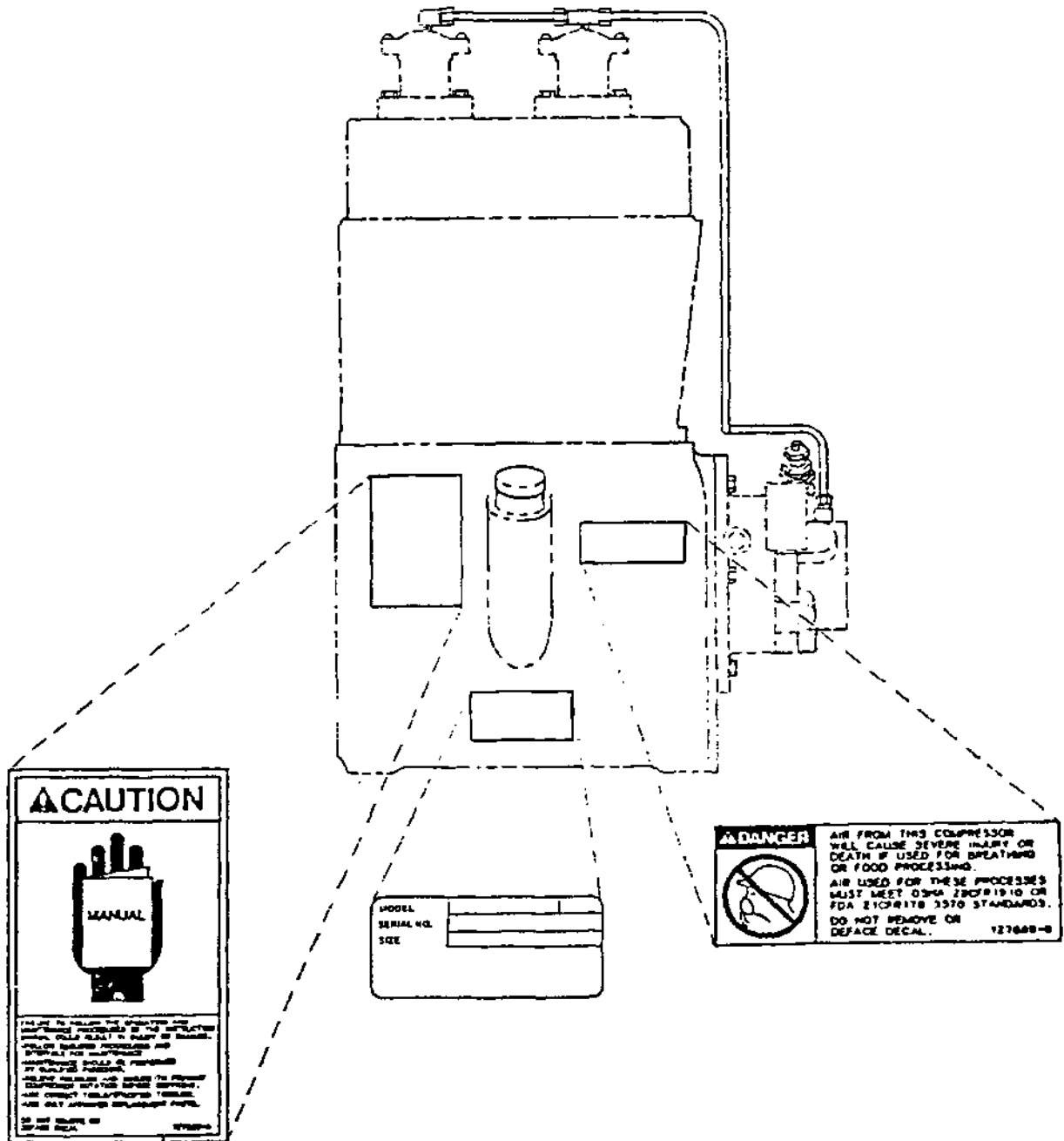
** For synthetic lubricated models.

BASIC COMPRESSOR REPAIR KIT 110823-350

	1	110190-004	PIN-PISTON
	1	110377E200	ELEMENT-AIR FILTER
	1	110774	"O"RING KIT-COMPLETE COMPRESSOR OVERHAUL
	2	110799-010	BEARING (NEEDLE)-CONNECTING ROD
	1	110814	OIL-FILTER
	2	1855	DIAPHRAGM-UNLOADER
	6	2036	DISC-VALVE
	1	2720	CUP-BEARING
	1	2788	CONE-BEARING
	1	3720	CUP-BEARING
	1	40775	CONE-BEARING
	1	6443SR	BUSHING-CONNECTING ROD
	1	6652	CONE-BEARING
	2	6656PR	INSERTS(PAIR)-CON ROD BEARING,(STANDARD)
	6	6909	SPRING-VALVE
	1	7503	GASKET SET-COMPLETE OVERHAUL
	1	7527	RING SET-PISTON,L.P. (STANDARD) NO COLOR CODE
	1	8168	RING SET-PISTON,H.P.(STANDARD) NO COLOR CODE
	1	8647	PIN-PISTON

DECALS

ITEM NUMBER	QTY	PART NUMBER	DESCRIPTION
1		110831	MODEL, SERIAL NUMBER & SIZE PLATE
1		127889-A	CAUTION/MANUAL/FAILURE TO FOLLOW....
1		127889-B	DANGER/AIR FROM THIS COMPRESSOR....



NATIONWIDE SALES & SERVICE

Quincy Service is always near.
There are Authorized Quincy Distributors located
throughout the United States & Canada that stock
genuine Quincy parts & accessories for a wide
range of Quincy products.

Quincy Service specialists are factory trained and
will help keep you in business. Call for Authorized
Quincy Service.

For reciprocating
and natural gas engine driven
helical screw products:
call 1-217-222-7700
or *fax requests to 1-800-219-9126*

For all other helical screw products:
call 1-334-937-5900
or *fax requests to 1-800-219-9131*



Quincy
Compressor Division

Coltec Industries

