



QGV-150/200

Variable Speed Drive Air Compressor



Parts Manual

Air-cooled & Water-cooled

This manual contains important safety information and should be made available to all personnel who operate and/or maintain this product. Carefully read this manual before attempting to operate or perform maintenance on this equipment.

Manual No. 2012203614

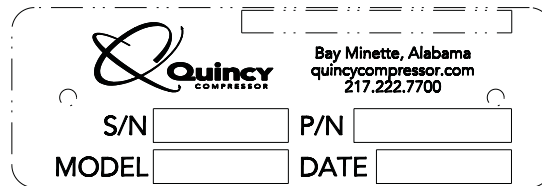
October 2012 Edition

Alphabetical Index

Airend	4-5
Airend Mounting	6-7
Air Filter (LESS CABINET)	12
Air Filter (WITH CABINET)	13
Air Piping (QGV-150)	26-27
Air Piping (QGV-200)	28-29
Cabinet (AIR COOLED)	34-35
Cabinet (WATER COOLED)	35-36
Control Piping	16-17
Control Schematic.....	40
Cooler (QGV-150)	20-21
Cooler (QGV-200)	22-23
Decals 38-39	
Discharge Piping	8
Drive Coupling	9
Electrical Control & Starting	14-15
Electrical Control Diagram (QGV-150)	42
Electrical Control Diagram (QGV-200)	43
Fluid Piping (QGV-150).....	30-31
Fluid Piping (QGV-200).....	32-33
Fluid Specifications.....	2
Inlet Valve	11
Motor Mounting	10
Ordering Replacement Parts.....	1
Recommended Spare Parts	3
Reservoir.....	18-19
Serial Number Identification	1
Shaft Seal Kit	4
Water Piping.....	24-25

Serial Number Identification

The serial number tag is located on the top flange of the unit frame just left of the control panel and in the upper right corner of the electrical control panel.



Ordering Replacement Parts

Prompt service can be rendered on replacement part orders if the following information is given:

1. The serial number must be given when ordering replacement parts. Part numbers should be verified per the bill of materials associated with the serial number to ensure that correct replacement parts are ordered.
2. State the exact part number needed. Do not order by index numbers, as index numbers are repeated throughout this manual and if used for ordering parts will necessitate time consuming correspondence.
3. State the exact quantity needed.
4. State the preferred type of transportation.

All replacement parts are to be ordered through an authorized distributor. Insist on Genuine Quincy Parts only! Failure to do so may void your warranty.

Fluid Specifications

Quincy Compressor® recommends that all Quincy Rotary Screw Products be filled with one of the following QuinSyn® Brand synthetic fluids:

QuinSyn Plus™

QuinSyn XP®

QuinSyn PG™

QuinSyn F® (food grade)

Synthetic fluids other than QuinSyn brand(s) may not be compatible with components used in Quincy Compressor products. If it is deemed necessary to convert a Quincy compressor or vacuum pump to a synthetic other than QuinSyn brand, please contact an authorized Quincy Compressor distributor. To locate your nearest distributor, contact Sales & Marketing in Quincy, Illinois:
Phone 217-222-7700, FAX 217-222-4138 or visit our website:
<http://www.quincycompressor.com>.

The following information will be required by the distributor when changing compressor fluid:

MODEL (CIRCLE CONFIGURATION):	QGV-	150	200		COOLING		PSI		
					A/C	W/C	100	125	150
SERIAL NO.	_____			FLUID ORIGINALLY USED:	_____				
FLUID NOW USED (IF CHANGED):	_____			NEW FLUID TO BE USED:	_____				

Additional information regarding fluid specifications can be found in the Instruction Manual shipped with your unit.

- Fluid Analysis Kit

Quincy Compressor offers free fluid analysis to provide early detection of excessive parts wear, fluid breakdown, or a contaminated fluid system. Order the Fluid Analysis Kit (part no. 128515) from your local authorized Quincy Compressor distributor.

- Fluid Requirements

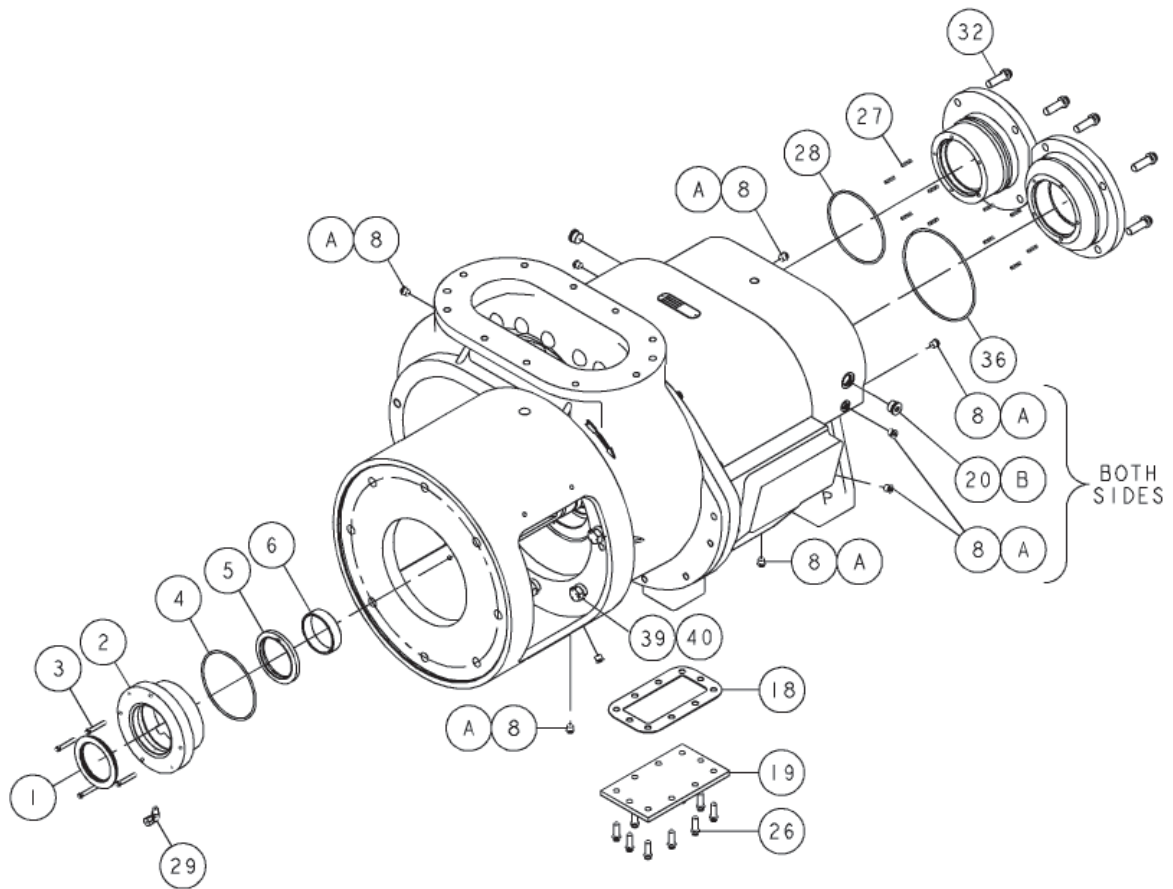
150	-	30 gallons
200	-	31 gallons

Recommended Spare Parts

QTY.	PART NUMBER	DESCRIPTION
1	140413	SHAFT SEAL KIT
1	146397-12	AIR FILTER ELEMENT
1	122880-232	TEMPERATURE SWITCH (230°F)
1	144981	TEMPERATURE PROBE-HIGH VIBRATION
1	129732-051	LINE FILTER KIT (INCLUDES BOWL SEAL, FILTER ELEMENT, GASKET)
1	23543-050	AIR REGULATOR KIT
3/4*	144606-02	AIR/FLUID SEPARATOR
1	146342-050	MINIMUM PRESSURE CHECK VALVE KIT
1	124827-052	MOISTURE SEPARATOR KIT (INCLUDES GASKET)
1	142136	FLUID FILTER ELEMENT
1	144046-005	FLUID-QUINSYN PLUS (5 GALLON CONTAINER)
1	143808-005	FLUID-QUINSYN PG (5 GALLON CONTAINER)
1	142784-005	FLUID-QUINSYN XP (5 GALLON CONTAINER)
1	110756-005	FLUID-QUINSYN F (5 GALLON CONTAINER)
1	128515-3	FLUID ANALYSIS KIT (CONTAINS 3 INDIVIDUAL SAMPLE KITS)
1	144995-332	DRIVE PANEL FILTER ELEMENT

*QUANTITY OF 4 REQUIRED FOR QGV-200

 <h3 style="margin: 0;">WARNING</h3>  <p style="margin: 0;">GUARDS MUST BE FASTENED IN PLACE BEFORE STARTING THE MACHINE AND NEVER REMOVED BEFORE DISCONNECTING AND LOCKING OUT THE MAIN POWER SUPPLY.</p>	 <h3 style="margin: 0;">DANGER</h3>  <p style="margin: 0;">AIR IN THE PIPING FROM THIS EQUIPMENT WILL CAUSE SEVERE INJURY OR DEATH IF USED FOR BREATHING AIR OR FOOD PROCESSING (IF NON-FOOD GRADE FLUID IS USED). AIR USED FOR THESE PROCESSES MUST MEET OSHA 29CFR1910.134 OR FDA 21CFR178.3570 STANDARDS.</p>
--	---

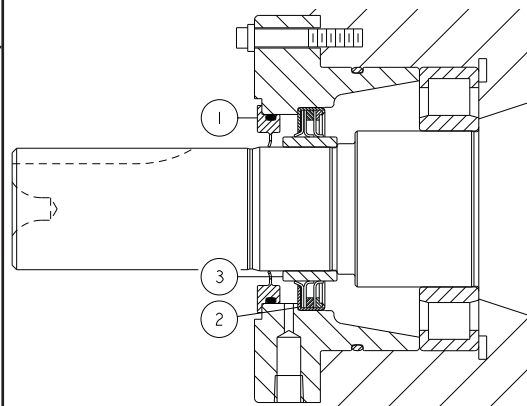


NOTES - UNLESS OTHERWISE SPECIFIED:
 1) ONLY EXTERNAL, REPLACEABLE ITEMS ARE SHOWN.
 (INTERNAL AIREND COMPONENTS ARE NOT SHOWN.)
 2) NOT ALL REPLACEABLE ITEMS ARE SHOWN.
 3) ITEMS A & B ARE MAINTENANCE ITEMS.

Shaft Seal Kit - 140413

ITEM No.	QTY.	PART NUMBER	DESCRIPTION
1	1	129619	FLUID SLINGER
2	1	129618	SHAFT SEAL
3	1	129620	WEAR RING SEAL

REFERENCE INSTRUCTION MANUAL TO INSTALL COMPRESSOR SHAFT SEAL. TOOL KIT 140414 FOR 255 MM SHAFT SEAL AND WEAR RING INSTALLATION CAN BE PURCHASED FROM QUINCY COMPRESSOR.



Airend Group (150/200 hp) - 145149-HP1/145151-HP1

ITEM No.	QTY.	PART NUMBER	DESCRIPTION
1	1	129619	COMPRESSOR FLUID SLINGER
2	1	129617	SEAL ADAPTER
3	4	90386-J15	COUNTERBORE SCREW-1/4-20 UNC X 1.50, GRADE 8 (@ 9 FT-LBS)
4	1	22749-249	VITON O-RING-4.88 I.D.
5	1	129618	SHAFT SEAL
6	1	129620	WEAR RING SEAL
7	*		INLET CASING
8	12	128883-044	PIPE PLUG-7/16-20 (O-RING)
9	4	124145-005	DOWEL PIN
10	1	22749-466	VITON O-RING-18.50 I.D.
11	*		ROTOR HOUSING
12	*		ROTOR BEARING-SUCTION END
13	2	128203-500	BEARING RETAINER RING
14	*		MALE ROTOR-255 MM
15	*		FEMALE ROTOR-255 MM
16	1	23207	PLUG ORIFICE-0.12 NPT
17	12	90386-N17	COUNTERBORE SCREW-1/2-13 UNC X 2.00, GRADE 8 (@ 75 FT-LBS)
18	1	23218	FLUID GALLERY PLATE GASKET (QGV-150)
	1	23204	FLUID GALLERY PLATE GASKET (QGV-200)
19	1	23217	FLUID GALLERY COVER PLATE (QGV-150)
	1	23203	FLUID GALLERY COVER PLATE (QGV-200)
20	2	128883-075	PIPE PLUG-3/4-16 (O-RING)
21	*		ROTOR BEARING
22	*		ROTOR BEARING
23	**	140889	ROTOR SHIM-TEMPERED STEEL & STAINLESS STEEL/BRASS
24	**	129995	ROTOR SHIM-TEMPERED STEEL & STAINLESS STEEL/BRASS
25	2	129624	BEARING RETAINER
26	10	90386-L12	COUNTERBORE SCREW-3/8-16 UNC X 1.00, GRADE 8 (@ 35 FT-LBS)
27	10	129979	COMPRESSION SPRING
28	1	22749-251	VITON O-RING-5.12 I.D.
29	1	128967-001	45° MALE ELBOW-0.25 TUBE X 0.12 NPT
30	8	90386-L14	COUNTERBORE SCREW-3/8-16 UNC X 1.25, GRADE 8 (@ 45 FT-LBS, BACK OFF TO 25 FT-LBS)
31	1	129980	DISCHARGE END CAP
32	8	90386-N15	COUNTERBORE SCREW-1/2-13 UNC X 1.50, GRADE 8 (@ 75 FT-LBS)
33	*		ROTOR BEARING
34	1	124530	BEARING RETAINER RING
35	*		ROTOR BEARING
36	1	22749-259	VITON O-RING-6.25 I.D.
37	1	129992	DISCHARGE END CAP
38	1	129947-4	MOTOR ADAPTER
39	8	123478-Q17	CAP SCREW-5/8-11 UNC X 2.00, GRADE 5 (@ 110 FT-LBS)
40	8	123115-10C	LOCKWASHER, 0.63

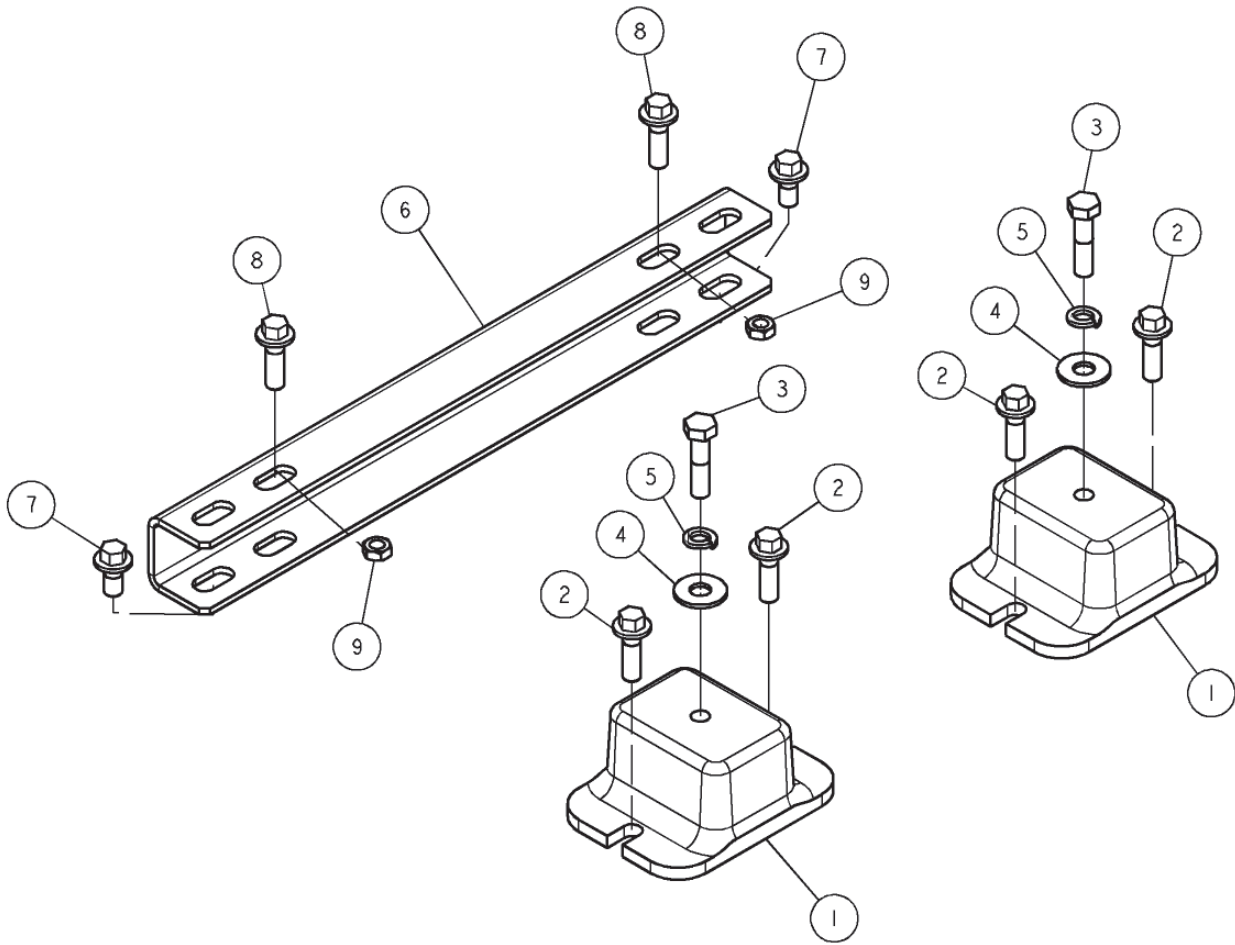
COMPONENT MAINTENANCE PARTS

A	12	140406-904	VITON O-RING, 0.35 I.D.
B	2	140406-908	VITON O-RING, 0.64 I.D.

* ITEMS NOT SOLD SEPARATELY, MUST BE ORDERED AS A COMPLETE AIREND.

** QUANTITY AS REQUIRED.

@ INDICATES TORQUE VALUE IN FOOT POUNDS (LUBRICATED THREADS).



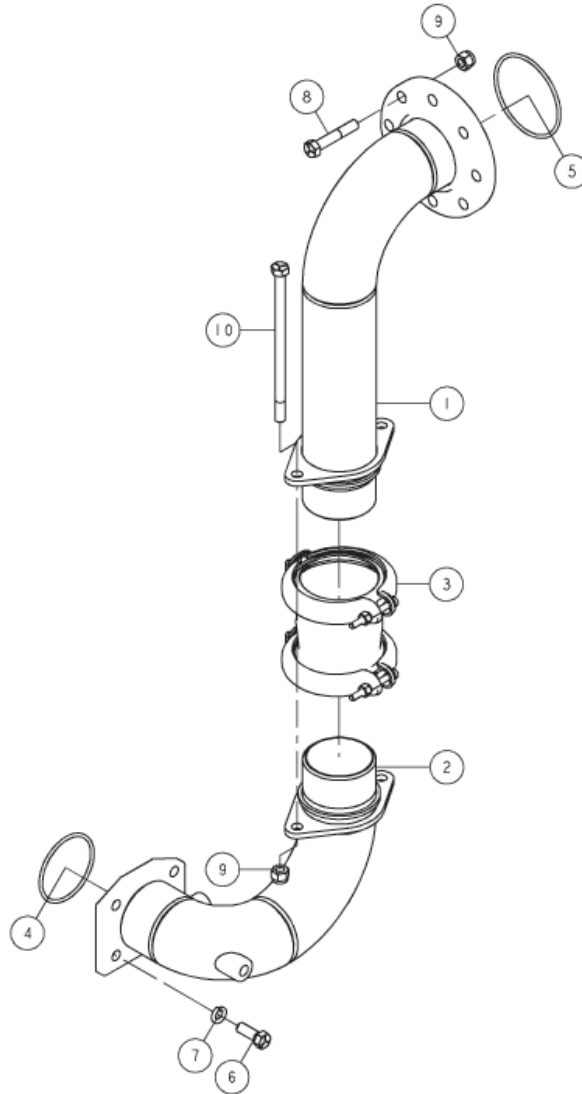
NOTES-UNLESS OTHERWISE SPECIFIED:
1) ITEMS 6 THROUGH 9 ARE INSTALLED FOR SHIPPING
PURPOSES ONLY. REMOVE BEFORE STARTING COMPRESSOR

Airend Mounting (150/200 hp) - 147010-003

ITEM NO.	QTY.	PART NUMBER	DESCRIPTION
1	2	146456-09	VIBRATION ISOLATOR
2	4	14654412040	LOCK SCREW-ZINC, 12 MM X 40 MM
3	2	12798512050	CAP SCREW-ZINC, 12 MM X 50 MM
4	4	110428W050	FLAT WASHER-0.50
5	4	123115-08Z	LOCKWASHER-ZINC, 0.50
6	1	147060-01	AIREND SHIPPING SUPPORT
7	4	14568512025	CAP SCREW-ZINC, 12 MM X 25 MM (RED)
8	2	14568512065	CAP SCREW-ZINC, 12 MM X 65 MM (RED)
9	2	14654412020	LOCK SCREW-ZINC, 12 MM X 20 MM
10	1	8215-002	GROUND STRAP

@ INDICATES TORQUE VALUE IN FOOT POUNDS (LUBRICATED THREADS).

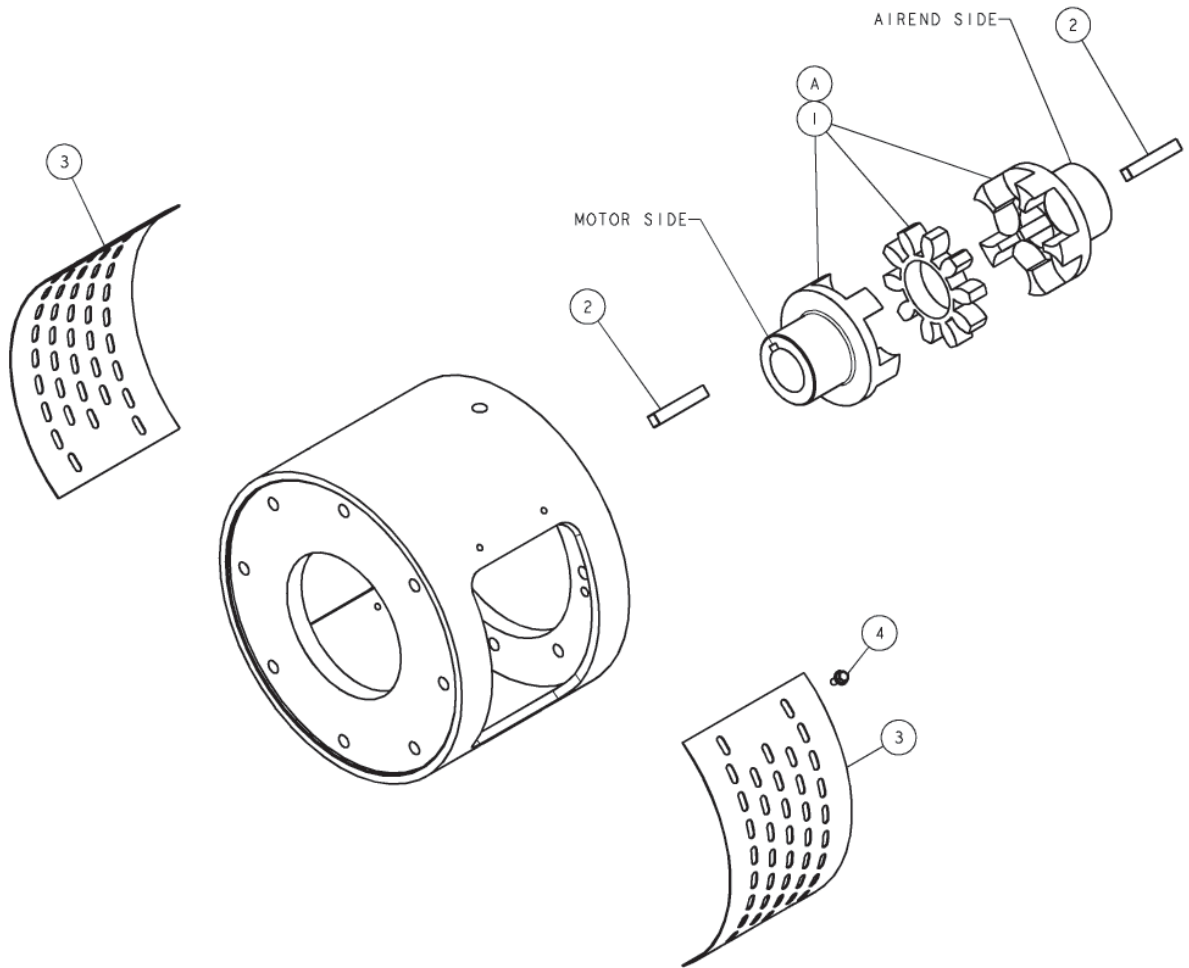
Discharge Piping (150/200 hp) - 147545-002



ITEM No.	QTY.	PART NUMBER	DESCRIPTION
1	1	147547	DISCHARGE MANIFOLD, U
2	1	147546	DISCHARGE MANIFOLD, L
3	1	140509S400	FLEXIBLE COUPLING
4	1	22749-347	VITON O-RING-4.25 I.D.
5	1	22749-355	VITON O-RING-5.22 I.D.
6	4	145067-Q10	SHOULDER SCREW-0.63 X 0.75 X 1/2-13 UNC
7	4	123115-10Z	LOCKWASHER-ZINC, 0.63
8	8	142578-Q23	CAP SCREW-ZINC, 5/8-11 UNC X 3.50, GRADE 5 (@ 110 FT-LBS)
9	10	124370-Q02	LOCKNUT-5/8-11 UNC
10	2	142578-Q39	CAP SCREW-ZINC, 5/8-11 UNC X 11.00, GRADE 5 (@ 110 FT-LBS)

@ INDICATES TORQUE VALUE IN FOOT POUNDS (LUBRICATED THREADS).

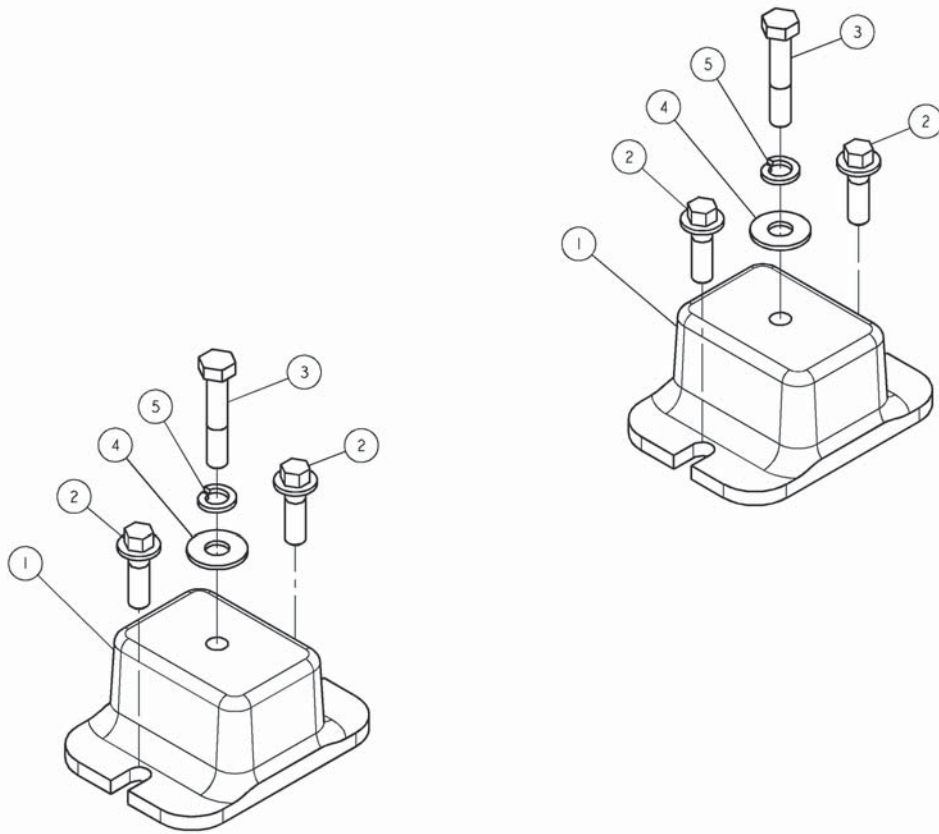
Drive Coupling (150/200 hp) - 147789-001



NOTES - UNLESS OTHERWISE SPECIFIED:
 1) COUPLING HUBS MUST BE INSTALLED WITH KEYWAYS
 OFFSET 180 (1/2 TURN) TO MAINTAIN COUPLING BALANCE
 2) ITEM A IS A MAINTENANCE PART

ITEM No.	QTY.	PART NUMBER	DESCRIPTION
1	1	145073-107	DRIVE COUPLING
2	2	21184	SHAFT KEY
3	2	129925-1	COUPLING GUARD
4	8	141631-K10	CAP SCREW-5/16-18 UNC X 0.75, GRADE 5 (@ 23 FT-LBS)
<u>COMPONENT MAINTENANCE PARTS</u>			
A	1	145073-407	DRIVE COUPLING ELEMENT

Motor Mounting (150/200 hp) - 147014-007

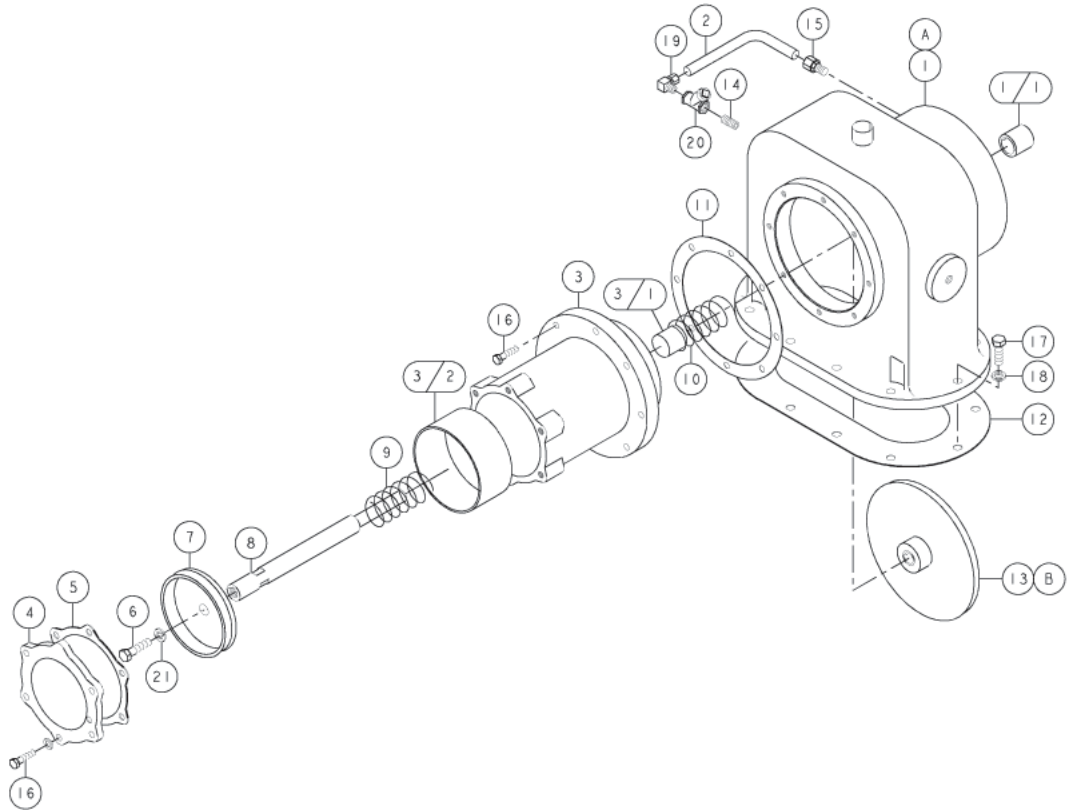


NOTES:
 1) ITEM 6 NOT SHOWN. ITEM 6 IS THE BOLTS USED TO ATTACH THE MOTOR TO THE AIR END

ITEM No.	QTY.	PART NUMBER	DESCRIPTION
1	2	146456-09	VIBRATION ISOLATOR
2	4	14654412040	LOCK SCREW-ZINC, 12 MM X 40 MM
3	2	12798512065	CAP SCREW-ZINC, 12 MM X 65 MM
4	2	110428W050	FLAT WASHER-0.50
5	2	123115-08Z	LOCKWASHER-ZINC, 0.50
6	8	123478-Q17	CAP SCREW-5/8-11 UNC X 2.00, GRADE 5 (@ 110 FT-LBS)
7	8	123115-10C	LOCKWASHER, 0.63

@ INDICATES TORQUE VALUE IN FOOT POUNDS (LUBRICATED THREADS).

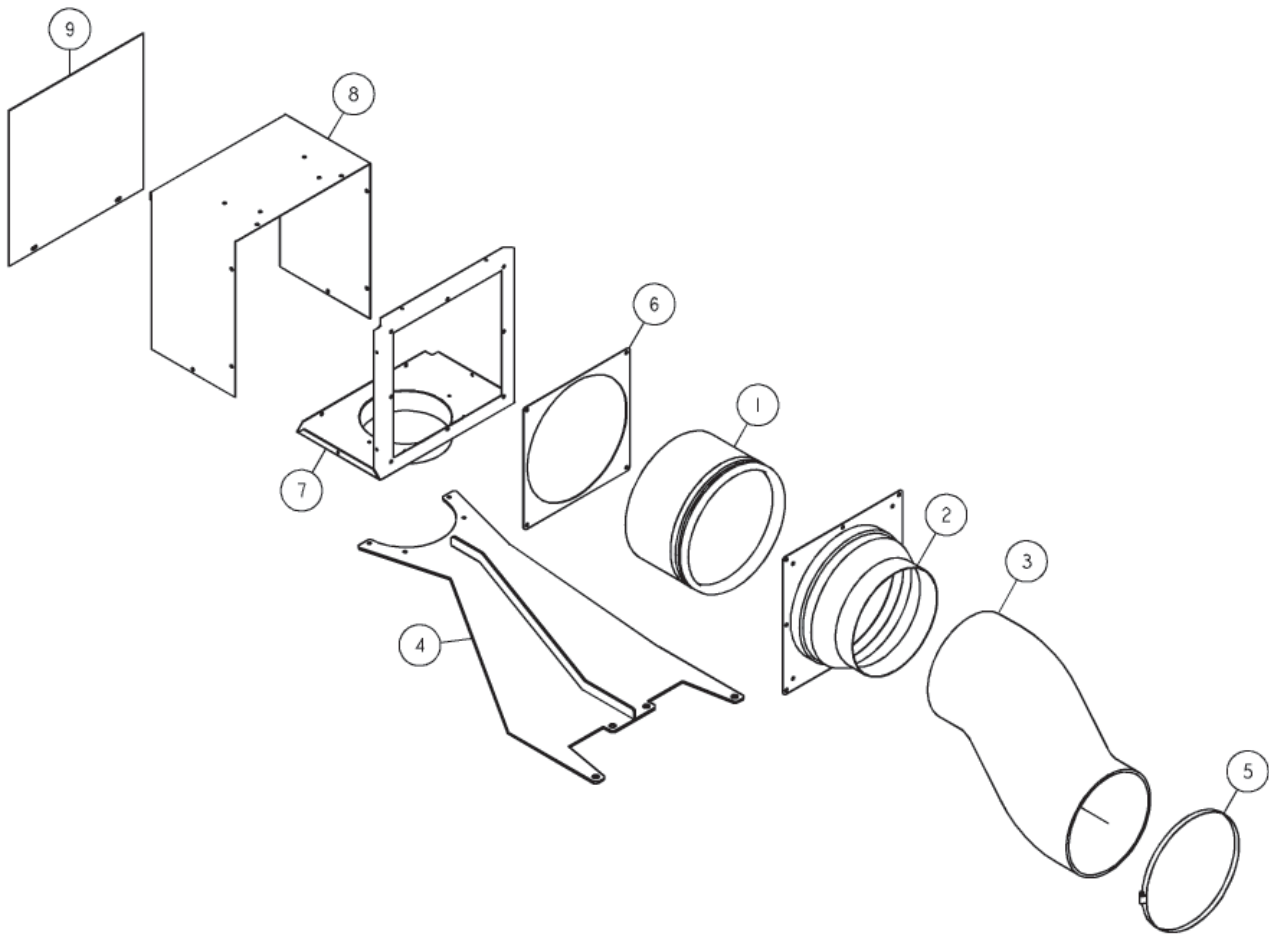
Inlet Valve (150/200 hp) - 147803-001



ITEM No.	QTY.	PART NUMBER	DESCRIPTION
1	1	129522-5	INLET VALVE HOUSING ASSEMBLY
2	1	110515-062	TUBE-COPPER, 0.63 O.D.
3	1	126730	INLET VALVE CYLINDER ASSEMBLY
4	1	126710	INLET VALVE CYLINDER CAP
5	1	126732	INLET VALVE GASKET
6	1	123478-R14	CAP SCREW-3/4-10 UNC X 1.25, GRADE 5 (@ 200 FT-LBS)
7	1	126460-558	PISTON CUP
8	1	126731	INLET VALVE SHAFT
9	1	126719	INLET VALVE SPRING
10	1	126760	INLET VALVE SPRING
11	1	126814	INLET VALVE GASKET
12	1	141917	INLET VALVE ADAPTER GASKET
13	1	22876-2	INLET VALVE PLATE ASSEMBLY
14	1	125935-010	PIPE NIPPLE-0.50 NPT X 2.00
15	1	124393-021	MALE CONNECTOR-0.63 TUBE X 0.50 NPT
16	14	123478-L12	CAP SCREW-3/8-16 UNC X 1.00, GRADE 5 (@ 23 FT-LBS)
17	10	123478-N15	CAP SCREW-1/2-13 UNC X 1.50, GRADE 5 (@ 55 FT-LBS)
18	10	123115-08C	LOCKWASHER, 0.50
19	1	124349-018	90° MALE ELBOW-0.63 TUBE X 0.50 NPT
20	1	123454-005	CHECK VALVE
21	1	20616	FLAT WASHER-0.78, COPPER
<u>COMPONENT MAINTENANCE PARTS</u>			
A	1	129946-050	INLET VALVE KIT
B	1	22749-240	VITON O-RING-3.75 I.D.

@INDICATES TORQUE VALUE IN FOOT POUNDS (LUBRICATED THREADS).

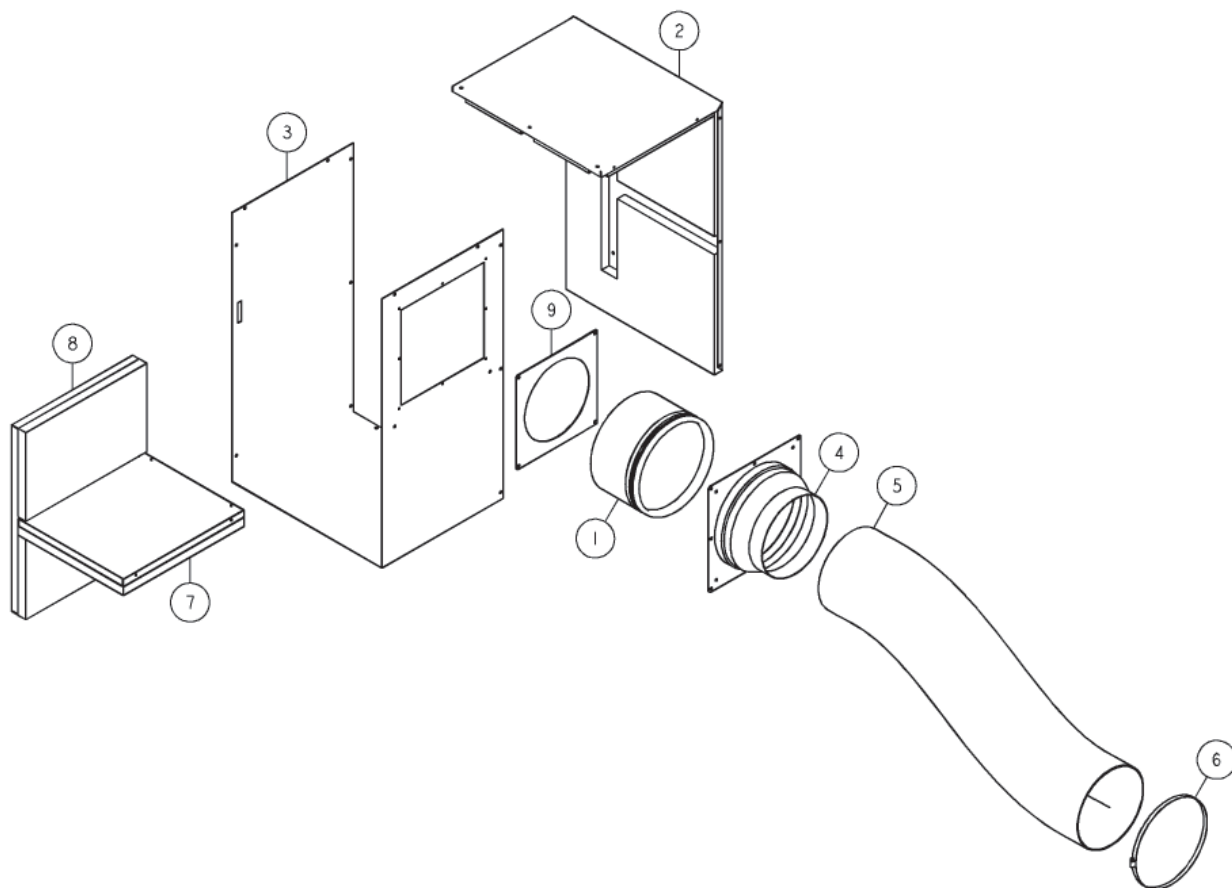
Air Filter (150/200 hp, less cabinet) - 147008-002



ITEM No.	QTY.	PART NUMBER	DESCRIPTION
1	1	146397-12	AIR FILTER ELEMENT
2	1	147052-02	AIR FILTER HOUSING
3	1.75 FT	147049	INTAKE AIR HOSE
4	1	147056	AIR FILTER BRACKET
5	2	110423-160	HOSE CLAMP
6	1	147221-02	AIR FILTER RETAINING PLATE
7	1	147220	INLET FILTER PANEL
8	1	146659-02	INLET FILTER PANEL
9	1	146659-03	INLET FILTER PANEL
10	24	110511-J07	HEX HEAD SCREW-ZINC, 1/4-20 UNC X 0.50
11	6	122151	HEX HEAD SCREW-1/4-20 UNC X 0.63, GRADE 5 (@ 6 FT-LBS)

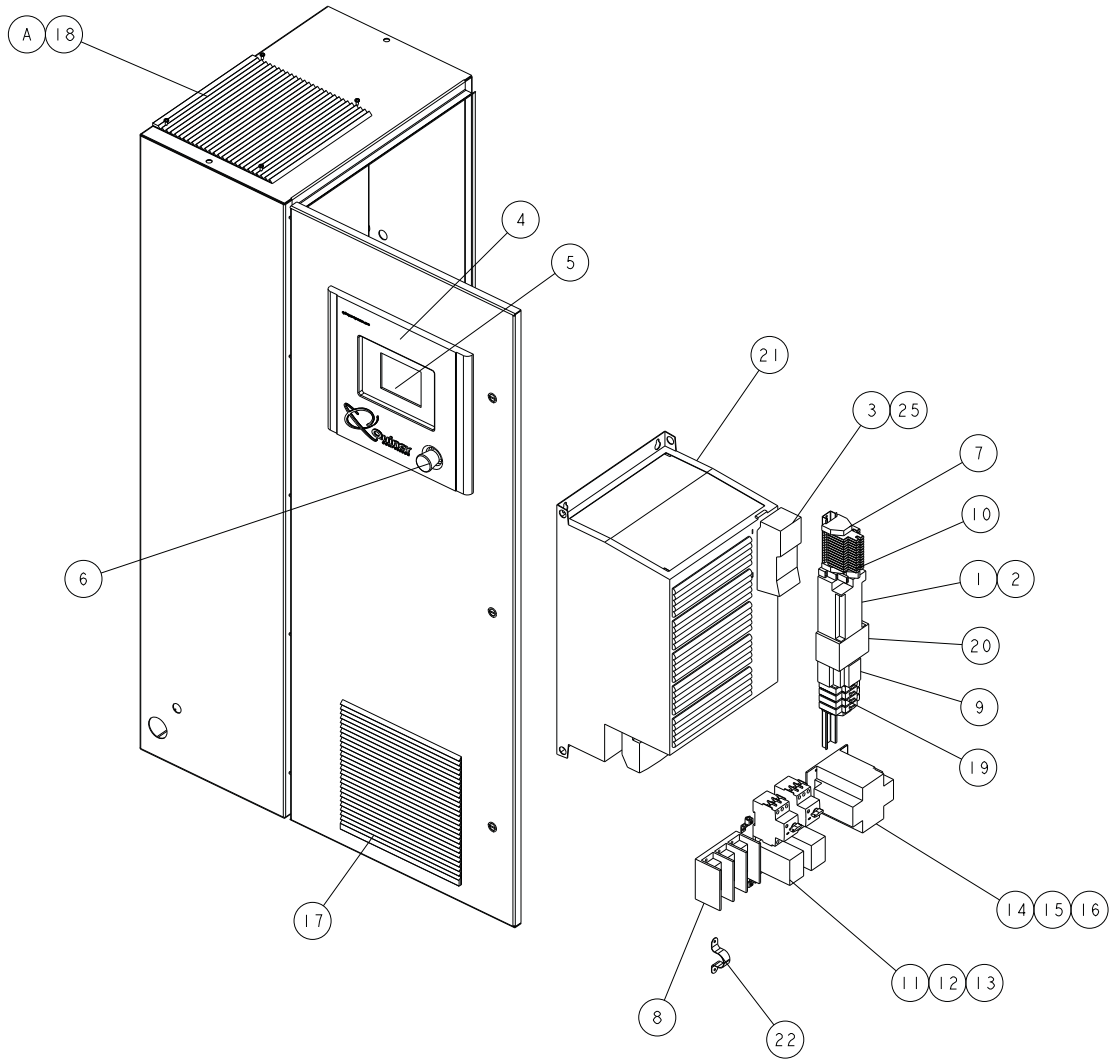
@ INDICATES TORQUE VALUE IN FOOT POUNDS (LUBRICATED THREADS).

Air Filter (150/200 hp, with cabinet) - 147008-005



ITEM No.	QTY.	PART NUMBER	DESCRIPTION
1	1	146397-12	AIR FILTER ELEMENT
2	1	147051-01	AIR INLET PAN
3	1	147051-02	AIR INLET PAN
4	1	147052-02	AIR FILTER HOUSING
5	4.2 FT	147049	INTAKE AIR HOSE
6	2	110423-160	HOSE CLAMP
7	1	147053-01	AIR FILTER BAFFLE PANEL
8	1	147053-02	AIR FILTER BAFFLE PANEL
9	1	147221-02	AIR FILTER RETAINING PLATE
10	34	110511-J07	HEX HEAD SCREW-ZINC, 1/4-20 UNC X 0.50
11	4	122151	HEX HEAD SCREW-1/4-20 UNC X 0.63, GRADE 5 (@ 6 FT-LBS)

Electrical Control & Starting (150/200 hp) - 147442-1



Electrical Control & Starting (150/200 hp) - 147442-1

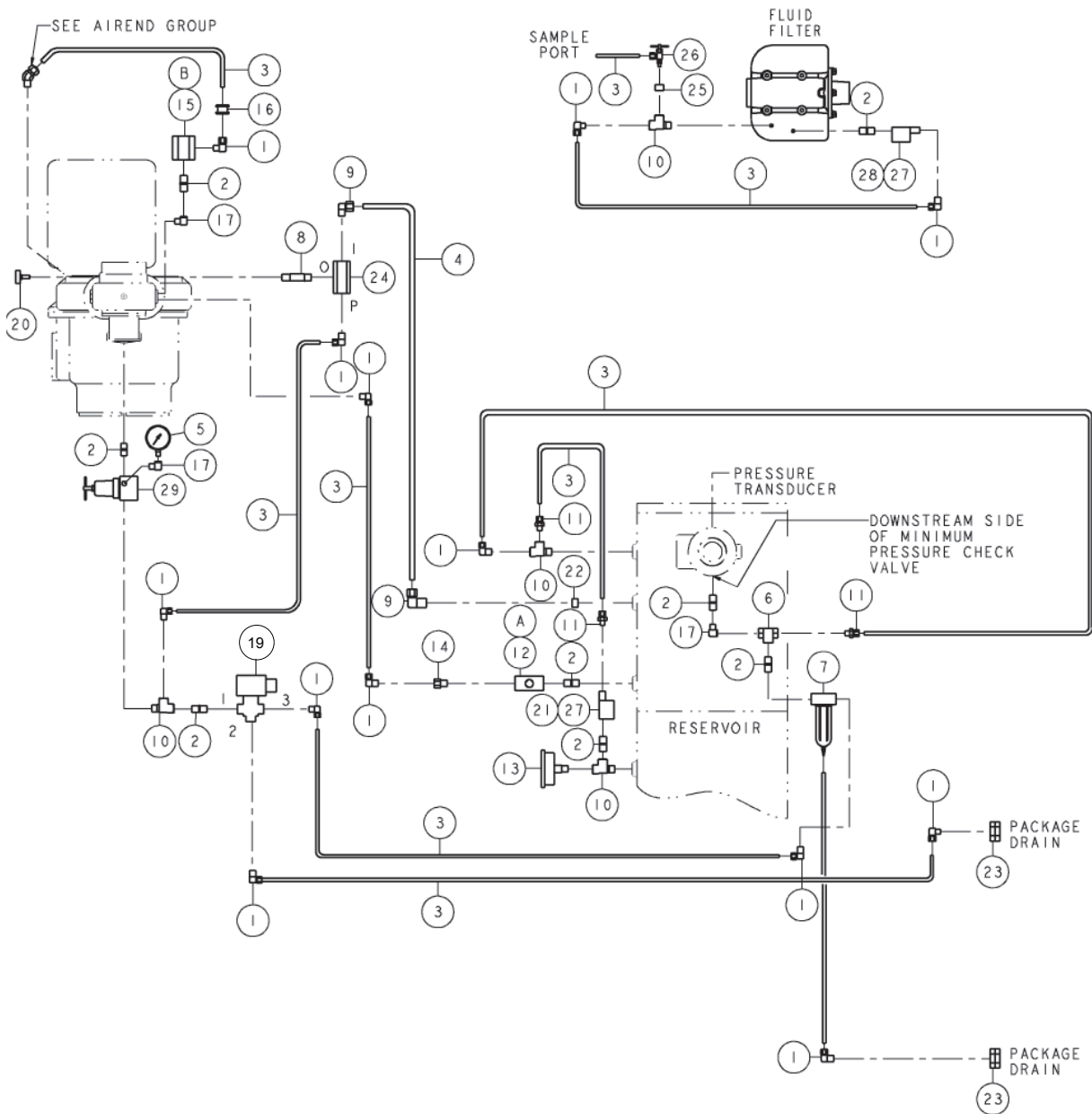
ITEM NO.	QTY.	PART NUMBER	DESCRIPTION
1	1	146303-102	PLC CONTROLLER
2	1	146303-504	CHIP-BATTERY BACKUP
3	1	2014000089	COMMUNICATION MODULE
4	1	146669	BEZEL
5	1	144993-1	COLOR TOUCH SCREEN
6	1	146102-006	EMERGENCY STOP BUTTON
7	1	142334-28	TERMINAL BLOCK ASSEMBLY
8	1	129229-014	POWER BLOCK
9	1	144989	POWER SUPPLY
10	1	147135-01	RELAY ASSEMBLY
11	1	144570-01	CONTACTOR-120 VOLT-150 HP
	2	144570-01	CONTACTOR-120 VOLT-200 HP
12	1	146237-24	OVERLOAD DISCONNECT-150/200 HP
	1	146237-22	OVERLOAD DISCONNECT-200 HP
13	1	146237-L1	LINK MODULE-150 HP
	2	146237-L1	LINK MODULE-200 HP
14	1	128413-253	TRANSFORMER (250VA)
15	2	128857-011	TRANSFORMER FUSE (PRIMARY)
16	1	128622-250	TRANSFORMER FUSE (SECONDARY)
17	1	144995-460	FAN-VENT
18	1	144995-331	LOUVER-VENT FAN
19	1	144117-06	FUSEBLOCK
20	1	146303-301	PROFIBUS MODULE
21	1	147606-VCA	VARIABLE FREQUENCY DRIVE-150 HP
	1	147606-WCA	VARIABLE FREQUENCY DRIVE-200 HP
22	1	147611-005	CONDUIT CLAMP
23*	1	145072	PRESSURE TRANSDUCER
24*	1	147827	CONTROL HARNESS
25	1	2014002216	STRAIN RELIEF

* NOT SHOWN

COMPONENT MAINTENANCE PARTS

A	1	144995-332	PANEL FILTER REPLACEMENT
---	---	------------	--------------------------

Control Piping (150/200 hp) - 147693-001



NOTES-UNLESS OTHERWISE SPECIFIED:
 1) ITEM A AND B ARE MAINTENANCE PARTS.

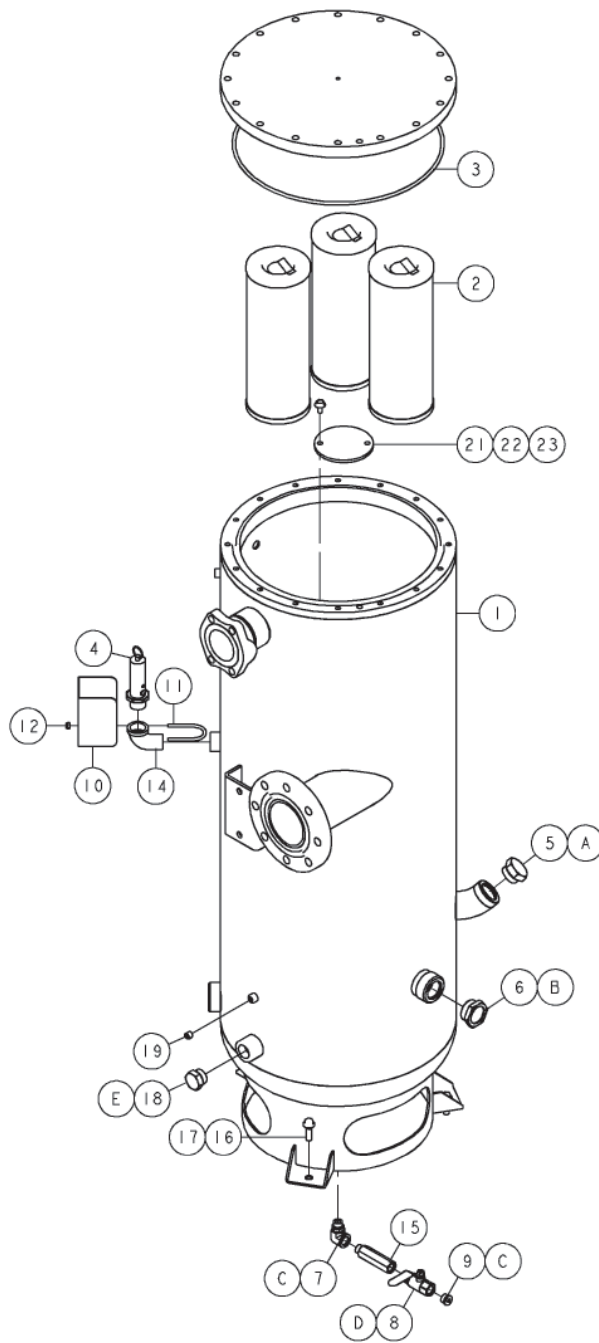
Control Piping (150/200 hp) - 147693-001

ITEM NO.	QTY.	PART NUMBER	DESCRIPTION
1	13	124349-005	90° MALE ELBOW-0.25 TUBE X 0.25 NPT
2	8	142125-1	EXTRA STRONG BRASS NIPPLE-0.25 NPT X CLOSE
3	26	140620-003	BLACK NYLON TUBING-0.25 O.D.
4	6	140620-005	BLACK NYLON TUBING-0.50 O.D.
5	1	140718	PRESSURE GAUGE
6	1	147239-025	SHUTTLE VALVE-0.25 NPT
7	1	129732	AUTOMATIC LINE FILTER
8	1	126018-026	PIPE NIPPLE-GALVANIZED, 0.50 NPT X 4.00
9	2	124349-015	90° MALE ELBOW-0.50 TUBE X 0.50 NPT
10	4	7361	PIPE TEE-BRASS, 0.25 NPT
11	2	124393-005	MALE CONNECTOR-0.25 TUBE X 0.25 NPT
12	1	140508	SIGHTGLASS (O-RING)
13	1	126345	PRESSURE GAUGE-LIQUID FILLED (0-200#)
14	1	125025-002	LINE FILTER ORIFICE (Ø0.078)
15	1	122056	CHECK VALVE
16	1	140317	RUBBER GROMMET
17	3	122636	PIPE ELBOW-BRASS, 0.25 NPT
19	1	120496-4	SOLENOID VALVE-3-WAY
20	1	146770	VACUUM SWITCH
21	1	146768-10	DIFFERENTIAL PRESSURE SWITCH (10#)
22	1	125868-012	PIPE BUSHING-GALVANIZED, 1.00 NPT X 0.50 NPT
23	2	129203-002	BULKHEAD COUPLING-BRASS, 0.25 NPT
24	1	128826-1	BLOWDOWN VALVE
25	1	121033-1	PIPE BUSHING-BRASS, 0.25 NPT X 0.125 NPT
26	1	142947	FLUID SAMPLE VALVE
27	2	146296-2	CABLE ASSEMBLY-5 METER
28	1	146768-19	DIFFERENTIAL PRESSURE SWITCH (19#)
29	1	23543-002	PRESSURE REGULATOR

COMPONENT MAINTENANCE PARTS

A	2	22749-010	VITON O-RING-0.25 I.D.
B	2	123157-008	BUNA-N O-RING-0.18 I.D.

Reservoir (150/200 hp) - 147002-001/-002



- NOTES-UNLESS OTHERWISE SPECIFIED:
- 1) BOLTS USED TO ATTACH THE RESERVOIR LID ARE SUPPLIED BY THE RESERVOIR MANUFACTURER. IF REPLACEMENT BOLTS ARE NEEDED, THEY MUST BE APPROVED BY THE MANUFACTURER IN ORDER TO ENSURE THE INTEGRITY OF THE PRESSURE RATED RESERVOIR.
 - 2) ITEM 20 (FLUID DRAIN ASSEMBLY) IS NOT SHOWN AND IS SHIPPED LOOSE.
 - 3) ITEMS A THRU E ARE MAINTENANCE PARTS.

Reservoir (150/200 hp) - 147002-001/-002

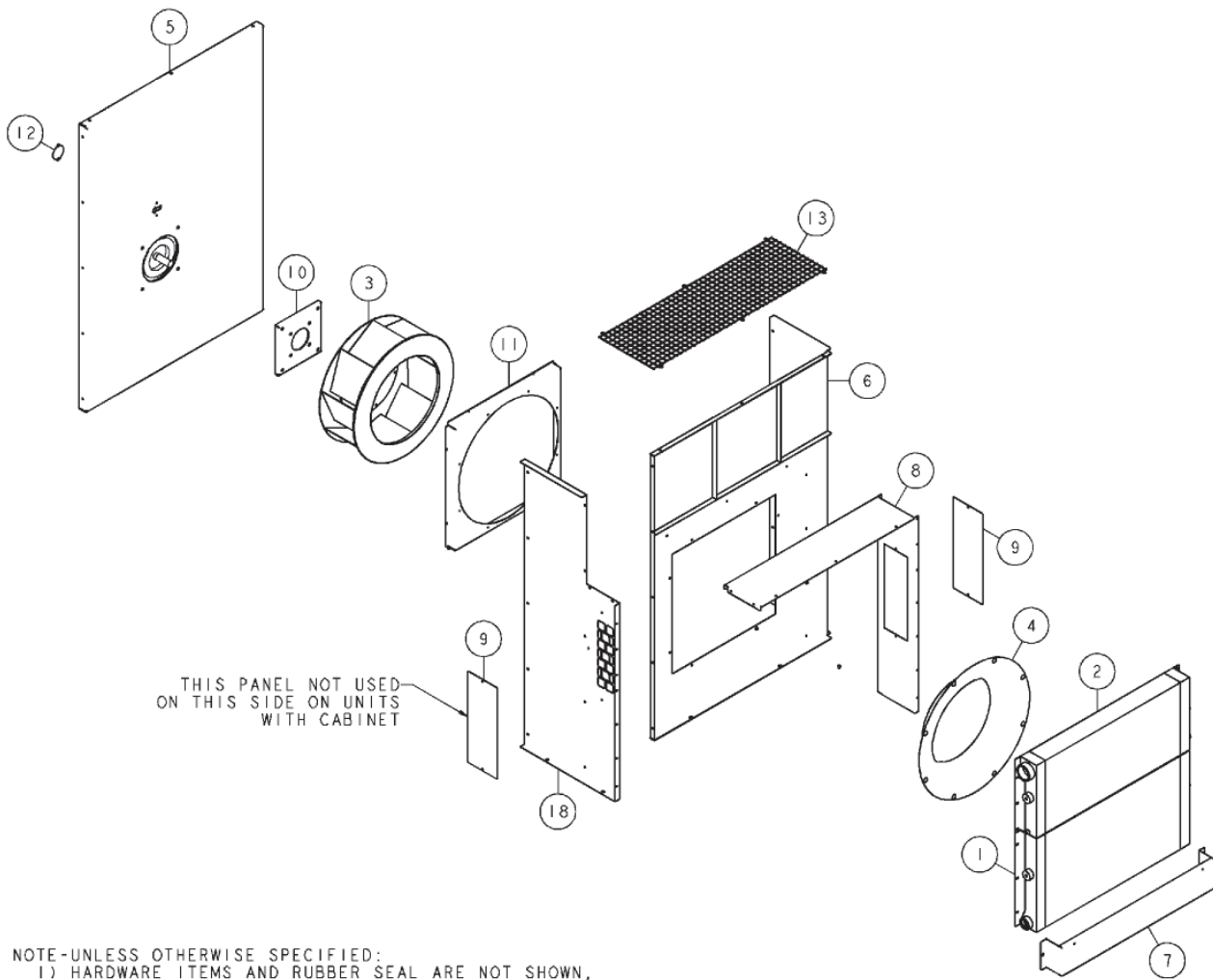
ITEM NO.	QTY.	PART NUMBER	DESCRIPTION
1	1	147003-200	AIR/FLUID RESERVOIR
2	3	144606-02	AIR/FLUID SEPARATOR (QGV-150)
	4	144606-02	AIR/FLUID SEPARATOR (QGV-200)
3	1	22749-464	VITON O-RING-17.45 I.D.
4	1	147028-200	PRESSURE RELIEF VALVE
5	1	129844-162	FILLER CAP (O-RING)
6	1	129843-188	SIGHTGLASS (O-RING)
7	1	143355-003	ELBOW-0.50 TUBE X 3/4-16 (O-RING)
8	1	129730-050	QUARTER TURN VALVE (O-RING)
9	1	128883-075	PIPE PLUG-3/4-16 (O-RING)
10	1	147228	PRESSURE RELIEF VALVE COVER
11	1	122560-01	U-BOLT-GALVANIZED,1/4-20 UNC, 1.75 I.D. X 3.00
12	2	124370-J02	LOCKNUT-1/4-20 UNC
14	1	21730	PIPE ELBOW-GALVANIZED, 1.00 NPT
15	1	147372-002	CONNECTOR-0.75 SAE
16	3	110428W050	FLAT WASHER-0.50
17	3	14654412040	LOCK SCREW-ZINC, 12 MM X 40 MM
18	1	129770-131	PIPE PLUG-1-5/16-12 (O-RING)
19	1	2719	PIPE PLUG-HEX SOCKET, 0.25 NPT
20	1	140407-001	FLUID DRAIN ASSEMBLY
21	1	147333	SEPARATOR PLATE PLUG (QGV-150)
22	1	22749-144	VITON O-RING-2.50 I.D. (QGV-150)
23	2	141631-L10	CAP SCREW-3/8-16 UNC X 0.75, GRADE 5 (@ 23 FT-LBS) (QGV-150)

COMPONENT MAINTENANCE PARTS

A	1	140406-920	VITON O-RING-1.48 I.D.
B	1	140406-924	VITON O-RING-1.72 I.D.
C	2	140406-908	VITON O-RING-0.64 I.D.
D	1	140406-912	VITON O-RING-0.92 I.D.
E	1	140406-916	VITON O-RING-1.17 I.D.

@ INDICATES TORQUE VALUE IN FOOT POUNDS (LUBRICATED THREADS).

Cooler (150 hp) - 147094-001/-002



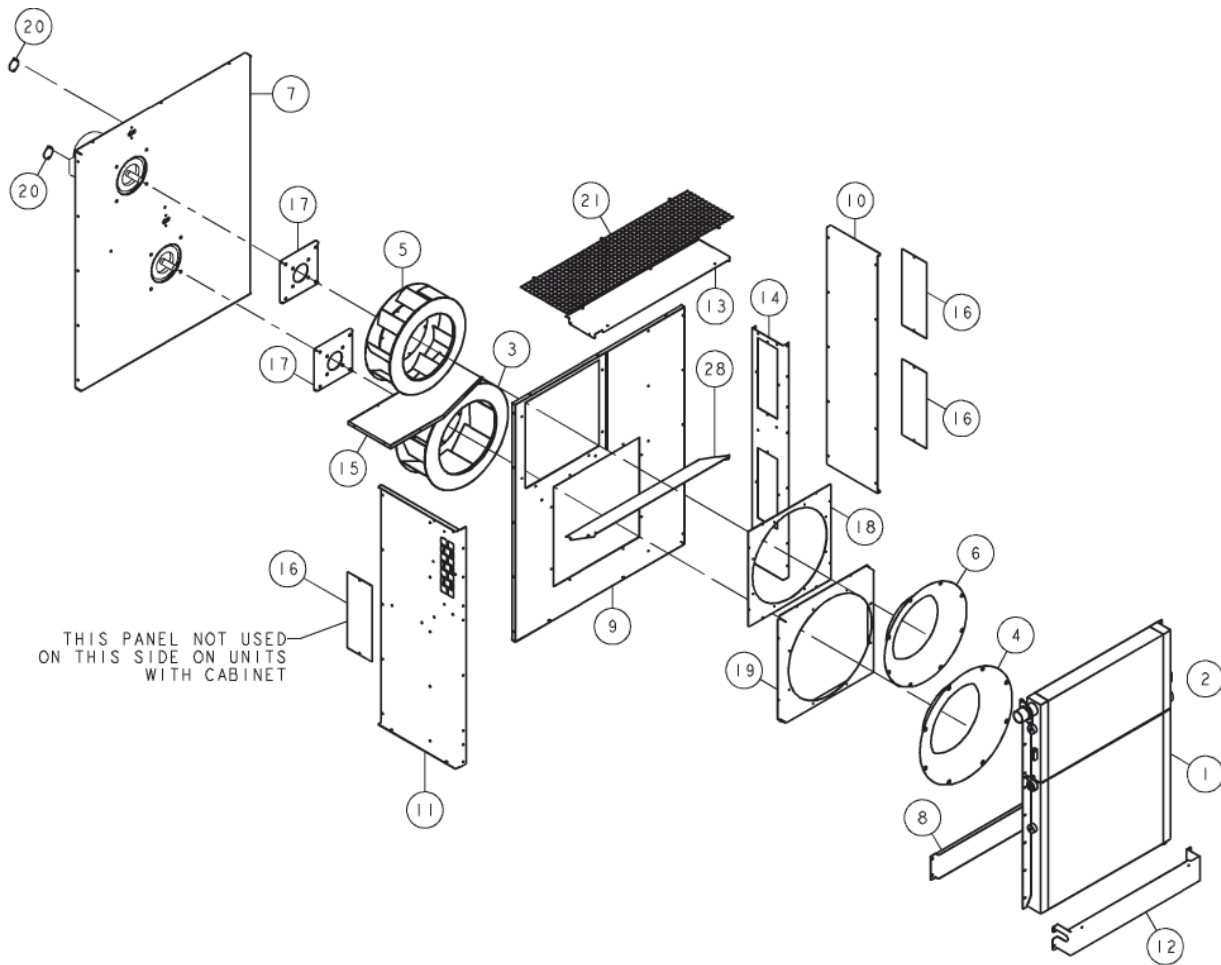
Cooler (150 hp) - 147094-001/-002

ITEM NO.	QTY.	PART NUMBER	DESCRIPTION
1	1	147096-1	FLUID COOLER
2	1	147097-1	AFTERCOOLER
3	1	147260-12	FAN WHEEL-27"
4	1	146447-07	FAN CONE
5	1	147369	FAN HOUSING REAR PANEL
6	1	147099	FAN HOUSING FRONT PANEL
7	1	147101	COOLER COVER
8	1	147100	FAN SHROUD SIDE
9*	2/1	147058-01	FAN SHROUD PLATE
10	1	147368-02	FAN MOTOR MOUNTING PANEL
11	1	147085-01	INLET CONE ADAPTER
12	1	147059	FAN HOUSING COVER PLATE
13	1	147102	FAN GUARD (USED ONLY ON UNITS LESS CABINET)
14	4	141631-N12	CAP SCREW-1/2-13 UNC X 1.00, GRADE 5 (@ 23 FT-LBS)
15	11	14654410030	LOCK SCREW-ZINC, 10 MM X 30 MM
16	6	14654408020	LOCK SCREW-ZINC, 8 MM X 20 MM
17*	44/42	14654406012	LOCK SCREW-ZINC, 6 MM X 12 MM
18	1	147463	FAN HOUSING SIDE PANEL
19	4	14654412025	LOCK SCREW-ZINC, 12 MM X 25 MM
20*	8.5/12.75	141528	RUBBER SEAL

* QUANTITY VARIES DEPENDING ON WHETHER OR NOT THE UNIT HAS A CABINET. (LESS CABINET/WITH CABINET)

@ INDICATES TORQUE VALUE IN FOOT POUNDS (LUBRICATED THREADS).

Cooler (200 hp) - 147004-001/-002



NOTES-UNLESS OTHERWISE SPECIFIED:
1) HARDWARE ITEMS AND RUBBER SEAL ARE NOT SHOWN.

Cooler (200 hp) - 147004-001/-002

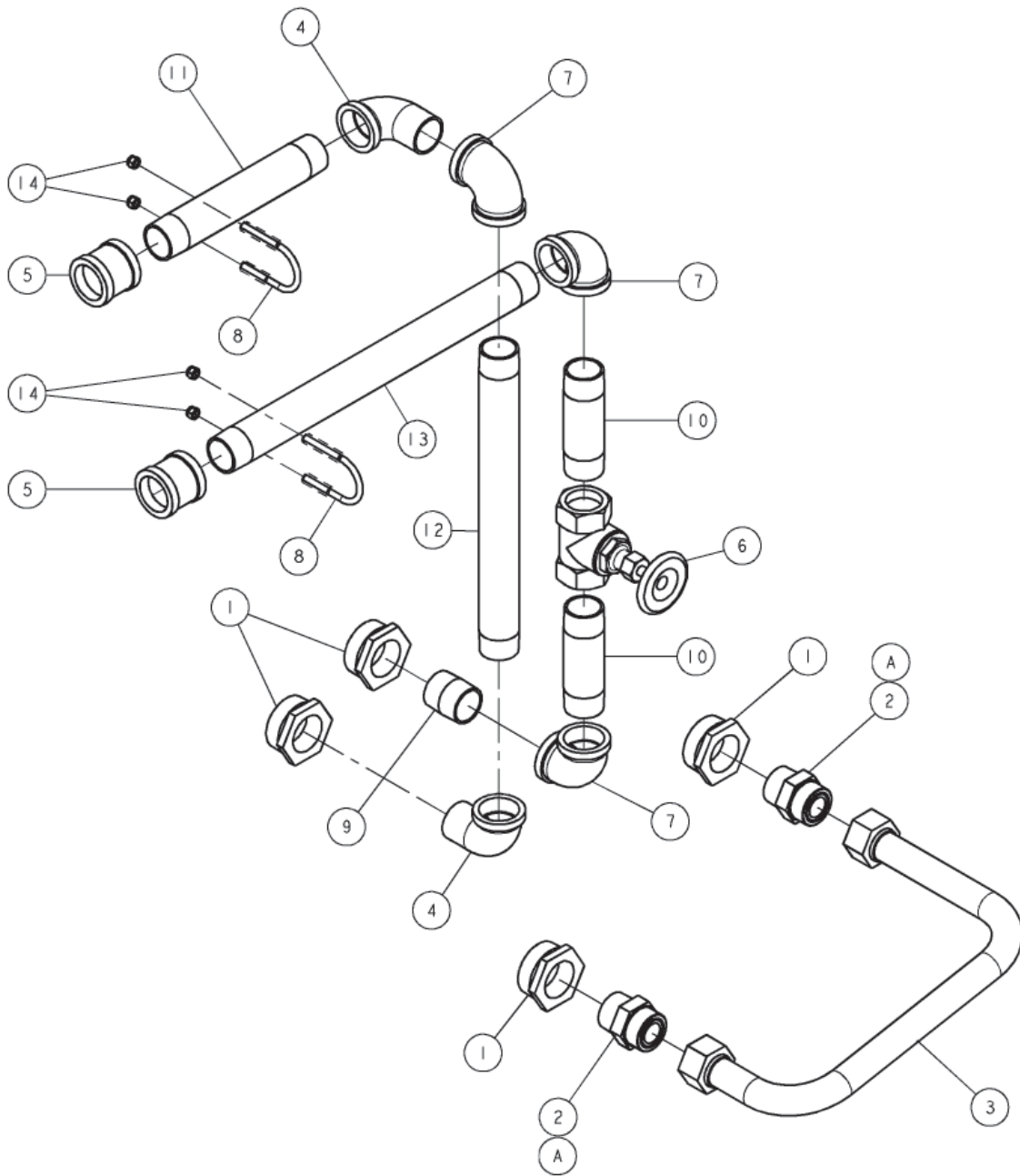
ITEM NO.	QTY.	PART NUMBER	DESCRIPTION
1	1	147351-1	FLUID COOLER
2	1	147352-2	AFTERCOOLER (LESS CABINET)
	1	147352-1	AFTERCOOLER (WITH CABINET)
3	1	146440-12	FAN WHEEL
4	1	146447-07	FAN CONE
5	1	147260-03	FAN WHEEL-24"
6	1	146447-03	FAN CONE
7	1	147367	FAN HOUSING REAR PANEL
8	1	147359	COOLER FILLER PANEL
9	1	147084	FAN HOUSING FRONT PANEL
10	1	147050	FAN HOUSING SIDE PANEL
11	1	147357	FAN HOUSING SIDE PANEL
12	1	147362	COOLER COVER (WITH CABINET)
13	1	147024	FAN SHROUD TOP
14	1	147358	FAN SHROUD SIDE
15	1	147040	FAN SHROUD DIVIDER
16*	3/2	147058-01	FAN SHROUD PLATE
17	2	147368-02	FAN MOTOR MOUNTING PANEL
18	1	147086-01	INLET CONE PLATE
19	1	147085-01	INLET CONE ADAPTER
20	2	147059	FAN HOUSING COVER PLATE
21	1	147067	FAN GUARD (LESS CABINET)
22	8	141631-N12	CAP SCREW-1/2-13 UNC X 1.00, GRADE 5 (@ 23 FT-LBS)
23	12	14654410030	LOCK SCREW-ZINC, 10 MM X 30 MM
24	6	14654408020	LOCK SCREW-ZINC, 8 MM X 20 MM
25*	80/78	14654406012	LOCK SCREW-ZINC, 6 MM X 12 MM
26	8	14654412025	LOCK SCREW-ZINC, 12 MM X 25 MM
27	8.5 FT	141528	RUBBER SEAL
28	1	147023	FAN SHROUD DIVIDER

* QUANTITY VARIES DEPENDING ON WHETHER OR NOT THE UNIT HAS A CABINET. (LESS CABINET/WITH CABINET)

@ INDICATES TORQUE VALUE IN FOOT POUNDS (LUBRICATED THREADS).

Water Piping (150/200 hp) - 147017-001

==



Water Piping (150/200 hp) - 147017-001

ITEM NO.	QTY.	PART NUMBER	DESCRIPTION
1	4	125868-028	PIPE BUSHING-GALVANIZED, 2.00 NPT X 1.25 NPT
2	2	140681-017	CONNECTOR-1.25 NPTF X 1.25 TUBE (O-RING)
3	1	147044	FORMED TUBE ASSEMBLY-FLANGED, 1.25 O.D.
4	2	120308	PIPE ELBOW-GALVANIZED, 1.25 NPT
5	2	124874-001	PIPE COUPLING-GALVANIZED, 1.25 NPT
6	1	121087	GLOBE VALVE
7	3	23881	PIPE ELBOW-GALVANIZED, 1.25 NPT
8	2	122560-01	U-BOLT-GALVANIZED, 1/4-20 UNC, 1.75 I.D. X 3.00
9	1	126021-008	PIPE NIPPLE-GALVANIZED, 1.25 NPT X 1.75
10	2	126021-034	PIPE NIPPLE-GALVANIZED, 1.25 NPT X 5.00
11	1	126021-066	PIPE NIPPLE-GALVANIZED, 1.25 NPT X 9.00
12	1	126021-114	PIPE NIPPLE-GALVANIZED, 1.25 NPT X 15.00
13	1	126021-134	PIPE NIPPLE-GALVANIZED, 1.25 NPT X 17.50
14	4	124370-J02	LOCKNUT-1/4-20 UNC

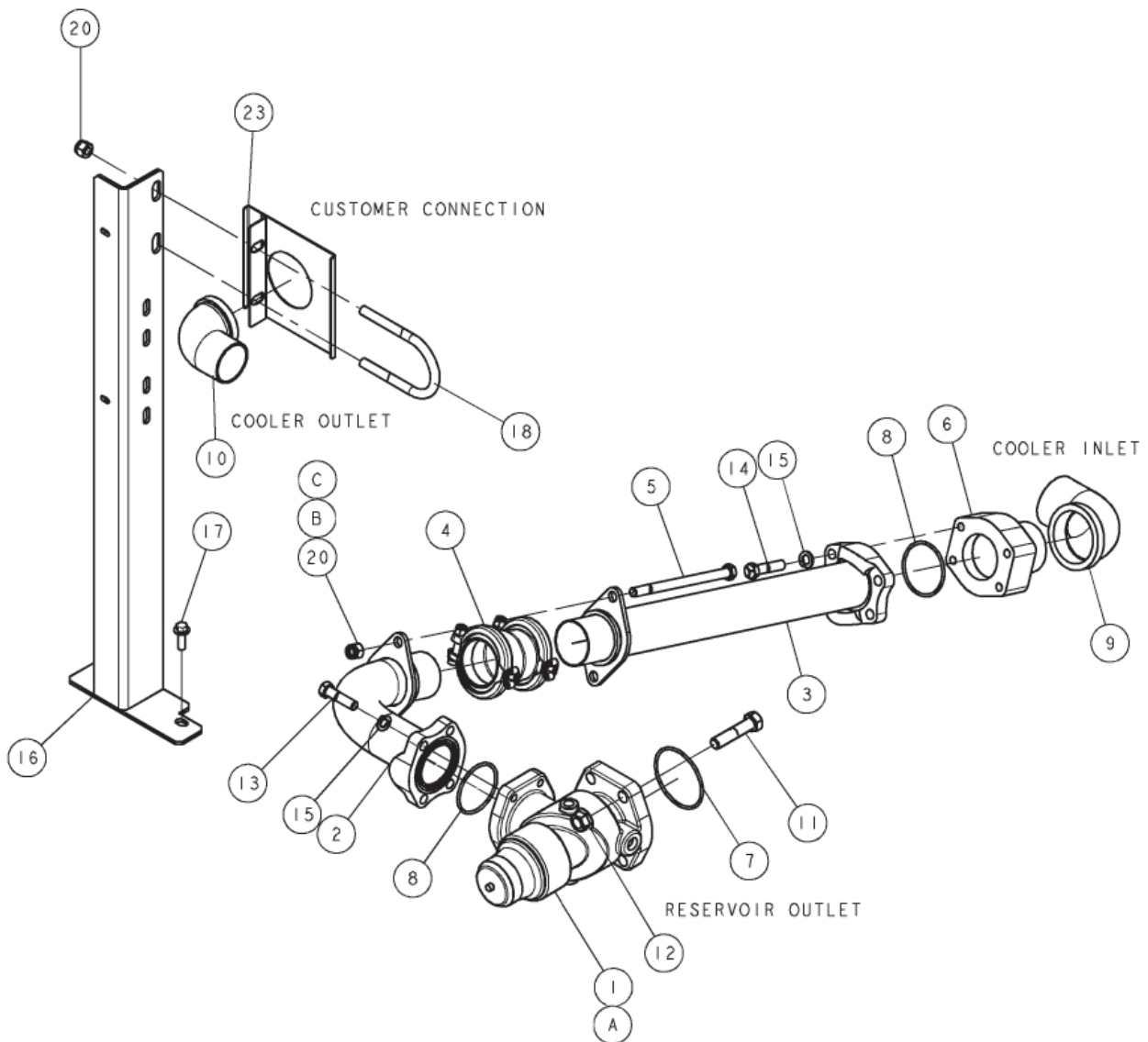
COMPONENT MAINTENANCE PARTS

A	2	140675-007	VITON O-RING/FACE SEAL-1.18 I.D.
---	---	------------	----------------------------------

* QUANTITY VARIES DEPENDING ON WHETHER OR NOT THE UNIT HAS A CABINET. (LESS CABINET/WITH CABINET)

@ INDICATES TORQUE VALUE IN FOOT POUNDS (LUBRICATED THREADS).

Air Piping (150 hp) - 147103-001/-002



NOTES-UNLESS OTHERWISE SPECIFIED:

- 1) CUSTOMER ATTACHES MOISTURE SEPERATOR TO AIR PIPING OUTSIDE UNIT
- 2) THIS ARRANGEMENT FOR UNITS AIR COOLED, WITH CABINET
- 3) ITEM 23 NOT USED ON UNITS W/O CABINET

Air Piping (150 hp) - 147103-001/-002

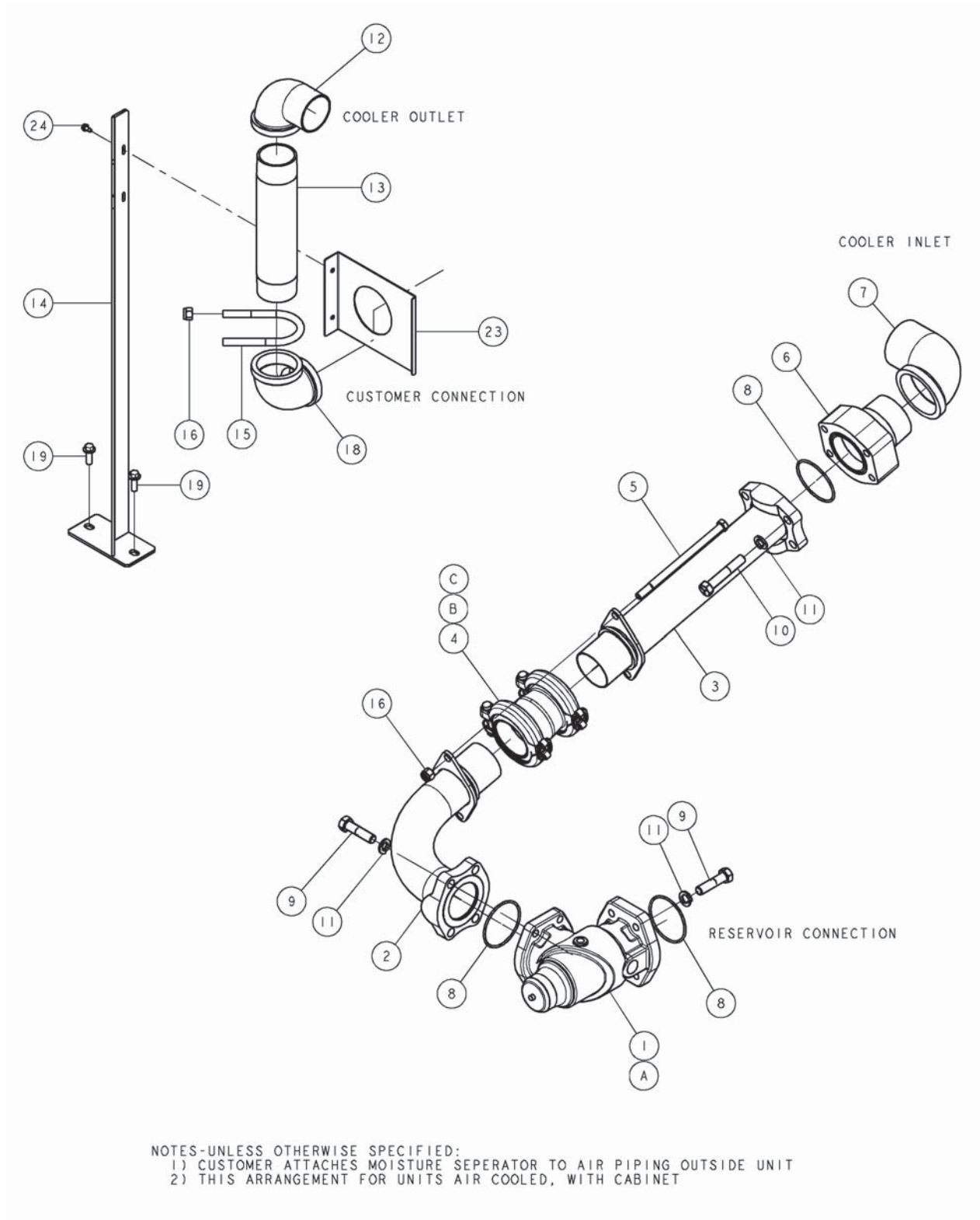
ITEM NO.	QTY.	PART NUMBER	DESCRIPTION
1	1	147662	MINIMUM PRESSURE CHECK VALVE
2	1	147543	FORMED TUBE ASSEMBLY-FLANGED, 2.50 O.D.
3	1	147544	FORMED TUBE ASSEMBLY-FLANGED, 2.50 O.D.
4	1	147575S250	FLEXIBLE COUPLING
5*	2/1	142578-N32	CAP SCREW-ZINC, 1/2-13 UNC X 7.50, GRADE 5 (@ 23 FT-LBS)
6	1	146361-05	FLANGE ADAPTER
7	1	22749-237	VITON O-RING-3.38 I.D.
8	2	22749-232	VITON O-RING-2.75 I.D.
9	1	22625	PIPE ELBOW-GALVANIZED, 2.50 NPT
10	1	22630	PIPE ELBOW-GALVANIZED, 2.00 NPT
11	4	142578-Q20	CAP SCREW-ZINC, 5/8-11 UNC X 2.75, GRADE 5 (@ 110 FT-LBS)
12	4	112272-Q02	SELF-LOCKING HEX NUT-ZINC, 5/8-11 UNC
13	4	142578-N17	CAP SCREW-ZINC, 1/2-13 UNC X 2.00, GRADE 5 (@ 23 FT-LBS)
14	4	142578-N18	CAP SCREW-ZINC, 1/2-13 UNC X 2.25, GRADE 5 (@ 23 FT-LBS)
15	8	123115-08Z	LOCKWASHER-ZINC, 0.50
16	1	147207	AIR PIPING BRACKET
17	2	14654410030	LOCK SCREW-ZINC, 10 MM X 30 MM
18	1	122560-02	U-BOLT-GALVANIZED, 1/2-13 UNC, 2.94 I.D. X 5.22
19	1	2713	AIR/FLUID SEPARATOR (PRIMARY)
20	4	124370-N02	LOCKNUT-1/2-13 UNC
21	1	124827-250	MOISTURE SEPARATOR (LESS CABINET)
	1	124827-200	MOISTURE SEPARATOR (WITH CABINET)
22	1	3535	PIPE BUSHING-0.38 NPT X 0.25 NPT
23	1	147500	DRAIN LINE BRACKET
	1	147349-01	AIR PIPING PANEL
24	2	14654408020	LOCK SCREW-ZINC, 8 MM X 20 MM (LESS CABINET)

COMPONENT MAINTENANCE PARTS

A	1	146342-050	MINIMUM PRESSURE CHECK VALVE KIT
B	2	147575G300	COUPLING GASKET
C	2	147575R300	COUPLING GASKET RETAINER
D	1	124827-052	MOISTURE SEPARATOR KIT (INCLUDES ITEM E)
E	1	124827-051	MOISTURE SEPARATOR GASKET

* QUANTITY VARIES DEPENDING ON WHETHER OR NOT THE UNIT HAS A CABINET. (LESS CABINET/WITH CABINET)
 @ INDICATES TORQUE VALUE IN FOOT POUNDS (LUBRICATED THREADS).

Air Piping (200 hp) - 147009-001/-002



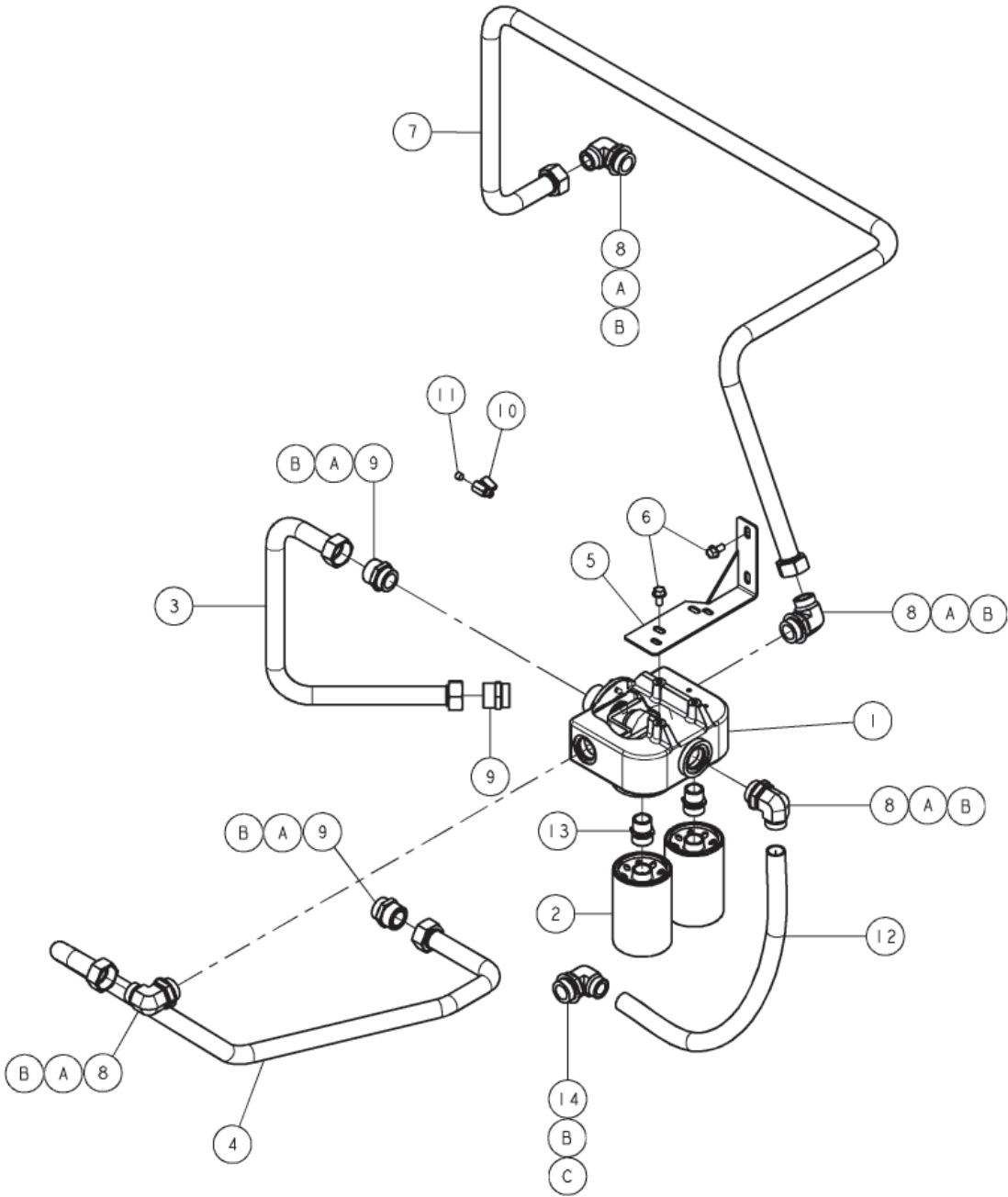
Air Piping (200 hp) - 147009-001/-002

ITEM NO.	QTY.	PART NUMBER	DESCRIPTION
1	1	147029	MINIMUM PRESSURE CHECK VALVE
2	1	147541	FORMED TUBE ASSEMBLY-FLANGED, 3.00 O.D.
3	1	147542	FORMED TUBE ASSEMBLY-FLANGED, 3.00 O.D.
4	1	147575S300	FLEXIBLE COUPLING
5	2	142578-N34	CAP SCREW-ZINC, 1/2-13 UNC X 8.50, GRADE 5 (@ 23 FT-LBS)
6	1	146361-11	FLANGE ADAPTER
7	1	123651-005	PIPE ELBOW-GALVANIZED, 3.00 NPT
8	3	22749-237	VITON O-RING-3.38 I.D.
9	8	142578-Q19	CAP SCREW-ZINC, 5/8-11 UNC X 2.50, GRADE 5 (@ 110 FT-LBS)
10	4	142578-Q23	CAP SCREW-ZINC, 5/8-11 UNC X 3.50, GRADE 5 (@ 110 FT-LBS)
11	12	123115-10Z	LOCKWASHER-ZINC, 0.63
12	1	22625	PIPE ELBOW-GALVANIZED, 2.50 NPT
13	1	126024-088	PIPE NIPPLE-GALVANIZED, 2.50 NPT X 11.75
14	1	147087	AIR PIPING BRACKET
15	1	122560-02	U-BOLT-GALVANIZED, 1/2-13 UNC, 2.94 I.D. X 5.22
16	4	124370-N02	LOCKNUT-1/2-13 UNC
17	1	2719	PIPE PLUG-HEX SOCKET, 0.25 NPT
18	1	22624	PIPE ELBOW-GALVANIZED, 2.50 NPT
19	2	14654410030	LOCK SCREW-ZINC, 10 MM X 30 MM
20	1	124827-250	MOISTURE SEPARATOR
21	1	3535	PIPE BUSHING-0.38 NPT X 0.25 NPT
22	1	2713	DRAINCOCK-0.25 NPT
23	1	147088-01	AIR PIPING PANEL (WITH CABINET)
	1	147500	DRAIN LINE BRACKET(LESS CABINET)
24	2	110511-J07	HEX HEAD SCREW-ZINC, 1/4-20 UNC X 0.50 (WITH CABINET)
	2	14654408020	LOCK SCREW-ZINC, 8 MM X 20 MM (LESS CABINET)

COMPONENT MAINTENANCE PARTS

A	1	146342-050	MINIMUM PRESSURE CHECK VALVE KIT
B	2	147575G300	COUPLING GASKET
C	2	147575R300	COUPLING GASKET RETAINER
D	1	124827-052	MOISTURE SEPARATOR KIT (INCLUDES ITEM E)
E	1	124827-051	MOISTURE SEPARATOR GASKET

@ INDICATES TORQUE VALUE IN FOOT POUNDS (LUBRICATED THREADS).



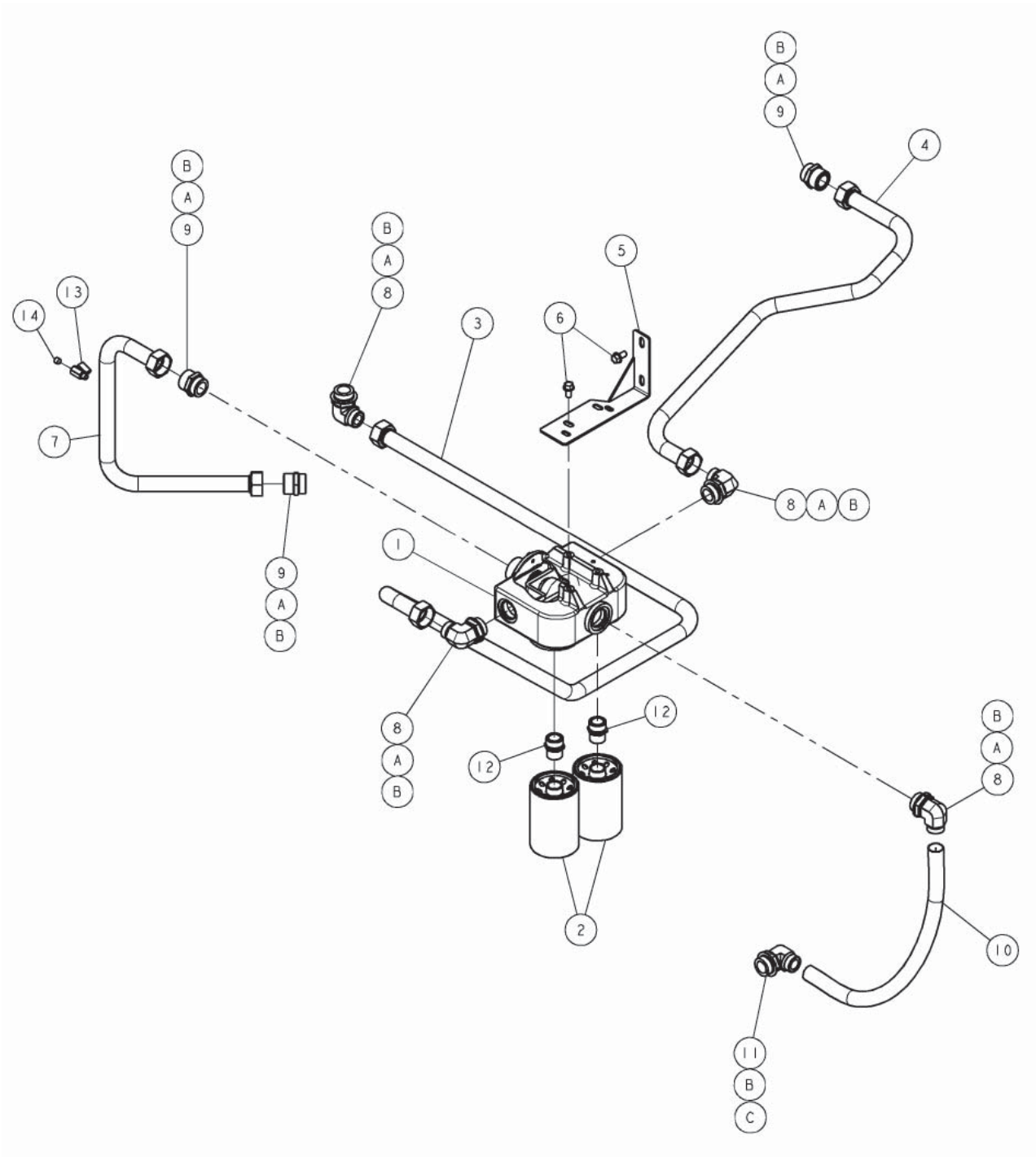
Fluid Piping (150 hp) - 147104-003

ITEM NO.	QTY.	PART NUMBER	DESCRIPTION
1	1	142615-01	THERMAL VALVE/FLUID FILTER, 190°F
2	2	142136	FLUID FILTER ELEMENT
3	1	147434	TUBE ASSEMBLY-FLANGED, 2.50 O.D.
4	1	147108	FORMED TUBE-1.50 O.D.
5	1	147039	FLUID FILTER BRACKET
6	4	141631-N12	CAP SCREW-1/2-13 UNC X 1.00, GRADE 5 (@ 23 FT-LBS)
7	1	147109	FORMED TUBE-1.50 O.D.
8	4	140676-024	ELBOW-1.50 TUBE X 1-7/8-12 (O-RING)
9	3	140682-026	CONNECTOR-1.50 TUBE X 1-7/8-12 (O-RING)
10	1	129251-025	PLUG VALVE
11	1	2719	PIPE PLUG-HEX SOCKET, 0.25 NPT
12	1	146245-2433	DRYER HOSE
13	2	140537	FLUID FILTER STUD
14	1	140676-025	ELBOW-1.50 TUBE X 1-5/8-12 (O-RING)

COMPONENT MAINTENANCE PARTS

A	7	140675-008	VITON O-RING/FACE SEAL-1.49 I.D.
B	8	140406-924	VITON O-RING-1.72 I.D.
C	1	140675-007	VITON O-RING/FACE SEAL-1.18 I.D.

@ INDICATES TORQUE VALUE IN FOOT POUNDS (LUBRICATED THREADS).



Fluid Piping (200 hp) - 147013-003

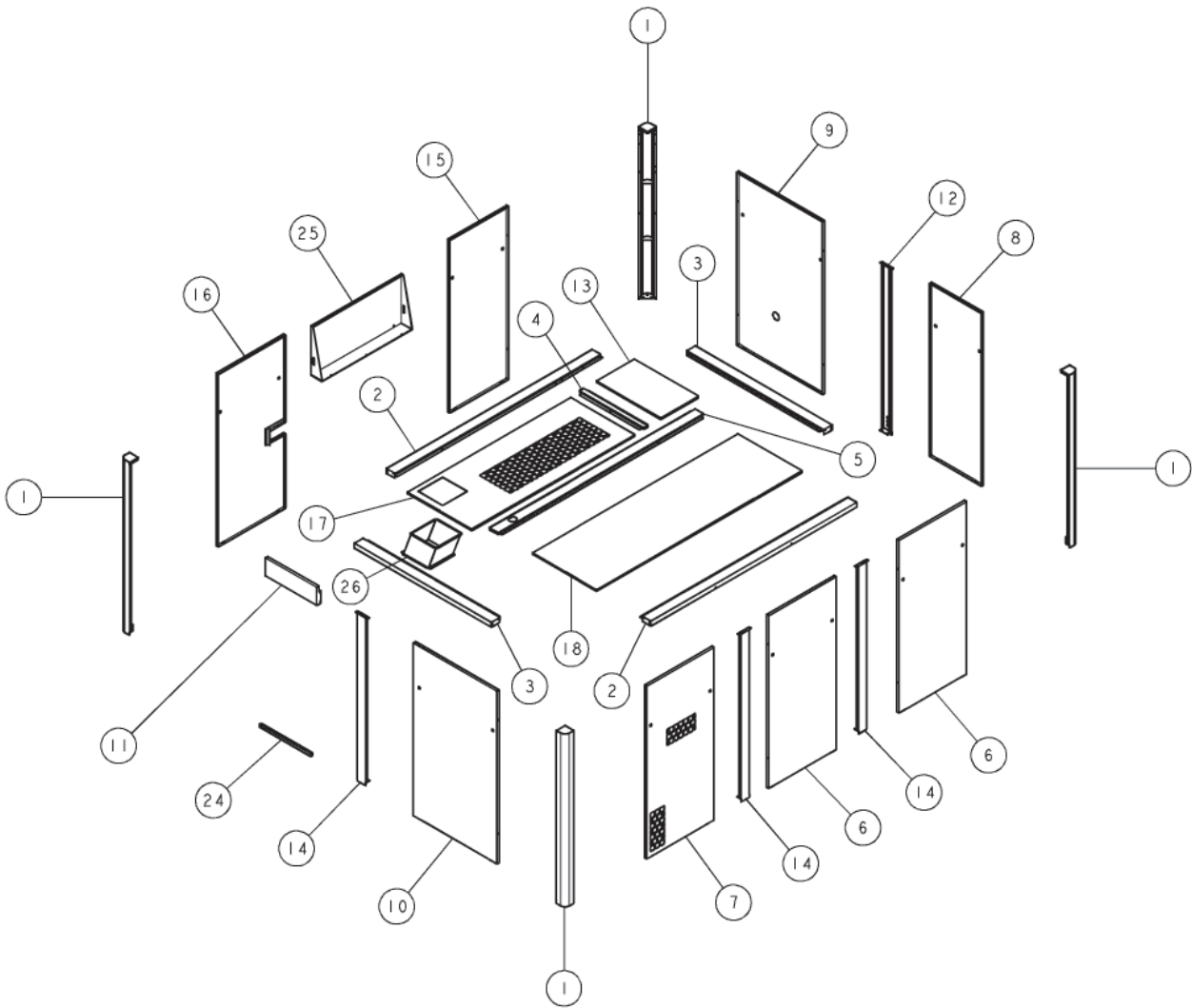
ITEM NO.	QTY.	PART NUMBER	DESCRIPTION
1	1	142615-01	THERMAL VALVE/FLUID FILTER, 190°F
2	2	142136	FLUID FILTER ELEMENT
3	1	147355	FORMED TUBE-1.50 O.D.
4	1	147356	FORMED TUBE-1.50 O.D.
5	1	147039	FLUID FILTER BRACKET
6	4	141631-N12	CAP SCREW-1/2-13 UNC X 1.00, GRADE 5 (@ 23 FT-LBS)
7	1	147434	FORMED TUBE-1.50 O.D.
8	4	140676-024	ELBOW-1.50 TUBE X 1-7/8-12 (O-RING)
9	3	140682-026	CONNECTOR-1.50 TUBE X 1-7/8-12 (O-RING)
10	1	146245-2433	DRYER HOSE
11	1	140676-025	ELBOW-1.50 TUBE X 1-5/8-12 (O-RING)
12	2	140537	FLUID FILTER STUD
13	1	129251-025	PLUG VALVE
14	1	2719	PIPE PLUG-HEX SOCKET, 0.25 NPT

COMPONENT MAINTENANCE PARTS

A	8	140675-008	VITON O-RING/FACE SEAL-1.49 I.D.
B	8	140406-924	VITON O-RING-1.72 I.D.

@ INDICATES TORQUE VALUE IN FOOT POUNDS (LUBRICATED THREADS).

Cabinet (150/200 hp, Air-Cooled)- 147851-001/-002



NOTES-UNLESS OTHERWISE SPECIFIED:
1) HARDWARE ITEMS (SCREWS, WASHERS, SUPPORTS, & LATCHES) ARE NOT SHOWN

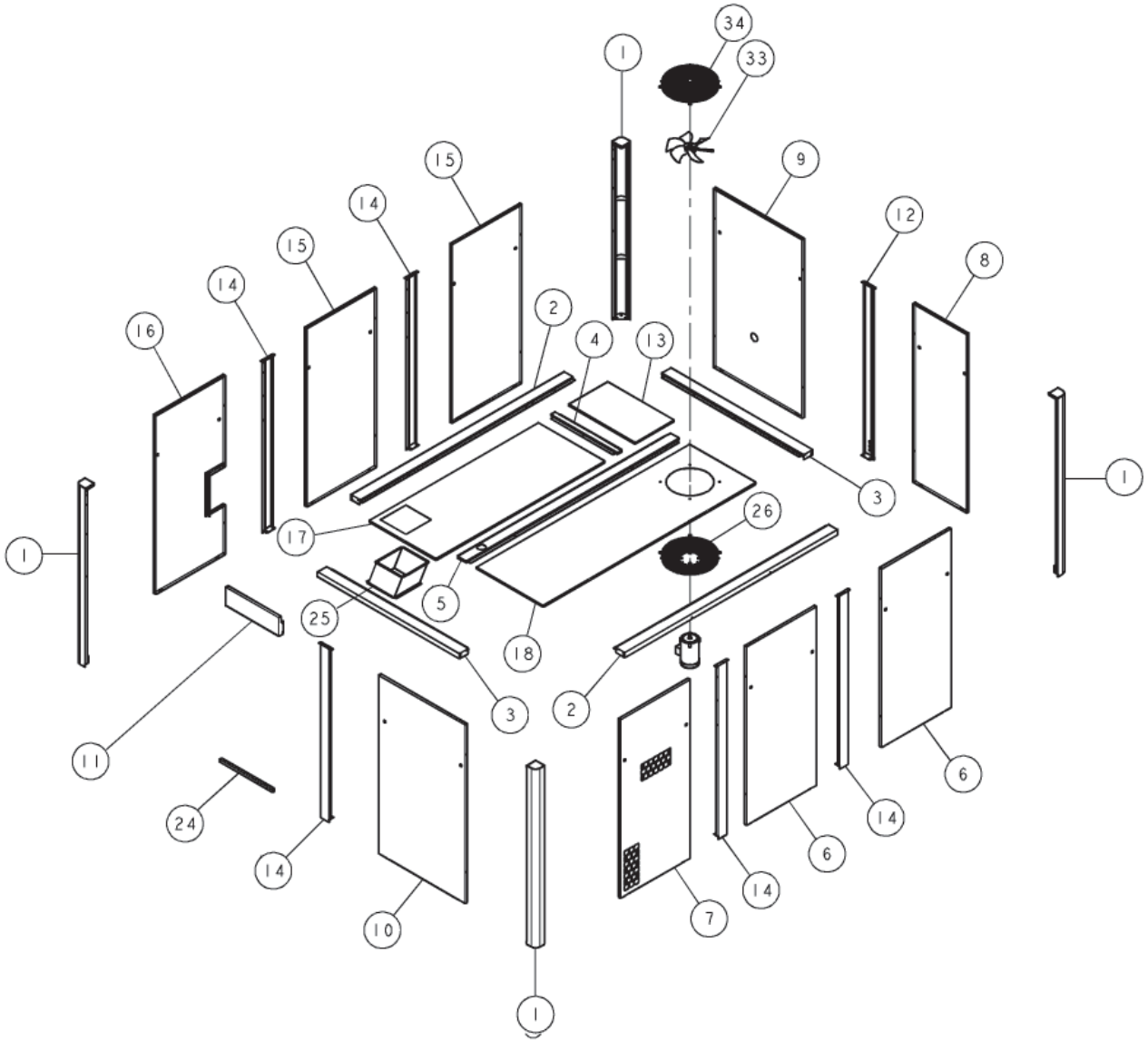
Cabinet (150/200 hp, Air-Cooled)- 147851-001/-002

ITEM NO.	QTY.	PART NUMBER	DESCRIPTION
1	4	146684-07	CORNER POST PANEL
2	2	147031-01	SIDE ROOF RAIL PANEL
3	2	147031-02	END ROOF RAIL PANEL
4	1	147031-18	CROSS ROOF RAIL PANEL
5	1	147031-03	CENTER ROOF RAIL PANEL
6	2	147031-05	REAR DOOR PANEL
7	1	147031-12	VENTED DOOR PANEL
8	1	147031-06	END DOOR PANEL
9	1	147031-11	END DOOR PANEL
10	1	147031-07	END DOOR PANEL
11	1	146684-32	FILLER PANEL
12	1	146684-17	CABINET POST PANEL
13	1	147031-20	REMOVEABLE ROOF PANEL
14*	3/5	146684-01	CABINET POST PANEL
15	1	147031-13	FRONT DOOR PANEL (QGV-150)
	1	147031-04	FRONT DOOR PANEL (QGV-200)
16	1	147031-16	FRONT DOOR PANEL (QGV-150)
	1	147031-10	FRONT DOOR PANEL (QGV-200)
17	1	147031-25	ROOF PANEL (QGV-150)
	1	147031-24	ROOF PANEL (QGV-200)
18	1	147031-09	ROOF PANEL
19	16	128954-3	QUARTER TURN DOOR LATCH
20	16	146682	DOOR SUPPORT
21*	49/44	110511-J07	HEX HEAD SCREW-ZINC, 1/4-20 UNC X 0.50
22	20	14654408020	LOCK SCREW-ZINC, 8 MM X 20 MM
23	32	14654405012	LOCK SCREW-ZINC, 5 MM X 12 MM
24	1	146684-28	DOOR PANEL EXTENSION
25	1	147217	COOLER COVER (QGV-150)
26	1	147849	60° DUCT
27	3.6 FT	141528	RUBBER SEAL

* QUANTITY VARIES DEPENDING ON SIZE. (150 HP/ 200 HP)

@ INDICATES TORQUE VALUE IN FOOT POUNDS (LUBRICATED THREADS).

Cabinet (150/200 hp, Water-Cooled) - 147851-003



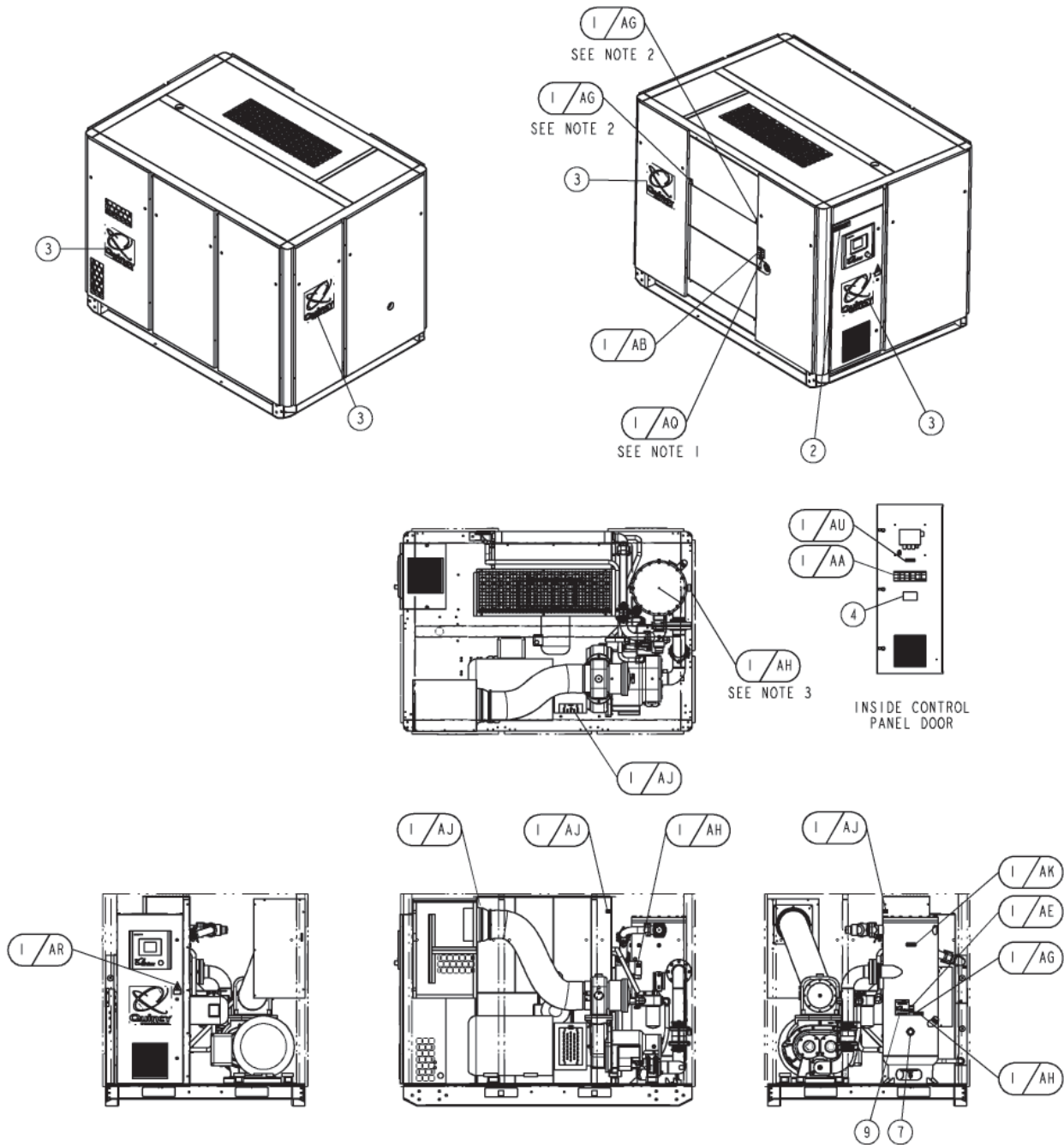
NOTES-UNLESS OTHERWISE SPECIFIED:
1) HARDWARE ITEMS (SCREWS, WASHERS, SUPPORTS, & LATCHES) ARE NOT SHOWN

Cabinet (150/200 hp, Water-Cooled) - 147851-003

ITEM NO.	QTY.	PART NUMBER	DESCRIPTION
1	4	146684-07	CORNER POST PANEL
2	2	147031-01	SIDE ROOF RAIL PANEL
3	2	147031-02	END ROOF RAIL PANEL
4	1	147031-18	CROSS ROOF RAIL PANEL
5	1	147031-03	CENTER ROOF RAIL PANEL
6	2	147031-05	REAR DOOR PANEL
7	1	147031-12	VENTED DOOR PANEL
8	1	147031-06	END DOOR PANEL
9	1	147031-11	END DOOR PANEL
10	1	147031-07	END DOOR PANEL
11	1	146684-32	FILLER PANEL
12	1	146684-17	CABINET POST PANEL
13	1	147031-20	REMOVEABLE ROOF PANEL
14	5	146684-01	CABINET POST PANEL
15	2	147031-05	FRONT DOOR PANEL
16	1	147031-15	FRONT DOOR PANEL
17	1	147031-26	ROOF PANEL
18	1	147031-14	ROOF PANEL
19	18	128954-3	QUARTER TURN DOOR LATCH
20	18	146682	DOOR SUPPORT
21	48	110511-J07	HEX HEAD SCREW-ZINC, 1/4-20 UNC X 0.50
22	24	14654408020	LOCK SCREW-ZINC, 8 MM X 20 MM
23	36	14654405012	LOCK SCREW-ZINC, 5 MM X 12 MM
24	1	146684-28	DOOR PANEL EXTENSION
25	1	147849	60° DUCT
26	1	143061	FAN GUARD
27	4	142578-K14	CAP SCREW-ZINC, 5/16-18 UNC X 1.25, GRADE 5 (@ 13 FT-LBS)
28	8	110428W031	FLAT WASHER-0.31
29	4	112272-K02	SELF-LOCKING HEX NUT-ZINC, 5/16-18 UNC
30	4	142578-L12	CAP SCREW-ZINC, 3/8-16 UNC X 1.00, GRADE 5 (@ 23 FT-LBS)
31	4	110428W038	FLAT WASHER-0.38
32	4	123115-06Z	LOCKWASHER-ZINC, 0.38
33	1	146888-001	FAN-6 BLADE, 15.0 O.D.
34	1	141223	FAN GUARD
35	4	147852-01	RIBBED PLASTIC RIVET
36	3.6 FT	141528	RUBBER SEAL

@ INDICATES TORQUE VALUE IN FOOT POUNDS (LUBRICATED THREADS).

Decals (150/200 hp) - 147846-001



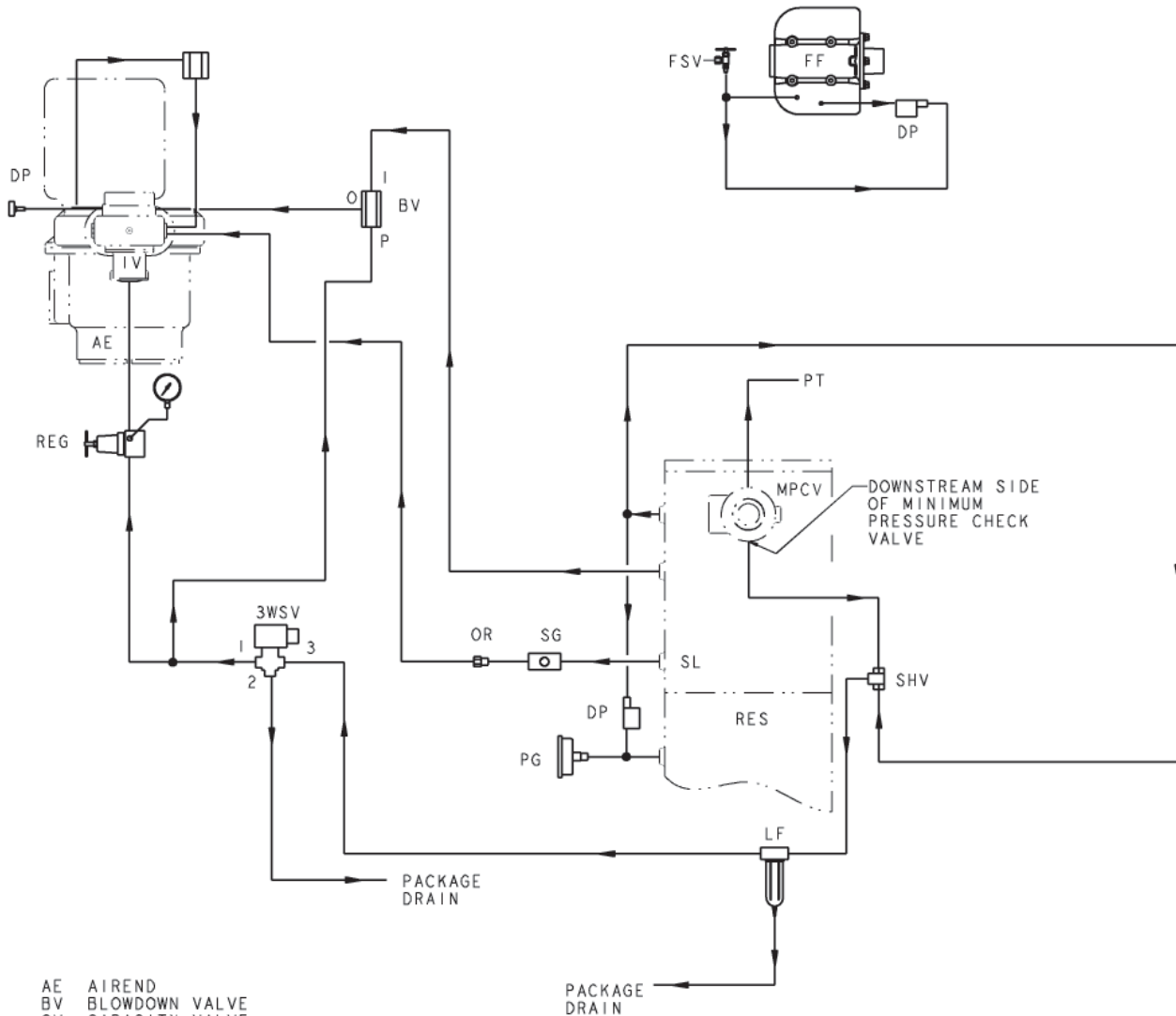
- NOTES: UNLESS OTHERWISE SPECIFIED
- 1) PLACE DECAL AQ ON COVER PLATE IF L/ CANOPY
 - 2) DO NOT PLACE DECAL AG OVER COOLER OPENINGS
 - 3) DECAL AH TO BE PLACED ON BASE NEXT TO RESERVOIR DRAIN
 - 4) ITEM 10 (FLUID TYPE DECAL) SHOWN HERE FOR LOCATION. SEE APPROPRIATE FLUID GROUP FOR PART NUMBER.

Decals (150/200 hp) - 147846-001/-002

ITEM NO.	QTY.	PART NUMBER	DESCRIPTION
1	1	146001	SAFETY DECAL SHEET
2	1	146020-150	DECAL-QGV-150
	1	146020-200	DECAL-QGV-200
3	1	146021-2	DECAL-Q/QUINCY, WHITE (15 INCH)
4	1	128198	GENUINE QUINCY COMPONENTS LABEL
5	1	22177	TAG-FLUID TYPE SHIPPED WITH UNIT
6	1	110690-001	PLASTIC ENVELOPE
7	1	142325	FLUID LEVEL DECAL
8	1	128515-3	FLUID ANALYSIS KIT (CONTAINS 3 INDIVIDUAL SAMPLE KITS)

Control Schematic (150/200 hp)

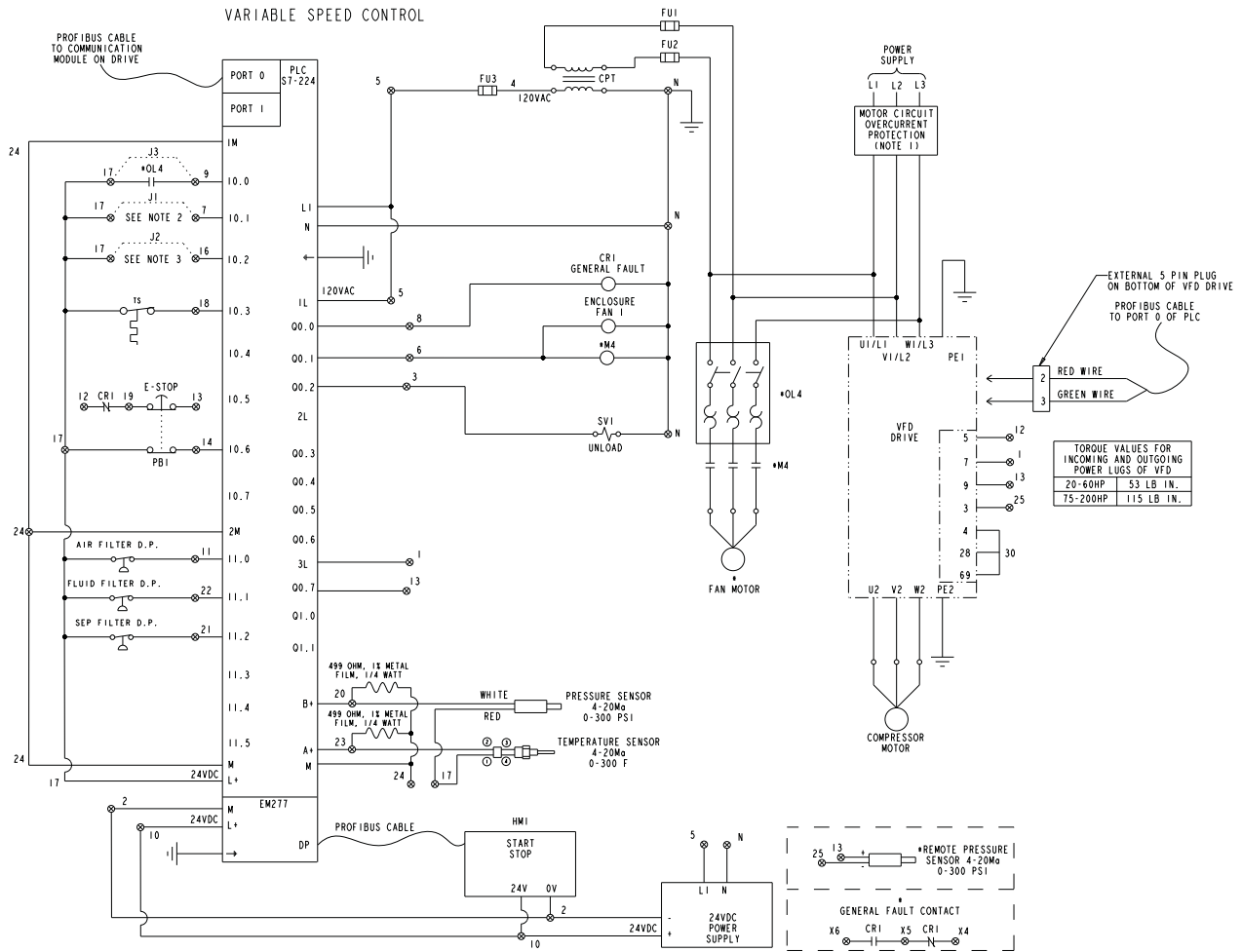
147693-001



- AE AIREND
- BV BLOWDOWN VALVE
- CV CAPACITY VALVE
- DP DIFFERENTIAL PRESSURE SWITCH
- FF FLUID FILTER
- FSV FLUID SAMPLE VALVE
- IV INLET VALVE
- LF LINE FILTER
- MPCV MINIMUM PRESSURE CHECK VALVE
- OR ORIFICE
- PG PRESSURE GAUGE
- PT PRESSURE TRANSDUCER
- REG INLET VALVE REGULATOR
- RG REGULATOR PRESSURE GAUGE
- RES RESERVOIR
- SG SIGHTGLASS
- SHV SHUTTLE VALVE
- SL SCAVENGE LINE
- 3WSV 3-WAY SOLENOID VALVE

THIS PAGE INTENTIONALLY LEFT BLANK

Electrical Control Diagram (150 hp) - 2012200019

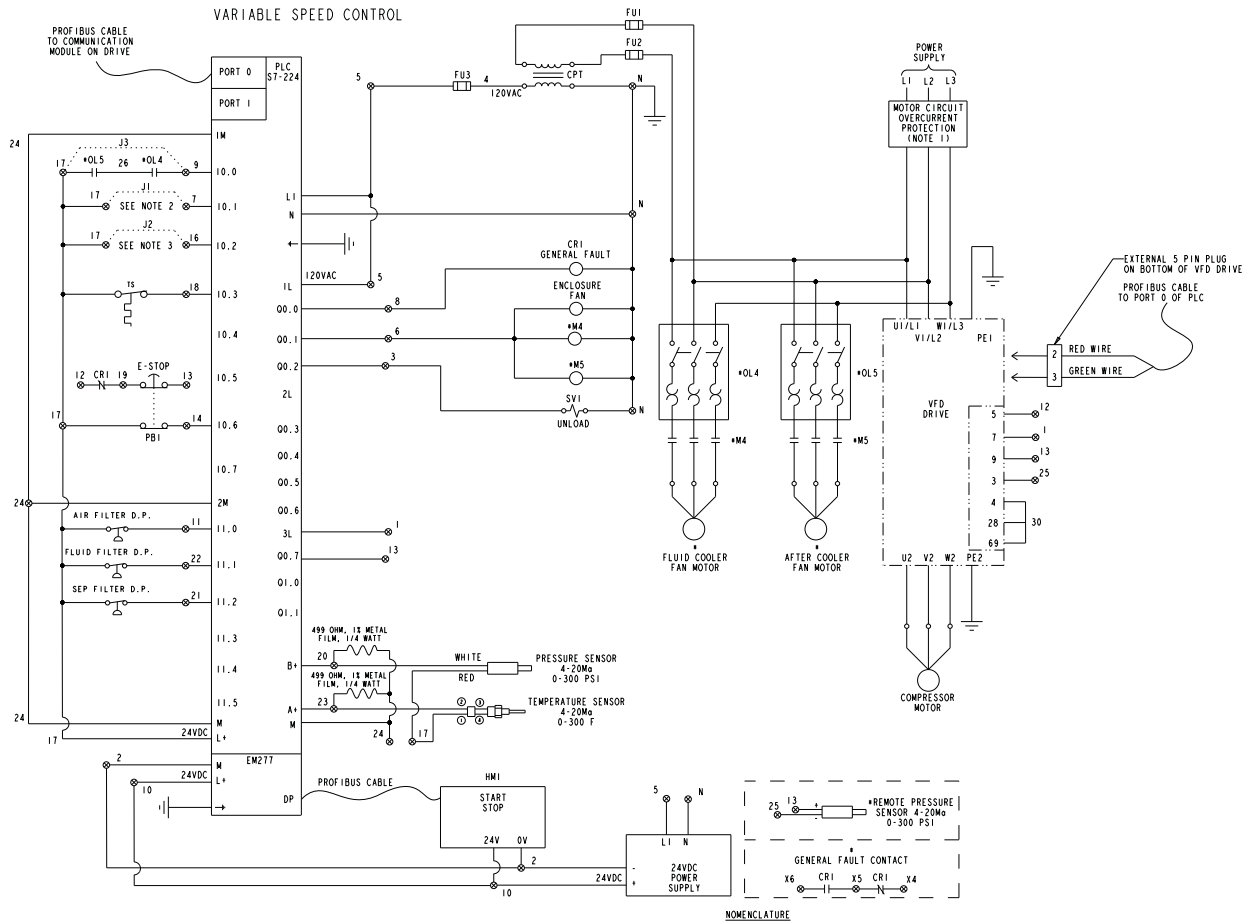


- NOTES-UNLESS OTHERWISE SPECIFIED:**
- 1) AT INSTALLATION, CUSTOMER IS TO PROVIDE DISCONNECT AND WITH J TYPE FUSES IN ACCORDANCE WITH THE NATIONAL ELECTRICAL CODE AND/OR ANY LOCAL CODES HAVING PRECEDENCE.
 - 2) TO ENABLE REMOTE START REMOVE J1 - UNIT MUST BE LOCALLY STARTED BEFORE REMOTE INPUT WILL WORK. WHEN CONTACT BETWEEN 17 AND 7 IS CLOSED THE UNIT WILL START.
 - 3) TO ENABLE REMOTE UNLOAD REMOVE J2. WHEN CONTACT BETWEEN 17 AND 16 IS CLOSED THE UNIT WILL LOAD.

TORQUE VALUES FOR INCOMING AND OUTGOING POWER LUGS OF VFD

20-60HP	53 LB IN.
75-200HP	115 LB IN.

Electrical Control Diagram (200 hp) - 2012200020



NOTES-UNLESS OTHERWISE SPECIFIED:
 1) AT INSTALLATION, CUSTOMER IS TO PROVIDE DISCONNECT AND WITH J TYPE FUSES IN ACCORDANCE WITH THE NATIONAL ELECTRICAL CODE AND/OR ANY LOCAL CODES HAVING PRECEDENCE.
 2) TO ENABLE REMOTE START REMOVE J1. UNIT MUST BE LOCALLY STARTED BEFORE REMOTE INPUT WILL WORK. WHEN CONTACT BETWEEN 17 AND 7 IS CLOSED THE UNIT WILL START.
 3) TO ENABLE REMOTE UNLOAD REMOVE J2. WHEN CONTACT BETWEEN 17 AND 16 IS CLOSED THE UNIT WILL LOAD.

TORQUE VALUES FOR INCOMING AND OUTGOING POWER LOSS OF VFD	
20-60HP	53 LB IN.
75-200HP	115 LB IN.

- NOMENCLATURE**
- FU FUSE
 - PB PUSH BUTTON
 - SS SELECTOR SWITCH
 - CR CONTROL RELAY
 - CPT CONTROL POWER TRANSFORMER
 - TS TEMPERATURE SENSOR
 - HAT HIGH AIR TEMPERATURE
 - PLC PROGRAMMABLE LOGIC CONTROLLER
 - CT CURRENT TRANSFORMER
 - OL OVERLOAD RELAY
 - M CONTACTOR
 - SV SOLENOID VALVE
 - PS PRESSURE SENSOR
 - ⊙ SCREW TERMINAL
 - ⊘ NUMBER DESIGNATOR ON DEVICE
 - * OPTIONAL
 - TS TEMPERATURE SWITCH
 - HMI HUMAN MACHINE INTERFACE

Standard Terms and Conditions

Quincy Compressor and Ortman Fluid Power Divisions

TITLE & LIEN RIGHTS: The equipment shall remain personal property, regardless of how affixed to any realty or structure. Until the price (including any notes given therefore) of the equipment has been fully paid in cash, Seller shall, in the event of Buyer's default, have the right to repossess such equipment.

PATENT INFRINGEMENT: If properly notified and given an opportunity to do so with friendly assistance, Seller will defend Buyer and the ultimate user of the equipment from any actual or alleged infringement of any published United States patent by the equipment or any part thereof furnished pursuant hereto (other than parts of special design, construction, or manufacture specified by and originating with Buyer), and will pay all damages and costs awarded by competent court in any suit thus defended or of which it may have had notice and opportunity to defend as aforesaid.

STANDARD WARRANTY: Seller warrants that products of its own manufacture will be free from defects in workmanship and materials under normal use and service for the period specified in the product instruction manual. Warranty for service parts will be ninety (90) days from date of factory shipment. Electric Motors, gasoline and diesel engines, electrical apparatus and all other accessories, components and parts not manufactured by Seller are warranted only to the extent of the original manufacturer's warranty.

Notice of the alleged defect must be given to the Seller, in writing with all identifying details including serial number, type of equipment and date of purchase within thirty (30) days of the discovery of the same during the warranty period.

Seller's sole obligation on this warranty shall be, at its option, to repair or replace or refund the purchase price of any product or part thereof which proves to be defective. If requested by Seller, such product or part thereof must be promptly returned to seller, freight prepaid, for inspection.

Seller warrants repaired or replaced parts of its own manufacture against defects in materials and workmanship under normal use and service for ninety (90) days or for the remainder of the warranty on the product being repaired.

This warranty shall not apply and Seller shall not be responsible or liable for:

- (a) Consequential, collateral or special losses or damages;
- (b) Equipment conditions caused by fair wear and tear, abnormal conditions of use, accident, neglect or misuse of equipment, improper storage or damage resulting during shipping;
- (c) Deviation from operating instructions, specifications or other special terms of sale;
- (d) Labor charges, loss or damage resulting from improper operation, maintenance or repairs made by person(s) other than Seller or Seller's authorized service station.

In no event shall Seller be liable for any claims whether arising from breach of contract or warranty or claims of negligence or negligent manufacture in excess of the purchase price.

THIS WARRANTY IS THE SOLE WARRANTY OF SELLERS AND ANY OTHER WARRANTIES, WHETHER EXPRESS OR IMPLIED IN LAW OR IMPLIED IN FACT, INCLUDING ANY WARRANTIES OF MERCHANTABILITY AND FITNESS FOR PARTICULAR USE ARE HEREBY SPECIFICALLY EXCLUDED.

LIABILITY LIMITATIONS: Under no circumstances shall the Seller have any liability for liquidated damages or for collateral, consequential or special damages or for loss of profits, or for actual losses or for loss of production or progress of construction, whether resulting from delays in delivery or performance, breach of warranty, negligent manufacture or otherwise.

ENVIRONMENTAL AND OSHA REQUIREMENTS: At the time of shipment of the equipment from the factory, Quincy Compressor / Ortman Fluid Power will comply with the various Federal, State and local laws and regulations concerning occupational health and safety and pollution. However, in the installation and operation of the equipment and other matters over which the seller has no control, the Seller assumes no responsibility for compliance with those laws and regulations, whether by the way of indemnity, warranty or otherwise.

Standard Terms and Conditions

Quincy Compressor and Ortman Fluid Power Divisions

LEGAL EFFECT: Except as expressly otherwise agreed to in writing by an authorized representative of Seller, the following terms and conditions shall apply to and form a part of this order and any additional and/or different terms of Buyer's purchase order or other form of acceptance are rejected in advance and shall not become a part of this order.

The rights of Buyer hereunder shall be neither assignable nor transferable except with the written consent of Seller.

This order may not be canceled or altered except with the written consent of Seller and upon terms which will indemnify Seller against all loss occasioned thereby. All additional costs incurred by Seller due to changes in design or specifications, modification of this order or revision of product must be paid for by Buyer.

In addition to the rights and remedies conferred upon Seller by this order, Seller shall have all rights and remedies conferred at law and in equity and shall not be required to proceed with the performance of this order if Buyer is in default in the performance of such order or of any other contract or order with seller.

TERMS OF PAYMENT: Unless otherwise specified in the order acknowledgment, the terms of payment shall be net cash within thirty (30) days after shipment. These terms shall apply to partial as well as complete shipments. If any proceeding be initiated by or against Buyer under any bankruptcy or insolvency law, or in the judgment of Seller the financial condition of Buyer, at the time the equipment is ready for shipment, does not justify the terms of payment specified, Seller reserves the right to require full payment in cash prior to making shipment. If such payment is not received within fifteen (15) days after notification of readiness for shipment, Seller may cancel the order as to any unshipped item and require payment of its reasonable cancellation charges.

If Buyer delays shipment, payments based on date of shipment shall become due as of the date when ready for shipment. If Buyer delays completion of manufacture, Seller may elect to require payment according to percentage of completion. Equipment held for Buyer shall be at Buyer's risk and storage charges may be applied at the discretion of Seller.

Accounts past due shall bear interest at the highest rate lawful to contract for but if there is no limit set by law, such interest shall be eighteen percent (18%). Buyer shall pay all cost and expenses, including reasonable attorney's fees, incurred in collecting the same, and no claim, except claims within Seller's warranty of material or workmanship, as stated below, will be recognized unless delivered in writing to Seller within thirty (30) days after date of shipment.

TAXES: All prices exclude present and future sales, use, occupation, license, excise, and other taxes in respect of manufacture, sales or delivery, all of which shall be paid by Buyer unless included in the purchase price at the proper rate or a proper exemption certificate is furnished.

ACCEPTANCE: All offers to purchase, quotations and contracts of sales are subject to final acceptance by an authorized representative at Seller's plant.

DELIVERY: Except as otherwise specified in this quotation, delivery will be F. O. B. point of shipment. In the absence of exact shipping instruction, Seller will use its discretion regarding best means of insured shipment. No liability will be accepted by Seller for so doing. All transportation charges are at Buyer's expense. Time of delivery is an estimate only and is based upon the receipt of all information and necessary approvals. The shipping schedule shall not be construed to limit seller in making commitments for materials or in fabricating articles under this order in accordance with Seller's normal and reasonable production schedules.

Seller shall in no event be liable for delays caused by fires, acts of God, strikes, labor difficulties, acts of governmental or military authorities, delays in transportation or procuring materials, or causes of any kind beyond Seller's control. No provision for liquidated damages for any cause shall apply under this order. Buyer shall accept delivery within thirty (30) days after receipt of notification of readiness for shipment. Claims for shortages will be deemed to have been waived if not made in writing within ten (10) days after the receipt of the material in respect of which any such shortage is claimed. Seller is not responsible for loss or damage in transit after having received "In Good Order" receipt from the carrier. All claims for loss or damage in transit should be made to the carrier.



Quincy Compressor Products: 217.222.7700
E-mail: info@quincycompressor.com
Website: quincycompressor.com



© 2010 Quincy Compressor
All Rights Reserved. Litho in U.S.A.