



QGB-40/50/60

Belt Drive Air Compressor



Parts Manual

This manual contains important safety information and should be made available to all personnel who operate and/or maintain this product. Carefully read this manual before attempting to operate or perform maintenance on this equipment.

Manual No. 65088-1B

June 2009 Edition

Alphabetical Index

Airend	4-5
Airend/Motor Mounting	6-7
Air Filter	10
Air Piping (less dryer) (<i>Updated 05/06</i>)	28-29
Air Piping (with dryer & filter)	32-33
Air Piping (with dryer)	30-31
Belt Drive	8-9
Cabinet (<i>Updated 04/09</i>)	36-37
Control Piping (PLC control)	20-21
Control Piping (standard control)	18-19
Control Schematic (PLC control).....	41
Control Schematic (standard control).....	40
Cooler (<i>Updated 06/09</i>)	26-27
Decals	38-39
Discharge Piping	25
Electrical Control & Starting	12-17
Electrical Control Diagrams	42-47
Fluid Piping	34-35
Fluid Specifications.....	2
Inlet Valve	11
Integrated Dryer (optional) (<i>Updated 10/07</i>)	22-23
Ordering Replacement Parts.....	1
Recommended Spare Parts.....	3
Reservoir (<i>Updated 05/09</i>)	24
Serial Number Identification.....	1
Shaft Seal Kit	4

Serial Number Identification

The serial number tag is located on the top flange of the unit frame just left of the control panel and in the upper right corner of the electrical control panel.

Bay Minette, Alabama
quincycompressor.com
217.222.7700

S/N P/N

MODEL DATE

Ordering Replacement Parts

Prompt service can be rendered on replacement part orders if the following information is given:

1. The serial number must be given when ordering replacement parts. Part numbers should be verified per the bill of materials associated with the serial number to ensure that correct replacement parts are ordered.
2. State the exact part number needed. Do not order by index numbers, as index numbers are repeated throughout this manual and if used for ordering parts will necessitate time consuming correspondence.
3. State the exact quantity needed.
4. State the preferred type of transportation.

All replacement parts are to be ordered through an authorized distributor. Insist on Genuine Quincy Parts only! Failure to do so may void your warranty.

Fluid Specifications

Quincy Compressor® recommends that all Quincy Rotary Screw Products be filled with one of the following QuinSyn® Brand synthetic fluids:

★QuinSyn Plus™★

★QuinSyn XP®★

★QuinSyn PG™★

★QuinSyn F® (food grade)★

Synthetic fluids other than QuinSyn brand(s) may not be compatible with components used in Quincy Compressor products. If it is deemed necessary to convert a Quincy compressor or vacuum pump to a synthetic other than QuinSyn brand, please contact an authorized Quincy Compressor distributor. To locate your nearest distributor, contact Sales & Marketing in Quincy, Illinois:

Phone 217-222-7700, FAX 217-222-4138 or visit our website:

<http://www.quincycompressor.com>.

The following information will be required by the distributor when changing compressor fluid:

MODEL (CIRCLE CONFIGURATION):	HORSEPOWER			COOLING		PSI		
	QGB	40	50	60	A/C	100	125	150
SERIAL NO. _____ FLUID ORIGINALLY USED: _____								
FLUID NOW USED (IF CHANGED): _____ NEW FLUID TO BE USED: _____								

Additional information regarding fluid specifications can be found in the Instruction Manual shipped with your unit.

- **Fluid Analysis Kit**

Quincy Compressor offers free fluid analysis to provide early detection of excessive parts wear, fluid breakdown, or a contaminated fluid system. Order the Fluid Analysis Kit (part no. 128515) from your local authorized Quincy Compressor distributor.

- **Fluid Requirements**

Air-cooled - 8.5 gallons

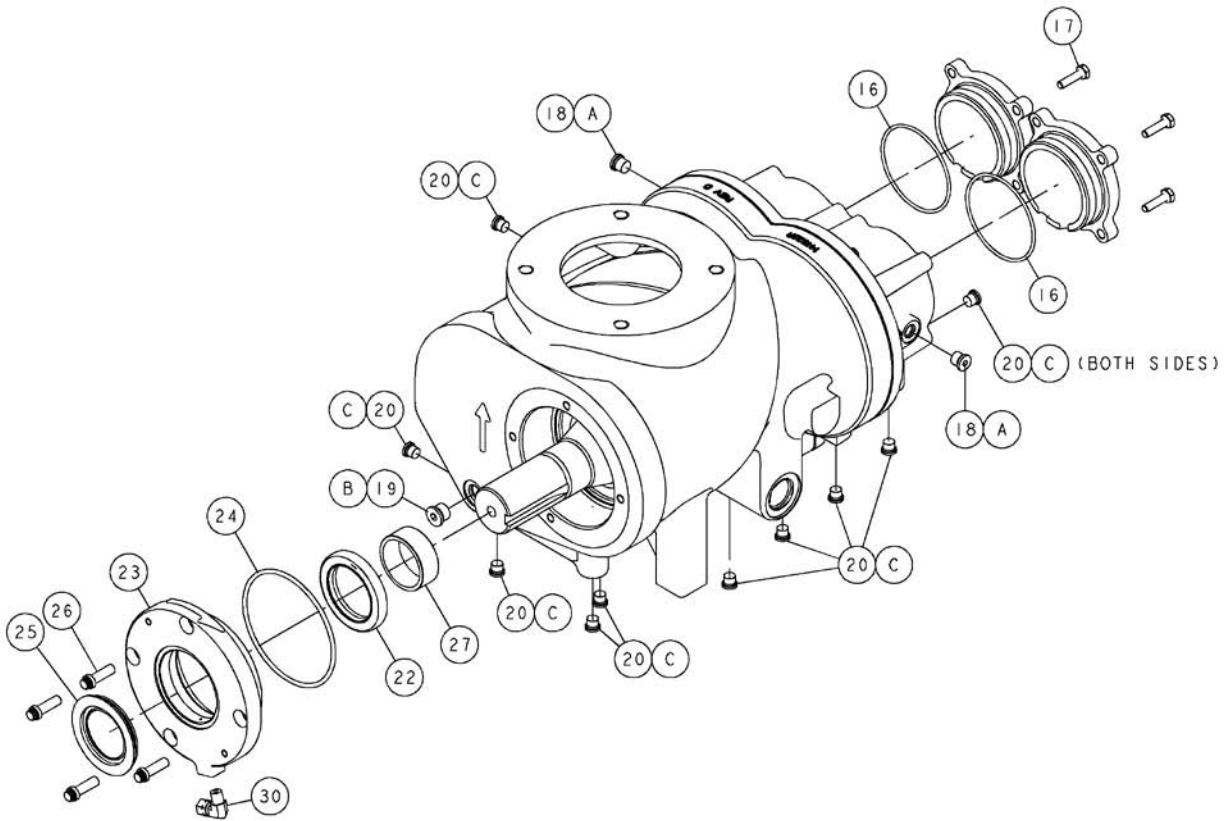
Recommended Spare Parts

QTY.	PART NUMBER	DESCRIPTION
1	144046-005	QUINSYN PLUS FLUID (5 GALLON CONTAINER)
1	143808-005	QUINSYN PG FLUID (5 GALLON CONTAINER)
1	142784-005	QUINSYN XP FLUID (5 GALLON CONTAINER)
1	110756-005	QUINSYN F FLUID (5 GALLON CONTAINER)
1	128515-3	FLUID ANALYSIS KIT (CONTAINS 3 INDIVIDUAL SAMPLE KITS)
1	140209	SHAFT SEAL KIT
1	146397-08	AIR FILTER ELEMENT
1	144606-01	AIR/FLUID SEPARATOR
1	128691-051	MINIMUM PRESSURE CHECK VALVE KIT
1	124973-060	THERMAL VALVE KIT (INCLUDES ELEMENT, GASKET & SEAL)
1	142136	FLUID FILTER ELEMENT

<div style="display: flex; justify-content: space-between; align-items: center;">  <div style="text-align: center;"> <h3 style="margin: 0;">WARNING</h3> </div>  </div> <p style="margin-top: 10px;">GUARDS MUST BE FASTENED IN PLACE BEFORE STARTING THE MACHINE AND NEVER REMOVED BEFORE DISCONNECTING AND LOCKING OUT THE MAIN POWER SUPPLY.</p>	<div style="display: flex; justify-content: space-between; align-items: center;">  <div style="text-align: center;"> <h3 style="margin: 0;">DANGER</h3> </div>  </div> <p style="margin-top: 10px;">AIR IN THE PIPING FROM THIS EQUIPMENT WILL CAUSE SEVERE INJURY OR DEATH IF USED FOR BREATHING AIR OR FOOD PROCESSING (IF NON-FOOD GRADE FLUID IS USED). AIR USED FOR THESE PROCESSES MUST MEET OSHA 29CFR1910.134 OR FDA 21CFR178.3570 STANDARDS.</p>
---	--

Airend - 145979-001

145979-TEC

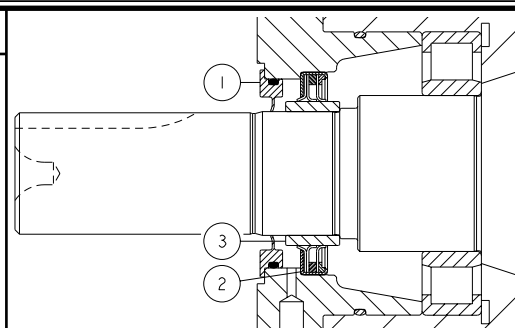


NOTES - UNLESS OTHERWISE SPECIFIED:
 1) ONLY REPLACEABLE ITEMS ARE SHOWN.
 INTERNAL AIREND COMPONENTS ARE NOT SHOWN

Shaft Seal Kit - 140209

ITEM No.	QTY.	PART NUMBER	DESCRIPTION
1	1	129613	SLINGER
2	1	129612	SHAFT SEAL
3	1	129610	WEAR RING SEAL

REFERENCE INSTRUCTION MANUAL TO INSTALL COMPRESSOR SHAFT SEAL. TOOL KIT 140284 FOR 127 MM SHAFT SEAL AND WEAR RING INSTALLATION CAN BE PURCHASED FROM QUINCY COMPRESSOR.



ITEM NO.	QTY.	PART NUMBER	DESCRIPTION
1*	1		ROTOR HOUSING
2	2	124145-004	DOWEL PIN
3*	1		ROTOR BEARING
4	1	129964-003	BEARING RETAINER RING
5*	1		ROTOR BEARING
6	2	125688	BEARING RETAINER
7*	1		MALE ROTOR-127 MM
8*	1		FEMALE ROTOR-127 MM
9	1	125577-001	DISCHARGE PLATE GASKET
10	1	146242	DISCHARGE END PLATE
11	9	90386-L14	COUNTERBORE SCREW-3/8-16 UNC X 1.25, GRADE 8 (@ 45 FT-LBS, BACK OFF TO 25 FT-LBS)
12*	4		ROTOR BEARING-DISCHARGE END
13	2	125572	BEARING RETAINER
14	6	90386-K12	COUNTERBORE SCREW-5/16-18 UNC X 1.00, GRADE 8 (@ 13 FT-LBS)
15	2	125567	DISCHARGE END CAP
16	2	22749-151	VITON O-RING, 3.00 I.D.
17	8	123478-J12	CAP SCREW-1/4-20 UNC X 1.00, GRADE 5 (@ 6 FT-LBS)
18	2	128883-044	PIPE PLUG-7/16-20 (O-RING)
19	1	128883-056	PIPE PLUG-9/16-18 (O-RING)
20	11	128883-038	PIPE PLUG-3/8-24 (O-RING)
21	1	143019	AIR SEAL
22	1	129612	SHAFT SEAL
23	1	142658	SEAL ADAPTER
24	1	22749-242	VITON O-RING, 4.00 I.D.
25	1	129613	SLINGER
26	4	90386-K12	COUNTERBORE SCREW-5/16-18 UNC X 1.00, GRADE 8 (@ 13 FT-LBS)
27	1	129610	WEAR RING SEAL
28	**	125576	DISCHARGE CAP SHIM-TEMPERED STEEL
29	**	125575	ROTOR SHIM-TEMPERED STEEL
30	1	124349-004	90° MALE ELBOW-0.25 TUBE X 0.125 NPT

COMPONENT MAINTENANCE PARTS

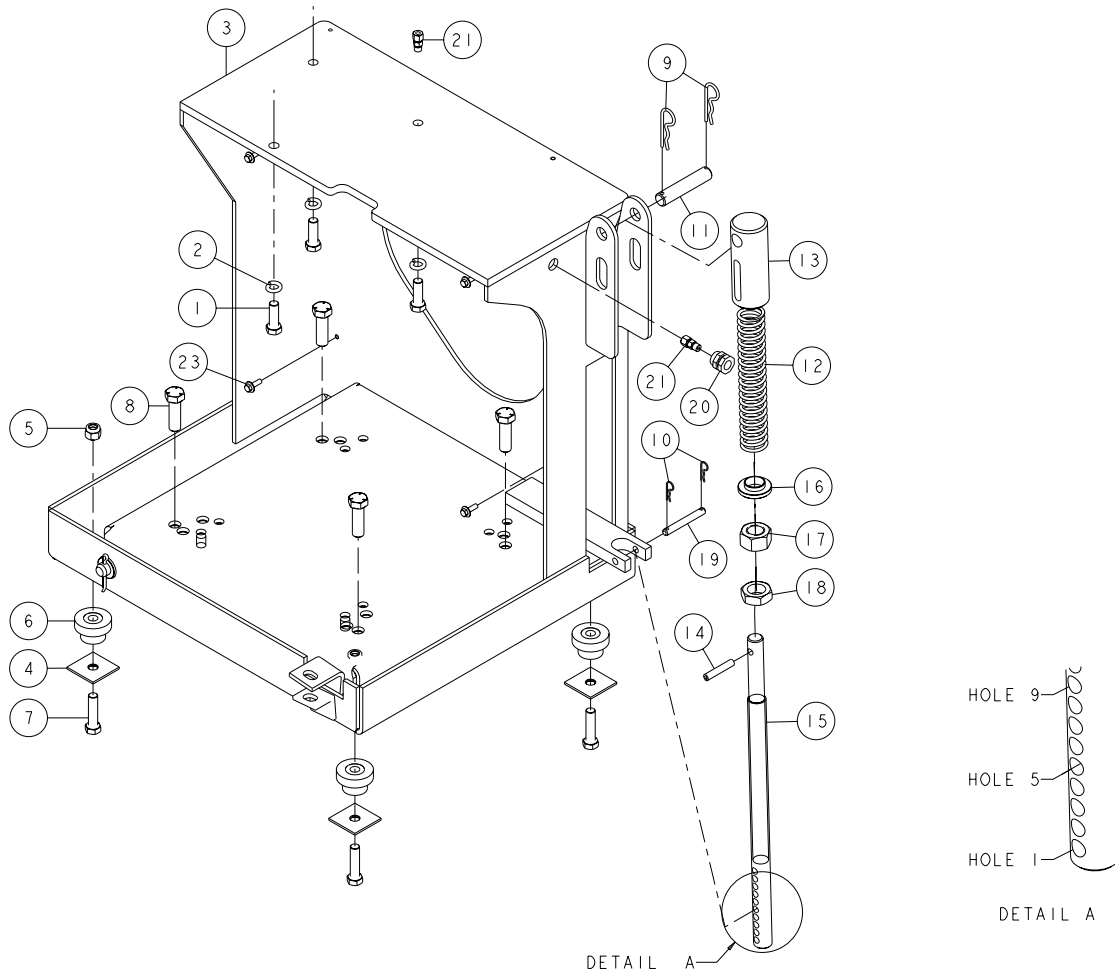
A	2	140406-904	VITON O-RING, 0.35 I.D.
B	1	140406-906	VITON O-RING, 0.47 I.D.
C	11	140406-903	VITON O-RING, 0.30 I.D.

* ITEMS NOT SOLD SEPARATELY, MUST BE ORDERED AS A COMPLETE AIREND.

** QUANTITY AS REQUIRED.

@ INDICATES TORQUE VALUE IN FOOT POUNDS (LUBRICATED THREADS).

Airend/Motor Mounting - 146387-001/-002



- NOTES-UNLESS OTHERWISE SPECIFIED:
 1) ITEM 22 (NYLON TUBING) IS NOT SHOWN. (FOR MOTOR GREASE LINE)
 2) ITEM 21 REPLACES GREASE FITTING FOR MOTOR FRONT BEARING.
 3) ATTACH GREASE FITTING TO ITEM 20.

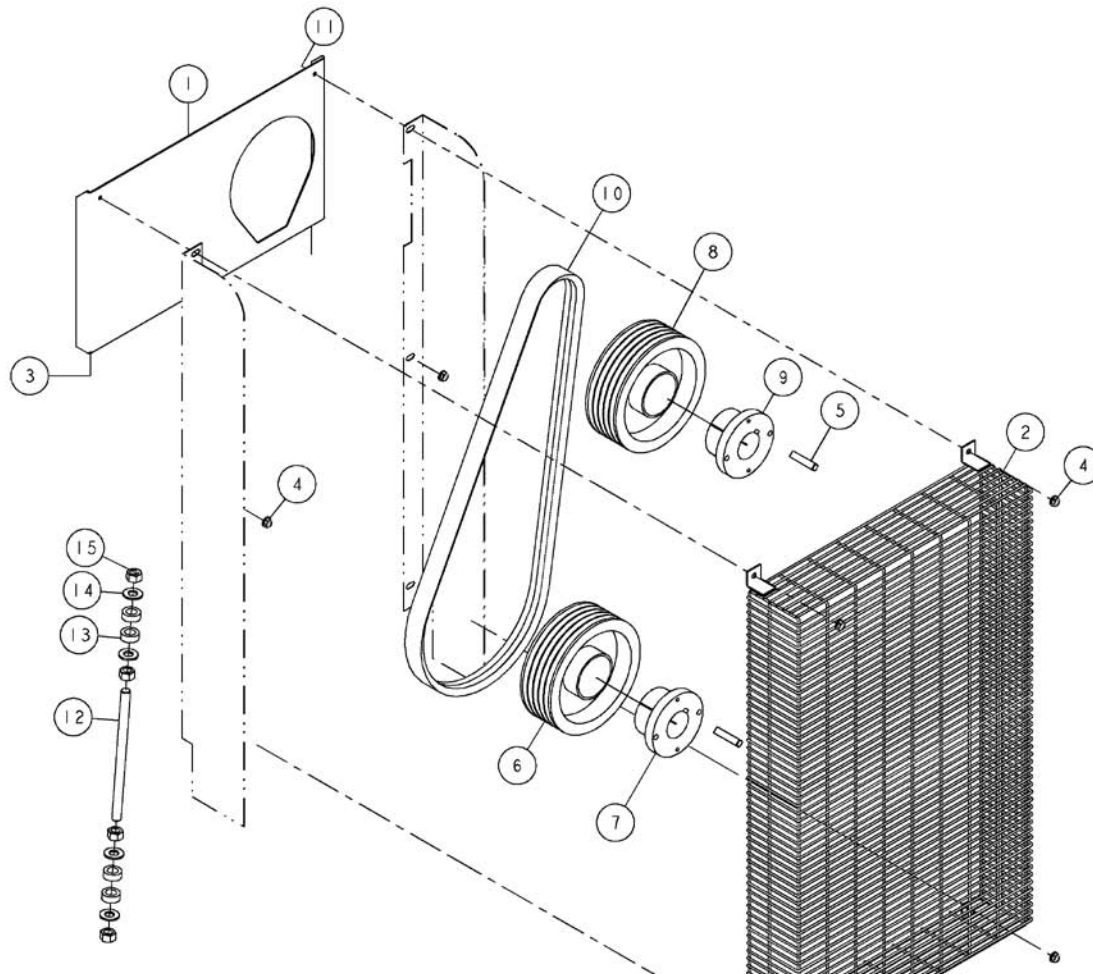
ITEM 15 HOLE SELECTION FOR ITEM 19 (PIN) - (DETAIL A)				
HOLE NO. SEE DET A	TEFC DRIVE HP-PRESSURE-HZ		ODP DRIVE HP-PRESSURE-HZ	
	60 HZ	50 HZ	60 HZ	50 HZ
1				
2	40-125-60		40-150-60	
3			60-150-60	
4		40-100-50 40-125-50 60-100-50		60-125-50
5	40-100-60 50-150-60 60-150-60		50-150-60 60-100-60	40-150-50 60-150-50
6	40-150-60	50-125-50 60-125-50	40-125-60 60-125-60	50-125-50
7	50-100-60 60-100-60	50-100-50 60-150-50	50-100-60	50-100-50
8	60-125-60	50-150-50		40-100-50 40-125-50 50-150-50 60-100-50
9	50-125-60	40-150-50	40-100-60 50-125-60	

Airend/Motor Mounting - 146387-001/-002

ITEM NO.	QTY.	PART NUMBER	DESCRIPTION
1	1	145909	MOTOR BASE ASSEMBLY
2	4	142201-02	MOTOR MOUNT
3	4	123478-N17	CAP SCREW-1/2-13 UNC X 2.00, GRADE 5 (@ 55 FT-LBS)
4	4	122680-17	FLAT WASHER-0.50
5	4	124370-N02	LOCKNUT, 1/2-13 UNC
6	3	123478-N15	CAP SCREW-1/2-13 UNC X 1.50, GRADE 5 (@ 55 FT-LBS)
7	3	123115-08Z	LOCKWASHER-ZINC, 0.50
8	4	123478-Q17	CAP SCREW-5/8-11 UNC X 2.00, GRADE 5 (@ 110 FT-LBS)
			(40 HP, TEFC & ALL 50/60 HP)
	4	123478-N17	CAP SCREW-1/2-13 UNC X 2.00, GRADE 5 (@ 55 FT-LBS)
			(40 HP, ODP)
9	2	145146-02	HAIR PIN-STEEL, 0.15 X 2.69
10	2	145146-01	HAIR PIN-STEEL, 0.06 X 1.31
11	1	142624-3	CLEVIS PIN
12	1	146140-01	COMPRESSION SPRING
13	1	142621-2	TENSIONER ADAPTER
14	1	145145-003	SPRING PIN-STEEL, 0.38 X 2.00
15	1	142623-2	TENSION ADJUSTMENT ROD-1.00 X 19.00
16	1	142622-1	SPRING WASHER
17	1	145143-T02	HEX NUT-ZINC, 1-8 UNC
18	1	124368-T02	JAM NUT-1-8 UNC
19	1	142624-5	CLEVIS PIN-STEEL
20	1	129203-004	BULKHEAD COUPLING
21	2	124393-004	MALE CONNECTOR-0.25 TUBE X 0.125 NPT
22	3.0 FT	124435-003	NYLON TUBING-0.25 O.D.
23	4	122151	HEX HEAD SCREW-1/4-20 UNC X 0.63, GRADE 5 (@ 6 FT-LBS)

@ INDICATES TORQUE VALUE IN FOOT POUNDS (LUBRICATED THREADS).

Belt Drive - 146388-001 thru -048



ITEM No.	QTY.	PART NUMBER	DESCRIPTION
1	1	145932-2	BELT GUARD BRACKET
2	1	145939-1	BELT GUARD
3	2	142578-J07	CAP SCREW-ZINC, 1/4-20 UNC X 0.50, GRADE 5 (@ 6 FT-LBS)
4	6	112272-J02	SELF-LOCKING HEX NUT-ZINC, 1/4-20 UNC
5	1	20109	SHAFT KEY
6	1	(PAGE 9)	MOTOR SHEAVE
7	1	(PAGE 9)	MOTOR SHEAVE BUSHING
8	1	(PAGE 9)	COMPRESSOR SHEAVE
9	1	(PAGE 9)	COMPRESSOR SHEAVE BUSHING
10	1	(PAGE 9)	BELT(S)-POWERBAND
11	2	110511-J07	HEX HEAD SCREW-ZINC, 1/4-20 UNC X 0.50
12	1	(PAGE 9)	TRANSIT LOCKING SHAFT
13	4	146480-01	WASHER
14	4	110428N050	FLAT WASHER-0.50
15	4	142667-N02	HEX NUT-ZINC, 1/2-13 UNC

@ INDICATES TORQUE VALUE IN FOOT POUNDS (LUBRICATED THREADS).

Belt Drive - 146388-001 thru -048

ITEM 6		MOTOR SHEAVE					
HP	QTY.	100#	60 Hz 125#	150#	100#	50 Hz 125#	150#
40	1	121176	121174	146432-004	146434-005	121176	146434-005
50	1	146434-002	146434-002	146434-004	146434-004	146434-002	140266-008
60	1	146434-012	146434-011	146434-010	144471-014	144471-014	146434-012

ITEM 7		MOTOR SHEAVE BUSHING					
HP	QTY.	100#	60 Hz 125#	150#	100#	50 Hz 125#	150#
40 (ODP)	1	122474	122474	22223	122474	122474	122474
40 (TEFC)	1	121178	121178	144522-002	121178	121178	121178
50	1	121178	121178	121178	121178	121178	9951
60	1	121178	121178	121178	9482	9482	121178

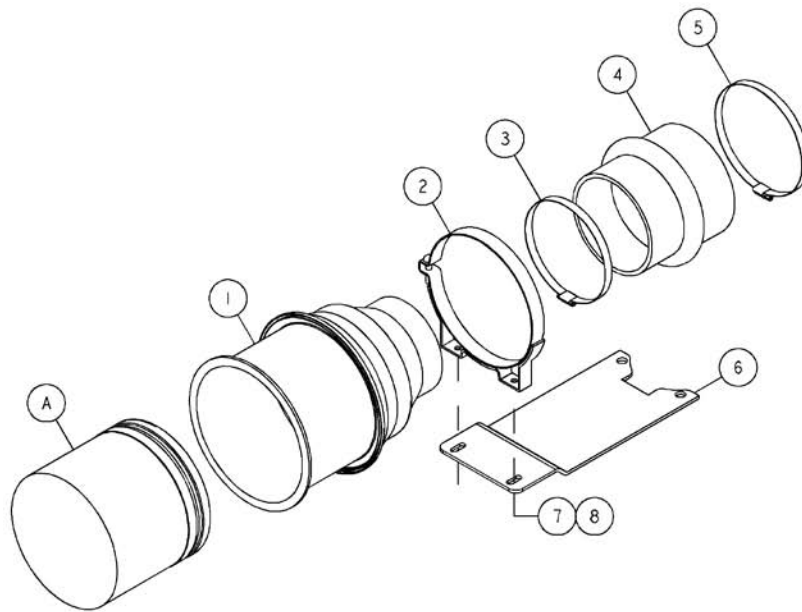
ITEM 8		COMPRESSOR SHEAVE					
HP	QTY.	100#	60 Hz 125#	150#	100#	50 Hz 125#	150#
40	1	121176	121176	146434-002	146432-004	121179	146434-002
50	1	146434-006	146434-005	146434-004	146432-002	146432-004	128695
60	1	146434-007	146434-009	146434-009	144471-012	144471-013	146434-008

ITEM 9		COMPRESSOR SHEAVE BUSHING					
HP	QTY.	100#	60 Hz 125#	150#	100#	50 Hz 125#	150#
40	1	121175	121175	121175	144522-003	121175	121175
50	1	121175	121175	121175	144522-003	144522-003	121175
60	1	121175	121175	121175	125878	125878	121175

ITEM 10		BELTS (POWERBANDS)					
HP	QTY.	100#	60 Hz 125#	150#	100#	50 Hz 125#	150#
40 (ODP)	1	146482-560	146482-560	146483-360	146483-356	146482-560	146483-360
40 (TEFC)	1	146482-560	146482-560	146483-356	146483-356	146482-560	146483-356
50	1	146483-356	146483-356	146483-360	146483-356	146483-356	146484-360
60 (ODP)	1	146483-363	146483-363	146483-363	146484-460	146484-463	146483-363
60 (TEFC)	1	146483-360	146483-360	146483-360	146484-460	146484-460	146483-360

ITEM 12		TRANSIT LOCKING SHAFT					
HP	QTY.	60 Hz 100#	125#	150#	50 Hz 100#	125#	150#
40 (ODP)	1	146143-002	146143-002	146143-001	146143-002	146143-002	146143-001
40 (TEFC)	1	146143-002	146143-001	146143-002	146143-001	146143-001	146143-002
50 (ODP)	1	146143-002	146143-002	146143-001	146143-002	146143-002	146143-002
50 (TEFC)	1	146143-001	146143-002	146143-001	146143-001	146143-001	146143-001
60 (ODP)	1	146143-001	146143-002	146143-001	146143-002	146143-001	146143-001
60 (TEFC)	1	146143-002	146143-002	146143-002	146143-001	146143-002	146143-002

Air Filter - 146158-001

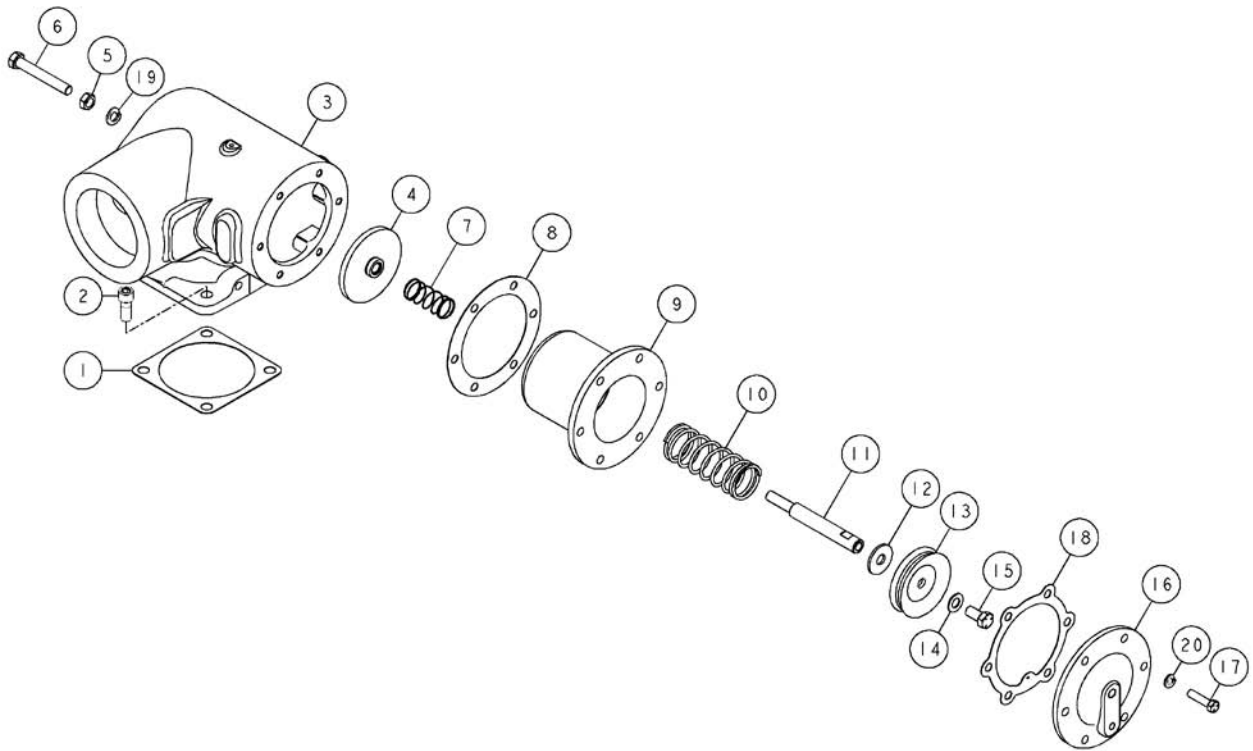


ITEM No.	QTY.	PART NUMBER	DESCRIPTION
1	1	146396-08	AIR FILTER
2	1	123352-009	AIR FILTER MOUNTING BAND
3	1	110423-096	HOSE CLAMP
4	1	20683	RUBBER COUPLING-6.00 X 5.50
5	1	110423-104	HOSE CLAMP
6	1	146129-1	AIR FILTER BRACKET
7	2	141631-K10	CAP SCREW-5/16-18 UNC X 0.75, GRADE 5 (@ 23 FT-LBS)
8	2	112272-K02	SELF-LOCKING HEX NUT-ZINC, 5/16-18 UNC

COMPONENT MAINTENANCE PARTS

A	1	146397-08	AIR FILTER ELEMENT
---	---	-----------	--------------------

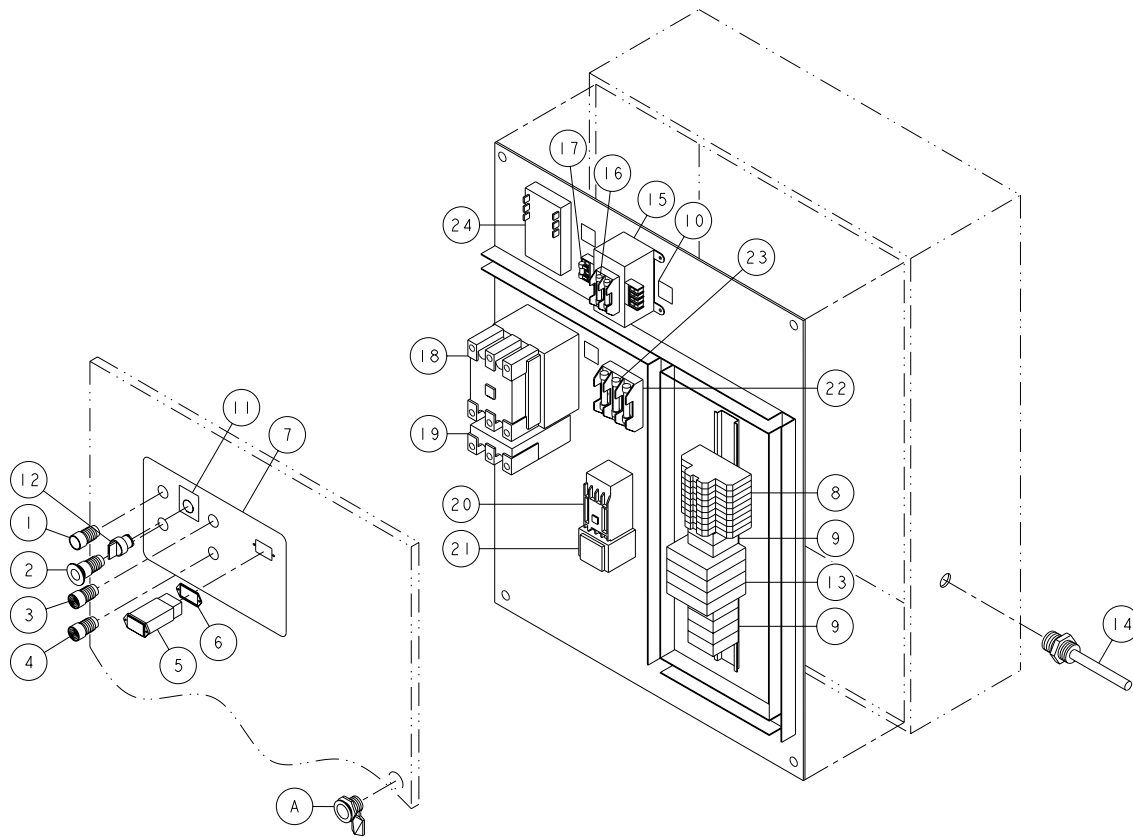
@ INDICATES TORQUE VALUE IN FOOT POUNDS (LUBRICATED THREADS).



ITEM No.	QTY.	PART NUMBER	DESCRIPTION
1	1	141608	INLET VALVE GASKET
2	4	142650-N14	CAP SCREW-ZINC, 1/2-13 UNC X 1.00, GRADE 5 (@55 FT-LBS)
3	1	145509-1	INLET VALVE HOUSING
4	1	122995	INLET VALVE PLATE ASSEMBLY (INCLUDES BUSHING-P/N 23681)
5	1	124368-N02	JAM NUT-1/2-13 UNC
6	1	128720-003	HEX HEAD SCREW-1/2-13 UNC X 3.50, GRADE 5 (@ 55 FT-LBS)
7	1	123092	SPRING
8	1	123549-003	GASKET-6.50 O.D. X 4.56 I.D.
9	1	126644	INLET VALVE CYLINDER (INCLUDES BUSHING-P/N 22880)
10	1	126649	INLET VALVE SPRING
11	1	126648	INLET VALVE SHAFT
12	1	126647	FLAT WASHER-0.56
13	1	126460-350	PISTON CUP
14	1	1478-1	FLAT WASHER-0.52
15	1	123478-N12	CAP SCREW-1/2-13 UNC X 1.00, GRADE 5 (@ 55 FT-LBS)
16	1	126645	INLET VALVE COVER PLATE
17	6	123478-L15	CAP SCREW-3/8-16 UNC X 1.50, GRADE 5 (@ 23 FT-LBS)
18	1	141258	INLET VALVE GASKET
19	1	123115-08C	LOCKWASHER, 0.50
20	6	123115-06C	LOCKWASHER, 0.38

@ INDICATES TORQUE VALUE IN FOOT POUNDS (LUBRICATED THREADS).

Electrical Control & Starting (standard control)



NOTES-UNLESS OTHERWISE SPECIFIED:
 1) QUANTITIES OF ITEMS 9 (RELAY) AND 13 (TIMER)
 WILL VARY DEPENDING ON OPTIONS SELECTED.
 2) ITEM 24 (PHASE MONITOR) IS OPTIONAL.

ITEM 15 TRANSFORMER

VOLTAGE	QTY.	
200	1	128413-351
230	1	128413-353
380	1	128413-356
415	1	128413-354
460	1	128413-353
575	1	128413-355

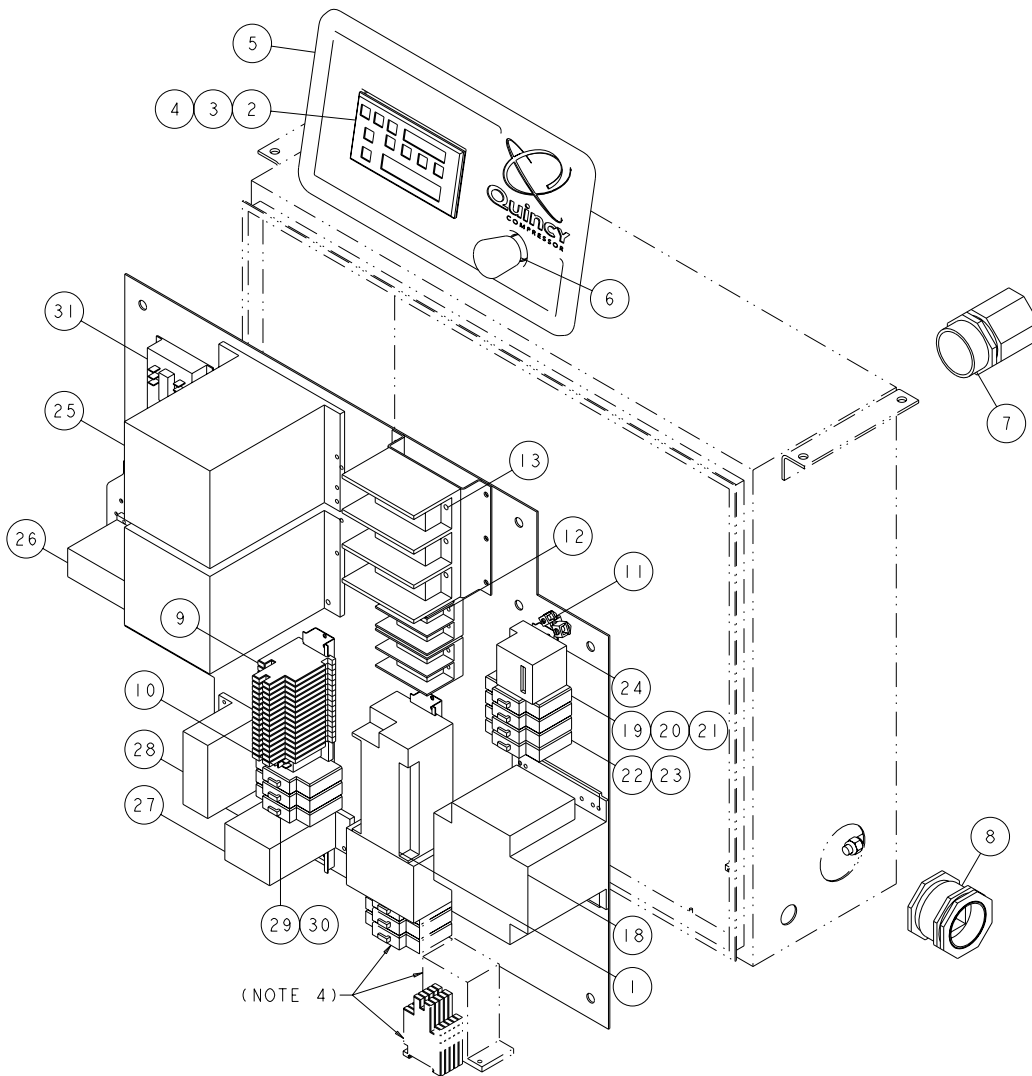
ITEM 16 TRANSFORMER FUSES (PRIMARY)

VOLTAGE	QTY.	
200	2	128857-006
230	2	128857-005
380	2	128857-004
415	2	128857-004
460	2	128857-030
575	2	128857-011

Electrical Control & Starting (standard control)

ITEM NO.	QTY.	PART NUMBER	DESCRIPTION
1	1	129081	START BUTTON
INCLUDES:	1	129090	CONTACT BLOCKS (2 NORMALLY OPEN)
2	1	129082	STOP BUTTON
INCLUDES:	1	129089	CONTACT BLOCK (NORMALLY CLOSED)
3	1	129087	AMBER INDICATOR LIGHT
INCLUDES:	1	143144-01	AMBER LAMP
	2	129092	INDICATOR LIGHT BASE
4	1	129088	RED INDICATOR LIGHT
INCLUDES:	1	143144-02	RED LAMP
5	1	110871-120	HOURMETER (60 Hz)
	1	110871-125	HOURMETER (50 Hz)
6	1	126972	HOURMETER GASKET
7	1	129077	CONTROL PANEL DECAL
8	1	142334-13	TERMINAL BLOCK ASSEMBLY
9	2	146561-1	SOCKET RELAY
10	1	143470	ELECTRICAL DECALS SHEET
11	1	129103-2	LEGEND PLATE-AUTO DUAL
	1	129103-4	LEGEND PLATE-REMOTE/LOCAL
	1	129103-6	LEGEND PLATE-LEAD/LAG
12	1	129083	SELECTOR SWITCH (NOT USED ON CONTINUOUS RUN UNITS)
INCLUDES:	1	129089	CONTACT BLOCK (NORMALLY CLOSED) (AUTO DUAL)
	1	129091	CONTACT BLOCKS (1 NORMALLY OPEN/1 NORMALLY CLOSED) (AUTO DEMAND & LEAD LAG)
13	1	144739	PROGRAMMABLE TIMER (NOT USED ON CONTINUOUS RUN UNITS)
14	1	122880-232	TEMPERATURE SWITCH (230°F)
15		(PAGE 12)	TRANSFORMER
16		(PAGE 12)	TRANSFORMER FUSE (PRIMARY)
17	1	128622-400	TRANSFORMER FUSE (SECONDARY)
18		(PAGE 16)	DRIVE MOTOR CONTACTOR
19		(PAGE 16)	DRIVE MOTOR OVERLOAD RELAY
20	1	144570-01	FAN MOTOR CONTACTOR
21	1	143780-12	FAN MOTOR OVERLOAD RELAY (380/415/460/575 VOLT-40 & 50 HP, 575 VOLT-60 HP)
	1	143780-13	FAN MOTOR OVERLOAD RELAY (200/230 VOLT-40 & 50 HP, 200 THRU 460 VOLT-60 HP)
22	1	126263-004	FAN MOTOR FUSEBLOCK
23		(PAGE 17)	FAN MOTOR FUSES
OPTIONAL:			
24	1	129200-001	PHASE MONITOR (200/230 VOLT)
	1	129200-003	PHASE MONITOR (380/415 VOLT)
	1	129200-002	PHASE MONITOR (460 VOLT)
	1	128422-003	PHASE MONITOR (575 VOLT)

Electrical Control & Starting (PLC control)



NOTE-UNLESS OTHERWISE SPECIFIED:
 1) ITEM 13 NOT USED ON ACROSS THE LINE UNITS.
 2) ITEMS 14 THRU 17 ARE NOT SHOWN.
 3) ITEM 31 (PHASE MONITOR) IS OPTIONAL.
 4) THESE PARTS ARE FOR (OPTIONAL) INTEGRATED DRYER.

DRYER FUSE

VOLTAGE	QTY.	40 HP	50 HP	60 HP
200/230	3	128857-035	128857-026	128857-028
380/415	3	128857-023	128857-024	128857-024
460	3	128857-023	128857-024	128857-024
575	3	128857-021	128857-021	128857-023

DRYER CONTACTOR

VOLTAGE	QTY.	40 HP	50 HP	60 HP
200/230	1	144570-02	144570-03	144570-04
380/415	1	144570-01	144570-01	144570-02
460	1	144570-01	144570-01	144570-02
575	1	144570-01	144570-01	144570-01

Electrical Control & Starting (PLC control)

ITEM No.	QTY.	PART NUMBER	DESCRIPTION
1	1	146303-102	PLC CONTROLLER
2	1	146303-202	OPERATOR INTERFACE
3	1	146457	CONTROL PANEL DECAL-QGB
4	1	146467	CONTROL PANEL ASSEMBLY
5	1	146459	HMI BEZEL
6	1	146102-006	EMERGENCY STOP BUTTON
7	1	142096-06	STRAIN RELIEF CONNECTOR
8	2	146550	STRAIN RELIEF CONNECTOR
9	1	142334-18	TERMINAL BLOCK ASSEMBLY
10	1	143059-4	SOCKET RELAY (40/50/60 HP)
11	2	128002-001	TERMINAL-GROUND
12	1	129229-005	POWER BLOCK
13	1	129229-007	POWER BLOCK (WYE-DELTA ONLY)
	1	129229-008	POWER BLOCK (60 HP, 200 VOLT, WYE-DELTA ONLY)
14	2	146103-002	CONTACT BLOCK (NORMALLY CLOSED) (FULL VOLTAGE)
	1	146103-004	CONTACT BLOCKS (2 NORMALLY CLOSED) (WYE-DELTA)
15	1	144981	TEMPERATURE PROBE-HIGH VIBRATION, 0.50 NPT
16	1	145072	PRESSURE TRANSDUCER (0-300#)
17	1	122880-232	TEMPERATURE SWITCH (230°F)
18	1	145785-350	TRANSFORMER (350VA)
19	1	144117-06	TRANSFORMER FUSE HOLDER
20	2	128857-006	TRANSFORMER FUSE (200 VOLT)
	2	128857-005	TRANSFORMER FUSE (230 VOLT)
	2	128857-004	TRANSFORMER FUSE (380/415 VOLT)
	2	128857-030	TRANSFORMER FUSE (460 VOLT)
	2	128857-011	TRANSFORMER FUSE (575 VOLT)
21	1	128857-007	TRANSFORMER FUSE
22	1	144117-04	TRANSFORMER FUSE HOLDER
23	1	128857-009	TRANSFORMER FUSE
24	1	146551-60	HOURLY METER (60 Hz)
	1	146551-50	HOURLY METER (50 Hz)
25		(PAGE 14)	DRIVE MOTOR CONTACTOR
26		(PAGE 14)	DRIVE MOTOR OVERLOAD RELAY
	3	143781-300	CURRENT TRANSFORMER (USED ONLY W/143780-01 OVERLOAD)
27	1	144570-01	FAN MOTOR CONTACTOR
28	1	143780-12	FAN MOTOR OVERLOAD RELAY (380/415/460/575 VOLT-40 & 50 HP, 575 VOLT-60 HP)
	1	143780-13	FAN MOTOR OVERLOAD RELAY (200/230 VOLT-40 & 50 HP, 200/230/380/415/460 VOLT-60 HP)
29	1	144117-04	FAN MOTOR FUSE HOLDER
30		(PAGE 17)	FAN MOTOR FUSES

OPTIONAL PARTS:

31	1	129200-001	PHASE MONITOR (200-240 VOLT)
	1	129200-003	PHASE MONITOR (360-430 VOLT)
	1	129200-002	PHASE MONITOR (400-480 VOLT)
	1	128422-003	PHASE MONITOR (525-625 VOLT)

ELECTRICAL COMPONENTS FOR INTEGRATED DRYER (OPTIONAL):

	1	142334-19	TERMINAL BLOCK ASSEMBLY
	1	143059-4	SOCKET RELAY
	1	144117-06	FUSE HOLDER
	3	(PAGE 12)	DRYER FUSE
	1	(PAGE 12)	DRYER CONTACTOR

Electrical Control & Starting

ITEM 25

DRIVE MOTOR CONTACTOR

VOLTAGE	QTY.	FULL VOLTAGE		
		40 HP	50 HP	60 HP
200	1	144570-12	N/A	N/A
230	1	144570-12	144570-12	N/A
380	1	144570-08	144570-09	144570-11
415	1	144570-08	144570-09	144570-11
460	1	144570-08	144570-09	144570-10
575	1	144570-06	144570-08	144570-09

VOLTAGE	QTY.	WYE-DELTA		
		40 HP	50 HP	60 HP
200	*	144570-09 (1)	144570-10 (1)	144570-11 (2)
	*		144570-08 (1)	144570-08 (1)
230	*	144570-09 (1)	144570-10 (1)	144570-11 (2)
	*		144570-08 (1)	144570-08 (1)
380	*	144570-09 (1)	144570-08 (2)	144570-09 (1)
	*	144570-08 (1)		144570-08 (1)
415	*	144570-06 (1)	144570-07 (1)	144570-08 (2)
	*		144570-05 (1)	144570-05 (1)
460	*	144570-06 (1)	144570-07 (1)	144570-08 (2)
	*		144570-05 (1)	144570-05 (1)
575	*	144570-05 (2)	144570-06 (1)	144570-07 (1)
	*		144570-05 (1)	144570-05 (1)

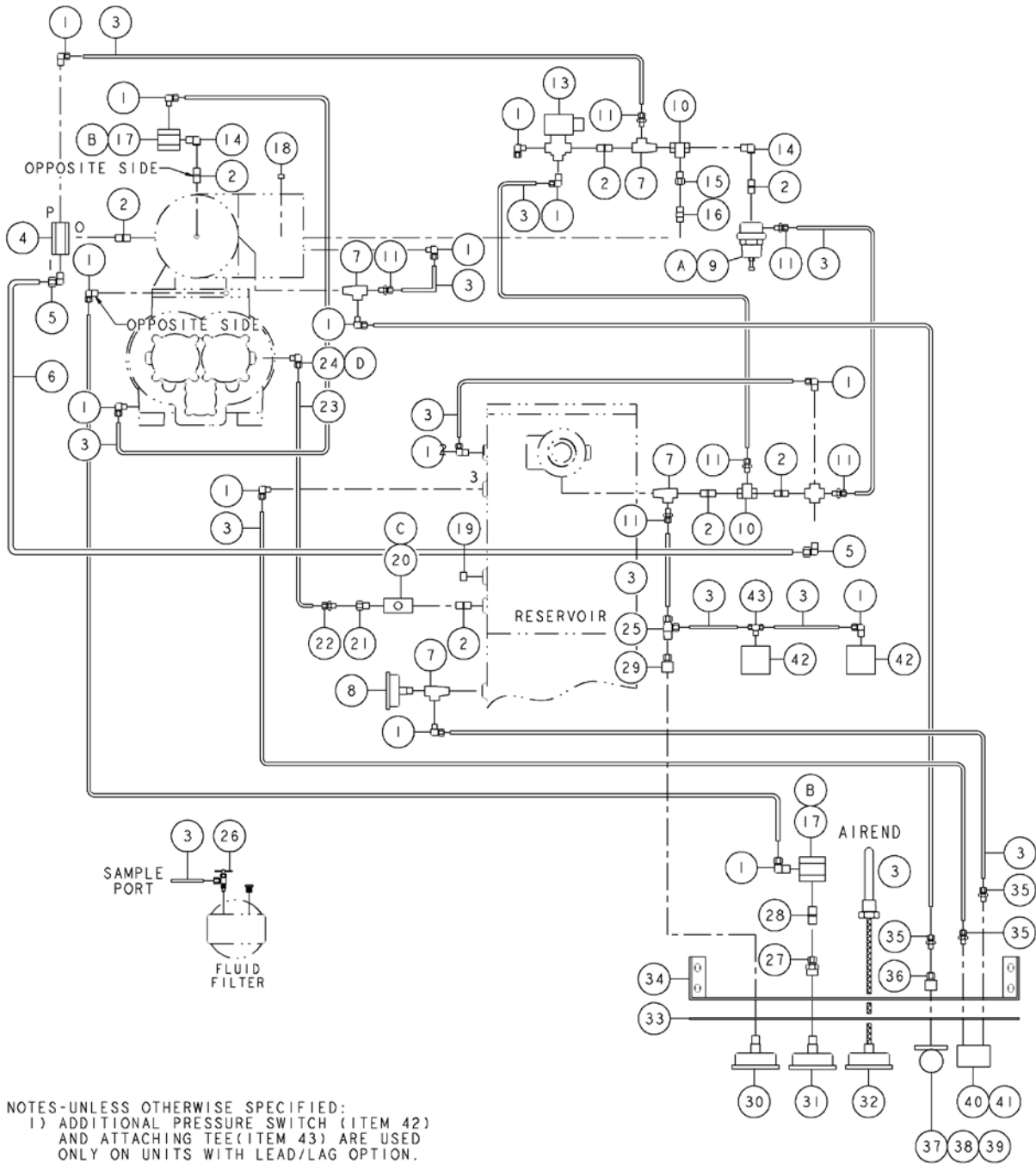
* QUANTITY IS IN PARENTHESIS () FOLLOWING PART NUMBER.

Electrical Control & Starting

ITEM 26		DRIVE MOTOR OVERLOAD RELAY		
		FULL VOLTAGE		
VOLTAGE	QTY.	40 HP	50 HP	60 HP
200	1	143780-09	N/A	N/A
230	1	143780-08	143780-01	N/A
380	1	143780-06	143780-06	143780-07
415	1	143780-06	143780-06	143780-07
460	1	143780-05	143780-06	143780-06
575	1	143780-05	143780-05	143780-06
		WYE-DELTA		
VOLTAGE	QTY.	40 HP	50 HP	60 HP
200	1	143780-06	143780-07	143780-07
230	1	143780-06	143780-06	143780-07
380	1	143780-04	143780-05	143780-05
415	1	143780-04	143780-05	143780-05
460	1	143780-04	143780-04	143780-05
575	1	143780-03	143780-04	143780-04

ITEM 30		FAN MOTOR FUSES	
VOLTAGE	QTY.	40/50 HP	60 HP
200	3	128857-020	128857-025
230	3	128857-019	128857-023
380	3	128857-007	128857-020
415	3	128857-016	128857-020
460	3	128857-034	128857-008
575	3	128857-005	128857-007

Control Piping (standard control) - 146563-005/-006



Control Piping (standard control) - 146563-005/-006

ITEM NO.	QTY.	PART NUMBER	DESCRIPTION
1	14	124349-005	90° MALE ELBOW-0.25 TUBE X 0.25 NPT
2	6	142125-1	EXTRA STRONG BRASS NIPPLE-0.25 NPT X CLOSE
3	38.0 FT	140620-003	BLACK NYLON TUBING-0.25 O.D.
4	1	128826	BLOWDOWN VALVE
5	2	124349-010	90° MALE ELBOW-0.38 TUBE X 0.25 NPT
6	4.0 FT	140620-004	BLACK NYLON TUBING-0.38 O.D.
7	4	7361	PIPE TEE-BRASS, 0.25 NPT
8	1	126345	PRESSURE GAUGE-LIQUID FILLED (0-200#)
9	1	146175-2	DIFFERENTIAL PILOT VALVE
10	2	129337-025	SHUTTLE VALVE-0.25 NPT
11	6	124393-005	MALE CONNECTOR-0.25 TUBE X 0.25 NPT
12	1	6150	PIPE CROSS-BRASS, 0.25 NPT
13	1	120496-4	SOLENOID VALVE-3-WAY
14	2	122636	PIPE ELBOW-BRASS, 0.25 NPT
15	1	143742-001	SWIVEL CONNECTOR-0.38 TUBE X 0.38 NPT
16	1	123166-04	MALE CONNECTOR-0.25 TUBE X 0.25 NPT
17	2	122056	CHECK VALVE
18	1	2719	PIPE PLUG-HEX SOCKET, 0.25 NPT
19	1	2721	PIPE PLUG-0.50 NPT
20	1	140508	SIGHTGLASS (O-RING)
21	1	125025	LINE FILTER ORIFICE (0.040)
22	1	110419-005	90° MALE ELBOW-0.25 TUBE X 0.25 NPT
23	2.0 FT	140333	STAINLESS STEEL TUBE-0.25 O.D.
24	1	128886-003	ELBOW-0.25 TUBE X 7/16-20 (O-RING)
25	1	124348-003	MALE RUN TEE-0.25 TUBE X 0.25 NPT
26	1	142947	NEEDLE ANGLE VALVE
27	1	125260-001	PIPE REDUCER-BRASS, 0.25 NPT X 0.12 NPT
28	1	142125-1	EXTRA STRONG BRASS NIPPLE-0.25 NPT X CLOSE
29	1	125259-002	BRASS COUPLING-0.25 X 0.25
30	1	128662	PRESSURE GAUGE (0-300#)
31	1	128663	PERCENT CAPACITY GAUGE
32	1	128664	TEMPERATURE GAUGE
33	1	146677-1	GAUGE PANEL DECAL (WITH INDICATORS)
34	1	146675	GAUGE PANEL
35	3	124393-004	MALE CONNECTOR-0.25 TUBE X 0.125 NPT
36	1	125259-001	BRASS COUPLING-0.12 X 0.12
37	1	21312	AIR FILTER INDICATOR
38	2	142578-J09	CAP SCREW-ZINC, 1/4-20 UNC X 0.63, GRADE 5 (@ 6 FT-LBS)
39	2	142835-J02	LOCKNUT-ZINC PLATED, 1/4-20 UNC
40	1	23779-15	DIFFERENTIAL PRESSURE INDICATOR
41	4	140764-L10	PAN HEAD CAP SCREW-10 UNF X 0.75
42*	1	8698-011	PRESSURE SWITCH (150-210#)
43**	1	124351-004	MALE BRANCH TEE-0.25 TUBE X 0.25 NPT

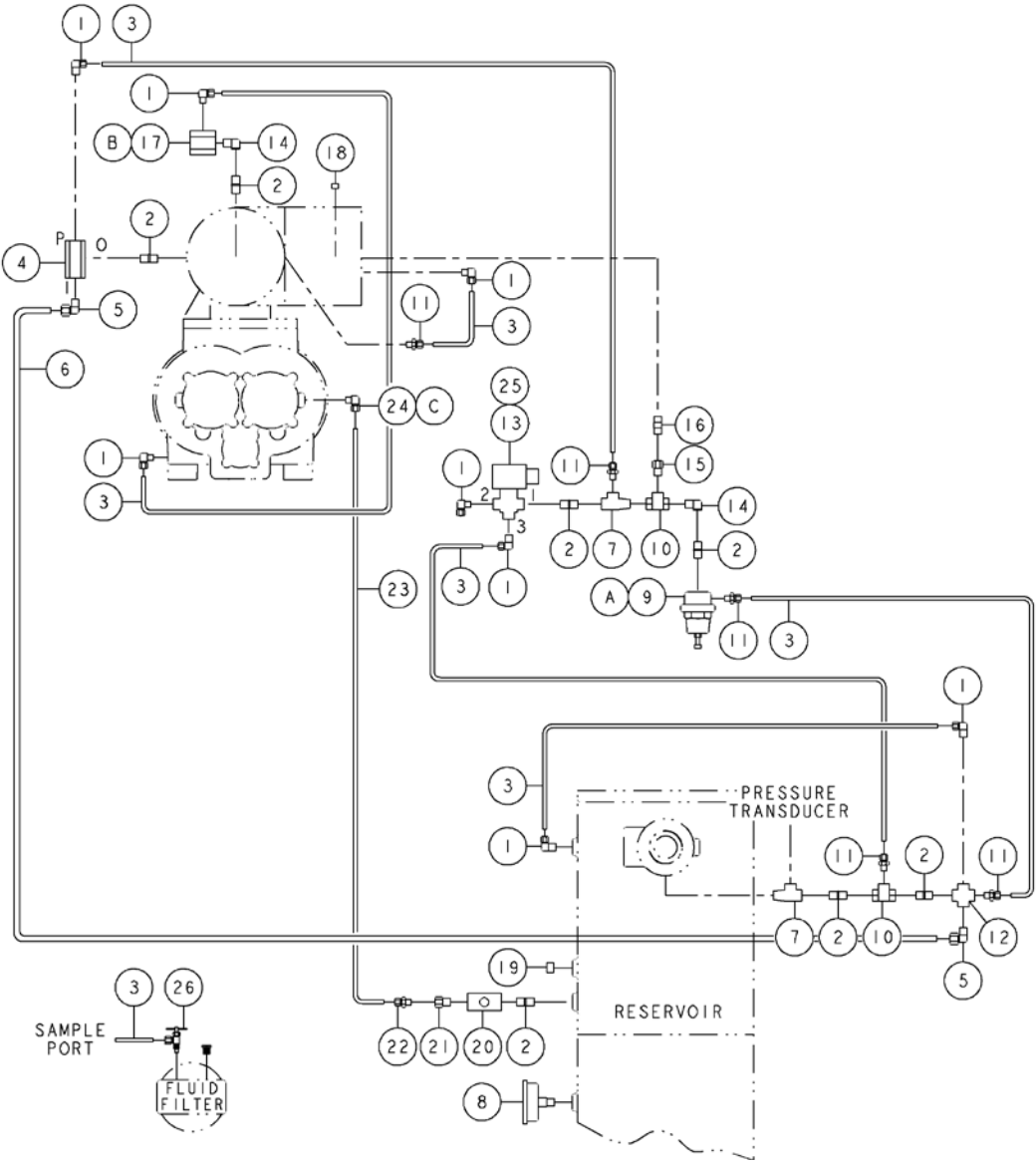
COMPONENT MAINTENANCE PARTS

A	1	146175-100	DIFFERENTIAL PILOT VALVE KIT (INCLUDES DIAPHRAGM ASSEMBLY & SEAT)
B	4	123157-008	BUNA-N O-RING-0.18 I.D.
C	2	22749-010	VITON O-RING-0.25 I.D.
D	1	140406-904	VITON O-RING-0.35 I.D.

* ITEM 42 (PRESSURE SWITCH): QUANTITY OF 2 REQUIRED ON UNITS WITH LEAD/LAG OPTION.

** ITEM 43 (TEE) USED ONLY ON UNITS WITH LEAD/LAG OPTION.

Control Piping (PLC control) - 146294-001



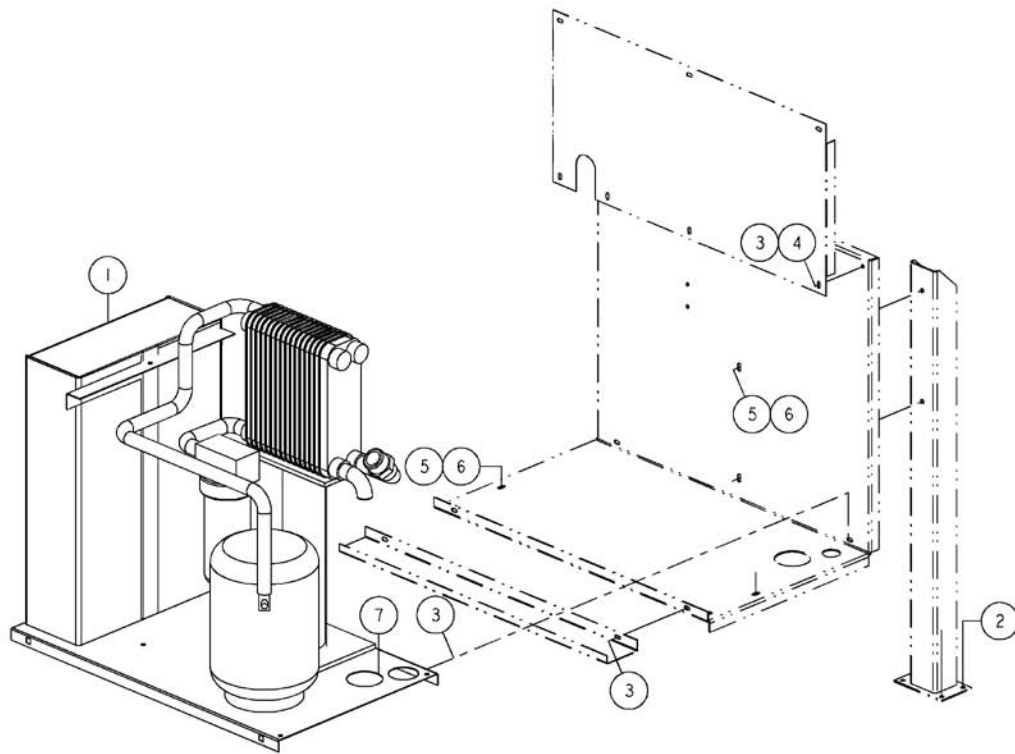
Control Piping (PLC control) - 146294-001

ITEM NO.	QTY.	PART NUMBER	DESCRIPTION
1	8	124349-005	90° MALE ELBOW-0.25 TUBE X 0.25 NPT
2	6	142125-1	EXTRA STRONG BRASS NIPPLE-0.25 NPT X CLOSE
3	14.0 FT	140620-003	BLACK NYLON TUBING-0.25 O.D.
4	1	128826	BLOWDOWN VALVE
5	2	124349-010	90° MALE ELBOW-0.38 TUBE X 0.25 NPT
6	4.0 FT	140620-004	BLACK NYLON TUBING-0.38 O.D.
7	2	7361	PIPE TEE-BRASS, 0.25 NPT
8	1	126345	PRESSURE GAUGE-LIQUID FILLED (0-200#)
9	1	146175-2	DIFFERENTIAL PILOT VALVE
10	2	129337-025	SHUTTLE VALVE-0.25 NPT
11	5	124393-005	MALE CONNECTOR-0.25 TUBE X 0.25 NPT
12	1	6150	PIPE CROSS-BRASS, 0.25 NPT
13	1	120496-12	SOLENOID VALVE-3-WAY
14	2	122636	PIPE ELBOW-BRASS, 0.25 NPT
15	1	143742-001	SWIVEL CONNECTOR-0.38 TUBE X 0.38 NPT
16	1	123166-04	MALE CONNECTOR-0.25 TUBE X 0.25 NPT
17	1	122056	CHECK VALVE
18	1	2719	PIPE PLUG-HEX SOCKET, 0.25 NPT
19	1	2721	PIPE PLUG-0.50 NPT
20	1	140508	SIGHTGLASS (O-RING)
21	1	125025	ORIFICE-LINE FILTER (0.040)
22	1	110419-005	90° MALE ELBOW-0.25 TUBE X 0.25 NPT
23	2.0 FT	140333	STAINLESS STEEL TUBE-0.25 O.D.
24	1	128886-003	ELBOW-0.25 TUBE X 7/16-20 (O-RING)
25	1	146296	CABLE ASSEMBLY-5 METER
26	1	142947	NEEDLE ANGLE VALVE

COMPONENT MAINTENANCE PARTS

A	1	146175-100	DIFFERENTIAL PILOT VALVE KIT (INCLUDES DIAPHRAGM ASSEMBLY & SEAT)
B	2	123157-008	BUNA-N O-RING-0.18 I.D.
C	1	140406-904	VITON O-RING-0.35 I.D.

Integrated Dryer (optional) - 146385-001 thru -012



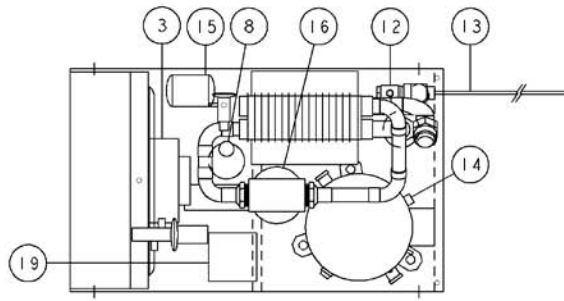
NOTE-OTHERWISE SPECIFIED:
 1) ITEMS SHOWN PHANTOM ARE IN CABINET GROUP.

ITEM No.	QTY.	PART NUMBER	DESCRIPTION
1	1	(BELOW)	DRYER ASSEMBLY
2	4	12798508025	CAP SCREW-ZINC, 8MM X 25MM
3	11	122151	HEX HEAD SCREW-1/4-20 UNC X 0.63, GRADE 5 (@ 6 FT-LBS)
4	7	112272-J02	SELF-LOCKING HEX NUT-ZINC, 1/4-20 UNC
5	6	141631-K10	CAP SCREW-5/16-18 UNC X 0.75, GRADE 5 (@ 23 FT-LBS)
6	6	112272-K02	SELF-LOCKING HEX NUT-ZINC, 5/16-18 UNC
7	1.6 FT	20579	VIBRATION DAMPENER

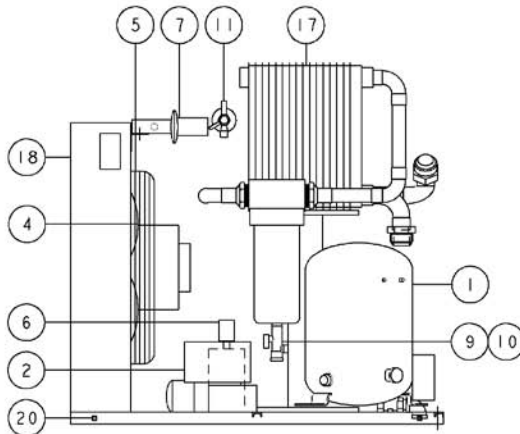
ITEM 1		DRYER ASSEMBLY		
VOLTAGE	QTY.	40 HP	50 HP	60 HP
200/230	1	146271-01	146271-05	146271-09
380/415	1	146271-04	146271-08	146271-12
460	1	146271-02	146271-06	146271-10
575	1	146271-03	146271-07	146271-11

@ INDICATES TORQUE VALUE IN FOOT POUNDS (LUBRICATED THREADS).

Integrated Dryer (optional) - 146385-001 thru -012



TOP VIEW



FRONT VIEW

- 1) REFRIGERATION COMPRESSOR
- 2) DUAL PRESSURE SWITCH
- 3) FAN MOTOR
- 4) FAN BLADE
- 5) FAN GUARD/MOTOR MOUNT
- 6) FAN CYCLING SWITCH
- 7) HOT GAS BYPASS VALVE
- 8) RECEIVER
- 9) Y-STRAINER
- 10) Y-STRAINER SCREEN
- 11) EXPANSION VALVE
- 12) AUTOMATIC TIMER/DRAIN
- 13) DRAIN POWER SUPPLY CORD
- 14) CRANKCASE HEATER
- 15) FILTER DRYER
- 16) SEPARATOR
- 17) HEAT EXCHANGER ASSEMBLY
- 18) CONDENSER
- 19) ELECTRICAL ENCLOSURE
- 20) CAGE NUT

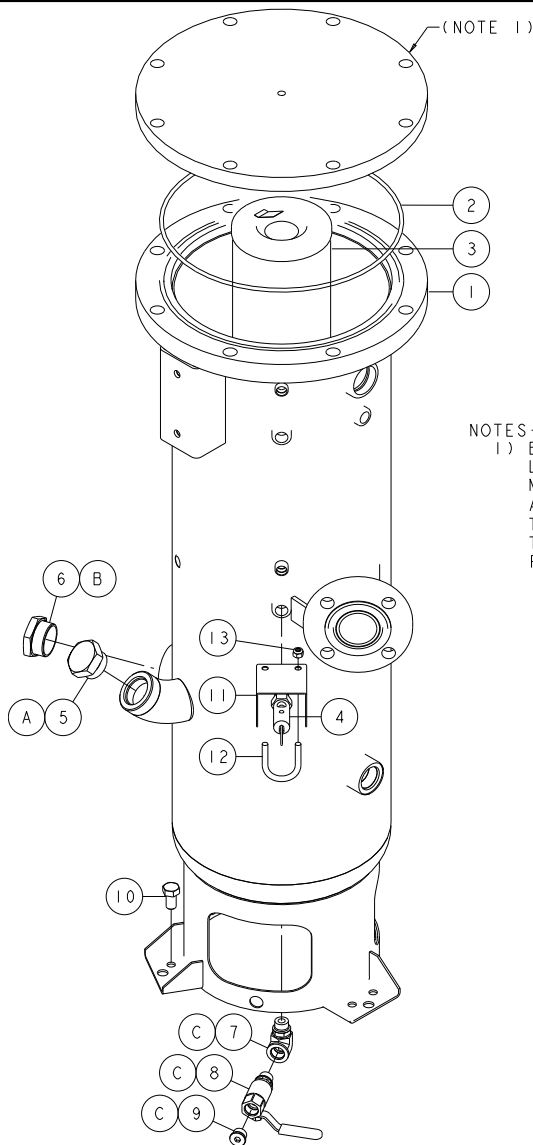
NOTE:
ITEMS 1 THRU 15 ARE REPAIRABLE/
REPLACEABLE PARTS (SEE PARTS LIST).

ITEM No.	QTY.	PART NUMBER	DESCRIPTION
----------	------	-------------	-------------

DRYER ASSEMBLY PARTS BREAKDOWN (REPAIRABLE/REPLACEABLE PARTS):

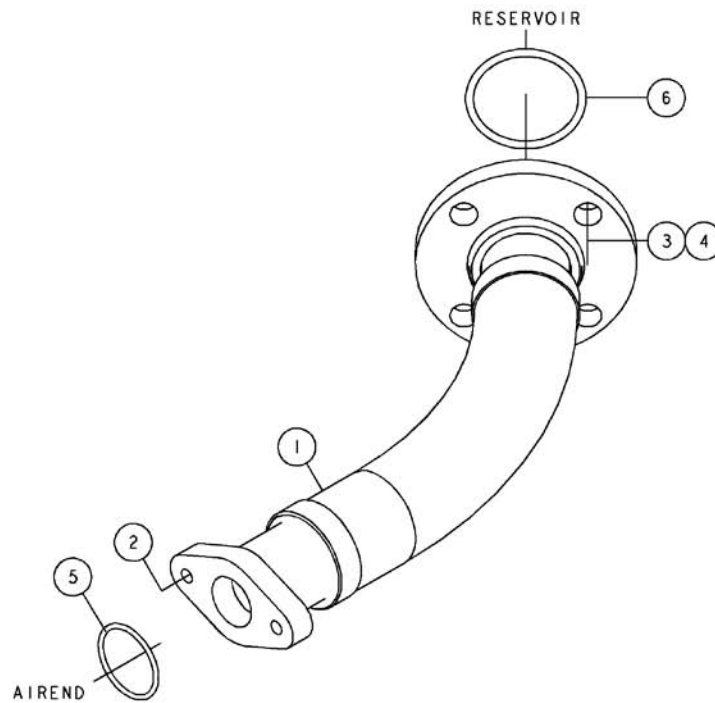
1	1	QRF-003196	COMPRESSOR (146271-02 - 40 HP, 460 VOLT)
		QRF-003198	COMPRESSOR (146271-06 - 50 HP, 460 VOLT)
		QRF-003199	COMPRESSOR (146271-10 - 60 HP, 460 VOLT)
2	1	QRF-000505	DUAL PRESSURE SWITCH
3	1	QRF-001971	FAN MOTOR
4	1	QRF-001742	FAN BLADE
5	1	QRF-003193	FAN GUARD/MOTOR MOUNT
6	1	QRF-002079	FAN CYCLING SWITCH
7	1	QVA-001537	HOTGASS BYPASS VALVE
8	1	QRF-003225	RECEIVER
9	1	QRF-001210	Y-STRAINER
10	1	QFT-003845	Y-STRAINER SCREEN
11	1	QVA-003151	EXPANSION VALVE
12	1	QRF-003288	DRAIN VALVE AND TIMER
13	1	QEC-003185	DRAIN POWER SUPPLY CORD
14	1	QEC-003063	CRANKCASE HEATER
15	1	QRF-003214	FILTER DRYER

Reservoir - 145982-001



NOTES-UNLESS OTHERWISE SPECIFIED:
 1) BOLTS USED TO ATTACH THE RESERVOIR LID ARE SUPPLIED BY THE RESERVOIR MANUFACTURER. IF REPLACEMENT BOLTS ARE NEEDED, THEY MUST BE APPROVED BY THE MANUFACTURER IN ORDER TO ENSURE THE INTEGRITY OF THE PRESSURE RATED RESERVOIR.

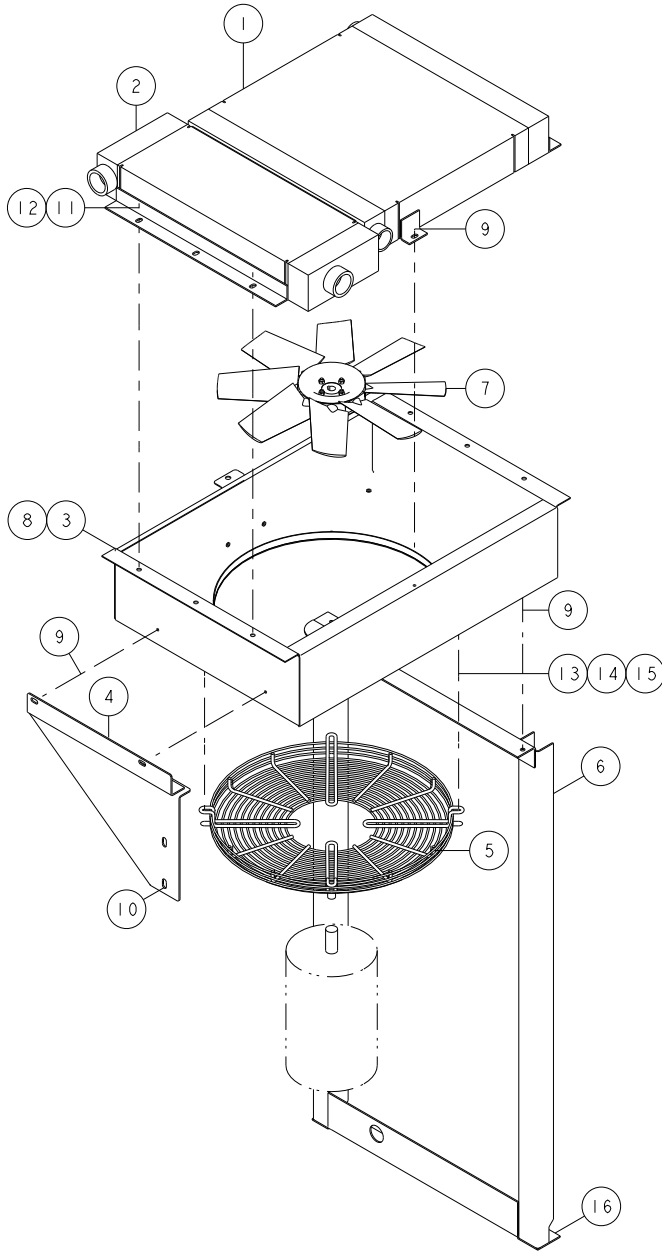
ITEM No.	QTY.	PART NUMBER	DESCRIPTION
1	1	146803-175	AIR/FLUID RESERVOIR
2	1	22749-382	VITON O-RING-13.00 I.D.
3	1	144606-02	AIR/FLUID SEPARATOR
4	1	143556-175	PRESSURE RELIEF VALVE
5	1	129844-162	FILLER CAP (O-RING)
6	1	129843-188	SIGHTGLASS(O-RING)
7	1	143355-003	ELBOW-0.50 TUBE X 3/4-16(O-RING)
8	1	129730-050	QUARTER TURN VALVE(O-RING)
9	1	128883-075	PIPE PLUG-3/4-16(O-RING)
10	3	12798514025	CAP SCREW-ZINC, 14 MM X 25 MM
11	1	147218	PRESSURE RELIEF VALVE COVER
12	1	122560-08	U-BOLT-ZINC, 5/16-18 UNC, 1.50 I.D. X 2.19
13	2	124370-K02	LOCKNUT-5/16-18 UNC
			<u>COMPONENT MAINTENANCE PARTS</u>
A	8		SCREW
B	8		WASHER
C	1	140406-920	VITON O-RING, 1.48 I.D.
D	1	140406-924	VITON O-RING, 1.72 I.D.
E	3	140406-908	VITON O-RING, 0.64 I.D.



ITEM No.	QTY.	PART NUMBER	DESCRIPTION
1	1	145965-02	DISCHARGE MANIFOLD
2	2	90386-L15	COUNTERBORE SCREW-3/8-16 UNC X 1.50, GRADE 8 (@ 45 FT-LBS, BACK OFF TO 25 FT-LBS)
3	4	124370-Q02	LOCKNUT, 5/8-11 UNC
4	4	142578-Q20	CAP SCREW-ZINC, 5/8-11 UNC X 2.75, GRADE 5 (@ 110 FT-LBS)
5	1	22749-226	VITON O-RING, 2.00 I.D.
6	1	22749-336	VITON O-RING, 2.88 I.D.

@ INDICATES TORQUE VALUE IN FOOT POUNDS (LUBRICATED THREADS).

Cooler - 145938-001 thru -006



Cooler - 145938-001 thru -006

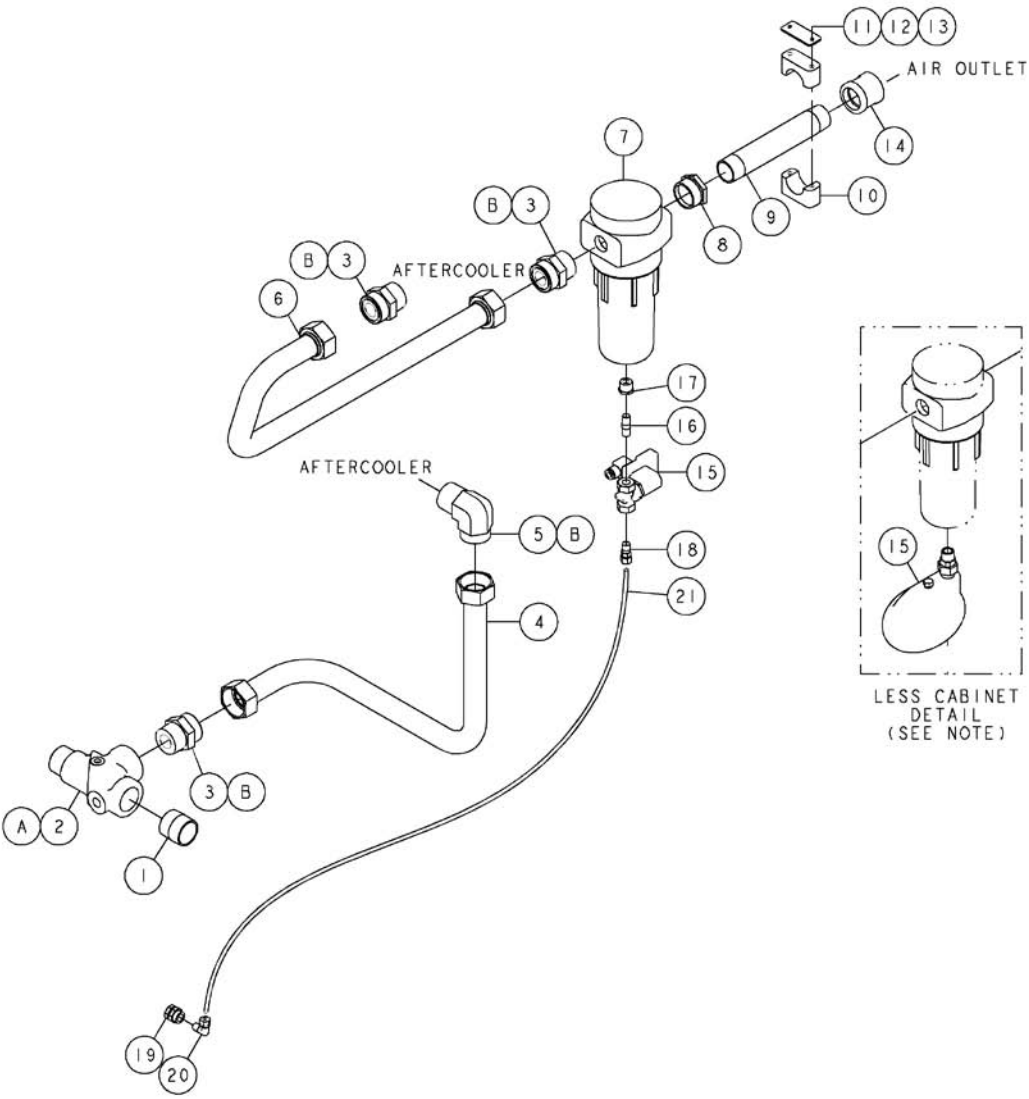
ITEM No.	QTY.	PART NUMBER	DESCRIPTION
1	1	145916-1	FLUID COOLER
2	1	145916-2	AFTERCOOLER
3	1	145917	COOLER SHROUD
4*	1	145932-9	COOLER SUPPORT BRACKET
	1	147423	COOLER SUPPORT BRACKET
5	1	145947	FAN GUARD
6	1	145932-5	COOLER SUPPORT BRACKET
7	1	128887-015	FAN-8 BLADE, 18.0 O.D. (40 HP, 60 Hz)
	1	126511-100	FAN-5 BLADE, 18.0 O.D. (40 HP, 50 Hz/50 HP, 60 Hz)
	1	128887-016	FAN-3 BLADE, 18.0 O.D. (50 HP, 50 Hz)
	1	128887-017	FAN-6 BLADE, 18.0 O.D. (60 HP, 60 Hz)
	1	128887-021	FAN-6 BLADE, 18.0 O.D. (60 HP, 50 Hz)
8	4.8 FT	141528	RUBBER SEAL
9	6	110511-K10	HEX HEAD SCREW-ZINC, 5/16-18 UNC X 0.75
10	6	141631-L10	CAP SCREW-3/8-16 UNC X 0.75, GRADE 5 (@ 23 FT-LBS)
11	7	141631-K10	CAP SCREW-5/16-18 UNC X 0.75, GRADE 5 (@ 23 FT-LBS)
12	7	112272-K02	SELF-LOCKING HEX NUT-ZINC, 5/16-18 UNC
13	4	110511-K14	HEX HEAD SCREW-ZINC, 5/16-18 UNC X 1.25
14	4	110428W031	FLAT WASHER-0.31
15	4	124370-K02	LOCKNUT, 5/16-18 UNC
16	4	12798508025	CAP SCREW-ZINC, 8MM X 25MM

* 147423 SHOWN. UNITS BUILT WITH THE CURRENT PRODUCTION RESERVOIR WILL HAVE 145932-9.

UNITS HAVING THE RESERVOIR REPLACED IN THE FIELD USING RETROFIT KIT 147417 WILL HAVE 147423.

@ INDICATES TORQUE VALUE IN FOOT POUNDS (LUBRICATED THREADS).

Air Piping (less dryer) - 145936-002/-005



NOTE-UNLESS OTHERWISE SPECIFIED:
 1) UNITS LESS CABINET: DRAIN VALVE ASSEMBLY (ITEMS 15 THRU 21)
 IS REPLACED WITH A FLOAT DRAIN (ITEM 15). SEE DETAIL.

Air Piping (less dryer) - 145936-002/-005

ITEM NO.	QTY.	PART NUMBER	DESCRIPTION
1	1	126022-001	PIPE NIPPLE-1.50 NPT X CLOSE
2	1	128691-001	MINIMUM PRESSURE CHECK VALVE
3	3	140681-018	CONNECTOR-1.50 NPTF X 1.50 TUBE (O-RING)
4	1	145936-4	FORMED TUBE ASSEMBLY-PAR-FLANGED, 1.50 O.D.
5	1	140677-017	ELBOW-1.50 TUBE X 1-1/2-11.5 NPTF (O-RING)
6	1	145936-5	FORMED TUBE ASSEMBLY-PAR-FLANGED, 1.50 O.D.
7	1	145999-150	MOISTURE SEPARATOR
8	1	125868-021	PIPE BUSHING-1.50 NPT X 1.25 NPT
9	1	126021-066	PIPE NIPPLE-GALVANIZED, 1.25 NPT X 9.00
10	2	141822-422	TUBE CLAMP-1.66 I.D.
11	1	141827-05	TUBE CLAMP COVER PLATE-1.38 I.D.
12	2	142578-J19	CAP SCREW-ZINC, 1/4-20 UNC X 2.50, GRADE 5 (@ 6 FT-LBS)
13	2	112272-J02	SELF-LOCKING HEX NUT-ZINC, 1/4-20 UNC
14	1	124874-001	PIPE COUPLING-GALVANIZED, 1.25 NPT
15	1	115698-125	DRAIN VALVE (WITH CABINET)
	1	146395	CONDENSATE DRAIN (LESS CABINET)
16*	1	121032-3	PIPE NIPPLE-BRASS, 0.25 NPT X CLOSE
17*	1	121033-5	PIPE BUSHING-BRASS, 0.50 NPT X 0.25 NPT
18*	1	124393-012	MALE CONNECTOR-0.38 TUBE X 0.25 NPT
19*	1	129203-003	BULKHEAD COUPLING
20*	1	124349-010	90° MALE ELBOW-0.38 TUBE X 0.25 NPT
21*	4.0 FT	124435-004	NYLON TUBING-0.38 O.D.

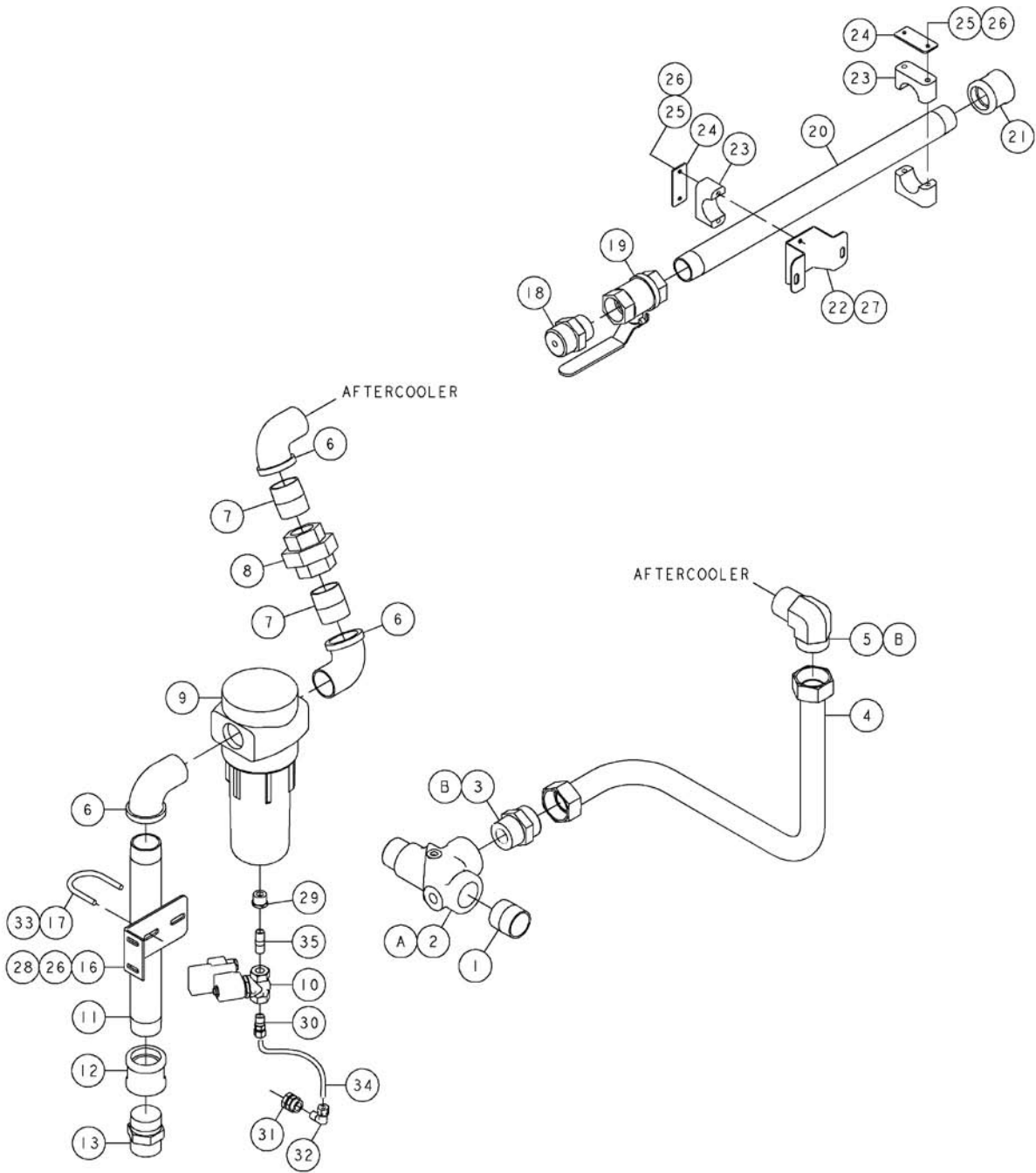
COMPONENT MAINTENANCE PARTS

A	1	128691-051	MINIMUM PRESSURE CHECK VALVE KIT
B	4	140675-008	VITON O-RING/FACE SEAL-1.49 I.D.

* THESE ITEMS NOT USED ON UNITS LESS CABINET.

@ INDICATES TORQUE VALUE IN FOOT POUNDS (LUBRICATED THREADS).

Air Piping (with dryer) - 145936-003



NOTE-UNLESS OTHERWISE SPECIFIED:
 1) ITEMS 14 & 15 (DRYER HOSES) ARE NOT SHOWN.

Air Piping (with dryer) - 145936-003

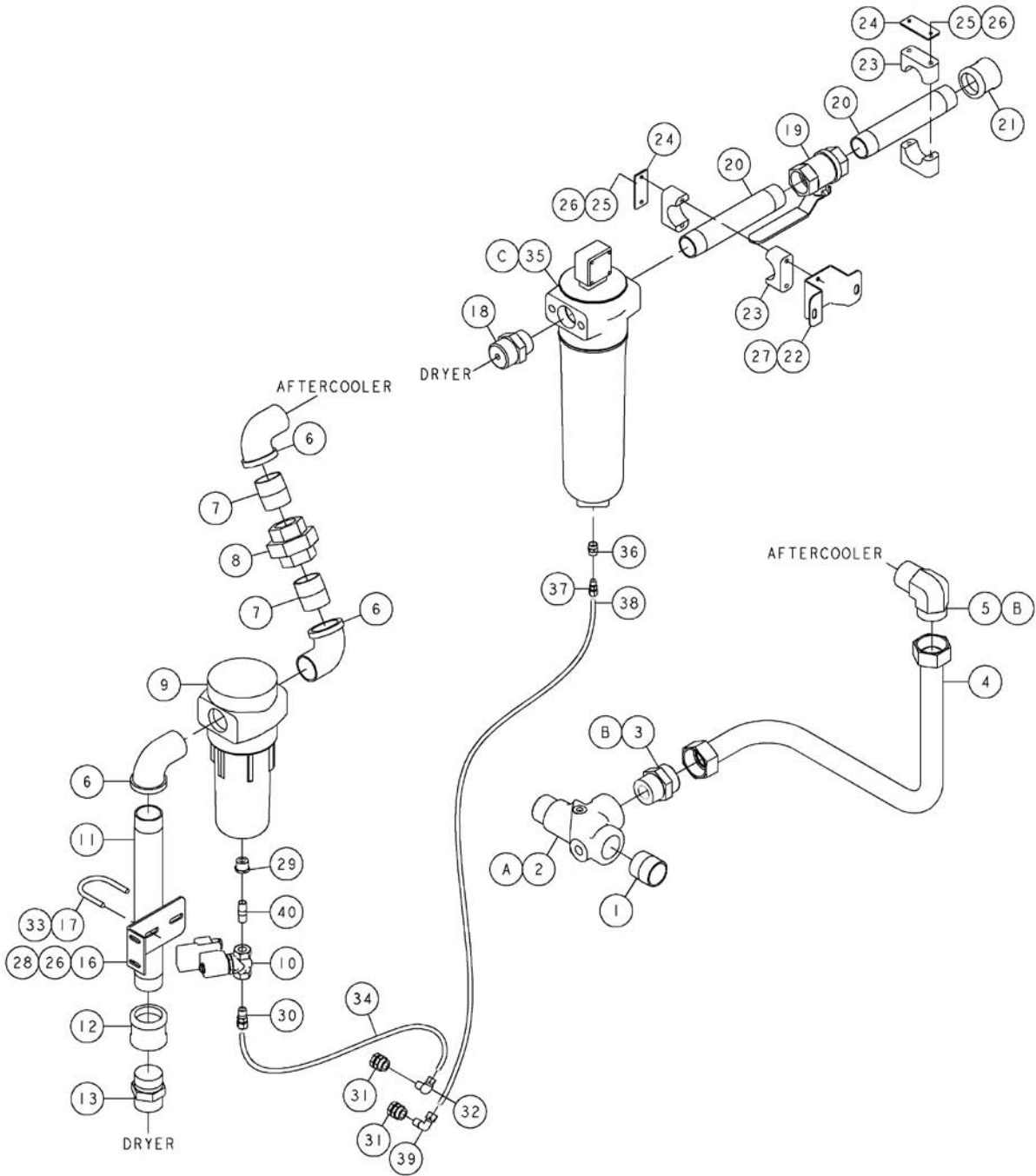
ITEM No.	QTY.	PART NUMBER	DESCRIPTION
1	1	126022-001	PIPE NIPPLE-1.50 NPT X CLOSE
2	1	128691-001	MINIMUM PRESSURE CHECK VALVE
3	1	140681-018	CONNECTOR-1.50 NPTF X 1.50 TUBE (O-RING)
4	1	145936-4	FORMED TUBE ASSEMBLY-PAR-FLANGED, 1.50 O.D.
5	1	140677-017	ELBOW-1.50 TUBE X 1-1/2-11.5 NPTF (O-RING)
6	3	21943	PIPE ELBOW-GALVANIZED, 1.50 NPT
7	2	126022-010	PIPE NIPPLE-1.50 NPT X 2.00
8	1	127289-021	PIPE UNION-1.50 NPT
9	1	145999-150	MOISTURE SEPARATOR
10	1	115698-125	DRAIN VALVE
11	1	126022-106	PIPE NIPPLE-1.50 NPT X 14.00
12	1	23887	PIPE COUPLING-GALVANIZED, 1.50 NPT
13	1	123166-29	MALE CONNECTOR-1.00 TUBE X 1.50 NPT
14	1	141951-006	HOSE ASSEMBLY-1.50 X 55.00 LONG
15	1	141951-007	HOSE ASSEMBLY-1.50 X 63.75 LONG
16	1	146119	AIR PIPING BRACKET
17	1	120317	U-BOLT, 5/16-18 UNC
18	1	123166-30	MALE CONNECTOR-1.50 TUBE X 1.25 NPT
19	1	110425-125	QUARTER TURN VALVE
20	1	126021-178	PIPE NIPPLE-GALVANIZED, 1.25 NPT X 23.00
21	1	124874-001	PIPE COUPLING-GALVANIZED, 1.25 NPT
22	1	146129	AIR PIPING BRACKET
23	4	141822-422	TUBE CLAMP-1.66 I.D.
24	2	141827-05	TUBE CLAMP COVER PLATE-1.38 I.D.
25	4	142578-J19	CAP SCREW-ZINC, 1/4-20 UNC X 2.50, GRADE 5 (@ 6 FT-LBS)
26	6	112272-J02	SELF-LOCKING HEX NUT-ZINC, 1/4-20 UNC
27	2	110511-K10	HEX HEAD SCREW-ZINC, 5/16-18 UNC X 0.75
28	2	142578-J10	CAP SCREW-ZINC, 1/4-20 UNC X 0.75, GRADE 5 (@ 6 FT-LBS)
29	1	121033-5	PIPE BUSHING-BRASS, 0.50 NPT X 0.25 NPT
30	1	124393-012	MALE CONNECTOR-0.38 TUBE X 0.25 NPT
31	1	129203-003	BULKHEAD COUPLING
32	1	124349-010	90° MALE ELBOW-0.38 TUBE X 0.25 NPT
33	2	112272-K02	SELF-LOCKING HEX NUT-ZINC, 5/16-18 UNC
34	4.0 FT	124435-004	NYLON TUBING-0.38 O.D.
35	1	121032-3	PIPE NIPPLE-BRASS, 0.25 NPT X CLOSE

COMPONENT MAINTENANCE PARTS

A	1	128691-051	MINIMUM PRESSURE CHECK VALVE KIT
B	2	140675-008	VITON O-RING/FACE SEAL-1.49 I.D.

@ INDICATES TORQUE VALUE IN FOOT POUNDS (LUBRICATED THREADS).

Air Piping (with dryer & filter) - 145936-004



NOTE-UNLESS OTHERWISE SPECIFIED:
 1) ITEMS 14 & 15 (DRYER HOSES) ARE NOT SHOWN.

Air Piping (with dryer & filter) - 145936-004

ITEM NO.	QTY.	PART NUMBER	DESCRIPTION
1	1	126022-001	PIPE NIPPLE-1.50 NPT X CLOSE
2	1	128691-001	MINIMUM PRESSURE CHECK VALVE
3	1	140681-018	CONNECTOR-1.50 NPTF X 1.50 TUBE (O-RING)
4	1	145936-4	FORMED TUBE ASSEMBLY-PAR-FLANGED, 1.50 O.D.
5	1	140677-017	ELBOW-1.50 TUBE X 1-1/2-11.5 NPTF (O-RING)
6	3	21943	PIPE ELBOW-GALVANIZED, 1.50 NPT
7	2	126022-010	PIPE NIPPLE-1.50 NPT X 2.00
8	1	127289-021	PIPE UNION-1.50 NPT
9	1	145999-150	MOISTURE SEPARATOR
10	1	115698-125	DRAIN VALVE
11	1	126022-106	PIPE NIPPLE-1.50 NPT X 14.00
12	1	23887	PIPE COUPLING-GALVANIZED, 1.50 NPT
13	1	123166-29	MALE CONNECTOR-1.00 TUBE X 1.50 NPT
14	1	141951-006	HOSE ASSEMBLY-1.50 X 55.00 LONG
15	1	141951-007	HOSE ASSEMBLY-1.50 X 63.75 LONG
16	1	146119	AIR PIPING BRACKET
17	1	120317	U-BOLT, 5/16-18 UNC
18	1	123166-30	MALE CONNECTOR-1.50 TUBE X 1.25 NPT
19	1	110425-125	QUARTER TURN VALVE
20	2	126021-062	PIPE NIPPLE-GALVANIZED, 1.25 NPT X 8.50
21	1	124874-001	PIPE COUPLING-GALVANIZED, 1.25 NPT
22	1	146129	AIR PIPING BRACKET
23	4	141822-422	TUBE CLAMP-1.66 I.D.
24	2	141827-05	TUBE CLAMP COVER PLATE-1.38 I.D.
25	4	142578-J19	CAP SCREW-ZINC, 1/4-20 UNC X 2.50, GRADE 5 (@ 6 FT-LBS)
26	6	112272-J02	SELF-LOCKING HEX NUT-ZINC, 1/4-20 UNC
27	2	110511-K10	HEX HEAD SCREW-ZINC, 5/16-18 UNC X 0.75
28	2	142578-J10	CAP SCREW-ZINC, 1/4-20 UNC X 0.75, GRADE 5 (@ 6 FT-LBS)
29	1	121033-5	PIPE BUSHING-BRASS, 0.50 NPT X 0.25 NPT
30	1	124393-012	MALE CONNECTOR-0.38 TUBE X 0.25 NPT
31	2	129203-003	BULKHEAD COUPLING
32	1	124349-010	90° MALE ELBOW-0.38 TUBE X 0.25 NPT
33	2	112272-K02	SELF-LOCKING HEX NUT-ZINC, 5/16-18 UNC
34	4.0 FT	124435-004	NYLON TUBING-0.38 O.D.
35	1	CSNT00300	COALESCING FILTER ASSEMBLY
36	1	125259-001	BRASS COUPLING-0.12 X 0.12
37	1	124393-004	MALE CONNECTOR-0.25 TUBE X 0.125 NPT
38	4.0 FT	124435-003	NYLON TUBING-0.25 O.D.
39	1	124349-005	90° MALE ELBOW-0.25 TUBE X 0.25 NPT
40	1	121032-3	PIPE NIPPLE-BRASS, 0.25 NPT X CLOSE

COMPONENT MAINTENANCE PARTS

A	1	128691-051	MINIMUM PRESSURE CHECK VALVE KIT
B	2	140675-008	VITON O-RING/FACE SEAL-1.49 I.D.
C	1	CSNE00300	FILTER ELEMENT

@ INDICATES TORQUE VALUE IN FOOT POUNDS (LUBRICATED THREADS).

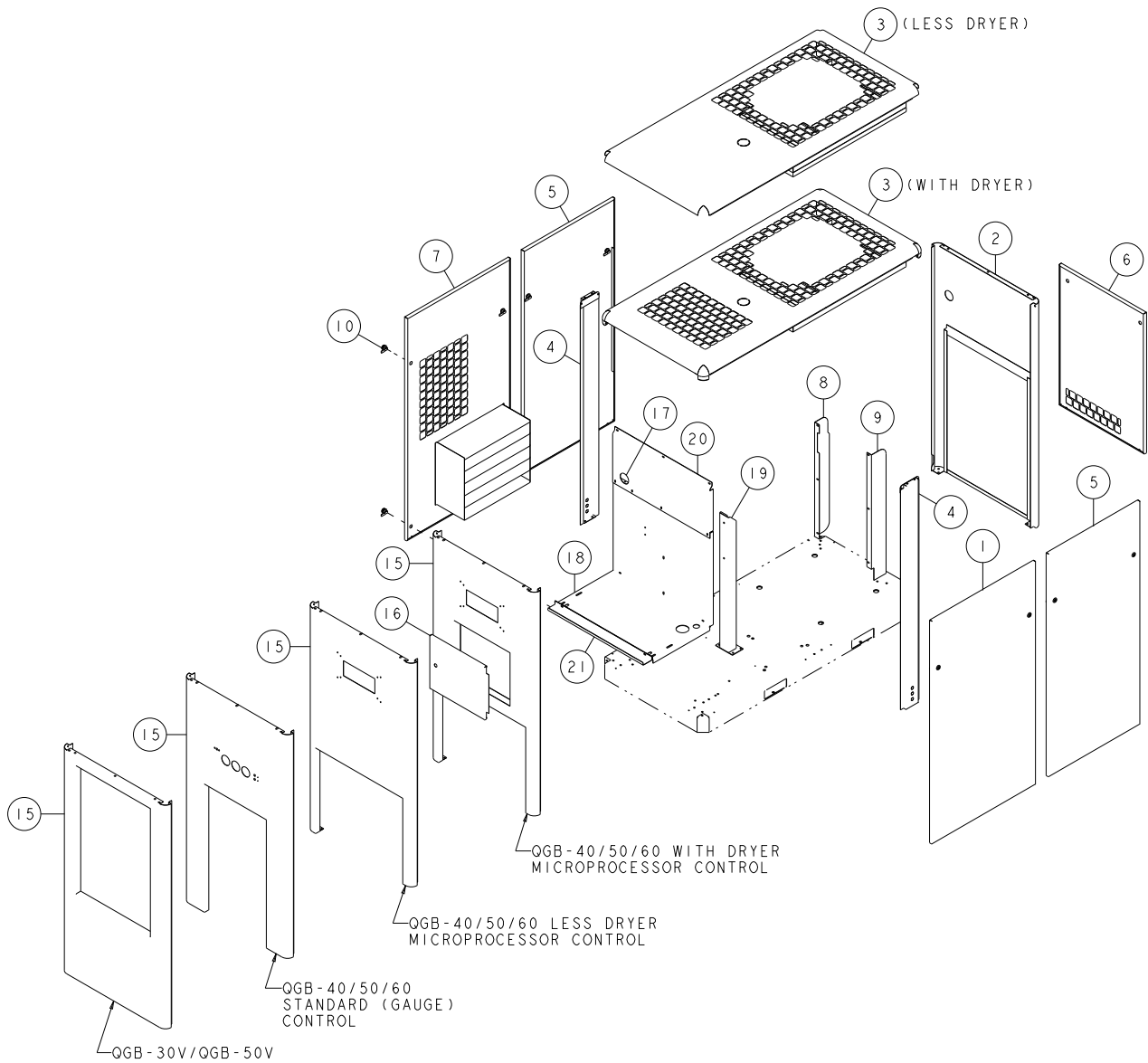
Fluid Piping - 145937-001

ITEM NO.	QTY.	PART NUMBER	DESCRIPTION
1	1	145937-1	FORMED TUBE ASSEMBLY-PAR-FLANGED, 1.00 O.D.
2	1	145937-2	FORMED TUBE ASSEMBLY-PAR-FLANGED, 1.00 O.D.
3	1	145937-4	FORMED TUBE ASSEMBLY-PAR-FLANGED, 1.00 O.D.
4	1	145937-6	FORMED TUBE ASSEMBLY-PAR-FLANGED, 1.00 O.D.
5	1	124973-016	THERMAL VALVE, 190°F
6	1	129845	FLUID FILTER HEAD
7	1	142136	FLUID FILTER ELEMENT
8	1	140676-018	ELBOW-1.00 TUBE X 1-5/16-12 (O-RING)
9	3	140682-020	CONNECTOR-1.00 TUBE X 1-5/16-12 (O-RING)
10	2	140676-020	ELBOW-1.00 TUBE X 1-5/8-12 (O-RING)
11	1	140672-006	TEE-1.00 TUBE X 1-5/16-12 (O-RING)
12	2	129208-021	ADAPTER-1-5/16-12 X 1-5/8-12 (O-RING)
13	1	129010-019	ELBOW-1.00 TUBE X 1-5/16-12 (O-RING)
14	1	129048-018	ADAPTER-1.00 TUBE X 1-1/16-12 (O-RING)
15	1	146245-1618	HOSE ASSEMBLY-1.00 X 18.00 LONG

COMPONENT MAINTENANCE PARTS

A	1	124973-060	THERMAL VALVE KIT (INCLUDES THE FOLLOWING THREE ITEMS:)
	1	124973-061	THERMAL VALVE ELEMENT
	1	124973-051	THERMAL VALVE GASKET/O-RING
	1	124973-052	THERMAL VALVE SEAL
B	9	140406-916	VITON O-RING, 1.17 I.D.
C	5	140675-006	VITON O-RING/FACE SEAL, 0.93 I.D.
D	2	140675-007	VITON O-RING/FACE SEAL, 1.18 I.D.
E	2	140406-920	VITON O-RING, 1.48 I.D.
F	1	140406-912	VITON O-RING, 0.92 I.D.

Cabinet - 146176-002/-003/-004/-005



NOTES-UNLESS OTHERWISE SPECIFIED:

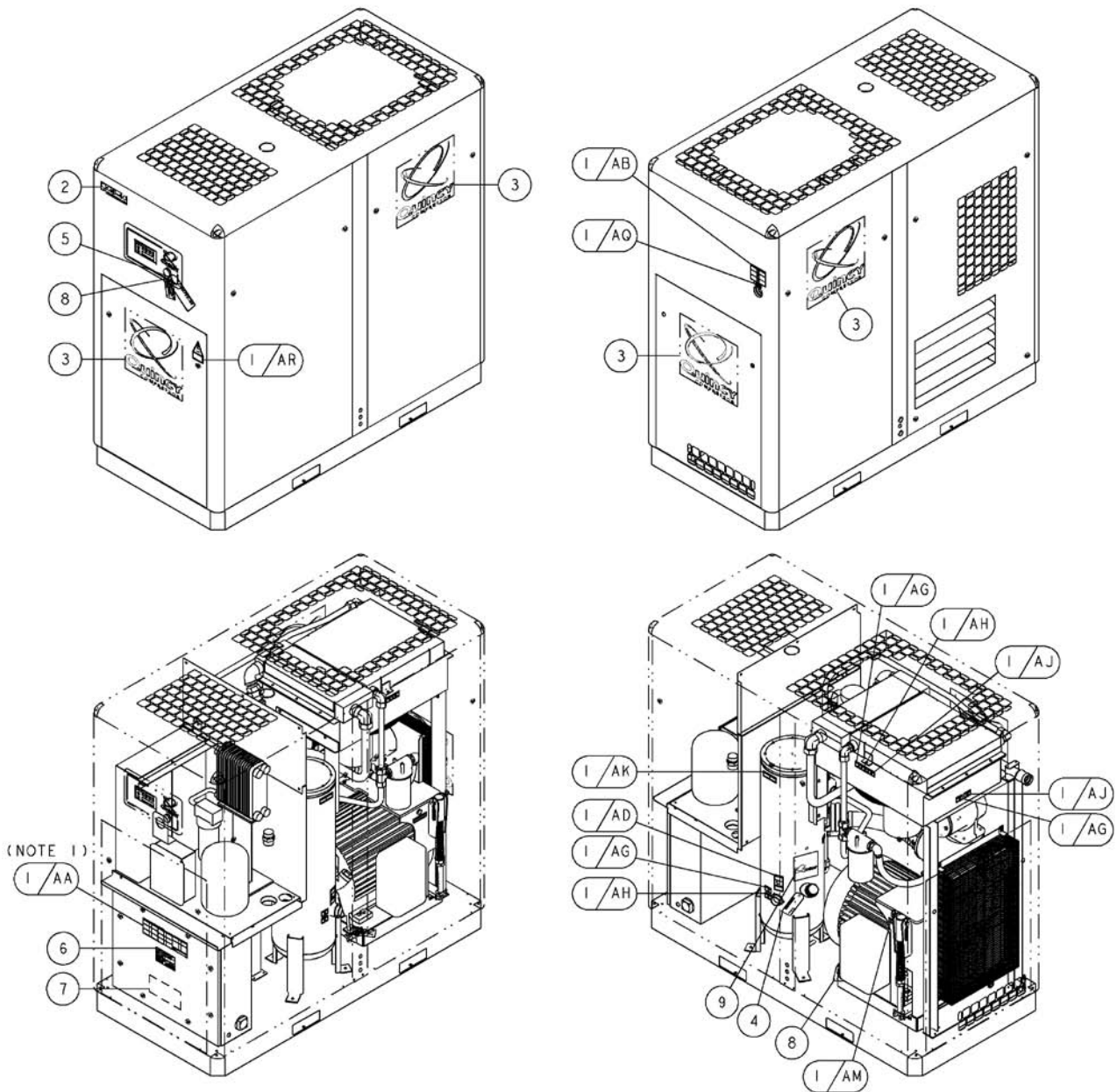
- 1) ITEMS 16 THRU 21 ARE USED ONLY ON UNITS WITH DRYER.
- 2) ITEMS 11 THRU 14 & ITEM 22 (HARDWARE ITEMS) ARE NOT SHOWN.

Cabinet - 146176-002/-003/-004/-005

ITEM NO.	QTY.	PART NUMBER	DESCRIPTION
1	1	146176-21	DOOR PANEL
2	1	146176-11	REAR PANEL
3	1	146176-15	TOP PANEL (WITH DRYER)
	1	146176-22	TOP PANEL (LESS DRYER)
4	2	146176-24	DOOR POST PANEL
5	2	146176-18	DOOR PANEL
6	1	146176-23	VENTED DOOR PANEL
7	1	146177	LOUVERED PANEL ASSEMBLY (WITH DRYER)
	1	146177-1	LOUVERED PANEL ASSEMBLY (LESS DRYER)
8	1	145932-7	COOLER BAFFLE-RIGHT
9	1	145932-8	COOLER BAFFLE-LEFT
10	14	127623	QUARTER TURN DOOR LATCH
11	12	12798508025	CAP SCREW-ZINC, 8 MM X 25 MM
12	10	12798508012	CAP SCREW-ZINC, 8 MM X 12 MM
13	4	145425-610	MACHINE SCREW-FLATHEAD, ZINC, 6 MM X 10 MM
14	10	146468	LOCATING PIN-QGB CABINET DOORS
15	1	146176-30	END PANEL (GAUGE CONTROL)
	1	146176-29	END PANEL (ELECTRONIC CONTROL)
	1	146176-33	END PANEL (ELECTRONIC CONTROL, WITH DRYER)
	1	146176-25	END PANEL (VARIABLE SPEED CONTROL)
16	1	146176-34	INLET DOOR PANEL
17	0.5	20579	VIBRATION DAMPENER
18	1	147632	BAFFLE PANEL
19	1	145932-10	DRYER SUPPORT
20	1	147631	BAFFLE PANEL
21	1	145971-4	BAFFLE BRACKET
22	2	12798505010	CAP SCREW-ZINC, 5 MM X 10 MM (GAUGE CONTROL ONLY)

* ITEMS 16 THRU 21 ARE USED ONLY ON UNITS WITH DRYER.

Decals - 146437-040/-050/-060

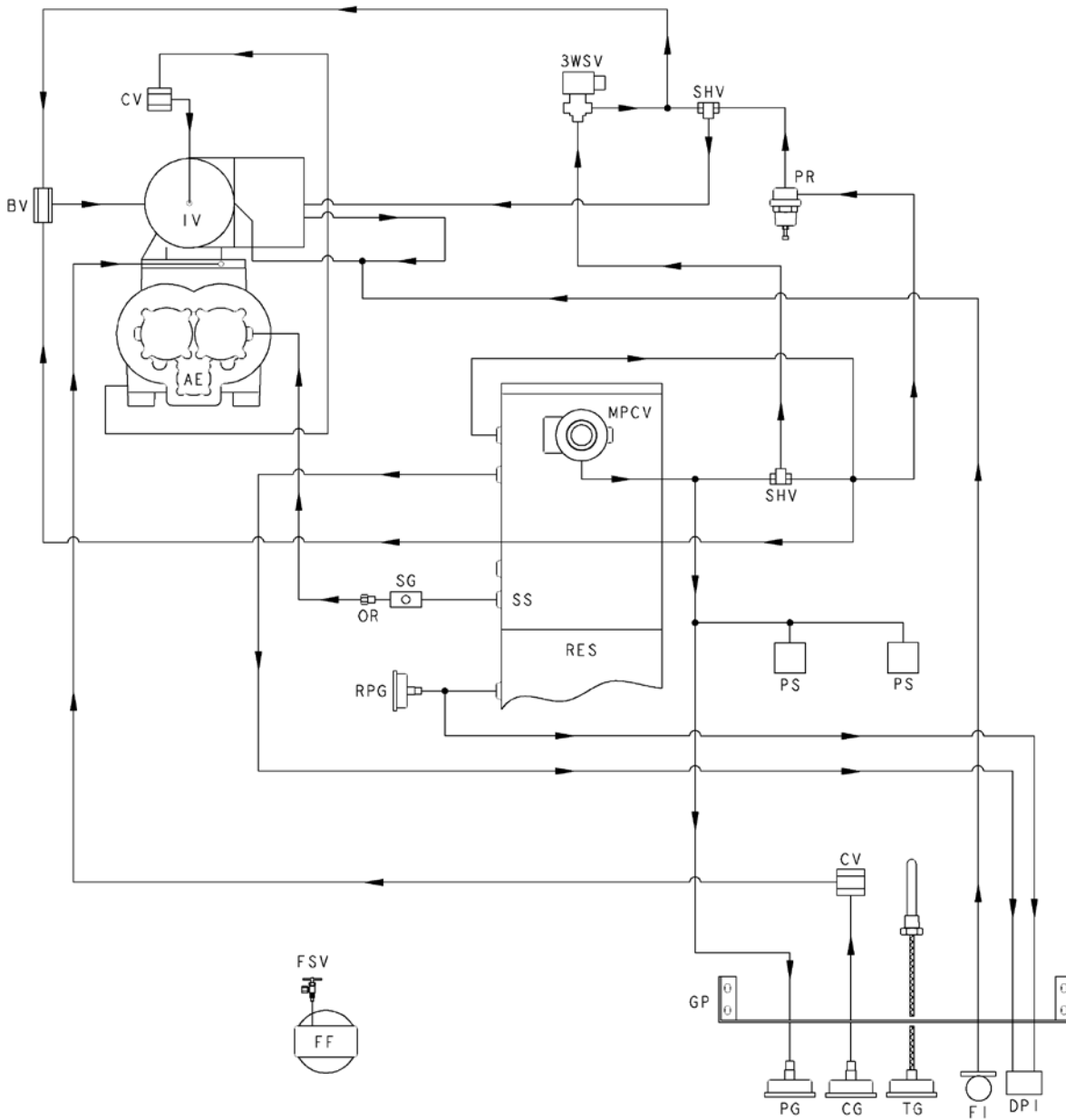


- NOTES-UNLESS OTHERWISE SPECIFIED:
 1) ITEMS 1/AA, 6 & 7 TO BE PLACED ON INSIDE OF ELECTRICAL ENCLOSURE DOOR POSITIONED AS SHOWN.
 2) UNITS WITHOUT CABINET:
 PLACE ITEM 2 (MODEL ID) ON CONTROL PANEL SUPPORT (CENTERED BELOW CONTROL PANEL).
 PLACE ITEM 3 (QUINCY LOGO) ON ELECTRICAL ENCLOSURE DOOR (QTY OF 1 USED).

Decals - 146437-040/-050/-060

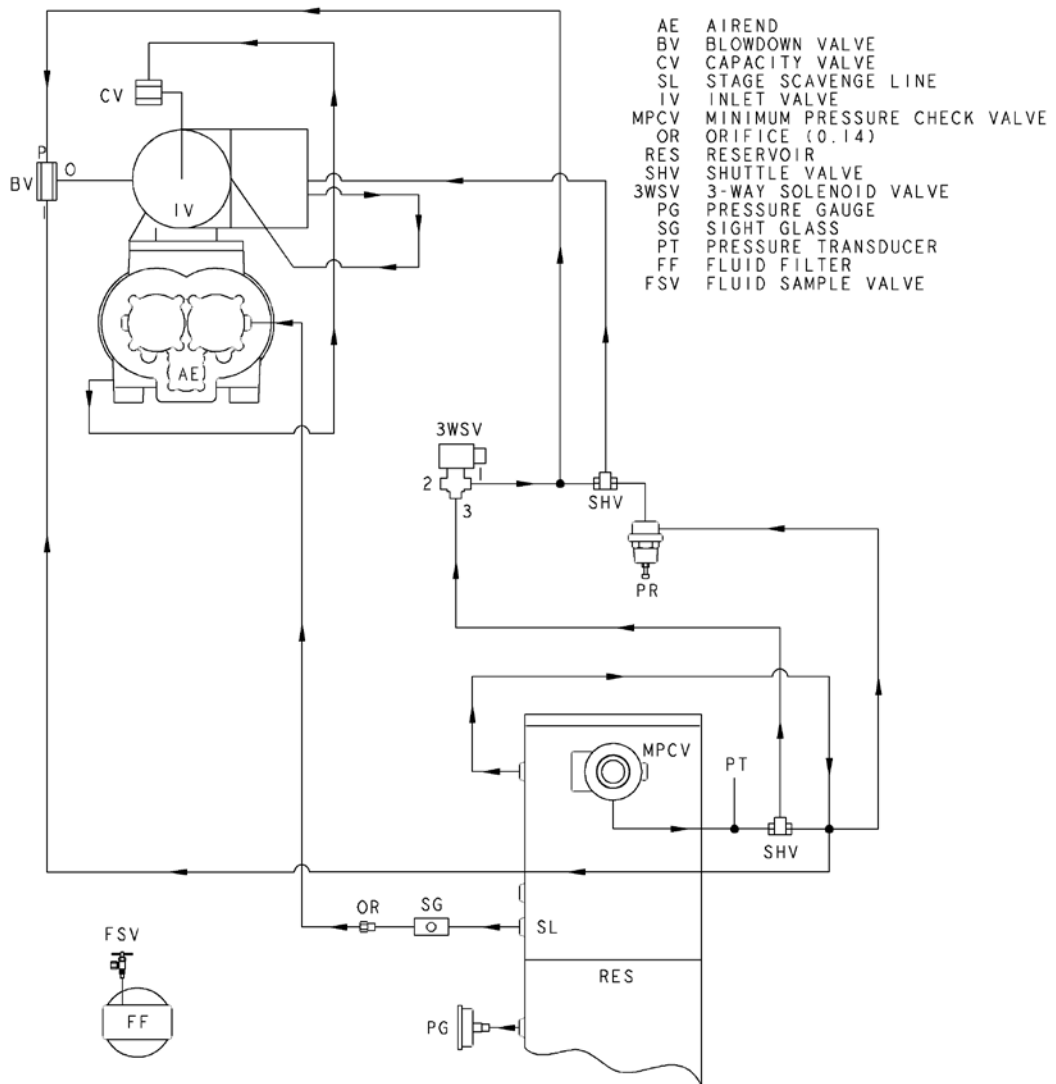
ITEM NO.	QTY.	PART NUMBER	DESCRIPTION
1	1	146001	SHEET-SAFETY DECALS
2	1	146022-40	DECAL-QGB-40
	1	146022-50	DECAL-QGB-50
	1	146022-60	DECAL-QGB-60
3	4	146021-2	DECAL-Q/QUINCY (15 INCH)
4	1	22177	TAG-FLUID TYPE SHIPPED WITH UNIT
5	1	141250	CAUTION TAG-JOG MOTOR
6	1	128198	LABEL-GENUINE QUINCY COMPONENTS
7	1	110690-001	PLASTIC ENVELOPE
8	2	146028	WARNING TAG-LOCKING BAR INSTALLED
9	1	143861	DECAL-THIS MACHINE PROTECTED WITH QUINSYN PG™
	1	140519-3	DECAL-THIS MACHINE PROTECTED WITH QUINSYN XP®
	1	144048	DECAL-THIS MACHINE PROTECTED WITH QUINSYN PLUS
	1	128426	DECAL-THIS MACHINE PROTECTED WITH QUINSYN-F®

Control Schematic (standard control)



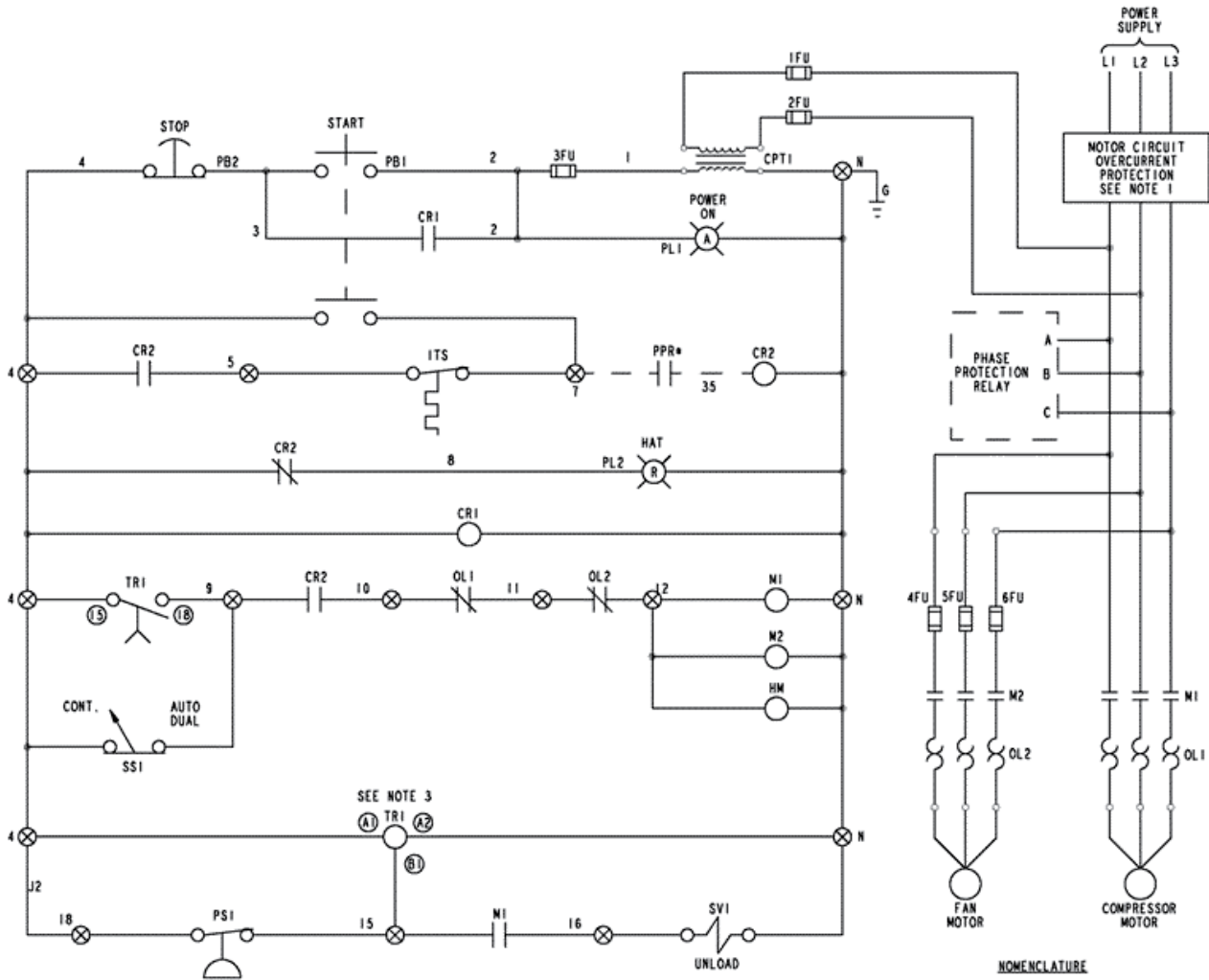
- | | |
|--------------------------------------|-------------------------------|
| AE: AIREND | OR: ORIFICE (0.140) |
| BV: BLOWDOWN VALVE | PG: PRESSURE GAUGE |
| CG: CAPACITY GAUGE | PS: PRESSURE SWITCH |
| CV: CAPACITY VALVE | PR: PRESSURE REGULATOR |
| DPI: DIFFERENTIAL PRESSURE INDICATOR | RES: RESERVOIR |
| FF: FLUID FILTER | RPG: RESERVOIR PRESSURE GAUGE |
| FI: AIR FILTER INDICATOR | SG: SIGHTGLASS |
| FSV: FLUID SAMPLE VALVE | SHV: SHUTTLE VALVE |
| GP: GAUGE PANEL | SS: SEPARATOR SCAVENGE |
| IV: INLET VALVE | TG: TEMPERATURE GAUGE |
| MPCV: MINIMUM PRESSURE CHECK VALVE | 3WSV: 3-WAY SOLENOID VALVE |

Control Schematic (PLC control)



Electrical Control Diagram (full voltage, auto dual)

WP2056A



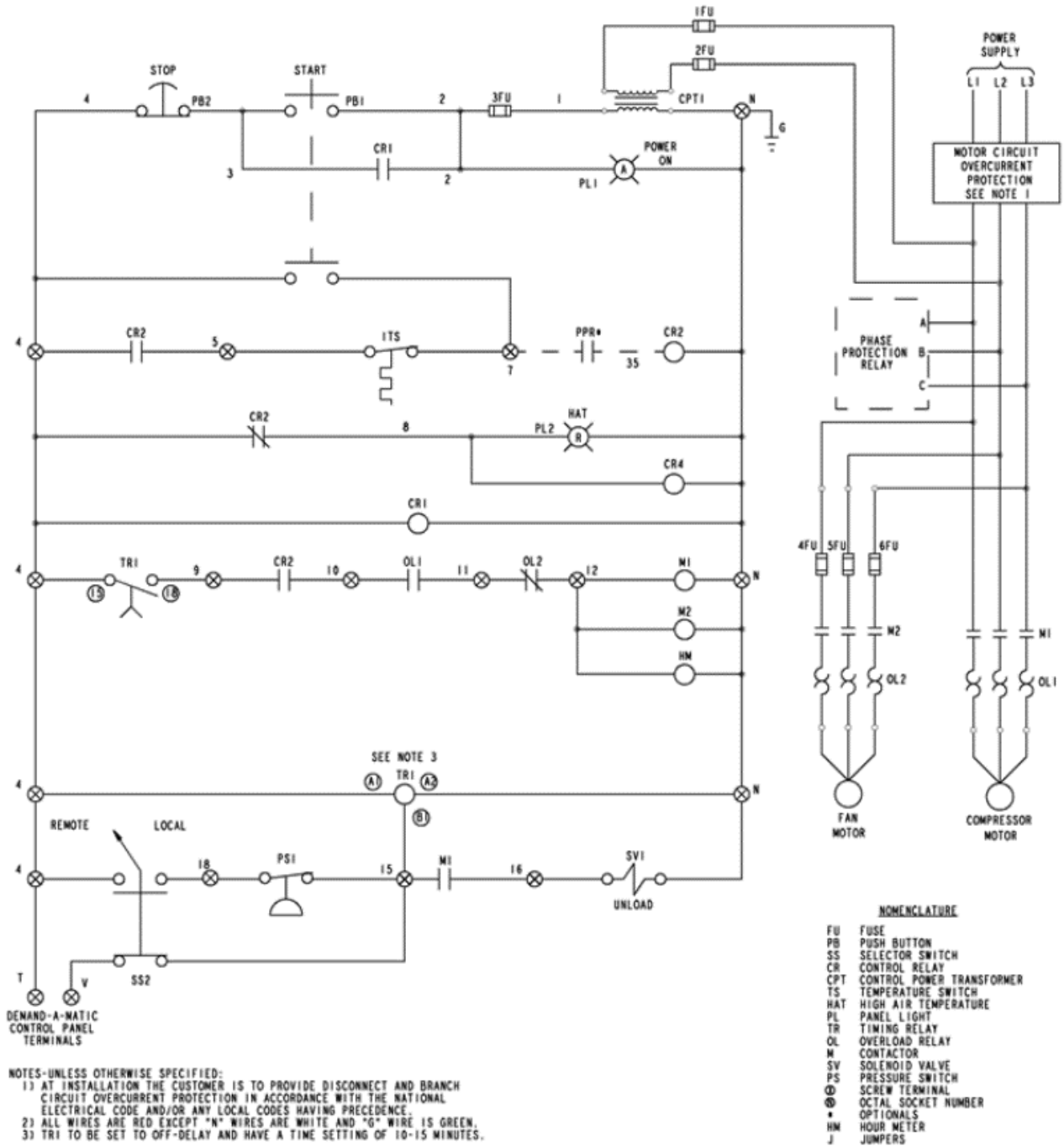
- NOTES-UNLESS OTHERWISE SPECIFIED:
 1) AT INSTALLATION THE CUSTOMER IS TO PROVIDE DISCONNECT AND BRANCH CIRCUIT OVERCURRENT PROTECTION IN ACCORDANCE WITH THE NATIONAL ELECTRICAL CODE AND/OR ANY LOCAL CODES HAVING PRECEDENCE.
 2) ALL WIRES ARE RED EXCEPT "N" WIRES ARE WHITE AND "G" WIRE IS GREEN.
 3) TRI TO BE SET TO OFF-DELAY AND HAVE A TIME SETTING OF 10-15 MINUTES.

NOMENCLATURE

FU	FUSE
PB	PUSH BUTTON
SS	SELECTOR SWITCH
CR	CONTROL RELAY
CPT	CONTROL POWER TRANSFORMER
TS	TEMPERATURE SWITCH
HAT	HIGH AIR TEMPERATURE
PL	PANEL LIGHT
TR	TIMING RELAY
OL	OVERLOAD RELAY
M	CONTACTOR
SV	SOLENOID VALVE
PS	PRESSURE SWITCH
⊙	SCREW TERMINAL
Ⓢ	OCTAL SOCKET NUMBER
*	OPTIONALS
HM	HOURLY METER
J	JUMPERS

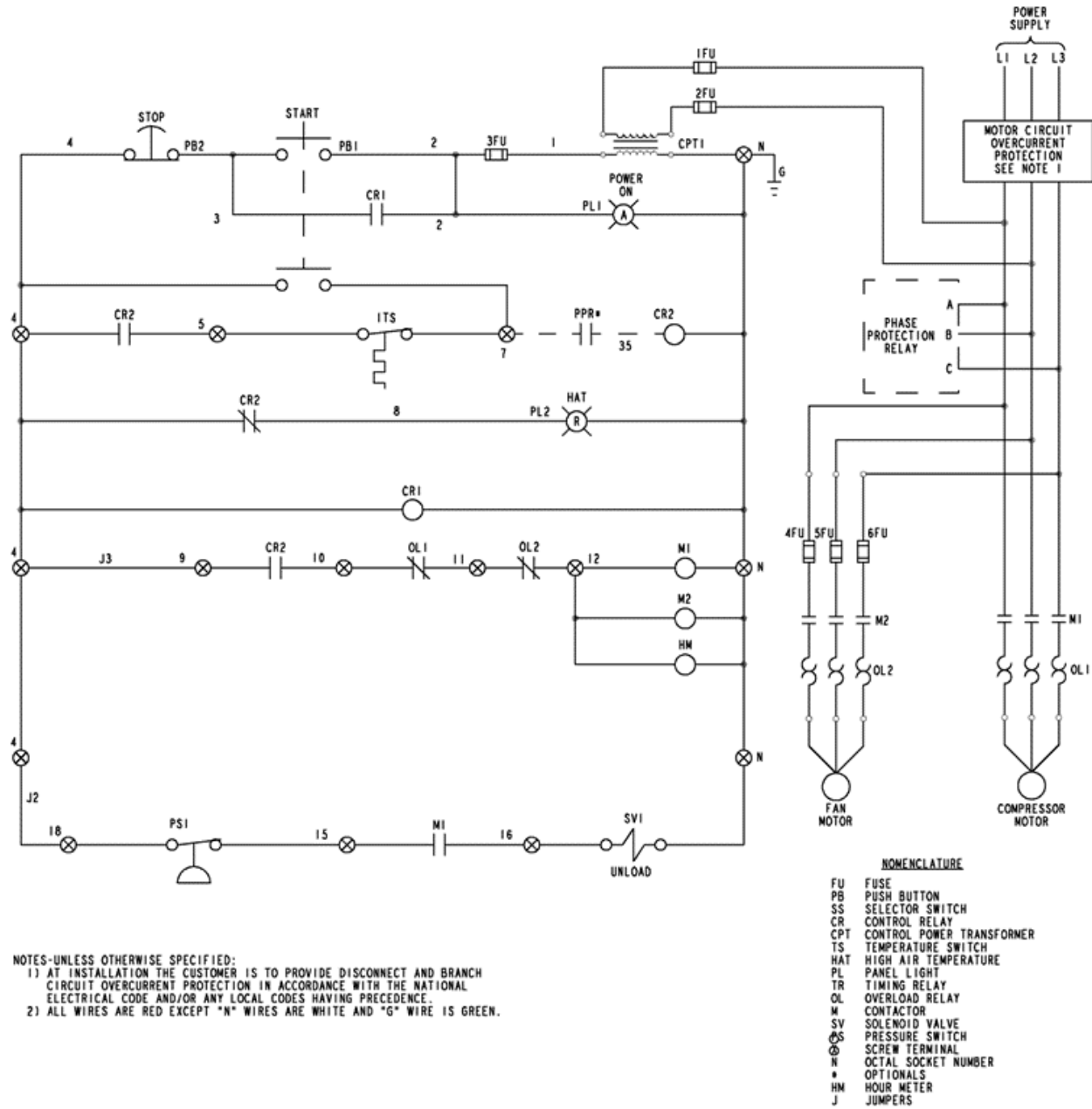
Electrical Control Diagram (full voltage, auto demand)

WP2056B



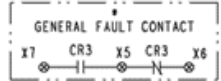
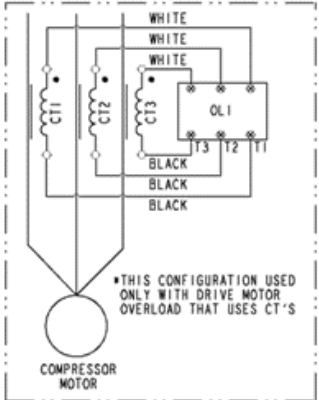
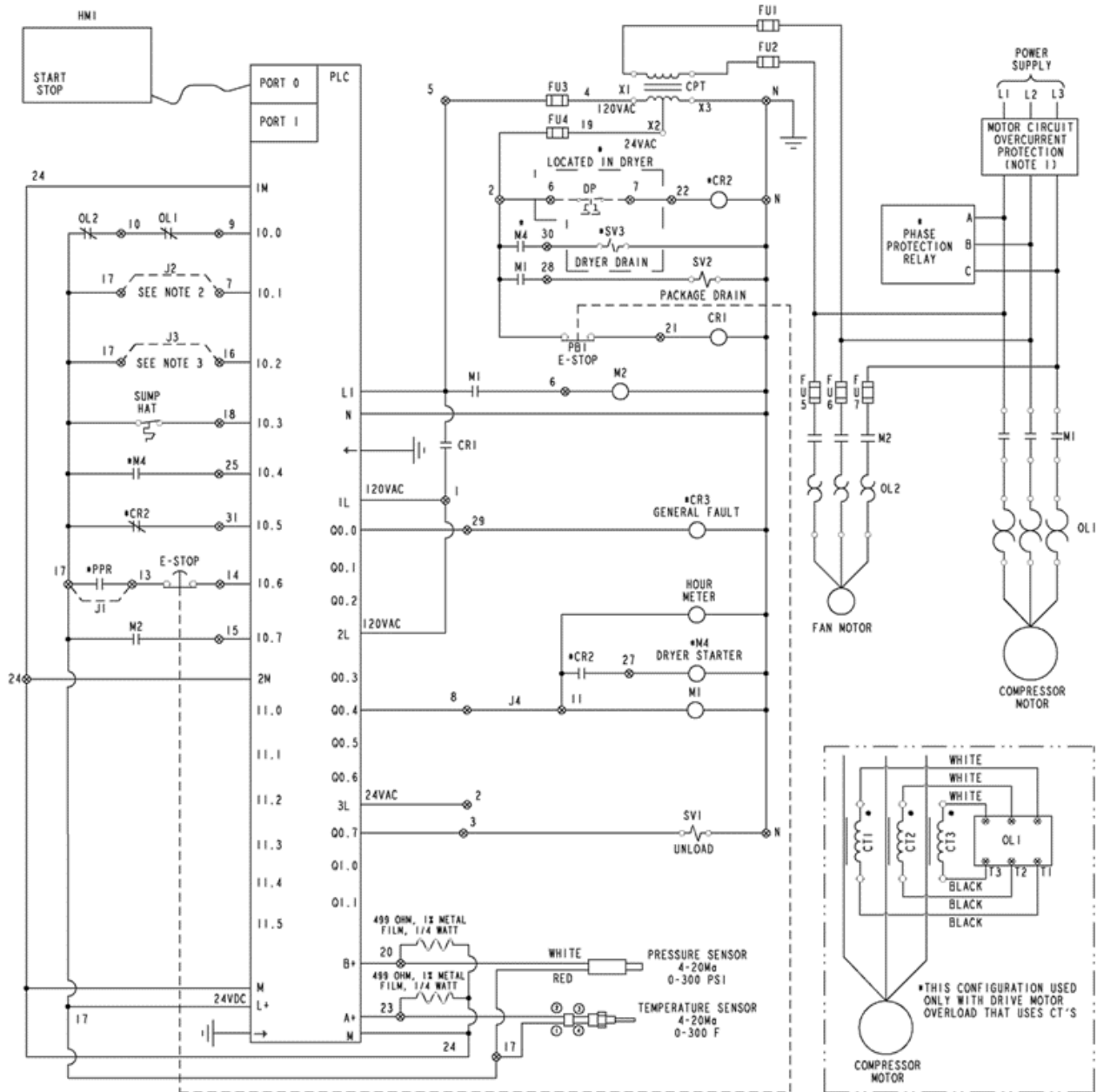
Electrical Control Diagram (full voltage, continuous run)

WP2056C



Electrical Control Diagram (PLC, full voltage)

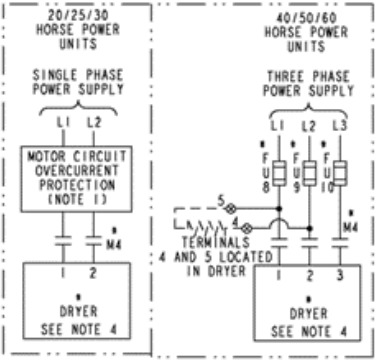
WP2047AS1



- NOMENCLATURE**
- FU FUSE
 - PB PUSH BUTTON
 - SS SELECTOR SWITCH
 - CR CONTROL RELAY
 - CPT CONTROL POWER TRANSFORMER
 - TS TEMPERATURE SENSOR
 - HAT HIGH AIR TEMPERATURE
 - PLC PROGRAMMABLE LOGIC CONTROLLER
 - CT CURRENT TRANSFORMER
 - OL OVERLOAD RELAY
 - M CONTACTOR
 - SV SOLENOID VALVE
 - PS PRESSURE SENSOR
 - ⊕ SCREW TERMINAL
 - ⊙ NUMBER DESIGNATOR ON DEVICE
 - * OPTIONAL
 - HMI HUMAN MACHINE INTERFACE

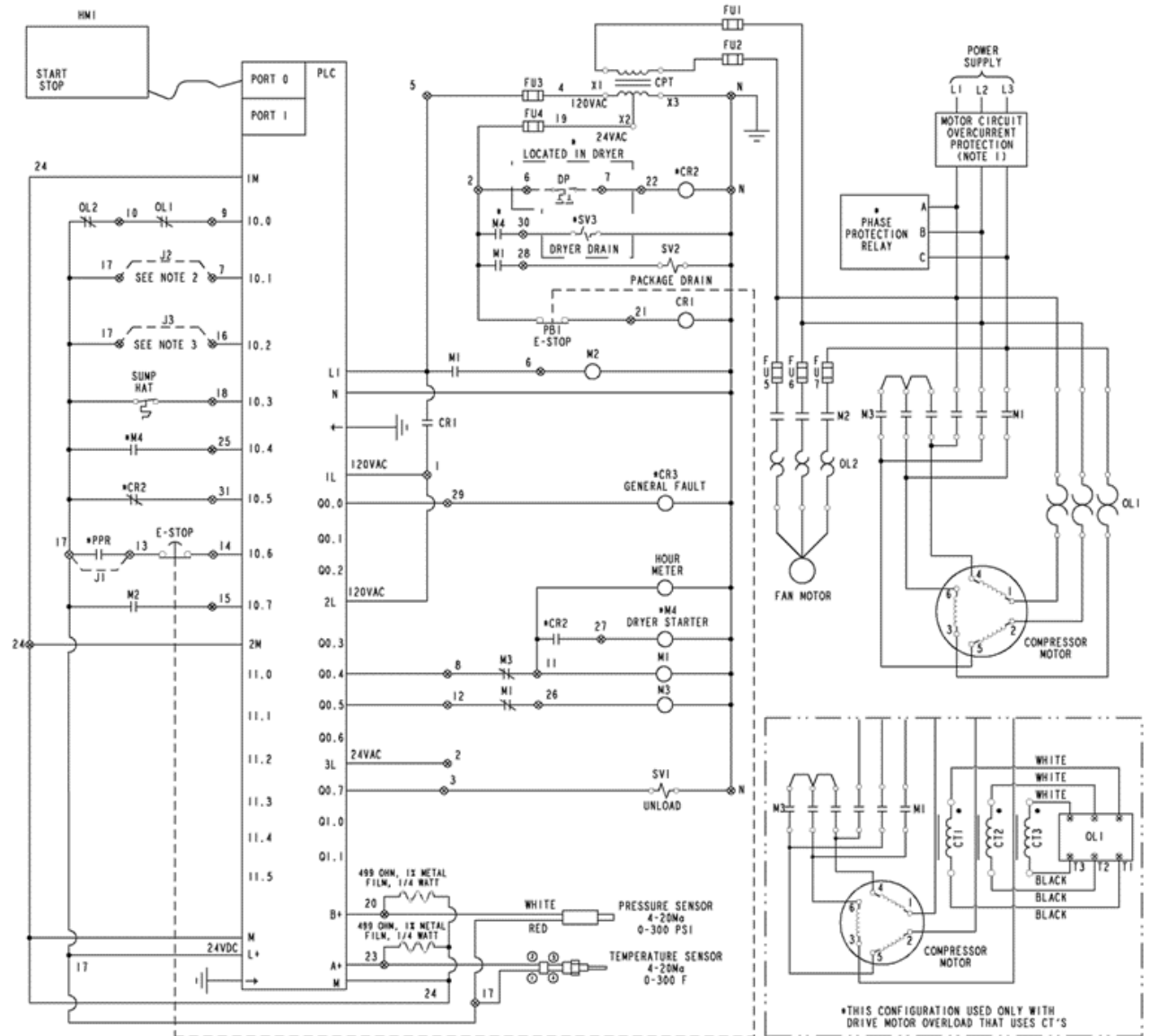
NOTES-UNLESS OTHERWISE SPECIFIED:

- 1) AT INSTALLATION, CUSTOMER IS TO PROVIDE DISCONNECT AND BRANCH CIRCUIT OVERLOAD PROTECTION IN ACCORDANCE WITH THE NATIONAL ELECTRICAL CODE AND/OR ANY LOCAL CODES HAVING PRECEDENCE.
- 2) TO ENABLE REMOTE START REMOVE J2. UNIT MUST BE LOCALLY STARTED BEFORE REMOTE INPUT WILL WORK. WHEN CONTACT BETWEEN 17 AND 7 IS CLOSED THE UNIT WILL START.
- 3) TO ENABLE REMOTE UNLOAD REMOVE J3. WHEN CONTACT BETWEEN 17 AND 16 IS CLOSED THE UNIT WILL LOAD.
- 4) DRYERS FOR THE 20-30HP UNITS WILL BE 220V SINGLE PHASE. DRYERS FOR THE 40-60HP UNITS WILL BE THE SAME THREE PHASE VOLTAGE AS THE UNIT.

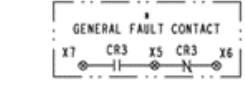
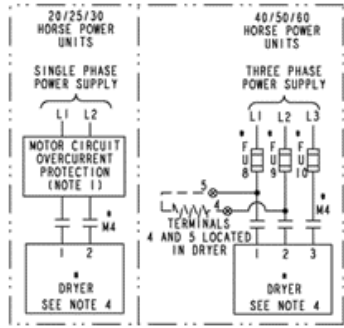


Electrical Control Diagram (PLC, wye-delta)

WP2047AS



- NOTES-UNLESS OTHERWISE SPECIFIED:
- 1) AT INSTALLATION, CUSTOMER IS TO PROVIDE DISCONNECT AND BRANCH CIRCUIT OVERLOAD PROTECTION IN ACCORDANCE WITH THE NATIONAL ELECTRICAL CODE AND/OR ANY LOCAL CODES HAVING PRECEDENCE.
 - 2) TO ENABLE REMOTE START REMOVE J2. UNIT MUST BE LOCALLY STARTED BEFORE REMOTE INPUT WILL WORK. WHEN CONTACT BETWEEN 17 AND 7 IS CLOSED THE UNIT WILL START.
 - 3) TO ENABLE REMOTE UNLOAD REMOVE J3. WHEN CONTACT BETWEEN 17 AND 16 IS CLOSED THE UNIT WILL LOAD.
 - 4) DRYERS FOR THE 20-30HP UNITS WILL BE 220V SINGLE PHASE. DRYERS FOR THE 40-60HP UNITS WILL BE THE SAME THREE PHASE VOLTAGE AS THE UNIT.



- NOMENCLATURE**
- FU FUSE
 - PB PUSH BUTTON
 - SS SELECTOR SWITCH
 - CR CONTROL RELAY
 - CPT CONTROL POWER TRANSFORMER
 - TS TEMPERATURE SENSOR
 - HAT HIGH AIR TEMPERATURE
 - PLC PROGRAMMABLE LOGIC CONTROLLER
 - CT CURRENT TRANSFORMER
 - OL OVERLOAD RELAY
 - M CONTACTOR
 - SV SOLENOID VALVE
 - PS PRESSURE SENSOR
 - ⊕ SCREW TERMINAL
 - ⊙ NUMBER DESIGNATOR ON DEVICE
 - * OPTIONAL
 - HMI HUMAN MACHINE INTERFACE

Standard Terms and Conditions

Quincy Compressor and Ortman Fluid Power Divisions

LEGAL EFFECT: Except as expressly otherwise agreed to in writing by an authorized representative of Seller, the following terms and conditions shall apply to and form a part of this order and any additional and/or different terms of Buyer's purchase order or other form of acceptance are rejected in advance and shall not become a part of this order.

The rights of Buyer hereunder shall be neither assignable nor transferable except with the written consent of Seller.

This order may not be canceled or altered except with the written consent of Seller and upon terms which will indemnify Seller against all loss occasioned thereby. All additional costs incurred by Seller due to changes in design or specifications, modification of this order or revision of product must be paid for by Buyer.

In addition to the rights and remedies conferred upon Seller by this order, Seller shall have all rights and remedies conferred at law and in equity and shall not be required to proceed with the performance of this order if Buyer is in default in the performance of such order or of any other contract or order with seller.

TERMS OF PAYMENT: Unless otherwise specified in the order acknowledgment, the terms of payment shall be net cash within thirty (30) days after shipment. These terms shall apply to partial as well as complete shipments. If any proceeding be initiated by or against Buyer under any bankruptcy or insolvency law, or in the judgment of Seller the financial condition of Buyer, at the time the equipment is ready for shipment, does not justify the terms of payment specified, Seller reserves the right to require full payment in cash prior to making shipment. If such payment is not received within fifteen (15) days after notification of readiness for shipment, Seller may cancel the order as to any unshipped item and require payment of its reasonable cancellation charges.

If Buyer delays shipment, payments based on date of shipment shall become due as of the date when ready for shipment. If Buyer delays completion of manufacture, Seller may elect to require payment according to percentage of completion. Equipment held for Buyer shall be at Buyer's risk and storage charges may be applied at the discretion of Seller.

Accounts past due shall bear interest at the highest rate lawful to contract for but if there is no limit set by law, such interest shall be eighteen percent (18%). Buyer shall pay all cost and expenses, including reasonable attorney's fees, incurred in collecting the same, and no claim, except claims within Seller's warranty of material or workmanship, as stated below, will be recognized unless delivered in writing to Seller within thirty (30) days after date of shipment.

TAXES: All prices exclude present and future sales, use, occupation, license, excise, and other taxes in respect of manufacture, sales or delivery, all of which shall be paid by Buyer unless included in the purchase price at the proper rate or a proper exemption certificate is furnished.

ACCEPTANCE: All offers to purchase, quotations and contracts of sales are subject to final acceptance by an authorized representative at Seller's plant.

DELIVERY: Except as otherwise specified in this quotation, delivery will be F. O. B. point of shipment. In the absence of exact shipping instruction, Seller will use its discretion regarding best means of insured shipment. No liability will be accepted by Seller for so doing. All transportation charges are at Buyer's expense. Time of delivery is an estimate only and is based upon the receipt of all information and necessary approvals. The shipping schedule shall not be construed to limit seller in making commitments for materials or in fabricating articles under this order in accordance with Seller's normal and reasonable production schedules.

Seller shall in no event be liable for delays caused by fires, acts of God, strikes, labor difficulties, acts of governmental or military authorities, delays in transportation or procuring materials, or causes of any kind beyond Seller's control. No provision for liquidated damages for any cause shall apply under this order. Buyer shall accept delivery within thirty (30) days after receipt of notification of readiness for shipment. Claims for shortages will be deemed to have been waived if not made in writing within ten (10) days after the receipt of the material in respect of which any such shortage is claimed. Seller is not responsible for loss or damage in transit after having received "In Good Order" receipt from the carrier. All claims for loss or damage in transit should be made to the carrier.

Standard Terms and Conditions

Quincy Compressor and Ortman Fluid Power Divisions

TITLE & LIEN RIGHTS: The equipment shall remain personal property, regardless of how affixed to any realty or structure. Until the price (including any notes given therefore) of the equipment has been fully paid in cash, Seller shall, in the event of Buyer's default, have the right to repossess such equipment.

PATENT INFRINGEMENT: If properly notified and given an opportunity to do so with friendly assistance, Seller will defend Buyer and the ultimate user of the equipment from any actual or alleged infringement of any published United States patent by the equipment or any part thereof furnished pursuant hereto (other than parts of special design, construction, or manufacture specified by and originating with Buyer), and will pay all damages and costs awarded by competent court in any suit thus defended or of which it may have had notice and opportunity to defend as aforesaid.

STANDARD WARRANTY: Seller warrants that products of its own manufacture will be free from defects in workmanship and materials under normal use and service for the period specified in the product instruction manual. Warranty for service parts will be ninety (90) days from date of factory shipment. Electric Motors, gasoline and diesel engines, electrical apparatus and all other accessories, components and parts not manufactured by Seller are warranted only to the extent of the original manufacturer's warranty.

Notice of the alleged defect must be given to the Seller, in writing with all identifying details including serial number, type of equipment and date of purchase within thirty (30) days of the discovery of the same during the warranty period.

Seller's sole obligation on this warranty shall be, at its option, to repair or replace or refund the purchase price of any product or part thereof which proves to be defective. If requested by Seller, such product or part thereof must be promptly returned to seller, freight prepaid, for inspection.

Seller warrants repaired or replaced parts of its own manufacture against defects in materials and workmanship under normal use and service for ninety (90) days or for the remainder of the warranty on the product being repaired.

This warranty shall not apply and Seller shall not be responsible or liable for:

- (a) Consequential, collateral or special losses or damages;
- (b) Equipment conditions caused by fair wear and tear, abnormal conditions of use, accident, neglect or misuse of equipment, improper storage or damage resulting during shipping;
- (c) Deviation from operating instructions, specifications or other special terms of sale;
- (d) Labor charges, loss or damage resulting from improper operation, maintenance or repairs made by person(s) other than Seller or Seller's authorized service station.

In no event shall Seller be liable for any claims whether arising from breach of contract or warranty or claims of negligence or negligent manufacture in excess of the purchase price.

THIS WARRANTY IS THE SOLE WARRANTY OF SELLERS AND ANY OTHER WARRANTIES, WHETHER EXPRESS OR IMPLIED IN LAW OR IMPLIED IN FACT, INCLUDING ANY WARRANTIES OF MERCHANTABILITY AND FITNESS FOR PARTICULAR USE ARE HEREBY SPECIFICALLY EXCLUDED.

LIABILITY LIMITATIONS: Under no circumstances shall the Seller have any liability for liquidated damages or for collateral, consequential or special damages or for loss of profits, or for actual losses or for loss of production or progress of construction, whether resulting from delays in delivery or performance, breach of warranty, negligent manufacture or otherwise.

ENVIRONMENTAL AND OSHA REQUIREMENTS: At the time of shipment of the equipment from the factory, Quincy Compressor / Ortman Fluid Power will comply with the various Federal, State and local laws and regulations concerning occupational health and safety and pollution. However, in the installation and operation of the equipment and other matters over which the seller has no control, the Seller assumes no responsibility for compliance with those laws and regulations, whether by the way of indemnity, warranty or otherwise.



Rotary/Vacuum/Systems: 251.937.5900
Nearest Distributor: 888.424.7729
E-mail: info@quincycompressor.com
Website: www.quincycompressor.com



© 2007 Quincy Compressor
All Rights Reserved. Litho in U.S.A.