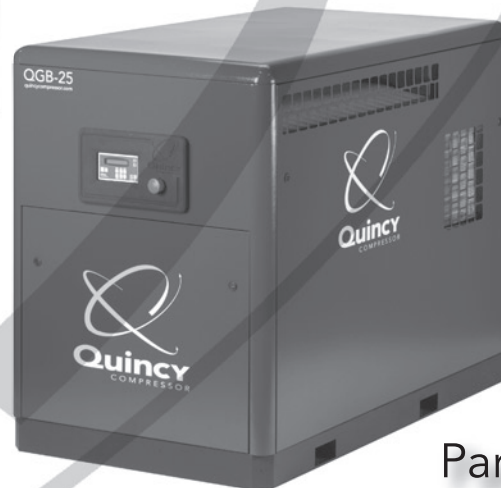




an EnPro Industries company

QGB 20/25/30

Belt Drive Air Compressor



Parts Manual

This manual contains important safety information and should be made available to all personnel who operate and/or maintain this product. Carefully read this manual before attempting to operate or perform maintenance on this equipment.

Manual No. 65087-1A

October 2005 Edition

Alphabetical Index

Airend/Motor Mounting	6-7
Airend	4-5
Air Filter	10
Air Piping (less dryer)	22-23
Air Piping (w/dryer)	24-25
Air Piping (w/dryer, filter & receiver)	28-29
Air Piping (w/dryer & filter)	26-27
Belt Drive	8-9
Cabinet (less dryer)	32
Cabinet (with dryer)	33
Controller Support (less cabinet)	15
Control Piping	16
Control Schematic	36
Cooler.....	17
Decals	34-35
Electrical Control & Starting.....	12-14
Electrical Control Diagram (across the line).....	37
Electrical Control Diagram (wye-delta).....	38
Fluid Piping	30
Fluid Specifications.....	2
Inlet Valve (wye-delta)	11
Integrated Dryer (optional)	20-21
Ordering Replacement Parts	1
Receiver (optional)	31
Recommended Spare Parts	3
Reservoir	18-19
Serial Number Identification.....	1
Shaft Seal Kit	4

Serial Number Identification

The serial number tag is located on the top flange of the unit frame just left of the control panel and in the upper right corner of the electrical control panel.

SERIAL NO.	MODEL NO.
<input type="text"/>	<input type="text"/>
WHEN ORDERING PARTS INCLUDE ALL OF THE ABOVE NUMBERS	
Quincy COMPRESSOR BAY MINETTE, ALABAMA	
MADE IN U.S.A.	QUINCY P/N 1693-176

Ordering Replacement Parts

Prompt service can be rendered on replacement part orders if the following information is given:

1. The serial number must be given when ordering replacement parts.
2. State the exact part number needed. Do not order by index numbers, as index numbers are repeated throughout this manual and if used for ordering parts will necessitate time consuming correspondence.
3. State the exact quantity needed.
4. State the preferred type of transportation.

All replacement parts are to be ordered through an authorized distributor. Insist on Genuine Quincy Parts only! Failure to do so may void your warranty.

Fluid Specifications

Quincy Compressor® recommends that all Quincy Rotary Screw Products be filled with one of the following QuinSyn® Brand synthetic fluids:

★QuinSyn PG™★

★QuinSyn F® (food grade)★

★QuinSyn Plus™★

★QuinSyn XP®★

Synthetic fluids other than QuinSyn brand(s) may not be compatible with components used in Quincy Compressor products. If it is deemed necessary to convert a Quincy compressor or vacuum pump to a synthetic other than QuinSyn brand, please contact an authorized Quincy Compressor distributor. To locate your nearest distributor, contact Sales & Marketing in Quincy, Illinois:

Phone 217-222-7700, FAX 217-222-4138 or visit our website:

<http://www.quincycompressor.com>.

The following information will be required by the distributor when changing compressor fluid:

MODEL (CIRCLE CONFIGURATION):	HORSEPOWER			COOLING A/C	PSI			
	QGB	20	25		30	100	125	150

SERIAL NO. _____ FLUID ORIGINALLY USED: _____

FLUID NOW USED (IF CHANGED): _____ NEW FLUID TO BE USED: _____

Additional information regarding fluid specifications can be found in the Instruction Manual shipped with your unit.

- Fluid Analysis Kit

Quincy Compressor offers free fluid analysis to provide early detection of excessive parts wear, fluid breakdown, or a contaminated fluid system. Order the Fluid Analysis Kit (part no. 128515) from your local authorized Quincy Compressor distributor.

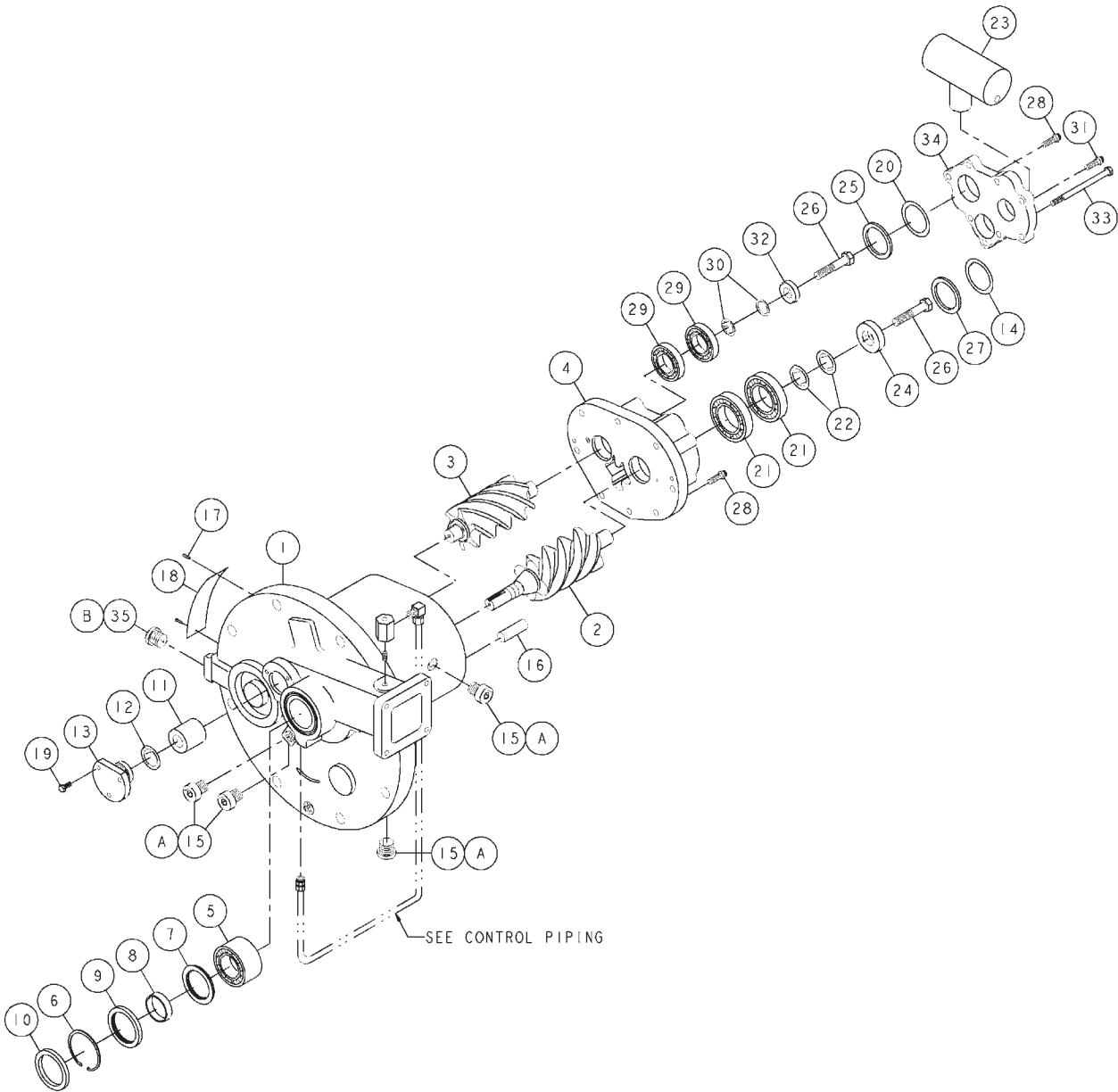
- Fluid Requirements

Air-cooled - 3 gallons

Recommended Spare Parts

QTY.	PART NUMBER	DESCRIPTION
1	144046-005	FLUID-QUINSYN PLUS (5 GALLON CONTAINER)
1	143808-005	FLUID-QUINSYN PG (5 GALLON CONTAINER)
1	142784-005	FLUID-QUINSYN XP (5 GALLON CONTAINER)
1	110756-005	FLUID-QUINSYN F (5 GALLON CONTAINER)
1	128515-3	KIT-FLUID ANALYSIS (CONTAINS 3 INDIVIDUAL SAMPLE KITS)
1	129216	SHAFT SEAL KIT
1	128849E362	AIR FILTER ELEMENT
1	129881-001	AIR/FLUID SEPARATOR
1	128813-050	MINIMUM PRESSURE CHECK VALVE KIT
1	128598	FLUID FILTER ELEMENT

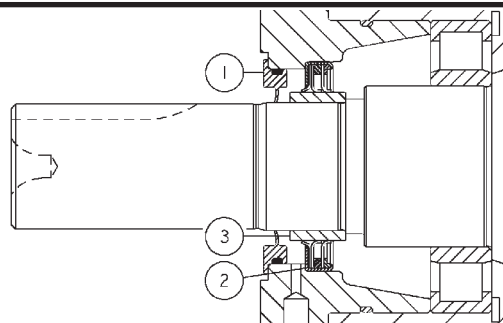
<div style="display: flex; justify-content: space-between; align-items: center;">  <div style="text-align: center;"> <h3 style="margin: 0;">WARNING</h3> </div>  </div> <p style="margin-top: 10px;">GUARDS MUST BE FASTENED IN PLACE BEFORE STARTING THE MACHINE AND NEVER REMOVED BEFORE DISCONNECTING AND LOCKING OUT THE MAIN POWER SUPPLY.</p>	<div style="display: flex; justify-content: space-between; align-items: center;">  <div style="text-align: center;"> <h3 style="margin: 0;">DANGER</h3> </div>  </div> <p style="margin-top: 10px;">AIR IN THE PIPING FROM THIS EQUIPMENT WILL CAUSE SEVERE INJURY OR DEATH IF USED FOR BREATHING AIR OR FOOD PROCESSING (IF NON-FOOD GRADE FLUID IS USED). AIR USED FOR THESE PROCESSES MUST MEET OSHA 29CFR1910.134 OR FDA 21CFR178.3570 STANDARDS.</p>
---	--



Shaft Seal Kit - 129216

ITEM No.	QTY.	PART NUMBER	DESCRIPTION
1	1	128867	SLINGER
2	1	128866	SHAFT SEAL
3	1	128993	WEAR RING SEAL

REFERENCE INSTRUCTION MANUAL TO INSTALL COMPRESSOR SHAFT SEAL. TOOL KIT 129414 FOR 85 MM SHAFT SEAL AND WEAR RING INSTALLATION CAN BE PURCHASED FROM QUINCY COMPRESSOR.



ITEM No.	QTY.	PART NUMBER	DESCRIPTION
1*	1		ROTOR HOUSING
2*	1		MALE ROTOR-85 MM
3*	1		FEMALE ROTOR-71 MM
4	1	141244	DISCHARGE END PLATE
5*	1		BEARING
6	1	128875	INTERNAL RETAINING RING
7	1	1939-020	RING-COMPRESSOR FLUID
8	1	128993	WEAR RING SEAL
9	1	128866	SHAFT SEAL
10	1	128867	SLINGER-COMPRESSOR FLUID
11*	1		BEARING
12	1	22749-212	O-RING, VITON, 0.88 I.D.
13	1	128815	SUCTION END CAP
14	1	142750	ROTOR SHIM-TEMPERED STEEL
15	4	128883-031	PIPE PLUG-5/16-24 (O-RING)
16	2	124145-004	DOWEL PIN
17	2	4029	DATA PLATE PIN
18	1	142832	PATENT PLATE
19	3	8088	HEX HEAD SCREW-#10-24 UNC X 0.63, GRADE 5 (@ 32 FT-LBS)
20	1	128904	ROTOR SHIM-TEMPERED STEEL
21*	2		ROTOR BEARING-DISCHARGE END
22	1	128926	ROTOR SHIM-TEMPERED STEEL
23	1	128999-1	SILENCER-DISCHARGE
24	1	128870-007	BEARING RETAINER
25	1	142749-001	PISTON RING
26	2	128928	HEX HEAD SCREW-1/2-20 UNF X 1.25, GRADE 8 (@ 120 FT-LBS)
27	1	142749-002	PISTON RING
28	13	90386-J12	COUNTERBORE SCREW-1/4-20 UNC X 1.00, GRADE 8 (@ 9 FT-LBS)
29*	2		ROTOR BEARING-DISCHARGE END
30	1	128927	ROTOR SHIM-TEMPERED STEEL
31	1	123478-J09	CAP SCREW-1/4-20 UNC X 0.63, GRADE 5 (@ 6 FT-LBS)
32	1	128870-006	BEARING RETAINER
33	3	90386-J18	COUNTERBORE SCREW-1/4-20 UNC X 2.25, GRADE 8 (@ 9 FT-LBS)
34	1	142697	DISCHARGE END CAP
35	1	128883-075	PIPE PLUG-3/4-16 (O-RING)

COMPONENT MAINTENANCE PARTS

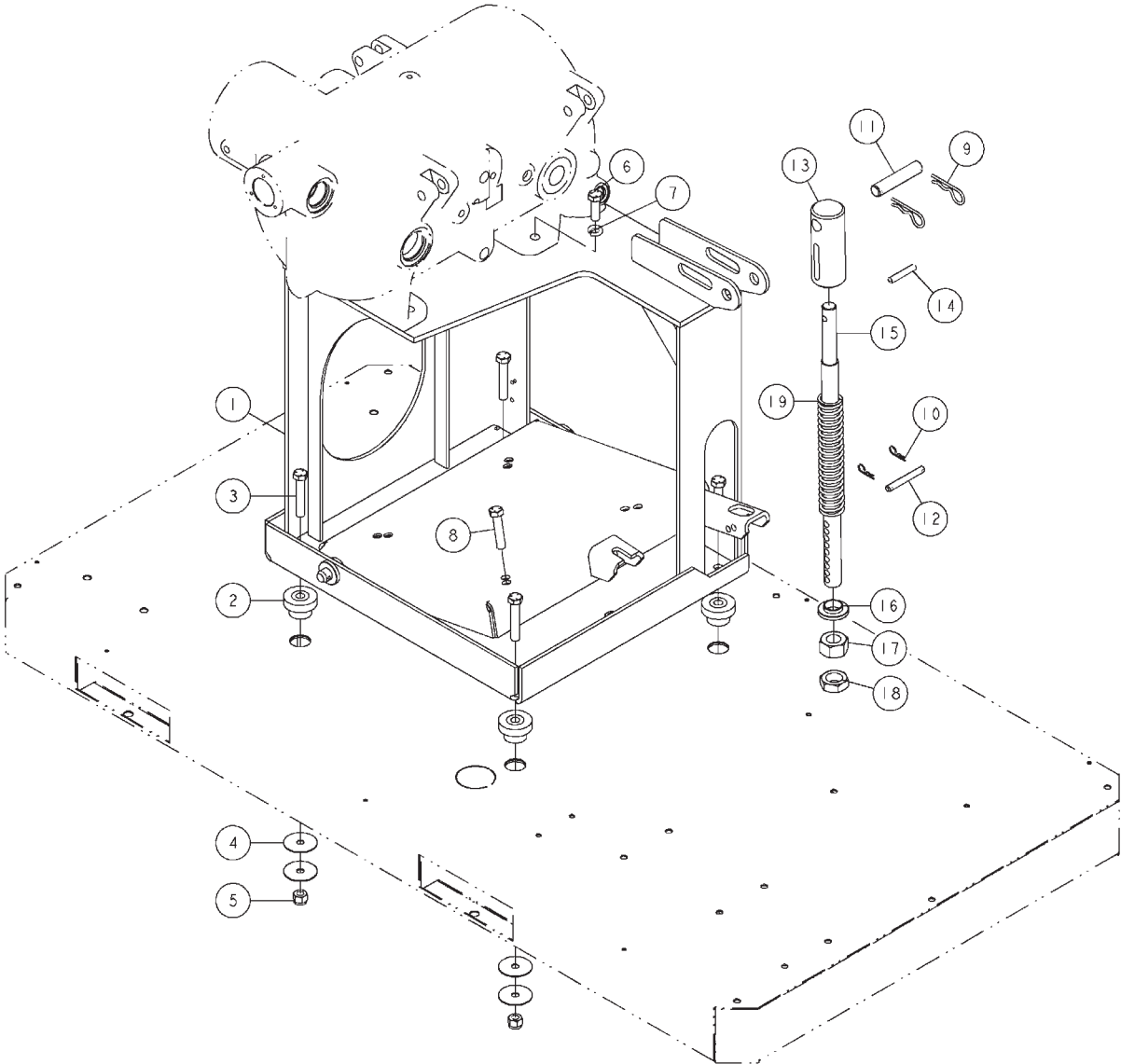
A	4	140406-902	O-RING, VITON, 0.24 I.D.
B	1	140406-908	O-RING, VITON, 0.64 I.D.

* ITEMS NOT SOLD SEPARATELY, MUST BE ORDERED AS A COMPLETE AIREND.

** QUANTITY AS REQUIRED.

@ INDICATES TORQUE VALUE IN FOOT POUNDS (LUBRICATED THREADS).

Airend/Motor Mounting

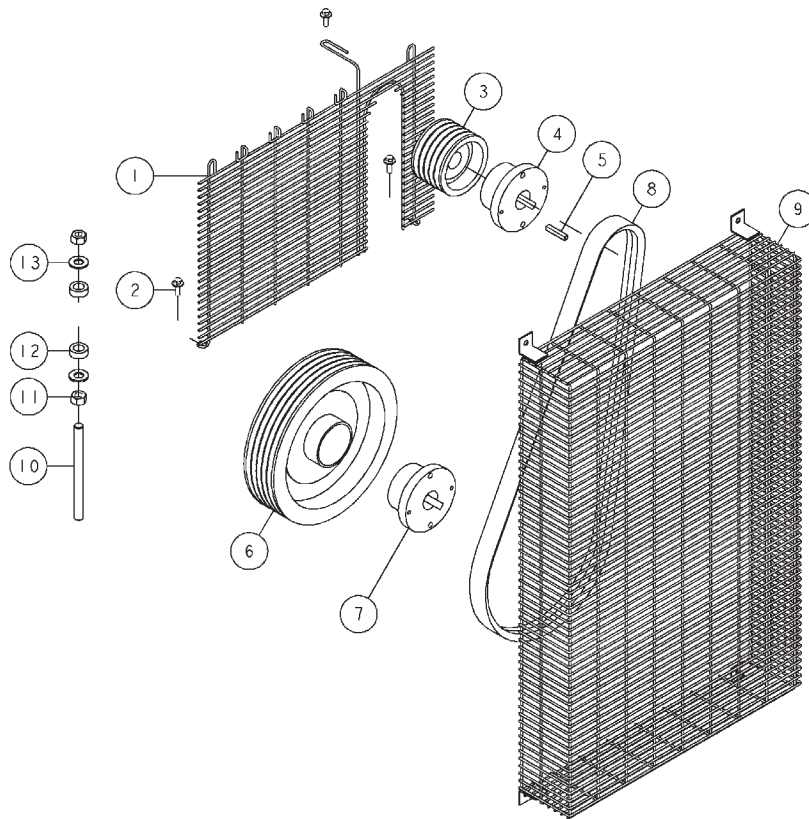


Airend/Motor Mounting

ITEM NO.	QTY.	PART NUMBER	DESCRIPTION
1	1	145892	MOTOR/AIREND BASE
2	4	142201-02	MOTOR MOUNT
3	4	123478-N17	CAP SCREW-1/2-13 UNC X 2.00, GRADE 5 (@ 55 FT-LBS)
4	4	122680-17	FLAT WASHER-0.50
5	4	124370-N02	LOCKNUT, 1/2-13 UNC
6	4	123478-N15	CAP SCREW-1/2-13 UNC X 1.50, GRADE 5 (@ 55 FT-LBS)
7	4	123115-08Z	LOCKWASHER-ZINC, 0.50
8	4	123478-N18	CAP SCREW-1/2-13 UNC X 2.25, GRADE 5 (@ 55 FT-LBS)
9	2	145146-02	HAIR PIN-STEEL, 0.15 X 2.69
10	2	145146-01	HAIR PIN-STEEL, 0.06 X 1.31
11	1	142624-3	CLEVIS PIN
12	1	142624-5	CLEVIS PIN-STEEL
13	1	142621-2	TENSIONER ADAPTER
14	1	145145-003	SPRING PIN-STEEL, 0.38 X 2.00
15	1	142623-2	TENSION ADJUSTMENT ROD-1.00 X 19.00
16	1	142622-1	SPRING WASHER
17	1	145143-T02	HEX NUT-ZINC, 1-8 UNC
18	1	124368-T02	JAM NUT-1-8 UNC
19	1	146140-03	COMPRESSION SPRING 20 HP, TEFC, 60 Hz
	1	146140-02	COMPRESSION SPRING 30 HP, TEFC, 50 Hz, 150# 20 HP, ODP, 60 Hz 25 HP, ODP, 60 Hz, 100 & 150# 20 & 25 HP, TEFC, 50 Hz 25 & 30 HP, TEFC, 60 Hz 20, 25 & 30 HP, ODP, 50 Hz
	1	146140-01	COMPRESSION SPRING 25 HP, ODP, 60 Hz, 125# 30 HP, ODP, 60 Hz

@ INDICATES TORQUE VALUE IN FOOT POUNDS (LUBRICATED THREADS).

Belt Drive - 145873-001 thru -047



ITEM No.	QTY.	PART NUMBER	DESCRIPTION
1	1	146411	BELT GUARD PANEL
2	5	110511-J07	HEX HEAD SCREW-ZINC, 1/4-20 UNC X 0.50
3	1	(PAGE 9)	COMPRESSOR SHEAVE
4	1	(PAGE 9)	COMPRESSOR SHEAVE BUSHING
5	1	160075-008	SHAFT KEY
6	1	(PAGE 9)	MOTOR SHEAVE
7	1	122474	MOTOR SHEAVE BUSHING (THIS P/N USED ON ALL EXCEPT AS INDICATED BELOW)
	1	125150	MOTOR SHEAVE BUSHING (20 HP, 60 Hz, 150 & 175#)
8	1	(PAGE 9)	BELTS
9	1	145939-1	BELT GUARD
10	1	146143-001	TRANSIT LOCKING SHAFT
11	2	142667-N02	HEX NUT-ZINC, 1/2-13 UNC
12	2	146480-01	WASHER
13	2	110428N050	FLAT WASHER-0.50

* REFERENCE INSTRUCTION MANUAL SECTION VI - SERVICING "V-BELT DRIVE MAINTENANCE" FOR PROPER TORQUE VALUES FOR BUSHINGS.

Belt Drive - 145873-001 thru -047

ITEM 3
COMPRESSOR SHEAVE

		60 Hz			
HP	QTY.	100#	125#	150#	175#
20	1	128077-007	128077-007	128077-012	128077-006
25	1	129901-014	129901-015	128077-005	128077-008
30	1	141537-012	141537-010	141537-011	141537-006

		50 Hz		
HP	QTY.	100#	125#	150#
20	1	128077-012	128077-008	129901-002
25	1	129901-002	129901-010	129901-002
30	1	141537-006	141537-008	141537-008

ITEM 4
COMPRESSOR SHEAVE BUSHING

		60 Hz			
HP	QTY.	100#	125#	150#	175#
20	1	128962	128962	128962	128962
25	1	127454	128962	128962	128962
30	1	127454	129933	127454	127454

		50 Hz		
HP	QTY.	100#	125#	150#
20	1	128962	128962	127454
25	1	127454	127454	127454
30	1	127454	127454	127454

ITEM 6
MOTOR SHEAVE

		60 Hz			
HP	QTY.	100#	125#	150#	175#
20	1	127457	128077-004	128077-003	128077-010
25	1	129901-013	129901-018	125440-001	127457
30	1	141537-007	141537-009	141537-009	121179

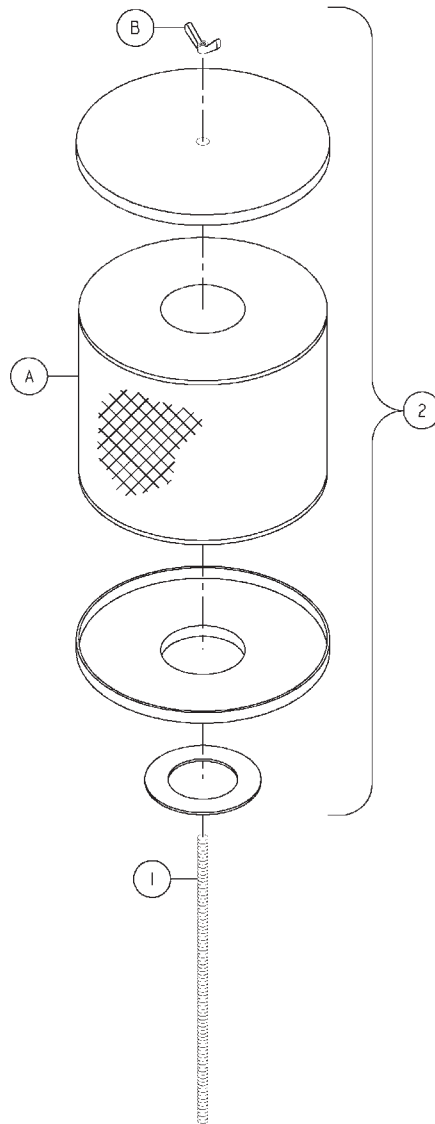
		50 Hz		
HP	QTY.	100#	125#	150#
20	1	125440-001	125440-001	121582
25	1	129901-018	129901-013	129901-021
30	1	141537-005	141537-005	141537-007

ITEM 8
BELTS (POWERBANDS)

		60 Hz				
HP	QTY.	100#	125#	150#	175#	
20	1	146482-360	146482-360	146482-356	146482-356	
25	1	146482-460	146482-460	146482-363	146482-360 (TEFC)	
25	1				146482-363 (ODP)	
30	1	146482-560	146482-556	146482-556	146482-553	

		50 Hz		
HP	QTY.	100#	125#	150#
20	1	146482-363	146482-365	146482-453
25	1	146482-458 (TEFC)	146482-458 (TEFC)	146482-456 (TEFC)
25	1	146482-460 (ODP)	146482-460 (ODP)	146482-458 (ODP)
30	1	146482-560	146482-560	146482-558

Air Filter - 141505-001



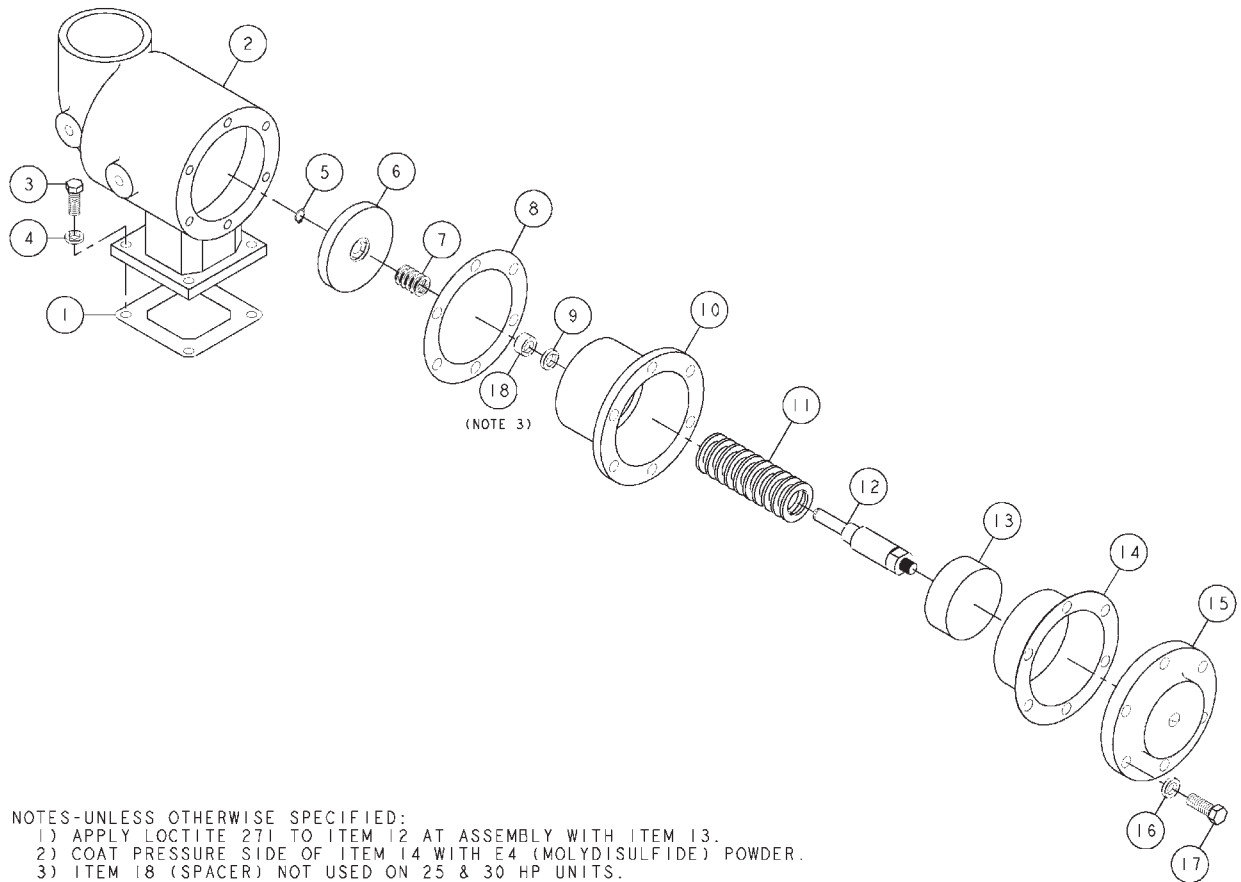
ITEM No.	QTY.	PART NUMBER	DESCRIPTION
1	1	127635-004	AIR FILTER STUD
2	1	128849F362	AIR FILTER ASSEMBLY

COMPONENT MAINTENANCE PARTS

A	1	128849E362	AIR FILTER ELEMENT
B	1	128882	WING NUT-1/4-20 UNC

@ INDICATES TORQUE VALUE IN FOOT POUNDS (LUBRICATED THREADS).

Inlet Valve (wye-delta) - 128900-001/-003

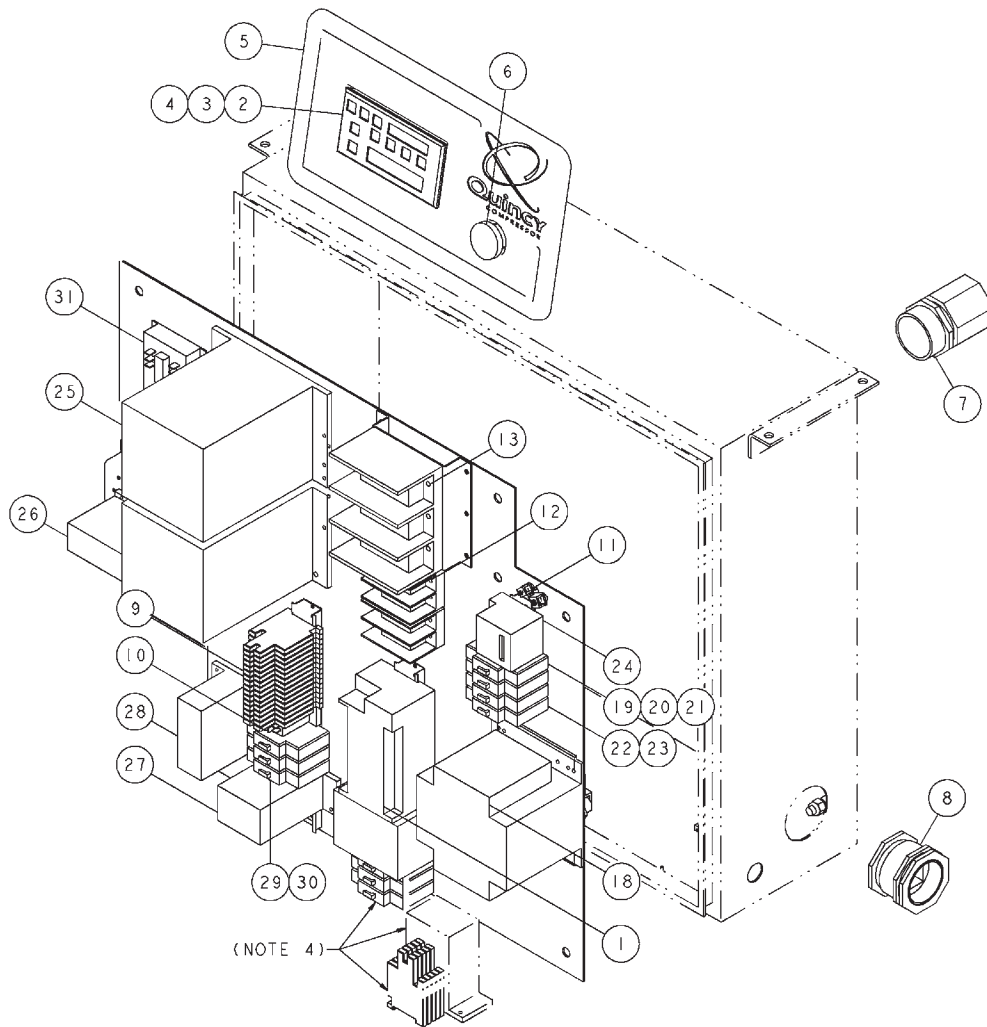


NOTES-UNLESS OTHERWISE SPECIFIED:
 1) APPLY LOCTITE 271 TO ITEM 12 AT ASSEMBLY WITH ITEM 13.
 2) COAT PRESSURE SIDE OF ITEM 14 WITH E4 (MOLYDISULFIDE) POWDER.
 3) ITEM 18 (SPACER) NOT USED ON 25 & 30 HP UNITS.

ITEM No.	QTY.	PART NUMBER	DESCRIPTION
1	1	128861	GASKET-INLET VALVE
2	1	128805	INLET VALVE HOUSING
3	4	123478-J12	CAP SCREW-1/4-20 UNC X 1.00, GRADE 5 (@ 6 FT-LBS)
4	4	123115-04C	LOCKWASHER, 0.25
5	1	124098-013	RETAINING RING
6	1	128853	INLET VALVE PLATE
7	1	128963	COMPRESSION SPRING
8	1	123549-006	GASKET-4.31 O.D. X 3.06 I.D.
9	1	128560	INLET VALVE SHAFT SEAL
10	1	128806	INLET VALVE CYLINDER
11	1	128994	COMPRESSION SPRING
12	1	128852	INLET VALVE SHAFT
13	1	128854	PISTON-INLET VALVE
14	1	128810	DIAPHRAGM-INLET VALVE
15	1	128807	CAP-INLET VALVE CYLINDER
16	6	123115-05C	LOCKWASHER, 0.31
17	6	123478-K15	CAP SCREW-5/16-18 UNC X 1.50, GRADE 5 (@ 13 FT-LBS)
18	1	128995	SPACER-INLET VALVE SHAFT (20 HP ONLY)

@ INDICATES TORQUE VALUE IN FOOT POUNDS (LUBRICATED THREADS).

Electrical Control & Starting



- NOTE-UNLESS OTHERWISE SPECIFIED:
1) ITEM 13 NOT USED ON ACROSS THE LINE UNITS.
2) ITEMS 14 THRU 17 ARE NOT SHOWN.
3) ITEM 31 (PHASE MONITOR) IS OPTIONAL.
4) THESE PARTS ARE FOR (OPTIONAL) INTEGRATED DRYER.

Electrical Control & Starting

ITEM No.	QTY.	PART NUMBER	DESCRIPTION
1	1	146303-102	PLC CONTROLLER
2	1	146303-202	OPERATOR INTERFACE
3	1	146457	CONTROL PANEL DECAL-QGB
4	1	146467	CONTROL PANEL ASSEMBLY
5	1	146459	HMI BEZEL
	4	12798505010	CAP SCREW-ZINC, 5MM X 10MM
6	1	146102-006	EMERGENCY STOP BUTTON
7	1	142096-06	STRAIN RELIEF CONNECTOR
8	2	146550	STRAIN RELIEF CONNECTOR
9	1	142334-18	TERMINAL BLOCK ASSEMBLY
10	1	143059-4	SOCKET RELAY
11	2	128002-001	TERMINAL-GROUND
12	1	129229-005	POWER BLOCK
13	1	129229-006	POWER BLOCK (WYE-DELTA ONLY)
14	2	146103-002	CONTACT BLOCK (NORMALLY CLOSED) (ACROSS THE LINE)
	1	146103-004	CONTACT BLOCKS (2 NORMALLY CLOSED) (WYE-DELTA)
15	1	144981	TEMPERATURE PROBE-HIGH VIBRATION, 0.50 NPT
16	1	145072	PRESSURE TRANSDUCER (0-300#)
17	1	122880-232	TEMPERATURE SWITCH (230°F) (ACROSS THE LINE)
	1	122880S232	TEMPERATURE SWITCH (230°F) (WYE-DELTA)
18	1	145785-250	TRANSFORMER (250VA)
19	1	144117-06	TRANSFORMER FUSE HOLDER
20	2	128857-012	TRANSFORMER FUSE (200 VOLT)
	2	128857-015	TRANSFORMER FUSE (230 VOLT)
	2	128857-011	TRANSFORMER FUSE (380/415/460 VOLT)
	2	128857-003	TRANSFORMER FUSE (575 VOLT)
21	1	128857-005	TRANSFORMER FUSE (2 1/2 AMP)
22	1	144117-04	TRANSFORMER FUSE HOLDER
23	1	128857-009	TRANSFORMER FUSE (6 AMP)
24	1	146551-60	HOURLMETER (60 Hz)
	1	146551-50	HOURLMETER (50 Hz)
25		(PAGE 14)	DRIVE MOTOR CONTACTOR
26		(PAGE 14)	DRIVE MOTOR OVERLOAD RELAY
27	1	144570-01	FAN MOTOR CONTACTOR
28	1	143780-12	FAN MOTOR OVERLOAD RELAY
			(380/415/460/575 VOLT-20 & 25 HP, 460 & 575 VOLT-30 HP)
	1	143780-13	FAN MOTOR OVERLOAD RELAY
			(200/230 VOLT-20 & 25 HP, 200/230/380/415 VOLT-30 HP)
29	1	144117-06	FAN MOTOR FUSE HOLDER
30		(PAGE 14)	FAN MOTOR FUSES
OPTIONAL PARTS:			
31	1	129200-001	PHASE MONITOR (200-240 VOLT)
	1	129200-003	PHASE MONITOR (360-430 VOLT)
	1	129200-002	PHASE MONITOR (400-480 VOLT)
	1	128422-003	PHASE MONITOR (525-625 VOLT)
ELECTRICAL COMPONENTS FOR INTEGRATED DRYER (OPTIONAL):			
	1	142334-19	TERMINAL BLOCK ASSEMBLY
	1	143059-4	SOCKET RELAY
	1	129229-004	POWER BLOCK
	1	144570-02	CONTACTOR-120 VOLT

Electrical Control & Starting

ITEM 24

DRIVE MOTOR CONTACTOR

ACROSS THE LINE

VOLTAGE	QTY.	20 HP	25 HP	30 HP
200	1	144570-08	144570-09	144570-10
230	1	144570-08	144570-09	144570-09
380	1	144570-06	144570-07	144570-07
415	1	144570-05	144570-06	144570-07
460	1	144570-05	144570-06	144570-06
575	1	144570-04	144570-05	144570-06

WYE-DELTA

VOLTAGE	QTY.	20 HP	25 HP	30 HP
200	*	144570-06 (1)	144570-07 (1)	144570-08 (2)
	*	144570-05 (1)	144570-05 (1)	
230	*	144570-06 (1)	144570-07 (1)	144570-08 (2)
	*	144570-05 (1)	144570-05 (1)	
380	*	144570-04 (1)	144570-04 (1)	144570-05 (2)
	*	144570-02 (1)	144570-03 (1)	
415	*	144570-03 (1)	144570-04 (1)	144570-05 (2)
	*	144570-01 (1)	144570-02 (1)	
460	*	144570-04 (1)	144570-04 (1)	144570-05 (2)
	*	144570-02 (1)	144570-03 (1)	
575	*	144570-03 (1)	144570-04 (1)	144570-04 (1)
	*	144570-01 (1)	144570-02 (1)	144570-02 (1)

* QUANTITY IS IN PARENTHESIS () FOLLOWING PART NUMBER.

ITEM 25

DRIVE MOTOR OVERLOAD RELAY

ACROSS THE LINE

VOLTAGE	QTY.	20 HP	25 HP	30 HP
200	1	143780-06	143780-06	143780-07
230	1	143780-05	143780-06	143780-06
380	1	143780-04	143780-04	143780-05
415	1	143780-04	143780-04	143780-05
460	1	143780-04	143780-04	143780-05
575	1	143780-03	143780-04	143780-04

WYE-DELTA

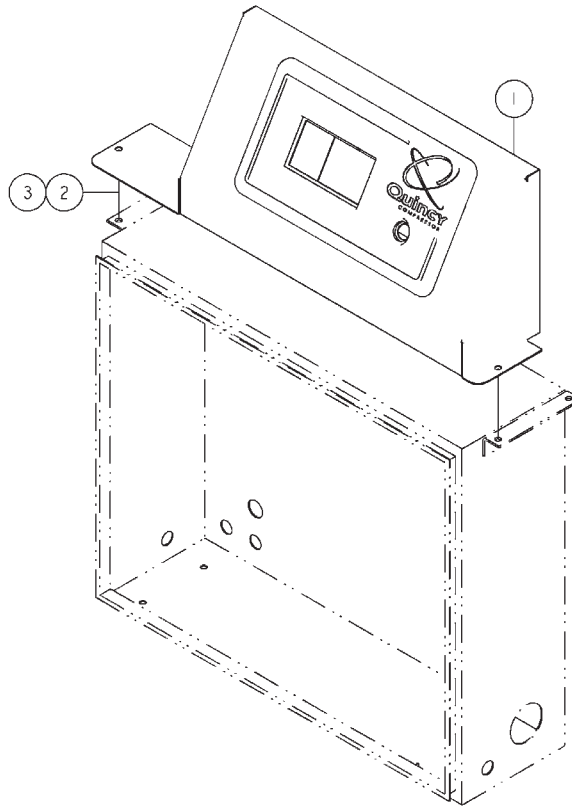
VOLTAGE	QTY.	20 HP	25 HP	30 HP
200	1	143780-04	143780-05	143780-05
230	1	143780-04	143780-04	143780-05
380	1	143780-14	143780-03	143780-03
415	1	143780-14	143780-03	143780-03
460	1	143780-14	143780-03	143780-03
575	1	143780-14	143780-14	143780-14

ITEM 29

FAN MOTOR FUSES

VOLTAGE	QTY.	20 & 25 HP	30 HP
200	3	128857-020	128857-023
230	3	128857-019	128857-022
380	3	128857-007	128857-018
415	3	128857-016	128857-008
460	3	128857-034	128857-017
575	3	128857-005	128857-016

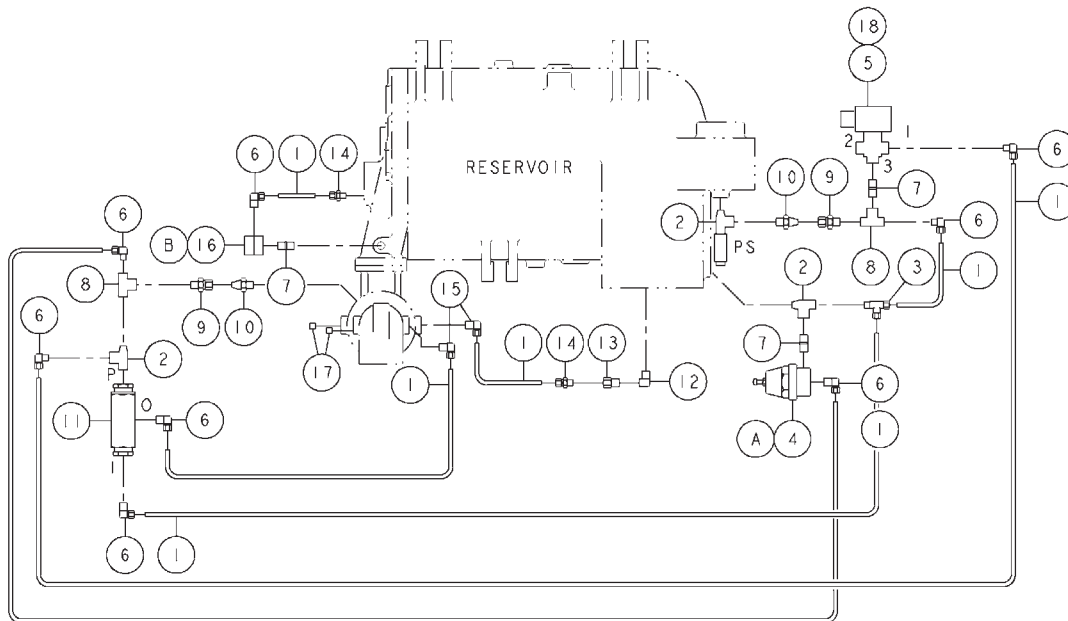
Controller Support (less cabinet) - 146585-001



ITEM No.	QTY.	PART NUMBER	DESCRIPTION
1	1	146584	CONTROLLER SUPPORT
2	2	141631-K10	CAP SCREW-5/16-18 UNC X 0.75, GRADE 5 (@ 23 FT-LBS)
3	2	112272-K02	SELF-LOCKING HEX NUT-ZINC, 5/16-18 UNC

@ INDICATES TORQUE VALUE IN FOOT POUNDS (LUBRICATED THREADS).

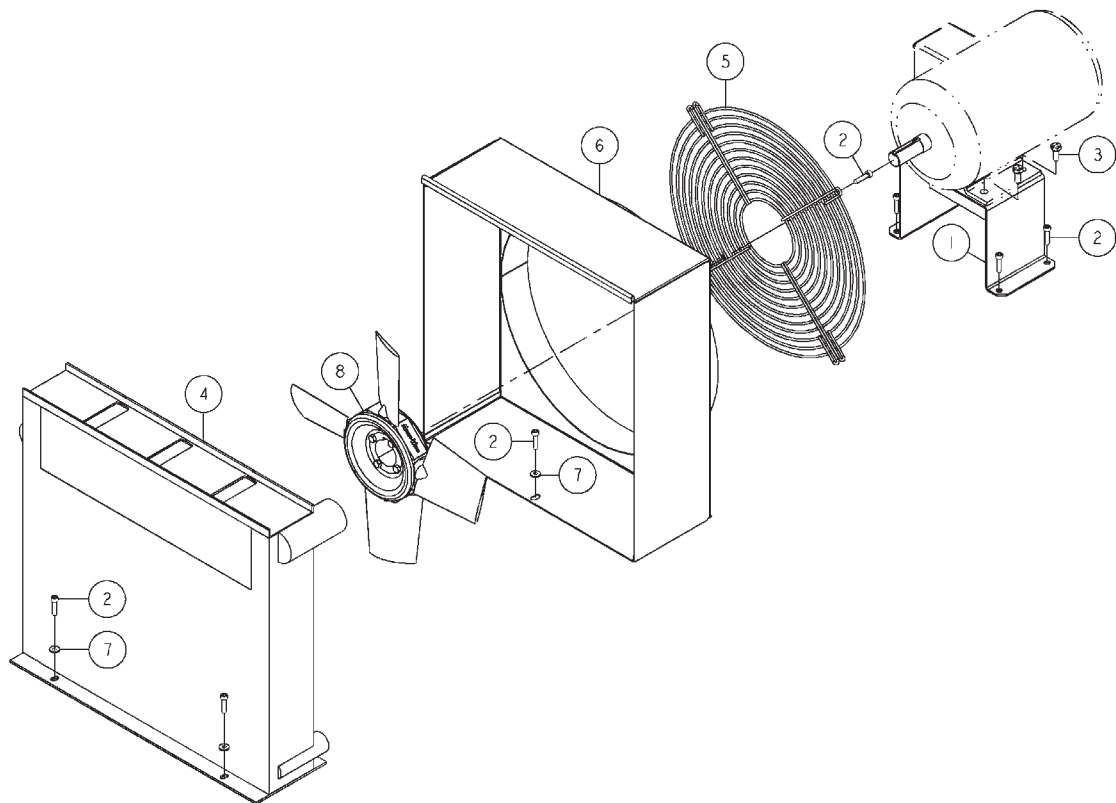
Control Piping - 146294-002



ITEM No.	QTY.	PART NUMBER	DESCRIPTION
1	8.0 FT	140620-003	BLACK NYLON TUBING-0.25 O.D.
2	3	7361	PIPE TEE-BRASS, 0.25 NPT
3	1	124348-003	MALE RUN TEE-0.25 TUBE X 0.25 NPT
4	1	146175-2	DIFFERENTIAL PILOT VALVE
5	1	120496-12	SOLENOID VALVE-3-WAY
6	8	124349-005	90° MALE ELBOW-0.25 TUBE X 0.25 NPT
7	3	142125-1	EXTRA STRONG BRASS NIPPLE-0.25 NPT X CLOSE
8	2	129337-025	SHUTTLE VALVE-0.25 NPT
9	2	143742-001	SWIVEL CONNECTOR-0.38 TUBE X 0.38 NPT
10	2	123166-04	MALE CONNECTOR-0.25 TUBE X 0.25 NPT
11	1	128826	BLOWDOWN VALVE
12	1	122636	PIPE ELBOW-BRASS, 0.25 NPT
13	1	125025-006	LINE FILTER ORIFICE (0.032)
14	2	124393-005	MALE CONNECTOR-0.25 TUBE X 0.25 NPT
15	2	124349-004	90° MALE ELBOW-0.25 TUBE X 0.125 NPT
16	1	122056	CHECK VALVE
17	2	2140	PIPE PLUG-0.125 NPT
18	1	146296	CABLE ASSEMBLY-5 METER

COMPONENT MAINTENANCE PARTS

A	1	146175-100	DIFFERENTIAL PILOT VALVE KIT (INCLUDES DIAPHRAGM ASSEMBLY & SEAT)
B	2	123157-008	BUNA-N O-RING-0.18 I.D.



ITEM No.	QTY.	PART NUMBER	DESCRIPTION
1	1	146131	FAN MOTOR BRACKET
2	9	14641206025	CAP SCREW-ZINC, 6MM X 25MM
3	4	123478-K10	CAP SCREW-5/16-18 UNC X 0.75, GRADE 5 (@ 13 FT-LBS)
4	1	145885	COMBINATION COOLER
5	2	145894	FAN GUARD
6	1	146136	FAN SHROUD
7	3	110428-010	FLAT WASHER-#10
8	1	128887-018	FAN-3 BLADE, 14.5 O.D. (20 HP, 60 Hz)
	1	128887-019	FAN-6 BLADE, 14.5 O.D. (20 HP, 50 Hz/25 HP, 60 Hz)
	1	128887-020	FAN-8 BLADE, 14.5 O.D. (25 HP, 50 Hz/30 HP, 60 Hz)
	1	128887-022	FAN-8 BLADE, 14.5 O.D. (30 HP, 50 Hz)

@ INDICATES TORQUE VALUE IN FOOT POUNDS (LUBRICATED THREADS).

Reservoir - 142203-002

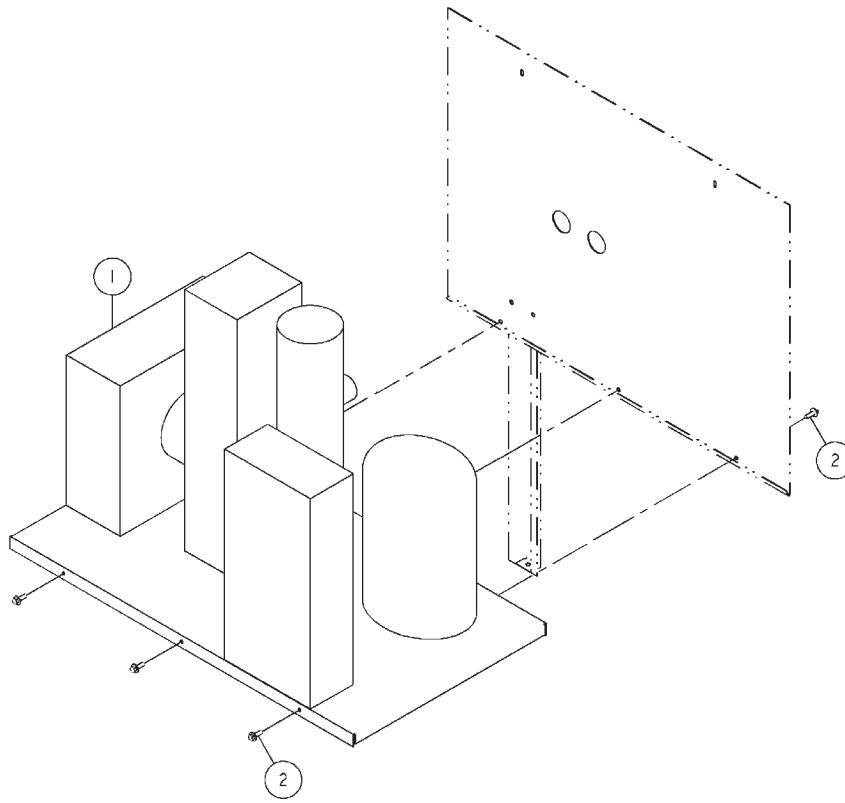
ITEM No.	QTY.	PART NUMBER	DESCRIPTION
1	1	141050-4	AIR/FLUID RESERVOIR
2	1	140147-2	THERMAL VALVE-CARTRIDGE
3	1	143555-200	PRESSURE RELIEF VALVE
4	1	128813	MINIMUM PRESSURE CHECK VALVE
5	1	128916	MINIMUM PRESSURE CHECK VALVE RETAINER
6	3	123115-04C	LOCKWASHER, 0.25
7	3	123478-J10	CAP SCREW-1/4-20 UNC X 0.75, GRADE 5 (@ 6 FT-LBS)
8	1	22749-157	VITON O-RING-4.25 I.D.
9	1	146400	SEPARATOR/RESERVOIR COVER
10	6	123115-06C	LOCKWASHER, 0.38
11	6	123478-L14	CAP SCREW-3/8-16 UNC X 1.25, GRADE 5 (@ 23 FT-LBS)
12	1	3092	PIPE ELBOW-0.75 NPT
13	1	2058	PIPE PLUG-0.75 NPT
14	1	129843-188	SIGHTGLASS (O-RING)
15	2	122636	PIPE ELBOW-BRASS, 0.25 NPT
16	8	123115-08C	LOCKWASHER, 0.50
17	1	125259-002	BRASS COUPLING-0.25 X 0.25
18	1	141243	RESERVOIR GASKET
19	8	123478-N17	CAP SCREW-1/2-13 UNC X 2.00, GRADE 5 (@ 55 FT-LBS)
20	1	128599	FLUID FILTER STUD
21	1	129251-025	PLUG VALVE
22	2	2574	PIPE PLUG-0.25 NPT
23	1	129881-001	AIR/FLUID SEPARATOR
24	1	126016-026	PIPE NIPPLE-GALVANIZED, 0.25 NPT X 4.00
25	1	22749-030	VITON O-RING-1.62 I.D.
26	1	128883-050	PIPE PLUG-1/2-20 (O-RING)

COMPONENT MAINTENANCE PARTS

A	1	22749-123	VITON O-RING, 1.18 I.D.
B	1	128813-050	MINIMUM PRESSURE CHECK VALVE KIT
C	1	140406-924	VITON O-RING, 1.72 I.D.

@ INDICATES TORQUE VALUE IN FOOT POUNDS (LUBRICATED THREADS).

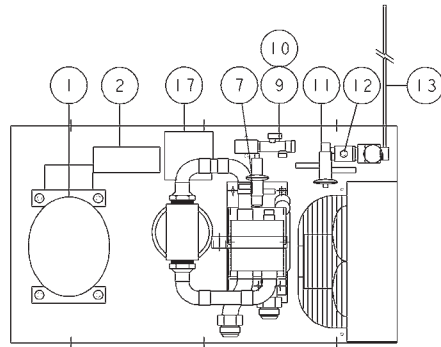
Integrated Dryer (optional) - 146416-001 thru -006



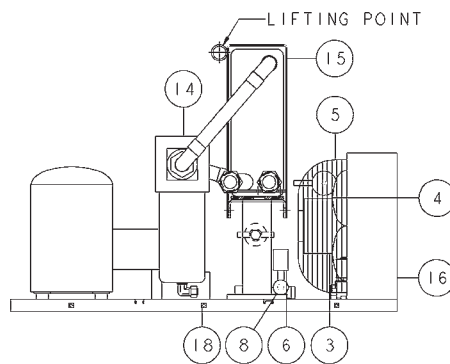
ITEM No.	QTY.	PART NUMBER	DESCRIPTION
1	1	145886-96	DRYER ASSEMBLY-QGB 20 (92 CFM, 60 Hz)
	1	145886-103	DRYER ASSEMBLY-QGB 20 (92 CFM, 50 Hz)
	1	145886-121	DRYER ASSEMBLY-QGB 25 (117 CFM, 60 Hz)
	1	145886-128	DRYER ASSEMBLY-QGB 25 (117 CFM, 50 Hz)
	1	145886-147	DRYER ASSEMBLY-QGB 30 (143 CFM, 60 Hz)
	1	145886-154	DRYER ASSEMBLY-QGB 30 (143 CFM, 50 Hz)
2	6	122151	HEX HEAD SCREW-1/4-20 UNC X 0.63, GRADE 5 (@ 6 FT-LBS)

@ INDICATES TORQUE VALUE IN FOOT POUNDS (LUBRICATED THREADS).

Integrated Dryer (optional) - 146416-001 thru -006



TOP VIEW



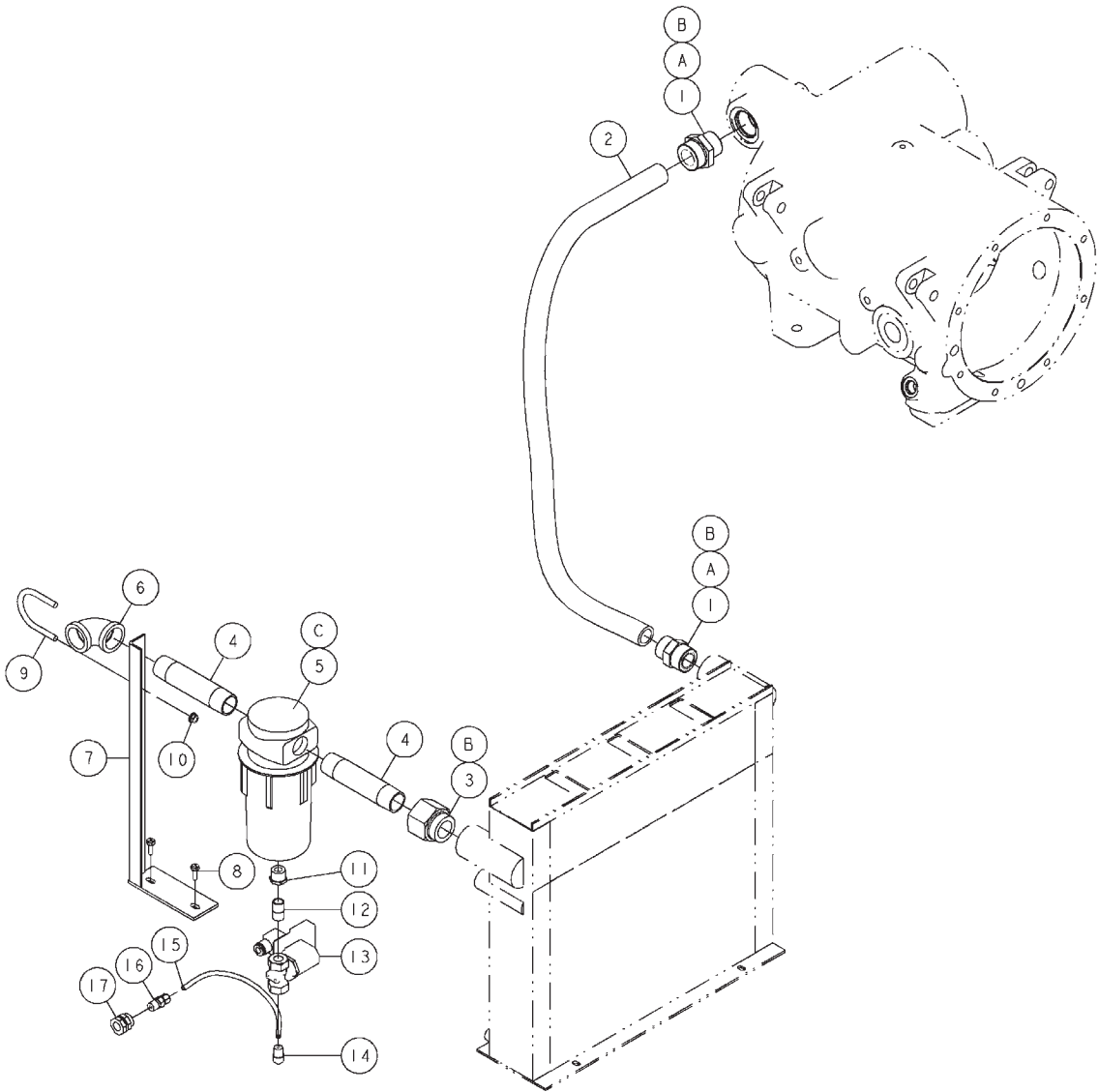
FRONT VIEW

- 1) REFRIGERATION COMPRESSOR
- 2) DUAL PRESSURE SWITCH
- 3) FAN MOTOR
- 4) FAN BLADE
- 5) FAN GUARD/MOTOR MOUNT
- 6) FAN CYCLING SWITCH
- 7) HOT GAS BYPASS VALVE
- 8) RECEIVER
- 9) Y-STRAINER
- 10) Y-STRAINER SCREEN
- 11) EXPANSION VALVE
- 12) AUTOMATIC TIMER DRAIN
- 13) DRAIN POWER SUPPLY CORD
- 14) SEPARATOR
- 15) HEAT EXCHANGER ASSEMBLY
- 16) CONDENSER
- 17) ELECTRICAL ENCLOSURE
- 18) CAGE NUT

NOTE:
ITEMS 1 THRU 13 ARE REPAIRABLE/
REPLACEABLE PARTS (SEE PARTS LIST).

ITEM NO.	QTY.	PART NUMBER	DESCRIPTION
DRYER ASSEMBLY PARTS BREAKDOWN (REPAIRABLE/REPLACEABLE PARTS):			
1	1	RF-003110	COMPRESSOR (145886-96 - 20 HP, 60 Hz)
	1	RF-003915	COMPRESSOR (145886-121 - 25 HP, 60 Hz)
	1	RF-003111	COMPRESSOR (145886-147 - 30 HP, 60 Hz)
2	1	RF-000505	DUAL PRESSURE SWITCH
3	1	RF-000795	FAN MOTOR
4	1	RF-003924	FAN BLADE
5	1	RF-003290	FAN GUARD/MOTOR MOUNT
6	1	RF-002079	FAN CYCLING SWITCH
7	1	VA-000579	HOTGASS BYPASS VALVE
8	1	RF-003224	RECEIVER
9	1	RF-001210	Y-STRAINER
10	1	FT-003845	Y-STRAINER SCREEN
11	1	VA-003155	EXPANSION VALVE
12	1	RF-003288	DRAIN VALVE AND TIMER
13	1	EC-003185	DRAIN POWER SUPPLY CORD

Air Piping (less dryer) - 145898-001/-002



NOTE-UNLESS OTHERWISE SPECIFIED:
1) ITEMS 14 THRU 17 NOT USED ON UNITS LESS CABINET.

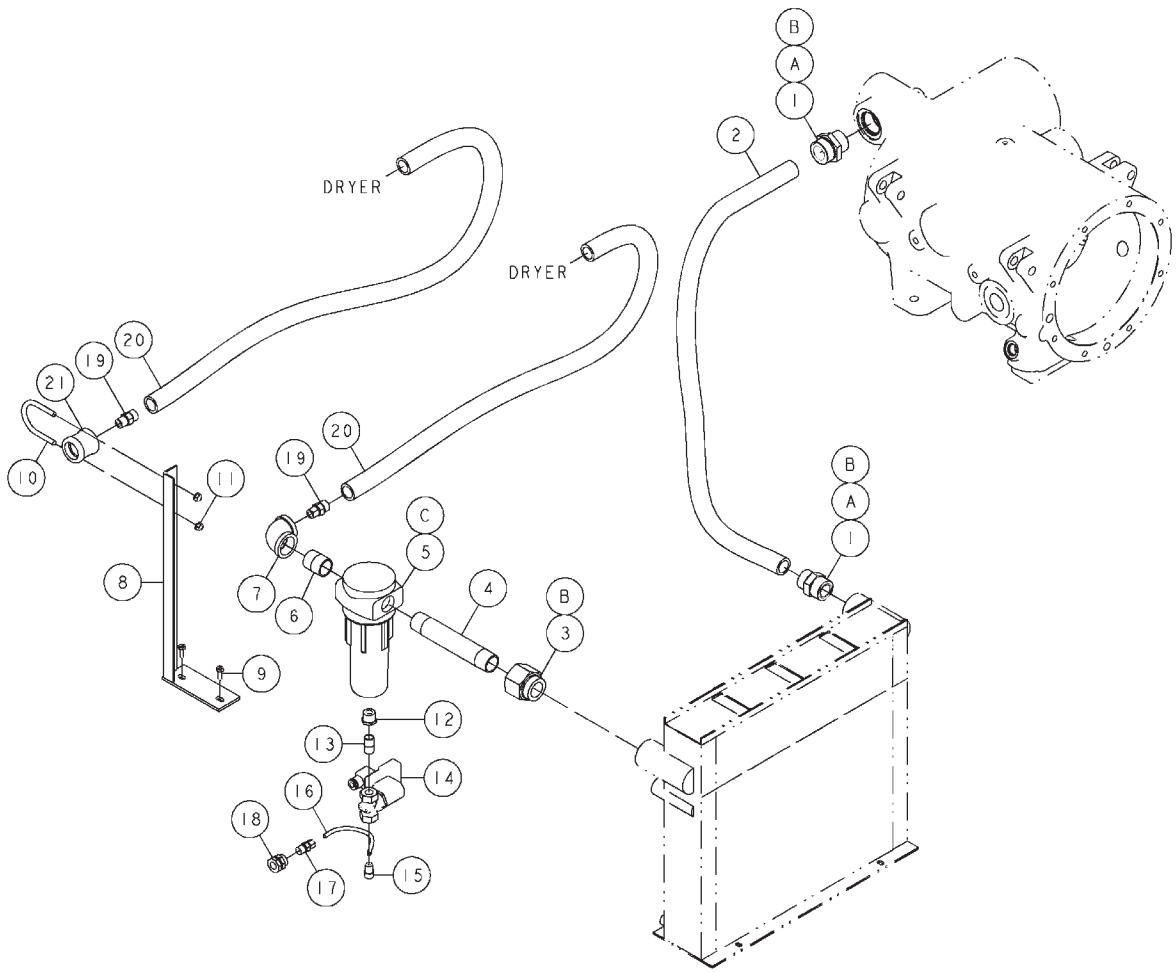
Air Piping (less dryer) - 145898-001/-002

ITEM NO.	QTY.	PART NUMBER	DESCRIPTION
1	2	140682-024	CONNECTOR-1.25 TUBE X 1-5/8-12 (O-RING)
2	1	146245-2040	AIR HOSE - 1.00 X 40.00 LONG
3	1	140106-017	ADAPTER-1-5/8-12 X 1-1/4 NPTF (O-RING)
4	2	126020-038	PIPE NIPPLE-GALVANIZED, 1.00 NPT X 5.50
5	1	145999-100	MOISTURE SEPARATOR
6	1	21731	PIPE ELBOW-GALVANIZED, 1.00 NPT
7	1	146144	AIR PIPING BRACKET
8	2	12798508025	CAP SCREW-ZINC, 8MM X 25MM
9	1	120317	U-BOLT, 5/16-18 UNC
10	2	112272-J02	SELF-LOCKING HEX NUT-ZINC, 1/4-20 UNC
11	1	121033-5	PIPE BUSHING-BRASS, 0.50 NPT X 0.25 NPT
12	1	141646-010	PIPE NIPPLE-0.25 NPT X 2.00
13	1	115698-025	DRAIN VALVE
14	1	124349-005	90° MALE ELBOW-0.25 TUBE X 0.25 NPT
15	0.8 FT	124435-003	NYLON TUBING-0.25 O.D.
16	1	124393-005	MALE CONNECTOR-0.25 TUBE X 0.25 NPT
17	1	129203-003	BULKHEAD COUPLING

COMPONENT MAINTENANCE PARTS

A	2	140675-007	VITON O-RING/FACE SEAL-1.18 I.D.
B	3	140406-920	VITON O-RING, 1.48 I.D.
C	1	145999-050	VITON O-RING

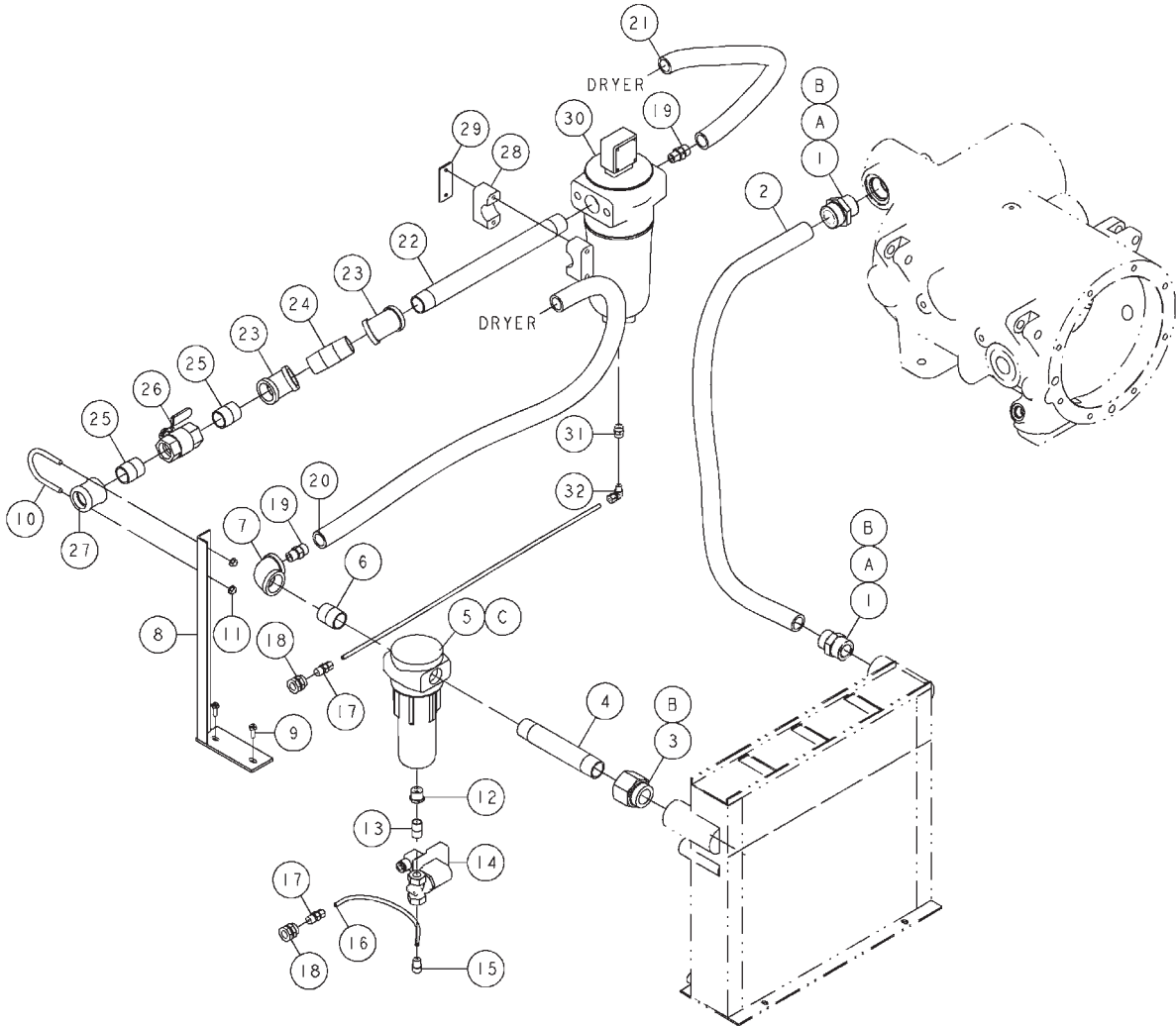
Air Piping (w/dryer) - 146414-001



Air Piping (w/dryer) - 146414-001

ITEM No.	QTY.	PART NUMBER	DESCRIPTION
1	2	140682-024	CONNECTOR-1.25 TUBE X 1-5/8-12 (O-RING)
2	1	146245-2040	AIR HOSE - 1.00 X 40.00 LONG
3	1	140106-017	ADAPTER-1-5/8-12 X 1-1/4 NPTF (O-RING)
4	1	126020-050	PIPE NIPPLE-GALVANIZED, 1.00 NPT X 7.00
5	1	145999-100	MOISTURE SEPARATOR
6	1	126020-001	PIPE NIPPLE-GALVANIZED, 1.00 NPT X CLOSE
7	1	21731	PIPE ELBOW-GALVANIZED, 1.00 NPT
8	1	146144	AIR PIPING BRACKET
9	2	12798508025	CAP SCREW-ZINC, 8MM X 25MM
10	1	120317	U-BOLT, 5/16-18 UNC
11	2	112272-J02	SELF-LOCKING HEX NUT-ZINC, 1/4-20 UNC
12	1	121033-5	PIPE BUSHING-BRASS, 0.50 NPT X 0.25 NPT
13	1	121032-3	PIPE NIPPLE-BRASS, 0.25 NPT X CLOSE
14	1	115698-025	DRAIN VALVE
15	1	124349-005	90° MALE ELBOW-0.25 TUBE X 0.25 NPT
16	0.5 FT	124435-004	NYLON TUBING-0.38 O.D.
17	1	124393-005	MALE CONNECTOR-0.25 TUBE X 0.25 NPT
18	1	129203-003	BULKHEAD COUPLING
19	2	123166-28	MALE CONNECTOR-1.25 TUBE X 1.00 NPT
20	2	141951-016	HOSE ASSEMBLY-1.25 X 42.00 LONG
21	1	21149	PIPE COUPLING-1.00 NPT
<u>COMPONENT MAINTENANCE PARTS</u>			
A	2	140675-007	VITON O-RING/FACE SEAL-1.18 I.D.
B	3	140406-920	VITON O-RING, 1.48 I.D.
C	1	145999-050	VITON O-RING

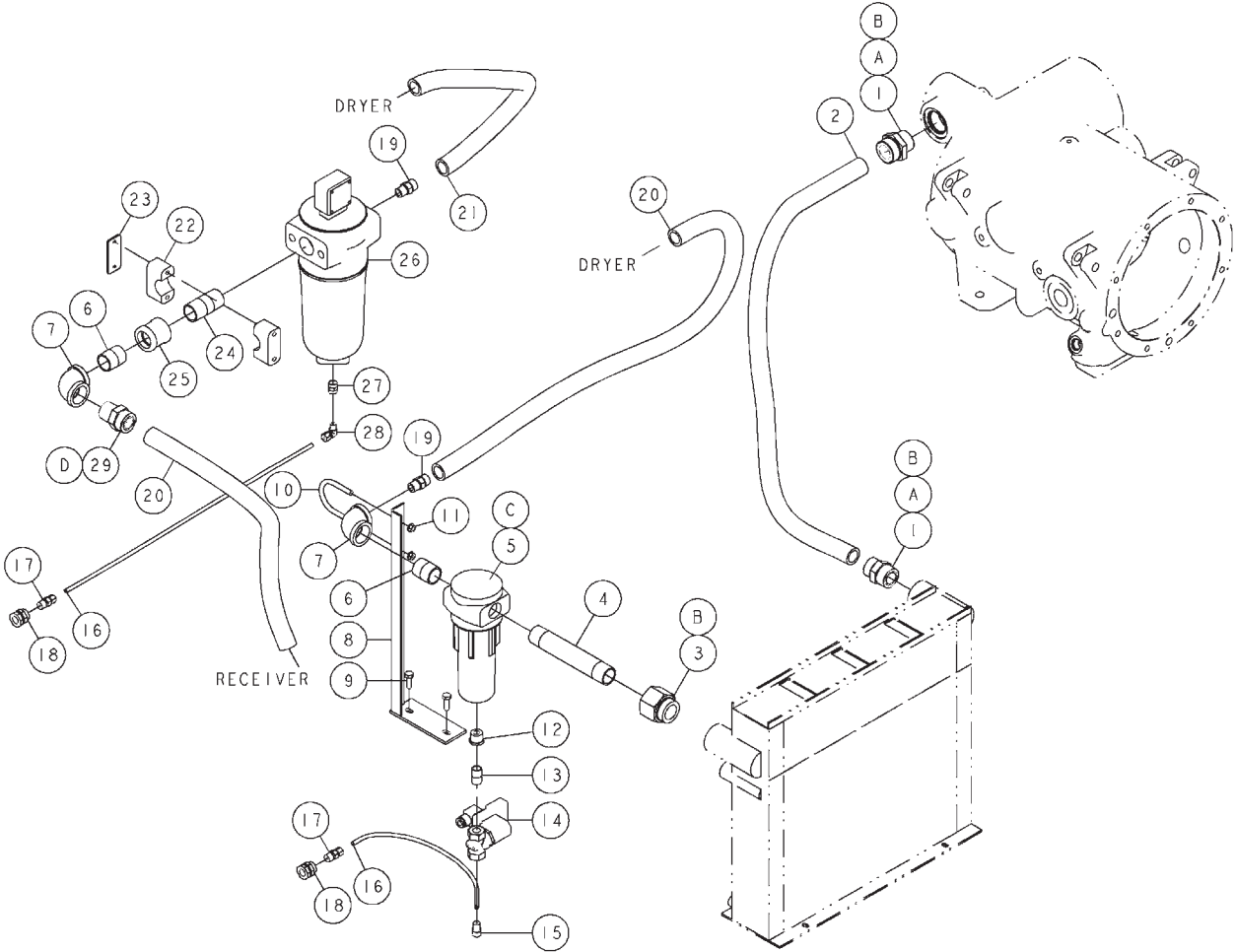
Air Piping (w/dryer & filter) - 146415-001



Air Piping (w/dryer & filter) - 146415-001

ITEM No.	QTY.	PART NUMBER	DESCRIPTION
1	2	140682-024	CONNECTOR-1.25 TUBE X 1-5/8-12 (O-RING)
2	1	146245-2040	AIR HOSE - 1.00 X 40.00 LONG
3	1	140106-017	ADAPTER-1-5/8-12 X 1-1/4 NPTF (O-RING)
4	1	126020-050	PIPE NIPPLE-GALVANIZED, 1.00 NPT X 7.00
5	1	145999-100	MOISTURE SEPARATOR
6	1	126020-001	PIPE NIPPLE-GALVANIZED, 1.00 NPT X CLOSE
7	1	21731	PIPE ELBOW-GALVANIZED, 1.00 NPT
8	1	146144	AIR PIPING BRACKET
9	1	12798508025	CAP SCREW-ZINC, 8MM X 25MM
10	1	120317	U-BOLT, 5/16-18 UNC
11	2	112272-J02	SELF-LOCKING HEX NUT-ZINC, 1/4-20 UNC
12	1	121033-5	PIPE BUSHING-BRASS, 0.50 NPT X 0.25 NPT
13	1	121032-3	PIPE NIPPLE-BRASS, 0.25 NPT X CLOSE
14	1	115698-025	DRAIN VALVE
15	1	124349-005	90° MALE ELBOW-0.25 TUBE X 0.25 NPT
16	2.6 FT	124435-004	NYLON TUBING-0.38 O.D.
17	2	124393-005	MALE CONNECTOR-0.25 TUBE X 0.25 NPT
18	2	129203-003	BULKHEAD COUPLING
19	2	123166-28	MALE CONNECTOR-1.25 TUBE X 1.00 NPT
20	1	141951-016	HOSE ASSEMBLY-1.25 X 42.00 LONG
21	1	141951-015	HOSE ASSEMBLY-1.25 X 33.50 LONG
22	1	126020-102	PIPE NIPPLE-GALVANIZED, 1.00 NPT X 13.50
23	1	122171	PIPE ELBOW-GALVANIZED, 1.00 NPT X 45°
24	1	126020-018	PIPE NIPPLE-GALVANIZED, 1.00 NPT X 3.00
25	2	126020-001	PIPE NIPPLE-GALVANIZED, 1.00 NPT X CLOSE
26	1	110425-100	QUARTER TURN VALVE
27	1	21149	PIPE COUPLING-1.00 NPT
28	1	141822-32	TUBE CLAMP-1.25 I.D.
29	1	141827-05	TUBE CLAMP COVER PLATE-1.38 I.D.
30	1	CSNT00150	COALESCING FILTER ASSEMBLY
31	1	125259-001	BRASS COUPLING-0.12 X 0.12
32	1	124349-004	90° MALE ELBOW-0.25 TUBE X 0.125 NPT
<u>COMPONENT MAINTENANCE PARTS</u>			
A	2	140675-007	VITON O-RING/FACE SEAL-1.18 I.D.
B	3	140406-920	VITON O-RING, 1.48 I.D.
C	1	145999-050	VITON O-RING

Air Piping (w/dryer, filter & receiver) - 146424-001



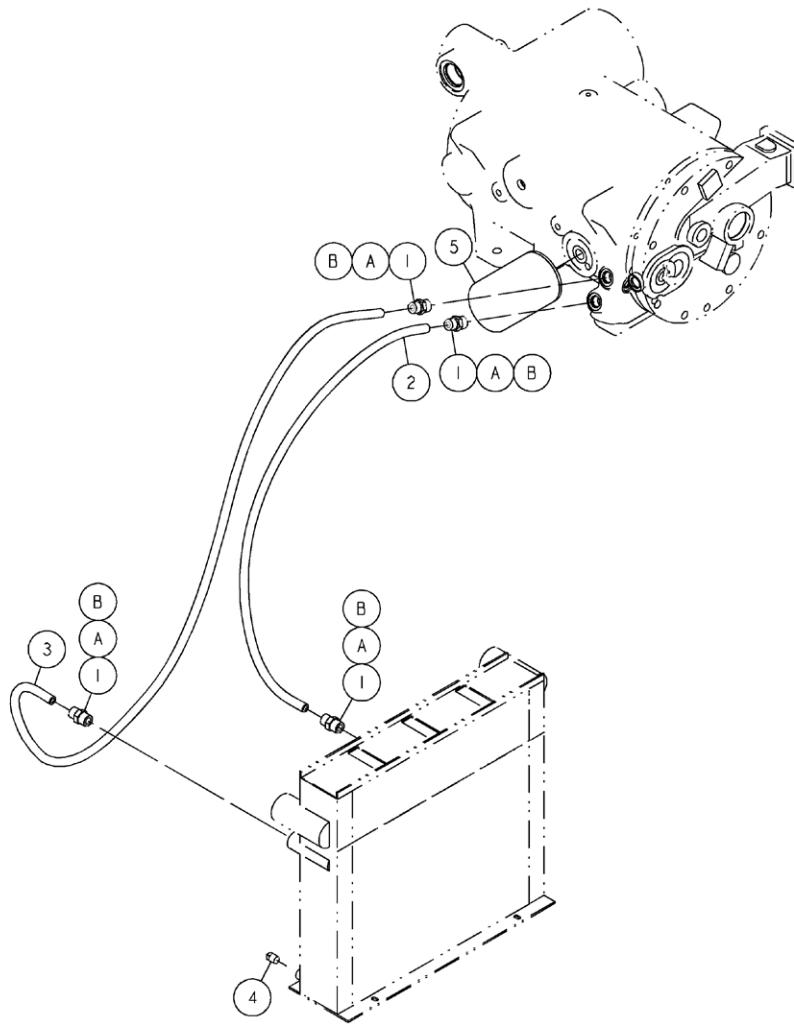
Air Piping (w/dryer, filter & receiver) - 146424-001

ITEM No.	QTY.	PART NUMBER	DESCRIPTION
1	2	140682-020	CONNECTOR-1.00 TUBE X 1-5/16-12 (O-RING)
2	1	146245-2040	AIR HOSE - 1.00 X 40.00 LONG
3	1	140106-017	ADAPTER-1-5/8-12 X 1-1/4 NPTF (O-RING)
4	1	126020-050	PIPE NIPPLE-GALVANIZED, 1.00 NPT X 7.00
5	1	145999-100	MOISTURE SEPARATOR
6	2	126020-001	PIPE NIPPLE-GALVANIZED, 1.00 NPT X CLOSE
7	2	21731	PIPE ELBOW-GALVANIZED, 1.00 NPT
8	1	146144	AIR PIPING BRACKET
9	2	12798508025	CAP SCREW-ZINC, 8MM X 25MM
10	1	120317	U-BOLT, 5/16-18 UNC
11	11	112272-J02	SELF-LOCKING HEX NUT-ZINC, 1/4-20 UNC
12	1	121033-5	PIPE BUSHING-BRASS, 0.50 NPT X 0.25 NPT
13	2	121032-3	PIPE NIPPLE-BRASS, 0.25 NPT X CLOSE
14	1	115698-025	DRAIN VALVE
15	1	124349-005	90° MALE ELBOW-0.25 TUBE X 0.25 NPT
16	2.7 FT	124435-004	NYLON TUBING-0.38 O.D.
17	2	124393-005	MALE CONNECTOR-0.25 TUBE X 0.25 NPT
18	2	129203-003	BULKHEAD COUPLING
19	2	123166-28	MALE CONNECTOR-1.25 TUBE X 1.00 NPT
20	2	141951-016	HOSE ASSEMBLY-1.25 X 42.00 LONG
21	1	141951-015	HOSE ASSEMBLY-1.25 X 33.50 LONG
22	1	141822-32	TUBE CLAMP-1.25 I.D.
23	1	141827-05	TUBE CLAMP COVER PLATE-1.38 I.D.
24	1	126020-015	PIPE NIPPLE-GALVANIZED, 1.00 NPT X 2.62
25	1	21740	PIPE COUPLING-GALVANIZED, 1.00 NPT
26	1	CSNT00150	COALESCING FILTER ASSEMBLY
27	1	125259-001	BRASS COUPLING-0.12 X 0.12
28	1	124349-004	90° MALE ELBOW-0.25 TUBE X 0.125 NPT
29	1	140681-015	CONNECTOR-1.00 NPTF X 1.00 TUBE (O-RING)

COMPONENT MAINTENANCE PARTS

A	2	140675-007	VITON O-RING/FACE SEAL-1.18 I.D.
B	3	140406-920	VITON O-RING, 1.48 I.D.
C	1	145999-050	VITON O-RING
D	1	140675-006	VITON O-RING/FACE SEAL-0.93 I.D.

Fluid Piping - 146423-001

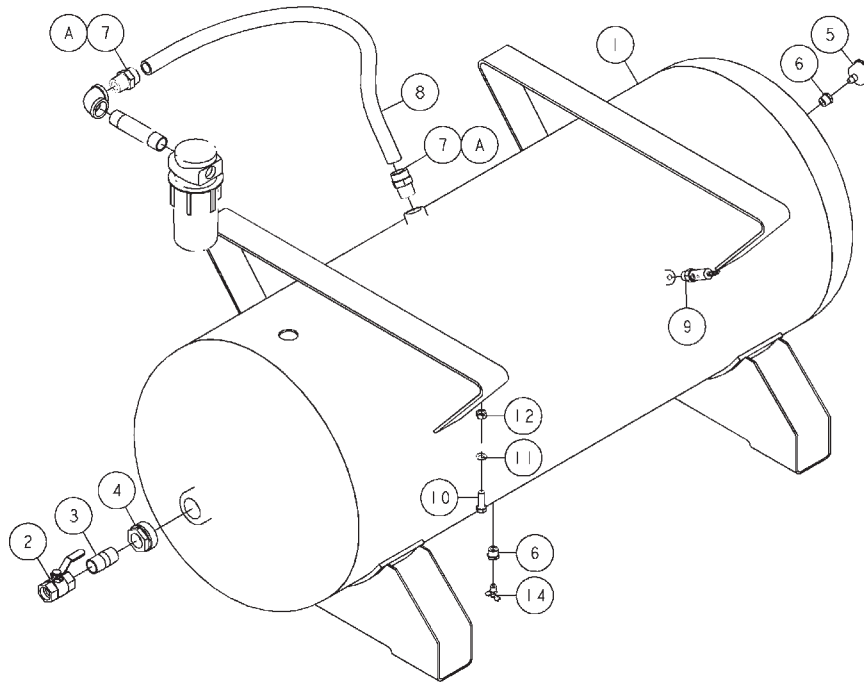


ITEM NO.	QTY.	PART NUMBER	DESCRIPTION
1	4	140682-008	CONNECTOR-0.50 TUBE X 3/4-16 (O-RING)
2	1	146245-0844	HOSE ASSEMBLY
3	1	146245-0872	HOSE ASSEMBLY
4	1	2574	PIPE PLUG-0.25 NPT
5	1	128598	FLUID FILTER ELEMENT

COMPONENT MAINTENANCE PARTS

A	4	140406-908	VITON O-RING, 0.64 I.D.
B	4	140675-003	VITON O-RING/FACE SEAL-0.49 I.D.

Receiver (optional) - 146426-001/-002



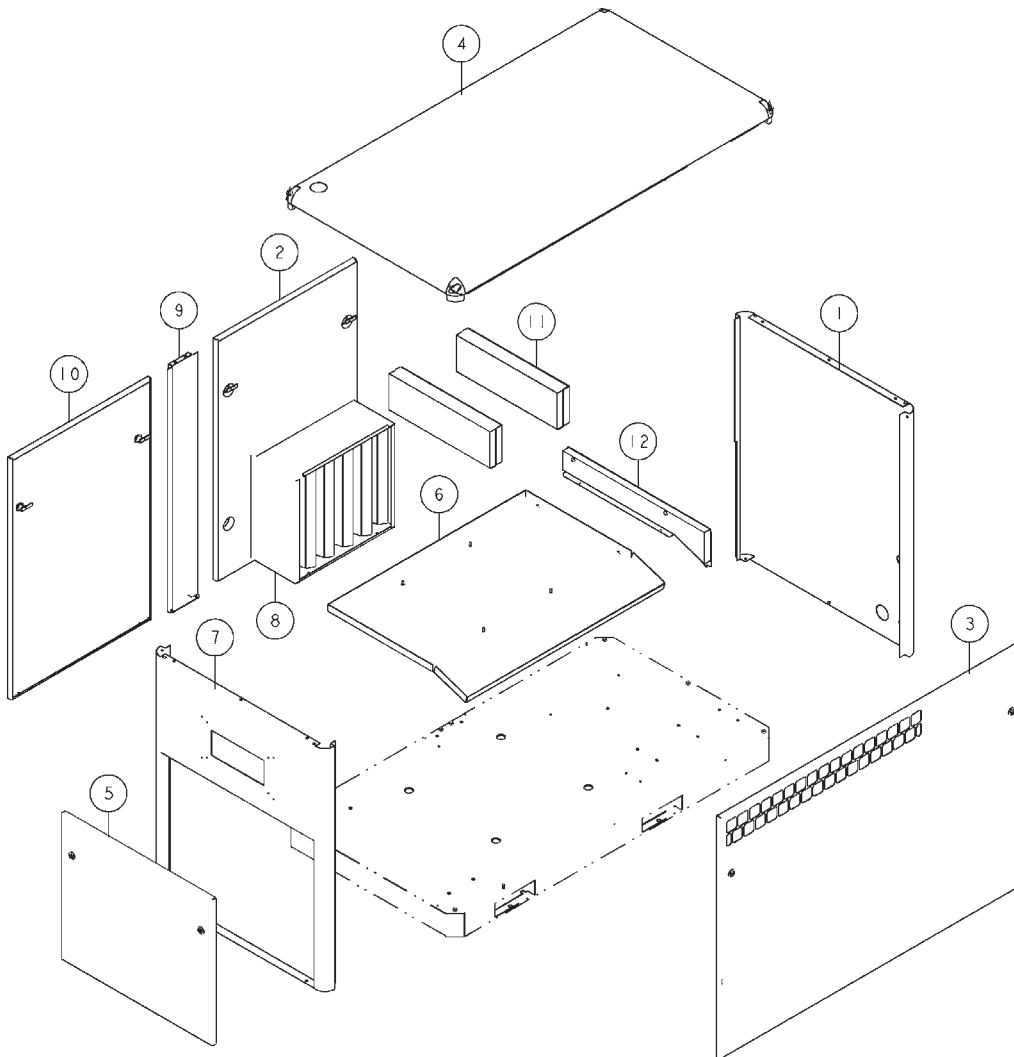
ITEM NO.	QTY.	PART NUMBER	DESCRIPTION
1	1	128848-200	RECEIVER-120 GALLON
	1	128899-200	RECEIVER-200 GALLON
2	1	110425-100	QUARTER TURN VALVE
3	1	126020-014	PIPE NIPPLE-GALVANIZED, 1.00 NPT X 2.50
4	2	20882	PIPE BUSHING-2.00 NPT X 1.00 NPT
5	1	110514-300	PRESSURE GAUGE
6	2	2951	PIPE BUSHING-0.50 NPT X 0.25 NPT
7	2	140681-015	CONNECTOR-1.00 NPTF X 1.00 TUBE (O-RING)
8	1	145899-01	AIR HOSE
9	1	143556-200	PRESSURE RELIEF VALVE
10	4	123478-N15	CAP SCREW-1/2-13 UNC X 1.50, GRADE 5 (@ 55 FT-LBS)
11	4	123115-08C	LOCKWASHER, 0.50
12	4	124364-N02	HEX NUT-1/2-13 UNC
13	1	2713	DRAINCOCK-0.25 NPT

COMPONENT MAINTENANCE PARTS

A	2	140675-006	VITON O-RING/FACE SEAL-0.93 I.D.
---	---	------------	----------------------------------

@ INDICATES TORQUE VALUE IN FOOT POUNDS (LUBRICATED THREADS).

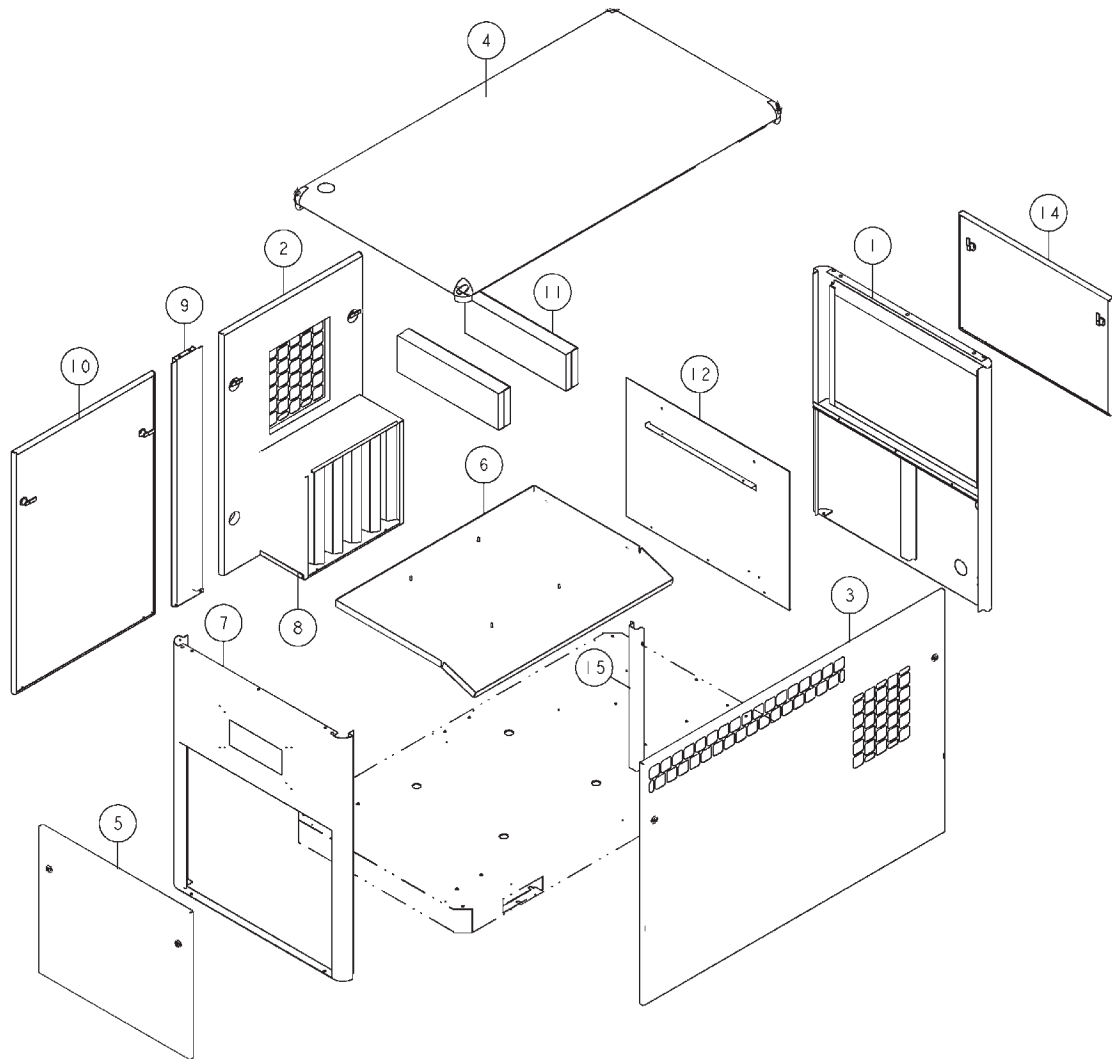
Cabinet (less dryer) - 146446-001



NOTES-UNLESS OTHERWISE SPECIFIED:
 1) ITEM 13 (LOCATING PINS) IS NOT SHOWN.

ITEM NO.	QTY.	PART NUMBER	DESCRIPTION
1	1	145895-23	END PANEL
2	1	145895-21	OUTLET DOOR PANEL
3	1	145895-20	INLET DOOR PANEL
4	1	145895-07	TOP PANEL
5	1	145895-09	INLET DOOR PANEL
6	1	145895-14	INLET DUCT PANEL
7	1	145895-15	END PANEL
8	1	146460	OUTLET LOUVER
9	1	145895-17	DOOR POST PANEL
10	1	145895-18	INLET DOOR PANEL
11	2	145895-24	BAFFLE PANEL
12	1	145895-22	OUTLET DOOR PANEL
13	11	146468	LOCATING PIN-QGB CABINET DOORS

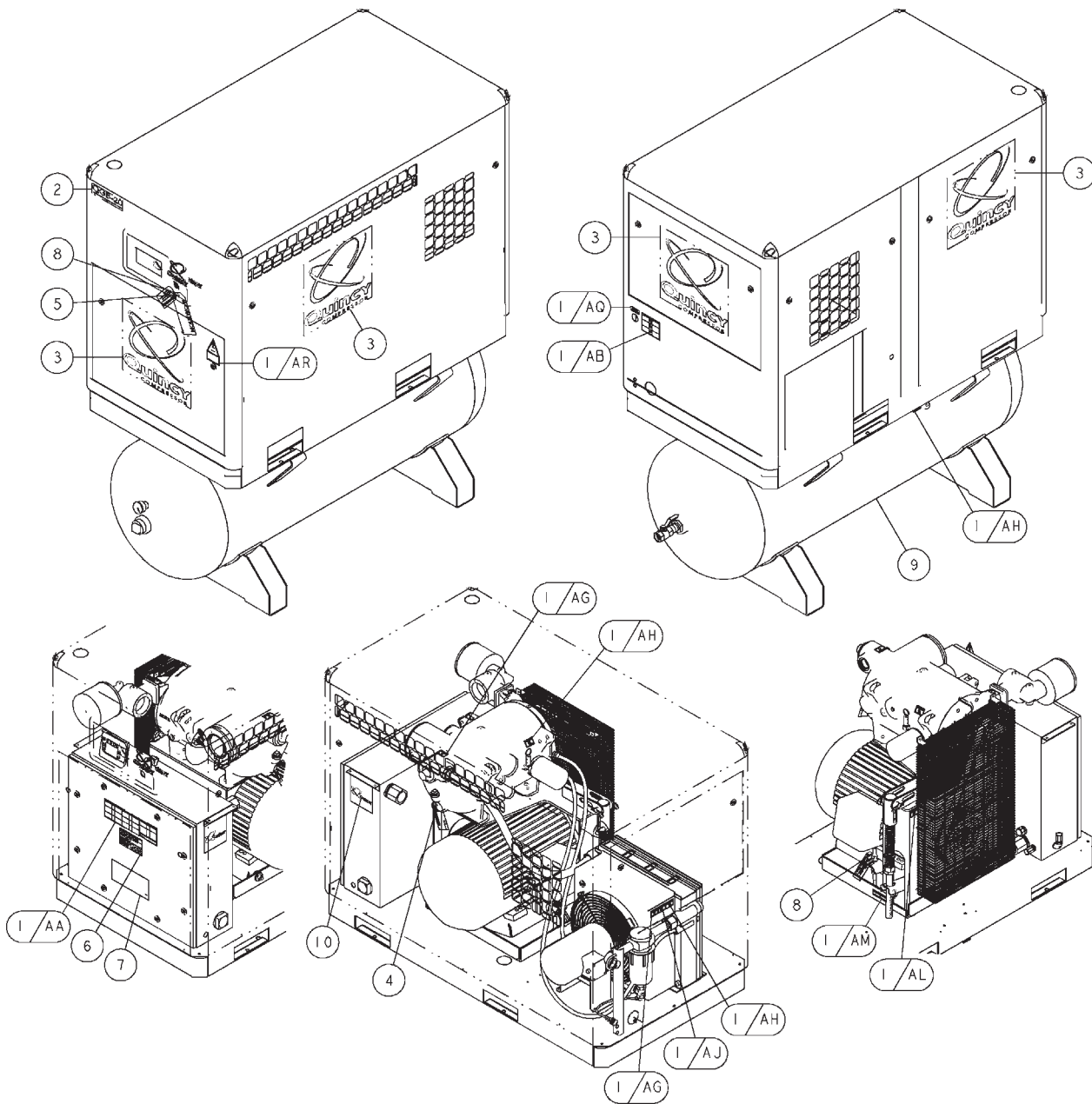
Cabinet (with dryer) - 145895-001



NOTES-UNLESS OTHERWISE SPECIFIED:
 1) ITEM 13 (LOCATING PINS) IS NOT SHOWN.

ITEM NO.	QTY.	PART NUMBER	DESCRIPTION
1	1	145895-01	END PANEL
2	1	145895-03	OUTLET DOOR PANEL
3	1	145895-04	INLET DOOR PANEL
4	1	145895-07	TOP PANEL
5	1	145895-09	INLET DOOR PANEL
6	1	145895-14	INLET DUCT PANEL
7	1	145895-15	END PANEL
8	1	146460	OUTLET LOUVER
9	1	145895-17	DOOR POST PANEL
10	1	145895-18	INLET DOOR PANEL
11	2	145895-24	BAFFLE PANEL
12	1	145897-01	DRYER PARTITION PANEL
13	13	146468	LOCATING PIN-QGB CABINET DOORS
14	1	145895-16	INLET DOOR PANEL
15	1	145897-02	DRYER LEG PANEL

Decals - 146437-020/-025/-030



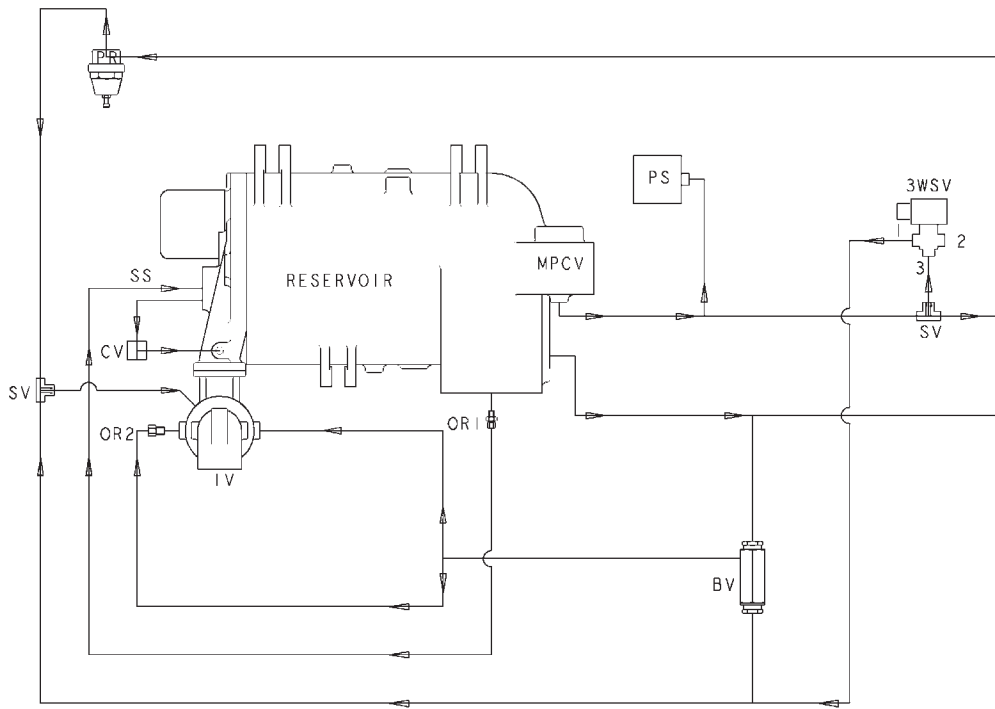
NOTES-UNLESS OTHERWISE SPECIFIED:

- 1) ITEMS 1/AA, 6 & 7 TO BE PLACED ON INSIDE OF ELECTRICAL ENCLOSURE DOOR POSITIONED AS SHOWN.
- 2) UNITS WITHOUT CABINET:
 PLACE ITEM 2 (MODEL ID) ON CONTROL PANEL SUPPORT (CENTERED BELOW CONTROL PANEL).
 PLACE ITEM 3 (QUINCY LOGO) ON ELECTRICAL ENCLOSURE DOOR (QTY OF 1 USED).
- 3) ITEMS 1/AH & ITEM 9 (SHOWN IN UPPER RIGHT VIEW) USED ONLY ON UNITS WITH RECEIVER TANK.

Decals - 146437-020/-025/-030

ITEM No.	QTY.	PART NUMBER	DESCRIPTION
1	1	146001	SHEET-SAFETY DECALS
2	1	146022-20	DECAL-QGB-20
	1	146022-25	DECAL-QGB-25
	1	146022-30	DECAL-QGB-30
3	4	146021-2	DECAL-Q/QUINCY (15 INCH)
4	1	22177	TAG-FLUID TYPE SHIPPED WITH UNIT
5	1	141250	CAUTION TAG-JOG MOTOR
6	1	128198	LABEL-GENUINE QUINCY COMPONENTS
7	1	110690-001	ENVELOPE-PLASTIC
8	2	146028	WARNING TAG-LOCKING BAR INSTALLED
9	1	5042	DECAL-DRAIN TANK EVERY DAY
10	1	143861	DECAL-THIS MACHINE PROTECTED WITH QUINSYN PG™
	1	140519-3	DECAL-THIS MACHINE PROTECTED WITH QUINSYN XP®
	1	144048	DECAL-THIS MACHINE PROTECTED WITH QUINSYN PLUS
	1	128426	DECAL-THIS MACHINE PROTECTED WITH QUINSYN-F®

Control Schematic

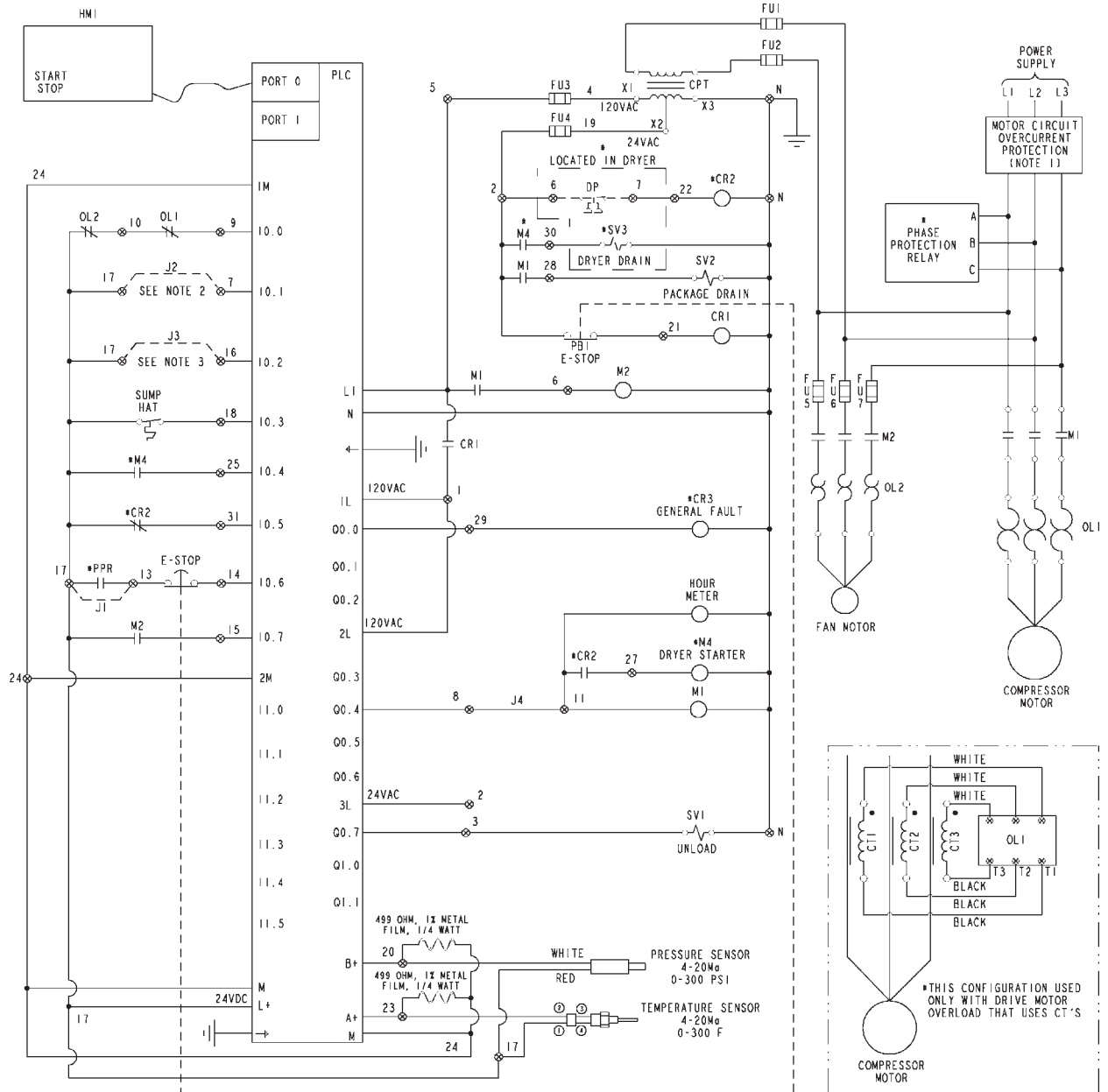


NOMENCLATURE

BV: BLOWDOWN VALVE	OR2: LINE FILTER (0.096)
CV: CAPACITY VALVE	PR: PRESSURE REGULATOR
IV: INLET VALVE	PS: PRESSURE SENSOR
MPCV: MINIMUM PRESSURE CHECK VALVE	SS: SEAL SCAVENGE
OR1: LINE FILTER (0.032)	SV: SHUTTLE VALVE
	3WSV: 3-WAY SOLENOID VALVE

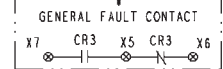
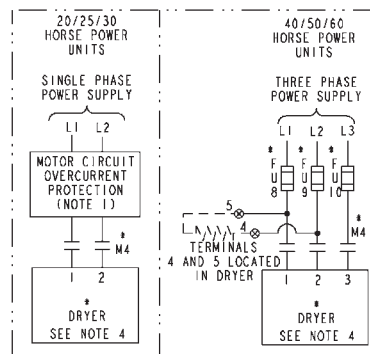
Electrical Control Diagram (across the line)

WP2047AS1



NOTES-UNLESS OTHERWISE SPECIFIED:

- 1) AT INSTALLATION, CUSTOMER IS TO PROVIDE DISCONNECT AND BRANCH CIRCUIT OVERLOAD PROTECTION IN ACCORDANCE WITH THE NATIONAL ELECTRICAL CODE AND/OR ANY LOCAL CODES HAVING PRECEDENCE.
- 2) TO ENABLE REMOTE START REMOVE J2. UNIT MUST BE LOCALLY STARTED BEFORE REMOTE INPUT WILL WORK. WHEN CONTACT BETWEEN 17 AND 7 IS CLOSED THE UNIT WILL START.
- 3) TO ENABLE REMOTE UNLOAD REMOVE J3. WHEN CONTACT BETWEEN 17 AND 16 IS CLOSED THE UNIT WILL UNLOAD.
- 4) DRYERS FOR THE 20-30HP UNITS WILL BE 220V SINGLE PHASE. DRYERS FOR THE 40-60HP UNITS WILL BE THE SAME THREE PHASE VOLTAGE AS THE UNIT.

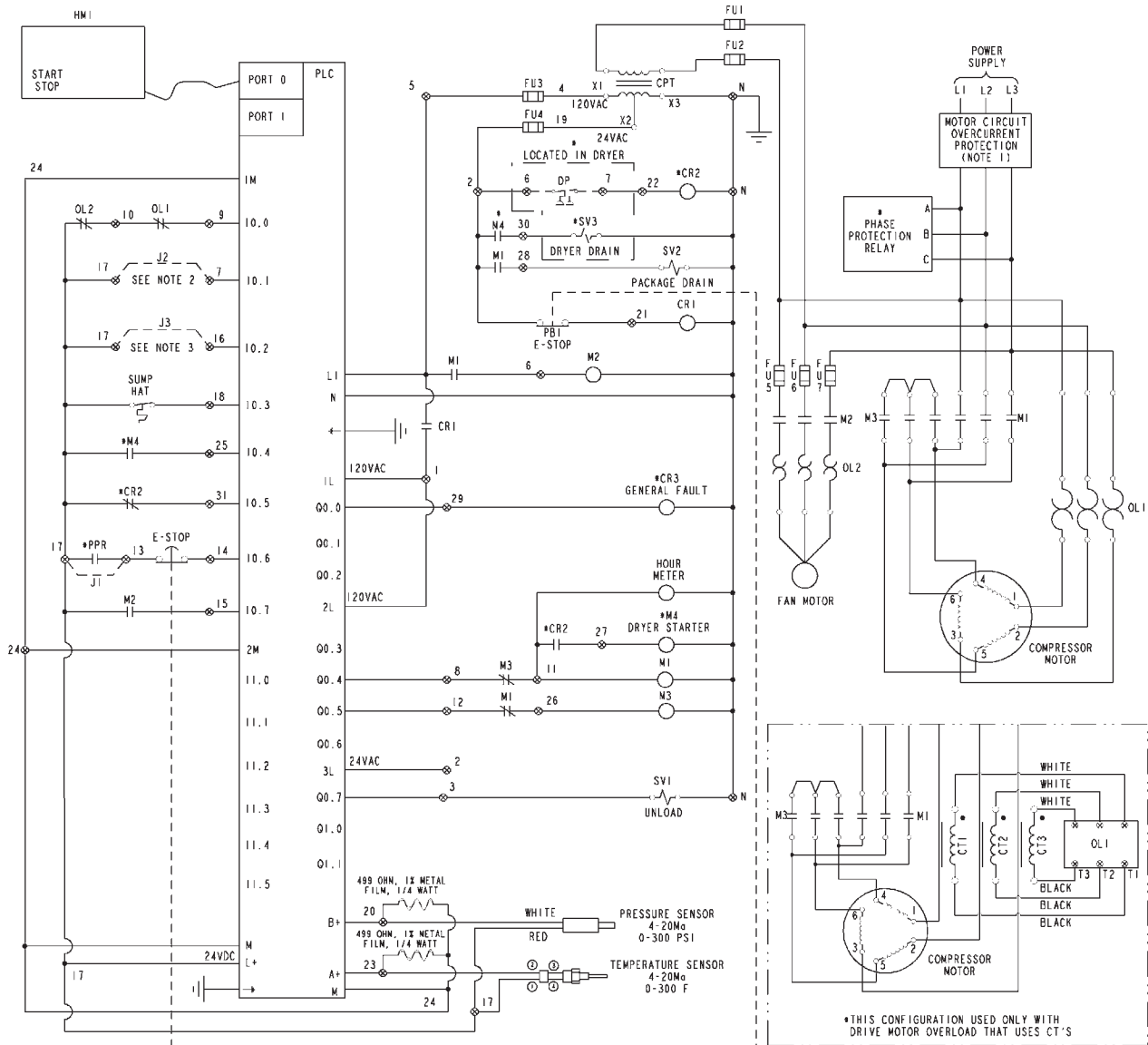


NOMENCLATURE

- FU FUSE
- PB PUSH BUTTON
- SS SELECTOR SWITCH
- CR CONTROL RELAY
- CPT CONTROL POWER TRANSFORMER
- TS TEMPERATURE SENSOR
- HAT HIGH AIR TEMPERATURE
- PLC PROGRAMMABLE LOGIC CONTROLLER
- CT CURRENT TRANSFORMER
- OL OVERLOAD RELAY
- M CONTACTOR
- SV SOLENOID VALVE
- PS PRESSURE SENSOR
- ⊕ SCREW TERMINAL
- ⊗ OPTIONAL
- * NUMBER DESIGNATOR ON DEVICE
- HMI HUMAN MACHINE INTERFACE

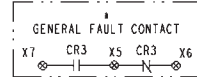
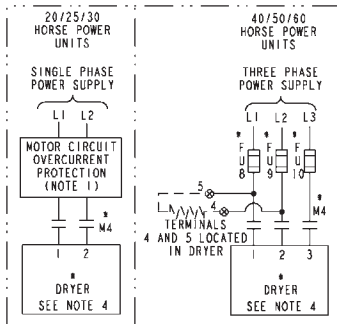
Electrical Control Diagram (wye-delta)

WP2047AS



NOTES-UNLESS OTHERWISE SPECIFIED:

- 1) AT INSTALLATION, CUSTOMER IS TO PROVIDE DISCONNECT AND BRANCH CIRCUIT OVERLOAD PROTECTION IN ACCORDANCE WITH THE NATIONAL ELECTRICAL CODE AND/OR ANY LOCAL CODES HAVING PRECEDENCE.
- 2) TO ENABLE REMOTE START REMOVE J2. UNIT MUST BE LOCALLY STARTED BEFORE REMOTE INPUT WILL WORK. WHEN CONTACT BETWEEN 17 AND 7 IS CLOSED THE UNIT WILL START.
- 3) TO ENABLE REMOTE UNLOAD REMOVE J3. WHEN CONTACT BETWEEN 17 AND 16 IS CLOSED THE UNIT WILL LOAD.
- 4) DRYERS FOR THE 20-30HP UNITS WILL BE 220V SINGLE PHASE. DRYERS FOR THE 40-60HP UNITS WILL BE THE SAME THREE PHASE VOLTAGE AS THE UNIT.



NOMENCLATURE

- FU FUSE
- PB PUSH BUTTON
- SS SELECTOR SWITCH
- CR CONTROL RELAY
- TS TEMPERATURE SENSOR
- HAT HIGH AIR TEMPERATURE
- PLC PROGRAMMABLE LOGIC CONTROLLER
- CT CURRENT TRANSFORMER
- OL OVERLOAD RELAY
- M CONTACTOR
- SV SOLENOID VALVE
- PS PRESSURE SENSOR
- ⊕ SCREW TERMINAL
- ⊙ NUMBER DESIGNATOR ON DEVICE
- * OPTIONAL
- HMI HUMAN MACHINE INTERFACE

Standard Terms and Conditions

Quincy Compressor and Ortman Fluid Power Divisions

LEGAL EFFECT: Except as expressly otherwise agreed to in writing by an authorized representative of Seller, the following terms and conditions shall apply to and form a part of this order and any additional and/or different terms of Buyer's purchase order or other form of acceptance are rejected in advance and shall not become a part of this order.

The rights of Buyer hereunder shall be neither assignable nor transferable except with the written consent of Seller.

This order may not be canceled or altered except with the written consent of Seller and upon terms which will indemnify Seller against all loss occasioned thereby. All additional costs incurred by Seller due to changes in design or specifications, modification of this order or revision of product must be paid for by Buyer.

In addition to the rights and remedies conferred upon Seller by this order, Seller shall have all rights and remedies conferred at law and in equity and shall not be required to proceed with the performance of this order if Buyer is in default in the performance of such order or of any other contract or order with seller.

TERMS OF PAYMENT: Unless otherwise specified in the order acknowledgment, the terms of payment shall be net cash within thirty (30) days after shipment. These terms shall apply to partial as well as complete shipments. If any proceeding be initiated by or against Buyer under any bankruptcy or insolvency law, or in the judgment of Seller the financial condition of Buyer, at the time the equipment is ready for shipment, does not justify the terms of payment specified, Seller reserves the right to require full payment in cash prior to making shipment. If such payment is not received within fifteen (15) days after notification of readiness for shipment, Seller may cancel the order as to any unshipped item and require payment of its reasonable cancellation charges.

If Buyer delays shipment, payments based on date of shipment shall become due as of the date when ready for shipment. If Buyer delays completion of manufacture, Seller may elect to require payment according to percentage of completion. Equipment held for Buyer shall be at Buyer's risk and storage charges may be applied at the discretion of Seller.

Accounts past due shall bear interest at the highest rate lawful to contract for but if there is no limit set by law, such interest shall be eighteen percent (18%). Buyer shall pay all cost and expenses, including reasonable attorney's fees, incurred in collecting the same, and no claim, except claims within Seller's warranty of material or workmanship, as stated below, will be recognized unless delivered in writing to Seller within thirty (30) days after date of shipment.

TAXES: All prices exclude present and future sales, use, occupation, license, excise, and other taxes in respect of manufacture, sales or delivery, all of which shall be paid by Buyer unless included in the purchase price at the proper rate or a proper exemption certificate is furnished.

ACCEPTANCE: All offers to purchase, quotations and contracts of sales are subject to final acceptance by an authorized representative at Seller's plant.

DELIVERY: Except as otherwise specified in this quotation, delivery will be F. O. B. point of shipment. In the absence of exact shipping instruction, Seller will use its discretion regarding best means of insured shipment. No liability will be accepted by Seller for so doing. All transportation charges are at Buyer's expense. Time of delivery is an estimate only and is based upon the receipt of all information and necessary approvals. The shipping schedule shall not be construed to limit seller in making commitments for materials or in fabricating articles under this order in accordance with Seller's normal and reasonable production schedules.

Seller shall in no event be liable for delays caused by fires, acts of God, strikes, labor difficulties, acts of governmental or military authorities, delays in transportation or procuring materials, or causes of any kind beyond Seller's control. No provision for liquidated damages for any cause shall apply under this order. Buyer shall accept delivery within thirty (30) days after receipt of notification of readiness for shipment. Claims for shortages will be deemed to have been waived if not made in writing within ten (10) days after the receipt of the material in respect of which any such shortage is claimed. Seller is not responsible for loss or damage in transit after having received "In Good Order" receipt from the carrier. All claims for loss or damage in transit should be made to the carrier.

Standard Terms and Conditions

Quincy Compressor and Ortman Fluid Power Divisions

TITLE & LIEN RIGHTS: The equipment shall remain personal property, regardless of how affixed to any realty or structure. Until the price (including any notes given therefore) of the equipment has been fully paid in cash, Seller shall, in the event of Buyer's default, have the right to repossess such equipment.

PATENT INFRINGEMENT: If properly notified and given an opportunity to do so with friendly assistance, Seller will defend Buyer and the ultimate user of the equipment from any actual or alleged infringement of any published United States patent by the equipment or any part thereof furnished pursuant hereto (other than parts of special design, construction, or manufacture specified by and originating with Buyer), and will pay all damages and costs awarded by competent court in any suit thus defended or of which it may have had notice and opportunity to defend as aforesaid.

STANDARD WARRANTY: Seller warrants that products of its own manufacture will be free from defects in workmanship and materials under normal use and service for the period specified in the product instruction manual. Warranty for service parts will be ninety (90) days from date of factory shipment. Electric Motors, gasoline and diesel engines, electrical apparatus and all other accessories, components and parts not manufactured by Seller are warranted only to the extent of the original manufacturer's warranty.

Notice of the alleged defect must be given to the Seller, in writing with all identifying details including serial number, type of equipment and date of purchase within thirty (30) days of the discovery of the same during the warranty period.

Seller's sole obligation on this warranty shall be, at its option, to repair or replace or refund the purchase price of any product or part thereof which proves to be defective. If requested by Seller, such product or part thereof must be promptly returned to seller, freight prepaid, for inspection.

Seller warrants repaired or replaced parts of its own manufacture against defects in materials and workmanship under normal use and service for ninety (90) days or for the remainder of the warranty on the product being repaired.

This warranty shall not apply and Seller shall not be responsible or liable for:

- (a) Consequential, collateral or special losses or damages;
- (b) Equipment conditions caused by fair wear and tear, abnormal conditions of use, accident, neglect or misuse of equipment, improper storage or damage resulting during shipping;
- (c) Deviation from operating instructions, specifications or other special terms of sale;
- (d) Labor charges, loss or damage resulting from improper operation, maintenance or repairs made by person(s) other than Seller or Seller's authorized service station.

In no event shall Seller be liable for any claims whether arising from breach of contract or warranty or claims of negligence or negligent manufacture in excess of the purchase price.

THIS WARRANTY IS THE SOLE WARRANTY OF SELLERS AND ANY OTHER WARRANTIES, WHETHER EXPRESS OR IMPLIED IN LAW OR IMPLIED IN FACT, INCLUDING ANY WARRANTIES OF MERCHANTABILITY AND FITNESS FOR PARTICULAR USE ARE HEREBY SPECIFICALLY EXCLUDED.

LIABILITY LIMITATIONS: Under no circumstances shall the Seller have any liability for liquidated damages or for collateral, consequential or special damages or for loss of profits, or for actual losses or for loss of production or progress of construction, whether resulting from delays in delivery or performance, breach of warranty, negligent manufacture or otherwise.

ENVIRONMENTAL AND OSHA REQUIREMENTS: At the time of shipment of the equipment from the factory, Quincy Compressor / Ortman Fluid Power will comply with the various Federal, State and local laws and regulations concerning occupational health and safety and pollution. However, in the installation and operation of the equipment and other matters over which the seller has no control, the Seller assumes no responsibility for compliance with those laws and regulations, whether by the way of indemnity, warranty or otherwise.



an EnPro Industries company

Rotary/Vacuum/Systems: 251.937.5900
Nearest Distributor: 888.424.7729
E-mail: info@quincycompressor.com
Website: www.quincycompressor.com



© 2005 Quincy Compressor, an EnPro Industries company
All Rights Reserved. Litho in U.S.A.