

# Atlas Copco Stationary Air Compressors

GA 7 VSD, GA 11VSD

## Parts list

From following serial No. onwards :  
AII - 140 000

- Copyright 2007, Atlas Copco Airpower n.v., Antwerp, Belgium.  
Any unauthorized use or copying of the contents or any part thereof is prohibited.  
This applies in particular to trademarks, model denominations, part numbers and drawings.
- **Use only authorized parts.** Any damage or malfunction caused by the use of unauthorized parts is not covered by Warranty or Product Liability.

No. 2930 1412 03

Replaces No. 2930 1412 02

2007 - 01

[www.atlascopco.com](http://www.atlascopco.com)

**Atlas Copco**

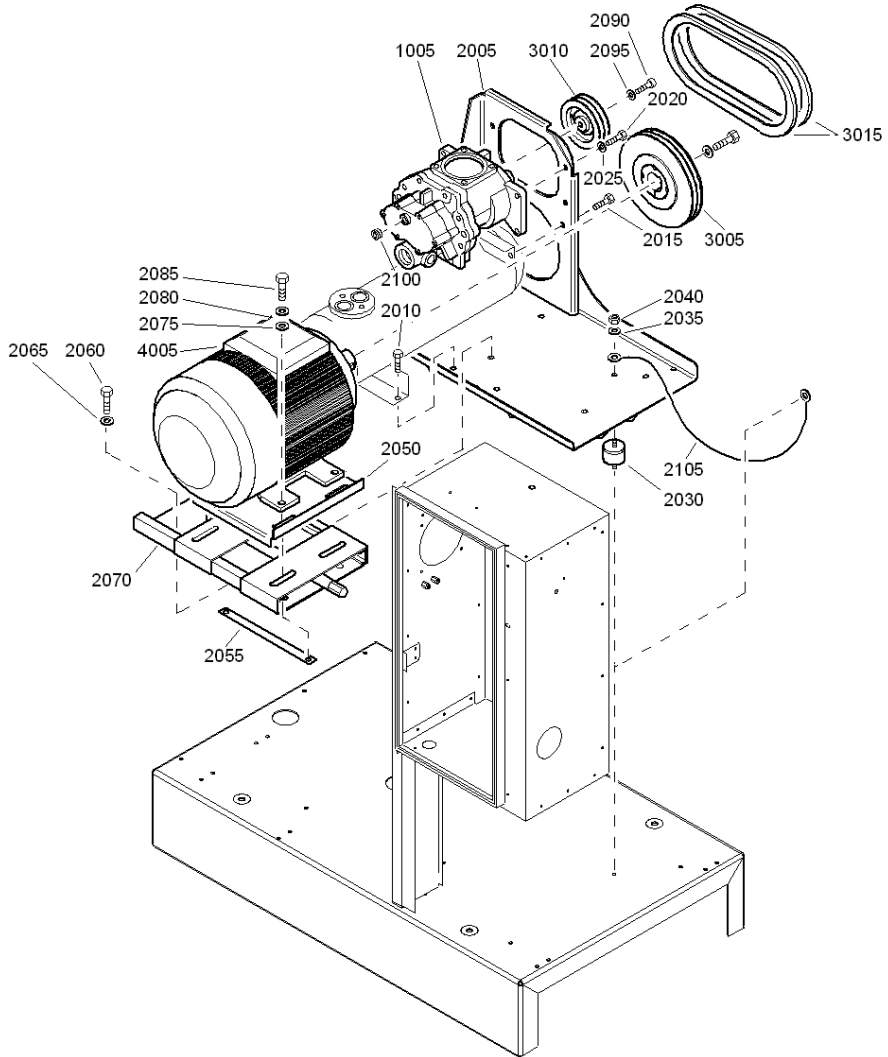
Contents  
Inhoud  
Innehåll  
Inhaltsverzeichnis  
Table des matières  
Indice

Indice  
Innehållsförteckning  
Indice  
Innehållsförteckning  
Sisällysluettelo

Drive arrangement Aandrijfuitvoering Drivarrangemang Antriebsanordnung Dispositif d'entraînement Disposición de accionamiento Disposizione di azionamento Arrangement Disposição de accionamento Drivarrangement Rakenne .....	1	Cooling system Koelsysteem Kylsystem Kühlsystem Circuit de refroidissement Sistema de refrigeración Sistema di raffreddamento Kølesystem Sistema de arrefecimento Kjølesystem Jäähdytysjärjestelmä .....	9
Air flow Luchtstroming Luftflöde Luftstrom Flux d'air Flujo de aire Flusso d'aria Luftflow Fluxo de ar Luftstrøm Ilman virtaus		Air dryer Luchtdroger Lufttorkare Lufttrockner Sécheur d'air Secador de aire Essiccatore d'aria Lufttørrer Secador de ar Lufttørker Kuivain	
- Common .....	2	- GA 7VSD .....	10
- Air outlet - WorkPlace - Floor mounted .....	3	- GA 11VSD .....	11
- Air outlet - WorkPlace Full feature - Floor mounted ...	4	By-pass Omloopleiding Förbildningskanal Umgehungsleitung Tuyaux de by-pass Tubería de derivación By-pass By-pass Tubagem de derivação Omløpsrør Ohitus	
- Air outlet - WorkPlace - Tank mounted .....	5	- WorkPlace Full-feature - Floor mounted .....	12
- Air outlet - WorkPlace Full feature - Tank mounted ....	6	- WorkPlace Full-feature - Tank mounted .....	13
Oil system Oliesysteem Oljesystem Ösystem Système d'huile Sistema de aceite Sistema dell'olio Oliesystem Sistema de óleo Oljesystem Voitelujärjestelmä .....	7	Start cubicle Startkast Startskåp Anlaßschrank Armoire de démarrage Cubículo de arranque Armadio apparecch. di avviamento Starterskab Cubículo-arranque Startskap Käynnistinkotelo	
Unloading valve Ontlastventiel Avlastningsventil Entlastungsventil Soupape de décharge Válvula de descarga Valvola di messa a vuoto Aflastningsventil Válvula de descarga Avlastningsventil Kevennysventtiili .....	8	- 1) .....	14
		- 2) .....	15

Bodywork		Interruptor principal	
Carrosserie		Interruttore della linea di alimentazione	
Karosseri		Hovedrørbryder	
Karosserie		Interruptor principal	
Capotage		Hovedstrømbryter	
Carrocería		Pääkytkin .....	23
Cappottatura			
Karosseri		DD Filter kit	
Carroceria		DD Filter kit	
Kabinett		DD Filter kit	
Kotelo .....	16	DD Filter kit	
		Kit, filtre DD	
Heavy duty filters		Equipo de filtros DD	
Filters, hoge prestatie		Kit, filtro DD	
Högeffektfilter		DD Filtersaet	
Hochleistungsfilter		Kit, filtro DD	
Filtres hautement performants		DD Filtersett	
Filtros para trabajo pesado		DD-suodatinsarja	
Filtro per servizio pesante			
Heavy duty filtre		- WorkPlace Full-feature .....	24
Filtro para trabalho pesado			
Heavy-duty filtre		PD/DD Filter kit	
Suurtehosuodattimet .....	17	PD/DD Filter kit	
		PD/DD Filter kit	
Rain protection		PD/DD Filter kit	
Regenbescherming		Kit, filtre PD/DD	
Regnskydd		Equipo de filtros PD/DD	
Regenschutz		Kit, filtro PD/DD	
Protection contre la pluie		PD/DD Filtersaet	
Protección la lluvia		Kit, filtro PD/DD	
Protezione contro la pioggia		PD/DD Filtersett	
Regnbeskyttelse		PD/DD-suodatinsarja	
Protecção contra a chura			
Regnbeskyttelse		- WorkPlace Full-feature .....	25
Sadesvuoja .....	18		
		Service kits	
Lifting device		Service kits	
Hijstoestel		Service kits	
Lyftverktøy		Service Kits	
Hebezeug		Service kits	
Outil de levage		Service kits	
Aparato de elevación		Kit per la manutenzione	
Utensile di sollevamento		Service kits	
Lyftverktøy		Conjuntos de reparação	
Ferramenta de elevação		Servicesett	
Løfteværktøj		Huoltotarvikesarjat .....	26
Nostotyökälu .....	19		
		1) Up to serial No. :	
Drain system		Tot serienummer:	
Aftapsysteem		T.o.m. tillverkningsnummer:	
Avtappingssystem		Bis Seriennummer:	
Ablaßsystem		Jusqu'au numéro de série:	
Système de vidange		Hasta el número de serie:	
Sistema de drenaje		Fino al numeri di serie:	
Sistema di scarico		Gælder til følgende serienummer:	
Drænsystem		Até o número de série:	
Sistema de drenagem de condensados		Til følgende serienummer:	
Avtappingssystem		Seuraavaan valmistusnumeroon asti, No.:	
Lauhteenpoistojärjestelmä		API - 161 499	
- Oil Separator condensate Drain .....	20	2) From following serial No. onwards:	
- Electronic Water Drain - Floor mounted .....	21	Geldig vanaf volgend serienummer:	
- Electronic Water Drain - Tank mounted .....	22	Fr.o.m. tillverkningsnummer:	
		Gültig ab Seriennummer:	
Main switch		Valable à partir du numéro de série suivant:	
Hoofdschakelaar		A partir del siguiente número de serie:	
Huvudströmbrytare		Dai seguenti numeri di serie in avanti:	
Hauptschalter		Gælder fra følgende serienummer:	
Interrupteur principal		A partir do número de série:	
		Fra og med følgende serienummer:	
		Alkaen valmistusnumerosta	
		API - 161 500	

1



62717\_01

## Drive arrangement

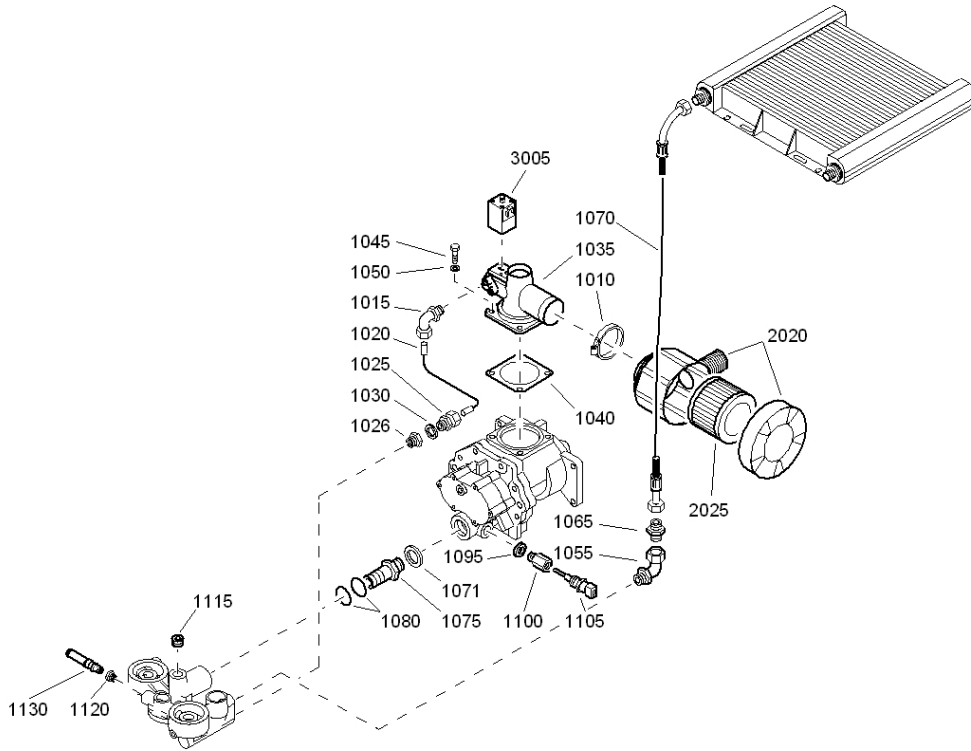
Up to serial No. :  
 Tot serienummer:  
 T.o.m. tillverkningsnummer:  
 Bis Seriennummer:  
 Jusqu'au numéro de série:  
 Hasta el número de serie:  
 Fino al numeri di serie:  
 Gælder til følgende serienumre:  
 Até o número de série:  
 Til følgende serienummer:  
 Seuraavaan valmistusnumeroon asti, No.:  
 API - 159 999

From following serial No. onwards:  
 Geldig vanaf volgend serienummer:  
 Fr.o.m. tillverkningsnummer:  
 Gültig ab Seriennummer:  
 Valable à partir du numéro de série suivant:  
 A partir del siguiente número de serie:  
 Dai seguenti numeri di serie in avanti:  
 Gælder fra følgende serienumre:  
 A partir do número de série:  
 Fra og med følgende serienummer:  
 Alkaen valmistusnumerosta:  
 API - 160 000

Ref.	Part number	Qty	Name	Remarks	Ref.	Part number	Qty	Name	Remarks
1005	2989 0164 00	1	Service stage		1005	2989 0164 00	1	Service stage	
2005	1622 0818 20	1	Support		2005	1622 0818 20	1	Support	
2010	0147 1963 08	2	Hexagon bolt		2010	0147 1963 08	2	Hexagon bolt	
2015	1619 2766 00	2	Bolt		2015	1619 2766 00	2	Bolt	
2020	0147 1323 03	4	Hexagon bolt		2020	0147 1323 03	4	Hexagon bolt	
2025	0301 2335 00	4	Washer		2025	0301 2335 00	4	Washer	
2030	0392 1100 12	3	Damper		2030	0392 1100 12	3	Damper	
2035	0301 2335 00	3	Washer		2035	0301 2335 00	3	Washer	
2040	0266 2110 00	3	Nut		2040	0266 2110 00	3	Nut	
2050	1622 0211 20	1	Plate		2050	1622 0211 20	1	Plate	
2055	1622 0211 01	1	Support		2055	1622 0211 01	1	Support	
2060	0147 1323 03	4	Hexagon bolt		2060	0147 1323 03	4	Hexagon bolt	
2065	0303 1274 01	4	Washer		2065	0303 1274 01	4	Washer	
2070	1622 0252 00	2	Support		2070	1622 0252 00	2	Support	
2075	0301 2344 00	4	Washer		2075	0301 2344 00	4	Washer	
2080	0333 3232 00	4	Lock washer		2080	0333 3232 00	4	Lock washer	
2085	0147 1364 03	4	Hexagon bolt		2085	0147 1364 03	4	Hexagon bolt	
2090	0301 2344 00	1	Washer		2090	0301 2344 00	1	Washer	
2095	0211 1964 06	1	Hex.screw		2095	0211 1964 06	1	Hex.screw	
2100	0686 6126 00	1	Plug		2100	0686 6126 00	1	Plug	
2105	1613 8967 01	1	Cable		2105	1613 8967 01	1	Cable	
3005	1622 0225 08	1	Pulley		3005	1622 0225 07	1	Pulley	
3010	1622 0224 02	1	Pulley			1622 0225 08	1	GA 7VSD	
	1622 0224 03	1	10bar(e)				1	GA 11VSD	
			13bar(e)		3010	1622 0224 06	1	Pulley	
3015	1613 9032 05	1	V-belt set			1622 0224 02	1	GA 7VSD	
	1613 9032 06	1	10bar(e)			1622 0224 03	1	GA 11VSD 10bar(e)	
			13bar(e)				1	GA 11VSD 13bar(e)	
4005	1080 4245 02	1	Motor		3015	1622 0224 03	1	V-belt set	
	1080 4245 01	1	GA 7VSD			1613 9032 04	1	GA 7VSD	
			GA 11VSD			1613 9032 05	1	GA 11VSD 10bar(e)	
						1613 9032 06	1	GA 11VSD 13bar(e)	
					4005	1080 4245 11	1	Motor	
						1080 4245 01	1	GA 7VSD	
							1	GA 11VSD	

2

Air system - Common



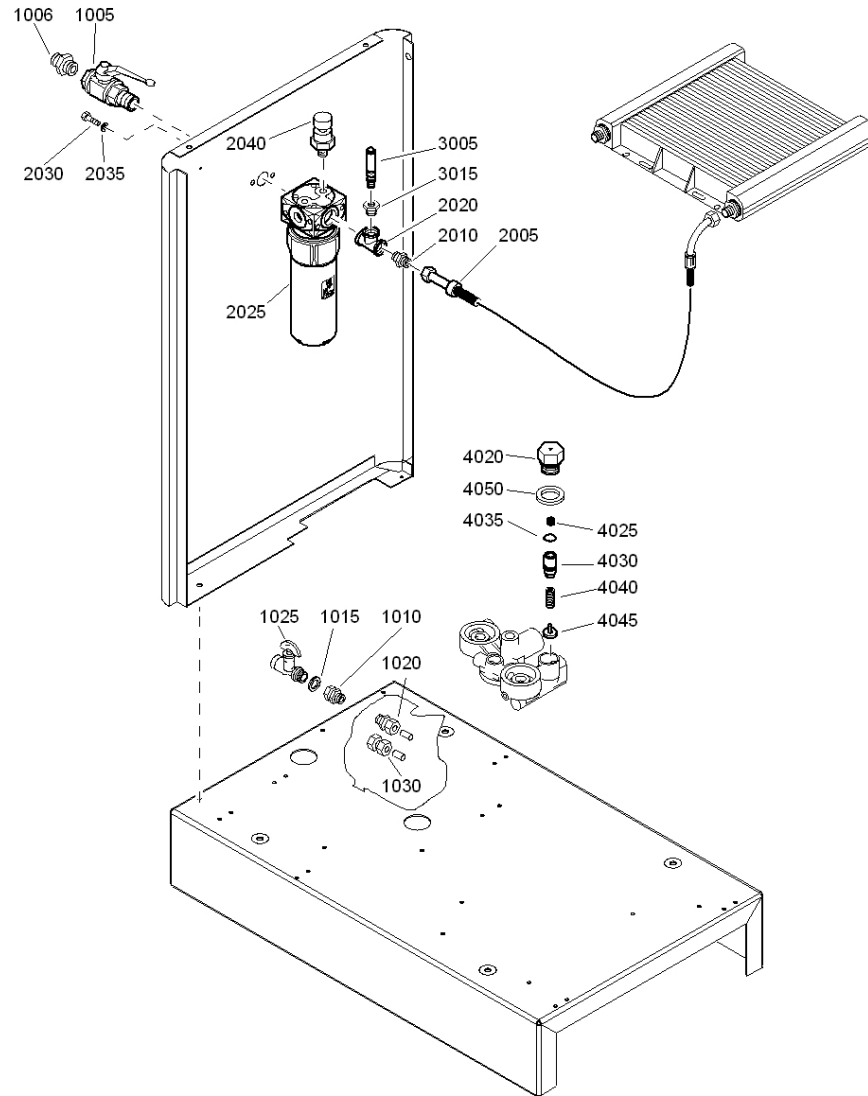
62718\_02

62718\_02

Ref.	Part number	Qty	Name	Remarks	Ref.	Part number	Qty	Name	Remarks
1010	0347 6113 00	1	Hose clip		1080	0663 3130 00	2	O-ring	
1015	0581 1200 16	1	Coupling(elbow)		1095	0661 1000 27	1	Seal washer	
1020	0070 6002 04	AR	Plastic tube		1100	0605 8995 02	1	Bushing	
1025	0581 0000 34	1	Coupling		1105	1089 0574 04	1	Temp.sensor	
1026	0605 8700 90	1	Bushing		1115	0686 3115 67	1	Plug	
1030	0661 1000 38	1	Seal washer		1120	0605 8700 90	1	Bushing	
<b>1035</b>	<b>&lt;&lt;&lt; &gt;&gt;&gt;</b>	<b>1</b>	<b>Unloader valve</b>		1130		1	Safety valve	
1040	1613 9010 00	1	Gasket			0830 1008 38		ASME	
1045	0147 1323 03	4	Hexagon bolt			0830 1007 70		CE	
1050	0301 2335 00	4	Washer			<b>1613 9000 80</b>	<b>1</b>	<b>Air filter assembly</b>	
1055	1503 2565 04	1	Elbow		2020	1613 9000 00	• 1	Air filter housing	
1065	0571 0035 55	1	Nipple		2025	1613 9001 00	• 1	Air filter element	
1070	0574 9911 28	1	Hose		3005		1	Solenoid valve	
1071	0661 1000 44	1	Seal washer			1089 0621 20		50Hz	
1075	1622 0233 00	1	Coupling			1089 0621 19		60Hz	

**Air flow - Air outlet - WorkPlace - Floor mounted**

**3**

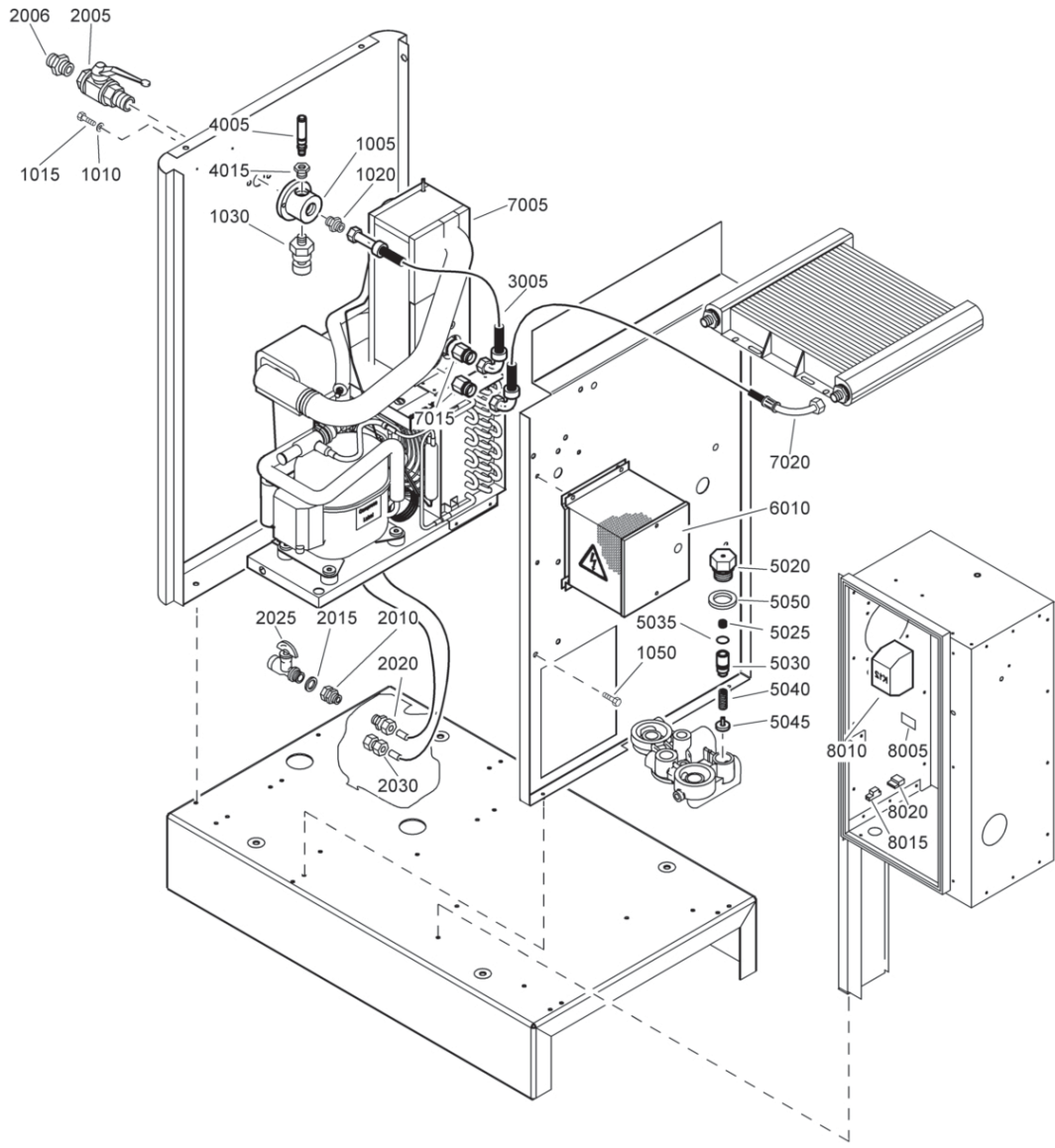


62719\_06

62719\_06

Ref.	Part number	Qty	Name	Remarks	Ref.	Part number	Qty	Name	Remarks
1005	0852 0010 21	1	Ball valve		2030	0147 1247 03	2	Hexagon bolt	
1006		1	Bushing		2035	0301 2321 00	2	Washer	
	0603 4150 14		CSA/UL		2040	1089 0575 54	1	Press.transducer	
1010	0581 0000 33	1	Coupling		3005		1	Safety valve	
1015	0661 1000 42	1	Seal washer			0830 1008 85		ASME	
1020	0581 0000 43	1	Coupling			0830 1008 88		CE	
1025	1619 7336 00	1	Cock		3015	0605 8700 90	1	Bushing	
1030	0581 0000 55	1	Pipe coupling		4020	1513 0539 00	1	Housing	
2005	0575 0125 39	1	Hose assy		4025	1513 0064 00	1	Spring	
2010	0571 0035 55	1	Nipple		4030	1513 0402 01	1	Piston	
2020	1503 2566 13	1	Tee		4035	0663 2105 40	1	O-ring	
<b>2025</b>	<b>1613 8223 80</b>	<b>1</b>	<b>WSD 25</b>		4040	1513 0063 00	1	Spring	
	2901 0712 00	• 1	Drain valve kit		4045	1513 0401 01	1	Valve disc	
	2901 0748 00	• 1	Separation kit		4050	0661 1000 44	1	Seal washer	

# 4



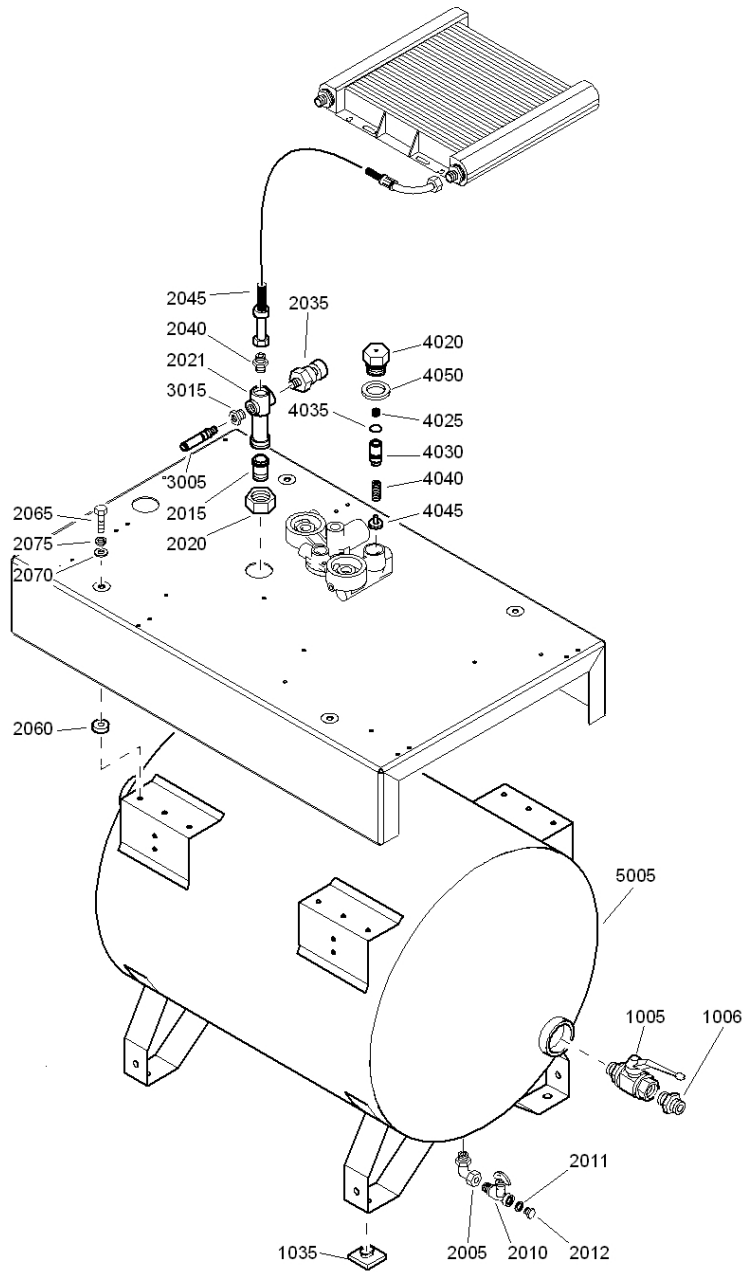
62720\_06

## Air flow - Air outlet - WorkPlace Full-feature - Floor mounted

4

Ref.	Part number	Qty	Name	Remarks	Ref.	Part number	Qty	Name	Remarks
1005	1622 0838 00	1	Flange		5025	1513 0064 00	1	Spring	
1010	0301 2335 00	2	Washer		5030	1513 0402 01	1	Piston	
1015	0147 1323 03	2	Hexagon bolt		5035	0663 2105 40	1	O-ring	
1020	0571 0035 55	1	Nipple		5040	1513 0063 00	1	Spring	
1030	1089 0575 51	1	Press.transducer		5045	1513 0401 01	1	Valve disc	
1045	1619 5337 03	2	Paint strip		5050	0661 1000 44	1	Seal washer	
1050	1079 1472 05	3	Bolt		<b>6010</b>		<b>1</b>	<b>Trafo kit</b>	
2005	0852 0010 21	1	Ball valve			1089 9437 52	• 1	Transformer	
2006	0603 4150 14	1	Bushing CSA/UL			1088 1001 03	• 1	Warning label	
2010	0581 0000 33	1	Coupling		<b>7005</b>	<<< >>>	<b>1</b>	<b>Dryer</b>	
2015	0661 1000 42	1	Seal washer		7015		2	Nipple	
2020	0581 0000 43	1	Coupling			0571 0035 37		GA 7VSD	
2025	1619 7336 00	1	Cock			0571 0035 58		GA 11VSD	
2030	0581 0000 55	1	Pipe coupling		7020		1	Hose assy	
3005	0575 0125 33	1	Hose assy			0575 0784 99		GA 7VSD	
4005		1	Safety valve			0575 0406 38		GA 11VSD	
	0830 1008 85		ASME		8005	1079 9924 28	1	Label fuse	
	0830 1008 88		CE		8010	1089 9415 14	1	Contactore	
4015	0605 8700 90	1	Bushing		8015	1088 0031 53	1	Connector	
5020	1513 0539 00	1	Housing		8020	1088 0037 22	1	Connector	

# 5

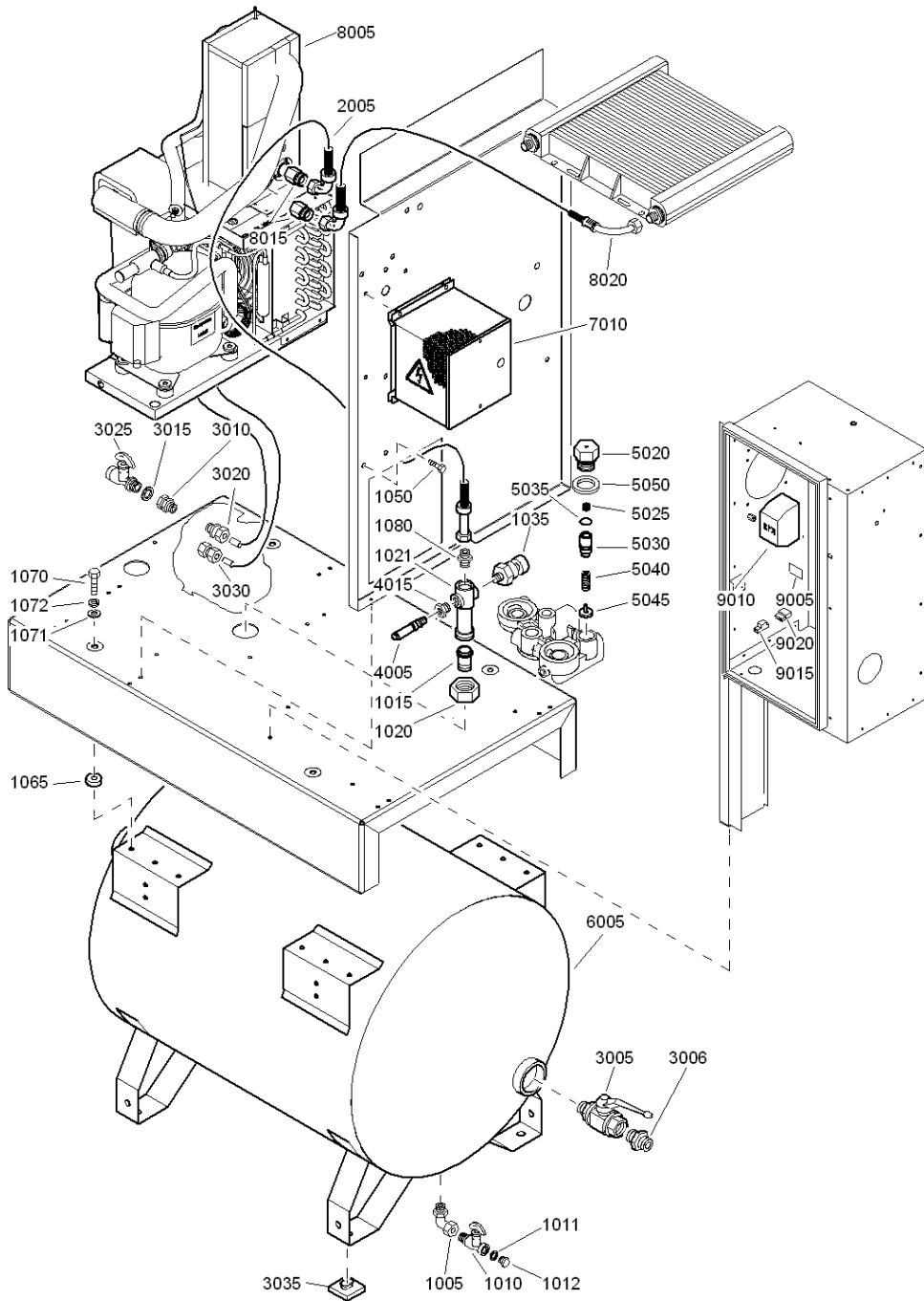


62721\_06

**Air flow - Air outlet - WorkPlace - Tank mounted**

Ref.	Part number	Qty	Name	Remarks	Ref.	Part number	Qty	Name	Remarks
1005	0852 0010 21	1	Ball valve		3005		1	Safety valve	
1006		1	Bushing			0830 1008 85		ASME	
	0603 4150 14		CSA/UL			0830 1008 88		CE	
1035	1502 4202 00	4	Pad		3015	0605 8700 90	1	Bushing	
2005	1503 2565 41	1	Elbow		4020	1513 0539 00	1	Housing	
2010	0852 0010 36	1	Ball valve		4025	1513 0064 00	1	Spring	
2011	0661 1000 40	1	Seal washer		4030	1513 0402 01	1	Piston	
2012	0686 3716 30	1	Hexagon plug		4035	0663 2105 40	1	O-ring	
2015	1622 0697 00	1	Coupling		4040	1513 0063 00	1	Spring	
2020	1622 0698 00	1	Nut		4045	1513 0401 01	1	Valve disc	
2021	1622 0699 00	1	Connection		4050	0661 1000 44	1	Seal washer	
2035	1089 0575 54	1	Press.transducer		5005		1	Air receiver	
2040	0571 0035 36	1	Hexagon nipple			1622 0228 00		270 l - CE	
2045	0575 0125 39	1	Hose assy			1622 0254 00		500 l - CE	
2060	1622 0872 00	4	Damper			1622 0279 00		500 l - DIR	
2065	0147 1330 03	4	Hexagon bolt			1622 0268 00		80 gal - ASME	
2070	0301 2335 00	4	Washer			1622 0269 00		125 gal - ASME	
2075	0333 3227 00	4	Lock washer						

# 6



62722\_06

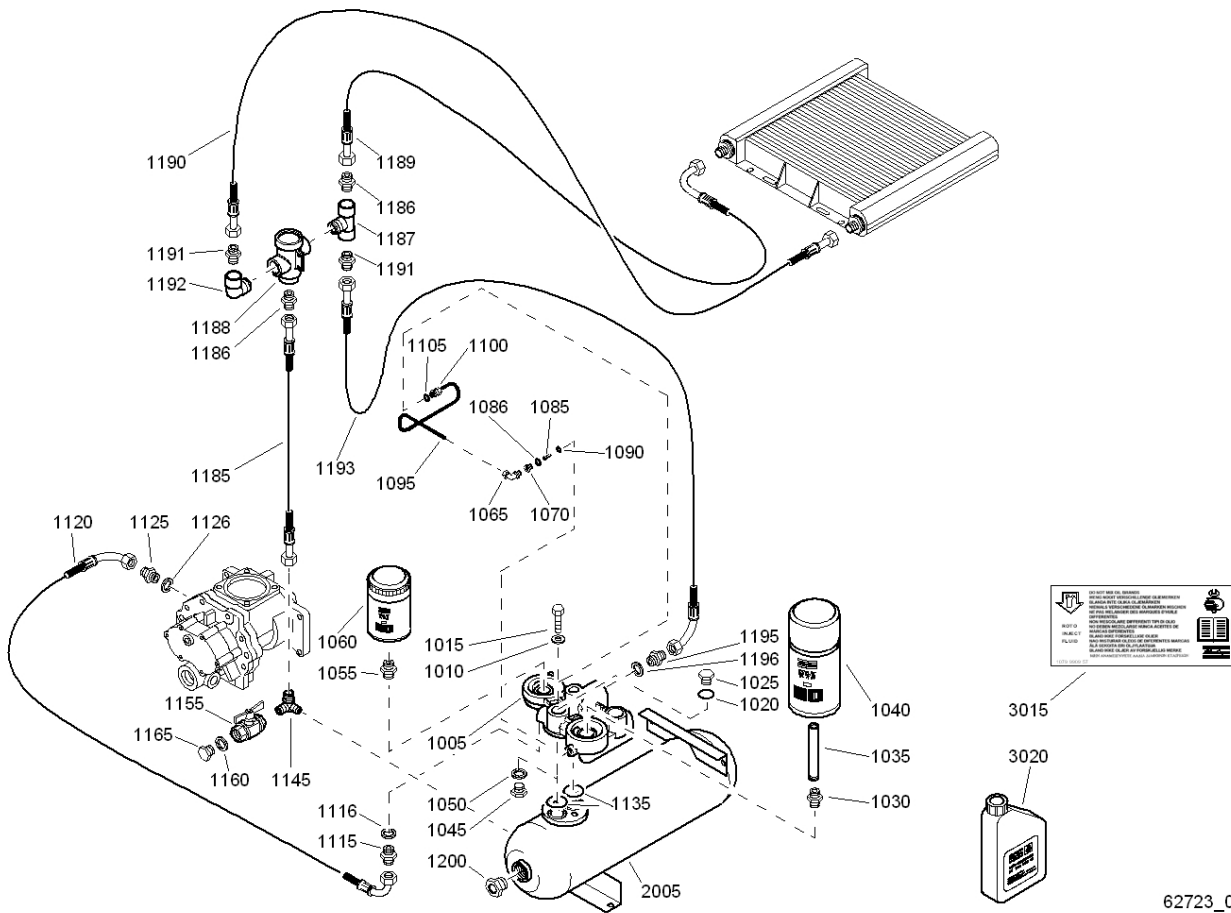
## Air flow - Air outlet - WorkPlace Full-feature - Tank mounted

## 6

Ref.	Part number	Qty	Name	Remarks	Ref.	Part number	Qty	Name	Remarks
1005	1503 2565 41	1	Elbow		4015	0605 8700 90	1	Bushing	
1010	0852 0010 36	1	Ball valve		5020	1513 0539 00	1	Housing	
1011	0661 1000 40	1	Seal washer		5025	1513 0064 00	1	Spring	
1012	0686 3716 30	1	Hexagon plug		5030	1513 0402 01	1	Piston	
1015	1622 0697 00	1	Coupling		5035	0663 2105 40	1	O-ring	
1020	1622 0698 00	1	Nut		5040	1513 0063 00	1	Spring	
1021	1622 0699 00	1	Connection		5045	1513 0401 01	1	Valve disc	
1035	1089 0575 51	1	Press.transducer		5050	0661 1000 44	1	Seal washer	
1050	1079 1472 05	3	Bolt		6005		1	Air receiver	
1065	1622 0872 00	4	Damper			1622 0228 00		270 l - CE	
1070	0147 1330 03	4	Hexagon bolt			1622 0254 00		500 l - CE	
1071	0301 2335 00	4	Washer			1622 0279 00		500 l - DIR	
1072	0333 3227 00	4	Lock washer			1622 0268 00		80 gal - ASME	
1075	1619 5337 03	2	Paint strip			1622 0269 00		125 gal - ASME	
1080	0571 0035 36	1	Hexagon nipple		<b>7010</b>		<b>1</b>	<b>Trafo kit</b>	
2005		1	Hose assy			1089 9437 52	• 1	Transformer	
	0575 0798 02		GA 7VSD			1088 1001 03	• 1	Warning label	
	0575 0796 12		GA 11VSD		<b>8005</b>	<<< >>>	<b>1</b>	<b>Dryer</b>	
3005	0852 0010 21	1	Ball valve		8015		2	Nipple	
3006		1	Bushing			0570 0035 37		GA 7VSD	
	0603 4150 14		CSA/UL			0570 0035 58		GA 11VSD	
3010	0581 0000 33	1	Coupling		8020		1	Hose assy	
3015	0661 1000 42	1	Seal washer			0575 0484 49		GA 7VSD	
3020	0581 0000 43	1	Coupling			0575 0406 38		GA 11VSD	
3025	1619 7336 00	1	Cock		9005	1079 9924 28	1	Label fuse	
3030	0581 0000 55	1	Pipe coupling		9010	1089 9415 14	1	Contactore	
3035	1502 4202 00	4	Pad		9015	1088 0031 53	1	Connector	
4005		1	Safety valve		9020	1088 0037 22	1	Connector	
	0830 1008 85		ASME						
	0830 1008 88		CE						

7

Oil system

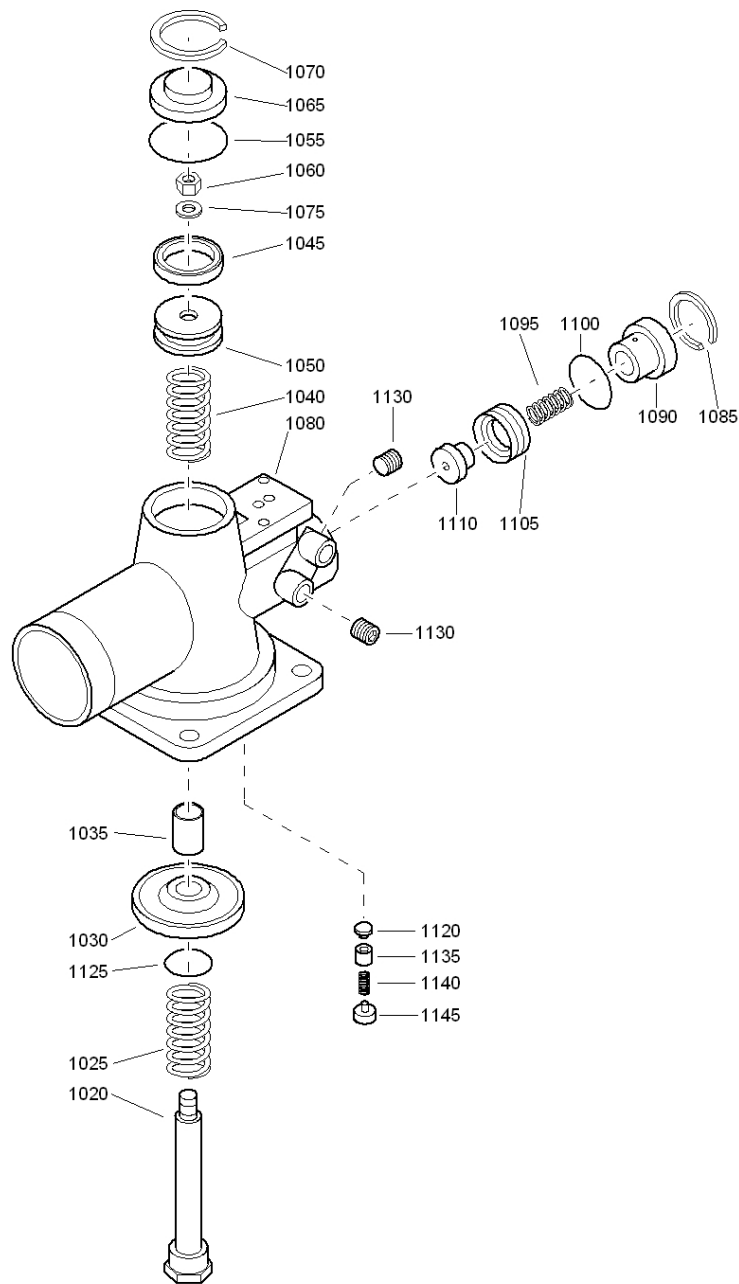


62723\_05

62723\_05

Ref.	Part number	Qty	Name	Remarks	Ref.	Part number	Qty	Name	Remarks
1005	1622 0559 00	1	Connection		1126	0661 1000 39	1	Seal washer	
1010	0301 2344 00	2	Washer		1135	0663 3130 00	2	O-ring	
1015	0147 1365 03	2	Hexagon bolt		1145	1622 1718 00	1	Tee	
1020	0663 2102 15	1	O-ring		1155	0852 0010 36	1	Ball valve	
1025	1202 8992 00	1	Plug		1160	0661 1000 38	1	Seal washer	
1030	1622 0235 00	1	Coupling		1165	0686 3716 01	1	Hexagon plug	
1035	1622 0236 00	1	Pipe		1185	0575 1205 10	1	Hose assembly	
1040	1622 0871 00	1	Oil separator		1186	0571 0035 57	2	Nipple	
1045	0686 4201 03	1	Hexagon plug		1187	0605 9500 10	1	Tee	
1050	0661 1000 42	1	Seal washer		1188	1622 3434 01	1	Valve	
1055	1622 0624 00	1	Nipple		1189	0575 1216 61	1	Hose assembly	
1060	1513 0337 01	1	Oilfilter		1190	0575 1205 09	1	Hose assembly	
1065	0581 1200 32	1	Coupling		1191	0571 0035 57	2	Nipple	
1070	1622 0731 00	1	Nipple		1192	0605 9500 09	1	Elbow	
1085	1613 9005 01	1	Valve		1193	0575 1216 53	1	Hose assembly	
1086	0661 1000 38	1	Seal washer		1195	1079 5840 12	1	Nipple	
1090	0663 2108 11	1	O-ring		1196	0661 1000 39	1	Seal washer	
1095	1622 0738 00	1	Scavenge line		1200	1513 0164 00	1	Sight glass	
1100	0581 0001 16	1	Pipe coupling		2005		1	Vessel	
1105	0661 1000 38	1	Seal washer			1622 1017 00		ASME, LLOYD'S	
1115	1079 5840 12	1	Nipple			1622 1016 00		CE	
1116	0661 1000 39	1	Seal washer		3015	1079 9909 57	1	Label	
1120	0575 1281 01	1	Hose assembly		3020	1613 6532 01	1	Oil can	
1125	1079 5840 12	1	Nipple						

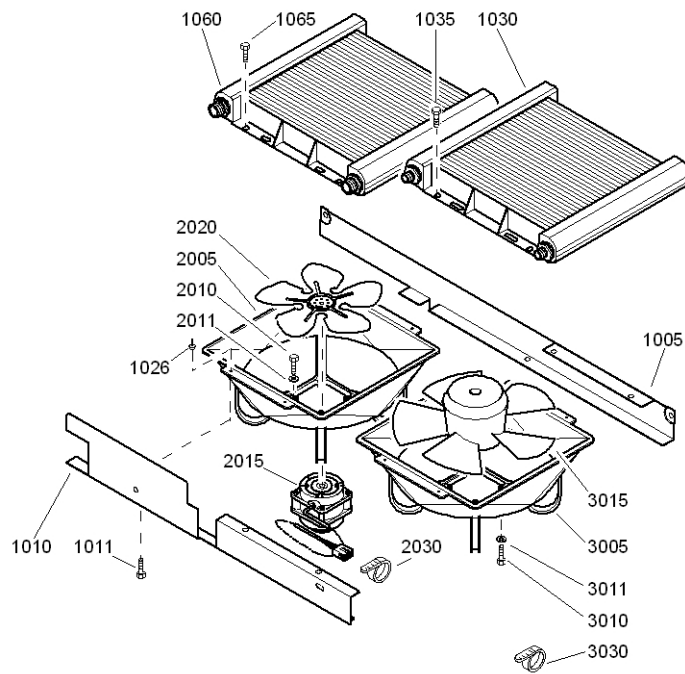
# Unloading valve



61066\_20

Ref.	Part number	Qty	Name	Remarks	Ref.	Part number	Qty	Name	Remarks
	<b>1613 9008 84</b>	<b>1</b>	<b>Unloading valve</b>		1080	1613 9008 10	• 1	Valve housing	
1020	1613 9009 00	• 1	Piston rod		1085	0335 2130 00	• 1	Circlip	
1025	1513 0015 00	• 1	Spring		1090	1513 0533 00	• 1	Cover	
1030	1513 0398 00	• 1	Valve		1095	1513 0011 00	• 1	Spring	
1035	2235 3012 00	• 1	Bush		1100	0663 6129 00	• 1	O-ring	
1040	1513 0385 00	• 1	Spring		1105	1513 0532 00	• 1	Piston	
1045	1513 0019 00	• 1	Piston ring		1110	1513 0535 00	• 1	Valve seat	
1050	1513 0384 00	• 1	Piston		1120	2235 3039 00	• 1	Piston seat	
1055	0663 7132 00	• 1	O-ring		1125	0663 2105 13	• 1	O-ring	
1060	0266 1110 02	• 1	Nut		1130	0686 6126 00	• 2	Plug	
1065	1513 0382 00	• 1	Cover		1135	1513 0248 00	• 1	Piston	
1070	0335 2136 00	• 1	Circlip		1140	1513 0014 00	• 1	Spring	
1075	0301 2135 01	• 1	Washer		1145	1613 9662 00	• 1	Spring retainer	

# 9



62725\_02

## Cooling system

## 9

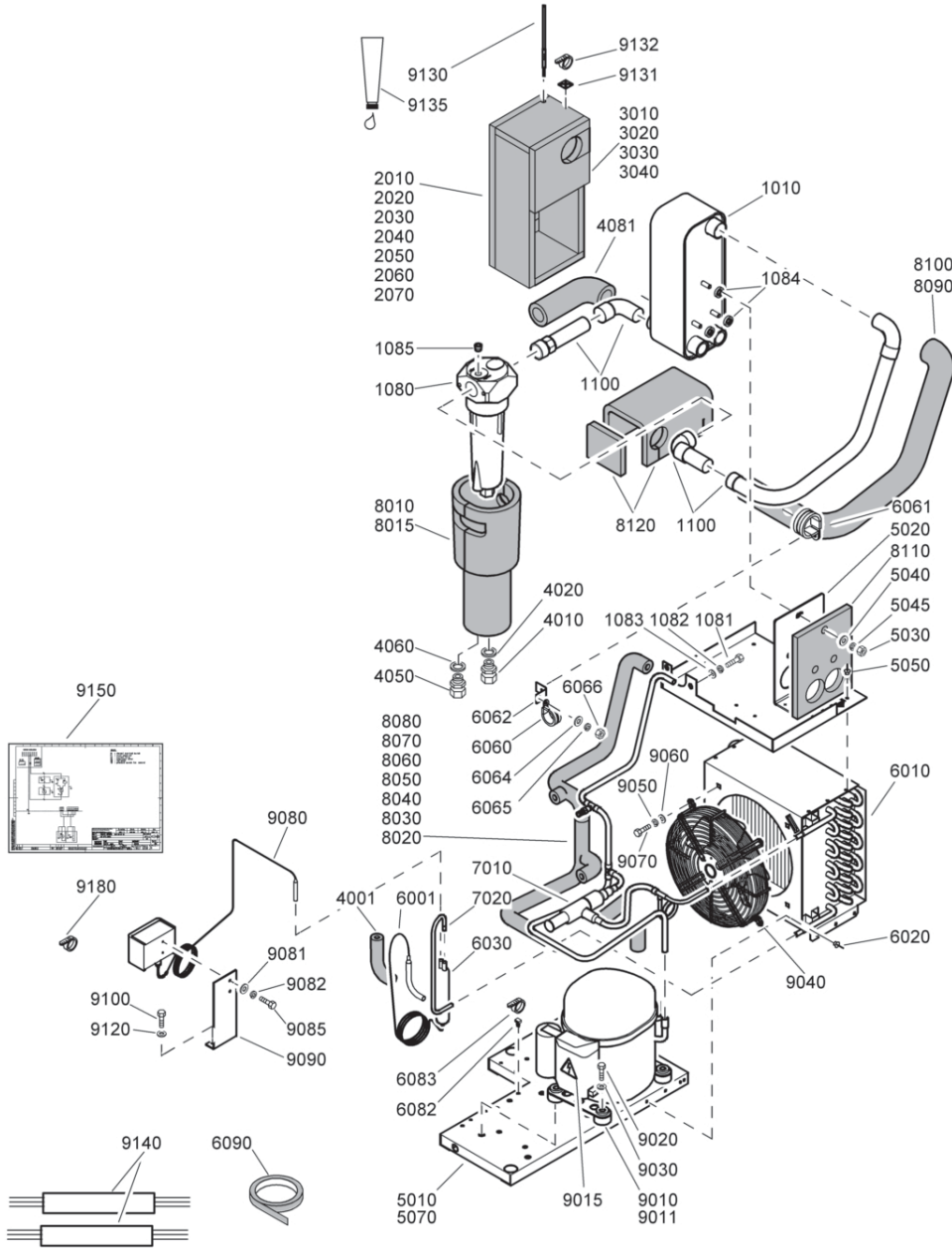
Ref.	Part number	Qty	Name	Remarks	Ref.	Part number	Qty	Name	Remarks
1005	1622 0814 00	1	Support		2030	1088 1301 01	• 3	Cable strip	
1010	1622 0815 00	1	Support				<b>1</b>	<b>Fan assembly</b>	
1011	0147 1963 08	4	Hexagon bolt			<b>1622 0801 81</b>		GA 7VSD CSA/UL	
1026	0129 3115 00	8	Blind rivet			<b>1622 0801 80</b>		GA 7VSD IEC	
1030	1622 0594 01	1	Cooler			<b>1622 0801 81</b>		GA 11VSD Pack CSA/UL	
1035	0147 1963 08	2	Hexagon bolt			<b>1622 0801 80</b>		GA 11VSD Pack IEC	
1060	1622 0594 02	1	Aircooler			<b>1622 0861 91</b>		GA 11VSD Full Feature CSA/UL	
1065	0147 1963 08	2	Hexagon bolt			<b>1622 0861 90</b>		GA 11VSD Full Feature IEC	
		<b>1</b>	<b>Fan assembly</b>		3005		• 1	Fanduct	
	<b>1622 0801 81</b>		GA 7VSD CSA/UL			1622 0801 00		GA 7VSD	
	<b>1622 0801 80</b>		GA 7VSD IEC			1622 0801 00		GA 11VSD Pack	
	<b>1622 0861 91</b>		GA 11VSD CSA/UL			1622 0861 01		GA 11VSD Full Feature	
	<b>1622 0861 92</b>		GA 11VSD IEC 50Hz		3010		• 4	Bolt	
	<b>1622 0861 90</b>		GA 11VSD IEC 60Hz			0217 1100 34		GA 11VSD Full Feature	
2005		• 1	Fanduct		3011		• 4	Washer	
	1622 0801 00		GA 7VSD			0300 0274 65		GA 11VSD Full Feature	
	1622 0861 01		GA 11VSD		3015		• 1	Motor	
2010		• 4	Bolt			1613 9800 14		GA 7VSD CSA/UL	
	0217 1100 34		GA 11VSD			1613 9800 13		GA 7VSD IEC	
2011		• 4	Washer			1613 9800 14		GA 11VSD Pack CSA/UL	
	0300 0274 65		GA 11VSD			1613 9800 13		GA 11VSD Pack IEC	
2015		• 1	Motor		3020		• 1	Fan	
	1613 9800 14		GA 7VSD CSA/UL			1613 9819 01		GA 7VSD	
	1613 9800 13		GA 7VSD IEC			1613 9819 01		GA 11VSD Pack	
2020		• 1	Fan		3025		• 1	Fan + Motor	
	1613 9819 01		GA 7VSD			1622 0860 02		GA 11VSD Full feature CSA/ UL	
2025		• 1	Fan + Motor			1622 0860 01		GA 11VSD Full Feature IEC	
	1622 0860 02		GA 11VSD CSA/UL		3030	1088 1301 01	• 3	Cable strip	
	1622 1087 01		GA 11VSD IEC 50Hz						
	1622 0860 01		GA 11VSD IEC 60Hz						



## Air dryer - GA 7VSD

Ref.	Part number	Qty	Name	Remarks	Ref.	Part number	Qty	Name	Remarks
	<b>8092 2497 65</b>	<b>1</b>	<b>Dryer</b>		4070	1603 1900 82 •	1	Insulation set	
	<b>8092 2497 73</b>		230V/50Hz		<b>5010</b>	•	<b>1</b>	<b>Refr.compressor</b>	
	<b>8092 2497 73</b>		200-220V/60Hz			<b>1624 2214 10</b>		230V/50Hz	
1010	1617 3000 04 •	1	Heat exchanger			<b>1624 2214 02</b>		200-220V/60Hz	
1080	1617 3030 80 •	1	Water separator				••	1	Start capacitor
1090	1603 1900 61 •	1	Insulation set			1617 1549 13			230V/50Hz
1100	1603 1008 85 •	1	Pipe set			1617 1549 01			200-220V/60Hz
2010	0581 0000 35 •	1	Straight coupling				••	1	Start relay
2020	0661 1020 00 •	1	Seal washer			1617 1551 56			230V/50Hz
2030	0070 6002 05 •	AR	Plastic tube			1617 1551 47			200-220V/60Hz
2040	0070 6002 04 •	AR	Plastic tube				••	1	Overload protector
2050	0581 0000 34 •	1	Straight coupling			1617 1550 63			230V/50Hz
2060	0653 1062 00 •	1	Flat gasket			1617 1550 54			200-220V/60Hz
3010	1617 3461 80 •	1	Frame assy			1617 1530 00 ••	1		Anti vibration set
3020	1617 3111 00 •	1	Support		5015	1088 1001 01 •	1		Warning mark
3030	1617 3117 00 •	1	Support		5020	0147 1249 03 •	4		Hex.bolt
3040	0266 2108 00 •	2	Nut		5030	0300 0274 64 •	4		Washer rosetta
3050	0301 2321 00 •	2	Washer		5040		•	1	Fan assy
3055	0333 3220 00 •	2	Washer			1617 2381 81			230V/50Hz
3060	0129 3115 00 •	6	Blind rivet			1617 2381 82			200-220V/60Hz
3070	0147 1247 03 •	2	Hex.bolt		5085	0147 1169 03 •	2		Hex.head screw
3080	0301 2321 00 •	4	Washer		5090	1617 3168 00 •	1		Support
4010	1617 3691 00 •	1	Condensor		5100	0226 3256 00 •	2		Screw
4015	1617 2385 00 •	1	Rotation arrow		5120	0301 2315 00 •	4		Washer
4020	0129 3115 00 •	4	Blind rivet		5130	1089 0574 71 •	1		Temp.sensor
4030	1617 2996 01 •	1	Filter dryer		5140		•	1	Wiring
4050	1617 1331 27 •	1	Capillary			1617 3595 80			230V/50Hz
<b>4060</b>	<b>1603 6000 37 •</b>	<b>1</b>	<b>Pipe set</b>			1617 3594 80			200-220V/60Hz
	1619 5563 02 ••	1	Shrader valve		5150	9827 0208 24 •	1		Service diagram
	1617 1524 01 ••	1	Hot gas bypass valve		5180	0348 0101 13 •	4		Cable tie

# 11

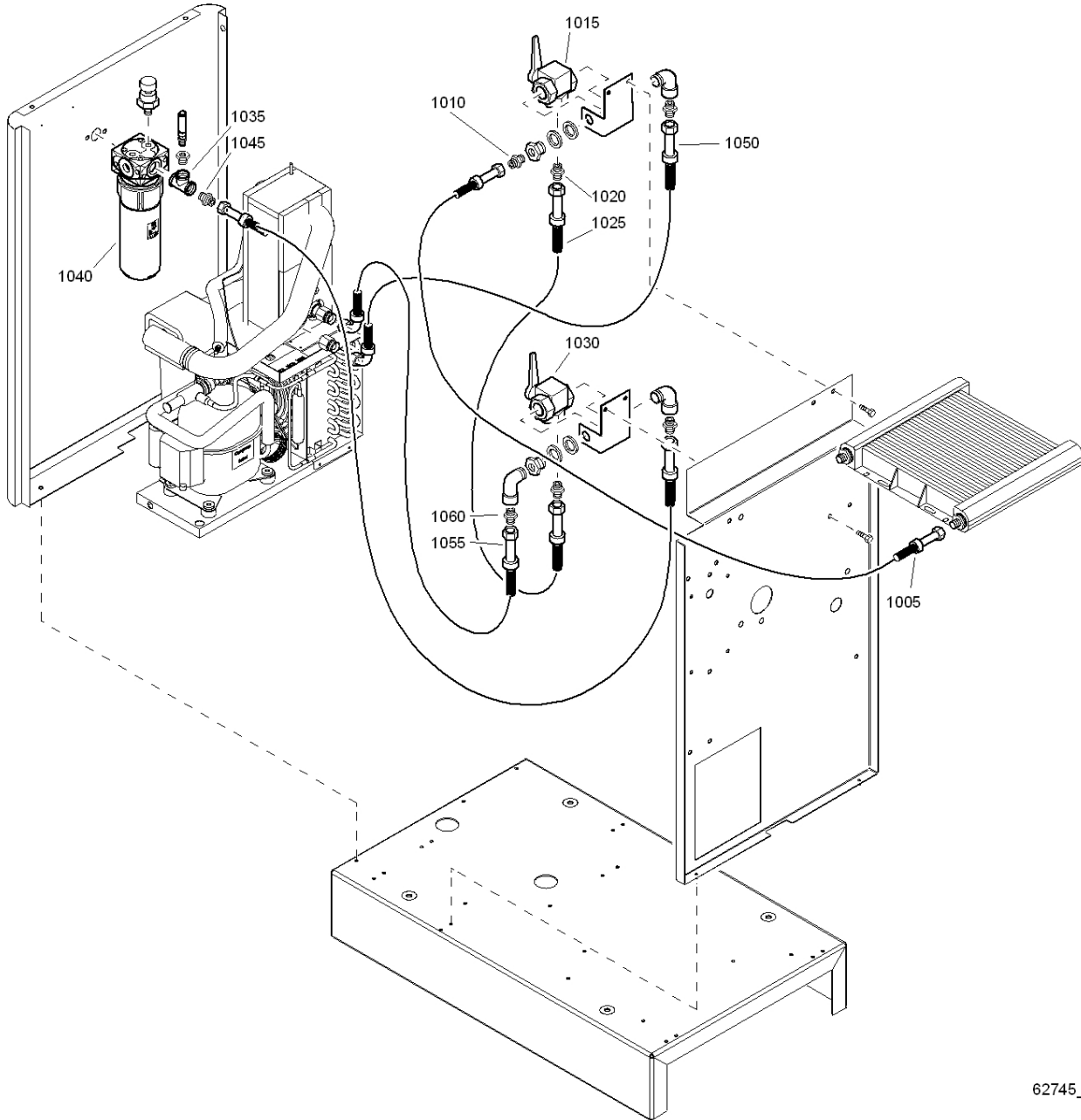


62731\_17

## Air dryer - GA 11VSD

Ref.	Part number	Qty	Name	Remarks	Ref.	Part number	Qty	Name	Remarks
	<b>8092 2498 07</b>	<b>1</b>	<b>Dryer</b>		<b>8010</b>	<b>1617 3745 80</b>	<b>• 1</b>	<b>Insulation assy</b>	
			230V/50Hz			1617 1915 03	•• 1	Insulation hose	
	<b>8092 2498 15</b>		200-220V/60Hz			1617 3744 00	•• 1	Insulation plate	
1010	1617 3003 02	• 1	Heat exchanger			1617 3743 00	•• 1	Insulation plate	
<b>1080</b>	<b>1617 3049 80</b>	<b>• 1</b>	<b>Water separator</b>		8015	1617 3735 00	• 1	Insulation plate	
	0663 6128 00	•• 1	O-ring 25.1x1.6		<b>8020</b>	<b>1617 3738 80</b>	<b>• 1</b>	<b>Insulation assy</b>	
	0663 6124 00	•• 1	O-ring 17.1x1.6			1617 3737 00	•• 1	Insulation hose	
	0663 9289 00	•• 1	O-ring 30x2			1617 3736 00	•• 1	Insulation plate	
	0663 2111 28	•• 1	O-ring 61x3		8030	1617 1688 18	• 1	Insulation hose	
1081	0147 1322 03	• 2	Hex.bolt		8040	1617 1688 20	• 1	Insulation hose	
1082	0301 2335 00	• 2	Washer		8050	1617 1688 41	• 1	Insulation hose	
1083	0333 3127 00	• 2	Washer		8060	1617 1688 42	• 1	Insulation hose	
1084	1617 3294 00	• 3	Spacer		8070	1617 1688 43	• 1	Insulation hose	
1085	0686 6128 00	• 1	Plug		8080	1617 1619 02	• 1	Insulation	
2010	1617 3635 80	• AR	Assembly insulation		8090	1617 3119 03	• 1	Insulation hose	
2020	1617 3296 00	• 1	Insulation plate		8100	1617 3119 04	• 1	Insulation hose	
2030	1617 3641 00	• AR	Insulation plate		8110	1617 3090 00	• 1	Insulation sheet	
2040	1617 3640 00	• AR	Insulation plate		8120	1617 3739 00	• 1	Insulation plate	
2050	1617 3009 00	• 1	Insulation plate		<b>9010</b>	<b>• 1</b>	<b>Refrig. compr.</b>		
2060	1617 3639 00	• AR	Insulation plate			<b>1617 3460 01</b>		230V/50Hz	
2070	1617 3638 00	• AR	Insulation plate			<b>1617 3460 03</b>		200-220V/60Hz	
3010	1617 3636 00	• AR	Insulation plate			1617 1549 02	•• 1	Start capacitor	
3020	1617 3637 00	• AR	Insulation plate				•• 1	Start relay	
3030	1617 3010 00	• 1	Insulation plate			1617 1551 49		230V/50Hz	
3040	1617 3009 00	• 1	Insulation plate			1617 1551 50		200-220V/60Hz	
4010	0581 0000 35	• 1	Straight coupling				•• 1	Overload protector	
4020	0661 1020 00	• 1	Seal washer			1617 1550 56		230V/50Hz	
4050	0581 0000 34	• 1	Straight coupling			1617 1550 57		200-220V/60Hz	
4060	0653 1062 00	• 1	Flat gasket			1617 1530 00	•• 1	Anti vibration set	
5010	1617 3461 80	• 1	Frame assy		9011	0301 2315 00	• 2	Washer	
5020	1617 3043 80	• 1	Support		9015	1088 1001 01	• 1	Warning mark	
5030	0261 2110 00	• 3	Nut		9020	1619 5337 03	• 4	Scr.bolt	
5040	0301 2335 00	• 3	Washer		9030	0300 8019 00	• 4	Washer	
5045	0333 3127 00	• 3	Washer		9040	1617 3350 81	• 1	Fan assy	
5050	0129 3115 00	• 6	Blind rivet		9050	0333 3215 00	• 4	Washer	
5070	0301 2321 00	• 4	Washer		9060	0301 2318 00	• 4	Washer	
6001	1617 3089 80	• 1	Capillary assy		9070	0147 1208 03	• 4	Hex.bolt,	
6010	1617 3334 00	• 1	Condensor		9080	1089 9139 02	• 1	Pressure switch	
6020	0129 3115 00	• 4	Blind rivet		9081	0301 2315 00	• 2	Washer	
6030	1617 2996 01	• 1	Filter dryer		9082	0333 3214 00	• 1	Washer	
6060	0346 1000 37	• 1	Pipe clamp		9085	0147 1169 03	• 2	Hex.head screw	
6061	0346 1000 07	• 1	Pipe clamp		9090	1617 3168 00	• 1	Support	
6062	1617 3421 00	• 1	Support		9100	0226 3256 00	• 2	Screw	
6064	0301 2321 00	• 4	Washer		9120	0301 2315 00	• 3	Washer	
6065	0333 3214 00	• 2	Washer		9130	1089 0574 71	• 1	Temp.sensor	
6066	0266 2108 00	• 2	Nut		9131	0348 0110 01	• 1	Anchor plate ty	
6082	0348 0111 06	• 1	Connector		9132	0348 0101 13	• 1	Cable tie	
6083	0348 0101 13	• 1	Cable tie		9135	1617 0128 00	• AR	Heat conducting	
6090	0395 1010 05	• AR	Insulation tape		9140		• 1	Wiring	
<b>7010</b>	<b>1617 3463 80</b>	<b>• 1</b>	<b>Pipe assy</b>			1617 3595 80		230V/50Hz	
	1617 1524 01	•• 1	Hot Gas Bypass			1617 3594 80		200-220V/60Hz	
	1619 5563 02	•• 1	Valve Schröder		9150	9827 0208 24	• 1	Service diagram	
7020	1617 3385 00	• 1	Pipe		9180	0348 0101 13	• 4	Cable tie	

# 12 By-pass dryer - WorkPlace Full-feature - Floor mounted

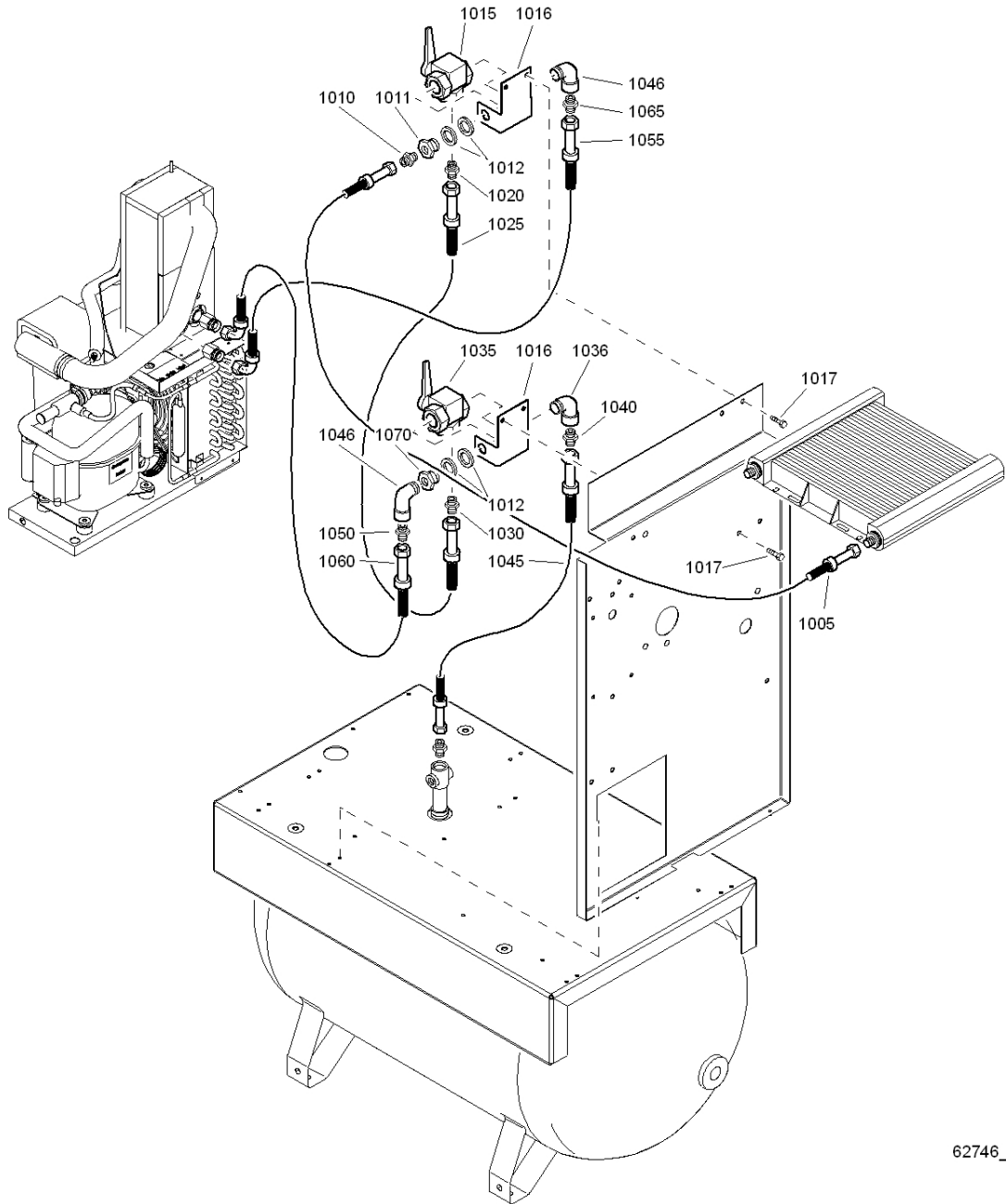


62745\_03

62745\_03

Ref.	Part number	Qty	Name	Remarks	Ref.	Part number	Qty	Name	Remarks
	<b>8092 2843 20</b>	<b>1</b>	<b>Standard option</b>		1030	1613 9086 00	• 1	Valve	
			Dryer by-pass		1035	1503 2566 13	• 1	Tee	
1005	0574 9910 12	• 1	Hose assy		1040	1613 8223 80	• 1	WSD 25	
1010	0571 0035 55	• 1	Nipple		1045	0571 0035 55	• 1	Nipple	
1015	1613 9086 00	• 1	Valve		1050	0574 9911 27	• 1	Hose assy	
1020	0571 0035 55	• 1	Nipple		1055	0574 9911 28	• 1	Hose assy	
1025	0574 9911 27	• 1	Hose assy		1060	0571 0035 55	• 1	Nipple	

## By-pass dryer - WorkPlace Full-feature - Tank mounted

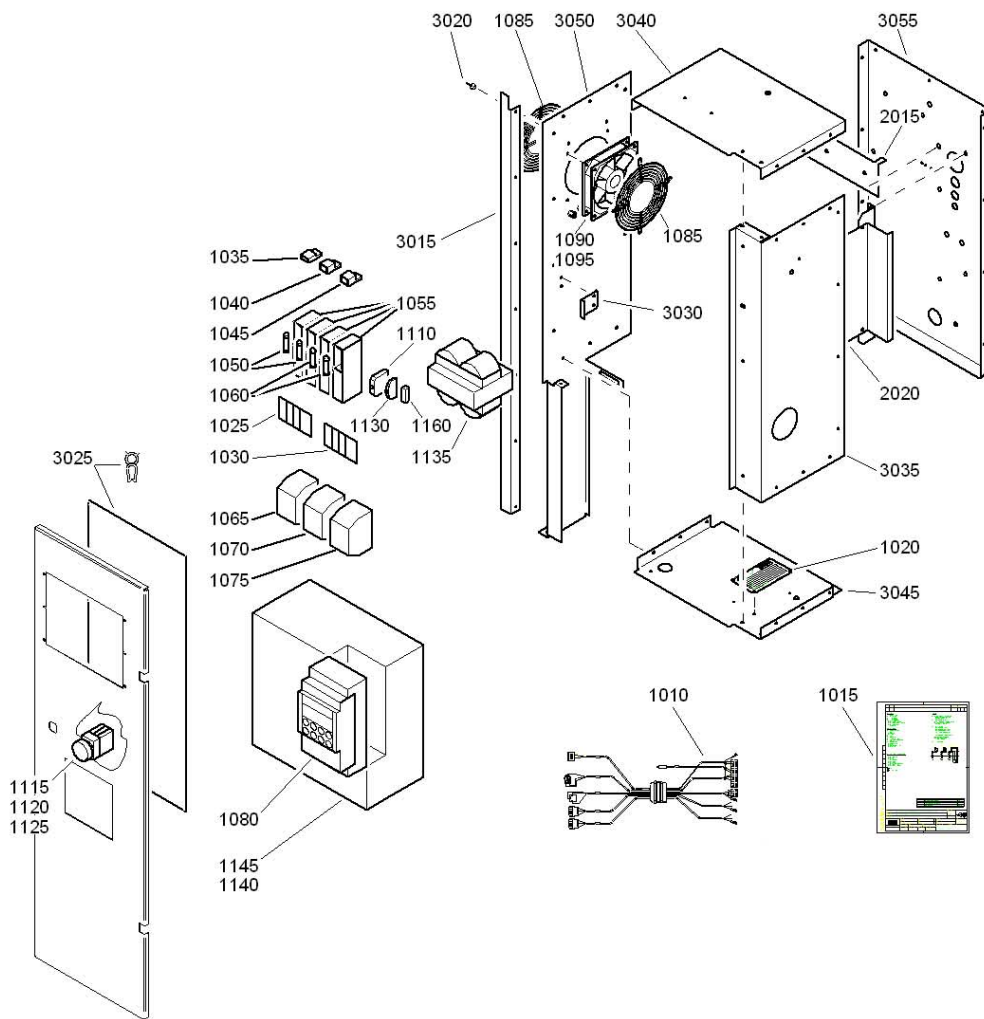


62746\_03

62746\_03

Ref.	Part number	Qty	Name	Remarks	Ref.	Part number	Qty	Name	Remarks
	<b>8092 2843 38</b>	<b>1</b>	<b>Standard option</b>						
			Dryer by-pass		1030	0571 0035 55	• 1	Nipple	
1005	0574 9910 12	• 1	Hose assy		1035	1613 9086 00	• 1	Valve	
1010	0571 0035 55	• 1	Nipple		1036	1503 2565 04	• 1	Elbow	
1011	1613 9029 00	• 1	Nipple		1040	0571 0035 55	• 1	Nipple	
1012	0661 1000 39	• 2	Seal washer		1045	0574 9911 27	• 1	Hose assy	
1015	1613 9086 00	• 1	Valve		1046	1503 2565 04	• 1	Elbow	
1016	1622 0888 00	• 2	Support		1050	0571 0035 55	• 1	Nipple	
1017	0147 1963 08	• 4	Hexagon bolt		1055	0574 9911 27	• 1	Hose assy	
1020	0571 0035 55	• 1	Nipple		1060	0574 9911 28	• 1	Hose assy	
1025	0574 9910 03	• 1	Hose assy		1065	0571 0035 55	• 1	Nipple	
					1070	1613 9029 00	• 1	Nipple	

# 14



62747\_12

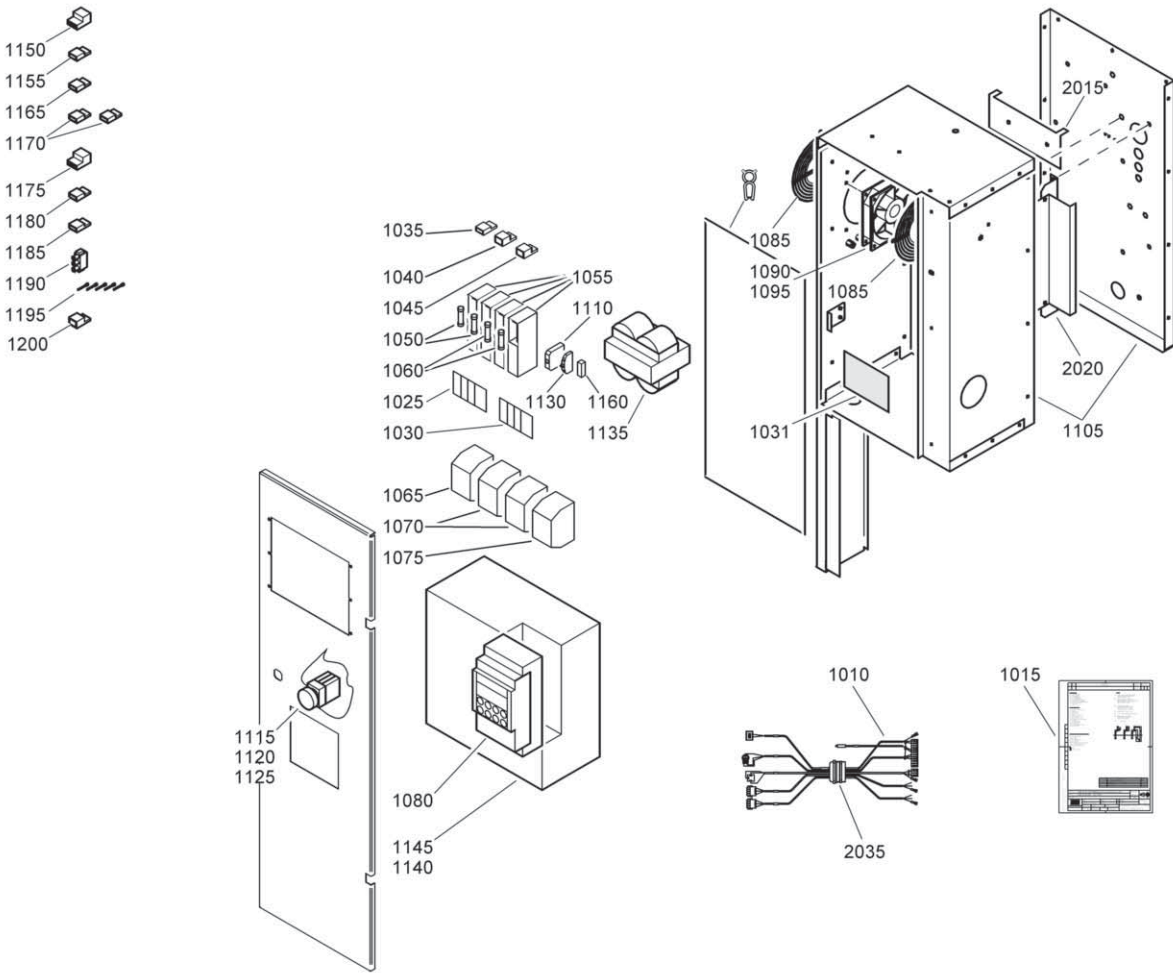
## Start cubicle

Up to serial No. :  
 Tot serienummer:  
 T.o.m. tillverkningsnummer:  
 Bis Serienummer:  
 Jusqu'au numéro de série:  
 Hasta el número de serie:  
 Fino al numeri di serie:  
 Gælder til følgende serienumre:  
 Até o número de série:  
 Til følgende serienummer:  
 Seuraavaan valmistusnumeroon asti, No.:  
 API-159 999

From following serial No. onwards:  
 Geldig vanaf volgend serienummer:  
 Fr.o.m. tillverkningsnummer:  
 Gültig ab Serienummer:  
 Valable à partir du numéro de série suivant:  
 A partir del siguiente número de serie:  
 Dai seguenti numeri di serie in avanti:  
 Gælder fra følgende serienumre:  
 A partir do número de série:  
 Fra og med følgende serienummer:  
 Alkaen valmistusnumerosta  
 API-160 000 > API - 161 499

Ref.	Part number	Qty	Name	Remarks	Ref.	Part number	Qty	Name	Remarks
	<b>1900 2054 01</b>	<b>1</b>	<b>Cubicle</b>				<b>1</b>	<b>Cubicle</b>	
1010	1622 0873 52 •	1	Wire harness			<b>1900 2054 12</b>		GA 7VSD IT network	
1015	9820 3603 01 •	1	Service diagram			<b>1900 2054 11</b>		GA 7VSD TT network	
1020	1614 8949 00 •	1	Data plate			<b>1900 2054 04</b>		GA 11VSD IT network	
1025	1079 9924 27 •	1	Label			<b>1900 2054 03</b>		GA 11VSD TT network	
1030	1079 9924 28 •	1	Label		1010	1622 0873 52 •	1	Wire harness	
1035	1088 0031 49 •	1	Connector		1015	9820 3603 01 •	1	Service diagram	
1040	1088 0031 29 •	1	Connector		1020	1614 8949 00 •	1	Data plate	
1045	1088 0031 13 •	1	Connector		1025	1079 9924 27 •	1	Label	
1050	1089 9168 24 •	2	Fuse link		1030	1079 9924 28 •	1	Label	
1055	1089 0612 01 •	4	Fuse holder		1035	1088 0031 49 •	1	Connector	
1060	1089 9168 35 •	2	Fuse link		1040	1088 0031 29 •	1	Connector	
1065	1089 9415 07 •	2	Contact block		1045	1088 0031 13 •	1	Connector	
1070	1089 9416 05 •	1	3ph terminal		1050	1089 9168 24 •	2	Fuse link	
1075	1089 9415 26 •	1	Contactor		1055	1089 0612 01 •	4	Fuse holder	
1080	1089 9338 82 •	1	Inductor		1060	1089 9168 35 •	2	Fuse link	
1085	1089 0388 34 •	2	Guard		1065	1089 9415 07 •	2	Contact block	
1090	1089 0388 12 •	1	Cable		1070	1089 9416 05 •	1	3ph terminal	
1095	1089 0388 22 •	1	Fan		1075	1089 9415 26 •	1	Contactor	
1110	1089 0506 06 •	1	Terminal		1080		1	Inductor	
1115	1089 0362 51 •	1	Push button			1089 9338 98		GA 7VSD	
1120	1089 0362 50 •	3	Contact block			1089 9338 82		GA 11VSD	
1125	1089 0362 80 •	1	Holder		1085	1089 0388 34 •	2	Guard	
1130	1089 0506 52 •	1	Terminal switch		1090	1089 0388 12 •	1	Cable	
1135	1089 9436 42 •	1	Trafo		1095	1089 0388 22 •	1	Fan	
1140	2908 0094 00 •	1	Control panel		1110	1089 0506 06 •	1	Terminal	
1145	1089 9338 47 •	1	Freq. converter		1115	1089 0362 51 •	1	Push button	
	<b>1622 3430 00 •</b>	<b>1</b>	<b>Plate</b>		1120	1089 0362 50 •	3	Contact block	
2015	1622 3440 00 ••	1	Support		1125	1089 0362 80 •	1	Holder	
2020	1622 3439 00 ••	1	Support		1130	1089 0506 52 •	1	Terminal switch	
	<b>1622 3430 80 •</b>	<b>1</b>	<b>Assembly</b>		1135	1089 9436 42 •	1	Trafo	
3015	1622 0832 00 ••	1	Elbow		1140	2908 0094 00 •	1	Control panel	
3020	0129 3270 33 ••	26	Rivet		1145		1	Freq. converter	
3025	1202 6584 00 ••	AR	Seal			1089 9338 64		GA 7VSD IT network	
3030	1622 0831 00 ••	1	Elbow			1089 9338 63		GA 7VSD TT network	
3035	1622 3441 00 ••	1	Plate			1089 9338 86		GA 11VSD IT network	
3040	1622 3430 01 ••	1	Plate			1089 9338 47		GA 11VSD TT network	
3045	1622 3430 02 ••	1	Plate			<b>1622 3430 00 •</b>	<b>1</b>	<b>Plate</b>	
3050	1622 3430 03 ••	1	Plate		2015	1622 3440 00 ••	1	Support	
3055	1622 3430 00 ••	1	Plate		2020	1622 3439 00 ••	1	Support	
						<b>1622 3430 80 •</b>	<b>1</b>	<b>Assembly</b>	
					3015	1622 0832 00 ••	1	Elbow	
					3020	0129 3270 33 ••	26	Rivet	
					3025	1202 6584 00 ••	AR	Seal	
					3030	1622 0831 00 ••	1	Elbow	
					3035	1622 3441 00 ••	1	Plate	
					3040	1622 3430 01 ••	1	Plate	
					3045	1622 3430 02 ••	1	Plate	
					3050	1622 3430 03 ••	1	Plate	
					3055	1622 3430 00 ••	1	Plate	

# 15

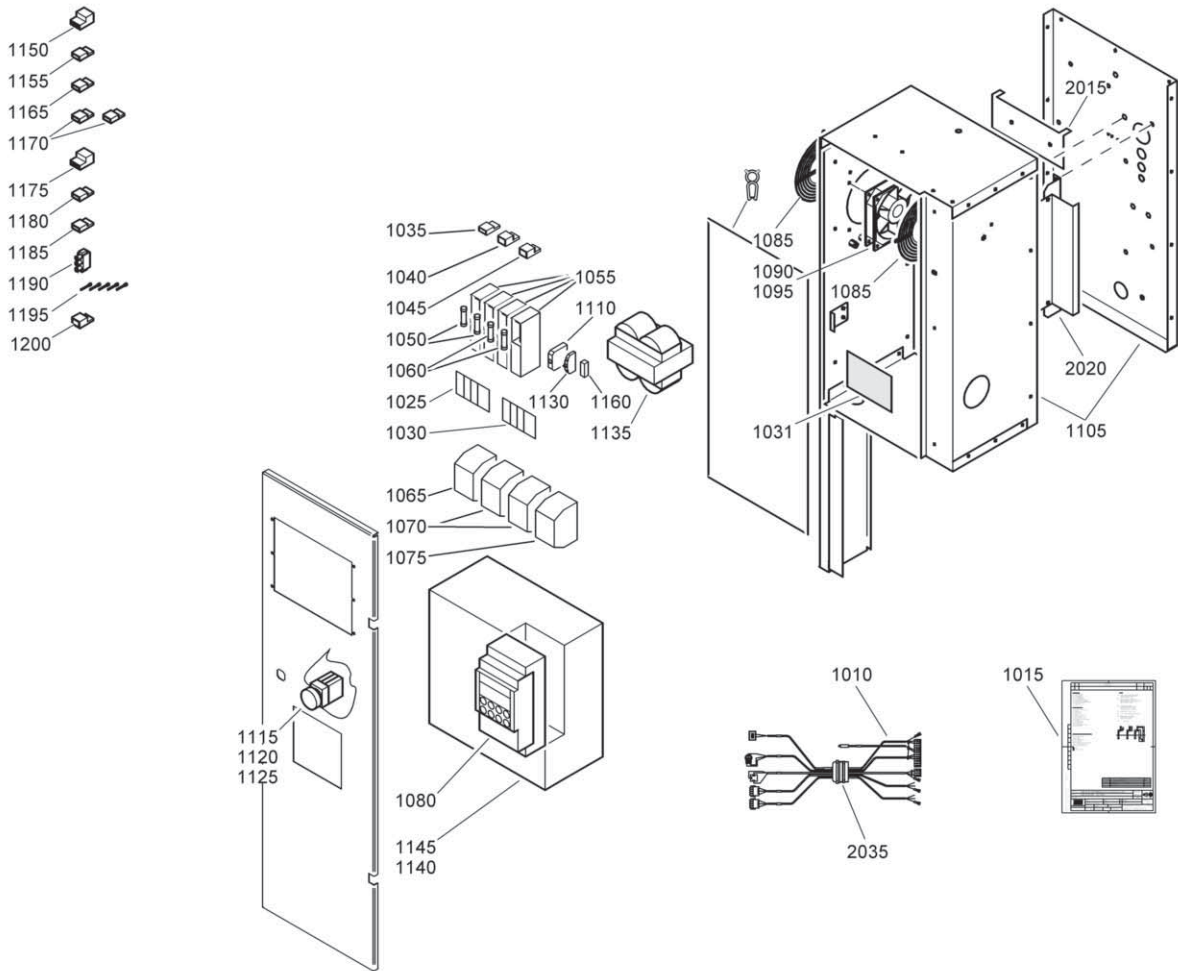


63540\_12

## Start cubicle - 1)

Ref.	Part number	Qty	Name	Remarks	Ref.	Part number	Qty	Name	Remarks
	<b>1900 2054 15</b>	<b>1</b>	<b>Cubicle</b>		<b>1105</b>	<b>1622 3430 80</b>	<b>1</b>	<b>Cubicle</b>	
			GA 7VSD 380-460V/50-60Hz IEC-CSA/UL			1202 6584 00	AR	Seal	
	<b>1900 2054 16</b>		GA 7VSD IT 380-460V/50-60Hz IEC-CSA/UL		1110		1	Terminal	
	<b>1900 2054 05</b>		GA 11VSD 380-460V/50-60Hz IEC-CSA/UL			1089 0506 06		GA 7VSD 380-460V/50-60Hz IEC-CSA/UL	
	<b>1900 2054 06</b>		GA 11VSD IT 380-460V/50-60Hz IEC-CSA/UL			1089 0506 06		GA 7VSD IT 380-460V/50-60Hz IEC-CSA/UL	
1010	1622 0873 53	• 1	Wire harness			1089 0506 52		GA 11VSD 380-460V/50-60Hz IEC-CSA/UL	
1015	9820 3603 01	• 1	Label			1089 0506 06		GA 11VSD IT 380-460V/50-60Hz IEC-CSA/UL	
1025	1079 9924 27	• 1	Label		1115	1089 0362 80	• 1	Contact block	
1030	1079 9924 28	• 1	Label		1120	1089 0362 80	• 1	Contact block	
1031	1079 9901 61	• 1	Label		1125	1089 0362 51	• 1	Emergency stop button	
1035		• 1	Connector		1130	1089 0506 62	• 1	Terminal	
	1088 0031 49		GA 7VSD 380-460V/50-60Hz IEC-CSA/UL		1135	1089 9436 42	• 1	Transformer	
	1088 0037 06		GA 7VSD IT 380-460V/50-60Hz IEC-CSA/UL		1140		• 1	Inductor	
	1088 0031 13		GA 11VSD 380-460V/50-60Hz IEC-CSA/UL			1089 9338 98		GA 7VSD 380-460V/50-60Hz IEC-CSA/UL	
	1088 0031 49		GA 11VSD IT 380-460V/50-60Hz IEC-CSA/UL			1089 9338 98		GA 7VSD IT 380-460V/50-60Hz IEC-CSA/UL	
1040		• 1	Connector			1089 9338 82		GA 11VSD 380-460V/50-60Hz IEC-CSA/UL	
	1088 0031 29		GA 7VSD 380-460V/50-60Hz IEC-CSA/UL			1089 9338 82		GA 11VSD IT 380-460V/50-60Hz IEC-CSA/UL	
	1088 0037 32		GA 7VSD IT 380-460V/50-60Hz IEC-CSA/UL		1145		• 1	Freq. converter	
	1088 0015 05		GA 11VSD 380-460V/50-60Hz IEC-CSA/UL			1089 9623 01		GA 7VSD 380-460V/50-60Hz IEC-CSA/UL	
	1088 0031 29		GA 11VSD IT 380-460V/50-60Hz IEC-CSA/UL			1089 9623 02		GA 7VSD IT 380-460V/50-60Hz IEC-CSA/UL	
1045		• 1	Connector			1089 9623 03		GA 11VSD 380-460V/50-60Hz IEC-CSA/UL	
	1088 0031 13		GA 7VSD 380-460V/50-60Hz IEC-CSA/UL			1089 9623 04		GA 11VSD IT 380-460V/50-60Hz IEC-CSA/UL	
	1088 0015 05		GA 7VSD IT 380-460V/50-60Hz IEC-CSA/UL		1150		• 1	Connector	
	1088 0031 49		GA 11VSD 380-460V/50-60Hz IEC-CSA/UL			1088 0031 87		GA 7VSD 380-460V/50-60Hz IEC-CSA/UL	
	1088 0031 13		GA 11VSD IT 380-460V/50-60Hz IEC-CSA/UL			1088 0037 31		GA 7VSD IT 380-460V/50-60Hz IEC-CSA/UL	
1050	1089 9168 24	• 2	Fuse link			1088 0031 86		GA 11VSD 380-460V/50-60Hz IEC-CSA/UL	
1055	1089 0612 01	• 4	Fuse holder			1088 0031 87		GA 11VSD IT 380-460V/50-60Hz IEC-CSA/UL	
1060	1089 9168 35	• 2	Fuse link		1155		•	Connector	
1065	1089 9416 05	• 1	3ph Terminal block			1088 0037 07	1	GA 7VSD 380-460V/50-60Hz IEC-CSA/UL	
1070	1089 9415 07	• 2	Contact block			1088 0031 13	1	GA 7VSD IT 380-460V/50-60Hz IEC-CSA/UL	
1075	1089 9415 26	• 1	Contact block			1088 0015 36	5	GA 11VSD 380-460V/50-60Hz IEC-CSA/UL	
1080	1089 9623 11	• 1	Contact block			1088 0037 07	1	GA 11VSD IT 380-460V/50-60Hz IEC-CSA/UL	
1085	1089 0388 34	• 2	Contact block						
1090	1089 0388 12	• 1	Contact block						
1095	1089 0388 22	• 1	Plug & Cable						
1100	0698 5141 32	• 1	Fan						
			Cable gland						

# 15

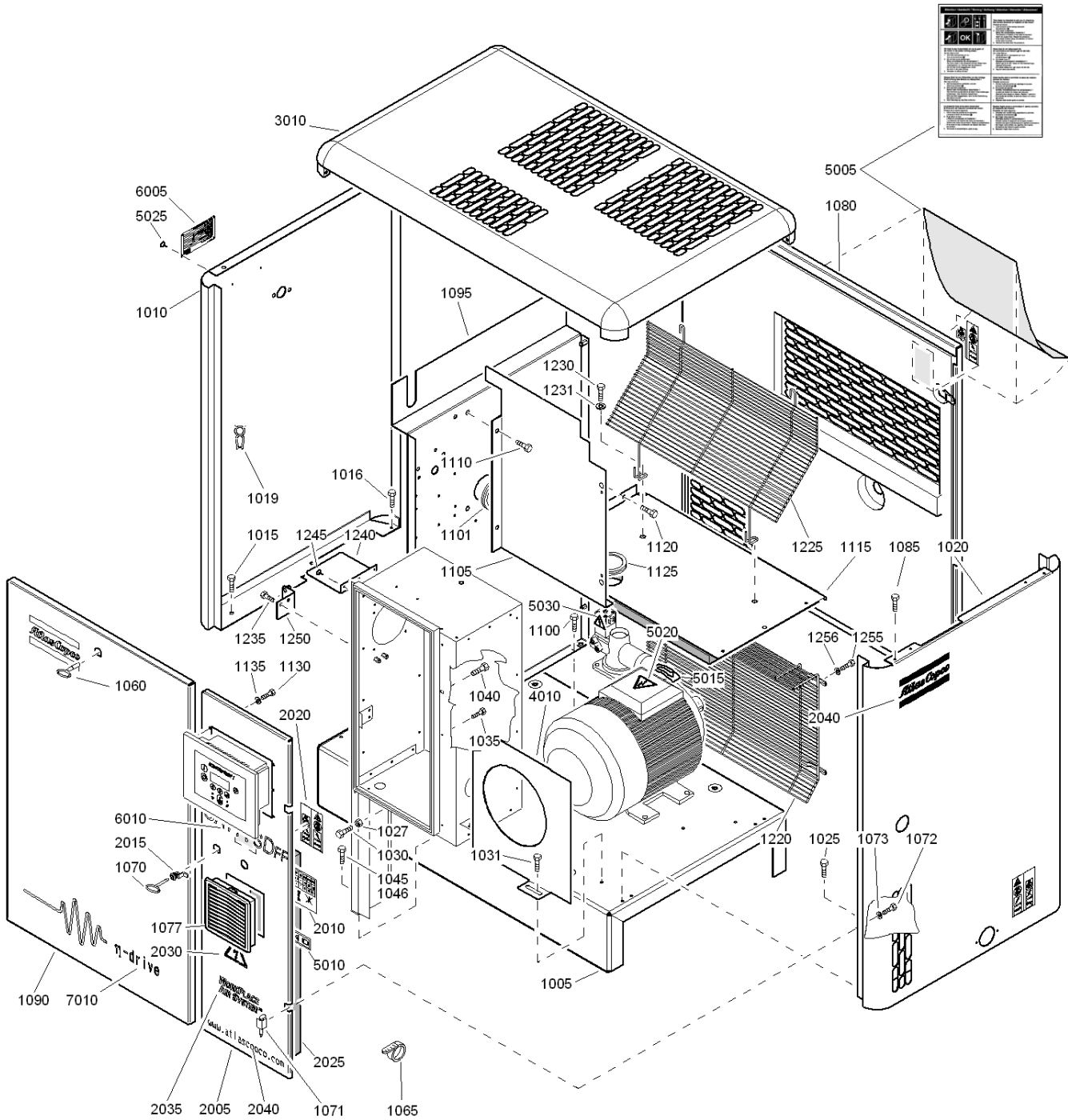


63540\_12

## Start cubicle - 1)

Ref.	Part number	Qty	Name	Remarks	Ref.	Part number	Qty	Name	Remarks
1160	1088 0031 18	• 4	Adaptor		1190	•		Connector	
1165	• 1	Connector		1088 0015 05	1	GA 7VSD 380-460V/50-60Hz IEC-CSA/UL			
	1088 0037 31		GA 7VSD 380-460V/50-60Hz IEC-CSA/UL		1088 0031 87	1	GA 7VSD IT 380-460V/50-60Hz IEC-CSA/UL		
	1088 0031 49		GA 7VSD IT 380-460V/50-60Hz IEC-CSA/UL		1088 0037 30	2	GA 11VSD 380-460V/50-60Hz IEC-CSA/UL		
	1088 0037 06		GA 11VSD 380-460V/50-60Hz IEC-CSA/UL		1088 0015 05	1	GA 11VSD IT 380-460V/50-60Hz IEC-CSA/UL		
	1088 0037 31		GA 11VSD IT 380-460V/50-60Hz IEC-CSA/UL		1195	•		Connector	
1170	•	Connector		1088 0015 36	5	GA 7VSD 380-460V/50-60Hz IEC-CSA/UL			
	1088 0037 30	2	GA 7VSD 380-460V/50-60Hz IEC-CSA/UL		1088 0031 86	1	GA 7VSD IT 380-460V/50-60Hz IEC-CSA/UL		
	1088 0031 29	1	GA 7VSD IT 380-460V/50-60Hz IEC-CSA/UL		1088 0037 32	1	GA 11VSD 380-460V/50-60Hz IEC-CSA/UL		
	1088 0031 87	1	GA 11VSD 380-460V/50-60Hz IEC-CSA/UL		1088 0015 36	5	GA 11VSD IT 380-460V/50-60Hz IEC-CSA/UL		
	1088 0037 30	2	GA 11VSD IT 380-460V/50-60Hz IEC-CSA/UL		1200	• 1	Connector		
1175	•	Connector		1088 0031 75		GA 7VSD 380-460V/50-60Hz IEC-CSA/UL			
	1088 0031 86	1	GA 7VSD 380-460V/50-60Hz IEC-CSA/UL		1088 0037 07		GA 7VSD IT 380-460V/50-60Hz IEC-CSA/UL		
	1088 0037 30	2	GA 7VSD IT 380-460V/50-60Hz IEC-CSA/UL		1088 0031 75		GA 11VSD 380-460V/50-60Hz IEC-CSA/UL		
	1088 0031 29	1	GA 11VSD 380-460V/50-60Hz IEC-CSA/UL		1088 0031 75		GA 11VSD IT 380-460V/50-60Hz IEC-CSA/UL		
	1088 0031 86	1	GA 11VSD IT 380-460V/50-60Hz IEC-CSA/UL		1265	1089 0691 01	• 1	Connector	
1180	•	Connector		2015	1622 3440 00	• 1	Support		
	1088 0037 06	1	GA 7VSD 380-460V/50-60Hz IEC-CSA/UL		2020	1622 3439 00	• 1	Support	
	1088 0015 36	5	GA 7VSD IT 380-460V/50-60Hz IEC-CSA/UL		2035	0697 9809 24	• 1	Nut	
	1088 0037 31	1	GA 11VSD 380-460V/50-60Hz IEC-CSA/UL		1)			From following serial No. onwards: Geldig vanaf volgend serienummer: Fr.o.m. tillverkningsnummer: Gültig ab Seriennummer: Valable à partir du numéro de série suivant: A partir del siguiente número de serie: Dai seguenti numeri di serie in avanti: Gælder fra følgende serienumre: A partir do número de série: Fra og med følgende serienummer: Alkaen valmistusnumerosta API - 161 500	
	1088 0037 06	1	GA 11VSD IT 380-460V/50-60Hz IEC-CSA/UL						
1185	• 1	Connector							
	1088 0037 32		GA 7VSD 380-460V/50-60Hz IEC-CSA/UL						
	1088 0031 75		GA 7VSD IT 380-460V/50-60Hz IEC-CSA/UL						
	1088 0037 07		GA 11VSD 380-460V/50-60Hz IEC-CSA/UL						
	1088 0037 32		GA 11VSD IT 380-460V/50-60Hz IEC-CSA/UL						

# 16



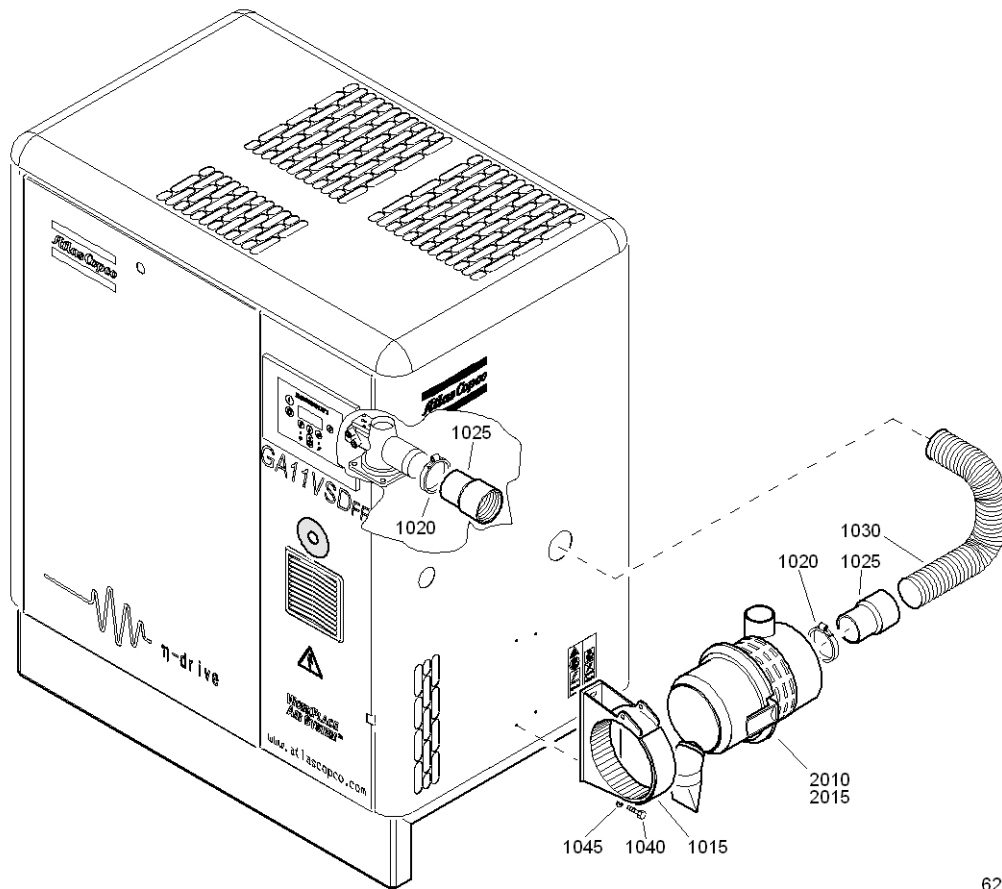
62748\_10

## Bodywork

Ref.	Part number	Qty	Name	Remarks	Ref.	Part number	Qty	Name	Remarks
1005	1622 0856 00	1	Frame		1135	0301 2315 00	4	Washer	
<b>1010</b>	<b>1622 0803 80</b>	<b>1</b>	<b>Left panel assy</b>	1)	1140	0346 1002 07	1	Clamp	
	1622 0862 00	• 1	Positioning pen		1145	0147 1962 65	1	Hexagon bolt	
	1079 2903 01	• 2	Panel clip		1150	0346 1002 07	1	Clamp	
	0690 1116 00	• 1	House mark		1155	0147 1962 65	1	Hex. bolt	
1015	1619 2766 00	1	Bolt		1220	1622 1000 00	1	Grating	
1016	0147 1963 08	1	Hexagon bolt		1225	1622 0993 00	1	Grating	
1019	1202 6584 00	AR	Seal		1230	0147 1249 03	4	Hexagon bolt	
<b>1020</b>	<b>1622 0936 80</b>	<b>1</b>	<b>Right panel assy</b>	1)	1231	0301 2321 00	4	Washer	
	1079 2903 01	• 2	Panel clip		1235	0147 1964 29	4	Hexagon bolt	
	0226 3256 00	• 2	Tapping screw		1240	1622 3432 00	1	Plate	
	1622 0805 00	• 1	Service panel		1245	0129 3270 33	2	Rivet	
	1079 9903 48	• 1	Warning label		1250	1622 3431 80	1	Support	
1025	1619 2766 00	2	Bolt		1255	0147 1249 03	4	Hexagon bolt	
1027	0697 9809 24	1	Lock nut		1256	0301 2321 00	4	Washer	
1030	0147 1963 08	1	Hexagon bolt			<b>1622 1164 80</b>	<b>1</b>	<b>Door assembly 1)</b>	
1031	1619 2766 00	1	Bolt		2005		• 1	Panel	
1035	0226 3256 00	3	Tapping screw		2010	1079 9906 09	• 1	Label	
1040	0147 1963 08	1	Hexagon bolt		2015	1619 7705 00	• 1	Lock	
1045	1619 2766 00	2	Bolt		2020	1079 9903 48	• 1	Warning label	
1046	0147 1963 08	2	Hexagon bolt		2030	1088 1001 03	• 1	Warning mark	
1060	1089 9068 01	1	Key		2035	1613 9846 00	• 1	Decal WorkPlace	
1065	1088 1301 02	1	Cable strip		2040	1079 9920 83	• 1	Label Website	
1070	1089 9154 02	1	Key		<b>3010</b>	<b>1622 0847 80</b>	<b>1</b>	<b>Roof assy</b>	1)
1071	1202 6400 00	2	Hinge			1079 2903 03	• 4	Panel pin	
1072	0147 1244 03	2	Hexagon bolt			0266 2107 00	• 4	Nut	
1073	0301 2321 00	2	Washer			<b>1622 0866 80</b>	<b>1</b>	<b>Plate</b>	2)
1077	1089 9556 05	1	Air inlet		4010		• 1	Plate	
<b>1080</b>	<b>1622 0926 80</b>	<b>1</b>	<b>Rear panel assy</b>	1)	5005	1079 9905 09	1	Label	
	1079 9903 48	• 1	Warning label		5010	1079 9901 68	1	Warning label	
	1513 0431 00	• 2	Door lock		5015	1503 0786 00	1	Rotation arrow	
	1616 2987 00	• 2	Plug		5020	1088 1001 02	1	Warning mark	
	1622 0862 00	• 2	Positioning pen		5025	0129 3103 00	4	Blind rivet	
<b>1090</b>	<b>1622 0809 80</b>	<b>1</b>	<b>Front panel assy</b>	1)	5030	1088 1001 01	1	Warning mark	
	1513 0431 00	• 1	Door lock		6005	1622 0395 00	1	Dataplate	
	1616 2987 00	• 2	Plug		6010		1	Decal	
	1622 0862 00	• 2	Positioning pen			1622 3438 03		GA7VSD	
	0690 1116 01	• 1	House mark			1622 3438 04		GA7VSDFF	
<b>1095</b>	<b>1622 0899 00</b>	<b>1</b>	<b>Plate</b>			1622 3438 01		GA11VSD	
	1622 0862 00	• 2	Positioning pen			1622 3438 02		GA11VSDFF	
	1619 2758 00	• AR	Seal		7010	1079 9921 80	1	Label	
1100	1619 2766 00	2	Bolt						
1101	1088 0803 27	1	Grommet		1-2)	Lined with / Bekleed met / Beklädd med / Ausgekleidet mit / Garni de / Revestido de / Allineato con / Foret med / Revestido com / Kledd med / Vuorattu			
1105	1622 1173 00	1	Baffle			1) Foam : 0395 6001 66 (AR) 25 x 2040 x 1650			
1110	0147 1963 08	3	Hexagon bolt			2) Foam : 0395 6001 67 (AR) 30 x 2040 x 1650			
<b>1115</b>	<b>1622 0802 80</b>	<b>1</b>	<b>Baffle assy</b>	2)					
1120	0147 1963 08	3	Hexagon bolt						
1125	1088 0803 27	1	Grommet						
1130	0147 1169 03	4	Hexagon bolt						

17

Heavy duty filter

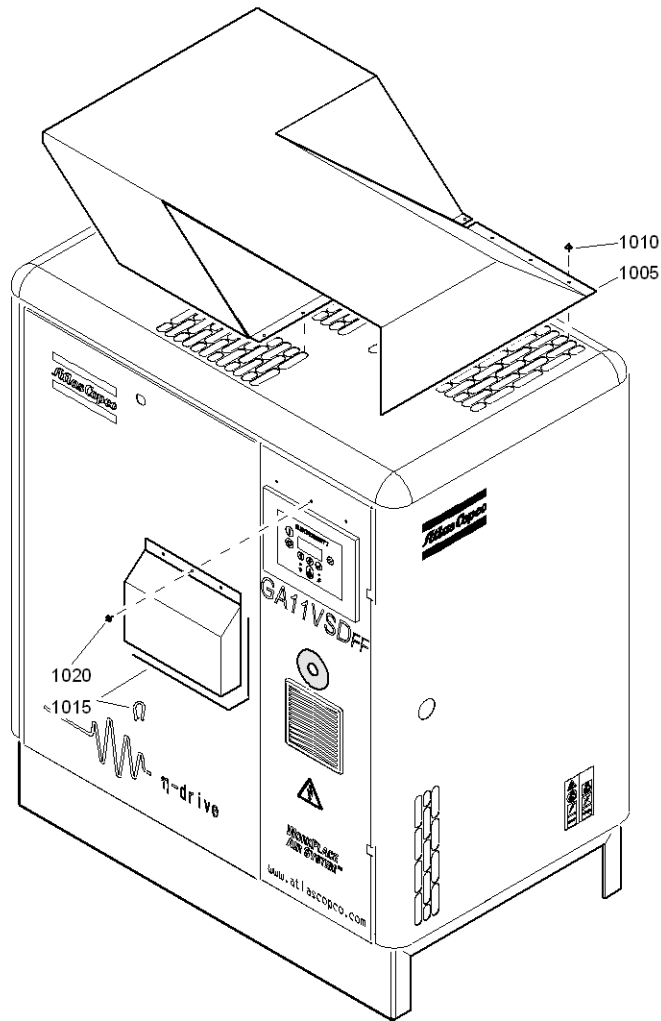


62749\_02

62749\_02

Ref.	Part number	Qty	Name	Remarks	Ref.	Part number	Qty	Name	Remarks
	<b>8092 2484 52</b>	<b>1</b>	<b>Heavy duty filter</b>		1040	0147 1327 03	• 2	Hexagon bolt	
1015	1613 9105 00	• 1	Support		1045	0301 2335 00	• 2	Washer	
1020	0347 6113 00	• 2	Hose clip			<b>1613 9106 80</b>	• 1	<b>Air filter assy</b>	
1025	1613 9104 00	• 2	Coupling		2010	1613 9107 00	•• 1	Air filter element	
1030	1613 9103 00	• AR	Hose		2015	1613 9106 00	•• 1	Air filter	

**Rain protection**



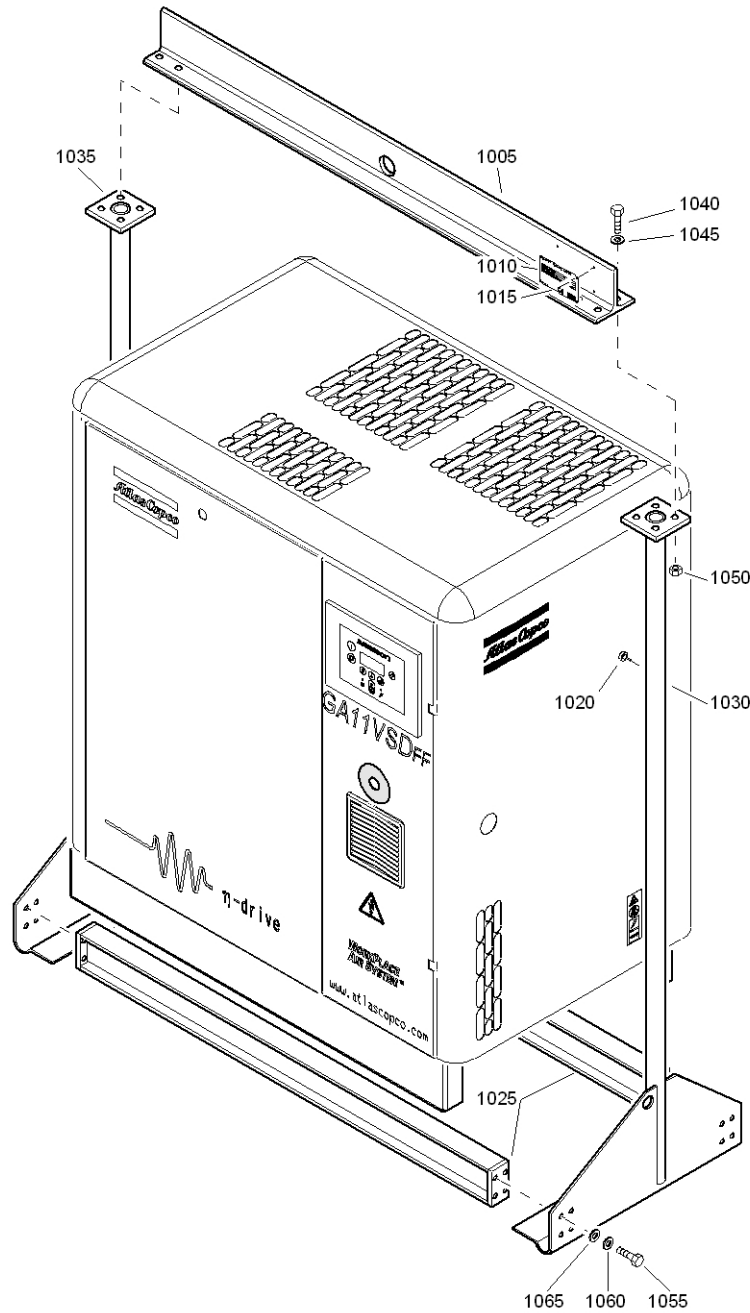
62750\_10

62750\_10

Ref.	Part number	Qty	Name	Remarks	Ref.	Part number	Qty	Name	Remarks
1005	1622 0877 00	1	Rain protection		1503	1056 00	• 3	AR Seal	
1010	0226 3256 00	15	Tapping screw		1020	0129 3115 00	3	Blind rivet	
1015	1613 7954 81	1	Baffle assy						

# 19

## Lifting device



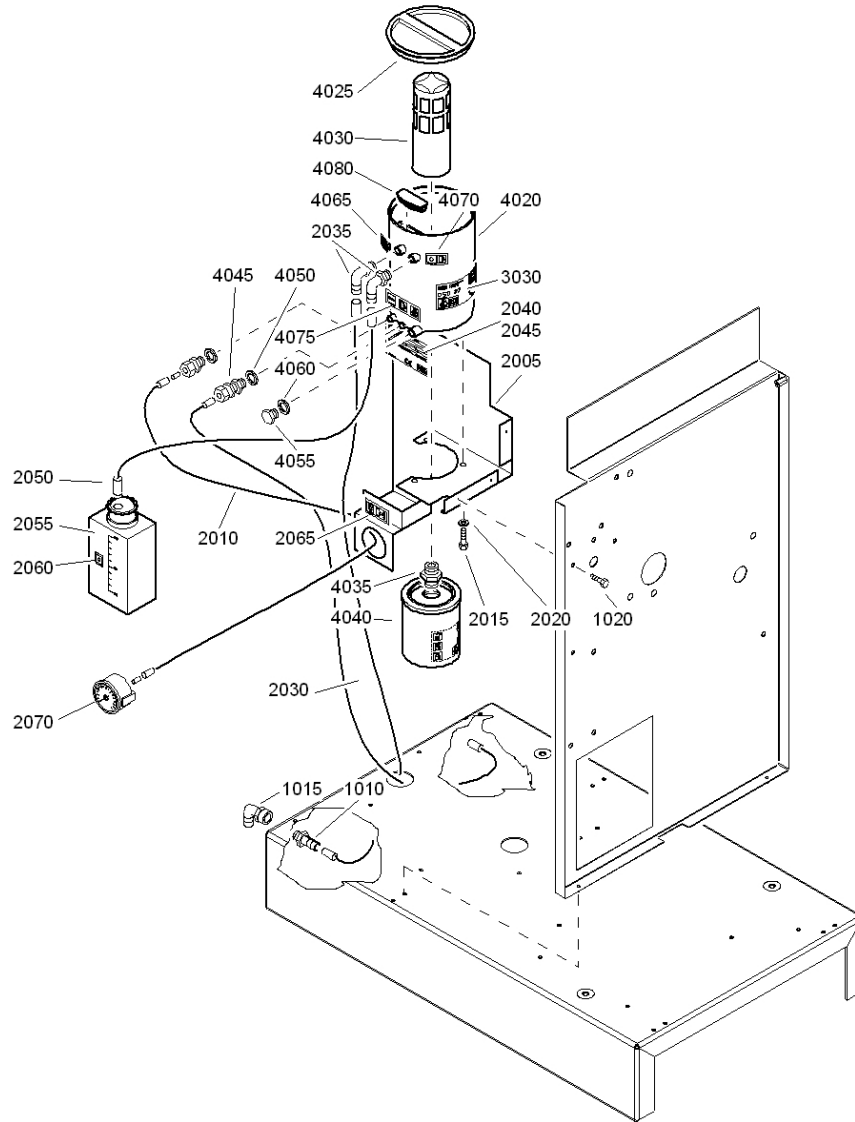
62751\_10

62751\_10

Ref.	Part number	Qty	Name	Remarks	Ref.	Part number	Qty	Name	Remarks
	<b>8092 2483 79</b>	<b>1</b>	<b>Standard option</b>		1035	1622 0883 00 •	1	Lifting device	
			Lifting device		1040	0147 1363 03 •	8	Hexagon bolt	
1005	1622 0880 00 •	1	Lifting device		1045	0301 2344 00 •	8	Washer	
1010	1613 7394 03 •	1	Data plate		1050	0291 1111 00 •	8	Lock nut	
1015	0160 6021 00 •	4	Rivet		1055	0147 1363 03 •	16	Hexagon bolt	
1020	1619 0269 00 •	2	Rubber bumper		1060	0333 2174 03 •	16	Freedom fastener	
1025	1622 0881 00 •	2	Lifting device		1065	0301 2344 00 •	16	Washer	
1030	1622 0882 00 •	1	Lifting device						

**Drain system - Oil Separator condensate Drain**

20

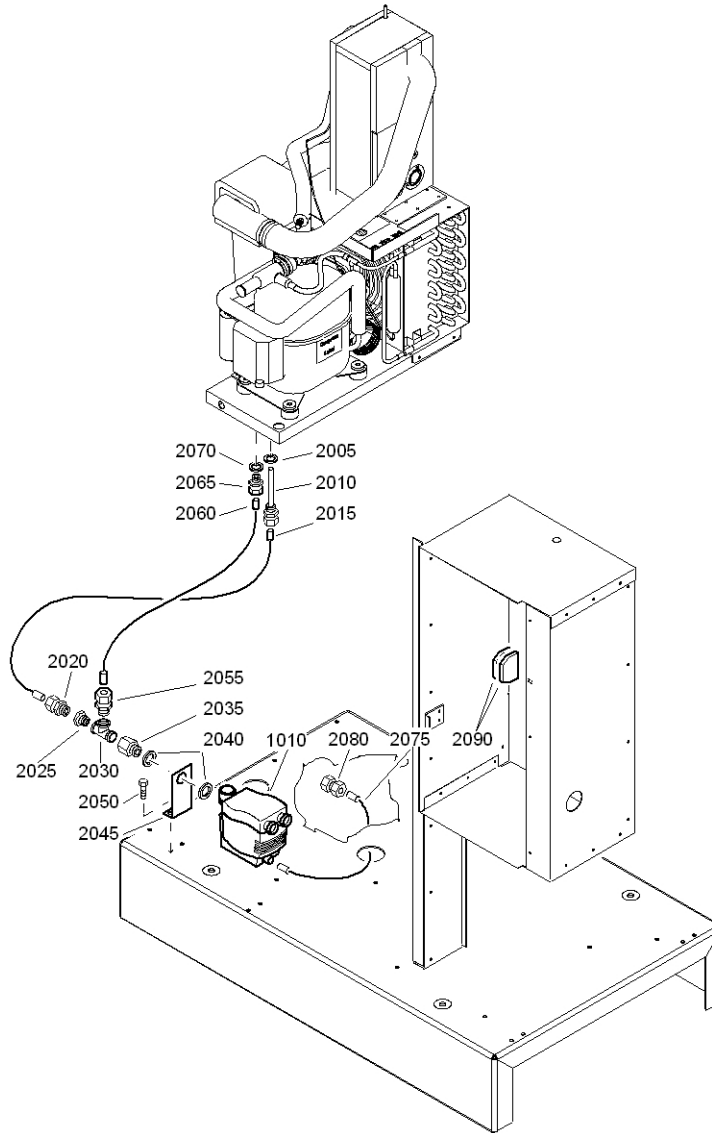


61774\_06

Ref.	Part number	Qty	Name	Remarks	Ref.	Part number	Qty	Name	Remarks
	<b>8092 2483 12</b>	<b>1</b>	<b>Standard option</b>		2070	1615 7264 00 ●●	1	Pressure gauge	
			OSD 22			<b>1613 7603 81 ●●</b>	<b>1</b>	<b>OSD 22 sub assy</b>	
1010	1613 7341 00 ●	1	Pipe coupling		3030	1079 9909 06 ●●●	1	Label	
1015	1613 7342 00 ●	1	Elbow coupling			<b>1613 7603 80 ●●●</b>	<b>1</b>	<b>OSD assembly</b>	
1020	0147 1963 08 ●	3	Hexagon bolt		4020	1613 7603 00 ●●●●	1	Housing	
	<b>1622 0849 80 ●</b>	<b>1</b>	<b>OSD 22</b>		4025	1613 7604 00 ●●●●	1	Plug	
2005	1622 0849 00 ●●	1	Plate		4030	1613 7299 00 ●●●●	1	Filter	
2010	0070 6002 05 ●●	AR	Plastic tube		4035	1613 7601 00 ●●●●	1	Check valve	
2015	0226 0301 00 ●●	3	Tapping screw		4040	1613 7602 00 ●●●●	1	Oil separator	
2020	0300 0275 23 ●●	3	Plain washer		<b>4045 1613 7378 00 ●●●●</b>	<b>1</b>	<b>Strainer</b>		
2030	0070 6002 14 ●●	AR	Plastic tube			0581 2024 25 ●●●●●	1	Sleeve	
2035	1613 7985 00 ●●	2	Nipple		4050	0653 0500 47 ●●●●	1	Gasket	
2040	1613 7384 00 ●●	1	Data plate		4055	0686 3716 02 ●●●●	1	Hexagon plug	
2045	0129 3103 00 ●●	4	Blind rivet		4060	0653 9098 00 ●●●●	1	Flat gasket	
2050	0070 6002 14 ●●	AR	Plastic tube		4065	1079 9913 69 ●●●●	1	Inform.label	
2055	1613 7657 00 ●●	1	Oil can		4070	1079 9912 28 ●●●●	1	Decal	
2060	1079 9912 38 ●●	1	Decal		4075	1079 9912 07 ●●●●	1	Decal	
2065	1079 9912 11 ●●	1	Decal		4080	1613 7945 00 ●●●●	1	Plug	

# 21

## Drain system - Electronic Water Drain - Floor mounted

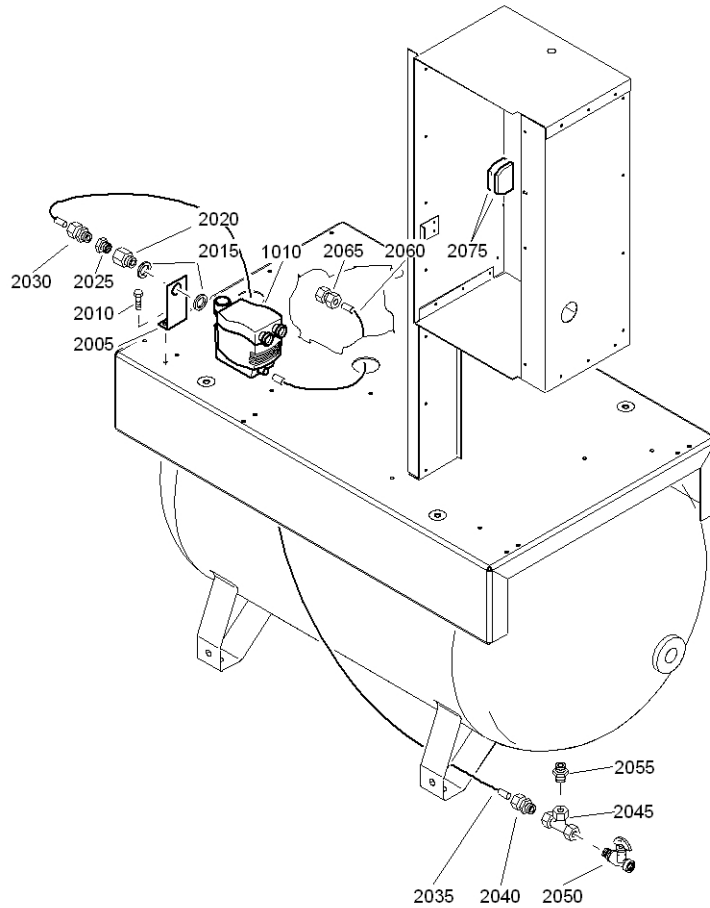


61789\_06

61789\_06

Ref.	Part number	Qty	Name	Remarks	Ref.	Part number	Qty	Name	Remarks
1010	1613 8913 02	1	EWD 50		2040	0661 1000 39	2	Seal washer	
	1613 8913 01		110V		2045	1622 0833 00	1	Support	
			230V		2050	0226 3256 00	2	Tapping screw	
2005	0661 1000 39	1	Seal washer		2055	0581 0000 53	1	Straight pipe coupling	
2010	1613 8084 00	1	Pipe coupling		2060	0070 6002 06	AR	Plastic tube	
2015	0070 6002 05	AR	Plastic tube		2065	0581 0000 45	1	Pipe coupling	
2020	0581 0000 35	1	Coupling		2070	0661 1000 39	1	Seal washer	
2025	0605 8700 90	1	Bushing		2075	0070 6002 05	AR	Plastic tube	
2030	1503 2566 13	1	Tee		2080	0581 0000 55	1	Pipe coupling	
2035	1613 9029 00	1	Nipple		2090	1089 0506 62	2	Terminal	

Drain system - Electronic Water Drain - Tank mounted



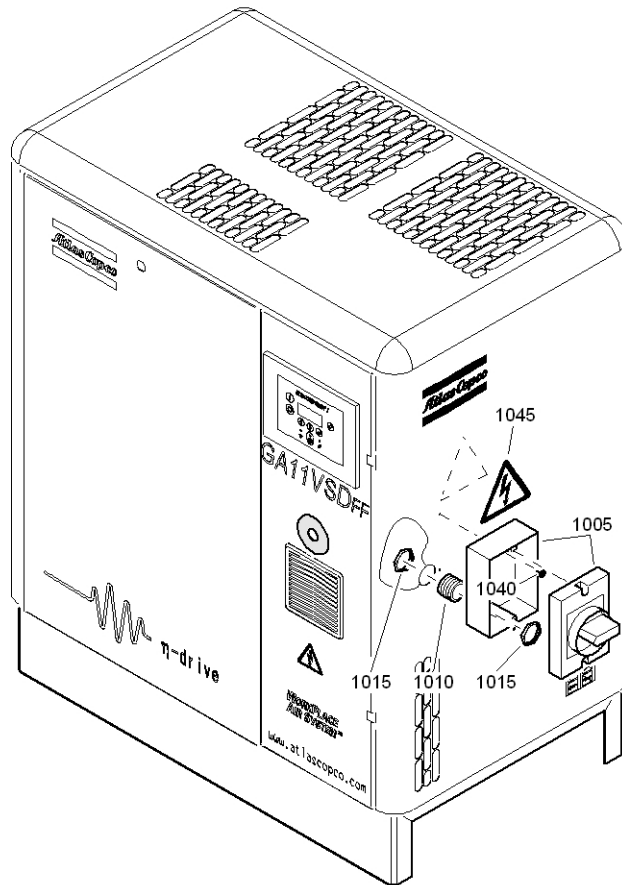
61791\_06

61791\_06

Ref.	Part number	Qty	Name	Remarks	Ref.	Part number	Qty	Name	Remarks
1010		1	EWD 50		2035	0070 6002 05	AR	Plastic tube	
	1613 8913 02		110V		2040	0581 0000 35	1	Coupling	
	1613 8913 01		230V		2045	1503 2566 11	1	Tee	
2005	1622 0833 00	1	Support		2050	0852 0010 36	1	Ball valve	
2010	0226 3256 00	2	Tapping screw		2055	1503 2564 11	1	Nipple	
2015	0661 1000 39	2	Seal washer		2060	0070 6002 05	AR	Plastic tube	
2020	1613 9029 00	1	Nipple		2065	0581 0000 55	1	Pipe coupling	
2025	0605 8700 90	1	Bushing		2075	1089 0506 62	2	Terminal	
2030	0581 0000 35	1	Coupling						

23

Main switch

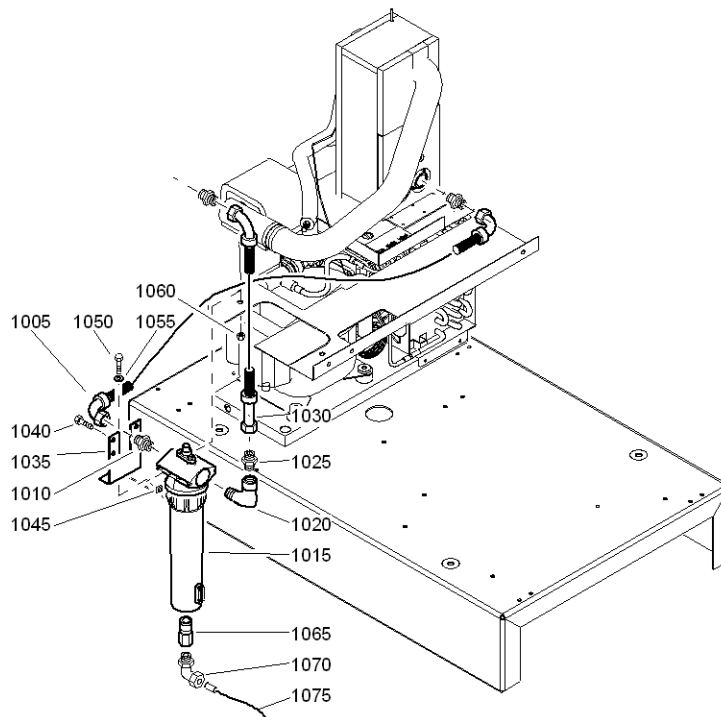


62752\_12

62752\_12

Ref.	Part number	Qty	Name	Remarks	Ref.	Part number	Qty	Name	Remarks
	<b>8092 2483 46</b>	<b>1</b>	<b>Main switch</b>		1015	0697 9809 06 •	2	Lock nut	
1005	1089 9445 03 •	1	Load disconnecter		1045	1088 1001 04 •	1	Warning mark	
1010	0697 9910 12 •	1	Nipple						

**DD Filter kit - WorkPlace Full-feature**



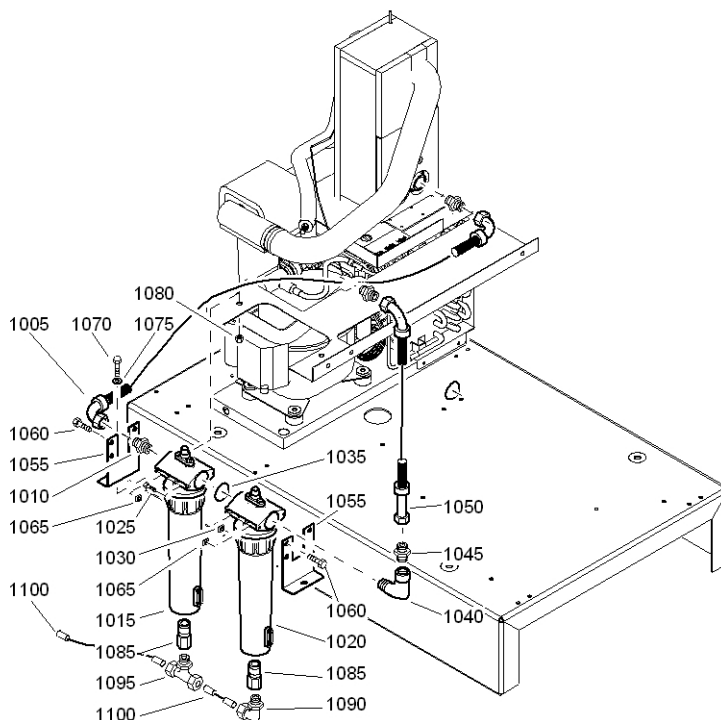
61776\_02

61776\_02

Ref.	Part number	Qty	Name	Remarks	Ref.	Part number	Qty	Name	Remarks
	<b>8092 2485 36</b>	<b>1</b>	<b>Standard option</b>						
			DD filter kit		1055	0301 2335 00	• 1	Washer	
1005	0574 9911 28	• 1	Hose assy		1060	0266 2110 00	• 1	Nut	
1010	0571 0035 55	• 1	Nipple		1065	1617 7082 02	• 1	Quick coupling	
1015	1617 7201 00	• 1	Filter DD 32		1070	0581 1228 04	• 1	Elbow	
1020	1503 2565 33	• 1	Bend		1075	0070 6002 05	• AR	Plastic tube	
1025	0571 0035 55	• 1	Nipple		1080	0581 2000 25	• 1	Pipe coupling	
1030	0574 9911 29	• 1	Hose assy		1085	0070 6002 05	• AR	Plastic tube	
1035	1622 0854 00	• 1	Bracket		1090	0581 0000 55	• 1	Pipe coupling	
1040	0162 4247 00	• 2	Bolt		1095	0661 1000 39	• 1	Seal washer	
1045	0282 0000 07	• 2	Square nut		1100	0581 0000 34	• 1	Coupling	
1050	0147 1323 03	• 1	Hexagon bolt		1105	0070 6002 04	• AR	Plastic tube	
					1110	0581 0000 33	• 1	Coupling	

# 25

## PD/DD Filter kit - WorkPlace Full-feature



61786\_02

61786\_02

Ref.	Part number	Qty	Name	Remarks	Ref.	Part number	Qty	Name	Remarks
	<b>8092 2484 60</b>	<b>1</b>	<b>Standard option</b>						
			PD/DD filter kit						
1005	0574 9911 28	• 1	Hose assy		1070	0147 1323 03	• 2	Hexagon bolt	
1010	0571 0035 55	• 1	Nipple		1075	0301 2335 00	• 2	Washer	
1015	1617 7202 00	• 1	Filter PD 32		1080	0266 2110 00	• 2	Nut	
1020	1617 7201 00	• 1	Filter DD 32		1085	1617 7082 02	• 2	Quick coupling	
1025	9125 7166 00	• 2	Hexagon socket		1090	0581 1228 04	• 1	Elbow	
1030	0282 0000 07	• 2	Square nut		1095	0581 2000 28	• 1	Tee coupling	
1035	0663 2100 24	• 1	O-ring		1100	0070 6002 05	• AR	Plastic tube	
1040	1503 2565 33	• 1	Bend		1105	0581 2000 25	• 1	Pipe coupling	
1045	0571 0035 55	• 1	Nipple		1110	0070 6002 05	• AR	Plastic tube	
1050	0574 9911 29	• 1	Hose assy		1115	0581 0000 55	• 1	Pipe coupling	
1055	1622 0854 00	• 2	Bracket		1120	0661 1000 39	• 1	Seal washer	
1060	0162 4247 00	• 4	Bolt		1125	0581 0000 34	• 1	Coupling	
1065	0282 0000 07	• 4	Square nut		1130	0070 6002 04	• AR	Plastic tube	
					1135	0581 0000 33	• 1	Coupling	

## Service Kits

Ref.	Part number	Qty	Name	Remarks	Ref.	Part number	Qty	Name	Remarks
	<b>2901 0298 50</b>	<b>1</b>	<b>Unloading valve kit</b>			1513 0028 01 •	1	Gasket	
	1513 0532 00 •	1	Piston			1513 0434 00 •	1	Valve	
	1513 0011 00 •	1	Spring			1613 9010 00 •	1	Gasket	
	1513 0019 00 •	1	Piston ring			<b>2901 0245 01</b>	<b>1</b>	<b>Oil can</b>	
	0663 2105 13 •	1	O-ring					ROTO-INJECTFLUID 5 l	
	1513 0015 00 •	1	Spring			<b>2901 0522 00</b>	<b>1</b>	<b>Oil can</b>	
	0663 6129 00 •	1	O-ring					ROTO-INJECTFLUID 20 l	
	0663 7132 00 •	1	O-ring						
	0335 2130 00 •	1	Circlip						
	0335 2136 00 •	1	Circlip						







# **Atlas Copco** Stationary Air Compressors

GA 7 VSD, GA 11VSD

Parts list

What sets Atlas Copco apart as a company is our conviction that we can only excel in what we do if we provide the best possible know-how and technology to really help our customers produce, grow and succeed.

There is a unique way of achieving that - we simply call it the Atlas Copco way. It builds on **interaction**, on long-term relationships and involvement in the customers' process, needs and objectives. It means having the flexibility to adapt to the diverse demands of the people we cater for.

It's the **commitment** to our customers' business that drives our effort towards increasing their productivity through better solutions. It starts with fully supporting existing products and continuously doing things better, but it goes much further, creating advances in technology through **innovation**. Not for the sake of technology, but for the sake of our customer's bottom line and peace-of-mind.

That is how Atlas Copco will strive to remain the first choice, to succeed in attracting new business and to maintain our position as the industry leader.

